

1 Clinical Trial Report

2 Muyan Zuo et al

3 **Esketamine rapid antidepression combined with**  
4 **dexmedetomidine sleep modulation for patients with**  
5 **depression and insomnia**

6 Muyan Zuo<sup>1</sup>, Yaozu Li<sup>1</sup>, John P Williams<sup>2</sup>, Yongxiang Li<sup>3</sup>, Lina Sun<sup>3</sup>, Ruoguo Wang<sup>3</sup>,

7 Guoqiang Ren<sup>4</sup>, Qinyan Xu<sup>5\*</sup>, Jianxiong An<sup>123\*</sup>

8

9 <sup>1</sup> Medical School, University of Chinese Academy of Sciences, Beijing, China

10 <sup>2</sup> Department of Anesthesiology, University of Pittsburgh School of Medicine, Pittsburgh,

11 USA

12 <sup>3</sup> Institute for Innovation Diagnosis & Treatment in Anesthesiology, Rapid Antidepression

13 Center, Affiliated Hospital of Shandong Second Medical University, Weifang, China

14 <sup>4</sup> Department of Anesthesiology, Shandong Mental Health Center, Jinan, China

15 <sup>5</sup> Imaging Center, Affiliated Hospital of Shandong Second Medical University, Weifang,

16 China

17

18 \*These authors contributed equally to this work

19

20 Correspondence: Jianxiong An, University of Chinese Academy of Sciences, Chaoyang

21 District, Beijing, China, Tel +86-13801281750, Email [anjianxiong@yeah.net](mailto:anjianxiong@yeah.net); Qin-Yan Xu,

22 Imaging Center, Affiliated Hospital of Shandong Second Medical University, Weifang,  
23 China, Tel +86-13801281750, Email [xu15065635583@163.com](mailto:xu15065635583@163.com).

24

25 **ABSTRACT:**

26 **Purpose:** Depression combined with insomnia is a complex bidirectional relationship that  
27 is more difficult to treat versus a single disorder, and there is a lack of effective treatments  
28 available. In this study, we carried out a novel way to simultaneously intervene in  
29 depression combined with insomnia and examined functional magnetic resonance imaging  
30 (fMRI) to help further elucidate the mechanisms.

31 **Patients and methods:** A total of 105 patients with depression and insomnia were  
32 included in this observational and prospective study. 17-item Hamilton Depression Scale  
33 (HAMD-17), Pittsburgh Sleep Quality Index (PSQI) were collected from medical records at  
34 baseline (T0), 24 hours (T1), 7 days (T2), 14 days (T3), 21 days (T4), one month (T5), two  
35 months (T6), three months (T7) follow-up. fMRI scans were performed at baseline and two  
36 hours after treatment.

37 **Results:** Compared with baseline, the symptoms of depression in T1-T7 were significantly  
38 reduced. At two hours after treatment, the left amygdala, the left hippocampus, the left  
39 superior temporal gyrus, the left anterior cingulate gyrus, and the left paracingulate gyrus  
40 showed a consistent reduction in spontaneous neural functional activity. In contrast, the  
41 right dorsolateral superior frontal gyrus, middle frontal gyrus, infraorbital frontal gyrus,  
42 middle orbital frontal gyrus and right caudate nucleus showed increased consistency of

43 spontaneous neural function. No unanticipated safety issues were detected, and the rate  
44 of side effects was equivalent to those reported in RCTs.

45 **Conclusion:** Our findings support the efficacy and safety of esketamine combined with  
46 dexmedetomidine (Dex) in patients with depression and insomnia, which provides a new  
47 approach to clinical improvement of depression combined with insomnia.

48 **Keywords:** antidepressant, sleep quality, mental disorder, functional magnetic resonance  
49 imaging

50

51

52

53

54

55

56

57

58

59

60

61

62

63

## 64 **Introduction**

65 Depression is the most common mental disorder worldwide, accounting for 17.3% of the  
66 global burden of mental illness and is characterized by a variety of symptoms such as  
67 depressive mood, anhedonia, somatization, cognitive disturbance, and sleep disorder.<sup>1</sup>  
68 Sleep disorder is always the primary complaint and the first symptom of depressed  
69 patients, suicidal ideation, treatment response, relapse risk, and the intensity of  
70 depression are all correlated with the severity of insomnia.<sup>2</sup> Numerous studies have  
71 demonstrated that insomnia and depression have a complex bidirectional link rather than a  
72 simple cause-and-effect one.<sup>3,4</sup> Additionally, sleep disorders linked to depression are  
73 persistent and troublesome conditions that significantly impair patients' social functioning  
74 and quality of life.<sup>5,6</sup>

75 Sleep disorder was traditionally seen as being simply affiliated with depression thus,  
76 insomnia was rarely the target of treatment because it was widely assumed that insomnia  
77 will resolve with treatment for depression.<sup>7</sup> Currently however, sleep disorder is recognized  
78 as a distinct diagnostic category that can potentially contribute to episodes of depression,  
79 and enhancing sleep quality has been found to have a positive impact on the outcomes of  
80 depression.<sup>8</sup> The main treatment modalities currently available include medication and  
81 cognitive behavioral therapy (CBT). Sedative antidepressants shorten sleep latency and  
82 improve sleep efficiency, however, there are issues such as drug dependence and  
83 tolerance, and approximately 30% of people diagnosed with major depression do not  
84 achieve remission, even after undergoing treatment with various antidepressant

85 medications.<sup>9</sup> Although CBT is a significant non-pharmacological treatment for insomnia  
86 and has been demonstrated to be useful in reducing depression, there are still limits due  
87 to a shortage of specialist psychiatrists and geographic distance from providers.<sup>10</sup>  
88 Furthermore, both pharmacological and CBT are slow to work, especially as many  
89 depressed patients are at imminent risk of suicide.

90 In clinical practice, depressed patients with insomnia are prone to encounter more  
91 serious symptoms and difficulties in therapy.<sup>11</sup> If only depression is treated, the core  
92 symptoms may be in remission, but persistent insomnia remains a common residual  
93 symptom in depressed patients, and if an intervention for insomnia occurs without  
94 concomitant treatment for depression, it is difficult to cure due to relapse and may  
95 contribute to unpleasant clinical outcomes.

96 Depression and insomnia share a common biological mechanism. Functional  
97 magnetic resonance imaging (fMRI) studies have found that 39 brain regions, including the  
98 amygdala, hippocampus, dorsolateral prefrontal cortex, anterior and posterior cingulate  
99 cortices, are associated with insomnia and depression.<sup>12</sup> In addition, inflammatory markers  
100 such as IL-6 and TNF were elevated in both insomnia and depression patients,<sup>13,14</sup> the  
101 combined action of cholinergic and monoaminergic neurons modulates sleep rhythms but  
102 are also one of the well-known pathophysiological mechanisms of depression.<sup>9</sup> The  
103 substantial correlation between insomnia and depression is evident, but the exact  
104 interaction between them is still uncertain, which is also the reason for the lack of effective  
105 intervention methods in clinic. Due to these shortcomings in traditional treatments,

106 clinicians and researchers are exploring novel ways to improve the treatment of  
107 depression combined with insomnia. The US Food and Drug Administration (FDA) and  
108 Europe approved esketamine for the treatment of patients with treatment-resistant  
109 depression (TRD) in 2019, a series of studies have demonstrated the efficacy and safety  
110 of esketamine.<sup>15,16</sup> In our previous study, we developed Patient-Controlled Sleep (PCSL)  
111 as a therapeutic modality to treat chronic intractable insomnia by using dexmedetomidine  
112 (Dex).<sup>17</sup> Given the above context, we initiated a pilot study to evaluate the effectiveness of  
113 the combination of esketamine and Dex in the treatment of depression combined with  
114 insomnia.

115

## 116 **Patients and Methods**

### 117 **Participants and study design**

118 This was a single arm study. The clinical trial has been approved by the Institutional  
119 Review Board (IRB) of the Shandong Second Medical University (wyfy-2023-ky-057) and  
120 registered on Chinese Clinical Trial Registry (ChiCTR2300070756), which was performed  
121 from April 2023 to December 2023 at our center. The study protocol followed the  
122 Declaration of Helsinki. All participants gave written informed consent for participation in  
123 the study and were fully aware of the risks associated with off-label use, informed consent  
124 for minor participants were obtained from legal guardian. Eligibility criteria for patients  
125 were as follows: (1) Met the diagnostic criteria for depression and insomnia according to  
126 the fifth edition of the Diagnostic and Statistical Manual of Mental Disorders. (2) The

127 patient had right-hand dominance. Patients were excluded as follows: (1) Contraindication  
128 of Dex and esketamine: heart block, intracranial hypertension, hyperthyroidism and  
129 narrow-angle glaucoma. (2) Patients with other types of sleep disorders such as sleep  
130 apnea, restless legs syndrome, etc. All participants underwent a physical examination and  
131 laboratory screening, including electrocardiography, routine hematology and chemistry  
132 tests, sex hormone tests and thyroid functional measurement. In addition, all patients  
133 underwent free fMRI scans. The 17-item Hamilton Depression Scale (HAMD-17)<sup>18</sup> were  
134 used to characterize depressive symptoms by clinicians (We have obtained the copyright  
135 license for the scale). The Pittsburgh Sleep Quality Index (PSQI)<sup>19</sup> was used to assess  
136 severity of insomnia.

137

## 138 **Study procedures**

139 Prior to treatment, patients were instructed to fast for six hours, but they were permitted to  
140 consume clear liquids for a period of two hours. Sleep monitoring was performed with a  
141 polysomnography (PSG) device (iRem-A, iphysio, Hangzhou, China) equipped with six  
142 electroencephalograph (EEG) leads (F3, F4, C3, C4, O1, and O2), two electrooculogram  
143 (EOG) leads (M1 and M2), submental EMG, anterior tibialis EMG  
144 (right and left legs), respiratory effort (thoracic and abdominal impedance),  
145 electrocardiogram (ECG) and pulse oximetry. The PSG electrodes were applied to the  
146 participants an hour before therapy. The PSG recordings complied with American  
147 Academy of Sleep Medicine (AASM) recommendations.<sup>20</sup> A certified registered nurse

148 (CRN) inserted a dedicated intravenous cannula and started an infusion of 500 mL of  
149 saline solution. During the procedure, patients were monitored with ECG, non-invasive  
150 blood pressure (BP) monitoring, oxygen saturation (SpO<sub>2</sub>) and bispectral index (BIS). A  
151 solution was prepared by diluting 200 mcg of Dex (HumanwellHealthcare(Group)Co., Ltd.  
152 Hubei, China) with 0.9% normal saline to a volume of 50 mL in a syringe. The resulting  
153 drug concentration was maintained at 4 mcg/mL, a Constant Speed Syringe Pump  
154 (Hopefusion™, SP5, Weifang, China) was utilized to administer the solution through the  
155 intravenous cannula. Dex titration was performed subsequent to the preceding protocol,<sup>17</sup>  
156 the titration technique was established by a seasoned anesthesiologist (An JX), and the  
157 attending anesthesiologist (Li YX) performed and documented the operation and  
158 evaluation, the anesthesiologist operated the constant speed syringe pump, employing a  
159 basal rate of 60 mL/h (4 mcg/min). At the same time, a trained physician judged the sleep  
160 stage of the patients based on PSG, and the titration was stopped when the characteristic  
161 spindles and K-waves were seen and the patients entered the N2 stage, the dosage of  
162 Dex at this time was recorded as D1. Then esketamine 0.25 mg/kg diluted to 50 ml was  
163 infused over 40 minutes. A trained rater assessed side effects two hours after start of  
164 infusion. All patients underwent fMRI scanning two hours after stopping the infusion. The  
165 BP was kept within 30% of the initial level, phenylephrine was used to raise blood  
166 pressure and nitroglycerin was used to lower it if the reading deviated from the intended  
167 range; Anisodamine was given if the heart rate (HR) fell below 40 bpm; If the previous  
168 course of treatment didn't work, atropine and isoproterenol were made accessible. If



169 agitation occurred during the application of esketamine, midazolam was given for  
170 sedation, but needed to be excluded from the study. The anesthesiologist made the  
171 decision about additional medical care.

172       Following therapy, patients were excluded if they reported discomfort or exhibited side  
173 symptoms, such as agitation, bradycardia, or hypotension. Participants who were able to  
174 endure the treatment were identified as potential candidates to proceed with Self-  
175 controlled sleep. The patient was assisted by a specialized nurse in self-controlled sleep  
176 30 minutes before bedtime, 1.5 times the dose of D1 was drawn by a syringe and injected  
177 into a sterile cotton ball, which was placed under the patient's tongue for 10 minutes to  
178 allow the Dex to be fully absorbed, the cotton ball was removed, and the patient lied down  
179 to rest and fall asleep naturally. If the patient woke up and was unable to sleep at night,  
180 added 0.5 times D1 in the same way. In a sound-insulated chamber, specially trained  
181 nurses assessed HR and SpO<sub>2</sub>. After discharge from the hospital, the patient continued to  
182 apply self-controlled sleep every night in the manner described above and arranged for a  
183 trained medical professional to follow up and adjust the Dex dosage according to the sleep  
184 situation.

185       Participants were required to maintain their present psychiatric medication regimen  
186 consistent for four weeks before the first infusion and for three weeks after treatment.  
187 Patients received another esketamine antidepressant treatment when the patient  
188 experienced a relapse, relapse was considered the reappearance of symptoms from a  
189 continuing episode that had been symptomatically repressed.<sup>21</sup> To evaluate the efficacy of

190 esketamine use, when the patients' HAMD-17 score decreased by 50% overall from the  
191 baseline evaluation, they were classified as responders.<sup>22</sup> In addition, remission was  
192 defined as a HAMD-17 score of <7.<sup>23</sup> The HAMD-17 and PSQI scores were gathered by  
193 telephone surveys and online questionnaires. Two physicians who were not participating in  
194 the clinical trial conducted follow-up interviews. Rating scales were administered at  
195 baseline (T0) and at seven-time intervals after infusion: 24 hours (T1), 7 days (T2), 14  
196 days (T3), 21 days (T4), one month (T5), two months (T6), and three months (T7). All  
197 personal data was recorded on the Case Record Form (CRF) and was kept totally private  
198 for the sole purpose of study. Personal data will be kept by the members of the research  
199 team.

200

## 201 Magnetic Resonance Imaging Acquisition

202 The imaging was conducted utilizing a 3.0-T Magnetic Resonance Imaging (MRI) scanner  
203 (Signa HDxt, GE Medical Systems, Waukesha, WI, USA) that had an eight-channel phase  
204 array head coil. Two earplugs that were the right size were utilized to limit scanner noise,  
205 and plastic foam pads were employed to lessen head movement. All individuals were  
206 instructed to stay motionless during the scanning procedure, keeping their eyes closed but  
207 not thinking or dozing off. If a participant displayed signs of discomfort, their scanning was  
208 stopped.

209 To begin, all participants underwent T2-weighted imaging (T2WI) to rule out the  
210 possibility of asymptomatic lesions.

211 The following parameters were used to obtain resting-state fMRI data: total  
212 volume=200, repetition time (TR)=2,000 ms, echo time (TE)=30 ms, flip angle=90°, slice  
213 thickness=4.0 ms, matrix=64×64, field of view (FOV)=240×240 ms, number of slices=32,  
214 the duration of the session was 400 seconds. Collecting three-dimensional high-resolution  
215 T1-weighted anatomical images with the following parameters: TR=7.8 ms, TE=3.0 ms, flip  
216 angle=15°, slice thickness=1.0 mm, FOV=256×256 mm<sup>2</sup>, matrix=256×256, and number of  
217 slices=188 were achieved using the defective gradient recalled acquisition, the entire  
218 session lasted 250 s.

219

## 220 Data Preprocessing

221 REST plus, V1.25 was executed on the MATLAB 2017b platform (MathWorks, Natick, MA,  
222 USA), was used for processing fMRI data.<sup>24</sup> The steps were as follow: (1) for magnetic  
223 field stabilization, delete the first ten of the 200-time points, (2) a correction to the slice  
224 timing in order to account for acquisition delays between slices, (3) head motion  
225 correction, (4) normalization, (5) remove the impact of thermal drift on the signal during  
226 extended scanning, (6) to remove the head motion confound, the 24 head motion  
227 characteristics were regressed out.<sup>25</sup> As a result of excessive head motion, eleven  
228 participants were disqualified from additional analysis. (7) band-pass filtration with a 0.01–  
229 0.08 Hz frequency band.

230

## 231 Regional homogeneity calculations

232 Regional homogeneity (ReHo) was evaluated using the Kendall's coefficient of  
233 concordance (KCC), a task executed utilizing the REST plus toolkits version 1.25.<sup>24</sup> In  
234 order to obtain the ReHo value, every 27 closest neighboring voxels' time course KCC  
235 was calculated.<sup>26</sup> For purposes of standardization, each voxel's ReHo value was divided  
236 by the individual's global mean ReHo. After the ReHo calculation, fullwidth at half-  
237 maximum [FWHM] = 6 mm was used for the spatial smoothing.–

238

## 239 Statistical analysis

240 The G\*Power software and the ANOVA: repeated measures, within factors test were  
241 utilized for calculating the sample size. In accordance with previous research, the sample  
242 size was determined using the anticipated response to esketamine as 40%, a significance  
243 level of 0.05, and a power of 95%. Additionally, the non-experimental sample was  
244 accounted for when testing the hypothesis of 20% of the patients discontinuing treatment  
245 prematurely or not initiating it.

246 The mean and standard deviation (SD) are used to show continuous variables.

247 Numbers and percentages are used to show category variables. Using a repeated-  
248 measures analysis of variance (ANOVA) on the HAMD-17 and PSQI scores, the  
249 intervention impact was determined. Pearson's correlation analyses were used to  
250 investigate the associations between clinical symptom remission (lower HAMD-17 and  
251 PSQI scores) and sociodemographic characteristics.

252 A paired t-test was performed in the field of Data Processing & Analysis for Brain

253 Imaging (REST plus, V1.25)<sup>24</sup> to compare the ReHo differences between the baseline and  
254 after treatment. In the statistical study, Gaussian Random Field theory (GRF) correction for  
255 multiple comparisons, the results were thresholded with voxel level  $p < 0.005$ , cluster level  
256  $p < 0.05$ .

257

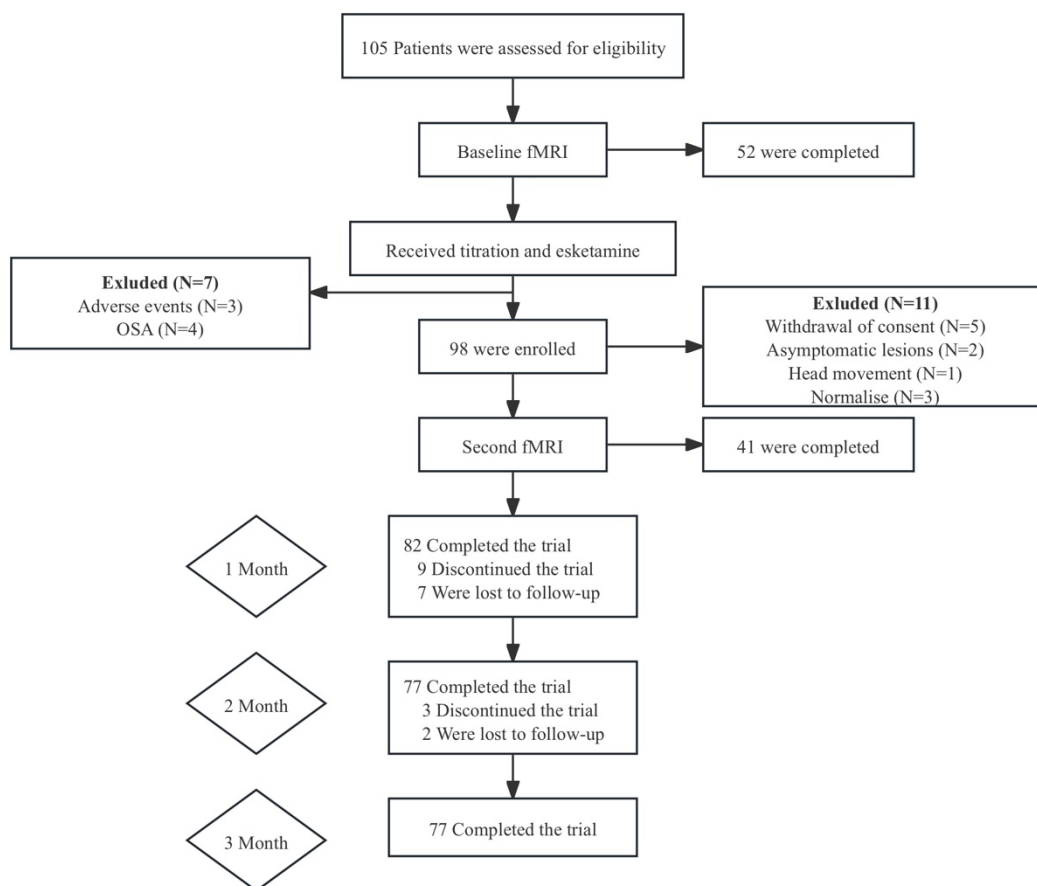
## 258 **Results**

### 259 **Baseline characteristics and treatments**

260 A total of 98 patients were enrolled, 41 of whom completed the second fMRI (Figure 1).  
261 Most participants completed the treatment phase and entered the post-treatment follow-up  
262 phase, with 77 completing the 3-month follow-up (Table 1). There were 47 (61.0%)  
263 females and 30 (39.0%) males, 30 (39.0%) married, and 47 (61.0%) singles. The mean  
264 age was 28.95 ( $\pm 14.64$ ) years, the mean duration of depression was 5.16 ( $\pm 6.18$ ) years,  
265 and the mean duration of insomnia was 4.98 ( $\pm 6.82$ ) years. The mean HAMD-17 score  
266 was 25.61 ( $\pm 6.31$ ) and the mean PSQI score was 14.08 ( $\pm 2.84$ ). 48 patients (62.3%) had a  
267 history of suicide ideation, and 18 patients (23.4%) had a history of self-injury.

268 Bipolar disorder (BD) was the most common comorbidity (13.0%), together with  
269 schizophrenia (SZ) (10.4%). 70.1% of the individuals had no additional mental conditions.  
270 62 patients (81%) had received antidepressant therapy in the past, 14 patients (18.2%)  
271 had previously used repetitive transcranial magnetic stimulation (rTMS); and 13 patients  
272 (16.9%) had previously used ECT for treating depression. In addition, 31 patients (40.3%)  
273 were taking hypnotics. As part of augmentation techniques, 33 patients (42.9%) were

274 taking SSRIs and 6 patients (7.8%) were using SNRIs as antidepressants, 23 patients  
275 (29.9%) were taking an antipsychotic in addition to antidepressant (Table 1).



276

277 **Figure 1** The flowchart for the study.

278 **Abbreviations:** obstructive sleep apnea; fMRI: functional magnetic resonance imaging

279

280 **Table 1** Sociodemographic and clinical data (n=77)

	Mean	Sd
Age	28.95	14.64
Body mass index (calculated as kg/m <sup>2</sup> )	23.75	5.34

Education	12.23	3.86
Duration of depression (years)	5.16	6.18
Duration of insomnia (years)	4.98	6.82
Baseline clinical measures		
HAMD-17	25.61	6.31
PSQI	14.08	2.84
	N	%
Female	47	61.0%
Status		
Single	47	61.0%
Married	30	39.0%
Previous suicidal ideation	48	62.3%
Previous self-injury	18	23.4%
Psychiatric comorbidities		
BD	10	13.0%
SZ	8	10.4%
OCD	3	3.9%
PTSD	1	1.3%
SAD	1	1.3%
Participants who attempted FDA-approved rTMS	14	18.2%

Participants who attempted FDA-approved ECT	13	16.9%
Add-on therapies		
Hypnotics	31	40.3%
SSRIs	33	42.9%
SNRIs	6	7.8%
Antipsychotic	23	29.9%
Other antidepressants	7	9.1%

281 **Abbreviations:** HAMD-17: Hamilton Depression Scale; PSQI: Pittsburgh Sleep Quality

282 Index; BD: Bipolar disorder; SZ: Schizophrenia; OCD: Obsessive-compulsive disorder;

283 PTSD: Post-traumatic stress disorder; SAD: Social anxiety disorder; SSRI: Selective

284 serotonin reuptake inhibitors. SNRIs: Serotonin and Noradrenalin Reuptake Inhibitors.

285

## 286 Effects of depression and insomnia

287 Repeated measurements showed that HAMD-17 scores decreased significantly at T1–T7

288 compared with T0. The average HAMD-17 score was 25.61 ( $\pm 6.31$ ) at T0, 19.77 ( $\pm 6.85$ ) at

289 T1, and 11.90 $\pm$ 6.44 at T7, One-way ANOVA results showed that HAMD-17 scores

290 significantly decreased over time ( $F=29.043$ ,  $p<0.01$ ) (Figure 2A). In addition, esketamine

291 also had a significant effect on reducing suicidal ideation, with 48 patients had suicidal

292 ideation in the past three months before treatment and 42 patients no longer had suicidal

293 ideation at T8; in addition, 18 patients had non-suicidal self-injury before treatment, and

294 only two patients still had this behavior at T7.

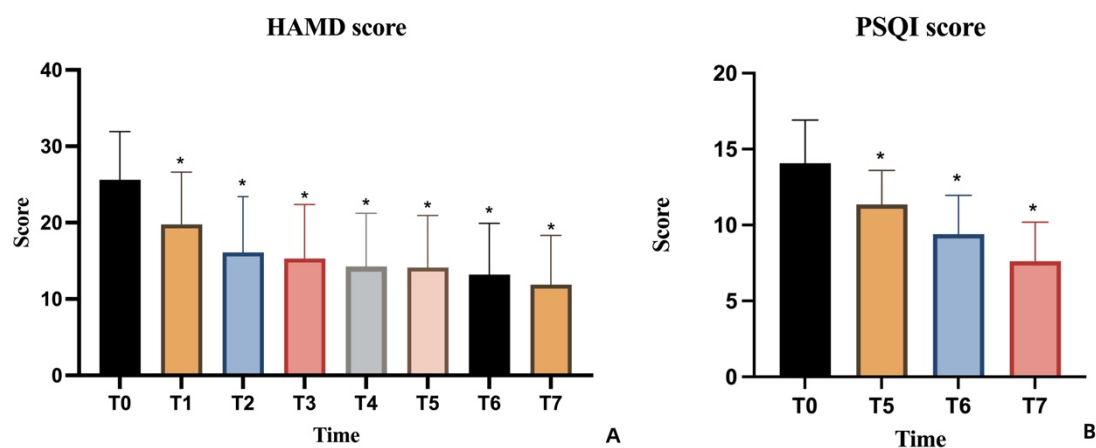


295 The average PSQI score was 14.08 ( $\pm 2.84$ ) at T0, 11.36 ( $\pm 2.24$ ) at T5 ( $p < 0.01$ ), and  
296 9.40  $\pm 2.56$  at T6, and 7.61 ( $\pm 2.58$ ) at T7. PSQI scores decreased significantly at T5, T6  
297 and T7 compared with T0 ( $F = 107.852$ ,  $p < 0.01$ ) (Figure 2B).

298 Overall effectiveness was assessed at T7, according to the definitions of responder and  
299 remission, 26 (34%) patients exhibited a clinical response to treatment, and 21 (27%)  
300 patients were in remission, 11 (14%) patients did not respond to treatment and 19 (25%)  
301 patients had a HAMD-17 decrease of  $\geq 20\%$  but not yet 50% (Figure 3).

302 We further analyzed the demographic information and clinical data of responders and  
303 non-responders and found that there were statistically significant differences in age,  
304 insomnia duration, and marital status between the two groups (Table 2).

305



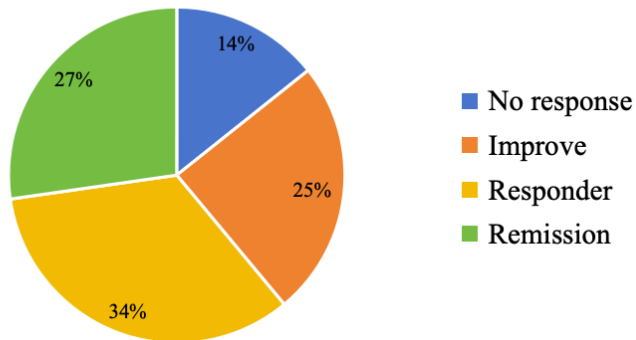
306

307 **Figure 2** Treatment outcomes.

308 **Abbreviations:** HAMD: Hamilton Depression Scale; PSQI: Pittsburgh Sleep Quality Index.

309

### Overall effectiveness



310

311 **Figure 3** Overall effectiveness.

312

313 **Table 2** Differences in sociodemographic and clinical data between responders and non-

314 responders

	responders (n=47)	non-responders (n=30)	P
Age	24.60±13.13	35.77±14.46	0.001
Body mass index (calculated as kg/m <sup>2</sup> )	23.12±5.72	24.72±4.62	0.20
Education	11.91±3.99	12.73±3.67	0.37
Duration of depression (years)	4.13±5.42	6.79±6.99	0.06
Duration of insomnia (years)	3.49±5.34	7.30±8.22	0.02
Baseline clinical measures			
HAMD-17	25.40±6.62	25.93±5.89	0.72
PSQI	13.72±2.40	14.63±3.38	0.21

	N (%)		P
Female	31 (66%)	16 (53.3%)	0.27
Status			
Single	35 (74.5%)	12 (25.5%)	0.002
Married	12 (40.0%)	18 (60.0%)	
Previous suicidal ideation	32 (68.1%)	16 (53.3%)	0.19
Previous self-injury	14 (29.8%)	4 (13.3%)	0.10
Participants who attempted FDA-approved rTMS	8 (17.0%)	6 (20.0%)	0.74
Participants who attempted FDA-approved ECT	6 (12.8%)	7 (23.3%)	0.23

315

316 **Brain activity between baseline and two hours after**  
317 **treatment**

318 Compared with baseline, decreased ReHo values were observed in the left amygdala, left  
319 hippocampus, left superior temporal gyrus, left anterior cingulate gyrus, and paracingulate  
320 gyrus. In contrast, increased ReHo values were observed in the right dorsolateral superior  
321 frontal gyrus, middle frontal gyrus, inferior orbital frontal gyrus, middle orbital frontal gyrus,  
322 and right caudate nucleus (Figure 4). Table 3 details the regions with significant  
323 differences. The preceding outcomes were adjusted utilizing the Gaussian Random Field  
324 theory (GRF) (voxel  $p < 0.005$ , cluster  $p < 0.05$ ).

325

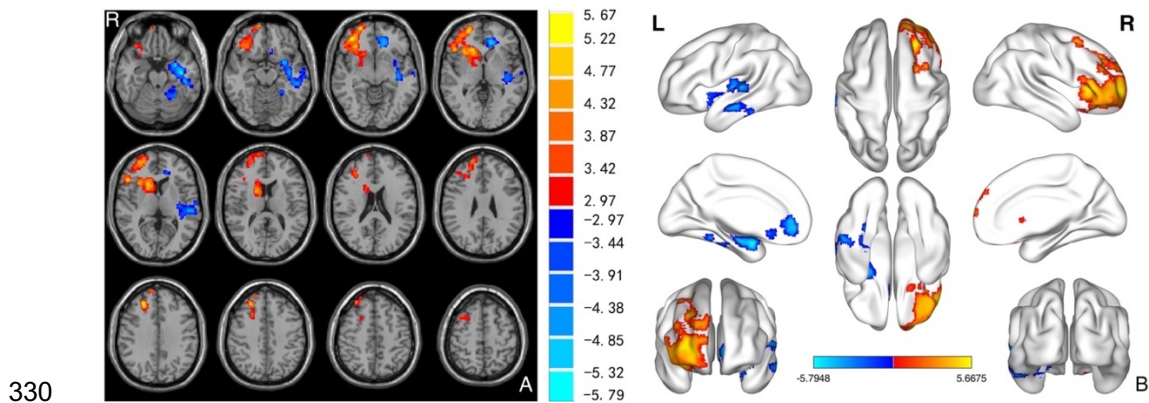
326 **Table 3** Brain areas with significantly changed ReHo values

AAL cluster label	Cluster size	MNI coordinate			Peak T value
		x	y	z	
clusyter1 Amygdala_L Hippocampus_L Temporal_Sup_L	733	-30	3	-18	-5.7948
clusyter2 Frontal_Sup_R Frontal_Mid_R Frontal_Inf_Orb_R Frontal_Mid_Orb_R Caudate_R	1815	24	36	36	5.6675
clusyter3 Cingulum_Ant_L	204	-12	39	3	-5.2302

327 **Abbreviations:** AAL: Anatomical Automatic Labeling; MNI coordinates (X, Y, and Z)

328 refer to the cluster's center of gravity.

329



331 **Figure 4** ReHo maps demonstrate significant variations in brain activity at baseline and

332 after therapy.

333

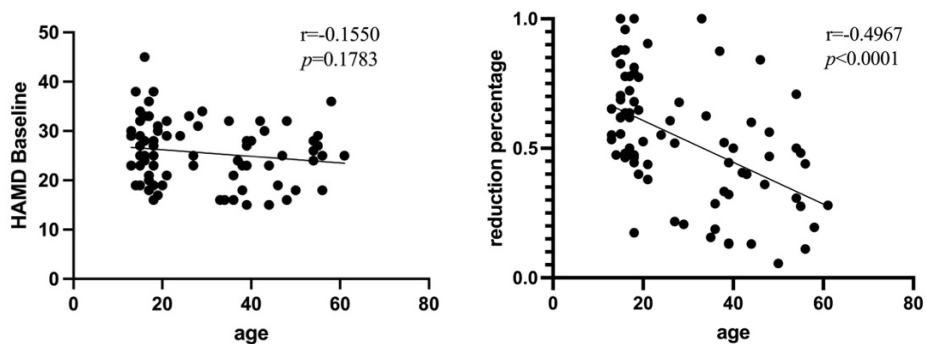
### 334 Correlation analyses

335 There was no statistically significant correlation between baseline HAMD-17 score and

336 age, and after treatment, percentage improvement in HAMD-17 scores was negatively

337 correlated with age ( $p < 0.001$ ,  $r = 0.4967$ ) (Figure 5).

338



340 **Figure 5** Correlation analyses between HAMD-17 scores and age.

341 **Abbreviations:** HAMD: Hamilton Depression Scale.

342

## 343 Safety and tolerability

344 As described above, seven patients discontinued treatment due to severe side effects.

345 Three patients were diagnosed with OSA during titration, two patients had HR less than 40

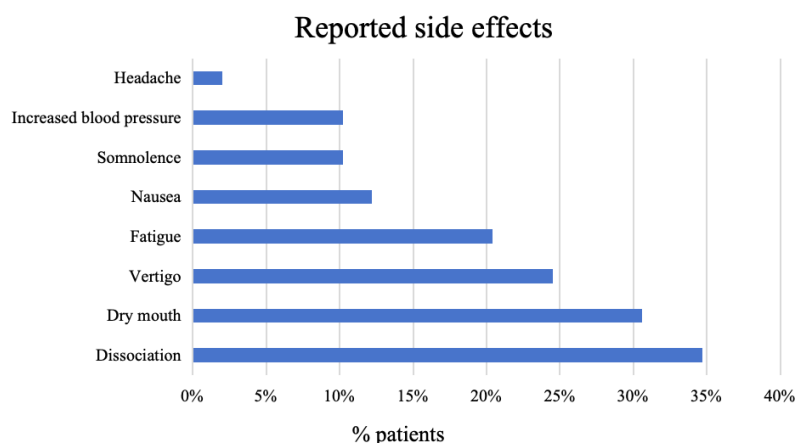
346 after Dex titration, and one had severe psychomotor agitation. The most commonly

347 reported adverse effects were dissociative symptoms (34.7%), dry mouth (30.6%), and

348 vertigo (24.5%). Other adverse reactions included nausea, somnolence, increased blood

349 pressure and headache (Figure 6).

350



351

352 **Figure 6** Reported side effects.

353

## 354 Discussion

355 Through this study, we examined the efficacy, safety, and tolerability of esketamine in

356 combination with Dex in the treatment of depression combined with insomnia. In the

357 traditional way, approved oral combinations of antipsychotics and monoaminergic

358 antidepressants have response rates of roughly 37%–56% after 6-12 weeks for TRD or

359 insufficiently responsive MDD.<sup>27</sup> In this study, based on HAMD-17 score and clinical  
360 symptom assessment, the response rate was 61%, as reported in a previous study,  
361 esketamine improved depressive symptoms more significantly,<sup>28,29</sup> which is consistent with  
362 our findings. Importantly, we found that the improvement in depression was inversely  
363 associated with age, also, there was a difference in age between responders and non-  
364 responders, which is consistent with clinical observation. This age-related phenomenon  
365 was also found after esketamine application, and this decrease in efficacy may be related  
366 to increased neuromorphological alterations and treatment resistance, which may also  
367 increase the difficulty of treatment.

368         Dex is an alpha-2 agonist, frequently used in preoperative treatment, sedative, and  
369 antianxiety. Recent studies have found that Dex induces biomimetic sleep in humans,  
370 increases non-rapid eye movement (non-REM) time, and does not impair performance on  
371 psychomotor alertness tests compared to hypnotics.<sup>30,31</sup>

372         On the basis of PCSL, we made a further upgrade to the treatment, namely  
373 multimodal sleep (MMS);<sup>32</sup> however, despite apparent success in treating patients with  
374 chronic intractable insomnia, there is still a proportion of insomnia patients with depression  
375 who relapse after treatment because of untreated depression. Thus, we developed a new  
376 set of approaches and procedures to address both issues simultaneously.

377         This treatment has several advantages over traditional treatments, first of all, recent  
378 study data demonstrated that Dex can considerably lower bipolar disorder patients' two-  
379 hour agitation scores. These findings also suggested that Dex is crucial in lowering the

380 high emotional risk of depression, manic episodes, and mixed mood states.<sup>33</sup> Compared  
381 with prior randomized controlled trials (RCTs), our study included patients with psychiatric  
382 comorbidities and recent suicide risk, who might be considered more vulnerable to  
383 emotional states. Dex's mood-stabilizing effects can be used as a useful adjuvant to  
384 esketamine antidepressants. Secondly, Dex can relieve sleep deprivation (SD) in rats by  
385 reducing oxidative stress of hippocampal neurons, restoring damaged cells, reducing  
386 hippocampal inflammation and improving cognitive function.<sup>34</sup> Most depression patients  
387 suffer from accompanying cognitive disturbances such as memory decline and retardation  
388 of thought, so the long-term application of Dex may repair these symptoms. Not only that,  
389 we also found that there was a statistically significant difference in the duration of insomnia  
390 between responders and non-responders, and for patients with chronic insomnia, we  
391 believe that long-term repair with esketamine antidepressant combined with Dex sleep  
392 modulation that can improve the cognitive impairment caused by depression and  
393 insomnia. Finally, 62 patients (81%) received oral medications in the past in our study, and  
394 discontinuation and tapering were difficult steps for all patients who received oral  
395 antidepressants or sleeping pills as they were faced with discontinuation syndrome and  
396 relapse. Drugs that act on  $\alpha_2c$  adrenoceptors may be useful in treating illnesses  
397 associated with increased startle responses and sensorimotor gating impairments, such as  
398 schizophrenia, drug withdrawal, attention deficit hyperactivity disorder, and posttraumatic  
399 stress disorder.<sup>35</sup> As a highly selective  $\alpha_2$  adrenergic receptor agonist, Dex may  
400 prevent withdrawal reactions in patients discontinuing the drug.



401           Due to the inconvenience in the application of patient-controlled device, we have  
402   adjusted the previous PCSL program. In this study, Dex was administered using a  
403   sublingual approach. The average onset of effect for the sublingual route was  $13.89\pm 1.54$   
404   minutes secondary to the abundant blood supply of the sublingual mucosa that permits  
405   direct and rapid absorption of the drug into the body circulation and avoids first-pass  
406   elimination. However, absorption appears to be influenced by a number of factors, such  
407   as the duration of contact between the drug and the mucosal surface, the local pH., and  
408   the salivary flow rate.<sup>36</sup> In the future, better dosage forms and application methods may  
409   solve this problem.

410           In fMRI scans performed two hours after treatment, we observed significant changes.  
411   Elevated ReHo might be a sign of neuronal hyperactivity in a specific brain region.<sup>26</sup> In  
412   fMRI studies of normal emotional processing, multiple brain regions are frequently co-  
413   activated when performing emotional tasks, possibly due to interactions between emotion  
414   production and regulation.<sup>37</sup> Transcranial direct current stimulation (tDCS) treatment  
415   reduced depression and was linked to lower ReHo in the hippocampus and amygdala,  
416   which is consistent with our findings.<sup>38</sup>

417           The amygdala is a brain region that regulates emotions. People with depression  
418   exhibit elevated amygdala activation when exposed to favorable emotions. There is  
419   evidence that antidepressant medications or CBT can lower amygdala hyperactivity, which  
420   may be related to esketamine's antidepressant effect.<sup>39,40</sup> Furthermore, it was discovered  
421   that ReHo increased in the hippocampus of individuals with significant depression

422 compared to healthy controls.<sup>41</sup> Several investigations have demonstrated that  
423 hippocampus serves as a key node in the limbic thalamo-cortical network involved in  
424 cognitive functions as well as in the regulation of motivation and emotion.<sup>42-44</sup> Changes in  
425 activity within the anterior cingulate cortex (ACC) have been associated with the  
426 antidepressant effects of ketamine. Similarly, changes in the ACC were observed in our  
427 study at an earlier time, two hours after injection. Esketamine may improve depression by  
428 modulating the overactive limbic system. In the future, nevertheless, more reliable  
429 experiments are required to test this theory.

430 A decrease in ReHo could potentially indicate an incoherent intraregional neural  
431 activity, while an increase in ReHo could indicate an improvement in emotional regulation.  
432 The superior frontal gyrus, dorsolateral (SFGdl) is involved in a variety of cognitive  
433 activities, primarily working memory, and the execution of cognitive maneuvers. The  
434 inferior frontal gyrus and middle frontal gyrus are essential components of the dorsolateral  
435 prefrontal cortex (DLPFC), which plays a role in the regulation of cognitive and emotional  
436 processes as well as the perception of pain.<sup>45</sup>

437 A study showed that compared to non-depressed patients, the brain of depressed  
438 patients typically has a reduced level of activity at rest in the region of the DLPFC,<sup>46</sup> and  
439 ReHo in the DLPFC is elevated after rTMS.<sup>47</sup> It has been noted that there was a significant  
440 increase in ReHo values in the right caudate nucleus after several courses of ECT in the  
441 previous study,<sup>41</sup> and similar results were obtained in this study. We proposed an increase  
442 in ReHo after therapy could enhance emotional control or some cognitive functions to

443 alleviate depressed symptoms.

444       Several limitations of our study deserve comment. First, the study's open design and  
445 absence of a placebo or active comparison group are major shortcomings. Second, the  
446 duration of the study was relatively short, with induction and maintenance responses  
447 assessed for only three months. Depression is a chronic condition, and longer studies are  
448 necessary to fully determine whether the clinical benefits of esketamine can be  
449 maintained. Third, the study evaluated the efficacy and safety of the method but did not  
450 assess efficacy of two dosing regimens that differed in frequency of administration.

451

## 452 **Conclusion**

453 This article is the first to propose that combining esketamine with Dex could be an  
454 effective treatment for patients with depression and insomnia. The safety and tolerability of  
455 esketamine combined with Dex for the treatment of depression and insomnia are  
456 supported by our observational data. But more research is required to determine long-term  
457 efficacy.

458

## 459 **Acknowledgements**

460 Thanks to ShuangJie Cao MD. PhD., Kun Niu MD. PhD. from Institute for Innovation  
461 Diagnosis & Treatment in Anesthesiology, Shandong Second Medical University and Le  
462 Shi MD. PhD. from Peking University Sixth Hospital for their helpful suggestions.

463

## 464 **Disclosure**

465 The authors report no conflicts of interest in this work.

466

## 467 **Funding**

468 This work was supported by the program of the National Natural Science Foundation of

469 China (82072086).

470

## 471 **Ethics Approval and Consent to Participate**

472 Ethical approval was given by the medical ethics committee of Shandong Second Medical

473 University (number: wyfy-2023-ky-057). All participants gave written informed consent.

474 Registration: Chinese Clinical Trial Registry (ChiCTR2300070756)

475

## 476 **CRedit authorship contribution statement**

477 Muyan Zuo: collect clinical data, formal analysis and writing original draft. Yaozu Li: collect

478 clinical data, formal analysis. John P Williams: modify the manuscript. Yongxiang Li, Lina

479 Sun, Ruoguo Wang: carried out the study, collect clinical data. Guoqiang Ren: provided

480 substantial comments. Qinyan Xu: fMRI scanning, data analysis. Jianxiong An: funding

481 acquisition, design the study, writing - review & editing. All authors read and approved the

482 final manuscript.

483

## 484 **Data availability statement**

485 The data that support the findings of this study are available from the corresponding  
486 author upon reasonable request. Due to ethical restrictions, the data that support the  
487 findings of this study are not publicly available. Data may be available from the authors  
488 upon reasonable request and with the approval of relevant ethics committee.

489

## 490 **References**

- 491 1. Collaborators GDallaP. Global, regional, and national incidence, prevalence, and  
492 years lived with disability for 328 diseases and injuries for 195 countries, 1990-2016:  
493 a systematic analysis for the Global Burden of Disease Study 2016. *Lancet*.  
494 2017;390(10100):1211-1259. doi:10.1016/s0140-6736(17)32154-2
- 495 2. Gong L, Xu R, Liu D, et al. Abnormal functional connectivity density in patients with  
496 major depressive disorder with comorbid insomnia. *J Affect Disord*. Apr 1  
497 2020;266:417-423. doi:10.1016/j.jad.2020.01.088
- 498 3. Buysse DJ, Angst J, Gamma A, Ajdacic V, Eich D, Rössler W. Prevalence, course, and  
499 comorbidity of insomnia and depression in young adults. *Sleep*. Apr 2008;31(4):473-  
500 80. doi:10.1093/sleep/31.4.473
- 501 4. Staner L. Comorbidity of insomnia and depression. *Sleep Med Rev*. Feb  
502 2010;14(1):35-46. doi:10.1016/j.smr.2009.09.003
- 503 5. Vargas I, Perlis ML. Insomnia and depression: clinical associations and possible  
504 mechanistic links. *Curr Opin Psychol*. Aug 2020;34:95-99.  
505 doi:10.1016/j.copsyc.2019.11.004
- 506 6. Sweetman A, Lack L, Van Ryswyk E, et al. Co-occurring depression and insomnia in  
507 Australian primary care: recent scientific evidence. *Med J Aust*. Sep 6  
508 2021;215(5):230-236. doi:10.5694/mja2.51200
- 509 7. Eyre H, Baune BT. Neuroimmunomodulation in unipolar depression: a focus on  
510 chronobiology and chronotherapeutics. *J Neural Transm (Vienna)*. Oct  
511 2012;119(10):1147-66. doi:10.1007/s00702-012-0819-6
- 512 8. McCall WV, Blocker JN, D'Agostino R, Jr., et al. Treatment of insomnia in depressed  
513 insomniacs: effects on health-related quality of life, objective and self-reported  
514 sleep, and depression. *J Clin Sleep Med*. Aug 15 2010;6(4):322-9.
- 515 9. Fang H, Tu S, Sheng J, Shao A. Depression in sleep disturbance: A review on a  
516 bidirectional relationship, mechanisms and treatment. *J Cell Mol Med*. Apr  
517 2019;23(4):2324-2332. doi:10.1111/jcmm.14170
- 518 10. Sadler P, McLaren S, Klein B, Harvey J, Jenkins M. Cognitive behavior therapy for  
519 older adults with insomnia and depression: a randomized controlled trial in  
520 community mental health services. *Sleep*. Aug 1 2018;41(8)doi:10.1093/sleep/zsy104

- 521 11. Hinkelmann K, Moritz S, Botzenhardt J, et al. Changes in cortisol secretion during  
522 antidepressive treatment and cognitive improvement in patients with major  
523 depression: a longitudinal study. *Psychoneuroendocrinology*. May 2012;37(5):685-  
524 92. doi:10.1016/j.psyneuen.2011.08.012
- 525 12. Cheng W, Rolls ET, Ruan H, Feng J. Functional Connectivities in the Brain That  
526 Mediate the Association Between Depressive Problems and Sleep Quality. *JAMA*  
527 *Psychiatry*. Oct 1 2018;75(10):1052-1061. doi:10.1001/jamapsychiatry.2018.1941
- 528 13. Razeghi E, Sahraian MA, Heidari R, Bagherzadeh M. Association of inflammatory  
529 biomarkers with sleep disorders in hemodialysis patients. *Acta Neurol Belg*. Mar  
530 2012;112(1):45-9. doi:10.1007/s13760-012-0003-7
- 531 14. Slavich GM, Irwin MR. From stress to inflammation and major depressive disorder: a  
532 social signal transduction theory of depression. *Psychol Bull*. May 2014;140(3):774-  
533 815. doi:10.1037/a0035302
- 534 15. Zhang K, Yang Y, Yuan X, et al. Efficacy and safety of repeated esketamine  
535 intravenous infusion in the treatment of treatment-resistant depression: A case  
536 series. *Asian J Psychiatr*. Feb 2022;68:102976. doi:10.1016/j.ajp.2021.102976
- 537 16. Canuso CM, Singh JB, Fedgchin M, et al. Efficacy and Safety of Intranasal Esketamine  
538 for the Rapid Reduction of Symptoms of Depression and Suicidality in Patients at  
539 Imminent Risk for Suicide: Results of a Double-Blind, Randomized, Placebo-  
540 Controlled Study. *Am J Psychiatry*. Jul 1 2018;175(7):620-630.  
541 doi:10.1176/appi.ajp.2018.17060720
- 542 17. An JX, Williams JP, Fang QW, et al. Feasibility of Patient-Controlled Sleep with  
543 Dexmedetomidine in Treating Chronic Intractable Insomnia. *Nat Sci Sleep*.  
544 2020;12:1033-1042. doi:10.2147/nss.S262991
- 545 18. Hamilton M. A RATING SCALE FOR DEPRESSION. *Journal of Neurology,*  
546 *Neurosurgery & Psychiatry*. 1960;23(1):56-62. doi:10.1136/jnnp.23.1.56
- 547 19. Tsai PS, Wang SY, Wang MY, et al. Psychometric evaluation of the Chinese version of  
548 the Pittsburgh Sleep Quality Index (CPSQI) in primary insomnia and control subjects.  
549 *Qual Life Res*. Oct 2005;14(8):1943-52. doi:10.1007/s11136-005-4346-x
- 550 20. Kushida CA, Morgenthaler TI, Littner MR, et al. Practice parameters for the treatment  
551 of snoring and Obstructive Sleep Apnea with oral appliances: an update for 2005.  
552 *Sleep*. Feb 2006;29(2):240-3. doi:10.1093/sleep/29.2.240
- 553 21. de Zwart PL, Jeronimus BF, de Jonge P. Empirical evidence for definitions of episode,  
554 remission, recovery, relapse and recurrence in depression: a systematic review.  
555 *Epidemiol Psychiatr Sci*. Oct 2019;28(5):544-562. doi:10.1017/s2045796018000227
- 556 22. Fedgchin M, Trivedi M, Daly EJ, et al. Efficacy and Safety of Fixed-Dose Esketamine  
557 Nasal Spray Combined With a New Oral Antidepressant in Treatment-Resistant  
558 Depression: Results of a Randomized, Double-Blind, Active-Controlled Study  
559 (TRANSFORM-1). *Int J Neuropsychopharmacol*. Oct 1 2019;22(10):616-630.  
560 doi:10.1093/ijnp/pyz039
- 561 23. Frank E, Prien RF, Jarrett RB, et al. Conceptualization and rationale for consensus  
562 definitions of terms in major depressive disorder. Remission, recovery, relapse, and

- 563 recurrence. *Arch Gen Psychiatry*. Sep 1991;48(9):851-5.  
564 doi:10.1001/archpsyc.1991.01810330075011
- 565 24. Jia XZ, Wang J, Sun HY, et al. RESTplus: an improved toolkit for resting-state  
566 functional magnetic resonance imaging data processing. *Sci Bull (Beijing)*. Jul 30  
567 2019;64(14):953-954. doi:10.1016/j.scib.2019.05.008
- 568 25. Zeng LL, Wang D, Fox MD, et al. Neurobiological basis of head motion in brain  
569 imaging. *Proc Natl Acad Sci U S A*. Apr 22 2014;111(16):6058-62.  
570 doi:10.1073/pnas.1317424111
- 571 26. Zang Y, Jiang T, Lu Y, He Y, Tian L. Regional homogeneity approach to fMRI data  
572 analysis. *Neuroimage*. May 2004;22(1):394-400.  
573 doi:10.1016/j.neuroimage.2003.12.030
- 574 27. Singh JB, Fedgchin M, Daly E, et al. Intravenous Esketamine in Adult Treatment-  
575 Resistant Depression: A Double-Blind, Double-Randomization, Placebo-Controlled  
576 Study. *Biol Psychiatry*. Sep 15 2016;80(6):424-431.  
577 doi:10.1016/j.biopsych.2015.10.018
- 578 28. Martinotti G, Vita A, Fagiolini A, et al. Real-world experience of esketamine use to  
579 manage treatment-resistant depression: A multicentric study on safety and  
580 effectiveness (REAL-ESK study). *J Affect Disord*. Dec 15 2022;319:646-654.  
581 doi:10.1016/j.jad.2022.09.043
- 582 29. Popova V, Daly EJ, Trivedi M, et al. Efficacy and Safety of Flexibly Dosed Esketamine  
583 Nasal Spray Combined With a Newly Initiated Oral Antidepressant in Treatment-  
584 Resistant Depression: A Randomized Double-Blind Active-Controlled Study. *Am J*  
585 *Psychiatry*. Jun 1 2019;176(6):428-438. doi:10.1176/appi.ajp.2019.19020172
- 586 30. Akeju O HL, Gao L, Burns SM, Pavone KJ, Plummer GS, Walsh EC, Houle TT, Kim SE,  
587 Bianchi MT, Ellenbogen JM, Brown EN. . Dexmedetomidine promotes biomimetic  
588 non-rapid eye movement stage 3 sleep in humans: A pilot study. *Future Internet*.  
589 2018;129:69-78. doi:10.1016/j.clinph.2017.10.005
- 590 31. Chamadia S HL, Marota S, Ibalá R, Hahm E, Gitlin J, Mekonnen J, Ethridge B, Colon  
591 KM, Sheppard KS, Manoach DS, DiBiasio A, Nguyen S, Pedemonte JC, Akeju O. . Oral  
592 Dexmedetomidine Promotes Non-rapid Eye Movement Stage 2 Sleep in Humans.  
593 *Anesthesiology*. 2020;133:1234-1243. doi:10.1097/aln.0000000000003567
- 594 32. Zhang JF, Williams JP, Zhao QN, et al. Multimodal sleep, an innovation for treating  
595 chronic insomnia: case report and literature review. *J Clin Sleep Med*. Aug 1  
596 2021;17(8):1737-1742. doi:10.5664/jcsm.9310
- 597 33. Preskorn SH, Zeller S, Citrome L, et al. Effect of Sublingual Dexmedetomidine vs  
598 Placebo on Acute Agitation Associated With Bipolar Disorder: A Randomized Clinical  
599 Trial. *Jama*. Feb 22 2022;327(8):727-736. doi:10.1001/jama.2022.0799
- 600 34. Guo B, Chen C, Yang L, Zhu R. Effects of dexmedetomidine on postoperative  
601 cognitive function of sleep deprivation rats based on changes in inflammatory  
602 response. *Bioengineered*. 2021/12// 12(1):7920-7928.  
603 doi:10.1080/21655979.2021.1981757
- 604 35. Kamibayashi T, Maze M. Clinical uses of alpha2 -adrenergic agonists.

- 605 *Anesthesiology*. Nov 2000;93(5):1345-9. doi:10.1097/00000542-200011000-00030
- 606 36. Shaat MA, Bakry NS, Elshafie AM, Talaat DM. Intranasal versus sublingual route of  
607 dexmedetomidine sedation in paediatric dentistry: A randomized controlled clinical  
608 trial. *Int J Paediatr Dent*. Mar 2022;32(2):232-239. doi:10.1111/ipd.12848
- 609 37. Phelps EA. Human emotion and memory: interactions of the amygdala and  
610 hippocampal complex. *Curr Opin Neurobiol*. Apr 2004;14(2):198-202.  
611 doi:10.1016/j.conb.2004.03.015
- 612 38. Zhang L, Li Q, Du Y, et al. Effect of high-definition transcranial direct current  
613 stimulation on improving depression and modulating functional activity in emotion-  
614 related cortical-subcortical regions in bipolar depression. *J Affect Disord*. Feb 15  
615 2023;323:570-580. doi:10.1016/j.jad.2022.12.007
- 616 39. Paulus MP, Feinstein JS, Castillo G, Simmons AN, Stein MB. Dose-dependent  
617 decrease of activation in bilateral amygdala and insula by lorazepam during emotion  
618 processing. *Arch Gen Psychiatry*. Mar 2005;62(3):282-8.  
619 doi:10.1001/archpsyc.62.3.282
- 620 40. Furmark T, Tillfors M, Marteinsdottir I, et al. Common changes in cerebral blood flow  
621 in patients with social phobia treated with citalopram or cognitive-behavioral  
622 therapy. *Arch Gen Psychiatry*. May 2002;59(5):425-33. doi:10.1001/archpsyc.59.5.425
- 623 41. Qiu H, Li X, Zhao W, et al. Electroconvulsive Therapy-Induced Brain Structural and  
624 Functional Changes in Major Depressive Disorders: A Longitudinal Study. *Med Sci*  
625 *Monit*. Nov 26 2016;22:4577-4586. doi:10.12659/msm.898081
- 626 42. Cao X, Liu Z, Xu C, et al. Disrupted resting-state functional connectivity of the  
627 hippocampus in medication-naïve patients with major depressive disorder. *J Affect*  
628 *Disord*. Dec 10 2012;141(2-3):194-203. doi:10.1016/j.jad.2012.03.002
- 629 43. Sampath D, Sathyanesan M, Newton SS. Cognitive dysfunction in major depression  
630 and Alzheimer's disease is associated with hippocampal-prefrontal cortex  
631 dysconnectivity. *Neuropsychiatr Dis Treat*. 2017;13:1509-1519.  
632 doi:10.2147/ndt.S136122
- 633 44. Zhang B, Qi S, Liu S, Liu X, Wei X, Ming D. Altered spontaneous neural activity in the  
634 precuneus, middle and superior frontal gyri, and hippocampus in college students  
635 with subclinical depression. *BMC Psychiatry*. 2021/6/1/ 21(1):280.  
636 doi:10.1186/s12888-021-03292-1
- 637 45. Seminowicz DA, Moayed M. The Dorsolateral Prefrontal Cortex in Acute and Chronic  
638 Pain. *J Pain*. Sep 2017;18(9):1027-1035. doi:10.1016/j.jpain.2017.03.008
- 639 46. Che K, Mao N, Li Y, et al. Altered Spontaneous Neural Activity in Peripartum  
640 Depression: A Resting-State Functional Magnetic Resonance Imaging Study. *Front*  
641 *Psychol*. 2020/4/8/ 11:656. doi:10.3389/fpsyg.2020.00656
- 642 47. Lu F, Cui Q, Zou Y, et al. Effects of rTMS Intervention on Functional Neuroimaging  
643 Activities in Adolescents with Major Depressive Disorder Measured Using Resting-  
644 State fMRI. *Bioengineering (Basel)*. 2023/11/29/ 10(12):1374.  
645 doi:10.3390/bioengineering10121374

646



647

648