

1 **TITLE**

2 Protocol for the Redefining Maternal Anemia in Pregnancy and Postpartum (ReMAPP) study: A  
3 multisite, international, population-based cohort study to establish global hemoglobin thresholds  
4 for maternal anemia

5 **SHORT TITLE**

6 Protocol for the Redefining Maternal Anemia in Pregnancy and Postpartum (ReMAPP) study

7 **AUTHORS**

8 **AKU** (Zahra Hoodbhoy<sup>1</sup>, Aneeta Hotwani<sup>1</sup>, Fyezah Jehan<sup>1</sup>, Amna Khan<sup>1</sup>, Imran Nisar<sup>1</sup>, Nida  
9 Yazdani<sup>1</sup>), **CMC** (Santosh Joseph Benjamin<sup>2</sup>, Anne George Cherian<sup>2</sup>, Venkata Raghava  
10 Mohan<sup>2</sup>, Sunitha Varghese<sup>2</sup>, Balakrishnan Vijayalekshmi<sup>2</sup>), **CU** (Blair J. Wylie<sup>3</sup>), **Dr. Dang's Lab**  
11 (Leena Chatterjee<sup>4</sup>, Arjun Dang<sup>4</sup>, R Venketeshwar<sup>4</sup>), **GW** (Sasha G. Baumann<sup>5</sup>, Christopher  
12 Mores<sup>5</sup>, Qing Pan<sup>5</sup>, Emily R. Smith<sup>5\*</sup>), **HSPH** (Christopher R. Sudfeld<sup>6</sup>), **KEMRI** (Victor Akelo<sup>7,8</sup>,  
13 □Winnie K. Mwebia<sup>8</sup>, Kephas Otieno<sup>8</sup>, Gregory Ouma<sup>8</sup>, Harun Owuor<sup>8</sup>, Joyce Were<sup>8</sup>), **KHRC**  
14 (Dennis Adu-Gyasi<sup>9</sup>, Veronica Agyemang<sup>9</sup>, Kwaku Poku Asante<sup>9\*</sup>, Sam Newton<sup>9</sup>, Charlotte  
15 Tawiah<sup>9</sup>), **SAS** (Arun Singh Jadaun<sup>10</sup>, Sarmila Mazumder<sup>10</sup>, Neeraj Sharma<sup>10</sup>), **UAB** (Lynda G.  
16 Ugwu<sup>11</sup>), **UG** (Amma Benneh-Akwasi Kuma<sup>12</sup>), **UNC** (Bethany Freeman<sup>13</sup>, Margaret P. Kasaro<sup>13</sup>,  
17 <sup>14</sup>, Felistas M. Mbewe<sup>14</sup>, Humphrey Mwape<sup>14</sup>, Rachel S. Resop<sup>14</sup>, M. Bridget Spelke<sup>13, 14</sup>)  
18 *Authors are listed in alphabetical order first by affiliated institution and then by last name.*

19 **AFFILIATIONS**

20 <sup>1</sup>Department of Paediatrics and Child Health, Aga Khan University, Karachi, Pakistan

21 <sup>2</sup>Christian Medical College Vellore, Vellore, India

22 <sup>3</sup>Department of Obstetrics and Gynecology, Columbia University Medical Center, NY, United  
23 States

24 <sup>4</sup>Dr. Dangs Lab, New Delhi, India

25 <sup>5</sup>Department of Global Health, George Washington University, Washington, DC, United States

26 <sup>6</sup>Department of Global Health, Harvard T.H. Chan School of Public Health, Cambridge, MA,  
27 United States

28 <sup>7</sup>Kenya Medical Research Institute, Kisumu, Kenya

29 <sup>8</sup>Department of Clinical Sciences, Liverpool School of Tropical Medicine, Liverpool, England

30 <sup>9</sup>Kintampo Health Research Centre, Research and Development Division, Ghana Health  
31 Service, Kintampo North Municipality, Bono East Region, Ghana

32 <sup>10</sup>Society for Applied Studies, New Delhi, India

33 <sup>11</sup>Department of Maternal-Fetal Medicine, University of Alabama at Birmingham School of  
34 Medicine, Birmingham, AL, United States

35 <sup>12</sup>Department of Hematology, College of Health Sciences, University of Ghana, Accra, Ghana

36 <sup>13</sup>Department of Obstetrics and Gynecology, School of Medicine, University of North Carolina,  
37 Chapel Hill, NC

38 <sup>14</sup>University of North Carolina—Global Projects Zambia, Lusaka, Zambia

### 39 **CORRESPONDING AUTHORS**

40 \*Kwaku Poku Asante

41 Kintampo Health Research Centre, Kintampo, Ghana

42 kwakupoku.asante@kintampo-hrc.org

43 \*Emily R. Smith

44 The George Washington University, Washington D.C., USA

45 emilysmith@gwu.edu

### 46 **KEYWORDS**

47 hemoglobin; pregnancy; anemia; micronutrient deficiency; thresholds

48 **ABSTRACT**

49 **Background:** Anemia affects one in three pregnant women worldwide, with the greatest burden  
50 in South Asia and sub-Saharan Africa. During pregnancy, anemia has been linked to an increased  
51 risk of adverse maternal and neonatal health outcomes. Despite widespread recognition that  
52 anemia can complicate pregnancy, critical gaps persist in our understanding of the specific  
53 causes of maternal anemia and the cutoffs used to diagnose anemia in each trimester and in the  
54 postpartum period.

55 **Methods and analysis:** The Redefining Maternal Anemia in Pregnancy and Postpartum  
56 (ReMAPP) study is a multisite, prospective, cohort study nested within the Pregnancy Risk, Infant  
57 Surveillance, and Measurement Alliance (PRISMA) Maternal and Newborn Health study.  
58 Research sites are located in Kenya, Ghana, Zambia, India, and Pakistan. Participants are up to  
59 12,000 pregnant women who provide serial venous blood samples for hemoglobin assessment  
60 at five time points: at <20 weeks, 20 weeks, 28 weeks, and 36 weeks gestation and at six weeks  
61 postpartum. We will use two analytical approaches to estimate hemoglobin thresholds for defining  
62 anemia: (1) clinical decision limits for cutoffs in each trimester and at six weeks postpartum based  
63 on associations of hemoglobin levels with adverse maternal, fetal, and neonatal health outcomes  
64 and (2) reference limits for gestational-week-specific cutoffs and at six weeks postpartum for mild,  
65 moderate, and severe anemia based on tail statistical percentiles of hemoglobin values in a  
66 reference (i.e., clinically healthy) subpopulation. We will also conduct biomarker-intensive testing  
67 among a sub-sample of participants in each trimester to explore underlying contributing factors of  
68 maternal anemia.

69 **Ethics and dissemination:** The study received local and national ethical approvals from all  
70 participating institutions. Findings from multisite analyses will be published among open-access,  
71 peer-reviewed journals and disseminated with local, national, and international partners.

72 **Registration:** ClinicalTrials.gov (ID: PRISMA-MNH 2022; NCT05904145)

73 **Strengths and limitations:**

- 74 ● Novel study design to allow multiple analytical approaches (clinical decision limits and  
75 reference limits) in the same population to establish hemoglobin thresholds.
- 76 ● Use of gold standard methods and external quality assurance programs to ensure  
77 harmonized hemoglobin measurement across sites.
- 78 ● Inclusion of biomarker-intensive study arm to examine the etiology of anemia among  
79 pregnant women.
- 80 ● All data is contributed by populations historically underrepresented in research in low- and  
81 middle-income countries.

## 82 INTRODUCTION

83 Anemia is a common health condition characterized by low blood hemoglobin concentration  
84 and/or low red blood cell count. Women, particularly those who are pregnant and lactating, are  
85 physiologically at a higher risk than men of being anemic [1,2]. An estimated 36% of pregnant  
86 women globally are anemic, with the highest prevalence in South Asia (48%) and West and  
87 Central Africa (52%) [3]. Although there are many causes of anemia, iron deficiency is estimated  
88 to account for roughly half of anemia cases in women [4]. Other contributing causes of anemia  
89 include infectious diseases (e.g., hookworm, malaria, schistosomiasis, HIV), gynecologic  
90 conditions (e.g., abnormal uterine bleeding, hemorrhage, uterine fibroids), other micronutrient  
91 deficiencies (e.g. folate, vitamin B12), thyroid dysfunction, chronic kidney disease,  
92 hemoglobinopathies like sickle cell disease or thalassemia, and environmental exposures such  
93 as lead or arsenic [1,2,5–8]. Importantly, causes of anemia vary widely by geography, life stage,  
94 and age.

95 During pregnancy, abnormal hemoglobin levels are linked to an increased risk of adverse  
96 maternal, fetal and neonatal health outcomes. Specifically, maternal anemia (i.e. low hemoglobin)  
97 can increase risk of postpartum hemorrhage, preeclampsia, maternal mortality, postpartum  
98 maternal depression, preterm delivery, low birth weight, small for gestational age, stillbirth,  
99 neonatal mortality, and poor infant brain structural development [9–13]. The likelihood of these  
100 outcomes depends on the case severity, gestational timing onset and duration of anemia [11,12].  
101 Multiple studies have also observed an association between high hemoglobin concentration and  
102 pregnancy complications, though there are no standard thresholds to define excess hemoglobin  
103 [11,14–16]. In a systematic review and meta-analysis by Young et al. (2023), hemoglobin levels  
104 greater than 13.0 g/dL during pregnancy were associated with increased risk of small-for-  
105 gestational-age, stillbirth, (very) low birth weight, preterm birth, gestational diabetes,  
106 preeclampsia, and maternal mortality [17].

107 A growing body of evidence over the last decade suggests that the hemoglobin cutoffs used to  
108 diagnose anemia during pregnancy and the postpartum period should be reevaluated in  
109 consideration of data from low- and middle-income countries (LMICs) [11,18–20]. In 2017, a  
110 World Health Organization (WHO) technical consultation concluded that the current hemoglobin  
111 thresholds used in pregnancy were not supported by sufficient data, not proven to be linked to  
112 health outcomes, not representative of diverse geographies and ethnicities, and not necessarily  
113 applicable in the context of common gene mutations that affect hemoglobin function [21]. Although  
114 WHO released revised anemia definitions in 2024, the use of trimester-specific cutoffs during  
115 pregnancy and of non-pregnant adult cutoffs in the immediate postpartum period to diagnose  
116 anemia are not well-evidenced [22]. Similarly—given that causes of anemia are varied in severity,  
117 multifactorial, and regionally distinct—further research is needed to understand how anemia  
118 etiology differs for pregnant women, given that most research to date has focused on non-  
119 pregnant women [23].

120 Correct anemia identification carries significance not only for its prevention, diagnosis, and  
121 treatment at the individual level, but also for tracking progress toward global anemia reduction  
122 targets. Hemoglobin thresholds to diagnose anemia in pregnancy at all gestational ages were first  
123 established by the World Health Organization (WHO) in 1959 as <10.0 g/dL, then adapted in 1968  
124 to <11.0 g/dL [24,25]. These definitions of anemia were based on a ‘normal range’ of hemoglobin  
125 values; wherein below the 2.5th percentile (-2 standard deviations (SDs) from the mean) is  
126 considered low hemoglobin (i.e. anemia) and above the 97.5th percentile (+2 SDs from the mean)  
127 is high hemoglobin. Data informing the ‘normal range’ was largely derived from four published  
128 studies in high-income countries (Norway, England, Wales, United States) with small sample  
129 sizes, not all of which included women [26–29]. In 1989, the Centers for Disease Control (CDC)  
130 set thresholds based on studies in Europe and the United States for each trimester: <11.0 g/dL  
131 in the first and third trimesters and <10.5 g/dL in the second trimester [30]. The WHO introduced

132 thresholds for anemia severity in pregnant women in 2011, adopted the CDC trimester-specific  
133 thresholds in 2016, and added trimester-specific severity cutoffs in 2024 (**Table 1**) [22,31,32].  
134 Notably, the WHO guidelines released in 2024 excluded data from LMICs in the pooled analysis  
135 that informed the update, citing that the unknown effect of infection and inflammation on  
136 hemoglobin coupled with their high prevalence in these settings precluded their inclusion [22].

137 **Table 1. WHO (2024) thresholds for anemia for non-pregnant and pregnant women**

Population	Hemoglobin threshold (g/dL)			
	Any anemia	Mild anemia	Moderate anemia	Severe anemia
Non-pregnant women	<12.0	11.0 - 11.9	8.0 - 10.9	<8.0
Pregnant women	-	-	-	-
1st trimester ( $\leq 13$ weeks)	<11.0	10.0 - 10.9	7.0 - 9.9	<7.0
2nd trimester (14-27 weeks)	<10.5	9.5 - 10.4	7.0 - 9.4	<7.0
3rd trimester ( $\geq 28$ weeks)	<11.0	10.0 - 10.9	7.0 - 9.9	<7.0

138 We designed the Redefining Maternal Anemia in Pregnancy and Postpartum (ReMAPP) study to  
139 establish hemoglobin cutoffs using multiple analytical approaches for the diagnosis of anemia  
140 during pregnancy and within 42 days postpartum in LMIC populations. The specific aims are  
141 threefold: (1) to determine trimester-specific and postpartum hemoglobin thresholds for anemia  
142 diagnosis based on statistically significant increased risks of adverse maternal, fetal, and newborn  
143 health outcomes (i.e. decision limits); (2) to estimate gestational-week-specific and six-week  
144 postpartum hemoglobin thresholds for mild, moderate, and severe anemia diagnosis using the  
145 5th and 2.5th statistical percentiles among a clinically healthy subpopulation (i.e. reference limits);  
146 (3) to describe the underlying contributing factors of anemia (i.e. etiology) in pregnancy in Ghana,  
147 Kenya, Zambia, Pakistan, and India.

## 148 **MATERIALS AND METHODS**

### 149 **Study design**

150 ReMAPP is a prospective cohort study in five countries. It is embedded within the Pregnancy  
151 Risk, Infant Surveillance, and Measurement Alliance (PRISMA) Maternal and Newborn Health  
152 study: a longitudinal, open cohort study that seeks to evaluate pregnancy risk and health and  
153 development for women and infants [33]. The population for ReMAPP is nested in the PRISMA  
154 study cohort. Enrollment for ReMAPP was initiated on a rolling basis by site and began between  
155 September 2022 and December 2023 (22 September 2022 in Pakistan, 15 December 2022 in  
156 Zambia, 28 December 2022 in Ghana, 14 April 2023 in Kenya, 20 June 2023 in India (Vellore),  
157 and 12 December 2023 in India (Hodal). Enrollment is expected to be completed by June 2025.  
158 As illustrated in **Figure 1**, further selection will be done from the primary cohort of enrolled  
159 participants to identify a clinically ‘healthy’ analytical subcohort and cross-sectional sub-samples  
160 for etiology assessment. Data from the primary cohort, analytical subcohort, and cross-sectional  
161 sample will be used to achieve aims one, two, and three, respectively.

162 **Figure 1. Nested ReMAPP study design with estimated 12,000 pregnancies in study cohort**  
163 **(n=1,650 to 2,000 each site)**

### 164 **Study setting**

165 This study focuses on countries in South Asia and sub-Saharan Africa with high anemia  
166 prevalence [34]. There are six research sites: Kintampo, Ghana; Kisumu and Siaya, Kenya;  
167 Lusaka, Zambia; Karachi, Pakistan; Vellore, India; and Hodal, India. Each site has identified and  
168 mapped geographic catchment areas, which have at least 1500 deliveries per year.

### 169 **Eligibility criteria and recruitment**

170 Participants eligible for the ReMAPP study are pregnant women who live within the catchment  
171 area, are <45 years and meet country-specific minimum age requirements (Ghana: 15 years of



172 age; Kenya: 18 years of age or emancipated minors; Pakistan: 15 years of age or emancipated  
173 minors; Zambia: 15 years of age; India: 18 years of age), have a viable intrauterine pregnancy,  
174 are less than 20 weeks gestation as verified via ultrasound, intend to stay in the study area until  
175 six weeks post-delivery, and who provide informed consent.

## 176 **Participant selection and sampling**

177 All participants enrolled in the PRISMA study will be invited to participate in the ReMAPP study if  
178 they meet eligibility criteria. Enrollment will continue until the target sample size (n=1650 to 2000  
179 per site) is achieved. These participants will form the ReMAPP primary cohort, and will undergo  
180 serial hemoglobin testing by complete blood count and be followed up at regular study visits  
181 through one year postpartum.

182 Upon enrollment, all ReMAPP participants will undergo screening based on predetermined criteria  
183 to obtain sociodemographic information, obstetric history, vital signs, anthropometric  
184 measurements, and laboratory results. If a participant meets the 21 screening criteria (**Box 1**),  
185 they will be included in the clinically 'healthy' analytical subcohort. Selected participants may also  
186 be excluded from the final 'healthy' analytical subcohort if any of the following occur during follow-  
187 up: multiple pregnancies previously not identified, severe conditions not initially evident including  
188 cancer, HIV, tuberculosis, or malaria, or severe pregnancy-related conditions requiring hospital  
189 admission including severe preeclampsia/eclampsia.

### 190 **Box 1. Screening criteria for clinically healthy subcohort**

1. Aged 18 to 34 years
2. Gestational age at enrollment <14 weeks
3. Pre-pregnancy or early pregnancy body mass index (BMI) of >18.5 and <30 kg/m<sup>2</sup>
4. Mid-upper arm circumference >23cm
5. Height ≥150 cm
6. Singleton pregnancy
7. Systolic blood pressure <140 mmHg and diastolic blood pressure <90 mmHg
8. No iron deficiency (serum ferritin >15 mcg/L adjusted for inflammation [35])
9. No subclinical inflammation (CRP≤5 mg/L and/or AGP≤1 g/L)

10. No hemoglobinopathies (SS, SC, SE, EE, CC, SD-Punjab, S $\beta$ thal, E $\beta$ thal, C $\beta$ thal, CD-Punjab, ED-Punjab, D-D-Punjab, D-Punjab $\beta$ thal, Thalassemia major, Thalassemia intermedia, or Alpha thalassemia)
11. Normal glucose-6-phosphate dehydrogenase ( $\geq 6.1$  U/g Hb)
12. No reported previous low birth weight delivery
13. No reported previous stillbirth
14. No reported previous unplanned cesarean delivery
15. No reported cigarette smoking, tobacco chewing, or betel nut use
16. No reported alcohol consumption during pregnancy
17. No current malaria infection (per rapid diagnostic test)
18. No current Hepatitis B virus infection (per rapid diagnostic test)
19. No current Hepatitis C virus infection (per rapid diagnostic test)
20. No known history or current chronic disease (cancer, kidney disease, or cardiac condition)
21. No known history or current HIV

191 Among the participants screened, a cross-sectional sample of up to 300 participants (100 per  
192 trimester, both anemic and nonanemic) per site will be selected to undergo biomarker-intensive  
193 testing. Any method of population-representative sampling may be used within each trimester  
194 stratum, provided that selection occurs over the same time period to eliminate time bias.

#### 195 **Follow-up procedures and data collection**

196 Data will be collected using a harmonized set of forms developed for the PRISMA study [33].  
197 Beyond the routine PRISMA study visit procedures, ReMAPP participants will provide biological  
198 specimens to undergo additional laboratory testing (**Table 2**). For hemoglobin, the primary  
199 measure of interest, participants will be serially assessed at less than 20 weeks, at 20 weeks, 28  
200 weeks, and 36 weeks gestation and at six weeks postpartum by complete blood count using a  
201 venous blood sample and a five-part differential automated hematology analyzer. Additional  
202 testing will be done at enrollment, as a part of the screening laboratory tests for the clinically  
203 'healthy' subcohort. Biomarker-intensive testing will be done for the sample of 300 participants  
204 (100 per trimester), either during their enrollment visit (gestational age less than 14 weeks), 20-  
205 week, or 32-week ANC visit. Methods and timing of laboratory assessments will be standardized  
206 across sites to ensure comparability and quality.

#### 207 **Table 2. Laboratory tests for the ReMAPP study**

Condition	Assessment	Method
-----------	------------	--------

<b>Serial hemoglobin tests at &lt;20, 20, 28, and 36 weeks gestation and 6 weeks postpartum</b>		
Anemia	Hemoglobin*	Complete blood count using five-part differential hematology analyzer
<b>Screening tests at enrollment (&lt;20 weeks gestation) to identify clinically healthy subcohort</b>		
Iron deficiency	Ferritin	ELISA <sup>1</sup> (Quansys Q-plex™ Human Micronutrient v2 (7-plex))
	Serum transferrin receptor	ELISA <sup>1</sup> (Quansys Q-plex™ Human Micronutrient v2 (7-plex))
Inflammation	C-reactive protein	ELISA <sup>1</sup> (Quansys Q-plex™ Human Micronutrient v2 (7-plex))
	Alpha 1-acid glycoprotein	ELISA <sup>1</sup> (Quansys Q-plex™ Human Micronutrient v2 (7-plex))
Communicable diseases	HIV	Rapid diagnostic test
	Malaria	Rapid diagnostic test
	Hepatitis B and C	Rapid diagnostic test
Red blood cell defects	Sickle cell disease	HPLC <sup>2</sup>
	Beta (β) and alpha (α) thalassemias	HPLC <sup>2</sup>
	Glucose-6-phosphate dehydrogenase	SD Biosensor Standard G6PD Analyzer
<b>Biomarker-intensive tests at &lt;14, 20, or 32 weeks gestation for random sample</b>		
Iron deficiency	Hepcidin	ELISA <sup>1</sup>
	Total iron-binding capacity	Colorimetric chemistry analyzers
Other micronutrient deficiency	Vitamin A serum retinol	HPLC <sup>2</sup>
	Vitamin B12 total cobalamin	ECLIA <sup>3</sup>
	Vitamin B12 holotranscobalamin II	Abbexa HoloTC ELISA <sup>1</sup>
	Folate	Microbiologic assay
	Zinc	ICP-MS <sup>4</sup> or AAS <sup>5</sup>
Red blood cell parameters	Red blood cell count	Five-part differential hematology analyzer
	Hematocrit	
	Mean corpuscular volume	
	Mean corpuscular hemoglobin concentration	

	Red cell distribution width	
	Red blood cell morphological abnormalities	Leishman, Wright-Giemsa, or Giemsa stain for microscopy
	White blood cell morphological abnormalities	
	Platelet morphological abnormalities	
	Presence of blood parasites	
Communicable diseases	Syphilis	Rapid diagnostic test
	HIV	Rapid diagnostic test
	Hepatitis B and C	Rapid diagnostic test
	Malaria	Rapid diagnostic test
		Placental tissue histopathology
		Leishman, Giemsa stain, or Quantitative Buffy Coat for microscopy
	Tuberculosis	GeneXpert (4-module, 8-module, or 24-module)
	Schistosomiasis	Kato-Katz coproscopy, PCR <sup>6</sup> test, or urine filtration
Soil-transmitted helminths	Kato-Katz coproscopy	
Non-communicable diseases	Urinalysis	Dipstick
	Renal function	Colorimetric chemistry analyzer
	Liver function	Colorimetric chemistry analyzer
	Blood lead	ICP-MS <sup>4</sup> or AAS <sup>5</sup>

- 208 <sup>1</sup>Enzyme-linked immunoassay (ELISA)  
 209 <sup>2</sup>High-performance liquid chromatography (HPLC)  
 210 <sup>3</sup>Electrochemiluminescence (ECLIA)  
 211 <sup>4</sup>Inductively coupled plasma mass spectrometry (ICP-MS)  
 212 <sup>5</sup>Atomic Absorption Spectrophotometry (AAS)  
 213 <sup>6</sup>Polymerase chain reaction (PCR)

#### 214 **Quality assurance for laboratory tests**

215 Each site laboratory will adhere to the Laboratory Quality Assurance and Quality Control Standard  
 216 Operating Procedures manual developed specifically for this study. For full blood count  
 217 measurement, all participating labs will be enrolled onto the United Kingdom National External

218 Quality Assurance Scheme for Hematology for monthly quality assurance [36]. For full blood count  
219 and all other analytes, the College of American Pathologists' External Quality Assessment  
220 Program is required [37].

### 221 **Sample size estimates**

222 Each site will enroll 1,650 to 2,000 participants in the ReMAPP study, to achieve an overall study  
223 sample of 12,000 participants across the six sites. The sample size was selected assuming that  
224 about 30% (n=600) will meet the eligibility criteria for the 'healthy' subcohort. This sample size will  
225 also capture sufficient cases of the primary maternal and newborn outcomes of interest, based  
226 on previous regional prevalence estimates, in order to conduct a pooled decision limits analysis  
227 with at least 90% power to estimate association between anemia and each outcome.

228 Our power speculation is based on the distribution of hemoglobin values in pregnancy by  
229 gestational age presented in the INTERGROWTH-21<sup>st</sup> study [18]. For the 'healthy' analytical  
230 subcohort, a sample size of 600 participants per site allows for single-site estimation of  
231 hemoglobin thresholds for any maternal anemia (i.e., 5th percentile) and severe maternal anemia  
232 (i.e., 2.5th percentile). As illustrated in **Figure 2**, there will be sufficient precision to distinguish  
233 between these two percentiles without overlapping 95% confidence intervals. If sites are unable  
234 to identify 600 participants for the healthy cohort, a minimum sample size of 300 participants will  
235 be sufficient for single-site hemoglobin threshold estimation.

### 236 **Figure 2. Visualization of sample size estimates with thresholds for any (i.e. 5th** 237 **percentile) and severe maternal anemia (i.e. 2.5th percentile) at n = 300, 400, 500, 600**

238 For the cross-sectional sample, n=300 was determined to minimize the burden of additional  
239 specimen collection while allowing for exploratory pooled analyses of anemia etiology. The  
240 calculation is based on the following assumptions: one third of the participants have a certain  
241 contributing factor (e.g., the prevalence of vitamin A insufficiency); 30% of participants without the

242 factor have anemia; and 50% with the factor have anemia. At the two-sided significance level of  
243 95% and 80% statistical power, we can detect a prevalence ratio of 1.7 with a sample size of  
244 between 240 and 270 [38]. We inflated the sample to 300 to account for the fact that some  
245 contributing factors are less prevalent in certain study sites.

#### 246 **Participant and public involvement**

247 Participants will be collaboratively involved at multiple phases of the study. During initial protocol  
248 workshops, investigators carefully evaluated the additional burden of study participation; for this  
249 reason, the size of the biomarker-intensive sample was kept to a minimum and invasive blood  
250 draws limited to select visit timepoints. As a part of the translation and validation process for  
251 questionnaires to measure fatigue, patients' experiences were centered and informed scale  
252 validation procedures. Participants' health priorities and experiences will also be explored in  
253 corresponding qualitative research about maternal morbidity. Upon completion of the study, we  
254 intend to share the main findings with participants and community members via appropriate local  
255 dissemination methods. Finally, we will ensure that participants' contributions to this research are  
256 acknowledged in any subsequent reports, presentations, and publications.

#### 257 **Ethical and safety considerations**

258 This protocol, the informed consent documents and any subsequent modifications will be  
259 reviewed and approved by the relevant institutional review board (IRB) and ethics review  
260 committee (ERC) responsible for oversight of the study at each site. IRB approvals for this  
261 research were received from the following ERCs in each country: Ghana (Ghana Health Service  
262 ERC (FWA No. 000200025) and the Kintampo Health Research Center Institutional Ethics  
263 Committee, FWA No. 00011103), Kenya (KEMRI Scientific and Ethics Review Unit, 04-10-358-  
264 4166), Zambia (University of Zambia Biomedical Research Ethics Committee, IRB00001131 of  
265 IORG0000774 and UNC Biomedical IRB 356795), India (Office of Research, Christian Medical

266 College, Vellore, India Ethics Committee, IRB14553), India (Ethics Review Committee, Society  
267 for Applied Studies, New Delhi, SAS/ERC/ReMAPP Study/2022; Department of Health Research,  
268 EC/NEW/INST/2022/DL/0140), Pakistan (National Institutes of Health - Health Research Institute,  
269 National Bioethics Committee Ref: No.4-87/NBC-962/23/593 and Aga Khan University Ethics  
270 Review Committee, 2022-7197-21350), and the United States (Columbia University IRB IRB-  
271 AAAU7504; The George Washington University IRB NCR224396; Harvard University IRB IRB-  
272 23-1093). The rights and safety of all study participants will be protected. Written informed  
273 consent, assent and parental consent will be sought from all study participants as appropriate  
274 prior to enrollment. Site-specific unique identification numbers will be issued to participants  
275 instead of names to protect their identity. A limited data set will be stored in a secure cloud server  
276 where only trained study staff will have credentials for access. Study participants with abnormal  
277 biochemical results will be referred for further clinical assessment and management according to  
278 study-specific standard operating procedures.

## 279 **ANALYTICAL PLAN**

### 280 **Aim 1: Establishing hemoglobin clinical decision limits based on adverse outcomes**

281 Aim 1 will establish trimester-specific and postpartum hemoglobin clinical decision limits for any  
282 anemia based on associations with adverse maternal, fetal, and infant outcomes (**Table 3**). For  
283 this analysis, hemoglobin and outcome data points from all participants will be pooled.  
284 Nonparametric relationships between risks of adverse events and hemoglobin levels will be  
285 plotted using real data [39]. A series of candidate thresholds in hemoglobin values will be  
286 considered and disease risks before and after each threshold will be compared. Thresholds with  
287 clinically meaningful differences in the disease risks and statistically sound significance levels will  
288 be selected. Clinical decision limits for overall adverse events will be reported, as well as disease-  
289 specific clinical decision limits.

290 **Table 3. Primary and secondary health outcomes for establishing decision limits**

Outcome	Definition	Timing
<b>Primary outcomes</b>		
Severe maternal outcomes	Composite of maternal deaths, late maternal deaths, and near-misses	Pregnancy through 1 year postpartum
Maternal death	Death from any cause related to or aggravated by pregnancy or its management (excluding accidental or incidental causes)	Pregnancy through 42 days postpartum
Perinatal depression	Likelihood of depression per the Edinburgh Postnatal Depression Scale	At 20 weeks and 32 weeks gestation; at 6 weeks postpartum
Postpartum anemia	Low hemoglobin concentration <12 g/dL	6 weeks and 6 months
Preterm birth	Delivery prior <37 weeks of gestation of a live born infant	<37 weeks gestation
Small for gestational age <sup>1</sup>	Birthweight of lower than the sex-specific 10th percentile for each week of gestational age, according to the sex-specific INTERGROWTH reference standards	Delivery
Stillbirth	Delivery of a fetus showing no signs of life or >350g birth weight, if gestational age is unavailable	≥20 weeks gestation
<b>Secondary outcomes</b>		
Late maternal death	Death from any cause related to or aggravated by pregnancy or its management (excluding accidental or incidental causes)	From 42 days to 1 year postpartum
Preeclampsia	For participants without preexisting hypertension, defined as gestational hypertension AND gestational proteinuria OR development of severe features. For participants with chronic hypertension, defined as gestational proteinuria OR development of severe features	>20 weeks gestation to 42 days postpartum
Hemorrhage	Antepartum hemorrhage (APH): bleeding from or into the genital tract during pregnancy. Postpartum hemorrhage (PPH): estimated blood loss of ≥500 mL, clinical diagnosis of PPH, or receipt of a procedure to manage PPH (including blood transfusion).	≥24 weeks gestation and prior to delivery (APH), within 24 hours after birth (PPH)



Preterm premature rupture of membranes	Rupture of membranes before the onset of labor	<37 weeks of gestation
Maternal sepsis	Organ dysfunction resulting from infection	Pregnancy, delivery, and up to 42 days postpartum
Maternal fatigue <sup>2</sup>	Decreased capacity for physical and mental activity after childbirth, a persistent lack of energy, impairments in concentration and attention not easily relieved by rest or sleep	At 20 weeks and 32 weeks gestation; at 6 weeks postpartum
Low birthweight	Liveborn infant weighing less than 2500 g at birth	Within 72 hours of delivery
Neonatal hyperbilirubinemia	Presence of excess bilirubin. Calculated in line with the age-specific total bilirubin thresholds per the American Academy of Pediatrics BiliTool™ algorithm [40]	Birth to 7 days
Possible severe bacterial infection	Presence of any of the following signs or symptoms: Not able to feed at all or not feeding well; convulsions; severe chest indrawing; high body temperature ( $\geq 38^{\circ}\text{C}$ for <2 months, $\geq 37.5^{\circ}\text{C}$ for 2+ months); low body temperature (less than $35.5^{\circ}\text{C}$ ); no movement/only when stimulated; fast breathing ( $\geq 60$ BPM for <2 months, $\geq 50$ BPM for 2+ months)	Birth to 59 days
Neonatal sepsis	Inflammatory response and organ dysfunction following presence of a severe infection from as suspected (by a clinician) or proven (with culture)	Birth to 28 days
Infant neurodevelopment <sup>3</sup>	Infant's cognitive, motor, linguistic, and social-emotional development	At 12 months

291 <sup>1</sup>Small for gestational age defined as lower than the sex-specific 10th percentile for each week of  
 292 gestational age per INTERGROWTH standards [41]

293 <sup>2</sup>Maternal fatigue assessed using the FACIT-Fatigue Scale at 20 weeks and 32 weeks gestation and six  
 294 weeks postpartum.

295 <sup>3</sup>Infant neurodevelopment assessed using the Global Scale for Early Development Short Form.

## 296 **Aim 2: Establishing hemoglobin reference limits among a healthy population**

297 Aim 2 will establish gestational-age-specific hemoglobin reference limits for any, mild, moderate,  
 298 or severe anemia in a reference population (i.e., clinically 'healthy' subcohort) during pregnancy  
 299 and within 42 days postpartum [42,43]. This analysis will include hemoglobin data points from all  
 300 participants eligible for the clinically 'healthy' subcohort. Fractional polynomial regression (FPR)  
 301 will be used to model and visualize the hemoglobin changing curves of different percentiles

302 against gestational age [18]. Sensitivity analysis of the percentile curves predicted by FPR models  
303 will be performed excluding one site at a time. If the hemoglobin distributions are similar across  
304 sites and between-site between is less than within-site variance, we will pool the data; if not,  
305 analyses will remain stratified by site.

306 Hemoglobin levels below the 5th or 2.5th percentiles at the corresponding time points during  
307 pregnancy are typically considered abnormally low and likely indicative of anemia. Therefore, the  
308 reference limits are defined as tail percentiles of hemoglobin levels in the reference population.  
309 Tail percentiles, such as 5th or 2.5th percentiles, will be modeled as a smooth polynomial function  
310 of gestational weeks using hemoglobin levels. With the final validated model, we will estimate the  
311 2.5th, 5th, 95th, and 97.5th percentiles predicted from the FPR curves at specific gestational  
312 timepoints from 14 to 40 weeks and postpartum.

### 313 **Aim 3: Describing the etiology of anemia in pregnancy**

314 Aim 3 will describe the underlying contributing factors of anemia in pregnancy among a sample  
315 of up to 1,800 participants (up to 300 per site), with approximately equal numbers in each  
316 trimester. Analyses will be performed on pooled, regional, and site-specific data to identify shared  
317 and unique risk factors for anemia. We will quantify the association between contributing factors  
318 and anemia (defined using the WHO cutoffs and study-established reference and decision limit  
319 thresholds) by calculating relative risks from a generalized linear log-binomial model with robust  
320 standard errors. If these models fail to converge, we will use modified Poisson estimates, which  
321 produce valid but less efficient estimates of the log-binomial model. We will run separate models  
322 for proximal, medial, and distal risk factors (**Figure 3**). Distal risk factors will be included as  
323 potential confounders to proximal and medial models. We will estimate the population attributable  
324 risk fraction using prevalence of the exposure/risk factor and the relative risk of anemia in the  
325 exposed versus unexposed group. Partial population attributable risk will be calculated by fitting  
326 multivariate models with log link for anemia adjusting for multiple risk factors. For contributing

327 factors significantly associated with risks of anemia, we will further report the change in  
328 continuous hemoglobin concentrations associated with the factor.

### 329 **Figure 3. Risk factors of maternal anemia**

#### 330 **Dissemination plan**

331 The data generated in the course of the study will be reviewed on a regular basis for quality per  
332 our established Data Quality Assurance and Quality Control Standard Operating Procedures  
333 monthly. Following the end of the study, meetings will be organized at each study site to share  
334 results with community members, local authorities, and study participants. Findings will also be  
335 shared with local and international stakeholders, including the Bill & Melinda Gates Foundation,  
336 WHO, CDC, United States Agency for International Development, and Ministries of Health in each  
337 participating country. Abstracts will be developed for dissemination through both local and  
338 international scientific conferences and publication in peer-reviewed journals.

#### 339 **AUTHORS' CONTRIBUTIONS**

340 Conceptualization: VA, KPA, AGC, ZH, FJ, MPK, SM, VRM, CM, IN, QP, ERS, MBS, and CRS.  
341 Funding acquisition: KPA, CT, SN, VA, SJB, IN, MPK, MBS, ERS, CM, and SM. Design of  
342 methodology: KPA, CT, ABAK, ERS, QP, LGU, CRS, and BJW. Project administration: VA, DAG,  
343 SGB, BF, ASJ, AK, FMM, HM, KO, RSR, WKM, GO, HO, NS, BV, SV, ZAW, JW, and NY.  
344 Provision of study materials: VA, DAG, LC, AD, AH, HM, KO, RR, RV, and BV. Supervision: VA,  
345 KPA, SJB, ZH, FJ, ASJ, MPK, SM, VRM, CM, WKM, SN, IN, QP, NS, ERS, MBS, CRS, CT, and  
346 LGU. Visualization: SGB, QP, and ERS. Writing—original draft preparation: VA, KPA, SGB, QP,  
347 and ERS. Writing—review and editing: VA, VA, KPA, SGB, SJB, LC, AGC, AD, DAG, AH, BF,  
348 ZH, ASJ, FJ, ABAK, AK, MPK, CM, VRM, HM, SM, IM, FMM, WKM, SN, GO, KO, HO, QP, RSR,  
349 NS, ERS, MBS, CRS, CT, LGU, BV, RV, SV, BJW, JW, NY.

## 350 **FUNDING STATEMENT**

351 This work was supported by Bill and Melinda Gates Foundation grant number [INV-002220 and  
352 INV-037626 to KPA, CTA, and SN; INV-003601 to VA; INV-043092 to SB; INV-005776 to IN and  
353 ZH; INV-057218 to MPK; K01TW012426 NIH/FIC to MBS; INV-041999 and INV-031954 to ERS;  
354 INV-060797 to CM; and INV-057223 to SM]. The funders provided input on the design of the study  
355 but had no role in the decision to publish or preparation of the manuscript.

## 356 **ACKNOWLEDGEMENTS**

357 This study would not be possible without the support of the Bill & Melinda Gates Foundation,  
358 specifically from Laura Lamberti and Sun-Eun Lee. The study design greatly benefited from the  
359 expertise of the ReMAPP Technical Advisory Group members, who were generous with their time  
360 and expertise: Lisa Rogers, Maria Elena Jefferds, Denish Moorthy, Melissa Fox Young, Nicholas  
361 Kassebaum, Eric Ohuma, and Bosede Afolabi. ReMAPP investigators are grateful to the  
362 extensive network of individuals and organizations who contributed to the design of this study,  
363 including but not limited to biostatisticians, laboratory technicians, obstetricians, community health  
364 workers, field data collectors, and research partners.

## 365 **COMPETING INTERESTS STATEMENT**

366 The authors declare no competing interests.

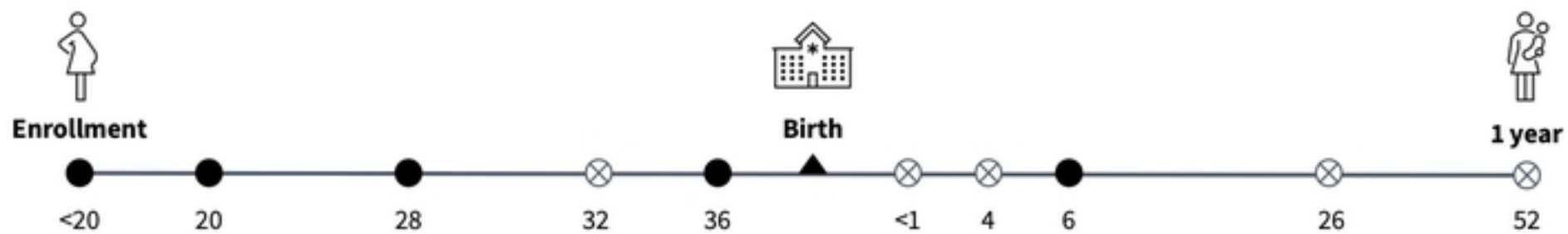
## 367 **REFERENCES**

- 368 1. Kassebaum NJ, Jasrasaria R, Naghavi M, Wulf SK, Johns N, Lozano R, et al. A systematic  
369 analysis of global anemia burden from 1990 to 2010. *Blood*. 2014;123: 615–624.
- 370 2. Anemia in Pregnancy: ACOG Practice Bulletin, Number 233. *Obstet Gynecol*. 2021;138:  
371 e55–e64.
- 372 3. Stevens GA, Paciorek CJ, Flores-Urrutia MC, Borghi E, Namaste S, Wirth JP, et al.  
373 National, regional, and global estimates of anaemia by severity in women and children for  
374 2000–19: a pooled analysis of population-representative data. *Lancet Glob Health*. 2022;10:  
375 e627–e639.
- 376 4. Safiri S, Kolahi A-A, Noori M, Nejadghaderi SA, Karamzad N, Bragazzi NL, et al. Burden of

- 377 anemia and its underlying causes in 204 countries and territories, 1990-2019: results from  
378 the Global Burden of Disease Study 2019. *J Hematol Oncol.* 2021;14: 185.
- 379 5. Yang Y, Hou Y, Wang H, Gao X, Wang X, Li J, et al. Maternal Thyroid Dysfunction and  
380 Gestational Anemia Risk: Meta-Analysis and New Data. *Front Endocrinol .* 2020;11: 201.
- 381 6. Deng Y, Steenland K, Sinharoy SS, Peel JL, Ye W, Pillarisetti A, et al. Association of  
382 household air pollution exposure and anemia among pregnant women: Analysis of baseline  
383 data from “Household Air Pollution Intervention Network (HAPIN)” trial. *Environ Int.*  
384 2024;190: 108815.
- 385 7. Yadav G, Chambial S, Agrawal N, Gothwal M, Kathuria P, Singh P, et al. Blood lead levels  
386 in antenatal women and its association with iron deficiency anemia and adverse pregnancy  
387 outcomes. *J Family Med Prim Care.* 2020;9: 3106–3111.
- 388 8. Ortiz-Garcia NY, Cipriano Ramírez AI, Juárez K, Brand Galindo J, Briceño G, Calderon  
389 Martinez E. Maternal Exposure to Arsenic and Its Impact on Maternal and Fetal Health: A  
390 Review. *Cureus.* 2023;15: e49177.
- 391 9. Azami M, Badfar G, Khalighi Z, Qasemi P, Shohani M, Soleymani A, et al. The association  
392 between anemia and postpartum depression: A systematic review and meta-analysis.  
393 *Caspian J Intern Med.* 2019;10: 115–124.
- 394 10. Kang SY, Kim H-B, Sunwoo S. Association between anemia and maternal depression: A  
395 systematic review and meta-analysis. *J Psychiatr Res.* 2020;122: 88–96.
- 396 11. Young MF, Oaks BM, Tandon S, Martorell R, Dewey KG, Wendt AS. Maternal hemoglobin  
397 concentrations across pregnancy and maternal and child health: a systematic review and  
398 meta-analysis. *Ann N Y Acad Sci.* 2019;1450: 47–68.
- 399 12. Sukrat B, Wilasrusmee C, Siribumrungwong B, McEvoy M, Okascharoen C, Attia J, et al.  
400 Hemoglobin concentration and pregnancy outcomes: a systematic review and meta-  
401 analysis. *Biomed Res Int.* 2013;2013: 769057.
- 402 13. Wedderburn CJ, Ringshaw JE, Donald KA, Joshi SH, Subramoney S, Fouche J-P, et al.  
403 Association of Maternal and Child Anemia With Brain Structure in Early Life in South Africa.  
404 *JAMA Netw Open.* 2022;5: e2244772.
- 405 14. Steer PJ. Maternal hemoglobin concentration and birth weight. *Am J Clin Nutr.* 2000;71:  
406 1285S–7S.
- 407 15. Yip R. Significance of an abnormally low or high hemoglobin concentration during  
408 pregnancy: special consideration of iron nutrition. *Am J Clin Nutr.* 2000;72: 272S–279S.
- 409 16. Amburgey OA, Ing E, Badger GJ, Bernstein IM. Maternal hemoglobin concentration and its  
410 association with birth weight in newborns of mothers with preeclampsia. *J Matern Fetal  
411 Neonatal Med.* 2009;22: 740–744.
- 412 17. Young MF, Oaks BM, Rogers HP, Tandon S, Martorell R, Dewey KG, et al. Maternal low  
413 and high hemoglobin concentrations and associations with adverse maternal and infant  
414 health outcomes: an updated global systematic review and meta-analysis. *BMC Pregnancy  
415 Childbirth.* 2023;23: 264.

- 416 18. Ohuma EO, Young MF, Martorell R, Ismail LC, Peña-Rosas JP, Purwar M, et al.  
417 International values for haemoglobin distributions in healthy pregnant women.  
418 *EClinicalMedicine*. 2020;29-30: 100660.
- 419 19. Chang S-C, O'Brien KO, Nathanson MS, Mancini J, Witter FR. Hemoglobin concentrations  
420 influence birth outcomes in pregnant African-American adolescents. *J Nutr*. 2003;133:  
421 2348–2355.
- 422 20. Yip R. Significance of an abnormally low or high hemoglobin concentration during  
423 pregnancy: special consideration of iron nutrition. *Am J Clin Nutr*. 2000;72: 272S–279S.
- 424 21. Garcia-Casal MN, Pasricha S-R, Sharma AJ, Peña-Rosas JP. Use and interpretation of  
425 hemoglobin concentrations for assessing anemia status in individuals and populations:  
426 results from a WHO technical meeting. *Ann N Y Acad Sci*. 2019;1450: 5–14.
- 427 22. Guideline on haemoglobin cutoffs to define anaemia in individuals and populations. World  
428 Health Organization; 2024 Mar. Available:  
429 <https://www.who.int/publications/i/item/9789240088542>
- 430 23. Chaparro CM, Suchdev PS. Anemia epidemiology, pathophysiology, and etiology in low-  
431 and middle-income countries. *Ann N Y Acad Sci*. 2019;1450: 15–31.
- 432 24. World Health Organization. Iron Deficiency Anaemia: Report of a Study Group. World  
433 Health Organization Technical Report Series; 1959. Report No.: 182. Available:  
434 [https://apps.who.int/iris/bitstream/handle/10665/40447/WHO\\_TRS\\_182.pdf](https://apps.who.int/iris/bitstream/handle/10665/40447/WHO_TRS_182.pdf)
- 435 25. World Health Organization. WHO Scientific Group on Nutritional Anaemias & World Health  
436 Organization. Nutritional anaemias : report of a WHO scientific group [meeting held in  
437 Geneva from 13 to 17 March 1967]. 1968. Available:  
438 <https://apps.who.int/iris/handle/10665/40707>
- 439 26. Natvig K. Studies on hemoglobin values in Norway. V. Hemoglobin concentration and  
440 hematocrit in men aged 15-21 years. *Acta Med Scand*. 1966;180: 613–620.
- 441 27. Kilpatrick GS HRM. The prevalence of anaemia in the community. *British Medical Journal*.  
442 1961. pp. 778–782.
- 443 28. De Leeuw KM Lowenstein L Hsieh YS. Iron deficiency and hydremia in normal pregnancy.  
444 *Medicine*. The Williams & Wilkins Co.; 1966. pp. 291–315.
- 445 29. Sturgeon P. Studies of iron requirements in infants. III. Influence of supplemental iron  
446 during normal pregnancy on mother and infant. A. The mother. *British Journal of*  
447 *Haematology*. 1959.
- 448 30. CDC Criteria for Anemia in Children/Childbearing-Aged Women. 9 Jun 1989 [cited 9 Mar  
449 2021]. Available: <https://wonder.cdc.gov/wonder/prevguid/p0000169/p0000169.asp>
- 450 31. World Health Organization. WHO recommendations on antenatal care for a positive  
451 pregnancy experience. 2016. Available:  
452 [https://apps.who.int/iris/bitstream/handle/10665/250796/9789241549912-](https://apps.who.int/iris/bitstream/handle/10665/250796/9789241549912-eng.pdf;jsessionid=B18B1C73CA88F51F6DD4326F3906382B?sequence=1)  
453 [eng.pdf;jsessionid=B18B1C73CA88F51F6DD4326F3906382B?sequence=1](https://apps.who.int/iris/bitstream/handle/10665/250796/9789241549912-eng.pdf;jsessionid=B18B1C73CA88F51F6DD4326F3906382B?sequence=1)
- 454 32. World Health Organization. Haemoglobin concentrations for the diagnosis of anaemia and

- 455 assessment of severity. Vitamin and Mineral Nutrition Information System; 2011. Available:  
456 <https://www.who.int/vmnis/indicators/haemoglobin.pdf>
- 457 33. Smith ER, Baumann SG, Mores C, Tawiah C, Asante KP, Mazumder S, et al. PRISMA  
458 Maternal & Newborn Health Study. In: Open Science Foundation [Internet]. OSF; 1 Oct  
459 2024 [cited 2 Oct 2024]. Available: <https://osf.io/qckyt/>
- 460 34. World Health Organization. Nutritional Anaemias: Tools for Effective Prevention and  
461 Control. 2017.
- 462 35. Suchdev PS, Namaste SML, Aaron GJ, Raiten DJ, Brown KH, Flores-Ayala R, et al.  
463 Overview of the Biomarkers Reflecting Inflammation and Nutritional Determinants of  
464 Anemia (BRINDA) Project. *Adv Nutr*. 2016;7: 349–356.
- 465 36. Full Blood Count (FBC) Programme. In: UK NEQAS [Internet]. 6 Mar 2017 [cited 15 Jul  
466 2024]. Available: [https://ukneqas.org.uk/programmes/result/?programme=full-blood-count-  
467 %28fbc%29](https://ukneqas.org.uk/programmes/result/?programme=full-blood-count-%28fbc%29)
- 468 37. Proficiency Testing (PT)/External Quality Assessment (EQA) Programs Process. In:  
469 College of American Pathologists [Internet]. 26 Jan 2018 [cited 15 Jul 2024]. Available:  
470 [https://www.cap.org/laboratory-improvement/laboratories-outside-the-usa/proficiency-  
471 testing-pt-external-quality-assessment-eqa-programs/proficiency-testing-pt-external-quality-  
472 assessment-eqa-programs-process](https://www.cap.org/laboratory-improvement/laboratories-outside-the-usa/proficiency-testing-pt-external-quality-assessment-eqa-programs/proficiency-testing-pt-external-quality-assessment-eqa-programs-process)
- 473 38. Kelsey JL. *Methods in Observational Epidemiology*. Monographs in Epidemiology and;  
474 1996.
- 475 39. Lai Y. On the adaptive partition approach to the detection of multiple change-points. *PLoS*  
476 *One*. 2011;6: e19754.
- 477 40. Kemper AR, Newman TB, Slaughter JL, Maisels MJ, Watchko JF, Downs SM, et al. Clinical  
478 Practice Guideline Revision: Management of Hyperbilirubinemia in the Newborn Infant 35  
479 or More Weeks of Gestation. *Pediatrics*. 2022;150. doi:10.1542/peds.2022-058859
- 480 41. Fernandes M, Villar J, Stein A, Staines Urias E, Garza C, Victora CG, et al.  
481 INTERGROWTH-21st Project international INTER-NDA standards for child development at  
482 2 years of age: an international prospective population-based study. *BMJ Open*. 2020;10:  
483 e035258.
- 484 42. Sikaris K. Application of the stockholm hierarchy to defining the quality of reference  
485 intervals and clinical decision limits. *Clin Biochem Rev*. 2012;33: 141–148.
- 486 43. Ozarda Y, Sikaris K, Streichert T, Macri J, IFCC Committee on Reference intervals and  
487 Decision Limits (C-RIDL). Distinguishing reference intervals and clinical decision limits - A  
488 review by the IFCC Committee on Reference Intervals and Decision Limits. *Crit Rev Clin*  
489 *Lab Sci*. 2018;55: 420–431.



- Study visit
- Hemoglobin by complete blood count
- ⊗ Hemoglobin by point-of-care device

*\*Sample sizes are by site*

Cohort of 2000\* pregnant women aged 15 or 18 to 45 years enrolled  $<20$  weeks gestation to undergo serial hemoglobin testing by complete blood count

Follow up continues through 1 year postpartum to capture adverse health outcomes to define **decision limits** (n=2000)

'Healthy' subcohort identified to define **reference limits**  
(n=600)

Random sample selected to describe **anemia etiology**  
(n=300, 100 per trimester)

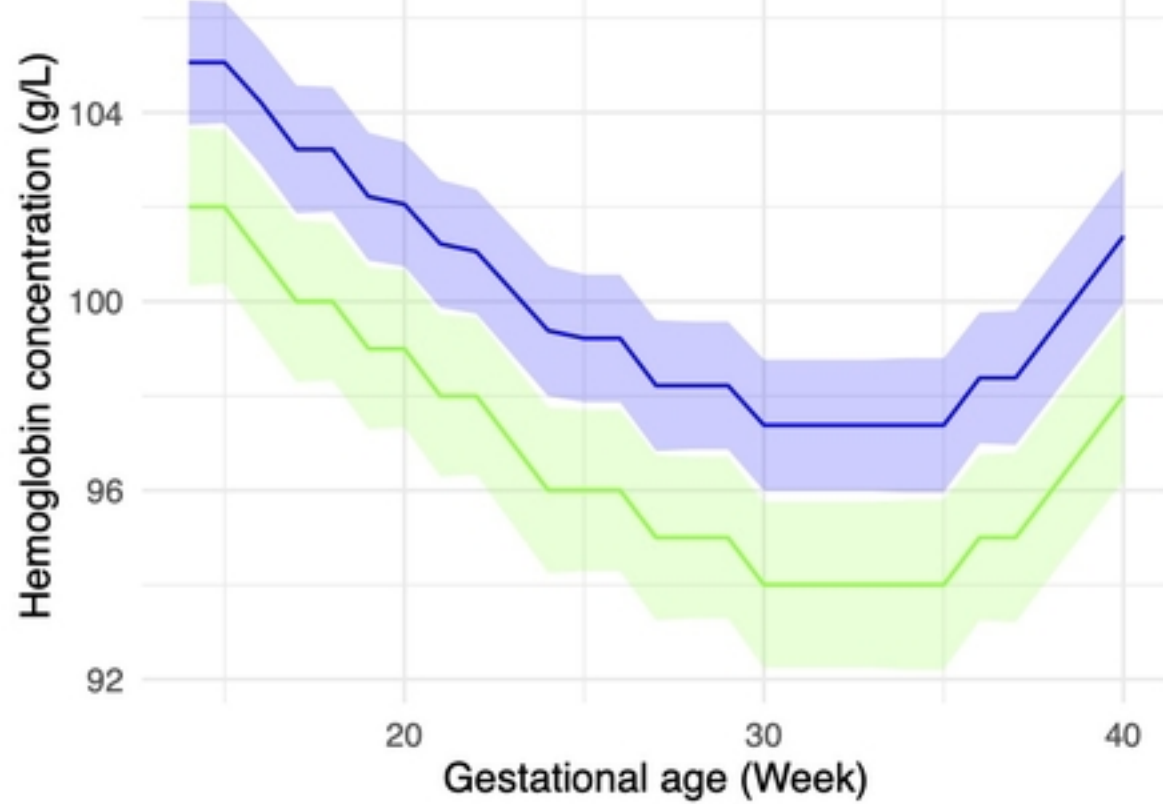
Fig1



n=600

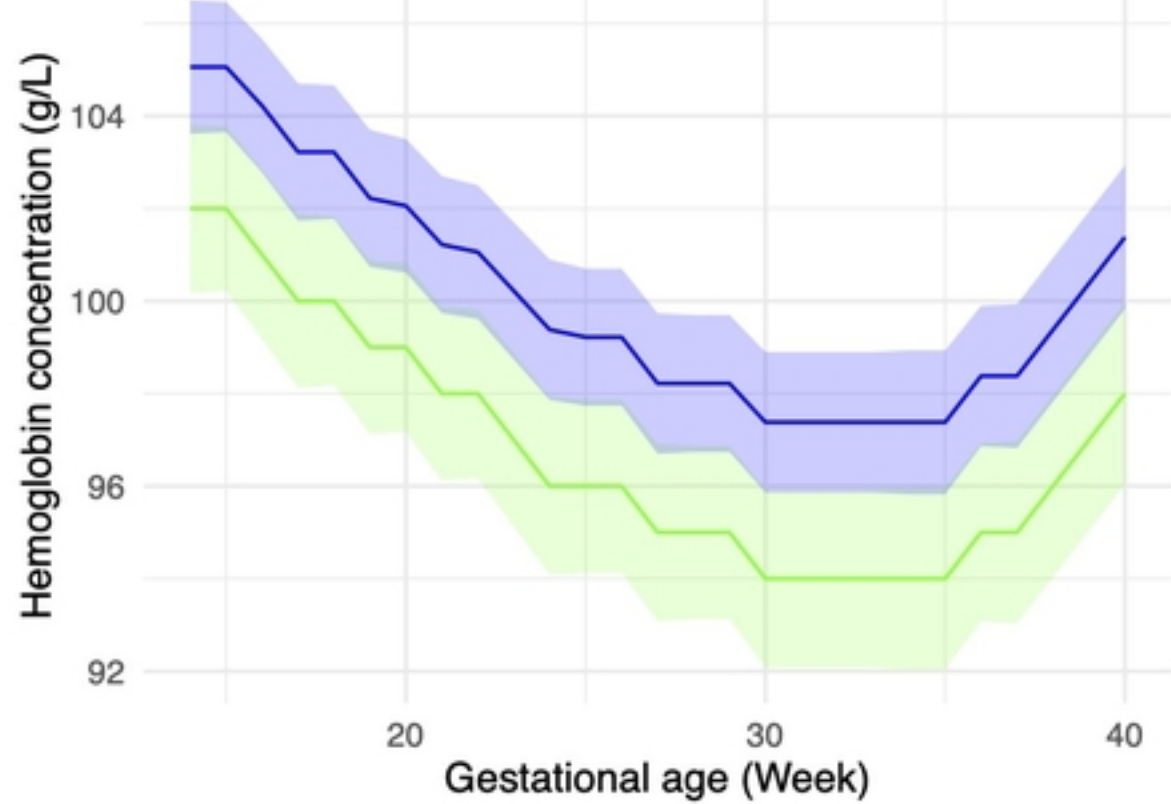
2.5th Percentile 5th Percentile

medRxiv preprint doi: <https://doi.org/10.1101/2024.11.06.24316823>; this version posted November 6, 2024. The copyright holder for this preprint (which was not certified by peer review) is the author/funder, who has granted medRxiv a license to display the preprint in perpetuity. It is made available under a [CC-BY 4.0 International license](https://creativecommons.org/licenses/by/4.0/).



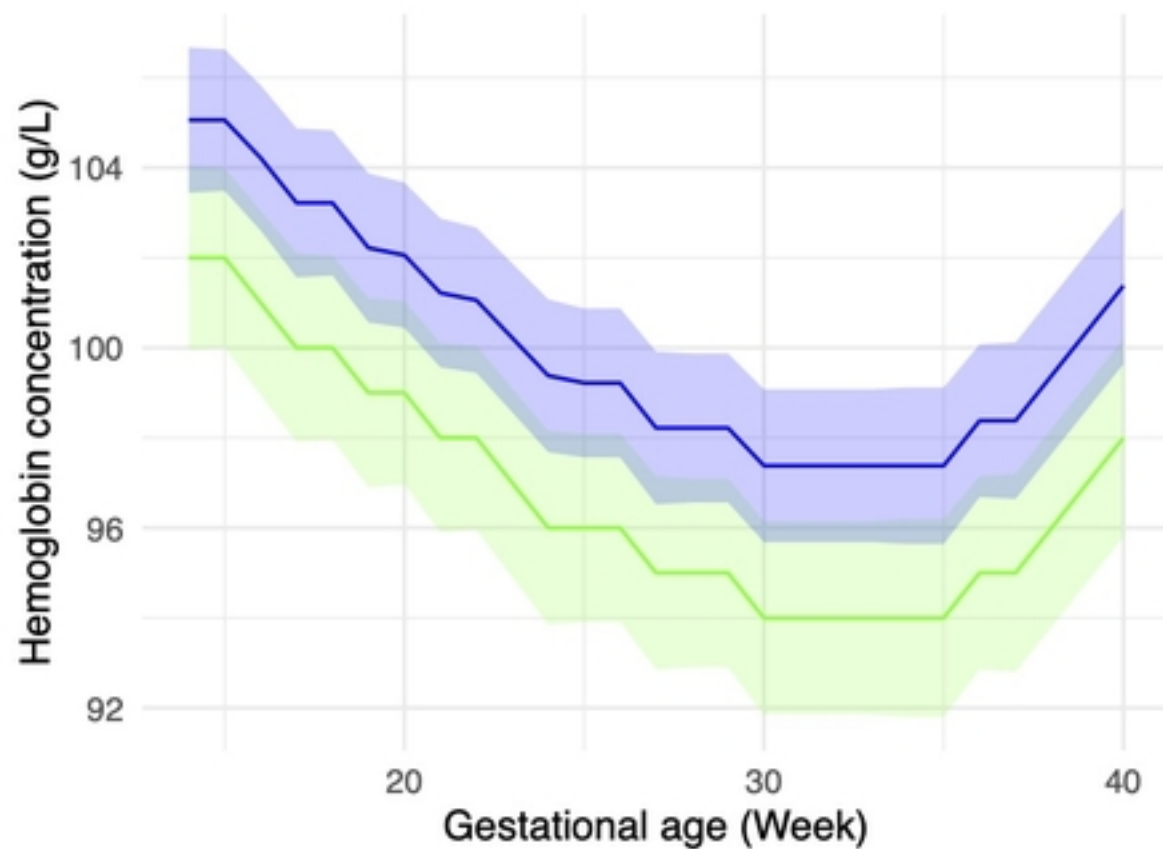
n=500

2.5th Percentile 5th Percentile



n=400

2.5th Percentile 5th Percentile



n=300

2.5th Percentile 5th Percentile

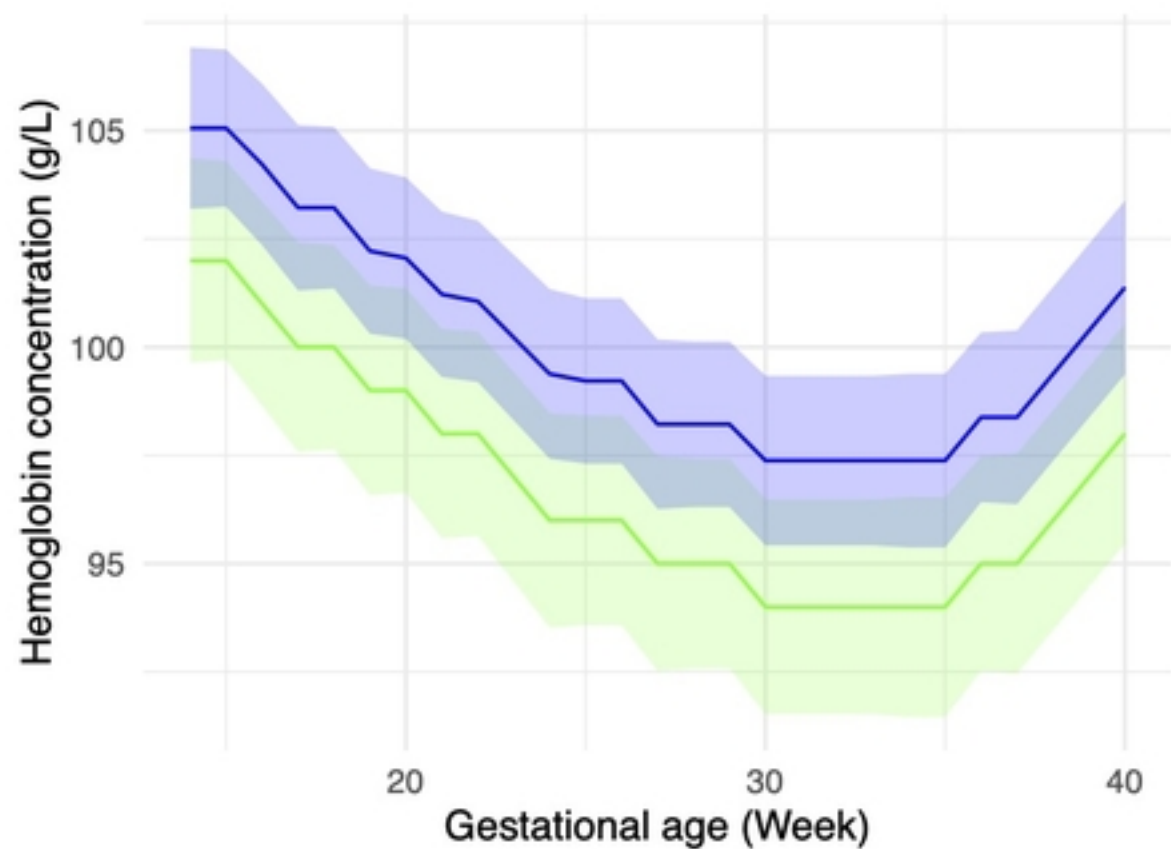


Fig2

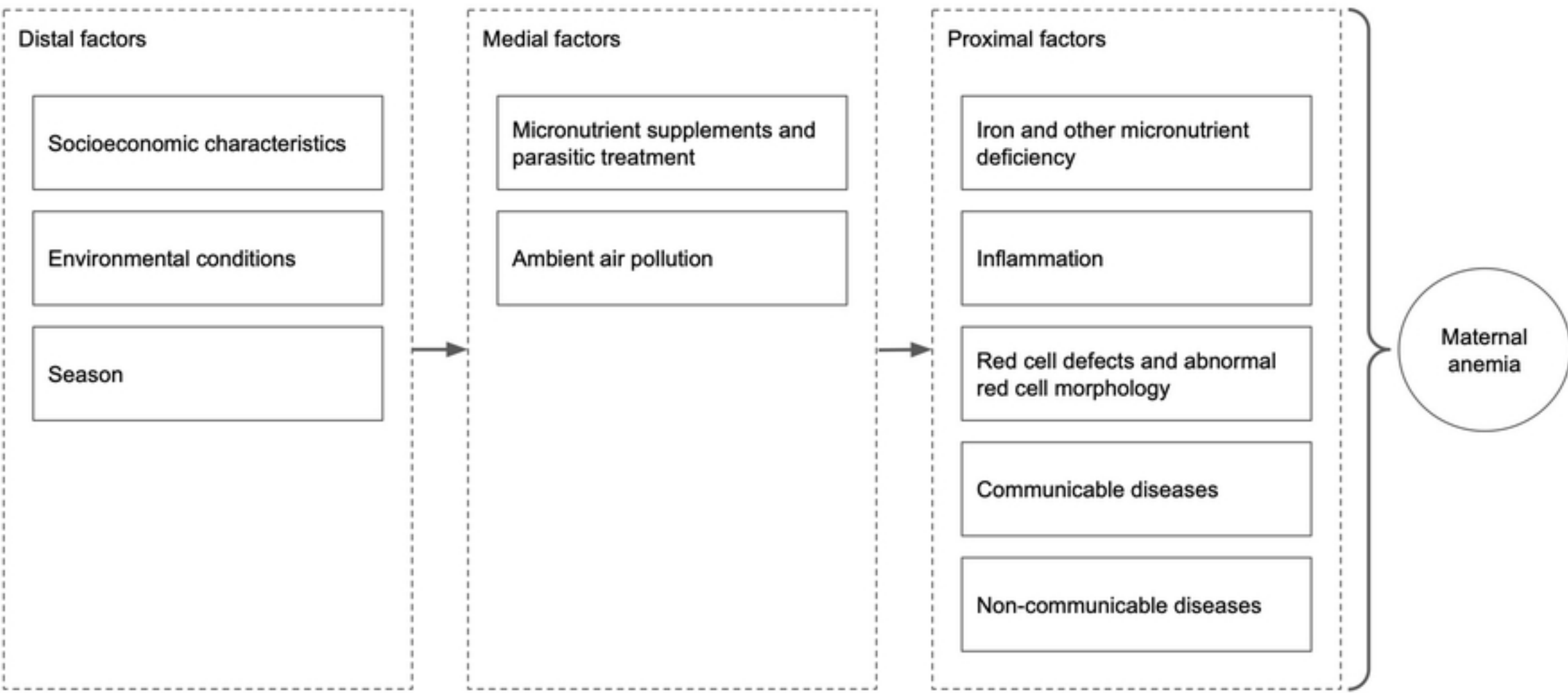


Fig3