

## 1 Title Page

## 2 Title: Apathy and Affective Symptoms Associated with Elevated Alzheimer's Disease

## 3 Biomarkers

## 4 Authors

Name	Affiliations (separated by semi colon)	Title	Highest qualification	Email
Matthew JY Kang	Neuropsychiatry Centre, Royal Melbourne Hospital; Department of Psychiatry, University of Melbourne	Dr	MBBS (Hons), FRANZCP	Matthew.Kang1@unimelb.edu.au
Dhamidhu Eratne	Neuropsychiatry Centre, Royal Melbourne Hospital; Department of Psychiatry, University of Melbourne	Dr	MBChB FRANZCP	deratne@unimelb.edu.au
Samantha M Loi	Neuropsychiatry Centre, Royal Melbourne Hospital; Department of Psychiatry, University of Melbourne	Associate Professor	PhD, FRANZCP, MBBS	Samantha.loi@unimelb.edu.au
Christa Dang	National Ageing Research Institute; Department of General Practice, University of Melbourne	Dr	PhD	christa.dang@unimelb.edu.au
Alexander F Santillo	Department of Clinical Sciences, Faculty of Medicine, Lund University, Malmö, Sweden	A/Prof	MD	alexander.santillo@med.lu.se
Henrik Zetterberg	Department of Psychiatry and Neurochemistry, Institute of Neuroscience & Physiology, Sahlgrenska Academy at the University of Gothenburg, Mölndal, Sweden. Clinical Neurochemistry Laboratory, Sahlgrenska University Hospital, Mölndal, Sweden. Department of Neurodegenerative Disease, Queen Square	Prof	MD, PhD	henrik.zetterberg@gu.se

	<p>Institute of Neurology, University College London, London, UK.          UK Dementia Research Institute, University College London, London, UK.          Hong Kong Center for Neurodegenerative Diseases, Hong Kong, China.          UW Department of Medicine, School of Medicine and Public Health, Madison, WI, USA.</p>			
Kaj Blennow	<p>Inst. of Neuroscience and Physiology, University of Gothenburg, Mölndal, Sweden</p> <p>Clinical Neurochemistry Lab, Sahlgrenska University Hospital, Mölndal, Sweden</p> <p>Paris Brain Institute, ICM, Pitié-Salpêtrière Hospital, Sorbonne University, Paris, France</p> <p>Neurodegenerative Disorder Research Center, Division of Life Sciences and Medicine, and Department of Neurology, Institute on Aging and Brain Disorders, University of Science and Technology of China and First Affiliated Hospital of USTC, Hefei, P.R. China</p>	Professsor	MD, PhD	kaj.blennow@neuro.gu.se
Philip B Mitchell	Discipline of Psychiatry and Mental Health, School of Clinical Medicine,	Scientia Professor	AM, FAHMS, FASSA,	Phil.mitchell@unsw.edu.au

	Faculty of Medicine and Health, UNSW		MBBS, MD, FRANZCP, FRCPsych	
Malcolm Hopwood	Department of Psychiatry, University of Melbourne Professorial Psychiatry Unit, Ramsay Clinic Albert Road	Prof	MD, FRANZCP	mhopwood@unimelb.edu.au
Charles B Malpas <sup>^</sup>	Department of Medicine, Melbourne Medical School, University of Melbourne; Melbourne School of Psychological Sciences, University of Melbourne	A/Prof	MPsych, PhD	charles.malpas@unimelb.edu.au
Dennis Velakoulis <sup>^</sup>	Neuropsychiatry Centre, Royal Melbourne Hospital; Department of Psychiatry, University of Melbourne	Professor	MBBS DMedSci FRANZCP	Dennis.Velakoulis@mh.org.au

for the Alzheimer’s Disease Neuroimaging Initiative\*

\*Data used in preparation of this article were obtained from the Alzheimer’s Disease Neuroimaging Initiative (ADNI) database ([adni.loni.usc.edu](http://adni.loni.usc.edu)). As such, the investigators within the ADNI contributed to the design and implementation of ADNI and/or provided data but did not participate in the analysis or writing of this report. A complete listing of ADNI investigators can be found at: [https://adni.loni.usc.edu/wp-content/uploads/how\\_to\\_apply/ADNI\\_Acknowledgement\\_List.pdf](https://adni.loni.usc.edu/wp-content/uploads/how_to_apply/ADNI_Acknowledgement_List.pdf)

<sup>^</sup>CB Malpas and D Velakoulis are joint senior authors

5 **Corresponding author:**

6 Dr Matthew Kang

7 MBBS BMedSci MP FRANZCP

8 Neuropsychiatry Centre, Royal Melbourne Hospital, 300 Grattan St, Parkville VIC 3050,  
9 Australia

10 [matthew.kang1@unimelb.edu.au](mailto:matthew.kang1@unimelb.edu.au)

11 Tel: +61 3 9342 8750

12

13 **CRedit authorship contribution statement**

14 Matthew JY Kang: Study conceptualisation, literature review, data analysis, manuscript writing  
15 and submission

16 Dhamidhu Eratne: Study design, data analysis, manuscript revision and supervision

- 17 Samantha M Loi manuscript revision and supervision
- 18 Christa Dang manuscript revision
- 19 Alexander F Santillo manuscript revision and supervision
- 20 Henrik Zetterberg: Study design, biomarker data generation, manuscript revision
- 21 Kaj Blennow: Study design, biomarker data generation, manuscript revision
- 22 Philip B Mitchell: Study design, supervision and manuscript revision
- 23 Malcolm Hopwood: Study design, supervision and manuscript revision
- 24 Charles B Malpas: Study design, data analysis, statistical support, supervision and manuscript  
25 revision
- 26 Dennis Velakoulis: Study design, data analysis, supervision and manuscript revision
- 27
- 28 **Word Count (excluding title page, abstract, headings, references, figures and tables): 2,998**  
29 **words**
- 30 Submission Type: Original Article
- 31 Abstract word count: 344
- 32 Number of figures: 2
- 33 Number of tables: 3
- 34
- 35 **ORCID ID**
- 36 Matthew Jee Yun Kang: <https://orcid.org/0000-0001-9375-3762>
- 37 Dhamidhu Eratne: <https://orcid.org/0000-0002-3226-7645>
- 38 Philip B. Mitchell 0000-0002-7954-5235
- 39 Dennis Velakoulis: <https://orcid.org/0000-0002-8842-8479>
- 40 Malcolm Hopwood: <https://orcid.org/0000-0001-6004-4521>
- 41 Henrik Zetterberg: 0000-0003-3930-4354
- 42 Christa Dang <https://orcid.org/0000-0003-0905-282X>
- 43 Alexander F Santillo ID 0000-0001-9717-0820
- 44 Samantha M Loi <https://orcid.org/0000-0002-4953-4500>

45

## 46 **Acknowledgements**

47 Data collection and sharing for the Alzheimer's Disease Neuroimaging Initiative (ADNI) is  
48 funded by the National Institute on Aging (National Institutes of Health Grant U19AG024904).  
49 The grantee organization is the Northern California Institute for Research and Education. In the  
50 past, ADNI has also received funding from the National Institute of Biomedical Imaging and  
51 Bioengineering, the Canadian Institutes of Health Research, and private sector contributions  
52 through the Foundation for the National Institutes of Health (FNIH) including generous  
53 contributions from the following: AbbVie, Alzheimer's Association; Alzheimer's Drug  
54 Discovery Foundation; Araclon Biotech; BioClinica, Inc.; Biogen; Bristol- Myers Squibb  
55 Company; CereSpir, Inc.; Cogstate; Eisai Inc.; Elan Pharmaceuticals, Inc.; Eli Lilly and  
56 Company; EuroImmun; F. Hoffmann-La Roche Ltd and its affiliated company Genentech, Inc.;  
57 Fujirebio; GE Healthcare; IXICO Ltd.; Janssen Alzheimer Immunotherapy Research &  
58 Development, LLC.; Johnson & Johnson Pharmaceutical Research & Development LLC.;  
59 Lumosity; Lundbeck; Merck & Co., Inc.; Meso Scale Diagnostics, LLC.; NeuroRx Research;  
60 Neurotrack Technologies; Novartis Pharmaceuticals Corporation; Pfizer Inc.; Piramal Imaging;  
61 Servier; Takeda Pharmaceutical Company; and Transition Therapeutics.

62 MK is supported by the Nick Christopher PhD scholarship and the Research Training Program  
63 Scholarship from the Department of Psychiatry, University of Melbourne with contributions  
64 from the Australian Commonwealth Government, and the Ramsay Hospital Research  
65 Foundation.

66 A.F.S is primarily funded by the Swedish federal government under the ALF agreement (ALF  
67 ALF 2022 YF 0017) The Fromma foundation and The Åke Wiberg foundation.

68 HZ is a Wallenberg Scholar and a Distinguished Professor at the Swedish Research Council  
69 supported by grants from the Swedish Research Council (#2023-00356; #2022-01018 and  
70 #2019-02397), the European Union's Horizon Europe research and innovation programme under  
71 grant agreement No 101053962, Swedish State Support for Clinical Research (#ALFGBG-  
72 71320), the Alzheimer Drug Discovery Foundation (ADDF), USA (#201809-2016862), the AD  
73 Strategic Fund and the Alzheimer's Association (#ADSF-21-831376-C, #ADSF-21-831381-C,

74 #ADSF-21-831377-C, and #ADSF-24-1284328-C), the European Partnership on Metrology, co-  
75 financed from the European Union’s Horizon Europe Research and Innovation Programme and  
76 by the Participating States (NEuroBioStand, #22HLT07), the Bluefield Project, Cure  
77 Alzheimer’s Fund, the Olav Thon Foundation, the Erling-Persson Family Foundation, Familjen  
78 Rönströms Stiftelse, Stiftelsen för Gamla Tjänarinnor, Hjärnfonden, Sweden (#FO2022-0270),  
79 the European Union’s Horizon 2020 research and innovation programme under the Marie  
80 Skłodowska-Curie grant agreement No 860197 (MIRIADE), the European Union Joint  
81 Programme – Neurodegenerative Disease Research (JPND2021-00694), the National Institute  
82 for Health and Care Research University College London Hospitals Biomedical Research Centre,  
83 and the UK Dementia Research Institute at UCL (UKDRI-1003).

84 KB is supported by the Swedish Research Council (#2017-00915 and #2022-00732), the  
85 Swedish Alzheimer Foundation (#AF-930351, #AF-939721, #AF-968270, and #AF-994551),  
86 Hjärnfonden, Sweden (#FO2017-0243 and #ALZ2022-0006), the Swedish state under the  
87 agreement between the Swedish government and the County Councils, the ALF-agreement  
88 (#ALFGBG-715986 and #ALFGBG-965240), the European Union Joint Program for  
89 Neurodegenerative Disorders (JPND2019-466-236), the Alzheimer’s Association 2021 Zenith  
90 Award (ZEN-21-848495), the Alzheimer’s Association 2022-2025 Grant (SG-23-1038904 QC),  
91 La Fondation Recherche Alzheimer (FRA), Paris, France, the Kirsten and Freddy Johansen  
92 Foundation, Copenhagen, Denmark, and Familjen Rönströms Stiftelse, Stockholm, Sweden.

93 PBM is supported by an Australian NHMRC Investigator Grant (1177991), Lansdowne  
94 Foundation and Good Talk charity

95

96

97

## 98 **Data Sharing Statement**

99 This study used data from the Alzheimer’s Disease Neuroimaging Initiative (ADNI;  
100 [adni.loni.usc.edu](http://adni.loni.usc.edu))

## 101 **Conflicts of interest**

102 HZ has served at scientific advisory boards and/or as a consultant for Abbvie, Acumen, Alector,  
103 Alzinova, ALZPath, Amylyx, Annexon, Apellis, Artery Therapeutics, AZTherapies, Cognito  
104 Therapeutics, CogRx, Denali, Eisai, LabCorp, Merry Life, Nervgen, Novo Nordisk, Optoceutics,  
105 Passage Bio, Pinteon Therapeutics, Prothena, Red Abbey Labs, reMYND, Roche, Samumed,  
106 Siemens Healthineers, Triplet Therapeutics, and Wave, has given lectures sponsored by  
107 Alzecure, BioArctic, Biogen, Cellectricon, Fujirebio, Lilly, Novo Nordisk, Roche, and WebMD,  
108 and is a co-founder of Brain Biomarker Solutions in Gothenburg AB (BBS), which is a part of  
109 the GU Ventures Incubator Program (outside submitted work).

110 KB has served as a consultant and at advisory boards for Abbvie, AC Immune, ALZPath,  
111 AriBio, BioArctic, Biogen, Eisai, Lilly, Moleac Pte. Ltd, Neurimmune, Novartis, Ono Pharma,  
112 Prothena, Roche Diagnostics, Sanofi and Siemens Healthineers; has served at data monitoring  
113 committees for Julius Clinical and Novartis; has given lectures, produced educational materials  
114 and participated in educational programs for AC Immune, Biogen, Celdara Medical, Eisai and  
115 Roche Diagnostics; and is a co-founder of Brain Biomarker Solutions in Gothenburg AB (BBS),  
116 which is a part of the GU Ventures Incubator Program, outside the work presented in this paper.

117

118 SL has received honorarium from Lundbeck and Otsuka.

119

120 MH has served as a consultant and at advisory boards for Boehringer-Ingelheim, Cortexa, Eli  
121 Lilly, Janssen, Lundbeck, Novartis, Otsuka, Orion, Servier and Takeda. He has received research  
122 support from Alto Neuroscience, Boehringer-Ingelheim, Douglas, Janssen, and Lyndra,

123

124 PBM has received honoraria from Janssen (Australia) for lectures and advisory board  
125 membership

126

127 The remaining authors declare no conflict of interests.

## 128 **Key Points**

129 **Question:** Do apathy and affective neuropsychiatric symptoms correlate with the rate of tau  
130 pathology and neurodegeneration, as measured by plasma phosphorylated-tau181 (p-tau181) and  
131 neurofilament light chain protein (NfL), in individuals across the clinical spectrum of  
132 Alzheimer's disease (AD)?

133 **Findings:** In a longitudinal study of 790 patients with mild cognitive impairment (MCI) and AD  
134 dementia, serial measurements of plasma p-tau181 and NfL were collected annually over four  
135 years. P-tau181 and NfL levels were elevated in those with apathy or anxiety compared to those  
136 without. The rate of NfL increase, an indicator of neurodegeneration, was significantly higher in  
137 those with apathy.

138 **Meaning:** The presence of anxiety and apathy was associated with elevated biomarkers of  
139 neurodegeneration in MCI and AD dementia. Notably, apathy was linked to a faster rate of NfL  
140 increase, suggesting an accelerated neurodegenerative process.

141

## 142 **Abstract**

143 **Importance:** While apathy and affective neuropsychiatric symptoms (NPS) are common in the  
144 clinical spectrum of Alzheimer's disease (AD), their neurobiological correlates remain unclear.

145 **Objective:** To longitudinally examine plasma markers of neurodegeneration (neurofilament light  
146 chain; NfL) and tau pathology (phosphorylated at threonine 181; p-tau181) and their associations  
147 with apathy and affective symptoms in individuals with clinical diagnoses of AD dementia and  
148 mild cognitive impairment (MCI).

149 **Design, Setting, Participants and Exposure:** This cohort study used longitudinal data from the  
150 Alzheimer Disease Neuroimaging Initiative (ADNI). Individuals with clinical diagnoses of MCI  
151 and AD dementia were enrolled in ADNI with serial annual blood samples over a four-year  
152 period, which were analyzed for NfL and p-tau181 using ultrasensitive techniques. Study data  
153 were accessed between July and September 2024.



154 **Main Outcomes and Measures:** The presence of neuropsychiatric symptoms was determined  
155 using the Neuropsychiatric Interview (NPI). We analyzed the trajectory of plasma NfL and p-  
156 tau181 in each NPS using general linear mixed-effects models adjusted for age and sex.

157 **Results:** There were 790 participants with AD dementia and MCI (mean [SD] age 72.7 [7.6]  
158 years; 333 females, 42%) and 417 healthy controls. The most common NPS was depression (n =  
159 428; 54%), followed by irritability (n = 419; 53%), apathy (n = 348; 44%) and anxiety (n = 341;  
160 43%). In the AD dementia and MCI group, apathy and anxiety were associated with higher  
161 levels of both NfL and p-tau181 after controlling for cognitive and functional decline. Moreover,  
162 apathy was associated with higher rate of NfL increase longitudinally. Depression at baseline  
163 was initially associated with higher NfL and p-tau181 levels, but this did not remain significant  
164 in the sensitivity analyses.

165 **Conclusion and Relevance:** This study found that in individuals with clinical AD, apathy and  
166 anxiety are associated greater tau and neurodegenerative burden. Furthermore, those with apathy  
167 had a higher rate of NfL increase, which suggests an accelerated neurodegenerative process.  
168 These findings highlight that these symptoms be indicative of AD pathology severity and have  
169 implications for potential treatments which target tau pathology.

170  
171 **Keywords:** Neuropsychiatric symptoms, Blood-based biomarkers, Alzheimer's disease,  
172 Depression, Apathy, Anxiety, Phosphorylated tau 181, Neurofilament light chain,

## 173 **Background**

174 Neuropsychiatric symptoms (NPS) are prevalent in individuals across the clinical spectrum of  
175 Alzheimer's disease (AD) including mild cognitive impairment (MCI) and AD dementia.<sup>1,2</sup>  
176 These symptoms often co-occur in clusters, with affective symptoms (depression and anxiety)  
177 and apathy among the most prevalent.<sup>1-4</sup> NPS have been associated with worse cognitive decline,  
178 higher mortality rates, and greater caregiver burden.<sup>5-7</sup> Despite their prevalence and impact, the  
179 neurobiological mechanisms underlying NPS, and their contribution to disease progression  
180 remain inadequately understood.

181 Previous literature have reported mixed findings regarding the association between AD  
182 biomarkers and NPS.<sup>8,9</sup> Several factors may account for the inconsistent results. Many studies  
183 may be underpowered to detect the subtle associations between NPS and biomarkers.<sup>10</sup>  
184 Additionally, some studies have grouped NPS together,<sup>2,6</sup> such as within the mild behavioral  
185 impairment (MBI) framework,<sup>11,12</sup> potentially obscuring the effects of individual symptom  
186 groups.

187 Ultrasensitive blood-based immunoassays can now detect and track the progression of AD-  
188 related neuropathological processes. Plasma tau phosphorylated at threonine 181 (p-tau181)  
189 shows strong associations with tau pathology and amyloid deposition.<sup>13</sup> Neurofilament light  
190 chain protein (NfL) reflects neuroaxonal damage,<sup>14,15</sup> including in AD dementia.<sup>16,17</sup> These  
191 blood-based biomarkers offer minimally invasive alternatives to traditional cerebrospinal fluid  
192 (CSF) and imaging biomarkers.<sup>18,19</sup>

193 A recent study found that that the emergence of psychosis was associated with elevated plasma  
194 levels of p-tau181 and NfL in individuals across the clinical spectrum of AD.<sup>20</sup> However, no  
195 studies have explored their relationship to other NPS longitudinally, such as apathy and affective  
196 symptoms, which are the most common neuropsychiatric manifestations of AD dementia and  
197 MCI.

198 Our primary aim was to explore the association between apathy and affective NPS (depression,  
199 anxiety) with blood NfL and p-tau181 longitudinally in individuals with clinical diagnoses of  
200 AD dementia and MCI. As a secondary aim, we explored plasma biomarker associations with

201 other NPS, including delusions, hallucinations, agitation, irritability, disinhibition, elation,  
202 appetite disturbance, sleep disturbance and aberrant motor symptoms.

## 203 **Methods**

204 This longitudinal study used data from the Alzheimer’s Disease Neuroimaging Initiative (ADNI)  
205 database ([adni.loni.usc.edu](http://adni.loni.usc.edu)). The ADNI was launched in 2003 as a public-private partnership,  
206 led by Principal Investigator Michael W. Weiner, MD. The ADNI participants have been  
207 recruited from more than 50 sites across the United States and Canada. We downloaded the data  
208 from the ADNI database on the 22<sup>nd</sup> July 2024. Regional ethical committees of all institutions  
209 approved the ADNI study. All study participants gave written informed consent. This study was  
210 carried out according to the Strengthening the Reporting of Observational Studies in  
211 Epidemiology (STROBE) reporting guideline.<sup>21</sup>

## 212 **Participants**

213 This cohort has been described in a previous publication.<sup>19</sup> In brief, the cohort consisted of  
214 patients with clinical diagnoses of AD dementia and MCI, and an additional group of cognitively  
215 unimpaired (CU) participants with available plasma NfL and p-tau181 measurements collected  
216 annually over four years. All ADNI participants had no significant neurological disease other  
217 than AD. The following measures were also obtained during the annual visits: Mini-Mental State  
218 Examination (MMSE), Clinical Dementia Rating Scale Sum of Boxes (CDR-SB), hippocampal  
219 volume acquired using 3-T MRI scanners,<sup>22</sup> and Florbetapir positron emission tomography  
220 standardized uptake value ratio (AV45 PET SUVR) which quantifies amyloid plaque burden.<sup>23</sup>  
221 The CU participants reported a MMSE score of 24 or higher and a CDR score of zero. The MCI  
222 participants reported an MMSE score of 24 or higher and a CDR score of 0.5. The patients with  
223 AD dementia fulfilled the clinical diagnostic criteria for probable AD,<sup>24</sup> reported an MMSE  
224 score between 20 and 26, and a CDR score from 0.5 to 1.0.

225 The presence of NPS was assessed with the Neuropsychiatric Inventory (NPI), an informant-  
226 based scale that examines 12 neuropsychiatric domains through a structured interview with the  
227 caregiver. The NPS in the NPI are apathy, anxiety, depression, irritability, elation, disinhibition,  
228 aggression, delusions, hallucinations, aberrant motor symptoms, appetite disturbance and sleep  
229 disturbance.

230 For each NPS of interest (i.e. apathy), participants with AD dementia and MCI were distributed  
231 in 3 groups according to presence or absence of the NPS longitudinally: (1) participants without

232 the specific NPS over the course of the study (i.e., apathy absent), (2) participants with the  
233 specific NPS at baseline (i.e., apathy baseline), and (3) participants with the specific NPS at any  
234 time point over the course of the study (i.e., apathy incident), consistent with a previous study by  
235 Gomar et al. exploring psychosis in the ADNI cohort.<sup>20</sup>

## 236 **Samples Analyses**

237 Plasma p-tau181 and NfL concentrations were measured using Single molecule array (Simoa)  
238 technology (Quanterix, Billerica, MA) at the Clinical Neurochemistry Laboratory, University of  
239 Gothenburg, Mölndal, Sweden, as previously described.<sup>19,20</sup>

## 240 **Statistical Analyses**

241 All statistical analyses were performed using R version 4.2.2 (2022-10-31), the lmer package,  
242 Jamovi version 2.6.0 and GAMLj package.<sup>25-28</sup> For the participant characteristics, demographic  
243 and clinical status between groups at baseline were compared using general linear models  
244 (GLMs) for continuous variables, and  $\chi^2$  test of independence were used for comparisons in  
245 categorical variables.

246 To explore whether a specific NPS (i.e. apathy) was associated with NfL or p-tau181 levels over  
247 time, a general linear mixed-effects model (GLMM) was estimated to analyze the longitudinal  
248 biomarkers (NfL and p-tau181) trajectories in each NPS subgroups (i.e. apathy absent, apathy  
249 baseline and apathy incident) with random intercepts and slopes for each participant. For the  
250 primary analysis, age and sex were included as covariates, using residual (restricted) maximum  
251 likelihood estimation and assuming an unstructured covariance matrix. Plasma NfL and p-tau181  
252 levels were log-transformed. All continuous variables were centered and scaled prior to analysis.  
253 The rate of change of biomarkers within groups ( $\beta$  slopes) was computed as averaged individual  
254 slopes from GLMMs that included random intercepts and slopes. Robust standard errors and  
255 confidence intervals were computed using bootstrapping with 2000 replicates. We performed  
256 simple effects analysis to determine whether the presence of a specific NPS (i.e. apathy baseline  
257 vs apathy absent, apathy incident vs apathy absent) was associated with significantly higher NfL  
258 levels or slope compared to those without the specific NPS (i.e. absent baseline). All *p* values  
259 were 2-sided and corrected for multiple testing using the Benjamin-Hochberg adjusted false  
260 discovery rate (FDR) of 5%.

261 We performed additional **sensitivity analyses** to ensure the findings in the primary outcomes of  
262 interest (apathy, anxiety and depression) were robust. We added CDR-SB and MMSE scores as  
263 covariates to account for any confounding effects of dementia severity. We also repeated the  
264 GLMMs for the subgroup of individuals who demonstrated amyloid positivity during the study  
265 (AV45 SUVR > 1.11). As a post-hoc analysis, we also performed GLMMs using the severity  
266 score for each NPS derived from the NPI (frequency x severity) adjusting for age and sex as  
267 covariates.

## 268 **Results**

269 A total of 1207 participants from ADNI had their serial plasma samples analyzed for p-tau181  
270 and NfL are summarized in Table 1. For the cohort across the clinical AD spectrum (AD  
271 dementia and MCI; n = 790), the mean age was 72.7 (SD 7.63) years, with 333 females (42%).  
272 The mean CDR-SB was 5.3 for AD dementia and 1.5 for MCI, which is the equivalent of mild  
273 and very mild severity respectively. 161 (88%) individuals diagnosed with AD dementia and 327  
274 (62%) individuals with MCI were amyloid-positive respectively. The most common NPS was  
275 depression (54%), followed by irritability (53%), apathy (44%) and anxiety (43%). The  
276 prevalence of the secondary NPS of interest are listed in sTable 1.

### 277 **Associations between NPS and plasma NfL over time in the Clinical AD Spectrum**

278 The overall associations between NPS and plasma NfL are shown in Figure 1. The primary NPS  
279 of interest are summarized in Figure 1 and Table 2.

#### 280 Apathy

281 The GLMM revealed that the **apathy baseline group** had **higher NfL levels** over time,  
282 compared to the apathy absent group ( $\beta = 0.18$ ,  $p < 0.001$ ). This finding remained robust in  
283 sensitivity analyses adjusting for CDR-SB and MMSE. The **apathy incident group** had  
284 significantly higher NfL levels compared to the **apathy absent group** ( $\beta = 0.10$ ,  $p = 0.029$ ). This  
285 finding did not survive the sensitivity analyses. The simple effects analysis showed that both  
286 apathy baseline ( $\beta = 0.16$ ,  $p < 0.001$ ) and apathy incident ( $\beta = 0.09$ ,  $p = 0.016$ ) groups had higher  
287 NfL levels than the apathy absent group at the baseline timepoint.

288 In terms of the **rate of NfL increase**, **apathy baseline group** ( $\beta = 0.04$ ,  $p < 0.001$ ) and **apathy**  
289 **incident group** ( $\beta = 0.03$ ,  $p = 0.009$ ) exhibited higher rates of NfL increase compared to the  
290 **apathy absent group**. The significant finding for the apathy baseline group was robust in the  
291 sensitivity analyses.

#### 292 Anxiety

293 The GLMM exploring the impact of anxiety on NfL levels showed that **anxiety absent group**  
294 had significantly higher NfL levels compared to the **anxiety absent group** ( $\beta = 0.16$ ,  $p < 0.001$ ).

295 The **anxiety incident group** had significantly higher NfL levels than the **anxiety absent group**  
296 ( $\beta = 0.16, p < 0.001$ ). Both findings were robust in the sensitivity analyses adjusting for CDR-SB  
297 and MMSE, and the subgroup analyses of amyloid positive individuals. The simple effects  
298 analysis also showed that both anxiety baseline ( $\beta = 0.16, p < 0.001$ ) and anxiety incident ( $\beta =$   
299  $0.14, p < 0.001$ ) groups had higher NfL levels than the anxiety absent group at the baseline  
300 timepoint.

301 Neither anxiety baseline group nor anxiety incident group had significantly different rate of NfL  
302 increase compared to the anxiety absent group.

### 303 Depression

304 The GLMM examining depression found that the **depression baseline group** exhibited  
305 **significantly higher NfL levels** than the **depression absent group** ( $\beta = 0.11, p = 0.009$ ). This  
306 finding was significant in the subgroup analysis of individuals who were amyloid positive,  
307 however this did not survive the sensitivity analyses adjusting for MMSE and CDR-SB. At the  
308 baseline timepoint, the depression baseline group had higher NfL levels than the depression  
309 absent group ( $\beta = 0.13; p < 0.001$ ) whilst there were no significant differences between the  
310 depression incident and depression absent groups ( $\beta = 0.06, p = 0.104$ ).

311 **The depression baseline group had a significantly higher rate of NfL increase** compared to  
312 the **depression absent group** ( $\beta = 0.02, p = 0.048$ ). However, this did not survive the sensitivity  
313 analyses adjusting for CDR-SB and MMSE.

### 314 Other NPS of interest

315 For our secondary aims, the GLMMs found that baseline symptoms of delusions, appetite  
316 disturbances, agitation, disinhibition, and motor symptoms were associated with elevated NfL  
317 levels compared to those who did not develop the NPS over time. Individuals who developed (  
318 NPS incident) appetite disturbances, delusions, hallucinations, and motor symptoms were  
319 associated with increased NfL levels compared to their respective absent groups. Disinhibition  
320 baseline and elation incident showed significantly steeper increases in NfL levels compared to  
321 the absent groups.

### 322 Associations between each NPS severity score and NfL over time



323 For post-hoc analysis where each NPS was added to the GLMM as a severity variable, apathy  
324 and depression were associated with higher NfL levels, and the interaction terms for rate of  
325 increase were also significantly high. The post-hoc analyses are summarized in sTable 3.

326

### 327 **Associations between NPS and plasma p-tau181 over time in the Clinical AD Spectrum**

328 The overall associations between NPS and plasma p-tau181 are shown in Figure 1. The primary  
329 NPS of interest are summarized in Figure 1 and Table 2. None of the NPS groups had  
330 significantly higher rates of p-tau181 change.

#### 331 Apathy

332 GLMM showed that the apathy baseline group had higher p-tau181 levels compared to the  
333 apathy absent group ( $\beta = 0.15$ ,  $p = 0.015$ ). This finding was still significant in the subgroup  
334 analysis for amyloid positive individuals, but not in the sensitivity analyses controlling for CDR-  
335 SB. The apathy incident group also had higher p-tau181 levels compared to the apathy absent  
336 group ( $\beta = 0.14$ ,  $p = 0.015$ ). This finding survived sensitivity analyses controlling for CDR-SB  
337 and MMSE. At the baseline timepoint, both the apathy baseline ( $\beta = 0.24$ ,  $p < 0.001$ ) and apathy  
338 incident ( $\beta = 0.21$ ,  $p < 0.001$ ) groups had significantly higher levels compared to apathy absent  
339 group.

#### 340 Depression

341 GLMM showed that the depression baseline group had higher p-tau181 levels compared to the  
342 depression absent group ( $\beta = 0.11$ ,  $p = 0.048$ ). This finding was still significant in the subgroup  
343 analysis of amyloid positive individuals but did not survive the sensitivity analyses adjusting for  
344 CDR-SB and MMSE. At the baseline timepoint, the depression baseline group had significantly  
345 higher levels compared to the depression absent group ( $\beta = 0.17$ ,  $p < 0.001$ ).

#### 346 Anxiety

347 GLMM showed that the anxiety baseline group had higher p-tau181 levels compared to the  
348 anxiety absent group ( $\beta = 0.19$ ,  $p = 0.001$ ). This finding was robust in the sensitivity analyses  
349 controlling for CDR-SB and MMSE. At the baseline timepoint, both the anxiety baseline ( $\beta =$

350 0.25,  $p < 0.001$ ) and anxiety incident ( $\beta = 0.17$ ,  $p = 0.001$ ) groups had significantly higher levels  
351 compared to anxiety absent group.

### 352 Other NPS of interest

353 The secondary NPS of interest are summarized in sTable 2. Delusions, agitation, and motor  
354 symptoms at baseline were associated with higher p-tau181 levels compared to individuals  
355 without these symptoms. Furthermore, delusion incident and motor symptom incident also had  
356 higher p-tau181 levels compared to individuals without those symptoms.

### 357 Associations between each NPS severity score and NfL over time

358 When each NPS was added to the GLMM as a severity variable, depression severity was  
359 associated with p-tau181 levels ( $p = 0.009$ ), whilst apathy severity was trending ( $p = 0.053$ ).

360

## 361 Discussion

362 In this longitudinal study, we found that plasma p-tau181 and NfL were significantly elevated in  
363 participants with apathy and anxiety at baseline or follow-up, compared to those without these  
364 symptoms. Moreover, participants with apathy showed a faster rate of NfL increase over time,  
365 suggesting accelerated neurodegeneration. Although depression showed an association with NfL  
366 and p-tau181, this did not remain significant in the sensitivity analyses controlling for cognitive  
367 and functional decline. These results underscore the potential relationship between  
368 neuropsychiatric symptoms and neurodegenerative biomarkers, particularly NfL, in the AD  
369 continuum.

370 Our findings support previous literature linking apathy with tau pathology and  
371 neurodegeneration.<sup>29-32</sup> In particular, Kitamura et al. conducted one of the few multi-modal  
372 studies which investigated apathy in AD patients (n=17) with structural and tau imaging.<sup>33</sup> They  
373 found an association between apathy, elevated tau deposition and decreased cortical thickness  
374 the in orbitofrontal cortex (OFC). The authors hypothesized that increased tau accumulation  
375 leads to degeneration of OFC thickness and integrity, thereby disrupting the limbic system, and  
376 contributing to apathy.<sup>34,35</sup> Our observation that participants developing apathy also exhibited  
377 higher levels NfL and p-tau181 may be reflective of the preclinical manifestation of tau  
378 accumulation and neurodegeneration before the onset of clinical apathy. A longitudinal, multi-  
379 modal approach incorporating fluid-based AD biomarkers and neuroimaging is needed to further  
380 validate these findings.

381 Notably, some studies did not find an association between tau pathology and apathy.<sup>29,36-39</sup> This  
382 discrepancy may be due to these studies being underpowered or cross-sectional,<sup>37,40</sup> limiting  
383 their ability to detect subtle differences in tau pathology. Our study demonstrates the advantage  
384 of using blood-based AD biomarkers, which are more accessible and allow for larger,  
385 longitudinal data sets.<sup>10,41</sup> However, a key limitation of blood biomarkers is that they provide a  
386 measure of overall pathology, without offering insights into specific brain regions or circuits  
387 directly involved.

388 The higher rate of NfL increase over time suggests heightened neurodegeneration in AD  
389 dementia and MCI patients with apathy, independent of cognitive and functional decline. Apathy

390 has been linked to more rapid disease progression in AD, with several studies identifying it as a  
391 predictor of faster cognitive decline<sup>42</sup> and earlier mortality.<sup>43</sup> This may be due to the presence of  
392 apathy resulting in less optimal dementia care given its impact on functioning and caregiver  
393 burden, leading to worse outcomes.<sup>42</sup> These findings reinforce the importance of identifying and  
394 treating neuropsychiatric symptoms including apathy in AD patients.<sup>44</sup> Furthermore, plasma NfL  
395 may be a candidate for apathy-specific biomarker in AD to guide treatment.<sup>45</sup>

396 Anxiety was significantly associated with both NfL and p-tau181 in our study, aligning with  
397 previous reports linking anxiety to AD and neurodegenerative markers.<sup>36,39</sup> Our longitudinal  
398 study builds on recent literature in CSF and cross-sectional data, including Banning et al's  
399 investigation which found an association between anxiety and CSF p-tau181.<sup>29</sup> Anxiety has been  
400 conceptualized as an early manifestation of compensatory behavior in response to preclinical  
401 cognitive decline,<sup>29,46</sup> suggesting that its presence may serve as a behavioral signal of p-tau181  
402 accumulation and subsequent neurodegeneration.

403 Although depression has been linked to AD progression,<sup>47-49</sup> our study did not find a significant  
404 association between depression and NfL or p-tau181 after controlling for AD severity, consistent  
405 with other research.<sup>29,36,50</sup> One hypothesis is that previous studies may have conflated measures  
406 of depression with other NPS, given the significant overlap between depression with apathy and  
407 anxiety. For example, Krell-Roesch et al. observed a relationship between clinical depression as  
408 defined by Beck Depression Inventory II (BDI-II) score and AD biomarkers, but not when  
409 depression was based on informant-observed NPI-Q.<sup>9</sup> As several of the 21 items in BDI-II may  
410 be influenced by apathy, including loss of interest, energy and pleasure, the presence of apathy  
411 may have increased their BDI-II total score to meeting the cut-off score for depression. This  
412 highlights the heterogeneous nature of depression, and its apparent association with AD  
413 biomarkers may depend on the instrument that is used to define depression. However, our  
414 interpretation in this context is limited to depression symptoms, as our study could not control  
415 for a history of depression due to the lack of available data. Future studies that better characterize  
416 depression history in participants are needed.

417 As for our secondary aims, our study replicated findings that delusions and hallucinations are  
418 associated with higher NfL and p-tau181 levels.<sup>20,51</sup> Our results also align with existing literature  
419 showing that agitation<sup>50</sup> and motor symptoms<sup>51</sup> are associated with disease progression.

420 There are several limitations of this study. The number of participants with available biomarker  
421 samples decreased during follow-up. As ADNI excluded participants with a history of major  
422 depression or bipolar disorder within the past year, it limits the generalizability of our findings to  
423 individuals with more severe psychiatric comorbidities, which is important given that mood  
424 disorders may have a mild influence on plasma NfL.<sup>53</sup> Our study focused on p-tau181, but other  
425 tau species like p-tau217 may offer additional insights into tau pathology in AD. Future studies  
426 should explore the role of different tau species in relation to neuropsychiatric symptoms.

427 In conclusion, our findings emphasize the complex relationship between NPS and AD  
428 biomarkers, particularly NfL, and suggest that apathy may be linked to accelerated  
429 neurodegeneration. The observed changes in AD biomarkers across various NPS profiles provide  
430 valuable insights into the neurobiological mechanisms underlying these symptoms. Further  
431 research is required to better understand the role of these symptoms in disease progression and to  
432 develop targeted interventions aimed at slowing cognitive and functional decline in AD.

## 433 **References**

- 434 1. Zhao QF, Tan L, Wang HF, et al. The prevalence of neuropsychiatric symptoms in  
435 Alzheimer's disease: Systematic review and meta-analysis. *J Affect Disord.* 2016;190:264-  
436 271. doi:10.1016/j.jad.2015.09.069
- 437 2. Eikelboom WS, van den Berg E, Singleton EH, et al. Neuropsychiatric and Cognitive  
438 Symptoms Across the Alzheimer Disease Clinical Spectrum. *Neurology.* 2021;97(13):e1276-  
439 e1287. doi:10.1212/WNL.0000000000012598
- 440 3. Arenare G, Manca R, Caffarra P, Venneri A. Associations between Neuropsychiatric  
441 Symptoms and Alzheimer's Disease Biomarkers in People with Mild Cognitive Impairment.  
442 *Brain Sci.* 2023;13(8):1195. doi:10.3390/brainsci13081195
- 443 4. Greig Custo MT, Lang MK, Barker WW, et al. The association of depression and apathy  
444 with Alzheimer's disease biomarkers in a cross-cultural sample. *Appl Neuropsychol Adult.*  
445 2024;31(5):849-865. doi:10.1080/23279095.2022.2079414
- 446 5. Jin P, Xu J, Liao Z, et al. A review of current evidence for mild behavioral impairment as an  
447 early potential novel marker of Alzheimer's disease. *Front Psychiatry.* 2023;14:1099333.  
448 doi:10.3389/fpsy.2023.1099333
- 449 6. Ghahremani M, Wang M, Chen HY, Zetterberg H, Smith E, Ismail Z. Plasma  
450 Phosphorylated Tau at Threonine 181 and Neuropsychiatric Symptoms in Preclinical and  
451 Prodromal Alzheimer Disease. *Neurology.* 2023;100(7):e683-e693.  
452 doi:10.1212/WNL.0000000000201517
- 453 7. Dolphin H, Dyer AH, McHale C, O'Dowd S, Kennelly SP. An Update on Apathy in  
454 Alzheimer's Disease. *Geriatrics (Basel).* 2023;8(4):75. doi:10.3390/geriatrics8040075
- 455 8. Ng KP, Chiew H, Rosa-Neto P, Kandiah N, Ismail Z, Gauthier S. Associations of AT(N)  
456 biomarkers with neuropsychiatric symptoms in preclinical Alzheimer's disease and  
457 cognitively unimpaired individuals. *Translational Neurodegeneration.* 2021;10(1):11.  
458 doi:10.1186/s40035-021-00236-3
- 459 9. Krell-Roesch J, Rakusa M, Syrjanen JA, et al. Association between CSF biomarkers of  
460 Alzheimer's disease and neuropsychiatric symptoms: Mayo Clinic Study of Aging.  
461 *Alzheimer's & Dementia.* 2023;19(10):4498-4506. doi:10.1002/alz.12557
- 462 10. Arslan B, Zetterberg H. Neurofilament light chain as neuronal injury marker – what is  
463 needed to facilitate implementation in clinical laboratory practice? *Clinical Chemistry and*  
464 *Laboratory Medicine (CCLM).* 2023;61(7):1140-1149. doi:10.1515/cclm-2023-0036
- 465 11. Naude JP, Gill S, Hu S, et al. Plasma neurofilament light: A marker of neurodegeneration in  
466 mild behavioral impairment. Alzheimer's Disease Neuroimaging Initiative, ed. *Journal of*  
467 *Alzheimer's Disease.* 2020;76(3):1017-1027. doi:10.3233/JAD-200011

- 468 12. Lussier FZ, Pascoal TA, Chamoun M, et al. Mild behavioral impairment is associated with  
469  $\beta$ -amyloid but not tau or neurodegeneration in cognitively intact elderly individuals.  
470 *Alzheimers Dement.* 2020;16(1):192-199. doi:10.1002/alz.12007
- 471 13. Karikari TK, Ashton NJ, Brinkmalm G, et al. Blood phospho-tau in Alzheimer disease:  
472 analysis, interpretation, and clinical utility. *Nat Rev Neurol.* 2022;18(7):400-418.  
473 doi:10.1038/s41582-022-00665-2
- 474 14. Mattsson N, Insel PS, Palmqvist S, Portelius E, Zetterberg H. Cerebrospinal fluid tau,  
475 neurogranin, and neurofilament light in Alzheimer's disease. *EMBO molecular medicine.*  
476 2016;8(10):1-13.
- 477 15. Khalil M, Teunissen CE, Otto M, et al. Neurofilaments as biomarkers in neurological  
478 disorders. *Nature Reviews Neurology.* 2018;14(10):577-589. doi:10.1038/s41582-018-0058-  
479 z
- 480 16. Bridel C, Van Wieringen WN, Zetterberg H, et al. Diagnostic Value of Cerebrospinal Fluid  
481 Neurofilament Light Protein in Neurology: A Systematic Review and Meta-analysis. *JAMA*  
482 *Neurology.* 2019;76(9):1035-1048. doi:10.1001/jamaneurol.2019.1534
- 483 17. Eratne D, Loi SM, Li QX, et al. Cerebrospinal fluid neurofilament light chain differentiates  
484 primary psychiatric disorders from rapidly progressive, Alzheimer's disease and  
485 frontotemporal disorders in clinical settings. *Alzheimer's & Dementia.* 2022;18(11):2218-  
486 2233. doi:10.1002/alz.12549
- 487 18. Mattsson-Carlsson N, Salvadó G, Ashton NJ, et al. Prediction of Longitudinal Cognitive  
488 Decline in Preclinical Alzheimer Disease Using Plasma Biomarkers. *JAMA Neurol.*  
489 2023;80(4):360. doi:10.1001/jamaneurol.2022.5272
- 490 19. Mattsson N, Cullen NC, Andreasson U, Zetterberg H, Blennow K. Association Between  
491 Longitudinal Plasma Neurofilament Light and Neurodegeneration in Patients With  
492 Alzheimer Disease. *JAMA Neurol.* 2019;76(7):791-799. doi:10.1001/jamaneurol.2019.0765
- 493 20. Gomar JJ, Koppel J. Psychosis in Alzheimer Disease and Elevations in Disease-Relevant  
494 Biomarkers. *JAMA Psychiatry.* Published online June 26, 2024.  
495 doi:10.1001/jamapsychiatry.2024.1389
- 496 21. von Elm E, Altman DG, Egger M, et al. The Strengthening the Reporting of Observational  
497 Studies in Epidemiology (STROBE) statement: guidelines for reporting observational  
498 studies. *Ann Intern Med.* 2007;147(8):573-577. doi:10.7326/0003-4819-147-8-200710160-  
499 00010
- 500 22. Jack Jr. CR, Bernstein MA, Fox NC, et al. The Alzheimer's disease neuroimaging initiative  
501 (ADNI): MRI methods. *Journal of Magnetic Resonance Imaging.* 2008;27(4):685-691.  
502 doi:10.1002/jmri.21049

- 503 23. Landau SM, Lu M, Joshi AD, et al. Comparing positron emission tomography imaging and  
504 cerebrospinal fluid measurements of  $\beta$ -amyloid. *Ann Neurol*. 2013;74(6):826-836.  
505 doi:10.1002/ana.23908
- 506 24. McKhann G, Drachman D, Folstein M, Katzman R, Price D, Stadlan EM. Clinical diagnosis  
507 of Alzheimer's disease: report of the NINCDS-ADRDA Work Group under the auspices of  
508 Department of Health and Human Services Task Force on Alzheimer's Disease. *Neurology*.  
509 1984;34(7):939-944. doi:10.1212/wnl.34.7.939
- 510 25. Gallucci M. GAMLj: General analyses for linear models. Published online 2019.  
511 <https://gamlj.github.io>
- 512 26. jamovi (Version 1.6). Published online 2021. <https://www.jamovi.org>
- 513 27. Kuznetsova A, Brockhoff PB, Christensen RHB. lmerTest Package: Tests in Linear Mixed  
514 Effects Models. *J Stat Soft*. 2017;82(13). doi:10.18637/jss.v082.i13
- 515 28. R Core Team. R: A language and environment for statistical computing. Published online  
516 2021. <https://www.R-project.org/>
- 517 29. Banning LCP, Ramakers IHGB, Köhler S, et al. The Association Between Biomarkers and  
518 Neuropsychiatric Symptoms Across the Alzheimer's Disease Spectrum. *The American*  
519 *Journal of Geriatric Psychiatry*. 2020;28(7):735-744. doi:10.1016/j.jagp.2020.01.012
- 520 30. Skogseth R, Mulugeta E, Ballard C, et al. Neuropsychiatric Correlates of Cerebrospinal Fluid  
521 Biomarkers in Alzheimer's Disease. *Dementia and Geriatric Cognitive Disorders*.  
522 2008;25(6):559-563. doi:10.1159/000137671
- 523 31. Pichet Binette A, Vachon-Pressseau É, Morris J, et al. Amyloid and Tau Pathology  
524 Associations With Personality Traits, Neuropsychiatric Symptoms, and Cognitive Lifestyle  
525 in the Preclinical Phases of Sporadic and Autosomal Dominant Alzheimer's Disease. *Biol*  
526 *Psychiatry*. 2021;89(8):776-785. doi:10.1016/j.biopsych.2020.01.023
- 527 32. Donovan NJ, Hsu DC, Dagley AS, et al. Depressive symptoms and biomarkers of  
528 Alzheimer's disease in cognitively normal older adults. *J Alzheimers Dis*. 2015;46(1):63-73.  
529 doi:10.3233/JAD-142940
- 530 33. Kitamura S, Shimada H, Niwa F, et al. Tau-induced focal neurotoxicity and network  
531 disruption related to apathy in Alzheimer's disease. *J Neurol Neurosurg Psychiatry*.  
532 2018;89(11):1208-1214. doi:10.1136/jnnp-2018-317970
- 533 34. Steffens DC, Fahed M, Manning KJ, Wang L. The neurobiology of apathy in depression and  
534 neurocognitive impairment in older adults: a review of epidemiological, clinical,  
535 neuropsychological and biological research. *Transl Psychiatry*. 2022;12(1):1-16.  
536 doi:10.1038/s41398-022-02292-3
- 537 35. Levy R, Dubois B. Apathy and the functional anatomy of the prefrontal cortex-basal ganglia  
538 circuits. *Cereb Cortex*. 2006;16(7):916-928. doi:10.1093/cercor/bhj043



- 539 36. Banning LCP, Ramakers IHGB, Deckers K, Verhey FRJ, Aalten P. Affective symptoms and  
540 AT(N) biomarkers in mild cognitive impairment and Alzheimer's disease: A systematic  
541 literature review. *Neuroscience & Biobehavioral Reviews*. 2019;107:346-359.  
542 doi:10.1016/j.neubiorev.2019.09.014
- 543 37. Donovan NJ, Wadsworth LP, Lorus N, et al. Regional cortical thinning predicts worsening  
544 apathy and hallucinations across the Alzheimer's disease spectrum. *Am J Geriatr Psychiatry*.  
545 2014;22(11):1168-1179. doi:10.1016/j.jagp.2013.03.006
- 546 38. Peters ME, Schwartz S, Han D, et al. Neuropsychiatric symptoms as predictors of  
547 progression to severe Alzheimer's dementia and death: The Cache County Dementia  
548 Progression Study. *Am J Psychiatry*. 2015;172(5):460-465.  
549 doi:10.1176/appi.ajp.2014.14040480
- 550 39. Ramakers IHGB, Verhey FRJ, Scheltens P, et al. Anxiety is related to Alzheimer  
551 cerebrospinal fluid markers in subjects with mild cognitive impairment. *Psychological  
552 Medicine*. 2013;43(5):911-920. doi:10.1017/S0033291712001870
- 553 40. Ozaki T, Hashimoto N, Udo N, Narita H, Nakagawa S, Kusumi I. Neurobiological  
554 correlation between phosphorylated tau and mood symptoms in memory clinic patients.  
555 *Psychogeriatrics*. 2023;23(6):954-962. doi:10.1111/psyg.13016
- 556 41. Chatterjee P, Pedrini S, Ashton NJ, et al. Diagnostic and prognostic plasma biomarkers for  
557 preclinical Alzheimer's disease. *Alzheimer's & Dementia: The Journal of the Alzheimer's  
558 Association*. 2022;18(6):1141-1154. doi:10.1002/alz.12447
- 559 42. Liew TM. Neuropsychiatric symptoms in early stage of Alzheimer's and non-Alzheimer's  
560 dementia, and the risk of progression to severe dementia. *Age Ageing*. 2021;50(5):1709-  
561 1718. doi:10.1093/ageing/afab044
- 562 43. Vilalta-Franch J, Calvó-Perxas L, Garre-Olmo J, Turró-Garriga O, López-Pousa S. Apathy  
563 syndrome in Alzheimer's disease epidemiology: prevalence, incidence, persistence, and risk  
564 and mortality factors. *J Alzheimers Dis*. 2013;33(2):535-543. doi:10.3233/JAD-2012-120913
- 565 44. Livingston G, Huntley J, Liu KY, et al. Dementia prevention, intervention, and care: 2024  
566 report of the Lancet standing Commission. *The Lancet*. 2024;404(10452):572-628.  
567 doi:10.1016/S0140-6736(24)01296-0
- 568 45. Mortby ME, Adler L, Agüera-Ortiz L, et al. Apathy as a Treatment Target in Alzheimer's  
569 Disease: Implications for Clinical Trials. *The American Journal of Geriatric Psychiatry*.  
570 2022;30(2):119-147. doi:10.1016/j.jagp.2021.06.016
- 571 46. Hanseeuw BJ, Jonas V, Jackson J, et al. Association of anxiety with subcortical amyloidosis  
572 in cognitively normal older adults. *Mol Psychiatry*. 2020;25(10):2599-2607.  
573 doi:10.1038/s41380-018-0214-2

- 574 47. Lanctôt KL, Amatniek J, Ancoli-Israel S, et al. Neuropsychiatric signs and symptoms of  
575 Alzheimer's disease: New treatment paradigms. *Alzheimers Dement (N Y)*. 2017;3(3):440-  
576 449. doi:10.1016/j.trci.2017.07.001
- 577 48. Lee GJ, Lu PH, Hua X, et al. Depressive symptoms in mild cognitive impairment predict  
578 greater atrophy in Alzheimer's disease-related regions. *Biol Psychiatry*. 2012;71(9):814-821.  
579 doi:10.1016/j.biopsych.2011.12.024
- 580 49. Gatchel JR, Donovan NJ, Locascio JJ, et al. Depressive Symptoms and Tau Accumulation in  
581 the Inferior Temporal Lobe and Entorhinal Cortex in Cognitively Normal Older Adults: A  
582 Pilot Study. *J Alzheimers Dis*. 2017;59(3):975-985. doi:10.3233/jad-170001
- 583 50. Showraki A, Murari G, Ismail Z, et al. Cerebrospinal Fluid Correlates of Neuropsychiatric  
584 Symptoms in Patients with Alzheimer's Disease/Mild Cognitive Impairment: A Systematic  
585 Review. *J Alzheimers Dis*. 2019;71(2):477-501. doi:10.3233/JAD-190365
- 586 51. Huang L, Xie F, Guo Q. Neuropsychiatric symptoms in Alzheimer's continuum and their  
587 association with plasma biomarkers. *Journal of Affective Disorders*. 2024;348:200-206.  
588 doi:10.1016/j.jad.2023.12.062
- 589 52. Rabl M, Zullo L, Lewczuk P, et al. Plasma neurofilament light, glial fibrillary acid protein,  
590 and phosphorylated tau 181 as biomarkers for neuropsychiatric symptoms and related  
591 clinical disease progression. *Alzheimer's Research & Therapy*. 2024;16(1):165.  
592 doi:10.1186/s13195-024-01526-4
- 593 53. Kang MJ, Grewal J, Eratne D, et al. Neurofilament light and glial fibrillary acidic protein in  
594 mood and anxiety disorders: A systematic review and meta-analysis. Published online March  
595 9, 2024. doi:10.1101/2024.03.07.24303938
- 596
- 597

598 Table 1 – Participant Characteristics at Baseline

Characteristic	CU N = 417 <sup>1</sup>	AD Dementia N = 220 <sup>1</sup>	MCI N = 570 <sup>1</sup>	p-value <sup>2</sup>	Group Comparison
Age	73.5 [5.9]	74.2 [7.7]	72.0 [7.5]	<0.001	CU > MCI** AD Dementia > MCI**
Sex: Female	222 (53%)	90 (41%)	244 (43%)	<0.001	CU > MCI** CU > AD Dementia**
Education (years)	16.5 [2.6]	15.8 [2.8]	16.0 [2.8]	0.005	CU > MCI** CU > AD Dementia**
APOE e4	1 105 / 417 (25%) 2 8 / 417 (1.9%)	105 (48%) 43 (20%)	210 / 570 (37%) 49 / 570 (8.6%)	<0.001	CU < MCI** CU < AD Dementia** MCI < AD Dementia**
Plasma NfL (pg/mL)	38.3 [23.2]	51.1 [22.6]	40.5 [23.4]	<0.001	CU < AD Dementia** CU < MCI* MCI < AD Dementia**
Plasma p-tau181 (pg/mL)	N = 416 17.1 [25.2]	23.7 [8.9]	18.5 [11.9]	<0.001	CU < AD Dementia** CU < MCI** MCI < AD Dementia**
MMSE	29.1 [1.2]	22.1 [3.5]	N = 569 28.1 [1.7]	<0.001	CU > MCI** CU > AD Dementia** MCI > AD Dementia**
CDR-SB	N = 416 0.1 [0.3]	N = 219 5.3 [2.5]	N = 569 1.5 [1.0]	<0.001	CU > MCI** CU > AD Dementia** MCI > AD Dementia**
NPI Score	0.9 [2.4]	6.6 [8.9]	2.9 [5.7]	<0.001	CU < AD Dementia** CU < MCI** MCI < AD Dementia**
Hippocampus volume at baseline (mm <sup>3</sup> )	N = 360 7388 [930]	N = 163 5757 [1058]	N = 483 7024 [1087]	<0.001	CU > MCI** CU > AD Dementia** MCI > AD Dementia**
Florbetapir (AV45) PET SUVR	N = 357 1.1 [0.2]	N = 175 1.4 [0.2]	N = 499 1.2 [0.2]	<0.001	CU < MCI** CU < AD Dementia** MCI < AD Dementia**
Depression	N = 415	N = 220	N = 570	<0.001	CU < MCI**
Absent	313 (75%)	96 (44%)	266 (47%)		CU < AD Dementia** MCI < AD Dementia**
Baseline	38 (9.2%)	93 (42%)	155 (27%)		
Incident	64 (15%)	31 (14%)	149 (26%)		
Anxiety	N = 415	N = 220	N = 570	<0.001	CU < MCI**
Absent	366 (88%)	104 (47%)	345 (61%)		CU < AD Dementia** MCI < AD Dementia**
Baseline	23 (5.5%)	73 (33%)	95 (17%)		
Incident	26 (6.3%)	43 (20%)	130 (23%)		

Characteristic	CU N = 417 <sup>1</sup>	AD Dementia N = 220 <sup>1</sup>	MCI N = 570 <sup>1</sup>	p-value <sup>2</sup>	Group Comparison
Apathy	N = 415	N = 220	N = 570	<0.001	CU < MCI <sup>**</sup>
Absent	378 (91%)	90 (41%)	352 (62%)		CU < AD Dementia <sup>**</sup>
Baseline	11 (2.7%)	93 (42%)	95 (17%)		MCI < AD Dementia <sup>**</sup>
Incident	26 (6.3%)	37 (17%)	123 (22%)		

<sup>1</sup>Mean [SD]; n / N (%)

<sup>2</sup>Kruskal-Wallis rank sum test; Pearson's Chi-squared test

\* p < 0.05

\*\* p < 0.001

599 AD = Alzheimer's disease; APOE = Apolipoprotein E; CDR-SB = Clinical Dementia Rating Sum of  
600 Boxes; CN = cognitively unimpaired; MCI = mild cognitive impairment; MMSE, Mini-Mental State  
601 Examination; NfL = neurofilament light chain; p-tau181 = phosphorylated tau at threonine 181;  
602 Flortetapir (AV45) PET SUVR = positron emission tomography standardized uptake value ratio;  
603

604 Table 2: Summary of Apathy and Affective Symptom Effects on Plasma NfL and p-Tau181

NPS	Mean or Slope	Comparison Groups	Plasma NfL	Plasma p-tau181
Apathy	Mean	Baseline vs Absent	<b>0.18 (0.1, 0.25), p &lt; 0.001<sup>s</sup></b>	<b>0.15 (0.06, 0.24), p = 0.015</b>
Apathy	Mean	Incident vs Absent	<b>0.10 (0.03, 0.18), p = 0.029</b>	<b>0.14 (0.05, 0.24), p = 0.015<sup>s</sup></b>
Apathy	Slope	Baseline vs Absent	<b>0.04 (0.02, 0.06), p &lt; 0.001<sup>s</sup></b>	-0.01 (-0.04, 0.03), p = 0.789
Apathy	Slope	Incident vs Absent	<b>0.03 (0.01, 0.05), p = 0.009</b>	0.01 (-0.03, 0.04), p = 0.789
Depression	Mean	Baseline vs Absent	<b>0.11 (0.05, 0.18), p = 0.009</b>	<b>0.11 (0.02, 0.20), p = 0.048</b>
Depression	Mean	Incident vs Absent	0.04 (-0.03, 0.12), p = 0.39	0.04 (-0.06, 0.13), p = 0.595
Depression	Slope	Baseline vs Absent	<b>0.02 (0, 0.04), p = 0.048</b>	0.01 (-0.02, 0.04), p = 0.623
Depression	Slope	Incident vs Absent	0 (-0.02, 0.02), p = 0.789	0.02 (-0.01, 0.05), p = 0.39
Anxiety	Mean	Baseline vs Absent	<b>0.16 (0.09, 0.23), p &lt; 0.001<sup>s</sup></b>	<b>0.19 (0.1, 0.29), p = 0.001<sup>s</sup></b>
Anxiety	Mean	Incident vs Absent	<b>0.14 (0.07, 0.21), p = 0.002<sup>s</sup></b>	0.11 (0.01, 0.20), p = 0.068
Anxiety	Slope	Baseline vs Absent	0.02 (0, 0.04), p = 0.118	-0.01 (-0.05, 0.02), p = 0.665
Anxiety	Slope	Incident vs Absent	0.01 (-0.01, 0.03), p = 0.39	0.01 (-0.02, 0.04), p = 0.682

605 Note: Results are displayed as  $\beta$  (95% confidence interval), p-value adjusted for multiple comparisons.

606 Analyses are corrected for age and gender.

607 **Bolded** indicates statistical significance set at  $p < 0.05$

608 <sup>s</sup>Survived sensitivity analysis adding CDR-SB and MMSE as covariates separately

609 NfL = neurofilament light chain, p-tau181 = phosphorylated-tau 181, NPS = neuropsychiatric symptom

610

611

612

613 **Table 3: Subgroup analysis of Apathy and Affective Symptom Effects on Plasma NfL and p-Tau181**  
 614 **in amyloid positive group only**

NPS	Mean or Slope	Comparison Groups	Plasma NfL	Plasma p-tau181
Apathy	Mean	Baseline vs Absent	<b>0.15 (0.07, 0.24), p = 0.001</b>	<b>0.13 (0.03, 0.23), p = 0.015</b>
Apathy	Mean	Incident vs Absent	0.07 (-0.01, 0.16), p = 0.102	0.08 (-0.02, 0.18), p = 0.107
Apathy	Slope	Baseline vs Absent	<b>0.04 (0.02, 0.07), p &lt; 0.001</b>	0.03 (-0.01, 0.07), p = 0.219
Apathy	Slope	Incident vs Absent	<b>0.03 (0.01, 0.05), p = 0.014</b>	0.02 (-0.02, 0.06), p = 0.336
Depression	Mean	Baseline vs Absent	<b>0.14 (0.05, 0.22), p = 0.001</b>	<b>0.12 (0.02, 0.22), p = 0.017</b>
Depression	Mean	Incident vs Absent	0.04 (-0.04, 0.13), p = 0.34	0.01 (-0.10, 0.11), p = 0.912
Depression	Slope	Baseline vs Absent	0.02 (0, 0.04), p = 0.110	0.02 (-0.02, 0.06), p = 0.265
Depression	Slope	Incident vs Absent	0.01 (-0.02, 0.03), p = 0.589	0.01 (-0.02, 0.05), p = 0.454
Anxiety	Mean	Baseline vs Absent	<b>0.13 (0.04, 0.22), p = 0.005</b>	0.08 (-0.03, 0.19), p = 0.153
Anxiety	Mean	Incident vs Absent	<b>0.12 (0.03, 0.21), p = 0.008</b>	0 (-0.10, 0.11), p = 0.967
Anxiety	Slope	Baseline vs Absent	0.03 (0, 0.05), p = 0.058	-0.01 (-0.05, 0.03), p = 0.595
Anxiety	Slope	Incident vs Absent	0.02 (0, 0.03), p = 0.12	0.02 (-0.02, 0.06), p = 0.258

615 Note: Results are displayed as  $\beta$  (95% confidence interval). Analyses are corrected for age and gender.

616 Amyloid positive status determined by AV45 SUVR > 1.11 during the study.

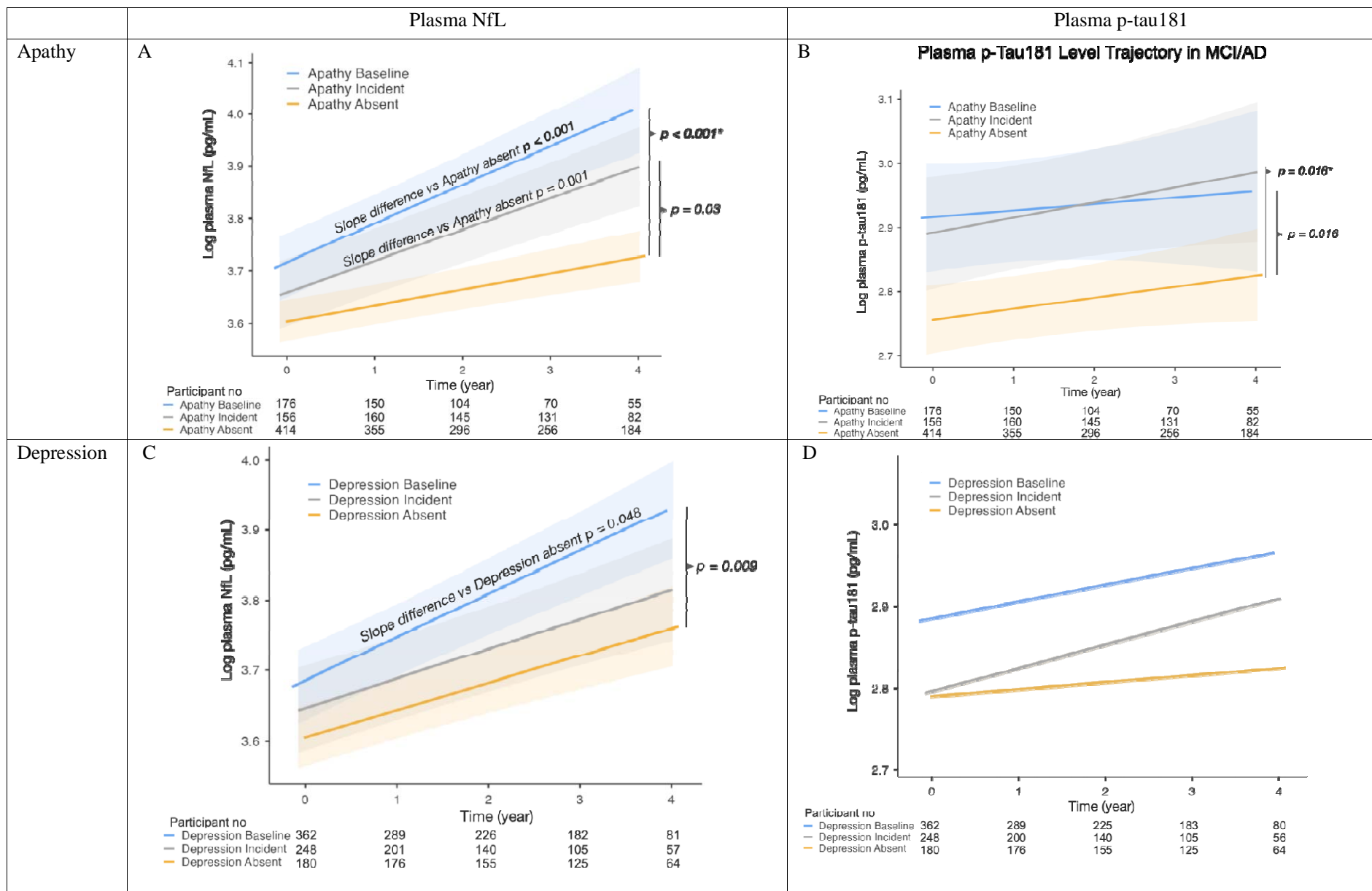
617 **Bolded** indicates statistical significance set at  $p < 0.05$

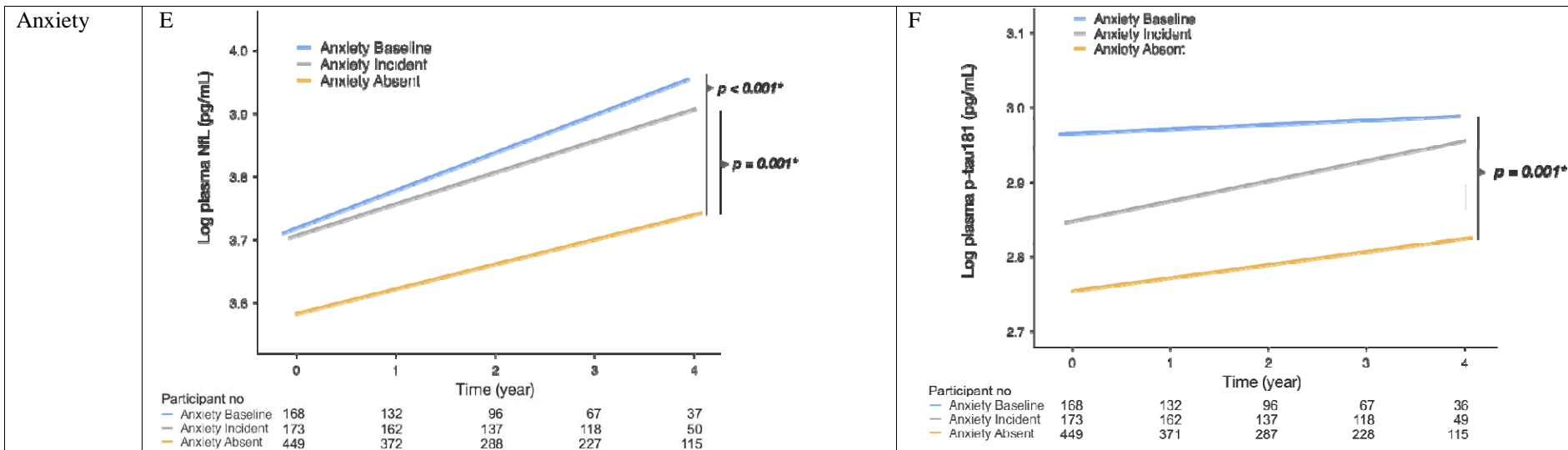
618 NfL = neurofilament light chain, p-tau181 = phosphorylated-tau 181, NPS = neuropsychiatric symptom

619

620

Figure 1 – Longitudinal plots of plasma biomarkers for apathy, depression and anxiety in the clinical spectrum of Alzheimer’s disease



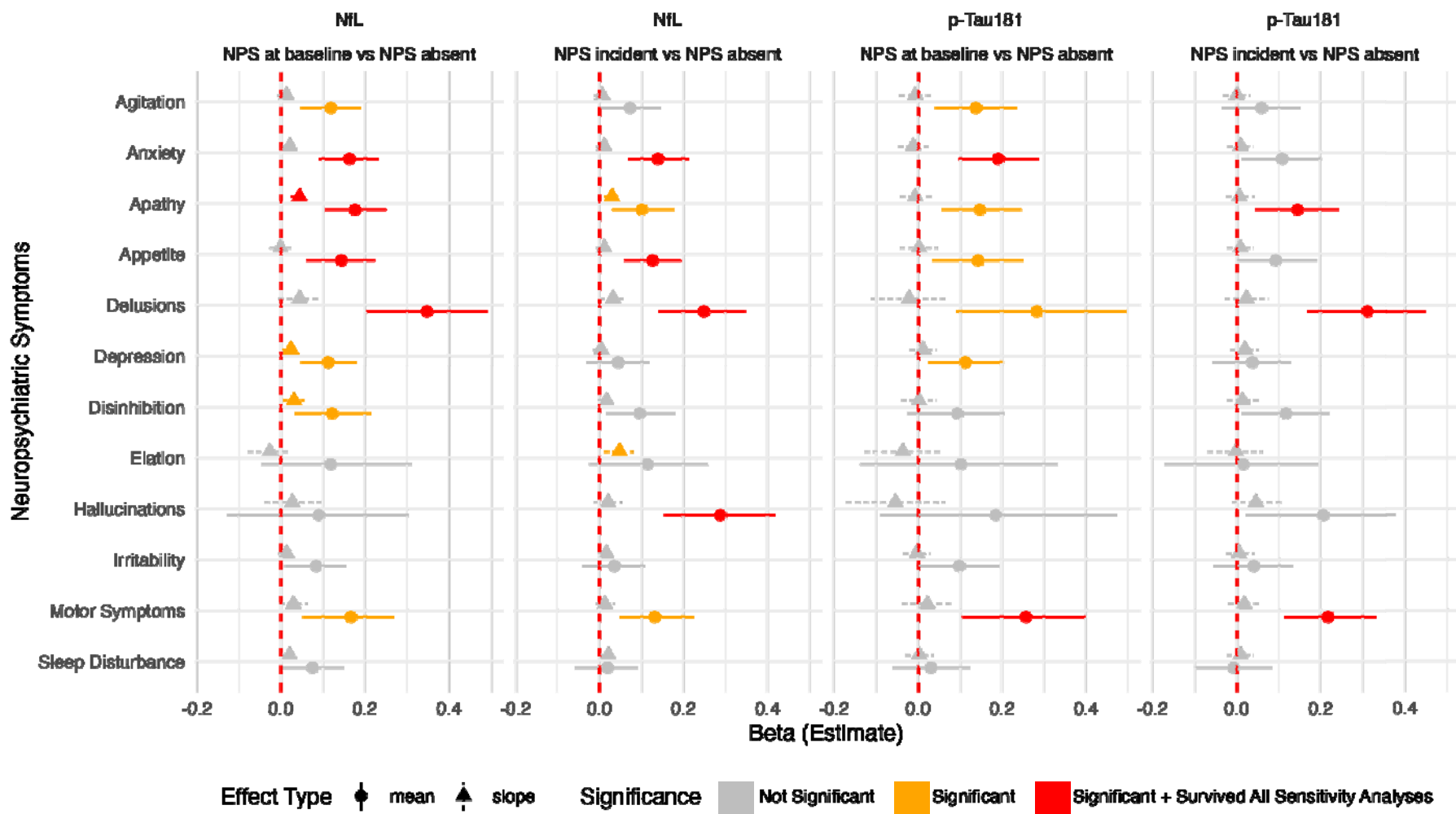


Significant differences between slopes are represented on the slope, whilst the significant differences between group levels are represented on the right of the plot. Sample sizes for each timepoint are displayed on the table below each line plot. A. NfL differences between apathy groups, B. p-tau181 differences between apathy groups, C. NfL differences between depression groups, D. p-tau181 differences between depression groups, E. NfL differences between anxiety groups, F. p-tau181 differences between anxiety groups. Sensitivity analyses involved adding CDR-SB and MMSE as separate covariates, and subgroup analysis of amyloid positive participants only.

\* = **Survived all sensitivity analyses**; NfL = neurofilament light chain, p-tau181 = phosphorylated tau at threonine 181.



Figure 2 – Forest plots of NPS effects on plasma biomarkers



Forest plot summarising the associations between biomarker level and specific neuropsychiatric symptoms. Significant findings were adjusted p-values < 0.05. Sensitivity analyses involved adding CDR-SB and MMSE as separate covariates, and subgroup analysis of amyloid positive participants only.

NfL = neurofilament light chain, p-tau181 = phosphorylated tau at threonine 181, NPS = neuropsychiatric symptom