

The Impact of Brain-Derived Neurotrophic Factor Polymorphism and Stimulation Parameters on the Response to Repetitive Transcranial Magnetic Stimulation: A Systematic Review

Yi-Ling Kuo, PT, PhD¹, Gracy Lin², Stephen J. Glatt, PhD^{3,4,5}

¹ Department of Physical Therapy Education, SUNY Upstate Medical University, Syracuse, NY

² Norton College of Medicine, SUNY Upstate Medical University, Syracuse, NY

³ Department of Psychiatry and Behavioral Sciences, SUNY Upstate Medical University, Syracuse, NY

⁴ Department of Neuroscience and Physiology, SUNY Upstate Medical University, Syracuse, NY

⁵ Department of Public Health and Preventive Medicine, SUNY Upstate Medical University, Syracuse, NY

ABSTRACT

Introduction: TMS has been a common technique used to stimulate neuromodulatory changes, which can have therapeutic effects. The underlying mechanism is still unknown, however it is thought to cause neuroplastic changes via LTD or LTP. However, the effects are highly variable, with demographics and baseline physiology thought to be playing a role.

Objectives: The purposes of this systematic review were to 1) examine how BDNF polymorphisms are related to the after-effects of rTMS in humans and 2) investigate the association between BDNF polymorphism and rTMS stimulation parameters as contributing factors to the response to rTMS.

Materials and Methods: Studies identified from PubMed, The Cochrane Library, and Embase were screened for eligibility. Data were extracted from the selected studies by one reviewer and verified by another reviewer. Risk of Bias was assessed using the Cochrane Collaboration's tool. Results were synthesized narratively.

Results: Of the 224 initial studies, 35 were included in this systematic review. 33 out of 35 studies had at least one domain of high or unclear risk of bias. 53% of the studies in healthy individuals showed differences in TMS-derived or behavioral measures between Val/Val homozygotes and Met allele carriers. The neuromodulatory effects were more reliable in Val/Val homozygotes than Met allele carriers. In stroke, neuromodulatory effects on corticospinal excitability and motor deficits were more evident in Val/Val homozygotes than Met allele carriers. Similarly, in depression, Val/Val homozygotes demonstrated more improvement in depression symptoms compared with Met allele carriers following rTMS. The role of BDNF polymorphism in other disorders remained unclear.

Conclusion: It remains inconclusive whether and how BDNF genotype impacts the effects of rTMS. Methodological heterogeneity in the stimulation parameters, such as dosage and excitatory or inhibitory protocols, interact with BDNF polymorphism and contribute to the response to rTMS.

Keywords: BDNF, Polymorphism, rTMS, Theta-burst stimulation, neuromodulation

INTRODUCTION

The rapid increase in the application of non-invasive brain stimulation (NIBS) has led to numerous breakthroughs in experimental and clinical neuroscience. Transcranial magnetic stimulation (TMS) has been the most used NIBS technique for studying cortical physiology and neuroplasticity. A high-current generator flows electrical current to the conducting coil and generates a magnetic field that induces an electric current to depolarize superficial axons and create action potentials in the cortex^{1,2}. The repetitive introduction of TMS pulses can alter brain function lasting for a period of time following the stimulation, typically tens of minutes, which is known as repetitive TMS (rTMS). The neuromodulatory effects of rTMS are dependent on the stimulation site, frequency, intensity of the magnetic pulses, and orientation of the coil. The consensus from the neuromodulation societies considers low-frequency stimulation of ≤ 1 Hz to be “inhibitory”, whereas high-frequency stimulation of ≥ 5 Hz to be “excitatory” in modulating corticospinal excitability (CSE). The modified form of rTMS with a much higher stimulation frequency, called theta-burst stimulation (TBS), produces a longer-lasting neuromodulatory effect (up to 60 minutes) within a shorter stimulation time frame and at a lower intensity³. TBS is administered as a continuous (cTBS) train with inhibitory effects, or intermittent (iTBS) train with excitatory effects¹. It is generally acknowledged that TBS modifies CSE with a robust change similar to the cellular processing of long-term depression (LTD) with an inhibitory effect and long-term potentiation (LTP) with an excitatory effect^{1,4}.

The mechanism underlying the neuroplastic changes associated with the transient or lasting rTMS-modulated CSE remains unclear⁴. rTMS-induced neuromodulatory effects are highly variable and it has been demonstrated that only approximately 50% of participants responded to TBS with anticipated experimental and therapeutic effects⁵. Inter- and intra-individual variability of rTMS is dependent on baseline demographics and physiological characteristics such as anthropometric measurements of the head and brain, pathological changes in the central and peripheral nervous systems, and past life experiences leading to neuroplastic changes⁶. rTMS is used as a treatment to intervene in the brain circuits and has been shown to demonstrate efficacy in psychiatric and neurologic disorders⁷. Even though rTMS has been FDA-approved for a few indications, lacking markers to predict treatment efficacy is a long-standing issue in the field of neuromodulation. It is important to identify potential responders to rTMS to enhance the cost-effectiveness of this technique given the highly variable nature of this technique⁴. Predictor studies will help to pinpoint individuals suitable for rTMS intervention. Demographics, neurophysiology, and genetic traits have been studied. Using demographic, neurobiological, and clinical factors as predictors of rTMS treatment response is critical to fill the knowledge gap in identifying candidates to receive rTMS treatment.

Brain-derived neurotrophic factor (*BDNF*) is one of the candidate genes that contribute to brain morphological and functional changes and plays a critical role in synaptic plasticity and neuroprotection, integrating the metabolic and behavioral responses to the environments^{8,9}. The Val66Met (rs6265) variant is a functional nonsynonymous single nucleotide polymorphism (SNP) in the *BDNF* gene that encodes the *BDNF* protein on chromosome 11 (11p13). This SNP of *BDNF* is hypothesized to affect the heterogeneity of response to rTMS as the placement of Val or Met occurring at position 66 in the pro-region of the *BDNF* gene determines the distribution of *BDNF* in the brain¹⁰. As *BDNF* is essential in regulating synaptic plasticity and brain connectivity, the Val66Met polymorphism is associated with reduced activity-dependent *BDNF* release, which can lead to cognitive deficits and susceptibility to neurologic and psychiatric disorders^{11,12}. Another frequently studied *BDNF* polymorphism is C270T (rs56164415), a variant of a C to T substitution in the 5' untranslated region that impacts the transcription of the *BDNF* gene. *BDNF* C270T alters the efficacy of *BDNF* translation, which can lead to *BDNF* imbalance in the brain and has also been linked to neurologic and psychiatric disorders¹³.

There are increasing studies suggesting that *BDNF* polymorphism is a vital factor in identifying responders to rTMS. However, there is conflicting evidence on the impact of *BDNF* genotype on responsiveness to rTMS, which might be attributed to various physiological factors and stimulation parameters. Here, this systematic review aims to 1) examine how the rs6265 and rs56164415 *BDNF* polymorphisms are related to the after-effects of rTMS in humans and 2) investigate the association between *BDNF* polymorphism and rTMS stimulation parameters as contributing factors to the response to rTMS.

MATERIALS AND METHODS

2.1 Protocol

The guidelines of the Preferred Reporting Items for Systematic Reviews and Meta-analyses for Protocols 2015 (PRISMA-P 2015) were used to conduct this systematic review. The protocol was registered in the PROSPERO.

2.2 Eligibility Criteria

Studies met the following eligibility criteria were included in this systematic review: (1) research in humans; (2) peer-reviewed studies published in English; (3) studies with accessible full-text; (4) original research; (5) participants classified and grouped according to *BDNF* genotype; (6) rTMS used as the non-invasive brain stimulation intervention; (7) outcomes measured pre and post rTMS

intervention to determine changes and treatment effects; (8) outcomes compared between groups with different *BDNF* genotypes or between groups receiving active and sham rTMS.

2.3 Search Strategy

Electronic literature searches were performed using PubMed, The Cochrane Library, and Embase, up to November 2024. These databases were searched using keywords and medical subject headings (MeSH), including: 'rTMS' or 'repetitive transcranial magnetic stimulation' or 'TBS' or 'theta burst stimulation' and '*BDNF*' or 'brain-derived neurotrophic factor' and 'polymorphism' or 'genotype'. Titles and abstracts of the initial search results were screened for relevant studies meeting the inclusion criteria. Full-text versions of potentially eligible studies were then examined. A manual search of the reference lists of the eligible studies was also performed.

2.4 Selection Process

One reviewer (YLK) initially screened the titles and abstracts of the articles, and the eligibility of the screened studies was determined independently by all reviewers.

2.5 Outcome Measures

The effects of rTMS or TBS on TMS-measured motor evoked potential (MEP) amplitudes were included as the neurophysiological outcomes. Outcomes other than TMS-derived measurements were included as behavioral outcomes or clinical outcomes.

2.6 Data Extraction

Demographic data extracted included the study population, sample size of each group, mean age, and sex. Brain stimulation-related data included the location of stimulation, side of stimulation (left or right hemisphere), stimulation protocol (stimulation frequency, session number, stimulation intensity, and number of stimuli), and sham stimulation. Methods of obtaining body fluid drawing and *BDNF* genotyping were extracted. Behavioral and clinical outcome measures obtained before and after rTMS or TBS were extracted. Data were independently extracted by one reviewer and verified by another reviewer (YLK and GL). The reviewers discussed any discrepancy in data to reach a consensus.

2.7 Risk of Bias

The Cochrane Collaboration's tool¹⁴ was used to assess the risk of bias in each included study. The domains assessed the risk of selection bias, performance bias, detection bias, attrition bias, reporting bias, and other biases. The ratings were categorized as low, unclear, or high risk of bias. The risk of

bias in each included study was independently assessed by one reviewer and verified by another reviewer (GL and YLK).

RESULTS

3.1 Selection of Studies

Electronic literature searches with keyword searches yielded a total of 224 studies. After removing the duplicates, 115 studies were included in the initial screening of titles and abstracts with the eligibility criteria. 74 studies were eliminated due to the following reasons: (1) studies were conference abstracts or proceedings (N = 16); (2) studies were reviews or commentaries (N = 18); (3) rTMS or TBS was not used as an intervention (N = 32); (4) articles were not written in English (N = 2); (5) records were protocol registrations (N = 6); (6) studies were performed in animals (N = 5); and (7) participants all had the same *BDNF* genotype and all received iTBS without a control condition (N = 1). As a result, 35 articles met the full eligibility criteria and were included in this systematic review. The selected studies were categorized according to population, including 17 studies in healthy individuals, nine in stroke, three in depression, one in spinocerebellar ataxia, one in Parkinson's Disease with levodopa-induced dyskinesias, one in Tourette syndrome, one in schizophrenia, one in autism spectrum disorder, and one with combined populations of older adults, Type-2 diabetes mellitus, and Alzheimer's disease. The PRISMA diagram (Figure 1) demonstrates the study inclusion process.

3.2 Risk of Bias

The risk of bias in the studies grouped by participant condition is presented in Figure 2. Risk of bias categories were "low risk of bias," "unclear risk of bias," or "high risk of bias." Most studies had a high or unclear risk of bias in three or more domains. Out of the total 35 studies, two had a high risk of bias for not using random sequence, five had a high risk of bias for not using allocation concealment, two had a high risk of bias for not blinding participants and researchers, one had a high risk of bias for not blinding outcomes assessment, 16 had a high risk of bias for incomplete outcome data, one had a high risk of selective reporting, and 17 had a high risk of other bias. Most studies did not include information regarding allocation concealment and blinding of outcome assessment. 33 out of 35 (94.3%) studies had at least one domain of unclear risk of bias.

3.3 *BDNF* Genotyping Methods

Twelve studies obtained saliva samples to perform *BDNF* genotyping¹⁵⁻²⁶, whereas other studies used venous blood samples. *BDNF* Val66Met polymorphisms were categorized as homozygous for valine in codon 66 (Val/Val), homozygous for methionine (Met), or Val/Met heterozygotes. Met/Met homozygotes

were less seen in the general population, and only four studies had sufficient sample size to group and compare participants across all polymorphisms (Val/Val versus Val/Met versus Met/Met)^{27–30}.

Individuals with variants of Val/Met and Met/Met were pooled as Met allele carriers in some studies to refer to individuals with the Met variant form of *BDNF*^{16,20,25,31–40}. Only two studies genotyped the C270T polymorphisms: one in stroke³⁴ and one in schizophrenia⁴¹.

3.4 Stimulation Parameters, *BDNF* Polymorphism, and Responses to rTMS

Data extracted from the included studies are presented in Table 1. Low-frequency rTMS studies used 1 Hz, whereas high-frequency rTMS studies used 5, 10, and 20 Hz. TBS studies used 50 Hz as the stimulation frequency in both iTBS and cTBS. The stimulation sites included M1, frontal cortex, dorsal lateral prefrontal cortex (DLPFC), Broca's area, and cerebellum, with M1 being the most stimulated location. For single-session studies examining the immediate effects of rTMS and TBS, stimulation stimuli applied ranged from 250 to 1,500. For multi-session studies, rTMS and TBS were used as therapeutic interventions with neuromodulatory effects in some studies on stroke^{30,34,35,37,42} and depression^{39,43,44}, as well as other disorders^{26,41,45}. The treatment courses were five to 22 sessions over one to three weeks, with stimulation stimuli ranging from 300 to 1,800 per session.

Healthy Individuals

Most studies in healthy individuals targeted the left M1 at the representational area of the first dorsal interosseus (FDI) muscle, whereas some studies targeted the dominant M1 of the pharyngeal muscle¹⁷, dominant³² or non-dominant²⁷ M1 of the FDI, right DLPFC¹⁵, and left frontal cortex¹⁶. Five studies administered rTMS (high and/or low frequency)^{15–17,27,31}, and 14 studies administered TBS (iTBS and/or cTBS)^{18–22,28,29,31–33,46–49}. Sub-threshold^{16,17,27,34–37,42}, at-threshold^{15,30,39}, or supra-threshold^{17,27,30,31,36,39,41,43,44} intensities were used in rTMS protocols, ranging from 90% to 120% resting motor threshold (RMT) or motor threshold (MT) without specifying muscle activation status. TBS protocols, including iTBS and cTBS, used an 80% active motor threshold (AMT) as the stimulus intensity, except for one study using 80% RMT²⁸.

Most studies used a single-session cross-sectional design to investigate the acute effects of rTMS or TBS. MEP amplitude was the most commonly used outcome measure to capture brain physiology^{17–22,27–29,31–33,46,47,49}, while some studies reported the neuromodulatory effects with other physiological parameters such as MEP latency^{17,27}, RMT^{27–29}, AMT²⁹, short-interval intracortical inhibition¹⁸, intracortical facilitation¹⁸, and motor map²⁸. Behavior outcomes measuring cognitive function were used in two rTMS studies^{15,16}. Some studies showed that neuromodulatory effects were less observed in Met allele carriers compared to Val/Val homozygotes^{17,18,22,27,32}. Val/Val homozygotes

demonstrated more reliable neuromodulatory effects (excitatory or inhibitory) than Met allele carriers^{21,22,26}. Alterations in behaviors measured by cognitive performance were evident in Val/Val homozygotes but not in Met allele carriers^{15,16}. However, 47% of the studies in healthy individuals did not observe differences in neuromodulatory effects between Val/Val homozygotes and Met allele carriers, of which one study used rTMS³¹, seven studies used iTBS^{20,28,29,31,46,47,49}, and three studies used cTBS^{29,33,46}.

Stroke

In stroke, three studies used high-frequency (10 Hz) rTMS at the ipsilesional M1^{35,36,42}; two used low-frequency rTMS at the contralesional M1^{34,37}; one used iTBS at the ipsilesional M1³⁸; and two used cTBS at the right M1^{23,24}. Only one study targeted the right DLPFC with low-frequency rTMS³⁰. Neuromodulatory effects on CSE were greater in Val/Val homozygotes compared to Met allele carriers^{23,36}. Motor impairments of the upper limb measured by the Fugl Meyer Assessment and Box and Block Test were improved with excitatory high-frequency rTMS applied to the ipsilesional M1 in Val/Val homozygotes compared to Met allele carriers^{35,42}, which was not observed with inhibitory low-frequency rTMS applied to the contralesional M1³⁷. Inhibitory cTBS reduced aphasia more in Val/Val homozygotes than Val/Met heterozygotes²⁴. However, *BDNF* polymorphism has no impact on the CSE, *BDNF* concentration, and cognitive symptoms following low-frequency rTMS^{30,34} or iTBS³⁸ in stroke.

Depression

All three studies on depression stimulated the DLPFC, and two studies targeted the left^{39,43} while one targeted the right DLPFC⁴⁴. Low-frequency rTMS^{43,44}, high-frequency rTMS^{39,43}, and iTBS³⁹ were used in these studies on depression. Stimulation intensities ranged from 100% to 110% RMT in rTMS studies^{39,43,44}. A total of five to 10 sessions were administered with the number of stimulation stimuli ranging from 300 to 1800 per session. All rTMS studies showed more improvement in depression symptoms (measured by the Hamilton Depression Rating Scale) in Val/Val homozygotes than Met allele carriers^{39,43,44}, whereas *BDNF* polymorphisms did not affect the change of depression symptoms following iTBS³⁹.

Other Disorders

In studies on disorders other than stroke or depression, iTBS or cTBS was used on the left M1 of the FDI^{25,26,40}. Two studies used iTBS⁴⁵ or cTBS⁵⁰ targeting the cerebellum, and one used high-frequency rTMS on the left DLPFC⁴¹. There were various outcome measures used to capture the neuromodulatory effects of rTMS and TBS, including physiological measures such as MEP amplitudes

and RMT, and behavioral or clinical measures of symptoms. One study in Parkinson's Disease with levodopa-induced dyskinesias⁵⁰ and another study in Spinocerebellar Ataxia 38⁴⁵ demonstrated greater neuromodulatory responses on serum *BDNF* with Val/Val homozygotes compared to Val/Met heterozygotes. Nonetheless, studies on Gilles de la Tourette syndrome and Spinocerebellar Ataxia 38 did not find different responses to TBS in clinical symptoms and MEP amplitudes between Val/Val homozygotes and Met allele carriers^{40,45}. In this systematic review, only one study demonstrated greater neuromodulatory effects in Met allele carriers than Val/Val homozygotes after pooling the data from Alzheimer's disease, Type-2 diabetes mellitus, and controls²⁶. Val/Met heterozygotes may result in more variability in the response to neuromodulation, which is consistent with the finding of another study in healthy individuals²¹.

DISCUSSION

This systematic review investigated the impact of *BDNF* genotypes, including the rs6265 and rs56164415, on the response to rTMS or TBS in the literature of human research. There was high heterogeneity in the research methodology across studies. 12 out of 23 (52.2%) of the rTMS or TBS protocols in healthy individuals demonstrated greater neuromodulatory effects with rTMS or TBS on neurophysiological measures such as MEP amplitude and behavioral measures of cognitive performance, in Val/Val homozygotes than Met allele carriers. 3 out of 10 (30.0%) protocols in stroke showed greater neuromodulatory effects on physiological measures like MEP amplitude or peripheral *BDNF* serum concentration, and another 30% of protocols showed more improvement in clinical outcomes with symptom improvement in Val/Val homozygotes compared to Met allele carriers. 4 out of 5 protocols in depression demonstrated more improvement in clinical outcomes with symptom improvement in Val/Val homozygotes compared to Met allele carriers. 11 out of 23 (47.8%) rTMS or TBS protocols in healthy individuals and 4 out of 10 (40.0%) protocols in stroke did not demonstrate different responses to rTMS or TBS in any outcome measures with the Val66Met polymorphism. The impact of *BDNF* Val66Met polymorphisms on other disorders was mixed.

4.1 Dosage

Determining appropriate dosage in the use of neuromodulation has been challenging due to a lack of standard definition of dosage⁵¹. The total number of pulses is the most common method of determining the dosage of TMS, while other parameters, such as stimulation intensity, stimulation frequency, and trial session number, contribute to the dose-response algorithm⁵¹⁻⁵³. To date, the interaction between *BDNF* polymorphism and dosage of TMS has not been systematically investigated. Dosage can be discussed in two categories in the studies included in this systematic review: 1) immediate effect with a

single session of neuromodulation and 2) therapeutic effect with multiple neuromodulation sessions. All studies in healthy individuals were designed to investigate the immediate effect of rTMS/TBS with a single session, and the number of stimuli ranged from 250 to 1500. Five protocols for stroke and five protocols for other disorders used a single-session design, with the number of stimuli ranging from 600 to 1000. Single-session rTMS/TBS has not been shown to consistently modulate CSE in healthy individuals⁵⁴. Similarly, the current systematic review also showed that the number of stimuli did not appear to contribute to the differences observed between *BDNF* genotypes with the immediate after-effects of rTMS/TBS.

For multiple-session studies, five protocols for stroke, five protocols for depression, and two protocols for other disorders used five to 22 sessions to build up therapeutic effects with rTMS/TBS. There was high variability in the total number of stimuli used across these studies, between 2000 and 27000. Surprisingly, a lower total number of stimuli (10000 or less) appeared to be associated with differences observed in MEP amplitude and clinical outcomes between *BDNF* genotypes^{35,42–44}, whereas a larger total number of stimuli (more than 10000) was associated with insignificant between-genotype differences^{30,34,37,39,45}. It is possible that the influence of the *BDNF* polymorphism can be overcome by increasing the dosage with a large total number of stimuli to achieve the modulatory effects. However, *BDNF* polymorphism effects were not attenuated by higher dosages from increased stimulation intensity (100% RMT or higher)^{15,17,27,36,39,41,43,44}.

4.2 Forms of rTMS

Theta burst stimulation, a modified form of rTMS, generates more substantial neuromodulatory effects in modulating CSE and synaptic plasticity than conventional rTMS^{2,55}. It has been shown that the iTBS leads to longer-lasting increased CSE than high-frequency rTMS. Similarly, cTBS leads to longer-lasting decreased CSE than low-frequency rTMS, although the effects are less consistent than iTBS². A previous systematic review and meta-analysis examined how *BDNF* polymorphism influenced TBS effects and demonstrated larger effect sizes in Val/Val homozygotes. Met allele carriers, on the other hand, demonstrated variable results in response to TBS⁵³. Two studies included in the current systematic review demonstrated variable findings in Met allele carriers and also used TBS^{21,26}. In studies with both rTMS and TBS protocols, one study in healthy individuals did not find *BDNF* polymorphism to impact CSE with either protocol³¹, whereas another study in depression showed that the depression symptoms reduced in Val/Val homozygotes but not Met allele carriers only with rTMS³⁹. Overall, *BDNF* polymorphism influences response to neuromodulation in 14 out of 19 studies in rTMS

and 14 out of 26 studies in TBS. It is possible that the impact of the *BDNF* polymorphism could be attenuated by a modified yet intensive form of rTMS.

4.3 Excitatory versus Inhibitory Protocols

There were conflicting findings on the consistency in modulating CSE with the excitatory versus inhibitory protocols in rTMS⁵⁶ and TBS^{53,57}. There are known demographic and personal factors contributing to the neuromodulatory effects of long-term depression and long-term potentiation, including *BDNF* polymorphism^{9,58}. In the current systematic review, the *BDNF* polymorphism effect was evident in similar percentages of studies in excitatory and inhibitory protocols. Overall, 16 out of 26 (61.5%) excitatory protocols (including high-frequency rTMS and iTBS) and 13 out of 19 (68.4%) inhibitory protocols (including low-frequency rTMS and cTBS) demonstrated a *BDNF* polymorphism effect on the response to neuromodulation. A previous systematic review, which only included healthy individuals, found approximately 20-30% of studies showed *BDNF* polymorphism-related changes in MEP⁵⁹. When considering only the studies with healthy individuals in the current systematic review, 12 out of 23 (52.2%) protocols (excitatory: 6; inhibitory: 6) demonstrated *BDNF* polymorphism-related changes, which is considerably more than the previous systematic review⁵⁹. This is possibly due to diverse statistical approaches, as the previous systematic review only considered the results of ANOVA to determine whether there was a *BDNF* polymorphism effect, while the current study included any statistical analyses showing differences in outcome measures between *BDNF* genotypes. Another systematic review and meta-analysis study in healthy individuals indicated that the effects of TBS (including both iTBS and cTBS) favored Val/Val homozygote over Met allele carriers, with the excitatory iTBS showing greater effect sizes⁵³. While the current systematic review did not compare the effect sizes across the included studies, we expanded the scope to also include pathological populations beyond healthy individuals. A *BDNF* polymorphism effect was evident in 17 out of 22 (77.3%) protocols in pathological populations, with a marginally higher percentage in the excitatory (10 out of 12, 83.3%) compared to inhibitory (7 out of 10, 70%) protocols.

4.4 Methodological Considerations

The methodologies and stimulation parameters used in the included studies were variable, likely due to a lack of consensus on optimal protocols in rTMS and TBS research. While the stimulation intensity, stimulation frequency, and pulse number used for TBS were consistent in most studies (80% AMT, 50 Hz, and 600 pulses, respectively), these three parameters were more variable in rTMS studies. Although the consistency of stimulation parameters reduced variability resulting from the neuromodulation device, of the 26 TBS protocols, only 14 studies (53.8%) showed significant *BDNF*

polymorphism effects. Personal factors such as symptom severity and demographics need to be taken into account as possible predictors of rTMS responsiveness.

Some commonly used outcome measures were not completely comparable given the different scales or units (e.g., MEP amplitude measured with the original unit in mV, percentage difference, or log-transformed; Hamilton rating scale for depression in 21 versus 17 items). Some studies segregated participants with Val/Met heterozygotes and Met/Met homozygotes as different genotypes, whereas others grouped them as Met allele carriers since there were often not enough data points with the Met/Met homozygotes. This precludes inferring the association between response to rTMS and Val/Met heterozygotes or Met/Met homozygotes.

As for stimulation sites, there were not enough studies using hotspots other than M1 in studies with healthy individuals, and thus whether brain region influences *BDNF* polymorphism effects remain inconclusive. In stroke, *BDNF* polymorphism effects were more apparent when targeting the ipsilesional M1 with high-frequency rTMS^{35,36,42} compared to targeting the contralesional M1 with low-frequency rTMS^{30,34,37} or ipsilesional iTBS³⁸. Facilitating the post-stroke ipsilesional hemisphere or inhibiting the contralesional hemisphere was based on the interhemispheric imbalance model that hypothesizes asymmetric interhemispheric inhibition⁶⁰. While administering low-frequency rTMS at the contralesional M1 and high-frequency rTMS at the ipsilesional M1 have been recommended by the most recent guidelines on the therapeutic use of rTMS⁷, it is possible that Met allele carriers are less responsive to high-frequency rTMS and therefore *BDNF* polymorphism should be considered while determining the rTMS protocol to enhance post-stroke motor recovery.

In the risk of bias assessments, lack of allocation concealment was often seen in the included studies, or there was no description of whether the investigators performing TMS-derived assessments were aware of the rTMS/TBS protocol. Other common biases included no blinding of the participants receiving different protocols of rTMS, and incomplete reports of stimulation parameters and the original values of group means in TMS-derived outcomes. Most of the studies (94.3%) did not report procedures or data in at least one domain of risk of bias assessment. These were rated as unclear risk of bias and further contributed to potential bias while interpreting the findings.

4.5 Limitations and Future Directions

Some limitations of this systematic review are noted. First, only two studies examined the *BDNF* C270T polymorphism; therefore, there was not enough data to conclude the relationship between C270T

polymorphism and response to neuromodulation. Second, most included studies had small sample sizes of less than 50 participants. It is possible that some studies were underpowered with insignificant differences in outcome measures with classification according to *BDNF* genotypes or assignments to receive different rTMS protocols. Third, while *BDNF* polymorphism as a contributing factor to rTMS modulatory effects was widely studied in healthy individuals, there were insufficient publications in people with medical conditions. Quantitative data analysis was limited by the small number of studies, heterogeneity of patient characteristics, unretrievable data of key parameters, and inconsistency of rTMS protocols. Future studies are warranted to explore interactions between *BDNF* polymorphism and rTMS parameters and dosages while controlling participant-specific factors, such as symptom severity, in populations with medical conditions.

REFERENCES

1. Lefaucheur, J. P. *et al.* Evidence-based guidelines on the therapeutic use of repetitive transcranial magnetic stimulation (rTMS). *Clinical Neurophysiology* vol. 125 2150–2206 Preprint at <https://doi.org/10.1016/j.clinph.2014.05.021> (2014).
2. Rossini, P. M. *et al.* Non-invasive electrical and magnetic stimulation of the brain, spinal cord, roots and peripheral nerves: basic principles and procedures for routine clinical and research application. An updated report from an I.F.C.N. Committee. *Clinical Neurophysiology* **126**, 1071–1107 (2015).
3. Huang, Y. Z., Edwards, M. J., Rounis, E., Bhatia, K. P. & Rothwell, J. C. Theta burst stimulation of the human motor cortex. *Neuron* **45**, (2005).
4. Pellegrini, M., Zoghi, M. & Jaberzadeh, S. Biological and anatomical factors influencing interindividual variability to noninvasive brain stimulation of the primary motor cortex: A systematic review and meta-analysis. *Rev Neurosci* **29**, (2018).
5. López-Alonso, V., Cheeran, B., Río-Rodríguez, D. & Fernández-Del-Olmo, M. Inter-individual variability in response to non-invasive brain stimulation paradigms. *Brain Stimul* **7**, (2014).
6. Krause, B. & Kadosh, R. C. Not all brains are created equal: The relevance of individual differences in responsiveness to transcranial electrical stimulation. *Frontiers in Systems Neuroscience* vol. 8 Preprint at <https://doi.org/10.3389/fnsys.2014.00025> (2014).
7. Lefaucheur, J. P. *et al.* Evidence-based guidelines on the therapeutic use of repetitive transcranial magnetic stimulation (rTMS): An update (2014–2018). *Clinical Neurophysiology* vol. 131 474–528 Preprint at <https://doi.org/10.1016/j.clinph.2019.11.002> (2020).
8. Kotłęga, D., Peda, B., Zembroń-Łacny, A., Gołąb-Janowska, M. & Nowacki, P. The role of brain-derived neurotrophic factor and its single nucleotide polymorphisms in stroke patients. *Neurol Neurochir Pol* **51**, 240–246 (2017).
9. Suppa, A. & Cheeran, B. Further insights into the effect of BDNF genotype on non-invasive brain stimulation. *Clin Neurophysiol* **126**, 1281–1283 (2015).
10. Saghazadeh, A., Esfahani, S. A. & Rezaei, N. Genetic polymorphisms and the adequacy of brain stimulation: state of the art. *Expert Review of Neurotherapeutics* vol. 16 Preprint at <https://doi.org/10.1080/14737175.2016.1194202> (2016).
11. McHughen, S. A. *et al.* BDNF val66met polymorphism influences motor system function in the human brain. *Cerebral Cortex* **20**, (2010).
12. Bath, K. G. & Lee, F. S. Variant BDNF (Val66Met) impact on brain structure and function. *Cognitive, Affective and Behavioral Neuroscience* vol. 6 Preprint at <https://doi.org/10.3758/CABN.6.1.79> (2006).
13. Watanabe, Y., Nunokawa, A. & Someya, T. Association of the BDNF C270T polymorphism with schizophrenia: Updated meta-analysis. *Psychiatry Clin Neurosci* **67**, (2013).
14. Higgins, J. P. T. *et al.* The Cochrane Collaboration’s tool for assessing risk of bias in randomised trials. *BMJ* **343**, (2011).
15. Tulviste, J. *et al.* BDNF polymorphism in non-veridical decision making and differential effects of rTMS. *Behavioural Brain Research* **364**, (2019).
16. Abellaneda-Pérez, K. *et al.* BDNF Val66Met gene polymorphism modulates brain activity following rTMS-induced memory impairment. *Sci Rep* **12**, (2022).

17. Jayasekeran, V. *et al.* Val66Met in brain-derived neurotrophic factor affects stimulus-induced plasticity in the human pharyngeal motor cortex. *Gastroenterology* **141**, (2011).
18. Andrews, S. C. *et al.* Intensity Matters: High-intensity Interval Exercise Enhances Motor Cortex Plasticity More Than Moderate Exercise. *Cerebral Cortex* **30**, (2020).
19. Jannati, A., Block, G., Oberman, L. M., Rotenberg, A. & Pascual-Leone, A. Interindividual variability in response to continuous theta-burst stimulation in healthy adults. *Clinical Neurophysiology* **128**, (2017).
20. Gomes-Osman, J. *et al.* The effects of exercise on cognitive function and brain plasticity - a feasibility trial. *Restor Neurol Neurosci* **35**, (2017).
21. Harvey, D. Y. *et al.* Variability in cTBS Aftereffects Attributed to the Interaction of Stimulus Intensity With BDNF Val66Met Polymorphism. *Front Hum Neurosci* **15**, (2021).
22. Jannati, A. *et al.* Test-retest reliability of the effects of continuous theta-burst stimulation. *Front Neurosci* **13**, (2019).
23. Parchure, S. *et al.* Brain-Derived Neurotrophic Factor Gene Polymorphism Predicts Response to Continuous Theta Burst Stimulation in Chronic Stroke Patients. *Neuromodulation* **25**, (2022).
24. Dresang, H. C. *et al.* Genetic and Neurophysiological Biomarkers of Neuroplasticity Inform Post-Stroke Language Recovery. *Neurorehabil Neural Repair* **36**, (2022).
25. Jannati, A. *et al.* Modulation of motor cortical excitability by continuous theta-burst stimulation in adults with autism spectrum disorder. *Clinical Neurophysiology* **132**, (2021).
26. Fried, P. J., Jannati, A., Davila-Pérez, P. & Pascual-Leone, A. Reproducibility of single-pulse, paired-pulse, and intermittent theta-burst TMS measures in healthy aging, Type-2 diabetes, and Alzheimer's disease. *Front Aging Neurosci* **9**, (2017).
27. Hwang, J. M., Kim, Y. H., Yoon, K. J., Uhm, K. E. & Chang, W. H. Different responses to facilitatory rTMS according to BDNF genotype. *Clinical Neurophysiology* **126**, (2015).
28. Lee, M. *et al.* Interaction of Motor Training and Intermittent Theta Burst Stimulation in Modulating Motor Cortical Plasticity: Influence of BDNF Val66Met Polymorphism. *PLoS One* **8**, (2013).
29. Guerra, A. *et al.* Gamma-transcranial alternating current stimulation and theta-burst stimulation: inter-subject variability and the role of BDNF. *Clinical Neurophysiology* **131**, (2020).
30. Lu, H., Zhang, T., Wen, M. & Sun, L. Impact of repetitive transcranial magnetic stimulation on post-stroke dysmnnesia and the role of BDNF Val66Met SNP. *Med Sci Monit* **21**, 761–8 (2015).
31. Li Voti, P. *et al.* Correlation between cortical plasticity, motor learning and BDNF genotype in healthy subjects. *Exp Brain Res* **212**, (2011).
32. Cheeran, B. *et al.* A common polymorphism in the brain-derived neurotrophic factor gene (BDNF) modulates human cortical plasticity and the response to rTMS. *Journal of Physiology* **586**, (2008).
33. McDonnell, M. N., Buckley, J. D., Opie, G. M., Ridding, M. C. & Semmler, J. G. A single bout of aerobic exercise promotes motor cortical neuroplasticity. *J Appl Physiol* **114**, (2013).
34. Mirowska-Guzel, D. *et al.* Association between BDNF-196 G>A and BDNF-270 C>T polymorphisms, BDNF concentration, and rTMS-supported long-term rehabilitation outcome after ischemic stroke. *NeuroRehabilitation* **32**, (2013).

35. Chang, W. H. *et al.* BDNF polymorphism and differential rTMS effects on motor recovery of stroke patients. *Brain Stimul* **7**, (2014).
36. Uhm, K. E., Kim, Y. H., Yoon, K. J., Hwang, J. M. & Chang, W. H. BDNF genotype influence the efficacy of rTMS in stroke patients. *Neurosci Lett* **594**, (2015).
37. Niimi, M. *et al.* Role of brain-derived neurotrophic factor in beneficial effects of repetitive transcranial magnetic stimulation for upper limb hemiparesis after stroke. *PLoS One* **11**, (2016).
38. Di Lazzaro, V. *et al.* Val66Met BDNF gene polymorphism influences human motor cortex plasticity in acute stroke. *Brain Stimul* **8**, 92–96 (2015).
39. Cheng, C. M. *et al.* Predictive roles of brain-derived neurotrophic factor Val66Met polymorphism on antidepressant efficacy of different forms of prefrontal brain stimulation monotherapy: A randomized, double-blind, sham-controlled study. *J Affect Disord* **297**, (2022).
40. Marsili, L. *et al.* BDNF and LTP-/LTD-like plasticity of the primary motor cortex in Gilles de la Tourette syndrome. *Exp Brain Res* **235**, (2017).
41. Su, X. *et al.* Neuronavigated Repetitive Transcranial Stimulation Improves Neurocognitive Functioning in Veterans with Schizophrenia: A Possible Role of BDNF Polymorphism. *Curr Neuropharmacol* **21**, 142–150 (2023).
42. Chang, W. H., Uhm, K. E., Shin, Y. Il, Pascual-Leone, A. & Kim, Y. H. Factors influencing the response to high-frequency repetitive transcranial magnetic stimulation in patients with subacute stroke. *Restor Neurol Neurosci* **34**, (2016).
43. Bocchio-Chiavetto, L. *et al.* 5-HTTLPR and BDNF Val66Met polymorphisms and response to rTMS treatment in drug resistant depression. *Neurosci Lett* **437**, (2008).
44. Krstić, J. *et al.* Low-frequency repetitive transcranial magnetic stimulation in the right prefrontal cortex combined with partial sleep deprivation in treatment-resistant depression: A randomized sham-controlled trial. *Journal of ECT* **30**, (2014).
45. Sanna, A. *et al.* Therapeutic Use of Cerebellar Intermittent Theta Burst Stimulation (iTBS) in a Sardinian Family Affected by Spinocerebellar Ataxia 38 (SCA 38). *Cerebellum* **21**, (2022).
46. Mastroeni, C. *et al.* Brain-Derived Neurotrophic Factor - A Major Player in Stimulation-Induced Homeostatic Metaplasticity of Human Motor Cortex? *PLoS One* **8**, (2013).
47. Antal, A. *et al.* Brain-derived neurotrophic factor (BDNF) gene polymorphisms shape cortical plasticity in humans. *Brain Stimul* **3**, (2010).
48. Moliadze, V., Fritzsche, G. & Antal, A. Comparing the efficacy of excitatory transcranial stimulation methods measuring motor evoked potentials. *Neural Plast* **2014**, (2014).
49. Antal, A. *et al.* BDNF Gene Polymorphisms and Motor Cortical Plasticity in Healthy Humans: When Should We Consider It. *J Neurosci Rehabil* **1**, (2014).
50. Sanna, A. *et al.* Cerebellar continuous theta burst stimulation reduces levodopa-induced dyskinesias and decreases serum BDNF levels. *Neurosci Lett* **716**, (2020).
51. Sabé, M. *et al.* Transcranial Magnetic Stimulation and Transcranial Direct Current Stimulation Across Mental Disorders: A Systematic Review and Dose-Response Meta-Analysis. *JAMA Netw Open* **7**, (2024).
52. Yang, C. *et al.* Repetitive transcranial magnetic stimulation therapy for motor recovery in Parkinson's disease: A Meta-analysis. *Brain and Behavior* vol. 8 Preprint at <https://doi.org/10.1002/brb3.1132> (2018).

53. Chung, S. W., Hill, A. T., Rogasch, N. C., Hoy, K. E. & Fitzgerald, P. B. Use of theta-burst stimulation in changing excitability of motor cortex: A systematic review and meta-analysis. *Neurosci Biobehav Rev* **63**, 43–64 (2016).
54. Hiscock, A., Miller, S., Rothwell, J., Tallis, R. C. & Pomeroy, V. M. Informing dose-finding studies of repetitive transcranial magnetic stimulation to enhance motor function: A qualitative systematic review. *Neurorehabil Neural Repair* **22**, (2008).
55. Rachid, F. Safety and efficacy of theta-burst stimulation in the treatment of psychiatric disorders: A review of the literature. *Journal of Nervous and Mental Disease* vol. 205 Preprint at <https://doi.org/10.1097/NMD.0000000000000742> (2017).
56. Prei, K. *et al.* Limited evidence for reliability of low and high frequency rTMS over the motor cortex. *Brain Res* **1820**, (2023).
57. Wischniewski, M. & Schutter, D. J. L. G. Efficacy and Time Course of Theta Burst Stimulation in Healthy Humans. *Brain Stimul* **8**, 685–692 (2015).
58. Silverstein, W. K. *et al.* NEUROBIOLOGICAL PREDICTORS of RESPONSE to DORSOLATERAL PREFRONTAL CORTEX REPETITIVE TRANSCRANIAL MAGNETIC STIMULATION in DEPRESSION: A SYSTEMATIC REVIEW. *Depress Anxiety* **32**, (2015).
59. Sasaki, R. *et al.* Influence of brain-derived neurotrophic factor genotype on short-latency afferent inhibition and motor cortex metabolites. *Brain Sci* **11**, (2021).
60. Boddington, L. J. & Reynolds, J. N. J. Targeting interhemispheric inhibition with neuromodulation to enhance stroke rehabilitation. *Brain Stimulation* vol. 10 Preprint at <https://doi.org/10.1016/j.brs.2017.01.006> (2017).

FIGURE CAPTIONS

Figure 1. PRISMA diagram of the review

Figure 2. Risk of bias assessments showing the percentage of included studies with high, unclear, or low risk of bias in the population of A. healthy individuals; B. stroke; C. depression; and D. other disorders.

Table 1. Data extraction.

#	Study	Age, Sex, Disease Characteristics	Genotyped sample size		rTMS type	Stimulation parameters				BDNF Sample	Outcome measures	Comparisons between BDNF genotypes in response to rTMS or TBS	
						Placement	Frequency	Intensity	Pulse number/Duration				
Healthy individuals (17 studies, 23 protocols)													
1	Li Voti et al. (2011)	27.95 ± 5.57 16 F, 22 M	Val/Val	14	rTMS	Left M1 (FDI)	5 Hz	120% RMT	1 session per condition, 3 conditions with counterbalanced order, 2 weeks apart	1,500 (10 stimuli/train, 15 trains, intertrain interval: 1–2 min)	Blood	MEP amplitude	NS
			Met allele carriers	7									
			Val/Val	14	iTBS	Left M1 (FDI)	50 Hz	80% AMT		600 (2 sec of train, 20 trains in every 200 ms, intertrain interval: 8 sec)	Blood	MEP amplitude	NS
			Met allele carriers	7									
2	Jayasekaran et al. (2011)	60 ± 20 15 F, 7 M	Val/Val	15	rTMS	Dominant M1 (pharyngeal)	5 Hz	90% RMT	250 (5 trains of 50 pulses, intertrain interval: 10 sec) 1 session	Mixed: Blood or saliva	MEP amplitude, latency	Reduced MEP latency in Val/Met compared to Val/Val	
			Val/Met	7									
			Val/Val	16	rTMS		1 Hz	120% RMT	600 (10 minutes of stimulation) 1 session	Mixed: Blood or saliva	MEP amplitude, latency	Reduced inhibitory modulatory effects in Val/Met compared to Val/Val	
			Val/Met	6									
3	Hwang et al. (2015)	29.1 ± 4.2 7 F, 5 M	Val/Val	12	rTMS	Non-dominant M1 (FDI)	10 Hz	90% RMT	1,000 (20 trains, intertrain interval: 55 sec) 1 session per condition, 3 conditions with 24 hr washout period	Blood	MEP amplitude, latency, RMT	Reduced excitatory modulatory effects in Met/Met following both sub- and supra-threshold rTMS.	
		26.6 ± 2.8 12 F, 7 M	Val/Met	19			10 Hz	110% RMT					
		26.4 ± 3.7 7 F, 2 M	Met/Met	9			Sham (unspecified)						
4	Tulviste et al. (2019)	30.66 ± 7.85 3 F, 6 M	Val/Val	9	rTMS	R DLPFC	1 Hz	100% RMT	360 (6 min) 1 session per condition	Saliva	Cognitive Bias task	Following rTMS, Val/Val were more context-dependent, whereas Val/Met were more context-independent	
		35.00 ± 3.46 5 F, 2 M	Val/Met	7			Sham (coil tilted 90°)						
5	Abellana et al. (2022)	23.47 ± 3.5 0 F, 43 M	Val/Val	24	rTMS	L frontal cortex	20 Hz	90% RMT	1,296 (last 900 ms synchronized with a cognitive encoding task: 0.9 sec * 20 Hz * 6 blocks * 12 pictures) 1 session per condition, 3 conditions with 1 day apart [cited protocol of Martin-Trias et al. (2018)]	Saliva	Cognitive performance fMRI BOLD activation	rTMS over frontal cortex decreased cognitive performance in Val/Val but not in Met carriers	
			Met allele carriers	19		Cranial vertex (control)							
6	Cheeran et al. (2008)	26.45 ± 5 5 F, 4 M	Val/Val	9	cTBS	Dominant M1 (FDI)	50 Hz	80% AMT	300 (sequences of 100 bursts at a rate of 5 Hz for 20 sec)	Blood	MEP amplitude	Corticomotor excitability decreased in Val/Val compared to Met allele	

		26.45 ± 5 5 F, 4 M	Met allele carriers	9					1 session			carriers.					
		29.3 ± 3 3 F, 6 M	Val/Val	9	iTBS	Dominant M1 (FDI)	50 Hz	80% AMT	600 (2 sec train repeated every 10 sec, 20 repetitions)	1 session	MEP amplitude	Corticomotor excitability increased in Val/Val compared to Met carriers; Met carriers responded to neuromodulation less than Val/Val					
		28.7 ± 3 3 F, 6 M	Met allele carriers	9													
7	Antal et al. (2010)	21 to 32 7 F, 3 M	Val/Val	10	iTBS	Left M1 (FDI or ADM)	50 Hz	80% AMT	600 (3-pulse bursts repeated at 200 ms, 2-sec train of TBS for 190 sec, intertrain interval: 10 sec)	1 session	Blood	MEP amplitude	NS				
		20 to 29 3 F, 2 M	Val/Met	5													
8	Lee et al. (2013)	29.6 ± 3.6 2 F, 4 M	Val/Val	6	iTBS	L M1 (FDI)	50 Hz	80% RMT	600 (3-pulse bursts repeated at 200 ms, 2-sec train of TBS for 190 sec, intertrain interval: 10 sec)	1 session	Blood	Motor performance, motor threshold, MEP amplitude, motor map	NS				
		32.5 ± 4.7 9 F, 4 M	Val/Met	13													
		31.3 ± 5.3 2 F, 2 M	Met/Met	4													
9	Mastroeni et al. (2013)	26.0 ± 3.2 0 F, 29 M	Val/Val	17	iTBS	L M1 (FDI)	50 Hz	80% AMT	1 session per condition, 3 conditions in pseudorandomized order with at least 5 days apart		Blood	MEP amplitude	NS				
			Val/Met	12													
			Val/Val	17	cTBS	L M1 (FDI)	50 Hz	80% AMT						600 (3-pulse bursts repeated at 200 ms, 40-sec train of TBS)	Blood	MEP amplitude	NS
			Val/Met	12													
10	McDonnell et al. (2013)	27.8 ± 7.9 6 F, 4 M	Val/Val	10	cTBS	L M1 (FDI)	50 Hz	80% AMT	600 (3-pulse bursts repeated at 200 ms, 40-sec train of TBS)	1 session per condition, 3 conditions with at least 1 wk apart	Blood	M-wave amplitude MEP amplitude	NS				
		26.1 ± 8.4 10 F, 5 M	Met allele carriers	15													
11	Antal et al. (2014)	Age N/A 10F, 5M	Val/Val	15	iTBS	L M1 (FDI or ADM)	50 Hz	80% AMT	600 (3-pulse bursts repeated at 200 ms intervals. 2-sec train for 190 sec, intertrain interval: 10 sec)	1 session	Blood	MEP amplitude	NS				
		Age N/A 6F, 2M	Val/Met	8													
12	Gomes-Osman et	27 ± 12.3 12 F, 2 M	Val/Val	8	iTBS	L M1 (FDI)	50 Hz	80% AMT	600 (3-pulse bursts repeated at 200 ms, 2-sec train of TBS for 192		Saliva	MEP amplitude	NS				

	al. (2017)		Met allele carriers	6					sec, intertrain interval: 8 sec				
13	Jannati et al. (2017)	36.9 ± 15.2 0 F, 18 M	Val/Val	12	cTBS	L M1 (FDI)	50Hz	80% AMT	600 (3 pulses bursts repeated at 200 ms for 40 sec)	Saliva	MEP amplitude	Val/Met showed excitatory modulatory effects with an inhibitory protocol	
			Val/Met	6					1 session				
14	Jannati et al. (2019)	36.6 ± 14.4 1 F, 13 M	Val/Val	14	cTBS	L M1 (FDI)	50Hz	80% AMT	600 (3 pulses bursts repeated at 200ms for 40 sec)	Saliva	Motor threshold, MEP amplitude, Area under curve of MEP amplitude	Modulatory effects of cTBS were more reliable in Val/Val	
		37.8 ± 15.4 0 F, 8 M	Val/Met	8					1 session, repeated twice for test-retest reliability (7-33 days apart)				
15	Andrews et al. (2020)	32.42 ± 11.24 8 F, 4 M	Val/Val	12	iTBS	L M1 (FDI)	50Hz	80% AMT	600 (3-pulse bursts repeated at 200 ms, 2-sec train of TBS for 192 sec, intertrain interval: 10 sec, repeat 20 times)	Saliva	MEP amplitude, SICI, ICF	Rest: NS Moderate intensity exercise: NS High intensity exercise: Val/Val showed more excitatory modulatory effects following iTBS than Val/Met.	
		39.25 ± 15.68 3 F, 5 M	Val/Met	8					1 session per condition, 3 conditions in counterbalanced order with at least 72 hr apart				
16	Guerra et al. (2020)	27.7 ± 2.8 16 F, 21 M	Val/Val	19	iTBS	L M1 (FDI)	50Hz	80% AMT	1 session per condition, 4 conditions with at least 7 days apart	Blood	MEP amplitude, RMT, AMT	NS	
			Val/Met	15									600 (Bursts in 2-sec train for 200 sec, intertrain interval: 8 sec 20 trains)
			Met/Met	3									
		27.7 ± 2.8 16 F, 21 M	Val/Val	19	cTBS	L M1 (FDI)	50 Hz	80% AMT		600 (200 bursts for 40 sec)	Blood	MEP amplitude, RMT, AMT	NS
			Val/Met	15									
			Met/Met	3									
17	Harvey et al. (2021)	23.5 ± 5.7 12 F, 8 M	Val/Val	20	cTBS	L M1 (FDI)	50 Hz	80% AMT	600 (triplets at 5 Hz for 40 sec)	Saliva	MEP amplitude	Modulatory effects were more variable in Val/Met compared to Val/Val.	
		25.5 ± 7.0 4 F, 7 M	Val/Met	11					1 session				
Stroke (9 studies, 10 protocols)													
18	Mirowska-Guzel et al. (2013)	Ischemic stroke Hand paresis (N = 26): 62.73 ± 12.84	12 F, 23 M	Val/Val	35	rTMS	Hand paresis: contralesional hemisphere of hand motor cortex Aphasia: right Broca's	1 Hz	90% RMT	1800/session (30 min)	Blood	BDNF concentration	Val66Met: NS
			5 F, 6 M	Met allele carriers	11								
		16 F, 24 M	C/C	40	Sham (sham coil)			Total pulses: 27000	C270T: NS				
		Aphasia (N = 20): 61.25 ± 10.66	1 F, 5 M	C/T						6			

19	Chang et al. (2014)	< 2 weeks post stroke with moderate to severe unilateral upper extremity motor involvement	58.4 ± 9.6 4 F, 5 M	Val/Val	9	rTMS	Ipsilesional M1 (Hand, no muscle specified)	10 Hz	90% RMT	1000/session (50 trains, intertrain interval: 55 sec) 10 sessions over 2 weeks Total pulses: 10000	Blood	FMA-UL	Val/Val showed greater improvement compared to Met carriers
			53.4 ± 13.7 15 F, 20 M	Met allele carriers	35							BBT	Val/Val showed greater improvement compared to Met carriers
20	Lu et al. (2015)	Post stroke dysmnesia 44.9 ± 11.1 15F, 25M	Val/Val	14	rTMS	R DLPFC	1 Hz	100% MT	600/session (30 sequences of 20 pulses) 20 sessions over 4 weeks Total pulses: 12000	Blood	MoCA	NS	
			Met/Met	11							LOTCA	NS	
			Val/Met	15							Sham (coil tilted 90°)	RBMT	NS
21	Uhm et al. (2015)	> 6 months post stroke with hemiparesis	63.8 ± 6.3 0 F, 6 M	Val/Val	6	rTMS	Ipsilesional M1 (FDI)	10 Hz	1000/session (20 trains of 5 sec stimulation, intertrain interval: 55 sec) 1 session per condition	Blood	MEP amplitude	Val/Val showed higher increase in MEP amplitude with supra-threshold rTMS compared to sub-threshold rTMS. Met carriers showed no differences of MEP amplitude between sub- and supra- threshold rTMS.	
			55.3 ± 11.1 6 F, 10 M	Met allele carriers							16	MEP latency	NS
												RMT	NS
22	Chang et al. (2016)	< 4 weeks post stroke with hemiparesis, moderate to severe upper extremity motor involvement 56.7 ± 13.0 30F, 32M	Val/Val	12	rTMS	Ipsilesional M1 (FDI)	10 Hz	90% RMT	1,000/session (20 trains, intertrain interval: 55 sec) 10 sessions over 2 weeks Total pulses: 10000	Blood	FMA-UL, FMA-LL, FMA-T	Good responders showed greater proportion of Val/Val compared to poor responders. Val/Val were 1.80 times more likely than Met allele carriers to be associated with motor improvement.	
			Met allele carriers	50							Good responders (FMA-UL was ≥5 points) vs poor responders (FMA-UL was <5 points)		
23	Niimi et al. (2016)	N/A	Val/Val	N = 95, genotype data N/A	rTMS	Contralesional M1 (FDI)	1 Hz	90% MT	1200/session x 2 sessions/day	Blood	FMA	NS	
			Met allele carriers						22 sessions over 11 days Total pulses: 26400		WMFT	NS	

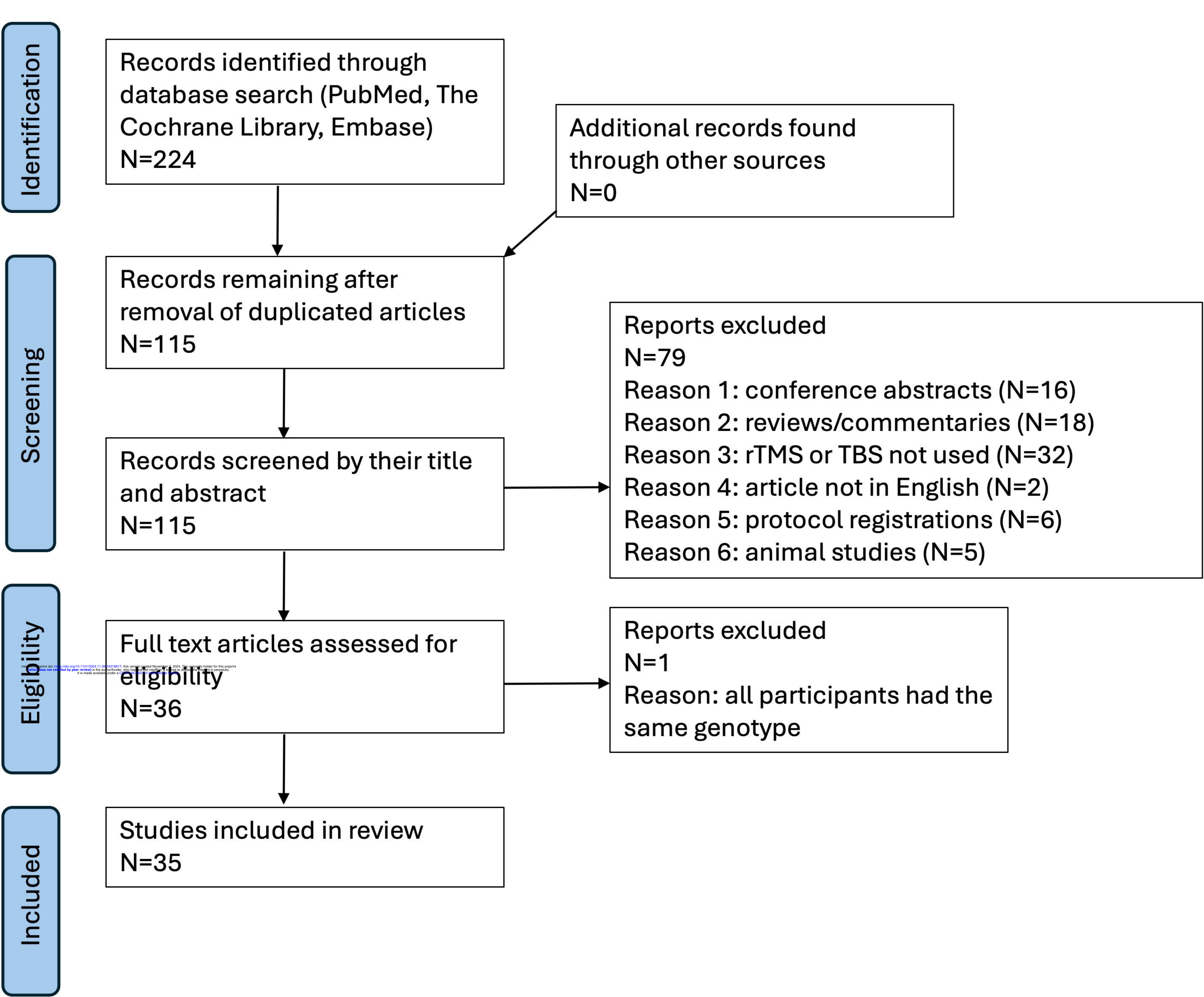
24	Di Lazzaro et al. (2015)	< 10 days post MCA ischemic stroke 64.15 ± 2.4	4F, 8M	Val/Val	12	iTBS	Ipsilesional M1 (FDI)	50 Hz	80% AMT	600 (5 Hz every 10 sec of 10 bursts of 3 pulses at 50Hz) 1 session	Blood	RMT, AMT, MEP amplitude, laterality index	NS	
			5F, 3M	Met allele carriers	8									
25	Parchure et al. (2022)	> 6 months post singular left hemisphere ischemic stroke	54.8 ± 13.9 2 F, 6 M	Val/Val	8	cTBS	R M1 (FDI)	50 Hz	80% AMT	600 (50Hz triplets of pulses at 5Hz for approximately 40 sec) 1 session	Saliva	LnMEP	Inhibitory modulatory effects lasted 30 min post-cTBS in Val/Val but was not observed in Val/Met until 30 min after.	
			58 ± 13.9 0 F, 10 M	Val/Met	10									
26	Dresang et al. (2022)	>6 months post singular left hemisphere ischemic stroke	54.8 ± 13.9 2 F, 6 M	Val/Val	8	cTBS	R M1 (FDI)	50 Hz	80% AMT	600 (50 Hz triplets of pulses at 5Hz) 1 session	Saliva	WAB-AQ	Aphasia was less severe in Val/Val than Val/Met. Less severe aphasia was associated with more inhibitory modulatory effects in Val/Val than Val/Met.	
			58 ± 13.9 0 F, 10 M	Val/Met	10									
Depression (3 studies, 5 protocols)														
27	Bocchio-Chiavetto et al. (2008)	Drug resistant mood disorders (31 major depression + 5 bipolar disorder in depressive phase)	56.10 ± 13.71 17 F, 3 M	Val/Val	20	rTMS	L DLPFC	1 Hz	110% MT	400/session (trains of 10 sec, intertrain interval: 20 sec)	5 sessions per condition over 5 days [Cited protocol of Miniussi et al. (2005)] Total pulses: 2000	Blood	HAMD	Val/Val showed more improvement in depression symptoms than Met allele carriers following rTMS (equivalent efficacy with both 1 Hz and 17 Hz).
			64.13 ± 11.53 12 F, 4 M	Met allele carriers	16			17 Hz	110% MT	408/session (trains of 3 sec, intertrain interval: 120 sec)				
								Sham (coil flipped 180°, 40% MT)		N/A				
28	Krstić et al. (2014)	Treatment resistant unipolar major depression on stable antidepressants	50.7 ± 7.3 11 F, 0 M	Val/Val	5	rTMS	R DLPFC	1 Hz	110% RMT	300/session (5 trains of 60 stimuli, intertrain interval: 3 min)	10 sessions over 2 weeks Total pulses: 3000	Blood	HDRS Clinical Impression Scale - Severity of Illness	Val/Val were more likely to achieve long-term sustained remission with rTMS than Met allele carriers (4/5 vs. 1/5, respectively).
				Val/Met	6									
			46.1 ± 8.5 8 F, 0 M	Val/Val	7			Sham (coil tilted 90°, 60% RMT)						
				Val/Met	1									
29	Cheng et al. (2022)	Medication resistant depression	46.65 ± 14.49 17 F, 9 M	Val/Val	3	iTBS	L DLPFC	50 Hz	80% AMT	1800/session (3 pulse bursts every 200ms/5Hz)	10 sessions over 2 weeks	Blood	HDRS-17	iTBS: NS rTMS: Depression reduced more in Val/ Val compared to Met allele carriers.
				Met allele carriers	23									
				Val/Val	3	rTMS		10 Hz	100%	1600/session	Total pulses: iTBS: 18000 rTMS: 16000			

			14.12 15 F, 8 M	Met allele carriers	20			RMT	(40 trains of 4 sec stimulation, intertrain interval: 26 sec)					
			45.38 ± 12.38 21 F, 5 M	Val/Val	8	Sham		Sham coil using protocols of iTBS or rTMS with random assignment						
				Met allele carriers	18									
Others (6 studies, 7 protocols)														
30	Su et al. (2023)	Veterans with Schizophrenia	51.7 ± 9.4 0 F, 70 M	C/C	70	rTMS	L DLPFC	Unspecified high frequency	110% MT	Pulse number N/A 20 sessions over 4 weeks Total pulses: N/A	Blood	Repeatable Battery for the Assessment of Neuropsychological Status	Immediate memory improved more in CC homozygotes than in T allele carriers.	
			55.7 ± 8.6 0 F, 39 M	T allele carriers	39			Sham (sham coil)						
31	Fried et al. (2017)	Mild-to-moderate Alzheimer's disease	67.7 ± 6.9 5 F, 4 M	BDNF polymorphism subtype data in Val/Val and Val/Met N/A**	4	iTBS	L M1 (R FDI)	50 Hz	80% AMT	600 (2-sec train of 3 pulses every 200ms with 30 pulses per train, repeated 20 times, intertrain interval: 8 sec) 1 session, repeated twice for test-retest reliability with median 14 days apart	Saliva	MEP amplitudes RMT AMT	Met allele carriers showed greater absolute changes post iTBS than Val/Val. Intraindividual variability was higher in Met allele carriers than in Val/Val.	
		Type-2 diabetes	63.4 ± 7.3 6 F, 9 M		10									
		Healthy controls	58.6 ± 9.1 6 F, 6 M		10									
32	Marsili et al. (2017)	Gilles de la Tourette syndrome (GTS) 35.0 ± 14.0	14 F, 23 M	Val/Val	37	iTBS	L M1 (FDI)	50 Hz	80% AMT	600 (3 bursts at 50 Hz, repeated at 5 Hz)	Blood	MEP amplitude – GTS MEP amplitude – Controls Yale Global Tic Severity Scale Yale–Brown Obsessive–Compulsive Scale	NS	iTBS and cTBS induced greater changes in Val/Val compared to Met allele carriers.
			3 F, 10 M	Met allele carriers	13									
		Controls 32.0 ± 13.0 18 F, 32 M		Val/Val	36	cTBS	50 Hz	80% AMT	NS					
				Met allele carriers	14									
33	Sanna et al. (2020)	Parkinson's Disease with Levodopa-induced Dyskinesias (LID)	6M, 1 F	Val/Val	7	cTBS	Lateral cerebellum ipsilateral to the LID	50 Hz	80% AMT	600 (3 bursts at 50 Hz every 200 ms/5Hz) 1 session per condition, 2 conditions with one week apart in random order (crossover design)	Blood	Core Assessment Program for Surgical Interventional Therapies	Inhibitory cTBS decreased dyskinesia in Val/Val but not in Val/Met.	

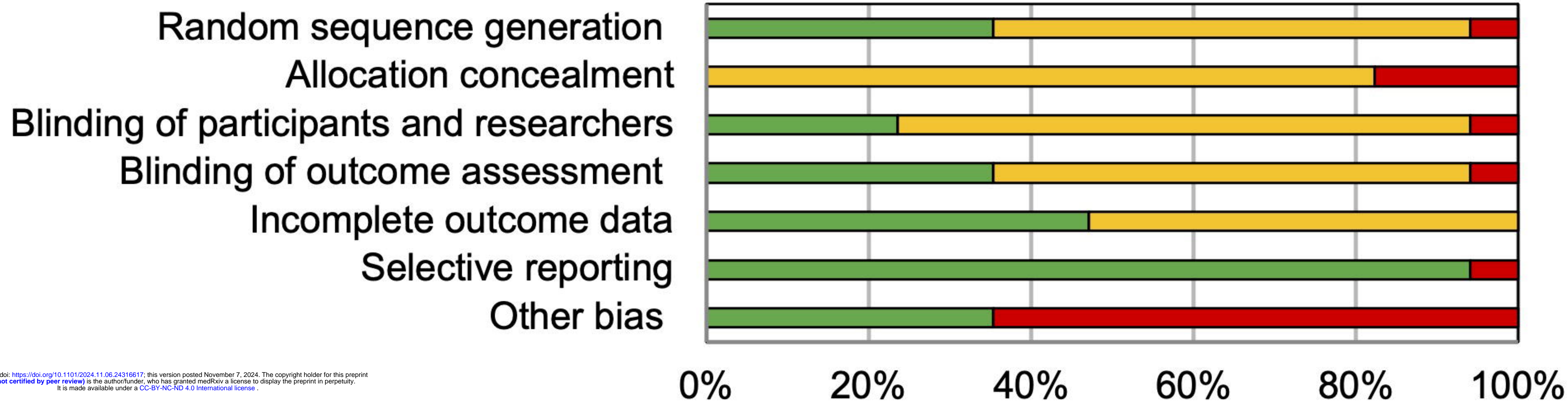
		68.09 ± 8.8										dyskinesia score	
			2M, 2F	Val/Met	4			Sham (coil tilted 90°, 40% AMT)				Serum BDNF	Inhibitory cTBS decreased serum BDNF in Val/Val but not in Val/Met.
34	Jannati et al. (2021)	High-functioning adults with non-syndromic Autism Spectrum Disorder (ASD)	39.9 ± 14.0 2 F, 6 M	Val/Val	8	cTBS	L M1 (FDI)	50 Hz	80% AMT	600 (triplet pulses of 200 bursts every 200 ms for 40 sec) 1 session	Saliva	MEP amplitude	No differences of cTBS responses between ASD and controls in Val/Val. cTBS-induced MEP suppression was a predictor of ASD diagnosis in Met carriers.
			35.7 ± 9.1 0 F, 9 M	Met allele carriers	9								
		Controls	34.0 ± 13.7 4F, 19 M	Val/Val	23								
			39.9 ± 14.0 3 F, 13 M	Met allele carriers	16								
35	Sanna et al. (2022)	Spinocerebellar Ataxia 38 (SCA 38)	1F, 2M	Val/Val	3	iTBS	Cerebellum (1 cm inferior and 3 cm left/right to theinion)	50 Hz Sham (coil tilted 90°, 40% AMT)	80% AMT	1,200/session (3 bursts at 50 Hz every 200 ms/5 Hz, 20 2-sec trains repeated every 10 sec, 2-min pause between left- and right-side stimulation with 600 stimuli/side)	Blood	Modified International Cooperative Ataxia Rating Scale	NS
			50.33 ± 4.93	2F, 1M	Val/Met								
		Serum BDNF						Excitatory iTBS increased serum BDNF in Val/Val but decreased serum BDNF in Val/Met.					

F: females, M: males, L: left, R: right, M1: primary motor cortex, DLPFC: dorsal lateral prefrontal cortex, FDI: first dorsal interosseous, ADM: abductor digiti minimi, RMT: resting motor threshold, AMT: active motor threshold, rTMS: repetitive transcranial magnetic stimulation, iTBS: intermittent theta-burst stimulation, cTBS: continuous theta-burst stimulation, BDNF: brain-derived neurotrophic factor, MEP: motor evoked potential, LnMEP: Natural log-transformed MEP, SICl: short-interval intracortical inhibition, ICF: intracortical facilitation, FMA: Fugl Meyer Assessment, FMA-UL: Fugl Meyer Assessment-Upper Limb, FMA-LL: Fugl Meyer Assessment-Lower Limb, FMA-T: Fugl Meyer Assessment-Total, BBT: Box and Block Test, MoCA: Montreal Cognitive Assessment, LOTCA: Loewenstein Occupational Therapy Cognitive Assessment, RBMT: Rivermead Behavioral Memory Test, fMRI BOLD activation: functional magnetic resonance imaging blood oxygen level-dependent activation, WAB-AQ: Western Aphasia Battery-Aphasia Quotient, HAMD and HDRS: Hamilton Depression Rating Scale, NS: non-significant, N/A: not available

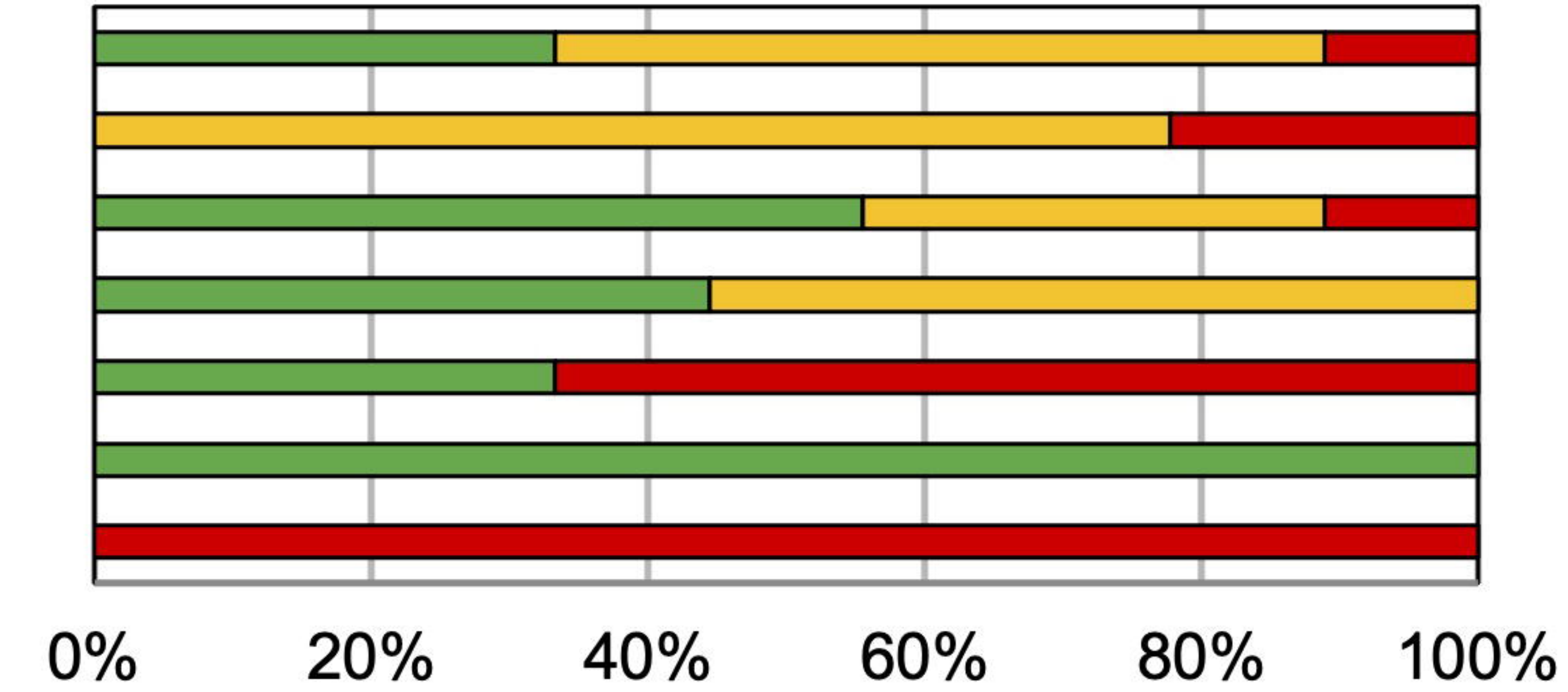
** not all participants provided saliva sample for genotyping



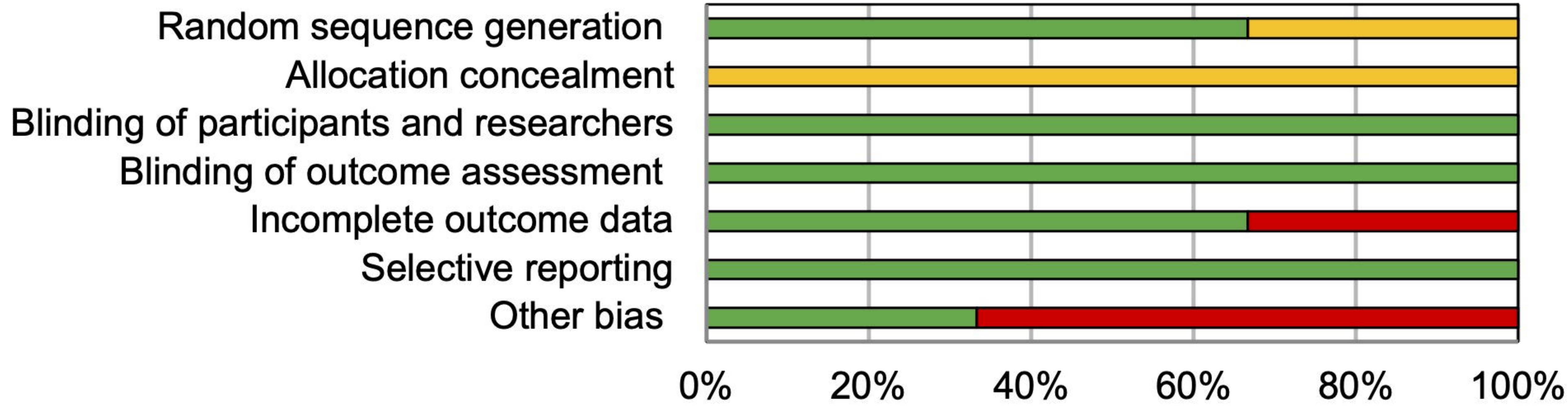
A. Healthy



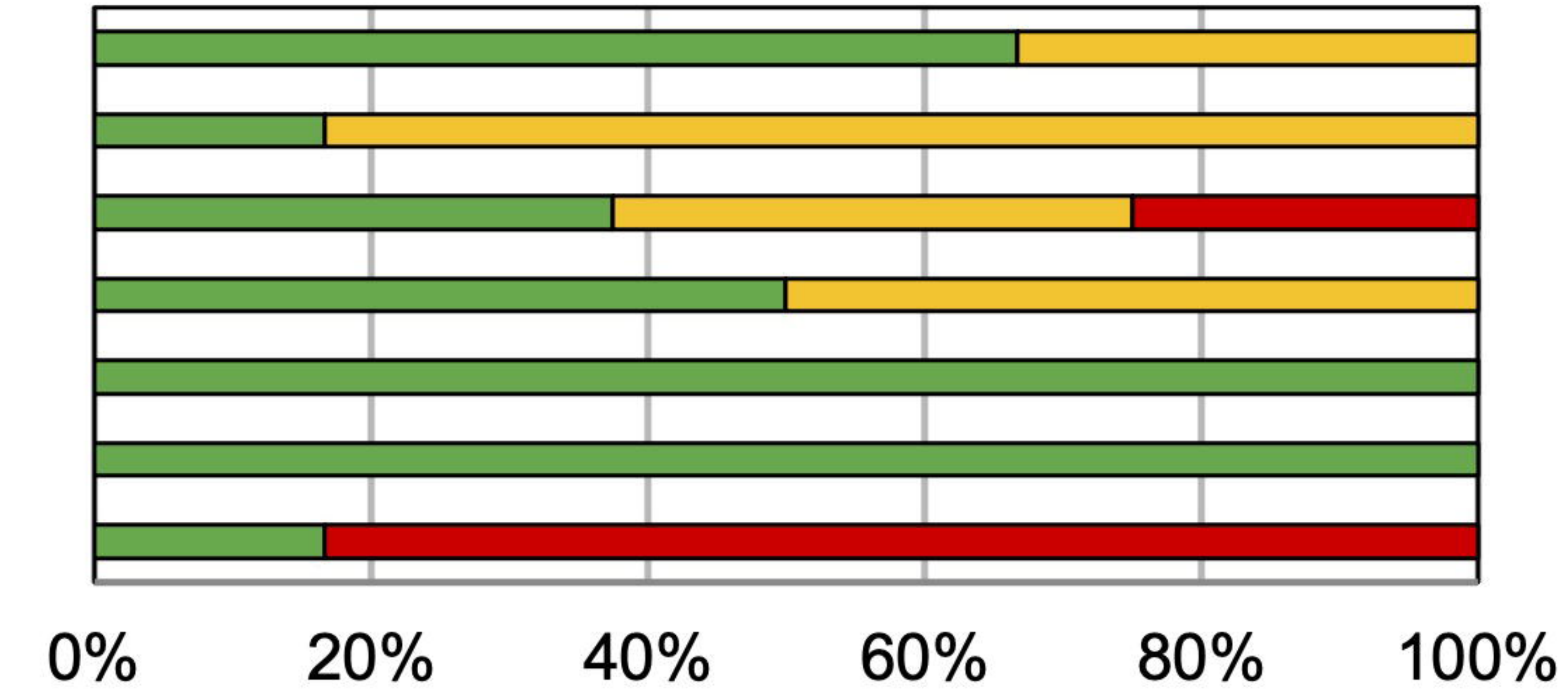
B. Stroke



C. Depression



D. Other Disorders



■ low risk of bias ■ unclear risk of bias ■ high risk of bias