

1 Assessment of the school environment for risk factors for tungiasis in
2 nine counties of Kenya: a cross-sectional survey.

3
4 Lynne Elson^{1,2}, Christopher Kamau³, Sammy Koech⁴, Christopher Muthama⁵, George Gachomba⁶, Erastus
5 Sinoti⁷, Elwyn Chondo⁸, Eliud Mburu⁹, Miriam Wakio¹⁰, Jimmy Lore¹¹, Marta Maia^{1,2}, Ifedayo Adetifa^{1,12},
6 Benedict Orindi¹, Phillip Bejon^{1,2}, Ulrike Fillinger¹³

7
8 ¹Kenya Medical Research Institute (KEMRI)-Wellcome Trust, Kilifi, Kenya,

9 ²Nuffield Department of Medicine, University of Oxford, United Kingdom,

10 Departments of Health in ³Muranga, ⁴Kericho, ⁵Makueni, ⁶Nakuru, ⁷Samburu, ⁸Kilifi, ⁹Kajiado, ¹⁰Taita
11 Taveta, ¹¹Turkana, Kenya.

12 ¹² London School of Hygiene & Tropical Medicine, Keppel Street, London, United Kingdom,

13 ¹³ International Centre for Insect Physiology and Ecology (icipe) Kenya.

14

15 ***Correspondence**

16 lynne.elson@gmail.com

17 **Keywords**

18 Tungiasis, NTDs, schools, sanitation, WASH

19

20 Abstract

21 **Background** Tungiasis is a neglected tropical skin disease mostly affecting children under 15 years, the
22 elderly and disabled people in the most resource poor populations in Latin America and Sub-Saharan
23 Africa. While most transmission seems to occur at home inside houses, we aimed to identify factors in
24 the school environment that may put children at increased risk of infection.

25 **Methods** As part of a cross-sectional school-based prevalence survey of 21,466 pupils in nine counties of
26 Kenya, observations of school infrastructure were made and the headteacher interviewed in each of 196
27 schools. In a subset of 97 schools, detailed observations of 322 classrooms were made and 117 teachers
28 interviewed. Mixed effect logistic regression models were used to identify factors associated with
29 tungiasis infection in pupils.

30 **Results** We found a higher odds of tungiasis infection for pupils in schools where more than 400 pupils
31 were enrolled (aOR 2.24, 95% CI 1.12–4.50, $p=0.023$), where clean water was not always available (aOR
32 2.28, 95% CI 1.13–4.60, $p=0.021$); and if the school buildings were in a bad structural condition (aOR
33 2.15, 95% CI 1.00–4.62, $p=0.050$). Of the 5,102 pupils in 97 schools, 99% studied in a classroom with a
34 concrete floor and those with a lot of loose soil or sand on top of the concrete floor had a six times
35 higher odds of infection than those on a clean concrete floor (aOR 6.52, 95% CI 1.61–26.35, $p=0.008$).
36 Only 45% of (head)teachers in affected schools knew they had infected pupils in their school or grade.
37 Those who did, were aware of the impact it was having on the pupils and yet only three of 76 affected
38 schools had conducted a tungiasis intervention activity within the last year.

39 **Conclusion** Most schools do not pose a risk of tungiasis for pupils, instead the home environment is the
40 main risk. However, where school buildings are not well maintained and water not always available a
41 multisectoral approach to control tungiasis is needed involving the Department of Health as well as the
42 school management and the Department of Education.

43 Background

44 Tungiasis is a skin disease mostly affecting children under 15 years, the elderly and disabled people in
45 the most resource poor populations in Latin America and Sub-Saharan Africa[1]. It has been neglected by
46 governments, donors, and the scientific community to this day, and was only recently added to the
47 World Health Organization's list of neglected tropical disease[2] and neglected diseases of the skin [3].
48 The disease is caused by the sand flea, *Tunga penetrans*. The female of this species burrows into the
49 skin, where it remains embedded for the duration of its five-week adult life, unless removed by its host
50 [4]. The flea is less than 1mm in length when it seeks out its host, once in the skin it copulates with the
51 free-living male flea and grows 2000 times in size as eggs develop in the abdomen. Hundreds of eggs are
52 released into the environment, where larvae will hatch and develop in the upper layer of soil and dust if
53 conditions are suitable. After one week the larvae pupate, cloaking themselves in sand grains, and after
54 one more week the adult emerges [5].

55 The rapid growth of the embedded female in the skin causes considerable pain and the flea
56 induces an inflammatory response resulting in intense itching, often exacerbated by secondary bacterial
57 infection [6, 7]. A few studies have demonstrated tungiasis reduces a patient's quality of life through
58 reduced mobility, disturbed sleep, concentration at school or work, stigma and discrimination [8, 9]. It
59 was also shown that tungiasis was associated with higher absenteeism and lower school performance
60 [8].

61 People's own homes have been identified as the most likely source of infection through risk
62 factor studies of households [10] and schools [11], and by identification of the larvae in the soils of
63 unsealed earthen floors in the sleeping rooms of houses [5, 12]. However, since the most affected
64 population are children under 15 years, it might be expected that schools, which has a high density of
65 children for a large proportion of each day, may contribute to the risk of infection. The objective of this

66 study was to determine whether any aspects of the school environment may be associated with
67 tungiasis infection among pupils and explore headteachers' and teachers' knowledge and attitudes
68 relating to risk factors for, and the impact of tungiasis on their pupils.

69 [Methods](#)

70 [Study design and population](#)

71 This study was a comparison of school-related risk factors for infected and uninfected pupils, nested in a
72 cross-sectional survey in nine counties which was designed to determine the national prevalence of
73 tungiasis in Kenya [13]. The counties were purposively selected to represent the five major climatic
74 zones, cultures and geographies of the country: Turkana, Samburu, Kericho, Nakuru, Muranga, Kajiado,
75 Makueni, Taita Taveta and Kilifi.

76 [Sample size and selection](#)

77 The number of pupils and schools to enrol was based on the sample size of pupils needed for the
78 national prevalence estimate. A total of 21,466 pupils were enrolled from 196 schools across the nine
79 counties. Within each county 22 primary schools were stratified randomly selected from pre-existing
80 school lists for each sub-county, selecting at least two schools from each sub-county. The schools were
81 surveyed between May 2021 and April 2023. Within each selected school 114 pupils aged 8 to 14 years,
82 equal number of girls and boys, were examined for tungiasis [13].

83 [Procedures](#)

84 Observations were conducted of the school infrastructure including the composition and condition of
85 buildings, washing and sanitation facilities, and presence of animals on the compound. For half of the
86 schools, observations were also made of individual classrooms: measuring the length and width of the
87 classroom, obtaining enrolment and absentee numbers for the day of the visit, the materials used for
88 construction, the condition of the classroom floor and building and the amount of loose soil on a

89 concrete floor. In every school, the headteacher or their representative was interviewed, and in half of
90 the schools up to eight teachers per school, using a semi-structured questionnaire regarding themselves,
91 the school and pupil welfare. Headteachers and teachers who said they currently or previously had
92 tungiasis cases in the school were asked questions about their knowledge and attitudes of tungiasis and
93 infected pupils. Where questions were open, limited space was provided for responses. The tool was
94 piloted, and necessary adjustments made before implementation. The questionnaire was pre-translated
95 and administered in Kiswahili. The field interviewers were trained by the lead investigator. All interview
96 responses were entered into electronic tablets using the REDCap web application [14] and uploaded to
97 the Kenya medical Research Institute (KEMRI)-Wellcome Trust servers.

98 Observations

99 The outcome of interest was a pupil's infection status defined as tungiasis case if they had at least one
100 embedded flea (live, dead or manipulated) on their hands or feet, and uninfected otherwise.

101 The selection of explanatory variables for the regression models was based on the biology of the
102 parasite. For instance, buildings in poor condition, unsealed earthen floors, concrete floors that are
103 broken/ cracked and/ or covered with loose soil or dust and general poor cleanliness might be expected
104 to support the development of off-host stages of *T. penetrans*. Previously it has been shown that adult
105 female fleas can jump from one heavily infected host to another in proximity [15], so we included the
106 total pupil enrolment in a school and the density of pupils in a classroom. Past studies have identified
107 factors relating to hygiene and sanitation to be associated with disease, therefore access to water,
108 washing stations, presence of hygiene promotion signs, access to toilets and the condition of toilets were
109 included in the observations. The attitudes of headteachers and teachers towards pupil welfare was
110 explored as it could potentially impact the vulnerability of pupils for infection. In this context, questions
111 were asked around supervision of pupil hygiene behaviors and shoe-wearing, the actions taken if pupils
112 do not match the school standards, and whether regular hygiene promotion, deworming or jigger

113 programs were conducted. Since county, age and sex have previously been shown to be important
114 factors associated with tungiasis in this study, these were also included in the models.

115 Data Analysis

116 **School and classroom-related risk factors**

117 Mixed effects logistic regression models were used to identify factors related to the school and
118 classrooms that may be associated with pupils' tungiasis infection status (pupil infected or not). Fixed
119 effects included the county, pupil age and sex, school and classroom characteristics described in the
120 observations paragraph above. The school was used as a random effect to control for the clustered study
121 design. All variables with a p-value less than 0.2 in univariable models were included in a multivariable
122 model. Backward elimination, sequentially excluding variables was used for the final model. Akaike
123 information criteria (AIC) was used to compare the models. Models with lower AIC values were
124 preferred. Additional consideration on variable selection was expert knowledge on potential
125 relationships with the outcome. Results are presented as odds ratios or adjusted odds ratios with 95%
126 confidence intervals and p-values.

127 **Headteacher and teacher interviews**

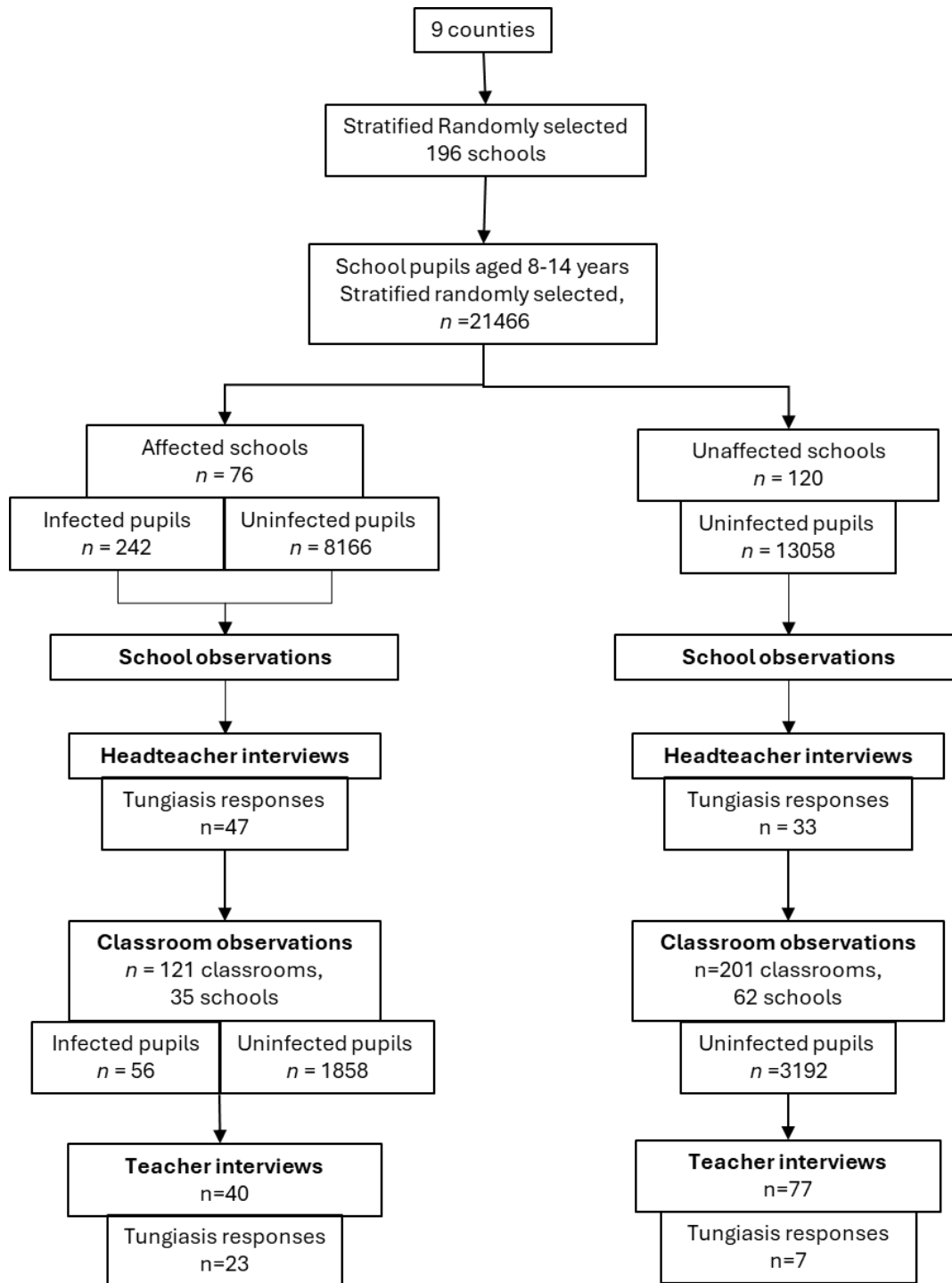
128 Pearson Chi-square was used to test whether headteachers' awareness of the tungiasis status of pupils
129 (said yes to question "are there any tungiasis cases in your school") was different to the actual status
130 established during foot examinations. The same was conducted for teachers' awareness of tungiasis
131 cases in the grade that they taught most of the time. Wilcoxon rank-sum tests were used to test
132 whether their awareness was related to the prevalence of tungiasis in their school. The remaining
133 responses of the interviews were summarized using the percent of respondents with each response
134 type.

135 All analyses were conducted using Stata BE version 18 (Stata Corp LLC, College Station, Texas, USA). All
136 tests were performed at 5% significance level.

137 Results

138 Study population

139 A total of 196 schools were enrolled in the study and 21,466 pupils were examined, of whom 242 (1.1%)
140 were found to be infected. The infected pupils were from 76 schools (“affected schools” in Fig 1). In all
141 196 schools, observations were made of the school infrastructure and enrollment records and
142 headteachers or their representatives were interviewed. For a subset of 97 schools, 35 of whom had
143 tungiasis cases, detailed observations were made of 322 classrooms and 117 teachers were interviewed
144 (Fig 1). Within the 76 affected schools, the school prevalence of tungiasis varied from a low of 0.8% to a
145 high of 22.3% among pupils aged 8 to 14 years. The distribution of pupils by all explanatory variables is
146 presented in the Additional file S1.



147

148 *Figure 1. Flow chart of participants and activities. A school was considered “affected” if at least one case*
149 *was identified during examinations of 114 randomly selected pupils aged 8 to 14 years. n: number.*
150 *“Tungiasis responses” refers to the number of headteachers or teachers who responded to questions*
151 *regarding tungiasis in the interview.*

152

153 School-related risk factors

154 During univariable analysis, many of the observed factors were associated with tungiasis (Table 1) and
155 were included in the multivariable analysis. In the final model, pupil age and sex were associated with
156 tungiasis status and only a few school factors. Pupils were twice as likely to be infected in a school where
157 more than 400 pupils were enrolled (aOR 2.24, 95% CI 1.12–4.50, $p=0.023$); where clean water was not
158 always available (aOR 2.28, 95% CI 1.13–4.60, $p=0.021$); that had a mass deworming event within one to
159 three months prior to the tungiasis survey (aOR 2.06, 95% CI 1.03–4.16, $p=0.042$); and although
160 borderline, if the school buildings were in a bad structural condition (aOR 2.15, 95% CI 1.00–4.62,
161 $p=0.050$). While not significant, the ratio of boys to girls in the school was retained in the model based
162 on the AIC and Wald tests indicating pupils in schools with a higher ratio of boys to girls had four times
163 the risk of infection (aOR 4.27, 95% CI 0.78–23.27, $p=0.093$).

164

165 Table 1. Mixed effects logistic regression of school-related factor for tungiasis infection in pupils, county and school as random effect (n=21,465,
 166 242 cases).

Variables	Categories	N ¹	% pupils infected	Univariable		Full multivariable		Final multivariable	
				OR ² (95% CI ³)	P ⁴	aOR ⁵ (95% CI)	P	aOR (95% CI)	P
Pupil age (years)				0.81 (0.76–0.87)	<0.001	0.82 (0.76–0.89)	<0.001	0.82 (0.76–0.89)	<0.001
Pupil sex	Female	10889	0.8	1		1		1	
	Male	10576	1.5	1.98 (1.51–2.61)	<0.001	1.95 (1.44–2.64)	<0.001	1.90 (1.41–2.56)	<0.001
School type	Private	1854	0.16	1		1			
	Public	19612	1.22	5.96 (1.23–28.75)	0.026	2.32 (0.41–13.20)	0.343		
School location	Urban	3554	0.7	1					
	Rural	17912	1.2	1.26 (0.55–2.90)	0.586				
School structure	Mixed ⁶	4067	0.86	1		1			
	Day only	17399	1.19	2.69 (1.03–7.07)	0.044	1.32 (0.41–4.34)	0.639		
Total enrolment	≤400	12907	0.85	1		1		1	
	>400	8559	1.54	1.59 (0.84–3.02)	0.154	2.29 (1.08–4.85)	0.030	2.24 (1.12–4.50)	0.023
Boy: girl ratio				2.91 (0.78–10.90)	0.113	5.20 (0.85–31.94)	0.075	4.27 (0.78–23.27)	0.093
Condition of toilets	Good	6751	0.84	1		1			
	Not good	14271	1.3	2.37 (1.13–4.96)	0.022	1.36 (0.55–3.39)	0.510		
Clean water available	Always	12656	0.81	1		1		1	
	Not always	8589	1.49	2.58 (1.37–4.79)	0.003	2.03 (0.98–4.18)	0.056	2.28 (1.13–4.60)	0.021
Handwashing stations on compound	No	3257	0.98	1					
	Yes	18209	1.15	1.02 (0.42–2.48)	0.958				
Hygiene promotion signs on compound	Yes	13200	0.95	1		1			
	No	8266	1.4	1.84 (0.96–3.53)	0.066	1.06 (0.49–2.26)	0.885		
Classrooms clean	Yes	20697	1.07	1		1		1	
	No	769	2.73	4.46 (1.00–19.84)	0.050	2.93 (0.63–13.64)	0.170	2.80 (0.63–12.36)	0.174
Condition of building	Good	10342	0.78	1		1		1	
	Not good	10902	1.47	2.31 (1.19–4.49)	0.013	1.86 (0.81–4.26)	0.144	2.15 (1.00–4.62)	0.050
Headteacher age				1.02 (0.99–1.07)	0.333				
Conduct Income generating activity	Yes	4009	0.55	1		1			
	No	17457	1.26	2.01 (0.83–4.91)	0.124	1.52 (0.60–3.83)	0.372		
Check pupils washed	No	606	0.33	1					

Variables	Categories	N ¹	% pupils infected	Univariable		Full multivariable		Final multivariable	
				OR ² (95% CI ³)	P ⁴	aOR ⁵ (95% CI)	P	aOR (95% CI)	P
Action if not washed	Yes	20752	1.16	3.04 (0.36–25.76)	0.308				
	Wash at school	7259	0.9	1		1			
	Not wash at school	13564	1.29	2.23 (1.05–4.73)	0.036	1.34 (0.56–3.22)	0.505		
Check pupils wear shoes	No	4789	0.81	1					
	Yes	16677	1.22	1.12 (0.50–2.49)	0.789				
Action if no shoes	Other	18349	1.05	1		1			
	Send home	2448	1.84	2.20 (0.89–5.45)	0.087	1.42 (0.51–3.93)	0.504		
Notice pupil ill health	No	774	0.52	1					
	Yes	20692	1.15	2.09 (0.32–13.61)	0.442				
Deworming event	No	3315	0.9	1					
	Yes	18151	1.17	1.01 (0.43–2.37)	0.976				
Last deworming event	> 3 months	8881	0.89	1		1		1	
	1-3 months	9157	1.45	1.73 (0.86–3.50)	0.126	1.79 (0.86–3.70)	0.117	2.06 (1.03–4.16)	0.042
Jigger treatment in school	No	7451	1.97	1					
	Yes	1328	2.48	1.32 (0.48–3.64)	0.594				
Hygiene program in school	No	1868	1.45	1					
	Yes	19520	1.1	0.78 (0.27–2.26)	0.652				
Jigger prevention program in school	No	19296	1	1					
	Yes	2057	2.43	1.59 (0.57–4.48)	0.371				

167 ¹number, ²odds ratio ³confidence interval, ⁴p value, ⁵adjusted odds ratio, ⁶ mixed day and boarding school

168 Classroom-related factors.

169 Specific classroom factors were collected in 97 schools for 322 classrooms of which 40 (12.4%)
170 classrooms had at least one case. A total of 5,106 pupils studied in the 322 classrooms, of whom 56
171 (1.1%) were infected. Although the construction materials of the classrooms were recorded, these were
172 not included in the models since 99.4% of classrooms had an iron sheet roof, 95.6% had walls of bricks,
173 cement blocks or stones and 99% had concrete floors. The distribution of pupils by all classroom
174 variables is presented in the Additional file S2.

175 In the univariable analysis, tungiasis was positively associated with all the variables assessed
176 except the number of pupils enrolled in a classroom and the pupil density (number of pupils per m²) in a
177 classroom (Table 2). The condition of the concrete floor and cleanliness of the classroom were not
178 included in the final multivariable model since they were conceptually related and positively correlated
179 to the amount of loose soil or sand on the floor (Additional file S3, Pearson's chi² p<0.001). Pupils who
180 studied in a class with a lot of loose soil or sand on the floor had a six times higher odds of being infected
181 (aOR 6.52, 95% CI 1.61–26.35, p=0.008) albeit with a wide confidence interval due to the low number of
182 cases (Table 2). Tungiasis was also associated with the number of pupils absent on the day of the survey
183 (aOR 1.11, 95% CI 1.01–1.22, p=0.023). As before, pupil sex was also associated with infection.

184 Table 2. Mixed effects logistic regression for classroom factors associated with pupil infection, county and school as random effects (n=5102
 185 pupils, 56 infected).

Variables	Categories	N ¹	% infected	Univariable		Full multivariable		Final multivariable	
				OR ² (95% CI ³)	P ⁴	aOR ⁵ (95% CI)	P	aOR (95% CI)	P
Pupil age				0.84 (0.72–0.99)	0.032	0.90 (0.75–1.07)	0.214		
Pupil sex	Female	2582	0.7	1		1		1	
	Male	2523	1.5	2.25 (1.27–4.01)	0.006	2.05 (1.11–3.81)	0.023	2.22 (1.25–3.95)	0.007
Pupils enrolled ⁶				1.01 (0.99–1.03)	0.328				
Pupils absent ⁷				1.11 (1.01–1.22)	0.031	1.08 (0.95–1.18)	0.123	1.11 (1.01–1.22)	0.023
Pupil density ⁸				0.47 (0.13–1.66)	0.242				
Concrete floor condition	good	2212	0.77	1		1			
	slightly cracked	2122	1.08	2.40 (0.84–6.81)	0.101	1.30 (0.47–3.60)	0.607		
	very broken	539	1.3	1.51 (0.37–6.14)	0.567	0.41 (0.09–1.85)	0.248		
Amount of loose dust soil	none	1236	0.32	1		1		1	
	a little	3086	0.87	2.87 (0.76–10.82)	0.120	2.44 (0.61–9.71)	0.206	2.29 (0.63–8.32)	0.208
	a lot	780	3.21	7.72 (1.80–33.10)	0.006	6.38 (1.13–36.00)	0.036	6.52 (1.61–26.35)	0.008
Cleanliness of classrooms	tidy & clean	1627	0.55	1		1			
	slightly tidy & clean	2894	0.9	1.64 (0.62–4.34)	0.316	0.68 (0.22–2.08)	0.502		
	very untidy & dirty	585	3.59	3.30 (1.03–10.55)	0.044	1.16 (0.28–4.86)	0.836		

186 ¹number, ²odds ratio ³confidence interval, ⁴p value, ⁵adjusted odds ratio, ⁶ number of pupils/ m² of classroom

187 Headteachers and teachers' knowledge and attitudes

188 Of the 197 headteachers interviewed, 26.4% (52) were female, while 51% (60) of the 117 teachers were
189 female. Both teachers and headteachers had worked in the school for a median of three years (IQR 2-6).

190 *Head (Teacher) awareness of tungiasis situation in schools*

191 To assess the level of awareness of the tungiasis status of pupils in their school, headteachers were
192 asked if they thought there were cases in the school, and we compared their response to the results of
193 our foot examinations. At the time of the interview respondent headteachers were not aware of the
194 results of the pupil examinations conducted by the research team. Of the 76 headteachers in schools
195 with at least one case, only 45% (34) were correct in reporting there were cases in their school (Pearson
196 χ^2 $p < 0.001$, Table 3). Teachers were asked if they knew of cases in their grade. Of the 19 teachers in
197 grades with at least one case, 74% (14) were correct in reporting they had cases in their grade (Table 4).

198 The 55% of headteachers who incorrectly reported that the school had no cases, were in schools
199 with a lower prevalence (median 0.95%, IQR 0.9–2.7) than those who were correct (median 2.25%, IQR
200 0.9–4.4, $p = 0.065$). However, this difference was not statistically significant in the Wilcoxon rank sum test.
201 For teachers the difference was significant (median 2.7%, IQR 1.8–5.4 vs. 0.9%, IQR 0.9–1.8, $p < 0.001$).

202 *Table 3. Headteacher awareness of the tungiasis situation in their school*

	Actual foot examination results			Pearson χ^2 p value
	At least one case in the school	No cases in the school	Total	
Headteachers				
Yes, have cases in my school	34 (44.7%)	9 (7.5%)	43 (21.9%)	<0.001
No cases in my school	42 (55.3%)	111 (92.5%)	153 (78.1%)	
Total	76	120	196	

203

204

205 *Table 4. Teacher awareness of the tungiasis situation in their grade*

Teachers	Actual foot examination results			Pearson Chi ² p value
	At least one case in the grade	No cases in the grade	Total	
Yes, have cases in my grade	14 (73.7%)	4 (4.1%)	18 (15.4%)	
No cases in my grade	5 (26.3%)	94 (95.9%)	99 (84.6%)	
Total	19	98	117	

206

207 One limitation often proposed for using school-based surveys to assess prevalence and risk
208 factors, is that the most severe cases will be missed as they are unable to attend school on account of
209 their poor mobility. To date there is no evidence to support this, so we asked teachers if they knew if
210 there were pupils missing from their class due to tungiasis, and four teachers from four schools (11.4%
211 of affected schools) said there were. The schools with pupils absent on account of tungiasis had higher
212 prevalence among the pupils who did attend, than schools who did not have any pupils absent on
213 account of tungiasis (median 4.6, IQR 2.3–7.1 vs. 1.8, IQR 0.9–3.1, Wilcoxon rank sum p=0.002).

214 *Knowledge of and impact of tungiasis*

215 Those headteachers and teachers who said they currently or previously had tungiasis cases in their
216 school were asked more questions about the disease and its impact on pupils. A total of 80 headteachers
217 and 30 teachers responded (Fig 1). The headteachers and teachers were asked why they thought
218 infected pupils had tungiasis and the majority attributed it to family poverty (70%) and poor hygiene
219 (87%). A few also suggested it was due to lack of adult care (15.5%), lazy parents (18.2%), and to living in
220 an area with red soil (14.5%), and 80% consider the disease to be seasonal, being worse during “hot, dry,
221 and dusty” times of the year.

222 Respondents were asked their opinion as to how they thought pupils with tungiasis are affected
223 by the disease. The most common impacts mentioned were poor concentration in class, low academic
224 performance, poor attendance, mobility, stigma, “poor health/ sickly”, low self-esteem, and being

225 “uncomfortable or restless”. Other impacts mentioned by a few respondents were being “tired”, sleeping
226 in class, “mentally disturbed”, “poor memory”, and “socially isolated”.

227 When headteachers and teachers were specifically asked about the psychological impact on
228 pupils compared to uninfected pupils, only two felt they were no different to uninfected pupils. Around
229 one third mentioned that they were sad (29.1%), quiet (25.5%), withdrawn (36.4%) and seemed
230 ashamed or embarrassed (38.2%). More than half (60%) said pupils with tungiasis are excluded by other
231 pupils and 42.7% said pupils with tungiasis were ridiculed by others. When asked about the parents of
232 the infected pupils, 58% felt the parents of infected pupils engage less, and 60% felt parents were less
233 likely to come to school when asked, compared to parents of uninfected pupils.

234 **Health programs in school**

235 Despite 21.9% (43) of headteachers thinking they had pupils in their school infected with tungiasis and
236 being aware of the impact it had on their academic achievement, only 6.1% (12) of all headteachers
237 reported they had had an intervention activity to treat the pupils, and for 75% (9) of those, that was
238 more than a year before the interview. For the 12 schools who had had an intervention, only six had
239 treated the pupils, either with potassium permanganate, coconut oil or neem oil and three had
240 conducted, or provided chemicals for the fumigation of homes. Only 9.6% (19) of all headteachers
241 reported having an active program to teach pupils about tungiasis and prevention, while 91.3% (179) of
242 headteachers reported having a hygiene program and 60.7% (119) had other health interventions
243 (COVID-19, polio, measles, trachoma, nutrition, menstrual hygiene, human papilloma virus and cervical
244 cancer) in their school.

245 **Discussion**

246 Given that those most affected by tungiasis are school aged children, it is often assumed that the school
247 environment is a major risk factor for the spread of the disease. Apart from one other study conducted

248 previously in Kilifi County in 2014 [11], no other study has investigated factors in schools that may be
249 associated with tungiasis. Many risk factor studies have been conducted with school pupils in schools,
250 but these have focused on the pupil and their home. In our own work, we previously concluded that the
251 home environment is largely responsible for infection risk, but we also found indications that the school
252 environment is a contributing factor [11]. Here we have investigated many more behavioral and
253 environmental factors in depth but only a few factors were found to be associated with a pupil's
254 tungiasis infection.

255 We provide more evidence of an association of infection in pupils in schools with neglected
256 infrastructure and poor cleanliness, having broken concrete floors and large amounts of loose soil or
257 sand on the classroom floor. These factors are all linked to the developmental biology of the sand flea.
258 The larvae need a certain amount of soil or sand to hide to prevent dehydration and avoid predation.
259 The pupae require particles of soil/sand to coat themselves for protection [5]. Sand flea eggs expelled
260 from the feet of an infected pupil wearing open or no shoes during class time, could drop on the sand
261 and the off-host life cycle could be completed in the classroom. Consequently, keeping classroom floors
262 in good condition and dust-free may help to reduce parasite development and pupil infection.

263 The positive association with having had a mass drug administration (MDA) event within the last
264 three months for soil transmitted helminths (STH) and schistosomiasis is perhaps because the areas of
265 the country targeted for frequent MDA, are also the areas in the country with the higher prevalence of
266 tungiasis. Although integrated surveys have not yet been published, it might be expected that STH and
267 tungiasis would have the highest prevalence in the same locations since they both tend to be found in
268 children under the age of 15 years in resource-poor communities and the parasites all have an obligate
269 life cycle stage in the soil from where infection is obtained [16]. The association also suggests the
270 products and doses used in MDA are not effective against tungiasis.

271 Tungiasis has previously and in the current study population, been associated with not washing
272 feet at least once a day with soap [10, 11, 13, 17]. Children in resource poor families may well not have
273 access to water and/or soap at home, or parents lack the ability to enforce washing every day before
274 and/or after school. We have found that in addition, if a school did not have constant access to water,
275 the pupils had a higher risk of infection. Promoting foot hygiene and providing facilities for foot washing
276 in school for those who do not have access at home could help reduce infection among pupils.

277 The majority of headteachers and teachers in affected schools knew that tungiasis was
278 associated with poverty and poor hygiene and its impact on children, but there was rarely systematic
279 action to help individual children to wash in school, nor implement a school-wide intervention program.
280 While most schools had a general hygiene program, these programs focus on handwashing to prevent
281 diarrheal diseases and soil transmitted helminths, and of course at the time of this study, COVID-19.

282 The association with a higher boy: girl ratio is not unexpected since boys in this study and
283 previously have been shown [10, 18, 19] to be two to three times as likely to be infected than girls.
284 Consequently, the more boys there are in a school the higher the risk for all pupils.

285 Often public health officials have relied on phoning school headteachers to determine which
286 schools have pupils with tungiasis (LE personal experience). The findings of this study indicate
287 headteachers are not very aware of the tungiasis situation in their school and are only likely to be if the
288 school prevalence is over 1%. A higher proportion of teachers than headmasters correctly reported there
289 were cases in the school or grade. This is not surprising since teachers have more contact with pupils
290 each day, but there seems to be a lack of communication with school management to potentially
291 address the problem.

292 Most headteachers and teachers felt tungiasis is seasonal and associated with the hot, dry or
293 dusty times of year. Only one past survey in Brazil [20], has systematically investigated the seasonality

294 and found the prevalence to be highest in the dry season. More studies are clearly needed to confirm
295 this to provide health departments with the best time of the year to target for prevention interventions,
296 before transmission begins to rise.

297 Most headteachers and teachers were not aware of the major impacts tungiasis has on children,
298 except that they are stigmatized by other pupils, being excluded and ridiculed. Only a third or less of
299 respondents in affected schools identified lack of concentration in class, absenteeism, poor academic
300 performance, and the child's psychological state. We have reported previously how the infected pupils in
301 these schools, themselves reported having difficulty concentrating in class and sleeping at night, being
302 ashamed, sad and angry, and observations of their school records found infected pupils missed more
303 days of school and had lower exam results [8]. Many of these impacts have also been documented by
304 previous studies [9, 21].

305 Something that has rarely been explored before in relation to children with tungiasis is the role
306 parents may play in the child's risk for infection. Two thirds of headteachers and teachers felt that
307 parents of children with tungiasis were less engaged with the school than parents of uninfected pupils
308 and were less likely to attend a meeting when specifically asked to come. This could reflect parental
309 neglect of the child or shame regarding their child's infection. Some teachers thought the child's
310 infection was caused by "lack of adult care", or from having "lazy parents" and some were aware that
311 there were problems at home for infected children and named poverty, alcohol use, divorce and
312 illiteracy. The causes of neglect are likely to be many, but previously tungiasis has been shown to be
313 associated with caregiver depression [22], which itself has been associated with child neglect [23] and
314 poor hygiene of children [24]. Further research is needed to determine if there is an association between
315 tungiasis and parental neglect, and to explore the possible reasons for child neglect in these
316 communities and how that might be changed.

317 LIMITATIONS

318 This study had one major limitation which was that it was not designed as a case: control study for risk
319 factors, but rather was nested in a fully randomized prevalence survey which resulted in a low number of
320 tungiasis cases encountered during the surveys, particularly when the detailed classroom observations
321 and teacher interviews were conducted.

322 Conclusions

323 Despite investigating many plausible environment and behavioral school-related factors, our study only
324 found a few associated with tungiasis in pupils, reinforcing our previous conclusions that most risk is
325 from pupils' homes. In the few schools that have more than 400 pupils, classrooms in poor condition,
326 cracked concrete floors not kept clean and tidy and free of loose soil or dust, do not have a constant
327 supply of water, can contribute to the risk of tungiasis infection for their pupils. These findings reinforce
328 the need for a one health, multisectoral approach to control tungiasis in a community, combining
329 treatment with prevention which requires not only the Department of Health and health workers to
330 target people in affected communities, but also the Board of Management of schools, teachers and the
331 Department of Education to ensure all school buildings are in good condition, kept clean, and pupils
332 encouraged to wash at school if they need to.

333 Ethics approval and consent to participate

334 The study was approved by the KEMRI Scientific and Ethics Review Committee (approval number
335 KEMRI/SERU/CGMR-C/170/3895) as well as the Oxford Tropical Research Ethics Committee (reference
336 number 38-19). During the community engagement phase, a presentation was made to the national
337 Director for Neglected Tropical Diseases at the Ministry of Health, the county and sub-County Health
338 Management Teams and the Department of Education in all counties to obtain their approval. In each
339 school a meeting was held with the school Parent Teachers' Association (PTA) or management board to
340 obtain their permission to conduct the survey in their school. The head teacher and PTA chairperson

341 signed the consent form on behalf of the parents and school for the pupils to be examined. Each child
342 gave verbal assent. Community health workers were hired and trained in each school to assist and be the
343 link with the community emphasizing that participation was completely voluntary, and subjects had the
344 opportunity to withdraw from the study at any point in the study.

345 For pupils selected for interviews, these were explained, and each was given an information leaflet to
346 take home for their parents along with an opt-out form. Parents were to sign and return the form only if
347 they did not want their child to participate in the interviews, or they could attend the school the next day
348 to clarify any issues they may have. On the following day, if the selected pupils did not have the opt out
349 form and were willing to participate, they proceeded with the interviews.

350 All data were collected on PIN protected electronic tablets, stored on password protected RedCap
351 databases on the KEMRI-Wellcome Trust servers. Data were analyzed after export to Excel spreadsheets
352 without inclusion of personal identifiers.

353 All pupils with tungiasis were referred for treatment to the community health workers or the local
354 health facility using benzyl benzoate provided by the study. For those with secondary bacterial infection
355 and other illnesses requiring treatment, a referral was made to the nearest health facility.

356

357 [Consent for publication](#)

358 All the authors have reviewed and approved the publication of this paper.

359

360 [Availability of data and materials](#)

361 The datasets and other materials supporting the conclusions of this article are available on KWTRP
362 Research Data Repository at Harvard Dataverse through the following
363 link: <https://doi.org/10.7910/DVN/XM4K5I>.

364

365 [Supplementary material](#)

366 S1 Distribution of pupil population by school variables

367 S2 Distribution of pupil population by classroom variables

368 S3 Correlation of classroom variables with each other

369

370 [Competing interests](#)

371 All authors declare no conflict of interest.

372 [Funding Information](#)

373 Research funding for this work was provided by the Wellcome Trust through the project “Epidemiology of
374 Tungiasis” (grant number 213724/Z/18/) granted to Lynne Elson as a Career Re-Entry Fellowship. This work
375 was written with the permission of Director KEMRI-CGMRC. The views expressed herein do not necessarily
376 reflect the official opinion of the donors. The funders had neither a role in the design of the study, nor in
377 collection, analysis, interpretation of data nor in writing the manuscript.

378 [Author Contributions](#)

379 Conceptualization, LE, UF, MM, IA, PB; Methodology, LE, UF, PB, BO, MM, IA; Formal Analysis, LE, BO;
380 Investigation, LE, CK, SK, CM, GG, EC, MO, ES, JK, EM, MW, JL; Resources, LE, PB; Data Curation, LE; Writing
381 – Original Draft Preparation, LE.; Writing – Review & Editing, CK, SK, CM, GG, EC, MO, ES, JK, EM, MW, JL,
382 UF, BO, PB, MM, IA; Visualization, LE.; Supervision, PB; Project Administration, LE, MM, PB; Funding
383 Acquisition, LE, MM, PB.

384 [Acknowledgements](#)

385 We are grateful to the County Tungiasis Team Leaders: Wambani Zablon³, Collins Kipkorir⁴, Philip Nzyoka⁵,
386 Moses Obiero⁶, Marawan Elijah⁷, Jacob Kapombe⁸, Kuyan Malano⁹, Caleb Kasuku¹⁰, Rael Kukule¹¹ from
387 Departments of Health in ³Muranga, ⁴Kericho, ⁵Makueni, ⁶Nakuru, ⁷Samburu, ⁸Kilifi, ⁹Kajiado, ¹⁰Taita
388 Taveta, ¹¹Turkana,

389 We are also grateful to the communities who participated, the school Parent Teacher Associations and
390 Head Teachers who allowed us to work in their schools, the county Directors of Health and Education who

391 gave their approval for the study and assisted in many ways to ensure its success. We acknowledge the
392 efforts and dedication of Henry Kivuva (RIP) to set up the survey in Makueni County.

393

394 Abbreviations

395 aOR Adjusted odds ratio

396 CHMT County Health Management Team

397 CI Confidence Interval

398 KEMRI Kenya Medical Research Institute

399 NTDs Neglected Tropical Diseases

400 OR Odds ratio

401 PTA Parent Teachers Association

402 SES Socio-economic status

403 SD Standard deviation

404 WASH Water, sanitation and hygiene

405

406 References

- 407 1. Feldmeier H, Heukelbach J, Ugbomoiko US, Sentongo E, Mbabazi P, von Samson-Himmelstjerna
408 G, et al. Tungiasis--a neglected disease with many challenges for global public health. PLoS Negl Trop Dis.
409 2014;8(10):e3133. doi: 10.1371/journal.pntd.0003133.
- 410 2. World_Health_Organization. Ending the neglect to attain the Sustainable Development Goals: a
411 road map for neglected tropical diseases 2021–2030. Geneva: World Health Organization 2020.
- 412 3. World_Health_Organization. Ending the neglect to attain the Sustainable Development Goals: a
413 strategic framework for integrated control and management of skin-related neglected tropical diseases.
414 Geneva2022.
- 415 4. Eisele M, Heukelbach J, Van Marck E, Mehlhorn H, Meckes O, Franck S, et al. Investigations on
416 the biology, epidemiology, pathology and control of Tunga penetrans in Brazil: I. Natural history of
417 tungiasis in man. Parasitol Res. 2003;90(2):87-99. doi: 10.1007/s00436-002-0817-y.
- 418 5. Nagy N, Abari E, D'Haese J, Calheiros C, Heukelbach J, Mencke N, et al. Investigations on the life
419 cycle and morphology of Tunga penetrans in Brazil. Parasitol Res. 2007;101 Suppl 2:S233-42. doi:
420 10.1007/s00436-007-0683-8.

- 421 6. Feldmeier H, Eisele M, Van Marck E, Mehlhorn H, Ribeiro R, Heukelbach J. Investigations on the
422 biology, epidemiology, pathology and control of *Tunga penetrans* in Brazil: IV. Clinical and histopathology.
423 *Parasitol Res.* 2004;94:275–82.
- 424 7. Feldmeier H, Heukelbach J, Eisele M, Sousa AQ, Barbosa LM, Carvalho CB. Bacterial
425 superinfection in human tungiasis. *Trop Med Int Health.* 2002;7(7):559-64. doi: 10.1046/j.1365-
426 3156.2002.00904.x.
- 427 8. Elson L, Kamau C, Koech S, Muthama C, Gachomba G, Sinoti E, et al. Children with tungiasis in
428 Kenya have poor school performance and quality of life. medRxiv preprint. 2023. doi:
429 10.1101/2023.11.17.23298667v1.
- 430 9. Wiese S, Elson L, Feldmeier H. Tungiasis-related life quality impairment in children living in rural
431 Kenya. *PLoS Negl Trop Dis.* 2018;12(1):e0005939. doi: 10.1371/journal.pntd.0005939.
- 432 10. Wiese S, Elson L, Reichert F, Mambo B, Feldmeier H. Prevalence, intensity and risk factors of
433 tungiasis in Kilifi County, Kenya: I. Results from a community-based study. *PLoS Negl Trop Dis.*
434 2017;11(10):e0005925. doi: 10.1371/journal.pntd.0005925.
- 435 11. Elson L, Wiese S, Feldmeier H, Fillinger U. Prevalence, intensity and risk factors of tungiasis in
436 Kilifi County, Kenya II: Results from a school-based observational study. *PLoS Negl Trop Dis.*
437 2019;13(5):e0007326. doi: 10.1371/journal.pntd.0007326.
- 438 12. Matharu AK, Ouma P, Njoroge MM, Amugune BL, Hyuga A, Mutebi F, et al. Identification of
439 tungiasis infection hotspots with a low-cost, high-throughput method for extracting *Tunga penetrans*
440 (*Siphonaptera*) off-host stages from soil samples-An observational study. *PLoS Negl Trop Dis.*
441 2024;18(2):e0011601. doi: 10.1371/journal.pntd.0011601.
- 442 13. Elson L, Kamau C, Koech S, Muthama C, Gachomba G, Sinoti E, et al. National prevalence and risk
443 factors for tungiasis in Kenya. *Infect Dis Poverty.* 2023;12(1):85. doi: 0.1186/s40249-023-01131-x.
- 444 14. PA Harris RT, R Thielke, J Payne, N Gonzalez, JG. Conde, . Research electronic data capture
445 (REDCap) – A metadata-driven methodology and workflow process for providing translational research
446 informatics support. *J Biomed Inform.* 2009;42(2):377-81. doi: 10.1016/j.jbi.2008.08.010.
- 447 15. Elson L, Thielecke M, Fillinger U, Feldmeier H. Infection with tungiasis through interhost
448 movement of adult female sand fleas, *Tunga penetrans*. *Trans R Soc Trop Med Hyg.* 2022;116(2):85-6.
449 doi: 10.1093/trstmh/trab117.
- 450 16. World_Health_Organization. WHO Health Topics: Soil Transmitted Helminths 2024 [cited 2024
451 9/9/2024]. Available from: [https://www.who.int/health-topics/soil-transmitted-
452 helminthiasis#tab=tab_1](https://www.who.int/health-topics/soil-transmitted-helminthiasis#tab=tab_1).
- 453 17. Nsanzimana J, Karanja S, Kayongo M, Nyirimanzi N, Umuhiza H, Murangwa A, et al. Factors
454 associated with tungiasis among primary school children: a cross-sectional study in a rural district in
455 Rwanda. *BMC Public Health.* 2019;19(1):1192. doi: 10.1186/s12889-019-7481-y.
- 456 18. Muehlen M, Feldmeier H, Wilcke T, Winter B, Heukelbach J. Identifying risk factors for tungiasis
457 and heavy infestation in a resource-poor community in northeast Brazil. *Trans R Soc Trop Med Hyg.*
458 2006;100(4):371-80. doi: 10.1016/j.trstmh.2005.06.033.
- 459 19. Elson L, Matharu AK, Riithi N, Ouma P, Mutebi F, Feldmeier H, et al. Characterization of tungiasis
460 infection and morbidity using thermography in Kenya revealed higher disease burden during COVID-19
461 school closures. *Infectious Diseases of Poverty.* 2023;12(1):24. doi: 10.1186/s40249-023-01080-5.
- 462 20. Heukelbach J, Wilcke T, Harms G, Feldmeier H. Seasonal variation of tungiasis in an endemic
463 community. *Am J Trop Med Hyg.* 2005;72(2):145-9.
- 464 21. McNeilly H, Thielecke M, Mutebi F, Banalyaki M, Reichert F, Wiese S, et al. Tungiasis Stigma and
465 Control Practices in a Hyperendemic Region in Northeastern Uganda. *Trop Med Infect Dis.* 2023;8(4). doi:
466 10.3390/tropicalmed8040206.

- 467 22. Otieno B, Elson L, Matharu AK, Riithi N, Chongwo E, Katana K, et al. Neurocognitive and mental
468 health outcomes in children with tungiasis: a cross-sectional study in rural Kenya and Uganda. *Infectious*
469 *Diseases of Poverty*. 2023;12(1):100. doi: 10.1186/s40249-023-01154-4.
- 470 23. Cummings EM, Davies PT. Maternal depression and child development. *Journal of child*
471 *psychology and psychiatry*. 1994;35(1):73-112.
- 472 24. Runyan D, Wattam C, Ikeda R, Hassan F, Ramiro L. Child abuse and neglect by parents and other
473 caregivers. In: Krug EG, Dahlberg JA, Mercy AB, Lozano Z, LozanoR, editors. *World report on violence and*
474 *health* Geneva, Switzerland: World Health Organization; 2002. p. 57–86.
- 475