

# 1 **Health benefits of a five-day at-home modified fasting program: a** 2 **randomised controlled trial**

3

4 **Franziska Grundler<sup>1</sup>, Quinten R. Ducarmon<sup>2,3</sup>, Alfred Holley<sup>1</sup>, Marie Knufinke<sup>1,4</sup>, Selina**  
5 **Strathmeyer<sup>5</sup>, Steffen Heelemann<sup>5</sup>, Roland Geyer<sup>5</sup>, Borja Martinez Tellez<sup>6,7</sup>, Michael R**  
6 **MacArthur<sup>8</sup>, Georg Zeller<sup>2,3</sup>, Françoise Wilhelmi de Toledo<sup>1</sup>, Robin Mesnage<sup>1,9\*</sup>**

7

8 <sup>1</sup> Buchinger Wilhelmi Clinic, Wilhelm-Beck-Straße 27, 88662 Überlingen, Germany

9 <sup>2</sup> Structural and Computational Biology Unit, European Molecular Biology Laboratory, Heidelberg, Germany

10 <sup>3</sup> Leiden University Center for Infectious Diseases (LUCID), Leiden University Medical Center, Leiden, the  
11 Netherlands.

12 <sup>4</sup> Laboratory of Nutrition and Metabolic Epigenetics, Department of Health Sciences and Technology, ETH Zurich,  
13 Zurich, Switzerland

14 <sup>5</sup> Lifespin GmbH, Am BioPark 13, 93053 Regensburg, Germany

15 <sup>6</sup> Department of Nursing, Physiotherapy and Medicine and SPORT Research Group (CTS-1024), CIBIS Research  
16 Center, University of Almería, Almería, Spain.

17 <sup>7</sup> Department of Medicine, Division of Endocrinology and Einthoven Laboratory for Experimental Vascular  
18 Medicine, Leiden University Medical Center, Leiden, The Netherlands.

19 <sup>8</sup> Lewis-Sigler Institute for Integrative Genomics, Princeton University, Princeton NJ 08540, USA

20 <sup>9</sup> Department of Nutritional Sciences, School of Life Course Sciences, Faculty of Life Sciences and Medicine,  
21 King's College London, SE1 9NH London, UK

22

23 \* Corresponding author:

24 Dr. Robin Mesnage; [robin.mesnage@buchinger-wilhelmi.com](mailto:robin.mesnage@buchinger-wilhelmi.com)

25

26

27 **ABSTRACT**

28 **Background**

29 Fasting has been shown to be one of the most cost-effective methods to improve cardiometabolic health.  
30 We studied a 5-day hypocaloric (~600 kcal/day) and ketogenic, modified fasting program (MFP) for at-  
31 home interventions. We hypothesised that this MFP induces metabolic changes comparable to 5 days of  
32 prolonged fasting (75-250kcal/day).

33 **Methods**

34 We tested the MFP in a two-arm randomised controlled trial where sixty-four healthy subjects were  
35 randomised to MFP or control group. Serum biochemistry analyses and questionnaires allowed for  
36 determining effects on cardiometabolic risk factors. Emotional well-being, possible side effects and  
37 physical activity were assessed with questionnaires. Biological pathways and metabolic processes were  
38 explored with nuclear magnetic resonance blood metabolomics and gut metagenomics analyses.

39 **Results**

40 MFP participants (n=32) experienced weight loss ( $-3.1 \pm 1.1$  kg) persisting one month after the  
41 intervention. The MFP induced significant, but transient reductions, in systolic ( $-6.4 \pm 11.5$  mmHg) and  
42 diastolic ( $-4.4 \pm 7.7$  mmHg) blood pressure, glucose levels, HbA1c and coagulation factors. The MFP led  
43 to greater reductions in BMI ( $p=0.006$ ), diastolic pressure ( $p = 0.009$ ), cholesterol ( $p = 0.02$ ), and LDL ( $p$   
44  $= 0.02$ ) in individuals at risk of cardiometabolic diseases compared to healthy individuals. Total  
45 cholesterol, LDL-C and HDL-C levels continued decreasing during food reintroduction. The MFP also  
46 increased emotional and physical well-being. Blood metabolomics revealed a significant decrease in  
47 chronic inflammation markers. Shotgun metagenomics of the gut microbiome showed trends in the  
48 changes in relative abundance of the majority of bacterial species and their genomic repertoire of  
49 carbohydrate-active enzymes (CAZymes). This reflected a decrease in families metabolising dietary fibre  
50 substrates and an increase in families metabolising host-derived glycan substrates. Comparing MFP  
51 effects with a previous cohort's 5-day prolonged fasting showed similar metabolic changes.

52 **Conclusion**

53 This MFP is safe and effectively improves cardiometabolic health and emotional well-being in healthy  
54 individuals. It offers comparable metabolic benefits to those observed during 5-day prolonged fasting in a  
55 clinic. It is safe to be practised at home, widely accessible and compatible with individuals' everyday life.

56

57

58

59

60

61

62 **Keywords:** fasting ; cardiometabolic health ; FMD ; gut microbiome ; weight loss ; metabolomics

## 63 Introduction

64 Throughout history, humans and free living animals have regularly undergone long periods of fasting in  
65 response to limited food availability, during several days or weeks according to seasonal cycles <sup>1</sup>, and  
66 several hours while they sleep in alignment with circadian rhythms <sup>2</sup>. In current times, the disruption in  
67 life rhythmicity brought by the western lifestyle and the occurrence of "chronic fasting deficiency"—  
68 when individuals do not respect physiologic fasting periods (e.g. eating at night or skipping longer  
69 circannual fasting periods)—can be hypothesised to contribute to the development of cardiometabolic  
70 diseases, along with other factors such as poor nutrition, exposure to toxic pollutants, decreased sleep  
71 duration and sedentarism <sup>3</sup>. Conversely, calorie restriction and fasting are known to extend lifespan and  
72 health span in various animal models <sup>1,4</sup>.

73 Fasting strategies vary widely in terms of duration and frequency, as well as in caloric intake and  
74 macronutrient profiles <sup>5</sup>. These can range from daily time-restricted eating, which reduces eating windows  
75 thus allowing fasting periods each day <sup>6,7</sup>, to extended fasting periods lasting up to 21 days or more <sup>8,9</sup>.  
76 Retaining the health benefits of fasting is often difficult once subjects return to their adipogenic  
77 environment <sup>10</sup>. Incorporating fasting strategies in everyday life under online supervision could improve  
78 compliance and increase the range of applications of fasting interventions and thus promote healthy  
79 longevity in the general population <sup>11,12</sup>.

80 We previously reported the safety, well-being and metabolic improvements in a cohort of 1422 patients  
81 undergoing prolonged fasting programme (PF) with the Buchinger Wilhelmi protocol (75-250 kcal daily  
82 as fruit juice, vegetable soup and honey) lasting between 4 and 21 days under medical supervision and  
83 moderate physical activity <sup>8</sup>. Whether these effects persist after fasting—like after any intensive  
84 nutritional intervention—depends largely on the diet during the period of food reintroduction and the  
85 adherence to a healthy lifestyle post-intervention <sup>13</sup>. This underscores the necessity for new, easily  
86 accessible interventions that can be routinely implemented in daily life. To address this need, a five-day,  
87 600-calorie ketogenic diet with restricted protein and carbohydrate intake, was designed to mimic a 5-day  
88 period of PF programme in an at-home setting <sup>8</sup>.

89 Mechanisms of fasting-induced health benefits are well understood. At the molecular level, the restriction  
90 of glucose and proteins causes the inactivation of nutrient-sensing pathways, which in return modulate  
91 adaptive cellular responses such as DNA repair, autophagy, apoptosis, and oxidative stress defence <sup>14</sup>.  
92 These mechanisms are recognized hallmarks of ageing which can partially explain the healthy longevity-  
93 enhancing effects of fasting <sup>15</sup>. In addition, the switch from food-derived glucose to endogenous energy  
94 substrates, mainly fatty acids, triggers the production of ketone bodies which, beyond energy provision,  
95 signals fasting adaptations, reducing oxidative stress and inflammation <sup>4</sup>. The ability of the body to switch  
96 between different fuel sources, such as carbohydrates and fats, is known as metabolic flexibility and can  
97 be trained by regular fasting bouts <sup>16,17</sup>.

98 Our two-arm randomised controlled trial (RCT) aimed to explore the effects of this MFP on  
99 cardiometabolic risk factors, well-being, gut microbiome composition and functional potential as well as  
100 the feasibility of this MFP at home. In order to understand whether the effects of our MFP can induce  
101 hallmarks of fasting metabolism, we performed blood biochemistry, blood metabolomics and a gut  
102 metagenomics analysis.

103

104

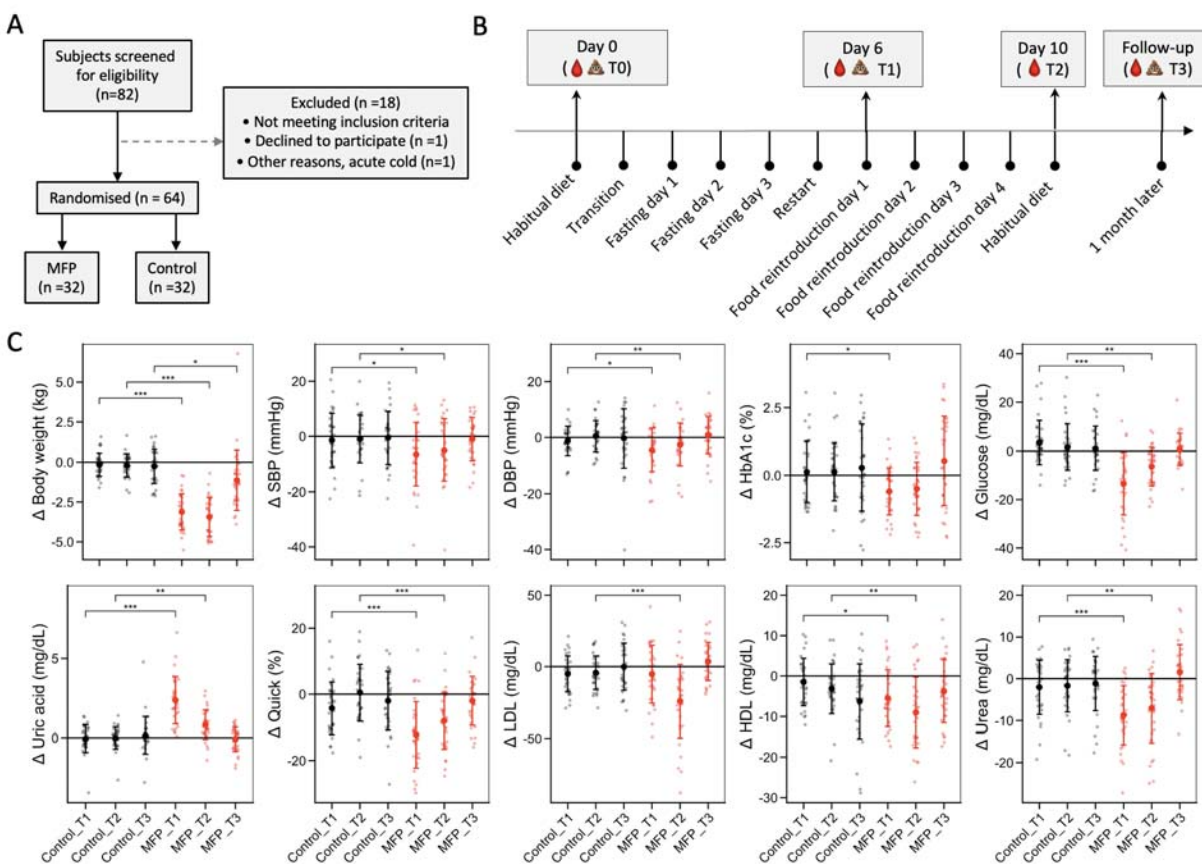
## 105 RESULTS

### 106 Study participation

107 A total of 82 healthy subjects were screened for eligibility between March 2023 and August 2023. Sixteen  
 108 subjects were excluded due to limited availability during the trial (n=10), drug intake (n=4), recent  
 109 antibiotic use (n=1), and pregnancy (n=1). Two subjects declined participation due to loss of motivation  
 110 and an acute cold. We randomly assigned 64 participants to a group receiving the MFP or to a group of  
 111 participants who were told to continue with their usual eating behaviour and lifestyle (control group).  
 112 Recruitment, randomization and follow-up participation are summarised in the Consolidated Standards of  
 113 Reporting Trials (CONSORT) diagram (Figure 1A) together with a timeline of the programme phases  
 114 (Figure 1B).

115 The 22 men (34.4%) and 42 women (65.6%) who participated in this RCT were mostly Caucasian (62 out  
 116 of 64), non-smokers and moderate alcohol consumers (Table S4). There were no significant differences in  
 117 baseline characteristics between the MFP and control group with respect to age, sex, body weight, blood  
 118 pressure and waist circumference (Table S4). Only BMI was slightly higher in the MFP group than in the  
 119 control group (Table 1).

120



121

122

123 **Figure 1. Metabolic effects of the MFP. A.** Diagram of the recruitment procedure. **B.** Study design with  
 124 repeated sampling of blood and faecal samples. **C.** Effects of the MFP (red) in comparison to the control

125 *group (black) at the end of the MFP period (T1), after 5 days food reintroduction (T2), or a month later*  
126 *(T3), for major parameters reflecting the switch to the fasting metabolism, presented as changes in the*  
127 *mean  $\pm$  SD together with individual differences for each study individual relative to baseline (T0). The p-*  
128 *value indicates the statistical significance in a linear-mixed model where the effects are compared to the*  
129 *control group at a given timepoint (\*,  $p < 0.05$  ; \*\*,  $p < 0.01$  ; \*\*\*,  $p < 0.001$ ).*

### 130 **Adverse events**

131 We observed transient adverse events. A woman experienced brief nausea and vomiting on the second  
132 day of the MFP. Three participants working together in the same workplace developed symptoms on day  
133 2 of the study, including a woman (control group) who reported nausea, vomiting, headache, dizziness  
134 and increased body temperature, a woman (MFP group) who reported dizziness, and a man (MFP group)  
135 who reported dizziness and nausea. The latter person took medication (metamizol dipyrone 500 mg for 3  
136 days). All continued their participation. An environmental cause for these adverse events cannot be  
137 excluded, especially given that symptoms occurred in one participant of the control group.

### 138 **Improved metabolic health in MFP as compared to controls**

139 Participants in the MFP group experienced a variety of improvements in cardiometabolic health which  
140 were not observed in the control group (Table 1). Body weight was decreased by  $3.1 \pm 1.1$  kg ( $p = 5.8 \times 10^{-87}$ )  
141 by MFP, while systolic and diastolic blood pressure were reduced by  $6.4 \pm 11.5$  mmHg ( $p=0.03$ ) and  
142  $4.4 \pm 7.7$  mmHg ( $p=0.05$ ), respectively (Figure 1D and Table 1). Ketone bodies measured in urine with  
143 ketone test stripes showed that participants in the MFP group entered ketosis rapidly from day 2 onwards  
144 (Figure S1). Blood glucose and HbA1c significantly decreased by  $0.71 \pm 0.69$  mmol/l ( $p=3.7 \times 10^{-57}$ ) and  
145  $0.58 \pm 0.89$  mmol/mol ( $p=5.5 \times 10^{-7}$ ), respectively (Table 1), reflecting the known improvement of  
146 glycaemic control caused by fasting.

147 The participants exhibited characteristic features of fasting metabolism, such as an increase in uric acid  
148 levels ( $p=6.6 \times 10^{-18}$ ), while ketonuria ( $p=1.7 \times 10^{-29}$ ) and creatinine slightly increased ( $p=0.001$ ) (Table 1).  
149 There was also an increase in international normalised ratio (INR) ( $p=9.6 \times 10^{-7}$ ) and partial  
150 thromboplastin time (PTT) ( $p=0.001$ ), which altogether reflected mild anticoagulative effects  
151 characteristic of the fasting metabolism. The increase in uric acid levels is another hallmark of fasting  
152 metabolism which has been associated with an increased antioxidative capacity and reduced lipid  
153 peroxidation in previous fasting studies<sup>18</sup>.

154 This MFP programme also includes a food reintroduction phase (Fig 1B), which consists of a stepwise  
155 reintroduction of different food items, gradually increasing the number of calories (800 to 1600 kcal per  
156 day during 4 days). Most of the effects observed at the end of the MFP were stable or continuously  
157 improving after the 4 days of food reintroduction (Table 1), including further reductions in body weight,  
158 BMI and waist circumference. LDL-C ( $p=2.2 \times 10^{-5}$ ) and non-HDL-C ( $p=0.002$ ) levels were significantly  
159 reduced compared to baseline after food reintroduction (Table 1), while they were only non-significantly  
160 reduced at the end of the MFP, suggesting that the MFP can have lipid metabolism-normalising effects  
161 detectable mainly after food reintroduction.

162 To explore the effects of two food reintroduction strategies after fasting, participants were evenly divided:  
163 half received a ketogenic diet, and the other half received a non-ketogenic diet (Table S2). Limited  
164 differences were observed between the ketogenic and standard diet groups (Table S5). Both groups  
165 continued to excrete urinary ketone bodies consistently. Notably, the increase in PTT seen during the  
166 modified fasting program (MFP) persisted and was amplified after ketogenic food reintroduction but not  
167 with the standard diet ( $p=0.003$ ). Conversely, the decrease in urea levels observed during MFP was

168 further amplified with standard food reintroduction but not with the ketogenic diet (p=0.0001).  
 169 Altogether, these findings can suggest that reintroducing food with a ketogenic diet can prolong the health  
 170 benefits of fasting by sustaining ketosis.

171 We investigated if the MFP-induced effects persisted after a month (Table 1). Body weight and BMI of  
 172 the participants remained lower than baseline. Blood pressure returned to pre-intervention levels. Most of  
 173 the parameters in these healthy subjects, which reflected beneficial changes in metabolism caused by the  
 174 MFP intervention, returned to baseline levels.

175

176 **Table 1. Biomarker or risk factor changes in the study participants.** The p-value indicates the statistical  
 177 significance in a linear-mixed model (individuals as random effects) where the effects of the MFP are  
 178 compared to the control (CON) group at the same timepoint (\*, p < 0.05 ; \*\*, p < 0.01 ; \*\*\*, p < 0.001).  
 179 Data as mean ± SD. # Primary endpoints.

180

	CON (T0)	CON (T1)	CON (T2)	CON (T3)	MFP (T0)	MFP (T1)	MFP (T2)	MFP (T3)
<b>Clinical parameters</b>								
# Body weight (kg)	70.1 ± 11.5	69.9 ± 11.2	69.9 ± 11.3	69.9 ± 11.3	74.0 ± 13.8	70.8 ± 13.0***	70.2 ± 13.1***	72.8 ± 14.4*
BMI (kg/m <sup>2</sup> )	23.8 ± 3.0	23.8 ± 2.9	23.7 ± 2.9	23.7 ± 2.9	25.4 ± 2.7*	24.3 ± 2.5***	24.1 ± 2.5***	24.9 ± 2.8*
Waist (cm)	82.3 ± 9.7	82.1 ± 10.3	81.9 ± 10.1	80.2 ± 10.0	82.8 ± 9.4	81.4 ± 9.7***	79.9 ± 9.8***	81.5 ± 9.9
# DBP (mmHg)	81.4 ± 8.7	80.4 ± 9.4	81.5 ± 9.1	81.1 ± 11.4	85.1 ± 11.4	80.7 ± 8.5*	82.9 ± 9.1**	86.2 ± 10.9
# SBP (mmHg)	129 ± 13	128 ± 14	128 ± 12	128 ± 13	133 ± 16	126 ± 13*	128 ± 13*	132 ± 16
Resting heart rate (beats/min)	67.4 ± 10.9	67.5 ± 11.2	65.1 ± 9.7	66.3 ± 13.0	67.6 ± 11.5	67.8 ± 11.5	64.7 ± 9.7	65.9 ± 9.0
<b>Energy metabolism</b>								
Serum Glucose (mmol/l)	4.71 ± 0.55	4.90 ± 0.40	4.79 ± 0.45	4.77 ± 0.54	4.75 ± 0.39	4.01 ± 0.59***	4.40 ± 0.49**	4.79 ± 0.44
HbA1c (mmol/mol)	36.3 ± 3.7	36.4 ± 3.9	36.4 ± 3.9	36.6 ± 3.8	35.0 ± 2.6	34.4 ± 2.9*	34.5 ± 2.7	35.5 ± 3.0
Insulin (mIU/l)	6.91 ± 3.73	7.06 ± 3.50	6.34 ± 3.02	9.66 ± 16.04	6.50 ± 4.48	3.06 ± 1.78	4.50 ± 3.19	6.44 ± 2.51
Total Cholesterol (mmol/l)	4.98 ± 0.84	4.77 ± 0.78	4.75 ± 0.73	4.91 ± 0.81	4.98 ± 1.18	4.74 ± 1.05	4.24 ± 0.86***	5.16 ± 1.16*
LDL-C (mmol/l)	3.18 ± 1.00	3.05 ± 0.94	3.07 ± 0.90	3.18 ± 0.96	3.19 ± 1.07	3.05 ± 0.99	2.57 ± 0.80***	3.28 ± 1.12
HDL-C (mmol/l)	1.75 ± 0.44	1.71 ± 0.41	1.67 ± 0.41	1.59 ± 0.39	1.79 ± 0.51	1.64 ± 0.50*	1.55 ± 0.41**	1.69 ± 0.48
Non-HDL-C (mmol/l)	3.22 ± 0.97	3.06 ± 0.93	3.07 ± 0.87	3.32 ± 0.95	3.19 ± 1.10	3.09 ± 0.89	2.68 ± 0.79**	3.46 ± 1.08
LDL/HDL (ratio)	1.99 ± 0.91	1.94 ± 0.88	2.01 ± 0.91	2.17 ± 0.95	1.97 ± 0.98	2.05 ± 1.06	1.82 ± 0.92	2.12 ± 1.02
TG (mmol/l)	1.02 ± 0.45	0.92 ± 0.38	0.91 ± 0.38	1.02 ± 0.56	1.00 ± 0.56	0.91 ± 0.20	0.88 ± 0.29	1.14 ± 0.75
Acetoacetate in urine morning (mg/dl)	1.25 ± 2.20	0.65 ± 1.70	0.54 ± 1.57	1.25 ± 3.23	1.29 ± 3.87	42.8 ± 27.0***	14.8 ± 15.6***	1.11 ± 3.20
Acetoacetate in urine evening (mg/dl)	1.07 ± 2.09	0.50 ± 1.53	0.52 ± 1.55	1.96 ± 7.62	0.78 ± 1.84	21.8 ± 16.4***	6.15 ± 9.20***	0.93 ± 3.11
TSH (mE/l)	2.37 ± 1.58	1.97 ± 1.43	2.02 ± 1.27	2.44 ± 2.60	2.32 ± 1.13	1.65 ± 0.86	1.74 ± 0.81	2.04 ± 1.02
<b>Inflammatory parameters</b>								
CRP (mg/l)	1.54 ± 1.46	1.20 ± 1.20	1.02 ± 1.02	3.02 ± 7.89	1.23 ± 1.94	1.72 ± 2.19	1.33 ± 1.96	1.12 ± 1.92
ESR (mm/h)	4.19 ± 3.40	4.38 ± 4.42	3.44 ± 2.78	5.91 ± 7.90	3.19 ± 2.91	3.59 ± 6.02	2.44 ± 1.05	4.03 ± 4.76
TNF alpha (pg/ml)	5.75 ± 1.42	6.00 ± 1.75	5.66 ± 1.33	6.60 ± 2.67	5.84 ± 1.63	5.80 ± 1.34	5.62 ± 1.10	5.65 ± 1.27**
<b>Kidney function</b>								
Creatinine (μmol/l)	67.5 ± 10.4	67.2 ± 10.2	68.6 ± 11.3	66.9 ± 10.9	69.2 ± 12.6	73.5 ± 14.3**	70.0 ± 13.4	67.2 ± 11.3
GFR (ml/min)	104 ± 14	104 ± 14	102 ± 16	104 ± 15	99.6 ± 17.4	97.0 ± 16.2	101 ± 16	104 ± 16
Urea (mmol/l)	5.34 ± 1.43	5.00 ± 1.27	5.06 ± 1.26	5.14 ± 1.52	4.97 ± 1.25	3.52 ± 1.03***	3.80 ± 1.11**	5.23 ± 1.48
Uric Acid (μmol/l)	277 ± 79	273 ± 66	275 ± 66	285 ± 85	293 ± 72	433 ± 131***	341 ± 87**	287 ± 53
<b>Liver function</b>								
Alkaline phosphatase (U/l)	64.3 ± 20.3	62.0 ± 19.8	62.0 ± 19.5	65.7 ± 20.5	64.2 ± 22.7	60.2 ± 21.6	56.8 ± 18.3**	63.0 ± 23.2
GOT (U/l)	17.8 ± 6.8	17.2 ± 7.0	16.5 ± 6.3	19.0 ± 7.3	16.9 ± 5.4	26.7 ± 15.8***	19.7 ± 8.9	18.6 ± 9.3
GPT (U/l)	23.9 ± 9.9	22.6 ± 9.9	21.4 ± 8.9	23.8 ± 9.9	22.0 ± 5.7	26.2 ± 12.2**	24.8 ± 11.9*	20.9 ± 9.5
Gamma GT (U/l)	20.8 ± 14.8	19.6 ± 12.7	18.3 ± 13.1	19.8 ± 12.2	19.0 ± 10.8	16.3 ± 8.7	14.1 ± 6.7	21.0 ± 15.1*
<b>Redox parameters</b>								
ACL Lipid-soluble Antiox Cap (μmol/l)	42.2 ± 14.8	38.7 ± 10.5	39.2 ± 9.7	40.1 ± 9.7	38.3 ± 10.9	35.6 ± 9.6	33.4 ± 7.2	38.7 ± 10.9

ACU Urate-independent Antiox Cap (µmol/l)	82.4 ± 26.5	88.8 ± 28.6	79.7 ± 19.2	81.7 ± 21.3	80.2 ± 23.4	71.6 ± 20.0*	80.4 ± 15.6	69.4 ± 15.7
Plasma Lipid Peroxides (µmol/l)	411 ± 245	392 ± 239	329 ± 246	363 ± 228	387 ± 198	323 ± 215	335 ± 228	369 ± 233
<b>Blood cells</b>								
Erythrocytes (Mio/µl)	4.57 ± 0.33	4.48 ± 0.38	4.46 ± 0.38	4.49 ± 0.33	4.71 ± 0.40	4.76 ± 0.37**	4.60 ± 0.37	4.67 ± 0.41
Hematocrit (%)	40.9 ± 3.0	39.9 ± 3.1	39.6 ± 3.1	40.0 ± 2.5	41.2 ± 3.2	41.2 ± 2.9*	39.8 ± 2.9	41.1 ± 3.1
Hemoglobin (g/dl)	13.7 ± 1.0	13.5 ± 1.2	13.5 ± 1.1	13.6 ± 1.0	14.0 ± 1.2	14.2 ± 1.1*	13.7 ± 1.1	13.9 ± 1.0
Leukocytes (Tsd./µl)	6.37 ± 1.46	5.83 ± 1.43	5.75 ± 1.43	6.32 ± 2.30	5.72 ± 2.23	4.97 ± 1.41	4.60 ± 1.63	5.53 ± 1.50
MCH (pg)	30.0 ± 1.4	30.3 ± 1.4	30.3 ± 1.4	30.4 ± 1.5	29.8 ± 1.6	29.9 ± 1.6	29.8 ± 1.7	29.9 ± 1.8
MCHC (g/dl)	33.5 ± 1.1	33.9 ± 1.1	34.1 ± 0.8	34.1 ± 1.1	34.0 ± 1.0	34.4 ± 0.9	34.4 ± 0.9	33.9 ± 0.9**
MCV (fl)	89.6 ± 3.6	89.3 ± 3.4	88.9 ± 2.8	89.1 ± 3.6	87.6 ± 4.8*	86.8 ± 4.1	86.6 ± 4.0	88.4 ± 4.4**
MPV (fl)	10.7 ± 0.7	10.6 ± 0.6	10.8 ± 0.8	11.0 ± 0.8	10.8 ± 0.7	10.9 ± 0.7	11.0 ± 0.7	10.8 ± 0.7
P-LCR (%)	30.4 ± 5.5	29.5 ± 4.6	30.7 ± 6.6	32.4 ± 6.7	30.6 ± 4.7	32.4 ± 6.0	33.3 ± 5.1***	31.7 ± 5.6
PDW (fl)	12.6 ± 1.4	12.3 ± 1.1	12.7 ± 1.8	13.1 ± 1.8	12.6 ± 1.2	13.1 ± 1.6	13.3 ± 1.3*	12.9 ± 1.6
Platelets (Tsd./µl)	256 ± 62	254 ± 58	251 ± 63	254 ± 61	246 ± 55	230 ± 63	226 ± 56	250 ± 75
RDW (%)	12.9 ± 0.7	12.9 ± 0.8	12.9 ± 0.7	12.7 ± 0.6	12.9 ± 0.9	12.5 ± 0.8**	12.6 ± 0.8*	13.0 ± 0.8**
<b>Coagulation</b>								
INR	1.00 ± 0.05	1.03 ± 0.06	1.00 ± 0.06	1.02 ± 0.07	0.99 ± 0.07	1.08 ± 0.06***	1.04 ± 0.06***	1.00 ± 0.06
PTT (sec)	30.5 ± 2.3	30.9 ± 2.1	30.7 ± 2.1	30.4 ± 2.2	31.4 ± 2.9	32.8 ± 3.6**	33.2 ± 3.7***	31.2 ± 2.9
Quick (%)	101 ± 8	96.5 ± 8.6	101 ± 10	98.7 ± 9.5	102 ± 11	90.1 ± 6.9***	94.3 ± 8.5***	100 ± 9
<b>Electrolytes</b>								
Calcium (mmol/l)	2.32 ± 0.08	2.34 ± 0.07	2.34 ± 0.09	2.36 ± 0.09	2.33 ± 0.09	2.36 ± 0.09	2.35 ± 0.07	2.38 ± 0.12
Magnesium (mmol/l)	0.84 ± 0.05	0.82 ± 0.05	0.83 ± 0.05	0.83 ± 0.06	0.84 ± 0.06	0.84 ± 0.06	0.81 ± 0.07*	0.82 ± 0.06
Potassium (mmol/l)	4.25 ± 0.23	4.14 ± 0.18	4.33 ± 0.23	4.24 ± 0.26	4.34 ± 0.45	4.19 ± 0.37	4.28 ± 0.33	4.34 ± 0.44
Sodium (mmol/l)	139 ± 2	139 ± 2	140 ± 2	140 ± 2	140 ± 3	138 ± 3	139 ± 2*	140 ± 2

181

## 182 **Effects on individuals at risk of chronic diseases.**

183 We evaluated whether the MFP caused even larger benefits for the health of individuals with risk factors  
 184 of cardiometabolic disease (Table 2). Subjects with BMI >25 kg/m<sup>2</sup> showed a stronger reduction in BMI  
 185 than those with BMI < 25 (p = 0.006). Systolic and diastolic blood pressure were reduced by 0.94 ± 8.7  
 186 mmHg and 0.31 ± 6.37 mmHg in healthy subjects, respectively, but by 9.32 ± 11.8 mmHg and -7.31 ±  
 187 7.34 mmHg in at-risk individuals. This reached statistical significance for diastolic (p = 0.009) but not  
 188 systolic (p= 0.08) blood pressure. Cholesterol and LDL levels also significantly decreased in participants  
 189 with elevated baseline values: cholesterol >200 mg/dl dropped by 19.7 mg/dl (p = 0.02), and LDL >130  
 190 mg/dL decreased by 16.8 mg/dl (p = 0.02).

191

192 We investigated whether the amount of 600 kcal in this program would impact individuals with different  
 193 energy requirements. First, we calculated the resting energy expenditure (REE) of every participant using  
 194 the validated Oxford equation<sup>19</sup>. After that, we divided the 32 participants included in the MFPgroup into  
 195 tertiles and compared individuals with high REE (highest tertile) vs individuals with low REE (lowest  
 196 tertile). Individuals with high REE lost more weight than those with low REE (-3.9 kg vs -1.8 kg,  
 197 respectively, p = 5.5×10<sup>-4</sup>). However, there were no differences in the metabolic changes in systolic or  
 198 diastolic blood pressure, uric acid levels, or in parameters of coagulation, glucose, or lipid metabolism,  
 199 such as total cholesterol, LDL, HDL cholesterol, or GGT (all p > 0.05). This suggests that while  
 200 individuals with higher REE lose more weight due to a greater negative calorie balance, the 600 kcal per  
 201 day provided in this program is able to produce similar metabolic benefits in people with lower REE. This  
 202 implies that the cardiometabolic benefits of fasting in regulating glucose and lipid metabolism may be  
 203 independent of the fasting induced weight loss.

204

205 **Table 2. Posthoc analysis of changes in the levels of risk factors for individuals at risks of chronic**  
 206 **disease. Not enough individuals had poor glycemic control (serum glucose level over 100 mg/dL or**  
 207 **HbA1c levels over 5.7%). The p-values are from an independent t-test.**

208

Parameter	n	Delta T1 – T0	p
<b>BMI (kg/m<sup>2</sup>)</b>			0.006
>25	15	-1.22 ± 0.20	
<25	17	-0.91 ± 0.37	
<b>SBP (mmHg)</b>			0.08
>120	23	-9.32 ± 11.8	
<120	8	-0.94 ± 8.7	
<b>DBP (mmHg)</b>			0.009
>80	18	-7.31 ± 7.34	
<80	13	-0.31 ± 6.37	
<b>Cholesterol (mg/dl)</b>			0.02
>200	12	-19.7 ± 18.0	
<200	20	-3.4 ± 17.2	
<b>LDL (mg/dl)</b>			0.02
>130	12	-16.8 ± 21.5	
<130	20	+1.7 ± 16.1	
<b>HDL (mg/dl)</b>			0.1
>60	20	-6.9 ± 7.5	
<60	12	-3.1 ± 5.6	

209

210 **Well-being, symptoms and lifestyle**

211 Participants answered daily questionnaires to assess their well-being, possible side effects, and lifestyle  
 212 factors throughout the study. The MFP increased emotional and physical well-being, as well as quality of  
 213 life evaluated using the WHO-5 index (Table 3). Energy level was higher in the MFP group after food  
 214 reintroduction in comparison to baseline, but they returned to baseline after a month. Participants in the  
 215 MFP group reported significantly higher levels of anxiety, cravings, headache, insomnia, and muscle  
 216 weakness at baseline in comparison to the control group. Although it is unclear whether these differences  
 217 existed prior to randomization, it is likely that the elevated anxiety symptoms were linked to concerns  
 218 about undergoing the fasting experience. These symptoms rapidly normalised during the early days of the  
 219 MFP and were no different from those experienced by the control group during the MFP and the  
 220 subsequent food reintroduction. Hunger or sleep quality was not different between the two groups. Note  
 221 that these findings are based on self-reported measures, which may limit their robustness.

222 **Table 3. Well-being, symptoms and physical activity – questionnaires. The p-value indicates if the**  
 223 **changes in time for a given parameter are different between the MFP group and the control (CON)**  
 224 **group. The p-value indicates the statistical significance in a linear-mixed model where the effects of the**  
 225 **MFP are compared to the control group at a given timepoint (\*, p < 0.05 ; \*\*, p < 0.01 ; \*\*\*, p < 0.001).**  
 226 **Some questions were asked daily (& symbol) while some were only asked at a given timepoint. All scales**  
 227 **are interpreted from 0 (minimum intensity) to 10 (maximum intensity) Data as mean ± SD for given**  
 228 **timepoints.**

229

	CON (T0)	CON (T1)	CON (T2)	CON (T3)	MFP (T0)	MFP (T1)	MFP (T2)	MFP (T3)
EWB (0-10) &	7.47 ± 1.88	7.53 ± 2.06	7.30 ± 2.12	7.63 ± 1.43	6.84 ± 2.50	8.06 ± 1.53*	8.28 ± 1.58	7.63 ± 1.73
WHO (0-100)	27.5 ± 9.4	24.8 ± 8.7	23.4 ± 9.3	24.7 ± 8.2	25.9 ± 9.1	22.4 ± 10.2	18.5 ± 5.5	23.6 ± 10.3
Physical activity (0-10)	6.19 ± 2.49	5.72 ± 2.11	5.73 ± 2.45	5.76 ± 2.37	6.03 ± 2.09	5.77 ± 2.54	5.90 ± 2.73	5.37 ± 2.72



Physical activity (hours/day) &	3.64 ± 3.46	3.30 ± 2.94	3.25 ± 3.18	3.10 ± 2.82	4.39 ± 3.88	3.45 ± 3.04	4.75 ± 4.25	3.43 ± 3.32
PWB (0-10) &	7.31 ± 1.84	7.47 ± 1.87	7.37 ± 1.99	7.53 ± 1.63	6.78 ± 2.43	7.77 ± 1.78**	8.28 ± 1.71	7.40 ± 2.01
IPAQ (MET-min/week)	3961 ± 3844	5916 ± 8170	2985 ± 4002	4491 ± 7961	2886 ± 2165	20.41 ± 21.66	2602 ± 3384	5323 ± 7932
Backache (0-10) &	1.12 ± 1.77	0.88 ± 1.56	0.60 ± 1.54	1.03 ± 1.76	2.09 ± 2.80	1.81 ± 2.70	1.03 ± 1.68	1.43 ± 2.21
Energy level (0-10) &	6.84 ± 2.03	7.25 ± 1.80	7.03 ± 1.96	7.10 ± 1.65	6.41 ± 2.37	7.10 ± 2.23	8.28 ± 1.71**	7.70 ± 1.88
Fatigue (0-10) &	4.09 ± 2.96	3.44 ± 2.08	2.73 ± 2.70	3.45 ± 2.11	4.69 ± 3.04	3.29 ± 2.81*	1.52 ± 2.25	1.97 ± 2.14**
Fear (0-10) &	0.44 ± 0.88	0.06 ± 0.25	0.23 ± 0.77	0.17 ± 0.54	1.06 ± 1.83	0.35 ± 0.80	0.07 ± 0.37**	0.30 ± 0.84
Flatulence (0-10) &	2.56 ± 2.71	1.69 ± 2.18	1.40 ± 2.04	1.87 ± 1.98	2.56 ± 2.96	1.55 ± 2.68	1.48 ± 2.29	1.70 ± 2.31
Headache (0-10) &	1.16 ± 2.62	0.50 ± 1.16	0.33 ± 1.03	0.62 ± 1.12	2.56 ± 3.16	0.23 ± 0.62***	0.34 ± 1.34	0.30 ± 1.06*
Hunger (0-10) &	3.06 ± 2.94	1.69 ± 1.79	1.63 ± 2.17	2.03 ± 2.06	3.97 ± 2.92	3.06 ± 2.76	2.38 ± 2.77	2.83 ± 2.87
Indigestions (0-10) &	1.31 ± 2.51	1.06 ± 2.26	0.37 ± 0.72	0.83 ± 1.61	1.56 ± 2.60	1.16 ± 2.28	0.97 ± 2.24	0.70 ± 2.04
Insomnia (0-10) &	1.50 ± 1.88	1.27 ± 1.81	1.41 ± 1.74	2.41 ± 2.28	2.62 ± 2.34*	2.34 ± 2.47	1.23 ± 2.01	2.07 ± 2.13*
Myasthenia (0-10) &	1.16 ± 1.80	0.75 ± 1.68	0.53 ± 1.36	0.45 ± 0.74	2.31 ± 3.17	1.94 ± 2.24	0.83 ± 1.56	0.93 ± 1.53
Ravenous appetite (0-10) &	2.12 ± 2.66	0.94 ± 1.76	0.63 ± 1.33	1.17 ± 2.02	3.59 ± 3.05*	2.29 ± 2.83	2.07 ± 2.52	2.53 ± 2.66
Sensation of cold (0-10) &	0.28 ± 0.68	0.44 ± 1.83	0.40 ± 1.83	0.80 ± 1.56	1.94 ± 2.97**	0.06 ± 0.25**	0.41 ± 1.21	0.30 ± 0.92**
Sleep quality (0-10) &	3.03 ± 2.57	1.85 ± 1.99	2.10 ± 2.40	3.52 ± 2.61	3.53 ± 2.33	3.09 ± 2.83	2.07 ± 2.79	3.07 ± 2.96
Backache (0-10)	2.03 ± 1.84	0.88 ± 1.66	0.83 ± 1.7	1.31 ± 1.67	3.78 ± 2.89**	1.77 ± 2.31	1.6 ± 2.25	2.1 ± 2.35*
Heartburn (0-10)	0.69 ± 1.35	0.19 ± 0.64	0.23 ± 0.5	0.28 ± 0.75	1.44 ± 2.23	0.58 ± 1.48	0.3 ± 0.75	0.37 ± 0.76
Joint pain (0-10)	1.56 ± 2.18	1.16 ± 2.29	0.73 ± 1.68	0.79 ± 1.76	2.34 ± 2.68	1.32 ± 2.37	1.03 ± 1.63	1.6 ± 2.21
Muscle (0-10)	1.5 ± 1.65	0.75 ± 1.48	0.67 ± 1.58	0.72 ± 1.28	2.0 ± 2.29	2.0 ± 2.52	1.17 ± 1.76	1.13 ± 1.68
Stomach ache (0-10)	1.91 ± 2.54	0.62 ± 1.48	0.4 ± 0.81	0.86 ± 2.08	1.69 ± 2.04	0.81 ± 1.47	1.0 ± 1.88	1.0 ± 1.74
Stress (0-10)	4.44 ± 1.93	3.59 ± 2.15	3.93 ± 2.16	3.79 ± 2.29	5.5 ± 2.16*	4.03 ± 2.51	3.97 ± 2.51	4.2 ± 2.23
PSQI (0-20)	7.59 ± 2.75	6.66 ± 2.91	5.73 ± 2.56	6.16 ± 2.92	8.50 ± 3.31	7.68 ± 3.02	6.33 ± 2.54	6.71 ± 2.67

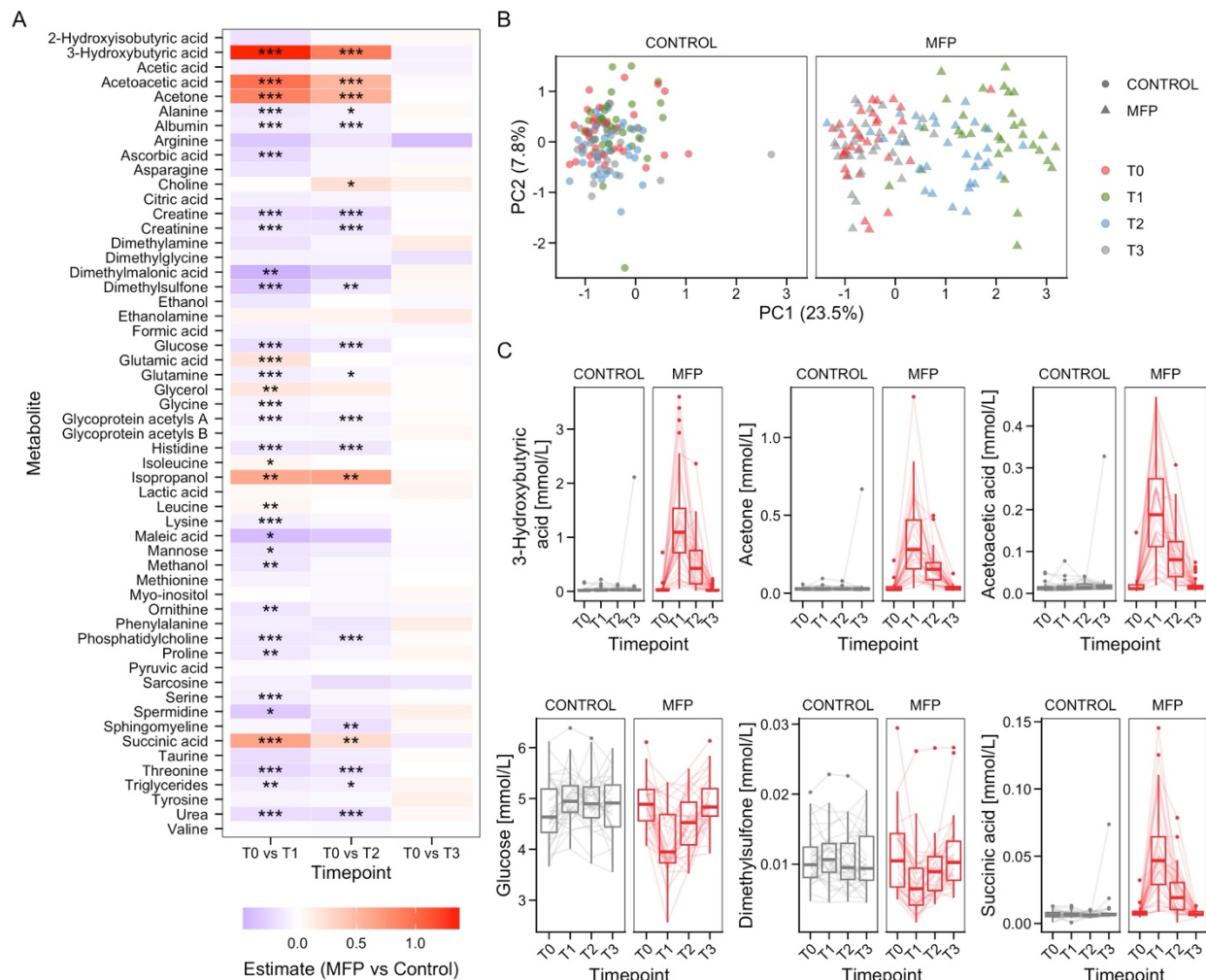
230

231

## 232 Serum metabolomics reflects remodelling of energy metabolism

233 NMR metabolomics revealed that the MFP caused marked metabolic changes, which persisted during the  
 234 food reintroduction and returned to baseline after a month (Figure 2). We observed that concentrations of  
 235 24 metabolites were significantly decreased in the MFP in comparison to the control group, and that 9  
 236 metabolites were increased. In line with expectations from metabolic switching, strong increases were  
 237 observed for the ketone bodies acetoacetic acid and 3-hydroxybutyric acid after the MFP. Strongly  
 238 decreased metabolites include amino acids (i.e., proline, alanine, glutamine, glycine, methionine, lysine,  
 239 serine, threonine, histidine). Other notably decreased metabolites include glycoprotein acetyls A, a known  
 240 biomarker of chronic inflammation<sup>20</sup>. Altogether, this serum metabolomics analysis reflected a strong  
 241 metabolic remodelling caused by the fasting intervention, but also a return to baseline after a month.

242



243

244

245 **Figure 2. Serum metabolomics analysis of the effects of the MFP on serum metabolite composition.** **A:**  
 246 Heatmap showing the changes in the levels of metabolites between the MFP group and the control group  
 247 at different timepoints. The colour scale shows the estimate of the difference between the MFP group and  
 248 the control group in a linear mixed model with individuals as random effects. The p-value resulting from  
 249 these models was adjusted for multiple comparisons using the Benjamini-Hochberg procedure (\*,  $p <$   
 250  $0.05$ ; \*\*,  $p < 0.01$ ; \*\*\*,  $p < 0.001$ ). **B:** Principal Component Analysis (PCA) shows the structure of the  
 251 variance between these groups and timepoints. The PCA was done for all samples together, but the  
 252 grouping of samples are visualised faceted for the sake of clarity. **C:** Time trajectory for the abundance  
 253 of 6 metabolites with the lowest p-values.

254

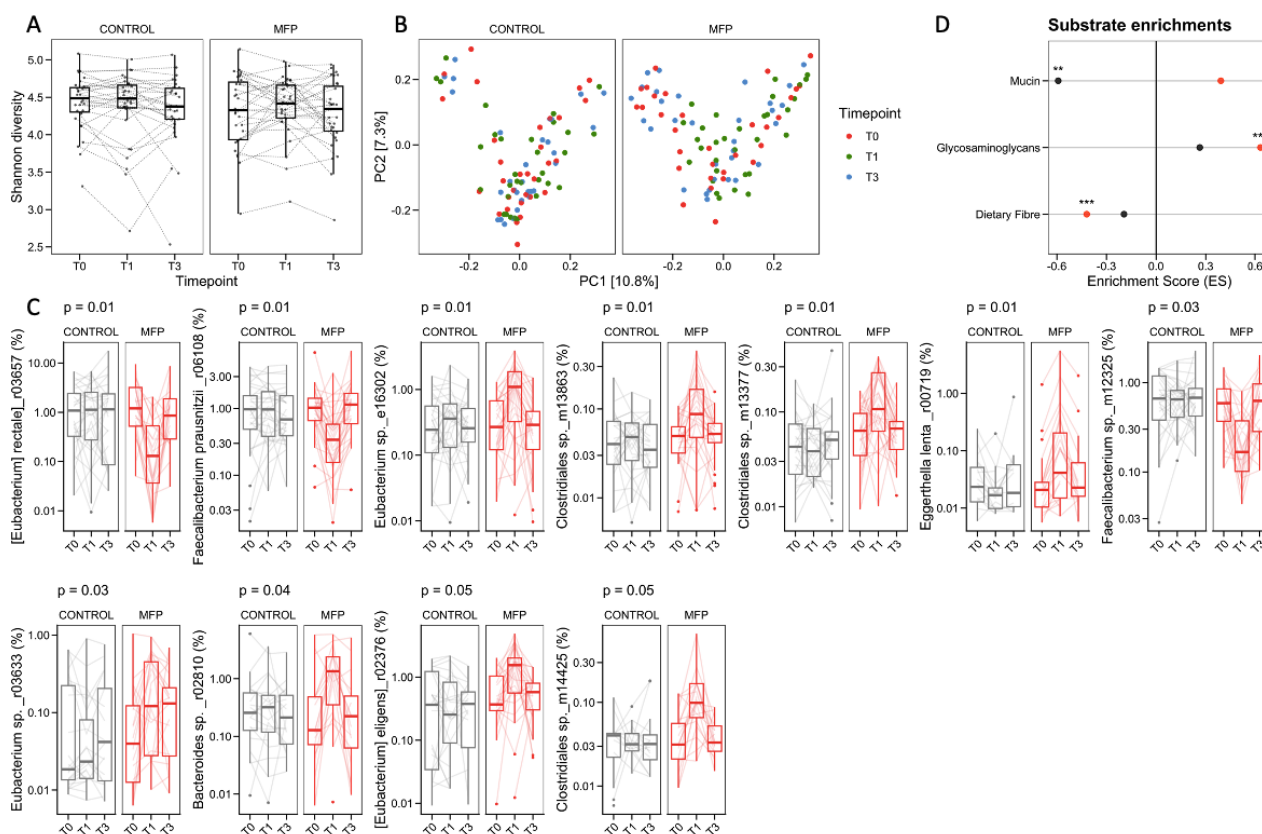
## 255 Shotgun metagenomics reveals foraging of host-derived substances

256 Changes in the gut microbiota were investigated by performing shotgun metagenomics on participants'  
 257 faecal samples. Both alpha diversity analysed with the Shannon index (Figure 3A) and beta diversity  
 258 analysed with Bray-Curtis dissimilarity remained unchanged (Figure 3B). Limited changes were observed

259 with only 11 species having their relative abundance statistically significantly changed at T1 of MFP  
 260 versus T1 of controls (as assessed by mOTUs, Figure 3C). No changes were observed at T3 compared to  
 261 T0, indicating that the effects on the gut microbiota were transitory.

262 Changes in energy metabolism in the gut microbiota were even clearer. We analyzed substrate preference  
 263 derived from CAZyme abundances quantified from metagenomes<sup>21</sup>. A total of 52 CAZymes had their  
 264 abundance significantly changed at T1 of MFP versus T1 of controls, but none were persistently changed  
 265 at T3. This reflected a transient reduction in the abundance of CAZymes that metabolise dietary fibre  
 266 concomitant with an increase in CAZymes involved in host-derived glycosaminoglycan foraging. Gene-  
 267 set enrichment analysis (GSEA) to evaluate substrate enrichments suggested that the gut microbiome  
 268 switched metabolism and started foraging host-derived substances during the MFP intervention (Figure  
 269 3H).

270



271  
 272 **Figure 3. Changes in faecal microbiota composition and function.** **A:** Alpha diversity was computed as  
 273 Shannon diversity. **B:** The Principal Coordinate Analysis (PCoA) of microbial communities is based on  
 274 Bray-Curtis dissimilarities, coloured by timepoints and faceted by study arms. **C:** Individual changes in  
 275 abundance for the 11 bacteria species with the p-values <0.05 in the evaluation of the effect of the MFP  
 276 (T1 vs T0). **D:** All CAZyme families were additionally subjected to gene-set enrichment analysis (GSEA)  
 277 to evaluate substrate enrichments (p-values are indicated as start symbols, \* p<0.05 ; \*\* p<0.01 ; \*\*\*  
 278 p<0.001). Generalized fold changes were calculated using linear mixed models (LMMs) with random  
 279 intercepts for the individuals.

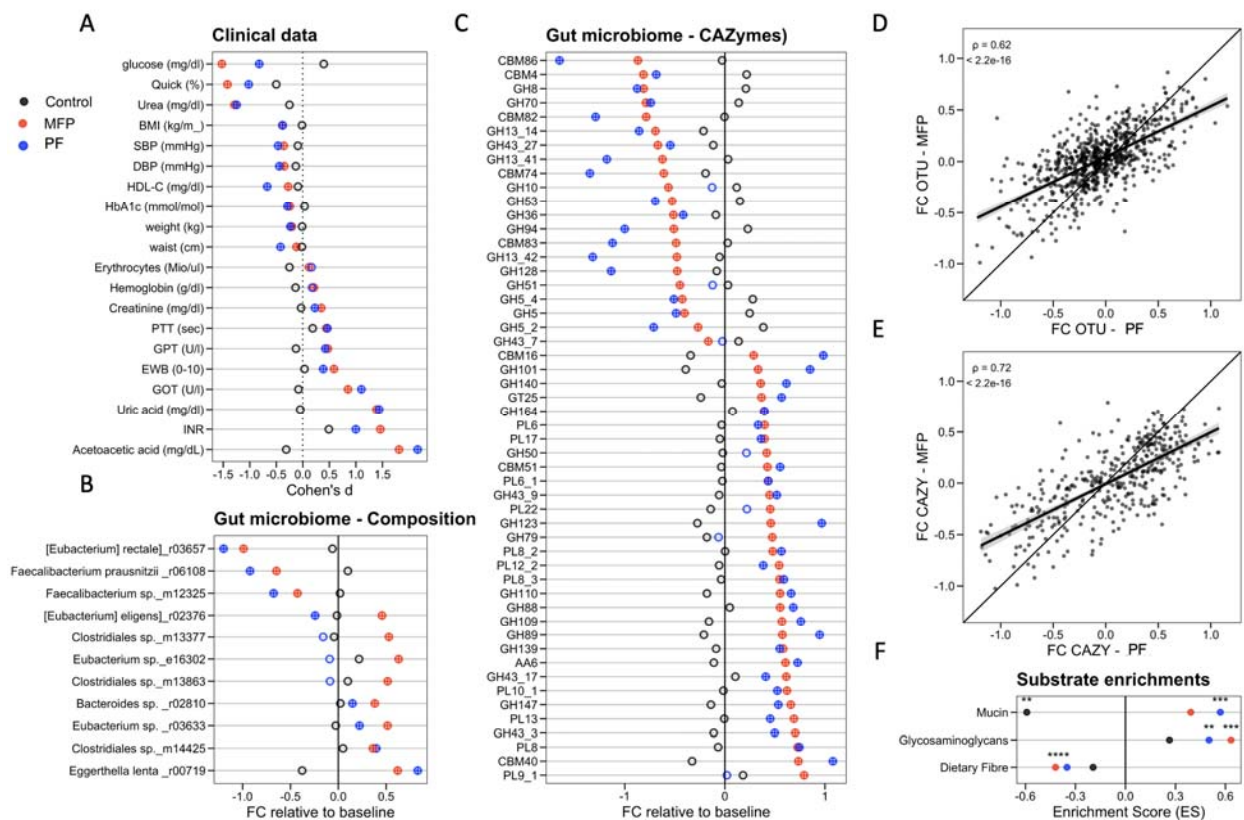
280

## 281 Comparison with 5 days of prolonged fasting

282 We compared the effects of the MFP to the effects of 5 days of PF according to the Buchinger Wilhelmi  
 283 protocol (75 - 250 kcal/day). In order to allow for fair comparisons between groups, we matched each of  
 284 the 32 participants from the MFP group to individuals with similar sex, age, blood pressure, triglycerides,  
 285 BMI, waist circumference from a total of 400 patients who performed 5 days of fasting in the Buchinger  
 286 Wilhelmi clinic in 2016<sup>8</sup>. Effect sizes of the MFP or 5 days of fasting were comparable for most clinical  
 287 parameters (Figure 4A and Table S6). Effects of the MFP were slightly more pronounced than 5 days of  
 288 prolonged fasting for the changes in the anticoagulative effects and the glucose levels. The latter is related  
 289 to the glucose content of the supplementation, higher in PF and then MFP. Altogether, this shows that the  
 290 MFP has comparable beneficial metabolic effects to PF.

291 We compared the directionality of the changes in gut microbiota composition with the changes caused by  
 292 PF we observed in another study<sup>22</sup>. The changes induced during PF are comparable to those induced by  
 293 the MFP (Figure 4B), as shown by the statistically significant correlation between generalized fold  
 294 changes for each mOTU measured in both interventions (Figure 4D). The changes in CAZy families were  
 295 highly correlated (Figure 4E) and thus comparable to those observed during PF (Figure 4B). Gene-set  
 296 enrichment analysis (GSEA) suggested that the gut microbiome switched metabolism in a comparable  
 297 way to what is observed during PF (Figure 4F).

298



299

300 **Figure 4. Metabolic changes caused by the MFP were comparable to those of a 5-day prolonged**  
 301 **fasting.** A. Comparison of the effect size estimated from the effects of 5-day MFP in comparison to the  
 302 control group at T1 for parameters showing statistically significant changes in their levels at T1. These

303 *effects are also compared to 5 days of prolonged fasting in 32 individuals matched based on their age,*  
304 *sex, body weight and triglyceride levels out of 400 participants who fasted according to the Buchinger*  
305 *Wilhelmi fasting programme (250 kcal/day) in 2016. B: Dot plot shows fold changes in differential*  
306 *abundance in microbiota composition before and after the MFP intervention in comparison to PF in*  
307 *another study. C: Differential CAZyme family abundance in comparison to PF in another study. D:*  
308 *Correlations between fold changes in relative abundance for microbiota composition. E: Correlations*  
309 *between fold changes for CAZyme family abundance. F. All CAZyme families were additionally subjected*  
310 *to gene-set enrichment analysis (GSEA) to evaluate substrate enrichments (p-values are indicated as start*  
311 *symbols, \*  $p < 0.05$  ; \*\*  $p < 0.01$  ; \*\*\*  $p < 0.001$ ). Parameters are ordered by MFP effect sizes. Statistical*  
312 *significance is indicated with crossed circles ( $p < 0.05$ ).*

313

314

## 315 **DISCUSSION**

316 Large research efforts are currently undertaken to find pharmacological and non-pharmacological  
317 interventions for maintaining body weight and blood pressure within recommended limits, in order to  
318 reduce the high incidence of chronic metabolic diseases such as type 2 diabetes or coronary heart disease  
319 <sup>23</sup>. The possibility to modulate cardiovascular risk factors triggers the need for proactive healthcare policy  
320 planning <sup>24</sup>. The MFP evaluated in the present RCT demonstrates that short fasting periods performed at  
321 home are an effective strategy for reducing body weight and improving the cardiometabolic profile.

322 Compared to pharmacological approaches for weight loss and metabolic normalisation, such as GLP-1  
323 agonists <sup>25</sup>, fasting strategies generally present with only mild side effects, particularly when conducted  
324 under professional supervision, either in specialised institutions or for shorter periods through online  
325 platforms, as is the case of MFP <sup>8</sup>. Unlike GLP-1 agonists, which are associated with significant costs <sup>26</sup>,  
326 non-pharmacological strategies like MFP empowers individuals to explore and manage on their own  
327 dietary strategies enhancing a sense of self-efficacy and safety <sup>27</sup>. The alternance of MFP with a normal  
328 diet triggers well-being and diminishes cravings often associated with continuous caloric restriction. MFP  
329 offers health benefits and is compatible with daily life <sup>28</sup>. Short and periodically repeated interventions  
330 also prevents from developing with its deleterious effects on the immune system and wound healing <sup>29</sup>.  
331 Nevertheless, the risk of falling back into old lifestyle habits that led to poor metabolic health cannot be  
332 fully eliminated.

333 The mechanisms through which the MFP intervention may confer health benefits seem to be multifaceted  
334 and deeply interconnected. The loss of body weight by itself could explain a decrease in chronic  
335 inflammation <sup>30</sup>. The clinical and metabolic changes caused by the MFP were comparable to those  
336 observed after PF (i.e. total of 5 days of fasting at 250 kcal/day). The changes caused by the metabolic  
337 shift into ketosis fasting are known to contribute to beneficial changes in nutrient-sensing signalling  
338 pathways <sup>31,32</sup>, which play crucial roles in regulating cellular processes related to metabolism, growth,  
339 autophagy, stem cell-based regeneration and ultimately longevity <sup>14</sup>. Therefore, by modulating these  
340 pathways, our MFP holds substantial potential for enhancing public health.

341 A single cycle of the MFP showed maintenance of weight loss after a month in predominantly normal  
342 weighted individuals, while other parameters returned to baseline. The easy implementation makes it a  
343 promising candidate for multiple-cycle programs, potentially mirroring the enhanced outcomes seen with  
344 Fasting Mimicking Diets (FMD). In humans, three cycles of a monthly 5-day FMD in a RCT involving  
345 100 healthy subjects resulted in weight loss of on average  $2.6 \pm 2.5$  kg, decreased BMI, total body fat,

346 trunk fat and reduced waist circumference<sup>33</sup>. It also reduced the need for medication and improved  
347 glycaemic control in primary care for type 2 diabetes<sup>34</sup>. A study involving 24 healthy volunteers  
348 confirmed the glucose-lowering effect of a 5-day FMD and also demonstrated reductions in IGF-1  
349 alongside improved insulin sensitivity<sup>35</sup>. A recent study even showed that three cycles of FMD had the  
350 potential of slowing down markers of biological ageing<sup>36</sup>. Longer follow-up including different  
351 frequencies of MFP use will be needed to understand whether this MFP can be used to treat chronic  
352 diseases.

353 Our study shows that the MFP is an effective method to address risk factors for cardiometabolic diseases.  
354 A main strength of our study is the joint collection of patient blood markers, metagenomic and  
355 metabolomic data in a longitudinal design surveyed under randomised controlled clinical conditions. This  
356 helped us demonstrate that this MFP can exert beneficial health effects by eliciting mechanisms which are  
357 known hallmarks of the fasting metabolism. We even noted that participants in the MFP group with  
358 higher baseline values above the norm ranges experienced more significant improvements in metabolic  
359 parameters compared to those whose values were within the normal range. This was suggested in another  
360 study where metabolic markers like fasting glucose, triglycerides, CRP, and cholesterol levels, which  
361 were within the normal range at baseline, did not show significant changes after three cycles of FMD in a  
362 randomised comparison<sup>33</sup>. The same is true for the PF<sup>8</sup>, showing that at-risk individuals may benefit  
363 more from the intervention. Another strength of our program is that participants received educational  
364 material to improve their lifestyle including instructions to do more physical activity. It can also be seen  
365 as a limitation, because even if the control group received similar advice and could be used to  
366 differentiate the effects of the MFP from the effects of the accompaniment, it is not always practical to  
367 disentangle the contribution of the numerous factors which compose such a lifestyle intervention. Other  
368 limitations include the focus on individuals who were mostly metabolically healthy, making it  
369 challenging to predict the potential benefits or difficulties that might arise in patients with underlying  
370 conditions. Therefore, further research is needed to explore the effects of MFP in patients with metabolic  
371 conditions such as hypertension or type 2 diabetes, or fatty liver disease chronic diseases.

372 This new programme is in line with the need for lifestyle interventions which substantially decrease  
373 healthcare costs<sup>37,38</sup>. At-home interventions are accessible to a broad population, and are compatible with  
374 individuals' daily lives, thereby increasing the likelihood for long-term adherence. This could be the case  
375 when individuals are confined at home in isolation such as during the Coronavirus-19 disease (COVID-  
376 19) pandemic<sup>39,40</sup> or other reasons.

377 In conclusion, the results of this RCT show that the MFP is an effective intervention for reducing body  
378 weight, lowering blood pressure and inducing a metabolic switch to ketosis thus inducing similar  
379 beneficial effects than those observed in other fasting interventions. The improvements in cardiovascular  
380 and metabolic risk factors, especially in subjects with elevated baseline levels of these markers, are of  
381 significant value for non-pharmacological public health strategies.

382  
383 Future investigations should prioritise the study of at-risk patient groups to understand the efficacy of  
384 MFP in reducing lifestyle-related diseases, assess long-term effects, and explore the fasting-like effects to  
385 gain insight into its broader preventive and therapeutic benefits for promoting health and longevity.

386

387

388

## 389 MATERIALS AND METHODS

### 390 Subjects

391 The Fastreset study was designed as a RCT with two parallel study arms. Subjects were randomised either  
392 to five days of MFP followed by four days of food reintroduction or to their usual diet (Figure 1B). The  
393 study protocol was approved by the Ethics Committee of the Medical Association of Baden-Württemberg,  
394 Stuttgart, Germany (approval number: F-2023-014). The study was registered at ClinicalTrials.gov  
395 (NCT05821660) prior to the start of patient recruitment. The study was conducted in accordance with the  
396 principles of the Declaration of Helsinki and the standards of Good Clinical Practice. The study visits  
397 were carried out on an outpatient ambulatory basis between June and August 2023 at the Buchinger  
398 Wilhelmi Clinic in Überlingen (Baden-Württemberg, Germany). Written informed consent was obtained  
399 from all participants.

### 400 Dietary intervention

401 The MFP used was the Buchinger Wilhelmi FASTING BOX (Buchinger Wilhelmi Development und  
402 Holding GmbH, Germany) which includes ready-made meal replacements to be consumed over a five-  
403 day period. The ingredients are organic, plant-based products. The 24 items include vegetable soups as  
404 the main supplement, high-quality oils (linseed and algae oil) rich in omega 3 polyunsaturated fatty acids,  
405 chickpea puree, apple puree, honey and cashew nuts. The MFP provides on average 623 kcal per day,  
406 consisting of 9.8 grams (6.2 % of caloric intake) of proteins, 41.5 grams (26.6 %) of carbohydrates, and  
407 44.7 grams (64.7 %) of fat (Table S1). The aim of the MFP regimen is to achieve a steady reduction in  
408 calorie intake while limiting carbohydrate consumption to less than 50 g and proteins to less than ~10 g  
409 per day. The MFP includes a food supplement containing Tricalcium citrate, potassium citrate,  
410 magnesium citrate, zinc citrate trihydrate, sodium chloride. Furthermore, herbal teas, soup essences and  
411 herbal extracts are included as refreshment options, along with the recommendation to drink at least 2.5 L  
412 non-caloric, caffeine-free beverages daily. The consumption of water and herbal tea is not restricted. A  
413 detailed meal plan describes the recommended daily food intake and reflects the energy, fat, carbohydrate  
414 and protein content (Table S1).

415 The 5-day program begins with a transition day. This is the only day when a morning serving is provided.  
416 On the following four MFP days, subjects skip the morning meal inducing a time-restricted eating pattern.  
417 The entire MFP programme is gluten-free and contains only a very restricted diversity of food items. The  
418 MFP was followed by four days of gradual food reintroduction from 800 to 1600 kcal per day. Half of the  
419 intervention group received a standard food reintroduction (n=16) and half received a ketogenic food  
420 reintroduction (n=16) (Table S2). The food was freshly cooked, organic, plant-based meals to take home  
421 after their daily measurements. Subjects in the control group were advised to stick to their usual diet.

### 422 Participants

423 Participants were recruited from the local area of Überlingen, Germany. Information about the study was  
424 offered in social media and per mail. An online questionnaire was used to recruit volunteers. If they  
425 appeared eligible, potential candidates were invited to an online presentation of the study. They were then  
426 invited to an assessment with the study physician, who checked the inclusion and exclusion criteria and  
427 asked for written informed consent. Women and men between 18 and 80 years were eligible. The  
428 following criteria led to exclusion: (1) intake of antibiotics up to 2 months prior the study; (2) medicated  
429 high blood pressure; (3) diagnosed hyperuricemia; (4) diagnosed diabetes mellitus type I and II; (5)  
430 diagnosed kidney stone; (6) active malignant diseases; (7) known substance addiction; (8) pregnancy or  
431 breastfeeding; (9) diagnosed with cachexia, anorexia, nervosa, advanced kidney, liver or cerebrovascular

432 insufficiency; (10) inability to sign the informed consent and (11) participation in another study. The  
433 participants received no fee for their study participation.

#### 434 **Measurements**

435 After a thorough physical examination by the study physician participants were randomised to either the  
436 intervention or control group. In order to facilitate the conduction of the study by the clinical centre, the  
437 study was conducted in two phases, each comprising 32 participants from both the control and  
438 intervention groups, with a one-month interval between them. For eleven consecutive days, the  
439 participants were examined daily in the morning. Four main visits were conducted: T0 at baseline (BL)  
440 before the start of the intervention, T1 in the morning of the 7th day after the five-day MFP (end MFP),  
441 T2 in the morning of the 11th day after the subsequent four-days of food reintroduction (FR) and T3 at  
442 follow-up one month later.

#### 443 **Endpoints**

444 The changes in blood pressure and body weights are considered as primary endpoints. Changes in lipid  
445 and glucose metabolism, inflammatory parameters, total antioxidant capacity, and well-being were also  
446 analysed using linear mixed models with adjusted p-values < 0.05 being considered significant. All other  
447 parameters are considered as exploratory endpoints.

#### 448 **Clinical examination**

449 Clinical parameters were measured daily by trained research assistants. Body weight was evaluated with  
450 participants lightly dressed, utilising a Seca 704 (Seca, Hamburg, Germany). Height was measured using  
451 the same device. Blood pressure and heart rate were measured twice on the non-dominant arm while  
452 seated, after a resting period, using a bosco Carat professional (Bosch und Sohn GmbH u. Co. KG,  
453 Jungingen, Germany). Waist circumference was determined using a tape, which was placed halfway  
454 between the lowest rib and the iliac crest (openmindz GmbH, Heidelberg, Germany). Acetoacetic acid  
455 was self-measured twice per day in the first morning and last evening urine using Ketostix (Bayer,  
456 Leverkusen, Germany).

#### 457 **Blood parameters**

458 Blood samples were collected at all four main visits (baseline, end of fasting, end of food reintroduction  
459 period, follow-up) by trained medical assistants after participants had fasted overnight (Figure 1B). Lipid,  
460 glucose, kidney, liver and inflammatory parameters were determined as described in a previous study<sup>41</sup>.  
461 The antioxidative capacity of water-soluble substances (ACU) and lipid-soluble substances (ACL) was  
462 determined by photochemiluminiscence in serum and lipidperoxide by photometry in EDTA  
463 plasma. TNF-alpha was measured in serum by chemiluminiscence immunoassay.

#### 464 **Questionnaires**

465 Self-reported data was documented by completing online questionnaires in the Buchinger Wilhelmi  
466 Amplius app. The participants received instructions and further information via this app to enable them to  
467 participate in this programme remotely. Adverse events were recorded in a report form by study  
468 physicians.

469 Participants reported the following outcomes on all four main visits (T0-T3): The Well-being Index  
470 World Health Organization 5 (WHO-5)<sup>42</sup>, International Physical Activity Questionnaire (IPAQ) - short  
471 form, Pittsburgh Sleep Quality Index (PSQI)<sup>43</sup>, Short healthy eating index (sHEI)<sup>44</sup>, and Questionnaire of  
472 highly processed food consumption (sQ-HPF)<sup>45</sup>. Furthermore, lifestyle habits such as smoking, and



473 alcohol consumption were documented. Stress level was rated on a visual scale from 0 (none) to 10  
474 (extreme), and energy level from 0 (weak) to 10 (full of energy). Alcohol consumption was recorded as  
475 glasses of beer (0.5 l; 2 units of alcohol), wine (0.25 l; 2 units of alcohol) or spirits (0.02 l; 1 unit of  
476 alcohol) per week and added up to the number of drinks per week.

477 Additionally, participants self-reported daily their emotional and physical well-being as well as energy  
478 level on visual scales from 0 (very bad) to 10 (excellent). Sleep disturbances (0, none to 10, very strong)  
479 and sleep quality (0, calm to 10, restless) were reported. Further, participants rated whether they had  
480 cravings, felt bloated or cold (0; strongly disagree to 10; strongly agree). Symptoms such as fatigue,  
481 muscle weakness, back pain, headache, hunger, anxiety and digestive disorders on visual scales from 0  
482 (none) to 10 (maximum) were evaluated. Self-perceived physical activity was recorded on a visual scale  
483 from 0 (inactive) to 10 (very active) and the actual activity time was captured in hours per day.

#### 484 **Faecal microbiota shotgun metagenomics**

485 Three faecal samples were collected using EasySampler Stool Collection Kit (GP Medical Devices,  
486 Holstebro, Denmark) at T0, T2 and T3. Samples were stabilised by DNA/RNA Shield™ Reagent, Zymo  
487 Research Europe GmbH, Freiburg, Germany and stored at -20°C. The samples were processed and  
488 analysed by CeGaT, Tübingen, Germany.

489 Genomic DNA samples were profiled with shotgun metagenomic sequencing. Sequencing libraries were  
490 prepared with the Illumina preparation kit (M) Tagmentation (Illumina, San Diego, CA) with 100 ng  
491 genomic DNA following the manufacturer's protocol. Q30 value of sequencing was >90.25%. The final  
492 library was sequenced on the NovaSeq 6000® (Illumina, San Diego, CA) platform.

493 Metagenomics shotgun sequencing data processing was performed as described in Ducarmon et al. <sup>22</sup>.  
494 Raw reads underwent quality filtering using bbduk (v38.93): 1) low-quality trimming (qtrim=r1, trimq=3),  
495 2) discarding low-quality reads (maq=25), 3) adapter removal, and 4) length filtering (ml=45).  
496 Taxonomic profiling used mOTUs (v3.1), while functional profiling filtered out human genome reads via  
497 kraken2 (v2.1.2) against hg38, then mapped to a reduced GMGC human gut catalogue. Profiling of  
498 carbohydrate-active enzymes was done using Cayman <sup>21</sup>.

499 Statistical analysis of metagenomic data was done in the statistical programming language R. Alpha-  
500 diversity was assessed using in phyloseq. Differences between baseline and other timepoints were  
501 statistically evaluated using a linear mixed model (LMM). Beta-diversity was determined using Bray-  
502 Curtis dissimilarity. Differential abundance analysis was done using LMM in SIAMCAT (v2.5.1), with  
503 participant-specific random effects. Features with <10% prevalence were excluded. Pseudocounts varied  
504 and were 1e-4 for taxonomic analysis or 0.01 RPKM for CAZy. FDR correction was applied to p-values,  
505 with significance defined as adjusted  $p < 0.05$ .

506 Functional analyses in gut metagenome were done as described in Ducarmon et al. <sup>22</sup>. Gene-set  
507 enrichment analysis (GSEA) using fgsea identified higher-level CAZy substrates.

#### 508 **Serum metabolomics**

509 Serum metabolomics was performed by lifespın GmbH (Regensburg, Germany). Sample preparation was  
510 done from 350 µl of serum mixed with 350 µl of aqueous buffer. The buffer consists of H<sub>2</sub>O p.A., 0.1 g/l  
511 NaN<sub>3</sub>, 0.067 mol/l Na<sub>2</sub>HPO<sub>4</sub>, 0.033 mol/l NaH<sub>2</sub>PO<sub>4</sub> (pH: 7.15 ± 0.05), 5% D<sub>2</sub>O field-lock substance and  
512 an internal standard (6 mM pyrazine) for quantification. From this mixture, 600 µl were transferred into a  
513 5 mm Bruker NMR tube and sealed with barcode-labelled lids. The final NMR samples were stored after  
514 preparation at refrigerator temperature until measurement, not more than 24 h. NMR measurement was

515 performed on a Bruker AVANCE NEO 600 MHz (measuring method 1D 1H noesygppr1d\_d20, NS=16,  
516 T=310K).

517  
518 The spectra obtained were Fourier transformed using TopSpin software (version 4.0, Bruker Biospin,  
519 Germany). All spectra were automatically phased and subjected to baseline correction. Subsequently, the  
520 spectra were analyzed using the proprietary lifespin Profiler software (version 1.4\_Blood) and a  
521 quantitative metabolite list was generated.

522

## 523 **Statistical analysis**

524 Based on previously collected data for changes in systolic blood pressure<sup>46</sup>, we calculated that a sample  
525 size of 32 participants per arm is required to detect a decrease in 1 mm/hg per day with three groups and  
526 an effect size of 0.33 with 90% power and an alpha error probability of 0.05 with an ANOVA test  
527 including repeated measurements (G\*Power version 3.1.9.7). Randomisation was performed with R, with  
528 a custom script splitting individuals into two groups randomly with equal mean age and weight.

529 Statistical significance for the primary endpoints was assessed using LMM. Extraction of 32 closest  
530 neighbors of our participants, from subjects of our study with a cohort of 1422, was done using the  
531 NearestNeighbors class from the module neighbors of sklearn (1.3.2). The distance computed was the  
532 Euclidean, based on the following normalized parameters: BMI (kg/m<sup>2</sup>), age, SBP, waist circumference,  
533 triglycerides (Table S3). All statistics and tables were generated with python using the packages  
534 statsmodels (0.14.0) and scipy.stats (1.11.3). Differences were calculated using unrounded values to  
535 maintain accuracy, with rounded values presented for clarity. For the baseline comparison we used a t-test  
536 with adjustment for equality of the variance depending on the outcome of a Levene test. All other  
537 comparisons were measured using mixed models with the participant ID considered as a random effect. P-  
538 values less than 0.05 were considered to be statistically significant.

539

540

## 541 **References**

542

- 543 1 Wilhelmi de Toledo, F., Grundler, F., Sirtori, C. R. & Ruscica, M. Unravelling the health effects  
544 of fasting: a long road from obesity treatment to healthy life span increase and improved  
545 cognition. *Ann. Med.* **52**, 147-161, doi:10.1080/07853890.2020.1770849 (2020).
- 546 2 Mihaylova, M. M. *et al.* When a calorie is not just a calorie: Diet quality and timing as mediators  
547 of metabolism and healthy aging. *Cell Metab* **35**, 1114-1131, doi:10.1016/j.cmet.2023.06.008  
548 (2023).
- 549 3 Global burden of 87 risk factors in 204 countries and territories, 1990-2019: a systematic analysis  
550 for the Global Burden of Disease Study 2019. *Lancet* **396**, 1223-1249, doi:10.1016/s0140-  
551 6736(20)30752-2 (2020).
- 552 4 de Cabo, R. & Mattson, M. P. Effects of Intermittent Fasting on Health, Aging, and Disease. *N.*  
553 *Engl. J. Med.* **381**, 2541-2551, doi:10.1056/NEJMra1905136 (2019).
- 554 5 Koppold, D. A. *et al.* International consensus on fasting terminology. *Cell Metab* **36**, 1779-  
555 1794.e1774, doi:10.1016/j.cmet.2024.06.013 (2024).
- 556 6 Sun, M. L. *et al.* Intermittent fasting and health outcomes: an umbrella review of systematic  
557 reviews and meta-analyses of randomised controlled trials. *EClinicalMedicine* **70**, 102519,  
558 doi:10.1016/j.eclinm.2024.102519 (2024).

- 559 7 Gill, S. & Panda, S. A Smartphone App Reveals Erratic Diurnal Eating Patterns in Humans that  
560 Can Be Modulated for Health Benefits. *Cell Metab* **22**, 789-798, doi:10.1016/j.cmet.2015.09.005  
561 (2015).
- 562 8 Wilhelmi de Toledo, F., Grundler, F., Bergouignan, A., Drinda, S. & Michalsen, A. Safety, health  
563 improvement and well-being during a 4 to 21-day fasting period in an observational study  
564 including 1422 subjects. *PLoS One* **14**, e0209353, doi:10.1371/journal.pone.0209353 (2019).
- 565 9 Grundler, F., Mesnage, R., Michalsen, A. & Wilhelmi de Toledo, F. Blood pressure changes in  
566 1610 subjects with and without antihypertensive medication during long-term fasting. *Journal of*  
567 *the American Heart Association* **9**, e018649 (2020).
- 568 10 Baker, P. *et al.* Ultra-processed foods and the nutrition transition: Global, regional and national  
569 trends, food systems transformations and political economy drivers. *Obes Rev* **21**, e13126,  
570 doi:10.1111/obr.13126 (2020).
- 571 11 Wilhelmi de Toledo, F., Grundler, F. & Mesnage, R. World's Longest Medically Documented  
572 Repeated Fasting History in a 92 Years Old Man Who Fasted 21 Days Yearly for 45 Years: A  
573 Case Report. *J Integr Complement Med* **30**, 487-491, doi:10.1089/jicm.2023.0352 (2024).
- 574 12 Brandhorst, S. *et al.* Fasting-mimicking diet causes hepatic and blood markers changes indicating  
575 reduced biological age and disease risk. *Nature Communications* **15**, 1309, doi:10.1038/s41467-  
576 024-45260-9 (2024).
- 577 13 Kjeldsen-Kragh, J. Rheumatoid arthritis treated with vegetarian diets. *The American journal of*  
578 *clinical nutrition* **70**, 594s-600s (1999).
- 579 14 Longo, V. D., Di Tano, M., Mattson, M. P. & Guidi, N. Intermittent and periodic fasting,  
580 longevity and disease. *Nat. Aging*. **1**, 47-59 (2021).
- 581 15 Longo, V. D., Di Tano, M., Mattson, M. P. & Guidi, N. Intermittent and periodic fasting,  
582 longevity and disease. *Nat Aging* **1**, 47-59, doi:10.1038/s43587-020-00013-3 (2021).
- 583 16 Palmer, B. F. & Clegg, D. J. Metabolic Flexibility and Its Impact on Health Outcomes. *Mayo*  
584 *Clin. Proc.* **97**, 761-776, doi:10.1016/j.mayocp.2022.01.012 (2022).
- 585 17 Grundler, F., Mesnage, R., Ruppert, P. M. M., Kouretas, D. & Wilhelmi de Toledo, F. Long-  
586 Term Fasting-Induced Ketosis in 1610 Subjects: Metabolic Regulation and Safety. *Nutrients* **16**  
587 (2024).
- 588 18 Grundler, F. *et al.* Interplay between oxidative damage, the redox status, and metabolic  
589 biomarkers during long-term fasting. *Food Chem. Toxicol.* **145** (2020).  
590 <<https://doi.org/10.1016/j.fct.2020.111701>>.
- 591 19 Henry, C. J. Basal metabolic rate studies in humans: measurement and development of new  
592 equations. *Public Health Nutr* **8**, 1133-1152, doi:10.1079/phn2005801 (2005).
- 593 20 Chiesa, S. T. *et al.* Glycoprotein Acetyls: A Novel Inflammatory Biomarker of Early  
594 Cardiovascular Risk in the Young. *J Am Heart Assoc* **11**, e024380, doi:10.1161/jaha.121.024380  
595 (2022).
- 596 21 Ducarmon, Q. R. *et al.* Large-scale computational analyses of gut microbial CAZyme repertoires  
597 enabled by Cayman. *bioRxiv*, 2024.2001.2008.574624, doi:10.1101/2024.01.08.574624 (2024).
- 598 22 Ducarmon, Q. R. *et al.* Long-term fasting remodels gut microbial metabolism and host  
599 metabolism. *bioRxiv*, 2024.2004.2019.590209, doi:10.1101/2024.04.19.590209 (2024).
- 600 23 Nyberg, S. T. *et al.* Obesity and loss of disease-free years owing to major non-communicable  
601 diseases: a multicohort study. *The Lancet Public Health* **3**, e490-e497,  
602 doi:[https://doi.org/10.1016/S2468-2667\(18\)30139-7](https://doi.org/10.1016/S2468-2667(18)30139-7) (2018).
- 603 24 Wang, T.-D., Hung, C.-L. & Yeh, H.-I. Predicted but not destined: considerations for obesity-  
604 related cardiovascular risk projection. *The Lancet Regional Health – Western Pacific* **37**,  
605 doi:10.1016/j.lanwpc.2023.100828 (2023).
- 606 25 Long, B., Pelletier, J., Koyfman, A. & Bridwell, R. E. GLP-1 agonists: A review for emergency  
607 clinicians. *Am J Emerg Med* **78**, 89-94, doi:10.1016/j.ajem.2024.01.010 (2024).

- 608 26 Emanuel, E. J., Dellgren, J. L., McCoy, M. S. & Persad, G. Fair Allocation of GLP-1 and Dual  
609 GLP-1-GIP Receptor Agonists. *N Engl J Med* **390**, 1839-1842, doi:10.1056/NEJMp2400978  
610 (2024).
- 611 27 Cramer, H. *et al.* Predictors of health behavior change after an integrative medicine inpatient  
612 program. *Int J Behav Med* **21**, 775-783, doi:10.1007/s12529-013-9354-6 (2014).
- 613 28 Mishra, A. *et al.* Fasting-mimicking diet prevents high-fat diet effect on cardiometabolic risk and  
614 lifespan. *Nature Metabolism* **3**, 1342-1356, doi:10.1038/s42255-021-00469-6 (2021).
- 615 29 Brandhorst, S. & Longo, V. D. Protein Quantity and Source, Fasting-Mimicking Diets, and  
616 Longevity. *Adv. Nutr.* **10**, S340 - S350 (2019).
- 617 30 Bianchi, V. E. Weight loss is a critical factor to reduce inflammation. *Clin Nutr ESPEN* **28**, 21-  
618 35, doi:10.1016/j.clnesp.2018.08.007 (2018).
- 619 31 Fontana, L., Partridge, L. & Longo, V. D. Extending healthy life span—from yeast to humans.  
620 *Science* **328**, 321-326 (2010).
- 621 32 Longo, Valter D. & Mattson, Mark P. Fasting: Molecular Mechanisms and Clinical Applications.  
622 *Cell Metab* **19**, 181-192, doi:<https://doi.org/10.1016/j.cmet.2013.12.008> (2014).
- 623 33 Wei, M. *et al.* Fasting-mimicking diet and markers/risk factors for aging, diabetes, cancer, and  
624 cardiovascular disease. *Sci. Transl. Med.* **9**, eaai8700 (2017).
- 625 34 van den Burg, E. L. *et al.* Integration of a fasting-mimicking diet programme in primary care for  
626 type 2 diabetes reduces the need for medication and improves glycaemic control: a 12-month  
627 randomised controlled trial. *Diabetologia* **67**, 1245-1259, doi:10.1007/s00125-024-06137-0  
628 (2024).
- 629 35 Videja, M. *et al.* Fasting-Mimicking Diet Reduces Trimethylamine N-Oxide Levels and Improves  
630 Serum Biochemical Parameters in Healthy Volunteers. *Nutrients* **14**, 1093 (2022).
- 631 36 Brandhorst, S. *et al.* Fasting-mimicking diet causes hepatic and blood markers changes indicating  
632 reduced biological age and disease risk. *Nature Communications* **15**, 1309 (2024).
- 633 37 Sülz, S., van Elten, H. J., Askari, M., Weggelaar-Jansen, A. M. & Huijsman, R. eHealth  
634 Applications to Support Independent Living of Older Persons: Scoping Review of Costs and  
635 Benefits Identified in Economic Evaluations. *J Med Internet Res* **23**, e24363, doi:10.2196/24363  
636 (2021).
- 637 38 Sagastume, D. *et al.* The effectiveness of lifestyle interventions on type 2 diabetes and gestational  
638 diabetes incidence and cardiometabolic outcomes: A systematic review and meta-analysis of  
639 evidence from low- and middle-income countries. *EClinicalMedicine* **53**, 101650,  
640 doi:10.1016/j.eclinm.2022.101650 (2022).
- 641 39 Hollander, J. E. & Carr, B. G. Virtually Perfect? Telemedicine for Covid-19. *N Engl J Med* **382**,  
642 1679-1681, doi:10.1056/NEJMp2003539 (2020).
- 643 40 Omboni, S. *et al.* Evidence and Recommendations on the Use of Telemedicine for the  
644 Management of Arterial Hypertension. *Hypertension* **76**, 1368-1383,  
645 doi:10.1161/HYPERTENSIONAHA.120.15873 (2020).
- 646 41 Wilhelmi de Toledo, F., Grundler, F., Bergouignan, A., Drinda, S. & Michalsen, A. Safety, health  
647 improvement and well-being during a 4 to 21-day fasting period in an observational study  
648 including 1422 subjects. *PLoS One* **14** (2019). <<https://doi.org/10.1371/journal.pone.0209353>>.
- 649 42 Topp, C. W., Østergaard, S. D., Søndergaard, S. & Bech, P. The WHO-5 Well-Being Index: A  
650 Systematic Review of the Literature. *Psychotherapy and Psychosomatics* **84**, 167-176,  
651 doi:10.1159/000376585 (2015).
- 652 43 Buysse, D. J., Reynolds III, C. F., Monk, T. H., Berman, S. R. & Kupfer, D. J. The Pittsburgh  
653 Sleep Quality Index: a new instrument for psychiatric practice and research. *Psychiatry Res.* **28**,  
654 193-213 (1989).
- 655 44 Lavelle, G. *et al.* Validity of the international physical activity questionnaire short form (IPAQ-  
656 SF) as a measure of physical activity (PA) in young people with cerebral palsy: A cross-sectional  
657 study. *Physiotherapy* **107**, 209-215 (2020).

- 658 45 Martinez-Perez, C. *et al.* Integrative development of a short screening questionnaire of highly  
659 processed food consumption (sQ-HPF). *International Journal of Behavioral Nutrition and*  
660 *Physical Activity* **19**, 6 (2022).  
661 46 Grundler, F., Mesnage, R., Michalsen, A. & Wilhelmi de Toledo, F. Blood pressure changes in  
662 1610 subjects with and without antihypertensive medication during long-term fasting. *J Am Heart*  
663 *Assoc* **9** (2020). <<https://doi.org/10.1161/JAHA.120.018649>>.  
664

665

## 666 **ADDITIONAL INFORMATION**

667

### 668 **ACKNOWLEDGMENTS**

669 We are grateful for the continuous support of the whole staff of Buchinger Wilhelmi Clinics.

670

### 671 **FUNDING**

672 The study was financed by Buchinger Wilhelmi Development & Holding GmbH. Further funding was  
673 provided by the LUMC (LUMC Fellowship to G.Z.), the Health + Life Science Alliance Heidelberg  
674 Mannheim through state funds approved by the State Parliament of Baden-Württemberg (postdoctoral  
675 fellowships to Q.D.) and EMBO postdoctoral fellowship (ALTF 1030-2022 to Q.D.).  
676

676

### 677 **COMPETING INTERESTS**

678 Authors FG, RM, AH and FWT are employees of the Buchinger Wilhelmi Development and Holding  
679 GmbH. Authors SS, SH, RG are employees of lifespın GmbH. The remaining authors declare no  
680 competing.

681

### 682 **CODE AVAILABILITY**

683 The code used to perform the statistical analysis is available upon request. Scripts used to process the  
684 shotgun metagenomics data are available on GitHub.

685

### 686 **AUTHOR CONTRIBUTIONS**

687 FG, FWT, and RM conceptualized and designed the study. AH contributed to statistical analyses, with  
688 support from RM. SS, SH and RH performed the metabolomics analysis. QRD and GZ performed the  
689 shotgun metagenomics analysis. BMT and MRM contributed to data analyses and interpretations. RM,  
690 FG and FWT drafted the initial version manuscript. RM wrote the final version of the manuscript. All  
691 authors reviewed, edited, and approved the final version of the manuscript.  
692

692

### 693 **DATA AVAILABILITY**

694 Raw metagenomic data will be made available upon acceptance of the manuscript under accession  
695 number PRJEB75353 at ENA.

696

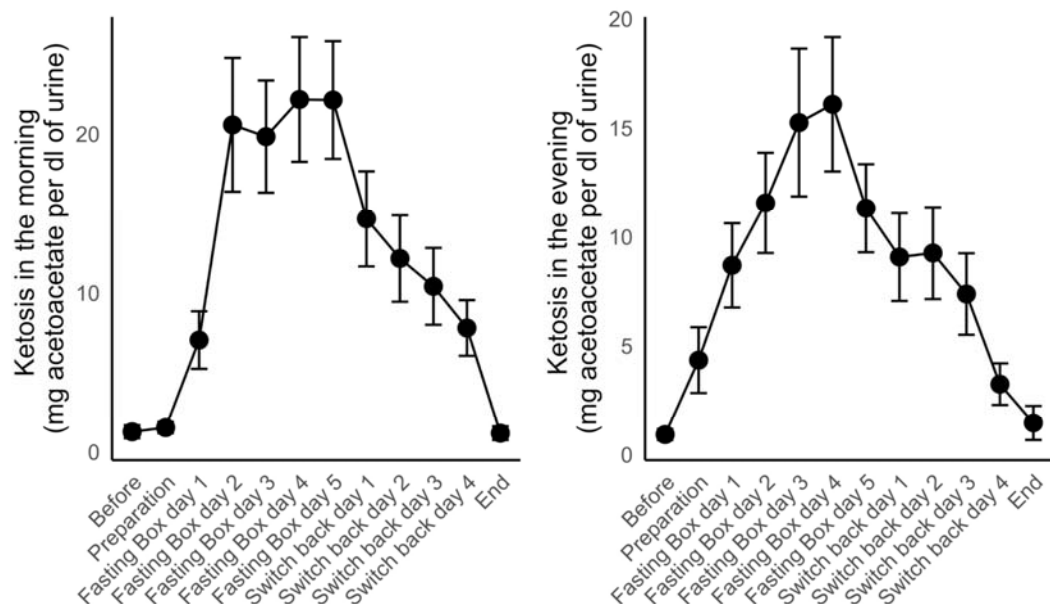
697

698

699 SUPPLEMENTARY MATERIAL

700

701



702

703

704 **Figure S1. Ketonuria in the group of 32 participants in the MFP arm.** Ketosis was not detectable in  
705 the control group. Data as mean  $\pm$  SD.

706

707

708

709

710

711 **Table S1. Meal plan during the 5-day MFP and the energy and macronutrient content provided.**

	<b>Day 1</b>	<b>Day 2 -4</b>	<b>Day 5</b>
	<b>Transition</b>	<b>Fast Reset Day</b>	<b>Restart</b>
<b>Breakfast</b>	Yoghurt 1.5 % fat Cashews Oil	-	-
<b>Lunch</b>	Soup, Oil	Soup Chickpea puree Oil	Apple puree Cashews Oil
<b>Dinner</b>	Soup Oil	Soup Chickpea puree Oil	Soup Oil
<b>During the day</b>	Mineral capsule	Mineral capsule	Mineral capsule
	Herbal tea	Herbal tea	Herbal tea
	Herbal extract	Herbal extract	Herbal extract
		Soup essence	Soup essence
<b>Energy (kcal)</b>	648.4	600	620.7
<b>Fat (g)</b>	44.6 (61.9 %)	47.0 (70.5 %)	42.5 (61.6 %)
<b>Carbohydrate (g)</b>	43.8 (27.0 %)	32.8 (21.9 %)	47.9 (30.9 %)
<b>Protein (g)</b>	16.1 (9.9 %)	7.0 (4.7 %)	6.2 (4.0 %)

712

713

714 **Table S2. Food reintroduction for the ketogenic group and the non-ketogenic group**

715

716 **Standard non-ketogenic food reintroduction**

717

Day of breaking the fast	Lunch:	150g applesauce homemade
	2:00 p.m.	1 raw apple or applesauce homemade
	Supper:	380ml creamy potato soup
1st food-reintroduction day 800 kcal	Breakfast:	2 prunes Spelt porridge with fig puree and apple, orange juice Herbal tea or malt coffee
	Lunch:	Leaf salads with vinaigrette Quark-oil-cream Mashed potatoes with freshly steamed spinach
	Snack:	150g yoghurt (1.5% fat), 4 nuts
	Supper:	Fennel salad Vegetable plate with a rice ball in saffron sauce
2nd food-reintroduction day 1000 kcal	Breakfast:	2 prunes Muesli (quark, linseed oil, fruits, oats) Herbal tea or grain coffee
	Lunch:	Leaf salads with vinaigrette

		Quark-oil-cream Quinoa souffle with vegetable cubes, tomato with aubergine caviar on zucchini foam with parmesan cheese
	Snack:	150g yoghourt (1.5% fat), 4 nuts
	Supper:	Zucchini salad and jacket potatoes with quark-oil-cream and beetroot Herbal tea or malt coffee
3rd food-reintroduction day 1200 kcal	Breakfast:	1 apple Muesli (quark, linseed oil, fruits, oats) Herbal tea or grain coffee
	Lunch:	Leaf salads with sauerkraut Quark-oil-cream Chicory au gratin with quinoa
	Snack:	150g yoghourt (1.5% fat), 4 nuts
	Supper:	1 kiwi Celery salad Millet soufflé (normal soufflé with vegetable cubes with vegetable sauce and vegetables of the day) Herbal tea or grain coffee
4th food-reintroduction day 1600 kcal	Breakfast:	Muesli (quark, linseed oil, fruits, oats) Quark-oil-cream and crispbread Herbal tea and grain coffee
	Lunch:	Quark-oil-cream light dish of the day
	Snack:	20g nuts
	Supper:	Raw carrot vegetables with apple light dish of the day Herbal tea and grain coffee

718

719 **Ketogenic food reintroduction**

720

Day of breaking the fast	Lunch:	200g zucchini puree
	2:00 p.m.	5 almonds
	Supper:	200g vegetables (e.g., 100g fennel + 100g carrots) 1 tbsp olive oil
1st food-reintroduction day 800 kcal	Breakfast:	100g dairy product mixed with 1 tbsp flaxseed oil 50g fruit 1 tbsp coconut flakes, 1 tbsp chia seeds Herbal tea or grain coffee
	Lunch:	Chicory salad with avocado vinaigrette Quark-oil-cream 100g spinach and 100g broccoli 1 tbsp olive oil
	Snack:	5 Almonds
	Supper:	200ml vegetable soup (without potatoes) 200g vegetable plate (e.g., celery, tomato, kohlrabi) 1 tbsp vegan pesto, 1 tbsp olive oil Herbal tea or grain coffee



2nd food-reintroduction day 1000 kcal	Breakfast:	150g dairy product mixed with 1 tbsp flaxseed oil 50g fruit 1 tbsp chopped almonds, 1 tbsp chia seeds Herbal tea or grain coffee
	Lunch:	Summer salad with green leaves, 100g tomato, 60g avocado, 2 tbsp sprouts, and 60ml avocado vinaigrette Quark-oil-cream
	Snack:	20g walnuts
	Supper:	Green salad with 1 grated fennel or kohlrabi, 1 tbsp pumpkin seeds, vinaigrette Omelette made from 1 egg, served with 200g broccoli and 1 tbsp sunflower seeds 1 tbsp olive oil Herbal tea or grain coffee
3rd food-reintroduction day 1200 kcal	Breakfast:	200g coconut yoghurt mixed with 1 tbsp flaxseed oil and 1 tbsp lemon juice 50g fruit 2 tbsp coconut flakes, 1 tbsp chia seeds Herbal tea or grain coffee
	Lunch:	Summer salad with green leaves, ½ pepper, 100g grated zucchini or radishes, 60ml avocado vinaigrette, 40g feta cheese, and 60g avocado Quark-oil-cream 50g keto bread 1 tbsp olive oil
	Snack:	20g walnuts
	Supper:	Green salad with 100g grated celery salad, 1 tbsp chopped almonds, and 60ml avocado vinaigrette 100g smoked tofu with 1 tsp olive oil 200g vegetable plate (e.g., 100g fennel, zucchini, spinach, or chard, with 1 tbsp pesto) 1 tbsp olive oil Herbal tea or grain coffee
4th food-reintroduction day 1600 kcal	Breakfast:	200g dairy product mixed with 2 tbsp flaxseed oil and 1 tbsp lemon juice 50g fruit 1 tbsp chopped almonds, 1 tbsp sunflower seeds, 1 tbsp chia seeds Herbal tea and grain coffee
	Lunch:	Gazpacho (100g tomato, 200g cucumber, 100g bell pepper, 2 tbsp olive oil, and garnished with 1 tbsp chopped herbs, scallions, or cress) Sautéed spinach with some onions in 1 tsp olive oil Omelette (2 eggs with 1 tbsp Parmesan), served with 100g tomato sauce 1 tbsp olive oil
	Snack:	20g walnuts
	Supper:	Mixed salad (green leaves, arugula, tomato, cucumber, zucchini, bell pepper, and herbs) 2 tbsp green olives

		3 tbsp olive oil and 2 tbsp lemon juice or vinegar dressing 100g goat cheese or 200g cottage cheese mixed with 1 tbsp olive oil and herbs Herbal tea and grain coffee
--	--	---

721

722

723

724 **Table S3. Baseline data comparison between the 32 closest neighbours of our participants extracted**  
 725 **from subjects of our study with a cohort of 1422 participants.** The distance computed was the  
 726 Euclidean, based on the following normalised parameters: BMI (kg/m<sup>2</sup>), age, SBP, waist circumference,  
 727 triglycerides. P-value is from a t-test.

	<b>MFP (n =32)</b>	<b>Closest neighbours PF (n =32)</b>	<b>p-value</b>
<b>Women (n, %)</b>	22 (68.8)	22	1
<b>Men (n, %)</b>	10 (31.2)	10	1
<b>Age (years)</b>	41.5 ± 12.88	44.91 ± 12.76	0.292
<b>BMI</b>	25.35 ± 2.67	25.27 ± 2.61	0.897
<b>Waist circumference</b>	82.85 ± 9.44	84.69 ± 10.69	0.460
<b>SBP</b>	132.1 ± 15.4	127.84 ± 12.76	0.237
<b>Triglycerides</b>	88.44 ± 49.64	99.77 ± 44.76	0.341

728

729

730 **Table S4. Study demographic data.**

	<b>MFP</b>	<b>Control</b>	<b>p-value</b>
<b>Women (n, %)</b>	22 (68.8)	20 (62.5)	0.79
<b>Men (n, %)</b>	10 (31.2)	12 (37.5)	
<b>Age (years)</b>	41.5 ± 12.88	44.625 ± 14.03	0.3569
<b>Ethnicity (n, %)</b>			
§ <b>Caucasian</b>	30 (93.8)	32 (100.0)	
§ <b>Afro-American</b>	1 (3.1)		
§ <b>Hispano-American</b>	1 (3.1)		
<b>Smoking (n, %)</b>			
§ <b>Never</b>	18 (56.3)	19 (59.4)	
§ <b>Former</b>	13 (40.6)	13 (40.6)	
§ <b>Current</b>	1 (3.1)	-	
<b>Alcohol consumption (units/week)</b>	2.05 ± 4.38	2.43 ± 4.5	0.559

731

732

733 **Table S5. Differences in clinical parameters between the ketogenic food reintroduction and the**  
 734 **standard food reintroduction. The p-value indicates the statistical significance in a linear-mixed model**  
 735 *where the effects of the effects between the ketogenic food reintroduction and the non-ketogenic food*  
 736 *reintroduction for the participants receiving the MFP at the same timepoint (\*, p < 0.05 ; \*\*, p < 0.01 ;*  
 737 *\*\*\*, p < 0.001). # Primary endpoints.*

738

	Ketogenic food reintroduction [mean ± std]				Non Ketogenic food reintroduction [mean ± std]				P-values			
	T0	T1	T2	T3	T0	T1	T2	T3	T0	T1	T2	T3
P-LCR (%)	31.67 ± 5.33	33.94 ± 6.58	32.89 ± 6.0	32.12 ± 6.16	29.03 ± 3.28	30.04 ± 4.09	33.92 ± 3.68	31.02 ± 5.03	0.157	0.977	<0.001	0.053
Urea (mmol/l)	4.65 ± 0.98	3.37 ± 1.13	4.15 ± 1.22	5.22 ± 1.6	5.38 ± 1.47	3.72 ± 0.89	3.34 ± 0.77	5.23 ± 1.36	0.105	0.356	<0.001	0.075
PTT (sec)	31.39 ± 3.03	33.0 ± 3.24	33.89 ± 3.8	31.33 ± 3.11	31.5 ± 2.85	32.64 ± 4.2	32.21 ± 3.42	30.93 ± 2.73	0.917	0.429	0.003	0.384
PDW (fl)	12.88 ± 1.36	13.35 ± 1.77	13.13 ± 1.46	12.94 ± 1.68	12.27 ± 1.01	12.64 ± 1.12	13.45 ± 1.04	12.75 ± 1.48	0.223	0.584	0.008	0.105
MPV (fl)	10.94 ± 0.77	11.12 ± 0.78	10.93 ± 0.8	10.88 ± 0.7	10.55 ± 0.52	10.55 ± 0.52	11.09 ± 0.54	10.75 ± 0.75	0.156	0.796	0.009	0.163
Plasma Lipid Peroxides (µmol/l)	385.61 ± 189.65	344.72 ± 200.34	382.06 ± 239.17	406.28 ± 242.82	388.36 ± 214.6	295.5 ± 238.2	274.07 ± 204.83	321.86 ± 218.39	0.970	0.262	0.017	0.06
Gamma GT (U/l)	21.94 ± 13.44	18.72 ± 10.93	15.33 ± 8.47	24.28 ± 19.27	15.21 ± 3.96	13.21 ± 2.52	12.57 ± 2.9	16.86 ± 4.7	0.081	0.601	0.089	0.768
Magnesium (mmol/l)	0.83 ± 0.06	0.84 ± 0.06	0.81 ± 0.07	0.81 ± 0.06	0.85 ± 0.05	0.85 ± 0.06	0.81 ± 0.07	0.84 ± 0.06	0.217	0.591	0.114	0.865
Serum Glucose (mmol/l)	4.71 ± 0.38	4.24 ± 0.55	4.48 ± 0.47	4.75 ± 0.49	4.82 ± 0.41	3.71 ± 0.53	4.3 ± 0.51	4.83 ± 0.38	0.431	0.001	0.126	0.858
Stress (0-10)	5.22 ± 2.13	4.12 ± 2.85	4.24 ± 2.41	3.94 ± 2.22	5.86 ± 2.21	3.93 ± 2.13	3.62 ± 2.69	4.54 ± 2.3	0.455	0.337	0.137	0.851
GPT (U/l)	21.17 ± 6.7	23.94 ± 10.0	21.67 ± 6.89	21.89 ± 11.52	23.0 ± 4.21	29.21 ± 14.33	28.93 ± 15.63	19.71 ± 6.29	0.378	0.35	0.14	0.276
Creatinine (µmol/l)	66.46 ± 12.17	70.1 ± 14.24	65.97 ± 10.96	64.84 ± 8.57	72.76 ± 12.59	77.94 ± 13.48	75.28 ± 14.77	70.17 ± 13.76	0.163	0.466	0.154	0.647
WHO-5 (0-100)	69.56 ± 11.57	63.06 ± 22.91	75.53 ± 10.09	78.12 ± 13.94	64.86 ± 19.42	70.29 ± 24.79	80.0 ± 15.92	78.57 ± 20.49	0.46	0.042	0.19	0.363
Muscle (0-10)	1.72 ± 2.27	2.47 ± 3.04	1.29 ± 1.79	0.82 ± 1.42	2.36 ± 2.34	1.43 ± 1.6	1.0 ± 1.78	1.54 ± 1.94	0.395	0.011	0.194	0.924
LDL-C (mmol/l)	3.16 ± 1.3	2.92 ± 1.07	2.43 ± 0.73	3.31 ± 1.27	3.22 ± 0.72	3.22 ± 0.88	2.74 ± 0.88	3.25 ± 0.93	0.873	0.249	0.238	0.601
Insulin (mIU/l)	6.28 ± 2.42	3.28 ± 2.16	3.61 ± 1.46	5.67 ± 2.33	6.79 ± 6.33	2.79 ± 1.12	5.64 ± 4.36	7.43 ± 2.47	0.756	0.453	0.253	0.346
Total Cholesterol (mmol/l)	5.08 ± 1.4	4.75 ± 1.16	4.25 ± 0.86	5.26 ± 1.34	4.85 ± 0.85	4.71 ± 0.92	4.22 ± 0.91	5.01 ± 0.92	0.583	0.297	0.278	0.943
ACU Urate-independent Antiox Cap (µmol/l)	79.11 ± 20.83	74.22 ± 23.35	83.44 ± 15.34	71.17 ± 15.75	81.5 ± 27.13	68.21 ± 14.94	76.57 ± 15.57	67.21 ± 15.84	0.780	0.334	0.286	0.465

MCH (pg)	29.77 ± 1.57	29.89 ± 1.69	29.9 ± 1.77	30.22 ± 1.86	29.78 ± 1.7	29.8 ± 1.64	29.73 ± 1.69	29.55 ± 1.65	0.99 1	0.58 2	0.304	0
Uric Acid (µmol/l)	289.8 ± 72.76	400.83 ± 116.9	349.28 ± 96.47	285.17 ± 50.12	296.55 ± 72.62	474.14 ± 140.32	330.11 ± 74.21	288.48 ± 58.45	0.79 6	0.01 1	0.325	0.89 6
HbA1c (%)	5.37 ± 0.22	5.33 ± 0.24	5.35 ± 0.24	5.42 ± 0.26	5.31 ± 0.26	5.24 ± 0.27	5.25 ± 0.28	5.38 ± 0.28	0.48 4	0.36	0.331	0.70 3
PSQI (0-20)	8.72 ± 3.79	8.35 ± 3.48	6.94 ± 2.97	7.59 ± 2.81	8.21 ± 2.69	6.86 ± 2.18	5.54 ± 1.61	5.64 ± 2.13	0.61 7	0.3	0.345	0.13 6
Non-HDL-C (mmol/l)	3.21 ± 1.37	3.0 ± 0.99	2.64 ± 0.77	3.48 ± 1.3	3.16 ± 0.66	3.2 ± 0.75	2.75 ± 0.85	3.44 ± 0.75	0.88 9	0.16 6	0.368	0.93 6
Leukocytes (Tsd./µl)	5.98 ± 2.62	5.0 ± 1.24	4.65 ± 1.66	5.79 ± 1.61	5.39 ± 1.63	4.92 ± 1.65	4.53 ± 1.65	5.19 ± 1.32	0.46 5	0.33 2	0.374	0.99 4
RDW (%)	12.94 ± 0.87	12.56 ± 0.92	12.72 ± 0.89	13.06 ± 0.87	12.79 ± 0.89	12.5 ± 0.76	12.43 ± 0.76	12.86 ± 0.77	0.61 7	0.55 2	0.437	0.81 9
GFR (ml/min)	103.06 ± 13.26	98.89 ± 15.18	103.06 ± 12.51	105.61 ± 12.83	95.07 ± 21.23	94.57 ± 17.69	98.43 ± 19.7	102.36 ± 19.85	0.20 2	0.39 8	0.439	0.27 6
sQ-HPF	24.46 ± 7.64	19.07 ± 5.64	18.36 ± 5.84	21.31 ± 7.14	27.69 ± 10.73	29.06 ± 14.43	18.7 ± 5.23	26.36 ± 12.86	0.31 2	0.25 8	0.465	0.64 5
MCV (fl)	87.69 ± 5.16	86.96 ± 4.38	86.93 ± 4.42	89.06 ± 4.79	87.48 ± 4.57	86.64 ± 3.9	86.29 ± 3.6	87.52 ± 3.95	0.90 2	0.88 3	0.518	0.04 5
LDL/HDL (ratio)	1.86 ± 1.04	1.82 ± 0.96	1.67 ± 0.87	2.01 ± 1.02	2.11 ± 0.91	2.34 ± 1.15	2.01 ± 0.98	2.26 ± 1.05	0.46 7	0.08 3	0.556	0.97 1
Hemoglobin (g/dl)	13.68 ± 1.24	13.93 ± 1.03	13.42 ± 1.03	13.74 ± 1.12	14.44 ± 1.02	14.51 ± 1.15	14.06 ± 1.21	14.16 ± 0.91	0.07 1	0.43 7	0.571	0.14
HbA1c (mmol/mol)	35.39 ± 2.38	34.89 ± 2.78	35.0 ± 2.5	35.78 ± 2.94	34.5 ± 2.9	33.79 ± 3.07	33.86 ± 2.98	35.21 ± 3.17	0.34 8	0.63 8	0.577	0.47 5
HDL-C (mmol/l)	1.87 ± 0.48	1.75 ± 0.51	1.62 ± 0.44	1.78 ± 0.45	1.68 ± 0.55	1.51 ± 0.47	1.47 ± 0.37	1.57 ± 0.5	0.31 2	0.54 9	0.608	0.78 1
Hematocrit (%)	40.23 ± 3.26	40.52 ± 2.73	39.0 ± 2.51	40.51 ± 3.37	42.42 ± 2.67	42.19 ± 2.93	40.81 ± 3.23	41.97 ± 2.62	0.05 1	0.5	0.616	0.34 2
Platelets (Tsd./µl)	243.28 ± 52.02	240.28 ± 54.49	227.72 ± 58.27	237.5 ± 74.64	250.29 ± 60.42	216.76 ± 72.74	224.86 ± 56.25	265.14 ± 76.22	0.72 7	0.12 4	0.619	0.29 9
Potassium (mmol/l)	4.28 ± 0.42	4.06 ± 0.2	4.26 ± 0.3	4.25 ± 0.46	4.41 ± 0.49	4.36 ± 0.47	4.32 ± 0.37	4.46 ± 0.4	0.40 3	0.29 2	0.655	0.65 5
Joint pain (0-10)	2.17 ± 2.75	1.76 ± 2.82	1.06 ± 1.82	1.59 ± 2.32	2.57 ± 2.68	0.79 ± 1.63	1.0 ± 1.41	1.62 ± 2.14	0.61 9	0.06 3	0.679	0.58
Headache (0-10)	2.78 ± 2.49	3.18 ± 3.32	1.06 ± 1.75	1.18 ± 2.13	2.0 ± 2.39	1.14 ± 1.51	0.69 ± 1.8	0.62 ± 1.45	0.32 5	0.11 7	0.683	0.82 9
Quick (%)	102.0 ± 11.22	90.0 ± 7.13	93.5 ± 6.67	100.83 ± 7.97	102.71 ± 10.56	90.14 ± 6.92	95.36 ± 10.51	99.64 ± 10.47	0.85 6	0.84 1	0.688	0.50 3
Calcium (mmol/l)	2.33 ± 0.09	2.34 ± 0.08	2.35 ± 0.08	2.38 ± 0.12	2.33 ± 0.1	2.39 ± 0.1	2.36 ± 0.06	2.38 ± 0.12	0.95 6	0.11	0.695	0.83 9
TNF alpha (pg/ml)	5.56 ± 1.34	5.24 ± 1.09	5.41 ± 1.03	5.48 ± 1.23	6.21 ± 1.94	6.51 ± 1.33	5.91 ± 1.15	5.86 ± 1.35	0.26 4	0.13 6	0.701	0.49 8
Erythrocytes (Mio/µl)	4.6 ± 0.43	4.67 ± 0.4	4.5 ± 0.39	4.56 ± 0.46	4.86 ± 0.32	4.87 ± 0.31	4.73 ± 0.32	4.8 ± 0.29	0.07 3	0.50 5	0.756	0.82 5
Stomachache (0-10)	1.94 ± 1.92	0.65 ± 1.22	1.12 ± 1.8	1.12 ± 1.76	1.36 ± 2.21	1.0 ± 1.75	0.85 ± 2.03	0.85 ± 1.77	0.36 4	0.14 6	0.766	0.76 6
TG (mmol/l)	1.0 ± 0.55	0.89 ± 0.22	0.9 ± 0.26	1.01 ± 0.64	0.99 ± 0.6	0.93 ± 0.19	0.84 ± 0.33	1.3 ± 0.87	0.94 3	0.77 7	0.795	0.05 4
IPAQ (MET-min/week)	2926.79 ± 2454.47	7007.53 ± 10007.28	2365.1 ± 2031.99	7072.04 ± 9934.11	2841.3 ± 1917.58	4791.94 ± 4633.89	2861.36 ± 4528.99	3049.2 ± 3471.79	0.71 9	0.36	0.795	0.17 3

Physical activity (hours/week)	14.22 ± 15.76	23.61 ± 23.92	12.06 ± 14.27	12.78 ± 12.53	5.27 ± 3.59	16.46 ± 18.67	4.82 ± 2.23	7.42 ± 4.01	0.09 ± 2	0.71	0.799	0.66 ± 8
TSH (mE/l)	2.55 ± 1.25	1.87 ± 0.91	1.95 ± 0.81	1.98 ± 0.89	2.02 ± 0.92	1.36 ± 0.7	1.47 ± 0.74	2.13 ± 1.21	0.19 ± 2	0.95 ± 5	0.806	0.00 ± 5
ESR (mm/h)	3.33 ± 2.74	2.83 ± 1.34	2.44 ± 1.15	3.89 ± 3.16	3.0 ± 3.21	4.57 ± 9.06	2.43 ± 0.94	4.21 ± 6.4	0.75 ± 3	0.15 ± 5	0.828	0.65 ± 1
Backache (0-10)	3.94 ± 3.0	2.18 ± 2.4	1.76 ± 2.44	2.18 ± 2.67	3.57 ± 2.85	1.29 ± 2.16	1.38 ± 2.06	2.0 ± 1.96	0.67 ± 5	0.58	0.873	0.91
Energy level (0-10)	6.06 ± 2.18	5.24 ± 2.46	6.71 ± 2.49	6.71 ± 1.4	7.29 ± 1.49	6.43 ± 2.5	7.92 ± 1.89	7.92 ± 1.5	0.09 ± 3	0.92 ± 8	0.897	0.95 ± 2
INR	0.99 ± 0.07	1.08 ± 0.06	1.05 ± 0.05	1.0 ± 0.05	0.99 ± 0.06	1.08 ± 0.06	1.04 ± 0.08	1.01 ± 0.07	0.84 ± 9	0.82 ± 4	0.905	0.37 ± 7
AP (U/l)	61.67 ± 16.31	57.22 ± 13.86	54.44 ± 12.51	63.39 ± 22.43	67.43 ± 29.27	63.93 ± 28.88	59.86 ± 23.98	62.43 ± 25.01	0.48 ± 4	0.75 ± 5	0.908	0.02 ± 7
Heartburn (0-10)	1.56 ± 2.57	0.82 ± 1.88	0.41 ± 0.87	0.29 ± 0.59	1.29 ± 1.77	0.29 ± 0.73	0.15 ± 0.55	0.46 ± 0.97	0.61 ± 2	0.56 ± 4	0.912	0.62 ± 5
Sodium (mmol/l)	140.17 ± 2.15	139.78 ± 2.21	139.44 ± 1.89	139.33 ± 2.06	139.29 ± 3.15	136.5 ± 2.21	138.64 ± 2.56	140.29 ± 2.52	0.35 ± 4	0.00 ± 5	0.926	0.03 ± 2
MCHC (g/dl)	33.98 ± 0.89	34.36 ± 0.73	34.39 ± 0.98	33.93 ± 0.69	34.04 ± 1.23	34.4 ± 1.08	34.43 ± 0.81	33.75 ± 1.13	0.87 ± 5	0.95 ± 2	0.942	0.48 ± 3
GOT (U/l)	16.17 ± 5.53	24.11 ± 12.63	19.0 ± 7.18	20.5 ± 11.72	17.86 ± 5.27	30.0 ± 19.17	20.5 ± 10.89	16.21 ± 3.95	0.38 ± 9	0.31	0.963	0.14 ± 9
ACL Lipid-soluble Antiox Cap (µmol/l)	42.06 ± 10.54	39.72 ± 9.37	37.17 ± 6.11	39.22 ± 12.92	33.5 ± 9.78	30.36 ± 7.27	28.64 ± 5.5	38.0 ± 8.08	0.02 ± 5	0.82 ± 2	0.993	0.04 ± 2
CRP (mg/l)	1.56 ± 2.32	1.96 ± 2.31	1.66 ± 2.38	1.39 ± 2.48	0.81 ± 1.25	1.4 ± 2.06	0.91 ± 1.19	0.76 ± 0.73	0.29 ± 0	0.79 ± 4	0.994	0.86 ± 6

739

740 **Table S6. Comparison of the effects of the MFP and the PF.** The effects of the MFP were compared to  
 741 those of 32 matched individuals doing 5 day PF with a linear mixed model (participants as random  
 742 effects). P interaction shows whether the changes between MFP and PF are different. The p baseline is the  
 743 comparison of the MFP and PF baseline values.

744

745

	PF - T0	PF - fasting	MFP - T0	MFP - T1	p interaction	p baseline
AP (U/l)	60.516	59.798	64.188	60.323	0.052	0.44
Acetoacetic acid (mg/dL)	1.4	40.8	0.781	21.774	0.001	0.263
BMI (kg/m <sup>2</sup> )	25.266	24.286	25.352	24.343	0.118	0.897
CRP (mg/l)	1.39	3.383	1.231	1.745	0.026	0.753
Ca (mmol/l)	2.325	2.356	2.332	2.362	0.974	0.752
Creatinine (mg/dl)	0.809	0.845	0.783	0.836	0.367	0.467
DBP (mmHg)	80.625	76.75	84.581	81.161	0.969	0.102
EWB (0-10)	6.84	7.68	6.844	8.065	0.476	0.995

<b>Erythrocytes (Mio/<math>\mu</math>l)</b>	4.732	4.8	4.712	4.757	0.6	0.848
<b>GGT (U/l)</b>	18.56	18.155	19	15.258	0.137	0.877
<b>GOT (U/l)</b>	20.151	29.977	16.906	27	0.919	0.022
<b>GPT (U/l)</b>	22.865	26.827	21.969	26.484	0.834	0.662
<b>HDL-C (mg/dl)</b>	62.085	52.282	69.094	63.645	0.088	0.122
<b>Haemoglobin (g/dl)</b>	14.197	14.397	14.012	14.248	0.877	0.532
<b>HbA1c (mmol/mol)</b>	32.616	31.421	35	34.323	0.067	0.007
<b>INR</b>	0.983	1.047	0.991	1.081	0.039	0.630
<b>K (mmol/l)</b>	4.303	4.481	4.338	4.197	0.002	0.71
<b>LDL-C (mg/dl)</b>	136.444	133.082	123.375	119.161	0.639	0.178
<b>LDL/HDL ratio</b>	2.325	2.706	1.969	2.071	0.024	0.127
<b>Leucocytes (103/<math>\mu</math>l)</b>	5.844	5.819	5.719	4.884	0.117	0.778
<b>MCH (pg)</b>	30	30	29.775	29.997	0.314	0.519
<b>MCHC (g/dl)</b>	34	34.594	34.009	34.432	0.435	0.972
<b>MCV (fl)</b>	88.594	87.031	87.6	87.123	0.052	0.355
<b>Mg (mmol/l)</b>	0.873	0.883	0.839	0.845	0.716	0.024
<b>Na (mmol/l)</b>	139.75	137.812	139.781	138.29	0.493	0.954
<b>PTT (sec)</b>	31.219	32.226	31.438	32.903	0.408	0.722
<b>PWB (0-10)</b>	5.8	7.28	6.781	7.774	0.446	0.132
<b>Quick (%)</b>	103.438	93.806	102.312	89.613	0.095	0.664
<b>SBP (mmHg)</b>	127.844	122.156	132.097	127.065	0.993	0.237
<b>TC (mg/dl)</b>	215.694	199.45	192.625	184.452	0.276	0.04
<b>TG (mg/dl)</b>	99.771	90.557	88.438	81.161	0.868	0.341
<b>Thrombocytes (Tsd/<math>\mu</math>l)</b>	247.594	246.375	246.344	226.603	0.167	0.923
<b>Urea (mg/dl)</b>	26.049	18.23	29.853	20.958	0.508	0.027
<b>Uric acid (mg/dl)</b>	5.288	7.946	4.922	7.361	0.569	0.261
<b>glucose</b>	88.97	76.872	85.656	71.903	0.685	0.108

<b>(mg/dl)</b>						
<b>Resting heart rate (beats/min)</b>	69.469	73.656	67.71	68.194	0.055	0.531
<b>waist (cm)</b>	84.688	80.591	82.848	81.703	0	0.46
<b>weight (kg)</b>	72.355	69.547	73.95	71.189	0.093	0.626

746

747