

1 **Diagnostic value of neutrophil gelatinase-associated lipocalin and neutrophil-**  
2 **to-lymphocyte ratio in type 2 diabetes mellitus individuals with reduced**  
3 **estimated glomerular filtration rate(eGFR): A case-control study in a**  
4 **municipal hospital in Ghana**

5  
6 Allwell Adofa Ayirebi<sup>1\*</sup>, Wina Ivy Ofori Boadu<sup>1</sup>, Benedict Sackey<sup>1</sup>, Lilian Antwi-Boateng<sup>1</sup>,  
7 Prince Adoba<sup>1</sup>, Patrick Adu<sup>4</sup>, Joseph Boachie<sup>4</sup>, Stephen Twumasi<sup>1</sup> Joseph Frimpong<sup>1</sup>, Emmanuel  
8 Ekow Korsah<sup>1</sup>, Ezekial Ansah<sup>1</sup>, Ebenezer Senu<sup>5</sup>, Eugene Arele Ansah<sup>5</sup>, Daniel Nii Martey  
9 Antonio<sup>5</sup>, Afua Marfowaa<sup>1</sup>, Isaac Opoku Antwi<sup>6</sup>, John Agyemang Sah<sup>1</sup>, Joachim Baba Domosie<sup>1</sup>,  
10 Abiba Khalifah<sup>1</sup>, Evans Adu Asamoah<sup>5</sup>, Christian Obirikorang<sup>5</sup>, Otchere Addai-Mensah<sup>1</sup>, Enoch  
11 Odame Anto<sup>1,2,3\*</sup>

12 <sup>1</sup> Department of Medical Diagnostics, Faculty of Allied Health Sciences, College of Health  
13 Sciences, Kwame Nkrumah University of Science and Technology, Kumasi, Ghana

14 <sup>2</sup> School of Medical and Health Sciences, Edith Cowan University, Joondalup Drive, Perth,  
15 Australia

16 <sup>3</sup> Centre for Precision Health, ECU Strategic Research Centre, Edith Cowan University, Perth,  
17 Australia.

18 <sup>4</sup>Department of Medical Laboratory Science, University of Cape Coast, Cape Coast, Ghana

19 <sup>5</sup> Department of Molecular Medicine, School of Medicine and Dentistry, Kwame Nkrumah  
20 University of Science and Technology, Kumasi, Ghana

21 <sup>6</sup>Department of Surgery, Tafo Government Hospital, Tafo, Ghana

22 **\*Correspondence:**

23 1. Allwell Adofa Ayirebi ([aaayirebi28@gmail.com](mailto:aaayirebi28@gmail.com))

24 2. Enoch Odame Anto ([odameenoch@yahoo.com](mailto:odameenoch@yahoo.com))

25 **Abstract**

26 **Introduction:** Serum neutrophil gelatinase-associated lipocalin (sNGAL), a renal tubular marker,  
27 and Neutrophil-to-Lymphocyte Ratio (NLR), a haematological inflammatory marker are two  
28 biomarkers that have recently received attention, because of their association with kidney disease.  
29 This study examined the diagnostic value sNGAL and NLR in type 2 diabetes mellitus (T2DM)  
30 patients with reduced eGFR.

31 **Materials and methods:** In this hospital-based case-control research, 97 T2DM participants and  
32 70 healthy subjects were included. Participants' information was documented using a structured  
33 questionnaire and patient case records. Venous blood was drawn from each participant to evaluate  
34 absolute neutrophil and lymphocyte count ratio, glycosylated haemoglobin (HBA1c), creatinine,  
35 sNGAL, and fasting blood glucose.

36 **Results:** sNGAL and NLR were higher in diabetes patients with reduced eGFR than those with  
37 normal eGFR and control ( $p < 0.05$ ). sNGAL level was negative correlated with eGFR among both  
38 good ( $r = -0.317$ ,  $p = 0.036$ ) and poor ( $r = -0.544$ ,  $p < 0.001$ ) glycaemic-controlled T2DM subjects  
39 with reduced eGFR. A negative correlation was observed between NLR and eGFR among poor  
40 glycaemic-controlled T2DM subjects with reduced eGFR ( $r = -0.329$ ,  $p = 0.016$ ). At a cut off of  
41  $8.87 \mu\text{g/L}$  and  $2.34$  respectively, sNGAL and NLR were found to be good predictors of  
42 nephropathy among T2DM patients (AUC=100.0,  $p < 0.0001$  and AUC=76.0,  $p < 0.0001$   
43 respectively) with sNGAL being the superior marker.

44 **Conclusions:** sNGAL and NLR have important diagnostic value for diabetic with reduced eGFR.  
45 Whiles sNGAL showed superiority and is recommended, NLR can serve as a less expensive and  
46 readily measurable alternative biomarker for diabetic patients with reduced eGFR, particularly in

47 poorly controlled diabetes. These two markers can be added to the available array of tests used to  
48 indicate nephropathy in type 2 diabetics to help clinicians in better management of the disease.

#### 49 **Keywords**

50 Diabetic nephropathy, Type 2 diabetes mellitus, Serum neutrophil gelatinase- associated lipocalin,  
51 Neutrophil-to-lymphocyte ratio

52

#### 53 **Introduction**

54 Type 2 diabetes mellitus (T2DM) is a metabolic illness that affects most people worldwide.  
55 Globally, the prevalence of diabetic mellitus (DM) is believed to be at 8.5%, and it is predicted  
56 that this number could double in the next ten years (1). Numerous research has indicated that the  
57 prevalence of diabetes mellitus in Ghana varies from 6.4% to 13.9% (2,3).

58 Diabetic Nephropathy (DN), as a major vascular adverse outcome of diabetes mellitus (DM), arises  
59 due to uncontrolled hyperglycaemia resulting in glomerular and tubular destruction and eventual  
60 permanent kidney damage (4). A lower estimated glomerular filtration rate (GFR) of less than 60  
61 ml/min/1.73 m<sup>2</sup> and albuminuria for a minimum of three months are indicative of chronic kidney  
62 disease (5). The prevalence of diabetic nephropathy in Ghana ranges from 14% to 19% (6). A 13-  
63 year retrospective study found diabetic nephropathy to be the third leading cause of chronic kidney  
64 disease, and the second leading cause of end-stage kidney disease in Ghanaian adults (7).

65 The conventional estimated Glomerular Filtration Rate (eGFR) and its albuminuria correlation  
66 (uACR) are regarded as the primary laboratory markers for indicating chronic kidney disease  
67 (CKD) in Ghana. However, creatinine is a marker of glomerular filtration and is unable to  
68 appropriately assess renal tissue damage. Also, serum creatinine rises after about 50% of kidney  
69 function is lost, hence not sensitive enough to pick up on subtle variations in renal function that

70 might occur before albuminuria manifests. (8,9). It has been widely proposed that other biomarkers  
71 are needed for early detection of renal dysfunction. There is also the need for cost-effective and  
72 accessible biomarkers that can effectively detect DN, as current markers are expensive and  
73 financially burdensome for both the government and individuals (10).

74 A tubulointerstitial injury marker, neutrophil gelatinase-associated lipocalin (NGAL), is a 25kDa  
75 protein that stems from the lipocalin superfamily has been suggested as a potential marker of CKD  
76 (11). It is mainly used to transport tiny hydrophobic molecules and control innate immune  
77 responses. It is secreted by renal tubular epithelial cells and released by active neutrophils (12).

78 The haematological inflammatory neutrophil-to-lymphocyte ratio (NLR) measures the interaction  
79 between the innate and adaptive cellular immune responses. NLR is an affordable and easily  
80 measurable marker of inflammation, indicating inflammatory burden in many chronic conditions.

81 It has been shown that NLR can serve as an early marker for diabetic nephropathy (DN), evidenced  
82 by a lower predicted risk of hospitalizations in diabetic patients undergoing haemodialysis (13).

83 The efficacy of these two markers in detecting DN has not been evaluated in the context of Ghana.

84 As a result, the study assessed the performance of sNGAL and NLR in predicting nephropathy  
85 among type 2 diabetics. Moreover, given the major role uncontrolled hyperglycaemia plays in  
86 renal pathology incidence, this study also assessed these markers in diabetics with reduced eGFR  
87 with good and poor glycaemic management.

## 88 **Materials and Methods**

### 89 **Study design, duration and study setting**

90 This was a prospective case-control study and conducted at the Ejisu Government Hospital from  
91 December 15,2022 to February 25, 2023.The Ejisu Government Hospital, located in the Ejisu  
92 Juaben Municipality of the Ashanti region of Ghana, served as the site of this hospital-based case-

93 control study. The municipality has a total size of 637.2 square kilometres, or about 10% of the  
94 Ashanti Region's total land area. The geographical coordinates of the location in question are  
95 situated between longitudes 1°5W and 1°39W, and latitudes 7°9' N and 7°36'N. The hospital is the  
96 biggest healthcare facility in the municipality, providing an extensive array of services including  
97 emergency medical treatment, obstetrics and gynaecology, laboratory testing, and medical  
98 imaging. The medical centre is open around-the-clock, all year round. Participants were chosen  
99 for the study from the facility's diabetic clinic.

#### 100 **Ethical Clearance and Informed Consent**

101 The Committee for Human Research Publication and Ethics of Kwame Nkrumah University of  
102 Science and Technology, School of Medical Sciences, evaluated and approved the study  
103 protocol, permission forms, and participant information material (CHRPE/AP/742/22). The Ejisu  
104 Government Hospital ethical committee also approved the study. Once the study participants  
105 had received a thorough explanation of the study's objectives, advantages, risks, and right to  
106 withdraw at any time in both English and the local dialect (primarily Twi), their written consent  
107 was requested.

#### 108 **Study participants**

109 A total of 167 participants were recruited for this study. Cases consisted of 97 type 2 diabetics (21  
110 males and 75 females) under management at the clinic, six months or more prior to recruitment of  
111 study, and 70 participants without diabetes (28 men and 42 females) used as healthy controls.  
112 Patients with cancer, microbial infections, pregnant women, those with changes in leucocyte count,  
113 and advanced kidney impairment (eGFR <30 ml/min) were excluded. Additionally, we excluded  
114 diabetics with iron deficiency anaemia, HIV infection, hepatitis C, and inherited haemolytic  
115 disorders.

116 **Data collection**

117 Demographic and clinical history of the participants were recorded using well-structured  
118 questionnaires and patient case records. Dietary habits were categorised qualitatively as occurring  
119 rarely (one per month), irregularly (seven times per month), and regularly (twice per month).  
120 Estimates were made for height to the nearest centimetre without shoes and weight to the nearest  
121 0.1 kg when wearing light clothes. A wall-mounted ruler was used to measure height. A Zhongshan  
122 Camry Electronic Co. Ltd. bathroom scale (Guangdong, China) was used to assess weight.

123 **Blood sampling**

124 After an 8-12 hours overnight fast, venous blood sample was drawn from each participant into  
125 fluoride/oxalate, serum separator tube (SST) and ethylenediamine tetracetate (EDTA) tubes. After  
126 clotting, the SST was centrifuged and kept at -20°C until analysis.

127 **Laboratory Assays**

128 Haemogram analysis of the EDTA samples were determined within one (1) hour after sample  
129 using an automated haematology analyser (XN-550; Sysmex Corporation, Kobe Japan). NLR  
130 levels were determined from haemogram test by calculating the ratio of absolute neutrophil count  
131 and absolute lymphocyte count. Glycosylated haemoglobin test was run on a Getein Biotech  
132 Immunofluorescence Quantitative Analyser (Getein 1100, China). Well controlled diabetes and  
133 poorly controlled diabetes was defined as HbA1c  $\leq 7\%$  and  $>7\%$  respectively. The Mindray BS-  
134 240 fully automated chemistry analyser and an assay kit (Shenzhen Mindray Bio-Medical  
135 Electronics Co., China) were used to estimate the plasma concentration and level of creatinine in  
136 serum samples. Estimated Glomerular Filtration Rate (eGFR) was calculated using the CKD-EPI  
137 equation (16). Participants with eGFR  $<60\text{ml}/\text{min}/1.72\text{m}^2$  were classified as having reduced eGFR.

138 A commercially available ELISA kit (Melson Shanghai Chemical Ltd, China) was used for the  
139 sNGAL measurement. Reagent was used in accordance with the manufacturer's instructions to  
140 measure samples from the controls and the participants using the solid phase ELISA technique.

#### 141 **Statistical analysis**

142 The data obtained from the study was entered into Microsoft Excel software (2016) and analysed  
143 using GraphPad Prism (version 8.0.1), R programming version 4.2.3, and IBM Statistical Package  
144 for Social Sciences (version 26.0). In contrast to categorical variables, which were expressed as  
145 proportions and compared using the chi-square test, parametric continuous variables were  
146 expressed as mean standard deviation. The chi-square test was used to examine the relationship  
147 between categorical research variables and diabetics with reduced eGFR. Additionally, one-way  
148 ANOVA and the post-hoc Bonferroni test were used to assess the differences between parametric  
149 continuous variables and study groups. Pearson correlation was used to analyse the association  
150 between NGAL, NLR, and eGFR. The area under the curves for NGAL and NLR used in the  
151 evaluation of diabetic nephropathy was calculated using the Receiver Operator Characteristics  
152 Curve. A p value of 0.05 and a 95% confidence interval were used for all statistical significance  
153 calculations.

154

#### 155 **Results**

##### 156 **Baseline characteristics of study participants**

157 The prevalence of reduced eGFR among type 2 diabetic was 10.4%. The majority of the case group  
158 participants that enrolled for the study were females, who had no postsecondary education, and  
159 had an average age of 57 years. Body mass index, fasting blood glucose, diastolic and systolic  
160 blood pressure, glycosylated haemoglobin percent, and creatinine levels, showed statistically

161 significant difference ( $p < 0.05$ ) among diabetics with reduced eGFR, those with normal eGFR, and  
162 healthy controls. The variables among diabetics with reduced eGFR and diabetics with normal  
163 eGFR were considerably greater than those among healthy controls in a post-hoc Bonferroni test  
164 ( $p < 0.05$ ), with the exception of diastolic blood pressure. White blood cell count, absolute  
165 neutrophil count, absolute lymphocyte count and NLR were higher diabetes patients with reduced  
166 eGFR than those with normal eGFR and controls ( $p < 0.05$ ), but were comparable between controls  
167 and diabetes patients with normal eGFR ( $p > 0.05$ ). Similarly, sNGAL levels were increased in  
168 diabetes patients with reduced eGFR than those with normal eGFR and controls ( $p < 0.05$ ). A  
169 significant association was found between consumption of sweets, vigorous exercising and  
170 development of diabetics with reduced eGFR among study participants ( $p < 0.05$ ) Conversely,  
171 alcohol intake was not significantly associated with reduced eGFR among study participants  
172 ( $p > 0.05$ ) (**Table 1**).

173  
174 **The distribution and comparison of sNGAL and NLR between healthy controls, and good**  
175 **and poor glycaemic controlled diabetics.**

176 We observed a significantly higher NLR in poor glycaemic controlled diabetics with reduced eGFR  
177 than good glycaemic control and healthy subjects [2.09 (1.73 – 2.78) vs 1.81(1.36 – 2.22) vs 1.72  
178 (1.40 – 2.51) respectively, ( $p < 0.05$ )]. sNGAL level was also significantly higher among diabetics  
179 with reduced eGFR patients with poor and good glycaemic control than the healthy individuals  
180 [{5.60 (4.8 – 6.20) vs 5.18 (4.88 – 6.11) vs 4.50 (3.60 – 5.10)}  $\mu\text{g/L}$  respectively, ( $p < 0.05$ )]. NLR  
181 levels between good glycaemic control and controls as well as sNGAL levels between poor and  
182 good glycaemic controlled patients with reduced eGFR were not statistically significant  
183 ( $p > 0.05$ )(**Figure 1**).



184

185 **Pearson correlations between sNGAL, NLR and eGFR in good and poor glycaemic**  
186 **controlled diabetics with reduced eGFR.**

187 We found an insignificant negative weak correlation between NLR and eGFR ( $r = -0.038, p =$   
188  $0.806$ ) (**Figure 2A**) and a significant moderate negative correlation between sNGAL and eGFR ( $r$   
189  $= -0.317, p = 0.036$ ) (**Figure 2B**) among good glycaemic controlled diabetics with reduced eGFR.

190 There were also significant weak negative correlations between NLR and eGFR ( $r = -0.329, p =$   
191  $0.016$ ) (**Figure 2C**) and a significant moderate negative correlation between sNGAL and eGFR ( $r$   
192  $= -0.544, p < 0.001$ ) (**Figure 2D**) among poor glycaemic controlled diabetics with reduced eGFR.

193

#### 194 **Diagnostic Performance of NGAL and NLR**

195 Receiver operating characteristic (ROC) analysis showed that sNGAL had an excellent  
196 performance ( $AUC = 100.0, p < 0.0001$ ) and NLR had a moderate performance ( $AUC = 76.0, p <$   
197  $0.0001$ ) for predicting diabetic nephropathy (**Figure 3**). An NGAL cut-off of  $8.87\mu\text{g/L}$  had 100%  
198 sensitivity and specificity while NLR threshold of 2.34 had 80% sensitivity and 73.6% specificity  
199 in predicting nephropathy in type 2 diabetes mellitus patients using CKD-EPI equation. (**Table 2**).

200

201

#### 202 **Discussion**

203 Effective monitoring is paramount to preventing exacerbating of diabetes mellitus to diabetes  
204 nephropathy (DN). This can be achieved by identifying biomarkers that can provide early  
205 indication of renal impairment as well as markers that are readily available and less expensive.

206 This hospital-based case-control study aimed to investigate the diagnostic value of sNGAL and  
207 NLR for the detection of nephropathy among type 2 diabetics using the CKD-EPI equation.

208 The prevalence of reduced eGFR among T2DM patients from this present study was significant  
209 (10.4%) and reflective of findings by Tannor et al., and Ofori et al, (6,15) which reported between  
210 them 16.1% to 19% prevalence of CKD based on reduced eGFR among diabetes mellitus patients  
211 in Ghana. The variations of prevalences may be due to the different samples sized. Nevertheless,  
212 the prevalence observed in this is alarming and could be attributed to patients not taking their  
213 medications as directed by physicians or the therapy regimen not working for them.

214 In this study, NLR level was significantly higher in diabetics with reduced eGFR than those with  
215 normal eGFR, consistent with findings from Paulus et al, (17) who reported an increase in NLR  
216 levels among diabetics with reduced eGFR than those with normal eGFR. This could be attributed  
217 to excess glucose in circulation causing damage to the renal tubules, subsequently inducing a  
218 persistent inflammatory state. However, studies conducted by Wan et al, (18) reported comparable  
219 levels of NLR in diabetics with reduced eGFR and with normal eGFR. The reason for this  
220 inconsistency includes differences in sample size, population and geography. In addition, a  
221 significant increase in NLR was found in diabetics with reduced eGFR with poor glycaemic  
222 control than those with good glycaemic control and is reflective of the findings from Hussain et  
223 al., (19) that suggested that an elevated HbA1c is associated with high NLR levels due to an  
224 induced chronic inflammatory state by the hyperglycaemic milieu.

225 sNGAL levels in this study was found to be significantly higher in diabetics with reduced eGFR  
226 than those with normal eGFR. This could be due to damage to renal tubules as a result of the  
227 presence of excess glucose in circulation leading to endothelial dysfunction and tubulointerstitial  
228 damage consistent with finding from Kaul et al, (20). Furthermore, mild rise in levels of serum

229 sNGAL level was also found in diabetics with reduced eGFR with both poor and good glycaemic  
230 control than apparently healthy non-diabetics which also agrees with Kaul et al., (20) that sNGAL  
231 is an early predictor of DN in type 2 diabetics. This explains why even in good glycaemic  
232 controlled diabetics, levels of sNGAL were mildly increased.

233 Moreover, sNGAL level in both good and poor glycaemic controlled diabetic patients was  
234 negatively associated with eGFR. This is consistent with the findings from Bolignano, Lacquaniti,  
235 et al., which suggested an inverse correlation between NGAL and eGFR, thus proposing NGAL  
236 as a strong and independent risk marker for progression of chronic kidney disease (21). It is also  
237 in line with the findings from Danquah et al, (22) which reported that plasma NGAL was a reliable  
238 indicator of kidney damage in initial phases of CKD in comparison to serum creatinine. This  
239 indeed makes sNGAL a good marker for kidney injury as even before glycaemic control worsens,  
240 levels are already elevated mildly or markedly.

241 We also found that NLR and eGFR among poorly glycaemic controlled diabetic patients was  
242 negatively associated. However, no such correlation was observed in good glycaemic controlled  
243 diabetes patients. The poor management of hyperglycaemia leads to damage of glomerulus and  
244 tubules of nephron and may results in neutrophilia caused by release of cytokines and chemokines.  
245 This study also examined the diagnostic performance of these markers as indicators of DN. The  
246 excellent cut point to indicate DN was assessed using CKD-EPI equation as reference. This study  
247 found NLR (AUC = 76.0) and NGAL  $\mu\text{g/L}$  (AUC = 100) to be good indicators of DN with sNGAL  
248 being the superior marker. These findings is consistent with previous studies which observed good  
249 performance of these markers for diagnosing DN (18,22–24). Also, in this present study, the  
250 optimal threshold at which NLR and NGAL levels indicated DN were 2.34 and 8.87  $\mu\text{g/L}$   
251 respectively. However, the cut-off level for sNGAL were markedly lower than reported findings

252 of Kaul et al, (20) with cut point of 78.7ng/ml (sensitivity 95.1% ; specificity 100%) and Danquah  
253 et al, (22) with cut point of 120µg/L (sensitivity 100.0%; specificity 72.0%). This could be due to  
254 participants being at the early stage of CKD. The cut-off values for NLR were a slightly decreased  
255 than reports of Singh et al, (24) with cut-off level of 3.28 (sensitivity 89.7%, specificity 69.7%).  
256 On the other hand, the cut-off value for NLR in this study is slightly higher than findings of Wan  
257 et al, (18) with cut point of 1.7 (sensitivity 68.0, specificity 47.8). These slight variations could be  
258 due to ethnic or geographical differences between the populations of study. These findings from  
259 the present study, however, suggest that chronic inflammation is involved in development of  
260 kidney disease in Type 2 diabetics.

261 The strength of this study is that, it is the first attempt to investigate the diagnostic value of sNGAL  
262 and NLR for the detection of nephropathy in Ghanaian type 2 diabetes mellitus patients. Despite  
263 the novel findings, this study has certain limitation. This study was a one-centre study and may  
264 not be true reflection of the entire Ghanaian population.

## 265 **Conclusion**

266 In conclusion, sNGAL, as an independent biomarker, is an excellent indicator of kidney disease  
267 as levels increases in both good and poor glycaemic controlled type 2 diabetics with reduced eGFR.  
268 NLR can serve a less expensive and readily measurable alternative biomarker for diabetic  
269 nephropathy, particularly in poorly controlled diabetes. These two markers can be added to the  
270 available array of tests used to indicate nephropathy in type 2 diabetics to help clinicians in better  
271 management of the disease.

## 272 **Data Availability Statement**

273 The data that support the findings of this study are available from the corresponding authors upon  
274 reasonable request.

275 **Declarations**

276  
277 This study was conducted based on the Helsinki Declaration and the study protocol, consent forms  
278 and participant information material were reviewed and approved by the Committee for Human  
279 Research Publication and Ethics of Kwame Nkrumah University of Science and Technology,  
280 School of Medical Sciences (CHRPE/AP/742/22). Permission was sought from the research  
281 facility of Ejisu Government Hospital before commencement of study. Written consent of  
282 individual participants was sought after the aims, benefits, risk and right of withdrawal at any time  
283 from the study were well explained to the study participants in English and in the local dialect  
284 (mostly Twi) and their consent was obtained.

285 **Conflicts of Interest**

286 The authors declare that there is no conflict of interest regarding the publication of this article.

287 **Authors Contribution**

288 **Conceptualization** Allwell Adofa Ayirebi, Benedict Sackey, Enoch Odame Anto, Lilian Antwi-  
289 Boateng, Evans Adu Asamoah, Christian Obirikorang and Otchere Addai-Mensah

290 **Data curation:** Allwell Adofa Ayirebi, Benedict Sackey, Enoch Odame Anto Prince Adoba,  
291 Daniel Nii Martey Antonio, Isaac Opoku Antwi, John Agyemang Sah, Stephen Twumasi Wina  
292 Ivy Ofori Boadu Patrick Adu, Joachim Baba Domosie, Afua Marfowaa and Joseph Boachie

293 **Formal analysis:** Stephen Twumasi, Abiba Khalifah, Ebenezer Senu, Joseph Frimpong,  
294 Emmanuel Ekow Korsah, Ezekial Ansah, Eugene Arele

295 **Investigation:** Allwell Adofa Ayirebi, Daniel Nii Martey Antonio, Stephen Twumasi

296 **Methodology:** Allwell Adofa Ayirebi, Daniel Nii Martey Antonio, Stephen Twumasi

297 **Project administration:** Allwell Adofa Ayirebi, Benedict Sackey, Enoch Odame Anto

298 **Resources:** Allwell Adofa Ayirebi

299 **Software:** Allwell Adofo Ayirebi, Stephen Twumasi

300 **Supervision:** Allwell Adofo Ayirebi, Wina Ivy Ofori Boadu, Enoch Odame Anto

301 **Validation:** Enoch Odame Anto, Wina Ivy Ofori Boadu

302 **Visualization:** Allwell Adofo Ayirebi, Benedict Sackey, Enoch Odame Anto

303 **Writing-original draft:** Allwell Adofo Ayirebi, Stephen Twumasi, Enoch Odame Anto

304 **Writing-review & editing:** Allwell Adofo Ayirebi, Wina Ivy Ofori Boadu, Benedict Sackey,

305 Lilian Antwi-Boateng, Prince Adoba, Patrick Adu, Joseph Boachie, Stephen Twumasi, Joseph

306 Frimpong, Emmanuel Ekow Korsah, Ezekial Ansah, Ebenezer Senu, Eugene Arele Ansah, Daniel

307 Nii Martey Antonio, Afua Marfowaa, Isaac Opoku Antwi, John Agyemang Sah, Joachim Baba

308 Domosie, Abiba Khalifah, Evans Adu Asamoah, Christian Obirikorang, Otchere Addai-Mensah,

309 Enoch Odame Anto

### 310 **Funding Statement**

311 The authors received no financial support for the research, authorship and or/ publication of this

312 article.

### 313 **Acknowledgements**

314 We are grateful for the immense contributions of the staff of Ejisu Government Hospital for their

315 warm reception, not forgetting our participants. Special thanks to the theoretical and applied

316 biology laboratory of Kwame Nkrumah University of Science and Technology for their support in

317 storage of samples.

318

### 319 **References**

320 1. Guariguata L, Whiting DR, Hambleton I, Beagley J, Linnenkamp U, Shaw JE. Global

321 estimates of diabetes prevalence for 2013 and projections for 2035. *Diabetes Res Clin Pract.*

- 322 2014;103(2). doi 10.1016/j.diabres.2013.11.002
- 323 2. Sarfo-Kantanka O, Owusu-Dabo E, Adomako-Boateng F, Eghan B, Dogbe J, Bedu-Addo  
324 G. An assessment of prevalence and risk factors for hypertension and diabetes during world  
325 diabetes day celebration in Kumasi, Ghana. *East Afr J Public Health*. 2014;11(2).
- 326 3. Asamoah-Boaheng M, Sarfo-Kantanka O, Tuffour AB, Eghan B, Mbanaya JC. Prevalence  
327 and risk factors for diabetes mellitus among adults in Ghana: A systematic review and meta-  
328 analysis. Vol. 11, *International Health*. 2019. doi 10.1093/inthealth/ihy067
- 329 4. Samsu N. Diabetic Nephropathy: Challenges in Pathogenesis, Diagnosis, and Treatment.  
330 Vol. 2021, *BioMed Research International*. 2021. doi 10.1155/2021/1497449
- 331 5. Levey AS, Atkins R, Coresh J, Cohen EP, Collins AJ, Eckardt KU, et al. Chronic kidney  
332 disease as a global public health problem: Approaches and initiatives - A position statement  
333 from Kidney Disease Improving Global Outcomes. In: *Kidney International*. 2007. doi  
334 10.1038/sj.ki.5002343
- 335 6. Ofori E, Gyan KF, Gyabaah S, Nguah SB, Sarfo FS. Predictors of rapid progression of  
336 estimated glomerular filtration rate among persons living with diabetes and/or hypertension  
337 in Ghana: Findings from a multicentre study. *J Clin Hypertens*. 2022;24(10). doi  
338 10.1111/jch.14568
- 339 7. Okyere P, Okyere I, Ephraim RKD, Attakorah J, Osafo C, Arhin B, et al. Spectrum and  
340 Clinical Characteristics of Renal Diseases in Ghanaian Adults: A 13-Year Retrospective  
341 Study. *Int J Nephrol*. 2020;2020. doi 10.1155/2020/8967258
- 342 8. Satirapoj B, Nast CC, Adler SG. Novel Insights into the Relationship Between Glomerular  
343 Pathology and Progressive Kidney Disease. Vol. 19, *Advances in Chronic Kidney Disease*.  
344 2012. doi 10.1053/j.ackd.2011.12.001

- 345 9. Satirapoj B. Tubulointerstitial Biomarkers for Diabetic Nephropathy. Vol. 2018, Journal of  
346 Diabetes Research. 2018. doi 10.1155/2018/2852398
- 347 10. Gad M, Kazibwe J, Abassah-Konadu E, Amankwah I, Owusu R, Gulbi G, et al. The  
348 Epidemiological and Economic Burden of Diabetes in Ghana: A Scoping Review to Inform  
349 Health Technology Assessment. medRxiv. 2023 Jan;2023.04.19.23288806. doi  
350 10.1101/2023.04.19.23288806
- 351 11. Bolignano D, Coppolino G, Romeo A, De Paola L, Buemi A, Lacquaniti A, et al. Neutrophil  
352 gelatinase-associated lipocalin (NGAL) reflects iron status in haemodialysis patients.  
353 Nephrol Dial Transplant. 2009;24(11). doi 10.1093/ndt/gfp310
- 354 12. Cernaro V, Bolignano D, Buemi A, Lacquaniti A, Santoro D, Buemi M. Biomarkers in  
355 Kidney Disease. Biomarkers Kidney Dis. 2016;1–24. doi 10.1007/978-94-007-7743-9
- 356 13. Zhang J, Zhang R, Wang Y, Wu Y, Li H, Han Q, et al. Effects of neutrophil–lymphocyte  
357 ratio on renal function and histologic lesions in patients with diabetic nephropathy.  
358 Nephrology. 2019;24(11). doi 10.1111/nep.13517
- 359 14. Book Reviews. Community Health Stud. 2010;11(2). doi 10.1111/j.1753-  
360 6405.1987.tb00145.x
- 361 15. Tannor EK, Sarfo FS, Mobula LM, Sarfo-Kantanka O, Adu-Gyamfi R, Plange-Rhule J.  
362 Prevalence and predictors of chronic kidney disease among Ghanaian patients with  
363 hypertension and diabetes mellitus: A multicenter cross-sectional study. J Clin Hypertens.  
364 2019;21(10). doi 10.1111/jch.13672
- 365 16. Levey AS, Stevens LA. Estimating GFR Using the CKD Epidemiology Collaboration  
366 (CKD-EPI) Creatinine Equation: More Accurate GFR Estimates, Lower CKD Prevalence  
367 Estimates, and Better Risk Predictions. Vol. 55, American Journal of Kidney Diseases.



- 368 2010. doi 10.1053/j.ajkd.2010.02.337
- 369 17. Paulus I, Palguna KAS, Wirasugianto J, Supadmanaba IG, Semadi IMS, Suastika K.  
370 Neutrophil Lymphocyte Ratio (NLR) was Significantly Associated with Diabetic  
371 Nephropathy at Sanglah General Hospital, Denpasar, Bali, Indonesia: A Case-Control  
372 Study. *World J Curr Med Pharm Res.* 2021; doi 10.37022/wjcmpr.vi.173
- 373 18. Wan H, Wang Y, Fang S, Chen Y, Zhang W, Xia F, et al. Associations between the  
374 Neutrophil-to-Lymphocyte Ratio and Diabetic Complications in Adults with Diabetes: A  
375 Cross-Sectional Study. *J Diabetes Res.* 2020;2020. doi 10.1155/2020/6219545
- 376 19. Hussain M, Babar MZM, Akhtar L, Hussain MS. Neutrophil lymphocyte ratio (NLR): A  
377 well assessment tool of glycemic control in Type-2 diabetic patients. *Pakistan J Med Sci.*  
378 2017;33(6). doi 10.12669/pjms.336.12900
- 379 20. Kaul A, Behera M, Rai M, Mishra P, Bhaduarua D, Yadav S, et al. Neutrophil gelatinase-  
380 Associated lipocalin: As a predictor of early diabetic nephropathy in Type 2 diabetes  
381 mellitus. *Indian J Nephrol.* 2018;28(1). doi 10.4103/ijn.IJN\_96\_17
- 382 21. Bolignano D, Lacquaniti A, Coppolino G, Donato V, Campo S, Fazio MR, et al. Neutrophil  
383 gelatinase-associated lipocalin (NGAL) and progression of chronic kidney disease. *Clin J*  
384 *Am Soc Nephrol.* 2009;4(2). doi 10.2215/CJN.03530708
- 385 22. Danquah M, Owiredu WKBA, Jnr BAE, Serwaa D, Odame Anto E, Peprah MO, et al.  
386 Diagnostic value of neutrophil gelatinase-associated lipocalin (NGAL) as an early  
387 biomarker for detection of renal failure in hypertensives: a case-control study in a regional  
388 hospital in Ghana. *BMC Nephrol [Internet].* 2023;24(1):114. Available from:  
389 <https://doi.org/10.1186/s12882-023-03120-6>
- 390 23. Bolignano D, Coppolino G, Campo S, Aloisi C, Nicocia G, Frisina N, et al. Urinary

391 Neutrophil Gelatinase-Associated Lipocalin (NGAL) is associated with severity of renal  
 392 disease in proteinuric patients. Vol. 23, Nephrology Dialysis Transplantation. 2008. doi  
 393 10.1093/ndt/gfm541  
 394 24. Singh A, Jha AK, Kalita BC, Jha DK, Alok Y. Neutrophil lymphocyte ratio: a reliable  
 395 biomarker for diabetic nephropathy? Int J Diabetes Dev Ctries. 2021; doi 10.1007/s13410-  
 396 021-01000-z

397

398

### 399 **Tables and Figures**

400 **Table 1** Comparison of sociodemographic, anthropometric indices, haemato-biochemical values  
 401 and dietary lifestyle of type 2 diabetics with reduced eGFR and normal eGFR and controls

402

<b>Variables</b>	<b>Diabetics with reduced eGFR (n=10)</b>	<b>Diabetics with normal eGFR (n=87)</b>	<b>Controls (n=70)</b>	<b><i>p-value</i></b>
Age (yr)	56.7 ± 9.0	56.5 ± 7.5	45.5 ± 7.5	<b>0.0040<sup>a,b</sup></b>
Females (%)	9 (90.0)	70 (77.0)	42(60.0)	<b>0.0260</b>
Beyond high school education (%)	3 (30.0)	11(12.6)	47 (67.1)	<b>&lt;0.0001</b>
BMI (kg/m <sup>2</sup> )	30.4 ± 2.5	28.5 ± 3.0	22.8 ± 1.8	<b>&lt;0.0001<sup>a,b</sup></b>
Diastolic (mm/Hg)	68.8 ± 7.2	72.6 ± 6.7	73.1 ± 1.4	<b>&lt;0.0001<sup>a</sup></b>
Systolic (mm/Hg)	125.5 ± 3.6	125.1 ± 4.3	120.5 ± 1.7	<b>&lt;0.0001<sup>a,b</sup></b>
FBG (mmol/L)	7.0 ± 1.3	8.8 ± 3.8	4.4 ± 0.7	<b>&lt;0.0001<sup>a,b</sup></b>

HbA1c(%)	8.8 ± 3.1	7.7 ± 2.2	5.6 ± 0.7	<b>0.0370</b> <sup>a,b</sup>
eGFR (ml/min/1.732)	48.5 ± 10.4	91.3 ± 16.7	115.5 ± 15.7	<b>&lt;0.0001</b> <sup>a,b,c</sup>
Creatinine (µmol/L)	116.8 ± 32.8	69.0 ± 17.2	52.7 ± 16.0	<b>&lt;0.0001</b> <sup>a,b,c</sup>
sNGAL (µg/L)	12.4 ± 2.8	5.3 ± 1.01	4.4 ± 0.8	<b>&lt;0.0001</b> <sup>a,b,c</sup>
NLR	2.9 ± 0.8	2.2 ± 0.9	2.0 ± 0.8	<b>0.0070</b> <sup>a,c</sup>
White Blood Count (/nL)	16.8 ± 4.1	6.4 ± 2.0	5.9 ± 2.0	<b>0.0260</b> <sup>a,c</sup>
Absolute Neutrophil Count (/nL)	13.7 ± 3.1	4.7 ± 1.5	4.0 ± 0.9	<b>0.0020</b> <sup>a,c</sup>
Absolute Lymphocyte Count (/nL)	4.8 ± 0.7	2.4 ± 0.8	2.2 ± 0.8	<b>0.0230</b> <sup>a,c</sup>
<i>Monthly Sweets Consumption</i>				<b>&lt;0.0001</b>
Rarely	5(50.0)	20(23.0)	0(0.0)	
Irregular	5(50.0)	67(77.0)	57(81.4)	
Regular	0(0.0)	0(0.0)	13(18.6)	
<i>Monthly vigorous Exercise</i>				<b>&lt;0.0001</b>
Rarely	1(1.0)	5(5.7)	0(0.0)	
Irregular	9(90.0)	57(65.5)	10(14.3)	
Regular	0(0.0)	25(28.7)	60(85.7)	
<i>Monthly Tuber Consumption</i>				<b>0.8030</b>
Rarely	0(0.0)	1(1.0)	0(0.0)	
Irregular	2(20.0)	18(20.7)	11(15.7)	
Regular	8(80.0)	68(78.2)	59(84.3)	
<i>Alcohol intake</i>				0.630

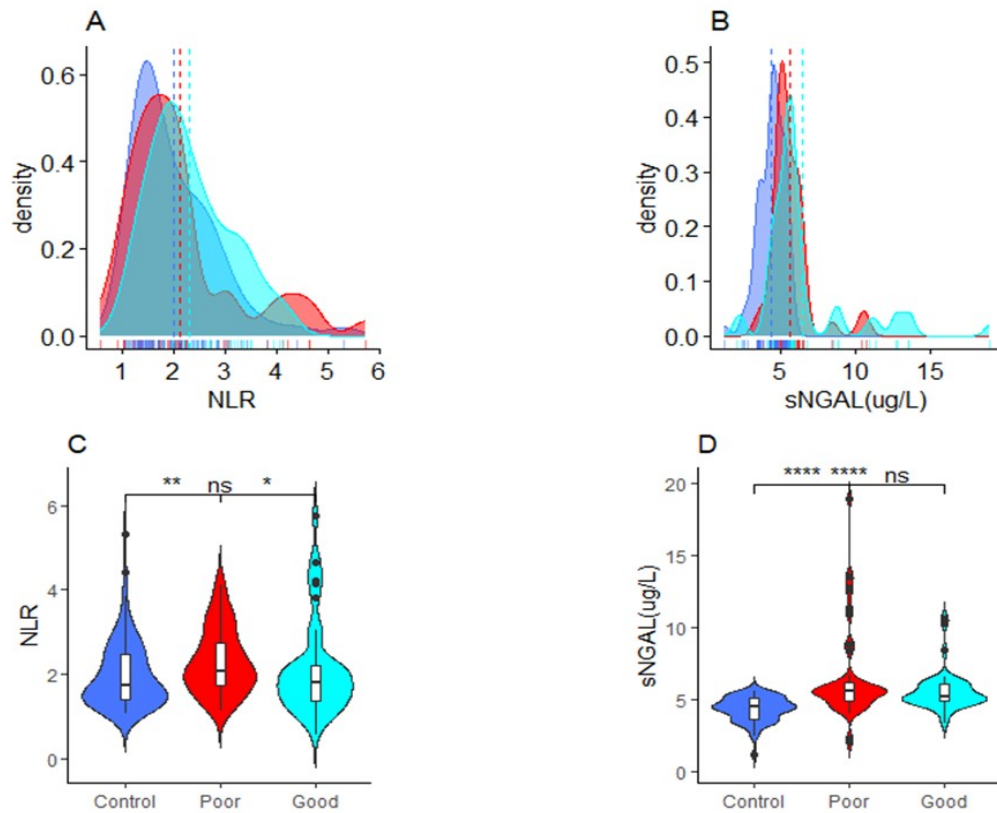
Rarely	10(100.0)	86 (98.9)	70(100.0)
Irregular	0(0.0)	1(1.1)	0(0.0)

403 BMI- Body Mass Index, FBS- Fasting Blood Glucose, HbA1c- Glycosylated haemoglobin, eGFR- Estimated  
 404 Glomerular Filtration Rate, sNGAL- Serum neutrophil gelatinase-associated lipocalin, NLR- Neutrophil-to-  
 405 Lymphocyte Ratio, <sup>a</sup>: significant difference between controls and diabetic nephropathy, <sup>b</sup>: significant difference  
 406 between controls and non-diabetic nephropathy, <sup>c</sup>: significant difference between diabetic nephropathy and non-  
 407 diabetic nephropathy, p< 0.05 and bolded means statistically significant  
 408

409  
 410 **Table 2 Diagnostic performance of sNGAL and NLR in predicting Diabetic Nephropathy**  
 411 **among type 2 diabetics**

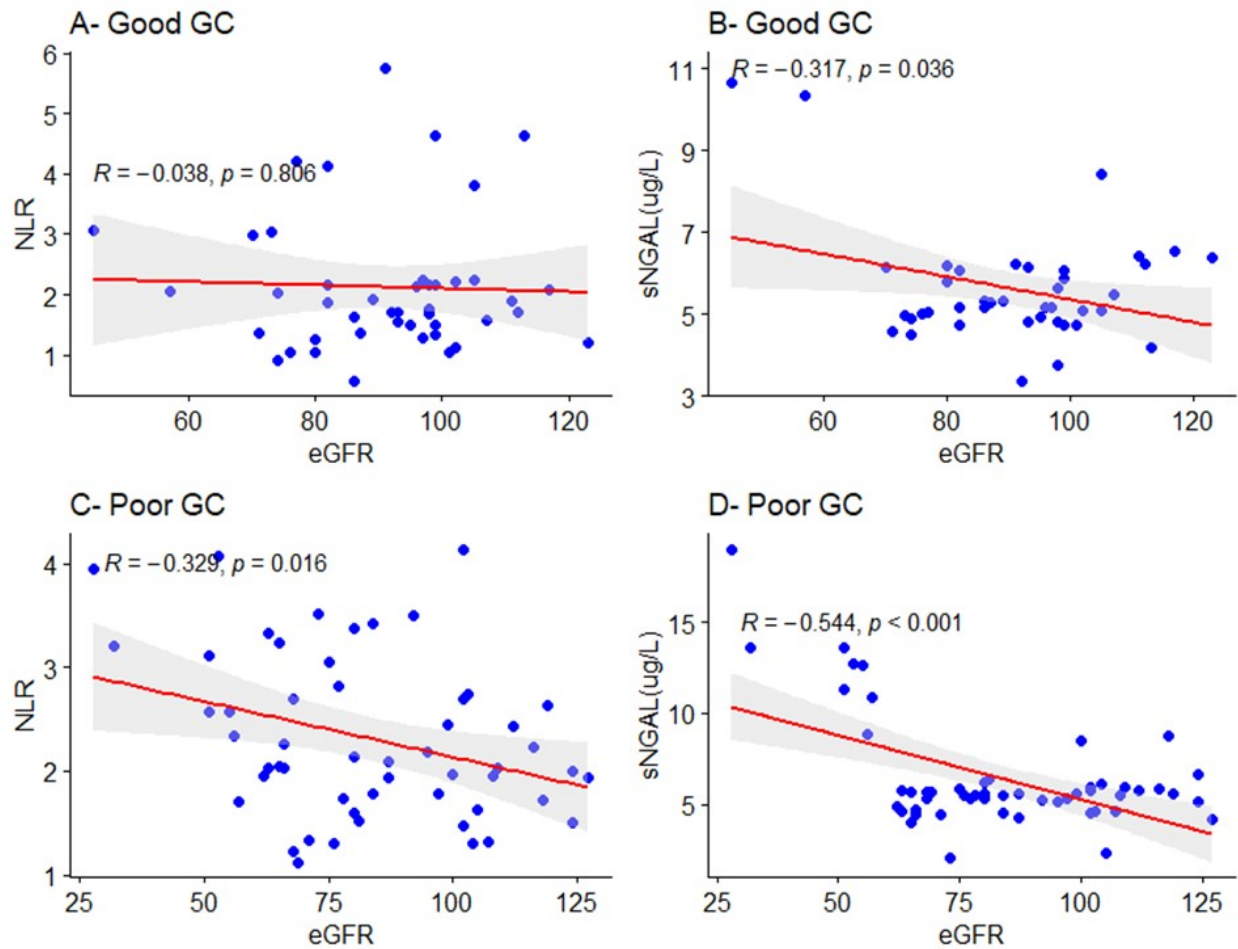
Marker	Cut-off	Sensitivity (95% CI)	Specificity (95% CI)	PPV	NPV	LR+	LR-
NLR	2.34	80.0 (47.8-95.1)	73.6 (63.4-81.7)	25.8	97	3.03	0.27
sNGAL (µg/L)	8.87	100.0 (67.4-100.0)	100.0 (94.8-100.0)	100.0	100.0	inf	0.00

412 Abbreviations: NLR: Neutrophil-to-Lymphocyte Ratio, sNGAL: serum Neutrophil Gelatinase – Associated  
 413 Lipocalin, CI: Confidence interval, PPV: Positive predictive value, NPV: Negative predictive value, LR+: Positive  
 414 likelihood ratio, LR-: Negative likelihood ratio  
 415



416

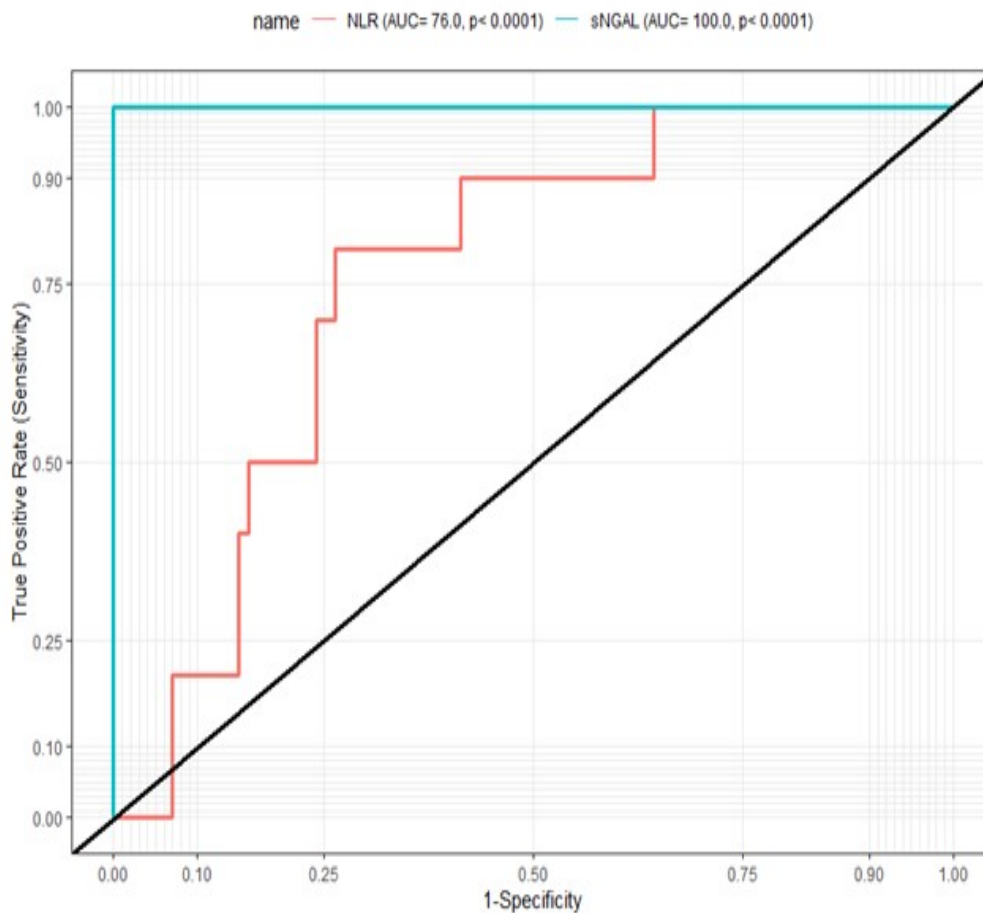
417 **Figure 1: Density (A-B) and box and violin plot (C-D) showing the distribution and comparison respectively of**  
418 **NLR, and sNGAL between good and poor glycaemic controlled type 2 diabetics with reduced eGFR and healthy**  
419 **controls; ns (not significant) =  $p > 0.05$ , \* =  $p < 0.05$ , \*\* =  $p < 0.01$ , \*\*\* =  $p < 0.001$ , \*\*\*\* =  $p < 0.0001$**



420

421 **Figure 2: Relationship between sNGAL NLR, and eGFR among good and poor glycaemic controlled type 2**  
422 **diabetics with reduced eGFR.**

423



424

425 **Figure 3: The receiver operating characteristics (ROC) curves of NGAL and NLR for predicting diabetic**  
426 **nephropathy among T2DM.**

427