

1 **Impact of Cushing's syndrome on the hypothalamus-pituitary-gonad axis in**  
2 **women**

3

4

5

6 Anting Yu<sup>1</sup>, Xuan Liu<sup>1</sup>, Yiyu Chen<sup>1</sup>, Shuo Li<sup>1</sup>, Ming Liu<sup>1\*</sup>

7 <sup>1</sup>Department of Endocrinology and Metabolism, Tianjin Medical University General Hospital,

8 Tianjin, China

9

10

11

12 **\* Correspondence:**

13 **Ming Liu**, [mingliu@tmu.edu.cn](mailto:mingliu@tmu.edu.cn), 18320017516;

14 Department of Endocrinology and Metabolism, Tianjin Medical University General Hospital,

15 Tianjin, China

16 154 Anshan Road, Heping District, Tianjin 300052, China

17

18

19

20

21

22

23 **Abstract**

24 **Background:** The reproductive and sexual disorders commonly occur in patient with Cushing's  
25 syndrome (CS), but only few clinical studies focused on the hypothalamus-pituitary-gonad (HPG)  
26 axis status in women with CS. A comprehensive spectrum of the impairment on HPG axis in  
27 women with CS of different tensity and causes is needed.

28 **Method:** This retrospective study analyzed the status of HPG axis in 137 women with different  
29 CS causes diagnosed between 2007 and May 2024, and the correlation between reproductive  
30 hormones and the tensity of hypercortisolism. Receiver operating characteristic (ROC) analysis  
31 was performed in 45 women with available data of plasma steroids by tandem mass spectrometry  
32 (LC-MS/MS) as well.

33 **Results:** Women with ectopic adrenocorticotropin (ACTH) secretion (EAS) had significantly  
34 higher levels of serum cortisol, 24h urinary-free cortisol (UFC), ACTH, with marked increase in  
35 testosterone and decrease in Luteinizing hormone (LH) and Follicle-stimulating hormone (FSH)  
36 ( $P<0.001$ ).The serum cortisol and ACTH were positively associated with testosterone, while  
37 negatively associated with LH and FSH, especially in postmenopausal women. Further  
38 investigation of steroid profiles found plasma androgen including testosterone, Androstenedione  
39 (A2), dehydrospirostenedione (DHEA) and dehydrospirostenedione sulfate (DHEAS) had  
40 high sensitivity and specificity in discriminating CD from adrenal CS. Additional analysis of  
41 thyroid axis found hypercortisolism had less influence on TSH compared with LH and FSH.

42 **Conclusion:** Excessive cortisol caused by CS can impair the HPG axis in women, which were  
43 especially intense in EAS. The degrees of impairment were associated with the intensity and the  
44 underlying causes of hypercortisolism.

45 **Keywords:** Cushing's syndrome/HPG axis/ectopic ACTH syndrome/serum steroids/mass  
46 spectrometry

47

## 48 **Introduction**

49 Cushing's syndrome (CS), as a chronic and systemic endocrine disease caused by long-term and  
50 excessive exposure to glucocorticoids, can leads to a myriad of clinical manifestations and  
51 complications. CS traditionally comprises two subgroups: ACTH-dependent CS, which account  
52 for 70-80% of CS, and ACTH-independent CS (AI-CS).[1] ACTH-dependent CS is most  
53 commonly caused by Cushing's disease (CD) (80-90%), and more rarely ectopic ACTH secretion  
54 (EAS) (10-20%), whose discrimination from Cushing's disease is considered challenging[2,  
55 3]. ACTH-independent CS is most frequently caused by unilateral adrenal adenomas (70-80%)[1].

56 The clinical complications of CS primarily include systematic arterial hypertension, impairment of  
57 glucose and lipid metabolism, musculoskeletal disorders, neuropsychiatric disorders, impairment  
58 of reproductive and sexual function and dermatological manifestations. Reproductive and sexual  
59 disorders commonly occur in patients with CS, and most frequently represented as decreased  
60 libido and hypogonadism in men and menstrual irregularity in women[4]. It is widely accepted  
61 that the hypothalamus-pituitary-gonad (HPG) axis can be affected by hypercortisolism at different  
62 levels, which accounts for the reproductive and sex disorders[5, 6]. Besides, excessive cortisol  
63 secretion can also impair the function of hypothalamus-pituitary-thyroid (HPT) axis[7].

64 Recently, some clinical studies has investigated the impact of CS on HPG axis in men, pointed out  
65 that hypercortisolism can lead to reversible hypogonadotropic hypogonadism in men[8, 9].

66 Though the female predominance exist in CS of different causes[1], only a few studies focused on

67 the HPG status in women with CS in clinic[10-12], and rarely investigated the impairment of  
68 different subtypes of CS on HPG axis and its correlation with the intensity of hypercortisolism. Thus  
69 the aim of this retrospective study was to investigate the clinical status of HPG axis in women  
70 affected by different causes of CS and varying intensity of hypercortisolism.

71

## 72 **Materials and methods**

### 73 **Setting**

74 This was a retrospective study at the department of Endocrinology and Metabolism at Tianjin  
75 Medical University General Hospital. All coded medical records of women patient with CS  
76 assessed in routine care between 2007 and May 2024 were analyzed.

### 77 **Clinical evaluation**

78 All patient were hospitalized at Tianjin Medical University General Hospital to undergo a full  
79 diagnostic work-up. The diagnosis of Cushing syndrome was based on clinical features and at  
80 least 2 of the following: (1) 24-h urinary free cortisol excretion ( $>300$  nmol/24 h) in at least 2  
81 samples; (2) 1-mg overnight dexamethasone suppression test (0800 h plasma cortisol $>50$  nmol/L)  
82 [13]; (3) 48 h, 2 mg/d dexamethasone suppression test urinary free cortisol $>27$  nmol/24 h [14].

83 Majority of the diagnoses of adrenal Cushing's syndrome was histologically confirmed. The  
84 diagnosis of Cushing disease was established if pathological examination of the pituitary surgical  
85 specimen confirmed the diagnosis, or if the condition resolved after resection or irradiation of the  
86 pituitary gland. The diagnosis of an ectopic cause of ACTH secretion was confirmed by  
87 histological examination of surgical or biopsy specimen. Nonetheless, not all sources of ACTH  
88 excess were confirmed, in this case, presumed diagnosis was extracted from diagnostic code at

89 discharge. The diagnoses were made at the discretion of the attending physician, based on clinical  
90 presentation, results of high-dose dexamethasone test, pituitary MRI, chest and abdominal CT.

### 91 **Hormone assays**

92 Preoperative blood samples were obtained in the morning between 06:00 to 08:00 from an 8h  
93 fasting blood draw to minimize potential confounding introduced by circadian rhythmicity and  
94 food intake. Plasma ACTH, cortisol and 24-h excretion of urinary free cortisol were measured  
95 using chemiluminescent enzyme immunoassay (Siemens Healthcare Diagnostics Inc., Erlangen,  
96 Germany). The reproductive hormones (FSH, LH, estradiol, testosterone) were measured at the  
97 early time of primary diagnosis, and determined by chemiluminescence as well.

98 Only 45 women with CS were available to measure the plasma steroids by MS, and the steroid  
99 profile includes the following: progesterone, 17-hydroxyprogesterone, DHEA, DHEAS,  
100 androstenedione, testosterone, 11-deoxycorticosterone, 11-deoxycortisol, cortisol, corticosterone  
101 and cortisone. After appropriate sample preparation, the blood was centrifuged at 14,000g for 10  
102 minutes. A 100  $\mu$ L aliquot of the supernatant was then analyzed using a Jasper™  
103 high-performance liquid chromatography system coupled with an ABSCIEX Triple Quad™ 4500  
104 MD mass spectrometer, equipped with a heated nebulizer ionization source operating in positive  
105 ion mode. Quantification of the data was performed using MultiQuant™ MD 3.0.3 software.

### 106 **Statistic analysis**

107 Statistical analysis was performed using GraphPad Prism version 9.0, IBM SPSS Statistics version  
108 25 and R (a language and environment for statistical computing). Standard descriptive analyses  
109 were used to summarize the study variables. Shapiro's test was applied to test for normality. For  
110 quantitative variables, comparisons between controls and cases at baseline were performed by

111 unpaired Student's t-tests (or Mann-Whitney tests if the distribution of the variable was not  
112 log-normal). Comparison between the three subgroups of CS was conducted by ordinary one-way  
113 ANOVA in case of homoscedasticity or Kruskal-Wallis instead. The simple linear regression was  
114 used to study the association between Cushing's indexes and reproductive outcomes at baseline.  
115 The receiver operating characteristic (ROC) curve analysis was performed to test the usefulness of  
116 plasma androgens as markers for differentiating between adrenal CS and CD. The optimal cutoff  
117 values were determined using the Youden index (sensitivity + specificity -1). A p-value <0.05 was  
118 considered statistically significant.

119

## 120 **Results**

### 121 **Demographic and clinicopathological characteristics**

122 287 female patients clinically suspected as Cushing's syndrome were considered for inclusion in  
123 this study to begin with. After the exclusion of subclinical CS, iatrogenic CS and patients lacking  
124 sexual hormone assays, only 137 women with CS served as study's population, including 63 with  
125 adrenal CS, 57 with CD and 17 with EAS. Of note, the source of ectopic ACTH secretion include  
126 5 thymic neuroendocrine tumor, 3 gastrointestinal carcinomas, 2 pheochromocytomas, 1 renal  
127 clear cell carcinoma, 1 lung neuroendocrine tumor, 1 small cell lung carcinoma and 1 pancreatic  
128 neuroendocrine tumor.

### 129 **Gonadotrope axis in women patient with Cushing's syndrome**

130 The basic information and hormonal characteristics of study's cohort are shown in Table 1. No  
131 significant difference in body mass index (BMI) were showed. But the mean age of EAS was  
132 older than the other two subgroups, comport with previous report [3]. The three subgroups of

133 women with CS have markedly different levels of ACTH (AI-CS<CD<EAS), whereas the  
134 intensity of hypercortisolism, represented by serum cortisol and 24h-UFC, only significantly  
135 higher in women with EAS (P<0.001).

136 Comparisons of reproductive hormones between women with different CS are detailed in Figure 1.

137 There was no much difference in serum estradiol level between adrenal CS, CD and EAS.

138 Conversely, the testosterone levels significantly increased in women with EAS and CD in

139 comparison with AI-CS (P<0.001), and rather higher in EAS (P<0.001) (Figure 1 A, B). Both

140 circulating LH and FSH levels in women with EAS markedly decreased, showing significant

141 differences with the other two subgroups. But the LH and FSH levels of women with CD did not

142 significantly differ from AI-CS (Figure 1 C, D). Furthermore, the FSH:LH ratios were also

143 calculated and compared, and the EAS showed markedly higher FSH:LH ratio than AI-CS

144 (P<0.001) and CD (P=0.002), while no marked difference existed between AI-CS and CD

145 (supplementary figure S1).

#### 146 **Linear regression between hypercortisolism intensity and reproductive hormones in**

#### 147 **premenopausal and postmenopausal women**

148 It is a general consensus that the level of women's reproductive hormones have clear periodicity

149 and regulate the menstruation [15], thus the study's group was further divided into the

150 premenopausal women and the postmenopausal women, detailed in Table 2. As shown, most

151 women with EAS were postmenopausal (premenopause, n=5; psomenopause, n=12), with

152 significantly higher levels of serum cortisol, 24h-UFC, ACTH and testosterone levels, and lower

153 levels of LH and FSH. It is noteworthy that the LH and FSH levels reached a more significant

154 difference in postmenopausal women with EAS in comparison with adrenal CS and CD

155 (Supplementary Figure S2). The serum cortisol and 24h UFC levels did no significantly differ  
156 between AI-CS and CD neither in premenopause nor postmenopause women, while the ACTH and  
157 testosterone levels were higher in CD than AI-CS in both situations, similar with above (Table 1).  
158 The estradiol levels still showed no difference among the three subgroups neither in  
159 premenopausal women nor in postmenopausal women.

160 For the sake of investigating the relationship between the tensity of hypercortisolism and the HPG  
161 axis impairment, linear regression analyses between serum cortisol and the reproductive hormones  
162 were performed, detailed in Figure 2. As shown, in postmenopausal women, serum cortisol was  
163 significantly and negatively associated with FSH ( $P=0.014$ ) and LH ( $P=0.016$ ), while positively  
164 associated with testosterone ( $P<0.001$ ). Similar analyses were performed in premenopausal  
165 women with CS as well, and found that serum cortisol did not significantly associated with LH or  
166 FSH. Only testosterone was positively associated with serum cortisol in premenopausal women  
167 with CS ( $P<0.001$ ). Of note, the linear regression curves in postmenopausal women described  
168 those relationships better, which are demonstrated by Pearson's correlations[16].

169 The linear regression between ACTH, 24h-UFC and reproductive hormones are presented in  
170 Supplementary Table S1. The results were quiet similar with serum cortisol when studying the  
171 relationship between ACTH and reproductive hormones, showing significant correlations with  
172 testosterone in both situations, but only in postmenopausal women ACTH did significantly  
173 correlate with LH and FSH. Moreover, the 24h-UFC only showed significant correlation with  
174 testosterone, and merely did correlate with LH or FSH in neither situations. Still, serum estradiol  
175 did not correlate with any parameters of CS in any situations.

176 **The characteristics of steroid profiles in adrenal CS and Cushing's disease**



177 The measurement of plasma steroids by MS was only available in 45 women with CS, detailed in  
178 Table 3 (AI-CS, n=24; CD, n=21). As shown, plasma androgen including testosterone, A2, DHEA  
179 and DHEAS significantly increased in women with CD compared with AI-CD ( $P<0.001$ )  
180 (Supplementary Figure S3). Additional linear regression analyses between ACTH and DHEA and  
181 DHEAS were performed as well, and showed significant and positive association between them  
182 (supplementary figure S4), comport with the general acceptance that DHEA and DHEAS are  
183 majorly determined by ACTH levels [17]. Except plasma androgen, only 11-Deoxycortisol  
184 ( $P=0.011$ ) and 11-deoxycortisterone ( $P=0.006$ ) moderately decreased in women with CD.  
185 The receiver operating characteristic curve (ROC) analyses were applied to assess the diagnostic  
186 power of plasma androgen in differentiating CD from adrenal Cushing's syndrome, and detailed in  
187 Table 4 and Figure 3. As shown, the testosterone had a sensitivity of 81.0% and a specificity of  
188 83.3%, with a cutoff value of 172.5 pg/ml and an AUC of 0.816. The androstenedione had a  
189 sensitivity of 100.0% and a specificity of 83.3%, with a cutoff value of 917.5 pg/ml and an AUC  
190 of 0.829. The DHEA had a sensitivity of 100.0% and a specificity of 87.5%, with a cutoff value of  
191 1170.5 pg/ml and an AUC of 0.972. The DHEA-S had a sensitivity of 100.0% and a specificity of  
192 83.3%, with a cutoff value of  $0.27 \times 10^6$  pg/ml and an AUC of 0.958. Taken together, all four  
193 plasma androgen can effectively discriminate between adrenal CS and CD, with high sensitivity  
194 and specificity at the best cutoff, especially DHEA and DHEAS.

#### 195 **Thyroid axis in women patient with Cushing's syndrome**

196 Due to the Interest in the impact of hypercortisolism on HPT axis, and the high prevalence of  
197 thyroid function test, the data of thyroid hormone was also collected, detailed in Table1 and Figure  
198 4. As shown, only serum FT3 levels in women with EAS markedly decreased compared to adrenal

199 CS and CD ( $P < 0.01$ ), either FT4 nor TSH showed much difference (figure 5A, B). The FT3:FT4  
200 ratios were further calculated and compared, and reflected a more distinguishing difference in  
201 EAS compared with AI-CS and CD as well ( $P < 0.001$ ) (Figure 5C), which statistically indicated the  
202 prominent effect of cortisol-mediated inhibition on peripheral deiodination [7]. The linear  
203 regression analyses between hypercortisolism and thyroid hormones were also performed, detailed  
204 in supplementary figure S5. Only the FT3 showed a moderate correlation with serum cortisol,  
205 24h-UFC and ACTH, neither FT4 nor TSH did significantly correlate with any parameters of CS.

206

## 207 **Discussion**

208 This study successfully characterizes the impact of hypercortisolism on gonadotrope axis in women  
209 with CS of different causes, and further clarifies its correlation with the intensity of  
210 hypercortisolism. The steroids profiles between CD and adrenal CS in a limited group is  
211 investigated as well, offering a more profound insight into the changes of sexual hormones. The  
212 effects of CS on HPT axis is also mentioned, in comparison with the HPG axis.

213 The primary finding of this study is the distinguishing decrease of LH and FSH, and the marked  
214 increase of testosterone levels in women with EAS compared with adrenal CS and CD. It is widely  
215 accepted that EAS is usually associated with more severe hypercortisolism, which was also  
216 confirmed in this study, and that glucocorticoids can dose-dependently impair the hypothalamus,  
217 pituitary and the reproductive tract in women [1, 5, 6], thus the decrease of LH and FSH is  
218 theoretically expected. However, there was no significant difference in estradiol between the three  
219 CS subgroups, nor correlation with the intensity of hypercortisolism in neither premenopausal  
220 cohort or in the postmenopausal cohort. This may be explained by the dual roles of

221 glucocorticoids in the ovary. The glucocorticoids have been found have both stimulatory and  
222 inhibitory effects on ovary, depending on the cortisol dosage, follicular phase or GR isoforms  
223 expression, and the function still remains unclear [18]. Moreover, women with EAS had markedly  
224 higher FSH:LH ratio, and there has study pointed out that a basal cycle high FSH:LH ratio has a  
225 negative impact on follicular development and oocyte quality [19], indicating another possible  
226 mechanism by which the gonad was impaired in women with EAS.

227 This study also found significant linear associations between serum cortisol and ACTH versus  
228 reproductive hormones, especially in postmenopausal women with CS, which were negative in LH  
229 and FSH, while positive in testosterone. Through further dividing the study's group by the  
230 menopause, we hope to exclude the influence of menstruation on reproductive hormones. And the  
231 result exhibited more fitting models of linear regression for the association between the tensity of  
232 hypercortisolism and LH and FSH in postmenopausal cohort, demonstrated by higher Pearson's  
233 correlations [16]. Comport with previous studies [5, 6, 18], those results once again confirmed that  
234 the function of HPG axis in women can be impaired by hypercortisolism, and is associated with its  
235 intensity. Nevertheless, similar with previous study in men, these associations were quite  
236 moderate[8], indicating that other influential factors, like personal heterogeneity and underlying  
237 cause, also have influence on the degrees of gonadal impairment by hypercortisolism.

238 As mentioned above, the response of testosterone to hypercortisolism was antithetical to LH and  
239 FSH, showing that more severe hypercortisolism is associated with higher plasma testosterone in  
240 women with CS. Further, the steroids profile by MS showed that testosterone, A2, DHEA and  
241 DHEAS were all increased in women with CD compared with AI-CS. Interestingly, this finding is  
242 right inverse to the finding in men, which showed that testosterone levels were frequently lower in

243 men with CS and negatively associated with the intensity of hypercortisolism [8, 9, 20]. This  
244 phenomenon suggests that the sexual dimorphism exists in testosterone's response to CS. The  
245 explanation lies in that the testosterone is mainly secreted by testicle in men, and its secretion can  
246 be inhibited by hypercortisolism [20], whereas in women, the testosterone is produced from  
247 adrenal (25%), ovary (25%), and circulating A2 (50%), and the A2 is secreted by adrenal (50%)  
248 and ovary (50%) as well [21]. As generally accepted, the adrenal androgen production is  
249 stimulated by ACTH [22], which is also confirmed by this study's result, presenting significant  
250 and positive correlation between ACTH and plasma androgen. Thus in women with CS, the  
251 regulation of ACTH on adrenal androgen seemed have a more predominant role than the inhibition  
252 of hypercortisolism on gonad.

253 The steroid profiles of CS based on MS is a hot topic recently, many studies have reported that the  
254 steroid profiles can help diagnose different subtypes of CS, including clinical and subclinical CS,  
255 adrenal CS, CD, EAS and so on [23-26]. The diagnostic power of plasma androgen in  
256 discriminating CD and adrenal CS was also analyzed in this study, and found all the four androgen  
257 can effectively differentiate CD from adrenal CS. Among them, DHEA and DHEAS can best  
258 serve as diagnostic parameters with higher sensitivity and specificity, making them useful  
259 supplementary measurement to confirm the causes of CS.

260 This study also investigated the impact of CS on HPT axis, but only found the peripheral  
261 inhibitory effect of hypercortisolism, demonstrated by the decreased FT3 and T3:T4 ratio in EAS,  
262 and the negative correlation between FT3 and hypercortisolism. The FT4 and TSH showed no  
263 significant difference or correlation with hypercortisolism, which seemed contrary to previous  
264 study [7, 27]. But this result may imply that the HPG axis was more vulnerable to excessive serum

265 cortisol than the thyroid axis, since the HPG axis seemed more severely impaired than thyroid axis  
266 but similar intensity of hypercortisolism. As normal thyroid function is important to maintaining  
267 normal reproduction, and thyrotoxicosis and hypothyroidism can cause reproductive and sex  
268 disorders in both men and women [28], extra attentions should be paid on HPG axis in those  
269 patient with CS and hypothyroidism.

270 The major limitation of this study is its retrospective design, which inevitably leading to selection  
271 bias, personal heterogeneity and measurement incompleteness. Besides, the 24h-UFC merely had  
272 significant correlations with reproductive hormones in this study, which may attributed to the  
273 retrospective design and the high degree of variability in UFC levels [29].The limited number  
274 available to MS is also a limitation, due to the low prevalence of MS, but taken previous studies  
275 together [23, 24, 30], the conclusion about the steroid profiles is quite convincing.

276 The major strength of this study is that it met the need to characterize the clinical spectrum of CS  
277 on HPG axis in women with the large population. Though it is widely received that high dose of  
278 glucocorticoid can impair reproductive system [5, 6, 18], only a handful studies reported its  
279 clinical status[10-12]. This study further divided the whole cohort by etiology and menopause, and  
280 through investigating the differences and associations among different groups, offered more  
281 comprehensive insight into the influence of hypercortisolism on HPG axis. The involvement of  
282 steroid profile using MS is also the novelty of this study, provided support for plasma androgen in  
283 discriminating CD from adrenal CS. Moreover, with the wide use of glucocorticoids, the result of  
284 this study highlights the importance to concern the HPG axis status in women with exogenous CS  
285 as well, especially in those who seek fertility.

286 In conclusion, the impairment of Cushing's syndrome on hypothalamic-pituitary-gonadal axis in

287 women is associated with the underlying causes and the intensity of hypercortisolism. Women  
288 with ectopic ACTH syndrome incline to show a more severe impairment of HPG axis but higher  
289 testosterone levels.

290

### 291 **Acknowledgments**

292 We thank all participants from the Department of Endocrinology and Metabolism at Tianjin  
293 Medical University General Hospital.

294

### 295 **Funding**

296 This work was supported by the National Key R&D Program of China (grant numbers  
297 2019YFA0802502 and 2022YFE0131400); we acknowledge the support of the National Natural  
298 Science Foundation of China (grant numbers 81830025 and 82220108014), Tianjin Key Medical  
299 Discipline (Specialty) Construction Project (grant number TJYXZDXK-030A), and Major Project  
300 of Tianjin Municipal Science and Technology Bureau (grant number 21ZXJBSY00060).

301

### 302 **Ethics approval**

303 The studies involving human participants were reviewed and approved by Institutional Review  
304 Board of Tianjin Medical University General Hospital. The ethics committee waived the  
305 requirement for written informed consent for participation.

306

### 307 **Human participant declaration**

308 Due to the extraction of all patient data from the hospital's electronic medical records and the

309 anonymization of participants' identities, the study waived the requirement for informed consent.

310

311 **statement of authorship**

312 Anting Yu participated in data collection and drafting and editing of the paper.

313 Ruixuan Liu, Yiyu Chen and Shuo Li participated in data analysis.

314 Ming Liu participated in revision of the paper.

315 All authors saw and approved the final version and no other person made a substantial

316 contribution to the paper.

317

318 **References**

319 1. Gadelha, M., et al., *Cushing's syndrome*. Lancet, 2023. **402**(10418): p. 2237-2252.

320 2. Giuffrida, G., et al., *Global Cushing's disease epidemiology: a systematic review and*

321 *meta-analysis of observational studies*. J Endocrinol Invest, 2022. **45**(6): p. 1235-1246.

322 3. Hayes, A.R. and A.B. Grossman, *Distinguishing Cushing's disease from the ectopic ACTH*

323 *syndrome: Needles in a haystack or hiding in plain sight?* J Neuroendocrinol, 2022. **34**(8): p.

324 e13137.

325 4. Pivonello, R., et al., *Complications of Cushing's syndrome: state of the art*. Lancet Diabetes

326 Endocrinol, 2016. **4**(7): p. 611-29.

327 5. Whirledge, S. and J.A. Cidlowski, *Glucocorticoids and Reproduction: Traffic Control on the*

328 *Road to Reproduction*. Trends Endocrinol Metab, 2017. **28**(6): p. 399-415.

329 6. Joseph, D.N. and S. Whirledge, *Stress and the HPA Axis: Balancing Homeostasis and Fertility*.

330 Int J Mol Sci, 2017. **18**(10).

- 331 7. Paragliola, R.M., et al., *Cushing's Syndrome Effects on the Thyroid*. Int J Mol Sci, 2021. **22**(6).
- 332 8. Papadakis, G.E., et al., *Impact of Cushing's syndrome on the gonadotrope axis and testicular*  
333 *functions in men*. Hum Reprod, 2023. **38**(12): p. 2350-2361.
- 334 9. Zheng, H., et al., *The hypothalamic-pituitary-gonad axis in male Cushing's disease before and*  
335 *after curative surgery*. Endocrine, 2022. **77**(2): p. 357-362.
- 336 10. Kaltsas, G.A., et al., *How common are polycystic ovaries and the polycystic ovarian syndrome*  
337 *in women with Cushing's syndrome?* Clin Endocrinol (Oxf), 2000. **53**(4): p. 493-500.
- 338 11. Akirov, A., et al., *Cushing's syndrome in women: age-related differences in etiology and*  
339 *clinical picture*. Pituitary, 2023. **26**(1): p. 144-151.
- 340 12. Keskin, F.E., et al., *Sexual function in women with Cushing's Syndrome: A controlled study*.  
341 Turk J Urol, 2018. **44**(4): p. 287-293.
- 342 13. Nieman, L.K., et al., *The diagnosis of Cushing's syndrome: an Endocrine Society Clinical*  
343 *Practice Guideline*. J Clin Endocrinol Metab, 2008. **93**(5): p. 1526-40.
- 344 14. Görge, R., et al., *Diagnosis of Cushing's syndrome: re-evaluation of midnight plasma cortisol*  
345 *vs urinary free cortisol and low-dose dexamethasone suppression test in a large patient group*.  
346 J Endocrinol Invest, 1999. **22**(4): p. 241-9.
- 347 15. Jabbour, H.N., et al., *Endocrine regulation of menstruation*. Endocr Rev, 2006. **27**(1): p.  
348 17-46.
- 349 16. Schneider, A., G. Hommel, and M. Blettner, *Linear regression analysis: part 14 of a series on*  
350 *evaluation of scientific publications*. Dtsch Arztebl Int, 2010. **107**(44): p. 776-82.



- 351 17. El Asmar, N., et al., *The Value of Perioperative Levels of ACTH, DHEA, and DHEA-S and*  
352 *Tumor Size in Predicting Recurrence of Cushing Disease.* J Clin Endocrinol Metab, 2018.  
353 **103**(2): p. 477-485.
- 354 18. Bhaumik, S., et al., *Glucocorticoids and Their Receptor Isoforms: Roles in Female*  
355 *Reproduction, Pregnancy, and Foetal Development.* Biology (Basel), 2023. **12**(8).
- 356 19. Barroso, G., et al., *High FSH:LH ratio and low LH levels in basal cycle day 3: impact on*  
357 *follicular development and IVF outcome.* J Assist Reprod Genet, 2001. **18**(9): p. 499-505.
- 358 20. Ren, L., et al., *Dysfunction in Sertoli cells participates in glucocorticoid-induced impairment*  
359 *of spermatogenesis.* Mol Reprod Dev, 2021. **88**(6): p. 405-415.
- 360 21. Burger, H.G., *Androgen production in women.* Fertil Steril, 2002. **77 Suppl 4**: p. S3-5.
- 361 22. Turcu, A., et al., *Adrenal androgens and androgen precursors-definition, synthesis, regulation*  
362 *and physiologic actions.* Compr Physiol, 2014. **4**(4): p. 1369-81.
- 363 23. Hines, J.M., et al., *High-Resolution, Accurate-Mass (HRAM) Mass Spectrometry Urine*  
364 *Steroid Profiling in the Diagnosis of Adrenal Disorders.* Clin Chem, 2017. **63**(12): p.  
365 1824-1835.
- 366 24. Braun, L.T., et al., *Delineating endogenous Cushing's syndrome by GC-MS urinary steroid*  
367 *metabotyping.* EBioMedicine, 2024. **99**: p. 104907.
- 368 25. Masjkur, J., et al., *Plasma Steroid Profiles in Subclinical Compared With Overt Adrenal*  
369 *Cushing Syndrome.* J Clin Endocrinol Metab, 2019. **104**(10): p. 4331-4340.
- 370 26. Eisenhofer, G., et al., *Plasma Steroid Metabolome Profiling for Diagnosis and Subtyping*  
371 *Patients with Cushing Syndrome.* Clin Chem, 2018. **64**(3): p. 586-596.

- 372 27. Shekhar, S., et al., *The Hypothalamic-Pituitary-Thyroid Axis in Cushing Syndrome Before and*  
373 *After Curative Surgery*. J Clin Endocrinol Metab, 2021. **106**(3): p. e1316-e1331.
- 374 28. Krassas, G.E., K. Poppe, and D. Glinoeer, *Thyroid function and human reproductive health*.  
375 Endocr Rev, 2010. **31**(5): p. 702-55.
- 376 29. Petersenn, S., et al., *High variability in baseline urinary free cortisol values in patients with*  
377 *Cushing's disease*. Clin Endocrinol (Oxf), 2014. **80**(2): p. 261-9.
- 378 30. Ahn, C.H., et al., *Metabolic changes in serum steroids for diagnosing and subtyping Cushing's*  
379 *syndrome*. J Steroid Biochem Mol Biol, 2021. **210**: p. 105856.

380

381 **Table1. Characteristics of 137 women with Cushing's syndrome.**

	<b>Adrenal Cushing's syndrome (n=63)</b>	<b>Cushing's disease (n=57)</b>	<b>ectopic ACTH syndrome (n=17)</b>	<b>P-value</b>
Age (years)	40.11±12.60	39.95±11.09	55.65±16.15	<b>&lt;0.001</b>
Body mass index (BMI)(kg/m <sup>2</sup> )	26.15±4.19	26.92±4.83	27.09±5.31	0.587
ACTH (pg/ml)	5.00(5.00,6.79)	66.40(46.55,114.00 )	225.00(123.00,481. 00)	<b>&lt;0.001</b>
Serum cortisol (ng/ml)	30.85±8.75	33.07±11.53	51.04±17.01	<b>&lt;0.001</b>
Urinary-free cortisol (mg/24 h)	450.00(193.50,650. 00)	412.20(174.65,592. 80)	1424.50(945.00,208 1.00)	<b>&lt;0.001</b>
FSH (IU/L)	4.54(3.00,7.48)	5.18(3.58,8.25)	1.70(0.79,3.32)	<b>&lt;0.001</b>
LH (IU/L)	3.29(1.32,6.21)	2.58(1.06,6.92)	0.16(0.07,0.39)	<b>&lt;0.001</b>
E2 (pg/ml)	34.00(15.00,91.00)	32.86(14.71,54.00)	22.80(14.50,31.67)	0.365
T (ng/dl)	24.15(17.79,40.23)	52.00(38.77,72.78)	105.50(65.26 , 199.80)	<b>&lt;0.001</b>
FSH:LH ratio	2.01(1.20,3.87)	2.62(1.64,4.64)	10.83(3.41,20.78)	<b>&lt;0.001</b>
FT3 (pmol/L)	3.21±0.66	3.29±0.81	2.64±0.72	<b>0.005</b>

FT4 (pmol/L)	11.274±1.778	11.556±2.470	11.86±3.54	0.613
TSH (uIU/mL)	0.69(0.53,1.22)	0.62(0.36,1.14)	0.49(0.23,0.91)	0.097
FT3:FT4 ratio	0.29(0.25,0.31)	0.28(0.25,0.32)	0.23(0.18,0.27)	<b>&lt;0.001</b>

382 Statistically significant results(P<0.05) were highlighted in bold.Comparison between groups was  
 383 performed using one-way ANOVA or Kruskal-Wallis test if the distribution of the respective  
 384 variable was not log-normal in any of the groups. ACTH, adrenocorticotrophic hormone; FSH,  
 385 Follicle-stimulating hormone; LH, Luteinizing hormone; E2, estradiol; T, testosterone; TSH,  
 386 thyroid-stimulating hormone.

387

388 **Table2. Characteristics of women with Cushing’s syndrome separated by menstruation.**

<b>Premenopause (n=99)</b>				
	<b>Adrenal Cushing’s syndrome (n=50)</b>	<b>Cushing’s Disease (n=44)</b>	<b>ectopic ACTH syndrome (n=5)</b>	P-value
Age (years)	34.98±7.99	35.27±7.53	34.20±9.91	0.953
Body mass index (BMI)(kg/m2)	26.05±4.31	27.88±4.60	30.23±8.59	0.149
Serum cortisol (random)(ng/ml)	31.22±8.76	32.62±11.46	52.75±3.78	<b>&lt;0.001</b>
ACTH (pg/ml)	5.00(5.00,5.75)	65.55(46.28,108.95)	741.00(123.00,10 83.00)	<b>&lt;0.001</b>
Urinary-free cortisol(mg/24 h)	490.00(259.75,701.35)	420.70(190.40,584.10 )	2000.00(1225.00, 2306.00)	<b>0.001</b>
FSH(IU/L)	4.08(3.07,6.43)	4.84(3.90,6.14)	2.300(1.10,10.37)	0.392
LH(IU/L)	2.59(1.29,5.04)	2.57(1.13,5.51)	0.40(0.35,1.00)	<b>0.009</b>
E2(pg/ml)	47.00(21.54,97.65)	36.00(22.50,62.06)	28.72(26.29,135.5 0)	0.620
T(ng/dl)	24.42(16.71,41.21)	52.48(41.48,71.40)	244.20(139.95 , 457.46)	<b>&lt;0.001</b>
<b>Postmenopause (n=38)</b>				
	<b>Adrenal Cushing’s syndrome (n=13)</b>	<b>Cushing’s Disease (n=13)</b>	<b>ectopic ACTH syndrome (n=12)</b>	P-value
Age (years)	59.85±5.24	55.77±4.34	64.58±6.88	<b>0.001</b>
Body mass index (kg/m2)	26.55±3.85	23.67±4.24	26.79±4.51	0.127
Serum cortisol (random)(ng/ml)	29.41±8.94	33.49±11.68	50.33±20.34	<b>0.002</b>
ACTH	5.00(5.00,9.32)	66.40(40.25,128.00)	220.50(83.45,328.	<b>&lt;0.001</b>

(pg/ml)			00)	
Urinary-free cortisol (mg/24 h)	299.00(147.75,503.10)	233.80(130.53,721.70)	1212.50(785.00,2012.50)	<b>0.001</b>
FSH(IU/L)	42.04(1.38,68.35)	23.33(2.14,45.13)	1.230(0.78,2.44)	<b>0.012</b>
LH(IU/L)	16.93(1.82,18.79)	9.03(0.18,19.56)	0.150(0.07,0.25)	<b>0.021</b>
E2(pg/ml)	11.00(10.00,16.50)	12.690(10.00,28.50)	16.00(13.10,28.46)	0.267
T(ng/dl)	24.15(20.64,39.13)	47.70(33.17,73.56)	85.26(55.85,114.44)	<b>0.008</b>

389 Statistically significant results(P<0.05) were highlighted in bold.Comparison between groups was  
 390 performed using one-way ANOVA or Kruskal-Wallis test if the distribution of the respective  
 391 variable was not log-normal in any of the groups.ACTH: adrenocorticotrophic hormone; FSH:  
 392 Follicle-stimulating hormone; LH: Luteinizing hormone; E2: estradiol; T: testosterone.

393

394 **Table3.Characteristics of steroid profile in 45 women with CS**

	<b>Adrenal Cushing's syndrome (n=24)</b>	<b>Cushing's disease (n=21)</b>	P-value
Age (years)	42.75±11.80	39.00±9.84	0.257
Body mass index (kg/m <sup>2</sup> )	27.47±4.35	26.81±4.84	0.633
Progesterone (pg/ml)	116.00(115.00,217.50)	120.00(100.00,299.50)	0.936
17-hydroxyprogesterone (pg/ml)	287.00(240.50,638.75)	532.00(209.00,815.00)	0.481
Testosterone (pg/ml)	107.50(96.00,162.75)	238.00(177.00,317.50)	<b>&lt;0.001</b>
Androstenedione (pg/ml)	602.00(107.50,812.75)	1349.00(960.00,2419.50)	<b>&lt;0.001</b>
DHEA (pg/ml)	648.00(556.50,841.00)	4054.00(2589.00,5588.50)	<b>&lt;0.001</b>
DHEA-S (*10 <sup>6</sup> ) (pg/ml)	0.14(0.08,0.25)	1.87(1.50,2.66)	<b>&lt;0.001</b>
Cortisol (*10 <sup>5</sup> ) (pg/ml)	1.78±0.78	1.90±0.83	0.538
Corticosterone (pg/ml)	3142.00(2128.25,6479.00)	3125.00(1320.00,5111.50)	0.328
11-Deoxycortisol (pg/ml)	811.50(664.25,1636.00)	609.00(397.00,801.00)	<b>0.011</b>
11-Deoxycorticosterone (pg/ml)	106.00(96.00,288.15)	96.000(80.00,96.00)	<b>0.006</b>
Cortisone	20386.13±6388.96	21192.76±8661.66	0.716

(pg/ml)

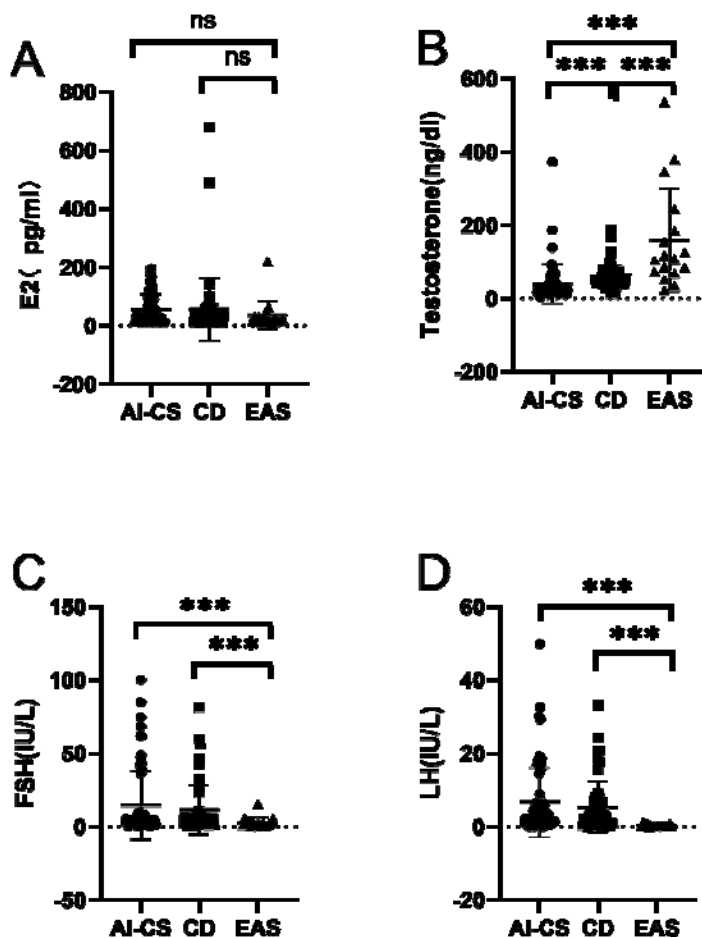
395 Statistically significant results(P<0.05) were highlighted in bold.Comparison between groups was  
 396 performed using one-way ANOVA or Kruskal-Wallis test if the distribution of the respective  
 397 variable was not log-normal in any of the groups. DHEA, dehydroepiandrosterone; DHEAS,  
 398 DHEA sulfate.

399

400 **Table 4. Accuracy of steroid biomarkers for differentiating CD form adrenal CS**

	AUC (95% CI)	Sensitivity (%)	Specificity (%)	Youden index
Total	0.816	81.0%	83.3%	0.643
Testosterone(TT) > 172.5 pg/ml	(0.682,0.951)			
Androstenedione (A2) > 917.5 pg/ml	0.829 (0.706,0.952)	100.0%	83.3%	0.875
DHEA > 1170.5 pg/ml	0.972 (0.934,1.000)	100.0%	87.5%	0.875
DHEA-S > 0.27*10 <sup>6</sup> pg/ml	0.958 (0.899,1.000)	100.0%	83.3%	0.833

401 The AUCs with 95% confidence intervals of the four different androgen were included. The  
 402 sensitivity and specificity for each marker were derived from the optimal cutoff value. AUC: area  
 403 under the curve; CI: confidence interval; DHEA dehydroepiandrosterone; DHEAS DHEA sulfate.



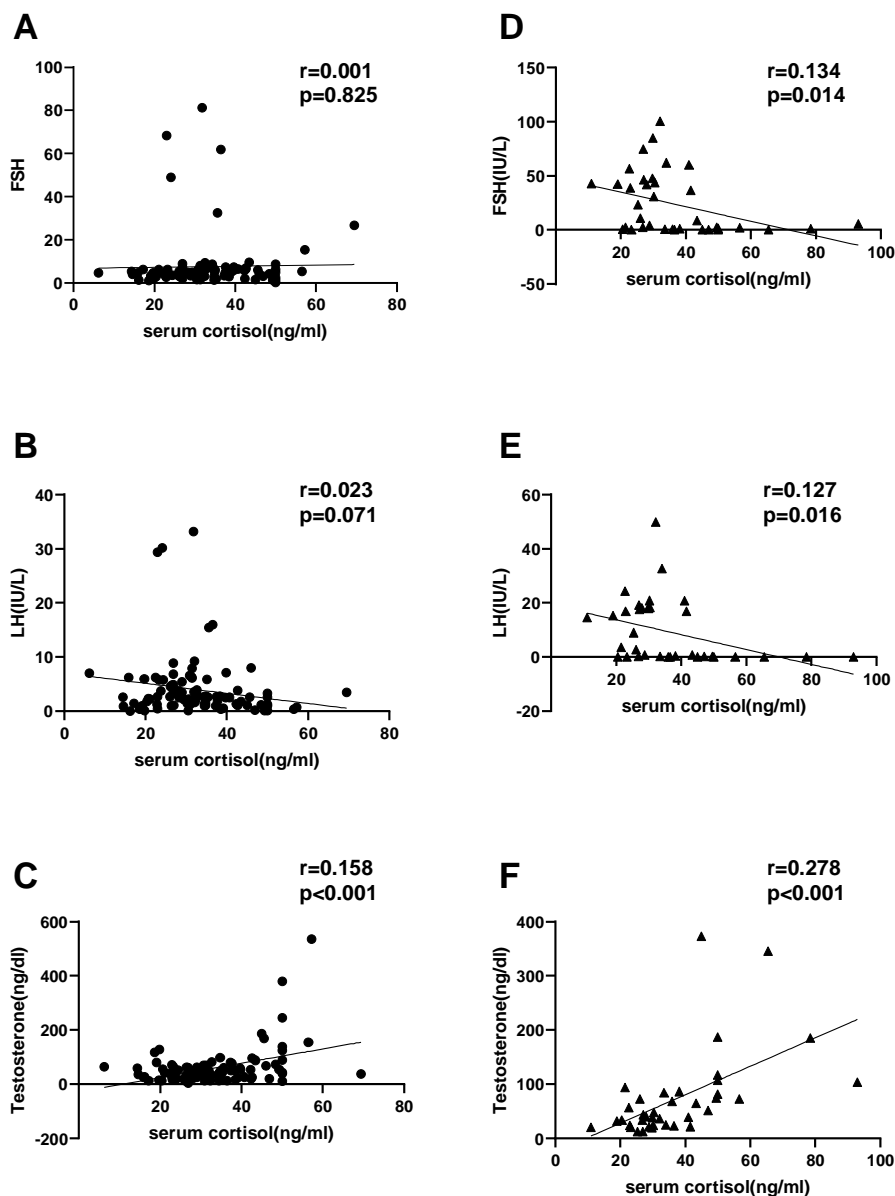
404

405

**Figure1. Scatter plots of reproductive hormones.** Estradiol, testosterone, LH and FSH values are displayed in (A)-(C), respectively. All comparison between the three subgroups are shown by brackets, asterisks or text. E2, estradiol; FSH, Follicle-stimulating hormone; LH, Luteinizing hormone; AI-CS, ACTH-independent Cushing's syndrome; CD, Cushing's disease; EAS, ectopic ACTH syndrome. \*\*\*, P<0.001; ns, not significant.

409

410



411

412 **Figure 2. Linear regressions between serum cortisol and reproductive hormones in**

413 **premenopausal and postmenopausal women.** Premenopausal women with Cushing's syndrome

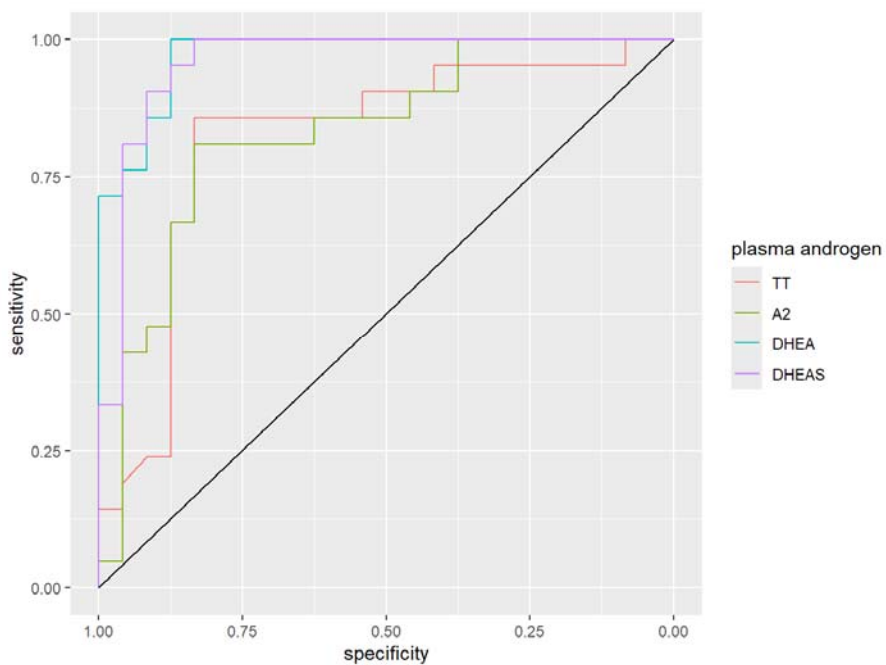
414 were included in (A)-(C). Postmenopausal women with CS were included in (D)-(F) to avoid

415 effects of the menstrual cycle. Pearson correlations( $r$ ) were calculated squares. FSH,

416 Follicle-stimulating hormone; LH, Luteinizing hormone.

417

418



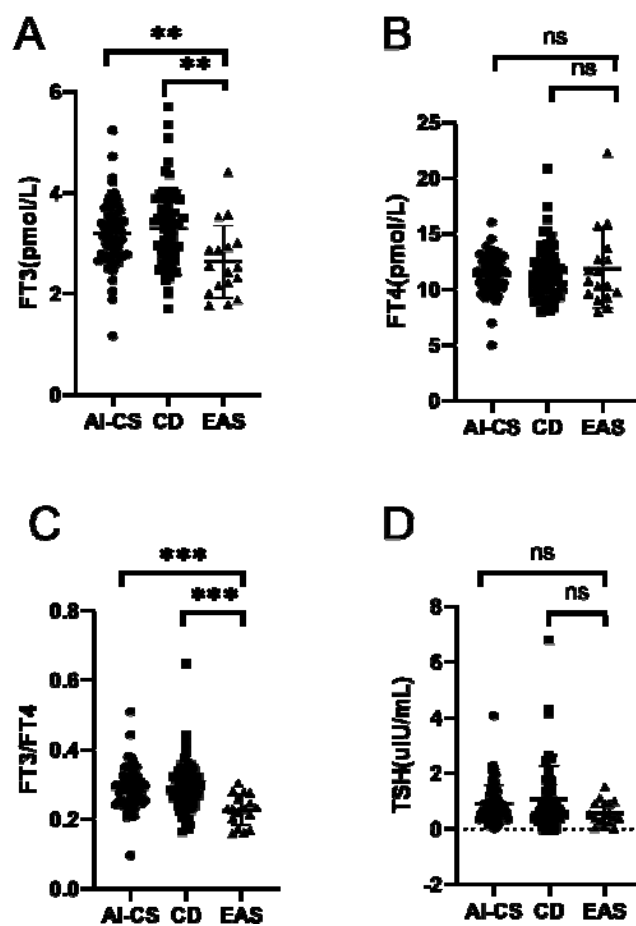
419

420 **Figure 3. ROC-analysis to differentiate between adrenal CS and CD with plasma androgens.**

421 ROC-analysis to differentiate between patients with AI-CS and CD with the most discriminative  
422 steroids. TT, total testosterone; A2, androstenedione; DHEA, dehydrospiroandrostenedione; DHEAS,  
423 dehydrospiroandrostenedione sulfate.

424





425

426 **Figure4. Scatter plots of Thyroid hormone.** Serum FT3, FT4, TSH and FT3/FT4 values are  
427 displayed in (A)-(D). All comparisons between the three subgroups are shown by brackets, asterisks  
428 or text. TSH: thyroid-stimulating hormone; AI-CS, ACTH-independent Cushing's syndrome; CD,  
429 Cushing's disease; EAS, ectopic ACTH syndrome. \*\*\*, P < 0.001; \*\*, P < 0.01; \*, P < 0.05; ns, not  
430 significant.