

CLOZAPINE-RELATED BRAIN *NRN1* EXPRESSION PATTERNS ARE ASSOCIATED WITH METHYLATION AND GENETIC VARIANTS IN SCHIZOPHRENIA

Carmen Almodóvar-Payá^{1,2,3,#,a}, Marcos Moreno^{4,#}, Maria Guardiola-Ripoll^{1,5}, Mariona Latorre-Guardia^{1,2}, Benito Morentin^{6,7}, Beatriz Garcia-Ruiz^{1,2,8}, Edith Pomarol-Clotet^{1,2}, Luis F. Callado^{2,7,9}, Carne Gallego^{4,+}, Mar Fatjó-Vilas^{1,2,3+,a}.

1. FIDMAG Germanes Hospitalàries Research Foundation, Barcelona, Spain.
2. CIBERSAM (Biomedical Research Network in Mental Health; Instituto de Salud Carlos III), Spain.
3. Department of Evolutionary Biology, Ecology and Environmental Sciences, University of Barcelona (UB), Barcelona, Spain.
4. Department of Cell and Tissues, Molecular Biology Institute of Barcelona (IBMB-CSIC), Barcelona, Spain.
5. CIBERER (Biomedical Research Network in Rare Diseases; Instituto de Salud Carlos III), Spain.
6. Section of Forensic Pathology, Basque Institute of Legal Medicine, Bilbao, Spain
7. BioBizkaia Health Research Institute, Bizkaia, Spain.
8. Institut d'Investigació Sanitària Pere Virgili (IISPV)-CERCA, Tarragona, Spain
9. Department of Pharmacology, University of the Basque Country (UPV/EHU), Bizkaia, Spain.

Co-first authors: C Almodóvar-Payá and M Moreno

+ Co-senior authors: C Gallego and M Fatjó-Vilas

^a Corresponding authors: C Almodóvar-Payá (calmodovar@fidmag.org) and M Fatjó-Vilas (mfatjo-vilas@fidmag.org)

ABSTRACT

The Neuritin-1 gene (*NRN1*), involved in neurodevelopment and synaptic plasticity, is associated with schizophrenia (SZ) and related clinical, cognitive, and neuroimaging phenotypes. Additionally, it is one of the most differentially methylated genes in the prefrontal cortex (PFC) in SZ and is responsive to neurotherapeutic agents. We aimed to investigate *NRN1*'s molecular mechanisms in SZ by analyzing its expression, methylation, and genotypic profiles in PFC and hippocampus (HIPP) post-mortem samples from 30 control (CTL) subjects and 20 individuals with SZ (10 treated with clozapine, SZ-Clz, and 10 without antipsychotic drugs at death, SZ-ApFree). We compared *the NRN1* mRNA expression between groups, measured by qPCR, and methylation levels across three CpG islands, assessed through EpiTYPER. Sparse Partial Least Square Discriminant Analysis identified key CpG units contributing to group differences. We then explored the relationship between *NRN1* methylation and expression, considering the influence of 11 polymorphisms genotyped by qPCR. We found that SZ-Clz had lower *NRN1* mRNA levels in the PFC than SZ-ApFree and CTL. SZ-Clz presented distinct methylation patterns across multiple CpG units in both brain regions compared to CTL. In the PFC, the methylation of the CpG units differentiating SZ-Clz from CTL correlated to *NRN1* expression, and the *NRN1*-rs12333117 and *NRN1*-rs2208870 polymorphisms influenced this effect. These findings reveal distinct correlations between *NRN1* epigenetic expression in SZ-Clz and CTL, shaped by genotypic variability. They emphasize region-specific alterations in SZ and underscore the importance of integrative approaches for a better understanding of the role of candidate genes in SZ etiology.

KEY WORDS

NRN1, schizophrenia, post-mortem brain tissue, methylation, expression, clozapine

1 1. BACKGROUND

2 Despite schizophrenia (SZ) research progress, central pathophysiological mechanisms, molecular diagnostics,
3 or precise biomarkers persist unclear. SZ is widely acknowledged to have a high ~80% heritability (1,2), with
4 a complex polygenic architecture involving numerous genetic variants (3). Large-scale genome-wide
5 association studies (GWAS) have identified around 270 loci, many related to synaptic plasticity genes (4).
6 However, these variants incompletely explain total heritability, with most not directly affecting protein structure
7 but notably enriched for variants affecting DNA methylation, gene expression, and gene splicing in the human
8 brain during different developmental stages (5). Together, these findings suggest that both genetic factors and
9 epigenetic mechanisms regulating gene expression contribute to the developmental origins of SZ.

10 Among studies on epigenetic mechanisms, DNA methylation has been extensively researched, particularly in
11 promoter regions for transcriptional repression, but it also regulates gene expression in distal elements like
12 enhancers, exonic regions, and gene bodies, either inhibiting or activating expression based on genomic
13 context (6). In the brain, methylation plays a twofold role: during development, the balance between
14 methylation of germline-specific genes suppresses pluripotency, and demethylation of neuron-specific genes
15 is key to facilitate neuronal specialization; in the mature brain, methylation changes can be induced by neuronal
16 activity, contributing to complex cognitive processes such as learning and memory (7,8).

17 Methylation and gene expression studies in SZ, often performed utilizing prefrontal cortex (PFC) or
18 hippocampus (HIPPO) tissues, have shown distinct methylation patterns in genes critical for neuron
19 development, synaptogenesis, and synaptic plasticity (9), as well as differential expression of genes related to
20 immune response and inflammation, mitochondrial energy metabolism, myeloid leukocyte activation,
21 cytoskeletal proteins, ion transport regulation, neurite outgrowth, and synaptic plasticity (10). Both types of
22 studies have also suggested that these differences may be region and even cell-specific, with distinct genes
23 implicated accordingly (11). Moreover, considering the impact of methylation on gene expression, numerous
24 studies have correlated promoter hypomethylation of genes related to dopaminergic (*DRD2*, *DRD3*, *COMT*),
25 GABAergic (*GAD1*), serotonergic (*HTR2A*), oligodendrocyte (*SOX10*), and synaptic plasticity (*RELN*)
26 pathways in brain samples from patients with SZ with increased gene expression (12–15).

27 The above-mentioned studies collectively indicate that exploring methylation's influence on expression in
28 genes involved in brain development and synaptic plasticity might be key to understanding the biological
29 underpinnings of SZ. The Neuritin1 gene (*NRN1*) exemplifies this, as it supports neuronal progenitors and
30 differentiated neurons during early development (16), promotes the growth and stabilization of axonal and
31 dendritic arbors, and facilitates synapse maturation in later development (17), while it also participates in adult

32 brain synaptic plasticity, particularly in the PFC and the HIPP (18,19). Although *NRN1* has received less
33 attention than traditional GWAS candidate genes, its chromosomal region is linked to an SZ subtype marked
34 by cognitive deficits (20) and genetic association studies have related *NRN1* variants to the risk for SZ,
35 cognitive deficits, early onset, and changes in brain structure and function (21–24). Additionally, two studies
36 comparing patients with SZ to control subjects (CTL) have pinpointed *NRN1*, firstly, as one of the most
37 differentially methylated genes in the PFC in SZ, and secondly, as one of the differentially expressed genes
38 significantly contributing to patient differentiation according to transcriptomic clustering (25,26). Also, various
39 cellular and animal models have shown that *NRN1* expression changes directly impact brain function and that
40 antipsychotic treatments can induce such changes. In animal models, increased *Nnr1* expression has been
41 linked to better cognitive performance (27), improved recovery after ischemia-reperfusion injury (28), and
42 protective effects in traumatic brain injury (29). Similarly, *Nrn1* expression responds to neurotherapeutic agents
43 like electroconvulsive therapy and fluoxetine through epigenetic pathways involving histone deacetylation
44 (30,31). These findings suggest that modulating the *NRN1* expression could improve SZ symptoms and
45 highlight its potential as a therapeutic target.

46 Among individuals with SZ undergoing antipsychotic therapy, special attention is given to those with a
47 treatment-resistant profile, which affects about one-third of cases and significantly lowers their quality of life
48 (32). Clozapine, the first atypical antipsychotic, has shown effectiveness in this group (33). It binds to various
49 receptors (34), including dopamine, serotonin, histamine, muscarinic, and adrenergic receptors. Although the
50 exact molecular pathways critical to its effectiveness are unclear, animal studies suggest that clozapine
51 improves behavioral outcomes by modulating genes related to cholesterol metabolism, GABAergic function,
52 cell cycle control, neurotrophins, and synaptic plasticity through reducing methylation or producing histone
53 modifications (35). Meanwhile, human studies are constrained by limited access to post-mortem brain samples
54 and the infrequent use of this treatment among patients. One study using publicly available SZ transcriptomic
55 data found that three genes (*GCLM*, *ZNF652*, *GYPC*) and four pathways involved in protein trafficking,
56 neuronal migration, brain development, and synaptic function were consistently differentially expressed in
57 clozapine-treated patients compared to those on other medications (36).

58 Overall, current data highlights the role of genetic variability and gene expression regulatory mechanisms,
59 such as methylation, in developmental abnormalities and the brain's response to stimuli, contributing to SZ
60 pathophysiology. Antipsychotics seem to modulate these epigenetic marks, suggesting new therapeutic
61 targets. Therefore, this study aimed to investigate expression, methylation, and genotype variability of *NRN1*,

62 a synaptic plasticity gene linked to SZ and sensitive to neurotherapeutic agents, in post-mortem PFC and HIPPP
63 samples from CTL and patients, considering antipsychotic treatment as a key factor.

64 **2. METHODS**

65 **2.1. Post-mortem human brain samples description**

66 Human post-mortem brain samples were collected at the Basque Institute of Legal Medicine (Bilbao, Spain),
67 following research and ethics committee guidelines (Law 14/2007 and RD 1716/2011). It comprised 50
68 subjects, 20 with an ante-mortem diagnosis of SZ and 30 CTL. The diagnosis was performed by a qualified
69 psychiatrist according to DSM-IV or ICD-10 criteria, as recorded in subjects' medical records. Control subjects
70 had no evidence of any psychiatric disorder in their medical records. Exclusion criteria for both groups included
71 neurological conditions and substance abuse. Post-mortem brain samples from the dorsolateral PFC
72 (Brodmann's area 9) and the HIPPP, excluding white matter, were dissected at the time of autopsy and
73 immediately stored at -80°C until posterior analyses. Blood samples of those subjects were used for
74 toxicological screening for antidepressants, antipsychotics, psychotropic drugs, and ethanol performed at the
75 National Institute of Toxicology (Madrid, Spain). For CTL, selection ensured the absence of antidepressants
76 or antipsychotic drugs at the time of death. Finally, both groups were selected to be matched by sex, age, and
77 post-mortem interval (PMI), referring to the time elapsed between the death and the autopsy. Subjects with
78 SZ were subsequently divided according to the presence of clozapine (SZ-Clz) or the absence of antipsychotic
79 medication (SZ-ApFree) in the blood at the time of death. The summary of demographics and sample quality
80 is shown in **Table 1** (see **Table S1** for individual details).

Table 1. Sample characteristics of control subjects (CTL) and individuals diagnosed with schizophrenia (SZ), categorized based on the presence of clozapine (SZ-Clz) or absence of antipsychotic medication (SZ-ApFree) in the blood at the time of death. Demographic information includes sex with female / male (F/M) count and frequency (%) for female category, age (in years), and cause of death. Assessment of post-mortem sample quality encompasses pH and post-mortem interval (PMI, in hours). All the quantitative variables are expressed as mean (standard deviation), while all the qualitative variables are presented as count (percentage). N=natural, O=others (including accidents and homicides), S=suicide.

	CTL (n=30)	SZ-ApFree (n=10)	SZ-Clz (n=10)	χ^2 / U	p-value
Sex (F/M)	10 (33.3%) / 20	3 (30.0%) / 7	4 (40.0%) / 6	0.238	0.888
Age	44.03 (12.10)	46.20 (10.14)	48 (14.90)	0.804	0.658
Death cause (N/O/S) ^a	11 (37%) / 19 (63%) / 0	5 (50%) / 3 (30%) / 2	4 (40%) / 1 (10%) / 5	2.397	0.302
PMI	14.13 (6.65)	16.00 (4.81)	19.20 (4.13)	5.589	0.061
pH	6.37 (0.35)	6.44 (0.28)	6.38 (0.29)	0.920	0.631

^a This analysis compares SZ-Free with SZ-Clz, as CTL did not die by suicide according to the inclusion criteria.

^b Data for pH was available for 27 CTL, 9 SZ-Clz and 6 SZ-ApFree.

81 2.2. Expression analyses

82 Total RNA was extracted using the NucleoSpin RNA Plus Kit (Cultek). RNA integrity and purity were analyzed
83 by agarose gel electrophoresis and spectrophotometry using a NanoDrop. Reverse transcription reaction was
84 performed with a maximum of 1µg of RNA using the Transcriptor First Strand cDNA Synthesis Kit (Roche) with
85 random hexamer oligonucleotides. For quantitative PCR (qPCR) quantification, 1µL of the reverse transcription
86 reaction was added to the qPCR reaction using JumpStart Taq ReadyMix for quantitative PCR (Sigma). qPCR
87 reaction was preceded with an initial denaturation step at 94°C for 5 minutes followed by 45 cycles of:
88 denaturation at 94°C for 15s, annealing at 51°C for 20s, and extension at 72°C for 30s. The fluorescent signal
89 resulting from the degradation of the TaqMan probe (6xFAM/Black Hole Quencher1) was read at the end of
90 the amplification phase. The primer sequences and probes are described in **Table S2**.

91 2.3. DNA extraction

92 Genomic DNA was extracted from post-mortem brain samples using the Quick-DNA Miniprep Plus Kit (Zymo
93 Research) and used for methylation and genotyping analyses.

94 2.4. Methylation

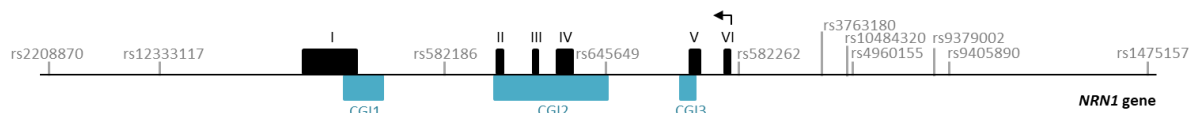
95 Methylation analyses targeted the CpGs along the three CpG islands (CGI) spanning the *NRN1* gene (CGI1
96 chr6:5998917-5999730, CGI2 chr6:6002288-6004772 and CGI3 chr6:6006457-6006810, reference genome
97 UCSC-GRC38/hg38). Samples were analyzed using the EpiTYPER method (Agena Bioscience) at the Centro
98 Nacional de Genotipado (CEGEN, <http://usc.es/cegen/>). This method examines CpG sites within amplicons
99 ranging from 200 to 600 base pairs, being especially well-suited for extensive endeavors aimed at investigating
100 specific regions. In our case, six amplicons were designed using Agena's EpiDesigner software to amplify
101 these regions of interest (**Table S3**).

102 The methylation values can range between 0 and 1, being 0 the value corresponding to a 0% methylation state
103 and 1 the value associated with a 100% methylated state. If CpG sites are too close together, their methylation
104 levels cannot be determined independently, so the methylation status of a fragment containing multiple sites
105 is measured, reflecting the average methylation of all CpG sites within that fragment. Accordingly, we will refer
106 to CpG units, which can comprise one or more CpG sites. Each CpG unit was denoted numerically based on
107 its 5' to 3' genomic position on the forward strand sequence.

108 The methylation quality control protocol implemented by CEGEN involved excluding units deviating by over
109 10% from the established commercial controls (HMc, 100% methylated, and LMc, 0% methylated), as well as
110 excluding the samples with standard deviation variances between replicas exceeding 10%. Additionally, we
111 eliminated units and subjects with more than 35% missing values and replaced outlier methylation values with
112 the maximum for z-scores ≥ 3 and the minimum for z-scores ≤ -3 . In all, we have analyzed 63 CpG units for
113 the PFC and 57 CpG units for the HIPPI along three CGIs within the *NRN1* region (see the details in **Figure 1**
114 and **Table S4**).

115 **2.5. Genotyping**

116 We genotyped eleven SNPs at the *NRN1* gene (6p25.1) at the National Genotyping Center (CEGEN,
117 <http://usc.es/cegen/>) that were chosen to cover the genomic sequence and approximately 10 kb upstream and
118 downstream. The optimal set of SNPs, which contained the maximum information about surrounding variants,
119 was selected using the SYSNPs tool (<http://www.sysnps.org/>) with a minor allele frequency (MAF) $> 5\%$,
120 utilizing the pairwise tagging option ($r^2 \geq 0.8$). Additionally, we included SNPs previously associated with SZ in
121 the study by Chandler et al. (2010). All these SNPs have also been genotyped in other studies conducted by
122 our group (21,21,23,37). The genotyping call rate was 100%, with minor allele frequencies closely matching
123 those of the EUR population in the 1000 Genomes Project (**Table 2**). Genotype frequencies for both groups
124 were in Hardy-Weinberg equilibrium (PLINK v.1.09, (38)).



CGI1 (chr6:5998917-5999730)

ATCTTCTCTCGATTTCGGGAGCAT
GGAGTGAGTGTGGGTGGG**CGCGCG**
GGGGAGTGGCCACGCTCAGAA
GGAAAGCCAGGTGCTAAAGCTGCC
GAGAGAGACACAGGAGCAC**CGGG**
AACCGCGGAGCAGGAGCCCGCC
GCCCGTTGCCGTGCCGAGAGTT
CGAATAAGTGCCTGGATGTTGAG
GTTTTGGATTCTTTTCTCAGTTTATC
CACATATCTTTCGCCCTTCTGGC
AATCCGTAAAGGGTGTGACCGTGCA
GCTGTGAAATCTCCAGTATCTGG
TGAGGAACAGAAACAAACAGAACAA
GCAGTTTCACTGGGA**CGCGGGAA**
CACCCCGGGCTTGGCCCTTGGCCT
CCCCGTGGCGGCCCGCAACTTC
CGGGGTGTCCTCTACCTCTCTCT
TCAC**CGCCCTGGCGCTGGCCTGCG**
CGAGGTGCGGACTCGCGGACTCC
GCCTACCCAGAAAGCGGCTGTCAA
AGCGGGGTGGGGGGCGCCCT
CCTGTCTGTTTTCTTCCAGTTTGG
GGGAGAGGACTAGGCAGCGGGGAG
CCGGGCCGTGCACCGCTGTGGCGC
GCTGACCTCGGCTCCGCAAAACA
GATTGCT**CGCCCTCTCGGGGAAAG**
CTAGGAAACAGTGTAAAGCT**CGC**
AAGCTGCCGCCATTAAAGCTCTTA
GCTTGAAGATGGTTACTAGCTCT
GAGCACGGCCCTCCCTCGGGCTT
CTTACATCTCTCCCTCCGCCCTT
CTGTCTCCCTCTTCCACGCGCG
GTACTCTGCCTTCC

CGI2 (chr6:6002288-6004772)

CGGCACCTCCGACCTCAGTAGCGCCCCAAAACCGAAGTCCAGCCGGCCAGAGGACACTT
ACGTGCACACGGTCTTATGTTCTGTCTGTCAGGCCCTGCGGGTAGTTGGCCATGCTGTC
GCCAGCTTAGAGCAACAGTCCGAAAAGCCCTTGAAGACCGCATCGCACTTGCCCGTCTCTC
ACGGCTGACACAGATACGCTGCGGGGAGGAGGAAACCCGGTCCAGCAGCCACGACCCCG
CCCTGCCGCCACTGCCCTTCTGCGAGACCTGGCTCCGCGCGCCTCATCGCATCGGGCGG
CCTCTCCAGCGCCAGCTCGGGGCTCGCAGTGTAAAGTGAATGAAAGACGTGACCCAG
GAATGCCCGACCTGCAGTAACTGCTAGTCAAATTGTCGGTGTGTGAGCAGGTGTGG
GTGGTGGGAGTGTGAGTCCATCTTCTCCAGCTCCCTCCGCATCTCGTCCGTATC
TTTTCTGTTCATCGCCCTCTTCTACCTCCCTCATCCCTTTAATTTCTTTCTCTCGCTCC
CTCCTTCTTCCAACTTCCAGCAAGCCCTGTACAGCTCTGCAATGCGATCTTCCATT
TTAGAGTGACAGAGGGTCTCGGCTGACAGCTGCGGGGCGGAGAACGGGGTGGGAGAGC
ACAGGGCTGGGGTCCAGCAGCTGAACCCAAACCGCCATCACAGAGAATAAGCCTCAGGCTT
GCGCTGTCTTGGTGGCGCTCAGCAAACTGCTGAATGAATGAACGAATAAGTCCCTG
GAAGCCACAGCAGTAC**CGAAATGGATTGTTT**CATTATAAAACCGATTGCTACCTGGACT
TGATTCGAGTGAGACCTCGGATGCACCTCT**CCCGCCCG**CTGGAAAGAGGGCAGCTGG
ACGTCTGAGACTGGCGGATGATGAGTGGTCTGGAGAGGAGAAAGCCAGAGGCGGGC
GGGGTACGGATGAGTCTGCTGGTCACT**CCGCAAGGCCAAATCCACGAACCTCGGGCT**
TTTTCTCTCCTCCTCCCTGTC**CGCCACTCGGCTCCAGACACCTTAAACAAACCCCGCCCG**
CCAAAAGCCGCTACACT**CGGACCGGAGCGGGGAGAGGCTGTTCTTCCAGGTGCGCAGC**
CTGCTGTGAAAGTGAGCT**CGCGCGCGCGGGGCTCCTGGCCCAAGCTCAGGACTCCTG**
AGAGAGCAGGCGAGGATAAAAGCTGAGCGCGGGAGGAGGAGGAGGAGGAAACACAG
GCCGACAGAGTCCAAGCCCAAGCCCAAGCCCGCGCTCTGACGGCCAAACCCGAG
GCGCGGAGTGGAAAGGACAGGTACAGGCTG**CGGGCGCGGCTGTGGCCATCTCTTTCCG**
CCTGAGGCGCAGAAC**CGGCTGGAAGCTGAGTGCCTAGCGCCAAAGCAGCCGGCGCC**
GGGAGGCGCGAGAGAAGCACAGCGTTAGGGCGGGGAAAGAGGTAATCTCAGAATCGA
AATCCGACTGGCGCCACGACCTGGGGCGCGGCTGGTCTCGGCAGCTTCTGGCGGCTG
CGCTTGTGTGAATGTGTCGGGGAGGACCGGACCTCAATCCCGCGCCCAA**CGCGGG**
CGCCTGTCCCGGAGCGCGGGCAGACGCCGAAGAGGAAAGTGAACCGAACCCTAGCAGCTT
CCGAGAGCGTACCGTTTGCATAATGCTGAGGAAAGGAGG**CGGGCCTTGCCTTTTAAAT**
CCGGAACGGAAAGCAGTGGGAAAGGACCGAGGTTAACTTCAGCTCCGCTGGGGCAGATA
GTAACCTTCTCAAACCTCCGAGTTACCTTACAGCGAACATTAATACCTTTCGACTACAATA
CTAACAATCGAACACTGACGTAATACTTAAGAATAAACGAATCTTTGTTGTAGAGACTCG
TTCAAAATGAAATACACTCACACATCTCTCTATAACGCATGTACAAAATACAGCTTTGCA
AGAAGAAACGAAATAAAATAAGTCCAATCTCCCGTCCAGTCTCTCCCAACCTTGTCTAC
ACCCCAAACCTCAGTGG**CGAAAGAACCCCTAAAATGACATTGACATTTTAAAGGGAAATTG**
GGGCT**CGCGGGGGCGGGAGCGCTCTTGTACGTTATCTTCCAGGCGCTGTGGGAGAGACC**
CTGCAC**CGCG**CATGTGTGAGTGTGCTGTGTAATAAGTCTGTAACATTCTGTCTTTTA
AAACTGTACTCTTGGACTTAGCTTCTGCGGAGG**CGGGAGGCTGCGCGGGAGCGGAT**
TTTGAGG**CGCACGCGCTCCAGCAGGTGCGAGCCCGTGGTCCCTCGCTGTCTTCTGAACCC**
CGCTTAGG**CGAGACTTAGCG**

CGI3 (chr6:6006457-6006810)

CGTGTCCAGAAAATGTCGGCCGCA
CACATTTCTGGCGAACATTTGGAAT
CTATAGCTTTAGGAAAAAC**CGATCTG**
GGACCGCTAGTCCCAAGAACTGA
TGCCCCACCT**CGGGGATTGCCG**
GCTTCT**CGCACCTCGGGGCGCGCG**
CGGACCCGCTAGTCCCT**CGCGCC**
TCGGCGCGGGCAGGCTGCTCCCG
CCTCCAGCTCAGCCGGGCTGAG**C**
GGCACTTACCTATTGACCGCGAG
GATCAGTGAATAATATCTGCGCTTCA
ACTTAAGTCCATCTACGTTTGTG
AAACCTT**CGACCG**CAGACTTTTA
AATAGTAGTTAGGAGAA**CGCG**

125
126
127

Figure 1. Schematic representation of the *NRN1* gene (NCBI36/hg18) with exonic (in black) and CpG island (CGI, in blue) regions, as well as single nucleotide polymorphisms (SNPs) included in the study according to the human genome browser (<http://genome.ucsc.edu>). Positions of the analyzed CpG sites in the DNA sequence are indicated below (in bold blue).

Table 2. Information regarding *NRN1* SNPs included in this study. The table contains the dbSNP number, chromosome location (Chr Pos), alleles, and minor allele frequency (MAF) for each SNP based on the UCSC Genome Browser on Human (GRCh38/hg38). Additionally, MAF and genotypic count and frequency (%) are listed separately for control subjects (CTL) and subjects with schizophrenia (SZ), categorized based on the presence of clozapine (SZ-Clz) or absence of antipsychotic medication (SZ-ApFree) in the blood at the time of death. Due to low frequency in some genotypes, frequencies shown and subsequent analyses were conducted with all SNPs dichotomized (homozygous and heterozygous for the minor allele versus homozygous for the major allele).

dbSNP	Chr Pos	Allele	MAF _{1000G}	MAF _{sample}	CTL freq	SZ-ApFree (n=10)	SZ-Clz (n=10)
rs2208870	6:5992257	G/A	0.34	0.33	16 (53.3%) / 14	4 (40.0%) / 6	6 (60.0%) / 4
rs12333117	6:5994759	T/C	0.40	0.41	16 (53.3%) / 14	8 (80.0%) / 2	8 (80.0%) / 2
rs582186	6:6001148	A/G	0.38	0.43	20 (66.7%) / 10	6 (60.0%) / 4	6 (60.0%) / 4
rs645649	6:6004726	C/G	0.36	0.34	18 (60.0%) / 12	5 (50.0%) / 5	5 (50.0%) / 5
rs582262	6:6007758	C/G	0.30	0.32	18 (60.0%) / 12	6 (60.0%) / 4	4 (40.0%) / 6
rs3763180	6:6009615	T/G	0.46	0.48	22 (73.3%) / 8	7 (70.0%) / 3	7 (70.0%) / 3
rs10484320	6:6010204	T/C	0.22	0.20	10 (33.3%) / 20	2 (20.0%) / 8	2 (20.0%) / 8
rs4960155	6:6010306	C/T	0.49	0.52	22 (73.3%) / 8	8 (80.0%) / 2	8 (80.0%) / 2
rs9379002	6:6012158	G/T	0.29	0.28	14 (46.7%) / 16	7 (70.0%) / 3	5 (50.0%) / 5
rs9405890	6:6012488	C/T	0.31	0.26	12 (40.0%) / 18	3 (30.0%) / 7	4 (40.0%) / 6
rs1475157	6:6016936	G/A	0.17	0.19	10 (33.3%) / 20	5 (50.0%) / 5	3 (30.0%) / 7

128 2.4. Statistical analysis

129 2.4.1. Sample characteristics

130 For mean comparisons between cases and controls concerning sociodemographic and clinical characteristics
131 as well as biological quality of the sample, Wilcoxon Rank Sum Test (for quantitative variables) and chi-square
132 tests (for qualitative variables) were used.

133 2.4.2. Expression analyses

134 Gene expression levels were determined with Delta Ct method (39), relativizing each gene expression to
135 GAPDH levels. For the analysis, confounding variables (sex, age, death cause, PMI, and pH) were regressed
136 from gene expression. Subsequently, a multifactorial ANOVA analysis was conducted followed by Tukey's

137 honest significance test, used for multiple comparisons of means between groups (CTL, SZ-ApFree and SZ-
138 Clz).

139 **2.4.3. Methylation analyses**

140 For methylation analyses, we assembled a subset consisting of 10 individuals each from the CTL, SZ-Clz, and
141 SZ-ApFree groups, ensuring no significant differences with the initial sample in either demographic factors or
142 post-mortem sample quality, as well as in *NRN1* expression across both regions (**Table S4** and **Figure S1**).
143 Prior to analyzing methylation data, the confounding variables (sex, age, illness duration, and clozapine
144 dosage) were regressed from each predictor methylation variable (CpG units).

145 To overcome the high intercorrelations among CpG units and the resulting multicollinearity (**Table S5**), we
146 employed sparse Partial Least Squares-Discriminant Analysis (sPLS-DA), a method that simultaneously
147 performs dimensionality reduction, feature selection, and classification to examine methylation differences
148 between groups. Similar techniques, such as Principal Component Analysis (PCA), have been used in
149 methylation studies to reduce high-dimensional genomic or locus-specific data into principal components that
150 capture overall variance among CpG units in an unsupervised manner (40,41). In contrast, sPLS-DA is a
151 supervised method that identifies latent components (LCs) by maximizing the covariance between the most
152 relevant CpG units and group labels, enabling the discovery of methylation patterns associated with specific
153 groups and enhancing the clinical significance of the findings.

154 All the analyses were based on the mixOmics protocol as implemented in the R package (42). To address the
155 challenge posed by the small sample size in our study, we applied Leave-One-Out Cross-Validation (LOOCV)
156 at multiple stages of the modelling process to calculate classification error. LOOCV is particularly well-suited
157 to small datasets as it maximizes each data point's use by treating each individual sample as a test set once,
158 while training the model on the remaining data. First, LOOCV was used to determine the optimal number of
159 LCs by evaluating the classification error across different component configurations. To further optimize the
160 model, we applied the LASSO penalty in combination with LOOCV to select the most relevant CpG units. After
161 determining the optimal number of LCs and CpG units, we used LOOCV to evaluate the performance of the
162 final sPLS-DA model. We interpreted each CpG unit within an LC in two main ways: first, through its coefficient
163 or loading value, which indicates its importance in distinguishing between groups, and second, by assessing
164 the contribution of the CpG, which identifies the group that shows higher methylation values. Additionally, to
165 validate the reproducibility of the CpG signature captured by the LCs, we performed a feature stability analysis,
166 which assessed how frequently each CpG site was selected across multiple iterations of the model.

167 We selected the most informative LC using two criteria: i) first, following the sPLS-DA methodology, where the
168 first component captures the maximum covariance between features and the outcome, which we further
169 validated by comparing LC scores between groups using the Mann-Whitney U test; and ii) second, based on
170 the stability of CpG units within each LC, as subsequent analyses focused on examining methylation patterns
171 defined by these CpG units.

172 To further characterize the CpG signature captured by the LCs and find methylation patterns, following other
173 studies with similar approaches (43,44), we computed two means: one grouping CpG units showing greater
174 methylation in the SZ group (referred as “positive mean”); and another grouping CpG units with lower
175 methylation in the SZ group (referred as “negative mean”). To validate the robustness of these patterns and
176 ensure that the observed differences were not merely the result of a data-driven process, we also utilized the
177 Mann-Whitney U test to statistically compare these means between the two groups.

178 **2.4.4. Expression-methylation correlates**

179 We conducted four linear regression analyses using the expression residuals of the HIPP or the PFC as
180 described in section 2.4.2 *Expression Analyses*. For each brain region, we tested two models: one with overall
181 methylation variation (LC1) as the predictor and another with positive and negative mean methylation values
182 as predictors.

183 **2.4.5. Genotypic analyses**

184 We conducted four stepwise regression analyses using the expression residuals of the HIPP or the PFC as
185 described in section 2.4.2 *Expression Analyses*. For each brain region, we tested two models: one with overall
186 methylation variation (LC1) with 11 *NRN1* genetic variants (SNPs) as the predictors and another with positive
187 and negative mean methylation values with 11 *NRN1* genetic variants (SNPs) as predictors.

188 **3. RESULTS**

189 **3.1. Sample description.**

190 There were no differences in sociodemographic nor in the quality of the biological sample between groups, as
191 they were matched for sex, age and PMI as shown in **Table 1**.

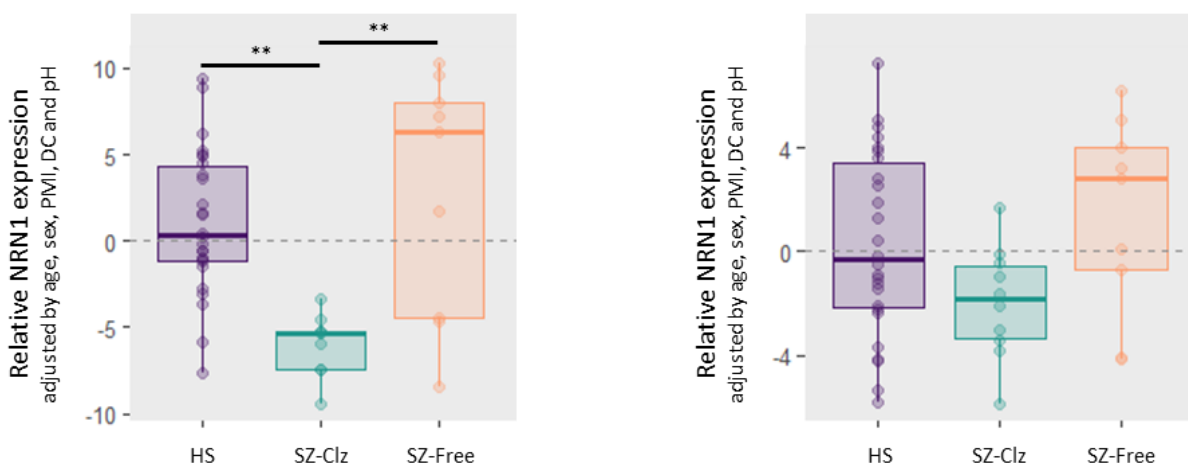
192 **3.2. *NRN1* mRNA expression differences between groups.**

193 We found group differences in the PFC ($F=10.160$ and $p=0.002$) but not in the HIPP ($F=2.576$ and $p=0.088$).
194 Tukey’s post-hoc analysis showed that SZ-Clz had significantly reduced *NRN1* mRNA expression levels in the

195 PFC compared to CTL (Δ -means=-7.10 and p-adj=0.007) and SZ-ApFree (Δ -means=-8.85 and p-adj=0.005)
196 (Figure 2).

Prefrontal cortex expression

Hippocampus expression



197

198 **Figure 2.** Boxplots representing NRN1 expression levels \pm 2 standard errors (SE) depicted according to the group, control
199 subjects (CTL), schizophrenia patients (SZ) categorized based on the presence of clozapine (SZ-Clz) or absence of
200 antipsychotic medication (SZ-ApFree) in the blood at the time of death, for both brain regions: **A)** Prefrontal cortex (n=27,
201 9, and 9 respectively), and **B)** hippocampus (n=26, 9, and 10 respectively). The NRN1 expression was relativized to
202 GAPDH, and the values expressed are the residuals (adjusted by sex, age, post-mortem interval (PMI), death cause (DC)
203 and pH). Adjusted p-values from Tukey's test are represented as * p<0.05, ** p<0.01, *** p<0.001.

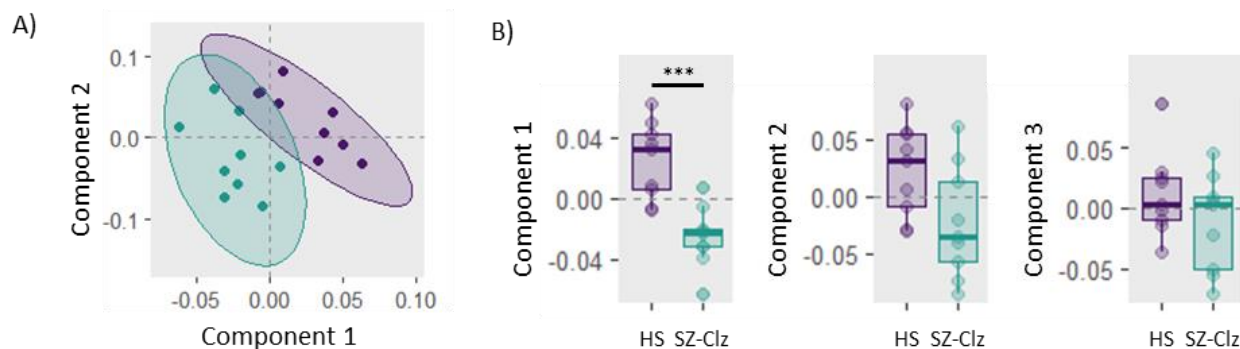
204 To validate the findings concerning NRN1 expression we also analyzed the expression of two other synapse-
205 related genes well described to be sensitive to clozapine treatment, *UMHK1* and *BDNF* (45). Like NRN1,
206 significant group differences emerged within the PFC for both *UMHK1* (F=5.73, p=0.006) and *BDNF* (F=8.993,
207 p<0.001), while not in the HIPP. Tukey's post-hoc analysis revealed that clozapine treatment was markedly
208 associated with a decrease of *UMHK1* mRNA expression levels in the PFC compared to both CTL (Δ -means=-
209 2.589, p-adj=0.032) and SZ-ApFree (Δ -means=-3.968, p-adj=0.005), while *BDNF* expression levels were
210 notably higher compared to CTL (Δ -means=1.307, p-adj < 0.001) (Figure S2).

211 3.3. NRN1 methylation differences between groups

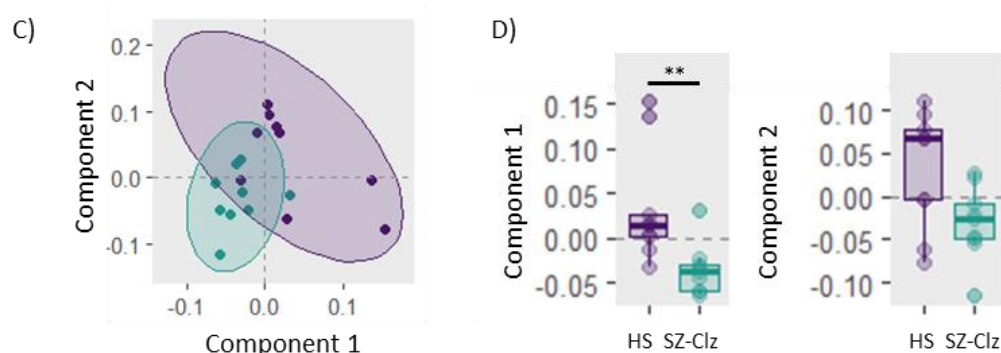
212 Initially, our analysis encompassed all three groups, but we observed a limited ability to identify a specific linear
213 combination of CpG units from either the PFC or the HIPP that could effectively differentiate between the three
214 groups (balanced error for the model incorporating CpG units from the PFC=0.74 and from the HIPP=0.66).
215 Furthermore, upon projecting the samples into the two LC spaces determined by the respective models, we
216 observed a significant overlap between CTL and SZ-ApFree, but a clear distinction of SZ-Clz in both regions
217 (Figure S3 and Figure S4).

218 Subsequently, we generated two separate models for each region, focusing on the CTL and SZ-Clz groups.
219 In the PFC, three LCs explained 12%, 17%, and 10% of the methylation variance, respectively, effectively
220 distinguishing the groups (balanced error=0.28) (**Figure 3A**). Similarly, in the HIPPI, two LCs explained 34%
221 and 22% of the variance, achieving the same level of separation (balanced error=0.28) (**Figure 3C**). Due to
222 the sPLS-DA methodology, LC1 was the most influential in differentiating the groups in both regions. This was
223 further confirmed by significant differences observed in PFC-LC1 ($W=76$, $p<0.001$) and HIPPI-LC1 ($W=71$,
224 $p=0.005$), while the other LCs did not reach statistical significance, neither in the PFC (LC2: $W=62$, $p=0.06$;
225 LC3: $W=51$, $p=0.38$; **Figure 3B**) nor in the HIPPI (LC2: $W=61$, $p=0.08$; **Figure 3D**). Additionally, PFC-LC1 and
226 HIPPI-LC1 exhibited greater feature stability, with at least 88% of CpG units showing high stability (>85%),
227 compared to less than 50% in the other LCs (**Table S6**). Accordingly, subsequent analyses of methylation
228 patterns among the CpG units focused on LC1 in both regions.

Prefrontal cortex sPLS-DA



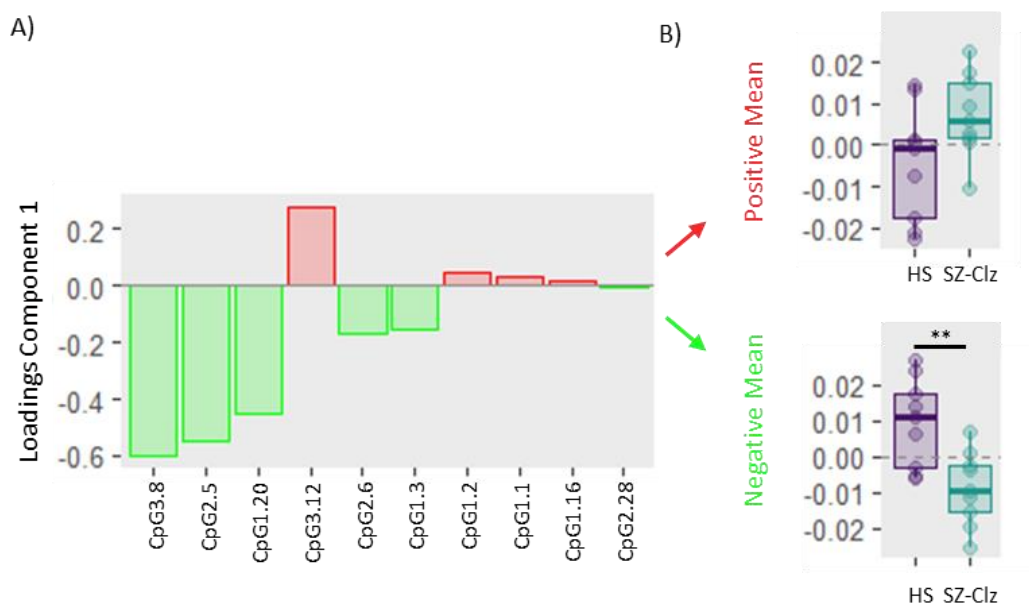
Hippocampus sPLS-DA



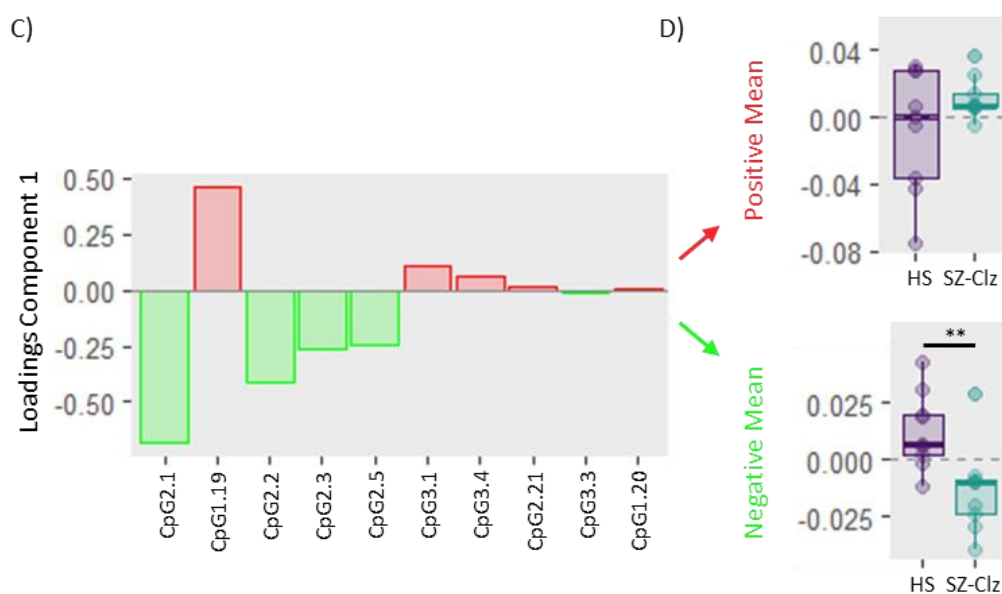
229 **Figure 3. A and C)** Scatter plot illustrating the distribution of samples projected into the space defined by the first two
230 components derived from sparse Partial Least Square Discriminant Analysis (sPLS-DA) using *NRN1* methylation values
231 from the hippocampus (HIPP). Each sample class is enclosed within 95% confidence ellipses. **B and D)** Boxplots
232 representing methylation scores for the first and second latent components (LC) ± 2 standard errors (SE) depicted
233 according to the group. Control subjects (CTL) are depicted in purple while schizophrenia patients treated with clozapine
234 (SZ-Clz) are shown in blue. * $p < 0.05$, ** $p < 0.01$, *** $p < 0.001$.

235 In both brain regions, LC1 included 10 CpG units with varying importance in distinguishing between classes.
236 CpG units with positive weights, represented by red bars, exhibited higher methylation levels in SZ-Clz subjects
237 compared to CTL, while those with negative weights, shown in green, exhibited lower methylation levels in SZ-
238 Clz subjects (**Figure 4A and C**). In both regions, the mean of the CpG units in LC1 with reduced methylation
239 in SZ-Clz subjects compared to CTL significantly differed between groups ("PFC negative average": CpG3.8,
240 CpG2.5, CpG1.20, CpG2.6, CpG1.3, and CpG2.28, $W=69$, $p=0.01$; "HIPP negative average": CpG2.1,
241 CpG2.2, CpG2.3, CpG2.5, and CpG3.3, $W=70$, $p=0.008$), suggesting that the observed differences are not
242 merely data-driven artifacts. In contrast, the mean of the CpG units in LC1 with higher methylation in SZ-Clz
243 subjects compared to CTL did not show significant differences in either region ("PFC positive average":
244 CpG3.12, CpG1.2, CpG1.1, and CpG1.16, $W=18$, $p=0.05$, **Figure 4B**; "HIPP positive average": CpG1.19,
245 CpG3.1, CpG3.4, CpG2.21, and CpG1.20, $W=31$, $p=0.44$, **Figure 4D**).

Prefrontal cortex sPLS-DA



Hippocampus sPLS-DA

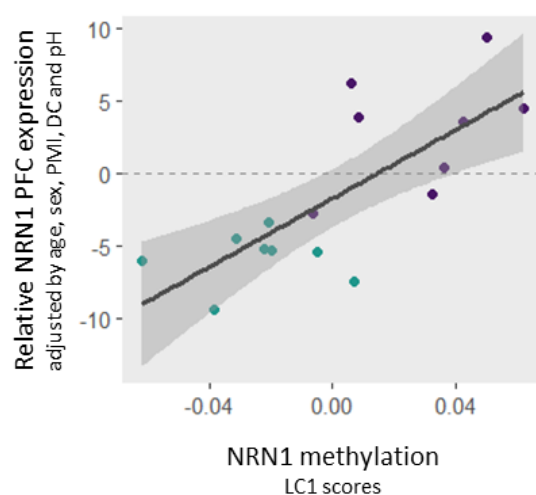


246 **Figure 4. A and C)** Bar plots illustrating the loading weights for each CpG unit in component 1. Red bars indicate higher
 247 methylation in patients with schizophrenia (SZ) treated with clozapine (SZ-Clz), while green bars represent lower
 248 methylation in SZ-Clz compared to control subjects (CTL). **B and D)** Boxplots representing the mean methylation values,
 249 computed based on whether the CpGs exhibited higher (positive mean) or lower (negative mean) methylation levels in SZ-
 250 Clz compared to CTL, ± 2 standard errors (SE) depicted according to the group. SZ-Clz are shown in blue and CTL in
 251 purple. * $p < 0.05$, ** $p < 0.01$, *** $p < 0.001$.

252 3.3. *NRN1* expression methylation correlates

253 We observed a significant correlation between LC1 scores derived from the PFC sPLS-DA model and *NRN1*
254 gene expression in the corresponding brain region across the sample including both SZ-Clz and CTL groups
255 (standardized $\beta=0.753$, $p<0.001$, $\text{adj-R}^2=0.536$). When we further analyzed the CpG units based on their
256 methylation status in the SZ-Clz group, the correlation remained significant for the "negative mean" values
257 (standardized $\beta=0.715$, $p=0.002$, $\text{adj-R}^2=0.477$), while the "positive mean" values were not associated with
258 *NRN1* expression. These results indicate that lower LC1 scores or "negative mean" values are linked to a
259 reduced *NRN1* expression (**Figure 5** and **Figure S5**). Conversely, we did not find any correlation between
260 *NRN1* expression and methylation in the HIPP.

Prefrontal cortex



261 **Figure 5.** Scatter plot illustrating the correlation between latent component 1 (LC1) scores derived from the sparse Partial
262 Least Square Discriminant Analysis (sPLS-DA) of the prefrontal cortex (PFC) and *NRN1* gene expression levels in the
263 same region. *NRN1* gene expression levels are shown with ± 2 standard errors (SE). The expression of *NRN1* was
264 normalized to GAPDH, and the values are presented as residuals, adjusted for sex, age, post-mortem interval (PMI), cause
265 of death (DC), and pH. The sample includes both schizophrenia patients treated with clozapine (SZ-Clz) and control
266 subjects (CTL), with dots colored blue for SZ-Clz patients and purple for CTL.

267 3.4 *NRN1* genetic variability effects

268 We found that incorporating two genetic variants, rs2208870 and rs12333117, along with LC1 scores or the
269 "negative mean" values from the PFC sPLS-DA model, enhanced the correlation with *NRN1* gene expression
270 in the corresponding brain region in the sample including SZ-Clz and CTL groups. Adding LC1 scores
271 alongside the two genetic variants significantly enhanced the model's performance compared to using only the
272 methylation variable (model's $F=11.3$, $\text{Adj-R}^2=0.673$, $p=0.001$; $\Delta\text{-R}^2=0.137$, p of the change=0.048). LC1
273 scores exhibited a robust association with *NRN1* gene expression (standardized $\beta=0.770$, $p<0.001$), while the
274 genetic variants also made significant contributions (standardized $\beta=-0.404$, $p=0.029$ for rs2208870;

275 standardized $\beta=-0.364$, $p=0.045$ for rs12333117). Similar improvements were observed when incorporating
276 the "negative mean" values alongside the two genetic variants, significantly enhancing the model's
277 performance compared to using only the methylation variable (model's $F=12.52$, $\text{Adj-R}^2=0.697$, $p=0.001$; Δ -
278 $R^2=0.221$, p of the change= 0.015). The "negative mean" exhibited a strong association with NRN1 gene
279 expression (standardized $\beta=0.790$, $p<0.001$), while the genetic variants also made notable contributions
280 (standardized $\beta=-0.490$, $p=0.010$ for rs2208870; standardized $\beta=-0.442$, $p=0.016$ for rs12333117).
281 Conversely, we found that incorporating genotypic variability into the methylation metric did not enhance the
282 model's ability to explain NRN1 expression in the HIPV.

283 4. Discussion

284 Given the crucial roles of NRN1 in brain development and synaptic plasticity, and the significance of these
285 mechanisms in the etiology of SZ, we have investigated the molecular variability of this gene in post-mortem
286 brain samples from patients with SZ and CTL. Our study reveals that NRN1 is significantly under-expressed
287 in the PFC of patients treated with clozapine and that methylation levels correlate with NRN1 expression in the
288 same region. In addition, our study shows that incorporating genetic variability data of NRN1 further shapes
289 this correlation, highlighting the necessity of multi-level approaches to understand the role of candidate genes
290 in SZ etiology.

291 First, our results showed that patients treated with clozapine exhibited reduced expression of NRN1 in the PFC
292 as compared to both CTL and Sz-ApFree patients. On the one hand, these differences should be considered
293 in terms of their functional impact, as NRN1 expression is crucial as it enhances synaptic transmission by
294 increasing the surface expression of CaV1.2, CaV1.3, and CaV3.3 channels, mediated through the insulin
295 receptor and ERK signaling pathways (46–48). Then, our data provides new evidence suggesting that the
296 reduced NRN1 PFC expression observed in patients with SZ may be specifically associated with, or at least
297 more pronounced under, clozapine treatment, and that such differences could be related to synaptic
298 transmission variability. Despite the scarcity of comparable studies, to further interpretating our findings it is
299 interesting to mention that epigenetic mechanisms have been implicated in the effects of atypical antipsychotic
300 treatment, specifically demonstrating that chronic treatment induces the expression of proteins related to
301 histones deacetylation, such as HDAC2 (49). Particularly, clozapine treatment has been related to widespread
302 promoter demethylation (50). Also, it is remarkable a previous study exploring dorsolateral PFC transcriptome
303 of schizophrenia patients, that identified two molecularly distinct subgroups of patients, one similar to CTL and
304 the other markedly different, with NRN1 being among the down-regulated genes between the latter subgroup
305 and CTL (25). Then, we tried to replicate our results with a larger sample of clozapine-treated patients, but

306 public data was limited and had fewer treated patients than our study (GSE224683, GSE80655, GSE12649).
307 On the other hand, the fact that our study did not reveal the same effect in HIPP, is aligned with previous
308 research showing different anatomical methylation signatures in patients with SZ and CTL when comparing
309 the PFC and the HIPP, possibly due to varying cellular compositions and their corresponding functional
310 specializations (51). This interpretation within the framework of region-specific transcriptome alterations in SZ
311 mirrors the loss-of-function mutations in the *GRIN2A* gene, encoding an NMDA receptor subunit, which
312 significantly increase SZ risk by differentially affecting brain regions and circuits (52,53).

313 Second, we explored the methylation profile of *NRN1* in the two brain regions, but recognizing the complexity
314 of interpreting methylation changes in SZ, in a complementary approach to the global perspective given by the
315 PLS, we advanced to more detailed interpretations to integrate both broad methylation patterns and targeted
316 site-specific analyses. As regards the differences between SZ-Clz and CTL, defined by distinct CpG units in
317 each region, we observed that the component LC1, which best distinguished the two groups, included CpG
318 units with both increased and decreased methylation in patients, indicating that bidirectional changes are a
319 defining feature of the patient methylation profile across both brain regions. However, upon grouping CpG
320 units by the direction of methylation change, we found that the average of those CpG units under-methylated
321 in SZ-Clz was significantly different between groups in both regions, suggesting that lower methylation in SZ-
322 Clz may play a more prominent role. Notably, a methylome-wide study identified a large region
323 (chr6:59992669-6006917) encompassing 29 adjacent CpG sites along the gene body of the *NRN1* as
324 hypomethylated in PFC of SZ patients compared to CTL (26). This region included all CpG sites detected as
325 hypomethylated in our study except for CpG 1.3, hence our findings add to those from Pidsley et al., 2014
326 while also suggesting that the observed hypomethylation may be characteristic of clozapine-treated patients.

327 Third, when exploring the relationship between *NRN1* methylation and expression patterns, we observed that
328 two methylation metrics derived from the PFC model, LC1 and the average of those CpG units under-
329 methylated correlated with *NRN1* expression in this region. Although the novelty of our study limits direct
330 comparison with other *NRN1*-specific results, our findings are consistent with previous research linking DNA
331 methylation to differential gene expression in post-mortem brain samples from individuals with SZ (54).
332 Additionally, it is important to note that some studies have linked clozapine treatment, but not haloperidol or
333 olanzapine, to changes in *BDNF* expression, an upstream regulator of *NRN1*, through the reduction of its
334 promoter methylation (55).

335 Next, to gain further insights into the potential methylation-expression correlates, we identified regulatory
336 elements overlapping with CpG units within PFC LC1 by using the UCSC Genome Browser

337 (<http://genome.ucsc.edu>) to access data from the Encyclopedia of DNA Elements (ENCODE) project (56) and
338 the Open Regulatory Annotation (OREgAnno) database (57). The presence of enhancer regions, DNase I
339 hypersensitive sites within these CpG units, and histone marks like H3K27me3, H3K4me1, and H3K36me3
340 highlights their potential in gene expression control and chromatin accessibility. Upon examining the
341 transcription factor binding sites (TFBS) influenced by these CpGs, we observed that most of the CpGs under-
342 methylated in SZ-Clz potentially altered the binding of numerous transcription factors (TFs). Many of these TF
343 have been previously associated with SZ. For instance, CpG1.3 methylation variability may impact the binding
344 of ELK1, differentially expressed in SZ lymphoblastoid cells (58), FEV, linked to affective disorders (59), and
345 SPDEF, which methylation moderates stress and substance abuse and its expression differs in the brain of
346 patients with autism spectrum disorders and CTL (60). Similarly, CpG2.5 and CpG2.6 could affect the binding
347 of EGR1, a stress response gene genetically associated with SZ (61).

348 Four, considering that many SZ-associated genetic variants have regulatory functions and that methylation is
349 under local genetic control (62), we integrated genotypic variability in our analysis. In the PFC, two variants
350 (rs2208870 and rs12333117) along with LC1 scores or hypomethylated CpG units correlated with *NRN1*
351 expression. HaploReg v4.2 data (63) showed that both variants alter TF binding affinity, with rs12333117 also
352 affecting enhancer and promoter function in multiple tissues, including the brain.

353 Despite the insights gained into the effects of genetic variability and methylation patterns on *NRN1* expression
354 in SZ, several limitations must be mentioned. Our relatively small sample size, although comparable to other
355 studies, may not capture the full variability of the methylation landscape in SZ, limiting the generalizability of
356 our findings. Additionally, the expression and methylation relationship with antipsychotics is two-way:
357 antipsychotics can modulate methylation and thereby gene expression, but the unique methylation profile of
358 an individual prior to treatment can also affect drug efficacy. Thus, without a group of never-treated patients,
359 we cannot truly separate the effects of the disorder from those of the medication, but finding such post-mortem
360 brain samples is challenging. Moreover, post-mortem samples also introduce variability due to tissue
361 heterogeneity and differences in the cause of death, though we tried to account for this by including this last
362 as a covariate. Finally, our cross-sectional study design limits our ability to assess changes in methylation over
363 time, which is crucial for understanding SZ progression and treatment response. Moreover, establishing
364 causality in such studies remains difficult. Therefore, further research with larger samples, longitudinal design,
365 and advanced multi-omics approaches are needed to fully understand the epigenetic mechanisms underlying
366 SZ.

367 In conclusion, we found that *NRN1* is significantly under-expressed in the PFC of patients with SZ treated with
368 clozapine, with methylation levels correlating with its expression. Our study underscores distinct *NRN1*
369 epigenetic patterns in the PFC and HIPPOCAMPUS, highlighting the brain region specificity of SZ-related alterations.
370 Additionally, incorporating genetic variability enhanced these correlations, emphasizing the importance of
371 considering both genetic and epigenetic factors to fully understand the molecular mechanisms underlying SZ.

372 6. ACKNOWLEDGEMENTS

373 This work was supported by: i) Fundació Alicia Koplowitz, ii) Acadèmia de les Ciències Mèdiques i de la Salut
374 de Catalunya i de Balears. This study also received funding provided by: i) the Instituto de Salud Carlos III
375 through a Miguel Servet contract to MF–V (CP20/00072), co-funded by European Regional Development Fund
376 (ERDF)/European Social Fund “Investing in your future”; (i) the Acadèmia de les Ciències Mèdiques i de la
377 Salut de Catalunya i de Balears through a contract to CA-P; iii) the Comissionat per a Universitats i Recerca
378 del DIUE of the Generalitat de Catalunya, Agència de Gestió d’Ajuts Universitaris i de Recerca (AGAUR:
379 2021SGR1475); iv) the Basque Government (IT1512/22).

380 7. ETHICAL STATEMENTS

381 The study adhered to legal and ethical standards, with all samples collected at the Basque Institute of Legal
382 Medicine (Bilbao, Spain) in accordance with Spanish national research policies and ethical guidelines for post-
383 mortem brain studies in effect at the time of collection (Law 14/2007). Additional approval was obtained from
384 the Research Ethics Committees of the Universidad del País Vasco/Euskal Herriko Unibertsitatea (UPV/EHU)
385 in País Vasco, Spain (RD 1716/2011), and Germanes Hospitalaries in Catalunya, Spain (PR-2016-07).

386 8. CONFLICT OF INTERESTS

387 All the authors reported no biomedical financial interests or potential conflicts of interest.

388 9. AUTHORSHIP CONTRIBUTION STATEMENT

389 **Carmen Almodóvar-Payá:** Conceptualization, Data curation, Methodology, Investigation, Formal Analysis,
390 Visualization, Writing – original draft, Writing – review & editing. **Marcos Moreno:** Data Curation, Methodology,
391 Investigation, Formal Analysis, Writing – review & editing. **Maria Guardiola-Ripoll:** Data Curation,
392 Investigation, Writing – review & editing. **Mariona Latorre-Guardia:** Methodology, Formal Analysis, Writing –
393 review & editing. **Benito Morentin:** Data curation, Resources, Writing – review & editing. **Beatriz Garcia-**
394 **Ruiz:** Investigation, Writing – review & editing. **Edith Pomarol-Clotet:** Resources, Funding acquisition, Writing
395 – review & editing. **Luis F Callado:** Data Curation, Resources, Funding acquisition, Writing – review & editing.
396 **Carne Gallego:** Conceptualization, Investigation, Methodology, Resources, Funding acquisition, Supervision,

397 Writing – review & editing. **Mar Fatjó-Vilas:** Conceptualization, Methodology, Resources, Funding acquisition,
398 Supervision, Writing – original draft, Writing – review & editing.

399 10. BIBLIOGRAPHY

- 400 1. Hilker R, Helenius D, Fagerlund B, Skyttke A, Christensen K, Werge TM, et al. Heritability of Schizophrenia
401 and Schizophrenia Spectrum Based on the Nationwide Danish Twin Register. *Biological Psychiatry*. 2018
402 Mar;83(6):492–8.
- 403 2. Sullivan PF, Kendler KS, Neale MC. Schizophrenia as a Complex Trait: Evidence From a Meta-analysis
404 of Twin Studies. *Arch Gen Psychiatry*. 2003 Dec 1;60(12):1187.
- 405 3. Purcell SM, Wray NR, Stone JL, Visscher PM, O'Donovan MC, Sullivan PF, et al. Common polygenic
406 variation contributes to risk of schizophrenia and bipolar disorder. *Nature*. 2009 Aug;460(7256):748–52.
- 407 4. Trubetskov V, Pardiñas AF, Qi T, Panagiotaropoulou G, Awasthi S, Bigdeli TB, et al. Mapping genomic
408 loci implicates genes and synaptic biology in schizophrenia. *Nature*. 2022 Apr;604(7906):502–8.
- 409 5. Takata A, Matsumoto N, Kato T. Genome-wide identification of splicing QTLs in the human brain and their
410 enrichment among schizophrenia-associated loci. *Nat Commun*. 2017 Feb 27;8(1):14519.
- 411 6. Moore LD, Le T, Fan G. DNA Methylation and Its Basic Function. *Neuropsychopharmacol*. 2013
412 Jan;38(1):23–38.
- 413 7. Halder R, Hennion M, Vidal RO, Shomroni O, Rahman RU, Rajput A, et al. DNA methylation changes in
414 plasticity genes accompany the formation and maintenance of memory. *Nat Neurosci*. 2016
415 Jan;19(1):102–10.
- 416 8. Sun M an, Sun Z, Wu X, Rajaram V, Keimig D, Lim J, et al. Mammalian Brain Development is
417 Accompanied by a Dramatic Increase in Bipolar DNA Methylation. *Sci Rep*. 2016 Sep 2;6(1):32298.
- 418 9. Richetto J, Meyer U. Epigenetic Modifications in Schizophrenia and Related Disorders: Molecular Scars
419 of Environmental Exposures and Source of Phenotypic Variability. *Biological Psychiatry*. 2021 Feb
420 1;89(3):215–26.
- 421 10. Merikangas AK, Shelly M, Knighton A, Kotler N, Tanenbaum N, Almasy L. What genes are differentially
422 expressed in individuals with schizophrenia? A systematic review. *Mol Psychiatry*. 2022 Mar;27(3):1373–
423 83.
- 424 11. Collado-Torres L, Burke EE, Peterson A, Shin J, Straub RE, Rajpurohit A, et al. Regional Heterogeneity
425 in Gene Expression, Regulation, and Coherence in the Frontal Cortex and Hippocampus across
426 Development and Schizophrenia. *Neuron*. 2019 Jul 17;103(2):203-216.e8.
- 427 12. Huang HS, Akbarian S. GAD1 mRNA Expression and DNA Methylation in Prefrontal Cortex of Subjects
428 with Schizophrenia. *PLOS ONE*. 2007 Aug 29;2(8):e809.
- 429 13. Iwamoto K, Bundo M, Yamada K, Takao H, Iwayama-Shigeno Y, Yoshikawa T, et al. DNA Methylation
430 Status of SOX10 Correlates with Its Downregulation and Oligodendrocyte Dysfunction in Schizophrenia.
431 *J Neurosci*. 2005 Jun 1;25(22):5376–81.
- 432 14. Kordi-Tamandani DM, Sahranavard R, Torkamanzehi A. Analysis of association between dopamine
433 receptor genes' methylation and their expression profile with the risk of schizophrenia. *Psychiatric*
434 *Genetics*. 2013 Oct;23(5):183.
- 435 15. Kundakovic M, Chen Y, Costa E, Grayson DR. DNA Methyltransferase Inhibitors Coordinately Induce
436 Expression of the Human Reelin and Glutamic Acid Decarboxylase 67 Genes. *Mol Pharmacol*. 2007 Mar
437 1;71(3):644–53.
- 438 16. Putz U, Harwell C, Nedivi E. Soluble CPG15 expressed during early development rescues cortical
439 progenitors from apoptosis. *Nat Neurosci*. 2005 Mar;8(3):322–31.

- 440 17. Javaherian A, Cline HT. Coordinated motor neuron axon growth and neuromuscular synaptogenesis are
441 promoted by CPG15 in vivo. *Neuron*. 2005 Feb 17;45(4):505–12.
- 442 18. Flavell SW, Greenberg ME. Signaling mechanisms linking neuronal activity to gene expression and
443 plasticity of the nervous system. *Annu Rev Neurosci*. 2008;31:563–90.
- 444 19. Loebrich S, Nedivi E. The function of activity-regulated genes in the nervous system. *Physiol Rev*. 2009
445 Oct;89(4):1079–103.
- 446 20. Hallmayer JF, Kalaydjieva L, Badcock J, Dragović M, Howell S, Michie PT, et al. Genetic Evidence for a
447 Distinct Subtype of Schizophrenia Characterized by Pervasive Cognitive Deficit. *The American Journal of*
448 *Human Genetics*. 2005 Sep 1;77(3):468–76.
- 449 21. Almodóvar-Payá C, Guardiola-Ripoll M, Giralt-López M, Gallego C, Salgado-Pineda P, Miret S, et al.
450 NRN1 Gene as a Potential Marker of Early-Onset Schizophrenia: Evidence from Genetic and
451 Neuroimaging Approaches. *International Journal of Molecular Sciences*. 2022 Jan;23(13):7456.
- 452 22. Almodóvar-Payá C, Guardiola-Ripoll M, Giralt-López M, Oscoz-Iruozqui M, Canales-Rodríguez EJ,
453 Madre M, et al. NRN1 epistasis with BDNF and CACNA1C: mediation effects on symptom severity through
454 neuroanatomical changes in schizophrenia. *Brain Struct Funct*. 2024 Jun 1;229(5):1299–315.
- 455 23. Fatjó-Vilas M, Prats C, Pomarol-Clotet E, Lázaro L, Moreno C, González-Ortega I, et al. Involvement of
456 NRN1 gene in schizophrenia-spectrum and bipolar disorders and its impact on age at onset and cognitive
457 functioning. *The World Journal of Biological Psychiatry*. 2016 Feb 17;17(2):129–39.
- 458 24. Chandler D, Dragović M, Cooper M, Badcock JC, Mullin BH, Faulkner D, et al. Impact of Neuritin 1 (NRN1)
459 polymorphisms on fluid intelligence in schizophrenia. *American Journal of Medical Genetics Part B:*
460 *Neuropsychiatric Genetics*. 2010;153B(2):428–37.
- 461 25. Bowen EFW, Burgess JL, Granger R, Kleinman JE, Rhodes CH. DLPFC transcriptome defines two
462 molecular subtypes of schizophrenia. *Transl Psychiatry*. 2019 May 9;9(1):1–10.
- 463 26. Pidsley R, Viana J, Hannon E, Spiers H, Troakes C, Al-Saraj S, et al. Methylomic profiling of human brain
464 tissue supports a neurodevelopmental origin for schizophrenia. *Genome Biol*. 2014;15(10):483.
- 465 27. Reshetnikov VV, Kisaretova PE, Ershov NI, Shulyupova AS, Oshchepkov DY, Klimova NV, et al. Genes
466 associated with cognitive performance in the Morris water maze: an RNA-seq study. *Sci Rep*. 2020 Dec
467 16;10(1):22078.
- 468 28. Wan K, Mao F, Li Q, Wang L, Wei Z, Wang P, et al. Neuritin-overexpressing transgenic mice demonstrate
469 enhanced neuroregeneration capacity and improved spatial learning and memory recovery after ischemia-
470 reperfusion injury. *Aging (Albany NY)*. 2020 Dec 15;13(2):2681–99.
- 471 29. Liu Y ping, Wu X, Xia X, Yao J, Wang B jie. The genome-wide supported CACNA1C gene polymorphisms
472 and the risk of schizophrenia: an updated meta-analysis. *BMC Medical Genetics*. 2020 Aug 8;21(1):159.
- 473 30. Alme MN, Wibrand K, Dagestad G, Bramham CR. Chronic Fluoxetine Treatment Induces Brain Region-
474 Specific Upregulation of Genes Associated with BDNF-Induced Long-Term Potentiation. *Neural Plast*.
475 2007;2007:26496.
- 476 31. Park HG, Yu HS, Park S, Ahn YM, Kim YS, Kim SH. Repeated treatment with electroconvulsive seizures
477 induces HDAC2 expression and down-regulation of NMDA receptor-related genes through histone
478 deacetylation in the rat frontal cortex. *International Journal of Neuropsychopharmacology*. 2014 Sep
479 1;17(9):1487–500.
- 480 32. Lally J, Ajnakina O, Forti MD, Trotta A, Demjaha A, Kolliakou A, et al. Two distinct patterns of treatment
481 resistance: clinical predictors of treatment resistance in first-episode schizophrenia spectrum psychoses.
482 *Psychological Medicine*. 2016 Nov;46(15):3231–40.
- 483 33. Samara MT, Dold M, Gianatsi M, Nikolakopoulou A, Helfer B, Salanti G, et al. Efficacy, Acceptability, and
484 Tolerability of Antipsychotics in Treatment-Resistant Schizophrenia: A Network Meta-analysis. *JAMA*
485 *Psychiatry*. 2016 Mar 1;73(3):199–210.

- 486 34. de Bartolomeis A, Vellucci L, Barone A, Manchia M, De Luca V, Iasevoli F, et al. Clozapine's multiple
487 cellular mechanisms: What do we know after more than fifty years? A systematic review and critical
488 assessment of translational mechanisms relevant for innovative strategies in treatment-resistant
489 schizophrenia. *Pharmacology & Therapeutics*. 2022 Aug 1;236:108236.
- 490 35. Guidotti A, Dong E, Grayson DR. *Epigenetic Basis of Clozapine Action*. 2017;
- 491 36. Lee BJ, Marchionni L, Andrews CE, Norris AL, Nucifora LG, Wu YC, et al. Analysis of differential gene
492 expression mediated by clozapine in human postmortem brains. *Schizophrenia Research*. 2017
493 Jul;185:58–66.
- 494 37. Prats C, Arias B, Ortet G, Ibáñez MI, Moya J, Pomarol-Clotet E, et al. Role of neurotrophins in depressive
495 symptoms and executive function: Association analysis of NRN1 gene and its interaction with BDNF gene
496 in a non-clinical sample. *Journal of Affective Disorders*. 2017 Mar 15;211:92–8.
- 497 38. Purcell S, Neale B, Todd-Brown K, Thomas L, Ferreira MAR, Bender D, et al. PLINK: A Tool Set for Whole-
498 Genome Association and Population-Based Linkage Analyses. *Am J Hum Genet*. 2007 Sep;81(3):559–
499 75.
- 500 39. Livak KJ, Schmittgen TD. Analysis of Relative Gene Expression Data Using Real-Time Quantitative PCR
501 and the $2^{-\Delta\Delta CT}$ Method. *Methods*. 2001 Dec 1;25(4):402–8.
- 502 40. Redlich R, Schneider I, Kerkenberg N, Opel N, Bauhaus J, Enneking V, et al. The role of BDNF methylation
503 and Val66Met in amygdala reactivity during emotion processing. *Human Brain Mapping*. 2020;41(3):594–
504 604.
- 505 41. Thompson M, Hill BL, Rakocz N, Chiang JN, Geschwind D, Sankararaman S, et al. Methylation risk scores
506 are associated with a collection of phenotypes within electronic health record systems. *npj Genom Med*.
507 2022 Aug 25;7(1):1–11.
- 508 42. Rohart F, Gautier B, Singh A, Cao KAL. mixOmics: An R package for 'omics feature selection and multiple
509 data integration. *PLOS Computational Biology*. 2017 Nov 3;13(11):e1005752.
- 510 43. Morgan SE, Seidlitz J, Whitaker KJ, Romero-Garcia R, Clifton NE, Scarpazza C, et al. Cortical patterning
511 of abnormal morphometric similarity in psychosis is associated with brain expression of schizophrenia-
512 related genes. *Proceedings of the National Academy of Sciences*. 2019 May 7;116(19):9604–9.
- 513 44. Fernandez-Egea E, Vértes PE, Flint SM, Turner L, Mustafa S, Hatton A, et al. Peripheral Immune Cell
514 Populations Associated with Cognitive Deficits and Negative Symptoms of Treatment-Resistant
515 Schizophrenia. *PLOS ONE*. 2016 May 31;11(5):e0155631.
- 516 45. Rizig MA, McQuillin A, Ng A, Robinson M, Harrison A, Zvelebil M, et al. A gene expression and systems
517 pathway analysis of the effects of clozapine compared to haloperidol in the mouse brain implicates
518 susceptibility genes for schizophrenia. *J Psychopharmacol*. 2012 Sep 1;26(9):1218–30.
- 519 46. Lu JM, Liu DD, Li ZY, Ling C, Mei YA. Neuritin Enhances Synaptic Transmission in Medial Prefrontal
520 Cortex in Mice by Increasing CaV3.3 Surface Expression. *Cerebral Cortex*. 2017 Jul 1;27(7):3842–55.
- 521 47. Yao JJ, Gao XF, Chow CW, Zhan XQ, Hu CL, Mei YA. Neuritin Activates Insulin Receptor Pathway to Up-
522 regulate Kv4.2-mediated Transient Outward K⁺ Current in Rat Cerebellar Granule Neurons *. *Journal of*
523 *Biological Chemistry*. 2012 Nov 30;287(49):41534–45.
- 524 48. Zhao QR, Lu JM, Li ZY, Mei YA. Neuritin promotes neurite and spine growth in rat cerebellar granule cells
525 via L-type calcium channel-mediated calcium influx. *Journal of Neurochemistry*. 2018;147(1):40–57.
- 526 49. Ibi D, de la Fuente Revenga M, Kezunovic N, Muguruza C, Saunders JM, Gaitonde SA, et al.
527 Antipsychotic-induced Hdac2 transcription via NF- κ B leads to synaptic and cognitive side effects. *Nat*
528 *Neurosci*. 2017 Sep;20(9):1247–59.
- 529 50. Dong E, Nelson M, Grayson DR, Costa E, Guidotti A. Clozapine and sulpiride but not haloperidol or
530 olanzapine activate brain DNA demethylation. *Proceedings of the National Academy of Sciences of the*
531 *United States of America*. 2008 Aug 29;105(36):13614.

- 532 51. Alelú-Paz R, Carmona FJ, Sanchez-Mut JV, Cariaga-Martínez A, González-Corpas A, Ashour N, et al.
533 Epigenetics in Schizophrenia: A Pilot Study of Global DNA Methylation in Different Brain Regions
534 Associated with Higher Cognitive Functions. *Front Psychol* [Internet]. 2016 Sep 30 [cited 2024 Jan 8];7.
535 Available from: <http://journal.frontiersin.org/Article/10.3389/fpsyg.2016.01496/abstract>
- 536 52. Farsi Z, Nicoletta A, Simmons SK, Aryal S, Shepard N, Brenner K, et al. Brain-region-specific changes in
537 neurons and glia and dysregulation of dopamine signaling in *Grin2a* mutant mice. *Neuron*. 2023 Nov
538 1;111(21):3378-3396.e9.
- 539 53. Huckins LM, Dobbyn A, Ruderfer DM, Hoffman G, Wang W, Pardiñas AF, et al. Gene expression
540 imputation across multiple brain regions provides insights into schizophrenia risk. *Nat Genet*. 2019
541 Apr;51(4):659–74.
- 542 54. Chen C, Zhang C, Cheng L, Reilly JL, Bishop JR, Sweeney JA, et al. Correlation between DNA methylation
543 and gene expression in the brains of patients with bipolar disorder and schizophrenia. *Bipolar Disorders*.
544 2014;16(8):790–9.
- 545 55. Dong E, Tueting P, Matriciano F, Grayson DR, Guidotti A. Behavioral and molecular neuroepigenetic
546 alterations in prenatally stressed mice: relevance for the study of chromatin remodeling properties of
547 antipsychotic drugs. *Transl Psychiatry*. 2016 Jan;6(1):e711–e711.
- 548 56. Dunham I, Kundaje A, Aldred SF, Collins PJ, Davis CA, Doyle F, et al. An integrated encyclopedia of DNA
549 elements in the human genome. *Nature*. 2012 Sep;489(7414):57–74.
- 550 57. Griffith OL, Montgomery SB, Bernier B, Chu B, Kasaian K, Aerts S, et al. ORegAnno: an open-access
551 community-driven resource for regulatory annotation. *Nucleic Acids Res*. 2008 Jan;36(Database
552 issue):D107–13.
- 553 58. Kyosseva SV, Elbein AD, Hutton TL, Griffin WST, Mrak RE, Sturner WQ, et al. Increased Levels of
554 Transcription Factors Elk-1, Cyclic Adenosine Monophosphate Response Element-Binding Protein, and
555 Activating Transcription Factor 2 in the Cerebellar Vermis of Schizophrenic Patients. *Archives of General
556 Psychiatry*. 2000 Jul 1;57(7):685–91.
- 557 59. Kriegebaum CB, Gutknecht L, Bartke L, Reif A, Buttenschon HN, Mors O, et al. The expression of the
558 transcription factor FEV in adult human brain and its association with affective disorders. *J Neural Transm*.
559 2010 Jul 1;117(7):831–6.
- 560 60. Tay N, Macare C, Liu Y, Ruggeri B, Jia T, Chu C, et al. Allele-Specific Methylation of SPDEF: A Novel
561 Moderator of Psychosocial Stress and Substance Abuse. *AJP*. 2019 Feb;176(2):146–55.
- 562 61. Duclot F, Kabbaj M. The Role of Early Growth Response 1 (EGR1) in Brain Plasticity and Neuropsychiatric
563 Disorders. *Front Behav Neurosci* [Internet]. 2017 Mar 6 [cited 2024 Jul 26];11. Available from:
564 <https://www.frontiersin.org/journals/behavioral-neuroscience/articles/10.3389/fnbeh.2017.00035/full>
- 565 62. Gaunt TR, Shihab HA, Hemani G, Min JL, Woodward G, Lyttleton O, et al. Systematic identification of
566 genetic influences on methylation across the human life course. *Genome Biol*. 2016 Mar 31;17(1):61.
- 567 63. Ward LD, Kellis M. HaploReg v4: systematic mining of putative causal variants, cell types, regulators and
568 target genes for human complex traits and disease. *Nucleic Acids Res*. 2016 Jan 4;44(Database
569 issue):D877–81.