

Genetic Contributions to Alzheimer's Disease and Frontotemporal Dementia in Admixed Latin American Populations

Juliana Acosta-Uribe^{*1,2}, Stefanie D. Piña Escudero^{*3,4}, J. Nicholas Cochran⁵, Jared W. Taylor⁵, P. Alejandra Castruita⁴, Caroline Jonson^{4,6,28}, Erin A. Barinaga⁵, Kevin Roberts⁵, Alexandra R. Levine², Dawwod S. George², José Alberto ÁvilaFunes^{7,8}, María I. Behrens^{9,10}, Martín A. Bruno^{11,12}, Luis I. Brusco^{13,14}, Nilton Custodio¹⁵, Claudia Duran-Aniotz¹⁶, Francisco Lopera^{1†}, Diana L. Matallana^{17,18,19}, Andrea Slachevsky^{9,20,21,22}, Leonel T. Takada²³, Lina M. Zapata-Restrepo^{24,25}, Dafne E. Durón-Reyes⁷, Elisa de Paula França Resende^{3,26}, Nancy Gelvez²⁷ Maria E. Godoy¹⁶, Marcelo A. Maito¹⁶, Shireen Javandel^{3,4}, Bruce L. Miller^{3,4}, Mike A. Nalls^{6,28}, Hampton Leonard^{6,28}, Dan Vitale^{6,28}, Sara Bandres-Ciga²⁸, Mathew J. Koretsky^{6,28}, Andrew B. Singleton^{28,29}, Caroline B. Pantazis²⁸, Victor Valcour^{3,4,30}, Agustin Ibañez^{16,31}, Kenneth S. Kosik^{**2}, Jennifer S. Yokoyama^{**3,4,32} and the Multi-Partner Consortium to Expand Dementia Research in Latin America (ReDLat).

1. Grupo de Neurociencias de Antioquia (GNA), Facultad de Medicina, Universidad de Antioquia. Medellín, Colombia.
2. Neuroscience Research Institute and Department of Molecular, Cellular and Developmental Biology, University of California Santa Barbara. Santa Barbara, USA.
3. Global Brain Health Institute (GBHI), Department of Neurology, University of California San Francisco. San Francisco, USA.
4. Memory and Aging Center, Department of Neurology, Weill Institute for Neurosciences, University of California San Francisco. San Francisco, USA.
5. HudsonAlpha Institute for Biotechnology. Huntsville, USA .
6. DataTecnica LLC, Washington DC, USA.
7. Instituto Nacional de Ciencias Médicas y Nutrición Salvador Zubirán. Ciudad de México, México.
8. Bordeaux Population Health Research Center, University of Bordeaux. Bordeaux, France.
9. Departamento de Neurología y Psiquiatría, Clínica Alemana-Universidad del Desarrollo. Santiago, Chile.
10. Centro de Investigación Clínica Avanza (CICA), Departamento de Neurología y Neurocirugía and Departamento de Neurociencia, Facultad de Medicina, Universidad de Chile. Santiago, Chile.
11. Instituto de Ciencias Biomédicas (ICBM) Facultad de Ciencias Médicas, Universidad Católica de Cuyo. San Juan, Argentina.
12. Consejo Nacional de Investigaciones Científicas y Técnicas (CONICET). San Juan, Argentina.
13. Asociación Alzheimer Argentina (ALZAR). Buenos Aires, Argentina.
14. Universidad de Buenos Aires. Buenos Aires, Argentina.
15. Instituto Peruano de Neurociencias. Lima, Perú.
16. Latin American Institute for Brain Health (BrainLat), Universidad Adolfo Ibanez. Santiago, Chile.

17. Instituto de Envejecimiento, Facultad de Medicina, Pontificia Universidad Javeriana, Bogotá, Colombia.
18. Centro de Memoria y Cognición Intellectus, Hospital Universitario San Ignacio. Bogotá, Colombia.
19. Departamento de Salud Mental, Hospital Universitario Fundación Santa Fe. Bogotá, Colombia.
20. Laboratorio de Neuropsicología y Neurociencias Cognitivas (LANNEC) del Programa de Fisiopatología del Instituto de Ciencias Biomédicas (ICBM), Departamento de Ciencias Neurológicas Oriente y Departamento de Neurociencias de la Facultad de Medicina de la Universidad de Chile. Santiago, Chile.
21. Centro de Gerociencia, Salud Mental y Metabolismo (GERO). Santiago, Chile.
22. Centro de Memoria y Neuropsiquiatría (CMYN), Departamento de Neurología. Hospital del Salvador, Chile.
23. Hospital das Clínicas, Faculdade de Medicina da Universidade de São Paulo. São Paulo, Brasil.
24. Facultad de Ciencias de la Salud, Universidad Icesi. Cali, Colombia.
25. Fundación Valle de Lili. Cali, Colombia.
26. Faculdade de Medicina da Universidade Federal de Minas Gerais. Belo Horizonte, Brasil.
27. Instituto de genética humana, Facultad de Medicina, Pontificia Universidad Javeriana, Bogotá, Colombia.
28. Center for Alzheimer's and Related Dementias (CARD), National Institute on Aging and National Institute of Neurological Disorders and Stroke, National Institutes of Health. Bethesda, USA.
29. National Institute on Aging, National Institutes of Health. Bethesda, USA.
30. Division of Geriatric Medicine, University of California San Francisco. San Francisco, USA.
31. Global Brain Health Institute, Trinity College Dublin. Dublin, Ireland.
32. Department of Radiology and Biomedical Imaging, University of California. San Francisco, USA.

*Both authors contributed equally

† Passed away during the preparation of this manuscript on September 10, 2024

**Both authors contributed equally

Corresponding author

Jennifer S. Yokoyama

e-mail: Jennifer.Yokoyama@ucsf.edu

Address for correspondence:

1651 4th St. Room 3C08,
San Francisco, CA 94158.
USA

Abstract

Background: Latin America's diverse genetic makeup, shaped by centuries of admixture, presents a unique opportunity to study Alzheimer's disease dementia (AD) and frontotemporal dementia (FTD). Our aim is to identify genetic variations associated with AD and FTD within this population.

Methods: The Multi-Partner Consortium to Expand Dementia Research in Latin America (ReDLat) recruited 2,162 participants with AD, FTD, and healthy controls from six Latin American countries (Argentina, Brazil, Chile, Colombia, Mexico, and Peru). All participants underwent array, exome, and/or whole-genome sequencing. Population structure was analyzed using Principal Component Analysis and ADMIXTURE, projecting the ReDLat population onto the 1000 Genomes Project database. To identify genes associated with autosomal dominant, autosomal recessive, or X-linked forms of adult-onset dementia, we searched the Online Mendelian Inheritance in Man database and analyzed pedigree information. Variant interpretation followed guidelines from the American College of Medical Genetics and Genomics, and the Guerreiro algorithm was applied for the *PSEN1* and *PSEN2* genes.

Results: Global ancestry analysis of the ReDLat cohort revealed a predominant mix of American, African, and European ancestries. Uniquely, Brazil displayed an additional East Asian component accurately reflecting the historical admixture patterns from this region. We identified 17 pathogenic variants, a pathogenic *C9orf72* expansion, and 44 variants of uncertain significance. Among our cohort, 70 families exhibited autosomal dominant inheritance of neurodegenerative diseases, with 48 families affected by AD and 22 by FTD. In families with AD, We discovered a novel variant in the *PSEN1* gene, c.519G>T (p.Leu173Phe), along with other previously described variants seen in the region, such as c.356C>T (p.Thr119Ile). In families with FTD, the most commonly associated gene was *GRN*, followed by *MAPT*. Notably, we identified a patient meeting criteria for FTD who carried a pathogenic variant in *SOD1*, c.388G>A (p.Phe21Leu), which had previously been reported in another FTD patient from the same geographical region.

Conclusions: This study provides the first snapshot of genetic contributors to AD and FTD in a multisite cohort across Latin America. It will be critical to evaluate the generalizability of genetic risk factors for AD and FTD across diverse ancestral backgrounds, considering distinct social determinants of health and accounting for modifiable risk factors that may influence disease risk and resilience across different cultures.

Keywords: Neurodegeneration, Alzheimer's disease, Frontotemporal dementia, Latin America, Admixture, Autosomal dominant dementia.

Background

Latin America houses a unique blend of Indigenous American, European, and African ancestries, creating a diverse genetic landscape that emerged from the conquest of the Americas and the slave trade that began in the 1500s. (1) Significant East Asian immigration that occurred during the early 20th century has further contributed to the continent's population diversity as observed today. (2,3) This admixture harbors a spectrum of novel genetic variants, including some that may modulate susceptibility to neurodegenerative diseases like Alzheimer's disease (AD) and frontotemporal dementia (FTD), or may result in a higher allelic frequency of known risk-conveying variants for neurodegeneration. (4) Studying these populations, with their complex genetic architecture, offers an invaluable resource for understanding neurodegenerative diseases.

Assessing admixed populations is particularly interesting because admixture introduces a rich heterogeneity of alleles, which can be crucial for understanding genetic risk. For instance, in the Colombian population, researchers from a single center in Medellín have identified 13 different pathogenic *PSEN1* variants. (5) This contrasts with the nine independent variants described in a screening study from nine centers throughout the Iberian Peninsula. (6) It is hypothesized that these mutations, which arose in different ancestral backgrounds, led to high amyloid-beta levels which possibly conferred antimicrobial benefits to carriers during the American Conquest. (5) Additionally, in the Peruvian population, a recent genome-wide association study and functional analysis suggested that the *NFASC* gene, located on chromosome 1, is associated with AD. The *NFASC* locus showed significant contributions from both European and African ancestries. (7) This finding emphasizes the crucial role that diverse ancestral backgrounds play in both uncovering novel variation and understanding the complex genetic foundations of AD.

Due to cultural, religious, and historical factors, Latin American families have traditionally been large. Government policies during the 1960s and 1970s further encouraged population growth, resulting in an average family size of six children. (8,9) Additionally, geographic and socioeconomic conditions often led to extended families residing in close proximity. (8,10) This unique demographic structure provides an exceptional opportunity to study large families, tracing the lineage and impact of specific genetic variants across generations. For example, the *PSEN1* E280A (Glu280Ala) variant in Medellín, Colombia has been traced back to approximately 500 years ago, around the time of the Spanish invasion. This variant entered an admixed population with a small effective population size, generating a large founder effect. This historical and genetic tracing aids in

understanding the genetic drift that occurs over time due to the small population size and increases the probability of identifying both risk and protective genetic variants. (11–13)

The scientific community from the region recognized the immense potential of this approach and formed the Multi-Partner Consortium to Expand Dementia Research in Latin America (ReDLat). (14) This consortium fosters collaboration among researchers, clinicians, and institutions across six Latin American countries and the United States to leverage the unique genetic diversity and demographic characteristics that influence AD and FTD in Latin American populations. ReDLat aims to highlight the unique genetic diversity and demographic features of these populations associated with these neurodegenerative diseases. (15) Ultimately, the consortium's work seeks to refine diagnostic approaches, to develop targeted therapeutic interventions, and significantly enhance our understanding of dementia across Latin America. (14)

This paper is the first genetic report from this consortium, focusing on AD and FTD in admixed Latin American participants, with a particular emphasis on families. Our research efforts aim to identify genetic variants associated with these neurodegenerative diseases in the region and provide insights into some of the clinical presentations observed within the studied families, thereby enhancing our understanding of AD and FTD across this vast and diverse population. By expanding the genomic dataset in the coming years, we aim to deepen our understanding of the genetic underpinnings and clinical presentations of these neurodegenerative diseases across diverse Latin American populations, enhancing the potential for targeted interventions and therapies.

Methods

A. Participant recruitment

Participants with mild to moderate Alzheimer's disease (AD) or frontotemporal dementia (FTD) were recruited from ten urban memory clinics across six Latin American countries: Argentina, Brazil, Chile, Colombia, Mexico, and Peru. Recruitment occurred in two phases due to the COVID-19 pandemic, which delayed the start of ReDLat's prospective recruitment, originally planned for 2020. Despite the timing differences, the inclusion criteria for both the retrospective and prospective cohorts were identical.

All participants underwent medical and neuropsychological evaluation. The clinical diagnosis was determined by site investigators through consensus conferences at each site, adhering to the current diagnostic criteria for AD and FTD. (16–18) Healthy controls

were recruited at the same locations meeting the following criteria: Clinical Dementia Rating (CDR) (19) of 0, a Mini-Mental State Examination (MMSE) (20) score greater than 25, or having been evaluated by a neuropsychologist who confirmed normal cognition in participants with few years of formal education. Family members of participants with AD or FTD, aged 18 years or older, were included if there were two or more individuals with neurodegenerative illnesses in the family, or were related to a study participant with a known dementia-associated genetic mutation and having undergone genetic counseling. All participants (diagnosed patients, healthy controls, and family members) demonstrated minimum fluency in the language of assessment (Spanish or Portuguese), had adequate vision and hearing for cognitive testing as determined by the investigator, and were required to have a study partner (informant) with at least six months of knowledge about their daily activities and cognitive/functional status. All participants (prospective and retrospective) had to be capable of providing informed consent or have a legally authorized representative. Consent was obtained following a detailed explanation of the procedures, associated risks, and potential benefits. This process complied with the ethical guidelines of each participating country and the International Declaration of Helsinki, including securing assent from the participants themselves, ensuring they expressed their willingness to participate. The study and informed consent were approved by the Institutional Review Board of each participating site.

B. Clinical characterization:

Recruited participants underwent a family history in which information was collected from patients and their study partners via self-report in the Genetic Pedigree Software-Progeny®. (21) A positive family history was defined as having at least one first- or second-degree relative with dementia or another neurodegenerative disorder. Families with three or more affected individuals in two consecutive generations were then labeled as ‘strong family aggregation’. Medical history and a full neuropsychological examination were conducted as described in Ibañez et. al. (2021). (14) Retrospective participants were assessed based on a re-evaluation of the available clinical data for each individual. The cognitive tests were harmonized as described in Maito et.al.(2023). (22)

C. Genetic sequencing and data processing:

1. Sample acquisition and processing: Standardized phlebotomy with EDTA tubes was used for sample collection. DNA was extracted using the techniques detailed in the Supplementary table 1. Samples were shipped

quarterly from the various participating sites in Latin America to the United States. HudsonAlpha Institute for Biotechnology (Alabama, U.S.A) performed Single Nucleotide Polymorphism (SNP) Arrays, whole exome sequencing (WES), and/or whole genome sequencing (WGS) of the samples. Additional whole genome sequencing was performed at Psomagen, Inc. (Maryland, U.S.A)

2. SNP Arrays: Variants were genotyped using the NeuroBooster array from Illumina, designed to capture variants relevant to neurological conditions. (23) Quality control (QC) of the SNP Array data was conducted using Genotools v1 default settings. (24) Prior to imputation, the QC'ed output files from Genotools were processed with the *no_qc_imputation_prep.sh* script. This script ran the datasets through the Wrayner script to compare them against all TOPMed freeze 8 variants. Excluded variants were then flipped to rescue additional variants, after which the dataset was processed again through the Wrayner script to compare against PASS TOPMed freeze 8 variants. Data was subsequently imputed using the TOPMed Imputation Panel and Server v1.3.3, following a previously developed pipeline for multi-ancestral sample sets as described in Vitale et. al. (2024). (24)
3. WES: DNA was processed using Integrated DNA Technologies xGen Exome Hyb Panel v2, and sequenced on the NovaSeq 6000 platform using paired-end 100-base pair reads to a target depth of 100X.
4. WGS: Samples at Psomagen were prepared using the TruSeq DNA PCR-Free library prep method to avoid PCR amplification bias. Samples at HudsonAlpha underwent a custom PCR-free preparation involving Covaris shearing (fragmenting the DNA), end repair (preparing the DNA fragments for ligation), and adapter ligation, all without PCR amplification. All libraries from both sites were then normalized using KAPA qPCR and sequenced on the Illumina NovaSeq 6000 platform to a target depth of 30X. The sequencing was paired-end with a read length of 150 bp (Illumina 150bpPE).
5. Alignment and variant calling: The raw sequence data (fastq files) were aligned to the hg38 reference genome using the Sentieon v202112.05 implementation of the BWA MEM algorithm at HudsonAlpha. Sentieon v202112.05 utilities were used to sort the reads, mark duplicate sequences,

and recalibrate the base quality scores. Variant calling, which identifies differences between the sample DNA and the reference genome, was performed using GATK4 tools implemented by Sentieon v202112.05. This step was conducted across all samples in a single batch to maintain consistency. Finally, variant quality score recalibration (VQSR) was applied to filter out false positive variant calls, ensuring high-quality data. This comprehensive approach achieved an average recall rate of 99.22% when compared to the Genome in a Bottle high confidence truth sets, indicating a high level of accuracy in detecting genetic variants.

D. Genomic analyses

1. Genomic data quality control:

- a. Variant Call Format (VCF) files were filtered according to established criteria to ensure high-quality data. For whole genome and exome sequences variants with genotype quality greater than 20 and read depth scores above 10 were retained. The filtered VCF was then annotated with gene names, variant types, and amino acid changes for all exonic variants using GRCh38.99 with SnpEff, dbSNP release 156, CADD 1.6, TOPMed Bravo Freeze 8 allele frequencies, and ClinVar through bcftools. (25–28) Variants with genotyping rates below 95% by individual and 95% by variant were removed. Chromosomal sex was further validated via genetic data by splitting the pseudoautosomal regions of the X chromosome and analyzing the heterozygosity of X-chromosome, as well as the count of variants present on the Y chromosome. A detailed pipeline and scripts are available at <https://github.com/TauConsortium/redlat-genetics>
- b. Relatedness: Family history was documented through elaboration of detailed pedigrees for each recruited participant. Disclosed relatedness was compared to expected genetic relatedness using KING. (29) Individuals with cryptic relatedness (kinship coefficient <0.125 without a familial relationship documented on the pedigrees) or discrepancies between disclosed and genetic relatedness were removed.

- c. Combining Datasets: To combine the arrays and WGS data, all variant IDs in both datasets were first annotated with “chrom:pos:ref:alt”. The VCFs were then intersected using BCFtools v1.9 isec, producing a list of intersecting variants between the two datasets. Both VCFs were filtered to include only these intersecting variants and then merged using BCFtools v1.9 merge. (30) After merging, the VCF was annotated with dbSNP 156. (31)
- d. Concordance Check: To ensure concordance between the imputed arrays and WGS, concordance was checked for individuals with data from both methods. The imputed array data was filtered for varying allele frequencies (AFs) using BCFtools v1.9. (30) Concordance was assessed for each AF-filtered VCF using SnpSift concordance. The final concordance for each individual was determined by dividing the number of correct variant calls by the total number of intersecting variant calls. The complete script for the concordance check is available at the project’s GitHub repository [see data sharing]. Samples with concordance below 0.95 at sites with AFs less than 0.0001 were excluded.

2. Population Stratification:

- a. Principal Component Analysis (PCA) was conducted using the smartpca package from EIGENSOFT (version 8.0.0). (32) Initial PCA calculations were based on samples from the 1000 Genomes Project, (33) and the ReDLat samples were subsequently projected onto the top principal components.
- b. Global ancestry was estimated using ADMIXTURE (version 1.3). (34) Initially, we performed an unsupervised ancestry analysis on data from the 1000 Genomes Project, which included individuals from various 'reference populations'. (33) The ReDLat samples were then projected onto the reference panel-based population structure.

3. Variant pathogenicity analysis:

Data from WGS and WES was merged for a joint analysis for pathogenic variation. We used the Online Mendelian In Men (OMIM) database to search

for genes associated with autosomal dominant, autosomal recessive, or X-linked forms of adult-onset dementia. (35)

We manually curated protein-altering variants in the ten genes most commonly associated with adult-onset neurodegeneration: *APP*, *CHMP2B*, *FUS*, *GRN*, *MAPT*, *PSEN1*, *PSEN2*, *TARDBP*, *TBK1*, and *VCP*, as well as expansions in *C9orf72*. (36) Variants located in introns, the 3' untranslated region (3' UTR), the 5' untranslated region (5' UTR), and synonymous variants within exons were included if their *in silico* splice-predicting scores (dbscSNV_RF_SCORE and dbscSNV_ADA_SCORE) were both greater than 0.6, since these variants were considered likely to have an impact on splicing, making them relevant for further study. (37) Exonic non-synonymous variants (missense, nonsense, and frameshift) were analyzed following guidelines from the American College of Medical Genetics and Genomics (ACMG) [20] and the Guerreiro algorithm for *PSEN1* and *PSEN2* genes. [21]

The variants identified in the remaining genes listed in [Supplementary Table 2](#) were queried in ClinVar [18] and AlzForum [19] and reported if previously classified as pathogenic or likely pathogenic. Variants identified through this process were then tested by hand for familial segregation to confirm their association with the disease within families.

Results

A. Characterization of the population

By the time of manuscript submission, we had sequenced a total of 2,254 participants from both the retrospective and prospective cohorts. Following thorough quality control, genomic data from 2,162 individuals were retained for analyses. The final dataset comprised 658 participants with SNP array data (including 174 who also had WES), 1,495 with WGS, and 9 individuals with only WES. [Figure 1] Among the participants with high quality genomic data, 999 were diagnosed with AD, 381 with FTD, and 755 were classified as healthy at the time of evaluation. Additionally, the sample included eight participants with mild cognitive impairment and 19 with conditions attributed to other neuropsychiatric factors (including Parkinson's disease, Lewy body dementia, atypical parkinsonism, neurodevelopmental disorders, cerebellar ataxia, brain tumor, cognitive impairment associated with non-brain cancer, vascular dementia, severe depressive disorder, bipolar

disorder, obstructive sleep apnea, and chronic traumatic encephalopathy). These individuals were part of the recruited families and had a recruited relative with AD or FTD related dementia.

As expected, a higher percentage of participants with FTD were under 65 years of age compared to those with AD (22.3% vs. 13.9%). Furthermore, the percentage of female participants was higher in the AD group (66.6%) compared to the FTD group (52.8%). Those in the AD group also showed a higher proportion of individuals who are heterozygous (41.5%) and homozygous (8.6%) for the *APOE* ϵ 4 allele. [Table 1] The distribution of *APOE* alleles of unrelated individuals varies per country as shown in [supplementary table 3](#). Homozygous *APOE* ϵ 2 carriers were observed only in Colombia (0.2%) and Brazil (1%). Conversely, the highest numbers of *APOE* ϵ 4 alleles were found in Argentina and Colombia (39% in both), although Colombia has 1% more homozygous carriers than Argentina. It is worth noting that these numbers may not be fully representative due to the Colombian sample size being considerably larger. As larger numbers of samples from all regions are collected, allele frequency estimates will be further refined.

B. Genetic Ancestry

To assess genetic ancestry similarity among our samples, we initially generated a merged ReDLat dataset that included 2,153 participants with WGS or SNP array data that passed the concordance analysis [Supplementary file 1]. We then used WGS from the 1000 Genomes Project (1000GP) [16] as reference populations to estimate the global ancestry of the participants, employing Principal Component Analysis (PCA) and ADMIXTURE software to estimate global ancestry. (34) We used the 1000GP cohort to identify variants with allelic frequency >10% and in linkage equilibrium that were present in both the 1000GP and the merged ReDLat dataset, resulting in a total of 226,524 variants used for ancestry analyses.

PCA [Figure 2, and [Supplementary Figure 1](#)] reveals that the ReDLat dataset shows substantial overlap with the American populations (AMR) sampled by the 1000GP, which also included Colombian, Mexican, and Peruvian participants. Though a substantial number of participants overlap with European (EUR) cohorts, there were 21 individuals clustering with the East Asian (EAS) population, suggesting recent EAS descent subgroups within ReDLat.

When analyzing the data by country, participants from Peru, Mexico, Chile, and Argentina exhibit minimal variation along Principal Component 1 (PC1), which is associated with African ancestry. In contrast, there is greater variation along Principal Component 2

(PC2), which is associated with Amerindian ancestry. This variation is particularly pronounced among participants from Mexico and Peru, who have individuals with a majority of their ancestry being Amerindian. These findings suggest a predominant two-way ancestry pattern in these populations. There is clear overlap between Argentinian and Brazilian samples with the European (EUR) cohort; however, the Brazilian samples show significant variation along PC1, highlighting the African component of the sample. While most Brazilian samples are distributed primarily between African (AFR) and EUR populations, a small subset clusters with EAS, indicating a distinct ancestral subgroup within Brazil. Colombia displays a clear three-way admixture pattern, as evidenced by its wide distribution along both PC1 and PC2. Additionally, Peruvian and Mexican samples from ReDLat exhibit clear overlap with their 1000GP counterparts, while ReDLat Colombian samples showed greater diversity than those in 1000GP [Figure 2]. This increased diversity is likely due to ReDLat's broader sampling across multiple regions of Colombia. Overall, the PCA analysis confirms that the ReDLat cohort accurately represents the different historical admixture patterns previously described in the corresponding countries. (1)

To calculate global ancestry Q-values, which are adjusted p-values accounting for multiple testing and controlling the false discovery rate, we projected the ReDLat samples onto the 1000GP dataset ADMIXTURE results at multiple clustering values. [Supplementary Figure 2]. At K=5, where K represents the number of ancestral populations in the clustering analysis, we observed a continental separation of ancestral origins and were able to differentiate the Amerindian component. [Figure 3] Peru is the only country where Amerindian ancestry exceeds European ancestry, followed by Mexico, where these two ancestries show similar distributions. In Argentina, Brazil, Colombia, and Chile, European ancestry is the most prevalent among the participants, with a median value of 86.9% (Mean value of 79.7%, Standard deviation 17.5) for Argentina and 84.2% (Mean value of 73.8%, Standard deviation 26.9) for Brazil. African ancestry is present in Colombia and Brazil at lower levels; we observe a continuum of this ancestry, with individuals having over 90% and 75% African descent, down to the mean levels for both countries (around 10%), suggesting ongoing admixture over generations. In contrast, this continuum is not observed in the EAS component of the Brazilian samples, suggesting a recent diaspora without intercontinental admixture. [Supplementary Figure 3]

C. Variant pathogenicity analysis

To identify Mendelian forms of neurodegeneration in our cohort, we analyzed data from 1,678 participants who had high-quality WGS or WES data to detect pathogenic variants.

Following standard practices in complex systems analysis, we employed both “bottom-up” and “top-down” approaches.

Our bottom-up approach was a “gene-to-family” search, in which we initially assessed genes most commonly associated with adult-onset neurodegeneration for pathogenic variants (see Methods). We identified a total of 17 pathogenic variants, a pathogenic *C9orf72* expansion, and 44 variants of uncertain significance (VUS). [[Table 2](#) and [Supplementary Table 4](#)]. In families with AD, we discovered a novel variant in the *PSEN1* gene, c.519G>T(p.Leu173Phe), as well as other previously described variants in the region, such as c.356C>T (p.Thr119Ile). (5) While variants like c.428T>C (p.Ile143Thr) and c.356C>T (p.Thr119Ile) are identical by descent due to founder effects, another variant, c.415A>G (p.Met139Val), has been identified as identical by state across multiple ancestral origins and presents as either AD or atypical dementia [[Clinical Vignette 1](#)]. In families with FTD, the gene most commonly associated with hereditary forms of the illness in our cohort was *GRN*, followed by *MAPT* [[Clinical Vignette 2](#) and [Clinical Vignette 3](#)]. Pathogenic *C9orf72* repeat expansions were observed in several families from geographically non-adjacent areas.

After the initial analysis of these primary genes, we expanded our search to include secondary genes associated with adult-onset neurodegeneration. Utilizing the OMIM database, we identified a set of genes where single nucleotide variants or short insertions/deletions could be disease-causing [[Supplementary Table 2](#)]. (5,38–42) In our analysis, we found four additional pathogenic variants. [[Supplementary table 5](#)] Three of these variants are present in families with autosomal dominant disease and are located in the *PRNP* and *NOTCH3* genes. Most notably, we identified an FTD patient without motor symptoms carrying a pathogenic variant in *SOD1* c.388G>A (p.Phe21Leu) which was previously reported in another FTD patient from the same geographical region [[Supplementary Table 6](#)]. (5)

In contrast, our top-to-bottom approach consisted of a “family-to-gene” search, where we analyzed the pedigrees of all recruited participants. After excluding individuals recruited as “healthy”, we identified 426 independent families that included a relative with neurodegeneration, who was considered the proband, and classified them based on the presence of affected relatives [[Figure 4](#)]. Among our cohort, 70 families exhibited autosomal dominant inheritance of neurodegenerative diseases, as evidenced by the presence of three affected individuals in two consecutive generations. The families were later classified according to the diagnosis of the proband, with 48 families identified as having AD and 22 as FTD. These families were subsequently categorized based on the age at disease onset: ‘late onset’ was assigned to families where all affected members presented dementia at ages older than 65 years; ‘early onset’ applied to those where all affected individuals were 65 years or younger at the time of dementia onset; and ‘mixed onset’ described families that included members with both early and late-onset disease

[\[Supplementary Table 7\]](#). Though many of the carriers of pathogenic variants belonged to the RedLat retrospective cohort, 14 of the recruited families were carriers of pathogenic variants, and the majority had positive family history of neurodegeneration.

In a further analysis of families exhibiting autosomal dominant patterns, we assessed the presence of at least one allele of *APOE* $\epsilon 4$. Among the families diagnosed with AD, nine were negative for *APOE* $\epsilon 4$ alleles, while 32 had at least an *APOE* $\epsilon 4$ carrier. Among these families we determined the *APOE* $\epsilon 4$ allele status for more than one participant in seven of them. Notably, only four families demonstrated a segregation pattern consistent with the presence of the *APOE* $\epsilon 4$ allele in the affected individuals. In contrast, among the families with FTD, six were negative for *APOE* $\epsilon 4$ alleles, and the one family where we could determine the *APOE* $\epsilon 4$ allele status for more than one participant, no segregation pattern was observed. [\[Figure 4\]](#)

Discussion

This initial release of genomic data from the ReDLat cohort provides early insights into the genetic underpinnings of neurodegeneration within a Latin American population, supported by genomic analyses of established variants associated with AD and FTD. Our genetic ancestry analysis, leveraging data from the 1000 Genomes Project, revealed tricontinental admixture patterns across most regions and an East Asian component in Brazil, reflecting historical migration and admixture events. The study notably identifies a significant prevalence of autosomal dominant inheritance patterns in AD and FTD, characterized by distinct age-of-onset categorizations, geographic distribution of genetic variants, and with a stronger presence of the *APOE* $\epsilon 4$ allele in AD families. These patterns also include newly discovered variants in the *PSEN1* and *APP* genes for AD, which play critical roles in the disease's pathogenesis. Families with as-yet unidentified variation remain strong candidates for future novel gene discovery as additional family members are recruited for gene-mapping linkage studies.

Indeed, there is considerable potential for novel genetic discovery in diverse cohorts such as ReDLat, both in terms of risk for ADRD and resilience against it, in both families and sporadic cases. As demonstrated by the *PSEN1* E280A kindred from Colombia,⁽⁴³⁾ leveraging larger, diverse cohorts—as well as genetic families with substantial clinical heterogeneity—represents a unique opportunity for discovery of resilience factors for ADRD, which may serve as strong targets for disease intervention.

As previously noted by Browning et. al. (2018), historical factors like colonization, migration, and genetic bottlenecks have significantly shaped the genetic landscape of Latin American populations. During and after the period of colonization, many Latin Americans lived in small, often isolated villages. This created a population structure

characterized by multiple mini-bottlenecks, as descendants of a small number of founders in each village tended to remain in the same location for many generations. As families expanded, the specific rare alleles in each place became fixed and more observable. This phenomenon resulted in a genetic map of the region that closely corresponds to the geographic map, facilitating genetic discovery. The long stretches of identical genes (long runs of homozygosity) and increased diversity within isolated populations are advantageous for researchers seeking to identify rare variants associated with diseases like AD and FTD. These factors underscore the value of family studies in Latin America, offering unique insights into genetic patterns and the potential for discovering new genetic contributions to disease. (44)

The first-wave study cohort reported here has several limitations. First, we have chosen not to conduct unbiased discovery efforts, such as genome-wide association studies and burden analyses, in this cohort due to the extensive family structure and relatively small sample size of the cross-sectional cohort collected to date. Second, despite the tangible advancement in global representation offered by this cohort, participants are still enriched for higher socioeconomic status due to the urban-centric recruitment. This drawback is being actively addressed through ongoing enrollments and community outreach efforts in more rural areas. Third, as with any clinic-based enrollment cohort, there is a possibility of ascertainment bias among recruited participants because the study recruits from clinical practices specializing in cognitive disorders, which may lead to an overrepresentation of more extreme clinical phenotypes.

Conclusion

We present here the first snapshot of genetic contributors to dementias from a distributed cohort across Latin America. The findings to date represent significant advances in understanding the etiology of Alzheimer's and Frontotemporal dementia in this region. Continued enrollment in this project will provide additional valuable insights through future studies that map the genetic underpinnings of disease risk in large families, genetic risk burden in cases, and offer well-powered cohorts for case-control studies to identify common risk variants. Moreover, the robust family structure already observed in ReDLat provides a unique opportunity to map genetic modifiers and assess the impact of local genomic ancestry on these modifiers. As global population representation continues to expand, it will be critical to evaluate the generalizability of genetic risk factors for AD and FTD across diverse ancestral backgrounds, within the context of distinct social determinants of health, and accounting for modifiable risk factors that may influence disease risk and resilience across distinct cultures.

List of abbreviations

1000GP: 1000 Genomes Project
ACE-III: Addenbrooke's Cognitive Examination-III
ACMG: American College of Medical Genetics
AD: Alzheimer's disease
AFR: African
AF: Allelic frequency
CDR: Clinical Dementia Rating Scale
DNA: Deoxyribonucleic acid
EDTA: Ethylenediaminetetraacetic acid
EUR: European
FTD: Frontotemporal dementia
GIAB: Genome in a Bottle Consortium
MoCA: Montreal Cognitive Assessment
MMSE: Mini-Mental State Examination
OMIM: Online Mendelian Inheritance in Men database
PC: Principal component
PCA: Principal component analysis
PCR: Polymerase chain reaction
QC: Quality control
qPCA: Quantitative Polymerase chain reaction
ReDLat: Multi-Partner Consortium to Expand Dementia Research in Latin America
SNP: Single Nucleotide Polymorphism
SNV: Single nucleotide variants
VCF: Variant Call Format
VUS: Variant of uncertain significance
VQSR: Variant quality score recalibration
WES: Whole exome sequencing
WGS: Whole genome sequencing

Declarations

A. Ethics approval and consent to participate

Written informed consent following the guidelines of the Code of Ethics of the World Medical Association, Helsinki Declaration and Belmont Report was obtained from all participants or their legally authorized proxies for all evaluations and assessments conducted. This consent included explicit permission to publish the findings. The project was approved by the Institutional Review Board of Each Medical Institution:

1. Argentina: INECO-Centro de Psicología Médica San Martín de Tours: FWA00028264
2. Brazil: Hospital das Clínicas da Faculdade de Medicina da Universidade de São Paulo: FWA00001035
3. Chile: Hospital Clínico Universidad de Chile: FWA00029089
4. Chile: Universidad Adolfo Ibáñez. FWA00030846
5. Colombia: Comité de Bioética del Instituto de Investigaciones Médicas, Facultad de Medicina, Universidad de Antioquia: FWA00028864
6. Colombia: Pontificia Universidad Javeriana - Hospital Universitario San Ignacio: FWA00001113
7. Colombia: Fundación Valle de Lili: FWA00029865
8. Mexico: Instituto Nacional de Ciencias Médicas FWAA00014416
9. Peru: Hospital Nacional Docente Madre Niño San Bartolome FWA00010121
10. USA: University of California San Francisco-Memory and Aging Center: FWA00000068

B. Consent for publication

Not applicable

C. Availability of data and materials

All the scripts used for the study have been compiled into a single GitHub repository: <https://github.com/TauConsortium/redlat-genetics>

D. Competing interests

J.S.Y and K.S.K collaborate with the scientific advisory board of the Epstein Family Alzheimer's Research Collaboration. C.J., M.A.N., H.L., D.V. and M.J.K.'s participation in this project was part of a competitive contract awarded to DataTecnica LLC by the National Institutes of Health to support open science research. M.A.N. also owns stock from Character Bio Inc and Neuron23 Inc.

E. Funding

This research was supported in part by the Intramural Research Program of the NIH, National Institute on Aging (NIA), National Institutes of Health, Department of Health and Human Services; project number Z1A AG000534 and AG000548, as well as the National Institute of Neurological Disorders and Stroke.

ReDLat is supported by the Fogarty International Center; the National Institutes of Health, National Institute on Aging (R01 AG057234, R01 AG075775, R01 AG021051, R01 AG083799 and CARDS-NIH); the Alzheimer's Association (SG-20-725707); the Rainwater Charitable foundation-Tau Consortium; the Bluefield Project to Cure Frontotemporal Dementia; and the Global Brain Health Institute).

J.A-U. is supported by the Rainwater Charitable Foundation.

A.I. A.I. is supported by ReDLat grants mentioned above and by ANID/FONDECYT Regular (1210195, 1210176 and 1220995); ANID/FONDAP/15150012; ANID/PIA/ANILLOS ACT210096; FONDEF ID20110152 and ID22110029; and ANID/FONDAP 15150012.

A.S. is supported by ReDLat grants mentioned above and by ANID/FONDAP/15150012, ANID/FONDECYT Regular / 1231839

C.D.A. is supported by ANID/FONDECYT Regular 1210622, ANID/PIA/ANILLOS ACT210096.

J.SY. receives funding from NIH-NIA R01AG062588, R01AG057234, P30AG062422, P01AG019724, U19AG079774; NIH-NINDS U54NS123985; NIH-NIDA 75N95022C00031; the Rainwater Charitable Foundation; the AFTD Susan Marcus Memorial Fund; the Larry L. Hillblom Foundation; the Bluefield Project to Cure Frontotemporal Dementia; the Alzheimer's Association; the Global Brain Health Institute; the French Foundation; the Mary Oakley Foundation; Alector, Transposon Therapeutics

J.A.F. receives funding from NIH-NIA-R01 (US-South American initiative for genetic-neural-behavioral interactions in human neurodegenerative research) / Alzheimer's Association (AA) / Tau Consortium (TC) / Global Brain Health Institute (GBHI).

The contents of this publication are solely the responsibility of the authors and do not represent the official views of these institutions. The funders had no role in study design, data collection and analysis, decision to publish or preparation of the manuscript.

F. Authors' contributions

J.A-U, S.D.P-E., J.S.Y and K.S.K. conceived and designed the project with some discussion from J.N.C., J.W.T, A.P.C., C.J., D.L.M., and M.L.N. E.A.B. handled the samples, and K.R. generated the SNP-array data at HudsonAlpha. All authors read and approved the final manuscript.

G. Acknowledgements

We thank the individuals and the families who participated in this study.

H. Authors' information

Juliana Acosta-Uribe and Stefanie D. Piña-Escudero contributed equally to this work
Jennifer S. Yokoyama and Kenneth S. Kosik contributed equally to this work

I. Footnotes

Not applicable

References

1. Adhikari K, Chacón-Duque JC, Mendoza-Revilla J, Fuentes-Guajardo M, Ruiz-Linares A. The Genetic Diversity of the Americas. *Annu Rev Genomics Hum Genet.* 2017 Aug 31;18:277–96.
2. Kunitomo I. Japanese Migration to Latin America. In: Stallings B, Székely G, editors. *Japan, the United States, and Latin America: Toward a Trilateral Relationship in the Western Hemisphere?* [Internet]. London: Palgrave Macmillan UK; 1993 [cited 2024 Aug 7]. p. 99–121. Available from: https://doi.org/10.1007/978-1-349-13128-0_4
3. Hassan WS. Arabs and the Americas: A Multilingual and Multigenerational Legacy. *Rev Lit Arts Am.* 2019 Jul 3;52(2):166–9.
4. Acosta-Urbe J, Aguillón D, Cochran JN, Giraldo M, Madrigal L, Killingsworth BW, et al. A neurodegenerative disease landscape of rare mutations in Colombia due to founder effects. *Genome Med.* 2022 Mar 8;14(1):27.
5. Acosta-Urbe J, Aguillón D, Cochran JN, Giraldo M, Madrigal L, Killingsworth BW, et al. A neurodegenerative disease landscape of rare mutations in Colombia due to founder effects. *Genome Med.* 2022 Mar 8;14(1):27.
6. Guerreiro RJ, Baquero M, Blesa R, Boada M, Brás JM, Bullido MJ, et al. Genetic screening of Alzheimer’s disease genes in Iberian and African samples yields novel mutations in presenilins and APP. *Neurobiol Aging.* 2010 May;31(5):725–31.
7. Akgun B, Cornejo-Olivas M, Custodio N, Mena PR, Soto-Añari M, Montesinos R, et al. A genome-wide association study in Peruvians suggests new risk loci for Alzheimer Disease [Internet]. *medRxiv*; 2023 [cited 2024 Jul 28]. p. 2023.11.29.23299201. Available from: <https://www.medrxiv.org/content/10.1101/2023.11.29.23299201v1>
8. Arriagada I. Familias latinoamericanas: diagnóstico y políticas públicas en los inicios del nuevo siglo. Santiago de Chile: Naciones Unidas, CEPAL, Div. de Desarrollo Social; 2001. 55 p. (Serie políticas sociales).
9. Van Bavel J. The world population explosion: causes, backgrounds and projections for the future. *Facts Views Vis ObGyn.* 2013;5(4):281–91.
10. Arriagada I. Familias latinoamericanas: cambiantes, diversas y desiguales. *Papeles Poblac.* 2007 Sep;13(53):9–22.
11. Acosta-Baena N, Sepulveda-Falla D, Lopera-Gómez CM, Jaramillo-Elorza MC, Moreno S, Aguirre-Acevedo DC, et al. Pre-dementia clinical stages in presenilin 1 E280A familial early-onset Alzheimer’s disease: a retrospective cohort study. *Lancet Neurol.* 2011 Mar;10(3):213–20.
12. Lalli MA, Cox HC, Arcila ML, Cadavid L, Moreno S, Garcia G, et al. Origin of the PSEN1 E280A mutation causing early-onset Alzheimer’s disease. *Alzheimers Dement J Alzheimers Assoc.* 2014 Oct;10(5 Suppl):S277-S283.e10.
13. Cochran JN, Acosta-Urbe J, Esposito BT, Madrigal L, Aguillón D, Giraldo MM, et al. Genetic associations with age at dementia onset in the PSEN1 E280A Colombian kindred. *Alzheimers Dement J Alzheimers Assoc.* 2023 Sep;19(9):3835–47.
14. Ibanez A, Yokoyama JS, Possin KL, Matallana D, Lopera F, Nitri R, et al. The Multi-Partner Consortium to Expand Dementia Research in Latin America (ReDLat): Driving Multicentric Research and Implementation Science. *Front Neurol.* 2021;12:631722.

15. Moguilner S, Baez S, Hernandez H, Migeot J, Legaz A, Gonzalez-Gomez R, et al. Brain clocks capture diversity and disparities in aging and dementia across geographically diverse populations. *Nat Med*. 2024 Aug 26;1–12.
16. Jack Jr. CR, Andrews JS, Beach TG, Buracchio T, Dunn B, Graf A, et al. Revised criteria for diagnosis and staging of Alzheimer's disease: Alzheimer's Association Workgroup. *Alzheimers Dement* [Internet]. [cited 2024 Aug 11];n/a(n/a). Available from: <https://onlinelibrary.wiley.com/doi/abs/10.1002/alz.13859>
17. Rascovsky K, Hodges JR, Knopman D, Mendez MF, Kramer JH, Neuhaus J, et al. Sensitivity of revised diagnostic criteria for the behavioural variant of frontotemporal dementia. *Brain*. 2011 Sep;134(9):2456–77.
18. Gorno-Tempini ML, Hillis AE, Weintraub S, Kertesz A, Mendez M, Cappa SF, et al. Classification of primary progressive aphasia and its variants. *Neurology*. 2011 Mar 15;76(11):1006–14.
19. Arnold BR, Cuellar I, Guzman N. Statistical and clinical evaluation of the Mattis Dementia Rating Scale-Spanish adaptation: an initial investigation. *J Gerontol B Psychol Sci Soc Sci*. 1998 Nov;53(6):P364-369.
20. Folstein MF, Folstein SE, McHugh PR. "Mini-mental state". A practical method for grading the cognitive state of patients for the clinician. *J Psychiatr Res*. 1975 Nov;12(3):189–98.
21. Progeny Genetics L. Pedigrees were constructed and drawn using the genetic data management system, Progeny Clinical – Version N from Progeny Genetics [Internet]. Copyright 2019. Reprinted with permission of Progeny Genetics LLC, Delray Beach, FL.; Available from: www.progenygenetics.com
22. Maito MA, Santamaría-García H, Moguilner S, Possin KL, Godoy ME, Avila-Funes JA, et al. Classification of Alzheimer's disease and frontotemporal dementia using routine clinical and cognitive measures across multicentric underrepresented samples: A cross sectional observational study. *Lancet Reg Health Am*. 2023 Jan;17:100387.
23. Bandres-Ciga S, Faghri F, Majounie E, Koretsky MJ, Kim J, Levine KS, et al. NeuroBooster Array: A Genome-Wide Genotyping Platform to Study Neurological Disorders Across Diverse Populations. *medRxiv* [Internet]. [cited 2024 Aug 7]; Available from: <https://www.ncbi.nlm.nih.gov/pmc/articles/PMC10659467/>
24. Vitale D, Koretsky M, Kuznetsov N, Hong S, Martin J, James M, et al. GenoTools: An Open-Source Python Package for Efficient Genotype Data Quality Control and Analysis [Internet]. *bioRxiv*; 2024 [cited 2024 Jul 28]. p. 2024.03.26.586362. Available from: <https://www.biorxiv.org/content/10.1101/2024.03.26.586362v1>
25. Cingolani P, Platts A, Wang LL, Coon M, Nguyen T, Wang L, et al. A program for annotating and predicting the effects of single nucleotide polymorphisms, SnpEff: SNPs in the genome of *Drosophila melanogaster* strain w1118; iso-2; iso-3. *Fly (Austin)*. 2012;6(2):80–92.
26. Taliun D, Harris DN, Kessler MD, Carlson J, Szpiech ZA, Torres R, et al. Sequencing of 53,831 diverse genomes from the NHLBI TOPMed Program. *Nature*. 2021 Feb;590(7845):290–9.
27. Danecek P, Bonfield JK, Liddle J, Marshall J, Ohan V, Pollard MO, et al. Twelve years of SAMtools and BCFtools. *GigaScience*. 2021 Feb 1;10(2):giab008.
28. ClinVar [Internet]. [cited 2024 Jul 28]. Available from: <https://www.ncbi.nlm.nih.gov/clinvar/>
29. Manichaikul A, Mychaleckyj JC, Rich SS, Daly K, Sale M, Chen WM. Robust relationship

- inference in genome-wide association studies. *Bioinforma Oxf Engl*. 2010 Nov 15;26(22):2867–73.
30. Li H. A statistical framework for SNP calling, mutation discovery, association mapping and population genetical parameter estimation from sequencing data. *Bioinformatics*. 2011 Nov 1;27(21):2987–93.
 31. Sherry ST, Ward MH, Kholodov M, Baker J, Phan L, Smigielski EM, et al. dbSNP: the NCBI database of genetic variation. *Nucleic Acids Res*. 2001 Jan 1;29(1):308–11.
 32. Patterson N, Price AL, Reich D. Population Structure and Eigenanalysis. *PLOS Genet*. 2006 Dec 22;2(12):e190.
 33. Auton A, Abecasis GR, Altshuler DM, Durbin RM, Abecasis GR, Bentley DR, et al. A global reference for human genetic variation. *Nature*. 2015 Oct;526(7571):68–74.
 34. Alexander DH, Novembre J, Lange K. Fast model-based estimation of ancestry in unrelated individuals. *Genome Res*. 2009 Sep;19(9):1655–64.
 35. Home - OMIM [Internet]. [cited 2024 Aug 10]. Available from: <https://www.omim.org/>
 36. Richards S, Aziz N, Bale S, Bick D, Das S, Gastier-Foster J, et al. Standards and guidelines for the interpretation of sequence variants: a joint consensus recommendation of the American College of Medical Genetics and Genomics and the Association for Molecular Pathology. *Genet Med*. 2015 May;17(5):405–23.
 37. Li Q, Wang K. InterVar: Clinical Interpretation of Genetic Variants by the 2015 ACMG-AMP Guidelines. *Am J Hum Genet*. 2017 Feb 2;100(2):267–80.
 38. Clark RF, Hutton M, Fuldner M, Froelich S, Karran E, Talbot C, et al. The structure of the presenilin 1 (S182) gene and identification of six novel mutations in early onset AD families. *Nat Genet*. 1995 Oct;11(2):219–22.
 39. Sandbrink R, Zhang D, Beyreuther K, Schaeffer S, Bauer J, Masters CL, et al. Missense mutations of the PS-1/S182 gene in german early-onset Alzheimer's disease patients. *Ann Neurol*. 1996;40(2):265–6.
 40. Rippon GA, Crook R, Baker M, Halvorsen E, Chin S, Hutton M, et al. Presenilin 1 Mutation in an African American Family Presenting With Atypical Alzheimer Dementia. *Arch Neurol*. 2003 Jun 1;60(6):884–8.
 41. Islam S, Sun Y, Gao Y, Nakamura T, Noorani AA, Li T, et al. Presenilin Is Essential for ApoE Secretion, a Novel Role of Presenilin Involved in Alzheimer's Disease Pathogenesis. *J Neurosci*. 2022 Feb 23;42(8):1574–86.
 42. Jia L, Fu Y, Shen L, Zhang H, Zhu M, Qiu Q, et al. PSEN1, PSEN2, and APP mutations in 404 Chinese pedigrees with familial Alzheimer's disease. *Alzheimers Dement*. 2020;16(1):178–91.
 43. Aguirre-Acevedo DC, Lopera F, Henao E, Tirado V, Muñoz C, Giraldo M, et al. Cognitive Decline in a Colombian Kindred With Autosomal Dominant Alzheimer Disease: A Retrospective Cohort Study. *JAMA Neurol*. 2016 Apr 1;73(4):431–8.
 44. Browning SR, Browning BL, Daviglus ML, Durazo-Arvizu RA, Schneiderman N, Kaplan RC, et al. Ancestry-specific recent effective population size in the Americas. *PLOS Genet*. 2018 May 24;14(5):e1007385.

Clinical Vignettes:

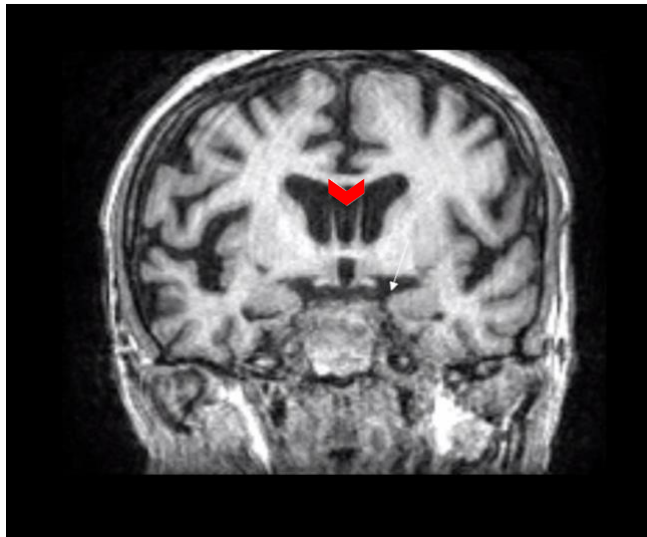
Clinical Vignette 1.

Family with *PSEN1* c.415A>G (p.Met139Val)

This vignette describes a family with early-onset Alzheimer's disease (EOAD), where the disease presented similarly across all affected members. Initial symptoms appeared between ages 35 and 45 and included temporal and spatial disorientation, speech disturbances, and memory difficulties. Early evaluations revealed declines in social cognition, phonological and semantic verbal fluency, and memory. As the disease progressed, there were notable reductions in processing speed, phonological verbal fluency, visuoconstructive abilities, and working memory. In advanced stages, severe impairments in memory, task-switching, processing speed, and phonological fluency severely impacted communication and daily functioning. Additional neurological symptoms included vascular episodes, hallucinations, violent behavior, spasmodic movements, and seizures.

Genomic analysis identified a pathogenic variant in *PSEN1* c.4.415A>G (p.Met139Val), which was present in more than 10 family members, confirming a genetic basis for the disease.

The MRI of one of the Met139Val carriers showed cortical atrophy, cavum septi pellucidi (arrow head), and hippocampal volume reduction (arrow).



An anatomopathological study of this same person later revealed a positive immunohistochemistry for β -amyloid and phosphorylated tau (p-tau) in the hippocampus

and cortex, indicating significant neurodegenerative changes confirming Alzheimer's disease as a result of the genetic variant in this family.

Clinical vignette 2.

Clinical presentation of a family with *MAPT* c.915T>C: (p.Ser305Ser)

This vignette describes a family with more than ten individuals affected by Frontotemporal dementia (FTD), presenting either as behavioral variant FTD (bvFTD) or as progressive supranuclear palsy (PSP). The proband, a 45–50-year-old individual, had a family history marked by severe behavioral changes in multiple relatives. Their first symptom, problem-solving difficulty around age 45-50, was a common initial sign among family members. As the disease progressed, they experienced loss of figurative language comprehension and gait changes. Shared symptoms across affected family members included fixations on specific foods, hyperphagia, and increased consumption of sweets. Social cognition impairments were marked by difficulties in social interactions, inappropriate behaviors, reduced emotional responses to others' pain, and notable aggressiveness. Behaviorally, individuals engaged in repetitive activities, neglected personal appearance, and showed hoarding tendencies. A unique symptom across all affected individuals was a persistent habit of tapping their teeth until they loosened and could be pulled out.

Clinical Vignette 3.

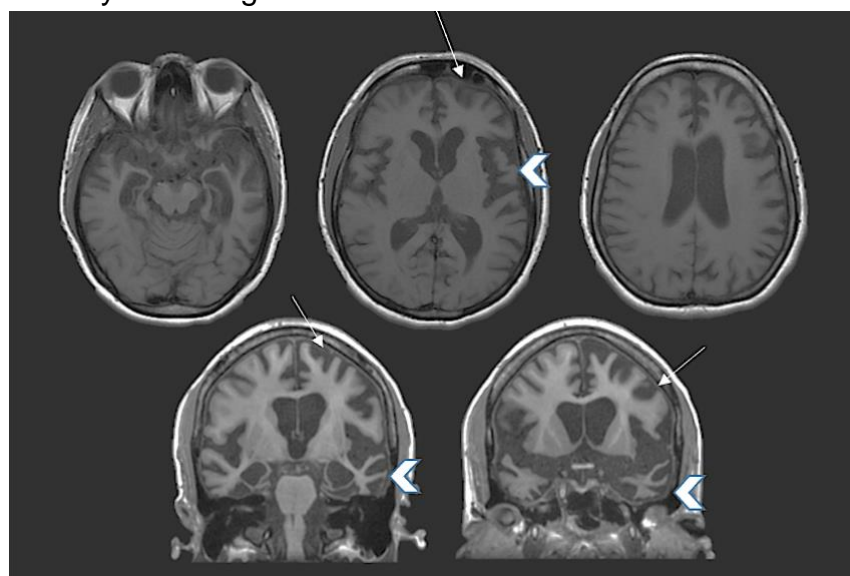
Clinical presentation of a family with *MAPT* c.796C>G:(p.Leu266Val).

The proband presented to the clinic with a five-year history of progressively worsening behavioral changes. Initial symptoms were difficult to assess, partly due to their living situation with an adolescent son who could not provide reliable information. The patient had become increasingly reliant on Post-it notes to remember tasks and was easily irritable. Their living conditions had severely deteriorated, with moldy, larval-infested clothing and significant neglect of household responsibilities, ultimately leading them to move in with a sibling by the age of 30-35.

During an initial assessment in early 2019, the patient required assistance with dressing and bathing and had started using diapers. Apathy was the predominant neuropsychiatric symptom, with occasional agitation, though they were generally quiet and withdrawn. Their appetite fluctuated between periods of anorexia and hyperphagia, during which they consumed inappropriate substances, such as skincare products and soap.

Trazodone was prescribed for insomnia, which also helped manage episodes of aggression. The patient had a long-standing history of alcoholism and had been involved in a car accident around age 25-30 due to this issue. The disease progressed rapidly, with the MMSE score dropping from 13 to untestable within six months. By this stage, the patient exhibited speech stereotypy, frequently repeating phrases like 'banana with milk' and 'I want to see my son today.'

Blood tests revealed a positive antinuclear antibody test ($>1/1280$), positive anti-thyroid antibodies, and mildly elevated ammonia levels, with no other signs of autoimmune or hepatic conditions detected. MRI scan indicated severe frontotemporal atrophy (arrows), predominantly affecting the anteroinferior and medial parts of the temporal lobes (arrow heads) predominately on the right side.



The participant was identified as heterozygous for a pathogenic variant in the *MAPT* gene, specifically c.796C>G (p.Leu266Val). The patient passed away at the age of 30-35 as a result of multiple organ failure secondary to a COVID-19 infection.

The proband's parent passed away before the age of 40-45, initially diagnosed with schizophrenic catatonia, though their symptoms were more consistent with behavioral variant frontotemporal dementia (bvFTD). Despite having young children, the parent would leave the house at 6 am, returning only at 10 pm. The family later discovered that they had been begging for money from strangers, smoking discarded cigarettes, and consuming food found on the ground. Additionally, the participant's grandparent and two relatives also died before the age of 40-45, exhibiting psychiatric symptoms or signs of early-onset dementia.

Tables

Table 1. Clinical characteristics of all included ReDLat participants

		AD n=999	HC n=755	FTD n=381	MCI (Relatives only) n=8	OTHER (Relatives only) n=19
Age<65y, n (%)		139 (13.9)	277 (36.7)	85 (22.3)	2 (25.0)	2 (10.5)
Females, n (%)		665 (66.6)	516 (68.3)	201 (52.8)	6 (75.0)	8 (42.1)
AD Phenotype	Amnestic	521 (52.2)				
	lvPPA	10 (1.0)				
	PCA	6 (0.6)				
	fvAD	1 (0.1)				
	usAD	461 (46.1)				
FTD Phenotype, n (%)	bvFTD			196 (51.4)		
	nfPPA			25 (6.6)		
	svPPA			37 (9.7)		
	FTD-CBS			26 (6.8)		
	FTD-MND			9 (2.4)		
	FTD-PSP			9 (2.4)		
	usFTD			72 (18.9)		
	usPPA			7 (1.8)		
APOE e4 alleles, n (%)	Heterozygous	408 (41.5)	153 (20.7)	96 (25.9)	1 (14.3)	2 (10.5)
	Homozygous	85 (8.6)	13 (1.8)	15 (4.0)		1 (5.3)
Country of Origin	Argentina	191 (19.1)	74 (9.8)	2 (0.5)	-	1 (5.3)
	Brazil	42 (4.2)	88 (11.7)	99 (26.0)	-	-
	Chile	115 (11.5)	115 (15.2)	45 (11.8)	6 (75.0)	11 (57.9)
	Colombia	536 (53.7)	289 (38.3)	193 (50.7)	1 (12.5)	6 (31.6)
	Mexico	59 (5.9)	133 (17.6)	17 (4.5)	-	-
	Peru	56 (5.6)	56 (7.4)	25 (6.6)	1 (12.5)	1 (5.3)
Genomic Data	SNP Array, n (%)	282 (28.2)	234 (31.0)	126 (33.1)	6 (75.0)	10 (52.6)
	WES, n (%)	6 (0.6)	3 (0.4)	-	-	-
	WGS, n (%)	711 (71.2)	518 (68.6)	255 (66.9)	2 (25.0)	9 (47.4)

lvPPA: logopenic variant primary progressive aphasia, PCA: Posterior cortical atrophy, fvAD: frontal variant AD, usAD: Unspecified Alzheimer's disease, bvFTD: behavioral variant frontotemporal dementia, nfPPA: nonfluent variant primary progressive aphasia, svPPA: semantic variant primary progressive aphasia, FTD-CBS: frontotemporal dementia-corticobasal syndrome, FTD-MND: frontotemporal dementia-motor neuron disease, FTD-PSP: frontotemporal dementia-progressive supranuclear paralysis, usFTD: Unspecified frontotemporal dementia, usPPA: Unspecified Primary progressive aphasia

Table 2. Pathogenic variants found in primary AD/FTD genes.

Gene	Coding Change	AA Change	ExAC	CADD	REVEL	Family history	ACMG Classification	Country of origin	Proband's Phenotype(s)
APP	c.G2020C	E674Q	< 0.00001	25.2	0.635	Autosomal Dominant	Likely pathogenic	Mexico	Amnestic AD
C9orf72	c.-45+163 GGGGCC [>24]	Autosomal Dominant	Pathogenic	Chile Brazil	bvFTD
	c.G21A	W7X	.	36	.	Sporadic	Pathogenic	Colombia	usAD
	c.58dupT	C20Lfs*45	.	.	.	Autosomal Dominant	Pathogenic	Chile	bvFTD
GRN	c.C328T	R110X	< 0.00001	29.4	.	Positive	Pathogenic	Colombia	FTD-PSP
	c.462+1G>A	.	.	26.3	.	Positive	Pathogenic	Peru	bvFTD
	c.767_768ins CC	Q257Pfs*27	.	.	.	Unknown	Pathogenic	Brazil	bvFTD
	c.T1098A	C366X	.	36	.	Positive	Pathogenic	Colombia	svPPA
	c.C796G	L266V	.	25.8	0.662	Autosomal Dominant	Pathogenic	Brazil	bvFTD
MAPT	c.T915C	S305S	.	.	.	Autosomal Dominant	Pathogenic	Colombia	bvFTD
	c.C1280T	T427M	0.00001	33	0.508	Unknown	Pathogenic	Argentina	Amnestic AD
	c.A250G	M84V	.	23.9	0.923	Unknown	VUS	Argentina	Amnestic AD
	c.G280A	V94M	< 0.00001	25.1	0.847	Autosomal Dom	Pathogenic	Colombia	usAD
	c.C356T	T119I	.	24.4	0.795	Autosomal Dom	Pathogenic	Colombia Argentina	bvFTD
PSEN1	c.A415G	M139V	.	23.4	0.879	Autosomal Dom	Pathogenic	Argentina	Amnestic AD
	c.T428C	I143T	.	26.8	0.985	Autosomal Dom	Pathogenic	Colombia	Amnestic AD
	c.G519T	L173F	.	25.8	0.923	Autosomal Dom	Pathogenic	Colombia	bvFTD
	c.T1223C	I408T	.	27.4	0.877	Unknown	VUS	Peru	Amnestic AD
VCP	c.C283T	R50C	.	27.1	0.606	Autosomal Dom	Pathogenic for essential tremor	Colombia	Amnestic AD
TARDBP	c.A1147G	I383V	< 0.00001	0.308	0.377	Autosomal Dom	Pathogenic	Colombia Brazil	Amnestic AD usFTD

usAD: Unspecified Alzheimer's disease, bvFTD: behavioral variant frontotemporal dementia, FTD-PSP: frontotemporal dementia-progressive supranuclear paralysis, svPPA: semantic variant primary progressive aphasia, AD: Alzheimer's disease, VUS: Variant of unknown significance. PVS1: The PVS1 rule is related to null variants which usually result with a loss of function effect. These variants include stop gain, frameshift insertions or deletions, splice donor or acceptor, a start loss

Supplementary Tables

Supplementary Table 1. DNA extraction techniques per site

Site	DNA extraction kit	Extraction Protocol
Colombia	The <i>Wizard</i> ®	Manufacturer recommendations
Bogotá	Genomic DNA	
Medellín	Purification Kit	
Peru		
Chile		
Santiago East		
Santiago West		
Brazil		
Colombia	QIAamp®	Manufacturer recommendations
Cali	DNA Mini Kit	
Argentina		
Buenos Aires		
San Juan		
Mexico	in-house developed DNA extraction technique	<ol style="list-style-type: none"> Starting Volume: Add a total of 100 uL of molecular grade water (H₂O). Sample Preparation: Dilute up to 50 mL with blood without plasma using Lysis Buffer (prepared with Tris base 8, sucrose, magnesium chloride, and Triton X-100). Mix for 10 minutes and centrifuge for 10 minutes at 3500 rpm at room temperature. First Centrifugation: Decant the supernatant and adjust the remaining volume to 25 mL with Lysis Buffer. Resuspension: Vortex until the pellet is dispersed and centrifuge again for 10 minutes at 3500 rpm at room temperature. Second Centrifugation: Carefully decant the supernatant without disturbing the pellet and allow the contents to dry. Digestion Setup: In an Eppendorf tube, add 5 microliters of Proteinase K (PK), 160 microliters of PK buffer, 80 microliters of 10% SDS, and 490 microliters of molecular biology grade water. Sample Transfer and Incubation: Transfer the pellet to the Eppendorf tube containing the previous substances. Vortex and incubate for 2 hours at 55°C. Salt Precipitation: Add 400 microliters of 3M NaCl and vortex. Centrifuge at the maximum speed of a microcentrifuge (15,000 rpm) for 10 minutes. Ethanol Precipitation: Transfer the contents to a cytometry tube with 1800 microliters of absolute ethanol. Mix gently and observe the DNA strand. DNA Pelleting: Centrifuge at 3500 rpm for 15 minutes and discard the supernatant. Ethanol Wash: Add 300 microliters of 70% ethanol. Centrifuge at 3500 rpm for 5 minutes and discard the supernatant. Drying: Allow drying for 10 minutes. Rehydration: Add 100 uL of H₂O. Incubate at 37°C for 2 hours. Final Transfer: Transfer the contents to an Eppendorf tube. DNA Concentration Measurement: Measure the concentration of DNA.

Supplementary table 2.

Genes associated with adult-onset dementia and/or neurodegeneration.

Gene	Location	Phenotype	Inheritance	Phenotype MIM
<i>AARS1</i>	16q22.1	Leukoencephalopathy, hereditary diffuse, with spheroids	AD	619661
<i>ALS2</i>	2q33.1	Amyotrophic lateral sclerosis, juvenile	AR	205100
<i>ANG</i>	14q11.2	Amyotrophic lateral sclerosis	AD	611895
<i>ANXA11</i>	10q22.3	Amyotrophic lateral sclerosis	AD	617839
<i>ATP13A2</i>	1p36.13	Kufor-Rakeb syndrome	AR	606693
<i>ATP7B</i>	13q14.3	Wilson disease	AR	277900
<i>C19orf12</i>	19q12	Neurodegeneration with brain iron accumulation	AD, AR	614298
<i>CCNF</i>	16p13.3	Frontotemporal dementia and/or amyotrophic lateral sclerosis	AD	619141
<i>CHCHD10</i>	22q11.23	Frontotemporal dementia and/or amyotrophic lateral sclerosis	AD	615911
<i>CHCHD2</i>	7p11.2	Parkinson disease autosomal dominant	AD	616710
<i>CLN3</i>	16p12.1	Ceroid lipofuscinosis, neuronal	AR	204200
<i>CLN5</i>	13q22.3	Ceroid lipofuscinosis, neuronal	AR	256731
<i>CLN6</i>	15q23	Ceroid lipofuscinosis, neuronal (Kufs type)	AR	204300
<i>CLN8</i>	8p23.3	Ceroid lipofuscinosis, neuronal, Northern epilepsy variant	AR	610003
<i>COASY</i>	17q21.2	Neurodegeneration with brain iron accumulation	AR	615643
<i>CRAT</i>	9q34.11	Neurodegeneration with brain iron accumulation	AR	617917
<i>CSF1R</i>	5q32	Leukoencephalopathy, diffuse hereditary, with spheroids	AD	221820
<i>CTSD</i>	11p15.5	Ceroid lipofuscinosis, neuronal	AR	610127
<i>CTSF</i>	11q13.2	Ceroid lipofuscinosis, neuronal (Kufs type)	AR	615362
<i>CYLD</i>	16q12.1	Frontotemporal dementia and/or amyotrophic lateral sclerosis	AD	619132
<i>CYP27A1</i>	2q35	Cerebrotendinous xanthomatosis	AR	213700
<i>DNAJC5</i>	20q13.33	Ceroid lipofuscinosis, neuronal (Kufs type), autosomal dominant	AD	162350
<i>DNAJC6</i>	1p31.3	Parkinson disease, early-onset	AR	615528
<i>EIF2B1</i>	12q24.31	Leukoencephalopathy with vanishing white matter with or without ovarian failure	AR	603896

<i>EIF2B2</i>	14q24.3	Leukoencephalopathy with vanishing white matter with or without ovarian failure	AR	620312
<i>EIF2B3</i>	1p34.1	Leukoencephalopathy with vanishing white matter with or without ovarian failure	AR	620313
<i>EIF2B4</i>	2p23.3	Leukoencephalopathy with vanishing white matter with or without ovarian failure	AR	620314
<i>EIF2B5</i>	3q27.1	Leukoencephalopathy with vanishing white matter with or without ovarian failure	AR	620315
<i>ERBB4</i>	2q34	Amyotrophic lateral sclerosis	AD	615515
<i>FBXO7</i>	22q12.3	Parkinson disease, autosomal recessive	AR	260300
<i>FIG4</i>	6q21	Amyotrophic lateral sclerosis	AD	612577
<i>FTH1</i>	11q12.3	Neurodegeneration with brain iron accumulation	AD	620669
<i>FTL</i>	19q13.33	Neurodegeneration with brain iron accumulation	AD	606159
<i>HNRNPA1</i>	12q13.13	Amyotrophic lateral sclerosis	AD	615426
<i>HNRNPA2B1</i>	7p15.2	Inclusion body myopathy with early-onset Paget disease with or without frontotemporal dementia	AD	615422
<i>HTRA1</i>	10q26.13	Cerebral arteriopathy, autosomal dominant/recessive, with subcortical infarcts and leukoencephalopathy	AD, AR	616779
<i>ITM2B</i>	13q14.2	Dementia, familial Danish	AD	117300
<i>JAM2</i>	21q21.3	Basal ganglia calcification, idiopathic, autosomal recessive	AR	618824
<i>KCTD7</i>	7q11.21	Epilepsy, progressive myoclonic, with or without intracellular inclusions	AR	611726
<i>MATR3</i>	5q31.2	Amyotrophic lateral sclerosis	AD	606070
<i>MFSD8</i>	4q28.2	Ceroid lipofuscinosis, neuronal	AR	610951
<i>MYORG</i>	9p13.3	Basal ganglia calcification, idiopathic, autosomal recessive	AR	618317
<i>NOTCH3</i>	19p13.12	Cerebral arteriopathy with subcortical infarcts and leukoencephalopathy	AD	125310
<i>OPTN</i>	10p13	Amyotrophic lateral sclerosis with or without frontotemporal dementia	AD, AR	613435
<i>PANK2</i>	20p13	Neurodegeneration with brain iron accumulation	AR	234200
<i>PARK7</i>	1p36.23	Parkinson disease, autosomal recessive early-onset	AR	606324
<i>PDGFB</i>	22q13.1	Basal ganglia calcification, idiopathic	AD	615483
<i>PDGFRB</i>	5q32	Basal ganglia calcification, idiopathic	AD	615007
<i>PFN1</i>	17p13.2	Amyotrophic lateral sclerosis	AD	614808

<i>PINK1</i>	1p36.12	Parkinson disease, early onset	AR	605909
<i>PLA2G6</i>	22q13.1	Neurodegeneration with brain iron accumulation	AR	610217
<i>PPT1</i>	1p34.2	Ceroid lipofuscinosis, neuronal	AR	256730
<i>PRKN</i>	6q26	Parkinson disease, juvenile	AR	600116
<i>PRNP</i>	20p13	Creutzfeldt-Jakob disease	AD	123400
<i>PTPA</i>	9q34.11	Parkinson disease, autosomal recessive early-onset, with impaired intellectual development	AR	620482
<i>REPS1</i>	6q24.1	Neurodegeneration with brain iron accumulation	AR	617916
<i>SETX</i>	9q34.13	Amyotrophic lateral sclerosis juvenile	AD	602433
<i>SIGMAR1</i>	9p13.3	Amyotrophic lateral sclerosis, juvenile	AR	614373
<i>SLC20A2</i>	8p11.21	Basal ganglia calcification, idiopathic,	AD	213600
<i>SNCA</i>	4q22.1	Parkinson disease	AD	168601
<i>SNCB</i>	5q35.2	Dementia, Lewy body	AD	127750
<i>SOD1</i>	21q22.11	Amyotrophic lateral sclerosis	AD, AR	105400
<i>SPG11</i>	15q21.1	Amyotrophic lateral sclerosis , juvenile	AR	602099
<i>SPTLC1</i>	9q22.31	Amyotrophic lateral sclerosis, juvenile	AD	620285
<i>SQSTM1</i>	5q35.3	Frontotemporal dementia and/or amyotrophic lateral sclerosis	AD	616437
<i>SYNJ1</i>	21q22.11	Parkinson disease early-onset	AR	615530
<i>TIA1</i>	2p13.3	Amyotrophic lateral sclerosis with or without frontotemporal dementia	AD	619133
<i>TPP1</i>	11p15.4	Ceroid lipofuscinosis, neuronal	AR	204500
<i>TREM2</i>	6p21.1	Polycystic lipomembranous osteodysplasia with sclerosing leukoencephalopathy	AR	618193
<i>TUBA4A</i>	2q35	Amyotrophic lateral sclerosis with or without frontotemporal dementia	AD	616208
<i>TYROBP</i>	19q13.12	Polycystic lipomembranous osteodysplasia with sclerosing leukoencephalopathy	AR	221770
<i>UBQLN2</i>	Xp11.21	Amyotrophic lateral sclerosis, with or without frontotemporal dementia	XLD	300857
<i>VAPB</i>	20q13.32	Amyotrophic lateral sclerosis	AD	608627
<i>VPS13C</i>	15q22.2	Parkinson disease, autosomal recessive	AR	616840
<i>WDR45</i>	Xp11.23	Neurodegeneration with brain iron accumulation	XLD	300894
<i>XPR1</i>	1q25.3	Basal ganglia calcification, idiopathic	AD	616413

AD: Autosomal dominant, AR: Autosomal recessive, XLD: X linked dominant

Supplementary Table 3.

APOE alleles per country

<i>APOE</i> alleles	Argentina (n=244)	Brazil (n=229)	Chile (n= 278)	Colombia (n= 807)	Mexico (n= 149)	Peru (n=137)
e2/e2	0 (0.0)	2 (0.9)	0 (0.0)	2 (0.3)	0 (0.0)	0 (0.0)
e2/e3	13 (5.5)	14 (6.5)	19 (7.0)	57 (7.2)	3 (2.1)	1 (0.7)
e2/e4	2 (0.8)	3 (1.4)	4 (1.5)	10 (1.3)	1 (0.7)	1 (0.7)
e3/e3	132 (55.5)	150 (69.1)	148 (54.8)	385 (48.5)	107 (73.3)	91 (66.4)
e3/e4	75 (31.5)	43 (19.8)	89 (33.0)	283 (35.6)	31 (21.2)	37 (27.0)
e4/e4	16 (6.7)	5 (2.3)	10 (3.7)	57 (7.2)	4 (2.7)	7 (5.1)

Supplementary Table 4.

Summary of manual curation of primary variants in all 10 first-pass genes

	Protein Altering Variants	Pathogenic Variants	Variants of Unknown Significance
<i>APP</i>	14	0	1
<i>CHMP2B</i>	6	0	2
<i>FUS</i>	20	0	8
<i>GRN</i>	27	5	12
<i>MAPT</i>	44	3	2
<i>PSEN1</i>	17	7	2
<i>PSEN2</i>	20	0	1
<i>TARDBP</i>	3	1	1
<i>TBK1</i>	15	0	13
<i>VCP</i>	5	1	2
SUM	171	17	44

Supplementary Table 5.

Summary of secondary variants associated with neurodegeneration

	Total	Variants of Unknown Significance	Pathogenic Variants
Non synonymous SNV	377	166	3
Exonic SNV splicing	1	0	0
Intronic SNV splicing	14	3	0
Start-loss	4	1	0
Stop-loss	1	0	0
Frameshift deletion	7	2	0
Frameshift insertion	4	4	0
Non frameshift deletion	13	6	0
Non frameshift insertion	7	4	1
SUM	428	186	4

SNV: Single nucleotide variant

Supplementary Table 6.

Variant filtering in secondary genes associated with neurodegeneration

Gene	All variation	Protein altering	Low MAF (<0.001)	CADD >20	Clinvar Pathogenic
AARS1	14	7	1	0	0
ANG	5	3	2	1	0
ANXA11	43	22	12	7	0
C19orf12	8	3	3	3	0
CCNF	7	5	3	2	0
CHCHD10	23	15	8	4	0
CHCHD2	6	6	5	4	0
CSF1R	56	28	16	8	0
CYLD	3	0	0	0	0
DNAJC5	9	2	2	1	0
ERBB4	37	14	13	10	0
FIG4	33	18	14	11	0
FTH1	3	1	1	0	0
FTL	1	0	0	0	0
HNRNPA1	11	3	2	2	0
HNRNPA2B1	11	2	2	2	0
HTRA1	9	2	0	0	0
ITM2B	15	9	8	5	0
LRP12	7	3	2	2	0
MATR3	20	16	15	12	0
NOTCH3	122	72	56	33	1
OPTN	28	16	14	10	0
PDGFB	3	2	1	1	0
PDGFRB	22	10	2	1	0
PRNP	31	20	11	5	2
SETX	130	93	59	20	0
SLC20A2	6	3	1	1	0
SNCA	8	5	4	4	0
SOD1	3	2	2	2	1
SPTLC1	3	3	2	1	0
SQSTM1	42	24	16	9	0
TIA1	7	3	0	0	0
TUBA4A	11	5	5	4	0
UBQLN2	11	6	6	2	0
VAPB	6	3	0	0	0
WDR45	1	1	0	0	0
XPR1	7	1	1	0	0
Total	762	428	289	167	4

Warmer colors are used to highlight a higher number of variants in a given gene.

Supplementary table 7.

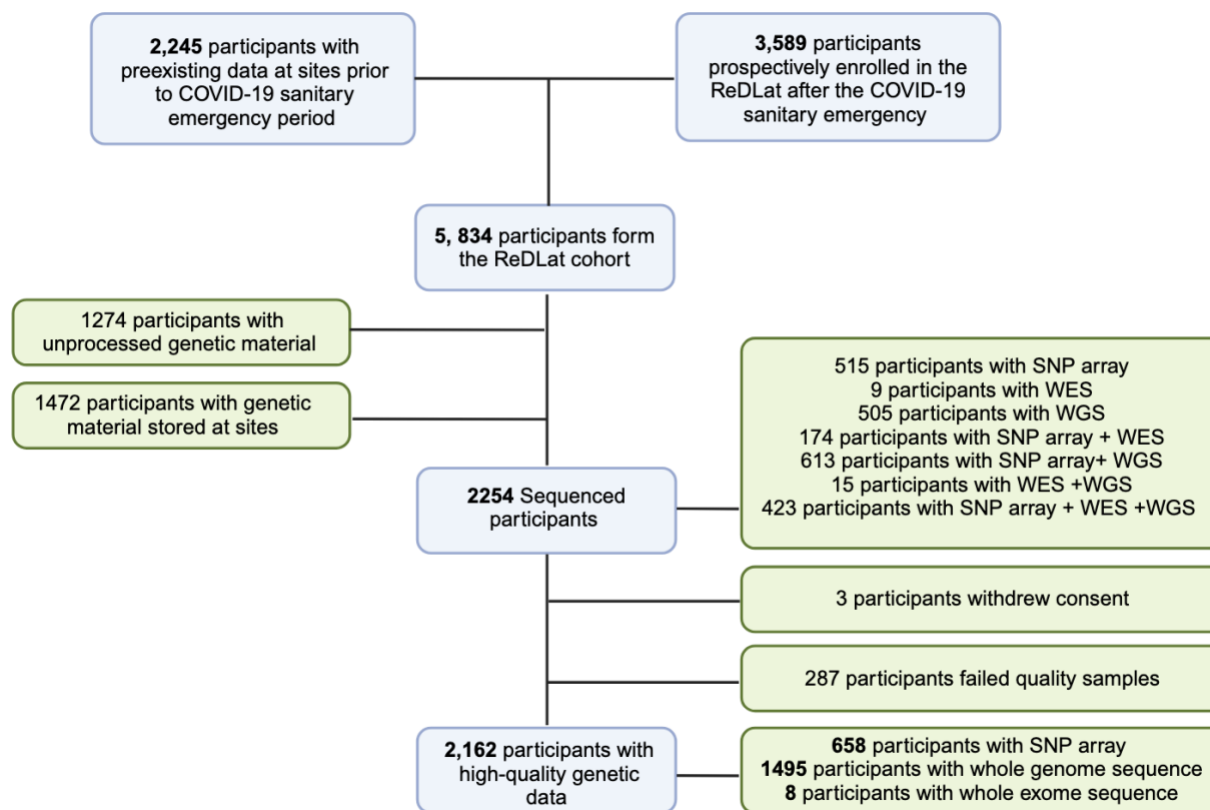
Familial clustering of Alzheimer's disease and Frontotemporal dementia in the actively recruited participants.

Cohort	Inheritance	Age of Onset	Families
Alzheimer's Disease n=296	Sporadic n=176	Early Onset ≤65 years	77
		Late Onset >65 years	99
	Familiar n=12	Early Onset ≤65 years	17
		Mixed Onset	21
		Late Onset >65 years	69
	No pedigree		13
Frontotemporal Dementia n=128	Sporadic n=67	Early Onset ≤65 years	45
		Late Onset >65 years	22
	Familiar n=53	Early Onset ≤65 years	9
		Mixed Onset	28
		Late Onset >65 years	16
	No pedigree		8
Total			424

****This table only includes the families that were recruited by the study and excludes all of the pre-existent samples and the families of origin.**

Figures

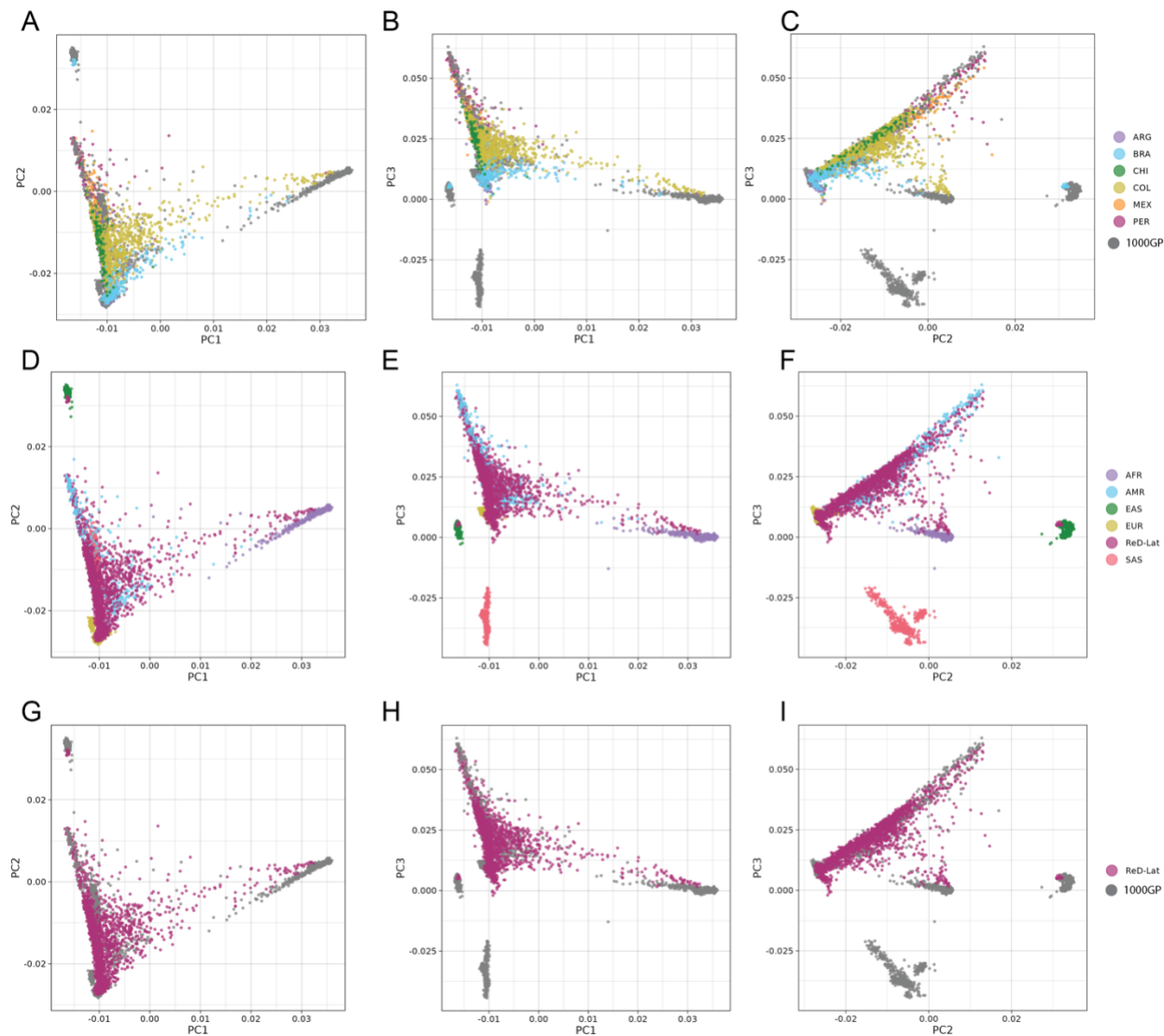
Figure 1.
Consort Diagram of the ReDLat Cohort



SNP: Single Nucleotide Polymorphism, **WES:** Whole exome sequencing, **WGS:** Whole genome sequencing

Figure 2.

Principal component analysis (PCA) of the ReDLat cohort.

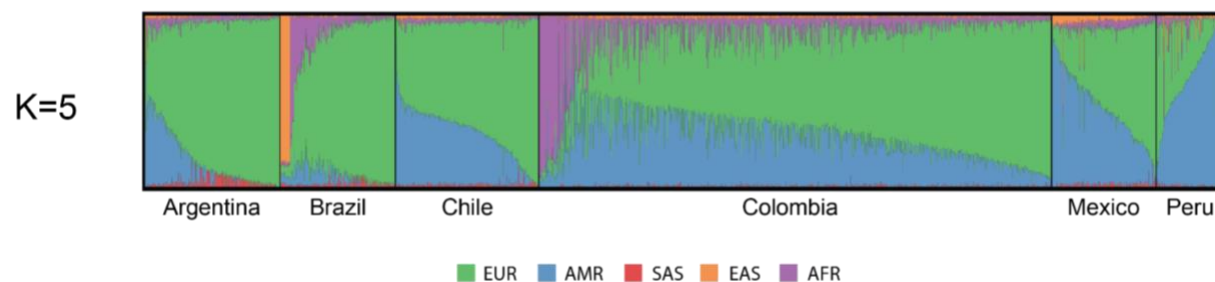


A-B-C: ReDLat sub-cohort distribution compared to the 1000GP. **D-E-F:** 1000GP sub-cohort distribution compared to ReDLat. **G-H-I:** ReDLat compared to the 1000GP. **A-D-G:** PC1 vs. PC2. **B-E-H:** PC1 vs. PC3. **C-F-G:** PC2 vs. PC3

1000GP: Reference dataset from the 1000 Genomes project; AFR: African, AMR: American admixed, EAS: Eastern Asia, EUR: Europe, SAS: South Asian. ReDLat subcohorts include ARG: Argentina, BRA: Brazil, CHI: Chile, COL: Colombia, MEX: Mexico, PER: Peru

Figure 3.

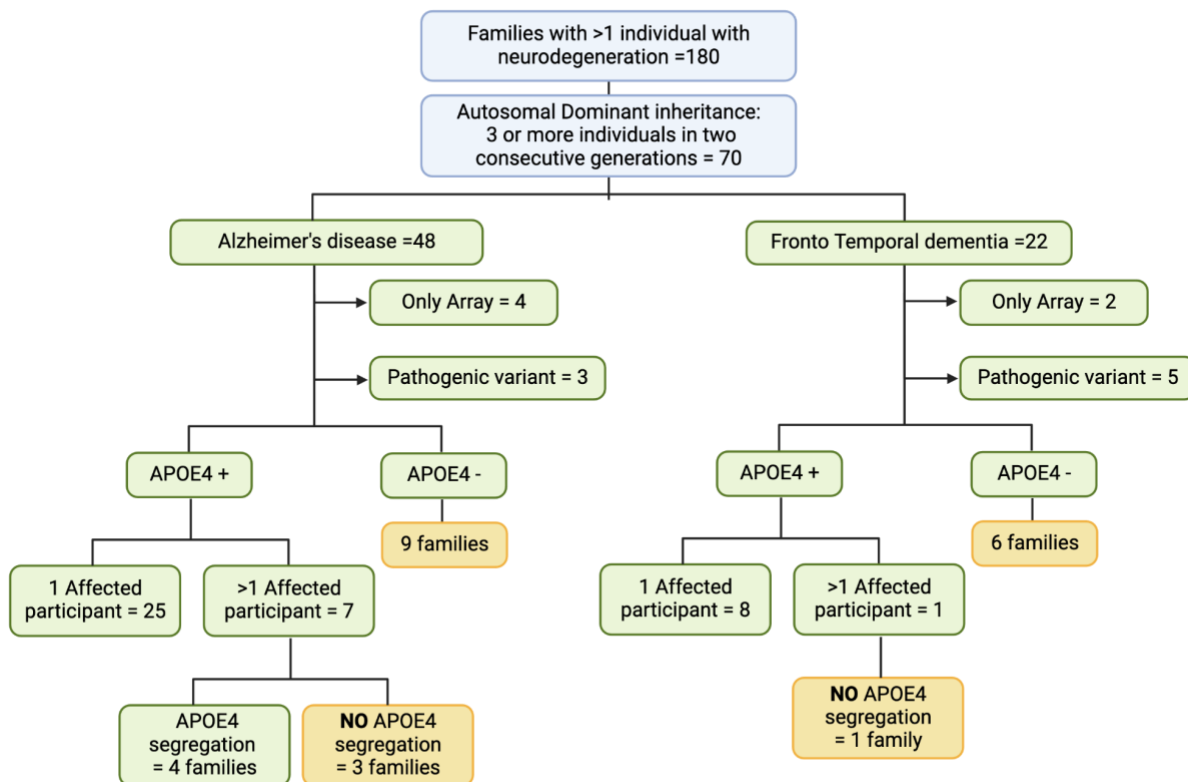
Global ancestry of ReDLat cohorts



Reference panel from the 1000 Genomes project; AFR: African, AMR: American admixed, EAS: Eastern Asia, EUR: Europe, SAS: South Asian. (see supplementary figure2)

Figure 4.

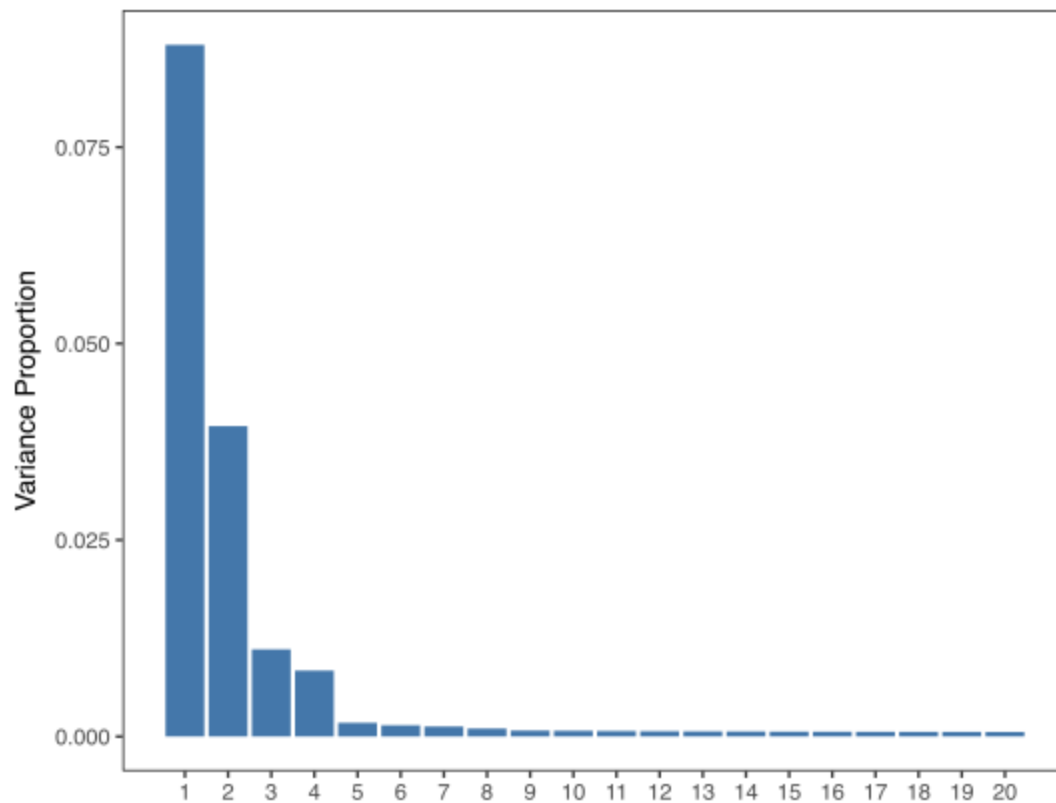
Segregation of neurodegeneration in the ReDLat recruited cohort



Supplementary Figures

Supplementary figure 1.

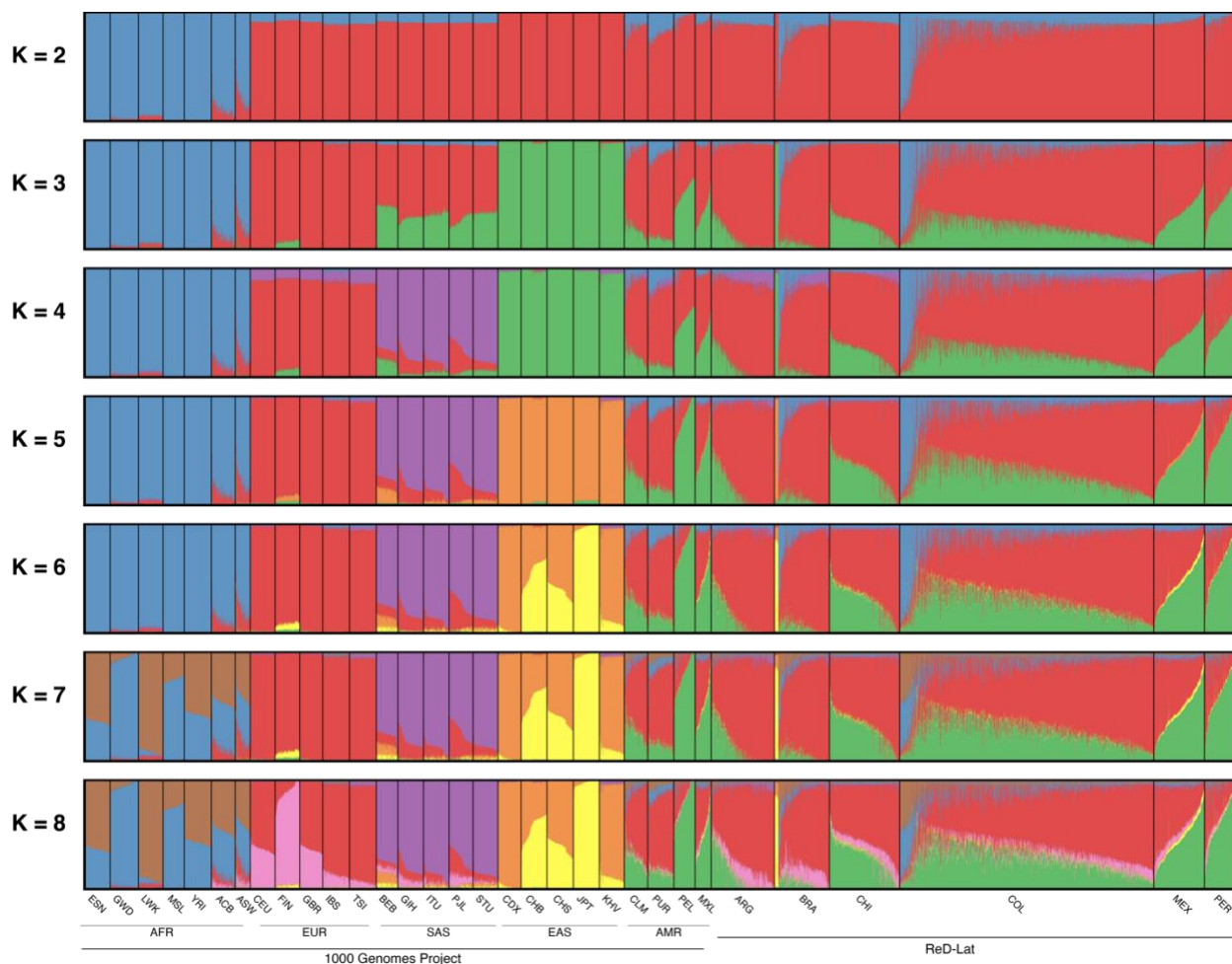
Principal component analysis scree plot



Variance explained by top 20 principal components

Supplementary figure 2.

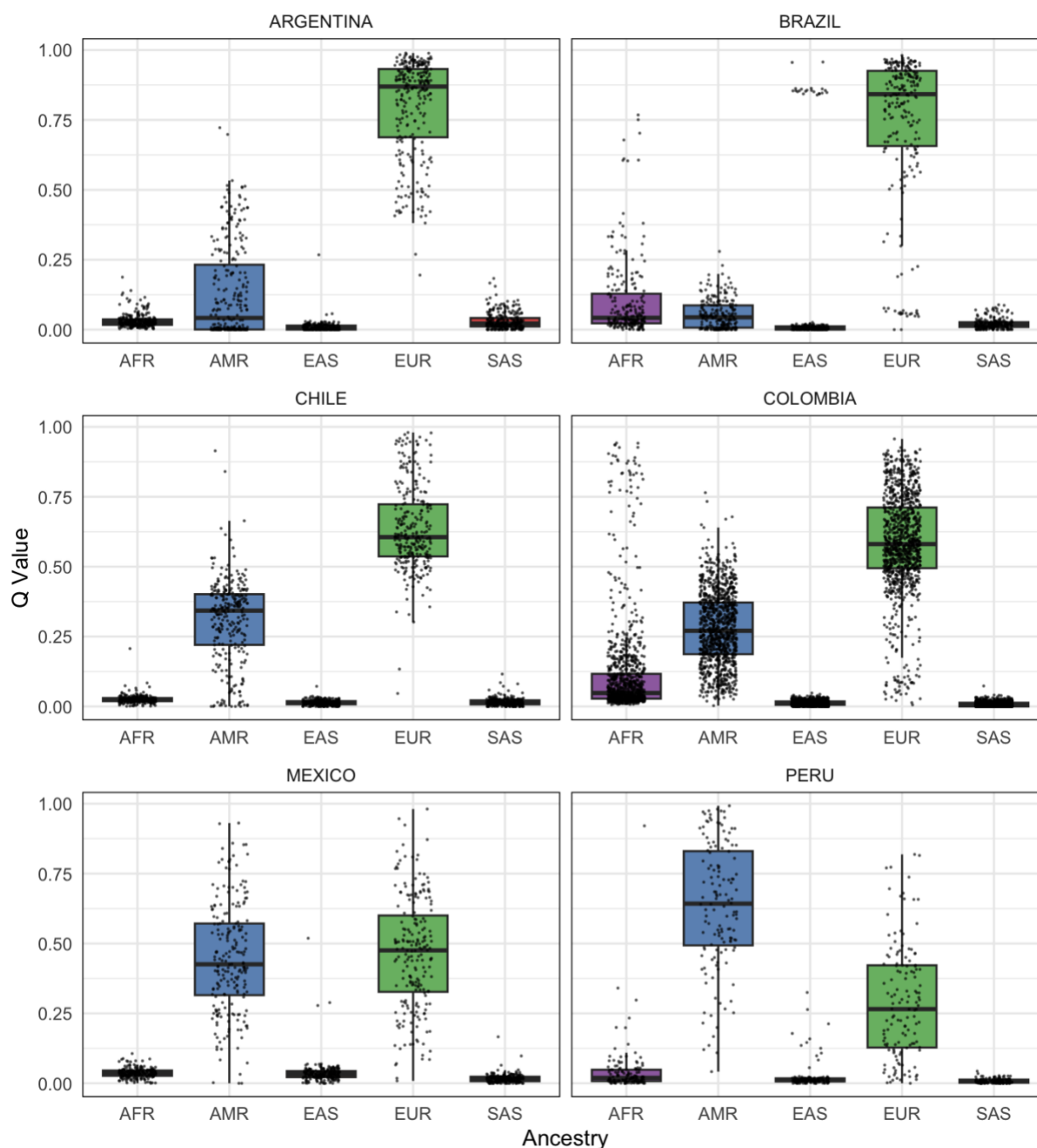
Global ancestry proportions of the ReDLat cohort represented by ADMIXTURE Q. values at different K (ancestral population) values



The 1000 Genomes project includes **African (AFR)**: GWD: Gambian in Western Divisions in the Gambia, LWK: Luhya in Webuye, MSL: Mende in Sierra Leone, YRI: Yoruba in Ibadan, Nigeria, ACB: African Caribbean in Barbados, ASW: African Ancestry in Southwest US. **European (EUR)**: CEU: Utah Residents (CEPH) with Northern and Western European Ancestry, FIN: Finnish in Finland, GBR: British in England and Scotland, IBS: Iberian Population in Spain, TSI: Tuscany in Italia. **South Asian (SAS)**: BEB: Bengali in Bangladesh, GHI: Gujarati Indians in Houston, ITU: Indian Telugu in the U.K., PJK: Punjabi in Lahore, STU: Sri Lankan Tamil in the UK. **East Asian (EAS)**: CDL: Chinese Dai in Xishuangbanna, China, CHB: Han Chinese in Beijing, CHS: Han Chinese South, JPT: Japanese, Kyushu, KHV: Kinh Vietnamese. **Admixed American (AMR)**: CLM: Colombian from Medellin, PUR: Puerto Rican from Puerto Rico. **ReDLat subcohorts**: ARG: Argentina, BRA: Brazil, CHI: Chile, COL: Colombia, MEX: Mexico, PER: Peru

Supplementary figure 3.

Distribution of global ancestries across the multiple countries.



Calculations were based on ADMIXTURE Q. values. Reference ancestries from the 1000 Genomes project are AFR: African, AMR: American admixed, EAS: Eastern Asia, EUR: Europe, SAS: South Asian.