

1 “People here live in denial”: A qualitative study of the pervasive impact of  
2 stigma on asthma diagnosis and care in Kenya and Sudan

3

4 Rana Ahmed<sup>1¶</sup>, Stephen Mulupi<sup>2¶</sup>, Miriam Taegtmeier<sup>3</sup>, Jane Ardrey<sup>4</sup>, Graham Devereux<sup>3</sup>,  
5 Martha Chinouya<sup>5</sup>, Rashid Osman<sup>1</sup>, ElHafiz Hussein<sup>1</sup>, Sundos Modawey<sup>1</sup>, Hoyam Eltahir<sup>1</sup>,  
6 Caroline Kinyua<sup>2</sup>, Helen Meme<sup>2</sup>, Elizabeth H Shayo<sup>6</sup>, Asma El Sony<sup>1</sup>, Rachel Tolhurst<sup>4\*</sup>

7

8 <sup>1</sup>Department of Lung Health, The Epidemiological Laboratory, Khartoum, Sudan

9 <sup>2</sup> Kenya Medical Research Institute- Centre for Respiratory Diseases Research, Nairobi,  
10 Kenya

11 <sup>3</sup>Department of Clinical Sciences, Liverpool School of Tropical Medicine, Pembroke Place,  
12 Liverpool, UK L35QA

13 <sup>4</sup>Department of International Public Health, Liverpool School of Tropical Medicine,  
14 Pembroke Place, Liverpool, UK L35QA

15 <sup>5</sup> Faculty of Education, Liverpool School of Tropical Medicine, Pembroke Place, Liverpool  
16 L3 5QA

17 <sup>6</sup> National Institute for Medical Research, P.O Box 9653,11101 Barack Obama Drive, Dar Es  
18 Salaam Tanzania

19

20

21

22 Corresponding author: Rachel Tolhurst

23 Rachel.Tolhurst@lstmed.ac.uk

24 **NOTE: This preprint reports new research that has not been certified by peer review and should not be used to guide clinical practice.**  
¶ Joint first authors

## 25 **Abstract**

26           Epidemiological studies show a global increase in asthma, straining healthcare systems  
27 in low- and middle-income countries. There are multiple barriers to accessing diagnosis and  
28 treatment in Sub-Saharan African countries like Kenya and Sudan such as healthcare  
29 infrastructure, diagnostic tools, healthcare workers' capacities, and cost. Asthma can be well  
30 controlled using safe and cost-effective treatments such as inhalers. Stigma related to asthma  
31 negatively impacts treatment-seeking and adherence in higher-income settings, with limited  
32 information about such impacts in Sub-Saharan Africa.

33 We conducted qualitative interviews and Focus Group Discussions in Kenya and Sudan to  
34 explore health systems aspects of diagnosis and management of chronic respiratory diseases.  
35 Participants included patients, primary care healthcare workers, hospitals, and community  
36 actors. Data were analysed through a framework approach; our initial analysis showed that  
37 asthma stigma was prevalent in both countries. Further analysis was done through Health,  
38 Stigma, and Discrimination Framework by Stangl.

39 Negative perceptions about the aetiology and prognosis of asthma contribute to stigma.  
40 Anticipated, internalized stigma, and enacted stigma affects individuals with asthma,  
41 encouraging them to hide their symptoms and resist diagnosis. This contribute to delayed  
42 healthcare seeking and treatment uptake, impacting both individuals with asthma and health  
43 professionals. Overall, stigma exacerbates challenges in communicating diagnosis, managing  
44 the illness, and maintaining psychosocial health and well-being for those with asthma.

45 Poor asthma control can exacerbate fear and stigma. Improving asthma control has the potential  
46 to reduce fear and positively influence community norms. The rollout of inhalers and spacers  
47 for asthma treatment should be accompanied by deliberate stigma reduction strategies and  
48 awareness raising at all levels of the system.

## 49 **Introduction**

### 50 **Asthma care**

51           The noncommunicable lung disease asthma is the most common chronic disease of  
52 childhood, it is characterised by variable airflow obstruction[1]. Symptoms include, wheeze,  
53 cough, breathlessness, and acute deteriorations in symptoms (exacerbations) requiring input  
54 from health services for treatment. Although asthma has an inherited component[2], there is no  
55 family history in 50% of cases and environmental exposures are important in aetiology. In sub-  
56 Saharan Africa (SSA)[3] the prevalence of asthma is 9-20%[4]. Prevalence has increased in  
57 recent decades[5] with the highest prevalence of severe asthma in African children[6,7].  
58 Childhood asthma is ‘underdiagnosed and undertreated’ in low-and-middle-income countries  
59 (LMICs),[8] resulting in high mortality and morbidity burden that includes adverse  
60 developmental outcomes, school absence, reduced academic achievement and social  
61 opportunities and (as adults) disadvantages in employment and livelihoods. Poorly controlled  
62 asthma is also a cause of catastrophic healthcare expenditure, exposing whole households to  
63 risk of impoverishment [9].

64 Asthma diagnosis and management remains challenging in sub-Saharan African (SSA).  
65 Diagnosis is based on clinical evaluation of symptoms and a therapeutic trial of treatment [10].  
66 When available a clinical diagnosis may be supported by tests such as spirometry, peak flow  
67 monitoring, and exhaled nitric oxide measurement. Asthma diagnosis is difficult in SSA  
68 contexts where primary care is poorly resourced, healthcare workers lack training in asthma  
69 diagnosis and systems are not designed for chronic disease management[11]. There is no cure  
70 for asthma; treatment aims to control symptoms and reduce exacerbations. Typical asthma  
71 treatment comprises a combination of ‘preventer’ and ‘reliever’ therapies, most effectively  
72 administered by inhaler via a spacer device if a metered dose inhaler is used. These treatments

73 are of proven efficacy, safe and highly cost-effective, reducing the incidence of acute  
74 exacerbations by 70% and making asthma deaths largely preventable[12]. Although these  
75 inhalers are on the WHO essential medicines list, spacers are not.

76 To date, efforts to address gaps in asthma care in SSA have focused on improving ‘supply side’  
77 factors such as policy/guideline documents, training healthcare workers and improving access  
78 to peak flow meters, and inhaled treatments. For example, Epilab (a local health non-  
79 governmental organisation in Sudan) introduced an asthma standard case management  
80 programme to Gezira district hospitals, which saw a significant reduction in hospital, and  
81 emergency-room admissions[13]. Unfortunately, this is the exception rather than the rule, as  
82 most initiatives to improve availability and affordability have been unsuccessful.[14,15]  
83 Notably; the provision of low-cost inhalers by the Asthma Drug Facility failed because of a  
84 lack of demand, despite a high burden of asthma and drastic reductions in asthma-related  
85 emergencies among those who did use provided inhalers.[14] Most interventions have failed  
86 to address ‘demand side’ factors (, socio-economic context, perceptions and behaviours of  
87 individuals, households and communities), important in determining how and when health  
88 services are accessed. Uptake may continue to be poor when the perceived risks to the  
89 individual outweigh the benefit of health seeking.

## 90 **Stigma**

91 Stigma is increasingly recognised as an important determinant of asthma control in the  
92 global north[16–20] where it is associated with delayed diagnosis, reluctance to use inhalers  
93 and reduced quality of life[21]. However, little is known about asthma stigma in SSA. In  
94 Tanzania, children fear eating and playing with children with asthma[22]; in Sudan widespread  
95 asthma stigma particularly affects young women, impacting marriage prospects and quality of  
96 life[22,23]. A Ugandan study revealed respiratory symptoms are stigmatised because of their

97 link with TB and with asthma thought to be contagious, and adults try to keep their wheezing  
98 child secret[24]. In Kenya, only 33% of parents of children with asthma accepted the diagnosis,  
99 34% feared inhalers and only 31% felt that long term therapy was necessary[25]. While  
100 addressing knowledge gaps is important [26], a deeper understanding of how stigma  
101 undermines asthma care is needed in the context of SSA.

102 Stigma is a contested concept, influentially defined by Goffman as an “attribute that is deeply  
103 discrediting” and that reduces the bearer “from a whole and usual person to a tainted,  
104 discounted one” [27]. Jones *et al.* (1984)[28], use Goffman’s (1963, p.4)[27] observation that  
105 stigma can be seen as a relationship between an “attribute and a stereotype” to produce a  
106 definition of stigma as a “mark” (attribute), linking a person to undesirable characteristics (or  
107 stereotypes). This focus on stigmatised individuals has been critiqued, in favour of  
108 understanding stigma as a process occurring through social and structural forces across  
109 multiple socio-ecological levels [29–31]. These later conceptualisations emphasise stigma in  
110 the context of social determinants of health, such as poverty and social stratification [32,33].

111 Arguing against constructions of stigma focused on specific diseases, Stangl *et al* (2019)  
112 propose a framework drawn from stigmatised health conditions (including HIV, mental health,  
113 and obesity) to inform research, intervention development, and policy on health-related  
114 stigmas, which we apply in this paper. They identify four key domains of the stigma process,  
115 which ultimately create health and social impacts. First, drivers and facilitators of stigma:  
116 drivers are inherently negative, including fear of infection, social judgement or blame, whilst  
117 facilitators may either minimise or exacerbate stigma. Second, ‘stigma marking’ refers to the  
118 application of stigma to an individual; similarly, Link and Phelan refer to placing a ‘label’ on  
119 a person, which links them to undesirable characteristics[29]. Stangl *et al* emphasise labelling  
120 is further shaped by gender, race, occupation, ethnicity, kinship. Third, marking leads to stigma  
121 experiences (that is lived realities) and practices (beliefs, attitudes and actions of others towards

122 a stigmatised person). A distinction is made here between: ‘self-stigma’ (sometimes referred  
123 to as ‘internalised stigma’), which refers to “a stigmatised group member’s own adoption of  
124 negative societal beliefs and feelings, as well as the social devaluation associated with their  
125 stigmatised status”[34, pg. 614; 35]; perceived stigma (i.e. perceptions about how stigmatised  
126 groups are treated in a given context); and anticipated stigma (i.e. expectations of bias being  
127 perpetrated by others). Scrambler (1998)[36] makes an additional distinction between  
128 ‘anticipated’ stigma and the ‘enacted stigma’ of overt acts of social exclusion. Finally, stigma  
129 manifestations lead to a range of outcomes for affected populations (including access to and  
130 uptake of healthcare) and relevant institutions (including health services).

131 We present findings from two linked studies (one in Sudan and one in Kenya) investigating  
132 health system readiness to respond to people with symptoms of chronic respiratory disease  
133 (CRDs), including asthma. Although not primarily designed to study the impact of asthma  
134 stigma, it emerged as such a strong theme in both countries and across all participant types that  
135 we feel obliged to report these findings separately in the hope they can assist programmes  
136 responding to the increasing need for asthma care in SSA. This paper adds to the evidence  
137 generated in earlier studies in Kenya, Sudan and Tanzania, highlighting policy and health care-  
138 level impediments to effective diagnosis and management of asthma in East African healthcare  
139 facilities[37; 43].

## 140 **Materials and methods**

### 141 **IMPALA (parent study) overview and sub-study designs**

142 We conducted two linked studies within the NIHR-funded International  
143 Multidisciplinary Program to Address Lung Disease and Tuberculosis in Africa  
144 (IMPALA)[38] an 11-country consortium aiming to improve the health of children and adults  
145 in Africa through multi-disciplinary applied health research on lung health and TB. The first

146 study, in Sudan, used an action research design. An initial health systems analysis and  
147 qualitative methods engaged actors from within healthcare facilities and community  
148 subsystems to collate experiences, identify requirements and generate context-specific  
149 interventions to integrate chronic lung disease services into existing health systems. The second  
150 study, in Kenya, investigated public healthcare facilities' readiness to respond to people  
151 presenting with symptoms of chronic respiratory diseases, within the context of a devolved  
152 county government system. Both studies explored community members' perceptions of  
153 chronic respiratory diseases, asthma and care seeking experiences, the roles of community  
154 actors (including community health volunteers (CHVs) in Kenya) in supporting referrals to  
155 healthcare facilities, and healthcare workers' experiences in diagnosing, treatment and  
156 subsequent management of asthma.

## 157 **Settings**

158 In Sudan, the study was based on eight purposively selected health facilities and their  
159 catchment communities in two localities within Gezira State. We selected Gezira State, because  
160 there is an asthma management program at district level hospitals where the Comprehensive  
161 Approach to improve quality of Lung Health Services (CLHS) has been implemented by  
162 EpiLab,[13,39] a local health research and development NGO with a mission to create and  
163 maintain access to effective health services. We purposively selected health facilities to  
164 represent experiences from district and health centre level facilities, in urban and rural  
165 locations, including those with and without support from Epilab. Four health facilities with  
166 Epilab support had an emergency room with nebulizers, and oxygen supply/canisters, an  
167 asthma clinic with a peak flow meter, a medical officer, a nurse and clerk or medical assistant  
168 for recording and reporting, while others only had emergency rooms with nebulizers, and  
169 oxygen supply/canisters.

170 In Kenya, the study was conducted in Meru County, central Kenya. We purposively selected  
171 four rural public healthcare facilities - two health centres, two primary referral hospitals,  
172 distributed across two of the nine sub-counties within Meru County. The fifth facility, Meru  
173 Teaching and Referral Hospital, was selected as it is a regional tertiary hospital and we wanted  
174 to explore referral pathways. All the health facilities provided diagnostic and treatment  
175 services, for asthma. None of the public facilities provided spirometry services, although peak  
176 flow meters were mentioned as available at hospital level. Similarly, only hospitals had medical  
177 officers.

178

### 179 ***Selection and recruitment of participants***

180 Study participants in both contexts were selected purposively, for their roles as  
181 (potential) users and consumers of healthcare services from the local healthcare facilities  
182 (community members and patients); or support in the provision of healthcare services  
183 (community health volunteers and facility healthcare workers). All participants were adults  
184 (over 18) and provided written informed consent (Table 1).



185 **Table 1:** Comparison of participant selection and recruitment

Study participants	Sudan	Kenya
Primary care and hospital clinicians	Purposively selected to include different types of clinical role (General practitioners, medical director and medical assistants) who had a wide range of years of experience in clinical work and administration	Purposively selected based on their roles in providing care to patients with symptoms of chronic respiratory diseases, and included clinical officers, medical doctors, medical social workers.
Community actors	Purposively selected from the general community in areas served by the selected health facilities to reflect a range of literacy levels, socio-economic backgrounds, distance (near or further) from the health facilities, and experiences of living with, or being affected by asthma.	All Community Health Volunteers (CHVs) supporting eight Community Health Units (CHU) linked to the primary health facilities and hospitals.
Male and female asthma patients*	Purposively selected to represent all asthma severities and catchment communities at varied distances from the health facility; identified by the field team and health workers from the Asthma Standard Case Management Programme at study sites.	Selected through convenient sampling, based on attendance at study site during the study period with asthma confirmed clinically during same day consultation (including new and former diagnosis)

186 \* Clinically confirmed asthma

187 ***Data collection***

188 Data were collected between August 2019 and November 2020 (Kenya), and February  
 189 to August (2019) in Sudan. All interviews and focus group discussions (FGDs) were conducted  
 190 by research assistants trained in qualitative research methods. FGDs were conducted in the  
 191 community at venues preferred by the participants. Health workers' interviews were conducted  
 192 within the health facility premises.

193 In Kenya, interviews were led by a single investigator (SM) and four research assistants who  
 194 also took field notes on key issues of discussion. Interviews involving healthcare workers were  
 195 carried out in English, whilst interviews with CHVs and community members were conducted

196 in Swahili. In Sudan, all interviews were conducted in Arabic and led by four co-investigators  
197 and five research assistants.

198 Health worker interviews: Health workers' interviews in both contexts were guided by semi-  
199 structured topic guides (see supplementary materials) exploring health workers' perceptions of  
200 health facility readiness for integration of CRD management, with a focus on asthma;  
201 perceptions, expectations and threats for anticipated integration of CRDs.

202 Community Focus Group Discussions (FGDs):

203 In Sudan, community FGDs were organised by gender and age (younger (18-39 years) and  
204 older ( $\geq 40$  years)) in line with the social structure and norms of the Sudan local society. A  
205 separate focus group of young women (18-39) was also conducted after the observation that  
206 asthma is a highly stigmatising illness in this group in Sudanese society. FGDs explored  
207 community understanding of CRDs especially asthma, community care-seeking practices for  
208 CRDs, community experiences with and priorities for care, including risks and economic  
209 impacts encountered.

210 In Kenya, we conducted focus group discussions with CHVs supporting eight Community  
211 Health Units (CHUs) that were linked to the primary health facilities and hospitals. In each  
212 CHU, FGDs were stratified by gender and consisted of 6-8 participants. Topic guides for CHVs  
213 examined their understanding of asthma, roles and experiences in providing care (including  
214 supporting referrals of community members to healthcare facilities for CHVs), and perceptions  
215 of stigma for asthma in the community. Additionally, FGDs were conducted with community  
216 members living within the catchment areas of five CHUs. These were further stratified by age  
217 (aged  $< 35$  years, and  $> 35$  years respectively). Most of the community FGDs were conducted  
218 in one sub-county; a government ban on community meetings to control the spread of COVID-  
219 19 meant that we could not hold FGDs in the second sub-county. FGDs explored community

220 members' perceptions about CRDs, asthma healthcare-seeking practices and experiences with  
221 asthma management services.

222 Interviews and FGDs were audio-recorded using digital audio recorders, transferred to laptops  
223 the same day of the interview and then transcribed using the denaturalised approach, in the  
224 original interview language using MS Word, by research assistants to produce verbatim,  
225 transcripts. [40] Transcripts were translated and back-translated from Arabic/Swahili by  
226 professional translators and reviewed for meaning. Transcripts were compared with field notes  
227 to triangulate data, add supplementary information and enrich the transcripts.

### 228 ***Data analysis***

229 Initial thematic analysis of the data was undertaken separately in the two countries  
230 using the framework approach[41] revealed stigma as an important theme. We then developed  
231 a coding framework based on Stangl's 2019 framework.[31] See Fig 1.

232

### 233 **Fig 1. Coding framework development across Kenya and Sudan**

234

235 Key domains described in the Stangl framework were applied in the analysis: 1) drivers  
236 and facilitators of stigma are those influences that encourage/fuel/shape stigmatising attitudes;  
237 2) an outcome of drivers/ facilitators, 'stigma marking' implies an application of stigma which  
238 is shaped by personal characteristics such as gender, race, occupation, ethnicity, and kinship;  
239 3). consequently, stigma experiences are observed i.e. lived realities and practices based on  
240 attitudes such as discrimination, avoidance, verbal abuse and other harms; 4) similarly, self/  
241 internalised stigma may occur, i.e. "a stigmatized group member's own adoption of negative  
242 societal beliefs and feelings, as well as the social devaluation, associated with their stigmatized

243 status”[34]; and 5) finally, stigma practices include attitudes, prejudices and behaviours of  
244 other people towards a stigmatised person(s).

245 Country research teams independently applied the Stangl framework[31] to develop the  
246 overarching themes. The final common coding framework was agreed after reviewing  
247 transcripts together and resolving any discrepancies. Separate analytical frameworks were  
248 developed for health worker interviews, patient interviews and community discussions. Codes  
249 were organised into categories and themes for analysis by charting into an Excel spreadsheet.  
250 Emerging themes were compared across interview categories.

251

### 252 *Ethical approval*

253 The study was approved by the Research Ethics Committees of Liverpool School of Tropical  
254 Medicine (refs18–043; 19-003), the Ministry of Health of Gezira state, Sudan (ref 44/T/KH/1)  
255 and the Kenya Medical Research Institute (KEMRI) Scientific and Ethics Review Unit (ref  
256 SERU No. 3848). We obtained permission from district authorities, including by the county  
257 government of Meru (Ref. MRU/MED/MRU/C.50). We obtained written informed consent  
258 from all participants. Additional consent was obtained from parents for the adolescent FGD  
259 group.

260

261

262

263

264

265

266 **Participant characteristics**

267 Table 2 below summarises the characteristics of the study participants in Kenya and  
268 Sudan.

269 **Table 2:** Summary of Participant Characteristics

Participant group	Sudan		Kenya	
	No and methods	Description	No and methods	Description
Primary care and hospital clinicians	4 IDI <sup>+</sup>	2 general practitioners 1 medical director 1 medical assistant 2 males and 2 females with 1-20 years of experience	13 IDI	6 clinical officers 2 medical officers 1 physician; 4 pharmacy staff (5 females and 8 males)
Community actors	6 FGD	1 adolescent girls group (15-17 years) 1 female group ≥40 years 2 males groups ≥40 years 2 males groups < 40 years	8 FGD, 6 IDI	4 FGDs- community members: - Adult community members >35 years, (1 male, 1 female) - Young community members age 20-30 years, (1 male, 1 Female) 4 FGD, female CHV 6 IDI, (4 male CHV)
Male and female asthma patients*	5 IDI <sup>~</sup>	- 4 females - 1 male Illiterate to university level with age varies from 16-65 years old	4 IDI	2 adult males >18 years old 2 adult females >18 years old

<sup>+</sup> Clinicians with 1-20 years of experience

<sup>~</sup> Illiterate to university level with age varies from 16-65 years old

## 271 **Results**

272 Asthma is a stigmatised disease in both Sudan and Kenya. Some of the stigma domains of  
273 the Stangl framework however showed contextual variations across the two countries. This section  
274 highlights areas of convergence as well as divergent perspectives of the research participants  
275 across the two countries. Fig 2 shows the key findings with regard to four key domains identified  
276 by Stangl *et al.* (2019)[31]. These domains are inter-related in multiple directions; for example,  
277 stigma contributes to poor treatment outcomes, which in turn perpetuate the negative perceptions  
278 of people with asthma that shape resistance to diagnosis and manifestations of stigma.

279

280 **Fig 2: Conceptual framework showing key findings**

281

### 282 **Theme 1. Drivers and facilitators**

283 Varying perceptions were expressed about the aetiology of asthma. A common perception  
284 in both countries was that asthma is hereditary or ‘genetic’. People with this view sometimes saw  
285 the aetiology as multi-factorial, acknowledging the relevance of other more immediate causes. For  
286 example,

287 *" We noticed these things many times that there are causing agents, but inheritance plays a very*  
288 *huge role. This is what I put my concentration on."* (Male Community FGD, Sudan)

289 Perceiving asthma as hereditary often meant that it was also perceived as incurable.

290        “ *We normally see asthmatic people in the community, and we view it as an inherited disease;*  
291        *it is there for life*”. (Male CHVs FGD, Kenya)

292        Another common view, particularly in Kenya, but also present in Sudan, was that asthma is  
293        infectious and can be transmitted to others.

294        “*They do say that if someone for example has asthma and they cough next to you and you*  
295        *are eating from the same plate, you would also be infected*” (Female CHV IDI, Kenya).

296        The persistent coughing seen by many as a sign of asthma was associated with tuberculosis, which  
297        is a stigmatised disease in both countries. In Kenya, symptoms of asthma such as difficulty in  
298        breathing were also associated with other stigmatised chronic conditions such as epilepsy as well  
299        as sometimes being attributed to witchcraft and/or hereditary.

300        “*Some, especially those with little education, view those infected as having been bewitched or*  
301        *are victims of generational curses*” (Male CHV IDI, Kenya).

302        Fear of infection is therefore one of the drivers of both internalised and enacted stigma, which is  
303        discussed further in manifestations.

304        Negative perceptions commonly expressed about the capacities and social and economic situations  
305        of people with asthma highlighted that this is a health condition to fear. In both countries, people  
306        with asthma were perceived as ‘weak’ and unable to contribute economically or socially towards  
307        the family or community. For example, in FGDs in Sudan, a male participant commented, “*The*  
308        *patient will be transformed from a productive person to a consumer*” (Male Community FGD,  
309        Sudan), whilst women agreed “*He won't be able to work. That will affect him, and then it will*  
310        *affect the society by causing reduction in workers*” (Female Community FGD, Sudan). Asthma  
311        was perceived as reducing the range of livelihood opportunities open to people. For example,

312 asthma symptoms were perceived to affect energy to do ‘hard’ physical work, which might expose  
313 them to dust or changes in temperature.

314 *" His opportunities are limited and if he is exposed to hard physical work like dust or air,  
315 coming in and out, from warmth to cold ... that will decrease the patient's job opportunities"*  
316 (Male Community FGD, Sudan)

317 Educational prospects were perceived to be affected:

318 *"My daughter is in high school level. She said there is a girl who gets attacks during school...  
319 She would like to study but her health condition will not allow. This will affect her  
320 performance results. It will absolutely affect her work later on."* (Female Community FGD,  
321 Sudan)

322 In both countries some people also perceived that asthma would affect the sexual performance of  
323 sufferers: *"Another thing about asthma, even the other ‘work’ in bed (sex) is hard"* (Female CHV  
324 FGD, Kenya).

325 Some participants added that people with asthma are not able to look after themselves. These  
326 perceived limitations to the capacities of people with asthma meant that they were viewed as a  
327 social burden.

328 In Kenya, perceptions of people with asthma as a burden to their families and communities were  
329 related to the anticipation they would incur healthcare expenditure, including costs of travel to  
330 healthcare facilities during asthma emergencies:

331 *"People feel that this asthmatic person... will consume their money. Sometimes people with  
332 asthma are rushed to hospital at night, they feel the money they are spending on transporting  
333 them to hospital is a burden"* (Female CHV FGD, Kenya).



334 **Theme 2: Stigma marking**

335 Peoples' reactions to a diagnosis of asthma demonstrated stigma 'marking'. In both countries,  
336 a range of participants described how many people responded by refusing the 'label' of asthma.  
337 For example, health workers in Kenya reported:

338 *"when you tell them it's asthma they say 'no daktari [doctor]! No! don't write asthma, in*  
339 *our family there is nobody who suffers from asthma, that's a bad illness, I don't want to be*  
340 *associated with it'"* (Clinical Officer IDI, Kenya).

341 In Sudan, people preferred the term 'allergy' instead of asthma:

342 *"Every person here has something making them fear the word "asthma", they call it*  
343 *"hassasya" (allergy) (Male HW, IDI, Sudan)*

344 There were mixed opinions about whether stigma marking affected people differently according  
345 to socio-economic status. In Kenya, one CHV perceived people with less education were more  
346 likely to attribute asthma to generational curses or witchcraft, whilst a healthcare worker  
347 emphasised resistance to asthma diagnosis was common regardless of educational background.

348 *"There is also the stigma attached to diseases like asthma. So, in my experience every time I*  
349 *tell a mum - even one who is educated - that your child could be having asthma, they tell you*  
350 *"No, where did he get it?"* (HW IDI, Kenya).

351 A patient in Kenya commented on the greater effect of asthma on people living in poverty due to  
352 lack of opportunity to avoid triggers:

353 *“it affects mostly the poor, do you know that? Because such poor people have to work*  
354 *whether it is cold or not- and they may get sick, but do not have anyone to support them*  
355 *(Female Patient IDI, Kenya).*

### 356 **Theme 3: Stigma manifestations (experiences and practices)**

357 In both countries, most people with asthma diagnosis and/or symptoms reported hiding these,  
358 particularly from their communities. This included making efforts to appear healthy, suppressing  
359 their coughs, even when their airways were irritated and carrying on with activities as normal  
360 despite feeling unwell. For example,

361 *“I don’t tell my friend clearly that I am irritated, and moreover; I am not showing that I have*  
362 *this disease.” (Female Patient, IDI, Sudan)*

363 In Sudan most interviewees only disclosed symptoms to close family members, such as mothers,  
364 sisters, wives and brothers. One interviewee had told no one:

365 *“Not even anyone at home. As they say; the pain is all mine! Who could feel my pain?! They*  
366 *are our wounds, and we tolerate them alone. Hahaha” (Female Patient, IDI, Sudan)*

367 Such concealment in both contexts related to both anticipated and internalised stigma. Interviewees  
368 shared how they wanted to prevent others worrying about them and how they feared no-one would  
369 help them, showing concern about being seen differently or discriminated against. They also  
370 explained they felt less able to fulfil expected roles in society. For example, one female interviewee  
371 in Sudan explained how she felt she was less useful to her family and community than previously:

372 *“ I used to work in the fields, but I gave that up ever since I got sick. Now I just stay at home and*  
373 *cook for my kids” (Female patient, IDI, Sudan)*

374 Another female patient felt less able to contribute to community events: *"whenever I go to an*  
375 *occasion I'll only participate in the conversation, I can't help and serve as I used to."* (Female  
376 patient, IDI, Sudan)

377 A male patient similarly expressed that *"I can't do hard work; I can only do desk jobs or easy*  
378 *work...I can't handle exertion"* (Male patient, IDI, Sudan). Many interviewees' narratives suggest  
379 they have internalised negative societal perceptions of being a burden to others. In Kenya, some  
380 participants felt 'shame' and 'disgrace' leading them to avoid socialising and isolate themselves.

381 As a health worker put it:

382 *"some of the patients...pity themselves a lot, and they take it as if they are being burdens to*  
383 *others. So, they stigmatise even themselves"* (Social Worker IDI, Kenya).

384 In both countries, interview narratives showed people living with asthma could be discriminated  
385 against and socially isolated in their communities. Women in a focus group in Sudan agreed that  
386 people would generally avoid someone with a chronic cough for fear of infection: *"It is not nice -*  
387 *they avoid him/ her.... Everybody worries about himself"* (Female Community, FGD, Sudan),  
388 whilst men expressed that chronic cough created vulnerability to theft or violence: *"He may be get*  
389 *robbed...or anything else. Chest diseases may make patient vulnerable to things like these...he*  
390 *may be tired and not able to defend himself"* (Male Community, FGD, Sudan). A CHV in Kenya  
391 stated that *"People will tend to move away saying you might infect them"* (Male CHV IDI, Kenya)  
392 and a female patient with asthma concurred: *"even neighbours wouldn't serve you a cup of tea,*  
393 *because people fear that you may infect them. They think it is like TB."* (Female Patient IDI Kenya)

394 In addition to fear of infection, in Kenya people with asthma were considered an inconvenience.  
395 Some community members excluded people with asthma from social events for fear that their  
396 illness may disrupt their plans.

397 *“Celebrations (laughs). There are those outings that we go to distant places, during the*  
398 *rainy season, you know, this asthmatic person is isolated or avoided, they won’t go with*  
399 *them because they might get sick there and bring us complications. So, they are avoided*  
400 (Female CHV FGD, Kenya)

401 In both countries, discrimination against individuals with asthma and even their families was  
402 reported with regard to marriage proposals due to perceptions of heredity, which particularly  
403 affected young women in Sudan.

404 *“Asthma... will lead to single marital status: It will lower their market value”* (Female  
405 Community, FGD, Sudan).

406 *“So if people know that that someone has asthma, they don’t want their girls to get married*  
407 *to someone with asthma* (Female CHV FGD, Kenya).

408 In Kenya, CHVs suggested their own lack of knowledge about asthma prior to training meant they  
409 avoided close contact with people with chronic cough, potentially exacerbating community fears:

410 *“But initially these diseases such as asthma and TB, you know [CHVs] would sometimes*  
411 *talk to [community members] from a distance because they feared contracting the same*  
412 *diseases. But now we have been trained to know”* (Male CHV IDI, Kenya)

413 Enacted stigma within families was less commonly reported. However, one asthma patient in  
414 Kenya narrated how husband’s family had been opposed to their marriage and encouraged him to

415 reject her. Whilst her husband was initially supportive, she described how he later expressed regret  
416 due to the financial burden of the costs of her treatment:

417 *So ... these problems caused financial strains and impoverished my husband. ... government*  
418 *hospitals only offered drug prescriptions, but no medicines, so money was never sufficient*  
419 *for other household expenses. We couldn't even afford rent, so we had to move from our*  
420 *rental house to our rural home.....now when we call his parents, they said "we told you to*  
421 *leave this woman alone but you did not listen- this is a problem you have brought on yourself*  
422 *- asthma is not treatable" ... It reached a point, I even despised myself...Even my husband...*  
423 *nowadays regrets - he tells me...that if I had disclosed my condition earlier that I am*  
424 *asthmatic, he wouldn't have married me" (Female patient IDI, Kenya).*

425 However, in both countries, a minority of community participants did not perceive any enacted  
426 stigma. For example, in Sudan some men in a focus group perceived that there were no social  
427 consequences for people with asthma:

428 *"I think the social aspect has very tiny effect" (Male Community, FGD, Sudan).*

429 Only one patient interviewed in Kenya did not feel that he needed to hide his condition, whilst a  
430 patient in Sudan did not feel surprise or concern at his diagnosis, *"because it runs in the family."*  
431 (Male patient, IDI, Sudan).

#### 432 **Theme 4: Outcomes**

433 In both countries, people with asthma, community members and healthcare workers agreed  
434 anticipating and internalising asthma stigma influenced their healthcare seeking behaviour. This  
435 included not seeking formal healthcare due to fear of a diagnosis. A woman with symptoms of

436 asthma in Sudan explained she had not sought healthcare for her symptoms because she feared a  
437 diagnosis of asthma and the visibility that using an inhaler would bring:

438 *“because I fear they may tell me that I have asthma and I have to use a spray “inhaler””*

439 (Female patient, IDI, Sudan)

440 Some people opted for home remedies, buying medicines from pharmacies and/or traditional  
441 treatments because of a perception they are suffering from ‘allergies.’ One patient diagnosed with  
442 asthma described how this delayed her initiation of treatment at hospital:

443 *“My family would say I should go to the doctor, (but) some of them say give her warm*  
444 *water, others say sesame oil and some say acacia plant. I would use them for three days,*  
445 *staying up the whole time until I feel better, but when I came here to Gezira I started going*  
446 *to hospitals and getting oxygen”* (Female patient, IDI, Sudan).

447 Women in a focus group explicitly related people hiding their symptoms and not seeking  
448 healthcare due to anticipated stigma:

449 *“Society’s fear of the disease makes TB patients or patient with cough hide their illness*  
450 *and do not seek medical advice ...so that people will not avoid them”* (Female community,  
451 FGD, Sudan)

452 In Kenya, concerns about the costs of care-seeking and the shame associated with asking for help  
453 were particularly emphasised.

454 *“Some people will not seek for help until their condition is so bad- they feel ashamed to*  
455 *ask for financial support from other people”* (HW IDI, Kenya).

456 In both countries, healthcare workers also reported that patients minimise the severity of their  
457 symptoms to avoid a diagnosis of asthma, in addition to delaying care seeking.

458 *'People here live in denial. One comes to you and says he has cough for 3 days, while the*  
459 *truth that he has cough for more than a year.'* (Male HW, IDI, Sudan)

460 *A patient comes in, you try to take her history- you ask, her do you cough? She says 'no'..*  
461 *but as you continue the examination, she starts coughing- you ask, "what is that?"*  
462 *(laughter!)* (HW IDI, Kenya).

463 Healthcare workers in both countries expressed the challenges they faced with patients accepting  
464 a diagnosis of asthma, which contributes towards limited adherence to treatment.

465 *"First, the patient must be convinced that s/he has asthma in order to be managed since*  
466 *most of the patients over here are not convinced. They say they have allergy."* (Female  
467 HW, IDI, Sudan)

468 Resistance to a diagnosis of asthma affected patient willingness to use recommended treatments,  
469 including inhalers, oxygen and hospital admissions, and referral. For example, in Sudan, health  
470 workers explained some patients even refused to have oxygen when indicated due to a belief that  
471 oxygen therapy could convert a temporary allergy into a permanent condition of asthma:

472 *'They refuse because they believe that oxygen will make it permanent'. The health worker*  
473 *later continued: If you prescribe an inhaler, the patient will absolutely refuse to take the*  
474 *inhaler"* (Female HW, IDI, Sudan).

475 One reason for this was explained in community focus groups where the group discussed concerns  
476 about using an inhaler in public making the condition visible. Patients may instead purchase  
477 antihistamines or corticosteroids from pharmacies as treatment for 'allergies':

478 *"I have told you that no one will accept asthma diagnosis... People get accustomed to*  
479 *purchasing antihistamine; they know what they shall purchase from the pharmacy...*

480 *Prednisone is constantly taken. The patient takes prednisone and never takes Ventolin.*  
481 *They call it allergy tablets. I get confused; I thought the patient was taking Antihistamine,*  
482 *and the patient showed me a prednisone strip. They take these tablets. Most patients do*  
483 *that” (Female HW, IDI, Sudan).*

484 Communication between health workers and patients can be negatively affected by their different  
485 understanding of ‘allergy’ treatments. Monitoring and evaluation of patients’ progress or otherwise  
486 can also be negatively affected by patients’ reluctance to engage with longer-term management:

487 *“However, the answer is always denial of asthma diagnosis and stating it is only allergy,*  
488 *even those cases presenting at the emergency department with attacks at night. We even*  
489 *tried to have a register book for those patients. Unfortunately, the patient leaves before*  
490 *obtaining any information; even we could not get the name of the patient.”(Male HW, IDI,*  
491 *Sudan)*

492 In Kenya, health workers reported patients were reluctant to use spacers as well as inhalers, which  
493 particularly affected management of children and presented barriers to demonstration of inhaler use.  
494 Furthermore, open spaces for drug dispensation at the pharmacies in all facilities limit audio privacy,  
495 and appropriate communication of inhaler use. Some healthcare workers observed that patients would  
496 communicate about asthma in hushed tones when receiving medication so as not to be heard.

497 Health workers in both countries and community health volunteers (CHVs) in Kenya, observed  
498 stigma experiences and practices could exacerbate other co-morbidities, including mental health  
499 problems, diabetes and hypertension. For example, in Kenya CHVs related anticipated social  
500 isolation and anticipated stigma to the development of co-morbidities:



501 *“Now this person, since he is isolated, you know he develops bad thoughts; he feels that he*  
502 *is a threat to the community, and he can even develop diabetes or hypertension because of*  
503 *that. See now? you have made someone develop a disease they would not have developed”*  
504 (Female CHV FGD, Kenya).

505 However, CHVs felt their support and explanations could make a difference to stigma and  
506 isolation:

507 *“If you visit them and let’s say the husband or wife has asthma you will see them very*  
508 *depressed. You see them in deep thoughts (and) self-pity. But if you tell them that the disease*  
509 *is just as normal as the others then they feel encouraged such that when you visit the next*  
510 *time she feels jovial”* ( Female CHV FGD, Kenya).

511 In Sudan, health workers reported that patients hiding their illness could lead to deterioration and  
512 even death:

513 *“The health condition of some of those patients deteriorated as they hide their illness... They*  
514 *hide their illness till they die. Some patients did that”* (Female Community, FGD, Sudan).

515

## 516 **Discussion**

517 Our findings contribute towards a limited literature on understanding stigma associated  
518 with asthma in SSA. We found that perceptions about aetiology and prognosis of asthma drive  
519 stigma in these contexts; in particular concerns about heritability, incurability and associations  
520 with other stigmatised diseases such as TB. People with asthma resist diagnosis as they fear a loss  
521 of social status and negative stereotypes, particularly with regard to loss of capacity to fulfil

522 economic and social roles in their families and communities. This stigma marking may affect  
523 people differentially according to social position; in particular for young women in Sudan with  
524 regard to limiting their opportunities for marriage. Anticipated and internalised stigma are  
525 commonly reported by people living with asthma leading them to hide signs, symptoms and  
526 diagnosis. People with asthma and community members report enacted stigma, particularly from  
527 communities. Anticipated, internalised and enacted stigma all contribute to delayed healthcare  
528 seeking and delayed (or limited) uptake of treatment, including self-medication (without  
529 appropriate information), incomplete histories given to professionals, inappropriate treatments  
530 where ‘allergy’ medicines are sought, refusing registration for chronic care, and repeated  
531 emergency care seeking. Stigma contributes towards challenges for health professionals in  
532 communicating diagnosis and managing illness, limiting effective management and contributing  
533 towards poor control of symptoms, poor mental health and poor psychosocial well-being.

534 Perceptions of the aetiology and prognosis of asthma are drivers of stigma and occur in a specific  
535 socio-economic and health systems context. Health systems in many SSA countries are ill-  
536 prepared to diagnose and manage asthma (45–48), publicly available accurate information about  
537 the disease is limited, and services are financially and geographically inaccessible to many. In this  
538 context, high rates of acute exacerbations and death are observed, leading communities to conclude  
539 people living with asthma will die young and perpetuating fear of the condition.. This sets up a  
540 vicious cycle of people living with uncontrolled symptoms that are visible in communities,  
541 exacerbating stigma and decreasing uptake of services (Fig 3).

542 **Fig 3: The interplay of uncontrolled asthma management and stigma**

543

544 Health-related stigma results from perceptions of threat in contexts of low-income and insecure  
545 livelihoods. Where livelihoods depend on physical labour, reduced capacities due to uncontrolled  
546 asthma are a threat to family economic security; educational prospects may also be affected,  
547 limiting future employment opportunities. Concerns about economic and social threats to  
548 individuals and families, may therefore be understood as ‘situated rationality’(49). Thus, our  
549 research contributes to a deepening understanding of how asthma stigma is a social and structural  
550 process, rather than purely an interpersonal phenomenon. There were few examples of intersecting  
551 stigma at the individual level, although the study was not designed to explore these. However,  
552 some participants commented people living in poverty are most vulnerable to the effects of asthma,  
553 and the anticipated costs of accessing care are perceived as a threat in a low-income context, further  
554 driving stigma.

### 555 *Perceptions of aetiology in health systems context*

556 Perceptions of asthma aetiology identified in the study are partially in line with existing  
557 biomedical understandings. For example, perceptions of asthma as heritable are in line with  
558 evidence that around 50% of people with asthma have a family history of the disease. However, a  
559 potential consequence of perceived heritability is that people with no known family history may  
560 not recognise the possibility that they have the condition. Whilst sometimes the perception of  
561 asthma as common within a family seems to support its acceptance, perceptions of heritability  
562 have differential consequences for young people, and especially women, in patriarchal societal  
563 contexts where marriage and childbearing are central to women’s social and economic  
564 security[42]. Respiratory symptoms being equated with tuberculosis may result from widespread  
565 education on signs and symptoms by TB control programmes in SSA. As we have reported  
566 elsewhere, such programs rarely provide further diagnosis or care to individuals who test negative

567 for tuberculosis[37,43]. Associations with TB lead to misplaced concerns about risks of infection  
568 from associating with symptomatic individuals. The conflation of asthma and ‘allergies’ is further  
569 in line with evidence of the role of atopy in asthma aetiology for some; in the Global North, about  
570 50-60% of asthma in children has an allergic/atopic aetiology[44]. The term ‘allergies’ also  
571 appears to function as a label for symptoms that avoids the stigma marking associated with the  
572 diagnostic label of asthma. However, this has problematic consequences for treatment. Our study  
573 found that antihistamines and oral corticosteroids e.g prednisolone were commonly used to treat  
574 symptoms which is consistent with a previous study [45]; these are not indicated in asthma  
575 guidelines, and therefore risk wasting limited resources, causing side effects and further  
576 compounding perceptions that asthma cannot be effectively managed.

### 577 ***Addressing stigma through demand and supply side approaches***

578 Efforts to address gaps in asthma care in LMICs have focused on ensuring ‘supply side’  
579 factors such as releasing new policy and guidelines, improving access to peak flow meters and  
580 drugs and training health care workers. Whilst these efforts are critically important to address the  
581 wider context facilitating stigma, our findings show engagement with the ‘demand side’ is  
582 important in determining how and when health services are accessed. In practice, demand and  
583 supply are interconnected and a holistic perspective is required, or uptake will continue to be poor  
584 as perceived threats to the individual outweigh the benefits of health seeking. Demand and supply  
585 particularly interact in clinical encounters between healthcare workers and patients, where  
586 anticipated stigma affects accurate history taking, poor explanation and negative patient responses  
587 (resistance) to asthma diagnosis. Addressing this challenge requires nuanced communication by  
588 health professionals in ways that engage with patients’ perspectives and socio-economic realities  
589 as well as the biomedical evidence base. For example, it may be helpful to explain that whilst

590 asthma may be inherited, this is not always the case and heritability need not be feared, since  
591 asthma is controllable with relatively low-cost medication. Similarly, the allergy label may  
592 potentially be useful if it provides patients with a way to access and use appropriate treatment,  
593 usually inhaled corticosteroids, and they are informed that antihistamines are ineffective.

594 Learning from other stigmatised conditions reveals possible strategies. Experience with HIV  
595 diagnosis and treatment in SSA shows affordable access to medication, counselling and  
596 confidentiality contribute to stigma reduction, particularly because this results in adherence to anti-  
597 retroviral medication[46], which observably reduces or eliminates disease symptoms, such as  
598 weight loss, and prevents death. Such successful treatment programs can lead to social diffusion  
599 of knowledge of these positive outcomes, where visible improvements in the health of people  
600 living with HIV challenge negative stereotypes and encourage others to seek testing and treatment,  
601 breaking the vicious cycle seen in Fig 3. However, this has been achieved with substantial  
602 investments through vertical disease control programmes.

603 Tuberculosis (TB) control programs may similarly offer valuable insights for managing asthma in  
604 primary care settings due to the importance of medication adherence. Community Health Workers  
605 (CHWs) have played a vital role in TB programs by providing directly observed therapy (DOT)  
606 and building trust with patients.[47] Whilst training of health workers on both technical aspects of  
607 diagnosis and treatment and communication is important, limitations on time for patient  
608 consultation and privacy are likely barriers to this approach for asthma in general health services.  
609 The potential role of primary care and CHWs in asthma management requires careful  
610 consideration, taking into account the differences between the two conditions. Asthma does not  
611 require DOT, but ensuring long-term medication adherence remains crucial. Primary care  
612 physicians can leverage their existing patient relationships for personalised asthma management

613 plans. CHWs, with their deep community connections, may focus on education, adherence support,  
614 and reducing stigma within communities. Public communication of this nuanced information will  
615 also be important to support changed perceptions among family and community members.  
616 Educational campaigns, including by celebrity champions can address misconceptions about  
617 asthma, highlight the benefits of treatment, and encourage open communication between patients  
618 and healthcare providers. By fostering understanding within families and communities, social  
619 diffusion of positive treatment outcomes can be harnessed to reduce stigma and encourage timely  
620 diagnosis and management of asthma.

621 Recent developments in asthma treatments such as the emphasis on the ‘as needed’ use of  
622 combined rapid onset inhaled long-acting beta-agonists with inhaled corticosteroids[48] are likely  
623 to support stigma reduction as treatment works with patients’ relief-seeking behaviour (due to the  
624 fast-acting property of formoterol for symptom relief) [49] to improve symptoms. Moreover, the  
625 prolonged duration of action of these inhaler preparations will also reduce the need for affected  
626 people to use an inhaler in public (as was the case for older short acting beta agonist preparations).  
627 The use of inhaled corticosteroids at much lower doses than oral corticosteroids is associated with  
628 far fewer side effects. Effective communication of this, and of the fast-acting properties of  
629 formoterol for symptom relief may also contribute to promoting adherence and reducing stigma.  
630 The Asthma Drug Facility initiative [14] found that where individuals with asthma who, despite  
631 the stigma, were able to adhere to use of inhalers and attend follow-up, these patients had  
632 controlled asthma, and drastic reductions in asthma related emergency visits and hospital  
633 admissions.

634

635

## 636 *Applying a stigma framework*

637           Stangl’s framework worked well for asthma stigma with regard to the relevance of  
638 distinguishing between drivers of stigma (particularly with regard to fear of the illness and its  
639 consequences for affected people), stigma marking (which in this case relates particularly to  
640 diagnosis and its communication), stigma experiences, and consequences (for people affected and  
641 for healthcare providers). We found it helpful to further distinguish stigma experiences and  
642 practices, for example between perceived, enacted and internalised experiences, since all were  
643 reported within our data and may have different implications for action. In particular, our  
644 application of the framework enables holistic consideration of stigma as a socio-economically  
645 produced rather than individual interpersonal phenomenon, which therefore requires actions across  
646 its dimensions by a range of actors at multiple socio-ecological levels, including policy,  
647 institutional and community.

## 648 **Limitations:**

649           The COVID-19 pandemic unfortunately hindered our ability to conduct all planned FGDs  
650 in Sudan. This might have limited our ability to achieve saturation, the point at which no new  
651 significant information emerges from further data collection.

652 Moreover, since this was primarily a qualitative study focused on health systems, we did not collect  
653 data on the specific processes of asthma diagnosis or inhaler use by patients. This limits our ability  
654 to analyse opinions or comments regarding treatment outcomes, healthcare service utilisation  
655 related to asthma, or the patient experience with these aspects of their care.

656 Since the study focused on adults, we were not able to fully explore the experiences of children.  
657 In addition, while stigma was not the original focus of the study, a comprehensive set of data

658 emerged on this theme. However, due to the study design and focus on health systems, we may  
659 not have been able to fully explore the nuances of stigma associated with asthma.

660

## 661 **Conclusion**

662 The underdiagnosis and undertreatment of asthma in the Global South is a human rights  
663 violation, since people with asthma continue to suffer and die despite availability of safe, highly  
664 clinically and cost-effective inhaled treatments widely used in the Global North. Our findings  
665 suggest action is required at multiple levels across the process of stigma production to create  
666 conditions that maximise the possibilities for patients to seek care, accept a diagnosis and adhere  
667 to highly effective inhaled medication and follow-up with the support of their families and  
668 communities. This approach offers the potential to intervene in the cycle of poor asthma  
669 management and stigma (Fig 3) and create instead a virtuous cycle in which experiences and  
670 observations of accessible, effective treatment significantly reduce the threat associated with the  
671 label of asthma.

## 672 **Acknowledgments**

673 We acknowledge the county government of Meru, healthcare workers and community  
674 members for supporting this research; and the research team members: Damian Mwaura, Noel  
675 Chemwa, Ruth Akiso, Elizabeth Sitati for supporting data collection in Kenya. We would also like  
676 to express our gratitude for the support received from the Ministry of Health in Gezira State, the  
677 health workers at both the Epilab and Non-Epilab sites, the patients, the members of the  
678 community, and the research team, including Ms. Hana A.Elsadig, Dr. Bandar Noory, Hind



679 Eltigani, Sayed Gamal, Sahar Aladdin, and Ayaa Abddin. Their assistance was invaluable in  
680 conducting research activities and collecting data in Sudan. We thank the NIHR Global Health  
681 Research Unit on Lung Health and TB in Africa at LSTM “IMPALA” for helping to make this  
682 work possible. In relation to IMPALA (grant number 16/136/35) specifically: IMPALA was  
683 commissioned by the National Institute of Health Research using Official Development Assistance  
684 (ODA) funding. The views expressed in this publication are those of the author(s) and not  
685 necessarily those of the NHS, the National Institute for Health Research or the Department of  
686 Health”.

687

- 690 1. Vos T, Lim SS, Abbafati C, Abbas KM, Abbasi M, Abbasifard M, et al. Global burden of  
691 369 diseases and injuries in 204 countries and territories, 1990–2019: a systematic  
692 analysis for the Global Burden of Disease Study 2019. *The Lancet*. 2020;396: 1204–1222.  
693 doi:10.1016/S0140-6736(20)30925-9
- 694 2. Thomsen SF. Genetics of asthma: an introduction for the clinician. *Eur Clin Respir J*.  
695 2015;2: 24643. doi:10.3402/ecrj.v2.24643
- 696 3. Ahmed R, Robinson R, Mortimer K. The epidemiology of noncommunicable respiratory  
697 disease in sub-Saharan Africa, the Middle East, and North Africa. *Malawi Medical*  
698 *Journal*. 2017;29: 203. doi:10.4314/mmj.v29i2.24
- 699 4. Asher MI, Rutter CE, Bissell K, Chiang C-Y, El Sony A, Ellwood E, et al. Worldwide  
700 trends in the burden of asthma symptoms in school-aged children: Global Asthma  
701 Network Phase I cross-sectional study. *The Lancet*. 2021;398: 1569–1580.  
702 doi:10.1016/S0140-6736(21)01450-1
- 703 5. Adeloje D, Chan KY, Rudan I, Campbell H. An estimate of asthma prevalence in Africa:  
704 a systematic analysis. *Croat Med J*. 2013;54: 519–531. doi:10.3325/cmj.2013.54.519
- 705 6. Lai CKW, Beasley R, Crane J, Foliaki S, Shah J, Weiland S. Global variation in the  
706 prevalence and severity of asthma symptoms: Phase Three of the International Study of  
707 Asthma and Allergies in Childhood (ISAAC). *Thorax*. 2009;64: 476–483.  
708 doi:10.1136/thx.2008.106609
- 709 7. Ait-Khaled N, Odhiambo J, Pearce N, Adjoh KS, Maesano IA, Benhabyles B, et al.  
710 Prevalence of symptoms of asthma, rhinitis and eczema in 13- to 14-year-old children in  
711 Africa: the International Study of Asthma and Allergies in Childhood Phase III. *Allergy*.  
712 2007;62: 247–258. doi:10.1111/j.1398-9995.2007.01325.x
- 713 8. WHO. Global surveillance, prevention and control of chronic respiratory diseases: a  
714 comprehensive approach. 2007 [cited 6 Jun 2024]. Available:  
715 [https://www.who.int/publications/i/item/global-surveillance-prevention-and-control-of-](https://www.who.int/publications/i/item/global-surveillance-prevention-and-control-of-chronic-respiratory-diseases)  
716 [chronic-respiratory-diseases](https://www.who.int/publications/i/item/global-surveillance-prevention-and-control-of-chronic-respiratory-diseases)
- 717 9. Haakenstad A, Coates M, Marx A, Bukhman G, Verguet S. Disaggregating catastrophic  
718 health expenditure by disease area: Cross-country estimates based on the World Health  
719 Surveys. *BMC Med*. 2019;17: 1–9. doi:10.1186/s12916-019-1266-0
- 720 10. Global Initiative for Asthma. Global Strategy for Asthma Management and Prevention,  
721 2022. Available: <https://ginasthma.org/gina-reports/>
- 722 11. Ait-khaled N, Enarson DA. Chronic air flow limitation in developing countries : burden  
723 and priorities. *International Journal of COPD*. 2007;2: 141–150.
- 724 12. Royal College of Physicians. Why Asthma Still Kills: the National Review of Asthma  
725 Deaths (NRAD) Confidential Enquiry Report. London; 2014. Available:  
726 <https://www.rcp.ac.uk/media/i2jjkbmc/why-asthma-still-kills-full-report.pdf>
- 727 13. El Sony AI, Chiang C-Y, Malik E, Hassanain SA, Hussien H, Khamis AH, et al. Standard  
728 case management of asthma in Sudan: a pilot project. *Public Health Action*. 2013;3: 247–  
729 252. doi:10.5588/pha.13.0019

- 730 14. Chiang C-Y, Bissell K, Macé C, Perrin C, Marks G, Mortimer K, et al. The Asthma Drug  
731 Facility and the future management of asthma. *The International Journal of Tuberculosis*  
732 *and Lung Disease*. 2022;26: 388–391. doi:10.5588/ijtld.22.0034
- 733 15. Rockers PC, Laing RO, Ashigbie PG, Onyango MA, Mukiira CK, Wirtz VJ. Effect of  
734 Novartis Access on availability and price of non-communicable disease medicines in  
735 Kenya: a cluster-randomised controlled trial. *Lancet Glob Health*. 2019;7: e492–e502.  
736 doi:10.1016/S2214-109X(18)30563-1
- 737 16. Ahmad S, Ismail NE. Stigma in the lives of asthma patients: A review from the literature.  
738 *Int J Pharm Pharm Sci*. 2015;7: 40–46.
- 739 17. Rose S, Paul C, Boyes A, Kelly B, Roach D. Stigma-related experiences in non-  
740 communicable respiratory diseases: A systematic review. *Chron Respir Dis*. 2017;14:  
741 199–216. doi:10.1177/1479972316680847
- 742 18. SNADDEN D, BROWN JB. Asthma and Stigma. *Fam Pract*. 1991;8: 329–335.  
743 doi:10.1093/fampra/8.4.329
- 744 19. Monaghan LF, Gabe J. Managing Stigma: Young People, Asthma, and the Politics of  
745 Chronic Illness. *Qual Health Res*. 2019;29: 1877–1889. doi:10.1177/1049732318808521
- 746 20. De Simoni A, Horne R, Fleming L, Bush A, Griffiths C. What do adolescents with asthma  
747 really think about adherence to inhalers? Insights from a qualitative analysis of a UK  
748 online forum. *BMJ Open*. 2017;7: 1–12. doi:10.1136/bmjopen-2016-015245
- 749 21. Ahmad S, Ismail NE. Stigma in the lives of asthma patients: A review from the literature.  
750 *International Journal of Pharmacy and Pharmaceutical Sciences*. 2015. pp. 40–46.
- 751 22. Shimwela M, Mwita JC, Mwandri M, Rwegerera GM, Mashalla Y, Mugusi F. Asthma  
752 prevalence, knowledge, and perceptions among secondary school pupils in rural and urban  
753 coastal districts in Tanzania. *BMC Public Health*. 2014;14: 387. doi:10.1186/1471-2458-  
754 14-387
- 755 23. Egere U, Shayo EH, Chinouya M, Taegtmeier M, Ardrey J, Mpagama S, et al. “Honestly,  
756 this problem has affected me a lot”: a qualitative exploration of the lived experiences of  
757 people with chronic respiratory disease in Sudan and Tanzania. *BMC Public Health*.  
758 2023;23: 1–13. doi:10.1186/s12889-023-15368-6
- 759 24. van Gemert F, Chavannes N, Nabadda N, Luzige S, Kirenga B, Eggermont C, et al.  
760 Impact of chronic respiratory symptoms in a rural area of sub-Saharan Africa: An in-depth  
761 qualitative study in the Masindi district of Uganda. *Primary Care Respiratory Journal*.  
762 2013;22: 300–305. doi:10.4104/pcrj.2013.00064
- 763 25. Simba JM, Marete I, Waihenya R, Kombe Y, Mwangi A, Kithuci RK, et al. Asthma  
764 control and factors associated with control among children attending clinics at a national  
765 referral hospital in western Kenya. *East Afr Med J*. 2018;95: 1844–1851.
- 766 26. Zaraket R, Al-Tannir MA, Bin Abdulhak AA, Shatila A, Lababidi H. Parental perceptions  
767 and beliefs about childhood asthma: a cross-sectional study. *Croat Med J*. 2011;52: 637–  
768 643. doi:10.3325/cmj.2011.52.637
- 769 27. Goffman E. *Stigma: Notes on the Management of Spoiled Identity*. New York: Simon &  
770 Schuster, Inc.; 1963.
- 771 28. Jones EE. *Social stigma: The psychology of marked relationships*. (No Title). 1984.
- 772 29. Link BG, Phelan JC. Conceptualizing Stigma. *Annu Rev Sociol*. 2001;27: 363–385.  
773 doi:10.1146/annurev.soc.27.1.363
- 774 30. Parker R, Aggleton P. *HIV- and AIDS-related stigma and discrimination: A conceptual*  
775 *framework and implications for action*. 1st ed. Culture, Society and Sexuality. 1st ed.

- 776 Routledge; 2006. p. 16. Available:  
777 [https://www.taylorfrancis.com/chapters/edit/10.4324/9780203966105-42/hiv-aids-related-](https://www.taylorfrancis.com/chapters/edit/10.4324/9780203966105-42/hiv-aids-related-stigma-discrimination-conceptual-framework-implications-action-richard-parker-peter-aggleton)  
778 [stigma-discrimination-conceptual-framework-implications-action-richard-parker-peter-](https://www.taylorfrancis.com/chapters/edit/10.4324/9780203966105-42/hiv-aids-related-stigma-discrimination-conceptual-framework-implications-action-richard-parker-peter-aggleton)  
779 [aggleton](https://www.taylorfrancis.com/chapters/edit/10.4324/9780203966105-42/hiv-aids-related-stigma-discrimination-conceptual-framework-implications-action-richard-parker-peter-aggleton)
- 780 31. Stangl AL, Earnshaw VA, Logie CH, van Brakel W, C. Simbayi L, Barré I, et al. The  
781 Health Stigma and Discrimination Framework: a global, crosscutting framework to inform  
782 research, intervention development, and policy on health-related stigmas. *BMC Med.*  
783 2019;17: 31. doi:10.1186/s12916-019-1271-3
  - 784 32. Farmer P. On Suffering and Structural Violence: A View from Below. *Daedalus.*  
785 1996;125: 261–283. Available: <http://www.jstor.org/stable/20027362>
  - 786 33. Gandy M, Zumla A. The resurgence of disease: social and historical perspectives on the  
787 ‘new’ tuberculosis. *Soc Sci Med.* 2002;55: 385–396. doi:[https://doi.org/10.1016/S0277-](https://doi.org/10.1016/S0277-9536(01)00176-9)  
788 [9536\(01\)00176-9](https://doi.org/10.1016/S0277-9536(01)00176-9)
  - 789 34. Rao D, Desmond M, Andrasik M, Rasberry T, Lambert N, Cohn SE, et al. Feasibility,  
790 Acceptability, and Preliminary Efficacy of the Unity Workshop: An Internalized Stigma  
791 Reduction Intervention for African American Women Living with HIV. *AIDS Patient*  
792 *Care STDS.* 2012;26: 614–620. doi:10.1089/apc.2012.0106
  - 793 35. Steward WT, Herek GM, Ramakrishna J, Bharat S, Chandu S, Wrubel J, et al. HIV-  
794 related stigma: Adapting a theoretical framework for use in India. *Soc Sci Med.* 2008;67:  
795 1225–1235. doi:<https://doi.org/10.1016/j.socscimed.2008.05.032>
  - 796 36. Scambler G. Stigma and disease: changing paradigms. *The Lancet.* 1998;352: 1054–1055.  
797 doi:10.1016/S0140-6736(98)08068-4
  - 798 37. Mulupi S, Ayakaka I, Tolhurst R, Kozak N, Shayo EH, Abdalla E, et al. What are the  
799 barriers to the diagnosis and management of chronic respiratory disease in sub-Saharan  
800 Africa? A qualitative study with healthcare workers, national and regional policy  
801 stakeholders in five countries. *BMJ Open.* 2022;12. doi:10.1136/bmjopen-2021-052105
  - 802 38. LSTM. The International Multidisciplinary Programme to Address Lung Health and TB in  
803 Africa “IMPALA.” [cited 24 Apr 2024]. Available: <https://www.lstmed.ac.uk/impala>
  - 804 39. Epilab. The Epidemiological Laboratory for Research and Development. [cited 24 Apr  
805 2024]. Available: <http://epilab-sd.org>
  - 806 40. Nascimento L da S, Steinbruch FK. “The interviews were transcribed”, but how?  
807 Reflections on management research. *RAUSP Management Journal.* 2019;54: 413–429.
  - 808 41. Gale NK, Heath G, Cameron E, Rashid S, Redwood S. Using the framework method for  
809 the analysis of qualitative data in multi-disciplinary health research. *BMC Med Res*  
810 *Methodol.* 2013;13: 117. doi:10.1186/1471-2288-13-117
  - 811 42. Dean L, Obasi A, El Sony A, Fadul S, El Hassan H, Thomson R, et al. “He is suitable for  
812 her, of course he is our relative”: a qualitative exploration of the drivers and implications  
813 of child marriage in Gezira State, Sudan. *BMJ Glob Health.* 2019;4: e001264.
  - 814 43. Egere U, Shayo E, Ntinginya N, Osman R, Noory B, Mpagama S, et al. Management of  
815 chronic lung diseases in Sudan and Tanzania: how ready are the country health systems?  
816 *BMC Health Serv Res.* 2021;21: 734. doi:10.1186/s12913-021-06759-9
  - 817 44. Comberiati P, Di Cicco ME, D’Elios S, Peroni DG. How much asthma is atopic in  
818 children? *Frontiers in Pediatrics.* Frontiers Media S.A.; 2017.  
819 doi:10.3389/fped.2017.00122
  - 820 45. Osman R, Ahmed K, ElSony A. Factors associated with uncontrolled asthma among  
821 Sudanese adult patients. *Journal of the Pan African Thoracic Society.* 2021;2: 85–93.

- 822 46. Haberer JE, Sabin L, Amico KR, Orrell C, Galárraga O, Tsai AC, et al. Improving  
823 antiretroviral therapy adherence in resource-limited settings at scale: a discussion of  
824 interventions and recommendations. *African Journal of Reproduction and Gynaecological*  
825 *Endoscopy*. 2017;20.
- 826 47. Zhang H, Ehiri J, Yang H, Tang S, Li Y. Impact of Community-Based DOT on  
827 Tuberculosis Treatment Outcomes: A Systematic Review and Meta-Analysis. *PLoS One*.  
828 2016;11: e0147744-. Available: <https://doi.org/10.1371/journal.pone.0147744>
- 829 48. Global Initiative for Asthma. Global strategy for asthma management and prevention.  
830 2020.
- 831 49. McIvor A, Kaplan A. A call to action for improving clinical outcomes in patients with  
832 asthma. *NPJ Prim Care Respir Med*. 2020;30: 1–5. doi:10.1038/s41533-020-00211-x  
833

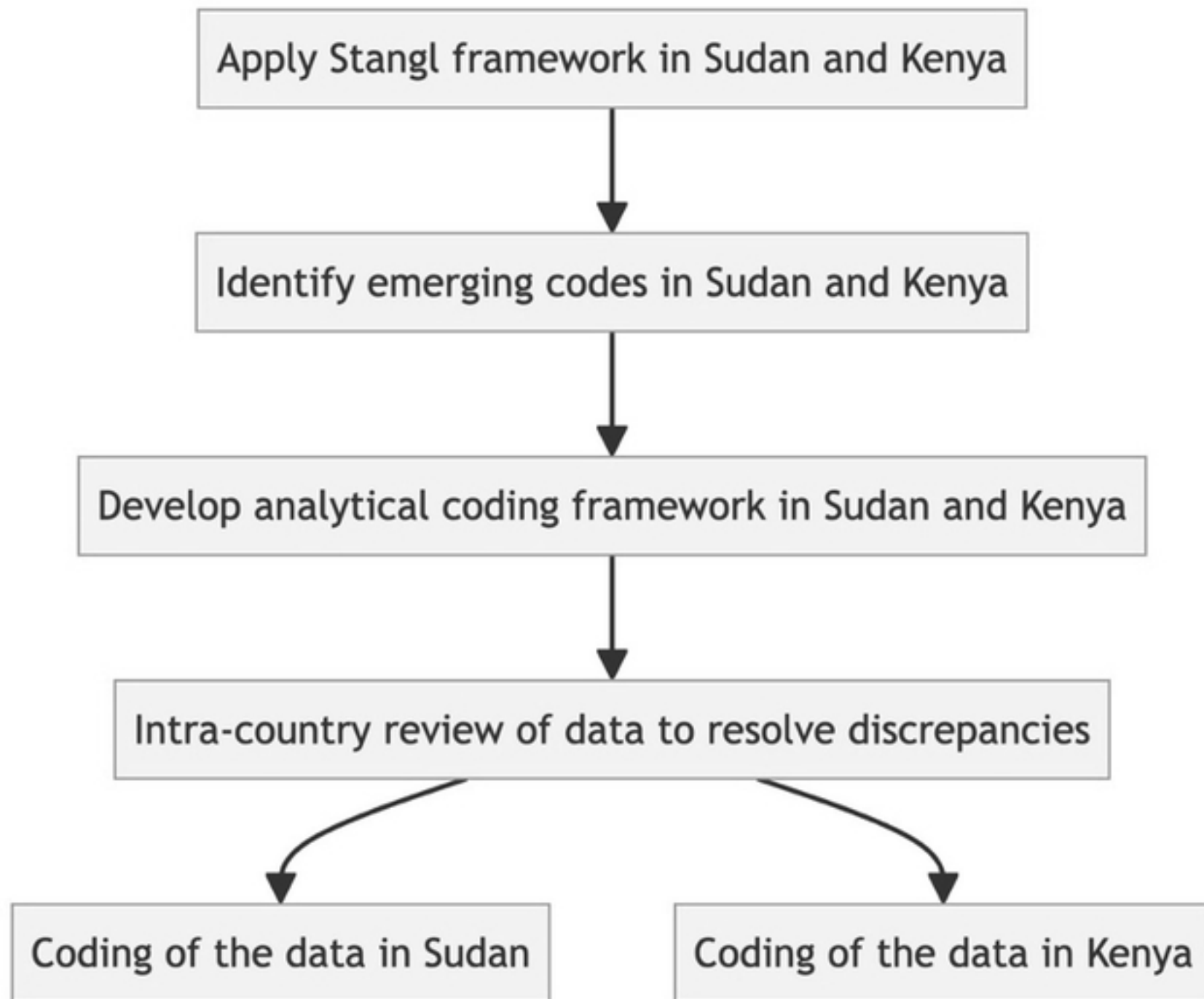


Fig1 Coding framework development across Kenya and Sudan

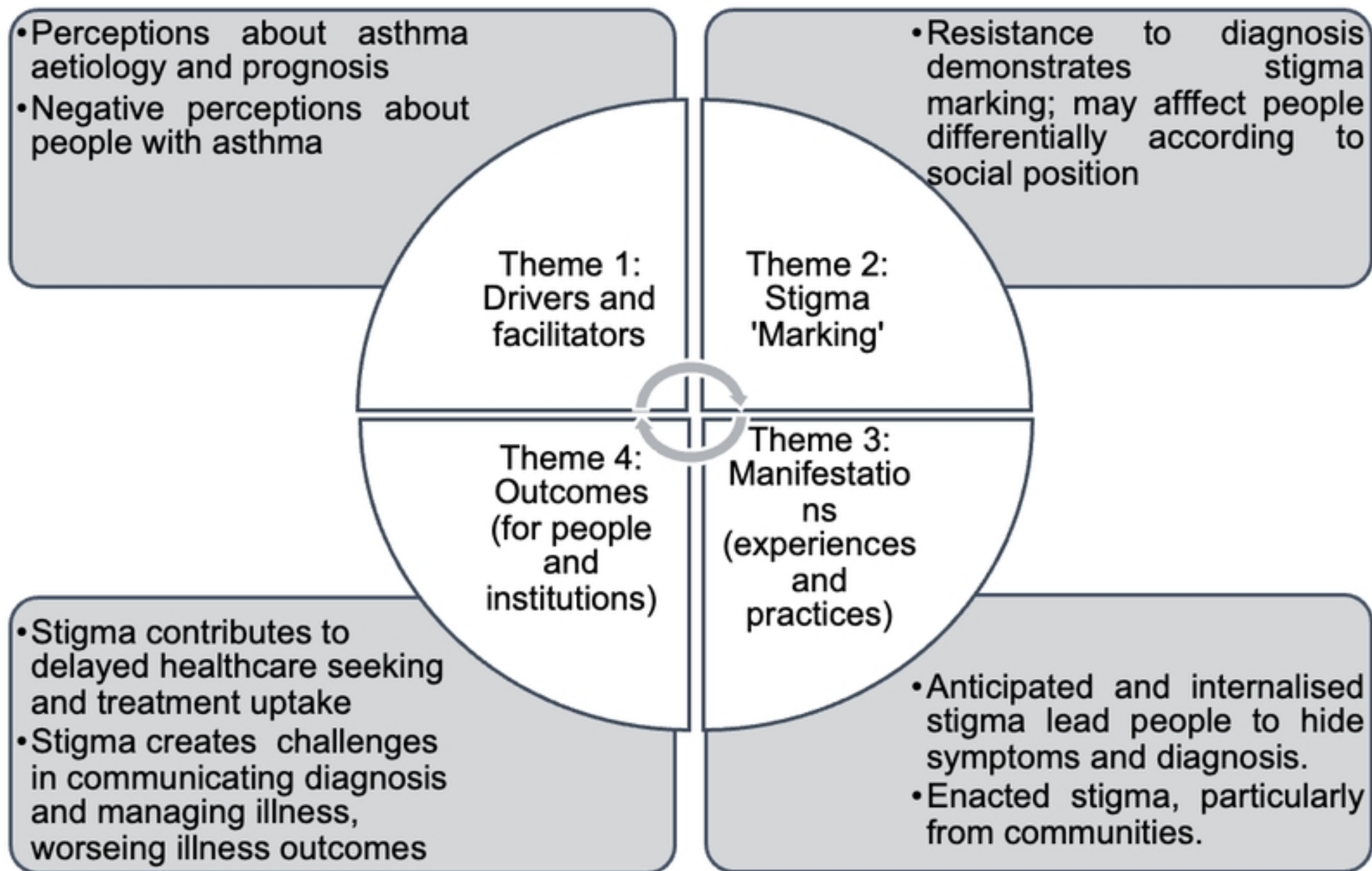


Fig2 Conceptual framework showing key findings

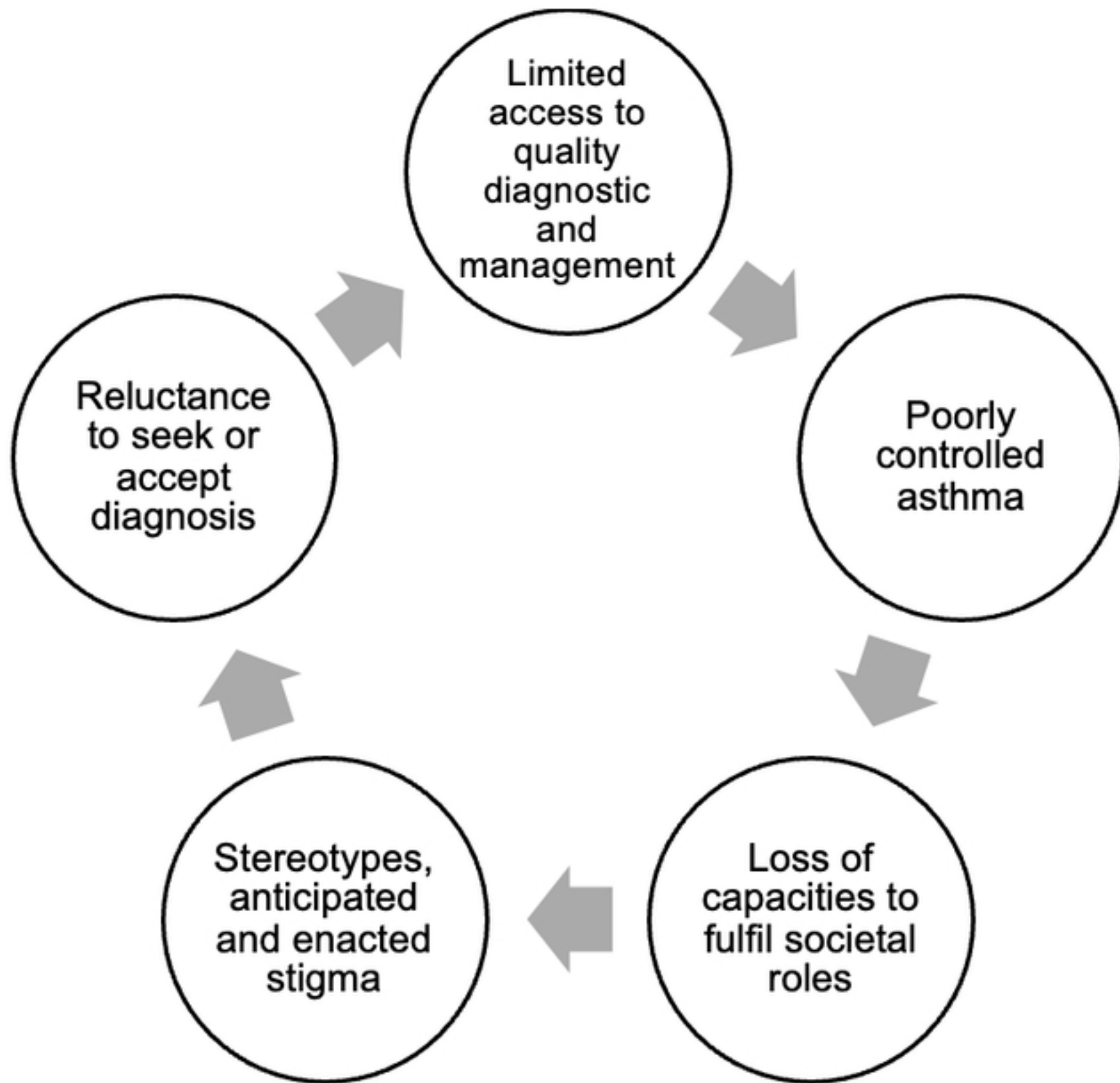


Fig3 The interplay of uncontrolled asthma management and stig