

1 **Real-life observation of wildfire-smoke impaired COVID-19 vaccine**
2 **immunity**

3
4 Gursharan Kaur Sanghar, BS, Melissa Teuber, BS, Resmi Ravindran, PhD, Emma Jean Keller, PhD,
5 Sean Raffuse MS, Pedro Hernandez, BS, Angela Linderholm, PhD, Gabrielle, Echt, BS, Lisa Franzi BS,
6 Kaelyn Tuermer-Lee, BS, Maya Juarez, BS, Timothy Albertson, MD, MPH, PhD, Imran Khan, PhD,
7 MBA, Angela Haczku, MD, PhD

8
9
10 University of California, Davis, CA, United States
11

12
13 **Address for correspondence:**

14 Angela Haczku haczku@ucdavis.edu
15 UC Davis Lung Center,
16 School of Medicine, University of California, Davis
17 6519 GBSF, 415 Health Sciences Drive, Davis, CA 95616

18
19 **Funding:**

20 T32 HL007013 (GKS); Chester Robbins Pulmonary Research Endowment (AH); TRDRP
21 556126/2018A (AH)
22

23 **Disclosure:**

24 The original clinical trial this study was associated with, was funded by Pfizer Inc. However, this study
25 received no financial support and was designed and executed independently from Pfizer Inc.
26

27 **Abstract:**

28 **Background:** Wildfires are increasingly common with wildfire smoke affecting millions globally, yet its
29 impact on immune responses is poorly understood. Natural Killer (NK) cells play a role in mediating air
30 pollutant effects and regulating vaccine immunity.

31 **Objective:** This real-world study, conducted on participants in the Pfizer BNT162b2 COVID-19 vaccine
32 trial, studied the effects of wildfire smoke exposure on long-term vaccine effects.

33 **Methods:** We collected blood samples from 52 healthy, non-smoking participants (ages 26–83) before
34 and 1 month after placebo or vaccine injections during heavy wildfire smoke events in Sacramento. The
35 study included 28 vaccinated (Group 1) and 24 placebo-injected (Group 2) individuals, the latter
36 vaccinated several months later, outside wildfire season. Blood samples from both Group 1 and 2 were
37 also investigated 6 months after the second dose of vaccine. We analyzed intracellular cytokines, B
38 and NK cell markers by flow cytometry, and serum immunoglobulin levels against common
39 coronaviruses using multiplex assays.

40 **Results:** A robust S-RBD-specific IgG response observed 1 month post booster, declined variably 6
41 months later. Wildfire smoke acutely increased IL-13 expression by CD56^{bright} NK cells. IL-13⁺CD56^{bright}
42 NK cells at the time of vaccination negatively correlated with anti-S-RBD IgG ($r=-0.41$, $p<0.05$) one
43 month later. Total IgG levels on the other hand, positively correlated with the air quality index (AQI)
44 measured during vaccination ($r=0.96$, $p<0.01$). Similarly to age (but not sex, BMI or race/ethnicity), the
45 two-week AQI averages during vaccination showed a significant negative correlation with anti-S-RBD
46 IgG levels 6 months later ($r=-0.41$, $p<0.05$).

47 **Conclusion:** Wildfire smoke may lead to inappropriate immunoglobulin production and diminished
48 vaccine immunity. Our novel findings highlight a previously unrecognized pathway involving NK-cell
49 derived IL-13 and non-specific B-cell activation and underscore the significance of environmental
50 exposures in shaping immunity.

51

52 **Clinical Trial registration:** Not applicable

53 **Key Messages:**

- 54 • Wildfire smoke exposure acutely increased IL-13 expression in NK cells, which in turn
55 negatively correlated with COVID-19 vaccine immunity.
- 56 • Higher AQI and age during vaccination was negatively associated with anti-SARS-CoV-2 IgG
57 levels six months later.
- 58 • Environmental factors such as air pollution caused by wildfire smoke can significantly impact
59 vaccine efficacy through immune modulation.

60 **Capsule Summary:** Wildfire smoke exposure impairs long-term COVID-19 vaccine immunity
61 potentially through increased IL-13 expression in NK cells.

62 **Key Words:** Wildfire smoke, COVID-19 vaccine, immunity, Natural Killer cells, IL-13, BNT162b2, air
63 quality index, IgG

64 **Abbreviations:**

65	AQI:	Air Quality Index
66	BMI:	Body Mass Index
67	FACS:	Fluorescence-Activated Cell Sorting
68	IgG:	Immunoglobulin G subclass
69	IL-13:	Interleukin-13
70	NK:	Natural Killer
71	O ₃ :	Ozone
72	PM2.5:	Particulate Matter <2.5 µm
73	S-RBD:	SARS-CoV-2 Spike Receptor Binding Domain

74

75 **Introduction**

76 Wildfires are becoming larger, longer lasting, and more intense, with smoke affecting millions of people
77 worldwide¹. While the acute impacts of wildfire smoke on the respiratory and cardiovascular systems
78 are well documented², the long-term effects are less studied and require further investigation to inform
79 effective mitigation and prevention strategies³. Notably, the influence of wildfire smoke on immune
80 responses remains particularly poorly understood.

81 Exposure to air pollutants has been shown to adversely affect immune cell function, potentially
82 impacting the efficacy of immunizations. Recent studies reported that individuals exposed to higher
83 levels of air pollution exhibited a reduced antibody response to COVID-19 vaccines, suggesting that air
84 pollutants may diminish vaccine-induced immunity^{4, 5}. Additionally, long-term exposure to particulate air
85 pollution demonstrated to weaken immune cells in the lungs, potentially undermining the body's
86 defense mechanisms against respiratory infections and affecting responses to immunizations⁶.

87 Natural Killer (NK) cells are innate immune cells found throughout the body including in the respiratory
88 tract mucosal tissue, that play an important role in immune responses to viral infections⁷⁻⁹. We
89 previously reported in a mouse model that lung NK cells were responsible for promoting dendritic cell
90 lymph node homing, an essential process in developing protective immunity. NK cells also mediated
91 the effects of the toxic air pollutant, ozone (O₃)¹⁰. Other studies suggested that NK cell activation during
92 BNT162b2 vaccination may reduce durability of vaccine-induced antibody responses^{11, 12}.

93 We conducted a real-world study on UC Davis participants of the Pfizer BNT162b2 vaccine trial¹³, that
94 allowed us the unique opportunity to investigate how exposure to wildfire smoke during vaccination may
95 affect NK cell function and long-term vaccine immunity.

96 **Results and discussion:**

97 52 healthy subjects from the Sacramento region (26-83 years old) who were recruited in the original
98 Pfizer BioNTech BNT162b2 vaccine trial¹³ at UC Davis Medical Center in August 2020 consented to
99 enroll in our study. Because of the real-world nature of our study, we were originally blinded to the
100 subjects' group assignments. The vaccination and blood collection timeline with the daily air quality
101 index (AQI) for fine particulate matter (PM_{2.5}) and O₃ are illustrated in **Figure 1A**. Although AQI serves
102 as a proxy for smoke exposure, it offers an accessible and relevant measure for assessing the potential
103 impact of environmental factors on vaccination outcomes. Our study subjects came from the
104 Sacramento County area where AQI monitoring stations in different locations showed similar level of

105 pollution (**Figure 1E**). To be able to correlate exposure levels to immune responses, in this study we
106 integrated the daily AQI data for PM_{2.5} and O₃ levels (**Figure 1B**).

107 To monitor the dynamics of immune responses and investigate both short-term and long-term vaccine-
108 induced immunity, blood samples were collected at three key time points (baseline, 1 month, and 6
109 months post-vaccination). Baseline blood samples were collected from all subjects. Group 1 received
110 the initial (1°) and booster (2°) vaccine shots (30µg of the BNT162b2 vaccine) 3 weeks apart. Group 2
111 received placebo (saline) during the same schedule, all under heavy wildfire smoke conditions. The
112 second blood sample was collected 1 month after the second dose of vaccine (Group 1) or placebo
113 (Group 2) under clean air conditions. Once FDA approved the BNT162b2 vaccine (on December 11,
114 2020), the group identities of the Pfizer vaccine trial volunteers were revealed. Our study included 28
115 vaccinated (Group 1, black symbols throughout) and 24 placebo-injected (Group 2, blue symbols)
116 individuals. This latter group then received their vaccine several months later, outside of wildfire
117 season, in March-April 2021 (**Figure 1A-B**). This design allowed us to compare immunoglobulin levels
118 6 months post vaccination between Group 1 that received the vaccine during wildfires and group 2 that
119 received it under clean air conditions. In 6 subjects in Group 2 however, the 6 months-post vaccine
120 blood draws occurred during the 2021 Caldor wildfires (under extreme AQI conditions indicated by the
121 bracket in **Figure 1B**). To ensure accurate comparisons and minimize confounding effects, these
122 samples were excluded from 6-month immunoglobulin assessments (please, see additional details of
123 Methods in the Online repository).

124 NK cell activation is involved in the effects of environmental exposures in mice^{10, 14} and in wildfire
125 smoke exposure in a recent study on human subjects¹⁵. IL-13, a major inflammatory cytokine and
126 activated NK cell product¹⁴ modulates both innate and adaptive immune responses, and can affect B
127 cell activation and immunoglobulin production. We studied CD56^{bright} and CD56^{dim} NK cell subtypes
128 because of their differential functional capabilities. CD56^{bright} cells (only present in a small proportion
129 [$<10\%$] in peripheral blood, **Figure 1C**), are major producers of pro-inflammatory cytokines⁷ but their
130 role in IL-13 production especially in response to wildfire smoke has not been described before. While
131 we found no changes in IL-13 expression in CD56^{dim} NK cells, CD56^{bright} NK cells showed highly
132 significantly greater IL-13 expression in samples drawn during wildfire smoke events (**Figure 1D**). In
133 fact, the AQI levels on the day of blood draw showed a strong positive correlation in the individual
134 Group 2 samples (**Figure 1D**, right panel) and across all 6 group averages (**Figure 1E**). These results
135 demonstrate that exposure to wildfire smoke is associated with increased IL-13 production from
136 CD56^{bright} NK cells suggesting their potential to impact vaccine-induced immunity.

137 We observed a robust induction of S-RBD-specific IgG one month after the booster dose in vaccinated
138 individuals (Group 1), while placebo-injected subjects (Group 2) showed no detectable response at the
139 same time point (**Figure 2A**). Although the 1-month S-RBD-specific IgG levels significantly correlated
140 with 6-month levels (**Figure 2B**), the latter showed substantial variability among subjects. Notably, there
141 was significant cross-reactivity between anti-SARS-CoV and anti-SARS-CoV-2 S-RBD IgG (**Figure 2C**),
142 while vaccination did not induce antibodies against MERS-CoV S-RBD, nucleocapsid (N), or total IgG
143 (**Figure E2A**). IgG1 was the predominant isotype among anti-S-RBD antibodies (**Figure 2D**). As
144 expected, age was inversely correlated with SARS-CoV-2 S-RBD IgG levels at both 1- and 6-months
145 post-vaccination (**Figure 2E**). Importantly, there were no statistical differences in age, sex,
146 race/ethnicity, or body mass index between Groups 1 and 2, ensuring that AQI (wildfire smoke
147 exposure) during vaccination remained the main distinguishing factor (**Figure 2F**; **Figure E3**).

148 At baseline, during active wildfire exposure, elevated IL-13 expression in CD56^{bright} NK cells showed a
149 positive correlation with total B cell counts, not only acutely, but also persisting at 1- and 6-months post-
150 vaccination in Group 2 subjects (**Figure 3A**). Higher AQI levels on the day of vaccination of Group 1
151 subjects positively correlated with total IgG, 1-month post vaccine (**Figure 3B**). These data raise the
152 possibility that pollutant exposure in association with elevated IL-13 expression in CD56^{bright} NK cells
153 may drive non-specific immunoglobulin production and can have a lasting impact on non-specific B cell
154 activation. In contrast, IL-13 expression in CD56^{bright} NK cells at the time of vaccination inversely
155 correlated with S-RBD-specific IgG, 1-month post vaccine in the same Group 1 subjects, suggesting
156 that excessive IL-13 production is associated with impaired quality of the antibody response to
157 vaccination (**Figure 3C**). Further, Group 1 (vaccinated during wildfires) exhibited increased total B cells
158 and significantly reduced S-RBD-specific IgG levels 6 months post-vaccination than Group 2
159 (vaccinated outside of wildfire periods) (**Figure 3E-F**). The 2-week average of AQI around the time of
160 vaccination was negatively associated with S-RBD-specific IgG levels at 6 months in both groups
161 (**Figure 3G**). These results indicate that in association with proinflammatory NK cell activation, wildfire
162 smoke may impair adaptive immunity to vaccines.

163 The real-world nature of our study while highly relevant also introduced limitations including the
164 relatively small number of participants and the reliance on AQI as a proxy for smoke exposure. We
165 found that age (not sex, BMI or race/ethnicity) negatively affected vaccine immunity but since the study
166 was conducted in healthy individuals, other potentially important modifiers such as underlying health
167 conditions were not investigated. While a few recent studies raised the general importance of air
168 pollution in vaccine immunity especially against SARS-CoV-2^{4, 5}, we uniquely conducted this work on
169 the first round of vaccination against COVID-19 concurrent with wildfire smoke exposure. We suggest a

170 previously unrecognized pathway involving wildfire-smoke induced CD56^{bright}NK-cell IL-13, non-specific
171 B activation and impaired vaccine immunity. These novel findings warrant future mechanistic and
172 clinical studies and could inform strategies during vaccination campaigns especially for populations
173 exposed to high levels of air pollution.

174

175 **Acknowledgments:**

176 The authors would like to acknowledge the 52 study participants who donated blood samples and their
177 time. We are also grateful for all the research coordinators who provided excellent help during the
178 conduct of this study. This work was supported by T32 HL007013 (for GKS), the Chester Robbins
179 Pulmonary Research Endowment and TRDRP 556126/2018A (both for AH)

180

181 **References:**

182

- 183 1. Bowman WS, Schmidt RJ, Sanghar GK, Thompson Iii GR, Ji H, Zeki AA, et al. "Air That Once
184 Was Breath" Part 2: Wildfire Smoke and Airway Disease - "Climate Change, Allergy and
185 Immunology" Special IAAI Article Collection: Collegium Internationale Allergologicum Update
186 2023. *Int Arch Allergy Immunol* 2024; 185:617-30.
- 187 2. Weheba A, Vertigan A, Abdelsayad A, Tarlo SM. Respiratory Diseases Associated With Wildfire
188 Exposure in Outdoor Workers. *J Allergy Clin Immunol Pract* 2024; 12:1989-96.
- 189 3. Hertelendy AJ, Howard C, Sorensen C, Ranse J, Eboreime E, Henderson S, et al. Seasons of
190 smoke and fire: preparing health systems for improved performance before, during, and after
191 wildfires. *Lancet Planet Health* 2024; 8:e588-e602.
- 192 4. Kogevinas M, Karachaliou M, Espinosa A, Aguilar R, Castano-Vinyals G, Garcia-Aymerich J, et
193 al. Long-Term Exposure to Air Pollution and COVID-19 Vaccine Antibody Response in a
194 General Population Cohort (COVICAT Study, Catalonia). *Environ Health Perspect* 2023;
195 131:47001.
- 196 5. Kogevinas M, Castano-Vinyals G, Karachaliou M, Espinosa A, de Cid R, Garcia-Aymerich J, et
197 al. Ambient Air Pollution in Relation to SARS-CoV-2 Infection, Antibody Response, and COVID-
198 19 Disease: A Cohort Study in Catalonia, Spain (COVICAT Study). *Environ Health Perspect*
199 2021; 129:117003.
- 200 6. Ural BB, Caron DP, Dogra P, Wells SB, Szabo PA, Granot T, et al. Inhaled particulate
201 accumulation with age impairs immune function and architecture in human lung lymph nodes.
202 *Nat Med* 2022; 28:2622-32.
- 203 7. Bjorkstrom NK, Strunz B, Ljunggren HG. Natural killer cells in antiviral immunity. *Nat Rev*
204 *Immunol* 2022; 22:112-23.
- 205 8. Karimi K, Forsythe P. Natural killer cells in asthma. *Front Immunol* 2013; 4:159.
- 206 9. Michel JJ, Griffin P, Vallejo AN. Functionally Diverse NK-Like T Cells Are Effectors and
207 Predictors of Successful Aging. *Front Immunol* 2016; 7:530.
- 208 10. Ge MQ, Kokalari B, Flayer CH, Killingbeck SS, Redai IG, MacFarlane AWt, et al. Cutting Edge:
209 Role of NK Cells and Surfactant Protein D in Dendritic Cell Lymph Node Homing: Effects of
210 Ozone Exposure. *J Immunol* 2016; 196:553-7.
- 211 11. Graydon EK, Conner TL, Dunham K, Olsen C, Goguet E, Coggins SA, et al. Natural killer cells
212 and BNT162b2 mRNA vaccine reactogenicity and durability. *Front Immunol* 2023; 14:1225025.
- 213 12. Rydzynski CE, Waggoner SN. Boosting vaccine efficacy the natural (killer) way. *Trends*
214 *Immunol* 2015; 36:536-46.
- 215 13. Polack FP, Thomas SJ, Kitchin N, Absalon J, Gurtman A, Lockhart S, et al. Safety and Efficacy
216 of the BNT162b2 mRNA Covid-19 Vaccine. *N Engl J Med* 2020; 383:2603-15.
- 217 14. Qian Q, Chowdhury BP, Sun Z, Lenberg J, Alam R, Vivier E, et al. Maternal diesel particle
218 exposure promotes offspring asthma through NK cell-derived granzyme B. *J Clin Invest* 2020;
219 130:4133-51.
- 220 15. Aguilera J, Kaushik A, Cauwenberghs N, Heider A, Ogulur I, Yazici D, et al. Granzymes, IL-16,
221 and poly(ADP-ribose) polymerase 1 increase during wildfire smoke exposure. *J Allergy Clin*
222 *Immunol Glob* 2023; 2.
- 223 16. Ravindran R, Kang H, McReynolds C, Sanghar GK, Chang WLW, Ramasamy S, et al.
224 Dynamics of temporal immune responses in nonhuman primates and humans immunized with
225 COVID-19 vaccines. *PLoS One* 2023; 18:e0287377.

226

227

228
229

Tables:

	Group 1	Group 2
	Vaccinated during wildfires (N=28)	Vaccinated outside of wildfire periods (N=24)
Age (y), mean \pm SD	47.8 \pm 14.4	45.7 \pm 12.2
Sex: male, n (%)	15 (53.6%)	16 (66.7%)
BMI (kg/m ²), mean \pm SD	29.0 \pm 5.8	30.8 \pm 6.2
Ethnicity/Race		
Asian	8	4
American Indian, Alaska Native	0	1
Black, African American	3	4
Hispanic, LatinX	3	3
Native Hawaiian, Pacific Islander	1	0
White	8	9
Multiracial	5	3

230
231
232
233

Table 1. Baseline demographics. Consented subjects were healthy, non-smoking, Sacramento Resident participants in the BNT162b2 COVID-19 vaccine trial at UC Davis Health.

234 **Figure Legends**

235 **Graphical abstract:** Wildfire smoke during BNT162b2 COVID-19 vaccination induced IL-
236 13^+ CD56^{bright}NK cells, increased B cell count and total IgG and decreased antigen-specific IgG

237 **Figure 1. Wildfire smoke exposure increased circulating NK cell expression of IL-13. (A):**
238 Vaccination and blood collection timeline with daily air quality index (AQI) for fine particulate matter
239 (PM_{2.5}, dark red) and O₃ (orange). **(B):** Blood samples were drawn from Group 1 and Group 2 at
240 baseline; 1 month after vaccination (Group 1) or placebo injection (Group 2) and 6 months post
241 vaccination. Bracket indicates the Group 2 (6 months post) samples collected during the Caldor Fire
242 that were removed from immunoglobulin assessment. **(C):** CD56^{bright} and CD56^{dim} NK cells were gated
243 and **(D):** assessed for IL-13 expression. **(E):** Group averages (Mean±SEM) of CD56^{bright} IL-13 vs. AQI
244 on day of blood draw (Pearson correlation)

245 **Figure 2. Anti-SARS-CoV-2 S-RBD response to BNT162b2 COVID-19 vaccination was reduced by**
246 **age. (A):** Anti-SARS-CoV-2 S-RBD IgG levels (LUMINEX) in Group 1 (black) and Group 2 (blue,
247 originally placebo) samples at baseline [open circles], 1 month-post vaccine (Group 1) or placebo
248 (Group 2), [crossed circles] and 6-month post vaccine [full circles] **(B):** Correlation between 1- and 6-
249 months post vaccine in Group 1 (Pearson correlation). **(C):** Cross reactivity between anti-SARS CoV
250 and anti-SARS-CoV-2 S-RBD IgG **(D):** Heat map from highest (top) to lowest (bottom) levels of anti-S-
251 RBD Ig isotypes X marks missing samples. **(E):** Age negatively correlated with SARS-CoV-2 S-RBD
252 IgG both at 1- and 6- months post vaccine; $r=-0.413$, $p=0.029$ (Group 1 only), $r=-0.401$, $p=0.028$ (all
253 subjects) respectively; Pearson correlation. **(F):** Subjects in Groups 1 and 2 did not statistically differ in
254 age $p=0.44$; Mann-Whitney test.

255 **Figure 3. Wildfire smoke exposure and circulating NK cell expression of IL-13 correlated with**
256 **impaired vaccine immunity. (A):** CD56^{bright} IL-13 at baseline (during wildfires) positively correlated
257 with total B cell counts (% of singles) acutely, 1 month later and 6-months post vaccination. **(B):** AQI on
258 day of initial shots positively correlated with total IgG in Group 1, 1-month post vaccination. **(C):** IL-
259 13^+ CD56^{bright}NK cells negatively correlated with S-RBD IgG in Group, 1-month post vaccination
260 (Pearson correlation). **(D):** AQI 2-week average (1 week before and 1 week after) the day of initial
261 vaccine shots. **(E-F):** Compared to Group 2 (vaccinated outside of wildfire period, blue dots), Group 1
262 (black dots) had and increased total (CD19+) B cells **(E)** and reduced S-RBD IgG **(F)** 6-months later.
263 **(G):** AQI 2-week average during vaccination negatively correlated with S-RBD IgG 6 months later. **(D):**
264 Box and whiskers with interquartile ranges; **(D-F):** * $p<0.05$; **** $p<0.0001$; Mann-Whitney test (Group 1 vs.
265 Group 2).

1 ONLINE REPOSITORY

2 Real-life observation of wildfire-smoke impaired COVID-19 vaccine 3 immunity

4 Gursharan Kaur Sanghar, BS, Melissa Teuber, BS, Resmi Ravindran, PhD, Emma Jean Keller, PhD,
5 Sean Raffuse MS, Pedro Hernandez, BS, Angela Linderholm, PhD, Gabrielle, Echt, BS, Lisa Franzi BS,
6 Kaelyn Tuermer-Lee, BS, Maya Juarez, BS, Timothy Albertson, MD, MPH, PhD, Imran Khan, PhD,
7 MBA, Angela Haczku, MD, PhD

8

9 Online Repository Methods

10 *Study participants and samples*

11 All participants provided informed consent as well as medical background information at the time of
12 enrollment. Only healthy non-smoking individuals, or individuals with diseases that have resolved in the
13 past, were recruited into this study. This study was approved by the UC Davis IRB.

14 52 healthy subjects from the Sacramento region (26-83 years old) who were recruited in the original
15 Pfizer BioNTech BNT162b2 vaccine trial at UC Davis Medical Center in August 2020 consented to
16 enroll into our study. Because of the real-world nature of our study (**Figure 1A**), we were originally
17 blinded to the subjects' group assignments. Subjects were administered either 30µg of the BNT162b2
18 vaccine or saline solution *via* two doses of intramuscular injection, approximately 21 days apart⁴. Once
19 FDA approved the BNT162b2 vaccine (December 11, 2020), the group identities of the 240 Pfizer
20 vaccine trial volunteers were revealed. Our study included 28 vaccinated (Group 1, black symbols
21 throughout) and 24 placebo-injected (Group 2, blue symbols) individuals. The latter group received their
22 vaccine several months later, outside of wildfire season, in March-April 2021. Thus, all 6-months
23 samples were collected from subjects who were vaccinated with the Pfizer mRNA BNT162b2 COVID-
24 19 vaccine. The tick marks on the x axis in **Figure 1A** denote weeks.

25 We collected blood samples (20mL) by venipuncture in August 2020 (at baseline); in October 2020, (1
26 month after vaccination/Group 1, or placebo/Group 2); and then April-October 2021, (6 months after
27 vaccination).

28 In Group 1 there were 28 samples at baseline and 1 month after vaccination and 18 samples at 6
29 months. In Group 2 there were 24 samples at baseline and 1 month and 8 samples at 6 months.
30 Attrition was due to study drop-outs, COVID-19 infections (determined by PCR positivity, SARS-CoV-2
31 nucleocapsid presence or 6-months S-RBD IgG levels exceeding 1-month levels. In addition, to be able

32 to compare 6-month Group 1 immunoglobulin levels (all collected outside of wildfire periods) with Group
33 2 levels, we had to remove 4 Group 2 samples collected during the Caldor fire under very high AQI
34 (**Figure 1B**). That way the only difference was that Group 1 received the vaccine during wildfires while
35 Group 2 received it outside of wildfires. Both groups were studied 6 months later outside of wildfires.

36 *Air Quality Index (AQI) data collection and calculation*

37 **Figure 1A** was prepared using Daily Air quality index (AQI) between August 1, 2020, and October 31,
38 2021, in Sacramento, CA, shown for fine particulate matter (PM_{2.5}, dark red) and O₃ (orange). The
39 data points came from the United States Environmental Protection Agency (U.S. EPA) Air Data – Tile
40 Plot ([Air Data - Tile Plot | US EPA](#)) by selecting: 1. Pollutant (PM_{2.5} and pzone); 2. Year (2020 and
41 2021); 3. Geographic Area (California, Sacramento County) and 4. Monitor Site (060670010). The
42 colors for the six AQI categories are shown by the y axis and the EPA definitions are listed on the right.
43 The higher the AQI value, the greater the level of air pollution. AQI values are calculated using
44 NowCast for each pollutant originally measured in parts per million (ppm) for ozone and in µg/m³ for
45 PM_{2.5}.

46 The combined (PM_{2.5} and O₃) individual AQI data used for statistical analysis were collected from the
47 [AirNow Interactive Map \(epa.gov\)](#) by selecting for the specific date, then ozone and PM_{2.5} monitors,
48 and selecting the Downtown Sacramento – T Street Site (Site ID: 060670010, Agency: California Air
49 Resources Board). AirNow is a partnership of the U.S. Environmental Protection Agency, National
50 Oceanic and Atmospheric Administration (NOAA), National Park Service, NASA, Centers for Disease
51 Control, and tribal, state, and local air quality agencies.

52 In **Figure E1** we show that the daily AQI measurements (on four randomly selected dates) were
53 comparable across 4 monitoring stations in Sacramento County suggesting that the study subjects
54 were similarly exposed by wildfire smoke. **Figure 1B** shows the individual AQI values on the days blood
55 samples were drawn from Group 1 and Group 2 at baseline; 1 month after vaccination (Group 1) or
56 placebo injection (Group 2); and 6 months after vaccination in both groups. The bracket indicates the
57 Group 2 6-month collections that occurred during the Caldor Fire. These samples were included into
58 the correlation assessing acute wildfire smoke effects with NK cell IL-13 expression on the day of blood
59 draw (shown in **Figure 1D-E**). However, to be able to compare 6-month immunoglobulin levels between
60 Group 1 (which were taken outside of wildfire period) with Group 2, the samples obtained during the
61 Caldor fire had to be removed from assessment.

62 *Peripheral blood mononuclear cell isolation*

63 20 mL of peripheral blood was collected by venipuncture. Blood was layered over Ficoll-Paque PLUS

64 (Amersham Biosciences, Piscataway, NJ) and centrifuged at 20°C for 25 minutes, brake and
65 acceleration speed set to 0. Cells were harvested from the interphase layer and washed twice with a
66 solution of PBS and 2% FBS. Cells were counted via the Countess® Automated Cell Counter (Thermo
67 Fisher Scientific, Waltham, MA) then apportioned for downstream flow cytometry experiments.

68 *Flow cytometry*

69 Fluorescent-conjugated monoclonal antibodies were purchased from Biolegend (San Diego, CA), BD
70 Biosciences (San Jose, CA), or eBioscience (San Diego, CA). Single-cell suspensions of peripheral
71 blood mononuclear cells were plated in 96-well round bottom plates. Cells were stained with surface
72 markers in FACS buffer (PBS + 2% FBS) for 30 minutes. Cells were washed in FACS buffer and then
73 fixed and permeabilized by eBioscience™ Foxp3/ Transcription Factor Staining Buffer Kit according to
74 the manufacturer's instructions. Cells were then stained for intracellular markers in FACS buffer for 30
75 minutes at room temperature, and analyzed by resuspending in FACS buffer and running them on LSR
76 II Flow Cytometer (BD Biosciences, San Jose, CA). Data was generated using FACSDiva software and
77 analyzed on FlowJo V10.8.1 (Tree Star, OR). Cells were stained with the following antibodies
78 purchased from BD Biosciences: anti-CD56-Alexa Fluor 488 (clone B159) and anti-CD3-PCP-Cy5.5
79 (clone SP34-2), and the following antibodies purchased from Biolegend: anti-CD4-APC (clone A161A1),
80 anti-CD8-APC-Cy7 (clone RPA-T8), anti-IL-13-PE (clone JES10-5A2) (Biolegend), anti-CD19-BV650
81 (clone HIB19), and anti-CD20-BV785 (clone 2H7).

82 Peripheral blood NK cells gated using standard strategy were stratified into CD56^{bright} and CD56^{dim}
83 populations and IL-13 expression was assessed in both. To control for non-specific fluorescence, PE-
84 GRA (gMFI) gated on B cells (normally no- or very low IL-13 expressors) was subtracted from every
85 corresponding sample of every subject.

86 *Quantifying antibodies against SARS-CoV-2*

87 A multiplex test was developed at the UC Davis Medical Center, Sacramento, CA that measured
88 antibodies against spike (S) and Nucleocapsid (N) proteins of SARS-CoV-2, as well as antibodies
89 against SARS-CoV, MERS-CoV and common human coronavirus strains (229E, NL63, OC43, HKU1).
90 Anti-N antibodies differentiated subjects who received the BNT162b2 vaccine from those who got
91 naturally infected with SARS-CoV-2¹⁶.

92 *Data Analysis*

93 Statistical analysis was performed using Prism v9 software (GraphPad Inc., La Jolla, CA). Wilcoxon
94 matched-pairs signed rank test was used to compare the effects of the vaccine and the wildfire. A p-
95 value less than 0.05 was considered significant.

96 **Online Repository Figure Legends**

97 **Figure E1: Measurements of daily AQI were comparable on four randomly selected dates across**
98 **4 monitoring stations (represented by the 4 different bars) in Sacramento County.**

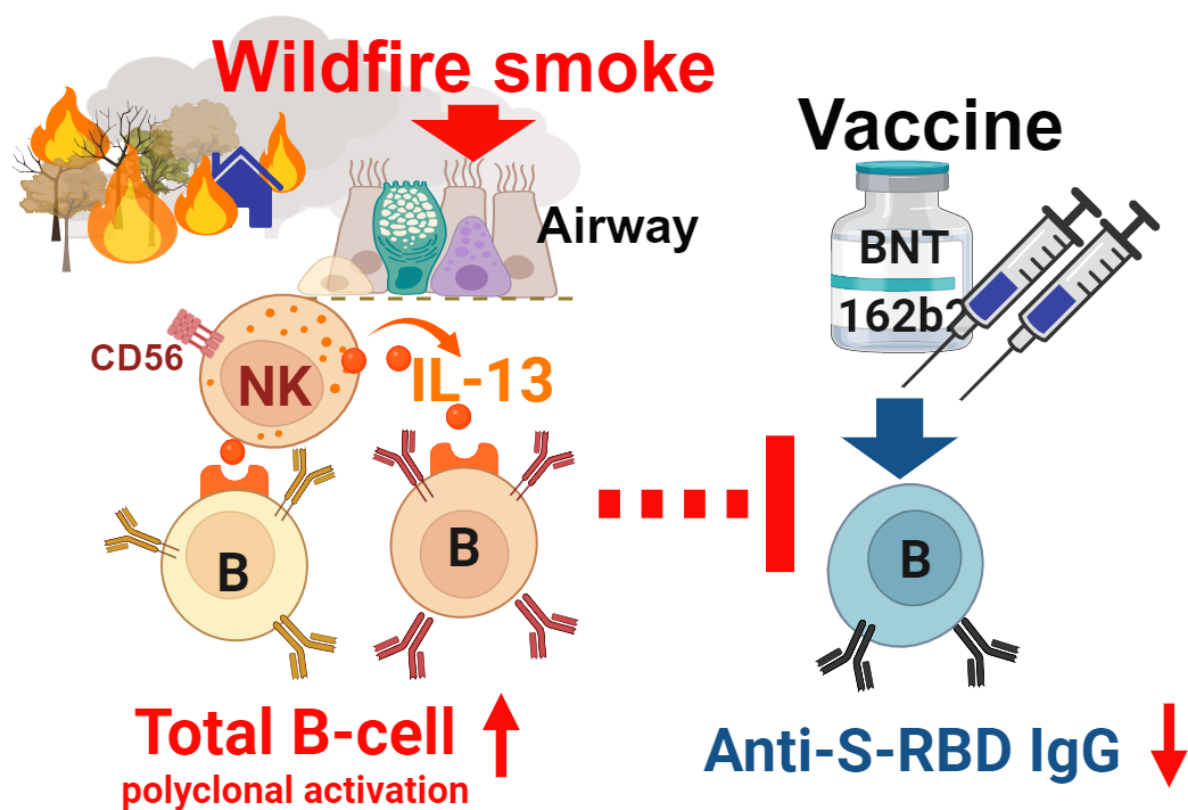
99 **Figure E2: Anti-MERS CoV S-RBD, nucleocapsid (N) or total IgG levels were not induced by**
100 **BNT162b2 COVID-19 vaccination (A):** Immunoglobulin levels were measured by LUMINEX before,
101 and 1 and 6-months post vaccination for MERS CoV S-RBD IgG, SARS-CoV-2 nucleocapsid (N) and
102 total IgG **(B):** Antibody levels against 4 common human coronaviruses were not affected.

103 **Figure E3: Sex, race, ethnicity or body mass index did not affect BNT162b2 vaccine immunity.**
104 **(A):** There was no difference in S-RBD IgG levels between sexes. **(B):** Race/ethnicity did not affect S-
105 RBD IgG levels; one-way ANOVA. **(C):** Body Mass Index (BMI) did not affect S-RBD IgG levels.

106

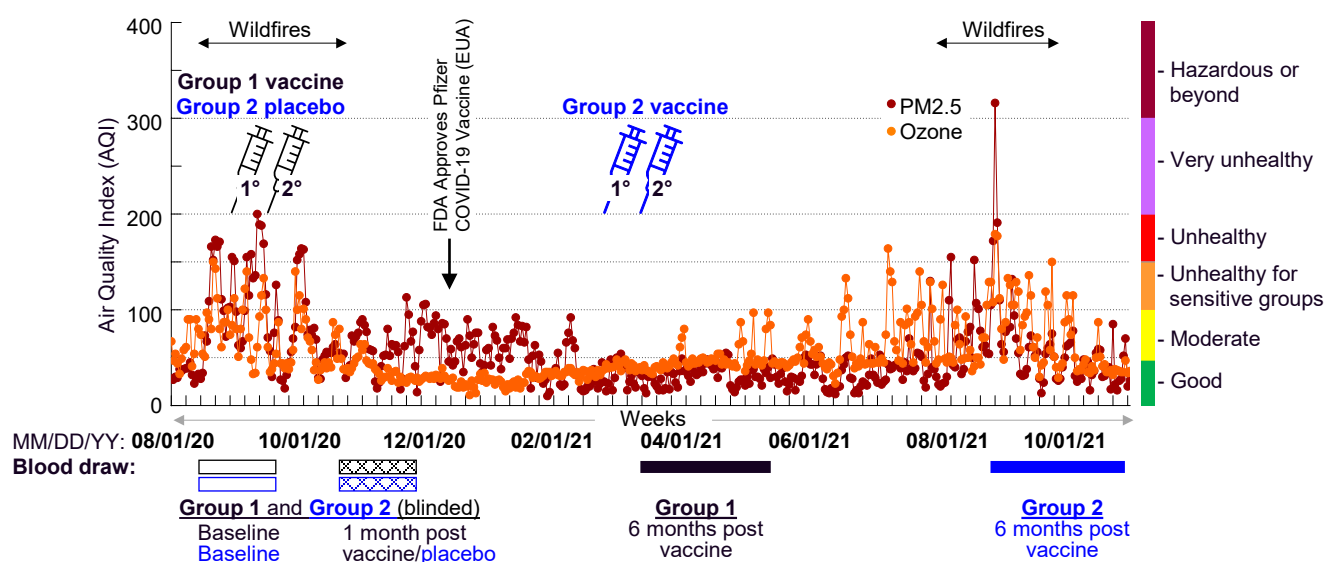
107

Wildfire smoke during BNT162b2 COVID-19 vaccination induced IL-13⁺CD56^{bright}NK cells, increased B cell count and total IgG and decreased antigen-specific IgG

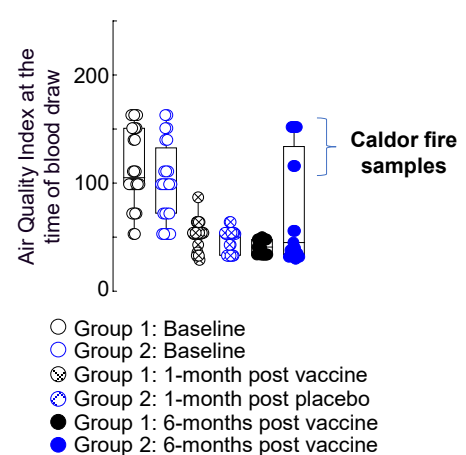


B: B lymphocyte; CD: Cluster of differentiation;
IgG: Immunoglobulin G subclass; IL-13: Interleukin-13; NK: Natural
Killer cell; S-RBD: SARS-CoV-2 Spike Receptor Binding Domain

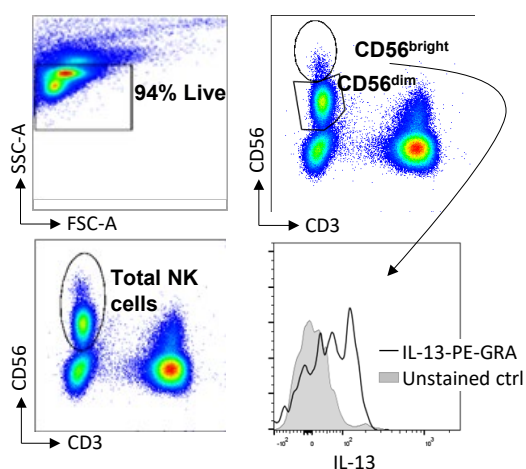
(A) Daily AQI, vaccine and blood draw timeline



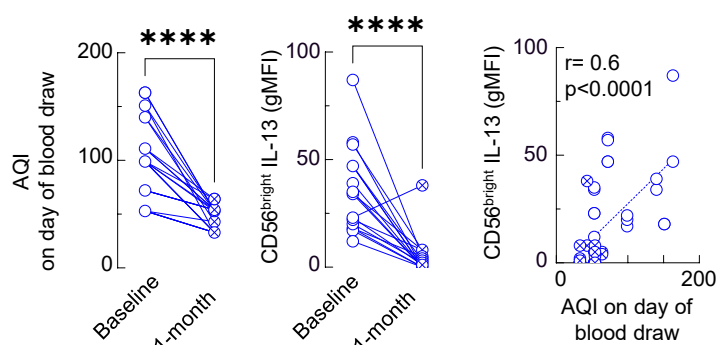
(B) AQI (combined O₃ and PM2.5) on day of blood draw



(C) Peripheral blood NK cell gating and intracellular IL-13 assessment



(E) AQI (combined O₃ and PM2.5) and NK cell IL-13 (Group 2 only)



(D) AQI vs. CD56^{bright} IL-13 on day of blood draw

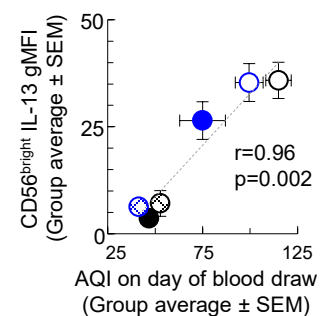


Figure 1. Wildfire smoke exposure increased circulating NK cell expression of IL-13. (A): Vaccination and blood collection timeline with daily air quality index (AQI) for fine particulate matter (PM_{2.5}, dark red) and O₃ (orange). **(B)** Blood samples were drawn from Group 1 and Group 2 at baseline; 1 month after vaccination (Group 1) or placebo injection (Group 2) and 6 months post vaccination. Bracket indicates the Group 2 (6 months post) samples collected during the Caldor Fire that were removed from immunoglobulin assessment. **(C):** CD56^{bright} and CD56^{dim} NK cells were gated and **(D):** assessed for IL-13 expression. **(E):** Group averages (Mean±SEM) of CD56^{bright} IL-13 vs. AQI on day of blood draw (Pearson correlation)

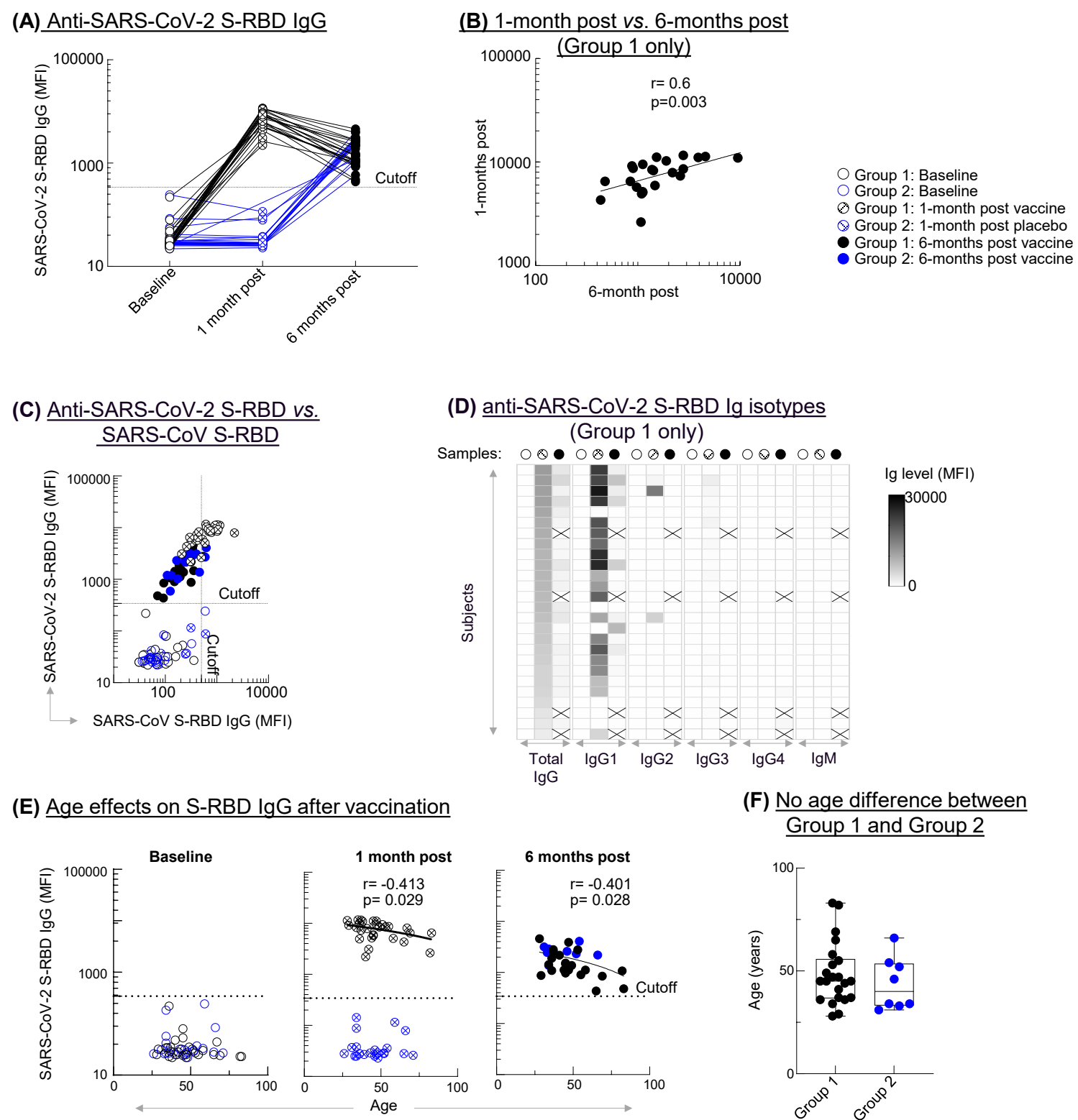


Figure 2. Anti-SARS-CoV-2 S-RBD response to BNT162b2 COVID-19 vaccination was reduced by age.

(A): Anti-SARS-CoV-2 S-RBD IgG levels (LUMINEX) in Group 1 (black) and Group 2 (blue, originally placebo) samples at baseline [open circles], 1 month-post vaccine (Group 1) or placebo (Group 2), [crossed circles] and 6-month post vaccine [full circles] **(B):** Correlation between 1- and 6-months post vaccine in Group 1 (Pearson correlation). **(C):** Cross reactivity between anti-SARS CoV and anti-SARS-CoV-2 S-RBD IgG **(D):** Heat map from highest (top) to lowest (bottom) levels of anti-S-RBD Ig isotypes X marks missing samples. **(E):** Age negatively correlated with SARS-CoV-2 S-RBD IgG both at 1- and 6- months post vaccine; $r=-0.413$, $p=0.029$ (Group 1 only), $r=-0.401$, $p=0.028$ (all subjects) respectively; Pearson correlation. **(F)** Subjects in Groups 1 and 2 did not statistically differ in age $p=0.44$; Mann-Whitney test.

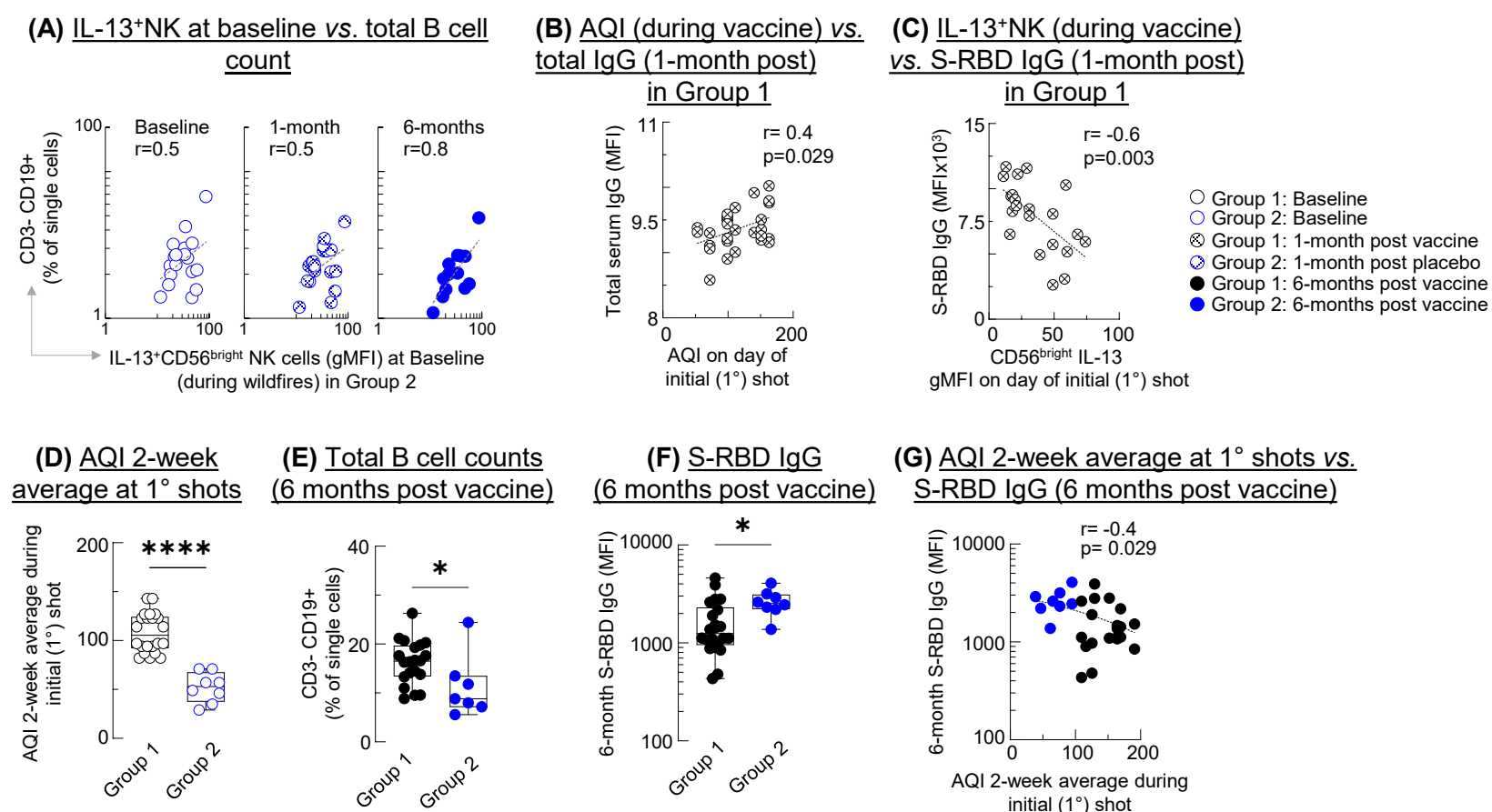


Figure 3. Wildfire smoke exposure and circulating NK cell expression of IL-13 correlated with impaired vaccine immunity. (A): CD56^{bright} IL-13 at baseline (during wildfires) positively correlated with total B cell counts (% of singles) acutely, 1 month later and 6-months post vaccination. (B): AQI on day of initial shots positively correlated with total IgG in Group 1, 1-month post vaccination. (C): IL-13⁺CD56^{bright}NK cells negatively correlated with S-RBD IgG in Group, 1-month post vaccination (Pearson correlation). (D): AQI 2-week average (1 week before and 1 week after) the day of initial vaccine shots. (E-F): Compared to Group 2 (vaccinated outside of wildfire period, blue dots), Group 1 (black dots) had and increased total (CD19+) B cells (E) and reduced S-RBD IgG (F) 6-months later. (G) AQI 2-week average during vaccination negatively correlated with S-RBD IgG 6 months later. (D): Box and whiskers with interquartile ranges; (D-F): * $p<0.05$; **** $p<0.0001$; Mann-Whitney test (Group 1 vs. Group 2).

medRxiv preprint doi: <https://doi.org/10.1101/2024.10.25.24316123>; this version posted October 29, 2024. The copyright holder for this preprint (which was not certified by peer review) is the author/funder, who has granted medRxiv a license to display the preprint in perpetuity. All rights reserved. No reuse allowed without permission.

AQI Monitoring Stations for PM2.5 in Sacramento County show similar level of pollution

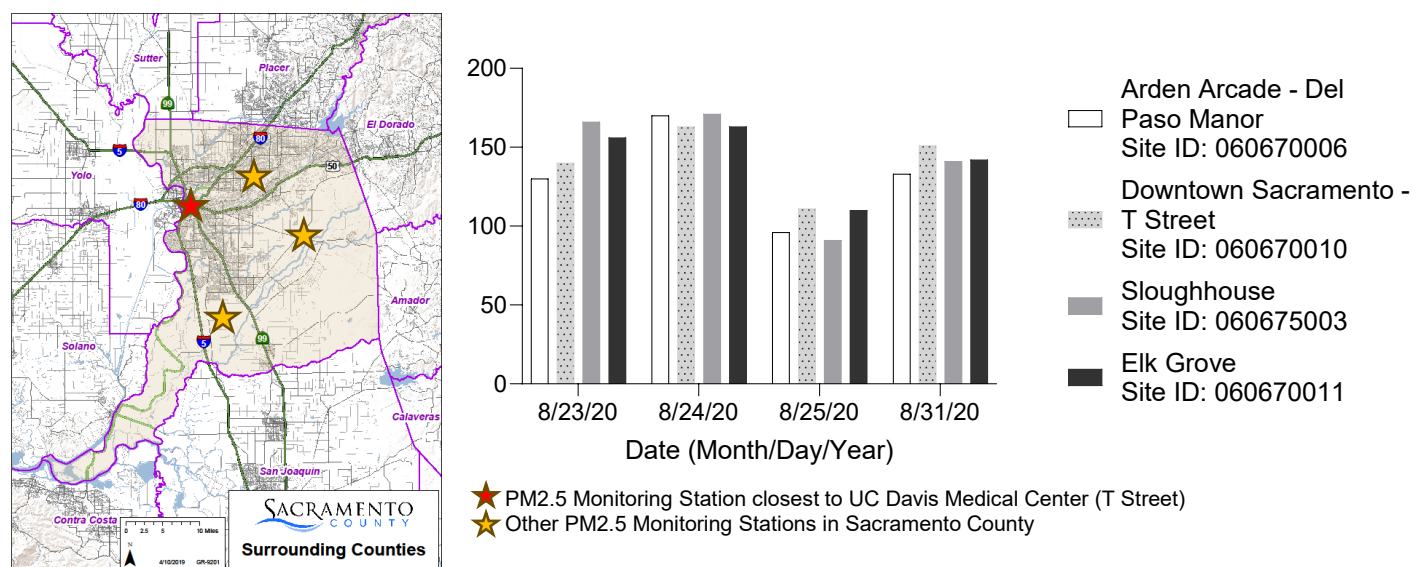


Figure E1. The daily AQI measurements were compared on four randomly selected dates across 4 monitoring stations (represented by the 4 different bars), in Sacramento County.

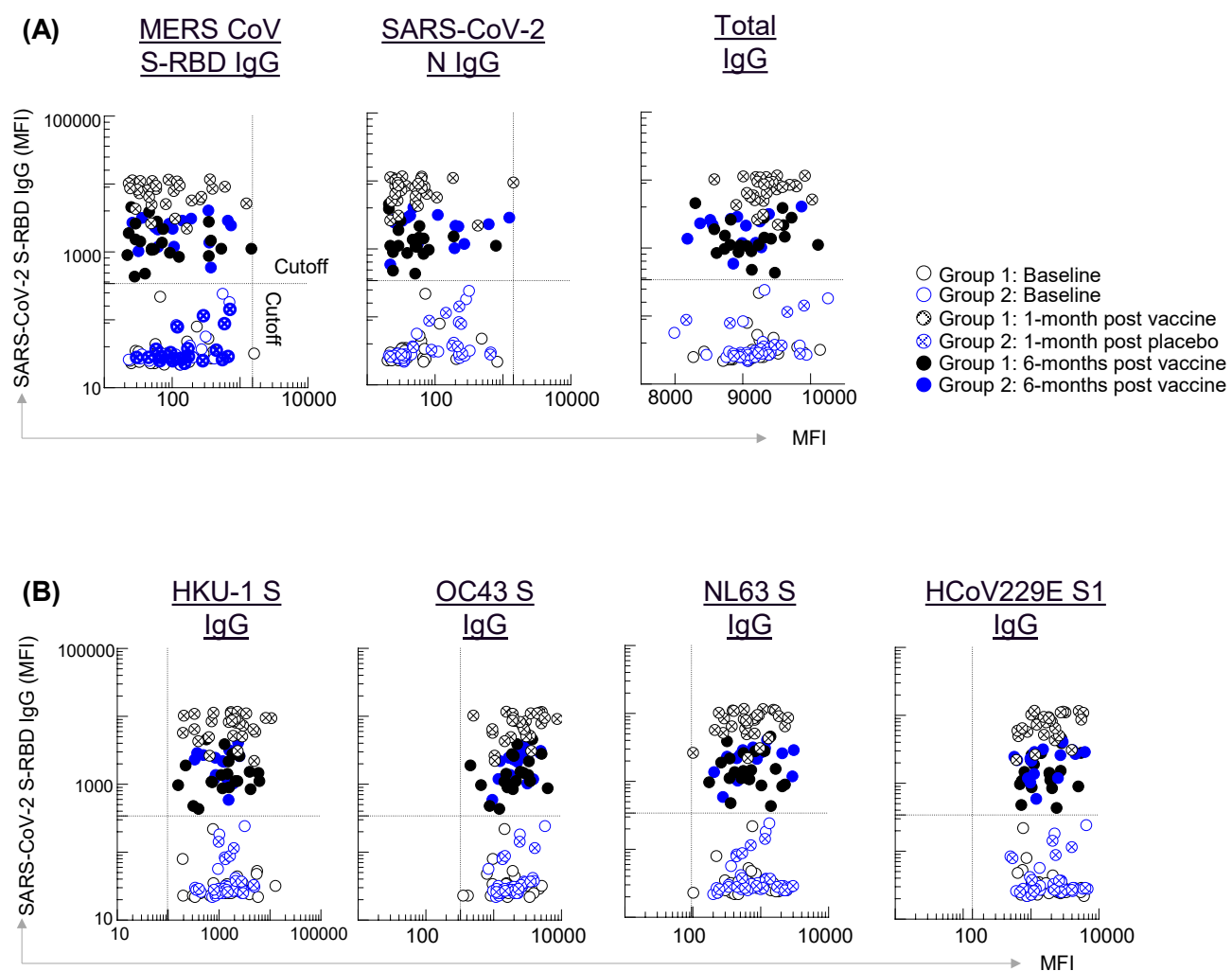


Figure E2. Anti-MERS CoV S-RBD, nucleocapsid (N) or total IgG levels were not induced by BNT162b2 COVID-19 vaccination (A): Immunoglobulin levels were measured by LUMINEX before and 1 and 6-months post vaccination for MERS CoV S-RBD IgG, SARS-CoV-2 nucleocapsid (N) and total IgG **(B):** Antibody levels against 4 common human coronaviruses were not affected.

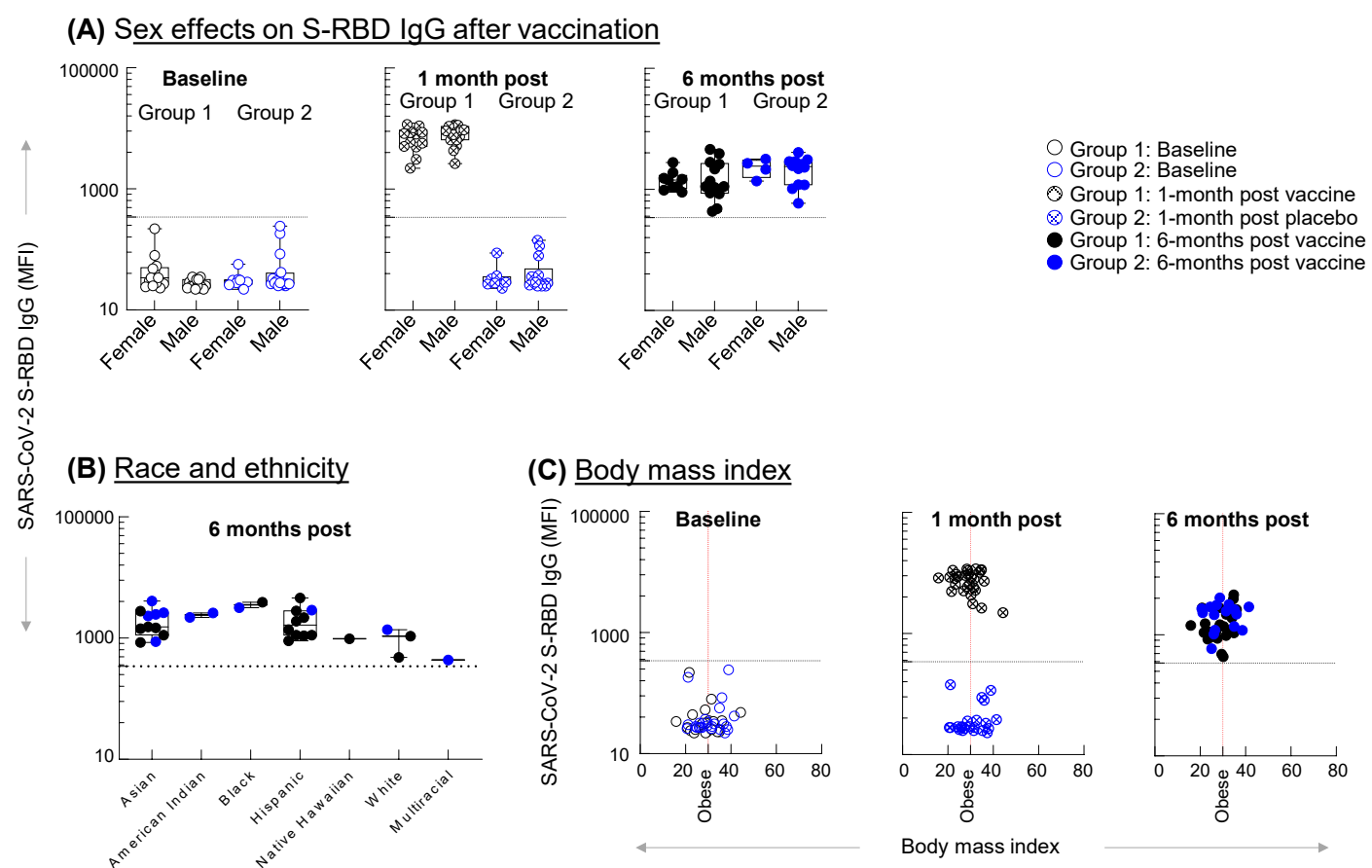


Figure E3. Determinants of BNT162b2 vaccine immunity. (A): There was no difference in S-RBD IgG levels between sexes. **(B):** Race/ethnicity did not affect S-RBD IgG levels; one-way ANOVA. **(C):** Body Mass Index (BMI) did not affect S-RBD IgG levels.