

1 **Global, Regional, and National Burden of Pulmonary Arterial Hypertension, 1990-2021: a**  
2 **Systematic Analysis of the Global Burden of Disease Study 2021**

3

4 **Authors**

5 Yafang Deng<sup>a,b</sup>, Xingbei Dong<sup>a</sup>, Junyan Qian<sup>a</sup>, Jiuliang Zhao<sup>a</sup>, Dong Xu<sup>a</sup>, Yanhong Wang<sup>c</sup>,  
6 Mengtao Li<sup>a</sup>, Xiaofeng Zeng<sup>a</sup>, Qian Wang<sup>a\*</sup>

7 \*Correspondence: wangqian\_pumch@126.com

8

9 **Affiliations**

10 a Department of Rheumatology and Clinical Immunology, Peking Union Medical College  
11 Hospital (PUMCH), Chinese Academy of Medical Sciences and Peking Union Medical College;  
12 National Clinical Research Center for Dermatologic and Immunologic Diseases (NCRC-DID),  
13 Ministry of Science and Technology; State Key Laboratory of Complex Severe and Rare Diseases;  
14 Key Laboratory of Rheumatology and Clinical Immunology, Ministry of Education, Beijing  
15 100730, China;

16 b School of Medicine, Tsinghua Medicine, Tsinghua University, Beijing 100084, China;

17 c Department of Epidemiology and Bio-Statistics, Institute of Basic Medical Sciences, Chinese  
18 Academy of Medical Sciences, School of Basic Medicine, Peking Union Medical College, Beijing  
19 100005, China.

20

21 **Abstracts**

22 **Aims**

23 Pulmonary arterial hypertension (PAH) is a severe pulmonary vascular disease with high mortality  
24 rates. This research aimed to examine the disease burden of PAH including prevalence, incidence,  
25 mortality, and disability-adjusted life-years (DALYs) from 1990 to 2021 across various age groups,  
26 sexes, and Socio-demographic Index (SDI) levels, at global, regional and national levels.

27 **Methods**

28 Data was collected from the Global Burden of Diseases, Injuries, and Risk Factors study (GBD)  
29 2021, which established models to estimate the burden of PAH for 204 countries and territories  
30 from 1990 to 2021. Age-standardized rates for PAH prevalence, incidence, mortality, and DALYs  
31 were calculated. Joinpoint regression was used to assess temporal trends. The correlation between  
32 disease burden and socioeconomic development was analyzed.

33 **Results**

34 In 2021, the global age-standardized prevalence and incidence rates were 2.28 and 0.52 per  
35 100,000 population, respectively. From 1990 to 2021, the age-standardized mortality rate  
36 decreased from 0.35 to 0.27 per 100,000, with an average annual trend of -0.82%. The

**Corresponding Author**

Dr. Qian Wang, Department of Rheumatology and Clinical Immunology, Peking Union Medical  
College Hospital, No. 1, Shuaifuyuan, Wangfujing Ave, Dongcheng District, Beijing 100730,  
China

E-Mail: wangqian\_pumch@126.com

37 age-standardized DALY rate decreased from 13.21 to 8.24 per 100,000 by -1.52%. Females  
38 exhibited a higher incidence rate but lower mortality and DALY rates. The burden of PAH  
39 distributed unequally, with regions possessing higher socioeconomic statuses exhibiting lower  
40 mortality and DALY rates. Such inequalities have been improved over past decades.

#### 41 **Conclusions**

42 The decline in mortality and DALY rates of PAH indicates improvements in disease management  
43 and patient outcomes, while the health inequalities among different regions and countries persist.  
44 Improving survival and life quality, and global health equality are crucial for future progress.

45

#### 46 **Keywords**

47 Pulmonary arterial hypertension, Global burden, Mortality, Disability-adjusted life years, Health  
48 inequality

49

#### 50 **Introduction**

51 Pulmonary arterial hypertension (PAH) is a life-threatening disease characterized by extensive  
52 pulmonary vasoconstriction and pulmonary vascular remodeling, and the progressive increased  
53 pulmonary vascular resistance eventually leads to right ventricular failure.<sup>1,2</sup> Despite existing  
54 studies on the disease burden of PAH across diverse geographies and etiologies,<sup>3</sup> a comprehensive,  
55 global investigation remains lacking. Prevailing studies report a mean prevalence ranging from 3  
56 to 5 cases per 100,000 individuals, with incidence rates fluctuating between 0.40 to 0.58 cases per  
57 100,000 person-years according to systematic reviews.<sup>4,5</sup> Such variation is often ascribed to the  
58 heterogeneity of included studies and the inconsistent application of diagnostic criteria. With the  
59 continuous changes in global demographics, the evolving definitions and classifications of PAH,  
60 and dynamic therapeutic landscape,<sup>6,7</sup> it is essential to systematically evaluate the contemporary  
61 global disease burden.

62 The Global Burden of Disease (GBD) study is the largest worldwide program to quantify health  
63 loss across global regions and over time, aiming to improve health outcomes.<sup>8</sup> The latest GBD  
64 database notably includes, for the first time, comprehensive data on the burden of PAH from 1990  
65 to 2021.<sup>9</sup> Such data is instrumental for advancing our understanding of PAH's epidemiological  
66 trends. In this study, we used the GBD database to investigate PAH associated prevalence,  
67 incidence, mortality, and disability adjusted life years (DALYs) at global, regional, and national  
68 level from 1990 to 2021, stratified by age, sex, and sociodemographic development. This  
69 comprehensive analysis of the global PAH burden is expected to inform future strategies for  
70 disease screening, surveillance, and management.

#### 71 **Methods**

##### 72 **Overview and data source**

73 The GBD 2021 study encompassed a comprehensive spectrum of 371 diseases and injuries, along  
74 with 88 risk factors, across 204 countries and territories. This study provides an in-depth look at  
75 the health metrics including prevalence, incidence, mortality, DALYs, and age-standardized rates  
76 (ASRs) by cause, age, sex, year, and location.<sup>9,10</sup> For this research, data on the global, regional  
77 and national disease burden of PAH from 1990 to 2021 was collected from The Global Health

78 Data Exchange GBD Results Tool (<https://vizhub.healthdata.org/gbd-results/>).

## 79 **Disease definition**

80 PAH in this study is limited to only the World Health Organization's (WHO) Group 1 pulmonary  
81 hypertension.<sup>3</sup> The diagnosis of PAH was established through either right heart catheterization or  
82 echocardiography and was confirmed by physician.

## 83 **Statistical analysis**

84 Numbers, crude rates, ASRs including age-standardized prevalence rates (ASPRs),  
85 age-standardized incidence rates (ASIRs), age-standardized mortality rates (ASMRs), and  
86 age-standardized disability-adjusted life-year rates (ASDRs), and 95% uncertainty interval (95%  
87 UI) data were extracted from GBD. ASRs were calculated with the following formula:  $ASR =$

88  $\frac{\sum(a_i \times w_i)}{\sum w_i} \times 100,000$ , in which  $i$  denotes the  $i^{\text{th}}$  age group,  $a_i$  indicates the age-specific rates in this

89 group, and  $w_i$  represents the population weight for the corresponding age group in the reference  
90 standard population. DALYs were calculated as the sum of years lived with disability (YLD) and  
91 years of life lost (YLL).

92 The joinpoint regression model was utilized to examine the linear trends in the disease burden of  
93 PAH from 1990 to 2021. This model employs the least squares method to minimize potential  
94 subjectivity in trend estimation. The average annual percent change (AAPC) was calculated to

95 quantify significant trends using the following formula:  $AAPC = \left\{ \exp\left(\frac{\sum(b_i \times \omega_i)}{\sum \omega_i}\right) - 1 \right\} \times 100\%$ , in

96 which  $i$  denotes the  $i^{\text{th}}$  desired segment of the time series,  $b_i$  indicates the slope coefficient of this  
97 segment, and  $w_i$  represents the duration of the segment in years. A positive AAPC, with both the  
98 estimate and its 95% confidence interval (CI) above zero, indicates an increasing trend, while a  
99 negative AAPC, with both values below zero, signifies a decreasing trend for the specific variable.

100 The Socio-demographic Index (SDI) serves as a comprehensive measure of a country or region's  
101 developmental progress, taking into account a spectrum of socioeconomic factors including  
102 income equality, educational levels, and fertility rates among young females.<sup>9</sup> With a scale  
103 ranging from 0 to 1, a higher SDI value indicates a more advanced state of socioeconomic  
104 development. The correlation between the disease burden of PAH and socioeconomic  
105 development in different countries and regions was analyzed to evaluate global health inequalities.  
106 The slope index of inequality (SII) was employed to quantify absolute inequalities by measuring  
107 the gradient of the regression line between the ASDR of PAH and weighted ranking of each  
108 country and territory.<sup>11</sup>

109 All data analysis and visualization were performed using Joinpoint Regression Program (version  
110 5.1.0.0, Statistical Research and Applications Branch, National Cancer Institute, USA) and the  
111 open-source software R (version 4.3.2; R Foundation for Statistical Computing, Vienna, Austria).

## 112 **Role of the funding source**

113 The funders of the study had no role in study design, data collection, data analysis, data  
114 interpretation, writing of the report, or decision to submit the paper for publication.

115

## 116 **Results**

## 117 **Global trends**

118 In 2021, the global prevalence of PAH was  $191.81 \times 10^3$  cases (95% UI,  $155.36 \times 10^3$  to  
119  $235.79 \times 10^3$ ), increased by 81.47% compared to which of 1990 ( $105.7 \times 10^3$ , 95% UI  $86.38 \times 10^3$  to  
120  $130.33 \times 10^3$ ). However, the ASPR of PAH showed a slight decline between 1990 and 2021 from  
121 2.30/100,000 (95% UI 1.87/100,000 to 2.82/100,000) to 2.28/100,000 (95% UI 1.85/100,000 to  
122 2.80/100,000). The ASIR of PAH was 0.50/100,000 (95% UI 0.40/100,000 to 0.60/100,000) in  
123 1990 and increased to 0.52/100,000 (95% UI 0.42/100,000 to 0.62/100,000) in 2021, with an  
124 AAPC of 0.10% (95% CI, 0.10% to 0.11%) (Table 1).

125 Despite an increase in the number of death cases, the ASMR in 2021 (0.27/100,000, 95% UI  
126 0.23/100,000 to 0.32/100,000) was lower than which in 1990 (0.35/100,000, 95% UI 0.29/100,000  
127 to 0.42/100,000), with an AAPC of -0.82% (95% CI -0.95% to -0.68%) between 1990 and 2021. A  
128 similar and more pronounced trend was observed in the ASDR, which decreased from  
129 13.21/100,000 (95% UI 10.78/100,000 to 15.36/100,000) in 1990 to 8.24/100,000 (95% UI  
130 7.14/100,000 to 9.39/100,000) in 2021, with an AAPC of -1.52% (95% CI -1.64% to -1.40%)  
131 (Table 1 and Structured Graphical Abstract).

## 132 **Age and sex patterns**

133 In both 1990 and 2021, the incidence of PAH was generally higher in females than in males. The  
134 ASIR in 2021 was 0.48/100,000 (95% UI 0.39/100,000 to 0.58/100,000) for males and  
135 0.55/100,000 (0.45/100,000 to 0.66/100,000) for females. The AAPC in ASIR from 1990 to 2021  
136 was 0.08% (95% CI 0.08% to 0.09%) for males and 0.12% (95% CI, 0.11% to 0.14%) for females,  
137 indicating rising trends in PAH incidence across both sexes (Table 1 and Supplementary Fig 1A).

138 In 2021, the highest incident cases and rates were observed in the 55-59 years age group and the  
139 75-79 years age group, respectively for both sexes, and the incidence rate increased with age in the  
140 population under 75 years. Across all age groups, the incidence rate in females consistently  
141 exceeded that in males (Fig 1A).

142 In 2021, females exhibited a higher number of death cases and a greater ASMR compared to  
143 males. However, females typically had lower ASMRs in most years, as depicted in Supplementary  
144 Fig 1b. The ASMR declined more markedly in males than in females between 1990 and 2021,  
145 with an AAPC of -1.04% (95% CI -1.17% to -0.92%) for males and -0.61% (95% CI -0.73% to  
146 -0.49%) for females (Table 1). Within the patient population aged 5 to 80 years, both the number  
147 of death cases and the mortality rate increased with age for both sexes. Notably, children aged 0 to  
148 5 years represented a significant part of death cases, with  $1.41 \times 10^3$  cases (95% UI  $1.08 \times 10^3$  to  
149  $1.78 \times 10^3$ ) (Fig 1B). YLL constituted the majority of DALYs for PAH, as shown in Supplementary  
150 Fig 2. Consistent with mortality trends, females generally presented lower ASDRs than males over  
151 the past three decades (Supplementary Fig 1C). Declining trends in ASDRs were observed for  
152 both sexes from 1990 to 2021, with a more significant decrease in males, as indicated by an AAPC  
153 of -1.80% (95% CI -1.90% to -1.70%) compared to -1.26% (95% CI -1.37% to -1.15%) in females  
154 (Table 1). Children under 5 years contributed the most to the total DALY numbers in both sexes,  
155 and the DALY rates increased with age in populations over 5 years old (Fig 1C). From 1990 to  
156 2021, most age groups showed downward trends in mortality and DALY rates, particularly in  
157 those under 5 years, with AAPCs of -3.16% (95% CI -3.37% to -2.94%) for mortality rate and  
158 -3.16% (95% CI -3.37% to -2.95%) for DALY rate. However, in individuals over 85 years, both  
159 mortality and DALY rates continued to increase from 1990 to 2021 (Table 1).

## 160 **Regional trends**

161 Among the 21 regions analyzed, the ASIR of PAH in 2021 varied from 0.30/100,000 (95% UI  
162 0.24/100,000 to 0.37/100,000) in High-income North America to 0.92/100,000 (95% UI  
163 0.75/100,000 to 1.09/100,000) in Eastern Sub-Saharan Africa (Supplemental Table 2). Generally,  
164 regions with higher SDI, such as High-income North America, High-income Asia Pacific, and  
165 Australasia exhibited lower incidence rates, while regions with lower socioeconomic development,  
166 including Central, Western, and Eastern Sub-Saharan Africa, had higher rates (Fig 2A). Temporal  
167 trends in incidence rates differed by region. Central Europe experienced the most rapid increase in  
168 ASIR, with an AAPC of 0.60% (95% CI 0.57% to 0.63%), whereas Western Sub-Saharan Africa  
169 showed the most significant decline, with an AAPC of -0.84% (95% CI -0.90% to -0.79%)  
170 (Supplemental Table 2). In most regions, the incidence rates over the past three decades showed  
171 moderate fluctuations (Fig 2A).

172 In 2021, the highest ASMR and ASDR for PAH were observed in North Africa and Middle East,  
173 at 0.44/100,000 (95% UI 0.31/100,000 to 0.53/100,000) and 14.81/100,000 (95% UI  
174 10.76/100,000 to 17.96/100,000), respectively. In contrast, Central Latin America reported the  
175 lowest rates, with an ASMR of 0.08/100,000 (95% UI 0.07/100,000 to 0.10/100,000) and an  
176 ASDR of 3.00/100,000 (95% UI 2.63/100,000 to 3.51/100,000) (Supplemental Table 3 and  
177 Supplemental Table 4). Between 1990 and 2021, all regions except Central Asia, which showed a  
178 non-significant trend, experienced significant declines in both ASMR and ASDR. The most  
179 significant decreases were noted in Eastern Europe, with an AAPC of ASMR at -2.98% (95% CI  
180 -3.74% to -2.21%) and an AAPC of ASDR at -3.22% (95% CI, -4.10% to -2.34%) (Supplemental  
181 Table 3 and Supplemental Table 4). In most regions, there was a general trend of decreasing  
182 age-standardized mortality and DALY rates with increasing SDI, although some regions exhibited  
183 considerable variations (Fig 2B and Fig 2C).

## 184 **National trends**

185 In 2021, the ASIRs of PAH varied significantly across countries and territories, ranging from 0.18  
186 to 1.06 per 100,000 persons. Zambia reported the highest ASIR at 1.06/100,000 (95% UI  
187 0.88/100,000 to 1.28/100,000), followed by Uganda (1.00/100,000, 95% UI 0.82/100,000 to  
188 1.20/100,000), and Ethiopia (1.00/100,000, 95% UI 0.82/100,000 to 1.19/100,000). In contrast,  
189 the lowest rates were observed in Ireland (0.18/100,000, 95% UI 0.15/100,000 to 0.23/100,000),  
190 Canada (0.26/100,000, 95% UI 0.21/100,000 to 0.32/100,000), and Portugal (0.28/100,000, 95%  
191 UI 0.23/100,000 to 0.34/100,000) (Supplemental Table 2 and Supplemental Fig 3A). From 1990 to  
192 2021, about half of the countries and territories experienced an increase in age-standardized  
193 incidence rates (Supplemental Fig 4A). Slovakia experienced the most substantial increase (AAPC  
194 1.07%, 95% CI 0.95% to 1.19%), while Senegal showed the greatest decrease (AAPC -1.61%, 95%  
195 CI -1.70% to -1.52%). Among 204 countries and territories, an inverse correlation was observed  
196 between the SDI and the incidence rate, aligning with the patterns seen in regional trends  
197 (Supplemental Fig 5A).

198 The age-standardized rate of mortality and DALYs also varied in distinct countries and territories.  
199 In 2021, the highest burden of disease was observed in Mongolia and Georgia, with ASMRs of  
200 1.59/100,000 (95% UI 0.91/100,000 to 2.05/100,000) and 1.01/100,000 (95% UI 0.79/100,000 to  
201 1.27/100,000), respectively, and ASDRs of 43.92/100,000 (95% UI 25.60/100,000 to  
202 56.54/100,000) and 27.83/100,000 (95% UI 22.18/100,000 to 34.82/100,000), respectively. The

203 Republic of Moldova reported the lowest ASMR at 0.01/100,000 (95% UI 0.01/100,000 to  
204 0.01/100,000) and ASDR at 0.54/100,000 (95% UI 0.44/100,000 to 0.68/100,000), followed by  
205 Montenegro and Slovenia, which also had notably low rates (Fig 3A, Supplemental Fig 3B,  
206 Supplemental Table 3 and Supplemental Table 4). Between 1990 and 2021, approximately 90% of  
207 countries and territories demonstrated a decline in both ASMRs and ASDRs, while few of them  
208 showed upward trends, such as Latvia and Mauritius (Fig 3B and Supplemental Fig 4B). In 2021,  
209 a statistically significant negative correlation between increasing SDI and both mortality and  
210 DALY rates was observed at the national level (Supplemental Fig 5B-C).

### 211 **Health Inequalities**

212 Overall, regions with lower SDI exhibited higher age-standardized incidence and DALY rates for  
213 PAH, while regions with higher socioeconomic status showed the opposite trend (Table 1).  
214 Regarding health disparities, the SII of ASDR in 1990 was -4.07 per 100,000 (95% CI -6.19 to  
215 -1.95), indicating an inverse relationship between PAH disease burden and socioeconomic  
216 development. By 2021, the SII had reduced to -3.55 per 100,000 (95% CI -4.87 to -2.23). The  
217 convergence of the SII towards zero between 1990 and 2021 indicates a more equitable global  
218 distribution of PAH burden.

219

### 220 **Discussion**

221 Despite the advent of novel drugs and treatment strategies, PAH remains a life-threatening disease  
222 imposing a significant burden in the modern era. Accurate epidemiological data is challenging to  
223 obtain due to evolving diagnostic criteria and the subtle early symptoms of the disease. This study,  
224 utilizing the GBD 2021 data, provides the first comprehensive summary and analysis of the global  
225 PAH burden over the past three decades. It offers valuable insights into disease patterns, aiming to  
226 inform enhanced diagnosis and management strategies for the future.

227 The overall prevalence and incidence rates of PAH observed in this study are consistent with data  
228 from other registries,<sup>12-15</sup> and have remained relatively stable over the past three decades.  
229 According to GBD 2021, both age-standardized prevalence and incidence rate of PAH were higher  
230 in females than in males, which is also observed across many other cohorts.<sup>16-18</sup> The higher  
231 incidence of PAH in females may be attributed to distinctions in estrogen metabolism, function,  
232 and receptor expression,<sup>19</sup> as well as autoimmune factors and variable penetrance of gene  
233 mutations in specific PAH subtypes.<sup>20,21</sup> In this study, females have generally exhibited lower  
234 age-standardized mortality and DALY rates compared to males, and better survival in females was  
235 also observed in previous clinical trials.<sup>22</sup> This survival advantage may be due to superior right  
236 ventricular contractility and adaptation and better response to treatment in females, potentially  
237 enhanced by the protective effects of estrogen during the disease process.<sup>19,23</sup>

238 Our study observed a shift in the median age of PAH diagnosis from 45-49 years in 1990 to 50-54  
239 years by 2021, a trend consistent with previous reports.<sup>12,16,17,24</sup> This demographic shift  
240 underscores the growing need of focusing on elderly patients, who frequently present with  
241 increased cardiovascular comorbidities and higher mortality rate, and face challenges in receiving  
242 an early and accurate diagnosis.<sup>25</sup> Another age group that calls for emphasis is children under the  
243 age of 5. Pediatric PAH, predominantly idiopathic PAH and PAH associated with congenital heart  
244 disease, is particularly challenging due to the delayed diagnosis often resulting from the inability

245 of young children to report their symptoms effectively.<sup>26</sup> Despite a decline from 1990 to 2021, the  
246 DALY burden remains significantly high in this age group, highlighting the need for improved  
247 pediatric PAH management. Future efforts should focus on non-invasive diagnostic methods,  
248 support for maintaining normal daily activities, and strategies aimed at prolonging survival.<sup>27</sup>

249 Over the past three decades, there has been a gradual decline in the global disease burden of PAH,  
250 as measured by mortality and DALYs. The predominant component of DALYs is YLL, indicating  
251 that the reduction in life expectancy due to PAH accounts for the most significant portion of its  
252 disease burden. Therefore, improving patient survival is of great importance. Although increased  
253 disease awareness and early diagnosis also contribute to improved survival in PAH, the marked  
254 reduction in mortality and DALYs is likely primarily due to the advent of targeted therapies.  
255 Previous studies have demonstrated significant improvements in the 1-, 3-, and 5-year survival of  
256 PAH patients since the introduction of these therapies.<sup>17,18,28,29</sup> With the continuous update of  
257 high-level clinical evidence, combination therapy with targeted drugs has become the first-line  
258 recommendation in international guidelines for most of the PAH patients.<sup>30-33</sup> Moreover, beyond  
259 the traditional pathways of prostacyclin, endothelin and nitric oxide, a variety of novel therapeutic  
260 targets are emerging, with candidates such as sotatercept—a fusion protein inhibiting activin  
261 receptor type IIA signaling—and imatinib—a tyrosine kinase inhibitor—currently under clinical  
262 investigation.<sup>2</sup> For future advancements, the relatively high mortality rate in PAH necessitates  
263 further transformative innovations, and enhancing the quality of life for patients remains a critical  
264 issue.

265 Despite the overall decline in PAH mortality and DALYs, the disease burden remains unevenly  
266 distributed across regions and nations. Some previous researches have described health disparities  
267 in PAH diagnosis and treatment, influenced by socioeconomic status, race, and ethnicity in certain  
268 countries.<sup>34</sup> While the environmental and genetic factors associated with geographic variations in  
269 PAH incidence are not fully understood, differences in etiological distributions may contribute to  
270 the observed disparities. In Africa, PAH prevalence is often linked to HIV infection, whereas in  
271 South America, schistosomiasis is a significant cause, with these infectious diseases being more  
272 prevalent in low- and middle-income countries.<sup>35</sup> The global distribution of mortality and DALYs  
273 is of even greater concern, with the GBD 2021 indicating a general correlation between lower SDI  
274 and higher age-standardized mortality and DALY rates. One significant reason is the delayed  
275 diagnosis and treatments in underdeveloped regions, resulting in more advanced disease stages at  
276 diagnosis and poorer survival outcomes.<sup>36</sup> Lower socioeconomic status has been identified as an  
277 independent risk factor for disease progression and mortality in idiopathic PAH.<sup>37</sup> In contrast, in  
278 more developed regions, both underlying diseases and PAH are more likely to receive specialized  
279 care. Additionally, the limited availability and high cost of targeted therapies may result in  
280 suboptimal treatment in low SDI countries. Therefore, the development of region- or  
281 country-specific guidelines and consensus will be instrumental in advancing the specialized  
282 management of PAH patients.<sup>38</sup> The analysis of health disparities reveals a promising trend  
283 towards a more equitable global distribution of PAH burden in 2021 compared to 1990,  
284 underscoring the need for continued focus on this issue in clinical practice and research moving  
285 forward.

286 This study also has some limitations. Firstly, the majority of data in GBD database are secondary  
287 data collected from other research organizations, which may potentially lead to the

288 underestimation of the disease burden. The further modeling and estimation process may  
289 introduce a degree of uncertainty. Secondly, the diagnostic criteria and classification systems for  
290 PAH have evolved over the years, and the difference between diagnostic methods of right heart  
291 catheterization and echocardiography also contribute to the heterogeneity. Finally, due to  
292 constraints in the available data, this study was unable to assess the disease burden associated with  
293 each subtype of PAH, and a comprehensive investigation of potential risk factors for PAH remains  
294 a task for future research.

295 In conclusion, this study presents the first systematic assessment of the global, regional, and  
296 national disease burden of PAH spanning the past three decades. The advancements in early  
297 diagnosis and targeted therapies have led to a significant decline in the mortality and DALYs.  
298 However, disparities in PAH burden persist across regions and countries, with health inequalities  
299 being closely linked to socioeconomic disparities. Enhancing survival, improving the quality of  
300 life, and promoting equitable access to PAH diagnosis and treatment are crucial for future progress  
301 in the field.

302

### 303 **Data availability**

304 The data used for analysis are publicly available from The Global Health Data Exchange GBD  
305 Results Tool (<https://vizhub.healthdata.org/gbd-results/>).

### 306 **Author contributions**

307 YD and QW conceived and designed the study. YD, XD, and JQ conducted the literature review.  
308 YD conducted data analysis and visualization. YD, YW, and QW drafted the original manuscript.  
309 ML, XZ, and QW contributed to the funding acquisition. All authors contributed to the  
310 interpretation of findings and critical revision of the article. All authors had approved the final  
311 version and accepted responsibility to submit for publication.

### 312 **Conflict of interest**

313 The authors declare that they have no competing interests.

### 314 **Acknowledgements**

315 The authors would like to thank the GBD 2021 and its collaborators for providing the publicly  
316 available data.

### 317 **Funding**

318 This study was supported by the Chinese National Key Technology R&D Program, Ministry of  
319 Science and Technology (2021YFC2501301-5); CAMS Innovation Fund for Medical Sciences  
320 (CIFMS) (2021-I2M-1-005, 2019-I2M-2-008); and National High Level Hospital Clinical  
321 Research Funding (2022-PUMCH-D-009).

322

### 323 **References**

- 324 1. Naeije R, Richter MJ, Rubin LJ. The physiological basis of pulmonary arterial hypertension. *Eur*  
325 *Respir J* 2022;**59**. doi: 10.1183/13993003.02334-2021
- 326 2. Ghofrani HA, Gomberg-Maitland M, Zhao L, Grimminger F. Mechanisms and treatment of  
327 pulmonary arterial hypertension. *Nat Rev Cardiol* 2024. doi: 10.1038/s41569-024-01064-4
- 328 3. Simonneau G, Montani D, Celermajer DS, *et al*. Haemodynamic definitions and updated clinical



- 329 classification of pulmonary hypertension. *Eur Respir J* 2019;**53**. doi: 10.1183/13993003.01913-2018
- 330 4. Emmons-Bell S, Johnson C, Boon-Dooley A, *et al*. Prevalence, incidence, and survival of
- 331 pulmonary arterial hypertension: A systematic review for the global burden of disease 2020 study. *Pulm*
- 332 *Circ* 2022;**12**:e12020. doi: 10.1002/pul2.12020
- 333 5. Leber L, Beaudet A, Muller A. Epidemiology of pulmonary arterial hypertension and chronic
- 334 thromboembolic pulmonary hypertension: identification of the most accurate estimates from a
- 335 systematic literature review. *Pulm Circ* 2021;**11**:2045894020977300. doi: 10.1177/2045894020977300
- 336 6. Ruopp NF, Cockrill BA. Diagnosis and Treatment of Pulmonary Arterial Hypertension: A Review.
- 337 *Jama* 2022;**327**:1379-1391. doi: 10.1001/jama.2022.4402
- 338 7. Weatherald J, Boucly A, Peters A, *et al*. The evolving landscape of pulmonary arterial
- 339 hypertension clinical trials. *Lancet* 2022;**400**:1884-1898. doi: 10.1016/s0140-6736(22)01601-4
- 340 8. Network. GBoDC. Global Burden of Disease Study 2021 (GBD 2021) Results. In. Seattle, United
- 341 States: Institute for Health Metrics and Evaluation (IHME). 2022.
- 342 9. Global incidence, prevalence, years lived with disability (YLDs), disability-adjusted life-years
- 343 (DALYs), and healthy life expectancy (HALE) for 371 diseases and injuries in 204 countries and
- 344 territories and 811 subnational locations, 1990-2021: a systematic analysis for the Global Burden of
- 345 Disease Study 2021. *Lancet* 2024;**403**:2133-2161. doi: 10.1016/s0140-6736(24)00757-8
- 346 10. Global burden and strength of evidence for 88 risk factors in 204 countries and 811 subnational
- 347 locations, 1990-2021: a systematic analysis for the Global Burden of Disease Study 2021. *Lancet*
- 348 2024;**403**:2162-2203. doi: 10.1016/s0140-6736(24)00933-4
- 349 11. Organization WH. Handbook on health inequality monitoring with a special focus on low- and
- 350 middle-income countries: Handbook on health inequality monitoring with a special focus on low- and
- 351 middle-income countries.; 2013.
- 352 12. Ling Y, Johnson MK, Kiely DG, *et al*. Changing demographics, epidemiology, and survival of
- 353 incident pulmonary arterial hypertension: results from the pulmonary hypertension registry of the
- 354 United Kingdom and Ireland. *Am J Respir Crit Care Med* 2012;**186**:790-796. doi:
- 355 10.1164/rccm.201203-0383OC
- 356 13. Wijeratne DT, Lajkosz K, Brogly SB, *et al*. Increasing Incidence and Prevalence of World Health
- 357 Organization Groups 1 to 4 Pulmonary Hypertension: A Population-Based Cohort Study in Ontario,
- 358 Canada. *Circ Cardiovasc Qual Outcomes* 2018;**11**:e003973. doi: 10.1161/circoutcomes.117.003973
- 359 14. Strange G, Playford D, Stewart S, *et al*. Pulmonary hypertension: prevalence and mortality in the
- 360 Armadale echocardiography cohort. *Heart* 2012;**98**:1805-1811. doi: 10.1136/heartjnl-2012-301992
- 361 15. Peacock AJ, Murphy NF, McMurray JJ, Caballero L, Stewart S. An epidemiological study of
- 362 pulmonary arterial hypertension. *Eur Respir J* 2007;**30**:104-109. doi: 10.1183/09031936.00092306
- 363 16. Humbert M, Sitbon O, Chaouat A, *et al*. Pulmonary arterial hypertension in France: results from a
- 364 national registry. *Am J Respir Crit Care Med* 2006;**173**:1023-1030. doi: 10.1164/rccm.200510-1668OC
- 365 17. Benza RL, Miller DP, Barst RJ, *et al*. An evaluation of long-term survival from time of diagnosis
- 366 in pulmonary arterial hypertension from the REVEAL Registry. *Chest* 2012;**142**:448-456. doi:
- 367 10.1378/chest.11-1460
- 368 18. D'Alonzo GE, Barst RJ, Ayres SM, *et al*. Survival in patients with primary pulmonary
- 369 hypertension. Results from a national prospective registry. *Ann Intern Med* 1991;**115**:343-349. doi:
- 370 10.7326/0003-4819-115-5-343
- 371 19. Cheron C, McBride SA, Antigny F, *et al*. Sex and gender in pulmonary arterial hypertension. *Eur*
- 372 *Respir Rev* 2021;**30**. doi: 10.1183/16000617.0330-2020

- 373 20. Larkin EK, Newman JH, Austin ED, *et al.* Longitudinal analysis casts doubt on the presence of  
374 genetic anticipation in heritable pulmonary arterial hypertension. *Am J Respir Crit Care Med*  
375 2012;**186**:892-896. doi: 10.1164/rccm.201205-0886OC
- 376 21. Chung L, Liu J, Parsons L, *et al.* Characterization of connective tissue disease-associated  
377 pulmonary arterial hypertension from REVEAL: identifying systemic sclerosis as a unique phenotype.  
378 *Chest* 2010;**138**:1383-1394. doi: 10.1378/chest.10-0260
- 379 22. Humbert M, Sitbon O, Chaouat A, *et al.* Survival in patients with idiopathic, familial, and  
380 anorexigen-associated pulmonary arterial hypertension in the modern management era. *Circulation*  
381 2010;**122**:156-163. doi: 10.1161/circulationaha.109.911818
- 382 23. Dignam JP, Sharma S, Stasinopoulos I, MacLean MR. Pulmonary arterial hypertension: Sex  
383 matters. *Br J Pharmacol* 2024;**181**:938-966. doi: 10.1111/bph.16277
- 384 24. Ventetuolo CE, Moutchia J, Baird GL, *et al.* Baseline Sex Differences in Pulmonary Arterial  
385 Hypertension Randomized Clinical Trials. *Ann Am Thorac Soc* 2023;**20**:58-66. doi:  
386 10.1513/AnnalsATS.202203-207OC
- 387 25. Hjalmarsson C, Rådegran G, Kylhammar D, *et al.* Impact of age and comorbidity on risk  
388 stratification in idiopathic pulmonary arterial hypertension. *Eur Respir J* 2018;**51**. doi:  
389 10.1183/13993003.02310-2017
- 390 26. Barst RJ, McGoon MD, Elliott CG, *et al.* Survival in childhood pulmonary arterial hypertension:  
391 insights from the registry to evaluate early and long-term pulmonary arterial hypertension disease  
392 management. *Circulation* 2012;**125**:113-122. doi: 10.1161/circulationaha.111.026591
- 393 27. Humbert M, Kovacs G, Hoeper MM, *et al.* 2022 ESC/ERS Guidelines for the diagnosis and  
394 treatment of pulmonary hypertension. *Eur Heart J* 2022;**43**:3618-3731. doi: 10.1093/eurheartj/ehac237
- 395 28. Jing ZC, Xu XQ, Han ZY, *et al.* Registry and survival study in chinese patients with idiopathic  
396 and familial pulmonary arterial hypertension. *Chest* 2007;**132**:373-379. doi: 10.1378/chest.06-2913
- 397 29. Zhang R, Dai LZ, Xie WP, *et al.* Survival of Chinese patients with pulmonary arterial  
398 hypertension in the modern treatment era. *Chest* 2011;**140**:301-309. doi: 10.1378/chest.10-2327
- 399 30. Humbert M, Kovacs G, Hoeper MM, *et al.* 2022 ESC/ERS Guidelines for the diagnosis and  
400 treatment of pulmonary hypertension. *Eur Respir J* 2023;**61**. doi: 10.1183/13993003.00879-2022
- 401 31. Galiè N, Humbert M, Vachiery JL, *et al.* 2015 ESC/ERS Guidelines for the diagnosis and  
402 treatment of pulmonary hypertension: The Joint Task Force for the Diagnosis and Treatment of  
403 Pulmonary Hypertension of the European Society of Cardiology (ESC) and the European Respiratory  
404 Society (ERS): Endorsed by: Association for European Paediatric and Congenital Cardiology (AEPC),  
405 International Society for Heart and Lung Transplantation (ISHLT). *Eur Heart J* 2016;**37**:67-119. doi:  
406 10.1093/eurheartj/ehv317
- 407 32. Galiè N, Hoeper MM, Humbert M, *et al.* Guidelines for the diagnosis and treatment of pulmonary  
408 hypertension: the Task Force for the Diagnosis and Treatment of Pulmonary Hypertension of the  
409 European Society of Cardiology (ESC) and the European Respiratory Society (ERS), endorsed by the  
410 International Society of Heart and Lung Transplantation (ISHLT). *Eur Heart J* 2009;**30**:2493-2537. doi:  
411 10.1093/eurheartj/ehp297
- 412 33. Galiè N, Torbicki A, Barst R, *et al.* Guidelines on diagnosis and treatment of pulmonary arterial  
413 hypertension. The Task Force on Diagnosis and Treatment of Pulmonary Arterial Hypertension of the  
414 European Society of Cardiology. *Eur Heart J* 2004;**25**:2243-2278. doi: 10.1016/j.ehj.2004.09.014
- 415 34. Talwar A, Morel KC, Perez VD, Talwar A. The Impact of Socioeconomic, Racial, and Ethnic  
416 Disparities on Pulmonary Hypertension Diagnosis and Treatment. *Advances in Pulmonary*

- 417 *Hypertension* 2022. doi:
- 418 35. Hooper MM, Humbert M, Souza R, *et al.* A global view of pulmonary hypertension. *Lancet*  
419 *Respir Med* 2016;**4**:306-322. doi: 10.1016/s2213-2600(15)00543-3
- 420 36. Talwar A, Sahni S, Talwar A, Kohn N, Klinger JR. Socioeconomic status affects pulmonary  
421 hypertension disease severity at time of first evaluation. *Pulm Circ* 2016;**6**:191-195. doi:  
422 10.1086/686489
- 423 37. Wu WH, Yang L, Peng FH, *et al.* Lower socioeconomic status is associated with worse outcomes  
424 in pulmonary arterial hypertension. *Am J Respir Crit Care Med* 2013;**187**:303-310. doi:  
425 10.1164/rccm.201207-1290OC
- 426 38. Zhao J, Wang Q, Wang Q, *et al.* 2020 Chinese Expert-based Consensus on the Diagnosis and  
427 Treatment of Connective Tissue Disease Associated Pulmonary Arterial Hypertension. *Rheumatol*  
428 *Immunol Res* 2021;**2**:63-78. doi: 10.2478/rir-2021-0010

429 **Table 1. Global incidence, deaths, and DALYs and their annual trends of pulmonary arterial**  
 430 **hypertension (PAH).**

	Incidence (95% UI)			Deaths (95% UI)			DALYs (95% UI)		
	Incident cases in 2021 (000s)	ASIR in 2021 (per 100,000)	AAPC of ASIR (95% CI)	Death cases in 2021 (000s)	ASMR in 2021 (per 100,000)	AAPC of ASMR (95% CI)	DALY cases in 2021 (000s)	ASDR in 2021 (per 100,000)	AAPC of ASDR (95% CI)
<b>Global</b>	43.25 (34.7 to 52.44)	0.52 (0.42 to 0.62)	0.10 (0.10 to 0.11)	22.02 (18.24 to 25.35)	0.27 (0.23 to 0.32)	-0.82 (-0.95 to -0.68)	642.1 (552.27 to 728.99)	8.24 (7.14 to 9.39)	-1.52 (-1.64 to -1.40)
<b>Sex</b>									
Female	23.42 (18.89 to 28.35)	0.55 (0.45 to 0.66)	0.12 (0.11 to 0.14)	12.44 (10 to 15.38)	0.28 (0.22 to 0.34)	-0.61 (-0.73 to -0.49)	342.47 (282.65 to 430.64)	8.39 (6.92 to 10.53)	-1.26 (-1.37 to -1.15)
Male	19.83 (15.82 to 24.09)	0.48 (0.39 to 0.58)	0.08 (0.08 to 0.09)	9.58 (7.52 to 11.7)	0.27 (0.21 to 0.33)	-1.04 (-1.17 to -0.92)	299.64 (246.73 to 348.33)	8.06 (6.72 to 9.36)	-1.80 (-1.90 to -1.70)
<b>SDI levels</b>									
High SDI	5.61 (4.5 to 6.96)	0.37 (0.29 to 0.44)	-0.02 (-0.03 to -0.01)	4.62 (3.92 to 5.05)	0.22 (0.19 to 0.23)	-0.59 (-0.75 to -0.44)	93.18 (84.87 to 99.19)	6.16 (5.76 to 6.49)	-1.29 (-1.45 to -1.14)
High-middle SDI	7.73 (6.19 to 9.59)	0.46 (0.37 to 0.55)	0.19 (0.17 to 0.21)	4.33 (3.59 to 5.14)	0.24 (0.2 to 0.29)	-1.22 (-1.50 to -0.95)	99.45 (85.76 to 117.64)	6.48 (5.61 to 7.87)	-2.27 (-2.48 to -2.07)
Middle SDI	14.17 (11.32 to 17.38)	0.53 (0.43 to 0.64)	-0.02 (-0.03 to -0.01)	7.55 (5.14 to 9.03)	0.33 (0.22 to 0.39)	-1.06 (-1.19 to -0.93)	197.17 (148.78 to 232.32)	8.23 (6.26 to 9.7)	-1.78 (-1.92 to -1.64)
Low-middle SDI	9.98 (8.09 to 12.02)	0.59 (0.47 to 0.7)	-0.07 (-0.10 to -0.03)	3.73 (2.76 to 5.09)	0.26 (0.18 to 0.38)	-0.89 (-1.03 to -0.75)	156.4 (122.43 to 194.17)	9.07 (7.05 to 11.6)	-1.59 (-1.70 to -1.47)
Low SDI	5.71 (4.68 to 6.85)	0.71 (0.58 to 0.85)	-0.30 (-0.33 to -0.27)	1.78 (1.15 to 2.54)	0.27 (0.15 to 0.40)	-0.53 (-0.81 to -0.25)	95.34 (67.47 to 133.05)	9.3 (6.08 to 13.2)	-0.92 (-1.04 to -0.80)
<b>Age</b>									
<5 years	1.20 (0.89 to 1.63)	0.18 (0.14 to 0.25)	0.11 (0.10 to 0.12)	1.41 (1.08 to 1.78)	0.21 (0.16 to 0.27)	-3.16 (-3.37 to -2.94)	125.96 (96.51 to 159.4)	19.14 (14.66 to 24.22)	-3.16 (-3.37 to -2.95)
5-9 years	1.26 (0.91 to 1.68)	0.18 (0.13 to 0.24)	0.11 (0.10 to 0.12)	0.15 (0.12 to 0.19)	0.02 (0.02 to 0.03)	-2.07 (-2.31 to -1.84)	12.81 (10.35 to 15.87)	1.86 (1.51 to 2.31)	-2.04 (-2.27 to -1.81)

Age	Incident cases in 2021 (000s)	Incidence rate in 2021 (per 100,000)	AAPC of ASIR (95% CI)	Death cases in 2021 (000s)	Mortality rate in 2021 (per 100,000)	AAPC of ASMR (95% CI)	DALY cases in 2021 (000s)	DALY rate in 2021 (per 100,000)	AAPC of ASDR (95% CI)
10-14 years	1.24 (0.74 to 1.93)	0.19 (0.11 to 0.29)	0.14 (0.13 to 0.15)	0.15 (0.12 to 0.19)	0.02 (0.02 to 0.03)	-1.34 (-1.58 to -1.10)	12.33 (9.82 to 15.35)	1.85 (1.47 to 2.3)	-1.31 (-1.54 to -1.07)
15-19 years	1.34 (0.87 to 2.04)	0.21 (0.14 to 0.33)	0.21 (0.17 to 0.24)	0.26 (0.21 to 0.33)	0.04 (0.03 to 0.05)	-1.04 (-1.18 to -0.91)	19.27 (15.49 to 24.75)	3.09 (2.48 to 3.97)	-1.02 (-1.15 to -0.88)
20-24 years	1.59 (1.03 to 2.35)	0.27 (0.17 to 0.39)	0.21 (0.19 to 0.23)	0.33 (0.26 to 0.42)	0.05 (0.04 to 0.07)	-0.76 (-0.82 to -0.71)	22.87 (18.25 to 28.91)	3.83 (3.06 to 4.84)	-0.71 (-0.80 to -0.61)
25-29 years	1.85 (1.03 to 2.86)	0.31 (0.18 to 0.49)	0.19 (0.18 to 0.20)	0.42 (0.35 to 0.51)	0.07 (0.06 to 0.09)	-0.90 (-0.98 to -0.82)	27.21 (22.50 to 32.56)	4.62 (3.82 to 5.53)	-0.88 (-0.95 to -0.80)
30-34 years	2.32 (1.48 to 3.42)	0.38 (0.25 to 0.57)	0.15 (0.13 to 0.17)	0.4 (0.34 to 0.48)	0.07 (0.06 to 0.08)	-1.03 (-1.21 to -0.85)	24.18 (20.20 to 28.86)	4.00 (3.34 to 4.77)	-0.99 (-1.16 to -0.81)
35-39 years	2.69 (1.79 to 3.89)	0.48 (0.32 to 0.69)	0.14 (0.13 to 0.16)	0.48 (0.41 to 0.56)	0.09 (0.07 to 0.10)	-1.14 (-1.28 to -0.99)	26.53 (22.78 to 30.79)	4.73 (4.06 to 5.49)	-1.09 (-1.23 to -0.95)
40-44 years	2.87 (1.59 to 4.57)	0.57 (0.32 to 0.91)	0.15 (0.13 to 0.17)	0.62 (0.52 to 0.73)	0.12 (0.10 to 0.15)	-1.17 (-1.37 to -0.97)	30.89 (26.22 to 35.88)	6.17 (5.24 to 7.17)	-1.13 (-1.32 to -0.94)
45-49 years	3.33 (2.07 to 4.91)	0.70 (0.44 to 1.04)	0.08 (0.07 to 0.09)	0.52 (0.45 to 0.62)	0.11 (0.09 to 0.13)	-1.26 (-1.41 to -1.10)	23.74 (20.37 to 27.85)	5.01 (4.30 to 5.88)	-1.20 (-1.34 to -1.05)
50-54 years	3.86 (2.57 to 5.59)	0.87 (0.58 to 1.26)	0.08 (0.07 to 0.09)	0.74 (0.62 to 0.86)	0.17 (0.14 to 0.19)	-1.40 (-1.57 to -1.23)	29.66 (25.33 to 34.27)	6.67 (5.69 to 7.70)	-1.34 (-1.52 to -1.15)
55-59 years	4.08 (2.43 to 6.40)	1.03 (0.61 to 1.62)	0.05 (0.02 to 0.08)	1.10 (0.86 to 1.32)	0.28 (0.22 to 0.33)	-1.13 (-1.30 to -0.97)	38.59 (30.61 to 46.13)	9.75 (7.74 to 11.66)	-1.08 (-1.24 to -0.92)
60-64 years	3.89 (2.56 to 5.67)	1.22 (0.80 to 1.77)	0.07 (0.05 to 0.09)	1.15 (0.91 to 1.34)	0.36 (0.28 to 0.42)	-1.17 (-1.31 to -1.04)	34.71 (27.82 to 39.95)	10.85 (8.69 to 12.48)	-1.13 (-1.26 to -1.01)
65-69 years	3.94 (2.85 to 5.29)	1.43 (1.03 to 1.92)	0.07 (0.05 to 0.09)	1.75 (1.38 to 2.08)	0.63 (0.50 to 0.75)	-0.95 (-1.08 to -0.81)	44.13 (34.81 to 52.09)	16.00 (12.62 to 18.88)	-0.92 (-1.03 to -0.81)
70-74 years	3.32 (2.19 to 4.84)	1.61 (1.06 to 2.35)	0.03 (-0.01 to 0.07)	2.23 (1.69 to 2.66)	1.08 (0.82 to 1.29)	-0.75 (-0.89 to -0.61)	46.04 (34.97 to 54.86)	22.37 (16.99 to 26.65)	-0.73 (-0.86 to -0.60)

Age	Incident cases in 2021 (000s)	Incidence rate in 2021 (per 100,000)	AAPC of ASIR (95% CI)	Death cases in 2021 (000s)	Mortality rate in 2021 (per 100,000)	AAPC of ASMR (95% CI)	DALY cases in 2021 (000s)	DALY rate in 2021 (per 100,000)	AAPC of ASDR (95% CI)
75-79 years	2.19 (1.43 to 3.15)	1.66 (1.09 to 2.39)	0.12 (0.10 to 0.13)	2.55 (1.88 to 3.07)	1.93 (1.43 to 2.33)	-0.46 (-0.78 to -0.14)	41.58 (31.08 to 49.95)	31.53 (23.57 to 37.88)	-0.47 (-0.76 to -0.18)
80-84 years	1.34 (0.95 to 1.82)	1.53 (1.09 to 2.08)	0.09 (0.07 to 0.11)	2.79 (2.07 to 3.39)	3.19 (2.36 to 3.87)	-0.15 (-0.38 to 0.09)	35.42 (26.37 to 42.82)	40.44 (30.11 to 48.89)	-0.13 (-0.35 to 0.08)
85-89 years	0.63 (0.39 to 0.99)	1.38 (0.86 to 2.18)	0.07 (0.05 to 0.10)	2.62 (2.03 to 3.07)	5.72 (4.43 to 6.72)	0.28 (0.10 to 0.47)	26.17 (20.30 to 30.62)	57.24 (44.39 to 66.97)	0.26 (0.08 to 0.45)
90-94 years	0.24 (0.14 to 0.38)	1.34 (0.76 to 2.15)	0.09 (0.07 to 0.10)	1.63 (1.27 to 1.92)	9.13 (7.10 to 10.74)	0.60 (0.40 to 0.80)	14.18 (11.02 to 16.65)	79.27 (61.63 to 93.09)	0.60 (0.40 to 0.79)
95+ years	0.08 (0.04 to 0.14)	1.39 (0.67 to 2.64)	0.06 (0.03 to 0.10)	0.72 (0.52 to 0.85)	13.19 (9.51 to 15.60)	0.91 (0.78 to 1.05)	5.82 (4.20 to 6.87)	106.77 (77.07 to 126.03)	0.88 (0.75 to 1.01)

431

432 DALYs, disability-adjusted life-years; ASIR, age-standardized incidence rate; ASMR,  
 433 age-standardized mortality rate; ASDR, age-standardized disability-adjusted life-year rate; AAPC,  
 434 average annual percentage change; UI, uncertainty interval; CI, confidence interval.

435

436

437

438

439

440

441

442

443

444

445

446

447

448

449

450

451

452

453

454

455

456 **Figure legends**

457 **Figure 1. Global numbers and rates of incidence, deaths and DALYs of PAH by age and sex**  
458 **in 2021.** The dotted lines indicate 95% upper and lower uncertainty intervals. DALY,  
459 disability-adjusted life-year. (A) The numbers and rates of incidence. (B) The numbers and rates of  
460 deaths. (C) The numbers and rates of DALYs.

461 **Figure 2. Age-standardized rates of PAH in global and 21 GBD regions by SDI from 1990 to**  
462 **2021.** 32 continuous points plotted for each GBD region represent the age-standardized rates from  
463 1990 to 2021 for that region. (A) Disease burden of ASIRs. (B) Disease burden of ASMRs. (C)  
464 Disease burden of ASDRs. GBD, Global Burden of Disease; SDI, Socio-Demographic Index;  
465 ASIR, age-standardized incidence rate; ASMR, age-standardized mortality rate; ASDR,  
466 age-standardized disability-adjusted life-year rate.

467 **Figure 3. Age-standardized DALY rates and the annual trends of PAH in 204 countries and**  
468 **territories.** (A) Disease burden of ASDRs in 2021. (B) The average annual percent changes of  
469 ASDRs between 1990 and 2021.

470 **Figure 4. The inequality of PAH disease burden worldwide in 1990 and 2021.** Absolute  
471 inequality of disease burden was evaluated by SII analysis.

472

473

474

475

476

477

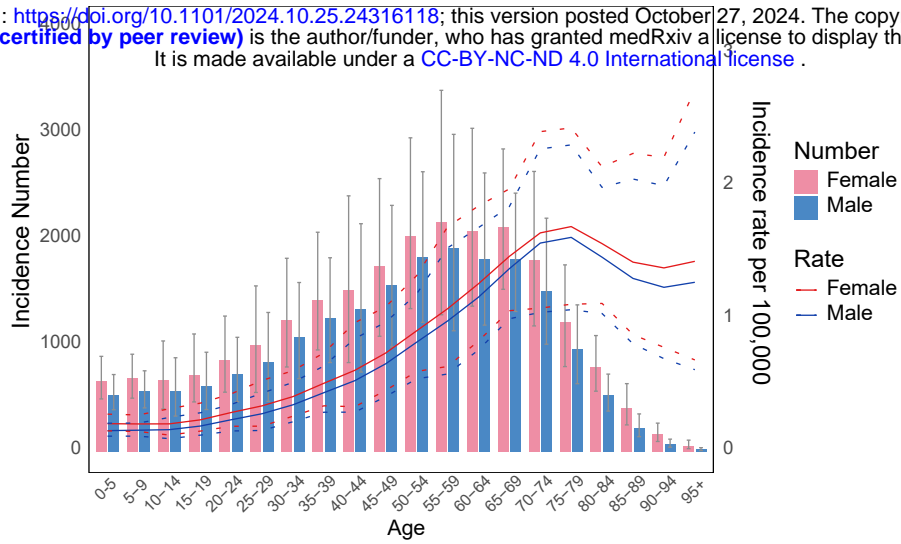
478

479

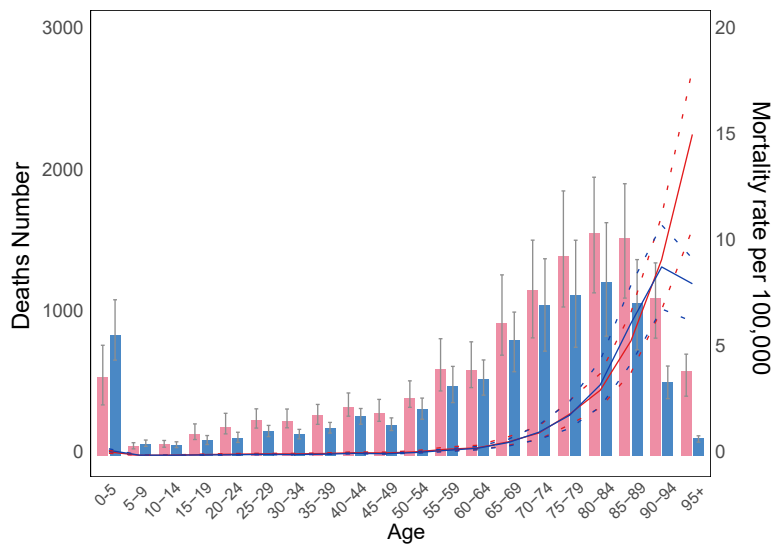
480

A

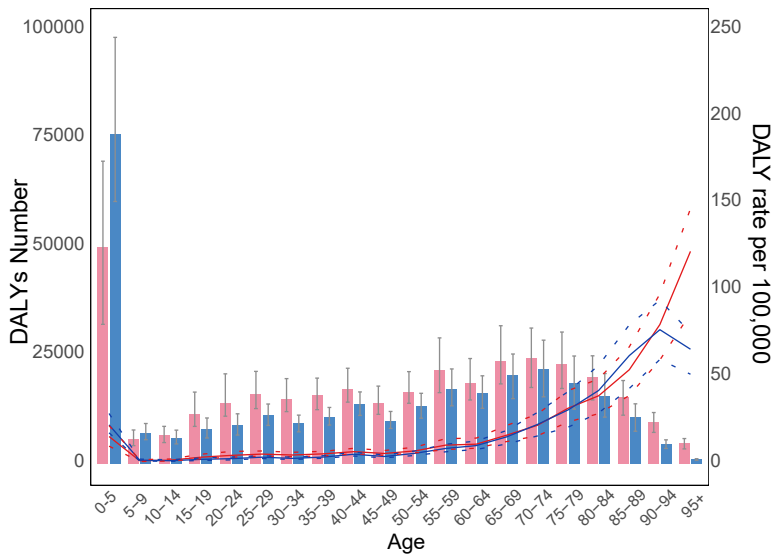
medRxiv preprint doi: <https://doi.org/10.1101/2024.10.25.24316118>; this version posted October 27, 2024. The copyright holder for this preprint (which was not certified by peer review) is the author/funder, who has granted medRxiv a license to display the preprint in perpetuity. It is made available under a [CC-BY-NC-ND 4.0 International license](https://creativecommons.org/licenses/by-nc-nd/4.0/).



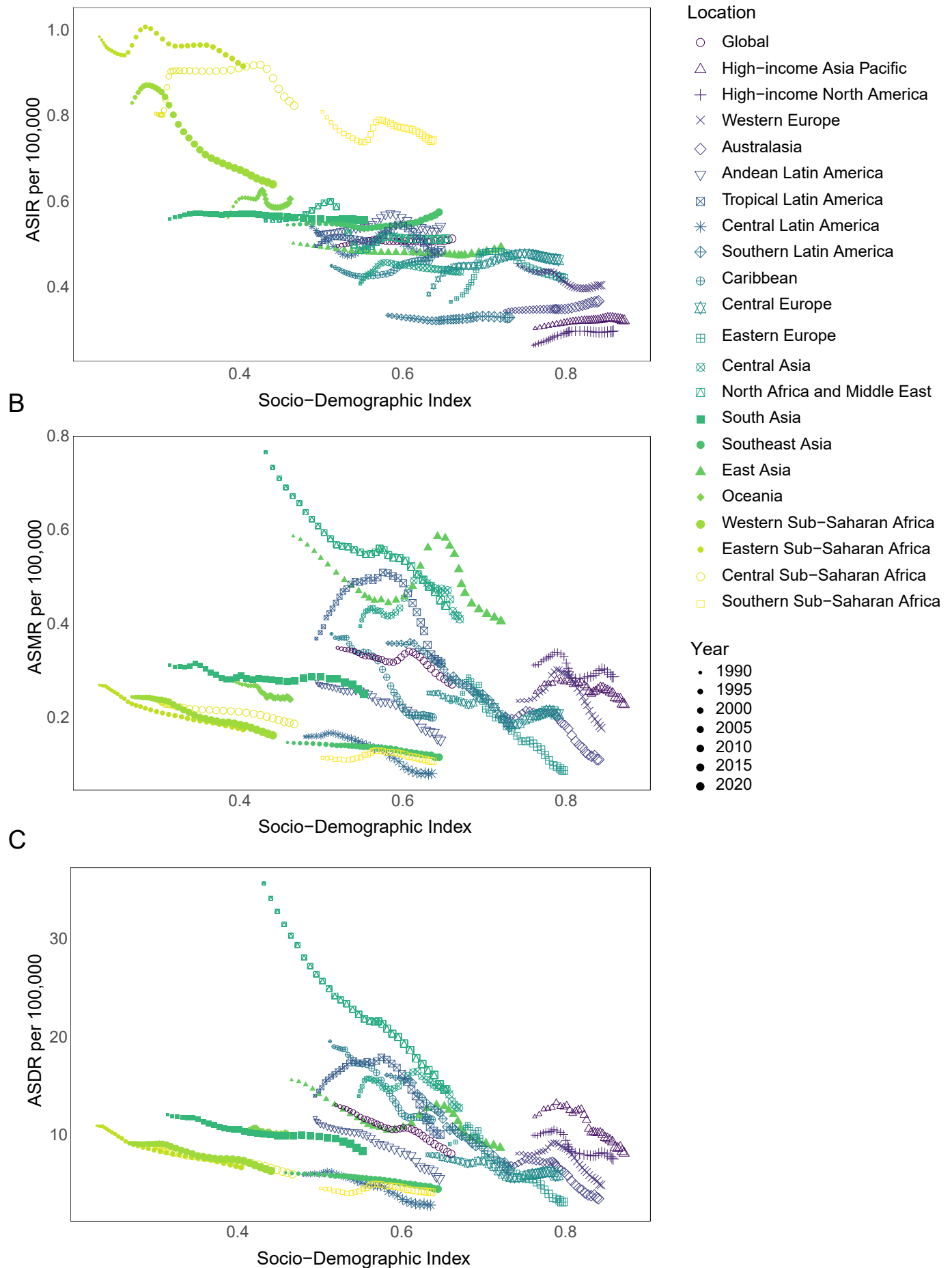
B



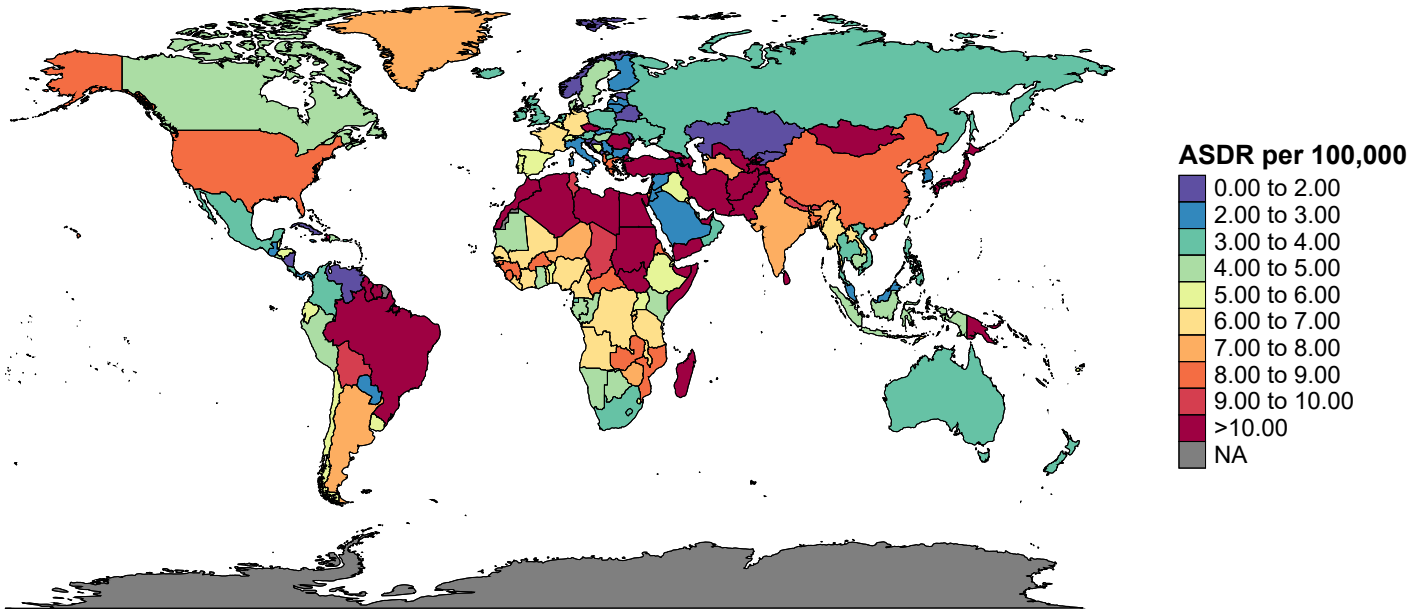
C



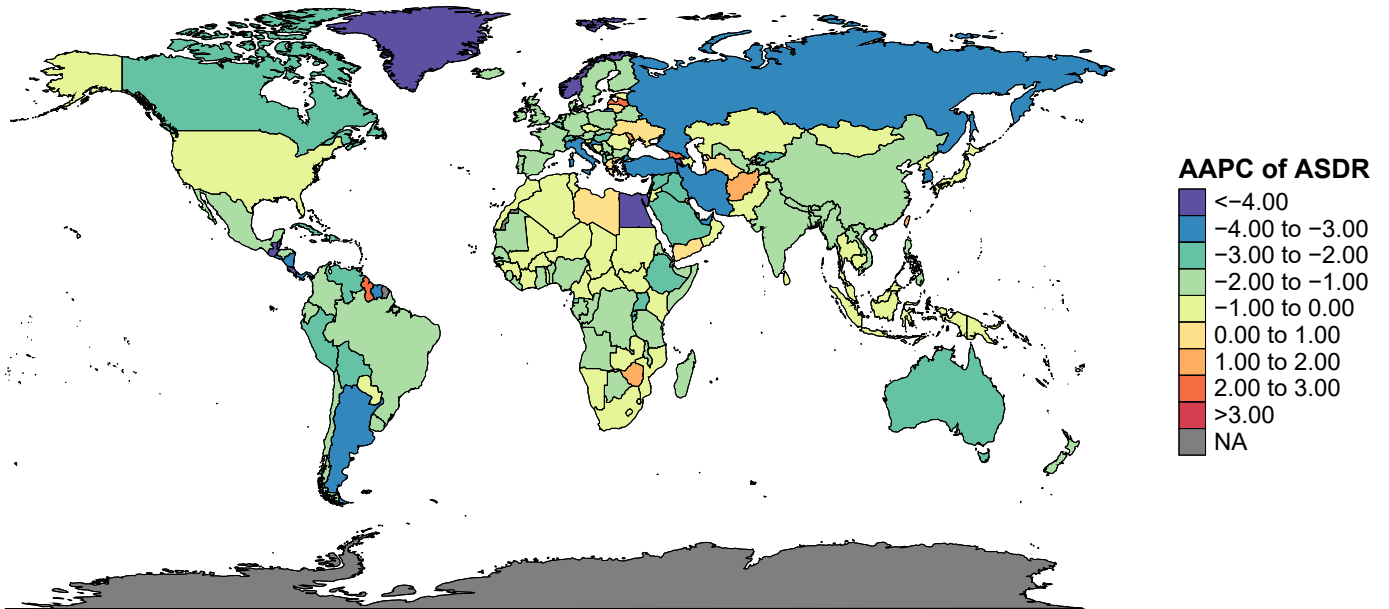




A



B



It is made available under a [CC-BY-NC-ND 4.0 International license](https://creativecommons.org/licenses/by-nc-nd/4.0/).

