

Prevalence and factors associated with iron deficiency anaemia among preterm infants attending clinics in Dodoma, Tanzania: A facility- based cross sectional study.

Christer R Mchwampaka¹, MD, Dina C. Mahamba¹, MD, Shubi Matovelo²,
MD, Shakilu Jumanne¹,

Authors' institutional affiliations

¹Department of Paediatrics & Child Health, University of Dodoma Tanzania

²Department of Biochemistry and Physiology, University of Dodoma, Dodoma,

Correspondence: Dina Mahamba, M.D

E-mail: +255755788427, dinamahamba@gmail.com

Department of Paediatrics & Child Health; College of Health Sciences- University of Dodoma, Box 395, Dodoma- Tanzania

Abstract

Aim: Iron deficiency anemia (IDA) among preterm infants is a global public health problem due to its effects on development, immunity and general growth that may be irreversible. Despite the high burden of preterm births in Tanzania the prevalence and factors associated with IDA among preterm infants remains relatively understudied and this constituted of the aim of this study.

Methods: A cross-sectional analytical study design was conducted among 190 preterm infants who attended pediatric clinic in Dodoma City from December 2022 to May 2023. Socio-demographic, clinical information, and laboratory markers of hemoglobin and iron status were obtained. Logistic regression analysis was applied to determine factors associated with the outcome (Iron Deficiency Anaemia).

Results: A total of 190 preterm infants were enrolled in the study and the mean age was 4.01 months (SD \pm 0.99 month. The prevalence of IDA among preterm infants was 11.58%. Factors associated with IDA were very low birth weight (AOR 6.906, CI: 1.4774-32.359, *p value* < 0.0142), preterm infant not supplemented with Iron (AOR 6.282, CI:1.045-37.763, *p value*< 0.0446, multiple pregnancies (AOR 6.848, CI:1.692-27.708, *p value* <0.0006) and severe anaemia during pregnancy (AOR 11.998, CI:5.068-40.197, *p value*< 0.0001).

Conclusion: Iron deficiency anemia was found to be 11.58% which fall under public health problem under WHO classification. To reduce IDA among preterm infants, there has to be an emphasis on iron supplementation to all preterm infants, and those with very low birth weight, born from mother who had multiple pregnancy and severe anaemia during pregnancy need close follow up and improved postnatal

Keynotes

- This study enrolled 190 preterm infants attending pediatric clinic in Dodoma city to determine factors associated with iron deficiency anaemia (IDA)
- Globally IDA in preterm infants range between 25 to 80, which complicates their prematurity by causing poor growth, poor functioning of multiple organ systems, poor neurological development and contributes to death and disability
- Iron supplementation to all preterm infants is highly recommended

Key words: Iron deficiency anaemia, Preterm infants

Background

Iron deficiency anemia (IDA) develops when the body's iron reserves are insufficient to maintain the regular synthesis of red blood cells (RBCs), inadequate dietary iron, impaired iron absorption, bleeding, or loss of body iron in the urine may be the cause (Hempel & Bollard, 2016) IDA among preterm infants is documented as a global public health problem, with prevalence ranging from 25% to 80%(Ferri et al., 2014)This is consistent with world health organization (WHO)'s standard, revealing that when the IDA prevalence is 5% it is considered a public health burden (Paulley & Duff, 2022). Preterm infants in the first week of life had 26.4 times likely to develop iron depletion which can lead to IDA compared to term infants with normal birth weights , the high prevalence of IDA among preterm infants has been associated with low iron stores at birth, early onset of erythropoiesis, rapid catch-up growth, iatrogenic blood loss , limited dietary sources of iron, (Moreno-Fernandez et al., 2019). IDA in preterm infants complicates their prematurity by causing poor growth, poor functioning of multiple organ systems, and poor neurological development (McCarthy et al., 2019a).This leads to the increase of infant mortality rates (Moreno-Fernandez et al., 2019)

In sub-Saharan Africa, IDA is not well reported especially for preterm infants , most of the studies have reported the prevalence of IDA for under five children accounting to 60% (Lemoine & Tounian, 2020) ,In East Africa according to a study done by Hellen in Kenya to assess the prevalence of iron deficiency and iron deficiency anaemia in low-birth-weight infants on follow -up at Kenyatta National Hospital was 14.5% (Hellen G, 2019). In Tanzania few conducted studies demonstrated (44.2%)

prevalence of IDA among infants in Dar es Salaam (Omar Lweno et al., 2022) and 50% among under-five age children in Kilimanjaro (Urio et al. 2019).

The factors that were documented to be associated with IDA among preterm infants include Birth weight and phlebotomy (Beard et al., 2007; Ganjigunta et al., 2021; Strauss, 2010) Gestation type (Ru et al., 2016; Shinar et al., 2017), Age (Hassan et al., 2016) feeding practices preterm infants and mothers who are not supplemented with iron during pregnancy, Low hemoglobin level, maternal illness (Gurung et al., 2020b: (Q.Li et al.,2019)

In Tanzania, only few studies have been conducted and the factors were generalised to infants and under five year's children not specific to preterm infants, the factors stated included; maternal hemoglobin, sex of the child, low income, low birth weight, small for gestational age (SGA), preterm delivery, and dietary status of infants and women (Omar Lweno et al., 2022). This study aimed to determine the prevalence and factors associated with iron deficiency anaemia in preterm infants attending premature clinic in Dodoma city.

Methods

This was a hospital based analytical cross section study design conducted at pediatric clinic at Dodoma Region Referral Hospital (DRRH) and RCH clinic in Makole health centre in Dodoma city, central Tanzania. Duration of study was six months starting from December 2022 to May 2023. The average attendance of preterm per months at paediatric clinic is 88 at DRRH, and 32 per months at RCH clinic at Makole Health centre. Paediatric clinic at DRRH serves infants who have been discharged from the DRRH and therefore infants from other facilities before reaching the target weight of 2.5kg. At DRRH, each visit to the clinic, preterm infant's weight and vital signs are carefully monitored to track their progress. Additionally, the pediatric clinic ensures that the preterm infants receive appropriate supplementation by providing iron and multivitamin supplements, blood investigations like full blood picture, blood grouping and cross matching are taken from infants whose assessment findings by attending doctor dictate. RCH clinic at Makole Health Centre receive large population of infants' average of 40 for immunization according to their age as per Expanded Programme on Immunization.

3.7 The sample size

The sample size was calculated using the Kish & Leslie

$$N = \frac{Z^2 P(1 - P)}{d^2}$$

Whereby:

- N = sample size
- Z = score for 95% Confidence Interval which is 1.96
- P = prevalence in a previous study
- d = tolerable error set at 5%,

P = Prevalence of IDA in preterm infants with low birth weight from previous study which was 14.5% was used according to study done in Kenya at Kenyatta National Hospital in 2019 (Hellen G, 2019)

The study included preterm infants aged 3 to 6 months, (infants born before < 37 completed weeks) Confirmed by RCH card 4

Infants with feeding difficulties due to different medical conditions example congenital anomalies like cleft lip and palate, hydrocephalus, history of bleeding, who were sick were, (eg high temperature $\geq 38^{\circ}\text{C}$) were excluded

Preterm infants meeting the inclusion criteria were consecutively enrolled until the required sample size was attained

Enrolment was done only after parents/guardians had signed a written informed consent at admission in the neonatal ward. Ethical approval to conduct the study was granted by the University of Dodoma research and ethical review board with ethical clearance reference number MA.84/261/59/154. Permission to conduct the study was sought from the DRRH and Makole Health centre administration. A pretested structured data collection sheet was used to extract demographic, medical history, clinical data of preterm infants and mothers, enrolled in the study. Physical examination and laboratory results was done on all preterm infants up component of the study. Social demographic data such as place of residence, age, sex, gestation age, weight, current feeding practices, phlebotomy and iron supplement status were recorded, also parents' or guardians' Gestation type, last hemoglobin level before delivery, any maternal illness like pregnancy induced hypertension, gestation diabetics and postpartum hemorrhage were collected. Each participant was examined for paleness and any sign of iron deficiency anemia like brittle or spoon-shaped nails.

Under aseptic technique peripheral vein was identified and tourniquet applied 4-5 inches from the puncture site, by using a gauge needle, the skin was punctured to access the vein. Approximately 6 milliliters of venous blood drawn. 4 milliliter was kept in the red top blood Collection tube for CRP and serum ferritin test, 2milliliter were kept on an EDTA purple top blood collection tube for Full Blood Picture test. All samples were kept in ice bag 2-8 centigrade, then transported to the lab according to laboratory instructions. (FBP) was measured using CELL-DYN Ruby hematology (Genway Biotech, USA) whereas serum ferritin and CRP were measured using Snibe Maglumi 800 analyser (Genway Biotech, USA). From the FBP; Hb level, MCV, and MCH were determined. All the samples were tested at DRRH laboratory, samples collected from Makole Health Center were collected and transported to DRRH Laboratory through Cool box temperature of 2C to 8C. IDA was defined if they met any of the following criteria: HB < 10, MCV < 80fl, MCHC <32 g/ dl, (Serum Ferritin < 12 ug/L and CRP < 5 mg/dL)

Data analysis was done using the Statistical Package for Social Science (SPSS) software version 25. Categorical variables were summarized using percentages (%) and frequency distributions, whereas mean and median with their measures of distributions were used to summarize continuous variables. Multinomial logistic regression was used to determine the association between clinical and laboratory factors and adverse outcomes for IDA. Variables with a p-value of < 0.2 for unadjusted multinomial logistic analysis were included in the adjusted multinomial logistic regression analysis to determine independent factors associated with IDA poor outcomes. Odds ratios were reported with 95% confidence interval and variables with p values of <0.05 were considered statistically significant.

Results

From December 2022 to May 2023, A total of 190 enrolled in this study 139 from DRRH and 51 from Makole Health Centre

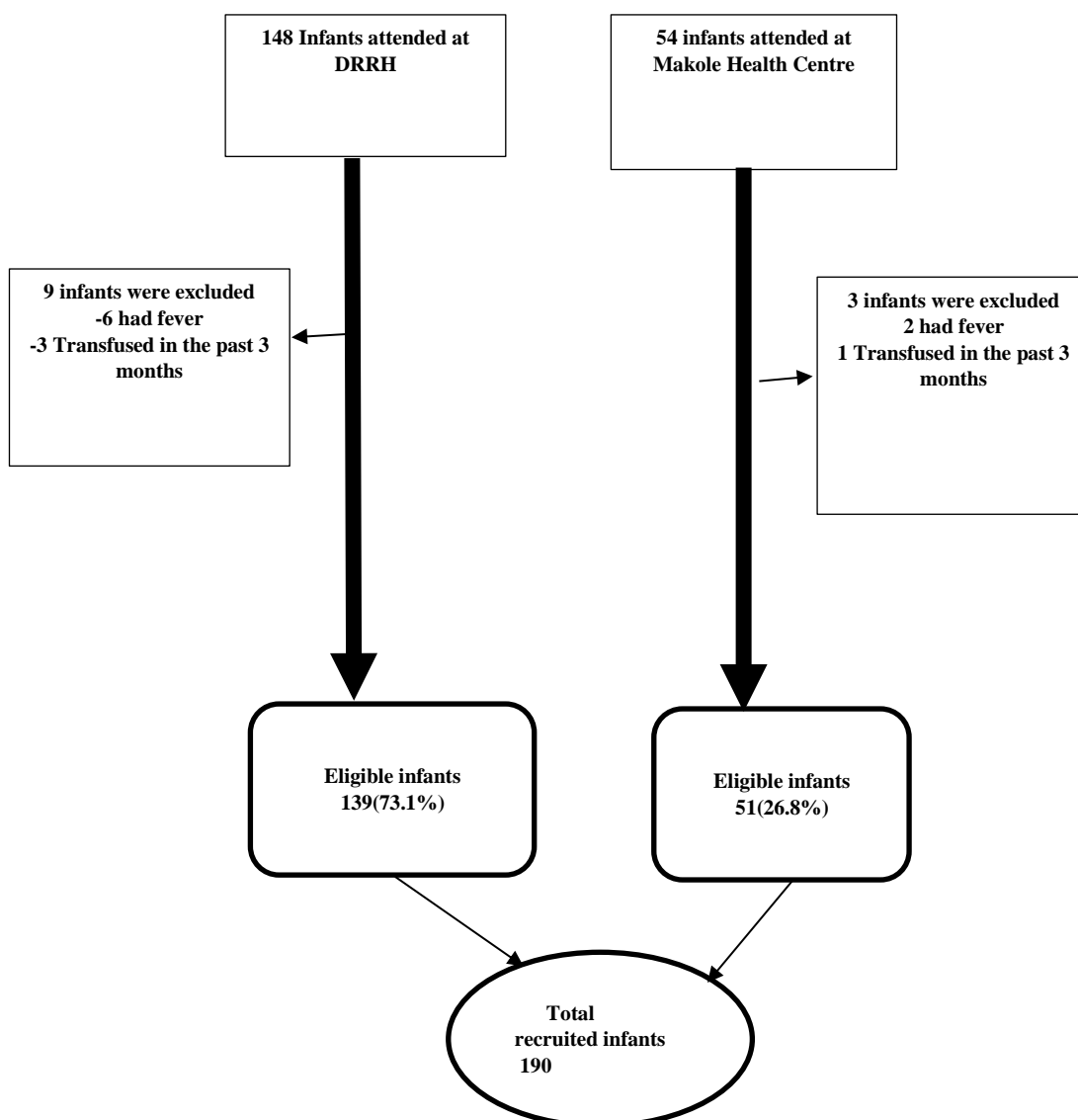


Figure 1: Flow chart of Enrolled in preterm infants

RESULTS

A total of 190 preterm infant with response rate of were enrolled in this study. 139 from pediatric clinic at DRRH and 51 from Makole Health were enrolled in this study

Infant and maternal demographic data and clinical characteristics

Majority of preterm infants 109, (57.37%) were females. Mean age was 4.01 months (SD 0.99 month). Majority of infants (157, (82.63%) were born as singletons, more than half 123 (64.74%) had birth weight of 1.5 kg or more and 175 infants (92.11%) were on iron supplements. Most 145(90.65%) of the mothers had no maternal illness (pregnancy induced hypertension, gestation diabetics and postpartum hemorrhage) during pregnancy and 22(11.58) had severe anaemia. **Table 1** summarizes the demographic data characteristics of the infants and maternal

Table 1: Infant and maternal demographic and clinical characteristics by IDA

	Frequency	Percent
Age (months)		
3-4	131	68.95
5-6	59	31.05
Sex		
Female	109	57.37
Male	81	42
Birth weight in kg		
<1.5 (Very low birth weight)	67	35.26
1.5 ≤2.5 (Low birth weight)	123	64.74
GA at birth in weeks		
<32 (Very preterm)	76	40.00
32-33(moderate preterm)	40	21.05
34-37(Late preterm)	74	38.95
Phlebotomy since birth		
None	66	34.74
1-2 times	106	55.79
>2 times	18	9.47
Current feeding practices		
Exclusive breastfeeding	146	76.84
Mixed feeding	44	23.165
Iron supplementation		
No	15	7.89
Yes	175	92.11
Pallor		
Pale	75	39.47

Not pale	115	60.53
Gestation type		
Single tone	157	82.63
Multiple pregnancy	33	17.37
Duration of iron supplements (months)		
<3	44	23.16
≥ 3	146	76.84
Last hb before delivery		
<7g/dl severe anaemia	22	11.58
≥7g/dl mild and anaemia to normal	168	88.42
Any maternal illness during pregnancy (PIH, gestational diabetes, antepartum hemorrhage and malaria)		
Yes	30	15.79
No	160	84.21
Laboratory findings of the infants		
Hemoglobin (hb)		
Normal (> 10g/dl)	125(65.79)	
Low (<10g/dl)	65(34.21)	

Prevalence of IDA among infants born preterm

The total of twenty-two of the 190 study participants had IDA making overall prevalence of IDA among preterm infants to be 11.58%

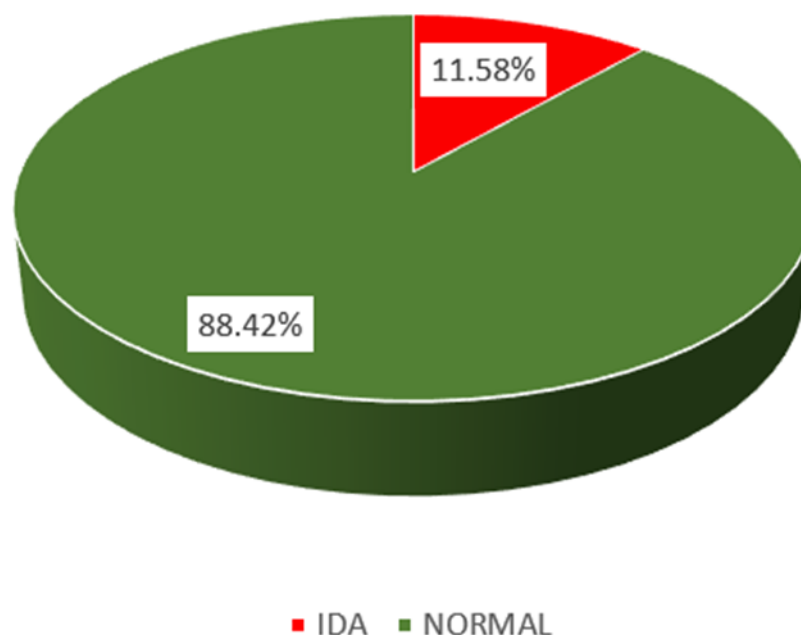


Figure 1: Prevalence of Iron deficiency anaemia among preterm infants

Factors associated with Iron deficiency anemia among preterm infants aged 3 to 6 months.

Chi-square test was used to assess the factors associated with iron deficiency anemia (IDA) among preterm infants (3 to 6 months). In this study the findings show, that IDA was associated with very low birth weight ($p < 0.0001$), preterm infants who are not on iron supplementation ($p = < 0.0001$), very preterm (gestation age at birth of less than 32 weeks) ($p = 0.0165$), multiple pregnancy ($p = 0.007$), duration of Iron supplementation of maternal of less than 3 month ($p = 0.0084$) and severe anemia during pregnancy ($p = 0.0011$). See table 2 for further observation of the findings

Table 2: Chi-square test and results on the assessment of factors associated with iron deficiency anemia (IDA) among preterm infants (aged 3 to 6 months)

Variables	No IDA N (%)	IDA N (%)	Chi- square	P-Value
Infant factors				
Age (months)				
3-4	116(88.55)	15(11.45)	0.0068	0.9342
5-6	52(88.14)	7(11.86)		
Sex				
Female	97(88.99)	12(11.01)	0.00811	0.7758
Male	71(87.650)	10(12.35)		
Birth weight(kg)				

<1.5 (Very low birth weight)	54(80.60)	13(19.40)	15.8739	<.0001
1.5+ (Low birth weight)	114(92.68)	9(7.32)		
GA at birth (weeks)				
<32 (Very preterm)	62(81.58)	14(18.42)	8.2121	0.0165
32-33Early moderate)	37(92.50)	3(7.50)		
34-37 (Late moderate preterm)	69(93.24)	5(6.76)		
Phlebotomy since birth				
Zero	60(90.91)	6(9.09)	5.1619	0.0757
1-2 times	95(89.62)	11(10.38)		
>2 times	13(72.22)	5(27.78)		
Feeding practices				
Exclusive breastfeeding	130(89.04)	16(10.96)	0.2367	0.6266
Mixed feeding (Breast feeding with formular milk)	38(86.36)	6(13.64)		
Iron supplementation				
No	6(40.00)	9(60.00)		<.0001*
Yes	162(92.57)	13(7.43)		
Maternal characteristics				
Gestation type				
Singleton	145(92.36))	12(7.64)		0.0010*
Multiple pregnant	23(69.70)	10(30.30)		
Duration of iron supplementation (months)				
<3	34(77.27)	10(22.73)	6.95510	0.0084
≥3	134(91.78)	12(8.22)		
Last hb before delivery				<.0001*
<7g/dl (severe anaemia)	11(50.00)	11(50.00)		
>7g/dl no severe anaemia)	157(93.45)	11(6.55)		
Maternal illness during pregnancy any of the maternal illness (PIH, Malaria, gestational diabetes, antepartum hemorrhage)				0.0547*
Yes	23(76.67)	7(23.33)		
No	145(90.63)	15(9.38)		

4.5 Factors associated with iron deficiency anemia and preterm infants aged 3 to 6 months.

Binary logistic regression was used to determine the factors association with iron deficiency anemia among preterm infants aged 3 to 6 months. which revealed that; Very low birth weight (OR6.80, *p value* <0.0003), Low gestation age (OR3.14, *p value* <0.0028), having more phlebotomy (OR3.85, *p value* <0.047), Preterm Infant not supplemented with Iron (OR18.69, *p value* <0.000), mothers who had multiple pregnancy (OR5.26, *p value* <0.001), Less than 3 months on iron supplemented with Iron during pregnancy (OR3.29, *p value* <0.011), Low Hb for mothers before delivery (OR14.27, *p value* <0.000), maternal illness during pregnancy (OR2.94, *p value* <0.034). All those factors with *p value* <0.25 at bivariate level were subjected to multivariate model.

Upon adjusted binary logistic regression; only four factors with *p value* <0.05 at 95% CI remained significant associated with IDA, the factors included: Very low birth weight (OR6.91, *p value* <0.014), preterm infant not supplemented with Iron (OR6.28, *p value* <0.045), mothers who had multiple pregnancy (OR6.85, *p value* <0.007) and Low Hb for mothers before delivery (OR11.99, *p value* <0.001).

Table 3 summarizes the factors associated with iron deficiency anaemia.

Table 3: Logistic Regression for Factors Associated with Iron Deficiency Anaemia for Preterm Infants Aged 3 to 6 Months

	No IDA N (%)	IDA N (%)	UNADJUSTED		ADJUSTED	
Infant factors						
Variable	168(88.42)	22(11.58)	OR [95% CI]	P-Value	AOR [95%CI]	P-Value
Birth weight(kg)						
<1.5	54(80.60)	13(19.40)	6.800[2.386,19.383]	0.0003	6.906[1.474,32.359]	0.0142
1.5+	114(92.68)	9(7.32)	Ref		Ref	
GA at birth(weeks)						
<32	62(81.58)	14(18.42)	3.139[1.134,8.689]	0.0276	1.988[0.450,8.784]	0.3645
32-33	37(92.50)	3(7.50)	0.633[0.122,3.283]	0.5859	1.179[0.166,8.369]	0.8692
34-37	69(93.24)	5(6.76)	Ref		Ref	
Phlebotomy since birth						
No	60(90.91)	6(9.09)	Ref		Ref	
1-2 (times)	95(89.62)	11(10.38)	1.158[0.407,3.295]	0.7835	0.369[0.082,1.664]	0.1944
>2 (times)	13(72.22)	5(27.78)	3.847[1.018,14.541]	0.0470	1.843[0.200,16.941]	0.5892
Iron supplementations						
No	6(40.00)	9(60.00)	18.692[5.759,60.674]		6.282[1.045,37.763]	
Yes	162(92.57)	13(7.43)	Ref	<.0001	Ref	0.0446
Maternal factors						
Gestation type						
Single tone	145(92.36))	12(7.64)	Ref		Ref	
Multiple pregnant	23(69.70)	10(30.30)	5.255[2.037,13.554]	0.0006	6.848[1.692,27.708]	0.0070
Duration of iron supplements during pregnancy (months)						
<3	34(77.27)	10(22.73)	3.285[1.309,8.240]	0.0113	1.835[0.452,7.457]	0.3960
≥ 3	134(91.78)	12(8.22)	Ref		Ref	
Last hb before delivery						
<7 g/dl (severe anemia)	11(50.00)	11(50.00)	14.273[5.068,40.197]	<.0001	11.998[2.699,53.335]	0.0011
≥7g/dl (not severe anaemia)	157(93.45)	11(6.55)	Ref		Ref	
Maternal illness during pregnancy (Any of maternal illness Malaria, PIH, gestational, diabetes and antepartum hemorrhage)						
Yes	23(76.67)	7(23.33)	2.942[1.083,7.992]	0.0343	2.398[0.490,11.742]	0.2807
No	145(90.63)	15(9.38)	Ref		Ref	

CHAPTER FIVE

DISCUSSION

Iron deficiency anemia (IDA) leads to poor growth, poor functioning of multiple organ systems, poor neurological development, effects on memory, cognition and auditory brain responses and irreversible long-term complications such as bone diseases among preterm infants. In Tanzania few conducted studies demonstrated high (44.2%) prevalence of IDA among infants in Dar es Salaam (Omar Lweno et al., 2022). Prevention is achieved by early initiation of iron supplementation of elemental iron for preterm infants as prophylaxis against IDA. In this cross-section study 190 preterm infants were enrolled. The study aimed to determine the prevalence and factors associated with IDA in preterm infants aged 3 to 6 months. The prevalence of IDA was found to be 11.58%. Very low birth weight, (birth weight less than 1.5kg, those who were not supplemented by iron, and those mothers who had multiple gestation and severe anemia were strongly associated with occurrence of IDA.

The overall prevalence of iron deficiency anemia (IDA) in this study was found to be 11.58%. This is a public health problem as defined by WHO that if prevalence $\geq 5\%$ (measuring by ferritin concentrations below the recommended cut off values (Paulley & Duff, 2022)). However it is almost similar to the study that was conducted in Sweden at Umea University that found the prevalence of IDA to be 9.9% (Berglund et al., 2010). Similarity in findings may be attributed by age groups of preterm infants in both studies that were within 6 months following birth, all infants had low birth weight and majority in both groups were exclusive breastfeeding. The findings in this study were also close to another study done in Kenya that revealed prevalence of 14.6% for IDA (Hellen W Githaiga, 2019). Similarity in the prevalence could be possibly due to the fact that both studies involved children with low birth weight, same study design, majority of infants were on iron supplements, similar culture setting, availability of health services and majority of infants were 6 months and below same as current study.

The prevalence of this study was low compared to the study conducted in Turkey which found the prevalence of Iron deficiency anemia in late-preterm infants to be 42.8% (Ozdemir et al., 2013). This observed differences in findings can be attributed by the fact that participants involved in Turkey were not on iron supplement unlike this study where by majority of participants (92.57%) were on iron supplementation, this might have led to the higher prevalence in the study conducted Turkey since the documented evidence indicate that premature infants who are not supplemented

are associated with IDA (Ozdemir et al., 2010). In addition, the study in Turkey included, lower age premature infants (2 to 4 months) that utilize and need more Iron for their growth compared to 3 to 6 months age used in our study. Postnatal, iron stores can be rapidly depleted during the first six to eight weeks, coinciding with the onset of erythropoiesis and rapid catch-up growth (Rao & Georgieff, 2009). Additionally, another study conducted in Brazil reported a higher prevalence of 26.5% among preterm infants with very low birth weight aged one year of corrected age (Ferri et al., 2014). The difference may be attributed by difference in the birth weight for the study population where the study focused on infants with less than 1.5 kg and gestation age of <34 weeks compared to the current study that considered infants with less than 2.5 kg and gestation age <37 weeks. The documented evidence indicates that higher demand of Iron in infants with low birth weight is due to rapid growth, also most of the iron transfer to fetus does occur during the third trimester, therefore the level of IDA increases as gestation age decreases, (Jopling et al., 2014)

Furthermore the finding in the current study was higher compared to the study conducted in Indonesia which revealed the prevalence of 6% (Puspitasari et al., 2017). This difference probably is due to involvement of participants born at very preterm (gestation age of 28 weeks to the current study compared that of Indonesia, which involve moderate to late preterm (gestation age of 32 <37) as documented that there is associated between IDA and low gestation age this is due to increase of rapid growth, high iron needs and reduced iron store (Omar Lweno et al., 2022).

Basing on the findings of the current study, preterm infants with very low birth weight (less than 1.5kg) were six-fold more likely to have IDA compared to their counterparts (above 1.5kg) This result is comparable to others studies conducted in Korea, India and Brazil where their results indicated a positive association of low birth weight with IDA (Ganjigunta et al., 2021; Joo et al., 2016; Ferri et al., 2014). Different studies demonstrated a correlation between a lower birth weight and IDA in infants, this is mainly attributed by lower store of iron at birth and higher iron requirements due to increased postnatal growth (Moreno-Fernandez et al., 2019). Iron is an essential element for the function of growing and differentiating cells so if there is in rapid growth as seen in very low birth more iron is needed compare to low birth weight (Ferri et al., 2014)

In this study we observed that preterm infants who had iron supplementation were less likely to develop IDA. This result is comparable to other studies conducted in Indonesia and China which revealed similar correlation (Berglund et al., 2010; Li et al., 2021). Also a systematic study that evaluated iron supplementation in preterm and low-birth-weight infants, confirmed that iron supplementation increased hemoglobin and ferritin concentrations and a reduction in iron

deficiency anemia (McCarthy et al., 2019b). Another study conducted in Italy that found similar correlation went further to explain the association basing on the fact that the more the duration of iron supplementation, the higher the possibility of increased hemoglobin and ferritin concentrations and a reduction in iron deficiency anemia, (Raffaelli et al., 2020). It has also been documented that maternal iron is transferred to fetus during the third trimester of gestation but once the transfer is interrupted by preterm birth iron stored deprived, thus preterm infants that are not supplemented with iron end up with IDA(Berglund et al., 2010).

The current study revealed that mothers who had low hemoglobin level during pregnancy increased the odds of having preterm infants with IDA. This finding is similar to the study done in Philippines, of which the results indicated that at 6 months evidence from the 2015–16 TDHS-MIS cross-sectional household survey in Tanzania (Msaki et al., 2022), which found a similar result and is supported by other evidence that suggested that anemic pregnant women are more likely to have preterm infant (Gurung et al., 2020), and hence increased the risk for IDA. In addition other research evidence conclude that preterm infants are deprived of the significant iron deposit that occurs in the third trimester of pregnancy and have reduced iron stores at birth compared with term infants (McCarthy et al., 2019b). This effect is more severe when the woman had anemia in pregnancy especially in the third trimester, the observed result and association could be linked to maternal anemia during pregnancy which has correlation to having infant with LBW(Enawgaw et al., 2019; Figueiredo et al., 2019). Another study conducted at Era Lucknow Medical College in India (Shukla et al., 2019) on effect of maternal anemia on the status of iron stores in infants, concluded that maternal IDA may have an effect on the iron stores of newborns. During pregnancy, the mother's body prioritizes transferring iron to the developing fetus. As a result, mother with anemia may have lower iron stores herself, and this can affect the iron stores that are transferred to the baby in utero.(Terefe et al., 2015)

It was also uncovered by this study that mothers who had multiple pregnancy were more likely to have preterm infants with IDA compared to those who had a singleton pregnancy. The current study results concurs with what was reported in the study conducted at the Ohio State University Wexner Medical Center in USA which concluded that twin babies born preterm (≤ 37 weeks) are at greater risk of low iron stores at birth and of ID later in infancy (Campbell et al., 2022). It could further be linked to the fact that iron deficiency and anemia are prevalent in women with multiple pregnancy (Ru et al., 2016), so that for pre-term twin babies, the odds for IDA increases as found

in our study. The maternal iron requirements are increased during twin pregnancies, estimated to be 1.8 times more than during singleton pregnancies, due to increased foetal and placental needs as well as increased maternal plasma volume expansion and red blood cell mass (Shinar et al., 2017). Therefore, compared to singleton gestations, maternal hemoglobin (Hgb) in multiple pregnancies is lower in all trimesters, with an estimated IDA rate of 2.4 to even 4 times (Shinar et al., 2017)

6.1 Conclusion

This study revealed that Iron Deficiency Anaemia is prevalent among preterm infants aged 3 to 6 months at health facilities in Dodoma city despite majority of them being on haematinics supplement. The prevalence was found to be 11.58%, the very low birth weight of the preterm infants, preterm infant not supplemented with Iron, mothers who had multiple pregnancy and mothers having low Hb before delivery were associate with IDA. Emphasis on iron supplementation to all preterm infants, and those with very low birth weight, born from mother who had multiple pregnancy and severe anaemia during pregnancy need close follow up and improved postnatal to reduce IDA.

Acknowledgements

We cannot express enough gratitude to the women who consented to let their preterm infants to participate in the study. Special thanks to Dr Halima Kasimu in charge of pediatric clinic from DRRH and Sr Josephine Dikoko incharge from Makole health centre and all the staff at the at premature clinicat DRRH and RCH clinic .

Funding

No funding was obtained for this study.

Conflict of interest

The authors report no conflict of interest

CRM: Conceptualization of the project, data collection and analysis and preparation of the manuscript draft

DM: Conceptualization of the project, data analysis and preparation of the final manuscript

SM: Conceptualization of the project, data analysis and preparation of the final manuscript

SJ: Conceptualization of the project, data analysis and preparation of the final manuscript

References

- Beard, J., deRegnier, R. A., Shaw, M. D., Rao, R., & Georgieff, M. (2007). Diagnosis of iron deficiency in infants. *Laboratory Medicine*, 38(2), 103–108. <https://doi.org/10.1309/7KJ11RX758UKLXXM>
- Berglund, S., Westrup, B., & Domellof, M. (2010). Iron Supplements Reduce the Risk of Iron Deficiency Anemia in Marginally Low Birth Weight Infants. *PEDIATRICS*, 126(4), e874–e883. <https://doi.org/10.1542/peds.2009-3624>
- Campbell, R. K., Buhimschi, C. S., Zhao, G., Dela Rosa, C., Stetson, B. T., Backes, C. H., & Buhimschi, I. A. (2022). Prevalence of and risk factors for iron deficiency in twin and singleton newborns. *Nutrients*, 14, 3854. <https://doi.org/10.3390/nu14183854>
- Enawgaw, B., Birhanie, M., Terefe, B., & Asrie, F. (2019). Prevalence of anemia and iron deficiency among pregnant women attending antenatal care service at University of Gondar Hospital, Northwest Ethiopia. *Clin Lab*, 65(4). <https://doi.org/10.7754/Clin.Lab.2018.180822>.
- Ferri, C., Procianoy, R. S., & Silveira, R. C. (2014). Prevalence and risk factors for iron-deficiency anemia in very-low-birth-weight preterm infants at 1 year of corrected age. *Journal of Tropical Pediatrics*, 60(1), 53–60. <https://doi.org/10.1093/tropej/fmt077>
- Figueiredo, A. C. M. G., Gomes-Filho, I. S., Batista, J. E. T., Orrico, G. S., Porto, E. C. L., Cruz Pimenta, R. M., dos Santos Conceição, S., Brito, S. M., Ramos, M. de S. X., Sena, M. C. F., Vilasboas, S. W. S. L., Seixas da Cruz, S., & Pereira, M. G. (2019). Maternal anemia and birth weight: A prospective cohort study. *Plos One*, 14(3), e0212817. <https://doi.org/10.1371/journal.pone.0212817>
- Ganjigunta, V., Ahirrao, V. S., R., P., & B., R. (2021). Study of iron deficiency anemia in infants of 3 to 6 months age group and its risk factors: a cross sectional study. *International Journal of Contemporary Pediatrics*, 8(7), 1183. <https://doi.org/10.18203/2349-3291.ijcp20212469>
- Gurung, A., Wrammert, J., Sunny, A. K., Gurung, R., Rana, N., Basaula, Y. N., Paudel, P., Pokhrel, A., & Kc, A. (2020). Incidence, risk factors and consequences of preterm birth - findings from a multi-centric observational study for 14 months in Nepal. *Archives of Public Health*, 78(1), 1–9. <https://doi.org/10.1186/S13690-020-00446-7/TABLES/2>
- Hassan, F., El-Gendy, F., Badra, H., Kamal Eldin, S., & Elsayyad, D. . (2016). Evaluation of iron-deficiency anemia in infancy. *Menoufia Medical Journal*, 29(2), 269. <https://doi.org/10.4103/1110-2098.192412>
- Hempel, E. V., & Bollard, E. R. (2016). The Evidence-Based Evaluation of Iron Deficiency

- Anemia. *Medical Clinics of North America*, 100(5), 1065–1075.
<https://doi.org/10.1016/j.mcna.2016.04.015>
- I, Urio, G., Beyanga, G., Musyoka, A., Ndaro, A., Mwitalemi, R., Maro, M., Majaliwa, E., Kinabo, G., & Mmbaga, B. (2019). Iron Depletion, Iron Deficiency, and Iron Deficiency Anaemia Among Children Under 5 Years Old in Kilimanjaro, Northern Tanzania: A Hospital-Based Cross-Sectional Study. *East African Health Research Journal*, 3(1), 42–47.
<https://doi.org/10.24248/eahrj.v3i1.597>
- Joo, E. Y., Kim, K. Y., Kim, D. H., Lee, J. E., & Kim, S. K. (2016). Iron deficiency anemia in infants and toddlers. *Blood Research*, 51(4), 268–273.
<https://doi.org/10.5045/br.2016.51.4.268>
- Jopling, J., Henry, E., Wiedmeier, S. E., & Christensen, R. D. (2014). *Reference Ranges for Hematocrit and Blood Hemoglobin Concentration During the Neonatal Period : Data From a Multihospital Health*. 123. <https://doi.org/10.1542/peds.2008-2654>
- Lemoine, A., & Tounian, P. (2020). Childhood anemia and iron deficiency in sub-Saharan Africa – risk factors and prevention: A review. *Archives de Pediatrie*, 27(8), 490–496.
<https://doi.org/10.1016/j.arcped.2020.08.004>
- Li, M., Lv, Y., Ying, J., Xu, L., Chen, W., Zheng, Q., Ji, C., & Shao, J. (2021). Effect of Daily Iron Supplementation on Infantile Iron Homeostasis in Preterm Infants. *Frontiers in Pediatrics*, 9(May), 1–10. <https://doi.org/10.3389/fped.2021.687119>
- McCarthy, E. K., Dempsey, E. M., & Kiely, M. E. (2019a). Iron supplementation in preterm and low-birth-weight infants: A systematic review of intervention studies. *Nutrition Reviews*, 77(12), 865–877. <https://doi.org/10.1093/nutrit/nuz051>
- McCarthy, E. K., Dempsey, E. M., & Kiely, M. E. (2019b). Iron supplementation in preterm and low-birth-weight infants: a systematic review of intervention studies. *Nutrition Reviews*, 77(12), 865–877. <https://doi.org/10.1093/NUTRIT/NUZ051>
- Moreno-Fernandez, J., Ochoa, J. J., Latunde-Dada, G. O., & Diaz-Castro, J. (2019). Iron deficiency and iron homeostasis in low birth weight preterm infants: A systematic review. *Nutrients*, 11(5), 1–20. <https://doi.org/10.3390/nu11051090>
- Msaki, R. V., Lyimo, E., Masumo, R. M., Mwana, E., Katana, D., Julius, N., Munuo, A., Leyna, G., Issaka, A. I., Dhimi, M. V., & Agho, K. E. (2022). Predictors of iron deficiency anaemia among children aged 6–59 months in Tanzania: Evidence from the 2015–16 TDHS-MIS cross-sectional household survey. *PLOS Global Public Health*, 2(11), e0001258.
<https://doi.org/10.1371/journal.pgph.0001258>

- Omar Lweno, Ellen Hertzmark, Anne Marie Darling, Ramadhani Noor, Leguma Bakari, Christopher Sudfeld, Karim Manji, & Wafaie Fawzi. (2022). The High Burden and Predictors of Anemia Among Infants Aged 6 to 12 Months in Dar es Salaam, Tanzania. *Food and Nutrition Bulletin*, 43(1), 68–83. <https://doi.org/10.1177/03795721211007009>
- Ozdemir, Decsi, T., Domello, M., Embleton, A. N. D., Fusch, C., Genzel-boroviczeny, O., Goulet, O., & Kalhan, S. C. (2010). *Enteral Nutrient Supply for Preterm Infants : Commentary From the European Society for Paediatric*. 50(1), 85–91. <https://doi.org/10.1097/MPG.0b013e3181adaee0>
- Puspitasari, H. A., Windiastuti, E., & Hendarto, A. (2017). Iron profiles of preterm infants at two months of chronological age. *Paediatrica Indonesiana*, 56(5), 277. <https://doi.org/10.14238/pi56.5.2016.277-84>
- Raffaelli, G., Manzoni, F., Cortesi, V., Cavallaro, G., Mosca, F., & Ghirardello, S. (2020). Iron homeostasis disruption and oxidative stress in preterm newborns. *Nutrients*, 12(6), 1–21. <https://doi.org/10.3390/nu12061554>
- Rao, R., & Georgieff, M. K. (2009). Iron therapy for preterm infants. *Clinics in Perinatology*, 36(1), 27–42.
- Ru, Y., Pressman, E. K., Cooper, E. M., Guillet, R., Katzman, P. J., Kent, T. R., Bacak, S. J., & O'Brien, K. O. (2016). Iron deficiency and anemia are prevalent in women with multiple gestations. *American Journal of Clinical Nutrition*, 104(4), 1052–1060. <https://doi.org/10.3945/ajcn.115.126284>
- Shinar, S., Skornick-rapaport, A., & Maslovitz, S. (2017). *Iron Supplementation in Twin Pregnancy — The Benefit of Doubling the Iron Dose in Iron Deficient Pregnant Women : A Randomized Controlled Trial*. 20(5), 419–424. <https://doi.org/10.1017/thg.2017.43>
- Shukla, A. K., Srivastava, S., & Verma, G. (2019). *Effect of maternal anemia on the status of iron stores in infants* : 118–122. <https://doi.org/10.4103/jfcm.JFCM>
- Strauss, R. G. (2010). Anaemia of prematurity: pathophysiology and treatment. *Blood Reviews*, 24(6), 221–225.
- Terefe, B., Birhanu, A., Nigussie, P., & Tsegaye, A. (2015). *Effect of Maternal Iron Deficiency Anemia on the Iron Store of Newborns in Ethiopia*. 2015, 8–11.

Abbreviations	
DRRH	Dodoma Regional Referral Hospital
EDTA	Ethylene Diaminetetraacetic Acid

FBP	Full Blood Picture
RCH	Reproductive and Child Health
DRRH	Dodoma Regional Referral Hospital
g/dl	Gram per Deciliters
Hb	Hemoglobin
VLBW	Very Low Birth Weight
WHO	World Health Organization

References

- Beard, J., deRegnier, R. A., Shaw, M. D., Rao, R., & Georgieff, M. (2007). Diagnosis of iron deficiency in infants. *Laboratory Medicine*, 38(2), 103–108. <https://doi.org/10.1309/7KJ11RX758UKLXXM>
- Berglund, S., Westrup, B., & Domellof, M. (2010). Iron Supplements Reduce the Risk of Iron Deficiency Anemia in Marginally Low Birth Weight Infants. *PEDIATRICS*, 126(4), e874–e883. <https://doi.org/10.1542/peds.2009-3624>
- Campbell, R. K., Buhimschi, C. S., Zhao, G., Dela Rosa, C., Stetson, B. T., Backes, C. H., & Buhimschi, I. A. (2022). Prevalence of and risk factors for iron deficiency in twin and singleton newborns. *Nutrients*, 14, 3854. <https://doi.org/10.3390/nu14183854>
- Enawgaw, B., Birhanie, M., Terefe, B., & Asrie, F. (2019). Prevalence of anemia and iron deficiency among pregnant women attending antenatal care service at University of Gondar Hospital, Northwest Ethiopia. *Clin Lab*, 65(4). <https://doi.org/10.7754/Clin.Lab.2018.180822>.
- Ferri, C., Procianoy, R. S., & Silveira, R. C. (2014). Prevalence and risk factors for iron-deficiency anemia in very-low-birth-weight preterm infants at 1 year of corrected age. *Journal of Tropical Pediatrics*, 60(1), 53–60. <https://doi.org/10.1093/tropej/fmt077>
- Figueiredo, A. C. M. G., Gomes-Filho, I. S., Batista, J. E. T., Orrico, G. S., Porto, E. C. L., Cruz Pimenta, R. M., dos Santos Conceição, S., Brito, S. M., Ramos, M. de S. X., Sena, M. C. F., Vilasboas, S. W. S. L., Seixas da Cruz, S., & Pereira, M. G. (2019). Maternal anemia and birth weight: A prospective cohort study. *Plos One*, 14(3), e0212817. <https://doi.org/10.1371/journal.pone.0212817>
- Ganjigunta, V., Ahirrao, V. S., R., P., & B., R. (2021). Study of iron deficiency anemia in infants

- of 3 to 6 months age group and its risk factors: a cross sectional study. *International Journal of Contemporary Pediatrics*, 8(7), 1183. <https://doi.org/10.18203/2349-3291.ijcp20212469>
- Gurung, A., Wrammert, J., Sunny, A. K., Gurung, R., Rana, N., Basaula, Y. N., Paudel, P., Pokhrel, A., & Kc, A. (2020). Incidence, risk factors and consequences of preterm birth - findings from a multi-centric observational study for 14 months in Nepal. *Archives of Public Health*, 78(1), 1–9. <https://doi.org/10.1186/S13690-020-00446-7/TABLES/2>
- Hassan, F., El-Gendy, F., Badra, H., Kamal Eldin, S., & Elsaiyad, D. . (2016). Evaluation of iron-deficiency anemia in infancy. *Menoufia Medical Journal*, 29(2), 269. <https://doi.org/10.4103/1110-2098.192412>
- Hempel, E. V., & Bollard, E. R. (2016). The Evidence-Based Evaluation of Iron Deficiency Anemia. *Medical Clinics of North America*, 100(5), 1065–1075. <https://doi.org/10.1016/j.mcna.2016.04.015>
- I, Urio, G., Beyanga, G., Musyoka, A., Ndaro, A., Mwitalemi, R., Maro, M., Majaliwa, E., Kinabo, G., & Mmbaga, B. (2019). Iron Depletion, Iron Deficiency, and Iron Deficiency Anaemia Among Children Under 5 Years Old in Kilimanjaro, Northern Tanzania: A Hospital-Based Cross-Sectional Study. *East African Health Research Journal*, 3(1), 42–47. <https://doi.org/10.24248/eahrj.v3i1.597>
- Joo, E. Y., Kim, K. Y., Kim, D. H., Lee, J. E., & Kim, S. K. (2016). Iron deficiency anemia in infants and toddlers. *Blood Research*, 51(4), 268–273. <https://doi.org/10.5045/br.2016.51.4.268>
- Jopling, J., Henry, E., Wiedmeier, S. E., & Christensen, R. D. (2014). *Reference Ranges for Hematocrit and Blood Hemoglobin Concentration During the Neonatal Period : Data From a Multihospital Health*. 123. <https://doi.org/10.1542/peds.2008-2654>
- Lemoine, A., & Tounian, P. (2020). Childhood anemia and iron deficiency in sub-Saharan Africa – risk factors and prevention: A review. *Archives de Pediatrie*, 27(8), 490–496. <https://doi.org/10.1016/j.arcped.2020.08.004>
- Li, M., Lv, Y., Ying, J., Xu, L., Chen, W., Zheng, Q., Ji, C., & Shao, J. (2021). Effect of Daily Iron Supplementation on Infantile Iron Homeostasis in Preterm Infants. *Frontiers in Pediatrics*, 9(May), 1–10. <https://doi.org/10.3389/fped.2021.687119>
- McCarthy, E. K., Dempsey, E. M., & Kiely, M. E. (2019a). Iron supplementation in preterm and

- low-birth-weight infants: A systematic review of intervention studies. *Nutrition Reviews*, 77(12), 865–877. <https://doi.org/10.1093/nutrit/nuz051>
- McCarthy, E. K., Dempsey, E. M., & Kiely, M. E. (2019b). Iron supplementation in preterm and low-birth-weight infants: a systematic review of intervention studies. *Nutrition Reviews*, 77(12), 865–877. <https://doi.org/10.1093/NUTRIT/NUZ051>
- Moreno-Fernandez, J., Ochoa, J. J., Latunde-Dada, G. O., & Diaz-Castro, J. (2019). Iron deficiency and iron homeostasis in low birth weight preterm infants: A systematic review. *Nutrients*, 11(5), 1–20. <https://doi.org/10.3390/nu11051090>
- Msaki, R. V., Lyimo, E., Masumo, R. M., Mwana, E., Katana, D., Julius, N., Munuo, A., Leyna, G., Issaka, A. I., Dhimi, M. V., & Agho, K. E. (2022). Predictors of iron deficiency anaemia among children aged 6–59 months in Tanzania: Evidence from the 2015–16 TDHS-MIS cross-sectional household survey. *PLOS Global Public Health*, 2(11), e0001258. <https://doi.org/10.1371/journal.pgph.0001258>
- Omar Lweno, Ellen Hertzmark, Anne Marie Darling, Ramadhani Noor, Leguma Bakari, Christopher Sudfeld, Karim Manji, & Wafaie Fawzi. (2022). The High Burden and Predictors of Anemia Among Infants Aged 6 to 12 Months in Dar es Salaam, Tanzania. *Food and Nutrition Bulletin*, 43(1), 68–83. <https://doi.org/10.1177/03795721211007009>
- Ozdemir, Decsi, T., Domello, M., Embleton, Ñ. Ñ. N. D., Fusch, C., Genzel-boroviczeny, O., Goulet, O., & Kalhan, S. C. (2010). *Enteral Nutrient Supply for Preterm Infants : Commentary From the European Society for Paediatric*. 50(1), 85–91. <https://doi.org/10.1097/MPG.0b013e3181adaee0>
- Puspitasari, H. A., Windiastuti, E., & Hendarto, A. (2017). Iron profiles of preterm infants at two months of chronological age. *Paediatrica Indonesiana*, 56(5), 277. <https://doi.org/10.14238/pi56.5.2016.277-84>
- Raffaeli, G., Manzoni, F., Cortesi, V., Cavallaro, G., Mosca, F., & Ghirardello, S. (2020). Iron homeostasis disruption and oxidative stress in preterm newborns. *Nutrients*, 12(6), 1–21. <https://doi.org/10.3390/nu12061554>
- Rao, R., & Georgieff, M. K. (2009). Iron therapy for preterm infants. *Clinics in Perinatology*, 36(1), 27–42.
- Ru, Y., Pressman, E. K., Cooper, E. M., Guillet, R., Katzman, P. J., Kent, T. R., Bacak, S. J., &

- O'Brien, K. O. (2016). Iron deficiency and anemia are prevalent in women with multiple gestations. *American Journal of Clinical Nutrition*, 104(4), 1052–1060. <https://doi.org/10.3945/ajcn.115.126284>
- Shinar, S., Skornick-rapaport, A., & Maslovitz, S. (2017). *Iron Supplementation in Twin Pregnancy — The Benefit of Doubling the Iron Dose in Iron Deficient Pregnant Women : A Randomized Controlled Trial*. 20(5), 419–424. <https://doi.org/10.1017/thg.2017.43>
- Shukla, A. K., Srivastava, S., & Verma, G. (2019). *Effect of maternal anemia on the status of iron stores in infants* : 118–122. <https://doi.org/10.4103/jfcm.JFCM>
- Strauss, R. G. (2010). Anaemia of prematurity: pathophysiology and treatment. *Blood Reviews*, 24(6), 221–225.
- Terefe, B., Birhanu, A., Nigussie, P., & Tsegaye, A. (2015). *Effect of Maternal Iron Deficiency Anemia on the Iron Store of Newborns in Ethiopia*. 2015, 8–11.

Factors associated with iron deficiency anaemia and preterm infants aged 3 to 6 months.

Binary logistic regression was used to determine the factors association with iron deficiency anaemia among preterm infants aged 3 to 6 months. which revealed that; Very low birth weight (OR6.80, p value <0.0003), Low gestation age (OR3.14, p value <0.028), having more phlebotomy (OR3.85, p value <0.047), Preterm Infant not supplemented with Iron (OR18.69, p value <0.000), mothers who had multiple pregnancy (OR5.26, p value <0.001), Less than 3 months on iron supplemented with Iron during pregnancy (OR3.29, p value <0.011), Low Hb for mothers before delivery (OR14.27, p value <0.000), maternal illness during pregnancy (OR2.94, p value <0.034). All those factors with p value <0.25 at bivariate level were subjected to multivariate model.

Upon adjusted binary logistic regression; only four factors with p value <0.05 at 95% CI remained significant associated with IDA, the factors included: Very low birth weight (OR6.91, p value <0.014), preterm infant not supplemented with Iron (OR6.28, p value <0.045), mothers who had multiple pregnancy (OR6.85, p value <0.007) and Low Hb for mothers before delivery (OR11.99, p value <0.001

Table 1: Chi-square test and results on the assessment of factors associated with iron deficiency anemia (IDA) among preterm infants (aged 3 to 6 months)

Variables	No IDA N (%)	IDA N (%)	Chi-square	P-Value
Infant factors				
Age (months)				
3-4	116(88.55)	15(11.45)	0.0068	0.9342
5-6	52(88.14)	7(11.86)		
Birth weight(kg)				
<1.5 (Very low birth weight)	54(80.60)	13(19.40)	15.8739	<.0001
1.5+ (Low birth weight)	114(92.68)	9(7.32)		
GA at birth (weeks)				
<32 (Very preterm)	62(81.58)	14(18.42)	8.2121	0.0165
32-33Early moderate)	37(92.50)	3(7.50)		
34-37 (Late moderate preterm)	69(93.24)	5(6.76)		
Phlebotomy since birth				
Zero	60(90.91)	6(9.09)	5.1619	0.0757
1-2 times	95(89.62)	11(10.38)		
>2 times	13(72.22)	5(27.78)		

Feeding practices

Exclusive breastfeeding	130(89.04)	16(10.96)	0.2367	0.6266
Mixed feeding (Breast feeding with formular milk)	38(86.36)	6(13.64)		

Iron supplementation

No	6(40.00)	9(60.00)		<.0001*
Yes	162(92.57)	13(7.43)		

Maternal characteristics**Gestation type**

Singleton	145(92.36)	12(7.64)		0.0010*
Multiple pregnant	23(69.70)	10(30.30)		

medRxiv preprint doi: <https://doi.org/10.1101/2024.10.25.24316098>; this version posted October 28, 2024. The copyright holder for this preprint (which was not certified by peer review) is the author/funder, who has granted medRxiv a license to display the preprint in perpetuity.

It is made available under a [CC-BY 4.0 International license](https://creativecommons.org/licenses/by/4.0/).

Duration of iron supplementation**(months)**

<3	34(77.27)	10(22.73)	6.95510	0.0084
≥3	134(91.78)	12(8.22)		

Last hb before delivery

<7g/dl (severe anemia)	11(50.00)	11(50.00)		<.0001*
>7g/dl no severe anemia)	157(93.45)	11(6.55)		

Maternal illness during**pregnancy**

any of the maternal illness (PIH, Malaria, gestational diabetes, antepartum hemorrhage)

Yes	23(76.67)	7(23.33)		0.0547*
-----	-----------	----------	--	---------

No	145(90.63)	15(9.38)
----	------------	----------

medRxiv preprint doi: <https://doi.org/10.1101/2024.10.25.24316098>; this version posted October 28, 2024. The copyright holder for this preprint (which was not certified by peer review) is the author/funder, who has granted medRxiv a license to display the preprint in perpetuity.
It is made available under a [CC-BY 4.0 International license](#) .

From December 2022 to May 2023, A total of 190 enrolled in this study 139 from DRRH and 51 from Makole Health Centre

medRxiv preprint doi: <https://doi.org/10.1101/2024.10.25.24316098>; this version posted October 28, 2024. The copyright holder for this preprint (which was not certified by peer review) is the author/funder, who has granted medRxiv a license to display the preprint in perpetuity. It is made available under a [CC-BY 4.0 International license](https://creativecommons.org/licenses/by/4.0/).

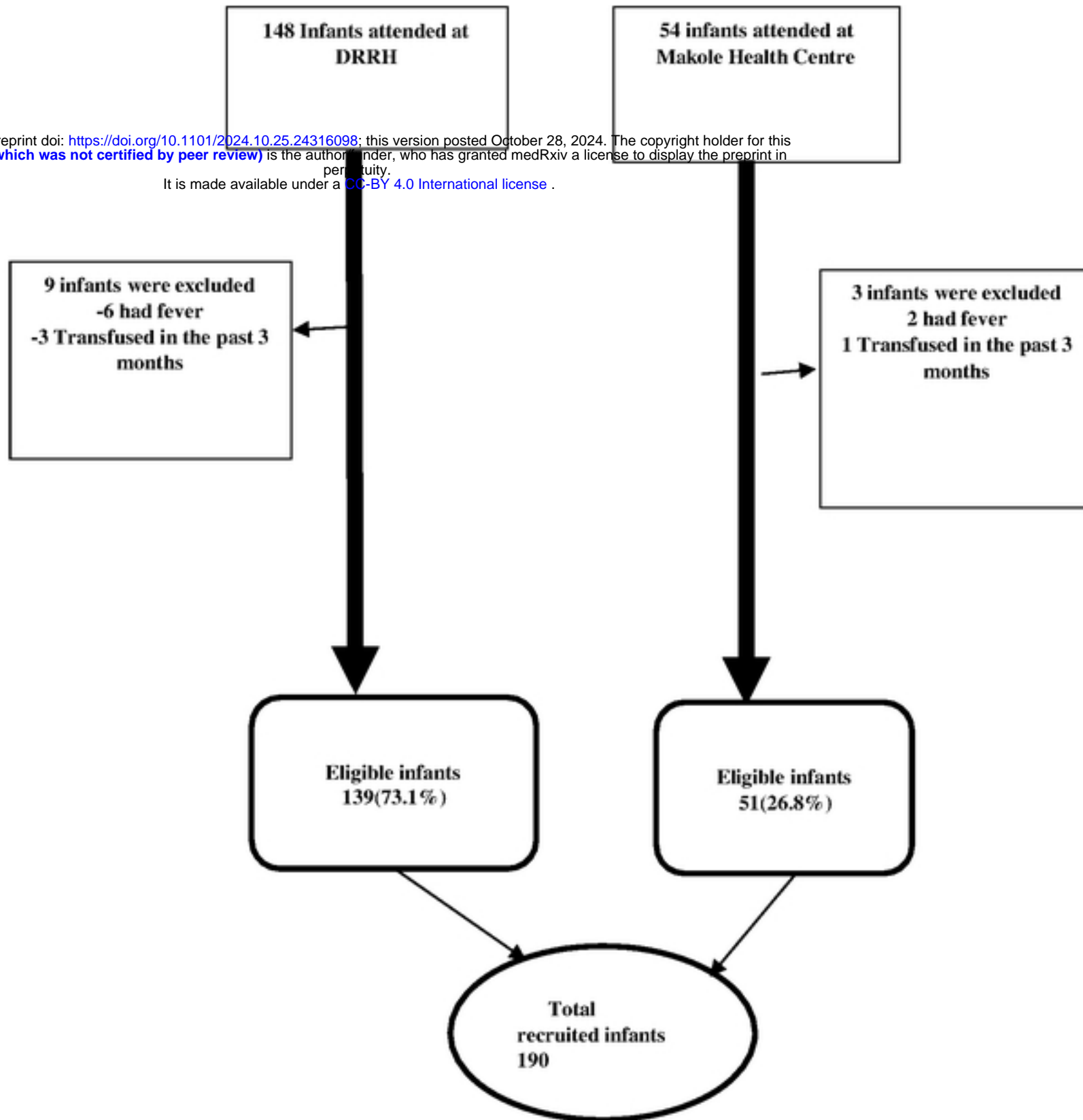
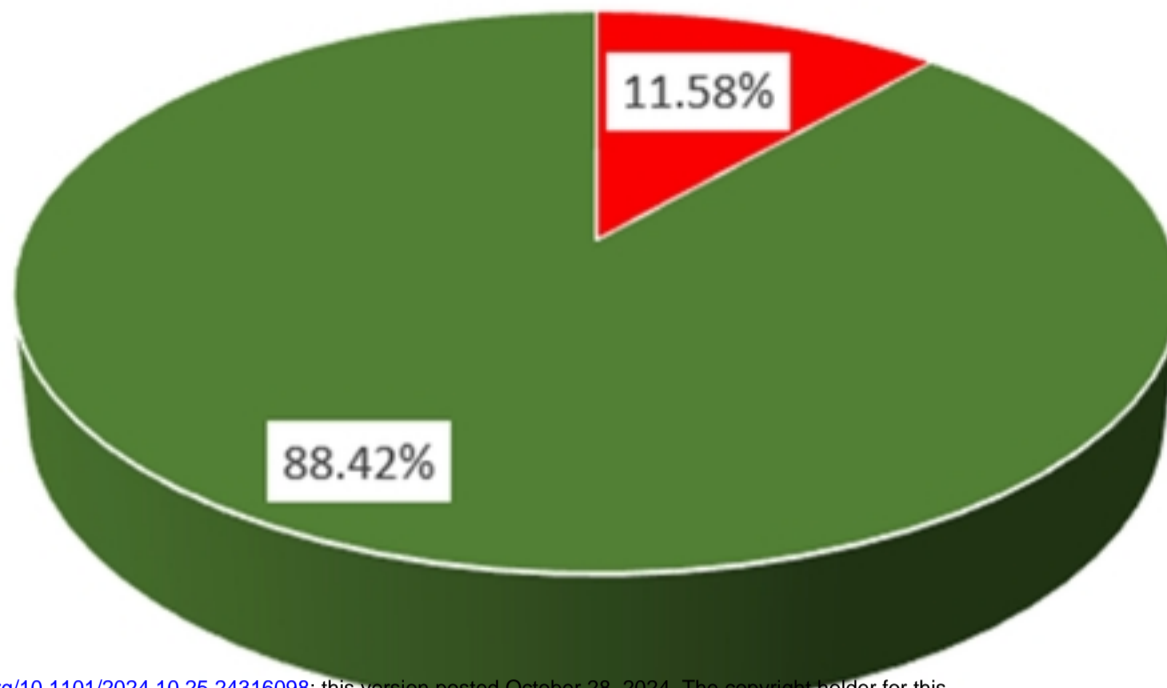


Figure 1: Flow chart of Enrolled in preterm infants

medRxiv preprint doi: <https://doi.org/10.1101/2024.10.25.24316098>; this version posted October 28, 2024. The copyright holder for this preprint **(which was not certified by peer review)** is the author/funder, who has granted medRxiv a license to display the preprint in perpetuity.
It is made available under a [CC-BY 4.0 International license](#) .



medRxiv preprint doi: <https://doi.org/10.1101/2024.10.25.24316098>; this version posted October 28, 2024. The copyright holder for this preprint (which was not certified by peer review) is the author/funder, who has granted medRxiv a license to display the preprint in perpetuity. It is made available under a [CC-BY 4.0 International license](#).

■ IDA ■ NORMAL

Figure 1: Prevalence of Iron deficiency anaemia among preterm infants

Table 1

summarizes the demographic data characteristics of the infants and maternal. A total of 190 preterm infants with birth asphyxia were attended at DRRH and Makole Health Centre from December 2022 to June 2023.

Table 1: Infant and maternal demographic and clinical characteristics by IDA

	Frequency	Percent
Age (months)		
3-4	131	68.95
5-6	59	31.05
Sex		
Female	109	57.37
Male	81	42
Birth weight in kg		
<1.5 (Very low birth weight)	67	35.26
1.5 ≤2.5 (Low birth weight)	123	64.74
GA at birth in weeks		
<32 (Very preterm)	76	40.00
32-33(moderate preterm)	40	21.05
34-37(Late preterm)	74	38.95
Phlebotomy since birth		
None	66	34.74
1-2 times	106	55.79
>2 times	18	9.47
Current feeding practices		
Exclusive breastfeeding	146	76.84
Mixed feeding	44	23.165
Iron supplementation		
No	15	7.89

medRxiv preprint doi: <https://doi.org/10.1101/2024.10.25.24316098>; this version posted October 28, 2024. The copyright holder for this preprint (which was not certified by peer review) is the author/funder, who has granted medRxiv a license to display the preprint in perpetuity. It is made available under a [CC-BY 4.0 International license](https://creativecommons.org/licenses/by/4.0/).

Yes	175	92.11
Pallor		
Pale	75	39.47
Not pale	115	60.53
Gestation type		
Singleton	157	82.63
Multiple pregnancy	33	17.37
Duration of iron supplements (months)		
<3	44	23.16
≥ 3	146	76.84
Last hb before delivery		
<7g/dl severe anaemia	22	11.58
≥7g/dl mild and anaemia to normal	168	88.42
Any maternal illness during pregnancy (PIH, gestational diabetes, antepartum hemorrhage and malaria)		
Yes	30	15.79
No	160	84.21
Hemoglobin (hb)		
Normal (> 10g/dl)	125(65.79)	
Low (<10g/dl)	65(34.21)	

medRxiv preprint doi: <https://doi.org/10.1101/2024.10.25.24316098>; this version posted October 28, 2024. The copyright holder for this preprint (which was not certified by peer review) is the author/funder, who has granted medRxiv a license to display the preprint in perpetuity. It is made available under a [CC-BY 4.0 International license](https://creativecommons.org/licenses/by/4.0/).

Table 1: Infant and maternal demographic and clinical characteristics by IDA

	Frequency	Percent
Age (months)		
3-4	131	68.95
5-6	59	31.05

Sex		
Female	109	57.37
Male	81	42
Birth weight in kg		
<1.5 (Very low birth weight)	67	35.26
1.5-2.5 (Low birth weight)	123	64.74
GA at birth in weeks		
<32 (Very preterm)	76	40.00
32-33(moderate preterm)	40	21.05
34-37(Late preterm)	74	38.95
Phlebotomy since birth		
None	66	34.74
1-2 times	106	55.79
>2 times	18	9.47
Current feeding practices		
Exclusive breastfeeding	146	76.84
Mixed feeding	44	23.165
Iron supplementation		
No	15	7.89
Yes	175	92.11

medRxiv preprint doi: <https://doi.org/10.1101/2024.10.25.24311098>; this version posted October 28, 2024. The copyright holder for this preprint (which was not certified by peer review) is the author/funder, who has granted medRxiv a license to display the preprint in perpetuity. It is made available under a [CC-BY 4.0 International license](https://creativecommons.org/licenses/by/4.0/).

Pallor		
Pale	75	39.47
Not pale	115	60.53
Gestation type		
Single tone	157	82.63
Multiple pregnancy	33	17.37
Duration of iron supplements (months)		
<3	44	23.16
≥ 3	146	76.84
Last hb before delivery		
<7g/dl severe anaemia	22	11.58
≥7g/dl mild and anaemia to normal	168	88.42
Any maternal illness during pregnancy (PIH, gestational diabetes, antepartum hemorrhage and malaria)		
Yes	30	15.79
No	160	84.21

Laboratory findings of the infants

Hemoglobin (hb)		
Normal (> 10g/dl)	125(65.79)	
Low (<10g/dl)	65(34.21)	

medRxiv preprint doi: <https://doi.org/10.1101/2024.10.25.24316098>; this version posted October 28, 2024. The copyright holder for this preprint (which was not certified by peer review) is the author/funder, who has granted medRxiv a license to display the preprint in perpetuity. It is made available under a [CC-BY 4.0 International license](https://creativecommons.org/licenses/by/4.0/).

Factors associated with iron deficiency anemia and preterm infants aged 3 to 6 months.

Binary logistic regression was used to determine the factors association with iron deficiency anemia among preterm infants aged 3 to 6 months. which revealed that; Very low birth weight (OR6.80, p value <0.0003), Low gestation age (OR3.14, p value <0.028), having more phlebotomy (OR3.85, p value <0.047), Preterm Infant not supplemented with Iron (OR18.69, p value <0.000), mothers who had multiple pregnancy (OR5.26, p value <0.001), Less than 3 months on iron supplemented with Iron during pregnancy (OR3.29, p value <0.011), Low Hb for mothers before delivery (OR14.27, p value <0.000), maternal illness during pregnancy (OR2.94, p value <0.034). All those factors with p value <0.25 at bivariate level were subjected to multivariate model.

Upon adjusted binary logistic regression; only four factors with p value <0.05 at 95% CI remained significant associated with IDA, the factors included: Very low birth weight (OR6.91, p value <0.014), preterm infant not supplemented with Iron (OR6.28, p value <0.045), mothers who had multiple pregnancy (OR6.85, p value <0.007) and Low Hb for mothers before delivery (OR11.99, p value <0.001).

Table 3 summarizes the factors associated with iron deficiency anaemia.

Logistic Regression for Factors Associated with Iron Deficiency Anemia for Preterm Infants Aged 3 to 6 Months

Infant factors	No IDA N (%)	IDA N (%)	UNADJUSTED		ADJUSTED	
Variable	168(88.42)	22(11.58)	OR [95% CI]	P- Value	AOR [95% CI]	P- Value
Birth weight(kg)						
<1.5	54(80.60)	13(19.40)	6.800[2.386,19.383]	0.0003	6.906[1.474,32.359]	0.0142
1.5+	114(92.68)	9(7.32)	Ref		Ref	
GA at birth(weeks)						
<32	62(81.58)	14(18.42)	3.139[1.134,8.689]	0.0276	1.988[0.450,8.784]	0.3645
32-33	37(92.50)	3(7.50)	0.633[0.122,3.283]	0.5859	1.179[0.166,8.369]	0.8692
34-37	69(93.24)	5(6.76)	Ref		Ref	
Phlebotomy since birth						
No	60(90.91)	6(9.09)	Ref		Ref	
1-2 (times)	95(89.62)	11(10.38)	1.158[0.407,3.295]	0.7835	0.369[0.082,1.664]	0.1944
>2 (times)	13(72.22)	5(27.78)	3.847[1.018,14.541]	0.0470	1.843[0.200,16.941]	0.5892

Iron**supplementations**

No	6(40.00)	9(60.00)	18.692[5.759,60.674]		6.282[1.045,37.763]	
Yes	162(92.57)	13(7.43)	Ref	<.0001	Ref	0.0446

Maternal factors**Gestation type**

Single tone	145(92.36)	12(7.64)	Ref		Ref	
Multiple pregnant	23(69.70)	10(30.30)	5.255[2.037,13.554]	0.0006	6.848[1.692,27.708]	0.0070

Duration of iron supplements during pregnancy (months)

<3	34(77.27)	10(22.73)	3.285[1.309,8.240]	0.0113	1.835[0.452,7.457]	0.3960
≥ 3	134(91.78)	12(8.22)	Ref		Ref	

medRxiv preprint doi: <https://doi.org/10.1101/2024.10.25.24316098>; this version posted October 28, 2024. The copyright holder for this preprint (which was not certified by peer review) is the author/funder, who has granted medRxiv a license to display the preprint in perpetuity.

Last hb before**delivery**

<7 g/dl (severe anemia)	11(50.00)	11(50.00)	14.273[5.068,40.197]	<.0001	11.998[2.699,53.335]	0.0011
-------------------------	-----------	-----------	----------------------	--------	----------------------	---------------

≥7g/dl (not severe anemia)	157(93.45)	11(6.55)	Ref		Ref	
----------------------------	------------	----------	-----	--	-----	--

Maternal illness during pregnancy

(Any of maternal illness Malaria, PIH, gestational, diabetes and antepartum hemorrhage)

Yes	23(76.67)	7(23.33)	2.942[1.083,7.992]	0.0343	2.398[0.490,11.742]	0.2807
No	145(90.63)	15(9.38)	Ref		Ref	
