

1 **Title page**

2 ODIASP: An Open User-Friendly Software for Automated SMI Determination—Application  
3 to an Inpatient Population

4

5 Katia Charrière<sup>1</sup>, Antoine Ragusa<sup>2</sup>, Béatrice Genoux<sup>1</sup>, Antoine Vilotitch<sup>3</sup>, Svetlana Artemova<sup>1</sup>,  
6 Charlène Dumont<sup>1</sup>, Paul-Antoine Beaudoin<sup>1,6</sup>, Pierre-Ephren Madiot<sup>1</sup>, Gilbert R. Ferretti<sup>4</sup>, Ivan  
7 Bricault<sup>4</sup>, Eric Fontaine<sup>5</sup>, Jean-Luc Bosson<sup>1,6</sup>, Alexandre Moreau-Gaudry<sup>1,6</sup>, Joris Giai<sup>1,6</sup>, Cécile  
8 Bétry<sup>7</sup>

9

10 <sup>1</sup> Univ. Grenoble Alpes, Clinical Investigation Center-Technological Innovation, INSERM  
11 CIC1406, CHU Grenoble Alpes, Public Health department, 38000 Grenoble, France

12 <sup>2</sup> Univ. Grenoble Alpes, CNRS, UMR 5525, VetAgro Sup, Grenoble INP, TIMC, 38000  
13 Grenoble, France

14 <sup>3</sup> Univ. Grenoble Alpes, Data Engineering Unit, Public Health Department, Grenoble Alpes  
15 University Hospital, 38000 Grenoble, France.

16 <sup>4</sup> Univ. Grenoble Alpes, INSERM U1209, IAB, CHU Grenoble Alpes, Service de radiologie  
17 diagnostique et interventionnelle, 38000 Grenoble, France

18 <sup>5</sup> Univ. Grenoble Alpes, INSERM U1055, LBFA, CHU Grenoble Alpes, Department of  
19 Endocrinology, Diabetology and Nutrition, 38000 Grenoble, France

20 <sup>6</sup> Univ. Grenoble Alpes, CNRS, UMR 5525, VetAgro Sup, Grenoble INP, CHU Grenoble  
21 Alpes, Public Health department, TIMC, 38000 Grenoble, France

22 <sup>7</sup> Univ. Grenoble Alpes, CNRS, UMR 5525, VetAgro Sup, Grenoble INP, CHU Grenoble  
23 Alpes, TIMC, Department of Endocrinology, Diabetology and Nutrition, 38000 Grenoble,  
24 France

25

**NOTE: This preprint reports new research that has not been certified by peer review and should not be used to guide clinical practice.**

26 Corresponding author

27 Prof. Cécile Bétry, MD-PhD

28 Université Grenoble Alpes

29 CHU Grenoble Alpes (CHUGA)

30 Service d'Endocrinologie Diabétologie Nutrition

31 Boulevard de la Chantourne

32 38700 La Tronche, France

33 [cbetry@chu-grenoble.fr](mailto:cbetry@chu-grenoble.fr)

34 Tel: +33 4 76 76 93 49

35 **Abstract**

36 **Background:** The diagnosis of malnutrition has evolved with the GLIM recommendations,  
37 which advocate for integrating phenotypic criteria, including muscle mass measurement. The  
38 GLIM framework specifically suggests using skeletal muscle index (SMI) assessed via CT scan  
39 at the third lumbar level (L3) as a first-line approach. However, manual segmentation of muscle  
40 from CT images is often time-consuming and infrequently performed in clinical practice. This  
41 study aims to develop and validate an open-access, user-friendly software tool called ODIASP  
42 for automated SMI determination.

43 **Methods:** Data were retrospectively collected from a clinical data warehouse at Grenoble Alpes  
44 University Hospital, including epidemiological and imaging data from CT scans. All  
45 consecutive adult patients admitted in 2018 to our tertiary center who underwent at least one  
46 CT scan capturing images at the L3 vertebral level and had a recorded height were included.  
47 The ODIASP tool combines two algorithms to automatically perform L3 slice selection and  
48 skeletal muscle segmentation, ensuring a seamless process. Agreement between cross-sectional  
49 muscle area (CSMA) values obtained via ODIASP and reference methodology was evaluated  
50 using the intraclass correlation coefficient (ICC). The prevalence of reduced SMI was also  
51 assessed.

52 **Results:** SMI values were available for 2,503 participants, 53.3% male, with a median age of  
53 66 years [51-78] and a median BMI of 24.8 kg/m<sup>2</sup> [21.7-28.7]. There was substantial agreement  
54 between the reference method and ODIASP (ICC: 0.971; 95% CI: 0.825 to 0.989) in a  
55 validation subset of 674 CT scans. After correcting for systematic errors (a 5.8 cm<sup>2</sup> [5.4-6.3]  
56 overestimation of the CSMA), the agreement improved to 0.984 (95% CI: 0.982 to 0.986),  
57 indicating excellent agreement. The prevalence of reduced SMI was estimated at 9.1% overall

58 (11.0% in men and 6.6% in women). To facilitate usage, the ODIASP software is encapsulated  
59 in a user-friendly interface.

60 Conclusions: This study demonstrates that ODIASP is a reliable tool for automated muscle  
61 segmentation at the L3 vertebra level from CT scans. The integration of validated AI algorithms  
62 into a user-friendly platform enhances the ability to assess SMI in diverse patient cohorts,  
63 ultimately contributing to improved patient outcomes through more accurate assessments of  
64 malnutrition and sarcopenia.

65 **Key words**

66 Sarcopenia, Malnutrition, Image Processing, Computer-Assisted, Computational Neural  
67 Networks, Skeletal Muscle, Body composition

## 68 **Introduction**

69           Since the release of the GLIM recommendations, malnutrition diagnosis has been based  
70 on both phenotypic and etiological criteria <sup>1</sup>. In current clinical practice, phenotypic criteria for  
71 malnutrition primarily involve mainly Body Mass Index (BMI) and weight loss assessments <sup>2,3</sup>.  
72 However, a large proportion of patients are not weighed during hospitalization <sup>4</sup>. The GLIM  
73 framework recommends that muscle mass assessments should be performed as a first-line  
74 approach to detect muscle mass reduction using one of three methods: dual-energy x-ray  
75 absorptiometry (DEXA), computerized tomography (CT) scan, or bioelectrical impedance  
76 analysis (BIA). For CT, the cross-sectional muscle area (CSMA) at the third lumbar vertebra  
77 (L3) is recommended to calculate the skeletal muscle index (SMI). However, manual  
78 segmentation of muscle from CT images is time-consuming<sup>3</sup>.

79           AI algorithms have the potential to automate SMI determination, potentially extending  
80 the use of CT scan for malnutrition diagnosis in clinical practice and across large volumes of  
81 CT scans <sup>5</sup>. Although research in AI-driven CT scan analysis is expanding, a significant gap  
82 persists between technological advancements and clinical integration. We hypothesize that part  
83 of this gap arises from the lack of user-friendly interfaces that facilitate the application of these  
84 algorithms. Furthermore, few comprehensive solutions exist that provide a fully automated  
85 pipeline for SMI determination, including both L3 slice identification and muscle segmentation.  
86 Existing tools are often developed within specific cohorts, limiting their applicability for  
87 malnutrition screening in broader, unselected patient populations <sup>6-8</sup>.

88           This study is a part of a larger research project: the Optimization of the DIagnosis of  
89 SarcoPenia through the automated determination of SMI (ODIASP) study. Our primary  
90 objective was to develop and validate an open-access, user-friendly software for the automated  
91 determination of the Skeletal Muscle Index (SMI) in clinical research. Additionally, we aimed

- 92 to evaluate the potential of this tool in identifying the risk of reduced SMI within a cohort of
- 93 patients managed at a tertiary hospital.

## 94 Methods

95

### 96 Ethics statement

97           The ODIASP study was conducted in accordance with the ethical standards laid down  
98 in the 1964 Declaration of Helsinki and its later amendments. Ethical approval was obtained on  
99 18 August 2021 by the regional ethics committee (CECIC Rhône-Alpes-Auvergne, Clermont-  
100 Ferrand, IRB 5891). In compliance with current French legislation for retrospective studies  
101 using clinical data, participants were individually informed that their data could be used for  
102 research purposes (in line with the MR-004 CNIL reference methodology). Individuals who  
103 objected to the use of their data or those with incomplete or outdated contact information were  
104 excluded from the study.

105

### 106 Study participants

107           All consecutive participants aged 18 years and older, admitted to Grenoble University  
108 Hospital (CHU Grenoble Alpes) between January and December 2018, who underwent at least  
109 one CT scan potentially capturing images at the L3 vertebral level and who had a recorded  
110 height were retrospectively included in the study. Participants with non-abdominal CT scans,  
111 including spinal or thoracic CT scans, were also eligible, as these may contain images at the L3  
112 level. This inclusion was particularly relevant for assessing whether the ODIASP software  
113 could effectively detect CT scans that lacked an L3 slice. When multiple CT scans were  
114 available for a patient during the inclusion period, the scan most likely to include the L3 slice  
115 was selected for analysis. A subset of this population had been previously defined for  
116 preliminary research<sup>9</sup> and was utilized for validation.

### 117 Data collection

118 Data were retrospectively collected from the clinical data warehouse (CDW) PREDIMED  
119 (French acronym for *Plateforme de Recueil et d'Exploitation des Données bloMEDicales*),  
120 implemented at the Grenoble Alpes University Hospital <sup>10,11</sup>. All structured data were  
121 pseudonymized and CT scans were de-identified. This de-identification of CT scans was carried  
122 out by: 1) removing all identifiable Digital Imaging and Communication in Medicine (DICOM)  
123 tags following the basic profile recommendations of the DICOM standard<sup>1</sup>, and 2) excluding  
124 all derived images (i.e., images where pixel values are derived or computed from other images,  
125 such as screenshots or dose reports) based on the 'ImageType' DICOM attribute.

126 The following data were collected

- 127 - General data: age, sex, height, weight
- 128 - Imaging data: CT scans, including abdominal area, in DICOM format with  
129 metadata. Since contrast enhancement does not influence cross-sectional skeletal  
130 muscle area, both CT images with and without contrast administration were eligible  
131 <sup>12,13</sup>. CT images could originate from different CT machines (Optima CT660 GE  
132 Healthcare, Revolution CT GE Healthcare, Siemens Somatom Definition Edge,  
133 Revolution HD GE Healthcare, Revolution EVO GE Healthcare , Toshiba Aquilion  
134 and Siemens Somatom Definition AS+).

135

### 136 Cross sectional muscle area (CSMA) determination

#### 137 *Reference Method*

138 All processing was performed on a single GPU machine (NVIDIA TITAN RTX 16  
139 graphics card, a 3.7 GHz CPU, and 64 GB of RAM) with an Intel(R) Xeon(R) W-2135  
140 processor. The third lumbar (L3) vertebra was manually identified by a medical expert on the  
141 sagittal reconstruction using the Picture Archiving and Communication System (PACS) in

---

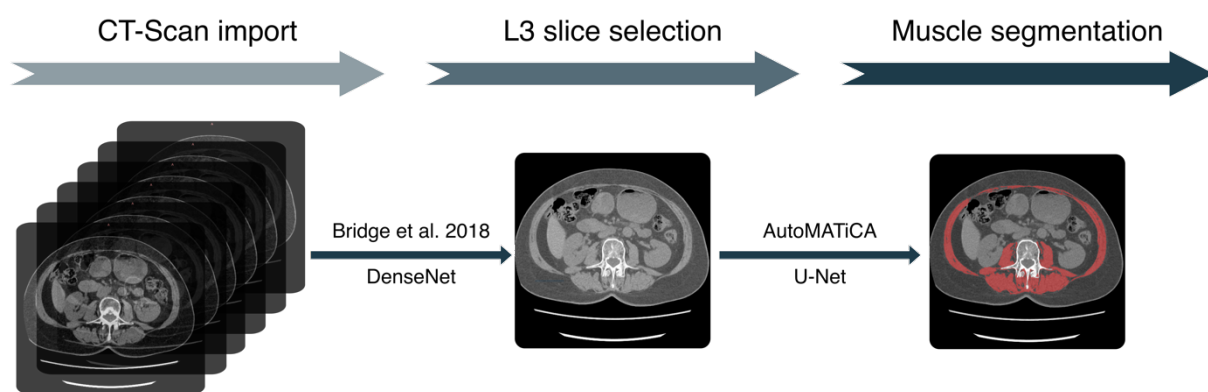
<sup>1</sup> [https://dicom.nema.org/medical/dicom/current/output/html/part15.html#sect\\_E.1.1](https://dicom.nema.org/medical/dicom/current/output/html/part15.html#sect_E.1.1)



142 DICOM format. For each participant, a slice approximately halfway along the vertebra was  
143 selected for muscle segmentation, with the identification of slices at both the lower and upper  
144 extremities. Skeletal muscle was then manually segmented with SliceOmatic Version 5.0  
145 (Tomovision, Canada) according to previously published methods to obtain the CSMA<sup>9</sup>. The  
146 abdominal muscles (transversus abdominis, external and internal obliques and rectus  
147 abdominis), the paraspinal muscles (erector spinae and quadratus lumborum) and the psoas  
148 muscle were segmented using Hounsfield unit (HU) values ranging from -29 to 150<sup>14</sup>.

#### 149 *ODIASP tool*

150 The ODIASP tool integrates two open-source algorithms: 1) for the automatic selection  
151 of a slice at the level of the L3 vertebra, and 2) for the automatic segmentation of skeletal muscle  
152 in this slice (Figure 1). For the first step, we employed the L3 slice selection algorithm  
153 developed by Bridge et al.<sup>15</sup> This algorithm, based on a DenseNet Convolutional Neural  
154 Network (CNN), was trained and validated using ODIASP project data through 5-fold cross-  
155 validation. A batch size of 64 images, a learning rate of 0.001, and a dropout rate of 0 were  
156 selected, while other hyperparameters proposed by Bridge et al. were maintained during the  
157 training phase. For the second step, we utilized the AutoMATiCA algorithm developed by Paris  
158 et al.<sup>16</sup>. The proposed U-Net model for automated segmentation of skeletal muscle was  
159 previously validated on ODIASP project CT data<sup>9</sup>.



160

161 Figure 1. Schematic overview of the architecture of the ODIASP tool

162 The ODIASP tool is based on two previously published algorithms from Bridge et al. <sup>15</sup> and  
163 Paris et al. <sup>16</sup>.

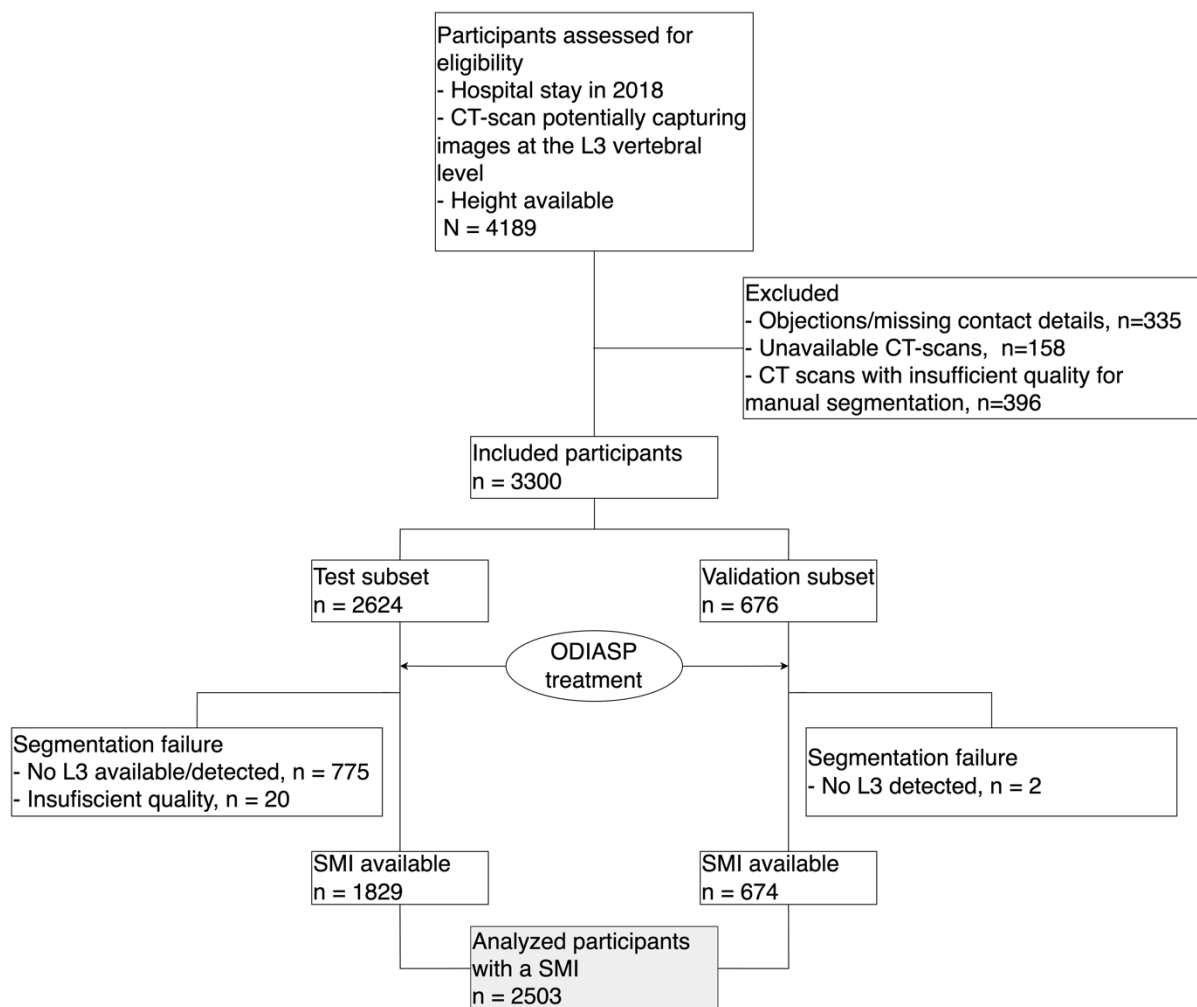
#### 164 Statistical analysis

165 Characteristics of the cohort were presented as medians with interquartile ranges (IQR)  
166 or using frequencies and proportions depending on their nature. The agreement between the  
167 CSMA values calculated by ODIASP and those obtained using the reference methodology was  
168 assessed using the intraclass correlation coefficient (ICC) along with 95% confidence intervals.  
169 This analysis was complemented with a mixed regression model. The interpretation of the  
170 strength of agreement between the two methods was based on the criteria established by Koo  
171 and Li: an ICC value < 0.5 indicated poor reliability, a value between 0.5 and 0.75 indicated  
172 moderate reliability, a value between 0.75 and 0.90 indicated substantial reliability, and a value  
173 > 0.90 indicated excellent reliability <sup>17</sup>. For determining the reduction in SMI within our sample,  
174 thresholds were derived from the study by van der Werf et al <sup>18</sup> and are applicable only to the  
175 subpopulation aged 20 to 79 years with a BMI ranging from 17 to 35 kg/m<sup>2</sup>. and were applicable  
176 only to the subsample of participants aged 20 to 79 years with a BMI ranging from 17 to 35  
177 kg/m<sup>2</sup>. Statistical analyses were conducted using Stata (version 15) with p-values <0.05  
178 considered statistically significant and without adjustment for test multiplicity.

## 179 Results

### 180 Participant inclusion and characteristics

181 A total of 3300 participants were included and 2503 participants were analyzed (Figure  
182 2). Their median age was 66 [51–78] years with 1334 (53.3%) males. The median BMI was  
183 24.8 [21.7–28.7] kg/m<sup>2</sup>, with 174 (7.3%) having a BMI < 18.5 kg/m<sup>2</sup> and 459 (19.3%) classified  
184 as obese. The median SMI was 45.1 [38.4–52.5] cm<sup>2</sup>/m<sup>2</sup>. Participants were hospitalized in the  
185 following units: day hospital (11.0%), medicine (27.4%), geriatrics (2.8%), surgery (10.4%),  
186 intensive care (6.1%), rehabilitation (1.8%), and emergency care (40.5%).



187

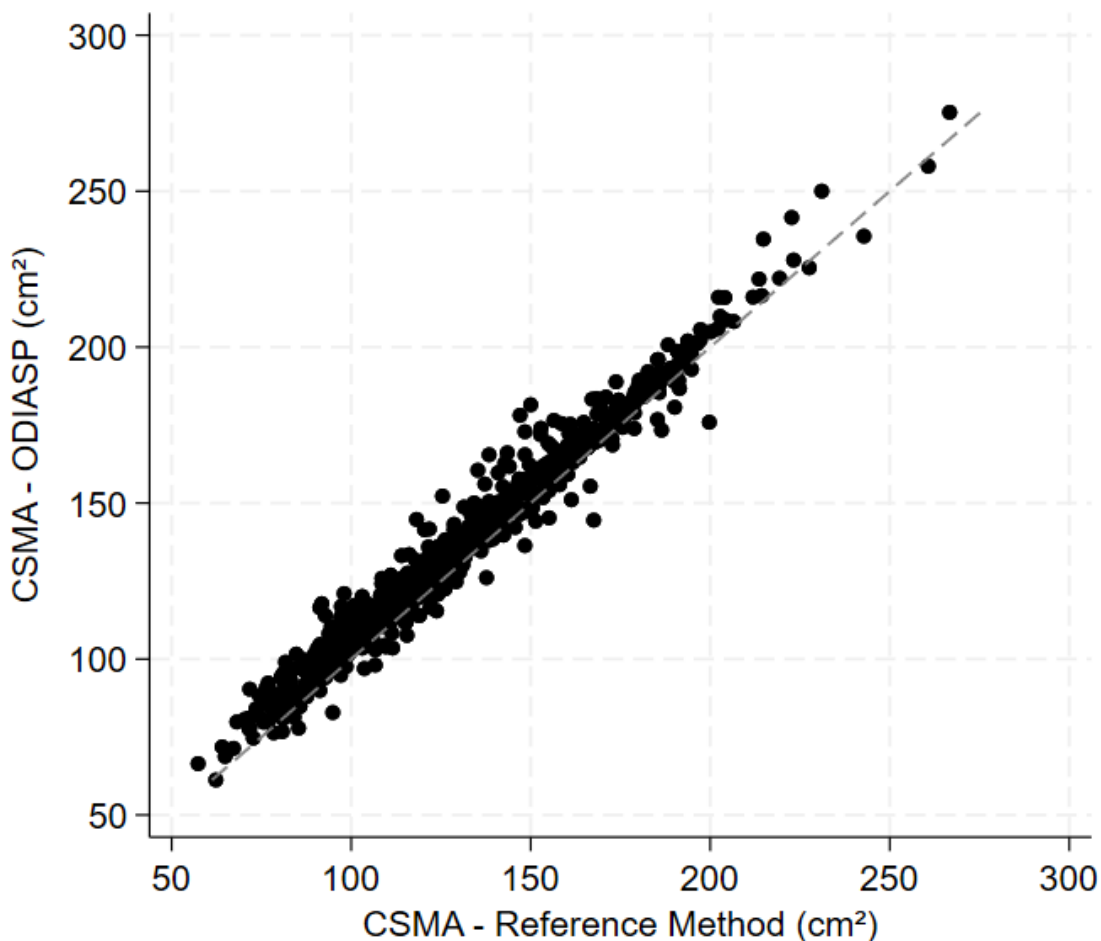
### 188 Validation of the ODIASP tool

189 The ODIASP tool operates through two main steps: first, identifying a L3 slice and  
190 second, segmenting the skeletal muscle (Figure 1). For the first step, we validated the algorithm

191 from Bridge et al. The algorithm correctly identified the L3 slice in 88% of cases (95% CI:  
192 85.49 to 90.50, n=596). For slices outside the L3 level (n=80), the median distance from the  
193 chosen L3 slice was -5.6 mm [-17.5 to 12.5], indicating that the slices were, on average, 5.6  
194 mm below the lower extremity of the L3 vertebra. The algorithm for the second step, muscle  
195 segmentation, was previously validated externally <sup>9</sup>.

196 To validate the entire pipeline, we compared the cross-sectional muscle area (CSMA)  
197 obtained using the reference method with that generated by the ODIASP tool in the validation  
198 subset. ODIASP failed to provide results for two participants (Figure 2). There was substantial  
199 agreement between the reference method and ODIASP (ICC: 0.971; 95% CI: 0.825 to 0.989)  
200 (Figure 3). After correcting for systematic errors (a 5.8 cm<sup>2</sup> [5.4-6.3] overestimation of the  
201 CSMA), there was excellent agreement (ICC:0.984, 95% CI: 0.982 to 0.986).

202



203

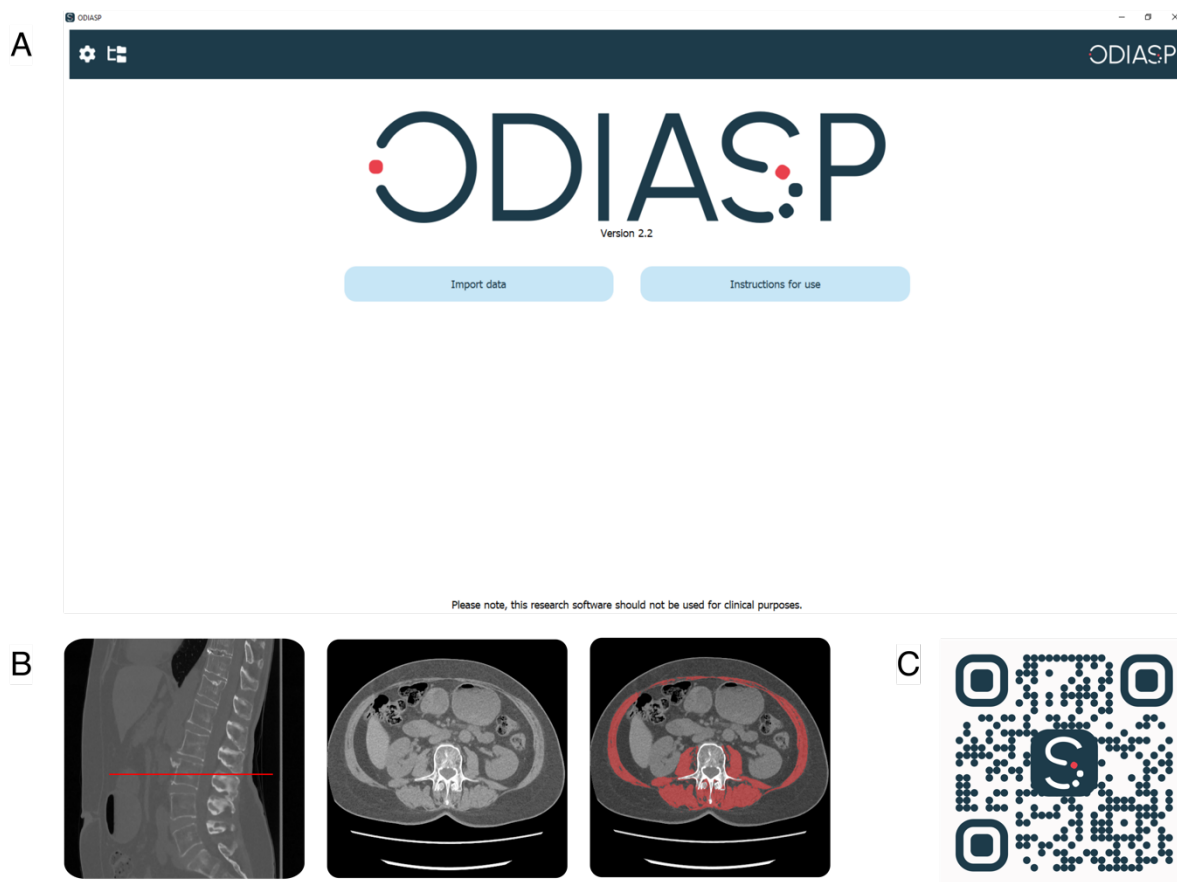
204 Figure 3. Scatterplot comparing cross-sectional muscle area (CSMA) measurements obtained  
205 with the reference method and the ODIASP tool (n = 674).

206 Each data point represents an individual measurement, and the dashed line signifies  
207 perfect agreement between the two methods. The proximity of data points to the dashed line  
208 indicates a high degree of agreement.

209

### 210 An Open-Access and User-Friendly Interface

211 To facilitate the use of the ODIASP tool, we encapsulated the code into a user-friendly  
212 software interface (Figure 4A). The interface displays the sagittal view with the chosen L3 slice  
213 localization, the L3 slice itself, and its segmentation, allowing for easy visual validation of  
214 results (Figure 4B). This software is freely available at <https://odiasp.timc.fr/> (Figure 4C).



215

216 Figure 4. The ODIASP tool: an open access software with user-friendly interface

217 (A) User interface

218 (B) Example of muscle segmentation

219 (C) QR code for downloading the ODIASP Software

220 ODIASP allows processing of large sets of CT scans without the need for pre-treatment.

221 It takes approximately 4 minutes to analyze one CT scan. In some cases, ODIASP did not

222 correctly identify or segment muscle. However, the interface allows for quick visual inspection

223 of the results if necessary.

224 Risk of reduced SMI in a large cohort of hospitalized participants

225 Based on previously published cut-off values for individuals aged 20–79 years with a

226 BMI between 17 and 35 kg/m<sup>2</sup>, 103 of 937 men (11.0%) and 46 of 699 women (6.6%) were

227 considered to have reduced skeletal muscle mass, representing a total of 9.1% of the participants

228 with an available cut-off<sup>18</sup>.

## 229 Discussion

230 This study aimed to develop and validate a tool for the automated determination of SMI  
231 at the L3 vertebra level using CT scan in a large population. We integrated AI algorithms into  
232 a user-friendly software, making advanced technologies accessible to clinical researchers who  
233 may be unfamiliar with them.

### 234 Reliability of the ODIASP automated tool

235 Most previous studies have focused on tissue segmentation at the L3 level <sup>16,19,20</sup>, with  
236 few addressing the challenge of developing a fully automated pipeline for L3 SMI  
237 determination. To our knowledge, we are the first to develop and validate automated AI  
238 software for L3 SMI determination in an unselected population of patients managed at a tertiary  
239 hospital across various units, including emergency and intensive care. Previous tools have been  
240 developed for specific populations, such as cancer patients <sup>6,7</sup> or mixed cohorts including  
241 cancer, sepsis, and healthy subjects <sup>8</sup>. Our approach involved utilizing previously published  
242 algorithms and validating them in our cohort, demonstrating good reliability across a large  
243 sample. We achieved accurate identification of most L3 slices, with 88% correctly positioned  
244 at the L3 vertebra, which aligns with previous findings (Delrieu et al.: 91.2% and 74.1% in, two  
245 datasets<sup>6</sup>). Slices identified outside of the L3 level showed a median deviation of -5.6 mm [-  
246 17.5; 12.5], typically locating them at adjacent vertebrae, given the approximate height of  
247 vertebrae (30 mm) and intervertebral disks (10 mm) <sup>21</sup>. A prior study indicates that CSMA at  
248 neighboring vertebrae are relatively comparable <sup>22</sup>. The reliability of muscle segmentation was  
249 previously validated <sup>9</sup>, and our full pipeline demonstrated substantial to excellent reliability.

### 250 Clinical implications

251 The prevalence of reduced SMI has mainly been studied in cancer populations <sup>23-25</sup>. To  
252 our knowledge, our study is the first to assess it in a large cohort of unselected patients, with  
253 the sole inclusion criteria being the availability of a CT scan. The cut-offs for defining reduced

254 SMI remains controversial, while the cut-offs proposed by Prado et al. <sup>14</sup> have been widely  
255 used, they are specific to patients with obesity and cancer and can lead to an overestimation of  
256 reduced SMI prevalence <sup>26</sup>. In our study, we referred to the cut-offs by Van der Werf et al.<sup>18</sup>,  
257 which are applicable to a Caucasian population and align well with our predominantly  
258 Caucasian cohort. Furthermore, Van der Werf et al. provide age- and BMI-specific cut-offs,  
259 enhancing the relevance of our findings. Our research indicates that 9% of the patients in our  
260 tertiary hospital setting have reduced muscle mass.

### 261 Study limitations

262 Several limitations should be acknowledged. First, we trained the algorithm of Bridge  
263 et al. on our dataset since it was only available in an untrained version. Consequently, our tool  
264 lacks full external validation. Second, when testing ODIASP on the analyzed populations, we  
265 identified some processing failures. Human oversight remains essential for maintaining data  
266 quality; thus, our software provides features for visual manual validation, in line with the recent  
267 European Union AI Act emphasizes the necessity of human oversight in algorithmic decision-  
268 making <sup>27</sup>. Third, processing large datasets can be time-consuming; for instance, analyzing  
269 1,000 scans requires just over 24 hours with a standard desktop computer. However, the process  
270 is fully automated and runs in the background. Our approach involved testing ODIASP under  
271 real-life conditions, using scans with multiple series, including those that did not contain the L3  
272 vertebra, which lengthened the process but reduced the time necessary to preprocess the data.  
273 Additionally, it is important to acknowledge that some CT scans may have insufficient quality  
274 for accurate segmentation, a factor that should be considered in future clinical research.. Lastly,  
275 ODIASP tends to slightly overestimate the CSMA compared to the ground truth. This  
276 discrepancy reflects a systematic error comparable to inter-expert variability and could be partly  
277 influenced by the overestimation observed with AutoMATiCA or the fact that the ground truth  
278 was constructed at our center by only two experts <sup>9,16</sup>.



## 279 Futures directions

280 Future work will focus on enhancing the reliability of our software. A strength of this  
281 project is our access to diverse medical imaging data through the CDW PREDIMED, allowing  
282 for the inclusion of patients from various units and with different pathologies. However, our  
283 study is monocentric, which may lead to overfitting and limit generalizability. Traditional  
284 training methods can overestimate model accuracy by about 20% due to hidden Data  
285 Acquisition Bias-Induced Shortcuts (DABIS)<sup>28</sup>. Strategies to increase reliability include using  
286 external training datasets and applying appropriate data preparation and partitioning techniques  
287 (training, validation, and testing sets) to improve generalizability<sup>29-31</sup>. Additionally, methods  
288 to address biases without external datasets can also be applied<sup>28</sup>. Our objective is to develop  
289 extensive cohorts for studying malnutrition and sarcopenia in inpatients. However, many  
290 patients do not undergo abdominal CT scans. To address this limitation, we plan to enhance  
291 ODIASP's capabilities to analyze chest CT scans, considering the growing interest in assessing  
292 SMI at the T12 vertebra level<sup>32</sup>. We also plan to validate the segmentation of other tissues—  
293 intermuscular, visceral, and subcutaneous adipose tissue—performed in AutoMATiCA before  
294 integrating it into ODIASP<sup>16</sup>. It is important to note that ODIASP is not yet CE marked or FDA  
295 approved, limiting its use to clinical research rather than routine practice. Our ultimate goal is  
296 to deploy this software in clinical settings after obtaining all mandatory regulatory  
297 authorization.

298

## 299 **Conclusion**

300 The results of this study demonstrate that ODIASP is a reliable tool for the automated  
301 segmentation of muscles at the L3 vertebra level from CT scans. Integrating validated AI  
302 algorithms into a user-friendly software platform can significantly enhance clinical researchers'  
303 ability to assess SMI in large, diverse patient cohorts. We anticipate that our research will

- 304 facilitate a deeper understanding of the impact of reduced SMI, ultimately contributing to
- 305 improve patient outcomes through more accurate malnutrition and sarcopenia assessments.

306 **Funding**

307           This work was supported by a grant from the Regional Delegation for Clinical Research  
308 of the University Hospital Grenoble Alpes in 2019 and MIAI@Grenoble Alpes, (ANR-19-  
309 P3IA-0003). The funding bodies did not have any involvement in the design/conduct of the  
310 research, in data analysis/interpretation, or in writing/approval of the manuscript.

311

312 **Conflict of interest Statement**

313           Katia Charrière, Antoine Ragusa, Béatrice Genoux, Antoine Vilotitch, Svetlana  
314 Artemova, Charlène Dumont, Paul-Antoine Beaudoin, Pierre-Ephren Madiot, Gilbert R.  
315 Ferretti, Ivan Bricault, Jean-Luc Bosson, Eric Fontaine, Alexandre Moreau-Gaudry, Joris Giai  
316 and Cécile Bétryhave no relevant conflict of interest to disclose.

317

318 **Ethical guidelines statement**

319           The ODIASP study was conducted in accordance with the ethical standards laid down  
320 in the 1964 Declaration of Helsinki and its later amendments. Ethical approval was obtained on  
321 18 August 2021 by the regional ethics committee (CECIC Rhône-Alpes-Auvergne, Clermont-  
322 Ferrand, IRB 5891). In compliance with current French legislation for retrospective studies  
323 using clinical data, participants were individually informed that their data could be used for  
324 research purposes (in line with the MR-004 CNIL reference methodology)

## 325 References

- 326 1. Cederholm T, Jensen GL, Correia MITD, Gonzalez MC, Fukushima R, Higashiguchi  
327 T *et al.* GLIM criteria for the diagnosis of malnutrition - A consensus report from the global  
328 clinical nutrition community. *Clin Nutr* 2019;**38**:1–9.
- 329 2. Ulmann G, Cherbuy C, Guerriero E, Jirka A, Le Gall M, Neuzillet C *et al.*  
330 Modifications des recommandations de la Haute Autorité de santé concernant le diagnostic de  
331 la dénutrition : application par les professionnels de la nutrition en pratique clinique. *Nutrition*  
332 *Clinique et Métabolisme* 2023;**37**:168–175.
- 333 3. Barazzoni R, Jensen GL, Correia MITD, Gonzalez MC, Higashiguchi T, Shi HP *et al.*  
334 Guidance for assessment of the muscle mass phenotypic criterion for the Global Leadership  
335 Initiative on Malnutrition (GLIM) diagnosis of malnutrition. *Clinical Nutrition*  
336 2022;**41**:1425–1433.
- 337 4. Lambert K, Ferguson A, Meletis M, Charlton K. How frequently are patients weighed  
338 in hospital ? Results from a five-year cross-sectional audit of clinical practice in nine  
339 hospitals. *Clinical Nutrition ESPEN* 2020;**36**:157–161.
- 340 5. Rozynek M, Kucybała I, Urbanik A, Wojciechowski W. Use of artificial intelligence  
341 in the imaging of sarcopenia: A narrative review of current status and perspectives. *Nutrition*  
342 2021;**89**:111227.
- 343 6. Delrieu L, Blanc D, Bouhamama A, Reyat F, Pilleul F, Racine V *et al.* Automatic  
344 deep learning method for third lumbar selection and body composition evaluation on CT  
345 scans of cancer patients. *Front Nucl Med* 2024;**3**.
- 346 7. Islam S, Kanavati F, Arain Z, Costa OFD, Crum W, Aboagye EO *et al.* Fully  
347 automated deep-learning section-based muscle segmentation from CT images for sarcopenia  
348 assessment. *Clinical Radiology* 2022;**77**:e363–e371.
- 349 8. Ha J, Park T, Kim H-K, Shin Y, Ko Y, Kim DW *et al.* Development of a fully  
350 automatic deep learning system for L3 selection and body composition assessment on  
351 computed tomography. *Sci Rep* 2021;**11**:21656.
- 352 9. Charrière K, Boulouard Q, Artemova S, Vilotitch A, Ferretti GR, Bosson J-L *et al.* A  
353 comparative study of two automated solutions for cross-sectional skeletal muscle  
354 measurement from abdominal computed tomography images. *Medical Physics* 2023;**50**:4973–  
355 4980.
- 356 10. Artemova S, Madiot P-E, Caporossi A, Group P, Mossuz P, Moreau-Gaudry A.  
357 PREDIMED: Clinical Data Warehouse of Grenoble Alpes University Hospital. *MEDINFO*  
358 *2019: Health and Wellbeing e-Networks for All* 2019;1421–1422.
- 359 11. Charrière K, Madiot P-E, Artemova S, Tep P, Lenne C, Cohard B *et al.* ODIASP:  
360 Clinically Contextualized Image Analysis Using the PREDIMED Clinical Data Warehouse,  
361 Towards a Better Diagnosis of Sarcopenia. *Stud Health Technol Inform* 2022;**290**:1068–1069.
- 362 12. Paris MT, Furberg HF, Petruzella S, Akin O, Hötter AM, Mourtzakis M. Influence of  
363 Contrast Administration on Computed Tomography-Based Analysis of Visceral Adipose and  
364 Skeletal Muscle Tissue in Clear Cell Renal Cell Carcinoma. *JPEN J Parenter Enteral Nutr*  
365 2018 doi:10.1002/jpen.1067.
- 366 13. van Vugt JLA, Coebergh van den Braak RRJ, Schippers HJW, Veen KM, Levolger S,  
367 de Bruin RWF *et al.* Contrast-enhancement influences skeletal muscle density, but not  
368 skeletal muscle mass, measurements on computed tomography. *Clin Nutr* 2017  
369 doi:10.1016/j.clnu.2017.07.007.
- 370 14. Prado CM, Lieffers JR, McCargar LJ, Reiman T, Sawyer MB, Martin L *et al.*  
371 Prevalence and clinical implications of sarcopenic obesity in patients with solid tumours of  
372 the respiratory and gastrointestinal tracts: a population-based study. *The Lancet Oncology*  
373 2008;**9**:629–635.

- 374 15. Bridge CP, Rosenthal M, Wright B, Kotecha G, Fintelmann F, Troschel F *et al.* Fully-  
375 Automated Analysis of Body Composition from CT in Cancer Patients Using Convolutional  
376 Neural Networks. 2018. pp. 204–213.
- 377 16. Paris MT, Tandon P, Heyland DK, Furberg H, Premji T, Low G *et al.* Automated  
378 body composition analysis of clinically acquired computed tomography scans using neural  
379 networks. *Clinical Nutrition* 2020;**39**:3049–3055.
- 380 17. Koo TK, Li MY. A Guideline of Selecting and Reporting Intraclass Correlation  
381 Coefficients for Reliability Research. *J Chiropr Med* 2016;**15**:155–163.
- 382 18. van der Werf A, Langius JAE, de van der Schueren MAE, Nurmohamed SA, van der  
383 Pant KAMI, Blauwhoff-Buskermolen S *et al.* Percentiles for skeletal muscle index, area and  
384 radiation attenuation based on computed tomography imaging in a healthy Caucasian  
385 population. *Eur J Clin Nutr* 2018;**72**:288–296.
- 386 19. Shen H, He P, Ren Y, Huang Z, Li S, Wang G *et al.* A deep learning model based on  
387 the attention mechanism for automatic segmentation of abdominal muscle and fat for body  
388 composition assessment. *Quant Imaging Med Surg* 2023;**13**:1384–1398.
- 389 20. Pu L, Gezer NS, Ashraf SF, Ocak I, Dresser DE, Dhupar R. Automated segmentation  
390 of five different body tissues on computed tomography using deep learning. *Med Phys*  
391 2023;**50**:178–191.
- 392 21. Zhou SH, McCarthy ID, McGregor AH, Coombs RRH, Hughes SPF. Geometrical  
393 dimensions of the lower lumbar vertebrae – analysis of data from digitised CT images. *Eur*  
394 *Spine J* 2000;**9**:242–248.
- 395 22. Park J, Gil JR, Shin Y, Won SE, Huh J, You M-W *et al.* Reliable and robust method  
396 for abdominal muscle mass quantification using CT/MRI: An explorative study in healthy  
397 subjects. *PLoS One* 2019;**14**:e0222042.
- 398 23. Raoul P, Cintoni M, Coppola A, Alfieri S, Tortora G, Gasbarrini A *et al.* Preoperative  
399 low skeletal muscle mass index assessed using L3-CT as a prognostic marker of clinical  
400 outcomes in pancreatic cancer patients undergoing surgery: A systematic review and meta-  
401 analysis. *Int J Surg* 2023 doi:10.1097/JS9.0000000000000989.
- 402 24. de Luis Roman D, López Gómez JJ, Muñoz M, Primo D, Izaola O, Sánchez I.  
403 Evaluation of Muscle Mass and Malnutrition in Patients with Colorectal Cancer Using the  
404 Global Leadership Initiative on Malnutrition Criteria and Comparing Bioelectrical Impedance  
405 Analysis and Computed Tomography Measurements. *Nutrients* 2024;**16**:3035.
- 406 25. Anabtawi NM, Pasala MS, Grimshaw AA, Kharel P, Bal S, Godby K *et al.* Low  
407 skeletal muscle mass and treatment outcomes among adults with haematologic malignancies:  
408 A systematic review and meta-analysis. *J Cachexia Sarcopenia Muscle* 2024;**15**:1084–1093.
- 409 26. Caudron L, Bussy A, Artemova S, Charrière K, Lakkiss SE, Moreau-Gaudry A *et al.*  
410 Sarcopenia diagnosis: comparison of automated with manual computed tomography  
411 segmentation in clinical routine. *JCSM Rapid Communications* 2021;**4**:103–110.
- 412 27. European Parliament. EU AI Act: first regulation on artificial intelligence. Topics |  
413 European Parliament.  
414 2024[https://www.europarl.europa.eu/topics/en/article/20230601STO93804/eu-ai-act-first-](https://www.europarl.europa.eu/topics/en/article/20230601STO93804/eu-ai-act-first-regulation-on-artificial-intelligence)  
415 [regulation-on-artificial-intelligence](https://www.europarl.europa.eu/topics/en/article/20230601STO93804/eu-ai-act-first-regulation-on-artificial-intelligence). Accessed 25 July 2024.
- 416 28. Ong Ly C, Unnikrishnan B, Tadic T, Patel T, Duhamel J, Kandel S *et al.* Shortcut  
417 learning in medical AI hinders generalization: method for estimating AI model generalization  
418 without external data. *NPJ Digit Med* 2024;**7**:124.
- 419 29. Xie C, Du R, Ho JW, Pang HH, Chiu KW, Lee EY *et al.* Effect of machine learning  
420 re-sampling techniques for imbalanced datasets in 18F-FDG PET-based radiomics model on  
421 prognostication performance in cohorts of head and neck cancer patients. *Eur J Nucl Med Mol*  
422 *Imaging* 2020;**47**:2826–2835.
- 423 30. Bradshaw TJ, Huemann Z, Hu J, Rahmim A. A Guide to Cross-Validation for

- 424 Artificial Intelligence in Medical Imaging. *Radiol Artif Intell* 2023;**5**:e220232.  
425 31. Willemink MJ, Koszek WA, Hardell C, Wu J, Fleischmann D, Harvey H *et al*.  
426 Preparing Medical Imaging Data for Machine Learning. *Radiology* 2020;**295**:4–15.  
427 32. Molwitz I, Ozga AK, Gerdes L, Ungerer A, Köhler D, Ristow I *et al*. Prediction of  
428 abdominal CT body composition parameters by thoracic measurements as a new approach to  
429 detect sarcopenia in a COVID-19 cohort. *Sci Rep* 2022;**12**:6443.  
430