

# 1 **Changing patterns of heart failure in China from 1990 to 2021: a secondary** 2 **analysis of the Global Burden of Disease study 2021**

3 (Short title: Changing patterns of heart failure in China)

4 Qiwen Yang, MD <sup>a,b,e</sup>; Rui Zhuang, MD, PhD <sup>a,e</sup>; Diyang Lyu, MD, PhD <sup>a</sup>; Donghua Xue, MD <sup>a,b</sup>;  
5 Chaofeng Niu, MD <sup>a,b</sup>; Yujie Shi, MD, PhD <sup>c,\*</sup>; Meng Li, MD, PhD <sup>a,d,\*</sup>; Lijing Zhang, MD, PhD <sup>a,\*</sup>

6 <sup>a</sup> Department of Cardiology, Dongzhimen Hospital, Beijing University of Chinese Medicine, Beijing,  
7 China

8 <sup>b</sup> Graduate School, Beijing University of Chinese Medicine, Beijing, China

9 <sup>c</sup> Department of Cardiology, the Seventh Medical Center of Chinese PLA General Hospital, Beijing,  
10 China

11 <sup>d</sup> Liverpool Centre for Cardiovascular Science at University of Liverpool, Liverpool John Moores  
12 University, and Liverpool Heart & Chest Hospital, Liverpool, United Kingdom

13 <sup>e</sup> These authors contributed equally to this work and share first authorship

## 14 **\* Correspondence:**

15 Yujie Shi, [13910978461@163.com](mailto:13910978461@163.com), Department of Cardiology, the Seventh Medical Center of  
16 Chinese PLA General Hospital, Beijing, China

17 Meng Li, [15201328277@163.com](mailto:15201328277@163.com), Department of Cardiology, Dongzhimen Hospital, Beijing  
18 University of Chinese Medicine, Beijing, China; Liverpool Centre for Cardiovascular Science at  
19 University of Liverpool, Liverpool John Moores University, and Liverpool Heart & Chest Hospital,  
20 Liverpool, United Kingdom.

21 Lijing Zhang, [dzmyyccu@163.com](mailto:dzmyyccu@163.com), Department of Cardiology, Dongzhimen Hospital, Beijing  
22 University of Chinese Medicine, Beijing, China.

23  
24 **The total word count: 8607.**

NOTE: This preprint reports new research that has not been certified by peer review and should not be used to guide clinical practice.

25 **Abstract**

26 **Background:** Heart failure is a leading public health issue in China, with a steadily increasing  
27 burden. This study aims to assess the changing patterns of heart failure in China from 1990 to 2021,  
28 providing evidence for informed healthcare strategies.

29 **Methods:** Data on prevalence, years lived with disability (YLDs), and their corresponding 95%  
30 uncertainty intervals (UI) were obtained from the Global Burden of Disease (GBD) Study 2021. The  
31 joinpoint regression model was used to identify both overall and localized trends of heart failure  
32 burden, and the age-period-cohort model served to analyze the contributions of age, period, and birth  
33 cohort separately. We further utilized the autoregressive integrated moving average (ARIMA) model  
34 to predict future trends of heart failure in the next 10 years.

35 **Results:** In 2021, 13099727 (95% UI, 11320895 to 15376467) individuals lived with heart failure  
36 and this illness accounted for 1290810 (95% UI, 865894 to 1775731) YLDs in China. The burden of  
37 heart failure is more pronounced in males and the elderly, and ischemic heart disease has become the  
38 leading cause since 2002. The age-standardized rates of prevalence and YLDs increased at average  
39 annual percentage changes of 0.23% (95% CI, 0.20 to 0.26) and 0.25% (95% CI, 0.23 to 0.27)  
40 respectively. The curve of local drift showed a downward trend with age. Both the period and cohort  
41 rate ratios have increased significantly over the last 30 years. By 2031, the age-standardized rates of  
42 prevalence will decrease to 678.69 (95% CI, 640.75 to 716.63), while the age-standardized rates of  
43 YLDs will increase to 69.19 (95% CI, 66.95 to 71.43).

44 **Conclusions:** The burden of heart failure in China remains concerning. The implementation of  
45 comprehensive strategies should be taken into consideration, including strengthening primary  
46 healthcare system, enhancing public awareness, and promoting cardiac rehabilitation.

47 **Keywords:** Heart failure, Global burden of disease, China, Prevalence, Years lived with disability

Non-standard Abbreviations and Acronyms	
AAPC	Average Annual Percentage Changes
ACF	Autocorrelation Function
AIC	Akaike Information Criterion
APC	Annual Percentage Changes

The APC model	The age-period-cohort model
ARIMA	Autoregressive Integrated Moving Average
ASR	Age-Standardized Rate
DALYs	Disability-Adjusted Life-Years
GBD	Global Burden of Disease
HAQ	Healthcare Quality and Access
HF	Heart Failure
MR-BRT	Meta-Regression—Bayesian, Regularized, Trimmed
UI	Uncertainty Interval
WHO	World Health Organization
YLDs	Years Lived with Disability
YLLs	Years of Life Lost

## Clinical Perspective

### What Is New?

- This is the first study of the Global Burden of Disease (GBD) 2021 that comprehensively analyzes the burden of heart failure in China over the past 30 years.

### What Are the Clinical Implications?

- The burden of heart failure in China remains concerning.
- Comprehensive strategies prioritizing primary healthcare system, public awareness, and cardiac rehabilitation could be effective to mitigate the burden of heart failure.

## 48 Introduction

49 Heart failure (HF) is a complex syndrome often identified by characteristic symptoms caused by  
50 structural or functional defects in ventricular filling or ejection of blood.<sup>1,2</sup> Approximately 55.5  
51 million people worldwide suffer from HF,<sup>3</sup> which poses notable clinical and public health challenges,  
52 including impaired quality of life,<sup>2,4</sup> high rates of hospitalization,<sup>5,6</sup> poor prognosis,<sup>7,8</sup> and huge  
53 economic burden.<sup>9,10</sup> Therefore, strategies for the prevention and management are important to  
54 minimize the burden of HF.

55 The Global Burden of Diseases, Injuries, and Risk Factors (GBD) study aims to quantify the

56 comparative magnitude of health loss, which provides an opportunity to understand in a given place,  
57 time, and age-sex group what are the most important contributors to health loss.<sup>11</sup> Two recent  
58 secondary analyses based on GBD 2019 illustrated the burden, trends, and regional variations in  
59 global HF from different perspectives.<sup>12, 13</sup> However, due to the scope defined by their primary  
60 objectives, they were unable to provide detailed country- or region-specific analyses. In the past 30  
61 years, China has made remarkable progress in the Healthcare Quality and Access (HAQ) Index,  
62 ranking the first among middle-income countries.<sup>14</sup> Still, China is struggling with steadily increasing  
63 prevalence of HF and high mortality rate.<sup>15, 16</sup> With China being the world's most populous country, it  
64 contributes to nearly one-third of all HF cases globally, highlighting its substantial burden on both  
65 national and international levels.<sup>13</sup> As such, there is an urgent need to thoroughly analyze the GBD  
66 data in China and implement targeted measures to reduce HF burden. Furthermore, recently released  
67 GBD 2021 updated new etiologies and methodologies, which led to a significant variation in the  
68 data.<sup>3, 17</sup> For example, regarding China's HF burden in 2019, GBD 2019 reported an age-standardized  
69 prevalence of 1032.84 per 100000 population,<sup>12</sup> compared to 690.94 per 100000 population as  
70 reported in GBD 2021 (<https://vizhub.healthdata.org/gbd-results/>). Considering such a large  
71 discrepancy could skew the understanding of HF in China, it is crucial to use the most recent data.  
72 This first-to-date study provides a comprehensive analysis of HF data in China using GBD 2021. We  
73 (1) quantified the burden and trends of HF over the past 30 years by sex, age, and cause; (2) assessed  
74 localized trend changes; (3) disentangled the complex effects of age, period, and birth cohort on HF  
75 burden; and (4) predicted the HF burden in the next decade. Our findings are expected to provide  
76 essential evidence for further healthcare strategies that can mitigate HF.

## 77 **Methods**

### 78 **Data source**

79 The GBD 2021 synthesized a vast array of data input sources and estimated the incidence,  
80 prevalence, years lived with disability (YLDs), years of life lost (YLLs), disability-adjusted  
81 life-years (DALYs), and healthy life expectancy (HALE) for 371 diseases and injuries across 204  
82 countries and territories, as well as 811 subnational areas, covering the period from 1990 to 2021.<sup>3</sup>

83 All estimates for China and globally were obtained from the GBD Results Tool  
84 (<https://vizhub.healthdata.org/gbd-results/>).

85 A total of seven national or regional epidemiological studies were utilized as data sources for HF in  
86 China in GBD 2021. Detailed information on these data sources and their characteristics is accessible  
87 through the GBD 2021 Sources Tool (<https://ghdx.healthdata.org/gbd-2021/sources>). The modelling  
88 software MR-BRT (meta-regression—Bayesian, regularized, trimmed) was employed to adjust  
89 systematic bias between definitions of HF. And overall prevalence of HF was estimated in  
90 DisMod-MR 2.1 (Disease Modelling Meta-Regression, version 2.1) based on the input data. More  
91 information on data processing and modeling methodologies can be found elsewhere.<sup>3</sup>

92 This study followed the Guidelines for Accurate and Transparent Health Estimation Reporting  
93 (GATHER) to ensure the transparency and reliability of results, and the GATHER checklist is  
94 presented in **Supplemental Table S1**.

### 95 **Definition and causal attribution**

96 HF, as a level 1 impairment in GBD 2021, is diagnosed using structured criteria, including the  
97 Framingham or European Society of Cardiology (ESC) criteria.<sup>3</sup> Briefly, the Framingham criteria  
98 need to be satisfied with at least two major criteria or one major and two minor criteria,<sup>18</sup> whereas  
99 the ESC criteria require typical signs and symptoms caused by a structural and/or functional cardiac  
100 abnormality, resulting in a reduced cardiac output and/or elevated intracardiac pressures at rest or  
101 during stress.<sup>19</sup> HF is further divided into four subgroups based on clinical symptoms: treated, mild,  
102 moderate and severe HF.<sup>3</sup>

103 HF can be attributed to 20 level 3 causes, as defined in a previous study,<sup>3</sup> including: atrial fibrillation  
104 and flutter; cardiomyopathy and myocarditis; chagas disease; chronic kidney disease (CKD); chronic  
105 obstructive pulmonary disease (COPD); cirrhosis and other chronic liver diseases; congenital birth  
106 defects; drug use disorders; endocarditis; endocrine, metabolic, blood, and immune disorders;  
107 hemoglobinopathies and hemolytic anemias; hypertensive heart disease; interstitial lung disease and  
108 pulmonary sarcoidosis; ischemic heart disease; non-rheumatic valvular heart disease; other

109 cardiovascular and circulatory diseases; pneumoconiosis; pulmonary arterial hypertension; rheumatic  
110 heart disease; and stroke.

### 111 **Statistical analysis**

112 We used prevalence and YLDs to quantify the burden of HF in China during 1990-2021 by sex, age,  
113 and cause. Age-standardized rates (ASRs) of prevalence and YLDs were also used to avoid the  
114 influences of population size and age composition. YLDs were measured by taking the prevalence  
115 multiplied by the disability weight for HF.<sup>3</sup> 95% uncertainty interval (UI) was generated for all final  
116 estimates as the 2.5th and 97.5th percentiles values of 500 draws.<sup>3</sup>

117 Joinpoint software (Version 5.2.0, <https://surveillance.cancer.gov/joinpoint/>) was utilized to further  
118 assess trends in HF over the past 30 years. The joinpoint regression, a segmented linear model, is  
119 designed to identify both overall and localized trends in data changes.<sup>20</sup> Annual percentage changes  
120 (APC) reflect shifts in the slope within each time segment, while average annual percentage changes  
121 (AAPC), calculated by weighting segment lengths, provide an overall trend for the entire period.  
122 APC and AAPC are considered stable if their 95% confidence interval (CI) included 0. A *P*-value of  
123 less than 0.05 indicates a significant increasing or decreasing trend.

124 The age-period-cohort (APC) model helps to assess the contribution of age, period, and cohort to the  
125 burden of HF separately, whereas traditional statistical methods are unable to reduce the collinearity  
126 between these factors.<sup>21-23</sup> Age effect refers to the effect of changes in biologic aging. Period  
127 effect represents the influence of human factors on HF burden that shared by all age groups  
128 simultaneously, such as new equipment and medication. Cohort effect reflects changes in HF burden  
129 among people of different birth years, which are influenced, for example, by exposure to risk factors.  
130 We employed 5 pivotal parameters for the analysis of APC model: net drift, local drift, longitudinal  
131 age curve, period rate ratio, and cohort rate ratio. The net drift represents the overall estimated annual  
132 percentage change in the ASRs, while the local drift reflects this change over time specific to a  
133 certain age group. The longitudinal age curve is the fitted longitudinal age-specific rate in the  
134 reference cohort adjusted for period effect. The period rate ratio measures the relative change in HF  
135 burden between two distinct time periods, and the cohort rate ratio compares HF burden across  
136 groups born in different years. The calculation of these parameters has been detailed in previous

137 study.<sup>20, 22</sup> To fit the APC model, age groups were defined as 0-4 (<5), 5-9, 10-14, ..., and 90-94. The  
138 periods were similarly categorized into 5-year intervals (1992-1996, 1997-2001, ..., and 2017-2021).  
139 Data for the period 1990 to 1991 and age groups >95 years were excluded from the analysis due to  
140 their failure to span a 5-year interval.

141 The autoregressive integrated moving average (ARIMA) model has been introduced to account for  
142 the complexity of time series data and is widely used to investigate time-dependent processes in  
143 population health.<sup>24</sup> The basic structure of an ARIMA model is  $(p, d, q)$ , where  $p$  is the order of the  
144 autoregressive component,  $d$  is the degree of differencing (integration), and  $q$  is the order of the  
145 moving average component.<sup>25</sup> To predict future trends of HF over the next 10 years, we applied  
146 “auto.arima()” function, an automated algorithm from the “forecast” packages, which simplifies  
147 model selection by identifying the best-fitting ARIMA model based on the Akaike Information  
148 Criterion (AIC).<sup>26</sup> Subsequently, the normality and autocorrelation (white noise) of the residuals  
149 from the fitted model were evaluated using the residual time series plot, autocorrelation function  
150 (ACF) Plot, histogram with density plot, and the Ljung-Box test. A  $P$ -value greater than 0.05 in the  
151 Ljung-Box test indicated no significant autocorrelation, supporting the model's adequacy.<sup>25</sup>

152 The joinpoint analysis was performed in joinpoint software (Version 5.2.0). Other analyses and  
153 visualizations were conducted in R software (version 4.3.3), utilizing the “ggplot2”, “nih.joinpoint”,  
154 “Epi”, “forecast”, and “forest” packages, among others.

## 155 **Ethics statement**

156 For GBD studies, the Institutional Review Board of the University of Washington reviewed and  
157 approved a waiver of informed consent (<https://www.healthdata.org/research-analysis/gbd>).

## 158 **Results**

### 159 **Temporal trends in the burden of HF**

160 In 2021, there were 13099727 (95% UI, 11320895 to 15376467) HF cases in China, with ASRs of  
161 692.50 (95% UI, 607.26 to 802.00) per 100000 population. This represents an increase from 1990,  
162 when there were 4683303 (95% UI, 4036499 to 5435212) cases and ASRs of 644.58 (95% UI,

163 558.65 to 751.14) per 100000 population. Additionally, the number of YLDs more than doubled from  
164 459512 (95% UI, 313552 to 630785) in 1990 to 1290810 (95% UI, 865894 to 1775731) in 2021,  
165 while the ASRs increased at AAPC of 0.25% (95% CI, 0.23 to 0.27) over the same period. **Table 1**  
166 presents the prevalence and YLDs in 1990 and 2021, as well as the AAPC from 1990 to 2021, for  
167 China and globally. Overall, the burden of HF has been on an upward trend over the last 30 years,  
168 with a more pronounced increase in China compared to the global level, as reflected by higher AAPC.  
169 Since 1990, the number of HF cases in China has increased by 2.8 times, making up 23.6% of the  
170 global total in 2021, compared to a 2.2-fold increase globally. However, from the perspective of  
171 ASRs of prevalence and YLDs, HF burden in China is higher than the global average. Trends in HF  
172 burden for China and globally over the past 30 years are presented in **Supplemental Figure S1**.

173 **Figure 1** illustrates the trends in sex-specific prevalence and YLDs in China, including both the  
174 number and ASRs from 1990 to 2021. The prevalence of HF in both males and females has shown an  
175 overall increasing trend, with males consistently experiencing a higher burden than females. Notably,  
176 the gap between the cases of HF in males and females gradually widened after 1990 (2446913 vs  
177 2236390), peaking in 2014 (5623587 vs 4598155), when the growth of the prevalence in males  
178 slowed, leading to a gradual reduction in the gap, until 2020 (6577128 vs 6075682). The trends in  
179 YLDs followed a similar pattern to those of prevalence. These localized trend changes are further  
180 described in the results of joinpoint analysis.

181 **Figure 2** presents the age-specific burden of HF among males and females in China in 2021.  
182 Generally, the number of HF cases for both males and females reaches its lowest point in the 20-24  
183 age group (40317 and 31944), then increases with age, particularly rising sharply after the age of 65,  
184 and peaking in the 70-74 age group (1372223 and 1121531). Notably, after the age of 80, the number  
185 of cases in females surpasses that in males. Similar tendencies are observed in YLDs, where the  
186 burden also increases with age and follows a comparable pattern across age groups.

### 187 **Joinpoint analysis**

188 The joinpoint analysis clearly quantifies the localized trend changes in ASRs of prevalence and  
189 YLDs of HF (**Figure 3**). It is evident that the burden of HF has shown an upward trend over the past  
190 30 years. After a significant decline in the ASRs of prevalence between 2000 and 2005 (APC =



191 -0.64%), a slow but nonsignificant decline was observed after 2014 (APC = -0.02%). Both males  
192 (APC = -0.49%) and females (APC = -0.72%) experienced a significant decline in ASRs of  
193 prevalence between 2000 and 2005, while the ASRs of prevalence in males showed another  
194 significant decline after 2014 (APC = -0.74%), narrowing the gap in the burden of HF between  
195 males and females. Additionally, the ASRs of prevalence in males (AAPC = 0.24%) increased at a  
196 faster rate than in females (AAPC = 0.21%). The trend in ASRs of YLDs closely mirrors that of  
197 prevalence. Meanwhile, it is noteworthy that the AAPC for the ASRs of YLDs in males, females, and  
198 both sexes are higher than that of prevalence. Detailed results of the joinpoint analysis can be found  
199 in **Supplemental Table S2**.

#### 200 **Age-period-cohort effects**

201 The local drift and net drift of HF prevalence calculated using the APC model are shown in **Figure**  
202 **4A**. The solid horizontal line and the dashed line represent the net drift (0.97%) with its 95% CI (0.76%  
203 to 1.19%), indicating that the overall ASRs of HF prevalence in China continues to increase. The  
204 blue curve represents the local drift, which shows an inverted U-shape and intersects with the net  
205 drift at one point. The growth rate for younger patients ( $\leq 50$ -54 age group) is higher than the overall  
206 level, indicating that the proportion of younger patients within the total HF population has gradually  
207 increased from 1992 to 2021. In contrast, the proportion of elderly patients ( $\geq 55$ -59 age group) has  
208 shown a downward trend. Additionally, the local drift for patients aged  $\geq 70$  is below 0, suggesting a  
209 continuous decline in their prevalence from 1992 to 2021.

210 **Figure 4B** shows the longitudinal age curve of HF prevalence in China, independent of period effect.  
211 The prevalence rate of HF remains stable up to the 60-64 age group, after which it increases rapidly  
212 with age. **Figure 4C** and **Figure 4D** present the period rate ratio and cohort rate ratio for the  
213 prevalence of HF in China. From 1992 to 2021, the period rate ratio for HF showed continuous  
214 growth, with the growth rate slowing after the period 2012-2016. The cohort rate ratio for HF  
215 showed a slight decline from the 1902 to 1937 birth cohorts, followed by a continuous increase in  
216 more recent birth cohorts. The age-period-cohort effects on YLDs are very similar to those on  
217 prevalence, and thus will not be elaborated here (**Supplemental Figure S2**).

## 218 **Trends in causes of HF**

219 Given that the majority of the HF burden is attributable to a few major causes, we selected the top 10  
220 contributors in 2021 and plotted their trends from 1990 to 2021 (**Figure 5**). Focusing on these top  
221 contributors allows us to gain clearer insights into the primary drivers of disease burden. It is evident  
222 that the prevalence and YLDs of HF caused by ischemic heart disease and hypertensive heart disease  
223 far exceed those caused by other conditions. The contributions of ischemic heart disease, congenital  
224 birth defects, and cardiomyopathy and myocarditis to the prevalence of HF have steadily increased,  
225 and their rankings have risen compared to 1990. Notably, the most significant increase was observed  
226 in ischemic heart disease, which surpassed hypertensive heart disease after 2002 to become the  
227 leading cause of HF. Although the prevalence of HF attributable to stroke is lower than that  
228 attributable to COPD, the YLDs attributable to stroke surpassed those of COPD after 2000.

229 Furthermore, a Sankey diagram is used to depict the proportions of sex, cause, and age distribution  
230 of HF in 2021, offering a clear overview of how these factors contribute to HF burden  
231 (**Supplemental Figure S3**). Among all patients, the elderly ( $\geq 55$  years) made up the largest  
232 proportion. Ischemic heart disease and hypertensive heart disease were the leading causes of HF in  
233 both the middle-aged (20-54 years) and elderly ( $\geq 55$  years) patients, whereas congenital birth defects  
234 were the primary cause in younger patients ( $< 20$  years).

## 235 **Prediction of the HF burden in 2022–2031**

236 The ARIMA model is used to predict the trends in the prevalence and YLDs of HF over the next 10  
237 years (**Figure 6**). The best-fitting model for the ASRs of prevalence is identified as (2, 1, 1), with an  
238 AIC value of 93.15. The residual time series plot, ACF plot, histogram with density plot, and the  
239 Ljung-Box test ( $\chi^2 = 0.095$ ,  $P = 0.757$ ) confirm the normality of residuals and lack of autocorrelation,  
240 suggesting the model's adequacy (**Supplemental Figure S4**). Using the same approach, the ARIMA  
241 model (2, 1, 0) for the ASRs of YLDs (AIC = -53.68) is developed. The adequacy of the model is  
242 validated by the aforementioned plots (**Supplemental Figure S5**) and the Ljung-Box test ( $\chi^2 = 1.630$ ,  
243  $P = 0.202$ ).

244 Based on the fitted models, the ASRs of prevalence are projected to decrease from 688.28 (95% CI,

245 686.44 to 690.12) in 2022 to 673.05 (95% CI, 649.94 to 696.16) in 2026, followed by a slow  
246 increase, reaching 678.69 (95% CI, 640.75 to 716.63) in 2031. In contrast, the ASRs of YLDs are  
247 expected to continue increasing, from 67.83 (95% CI, 67.65 to 68.00) in 2022 to 69.19 (95% CI,  
248 66.95 to 71.43) in 2031.

## 249 Discussion

250 To our knowledge, this is the first analysis of the GBD 2021 that comprehensively describes the  
251 burden of HF in China. Over the past 30 years, both the burden of HF and its growth rate in China  
252 have exceeded the global levels. In 2021, approximately 13.1 million individuals lived with HF and  
253 this illness accounted for 1.3 million YLDs in China. This is generally consistent with the prevalence  
254 estimated using the China Hypertension Survey and the National Urban Employee Basic Medical  
255 Insurance Database.<sup>27,28</sup> Specifically, the burden is higher in males than in females, and it is the  
256 heaviest among the elderly. As for the causes of HF, ischemic heart disease and hypertensive heart  
257 disease stand out as the most striking causes among all patients, while congenital birth defects are the  
258 leading cause among children and adolescents.

259 The algorithms and methodologies of the GBD study are continuously being optimized, making it  
260 essential to utilize the most up-to-date data.<sup>17</sup> Our analysis of GBD 2021 reveals that both ASRs of  
261 prevalence and YLDs in China and globally have increased in 2021 compared to 1990. This trend is  
262 significantly different from what was presented in GBD 2019.<sup>12</sup> The joinpoint regression model  
263 indicates that ASRs of prevalence and YLDs have ceased to increase after 2014, which may reflect  
264 the positive outcomes of China's continuous improvements in HF management.<sup>29,30</sup> This stabilization  
265 is largely attributed to the significant reduction in the burden of HF among males (**Figure 3B, 3E**).  
266 Males generally bear a heavier burden than females in terms of risk factors and causes of HF,<sup>31,32</sup>  
267 which aligns with the observed gender differences in the disease burden. Therefore, it is no surprise  
268 that, under the same management, the improvement in HF burden is more pronounced in males.  
269 Although ASRs of prevalence and YLDs have stabilized, HF remains a huge health care burden in  
270 China due to population aging and the increasing absolute number of patients.<sup>28,33</sup>

271 The results of APC effects have further revealed the severe nature of the HF burden in China. The

272 longitudinal age curve shows a positive correlation between age and HF burden, consistent with  
273 previous studies indicating that age is a risk factor for HF.<sup>34, 35</sup> The prevalence and YLDs rates of HF  
274 increase rapidly after the 60-64 age group, suggesting that greater efforts are needed to monitor and  
275 prevent HF in individuals aged 65 and above.

276 The curve of local drift suggests that the proportion of younger patients among the HF population is  
277 gradually rising. In contrast, HF burden in individuals aged  $\geq 55$ -59 is growing at a rate slower than  
278 the overall average, even the burden among those aged  $\geq 70$  is declining. Several factors may explain  
279 this trend. First, elderly patients are consistently a primary focus and may benefit more from the  
280 prevention and management efforts. Second, the unfavorable mortality rates<sup>36</sup> and survival rates<sup>37</sup> of  
281 HF may lead to the premature death of some patients, while those who survive tend to be relatively  
282 healthier.

283 Since the 2009 health-care reform, the Chinese government has doubled its expenditure in the health  
284 sector and established an integrated health-care delivery system based on primary health care.<sup>38, 39</sup>  
285 However, according to the trend of the period effect, the risk of HF continues to increase, which is  
286 closely associated with changes in certain lifestyles and risk factors.

287 Diet, as one of the most important components of the Chinese lifestyles, has undergone significant  
288 changes over the past few decades. People have shifted from a predominantly plant-based diet to a  
289 Western-style diet characterized by high fat and high animal-based food intake.<sup>40</sup> The intake of  
290 energy, carbohydrates, and protein has decreased, whereas fat consumption has significantly  
291 increased.<sup>40</sup> Furthermore, the consumption of whole grains, vegetables, and fruits in China over the  
292 past 20 years has remained far below the levels recommended by national dietary guidelines, and  
293 their inadequate intake constitutes a major dietary risk factor for ischemic heart disease and stroke.<sup>41</sup>  
294 Moreover, sodium intake in China has decreased since 1991, but it remains significantly higher than  
295 the World Health Organization (WHO) recommended level of  $< 2.0$  g/day, which is a major risk  
296 factor for hypertension.<sup>42</sup> The harmful effects of tobacco on cardiovascular and pulmonary health are  
297 well-documented. As the largest tobacco-consuming country, China currently has over 300 million  
298 smokers, with approximately half of them being tobacco dependent, making it more difficult for  
299 them to initiate or succeed in quitting smoking.<sup>43</sup> Unfortunately, younger age and lower

300 socioeconomic status are associated with a higher risk of tobacco dependence.<sup>43</sup> Physical activity has  
301 been proven to be associated with a lower risk of cardiovascular disease (CVD).<sup>44</sup> Over the past  
302 decade, the prevalence and volume of physical activity among adults have increased slightly, but  
303 they still remain at low levels. In contrast, the prevalence and volume of physical activity among  
304 children and adolescents have shown a declining trend.<sup>45, 46</sup>

305 Obesity, dyslipidemia, hypertension, and diabetes are fundamental cardiovascular risk factors, and  
306 their worsening trends also explain the continuous increase in HF risk. Data from the China Chronic  
307 Disease and Risk Factors Surveillance program indicate that the standardized mean body mass index  
308 (BMI) levels rose from 22.7 kg/m<sup>2</sup> to 24.4 kg/m<sup>2</sup>, and the prevalence of obesity increased from 3.1%  
309 to 8.1% over the past decade.<sup>47</sup> Another study comparing three national cross-sectional surveys  
310 found that the prevalence of dyslipidemia among Chinese adults increased from 2002 to 2015, and  
311 the weighted mean of low-density lipoprotein cholesterol (LDL-C) increased from 2.12 mmol/L to  
312 2.87 mmol/L.<sup>48</sup> Multiple nationwide cross-sectional studies indicated that the prevalence of  
313 hypertension increased from 5.1% in 1958 to 27.5% in 2018, with awareness and treatment rates  
314 below 50%.<sup>15</sup> Meanwhile, the prevalence of diabetes rose from 0.67% in 1980 to 11.2% in 2017.<sup>15</sup>

315 To our relief, after the period 2012-2016, the growth of period rate ratio began to slow. This  
316 improvement can be attributed not only to sustained financial support but also to significant progress  
317 in the quality of HF management in China, including standardized diagnosis, guideline-directed  
318 medical therapies, and device therapies.<sup>49</sup> The trend of the period effect is likely to improve further  
319 with a deeper understanding of HF and the establishment of the four pillars of HF therapy after  
320 2021.<sup>50, 51</sup> While the period effect has a broad impact across all age groups, the cohort effect  
321 highlights that younger generations are at higher risk of HF. Individuals from more recent birth  
322 cohorts are exposed to Westernized diets and other unhealthy lifestyles at a younger age, and they are  
323 also more vulnerable to risk factors of HF during their growth. In this context, it is essential to  
324 strengthen health education and regular screening for children and adolescents to mitigate the risk of  
325 early onset HF.

326 In line with global trends,<sup>13</sup> hypertensive heart disease and ischemic heart disease are the leading  
327 causes of HF in China. To address these major causes, we believe it is crucial to enhance public

328 health education to improve awareness and treatment rates, while general practitioners need to  
329 identify and manage related risk factors as early as possible. This presents a challenge to China's  
330 primary health care system. For children and adolescents, congenital heart disease ranks first among  
331 congenital birth defects, which is the main cause of HF.<sup>15</sup> A meta-analysis has filled the gap left by  
332 the GBD study, showing that atrial septal defect, patent ductus arteriosus, and ventricular septal  
333 defect are the most common subtypes of congenital heart disease in China, accounting for 27.37%,  
334 20.66%, and 18.72%, respectively.<sup>52</sup> Since the establishment of a screening and diagnosis system for  
335 congenital heart disease by the Chinese government in 2002, prenatal screening coverage and  
336 detection rates have continuously improved, which partly explain the slight increase in congenital  
337 birth defects after 2000.<sup>53</sup> However, China still faces issues regarding insufficient screening,  
338 diagnosis, and treatment capabilities in central and western regions, as well as rural areas.<sup>53</sup> Besides,  
339 the burden of HF attributable to COPD has declined significantly after 2000, largely due to the  
340 strengthened anti-smoking policies.<sup>54, 55</sup> It is noteworthy that ASRs of prevalence attributable to  
341 stroke rank fifth, whereas ASRs of YLDs rank third, indicating that HF caused by stroke has a  
342 pronounced impact on patients' quality of life. Considering that stroke and HF share several major  
343 risk factors,<sup>56</sup> clinicians must pay close attention to the cardiac function of stroke patients when  
344 initiating therapies. Early identification and intervention for HF are important to reduce the impact  
345 on the quality of life.

346 The course of HF is prolonged, and symptoms often lag behind the progression of the disease itself.  
347 The ARIMA model predicts that ASRs of prevalence will first decrease and then slightly increase  
348 over the next decade. This trend may be the result of continuous improvements in HF management,  
349 sustained financial support, and the high mortality rates among elderly patients. On the other hand,  
350 the continuous increase in ASRs of YLDs suggests that the quality of life of HF patients will further  
351 deteriorate. This is associated with worsening HF risk factors and its earlier onset tendency, as the  
352 increasing proportion of younger patients indicates that more individuals will be affected by HF for  
353 longer durations. The results of ARIMA model indicate that improving patients' quality of life will be  
354 a prominent challenge in the future. We believe that, in addition to pharmacological treatments,  
355 cardiac rehabilitation is a promising solution. Cardiac rehabilitation is a comprehensive intervention  
356 that includes, but is not limited to, exercise training, nutritional advice, patient education, risk factor

357 control, and psychological support.<sup>57</sup> High quality studies have shown that cardiac rehabilitation can  
358 effectively reduce the risk of hospitalization in HF patients, while also lowering healthcare costs and  
359 improving quality of life.<sup>58</sup> Cardiac rehabilitation is even considered the fifth pillar in the  
360 management of HF.<sup>59</sup> However, the importance attached to cardiac rehabilitation in China is far from  
361 sufficient. A cross-sectional survey of 124 large medical centers in China showed that only 30 of  
362 them provided cardiac rehabilitation services, and the estimated availability of cardiac rehabilitation  
363 programs was about 2 programs per 100 million inhabitants, which is much lower compared to the  
364 availability in the United States.<sup>60, 61</sup> We recommend increasing awareness of the benefits of cardiac  
365 rehabilitation among both patients and medical staff, and actively promoting cardiac rehabilitation  
366 programs in hospitals. This is of great value in improving the quality of life and mitigating the  
367 growth of YLDs.

368 We conducted a comprehensive analysis of the changing patterns of HF in China using the latest  
369 GBD 2021 data, but several limitations should be considered when interpreting the results. First, we  
370 were unable to report the burden of specific HF subtypes (HF with reduced/mildly reduced/preserved  
371 ejection fraction, HF<sub>rEF</sub>/HF<sub>mrEF</sub>/HF<sub>pEF</sub>). Since each type differs in epidemiology,  
372 pathophysiology, treatment, and prognosis,<sup>27, 62-65</sup> this prevents us from providing more tailored  
373 advice on healthcare strategies. Second, there are disparities in economic development and  
374 healthcare quality across provinces in China, yet we were unable to obtain provincial-level data to  
375 describe the geographical distribution of HF burden. Third, in the GBD study, HF is categorized as  
376 an "impairment", which limits its burden assessment to prevalence and YLDs. The lack of data on  
377 HF mortality and YLLs may hinders the accurate description of its threat to public health, which  
378 further impacts the allocation of healthcare resources and policymaking. Interestingly, CKD, which  
379 is also an end-stage disease with a similar five-year survival rate to HF,<sup>37, 66</sup> is categorized as a "cause  
380 of death or injury". The classification of HF in the GBD study may need reconsideration in the future.  
381 Lastly, the ARIMA model is a time series model which integrates the comprehensive effects of  
382 influencing factors into the time variable, characterized by simplicity and efficiency.<sup>67</sup> However,  
383 relying solely on the time variable makes it difficult to predict the long-term trend of HF burden.  
384 Particularly, when new influencing factors emerge in the future, such as advances in treatment or  
385 policy changes, the predictive power may decline. Therefore, our predictions should be interpreted

386 with caution.

## 387 **Conclusions**

388 Although the ASRs of prevalence and YLDs of HF in China gradually stabilized from 1990 to 2021,  
389 the burden remains substantial. The HF burden is heavier in males and the elderly, with ischemic  
390 heart disease and hypertensive heart disease as the primary causes, while congenital birth defects are  
391 the leading causes among children and adolescents. Lifestyle shifts and the worsening burden of  
392 cardiovascular risk factors continue to drive the risk of HF, and younger generations tend to be more  
393 vulnerable to HF. Given the severity of the HF burden in China, comprehensive strategies must be  
394 considered: (1) strengthening the primary healthcare system to improve prevention and early  
395 treatment of the major causes (ischemic heart disease, hypertensive heart disease, and congenital  
396 birth defects) and common risk factors (obesity, dyslipidemia, hypertension, and diabetes) of HF; (2)  
397 enhancing public awareness to encourage healthy lifestyle (balanced diet, reduced salt intake,  
398 smoking cessation, and increased physical activity), as well as improving awareness and treatment  
399 rates for the disease; (3) promoting cardiac rehabilitation to enhance quality of life and mitigate the  
400 growth of YLDs.

## 401 **Acknowledgments**

402 The authors thank the GBD 2021 Diseases and Injuries Collaborators and the Institute for Health  
403 Metrics and Evaluation (IHME) for sharing the high-quality data.

## 404 **Source of Funding**

405 This study was supported by the National Key Research and Development Program of China (grant  
406 number: 2022YFC3500101).

## 407 **Disclosures**

408 None.



## 409 **Data sharing statement**

410 Datasets analyzed for this study are publicly available at <https://vizhub.healthdata.org/gbd-results/>.

## 411 **Supplemental Material**

412 Tables S1-S2

413 Figure S1-S5

## 414 **References**

- 415 1. Rossignol P, Hernandez AF, Solomon SD, Zannad F. Heart failure drug treatment. *The Lancet*.  
416 2019;393:1034-1044.
- 417 2. Authors TFM, McDonagh TA, Metra M, Adamo M, Gardner RS, Baumbach A, Böhm M, Burri H, Butler J,  
418 Čelutkienė J, et al. 2021 ESC Guidelines for the diagnosis and treatment of acute and chronic heart failure. *EUR J*  
419 *HEART FAIL*. 2022;24:4-131.
- 420 3. Ferrari AJ, Santomauro DF, Aali A, Abate YH, Abbafati C, Abastabar H, Abd ElHafeez S, Abdelmasseh M,  
421 Abd-Elsalam S, Abdollahi A, et al. Global incidence, prevalence, years lived with disability (YLDs), disability-adjusted  
422 life-years (DALYs), and healthy life expectancy (HALE) for 371 diseases and injuries in 204 countries and territories  
423 and 811 subnational locations, 1990-2021: a systematic analysis for the Global Burden of Disease Study 2021. *The*  
424 *Lancet*. 2024;403:2133-2161.
- 425 4. Calvert MJ, Freemantle N, Cleland JGF. The impact of chronic heart failure on health-related quality of life data  
426 acquired in the baseline phase of the CARE-HF study. *EUR J HEART FAIL*. 2005;7:243-251.
- 427 5. Ziaeeian B, Fonarow GC. Epidemiology and aetiology of heart failure. *NAT REV CARDIOL*. 2016;13:368-378.
- 428 6. Lawson CA, Zaccardi F, Squire I, Ling S, Davies MJ, Lam CSP, Mamas MA, Khunti K, Kadam UT. 20-year trends  
429 in cause-specific heart failure outcomes by sex, socioeconomic status, and place of diagnosis: a population-based study.  
430 *The Lancet Public Health*. 2019;4:e406-e420.
- 431 7. Janaswamy P, Walters TE, Nazer B, Lee RJ. Current Treatment Strategies for Heart Failure: Role of Device  
432 Therapy and LV Reconstruction. *Current Treatment Options in Cardiovascular Medicine*. 2016;18:57.
- 433 8. Tsao CW, Lyass A, Enserro D, Larson MG, Ho JE, Kizer JR, Gottdiener JS, Psaty BM, Vasan RS. Temporal  
434 Trends in the Incidence of and Mortality Associated With Heart Failure With Preserved and Reduced Ejection Fraction.  
435 *JACC: Heart Failure*. 2018;6:678-685.
- 436 9. Cook C, Cole G, Asaria P, Jabbour R, Francis DP. The annual global economic burden of heart failure. *INT J*  
437 *CARDIOL*. 2014;171:368-376.
- 438 10. Virani SS, Alonso A, Benjamin EJ, Bittencourt MS, Callaway CW, Carson AP, Chamberlain AM, Chang AR,  
439 Cheng S, Delling FN, et al. Heart Disease and Stroke Statistics—2020 Update: A Report From the American Heart  
440 Association. *CIRCULATION*. 2020;141:e139-e596.
- 441 11. Murray CJ, Ezzati M, Flaxman AD, Lim S, Lozano R, Michaud C, Naghavi M, Salomon JA, Shibuya K, Vos T, et  
442 al. GBD 2010: design, definitions, and metrics. *The Lancet*. 2012;380:2063-2066.
- 443 12. Yan T, Zhu S, Yin X, Xie C, Xue J, Zhu M, Weng F, Zhu S, Xiang B, Zhou X, et al. Burden, Trends, and

- 444 Inequalities of Heart Failure Globally, 1990 to 2019: A Secondary Analysis Based on the Global Burden of Disease 2019  
445 Study. *J AM HEART ASSOC*. 2023;12:e027852.
- 446 13. Liu Z, Li Z, Li X, Yan Y, Liu J, Wang J, Guan J, Xin A, Zhang F, Ouyang W, et al. Global trends in heart failure  
447 from 1990 to 2019: An age-period-cohort analysis from the Global Burden of Disease study. *ESC HEART FAIL*.  
448 2024;Published online June 27, 2024.
- 449 14. Barber RM, Fullman N, Sorensen RJD, Bollyky T, McKee M, Nolte E, Abajobir AA, Abate KH, Abbafati C, Abbas  
450 KM, et al. Healthcare Access and Quality Index based on mortality from causes amenable to personal health care in 195  
451 countries and territories, 1990-2015: a novel analysis from the Global Burden of Disease Study 2015. *The Lancet*.  
452 2017;390:231-266.
- 453 15. The Writing Committee Of The Report On Cardiovascular Health And Diseases In China. Report on Cardiovascular  
454 Health and Diseases in China 2022: an Updated Summary. *BIOMED ENVIRON SCI*. 2023;36:669-701.
- 455 16. Zhang Y, Zhang J, Butler J, Yang X, Xie P, Guo D, Wei T, Yu J, Wu Z, Gao Y, et al. Contemporary Epidemiology,  
456 Management, and Outcomes of Patients Hospitalized for Heart Failure in China: Results From the China Heart Failure  
457 (China-HF) Registry. *J CARD FAIL*. 2017;23:868-875.
- 458 17. Institute For Health Metrics And Evaluation IHME. GBD 2021 Cause and Risk Summary: Heart failure. Seattle,  
459 USA: IHME, University of Washington, 2024. 2024;2024.
- 460 18. McKee PA, Castelli WP, McNamara PM, Kannel WB. The Natural History of Congestive Heart Failure: The  
461 Framingham Study. *NEW ENGL J MED*. 1971;285:1441-1446.
- 462 19. Ponikowski P, Voors AA, Anker SD, Bueno H, Cleland JGF, Coats AJS, Falk V, González-Juanatey JR, Harjola V,  
463 Jankowska EA, et al. 2016 ESC Guidelines for the diagnosis and treatment of acute and chronic heart failure: The Task  
464 Force for the diagnosis and treatment of acute and chronic heart failure of the European Society of Cardiology  
465 (ESC)Developed with the special contribution of the Heart Failure Association (HFA) of the ESC. *EUR HEART J*.  
466 2016;37:2129-2200.
- 467 20. Kim H, Fay MP, Feuer EJ, Midthune DN. Permutation tests for joinpoint regression with applications to cancer  
468 rates. *STAT MED*. 2000;19:335-351.
- 469 21. Rosenberg PS, Anderson WF. Age-Period-Cohort Models in Cancer Surveillance Research: Ready for Prime Time?  
470 *Cancer Epidemiology, Biomarkers & Prevention*. 2011;20:1263-1268.
- 471 22. Rosenberg PS. A new age-period-cohort model for cancer surveillance research. *STAT METHODS MED RES*.  
472 2018;28:3363-3391.
- 473 23. Bell A. Age period cohort analysis: a review of what we should and shouldn't do. *ANN HUM BIOL*.  
474 2020;47:208-217.
- 475 24. Wagner B, Cleland K. Using autoregressive integrated moving average models for time series analysis of  
476 observational data. *BMJ-BRIT MED J*. 2023;383:p2739.
- 477 25. Schaffer AL, Dobbins TA, Pearson S. Interrupted time series analysis using autoregressive integrated moving  
478 average (ARIMA) models: a guide for evaluating large-scale health interventions. *BMC MED RES METHODOL*.  
479 2021;21:58.
- 480 26. Hyndman RJ, Khandakar Y. Automatic Time Series Forecasting: The forecast Package for R. *J STAT SOFTW*.  
481 2008;27:1-22.
- 482 27. Hao G, Wang X, Chen Z, Zhang L, Zhang Y, Wei B, Zheng C, Kang Y, Jiang L, Zhu Z, et al. Prevalence of heart  
483 failure and left ventricular dysfunction in China: the China Hypertension Survey, 2012–2015. *EUR J HEART FAIL*.  
484 2019;21:1329-1337.
- 485 28. Wang H, Chai K, Du M, Wang S, Cai J, Li Y, Zeng P, Zhu W, Zhan S, Yang J. Prevalence and Incidence of Heart  
486 Failure Among Urban Patients in China: A National Population-Based Analysis. *Circulation: Heart Failure*.

- 487 2021;14:e008406.
- 488 29. Chinese Society Of Cardiology Of Chinese Medical Association, Editorial Board of Chinese Journal of Cardiology.  
489 Chinese guidelines for the diagnosis and treatment of heart failure 2014. *Zhonghua Xin Xue Guan Bing Za Zhi*.  
490 2014;42:98-122.
- 491 30. Heart Failure Group Of Chinese Society Of Cardiology Of Chinese Medical Association, Chinese Heart Failure  
492 Association Of Chinese Medical Doctor Association, Editorial Board of Chinese Journal of Cardiology. Chinese  
493 guidelines for the diagnosis and treatment of heart failure 2018. *Zhonghua Xin Xue Guan Bing Za Zhi*. 2018;46:760-789.
- 494 31. Walli-Attai M, Rosengren A, Rangarajan S, Breet Y, Abdul-Razak S, Sharief WA, Alhabib KF, Avezum A,  
495 Chifamba J, Diaz R, et al. Metabolic, behavioural, and psychosocial risk factors and cardiovascular disease in women  
496 compared with men in 21 high-income, middle-income, and low-income countries: an analysis of the PURE study. *The*  
497 *Lancet*. 2022;400:811-821.
- 498 32. Li Y, Lu Y, Hurwitz EL, Wu Y. Gender Disparities of Heart Disease and the Association with Smoking and  
499 Drinking Behavior among Middle-Aged and Older Adults, a Cross-Sectional Study of Data from the US Health and  
500 Retirement Study and the China Health and Retirement Longitudinal Study. *International Journal of Environmental*  
501 *Research and Public Health*. 2022;19.
- 502 33. Luo Y, Su B, Zheng X. Trends and Challenges for Population and Health During Population Aging — China,  
503 2015–2050. *CHINA CDC WEEKLY*. 2021;3:593-598.
- 504 34. Ho KKL, Pinsky JL, Kannel WB, Levy D. The epidemiology of heart failure: The Framingham Study. *J AM COLL*  
505 *CARDIOL*. 1993;22:A6-A13.
- 506 35. Bleumink GS, Knetsch AM, Sturkenboom MCJM, Straus SMJM, Hofman A, Deckers JW, Witteman JCM, Stricker  
507 BHC. Quantifying the heart failure epidemic: prevalence, incidence rate, lifetime risk and prognosis of heart failure: The  
508 Rotterdam Study. *EUR HEART J*. 2004;25:1614-1619.
- 509 36. HU S. Heart failure in China: epidemiology and current management. *J GERIATR CARDIOL*. 2024;21:631-641.
- 510 37. Jones NR, Roalfe AK, Adoki I, Hobbs FDR, Taylor CJ. Survival of patients with chronic heart failure in the  
511 community: a systematic review and meta-analysis. *EUR J HEART FAIL*. 2019;21:1306-1325.
- 512 38. Li H, Liu K, Gu J, Zhang Y, Qiao Y, Sun X. The development and impact of primary health care in China from  
513 1949 to 2015: A focused review. *The International Journal of Health Planning and Management*. 2017;32:339-350.
- 514 39. Yip W, Fu H, Chen AT, Zhai T, Jian W, Xu R, Pan J, Hu M, Zhou Z, Chen Q, et al. 10 years of health-care reform  
515 in China: progress and gaps in Universal Health Coverage. *The Lancet*. 2019;394:1192-1204.
- 516 40. Bu T, Tang D, Liu Y, Chen D. Trends in Dietary Patterns and Diet-related Behaviors in China. *AM J HEALTH*  
517 *BEHAV*. 2021;45:371-383.
- 518 41. Fang Y, Xia J, Lian Y, Zhang M, Kang Y, Zhao Z, Wang L, Yin P, Wang Z, Ye C, et al. The burden of  
519 cardiovascular disease attributable to dietary risk factors in the provinces of China, 2002&#x2013;2018: a nationwide  
520 population-based study. *The Lancet Regional Health – Western Pacific*. 2023;37.
- 521 42. Du S, Wang H, Zhang B, Popkin BM. Dietary Potassium Intake Remains Low and Sodium Intake Remains High,  
522 and Most Sodium is Derived from Home Food Preparation for Chinese Adults, 1991–2015 Trends. *The Journal of*  
523 *Nutrition*. 2020;150:1230-1239.
- 524 43. Liu Z, Li Y, Cui Z, Li L, Nie X, Yu C, Shan G, Zhou X, Qin R, Cheng A, et al. Prevalence of tobacco dependence  
525 and associated factors in China: Findings from nationwide China Health Literacy Survey during 2018-19. *The Lancet*  
526 *Regional Health – Western Pacific*. 2022;24:100464.
- 527 44. Eijsvogels TMH, Molossi S, Lee D, Emery MS, Thompson PD. Exercise at the Extremes: The Amount of Exercise  
528 to Reduce Cardiovascular Events. *J AM COLL CARDIOL*. 2016;67:316-329.
- 529 45. Zou Q, Wang H, Du W, Su C, Ouyang Y, Wang Z, Ding G, Zhang B. Trends in Leisure-Time Physical Activity

- 530 Among Chinese Adults — China, 2000–2015. *CHINA CDC WEEKLY*. 2020;2:135-139.
- 531 46. Yang X, Leung AW, Jago R, Yu SC, Zhao WH. Physical Activity and Sedentary Behaviors among Chinese  
532 Children: Recent Trends and Correlates. *BIOMED ENVIRON SCI*. 2021;34:425-438.
- 533 47. Wang L, Zhou B, Zhao Z, Yang L, Zhang M, Jiang Y, Li Y, Zhou M, Wang L, Huang Z, et al. Body-mass index  
534 and obesity in urban and rural China: findings from consecutive nationally representative surveys during  
535 2004–2013. *The Lancet*. 2021;398:53-63.
- 536 48. Song PK, Man QQ, Li H, Pang SJ, Jia SS, Li YQ, He L, Zhao WH, Zhang J. Trends in Lipids Level and  
537 Dyslipidemia among Chinese Adults, 2002-2015. *BIOMED ENVIRON SCI*. 2019;32:559-570.
- 538 49. Zhang Y, Gao C, Greene SJ, Greenberg BH, Butler J, Yu J, Zheng Z, Ma G, Wang L, Yang P, et al. Clinical  
539 performance and quality measures for heart failure management in China: the China-Heart Failure registry study. *ESC*  
540 *HEART FAIL*. 2023;10:342-352.
- 541 50. Bozkurt B, Coats AJ, Tsutsui H, Abdelhamid M, Adamopoulos S, Albert N, Anker SD, Atherton J, Böhm M, Butler  
542 J, et al. Universal Definition and Classification of Heart Failure: A Report of the Heart Failure Society of America, Heart  
543 Failure Association of the European Society of Cardiology, Japanese Heart Failure Society and Writing Committee of the  
544 Universal Definition of Heart Failure. *J CARD FAIL*. 2021;27:387-413.
- 545 51. McDonagh TA, Metra M, Adamo M, Gardner RS, Baumbach A, Böhm M, Burri H, Butler J, Čelutkienė J, Chioncel  
546 O, et al. 2021 ESC Guidelines for the diagnosis and treatment of acute and chronic heart failure: Developed by the Task  
547 Force for the diagnosis and treatment of acute and chronic heart failure of the European Society of Cardiology (ESC)  
548 With the special contribution of the Heart Failure Association (HFA) of the ESC. *EUR HEART J*. 2021;42:3599-3726.
- 549 52. Zhao L, Chen L, Yang T, Wang T, Zhang S, Chen L, Ye Z, Luo L, Qin J. Birth prevalence of congenital heart  
550 disease in China, 1980–2019: a systematic review and meta-analysis of 617 studies. *EUR J EPIDEMIOL*.  
551 2020;35:631-642.
- 552 53. Zhang Y, Wang J, Zhao J, Huang G, Liu K, Pan W, Sun L, Li J, Xu W, He C, et al. Current status and challenges in  
553 prenatal and neonatal screening, diagnosis, and management of congenital heart disease in China. *The Lancet Child &*  
554 *Adolescent Health*. 2023;7:479-489.
- 555 54. Lv J, Su M, Hong Z, Zhang T, Huang X, Wang B, Li L. Implementation of the WHO Framework Convention on  
556 Tobacco Control in mainland China. *TOB CONTROL*. 2011;20:309.
- 557 55. Guo B, Gan H, Xue M, Huang Z, Lin Z, Li S, Zheng P, Sun B. The Changing and Predicted Trends in Chronic  
558 Obstructive Pulmonary Disease Burden in China, the United States, and India from 1990 to 2030. *INT J CHRONIC*  
559 *OBSTR*. 2024;19:695-706.
- 560 56. Feigin VL, Abate MD, Abate YH, Abd ElHafeez S, Abd-Allah F, Abdelalim A, Abdelkader A, Abdelmasseh M,  
561 Abd-Elsalam S, Abdi P, et al. Global, regional, and national burden of stroke and its risk factors, 1990-2021: a systematic  
562 analysis for the Global Burden of Disease Study 2021. *The Lancet Neurology*. 2024;23:973-1003.
- 563 57. Bozkurt B, Fonarow GC, Goldberg LR, Guglin M, Josephson RA, Forman DE, Lin G, Lindenfeld J, O Connor C,  
564 Panjath G, et al. Cardiac Rehabilitation for Patients With Heart Failure: JACC Expert Panel. *J AM COLL CARDIOL*.  
565 2021;77:1454-1469.
- 566 58. Long L, Mordi IR, Bridges C, Sagar VA, Davies EJ, Coats A, Dalal H, Rees K, Singh SJ, Taylor RS. Exercise-  
567 based cardiac rehabilitation for adults with heart failure. *COCHRANE DB SYST REV*. 2019.
- 568 59. Taylor RS, Dalal HM, Zwisler A. Cardiac rehabilitation for heart failure: ‘Cinderella’ or evidence-based pillar of  
569 care? *EUR HEART J*. 2023;44:1511-1518.
- 570 60. Zhang Z, Pack Q, Squires RW, Lopez-Jimenez F, Yu L, Thomas RJ. Availability and characteristics of cardiac  
571 rehabilitation programmes in China. *Heart Asia*. 2016;8:9.
- 572 61. Turk-Adawi K, Sarrafzadegan N, Grace SL. Global availability of cardiac rehabilitation. *NAT REV CARDIOL*.

- 573 2014;11:586-596.
- 574 62. Borlaug BA, Redfield MM. Diastolic and Systolic Heart Failure Are Distinct Phenotypes Within the Heart Failure  
575 Spectrum. *CIRCULATION*. 2011;123:2006-2014.
- 576 63. Borlaug BA, Paulus WJ. Heart failure with preserved ejection fraction: pathophysiology, diagnosis, and treatment.  
577 *EUR HEART J*. 2011;32:670-679.
- 578 64. Shah SJ, Kitzman DW, Borlaug BA, van Heerebeek L, Zile MR, Kass DA, Paulus WJ. Phenotype-Specific  
579 Treatment of Heart Failure With Preserved Ejection Fraction. *CIRCULATION*. 2016;134:73-90.
- 580 65. Beghini A, Sammartino AM, Papp Z, von Haehling S, Biegus J, Ponikowski P, Adamo M, Falco L, Lombardi CM,  
581 Pagnesi M, et al. 2024 update in heart failure. *ESC HEART FAIL*. 2024.
- 582 66. Wu B, Wei CH, Yang C, Lin M, Hsu C, Hsu Y, Lin S, Tarng D. Mortality rate of end-stage kidney disease patients  
583 in Taiwan. *J FORMOS MED ASSOC*. 2022;121:S12-S19.
- 584 67. Lou H, Wang X, Gao Y, Zeng Q. Comparison of ARIMA model, DNN model and LSTM model in predicting  
585 disease burden of occupational pneumoconiosis in Tianjin, China. *BMC PUBLIC HEALTH*. 2022;22:2167.
- 586
- 587

588 **Table 1** The burden of heart failure in China and globally

Regions	Metrics	1990	2021		1990-2021	
		Number (95% UI)	ASRs per 100K (95% UI)	Number (95% UI)	ASRs per 100K (95% UI)	AAPC in ASRs (95% CI)
China	Prevalence	4683303 (4036499 to 5435212)	644.58 (558.65 to 751.14)	13099727 (11320895 to 15376467)	692.50 (607.26 to 802.00)	0.23 (0.20 to 0.26)
	YLDs	459512 (313552 to 630785)	62.83 (42.81 to 87.18)	1290810 (865894 to 1775731)	67.79 (45.92 to 93.34)	0.25 (0.23 to 0.27)
Global	Prevalence	25433220 (22319175 to 29214320)	641.14 (556.29 to 745.46)	55496833 (48996498 to 63842413)	676.68 (598.68 to 776.84)	0.17 (0.14 to 0.20)
	YLDs	2429267 (1644896 to 3347611)	61.07 (41.34 to 85.01)	5311084 (3626094 to 7360663)	64.70 (44.20 to 89.47)	0.18 (0.15 to 0.21)

589 UI, uncertainty interval; ASR, age-standardized rate; AAPC, average annual percentage change; CI,  
590 confidence interval; YLDs, years lived with disability.

591

592

593 **Figure 1** Trends in the burden of heart failure in China by sex from 1990 to 2021. (A) Number of  
594 prevalent cases and ASRs. (B) Number of YLDs and ASRs. The translucent ribbons and black error  
595 bars represent the 95% UI. ASR, age-standardized rate; YLDs, years lived with disability.

596

597

598 **Figure 2** Age-specific burden of heart failure in China, 2021. (A) Number of prevalent cases by age.  
599 (B) Number of YLDs by age. YLDs, years lived with disability.

600

601

602 **Figure 3** Joinpoint analysis of the burden of heart failure in China from 1990 to 2021. (A-C) Trends  
603 in age-standardized prevalence for both sexes, males, and females, respectively. (D-F) Trends in  
604 age-standardized YLDs for both sexes, males, and females, respectively. Significant trends are  
605 indicated with an asterisk (\*) based on *P*-values of APC and AAPC. ASR, age-standardized rate;  
606 APC, annual percentage changes; AAPC, average annual percentage change; YLDs, years lived with  
607 disability.

608

609

610 **Figure 4** Age-period-cohort effects on the prevalence of heart failure in China from 1992 to 2021. (A)  
611 Net drift and local drift for the prevalence of heart failure. The dashed lines and translucent ribbons  
612 represent the 95% CI of the net drift and the 95% CI of the local drift, respectively. (B) Longitudinal  
613 age curves for the prevalence of heart failure, adjusted for period effect. The translucent ribbons  
614 indicate the 95% CI of the age-specific prevalence rate. (C) Period rate ratio of the prevalence of  
615 heart failure, adjusted for age and cohort effects. The translucent ribbons indicate the 95% CI of the  
616 period rate ratio, and the period 2002 to 2006 is the reference period. (D) Cohort rate ratio of the  
617 prevalence of heart failure, adjusted for age and period effects. The translucent ribbons indicate the  
618 95% CI of the cohort rate ratio, and cohort 1957 is the reference cohort.

619

620

621 **Figure 5** Trends in age-standardized rates of prevalence (A) and YLDs (B) attributable to major  
622 causes of heart failure in China from 1990 to 2021. ASR, age-standardized rate; YLDs, years lived  
623 with disability.

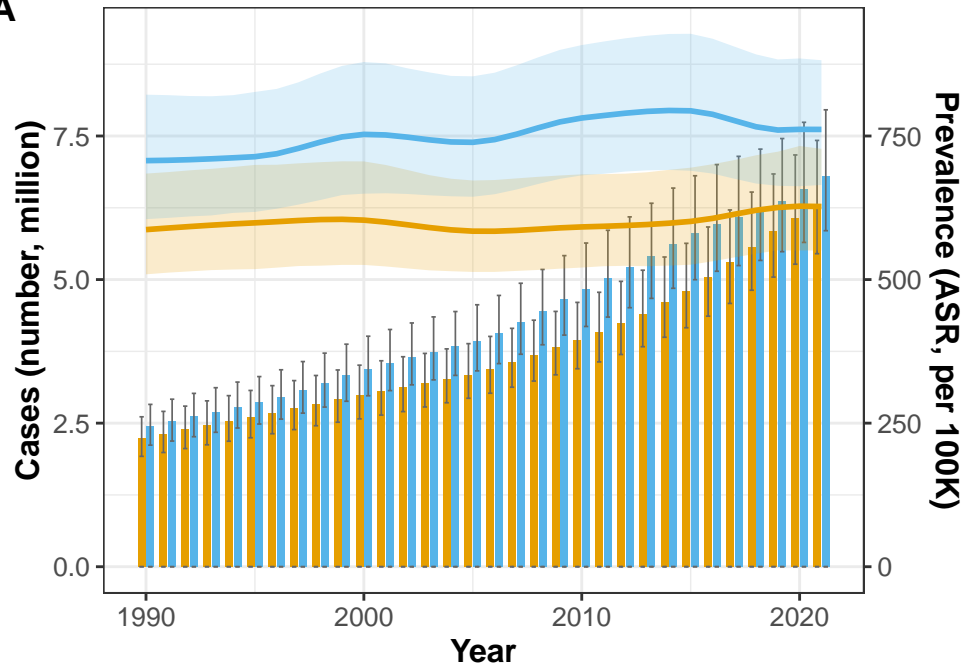
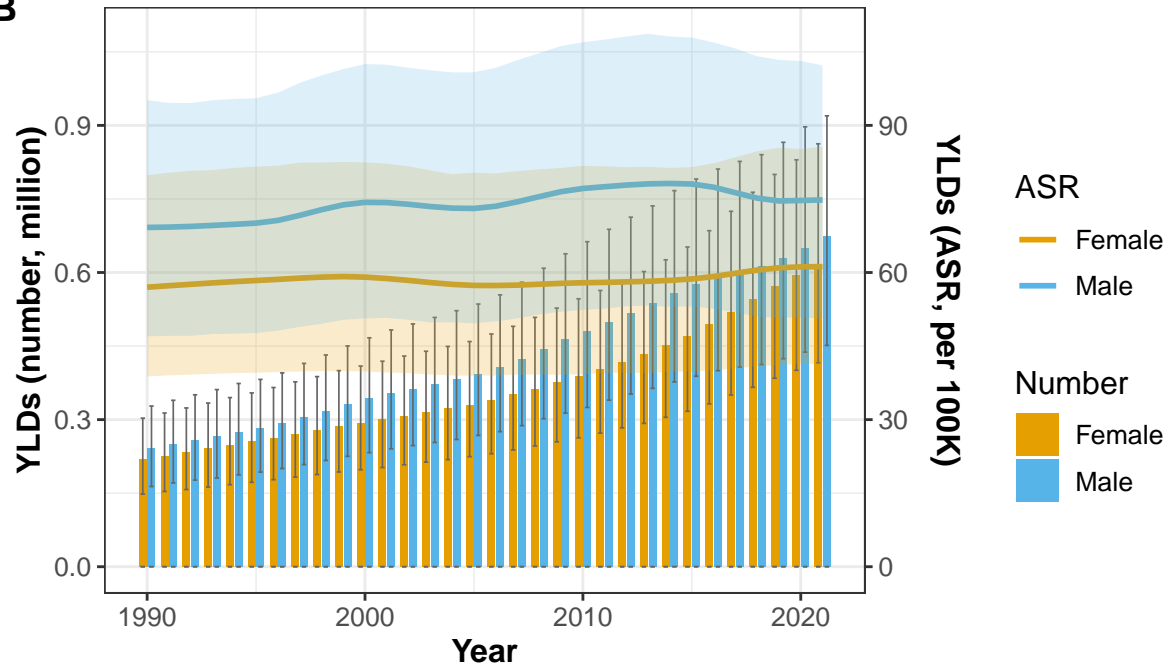
624

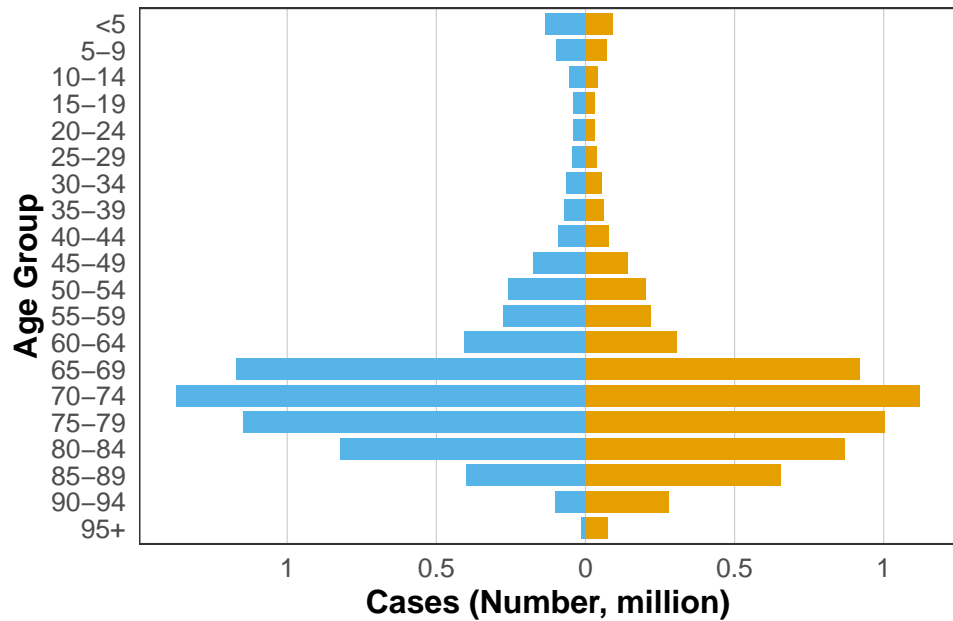
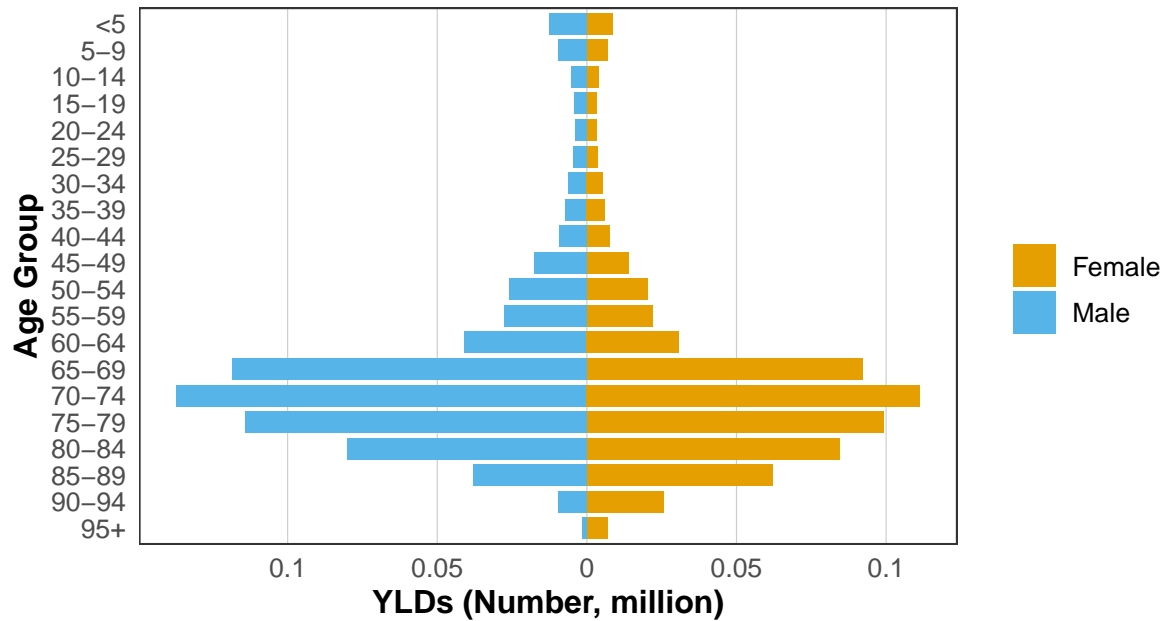
625

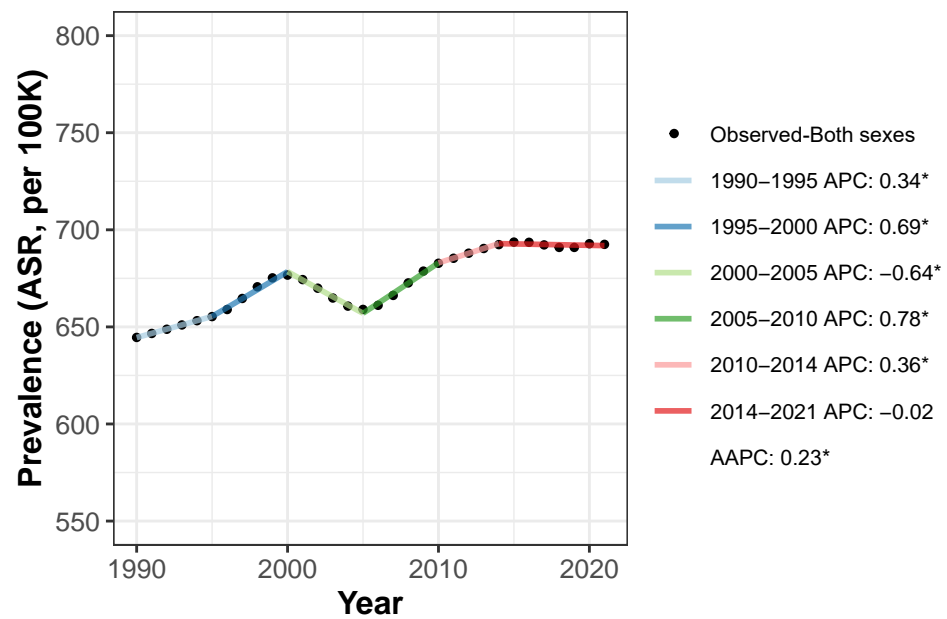
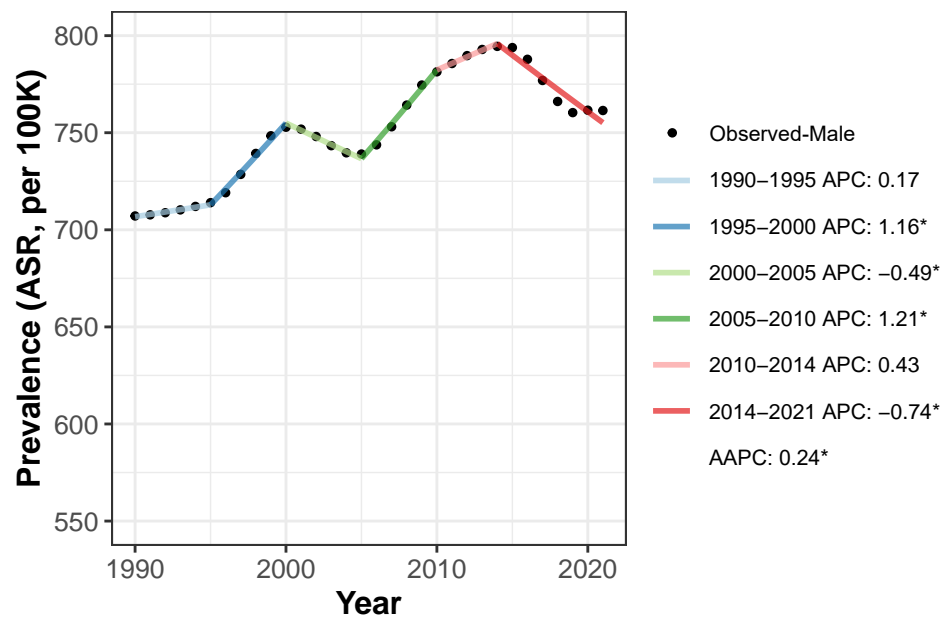
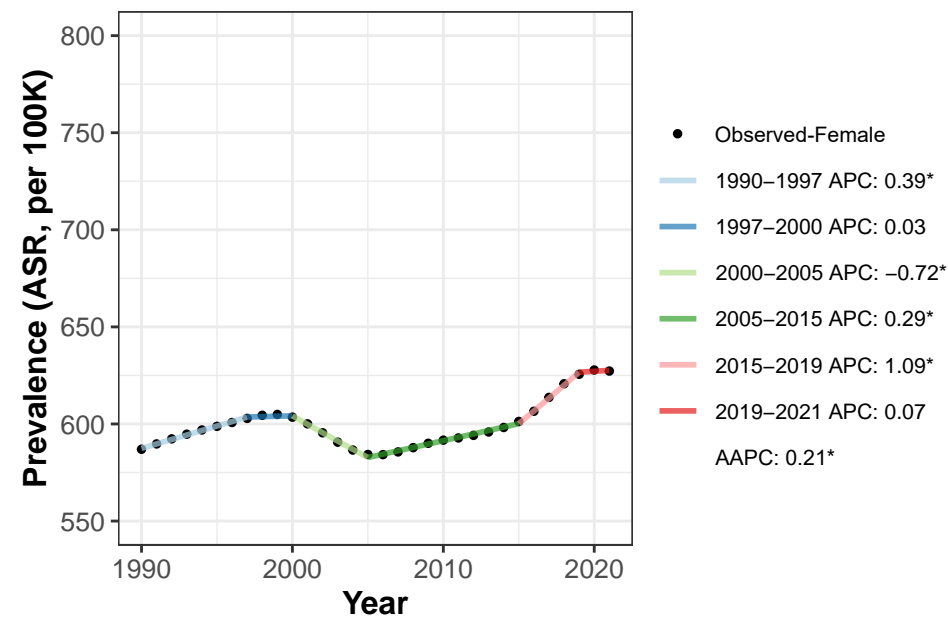
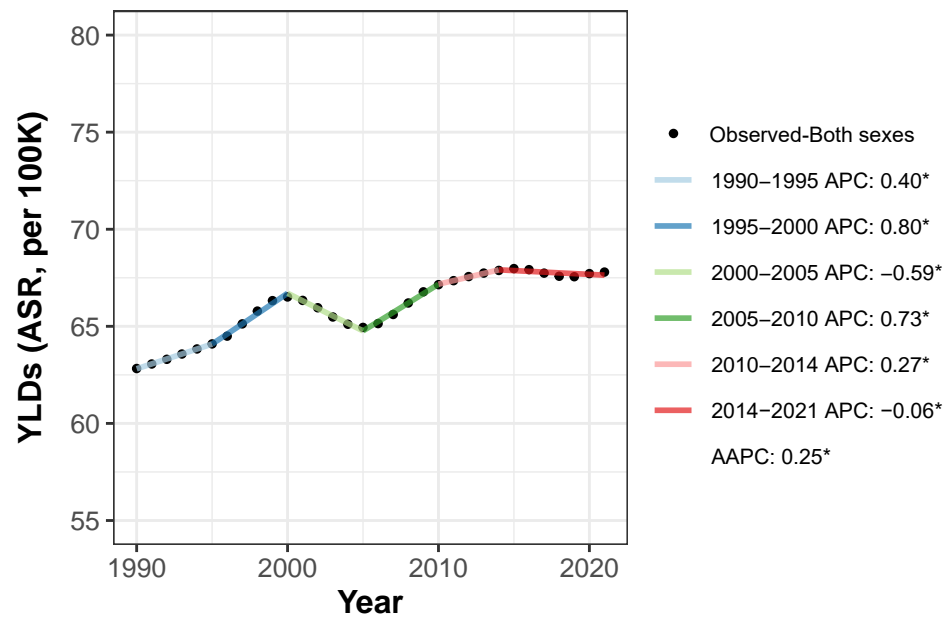
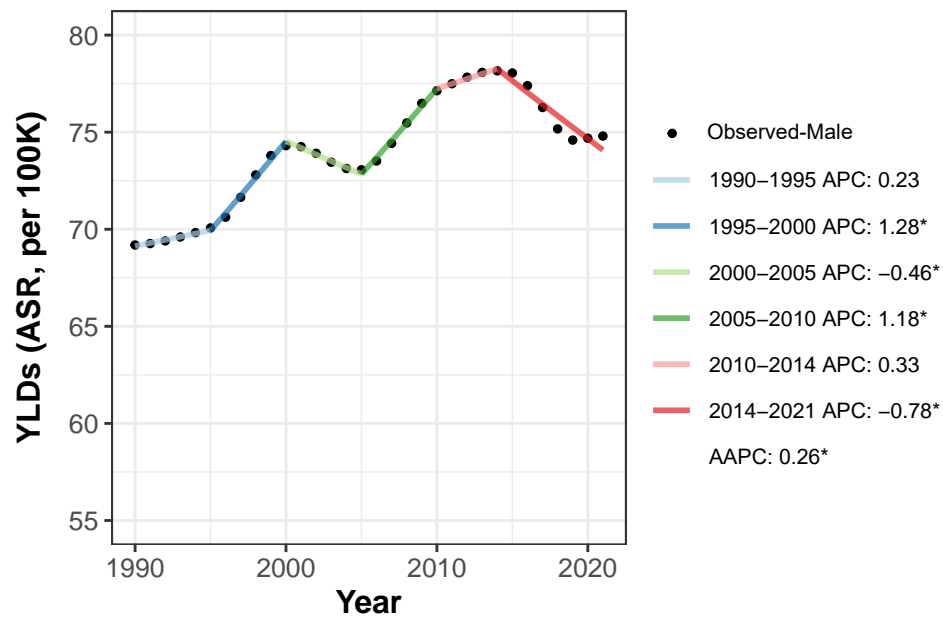
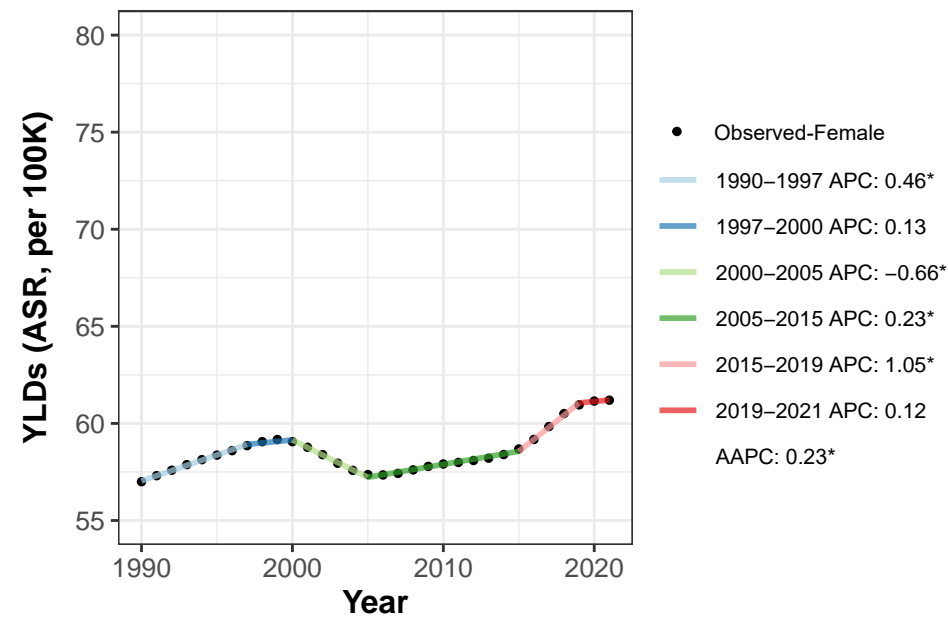
626 **Figure 6** Predicted trends in age-standardized rates of heart failure prevalence (A) and YLDs (B) in  
627 China from 2022 to 2031. The black lines represent the trend over the past 30 years, while the blue  
628 lines with black dots represent the forecast for the next 10 years. ARIMA, the autoregressive

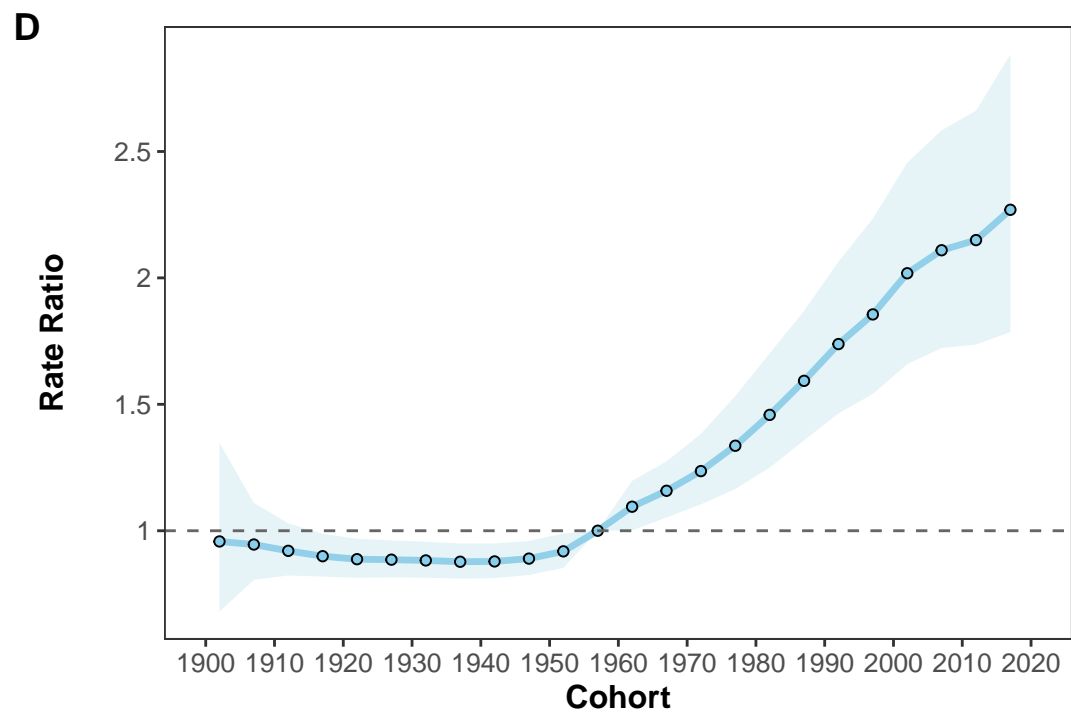
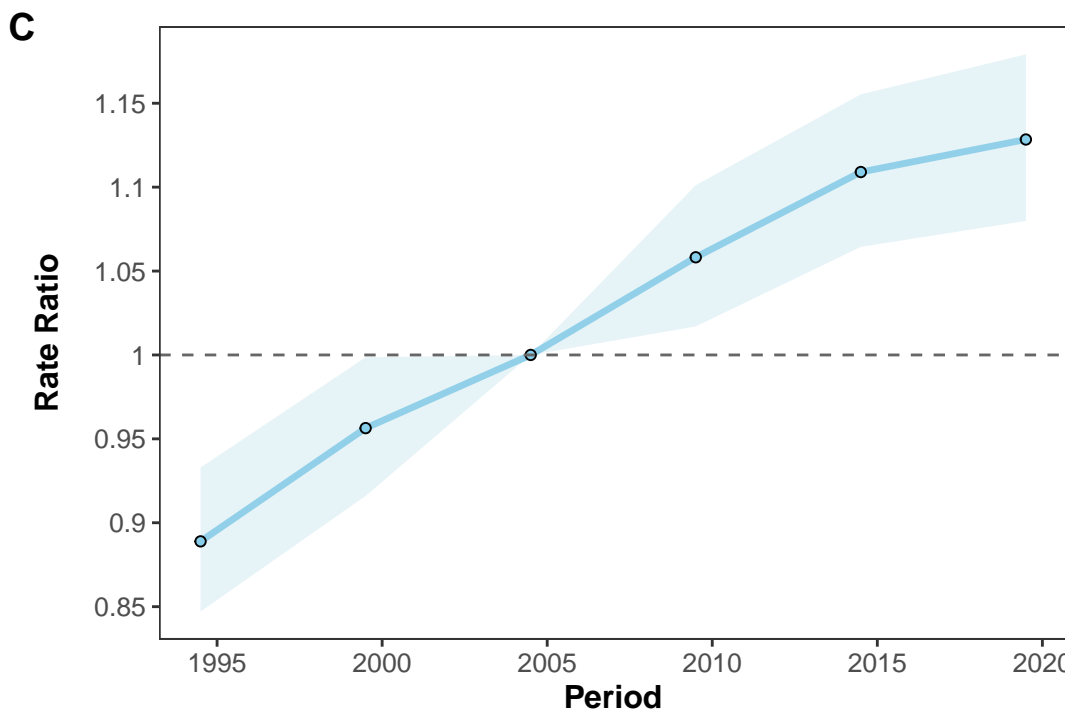
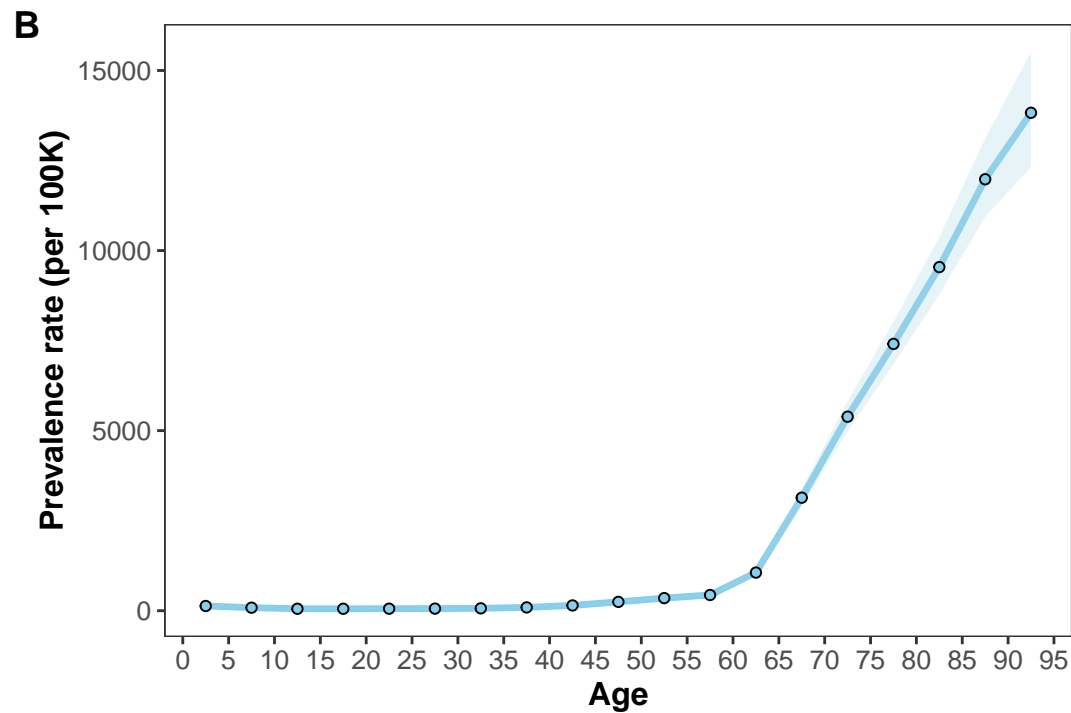
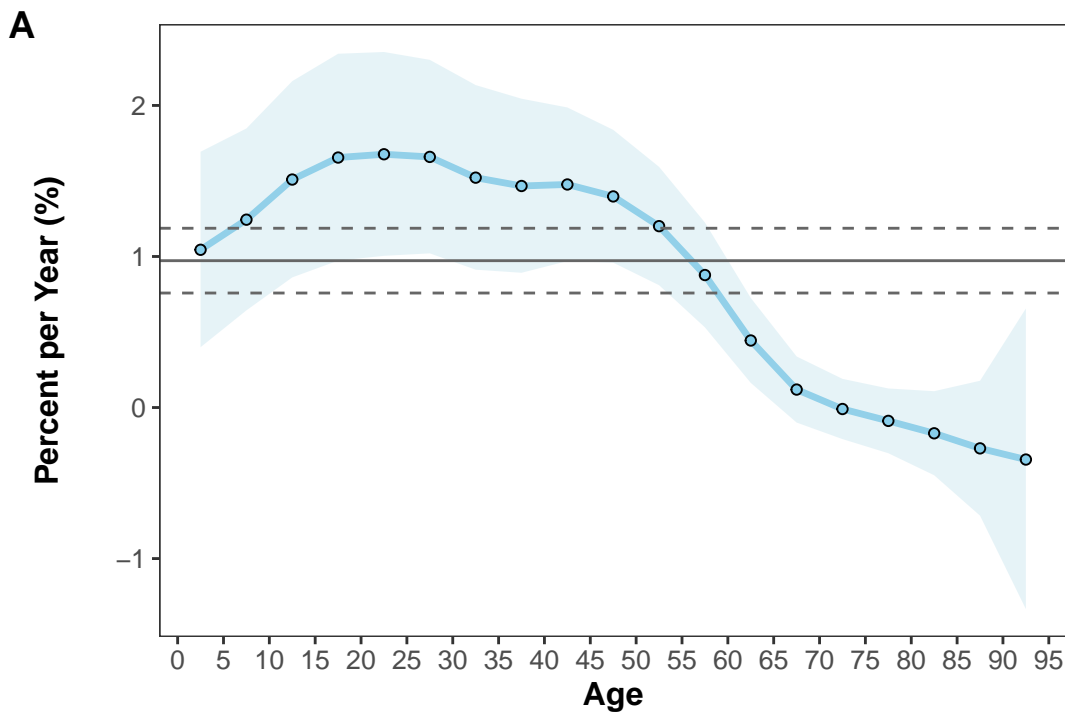
629 integrated moving average; ASR, age-standardized rate; YLDs, years lived with disability.

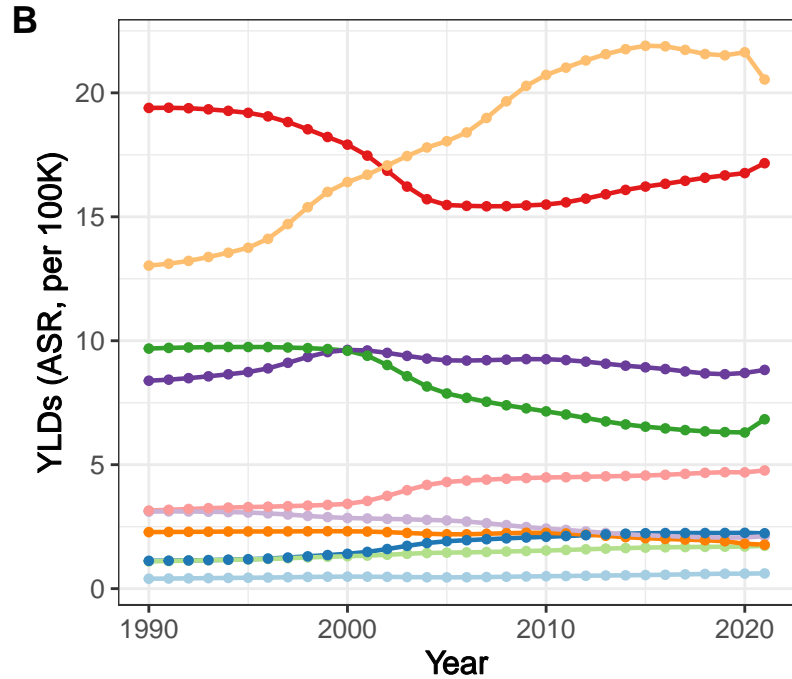
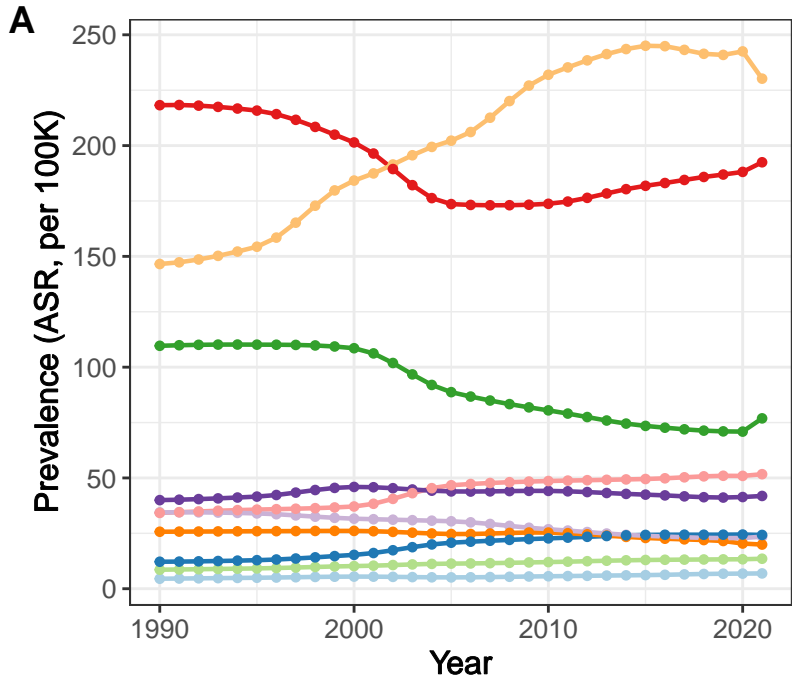


**A****B**

**A****B**

**A****B****C****D****E****F**





- Atrial fibrillation and flutter
- Cardiomyopathy and myocarditis
- Chronic kidney disease
- Chronic obstructive pulmonary disease
- Congenital birth defects
- Hypertensive heart disease
- Ischemic heart disease
- Non-rheumatic valvular heart disease
- Rheumatic heart disease
- Stroke

