

1 **Augmenting electronic health record data with social and environmental determinant of**
2 **health measures to understand regional factors associated with asthma exacerbations**

3 Alana Schreibman¹, Kimberly Lactaen¹, Jaehyun Joo¹, Patrick K. Gleeson², Gary E.

4 Weissman^{1,2}, Andrea J. Apter², Rebecca A. Hubbard³, Blanca E. Himes¹

5

6 ¹Department of Biostatistics, Epidemiology and Informatics, Perelman School of Medicine,

7 University of Pennsylvania, Philadelphia, PA 19104

8 ²Division of Pulmonary, Allergy and Critical Care Medicine, Perelman School of Medicine,

9 University of Pennsylvania, Philadelphia, PA 19104

10 ³Department of Biostatistics, School of Public Health, Brown University, Providence, RI 02912

11

12 Corresponding author:

13 Blanca E Himes, PhD

14 402 Blockley Hall

15 423 Guardian Drive

16 Philadelphia, PA 19104

17 Phone: (215) 573-3282

18 Email: bhimes@pennmedicine.upenn.edu

19 **Abstract**

20 Electronic health records (EHRs) provide rich data for diverse populations but often lack
21 information on social and environmental determinants of health (SEDH) that are important for
22 the study of complex conditions such as asthma, a chronic inflammatory lung disease. We
23 integrated EHR data with seven SEDH datasets to conduct a retrospective cohort study of 6,656
24 adults with asthma. Using Penn Medicine encounter data from January 1, 2017 to December 31,
25 2020, we identified individual-level and spatially-varying factors associated with asthma
26 exacerbations. Black race and prescription of an inhaled corticosteroid were strong risk factors
27 for asthma exacerbations according to a logistic regression model of individual-level risk. A
28 spatial generalized additive model (GAM) identified a hotspot of increased exacerbation risk
29 (mean OR = 1.42, SD 0.14, $p < 0.001$), and inclusion of EHR-derived variables in the model
30 attenuated the spatial variance in exacerbation odds by 33.8%, while additionally adjusting for
31 the SEDH variables attenuated the spatial variance in exacerbation odds by 67.2%. Additional
32 spatial GAMs adjusted one variable at a time revealed that neighborhood deprivation (OR =
33 1.05, 95% CI: 1.03, 1.07), Black race (OR = 1.66, 95% CI: 1.44, 1.91), and Medicaid health
34 insurance (OR = 1.30, 95% CI: 1.15, 1.46) contributed most to the spatial variation in
35 exacerbation odds. In spatial GAMs stratified by race, adjusting for neighborhood deprivation
36 and health insurance type did not change the spatial distribution of exacerbation odds. Thus,
37 while some EHR-derived and SEDH variables explained a large proportion of the spatial
38 variance in asthma exacerbations across Philadelphia, a more detailed understanding of SEDH
39 variables that vary by race is necessary to address asthma disparities. More broadly, our findings
40 demonstrate how integration of information on SEDH with EHR data can improve understanding
41 of the combination of risk factors that contribute to complex diseases.

42 **Author summary**

43 Electronic health records constitute an important source of data for understanding the health of
44 large and diverse real-world populations, however, they do not routinely capture socioeconomic
45 and environmental factors known to affect health outcomes. We show how electronic health
46 record data can be augmented to include individual measures of air pollution exposures,
47 neighborhood socioeconomic status, and the natural and built environment using patients’
48 residential addresses to study asthma exacerbations, episodes of worsening disease that remain a
49 major public health challenge in the United States. We found that on an individual patient-level,
50 Black race and prescription of an inhaled corticosteroid were the factors most strongly associated
51 with asthma exacerbations. In contrast, neighborhood deprivation, race, and health insurance
52 type accounted for the most spatial variation in exacerbation risk across Philadelphia. Our
53 findings provide insight into factors that contribute to asthma disparities in our region and
54 present a framework for future efforts to expand the scope of electronic health record data.

55

56 **Introduction**

57 Electronic health records (EHRs) are a source of rich patient-level data for large and diverse
58 populations that can be used for research due to their widespread availability [1]. However, EHR
59 data often contain incomplete or low-quality measures of social and environmental determinants
60 of health (SEDH), limiting their utility for the study of complex diseases [2]. Recent efforts to
61 address this limitation have included developing methodologies to integrate external data on the
62 physical, built, and social environment via linkage with patient addresses [3–5], with high-
63 resolution geospatial datasets providing the closest estimate of individual exposures [6].
64 Integrated EHR and SEDH datasets can be used to understand both individual-level outcomes
65 and patterns of risk across a spatial region, thereby providing insights for both precision
66 medicine and precision public health efforts. Because many environmental exposures pose a
67 greater risk to select groups of people, integrating external information on SEDH with EHR data
68 is also helpful to address health disparities according to race, ethnicity, and socioeconomic
69 status.

70 Asthma, a chronic disease that is characterized by inflammation and reversible narrowing
71 of the airways, affects over 25 million people or approximately 8% of the United States
72 population [7]. Racial and ethnic disparities in its morbidity and mortality are well known, and
73 those living in poverty are also more likely to have asthma [7–11]. The clinical goals of asthma
74 management are to control patients' symptoms and minimize long-term risk of lung function
75 decline [12]. This includes preventing asthma exacerbations, episodes of worsening disease
76 which require treatment with systemic steroids [13]. However, despite guideline-directed clinical
77 management, asthma exacerbations remain common, contributing to asthma-related morbidity
78 and mortality as well as higher health care costs and utilization [14,15]. Risk factors for asthma

79 exacerbations in adults include female sex [16], obesity [17], current or past smoking [18],
80 comorbid allergic rhinitis or chronic obstructive pulmonary disease (COPD) [17,19], and a
81 history of previous exacerbations [20]. Observational studies have also found independent
82 associations between asthma exacerbations and exposure to particulate matter (PM), gaseous air
83 pollutants, and to mixtures of pollutants such as traffic-related air pollution (TRAP) [21].
84 Similarly, associations between asthma exacerbations and living in poverty [22], substandard
85 housing conditions, such as the presence of mold and pests [23,24], and neighborhood
86 “greenness” [25,26] have been documented.

87 Because asthma exacerbations result from complex interactions among various
88 biological, social, and environmental factors that vary across individuals and geographically,
89 creating generalizable models of exacerbations remains an unachieved goal. Further, because in
90 the United States there is a high correlation between minoritized race or ethnicity, poverty, and
91 harmful environmental exposures, disentangling relationships among key variables is difficult
92 [9,27]. Approaches that model many asthma-related variables in specific regions may lead to the
93 identification of actionable strategies to reduce exacerbations locally, and using EHR data to
94 create these models has the advantage of providing health information for the specific catchment
95 region served by a given healthcare system. Few studies have linked EHRs with a diverse set of
96 SEDH variables to study asthma exacerbations using patient-level data [28–30], and to our
97 knowledge, none have used geospatial analysis techniques to understand the contribution of
98 these factors to the spatial distribution of exacerbation risk. Here, we show how EHR data can be
99 extended to include individualized measures of air pollution exposures, socioeconomic status
100 indices, and measures of the natural and built environment to identify local factors associated
101 with asthma exacerbation risk.

102

103 **Methods**

104 A retrospective cohort analysis was performed using de-identified EHR data from Penn
105 Medicine, a large health system that serves the greater Philadelphia area, from encounters dated
106 1/1/2017-12/31/2020. Our study was approved by the University of Pennsylvania Institutional
107 Review Board (IRB) under protocol number 824789. An overview of our study design is shown
108 in Fig 1.

109

110 Study population

111 Patient-level encounter data was obtained for adults (i.e. age \geq 18 years) who had at least one
112 encounter with an International Classification of Diseases (ICD)-10 code for asthma (J45*) and
113 who were prescribed a short-acting β_2 -agonist (SABA) (S1 Table). The most recent residential
114 address for each patient was obtained and geocoded using previously described methods [3].
115 Demographic, comorbidity, and medication data for encounters during the study period was
116 extracted and used to compute several variables, hereafter referred to as “EHR-derived
117 variables.” These included: age at first encounter, sex, race, ethnicity, body mass index (BMI),
118 health insurance type, smoking status, chronic obstructive pulmonary disease (COPD), allergic
119 rhinitis, a modified Elixhauser score [31], inhaled corticosteroid (ICS) prescription, and years
120 followed (defined as the number of years between first and last encounter). Additional details,
121 including inclusion and exclusion criteria and definitions of the EHR-derived variables, are
122 provided in S1 Text.

123

124 Outcome

125 Asthma exacerbations were defined as encounters with an oral corticosteroid (OCS) prescription
126 (S1 Table) and either 1) a primary asthma diagnosis code (ICD-10, J45*) for encounters with
127 primary diagnosis codes listed or 2) a nonprimary asthma ICD-10 code for encounters without a
128 primary diagnosis listed but only one or two ICD-10 codes listed. A count of exacerbations
129 during the study period was computed for each patient.

130

131 SEDH data

132 Seven external datasets were integrated with our EHR dataset via linkage with patient geocodes,
133 creating variables that are hereafter referred to as “SEDH variables.” Additional details on data
134 processing are reported in S1 Text, and dataset sources and spatiotemporal dimensions are
135 summarized in S2 Table. All processed SEDH data is available in Sensor-based Analysis of
136 Pollution in the Philadelphia Region with Information on Neighborhoods and the Environment
137 (SAPPHIRINE), a web application that integrates spatially distributed high-resolution social and
138 environmental data in the greater Philadelphia region to facilitate the conduct of local health
139 studies [32].

140

141 *Air pollution exposures*

142 Average pollutant exposures were assigned to each patient using high-resolution (~1x1 km²)
143 geophysical model estimates. 2017-2019 NO₂ estimates (in parts per billion by volume, or ppbv)
144 and 2017-2020 PM_{2.5} estimates (in µg/m³) were downloaded from resources reported in Cooper
145 et al. and van Donkelaar et al., respectively, temporally averaged, and linked to the study cohort
146 using bilinear interpolation [33,34]. Exposure to other toxic airborne chemicals from point
147 sources was estimated using the EPA Toxic Release Inventory (TRI) [35]. Total toxic air release

148 exposure by patient was computed as the sum of toxic releases (in kilograms) over the study
149 period within a 1-km circular buffer of each patient's residential address. Exposure to air
150 pollution from mobile sources was estimated as the sum of the daily vehicle distance traveled
151 (DVDT), a metric computed using traffic data published by the Pennsylvania Department of
152 Transportation, within a 300-m circular buffer [36].

153

154 *Neighborhood socioeconomic environment*

155 Socioeconomic disadvantage for each person was summarized as the Area Deprivation Index
156 (ADI), a validated index computed for each Census block group based on several ACS variables
157 [37]. A higher ADI score indicates greater disadvantage. 2018 ADI data was extracted from the
158 Neighborhood Atlas and was assigned to each patient by block group [38].

159

160 *Built and natural environment*

161 Asthma-related housing code violation data (i.e. pests, water damage, and indoor air
162 contamination) was obtained from a Philadelphia Department of Licenses and Inspections
163 dataset reported by OpenDataPhilly (S3 Table) [39]. For each block group, the number of
164 violations during the study period per 100 people (based on the 2019 ACS population estimates)
165 was computed and assigned to each patient. Vegetation density was summarized as the
166 normalized difference vegetation index (NDVI), an index with values ranging from -1.0 to 1.0
167 where higher positive values represent higher vegetation density. NDVI was computed in Google
168 Earth Engine using surface reflectance images from the Landsat 8 satellite during the study
169 period and assigned to each patient as the mean value within a 300-m circular buffer [40].

170

171 Statistical analysis

172 Analyses were conducted in R 4.2 [41].

173

174 *Study area*

175 To minimize bias in our geospatial analyses introduced by uneven spatial density across the Penn

176 Medicine catchment area, we restricted our study region to spatial areas in which the geospatial

177 representativeness of our EHR cohort was adequate compared to the underlying population.

178 Following methods described in Xie et al. [42], we computed a spatial representation ratio

179 (SRR), defined as the ratio between the proportion of our EHR cohort living in each census

180 block group and the proportion of the Philadelphia population living in that block group, as

181 reported by the 2019 American Community Survey (ACS). We defined our study region as

182 contiguous census tracts (i.e. adjacent or separated by a non-residential area such as a park) with

183 a mean SRR of 0.5 or greater. Only patients who resided in this study region were included in

184 analyses.

185

186 *Modeling individual-level risk factors*

187 Chi-squared and Kruskal-Wallis rank sum tests were used in bivariate analyses to assess

188 associations between patient characteristics and asthma exacerbation level (i.e. 0, 1-2, 3-4, 5+)

189 during the study period, and to compare the characteristics of complete cases to individuals with

190 missing data. To identify patient-level factors associated with asthma exacerbations, we fit

191 logistic regression models with asthma exacerbations as a binary case-control (0 vs >0) outcome.

192 This approach was chosen to match the dichotomous outcome used in spatial analyses. Logistic

193 regression models were initially adjusted for EHR-derived variables only, and then adjusted for

194 both EHR-derived and SEDH variables (EHR & SEDH-adjusted). Years followed was included
195 as a covariate in both models to account for variation in the length of available follow-up across
196 patients. Model fit was assessed using the Akaike information criterion (AIC). We checked for
197 multicollinearity by computing Pearson’s correlation coefficients between all EHR and SEDH
198 variables, while selecting White race and Private health insurance type as reference levels for the
199 two nominal categorical variables, and we computed variance inflation factors (VIF) for all
200 independent variables.

201

202 *Sensitivity analysis for individual-level risk factors*

203 We conducted sensitivity analyses of individual-level risk factors by fitting negative binomial
204 regression models with asthma exacerbations represented as a count outcome and comparing
205 results to those of logistic regression models. The negative binomial regression models were
206 adjusted first for EHR-derived variables only and then for EHR & SEDH variables, while
207 including years followed as an offset in each model.

208

209 *Modeling spatial risk factors*

210 To estimate local odds of exacerbation as a function of location, spatial generalized additive
211 models (GAMs) were fit with a binary case-control outcome (0 vs >0 exacerbations) on a grid of
212 points across the study region, using the R *MapGAM* package and previously described methods
213 (S1 Text) [3,43]. Maps of spatial effect predictions were created for the smoothed spatial term of
214 each model, where the spatial odds ratio (OR) at each point represented the ratio between the
215 odds of exacerbation at that point and the median odds across all points. First, a univariable
216 model adjusted only for years followed, hereafter referred to as “unadjusted model”, was fit to

217 identify hotspots and coldspots across the study region. Next, multivariable models adjusted for
218 1) only EHR-derived variables and 2) EHR & SEDH variables were compared to the unadjusted
219 model by computing the mean and standard deviation (SD) of the spatial ORs at points within
220 any overlapping hotspots, and by computing the percent difference between the variance in ORs
221 across the full study region in the adjusted models and the unadjusted model. To understand the
222 contribution of individual variables to the observed spatial effects, we fit additional models
223 adjusted for each EHR-derived or SEDH variable one variable at a time (all models were also
224 adjusted for years followed) and computed the percent difference between the variance in ORs in
225 these models and the unadjusted model. Model fit was assessed using the AIC.

226

227 *Stratified analysis*

228 We conducted a stratified analysis to further evaluate the association between race and asthma
229 exacerbations. Chi-square and Wilcoxon rank sum tests were used to assess bivariate
230 relationships between race and other variables. To test whether any EHR or SEDH variables that
231 were correlated with race influenced spatial patterns of asthma exacerbation risk independently
232 of race, spatial GAMs adjusted one variable at a time were fit on each race stratum using the
233 same approach described above. Before fitting the models, SRR selection was repeated for each
234 stratum to account for the uneven geographic distribution of race across the initial study region.

235

236 **Results**

237 Following selection of patients based on inclusion/exclusion criteria and spatial filtering (S1
238 Fig), the retrospective study cohort consisted of 6,656 asthma patients, 2,329 of whom had one
239 or more exacerbations (Table 1), with residence in 249 census tracts in Philadelphia (S2 Fig).

240 The spatial distribution of all processed SEDH datasets within the study region is shown in S3
241 Fig. The EHR-derived variables years followed, age, race, BMI, health insurance type, smoking
242 status, COPD, allergic rhinitis, Elixhauser comorbidity score, and ICS, as well as the SEDH
243 variable ADI were the most significantly associated with exacerbations according to bivariate
244 analyses ($p < 0.001$) (Table 1). Patients with more exacerbations during the study period were
245 followed for more years, more likely to be aged 35-54, of Black race, or class 2 or class 3 obese,
246 and more likely to have Medicaid health insurance, a history of smoking, COPD, allergic rhinitis,
247 higher Elixhauser comorbidity scores, an ICS prescription, or live in neighborhoods with higher
248 ADI. The proportion of patients in the study cohort who were prescribed controller medications
249 including ICS, leukotriene modifiers, long-acting β_2 -agonists (LABA), and biologic therapies
250 was positively associated with exacerbation count (S4 Table). Bivariate analyses comparing the
251 distribution of characteristics between the study cohort and patients excluded due to missing
252 EHR data found statistically significant differences in years followed, age, sex, health insurance
253 type, COPD, allergic rhinitis, Elixhauser comorbidity score, and ICS ($p < 0.001$) (S5 Table).

254 Based on Pearson's correlation coefficients, there were no strong correlations between
255 any EHR-derived or SEDH variables, except for NO_2 and $\text{PM}_{2.5}$ ($\rho = 0.77$) (S4 Fig). Moderate
256 correlations ($|\rho| > 0.50$) were observed between age and Medicare health insurance, Black race
257 and ADI, and NO_2 and NDVI. Furthermore, adjusted generalized VIFs for all variables did not
258 exceed 2.00, suggesting that all variables could be included in multivariable models (S6 Table).

259

260 Individual risk factors associated with asthma exacerbations

261 ORs for the EHR-derived and SEDH variables included in the multivariable logistic regression
262 model are summarized in Table 2. The EHR-derived variables years followed, age 35-54, Black

263 race, and ICS had the strongest positive associations with having at least one exacerbation during
264 the study period ($p < 0.001$) (Table 2). These effects persisted after additionally adjusting for
265 SEDH variables, and of the SEDH variables in the logistic regression model, only NO_2 exposure
266 was positively associated with exacerbations ($p = 0.0058$). Inclusion of the SEDH variables did
267 not improve model fit as determined by AIC (8,323 versus 8,322). Sensitivity analyses showed
268 that the risk factors identified by logistic and negative binomial regression models were mostly
269 consistent, with Black race and ICS prescription having the strongest effects between both
270 models ($p < 10^{-4}$), and variables such as Medicaid health insurance and Elixhauser comorbidity
271 score of 1-9 having statistically significant p-values in both models though smaller in the
272 negative binomial regression ($p < 0.001$) than the logistic regression ($p < 0.05$) (S7 Table).
273 However, the negative binomial regression model did not identify statistically significant
274 associations between asthma exacerbations and age 35-54 or NO_2 exposure as did the logistic
275 regression, although the directions of effect were consistent in both models. In addition, the
276 negative binomial regression model identified an association with the SEDH variable housing
277 code violations ($p = 0.044$) that was not present in the logistic regression model.

278

279 Spatial risk factors associated with exacerbations

280 Maps of ORs across the study region for the unadjusted, EHR-adjusted, and EHR & SEDH-
281 adjusted spatial GAMs are shown in Fig 2. In the unadjusted model, the global test of the null
282 hypothesis that asthma exacerbations were not associated with geographic location was
283 significant ($p < 0.001$) (Fig 2A). Local tests identified a statistically significant hotspot of
284 exacerbations ($p < 0.01$) in West and South Philadelphia with a mean spatial OR of 1.42 (SD
285 0.14). In the model adjusted for EHR-derived variables (Fig 2B) the global test statistic remained

286 significant ($p < 0.001$). Local tests again identified a hotspot ($p < 0.01$) in West and South
287 Philadelphia which had a decreased mean spatial OR of 1.27 (SD 0.057). In this EHR-adjusted
288 model, the variance in spatial ORs across the study region was 33.8% lower than the variance of
289 the unadjusted model (S5 Fig). In the model adjusted for both EHR-derived and SEDH variables,
290 the global test statistic remained significant ($p < 0.001$, Fig 2C) and local tests identified a
291 hotspot ($p < 0.01$) in West Philadelphia that overlapped geographically with the one in the other
292 models, although of a smaller area and with a smaller mean spatial OR of 1.24 (SD 0.040)
293 compared to the EHR-adjusted model. The variance in spatial ORs in the EHR & SEDH-
294 adjusted model was strongly attenuated (67.2% lower than that of the unadjusted model),
295 suggesting that these variables partially explained the spatial correlation of exacerbations (S5
296 Fig). The ORs for the other terms included in the spatial GAMs (i.e., the EHR-derived and
297 SEDH variables) are summarized in Table 3. All variables (i.e., years followed, age 35-54, Black
298 race, class 3 obesity, Medicaid health insurance, Elixhauser score 1-9, ICS) that were significant
299 in the multivariable logistic regression models (Table 2) were also significant in the spatial
300 GAMs (Table 3), except for NO_2 exposure, which was significant in the logistic regression
301 model but not in the spatial GAM.

302 In the spatial GAM models adjusted one variable at a time, ADI, race, and health
303 insurance type most strongly attenuated the variation in spatial ORs (Fig 3), individually
304 accounting for 55.2%, 38.5%, and 26.4%, respectively, of the variation in the unadjusted model
305 (S5 Fig). In these models, each variable was positively associated with exacerbations ($p <$
306 0.001): ADI with OR = 1.05 (95% CI: 1.03, 1.07); Black race with OR = 1.66 (95% CI: 1.44,
307 1.91); and Medicaid health insurance with OR = 1.30 (95% CI: 1.15, 1.46) (S8 Table). The
308 spatial distribution of these variables followed similar patterns: high ADI and high density of

309 Black patients and patients with Medicaid insurance cooccurred in West, North, and South
310 Philadelphia (Fig 3). No other EHR (S6 Fig) or SEDH (S7 Fig) variable attenuated the hotspot
311 area or its effect size, however, adjustment for NO₂ levels resulted in an expansion of a coldspot
312 area (S7A Fig).

313

314 Stratified analysis by race

315 Bivariate analysis comparing the distribution of all EHR and SEDH characteristics between
316 patients of Black and White race found statistically significant differences for all variables
317 except ethnicity and ICS (Table 4). Given that ADI, race, and health insurance type had the
318 strongest relationship with asthma exacerbations in spatial analyses, and their spatial
319 distributions were similar, we performed stratified spatial analyses by race to determine whether
320 ADI and health insurance status remained significantly associated with asthma exacerbations
321 within race-stratified groups. After applying SRR inclusion criteria in strata according to race, an
322 additional 265 Black patients were excluded from the stratified spatial analysis, resulting in a
323 sample size of 4,363 patients (Fig 4A). The unadjusted spatial GAM for patients of Black race
324 had a significant global test statistic ($p < 0.001$) and local tests identified hotspots in West and
325 South Philadelphia consistent with results of the full cohort (Fig 4B). In contrast to spatial
326 analyses in the full cohort, adjusting for ADI and health insurance separately for Black patients
327 did not attenuate the spatial variance in ORs, instead increasing the variance by 4.70% and
328 2.68%, respectively, compared to the unadjusted model (Fig 4C and 4D). In patients of White
329 race, 73 additional patients were removed after applying SRR inclusion criteria, resulting in
330 1,383 patients included in the spatial model for which the global test statistic was no longer
331 significant ($p = 0.079$, S8 Fig).

332

333 **Discussion**

334 Our analysis of individual-level risk factors found that Black race and ICS prescription had the
335 strongest positive associations with asthma exacerbations, as determined by individual-level
336 logistic regression and spatial GAM models. In our cohort of Penn Medicine asthma patients,
337 66% with no exacerbations were Black compared to 83% with 5+ exacerbations, consistent with
338 known racial disparities in asthma and observations in past Penn Medicine cohorts [44,45]. With
339 regard to the observed association between exacerbations and ICS prescription, international
340 asthma management guidelines underwent a major shift in 2019, recommending ICS as part of
341 the first-line treatment for all asthma patients [46]. This shift was not reflected in our cohort,
342 with only 76.0% of patients prescribed ICS. We observed exacerbations in patients in our cohort
343 regardless of whether they had an ICS prescription, however, the strong association between ICS
344 and exacerbations suggests that patients with more severe asthma were prescribed ICS more
345 frequently than those with milder asthma. Our sensitivity analysis found that logistic regression
346 identified positive associations between age 35-54 and NO₂ exposure that were not observed in a
347 negative binomial regression model, suggesting that these factors were associated with risk of
348 having at least one exacerbation compared to none, but not with having a higher count of
349 exacerbations.

350 Our spatial analysis of patient-level data revealed several important insights. First, we
351 observed that asthma exacerbation risk across Philadelphia was spatially correlated and
352 identified a hotspot with 42% higher odds of exacerbation compared to the median across the
353 study region. This finding is consistent with the results of community-based pediatric asthma
354 screening in Philadelphia, which have found that local asthma prevalence can vary significantly

355 from regional or national estimates [47]. Our findings are also consistent with studies that have
356 assessed spatial heterogeneity of pediatric and adult asthma data in other United States
357 metropolitan areas, albeit with less granular spatial resolution. Zárate et al. observed statistically
358 significant spatial patterning of asthma-related emergency department visits across census tracts
359 in Central Texas [48], Grunwell et al. identified a group of contiguous census tracts in the State
360 of Georgia with high rates of admission to the pediatric intensive care unit for asthma [49], and
361 Harris et al. and Corburn et al. identified a statistically significant cluster of zip codes in St.
362 Louis, Missouri and of census tracts in New York City, respectively, with elevated pediatric
363 asthma hospitalization rates [50,51]. Our observation of a West and South Philadelphia hotspot
364 of exacerbation risk is also consistent with analyses of past Penn Medicine cohorts [3,4] that
365 focused on validating methods for augmenting EHR datasets rather than identifying factors
366 associated with the hotspots.

367 The factors we found to be associated with asthma exacerbations according to EHR- and
368 EHR & SEDH- adjusted spatial GAM models were largely consistent with individual-level
369 logistic regression findings, but the spatial analysis provided an improved context to understand
370 the individual-level results. Adjusting for all EHR and SEDH variables decreased the variance in
371 spatial ORs by 67.2%, indicating that these variables together accounted for a large proportion of
372 the spatial variance in exacerbation odds. By adjusting the spatial model one variable at a time,
373 we found that ADI, race, and health insurance type most attenuated the hotspot area and effect
374 size by reducing the variance of spatial ORs, suggesting that these variables were the most
375 influential in determining the spatial distribution of exacerbation risk. Our findings are consistent
376 with known asthma disparities by race/ethnicity and socioeconomic status [7–11], as well as past
377 neighborhood-level analyses of pediatric asthma: Harris et al. and Corburn et al. found that

378 asthma hospitalization hotspots in St. Louis and New York City had greater proportions of non-
379 White residents and greater rates of poverty, unemployment, high-density housing, and lack of
380 access to a household vehicle, although they did not test for statistical significance [50,51].
381 Grunwell et al. found a statistically significant difference between hotspot and non-hotspot
382 census tracts in Georgia for poverty, unemployment, and high-density housing, but not for race
383 [49].

384 Nearly all patient characteristics in our cohort, including health insurance type and ADI,
385 differed significantly between Black and White patients (Table 4). Most notably, 8.5% of White
386 patients had Medicaid health insurance compared to 38% of Black patients, and the median ADI
387 for White patients was 2.60 (IQR 1.50-4.30) compared to 8.40 for Black patients (IQR 6.50-
388 9.40), making it difficult to assess confounding in our spatial models. Although the VIF
389 indicated that all variables could be included in a multivariable model without substantially
390 inflating variance, collinearity between race and ADI as well as race and health insurance type
391 (S4 Fig) may help explain why ADI and health insurance type were statistically significant in
392 bivariable spatial models but not in the EHR & SEDH-adjusted spatial GAM nor in the EHR &
393 SEDH-adjusted logistic regression (Tables 2 and 3). We attempted to overcome some of these
394 limitations by stratifying our analysis by race. We found that, unlike in the full cohort, adjusting
395 for ADI and health insurance type for Black patients did not attenuate the variance in spatial
396 ORs, suggesting that in our cohort the association between these variables and asthma
397 exacerbations was confounded by race. Our results are consistent with previous observations that
398 racial disparities in asthma control persist even after accounting socioeconomic status [52], but
399 that it is difficult to separate out the effects of socioeconomic status from the effects of race [53].
400 Confounding of the asthma-socioeconomic status relationship by race has also been observed in

401 past neighborhood-level analyses of asthma morbidity. Zárate et al. found that spatial patterning
402 of asthma-related emergency department visits in Central Texas was partially explained by
403 socioeconomic characteristics in White patients, but not in Black or Hispanic patients [48]. More
404 broadly, understanding the relative contributions of many social determinants of health to asthma
405 is made difficult by their unequal distribution across racial/ethnic groups in the United States
406 [10].

407 Our health insurance type variable serves as a proxy for individual-level socioeconomic
408 status, and the relationship we measured between it and asthma exacerbation risk is potentially
409 mediated by several pathways including increased rates of smoking [54], psychosocial stress
410 [55], and obesity [56], or an unmeasured variable that varies with socioeconomic status and is
411 also associated with minoritized racial and ethnicity groups in the United States [57]. On the
412 other hand, low neighborhood-level socioeconomic status, which we measured with ADI, is
413 associated with differential exposure to indoor and outdoor air pollution, psychosocial stress
414 from neighborhood violence, and community norms surrounding health behaviors, all of which
415 have been linked to asthma exacerbations [27]. Due to geographic segregation by race that
416 resulted from structural racism and is common in many US cities, including in Philadelphia as
417 we observed in our study, race and neighborhood-level SES are also highly correlated [58].
418 Thus, our inability to identify an association between asthma exacerbations and ADI when
419 restricting our analysis to Black patients may be due to a restriction of the range of people across
420 the ADI spectrum relative to the range observed in all patients [48]. Future work is needed to
421 understand what specific SEDH variables that covary with race, ADI, and health insurance type
422 are the primary drivers of local disparities in asthma exacerbation risk across Philadelphia.

423 Our results demonstrate that integration of diverse SEDH datasets with the EHR and the
424 use of both spatial and non-spatial modeling approaches are helpful to understand factors
425 contributing to complex health conditions in real world populations. In both our logistic
426 regression models and spatial GAMs, model fit was not improved by adjusting for SEDH
427 variables in addition to EHR-derived variables. However, in our spatial models, adjusting for
428 SEDH variables resulted in twice as much reduction of the initial variance in spatial ORs
429 compared to adjusting for EHR variables only. Our non-spatial and spatial models also identified
430 different sets of factors associated with exacerbations. For example, ICS prescription was found
431 to have a strong positive association with exacerbations in logistic regression models but did not
432 contribute to the spatial distribution of ORs; conversely, ADI attenuated the variance in spatial
433 ORs more strongly than all other variables tested but was not significant in either logistic
434 regression or negative binomial models. These findings present a framework for future efforts to
435 expand the scope of EHR data, which, especially as the spatial resolution of SEDH datasets
436 continues to increase, will allow for improved individualized exposure estimates. In the future,
437 integration of SEDH data into the EHR may be helpful to tailor asthma management strategies
438 and for health systems to create population-level interventions to improve health of their patients.

439 This study is strengthened by the high spatial resolution of both our SEDH data and our
440 analysis. Integrating the highest resolution SEDH data available during the time of the study
441 period allowed us to most closely approximate individual-level exposures, and analyzing EHR
442 data at a fine resolution allowed us to understand local health patterns that may not be visible at
443 the census tract or zip-code level. Additional strengths included accounting for many variables
444 and increasing the likelihood that Penn Medicine was patients' primary care provider by
445 applying SRR restriction. Our study is also subject to limitations, including some related to use

446 of EHR data, such as missingness, entry error, and phenotype misclassification. Additionally, the
447 geocoded addresses used in our study reflect residence at the time of the data pull, but they do
448 not account for residential mobility during the study period, nor does residence information
449 provide a full assessment of environmental exposures.

450

451 **Conclusion**

452 By integrating seven datasets containing information on SEDH with an EHR dataset to create
453 individualized exposure assessments, we identified non-spatial and spatial factors associated
454 with asthma exacerbations. Race and prescription of an ICS were most strongly associated with
455 exacerbations in individual-level models. Race also accounted for the most spatial variation in
456 exacerbation odds, along with ADI and health insurance type. Because these three variables had
457 similar spatial distributions, understanding which contributes most to disparities in asthma
458 exacerbations requires additional study of people living in the region identified as a hotspot. Our
459 findings demonstrate how integrating diverse data types and geospatial modeling approaches
460 with EHR data are helpful to understand complex diseases locally.

461

462 **Acknowledgements**

463 We would like to thank Sunil Thomas from the University of Pennsylvania Penn Data Store for
464 extracting the EHR data used for this project.

465 **Table 1. Patient characteristics by exacerbation count levels.** Shown are the characteristics of
 466 patients according to their number of exacerbations during the study period. For each
 467 exacerbation level, the number and percentage of patients are shown for categorical variables,
 468 and the Median and Interquartile Range (IQR) are shown for continuous variables.
 469

Characteristic ^a	Number of Exacerbations				p-value ^b
	0 N = 4,327	1-2 N = 1,810	3-4 N = 328	5+ N = 191	
Years followed	2.69 (1.89, 3.32)	2.81 (1.96, 3.46)	3.12 (2.48, 3.64)	3.60 (2.82, 3.84)	<10 ⁻⁴
Age					<10 ⁻⁴
18-34	1,498 (35%)	524 (29%)	82 (25%)	51 (27%)	
35-54	1,445 (33%)	688 (38%)	144 (44%)	81 (42%)	
55-74	1,198 (28%)	512 (28%)	87 (27%)	54 (28%)	
75+	186 (4.3%)	86 (4.8%)	15 (4.6%)	5 (2.6%)	
Sex					0.29
Male	1,020 (24%)	397 (22%)	71 (22%)	51 (27%)	
Female	3,307 (76%)	1,413 (78%)	257 (78%)	140 (73%)	
Race					<10 ⁻⁴
White	1,059 (24%)	325 (18%)	52 (16%)	20 (10%)	
Black	2,860 (66%)	1,349 (75%)	260 (79%)	159 (83%)	
Unknown/Other	408 (9.4%)	136 (7.5%)	16 (4.9%)	12 (6.3%)	
Ethnicity					0.10
non-Hispanic/Latino	4,160 (96%)	1,747 (97%)	322 (98%)	188 (98%)	
Hispanic/Latino	167 (3.9%)	63 (3.5%)	6 (1.8%)	3 (1.6%)	
BMI					<10 ⁻⁴
Not Overweight or Obese	908 (21%)	307 (17%)	48 (15%)	30 (16%)	
Overweight	1,008 (23%)	426 (24%)	81 (25%)	38 (20%)	
Class 1 Obesity	970 (22%)	381 (21%)	64 (20%)	40 (21%)	
Class 2 Obesity	651 (15%)	300 (17%)	40 (12%)	40 (21%)	
Class 3 Obesity	790 (18%)	396 (22%)	95 (29%)	43 (23%)	
Health insurance type					<10 ⁻⁴
Private	1,978 (46%)	736 (41%)	131 (40%)	49 (26%)	
Medicaid	1,270 (29%)	624 (34%)	113 (34%)	87 (46%)	
Medicare	1,079 (25%)	450 (25%)	84 (26%)	55 (29%)	
Smoking status					<10 ⁻⁴
Never Smoked	2,533 (59%)	997 (55%)	167 (51%)	84 (44%)	
Ever Smoker	1,233 (28%)	517 (29%)	110 (34%)	77 (40%)	
Current Smoker	561 (13%)	296 (16%)	51 (16%)	30 (16%)	
COPD	398 (9.2%)	219 (12%)	44 (13%)	30 (16%)	<10 ⁻⁴
Allergic rhinitis	1,478 (34%)	636 (35%)	133 (41%)	104 (54%)	<10 ⁻⁴
Elixhauser comorbidity score					<10 ⁻⁴
<0	220 (5.1%)	85 (4.7%)	21 (6.4%)	5 (2.6%)	
0	3,035 (70%)	1,214 (67%)	193 (59%)	99 (52%)	
1-9	723 (17%)	356 (20%)	71 (22%)	60 (31%)	
10+	349 (8.1%)	155 (8.6%)	43 (13%)	27 (14%)	
ICS	3,074 (71%)	1,489 (82%)	309 (94%)	188 (98%)	<10 ⁻⁴
NO₂ exposure	7.20 (6.86, 7.77)	7.18 (6.90, 7.70)	7.24 (6.86, 7.79)	7.14 (6.78, 7.56)	0.35
PM_{2.5} exposure	8.20 (7.84, 8.65)	8.16 (7.81, 8.62)	8.22 (7.86, 8.62)	8.14 (7.78, 8.58)	0.018
Toxic releases exposure	231 (5.3%)	87 (4.8%)	18 (5.5%)	10 (5.2%)	0.85
Vehicular traffic exposure					0.095

Lowest	1,079 (25%)	447 (25%)	85 (26%)	53 (28%)	
Low	1,079 (25%)	441 (24%)	96 (29%)	48 (25%)	
High	1,046 (24%)	485 (27%)	80 (24%)	53 (28%)	
Highest	1,123 (26%)	437 (24%)	67 (20%)	37 (19%)	
Area deprivation index	7.00 (3.50, 9.10)	7.80 (4.30, 9.20)	7.70 (5.30, 9.13)	7.80 (5.25, 9.30)	<10 ⁻⁴
Housing violations	0.80 (0.36, 1.47)	0.83 (0.39, 1.49)	0.90 (0.45, 1.61)	0.84 (0.38, 1.28)	0.083
Normalized difference vegetation index	0.21 (0.17, 0.27)	0.21 (0.17, 0.26)	0.21 (0.16, 0.27)	0.22 (0.19, 0.26)	0.26

470 ^aUnits are as follows: age (years), ICS (yes/no indicator of inhaled corticosteroid prescription), NO₂ (ppbv), PM2.5
 471 (µg/m³), toxic releases exposure (yes/no indicator of exposure), area deprivation index (unitless index scaled by
 472 dividing by 10), housing violations (housing violations per 100 people), normalized difference vegetation index
 473 (unitless index ranging from -1 to 1). See Methods for more details.

474 ^bKruskal-Wallis rank sum test; Pearson's Chi-squared test

475 **Table 2. Individual-level asthma exacerbation risk factors in multivariable logistic**
 476 **regression models.** Shown are the adjusted odds ratios (ORs), 95% confidence intervals (CIs),
 477 and p-values for logistic regression models of asthma exacerbations as a dichotomous outcome
 478 adjusted for EHR-derived variables only and for both EHR and SEDH variables.
 479

Characteristic ^a	EHR-adjusted			EHR & SEDH-adjusted		
	OR	95% CI	p-value	OR	95% CI	p-value
Years followed	1.16	1.09, 1.24	<10 ⁻⁴	1.17	1.09, 1.24	<10 ⁻⁴
Age						
18-34	—	—		—	—	
35-54	1.26	1.11, 1.44	5.7x10 ⁻⁴	1.27	1.11, 1.45	4.0x10 ⁻⁴
55-74	1.08	0.91, 1.27	0.38	1.09	0.92, 1.28	0.33
75+	1.29	0.96, 1.73	0.095	1.33	0.98, 1.79	0.064
Sex						
Male	—	—		—	—	
Female	0.98	0.87, 1.12	0.79	0.98	0.86, 1.11	0.77
Race						
White	—	—		—	—	
Black	1.48	1.29, 1.72	<10 ⁻⁴	1.52	1.28, 1.81	<10 ⁻⁴
Unknown/Other	1.01	0.79, 1.28	0.95	1.01	0.79, 1.29	0.94
Ethnicity						
Non-Hispanic/Latino	—	—		—	—	
Hispanic/Latino	0.99	0.71, 1.36	0.94	0.98	0.71, 1.35	0.91
BMI						
Not Overweight or Obese	—	—		—	—	
Overweight	1.15	0.98, 1.36	0.088	1.16	0.98, 1.37	0.079
Class 1 Obesity	0.99	0.83, 1.17	0.87	1.00	0.84, 1.18	0.97
Class 2 Obesity	1.09	0.91, 1.31	0.36	1.09	0.91, 1.32	0.35
Class 3 Obesity	1.24	1.04, 1.48	0.017	1.25	1.04, 1.49	0.015
Health insurance type						
Private	—	—		—	—	
Medicaid	1.22	1.07, 1.39	0.0036	1.19	1.04, 1.36	0.013
Medicare	0.91	0.77, 1.06	0.23	0.89	0.76, 1.05	0.17
Smoking status						
Never Smoked	—	—		—	—	
Ever Smoker	1.04	0.92, 1.18	0.52	1.04	0.92, 1.18	0.56
Current Smoker	1.17	1.0, 1.37	0.057	1.16	0.98, 1.36	0.075
COPD						
No	—	—		—	—	
Yes	1.14	0.95, 1.36	0.17	1.11	0.93, 1.34	0.24
Allergic rhinitis						
No	—	—		—	—	
Yes	1.09	0.97, 1.22	0.13	1.09	0.98, 1.22	0.11
Elixhauser comorbidity score						
<0	—	—		—	—	
0	1.20	0.94, 1.54	0.14	1.20	0.94, 1.54	0.14
1-9	1.40	1.08, 1.83	0.012	1.39	1.07, 1.82	0.015
10+	1.20	0.89, 1.62	0.22	1.19	0.89, 1.61	0.25
ICS						
No	—	—		—	—	
Yes	2.19	1.91, 2.51	<10 ⁻⁴	2.20	1.92, 2.52	<10 ⁻⁴
NO₂ exposure				1.28	1.07, 1.52	0.0058
PM_{2.5} exposure				0.89	0.72, 1.09	0.25

Toxic releases exposure						
No				—	—	
Yes				1.07	0.83, 1.37	0.60
Vehicular traffic exposure						
Lowest				—	—	
Low				1.01	0.88, 1.17	0.86
High				1.10	0.95, 1.28	0.18
Highest				0.95	0.82, 1.11	0.54
Area deprivation index				1.02	0.99, 1.04	0.22
Housing violations				0.96	0.90, 1.01	0.11
Normalized difference vegetation index				1.08	0.47, 2.44	0.86
AIC	8,323			8,322		

480 ^aUnits are as follows: age (years), ICS (yes/no indicator of inhaled corticosteroid prescription), NO₂ (ppbv), PM2.5
481 (µg/m³), toxic releases exposure (yes/no indicator of exposure), area deprivation index (unitless index scaled by
482 dividing by 10), housing violations (housing violations per 100 people), normalized difference vegetation index
483 (unitless index ranging from -1 to 1). See Methods for more details.

484 **Table 3. Spatial asthma exacerbation risk factors in multivariable spatial GAMs.** Shown are
 485 the adjusted odds ratios (ORs), 95% confidence intervals (CIs), and p-values for spatial GAMs of
 486 asthma exacerbations as a dichotomous outcome adjusted for EHR-derived variables only and
 487 for both EHR-derived and SEDH variables.
 488

Characteristic ^a	EHR-adjusted			EHR & SEDH-adjusted		
	OR	95% CI	p-value	OR	95% CI	p-value
Years followed	1.17	1.10, 1.25	<10 ⁻⁴	1.17	1.09, 1.25	<10 ⁻⁴
Age						
18-34	—	—	—	—	—	—
35-54	1.27	1.11, 1.45	3.7x10 ⁻⁴	1.27	1.11, 1.45	3.9x10 ⁻⁴
55-74	1.07	0.91, 1.26	0.42	1.07	0.91, 1.27	0.41
75+	1.30	0.97, 1.75	0.083	1.31	0.97, 1.77	0.075
Sex						
Male	—	—	—	—	—	—
Female	0.99	0.87, 1.12	0.82	0.98	0.87, 1.12	0.81
Race						
White	—	—	—	—	—	—
Black	1.58	1.35, 1.84	<10 ⁻⁴	1.55	1.30, 1.84	<10 ⁻⁴
Unknown/Other	1.03	0.81, 1.31	0.82	1.01	0.79, 1.30	0.91
Ethnicity						
non-Hispanic/Latino	—	—	—	—	—	—
Hispanic/Latino	1.03	0.74, 1.42	0.88	1.02	0.73, 1.41	0.92
BMI						
Not Overweight or Obese	—	—	—	—	—	—
Overweight	1.17	0.99, 1.37	0.065	1.16	0.99, 1.37	0.070
Class 1 Obesity	1.00	0.84, 1.18	0.99	1.00	0.84, 1.18	0.98
Class 2 Obesity	1.10	0.91, 1.32	0.34	1.09	0.91, 1.32	0.36
Class 3 Obesity	1.25	1.05, 1.50	0.012	1.25	1.05, 1.49	0.013
Health insurance type						
Private	—	—	—	—	—	—
Medicaid	1.18	1.03, 1.34	0.015	1.18	1.03, 1.34	0.019
Medicare	0.90	0.76, 1.05	0.17	0.89	0.76, 1.05	0.17
Smoking status						
Never Smoked	—	—	—	—	—	—
Ever Smoker	1.04	0.91, 1.17	0.58	1.03	0.91, 1.17	0.60
Current Smoker	1.15	0.98, 1.35	0.092	1.15	0.98, 1.35	0.093
COPD						
No	—	—	—	—	—	—
Yes	1.10	0.92, 1.32	0.30	1.10	0.92, 1.32	0.29
Allergic rhinitis						
No	—	—	—	—	—	—
Yes	1.09	0.98, 1.22	0.12	1.10	0.98, 1.22	0.11
Elixhauser comorbidity score						
<0	—	—	—	—	—	—
0	1.20	0.94, 1.54	0.14	1.20	0.94, 1.53	0.15
1-9	1.39	1.06, 1.81	0.016	1.38	1.06, 1.80	0.018
10+	1.18	0.87, 1.59	0.28	1.17	0.87, 1.58	0.29
ICS						
No	—	—	—	—	—	—
Yes	2.22	1.93, 2.54	<10 ⁻⁴	2.21	1.93, 2.54	<10 ⁻⁴
NO₂ exposure				1.09	0.82, 1.44	0.56
PM_{2.5} exposure				1.08	0.81, 1.45	0.59

Toxic releases exposure						
No				—	—	—
Yes				1.06	0.82, 1.37	0.65
Vehicular traffic exposure						
Lowest				—	—	—
Low				1.02	0.88, 1.19	0.76
High				1.10	0.95, 1.27	0.21
Highest				0.97	0.83, 1.13	0.66
Area deprivation index				1.01	0.99, 1.04	0.32
Housing violations				0.97	0.91, 1.02	0.23
Normalized difference vegetation index				0.99	0.43, 2.27	0.97
AIC^b	8,296			8,309		

489 ^aUnits are as follows: age (years), ICS (yes/no indicator of inhaled corticosteroid prescription), NO₂ (ppbv), PM2.5
 490 (µg/m³), toxic releases exposure (yes/no indicator of exposure), area deprivation index (unitless index scaled by
 491 dividing by 10), housing violations (housing violations per 100 people), normalized difference vegetation index
 492 (unitless index ranging from -1 to 1). See Methods for more details.

493 ^bThe AIC of the unadjusted model was 8,576.

494 **Table 4. Patient characteristics by race.** Shown are the number and percentage of patients in
 495 each level for categorical variables, and the Median and Interquartile Range (IQR) for
 496 continuous variables in patients of White race versus Black race.
 497

Characteristic ^a	Race		p-value ^b
	White N = 1,456	Black N = 4,628	
Exacerbation count			<10 ⁻⁴
0	1,059 (73%)	2,860 (62%)	
1-2	325 (22%)	1,349 (29%)	
3-4	52 (3.6%)	260 (5.6%)	
5+	20 (1.4%)	159 (3.4%)	
Years followed	2.62 (1.86, 3.28)	2.82 (1.98, 3.46)	<10 ⁻⁴
Age			<10 ⁻⁴
18-34	468 (32%)	1,458 (32%)	
35-54	481 (33%)	1,667 (36%)	
55-74	407 (28%)	1,332 (29%)	
75+	100 (6.9%)	171 (3.7%)	
Sex			<10 ⁻⁴
Male	473 (32%)	905 (20%)	
Female	983 (68%)	3,723 (80%)	
Ethnicity			0.0024
non-Hispanic/Latino	1,431 (98%)	4,591 (99%)	
Hispanic/Latino	25 (1.7%)	37 (0.8%)	
BMI			<10 ⁻⁴
Not Overweight or Obese	521 (36%)	636 (14%)	
Overweight	462 (32%)	935 (20%)	
Class 1 Obesity	264 (18%)	1,048 (23%)	
Class 2 Obesity	106 (7.3%)	862 (19%)	
Class 3 Obesity	103 (7.1%)	1,147 (25%)	
Health insurance type			<10 ⁻⁴
Private	981 (67%)	1,624 (35%)	
Medicaid	124 (8.5%)	1,781 (38%)	
Medicare	351 (24%)	1,223 (26%)	
Smoking status			<10 ⁻⁴
Never Smoked	898 (62%)	2,519 (54%)	
Ever Smoker	463 (32%)	1,328 (29%)	
Current Smoker	95 (6.5%)	781 (17%)	
COPD	115 (7.9%)	536 (12%)	<10 ⁻⁴
Allergic rhinitis	571 (39%)	1,541 (33%)	<10 ⁻⁴
Elixhauser comorbidity score			<10 ⁻⁴
<0	32 (2.2%)	262 (5.7%)	
0	1,117 (77%)	2,986 (65%)	
1-9	222 (15%)	924 (20%)	
10+	85 (5.8%)	456 (9.9%)	
ICS	1,105 (76%)	3,510 (76%)	0.97
NO₂ exposure	7.85 (7.40, 8.18)	7.10 (6.81, 7.39)	<10 ⁻⁴
PM_{2.5} exposure	8.72 (8.28, 8.90)	8.05 (7.77, 8.41)	<10 ⁻⁴
Toxic releases exposure	115 (7.9%)	194 (4.2%)	<10 ⁻⁴
Vehicular traffic exposure			<10 ⁻⁴
Lowest	279 (19%)	1,283 (28%)	
Low	267 (18%)	1,244 (27%)	
High	312 (21%)	1,177 (25%)	

Highest	598 (41%)	924 (20%)	
Area deprivation index	2.60 (1.50, 4.30)	8.40 (6.50, 9.40)	<10 ⁻⁴
Housing violations	0.41 (0.15, 0.74)	0.99 (0.52, 1.68)	<10 ⁻⁴
Normalized difference vegetation index	0.18 (0.13, 0.25)	0.22 (0.18, 0.27)	<10 ⁻⁴

498 ^aUnits are as follows: age (years), ICS (yes/no indicator of inhaled corticosteroid prescription), NO₂ (ppbv), PM2.5
 499 (µg/m³), toxic releases exposure (yes/no indicator of exposure), area deprivation index (unitless index scaled by
 500 dividing by 10), housing violations (housing violations per 100 people), normalized difference vegetation index
 501 (unitless index ranging from -1 to 1). See Methods for more details.

502 ^bPearson's Chi-squared test; Wilcoxon rank sum test

503 **Figure Legends**

504 **Figure 1. Overview of study design.** Graphical overview of study design, including processing
505 and linkage of electronic health record (EHR) and social and environmental determinants of
506 health (SEDH) data, cohort selection including spatial filtering by assessing the representation of
507 the EHR cohort compared to the underlying population, and patient-level and geospatial analyses
508 on the expanded EHR dataset.

509 **Figure 2. Spatial odds ratios (ORs) of exacerbations before and after adjusting for EHR-**
510 **derived and SEDH variables.** (A) Unadjusted spatial GAM (adjusted only for years followed).
511 (B) Spatial GAM adjusted for EHR-derived variables only. (C) Spatial GAM adjusted for both
512 EHR-derived and SEDH variables. Base maps were created using the Stamen Design from
513 Stadia Maps.

514 **Figure 3. Spatial distribution of individual variables that most strongly attenuated the**
515 **spatial odds ratios (ORs) of exacerbations along with corresponding spatial GAM results**
516 **adjusted for these individual variables.** Spatial distribution in the study region of (A) the area
517 deprivation index (ADI), (B) race, and (C) health insurance type of patients. Corresponding
518 spatial GAMs adjusted only for years followed and (D) ADI, (E) race, or (F) health insurance
519 type.

520 **Figure 4. Spatial odds ratios (ORs) of exacerbations among Black patients along with the**
521 **effects of ADI and health insurance type on this distribution.** (A) SRR values for the updated
522 study region used in spatial GAMs for patients of Black race only (SRR = 1 indicates no
523 representativeness bias). (B) Unadjusted spatial GAM (adjusted only for years followed) for
524 patients of Black race (N = 4,363). Spatial GAMs adjusted additionally for (C) area deprivation

525 index (ADI) and (D) health insurance type. Base maps were created using the Stamen Design
526 from Stadia Maps.

527 **References**

528

529 1. Mooney SJ, Westreich DJ, El-Sayed AM. Commentary: Epidemiology in the era of big data.
530 *Epidemiology*. 2015;c: 390–394. doi:10.1097/EDE.0000000000000274

531 2. Cook LA, Sachs J, Weiskopf NG. The quality of social determinants data in the electronic
532 health record: a systematic review. *J Am Med Inform Assoc JAMIA*. 2021;29: 187–196.
533 doi:10.1093/jamia/ocab199

534 3. Xie S, Greenblatt R, Levy MZ, Himes BE. Enhancing Electronic Health Record Data with
535 Geospatial Information. *AMIA Summits Transl Sci Proc*. 2017;2017: 123–132.

536 4. Xie S, Himes BE. Approaches to link geospatially varying social, economic, and
537 environmental factors with electronic health record data to better understand asthma
538 exacerbations. *AMIA Annu Symp Proc*. 2018;2018: 1561–1570.

539 5. Cui Y, Eccles KM, Kwok RK, Joubert BR, Messier KP, Balshaw DM. Integrating multiscale
540 geospatial environmental data into large population health studies: challenges and
541 opportunities. *Toxics*. 2022;10: 403. doi:10.3390/toxics10070403

542 6. Schreibman A, Xie S, Hubbard RA, Himes BE. Linking ambient NO₂ pollution measures
543 with electronic health record data to study asthma exacerbations. *AMIA Summits Transl
544 Sci Proc*. 2023;2023: 467–476.

545 7. CDC. Asthma: most recent national asthma data. Atlanta, GA: US Department of Health and
546 Human Services, CDC; 2020. Available:
547 https://www.cdc.gov/asthma/most_recent_national_asthma_data.htm

548 8. Leong AB, Ramsey CD, Celedón JC. The challenge of asthma in minority populations. *Clin
549 Rev Allergy Immunol*. 2012;43: 156–183. doi:10.1007/s12016-011-8263-1

550 9. Forno E, Celedón JC. Health disparities in asthma. *Am J Respir Crit Care Med*. 2012;185:
551 1033–1035. doi:10.1164/rccm.201202-0350ED

552 10. Grant T, Croce E, Matsui EC. Asthma and the social determinants of health. *Ann Allergy
553 Asthma Immunol Off Publ Am Coll Allergy Asthma Immunol*. 2022;128: 5–11.
554 doi:10.1016/j.anai.2021.10.002

555 11. Lovinsky-Desir S, Riley IL, Bryant-Stephens T, De Keyser H, Forno E, Kozik AJ, et al.
556 Research priorities in pediatric asthma morbidity: addressing the impacts of systemic
557 racism on children with asthma in the United States: an official American Thoracic Society
558 workshop report. *Ann Am Thorac Soc*. 2024;21: 1349–1364.
559 doi:10.1513/AnnalsATS.202407-767ST

560 12. Global Initiative for Asthma (GINA). Global strategy for asthma management and
561 prevention (2024 update). Bethesda, MD: Global Initiative for Asthma (GINA); 2024.

- 562 13. Fuhlbrigge A, Peden D, Apter AJ, Boushey HA, Camargo CA, Gern J, et al. Asthma
563 outcomes: exacerbations. *J Allergy Clin Immunol.* 2012;129: S34–S48.
564 doi:10.1016/j.jaci.2011.12.983
- 565 14. Krishnan V, Diette GB, Rand CS, Bilderback AL, Merriman B, Hansel NN, et al. Mortality
566 in patients hospitalized for asthma exacerbations in the United States. *Am J Respir Crit*
567 *Care Med.* 2006;174: 633–638. doi:10.1164/rccm.200601-007OC
- 568 15. Ivanova JI, Bergman R, Birnbaum HG, Colice GL, Silverman RA, McLaurin K. Effect of
569 asthma exacerbations on health care costs among asthmatic patients with moderate and
570 severe persistent asthma. *J Allergy Clin Immunol.* 2012;129: 1229–1235.
571 doi:10.1016/j.jaci.2012.01.039
- 572 16. Schatz M, Clark S, Camargo CA. Sex differences in the presentation and course of asthma
573 hospitalizations. *Chest.* 2006;129: 50–55. doi:10.1378/chest.129.1.50
- 574 17. Schatz M, Mosen DM, Kosinski M, Vollmer WM, Magid DJ, O'Connor E, et al. Predictors
575 of asthma control in a random sample of asthmatic patients. *J Asthma.* 2007;44: 341–345.
576 doi:10.1080/02770900701344421
- 577 18. Pedersen SE, Bateman ED, Bousquet J, Busse WW, Yoxall S, Clark TJ. Determinants of
578 response to fluticasone propionate and salmeterol/fluticasone propionate combination in the
579 Gaining Optimal Asthma control study. *J Allergy Clin Immunol.* 2007;120: 1036–1042.
580 doi:10.1016/j.jaci.2007.07.016
- 581 19. Price D, Zhang Q, Kocevar VS, Yin DD, Thomas M. Effect of a concomitant diagnosis of
582 allergic rhinitis on asthma-related health care use by adults. *Clin Exp Allergy.* 2005;35:
583 282–287. doi:10.1111/j.1365-2222.2005.02182.x
- 584 20. Miller MK, Lee JH, Miller DP, Wenzel SE. Recent asthma exacerbations: A key predictor of
585 future exacerbations. *Respir Med.* 2007;101: 481–489. doi:10.1016/j.rmed.2006.07.005
- 586 21. Guarnieri M, Balmes JR. Outdoor air pollution and asthma. *The Lancet.* 2014;383: 1581–
587 1592. doi:10.1016/S0140-6736(14)60617-6
- 588 22. Weitzman M, Gortmaker S, Sobol A. Racial, social, and environmental risks for childhood
589 asthma. *Am J Dis Child.* 1990;144: 1189–1194.
590 doi:10.1001/archpedi.1990.02150350021016
- 591 23. Black PN, Udy AA, Brodie SM. Sensitivity to fungal allergens is a risk factor for life-
592 threatening asthma. *Allergy.* 2000;55: 501–504. doi:10.1034/j.1398-9995.2000.00293.x
- 593 24. Gelber LE, Seltzer LH, Bouzoukis JK, Pollart SM, Chapman MD, Platts-Mills TAE.
594 Sensitization and exposure to indoor allergens as risk factors for asthma among patients
595 presenting to hospital. *Am Rev Respir Dis.* 1993;147: 573–578.
596 doi:10.1164/ajrccm/147.3.573

- 597 25. Lovasi GS, O’Neil-Dunne JPM, Lu JWT, Sheehan D, Perzanowski MS, MacFaden SW, et
598 al. Urban tree canopy and asthma, wheeze, rhinitis, and allergic sensitization to tree pollen
599 in a New York City birth cohort. *Environ Health Perspect.* 2013;121: 494–500.
600 doi:10.1289/ehp.1205513
- 601 26. Lovasi GS, Quinn JW, Neckerman KM, Perzanowski MS, Rundle A. Children living in areas
602 with more street trees have lower prevalence of asthma. *J Epidemiol Community Health.*
603 2008;62: 647–649. doi:10.1136/jech.2007.071894
- 604 27. Gold DR, Wright R. Population disparities in asthma. *Annu Rev Public Health.* 2005;26: 89–
605 113. doi:10.1146/annurev.publhealth.26.021304.144528
- 606 28. Fecho K, Ahalt SC, Appold S, Arunachalam S, Pfaff E, Stillwell L, et al. Development and
607 application of an open tool for sharing and analyzing integrated clinical and environmental
608 exposures data: asthma use case. *JMIR Form Res.* 2022;6: e32357. doi:10.2196/32357
- 609 29. Beck AF, Huang B, Ryan PH, Sandel MT, Chen C, Kahn RS. Areas with high rates of
610 police-reported violent crime have higher rates of childhood asthma morbidity. *J Pediatr.*
611 2016;173: 175-182.e1. doi:10.1016/j.jpeds.2016.02.018
- 612 30. Rasmussen SG, Ogburn EL, McCormack M, Casey JA, Bandeen-Roche K, Mercer DG, et al.
613 Association between unconventional natural gas development in the Marcellus Shale and
614 asthma exacerbations. *JAMA Intern Med.* 2016;176: 1334–1343.
615 doi:10.1001/jamainternmed.2016.2436
- 616 31. van Walraven C, Austin PC, Jennings A, Quan H, Forster AJ. A modification of the
617 Elixhauser comorbidity measures into a point system for hospital death using administrative
618 data. *Med Care.* 2009;47: 626. doi:10.1097/MLR.0b013e31819432e5
- 619 32. Christie C, Xie S, Diwadkar AR, Greenblatt RE, Rizaldi A, Himes BE. Consolidated
620 Environmental and Social Data Facilitates Neighborhood-Level Health Studies in
621 Philadelphia. *AMIA Annu Symp Proc.* 2022;2021: 305–313.
- 622 33. Cooper MJ, Martin RV, McLinden CA, Brook JR. Inferring ground-level nitrogen dioxide
623 concentrations at fine spatial resolution applied to the TROPOMI satellite instrument.
624 *Environ Res Lett.* 2020;15: 104013. doi:10.1088/1748-9326/aba3a5
- 625 34. van Donkelaar A, Hammer MS, Bindle L, Brauer M, Brook JR, Garay MJ, et al. Monthly
626 global estimates of fine particulate matter and their uncertainty. *Environ Sci Technol.*
627 2021;55: 15287–15300. doi:10.1021/acs.est.1c05309
- 628 35. US EPA. TRI basic data files: calendar years 1987-present. 3 Mar 2013 [cited 25 Jul 2023].
629 Available: [https://www.epa.gov/toxics-release-inventory-tri-program/tri-basic-data-files-](https://www.epa.gov/toxics-release-inventory-tri-program/tri-basic-data-files-calendar-years-1987-present)
630 [calendar-years-1987-present](https://www.epa.gov/toxics-release-inventory-tri-program/tri-basic-data-files-calendar-years-1987-present)
- 631 36. RMSTRAFFIC (Traffic Volumes). 2023 [cited 25 Jul 2023]. Available: [https://data-](https://data-pennshare.opendata.arcgis.com/datasets/rmstraffic-traffic-volumes/explore)
632 [pennshare.opendata.arcgis.com/datasets/rmstraffic-traffic-volumes/explore](https://data-pennshare.opendata.arcgis.com/datasets/rmstraffic-traffic-volumes/explore)

- 633 37. Kind AJH, Buckingham WR. Making neighborhood-disadvantage metrics accessible — the
634 neighborhood atlas. *N Engl J Med*. 2018;378: 2456–2458. doi:10.1056/NEJMp1802313
- 635 38. University of Wisconsin School of Medicine Public Health. 2018 Area Deprivation Index
636 v3.1. Available: <https://www.neighborhoodatlas.medicine.wisc.edu/>. Accessed July 2022.
- 637 39. Licenses and Inspections code violations. In: OpenDataPhilly [Internet]. [cited 25 Jul 2023].
638 Available: <https://opendataphilly.org/datasets/licenses-and-inspections-code-violations/>
- 639 40. Ermida SL, Soares P, Mantas V, Göttische F-M, Trigo IF. Google Earth Engine open-source
640 code for land surface temperature estimation from the Landsat series. *Remote Sens*.
641 2020;12: 1471. doi:10.3390/rs12091471
- 642 41. R Core Team (2020). R: a language and environment for statistical computing. Vienna,
643 Austria: R Foundation for Statistical Computing; Available: <https://www.R-project.org/>
- 644 42. Xie SJ, Kapos FP, Mooney SJ, Mooney S, Stephens KA, Chen C, et al. Geospatial divide in
645 real-world EHR data: analytical workflow to assess regional biases and potential impact on
646 health equity. *AMIA Summits Transl Sci Proc*. 2023;2023: 572–581.
- 647 43. Bai L, Bartell S, Bliss R, Vieira V. Mapping smoothed effect estimates from individual-level
648 spatial data. 2022. Available: [https://search.r-](https://search.r-project.org/CRAN/refmans/MapGAM/html/MapGAM-package.html)
649 [project.org/CRAN/refmans/MapGAM/html/MapGAM-package.html](https://search.r-project.org/CRAN/refmans/MapGAM/html/MapGAM-package.html)
- 650 44. Moorman JE, Akinbami LJ, Bailey CM, Zahran HS, King ME, Johnson CA, et al. National
651 surveillance of asthma: United States, 2001-2010. *Vital Health Stat 3*. 2012; 1–58.
- 652 45. Greenblatt RE, Zhao EJ, Henrickson SE, Apter AJ, Hubbard RA, Himes BE. Factors
653 associated with exacerbations among adults with asthma according to electronic health
654 record data. *Asthma Res Pract*. 2019;5: 1. doi:10.1186/s40733-019-0048-y
- 655 46. Global Initiative for Asthma (GINA). Global strategy for asthma management and
656 prevention (2019 update). Bethesda, MD: Global Initiative for Asthma (GINA); 2019.
- 657 47. Bryant-Stephens T, West C, Dirl C, Banks T, Briggs V, Rosenthal M. Asthma prevalence in
658 philadelphia: description of two community-based methodologies to assess asthma
659 prevalence in an inner-city population. *J Asthma*. 2012;49: 581–585.
660 doi:10.3109/02770903.2012.690476
- 661 48. Zárata RebeccaA, Bhavnani D, Chambliss S, Hall EM, Zigler C, Cubbin C, et al.
662 Neighborhood-level variability in asthma-related emergency department visits in Central
663 Texas. *J Allergy Clin Immunol*. 2024;154: 933–939. doi:10.1016/j.jaci.2024.05.024
- 664 49. Grunwell JR, Opolka C, Mason C, Fitzpatrick AM. Geospatial analysis of social
665 determinants of health identifies neighborhood hot spots associated with pediatric intensive
666 care use for life-threatening asthma. *J Allergy Clin Immunol Pract*. 2022;10: 981-991.e1.
667 doi:10.1016/j.jaip.2021.10.065

- 668 50. Harris KM. Mapping inequality: Childhood asthma and environmental injustice, a case study
669 of St. Louis, Missouri. *Soc Sci Med.* 2019;230: 91–110.
670 doi:10.1016/j.socscimed.2019.03.040
- 671 51. Corburn J, Osleeb J, Porter M. Urban asthma and the neighbourhood environment in New
672 York City. *Health Place.* 2006;12: 167–179. doi:10.1016/j.healthplace.2004.11.002
- 673 52. Haselkorn T, Lee JH, Mink DR, Weiss ST. Racial disparities in asthma-related health
674 outcomes in severe or difficult-to-treat asthma. *Ann Allergy Asthma Immunol.* 2008;101:
675 256–263. doi:10.1016/S1081-1206(10)60490-5
- 676 53. Boudreaux ED, Emond SD, Clark S, Camargo CA. Acute asthma among adults presenting to
677 the emergency department: the role of race/ethnicity and socioeconomic status. *Chest.*
678 2003;124: 803–812. doi:10.1378/chest.124.3.803
- 679 54. Hiscock R, Bauld L, Amos A, Fidler JA, Munafò M. Socioeconomic status and smoking: a
680 review. *Ann N Y Acad Sci.* 2012;1248: 107–123. doi:10.1111/j.1749-6632.2011.06202.x
- 681 55. Matthews KA, Gallo LC, Taylor SE. Are psychosocial factors mediators of socioeconomic
682 status and health connections? *Ann N Y Acad Sci.* 2010;1186: 146–173.
683 doi:10.1111/j.1749-6632.2009.05332.x
- 684 56. Wang Y, Beydoun MA. The obesity epidemic in the United States—gender, age,
685 socioeconomic, racial/ethnic, and geographic characteristics: a systematic review and meta-
686 regression analysis. *Epidemiol Rev.* 2007;29: 6–28. doi:10.1093/epirev/mxm007
- 687 57. Williams DR. Race, socioeconomic status, and health: the added effects of racism and
688 discrimination. *Ann N Y Acad Sci.* 1999;896: 173–188. doi:10.1111/j.1749-
689 6632.1999.tb08114.x
- 690 58. Charles CZ. The dynamics of racial residential segregation. *Annu Rev Sociol.* 2003;29: 167–
691 207. doi:10.1146/annurev.soc.29.010202.100002
- 692

693 **Supporting information**

694 **S1 Text. Supplementary Methods.**

695 **S1 Figure. Flowchart of patient cohort selection.** Overview of steps followed to select final
696 patient cohort (N = 6,656) from EHR data on all Penn Medicine patients with at least one asthma
697 ICD code (N = 86,787).

698 **S2 Figure. Selection of study region using the spatial representation ratio (SRR).** (A) SRR
699 values, defined as the cohort population residing in a block group divided by the underlying
700 population as reported by the 2019 American Community Survey, for all of Philadelphia and for
701 the selected study region (inset box). SRR = 1 indicates no representativeness bias. Density plots
702 of the study cohort (B) before and (C) after filtering for the study region. Base maps were created
703 using the Stamen Design from Stadia Maps.

704 **S3 Figure. Spatial distribution of SEDH datasets that were integrated with EHR data.**

705 The following maps are shown for the spatial area which comprised our study region: (A) raster
706 of NO₂ pollution levels, (B) raster of PM_{2.5} pollution levels, (C) point sites of toxic releases and
707 the total summed emissions at each site, (D) line segments of roadways and the daily vehicle
708 miles traveled (DVDT) on each, (E) housing violations per block group, normalized by the
709 underlying 2019 American Community Survey population, (F) raster of the normalized
710 difference vegetation index (NDVI). A map of area deprivation index (ADI), which most
711 strongly reduced the spatial variance of odds of exacerbation risk in our spatial GAMs, is shown
712 in Figure 3A. Base maps were created using the Stamen Design from Stadia Maps.

713 **S4 Figure. Pairwise correlation between all EHR and SEDH variables.** Measures in each box
714 correspond to Pearson's correlation coefficients. For nominal categorical variables, reference
715 levels are as follows: White (race), Private (health insurance type).

716 **S5 Figure. Influence of individual EHR and SEDH variables on the odds ratio (OR) of the**
717 **unadjusted spatial GAM.** Percent reduction in the variance of ORs across the study region for
718 one-variable-at-a-time adjusted spatial GAMs compared to the unadjusted model. OR changes
719 for models adjusted one variable at a time (in addition to years followed) are shown in blue.
720 Multivariable models (both EHR-adjusted and EHR & SEDH-adjusted) are shown in red for
721 comparison.

722 **S6 Figure. Spatial GAMs adjusted one-at-a-time for the EHR-derived variables that did**
723 **not greatly reduce variance.** Spatial odds ratios (ORs) of exacerbation are shown after
724 adjusting for years followed and one-at-a-time for the following variables whose percent
725 reduction in variance of ORs was less than 25: (A) age, (B) sex, (C) ethnicity, (D) BMI, (E)
726 smoking status, (F) COPD, (G) allergic rhinitis, (H) Elixhauser comorbidity score, (I) ICS. Base
727 maps were created using the Stamen Design from Stadia Maps.

728 **S7 Figure. Spatial GAMs adjusted one-at-a-time for the SEDH variables that did not**
729 **greatly reduce variance.** Spatial odds ratios (ORs) of exacerbation are shown after adjusting for
730 years followed and one-at-a-time for the following variables whose reduction in variance of ORs
731 was less than 25: (A) NO₂, (B) PM_{2.5}, (C) toxic releases exposure, (D) vehicular traffic, (E)
732 housing violations, (F) normalized difference vegetation index (NDVI). Base maps were created
733 using the Stamen Design from Stadia Maps.

734 **S8 Figure. Spatial odds ratios (ORs) of exacerbations among White patients along with the**
735 **effects of ADI and health insurance type on this distribution.** (A) SRR values for the updated
736 study region used in spatial GAMs for patients of White race only (SRR = 1 indicates no
737 representativeness bias). (B) Unadjusted spatial GAM adjusted only for years followed for
738 patients of White race (N = 1,383). Spatial GAMs adjusted additionally for (C) area deprivation

739 index (ADI) and (D) health insurance type. Base maps were created using the Stamen Design
740 from Stadia Maps.

741 **S1 Table. Generic medication names included in medication classes.** The following generic
742 drug names recorded in the EHR during the study period were used for asthma and exacerbation
743 phenotyping as well as used as independent variables in select models (i.e., ICS). Instances in
744 which these drugs were listed as investigational or nasal formulations were not included.

745 **S2 Table. Sources and spatiotemporal dimensions of geospatial datasets merged with EHR**
746 **data.**

747 **S3 Table. Asthma-related housing code violations extracted from the Philadelphia**
748 **Department of Licenses and Inspections.**

749 **S4 Table. Patient medications by exacerbation count levels.** Shown are the number and
750 percentage of patients receiving each of the medication types listed according to their number of
751 exacerbations during the study period.

752 **S5 Table. Characteristics of complete cases and patients excluded due to missingness.**
753 Shown are the number and percentage of patients in each level for categorical variables and the
754 Median and Interquartile Range (IQR) for the Years followed variable in complete cases versus
755 those excluded due to missingness in the sex, ethnicity, health insurance type, BMI, and smoking
756 status variables.

757 **S6 Table. Adjusted Generalized Variance Inflation Factors (GVIFs) for each EHR and**
758 **SEDH variable included in the EHR & SEDH-adjusted negative binomial and logistic**
759 **regression models.**

760 **S7 Table. Individual-level asthma exacerbation risk factors in multivariable negative**
761 **binomial regression models.** Shown are the adjusted incidence rate ratios (IRRs), 95%

762 confidence intervals (CIs), and p-values for negative binomial models of asthma exacerbations as
763 a count outcome adjusted for EHR-derived variables only and for both EHR-derived and SEDH
764 variables.

765 **S8 Table. Spatial GAMs of asthma exacerbations adjusted for individual risk factors that**
766 **most changed risk.** Shown are the adjusted odds ratios (ORs), 95% confidence intervals (CIs),
767 and p-values for spatial GAMs of asthma exacerbations as a dichotomous outcome adjusted for
768 years followed and one-at-a-time for ADI, race, and health insurance type, the three variables
769 whose percent reduction in variance of ORs was greater than 25.

Linking EHR with SEDH data

Electronic Health Records
(N = 86,787)

Jan 1, 2017

Dec 31, 2020



Diagnoses



Medications



Demographics



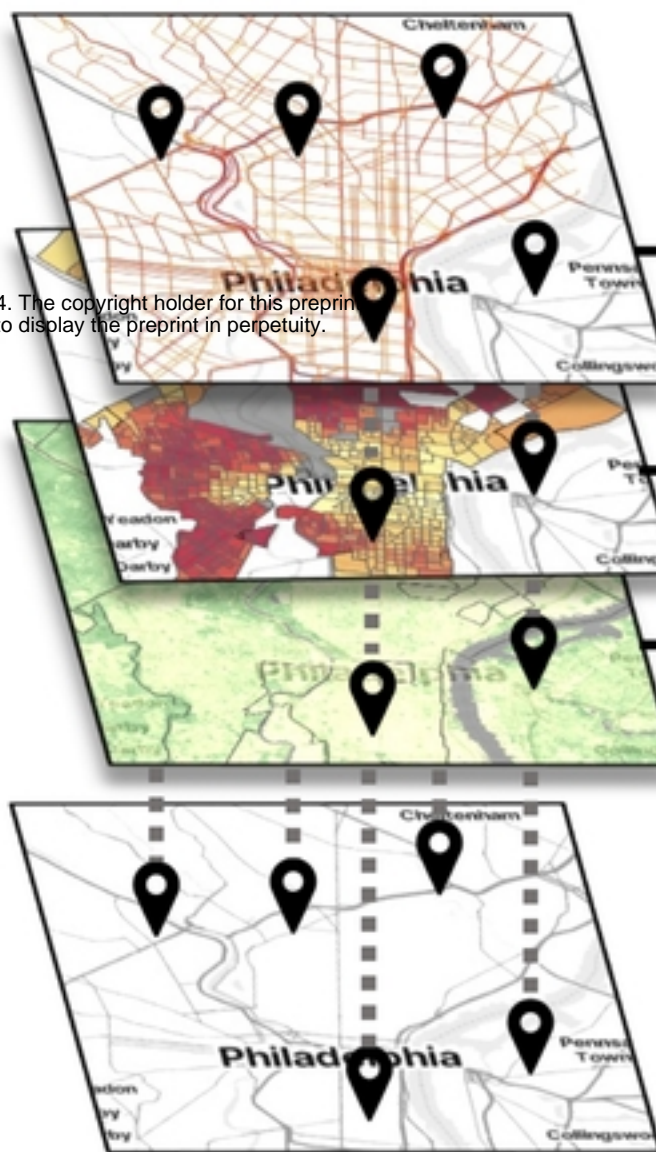
Addresses

Asthma
phenotype

Asthma
exacerbation
definition

Geocoding

SEDH Datasets



Air pollution
exposures

Neighborhood
socioeconomic
environment

Built and natural
environment

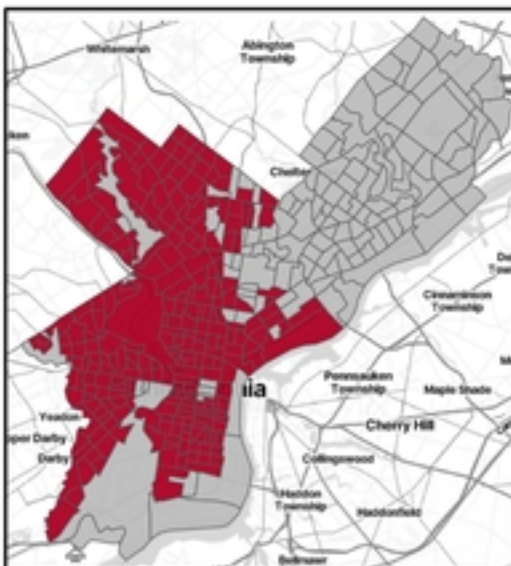
Cohort selection

Asthma
phenotype
criteria

Inclusion
criteria

Exclusion
criteria

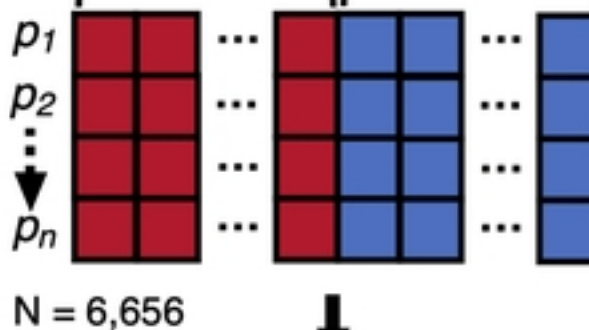
Spatial
representation



Analysis of expanded EHR

EHR
variables

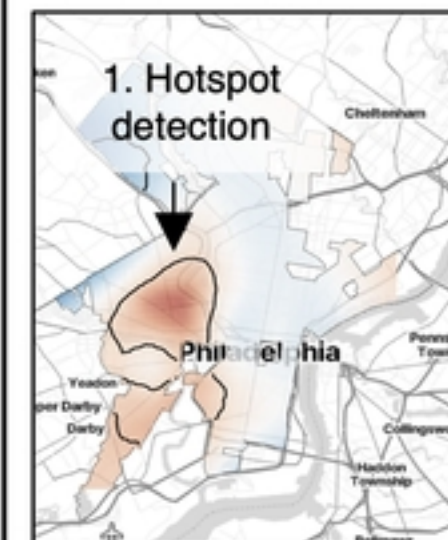
SEDH
variables



**Logistic & negative
binomial models**
Individual-level risk factor
identification

Spatial GAMs

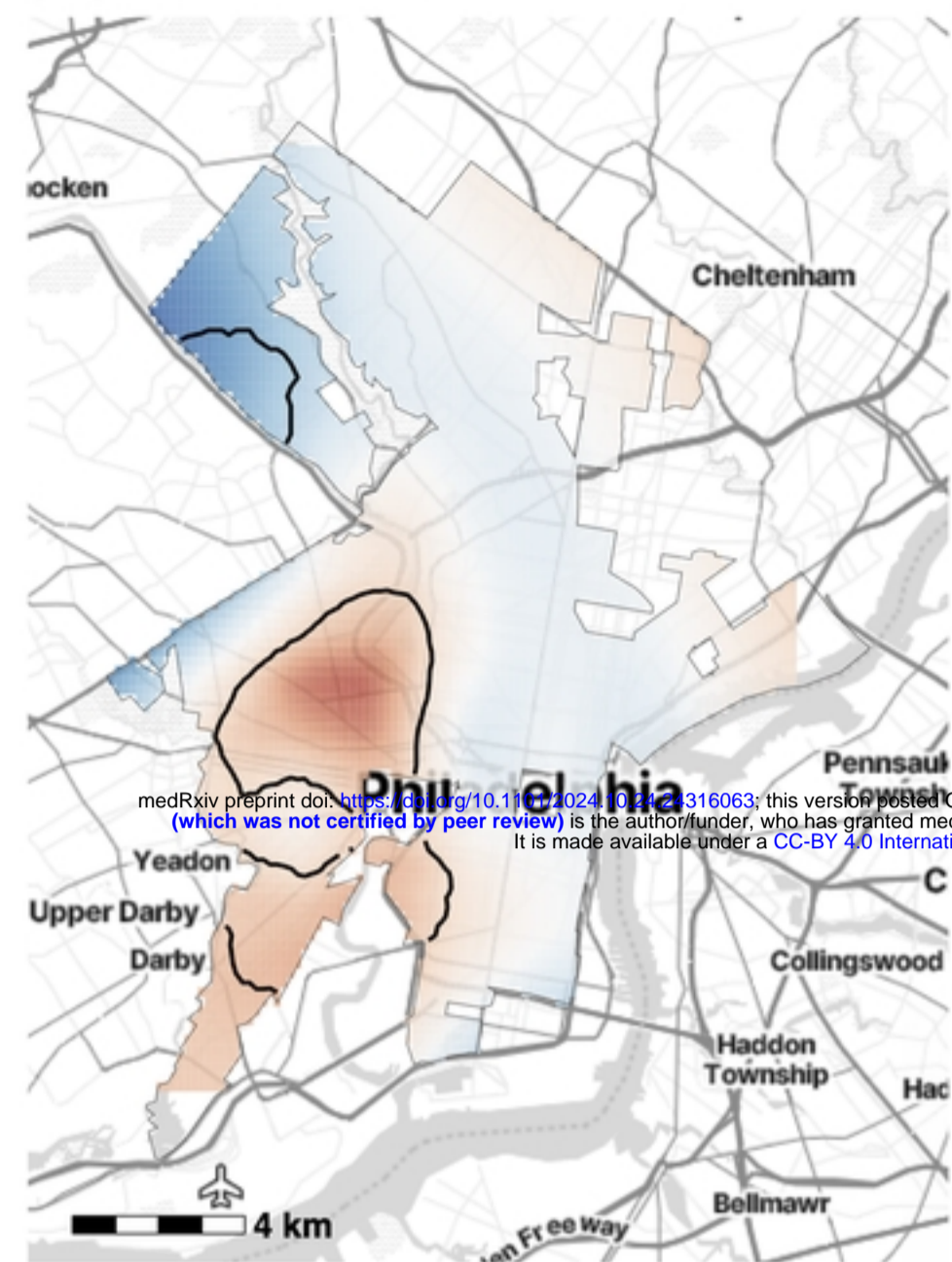
1. Hotspot
detection



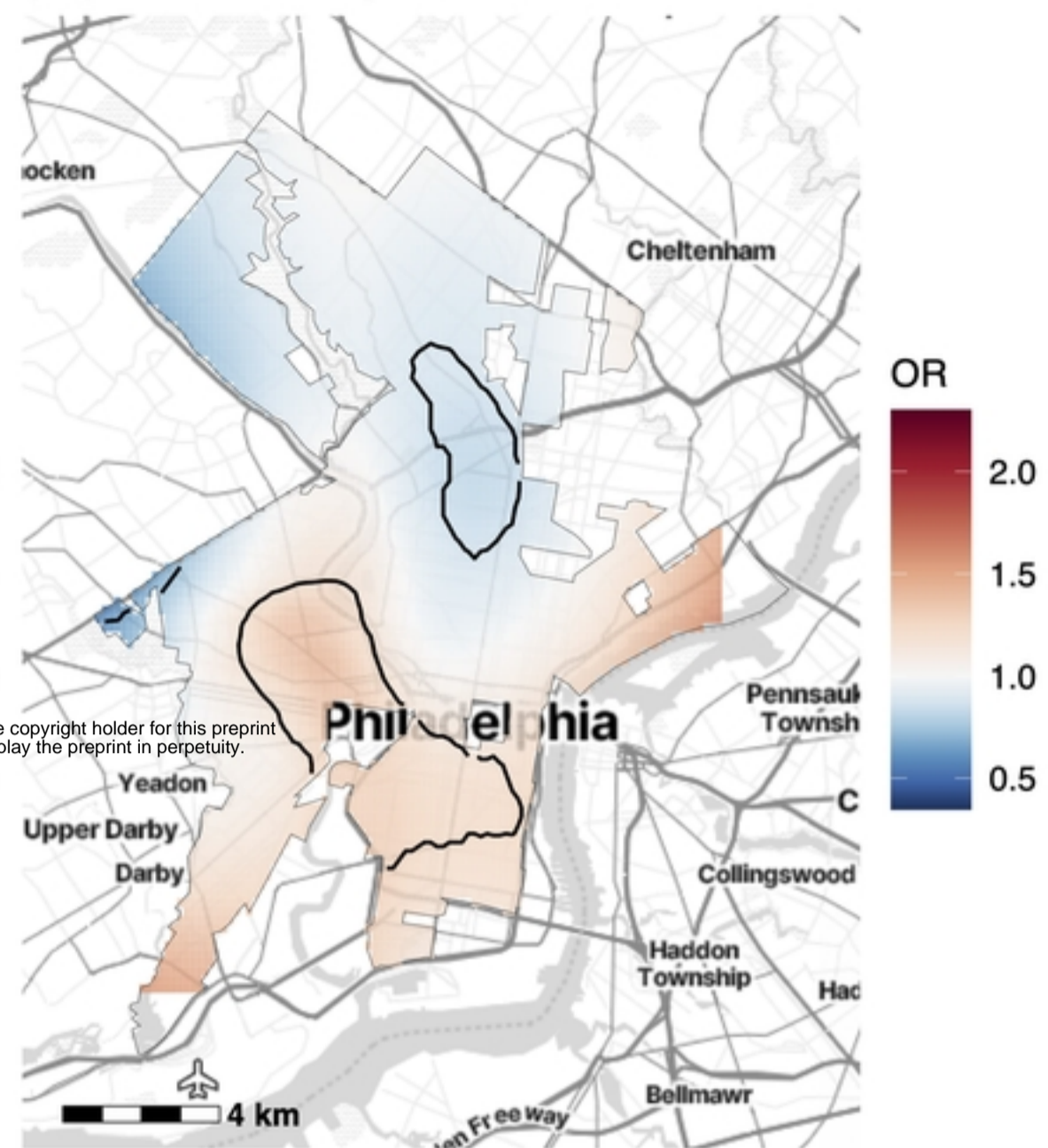
2. Spatial risk
factor identification

Figure 1

(A) Univariable



(B) EHR-adjusted



(C) EHR & SEDH-adjusted

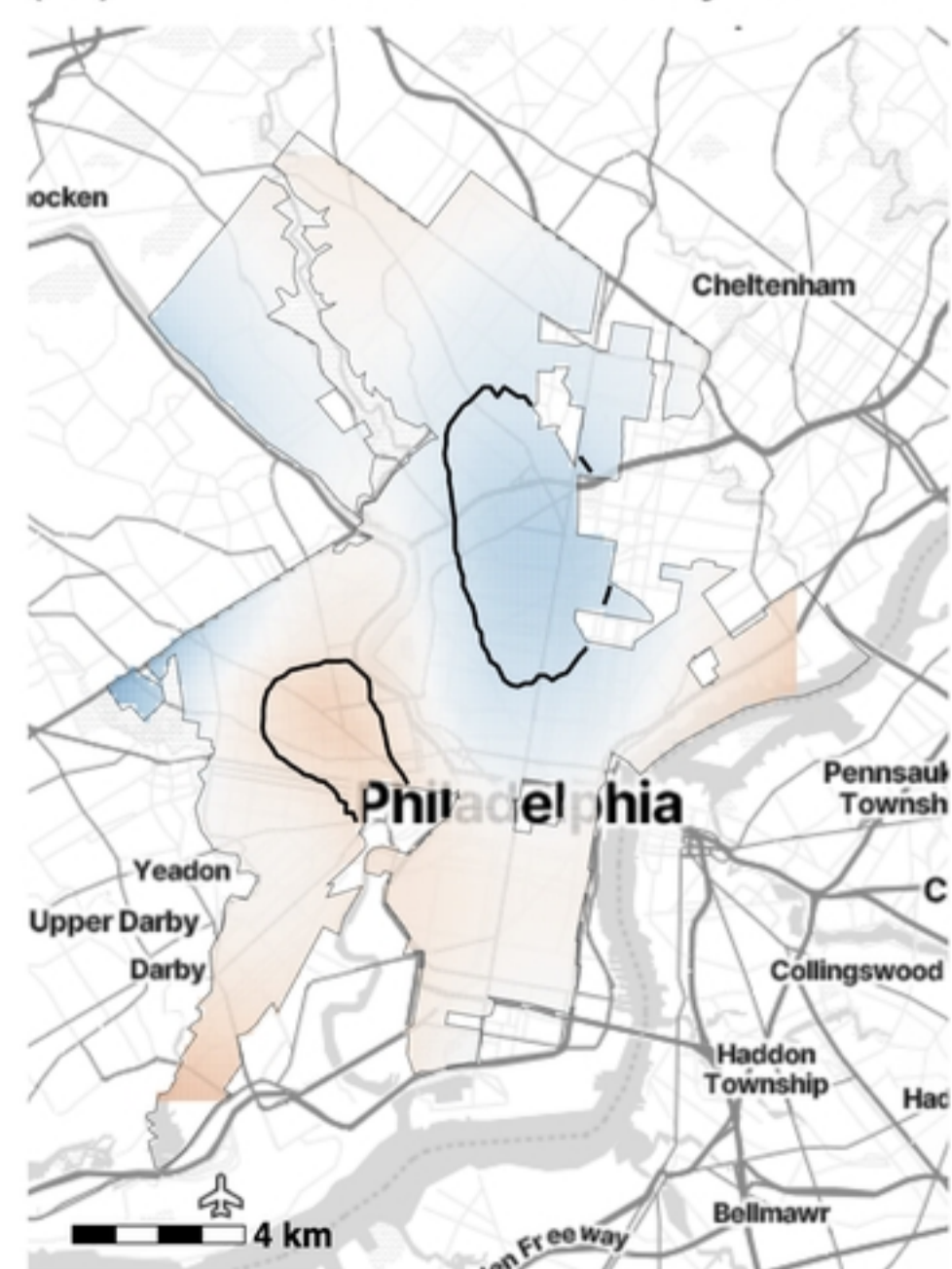
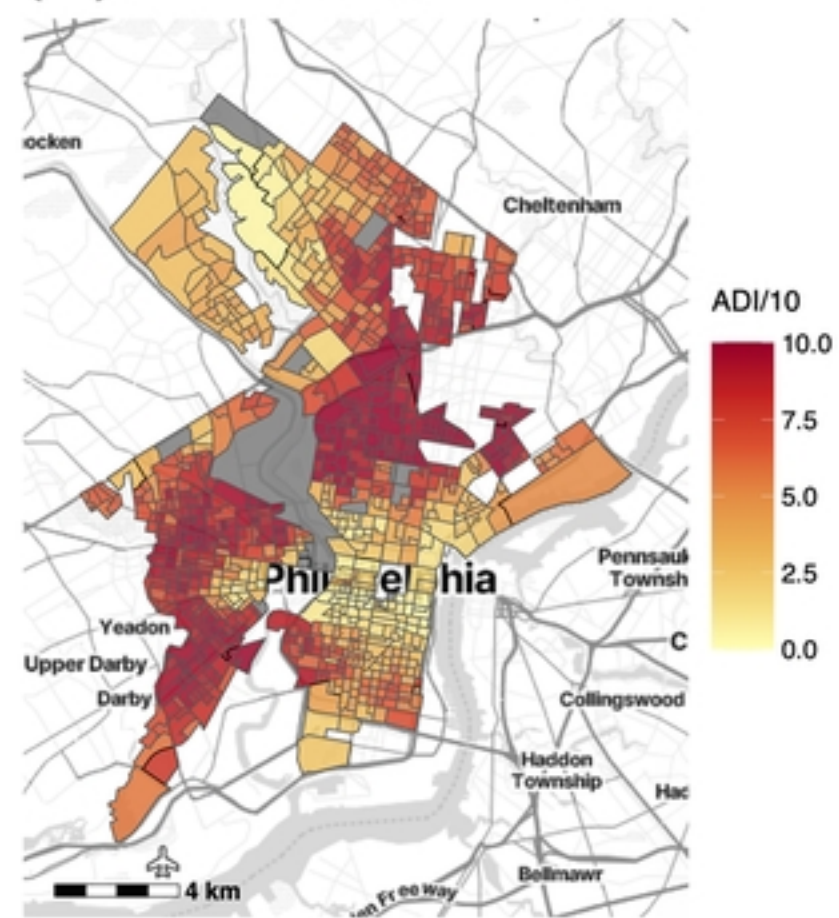
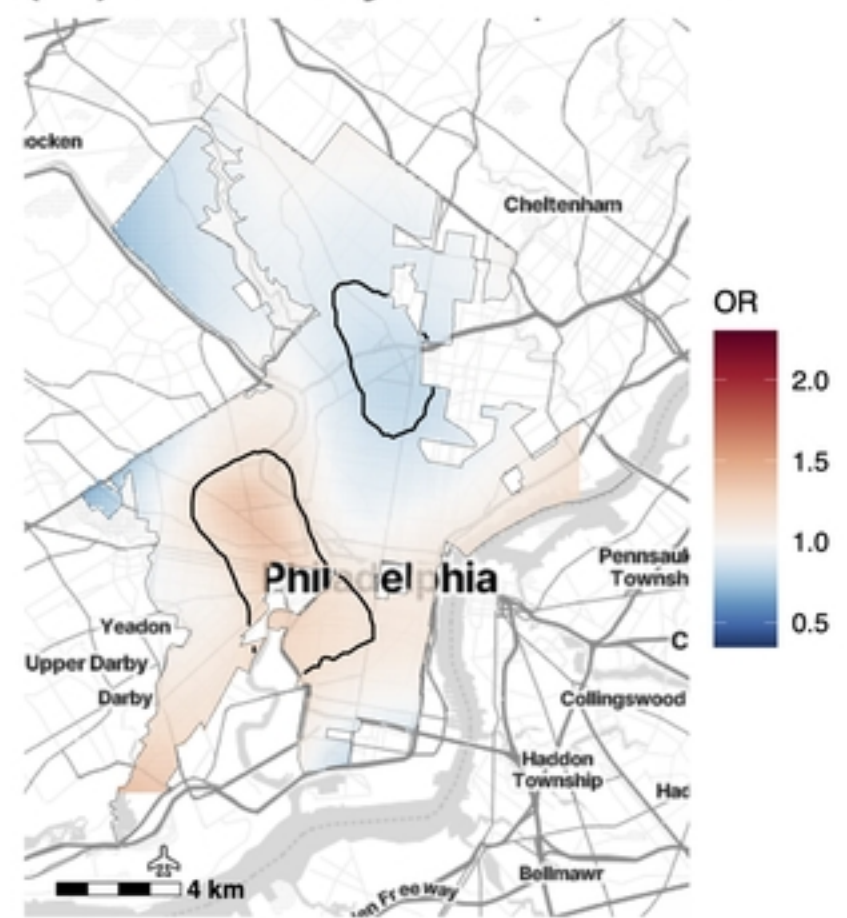


Figure 2

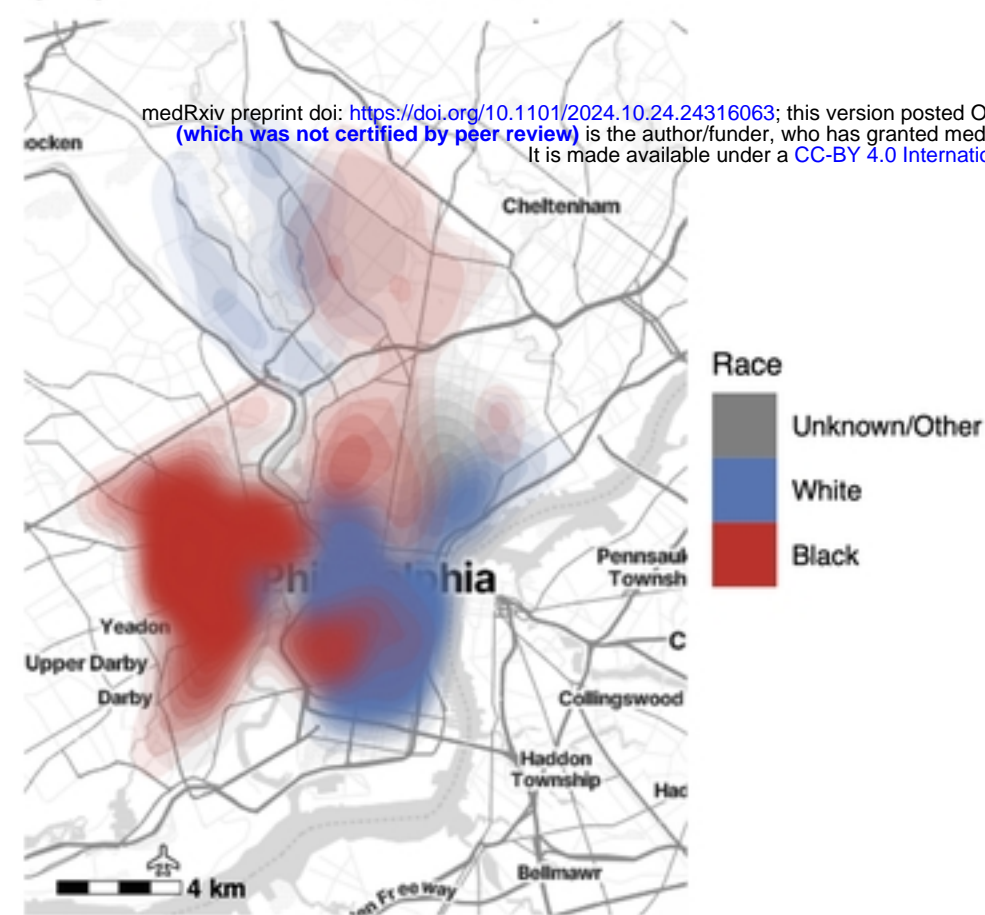
(A) ADI distribution



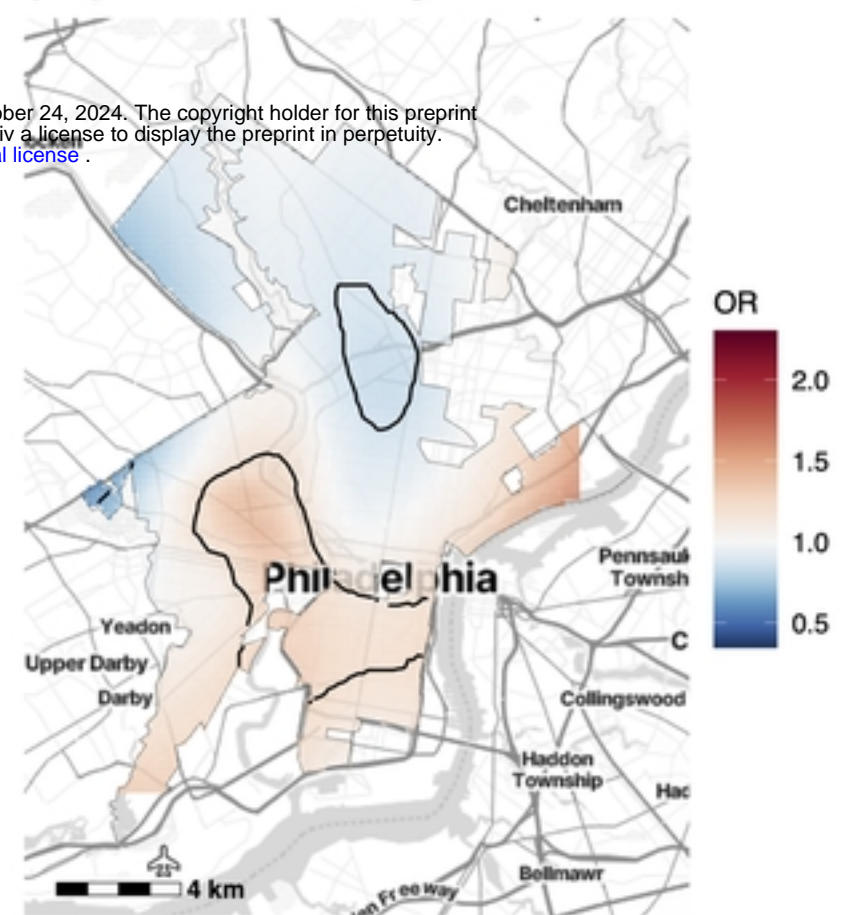
(D) ADI-adjusted GAM



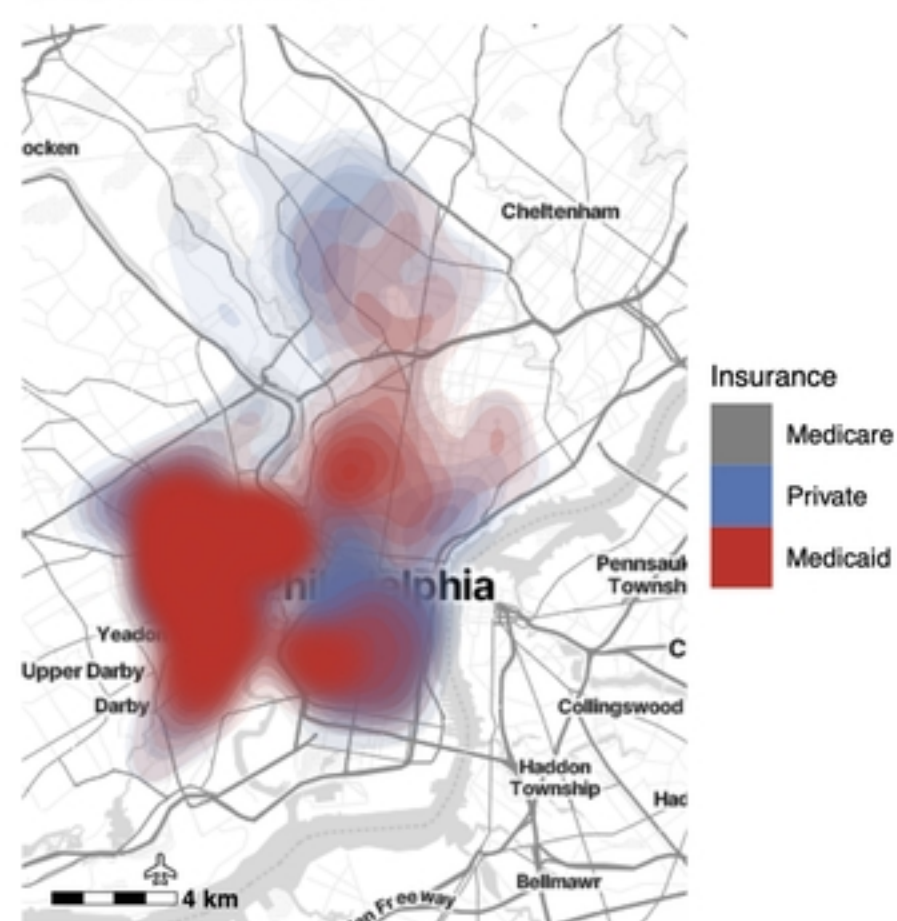
(B) Race distribution



(E) Race-adjusted GAM



(C) Health insurance type distribution



(F) Health insurance type-adjusted GAM

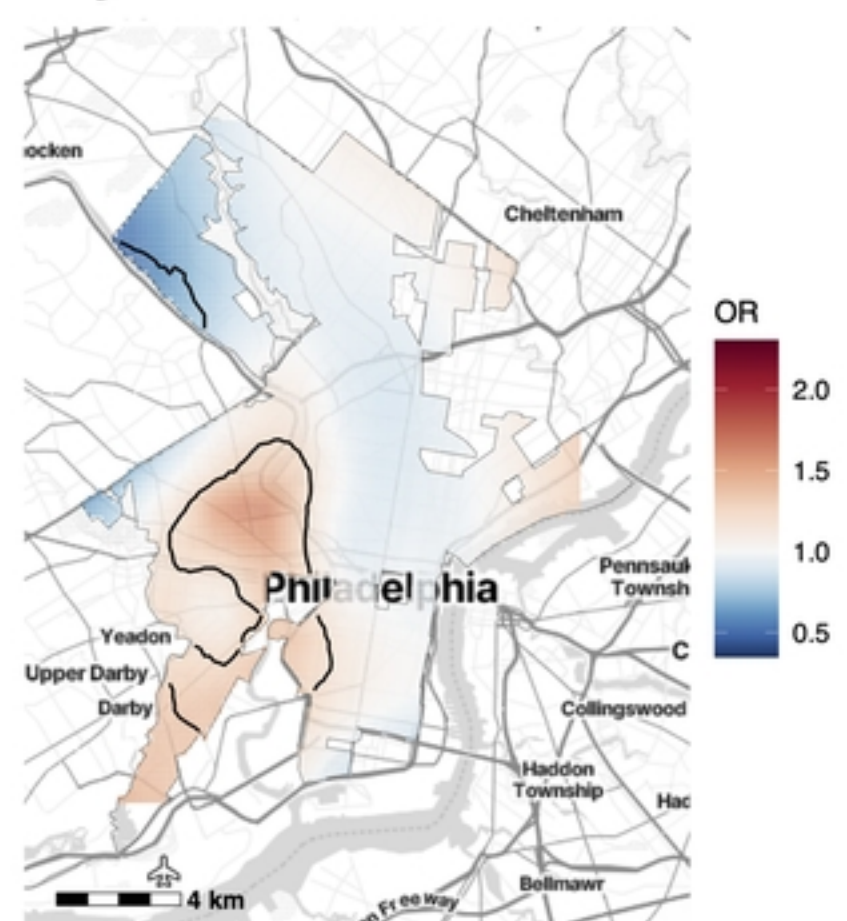
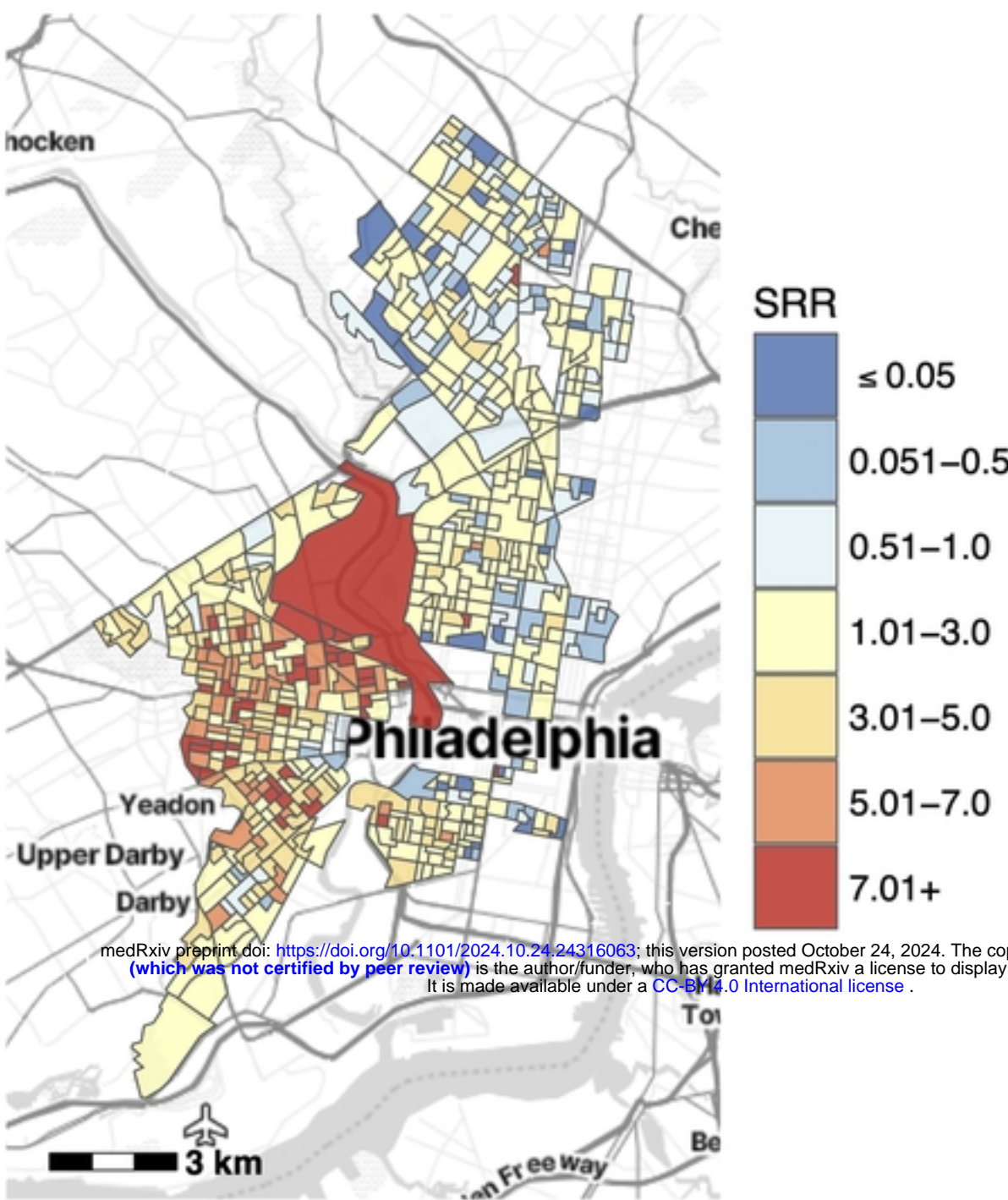
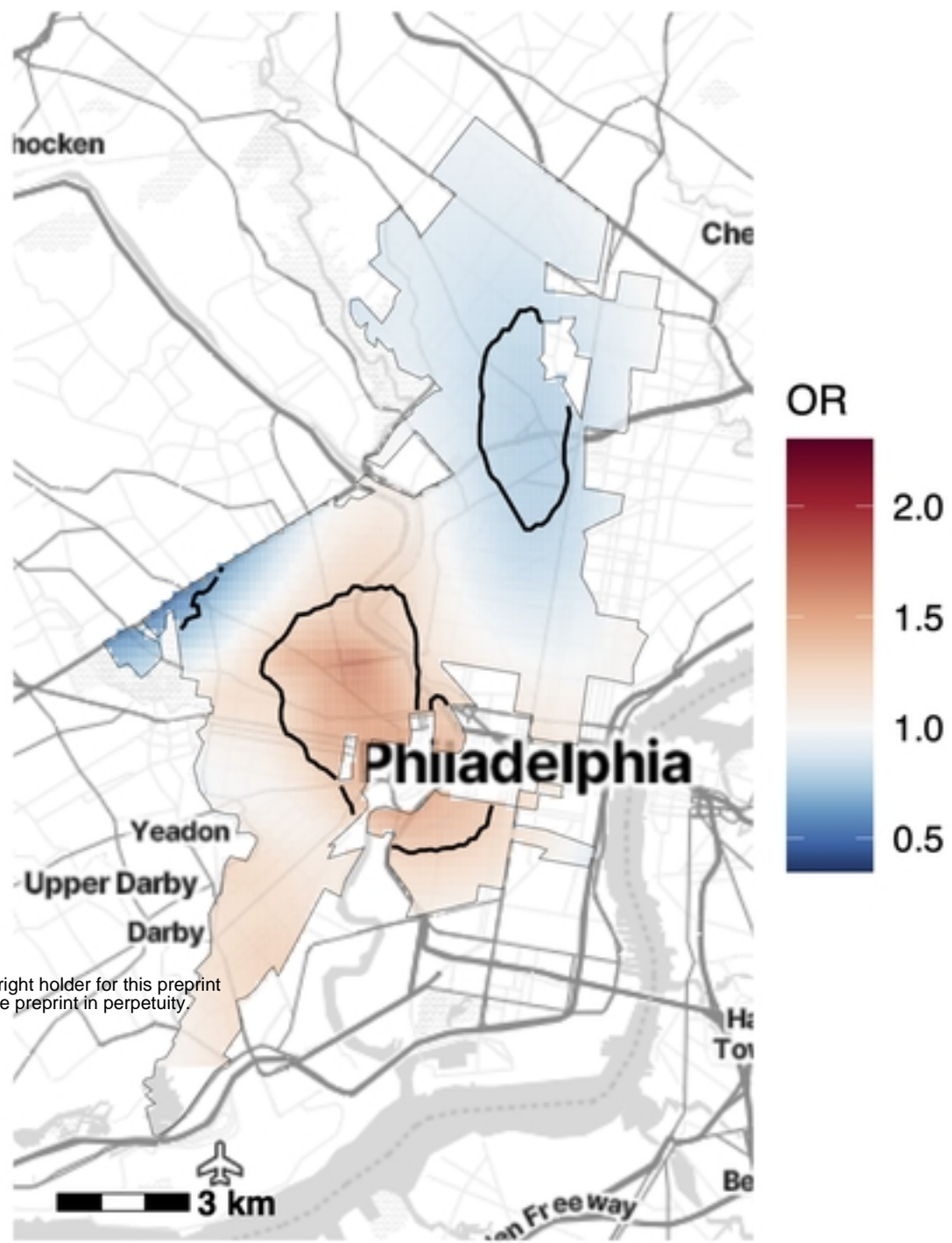


Figure 3

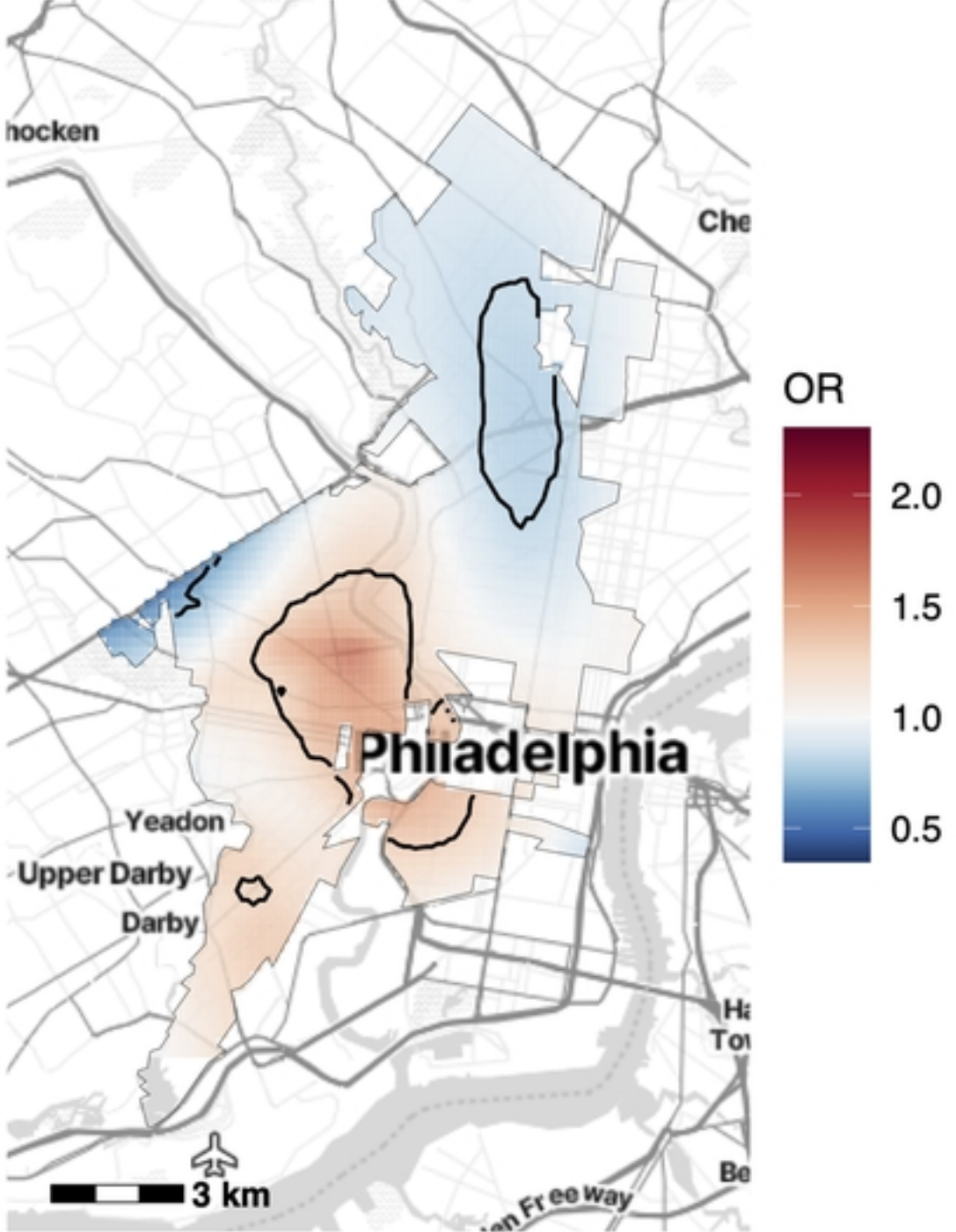
(A) Stratified SRR selection



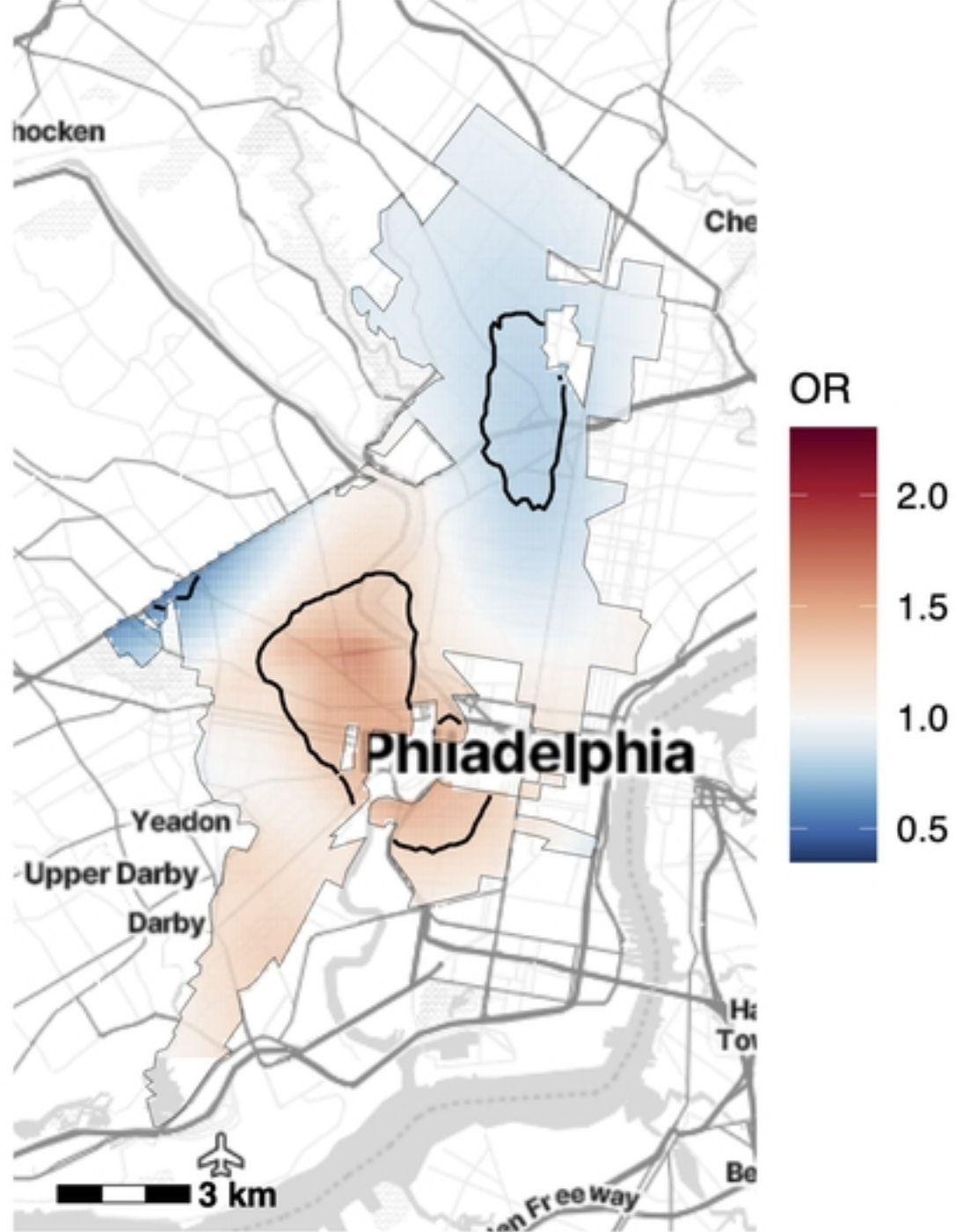
(B) Univariable GAM



(C) ADI-adjusted GAM



(D) Health insurance type-adjusted GAM



medRxiv preprint doi: <https://doi.org/10.1101/2024.10.24.24316063>; this version posted October 24, 2024. The copyright holder for this preprint (which was not certified by peer review) is the author/funder, who has granted medRxiv a license to display the preprint in perpetuity. It is made available under a CC-BY 4.0 International license.

Figure 4