

# 1 **Extreme weather events and dengue in Southeast Asia: a regionally-representative** 2 **analysis of 291 locations from 1998 to 2021**

3 Sophearen Ith<sup>1,2</sup>, Xerxes Seposo<sup>3\*</sup>, Vitou Phy<sup>4</sup>, Kraichat Tantrakarnapa<sup>5</sup>, Geminn Louis C. Apostol<sup>6</sup>, Pandji  
4 Wibawa Dhewantara<sup>7</sup>, Rozita Hod<sup>8</sup>, Mohd Rohaizat Hassan<sup>8</sup>, Hidayatulfathi Othman<sup>9</sup>, Mazrura Sahani<sup>9</sup>, Jue Tao  
5 Lim<sup>10</sup>, Ha Hong Nhung<sup>11</sup>, Nguyen Hai Tuan<sup>11</sup>, Ngu Duy Nghia<sup>11</sup>, Taichiro Takemura<sup>12</sup>, Inthavong Nouhak<sup>13</sup>,  
6 Paul Lester Carlos Chua<sup>1</sup>, Alex R Cook<sup>14</sup>, Felipe J Colón-González<sup>15,16,17</sup>, Masahiro Hashizume<sup>1,18</sup>

- 7 1. Department of Global Health Policy, Graduate School of Medicine, The University of Tokyo, Tokyo, Japan
- 8 2. Center for Surveillance, Immunization, and Epidemiologic Research, National Institute of Infectious  
9 Diseases, Tokyo, Japan
- 10 3. Department of Hygiene, Graduate School of Medicine, Hokkaido University, Hokkaido, Japan
- 11 4. Indeed Inc, Tokyo, Japan
- 12 5. Department of Social and Environmental Medicine, Faculty of Tropical Medicine, Mahidol University,  
13 Bangkok, Thailand
- 14 6. Center for Research and Innovation, Ateneo de Manila University-School of Medicine and Public Health,  
15 Pasig, Philippines
- 16 7. National Institute of Health Research and Development, Jakarta, Indonesia
- 17 8. Department of Public Health Medicine, Faculty of Medicine, Universiti Kebangsaan Malaysia, Cheras,  
18 Kuala Lumpur, Malaysia
- 19 9. Centre for Toxicology and Health Risk Studies, Faculty of Health Sciences, Universiti  
20 Kebangsaan Malaysia, Cheras, Kuala Lumpur, Malaysia
- 21 10. Lee Kong Chian School of Medicine, Nanyang Technological University, Singapore
- 22 11. National Institute of Hygiene and Epidemiology, Hanoi, Vietnam
- 23 12. Institute of Tropical Medicine, Nagasaki University, Nagasaki, Japan
- 24 13. Lao Tropical and Public Health Institute, Ministry of Health, Vientiane, Laos
- 25 14. Saw Swee Hock School of Public Health, National University of Singapore and National University Health  
26 System, Singapore
- 27 15. Data for Science and Health, Wellcome Trust, London, UK
- 28 16. Department of Infectious Disease Epidemiology, Faculty of Epidemiology and Population Health, London  
29 School of Hygiene & Tropical Medicine, London, UK
- 30 17. School of Environmental Sciences, University of East Anglia, Norwich, UK
- 31 18. Department of Global Health, School of Tropical Medicine and Global Health, Nagasaki University, Japan

32 \*Corresponding author

33 E-mail: [seposo.xerxestesoro@pop.med.hokudai.ac.jp](mailto:seposo.xerxestesoro@pop.med.hokudai.ac.jp) (XS)

## 34 **Abstract**

### 35 **Background**

36 Climate change, leading to more frequent and intense extreme weather events (EWEs), could significantly  
37 impact dengue transmission. However, the associations between EWEs and dengue remains underexplored in the  
38 Southeast Asia (SEA) region. We investigated the association between selected EWEs (i.e. heatwaves, extremely  
39 wet, and drought conditions) and dengue in the SEA region.

### 40 **Methods and Findings**

41 Monthly dengue case reports were obtained from 291 locations across eight SEA countries between 1998 and  
42 2021. Heatwaves are defined as the monthly total number of days where temperatures exceed the 95th percentile  
43 for at least two consecutive days. Droughts and extremely wet conditions are defined by a self-calibrating  
44 Palmer Drought Severity Index (scPDSI). We implemented a generalized additive mixed model coupled with a  
45 distributed lag non-linear model to estimate the association between each EWE and dengue. Months with fewer  
46 than 12 heatwave days increased dengue risk with delayed effect after two months lag, compared with months  
47 without any heatwave. Highest dengue risk is at 7 heatwave days (RR=1.28; 95%CI: 1.19,1.38). Compared to  
48 normal conditions (i.e. scPDSI=0), drought conditions (i.e. scPDSI=-4) were positively associated with dengue  
49 risk (RR=1.85; 95%CI: 1.73,1.99), while extremely wet conditions (i.e. scPDSI=4) have reduced dengue risk  
50 (RR=0.89; 95%CI: 0.87,0.91). Although the findings of this study are significant, its limitations arise from the  
51 inconsistency of dengue case reporting, which might complicate dengue risk estimation.

### 52 **Conclusions**

53 This study shows that the delayed effect of heatwaves and drought conditions magnifies the risk of dengue in the  
54 SEA region. Our findings offer stakeholders sizeable amount of time to organize and implement public health  
55 interventions in minimizing the prospective dengue risk, posed by EWEs in the context of climate change in  
56 SEA. Future research may focus on factors associated with dengue risk variations within SEA region to facilitate  
57 the development of location-based, tailor-fit mitigation and preventative interventions.

## 58 **Introduction**

59 Dengue is caused for Flaviviruses, transmitted by the infectious bite of *Aedes aegyti*, and *Ae. albopictus*  
60 mosquitoes. Dengue poses an alarming impact on human health, and the global economy, particularly in the  
61 Southeast Asian (SEA) region [1]. The climate in the SEA region, characterized by persistent hot and humid  
62 weather throughout most of the year, offers optimal environmental conditions for mosquito development and  
63 dengue transmission [2]. According to a recent projection study, dengue incidence in SEA is expected to reach  
64 its peak in the 21st century [3]. By the end of this century, the length of dengue transmission season in the SEA  
65 region is expected to be longer with a rise in number of population at risk of up to 696 million additional people  
66 [4].

67 Climate change, including extreme variations in precipitation and prolonged extreme temperatures, could modify  
68 the population density of the dengue vector [2]. Consequently, variation in the dengue transmission risk may  
69 occur following Extreme Weather Events (EWEs), including heatwaves, drought, and flood [5–7]. Briefly,  
70 heatwaves, defined as prolonged periods of extreme heat over a given threshold, could result in higher mosquito  
71 populations as heatwaves can accelerate the early development stage of mosquitoes life cycle [8]. Drought  
72 conditions have been also linked to increased dengue transmission risk via water storage in man-made containers  
73 [9]. Moreover, while cumulative precipitation might enhance mosquito abundance, heavy precipitation flushes  
74 away breeding sites, thereby decreasing mosquito populations [10].

75 In the context of a warming climate, EWEs are anticipated to become more frequent and intense [11]. Predictive  
76 models suggest that the dengue-endemic SEA region is becoming more susceptible to the adverse effects of  
77 climate change that included but are not limited to heat stress, heavy precipitation, widespread flooding both  
78 inland and in coastal zones, prolonged dry spells and acute deficits in water supply [11]. Heatwave intensity is  
79 projected to rise by 0.5 to 1.5 °C above a given global warming threshold, with an increase in duration of 2 to 10  
80 days per 1°C of global temperature rise [12]. Climate models under Representative Concentration Pathway  
81 (RCP4.5) scenario and the 14-model ensemble mean from Coupled Model Intercomparison Project Phase 5  
82 (CMIP5) projected an increasing trend of drought in SEA in the future [13].

83 Despite the substantial growth in evidence regarding the impacts of EWEs on human health, their effect on  
84 mosquito-borne diseases like dengue is limited especially in SEA, where dengue is endemic [14]. In line with  
85 WHO's Global Vector Control Response operational framework, it is essential to investigate the impact of  
86 climate factors, particularly EWEs, on dengue using a multi-country approach in generating evidence required to  
87 efficiently prevent and manage dengue transmission and respond to subsequent outbreaks [15]. To our  
88 knowledge, this is the first study investigating the associations between multiple EWEs (i.e. heatwaves,  
89 extremely wet and drought conditions) and dengue in the SEA region, utilizing a robust statistical modelling  
90 approach.

## 91 **Methods**

### 92 **Data collection**

#### 93 **Dengue data**

94 Monthly dengue count data were obtained from the Southeast Asia Research on Climate change and Dengue  
95 (SEARCD) collaboration platform for 268 locations in seven countries including Indonesia (33 provinces during  
96 2010–2020), Lao PDR (2 provinces during 2005–2021), Malaysia (14 states and federal territories during 2010–  
97 2017), the Philippines (79 provinces during 2010–2020), Singapore (1 city state during 2010–2017), Thailand  
98 (76 provinces during 2003–2021), and Vietnam (63 provinces during 2011–2021). Briefly, SEARCD is a  
99 platform with collaborators from the seven SEA countries that encourages research on meteorological factors  
100 and dengue. Additionally, monthly dengue count data from 23 locations in Cambodia during 1998–2010 was  
101 obtained from project Tycho 2·0 [16].

#### 102 **Temperature and precipitation**

103 Monthly meteorological data, including mean temperature, mean dew point temperature, and total precipitation,  
104 were obtained from the ERA5-Land dataset generated by the European Centre for Medium-Range Weather  
105 Forecasts (ECMWF) (appendix pp. 2) [17]. ERA5-Land is a reanalysis data set providing climate information at  
106 a fine spatiotemporal resolution ( $0\cdot1^{\circ}\times 0\cdot1^{\circ}$  grid) for the whole global land surface [17].

## 107 **Heatwave definitions**

108 Heatwaves were defined using relative thresholds, which consider the long-term daily mean temperature at each  
109 location. Heatwave were defined as two or more consecutive days with a daily mean temperature surpassing the  
110 95<sup>th</sup> percentile of its distribution in each specific location [18,19]. Hourly temperature data were averaged to  
111 compute the daily mean temperature for each location. The total number of heatwave days (HWt) was then  
112 calculated for each month and location. If a heatwave begins in the final days of one month and continues into  
113 the next, the heatwave days are included to each respective month (Table S2).

## 114 **Wet and drought conditions**

115 We used the Palmer Drought Severity Index (PDSI) to assess the effect of drought and extremely wet conditions  
116 on dengue. PDSI is a widely recognized standardized index for tracking drought and long-term variations in  
117 aridity and is computed by considering soil moisture content, the projected rate of evapotranspiration (i.e. the  
118 evaporation from soil under adequate water availability, considering mean daily temperature and numbers of  
119 days in the month) and rainfall amounts [20]. Here, we used the self-calibrating PDSI version (scPDSI) since it  
120 represents a geographically comparable index by calibrating a distinct normal condition for each location [21].  
121 The scPDSI data were sourced at a geographical resolution of  $0.5^{\circ} \times 0.5^{\circ}$  grid from the Climatic Research Unit  
122 gridded Time Series (version 4.05) corresponding to the specific time in each location [22]. The scPDSI ranges  
123 from  $-10$  (i.e., very dry conditions) to  $10$  (i.e. very wet conditions). Values below  $-4$  or over  $4$  are categorized as  
124 drought and extremely wet conditions, respectively [21].

## 125 **Population data**

126 Total population count for each location were obtained from the Gridded Population of the World Version 4  
127 developed by the Socioeconomic Data and Application Center for the period 2000 to 2020 at five-year intervals  
128 [23]. Linear interpolation was used to estimate yearly total population values for each location over the study  
129 period.

## 130 **Statistical analysis**

131 We specified a generalized additive mixed model (GAMM) coupled with a distributed non-linear model  
132 (DLNM) to investigate the association between EWEs and dengue [24,25]. A quasi-Poisson distribution was  
133 assumed to account for potential over-dispersion in the dengue data. The logarithm of the total population for  
134 each location was included as an offset to adjust dengue case count by population. A smoothing spline with 5  
135 degrees of freedom (df) per year was included to control for potential seasonality (Table S4). A cross-basis  
136 function was included in each model using natural cubic spline with two equally spaced knots for heatwave and  
137 3 df for scPDSI (i.e. the exposure dimension) and 3 df for the lag dimension based on exploratory analyses  
138 (Table S5). We included a smoothing spline with 3 df to control for potential nonlinear effects of monthly mean  
139 temperature and total precipitation based on previous study [26]. Long-term trends and interannual variability  
140 were accounted for incorporating an indicator term for each year in the time series. Unmeasured factors, such as  
141 public health interventions, were specified as unstructured random effects for each location. The reference value  
142 of heatwave was set at 0 heatwave days per month and scPDSI at 0. Models were fitted in R (version 4.3.1),  
143 using the packages *mgcv* 1.9.1 and *dlnm* 2.4.7 [24,25].

144 The algebraic definition of the EWE-dengue model is given by:

$$145 \quad \text{Log}(Y_{i,t}) = \alpha + \text{Log}(P_{i,t}) + f(\text{EWE}_{i,t}; \ell) + s(\text{Temp}_{i,t}) + s(\text{Preci}_{i,t}) + s(t) + \delta_{i,t} + v_i$$

146 where  $Y_{i,t}$  indicates monthly dengue case at time  $t$  in location  $i$ , assumed to follow an over-dispersed quasi-  
147 Poisson distribution;  $\alpha$  represents the intercept;  $\text{Log}(P_{i,t})$  represents the logarithm of the total population per  
148 location  $i$  at the time  $t$ , included as an offset;  $f(\text{EWE}_{i,t}; \ell)$  designate the cross-basis functions of either heatwave  
149 (HW) or scPDSI for maximum lag ( $\ell$ ) of 4 months;  $s(\text{Temp}_{i,t})$  and  $s(\text{Preci}_{i,t})$  denotes the smooth functions of  
150 temperature and precipitation, respectively;  $s(t)$  denotes the smooth seasonals trend of time;  $\delta_{i,T}$  indicates long-  
151 term trend using indicator variables for each year  $T$  in each location  $i$ ; and  $v_i$  expresses unstructured random  
152 effects for each location.

## 153 **Sensitivity analysis**

154 Multiple sensitivity analyses were carried out to assess the robustness of the results. We first examined the  
155 optimal exposure-response relationship in the cross-basis function by varying the df and placement of the knots,  
156 using natural cubic spline with two equally space internal knot, two knots at 25<sup>th</sup> and 75<sup>th</sup> percentile, and one  
157 knot at 50<sup>th</sup> percentile. We further applied a varying function of seasonality including smoothing spline with 3df,  
158 4df, cyclic cubic spline, and one pair of Fourier term. Maximum lags were also varied by 3 months, 5 months,  
159 and 6 months, respectively. We repeated the analysis with adjustment relative humidity and population density  
160 in the model to account for additional confounding effects. Analyses using the data from 1998 to 2019 were also  
161 conducted to determine the potential impact of the COVID-19 pandemic on our results. Various heatwave  
162 definitions were investigated including: (i) four or more days exceeding the 95<sup>th</sup> percentile, (ii) two or more days  
163 exceeding the 97<sup>th</sup> percentile, (iii) two or more days exceeding the 99<sup>th</sup> percentile, (iv) four or more days  
164 exceeding the 97<sup>th</sup> percentile, and (v) four or more days exceeding the 99<sup>th</sup> percentile.

## 165 **Results**

### 166 **Descriptive statistics**

167 Table 1 shows the summary statistics of dengue cases and meteorological factors in each country. A total of  
168 7,016,624 dengue cases was included in this study. The Philippines reported the highest mean annual dengue  
169 cases (196,719 cases), followed by Vietnam (121,822 cases) and Indonesia (112,156 cases). The monthly mean  
170 temperature, monthly total precipitation, mean annual heatwave days, and monthly scPDSI index at the country  
171 level ranged between 24.1°C and 26.8°C, 138mm and 254mm, 14.2 days and 17.2 days, and -0.3 and 0.3,  
172 respectively. State of Selangor in Malaysia showed the highest monthly dengue incidence per 100,000 people  
173 followed by Khah Hoa in Vietnam (Figures 1A). The lower mean annual number of heatwave days was observed  
174 in south-eastern locations (Figures 1B). Eastern Philippines and Northern of Vietnam and Cambodia indicate  
175 wetter conditions (Figures 1C). Additional descriptive results of each climate variable and dengue incidence for  
176 each location are shown in Table S3.

177 **Table 1: Summary statistics of dengue cases, monthly temperature, total precipitation, heatwave days and scPDSI index in eight**  
 178 **countries.**

	<b>Period</b>	<b>No of locations</b>	<b>Total dengue case</b>	<b>Mean annual dengue case</b>	<b>Monthly mean temperature<sup>a</sup> [mean (SD)]</b>	<b>Monthly total precipitation<sup>a</sup> [mean (SD)]</b>	<b>Annual number of heatwave days<sup>a,b</sup> [mean (SD)]</b>	<b>Monthly scPDSI<sup>a</sup> [mean (SD)]</b>
Cambodia	1998–2010	23	152,058	11,697	26.8 (0.9)	151 (37)	17.2 (2.4)	0.3 (0.8)
Indonesia	2010–2020	33	1,233,718	112,156	24.7 (1.2)	254 (51)	14.2 (4)	0.1 (0.6)
Lao PDR	2005–2021	2	63,391	3,729	25.1 (0.6)	158 (14)	17.1 (2.6)	0.1 (0.6)
Malaysia	2010–2017	14	545,479	68,185	25.5 (0.8)	222 (31)	15.3 (5.9)	−0.3 (0.7)
Philippines	2010–2020	79	2,163,905	196,719	25.1 (1.4)	230 (36)	16.5 (4)	0.8 (0.9)
Singapore	2012–2019	1	91,463	11,433	26.9 (0.6)	207 (89)	14.6 (2.9)	0.8 (2.0)
Thailand	2003–2021	76	1,426,568	75,083	26.1 (1.2)	138 (32)	17 (2.3)	0 (0.4)
Vietnam	2011–2021	63	1,340,042	121,822	24.1 (2.3)	173 (26)	15.2 (2.9)	0 (0.8)
	Total	291	7,016,624					

179 scPDSI stands for self-calibrated Palmer drought severity index; SD is standard deviation.

180 <sup>a</sup>: Location specific mean climate variable (SD)

181 <sup>b</sup>: 95<sup>th</sup> percentile for 2 consecutive days



## 182 **Heatwave-dengue association**

183 Figure 2A presents the pooled cumulative (lag 0 to 4 months) association between the total number of heatwave  
184 days per month and dengue relative to month without any heatwave day. The association between the monthly  
185 number of heatwave days and dengue was non-linear and showed a significant positive association for months  
186 with less than 12 heatwave days and a negative association between months with 12 and 27 heatwave days. The  
187 dengue risk leveled off at months with 7 heatwave days (RR=1.28; 95%CI: 1.19,1.38) and reached the  
188 minimum dengue risk at month with 21 heatwave days (RR=0.49; 95%CI: 0.42, 0.57). The lag-response  
189 association of month with 7 and 21 heatwave days show dengue risk increase after lag 1 and 3 months,  
190 respectively (Figure 2B). The lag-response association showed a negative association across all numbers of  
191 heatwave days per month within a lag of two months (Figure 2C). However, the dengue risk increases mostly  
192 after the lag of two months.

## 193 **scPDSI-dengue association**

194 Figure 3A shows the overall cumulative (lag 0 to 4 months) association between monthly scPDSI and dengue,  
195 compared to a value zero of scPDSI. The association between monthly scPDSI and dengue was non-linear and  
196 followed a reverse J-shaped curve association with minor upward tail and the minimum dengue risk observed at  
197 2.5 scPDSI value (RR=0.89; 95%CI: 0.87,0.91). Drought conditions (i.e. scPDSI values equal to or lower than  
198 -4) show a significant positive association with dengue incidence (RR=1.85; 95%CI: 1.73,1.99). In contrast, the  
199 extremely wet conditions show a significant negative association with dengue risk (RR=0.92; 95%CI:  
200 0.87,0.96) at scPDSI value between 4 and 5.8. An increase in dengue risk is observed when scPDSI is greater  
201 than 5.8, though the result is not significant.

202 The lag-response association of drought conditions shows both immediate and delayed positive association on  
203 dengue risk within lag 0 and after two months lag (Figure 3B). The lag pattern of extremely wet conditions  
204 shows a positive effect three months lag, suggesting a delayed positive effect on dengue risk (Figure 3B). When  
205 the scPDSI exceeds 5.8, there is an increased relative risk observed at a 1 month and after a 3-month lag (Figure  
206 3C).

## 207 **Sensitivity analysis**

208 The pooled effect estimates for each EWE on dengue incidence were generally robust, amidst varying  
209 adjustments for seasonality, maximum lag, as well as inclusion of relative humidity and population density  
210 (Figures S8, S9, S10). Changing the df for the cross-basis function did not change the direction nor the intensity  
211 of the association between scPDSI and dengue but did change it for heatwaves (Figure S7). For the heatwave  
212 model, result shows a reduction in dengue relative risk regardless of the monthly number of heatwave days when  
213 two internal knots were used at the 25<sup>th</sup> and 75<sup>th</sup> percentile or one internal knot at the 50<sup>th</sup> percentile (Figure S7).  
214 Analyses using the data from 1998 to 2019 shows no impact of the COVID-19 pandemic on our results (Figure  
215 S11).

216 Using various heatwave definitions in the sensitivity analysis did not change the direction of the association,  
217 except for heatwave with the 99<sup>th</sup> percentile for 2 and 4 consecutive days (Figure S12). With the definition of  
218 99<sup>th</sup> percentile for 2 and 4 consecutive days, there was a negative association between zero to 16 heatwave days  
219 per month and dengue. This was likely because of significantly fewer counts of months with heatwave days  
220 when the strictest heatwave definition was used.

## 221 **Discussion**

222 We examined the associations between several EWEs including heatwave, drought, and extremely wet  
223 conditions on dengue incidence in the SEA region. Months with fewer than 12 heatwave days showed increased  
224 dengue risks with a delayed effect observed after two months lag. This may partially be explained by the role of  
225 temperature on vector population since mosquitoes can survive even under continuous exposure to extreme heat  
226 amidst these heatwave durations [8]. In addition, heatwave event potentially facilitates vector population growth  
227 in the early development phase leading to an increased dengue transmission in the latter phase [8]. Also, the  
228 number of heatwave days may associated with a faster rate of viral replication within the vector and with a  
229 shorter extrinsic incubation period—the time required for dengue virus to become transmissible to another host  
230 after initial infection of a mosquito [2]. However, during the intense duration of heatwaves, adult mosquito

231 survival rates and feeding activities start to decline, explaining our result of a reduction in dengue risk at month  
232 with more than 12 heatwave days [2].

233 Our lag-exposure association result showed heatwaves more likely to increase dengue risk after a lag of two  
234 months. Comparing this finding with previous studies has its own limitations due to differences in heatwave  
235 definitions and statistical approaches used. However, a study in Hanoi, Vietnam, showed that heatwaves have an  
236 overall inhibitive effect at a shorter lag but were associated with increased magnitude of outbreaks at later lags  
237 [5]. In China, similar findings whereby heatwaves increase the risk of dengue outbreaks after six weeks were  
238 also observed [18]. This could be attributed to diapause behavior in mosquitoes, which is the inactive state where  
239 the dengue vectors halt their development and hatch to withstand harsh climatic conditions such as extreme heat  
240 or dry conditions [27]. The subsequent drops in temperature and increased humidity create favorable conditions  
241 for the continuation of the reproduction cycle of dengue vectors, ultimately leading to an increase in the dengue  
242 vector population [28]. The lags in mosquito outbreaks after a heatwave could result from the influence of  
243 climatic fluctuations on mosquito biology, serving as an adaptation mechanism to cope with unfavorable climate  
244 conditions [28].

245 Additionally, the association may be related to the change in human activities during and after heatwaves.  
246 During the heatwave, people tend to stay indoors in air conditioned environment, which limits vector-host  
247 contact [5]. However, lower temperatures after heatwaves encourage people to spend more time outside,  
248 increasing the likelihood of being bitten by mosquitoes. Another explanation might be an impairment of the host  
249 immunological response after exposure to certain sustained high temperature during heatwave [29]. Prolonged  
250 heat stress can reduce the ability of human body to mount an effective immune response, potentially making it  
251 easier for the dengue virus to be viable as an infection [29].

252 scPDSI index and dengue has a non-linear association with drought conditions showing an increase in dengue  
253 risk and extremely wet conditions showing a reduction in dengue risk. The similar association was reported in  
254 other studies in Brazil and China [7,30]. We noted that drought was positively associated with dengue risk at  
255 lags 0 and two months. This is likely because severe dry conditions increased water storage in artificial

256 containers, contributing to an increase in reproduction sites and the proliferation of mosquitoes [9]. Changes in  
257 water storage behavior may enhance the abundance of aquatic habitat for mosquitoes, given that their eggs can  
258 survive for up to 120 days in a drought environment [9]. The lag observed between a period of extreme drought  
259 and an uptick in dengue risk may be attributable to the incremental changes in domestic water storage habits as  
260 households adapt to the scarcity of water. This change might prompt individuals to adopt measures such as  
261 storing water in makeshift containers around the home during periods of water shortage. This finding indicates  
262 the importance of ongoing monitoring of drought conditions and the prompt implementation of emergency  
263 measures to reduce preventable negative effects of dry conditions on dengue risk.

264 We found that extremely wet conditions showed a reduction in dengue risk, which is in line with a study in  
265 Singapore, where a significant reduction in dengue outbreak risk followed the flushing effect of precipitation  
266 [10]. Non-standing water could flush away the mosquito eggs and shelter, consequently decreasing the dengue  
267 risk [6]. However, our results showed that severely wet conditions increase dengue risk, which could potentially  
268 be due to stagnant waters amidst severe wet conditions favoring development and reproduction of mosquitoes  
269 [6]. Moreover, severely wet conditions may also contribute to hydrological natural disasters, including floods or  
270 tropical cyclones, leading to significant deterioration of infrastructure or electricity, increasing the risk of close  
271 contact between dengue vectors and humans [6]. However, the impact of severely wet conditions needs further  
272 investigation to understand this phenomenon.

## 273 **Strength and limitations**

274 This research possesses a few strengths. First, this is the first study investigating of the EWEs-dengue  
275 association in the SEA region. This study was carried out in numerous subnational locations across most of the  
276 SEA region, representing different ranges of exposure levels and socio-demographic characteristics. By using a  
277 pooled design approach, this study provided strong evidence of the relationship between EWEs and dengue at  
278 the regional scale. Second, We used GAMM and DLNM that captures the complex non-linear and delayed  
279 relationships between climate variables and dengue incidence [24,25]. The use of GAMM enables the

280 consideration of both spatial and temporal variations, which means the model can account for differences across  
281 locations and over time—factors that are critical when studying a vector-borne disease like dengue [24].

282 However, some limitations need to be acknowledged. First, a significant limitation is the use of a single set of  
283 modeling parameters across all the locations, which may heavily impact location/country-specific estimations.  
284 Specifically, the chosen modeling may not fit the data well in certain locations, even if it results in the best  
285 overall fit. However, the robustness of the results to various modeling choices and selections was assessed by  
286 exploring different model specifications for exposure and lag. Additionally, dengue case reporting can vary due  
287 to regional and temporal differences in diagnosis approaches, leading to over- or under-reporting of dengue cases  
288 (Table S1). These variations may complicate accurate assessments of dengue risk, potentially skewing  
289 understanding of the climate true impact on dengue. Moreover, utilizing monthly data to study dengue risks may  
290 not capture short-term climate effects and dengue incubation periods. Also, relying on monthly total heatwave  
291 days might overlook the nuances of individual heatwave episode impacts on dengue transmission. The potential  
292 influence of serotype information on the climate-dengue association is acknowledged. Due to data availability  
293 limitations, the analysis could not be stratified by dengue serotypes, highlighting the need for future research in  
294 this aspect.

## 295 **Conclusions**

296 Given the anticipated rise in the number and intensity of EWEs, this research offers insights into estimating the  
297 dengue risk associated with heatwave, drought, and extremely wet conditions introduced by the global climate in  
298 a real-world setting. Our study showed that delayed heatwaves and drought effects contribute to increased  
299 dengue risk. These findings provide health managers and policymakers a better understanding of the contribution  
300 and importance of EWEs on dengue risks, and likewise serves as a groundwork in developing parallel strategies  
301 and interventions targeting both EWE adaptation and dengue response suited to the regional SEA context.

## 302 **Acknowledgements**

303 We would like to extend our sincere gratitude to Dr. Futoshi Hasebe and all collaborators for their valuable  
304 contributions to this study. We also thank Japan Agency for Medical Research and Development (AMED)  
305 (JP20wm0125006) for their support.

## 306 **Author Contributions**

307 IS, XS, and MH conceptualized the study. XS collected and compiled dengue data. IS collected the climate and  
308 population data, ran the modelling, and drafted the manuscript. VP provided the code for downloading climate  
309 data. MH, XS, FJC, and ARC guided the methods, presentation of the result and discussions. XS and MH  
310 verified the modeling outputs. IS and XS had full access to all the data in the study. All authors reviewed,  
311 approved the manuscript, and had final responsibility for the decision to submit for publication.

## 312 **Data sharing**

313 The dengue case data, except for Cambodia was obtained from collaboration platform of the Southeast Asia  
314 Research on Climate Change (SEARCD) under a data agreement and cannot be made publicly available. Dengue  
315 data of Cambodia can be freely downloaded from Project Tycho  
316 (<https://doi.org/10.25337/T7/ptycho.v2.0/KH.38362002>). Climate data can be downloaded from Copernicus  
317 (<https://doi.org/10.24381/cds.68d2bb30>). The self-calibrating PDSI can be sourced from the Climate Research  
318 Unit (<https://crudata.uea.ac.uk/cru/data/hrg/>). Population data can be downloaded from the Socioeconomic Data  
319 and Application Center (<https://doi.org/10.7927/H4PN93PB>). Researcher can refer to the corresponding authors  
320 for information on accessing the data. Code sources are available from the corresponding author upon reasonable  
321 request.

## 322 **Declaration of conflicts of interests**

323 The authors have declared that no competing interests exist.

## 324 **Funding**

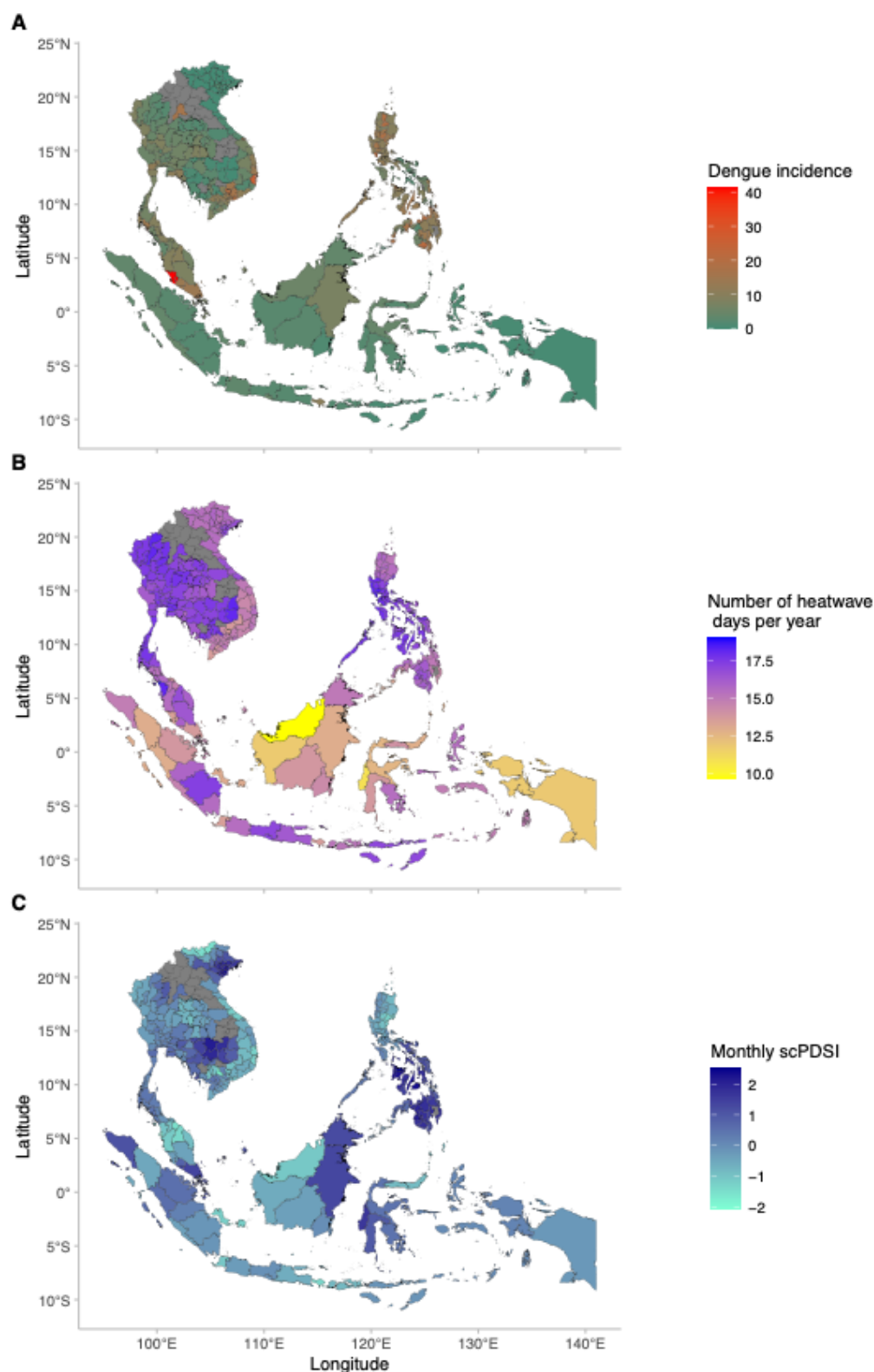
325 This work was funded by the Japan Society for the Promotion of Science Early-Career Scientist (22K17374)  
326 awarded to XS and the Japan Science and Technology Agency (JST) as part of SICORP (JPMJSC20E4)  
327 awarded to MH. The funders had no role in study design, data collection and analysis, decision to publish, or  
328 preparation of the manuscript.

## 329 **References**

- 330 1. Shepard DS, Undurraga EA, Halasa YA. Economic and disease burden of dengue in Southeast Asia. *PLoS*  
331 *Negl Trop Dis.* 2013;7:e2055.
- 332 2. Morin CW, Comrie AC, Ernst K. Climate and dengue transmission: evidence and implications. *Environ*  
333 *Health Perspect.* 2013;121:1264.
- 334 3. Colón-González FJ, Gibb R, Khan K, Watts A, Lowe R, Brady OJ. Projecting the future incidence and burden  
335 of dengue in Southeast Asia. *Nat Commun.* 2023;14:1–10.
- 336 4. Colón-González FJ, Sewe MO, Tompkins AM, Sjödin H, Casallas A, Rocklöv J, et al. Projecting the risk of  
337 mosquito-borne diseases in a warmer and more populated world: a multi-model, multi-scenario intercomparison  
338 modelling study. *Lancet Planet Heal.* 2021;5:e404–14.
- 339 5. Cheng J, Bambrick H, Yakob L, Devine G, Frentiu FD, Toan DTT, et al. Heatwaves and dengue outbreaks in  
340 Hanoi, Vietnam: new evidence on early warning. *PLoS Negl Trop Dis.* 2020;14:e0007997.
- 341 6. Coalson JE, Anderson EJ, Santos EM, Garcia VM, Romine JK, Dominguez B, et al. The complex  
342 epidemiological relationship between flooding events and human outbreaks of mosquito-borne diseases: a  
343 scoping review. *Environ Health Perspect.* 2021;129:96002.
- 344 7. Lowe R, Lee SA, O'Reilly KM, Brady OJ, Bastos L, Carrasco-Escobar G, et al. Combined effects of  
345 hydrometeorological hazards and urbanisation on dengue risk in Brazil: a spatiotemporal modelling study.  
346 *Lancet Planet Heal.* 2021;5:e209–19.
- 347 8. Jia P, Liang L, Tan X, Chen J, Chen X. Potential effects of heat waves on the population dynamics of the  
348 dengue mosquito *Aedes albopictus*. *PLoS Negl Trop Dis.* 2019;13:e0007528.
- 349 9. Islam S, Haque CE, Hossain S, Rochon K. Role of container type, behavioural, and ecological factors in  
350 *Aedes* pupal production in Dhaka, Bangladesh: an application of zero-inflated negative binomial model. *Acta*  
351 *Trop.* 2019;193:50–9.
- 352 10. Benedum CM, Seidahmed OME, Eltahir EAB, Markuzon N. Statistical modeling of the effect of rainfall  
353 flushing on dengue transmission in Singapore. *PLoS Negl Trop Dis.* 2018;12:e0006935.
- 354 11. Intergovernmental Panel on Climate Change. In: Pörtner HO, Roberts DC, Tignor MBM, et al.,  
355 editors. *Climate change 2022: impacts, adaptation, and vulnerability. Working Group II contribution to the sixth*  
356 *assessment report of the Intergovernmental Panel on Climate Change.* Cambridge (UK), New York (USA):  
357 Cambridge University Press; 2022.
- 358 12. Perkins-Kirkpatrick SE, Gibson PB. Changes in regional heatwave characteristics as a function of increasing  
359 global temperature. *Sci Rep.* 2017;7:1–12.
- 360 13. Dai A. Increasing drought under global warming in observations and models. *Nat Clim Chang.* 2012;3:52–8.
- 361 14. Damtew YT, Tong M, Varghese BM, Anikeeva O, Hansen A, Dear K, et al. Effects of high temperatures and  
362 heatwaves on dengue fever: a systematic review and meta-analysis. *eBioMedicine.* 2023;91:104582.
- 363 15. World Health Organization. *Global vector control response 2017-2030.* Geneva: WHO; 2017. Available  
364 from: <https://iris.who.int/bitstream/handle/10665/259205/9789241512978-eng.pdf?sequence=1>
- 365 16. Van Panhuis W, Cross A, Burke D, Choisy M. Counts of dengue reported in Cambodia: 1980-2011. Project

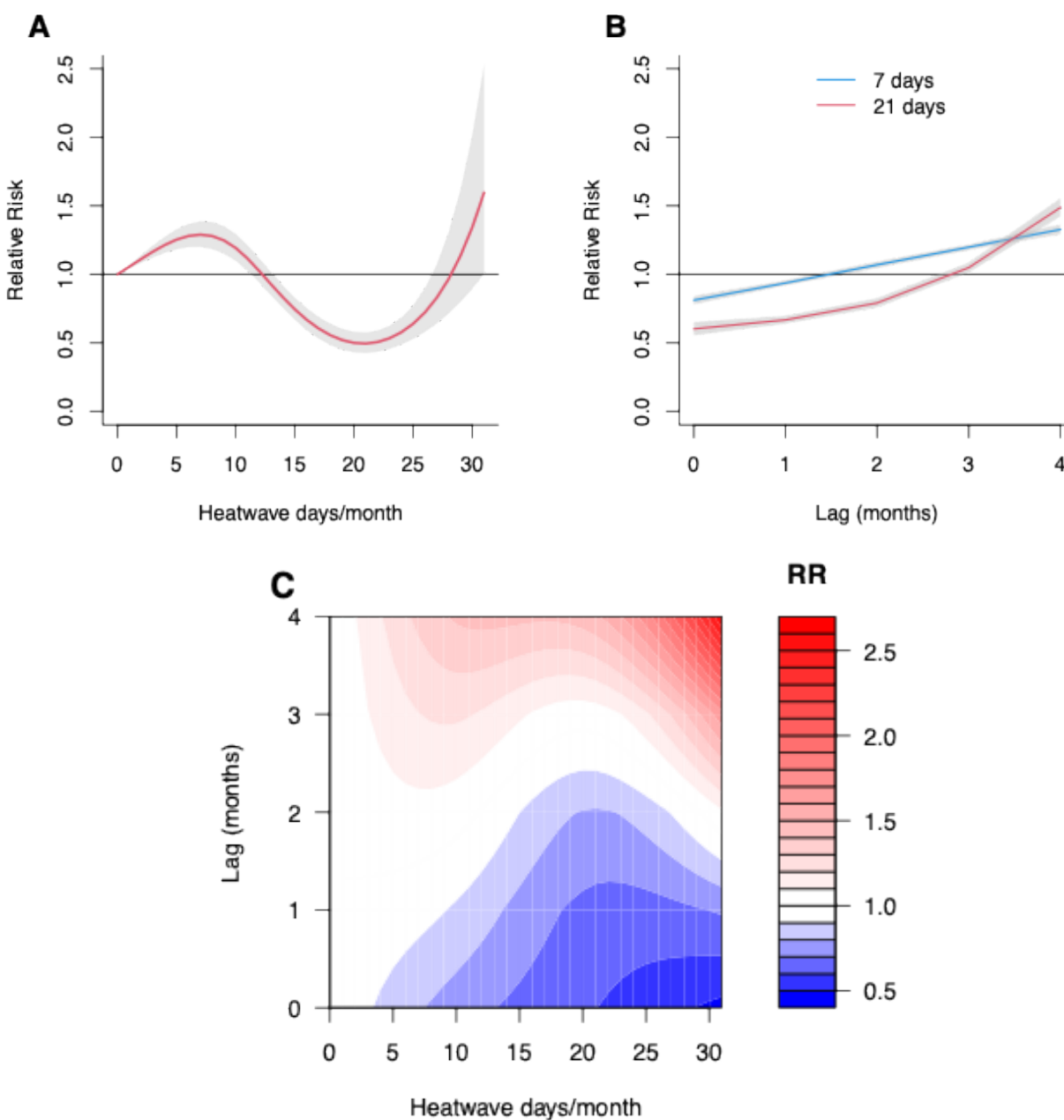


- 366 Tycho. 2018 [cited 2022 Aug 11]. Available from: <https://doi.org/10.25337/T7/ptycho.v2.0/KH.38362002>
- 367 17. Muñoz Sabater J. ERA5-Land monthly averaged data from 1950 to present. Copernicus Climate Change  
368 Service (C3S) Climate Data Store (CDS). [cited 2022 Aug 11]. Available from:  
369 <https://doi.org/10.24381/cds.68d2bb30>
- 370 18. Cheng J, Hilary B, Frentiu FD, Devine G, Yakob L, Xu Z, et al. Extreme weather events and dengue  
371 outbreaks in Guangzhou, China: a time-series quasi-binomial distributed lag non-linear model. *Int J*  
372 *Biometeorol.* 2021;65:1033–42.
- 373 19. Guo Y, Gasparrini A, Armstrong BG, Tawatsupa B, Tobias A, Lavigne E, et al. Heat wave and mortality: A  
374 multicountry, multicomunity study. *Environ Health Perspect.* 2017;125:27.
- 375 20. Palmer WC. Meteorological drought. US Dep. Commer. US Department of Commerce, Weather Bureau;  
376 1965.
- 377 21. Wells N, Goddard S, Hayes MJ. A self-calibrating Palmer Drought Severity Index. *J Clim.* 2004;17:2335–  
378 51.
- 379 22. Harris I, Osborn TJ, Jones P, Lister D. Version 4 of the CRU TS monthly high-resolution gridded  
380 multivariate climate dataset. *Sci Data.* 2020;7:109.
- 381 23. Center for International Earth Science Information Network-CIESIN-Columbia University. Gridded  
382 Population of the World, Version 4 (GPWv4): Population Count Adjusted to Match 2015 Revision of UN WPP  
383 Country Totals, Revision 11. Palisades, New York: NASA Socioeconomic Data and Applications Center  
384 (SEDAC); 2018 [cited 2021 Jul 25]. Available from: <https://doi.org/10.7927/H4PN93PB>
- 385 24. Wood SN. Generalized additive models: an introduction with R (2nd edition). Chapman and Hall/CRC. Boca  
386 Raton: Chapman and Hall/CRC; 2017.
- 387 25. Gasparrini A, Armstrong B, Kenward MG. Distributed lag non-linear models. *Stat Med.* 2010;29:2224–34.
- 388 26. Ramadona AL, Lazuardi L, Hii YL, Holmner Å, Kusnanto H, Rocklöv J. Prediction of dengue outbreaks  
389 based on disease surveillance and meteorological data. *PLoS One.* 2016;11:1–18.
- 390 27. Diniz DFA, De Albuquerque CMR, Oliva LO, De Melo-Santos MAV, Ayres CFJ. Diapause and quiescence:  
391 dormancy mechanisms that contribute to the geographical expansion of mosquitoes and their evolutionary  
392 success. *Parasit Vectors.* 2017;10:1–13.
- 393 28. Chaves LF, Scott TW, Morrison AC, Takada T. Hot temperatures can force delayed mosquito outbreaks via  
394 sequential changes in *Aedes aegypti* demographic parameters in autocorrelated environments. *Acta Trop.*  
395 2014;129:15–24.
- 396 29. Presbitero A, Melnikov VR, Krzhizhanovskaya V V, Sloom PMA. A unifying model to estimate the effect of  
397 heat stress in the human innate immunity during physical activities. *Sci Rep.* 2021;11:16688.
- 398 30. Li C, Liu Z, Li W, Lin Y, Hou L, Niu S, et al. Projecting future risk of dengue related to  
399 hydrometeorological conditions in mainland China under climate change scenarios: a modelling study. *Lancet*  
400 *Planet Heal.* 2023;7:e397–406.



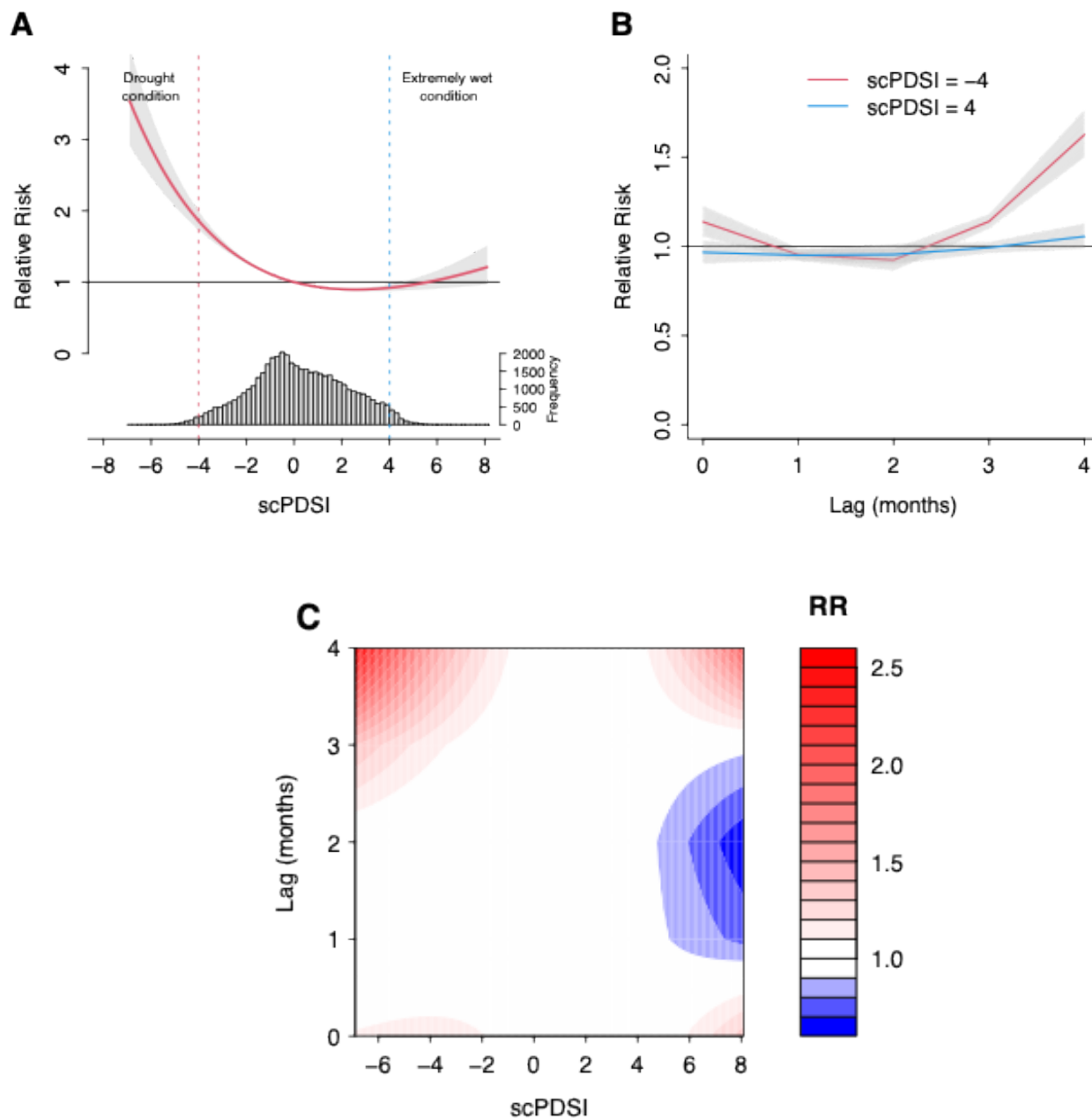
402  
403  
404  
405  
406

**Figure 1: Map of dengue case, heatwave, and scPDSI in each location of this study.**  
(A) Median monthly dengue incidence per 100,000 population in each location. (B) Mean annual number of heatwave days in each location. (C) Median monthly scPDSI index in each location. Grey areas have no data. scPDSI stands for self-calibrated Palmer drought severity index.



407 **Figure 2: Association between the number of heatwave days per month and dengue incidence in 291**  
408 **locations across the eight countries, relative to month with no heatwaves.**

409 (A) Cumulative exposure–response associations (with 95%CI, shaded grey), (B) lag–response  
410 association curves of specific monthly number of heatwave days (with 95% CI, shaded grey), (C)  
411 Contour plot of the association between monthly number of heatwave days and dengue. The  
412 deeper the shade of red, the greater the increase in the RR of dengue, and the deeper the shade of  
413 blue, the greater the decrease in the RR of dengue. CI indicates the confidence intervals; HW  
414 stands for number of heatwave days per month; RR is the relative risk.



415 **Figure 3: Association between scPDSI and dengue incidence in 291 locations across the**  
416 **eight countries, relative to a scPDSI value of zero.**

417 (A) Cumulative exposure–response associations (with 95%CI, shaded grey), with related PDSI  
418 distribution. Two vertical lines indicate the cut-off value for drought as a dotted line in red, and cut-off  
419 blue for extremely wet conditions as a dash-dotted line in blue. (B) lag-response association curves of  
420 specific scPDSI (with 95%CI, shaded grey). (C) Contour plot of the association between scPDSI and  
421 dengue. The deeper the shade of red, the greater the increase in the RR of dengue, and the deeper the  
422 shade of blue, the greater the decrease in the RR of dengue. CI indicates the confidence intervals; RR is  
423 the relative risk; scPDSI stands for self-calibrated Palmer drought severity index

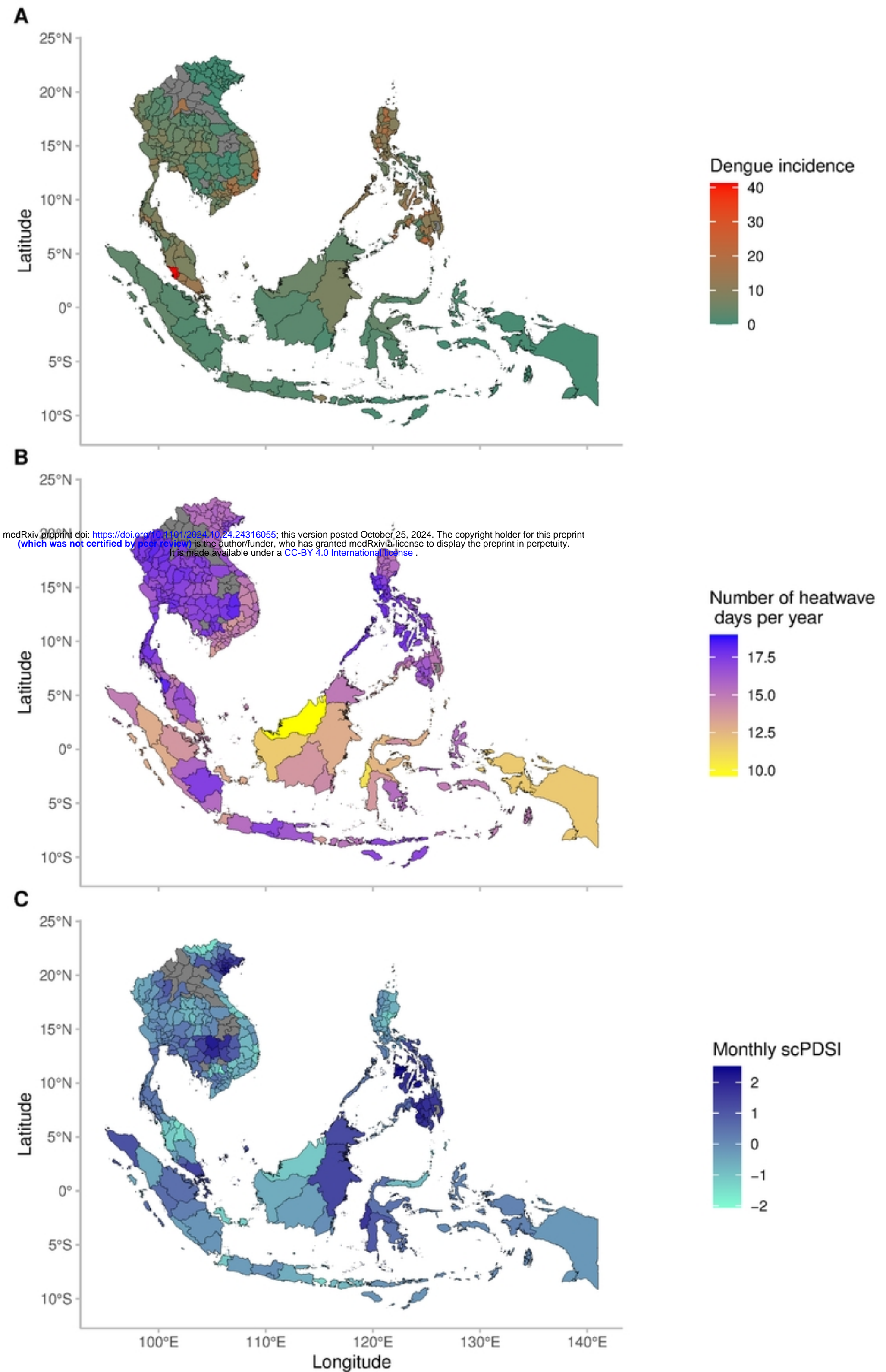
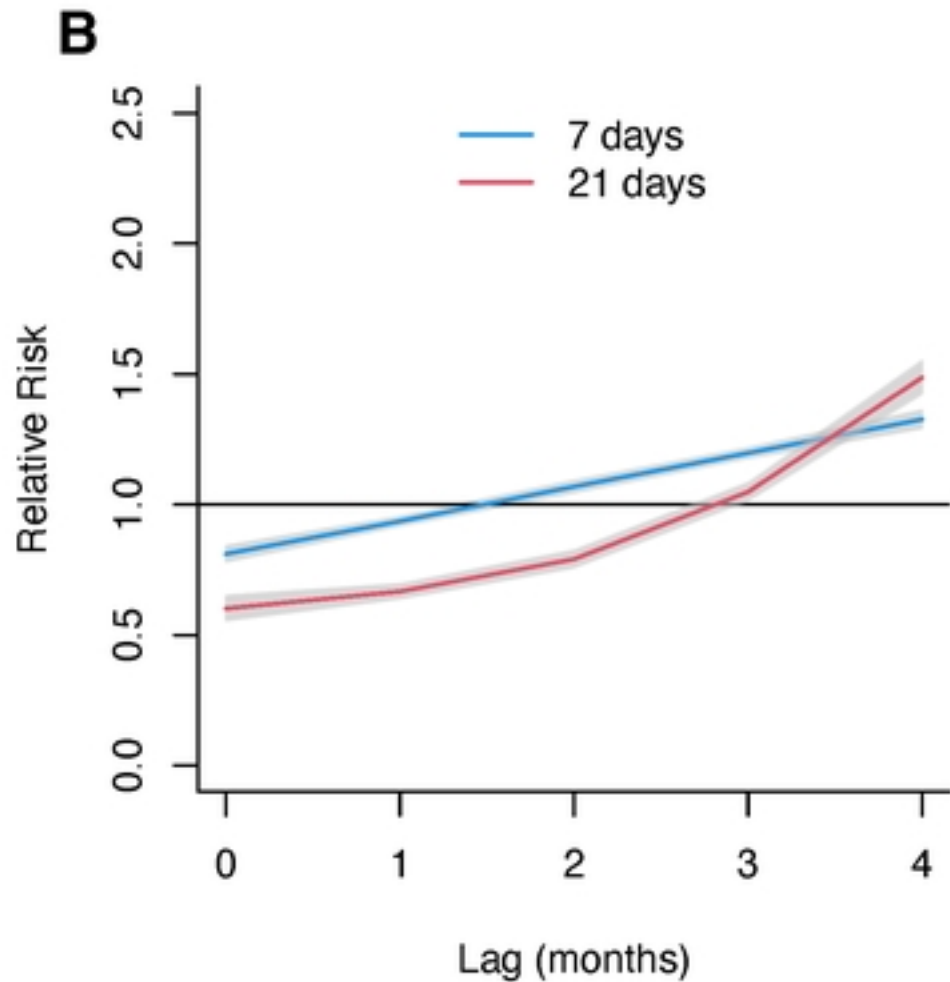
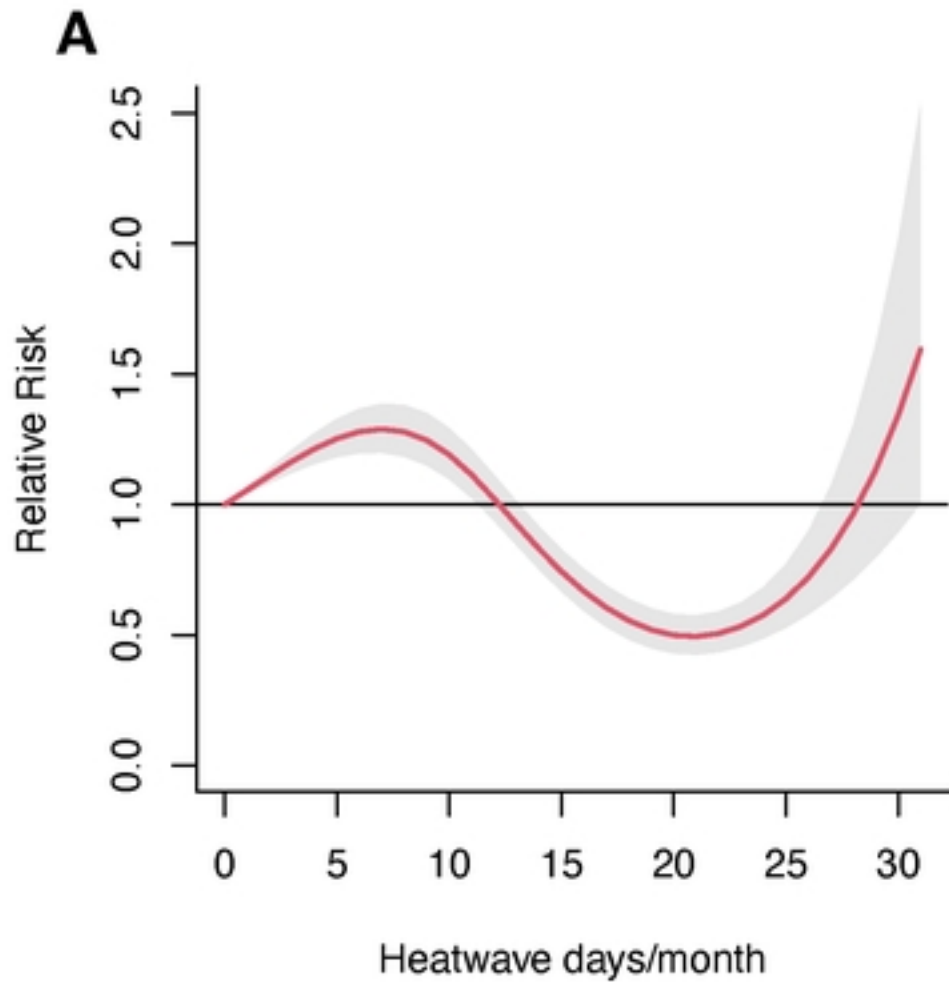
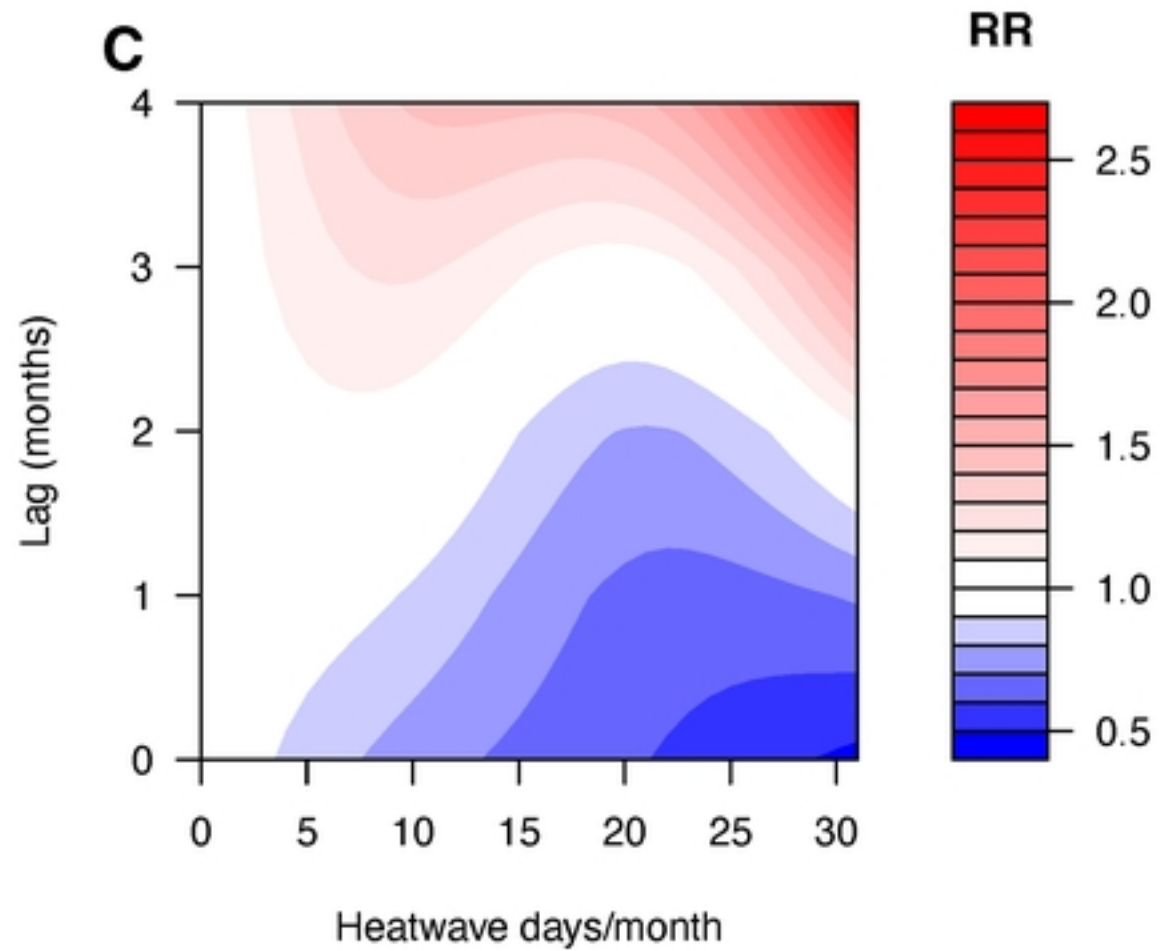
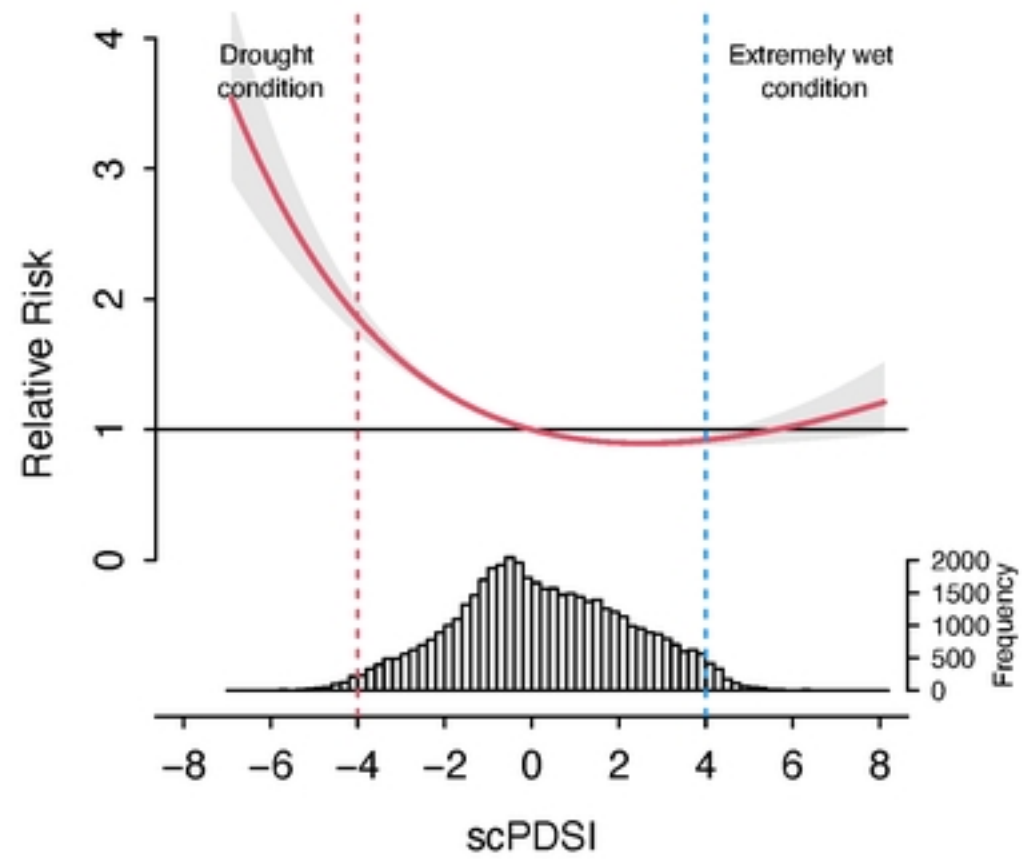


Figure 1





**A****B**