

An exposome-wide investigation of 2923 Olink proteins with non-genetic factors in Chinese adults

Andri Iona^{1*}, Baihan Wang^{1*}, Jonathan Clarke¹, KaHung Chan¹, Maria G. Kakkoura¹, Charlotte Clarke¹, Neil Wright¹, Pang Yao¹, Mohsen Mazidi¹, Pek Kei Im¹, Maryam Rahmati¹, Christiana Kartsonaki¹, Sam Morris¹, Hannah Fry¹, Iona Y Millwood¹, Robin G Walters¹, Yiping Chen¹, Huaidong Du¹, Ling Yang¹, Daniel Avery¹, Dan Valle Schmidt¹, Feifei Li,² Canqing Yu^{3,4,5}, Dianjianyi Sun^{3,4,5}, Jun Lv^{3,4,5}, Michael Hill¹, Liming Li^{3,4,5}, Robert Clarke¹, Derrick A Bennett¹, Zhengming Chen¹, on behalf of China Kadoorie Biobank Collaborative Group[#]

1. Clinical Trial Service Unit, Nuffield Department of Population Health, University of Oxford, Oxford, UK
2. NCDs Prevention and Control Department, Qingdao CDC
3. Department of Epidemiology & Biostatistics, School of Public Health, Peking University, Beijing, China
4. Peking University Center for Public Health and Epidemic Preparedness and Response, Beijing, China
5. Key Laboratory of Epidemiology of Major Diseases (Peking University), Ministry of Education, Beijing, China

** Co-first author; # Members of the China Kadoorie Biobank Collaborative Group are shown in the Supplementary material.*

Address for correspondence:

Assoc. Professor Derrick Bennett
CTSU, Big Data Institute,
Old Road Campus,
University of Oxford
Oxford, OX3 7LF, UK
Tel: 44-1865-743949

or

Professor Zhengming Chen
CTSU, Big Data Institute,
Old Road Campus
University of Oxford
Oxford, OX3 7LF, UK
Tel: 44-1865-743839

derrick.bennett@ndph.ox.ac.uk

zhengming.chen@ctsu.ox.ac.uk

Word count: Abstract 250, Text 3487

(1 Table, 5 Figures and 18 Supplementary Tables and Figures)

(CKB research tracker No.: 2023-0065; CKB data release 19)

28 October 2024

Abbreviations:

ACP5	Tartrate-resistant acid phosphatase type 5
ACRV1	Acrosomal protein SP-10
ALPP	ALPP alkaline phosphatase, placental
BMI	Body mass index
CDHR2	Cadherin-related family member 2
CGA	Glycoprotein hormones alpha chain
CHI3L1	Chitinase-3-like protein 1
CHRD2	Chordin-like 2
CKB	China Kadoorie Biobank
CK-BB	Brain-type creatine kinase also known as creatine kinase B-type
CRISP2	Cysteine-rich secretory protein 2
CSF3	Granulocyte colony-stimulating factor receptor
CTSV	Cathepsin V
CVD	Cardiovascular disease
CXCL17	C-X-C motif chemokine 17
DPP4	Dipeptidyl peptidase-4
DPT	Dermatopontin
EDA2R	Tumor necrosis factor receptor superfamily member 27
EDDM3B	Epididymal secretory protein E3-beta
EGFR	Epidermal growth factor receptor
ELN	Elastin
Exhaled CO	Exhaled carbon monoxide
FABP4	Fatty acid-binding protein, adipocyte
FGF5	Fibroblast growth factor 5
FSHB	Follitropin subunit beta
GDF15	Growth/differentiation factor 15
GGT1	Glutathione hydrolase 1 proenzyme
GIP	Gastric inhibitory polypeptide
HbA1c	Hemoglobin A1c
HBsAg	Hepatitis B virus surface antigen
HSPB6	Heat shock protein beta-6
IGFBP2	Insulin-like growth factor-binding protein 2
IGFBP3	Insulin-like growth factor-binding protein 3
IGSF9	Protein turtle homolog A
IHD	Ischaemic heart disease
IL17D	Interleukin-17D
IL1RN	Interleukin-1 receptor antagonist
INSL3	Insulin-like 3
ITGB5	Integrin beta-5
ITIH4	Inter-alpha-trypsin inhibitor heavy chain H4
LAMP3	Lysosome-associated membrane glycoprotein 3
LEP	Leptin
LPL	Lipoprotein lipase
LRP1	Low-density lipoprotein receptor-related protein 1
LTBP2	Latent-transforming growth factor beta-binding protein 2

MAMDC4	MAM domain-containing 4
MELTF	Melanotransferrin
NPX	Normalized Protein eXpression
PAEP	Glycodelin
PLAT	Plasminogen activator, tissue type
PON2	Serum paraoxonase/arylesterase 2
pQTLs	Protein quantitative trait locus
QC	Quality control
REN	Renin
RPG	Random plasma glucose
SBP	Systolic blood pressure
SD	Standard deviation
SDK2	Protein sidekick-2
SHBG	Sex hormone-binding globulin
SNED1	Sushi, nidogen and EGF-like domain-containing protein 1
SPINK 6	Serine protease inhibitor Kazal-type 6
TEX101	Testis-expressed protein 101
TIMP4	Metalloproteinase inhibitor 4
VWA1	Von Willebrand factor A domain containing 1
XG	Glycoprotein Xg

Abstract (word count 250/250)

Background: Previous studies in European populations have identified a large number of genetic variants affecting plasma levels of Olink proteins, but little is known about the non-genetic factors influencing plasma levels of proteins, particularly in Chinese populations.

Methods: We measured plasma levels of 2,923 proteins, using Olink Explore platform, in 2,006 participants in the China Kadoorie Biobank. Linear regression analyses were used to assess the cross-sectional associations of individual proteins with 37 exposures across multiple domains (e.g. socio-demographic, lifestyle, environmental, sample processing, reproductive factors, clinical measurements, and health-related indices), adjusted for potential confounders and multiple testing. These were further replicated and compared with similar analyses in Europeans.

Results: Overall 31 exposures were associated with at least one protein, with age (n=1,154), sex (n=827), BMI (n=869) showing the highest number of associations, followed by frailty index (n=597), SBP (n=479), RPG (n=387), ambient temperature (n=292), and HBsAg-positivity (n=282), with diet and physical activity showing little associations. Likewise, of the 2,923 proteins examined, 65% were associated with at least one exposure, with three proteins (CDHR2, CKB, and PLAT) showing the largest number of associations with baseline characteristics (n=14). The patterns of associations differed by sex, chiefly due to differences in lifestyle and reproductive factors. Over 90% of proteomic associations with key exposures in the current study were replicated in the UK Biobank.

Conclusions: In Chinese adults, the exposome-wide assessment of Olink proteins identified a large number of associations with a wide range of exposures, which could inform future research priorities and analytic strategies.

Keywords: *Exposure, Sex, Age, Frailty, Lifestyle, Proteomics, Biobank, Chinese*

Introduction

Deciphering the human proteome could enhance our understanding of human health and disease.¹ Plasma levels of proteins, which are secreted or leaked from cells or organs, may be affected by various genetic and non-genetic factors relevant to human health.² Investigating the relationships between plasma proteins and different exposures could improve our understanding of human biology and inform research strategies.

Traditionally, mass spectrometry has been used to measure plasma protein levels,³⁻⁵ but studies using this method are typically constrained by their small sample sizes and low breadth of coverage.² In contrast, advances in affinity-based technologies (e.g. Olink and SomaScan) have made it possible to leverage proteomics in large-scale population and clinical studies, thus allowing for a more comprehensive investigation of plasma proteins and their relationships with a variety of factors and health conditions.^{2,6,7} In particular, the Olink platform which utilises antibodies as reagents to bind target proteins, has been widely used in epidemiological research due to its high sample throughput and assay specificity.⁶ Recently, the Olink Explore 3072 platform was used to measure 2,923 plasma proteins in 54,219 participants in the UK Biobank,⁸ leading to many novel findings linking protein abundance with a range of demographic and clinical exposures and genetic factors.⁸ It also replicated some well-established associations, such as the associations between sex and LEP, and between age and GDF15.⁶⁻¹¹ Another affinity-based platform, SomaScan,⁷ has also been used by other studies,^{12,13} but analysis of such studies focused mainly on genetic analyses.

Most previous proteomics studies investigated only a few pre-selected exposures, without simultaneously considering a broader range of factors that might be associated with the plasma proteome. Moreover, few studies have investigated associations of plasma proteins with composite indices (e.g. frailty) derived from various measures that may

reflect general lifestyle and health,¹⁴⁻¹⁷ which could be useful for population-level screening and disease prevention. Furthermore, previous studies typically focused on the discovery of protein quantitative trait loci (pQTLs).^{8,12,13} While useful for downstream analyses such as Mendelian Randomisation to inform drug development,² they do not contribute important insights into the roles of non-genetic factors in influencing levels of circulating proteins. Finally, there is evidence that protein concentrations can vary across different populations,¹⁸ which could further affect their associations with exposures. However, the lack of diversity remains an issue in proteomics, as the majority of proteomic studies in large-scale population-based cohorts have been conducted in European populations. Our previous study in the China Kadoorie Biobank (CKB) identified 27 proteins associated with body mass index (BMI), but this was conducted in a small sample of 628 participants and with an older Olink panel covering 92 proteins.¹⁹

To fill the evidence gap, the present study aims to use an “exposome-wide” approach to (1) comprehensively explore the exposure profiles of ~3,000 Olink proteins in 2,000 Chinese adults in the CKB; (2) assess the consistency of proteomic associations between the Chinese and European populations; and (3) identify priorities for future research. We also conducted parallel analyses in the accompanied report on ~7,000 proteins measured by the SomaScan platform in the same sample.²⁰

Methods

Study population and design

The CKB is a prospective cohort study of >512,000 adults who were recruited from 2004 to 2008 in 10 geographically diverse areas.^{21,22} At baseline, detailed information was collected from all participants using laptop-based questionnaires, including socio-demographic characteristics, medical history, and lifestyle habits, in addition to physical

measurements including body composition and blood pressure. Non-fasting (with time since the last meal recorded) blood samples were also collected, processed, aliquoted, and then stored in liquid nitrogen for future unspecified research use. All participants provided written informed consent.

The present study was based on a case-subcohort study of IHD involving 1951 cases and 2026 subcohort participants who had no prior history of cardiovascular disease and no reported use of lipid-lowering medications.²³ The subcohort participants were randomly selected from a population subset of 69,353 genotyped participants who were unrelated to each other.

Proteomic assays

The plasma samples of all 3,977 participants collected at baseline were assayed by the Olink Explore 3072 platform that targets 2,923 unique proteins in four separate panels. The samples were retrieved from liquid nitrogen, thawed, and aliquoted into 96-well plates (including 8 wells per plate for external QC samples). They were then shipped separately to Olink laboratories in Uppsala, Sweden (first batch; 1,472 proteins) and Boston, USA (second batch; 1,469 proteins) for proteomic profiling. The final measurements of protein levels were provided in the arbitrary Normalized Protein eXpression (NPX) unit on a log₂ scale. Six proteins were replicated in four panels and showed high correlations across panels ($r > 0.8$), so only one measure was kept for each replicated protein. Details of individual proteins are shown in **eTable 1**. Further details on proteomic assays in CKB have been previously described.^{23,24}

Selected baseline characteristics

We selected 37 exposures across 6 broad categories (**eTable 2**), covering demographics (e.g., age, sex, study area), lifestyle habits (e.g., alcohol, smoking, diet, physical activity),

environmental factors (e.g., outdoor temperature, fasting time), health and wellbeing (e.g., prior disease and mental health), clinical measures (e.g., BMI, SBP, RPG) and female reproductive factors (e.g., age at menarche, age at menopause, parity). We also derived a healthy lifestyle index (ranging from 0 to 5, with a higher score indicating a healthier lifestyle) based on smoking, alcohol intake, physical activity, dietary habits, and body shape.¹⁵⁻¹⁷ Similarly, a frailty index based on an accumulation of age-related deficits was computed considering medical conditions (based on self-reports of diagnosis by a doctor or physical measurements), symptoms, signs, and physical measurements, of which the procedure is described in a previous publication.^{14,25}

Statistical analyses

The main analyses were conducted in 2006 subcohort participants only (after excluding 20 participants with missing data on outdoor temperature) and separately by sex.

The prevalence or mean values of selected baseline variables were standardised to the age (5-year groups), sex, and study area. Plasma protein levels were standardized (i.e. values divided by their SD) and analysed as continuous variables. Linear regression was used to examine the associations of different baseline characteristics with protein biomarkers, adjusting for age, age², sex, study area, fasting time, fasting time², outdoor temperature, outdoor temperature², and plate ID.

As many proteins and exposures are correlated with each other, we followed the approach by Gadd et al. (2023) to correct for multiple testing.²⁶ We performed principal component analysis for 2,923 unique proteins and found 834 components explaining 90% of the cumulative variance (**eFigure 1 and eTable 3**). Similarly, we performed principal component analysis for 32 exposures measured in both females and males and found 21 components explaining 90% of the cumulative variance. Taking into account 834

components for proteins and 26 components for exposures (21 + 5 reproductive factors measured only in females), we derived a Bonferroni-adjusted p-value threshold: $0.05/(834 \times 26) = 2.305 \times 10^{-6}$. This adjustment was applied across all linear regression models.

We also undertook separate analyses of the same 2923 Olink proteins in approximately 35,000 white participants from the UK Biobank to replicate the main study findings in CKB, with the exclusion of participants with prior CVD or use of cholesterol-lowering medication.⁸

All statistical analyses were performed using R version 4.1.2²⁷ and packages ‘tidyverse’, and ‘ggplot2’.

Results

Among the 2,006 participants, the mean baseline age was 50.8 (SD 10.5) years, 62% of participants were female and the mean BMI was 23.9 (3.4) kg/m² (**Table 1**). Overall, 15% of participants were regular alcohol drinkers (men: 37%; women 3%) and 25% (men: 63%; women: 2%) were current smokers. The prevalence of prior diseases was similar in males and females, with 8% of participants having respiratory disease, 2% having kidney/liver disease or tested sero-positive for HBsAg, and 6% having diabetes (self-reported or screen-detected).

Among 37 baseline characteristics examined, 31 were associated with at least one protein at the Bonferroni-adjusted threshold (**Table 1, Figure 1**). The three baseline characteristics that showed the largest number of associations with proteins were age (n=1154), sex (n=827) and BMI (n=869). Likewise, of the 2,923 proteins examined, 1900 (65%) were associated with at least one exposure, with three proteins (CDHR2, CK-BB, and PLAT) showing the largest number of associations with baseline characteristics

(n=14), involving primarily demographic factors and clinical measurements (**Figure 2, eFigure 2**).

Of the 827 sex-related proteins (higher levels in females for 259 and in males for 568 proteins), the strongest associations were observed for LEP, XG and FSHB in females and for ACRV1, EDDMEB and INSL3 in males (**Figure 3 I.a**). Among the top 50 sex-related proteins, most were also associated with other exposures, chiefly age (e.g., FSHB, CGA, XG) and BMI (e.g., LEP, FABP4, CDHR2; **Figure 3 I.b**). Additionally, 77 sex-related proteins were not associated with any other exposures examined, of which 27 were uniquely associated with female sex (e.g., CSF3, MELTF, ITIH4) and 50 with male sex (e.g., EDDM3B, TEX101 and CRISP2; **eTable 4**).

Of the 1,154 age-related proteins, the strongest positive associations were observed with EDA2R, ELN and LTBP2, and the strongest negative associations were with PAEP, CTSV and SDK2 (**Figure 3 II.a**). Among the top 50 age-related proteins, most were also associated with other exposures examined, chiefly sex (e.g., FSHB, CGA, PAEP) and BMI (e.g., DPT, HSPB6, FGF5; **Figure 3 II.b**). Additionally, 168 age-related proteins (e.g., ITGB5, IL17D, and TIMP4) were not associated with any other exposures (**eTable 4**). In sex-specific analyses, age was associated with 1,133 and 612 proteins in males and females, respectively (**Table 1; eFigure 3 I.a & II.b**). Among the 524 overlapping proteins in both sexes, nearly all (>95%) of the associations were directionally consistent, but the associations appeared stronger in females ($r=0.62$; **eFigure 4**). Among females, FSHB, ELN and EDA2R showed the strongest positive associations with age, while PAEP, SDK2 and CTSV showed the strongest negative associations (**eFigure 3 I.a**). Among males, EDA2R, ELN and LTBP2 showed the strongest positive associations, and EGFR, INSL3 and IGFBP3 showed the strongest negative associations (**eFigure 3 II.a**). Among females the top age-related proteins were predominantly associated with menopause, while among

males they were mainly associated with clinical measurements (i.e., BMI, SBP, and RPG), exhaled CO and current smoking status in males (**eFigure 3 I.b & 3 II.b**). Additionally, 394 and 352 age-related proteins in females and males, respectively, were not associated with any other exposures examined (**eTable 4**).

In overall analyses, regular alcohol consumption and current smoking were associated with 75 and 53 proteins (4 overlapping), respectively, with MAMDC4, CHI3L1 and VWA1 most strongly associated with alcohol drinking and CXCL17, LAMP3 and ALPP most strongly associated with smoking (**Table 1, eFigure 5**). In separate analyses among men, most of these protein associations with alcohol (n=53) and smoking (n=47) were significant (**eFigure 6**). Overall, outdoor temperature was associated with 292 proteins (e.g., SNED1, SPINK6 and LRP1), reducing to 174 and 57 in female- and male-specific analyses, respectively (**eFigure 5 and 6**).

Among clinical measurements, BMI was associated with the largest number of proteins (869) followed by SBP (n=479) and RPG (n=387; with 274 overlapping with prevalent diabetes; **Table 1**). For BMI, the strongest associations were observed for LEP, FABPA and IGFBP2 (**eFigure 7a**). In sex-specific analyses, BMI was associated with 576 proteins in females and with 353 proteins in males, with similar strength of associations among the 300 overlapping proteins ($r=0.97$; **Table 1 and eFigure 4b**). The leading BMI-related proteins demonstrated similar exposure profiles, with >90% of them also associated with age, sex, prevalent diabetes, and other clinical measurements in both overall and sex-specific analyses (**eFigure 7b, eFigure 8 I.b & II.b**).

Overall prevalent diabetes and HBsAg positivity were associated with 340 and 282 proteins, respectively (**Table 1**), with more associations in women than in men (217 vs. 39 and 198 vs. 45, respectively; **Table 1 and eFigure 6h**). Other health-related measures, including self-rated health and prior cancer, were associated with fewer than three

proteins. For females, post-menopause was associated with 181 proteins, with the strongest positive association being with FSHB, CGA and DPP4 and the strongest inverse association with PAEP, CHRD2 and SDK2 (**eFigure 9a**). Additionally, the top menopause-related proteins were predominantly associated with age (**eFigure 9b**).

Healthy lifestyle index was associated with 342 proteins (e.g., IGSF9, VWA1 and LEP) in overall analyses, and with 126 and 99 proteins in male- and female-specific analyses (**Table 1, Figure 4 I.a, eFigure 10 I.a & 10 II.a**). Most of these proteins were also associated with the individual components of the index, particularly age, sex and clinical measurements, with alcohol and smoking being particularly notable among males (**Figure 4 I.b, eFigure 10 I.b & 10 II.b**).

Overall the frailty index was associated with 597 proteins (e.g., IGSF9, CDHR2 and IL1RN), with 300 (50%) proteins overlapping with the lifestyle index, albeit in opposite directions in their associations ($r=-0.91$; **Table 1, Figure 4c II.a**). In sex-specific analyses, 102 and 279 proteins were associated with frailty index in females and males, respectively (**eFigure 12 I.a & 12 II.a**). Many of the frailty index-related proteins were also associated with individual components of the index, including age, sex, clinical measurements, and prior diseases, with similar association patterns in men and women (**Figure 4 II.b, eFigure 11 I.b & 11 II.b**).

In UKB participants (mean age 57 [SD 8.1], 55% female), a total of 1,871 proteins were significantly associated with sex, 1,659 with age, 2,144 with BMI, 1,658 with SBP, 702 with RPG, and 1,302 with prevalent diabetes (**Figure 5**). Over 90% of the significant associations in CKB were replicated in UKB, with the exception of RPG, which had a lower (~80%) replication rate. However, >95% of RPG associations in CKB were replicated in UKB using HbA1c (**eFigure 12**). Moreover, for the overlapping significant proteins in CKB and UKB, there were high correlations ($r>0.80$) in effect sizes, with over 95% being

directionally consistent. In sex-specific analyses, there were similar patterns and replication rates between the two populations (**eFigure 13**).

Discussion

In this exposome-wide analysis of Olink proteins in Chinese adults, we identified a large number of associations between various exposures and levels of ~3,000 proteins. In particular, age, sex and BMI each showed significant associations with plasma levels of >800 proteins. A range of other exposures including, socio-demographic, environmental factors, clinical measurements, health-related traits, and composite lifestyle and health indices, were also associated with levels of modest numbers of proteins. Many proteins were associated with multiple exposures, with CDHR2, CK-BB, and PLAT showing the largest number of associations with the exposures examined. We also observed differences in proteomic-exposure associations between females and males, and replicated >90% of proteomic associations with key exposures in the European populations.

Among all exposures investigated, age yielded the largest number of significant associations with plasma protein levels. The single protein most strongly and positively associated with age was EDA2R, a member of the tumour necrosis factor receptor superfamily.²⁸ EDA2R is a known marker for ageing, and its gene expression has been previously reported to be associated with ageing in plasma, muscle, and lung tissues.²⁹⁻³¹ Moreover, we found that older age was associated with higher levels of ELN, a protein making up elastic fibres in various human organs, including the skin, heart, and blood vessels.³²⁻³⁵ Consistent with this finding, we also found a positive association between older age and higher levels of LTBP2, a component of micro-fibrils that interact with ELN.³⁶ Finally, many age-related proteins were also significantly associated with other exposures.

For example, higher levels of CXCL17, a protein involved in respiratory diseases,^{37,38} were associated with older age, smoking, and amount of exhaled CO in our study.

Our analysis demonstrated marked sex differences in plasma levels of many proteins.

These included proteins that are known to be involved in human reproductive processes, such as FSHB which regulates follicular growth in females,^{39,40} as well as ACRV1,

EDDM3B, and TEX101, which are involved in spermatogenesis in males.⁴¹⁻⁴³ We

replicated the well-known finding of elevated LEP levels in females, a protein released by adipocytes and related to sex differences in body fat percentage/distribution.^{8,10,11}

Moreover, we found elevated levels of the XG protein in females, an antigen that defines the Xg blood group.^{44,45} Historically, the Xg blood group has received less research attention than other blood groups. However, given its strong associations with sex, age, and BMI in our study, more research is needed to re-evaluate the role of XG in health and disease aetiology. Many of the sex-associated proteins were also independently associated with other exposures, including FSHB, which was also associated with age. Additional analysis revealed that the association between FSHB and age was primarily driven by female sex, since elevated FSHB levels are an indicator of menopause and are commonly observed in post-menopausal women.^{46,47}

Our analyses also replicated a number of exposure-protein associations previously reported in Europeans. For example, we identified associations between BMI and 869 proteins, including known associations of higher BMI with higher levels of LEP (regulating energy balance)⁴⁸ and FABP4 (lipid transporter in adipocytes).⁴⁹ Other examples of proteomic associations with clinical measurements include higher SBP and lower REN levels (part of the renin-angiotensin system)⁵⁰ and higher RPG and lower LPL levels (involved in lipid metabolism).⁵¹ Moreover, several behavioural factors may also affect plasma levels of specific proteins. For example, smoking was associated with higher

CXCL17 levels (involved in immune responses and respiratory diseases),^{37,38} and alcohol drinking was associated with higher CHI3L1 levels (involved in liver diseases).⁵²

Additionally, factors related to sample collection such as outdoor temperature and fasting time (time since last meal) were also significantly associated with 292 and 79 proteins, respectively in our study. Those included the associations between higher outdoor temperature and higher SPINK6 levels (maintaining skin homeostasis and restricting influenza virus activation)^{53,54} and shorter fasting time and high GIP levels (stimulating insulin secretion).⁵⁵ Such factors related to sample collection could act as potential confounders in associations between exposures and proteins. Indeed, we observed changes in results before and after including them as covariates in the models (**Supplementary eTable 5**), providing justifications for including them in the main models. Given their importance, future studies should also consider collecting such information to improve the robustness and reliability of analyses.

In addition to individual exposures, we also demonstrated novel associations between many plasma proteins and two composite measures that reflect general lifestyle and health, namely the healthy lifestyle index and frailty index. The two indices showed opposing directions of associations with some proteins, including IGSF9, IGFBP2, and SHBG. Both IGSF9 and IGFBP2 have been implicated in multiple types of cancers, and thus have been considered potential diagnostic/prognostic markers and treatment targets.⁵⁶⁻⁶¹ SHBG is a liver-produced secreted protein that binds sex hormones,⁶² which is associated with metabolic and reproductive system disorders.⁶³⁻⁶⁶ As expected, many proteins associated with the two indices also showed associations with individual exposures, especially BMI, SBP, and RPG. Furthermore, we observed sex differences in proteomic associations for the two indices. For example, the healthy lifestyle index showed stronger inverse associations with GGT1 (a marker of liver function)^{67,68} and CXCL17 (involved in lung function)^{37,38} in males than females. Such difference may be due to the

much higher prevalence of alcohol drinking and smoking in males than females (37.2% vs 2.6% and 63.3% vs 2.3%, respectively) in CKB and the general Chinese population.⁶⁹⁻⁷¹

Apart from being the first such study in an East Asian population, the main strengths of the present study include a large number of proteins assayed and a wide range of exposures considered simultaneously in the analyses. Moreover, we also examined potential sex differences in the protein-exposure associations, revealing potential novel findings to inform future research. Nevertheless, the present study also had limitations. First, although our study represented the largest to date amongst proteomics studies in East Asians, it lacked the power for more detailed subgroup analyses beyond sex differences. There were also fewer males than females in our study, which might explain the smaller number of significant associations in males. Second, due to the cross-sectional study design, we could not confirm the direction of the observed associations. Third, although we have adjusted for key covariates (e.g. age, sex, region, outdoor temperature, and fasting time) in our analyses to minimise residual confounding, we could not establish reliably the cause-effect nature of the observed associations, which should be assessed in future studies using genetic approaches (e.g., Mendelian Randomisation). Finally, due to the lack of similar datasets with proteomics data available, we were unable to replicate our findings for all exposures in independent cohorts in Chinese or East Asian populations. However, since over 90% of the associations with sex, age, BMI, SBP and diabetes-related exposures were replicated in UK Biobank, we believe our findings using the same Olink platform should be generalisable to other study populations.

Overall, the present study in Chinese adults demonstrated a large number of proteomic associations across a diverse range of exposures, particularly sex, age, adiposity, and healthy lifestyle and frailty indices. We also identified sex differences in proteomic associations with various exposures, mainly reflecting differences in reproductive

processes and lifestyle habits between females and males. Future studies from diverse cohorts are required to replicate our findings and confirm the causal relevance of these associations.

Acknowledgements: The chief acknowledgment is to the participants, China Kadoorie Biobank project staff, staff of the China CDC and its regional offices for access to death and disease registries. The Chinese National Health Insurance scheme provided electronic linkage to all hospital admissions. The China Kadoorie Biobank study is jointly coordinated by the University of Oxford and the Chinese Academy of Medical Sciences.

Funding: The funding body for the baseline survey was the Kadoorie Charitable Foundation, Hong Kong, China and the funding sources for the long-term continuation of the study include UK Wellcome Trust (202922/Z/16/Z, 104085/Z/14/Z, 088158/Z/09/Z), Chinese National Natural Science Foundation (81390540, 81390541, 81390544), and the National Key Research and Development Program of China (2016YFC0900500, 2016YFC0900501, 2016YFC0900504, 2016YFC1303904). Core funding was provided to the CTSU, University of Oxford, by the British Heart Foundation, the UK Medical Research Council, and Cancer Research UK. The long-term follow-up was funded in part by the UK Wellcome Trust (212946/Z/18/Z, 202922/Z/16/Z, 104085/Z/14/Z, 088158/Z/09/Z). The proteomic assays were supported by BHF (FS/18/23/33512), Novo Nordisk, Olink, SomaScan and NDPH. Analyses using UK Biobank data were performed using data from this application number 50474.

Open Access Statement: For the purpose of Open Access, the author has applied a CC-BY public copyright license to any Author Accepted Manuscript version arising from this submission.

Declaration of interests: All authors declare no competing interests.

Ethics approval: The China Kadoorie Biobank complies with all the required ethical standards for medical research on human subjects. Ethical approvals were granted and have been maintained by the relevant institutional ethical research committees in the UK and China.

Consent to participate/publication: All participants provided written informed consent.

Author Contributions: AI, BW, RC, DAB, ZC conceived and designed the study. AI conducted the statistical analyses and AI and BW wrote the first draft of the manuscript. LL, and ZC as the members of China Kadoorie Biobank Steering Committee, designed and supervised the overall conduct of the study, including obtaining funding for the study. All other authors provided critical revision to the manuscript for important intellectual content. AI, BW, DAB and ZC are the guarantors of this work and take responsibility for the integrity and accuracy of the data analysis. DAB and ZC supervised the work.

Data Availability: Data from baseline, first and second resurveys, and disease follow-up are available under the China Kadoorie Biobank Open Access Data Policy to bona fide researchers. Details of the China Kadoorie Biobank Data Sharing Policy are available at www.ckbiobank.org.

Figure legends

Figure 1. Exposure profiles with 2923 protein biomarkers in CKB, overall and by sex

Three Miami plots are presented: one for female-specific analysis, one for male-specific analysis, and one for overall analysis. The x-axis represents baseline characteristics grouped by category, while the y-axis shows the negative logarithm of the p-value ($-\log_{10}$ p-value) for the association between each exposure and protein biomarkers. Each dot represents the $-\log_{10}$ Bonferroni corrected p-value for these associations. For visualization purposes, $-\log_{10}$ p-values exceeding 25 are not displayed (indicated with arrow). Positive associations are shown in red, negative associations in blue, and non-significant associations in grey. Analyses are adjusted for age, age², sex, study area, fasting time, fasting time², outdoor temperature, outdoor temperature² and plate ID, where appropriate.

Abbreviations: BMI: Body mass index; CKB: China Kadoorie Biobank; CO: carbon-monoxide; DBP: Diastolic blood pressure; FEV1/FVC: Forced Expiratory Volume in 1 second / Forced Vital Capacity; HBsAg+: Hepatitis B virus surface antigen seropositive; RPG: random plasma glucose

Figure 2. Exposure profiles by characteristics type of the top 25 protein biomarkers with most associations, overall and by sex

The bar plots show the number of baseline associated with the 25 most frequently associated protein biomarkers based on Bonferroni-corrected p-values. The analyses are presented separately for females, males, and overall. The x-axis represents the protein biomarkers, while the y-axis indicates the number of baseline characteristics associated with each protein. Bars are color-coded to represent different baseline characteristic groups. Analyses are adjusted for age, age², sex, study area, fasting time, fasting time², outdoor temperature, outdoor temperature² and plate ID, where appropriate.

Figure 3. Sex- and age-associated protein biomarkers and their associations with other exposures

Figures a) and c) represent the associations of sex and age, respectively, with protein biomarkers. The x-axis represents the effect size of the association between sex or age and the protein biomarkers, while the y-axis indicates the $-\log_{10}$ p-value. Red dots denote positive Bonferroni corrected associations, blue dots denote negative Bonferroni corrected associations, and grey dots denote non-significant associations.

Figures b) and d) illustrate the top sex- and age-associated protein biomarkers, respectively, and their associations with other exposures. The width of the ribbons is inversely proportional to the p-value, indicating the strength of the association (smaller p-values correspond to wider ribbons). The colors of the ribbons represent different baseline characteristic groups. The top protein biomarkers that are not associated with other exposures are not presented in the figure.

Analyses are adjusted for age, age², sex, study area, fasting time, fasting time², outdoor temperature, outdoor temperature² and plate ID, where appropriate. Abbreviations: BMI: Body mass index; CO: carbon-monoxide; DBP: Diastolic blood pressure; HBsAg+: Hepatitis B virus surface antigen seropositive; RPG: random plasma glucose

Figure 4. Lifestyle and frailty indices-associated protein biomarkers and their associations with other exposures

Symbols and conventions as in Figure 3.

Figure 5. Associations of six selected key baseline characteristics with protein biomarkers in CKB and UKB

In CKB, analyses were adjusted for age, age², sex, study area, fasting time, fasting time², outdoor temperature, outdoor temperature² and plate ID, where appropriate. In UKB, analyses were adjusted for age, age², sex, assessment centre, fasting time, fasting time², season, and plate ID, where appropriate.

Abbreviations: BMI: Body mass index; CKB: China Kadoorie Biobank; SBP: systolic blood pressure; UKB: UK Biobank; RPG: Random plasma glucose

References

1. Smith, L.M. *et al.* The Human Proteoform Project: Defining the human proteome. *Sci Adv* **7**, eabk0734 (2021).
2. Suhre, K., McCarthy, M.I. & Schwenk, J.M. Genetics meets proteomics: perspectives for large population-based studies. *Nat Rev Genet* **22**, 19-37 (2021).
3. Domon, B. & Aebersold, R. Mass spectrometry and protein analysis. *Science* **312**, 212-7 (2006).
4. Keshishian, H. *et al.* Quantitative, multiplexed workflow for deep analysis of human blood plasma and biomarker discovery by mass spectrometry. *Nat Protoc* **12**, 1683-1701 (2017).
5. Tognetti, M. *et al.* Biomarker Candidates for Tumors Identified from Deep-Profiled Plasma Stem Predominantly from the Low Abundant Area. *J Proteome Res* **21**, 1718-1735 (2022).
6. Assarsson, E. *et al.* Homogenous 96-plex PEA immunoassay exhibiting high sensitivity, specificity, and excellent scalability. *PLoS One* **9**, e95192 (2014).
7. Candia, J., Daya, G.N., Tanaka, T., Ferrucci, L. & Walker, K.A. Assessment of variability in the plasma 7k SomaScan proteomics assay. *Sci Rep* **12**, 17147 (2022).
8. Sun, B.B. *et al.* Plasma proteomic associations with genetics and health in the UK Biobank. *Nature* **622**, 329-338 (2023).
9. Conte, M. *et al.* GDF15, an emerging key player in human aging. *Ageing Res Rev* **75**, 101569 (2022).
10. Hickey, M.S. *et al.* Gender differences in serum leptin levels in humans. *Biochem Mol Med* **59**, 1-6 (1996).
11. Saad, M.F. *et al.* Sexual dimorphism in plasma leptin concentration. *J Clin Endocrinol Metab* **82**, 579-84 (1997).
12. Ferkingstad, E. *et al.* Large-scale integration of the plasma proteome with genetics and disease. *Nat Genet* **53**, 1712-1721 (2021).
13. Pietzner, M. *et al.* Mapping the proteo-genomic convergence of human diseases. *Science* **374**, eabj1541 (2021).
14. Fan, J. *et al.* Frailty index and all-cause and cause-specific mortality in Chinese adults: a prospective cohort study. *Lancet Public Health* **5**, e650-e660 (2020).
15. Lv, J. *et al.* Adherence to a healthy lifestyle and the risk of type 2 diabetes in Chinese adults. *Int J Epidemiol* **46**, 1410-1420 (2017).
16. Sun, Q. *et al.* Healthy lifestyle and life expectancy at age 30 years in the Chinese population: an observational study. *Lancet Public Health* **7**, e994-e1004 (2022).
17. The China Kadoorie Biobank Collaborative Group. Healthy lifestyle and life expectancy free of major chronic diseases at age 40 in China. *Nat Hum Behav* **7**, 1542-1550 (2023).
18. Sjaarda, J. *et al.* Influence of Genetic Ancestry on Human Serum Proteome. *Am J Hum Genet* **106**, 303-314 (2020).
19. Pang, Y. *et al.* Associations of Adiposity, Circulating Protein Biomarkers, and Risk of Major Vascular Diseases. *JAMA Cardiol* **6**, 276-286 (2021).
20. Chan, K.H. *et al.* An exposome-wide assessment of 6600 SomaScan proteins with non-genetic factors in Chinese adults. *medRxiv*, 2024.10.24.24316041 (2024).
21. Chen, Z. *et al.* China Kadoorie Biobank of 0.5 million people: survey methods, baseline characteristics and long-term follow-up. *Int J Epidemiol* **40**, 1652-66 (2011).
22. Chen, Z. *et al.* Cohort profile: the Kadoorie Study of Chronic Disease in China (KSCDC). *Int J Epidemiol* **34**, 1243-9 (2005).
23. Yao, P. *et al.* Conventional and genetic associations of adiposity with 1463 proteins in relatively lean Chinese adults. *Eur J Epidemiol* **38**, 1089-1103 (2023).
24. Wang, B. *et al.* Comparative studies of genetic and phenotypic associations for 2,168 plasma proteins measured by two affinity-based platforms in 4,000. *medRxiv* (Published online December 1, 2023:2023.12.01.23299236).

25. Hoogendijk, E.O. *et al.* Frailty: implications for clinical practice and public health. *Lancet* **394**, 1365-1375 (2019).
26. Gadd, D.A. *et al.* Blood protein assessment of leading incident diseases and mortality in the UK Biobank. *Nat Aging* **4**, 939-948 (2024).
27. Team, R.C. R: A Language and Environment for Statistical Computing. (Published online 2022).
28. Cai, Z., Deng, X., Jia, J., Wang, D. & Yuan, G. Ectodysplasin A/Ectodysplasin A Receptor System and Their Roles in Multiple Diseases. *Front Physiol* **12**, 788411 (2021).
29. Bilgic, S.N. *et al.* EDA2R-NIK signalling promotes muscle atrophy linked to cancer cachexia. *Nature* **617**, 827-834 (2023).
30. Chiara Barbera M, R.L.D., Romeo M, Mapelli S, Bolis M. . Increased expression of Ectodysplasin A2 Receptor EDA2R is the most remarkable and ubiquitous aging-related transcriptional hallmark. (Published online August 4, 2021).
31. de Vries, M. *et al.* Lung tissue gene-expression signature for the ageing lung in COPD. *Thorax* (2017).
32. Duca, L. *et al.* Matrix ageing and vascular impacts: focus on elastin fragmentation. *Cardiovasc Res* **110**, 298-308 (2016).
33. Fonck, E. *et al.* Effect of aging on elastin functionality in human cerebral arteries. *Stroke* **40**, 2552-6 (2009).
34. Tsamis, A., Krawiec, J.T. & Vorp, D.A. Elastin and collagen fibre microstructure of the human aorta in ageing and disease: a review. *J R Soc Interface* **10**, 20121004 (2013).
35. Weihermann, A.C., Lorencini, M., Brohem, C.A. & de Carvalho, C.M. Elastin structure and its involvement in skin photoageing. *Int J Cosmet Sci* **39**, 241-247 (2017).
36. Fujikawa, Y. *et al.* Latent TGF-beta binding protein 2 and 4 have essential overlapping functions in microfibril development. *Sci Rep* **7**, 43714 (2017).
37. Burkhardt, A.M. *et al.* CXCL17 is a major chemotactic factor for lung macrophages. *J Immunol* **193**, 1468-74 (2014).
38. Choreno-Parra, J.A., Thirunavukkarasu, S., Zuniga, J. & Khader, S.A. The protective and pathogenic roles of CXCL17 in human health and disease: Potential in respiratory medicine. *Cytokine Growth Factor Rev* **53**, 53-62 (2020).
39. McGee, E.A. & Hsueh, A.J. Initial and cyclic recruitment of ovarian follicles. *Endocr Rev* **21**, 200-14 (2000).
40. Polyzos, N.P. *et al.* The effect of polymorphisms in FSHR and FSHB genes on ovarian response: a prospective multicenter multinational study in Europe and Asia. *Hum Reprod* **36**, 1711-1721 (2021).
41. Barrachina, F. *et al.* Sperm acquire epididymis-derived proteins through epididymosomes. *Hum Reprod* **37**, 651-668 (2022).
42. Schiza, C.G., Jarv, K., Diamandis, E.P. & Drabovich, A.P. An Emerging Role of TEX101 Protein as a Male Infertility Biomarker. *EJIFCC* **25**, 9-26 (2014).
43. Tang, A. *et al.* Developmental expression of ACRV1 in humans and mice. *Andrologia* **44**, 16-22 (2012).
44. Moller, M. *et al.* Disruption of a GATA1-binding motif upstream of XG/PBDX abolishes Xg(a) expression and resolves the Xg blood group system. *Blood* **132**, 334-338 (2018).
45. Tippett, P. & Ellis, N.A. The Xg blood group system: a review. *Transfus Med Rev* **12**, 233-57 (1998).
46. Burger, H.G. Diagnostic role of follicle-stimulating hormone (FSH) measurements during the menopausal transition--an analysis of FSH, oestradiol and inhibin. *Eur J Endocrinol* **130**, 38-42 (1994).
47. Burger, H.G. The endocrinology of the menopause. *Maturitas* **23**, 129-36 (1996).
48. Obradovic, M. *et al.* Leptin and Obesity: Role and Clinical Implication. *Front Endocrinol (Lausanne)* **12**, 585887 (2021).

49. Furuhashi, M., Saitoh, S., Shimamoto, K. & Miura, T. Fatty Acid-Binding Protein 4 (FABP4): Pathophysiological Insights and Potent Clinical Biomarker of Metabolic and Cardiovascular Diseases. *Clin Med Insights Cardiol* **8**, 23-33 (2014).
50. Santos, R.A.S. *et al.* The renin-angiotensin system: going beyond the classical paradigms. *Am J Physiol Heart Circ Physiol* **316**, H958-H970 (2019).
51. Wu, S.A., Kersten, S. & Qi, L. Lipoprotein Lipase and Its Regulators: An Unfolding Story. *Trends Endocrinol Metab* **32**, 48-61 (2021).
52. Wang, S. *et al.* CHI3L1 in the pathophysiology and diagnosis of liver diseases. *Biomedicine & Pharmacotherapy* **131**, 110680 (2020).
53. Meyer-Hoffert, U. *et al.* Isolation of SPINK6 in Human Skin: Selective Inhibitor of Kallikrein-Related Peptidases. *Journal of Biological Chemistry* **285**, 32174-32181 (2010).
54. Wang, D. *et al.* SPINK6 inhibits human airway serine proteases and restricts influenza virus activation. *EMBO Molecular Medicine* **14**, e14485 (2022).
55. Seino, Y., Fukushima, M. & Yabe, D. GIP and GLP-1, the two incretin hormones: Similarities and differences. *J Diabetes Investig* **1**, 8-23 (2010).
56. Han, Y. *et al.* The ALDH2, IGSF9, and PRDM16 Proteins as Predictive Biomarkers for Prognosis in Breast Cancer. *Clin Breast Cancer* **23**, e140-e150 (2023).
57. Huang, D. *et al.* Identified IGSF9 association with prognosis and hypoxia in nasopharyngeal carcinoma by bioinformatics analysis. *Cancer Cell Int* **20**, 498 (2020).
58. Kendrick, Z.W. *et al.* Serum IGFBP2 and MSLN as diagnostic and prognostic biomarkers for pancreatic cancer. *HPB (Oxford)* **16**, 670-6 (2014).
59. Li, T. *et al.* IGFBP2: integrative hub of developmental and oncogenic signaling network. *Oncogene* **39**, 2243-2257 (2020).
60. Liu, Y. *et al.* Targeting the Immunoglobulin IGSF9 Enhances Antitumor T-cell Activity and Sensitivity to Anti-PD-1 Immunotherapy. *Cancer Res* **83**, 3385-3399 (2023).
61. Zhang, B. *et al.* Prognostic value of IGFBP2 in various cancers: a systematic review and meta-analysis. *Cancer Med* **11**, 3035-3047 (2022).
62. Simo, R., Saez-Lopez, C., Barbosa-Desongles, A., Hernandez, C. & Selva, D.M. Novel insights in SHBG regulation and clinical implications. *Trends Endocrinol Metab* **26**, 376-83 (2015).
63. Brand, J.S. & van der Schouw, Y.T. Testosterone, SHBG and cardiovascular health in postmenopausal women. *Int J Impot Res* **22**, 91-104 (2010).
64. Fortunati, N., Catalano, M.G., Boccuzzi, G. & Frairia, R. Sex Hormone-Binding Globulin (SHBG), estradiol and breast cancer. *Mol Cell Endocrinol* **316**, 86-92 (2010).
65. Perry, J.R. *et al.* Genetic evidence that raised sex hormone binding globulin (SHBG) levels reduce the risk of type 2 diabetes. *Hum Mol Genet* **19**, 535-44 (2010).
66. Wei, S., Schmidt, M.D., Dwyer, T., Norman, R.J. & Venn, A.J. Obesity and menstrual irregularity: associations with SHBG, testosterone, and insulin. *Obesity (Silver Spring)* **17**, 1070-6 (2009).
67. Conigrave, K.M., Davies, P., Haber, P. & Whitfield, J.B. Traditional markers of excessive alcohol use. *Addiction* **98 Suppl 2**, 31-43 (2003).
68. Conigrave, K.M. *et al.* CDT, GGT, and AST as markers of alcohol use: the WHO/ISBRA collaborative project. *Alcohol Clin Exp Res* **26**, 332-9 (2002).
69. Chan, K.H. *et al.* Tobacco smoking and risks of more than 470 diseases in China: a prospective cohort study. *Lancet Public Health* **7**, e1014-e1026 (2022).
70. Im, P.K. *et al.* Alcohol consumption and risks of more than 200 diseases in Chinese men. *Nat Med* **29**, 1476-1486 (2023).
71. Millwood, I.Y. *et al.* Alcohol intake and cause-specific mortality: conventional and genetic evidence in a prospective cohort study of 512 000 adults in China. *Lancet Public Health* **8**, e956-e967 (2023).

Table 1. Baseline characteristics of participants and their associations with Olink protein biomarkers

Characteristics	Mean (SD) or percentage, % ^a			No. of significant associations ^b		
	Female (n=1,247)	Male (n=759)	All (n=2,006)	Female	Male	All
Demographics						
Age, years	50.7 (10.2)	50.8 (11.0)	50.8 (10.5)	1133	612	1154
Sex	—	—	—	—	—	827
Urban residents	52.0	48.6	50.6	224	185	359
Schooling (>9 years)	20.4	7.6	22.9	4	0	3
Employed	60.1	77.5	66.8	1	0	3
Household income (≥¥20,000)	43.0	47.4	44.5	1	11	9
Ownership index ^c	3.3 (1.3)	3.4 (1.4)	3.3 (1.3)	0	29	15
Lifestyle						
Regular alcohol drinker	2.6	37.2	15.3	0	53	75
Current smoker	2.3	63.3	25.3	5	47	53
Diet						
Food diversity score ^d	11.4 (3.3)	11.3 (3.2)	11.3 (3.3)	0	0	1
Rapeseed oil	33.3	38.8	35.4	6	0	22
Physical activity, MET-hrs/day	20.5 (13.2)	23.2 (16.3)	21.4 (14.5)	1	0	3
Environmental						
Outdoor temperature, °C	16.0 (10.6)	15.7 (10.9)	15.9 (10.7)	174	57	292
Clean heating fuel	45.3	44.3	45.0	0	0	1
Clean cooking fuel	49.9	36.0	44.8	1	0	0
Health and wellbeing						
Self-rated health	8.5	8.2	8.3	0	0	3
Respiratory disease	8.3	8.0	8.2	0	2	0
Kidney/liver disease	2.1	2.5	2.2	0	2	0
HBsAg+	2.2	2.5	2.3	198	45	282
Diabetes	7.0	5.8	6.5	217	39	340
Cancer	0.6	0.6	0.7	2	1	1
Life satisfaction	3.7	4.9	4.0	1	0	0
Mental disorder	1.1	1.5	1.2	0	0	0
Clinical measurements						
BMI, kg/m ²	24.0 (3.5)	23.7 (3.3)	23.9 (3.4)	576	353	869
Standing height, cm	154.5 (6.1)	165.8 (6.5)	158.7 (8.3)	6	0	18
SBP, mmHg	129.4 (22.2)	132.6 (19.9)	130.5 (21.4)	295	80	479
DBP, mmHg	77.2 (10.6)	79.7 (11.6)	78.0 (11.1)	178	108	380
Heart rate, bpm	79.4 (11.4)	78.0 (11.9)	78.8 (11.6)	57	41	234
Exhaled CO, ppm	5.0 (2.2)	11.7 (2.5)	7.5 (2.3)	0	35	29
FEV1/FVC ratio	85.1 (6.1)	84.9 (10.1)	85.0 (8.5)	0	1	1
RPG, mmol/L	6.1 (8.2)	5.9 (8.8)	6.0 (8.5)	254	84	387
Fasting time, hours	5.2 (5.0)	5.0 (5.0)	5.1 (5.0)	56	26	79
Reproductive factors						
Age at menarche, years	15.4 (2.0)	—	15.4 (2.0)	1	—	1
Age at menopause, years	39.2 (4.3)	—	39.2 (4.3)	2	—	2
Post-menopausal	54.7	—	54.7	181	—	181
Parity	99.8	—	99.8	4	—	4
Age at first live birth, years	23.9 (3.3)	—	23.9 (3.3)	0	—	0
Lifestyle index^e						
	3.1 (0.8)	2.2 (1.0)	2.8 (1.0)	99	126	342
Frailty index^f						
	0.1 (0.06)	0.1 (0.06)	0.1 (0.06)	279	102	597

^a Baseline characteristics adjusted for age (10-year age groups) and study area (10 regions).

^b Analyses are adjusted for age, age², sex, study area, fasting time, fasting time², outdoor temperature, outdoor temperature² and plate ID, where appropriate. Bonferroni (PCA) corrected p-value < 0.05

^c 6-point index of qualitative measures of living standards

^d 24-point index of frequency of intake in 12 food groups

^e 5-point index of low-risk lifestyle characteristics

^f 28-point index of accumulation of health deficits and physical activity

Abbreviations: BMI: Body mass index; CO: carbon-monoxide; DBP: Diastolic blood pressure; FEV1/FVC: Forced Expiratory Volume in 1 second / Forced Vital Capacity; HBsAg+: Hepatitis B virus surface antigen seropositive; MET: metabolic equivalent task; RPG: random plasma glucose

Figure 1. Exposure profiles of 2923 Olink protein biomarkers in CKB, overall and by sex

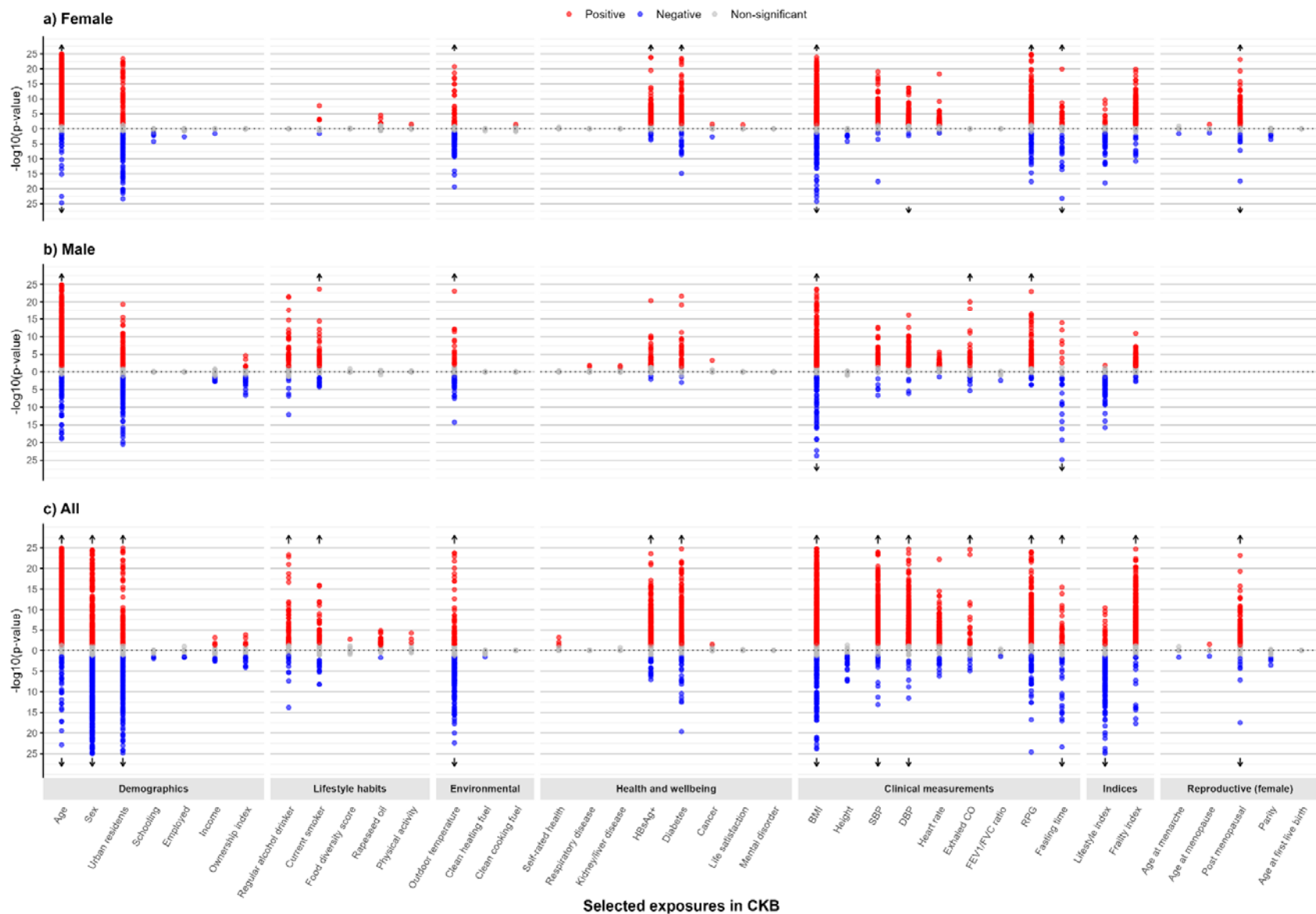


Figure 2. Exposure profiles by characteristics type of the top 25 protein biomarkers with most associations, overall and by sex

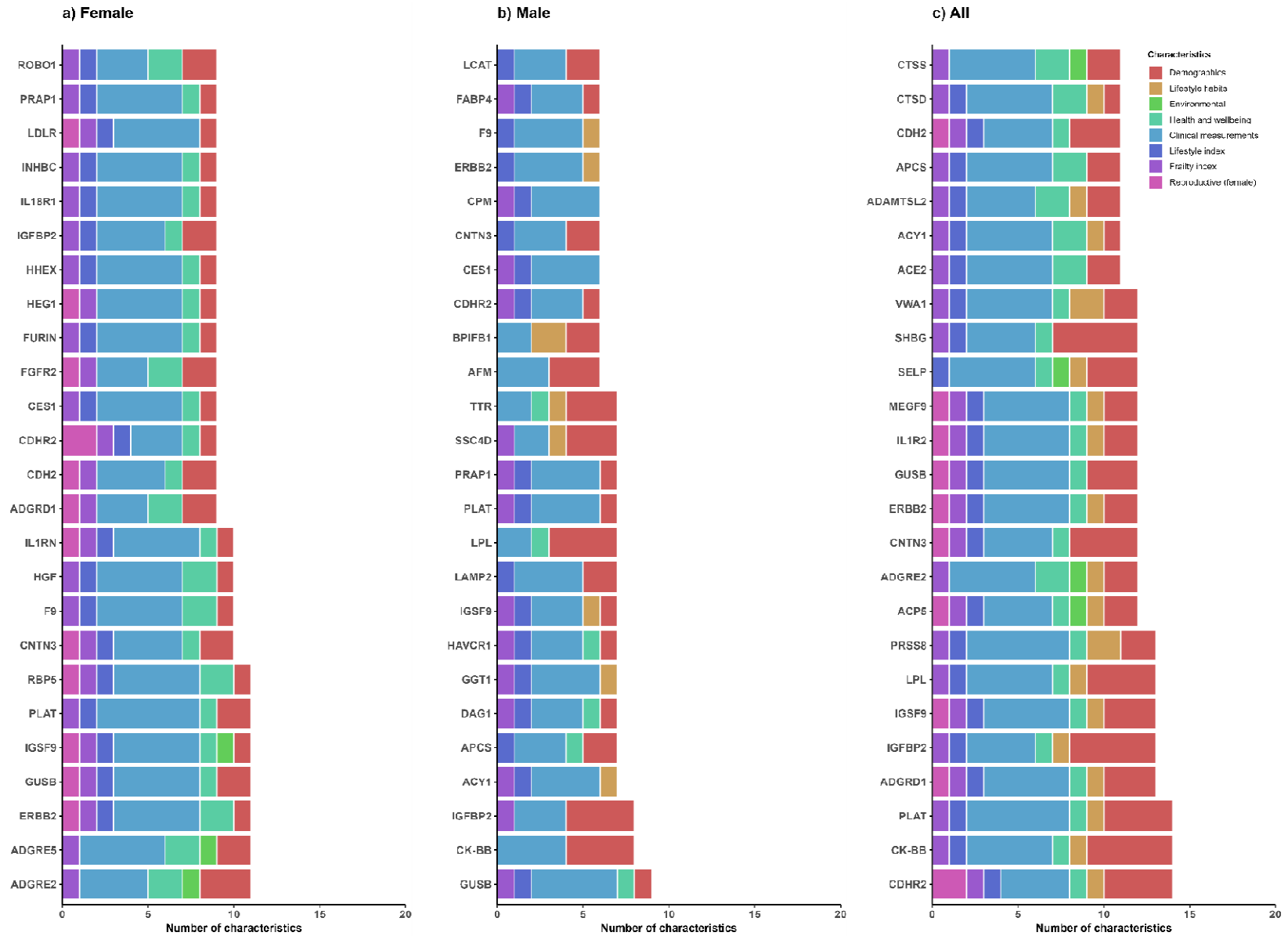


Figure 3. Sex- and age-associated protein biomarkers and their associations with other exposures

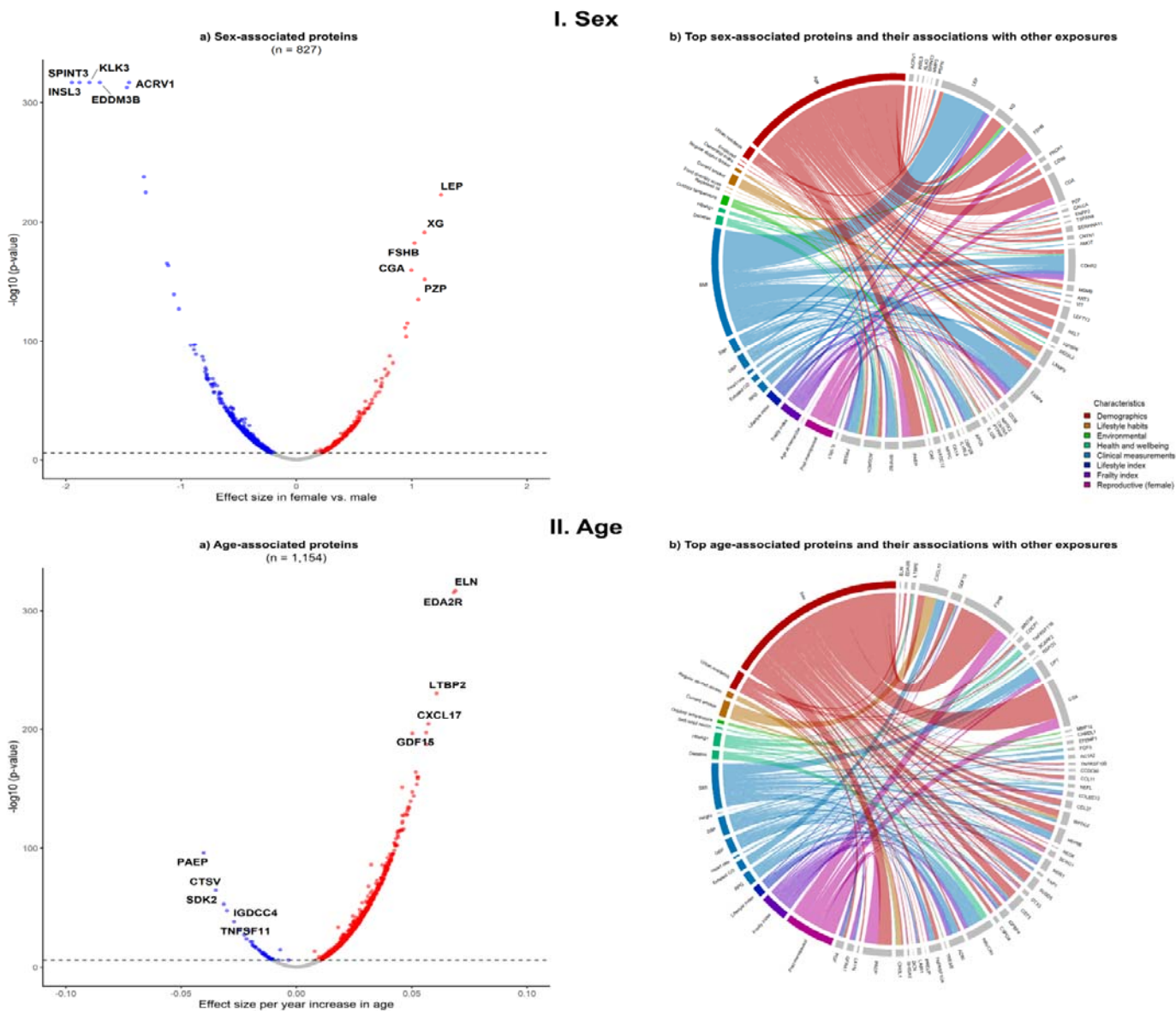


Figure 4. Lifestyle and frailty indices-associated protein biomarkers and their associations with other exposures

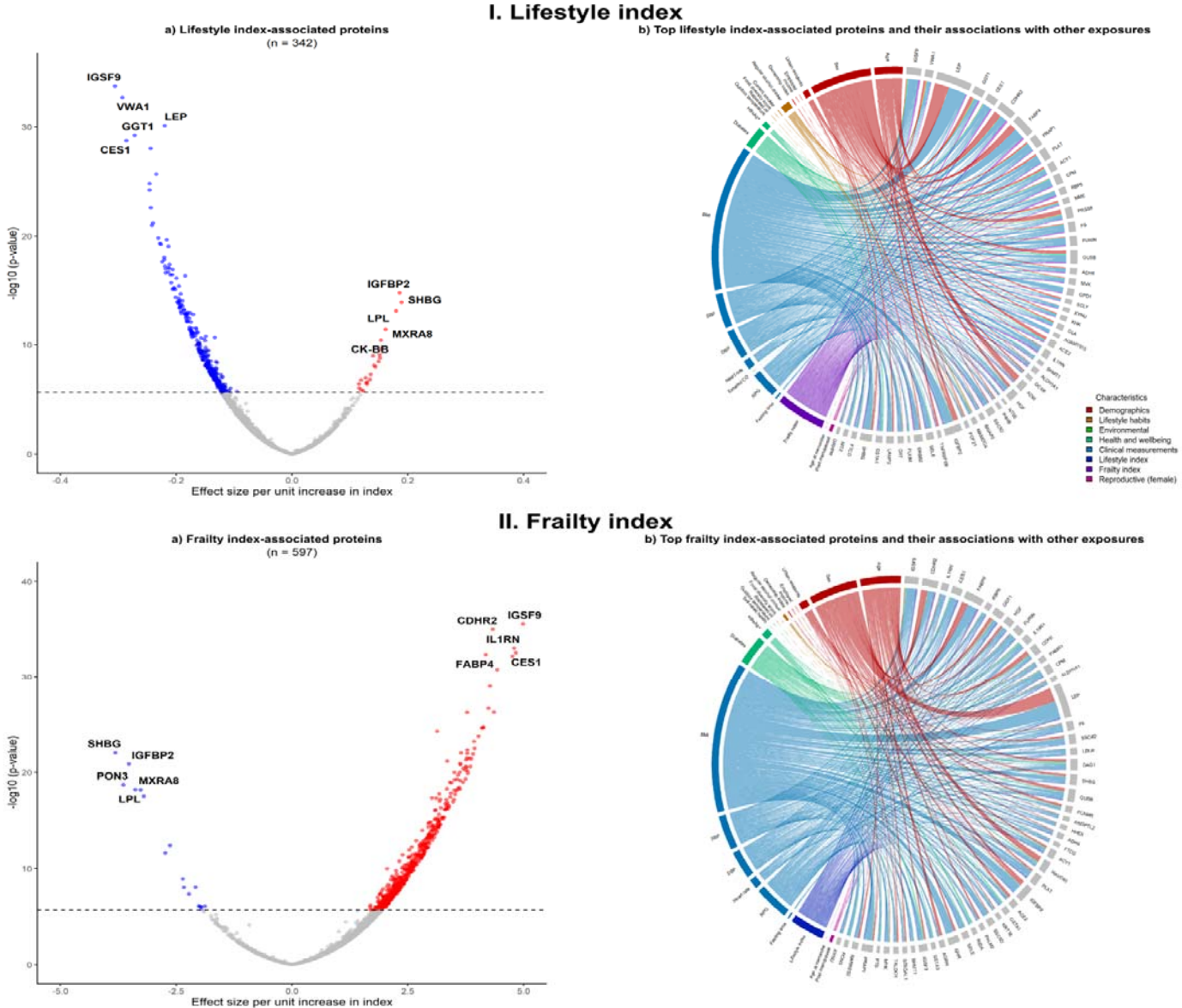


Figure 5. Associations of six selected key baseline characteristics with protein biomarkers in CKB and UKB

