



27 <sup>8</sup>Department of Medical Oncology, Institut Curie, University of Paris, 75005 Paris, France

28 <sup>9</sup>Aix Marseille Univ, Inserm, IRD, SESSTIM, Equipe Labellisée Ligue Contre le Cancer, 13005  
29 Marseille, France

30 <sup>10</sup>Survey Data Science and Assessment Division, French National Cancer Institute (Institut National du  
31 Cancer INCa), 92100 Boulogne-Billancourt, France

32 <sup>11</sup>Health Data and Assessment, Survey Data Science and Assessment Division, French National Cancer  
33 Institute (Institut National du Cancer INCa), 92100 Boulogne-Billancourt, France

34 <sup>12</sup>Department of Surgery, Institut Jean Godinot, Reims, France

35 <sup>13</sup>Department of Breast Surgical Oncology, The University of Texas MD Anderson Cancer Center,  
36 Houston, TX, USA

37

### 38 **Corresponding author**

39 Dr Elise DUMAS

40 École Polytechnique Fédérale de Lausanne (EPFL)

41 Institute of Mathematics

42 Station 3 CH-1015 Lausanne, Switzerland

43 [elise.dumas@epfl.ch](mailto:elise.dumas@epfl.ch)

44

45 **Number of words:** 3,500

46 **Key words:** breast cancer, vaginal estrogen therapy, disease-free survival, target trial  
47 emulation, causal inference

### 48 **Acknowledgments**

49 We thank the Department of Health Data and Assessment, Health Survey Data Science and  
50 Assessment Division, French National Cancer Institute (Institut National du Cancer INCa) for  
51 providing us with access to the cancer cohort.

## 52 Abstract

53 **Background:** Genitourinary syndrome of menopause (GSM) frequently occurs after breast  
54 cancer (BC), leading to symptoms that can severely affect quality of life. Vaginal estrogen  
55 therapies (VETs), including compounds like promestriene and estriol, are recommended for  
56 GSMs. However, there is concern that VETs might affect the risk of BC relapse in women with  
57 a history of BC.

58 **Material and Methods:** Utilizing data from the French National Health Data System, we  
59 emulated target trials to investigate the effect of VET initiation (promestriene or estriol) on  
60 disease-free survival (DFS) in women with a history of non-metastatic BC. Trials were  
61 emulated sequentially at 12, 24, 36, and 48 months after BC diagnosis. We estimated survival  
62 probabilities at three and five years and used inverse probability weights to adjust for  
63 confounders.

64 **Results:** Of the 136,408 unique patients meeting the inclusion criteria for at least one the  
65 emulated trials, 1,737 (1.3%) initiated VET. In patients with hormone receptor (HR)-positive  
66 tumors treated with tamoxifen, the estimated difference in DFS for VET initiation *versus* no  
67 initiation was 0.2 percentage-point at five years (95% CI -4.1; 3.6), while it was -2.9 (95% CI  
68 -6.5; 0.0) in patients with HR-positive tumors treated with aromatase inhibitors. In this  
69 subgroup, the estimated difference in DFS for promestriene initiation *versus* no VET initiation  
70 was -2.5 percentage-points at five years (95% CI -6.7; 1.1) while it was -3.7 (95% CI -10.1;  
71 1.8) for estriol initiation *versus* no VET initiation; and the differences between the two  
72 molecules were even more pronounced at three years.

73 **Discussion:** Our results do not find evidence that VET decreases DFS in patients with HR-  
74 positive tumor treated with tamoxifen. However, VET initiation might decrease DFS in patients  
75 treated with aromatase inhibitors, with estriol leading to a more pronounced decrease in DFS  
76 than promestriene.

## 77 **Introduction**

78 Breast cancer (BC) is the most frequent cancer in women, with approximately 2·3 million cases  
79 reported annually [1]. Due to the high incidence of BC around menopausal age and the common  
80 use of endocrine therapy as adjuvant treatment, BC survivors often experience symptoms  
81 associated with declining estrogen levels [2], including genitourinary syndrome of menopause  
82 (GSM). GSM is primarily characterized by vaginal dryness, itchiness, burning, overactive  
83 bladder, urinary incontinence or infection, sexual symptoms, and significantly impaired quality  
84 of life [3].

85

86 Vaginal estrogen therapies (VETs) are currently the main recommended treatment for the  
87 management of GSMs [4,5]. Available molecules include conjugated equine estrogens,  
88 estradiol (E2), estriol (E3), the final metabolite of estrogen synthesis, and promestriene, a  
89 synthetic estrogen-based VET. While all of these formulations are approved as pharmacologic  
90 interventions for the treatment of isolated moderate-to-severe GSM in healthy women [6,7],  
91 their availability varies worldwide. For example, promestriene is available in some European  
92 countries, such as France, but not in the United States. In case of history of BC, both the U.S.  
93 Food and Drug Administration and European Medicines Agency formally contraindicate the  
94 use of VET. However, most national and international guidelines, albeit cautious, endorse the  
95 use of VET after BC as a second-line intervention in case of non-hormonal treatments failure,  
96 with shared decision making between the oncologist and the patient [7–10].

97

98 Systemic administration of estrogen can lead to BC relapse [11]. Indeed, the rationale for  
99 prescribing endocrine therapy (ET) is to block estrogen pathways, either by reducing estrogen  
100 synthesis or by competitive linkage with estradiol receptors. However, current literature  
101 evaluating the effect of topical VET on oncological outcomes in patients with previous BC has

102 yielded inconsistent results. The reported effect of VETs on serum estradiol levels varied  
103 according to studies, with some studies finding increased estradiol levels[12,13] while others  
104 did not find changes [14–16]. From an epidemiological view, most observational studies found  
105 no significant association, or a positive association, between VET use after BC and BC  
106 prognosis [17–25]. However, two studies found an increased risk of relapse in the subgroup of  
107 patients treated with aromatase inhibitors (AIs) in patients using VETs [24,25]. So far, no  
108 randomized controlled trial has been conducted to evaluate the safety of VET after BC with  
109 recurrence as a primary endpoint, leaving open the question of the safety of VET utilization  
110 after BC.

111

112 Previous observational studies relied on classical statistical methods and were not designed to  
113 answer causal questions. In contrast, target trial emulation has been recently developed and  
114 popularized as a framework for designing observational studies that aim to quantify effects of  
115 interventions [26,27]. This approach consists of designing the observational study analysis to  
116 mimic key features of a hypothetical target randomized controlled trial in which the  
117 interventions would be compared, thereby reducing the risk of fundamental design flaws and  
118 highlighting potential sources of bias that could result in spurious causal conclusions.

119

120 In this study, we used data derived from one of the largest population-based resources available  
121 so far - the French National Health Data System [28,29] - to emulate target trials investigating  
122 the effect of VET initiation during BC follow-up on disease-free survival (DFS).

## 123 **Material and methods**

### 124 *Data source, ethics, and data protection*

125

126 We used nationwide data from the previously published retrospective French Early Breast  
127 Cancer Cohort (FRESH) cohort [30], which was released from the French administrative health  
128 care database, SNDS (Système National des Données de Santé) within the Oncology Data  
129 Platform available at the French National Cancer Institute [28,29]. The FRESH cohort includes  
130 all women 18 years and older, with non-metastatic BC newly diagnosed between January 1,  
131 2011, and December 31, 2017. Details about the cohort constitution and the data available have  
132 been previously published [30] and are provided in the Supplementary Notes. The study was  
133 conducted in collaboration between Institut Curie and the French National Cancer Institute  
134 (INCa), following institutional and ethical rules concerning research involving patient data,  
135 and was authorized by the French data protection agency (Commission nationale de  
136 l'informatique et des libertés—CNIL) under registration number 920017. No informed consent  
137 was required because the data used in the study was de-identified.

138

### 139 *Hypothetical target trial design*

140

141 We begin by defining a hypothetical target randomized controlled trial that would allow us to  
142 identify effects of VETs on relevant clinical outcomes. Inclusion criteria for the hypothetical  
143 target trial were (i) being a woman with a history of non-metastatic BC, treated at least by  
144 breast surgery and any systemic treatment (chemotherapy, targeted therapy, or endocrine  
145 therapy), (ii) being 70 years of age or younger, (iii) not having a history of BC recurrence, and  
146 (iv) not having used VET within the 2 years before target trial inclusion. In the hypothetical  
147 target trial, individuals were randomly assigned to one of two arms: (i) initiation of VET  
148 (treatment arm), or (ii) no initiation of VET (control arm). The trial endpoint was disease-free  
149 survival (DFS), defined as the time, in months, from BC diagnosis to death, loco-regional

150 recurrence, contralateral recurrence or distant recurrence, whichever occurred first. The causal  
151 estimand of interest was the average treatment effect (ATE) of initiating VET, which could be  
152 estimated by the difference in DFS probabilities in the two arms at three years and five years  
153 after trial inclusion. Subgroup analyses with respect to hormone receptor (HR) status and type  
154 of endocrine therapy (ET) were conducted.

155

### 156 *Emulation using observational data*

157

158 We next describe how the hypothetical target trial was emulated using the SNDS data. The  
159 emulation step involves matching the conditions specified in the hypothetical target trial as  
160 closely as possible.

161

### 162 *Inclusion criteria*

163

164 Patients were included in the emulated trial if they met the inclusion criteria of the hypothetical  
165 target trial and had not yet been administratively censored. As a single patient may meet the  
166 eligibility criteria on multiple occasions, we emulated not a single trial, but four trials  
167 sequentially, starting at months 12, 24, 36, and 48 after BC diagnosis, respectively. A patient  
168 could be included in several of these emulated trials, as long as she met the inclusion criteria  
169 on the month of trial onset.

170

### 171 *Treatment assignment*

172

173 For each of the four emulated trials, patients meeting the inclusion criteria were classified as  
174 initiating VET if they redeemed at least two prescriptions of VET in the 12 months after  
175 inclusion, and before relapse or death. The 12-month period during which patients were  
176 permitted to initiate VET is referred to as the grace period. VET delivery was identified based  
177 on the outpatient delivery of estriol or promestriene, presented either as cream or vaginal ovules

178 (Supplementary Table 1). The control group comprised patients who were not delivered VET  
179 in the year after inclusion in the emulated trial. Patients with a single VET delivery were  
180 considered to have neither initiated nor refrained from having initiated the treatment and were  
181 not included in either arm of the emulated trials.

182

### 183 *Oncological outcome*

184

185 The oncological outcome was disease free survival (DFS), as defined in the hypothetical trial.  
186 Relapses were identified from the treatments received and the conditions recorded during  
187 hospitalizations stays (Supplementary Notes and Supplementary Table 2). All patients were  
188 administratively censored on March 1, 2019, and administrative censoring was assumed to be  
189 non-informative.

190

### 191 *Covariates*

192

193 Covariates could either be measured once, at the time of BC diagnosis and initial treatment, in  
194 which case they were fixed for a single patient across all emulated trials, or they could be  
195 measured repeatedly at the time of inclusion for each of the emulated trials, in which case they  
196 could vary for a single patient across all emulated trials. Covariates measured once included  
197 the (1) number of general practitioner visits, (2) number of gynecologist visits, and (3)  
198 performance of mammography screening in the year before BC diagnosis; (4) deprivation level  
199 of the area of residence and (5) enrollment in universal health insurance at BC diagnosis; (6)  
200 BC subtype, (7) nodal status, (8) type of BC surgery, (9) use of axillary surgery, (10) type of  
201 hospital for surgery, (11) use of radiotherapy and (12) chemotherapy setting during initial BC  
202 treatment. Covariates measured repeatedly included (1) endocrine therapy regimen, (2)  
203 adherence to endocrine therapy, (3) comorbid conditions, (4) exposure to other medications at



204 trial inclusion, and (5) age at trial inclusion. Further details on the definition of covariates are  
205 provided in the Supplementary Notes.

206

207 *Statistical analysis*

208

209 Unlike the hypothetical target trial, treatment assignment in the observed data was not  
210 randomized and could depend on a patient's characteristics, potentially leading to confounding.  
211 Without appropriate adjustment, the study would also be subject to immortal-time bias due to  
212 the 12-month grace period allowed between inclusion and VET initiation. To address both  
213 confounding and immortal-time bias, we cloned each trial participant into two exact copies  
214 (clones) [31,32]. One clone was assigned to the treatment arm, the other to the control arm.  
215 Clones were artificially censored when their observed trajectories deviated from the treatment  
216 strategy of the arm to which they were assigned. This informative artificial censoring  
217 introduces selection bias over time, which was addressed by the use of time-varying inverse  
218 probability of censoring (IPC) weights, estimated from the covariates. Standardized mean  
219 differences (SMDs) were derived to assess adjustment quality after IPC weighting.

220 The ATE of VET initiation was estimated by the three-year and five-year differences in DFS  
221 on the IPC-weighted population and was visually assessed by weighted Kaplan-Meier survival  
222 curves. We intentionally reported outcomes on the survival scale to avoid the problems  
223 associated with the causal interpretation of hazard ratios [31,33]. We conducted subgroup  
224 analyses by HR status (*HR*-positive/*HR*-negative) and endocrine therapy regimen  
225 (tamoxifen/aromatase inhibitors), and we analyzed the two molecules used as VET  
226 (estriol/promestriene) both combined and separately. We performed a sensitivity analysis to  
227 assess potential residual confounding bias, using fosfomycin, a first-line antibiotic used in the  
228 treatment of urinary tract infections (UTIs) as a negative control exposure [34]. Fosfomycin  
229 emerged as a suitable candidate for a negative control, because vaginal dryness and UTIs are

230 both GSMs that could be induced by hypoestrogenic state [35], suggesting a common  
231 confounding structure of VET and fosfomycin, and because there was no prior evidence that  
232 fosfomycin could affect BC outcomes.

233

234 In a supplementary analysis, we adopted a methodology similar to previously proposed  
235 approaches [23], utilizing a time-dependent Cox proportional hazards regression model to  
236 estimate hazard ratios (HRs). Further details are provided in the Supplementary Notes and in  
237 Supplementary Table 3.

## 238 Results

### 239 *Patients' characteristics*

240

241 Overall, 136,408 patients with previous BC met the inclusion criteria for at least one of the  
242 emulated trials, representing 373,568 patient-years in the aggregated analysis (Supplementary  
243 Figure 1). Of them, 1,737 patients (1.3%), representing 1,739 patient-years, initiated VET  
244 (Supplementary Table 4). Most patient-years who initiated VET received only promestriene  
245 (55.5%), while 34.6% received only estriol, and 9.9% received both promestriene and estriol  
246 (Supplementary Figure 2A). The median number of VET deliveries was 3 (IQR 2-6,  
247 Supplementary Figure 2B).

248

249 When compared with patients who did not initiate VET, patients who initiated VET were  
250 slightly older at BC diagnosis (mean age 54.9 *versus* 54.0), resided in less deprived areas and  
251 had more frequent visits to their general practitioner and gynecologist during the year preceding  
252 BC diagnosis (Table 1). Overall, BC subtype was mostly luminal (77.3%) while TNBC  
253 (10.9%) and *HER2*-positive BC subtypes (*HR*-positive 7.6%; *HR*-negative 4.2%) were less  
254 frequent, and this distribution was not different between patients who initiated VET and  
255 patients who did not initiate VET. Regarding covariates measured repeatedly, patient-years  
256 who initiated VET were more frequently treated with AI at trial inclusion (65.0% *versus* 57.9%  
257 of patients with *HR*-positive tumors) while less frequently treated with tamoxifen  
258 (Supplementary Table 5).

259

260 After adjustment by IPC weighting, all SMDs were below 0.1 in absolute value  
261 (Supplementary Figure 3), suggesting that the statistical procedure enabled effective balancing  
262 of the characteristics between the group initiating VET and not initiating it. The estimated IPC  
263 weights at the end of the 12-month grace period ranged from 1.28 to 3.29 (median 2.04,

264 interquartile range IQR 1·84-2·31, Supplementary Figure 4). The median follow-up was 33  
265 months (IQR: 16-50).

266

### 267 ***Effect of VET initiation on DFS***

268

269 In the whole population, the estimated difference in DFS of VET initiation *versus* no initiation  
270 was 0·3 percentage-point at three years (95% CI -1·1 to 1·4) and -1·5 at five years (95% CI -  
271 3·7 to 0·6) (Figure 1A, Table 2). In patients with HR-positive tumors, the estimated difference  
272 at five years was -1·9 (95% CI -4·6 to 0·3, Figure 1B). We further subcategorized patients with  
273 HR-positive tumors by ET regimen. In patients treated with AIs, the estimated difference in  
274 DFS was -0·6 percentage-point at three years (95% CI -2·6 to 0·9), and -2·9 at five years (95%  
275 CI -6·5 to 0·0) (Figure 1C). Conversely, in patients treated with tamoxifen, the estimated  
276 difference in DFS was 2·2 percentage-points at three years (95% CI 0·4 to 3·7) and 0·2 at five  
277 years (95% CI -4·1 to 3·6, Figure 1D). In patients with HR-negative tumors, the estimated  
278 difference was 0·3 percentage-point at three years (95% CI -3·4 to 3·9) and 1·9 at five years  
279 (95% CI -2·4 to 6·7) (Figure 1E).

280

### 281 ***Effect of VET initiation on DFS according to the VET molecule***

282

283 The estimated differences in DFS of promestriene initiation *versus* no VET initiation are  
284 displayed in Figure 2. In patients with HR-positive tumors treated with AI, the estimated  
285 difference in DFS was 1·0 percentage-point at three years (95% CI -1·0 to 2·6) and -2·5  
286 percentage-points at five years (95% CI -6·7 to 1·1) (Figure 2C, Table 2).

287

288 The estimated differences in DFS of estriol initiation *versus* no VET initiation are displayed in  
289 Figure 3. Among patients with HR-positive disease currently treated with AIs, the estimated  
290 difference in DFS was -4·1 percentage-points at three years (95% CI -9·1 to -0·2) and -3·7 at

291 five years (95% CI -10·1 to 1·8) (Figure 3C); while it was 3·8 percentage-points at three years  
292 (95% CI 1·2 to 5·7) and 4·0 at five years (95% CI -2·8 to 8·8) among patients currently treated  
293 with tamoxifen (Figure 3D).

294

### 295 *Negative control exposure*

296

297 We analyzed fosfomycin initiation as a negative control exposure. The estimated difference in  
298 DFS for fosfomycin initiation *versus* no initiation was low in the whole population, and in  
299 patients with *HR*-positive tumors, regardless of their endocrine therapy regimen, both at three  
300 and five years (Supplementary Tables 6-7, Supplementary Figure 5). However, the estimated  
301 difference in DFS was 4·7 percentage-points (95% CI 0·8 to 7·8) at five years in patients with  
302 *HR*-negative tumors (Supplementary Figure 5E).

303

### 304 *Comparison with a time-dependent Cox model*

305

306 In a supplementary analysis mimicking an associational method previously proposed,[23] the  
307 estimated HR of VET initiation *versus* no initiation was 0·95 (95% CI 0·89-1·00) in the whole  
308 population, 0·96 (95% CI 0·82-1·12) in the subgroup of patients treated with tamoxifen, and  
309 0·93 (95% CI 0·87-1·00) in the subgroup of patients treated with aromatase inhibitors  
310 (Supplementary Table 3).

## 311 **Discussion**

312 We emulated target trials investigating the effect of VET initiation on the risk of relapse or  
313 death in patients with non-metastatic BC. We found an increased risk of relapse of 2·9  
314 percentage-points at five years among patients initiating VET while treated by AI, notably in  
315 patients who initiated estriol.

316  
317 Previous studies on VET use after BC provided reassuring results (Supplementary Table 8).  
318 None found an adverse association between the use of VET and overall survival (OS)  
319 [20,21,25], BC-specific survival [20–23], or DFS [17–21,25] in the broad population of BC  
320 survivors. On the contrary, some reported that VET use is associated with improved OS [25],  
321 BC-specific survival [21,23], or DFS [21]. In particular, in the largest study so far, McVicker  
322 et al [23] analyzed BC-specific survival according to VET use in a cohort of 49,237 women  
323 with BC aged between 40 and 79 years. The authors found that VET use was associated with  
324 a decrease in specific mortality (HR 0·77, 95% CI 0·63 to 0·94) in the overall population, but  
325 also in the subgroup of patients treated with AIs (HR 0·72, 95% CI 0·58 to 0·91). In contrast,  
326 a Danish observational study reported VET use to be associated with an increased risk of  
327 recurrence in this subgroup (HR 1·39, 95% CI 1·04 to 1·85) [25].

328  
329 All the previous observational studies are difficult to interpret causally and are prone to bias  
330 because they did not apply formal causal inference methods. In our work, by explicitly  
331 emulating a target trial, we have a straightforward causal interpretation of our results under  
332 explicit assumptions. In contrast, earlier investigations relied on traditional associational  
333 methods, estimating HRs from time-fixed or time-varying Cox models in cohort designs  
334 [18,20,21,23–25], or odds ratios (ORs) from logistic regression models in case-control designs  
335 [17,22]. These methods do not provide valid causal estimates, as shown in our supplementary

336 analysis where, by mimicking the methodology used in a previous study [23], we estimated the  
337 HR in the AI group to be 0·93 (95% CI 0·87-1·00), in the opposite direction to the results we  
338 obtained in our main analysis. Several reasons may explain this difference [32,36]. First,  
339 traditional methods cannot account for treatment-confounding feedback due to time-varying  
340 confounders [37–40]. In contrast, in our main analysis, we handled time-varying confounding  
341 factors by emulating multiple target trials sequentially, treating time-varying confounding  
342 factors as time-fixed confounders at each trials' baseline. Second, HRs and ORs are not  
343 collapsible, which implies that the covariate-adjusted HRs from the previous observational  
344 studies are substantially different quantities than the HRs estimated in randomized clinical  
345 trials [33]. More broadly, there are concerns about the causal interpretation of HRs [31]. This  
346 justifies why we have only presented results at the survival scale. Third, traditional time-fixed  
347 methods are susceptible to immortal-time bias, arising when a grace period for treatment  
348 initiation leads to a spurious overestimation of the protective effect of treatment [41]. We  
349 avoided the bias by a cloning and weighting approach. Finally, any observational study might  
350 be prone to bias due to unmeasured confounding. Unlike previous studies, we used a negative  
351 control exposure, fosfomycin, to detect potential residual confounding bias. The negative  
352 control analysis did not detect evidence of unmeasured confounding in any subgroup, except  
353 *HR*-negative tumors. Thus, we warrant caution in interpreting results pertaining to the *HR*-  
354 negative group. Conversely, the results of the negative control exposure analysis support a  
355 causal interpretation of our findings in the remaining subgroups.

356

357 Overall, in the current study, no harmful effect of VET was detected marginally, in the overall  
358 population. However, among patients with *HR*-positive tumors, the effect of VET initiation on  
359 DFS was different according to ET regimen, with a transient protective effect of VET initiation  
360 in patients under tamoxifen at three years, not confirmed at five years; and a deleterious effect

361 of VET initiation in patients under AI at five years. Several randomized trials have reported  
362 transient increases in circulating estrogen levels associated with the use of VET [12,42], with  
363 systemic passage potentially exacerbated by vaginal atrophy [16]. Tamoxifen, a selective  
364 estrogen receptor modulator, competes with estrogens and their derivatives with a higher  
365 affinity for the estrogen-receptor, resulting in the inhibition of estrogen oncogenic pathway,  
366 thereby counteracting the effects of small increases in circulating estrogen levels [43]. The  
367 increase in DFS at three years observed in patients initiating VET while on tamoxifen could be  
368 due to improved adherence to endocrine therapy, but further research is needed to validate this  
369 hypothesis. Conversely, AIs inhibit estrogen production to nearly undetectable circulating  
370 levels by inhibiting the conversion of adrenal androgens to estrogens [44]. With results  
371 suggesting that long-term sharp estrogen deprivation may cause a hypersensitivity of estrogen  
372 receptors in the breast [16], even a modest increase in estrogen levels in patients treated with  
373 AIs could promote cancer recurrence.

374

375 Among AI-treated patients, we observed decrease in DFS in patients initiating estriol at three  
376 years, but not in patients initiating promestriene. Several previous studies suggested that the  
377 systemic passage of VETs may vary by molecule, with promestriene exhibiting limited  
378 systemic absorption [45]. Promestriene has a favorable safety profile with no alteration of  
379 plasmatic levels of gonadotrophins or estradiol [46,47] while variations were found with estriol  
380 [14,48], no stimulation of endometrium [49], and a pharmacological specificity with the  
381 presence of 3-propyl and 17b-methyl ether groups making it less able to penetrate the basal  
382 membrane.

383

384 We report here the largest study from far on the effect of VET initiation on oncological  
385 outcomes. While we used state-of-the-art causal inference methodology, our study has



386 limitations. Firstly, our data do not allow assessment of over-the-counter purchases such as  
387 non-hormonal vaginal moisturizers, estradiol vaginal rings or prasterone. Secondly, we were  
388 not able to provide data on patients currently treated with gonadotropin-releasing hormone  
389 (gnRH) agonists together with AI or tamoxifen, due to the timeframe of the study, where these  
390 combinations were not yet standard of care. Finally, we were unable to draw conclusions for  
391 the subgroup of patients with *HR*-negative tumors due to potential residual unmeasured  
392 confounding, highlighting an area for future research.

393

394 In conclusion, our study suggests that VET initiation during BC follow-up could be safely  
395 proposed to patients with HR-positive tumors currently treated with tamoxifen. In patients  
396 currently treated with AIs, VET initiation should be avoided as much as possible until mature  
397 additional data are available. In the absence or after failure of non-hormonal alternatives,  
398 promestriene should be preferred over estriol in this subgroup. In a context of a growing  
399 number of patients are treated under AI notably with gnRH agonists, the development of novel  
400 efficient non hormonal therapies to alleviate GSM remains a burning unmet need.

## 401 **References**

- 402 1. Sung H, Ferlay J, Siegel RL, Laversanne M, Soerjomataram I, Jemal A, et al. Global  
403 Cancer Statistics 2020: GLOBOCAN Estimates of Incidence and Mortality Worldwide for 36  
404 Cancers in 185 Countries. *CA Cancer J Clin.* 2021;71:209–49.
- 405 2. Santen RJ. Vaginal administration of estradiol: effects of dose, preparation and timing on  
406 plasma estradiol levels. *Climacteric.* 2015;18:121–34.
- 407 3. Sousa MS, Peate M, Jarvis S, Hickey M, Friedlander M. A clinical guide to the  
408 management of genitourinary symptoms in breast cancer survivors on endocrine therapy.  
409 *Ther Adv Med Oncol.* 2017;9:269–85.
- 410 4. Pitkin J. BMS – Consensus statement. *Post Reprod Health.* 2018;24:133–8.
- 411 5. Baber RJ, Panay N, Fenton A. 2016 IMS Recommendations on women’s midlife health  
412 and menopause hormone therapy. *Climacteric.* 2016;19:109–50.
- 413 6. Del Pup L, Di Francia R, Cavaliere C, Facchini G, Giorda G, De Paoli P, et al.  
414 Promestriene, a specific topic estrogen. Review of 40 years of vaginal atrophy treatment: is it  
415 safe even in cancer patients? *Anti-Cancer Drugs.* 2013;24:989–98.
- 416 7. “The 2022 Hormone Therapy Position Statement of The North American Menopause  
417 Society” Advisory Panel. The 2022 hormone therapy position statement of The North  
418 American Menopause Society. *Menopause.* 2022;29:767–94.
- 419 8. Treatment of Urogenital Symptoms in Individuals With a History of Estrogen-dependent  
420 Breast Cancer: Clinical Consensus. *Obstetrics & Gynecology.* 2021;138:950–60.
- 421 9. Hocké C, Diaz M, Bernard V, Frantz S, Lambert M, Mathieu C, et al. [Genitourinary  
422 menopause syndrome. Postmenopausal women management: CNGOF and GEMVi clinical  
423 practice guidelines]. *Gynecol Obstet Fertil Senol.* 2021;49:394–413.
- 424 10. Cardoso F, Paluch-Shimon S, Senkus E, Curigliano G, Aapro MS, André F, et al. 5th  
425 ESO-ESMO international consensus guidelines for advanced breast cancer (ABC 5). *Annals*  
426 *of Oncology.* 2020;31:1623–49.
- 427 11. Poggio F, Del Mastro L, Bruzzone M, Ceppi M, Razeti MG, Fregatti P, et al. Safety of  
428 systemic hormone replacement therapy in breast cancer survivors: a systematic review and  
429 meta-analysis. *Breast Cancer Res Treat.* 2022;191:269–75.
- 430 12. Kendall A, Dowsett M, Folkerd E, Smith I. Caution: Vaginal estradiol appears to be  
431 contraindicated in postmenopausal women on adjuvant aromatase inhibitors. *Annals of*  
432 *Oncology.* 2006;17:584–7.
- 433 13. Wills S, Ravipati A, Venuturumilli P, Kresge C, Folkerd E, Dowsett M, et al. Effects of  
434 Vaginal Estrogens on Serum Estradiol Levels in Postmenopausal Breast Cancer Survivors  
435 and Women at Risk of Breast Cancer Taking an Aromatase Inhibitor or a Selective Estrogen  
436 Receptor Modulator. *JOP.* 2012;8:144–8.

- 437 14. Donders G, Neven P, Moegele M, Lintermans A, Bellen G, Prasauskas V, et al. Ultra-  
438 low-dose estriol and *Lactobacillus acidophilus* vaginal tablets (Gynoflor®) for vaginal  
439 atrophy in postmenopausal breast cancer patients on aromatase inhibitors: pharmacokinetic,  
440 safety, and efficacy phase I clinical study. *Breast Cancer Res Treat.* 2014;145:371–9.
- 441 15. Goldfarb SB, Dickler M, Dnistrian A, Patil S, Dunn L, Chang K, et al. Limited absorption  
442 of low dose 10µg intravaginal 17-β Estradiol (Vagifem®) in postmenopausal women with  
443 breast cancer on aromatase inhibitors. *Cancer Research.* 2012;72.
- 444 16. Biglia N, Peano E, Sgandurra P, Moggio G, Panuccio E, Migliardi M, et al. Low-dose  
445 vaginal estrogens or vaginal moisturizer in breast cancer survivors with urogenital atrophy: a  
446 preliminary study. *Gynecological Endocrinology.* 2010;26:404–12.
- 447 17. Le Ray I, Dell’Aniello S, Bonnetain F, Azoulay L, Suissa S. Local estrogen therapy and  
448 risk of breast cancer recurrence among hormone-treated patients: a nested case–control study.  
449 *Breast Cancer Res Treat.* 2012;135:603–9.
- 450 18. Dew JE, Wren BG, Eden JA. A cohort study of topical vaginal estrogen therapy in  
451 women previously treated for breast cancer. *Climacteric.* 2003;6:45–52.
- 452 19. Vassilopoulou-Sellin R, Theriault R, Klein MJ. Estrogen replacement therapy in women  
453 with prior diagnosis and treatment for breast cancer. *Gynecol Oncol.* 1997;65:89–93.
- 454 20. O’Meara ES, Rossing MA, Daling JR, Elmore JG, Barlow WE, Weiss NS. Hormone  
455 Replacement Therapy After a Diagnosis of Breast Cancer in Relation to Recurrence and  
456 Mortality. *Journal of the National Cancer Institute.* 2001;93:9.
- 457 21. Durna EM, Leader LR, Sjoblom P, Eden JA, Wren BG, Heller GZ. Hormone replacement  
458 therapy after a diagnosis of breast cancer: cancer recurrence and mortality. *Medical Journal*  
459 *of Australia.* 2002;177:347–51.
- 460 22. Sund M, Garmo H, Andersson A, Margolin S, Ahlgren J, Valachis A. Estrogen therapy  
461 after breast cancer diagnosis and breast cancer mortality risk. *Breast Cancer Res Treat.*  
462 2023;198:361–8.
- 463 23. McVicker L, Labeit AM, Coupland CAC, Hicks B, Hughes C, McMenamin Ú, et al.  
464 Vaginal Estrogen Therapy Use and Survival in Females With Breast Cancer. *JAMA Oncol.*  
465 2023;e234508.
- 466 24. Agrawal P, Singh SM, Able C, Dumas K, Kohn J, Kohn TP, et al. Safety of Vaginal  
467 Estrogen Therapy for Genitourinary Syndrome of Menopause in Women With a History of  
468 Breast Cancer. *Obstet Gynecol.* 2023;142:660–8.
- 469 25. Cold S, Cold F, Jensen M-B, Cronin-Fenton D, Christiansen P, Ejlersen B. Systemic or  
470 Vaginal Hormone Therapy After Early Breast Cancer: A Danish Observational Cohort Study.  
471 *JNCI: Journal of the National Cancer Institute.* 2022;djac112.
- 472 26. Hernán MA, Robins JM. Using Big Data to Emulate a Target Trial When a Randomized  
473 Trial Is Not Available. *Am J Epidemiol.* 2016;183:758–64.
- 474 27. Maringe C, Benitez Majano S, Exarchakou A, Smith M, Rachet B, Belot A, et al.  
475 Reflection on modern methods: trial emulation in the presence of immortal-time bias.

- 476 Assessing the benefit of major surgery for elderly lung cancer patients using observational  
477 data. *International Journal of Epidemiology*. 2020;49:1719–29.
- 478 28. Tuppin P, Rudant J, Constantinou P, Gastaldi-Ménager C, Rachas A, de Roquefeuil L, et  
479 al. Value of a national administrative database to guide public decisions: From the système  
480 national d’information interrégimes de l’Assurance Maladie (SNIIRAM) to the système  
481 national des données de santé (SNDS) in France. *Rev Epidemiol Sante Publique*. 2017;65  
482 Suppl 4:S149–67.
- 483 29. Bousquet PJ, Lefeuvre D, Tuppin P, BenDiane MK, Rocchi M, Bouée-Benhamiche E, et  
484 al. Cancer care and public health policy evaluations in France: Usefulness of the national  
485 cancer cohort. *PLoS One*. 2018;13:e0206448.
- 486 30. Dumas E, Laot L, Coussy F, Grandal Rejo B, Daoud E, Laas E, et al. The French Early  
487 Breast Cancer Cohort (FRESH): A Resource for Breast Cancer Research and Evaluations of  
488 Oncology Practices Based on the French National Healthcare System Database (SNDS).  
489 *Cancers*. 2022;14:2671.
- 490 31. Stensrud MJ, Hernán MA. Why Test for Proportional Hazards? *JAMA*. 2020;323:1401–  
491 2.
- 492 32. Hernán MA, Sauer BC, Hernández-Díaz S, Platt R, Shrier I. Specifying a target trial  
493 prevents immortal time bias and other self-inflicted injuries in observational analyses. *J Clin*  
494 *Epidemiol*. 2016;79:70–5.
- 495 33. Stensrud MJ, Aalen JM, Aalen OO, Valberg M. Limitations of hazard ratios in clinical  
496 trials. *European Heart Journal*. 2019;40:1378–83.
- 497 34. Lipsitch M, Tchetgen ET, Cohen T. Negative Controls: A Tool for Detecting  
498 Confounding and Bias in Observational Studies. *Epidemiology*. 2010;21:383–8.
- 499 35. Flores SA, Hall CA. Atrophic Vaginitis. *StatPearls [Internet]*. Treasure Island (FL):  
500 StatPearls Publishing; 2023 [cited 2023 Nov 29]. Available from:  
501 <http://www.ncbi.nlm.nih.gov/books/NBK564341/>
- 502 36. Dickerman BA, García-Albéniz X, Logan RW, Denaxas S, Hernán MA. Emulating a  
503 target trial in case-control designs: an application to statins and colorectal cancer.  
504 *International Journal of Epidemiology*. 2020;49:1637–46.
- 505 37. Hernán MA, Robins JM. *Causal Inference: What If*. Boca Raton: Chapman&Hall/CRC.  
506 2020.
- 507 38. Robins J. A new approach to causal inference in mortality studies with a sustained  
508 exposure period—application to control of the healthy worker survivor effect. *Mathematical*  
509 *Modelling*. 1986;7:1393–512.
- 510 39. Robins JM, Hernan MA, Brumback B. Marginal Structural Models and Causal Inference  
511 in Epidemiology. *Epidemiology*. 2000;11:550–60.
- 512 40. Hernán MA, Brumback B, Robins JM. Marginal structural models to estimate the causal  
513 effect of zidovudine on the survival of HIV-positive men. *Epidemiology*. 2000;11:561–70.

- 514 41. Suissa S. Immortal Time Bias in Pharmacoepidemiology. *American Journal of*  
515 *Epidemiology*. 2008;167:492–9.
- 516 42. Sánchez-Rovira P, Hirschberg AL, Gil-Gil M, Bermejo-De Las Heras B, Nieto-Magro C.  
517 A Phase II Prospective, Randomized, Double-Blind, Placebo-Controlled and Multicenter  
518 Clinical Trial to Assess the Safety of 0.005% Estriol Vaginal Gel in Hormone Receptor-  
519 Positive Postmenopausal Women with Early Stage Breast Cancer in Treatment with  
520 Aromatase Inhibitor in the Adjuvant Setting. *Oncologist*. 2020;25:e1846-1854.
- 521 43. Riggs BL, Hartmann LC. Selective Estrogen-Receptor Modulators — Mechanisms of  
522 Action and Application to Clinical Practice. *New England Journal of Medicine*.  
523 2003;348:618–29.
- 524 44. Miller WR. Aromatase inhibitors: mechanism of action and role in the treatment of breast  
525 cancer. *Semin Oncol*. 2003;30:3–11.
- 526 45. Santos I, Clissold S. Urogenital disorders associated with oestrogen deficiency: the role of  
527 promestriene as topical oestrogen therapy. *Gynecological Endocrinology*. 2010;26:644–51.
- 528 46. Wolff JP, Cachelou R, Guéritée N. Absence of systemic hormonal effects in an oestradiol  
529 diether topically active on the vaginal mucosa. *Maturitas*. 1982;4:239–46.
- 530 47. Campana G, Di Grancesco null. [Climacteric syndrome : clinical experiences using  
531 promestriene]. *Ann Ostet Ginecol Med Perinat*. 1976;97:189–97.
- 532 48. Pfeiler G, Glatz C, Königsberg R, Geisendorfer T, Fink-Retter A, Kubista E, et al.  
533 Vaginal estriol to overcome side-effects of aromatase inhibitors in breast cancer patients.  
534 *Climacteric*. 2011;14:339–44.
- 535 49. Sun A, Lin S, Jing L, Wang Z, Ye J, Zhang Y. [Safety of promestriene capsule used in  
536 postmenopausal atrophic vaginitis]. *Zhonghua Fu Chan Ke Za Zhi*. 2009;44:593–6.
- 537

## Tables

		No VET	Any VET
<b>Number of patients</b>		<b>133205</b>	<b>1737</b>
<b>Socio-economic factors</b>			
Age at BC diagnosis		54.0 (9.5)	54.9 (8.4)
Deprivation index	1st quintile (least deprived)	25099 (18.8)	414 (23.8)
	2nd quintile	26457 (19.9)	340 (19.6)
	3rd quintile	26020 (19.5)	324 (18.7)
	4th quintile	26365 (19.8)	320 (18.4)
	5th quintile (most deprived)	26637 (20.0)	298 (17.2)
	Overseas departments	2627 (2.0)	41 (2.4)
GP visits*	0	8688 (6.5)	75 (4.3)
	1-5	69124 (51.9)	812 (46.7)
	6-11	40699 (30.6)	574 (33.0)
	12+	14694 (11.0)	276 (15.9)
Gynecologist visits**	0	67235 (50.5)	733 (42.2)
	1	39471 (29.6)	536 (30.9)
	2-3	22138 (16.6)	378 (21.8)
	4+	4361 (3.3)	90 (5.2)
Enrollment in universal health insurance	No	125157 (94.0)	1657 (95.4)
	Yes	8048 (6.0)	80 (4.6)
<b>BC diagnostic, biology, and treatment</b>			
Mammographic screening before BC diagnosis	No	81645 (61.3)	1018 (58.6)
	Yes	51560 (38.7)	719 (41.4)
BC subtype	luminal	102977 (77.3)	1367 (78.7)
	TNBC	14492 (10.9)	181 (10.4)
	HER2+/HR+	10176 (7.6)	127 (7.3)
	HER2+/HR-	5560 (4.2)	62 (3.6)
HR status	HR -positive	113153 (84.9)	1494 (86.0)
	HR -negative	20052 (15.1)	243 (14.0)
Nodal status	Node-negative	102328 (76.8)	1389 (80.0)
	Node-positive	30877 (23.2)	348 (20.0)
Type of BC surgery	Lumpectomy	98061 (73.6)	1354 (78.0)
	Mastectomy	35144 (26.4)	383 (22.0)
Axillar surgery	No	10201 (7.7)	155 (8.9)
	Yes	123004 (92.3)	1582 (91.1)
Type of hospital for surgery	CLCC	36537 (27.4)	480 (27.6)
	Non profit private hospitals	4639 (3.5)	54 (3.1)
	Profit private hospitals	55408 (41.6)	776 (44.7)
	Public hospitals	36621 (27.5)	427 (24.6)
Radiotherapy	No	10019 (7.5)	122 (7.0)
	Yes	123186 (92.5)	1615 (93.0)
Chemotherapy	No	58983 (44.3)	806 (46.4)
	Yes	74222 (55.7)	931 (53.6)
Setting	Adjuvant	59074 (79.6)	762 (81.8)
	Neo-adjuvant	13678 (18.4)	148 (15.9)
	Both	1470 (2.0)	21 (2.3)

**Table 1:** Patient’s characteristics by VET initiation status for all variables measured at the time of BC diagnosis and initial treatments. Patients were assigned to the “Any VET” group

if they were classified as patients initiating VET in at least one of the four emulated trials; otherwise, they were assigned to the "No VET" group. The number of patients, and the percentage of patients (in parentheses), are reported for categorical variables. The mean value, and the standard deviation (in parentheses), are reported for continuous variables. Of note: of the 136,408 patients meeting the inclusion criteria for at least one of the emulated trials, 1,466 patients received VET only once during the grace period for at least one of the emulated trials, and were artificially censored from both arms for this trial. They are not shown in this table for the sake of simplicity. \*Number of general practitioner (GP) visits in the year preceding BC diagnosis. \*\*Number of gynecologist visits in the year preceding BC diagnosis. Abbreviations: VET: vaginal estrogen therapy; GP: general practitioner; BC: breast cancer; TNBC: triple-negative breast cancer; CLCC: "Centre de Lutte Contre le Cancer" (center for the fight against cancer); HR: hormone receptor; HER2: human epidermal growth factor receptor 2.

1

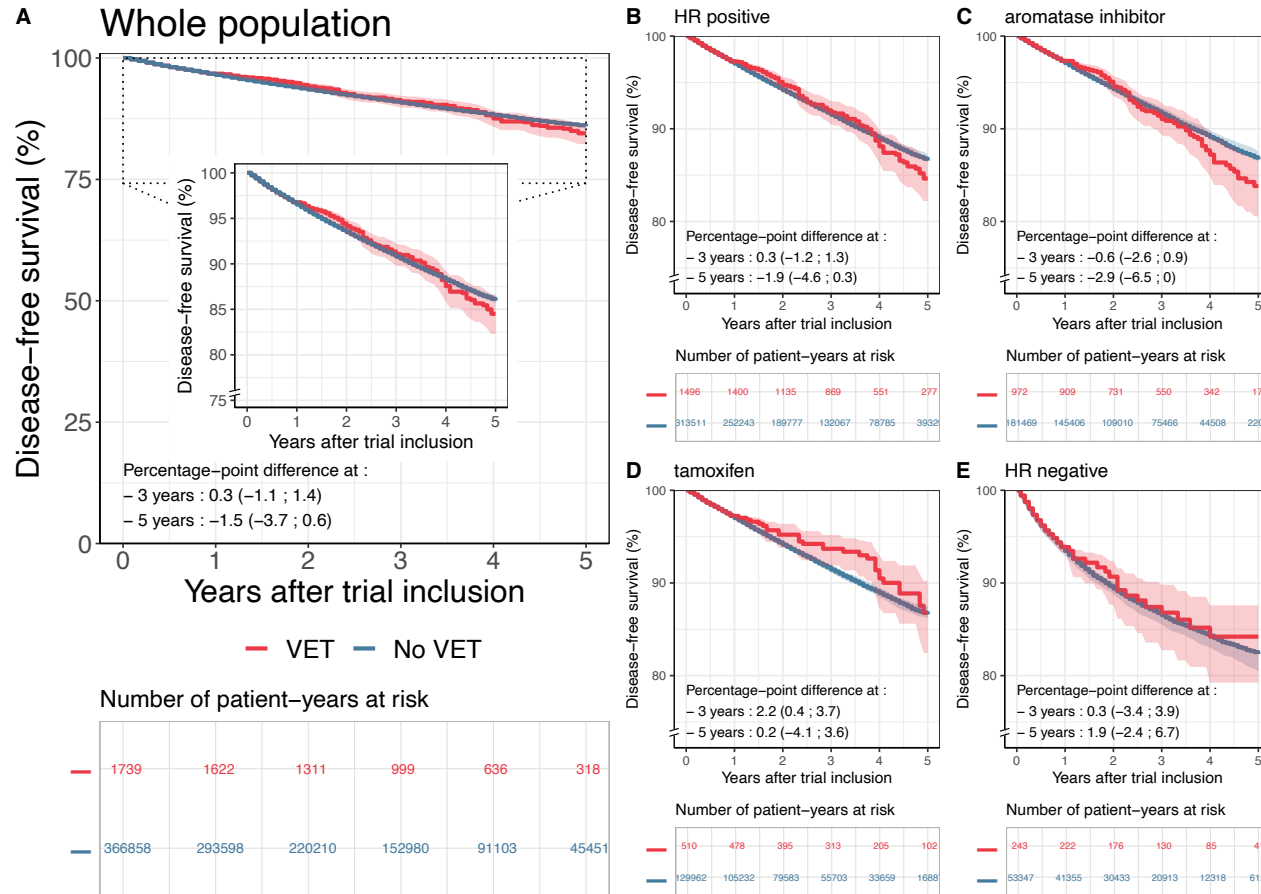
	Whole population	HR- positive			HR -negative
		All	Currently treated with AI	Currently treated with tamoxifen	
<b>VET</b> initiation versus <b>no VET</b> initiation					
<b>3 years</b>	0.3 (-1.1 to 1.4)	0.3 (-1.2 to 1.3)	-0.6 (-2.6 to 0.9)	2.2 (0.4 to 3.7)	0.3 (-3.4 to 3.9)
<b>5 years</b>	-1.5 (-3.7 to 0.6)	-1.9 (-4.6 to 0.3)	-2.9 (-6.5 to 0)	0.2 (-4.1 to 3.6)	1.9 (-2.4 to 6.7)
<b>Promestriene</b> initiation versus <b>no VET</b> initiation					
<b>3 years</b>	1 (-0.7 to 2.3)	1 (-0.8 to 2.4)	1 (-1 to 2.6)	1.5 (-1.1 to 3.8)	0.7 (-4.5 to 5)
<b>5 years</b>	-2.1 (-5.2 to 0.5)	-2.6 (-6.2 to 0)	-2.5 (-6.7 to 1.1)	-2.3 (-8.7 to 2.4)	1.8 (-3.7 to 8.2)
<b>Estriol</b> initiation versus <b>no VET</b> initiation					
<b>3 years</b>	-0.8 (-3.7 to 1.5)	-1 (-4.3 to 1.5)	-4.1 (-9.1 to -0.2)	3.8 (1.2 to 5.7)	0.9 (-4.6 to 6.4)
<b>5 years</b>	0.2 (-3.9 to 3.7)	-0.7 (-5.4 to 3.3)	-3.7 (-10.1 to 1.8)	4 (-2.8 to 8.8)	5.1 (-0.1 to 11.2)

2

3 **Table 2:** Difference in disease-free survival (DFS, in percentage-points) at three years and five years and associated 95% confidence intervals for  
4 VET initiation *versus* no VET initiation, promestriene initiation *versus* no VET initiation, and estriol initiation *versus* no VET initiation for the  
5 whole population and per subgroup. Abbreviations: VET: vaginal estrogen therapy; HR: hormone receptor; AI: aromatase inhibitor.



6 **Figures**

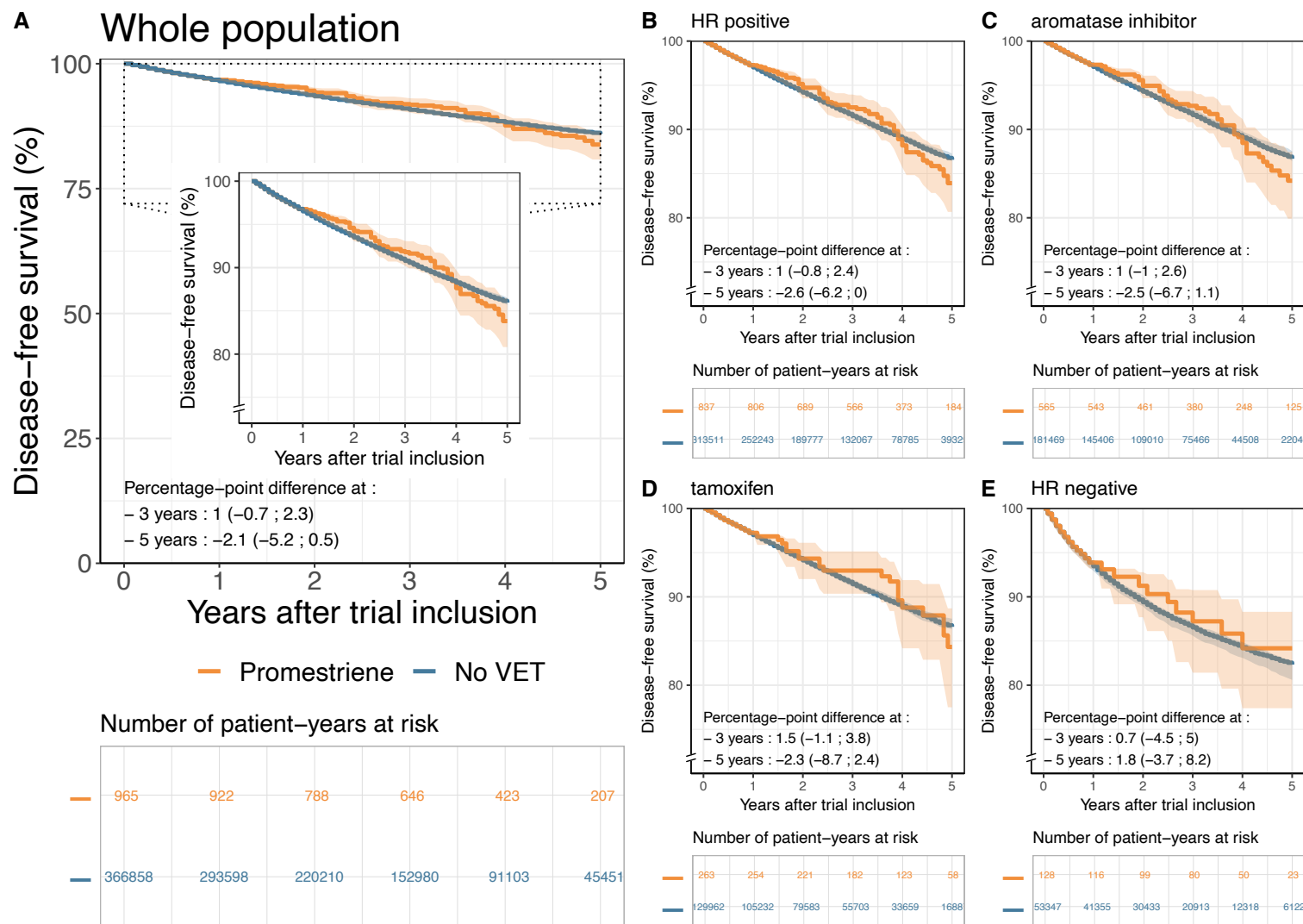


7

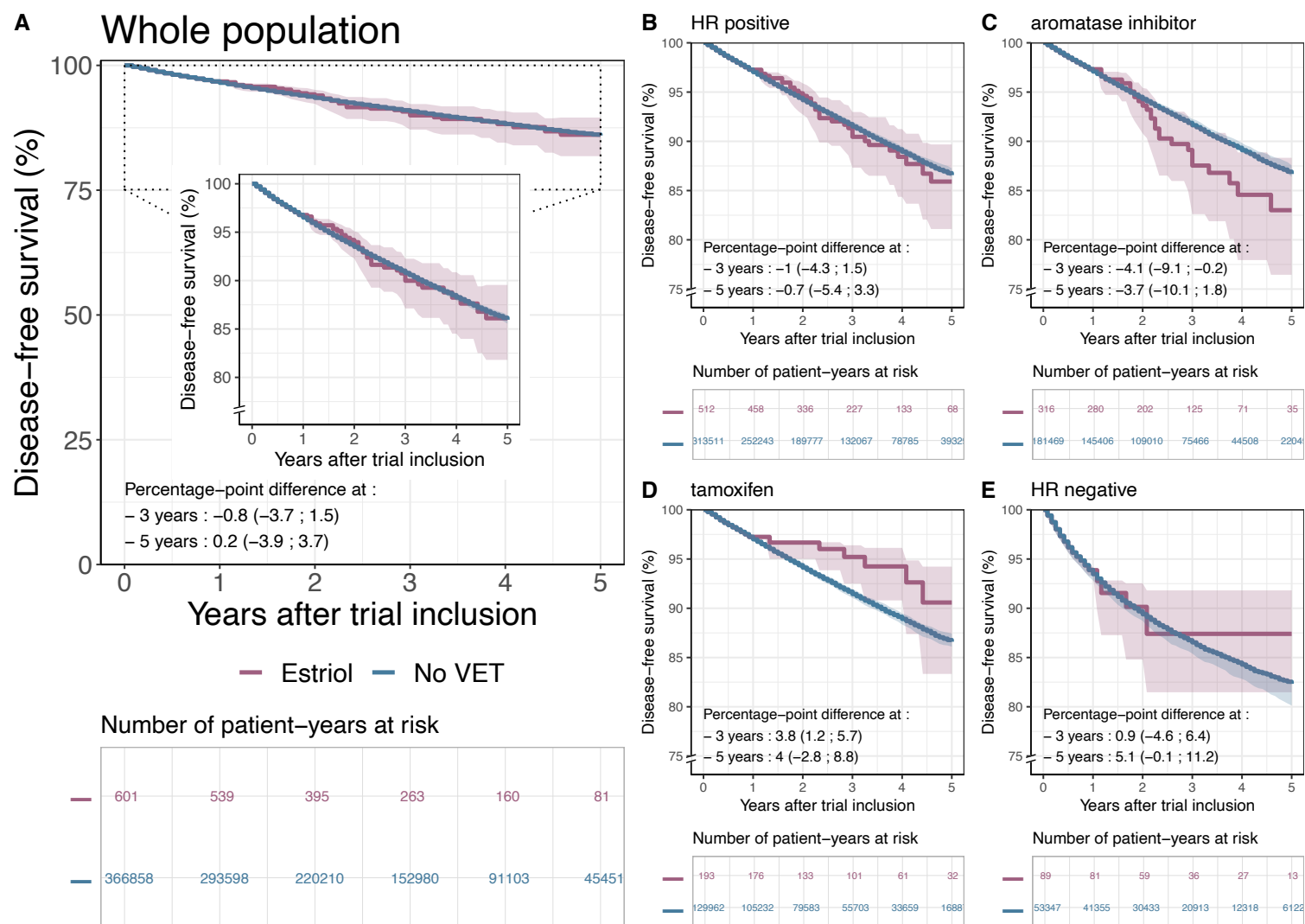
8

9 **Figure 1:** Effects of VET initiation on disease-free survival in the whole population of BC patients (A) and for subgroups defined by HR status

10 and endocrine therapy regimen (B-E). Abbreviations: VET: vaginal estrogen therapy; HR: hormone receptor; CI: confidence interval.



**Figure 2:** Effects of promestriene initiation on disease-free survival in the whole population of BC patients (A) and for subgroups defined by HR status and endocrine therapy regimen (B-E). Abbreviations: VET: vaginal estrogen therapy; HR: hormone receptor; CI: confidence interval.



**Figure 3:** Effects of estriol initiation on disease-free survival in the whole population of BC patients (A) and for subgroups defined by HR status and endocrine therapy regimen (B-E). Abbreviations: VET: vaginal estrogen therapy; HR: hormone receptor; CI: confidence interval.

### ***Funding***

This study was funded by Monoprix\*, INCa grant number 18-127 within the COMBIMMUNO (Comedications and comorbidities in breast cancer: Deciphering Interactions Between Immune Infiltration, Response to Treatment and Prognosis) project, and the Swiss National Science Foundation. The funder was not involved in study design, or in the collection, analysis, and interpretation of data, the writing of this article or the decision to submit it for publication.

### ***Competing interests***

Christine Rousset-Jablonski reports payment or honoraria for lectures, presentations, speakers bureaus, manuscript writing or educational events by Theramex (payment made to institution). Paul Gougis reports consulting fees for BMS, academic grant from Sanofi and travel accommodation by Eisai. Other authors have no relevant financial or non-financial interests to disclose.

### ***Author Contributions***

- (I) Project Conception: Ame-Sophie Hamy, Fabien Reyal, Florence Coussy.
- (II) Statistical Study design: Kerollos Nashat Wanis, Mats Julius Stensrud, Elise Dumas.
- (III) Data Provision and quality: Philippe-Jean Bousquet, Sophie Houzard, Christine Le Bihan-Benjamin.
- (IV) Medical support : Enora Laas, Floriane Jochum, Diane Hill, Christine Rousset-Jablonski, Sophie El Ferjaoui, Paul Gougis, Florence Coussy.
- (V) Data analysis and interpretation: Elise Dumas.
- (VI) Manuscript first draft: Elise Dumas, Mats Stensrud, Kerollos Wanis, Anne-Sophie Hamy, Florence Coussy.
- (VII) Manuscript writing: All authors.

(VIII) Final approval of manuscript: All authors.

### ***Ethics approval***

The study was conducted in collaboration between Institut Curie and the French National Cancer Institute (INCa), following institutional and ethical rules concerning research involving patient data, and was authorized by the French data protection agency (Commission nationale de l'informatique et des libertés—CNIL) under registration number 920017.

### ***Consent to participate***

In accordance with French regulations applicable to the SNDS, no informed consent was required because the data used in the study was de-identified.