

Loss of IVNS1ABP, a gigaxonin paralogue, leads to a progeroid neuropathy due to impaired proteostasis

Carine Bonnard^{1,2*}, Ain Nur Ali^{3,4}, Fang Yuan^{5,6}, Kiat Y. Tan⁷, Yan T. Lim⁷, Puck W. Chan⁸, Nanthini Ramanathan⁹, Nur A.B.M. Kamsani⁹, Vindhya Chaganty⁷, Ding Xiong¹⁰, Ye S. Tan^{5,6}, Shu-Min Chou^{5,6}, Marwa Chourabi¹¹, Gunaseelan Narayanan⁵, Alvin Y.J. Ng^{7,12}, Sumanty Tohari⁷, Meah W. Yang³, Birsen Karaman^{13,14}, Gözde T. Turgut¹³, Emmanuelle Szenker-Ravi^{3,4}, Radoslaw M. Sobota⁷, Zhuoyao Chen¹⁵, Alex N. Bullock¹⁵, Rajaa Fathallah¹⁶, Umut Altunoglu¹⁷, Venkatesh Byrappa⁷, Ajay S. Mathuru^{7,18,19}, Mohammad Shboul²⁰, Su-Chun Zhang^{5,6,21}, Bruno Reversade^{3,4,17,18*}

¹Model Development, A*STAR Skin Research Labs (ASRL), Agency for Science, Technology and Research (A*STAR), Republic of Singapore

²Asian Skin Biobank, Skin Research Institute of Singapore (SRIS), Agency for Science, Technology and Research (A*STAR), Republic of Singapore

³Genome Institute of Singapore (GIS), Agency for Science, Technology and Research (A*STAR), Republic of Singapore

⁴Biological, Environmental Sciences and Engineering, King Abdullah University of Science and Technology (KAUST), Thuwal, Saudi Arabia.

⁵Neuroscience & Behavioral Disorders, Duke-NUS Medical School, Republic of Singapore

⁶GK Goh Centre for Neuroscience, Duke-NUS Medical School, Republic of Singapore

⁷Institute of Molecular and Cell Biology (IMCB), Agency for Science, Technology and Research (A*STAR), Republic of Singapore

⁸Skin Omics Lab, A*STAR Skin Research Labs (ASRL), Agency for Science, Technology and Research (A*STAR), Republic of Singapore

⁹Institute of Medical Biology (IMB), Agency for Science, Technology and Research (A*STAR), Republic of Singapore

¹⁰State Key Laboratory of Oral Diseases, National Clinical Research Center for Oral Diseases, West China Hospital of Stomatology, Sichuan University, Chengdu, China

¹¹Tharb Camel Genetic Center, Tharb Camel Hospital, Qatar

¹²MGI Tech, Republic of Singapore

¹³Medical Genetics Department, Istanbul Medical Faculty, Istanbul University, Istanbul, Turkey

¹⁴Department of Pediatric Basic Sciences, Institute of Child Health, Istanbul University, Istanbul, Turkey

¹⁵Centre for Medicines Discovery, Nuffield Department of Medicine, Oxford, UK

¹⁶National Center for Diabetes, Endocrinology and Genetics, Amman, Jordan

¹⁷Department of Medical Genetics, Koç University School of Medicine, Istanbul, Turkey

¹⁸Department of Physiology, Yong Loo Lin School of Medicine, National University of Singapore, Republic of Singapore

¹⁹Institute for Digital Medicine (WisDM), Yong Loo Lin School of Medicine, National University of Singapore, Republic of Singapore

²⁰Department of Medical Laboratory Sciences, Faculty of Medical Sciences, Jordan University of Science and Technology, Irbid, Jordan

²¹Department of Neuroscience, Department of Neurology, School of Medicine and Public Health, Waisman Center, University of Wisconsin, Madison, USA

Authors to whom correspondence should be addressed:

*Bruno Reversade (bruno@reversade.com), lead contact

**Carine Bonnard (carine2bonnard@gmail.com)

Summary

Impaired proteostasis can induce protein aggregation which is toxic to neuronal cells, contributing to neurodegeneration and other signs of aging. In this study, we delineate an early-onset progressive neuropathy evoking Giant Axonal Neuropathy 1. The causative gene *IVNS1ABP* encodes a E3-ubiquitin ligase adaptor which is a close gigaxonin paralogue. Patient-derived fibroblasts, iPSCs, and neural progenitors exhibited hallmarks of protein accumulation and lysosomal dysfunction. Ubiquitome analysis revealed overlapping targets with gigaxonin, including Vimentin and MAP1B. The biallelic correction to the isogenic wildtype state in disease-relevant motor neurons partly rescued cellular vulnerabilities. A newly generated *ivns1abpa/b* knockout zebrafish model partially recapitulated the human peripheral neuropathy, exhibiting aberrant primary motor neuron axon pathfinding, leading to impaired locomotion. Our findings indicate that IVNS1ABP functions in the same pathway as gigaxonin, ensuring appropriate cellular turnover of critical protein substrates, whose accumulation leads to accelerated aging in discrete cellular lineages.

Introduction

Aging, an irreversible process affecting all humans, is characterized by a gradual decline in homeostasis due to both internal (intrinsic) and external (extrinsic) factors^{1,2}. It involves alterations in the capacity to sustain organ function driven by an accumulation of cellular damage^{3,4}. As a result, tissue function deteriorates, leading to a substantial increase in aging-related disorders. These disorders encompass cardiovascular diseases, metabolic dysfunctions, autoimmune conditions, musculoskeletal impairments, and neurodegenerative diseases^{5,6}.

Aging-related neurological disorders affect the central and peripheral nervous systems, resulting in a range of symptoms including paralysis, muscle weakness, poor coordination, loss of sensation, seizures, confusion, and dementia. The underlying molecular and cellular processes that cause neurodegeneration are classified in a set of hallmarks^{7,8}, including 1) genomic instability where DNA repair mechanism loses its efficiency⁹, 2) epigenetic alterations in DNA methylation, chromatin structure and histone modifications, impacting the regulation of gene expression^{10,11}, 3) RNA mis-splicing that changes gene expression¹², 4) mitochondrial malfunction, altering energy homeostasis¹³, 5) cell senescence that leads to inflammation^{14,15}, and 6) loss of proteostasis, causing accumulation of protein aggregates that are toxic for the cells^{16,17}.

Proteostasis is maintained by cellular processes which control folding, localization, and interactions of proteins from their nascent synthesis through their targeted degradation, the integrity of which is often challenged during aging. Protein accumulation, perturbed protein turnover, ubiquitination modification caused by non-functional ubiquitin proteasome pathway (UPP) are hallmarks of aging and diseases¹⁸⁻²⁰. Within the UPP, the chaperone network and autophagy are the primary protein degradation systems that regulate proteostasis. Protein aggregates are removed by a selective autophagy pathway, also termed aggrephagy²¹. The

decline or disruption of the aggrephagy pathways results in accumulation of protein aggregates and is associated with a wide range of neurodegenerative disorders^{16,22,23}.

Neurodegeneration, as is witnessed in chronological aging, can also be driven by genetic factors²⁴. Inherited monogenic variants or risk loci have been identified in patients presenting with premature aging syndromes with clinical features resembling accelerated aging, including early onset neuropathies^{25,26}. The investigation of premature aging syndromes has shed light into new pathogenic mechanisms and provides invaluable insights into the broader biology of aging^{27,28}. For instance, the identification of deleterious mutations in the PYCR1 and ALDH18 enzymes in patients with progeroid features has highlighted the importance of proline metabolism in aging of connective tissues^{29,30}. A large body of work on the rare premature aging disease, Hutchinson-Gilford Progeria Syndrome, demonstrated the role of Lamin A in controlling DNA damage, telomere shortening, genomic instability and senescence, all of which are linked to the hallmarks of aging³¹.

Following this line of investigation, we have sought to investigate patients with severe hereditary neurological diseases that could help us gain inroads into more common neurodegenerative disorders. We recruited three affected patients who display accelerated aging phenotypes, including progressive and degenerative neuropathy accompanied by premature hair whitening. Through homozygosity mapping and exome sequencing, we identified a likely causative biallelic variant in a poorly studied gene *IVNS1ABP*. The encoded IVNS1ABP protein belongs to the BTB-Kelch family of E3 ubiquitin ligase adaptors and shares homology with gigaxonin, suggesting a role in the UPP. Using *in vitro* assays with patients' cells including primary fibroblasts, iPSCs, NPCs, and *in vivo* disease modeling in zebrafish, our study characterizes the molecular function of IVNS1ABP towards cellular proteostasis. We document that IVNS1ABP is required for motor neuron development and function and possesses overlapping substrates with gigaxonin. We

propose that both E3 ligase adaptor proteins work in concert to engage the UPP pathway to clear the accumulation of proteins that would otherwise become toxic and drive neurodegeneration.

Results

A homozygous variant in *IVNS1ABP* segregates with a progeroid neuropathy

We investigated a consanguineous family in which three affected patients exhibit an early-onset and progressive neuropathy (Table 1 and Figures 1A and 1B). The proposita II.1, II.4 and II.5 display peripheral neuropathy leading to steppage gait with progressive loss of deambulation (Figure S1A). Patient II.1 walked at 1 year old, but showed signs of regression at 5-10 years old, with difficulty climbing the stairs at 5-10 years old, and lost gait at the age of 10-15. Patients II.4 and II.5 walked at 1.5 years old and showed abnormal gait from 5-10 years old (Movie 1). Skin dyschromatosis with hypo- and hyper-pigmented macules over the face and body were present, the extent of which increased with age (Figure S1B). A notable premature whitening of hairs, eyelashes and eyebrows was seen in all three affected patients (Figure 1B). Consistent with autosomal recessive inheritance, homozygosity mapping followed by exome sequencing in patient II.1 identified a biallelic germline missense variant in the *IVNS1ABP* gene (MIM609209) on chr1:185274675 (GRCh37/hg19) (Table 2 and Figures 1C and S1C). The private mutation NM_006469.4 c.758T>G, p.(Phe253Cys) fully segregated with the disease, the three patients being homozygous, and the unaffected family members either non-carrier (II.2) or heterozygous (II.3, II.6) (Figure 1A). According to publicly available databases and bioinformatics tools, this private allele p.F253C has never been reported in the population and is predicted to be pathogenic (SIFT=0.01, PolyPhen-2=0.993, M-CAP=0.022) (Table 2). According to gnomAD v4.1, no homozygous damaging variants have been reported for *IVNS1ABP*, and the pLoF observed/expected score is 0.32, suggesting that *IVNS1ABP* is intolerant to loss-of-function mutations. A high Combined Annotation Dependent Depletion (CADD) score of 29.9 further demonstrates that this homozygous variant may be deleterious (Figure 1D).

IVNS1ABP encodes the Influenza Virus NS1A-Binding Protein IVNS1ABP (Q9Y6Y0), also known as NS1-BP or KLHL39, a member of the BTB-Kelch family. Proteins in this family typically contain an N-terminal BTB domain and a C-terminal Kelch domain separated by an intervening linker region known as the BACK domain³²⁻³⁴. X-ray crystal structures have been determined for the individual BTB and Kelch domains of IVNS1ABP^{35,36}, but not for the full-length protein. The structural models of IVNS1ABP predicted by AlphaFold3³⁷ suggested a truncated BACK domain with only its 3-box motif which comprises the first two α -helices. Intriguingly, the remaining region is replaced by a ubiquitin-like β -grasp fold and two intrinsically disordered regions (IDR1 and IDR2), a likely unique feature for this family (Figure 1E). Phenylalanine 253 is located in IDR1, which forms a 51-residue disordered loop within the ubiquitin-like β -grasp domain (Figures 1E and 1F). IDRs often form sites of protein-protein interaction and can undergo disorder-to-order transitions upon complexing with their partners. Mutations in many proteins with IDRs have been implicated in human diseases, such as neurodegeneration³⁸. Importantly, Phe253 is conserved across IVNS1ABP orthologues, suggesting that its alteration may disrupt IVNS1ABP-protein interactions.

To examine the consequence of the IVNS1ABP missense variant p.F253C on the binding to one of its direct interacting partners KLHL20³⁹, overexpression of IVNS1ABP full-length and KLHL20 Kelch domain in HEK293T cells followed by co-immunoprecipitation was carried out. Unlike wildtype (WT) HA-tagged IVNS1ABP^{WT}, the mutant IVNS1ABP^{F253C} could no longer be pulled down by Flag-tagged KLHL20, suggesting that the p.F253C variant may introduce a conformational change in its native folding affecting KLHL20 engagement (Figure 1G). Notably, AlphaFold3 predicted that IVNS1ABP Phe253 forms hydrophobic interactions to KLHL20 in a similar manner as DAPK1 Leu1339 binds to KLHL20⁴⁰ (Figure 1H and S1D). In agreement, previous immunoprecipitation experiments mapped IVNS1ABP residues 234-350, encompassing all of IDR1 and IDR2, as an essential region for many of the native interactions of IVNS1ABP³⁵.

Altogether, these results indicate that the conserved region around the disease mutation site is required for IVNS1ABP interaction with its targets, supporting the deleterious effect of the p.F253C variant on IVNS1ABP function.

Past phylogenetic analyses performed on 38 BTB-Kelch family proteins⁴¹ showed that IVNS1ABP is a close paralogue of the E3 ligase adaptor gigaxonin. The genetic inactivation of gigaxonin (also known as KLHL16, MIM605379) is responsible for Giant Axonal Neuropathy-1 (GAN1, MIM256850), a severe neurodegenerative disease⁴². The comparison of GAN1's symptomatology with the clinical presentations of this novel syndrome revealed a strong overlap, including a similar progressive peripheral neuropathy leading to muscle weakness, hypotonia and steppage gait. Skin hyperpigmentation, scoliosis, long fingers, club feet, *pes cavus*, distal sensory impairment, dysarthria, reflex dysfunction, mental retardation were all shared between the two diseases (Table 1, Figures 1B and S1D). One of the distinguishing but related phenotypes is that GAN1 patients often present with kinky red hair whereas the three affected patients herein displayed premature hair whitening. The clinical similarities and protein sequence homology between IVNS1ABP and gigaxonin suggested that both proteins may fulfill similar functions by maintaining cellular proteostasis.

IVNS1ABP^{F253C} induces protein aggregation in patients' cells

To examine the pathogenicity of this private IVNS1ABP^{F253C} variant, primary fibroblasts isolated from skin biopsies of 2 affected patients (II.1, II.4), a healthy 'non-carrier' (II.2) and heterozygous (I.2) family members were reprogrammed into induced pluripotent stem cells (iPSCs). These iPSC lines were then differentiated into disease-relevant cell lineages including neural progenitor cells (NPCs) and post-mitotic neurons (Figure 2A). Using an aggresome detection assay, patients' primary fibroblasts (IVNS1ABP^{F253C/F253C}) showed significant increase of protein aggregates relative to WT cells (IVNS1ABP^{WT/WT}) (Figure 2B). This was also observed in the patient's iPSCs

and iPSC-derived neurons (Figures 2C, 2D and S2A). These results suggest that IVNS1ABP^{F253C} prevents proper degradation of endogenous proteins leading to their aggregation across many cell types. To assess the overall cellular proteostasis, we next examined autophagy lysosomal activity which drives the degradation and recycling of cellular wastes. Immunostaining of the lysosome-associated membrane proteins 1 and 2 (LAMP1/2) showed significant enlargement of the lysosomes in each patient cell type studied (Figures 2E and S2B). Increased level of P62, a classical marker of autophagy⁴³, was also observed by western blot in IVNS1ABP^{F253C/F253C} compared to IVNS1ABP^{WT/WT} and IVNS1ABP^{WT/F253C} NPCs (Figure 2F). These results indicate that maintenance of cellular proteostasis in patients' cells is significantly altered, causing protein aggregation and overactivation of the autophagy lysosomal pathway.

Loss of IVNS1ABP, or gigaxonin, result in a similar accumulation of ubiquitinated substrates

IVNS1ABP belongs to the BTB-Kelch protein family, members of which serve as adapters for the ubiquitination of protein substrates by multi-subunit E3-ubiquitin ligase complexes. Based on IVNS1ABP's homology to gigaxonin, we next examined its role in the ubiquitination of protein substrates^{33,39,44,45}. Upon cell starvation and Epoxomicin-mediated inhibition of the ubiquitin proteasome pathway (UPP), we found that, compared to WT NPCs, mutant IVNS1ABP^{F253C/F253C} cells displayed evidence of accumulation of ubiquitinated proteins (Figure 3A). To obtain a quantitative measure of these differences and identify possible substrates of IVNS1ABP, we employed targeted mass spectrometry following ubiquitin-mediated enrichment from whole cell extracts (Figure 3B). Significant differences in the total amount of ubiquitinated proteins from the two homozygous patients compared to WT or heterozygous NPCs could be readily quantified (Figures 3C). Remarkably, four of the top 10 differentially ubiquitinated proteins in patients' NPCs are established substrates of gigaxonin, including Vimentin⁴⁶⁻⁴⁹, Tubulin-binding cofactor B⁵⁰,

Peroxiredoxin-1⁴⁶ and 14-3-3 proteins⁵¹ (Figure 3D, Table S1 and Figure S3). Other hits included the ubiquitin-conjugating enzyme E2 L3 (UBE2L3) which was shown to bind MAP1B, a prototypical substrate of gigaxonin⁵² (Figure 3D). This prompted us to evaluate the levels of MAP1B in patients' NPCs by western blot. We observed that, with or without UPP inhibition by Epoxomicin, MAP1B full length or its cleaved light and heavy chains, were noticeably increased in patient cells relative to heterozygous IVNS1ABP^{F253C/WT} cells (Figure 3E). The accumulation of MAP1B being a tell-tale sign of Gigaxonin deficiency in GAN1 patient-derived cells, we sought to see if this was also true in patient's primary fibroblasts. Compared to heterozygous fibroblasts, endogenous MAP1B polyprotein and subunits were robustly increased in IVNS1ABP^{F253C/F253C} cells (Figure 3F). These results support the notion that IVNS1ABP and gigaxonin earmark similar substrates for degradation, explaining why their genetic inactivation results in a similar set of neurodegenerative phenotypes.

To address whether Gigaxonin and IVNS1ABP are functionally redundant, we sought to characterize single and double knockout fibroblasts for these two paralogous genes. First we derived fibroblasts from a GAN1 patient with a validated null homozygous allele which deletes the entirety of the *GAN* locus (breakpoints [GRCh37]16q23.2 [81262391_81445961]). The *GAN*-null patient showed similar musculoskeletal defects, progressive and severe neuropathy as did the three IVNS1ABP-deficient patients (Figure S1D and Table 1). By CRISPR-Cas9, we then knocked out *IVNS1ABP* in WT or *GAN*-null cells. These engineered and immortalized fibroblasts were confirmed to be single or double KO for *IVNS1ABP* and/or *GAN* by genomic sequencing (data not shown) and by western blotting (Figure 3G). Using endogenous MAP1B levels as a proxy for IVNS1ABP and gigaxonin activity, we observed that IVNS1ABP^{F253C/F253C} (lane 2) and IVNS1ABP^{KO/KO} (lane 5) cells equally result in the accumulation of MAP1B, indicating that this recessive missense allele behaves as KO allele. As expected, the loss of gigaxonin (lane 3) resulted in accrued MAP1B levels, which was comparable to that of IVNS1ABP KO cells, but was

not further enhanced in *GAN/IVNS1ABP* double KO cells (lane 4) (Figure 3G). These unambiguous KO alleles and pairwise isogenic cell lines proved to be robust readouts for addressing the complementarity of gigaxonin and IVNS1ABP. We find that both E3 ligase adapter proteins are needed for the degradation of common cytoskeletal substrates such as MAP1B, the accumulation of which may lead to neurotoxicity.

Axonal damage is rescued in genetically-corrected IVNS1ABP motor neurons

To further prove the pathogenicity of this private IVNS1ABP variant and mitigate the effect of possible genetic modifiers, isogenic lines were created using CRISPR-Cas9. To this end, the homozygous mutation (c.758T>G; p.F253C) in patient's iPSCs (II.1) was genetically and bi-allelically corrected into its WT genotype (c.758T/T)⁵³ (Figure 4A). Patient-derived and their isogenic WT iPSCs (WT^{corr.}/WT^{corr.}) efficiently differentiated into motor neuron (MN) progenitors, expressing MN markers such as OLIG2 and MNX1⁵⁴ (Figure S4). After 4 weeks of culture, these paired isogenic MN progenitors differentiated into mature MNs expressing choline acetyltransferase (ChAT) (Figure 4B). Less abundant and enlarged neurite bundles extending from the MN spheres marked by MAP2 were observed in mutant IVNS1ABP^{F253C/F253C} cells compared to isogenetically-corrected WT ones (Figure 4B). As previously observed in non-isogenic fibroblasts, iPSCs and neurons (Figure 2E), enlarged lysosomes in IVNS1ABP^{F253C/F253C} MNs compared to isogenic WT were documented (Figure 4C). The use of a lysotracker and live imaging revealed slower intra-cellular movement of lysosomes which was rescued in IVNS1ABP^{Corr./Corr.} MNs (Figure 4D). Immunostaining of neural filaments (NF) using phosphorylated p-NF, an established marker of axonal damage⁵⁵, showed abnormal p-NF accumulation especially in the distal ends of mutated axons, suggesting potential axon transport deficit (Figure 4E). Western blot analysis confirmed a noticeable increase of p-NF triple proteins (heavy, medium and light chains) in patient's MNs compared to WT corrected ones (Figure 4F).

p-NF is a pathological hallmark for axonal damage in multiple neurodegenerative diseases, such as amyotrophic lateral sclerosis, Alzheimer's disease and GAN1^{56,57}. Altogether these *in vitro* experiments using isogenic pairs of iPSC-derived MNs confirmed the deleterious effect of p.F253C, which we speculate may be responsible for motor neuron degeneration in the three affected patients.

***Ivns1abpa/b* KO zebrafish show defective motor neuron development and locomotion**

To better understand the physiological role of *Ivns1abp*, we next sought to create an animal model of the disease. We favored zebrafish over mice, following the observation that *gan* KO fish more faithfully recapitulated the severity of human disease than did mouse models of GAN1⁵⁸⁻⁶¹. In the zebrafish genome, *Ivns1abp* has been duplicated into *ivns1abpa* (GenBank NM_199279) and *ivns1abpb* (GenBank NM_201483), which are situated on chromosome 20 and 2 respectively. The spatio-temporal expression of both genes was analyzed by RT q-PCR and wholemount *in situ* hybridization. *Ivns1abpb* was highly expressed in zygotes indicating maternal deposition in the egg, while *ivns1abpa* was expressed from 3-somites stage onwards (Figures S5A and S5B). While phylogeny and synteny suggest that *ivns1abpa* is closer to the human *IVNS1ABP* locus (Figure S5C), we knocked out both genes using CRISPR-Cas9. We identified, selected, and outbred independent germline frameshift alleles for each gene: *ivns1abpa*^{7bpdel}: c.195delGGAACCT; p.(Glu66Metfs*5) and *ivns1abpb*^{2bpdel-1bpins}: c.205delGGinsT; p.(Gly69Leufs*27) (Figure S6A). Each mutated fish line was bred to homozygosity and intercrossed allowing to generate double maternal zygotic *ivns1abpa/b* null fish (referred to as MZ dKO) (Figure S6B). QPCR and western blot analyses of MZ dKO embryos indicated that both transcripts were targeted for nonsense mediated decay, resulting in *ivns1abpa/b* protein-null fish (Figures 5A, 5B and S6C). MZ dKO fish did not display overt anatomical differences during early embryogenesis but exhibited a shortened lifespan with approximately 45% dying within the first

month post fertilization. If bred in isolation, a few MZ dKO escapees could be grown up to one year of age (Figure 5C). Compared to WT, MZ dKO fish had a propensity to swim less and remained at the bottom of tanks. Based on the peripheral neuropathy diagnosed in the three *IVNS1ABP*^{F253C/F253C} patients and the cellular defects observed in patient-derived MNs, we next assessed the development of primary MNs in zebrafish larvae. During the first day of development, neuromuscular connections are limited to three primary MNs per hemisegment, including caudal primary (CaP) MN which is the only one extending an axon toward skeletal muscles, leading to spontaneous motor activity^{62,63}. We therefore investigated the morphology of CaP MNs at 32 hours post fertilization (hpf) using an anti-Synaptotagmin 2 antibody⁶⁴. Microscopic observation of trunk hemisegments between somites 2-7 revealed a significant increase of poorly fasciculated CaP MNs in MZ dKO (90%) compared to control (28%). Aberrant CaP axon pathfinding and ectopic branching in MZ dKO (35%) compared to control (5%) was also readily documented and quantified (Figure 5D). These abnormal primary MN phenotypes evoke those seen in *gan* knockout fish⁵⁹, indicating that *ivns1abp* may equally be required for proper axonal development of MNs.

Since MNs extend their axons toward skeletal muscles, leading to spontaneous motor activity, we next assessed whether these developmental anomalies could impact fish motility. At 7 days post fertilization (dpf), MZ dKO larvae (n=67) showed weaker locomotor capabilities, characterized by significantly lower distance swam and longer pause times compared to WT larvae (n=72) (Figures 5E, 5F and S6D). These differences were even more pronounced at 5, 10 and 15 minutes post Pentylentetrazol (PTZ) treatments, suggesting that at baseline and upon sensitization, MZ dKO fish exhibited impaired locomotion and overall swimming behaviors. These results are consistent with previous findings where defective axon pathfinding and axon over-branching in *ccdc80-11* or *gan* knocked-down zebrafish embryos led to motility issues⁶⁴. Altogether, these *in vivo* results obtained in a surrogate animal model revealed that the physiological function of *ivns1abp* towards

CaP MN development is conserved between mammals and fish. The complete inactivation of both *ivns1abpa/b* genes in zebrafish complements and supports the notion that the identified missense variant in humans is behaving as a typical loss-of-function allele.

Discussion

Here we identify IVNS1ABP as a critical regulator of cellular proteostasis. A private germline homozygous variant in *IVNS1ABP* in three affected patients was found to segregate with a new syndrome, consisting of progredient peripheral neuropathy, skin dyschromatosis and premature hair whitening. The complete genetic ablation of both *ivns1abp* genes in zebrafish phenocopies the human disease, resulting in defective locomotion which could be traced back to defective establishment of primary motor neurons. On a cellular level, the alteration of p.F253C caused significant accumulation of protein aggregates in human fibroblasts, iPSCs and NPCs. Remarkably the isogenic correction of the identified mutation in iPSC-derived MNs was sufficient to rescue these cellular vulnerabilities. Targeted proteomic analysis revealed a number of improperly ubiquitinated proteins in IVNS1ABP-deficient cells, including known targets of gigaxonin, which we propose works in concert with IVNS1ABP to prevent the accumulation of protein aggregates.

Recessive loss-of-function variants in *GAN* cause Giant axonal neuropathy-1 (GAN1), a disease that displays strikingly similar clinical features and functions as this IVNS1ABP-related syndrome^{42,65,66}. In humans, sporadic heterozygous mutations in *IVNS1ABP* have been associated with primary immunodeficiency⁶⁷. No recessive disease causative mutation in *IVNS1ABP* has been described before. Interestingly, it is worth noting that most of the KLHL proteins are expressed in the nervous system and play a role in neuronal structure and function⁴⁴. Our recent findings of patients lacking KBTBD2 with a neurodevelopmental disorder further support this notion⁶⁸. This suggests that IVNS1ABP, like gigaxonin and other KLHL proteins, may be central for neuronal development, function and homeostasis.

Are IVNS1ABP and gigaxonin functionally redundant?

The protein structure homology, the overlapping clinical presentations and shared protein substrates, point to a hitherto un-appreciated functional relatedness between IVNS1ABP and gigaxonin.

Our ubiquitome analysis revealed Tubulin-folding cofactor B (TBCB) as the most differently ubiquitinated in patients' cells compared to healthy controls. TBCB was shown to interact with gigaxonin for its targeted degradation via the UPP⁵⁰. TBCB is well known to play a role in neuronal growth cones, controlling microtubule dynamics and plasticity⁶⁹. Whereas TBCB knockdown promotes axon growth, TBCB overexpression leads to microtubule depolymerization and axonal damage, which are witnessed in GAN1 patients⁷⁰. Vimentin, Peroxiredoxin-1 (PRDX1) and 14-3-3 proteins are additional IVNS1ABP targets that overlap with previously published gigaxonin pull-down experiments^{46,51}. For instance, Vimentin accumulation in gigaxonin-deficient patients' fibroblasts⁴⁷, a tell-tale sign of GAN1, was readily observed in IVNS1ABP patient's cells as well. It is worth mentioning that the aggregation of mutant Vimentin in a patient carrying a heterozygous p.(Leu387Pro) variant is also associated with a progeroid syndrome with motor and sensitive peripheral neuropathy⁷¹. This suggests that the accumulation of Vimentin might be an important driver of the pathogenesis of IVNS1ABP deficiency. Similarly, the dysregulation of the antioxidant PRDX1 enzyme, known to control motor neuron differentiation⁷², and 14-3-3 proteins which interact with neurofilament protein-L and regulate dynamic assembly of neurofilaments⁷³ were further evidence that IVNS1ABP and gigaxonin converge on a similar set of substrates.

MAP1B is another well-established substrate of gigaxonin. Mutations in the KELCH domain of gigaxonin were shown to disrupt its interaction with MAP1B, leading to its accumulation and abnormal elongation and guidance of axons⁷⁴. Upon synthesis, MAP1B full length (FL) is cleaved in MAP1B heavy chain (MAP1B-HC) which possesses a microtubule binding site (MTB) at its N-terminus, and MAP1B-LC which contains an actin binding site in its C-terminus^{74,75}. Although

MAP1B was not part of the top 10 targets in our ubiquitome analysis, the Ubiquitin-conjugating enzyme E2 L3 (UBE2L3), a known binding partner of MAP1B-LC that favors UBE2L3-mediated UPP⁵², significantly accumulated in patients' NPCs compared to control cells. Accordingly, we found that endogenous MAP1B (FL, HC and LC) protein levels across different cell types significantly accumulated in *IVNS1ABP*-mutated and -null cells, as they did in *GAN*-null patient's fibroblasts. Our results documenting similar MAP1B and Vimentin accumulation in *IVNS1ABP* and gigaxonin single knockout fibroblasts argue in favor of both being needed for their effective turnover. However, one may be surprised that double *IVNS1ABP/GAN* knockout cells do not show worsened MAP1B levels than what is seen in single KOs. This indicates that *IVNS1ABP* alone cannot compensate for the loss of gigaxonin and vice versa. This is supported at the organismal level in humans or zebrafish, where the inactivation of each gene produces a phenotype that is not entirely masked by the remaining active paralogue. To examine the full extent of a possible functional redundancy between *IVNS1ABP* and gigaxonin, triple KO zebrafish or double KO mice will need to be generated to better appreciate if compensatory mechanisms take place, which would speak to the need of having both active paralogues to enforce tight proteostasis. Notwithstanding, our results indicate *IVNS1ABP* and gigaxonin are responsible for protein clearance of common substrates, which is reflected in the strong overlapping symptomology seen in both syndromes.

The moonlighting function of *IVNS1ABP*

Besides controlling proteostasis, *IVNS1ABP* seems to play different roles in multiple biological pathways, including spliceosome machinery^{35,76,77}, signal transduction⁷⁸, c-Myc transcriptional regulation⁷⁹, and actin stabilization and cytoskeleton organization⁸⁰. Concurrent investigation by Fang *et al.*, (2024) using the same isogenic patient cell lines carrying homozygous WT, p.F253C or KO alleles of *IVNS1ABP* showed that this E3 ligase is also regulating actin dynamics. For

instance, IVNS1ABP^{F253C/F253C}-mutated or IVNS1ABP^{KO/KO} cells displayed dysregulation of actin polymerisation, which led to impaired cytokinesis and mitosis, resulting in cell cycle arrest and premature senescence. All in all, our parallel investigations have revealed IVNS1ABP's function towards maintaining cellular homeostasis by controlling the levels of key cytoskeletal proteins.

Therapeutic intervention

Owing to the molecular, cellular and clinical signatures shared by *GAN*- and *IVNS1ABP*-deficient patients, we suspect that similar modalities could be employed for therapeutic interventions. Recently a small molecule screen in morpholino-depleted and knockout *gan* zebrafish has identified a few hit compounds⁵⁹. These small molecules belong to the class of muscarinic antagonist and α -adrenergic agonist and proved to be efficacious in stabilizing the neuromuscular junction and increasing the locomotion of *gan* deficient fish. Future experiments will need to assess whether these molecules can also prove to be effective in rescuing the locomotion in double *ivns1abpa/b* mutant fish, which would lend further credence to the notion that both diseases share a common pathogenesis.

The investigational gene therapy led by the NIH involving the single injection of a modified scAAV9/JeT-GAN virus into the fluid surrounding the spine of GAN1 children is an alternative strategy to restore adequate levels of gigaxonin⁸¹. The promising observation of a dose-dependent slowing down of motor decline in treated children suggest that similar approaches could be envisaged for IVNS1ABP-deficient patients which may also benefit from an exogenous supply of gigaxonin.

Keywords (up to 10)

Neurodegenerative syndrome, neuropathy, aging, proteostasis, *IVNS1ABP*, gigaxonin, motor neurons, zebrafish

Acknowledgments

We are grateful to all members of the Reversade laboratories for support, especially Pui-Mun Wong for technical advice, and Luc Grometto for movie editing. We thank Hane Lee, Barry Merriman, and Ascia Eskin (University of California Los Angeles) for the SNP-genotyping and homozygosity mapping. We thank Christoph Wolfram Winkler for his advice on zebrafish motor neuron study. C.B. is supported by a NMRC Open Fund - Young Individual Research Grant (OF-YIRG/0048/2017). F.Y. is supported by a NMRC Open Fund - Young Individual Research Grant (OF-YIRG22jul-0021) and Duke-NUS-KPFA/2020/0038. S-C.Z. acknowledges the support from Singapore Ministry of Education, MOE2018-T2-2-103 and Singapore Ministry of Health, MOH-000207 and 000212. A.S.M. acknowledges the support from Ministry of Education MOE-T2EP30220-0020. B.R. is a fellow of the National Research Foundation (NRF, Singapore) and Branco Weiss Foundation (Switzerland) and an EMBO Young Investigator. Z.C acknowledges support from the China Scholarship Council - Nuffield Department of Medicine Scholarship. A.N.B. acknowledges support from Wellcome (106169/ZZ14/Z). This work is supported by the Biomedical Research Council (BMRC), Agency for Science, Technology and Research (A*STAR) core funding and Singapore National Research Foundation grant (NRF-SIS) to RMS. This work was funded by a Strategic Positioning Fund for Genetic Orphan Diseases (SPF2012/005) and an inaugural A*STAR Investigatorship from the Agency for Science, Technology and Research in Singapore to B.R.

Author contributions

M.S., U.A., M.E.K., A.M., G.T.T. and R.F. made clinical diagnoses and collected clinical data and samples. M.W.Y., A.Y.J.N., S.T., V.B. and M.C. performed SNP genotyping, WES and Sanger sequencing on the family. B.K. molecularly diagnosed the *GAN*-null patient. P.W.C. and G.N. reprogrammed fibroblasts into iPSCs and derived NPCs. C.B. and A.N.A. performed all the experiments and analysis on primary fibroblasts and neural progenitor cells. C.B., A.N.A., N.R., N.A.B.M.K and E.S-R performed zebrafish work. A.S.M. and V.C. performed zebrafish locomotion assay and axon staining. F.Y., D.X., Y.S.T, S.M.C and S-C.Z. designed and performed iPSCs derived MN experiments and characterized lysosome and protein aggregation. Z.C. and A.N.B. analyzed KLHL20 binding by co-IP and AlphaFold predictions. R.M.S., K.Y.T., Y.T.L. performed ubiquitination assay and analyzed mass spectrometry data. C.B. and B.R. designed the study and wrote the manuscript with input from all co-authors.

Competing interest

The authors declare no competing interests.

Figure legends

Figure 1. A recessive p.(Phe253Cys) *IVNS1ABP* variant segregates with a segmental syndrome of premature aging

(A) Pedigree of a consanguineous family with three affected patients carrying a homozygous p.(Phe253Cys) *IVNS1ABP* variant. Black fill, affected individual; white fill, unaffected individual; green asterisk, skin biopsy; red asterisk, blood drawn. Unaffected family members are either heterozygous (F253C/WT) or non-carrier (WT/WT). Skin biopsies were obtained from unaffected family members (heterozygous I.1, non-carrier II.2) and two affected patients (II.1, II.4).

(B) Photographs of the three affected patients displaying premature hair whitening and skin dyschromatosis, long fingers, club feet and steppage gait. See also Figures S1A and S1B.

(C) Homozygosity mapping narrowed down four identical-by-descent (IBD) blocks, and exome sequencing delineated 1 deleterious homozygous (Hmz) variant in *IVNS1ABP*. See also Figure S1C.

(D) Minor allele frequency and combined annotation dependent depletion (CADD) score of homozygous *IVNS1ABP* coding variants found in gnomAD v.2.1.1 (black dots) and those found in the affected patients (red dot).

(E) Domain schematic of the *IVNS1ABP* protein predicted by AlphaFold3, with an N-terminal BTB domain and a C-terminal Kelch domain. In between, a truncated BACK domain with just its 3-box, a ubiquitin-like β -grasp domain, and two intrinsically disordered regions (IDR1 and IDR2), one within the β -grasp and one preceding the Kelch domain. The mutated residue p.F253 (located in IDR1) is highly conserved throughout vertebrate evolution.

(F) 3D conformation of *IVNS1ABP* homodimer predicted by AlphaFold3.

(G) Co-immunoprecipitation of transiently overexpressed Ha-tagged wildtype *IVNS1ABP*^{WT} or mutant *IVNS1ABP*^{F253C} by Flag-tagged KLHL20, a known *IVNS1ABP* interacting protein.

(H) AlphaFold3 prediction of the binding of IVNS1ABP β -grasp fold to KLHL20 Klech domain. See also Figure S1D.

Figure 2. Altered IVNS1ABP induces protein aggregation in patients' primary cells

(A) Schematic representation of the different cells generated from punch skin biopsy of patients and controls, from primary fibroblasts, to induced pluripotent stem cells (iPSCs), to neural progenitor cells (NPCs), to differentiated neurons.

(B) Proteostat® staining and quantification show significant increase of protein aggregates in patient's primary fibroblasts (II.4) (n=31) compared to unaffected non-carrier cells (II.2) (n=19). Scale bar = 50 μ m. Error bars indicate mean \pm SEM. Unpaired t test, *** p < 0.001.

(C) Proteostat® staining and quantification show significant increase of protein aggregates in patient's iPSCs (II.1) compared to unaffected non-carrier iPSCs (II.2) (each dot represents one protein aggregate. Data were collected from n \geq 3 independent cultures). Scale bar = 20 μ m. Error bars indicate mean \pm SEM. Unpaired t test, **** p < 0.0001. See also Figure S2A.

(D) Proteostat® staining and quantification show increase of protein aggregates in patient's iPSC-derived neurons (II.1) compared to unaffected non-carrier cells (F.II.2) (each dot represents one culture condition. Data were collected from n=3 independent cultures). iPSC-derived neurons expressed Microtubule-associated protein 2 (MAP2). Scale bar = 50 μ m. Error bars indicate mean \pm SEM. Unpaired t test, ns: non-significant.

(E) Immunostaining and quantification of lysosome-associated membrane protein 2 (LAMP2) show significant increase of the lysosomal network in patient's primary fibroblasts (II.4), iPSCs (II.1) and patient's iPSC-derived neurons (II.1) compared to unaffected cells (II.2) (One dot represents one lysosome, data were collected from n \geq 3 independent cultures in each group). Scale bar = 20 μ m. Error bars indicate mean \pm SEM. Unpaired t test, **** p < 0.0001. See also Figure S2B.

(F) Western blot of patient's NPCs (II.4) treated with MG132 shows increased P62 (autophagy marker) compared to unaffected family members (I.1) and (II.2). GAPDH was used as a loading control.

Figure 3. Protein ubiquitination is altered in *IVNS1ABP* mutant cells

(A) Western blot of patient's starved NPCs (II.4), in presence or absence of Epoxomicin, shows increased ubiquitinated proteins compared to unaffected control (II.2). GAPDH was used as a loading control.

(B) Schematic representation of mass spectrometry workflow to quantify ubiquitinated proteins in whole cell lysates.

(C) Quantification by mass spectrometry of whole-NPCs lysates from two patients (II.1 and II.4) shows significant increase of ubiquitinated peptides (normalized to total proteins) compared to two healthy controls (I.1 and II.2). Y-axis represents log₁₀ abundances of normalized ubiquitinated peptides. *** p-value<0.001.

(D) List of the top 10 differentially ubiquitinated proteins in two patients' NPC extracts (II.1 and II.4) compared to two controls (I.1 and II.2). Five of these are known to be direct substrates of gigaxonin or gigaxonin's targets. Proteins were ranked by the p-values in ascending order. See also Table S1 and Figure S3.

(E) Western blot of patient's NPCs (F253C/F253C, II.4) shows increased endogenous MAP1B compared to whole-cell lysates of unaffected control (WT/WT, II.2), with stronger differences when cells were treated with Epoxomicin. MAP1B LC, Light Chain; FL, Full Length; HC, Heavy Chain. GAPDH serves as loading control.

(F) Western blot of patient's primary fibroblasts (F253C/F253C, II.1) also shows increased endogenous MAP1B compared to whole-cell lysates of unaffected control (WT/WT, II.2).

(G) Western blot of endogenous *IVNS1ABP*, MAP1B and gigaxonin in immortalized fibroblasts of unaffected control II.2 (WT/WT, lane 1), *IVNS1ABP*-mutated patient II.1 (F253C/F253C, lane 2), *GAN*-null patient (-/-, lane 3), CRISPR-Cas9-induced *IVNS1ABP* knockout (-/-) in *GAN*-null patient (-/-, lane 4) and CRISPR-Cas9-induced *IVNS1ABP* knockout (-/-) in unaffected control II.2 (WT/WT, lane 5). All cell lines show increased MAP1B compared to unaffected WT/WT control

II.2. MAP1B LC, Light Chain; FL, Full Length; HC, Heavy Chain. GAPDH was used as a loading control.

Figure 4. *IVNS1ABP* mutation leads to human motor neuron degeneration

(A) Mutation F253C/F253C in patient's iPSCs (Il.1) was corrected using CRISPR-Cas9, creating isogenic control iPSCs ($WT^{corr.}/WT^{corr.}$). Spinal cord motor neurons (MNs) were differentiated from both isogenic iPSCs.

(B) Immunostaining of ChAT and MAP2 shows that isogenic motor neuron progenitors differentiated further into mature MNs.

(C) Lysotracker representative image and quantification show significant increase of the lysosome size in patient's iPSC-derived MNs (F253C/F253C) compared to its isogenic wildtype cell line ($WT^{corr.}/WT^{corr.}$). Error bars indicate mean \pm SEM. Unpaired t test, ** $p < 0.01$ (n=5 culture conditions).

(D) Live imaging of lysotracker dye in iPSC-derived MNs (4-week-old) shows impaired intracellular lysosome movement over time in patient's MNs (n=87) compared to its isogenic wildtype MNs (n=80). Each dot represents one organelle labeled by lysotracker. Data was collected across three independent cultures.

(E) Immunostaining with phospho-neurofilament antibodies (p-NF) shows that mutant F253C/F253C MNs display p-NF accumulation at the distal ends of MNs compared to isogenic $WT^{corr.}/WT^{corr.}$ cells. Each data point represents the ratio of damaged axons (labeled with pNF aggregates) in each image field taken from 3 independent MN cultures. Error bars indicate mean \pm SEM. Unpaired t test, * $p < 0.05$.

(F) Western blot of patient MNs show increased p-NF compared to its isogenic control cells. p-NF-H, heavy chain; p-NF-M, medium chain; p-NF-L, light chain. NSE, a neuron-specific enolase, is used as a loading control.

Figure 5. Maternal zygotic double knockout of *ivns1abpa* and *ivns1abpb* leads to defective motor neuron development in zebrafish

(A) qRT-PCR of maternal zygotic double knockout (MZ dKO) embryos at 24 hours post-fertilization (hpf) shows depletion of both *ivns1abpa* and *ivns1abpb* transcripts. See also Figure S6A. Unpaired t test, *** $p < 0.001$, $n=3$ biological samples, with at least 20 embryos for each biological sample.

(B) Western blot of MZ dKO embryos at 1-day post-fertilization (dpf) shows absence of *ivns1abp* proteins. See also Figure S6B.

(C) Representative image of 1-year-old WT and MZ dKO female fish shows no obvious phenotypic difference. Scale bar, 1000 μm .

(D) Representative confocal z-stack images of 4 hemisegments of 31 hpf WT and MZ dKO embryos immunostained with Znp1, as well as a schematic representation of the rostral, middle and caudal primary MNs (RoP, MiP and CaP respectively) with their axon trajectories in each hemisegment (A: anterior, P: posterior, D: dorsal, V: ventral). Compared to normal CaP motor neuron axons, MZ dKO embryos show higher % of poorly fasciculated ventral axons (*** $p < 0.001$) and aberrant pathfinding (**** $p < 0.0001$), with mild to severe projections that branched out.

(E) Exemplary swimming paths extracted from 2-minute videos of three WT and three MZ dKO 7 dpf larvae, with each larvae in individual well of a 24-well plate. WT larvae exhibited higher swimming distance and speed compared to MZ dKO, especially after 10 minutes exposure of 5 mM PTZ. Colors represent different velocity ranges, with blue: low ($< 8\text{mm/sec}$), yellow: intermediate ($8\text{-}16\text{mm/sec}$), and orange: high ($> 16\text{mm/sec}$). x and y Axis represent pixels.

(F) Compared to WT ($n=72$), 7 dpf MZ dKO ($n=67$) larvae show significant differences in locomotor behaviors, including shorter distance swam, higher total pause time between swim bouts, and lower high-speed bouts where velocity was at least 16 mm/s. Larvae were challenged with 5 mM

of Pentylenetetrazol (PTZ) for 5, 10, and 15 minutes (mins). In Gardener-Altman and Cummings estimation plots, the mean difference between the two groups (black dot) and 95% confidence intervals (black bar) are plotted on the secondary axis. The orange shaded area in orange shows the 5000 bootstrapped confidence intervals. Two-sided permutation t-test for p-values are represented as * $p < 0.05$, ** $p < 0.01$, *** $p < 0.001$, **** $p < 0.0001$. See also Figure S6D.

Supplemental Figure 1. Mutations in *IVNS1ABP* and *GAN* cause syndromes with similar clinical manifestations

(A) Screenshots demonstrating steppage gait and difficulty to walk of the three patients present with progressive and severe neuropathy.

(B) Body photograph of patients II.4 and II.5 displaying hyperpigmented macules.

(C) Variant filtering identified a single germline biallelic deleterious variant in the *IVNS1ABP* gene.

(D) AlphaFold3 prediction of the binding of DAPK1 peptide, containing a hydrophobic LPDLV motif, with Leu1339 interacting with KLHL20 Klech domain. *IVNS1ABP* is also predicted to bind to KLHL20 in a similar manner as DAPK1. See also Figure 1H.

(E) Photographs of a *GAN*-null patient displaying spastic paraplegia with severe muscle atrophy, scoliosis, club foot, and kinky hair and eyebrows. He has reticular skin hyperpigmentation on the axillary area, but the hyperpigmented skin macules on the torso are mainly due to healing scabies wounds.

Supplemental Figure 2. Altered *IVNS1ABP* induces protein aggregation in patients' cells

(A) Proteostat® staining shows significant increase of protein aggregates in two patients' iPSCs (II.1 and II.4) compared to unaffected control (I.1) and non-carrier control's iPSCs (II.2). Scale bar = 50 µm.

(B) Immunostaining of lysosome-associated membrane proteins 1 and 2 (LAMP1, LAMP2) shows significant increase of the lysosomal network in two patients' iPSCs (II.1 and II.4) compared to unaffected control (I.1) and non-carrier control's iPSCs (II.2). Scale bar = 50 µm.

Supplemental Figure 3. Protein ubiquitination is altered in *IVNS1ABP* mutant cells

Immunostaining and quantification of Vimentin in patient cells (II.1) (n=297) show increased signal compared to healthy control (II.2) (n=240), validating our approach. Scale bar = 10 μ m. Error bars indicate mean \pm SEM. Unpaired t test, **** p < 0.0001.

Supplemental Figure 4. Altered IVNS1ABP induces enlarged lysosomal network in patients' cells

Immunostaining and quantification of OLIG2 and MNX1 show that isogenic iPSCs differentiated into motor neuron progenitors with no significant difference (ns, unpaired t test).

Supplemental Figure 5. *Ivns1abpa* and *ivns1abpb* paralogs in zebrafish

(A) qRT-PCR shows the expression level of *ivns1abpa* and *ivns1abpb* transcripts at different stages of zebrafish embryo development, from zygotic to 5 dpf.

(B) WISH shows the spatio-temporal expression of *ivns1abpa* and *ivns1abpb* at different stages of zebrafish embryo development, from zygotic to 5 dpf.

(C) Phylogeny and synteny analysis show that *ivns1abpa* is closer to human *IVNS1ABP* than *ivns1abpb*.

Supplemental Figure 6. Generation and characterization of *Ivns1abpa* and *Ivns1abpb* maternal zygotic double knockout zebrafish

(A) Schematic representation of CRISPR-Cas9 engineered mutations generated in zebrafish *ivns1abpa* and *ivns1abpb*.

(B) CRISPR-Cas9 engineered mutations were confirmed by Sanger sequencing in *ivns1abpa* and *ivns1abpb* maternal zygotic double knockout zebrafish (MZ dKO).

(C) Western blot of overexpressed zebrafish *ivns1abpa* and *ivns1abpb* shows that IVNS1ABP antibodies recognized zebrafish *ivns1abp* proteins. Two independent frameshift mutations in *ivns1abpa* induced almost complete loss of *ivns1abp* proteins in 1 dpf zebrafish embryos.

(D) Compared to WT (n=72), 7 dpf MZ dKO (n=67) larvae show significant differences in locomotor behaviors, including a lower number of inter-swimming bout pauses and intermediate-speed bouts where larvae swam 8-16 mm/s. Larvae were challenged with 5 mM of Pentylene-tetrazol (PTZ) for 5, 10 and 15 minutes (mins). In Gardener-Altman and Cummings estimation plots, the mean difference between the two groups (black dot) and 95% confidence intervals (black bar) are plotted on the secondary axis. The orange-shaded area in orange shows the 5000 bootstrapped confidence intervals. Two-sided permutation t-test for p-values are represented as * p < 0.05, *** p < 0.001, **** p < 0.0001.

Supplemental Table 1. Protein ubiquitination is altered in IVNS1ABP mutant cells

Lists of top ubiquitinated proteins, peptides and targets.

Tables

Table 1. Clinical comparison of patients with biallelic IVNS1ABP variant with recessive GAN1 patients.

Table 2. Whole exome sequencing data of patient II.1, with multi-step variant filtering.

STAR Methods (format not required for first submission)

Human study participants

Peripheral blood samples were withdrawn from 8 members of the family to extract genomic DNA (gDNA) using DNeasy Blood & Tissue Kits (Qiagen). Skin biopsies from two patients II.1, II.4, unaffected family members I.1 and II.2 were collected to isolate primary skin cells. Cutaneous fibroblasts were derived from a GAN1 male patient with a recessive deletion 16q23.2 [81262391-81445961] (GRCh37) which encompasses the entirety of the *GAN* gene. All bio-specimens were obtained after written informed consents were signed from participants or their legal guardians. All human studies were reviewed and approved by the institutional review board of A*STAR (2019-087).

Homozygosity mapping and exome sequencing of the family

Eight family members (I.1, I.2, II.1-II.6) were genotyped using Illumina HumanCore-12v1 BeadChips following manufacturer's instructions. Call rates were above 99%. Gender and relationships were verified using Illumina BeadStudio. Mapping was performed by searching for shared regions that are homozygous and identical-by-descent (IBD) in the three affected patients using custom programs written in the Mathematica (Wofram Research, Inc.) data analysis software. As previously described, candidate regions were further refined by exclusion of common homozygous segments with any unaffected family members⁸². The confidence criteria to identify IBD blocks were a minimum of 2 cM. We identified four shared candidate loci on chromosomes 1, 5, 10 and 15, totalling 93.7 Mb. Exome sequencing was performed on gDNA from patient II.1. The library was prepared on an Ion OneTouch System and sequenced on an Ion Proton instrument (Life Technologies). Sequence reads were aligned to the human GRCh37/hg19 assembly (UCSC Genome browser). Each variant was annotated with the associated gene, location, protein position, amino acid change, quality-score and coverage. Variants were filtered

for common SNPs using the NCBI's "common and no known medical impacts" database (ftp://ftp.ncbi.nlm.nih.gov/pub/clinvar/vcf_GRCh37/), the Genome Aggregation Consortium (<https://gnomad.broadinstitute.org/>), and the Exome Sequencing Project (<http://evs.gs.washington.edu/EVS/>), as well as an in-house database of 666 sequenced individuals, mainly of Middle East origin. Homozygous variants were further filtered based on functional prediction scores including SIFT⁸³, PolyPhen-2⁸⁴, PhyloP conservation scores⁸⁵ and Mendelian Clinically Applicable Pathogenicity (M-CAP)⁸⁶. Sanger sequencing using primers flanking the mutation (Forward: 5'-GCTGCTTGATGGGAACCTAC-3'; Reverse 5'-GCTTGTTTTCTCCCAAAAATG-3') confirmed segregation of the variant with the disease.

Co-immunoprecipitation

HA-tagged human *IVNS1ABP* wildtype (HA-*IVNS1ABP*^{WT}) and mutant (*IVNS1ABP*^{F253C}) cDNAs were synthesized from mRNA extracted from control and patient fibroblasts using GenScript and cloned into pCS2+ vector. Flag-tagged human KLHL20 Kelch domain M303-W609 (Uniport identifier Q9Y2M5-1) was subcloned into pcDNA3-N-Flag-LIC vector. HEK293T cells were cultured in Dulbecco's modified Eagle's medium (DMEM, Gibco/Invitrogen) supplemented with 10% fetal bovine serum (FBS, Sigma Aldrich), 100 U/mL penicillin sodium and 100 µg/mL streptomycin sulfate (Sigma Aldrich) in a humidified incubator at 37°C with 5% CO₂. KLHL20 and *IVNS1ABP* were co-transfected 1:1 into HEK293T cells with a total amount of 5 µg DNA and 15 µg Polyethylenimine (PEI) at 60% cell confluency. Cells were harvested 40 h post transfection and lysed in an isotonic lysis buffer containing 0.1% NP40. Co-immunoprecipitation was performed with Flag M2 affinity gel (Sigma Aldrich, A2220) and detected by Western Blot with Flag antibody (Sigma-Aldrich, F1804). On the same blot, the co-purified *IVNS1ABP* was detected by HA antibody (Biolegend, 901501).

Induced pluripotent cells (iPSCs) and Neural progenitor cells (NPCs)

iPSCs were derived from primary cutaneous fibroblasts as previously described⁸⁷. Fibroblasts of two patients (II.1 and II.4) and two healthy controls (I.1 and II.2) were reprogrammed using the CytoTune™-iPS 2.0 Sendai Reprogramming Kit (Thermo Fisher Scientific, A16517) in accordance with manufacturer's instructions. Briefly, fibroblasts were transduced and after 7 days, were plated onto Matrigel Basement Membrane Matrix (Corning, 354234) in mTeSR1 medium (STEMCELL Technologies, 85850). iPSC colonies were picked between days 17-28 and maintained on Matrigel and mTeSR1 for expansion. NPCs were generated from iPSCs which were dissociated into single cells and seeded in low attachment U-bottom 96-well plate at a density of 10,000 cells/well in neural induction medium (DMEM/F12, Thermo Fisher Scientific, 10565-018) supplemented with B-27 (Thermo Fisher Scientific, 17504044), N-2 (Thermo Fisher Scientific, 17505048), 0.2 mM NEAA, 100 nM LDN 193189 (STEMCELL Technologies, 72148), 10 μM SB431542 (STEMCELL Technologies, 72234) and 10 μM ROCK Inhibitor Y-27632 (STEMCELL Technologies, 72304). After 6 days, cell aggregates were attached onto matrigel-coated plate and grown in neural expansion medium (DMEM/F12 (Thermo Fisher Scientific, 10565-018) supplemented with B-27, N-2, 0.2 mM NEAA and 20 ng/ml bFGF. After 3-6 days, rosette structures were manually cut and cultured in a neural expansion medium attached onto matrigel-coated plates⁶. Living cells were counted using Trypan Blue dye and glass hemocytometer.

Fibroblast immortalization and CRISPR-Cas9-knockout

Primary fibroblasts were immortalized via pBABE NEO hTERT, human pCMV gag pol and human pCMV VSV-g retroviral infection using standard protocol (pBABE-neo largeTcDNA, Addgene plasmid 1780). CRISPR-Cas9 gene editing was carried out using a lentiviral infection, a co-editing and positive selection protocol published by the Doyon lab⁸⁸. Cells were co-transfected with plasmids (Plasmid #52961) encoding guide RNAs against IVNS1ABP. Clonal selection was

carried out by sequencing using a U6 sequencing primer. A diagnostic digestion using the *Bam*HI and *Eco*RV enzymes was also performed to ensure that the selected colonies had the desired genomic alteration. LentiCRISPR-V2 and guide RNA were used to create stable deletions of *IVNS1ABP* and 2 µg/mL of puromycin was used for selection. The guide RNA target sequences for *IVNS1ABP* are Forward primer: 5'-CACCGACTGGGTGCAGCGTAGCATC-3' and Reverse primer: 5'-AAACGATGCTACGCTGCACCCAGTC-3'.

Neuron (NEUs) and motor neuron (MNs) differentiation from iPSCs

Neuron and motor neuron differentiation was carried out using CRISPR-Cas9 engineered isogenic iPSCs derived from patient II.1⁵⁴. following previously established protocol⁸. In brief, human iPSCs were cultured in Neural Differentiation Medium (NDM), which is a mixture of DMEM/F12 and Neurobasal (1:1) and supplemented with 0.5x N-2, 0.5x B-27, and 1x Glutamax. To pattern the iPSCs to neural epithelial cells, SB431542 (2 µM), DMH-1 (2 µM), and CHIR99021 (3 µM) were added from day 1 to day 7. On day 7, the neural epithelial cells were split and continued to culture in NDM containing SB431542 (2 µM), DMH-1 (2 µM), CHIR99021 (3 µM), RA (0.1 µM), and SAG (1 µM) until day 14. At day 14, the motor neuron progenitors were lifted up for suspension culture in NDM containing RA (0.1 µM) and SAG (0.1 µM) until day 20. On day 20, the motor neuron progenitors were dissociated with TrypLE and seeded onto Matrigel-coated plates. Cell markers, including HB9, Olig2, ChaT, and Tuj-1, were confirmed to characterize motor neuron identity. LysoTracker dye and live imaging were used to quantify lysosome motility, direction of movement, and velocity. Images were captured at 37°C with 5% CO₂ (on-stage incubator and CO₂ mixer (LCI)) using a Nikon Ti2 inverted microscope equipped with Yokogawa spinning disk confocal, GATACA super-resolution systems (SIM) and sCMOS camera (Prime 95B). Cells were imaged in multi channels by sequential laser excitations at 488 nm through a quad-bandpass dichroic mirror (Semrock) and single band emitters (Semrock). For LysoTracker

recording, movies were acquired on a single z plane with a speed of 2s/frame for 5 minutes, and exposure time was 100ms. Lysosome sizes were quantified with ImageJ macro ComDet.

Aggresome staining

Fibroblasts were placed in 4-well chamber slides (Merck Millipore) with a seeding density between 9,000-12,000 cells per well. After 24 hours, cells were treated (12 hours) or not with 10 μ M of MG132 (Merck/Calbiochem, 474790). Cells were fixed in 4% PFA for 30 minutes at room temperature, washed and permeabilized in 0.5% Triton X-100 for 15 minutes at room temperature. After three washes in PBS, cells were blocked in 1% BSA for 30 minutes at room temperature. Protein aggregates were stained using Proteostat® Aggresome Detection Reagent (Abcam, 139486, 1:1000 dilution) and nuclei were stained with Hoechst (Thermo Fisher Scientific, 62249). Slides were mounted in ProLong® Gold Antifade Reagent (Life Technologies) and images were taken with Brightfield and Widefield Zeiss AxioImager Z1 upright microscope.

Ubiquitination assay and mass spectrometry (MS) analysis

Frozen patient and control NPCs were lysed in 8 M Urea in 50 mM Tris pH 8.0 lysis buffer. Cells were sonicated on ice. After centrifugation (40 min at 5000 rpm at 25°C). Protein concentration was measured using BCA kit (Thermo Fisher Scientific, 23225). Subsequently, samples were reduced with 20 mM with TCEP for 20 min at 25°C then alkylated with 55 mM CAA for 30 min at 25°C protected from direct light. The samples were then further diluted to Urea < 1M with 100 mM TEAB. Digestion performed with Lys-C 1:40 (enzyme:protein) overnight at 25°C followed by Trypsin 1:30 (enzyme:protein) overnight at 25°C Ubiquitin enrichment was performed using the PTMScan® Ubiquitin Remnant Motif (K- ϵ -GG) kit (Cell Signaling Technology, 5562) as per manufacturer's instructions. The final desalting step of the protocol was performed on Oasis HLB

3cc 60 mg columns (Waters, WAT094226). Peptide quantification (Thermo 23290) was performed on the desalted samples to equalize sample amounts. The samples were dried and resuspended in 2% (v/v) Acetonitrile 0.5% (v/v) acetic acid, 0.06% (v/v) Trifluoroacetic acid (TFA) in water. The samples were separated by reverse phase liquid chromatography on the Easy nLC1000 coupled to Orbitrap Fusion™ Tribrid™ Mass Spectrometer with a 50 cm x 75 μm Easy Spray column (Thermo, ES803A). The samples were separated over a 120 min gradient with 0.1% formic acid in water (Merck, 1.59013.2500) and 99.9 % acetonitrile, 0.1% formic acid in water. The following acquisition parameters were applied: Data Dependent Acquisition/ positive mode with survey scan with 60000 Orbitrap Analyzer (OT), scan range of 350-1250 m/z, and AGC target of 4e5; MS/MS collision induced dissociation in ion trap (IT) and AGC target of 1.5e4; Isolation window 1.2 m/z. Peak lists for subsequent searches were generated in Proteome Discoverer 2.2 (Thermo Fisher Scientific) using Mascot 2.6.1 (Matrix Science) and concatenated forward/decoy Human Uniprot database. The search parameters were as follow: MS precursor mass tolerance: 10 ppm; MS/MS fragment mass tolerance: 0.8 Da; 3 missed cleavages; static modifications: Carboamidomethyl (C); variable modifications: Oxidation (M), Deamidated (NQ), GG(K). False discovery rate estimation with 2 levels: Strict = FDR 1%, Medium = FDR 5%. Statistical and bioinformatics analysis: Precursor mass peak (MS1) intensities were quantified by label-free quantification (LFQ) and were normalized for total peptide abundance per condition. The enriched ubiquitinated peptide dataset was filtered for peptides identified with the GlyGlyK remnant motif. Proteins and peptides that were not identified in any of the 4 conditions were removed from further analyses. The abundances of ubiquitinated peptides were further normalized to the abundance of their respective unenriched protein. Differential analysis between the control and patient NPCs were performed on the normalized ubiquitinated peptides using two-sided unpaired Mann-Whitney test, generating the p-values and the average expression per condition.

Amino acid starvation and drug treatment

NPCs were seeded in 6-well plates coated with matrigel and grown in a neural expansion medium. After 12 hours (70% confluent), medium was changed to 1) normal neural expansion medium, 2) amino acid-free neural expansion medium (US Biological #N1020, supplemented with B-27 and N-2) (starvation)⁸⁹. To block the ubiquitin proteasome pathway and reduce proteolysis, half the wells cells were treated with 2.5 nM of Epoxomicin (Sigma Aldrich, E3652-50UG) for 4 and 8 hours. After 4 and 8 hours of incubation, harvested cells were kept frozen for protein extraction.

Protein extraction and western blot

Cells were lysed and protein extracted using RIPA buffer (50 mM Tris HCl pH 7.5, 150 mM NaCl, 1% NP-40, 0.5% Na-Deoxycholate) supplemented with Complete Protease Inhibitor Cocktail tablets (EDTA free, Roche, 12245300). Protein extracts were quantified using Pierce BCA protein assay kit (Thermo Fisher Scientific, 23227) and 20 µg of protein lysate was loaded for western blotting. Protein extracts were then separated on 4–20% criterion TGX precast midi protein gel (Bio-Rad, 5678093) or 3-8% criterion XT Tris-Acetate Protein Gel (#3450129) with 1X XT tricine running buffer (#1610790), and transferred to PVDF membrane (Bio-rad, 170-4273) which was blocked in a 5% skim milk with TBST buffer. First antibodies were incubated overnight at 4°C and secondary antibodies at room temperature for 1 hour. All western blot results were confirmed in at least three fibroblast or neural progenitor cell subcultures derived from different controls and patients.

Antibodies

For western blotting and cell immunostaining, all antibodies are commercially available and listed below:

Antibodies	Species	Company	Catalog #	Dilution
------------	---------	---------	-----------	----------

Ha	mouse	Biolegend	B901501	1:1000
Flag	mouse	Sigma-Aldrich	F1804	1:1000
Ubiquitin P4D1-A11	mouse	Merck	05-944	0.5 µg/ml
MAP1B	rabbit	Atlas Antibodies	HPA022275	1:1000
MAP1B-LC (LC1)	mouse	Santa Cruz Biotechnology	SC-136472	1:200
IVNS1ABP	rabbit	Atlas Antibodies	HPA003405	1:200
Gigaxonin	rabbit	Atlas Antibodies	HPA049473	1:200
P62	mouse	BD Transduction	610833	1:1000
GAPDH	mouse	Santa Cruz Biotechnology	SC-32233	1:1000
β-Catenin	rabbit	Sigma Aldrich	C2206	1:1000
LAMP1	mouse	Santa Cruz	sc-20011	1:500
LAMP2	rabbit	Abcam	ab18528	1:1000
MNX1	mouse	DSHB	81.5C10-s	1:50
OLIG2	rabbit	Merck	AB9610	1:500
ChaT	goat	Merck	AB144P	1:300
MAP2	rabbit	Abcam	8707S	1:1000
p-NF	mouse	Sigma-Aldrich	MAB1592	1:1000
Synaptotagmin 2	mouse	DSHB	znp-1	1:1000

Zebrafish CRISPR-Cas9 editing

Zebrafish were maintained and used according to the Singapore National Advisory Committee on Laboratory Animal Research Guidelines. Two guide RNAs against exon 4 of *Ivns1abpa* and *Ivns1abpb* were used with the following targeting sequences: 5'-CTGGAACCTCATGGTATCTC-3' and 5'-CAGGGTGGAGTTTCGCTGGT-3' respectively. gRNAs were synthesized using the MEGAscript™ T7 Kit (Invitrogen, AM1354), treated with DNaseI and purified using RNeasy

Mini Kit (Qiagen, 74104). 1 nl of a mixture containing 600-900pg of gRNA and 0.1 mg/ml of Cas9 protein was injected into the yolk of 1-cell AB zebrafish embryos. We selected, raised, and outbred two independent lines to eliminate potential off-target mutations. To verify mutations, we sanger sequenced injected embryos using PCR primers for *Ivns1abpa*: Forward: 5'-TTTAATCCTGCAGCCAAGC-3' and Reverse: 5'-AATTTGACCGCAACCAAGTC-3', and for *Ivns1abpb*: Forward: 5'-TTTAATGAAACGAATTGTGCCTA-3' and Reverse: 5'-GAATACACATCACTGACCAGACTTTT-3'.

Maternal zygotic double knock-out fish (MZ dKO) generation

MZ dKO for *ivns1abpa* and *ivns1abpb* were generated by crossing homozygous zygotic single knock-out mutants for *ivns1abpa* and *ivns1abpb*, resulting in a heterozygous generation of mutants. Subsequently, the heterozygous mutants were incrossed and genotyped to identify the double knockout *ivns1abpa/b*.

Genotyping involved scaling zebrafish and overnight incubation at 65°C in a Proteinase K digestion solution, comprising Qiagen 10x PCR buffer, Qiagen Proteinase K (20 mg/ml), and Molecular Grade Water (SH30538.03). After centrifugation, the samples were used for Polymerase Chain Reaction with Hot Staq PCR Master mix (#203203), using 18 µl of PCR mix and 2 µl of DNA from digested zebrafish scales. Sanger sequencing was then carried out using a Big Dye mastermix with forward and reverse primers. Once the genotype was confirmed, the homozygous double knockout embryos were incrossed to obtain maternal-zygotic *ivns1abpa* and *ivns1abpb* double knock-out fish, and checked by Sanger sequencing.

Zebrafish reverse transcription quantitative PCR (RT-qPCR)

Embryos were harvested and de-chlorinated at different stages of development. About 20-30 embryos were pooled and lysed using 600 µl of BME-RLT buffer together with a 3 ml syringe and

BD precision Glide™ 23G 114 TW to homogenize it. Lysates were loaded into a QIA Shredder column (Qiagen, 79656) to reduce viscosity. Columns were then centrifuged at 10,000 rpm for 2 mins. Supernatants were collected for RNA extraction using RNeasy Mini Kit (Qiagen, 74104). 1 µg of the extracted RNA were converted to cDNA using the Iscript Reverse Transcription Supermix (Bio-Rad, 1708840). RT-qPCR reactions were carried out using the Power SYBR Green PCR Master Mix (Applied Biosystems, 4309155). Three technical replicates per sample were done in three biological replicates. *Actin* was used as the housekeeping gene. Data were analyzed and compared using Student's independent t-test using GraphPad Prism (GraphPad Software, La Jolla, California, USA). Data are plotted in column graphs with standard error of the mean (SEM). Statistical significance was assumed with a p-value <0.001 (indicated by ***).

Zebrafish whole mount in situ hybridization (WISH)

WISH was carried out using DIG-labeled and fluorescein-labeled antisense probes as previously described⁹⁰. Sense and antisense probes for *ivns1abpa* and *ivns1abpb* were synthesized with Sp6 and T7 RNA polymerases from a linearized pGEMT-easy vector containing *ivns1abpa* and *ivns1abpb* PCR inserts. Fluorescein-labeled probes were detected using P-iodonitrotetrazolium violet plus 5-bromo-4-chloro-3-indolyl phosphate (INT/BCIP) and DIG-labeled probes with nitro blue tetrazolium (NBT). After staining, embryos were fixed in 4% paraformaldehyde and submerged in 70% glycerol for imaging using Leica Application Suite (Leica Microsystems Switzerland Limited).

Zebrafish western blot

40 embryos were dechorionated 1 day post fertilization (dpf) and deyolked using Ginzburg Fish Ringer (6.5 g NaCl; 0.25 g KCl; 0.3 g CaCl₂; 0.2 g NaH CO₃ in 1 liter ddH₂O). Embryos were then disrupted using a syringe and left on a thermal shaker for 5 minutes at 1,100 rpm. Lysed

embryos were centrifuged at 300 g for 30 seconds. The pellet was washed 2 times in 1 ml of wash buffer (110 mM NaCl; 3.5 mM KCl; 2.7 mM CaCl₂; 10 mM Tris/Cl (pH8.5)), then left on shaker for 2 minutes at 1,100 rpm. Pellets were then centrifuged and lysed in RIPA buffer (250 mM Tris, pH: 7.5; 150 mM NaCl; 1% NP-40; 0.5% Na deoxycholate) together with Protease Inhibitor (Sigma Aldrich, S8820). Pellets were kept on ice for 20 minutes and centrifuged at 13,000 rpm for 20 minutes. Supernatant was loaded and immunoblotting was performed using anti-IVNS1ABP antibodies.

Zebrafish primary motor neuron axon staining and quantification

Embryos were collected 1 dpf, dechorionated, and fixed 31 hours post fertilization (hpf) in 4% paraformaldehyde at 4°C overnight on a rocker. Fixed embryos were then washed 3 times 5 minutes in PBST, followed by 5 minutes wash in water, 4 hours incubation in water on a rocker, 1 hour incubation in 500 µl PBDT. Embryos were then incubated with primary antibody α -synaptotagmin 2 (DSHB #ZNP-1) diluted in PBDT overnight at 4°C. The day after, embryos were washed 4 times, with 1 hour interval, in PBST with 0.1% TritonX-100 on rocker at room temperature. Embryos were then incubated with a secondary antibody biotin-coupled anti mouse for 1:1000 (VECTASTAIN® Elite ABC-HRP Kit, Peroxidase Mouse IgG, PK-6102) in PBST at 4°C overnight. Secondary antibody was then discarded and embryos were washed 4 times, with 1 hour interval. Embryos were then incubated in Vectastin ABC solution for 1 hour at room temperature on a rocker, then washed 4 times, with 30 minutes interval, in PBST with 0.1% TritonX-100, at room temperature on rocker. Embryos were then incubated for 30 minutes at room temperature in DAB solution (SIGMAFAST™ 3,3'-Diaminobenzidine tablets, Sigma Aldrich, D4418), then transferred in a mix of DAB and urea for 2 minutes, then washed in PBST 3 times, with 5 minutes interval. Stained embryos were stored at 4°C in PBST and visualized using Nikon Ni-E upright brightfield & widefield microscope. Analysis was done using ImageJ and NIS-

Elements Viewer 5.21. For quantification, the phenotype of the axonal projections of primary motor neurons were analyzed specifically in hemisegments 2-6 (from anterior to posterior). To avoid experimenter bias, a blind analysis was performed. Embryos were individually assessed on their axonal projections without knowing embryos' genotype. The folder names for each genotype were relabeled using an R program. Consequently, all folders were rendered anonymous, preventing the identification of their respective genotypes. Three types of axons were then categorized: normal axons, where all axons projected downwards in an orderly manner; poorly fasciculated axons, displaying less organized downward projection; and aberrant axon pathfinding, characterized by projections into neighboring somites. Subsequently, the scores were averaged and quantified using Estimation Stats (<https://www.estimationstats.com/#/analyze/two-independent-groups>).

Zebrafish locomotion swim assay

Zebrafish behavioral experiments were conducted according to approved protocols (A*STAR IACUC #191501 and #231797). The swimming behavior of a total of 139 zebrafish larvae (72 control and 69 MZ dKO) at 7 dpf was recorded on a custom-designed hardware via a Basler Ace (acA1300-200um; 1,280 × 1,024) camera with a 25 mm lens attachment placed 65 cm above a 24-well plate. Each well was coated with 1 ml of 2% agarose and backlit by uniform white LED lightbox. Using a dropper, larvae were placed singly into each well and acclimated for 5 minutes, followed by 2-minute video recording larval movement. Such videos of 2 minutes were acquired with 3 minutes rest between each video. 5 mM of pentylenetetrazole (PTZ, Sigma, 54-95-5) was added to each well after the first video. Medium- and high-speed swim bouts were defined as 8 to 16 mm/sec and >16 mm/sec respectively. Tracks, distance traveled, velocity, and immobility frequency were quantified automatically using custom-written scripts in Python. Repository for

pull requests: <https://github.com/mechunderlyingbehavior/24-Well-Larval-Locomotion.git>.

Statistical analysis was performed using Estimation Statistics. Two-sided permutation t-test was used for p-values presented⁹¹.

References

1. Harman, D. (1991). The aging process: major risk factor for disease and death. *Proc Natl Acad Sci U S A* 88, 5360-5363. 10.1073/pnas.88.12.5360.
2. Partridge, L., Deelen, J., and Slagboom, P.E. (2018). Facing up to the global challenges of ageing. *Nature* 561, 45-56. 10.1038/s41586-018-0457-8.
3. Lopez-Otin, C., Blasco, M.A., Partridge, L., Serrano, M., and Kroemer, G. (2013). The hallmarks of aging. *Cell* 153, 1194-1217. 10.1016/j.cell.2013.05.039.
4. Li, Z., Zhang, Z., Ren, Y., Wang, Y., Fang, J., Yue, H., Ma, S., and Guan, F. (2021). Aging and age-related diseases: from mechanisms to therapeutic strategies. *Biogerontology* 22, 165-187. 10.1007/s10522-021-09910-5.
5. Hou, Y., Dan, X., Babbar, M., Wei, Y., Hasselbalch, S.G., Croteau, D.L., and Bohr, V.A. (2019). Ageing as a risk factor for neurodegenerative disease. *Nat Rev Neurol* 15, 565-581. 10.1038/s41582-019-0244-7.
6. Niccoli, T., and Partridge, L. (2012). Ageing as a risk factor for disease. *Curr Biol* 22, R741-752. 10.1016/j.cub.2012.07.024.
7. Wilson, D.M., 3rd, Cookson, M.R., Van Den Bosch, L., Zetterberg, H., Holtzman, D.M., and Dewachter, I. (2023). Hallmarks of neurodegenerative diseases. *Cell* 186, 693-714. 10.1016/j.cell.2022.12.032.
8. Lopez-Otin, C., Blasco, M.A., Partridge, L., Serrano, M., and Kroemer, G. (2023). Hallmarks of aging: An expanding universe. *Cell* 186, 243-278. 10.1016/j.cell.2022.11.001.
9. Madabhushi, R., Pan, L., and Tsai, L.H. (2014). DNA damage and its links to neurodegeneration. *Neuron* 83, 266-282. 10.1016/j.neuron.2014.06.034.
10. Johnson, A.A., Akman, K., Calimport, S.R., Wuttke, D., Stolzing, A., and de Magalhaes, J.P. (2012). The role of DNA methylation in aging, rejuvenation, and age-related disease. *Rejuvenation Res* 15, 483-494. 10.1089/rej.2012.1324.
11. Sen, P., Shah, P.P., Nativio, R., and Berger, S.L. (2016). Epigenetic Mechanisms of Longevity and Aging. *Cell* 166, 822-839. 10.1016/j.cell.2016.07.050.
12. Li, D., McIntosh, C.S., Mastaglia, F.L., Wilton, S.D., and Aung-Htut, M.T. (2021). Correction to: Neurodegenerative diseases: a hotbed for splicing defects and the potential therapies. *Transl Neurodegener* 10, 41. 10.1186/s40035-021-00267-w.
13. Wiley, C.D., Velarde, M.C., Lecot, P., Liu, S., Sarnoski, E.A., Freund, A., Shirakawa, K., Lim, H.W., Davis, S.S., Ramanathan, A., et al. (2016). Mitochondrial Dysfunction Induces Senescence with a Distinct Secretory Phenotype. *Cell Metab* 23, 303-314. 10.1016/j.cmet.2015.11.011.
14. Martinez-Cue, C., and Rueda, N. (2020). Cellular Senescence in Neurodegenerative Diseases. *Front Cell Neurosci* 14, 16. 10.3389/fncel.2020.00016.
15. Zhu, Y., Liu, X., Ding, X., Wang, F., and Geng, X. (2019). Telomere and its role in the aging pathways: telomere shortening, cell senescence and mitochondria dysfunction. *Biogerontology* 20, 1-16. 10.1007/s10522-018-9769-1.
16. Ross, C.A., and Poirier, M.A. (2004). Protein aggregation and neurodegenerative disease. *Nat Med* 10 Suppl, S10-17. 10.1038/nm1066.
17. Hipp, M.S., Kasturi, P., and Hartl, F.U. (2019). The proteostasis network and its decline in ageing. *Nat Rev Mol Cell Biol* 20, 421-435. 10.1038/s41580-019-0101-y.
18. Nowotny, K., Jung, T., Grune, T., and Hohn, A. (2014). Accumulation of modified proteins and aggregate formation in aging. *Exp Gerontol* 57, 122-131. 10.1016/j.exger.2014.05.016.
19. Vilchez, D., Saez, I., and Dillin, A. (2014). The role of protein clearance mechanisms in organismal ageing and age-related diseases. *Nat Commun* 5, 5659. 10.1038/ncomms6659.
20. Klaips, C.L., Jayaraj, G.G., and Hartl, F.U. (2018). Pathways of cellular proteostasis in aging and disease. *J Cell Biol* 217, 51-63. 10.1083/jcb.201709072.
21. Bauer, B., Martens, S., and Ferrari, L. (2023). Aggrephagy at a glance. *J Cell Sci* 136. 10.1242/jcs.260888.
22. Berke, S.J., and Paulson, H.L. (2003). Protein aggregation and the ubiquitin proteasome pathway: gaining the UPPer hand on neurodegeneration. *Curr Opin Genet Dev* 13, 253-261. 10.1016/s0959-437x(03)00053-4.

23. Kinger, S., Jagtap, Y.A., Kumar, P., Choudhary, A., Prasad, A., Prajapati, V.K., Kumar, A., Mehta, G., and Mishra, A. (2024). Proteostasis in neurodegenerative diseases. *Adv Clin Chem* 121, 270-333. 10.1016/bs.acc.2024.04.002.
24. Pihlstrom, L., Wiethoff, S., and Houlden, H. (2017). Genetics of neurodegenerative diseases: an overview. *Handb Clin Neurol* 145, 309-323. 10.1016/B978-0-12-802395-2.00022-5.
25. Schnabel, F., Kornak, U., and Wollnik, B. (2021). Premature aging disorders: A clinical and genetic compendium. *Clin Genet* 99, 3-28. 10.1111/cge.13837.
26. Lessel, D., and Kubisch, C. (2019). Hereditary Syndromes with Signs of Premature Aging. *Dtsch Arztebl Int* 116, 489-496. 10.3238/arztebl.2019.0489.
27. Hofer, A.C., Tran, R.T., Aziz, O.Z., Wright, W., Novelli, G., Shay, J., and Lewis, M. (2005). Shared phenotypes among segmental progeroid syndromes suggest underlying pathways of aging. *J Gerontol A Biol Sci Med Sci* 60, 10-20. 10.1093/gerona/60.1.10.
28. Carrero, D., Soria-Valles, C., and Lopez-Otin, C. (2016). Hallmarks of progeroid syndromes: lessons from mice and reprogrammed cells. *Dis Model Mech* 9, 719-735. 10.1242/dmm.024711.
29. Fischer-Zirnsak, B., Escande-Beillard, N., Ganesh, J., Tan, Y.X., Al Bughaili, M., Lin, A.E., Sahai, I., Bahena, P., Reichert, S.L., Loh, A., et al. (2015). Recurrent De Novo Mutations Affecting Residue Arg138 of Pyrroline-5-Carboxylate Synthase Cause a Progeroid Form of Autosomal-Dominant Cutis Laxa. *Am J Hum Genet* 97, 483-492. 10.1016/j.ajhg.2015.08.001. S0002-9297(15)00322-5.
30. Reversade, B., Escande-Beillard, N., Dimopoulou, A., Fischer, B., Chng, S.C., Li, Y., Shboul, M., Tham, P.Y., Kayserili, H., Al-Gazali, L., et al. (2009). Mutations in PYCR1 cause cutis laxa with progeroid features. *Nat Genet* 41, 1016-1021. 10.1038/ng.413.
31. Foo, M.X.R., Ong, P.F., and Dreesen, O. (2019). Premature aging syndromes: From patients to mechanism. *J Dermatol Sci* 96, 58-65. 10.1016/j.jderm.2019.10.003.
32. Stogios, P.J., and Prive, G.G. (2004). The BACK domain in BTB-kelch proteins. *Trends Biochem Sci* 29, 634-637. 10.1016/j.tibs.2004.10.003.
33. Canning, P., Cooper, C.D.O., Krojer, T., Murray, J.W., Pike, A.C.W., Chaikuad, A., Keates, T., Thangaratnarah, C., Hojzan, V., Marsden, B.D., et al. (2013). Structural basis for Cul3 protein assembly with the BTB-Kelch family of E3 ubiquitin ligases. *J Biol Chem* 288, 7803-7814. 10.1074/jbc.M112.437996.
34. Zhuang, M., Calabrese, M.F., Liu, J., Waddell, M.B., Nourse, A., Hammel, M., Miller, D.J., Walden, H., Duda, D.M., Seyedin, S.N., et al. (2009). Structures of SPOP-substrate complexes: insights into molecular architectures of BTB-Cul3 ubiquitin ligases. *Mol Cell* 36, 39-50. 10.1016/j.molcel.2009.09.022.
35. Zhang, K., Shang, G., Padavannil, A., Wang, J., Sakthivel, R., Chen, X., Kim, M., Thompson, M.G., Garcia-Sastre, A., Lynch, K.W., et al. (2018). Structural-functional interactions of NS1-BP protein with the splicing and mRNA export machineries for viral and host gene expression. *Proc Natl Acad Sci U S A* 115, E12218-E12227. 10.1073/pnas.1818012115.
36. Guo, L., and Liu, Y. (2018). Crystal structure of the Kelch domain of human NS1-binding protein at 1.98 Å resolution. *Acta Crystallogr F Struct Biol Commun* 74, 174-178. 10.1107/S2053230X18001577.
37. Abramson, J., Adler, J., Dunger, J., Evans, R., Green, T., Pritzel, A., Ronneberger, O., Willmore, L., Ballard, A.J., Bambrick, J., et al. (2024). Accurate structure prediction of biomolecular interactions with AlphaFold 3. *Nature* 630, 493-500. 10.1038/s41586-024-07487-w.
38. Uversky, V.N. (2014). The triple power of D(3): protein intrinsic disorder in degenerative diseases. *Front Biosci (Landmark Ed)* 19, 181-258. 10.2741/4204.
39. Chen, H.Y., Hu, J.Y., Chen, T.H., Lin, Y.C., Liu, X., Lin, M.Y., Lang, Y.D., Yen, Y., and Chen, R.H. (2015). KLHL39 suppresses colon cancer metastasis by blocking KLHL20-mediated PML and DAPK ubiquitination. *Oncogene* 34, 5141-5151. 10.1038/onc.2014.435.
40. Chen, Z., Picaud, S., Filippakopoulos, P., D'Angiolella, V., and Bullock, A.N. (2019). Structural Basis for Recruitment of DAPK1 to the KLHL20 E3 Ligase. *Structure* 27, 1395-1404 e1394. 10.1016/j.str.2019.06.005.

41. Prag, S., and Adams, J.C. (2003). Molecular phylogeny of the kelch-repeat superfamily reveals an expansion of BTB/kelch proteins in animals. *BMC Bioinformatics* 4, 42. 10.1186/1471-2105-4-42.
42. Bomont, P., Cavalier, L., Blondeau, F., Ben Hamida, C., Belal, S., Tazir, M., Demir, E., Topaloglu, H., Korinthenberg, R., Tuysuz, B., et al. (2000). The gene encoding gigaxonin, a new member of the cytoskeletal BTB/kelch repeat family, is mutated in giant axonal neuropathy. *Nat Genet* 26, 370-374. 10.1038/81701.
43. Liu, W.J., Ye, L., Huang, W.F., Guo, L.J., Xu, Z.G., Wu, H.L., Yang, C., and Liu, H.F. (2016). p62 links the autophagy pathway and the ubiquitin-proteasome system upon ubiquitinated protein degradation. *Cell Mol Biol Lett* 21, 29. 10.1186/s11658-016-0031-z.
44. Shi, X., Xiang, S., Cao, J., Zhu, H., Yang, B., He, Q., and Ying, M. (2019). Kelch-like proteins: Physiological functions and relationships with diseases. *Pharmacol Res* 148, 104404. 10.1016/j.phrs.2019.104404.
45. Nguyen, H.C., Wang, W., and Xiong, Y. (2017). Cullin-RING E3 Ubiquitin Ligases: Bridges to Destruction. *Subcell Biochem* 83, 323-347. 10.1007/978-3-319-46503-6_12.
46. Johnson-Kerner, B.L., Garcia Diaz, A., Ekins, S., and Wichterle, H. (2015). Kelch Domain of Gigaxonin Interacts with Intermediate Filament Proteins Affected in Giant Axonal Neuropathy. *PLoS One* 10, e0140157. 10.1371/journal.pone.0140157.
47. Cleveland, D.W., Yamanaka, K., and Bomont, P. (2009). Gigaxonin controls vimentin organization through a tubulin chaperone-independent pathway. *Hum Mol Genet* 18, 1384-1394. 10.1093/hmg/ddp044.
48. Lowery, J., Jain, N., Kuczarski, E.R., Mahammad, S., Goldman, A., Gelfand, V.I., Opal, P., and Goldman, R.D. (2016). Abnormal intermediate filament organization alters mitochondrial motility in giant axonal neuropathy fibroblasts. *Mol Biol Cell* 27, 608-616. 10.1091/mbc.E15-09-0627.
49. Johnson-Kerner, B.L., Ahmad, F.S., Diaz, A.G., Greene, J.P., Gray, S.J., Samulski, R.J., Chung, W.K., Van Coster, R., Maertens, P., Noggle, S.A., et al. (2015). Intermediate filament protein accumulation in motor neurons derived from giant axonal neuropathy iPSCs rescued by restoration of gigaxonin. *Hum Mol Genet* 24, 1420-1431. 10.1093/hmg/ddu556.
50. Wang, W., Ding, J., Allen, E., Zhu, P., Zhang, L., Vogel, H., and Yang, Y. (2005). Gigaxonin interacts with tubulin folding cofactor B and controls its degradation through the ubiquitin-proteasome pathway. *Curr Biol* 15, 2050-2055. S0960-9822(05)01305-9. 10.1016/j.cub.2005.10.052.
51. Pozuelo Rubio, M., Geraghty, K.M., Wong, B.H., Wood, N.T., Campbell, D.G., Morrice, N., and Mackintosh, C. (2004). 14-3-3-affinity purification of over 200 human phosphoproteins reveals new links to regulation of cellular metabolism, proliferation and trafficking. *Biochem J* 379, 395-408. 10.1042/BJ20031797.
52. Gandini, M.A., Sandoval, A., Zamponi, G.W., and Felix, R. (2014). The MAP1B-LC1/UBE2L3 complex catalyzes degradation of cell surface CaV2.2 channels. *Channels (Austin)* 8, 452-457. 10.4161/19336950.2014.949162.
53. Fang, Y., Tan, Y.S., Wang H., Ali A.N., Yuan, Q., Chou, S-M., Yen, Y-H., Narayanan, G., Zhou, L., Shboul, M., Bonnard, C., Reversade, B., and Zhang, S-C. (2024). IVNS1ABP Deficiency Disrupts Actin Filament Organization and Leads to Cellular Senescence in a Newly Identified Progeroid Neuropathy Syndrome. doi: <https://doi.org/10.1101/2024.10.12.24315363>
54. Du, Z.W., Chen, H., Liu, H., Lu, J., Qian, K., Huang, C.L., Zhong, X., Fan, F., and Zhang, S.C. (2015). Generation and expansion of highly pure motor neuron progenitors from human pluripotent stem cells. *Nat Commun* 6, 6626. 10.1038/ncomms7626.
55. Gordon, B.A. (2020). Neurofilaments in disease: what do we know? *Curr Opin Neurobiol* 61, 105-115. 10.1016/j.conb.2020.02.001.
56. Manetto, V., Sternberger, N.H., Perry, G., Sternberger, L.A., and Gambetti, P. (1988). Phosphorylation of neurofilaments is altered in amyotrophic lateral sclerosis. *J Neuropathol Exp Neurol* 47, 642-653. 10.1097/00005072-198811000-00007.
57. Hu, Y.Y., He, S.S., Wang, X.C., Duan, Q.H., Khatoun, S., Iqbal, K., Grundke-Iqbal, I., and Wang, J.Z. (2002). Elevated levels of phosphorylated neurofilament proteins in cerebrospinal fluid of Alzheimer disease patients. *Neurosci Lett* 320, 156-160. 10.1016/s0304-3940(02)00047-2.

58. Arribat, Y., Mysiak, K.S., Lescouzeres, L., Boizot, A., Ruiz, M., Rossel, M., and Bomont, P. (2019). Sonic Hedgehog repression underlies gigaxonin mutation-induced motor deficits in giant axonal neuropathy. *J Clin Invest* 129, 5312-5326. 10.1172/JCI129788.
59. Lescouzeres, L., Hassen-Khodja, C., Baudot, A., Bordignon, B., and Bomont, P. (2023). A multilevel screening pipeline in zebrafish identifies therapeutic drugs for GAN. *EMBO Mol Med* 15, e16267. 10.15252/emmm.202216267.
60. Ganay, T., Boizot, A., Burrer, R., Chauvin, J.P., and Bomont, P. (2011). Sensory-motor deficits and neurofilament disorganization in gigaxonin-null mice. *Mol Neurodegener* 6, 25. 10.1186/1750-1326-6-25.
61. Dequen, F., Bomont, P., Gowing, G., Cleveland, D.W., and Julien, J.P. (2008). Modest loss of peripheral axons, muscle atrophy and formation of brain inclusions in mice with targeted deletion of gigaxonin exon 1. *J Neurochem* 107, 253-264. 10.1111/j.1471-4159.2008.05601.x.
62. Beattie, C.E. (2000). Control of motor axon guidance in the zebrafish embryo. *Brain Res Bull* 53, 489-500. 10.1016/s0361-9230(00)00382-8.
63. Tessier-Lavigne, M., and Goodman, C.S. (1996). The molecular biology of axon guidance. *Science* 274, 1123-1133. 10.1126/science.274.5290.1123.
64. Brusegan, C., Pistocchi, A., Frassine, A., Della Noce, I., Schepis, F., and Cotelli, F. (2012). *Ccdc80-11* is involved in axon pathfinding of zebrafish motoneurons. *PLoS One* 7, e31851. 10.1371/journal.pone.0031851.
65. Lescouzeres, L., and Bomont, P. (2020). E3 Ubiquitin Ligases in Neurological Diseases: Focus on Gigaxonin and Autophagy. *Front Physiol* 11, 1022. 10.3389/fphys.2020.01022.
66. Mahammad, S., Murthy, S.N., Didonna, A., Grin, B., Israeli, E., Perrot, R., Bomont, P., Julien, J.P., Kuczmarski, E., Opal, P., and Goldman, R.D. (2013). Giant axonal neuropathy-associated gigaxonin mutations impair intermediate filament protein degradation. *J Clin Invest* 123, 1964-1975. 10.1172/JCI66387.
67. Thaventhiran, J.E.D., Lango Allen, H., Burren, O.S., Rae, W., Greene, D., Staples, E., Zhang, Z., Farmery, J.H.R., Simeoni, I., Rivers, E., et al. (2020). Whole-genome sequencing of a sporadic primary immunodeficiency cohort. *Nature* 583, 90-95. 10.1038/s41586-020-2265-1.
68. Chundru, V.K., Zhang, Z., Walter, K., Lindsay, S.J., Danecek, P., Eberhardt, R.Y., Gardner, E.J., Malawsky, D.S., Wigdor, E.M., Torene, R., et al. (2024). Federated analysis of autosomal recessive coding variants in 29,745 developmental disorder patients from diverse populations. *Nat Genet*. 10.1038/s41588-024-01910-8.
69. Okumura, M., Miura, M., and Chihara, T. (2015). The roles of tubulin-folding cofactors in neuronal morphogenesis and disease. *Neural Regen Res* 10, 1388-1389. 10.4103/1673-5374.165226.
70. Lopez-Fanarraga, M., Carranza, G., Bellido, J., Kortazar, D., Villegas, J.C., and Zabala, J.C. (2007). Tubulin cofactor B plays a role in the neuronal growth cone. *J Neurochem* 100, 1680-1687. 10.1111/j.1471-4159.2006.04328.x.
71. Cogne, B., Bouameur, J.E., Hayot, G., Latypova, X., Pattabiraman, S., Caillaud, A., Si-Tayeb, K., Besnard, T., Kury, S., Chariou, C., et al. (2020). A dominant vimentin variant causes a rare syndrome with premature aging. *Eur J Hum Genet* 28, 1218-1230. 10.1038/s41431-020-0583-2.
72. Yan, Y., Sabharwal, P., Rao, M., and Sockanathan, S. (2009). The antioxidant enzyme Prdx1 controls neuronal differentiation by thiol-redox-dependent activation of GDE2. *Cell* 138, 1209-1221. 10.1016/j.cell.2009.06.042.
73. Miao, L., Teng, J., Lin, J., Liao, X., and Chen, J. (2013). 14-3-3 proteins interact with neurofilament protein-L and regulate dynamic assembly of neurofilaments. *J Cell Sci* 126, 427-436. 10.1242/jcs.105817.
74. Ding, J., Liu, J.J., Kowal, A.S., Nardine, T., Bhattacharya, P., Lee, A., and Yang, Y. (2002). Microtubule-associated protein 1B: a neuronal binding partner for gigaxonin. *J Cell Biol* 158, 427-433. 10.1083/jcb.200202055.
75. Allen, E., Ding, J., Wang, W., Pramanik, S., Chou, J., Yau, V., and Yang, Y. (2005). Gigaxonin-controlled degradation of MAP1B light chain is critical to neuronal survival. *Nature* 438, 224-228. 10.1038/nature04256.

76. Fortes, P., Lamond, A.I., and Ortin, J. (1995). Influenza virus NS1 protein alters the subnuclear localization of cellular splicing components. *J Gen Virol* 76 (Pt 4), 1001-1007. 10.1099/0022-1317-76-4-1001.
77. Tsai, P.L., Chiou, N.T., Kuss, S., Garcia-Sastre, A., Lynch, K.W., and Fontoura, B.M. (2013). Cellular RNA binding proteins NS1-BP and hnRNP K regulate influenza A virus RNA splicing. *PLoS Pathog* 9, e1003460. 10.1371/journal.ppat.1003460.
78. Dunham, E.E., Stevens, E.A., Glover, E., and Bradfield, C.A. (2006). The aryl hydrocarbon receptor signaling pathway is modified through interactions with a Kelch protein. *Mol Pharmacol* 70, 8-15. 10.1124/mol.106.024380.
79. Perconti, G., Ferro, A., Amato, F., Rubino, P., Randazzo, D., Wolff, T., Feo, S., and Giallongo, A. (2007). The kelch protein NS1-BP interacts with alpha-enolase/MBP-1 and is involved in c-Myc gene transcriptional control. *Biochim Biophys Acta* 1773, 1774-1785. S0167-4889(07)00217-0. 10.1016/j.bbamcr.2007.09.002.
80. Sasagawa, K., Matsudo, Y., Kang, M., Fujimura, L., Iitsuka, Y., Okada, S., Ochiai, T., Tokuhisa, T., and Hatano, M. (2002). Identification of Nd1, a novel murine kelch family protein, involved in stabilization of actin filaments. *J Biol Chem* 277, 44140-44146. 10.1074/jbc.M202596200.
81. Bharucha-Goebel, D.X., Todd, J.J., Saade, D., Norato, G., Jain, M., Lehky, T., Bailey, R.M., Chichester, J.A., Calcedo, R., Armao, D., et al. (2024). Intrathecal Gene Therapy for Giant Axonal Neuropathy. *N Engl J Med* 390, 1092-1104. 10.1056/NEJMoa2307952.
82. Bonnard, C., Strobl, A.C., Shboul, M., Lee, H., Merriman, B., Nelson, S.F., Ababneh, O.H., Uz, E., Guran, T., Kayserili, H., et al. (2012). Mutations in IRX5 impair craniofacial development and germ cell migration via SDF1. *Nat Genet* 44, 709-713. 10.1038/ng.2259.
83. Kumar, P., Henikoff, S., and Ng, P.C. (2009). Predicting the effects of coding non-synonymous variants on protein function using the SIFT algorithm. *Nat Protoc* 4, 1073-1081. 10.1038/nprot.2009.86.
84. Adzhubei, I.A., Schmidt, S., Peshkin, L., Ramensky, V.E., Gerasimova, A., Bork, P., Kondrashov, A.S., and Sunyaev, S.R. (2010). A method and server for predicting damaging missense mutations. *Nat Methods* 7, 248-249. 10.1038/nmeth0410-248.
85. Pollard, K.S., Hubisz, M.J., Rosenbloom, K.R., and Siepel, A. (2010). Detection of nonneutral substitution rates on mammalian phylogenies. *Genome Res* 20, 110-121. 10.1101/gr.097857.109.
86. Jagadeesh, K.A., Wenger, A.M., Berger, M.J., Guturu, H., Stenson, P.D., Cooper, D.N., Bernstein, J.A., and Bejerano, G. (2016). M-CAP eliminates a majority of variants of uncertain significance in clinical exomes at high sensitivity. *Nat Genet* 48, 1581-1586. 10.1038/ng.3703.
87. Bonnard, C., Navaratnam, N., Ghosh, K., Chan, P.W., Tan, T.T., Pomp, O., Ng, A.Y.J., Tohari, S., Changede, R., Carling, D., et al. (2020). A loss-of-function NUA2 mutation in humans causes anencephaly due to impaired Hippo-YAP signaling. *J Exp Med* 217. 10.1084/jem.20191561.
88. Agudelo, D., Durringer, A., Bozoyan, L., Huard, C.C., Carter, S., Loehr, J., Synodinou, D., Drouin, M., Salsman, J., Dellaire, G., et al. (2017). Marker-free coselection for CRISPR-driven genome editing in human cells. *Nat Methods* 14, 615-620. 10.1038/nmeth.4265.
89. Fuertes, G., Martin De Llano, J.J., Villarroja, A., Rivett, A.J., and Knecht, E. (2003). Changes in the proteolytic activities of proteasomes and lysosomes in human fibroblasts produced by serum withdrawal, amino-acid deprivation and confluent conditions. *Biochem J* 375, 75-86. 10.1042/BJ20030282.
90. Thisse, C., and Thisse, B. (2008). High-resolution in situ hybridization to whole-mount zebrafish embryos. *Nat Protoc* 3, 59-69. 10.1038/nprot.2007.514.
91. Ho, J., Tumkaya, T., Aryal, S., Choi, H., and Claridge-Chang, A. (2019). Moving beyond P values: data analysis with estimation graphics. *Nat Methods* 16, 565-566. 10.1038/s41592-019-0470-3.

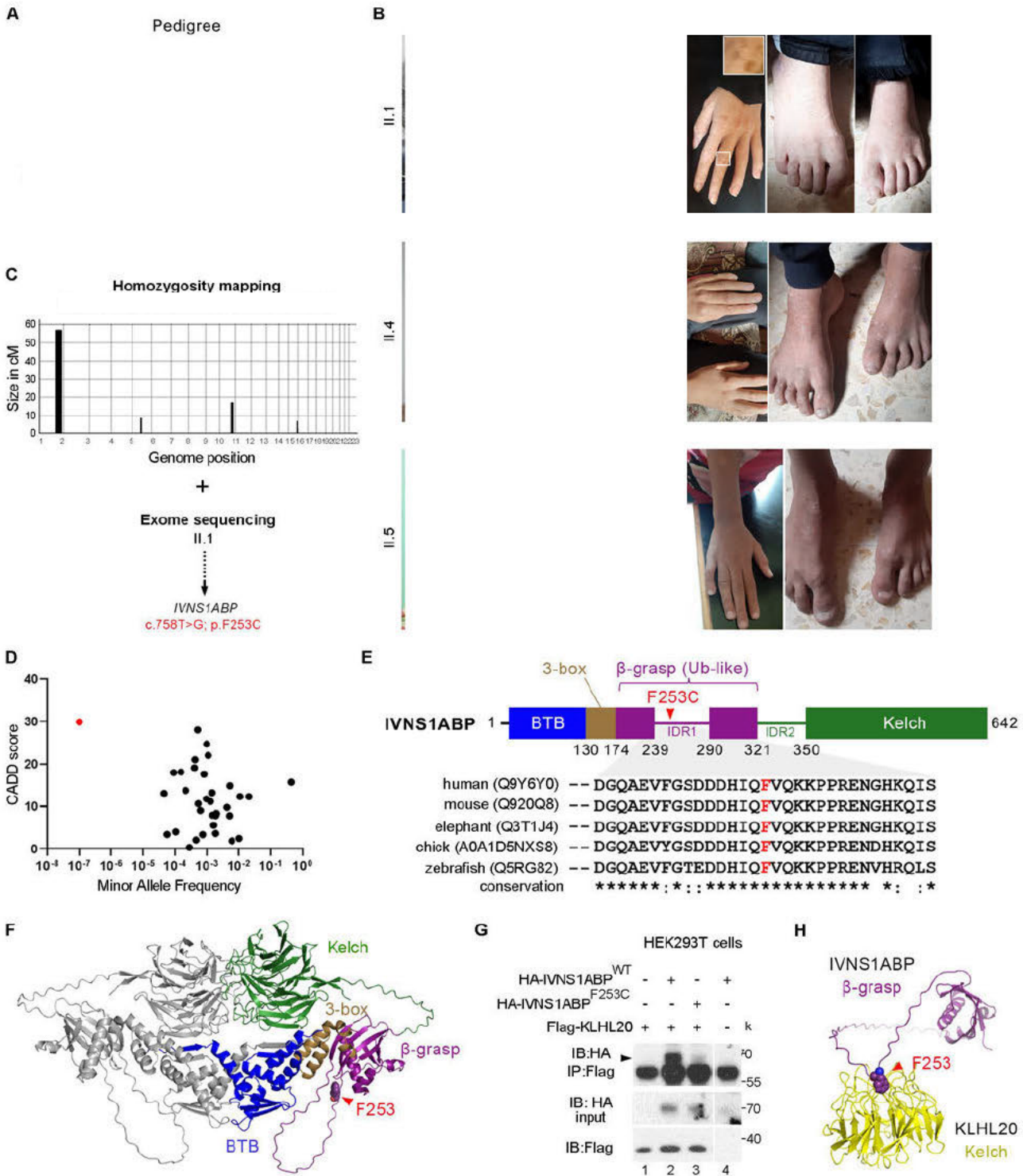


Figure 1
C. Bonnard *et al.*, (2024)

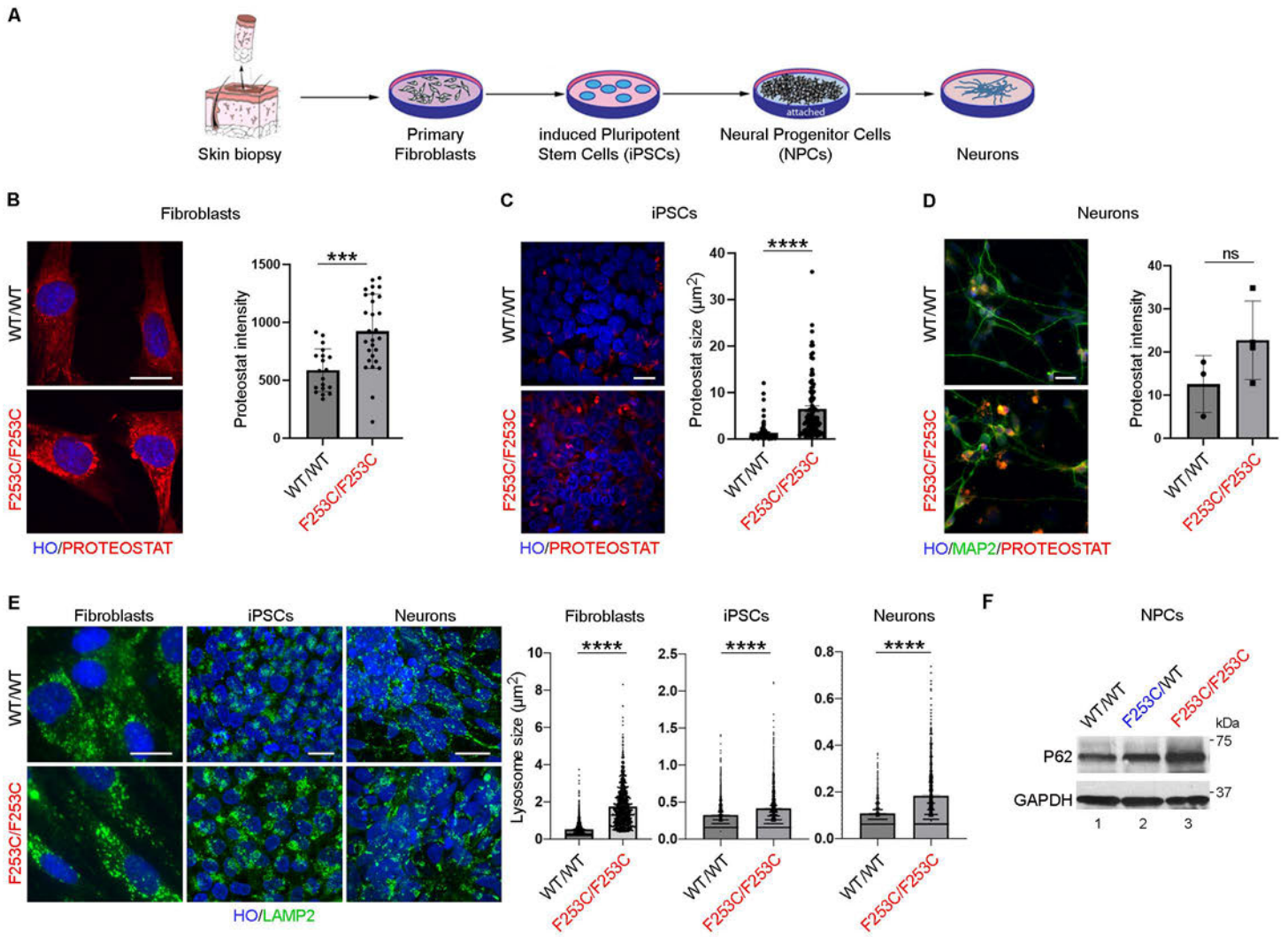


Figure 2
Bonnard *et al.*, (2024)

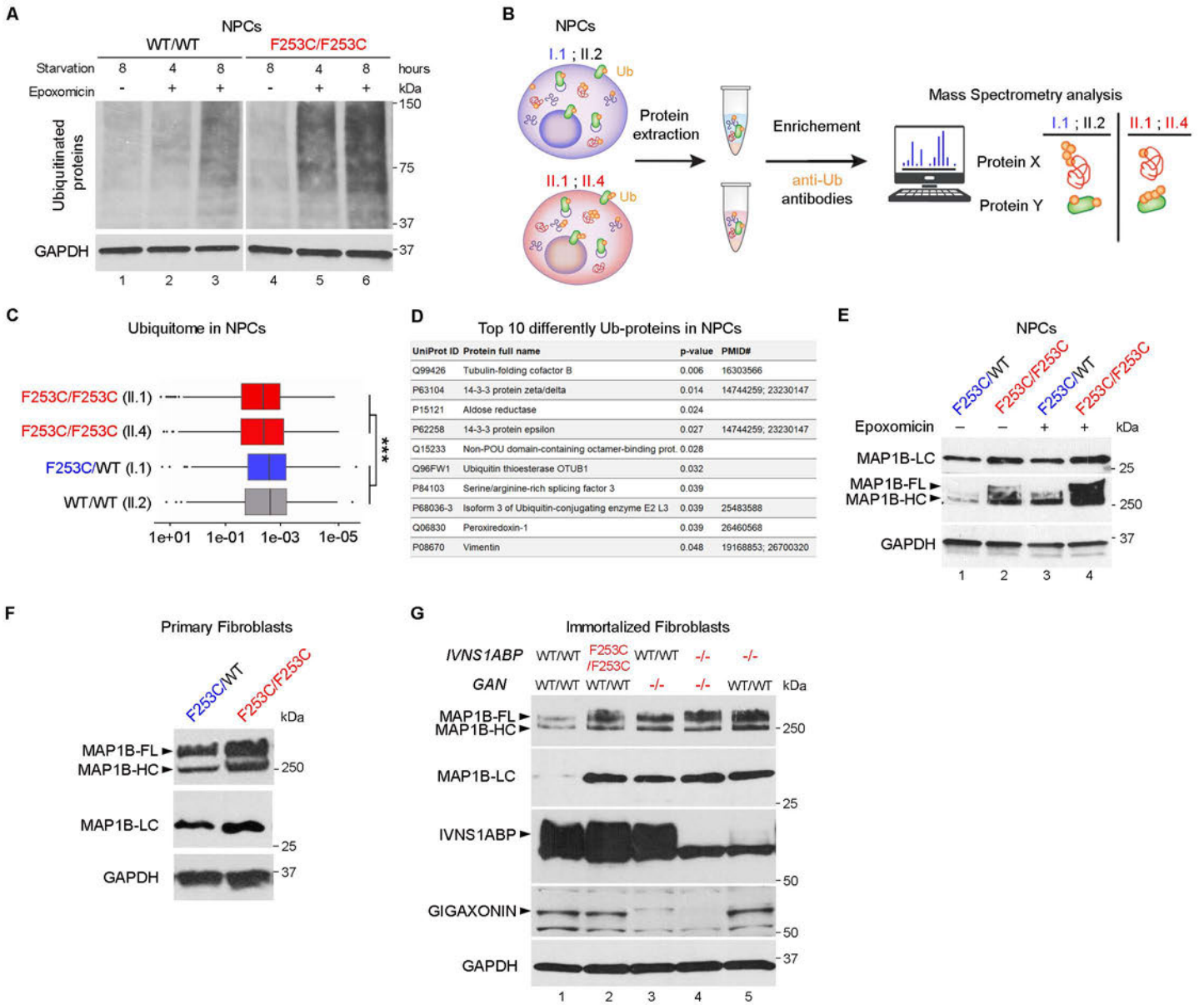


Figure 3
C. Bonnard *et al.*, (2024)

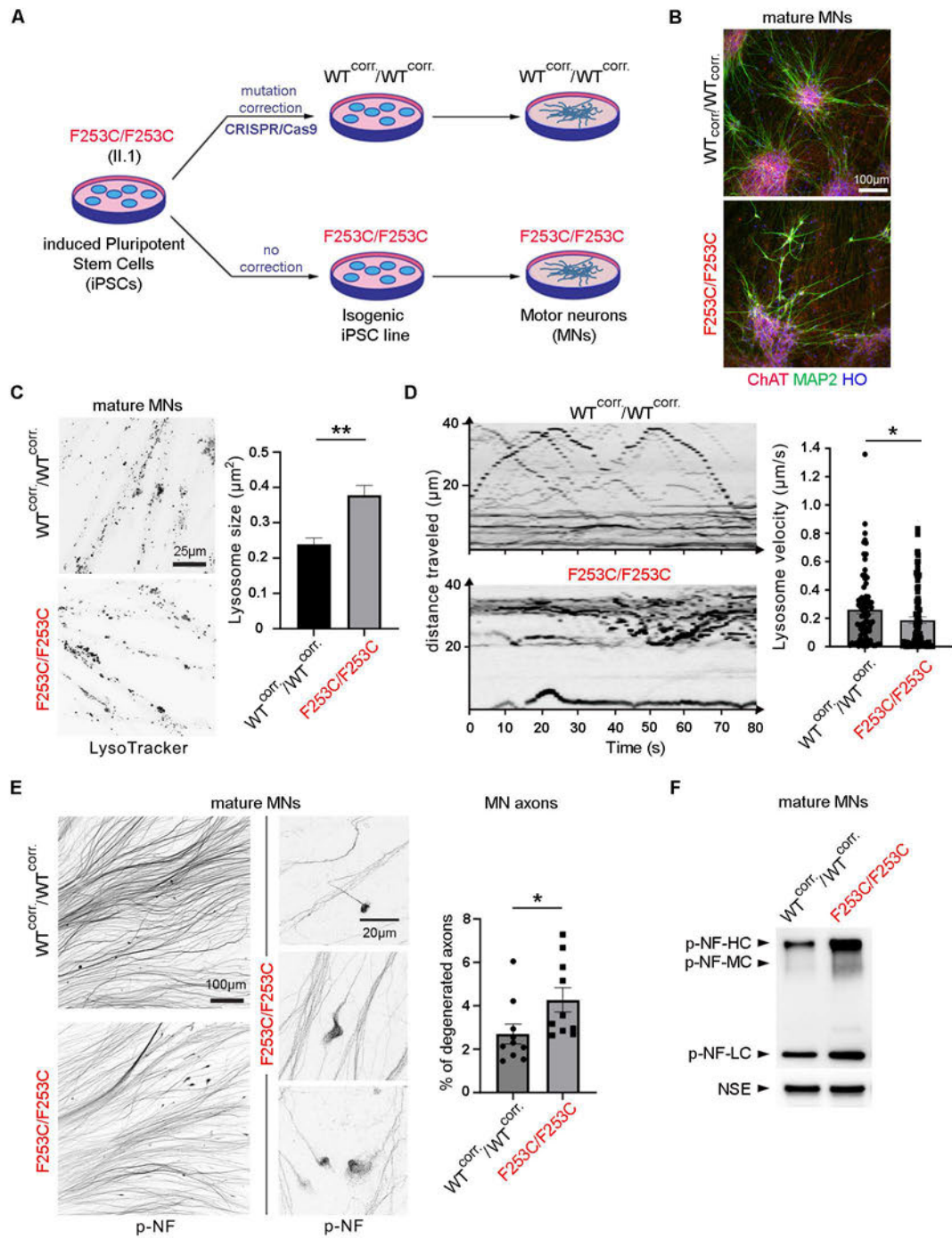


Figure 4
C.Bonnard *et al.*, (2024)

Patient ID	HPO#	II.1	II.4	II.5	GAN1 patient	GAN1 patients (literature review)
Disease (MIM number)					AR Giant axonal neuropathy-1 (256850)	
Gene (MIM number)			IVNS1ABP (609209)		GAN (605379)	
Mutation (protein)			Hmz F253C		Hmz del ch16:81262391-81445961	
Gender		Female	Male	Female	Male	Females or Males
Anthropometric measurements at last visit (SDS)		Length 156 cm Weight 32 kg OFC 53 cm			Length 150 cm (-3.76SD) Weight 21 kg (-9.5 SD) OFC 54 cm (-2.95 SD)	
CRANIOFACIAL						
Triangular face	HP:0000325	+	+	-	-	-
Long face	HP:0000276	+	++	-	+	
Hypertelorism	HP:0000316	-	-	-	+	
High palate	HP:0000218	+	ND	ND	+	
Prognathism (protuding jaw)	HP:0000303	+	-	-	-	-
Dental crowding	HP:0000678	+	+	+	-	-
MUSCULOSKELETAL						
Club feet (talipes equinovarus)	HP:0004696	+	-	-	+	+
Pes cavus or planus	HP:0001761	+	+	+	+	+
Hand deformities	HP:0001155	-	-	-	+	+
Clinodactyly	HP:0030084	-	+	+	-	-
Long fingers	HP:0100807	+	+	+	+	-
Scoliosis	HP:0002650	+	+	-	+	+
SKIN AND APPENDAGES						
Hair and body hair whitening	HP:0011364	+	+	+	-	-
Kinky or curly hair	HP:0002212	-	-	-	+ (kinky hair and eyebrows)	+
Skin dyschromatosis	HP:0007441	+	+	+	+ (reticular skin hyperpigmentation on the axillary area)	-
Hypopigmentation of the skin	HP:0001010	+	+	+	+ (perianal)	
NEUROLOGICAL						
Intellectual disability	HP:0001249	+	+	+	+	+
Epilepsy	HP:0001250	+ at the age of 20-25	-	-	+ (onset 10-15 years, tractable)	
Involuntary and rhythmic shaking		+	+	+	+ increased when hear high sounds / holding things	
Neuromotor developmental milestones						
Age of sitting without support		7 months	7 months	7 months		
Age of standing alone		9 months	>1 year	>1 year		
Age of walking alone		1 year with frequent falls	1.5 years	1.5 years	walked with support until 5-10 yrs old (unambulatory at last visit)	
Progressive and severe motor neuropathy	HP:0007002	+	+	+	+	+
Steppage gait	HP:0003376	+ lost gait at 10-15 yrs old	+	+	+	+
Distal sensory impairment	HP:0002936	+	+	ND	+	+
Hypotonia	HP:0001252	+	+	+	+	+
Facial weakness	HP:0030319	-	ND	ND	+	+
Muscle weakness and atrophy	HP:0001324	+	+	+	+	+
Muscle power		4/5 (UL), 3/5 (LL)	4/5 (UL), 4/5 (LL pro)	4/5 (UL and LL dis)	3/5 (ULR pro-dis), 2/5 (ULL pro-dis), 2/5 (LL pro-dis)	ND
Swallowing difficulties	HP:0002015	-	-	-	+ (onset 10-15 years)	
Abnormal pyramidal signs	HP:0007256	+	+	+	+	+
Spastic paraplegia	HP:0001258	-	-	-	+	+
Hyperreflexia	HP:0001347	+?	+?	+?	+?	+?
Hyporeflexia	HP:0001265	+?	+?	+?	+?	+?
Areflexia	HP:0001284	+?	+?	+?	+?	+?
Deep tendon reflexes		+1 (UL), 0 (LL)	1 (UL and LL)	2 (all over)	1+ (UL), 0 (LL)	ND
Cerebellar vermis atrophy, signs	HP:0006855	+	ND	ND	+	+
Intentional tremor	HP:0002080	+	+	+	-	
Dysarthria	HP:0001260	+	+	-	+	+
Nystagmus	HP:0000639	-	-	-	-	+
MRI ABNORMALITIES						
Thin corpus callosum	HP:0033725	thin	ND	ND	ND	
Abnormal corticospinal tract morphology	HP:0002492	ND	ND	ND	+ (progressive white matter changes of the corticospinal tract on MRI)	
OTHER						
Pressure ulcerations	HP:0012399	+	-	-	+	-
Acrocyanosis (when cold)	HP:0001063	+	+	+	-	-
Excessive sweating	HP:0000975	+	++	+	-	
Constipation	HP:0002019	+	+	ND	-	
Weight loss		+	+	-		

+: present

-: not present

UL: upper limbs; LL: lower limbs; ULR: upper limb right; ULL: upper limb left; pro: proximal; dis: distal

ND: Non Determined

Table 1

C. Bonnard et al. (2024)

S/N	#chr	pos	Pati ent	in IBD	# in house	type	ref	len	FLANK	BomoP	pvalue	coverage	allele coverage	maf	gene	transcript	location	function	codon	exon	protein	coding	sift	polyp hen	grant ham	5000 Exomes	dbSNP	phyloP		
1	1	18,957,987	1/1		0	INDEL	TA	1	GGTAAA	A=3	2.99E-11	62	2,60		PAX7	NM_002584.2	utr_5			1								0.34_0.3		
2	1	21,188,701	1/1		4	INDEL	TTA	2	TTATTAT	-	6.60E-97	102	0,102,0,0	426:0.4	EIF4G3	NM_001198801.1	intronic										rs10916885:rs20	-0.14,-0.51-		
3	1	22,928,018	2/2		0	INDEL	ACC	2	GGGACC	G=3, C=3	1.26E-11	35	5,0,30		EPHA8	NM_020526.3	intronic												-0.46,-1.35,C	
4	1	24,408,014	1/1		2	INDEL	GC	1	GGTCCGG	-	1.35E-82	85	0,85,0	0.405	MYOM3	NM_152372.3	intronic										rs10903090	0.67,-0.05		
5	1	35,932,111	1/1		0	INDEL	CA	1	TTACAAA	A=3	2.60E-12	89	8,81		KIAA0319L	NM_024874.4	intronic												-0.86,-1.36	
6	1	36,383,178	1/1		1	INDEL	AT	1	CCCATTT	T=3, C=3	7.22E-64	194	0,194		AGO1	NM_012199.2	intronic										rs369443213	-0.12,0.12		
7	1	103,455,015	1/1		5	INDEL	GA	1	AAGGAAA	A=3	1.12E-37	119	0,119		COL11A1	NM_001854.3	intronic												-1.86,-2.13	
8	1	104,076,536	1/1		0	INDEL	TA	1	TTTTAAA	A=3, T=4	2.38E-85	92	0,92,0	0.388	RNFC3	NM_017619.3	intronic										rs6702324	-0.43,-1.07		
9	1	110,292,978	1/1		0	SNV	C	1	CAGCGGG	-	1.26E-235	245	0,245,0		EPS8L3	NM_139053.2	utr_3			19						AMAFA=0.0:EMA	rs201801498	-0.61		
10	1	146,586,688	1/1		4	SNV	G	1	CCTGAGA	-	4.13E-08	8	0,8	0.343	NBP13P	NR_103466.1	upstream										rs149248152	-0.49		
11	1	155,218,168	1/1		4	SNV	T	1	CCATCCC	-	2.01E-233	244	0,244,0	0.48	FAM189B	NM_006589.2	intronic										AMAFA=0.4074:EMA	rs2075568:rs113	-0.69	
12	1	179,526,214	1/1	in IBD	0	SNV	C	1	GATCGAT	-	2.78E-317	331	0,331	0.022	NPH52	NM_014625.2	exonic	missense	CAA	5	p.Arg229Gln	c.686G>A				43	AMAFA=0.0077:EMA	rs61747728	2.83	
13	1	179,956,356	1/1	in IBD	0	INDEL	ATAT	3	TAATAT	A=3	1.09E-42	88	0,88	0.034	CEP350	NM_014810.4	intronic										rs58749862:rs58	-0.07,1.92,0.		
14	1	183,498,658	1/1	in IBD	0	SNV	A	1	AAGAAC	-	6.25E-165	172	0,172		SMG7	NM_201569.2	exonic	missense	GGA	8	p.Glu278Gly	c.833A>G	0	0.985	98	AMAFA=0.0016:EMA	rs146885503	1.92		
15	1	184,764,019	1/1	in IBD	8	INDEL	AT	1	AAAATT	A=4, T=3	1.23E-32	116	0,116		FAM129A	NM_052966.3	utr_3			14									-0.87,0.43	
16	1	185,274,675	1/1	in IBD	0	SNV	A	1	ACAAACT	-	6.25E-171	180	0,180		IVNS1AB	NM_006469.4	exonic	missense	TGT	8	p.Phe253Cys	c.758T>G				205			2.11	
17	1	197,684,138	2/2	in IBD	0	INDEL	TTA	1	TTTTAA	T=5	4.26E-12	35	0,5,30		DENND1B	NM_001195215.1	intronic												0.42,0.43,-2.	
18	1	198,673,658	1/1	in IBD	0	SNV	T	1	ACCTCAC	-	2.21E-297	310	0,310		PTPRC	NM_002838.4	intronic												0.14	
19	1	202,276,012	1/1	in IBD	0	SNV	C	1	AACCGCA	-	1.30E-173	181	0,181		LGR6	NM_001017403.1	exonic	missense	TGC	13	p.Arg385Cys	c.1153C>T	0.07	0.036	180	AMAFA=5.0E-4:EMA	rs150875603	1.39		
20	1	205,813,906	1/1	in IBD	0	SNV	G	1	GAGGACA	-	1.00E-159	166	0,166	0	PM20D1	NM_152491.4	intronic										AMAFA=0.0:EMA	rs148506388	-0.13	
21	2	15,542,412	1/1		5	INDEL	AT	1	ATAATT	T=3	8.98E-21	74	0,74		NBAS	NM_015909.3	exonic	frameshift	TTA	26	p.Ile984fs	c.2950_2950delA					AMAFA=0.0:EMA	rs140841721	2.13,0.92	
22	2	47,201,796	1/1		1	INDEL	TA	1	TTTTAAA	A=3, T=4	9.25E-38	65	0,64,1	0.325	TTCT7A	NM_020458.3	intronic												-1.33,-3.22	
23	2	55,549,817	1/1		0	INDEL	AT	1	ATAATT	T=3	2.23E-12	76	11,65		CCDC88A	NM_001135597.1	exonic	frameshift	ATT	18	p.Asn1002fs	c.3005_3005delA							0.33,1.99	
24	2	69,172,554	1/1		0	SNV	C	1	AGCCTT	-	5.09E-179	197	4193		GKN2	NM_182536.2	exonic	missense	AAC	6	p.Lys167Asn	c.501G>C				94	AMAFA=5.0E-4:EMA	rs368981064	0.4	
25	2	70,678,173	1/1		8	SNV	C	1	GACCTAG	-	1.06E-64	67	0,67	0.252	TGFA	NM_003236.3	intronic											rs3732249	0.01	
26	2	71,037,008	1/1		0	SNV	G	1	AGTGTC	-	1.92E-297	317	0,317		CLEC4F	NM_173535.2	intronic											AMAFA=0.0:EMA	rs369383205	-0.33
27	2	71,058,230	1/1		7	SNV	T	1	GTTTTGT	-	3.37E-123	138	4134	0.106	CD207	NM_015717.4	exonic	missense	ATA	6	p.Lys313Ile	c.938A>T				102	AMAFA=0.1595:EMA	rs57302492	-2.82	
28	2	71,058,306	1/1		7	SNV	T	1	CATTGTT	-	4.51E-132	137	0,137	0.106	CD207	NM_015717.4	exonic	missense	GAT	6	p.Asn288Asp	c.862A>G	0.15	0.189	23	AMAFA=0.1608:EMA	rs13383830	1.93		
29	2	74,867,462	1/1		0	SNV	G	1	AGGGAAG	-	6.46E-239	275	10265	0	MIAP	NM_138804.4	intronic												rs186232197	0.2
30	2	86,408,450	1/1		0	SNV	G	1	TGGGCA	-	1.46E-169	178	0,178	0	IMMT	NM_006839.2	exonic	missense	TGC	2	p.Arg31Cys	c.91C>T	0	0.362	180		rs201861204	2.62		
31	2	100,912,022	1/1		0	INDEL	CAA	1	TAACAA	A=3	1.02E-29	97	0,97,0	0.388	LONRF2	NM_198461.3	intronic												0.35,0.13,-0.	
32	2	167,163,661	2/2		8	INDEL	TTT	1	CCTTCT	T=3	3.43E-88	93	0,93,0	0.388	SCN9A	NM_002977.3	intronic											rs4447616	0.75,1.02,-0.	
33	2	170,350,208	1/1		8	INDEL	CA	1	TACCAA	A=3	1.86E-36	165	0,165		BB55	NM_152384.2	intronic												-0.07,0.48	
34	2	179,511,758	1/1		6	INDEL	TA	1	GATTAA	A=3	2.69E-11	37	4,33		TTN	NM_001256850.1	intronic_nc intronic												0.14,-0.49	
35	2	216,176,780	1/1		4	SNV	C	1	GAGCGC	-	1.83E-15	16	0,16	0.185	ATIC	NM_004044.6	utr_5			1								rs28366034	-0.44	
36	2	216,176,824	1/1		4	SNV	C	1	CGCGCT	-	2.34E-14	15	0,15	0.178	ATIC	NM_004044.6	utr_5			1								rs28366035	-0.49	
37	2	222,301,713	1/1		1	SNV	C	1	AAACCA	-	1.11E-123	128	0,128	0.195	EPHA4	NM_004438.3	intronic										AMAFA=0.271:EMA	rs2303900	-1.49	
38	2	222,307,534	1/1		1	SNV	G	1	AGGGGT	-	2.55E-223	238	0,238	0.21	EPHA4	NM_004438.3	intronic										AMAFA=0.3066:EMA	rs2288628	0.42	
39	2	222,434,898	1/1		2	SNV	T	1	TGATGG	-	1.72E-33	35	0,35	0.176	EPHA4	NM_004438.3	intronic											rs11687492	0.29	
40	2	225,702,565	1/1		5	SNV	G	1	GCTGTC	-	2.55E-190	200	0,200	0.24	DOCK10	NM_014689.2	intronic											AMAFA=0.4771:EMA	rs6724332	0.27
41	2	231,253,434	1/1		2	SNV	T	1	TATTCT	-	5.47E-143	151	0,151	0.174	SP140L	NM_138402.4	intronic											rs7586155	1.42	
42	2	231,256,755	1/1		2	SNV	C	1	GAGCGC	-	0.00E+00	341	0,341	0.178	SP140L	NM_138402.4	intronic											AMAFA=0.1332:EMA	rs10184953	-0.79
43	2	234,626,287	1/1		8	SNV	G	1	GGCGCC	-	1.36E-97	102	0,102	0.395	UGT1A8	NM_019076.4	intronic												rs869283	-1.13
44	2	234,638,282	1/1		2	INDEL	GT	1	TGTGTT	T=3	1.00E-62	374	17357		UGT1A8	NM_019076.4	intronic exon	frameshift	TTG	1	p.Leu173fs	c.511_511delT					AMAFA=0.0115:EMA	rs45586035	0.28,1.59	
45	2	234,668,879	1/1		3	INDEL	C	2	TGCCATA	-	3.43E-24	62	8,54		UGT1A8	NM_019076.4	intronic upstream											rs34983651	-2.03	
46	2	235,961,953	1/1		2	SNV	G	1	ACAGAGA	-	1.35E-135	140	0,140	0.133	SH3BP4	NM_014521.2	intronic											rs28403580	0.08	
47	2	237,255,303	1/1		4	SNV	A	1	AGAAGC	-	3.95E-85	88	0,88	0.278	IQCA1	NM_001270585.1	intronic											rs62192371	-0.65	
48	2	237,285,889	1/1		2	SNV	G	1	TCTGTA	-	2.35E-205	215	0,215	0.124	IQCA1	NM_001270585.1	intronic											AMAFA=0.0643:EMA	rs6431458	0.46
49	2	238,427,142	1/1		5	SNV	T	1	GACTGT	-	3.37E-103	107	0,107	0.169	MLPH	NM_024101.6	intronic											AMAFA=0.3386:EMA	rs3751110	-0.09
50	2	238,427,194	1/1		5	SNV	T	1	AACGTAT	-	9.06E-114	117	0,117	0.169	MLPH	NM_024101.6	exonic	missense	CCG	5	p.Leu153Pro	c.458T>C	0.26	0	98	AMAFA=0.3458:EMA	rs3751109	-1.19		
51	2	238,427,251	1/1		5	SNV	C	1	CTGGCT	-	6.99E-83	86	0,86	0.169	MLPH	NM_024101.6	exonic	missense	GAC	5	p.Gly172Asp	c.515G>A	0.97	0	94	AMAFA=0.3466:EMA	rs3751107	0.06		
52	2	238,434,434	1/1		2	SNV	C	1	GGACTG	-	1.30E-135	140	0,140	0.135	MLPH	NM_024101.6	exonic	missense	ATT	7	p.Thr289Ile	c.866C>T	0.42	0.004	89	AMAFA=0.2371:EMA	rs11883500	-1.02		
53	2	238,443,407	1/1		7	SNV	A	1	AAGTTA	-	4.57E-143	149	0,149	0.409																

71	3	53,267,342	1/1	2	SNV	G	1	ACCGAGG	-	9.89E-114	118	0,118	0.123	TKT	NM_001258028.1	intronic									rs2242303	-1.96		
72	3	53,277,476	1/1	2	SNV	C	1	CAGCGCT	-	1.79E-106	111	0,111	0.209	TKT	NM_001258028.1	intronic									rs7356056	0.3		
73	3	195,452,987	1/1	1	SNV	G	1	AGCGCCA	-	2.41E-277	287	0,287		MUC20	NM_001282506.1	exonic	missense	ACC	2	p.Ala505Thr	c.1513G>A			58	rs9866681	-2.05		
74	3	195,452,991	1/1	1	SNV	C	1	CCACAGA	-	1.43E-287	303	0,303		MUC20	NM_001282506.1	exonic	missense	ATA	2	p.Thr506Ile	c.1517G>T			89	rs3828411	-0.19		
75	3	195,453,014	1/1	0	SNV	G	1	CCCGGGG	-	5.64E-299	320	0,320	0.26	MUC20	NM_001282506.1	exonic	missense	AGG	2	p.Gly514Arg	c.1540G>A			125	rs3828410	-1.15		
76	3	195,508,262	1/1	0	SNV	T	1	TGTGGT	-	1.46E-04	5	0,5		MUC4	NM_018406.6	exonic	missense	GAC	2	p.Asn3397Asp	c.10189A>G	0	0.528	23	rs411286	-1.76		
77	3	195,513,364	1/1	2	SNV	C	1	AGACGGG	-	2.78E-04	5	0,5		MUC4	NM_018406.6	exonic	missense	CAT	2	p.Arg1696His	c.5087G>A			29	rs79986529	-1.92		
78	4	8,218,990	2/2	0	INDEL	TGGGGGGC	1	TGGTGGG	G=3	4.19E-07	19	1,018		SH3TC1	NM_018986.3	intronic											-1.88,-0.85,-	
79	4	84,231,235	1/1	3	INDEL	GA	1	CTAGAAA	A=3	2.74E-22	109	0,109		HPSE	NM_001098540.2	intronic											0.25,-0.93	
80	4	103,952,813	1/1	1	INDEL	CA	1	GACCAAA	A=3	1.11E-20	69	3,66		SLC9B2	NM_178833.4	intronic											-0.73,0.3	
81	4	173,873,168	2/2	3	INDEL	TTTG	2	ATTTTTT	T=5	2.45E-138	145	0,145,0	0.08,0.0	GALNTL6	NM_001034845.2	intronic									rs201651235:rs7	-0.41,-4.23,-		
82	5	41,000,192	1/1	8	SNV	A	1	AGGATAT	-	1.36E-64	67	0,67	0.412	MROH2B	NM_173489.4	intronic									rs3817324	0		
83	5	56,526,809	1/1	0	SNV	A	1	GCTAAGG	-	0.00E+00	397	0,397	0.002	GPBP1	NM_001127236.2	intronic								AMAF=2.0E-4:E	rs183423309	0.06		
84	5	57,752,504	1/1	0	SNV	T	1	TTATTGA	-	5.50E-102	106	0,106	0.124	PLK2	NM_006622.3	intronic											-0.33	
85	5	58,295,380	1/1	2	INDEL	GTA	2	TATGTAT	-	1.15E-71	120	0,120		PDE4D	NM_001104631.1	intronic											-0.49,0.34,0.	
86	5	69,784,650	1/1	6	SNV	C	1	GTCACA	-	1.11E-05	6	0,6		SMA5	NR_034021.1	intronic_nc exonic_nc												NaN
87	5	87,969,170	1/1	in IBD	0	INDEL	GTTTTT	1	CAAGTTT	T=3	2.85E-80	154	0,154,0	LINC00461	NR_015436.1	intronic_nc upstream											2.04,1.66,1.(
88	5	140,574,175	1/1	0	SNV	G	1	GCCGAGG	-	1.46E-04	5	0,5		PCDH10	NM_018930.3	exonic	missense	CAG	1	p.Glu684Gln	c.2050G>C			29	rs140393827:rs5	0.57		
89	5	156,668,577	1/1	0	INDEL	AT	1	ATTATTT	T=3	1.68E-13	131	1,912		ITK	NM_005546.3	intronic											-0.74,0.49	
90	5	159,665,499	1/1	4	SNV	G	1	TGGCGCT	-	1.46E-62	65	0,65	0.173	FABP6	NM_001130958.1	intronic										rs2277955	-1.63	
91	5	162,866,245	2/2	0	INDEL	CTT	1	GGTCTTT	T=3	4.32E-16	65	1,3,61		CCNG1	NM_199246.1	intronic											-0.59,0.24,-0.	
92	6	29,635,508	1/1	5	SNV	G	1	CCCGTTC	-	2.92E-160	170	0,170	0.21	MOG	NM_002433.4	intronic									AMAF=0.1149:rs	rs1318631	-0.65	
93	6	29,943,067	1/1	3	SNV	G	1	GGAGGGC	-	1.68E-204	214	0,214	0.284	HCG9	NR_028032.1	exonic_nc				1					AMAF=0.194:EN	rs6904029	0.53	
94	6	29,943,178	1/1	3	SNV	A	1	GTGACTG	-	1.24E-111	116	0,116	0.284	HCG9	NR_028032.1	exonic_nc				1					AMAF=0.1769:rs	rs6903753	-0.81	
95	6	31,082,734	1/1	8	SNV	G	1	GAGGAAA	-	2.12E-61	76	5,71	0.411	PSORS1C1	NM_014068.2	intronic downstream												-0.08
96	6	31,431,757	1/1	5	SNV	A	1	TGGACAC	-	0.00E+00	398	0,398	0.086	HCP5	NR_040662.1	exonic_nc					2				AMAF=0.1244:rs	rs11752262	-1.24	
97	6	31,851,234	1/1	4	SNV	A	1	CAGAGGT	-	5.38E-298	310	0,310	0.198	EHMT2	NM_006709.4	intronic									AMAF=0.229:EN	rs652888	-0.71	
98	6	31,857,165	1/1	7	INDEL	GC	1	GGGGCCC	G=4, C=3	7.85E-25	121	2,119		EHMT2	NM_006709.4	intronic											-0.46,-3.35	
99	6	31,936,057	1/1	0	SNV	G	1	CTGGGGG	-	3.06E-122	128	0,128	0.087	SKIV2L	NM_006929.4	intronic									AMAF=0.1344:rs	rs34241101	-1.19	
100	6	31,938,412	1/1	3	SNV	G	1	GCTGTGC	-	2.85E-273	284	0,284	0.099	SKIV2L	NM_006929.4	downstream	missense	CAA	4	p.His261Gln	c.783C>A			24.0	AMAF=0.1469:rs	rs17207867	1.09	
101	6	32,006,804	1/1	3	SNV	C	1	GGCCGAA	-	3.52E-85	88	0,88	0.135	CYP21A2	NM_000500.7	intronic											-0.28	
102	6	32,020,844	1/1	1	SNV	G	1	AGCGAAG	-	0.00E+00	358	0,358	0.096	TNXB	NM_019105.6	intronic											-0.03	
103	6	32,097,290	1/1	6	SNV	C	1	GGGGCTC	-	3.38E-258	271	0,271	0.11	FKBLP	NM_022110.3	exonic	missense	ACC	2	p.Ala90Thr	c.268G>A			58	AMAF=0.148:EN	rs28732176	0.35	
104	6	32,134,656	1/1	2	SNV	T	1	GTTTGA	-	0.00E+00	395	0,395	0.141	EGFL8	NM_030652.3	intronic_nc intronic										AMAF=0.1734:rs	rs3130347	-4.05
105	6	32,154,285	1/1	4	SNV	A	1	AGAAAGC	-	1.55E-252	263	0,263	0.259	PBX2	NM_002586.4	intronic									AMAF=0.3739:rs	rs204995	0.44	
106	6	32,155,581	1/1	4	SNV	A	1	AGCAATG	-	3.44E-162	168	0,168	0.288	PBX2	NM_002586.4	intronic									AMAF=0.2883:rs	rs204993	-1.33	
107	6	32,166,380	1/1	0	SNV	C	1	TTTCATC	-	5.53E-258	271	0,271	0.044	NOTCH4	NM_004557.3	intronic									AMAF=0.0546:rs	rs2114437	-0.19	
108	6	32,187,836	1/1	7	INDEL	G	2	TCTGCC	C=3	2.59E-46	79	0,79	0.271	NOTCH4	NM_004557.3	intronic										rs10568896:rs32	0.68	
109	6	32,191,581	1/1	3	SNV	T	1	TGATCAT	-	1.13E-77	82	0,82	0.306	NOTCH4	NM_004557.3	intronic									AMAF=0.3037:rs	rs396960	0.26	
110	6	32,605,336	1/1	7	SNV	G	1	AGGATG	-	1.48E-33	44	4,40	0.287	HLA-DQA1	NM_002122.3	intronic									AMAF=0.2009:rs	rs9272435	-0.45	
111	6	32,605,418	1/1	8	MNV	GG	2	AGGGGCC	-	2.40E-42	46	1,45	0.259,0.14	HLA-DQA1	NM_002122.3	intronic										rs199889539:rs9	-0.02,-0.24	
112	6	32,606,728	1/1	5	INDEL	AG	1	GACATG	-	3.09E-26	78	13,65	0.105	HLA-DQA1	NM_002122.3	intronic										rs37676366:rs1	1.58,-0.01	
113	6	32,610,623	1/1	5	SNV	T	1	GCCTTGT	-	1.63E-08	8	0,8		HLA-DQA1	NM_002122.3	intronic										rs9272818	-1.14	
114	6	32,611,012	1/1	1	SNV	A	1	CCAAGGA	-	7.24E-07	7	0,7	0.459	HLA-DQA1	NM_002122.3	utr_3						5				rs1048726	-0.11	
115	6	33,165,780	1/1	3	SNV	G	1	TCTGTCT	-	2.40E-123	129	0,129	0.073	RXRBP	NM_001270401.1	intronic										rs17847933	1.13	
116	6	33,272,626	1/1	2	SNV	C	1	TTACCCC	-	4.28E-43	45	0,45	0.135	TAPBP	NM_172208.2	intronic											rs1800837	-1.05
117	6	110,797,713	1/1	5	SNV	C	1	GCCCCTC	-	3.31E-68	90	9,81		SLC22A16	NM_033125.3	intronic									AMAF=0.3265:rs	rs367754468:rs6	0.74	
118	7	20,826,206	1/1	0	INDEL	GA	1	GCTGAAA	A=3	1.12E-05	19	1,18		SP8	NM_182700.4	intronic												2.02,1.15
119	7	38,543,102	1/1	3	MNV	GTG	2	GGGGTGG	-	2.30E-48	52	0,52	194,0.04	AMPH	NM_001635.3	intronic										rs67603609:rs10	0.0,0.0,0.0	
120	7	66,751,465	1/1	4	SNV	C	1	AATCGGG	-	8.21E-18	18	0,18		PMS2P4	NR_046299.1	intronic_nc											rs6962577	-1.94
121	7	154,237,702	1/1	0	INDEL	CA	1	AGGCCAA	A=3	6.47E-24	108	0,108		DPP6	NM_130797.2	exonic	frameshift	ATT	4	p.Ile184fs	c.544_544delA							2.58,2.09
122	7	157,367,205	1/1	0	INDEL	TGAGAGAGAGAGAG	2	TAATGAG	-	6.29E-28	68	6,61,1		PTPRN2	NM_002847.3	intronic upstream											rs371478928:rs1	-2.23,0.28,-0.
123	8	12,030,457	1/1	0	SNV	C	1	CAGCGCT	-	1.47E-04	5	0,5		FAM90A2P	NR_046354.1	downstream											rs202056025	-0.03
124	8	21,842,022	1/1	5	MNV	GTT	2	TGGTTA	-	9.82E-120	126	0,126		XPO7	NM_015024.4	intronic										rs71517672:rs18	0.06,-0.61,-1	
125	8	28,206,045	1/1	0	INDEL	CTTTTTTTA	2	TTCTTT	T=3	4.96E-17	56	2,54,0	0.003	ZNF395	NM_018660.2	utr_3							10			rs182034550	-0.98,-1.21,0.	
126	8	69,380,910	2/2	5	INDEL	ATT	1	ACCAATT	T=3	6.37E-31	92	0,92	0.092	C8orf34	NM_052958.2	intronic									AMAF=0.0019:EMAF=0.0022:GM	rs201086628	-0.75,0.91,0.	
127	8	79,672,805	1/1	4	SNV	A	1	CAAAGTA	-	8.24E-59	60	0,60		IL7	NM_000880.3	intronic												-2.37
128	8	95,143,037	1/1																									

141	8	145,009,610	1/1		5	SNV	A	1	AAAATAC	-	2.84E-42	48	1,47	0.242	PLEC	NM_201380.3	intronic												rs11784762	-5.06	
142	8	145,012,466	1/1		5	SNV	A	1	CTGAGTC	-	2.53E-151	157	0.157	0.242	PLEC	NM_201380.3	intronic													rs11136338	-0.37
143	8	145,012,777	1/1		5	SNV	C	1	ACACGCA	-	1.21E-295	307	0.307	0.242	PLEC	NM_201380.3	intronic											AMAF=0.1079:E	rs7823393	0.01	
144	8	145,020,477	1/1		6	SNV	T	1	CCCTCTC	-	2.38E-112	118	0,118	0.263	PLEC	NM_201380.3	intronic												rs12543539	-0.53	
145	8	145,020,636	1/1		5	SNV	G	1	GGAGGCA	-	4.46E-66	71	0,71	0.243	PLEC	NM_201380.3	intronic												rs12549853	0.82	
146	9	70,993,081	1/1		4	SNV	G	1	AAGGAAC	-	1.65E-11	12	0,12	0.348	PGM5	NM_021965.3	intronic											AMAF=0.4216:E	rs145607092	-2.02	
147	9	79,843,197	1/1		8	INDEL	CT	1	TATCTTT	T=3	4.79E-38	166	0,166		VPS13A	NM_033305.2	intronic										AMAF=5.0E-4:EMAF=2.0E-4:GMAF=0.07.0.85		0.07.0.85		
148	9	137,600,269	1/1		2	INDEL	GT	1	GGGGTGG	G=4	4.28E-28	29	0,29.0	264.0.14	COL5A1	NM_001278074.1	intronic												rs374098883:rs2	-0.69.0.68	
149	10	5,246,753	1/1		2	INDEL	CACAGAT	6	CTTCACA	-	1.00E-32	54	0,54	0.103	AKR1C4	NM_001818.3	intronic											rs201564021:rs1	0.16,0.9,-0.2		
150	10	5,247,701	1/1		2	SNV	G	1	AAAGTGA	-	2.50E-143	149	0,149	0.104	AKR1C4	NM_001818.3	intronic											AMAF=0.042:EN	rs7921838	-0.77	
151	10	5,247,784	1/1		3	SNV	C	1	TCTCTGC	-	6.12E-202	209	0,209	0.104	AKR1C4	NM_001818.3	exonic	missense	TGT	4	p.Ser145Cys	c.434C>G	1	0	112			AMAF=0.042:EN	rs3829125	0.43	
152	10	5,260,682	1/1		3	SNV	C	1	AGTCTTA	-	8.89E-201	209	0,209	0.104	AKR1C4	NM_001818.3	exonic	missense	GTT	9	p.Leu311Val	c.931C>G	0.33	0	32	AMAF=0.042:EN	rs17134592	-0.33			
153	10	12,131,124	1/1		0	SNV	A	1	CCAATCC	-	0.00E+00	395	0,395		DHTKD1	NM_018706.6	exonic	missense	AGT	5	p.Asn286Ser	c.857A>G	0	1	46					2.06	
154	10	26,417,377	1/1		3	INDEL	CA	1	TTTCAA	A=3, T=3	1.41E-57	224	0,224		MYO3A	NM_017433.4	exonic	frameshift	AAT	20	p.Asn727fs	c.2173_2173delA								2.84,2.29	
155	10	45,799,065	1/1		3	INDEL	T	1	TAATAAA	-	2.56E-171	294	0,294		OR13A1	NM_001004297.2	exonic	frameshift	TTA	4	p.Tyr269fs	c.805_806insT					AMAF=0.0603:EN	rs373028541:rs3	0.44		
156	10	51,465,650	1/1		2	SNV	C	1	CTTCGGT	-	1.46E-04	5	0,5	0.45	AGAP7	NM_001077685.2	exonic	missense	CAA	7	p.Arg269Gln	c.806G>A			43			AMAF=0.0603:EN	rs199898426	-1.39	
157	10	73,591,696	1/1		0	SNV	G	1	CGAGAAA	-	2.25E-161	167	0,167	0.001	PSAP	NM_002778.2	intronic											AMAF=0.0:EMAF	rs150679635	1.25	
158	10	75,676,256	1/1		0	SNV	C	1	ACACGAG	-	2.90E-186	194	0,194		C10orf55	NM_001001791.2	intronic exon	missense	ATG	11	p.Thr410Met	[c.1229C>T]	1.0	1.0	181.0					2.65	
159	10	76,980,472	1/1		0	SNV	C	1	TTCCCAA	-	1.31E-111	116	0,116	0	VDAC2	NM_001184823.1	intronic											AMAF=5.0E-4:E	rs201751542	-0.54	
160	10	97,960,993	1/1	in IBD	6	SNV	G	1	CAGGTGG	-	1.49E-49	52	0,52	0.205	BLNK	NM_013314.3	intronic												rs11188661	0.34	
161	10	99,510,190	1/1	in IBD	0	SNV	G	1	ATGGTCT	-	2.35E-209	223	0,223		ZFYVE27	NM_144588.6	exonic	missense	GAT	7	p.Gly256Asp	c.767G>A	0.02	0.007	94	AMAF=0.0:EMAF	rs369646259	-0.19			
162	10	101,591,541	1/1	in IBD	0	SNV	G	1	TCAGAGG	-	3.84E-271	284	0,284		ABCC2	NM_000392.3	exonic	missense	CAC	22	p.Gln1019His	c.3057G>C	0.35	0.025	24	AMAF=0.0:EMAF	rs144521346	2.66			
163	10	101,802,412	1/1	in IBD	0	SNV	G	1	CTAGGGA	-	3.74E-91	105	4,101		CPN1	NM_001308.2	intronic														-0.6
164	10	103,900,991	1/1	in IBD	0	SNV	T	1	CAGTACT	-	7.21E-249	261	0,261	0.001	PPRC1	NM_015062.4	exonic	missense	GCA	5	p.Val909Ala	c.2726T>C	0	0.231	64	AMAF=7.0E-4:E	rs143292683	2.04			
165	10	106,581,678	1/1	in IBD	0	SNV	T	1	TAGTAGG	-	1.91E-106	111	0,111		SORCS3	NM_014978.1	intronic														0.03
166	10	115,485,832	1/1	in IBD	0	SNV	G	1	CAGGTGT	-	3.38E-103	107	0,107		CASP7	NM_001267057.1	intronic														-0.4
167	11	2,432,853	1/1		6	INDEL	CCG	2	CCCCCGG	C=5	1.24E-56	329	7,6253		TRPM5	NM_014555.3	intronic												rs375609312	0.38,0.33,-2.	
168	11	26,574,781	2/2		8	INDEL	TTG	1	TTTTTGT	T=5	1.92E-52	55	0,0,55.0	067.0.05	ANO3	NM_031418.2	intronic											rs199734388:rs5	0.24,0.37,0.0		
169	11	32,722,315	1/1		3	INDEL	A	1	AAAATTG	A=4, T=3	3.73E-38	117	3,114		CCDC73	NM_001008391.3	intronic														0.26
170	11	67,161,312	2/2		0	INDEL	TTGG	2	TCTTTGG	T=3	1.83E-13	36	3,0,33		RAD9A	NM_004584.2	intronic														0.39,0.35,0.
171	11	70,757,620	1/1		5	SNV	T	1	AAGTAGG	-	7.92E-317	333	0,333	0.196	SHANK2	NM_012309.3	intronic												rs4409861	-0.75	
172	11	104,874,010	1/1		3	INDEL	AT	1	ATGATTT	T=3	4.27E-20	217	3,5182		CASP5	NM_001136112.1	exonic	frameshift	ATC	4	p.Asn191fs	c.572_572delA								-0.19,-0.52	
173	12	6,568,388	1/1		0	INDEL	CAGG	3	CTCCAGG	-	1.40E-167	283	0,283		TAPBP1	NM_018009.4	intronic													-2.48,-0.04,C	
174	12	16,510,514	2/2		6	INDEL	GTT	1	TAAGTTT	T=3	7.18E-19	83	1,9,73		MGST1	NM_001260511.1	intronic										AMAF=7.0E-4:EMAF=5.0E-4:GMAF=0.07.0.85			-1.42,-0.87,C	
175	12	55,794,609	1/1		7	INDEL	AT	1	AGTATTT	T=3	7.96E-38	196	0,196		OR6C65	NM_001005518.1	exonic	frameshift	TTA	1	p.Leu102fs	c.298_298delT								-0.68,1.62	
176	12	57,593,720	2/2		0	INDEL	CCG	2	CCCCCGG	C=5	6.98E-33	160	3,9,0,121	0	LRP1	NM_002332.2	exonic	frameshift	AGG	62	p.Gly331fs	c.9927_9928delCG						rs142253456:rs1	2.27,-0.69,0.		
177	12	96,184,006	1/1		2	INDEL	TGGGGCC	2	GGGTGGG	G=3	2.27E-49	109	1,108.0		NTN4	NM_021229.3	intronic														0.79,1.2,2.4
178	13	28,602,225	1/1		4	INDEL	AAAG	2	TAAATAA	A=5	1.77E-13	78	10,68.0		FLT3	NM_004119.2	intronic											rs35884842:rs20	0.18,0.18,-0.		
179	13	37,546,055	1/1		1	INDEL	TA	1	ATATAAA	A=3	1.12E-65	215	0,215		ALGS	NM_013338.4	intronic													0.12,-0.53	
180	14	36,005,056	1/1		4	INDEL	CTT	2	CCACTTT	T=3	3.54E-92	238	0,207,31		INSM2	NM_032594.3	exonic	frameshift	TAG	1	p.Phe535fs	c.1599_1600delTT								2.67,-1.04,2.	
181	15	41,976,539	1/1		1	INDEL	CAA	1	CAACAAA	A=3	2.58E-15	54	3,43.8		MGA	NM_001164273.1	intronic													-1.15,0.2,1.3	
182	15	50,189,447	1/1		5	INDEL	CA	1	AAAACAA	A=4	6.31E-43	46	0,46.0	0.35	ATP8B4	NM_024837.3	intronic											rs2413976	-0.7,-3.83		
183	15	64,742,853	2/2		0	INDEL	ATT	1	CTGATTT	T=3	3.39E-51	180	0,0,180		TRIP4	NM_016213.4	intronic														0.92,1.13,-0.
184	15	78,207,671	1/1		2	SNV	C	1	AGGCGGG	-	2.55E-157	163	0,163	0.188	LOC645752	NR_027024.1	intronic_nc												rs57708464	-0.04	
185	15	78,207,729	1/1		2	SNV	G	1	AGAGCTC	-	2.62E-74	77	0,77	0.177	LOC645752	NR_027024.1	intronic_nc												rs59711627	-0.01	
186	15	78,207,753	1/1		6	SNV	G	1	ACCGGCA	-	4.44E-55	57	0,57	0.148	LOC645752	NR_027024.1	exonic_nc						17					rs61520355	-0.87		
187	15	78,207,864	1/1		3	SNV	C	1	CAACACC	-	2.96E-20	21	0,21	0.175	LOC645752	NR_027024.1	exonic_nc						17					rs66955965	-0.05		
188	15	78,208,261	1/1		1	SNV	G	1	TCCGTAA	-	7.24E-07	7	0,7		LOC645752	NR_027024.1	exonic_nc						15					rs74027203	-0.75		
189	15	78,208,286	1/1		0	SNV	A	1	ATAATGG	-	7.24E-07	7	0,7	0.143	LOC645752	NR_027024.1	intronic_nc												rs77773002	-0.92	
190	15	79,168,890	1/1		3	INDEL	CT	1	GCACCTT	T=3	1.37E-33	139	0,139		MORF4L1	NM_206839.2	intronic														-0.57,0.06
191	16	1,497,617	1/1		6	INDEL	GGC	2	CGGGGCC	G=4	2.21E-91	148	1,147,0.0		CLCN7	NM_001287.5	intronic														-1.12,-0.37,C
192	16	29,876,150	1/1		7	INDEL	CAA	1	CATCAAA	A=3	2.20E-37	170	0,170.0		CDIPT-AS1	NR_015396.1	exonic_nc												rs75288698:rs76	0.34,0.43,0.	
193	16	30,977,316	1/1		0	INDEL	GCC	1	CTGGCCC	C=3	6.05E-26	283	56,225.2		SETD1A	NM_014712.1	exonic	frameshift	GTG												

211	19	54,755,674	1/1		2	SNV	C	1	GAGCGCT	-	1.46E-04	5	0,5		LILRB5	NM_001081442.1	intronic									rs624263	-0.71	
212	19	55,014,088	1/1		2	SNV	C	1	CAGCACA	-	6.65E-213	222	0,222	0.139	LAIR2	NM_002288.5	utr_5									AMAF=0.1434:Es2042287	0.23	
213	19	55,341,352	1/1		0	SNV	G	1	TCCGAGC	-	1.50E-75	78	0,78		KIR3DL1	NM_013289.2	intronic										-2.09	
214	19	55,341,460	1/1		6	SNV	G	1	CTCGTGG	-	6.70E-119	124	0,124	0.151	KIR3DL1	NM_013289.2	intronic									AMAF=0.1091:Es34775109	-1.75	
215	20	744,662	1/1		3	INDEL	A	9	AAGACAG	-	1.32E-35	115	22,93		SLC52A3	NM_033409.3	intronic									AMAF=0.4458:Es3833341	0.21	
216	20	39,708,708	1/1		2	INDEL	AT	1	GCAATTT	T=3	1.24E-48	192	0,192		TOP1	NM_003286.2	intronic										-5.57,0.54	
217	20	40,162,026	1/1		2	INDEL	GAAAAA	1	TAGGAAA	A=3	2.41E-34	112	1,109,2		CHD6	NM_032221.4	exonic	frameshift	CTA	3	p.Pro73fs				c.216_216delT		0.14,-0.76,2.	
218	20	45,214,417	1/1		1	INDEL	TAAAAAA	1	AAATAAA	A=3	1.98E-49	115	0,115,0		SLC13A3	NM_022829.5	intronic										-0.09,1.27,0.	
219	21	14,983,098	1/1		4	SNV	A	1	GGCAGGA	-	1.18E-10	10	0,10	0.205	POTED	NM_174981.3	intronic									rs117410873	-3	
220	21	14,992,475	1/1		4	SNV	T	1	ATTTTAG	-	2.34E-14	15	0,15		POTED	NM_174981.3	intronic									rs140804300	0.66	
221	22	20,130,519	1/1		7	INDEL	GGGC	3	GGGGGGC	G=6	6.08E-143	244	11,233,0		ZDHC8	NM_001185024.1	exonic	nonframeshiftDele	10	456_Pro457deli				c.1367_1369delGGC		2.22,0.97,2.,		
222	22	20,255,223	1/1		3	INDEL	CA	1	CTGCAA	A=3	1.08E-24	70	0,70		RTN4R	NM_023004.5	intronic										1.71,1.34	
223	22	51,135,697	1/1		4	INDEL	TG	1	GGGTGGG	G=3	1.14E-05	11	0,11		SHANK3	NM_033517.1	intronic								AMAF=0.0242:EMAF=0.0289:GM	-0.45,0.28		
224	X	3,747,555	1/1		3	SNV	G	1	TAATGTA	-	1.15E-06	7	0,7	0.16	LOC389906	NR_034031.1	intronic_nc									rs5915851	0.28	
225	X	35,971,684	1/1		8	SNV	A	1	AAAATAA	-	2.46E-100	126	917	0.26	CXorf22	NM_152632.3	intronic								AMAF=0.3939:Es6629023	0.79		
226	X	36,269,601	1/1		4	SNV	C	1	CTACGCT	-	0.00E+00	398	0,398	0.169	CXorf30	NM_001098843.4	intronic								rs5972034	-1.98		
227	X	103,040,728	2/2		0	INDEL	CTT	1	CATCTTT	T=3	8.34E-31	102	0,3,99		PLP1	NM_000533.3	intronic								AMAF=0.0:EMA	rs371686603	-0.13,0.15,0.	
228	Y	21,154,544	1/1		3	SNV	G	1	GCAGTGC	-	1.46E-04	5	0,5		TTY14	NM_013230.2	intronic_nc	missense	ATG	1	p.Leu18Met				c.52C>A		15.0	1.97

Table 2
C. Bonnard et al., (2024)