

**[Title]**

Advanced lung cancer inflammation index as a predictor of all-cause and cardiovascular mortality among American hypertensive patients

**[Authors]**

Nan Hu

Traditional Chinese and Western Medicine Hospital of Wuhan, Tongji Medical College, Huazhong University of Science and Technology.

Wuhan, China

+86 17798363925

hunan10729@163.com

Yin Feng

Traditional Chinese and Western Medicine Hospital of Wuhan, Tongji Medical College, Huazhong University of Science and Technology.

Wuhan, China

+86 18671460524

fyclinical@163.com

**corresponding author:**

Liqun He

Traditional Chinese and Western Medicine Hospital of Wuhan, Tongji Medical College, Huazhong University of Science and Technology.

Wuhan, China

+86 13720210083

liqunhe0902@hust.edu.cn

**[The total word count of the manuscript]**

5006.

**NOTE:** This preprint reports new research that has not been certified by peer review and should not be used to guide clinical practice.

## ABSTRACT

**BACKGROUND** The predictive value of advanced lung cancer inflammation index (ALI) in all-cause mortality and cardiovascular mortality among hypertensive patients has not been thoroughly investigated.

**METHOD AND RESULTS** A total of 2805 hypertensive patients from the National Health and Nutrition Examination Surveys from 2005-2006 to 2017-2018 were ultimately included in the analysis. Over the study period, participants were followed up for an average of 57.6 months, during which 311 deaths occurred, with 89 deaths attributed to cardiovascular causes. Survey-weighted restricted cubic spline (RCS) analysis revealed a nonlinear negative correlation between ALI and both all-cause and cardiovascular mortality among hypertensive patients. Survey-weighted Cox proportional hazards models revealed that in the highest ALI quartile experienced a 53.8% reduction in all-cause mortality and an 83.5% reduction in cardiovascular mortality compared with those in the lowest quartile. Survey-weighted Kaplan-Meier survival analysis also revealed that the all-cause mortality and cardiovascular mortality of hypertensive patients in the high ALI group were significantly lower than those in the low ALI group. Time-dependent ROC curves were used to assess the accuracy of survival outcomes and the area under the curve (AUC) values for the ability of ALI to predict all-cause mortality at 1, 3, and 5 years among hypertensive patients were 0.772, 0.672, and 0.634, respectively, whereas the AUC values for predicting cardiovascular mortality were 0.735, 0.760, and 0.723, respectively.

**CONCLUSIONS** ALI can be a valuable and effective tool for identifying high-risk hypertensive patients and guiding targeted interventions.

## **Nonstandard Abbreviations and Acronyms**

**ALI** Advanced lung cancer inflammation index

**NLR** Neutrophil to Lymphocyte ratio

**NHANES** National Health and Nutrition Examination Survey

## **INTRODUCTION**

Hypertension is a common chronic disease and is one of the main causes of death <sup>1</sup>. In recent years, the incidence of hypertension has increased <sup>2</sup>, and hypertension is widely recognized as a major risk factor for cardiovascular disease, stroke, and chronic kidney disease <sup>3-5</sup>. Hypertension affects more than 1 billion people worldwide and directly causes nearly 10 million deaths <sup>6</sup>. Reducing mortality and increasing life span are the primary goals of global public health <sup>7</sup>. Therefore, a novel prognostic biomarker that can identify patients with high mortality at an early stage is needed.

The advanced lung cancer inflammation index (ALI) is calculated by multiplying the body mass index (BMI) by the serum ALB level and dividing it by the Neutrophil to Lymphocyte ratio (NLR) <sup>8</sup>, and the NLR is determined by the ratio of neutrophils to lymphocytes <sup>9</sup>. Previous studies have shown that ALI is associated with the occurrence and prognosis of multiple system disorders, including cardiovascular disease, stroke, diabetes, lung cancer,

gastrointestinal cancer and rheumatoid arthritis<sup>10-15</sup>. However, the associations between ALI and the risk of both all-cause mortality and cardiovascular mortality among hypertensive patients have not been fully elucidated.

In this analysis, we conducted a study across seven cycles of the National Health and Nutrition Examination Survey (NHANES), encompassing a vast population, with the aim of exploring the link between ALI and both all-cause mortality and cardiovascular mortality in hypertensive patients. This endeavor seeks to offer fresh perspectives on their treatment and prognosis, ultimately enhancing their quality of life and survival rates.

## **METHODS**

### **Study population and design**

The NHANES database, fully named the National Health and Nutrition Examination Survey, is a large-scale cross-sectional research project administered by the National Center for Health Statistics (NCHS) in the United States. This database aims to evaluate the health and nutritional status of adults and children in the United States, collecting comprehensive data through interviews and physical examinations, covering demographics, diet, healthcare, physiological measurements, laboratory tests, and mortality<sup>16</sup>. More information about the NHANES database can be readily obtained from the official NHANES website (<http://www.cdc.gov/nchs/nhanes/index.htm>). Furthermore, all procedures adhered to the principles outlined in the Declaration of Helsinki, and NHANES has secured personal informed and written consent from every participant, ensuring their awareness and agreement in the study<sup>17</sup>.

The following populations were screened out in this study: (1) younger than 18 years of age (n=28047); (2) missing data on hypertension (n=27800); (3) lacking information on survival status (n=27); (4) missing data on ALI measurements (n=1769); (5) lacking relevant information on any of the covariates(n=9620); and (6) outliers of ALI (n=123). A total of 2805 participants were ultimately included in the analysis, sourced from the 2005-2006 to 2017-2018 NHANES datasets (Supplemental Material: Figure S1).

### **Assessment of hypertension**

After a 5-minute break, participants' blood pressure was measured three times consecutively and recorded as an average, and hypertension was defined as a blood pressure  $\geq 140/90$  mmHg<sup>18</sup>. In this study, with the questionnaire “Have you ever been told by a doctor or other health professional that you have hypertension, also called high blood pressure?”, participants were classified as hypertensive if they answered “yes”.

### **Measurement of ALI**

The advanced lung cancer inflammation index (ALI) was measured via the equation “ALI = BMI  $\times$  Alb/NLR”. BMI was measured by weight/height in kg/m<sup>2</sup>. The NLR is calculated from the absolute neutrophil count/absolute lymphocyte count<sup>19</sup>.

### **Ascertainment of mortality**

The main focus of this study was to assess all-cause mortality and cardiovascular mortality among hypertensive patients. To determine mortality among the follow-up population, we used the NHANES public-use mortality dataset, which has been linked to the National Death

Index (NDI) by the National Center for Health Statistics (NCHS) and is current up to December 31, 2019. We employed the ICD-10 to classify deaths by heart disease (054-064), chronic lower respiratory diseases (082-086), and all other causes (010) <sup>20</sup>.

## **Covariates**

Covariates such as age, sex, education, ethnicity, and the family poverty-to-income ratio can be obtained from “Demographics”. BMI was obtained from “Examination”, and we divided it into the categorization on the basis of the square of height in meters as follows: normal weight (less than 25 kg/m<sup>2</sup>), overweight (ranging from 25 to 30 kg/m<sup>2</sup>), and obese (30 kg/m<sup>2</sup> or above). <sup>21</sup>. Triglyceride (TG), total cholesterol (TC), high-density lipoprotein (HDL), low-density lipoprotein, glycosylated haemoglobin (HbA1c), ALB, urinary creatinine (UCR) and the NLR. All data were obtained from the “laboratory”. In the “Questionnaire”, for smoking, when asked, "Have you smoked at least 100 cigarettes in your life? ", the participants answered “yes” or “no”. For diabetes, when asked, “Has a doctor or health professional ever told you diabetes or sugar diabetes except during pregnancy, have you diabetes or sugar diabetes? ”, the participants also answered “yes” or “no”.

## **Statistical analysis**

Given the intricate multistage hierarchical probabilistic survey design employed by the NHANES, the statistical analysis incorporates a blend of sample weighting, clustering adjustments, and stratification to ensure the validity and representativeness of the study results <sup>22</sup>. The Kruskal-Wallis test was used to compare continuous variables, whereas the

chi-square test was used to compare categorical variables. In this study, ALI was categorized by machine learning methods: equal frequency binning<sup>23</sup>.

To explore potential nonlinear associations between ALI and both all-cause mortality and cardiovascular mortality, particularly among hypertensive patients, we employed survey-weighted RCS analysis. On the basis of the minimum Akaike information criterion (AIC), the optimal nodes of all-cause mortality (3) and cardiovascular mortality (3) are determined<sup>24</sup>.

Survey-weighted Cox proportional hazards models were used to evaluate the independent relationships of ALI with both all-cause mortality and cardiovascular mortality among hypertensive patients. To evaluate the independent predictive value of ALI, we constructed three models to present the findings. Model 1 was not adjusted. Model 2 was adjusted for age, sex, race, education and the family poverty income ratio. Model 3 was adjusted for age, sex, race, education, the family poverty income ratio, TG, TC, HDL, LDL, HbA1c, UCR, smoking status and diabetes status.

The optimal cut-off method involves segregating the continuous survival time data into two distinct groups to maximize the divergence between these groups. With this method, the optimal cut-off point was identified, and ALI was categorized into a high-level group and a low-level group<sup>25</sup>. Survey-weighted Kaplan-Meier survival analysis was then employed to assess the survival probabilities of hypertensive patients and distinguish them on the basis of their ALI levels. For cardiovascular mortality, the Fine and Gray methods were used to analyze competing risk regression and cumulative incidence curves.<sup>26</sup>

Survey-weighted time-dependent ROC curves were used to assess the accuracy of survival outcomes predicted by ALI at 1 year, 3 years, and 5 years among hypertensive patients. Subgroup analyzes were performed according to age, sex, education, ethnicity, diabetes status, and smoking status. Notably, previous studies have shown that diabetes is associated with hypertension, all-cause mortality and cardiovascular mortality<sup>27-28</sup>.

Statistical analyzes were conducted using R and DecisionLinnc Software. 2-sided p-value of less than 0.05 was considered statistically significant.

## **RESULTS**

### **Participant characteristics**

Table 1 presents the baseline characteristics of the cohort study participants (n = 2805) stratified by ALI quartile. The equal frequency binning divides ALI into four equal parts according to the number of participants: Q1 (4.14,44.02), Q2 (44.03,62.00), Q3 (62.02,84.04) and Q4 (84.08,151.61). Compared with the lowest quartile (Q1), ALI values were greater for the following participants: Seniors over the age of 65, non-Hispanic white, middle-income and obese patients. Additionally, with respect to the biochemical indices, TG, TC, LDL, ALB and UCR increased significantly with increasing quartile grade, whereas HDL levels tended to decrease (Table 1).

### **Associations between ALI and all-cause mortality and cardiovascular mortality among hypertensive patients**



In this study, during the average follow-up period of 57.6 (1,109) months, the total number of deaths was 311(11.09%), of which 89 (3.17%) died from cardiovascular causes. The RCS analysis revealed a nonlinear negative association between ALI and both all-cause mortality and cardiovascular mortality among hypertensive patients ( $p < 0.001$ ) (Figure 1); for details see the attached table (Supplemental Material: Table S1). Table 2 presents the independent associations between ALI and the risk of both all-cause mortality and cardiovascular death according to different Cox regression models. In Model 3, the hazard ratios (HRs), 95% confidence intervals (CIs) and p values for quartiles (Q1, Q2, Q3, and Q4) of all-cause mortality were 1.00(reference), 0.534(95%CI, 0.392-0.727;  $p < 0.001$ ), 0.488(95%CI, 0.346-0.690;  $p < 0.001$ ), and 0.462 (95%CI, 0.279-0.766;  $p = 0.003$ ), respectively. The cardiovascular mortality rates were 1.00(reference), 0.552(95%CI, 0.256-1.191;  $p = 0.130$ ), 0.327(95%CI, 0.147-0.725;  $p = 0.006$ ), and 0.165(95%CI, 0.056-0.482;  $p = 0.001$ ). After ALI reached the highest quartile, hypertensive patients experienced a 53.8% reduction in all-cause mortality risk and an 83.5% decrease in cardiovascular mortality risk (Table 2). Additionally, Cox regression analysis revealed a notable decline in mortality among those in the higher ALI quartiles (Q2, Q3, and Q4) compared with the lowest quartile (Q1), indicating a significant association between higher ALI and lower all-cause mortality. Moreover, this decreasing trend was more pronounced in the association of ALI with cardiovascular mortality among hypertensive patients.

The Kaplan–Meier survival curve analysis also revealed that the all-cause mortality and cardiovascular mortality of hypertensive patients in the high ALI group were significantly

lower than those in the low ALI group (Figure 2). The competing risk model presented the cumulative incidence function (CIF) of cardiovascular mortality and other-cause mortality at different time points. For both cardiovascular mortality and other-cause mortality, the incidence of mortality in the quartile gradually decreased ( $Q1 > Q2 > Q3 > Q4$ ) (Supplemental Material: Figure S2).

### **The ability of ALI to predict all-cause and cardiovascular death among hypertensive patients**

Surveyed-weighted ROC curve analysis revealed that the areas under ALI curve (AUCs) for all-cause mortality at 1, 3, and 5 years were 0.772, 0.672 and 0.634, respectively, and those for cardiovascular mortality were 0.735, 0.760 and 0.723, respectively (Figure 3). These findings indicate that ALI is similar and capable of making effective forecasts for hypertensive patients across various time periods. Additionally, we analyzed the predictive power of the NLR for all-cause mortality and cardiovascular mortality among hypertensive patients. The results showed that the NLR is less effective in predicting mortality than ALI (Supplemental Material: Figure S3).

### **Subgroup analysis**

Subgroup analyzes revealed a connection between ALI and both all-cause mortality and cardiovascular mortality, taking into account factors such as age, sex, education level, ethnicity, income, smoking, and diabetes status. No notable interaction was observed between any of these characteristics and ALI in terms of their relationship with all-cause mortality.

Interestingly, in terms of the relationship between ALI and cardiovascular mortality, all races in the United States have a better prognosis (Supplemental Material: Figure S4).

## DISCUSSION

The aim of this study was to explore the associations between ALI and all-cause mortality and cardiovascular mortality among hypertensive patients and to predict their risk of death at 1, 3, and 5 years. By analyzing the physical examination data of 2805 hypertensive participants, our research revealed an inverse correlation between ALI and both all-cause mortality and cardiovascular mortality in hypertensive patients and revealed that ALI played a prominent role in predicting their mortality risk. Patients with higher ALI values might experience a lower likelihood of mortality than those with lower ALI values. This relationship was further supported by Kaplan-Meier survival curve analysis, which revealed a clear separation in survival probability between hypertensive patients with high and low ALI levels. Moreover, our study demonstrated that ALI has a robust predictive ability for hypertensive patients at different time points, with area under the curve (AUC) values indicating its effectiveness in predicting both all-cause and cardiovascular mortality at 1, 3, and 5 years. This predictive power was further validated by comparing ALI with the NLR, another inflammation-related biomarker, which showed that ALI was more effective in predicting mortality among hypertensive patients. These findings indicate that ALI can serve as a straightforward and efficient alternative measure for assessing the risk of mortality among hypertensive patients and is convenient for individualized monitoring and management.

To date, only two teams have studied the impact of ALI on the prognosis of hypertensive patients<sup>30,31</sup>. Compared with their research, we divided ALI into four groups from small to large by the equal frequency binning method to achieve more accurate analysis results. We used survey-weighted method to analysis data, which made the analysis results more nationally representative. We found that ALI has a similar effect on reducing patient mortality across different factors through competing risk models. Furthermore, we found the NLR is less effective in predicting mortality than ALI. Previous studies have investigated the relationships between ALI and both all-cause and cardiovascular mortality among various patient groups and the wider population. For example, Chen<sup>12</sup> reported that higher ALI levels are linked to lower mortality in type 2 diabetes mellitus (T2DM) patients. Li<sup>32</sup> discovered in 2023 that ALI can serve as a novel prognostic biomarker for advanced hepatocellular carcinoma patients undergoing immunotherapy.

Although the specific biological mechanisms by which ALI is associated with mortality among hypertensive patients remain unclear, potential key pathways may involve endothelium impairment and inflammation. As mentioned above “ $ALI = BMI \times Alb/NLR$ ”, and the NLR is calculated from the absolute neutrophil count/absolute lymphocyte count. Neutrophils may promote vascular endothelial injury and the inflammatory response by secreting cytokines such as IL-1 $\beta$  and IL-8, and producing oxidative stress substances such as reactive oxygen species (ROS) and reactive nitrogen species (RNS)<sup>33,34</sup>. Endothelial impairment or cell death disrupts the vascular barrier, causing vasoconstriction, diastolic dysfunction, proliferation and migration of vascular smooth muscle cells, inflammation, and

thrombosis. These effects are tightly linked to the progression of cardiovascular conditions including atherosclerosis, hypertension, coronary artery disease, and cerebral ischemic stroke<sup>35</sup>. Various lymphocyte subsets and their cytokines contribute to vascular remodelling in hypertension, and other heart diseases. Effector T cells, such as Th1 (producing interferon-gamma), Th2 (producing interleukin-4), Th17 (producing interleukin-17), and regulatory T cells (Tregs, expressing Foxp3), exhibit both proinflammatory and anti-inflammatory properties. In particular, Th1 cells may increase blood pressure by directly affecting the kidney and promoting vascular remodelling via cytokines or their impact on perivascular fat. Conversely, adoptive transfer of Tregs can ameliorate oxidative stress in blood vessels and endothelial dysfunction, and reduce the plasma levels of proinflammatory cytokines to prevent increased blood pressure<sup>36</sup>.

## **Strengths and limitations**

When considering the results of our study, it is crucial to be aware of both its advantages and disadvantages. Our study was characterized as a large-scale, prospective, population-based study. When investigating the connection between ALI and mortality among patients with hypertension, as well as the ability of ALI to predict mortality, we employed survey-weighted analysis, which makes the research results more nationally representative. Moreover, several limitations should be noted. First, despite adjusting for potential confounding factors, residual confounding factors may still be present. Second, the NHANES did not collect detailed information on hypertension staging, impeding our capacity to perform a more detailed examination of the connection between ALI and

mortality across various stages of hypertension. Finally, the participants in this study were all Americans and lacked national representativeness, necessitating further investigations to confirm the applicability of ALI in predicting the prognosis of hypertensive patients globally.

## **CONCLUSION**

Our study revealed that in the US, ALI has a notable correlation with all-cause mortality and cardiovascular mortality among hypertensive patients, and has strong predictive power for mortality in both the short and long term. Consequently, ALI can be a valuable and effective tool for identifying hypertensive patients who are at heightened risk, and directing tailored interventions. Additional research is needed to validate these conclusions and delve into the fundamental mechanisms involved.

## **Acknowledgements**

The authors thank the NHANES participants and staff for their crucial contributions to this research.

## **Source of Funding**

This work was supported by a grant from the Health Commission of Hubei Province Funded Project (grant number W2023F043).

## **Disclosures**

None.

## **Supplemental Material**

Table S1

Figure S1-S4

## REFERENCES

1. Poulter NR, Prabhakaran D, Caulfield M. Hypertension. *Lancet*. 2015 Aug 22;386(9995):801-12. doi: 10.1016/S0140-6736(14)61468-9. Epub 2015 Mar 29. PMID: 25832858.
2. Sekkarie A, Fang J, Hayes D, Loustalot F. Prevalence of Self-Reported Hypertension and Antihypertensive Medication Use Among Adults - United States, 2017-2021. *MMWR Morb Mortal Wkly Rep*. 2024 Mar 7;73(9):191-198. doi: 10.15585/mmwr.mm7309a1. PMID: 38451865; PMCID: PMC10932583.
3. Wang W, Lee ET, Fabsitz RR, Devereux R, Best L, Welty TK, Howard BV. A longitudinal study of hypertension risk factors and their relation to cardiovascular disease: the Strong Heart Study. *Hypertension*. 2006 Mar;47(3):403-9. doi: 10.1161/01.HYP.0000200710.29498.80. Epub 2006 Jan 23. PMID: 16432042.
4. Cipolla MJ, Liebeskind DS, Chan SL. The importance of comorbidities in ischemic stroke: Impact of hypertension on the cerebral circulation. *J Cereb Blood Flow Metab*. 2018 Dec;38(12):2129-2149. doi: 10.1177/0271678X18800589. Epub 2018 Sep 10. PMID: 30198826; PMCID: PMC6282213.
5. Burnier M, Damianaki A. Hypertension as Cardiovascular Risk Factor in Chronic Kidney Disease. *Circ Res*. 2023 Apr 14;132(8):1050-1063. doi: 10.1161/CIRCRESAHA.122.321762. Epub 2023 Apr 13. PMID: 37053276.

6. Meijers WC, de Boer RA. Common risk factors for heart failure and cancer. *Cardiovasc Res*. 2019 Apr 15;115(5):844-853. doi: 10.1093/cvr/cvz035. PMID: 30715247; PMCID: PMC6452432.
7. World health statistics. 2024: monitoring health for the SDGs, sustainable development goals. [<https://www.who.int/data/gho/publications/world-health-statistics>. Accessed 21 May 2024.]
8. Feng JF, Huang Y, Chen QX. A new inflammation index is useful for patients with esophageal squamous cell carcinoma. *Onco Targets Ther*. 2014 Sep 30;7:1811-5. doi: 10.2147/OTT.S68084. PMID: 25336972; PMCID: PMC4199817.
9. Capone M, Giannarelli D, Mallardo D, Madonna G, Festino L, Grimaldi AM, Vanella V, Simeone E, Paone M, Palmieri G, Cavalcanti E, Caracò C, Ascierto PA. Baseline neutrophil-to-lymphocyte ratio (NLR) and derived NLR could predict all-cause survival in patients with advanced melanoma treated with nivolumab. *J Immunother Cancer*. 2018 Jul 16;6(1):74. doi: 10.1186/s40425-018-0383-1. PMID: 30012216; PMCID: PMC6048712.
10. Fan W, Zhang Y, Liu Y, Ding Z, Si Y, Shi F, Liu J, Sun L. Nomograms Based on the Advanced Lung Cancer Inflammation Index for the Prediction of Coronary Artery Disease and Calcification. *Clin Appl Thromb Hemost*. 2021 Jan-Dec;27:10760296211060455. doi: 10.1177/10760296211060455. PMID: 34786986; PMCID: PMC8619753.
11. Chen X, Hong C, Guo Z, Huang H, Ye L. Association between advanced lung cancer inflammation index and all-cause and cardiovascular mortality among stroke patients:



- NHANES, 1999-2018. *Front Public Health*. 2024 Apr 18;12:1370322. doi: 10.3389/fpubh.2024.1370322. PMID: 38699426; PMCID: PMC11063327.
12. Chen Y, Guan M, Wang R, Wang X. Relationship between advanced lung cancer inflammation index and long-term all-cause, cardiovascular, and cancer mortality among type 2 diabetes mellitus patients: NHANES, 1999-2018. *Front Endocrinol (Lausanne)*. 2023 Nov 28;14:1298345. doi: 10.3389/fendo.2023.1298345. PMID: 38111710; PMCID: PMC10726345.
  13. Song M, Zhang Q, Song C, Liu T, Zhang X, Ruan G, Tang M, Xie H, Zhang H, Ge Y, Li X, Zhang K, Yang M, Li Q, Liu X, Lin S, Xu Y, Xu H, Wang K, Li W, Shi H. The advanced lung cancer inflammation index is the optimal inflammatory biomarker of all-cause survival in patients with lung cancer. *J Cachexia Sarcopenia Muscle*. 2022 Oct;13(5):2504-2514. doi: 10.1002/jcsm.13032. Epub 2022 Jul 14. PMID: 35833264; PMCID: PMC9530543.
  14. Liu XR, Wang LL, Zhang B, Liu XY, Li ZW, Kang B, Yuan C, Wei ZQ, Peng D. The advanced lung cancer inflammation index is a prognostic factor for gastrointestinal cancer patients undergoing surgery: a systematic review and meta-analysis. *World J Surg Oncol*. 2023 Mar 6;21(1):81. doi: 10.1186/s12957-023-02972-4. PMID: 36879283; PMCID: PMC9987069.
  15. Ma Z, Wu S, Guo Y, Ouyang S, Wang N. Association of advanced lung cancer inflammation index with all-cause and cardiovascular mortality in US patients with rheumatoid arthritis. *Front Nutr*. 2024 May 30;11:1397326. doi: 10.3389/fnut.2024.1397326. PMID: 38873560; PMCID: PMC11169605.

16. Li B, Chen L, Hu X, Tan T, Yang J, Bao W, Rong S. Association of Serum Uric Acid With All-Cause and Cardiovascular Mortality in Diabetes. *Diabetes Care*. 2023 Feb 1;46(2):425-433. doi: 10.2337/dc22-1339. PMID: 36490263.
17. Yin J, Gong R, Zhang M, Ding L, Shen T, Cai Y, He S, Peng D. Associations between sleep disturbance, inflammatory markers and depressive symptoms: Mediation analyzes in a large NHANES community sample. *Prog Neuropsychopharmacol Biol Psychiatry*. 2023 Aug 30;126:110786. doi: 10.1016/j.pnpbp.2023.110786. Epub 2023 May 12. PMID: 37178815.
18. Chobanian AV, Bakris GL, Black HR, Cushman WC, Green LA, Izzo JL Jr, Jones DW, Materson BJ, Oparil S, Wright JT Jr, Roccella EJ; Joint National Committee on Prevention, Detection, Evaluation, and Treatment of High Blood Pressure. National Heart, Lung, and Blood Institute; National High Blood Pressure Education Program Coordinating Committee. Seventh report of the Joint National Committee on Prevention, Detection, Evaluation, and Treatment of High Blood Pressure. *Hypertension*. 2003 Dec;42(6):1206-52. doi: 10.1161/01.HYP.0000107251.49515.c2. Epub 2003 Dec 1. PMID: 14656957.
19. Yao J, Chen X, Meng F, Cao H, Shu X. Combined influence of nutritional and inflammatory status and depressive symptoms on mortality among US cancer survivors: Findings from the NHANES. *Brain Behav Immun*. 2024 Jan;115:109-117. doi: 10.1016/j.bbi.2023.10.002. Epub 2023 Oct 11. PMID: 37820973.
20. Zhang Q, Xiao S, Jiao X, Shen Y. The triglyceride-glucose index is a predictor for cardiovascular and all-cause mortality in CVD patients with diabetes or pre-diabetes:

- evidence from NHANES 2001-2018. *Cardiovasc Diabetol*. 2023 Oct 17;22(1):279. doi: 10.1186/s12933-023-02030-z. PMID: 37848879; PMCID: PMC10583314.
21. Claessen H, Brenner H, Drath C, Arndt V. Repeated measures of body mass index and risk of health related outcomes. *Eur J Epidemiol*. 2012 Mar;27(3):215-24. doi: 10.1007/s10654-012-9669-7. Epub 2012 Mar 3. PMID: 22388768.
  22. Hernaez R, McLean J, Lazo M, Brancati FL, Hirschhorn JN, Borecki IB, Harris TB; Genetics of Obesity-Related Liver Disease (GOLD) Consortium; Nguyen T, Kamel IR, Bonekamp S, Eberhardt MS, Clark JM, Kao WH, Speliotes EK. Association between variants in or near PNPLA3, GCKR, and PPP1R3B with ultrasound-defined steatosis based on data from the third National Health and Nutrition Examination Survey. *Clin Gastroenterol Hepatol*. 2013 Sep;11(9):1183-1190.e2. doi: 10.1016/j.cgh.2013.02.011. Epub 2013 Feb 13. PMID: 23416328; PMCID: PMC4197011.
  23. Jung S, Bi Y, Davuluri RV. Evaluation of data discretization methods to derive platform independent isoform expression signatures for multi-class tumor subtyping. *BMC Genomics*. 2015;16 Suppl 11(Suppl 11):S3. doi: 10.1186/1471-2164-16-S11-S3. Epub 2015 Nov 10. PMID: 26576613; PMCID: PMC4652565.
  24. Jones RH. Bayesian information criterion for longitudinal and clustered data. *Stat Med*. 2011 Nov 10;30(25):3050-6. doi: 10.1002/sim.4323. Epub 2011 Jul 29. PMID: 21805487.
  25. Liu Y, Ni J, Xiong Y, Wu C, He F. Neutrophil-to-lymphocyte ratio is associated with 28-day mortality in patients with severe fever with thrombocytopenia syndrome. *BMC Infect Dis*. 2022 Mar 6;22(1):225. doi: 10.1186/s12879-022-07206-8. PMID: 35249544;

PMCID: PMC8898529.

26. Kilic A, Mathier MA, Hickey GW, Sultan I, Morell VO, Mulukutla SR, Keebler ME. Evolving Trends in Adult Heart Transplant With the 2018 Heart Allocation Policy Change. *JAMA Cardiol.* 2021 Feb 1;6(2):159-167. doi: 10.1001/jamacardio.2020.4909. PMID: 33112391; PMCID: PMC7593876.
27. Zaccardi F, Dhalwani NN, Webb DR, Davies MJ, Khunti K. Global burden of hypoglycaemia-related mortality in 109 countries, from 2000 to 2014: an analysis of death certificates. *Diabetologia.* 2018 Jul;61(7):1592-1602. doi: 10.1007/s00125-018-4626-y. Epub 2018 May 1. PMID: 29717336; PMCID: PMC6438613.
28. Yang XH, Zhang BL, Cheng Y, Fu SK, Jin HM. Association of the Coexistence of Somniphath and Diabetes With the Risks of Cardiovascular Disease Events, Stroke, and All-Cause Mortality: A Systematic Review and Meta-analysis. *J Am Heart Assoc.* 2022 Jul 19;11(14):e024783. doi: 10.1161/JAHA.121.024783. Epub 2022 Jul 5. PMID: 35861844; PMCID: PMC9707815.
29. Zhang Y, Pan Y, Tu J, Liao L, Lin S, Chen K, Ding S, Xiao G. The advanced lung cancer inflammation index predicts long-term outcomes in patients with hypertension: National health and nutrition examination study, 1999-2014. *Front Nutr.* 2022 Oct 25;9:989914. doi: 10.3389/fnut.2022.989914. PMID: 36386913; PMCID: PMC9641016.
30. Tu J, Wu B, Xiu J, Deng J, Lin S, Lu J, Yan Y, Yu P, Zhu J, Chen K, Ding S, Chen L. Advanced lung cancer inflammation index is associated with long-term cardiovascular death in hypertensive patients: national health and nutrition examination study,

- 1999-2018. *Front Physiol.* 2023 May 3;14:1074672. doi: 10.3389/fphys.2023.1074672. PMID: 37206362; PMCID: PMC10189044.
31. Li Q, Ma F, Wang JF. Advanced lung cancer inflammation index predicts survival outcomes of hepatocellular carcinoma patients receiving immunotherapy. *Front Oncol.* 2023 Mar 14;13:997314. doi: 10.3389/fonc.2023.997314. *Erratum in: Front Oncol.* 2024 Jun 10;14:1431058. doi: 10.3389/fonc.2024.1431058. PMID: 36998452; PMCID: PMC10043333.
32. Zhong X, Zhao X, Zhang L, Liu N, Shi S, Wang Y. Sodium hydrosulfide inhibiting endothelial cells injury and neutrophils activation via IL-8/CXCR2/ROS/NF- $\kappa$ B axis in type 1 diabetes mellitus rat. *Biochem Biophys Res Commun.* 2022 May 28;606:1-9. doi: 10.1016/j.bbrc.2022.03.072. Epub 2022 Mar 18. PMID: 35334385.
33. Mittal M, Siddiqui MR, Tran K, Reddy SP, Malik AB. Reactive oxygen species in inflammation and tissue injury. *Antioxid Redox Signal.* 2014 Mar 1;20(7):1126-67. doi: 10.1089/ars.2012.5149. Epub 2013 Oct 22. PMID: 23991888; PMCID: PMC3929010.
34. Zheng D, Liu J, Piao H, Zhu Z, Wei R, Liu K. ROS-triggered endothelial cell death mechanisms: Focus on pyroptosis, parthanatos, and ferroptosis. *Front Immunol.* 2022 Nov 1;13:1039241. doi: 10.3389/fimmu.2022.1039241. PMID: 36389728; PMCID: PMC9663996.
35. Schiffrin EL. Immune mechanisms in hypertension and vascular injury. *Clin Sci (Lond).* 2014 Feb;126(4):267-74. doi: 10.1042/CS20130407. PMID: 24144355.

**Tables**

**Table 1 Baseline characteristics of 2805 hypertensive patients by quartiles of ALI index.**

Characteristic	N	ALI Index Quartiles					p-value
		Overall, N = 2,805	Q1(4.14,44.02), N = 702	Q2(44.03,62.00), N= 701	Q3(62.02,84.04), N= 701	Q4(84.08,151.61), N = 701	
<b>Age, years</b>	2,805						<0.001
>=18, <65		1679(59.86%)	308(43.87%)	412(58.77%)	472(67.33%)	487(69.47%)	
>=65		1126(40.14%)	394(56.13%)	289(41.23%)	229(32.67%)	214(30.53%)	
<b>Sex</b>	2,805						0.005
Female		1430(50.98%)	322(45.87%)	373(53.21%)	351(50.07%)	384(54.78%)	
Male		1375(49.02%)	380(54.13%)	328(46.79%)	350(49.93%)	317(45.22%)	
<b>Race</b>	2,805						<0.001
Mexican American		287(10.23%)	58(8.26%)	76(10.84%)	82(11.70%)	71(10.13%)	
Non-Hispanic Black		717(25.56%)	124(17.66%)	154(21.97%)	169(24.11%)	270(38.52%)	
Non-Hispanic White		1185(42.25%)	380(54.13%)	313(44.65%)	287(40.94%)	205(29.24%)	

ic White							
Other Race		616(21.96%)	140(19.94%)	158(22.54%)	163(23.25%)	155(22.11%)	
<b>Education</b>	2,805					0.156	
<High school		665(23.71%)	172(24.50%)	176(25.11%)	148(21.11%)	169(24.11%)	
High school		687(24.49%)	174(24.79%)	168(23.97%)	158(22.54%)	187(26.68%)	
>High school		1,453(51.80%)	356(50.71%)	357(50.93%)	395(56.35%)	345(49.22%)	
<b>The poverty income ratio</b>	2,805					0.011	
<1.3		916(32.66%)	205(29.20%)	242(34.52%)	210(29.96%)	259(36.95%)	
>1.3, <=3.5		1,090(38.86%)	302(43.02%)	259(36.95%)	272(38.80%)	257(36.66%)	
≥3.5		799(28.48%)	195(27.78%)	200(28.53%)	219(31.24%)	185(26.39%)	
<b>BMI, kg/m<sup>2</sup></b>	2,805					<0.001	
<25		520(18.54%)	223(31.77%)	146(20.83%)	89(12.70%)	62(8.84%)	
25-30		929(33.12%)	255(36.32%)	247(35.24%)	243(34.66%)	184(26.25%)	
≥30		1,356(48.34%)	224(31.91%)	308(43.94%)	369(52.64%)	455(64.91%)	
<b>TG, mg/dl</b>	2,805	122.46(18.00-39	113.37(22.00-	123.57(18.00-39	129.30(21.00-39	123.62(23.00	<0.001

		8.00)	374.00)	5.00)	6.00)	-398.00)	
<b>TC, mg/dl</b>	2,805	187.68(81.00-44	181.32(81.00-	186.74(99.00-38	190.92(88.00-42	191.76(99.00	<0.001
		6.00)	446.00)	0.00)	8.00)	-354.00)	
<b>HDL, mg/dl</b>	2,805	53.46(6.00-226.	55.95(16.00-2	53.16(18.00-114	52.34(6.00-142.	52.38(19.00-	0.013
		00)	26.00)	.00)	00)	156.00)	
<b>LDL, mg/dl</b>	2,805	109.72(14.00 -	102.69(14.00-	108.84(24.00-28	112.73(33.00-35	114.65(15.00	<0.001
		357.00)	354.00)	8.00)	7.00)	-233.00)	
<b>HbA1c, %</b>	2,805	6.11(3.50-15.60)	6.09(4.10-13.6	6.11(4.30-15.00)	6.09(3.50-15.60	6.14(3.80-13	0.279
			0)		)	.40)	
<b>ALB, g/dl</b>	2,805	4.15(2.00-5.30)	4.09(2.00-5.20	4.15(3.00-5.20)	4.17(2.60-5.30)	4.18(3.20-5.	<0.001
			)			10)	
<b>UCR, mg/dl</b>	2,805	123.63(8.00-522	114.40(9.00-4	121.99(8.00-496	126.61(9.00-520	131.56(10.00	<0.001
		.00)	87.00)	.00)	.00)	-522.00)	
<b>Smoking</b>	2,805						0.001
No		1,400(49.91%)	316(45.01%)	335(47.79%)	365(52.07%)	384(54.78%)	
Yes		1,405(50.09%)	386(54.99%)	366(52.21%)	336(47.93%)	317(45.22%)	
<b>Diabetes</b>	2,805						0.038
No		2,074(73.94%)	499(71.08%)	510(72.75%)	521(74.32%)	544(77.60%)	
Yes		731(26.06%)	203(28.92%)	191(27.25%)	180(25.68%)	157(22.40%)	
<b>NLR</b>	2,805	2.37(0.67-25.50	3.95(1.79-25.5	2.37(1.13-4.53)	1.83(1.00-3.53)	1.34(0.67-2.	<0.001
		)	0)			68)	



BMI: body mass index; TG: triglyceride; TC: total cholesterol; HDL: high-density lipoprotein cholesterol; LDL: low-density lipoprotein cholesterol; HbA1c: glycosylated Hemoglobin; UCR: urine creatinine. Continuous variables are presented as the mean and 95% confidence interval, category variables are described as the percentage and 95% confidence interval. Continuous variables are presented as the mean and 95% confidence interval. Category variables are described as the percentage and 95% confidence interval.

**Table 2 HRs (95% CIs) for the mortality of 2805 hypertensive patients according to ALI quartiles.**

Characteristic	Model1		Model2		Model3	
	HR (95%CI)	P-value	HR (95%CI)	Pvalue	HR (95%CI)	P-value
<b>Overall mortality</b>						
Q1	Reference		Reference		Reference	
Q2	0.413(0.297,0.576)	<0.001	0.504(0.364,0.698)	<0.001	0.534(0.392,0.727)	<0.001
Q3	0.325(0.230,0.459)	<0.001	0.440(0.304,0.637)	<0.001	0.488(0.346,0.690)	<0.001
Q4	0.302(0.180,0.507)	<0.001	0.400(0.238,0.672)	0.001	0.462(0.279,0.766)	0.003
<b>Cardiovascular mortality</b>						

---

Q1	Reference		Reference		Reference	
Q2	0.454(0.221,0.931)	0.031	0.587(0.279,1.234)	0.160	0.552(0.256,1.191)	0.130
Q3	0.238(0.109,0.523)	<0.001	0.351(0.155,0.795)	0.012	0.327(0.147,0.725)	0.006
Q4	0.120(0.042,0.344)	<0.001	0.166(0.057,0.486)	0.001	0.165(0.056,0.482)	0.001

---

Model1 : Unadjusted.

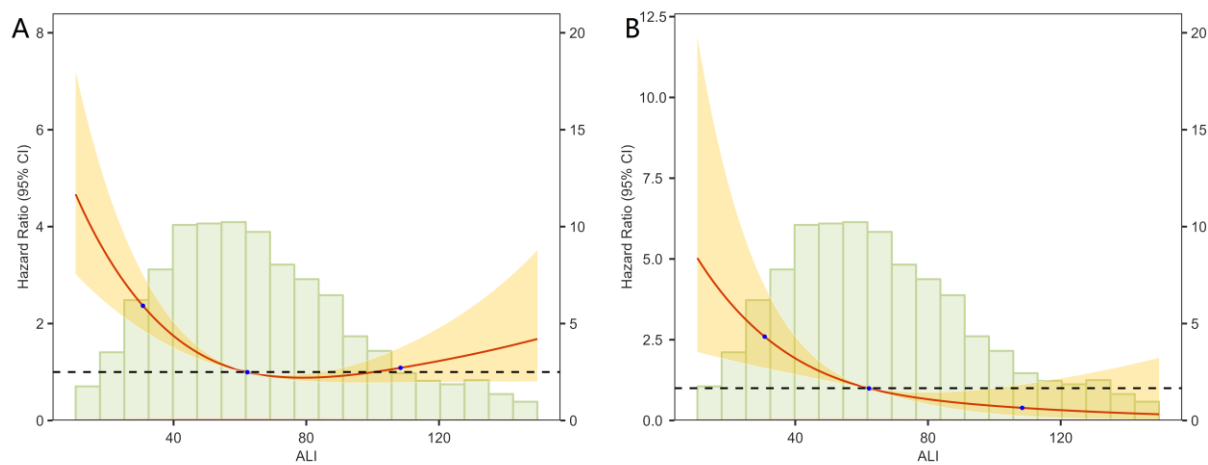
Model2 : Age, Sex, Education, Race, The poverty income ratio.

Model3 : Age, Sex, Education, Race, The poverty income ratio, TG, TC, HDL, LDL, HbA1c,

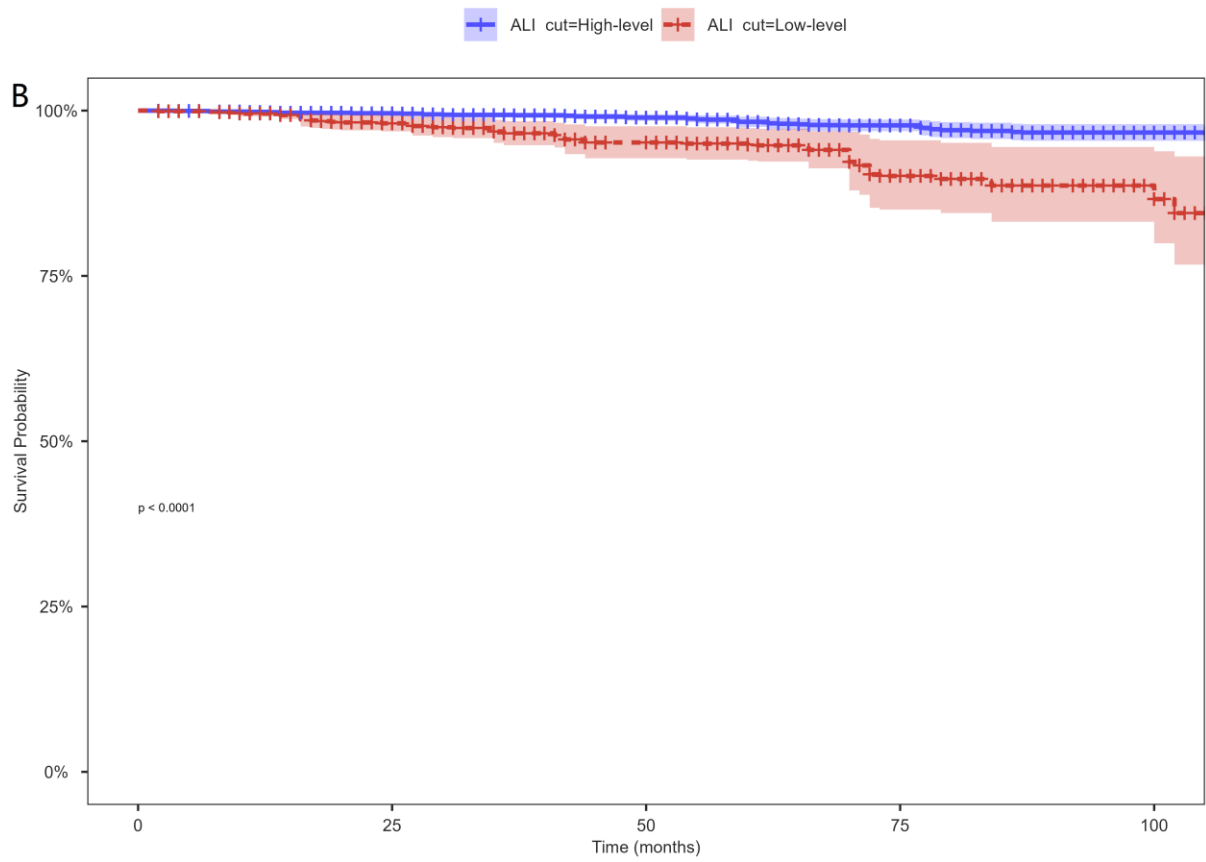
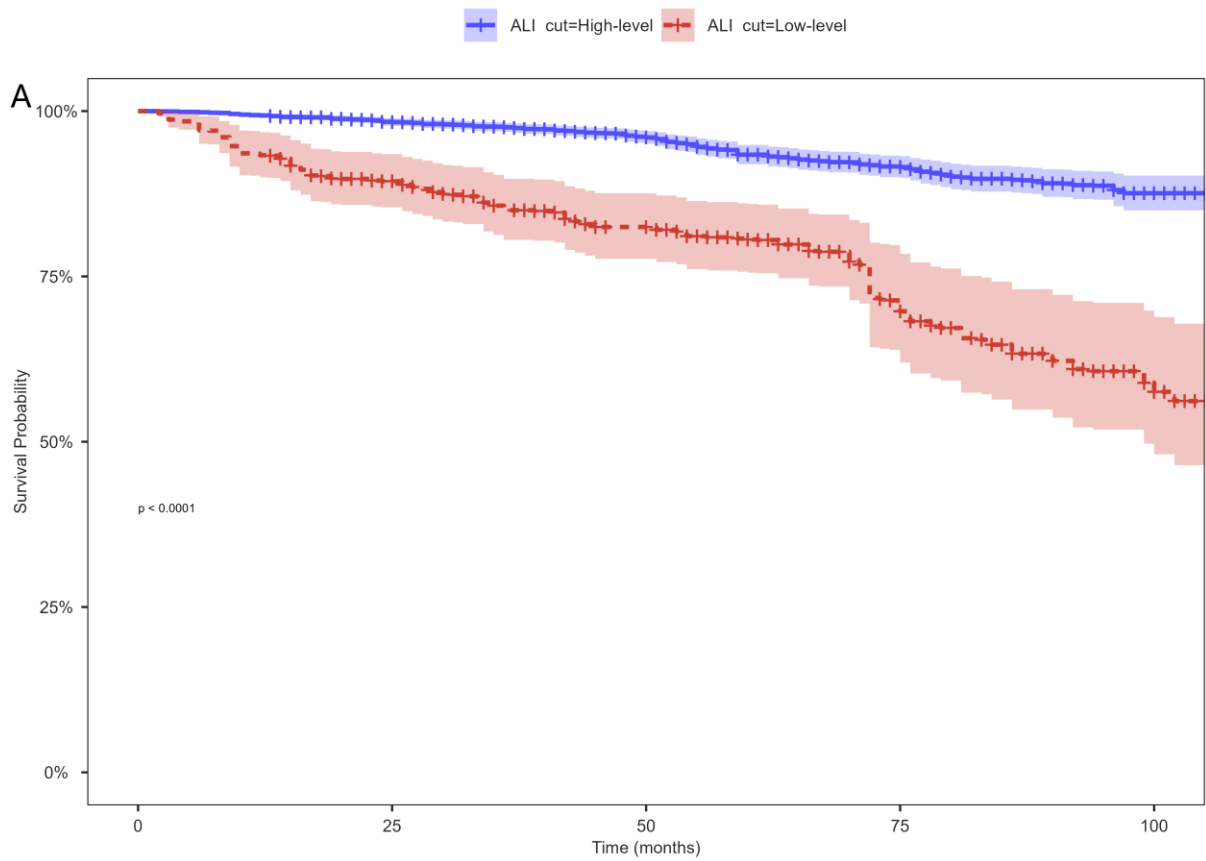
UCR Smoking status and Diabetes status.

Weighted.

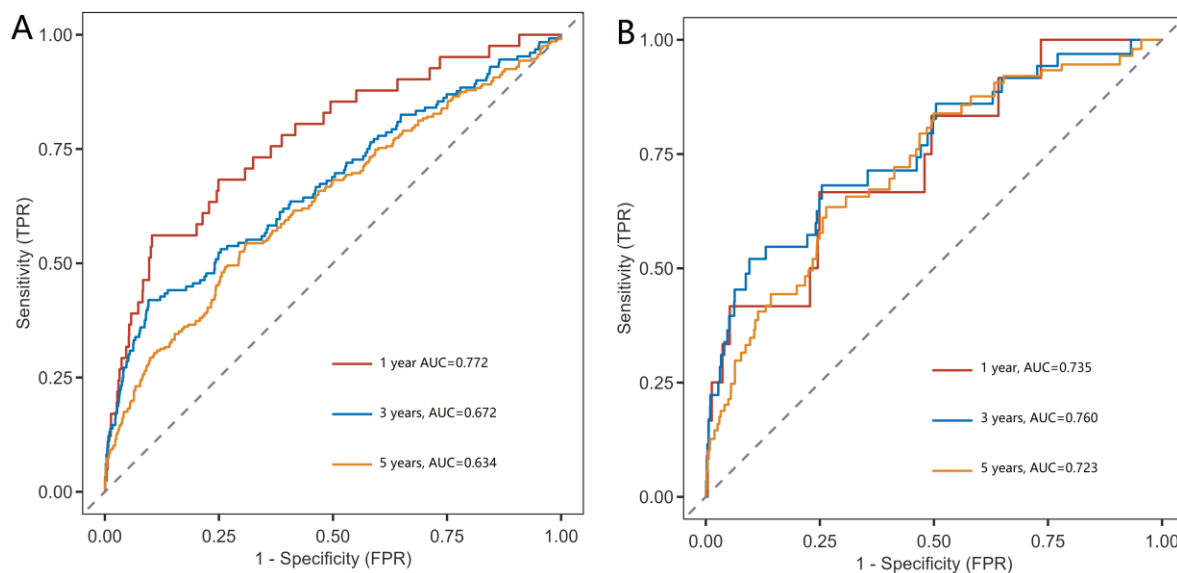
### Figures with Figure Legends



**Figure 1** The association of Advanced lung cancer inflammation index (ALI) with all-cause mortality and cardiovascular mortality among 2805 hypertensive patients visualized by restricted cubic spline, weighted.



**Figure 2** The survival rate with high-level ( $> 32.93$ ) and low-level ( $\leq 32.93$ ) Advanced lung cancer inflammation index (ALI) values among 2805 hypertensive patients, weighted.



**Figure 3** Advanced lung cancer inflammation index (ALI) for predicting overall mortality and cardiovascular mortality among 2805 hypertensive patients, weighted.