

**Manuscript Title:** Associations between Urinary Pesticide Metabolites and Serum Inflammatory Biomarkers in Adolescents Living in an Agricultural Region

**Authors:** Mohammed N. Hussari<sup>1</sup>, Briana N.C. Chronister<sup>2,3</sup>, Kun Yang<sup>2</sup>, Xin Tu<sup>2</sup>, Danilo Martinez<sup>4</sup>, Rajendra P Parajuli<sup>2</sup>, Jose Suarez-Torres<sup>4</sup>, Dana Boyd Barr<sup>5</sup>, Suzi Hong<sup>2,6#</sup>, Jose R. Suarez-Lopez<sup>2\*,#</sup>

**Affiliation:**

<sup>1</sup>University of California San Diego (UCSD) School of Medicine, 9500 Gillman Dr, CA 92093, USA

<sup>2</sup>Herbert Wertheim School of Public Health and Human Longevity Science, University of California San Diego (UCSD), 9500 Gillman Dr. MC: 0725, 92093-0725 CA, USA

<sup>3</sup>School of Public Health, San Diego State University, San Diego, California, USA.

<sup>4</sup>Fundación Cimas del Ecuador (CIMAS), De los Olivos E14-226 y, Quito 170124, Ecuador

<sup>5</sup>Rollins School of Public Health, Emory University, 1518 Clifton Road, NE, Atlanta, GA 30322, USA

<sup>6</sup>Department of Psychiatry, School of Medicine, University of California San Diego

**#Co-senior authors**

**\*Corresponding Author:**

Jose Ricardo Suarez, MD, PhD

Herbert Wertheim School of Public Health and Human Longevity Science,

University of California San Diego (UCSD), 9500 Gillman Dr. MC 0725, La Jolla, CA 92093-0725, USA

Email: [jrsuarez@health.ucsd.edu](mailto:jrsuarez@health.ucsd.edu), Phone: 1-858-822-0165

**Email Addresses**

MNH: [mhussari@health.ucsd.edu](mailto:mhussari@health.ucsd.edu) 0009-0006-1883-817X

BNC: [bcortez@health.ucsd.edu](mailto:bcortez@health.ucsd.edu) 0000-0002-8941-3981

KY: [kuyang@health.ucsd.edu](mailto:kuyang@health.ucsd.edu) NA

XMT: [x2tu@health.ucsd.edu](mailto:x2tu@health.ucsd.edu) 0000-0001-6470-980X

DM: [dmartinez@cimas.edu.ec](mailto:dmartinez@cimas.edu.ec) 0000-0001-6342-5928

RPP: [rparajuli@health.ucsd.edu](mailto:rparajuli@health.ucsd.edu) 0000-0002-4899-7212

JST: [jsuarez@cimas.edu.ec](mailto:jsuarez@cimas.edu.ec) 0000-0003-0318-6798

DB: [dbbarr@emory.edu](mailto:dbbarr@emory.edu) 0000-0002-5566-2138

SH: [slhong@health.ucsd.edu](mailto:slhong@health.ucsd.edu) 0000-0003-0300-5950

JRS: [jrsuarez@health.ucsd.edu](mailto:jrsuarez@health.ucsd.edu) 0000-0001-9738-137X

**ABSTRACT**

**Background**

In-vitro and in-vivo studies have shown evidence for the immuno-modulatory properties of different pesticides. However, few epidemiological studies on inflammation and pesticide exposure exist, with none in children and adolescents. Associations between pesticide metabolites in urine and inflammatory biomarkers in serum were evaluated among children and adolescents (n=512) of rural Ecuador as part of the ESPINA study

**Methods**

Seventeen urinary biomarkers of insecticide, herbicide and N, N-diethyl-meta-toluamide (DEET) insect repellent exposure were measured. Among them, acetamiprid-N-desmethyl [AND], 3,5,6-Trichloro-2-pyridinol [TCPy], para-nitrophenol [PNP], malathion dicarboxylic acid [MDA], 3-phenoxybenzoic acid [3-PBA], 2,4-Dichlorophenoxyacetic acid [2,4-D], glyphosate and 3-(diethylcarbamoyl) benzoic acid [DCBA] were included in analyses as they were detected in >30% of participants. Serum analysis included c-reactive protein (CRP), interleukin-6 (IL-6), tumor necrosis factor- $\alpha$  (TNF- $\alpha$ ), soluble intercellular adhesion molecule-1 (sICAM-1), soluble vascular cell adhesion molecule-1 (sVCAM-1), serum amyloid A (SAA), and soluble CD14 (sCD14). Associations were evaluated by generalized estimating equations (GEE) and partial least squares (PLS) regression, adjusting for demographic, anthropometric and socioeconomic variables.

**Results**

Positive quadratic associations were found between 2,4-D and CRP ( $\beta^2=0.13$ , [0.00, 0.27]), IL-6 ( $\beta^2=0.10$ , [0.04, 0.15]), SAA ( $\beta^2=0.13$ , [0.01, 0.30]), sICAM-1 ( $\beta^2=53.25$ , [27.26, 79.24]) and sVCAM-1 ( $\beta^2=61.11$ , [30.52, 91.70]). The pesticide metabolites PLS composite variable was positively associated with IL-6 ( $\beta=0.09$ , [0.01, 0.17]), SAA ( $\beta=0.43$ , [0.13, 0.17]), sICAM-1 ( $\beta=63.52$ , [9.92, 117.13]), sVCAM-1 ( $\beta=69.03$ , [8.29, 129.76]) and TNF- $\alpha$  ( $\beta=0.08$ , [0.00, 0.16]), and negatively associated with CRP ( $\beta=-0.28$ , [-0.49, -0.08], Figure 1).

**Conclusions**

Our findings demonstrate a novel pesticide/herbicide-inflammation link in adolescents, which may be an underlying mechanism of the health impacts of pesticides/herbicides.

**Key Words:** Inflammation, Pesticides, Agriculture, Ecuador, Cytokines, Adolescents

## 57 **Introduction**

58 Pesticide use in agriculture has soared in recent decades due to the Green Revolution,  
59 which introduced agrochemical use in human farming practices (Hayes and Hansen 2017). The  
60 Green Revolution's technological package increased agricultural yields and profits but came  
61 with significant environmental and health consequences (Suárez-Torres et al. 2017). In addition  
62 to acute toxicities, there is emerging evidence from human, animal and in-vitro models that  
63 chronic, low-level exposure to pesticides can have significant health consequences, including  
64 neurocognitive and neurodegenerative disorders such as ADHD, Parkinson's disease, other  
65 pathologies including bladder and hematologic cancers, and changes in cytokine mRNA  
66 expression (Henderson et al. 2002; de Souza et al. 2011; Baltazar et al. 2014; Koutros et al.  
67 2016).

68 Although various studies have demonstrated associations between inflammation status  
69 and the use of agrochemicals, many of the studies examining the relationship between  
70 inflammation and pesticides are largely confined to in vitro and animal models (Agrawal et al.  
71 2015a; Singh et al. 2016; Patel et al. 2018; Miao et al. 2022; Deng et al. 2022). Only a handful of  
72 studies have illustrated the effects of pesticide exposure on inflammation in humans.  
73 Inflammation, particularly chronic systemic inflammation, has been implicated in the  
74 pathogenesis of the world's most disabling and deadly diseases, including cardiovascular  
75 disease, chronic kidney disease, diabetes mellitus, non-alcoholic fatty liver disease,  
76 neurodegenerative disease and autoimmune disease (Furman et al. 2019).

77 Growing evidence indicates that human agricultural workers are at increased risk for  
78 inflammatory diseases. A meta-analysis of 14 different studies that examined pesticide exposure  
79 across various classes found evidence for associations between various pesticides and  
80 Parkinson's disease (Huang et al. 2022), which is believed to involve a neuroinflammatory  
81 process in its pathogenesis (Priyadarshi et al. 2001; Tansey et al. 2022; Huang et al. 2022).  
82 Similarly, a study of adult male pesticide applicators found that those diagnosed with rheumatoid  
83 arthritis (RA) had greater intensity-weighted lifetime use of certain insecticides and herbicides  
84 than did those without a confirmed RA diagnosis (Armando et al. 2024). Another study found  
85 that participants with recently diagnosed systemic lupus erythematosus (SLE) had higher odds of  
86 having ever worked in pesticide mixing (Cooper et al. 2004). Similarly, in a cohort of  
87 greenhouse insecticide applicators, the use of neonicotinoids, organophosphates, and pyrethroids

88 was associated with elevated levels of interleukin-22 (IL-22), a cytokine with complex pro- and  
89 anti-inflammatory functions. (Fenga et al. 2014). In contrast to these findings, a study found that  
90 male pesticide sprayers exposed to the pyrethroid cypermethrin had reduced levels of the  
91 proinflammatory cytokines IL-2, IL-8, IL-12 and interferon-gamma (IFN- $\gamma$ ) compared to those  
92 of male office workers who served as controls with less pesticide exposure. (Costa et al. 2013).

93 A limited number of studies have characterized the associations between pesticide  
94 exposure and inflammation biomarkers, and none have been found in pediatric populations.  
95 Mwanga et al. performed a cross-sectional study involving 113 women residing on farms in  
96 South Africa, and 98 women living in neighboring towns to examine the associations between  
97 urinary pesticide metabolites and various outcomes, including cytokine profiles for IL-4, IL-5,  
98 IL-6, IL-8, IL-10, IL-13 and IL-17, and found a consistent trend of increased cytokines with  
99 higher concentrations of various organophosphate and pyrethroid metabolites (Mwanga et al.  
100 2016). The association between use of pesticide mixtures, as reported through questionnaires,  
101 and various cytokines was studied in a group of 108 floriculture workers in Mexico, and it was  
102 found that the levels of IL-6 and IFN- $\gamma$  were higher amongst those with greater exposure  
103 (Godínez-Pérez et al. 2024). One small study involving 31 farm workers occupationally exposed  
104 to pesticides and city-dwelling unexposed controls matched for age and sex found significant  
105 increases in IL-6 concentrations among participants categorized as exposed (El-Gameel et al.  
106 2023). Another small study in Brazil compared the cytokine levels of farmworkers with reported  
107 occupational pesticide exposure to those of healthy controls and revealed that IL-6 was elevated  
108 in the exposed group (Jacobsen-Pereira et al. 2020). Similarly, Da Silva et al. reported that  
109 women with breast cancer who reported occupational exposure to pesticides had the worst  
110 prognostic features, a shift in helper T-cell (Th) profiles from Th1 to Th2, and a decrease in IL-  
111 17A, IL-1B and IL-4 in those with lymph node invasion (da Silva et al. 2022b).

112 Studies using in vitro and animal models have supported findings from human  
113 observational studies, demonstrating that insecticide exposure can upregulate inflammation. This  
114 includes upregulation of nuclear factor kappa beta (NF- $\kappa\beta$ ), tumor necrosis factor alpha (TNF- $\alpha$ ),  
115 IL-1 $\beta$ , and IL-6 associated with neonicotinoid insecticide exposure (Miao et al. 2022; Deng et al.  
116 2022), as well as elevated pro-inflammatory markers in the substantia nigra and microglia  
117 (Agrawal et al. 2015a, b; Hossain et al. 2017). Additionally, pyrethroid exposure has been linked  
118 to increased reactive oxygen species (ROS) production, while organophosphate insecticide

119 exposure has been associated with the upregulation of IL-8 and TNF- $\alpha$  and the downregulation  
120 of the anti-inflammatory cytokine IL-10 (Schäfer et al. 2013; Proskocil et al. 2019).  
121 Organophosphates, and to a lesser extent the insect repellent N,N-Diethyl-3-methylbenzamide  
122 (DEET), are known to inhibit acetylcholinesterase (AChE) activity (Corbel et al. 2009), and  
123 alterations in the cholinergic system due to pesticide exposure can trigger inflammatory  
124 responses and related pathophysiological changes or lead to reduced regulation of inflammation  
125 via the cholinergic anti-inflammatory pathway (Mokarizadeh et al. 2015).

126         Herbicides represent another major class of pesticides, and glyphosate and 2,4-D are the  
127 two most used herbicides worldwide. Animal and in vitro studies have found 2,4-D exposure to  
128 be associated with increased inflammasome activation and elevated caspase-1, IL-1 $\beta$ , IL-18, and  
129 p62 protein expression (Zhou et al. 2022), and reduced glutathione stores in human erythrocytes,  
130 suggesting that it is an oxidative stressor (Bukowska 2003). Glyphosate was found to upregulate  
131 the expression of IL-1 $\beta$ , TNF- $\alpha$ , IL-6, and C-reactive protein (CRP) in liver tissue samples  
132 compared to controls (Pandey et al. 2019), and was associated with increased IL-33, TSLP, IL-  
133 13, and IL-5, and increased numbers of eosinophils and neutrophils in lung tissue (Kumar et al.  
134 2014). Glyphosate may disturb mitochondrial architecture and function, inducing ROS-mediated  
135 inflammation (Qi et al. 2023).

136         Given the limited research on inflammation in humans as a function of pesticide  
137 exposure, our study seeks to better understand whether urinary pesticide metabolites,  
138 representing exposure to varying classes of pesticides, are associated with human inflammation  
139 markers in adolescents living in agricultural settings in Ecuador. It is important to understand  
140 how inflammation status is affected by pesticide exposure given the emerging evidence for  
141 inflammation-mediated pathogenesis of various diseases (Furman et al. 2019). We hypothesized  
142 that insecticide and herbicide urinary metabolites would positively associate with serum  
143 inflammatory biomarkers.

144

## 145 **Materials and Methods**

### 146 **Study Population**

147         The study of Secondary Exposures to Pesticides among Children and Adolescents  
148 (ESPINA) is a prospective cohort study focused on understanding the effects of pesticide  
149 exposure on the development of children and adolescents residing in the agricultural county of

150 Pedro Moncayo, Pichincha Province, Ecuador. The ESPINA study was established in 2008 and  
151 examined 313 boys and girls aged 4-9 years. Participants were recruited mostly through  
152 community announcements for their participation in the “2004 Survey of Access and Demand of  
153 Health Services in Pedro Moncayo County,” a representative survey of Pedro Moncayo County  
154 collected by Fundación Cimas del Ecuador in conjunction with the communities of Pedro  
155 Moncayo County. Details about participant recruitment in 2008 have been described previously  
156 (Suarez-Lopez et al. 2013). In 2016, the cohort was expanded, and two examinations were  
157 conducted. We examined a total of 554 participants in 2016: 330 participants in April and 535 in  
158 July-October, with 311 participants examined during both time periods. Participants in 2016  
159 (Suarez-Lopez et al. 2020) were 12-17 years of age and included 238 participants examined in  
160 2008 and 316 new volunteers (Suárez-López et al. 2020). The System of Local and Community  
161 Information (SILC) developed by Fundación Cimas del Ecuador was used to recruit new  
162 participants in 2016. The SILC included information from the 2016 Community Health Survey  
163 of Pedro Moncayo County (formerly the Survey of Access and Demand of Health Services in  
164 Pedro Moncayo). None of the participants reported working in agriculture in either 2008 or 2016.  
165 Additional details of participant recruitment in 2016 have been published (da Silva et al. 2022a).

166 To maximize the number of participants included in our analyses, we imputed missing  
167 data for parental education in 2016 (n=10), as well as residential distance to the nearest flower  
168 plantation in 2008 (n=3). Among the children who were examined in 2008 but were missing  
169 parental education data in 2016 (n=5), data for parental education were imputed using the 2008  
170 data for maternal and paternal education. For participants with missing paternal and maternal  
171 education data in 2008 and missing parental education in 2016 (n=5), a random imputation was  
172 conducted for each variable based on a normal distribution of the variable during the respective  
173 examination period. Since a small number of participants reported being White (n=4), we  
174 grouped these 6 participants in the mestizo (mix of White and Indigenous) category to improve  
175 model stability when adjusting for ethnicity.

176 The present analysis includes 512 participants examined in the July-October 2016 who  
177 had all covariates of interest: 8 observations were excluded due to missing inflammatory marker  
178 data and another 15 due to missing covariate data.

179 The 2016 examination of the ESPINA study was approved by the Institutional Review  
180 Boards of the University of California San Diego (UCSD), Universidad San Francisco de Quito

181 and the Ministry of Public Health of Ecuador and endorsed by the Commonwealth of Rural  
182 Parishes of Pedro Moncayo County. We obtained informed consent from adult participants (aged  
183 18 years or older) and parents, as well as parental permission of participation and informed  
184 assent of child participants.

185

## 186 **Data Collection**

### 187 **Examination and Survey**

188 In 2016, children were examined in 7 schools when they were out of session between  
189 July and October. The examiners were unaware of the participants' potential exposures. Home  
190 interviews with parents and adult residents were conducted to gather socioeconomic and  
191 demographic information. Participant ethnicity was categorized into 2 groups: 114 Indigenous  
192 and 407 Mestizo participants.

193

### 194 **Anthropometric measures**

195 Participant height was assessed using a height board following recommended guidelines,  
196 and weight was measured using a digital scale (Tanita model 0108 MC; Tanita Corporation of  
197 America, Arlington Heights, IL, USA). We calculated z-scores for height-for-age (Z-height-for-  
198 age) and body mass index-for-age (Z-BMI-for-age) using the World Health Organization growth  
199 standards (World Health Organization 2006).

200

### 201 **Biospecimen analysis**

202 All biospecimens were collected on the same day, including urine and venous blood.

### 203 **Inflammation markers**

204 Venipuncture of the median cubital or cephalic veins in the arm was conducted by a  
205 phlebotomist following standard guidelines without fasting (Clinical and Laboratory Standards  
206 Institute 2007). Blood samples were centrifuged and aliquoted on site and transported on dry ice  
207 to Quito, approximately 45-55 km from the various blood collection sites across Pedro Moncayo,  
208 for storage at -70°C. Samples were then shipped to the University of California San Diego  
209 (UCSD) at -20°F using an overnight courier. Samples were stored at -80°C at UCSD until they  
210 were analyzed for inflammation marker quantification at the UCSD Integrative Health Mind-  
211 Body Biomarker Core. Multiplex assay kits were used to measure plasma levels of pro-



212 inflammatory markers including TNF- $\alpha$ , IL-6, CRP, soluble intercellular adhesion molecule-1  
213 (sICAM-1), serum amyloid A (SAA) and soluble vascular adhesion molecule-1 (sVCAM-1),  
214 using the 2400 SECTOR Imager reader (Meso Scale Discovery, Rockville, Maryland). Levels of  
215 soluble cluster of differentiation 14 (sCD-14), a pro-inflammatory marker, indicating monocyte  
216 activation, were measured using quantikine ELISA kits using R&D Systems (Minneapolis, MN).  
217 The intra- and inter-assay coefficients of variation of those markers were <10%. The Pearson's  
218 correlation coefficients between paired inflammation markers were calculated and tested as  
219 additional information (Table S1).

220

## 221 **Urinary pesticide biomarkers**

### 222 *Overview*

223         Seventeen urinary biomarkers of pesticide exposure were measured, including six  
224 neonicotinoid metabolites (acetamiprid [ACET], acetamiprid-N-desmethyl [AND], clothianidin  
225 [CLOT], imidacloprid [IMID] and thiacloprid [THIA]), four organophosphates (2-isopropyl-4-  
226 methyl-6-hydroxypyrimidine [IMPY], 3,5,6-Trichloro-2-pyridinol [TCPy], *para*-nitrophenol  
227 [PNP], and malathion dicarboxylic acid [MDA]), three pyrethroid metabolites (3-  
228 phenoxybenzoic acid [3-PBA], 4-fluoro-3-phenoxybenzoic acid [4F-3PBA] and trans-3-(2,2-  
229 Dichlorovinyl)-2,2-dimethylcyclopropane carboxylic acid [*trans*-DCCA]), two herbicides (2,4-  
230 Dichlorophenoxyacetic acid [2,4-D] and glyphosate) and two DEET metabolites (3-  
231 (diethylcarbamoyl) benzoic acid [DCBA] and 3-(ethylcarbamoyl) benzoic acid [ECBA]). Urine  
232 samples were shipped overnight at -20° C from UCSD to the National Center for Environmental  
233 Health, Division of Laboratory Sciences of the CDC (Atlanta, GA) for quantification of all  
234 organophosphates, neonicotinoids, pyrethroids, DEET and 2,4-D biomarkers, and to the  
235 Laboratory for Exposure Assessment and Development in Environmental Research at Emory  
236 University (Atlanta, GA) for quantification of creatinine and glyphosate. Quality control/quality  
237 assurance protocols were followed to ensure data accuracy and reliability of the analytical  
238 measurements. All the study samples were re-extracted if quality control failed the statistical  
239 evaluation (Baker et al. 2019).

### 240 *Sample collection and preparation*

241         Urinary concentrations of creatinine and pesticide biomarkers were measured in samples  
242 collected upon awakening. Participants brought the urine samples to the examination site in the

243 morning where they were aliquoted and frozen at  $-20^{\circ}$  C. At the end of each day, samples were  
244 transported to Quito for storage at  $-80^{\circ}$  C. Samples were then shipped frozen overnight to UCSD  
245 for long-term storage at  $-80^{\circ}$  C.

#### 246 *Urinary organophosphate, pyrethroid, and 2,4-D biomarker quantification*

247 Organophosphate and pyrethroid metabolites and 2,4-D were quantified using liquid  
248 chromatography coupled with tandem mass spectrometry and isotope dilution (Davis et al. 2013;  
249 Baker et al. 2019). The limit of detection (LOD) was 0.1  $\mu\text{g/L}$  for TCPy, PNP, IMPy, 3-PBA,  
250 and 4F-3PBA; 0.15  $\mu\text{g/L}$  for 2,4-D; 0.5  $\mu\text{g/L}$  for MDA; and 0.6  $\mu\text{g/L}$  for *trans*-DCCA. Targeted  
251 metabolites were quantified from enzymatic hydrolysis of 0.5 or 1.0 mL of urine (metabolite  
252 dependent) and online solid phase extraction to release, extract and concentrate the target  
253 biomarkers, followed reversed-phase high-performance liquid chromatography-tandem mass  
254 spectrometry (HPLC-MS/MS) using electrospray ionization (ESI) (Davis et al. 2013; Baker et al.  
255 2019). The LOD was 0.03  $\mu\text{g/L}$  for THIA, 0.2  $\mu\text{g/L}$  for AND and CLOT, 0.3  $\mu\text{g/L}$  for ACET,  
256 and 0.4  $\mu\text{g/L}$  for IMID and OHIM.

#### 257 *Urinary glyphosate quantification*

258 Urine aliquots (250  $\mu\text{L}$ ) were spiked with isotopically labeled glyphosate, diluted to 1 mL  
259 with doubly deionized water, and extracted using a C18 solid phase extraction (SPE). Glyphosate  
260 was derivatized to create its heptafluorobutyl analogue then concentrated for analysis. To  
261 measure urinary glyphosate, all urine samples (aliquots) were randomized using a Fisher-Yates  
262 shuffling algorithm prior to analysis to reduce potential batch effects (Fisher and Yates 1948;  
263 Knuth 1960). Concentrated extracts were analyzed using gas chromatography-mass spectrometry  
264 using electron impact ionization in the multiple ion monitoring mode. The LOD was 0.25  $\mu\text{g/L}$   
265 with a relative standard deviation (RSD) of 3%.

#### 266 *Urinary Neonicotinoid and DEET biomarker quantification*

267 The neonicotinoid and DEET metabolite quantification analytical method is based on  
268 enzymatic hydrolysis of 0.2 mL of urine and online solid phase extraction to release, extract and  
269 concentrate the target biomarkers, followed reversed-phase high-performance liquid  
270 chromatography-tandem mass spectrometry (HPLC-MS/MS) using electrospray ionization (ESI).  
271 Additional details have been described previously (Baker et al. 2019). The LOD for ECBA and  
272 DCBA was 0.2  $\mu\text{g/L}$ . The precision of the measurements, expressed as the percent RSD of



273 multiple measures of two urine-based quality control (QC) materials, was below 6%, depending  
274 on the biomarker and concentration.

#### 275 *Imputation for values below the LOD*

276 After excluding any biomarkers with a detection rate below 30%, nine were included in  
277 our analysis: TCPy, PNP, MDA, 3-PBA, AND, 2,4-D, glyphosate and DCBA. We used multiple  
278 imputation to estimate metabolite concentrations for individuals who had pesticide metabolite  
279 concentrations below the LOD. The multiple imputation method was built as a log-logistic  
280 regression model. The initial model was adjusted for: age, gender, race, BMI-for-age z-score (z-  
281 BMI-for-age), monthly family income and parental education. Predicted concentrations were  
282 then rescaled between 0 and the LOD and imputed for observations below the level of detection.  
283 For the pesticide summary score calculation (see below) a variable that is only used to describe  
284 participant characteristics across a pesticide exposure construct in Table 1, observations below  
285 the LOD were imputed with a constant (LOD divided by the square root of two). This constant  
286 imputation method was also applied when we create the composite variables of pesticide  
287 exposure in PLS regression.

288

#### 289 **Urinary Creatinine quantification.**

290 To account for urinary dilution, the urinary creatinine concentration was quantified using  
291 HPLC-MS/MS with ESI. A 10  $\mu$ L aliquot of urine was diluted prior to analysis (Kwon et al.  
292 2012). No further sample preparation was performed prior to analysis. The LOD was 5 mg/dL,  
293 with an RSD of 7%.

294

#### 295 **AChE activity and hemoglobin concentration.**

296 AChE activity and hemoglobin concentration were measured in fresh finger-stick blood  
297 samples using the EQM-Test-mate ChE Cholinesterase Test System 400 during the examination  
298 following recommended procedures (EQM Research Inc., Cincinnati, OH, USA). Lower  
299 concentrations of AChE activity reflect greater exposure to cholinesterase inhibitor pesticides  
300 (Skomal et al. 2022).

301

#### 302 **Statistical analysis**

303

304 *Pesticide Summary Score Calculation*

305 The pesticide summary score represents the amount of pesticide exposure that a  
306 participant was found to have. This score was only used in Table 1 to describe participant  
307 characteristics across a single construct of urinary pesticide concentrations. The summarized  
308 pesticide score was calculated using the following steps. One was added to the variable and was  
309 natural-log transformed. The log-transformed concentrations were divided by the group's  
310 standard deviation, and then averaged with all pesticide metabolites, a variation of a method used  
311 in previous work (Suarez-Lopez et al. 2015). The metabolites that were included in the  
312 summarized score were TCPy, PNP, MDA, 3-PBA, AND, DCBA, 2,4-D and glyphosate.

313 Descriptive statistics were calculated for the overall cohort, and across tertiles of the  
314 summarized pesticide score. We calculated column percents for count data, and the means and  
315 standard deviations (SDs) for all normally distributed continuous variables. To determine  
316 whether there was a linear trend for participant characteristics across pesticide metabolite  
317 concentrations, we calculated a p-value for trend (p-trend) by running a linear regression using  
318 the summarized pesticide score as the independent variable, and the characteristic as the  
319 dependent variable. If the  $p < 0.05$ , then there was a linear trend. All pesticide concentration  
320 variables were naturally log-transformed because of non-normal distribution.

321  
322 *Independent associations of pesticide and DEET biomarkers with inflammation markers*  
323 Associations between log-transformed pesticide metabolites and inflammatory marker levels  
324 were estimated using linear regression with GEE, adjusting for covariates identified a priori. The  
325 covariates included were age, gender, race, BMI-for-age z-score, height-for-age z-score, parental  
326 education level, urinary creatinine, smokers at home (yes/no) based on research in the literature  
327 that indicates these variables may have associations with various inflammatory markers (Singer  
328 et al. 2014; Artero et al. 2014; Conklin et al. 2019; Klevebro et al. 2021; Horton 2023). When the  
329 independent variable was AChE, the models also adjusted for hemoglobin concentrations as the  
330 AChE is the erythrocytic concentration of the enzyme. In linear models, pesticide metabolite and  
331 AChE values were log- transformed and estimates of coefficients were scaled to show the  
332 difference in inflammatory biomarkers given a 50% increase in the metabolites or AChE.

333 To investigate if the individual pesticide metabolites had a curvilinear association with  
334 each inflammatory biomarker, we tested the significance of a quadratic term (e.g.,

335  $\ln\_TCPy * \ln\_TCPy$ ) into the regression model. Conversion per a 50% increase in metabolites, as  
336 described above, was not necessary for quadratic models, as the interpretation of the coefficients  
337 mostly focuses on the shape of the association. A curvilinear relationship was identified if the  
338 squared term had a  $p < 0.05$ . To visualize the adjusted associations between individual pesticide  
339 metabolites and individual inflammatory biomarkers, adjusted least squares means of  
340 inflammatory biomarkers were calculated for up to 1000 ranks for each metabolite and were  
341 plotted. Based on the covariate-adjusted data for the ranked variables, LOESS curves were used  
342 to visualize the adjusted associations with 95% CI.

#### 343 *Associations of pesticide and DEET biomarker mixtures with inflammation markers*

344         Given the multiple exposure variables, partial-least-squares (PLS) regression was used to  
345 create a composite exposure variable. PLS was chosen instead of principal component analysis  
346 (PCA) or factor analysis (FA), because it is more effective when composite variables are used as  
347 independent variables in a regression analysis (Liu et al. 2022). PLS regression is similar to PCA  
348 and FA in that it is a variable reduction methodology and creates a composite variable that is a  
349 linear combination of the original variables. The new composite variables are orthogonal and  
350 therefore uncorrelated. Unlike PCA, which orders its composite variables based on variance,  
351 with the first composite variable explaining the most variance, PLS orders the composite  
352 variables such that the first composite is the one that is most correlated with the outcome (Liu et  
353 al. 2022). Moreover, PLS is also used in cases where the explanatory variables are collinear and  
354 therefore problematic when used in a multiple linear regression, or when there are multiple  
355 explanatory variables with possible additive or synergistic effects.

356         The composite variable is a linear combination of the explanatory variables, and the  
357 loadings represent the direction and magnitude of the individual explanatory variables'  
358 contributions to the composite variable. In our analysis, the composite variable included five  
359 standardized pesticide biomarkers (glyphosate, TCPy, 2,4-D, 3-PBA and PNP), each of which  
360 could contribute positively or negatively to the composite-dependent variable association. To  
361 include as many participants as possible, imputation on 2,4-D and 3-PBA was considered. The  
362 multiple imputation was not appropriate because it would introduce more variables which could  
363 make the composite variables more complicated. Similar to the calculation of our pesticide  
364 summary score, we applied the constant imputation method instead. A positive vector loading for  
365 a given metabolite indicates that the metabolite is associated with the dependent variable in the

366 same direction as the composite variable, and vice versa for negative loadings. Winsorization  
367 was used to reduce the effect of outliers in the outcome variables on the PLS analysis.  
368 Particularly for this study, a residualization procedure was adopted as adjustment for covariates,  
369 which means the outcome variable corresponding to each inflammatory biomarker was the  
370 residual from a linear model fitted with the original outcome and the covariates. Negative R-  
371 squared values were set to zero. Selection of which composite variables to include in the  
372 regression model was based on p-value, effect size and the adjusted R-squared.

373

## 374 **Results**

### 375 *Participant Characteristics*

376 Participant characteristics for the overall cohort (n=507) stratified by tertiles of the  
377 pesticide summary score can be found in Table 1. Overall, the mean age of participants was 14.5  
378 years (standard deviation [SD]=1.77 years), 50% of the participants were male, and the racial  
379 composition was 22% indigenous and 78% mestizo. None of the participant sociodemographic  
380 characteristics differed significantly across the pesticide summary score. As expected, many of  
381 the pesticide metabolites differed significantly across the pesticide summary score with the  
382 exception of for MDA and AND.

383

### 384 *Associations between inflammatory biomarkers amongst themselves*

385 The majority of inflammatory biomarkers exhibited few correlations amongst themselves  
386 (Table S 1). Levels of CRP showed significant positive associations with the levels of SAA,  
387 sICAM, sVCAM and TNF- $\alpha$ .

388

### 389 *Associations between pesticide and DEET biomarkers and inflammatory biomarkers*

390 Independent linear associations were analyzed for each pesticide metabolite and the  
391 inflammatory biomarkers using GEE models. No significant associations were found between  
392 metabolites and the inflammation biomarkers in the linear models (Table S2).

393 Analyses assessing curvilinear (quadratic) associations between pesticide biomarkers and  
394 inflammation are presented in Table 2. Notably, we found significant and consistently positive  
395 curvilinear associations of 2,4-D with CRP ( $\beta^2=0.13$ , [0.00, 0.27]), IL-6 ( $\beta^2=0.10$ , [0.04, 0.15]),  
396 SAA ( $\beta^2=0.13$ , [0.01, 0.30]), sICAM-1 ( $\beta^2=53.25$ , [27.26, 79.24]) and sVCAM-1 ( $\beta^2=61.11$ ,

397 [30.52, 91.70]), where  $\beta$  represents percent difference in inflammatory marker concentration for  
398 a 10% increase in urinary metabolite concentration (Table 2, Figure 1). Other pesticide and  
399 DEET metabolites showed some evidence of curvilinear associations, although the associations  
400 were not consistent. Statistically significant negative curvilinear associations were observed for  
401 the associations of TCPy with CRP, DCBA with TNF- $\alpha$ , and glyphosate with sCD14;  
402 statistically significant positive curvilinear associations were observed for the associations of  
403 glyphosate with sVCAM-1 and MDA with TNF- $\alpha$ .

404

#### 405 *Associations between Pesticide Metabolite Composites and Inflammatory Markers*

406 Based on the model fit analyses of the PLS components (Table 3), we only included the  
407 first composite variable in our models as additional composites did not meaningfully improve the  
408 adjusted R-squared value of the model compared with the first composite variable. The loadings  
409 of the pesticide metabolite composite 1 are presented in the left panel of Figure 2 in bar graphs.  
410 The right panel in Figure 2 depicts the linear model between the first composite variable and  
411 each inflammatory biomarker.

412 Overall, there were consistent positive associations between pesticide composite 1 and  
413 IL-6 ( $\beta= 0.09$ , [0.01, 0.17]), SAA ( $\beta= 0.43$ , [0.13, 0.17]), sICAM-1 ( $\beta= 63.52$ , [9.92, 117.13]),  
414 sVCAM-1 ( $\beta= 69.03$ , [8.29, 129.76]) and TNF- $\alpha$  ( $\beta= 0.08$ , [0.00, 0.16]), whereas a negative  
415 association was observed with CRP ( $\beta= -0.28$ , [-0.49, -0.08], Figure 2), where  $\beta$  represents an  
416 increase in the inflammatory biomarker concentration for every unit increase in the composite  
417 pesticide variable. Of note, the loadings of the composite variable showed consistent positive  
418 associations between 2,4-D, 3-PBA and PNP and the inflammatory biomarkers under study with  
419 significant associations. The only exception is for 2,4-D for the association between the  
420 composite pesticide variable and CRP.

421

#### 422 **Discussion**

423 Our investigation reveals that urinary pesticide metabolite concentrations in adolescents  
424 residing in agricultural regions of Ecuador are indeed correlated with heightened levels of  
425 inflammatory biomarkers in plasma, aligning with our initial hypothesis. The cumulative  
426 exposure to pesticides demonstrates significant positive associations with the blood  
427 concentrations of SAA, sVCAM-1, and TNF- $\alpha$ , while exhibiting a negative association with

428 CRP. Upon conducting individual analyses of pesticides, it became evident that quadratic  
429 associations more effectively elucidate the intricate relationship between several metabolites and  
430 biomarkers, indicating non-linear interdependencies.

431 In particular, concentrations of 2,4-D showed positive quadratic associations with  
432 multiple inflammatory biomarkers, including CRP, IL-6, SAA, sICAM-1 and sVCAM-1. These  
433 findings are consistent with in-vitro and animal studies indicating 2,4-D can act as an oxidative  
434 stressor and immune-activator (Bukowska 2003; Mountassif et al. 2008; Zhou et al. 2022).  
435 Proposed mechanisms of how 2,4-D might increase inflammation have been gleaned from in-  
436 vitro studies in cell models. Zhou et al. have shown that 2,4-D increases radical oxygen species  
437 (ROS) in cells and can directly activate the NOD-, LRR- and pyrin domain-containing protein 3  
438 (NLRP3) inflammasome, which leads to caspase-1 dependent activation of the proinflammatory  
439 cytokines IL-1B and IL-18 (Zhou et al. 2022). The evidence that 2,4-D is an oxidative stressor is  
440 corroborated by a study by Bukowaska, which showed that 2,4-D depleted the reduced  
441 glutathione stores of erythrocytes in vitro (Bukowska 2003). Oxidative stress can lead to  
442 inflammatory responses, as cellular pattern recognition receptors (PRRs) detect oxidative  
443 danger-associated molecular patterns (DAMPs) (Mittal et al. 2014). Redox-sensitive  
444 transcription factors such as NF- $\kappa$ B and AP-1 also directly upregulate inflammatory mediators  
445 such as ICAM-1 in response to radical oxygen species (Mittal et al. 2014). Furthermore, IL-1B  
446 and IL-18 released through inflammasome activation have both been implicated in the  
447 upregulation of ICAM-1 and VCAM-1, suggesting that these cytokines mediate the recruitment  
448 of leukocytes into tissues (Meager 1999; Morel et al. 2001). Chronic low-level exposure to 2,4-D  
449 may therefore maintain increased oxidative stress and therefore a proinflammatory state in  
450 exposed people.

451 Using PLS analysis, we also found that the composite pesticide metabolite variable was  
452 positively associated with IL-6, SAA, sICAM-1, sVCAM-1 and TNF- $\alpha$ , and negatively  
453 associated with CRP. The PLS allows us to study how independent variables that exhibit  
454 collinearity explain changes in the dependent variable and how multiple exposures might  
455 synergize in their effect on an outcome. Pesticides are commonly applied in mixtures versus  
456 using singular chemicals, increasing the likelihood that agricultural communities will be exposed  
457 to a variety of pesticide chemicals simultaneously (Hernández et al. 2013). Thus, it is expected  
458 that different urinary pesticide metabolites would be correlated. The ESPINA study participants



459 reported non-engagement in agricultural activities, indicating presumptive low-dose exposure to  
460 pesticides via multiple routes, including pesticide drift from nearby agricultural sites to  
461 residential areas, parental "take-home" routes from occupational exposure, dietary intake, and  
462 other ambient environmental sources (Curl et al. 2002; Coronado et al. 2006). A review of the  
463 pesticides utilized in global floriculture identified a total of 201 distinct pesticides, with prevalent  
464 classes including organophosphates, carbamates, triazoles, and pyrethroids (Pereira et al. 2021).  
465 Hence, mixture modeling using PLS allows us to study interactions, synergies or potentiating  
466 effects of pesticides in tandem.

467 Our findings revealed positive associations between the pesticide composite 1 with levels  
468 of IL-6 and TNF- $\alpha$ , which are used as general markers of inflammation. IL-6 and TNF- $\alpha$  are  
469 principal cytokines with pleiotropic functions that regulate inflammatory state and several key  
470 physiologic processes (Kallioli and Ivashkiv 2016). The immune roles of the IL-6 and soluble  
471 IL-6 receptor (sIL-6R) complex include the progression from acute to chronic inflammatory  
472 states and the engagement of the adaptive immune system following innate response. TNF- $\alpha$ 's  
473 pro-inflammatory functions include upregulating selectins, CAMs, and pro-inflammatory NF-KB  
474 (Zelová and Hošek 2013). Animal and in vitro studies have found that perinatal exposure to  
475 glyphosate increased the levels of IL-6 and TNF- $\alpha$  in rat livers and upregulated IL-6 and TNF- $\alpha$   
476 mRNA and protein expression (Bai et al. 2022; Rieg et al. 2022). Furthermore, the mRNA and  
477 protein expression of both IL-6 and TNF- $\alpha$  are broadly upregulated with various classes of  
478 pesticides, including neonicotinoids, pyrethroids, organophosphates, and herbicides (Mense et al.  
479 2006; Agrawal et al. 2015a; Hossain et al. 2017; Pandey et al. 2019; Miao et al. 2022; Deng et al.  
480 2022).

481 Our results revealed associations between pesticide exposure with soluble levels of  
482 multiple vascular inflammatory markers, namely cellular adhesion molecules (CAMs) and the  
483 acute phase reactant SAA, both of which are also regulated by IL-6 and TNF- $\alpha$ . The  
484 aforementioned IL-6 and sIL-6R complex facilitates the expression of cellular adhesion  
485 molecules (CAMs) on endothelial cells and is involved in T-cell differentiation (Scheller et al.  
486 2011). CAMs allow for the extravasation of monocytes and lymphocytes into tissues and are  
487 therefore key inflammatory molecules. High levels of CAMs are involved in the pathogenesis of  
488 debilitating diseases such as atherosclerosis (Yin et al. 2021). Like CAMs, SAA may play a role  
489 in the development of atherosclerosis by promoting increased release of vascular proteoglycans,

490 which bind to and retain lipids in the endothelial wall through ionic interactions (Wilson et al.  
491 2008; Thompson et al. 2015). Notably, the herbicides 2,4-D (primarily) and glyphosate had  
492 consistent positive quadratic associations with sVCAM-1 and/or sICAM-1, evincing a potential  
493 role of herbicides in promoting the underlying pathophysiological processes by which  
494 atherosclerosis and neuroinflammation might occur. Epidemiological evidence from other  
495 studies has demonstrated that pesticide exposure is a risk factor for atherosclerosis. One cross-  
496 sectional study of 447 middle-aged and older participants in a rural area of Korea revealed a  
497 significantly greater atherosclerotic risk associated with reported pesticide exposure (Park et al.  
498 2020). Another epidemiological study reported a positive association between cardiovascular  
499 disease incidence and self-reported pesticide exposure in 7,557 middle-aged Japanese American  
500 men living in Hawaii (Berg et al. 2019). Together, our findings indicate that the associations  
501 between pesticide exposure and general and vascular inflammation may underlie inflammatory  
502 disease outcomes reported among individuals with chronic pesticide exposure.

503 The observed negative associations between pesticide exposure and CRP concentrations  
504 are intriguing but unexplained, especially considering the positive correlations noted between  
505 CRP concentrations and other measured inflammation markers. Given that CRP exists in two  
506 isoforms with potentially opposing roles such that a soluble pentameric form found in circulating  
507 blood may be involved in the resolution of inflammation compared to a monomeric form which  
508 is localized in inflamed tissues (Del Giudice and Gangestad 2018), our observation may reflect a  
509 complex phenomenon. Nonetheless, the participants in this study were children and adolescents  
510 with no known inflammatory conditions, in whom the levels of CRP are generally low and its  
511 implications for health outcomes are not well established other than small to modest associations  
512 with some demographic factors and adiposity (Cook et al. 2000; Caballero et al. 2008; Nappo et  
513 al. 2013). Investigations of CRP levels in children remain scarce besides a few studies of CRP as  
514 a clinical test for acute infections (Staiano et al. 2023) or inflammatory conditions (Enocsson et  
515 al. 2021), and its baseline levels in children in the absence of inflammatory diseases or infections  
516 are often low which is also shown in our study participants (i.e., mean 1.4  $\mu\text{g/mL}$ ) (Schlenz et al.  
517 2014). Thus, it is premature to speculate on the health or mechanistic implications of this finding.

518 Understanding the associations between urinary metabolites and inflammatory  
519 biomarkers is important in this population given that they have a higher exposure to pesticides.  
520 Creatinine-corrected pesticide metabolite concentrations ( $\mu\text{g/L}$ ) in the ESPINA cohort were

521 compared to creatinine-corrected concentrations reported by the National Health and Nutrition  
522 Examination Survey (NHANES). The geometric means of urinary metabolite concentrations  
523 from the 2015–2016 NHANES 12–19-year-old study participants were referenced (National  
524 Health and Nutrition Examination Survey 2016). Geometric means of the creatinine-corrected  
525 urinary metabolite concentrations for the ESPINA cohort were calculated and compared to  
526 geometric means of the 2015–2016 NHANES cohort. DEET metabolite concentrations were  
527 higher in the NHANES population (Table S 2). However, all the neonicotinoid concentrations  
528 and three of the four organophosphate metabolites were higher in the ESPINA participants.  
529 Overall, the ESPINA population had higher concentrations of neonicotinoid and  
530 organophosphate metabolites in their urine as compared to the participants in the United States  
531 NHANES study (AND 0.31 vs 0.18; CLOT 0.17 vs 0.12; IMID 0.34 vs 0.23; 5-Hydroxy  
532 imidacloprid 0.48 vs 0.28; 3,5,6-Trichloro-2-pyridinol 3.07 vs 0.92; MDA 3.07 vs 0.92; 2-  
533 isopropyl-4-methyl-6-hydroxypy 0.11 vs 0.07). However, there were lower levels of DCBA,  
534 ECBA and acetamiprid metabolites, and the same levels of PNP and 2,4-D when comparing  
535 ESPINA participants to those in the NHANES study (DCBA 0.63 vs 4.42; ECBA 0.36 vs 1.77).

536 Our study stands out due to its comprehensive examination of a diverse panel of  
537 pesticides, including insecticides, herbicides, and insect repellents, exploring both their  
538 individual effects and their combined associations with markers of overall and vascular  
539 inflammation. Additionally, our investigation focuses on adolescents, a demographic lacking  
540 sufficient evidence in similar studies, particularly those residing in rural areas of Ecuador, which  
541 are often underrepresented in research endeavors. Another strength of this study is the use of  
542 PLS regression analysis, which allows for the integration of the synergistic effects of multiple  
543 pesticides on inflammation. The PLS analyses also allow us to investigate the relationships  
544 between collinear pesticide metabolites with the inflammatory biomarker outcomes. Finally, the  
545 analysis in our study also does not rely on reported pesticide exposure but rather uses urinary  
546 pesticide metabolites to measure the level of exposure quantitatively.

547 A limitation of this study lies in the exclusive examination of circulating inflammatory  
548 biomarkers, which may not fully reflect tissue- and organ-specific inflammatory alterations.  
549 Furthermore, the cross-sectional nature of our analyses precludes definitive determination of  
550 causality and, in theory, the directionality of the association (do urinary pesticide concentrations  
551 influence inflammation markers? Or do inflammation markers influence urinary pesticide

552 concentrations?). We are unaware of mechanisms for how circulating inflammatory markers  
553 could influence urinary pesticide concentrations, although this is theoretically possible if  
554 pesticide metabolism and excretion processes are modified by circulating inflammatory markers.  
555 However, although it seems more likely that pesticides may influence the concentrations of  
556 inflammatory markers as observed in the experimental studies described in this manuscript, it is  
557 plausible that inflammatory markers may modulate the metabolism and excretion of pesticides.  
558 This topic needs further evaluation. Future studies of inflammatory-disease incidence in subjects  
559 chronically exposed to pesticides could help reveal any clinical manifestations of changes in  
560 inflammation status secondary to pesticide exposure. More prospective studies examining how  
561 inflammation status changes in response to low-grade chronic exposure to pesticides could help  
562 reveal more about the nature of physiological responses to agrochemicals.

563

## 564 **Conclusion**

565 We found that overall pesticide exposure, estimated using a pesticide composite variable  
566 of urinary pesticide metabolites, was positively associated with IL-6, SAA, sICAM-1, sVCAM-1  
567 and TNF- $\alpha$ , and negatively with CRP. Our findings also indicate that some of these associations  
568 are likely non-linear in nature, indicated by the consistent curvilinear associations of the  
569 herbicide 2,4-D with CRP, IL-6, SAA, sICAM-1 and sVCAM-1. These results agree with  
570 existing in vitro and animal studies that describe the proinflammatory nature of pesticides in  
571 tissue culture and animal models. Our study is one of the first to assess the associations between  
572 pesticide exposure, measured using urinary pesticide metabolites, and serum inflammation  
573 markers in adolescents and children. Our results suggest that exposure to pesticides at levels  
574 lower than those that can cause acute toxicity may alter the inflammatory state in the human  
575 body, which may be a mechanism by which pesticide exposure leads to detrimental health  
576 effects. Given the potential role of pesticides in inflammation, attention should be given to the  
577 incidence and prevalence of inflammatory diseases in affected populations. Given the cross-  
578 sectional design of this study, replication through longitudinal analysis would offer a more  
579 comprehensive understanding of the causal pathway linking pesticide exposure to inflammation.  
580 These findings underscore the imperative to reassess the widespread use of pesticides in  
581 agriculture, emphasizing the importance of adopting sustainable and health-conscious  
582 approaches to agricultural practices.

583 **Acknowledgments**

584 We especially thank all the participants who participated in the present study. We thank  
585 the ESPINA study staff, Fundación Cimas del Ecuador, the Parish Governments of Pedro Moncayo  
586 County, the community members of Pedro Moncayo and the Education District of Pichincha-  
587 Cayambe-Pedro Moncayo counties for their contributions to and support of this project. The  
588 coauthors extend thanks to Dolores Lopez Paredes for her contributions to this research.

589

590 **Funding Sources**

591 The research reported in this publication was supported by the National Institute of  
592 Environmental Health Sciences of the National Institutes of Health under Award Numbers  
593 R01ES025792, R01ES030378, R21ES026084, and U2CES026560.

594

595 **Competing Interests**

596 The authors have no relevant financial or non-financial interests to disclose.

597

598 **Author Contributions**

599 Conceptualization, Funding, & Methodology: **SH, JST & JRS** – Fieldwork, Data  
600 Collection & Management: **DM, BNC, JST & JRS** – Data Analysis & Interpretation: **KY, XT,**  
601 **JRS & SH** – Original Draft Preparation: **MNH** – Literature Review, Manuscript Writing –  
602 Review & Editing: **MNH, BNC, XT, RPP, JST, DB, SH & JRS.**

603 All the coauthors read and approved the final manuscript.

604

605 **Consent to participate and Ethics.**

606 Informed consent, parental authorization of child participation and assent of child  
607 participants older than 7 years of age were obtained. For the 2016 examination of the ESPINA  
608 study, we obtained approval from the Institutional Review Boards of Boards of the University of  
609 California San Diego (UCSD), Universidad San Francisco de Quito and Ecuador's Ministry of  
610 Public Health in 2016.

611

612

613

614 **References**

- 615 Agrawal S, Dixit A, Singh A, et al (2015a) Cyclosporine A and MnTMPyP alleviate  $\alpha$ -synuclein  
616 expression and aggregation in cypermethrin-induced Parkinsonism. *Molecular neurobiology*  
617 52:1619–1628
- 618 Agrawal S, Singh A, Tripathi P, et al (2015b) Cypermethrin-Induced Nigrostriatal Dopaminergic  
619 Neurodegeneration Alters the Mitochondrial Function: A Proteomics Study. *Molecular*  
620 *Neurobiology* 51:448–465. <https://doi.org/10.1007/s12035-014-8696-7>
- 621 Armando M, P. SD, E. BFL, et al (2024) Pesticide Exposure and Risk of Rheumatoid Arthritis  
622 among Licensed Male Pesticide Applicators in the Agricultural Health Study. *Environmental*  
623 *Health Perspectives* 125:77010. <https://doi.org/10.1289/EHP1013>
- 624 Bai G, Zhou R, Jiang X, et al (2022) Glyphosate-based herbicides induces autophagy in IPEC-J2  
625 cells and the intervention of N-acetylcysteine. *Environmental toxicology* 37:1878–1890.  
626 <https://doi.org/10.1002/tox.23534>
- 627 Baker SE, Serafim AB, Morales-Agudelo P, et al (2019) Quantification of DEET and  
628 neonicotinoid pesticide biomarkers in human urine by online solid-phase extraction high-  
629 performance liquid chromatography-tandem mass spectrometry. *Analytical and Bioanalytical*  
630 *Chemistry* 411:3
- 631 Baltazar MT, Dinis-Oliveira RJ, de Lourdes Bastos M, et al (2014) Pesticides exposure as  
632 etiological factors of Parkinson's disease and other neurodegenerative diseases--a  
633 mechanistic approach. *Toxicology letters* 230:85–103.  
634 <https://doi.org/10.1016/j.toxlet.2014.01.039>
- 635 Berg ZK, Rodriguez B, Davis J, et al (2019) Association between occupational exposure to  
636 pesticides and cardiovascular disease incidence: The Kuakini Honolulu Heart Program.  
637 *Journal of the American Heart Association* 8: e012569
- 638 Bukowska B (2003) Effects of 2,4-D and its metabolite 2,4-dichlorophenol on antioxidant  
639 enzymes and level of glutathione in human erythrocytes. *Comparative biochemistry and*  
640 *physiology Toxicology & pharmacology: CBP* 135:435–441. [https://doi.org/10.1016/s1532-0456\(03\)00151-0](https://doi.org/10.1016/s1532-0456(03)00151-0)
- 642 Clinical and Laboratory Standards Institute (2007) Procedures for the Collection of Diagnostic  
643 Blood Specimens by Venipuncture: Approved Standard, Sixth. Clinical and Laboratory  
644 Standards Institute
- 645 Cook DG, Mendall MA, Whincup PH, et al (2000) C-reactive protein concentration in children:  
646 relationship to adiposity and other cardiovascular risk factors. *Atherosclerosis* 149:139–150.  
647 [https://doi.org/10.1016/S0021-9150\(99\)00312-3](https://doi.org/10.1016/S0021-9150(99)00312-3)
- 648 Cooper GS, Parks CG, Treadwell EL, et al (2004) Occupational risk factors for the development  
649 of systemic lupus erythematosus. *The Journal of rheumatology* 31:1928–1933
- 650 Corbel V, Stankiewicz M, Pennetier C, et al (2009) Evidence for inhibition of cholinesterases in  
651 insect and mammalian nervous systems by the insect repellent deet. 7:  
652 <https://doi.org/10.1186/1741-7007-7-47>
- 653 Coronado GD, Vigoren EM, Thompson B, et al (2006) Organophosphate pesticide exposure and  
654 work in pome fruit: evidence for the take-home pesticide pathway. *Environmental health*  
655 *perspectives* 114:999–1006. <https://doi.org/10.1289/ehp.8620>
- 656 Costa C, Rapisarda V, Catania S, et al (2013) Cytokine patterns in greenhouse workers  
657 occupationally exposed to  $\alpha$ -cypermethrin: An observational study. *Environmental*  
658 *Toxicology and Pharmacology* 36:796–800. <https://doi.org/10.1016/j.etap.2013.07.004>



- 659 Curl CL, Fenske RA, Kissel JC, et al (2002) Evaluation of take-home organophosphorus  
660 pesticide exposure among agricultural workers and their children. *Environmental Health*  
661 *Perspectives* 110:12
- 662 da Silva CE, Gahagan S, Suarez-Torres J, et al (2022a) Time after a peak-pesticide use period  
663 and neurobehavior among ecuadorian children and adolescents: The ESPINA study.  
664 *Environmental research* 204:112325. <https://doi.org/10.1016/J.ENVRES.2021.112325>
- 665 da Silva JC, Scandolaro TB, Kern R, et al (2022b) Occupational exposure to pesticides affects  
666 pivotal immunologic anti-tumor responses in breast cancer women from the intermediate risk  
667 of recurrence and death. *Cancers* 14:5199
- 668 Davis MD, Wade EL, Restrepo PR, et al (2013) Semi-automated solid phase extraction method  
669 for the mass spectrometric quantification of 12 specific metabolites of organophosphorus  
670 pesticides, synthetic pyrethroids, and select herbicides in human urine. *Journal of*  
671 *Chromatography B* 929:18
- 672 de Souza A, Medeiros ADR, de Souza AC, et al (2011) [Evaluation of the impact of exposure to  
673 pesticides on the health of the rural population: Vale do Taquari, State of Rio Grande do Sul  
674 (Brazil)]. *Ciencia & saude coletiva* 16:3519–3528. [https://doi.org/10.1590/s1413-](https://doi.org/10.1590/s1413-81232011000900020)  
675 [81232011000900020](https://doi.org/10.1590/s1413-81232011000900020)
- 676 Del Giudice M, Gangestad SW (2018) Rethinking IL-6 and CRP: Why they are more than  
677 inflammatory biomarkers, and why it matters. *Brain, behavior, and immunity* 70:61–75
- 678 Deng N, Lv Y, Bing Q, et al (2022) Inhibition of the Nrf2 signaling pathway involved in  
679 imidacloprid-induced liver fibrosis in *Coturnix japonica*. *Environmental toxicology* 37:2354–  
680 2365. <https://doi.org/10.1002/tox.23601>
- 681 El-Gameel D, Hamdy NA, El-Yazbi AF, et al (2023) Chronic Exposure to Organophosphate  
682 Pesticides and Elevated Markers of Systemic Inflammation: Possible Neuroinflammatory and  
683 Genotoxic Effects
- 684 Fenga C, Gangemi S, Catania S, et al (2014) IL-17 and IL-22 serum levels in greenhouse  
685 workers exposed to pesticides. *Inflammation Research* 63:895–897.  
686 <https://doi.org/10.1007/s00011-014-0769-6>
- 687 Furman D, Campisi J, Verdin E, et al (2019) Chronic inflammation in the etiology of disease  
688 across the life span. *Nature medicine* 25:1822–1832. [https://doi.org/10.1038/s41591-019-](https://doi.org/10.1038/s41591-019-0675-0)  
689 [0675-0](https://doi.org/10.1038/s41591-019-0675-0)
- 690 Godínez-Pérez BM, Schilman A, Lagunas-Martínez A, et al (2024) Pesticide use patterns and  
691 their association with cytokine levels in Mexican flower workers. *International Archives of*  
692 *Occupational and Environmental Health* 1–12
- 693 Hayes TB, Hansen M (2017) From silent spring to silent night: Agrochemicals and the  
694 anthropocene. *Elementa: Science of the Anthropocene* 5:57.  
695 <https://doi.org/10.1525/elementa.246>
- 696 Henderson RF, Barr EB, Blackwell WB, et al (2002) Response of rats to low levels of sarin.  
697 *Toxicology and applied pharmacology* 184:67–76
- 698 Hernández AF, Parrón T, Tsatsakis AM, et al (2013) Toxic effects of pesticide mixtures at a  
699 molecular level: their relevance to human health. *Toxicology* 307:136–145
- 700 Hossain MM, Liu J, Richardson JR (2017) Pyrethroid Insecticides Directly Activate Microglia  
701 Through Interaction with Voltage-Gated Sodium Channels. *Toxicological Sciences* 155:112–  
702 123. <https://doi.org/10.1093/toxsci/kfw187>
- 703 Huang M, Barges-Carot A, Riaz Z, et al (2022) Impact of Environmental Risk Factors on  
704 Mitochondrial Dysfunction, Neuroinflammation, Protein Misfolding, and Oxidative Stress in

- 705 the Etiopathogenesis of Parkinson's Disease. *International journal of molecular sciences* 23:  
706 <https://doi.org/10.3390/ijms231810808>
- 707 Jacobsen-Pereira CH, Cardoso CC, Gehlen TC, et al (2020) Immune response of Brazilian  
708 farmers exposed to multiple pesticides. *Ecotoxicology and Environmental Safety*  
709 202:110912. <https://doi.org/10.1016/j.ecoenv.2020.110912>
- 710 Kallioliadis GD, Ivashkiv LB (2016) TNF biology, pathogenic mechanisms and emerging  
711 therapeutic strategies. *Nature Reviews Rheumatology* 12:49–62.  
712 <https://doi.org/10.1038/nrrheum.2015.169>
- 713 Koutros S, Silverman DT, Alavanja MC, et al (2016) Occupational exposure to pesticides and  
714 bladder cancer risk. *International journal of epidemiology* 45:792–805.  
715 <https://doi.org/10.1093/ije/dyv195>
- 716 Kumar S, Khodoun M, Kettleson EM, et al (2014) Glyphosate-rich air samples induce IL-33,  
717 TSLP and generate IL-13 dependent airway inflammation. *Toxicology* 325:42–51.  
718 <https://doi.org/10.1016/j.tox.2014.08.008>
- 719 Kwon W, Kim JY, Suh S, In MK (2012) Simultaneous determination of creatinine and uric acid  
720 in urine by liquid chromatography-tandem mass spectrometry with polarity switching  
721 electrospray ionization. *Forensic science international* 221:1–3
- 722 Meager A (1999) Cytokine regulation of cellular adhesion molecule expression in inflammation.  
723 *Cytokine & growth factor reviews* 10:27–39. [https://doi.org/10.1016/s1359-6101\(98\)00024-0](https://doi.org/10.1016/s1359-6101(98)00024-0)
- 724 Mense SM, Sengupta A, Lan C, et al (2006) The common insecticides cyfluthrin and  
725 chlorpyrifos alter the expression of a subset of genes with diverse functions in primary  
726 human astrocytes. *Toxicological sciences: an official journal of the Society of Toxicology*  
727 93:125–135. <https://doi.org/10.1093/toxsci/kfl046>
- 728 Miao Z, Miao Z, Wang S, et al (2022) Exposure to imidacloprid induce oxidative stress,  
729 mitochondrial dysfunction, inflammation, apoptosis and mitophagy via NF-kappaB/JNK  
730 pathway in grass carp hepatocytes. *Fish & Shellfish Immunology* 120:674–685.  
731 <https://doi.org/10.1016/J.FSI.2021.12.017>
- 732 Mittal M, Siddiqui MR, Tran K, et al (2014) Reactive oxygen species in inflammation and tissue  
733 injury. *Antioxidants & redox signaling* 20:1126–1167. <https://doi.org/10.1089/ars.2012.5149>
- 734 Mokarizadeh A, Faryabi MR, Rezvanfar MA, Abdollahi M (2015) A comprehensive review of  
735 pesticides and the immune dysregulation: mechanisms, evidence and consequences.  
736 *Toxicology Mechanisms and Methods* 25:258–278.  
737 <https://doi.org/10.3109/15376516.2015.1020182>
- 738 Morel JC, Park CC, Woods JM, Koch AE (2001) A novel role for interleukin-18 in adhesion  
739 molecule induction through NF kappa B and phosphatidylinositol (PI) 3-kinase-dependent  
740 signal transduction pathways. *The Journal of biological chemistry* 276:37069–37075.  
741 <https://doi.org/10.1074/jbc.M103574200>
- 742 Mountassif D, Kabine M, Karima Mounchid, et al (2008) Biochemical and histological  
743 alterations of cellular metabolism from jerboa (*Jaculus orientalis*) by 2,4-  
744 dichlorophenoxyacetic acid: Effects on d-3-hydroxybutyrate dehydrogenase. *Pesticide*  
745 *Biochemistry and Physiology* 90:87–96. <https://doi.org/10.1016/j.pestbp.2007.08.001>
- 746 Mwangi H, Dalvie M, Singh T, et al (2016) Relationship between Pesticide Metabolites,  
747 Cytokine Patterns, and Asthma-Related Outcomes in Rural Women Workers. *International*  
748 *Journal of Environmental Research and Public Health* 13:957.  
749 <https://doi.org/10.3390/ijerph13100957>

- 750 National Health and Nutrition Examination Survey (2016) 2015-2016 Laboratory Data -  
751 Continuous NHANES
- 752 Pandey A, Dhabade P, Kumarasamy A (2019) Inflammatory Effects of Subacute Exposure of  
753 Roundup in Rat Liver and Adipose Tissue. Dose-response: a publication of International  
754 Hormesis Society 17:1559325819843380. <https://doi.org/10.1177/1559325819843380>
- 755 Park S, Choi JR, Kim S-K, et al (2020) Increased risk of atherosclerosis associated with pesticide  
756 exposure in rural areas in Korea. *PloS one* 15: e0232531
- 757 Patel V, Saxena S, Lund C, et al (2018) The Lancet Commission on global mental health and  
758 sustainable development. *The Lancet* 392:1553–1598. [https://doi.org/10.1016/S0140-](https://doi.org/10.1016/S0140-6736(18)31612-X)  
759 [6736\(18\)31612-X](https://doi.org/10.1016/S0140-6736(18)31612-X)
- 760 Pereira PCG, Parente CET, Carvalho GO, et al (2021) A review on pesticides in flower  
761 production: A push to reduce human exposure and environmental contamination.  
762 *Environmental Pollution* 289:117817. <https://doi.org/10.1016/j.envpol.2021.117817>
- 763 Priyadarshi A, Khuder SA, Schaub EA, Priyadarshi SS (2001) Environmental risk factors and  
764 Parkinson's disease: a metaanalysis. *Environmental research* 86:122–127
- 765 Proskocil BJ, Grodzki ACG, Jacoby DB, et al (2019) Organophosphorus Pesticides Induce  
766 Cytokine Release from Differentiated Human THP1 Cells. *American journal of respiratory*  
767 *cell and molecular biology* 61:620–630. <https://doi.org/10.1165/rcmb.2018-0257OC>
- 768 Qi L, Dong Y-M, Chao H, et al (2023) Glyphosate based-herbicide disrupts energy metabolism  
769 and activates inflammatory response through oxidative stress in mice liver. *Chemosphere*  
770 315:137751. <https://doi.org/10.1016/j.chemosphere.2023.137751>
- 771 Rieg CEH, Cattani D, Napolini NF, et al (2022) Perinatal exposure to a glyphosate pesticide  
772 formulation induces offspring liver damage. *Toxicology and applied pharmacology*  
773 454:116245. <https://doi.org/10.1016/j.taap.2022.116245>
- 774 Schäfer M, Koppe F, Stenger B, et al (2013) Influence of organophosphate poisoning on human  
775 dendritic cells. *Chemico-biological interactions* 206:472–478
- 776 Scheller J, Chalaris A, Schmidt-Arras D, Rose-John S (2011) The pro- and anti-inflammatory  
777 properties of the cytokine interleukin-6. *Biochimica et Biophysica Acta (BBA) - Molecular*  
778 *Cell Research* 1813:878–888. <https://doi.org/10.1016/j.bbamcr.2011.01.034>
- 779 Singh A, Tripathi P, Prakash O, Singh MP (2016) Ibuprofen abates cypermethrin-induced  
780 expression of pro-inflammatory mediators and mitogen-activated protein kinases and averts  
781 the nigrostriatal dopaminergic neurodegeneration. *Molecular Neurobiology* 53:6849–6858.  
782 <https://doi.org/10.1007/s12035-015-9577-4>
- 783 Skomal AE, Zhang J, Yang K, et al (2022) Concurrent urinary organophosphate metabolites and  
784 acetylcholinesterase activity in Ecuadorian adolescents. *Environmental research* 207:3
- 785 Suarez-Lopez JR, Lee D-H, Porta M, et al (2015) Persistent organic pollutants in young adults  
786 and changes in glucose related metabolism over a 23-year follow-up. *Environmental research*  
787 137:485–494. <https://doi.org/10.1016/j.envres.2014.11.001>
- 788 Suarez-Lopez JR, Nazeeh N, Kayser G, et al (2020) Residential proximity to greenhouse crops  
789 and pesticide exposure (via acetylcholinesterase activity) assessed from childhood through  
790 adolescence. *Environmental Research* 188:109728.  
791 <https://doi.org/10.1016/j.envres.2020.109728>
- 792 Suárez-López JR, Nazeeh N, Kayser G, et al (2020) Residential proximity to greenhouse crops  
793 and pesticide exposure (via acetylcholinesterase activity) assessed from childhood through  
794 adolescence. *Environmental Research* 109728. <https://doi.org/10.1016/j.envres.2020.109728>

- 795 Suárez-Torres J, Suárez-López JR, López-Paredes D, et al (2017) Agroecology and Health:  
796 Lessons from Indigenous Populations. *Current Environmental Health Reports* 4:.  
797 <https://doi.org/10.1007/s40572-017-0146-z>
- 798 Tansey MG, Wallings RL, Houser MC, et al (2022) Inflammation and immune dysfunction in  
799 Parkinson disease. *Nature Reviews Immunology* 22:657–673.  
800 <https://doi.org/10.1038/s41577-022-00684-6>
- 801 Thompson JC, Jayne C, Thompson J, et al (2015) A brief elevation of serum amyloid A is  
802 sufficient to increase atherosclerosis. *Journal of lipid research* 56:286–293.  
803 <https://doi.org/10.1194/jlr.M054015>
- 804 Wilson PG, Thompson JC, Webb NR, et al (2008) Serum amyloid A, but not C-reactive protein,  
805 stimulates vascular proteoglycan synthesis in a pro-atherogenic manner. *The American*  
806 *journal of pathology* 173:1902–1910. <https://doi.org/10.2353/ajpath.2008.080201>
- 807 World Health Organization (2006) WHO child growth standards: length/height-for-age, weight-  
808 for-age, weight-for-length, weight-for-height and body mass index-for-age: methods and  
809 development. In: WHO. <https://www.who.int/publications/i/item/924154693X>. Accessed 1  
810 Feb 2024
- 811 Yin M, Li C, jiang J, et al (2021) Cell adhesion molecule-mediated therapeutic strategies in  
812 atherosclerosis: From a biological basis and molecular mechanism to drug delivery  
813 nanosystems. *Biochemical Pharmacology* 186:114471.  
814 <https://doi.org/10.1016/j.bcp.2021.114471>
- 815 Zelová H, Hošek J (2013) TNF- $\alpha$  signalling and inflammation: interactions between old  
816 acquaintances. *Inflammation Research* 62:641–651. <https://doi.org/10.1007/s00011-013-0633-0>
- 817  
818 Zhou J, Wang F, Jia L, et al (2022) 2,4-dichlorophenoxyacetic acid induces ROS activation in  
819 NLRP3 inflammatory body-induced autophagy disorder in microglia and the protective effect  
820 of Lycium barbarum polysaccharide. *Environmental toxicology* 37:1136–1151.  
821 <https://doi.org/10.1002/tox.23471>  
822  
823

**Table 1.** Characteristics of study participants

	Tertile of Pesticide Summary Score				p-trend
	All	T1	T2	T3	
<b>N</b>	<b>507</b>	<b>168</b>	<b>167</b>	<b>168</b>	
<b>Range</b>		<b>0.28, 1.26</b>	<b>1.27, 1.77</b>	<b>1.78, 5.02</b>	
Age (years)	14.5 ± 1.77	14.4 ± 1.75	14.4 ± 1.78	14.6 ± 1.77	<i>p</i> =0.548
Gender					
Male (%)	50%	52%	55%	44%	<i>p</i> =0.158
Female (%)	50%	48%	45%	56%	
Race					
Indigenous (%)	22%	27%	21%	19%	<i>p</i> =0.106 <sup>c</sup>
Mestizo (%)	78%	73%	79%	81%	
BMI-for-age Z-score (SD)	0.384 ± 0.835	0.448 ± 0.753	0.364 ± 0.860	0.341 ± 0.888	<i>p</i> =0.453
Family's Monthly Income (USD)	500 (350)	460 (335)	500 (325)	600 (374)	<i>p</i> =0.334
Average Parental Education (years)	7.00 (4.50)	7.00 (4.50)	7.00 (3.50)	7.50 (4.50)	<i>p</i> =0.316
Presence of Smokers at Home					
No	77%	81%	78%	72%	<i>p</i> =0.080
Yes	23%	19%	22%	28%	
TCPy (ug/L)	2.69 (2.89)	1.44 (1.13)	2.78 (2.55)	4.39 (3.97)	<i>p</i> <0.001
PNP (ug/L)	0.505 (0.371)	0.350 (0.194)	0.512 (0.268)	0.817 (0.626)	<i>p</i> <0.001
MDA (ug/L)	0.819 (0.188)	0.771 (0.139)	0.813 (0.134)	0.876 (0.213)	<i>p</i> =0.107
DCBA (ug/L)	0.769 (2.54)	0.540 (0.751)	0.798 (3.54)	0.833 (4.46)	<i>p</i> =0.694
3-PBA (ug/L)	0.428 (0.504)	0.258 (0.172)	0.407 (0.317)	0.822 (1.12)	<i>p</i> <0.001
AND (ug/L)	0.573 (0.766)	0.521 (0.429)	0.573 (0.867)	0.588 (1.00)	<i>p</i> =0.069
2,4-D (ug/L)	0.303 (0.266)	0.213 (0.106)	0.266 (0.192)	0.423 (0.352)	<i>p</i> <0.001
Glyphosate (ug/L)	0.870 (1.38)	0.390 (0.516)	0.898 (1.08)	1.85 (2.41)	<i>p</i> <0.001
AChE (U/mL)	3.70 ± 0.553	3.69 ± 0.573	3.72 ± 0.520	3.71 ± 0.568	<i>p</i> =0.635
sCD14 (ng/mL)	1590 ± 392	1620 ± 384	1570 ± 384	1580 ± 408	<i>p</i> =0.617
CRP (μg/mL)	1.39 ± 1.66	1.48 ± 1.66	1.37 ± 1.70	1.33 ± 1.61	<i>p</i> =0.427
IL-6 (pg/mL)	1.18 ± 0.684	1.15 ± 0.610	1.18 ± 0.714	1.20 ± 0.725	<i>p</i> =0.084
SAA (μg/mL)	2.01 ± 2.05	2.06 ± 1.99	1.88 ± 1.99	2.10 ± 2.17	<i>p</i> =0.500
sICAM-1 (ng/mL)	755 ± 467	752 ± 431	723 ± 483	788 ± 484	<i>p</i> =0.157
sVCAM-1 (ng/mL)	975 ± 548	966 ± 510	924 ± 554	1030 ± 577	<i>p</i> =0.031
TNF-α (pg/mL)	2.11 ± 0.609	2.13 ± 0.590	2.07 ± 0.498	2.13 ± 0.719	<i>p</i> =0.663

824

825

Values displayed mean ± standard deviation, percent or median and interquartile range (IQR).

826

827

Participant demographics did not differ significantly across summarized pesticide score tertile.

828

2,4-D= 2,4-Dichlorophenoxyacetic acid; AChE=acetylcholinesterase; AND=acetamiprid-N-desmethyl; TCPy= 3,5,6-

829

Trichloro-2-pyridinol; DCBA=3-(diethylcarbamoyl) benzoic acid; MDA= Malathion dicarboxylic acid; 3-PBA=3-

830

phenoxybenzoic acid; PNP= para-Nitrophenol.

831

832

**Table 2.** Independent quadratic associations between biomarkers of pesticide exposure and inflammation N= 507

Exposure Biomarkers	Inflammatory Biomarkers							
	CRP (ug/ml)		IL-6 (pg/ml)		SAA (ug/ml)		TNF- $\alpha$ (pg/ml)	
	$\beta$ (95% CI)	$\beta^2$ (95% CI)	$\beta$ (95% CI)	$\beta^2$ (95% CI)	$\beta$ (95% CI)	$\beta^2$ (95% CI)	$\beta$ (95% CI)	$\beta^2$ (95% CI)
<b>2,4-D</b> (ug/L)	0.14 [-0.09, 0.37]	<b>0.13</b> <b>[0.00, 0.27]</b>	0.08 [-0.02, 0.18]	<b>0.10</b> <b>[0.04, 0.15]</b>	0.21 [-0.08, 0.50]	<b>0.16</b> <b>[0.01, 0.30]</b>	0.05 [-0.04, 0.14]	0.00 [-0.03, 0.04]
<b>Glyphosate</b> (ug/L)	-0.05 [-0.20, 0.10]	0.01 [-0.02, 0.05]	0.02 [-0.05, 0.10]	0.00 [-0.01, 0.02]	0.01 [-0.20, 0.21]	0.02 [-0.02, 0.05]	0.03 [-0.02, 0.09]	0.00 [-0.01, 0.01]
<b>AND</b> (ug/L)	0.04 [-0.21, 0.30]	-0.07 [-0.24, 0.11]	0.06 [-0.04, 0.16]	-0.03 [-0.09, 0.04]	-0.08 [-0.41, 0.26]	-0.03 [-0.24, 0.18]	-0.11 [-0.19, -0.04]	-0.01 [-0.08, 0.06]
<b>TCPy</b> (ug/L)	0.19 [-0.11, 0.49]	<b>-0.15</b> <b>[-0.25, -0.04]</b>	0.01 [-0.14, 0.16]	-0.01 [-0.07, 0.04]	-0.17 [-0.60, 0.26]	0.04 [-0.15, 0.22]	0.04 [-0.07, 0.15]	-0.03 [-0.07, 0.02]
<b>3-PBA</b> (ug/L)	-0.09 [-0.28, 0.10]	0.02 [-0.10, 0.13]	0.06 [-0.04, 0.16]	0.02 [-0.03, 0.07]	0.18 [-0.12, 0.49]	0.11 [-0.08, 0.30]	0.02 [-0.04, 0.08]	0.01 [-0.03, 0.05]
<b>MDA</b> (ug/L)	0.27 [-0.51, 1.05]	-0.28 [-0.62, 0.05]	-0.22 [-0.46, 0.02]	0.06 [-0.05, 0.17]	-0.45 [-1.27, 0.36]	0.01 [-0.34, 0.37]	-0.37 [-0.66, -0.07]	<b>0.15</b> <b>[0.02, 0.28]</b>
<b>PNP</b> (ug/L)	-0.08 [-0.56, 0.39]	-0.10 [-0.37, 0.18]	-0.06 [-0.23, 0.12]	-0.03 [-0.15, 0.09]	-0.18 [-0.75, 0.40]	-0.06 [-0.40, 0.27]	0.04 [-0.10, 0.19]	-0.03 [-0.11, 0.06]
<b>DCBA</b> (ug/L)	-0.05 [-0.20, 0.11]	-0.01 [-0.05, 0.02]	0.03 [-0.04, 0.09]	-0.01 [-0.02, 0.01]	-0.07 [-0.26, 0.12]	-0.01 [-0.06, 0.04]	0.05 [-0.00, 0.10]	<b>-0.01</b> <b>[-0.03, -0.00]</b>
<b>AChE</b> (U/mL)	-8.16 [-17.27, 0.95]	2.93 [-0.66, 6.51]	1.01 [-2.33, 4.35]	-0.49 [-1.82, 0.84]	-2.59 [-14.22, 9.04]	0.93 [-3.70, 5.56]	0.51 [-2.04, 3.06]	-0.20 [-1.24, 0.84]

2,4-D= 2,4-Dichlorophenoxyacetic acid; AChE=acetylcholinesterase; AND=acetamiprid-N-desmethyl; TCPy= 3,5,6-Trichloro-2-pyridinol; DCBA=3-(diethylcarbamoyl) benzoic acid; MDA= Malathion dicarboxylic acid; 3-PBA=3-phenoxybenzoic acid; PNP= para-Nitrophenol.

Linear GEE model results for each pesticide metabolite and AChE and each inflammatory biomarker.

Presented are the linear and squared  $\beta$  coefficients for the quadratic models, where  $\beta$  represents the % difference in the inflammatory marker concentration for 1 unit increase in urinary metabolite concentration. Models were adjusted for the following covariates: age, gender, race, BMI-for-age z-score, height-for-age z-score, parental education level, creatinine, smokers at home (yes/no).

Bolded text indicates significant findings ( $p < 0.05$ )



**Table 2 (continued).** Independent quadratic associations between biomarkers of pesticide exposure and inflammation

Exposure Biomarkers	Inflammatory Biomarkers					
	CD14 (ng/ml)		sICAM-1 (ng/ml)		sVCAM-1 (ug/ml)	
	$\beta$ (95% CI)	$\beta^2$ (95% CI)	$\beta$ (95% CI)	$\beta^2$ (95% CI)	$\beta$ (95% CI)	$\beta^2$ (95% CI)
<b>2,4-D</b> (ug/L)	4.6 [-48.3, 57.5]	5.3 [-16.8, 27.4]	92.4 [32.9, 151.9]	<b>53.25</b> <b>[27.3, 79.2]</b>	125.5 [56.5, 194.5]	<b>61.1</b> <b>[30.5, 91.7]</b>
<b>Glyphosate</b> (ug/L)	-1.0 [-48.5, 28.6]	<b>-6.7</b> <b>[-12.9, -0.4]</b>	30.1 [-15.4, 75.6]	<b>9.6</b> <b>[0.4, 18.7]</b>	25.1 [-25.7, 75.9]	7.1 [-2.0, 16.2]
<b>AND</b> (ug/L)	13.1 [-53.0, 79.2]	19.4 [-24.2, 62.9]	-19.6 [-88.9, 49.7]	-38.8 [-82.6, 5.1]	-24.5 [-110.1, 61.2]	-39.3 [-96.1, 17.5]
<b>TCPy</b> (ug/L)	36.9 [-40.9, 114.7]	-17.5 [-49.7, 14.7]	-20.6 [-120.6, 79.5]	10.8 [-30.8, 52.4]	-48.2 [-171.0, 74.5]	19.3 [-34.7, 73.3]
<b>3-PBA</b> (ug/L)	-12.9 [-56.9, 31.0]	-1.8 [-31.6, 28.7]	49.4 [-21.3, 120.1]	20.5 [-21.7, 62.8]	64.1 [-28.8, 156.9]	23.1 [-33.4, 79.6]
<b>MDA</b> (ug/L)	-34.3 [-237.4, 168.7]	26.8 [-61.4, 114.9]	-108.9 [-315.5, 97.8]	28.2 [-59.1, 115.6]	-193.7 [-445.5, 58.1]	73.9 [-29.6, 177.3]
<b>PNP</b> (ug/L)	29.4 [-86.9, 145.7]	8.1 [-60.9, 77.1]	-39.4 [-150.1, 71.3]	-35.1 [-111.3, 41.1]	-12.1 [-160.7, 136.4]	-22.5 [-116.0, 71]
<b>DCBA</b> (ug/L)	4.6 [-34.5, 43.7]	2.9 [-10.3, 16.1]	1.6 [-45.7, 48.9]	-3.2 [-16., 9.8]	-1.4 [-51.2, 48.4]	-6.8 [-20.8, 7.2]
<b>AChE</b> (U/mL)	339.8 [-1516.1, 2195.7]	-196.4 [-949.6, 556.9]	-611.5 [-2836.2, 1613.1]	244.4 [-666.9, 1155.7]	-667.6 [-2960.5, 1625.4]	247.5 [-695.5, 1190.5]

2,4-D= 2,4-Dichlorophenoxyacetic acid; AChE=acetylcholinesterase; AND=acetamiprid-N-desmethyl; TCPy= 3,5,6-Trichloro-2-pyridinol; DCBA=3-(diethylcarbamoyl) benzoic acid; MDA= Malathion dicarboxylic acid; 3-PBA=3-phenoxybenzoic acid; PNP= para-Nitrophenol.

Linear GEE model results for each pesticide metabolite and AChE and each inflammatory biomarker.

Presented are the linear and squared  $\beta$  coefficients for the quadratic models, where  $\beta$  represents the % difference in the inflammatory marker concentration for 1 unit increase in urinary metabolite concentration. Models were adjusted for the following covariates: age, gender, race, BMI-for-age z-score, height-for-age z-score, parental education level, creatinine, smokers at home (yes/no).

Bolded text indicates significant findings ( $p < 0.05$ )

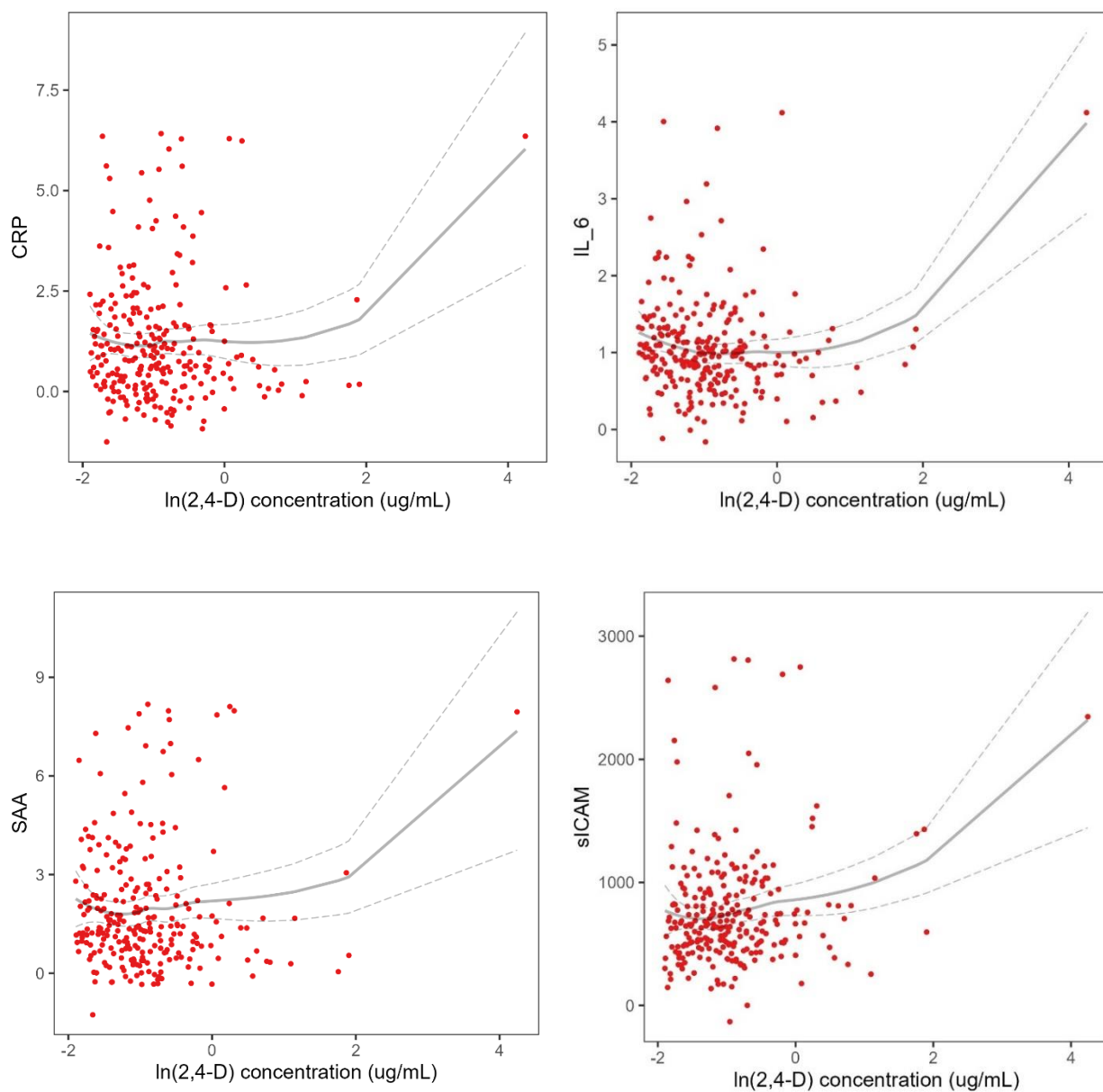
**Table 3.** Associations using PLS regression for the associations of pesticide and DEET metabolites with plasma inflammatory markers in adolescents, N= 507.

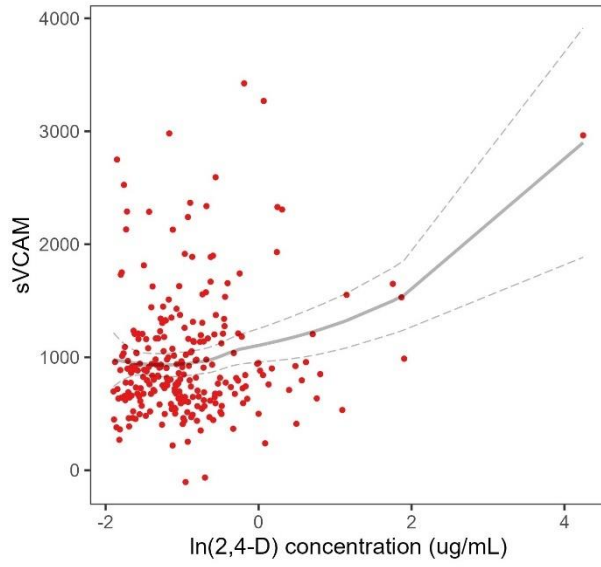
<b>Inflammatory Marker</b>	<b>Full model</b>	<b>PLS</b>	
		<b>Component 1</b>	<b>Component 1 + Component 2</b>
sCD-14	0 <sup>1</sup>	0.001	0 <sup>1</sup>
CRP	0.017	0.023	0.027
IL-6	0.003	0.013	0.013
SAA	0.014	0.024	0.024
sICAM-1	0.006	0.015	0.016
sVCAM-1	0.003	0.014	0.013
TNF- $\alpha$	0 <sup>1</sup>	0.010	0.008

Displayed values are adjusted  $R^2$  for 3 models: full model, which includes the linear combination of the pesticide variables, including the standardized pesticide variables in one model (2,4-D, Glyphosate, TCPy, 3-PBA, PNP), PLS model including the 1<sup>st</sup> component only and PLS model including the 1<sup>st</sup> and 2<sup>nd</sup> components. The outcomes (inflammatory markers CD-14, CRP, IL-6, SAA, sICAM-1, sVCAM-1, TNF- $\alpha$  and ETU) are residualized for the following covariates: age, gender, race, height-for-age z-score, and parental education. Bolded text indicates statistical significance for 95% confidence.

<sup>1</sup> Negative adjusted  $R^2$  values were set to 0

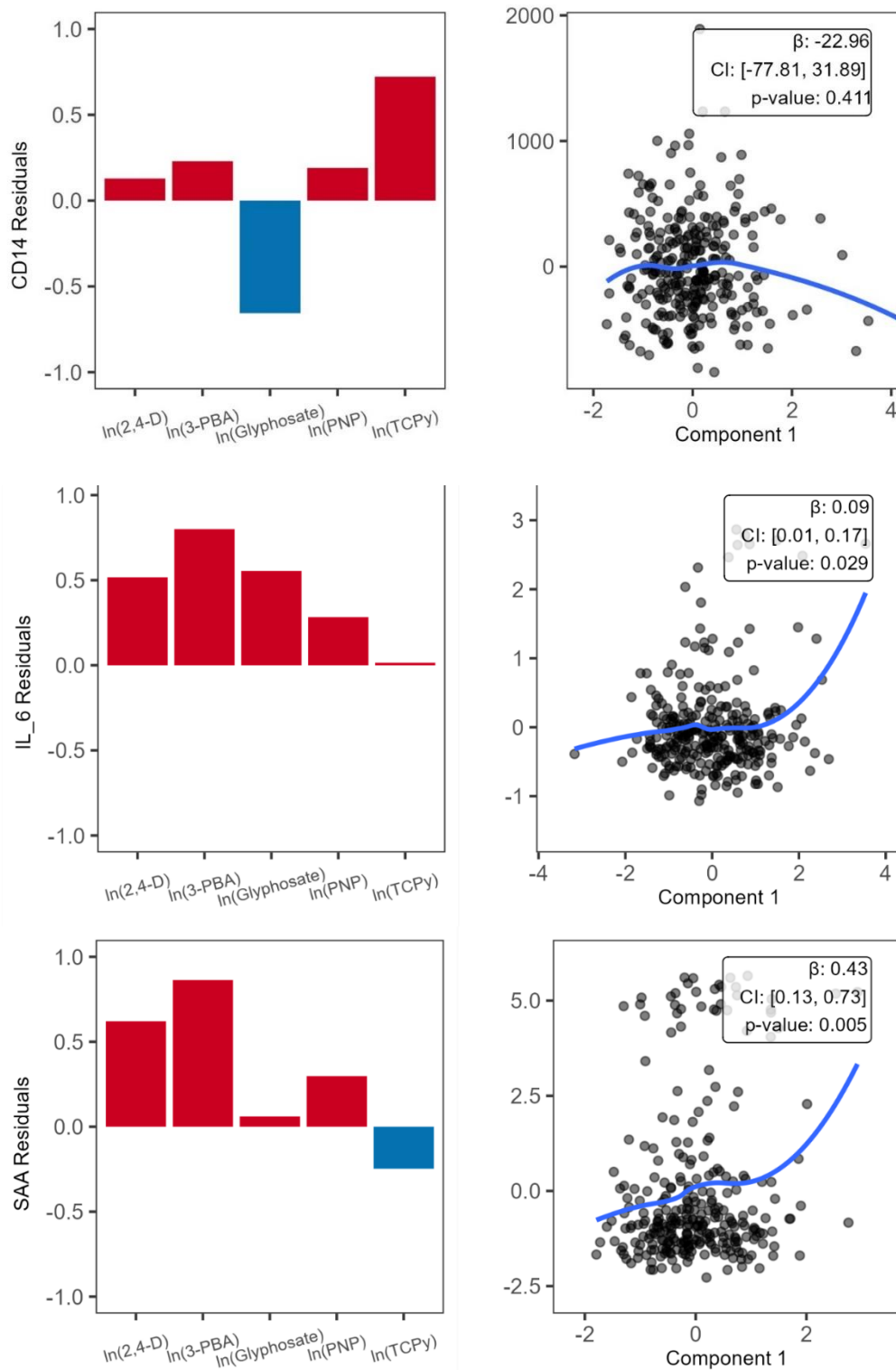
**Figure 1:** Adjusted associations between pesticide metabolites and inflammatory biomarkers among adolescents, N=507.

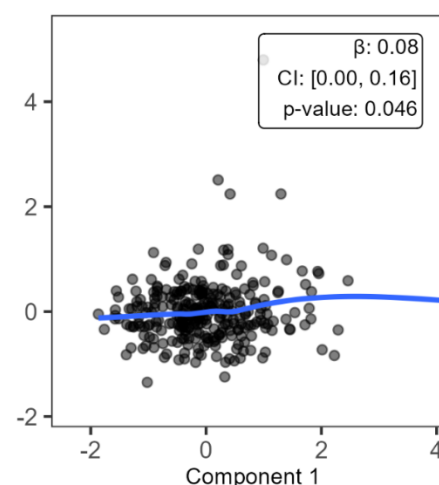
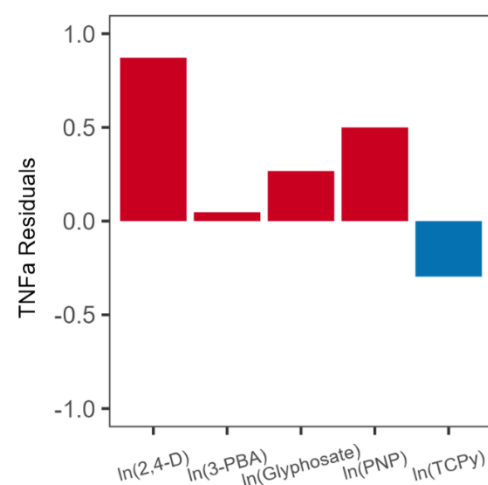
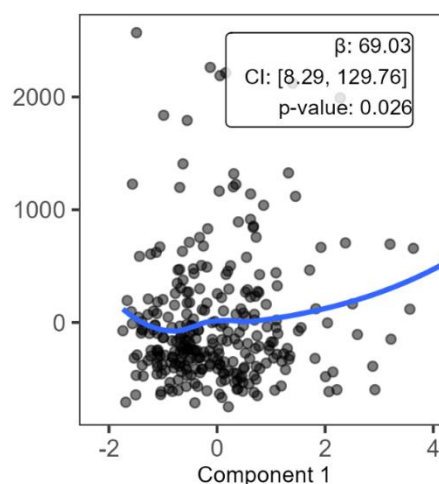
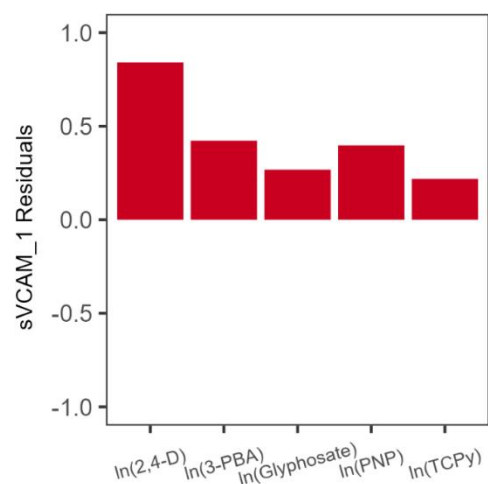
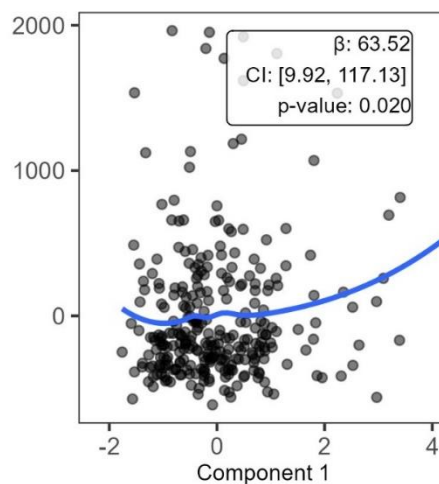
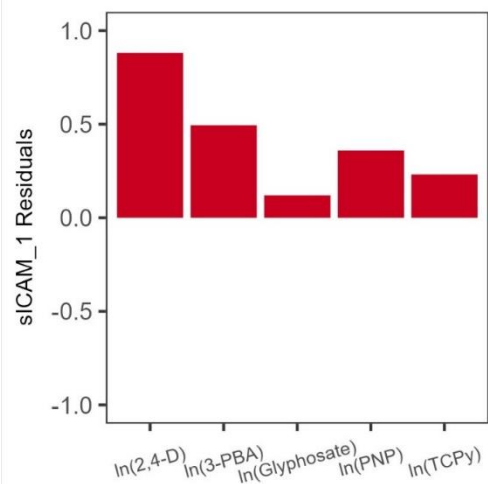




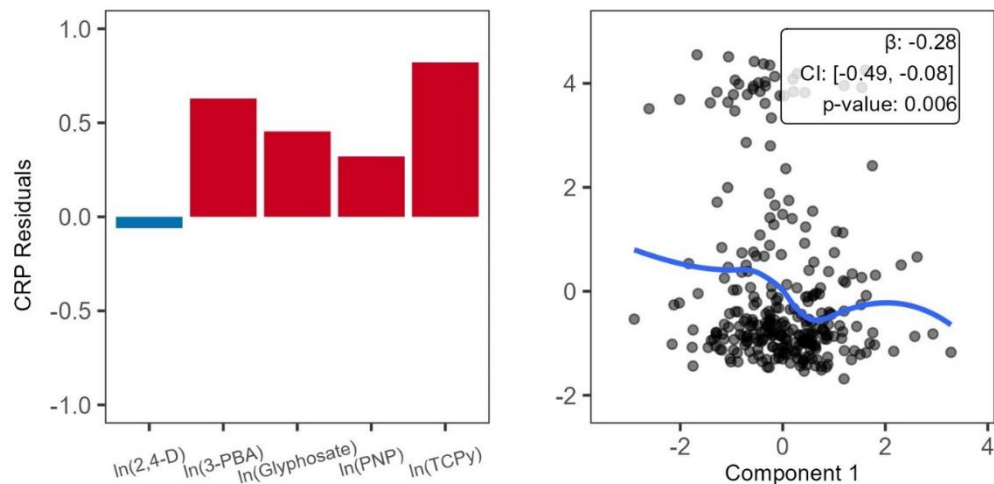
Red dots represent fully adjusted least squares means for 400 ranks. Gray lines are the LOESS model lines and 95% CI based on the adjusted least squares means data points.

**Figure 2.** PLS Component 1 loadings and associations between component 1 with inflammation markers in the ESPINA study. N=507









The figures on the left side depict the vector loadings of each independent variable within composite 1. Red color indicates that the component contributes to the same direction as the composite, and blue indicates that it contributes to the opposite direction. The figures on the right are estimated curves depicting the relationship between the composite variable and each inflammatory biomarker with  $\beta$ -coefficient estimates, confidence intervals (CI) and p-values shown in the top left-hand corner of each graph.  $\beta$  represents percent difference in inflammatory marker concentration for a 10% increase in urinary metabolite concentration

**Table S1.** Correlations between inflammatory biomarkers

	<b>CD14</b>	<b>CRP</b>	<b>IL-6</b>	<b>SAA</b>	<b>sICAM-1</b>	<b>sVCAM-1</b>	<b>TNF-<math>\alpha</math></b>
<b>CD14</b>	1	0.06	0.02	<b>0.09</b>	0	0.02	<b>0.24</b>
<b>CRP</b>		1	0.05	<b>0.63</b>	<b>0.52</b>	<b>0.51</b>	0.08
<b>IL-6</b>			1	0.03	0.01	0.01	0.04
<b>SAA</b>				1	<b>0.4</b>	<b>0.46</b>	0.03
<b>sICAM-1</b>					1	<b>0.88</b>	<b>0.22</b>
<b>sVCAM-1</b>						1	<b>0.25</b>
<b>TNF-<math>\alpha</math></b>							1

Values in bold were significant at a  $p < 0.05$  level

**Table S2.** Independent linear associations between biomarkers of pesticide exposure and inflammation. N=507

Exposure biomarker	Inflammatory Biomarkers						
	CD14	CRP	IL-6	SAA	sICAM-1	sVCAM-1	TNF- $\alpha$
<b>2,4-D</b> (ug/L)	1.03 [-22.30, 24.36]	0.04 [-0.09, 0.17]	0.02 [-0.05, 0.09]	0.06 [-0.10, 0.22]	29.06 [-8.21, 66.32]	41.23 [-2.16, 84.63]	0.02 [-0.02, 0.06]
<b>Glyphosate</b> (ug/L)	5.11 [-4.96, 15.19]	-0.04 [-0.09, 0.01]	0.01 [-0.01, 0.02]	-0.02 [-0.08, 0.04]	-0.90 [-15.59, 13.78]	0.40 [-13.90, 14.69]	0.01 [-0.01, 0.02]
<b>AND</b> (ug/L)	8.12 [-18.37, 34.62]	0.01 [-0.08, 0.10]	0.02 [-0.02, 0.06]	-0.04 [-0.16, 0.08]	-13.57 [-39.14, 12.01]	-15.60 [-47.15, 15.94]	<b>-0.05</b> <b>[-0.08, -0.02]</b>
<b>TCPy</b> (ug/L)	-0.26 [-18.73, 18.21]	-0.05 [-0.13, 0.02]	-0.00 [-0.04, 0.03]	-0.04 [-0.14, 0.06]	1.02 [-21.49, 23.52]	-2.79 [-29.83, 24.25]	-0.01 [-0.03, 0.02]
<b>MDA</b> (ug/L)	-0.02 [-44.37, 44.33]	-0.04 [-0.22, 0.15]	-0.06 [-0.12, 0.00]	<b>-0.18</b> <b>[-0.35, -0.01]</b>	-29.42 [-73.92, 15.08]	-39.89 [-107.06, 27.27]	-0.07 [-0.16, 0.02]
<b>PNP</b> (ug/L)	7.83 [-21.71, 37.37]	0.01 [-0.11, 0.14]	-0.01 [-0.05, 0.04]	-0.04 [-0.19, 0.11]	1.70 [-28.48, 31.88]	6.41 [-30.36, 43.18]	0.03 [-0.01, 0.07]
<b>3-PBA</b> (ug/L)	-4.80 [-21.78, 12.18]	-0.04 [-0.12, 0.04]	0.02 [-0.01, 0.06]	0.05 [-0.07, 0.16]	14.87 [-9.52, 39.27]	20.16 [-11.02, 51.34]	0.01 [-0.02, 0.03]
<b>DCBA</b> (ug/L)	4.94 [-6.99, 16.88]	-0.03 [-0.07, 0.01]	0.00 [-0.01, 0.02]	-0.04 [-0.09, 0.01]	-2.82 [-15.61, 9.97]	-7.82 [-21.81, 6.17]	0.00 [-0.01, 0.02]
<b>AChE</b> (U/mL)	-61.13 [-145.93, 23.68]	-0.34 [-0.76, 0.07]	-0.09 [-0.25, 0.07]	-0.11 ([-0.62, 0.40] 0.68)	-0.37 [-105.75, 105.02]	-19.97 [-136.63, 96.69]	0.00 [-0.12, 0.12]

**2,4-D= 2,4-Dichlorophenoxyacetic acid; AChE=acetylcholinesterase; AND=acetamiprid-N-desmethyl; TCPy= 3,5,6-Trichloro-2-pyridinol; DCBA=3-(diethylcarbamoyl) benzoic acid; MDA= Malathion dicarboxylic acid; 3-PBA=3-phenoxybenzoic acid; PNP= para-Nitrophenol.**

Presented are the  $\beta$  coefficients for the linear models, where  $\beta$  represents 1 unit of change in the inflammatory marker concentration for 1 unit of change in the urinary metabolite concentration. Models were adjusted for the following covariates: age, gender, race, BMI-for-age z-score, height-for-age z-score, parental education level, creatinine, smokers at home (yes/no). Bolded values are  $p < 0.05$ .