

1 ***Bifidobacterium animalis subsp. lactis* BL-11 Promotes Height Growth**
2 **in Children Aged 3-7 Years: A Self-controlled Cohort Study**

3

4 Qian Wang^{1#}, Yanan Yang^{2#}, Yin Xiao^{3#}, Ziyi Liu², Mingxi Li², Yue Yu¹, Nannan
5 Wang¹, Junyan Li⁴, Xiaohui Li⁵, Chuanhui Xu⁶, Deyun Liu^{1*}, Chongming Wu^{2,7,8*}

6

7 ¹ The Second Affiliated Hospital of Anhui Medical University, Hehui, Anhui, China.

8 ² School of Chinese Materia Medica, Tianjin University of Traditional Chinese
9 Medicine, Tianjin, China.

10 ³ Anhui Medical University, Hehui, Anhui, China.

11 ⁴ West China Second University Hospital, Sichuan University, Chengdu, Sichuan,
12 China.

13 ⁵ New Century Women's and Children's Hospital, Beijing, China.

14 ⁶ Minerva Hospital for women and children, Chengdu, Sichuan, China.

15 ⁷ Tianjin Key Laboratory of Therapeutic Substance of Traditional Chinese Medicine,
16 Tianjin, China

17 ⁸ State Key Laboratory of Chinese Medicine Modernization

18

19 **# These authors contributed equally to this work.**

20

21 *** Correspondence:**

22 Deyun Liu, 13966699361@163.com; Chongming Wu, chomingwu@163.com

NOTE: This preprint reports new research that has not been certified by peer review and should not be used to guide clinical practice.

23 **Abstract**

24 **Background:** Short status of children has captured extensive attention since it reflects
25 the health status of children and affects physical and psychological health throughout
26 children's life. Compelling evidences have revealed that gut microbiota participates in
27 the skeletal development directly or indirectly. Currently, the calcium agent and
28 growth hormone-like drugs have provided potential opportunities to promote growth
29 and development among children, yet limited trials existed with probiotic intake as a
30 primary strategy.

31 **Objectives:** Present cohort study was designed to evaluate the height-promoting
32 effect of gut probiotic *Bifidobacterium animalis subsp. lactis* BL-11 among 3-7 years
33 old children. Registered under ClinicalTrials.gov Identifier no. ChiCTR2400089723.

34 **Methods:** This study was conducted with Chinese children aged 3 to 7 years (n = 124)
35 who fall between the 3rd and 25th percentiles (P3-P25) for height, and whose annual
36 growth rate in height is less than 5 cm. The *Bifidobacterium animalis subsp. lactis*
37 BL-11 oiling agent were taken every day with total live bacteria \geq 30 billion. The
38 height of each participant was measured and recorded before and after three-months
39 *Bifidobacterium animalis subsp. lactis* BL-11 intervention.

40 **Results:** *Bifidobacterium animalis subsp. lactis* BL-11 could strikingly promote the
41 height growth of children, and shift the height percentile rage from P3-P10 to
42 P10-P25. Importantly, this promoting effect has no specificity between age and sex.
43 Comparatively, children with shorter height (P3-P10) were more sensitive to
44 *Bifidobacterium animalis subsp. lactis* BL-11.

45 **Conclusions:** Administration of *Bifidobacterium animalis subsp. lactis* BL-11 as early
46 as possible is in favor of the child's growth and development, which provided a
47 strategy for pediatricians to address some plights that how to promote children's
48 growth effectively and safely.

49

50 **Keywords:** cohort study, gut microbiota, *Bifidobacterium animalis subsp. lactis*
51 BL-11, growth-promoting

52 **Introduction**

53 Recently, children suffering from growth delay have received social attentions,
54 as the growth problem during early childhood higher the risk of long-term health,
55 educational, and emotional problems for children [1,2]. According to World Health
56 Organization (WHO) Global Database on Child Growth and Malnutrition, a child
57 whose height is lower than the average age by more than two standard deviations is
58 regarded as short stature [3]. Compelling evidences have proved that the short stature
59 is closely related to the development of several disease, such as metabolic disease and
60 cardiovascular diseases [4,5]. It is reported that an individual with short stature had
61 about a 50% higher risk of coronary heart disease morbidity and mortality than tall
62 ones [6]. Additionally, short stature can contribute to feelings of inferiority in children
63 and negatively impact the development of a healthy personality. Hence, it is necessary
64 to recognize the height problem in children as early as possible and to implement
65 timely interventions.

66 An intestinal probiotic is a type of bacteria that has been found to be non-harmful
67 and to have beneficial effects on the host [7-9]. Various studies have demonstrated
68 that administering *Bifidobacterium* spp. can enhance human immunity and improve
69 disease resistance [10]. For instance, *Bifidobacterium animalis subsp. Lactis* BB-12®
70 has been shown to reduce crying and fussing in infants diagnosed with infant colic
71 [11]. Additionally, treatment with *Lactobacillus acidophilus* DDS-1 and
72 *Bifidobacterium animalis subsp. lactis* UABla-12 alleviates the abdominal pain in
73 patients with irritable bowel syndrome [12]. *Bifidobacterium animalis subsp. lactis*

74 Bb12 may alleviate the unhealthy conditions of preterm infants [13]. Moreover, a
75 meta-analysis demonstrated that probiotic *Bifidobacterium animalis subsp. lactis*
76 CNCM I-3446 could exert positive effect on growth in infants born to mothers with
77 human immunodeficiency virus (HIV) [14]. Thus, probiotic intervention appears to be
78 a promising strategy for alleviating disease and enhancing human health, particularly
79 for children and patients who are intolerant to conventional medications. However,
80 the effectiveness of probiotics in promoting children's growth remains controversial
81 and requires further clinical research to validate this hypothesis.

82 To explore the potential efficacy of probiotics in promoting children's growth,
83 we selected a strain of *Bifidobacterium animalis subsp. lactis* BL-11 which has shown
84 to promote height in children with Prader-Willi Syndrome [15], and administered it to
85 children aged 3-7 years for three months. The height were measured and recorded
86 before and after intervention. As expected, there was a significant increase in height
87 following the *Bifidobacterium animalis subsp. lactis* BL-11 intervention. This cohort
88 study not only proved the role of probiotics in promoting children's growth, but also
89 provided an effective intervention for addressing short stature in children.

90 **Methods**

91 *Subjects and ethical approval*

92 Children of both sexes and aged 3-7 years who were recruited between Dec.
93 2023 and Sep. 2024. The study was conducted at the second affiliated hospital of
94 anhui medical university. The enrollment and research plan were reviewed and
95 approved by the institutional ethics committee of the second affiliated hospital of

96 anhui medical university (ethics number: SL-YX2023-172). Written informed consent
97 was obtained from each child's parents/guardians. This study complied with the code
98 of ethics of the World Medical Association (Declaration of Helsinki) and received
99 approval and registration in the Chinese Clinical Trial Registration Center with the
100 registration number ChiCTR2400089723.

101 ***Inclusion, exclusion, and withdrawal criteria***

102 ***Inclusion Criteria***

- 103 1. Aged 3-7 years.
- 104 2. Height between the 3rd and 25th percentiles (P3~P25) ,
- 105 3. The annual growth rate of height is less than 5 cm.

106 ***Exclusion Criteria***

- 107 1. Inherited metabolic diseases: trisomy 21 syndrome, Turner syndrome,
108 hypothyroidism, hyperthyroidism, growth hormone deficiency, SGA,
109 hypophosphatemic anti-D rickets.
- 110 2. Use of various antibiotics, antimicrobials, immunosuppressive drugs, other
111 probiotics, prebiotics, various dietary therapies, large doses of nutrients, and other
112 concurrent alternative therapies within the past one month.
- 113 3. Bone metabolic diseases: achondroplasia, osteogenesis imperfecta, moderate to
114 severe nutritional rickets.
- 115 4. Chronic diarrhea, asthma.
- 116 5. Other underlying diseases (leukemia, thalassemia, aplastic anemia, etc.).

117 6. Other circumstances considered by the investigator to be inappropriate for inclusion
118 in the trial.

119 ***Withdrawal criteria***

- 120 1. Misdiagnosis and incorrect admission.
- 121 2. Eligible patients who met the inclusion criteria did not take drugs after enrollment;
- 122 3. No post-treatment records.
- 123 4. During the trial, subjects used drugs that influenced the efficacy of the study drugs
124 that were prohibited by the study.

125 ***Intervention***

- 126 Dose, route and duration of administration
- 127 a. Take 40 drops of BL-11 daily (20 drops twice a day, recommended half an hour
128 after breakfast and half an hour before going to bed for best results).
 - 129 b. Shake thoroughly and then drop into the mouth or add to other food to eat.
 - 130 c. Continue for 3 months.

131 Remark: Subjects or their guardians should properly use the study drugs under
132 appropriate guidance and training. The precautions for drug use are as follows:

- 133 a. Take care that the mouth of the bottle and dropper do not touch the skin and saliva
134 during the eating process.
- 135 b. Add oil droplets to foods or drinks at temperatures not higher than 37 °C, which
136 can impair probiotic activity.
- 137 c. If the probiotic oil drops are dropped into water or liquid food for consumption, it is
138 recommended to drink within 20 minutes in order to maintain the activity of

139 probiotics.

140 d. Shake the product well before eating, shaking helps the probiotics to disperse more
141 evenly.

142 e. Do not take it with antibiotics. If antibiotics are used, take it at least 2 hours apart. f,
143 it is recommended to use it within 45 days after opening the lid.

144 At the same time, subjects or their guardians should carefully fill in the patient
145 diary card to record the patient's medication process.

146 ***Data collection***

147 Height measurements: Height measurements were performed by the same,
148 trained researchers as much as possible at the same time in the morning. Height was
149 measured with the use of a calibrated wall height meter, and three values were
150 measured and recorded at each visit. If the 3 measurements of height are different
151 from each other. 0.5 cm, then the height was measured three times again until the
152 difference between the two measurements was ≤ 0.5 cm.

153 To measure your height, use the following procedure:

154 Height measurements were recommended to be performed in the morning by the
155 same trained researcher.

156 1. Use a calibrated height meter.

157 2. Subjects should not stretch before height determination.

158 3. The subjects had to be standing with no shoes (bare feet or socks only).

159 4. The subject should wear only light clothing so that the body posture of the subject
160 can be observed.

- 161 5. Subjects had to look ahead horizontally.
- 162 6. Heel must be close together. If the subject had genu valgum (knee buckle), the
163 knees had to touch each other and the heels had to be as close to each other as
164 possible.
- 165 7. Heel, buttocks, shoulders and occipital bones must be in contact with the height
166 measuring instrument.
- 167 8. The mandible (chin) must be tightened upward.
- 168 9. The shoulders should be relaxed and the abdomen tightened to reduce lordosis
169 (curvature of the spine).
- 170 10. Lower the slide ruler or weight headrest until it is in contact with the highest part
171 of the subject's head.
- 172 11. The height measurement person read and recorded the measurement value.
- 173 12. Have the subject step away from the height meter and repeat two more times
174 according to the previous procedure. Repeated measurements had to differ by 0.5 cm
175 or less between the two measurements. If the 3 measurements of height are different
176 from each other. 0.5 cm, then the height measurements were repeated three times until
177 the difference between the two measurements was ≤ 0.5 cm.
- 178 13. Record the measurement value and measurement time.

179 ***Statistics***

180 All the information obtained was transferred to a Microsoft Excel® 2021 table
181 where age in months, sex, height, and percentiles were recorded. GraphPad Prism 8
182 (San Diego, USA) was employed for statistical analysis. Data were presented as mean

183 ± SEM, and figures were generated using the same software. The unpaired Student's
184 *t*-test was utilized to assess differences. Statistical significance was established at $P <$
185 0.05.

186 **Results**

187 *Study design and characteristics of participants*

188 To evaluate the growth-promoting effect of *Bifidobacterium animalis subsp.*
189 *lactis* BL-11 (BL-11), we enrolled 124 participants, consisting of 60 boys and 64 girls.
190 These children ranged in age from 3 to 7 years, with the average age of 60.8 months.
191 The height of participants ranged from 92 to 117 cm, with a mean height of 104.6 cm
192 (**Table 1**). Each participant consumed 40 drops of BL-11 oiling agent daily (total live
193 bacteria \geq 30 billion/day) for 3 months. Heights were measured and recorded both
194 before and after the BL-11 intervention. Finally, 124 participants with valid data were
195 included in the height assessment. Detailed information is presented in
196 **Supplementary Table 1**.

197 **Table 1. Characteristics of the study population**

Variables	Before intervention	After intervention
Gender, male/female (n/n)	60/64	60/64
Age, mean (months)	60.798	63.798
Height, mean (cm)	104.628	106.854

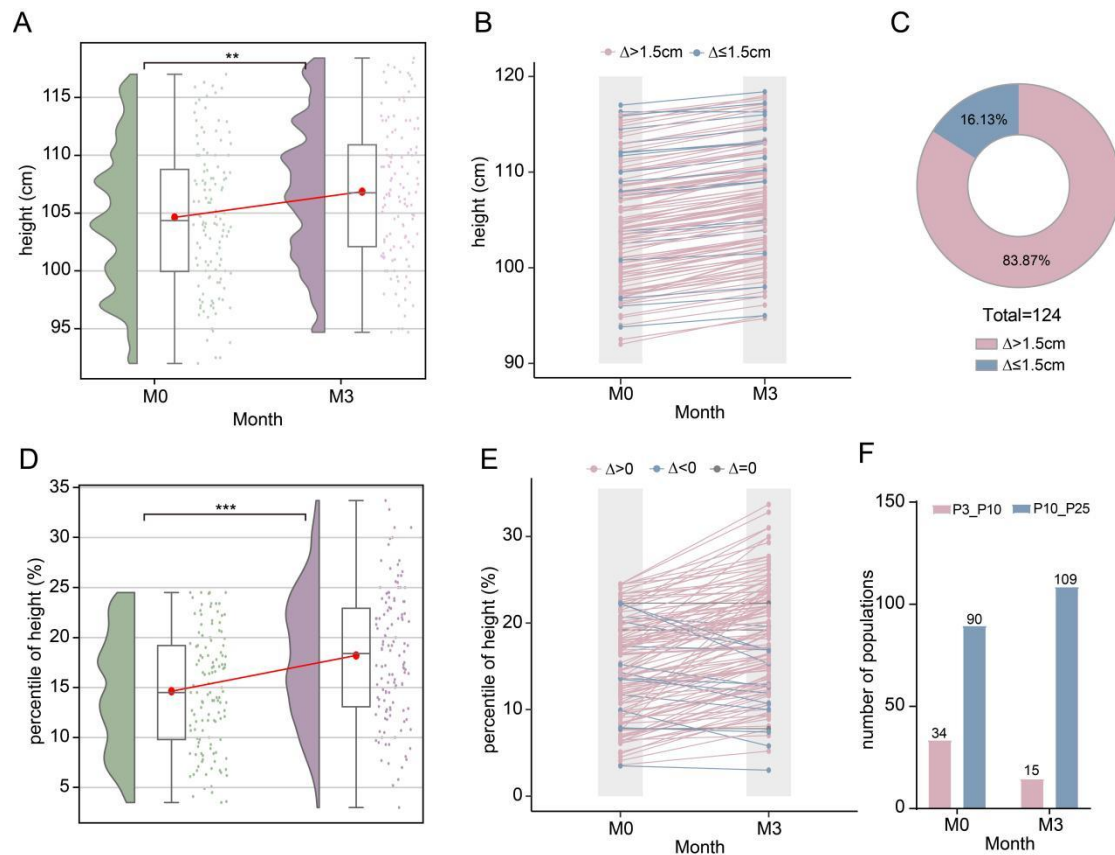
198 *Effect of Bifidobacterium animalis subsp. lactis BL-11 on height in pediatric* 199 *subjects*

200 We analyzed height changes among the 124 participants. On average, children

201 who consumed BL-11 experienced a height increase of 2.23 cm over three months
202 **(Table 1, Figure 1A)**. The included children were in the preschool stage, during
203 which the typical annual height increase is 5-6 cm. Therefore, we examined the
204 proportion of children whose height growth rate exceeded the average expected rate
205 of 1.5 cm over three months. A height increase greater than 1.5 cm was observed in
206 104 children (accounting to 83.87%), while the remaining 20 children (accounting to
207 16.13%) showed an increase of 1.5 cm or less **(Figure 1B-C)**.

208 The height percentile reflects the percentage of subjects with a certain height
209 relative to the total number of subjects. We next analyzed height percentile before and
210 after the BL-11 intervention. A significant increase in height percentile was observed
211 post- intervention **(Figure 1D)**. Of the 124 children, 108 showed an increase in height
212 percentile, 13 showed a decrease, and 3 showed no change **(Figure 1E)**.

213 To further understand the impact of BL-11, we categorized the into two groups
214 based on height percentile: P3-P10 and P10-P25. Before the BL-11 treatment, 34
215 children were in the P3-P10 percentile range, and 90 children were geared to P10-P25
216 range. After BL-11 treatment, there was a notable shift, with only 15 children
217 remaining in the P3-P10 range and 109 children moving to the P10-P25 range **(Figure**
218 **1F)**. These results suggested that BL-11 effectively promotes height growth in
219 children, particularly those with shorter stature.



220

221 **Figure 1. Effect of *Bifidobacterium animalis subsp. lactis* BL-11 on height in**

222 **pediatric subjects.** (A) The height of 124 children before and after 3-months BL-11

223 intervention. (B) The height change of 124 children. Red line represents a height

224 increase greater than 1.5 cm; blue line represents a height increase less than 1.5 cm.

225 (C) The proportions of children whose height has increased by more than 1.5 cm and

226 less than 1.5 cm. (D) The height percentile of 124 children before and after 3-months

227 BL-11 intervention. (E) The height percentile change of 124 children. Red line

228 represents an increase; blue line represents a decline; gray line represents unchanged.

229 (F) The number of children in P3-P10 and P10-P25 ranges before and after 3-months

230 BL-11 intervention. ** $P < 0.01$, *** $P < 0.001$.

231

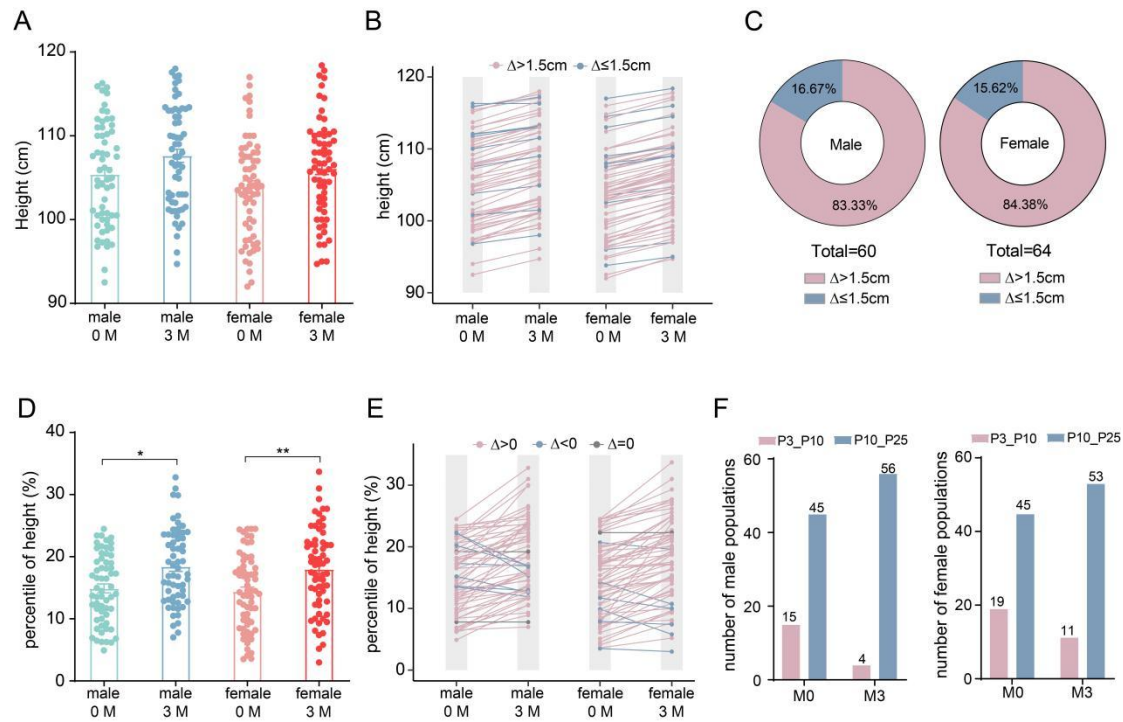
232 ***Effect of Bifidobacterium animalis subsp. lactis* BL-11 on height in children by**

233 *gender*

234 To determine if the growth-promoting effect of BL-11 varies by gender, we
235 conducted a subgroup analysis of the cohort based on gender. The height tended to be
236 increased among both male and female children after the three-month BL-11
237 intervention, although the increase was not statistically significant (**Figure 2A**).
238 Among the 60 male participants, 50 (83.33%) experienced a height increase greater
239 than 1.5 cm, while 10 (16.67%) showed an increase of 1.5 cm or less (**Figure 2B-C**).
240 Similarly, of the 64 female participants, 54 (84.38%) had a height increase greater
241 than 1.5 cm, and 10 (15.62%) had an increase of 1.5 cm or less (**Figure 2B-C**).

242 Although the overall height increase was not statistically significant, the height
243 percentiles showed a notable improvement in both male and female children after
244 BL-11 treatment (**Figure 2D**). Among the male participants, 51 showed an increase in
245 height percentile, 7 showed a decrease, and 2 showed no change (**Figure 2E**). Among
246 the female children, 57 showed an increase in height percentile, 6 showed a decrease,
247 and 1 showed no change (**Figure 2E**).

248 At the baseline, 15 male and 19 female children were in the P3-P10 percentile
249 range, while 45 male and 45 female children were in the P10-P25 percentile range.
250 Post the BL-11 intervention, only 4 male and 11 female children remained in the
251 P3-P10 range, whereas 56 male and 53 female individuals moved to the P10-P25
252 range (**Figure 2F**). Above data indicate that BL-11 effectively promotes height
253 growth in children regardless of gender.



254

255 **Figure 2. Effect of *Bifidobacterium animalis subsp. lactis* BL-11 on height in**

256 **children by gender. (A) The height of male and female children before and after**

257 **3-months BL-11 intervention. (B) The height change of male and female children.**

258 **Red line represents a height increase greater than 1.5 cm; blue line represents a height**

259 **increase less than 1.5 cm. (C) The proportions of male and female children whose**

260 **height has increased by more than 1.5 cm and less than 1.5 cm, respectively. (D) The**

261 **height percentile of male and female children before and after 3-months BL-11**

262 **intervention. (E) The height percentile change of male and female children. Red line**

263 **represents an increase; blue line represents a decline; gray line represents unchanged.**

264 **(F) The number of male or female children in P3-P10 and P10-P25 rages before and**

265 **after 3-months BL-11 intervention. * $P < 0.05$, ** $P < 0.01$.**

266

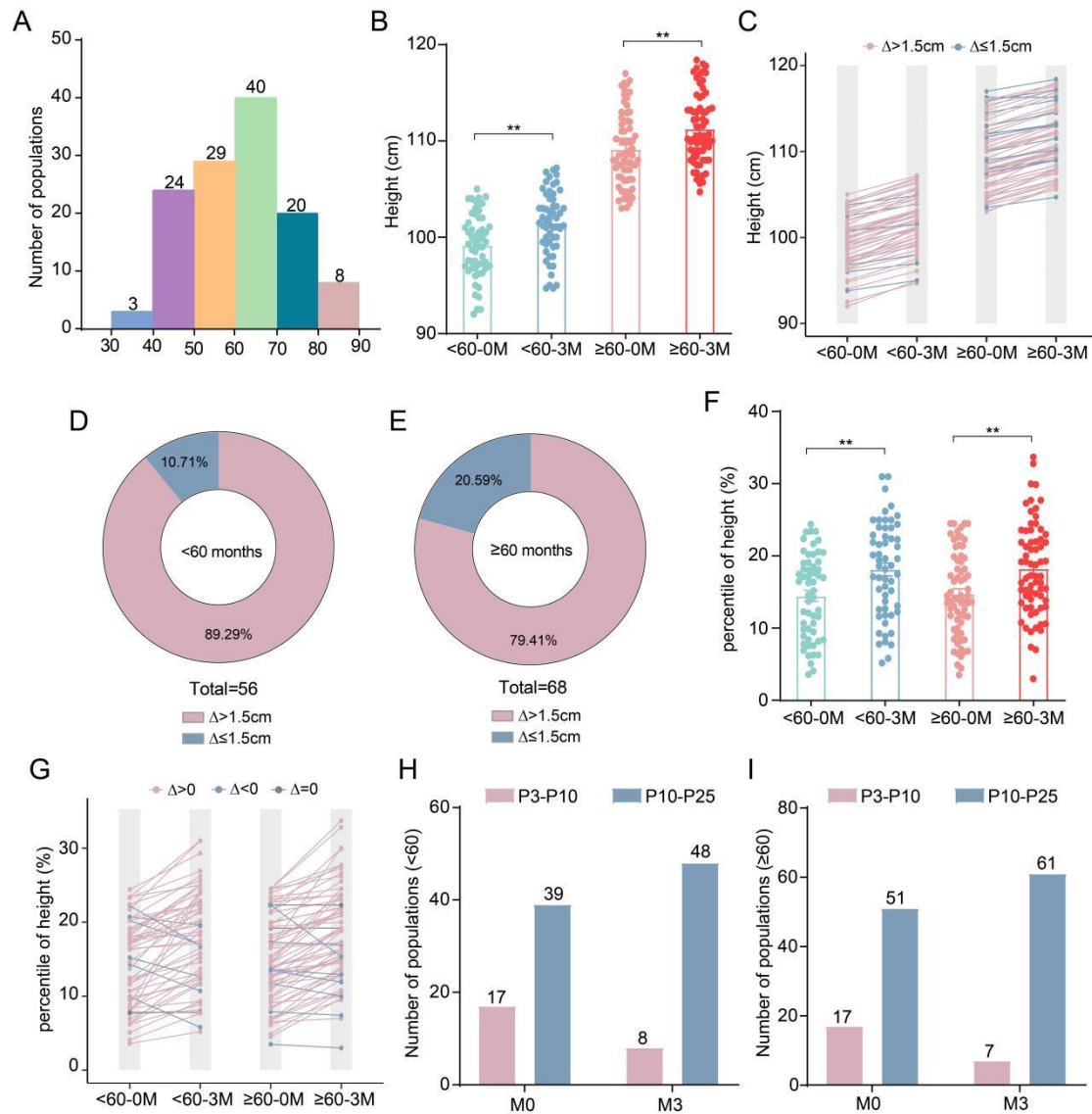
267 ***Effect of Bifidobacterium animalis subsp. lactis* BL-11 on height in children by age**

268 Next, we analyzed the age distribution of our cohort, dividing it into six stages: 3
269 children aged 30-40 months, 24 children aged 40-50 months, 29 children aged 50-60
270 months, 40 children aged 60-70 months, 20 children aged 70-80 months, and 8
271 children aged 80-90 months. For further analysis, we divided the children into two
272 subgroups based on 60 months as the boundary, with 56 children under 60 months old
273 and 68 participants aged 60 months or older (**Figure 3A**). Overall, the height was
274 markedly increased in both two subgroups (**Figure 3B**). Among the children under 60
275 months old, 50 individuals (89.29%) experienced a height increase greater than 1.5
276 cm, while 6 participants (10.71%) showed an increase of 1.5 cm or less (**Figure**
277 **3C-D**). For those aged 60 months or older, 54 individuals (79.41%) had a height
278 growth rate greater than 1.5 cm, while 14 individuals (20.59%) presented a height
279 growth rate less than 1.5 cm (**Figure 3C,E**).

280 The height percentile also strikingly increased in both subgroups (**Figure 3F**).
281 Specifically, among children under 60 months old, the percentile decreased in 6
282 children and increased in 49 children. Among children aged 60 months or older, the
283 percentile decreased in 7 children and increased in 59 children (**Figure 3G**).

284 At the baseline, 17 children in both age groups were in the P3-P10 percentile
285 range, while 39 children children under 60 months old and 51 children aged 60
286 months 0r older were in the P10-P25 percentile range, Post the BL-11 intervention,
287 only 8 children under 60 months old and 7 children aged 60 months or older remained
288 in the P3-P10 range, whereas 48 children under 60 months old and 61 children aged
289 60 months or older moved to the P10-P25 range (**Figure 3F**). These data indicate that

290 BL-11 effectively enhances height growth in children regardless of age.



291

292 **Figure 3. Effect of *Bifidobacterium animalis subsp. lactis* BL-11 on height in**

293 **children by age. (A) The age distribution of 124 children. (B) The height of children**

294 **aged under 60 months or over 60 months before and after 3-months BL-11**

295 **intervention. (C) The height change of children aged under 60 months or over 60**

296 **months. Red line represents a height increase greater than 1.5 cm; blue line represents**

297 **a height increase less than 1.5 cm. (D) The proportions of children aged under 60**

298 **months whose height has increased by more than 1.5 cm and less than 1.5 cm. (E) The**

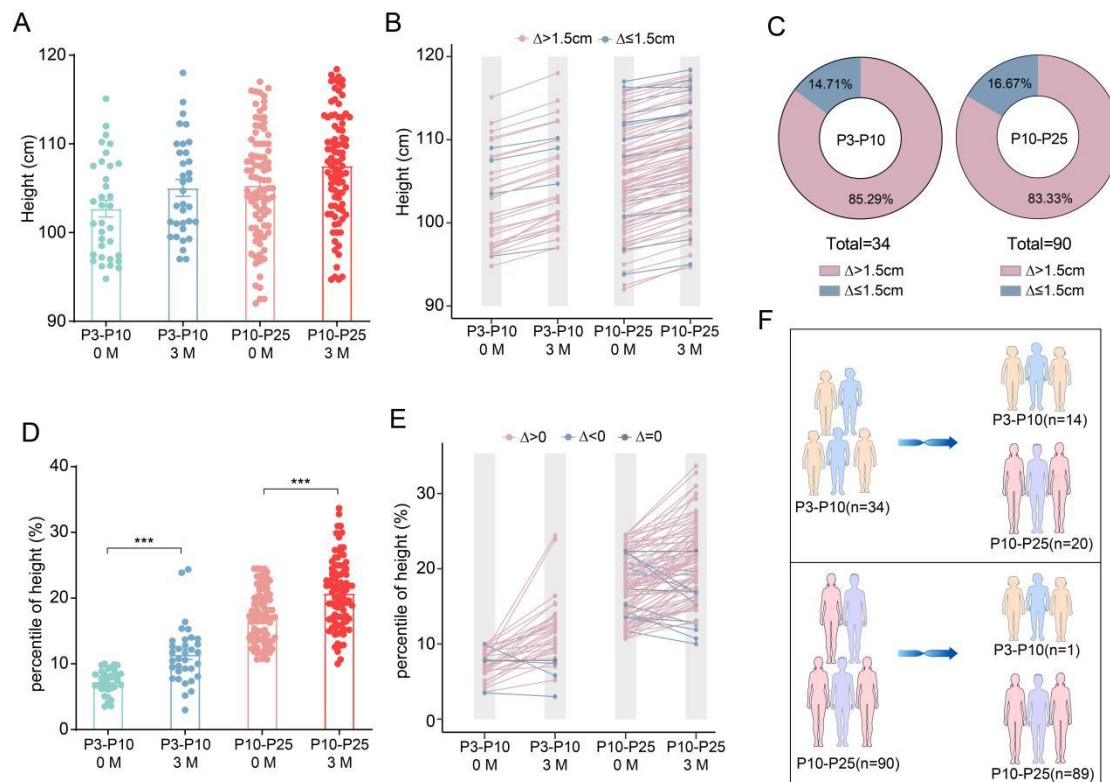
299 proportions of children aged over 60 months whose height has increased by more than
300 1.5 cm and less than 1.5 cm. (F) The height percentile of children aged under 60
301 months or over 60 months before and after 3-months BL-11 intervention. (G) The
302 height percentile change of children aged under 60 months or over 60 months. Red
303 line represents an increase; blue line represents a decline; gray line represents
304 unchanged. (H) The number of children aged under 60 months in P3-P10 and
305 P10-P25 ranges before and after 3-months BL-11 intervention. (I) The number of
306 children aged over 60 months in P3-P10 and P10-P25 ranges before and after 3-months
307 BL-11 intervention. ** $P < 0.01$.

308

309 ***Effect of Bifidobacterium animalis subsp. lactis BL-11 on height in children within***
310 ***different height ranges***

311 Based on the above analyses, we found that BL-11 has different effects on the
312 height of children within the P3-P10 and P10-P25 height percentiles. Therefore, we
313 reanalyzed the population within the in these two height ranges. The height showed an
314 increasing trend in both the P3-P10 and P10-P25 groups following the BL-11
315 intervention, although the increase was not statistically significant (**Figure 4A**).
316 Within the P3-P10 range, 29 (85.29%) children experienced a height increase greater
317 than 1.5 cm, while 5 (14.71%) children increased less than 1.5 cm (**Figure 4B-C**).
318 Comparatively, in the P10-P25 range, 75 (83.33%) children had a height increase
319 greater than 1.5 cm, while 15 (16.67%) children had an increase less than 1.5 cm
320 (**Figure 4B-C**).

321 The height percentile notably increased in both the P3-P10 and P10-P25 groups
 322 following the BL-11 intervention (**Figure 4D**). Among children in the P3-P10 range,
 323 30 showed an increase in height percentile, while 3 showed a decrease (**Figure 4E**).
 324 In the P10-P25 range, 78 children showed an increase in height percentile, while 10
 325 children showed a decline (**Figure 4E**). Overall, BL-11 effectively shifted the height
 326 range of 20 children from P3-P10 to P10-P25 (**Figure 4F**), displaying a superior
 327 growth-promoting effect.



328
 329 **Figure 4. Effect of *Bifidobacterium animalis subsp. lactis* BL-11 on height in**
 330 **children within different height ranges.** (A) The height of children within the
 331 P3-P10 and P10-P25 ranges before and after 3-months BL-11 intervention. (B) The
 332 height change of children within the P3-P10 and P10-P25 ranges. Red line represents
 333 a height increase greater than 1.5 cm; blue line represents a height increase less than
 334 1.5 cm. (C) The proportions of children within the P3-P10 and P10-P25 ranges whose

335 height has increased by more than 1.5 cm and less than 1.5 cm, respectively. (D) The
336 height percentile of children within the P3-P10 and P10-P25 ranges before and after
337 3-months BL-11 intervention. (E) The height percentile change of children within the
338 P3-P10 and P10-P25 ranges. Red line represents an increase; blue line represents a
339 decline; gray line represents unchanged. (F) The number of children in P3-P10 and
340 P10-P25 ranges before and after 3-months BL-11 intervention. *** $P < 0.001$.

341

342 **Discussions**

343 Early childhood is a period of rapid development in metabolism, endocrine,
344 immunity, and neural development, all of which strongly affect the growth and
345 development of children. Therefore, it is necessary to explore strategies to promote
346 the growth of children with short stature. The present cohort assessed the
347 growth-promoting effect of *Bifidobacterium animalis subsp. lactis* BL-11 among 124
348 children aged 3-7 years old with height ranging from 92 to 117. Positively,
349 three-months intervention with *Bifidobacterium animalis subsp. lactis* BL-11
350 significantly promoted height growth in these children, with no difference observed
351 based on gender or age. To a certain extent, these clinical trial data demonstrate that
352 treatment with specific probiotics strain can favorably impact children's growth and
353 development. This finding is likely to attract the attention of pediatrician and parents
354 concerned about short stature in children.

355 The chief indicators of short stature in children are their height and weight.
356 Growth disorders, such as short stature or growth failure, are often markers of

357 underlying conditions like nutritional deficits, abnormal hormone metabolism,
358 diarrhoeal disease or cardiovascular disease [16]. Currently, measures to promote
359 children's growth primarily include calcium agent supplementation and growth
360 hormone-like drugs. While these treatments are effective for many individuals, the
361 daily injections can be painful and and intolerable, particularly for children, leading to
362 the non-adherence and reduced treatment outcomes [17]. Obviously, it is meaningful
363 to explore complementary or alternative therapies that are both effective and safe.

364 The gut microbiota, which colonizes and stabilizes within the human intestine
365 during the childhood, plays a crucial role in growth and development. Compelling
366 evidences have confirmed that those gut bacteria contribute to lifelong and
367 intergenerational deficits in growth and development among children [18]. Probiotic
368 strains of *Bifidobacterium* are increasingly being used in pharmaceuticals and
369 functional foods [19]. *Bifidobacterium animalis subsp. lactis* is one of the probiotics
370 that supports the intestinal health, metabolic balance and growth performance [20-22],
371 indicating its potential as a candidate for height management. Consistent with the
372 speculation, our study found that *Bifidobacterium animalis subsp. lactis* BL-11
373 notably enhanced the height of children, implying that early probiotic
374 supplementation might prevent the occurrence of short status.

375 Generally, children's height is determined by their longitudinal growth index,
376 which is influenced by hereditary factors, nutrition, sleep, sports, hormone level,
377 environment, habits, and race [23]. Several *Bifidobacterium* strains, such as
378 *Bifidobacterium longum* and *Bifidobacterium pseudocatenulatum* CECT 7765, are

379 demonstrated to increase serum osteocalcin and minerals concentration, along with
380 decrease serum C-terminal telopeptide and parathormone, thereby favor a femur
381 growth [24,25]. Our present study displayed growth-promoting effect of another
382 *Bifidobacterium* strain — *Bifidobacterium animalis subsp. lactis* BL-11. While the
383 study was promising, it failed to provide mechanisms since mechanistic studies were
384 not performed. Ding et al. revealed that strain of *Bifidobacterium longum subsp.*
385 *infantis* CCFM1269 can modulate gut microbiota and metabolites, stimulate
386 GH/IGF-1 axis in growing mice [26]. We, therefore, cautiously speculate that the
387 growth-promoting mechanism of *Bifidobacterium animalis subsp. lactis* BL-11 is
388 related with the GH/IGF-1 pathway. Additionally, it is reported that *Bifidobacterium*
389 *longum* can modulate Treg-Th17 cell balance, elevate anti-osteoclastogenic cytokines
390 IFN- γ and IL-10 and decrease osteoclastogenic-cytokines IL-6, IL-17, and TNF- α
391 [27]. Hence, the immunomodulatory potential of *Bifidobacterium animalis subsp.*
392 *lactis* BL-11 may also be conducive to its growth-promoting effect. A further study
393 should elucidate the mechanisms of how *Bifidobacterium animalis subsp. lactis*
394 BL-11 promote bone growth, thus promote effective and efficient probiotic products
395 development.

396 **Conclusions**

397 Collectively, the foregoing data demonstrated that *Bifidobacterium animalis*
398 *subsp. lactis* BL-11 intervention is in favor of the child's growth and development.
399 This cohort study proposes that early supplementary with *Bifidobacterium animalis*
400 *subsp. lactis* BL-11 could help prevent short stature in children. These findings

401 provide pediatricians with a potential strategy to effectively and safely promote
402 children's growth.

403 **Author Approval**

404 All authors have seen and approved the manuscript.

405 **Declaration of competing interest**

406 The authors declare that they have no known financial interests or personal
407 relationships that might influence the work reported in this paper.

408 **Acknowledgments**

409 None

410 **CRedit authorship contribution statement**

411 Q.W.: Methodology, Formal Analysis, Visualization, Writing-Review & Editing;
412 Y.Y.: Methodology, Formal Analysis, Visualization, Writing-Review & Editing; Y.X.:
413 Visualization, Formal Analysis, Writing-original draft; Z.L.: Visualization, Formal
414 Analysis, Writing-original draft; M.L.: Methodology, Writing-Review & Editing; Y.Y.:
415 Methodology, Writing-Review & Editing; N.W.: Methodology, Investigation; J.L.:
416 Methodology, Investigation; X.L.: Visualization; C.X.: Visualization; D.L.:
417 Conceptualization, Data Curation, Formal Analysis, Visualization, Writing-Review &
418 Editing; C.W.: Conceptualization, Data Curation, Formal Analysis, Visualization,
419 Writing-Review & Editing.

420 **Data availability**

421 All data are available from the corresponding authors upon reasonable request.

422 **Reference**

- 423 [1] Dewey KG, Begum K. Long-term consequences of stunting in early life. *Maternal & Child*
424 *Nutrition* 2011; 7: 5-18.
- 425 [2] Black MM, Tofail F, Hodges EA, Bann CM, Hamadani JD, Aktar S, et al. Rethinking
426 Responsive Feeding: Insights from Bangladesh. *Nutrients* 2022; 14:
- 427 [3] Ad R, Gf H. Etiologies and early diagnosis of short stature and growth failure in children and
428 adolescents. *J Pediatr.* 2014; 164: S1-14.e6.
- 429 [4] S K, K K, M L, A K, T L, C R, et al. The association between the body height and
430 cardiovascular diseases: a retrospective analysis of 657,310 outpatients in Germany. *Eur J*
431 *Med Res.* 2022; 27: 240.
- 432 [5] Y J, T H, Yh D. The relationship of the waist to stature ration with type 2 diabetes mellitus.
433 *Chin J Diabetes* 2010; 18: 526-8.
- 434 [6] Ta P, Nk O, P K, Pj K. Short stature is associated with coronary heart disease: a systematic
435 review of the literature and a meta-analysis. *Eur Heart J.* 2010; 31: 1802-9.
- 436 [7] S S, Id O, Mc C, A E, Id O, C H, et al. The International Scientific Association of Probiotics
437 and Prebiotics (ISAPP) consensus statement on the definition and scope of postbiotics. *Nat*
438 *Rev Gastroenterol Hepatol* 2021; 18: 649-67.
- 439 [8] Xu W, Yu J, Yang Y, Li Z, Zhang Y, Zhang F, et al. Strain-level screening of human gut
440 microbes identifies *Blautia producta* as a new anti-hyperlipidemic probiotic. *Gut Microbes*
441 2023; 15: 2228045.
- 442 [9] Yang YN, Wang QC, Xu W, Yu J, Zhang H, Wu C. The berberine-enriched gut commensal
443 *Blautia producta* ameliorates high-fat diet (HFD)-induced hyperlipidemia and stimulates liver
444 LDLR expression. *Biomed Pharmacother* 2022; 155: 113749.

- 445 [10] Hidalgo-Cantabrana C, Delgado S, Ruiz L, Ruas-Madiedo P, Sanchez B, Margolles A.
446 Bifidobacteria and Their Health-Promoting Effects. *Microbiol Spectr* 2017; 5:
- 447 [11] Chen K, Zhang G, Xie H, You L, Li H, Zhang Y, et al. Efficacy of *Bifidobacterium animalis*
448 subsp. *lactis*, BB-12((R)) on infant colic - a randomised, double-blinded, placebo-controlled
449 study. *Benef Microbes* 2021; 12: 531-40.
- 450 [12] Martoni CJ, Srivastava S, Leyer GJ. *Lactobacillus acidophilus* DDS-1 and *Bifidobacterium*
451 *lactis* UABla-12 Improve Abdominal Pain Severity and Symptomology in Irritable Bowel
452 Syndrome: Randomized Controlled Trial. *Nutrients* 2020; 12:
- 453 [13] Mohan R, Koebnick C, Schildt J, Mueller M, Radke M, Blaut M. Effects of *Bifidobacterium*
454 *lactis* Bb12 supplementation on body weight, fecal pH, acetate, lactate, calprotectin, and IgA
455 in preterm infants. *Pediatr Res* 2008; 64: 418-22.
- 456 [14] Steenhout PG, Rochat F, Hager C. The effect of *Bifidobacterium lactis* on the growth of
457 infants: a pooled analysis of randomized controlled studies. *Annals of Nutrition and*
458 *Metabolism* 2009; 55: 334-40.
- 459 [15] Xj K, G W, R T, S L, K L, C C, et al. The Effects of Probiotic Supplementation on
460 Anthropometric Growth and Gut Microbiota Composition in Patients With Prader-Willi
461 Syndrome: A Randomized Double-Blinded Placebo-Controlled Trial. *Front Nutr* 2021; 8:
- 462 [16] Teran E, Chesner J, Rapaport R. Growth and growth hormone: An overview. *Growth Horm*
463 *IGF Res* 2016; 28: 3-5.
- 464 [17] Yuen KCJ, Miller BS, Boguszewski CL, Hoffman AR. Usefulness and Potential Pitfalls of
465 Long-Acting Growth Hormone Analogs. *Front Endocrinol (Lausanne)* 2021; 12: 637209.

- 466 [18] Robertson RC, Manges AR, Finlay BB, Prendergast AJ. The Human Microbiome and Child
467 Growth – First 1000 Days and Beyond. *Trends in Microbiology* 2019; 27: 131-47.
- 468 [19] Jamalifar H, Bigdeli B, Nowroozi J, Zolfaghari HS, Fazeli MR. Selection for autochthonous
469 bifidobacterial isolates adapted to simulated gastrointestinal fluid. *Daru* 2010; 18: 57-66.
- 470 [20] Cheng J, Laitila A, Ouwehand AC. *Bifidobacterium animalis* subsp. *lactis* HN019 Effects on
471 Gut Health: A Review. *Front Nutr* 2021; 8: 790561.
- 472 [21] Uusitupa HM, Rasinkangas P, Lehtinen MJ, Makela SM, Airaksinen K, Anglenius H, et al.
473 *Bifidobacterium animalis* subsp. *lactis* 420 for Metabolic Health: Review of the Research.
474 *Nutrients* 2020; 12:
- 475 [22] Abdel-Moneim AE, Elbaz AM, Khidr RE, Badri FB. Effect of in Ovo Inoculation of
476 *Bifidobacterium* spp. on Growth Performance, Thyroid Activity, Ileum Histomorphometry,
477 and Microbial Enumeration of Broilers. *Probiotics Antimicrob Proteins* 2020; 12: 873-82.
- 478 [23] Li YY, Chen Y, Xu X, Tan BY, Liu YB, Peng X, et al. Analysis of Prevalence, Influencing
479 Factors, and Countermeasures of Short Stature in Children and Adolescents Aged 6- 14 in
480 Furong District, Changsha City, in 2020. *Evid Based Complement Alternat Med.* 2021; 2021:
481 3933854.
- 482 [24] Fc R, As C, Vc R, Sa F, Ea F, Tt DO, et al. Yacon flour and *Bifidobacterium longum* modulate
483 bone health in rats. *J Med Food.* 2012; 15: 664-70.
- 484 [25] Fernández-Murga ML, Olivares M, Sanz Y. *Bifidobacterium pseudocatenulatum* CECT 7765
485 reverses the adverse effects of diet-induced obesity through the gut-bone axis. *Bone* 2020;
486 141:

- 487 [26] Ding M, Li B, Chen H, Liang D, Ross RP, Stanton C, et al. Human breastmilk-derived
488 *Bifidobacterium longum* subsp. *infantis* CCFM1269 regulates bone formation by the GH/IGF
489 axis through PI3K/AKT pathway. *Gut Microbes* 2023; 16:
- 490 [27] Sapra L, Shokeen N, Porwal K, Saini C, Bhardwaj A, Mathew M, et al. *Bifidobacterium*
491 *longum* Ameliorates Ovariectomy-Induced Bone Loss via Enhancing Anti-Osteoclastogenic
492 and Immunomodulatory Potential of Regulatory B Cells (Bregs). *Frontiers in Immunology*
493 2022; 13:
- 494
- 495

