

Parental income and psychiatric disorders from age 10 to 40: a genetically informative population study

Hans Fredrik Sunde^{1,2*}, Espen Moen Eilertsen³, Jonas Minet Kinge^{1,4}, Thomas H. Kleppe⁵,
Magnus Nordmo^{1,6}, Avshalom Caspi^{3,7,8}, Terrie E. Moffitt^{3,7,8}, Fartein Ask Torvik^{1,2,3}

¹ Centre for Fertility and Health, Norwegian Institute of Public Health, Oslo, Norway

² PsychGen Centre for Genetic Epidemiology and Mental Health, Norwegian Institute of Public Health, Oslo, Norway

³ PROMENTA Research Centre, Department of Psychology, University of Oslo, Oslo, Norway

⁴ Department of Health Management and Health Economics, University of Oslo, Oslo, Norway

⁵ Department of Psychology, Norwegian University of Science and Technology, Trondheim, Norway

⁶ Department of Educational Science, University of South-Eastern Norway, Notodden, Norway

⁷ Institute of Psychiatry, Psychology, & Neuroscience, King's College London, London, UK

⁸ Department of Psychology & Neuroscience, Duke University, Durham, NC, USA

Corresponding author: Hans Fredrik Sunde (hansfredrik.sunde@fhi.no)

Conflicts of Interest: None

Abbreviated Title: Parental income and psychiatric disorders from age 10 to 40

Word Count:

- Abstract: 195
- **Main Text:** 4717 (excl. fig. labels and references)
 - Intro: 651
 - Methods: 2008
 - Results: 674
 - Discussion: 1389

Abstract

Background: Lower parental income is associated with more psychiatric disorders among offspring, but it is unclear if this association reflects effects of parental income (social causation) or shared risk factors (social selection). Prior research finds contradictory results, which may be due to age differences between the studied offspring.

Methods: Here, we studied the entire Norwegian population aged 10 to 40 between 2006 and 2018 (N = 2,468,503). By linking tax registries to administrative health registries, we describe prevalence rates by age, sex, and parental income rank. Next, we used kinship-based models with extended families of twins and siblings to distinguish direct effects of parents from shared genetic and environmental risk factors.

Results: We show that lower parental income rank was associated with more psychiatric disorders at all ages from age 10 to 40 (r between $-.06$ and $-.15$). The kinship-based models indicated that direct effects of parental income played a large role (38%) in explaining the parent-offspring correlation among adolescents, while shared risk factors accounted for the entire parent-offspring correlation among adults.

Conclusion: Our findings indicate that social causation plays a significant role during adolescence, while social selection fully explains the parent-offspring association in adulthood.

Keywords: psychiatric disorders, socioeconomic status, social selection, social causation, twins, registry data

Introduction

Adults with lower income experience more health problems, including mental health problems, than their more well-off peers¹⁻⁵. This health gradient is reproduced across generations: Children from low-income households are at greater risk for poor health outcomes, including mental health problems⁶⁻⁹. Despite being well documented, it is not understood how the association between parental income and psychiatric disorders in offspring arises.

There are at least two potential causes¹⁰⁻¹². First, growing up in low-income households can directly increase the risk of psychiatric disorders. This is the *social causation* hypothesis. Alternatively, income could be influenced by psychiatric disorders or risk factors related to psychiatric disorders. This is the *social selection* hypothesis. Here, propensity for psychiatric disorders is correlated with propensity for less income. This propensity may be genetically or environmentally inherited by offspring, thus causing an intergenerational association between parental income and offspring psychiatric disorders.

Earlier attempts at distinguishing social causation and social selection have often focused on explaining within-individual associations, where the evidence points to a non-zero role for social causation^{5,10-13}. However, within-individual and intergenerational associations need not have the same explanation. For intergenerational associations, the evidence is mixed. Some studies support the social selection hypothesis^{8,14,15}. For example, Sariaslan, et al.⁸ found no evidence for social causation when comparing adult Finnish siblings who had experienced different parental income during childhood. This is corroborated by twin studies of psychiatric disorders, which typically find limited evidence for environmental effects shared by siblings¹⁶. Other studies are suggestive of social causation^{7,12,17,18}. Costello, et al.¹⁸ used a natural experiment to conclude that randomly moving Native American families out of poverty reduced symptoms of behavioral disorders in their children, and Kinge, et al.⁷ observed a health gradient along parental income and offspring psychiatric disorders among adoptive children in Norway, although it was less steep than among non-adoptive children. Because the intergenerational association is not confounded by shared genetic propensities for these children, these studies suggest that social causation may play a role in reproducing the health gradient across generations.

The mixed results in the literature can have numerous explanations, ranging from sociopolitical differences between the populations under study, the methods employed¹⁹⁻²¹, or the ages at which the

outcomes are observed. For example, whereas *Kinge et al.* and *Costello et al.* investigated psychiatric disorders in children, *Sariaslan et al.* investigated psychiatric disorders in adults. Perhaps parental income affects children's mental health when the children are residing with their parents, but the effects diminish as children move out into the world on their own. Environmental effects shared by family members are known to diminish with age for some phenotypes, including psychiatric phenotypes^{16,22}. To reconcile these studies, it is necessary to investigate offspring at different ages and to tackle the causation-selection issue with a diverse range of methodologies.

One promising methodology for tackling the causation-selection issue is kinship-based models of extended families, such as the children-of-twins model²³⁻²⁵. Kinship-based models employ differences in genetic relatedness to differentiate genetic and environmental causes of correlations between family members. Because monozygotic twins are genetically identical, their offspring will be equally related to their parent and their parent's twin. If the correlation between parents and offspring was entirely due to genetic similarity, you would expect the avuncular correlation (i.e., the correlation between offspring and their uncle or aunt) in families of monozygotic twins to be the same as the parent-offspring correlation. If parents instead had a causal effect on their offspring, the parent-offspring correlation should be greater than the avuncular correlation. In regular families, where offspring are twice as related to their parents as their uncles and aunts, the avuncular correlation can inform on whether shared risk factors are primarily genetic or environmental in origin. In this study, we aim to accurately describe the prevalence rates of psychiatric disorders for the Norwegian population across age and parental income, and to apply such kinship-based models to understand the cause of the intergenerational health gradient.

Methods

Sample

Our sample is based on the population register of Norway, which covers all inhabitants of Norway from 1960 to today (N = 8 589 458). Using unique personal identifiers, it is possible to link together tax records, health records, and basic demographic information on the entire population. The demographic information includes data on parentage for most of the population, which allowed us to link parental income data to offspring health data. The available health records span 13 years from 2006 to 2018. We investigated every individual who was aged between 10 and 40 at some point between 2006 and 2018, with available parental income data, and who was alive and living in Norway at the beginning of the relevant years. There were 2,468,503 unique eligible individuals resulting in 22,826,805 person-years of data for the descriptive analyses (approx. 736,000 individuals per age, see Supplementary Table S1 for precise numbers for each age).

For the kinship-based models, we grouped observations into adolescence (10-20 years), early adulthood (21-30 years), and adulthood (31-40 years), and analyzed them separately. Here, we only used data on individuals who were observed for at least 5 years during the relevant ages (i.e., alive and living in Norway during adolescence, early adulthood, and/or adulthood). For each age group, we identified nuclear families (i.e., sets of parents and their children) with children in the respective age groups. For nuclear families with more than two eligible children, we randomly selected two children. This randomization procedure also randomized the order of children, so that first-borns were not always considered the first child (to avoid complications from parity effects interfering with locations in the covariance matrix). We then paired nuclear families into extended family units by linking together same-sex twins and full siblings in the parental generation. Monozygotic and dizygotic twins were identified via the Norwegian Twin Registry²⁶, whereas full siblings were identified through shared parentage as recorded in the population register. Twins with unknown zygosity (identified via shared parentage and birth month) were not considered eligible pairs in the full sibling group. We first linked together all nuclear families that were linked via monozygotic twins, then via dizygotic twins, before joining the remaining nuclear families via a random same-sex full sibling. Nuclear families that formed part of extended family units on both the maternal and paternal side were randomly allocated to one of them. For each age group, we identified on average 150,785 extended family units (range: 115,029 – 174,452) that consisted of on average 1,917 (1,719 – 2,228) units linked by monozygotic twins, 2,582

(1,994 – 3,153) units linked by dizygotic twins and 146,286 (109,648 – 170,739) units linked by full siblings. There were on average 1,372,953 (1,029,721 – 1,635,877) observations per age group. See Supplementary Table S2 for detailed sample sizes for each age group.

Ethics

The study was approved, and participant consent was waived by the Regional Committee for Medical and Health Research Ethics South-East Norway (REK, approval 2018/434).

Measures

Diagnosis of Psychiatric Disorders

We use psychiatric diagnoses as registered in primary care, which covers a larger proportion of cases than specialist health care registries²⁷. Earlier research have compared and validated such medical records against diagnostic interviews²⁷. Health records were obtained from the Norwegian Control and Payment of Health Refunds Database (KUHR), which indexes visits to general practitioners. Norwegian health care is heavily subsidized. To receive reimbursement, general practitioners send billing information to the Norwegian Health Economics Administration, along with a diagnosis or reason for the visit coded according to the International Classification of Primary Care (ICPC-2)²⁸. Due to this financial scheme, it is unlikely that visits to the general practitioner go unreported. Another study found that >99% of the population (comprising full-time residents in the study period) had at least one visit to a general practitioner in the study period²⁹. For our descriptive analyses, we primarily looked at whether offspring had *any* psychiatric disorder, indicated by at least one visit that year registered with a diagnostic code (P70 – P99) in the psychological chapter of the ICPC-2. We also present descriptives for each code separately. See Supplementary Table S3 for the full list of codes and diagnoses. To ensure adequate statistical power for the kinship-based models, we investigated 5-year prevalence instead of 12-month prevalence. This will result in a higher prevalence and therefore more precise estimates. For individuals who were observed for more than five years within the age group, we randomly selected five years and marked them as affected if they had a registered diagnosis in any of the chosen year.

Parental Income

Pensionable income records from 1967 to 2017 were provided by Statistics Norway, which we transformed into income ranks based on sex, birth year and tax year. Pensionable income includes

salaries and some social benefits (e.g., sick pay, pay during maternity/paternity leave, etc.). Note that the ranks reflect the entire population and not the subset with children. To account for some of the random year-to-year fluctuations, we calculated the median income rank of each parent between offspring ages 10 to 18. We included the income of parents even if they were not observed for the entirety of this period (e.g., emigrated or deceased). For our descriptive analyses, we used income quartiles based on the distribution of ranks within each offspring birth year.

Measuring income in relation to offspring age rather than parental age meant that parental income rank would differ between offspring of the same parents. We incorporated this into the kinship-based model by modelling a variable parental phenotype with one observation per parent per child.

Because the power of the model relies on the number of monozygotic twin families, which were in short supply, we included monozygotic twin uncles and aunts who themselves did not have children in the respective age group. As we could not measure their income in relation to their offspring's age, we instead used their median income rank between the age of 30 to 40 (or the median rank between 2007 to 2017 for individuals who had not yet reached the age of 40).

Statistical Analysis

We estimated prevalences and prevalence ratios by log-binomial regressions for each age with parental income quartile as the predictor and whether the offspring had been registered with any of the relevant codes that year as the outcome variable (1 = diagnosed, 0 = not diagnosed). We did this separately for maternal and paternal income and stratified on offspring sex in follow-up analyses (Supplementary Fig. S1 and S2). We then estimated prevalences for each code separately, also stratified by sex and parental income.

Before modeling the parent-offspring associations, we calculated correlations between various family members (income rank in the parent generation and any psychiatric disorder in the offspring generation) by applying a structural equation model to the data where equivalent relations, such as the parent-offspring relations in the two connected nuclear families, were constrained to be equal. We used a liability threshold model for the offspring phenotype, meaning the correlations in the offspring generation are polychoric correlations, the intergenerational correlations are polyserial correlations, and the correlations in the parent generation are Pearson correlations.

Psychiatric disorders tend to co-occur, and how to categorize different psychiatric conditions is not yet well understood^{30,31}. Because of these ontological limitations, as well as issues concerning lack of statistical power, we only apply the kinship-based model to the association between parental income rank and any offspring psychiatric disorder.

The Kinship-Based Models

The kinship-based model used here (Fig. 1 and Supplementary Fig. S3) is a variant of the iAM-COTS model described in Sunde, Eilertsen & Torvik [preprint]²³. The iAM-COTS model is a Children-of-Twins model (see also^{9,25,32}), which is a family of genetically informative structural equation models that extend the classical twin design³³. By including information on the spouses of twins and siblings,

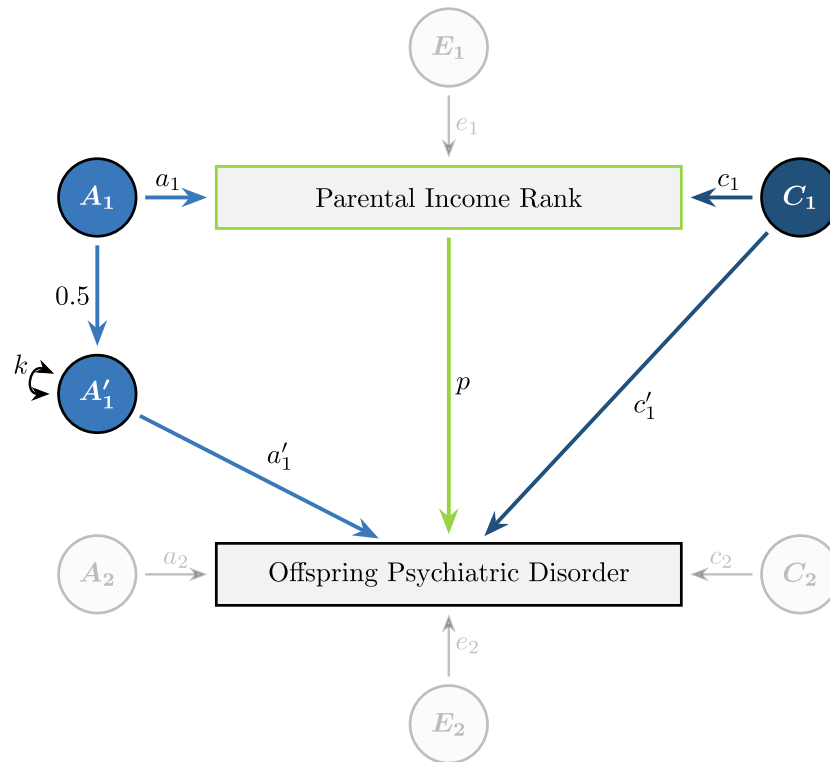


Figure 1: A simplified version of the kinship-based model, showing the relationship between a parental and offspring phenotype (omitting the effects of co-parents and assortative mating). Rectangles represent observed variables and circles represent latent variables. All latent variables have unit variances. The parent-offspring correlation is thought to result from direct phenotypic transmission ($\sigma_p^2 p$, green line), passive genetic transmission ($(a_1 a'_1)/2$, light blue line), and passive environmental transmission ($c_1 c'_1$, dark blue line). A = Additive Genetic Effects, C = Shared Environmental Effects, E = Non-Shared Environmental Effects. The model is identified by including multiple children and multiple nuclear families linked by monozygotic twins and full siblings. The full biometric model is presented in Supplementary Fig. S3. See Supplementary Table S5 for a complete overview of the parameters in the model and Supplementary Table S6 for the derived equations for the different covariances.

it can model and account for indirect assortative mating, and by including information on their children, it can model intergenerational transmission. See Sunde, Eilertsen & Torvik²³ for a more detailed description of this approach. In this paper, we have adapted the model to handle parental phenotypes that varies over time similar to³⁴.

The model decomposes the parent-offspring correlation into three components: *direct phenotypic transmission*, where paternal income rank directly influences offspring risk of psychiatric disorders; *passive genetic transmission*, where offspring resemble their parents due to genetic relatedness; and *passive environmental transmission*, where offspring resemble their parents because they are exposed to the similar environments (assuming these are shared equally in the extended family). The first pathway would constitute social causation while the other two pathways would constitute social selection. The model can differentiate these pathways because they will have different effects on the avuncular covariance across family types. By comparing the covariances across these different dyads, the model can decompose the parent-offspring covariance into genetic and environmental pathways.

The model takes as its input 12 variables reflecting the observed phenotypes of a pair of twins/siblings, their spouses, and their children (up to two per nuclear family). There is one observed offspring phenotype per child, and one observed parental phenotype per parent per child (two children → two observed phenotypes for each parent). The 12 variables yield a 12x12 covariance matrix which differs between family types (i.e., monozygotic twins versus dizygotic twins / full siblings). The goal of the model is to reduce these matrices, which normally contain 78 observed statistics each, down to just 14 free parameters. These parameters represents influences on parents: a_1 , c_1 , e_{1b} , and e_{1w} ; similarity between partners and in-laws: \tilde{a}_1 , \tilde{c}_1 , \tilde{e}_1 , and μ ; associations between parents and children: p , a'_1 , and c'_1 ; and child-specific influences a_2 , c_2 , and e_2 (see Supplementary Table S5 for a full description). Because dizygotic twins and full siblings were equally correlated, we combined these groups in the model. Because co-siblings-in-law were more correlated than siblings-in-law, which comes about when siblings tend to mate with similar partners beyond their tendency to mate with partners similar to themselves³⁵, we added two parameters, ζ_{MZ} and ζ_{FS} , to account for the excess correlation between co-siblings-in-law (as described in Sunde, Eilertsen & Torvik²³).

To reduce the observed statistics down to 16 parameters, the cells in the 12x12 covariance matrices are replaced by equations made up of the free parameters, known values (e.g., relatedness), and other

derived parameters. The model then uses Maximum Likelihood estimation to find values for the free parameters that, when entered into these equations, produce expected covariance matrices that resemble the observed covariance matrices as closely as possible. When the model produces values that result in expected covariance matrices that resemble the observed covariance matrices, the model is said to be a good fit. The equations are derived using path tracing rules^{23,36-38} following the full path diagram in Supplementary Fig. S3 and are listed in Supplementary Table S6. The key covariance of interest, namely the parent-offspring covariance, can be expressed using the following equation:

$$Cov(Parent, Offspring) = \sigma_p^2 + \frac{a_1 a'_1}{2} + c_1 c'_1 + \sigma_{PS} \mu \lambda_{SO} \quad (1)$$

Here, σ_p^2 refers to the variance of the parental phenotype, σ_{PS} refers to the within-person covariance between the observed parental phenotype and the sorting factor (representing the traits associated with the phenotype that partners are assorting on)²³, and λ_{SO} refers to the covariance between the parental sorting factor and offspring phenotype. The equation has four components: The first three components represent the three causes of similarity described above (direct phenotypic transmission, passive genetic transmission, and passive environmental transmission). The fourth component represents the inflation of the other three components that results from assortative mating.

The offspring phenotype was dichotomous, and therefore modelled with a liability threshold model, meaning we assume the presence or absence of psychiatric disorders reflects an underlying normally distributed liability. We constrained the offspring phenotypic mean (\overline{X}_O) to zero and the offspring unique environmental effect (e_2) to one, and freely estimated a threshold (θ). The variance components and related paths were standardized afterwards.

All analyses were conducted in *R* 4.2.1³⁹, using base R functions in conjunction with *data.table*⁴⁰, *tidyverse*⁴¹, *flextable*⁴², and *OpenMx* 2.20.6⁴³. The summary statistics and reproducible code for all figures and tables are available at osf.io/wq8fu/. The supplementary information is also available at osf.io/wq8fu/.

Results

Prevalence of psychiatric disorders by age and parental income quartile

The 12-month prevalence of psychiatric disorders increased steadily from age 10 and stabilized around 9.5% in the late twenties (Supplementary Fig. S1). Boys were more likely than girls to have any psychiatric disorder up to the age of 15, after which girls/women were more likely to have any psychiatric disorder. Men had higher prevalence rates of schizophrenia, mental retardation, hyperkinetic disorder, and unspecified disorders, whereas the remaining disorders were more common among women (see interactive figure at https://hfsu.shinyapps.io/prevalence_by_age/, or data files at <https://osf.io/wq8fu/>).

Lower parental income was associated with higher prevalence of psychiatric disorders at all ages, although the association decreased somewhat with age (Fig. 2). Comparing the top with the bottom paternal income quartile, the prevalence ratio was 0.47 (95% CIs: 0.45, 0.50) among 10-year-olds, 0.55 (0.54, 0.56) among 20-year-olds, 0.66 (0.64, 0.67) among 30-year-olds, and 0.72 (0.71, 0.74) among 40-year-olds. The absolute prevalence difference was 3.6 percentage points for 10-year-olds, 4.8 points for 20-year-olds, 4.1 points for 30-year-olds, and 3.0 points for 40-year-olds. Results were similar for maternal income, but with smaller differences among the oldest age groups.

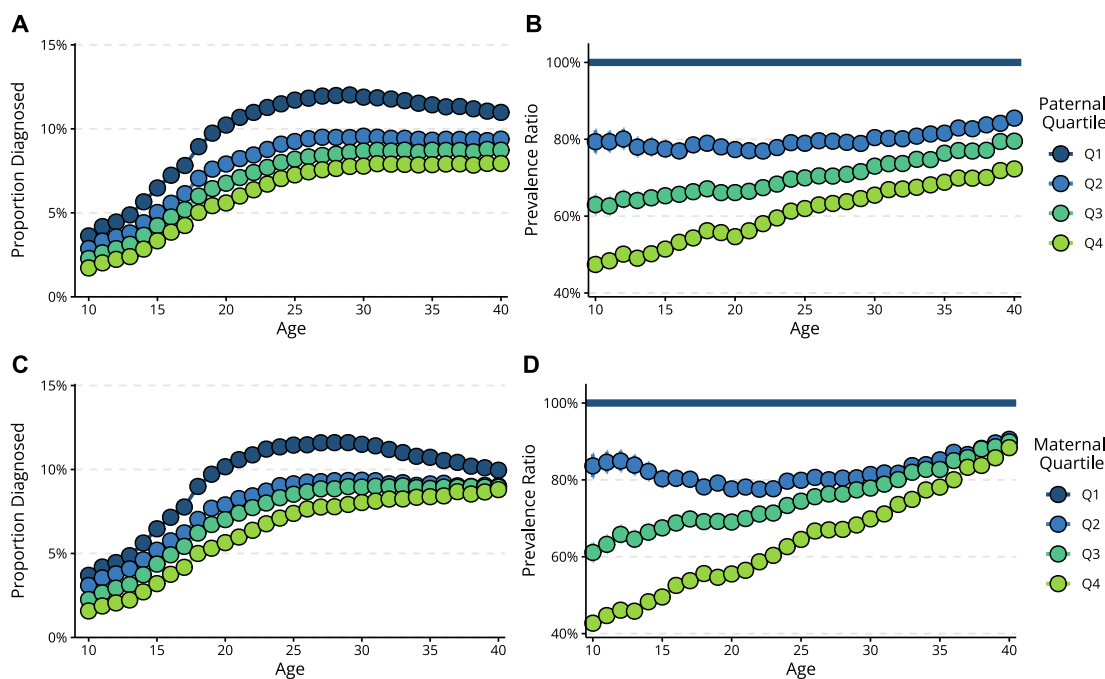


Figure 2: Psychiatric disorders across age and parental income quartile. 95% CIs are too small to be visible in this figure. The top panels present results for paternal income quartile (A: prevalences, B: prevalence ratios), and the bottom panels present results for maternal income quartile (C: prevalences, D: prevalence ratios).

There were large sex differences in prevalence and developmental trajectories of psychiatric disorders, but despite this, the associations with parental income rank were similar for both men and women throughout the age range (Supplementary Fig. S1 – S2). Likewise, prevalence and developmental trajectories differed between psychiatric disorders, but almost all psychiatric disorders were associated with parental income (Fig 3). Eating disorders stood out as the only disorder without a clear parental income gradient.

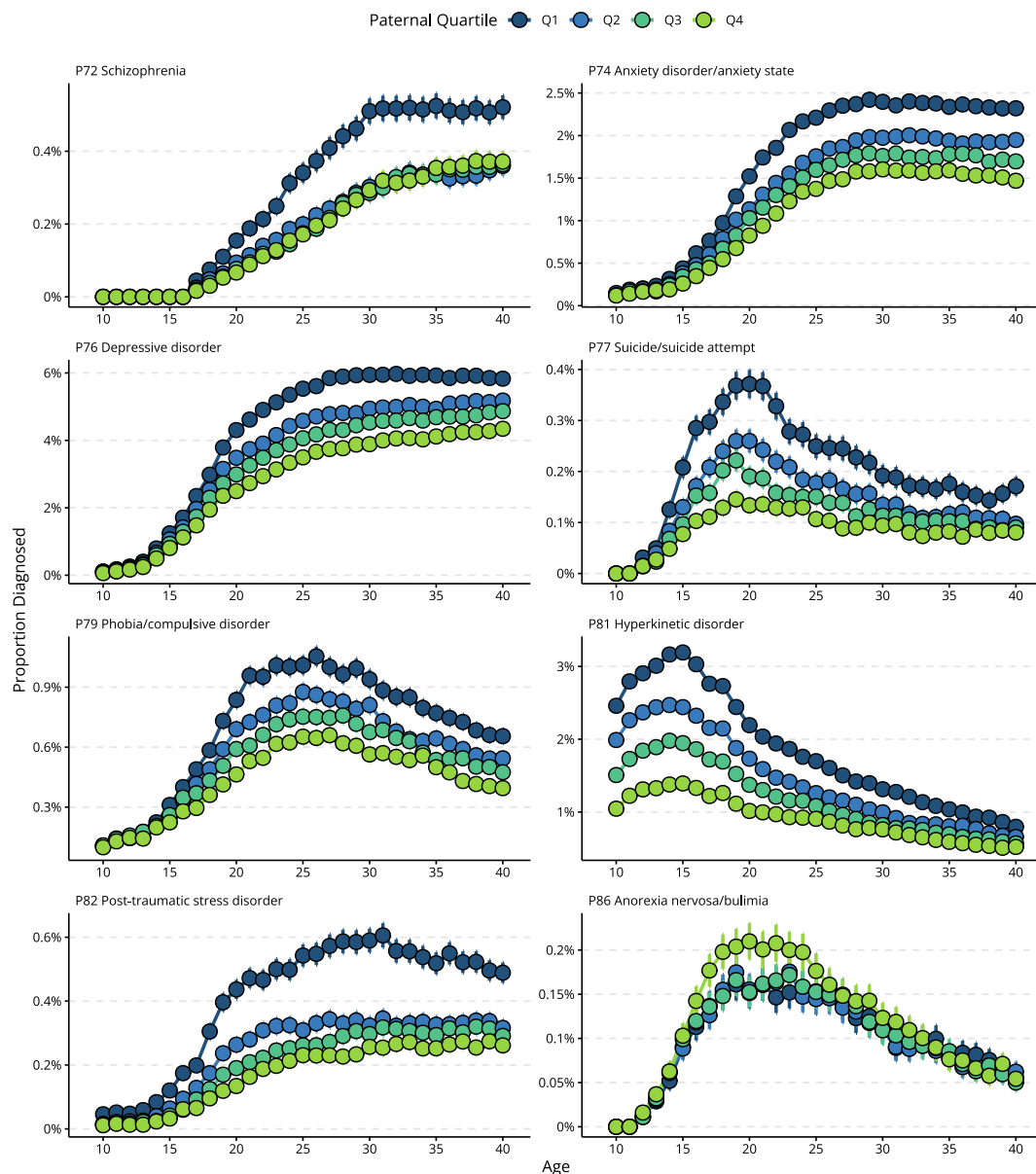


Figure 3: Proportion diagnosed (incl. 95% CIs) with a selection of specific psychiatric disorders the year they turn a given age, stratified by paternal income quartile. Note that the scaling of the y-axes varies so that differences in low-prevalence disorders become visible. Results for all investigated diagnostic codes, including stratification by maternal income quartile and by offspring sex, are presented in an interactive figure at https://hfsu.shinyapps.io/prevalence_by_age/, and in data files at osf.io/wq8fu/.

Intergenerational correlations across family type

In Fig. 4, we present polyserial correlations between parental income rank and any psychiatric disorder for parent-offspring pairs and avuncular pairs (offspring and their parent’s sibling), across age groups and family types (see Supplementary Table S4 for correlations among other family members). The parent-offspring correlation decreased with age. Among families in the full sibling group (the group with the highest sample size and therefore smallest confidence intervals), the parent-offspring correlation was $-.146$ (95% CI: $-.150, -.143$) in adolescence, $-.100$ ($-.100, -.093$) in early adulthood, and $-.060$ ($-.064, -.056$) in later adulthood. Parent-offspring correlations were similar in other family types, albeit with larger confidence intervals. The avuncular correlation was generally smaller, but this dependent on age group and family type. In full sibling families, the avuncular correlation was about half the parent-offspring correlation across age groups, which is expected if the parent-offspring correlation could be fully attributed to genetic similarity (although combinations of different forms of environmental transmission can also give similar expectations). In monozygotic twin families, where offspring are equally genetically related to their uncle/aunt as to their parent, the avuncular correlation was smaller than the parent-offspring correlation among adolescents, while but about equal among adults (albeit with wide confidence intervals).

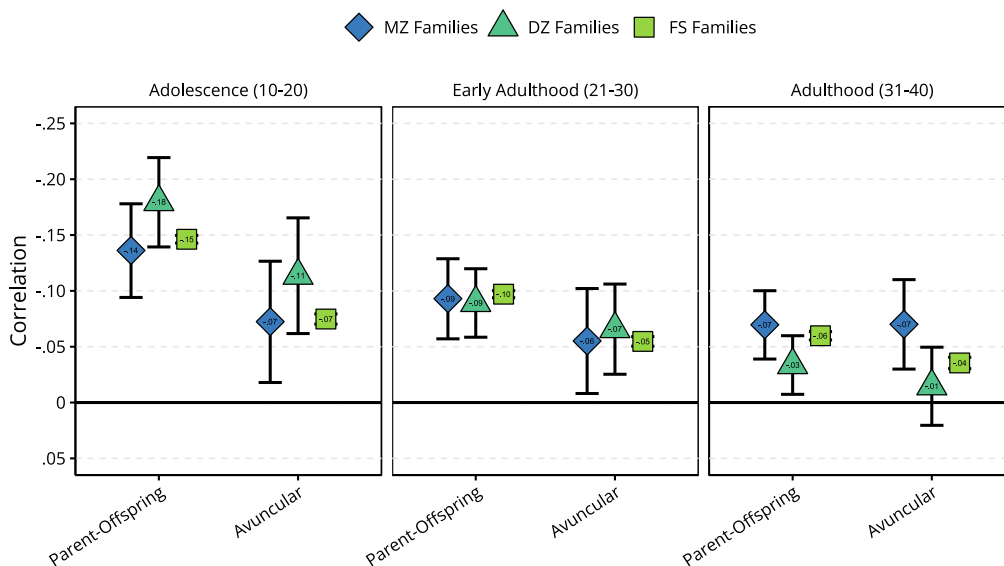


Figure 4: Polyserial correlations between parental or avuncular (uncle or aunt) income rank and offspring psychiatric disorder, stratified by age group and family type (i.e., whether uncle/aunt is a monozygotic twin (MZ), dizygotic twin (DZ), or a full sibling (FS) of the parent). The y-axis is reversed to make interpretation more intuitive. The numbers behind this figure are listed in Supplementary Table S4.

The Kinship-Based Models

The results of the decomposition of the parent-offspring correlation are presented in Fig. 5. For all three age groups, we found significant contributions from both passive environmental transmission (dark blue) and especially passive genetic transmission (light blue). We found evidence of phenotypic transmission (green) from parental income rank among adolescents, where it accounted for 38% of the parent-offspring correlation (with 48% being ascribed to passive genetic transmission and 14% being ascribed to passive environmental transmission). There was no statistically significant direct effect for the two other age groups (early adulthood: $\Delta -2LL = 1.81$, $\Delta df = 1$, $p = .179$, adulthood: $\Delta -2LL = 0.11$, $\Delta df = 1$, $p = .735$). All estimated and derived parameters are presented in Supplementary Tables S7 to S10, whereas model comparison statistics are presented in Supplementary Tables S11 to S13.

The heritability of having any psychiatric disorders was estimated to 52% (95% CIs: 46%, 59%) among adolescents, 49% (47%, 52%) among adults aged 21 to 30, and 40% (38%, 42%) among adults aged 31 to 40. The genetic correlation between income and psychiatric disorders were estimated to be moderate, ranging from $-.24$ ($-.29$, $-.19$) among adolescents to $-.37$ ($-.42$, $-.33$) among adults aged 21 to 30.

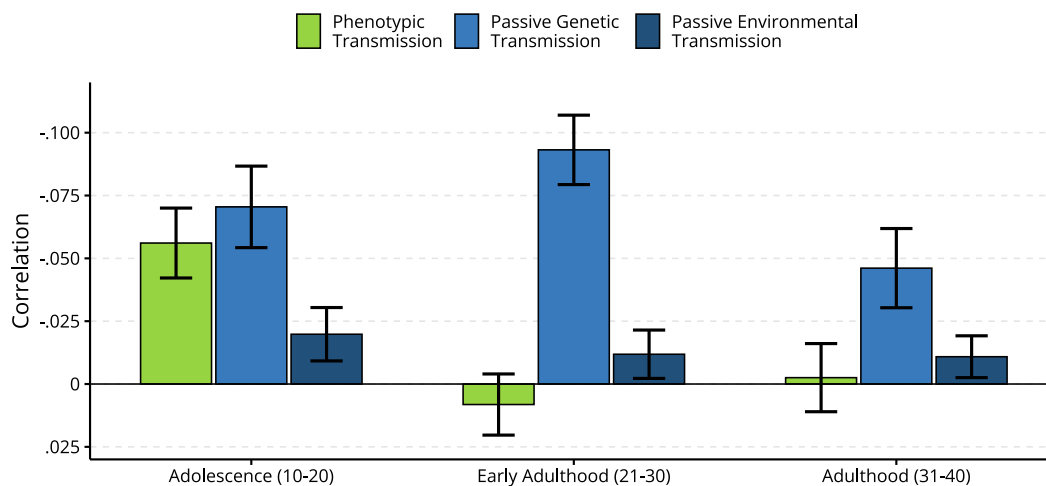


Figure 5: The decomposition (incl. 95% CIs) of the correlation between parental income rank and any offspring psychiatric disorders across offspring age groups. The correlations are assumed to reflect phenotypic transmission (i.e., direct effects of parental income rank, green), passive genetic transmission (light blue), and passive environmental transmission (dark blue). The total correlation is the sum of each component. The y-axis is reversed to make interpretation easier, so that a taller column means a larger negative correlation (lower income rank \rightarrow higher risk of psychiatric disorders). Results are also presented in Supplementary Table S9.

Discussion

We have described how parental income rank was associated with offspring risk of psychiatric disorders across 30 years from early adolescence and used kinship-based models to differentiate between social causation and social selection. We found that lower parental income was associated with higher prevalence of psychiatric disorders at all ages from age 10 to 40, with a moderate decrease with age. Although the prevalence and developmental trajectory varied between sexes and between different disorders, lower parental income was associated with higher prevalence of nearly all psychiatric disorders for both men and women. The kinship-based models indicated that social selection played a large role in explaining the parent-offspring correlation, through significant effects of both passive genetic transmission and passive environmental transmission. However, we found evidence of social causation during adolescence, suggesting a transient effect of parental income rank on offspring psychiatric disorders.

While no practically applicable method exists that can decide the causation-selection issue once and for all, our finding corroborates several lines of evidence that hint at a causal effect of parental income – or a correlate of income – on adolescent psychiatric disorders^{7,17,18}. This triangulation of methods with different sets of strengths and weaknesses makes us confident that social selection alone cannot explain the entirety of this intergenerational association. Furthermore, the fact that Norway has smaller economic inequalities than many other countries^{44,45} and easy access to health care suggest that, if a causal relationship is observed here, it may be even more pronounced in societies with greater inequality and more barriers to healthcare access.

A key aim of this study was to investigate whether direct effects of parental income, if any, changed with offspring age, as this would plausibly explain some of the conflicting findings from the literature. This is exactly what we found. Direct phenotypic transmission, evident among adolescent offspring, appeared to not play a role among adult offspring. Direct effects of parental income therefore appear to be transient. That is, lower parental income rank (or a correlate of income) could directly increase the risk of psychiatric disorders when the children still live with their parents, but this risk does not seem to last when children have moved out into different environments. This could explain why *Kinge et al* (who investigated children) and *Sariaslan et al* (who investigated adults) reached different

conclusions^{7,8}. This finding also adds to numerous lines of evidence suggesting that phenotypic stability over time is often due to genetic factors, whereas environmental effects tend to vary from age to age⁴⁶.

The lack of effects that last into adulthood can either be (1) because social selection truly explains the entire intergenerational association in this age group, or (2) because social causation is only detectable with larger variation in economic resources than seen in Nordic cultural contexts. Regardless of whether effects persist into adulthood, social selection is clearly an important contributor to the parent-offspring correlation. The kinship-based models indicated that passive genetic transmission accounted for a large proportion of this. That is, there was a genetic correlation ranging from $-.24$ to $-.37$ between genetic variants that were associated with income rank and variants that were associated with psychiatric disorders common in that age group. Because offspring are genetically related to their parents, parental income rank and offspring psychiatric disorders become phenotypically correlated in family members. The cause of this genetic correlation remains unknown, but a plausible explanation is that propensity for psychiatric disorders runs in families¹⁶ and psychiatric disorders influence educational achievement^{47,48} and consequently salaries^{49,50}. Genetic correlations between socioeconomic indicators and psychiatric conditions appear to play a key role in explaining psychiatric comorbidity⁵¹. Other causal processes, such as cross-trait assortative mating⁵², are also plausible.

Unlike previous studies, our analysis can differentiate genetic and environmental sources of intergenerational confounding. We find that passive environmental transmission was a significant contributor across all age groups. These are environmental factors shared by siblings that influence income rank, which also influence risk of psychiatric disorders in their offspring. Unlike phenotypic transmission, which increases the parent-offspring correlation more than correlations between extended family members, passive environmental transmission leads to increased correlations between all family members. These findings highlight that lack of social causation does not automatically imply genetic confounding, and that it is important to account for multiple sources of confounding in intergenerational studies. Understanding the mechanism behind passive environmental transmission will be an important avenue for future research.

A major strength of the current study is the data source, with a large sample size and minimal selection bias. Primary care also generally covers more cases than specialist care. Still, prevalence rates based on medical records stored in primary care health registers are generally lower than those reported in

interview studies. For example, whereas Kessler, et al.³¹ reported the 12-month prevalence of any disorder at 26.2%, we find a 12-month prevalence at around 9.5%. An earlier, Norwegian study validated the use of health registers, and attributed the difference in prevalence between interviews and health registries as a difference in threshold, not a difference in phenotype²⁷. The different prevalences found in health records compared to diagnostic interviews are therefore unlikely to lead to different conclusions for the role of parental income. This also suggest that diagnostic interviews may have a threshold that often captures cases that are not severe enough to seek medical attention.

Despite using a genetically informative design and primary health care data on an entire population, our study has some limitations. First, our measure of psychiatric disorders was dichotomous, which precludes investigating any sub-threshold effects (e.g., symptoms). Second, the statistical power in the kinship-based models is limited by the number of monozygotic twins and the dichotomous health register data. Because specific disorders necessarily have a lower prevalence than the sum of any psychiatric disorder, the estimated correlations with parental income are less accurate and consequently more difficult to decompose. When we attempted to run the model on specific disorders, it would often fail to converge and provided unreliable results. We therefore only decomposed the association between parental income rank and any psychiatric disorder, although we recognize that the specific decompositions may vary across different psychiatric disorders. Third, individual differences in help-seeking behavior may influence the likelihood of being registered with a diagnosis, especially for cases near the diagnostic threshold. To the extent that this is associated with parental income rank, this will confound the results. Fourth, the twin registry is based on informed consent and may therefore suffer from some participation bias. Fifth, the present study was conducted in Norway and generalizability may be limited to contexts with similar cultural characteristics. Sixth, the kinship models estimate population-average effects. Any non-linear or localized effects will go unnoticed unless they are large enough to influence the population average effect. Future research should investigate the lowest income brackets and poverty, which may have qualitatively different causal effects than general variation in income rank. Finally, the model assumes that the sources of variation in the parental phenotype are the same for mothers and fathers, and that they have a similar effect on the offspring. There were not enough power to relax these assumptions. Future research may want to undertake a more thorough investigation into sex differences in the sources of income rank variation and how they differentially affect offspring.

To conclude, we found a clear association between parental income rank and prevalence of offspring psychiatric disorders that persisted into adulthood. The association is present for both men and women and for most psychiatric disorders. By using genetically informative structural equation models, we found that a large part of the association was due to passive forms of transmission, mainly genetic transmission (i.e., the *social selection* hypothesis). This would mean that offspring of parents with lower income rank are at an increased risk of psychiatric disorders in the current cultural context partly because the set of traits that result in lower income rank are inherited and overlaps with the set of traits that influence risk of psychiatric disorders. Future research should attempt to identify why these traits overlap or co-occur. After controlling for shared genetic and environmental factors, we found evidence of direct effects of parental income rank on offspring psychiatric disorders during adolescence making up 38% of the correlation. Hence, we found transient effects of parental income, supporting the *social causation* hypothesis among adolescents, but not adults.

References

- 1 Bor, J., Cohen, G. H. & Galea, S. Population health in an era of rising income inequality: USA, 1980-2015. *The Lancet* **389**, 1475-1490 (2017). [https://doi.org/10.1016/S0140-6736\(17\)30571-8](https://doi.org/10.1016/S0140-6736(17)30571-8)
- 2 Fryers, T., Melzer, D. & Jenkins, R. Social inequalities and the common mental disorders. *Social Psychiatry and Psychiatric Epidemiology* **38**, 229-237 (2003). <https://doi.org/10.1007/s00127-003-0627-2>
- 3 Hu, Y. *et al.* Trends in socioeconomic inequalities in self-assessed health in 17 European countries between 1990 and 2010. *Journal of Epidemiology and Community Health* **70**, 644-652 (2016). <https://doi.org/10.1136/jech-2015-206780>
- 4 Kinge, J. M. *et al.* Association of Household Income With Life Expectancy and Cause-Specific Mortality in Norway, 2005-2015. *JAMA* **321**, 1916 (2019). <https://doi.org/10.1001/jama.2019.4329>
- 5 Meng, X., Liu, A., D'Arcy, C. & Caron, J. Baseline income, follow-up income, income mobility and their roles in mental disorders: a longitudinal intra-generational community-based study. *BMC Psychiatry* **20** (2020). <https://doi.org/10.1186/s12888-020-02578-0>
- 6 Evensen, M. *et al.* Parental income gradients in adult health: a national cohort study. *BMC Medicine* **19** (2021). <https://doi.org/10.1186/s12916-021-02022-4>
- 7 Kinge, J. M. *et al.* Parental income and mental disorders in children and adolescents: prospective register-based study. *International Journal of Epidemiology* (2021). <https://doi.org/10.1093/ije/dyab066>
- 8 Sariaslan, A. *et al.* No causal associations between childhood family income and subsequent psychiatric disorders, substance misuse and violent crime arrests: a nationwide Finnish study of >650 000 individuals and their siblings. *International Journal of Epidemiology* (2021). <https://doi.org/10.1093/ije/dyab099>
- 9 Torvik, F. A. *et al.* Mechanisms linking parental educational attainment with child ADHD, depression, and academic problems: a study of extended families in The Norwegian Mother, Father and Child Cohort Study. *Journal of Child Psychology and Psychiatry* **61** (2020). <https://doi.org/10.1111/jcpp.13197>
- 10 Kröger, H., Pakpahan, E. & Hoffmann, R. What causes health inequality? A systematic review on the relative importance of social causation and health selection. *European Journal of Public Health* **25**, 951-960 (2015). <https://doi.org/10.1093/eurpub/ckv111>
- 11 Thomson, R. M. *et al.* How do income changes impact on mental health and wellbeing for working-age adults? A systematic review and meta-analysis. *The Lancet Public Health* **7**, e515-e528 (2022). [https://doi.org/10.1016/S2468-2667\(22\)00058-5](https://doi.org/10.1016/S2468-2667(22)00058-5)
- 12 Ritsher, J. E. B., Warner, V., Johnson, J. G. & Dohrenwend, B. P. Inter-generational longitudinal study of social class and depression: A test of social causation and social selection models. *British Journal of Psychiatry* **178**, s84-s90 (2001). <https://doi.org/10.1192/bjp.178.40.s84>
- 13 Demange, P. A., Boomsma, D. I., van Bergen, E. & Nivard, M. G. Educational attainment and psychiatric diagnoses: a national registry data and two-sample Mendelian randomization study. *Nature Mental Health* **2**, 668-679 (2024). <https://doi.org/10.1038/s44220-024-00245-x>
- 14 Halpern-Manners, A., Schnabel, L., Hernandez, E. M., Silberg, J. L. & Eaves, L. J. The Relationship between Education and Mental Health: New Evidence from a Discordant Twin Study. *Social Forces* **95**, 107-131 (2016). <https://doi.org/10.1093/sf/sow035>
- 15 Tambs, K. *et al.* Genetic and environmental contributions to the relationship between education and anxiety disorders - a twin study. *Acta Psychiatrica Scandinavica* **125**, 203-212 (2012). <https://doi.org/10.1111/j.1600-0447.2011.01799.x>
- 16 Polderman, T. J. C. *et al.* Meta-analysis of the heritability of human traits based on fifty years of twin studies. *Nature Genetics* **47**, 702-709 (2015). <https://doi.org/10.1038/ng.3285>
- 17 Akee, R., Copeland, W., Costello, E. J. & Simeonova, E. How Does Household Income Affect Child Personality Traits and Behaviors? *American Economic Review* **108**, 775-827 (2018). <https://doi.org/10.1257/aer.20160133>
- 18 Costello, E. J., Compton, S. N., Keeler, G. & Angold, A. Relationships Between Poverty and Psychopathology. *JAMA* **290**, 2023 (2003). <https://doi.org/10.1001/jama.290.15.2023>

- 19 Biele, G., de Aguas, J. & Varnet Pérez, T. What can we conclude about the effect of parental income on offspring mental health? *International Journal of Epidemiology* (2022). <https://doi.org/10.1093/ije/dyab144>
- 20 Keyes, K. M. & Susser, E. Uses and misuses of sibling designs. *International Journal of Epidemiology* (2022). <https://doi.org/10.1093/ije/dyab187>
- 21 Rod, N. H., Lange, T. & Petersen, A. H. Do sibling comparisons answer the causal question? In response to ‘No causal associations between childhood family income and subsequent psychiatric disorders, substance misuse and violent crime arrests’. *International Journal of Epidemiology* (2021). <https://doi.org/10.1093/ije/dyab235>
- 22 Bergen, S. E., Gardner, C. O. & Kendler, K. S. Age-Related Changes in Heritability of Behavioral Phenotypes Over Adolescence and Young Adulthood: A Meta-Analysis. *Twin Research and Human Genetics* **10**, 423-433 (2007). <https://doi.org/10.1375/twin.10.3.423>
- 23 Sunde, H. F., Eilertsen, E. M. & Torvik, F. A. Understanding indirect assortative mating and its intergenerational consequences. *bioRxiv*, 2024.2006.2021.600029 (2024). <https://doi.org/10.1101/2024.06.21.600029>
- 24 D’Onofrio, B. M. *et al.* The role of the Children of Twins design in elucidating causal relations between parent characteristics and child outcomes. *Journal of Child Psychology and Psychiatry* **44**, 1130-1144 (2003). <https://doi.org/10.1111/1469-7610.00196>
- 25 McAdams, T. A. *et al.* Revisiting the Children-of-Twins Design: Improving Existing Models for the Exploration of Intergenerational Associations. *Behavior Genetics* **48**, 397-412 (2018). <https://doi.org/10.1007/s10519-018-9912-4>
- 26 Nilsen, T. S., Brandt, I., Magnus, P. & Harris, J. R. The Norwegian Twin Registry. *Twin Research and Human Genetics* **15**, 775-780 (2012). <https://doi.org/10.1017/rhg.2012.57>
- 27 A. Torvik, F. *et al.* Diagnostic and genetic overlap of three common mental disorders in structured interviews and health registries. *Acta Psychiatrica Scandinavica* **137**, 54-64 (2018). <https://doi.org/10.1111/acps.12829>
- 28 WONCA. *ICPC-2-R: International Classification of Primary Care*. (Oxford University Press, 2005).
- 29 Caspi, A. *et al.* A nationwide analysis of 350 million patient encounters reveals a high volume of mental-health conditions in primary care. *Nature Mental Health* (2024). <https://doi.org/10.1038/s44220-024-00310-5>
- 30 Lahey, B. B., Moore, T. M., Kaczkurkin, A. N. & Zald, D. H. Hierarchical models of psychopathology: empirical support, implications, and remaining issues. *World Psychiatry* **20**, 57-63 (2021). <https://doi.org/10.1002/wps.20824>
- 31 Kessler, R. C., Tat Chiu, W., Olga Demler & E. Walters, E. Prevalence, Severity, and Comorbidity of 12-Month DSM-IV Disorders in the National Comorbidity Survey Replication. *Archives of General Psychiatry* **62**, 617 (2005). <https://doi.org/10.1001/archpsyc.62.6.617>
- 32 Silberg, J. L., Maes, H. & Eaves, L. J. Unraveling the effect of genes and environment in the transmission of parental antisocial behavior to children’s conduct disturbance, depression and hyperactivity. *Journal of Child Psychology and Psychiatry* **53**, 668-677 (2012). <https://doi.org/10.1111/j.1469-7610.2011.02494.x>
- 33 Knopik, V. S., Neiderhiser, J. M., DeFries, J. C. & Plomin, R. *Behavioral Genetics*. 7th edn, (Worth Publishers, 2017).
- 34 Hannigan, L. J. *et al.* Maternal prenatal depressive symptoms and risk for early-life psychopathology in offspring: genetic analyses in the Norwegian Mother and Child Birth Cohort Study. *The Lancet Psychiatry* **5**, 808-815 (2018). [https://doi.org/10.1016/s2215-0366\(18\)30225-6](https://doi.org/10.1016/s2215-0366(18)30225-6)
- 35 Eaves, L. The use of twins in the analysis of assortative mating. *Heredity* **43**, 399-409 (1979). <https://doi.org/10.1038/hdy.1979.90>
- 36 Balbona, J. V., Kim, Y. & Keller, M. C. Estimation of Parental Effects Using Polygenic Scores. *Behavior Genetics* **51**, 264-278 (2021). <https://doi.org/10.1007/s10519-020-10032-w>
- 37 Keller, M. C. *et al.* Modeling Extended Twin Family Data I: Description of the Cascade Model. *Twin Research and Human Genetics* **12**, 8-18 (2009). <https://doi.org/10.1375/twin.12.1.8>
- 38 Wright, S. The Method of Path Coefficients. *The Annals of Mathematical Statistics* **5**, 161-215 (1934). <http://www.jstor.org/stable/2957502>

- 39 R Core Team. *R: A language and environment for statistical computing*. (R Foundation for Statistical Computing, Vienna, Austria, 2022). <https://www.R-project.org/>
- 40 Barrett, T. *et al.* *data.table: Extension of 'data.frame'* (2024). <https://CRAN.R-project.org/package=sjPlot>
- 41 Wickham, H. *et al.* Welcome to the Tidyverse. *Journal of Open Source Software* **4**, 1686 (2019). <https://doi.org/10.21105/joss.01686>
- 42 Gohel, D. & Skintzos, P. *flextable: Functions for Tabular Reporting* (2022). <https://CRAN.R-project.org/package=sjPlot>
- 43 Neale, M. C. *et al.* OpenMx 2.0: Extended Structural Equation and Statistical Modeling. *Psychometrika* **81**, 535-549 (2016). <https://doi.org/10.1007/s11336-014-9435-8>
- 44 The World Bank. *Gini Index*, <https://data.worldbank.org/indicator/SI.POV.GINI> (2022).
- 45 OECD. *Income inequality (indicator)*, www.doi.org/10.1787/459aa7f1-en (2022).
- 46 Plomin, R., Defries, J. C., Knopik, V. S. & Neiderhiser, J. M. Top 10 Replicated Findings From Behavioral Genetics. *Perspectives on Psychological Science* **11**, 3-23 (2016). <https://doi.org/10.1177/1745691615617439>
- 47 Sunde, H. F. *et al.* The ADHD deficit in school performance across sex and parental education: A prospective sibling-comparison register study of 344,152 Norwegian adolescents. *JCPP Advances* (2022). <https://doi.org/10.1002/jcv2.12064>
- 48 Nordmo, M. *et al.* The educational burden of disease: a cohort study. *The Lancet Public Health* **7**, e549-e556 (2022). [https://doi.org/10.1016/s2468-2667\(22\)00059-7](https://doi.org/10.1016/s2468-2667(22)00059-7)
- 49 Markussen, E., Daus, S. & Hovdhaugen, E. *Fra 16 til 30: Om utdanning, jobb og inntekt for 9341 unge fra Østlandet, 14 år etter at de gikk ut av tiende klasse i 2002*. Report No. 2020-2, (Nordisk institutt for studier av innovasjon, forskning og utdanning, 2020). <https://hdl.handle.net/11250/2675748>
- 50 Miller, S. R. Shortcut: High School Grades As a Signal of Human Capital. *Educational Evaluation and Policy Analysis* **20**, 299-311 (1998). <https://doi.org/10.3102/01623737020004299>
- 51 Marees, A. T. *et al.* Genetic correlates of socio-economic status influence the pattern of shared heritability across mental health traits. *Nature Human Behaviour* (2021). <https://doi.org/10.1038/s41562-021-01053-4>
- 52 Border, R. *et al.* Cross-trait assortative mating is widespread and inflates genetic correlation estimates. *Science* **378**, 754-761 (2022). <https://doi.org/10.1126/science.abo2059>

Acknowledgements

This work was supported by the Research Council of Norway (grants number 273659 and 300668). This work was partly supported by the Research Council of Norway through its Centres of Excellence funding scheme (grant number 262700). Data on twin zygosity were obtained from the Norwegian Twin Registry, Norwegian Institute of Public Health. The funders of this study had no role in study design, data collection, data analysis, data interpretation, or writing of the report.

Data Availability

The data for this study encompasses tax records, health records, and demographic information for the entire Norwegian population. Researchers can access the data by application to the Regional Committees for Medical and Health Research Ethics and the data owners. The authors cannot share these data with other researchers.

Author Contributions

Conceptualisation: H.F.S. and F.A.T.; Methodology: H.F.S., E.M.E. and F.A.T. Formal analysis: H.F.S, with supervision from E.M.E. and F.A.T.; Data Curation: H.F.S.; Writing – Original Draft: H.F.S.; Writing – Review and Editing: All authors; Visualization: H.F.S. and E.M.E.; Supervision: F.A.T. and E.M.E.; Project administration and funding acquisition: F.A.T.; All authors provided critical feedback, discussed the results, helped shape the manuscript, and approved the final paper for submission. H.F.S. had full access to the data and takes responsibility for the work.