

1  
2  
3  
4  
5  
6  
7  
8  
9  
10  
11  
12  
13  
14  
15  
16  
17  
18  
19  
20  
21  
22

# The impact of the termination of Lymphatic Filariasis mass drug administration on Soil-transmitted Helminth prevalence in school children in Malawi

Short Title: Mass drug administration and Soil-transmitted Helminth prevalence

Faduma Farah<sup>1</sup>, Claudio Fronterre<sup>2</sup>, Mark Taylor<sup>1</sup>, Armelle Forrer<sup>3\*</sup>

<sup>1</sup> Department of Tropical Disease Biology, Liverpool School of Tropical Medicine, Liverpool, United Kingdom.

<sup>2</sup> Centre for Health Informatics, Computing and Statistics, Lancaster Medical School, Lancaster University, Lancaster, United Kingdom.

<sup>3</sup> Department of Clinical Sciences, Liverpool School of Tropical Medicine, Liverpool, United Kingdom.

\* Corresponding author

E-mail: [armelle.forrer@lstmed.ac.uk](mailto:armelle.forrer@lstmed.ac.uk)

23 **Abstract**

24

25 Background: Soil-transmitted helminths (STH) have been passively treated with the  
26 implementation of mass drug administration (MDA), with the drugs ivermectin and  
27 albendazole, against the parasitic disease, lymphatic filariasis (LF). In Malawi, LF MDA was  
28 administered to communities between 2008 and 2014. The aim of this analysis is to  
29 estimate the impact of LF MDA and its termination on STH prevalence in school aged  
30 children.

31 Methodology: School survey data of STH prevalence in Malawi were obtained through the  
32 ESPEN website. The surveys spanned the periods before (1998-2004), during (2012-2014)  
33 and after LF MDA (2015-2019). Bayesian mixed-effects models were fit to estimate the  
34 impact of LF MDA termination, and other STH risk factors, on the odds of infection as well as  
35 generate predictions of nationwide STH prevalence after LF MDA.

36 Principal findings: School children after the termination of LF MDA had a threefold increase  
37 in the odds of *A. lumbricoides* infection compared to school children during the  
38 implementation of LF MDA (Odds Ratio (OR): 3.4, 95% credible interval (CI): 1.99 – 5.94),  
39 despite ongoing STH preventive chemotherapy targeting school age children. In contrast,  
40 school children had lower odds of hookworm infection after LF MDA compared to during  
41 (OR: 0.5, 95% CI: 0.33 – 0.73). Mulanje district in the south has above 50% probability of  
42 exceeding 20% *A. lumbricoides* prevalence while the probability for exceeding 20%  
43 hookworm prevalence is below 50% nationwide.

44 Conclusions/significance: An overall resurgence in *A. lumbricoides* infections after LF MDA is  
45 identified in school children despite ongoing annual STH preventive chemotherapy.  
46 Monitoring of STH prevalence and infection intensity using high sensitivity diagnostics  
47 should be prioritised to surveil this resurgence and better delineate infection hotspots. A  
48 greater assessment of underlying factors would also further aid the identification of  
49 hotspots.

50

## 51 **Author Summary**

52

53 Soil-transmitted helminths (STH) are a group of parasitic worms that cause infections. They  
54 cause significant morbidity in children and women and the World Health Organisation  
55 (WHO) recommends the mass distribution of drugs to these populations to treat infections.  
56 In Malawi, distribution of albendazole to school age children to treat STH has been  
57 conducted annually since at least 2012. In the past, Malawi also distributed albendazole to  
58 whole communities to treat another parasitic disease, lymphatic filariasis (LF). The aim of  
59 this study was to investigate the impact of terminating LF treatment on STH prevalence in  
60 school children. We found that after mass LF treatment was stopped, school children had  
61 around three times the odds of infection for one species of STH, compared to school  
62 children during the time of LF treatment distribution. This indicates a resurgence in  
63 infection, despite ongoing STH treatment, after community-wide treatment against LF was  
64 stopped. To better understand the lack of community treatment and its impact, monitoring  
65 of STH prevalence and infection intensity with more sensitive diagnostics needs to be  
66 prioritised to avoid further resurgence of infection. An understanding of underlying factors,

67 such as population movement or the potential emergence of drug resistance, would also  
68 help in identifying hotspots.

69

70

71

72

73

74

75

76

77

78

79

80

81

82

83

84

85

## 86 Introduction

87

88 Soil-transmitted helminths (STH) are parasitic worm infections that predominately burden  
89 tropical countries of low-income with limited access to adequate sanitation. They are  
90 classed as a neglected tropical disease (NTD) and are estimated to infect 1.5 billion people  
91 globally (1). In 2019, the burden was estimated to be equivalent to 1.9 million disability-  
92 adjusted life years (2). The main STH species are *Ascaris lumbricoides*, *Trichuris trichiura* and  
93 the hookworms *Ancylostoma duodenale* and *Necator americanus*. Infection occurs through  
94 either ingestion of the helminth eggs (*A. lumbricoides* and *T. trichiura*) or direct skin  
95 penetration of larvae (hookworms), which are both acquired from faecal contaminated soil.  
96 Chronic infections can lead to malnutrition, iron-deficiency anaemia and stunting of child  
97 development, making women of reproductive age and children at significant risk of  
98 morbidity (3, 4). The prevalence of infection with either *A. lumbricoides* or *T. trichiura* peaks  
99 in children 5-15 years of age (3), where with hookworm infections, prevalence increases  
100 with age and peaks in adulthood (5).

101

102 The World Health Organisation (WHO) has targeted STH for elimination as a public health  
103 problem, which is classified as a < 2% prevalence of moderate to heavy intensity (M&HI)  
104 infections (6). Preventive chemotherapy (PC) programmes with the anthelmintic drugs,  
105 albendazole or mebendazole, target countries where prevalence exceeds 20%. STH PC is  
106 targeted primarily at school aged children through school distributions. Pre-school aged  
107 children and women of reproductive age are also target groups for treatment. However,  
108 treatment coverage for pre-school aged children is highly variable and only a few countries

109 are known to actively treat women of reproductive age (7, 8). Re-infection rates between  
110 treatment rounds are high where adequate water and sanitation infrastructure is not in  
111 place (9), which threatens the attainability of the WHO goals and questions the current  
112 method of targeted deworming that is employed.

113

114 An alternative to targeted deworming of school children is treatment of whole communities  
115 at risk. Modelling studies have shown that elimination of STH or achievement of the WHO  
116 goals need community wide mass drug administration (MDA) (10, 11). As a result, trials are  
117 currently underway to determine the ability of community wide MDA to interrupt  
118 transmission of STH (12). An example of community-based MDA that passively treats STH  
119 infections is MDA against the parasitic disease lymphatic filariasis (LF). This involves the  
120 distribution of albendazole in combination with either ivermectin, where countries are also  
121 endemic for the disease onchocerciasis, or diethylcarbamazine. With LF MDA currently  
122 implemented in 45 countries and 18 having completed the required number of rounds,  
123 effort is being made to understand how to sustain the impact of this on STH prevalence (13-  
124 16). In Malawi, STH PC has been implemented nationwide since at least 2012 (17). LF MDA  
125 was implemented in Malawi, alongside STH PC, from 2008 to 2014, when it was then  
126 terminated. Following successful transmission assessment surveys, the country was certified  
127 by the WHO as having eliminated LF as a public health problem in 2020 (18).

128

129 The aim of this study is to analyse the impact of LF MDA termination on STH prevalence in  
130 school children, map STH prevalence before, during and after LF MDA, and predict STH  
131 prevalence post-termination of LF MDA across Malawi. Risk factors for STH infection and

132 predictions of prevalence in Malawi post LF MDA are determined using Bayesian models of  
133 open data on STH prevalence in school children, available through the Expanded Special  
134 Project for Elimination of Neglected Tropical Diseases (ESPEN) website. The potential  
135 presence of spatial correlation in the data was also checked. The predictions will assess  
136 whether STH have persisted despite several years of community-based albendazole  
137 treatment and identify any potential hotspots for infection.

138

## 139 **Methods**

140

### 141 Study area

142

143 Malawi is a landlocked country in Sub-Saharan Africa, bordered by Mozambique, Tanzania  
144 and Zambia. Malawi has a tropical climate with the rainy season between November and  
145 April. The country contains varying altitude, with mountainous areas as well as low lying  
146 regions in the south of around 90m above sea level. Malawi's population is estimated at  
147 20.5 million in 2022, of which 43% are children (0-14 years). Around 70% of the population  
148 live under \$2.15 a day and 82% live in rural areas (19).

149

150 The intestinal parasitic infections that are endemic to Malawi include STH and *Schistosoma*  
151 *mansoni* (20). Treatment delivered to school children, using albendazole against STH and  
152 praziquantel against schistosomiasis, was scaled up nationwide in 2012 and still continues

153 once annually (17). MDA against onchocerciasis, in the form of ivermectin, is also being  
154 conducted annually in eight southern districts.

155

#### 156 Data sources

157

158 Data on *A. lumbricoides*, *T. trichiura* and hookworm (*Necator americanus*, *Ancylostoma*  
159 *duodenale*) prevalence, obtained from surveys in schools from 1998 to 2018 in Malawi, was  
160 downloaded from ESPEN (21). ESPEN collates data on NTDs in Africa, shared by national  
161 governments, and summarises progress to elimination. Prevalence of STH species from 2012  
162 to 2019 was also obtained separately from the Malawi national STH control programme.  
163 Lymphatic filariasis MDA programme data, including coverage and the number of rounds  
164 completed by each district was obtained from the LF national control programme in Malawi.  
165 Environmental variables that are known to potentially correlate with STH prevalence (22)  
166 were selected and downloaded from open sources. An eight day average of Land Surface  
167 Temperature (LST) with a 1km resolution and a 16 day composite of the Enhanced  
168 Vegetation Index (EVI) at 250m resolution were obtained from the Terra MODIS version 6.0  
169 products (23, 24). A monthly total of precipitation at 0.05 degree resolution was obtained  
170 from the Climate Hazards Group InfraRed Precipitation with Station Data (CHIRPS) project  
171 (25). Elevation at 30m resolution was obtained from the Shuttle Radar Topography Mission  
172 (SRTM) (26). Measures of population size at a 100m resolution and the proportion of  
173 individuals who lived under \$2 or \$1.25 a day from 2010-2011 at 1km resolution were  
174 downloaded from the WorldPop database (27). The percentage of households with access



175 to various water, sanitation and hygiene (WASH) indicators were obtained from predictions  
176 based on a Bayesian geospatial model at a 5 km resolution previously published (28).

177

178 R software version 4.2.2 was used to combine and clean STH prevalence data as well as  
179 organise variables for assessment as risk factors for STH infection. All mapping was done on  
180 R or QGIS version 3.16. First, any differences between the ESPEN and programme  
181 prevalence data were investigated using the geographical coordinates of the survey sites. All  
182 survey sites from the programme prevalence data were present in the ESPEN data.  
183 However, the ESPEN data had nine sites surveyed in 2017 that were not apparent in the  
184 programme data. Therefore, the prevalence from 2019 in the programme data not available  
185 through ESPEN, was combined with the ESPEN data and that was taken forward for further  
186 analysis.

187

### 188 Exploratory analysis

189

190 *A. lumbricoides*, *T. trichiura* and hookworm prevalence were assessed separately and taken  
191 forward for exploratory analysis if there was considerable variation in the observed  
192 prevalence. The proportion of data available in each time period, before, during and after LF  
193 MDA, was also assessed and a time period was excluded if it constituted less than 5% of the  
194 total data. The variables selected were done so using knowledge of factors associated with  
195 STH transmission obtained from previous publications and research. These included land  
196 surface temperature, monthly precipitation, elevation, the enhanced vegetation index (EVI),

197 the percentage of individuals with access to unimproved sanitation, the percentage of  
198 individuals living under \$2 a day and the population count. Plots of the variables against the  
199 empirical logit transformation (29) of either *A. lumbricoides* or hookworm prevalence were  
200 generated to visually identify non-linear relationships. Continuous variables were also  
201 standardised. Next, univariate analyses with a logistic mixed effects regression model were  
202 conducted to select the best type of summary measure, e.g. mean or maximum  
203 precipitation, of relevant variables based on the Akaike Information Criterion (AIC), the  
204 lowest AIC indicating a better fit. In other cases, one variable was selected to represent a  
205 type of factor, e.g. unimproved sanitation access to represent WASH, based on the AIC and  
206 its relative impact on STH transmission.

207

#### 208 Variogram for assessing spatial correlation

209

210 The following Bayesian mixed-effects logistic regression model was fitted using the rstanarm  
211 package (30). Weakly informative prior distributions, a normal distribution with mean 0 and  
212 variance 2.5, were used for the intercept and the coefficients. A variogram was then created  
213 to assess the presence of residual spatial correlation.

$$214 \quad \log\left(\frac{P(x_i)}{1 - P(x_i)}\right) = \alpha_0 + b_{0i} + d(x_i)'\beta$$

215

$$216 \quad b_{0i} \sim N(0, \sigma^2)$$

217

218 Here the prevalence of either *A. lumbricoides* or hookworm at school  $x_i$  is equal to the  
219 global intercept ( $\alpha_0$ ), plus the intercept for school  $x_i$  ( $b_{0i}$ ) and  $d(x_i)'\beta$ , which is the vector  
220 of explanatory variables at school  $x_i$  with  $\beta$  as their coefficients.  $b_{0i}$  at each school are a set  
221 of independent zero-mean Gaussian variables with variance  $\sigma^2$ . Estimates of  $b_{0i}$  are used to  
222 create the variogram, which was done using the R package *geoR* (31). Evidence of spatial  
223 correlation is determined when the computed variogram lies outside of the 95% confidence  
224 intervals (CI), which are computed by 10,000 random combinations of  $b_{0i}$  estimates  
225 amongst the sampled schools, assuming spatial independence (32).

226

#### 227 Non-spatial Bayesian model

228 In the case of no evidence for spatial correlation, the previous model was taken forward and  
229 Markov chain Monte Carlo (MCMC) simulations were run to estimate model parameters  
230 (33). A total of 10,000 simulations over four chains were run to obtain the resulting  
231 estimates and their posterior distributions. The posterior distribution of the parameters  
232 were summarised, with odds ratios presented alongside 95% credible intervals. The  
233 posterior predictive distribution, which includes the model predictions for the prevalence at  
234 schools surveyed in the dataset, was investigated and compared to the actual observed  
235 prevalence to assess model fit. Predictions of either *A. lumbricoides* or hookworm  
236 prevalence across Malawi, after the termination of LF MDA, were produced from this model  
237 on a 2 km<sup>2</sup> grid alongside their 95% credible intervals. These were then used to determine  
238 and map the probability of locations exceeding the thresholds of 2% and 20% *A.*  
239 *lumbricoides* and hookworm prevalence respectively.

240

241 Sensitivity analysis

242 As additional districts were surveyed after LF MDA, the *A. lumbricoides* and hookworm  
243 models were run again with only the districts surveyed both during and after LF MDA. This  
244 was done to identify whether the impact of terminating LF MDA on the odds of infection  
245 were maintained.

246

247 **Results**

248

249 Data characteristics and observed prevalence

250

251 A total number of 1076 schools were surveyed between 1998 and 2019 across the 28  
252 districts of Malawi. There were a total of nine schools where coordinates were not available  
253 or incorrect, reducing the dataset to 1067. At 40 school locations, data on WASH variables  
254 were not available, making the final dataset used 1027. Majority of schools sampled around  
255 30 school children across the years with 29% sampling more. The majority of the data, 64%,  
256 was collected after LF MDA (2015-2019). Before LF MDA, only 33 schools were surveyed  
257 nationwide, averaging around one school per district.

258

259 LF MDA coverage in Malawi achieved above 65% coverage for over five years, fulfilling the  
260 target for LF MDA. It was implemented between 2008 and 2014 and the average LF MDA  
261 coverage nationwide ranged from 73% to 84% across the years. Two districts were classed

262 as non-endemic for LF, Chitipa and Likoma Island. Chitipa received one round of LF MDA in  
263 2014. Likoma received two rounds, in 2010 and 2014 respectively. Of the STH species, *T.*  
264 *trichiura* was the least prevalent in the country, averaging 0.2% (range: 0-1.8%), 0.1%  
265 (range: 0-6.7%) and 0.2% (range: 0-7.1%) before, during and after LF MDA respectively. *A.*  
266 *lumbricoides* was most prevalent in school children after the termination of LF MDA, with a  
267 national average of 2.5% (range: 0-15.4%), 1% (range: 0-16.7%) and 2.4% prevalence (range:  
268 0-36.7%) before, during and after LF MDA respectively, with hotspots in southern and  
269 northern districts (Fig 1). The mean hookworm prevalence nationwide during the three LF  
270 MDA phases were 9.8% (range: 0-77.3%), 2.3% (range: 0-66.7%) and 1.4% (range: 0-23.3%),  
271 with hotspots in central and northern districts (Fig 2). After LF MDA, variability in the  
272 observed prevalence of *A. lumbricoides* increased (Fig 3). This is in contrast with hookworm  
273 prevalence, where variability decreased post LF MDA (Fig 3).

274

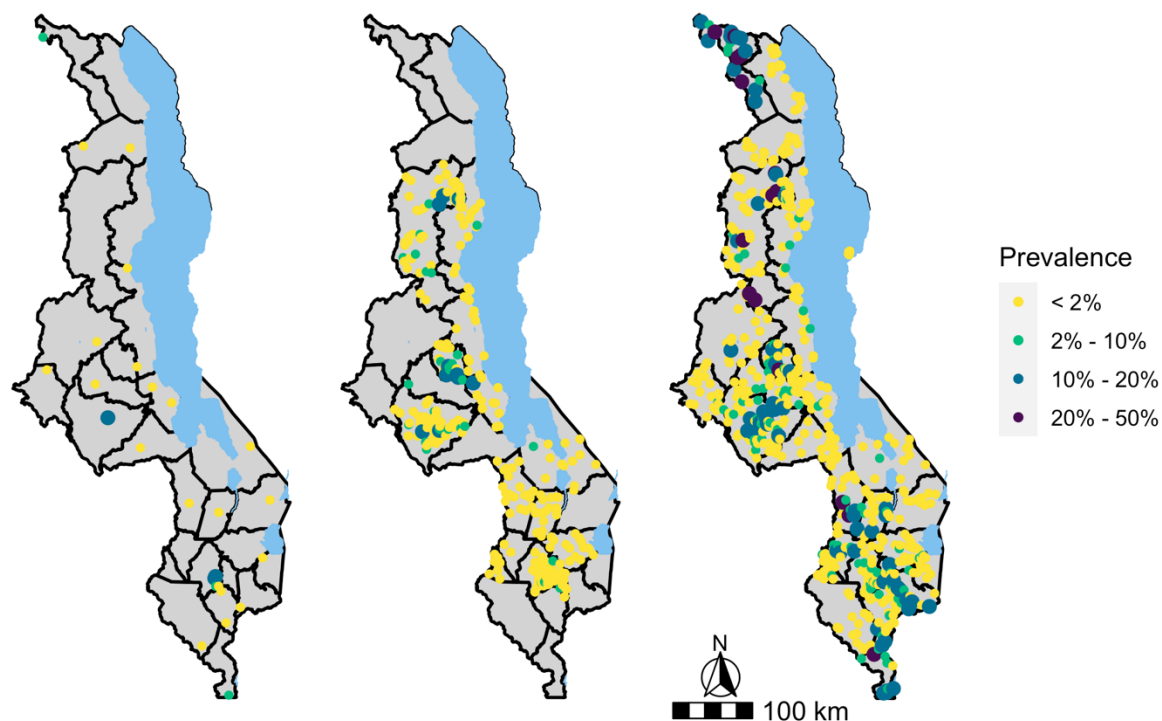
275 Due to the sparsity of data before LF MDA, which only had 33 schools in total, these points  
276 were excluded from further modelling. A model was also not fit to *T. trichiura* as its  
277 prevalence range only extended to 7% prevalence.

*A. lumbricoides*

Before LF MDA

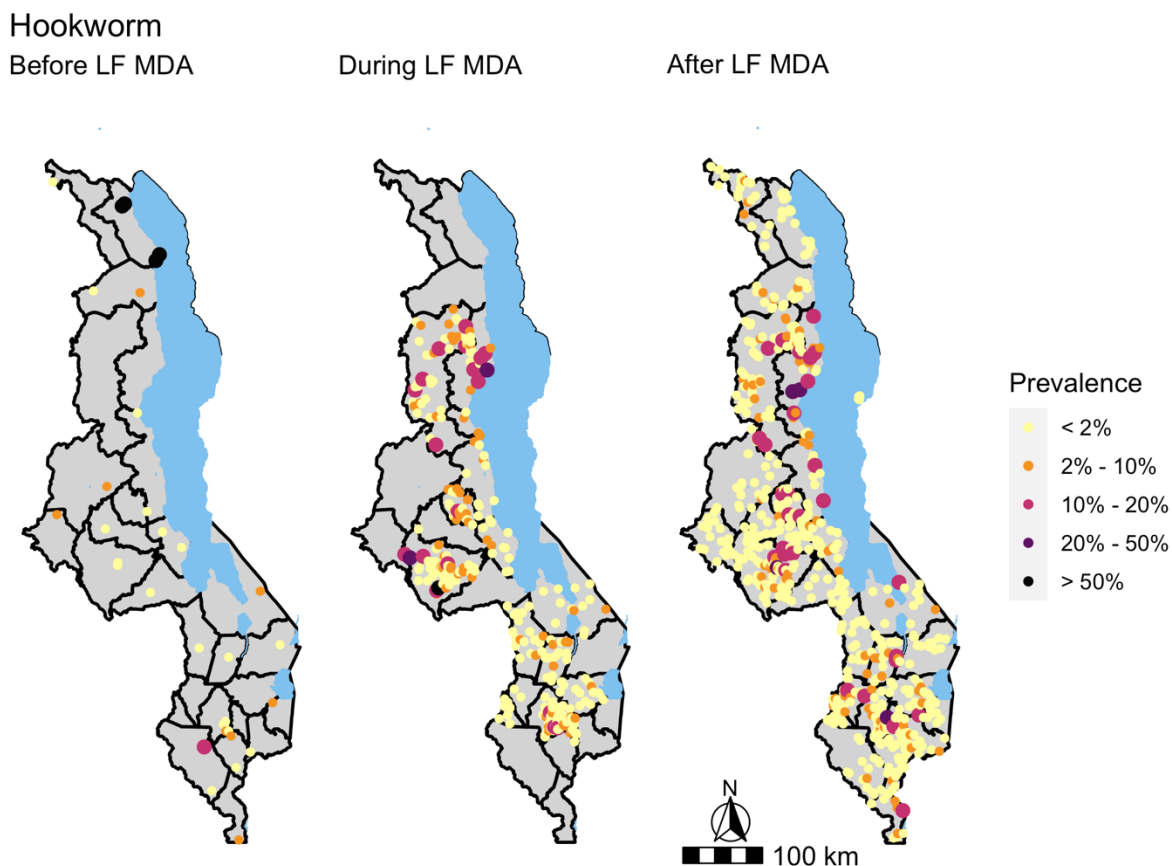
During LF MDA

After LF MDA



278

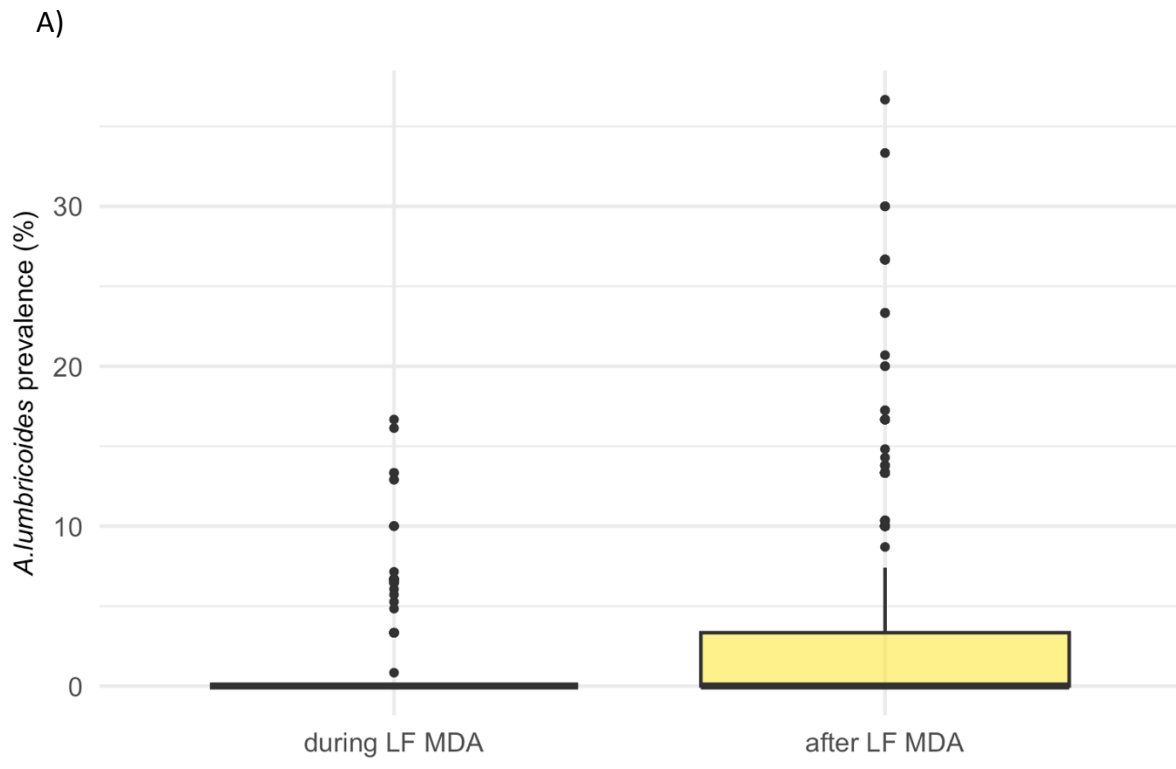
279 Fig 1. *A. lumbricoides* prevalence in school-aged children during the three phases of LF  
280 MDA, before, during and after. Data was obtained from ESPEN and the National  
281 Schistosomiasis & STH control programme in Malawi. Survey years range from 1998 to  
282 2019. 33 schools were surveyed before LF MDA (1998 – 2004), 337 schools during LF MDA  
283 (2012 – 2014) and 657 after LF MDA (2015 – 2019).



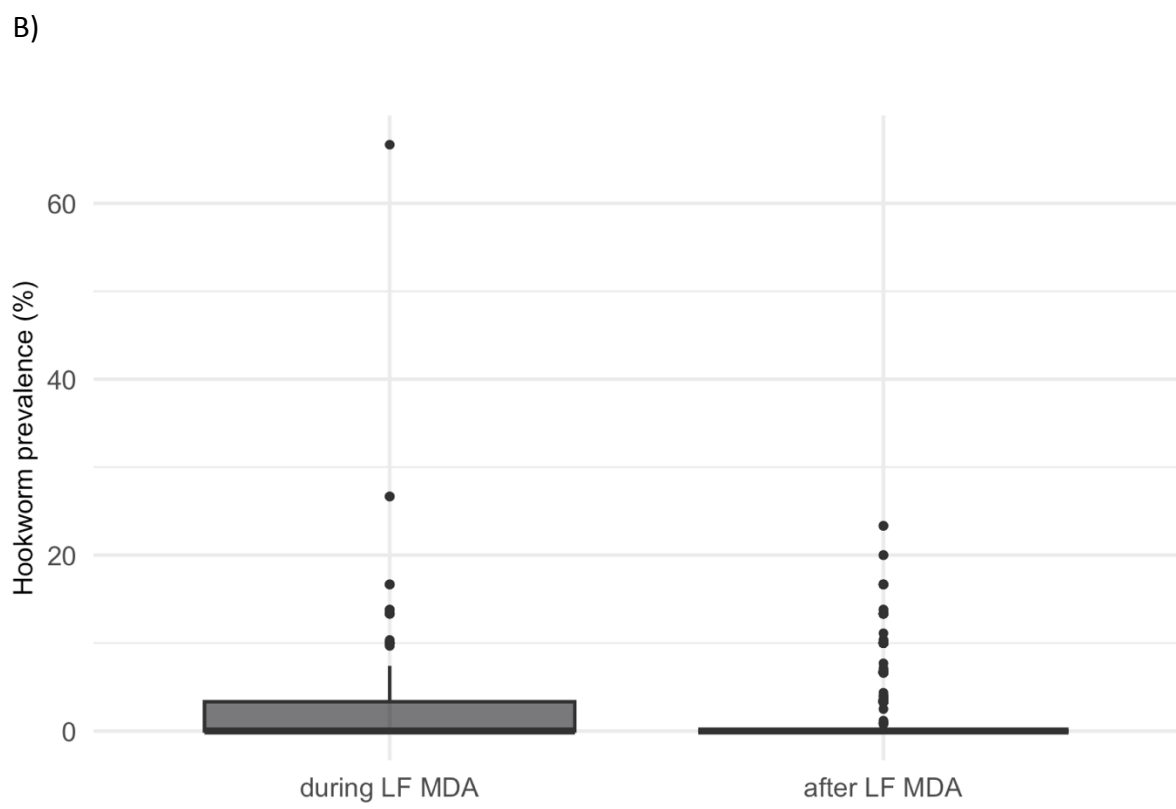
284

285 Fig 2. Hookworm prevalence in school-aged children from during the three phases of LF  
286 MDA, before, during and after. Data was obtained from ESPEN and the National  
287 Schistosomiasis & STH control programme in Malawi. Survey years range from 1998 to  
288 2019. 33 schools were surveyed before LF MDA (1998 – 2004), 337 schools during LF MDA  
289 (2012 – 2014) and 657 after LF MDA (2015 – 2019).

290



291



292

293 Fig 3. Prevalence in school aged children during and after LF MDA in Malawi. (A) *A.*

294 *lumbricoides*. (B) Hookworm. Data was obtained from ESPEN and the National



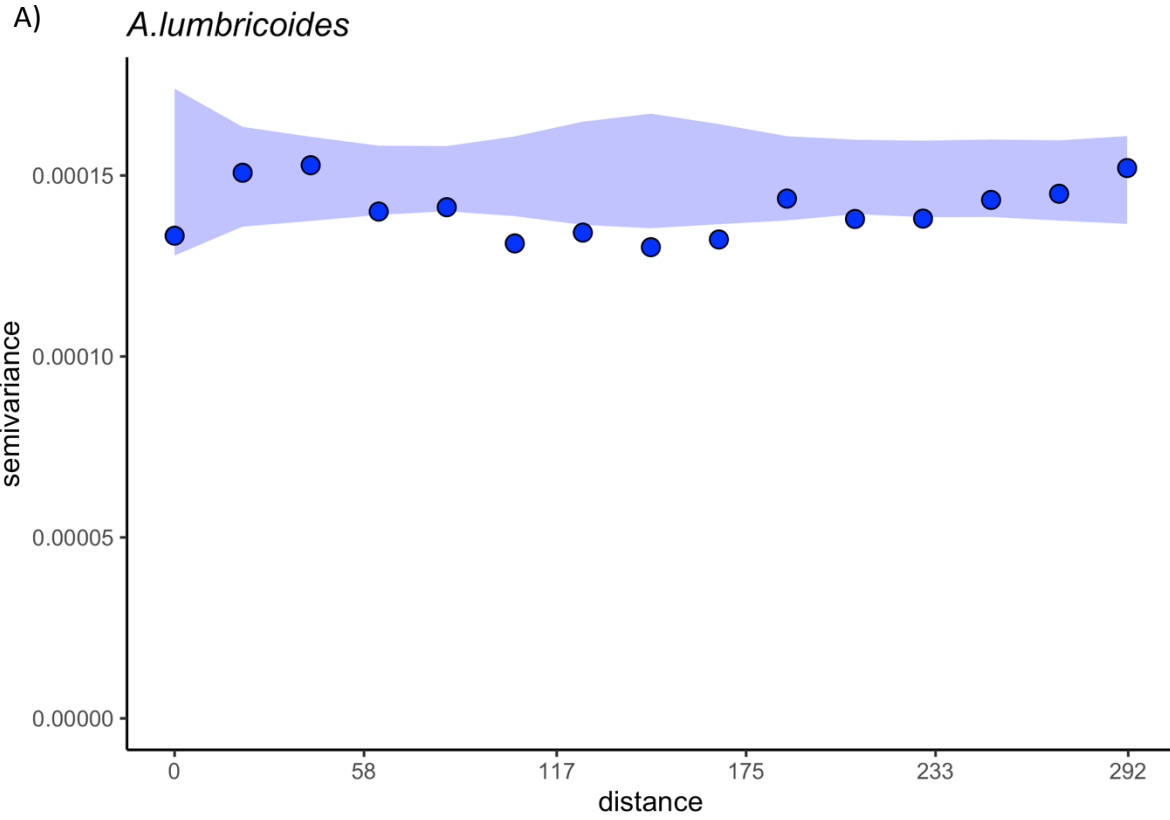
295 Schistosomiasis & STH control programme in Malawi. 337 schools were surveyed during LF  
296 MDA (2012 – 2014), 657 schools surveyed after LF MDA (2015 – 2019).

297

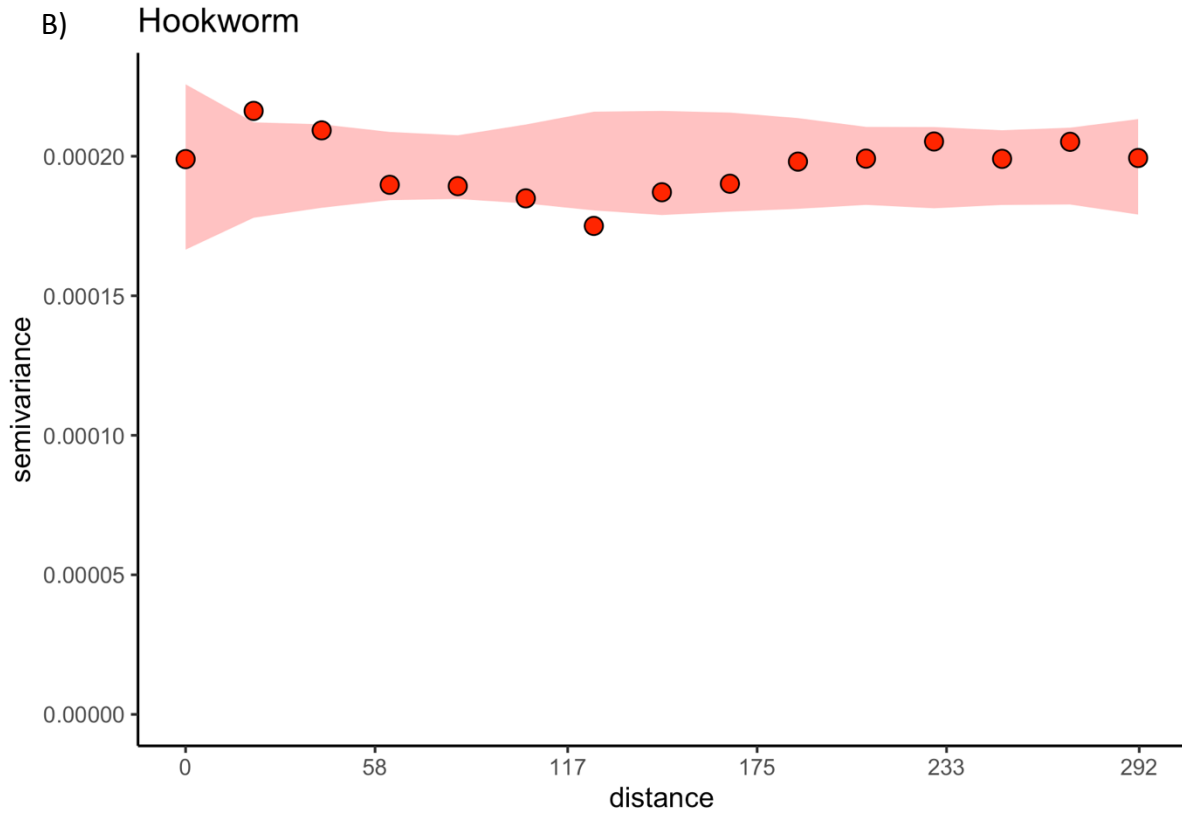
298 Assessment of spatial correlation

299

300 Variograms for assessing the presence of spatial correlation are shown in Fig 4. The  
301 variograms did not exhibit the distinct pattern of an initial increase in variance between  
302 schools with increasing distance and the eventual plateau as the variance reaches its  
303 maximum, suggesting the absence of spatial correlation. Instead, variance between schools  
304 fluctuates around the same level regardless of distance with both species.



305



306

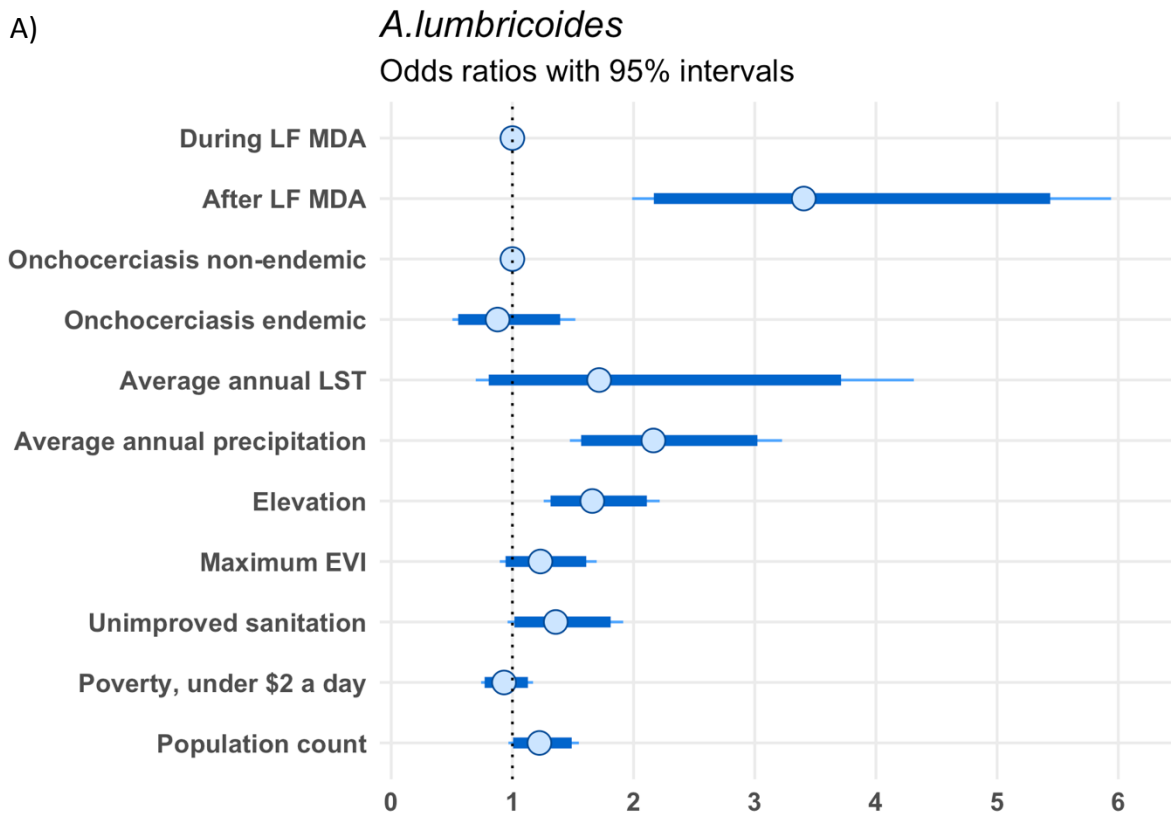
307 Fig 4. Variograms to assess the presence of residual spatial correlation with distance  
308 between schools on the x axis, variance on the y axis and the shaded areas the 95%  
309 confidence intervals. (A) *A. lumbricoides*. (B) Hookworm.

310

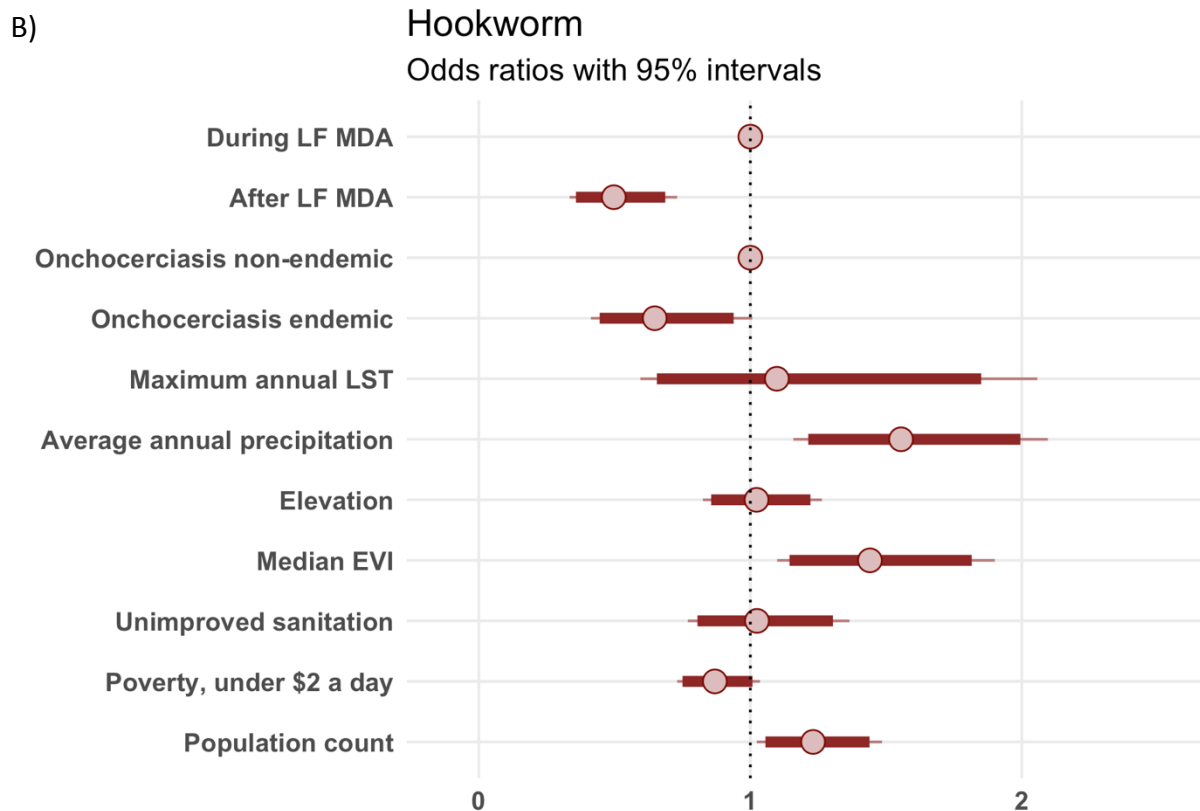
### 311 Determinants of *A. lumbricoides* and Hookworm infection

312

313 The results from the mixed-effects Bayesian logistic regression, accounting for school level  
314 heterogeneity, is shown in Fig 5. School children after the termination of LF MDA had a  
315 three and a half time increase in the odds of *A. lumbricoides* infection compared to school  
316 children during the implementation of LF MDA (Odds Ratio (OR): 3.4, 95% credible interval  
317 (CI): 1.99 – 5.94). In contrast, odds of hookworm infection were lower after LF MDA (OR:  
318 0.5, 95% CI: 0.33 – 0.73). Increase in precipitation in the previous year was associated with  
319 both increased odds of *A. lumbricoides* (OR: 2.16, 95% CI: 1.47 – 3.23) and hookworm  
320 infections (OR: 1.56, 95% CI: 1.16 – 2.1). Higher elevations were associated with increased  
321 odds of *A. lumbricoides* infection (OR: 1.66, 95% CI: 1.26 – 2.22). An increased level of EVI  
322 and larger populations were associated with increased odds of hookworm infection, with  
323 odds ratios of 1.44 (95% CI: 1.1 – 1.9) and 1.23 (95% CI: 1.02 – 1.49) respectively. The  
324 variability between the schools, as indicated by the school standard deviation obtained from  
325 the models, can be compared before and after the inclusion of the explanatory variables in  
326 the models presented. The variability between the schools after addition of the explanatory  
327 variables was only reduced by 5.7% and 4% in the *A. lumbricoides* and hookworm models  
328 respectively (S1 Table).



329



330

331 Fig 5. Determinants of *A. lumbricoides* (A) and hookworm (B) prevalence in school aged  
332 children in Malawi, obtained from a multivariate mixed-effects Bayesian logistic regression  
333 model.

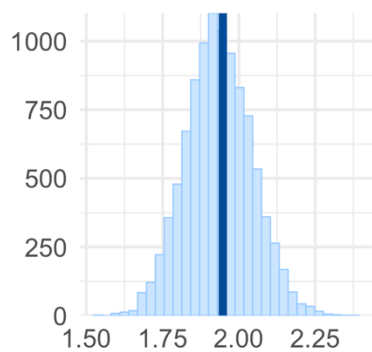
334

335 Assessment of model fit

336

337 The posterior predictive distributions at schools surveyed are shown in Fig 6. To assess  
338 model fit, 10,000 simulations of the prevalence predicted by the model at each school are  
339 compared to the observed prevalence at each school. Majority of the predictions generated  
340 from the *A. lumbricoides* model showed increased variance in prevalence in comparison to  
341 the variance observed in the dataset, captured by the range of standard deviations  
342 simulated (Fig 6b). Similarly, the maximum prevalence observed in the dataset is in the  
343 lower end of the distribution of the maximum prevalence's predicted by the model (Fig 6c).  
344 The hookworm model showed the same patterns, the model predominantly predicted both  
345 a higher maximum hookworm prevalence and exhibited increased variance (Fig 6e, 6f).  
346 However, the mean *A. lumbricoides* and hookworm prevalence were well captured by the  
347 model, with the observed mean in the middle of the distribution (Fig 6a, 6d).

A) *A.lumbricoides*

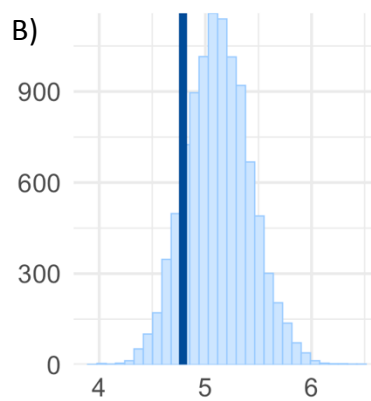


$T = \text{mean}$

$T(y_{\text{rep}})$

$T(y)$

B)

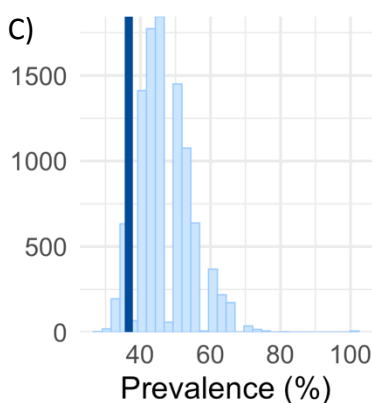


$T = \text{sd}$

$T(y_{\text{rep}})$

$T(y)$

C)



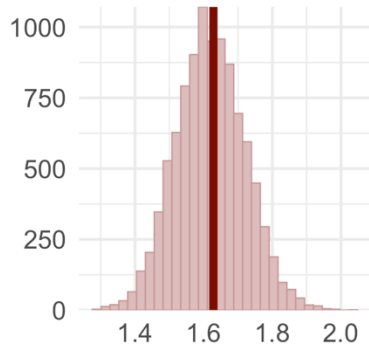
$T = \text{max}$

$T(y_{\text{rep}})$

$T(y)$

348

D) Hookworm

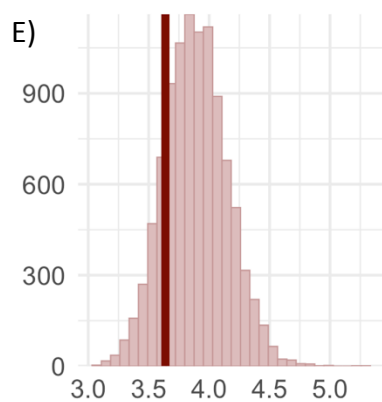


$T = \text{mean}$

$T(y_{\text{rep}})$

$T(y)$

E)

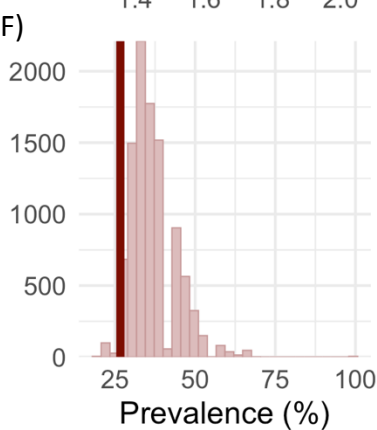


$T = \text{sd}$

$T(y_{\text{rep}})$

$T(y)$

F)



$T = \text{max}$

$T(y_{\text{rep}})$

$T(y)$

349

350 Fig 6. Density plots of summaries of the posterior predictive distribution at surveyed  
351 schools, generated from 10,000 simulations of a multivariate mixed-effects Bayesian logistic  
352 regression model. (A-C) Density plot of the mean, standard deviation, and maximum  
353 prevalence predicted by the *A. lumbricoides* model for each of the 10,000 simulations. (D-F)  
354 Density plot of the mean, standard deviation and maximum prevalence predicted by the  
355 hookworm model for each of the 10,000 simulations.  $y_{rep}$  = simulations,  $y$  = observed.

356

### 357 Predictions

358

359 Nationwide predictions of *A. lumbricoides* and hookworm prevalence in school children post  
360 LF MDA were generated from the models presented. The raw predictions with 95% credible  
361 intervals are available in S2 Fig and S3 Fig. For both species, the credible intervals have a  
362 wide range, where it extends from 0% prevalence nationwide at the lower limit to above  
363 50% predicted prevalence, in selected areas, at its upper limit (S2 Fig, S3 Fig). The  
364 probability of exceeding either 2% or 20% prevalence are shown in Fig 7 and Fig 8. For *A.*  
365 *lumbricoides* infections, there are patches where the probability of exceeding 2% prevalence  
366 is above 50%. These include some districts in the south, in particular Mulanje district, at  
367 borders between northern districts and areas in central Malawi. These same areas have  
368 between 10% and 30% probability of exceeding 20% prevalence with the exception of  
369 Mulanje district, where the probability is above 50%. Areas that have low elevation in the  
370 south have a less than 20% probability of exceeding 2% *A. lumbricoides* prevalence. Map of  
371 elevation is available in S4 Fig. For the predictions of hookworm prevalence, there are fewer  
372 areas where the probability of exceeding 2% prevalence is above 50%. These are in the

373 north just west of Lake Malawi, in Mulanje district and at borders in northern districts.  
374 These areas also have between 10 to 30% chance of exceeding 20% hookworm prevalence.  
375 In summary, there are only a number of areas where there is an above 50% probability that  
376 *A. lumbricoides* prevalence exceeds 2 or 20%. In the case of hookworm prevalence, the  
377 number of areas is fewer in regards to exceeding 2% prevalence and the likelihood of  
378 exceeding 20% prevalence is below 50% probability nationwide. However, there is an  
379 overlap in the areas highlighted between the species. These also correlate to regions that  
380 receive more rainfall and are of higher elevation (S4 Fig).

381

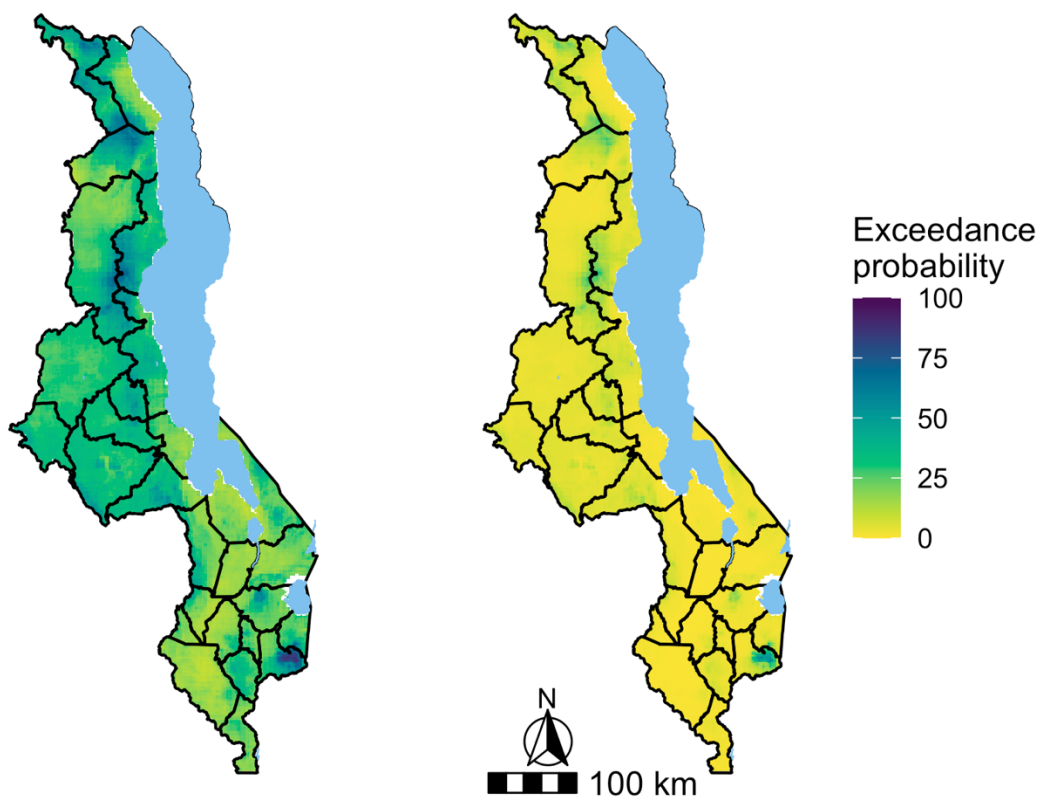
382



*A. lumbricoides*

2% prevalence

20% prevalence



383

384 Fig 7. Maps of the probability of exceeding 2% or 20% predicted *A. lumbricoides* prevalence

385 in Malawi. Predictions were generated from a multivariate mixed-effects Bayesian logistic

386 regression model.

387

388

389

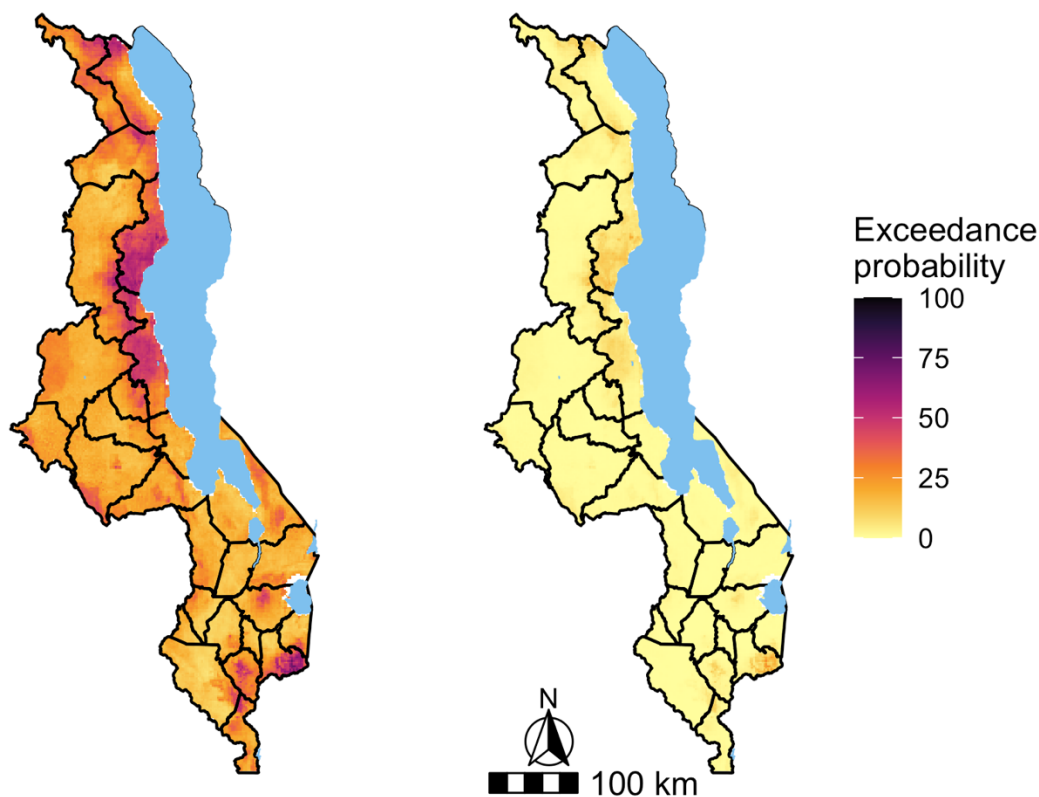
390

391

## Hookworm

2% prevalence

20% prevalence



392

393 Fig 8. Maps of the probability of exceeding 2% or 20% predicted hookworm prevalence in  
394 Malawi. Predictions were generated from a multivariate mixed-effects Bayesian logistic  
395 regression model.

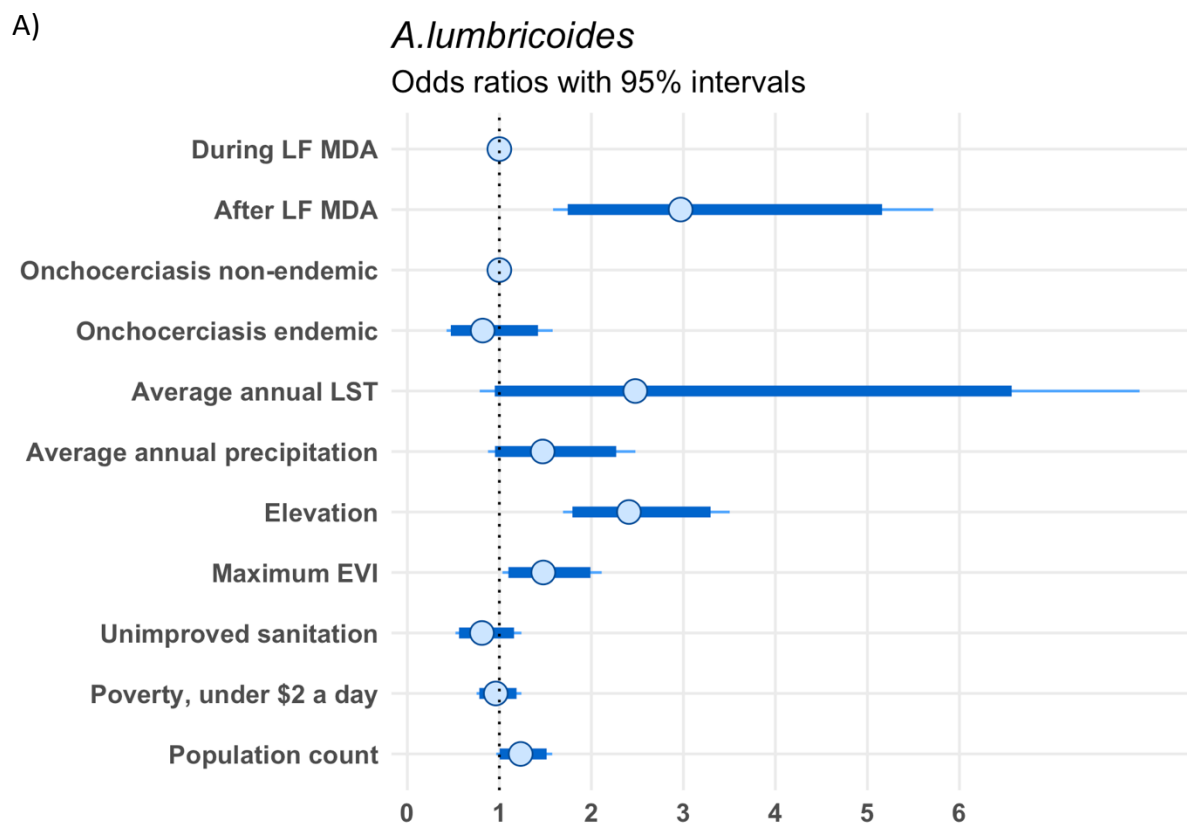
396

### 397 Sensitivity analysis

398 Fig 9 presents the output of the sensitivity analysis where the models were restricted to  
399 only include districts surveyed in both time periods, during and after LF MDA. This reduced  
400 the total number of schools from 994 to 753, 337 surveyed during and 416 surveyed after LF  
401 MDA. The *A. lumbricoides* model, continues to indicate increased odds of infection in school

402 children post termination of LF MDA (OR: 2.97, 95% CI: 1.58 – 5.72) and the presence of a  
403 resurgence in infection. With the hookworm model, odds of infection post LF MDA are  
404 lower when compared to during LF MDA, but this is no longer significant. Areas endemic for  
405 onchocerciasis are now significantly associated with lower odds of hookworm infection.

406

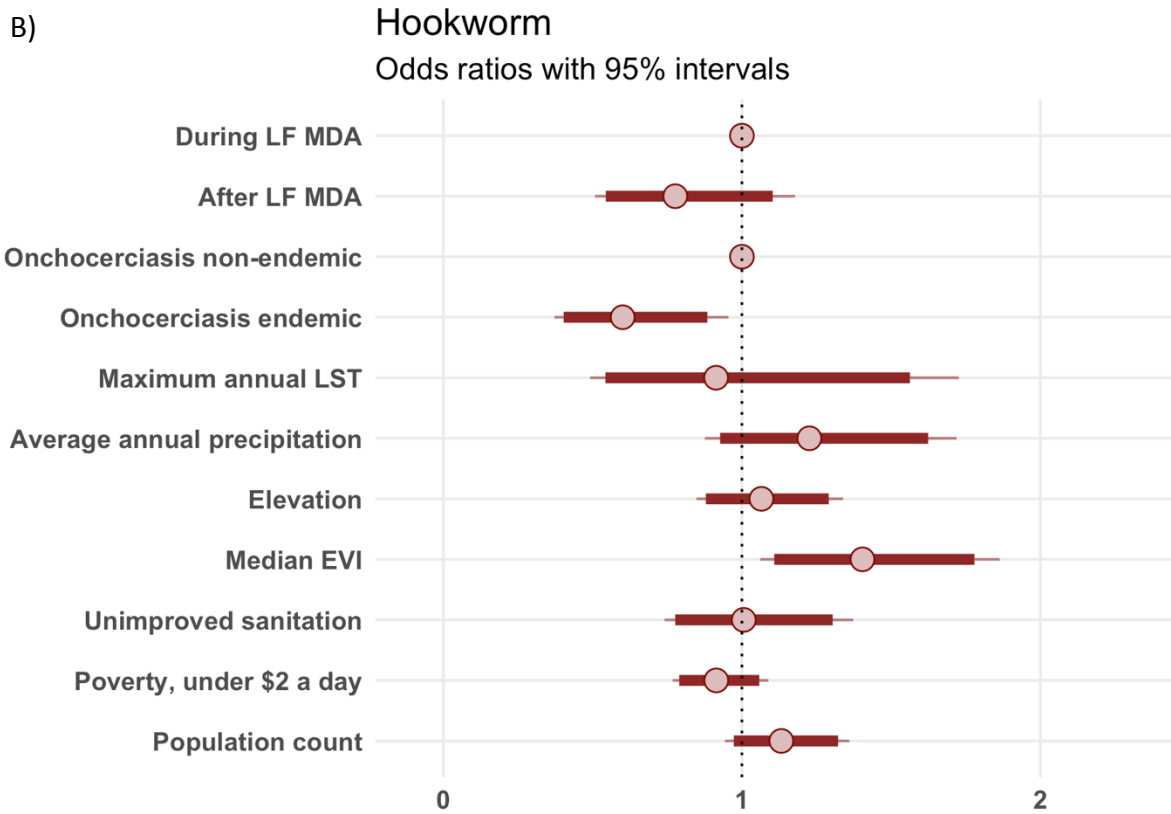


407

408

409

410



411

412 Fig 9. Impact of LF MDA termination on *A. lumbricoides* (A) and hookworm (B) prevalence in  
413 school aged children in Malawi.

414

415

416

417

418

419

420

421

## 422 Discussion

423 This analysis of STH prevalence data from Malawi reveals a resurgence in *A. lumbricoides*  
424 infections in school children post implementation of LF MDA, despite ongoing annual STH  
425 PC targeting school aged children.

426 The overall, country-wide odds of infection with *A. lumbricoides* were found to have  
427 increased as much as three-fold after the termination of LF MDA, and this effect was  
428 maintained when conducting the sensitivity analysis, which limited the analysis to districts  
429 sampled both during and after LF MDA. In contrast to *A. lumbricoides*, our hookworm model  
430 suggests that hookworm infection risk significantly decreased after several years of  
431 community wide LF MDA, but this result was not confirmed by the sensitivity analysis.

432 Adults are estimated to host around 30% of the infectious reservoir of *A. lumbricoides*,  
433 which could partially explain this resurgence (34). It is conceivable that in Malawi, the  
434 community wide treatment set *A. lumbricoides* prevalence to a low transmission level and  
435 reduced infectious eggs in the environment, which could not be maintained once  
436 community treatment was stopped. A previous study also showed that *A. lumbricoides* has a  
437 quicker re-infection rate than hookworm, where around 15% of individuals infected with *A.*  
438 *lumbricoides* and treated with albendazole, were found infected 8-9 months after. In the  
439 case of hookworm, this value was only 3% (35). Additionally, hookworm infection levels are  
440 known to be lower in children than in adults, with infections peaking at around middle age  
441 to 60 years old (5). This could explain why prolonged community wide LF MDA and  
442 continuing STH PC may have decreased hookworm infection levels in school children  
443 enough to be undetectable by routine monitoring surveys. However, there is the issue of  
444 diagnostic accuracy. The Kato-Katz technique used in the monitoring approach lacks

445 sensitivity, preventing the detection of light infections that are expected to prevail in areas  
446 of historic or ongoing community wide distribution of drugs efficacious against STH (36, 37).  
447 This issue is particularly salient for hookworm due to the additional challenge of egg frailty,  
448 which are rapidly destroyed following Kato Katz slide preparation (36, 38, 39). This is likely a  
449 major influence in the low hookworm levels detected post LF MDA.

450

451 The *A. lumbricoides* model predictions indicate areas in the extreme south of the country as  
452 likely “hotspots”. However, the predictions had wide credible intervals and primarily follow  
453 the distribution of precipitation and elevation in Malawi, as these were the two factors  
454 positively associated with infection risk in our *A. lumbricoides* model. These associations are  
455 well documented in many settings and is in line with biological plausibility, as survival of STH  
456 is favoured in moist and warm environments as well as at higher altitudes, where heat,  
457 which can cause egg desiccation, is less extreme (4, 40-44).

458 In terms of human-activity related determinants, we found a borderline significant trend of  
459 a positive association between *A. lumbricoides* infection risk and both increasing  
460 unimproved sanitation coverage and population. With hookworm, odds of infection were  
461 significantly higher in areas with larger populations. The association between WASH and  
462 STH infection levels and transmission is widely acknowledged (45-48). Larger populations  
463 with poor sanitation infrastructure can increase transmission due to higher environmental  
464 contamination (49, 50). However, inconsistency in finding associations with WASH and  
465 socioeconomic factors have been noted, citing high heterogeneity between studies and the  
466 lack of intervention trials assessing these factors (51-53).

467

468 Limitations

469 There are limitations to this analysis.

470 First, the models could not be adjusted for STH PC coverage, due to data unavailability  
471 before 2016. Assumptions were not made as reports from the national schistosomiasis and  
472 STH control programme in Malawi describe heterogeneity in albendazole availability for STH  
473 PC across different years, making assumptions of coverage more difficult (17).

474 Another limitation is the lack of infection intensity data. A community based cross-sectional  
475 study from 2018 in Mangochi district found all STH infections were of light intensity (54),  
476 which matches findings from other post LF MDA settings (13-16). The absence of this  
477 information limits result interpretation in terms of public health impact and prevents  
478 assessing whether the WHO target for morbidity control of < 2% prevalence of M&HI  
479 infections has been met (6).

480 Predictions of both *A. lumbricoides* and hookworm infection showed uncertainty, reflected  
481 by the wide credible intervals of the predictions. This uncertainty as well as the lack of  
482 reduction in the variability between schools in the data after the explanatory variables were  
483 included in the models, suggests that our models were lacking important predictive factors  
484 for *A. lumbricoides* and hookworm infection. These could include higher resolution  
485 sanitation coverage data or extreme weather events which could have impacted  
486 transmission. The role of human population movement or the potential emergence of drug  
487 resistance should also considered.

488 Movement of people into an infected area or their movement bringing parasites into a  
489 previously uninfected area, is a key factor in the epidemiology of infectious diseases (55-57).

490 A model simulation has shown that as few as 2% of the population of an area, even one of  
491 low prevalence, moving to an area that has undergone community based treatment for five  
492 years, is enough to reduce the probability of eliminating both *A. lumbricoides* and  
493 hookworm in the treated area to below 50% (58). The potential of reduced drug efficacy  
494 through either genetic resistance or other mechanisms, should also be investigated when  
495 assessing trends in STH transmission and intervention impact In Malawi, especially when  
496 MDA against onchocerciasis, LF and STH PC have been conducted for more than two  
497 decades (59).

498

#### 499 STH PC in other contexts

500 The increase in *A. lumbricoides* prevalence after the termination of LF MDA suggests that  
501 the benefits of a chemotherapy-based intervention as intensive as LF MDA cannot be  
502 sustained through STH PC only targeting school aged children. Moreover, this quick rise in *A.*  
503 *lumbricoides* prevalence after 6 years of LF MDA at around 78% coverage, also support  
504 findings from modelling studies suggesting that community wide treatment is needed to  
505 reach the WHO morbidity target when compared to school based distributions (10, 11).  
506 Examples of STH PC in other countries also indicate this. In Angola, after 6 years of STH PC,  
507 none of the provinces investigated showed a significant reduction in STH prevalence nor  
508 achieved the target of < 2% of M&HI infections, with one province showing a particularly  
509 high prevalence of 25% M&HI infections (60). In Kenya, significant reductions from baseline  
510 across all species were seen after 5 years of PC but certain regions still displayed STH  
511 prevalence above the WHO threshold of 20% (61).

512



513 Conclusion

514 A major obstacle to accurately monitor STH infection levels in the era of large-scale  
515 chemotherapy-based interventions is the low sensitivity of currently available methods,  
516 including those used to generate the data in this study. The actual resurgence in *A.*  
517 *lumbricoides* infection in Malawi is therefore likely to be higher than the observed threefold  
518 increase in the odds of infection. A study conducted in a district in Mozambique showed the  
519 impact of low sensitivity on predicting prevalence. In a low infection intensity setting, with 5  
520 years of STH PC, the use of qPCR diagnosis resulted in 86% of neighbourhoods predicted to  
521 have a prevalence above 20% when modelling the data. This is compared to just 10% of  
522 neighbourhoods estimated to have 20% prevalence or more when diagnosing using a single  
523 Kato-Katz (62).

524 The need for high sensitivity diagnostics is widely acknowledged by the STH scientific and  
525 public health community. Only such diagnostic tools will allow accurately estimating  
526 infection levels, intervention impact and better delineate infection hotspots in which  
527 monitoring should be prioritised. A greater assessment of underlying factors would increase  
528 understanding of current STH transmission and further aid the identification of hotspots. In  
529 the meantime, surveys using more intensive diagnostic approaches such as multiple slides  
530 on multiple samples could be conducted in areas of concern.

531 Monitoring activities are urgently required in Malawi to better understand infection  
532 transmission, factors underlying the potential resurgence in *A. lumbricoides* infections and  
533 how this translates to infections of M&HI, which is the focal point of the WHO targets for  
534 STH control.

535

## 536 **References**

- 537 1. Pullan RL, Smith JL, Jasrasaria R, Brooker SJ. Global numbers of infection and disease  
538 burden of soil transmitted helminth infections in 2010. *Parasit Vectors*. 2014;7(1):37.
- 539 2. Vos T, Lim SS, Abbafati C, Abbas KM, Abbasi M, Abbasifard M, et al. Global burden of  
540 369 diseases and injuries in 204 countries and territories, 1990–2019: a systematic analysis  
541 for the Global Burden of Disease Study 2019. *The Lancet*. 2020;396(10258):1204-22.
- 542 3. Bethony J, Brooker S, Albonico M, Geiger SM, Loukas A, Diemert D, et al. Soil-  
543 transmitted helminth infections: ascariasis, trichuriasis, and hookworm. *The Lancet*.  
544 2006;367(9521):1521-32.
- 545 4. Hall A, Hewitt G, Tuffrey V, de Silva N. A review and meta-analysis of the impact of  
546 intestinal worms on child growth and nutrition. *Matern Child Nutr*. 2008;4 Suppl 1:118-236.
- 547 5. Brooker S, Bethony J, Hotez PJ. Human hookworm infection in the 21st century. *Adv*  
548 *Parasitol*. 2004;58:197-288.
- 549 6. WHO. 2030 targets for soil-transmitted helminthiases control programmes. Geneva:  
550 WHO; 2020 2020.
- 551 7. WHO. PCT Databank - Soil-transmitted helminthiases 2024 [Available from:  
552 [https://www.who.int/teams/control-of-neglected-tropical-diseases/data-platforms/pct-](https://www.who.int/teams/control-of-neglected-tropical-diseases/data-platforms/pct-databank/soil-transmitted-helminthiases)  
553 [databank/soil-transmitted-helminthiases](https://www.who.int/teams/control-of-neglected-tropical-diseases/data-platforms/pct-databank/soil-transmitted-helminthiases)].
- 554 8. Bangert M, Bancalari P, Mupfasoni D, Mikhailov A, Gabrielli AF, Montresor A.  
555 Provision of deworming intervention to pregnant women by antenatal services in countries  
556 endemic for soil-transmitted helminthiasis. *PLoS Negl Trop Dis*. 2019;13(5):e0007406.
- 557 9. Jia TW, Melville S, Utzinger J, King CH, Zhou XN. Soil-transmitted helminth  
558 reinfection after drug treatment: a systematic review and meta-analysis. *PLoS Negl Trop Dis*.  
559 2012;6(5):e1621.

- 560 10. Coffeng LE, Truscott JE, Farrell SH, Turner HC, Sarkar R, Kang G, et al. Comparison  
561 and validation of two mathematical models for the impact of mass drug administration on  
562 *Ascaris lumbricoides* and hookworm infection. *Epidemics*. 2017;18:38-47.
- 563 11. Farrell SH, Coffeng LE, Truscott JE, Werkman M, Toor J, De Vlas SJ, et al. Investigating  
564 the Effectiveness of Current and Modified World Health Organization Guidelines for the  
565 Control of Soil-Transmitted Helminth Infections. *Clinical infectious diseases : an official  
566 publication of the Infectious Diseases Society of America*. 2018;66(suppl\_4):S253-S9.
- 567 12. Truscott JE, Hardwick RJ, Werkman M, Saravanakumar PK, Manuel M, Ajjampur SSR,  
568 et al. Forecasting the effectiveness of the DeWorm3 trial in interrupting the transmission of  
569 soil-transmitted helminths in three study sites in Benin, India and Malawi. *Parasit Vectors*.  
570 2021;14(1):67.
- 571 13. Bah YM, Bah MS, Paye J, Conteh A, Saffa S, Tia A, et al. Soil-transmitted helminth  
572 infection in school age children in Sierra Leone after a decade of preventive chemotherapy  
573 interventions. *Infect Dis Poverty*. 2019;8(1):41-.
- 574 14. Chu BK, Gass K, Batcho W, Ake M, Dorkenoo AM, Adjinacou E, et al. Pilot assessment  
575 of soil-transmitted helminthiasis in the context of transmission assessment surveys for  
576 lymphatic filariasis in Benin and Tonga. *PLoS Negl Trop Dis*. 2014;8(2):e2708-e.
- 577 15. Kaliappan S, Ramanujam K, Manuel M, Farzana J, Janagaraj V, Laxmanan S, et al. Soil-  
578 transmitted helminth infections after mass drug administration for lymphatic filariasis in  
579 rural southern India. *Trop Med Int Health*. 2022;27(1):81-91.
- 580 16. Kim SH, Stothard JR, Rinamalo M, Rainima-Qaniuci M, Talemaitoga N, Kama M, et al.  
581 A first nation-wide assessment of soil-transmitted helminthiasis in Fijian primary schools,  
582 and factors associated with the infection, using a lymphatic filariasis transmission  
583 assessment survey as surveillance platform. *PLoS Negl Trop Dis*. 2020;14(9):e0008511-e.

- 584 17. Peter M, Sekeleghe Amos K, Kondwani Chidzambuyo M, Grace B, Mathias F,  
585 Janelisa M, et al. An Assessment of Implementation of Mass Drug Administration for  
586 Prevention and Control of Schistosomiasis and Soil-Transmitted Helminths in Selected  
587 Southern Malawi Districts. BMC Health Serv Res. 2022.
- 588 18. Chipwanya J, Mkwanda S, Kabuluzi S, Mzilahowa T, Ngwira B, Matipula DE, et al.  
589 Elimination of lymphatic filariasis as a public health problem in Malawi. PLoS Negl Trop Dis.  
590 2024;18(2):e0011957.
- 591 19. World Bank. Malawi [Available from: <https://data.worldbank.org/country/malawi>.  
592 20. ESPEN. Malawi [Available from: <https://espen.afro.who.int/countries/malawi>.  
593 21. ESPEN. Expanded Special Project for Elimination of Neglected Tropical Diseases  
594 [Available from: <https://espen.afro.who.int/>.  
595 22. Sturrock SL, Yiannakoulis N, Sanchez AL. The Geography and Scale of Soil-  
596 Transmitted Helminth Infections. Curr Trop Med Rep. 2017;4(4):245-55.
- 597 23. Wan Z, Hook S, Hulley G. MOD11A2 MODIS/Terra Land Surface  
598 Temperature/Emissivity 8-Day L3 Global 1km SIN Grid V006</i> [Data set]. NASA EOSDIS  
599 Land Processes DAAC. 2015 [  
600 24. Didan K. MOD13Q1 MODIS/Terra Vegetation Indices 16-Day L3 Global 250m SIN Grid  
601 V006</i> [Data set]. NASA EOSDIS Land Processes DAAC. 2015 [  
602 25. Funk C, Peterson P, Landsfeld M, Pedreros D, Verdin J, Shukla S, et al. The climate  
603 hazards infrared precipitation with stations—a new environmental record for monitoring  
604 extremes. Scientific Data. 2015;2(1):150066.
- 605 26. EROS. USGS EROS Archive - Digital Elevation - Shuttle Radar Topography Mission  
606 (SRTM) 1 Arc-Second Global 2018 [Available from:

- 607 <https://www.usgs.gov/centers/eros/science/usgs-eros-archive-digital-elevation-shuttle->  
608 [radar-topography-mission-srtm-1?qt-science\\_center\\_objects=0#qt-science\\_center\\_objects](https://www.usgs.gov/centers/eros/science/usgs-eros-archive-digital-elevation-shuttle-radar-topography-mission-srtm-1?qt-science_center_objects=0#qt-science_center_objects).
- 609 27. WorldPop. 2023 [Available from: <https://www.worldpop.org/>].
- 610 28. Deshpande A, Miller-Petrie MK, Lindstedt PA, Baumann MM, Johnson KB, Blacker BF,  
611 et al. Mapping geographical inequalities in access to drinking water and sanitation facilities  
612 in low-income and middle-income countries, 2000&#x2013;17. *Lancet Glob Health*.  
613 2020;8(9):e1162-e85.
- 614 29. Giorgi E, Fronterre C, Macharia PM, Alegana VA, Snow RW, Diggle PJ. Model building  
615 and assessment of the impact of covariates for disease prevalence mapping in low-resource  
616 settings: to explain and to predict. *J R Soc Interface*. 2021;18(179):20210104.
- 617 30. Goodrich B, Gabry J, Ali I, Brilleman S. *rstanarm: Bayesian applied regression*  
618 *modeling via Stan*. 2023.
- 619 31. Ribeiro J, J. P, Diggle PJ. *geoR: A package for geostatistical analysis*. *R News*.  
620 2001;1(2):14-8.
- 621 32. Diggle PJ, Giorgi E. *Model-based Geostatistics for Global Public Health*. 1st ed ed:  
622 Chapman and Hall/CRC; 2019.
- 623 33. Johnson AA, Ott MQ, Dogucu M. *Bayes Rules!: An Introduction to Applied Bayesian*  
624 *Modeling*: CRC Press; 2022.
- 625 34. Anderson RM, Turner HC, Truscott JE, Hollingsworth TD, Brooker SJ. Should the Goal  
626 for the Treatment of Soil Transmitted Helminth (STH) Infections Be Changed from Morbidity  
627 Control in Children to Community-Wide Transmission Elimination? *PLoS Negl Trop Dis*.  
628 2015;9(8):e0003897.
- 629 35. Landeryou T, Maddren R, Rayment Gomez S, Kalahasti S, Liyew EF, Chernet M, et al.  
630 Longitudinal monitoring of prevalence and intensity of soil-transmitted helminth infections

631 as part of community-wide mass drug administration within the Geshiyaro project in the  
632 Bolosso Sore district, Wolaita, Ethiopia. *PLoS Negl Trop Dis.* 2022;16(9):e0010408.

633 36. Dunn JC, Papaïakovou M, Han KT, Chooneea D, Bettis AA, Wyine NY, et al. The  
634 increased sensitivity of qPCR in comparison to Kato-Katz is required for the accurate  
635 assessment of the prevalence of soil-transmitted helminth infection in settings that have  
636 received multiple rounds of mass drug administration. *Parasit Vectors.* 2020;13(1).

637 37. Lim MD, Brooker SJ, Belizario VY, Gay-Andrieu F, Gilleard J, Levecke B, et al.  
638 Diagnostic tools for soil-transmitted helminths control and elimination programs: A pathway  
639 for diagnostic product development. *PLoS Negl Trop Dis.* 2018;12(3):e0006213.

640 38. Tarafder MR, Carabin H, Joseph L, Balolong E, Jr., Olveda R, McGarvey ST. Estimating  
641 the sensitivity and specificity of Kato-Katz stool examination technique for detection of  
642 hookworms, *Ascaris lumbricoides* and *Trichuris trichiura* infections in humans in the absence  
643 of a 'gold standard'. *Int J Parasitol.* 2010;40(4):399-404.

644 39. Dacombe RJ, Crampin AC, Floyd S, Randall A, Ndhlovu R, Bickle Q, et al. Time delays  
645 between patient and laboratory selectively affect accuracy of helminth diagnosis. *Trans R*  
646 *Soc Trop Med Hyg.* 2007;101(2):140-5.

647 40. Holland C, Sepidarkish M, Deslyper G, Abdollahi A, Valizadeh S, Mollalo A, et al.  
648 Global prevalence of *Ascaris* infection in humans (2010–2021): a systematic review and  
649 meta-analysis. *Infect Dis Poverty.* 2022;11(1).

650 41. Jourdan PM, Lamberton PHL, Fenwick A, Addiss DG. Soil-transmitted helminth  
651 infections. *The Lancet.* 2018;391(10117):252-65.

652 42. Steinmann P, Zhou X-N, Li Y-L, Li H-J, Chen S-R, Yang Z, et al. Helminth infections and  
653 risk factor analysis among residents in Eryuan county, Yunnan province, China. *Acta Trop.*  
654 2007;104(1):38-51.

- 655 43. Eltantawy M, Orsel K, Schroeder A, Morona D, Mazigo HD, Kutz S, et al. Soil  
656 transmitted helminth infection in primary school children varies with ecozone in the  
657 Ngorongoro Conservation Area, Tanzania. *Trop Med Health*. 2021;49(1):22.
- 658 44. Brooker S, Clements ACA, Bundy DAP. Global epidemiology, ecology and control of  
659 soil-transmitted helminth infections. *Adv Parasitol*. 2006;62:221-61.
- 660 45. Strunz EC, Addiss DG, Stocks ME, Ogden S, Utzinger J, Freeman MC. Water,  
661 Sanitation, Hygiene, and Soil-Transmitted Helminth Infection: A Systematic Review and  
662 Meta-Analysis. *PLoS Med*. 2014;11(3):e1001620.
- 663 46. Raso G, Vounatsou P, Gosoni L, Tanner M, N'Goran EK, Utzinger J. Risk factors and  
664 spatial patterns of hookworm infection among schoolchildren in a rural area of western  
665 Côte d'Ivoire. *Int J Parasitol*. 2006;36(2):201-10.
- 666 47. Hesham Al-Mekhlafi M, Surin J, Atiya AS, Ariffin WA, Mohammed Mahdy AK, Che  
667 Abdullah H. Pattern and predictors of soil-transmitted helminth reinfection among  
668 aboriginal schoolchildren in rural Peninsular Malaysia. *Acta Trop*. 2008;107(2):200-4.
- 669 48. Forrer A, Khieu V, Schindler C, Schär F, Marti H, Char MC, et al. Ivermectin Treatment  
670 and Sanitation Effectively Reduce *Strongyloides stercoralis* Infection Risk in Rural  
671 Communities in Cambodia. *PLoS Negl Trop Dis*. 2016;10(8):e0004909.
- 672 49. Riess H, Clowes P, Kroidl I, Kowuor DO, Nsojo A, Mangu C, et al. Hookworm Infection  
673 and Environmental Factors in Mbeya Region, Tanzania: A Cross-Sectional, Population-Based  
674 Study. *PLoS Negl Trop Dis*. 2013;7(9):e2408.
- 675 50. Saathoff E, Olsen A, Sharp B, Kvalsvig JD, Appleton CC, Kleinschmidt I. Ecologic  
676 covariates of hookworm infection and reinfection in rural Kwazulu-natal/south Africa: a  
677 geographic information system-based study. *Am J Trop Med Hyg*. 2005;72(4):384-91.

- 678 51. Aw JYH, Clarke NE, Mayfield HJ, Lau CL, Richardson A, Vaz Nery S. Novel statistical  
679 approaches to identify risk factors for soil-transmitted helminth infection in Timor-Leste. *Int*  
680 *J Parasitol.* 2021;51(9):729-39.
- 681 52. Karagiannis-Voules D-A, Odermatt P, Biedermann P, Khieu V, Schär F, Muth S, et al.  
682 Geostatistical modelling of soil-transmitted helminth infection in Cambodia: Do  
683 socioeconomic factors improve predictions? *Acta Trop.* 2015;141:204-12.
- 684 53. Freeman MC, Garn JV, Sclar GD, Boisson S, Medlicott K, Alexander KT, et al. The  
685 impact of sanitation on infectious disease and nutritional status: A systematic review and  
686 meta-analysis. *Int J Hyg Environ Health.* 2017;220(6):928-49.
- 687 54. Jones TPW, Hart JD, Kalua K, Bailey RL. A prevalence survey of enteral parasites in  
688 preschool children in the Mangochi District of Malawi. *BMC Infect Dis.* 2019;19(1).
- 689 55. Aagaard-Hansen J, Nombela N, Alvar J. Population movement: a key factor in the  
690 epidemiology of neglected tropical diseases. *Trop Med Int Health.* 2010;15(11):1281-8.
- 691 56. Buckee CO, Tatem AJ, Metcalf CJE. Seasonal Population Movements and the  
692 Surveillance and Control of Infectious Diseases. *Trends in parasitology.* 2017;33(1):10-20.
- 693 57. Pindolia DK, Garcia AJ, Wesolowski A, Smith DL, Buckee CO, Noor AM, et al. Human  
694 movement data for malaria control and elimination strategic planning. *Malar J.*  
695 2012;11(1):205.
- 696 58. Vegvari C, Truscott JE, Kura K, Anderson RM. Human population movement can  
697 impede the elimination of soil-transmitted helminth transmission in regions with  
698 heterogeneity in mass drug administration coverage and transmission potential between  
699 villages: a metapopulation analysis. *Parasit Vectors.* 2019;12(1):438-.
- 700 59. Vinkeles Melchers NVS, Stolk WA, Van Loon W, Pedrique B, Bakker R, Murdoch ME,  
701 et al. The burden of skin disease and eye disease due to onchocerciasis in countries formerly



702 under the African Programme for Onchocerciasis Control mandate for 1990, 2020, and  
703 2030. PLoS Negl Trop Dis. 2021;15(7):e0009604.

704 60. Bartlett AW, Mendes EP, Dahmash L, Palmeirim MS, De Almeida MC, Peliganga LB, et  
705 al. School-based preventive chemotherapy program for schistosomiasis and soil-transmitted  
706 helminth control in Angola: 6-year impact assessment. PLoS Negl Trop Dis.  
707 2023;17(5):e0010849.

708 61. Okoyo C, Campbell SJ, Williams K, Simiyu E, Owaga C, Mwandawiro C. Prevalence,  
709 intensity and associated risk factors of soil-transmitted helminth and schistosome infections  
710 in Kenya: Impact assessment after five rounds of mass drug administration in Kenya. PLoS  
711 Negl Trop Dis. 2020;14(10):e0008604.

712 62. Grau-Pujol B, Marti-Soler H, Escola V, Demontis M, Jamine J, Gandasegui J, et al.  
713 Towards soil-transmitted helminths transmission interruption: The impact of diagnostic  
714 tools on infection prediction in a low intensity setting in Southern Mozambique. PLoS Negl  
715 Trop Dis. 2021;15:e0009803.

716

717

718