

Deleterious Variants Contribute Minimal Excess Risk in Large-Scale Testing

Yen-Tsung Huang[†], En-Yu Lai[†], Jia-Ying Su[†], Hsueh-Ju Lu[†],
Yen-Lin Chen[†], Jer-Yuarn Wu, Chun-yu Wei, Ling-Hui Li,
Cathy S.-J. Fann, Hsin-Chou Yang, Chien-Hsiun Chen,
Hung-Hsin Chen, Yi-Min Liu, Ming-Fang Tsai, Erh-Chan Yeh,
Chih-Kuang Cheng, Yen-Po Wang, Nai-Fang Chi, I-Cheng Lee,
Harn-Shen Chen, Yun-Cheng Hsieh, Yi-Chu Liao, Shao-Jung Hsu,
Shuo-Ming Ou, Kuan-Lin Lai, Chung-Chi Lin, Yi-Jen Chen,
Chia-Ming Chang, Peng-Hui Wang, Yung-Hung Luo,
Yun-Ting Chang, Chih-Chiang Chen, Yu-Cheng Hsieh,
Yi-Ming Chen, Tzu-Hung Hsiao, Ching-Heng Lin, Yen-Ju Chen,
I-Chieh Chen, Chien-Lin Mao, Shu-Jung Chang, Yen-Lin Chang,
Yi-Ju Liao, Chih-Hung Lai, Wei-Ju Lee, Hsin Tung,
Ting-Ting Yen, Hsin-Chien Yen, Shy-Shin Chang,
Yu-Sheng Chang, Ting-I Lee, Shaoh-Der Yeh, Mei-Yi Wu,
Ming-Shun Wu, Lung Wen Tsai, Cai-mei Zheng, Yu-Mei Chien,
Tsung-Hsien Lin, Yen-Hsu Chen, Cheng-Che E. Lan,
Jeng-Hsien Yen, Wen-Chen Liang, Te-Fu Chan,
Shyh-Shin Chiou, Shih-Chang Chuang, Shang-Jyh Hwang,
Yi-Jung Lin, Yu-Chuang Huang, Wan-Ru Li, Tsai-Chuan Chen,
Wei-Ting Huang, Kuan-Chih Chen, Shin-Yee Lim,
Yi-Shiuan Shen, Chia-Chia Huang, Chien-Hung Chen,
Ya-Chung Tian, Chia-Ling Chen, Yao-Fan Fang, Ji-Tseng Fang,
Yi-Hao Yen, Wei-Chi Wu, Wen-Shih Huang, Chi-Chin Sun,
Wen-Chien Chou, Ching-Hung Lin, Tsung-Hua Yang,
Pei-Lin Lee, Ming-Yang Wang, Tsen-Fang Tsai, Tung-Hung Su,
Jyh-Ming Liou, Shun-Fa Yang, Chia-Chuan Hsieh,
Chih-Chien Sung, Feng-Chih Kuo, Shih-Hua Lin,
Dueng-Yuan Hueng, Chien-Jung Lin, Hueng-Yuan Shen,
Chang-Hsun Hsieh, Shinn-Zong Ling, Tso-Fu Wang,

Tsung-Jung Ho, Pei-Wei Shueng, Chen-Hsi Hsieh,
Kuo-Shyang Jeng, Gwo-Chin Ma, Ting-Yu Chang,
Han-Sun Chiang, Yi-Tien Lin, Kuo-Jang Kao, Chen-Fang Hung,
I-Mo Fang, Po-Yueh Chen, Kochung Tsui, Pui-Yan Kwok,
Wei-Jen Yao, Shiou-Sheng Chen, Ming Chen, Chih-Yang Huang,
Da-Wei Wang, Chun-houh Chen

Corresponding authors: Wei-Jen Yao: 07568@cych.org.tw; Shiou-Sheng Chen: DAB67@tpech.gov.tw; Ming Chen: mingchenmd@gmail.com;
Chih-Yang Huang: cyhuang@mail.cmu.edu.tw; Da-Wei Wang: wdw@iis.sinica.edu.tw; Chun-houh Chen: cchen@stat.sinica.edu.tw;

[†]These authors contributed equally to this work.

Abstract

DNA sequencing of patients with rare disorders has been highly successful in identifying “causal variants” for numerous conditions. However, there are many reports of healthy individuals who harbor these deleterious variants, leading to the concept of incomplete penetrance and doubt about the utility of genetic testing in clinical practice and population screening. As the deleterious variants are rare, the penetrance of these variants in the population is largely unknown. We analyzed the genetic and clinical data from 486,956 participants of the Taiwan Precision Medicine Initiative (TPMI) to determine the risk difference between those with and without deleterious variants. In all, we analyzed 292 disease-relevant variants and their clinical outcomes to assess their association. We found that only 15 variants show a risk difference exceeding 5% between those with or without the variants. In essence, 87.3% of deleterious variants exhibit minimal risk differences, suggesting a limited impact on the individual and population levels. Our analysis revealed increasing trends with age in six cardiovascular and degenerative diseases and bell-shaped trends in two cancers. Additionally, we identified three clinical outcomes exhibiting a dose-response relationship with the number of deleterious variants. Our findings show that large-scale testing of deleterious variants found in the literature is not warranted, except for those exhibiting large disease risk differences.

Keywords: penetrance, prevalence, TPMI, deleterious variants

1 Introduction

A major advance in clinical genetics has been the identification of “causal variants” in genes responsible for rare genetic disorders by DNA sequencing of the patients.

The success of clinical sequencing has led to the discovery of new genes and deleterious variants for numerous conditions. About 170,000 genetic variants have been determined to be pathogenic or likely pathogenic in ClinVar [1], a database of genetic variation. While these “deleterious variants” fulfill consensus criteria for the designation, there are many reports of healthy individuals with deleterious variants who have never developed the associated conditions, and this leads to the concept of incomplete penetrance [2, 3].

Incomplete penetrance of deleterious variants reduces the predictive power of genetic testing, raising questions about its utility in clinical practice and population screening. Even for well-documented disease-associated variants, the level of risk may be overestimated [4] and this leads to unnecessary procedures, undue anxiety, and healthcare costs. For example, early cancer screening in individuals with deleterious variants in *BRCA1* and *BRCA2* genes can lead to diagnoses of early, curable stage cancers. However, deleterious variants in *BRCA1/2* do not always result in the development of breast or ovarian cancers due to low penetrance [5]. It is therefore important to determine the penetrance and further risk difference of each deleterious variant such that only highly penetrant variants with large risk difference are used in making clinical decisions. With such information, the benefits of genetic testing can be maximized while the undesired impact can be minimized.

There have been many studies conducted to quantify the penetrance of deleterious variants [6, 7]. In a recent study, Forrest et al. investigated the population-based penetrance of clinical variants and found that the estimated penetrance of pathogenic or loss-of-function variants was generally low [8]. However, the studies to-date are on European cohorts, and a comprehensive study focused on penetrance within the Asian population remains conspicuously absent. In this study, we analyzed genetic and clinical data from 486,956 participants in the Taiwan Precision Medicine Initiative (TPMI) to determine the penetrance of 292 selected deleterious variants. Those variants had robust genotyping precision and were annotated with clinical phenotypes. We further determined the risk difference based on penetrance and prevalence to infer the influence of deleterious variants on a population level. Our study is the largest of its kind and our results point to the limited utility of population screening of most of the 292 deleterious variants in asymptomatic Han Chinese individuals.

2 Results

2.1 Overview

We summarized the penetrance and prevalence of the 292 selected deleterious variants, along with their associated genes, disease annotations, phenotype categories, and age dependency in Figure 1. Detailed information on the 292 selected variants can be found in Supplementary Table S1, and the curation criteria can be found in Supplementary Figure S1. Since we mainly consider the influence of the deleterious variants on a population level, we present the risk difference (RD) of penetrance and prevalence on the same scale. Figure 2 shows that only 5.2% of the deleterious variants have large RDs (i.e., $RD > 5\%$). If we consider inheritance patterns, then only 2.5% of the dominant variants and 8.9% of the recessive variants have large RDs. For this

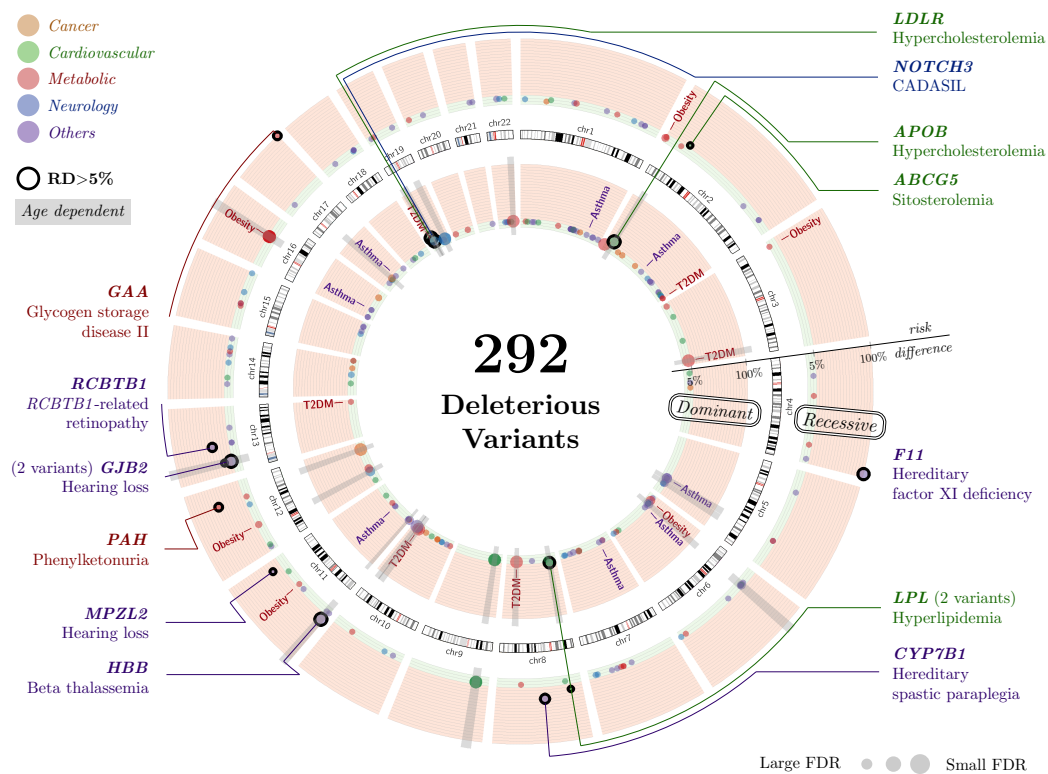


Fig. 1: Overview of the 292 deleterious variants. We illustrated the characteristics of the 292 deleterious variants on the Circos plot. Among them, 163 variants of the dominant pattern were placed in the inner circle, and 123 variants of the recessive pattern in the outer circle. Notice that 54 variants are analyzed as both patterns and 60 recessive variants have no BB-carriers in our study. The circle's height indicates the risk difference scale, where the $< 5\%$ region is colored green and $> 5\%$ colored red. The colors of the variants represent their phenotype categories; the age dependency and diseases with dose-response are also annotated. Gene names for the 15 variants with $RD > 5\%$ are listed.

report, autosomal dominant (AD), X-linked dominant (XLD), mitochondrial (MT), and X-linked recessive in males (XLR-male) conditions are categorized as part of the dominant pattern, since one mutant allele is sufficient to induce the outcome; autosomal recessive (AR) and XLR in females (XLR-female) are part of the recessive pattern, since mutations in both copies of the gene in question are required for the outcome. Supplementary Figure S2 depicts the RD density of variants for different inheritance patterns.

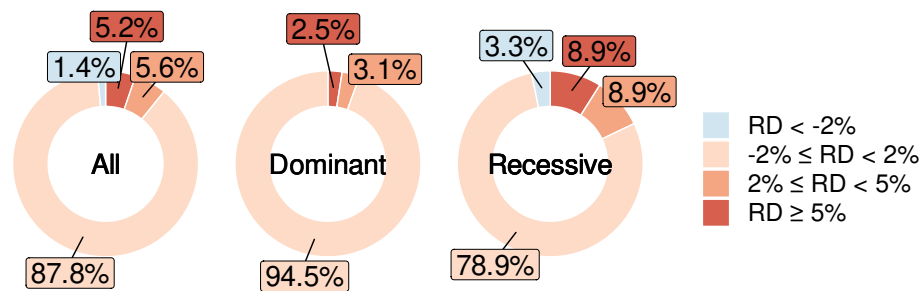


Fig. 2: Donut charts of the deleterious variants. The inheritance patterns of 54 variants remain uncertain; in that case, we calculated these variants for both patterns (i.e., “as AR” or “as AD” in Supplementary Table S1). Then, 4 out of the 163 dominant variants (2.5%) had large RDs, and 11 out of the 123 recessive variants (8.9%) had large RDs.

Table 1 tabulates the exact numbers of affected individuals and their genotypes for the 15 gene variants where RD is > 5%. Of the 15 variants, 11 are AR variants: *F11* (rs770505620, RD=1.00), *GAA* (rs577915581, RD=1.00), *PAH* (rs76687508, RD=0.50), *RCBTB1* (rs777630688, RD=0.33), *CYP7B1* (rs200737038, RD=0.25), *MPZL2* (rs146689036, RD=0.21), *GJB2* (rs80338943, RD=0.19), *HBB* (rs34451549, RD=0.16), *LPL* (rs145657341, RD=0.14), *ABCG5* (rs119480069, RD=0.09), and *GJB2* (rs72474224, RD=0.07). Malfunction of these genes leads to relatively rare, and serious diseases, such as hereditary factor XI deficiency, Pompe disease, phenylketonuria, and *RCBTB1*-related retinopathy. Among the AR variants, 4 of them have a large false discovery rate (FDR), indicating the uncertainty of penetrance estimates due to the rare conditions. The 4 AD variants are in genes *LDLR* (rs730882109, RD=0.13), *APOB* (rs144467873, RD=0.12), *LPL* (rs371282890, RD=0.06), and *NOTCH3* (rs201118034, RD=0.06). Malfunction of these genes leads to relatively common, and mild diseases, such as hypercholesterolemia and hyperlipidemia. Of note, only 4 of the 15 deleterious variants are annotated in both InterVar and ClinVar, and 2 out of the 4 are also annotated in the TPMI expert panel. These results point to the diversity of clinical impact between different populations.

We then investigated the 68 variants suggested by the TPMI expert panel (found in Supplementary Table 1). Considering the inheritance patterns of the 68 variants, 48 are AR variants and 6 are XLR-female variants (recessive pattern, 79.4% of total, mean RD=5.5%), while 8 are AD variants and 6 are XLR-male variants (dominant pattern, 20.6% of total, mean RD=2.9%). Only seven variants have large RD (5 of them are also found in ClinVar or InterVar). Variants rs730882109 in *LDLR* and rs144467873 in *APOB* are annotated only in the TPMI expert panel.

Table 1: Deleterious variants with large risk differences. We listed the exact numbers to calculate the prevalence and penetrance for the 15 deleterious variants with $RD > 5\%$. If the population scale is around 44000, the variant was identified from TPM1 and TPM2 chips. Otherwise, the variant was identified from the TPM2 chip alone. The nominal p -values were calculated by Fisher's exact test (data not shown here, can be found in Supplementary Table S1), and the FDR values were calculated by BH method [9]. Variants with $FDR > 0.01$ were highlighted.

SNP ID	Gene Name	MAF ¹ (%)	Inheritance Pattern	Affected		Affected BB ²	Prevalence	Penetrance	Risk Difference ³	FDR ⁴	Associated Disease
				AA ²	AB ²						
rs770505620	<i>FH1</i>	0.00170	AR	5/442715	0/1506	2/2	0.00	100.00	100.00	2.25e-09	Hereditary factor XI deficiency
rs577915581	<i>GAA</i>	0.00239	AR	18/305348	3/1466	1/1	0.01	100.00	99.99	4.87e-04	Glycogen storage disease II
rs76687508	<i>PAH</i>	0.00245	AR	7/442185	1/2169	1/2	0.00	50.00	50.00	2.80e-04	Phenylketonuria
rs777630688	<i>RC3TB1</i>	0.00254	AR	258/442022	0/2249	2/6	0.06	33.33	33.28	4.07e-05	Rc3tb1-related retinopathy
rs200737038	<i>CYP7B1</i>	0.00399	AR	40/440753	0/3532	2/8	0.01	25.00	24.99	2.25e-06	Hereditary spastic paraplegia
rs146689036	<i>MPZL2</i>	0.00409	AR	11302/304446	96/2496	2/8	3.71	25.00	21.29	1.81e-01	Hearing loss
rs80338943	<i>GJB2</i>	0.00660	AR	17931/438487	275/5839	3/13	4.10	23.08	18.98	8.39e-02	Hearing loss
rs34451549	<i>HBB</i>	0.00275	AR	90/435568	43/2346	5/31	0.03	16.13	16.10	5.32e-12	Beta thalassemia
rs145657341	<i>LPL</i>	0.00185	as AR	159191/442756	671/1639	1/2	35.97	50.00	14.03	1.00e-00	Hyperlipidemia
rs730882109	<i>LDLR</i>	0.00207	AD	158882/442402	902/1836	1/2	35.91	49.13	13.22	3.60e-29	Hypercholesterolemia
rs144467873	<i>APOB</i>	0.00197	AD	159023/442658	830/1740	2/4	35.92	47.71	11.78	3.76e-22	Hypercholesterolemia
rs119480069	<i>APOE5</i>	0.00367	AR	21766/441118	189/3249	1/7	4.94	14.29	9.34	9.19e-01	Sitosterolemia
rs72474224	<i>GJB2</i>	0.09615	AR	9143/250544	1954/53540	296/2731	3.65	10.84	7.19	2.24e-57	Hearing loss
rs371282890	<i>LPL</i>	0.00240	AD	158835/441951	905/2135	0/0	35.94	42.39	6.45	1.01e-08	Hyperlipidemia
rs201118034	<i>NOTCH3</i>	0.00501	AD	7869/439850	339/4414	7/18	1.79	7.81	6.02	6.19e-107	CADASIL

¹Minor Allele Frequency

²A: Major allele, B: Minor allele

³Risk Difference = Penetrance - Prevalence

⁴False Discovery Rate

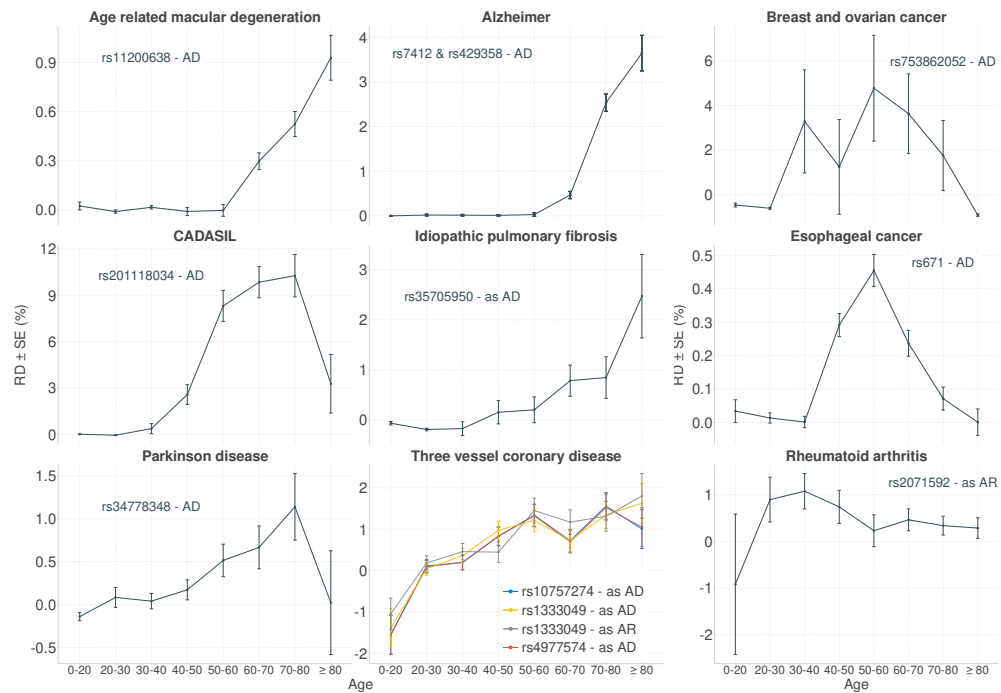
2.2 Age-stratified RD Patterns

As the results suggest, most variants have only small RDs between prevalence and penetrance, indicating that having the deleterious variant or not has only a limited influence on the outcome. Because some diseases may have a late age of onset, and our cohort has a wide range of ages, calculating RD without considering the effect of age may diminish the importance of certain variants. To investigate the influence of deleterious variants at different ages, we stratified the cohort into eight age groups for the analysis, and found three RD patterns to be influenced by age as illustrated in Figure 3.

Six clinical outcomes have an increasing RD pattern with age, indicating that the deleterious variants affect the older age groups. Although these variants have more influence on the elderly, their peak RD is still small, in general. Among the variants of increasing RD, only rs201118034 in *NOTCH3* reaches RD > 10% in CADASIL (Cerebral Autosomal Dominant Arteriopathy with Subcortical Infarcts and Leukoencephalopathy) at ages 60-80. Other variants with higher RD for the elderly have limited influence on disease (i.e., the highest RD in the onset group is still < 5%). Two cancers have a bell-shaped RD pattern, indicating that middle-aged individuals are more vulnerable to deleterious variants. We also found that individuals in their early adulthood are more vulnerable to the deleterious variant leading to rheumatoid arthritis. Among the three bell-shaped variants, only rs753862052 in *RAD51D* has a large RD for breast and ovarian cancer. Four clinical outcomes have a decreasing pattern for RD, indicating that younger people are more vulnerable to deleterious variants. Among the variants of decreasing RD, only rs34451549 in *HBB* is a recessive variant and has a large RD at ages 20-30; this variant is associated with beta thalassemia. The other six are dominant variants: rs371282890 and rs145657341 in *LPL* have large risk differences in hyperlipidemia at ages 0-30; rs137852331, rs72554664, and rs72554665 in *G6PD* also have large risk differences in glucose-6-phosphate dehydrogenase deficiency at ages 0-30. Figure 3 shows the outcomes with clear differences between the age groups (i.e. relative RD scale = $|\max(\text{RD}) - \min(\text{RD})|/\text{median}(\text{RD}) \geq 3$); Supplementary Figure S4 shows the RD patterns of all the outcomes.

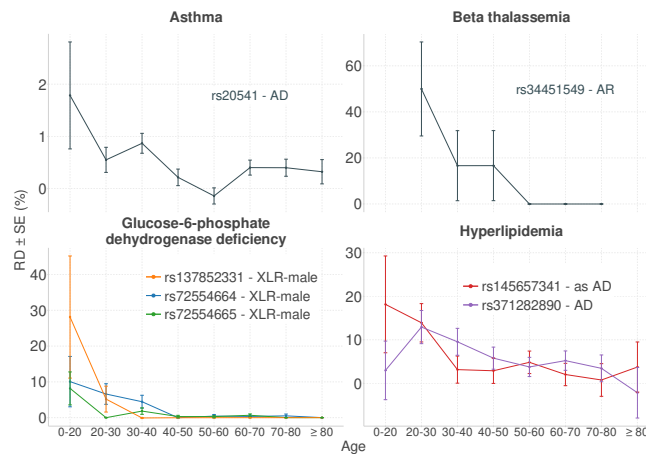
2.3 Dose–Response Relationship between Variants and Risks

Clinical outcomes usually involve intricate mechanisms; therefore, disease syndromes are generally polygenic. To examine whether those with more deleterious variants are more likely to develop the disease, we investigated the dose-response relationship between the number of variants and the risk of disease. Figure 4 shows that the risks of developing obesity, asthma, and type 2 diabetes mellitus increase with the number of variants possessed. However, comparing with non-carrier, having more than 5 variants only increases 1-3% of risk. Additionally, obesity and asthma have higher risks in the younger population, but type 2 diabetes mellitus has a higher risk in the older population. Type 2 diabetes mellitus is also the only disease that has a conspicuous risk difference between the younger and the older population. Other diseases without a clear dose-response relationship can be found in Supplementary Figure S5.



(a) Increasing

(b) Bell-shaped



(c) Decreasing

Fig. 3: Three age-stratified RD patterns. We selected the variants with more than 30 carriers and analyzed the variants with $RD > 5\%$ or $FDR < 0.01$. For each variant, we calculated the *relative RD scale* among the age group (i.e., $|\max(RD) - \min(RD)|/\text{median}(RD)$).

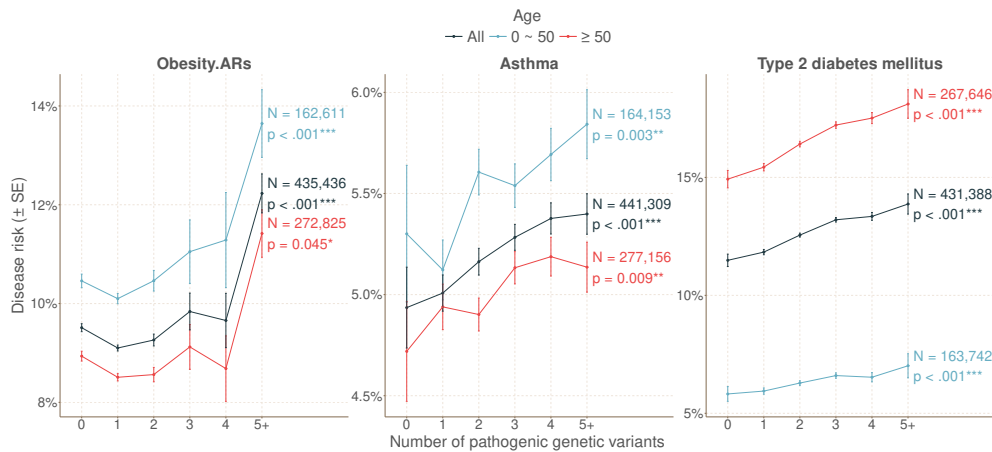


Fig. 4: Dose-Response relationship between Variants and Risks. Three diseases associated with > 5 deleterious variants with significant p -values of dose-response relationship. The p -values are calculated using the Cochran-Armitage trend test. Compared to non-carriers (0), the risk of developing the disease increases by 1-3% for those possessing more than 5 variants (5+).

2.4 Phenotype Category

Supplementary Figure S3 shows the violin plots of deleterious variants on penetrance and prevalence for five phenotype categories. Among the 15 variants in Table 1, 5 are related to cardiovascular diseases (belong to *LDLR*, *APOB*, *ABCG5*, and two variants in *LPL*); two to metabolic diseases (*GAA* and *PAH*); and one to neurology diseases (*NOTCH3*). Among the 55 variants with $FDR < 0.01$ in Supplementary Table S1, 2 are related to cancer, 10 to cardiovascular diseases; 26 to metabolic diseases; and 4 to neurology diseases. The two variants related to cancers, *RAD51D* and *ALDH2*, are the variants with bell-shaped age dependency in Figure 3; and the four variants related to neurology diseases, *NOTCH3*, *LRRK2*, and two variants in *APOE*, all show an increasing age effect. Variants related to the well-known cancer predisposition gene *BRCA1* and *BRCA2* are not included in our initial 292 variants because they do not meet the MAF and NGS concordance criteria (Supplementary Figure S1).

3 Methods

3.1 Study population

The TPMI is a nationwide research project encompassing 486,956 individuals with both genetic profiles and clinical data from 16 hospital systems across Taiwan [10–12]. Participants provided their informed consent for SNP genotyping and access to their electronic medical records (EMRs) at the recruitment hospitals. The dataset integrates comprehensive demographic, medical, and genotyping information. The TPMI participants were genotyped on the customized Taiwan Precision Medicine chips, TPM1 and

TPM2 Axiom Arrays (Thermo Fisher Scientific), designed jointly with the Taiwan Biobank. Whole-genome genotyping was performed using the TPM1 array for 165,666 participants and the TPM2 array for 321,360 participants, with 70 individuals having data available from both arrays. The TPM1 and TPM2 chips target 686,439 and 725,936 genetic loci, respectively, designed specifically to capture the genetic diversity of the Han Chinese population. This study was granted by the Ethics Committees of Academia Sinica and the participating hospitals of the TPMI. Rigorous quality control measures were implemented to exclude samples with discrepancies between genetic and documented sex, as well as any duplicates.

3.2 Variant curation and annotation

To study the clinical impact and penetrance of potential actionable genomic findings of the overlapping markers on TPM1 and TPM2 Axiom Array, we curated the clinically actionable variants, including pathogenic (P), likely pathogenic (LP) variants and risk variants annotated by ClinVar and InterVar, and known disease-related variants in Taiwanese chosen by a TPMI expert panel. The P/LP variants were extracted from ClinVar [1] (2023-06-17 release) and InterVar [13] (2022-06-13 release), and the risk variants annotated by ClinVar were also included. The list of the known disease-related variants in Taiwanese was curated by TPMI experts, including variants used for the molecular diagnosis of diseases, founder mutations of common inheriting diseases, and common disease-relevant variants.

The genes of all the variants studied were mapped onto ref gene from the UCSC genome browser [14] (<https://genome.ucsc.edu/>), and the related disease were obtained from the American College of Medical Genetics Secondary Findings v3.2 list [15] (ACMG), ClinGen Actionability Reports [16], ClinVar, Online Mendelian Inheritance in Man [17] (OMIM, <https://www.omim.org/>) and Orphanet [18] (<https://www.orpha.net/consor/cgi-bin/index.php>). The inheritance patterns of the diseases were extracted from OMIM, Orphanet, and MedlinePlus [19] (<https://medlineplus.gov/>). The Phenotype Categories of the diseases were obtained from ACMG, Orphanet, and MedlinePlus. The ICD-10 codes of each pathological condition were assigned based on the information from Health Promotion Administrative (HPA), Taiwan Foundation of Rare Disorders (TFRD), The American Academy of Ophthalmology (AAO), Orphanet, and TPMI clinical experts. The compilation includes only those variants that align with both the disease names and ICD-10 codes, accompanied by a documented mode of inheritance. The 292 variants in the final list (Supplementary Table S1) required an overall call rate > 95%, minor allele frequency (MAF) $\geq 0.1\%$ (the genotyping accuracy cannot be guaranteed at lower MAF), and next generation sequencing (NGS) concordance ≥ 0.8 , and selection criteria are shown in Supplementary Figure S1.

3.3 Phenotyping of patients

To pinpoint patients diagnosed with specific diseases, we employed ICD-10 codes. The case group is defined based on the inclusion of a minimum of one diagnostic code

entry within the medical documentation, originating from outpatient, inpatient, emergency, surgical, or medical imaging report records. Individuals who do not meet the specified criteria for any of the phenotypes are classified as the control group. For five specific phenotypes—hyperlipidemia, hypercholesterolemia, obesity, type 2 diabetes mellitus, and CADASIL—a mere presence of diagnostic codes was considered insufficient. Instead, these conditions required further qualifications involving additional test results or specific findings in imaging reports to be classified as cases.

The case definition for hyperlipidemia and hypercholesterolemia is not only based on their respective ICD-10 codes but also required at least one instance of documented biochemical markers showing total cholesterol (TC) ≥ 200 mg/dl, triglycerides (TG) ≥ 130 mg/dl, or low-density lipoprotein cholesterol (LDL-C) ≥ 190 mg/dl. Similarly, for obesity, a body mass index (BMI) of ≥ 30 kg/m² is required in addition to the diagnostic codes. Type 2 diabetes mellitus cases are confirmed with both the ICD-10 codes and a hemoglobin A1c (HBA1c) test result $> 6.5\%$. CADASIL requires not just the ICD-10 codes but also the presence in imaging reports of terms such as "lacune", "lacunar infarction", "small vessel", "white matter hyperintensity", "leukoaraiosis", "microbleed", "small infarct", or "white matter lesion" documented at least once in brain computed tomography (CT) or brain magnetic resonance imaging (MRI) scans.

3.4 Statistical analysis

Definitions of Carrier and Non-Carrier, and Quantification of Penetrance and Prevalence

The estimation of penetrance focused on quantifying disease prevalence among carriers, while prevalence indicated the proportion of disease occurrence among non-carriers. The definition of "carrier" and "non-carrier" varied depending on the specific mode of inheritance for each disease [8]. In the context of inheritance modes such as autosomal dominant (AD), non-specific patterns (either dominant or recessive) X-linked (XL), X-linked dominant (XLD), and mitochondrial (MT), individuals carrying at least one minor allele were designated as "carriers", while the remaining individuals were referred to as "non-carriers". For autosomal recessive (AR), individuals required two minor alleles to be considered "carriers". Concerning X-linked recessive (XLR) inheritance, we performed gender-specific analyses. For males, carriers of XLR were defined as individuals with a deleterious allele, while for females, carriers of XLR were those with homozygous deleterious alleles; the rest were classified as non-carriers.

Assessing the Impact of Genetic Variants on Phenotypes

To ascertain the significance of variant effects on their respective diseases, we employed Fisher's exact test using a 2×2 contingency table (comprising carriers/non-carriers versus affected/unaffected individuals). For a deeper insight into the variant effect, we employed the risk difference (the difference between penetrance and prevalence) to investigate the significance of each variant. All graphical representations and statistical analyses were performed using R version 4.3.3.

Donut charts of RD distribution.

To elucidate the distribution of RDs across the studied genetic variants, we utilized donut charts. These charts categorize the variants into defined RD ranges and visually represent these categories as proportions of the total.

Variants were categorized into four groups based on their RD values:

- **RD < -2%:** Variants in this group suggest a decreased prevalence of disease among carriers compared to non-carriers.
- **-2% ≤ RD < 2%:** This range includes variants with negligible impact on disease risk.
- **2% ≤ RD < 5%:** Variants in this category have a moderate increase in disease prevalence among carriers.
- **RD ≥ 5%:** These variants are associated with a substantial increase in disease risk, highlighting their potential importance in genetic screening and clinical interventions.

The analysis covered 292 unique variants, of which 232 displayed distinct RD values. Among these, the inheritance patterns were classified based on the variant's impact in monoallelic (dominant) or biallelic (recessive) conditions:

- **Dominant (163 variants):** Includes variants associated with autosomal dominant (AD), mitochondrial (MT), X-linked (XL), and X-linked recessive in males (XLR-male) inheritance patterns. For these variants, possessing one mutant allele is enough to influence the phenotype.
- **Recessive (123 variants):** Comprises variants associated with autosomal recessive (AR) and X-linked recessive in females (XLR-female) inheritance patterns. These variants require two mutant alleles to affect the phenotype.

Age-stratified RD analysis.

Understanding the age-specific impacts of genetic variants on their associated phenotypes is crucial, given that many diseases have age-dependent onsets and progressions. By conducting age-stratified RD analyses, we aim to reveal whether certain variants have disproportionate effects on disease risk at particular stages of life. This is particularly pertinent for conditions with known age of onset, where variants might exhibit significant influence in specific age brackets. First, we selected variants from the cohort that exceeded 30 carriers, targeting those with an RD greater than 5% or an FDR less than 0.01. This stringent selection process was employed to isolate variants that are statistically significant or carry potential clinical importance. Inclusion of variants with an FDR less than 0.01 allows for the consideration of those that are statistically significant but might not show a broad RD greater than 5%. This inclusion criteria ensures we do not overlook variants that, while not broadly impactful, may exhibit significant RD variations in restricted age groups. For each selected variant, we computed the relative RD scale among the age groups, defining it as $|\max(\text{RD}) - \min(\text{RD})| / \text{median}(\text{RD})$. This measure helped us to identify and illustrate the extent of RD variation across different age categories. Diseases with a relative RD scale larger than 3 were emphasized in Figure 3, signifying considerable fluctuations in risk which may provide insights into

age-specific genetic influences. By adopting a threshold that brings out the most pronounced RD variations, we aimed to prioritize findings that could indicate important age-related changes in disease risk profiles. Comprehensive results, capturing the entire spectrum of relative RD scale values, have been detailed in Supplementary Figure S4 for extended analysis and complete representation of the data.

Dose–response analysis between variants and risk.

We conducted dose–response analyses to investigate the potential correlation between the number of genetic variants and the disease risk. This analysis included diseases associated with more than five variants identified by both TPM1 and TPM2 chips. The statistical significance of the trends was assessed using the Cochran-Armitage trend test, which is specifically designed for ordered alternatives, making it suitable for evaluating trends across ordered groups of variant counts. The primary goal was to determine whether an increase in variant count is associated with an increase in disease risk, particularly examining if this trend persists across different age groups. Given the onset of many genetic disorders varies significantly with age, it is crucial to understand how these associations change with age. Therefore, we analyzed both overall trends and stratified the data by age groups (above and below 50 years) to assess whether the observed dose–response relationships were consistent across different age groups.

The diseases associated with more than five variants were selected for detailed analysis, including obesity (analyzed as ADs and ARs), breast and ovarian cancer (analyzed as ADs and ARs), asthma, Type 2 diabetes mellitus, Glucose-6-phosphate dehydrogenase deficiency, and retinitis pigmentosa (analyzed as ADs and ARs). The terms as ADs and as ARs refer to analyses conducted under the assumption that the unclear inheritance patterns of some variants were either autosomal dominant (AD) or autosomal recessive (AR), respectively. Diseases such as Glucose-6-phosphate dehydrogenase and retinitis pigmentosa were included in the initial analysis phase but were excluded due to the absence of patients with more than one variant. Only diseases that demonstrated a significant overall dose–response relationship were highlighted in Figure 4, ensuring the findings reflect substantial and clinically relevant variant–disease associations. All analysis results, including both significant and non-significant outcomes, are detailed in supplementary Figure S5.

4 Discussion

With the ever-increasing number of deleterious variants identified by clinical sequencing of patients with rare diseases, and the push to sequence “everyone” to incorporate genetic information in clinical practice, assessing the real disease risk in asymptomatic individuals with deleterious variants is of great clinical importance. As the deleterious variants are usually rare, only large cohort studies have sufficient power to provide evidence for disease risk levels relevant in clinical practice. In this study, we compared the penetrance and prevalence of 292 deleterious variants in a cohort of 486,956 individuals in the TPM1 and found that only 15 variants have RD > 5% between those with and without the deleterious variants. Specifically, 94.8% of the deleterious or loss of function variants found in the databases have limited impact in the Han Chinese

population. Even if we only consider the 68 clinical variants suggested by the TPMI expert panel, 89.7% of the variants have $RD < 5\%$. Similar results were presented in a previous study using BioMe and UK Biobank, where 89% of the variants have $RD < 5\%$ [8]. These results clearly indicate that most deleterious variants found in patients with rare diseases (and published in peer reviewed journals or submitted to databases such as ClinVar) do not exhibit a significant effect on asymptomatic individuals or the population as a whole.

For the small number of deleterious variants with significant risk differences, most of them cause severe AR diseases. For example, the top three AR variants are related to hereditary factor XI deficiency, Pompe disease, and phenylketonuria, all of which lack curative treatments and rely on symptomatic therapies to prevent excessive bleeding [20], glycogen buildup [21], or irreversible mental disability [22]. Additionally, the average risk difference is notably higher in recessive diseases ($RD = 0.0327$) compared to dominant diseases ($RD = 0.0040$), highlighting the considerable influence of inheritance patterns on the transmission of deleterious variants in the population. Despite the severity of AR-associated diseases, affected individuals represent a small fraction of the population, as the recessive pattern requires two alleles for trait manifestation. For example, only two out of approximately four hundred thousand participants in the TPMI cohort inherit the top-ranked homozygous variant rs770505620. On the contrary, three of the four autosomal dominant (AD) variants in Table 1 are associated with relatively mild conditions such as hypercholesterolemia and hyperlipidemia compared to AR-inherited diseases.

The variant rs201118034 (p.R544C) (Table 1) deserves our attention for several reasons. First, as an AD variant in the *NOTCH3* gene, an individual who inherited one copy of the mutated gene from either parent is supposed to develop the associated adult-onset condition, CADASIL, a hereditary small vessel disease of the brain with stroke as a defining symptom [23, 24]. Second, approximately 1% of individuals in Taiwan carry the rs201118034 variant (1% in the TPMI cohort, 0.9% in the Taiwan Biobank cohort [23]), and now our result showed that carriers of rs201118034 variant face a risk difference of roughly 6% compared to non-carriers (Table 1), the risk difference even reaches to 10% at ages 60-80 (Figure 3(a)). Because there is no cure for CADASIL, genetic counseling and health management measures that delay disease onset are the best course of action to reduce the burden of disease in the population. Third, mutations in the *NOTCH3* gene can also lead to cognitive impairment and other neurological deficits beyond stroke, underscoring the multifaceted impact of this genetic variant on cognitive functions [25, 26]. Fourth, understanding and monitoring the implications of rs201118034 is essential for effective management and intervention strategies to mitigate the risks associated with CADASIL and its broader neurological manifestations.

In addition to CADASIL, Alzheimer's and Parkinson's disease also showed conspicuous increases in risk differences with age (Figure 3(a)), suggesting that not only aging itself plays a key risk factor for neurodegenerative diseases [27, 28], but the risk increases even more with age if one carries certain deleterious variants. We can draw a similar conclusion on three vessel coronary disease, as the risk differences of four related variants also increase with age (Figure 3(a)). A similar study of a multicenter case

cohort also observed an increase in penetrance with age in cardiovascular disease [29]. The rationale behind the increasing RD pattern can be easily comprehended. In the context of neurodegenerative diseases, the accumulation of misfolded proteins, oxidative stress, and inflammation are prominent features of aging brains [27, 28]. Similarly, in cardiovascular diseases, the arteries become less flexible and more prone to plaque build-up with age, leading to reduced blood flow and an increased risk of cardiovascular events [30]. Our results pointed out that carrying certain deleterious variants worsens the clinical conditions while aging. Cancers, in general, also have increased risks with age [31], but Figure 3(b) depicted a bell-shaped pattern for breast and ovarian cancer, and esophageal cancer. We noticed that screening practices may also influence the observed risk across age groups and may result in bell-shaped or decreasing RD patterns. For example, in Taiwan, the newborn screening for *G6PD* deficiency became a regular test in 1987, and the screening rate reached 99% in 1996; breast cancer is also routinely screened since the government provides free mammography screening for women at 45-70 ages [32].

Finally, we explored the dose-response relationship between the number of variants and disease risk. While previous studies primarily focused on this relationship within different alleles of the same gene, comparing the effects of heterozygous and homozygous variants, comprehensive analyses encompassing both genome-wide and phenome-wide perspectives have been limited. In our study, we identified three polygenic diseases — obesity, asthma, and type 2 diabetes mellitus — that exhibit a dose-response relationship with the number of associated variants. Among the 18 variants associated with obesity, the top 1 to 12 belongs to the *FTO* gene, which not only increases body and fat mass but also affects food intake [33]. While none of these 18 variants individually demonstrate large risk differences, individuals carrying 5 or more variants exhibit a significantly higher average risk difference compared to non-carriers, consistent with previous research findings [34]. Similar observations were made in asthma, where 9 variants, including 3 belonging to interleukin genes, were associated with the disease, supporting the presence of a polygenic effect, as suggested in previous studies [35]. Type 2 diabetes mellitus also displays a polygenic nature with a dose-response effect, where different sets of variants can lead to distinct etiologies [36]. Among the 9 associated variants, the top variants belong to *TCF7L2*, *IGF2BP2*, and *SLC30A8*, genes that influence insulin secretion [37–39]. Our findings further reveal that the elderly population exhibits a stronger dose-response effect on Type 2 diabetes than younger individuals, highlighting the intricate relationship between aging and the penetrance of variants.

5 Conclusion

With the exception of 15 deleterious variants, our analysis of 292 deleterious variants in 486,956 Han Chinese individuals in Taiwan shows that the vast majority of deleterious variants identified in patients with rare diseases confer minimal added risk to those with the risk variant in the general population. This finding has several implications. First, genetic testing of most deleterious variants found in ClinVar or the literature in

the general population will have no impact on individual or population health management. Second, identifying protective or modifying genetic factors in asymptomatic individuals with deleterious variants will likely lead to useful insights into the diseases in question. Third, in several adult-onset diseases, the risk difference exhibits an age-related increasing trend. Fourth, three conditions display a dose-response relationship with the number of deleterious variants present in a patient. Overall, we have conducted the largest study on the penetrance of deleterious variants to-date and laid the foundation for risk assessment for these variants in the clinical setting.

Supplementary information. Supplementary information includes a list of 292 deleterious variants in a csv file (Table S1), and a pdf file containing demographic characteristics of the TPMI Biobanks (Table S2), variant curation of the 292 deleterious variants (Figure S1), RD distribution of the 292 deleterious variants (Figure S2), Violin plots of the 292 deleterious variants (Figure S3), age-stratified RD patterns (Figure S4), and dose-response relationship of the selected variants and disease risks (Figure S5).

Declarations

- Conflict of interest/Competing interests: The authors declare no conflict of interest or competing interests.
- Funding. This study was supported by the following agencies (grant numbers): Academia Sinica (40-05-GMM, AS-GC-110-MD02, 236e-110020) and National Development Fund, Executive Yuan (NSTC 111-3114-Y-001-001).
- Ethics approval. This study was approved by the Institutional Review Boards of 17 institutes: 1. Academia Sinica (AS-IRB01-18079), 2. Taipei Veterans General Hospital (2020-08-014A), 3. National Taiwan University Hospital (201912110RINC), 4. Tri-Service General Hospital (2-108-05-038), 5. Chang Gung Memorial Hospital (201901731A3), 6. Taipei Medical University Healthcare System (N202001037), 7. Chung Shan Medical University Hospital (CS19035), 8. Taichung Veterans General Hospital (SF19153A), 9. Changhua Christian Hospital (190713), 10. Kaohsiung Medical University Chung-Ho Memorial Hospital (KMUHIRB-SV(II)-20190059), 11. Hualien Tzu Chi Hospital (IRB108-123-A), 12. Far Eastern Memorial Hospital (110073-F), 13. Ditmanson Medical Foundation Chia-Yi Christian Hospital (IRB2021128), 14. Taipei City Hospital (TCHIRB-10912016), 15. Koo Foundation Sun Yat-Sen Cancer Center (20190823A), 16. Cathay General Hospital (CGH-P110041), 17. Fu Jen Catholic University Hospital (FJUH109001).
- Data availability. The genotyping and electronic medical record (EMR) data analyzed in this study are from the Taiwan Precision Medicine Initiative (TPMI) with proper approval from the TPMI Data Access Committee. In compliance with the confidentiality laws governing genetic and health data in Taiwan, the de-identified TPMI data are kept in a secure server at the Academia Sinica and not released to the public. Researchers requesting access to the individual genotyping and EMR data can do so on a collaborative basis. Instructions on requesting access to the data can be found on the TPMI's official website (<https://tpmi.ibms.sinica.edu.tw/www/en/>).

- Author contribution
 - Conceptualization: Yen-Tsung Huang, Pui-Yan Kwok, En-Yu Lai, Jia-Ying Su, Chun-yu Wei
 - Formal analysis: Jia-Ying Su, En-Yu Lai, Yen-Tsung Huang, Chun-yu Wei
 - Investigation: Hsueh-Ju Lu, Yen-Lin Chen, Chih-Kuang Cheng, Kuan-Chih Chen, Shin-Yee Lim, Yi-Shiuan Shen, Chia-Chia Huang, Yen-Po Wang, Nai-Fang Chi, I-Cheng Lee, Harn-Shen Chen, Yun-Cheng Hsieh, Yi-Chu Liao, Shao-Jung Hsu, Shuo-Ming Ou, Kuan-Lin Lai, Chung-Chi Lin, Yi-Jen Chen, Chia-Ming Chang, Peng-Hui Wang, Yung-Hung Luo, Yun-Ting Chang, Chih-Chiang Chen, Yu-Cheng Hsieh, Yi-Ming Chen, Tzu-Hung Hsiao, Ching-Heng Lin, Yen-Ju Chen, I-Chieh Chen, Chien-Lin Mao, Shu-Jung Chang, Yen-Lin Chang, Yi-Ju Liao, Chih-Hung Lai, Wei-Ju Lee, Hsin Tung, Ting-Ting Yen, Hsin-Chien Yen, Shy-Shin Chang, Yu-Sheng Chang, Ting-I Lee, Shaoh-Der Yeh, Mei-Yi Wu, Ming-Shun Wu, Lung Wen Tsai, Cai-mei Zheng, Yu-Mei Chien, Tsung-Hsien Lin, Yen-Hsu Chen, Cheng-Che E. Lan, Jeng-Hsien Yen, Wen-Chen Liang, Te-Fu Chan, Shyh-Shin Chiou, Shih-Chang Chuang, Shang-Jyh Hwang
 - Resources: Chien-Hung Chen, Ya-Chung Tian, Chia-Ling Chen, Yao-Fan Fang, Ji-Tseng Fang, Yi-Hao Yen, Wei-Chi Wu, Wen-Shih Huang, Chi-Chin Sun, Wen-Chien Chou, Ching-Hung Lin, Tsung-Hua Yang, Pei-Lin Lee, Ming-Yang Wang, Tsen-Fang Tsai, Tung-Hung Su, Jyh-Ming Liou, Shun-Fa Yang, Chia-Chuan Hsieh, Chih-Chien Sung, Feng-Chih Kuo, Shih-Hua Lin, Dueng-Yuan Hueng, Chien-Jung Lin, Hueng-Yuan Shen, Chang-Hsun Hsieh, Shinn-Zong Ling, Tso-Fu Wang, Tsung-Jung Ho, Pei-Wei Shueng, Chen-Hsi Hsieh, Kuo-Shyang Jeng, Gwo-Chin Ma, Ting-Yu Chang, Han-Sun Chiang, Yi-Tien Lin, Kuo-Jang Kao, Chen-Fang Hung, I-Mo Fang, Po-Yueh Chen, Kochung Tsui
 - Data Curation: Ming-Fang Tsai, Erh-Chan Yeh, Yi-Jung Lin, Yu-Chuang Huang, Wan-Ru Li
 - Writing - Original Draft: Pui-Yan Kwok, Yen-Tsung Huang, En-Yu Lai, Jia-Ying Su
 - Writing - Review & Editing: Jer-Yuarn Wu, Chun-yu Wei, Ling-Hui Li, Cathy S.-J. Fann, Hsin-Chou Yang, Chien-Hsiun Chen, Hung-Hsin Chen, Yi-Min Liu, Ming-Fang Tsai, Erh-Chan Yeh
 - Supervision: Pui-Yan Kwok, Jer-Yuarn Wu, Wei-Jen Yao, Shiou-Sheng Chen, Ming Chen, Chih-Yang Huang, Da-Wei Wang, Chun-houh Chen
 - Project administration: Yi-Min Liu, Tsai-Chuan Chen, Wei-Ting Huang,
 - Funding acquisition: Pui-Yan Kwok

References

- [1] Landrum, M.J., Chitipiralla, S., Brown, G.R., Chen, C., Gu, B., Hart, J., Hoffman, D., Jang, W., Kaur, K., Liu, C., *et al.*: Clinvar: improvements to accessing data. *Nucleic acids research* **48**(D1), 835–844 (2020)
- [2] Raj, A., Rifkin, S.A., Andersen, E., Van Oudenaarden, A.: Variability in gene expression underlies incomplete penetrance. *Nature* **463**(7283), 913–918 (2010)

- [3] Wright, C.F., *et al.*: Incomplete penetrance and variable expressivity: from clinical studies to population cohorts. *Frontiers in Genetics* **13**, 920390 (2022)
- [4] Manrai, A.K., Ioannidis, J.P., Kohane, I.S.: Clinical genomics: from pathogenicity claims to quantitative risk estimates. *Jama* **315**(12), 1233–1234 (2016)
- [5] Downs, B., Sherman, S., Cui, J., Kim, Y.C., Snyder, C., Christensen, M., Luo, J., Lynch, H., Wang, S.M.: Common genetic variants contribute to incomplete penetrance: evidence from cancer-free *brca1* mutation carriers. *European Journal of Cancer* **107**, 68–78 (2019)
- [6] Wright, C.F., West, B., Tuke, M., Jones, S.E., Patel, K., Laver, T.W., Beaumont, R.N., Tyrrell, J., Wood, A.R., Frayling, T.M., *et al.*: Assessing the pathogenicity, penetrance, and expressivity of putative disease-causing variants in a population setting. *The American Journal of Human Genetics* **104**(2), 275–286 (2019)
- [7] Shah, R.A., Asatryan, B., Sharaf Dabbagh, G., Aung, N., Khanji, M.Y., Lopes, L.R., Van Duijvenboden, S., Holmes, A., Muser, D., Landstrom, A.P., *et al.*: Frequency, penetrance, and variable expressivity of dilated cardiomyopathy-associated putative pathogenic gene variants in uk biobank participants. *Circulation* **146**(2), 110–124 (2022)
- [8] Forrest, I.S., Chaudhary, K., Vy, H.M.T., Petrazzini, B.O., Bafna, S., Jordan, D.M., Rocheleau, G., Loos, R.J., Nadkarni, G.N., Cho, J.H., *et al.*: Population-based penetrance of deleterious clinical variants. *Jama* **327**(4), 350–359 (2022)
- [9] Benjamini, Y., Hochberg, Y.: Controlling the false discovery rate: a practical and powerful approach to multiple testing. *Journal of the Royal statistical society: series B (Methodological)* **57**(1), 289–300 (1995)
- [10] Yang, H.C., *et al.*: The Taiwan Precision Medicine Initiative: a cohort for large-scale studies. submitted to *BioRxiv*, DOI pending (2024)
- [11] Chen, H.H., *et al.*: Population-specific polygenic risk scores developed for the Han Chinese. submitted to *MedRxiv*, DOI pending (2024)
- [12] Wei, C.Y., *et al.*: Clinical impact of pharmacogenetic risk variants in a large Chinese cohort. submitted to *MedRxiv*, DOI pending (2024)
- [13] Li, Q., Wang, K.: Intervar: clinical interpretation of genetic variants by the 2015 acmg-amp guidelines. *The American Journal of Human Genetics* **100**(2), 267–280 (2017)
- [14] Karolchik, D., Baertsch, R., Diekhans, M., Furey, T.S., Hinrichs, A., Lu, Y., Roskin, K.M., Schwartz, M., Sugnet, C.W., Thomas, D.J., *et al.*: The ucsc genome browser database. *Nucleic acids research* **31**(1), 51–54 (2003)

- [15] Miller, D.T., Lee, K., Abul-Husn, N.S., Amendola, L.M., Brothers, K., Chung, W.K., Gollob, M.H., Gordon, A.S., Harrison, S.M., Hershberger, R.E., *et al.*: Acmg sf v3. 2 list for reporting of secondary findings in clinical exome and genome sequencing: A policy statement of the american college of medical genetics and genomics (acmg). *Genetics in Medicine* **25**(8), 100866 (2023)
- [16] Webber, E.M., Hunter, J.E., Biesecker, L.G., Buchanan, A.H., Clarke, E.V., Currey, E., Dagan-Rosenfeld, O., Lee, K., Lindor, N.M., Martin, C.L., *et al.*: Evidence-based assessments of clinical actionability in the context of secondary findings: Updates from clingen’s actionability working group. *Human mutation* **39**(11), 1677–1685 (2018)
- [17] Hamosh, A., Scott, A.F., Amberger, J.S., Bocchini, C.A., McKusick, V.A.: Online mendelian inheritance in man (omim), a knowledgebase of human genes and genetic disorders. *Nucleic acids research* **33**(suppl.1), 514–517 (2005)
- [18] Weinreich, S.S., Mangon, R., Sikkens, J., Teeuw, M.E., Cornel, M.: Orphanet: a european database for rare diseases. *Nederlands tijdschrift voor geneeskunde* **152**(9), 518–519 (2008)
- [19] Miller, N., Lacroix, E.-M., Backus, J.E.: Medlineplus: building and maintaining the national library of medicine’s consumer health web service. *Bulletin of the Medical Library Association* **88**(1), 11 (2000)
- [20] Zhang, X., Lewandowska, M., Aldridge, M., Iglay, K., Wolford, E., Shapiro, A.: Global epidemiology of factor xi deficiency: a targeted review of the literature and foundation reports. *Haemophilia* **29**(2), 423–434 (2023)
- [21] Stevens, D., Milani-Nejad, S., Mozaffar, T.: Pompe disease: a clinical, diagnostic, and therapeutic overview. *Current treatment options in neurology* **24**(11), 573–588 (2022)
- [22] Blau, N., Van Spronsen, F.J., Levy, H.L.: Phenylketonuria. *The Lancet* **376**(9750), 1417–1427 (2010)
- [23] Lee, Y.-C., Chung, C.-P., Chang, M.-H., Wang, S.-J., Liao, Y.-C.: Notch3 cysteine-altering variant is an important risk factor for stroke in the taiwanese population. *Neurology* **94**(1), 87–96 (2020)
- [24] Tang, S.-C., Chen, Y.-R., Chi, N.-F., Chen, C.-H., Cheng, Y.-W., Hsieh, F.-I., Hsieh, Y.-C., Yeh, H.-L., Sung, P.-S., Hu, C.-J., *et al.*: Prevalence and clinical characteristics of stroke patients with p. r544c notch3 mutation in taiwan. *Annals of clinical and translational neurology* **6**(1), 121–128 (2019)
- [25] Liao, Y.-C., Hsiao, C.-T., Fuh, J.-L., Chern, C.-M., Lee, W.-J., Guo, Y.-C., Wang, S.-J., Lee, I.-H., Liu, Y.-T., Wang, Y.-F., *et al.*: Characterization of cadasil among the han chinese in taiwan: distinct genotypic and phenotypic profiles. *PloS one*

10(8), 0136501 (2015)

- [26] Lin, H.-J., Chen, C.-H., Su, M.-W., Lin, C.-W., Cheng, Y.-W., Tang, S.-C., Jeng, J.-S.: Modifiable vascular risk factors contribute to stroke in 1080 notch3 r544c carriers in taiwan biobank. *International Journal of Stroke* **19**(1), 105–113 (2024)
- [27] Hindle, J.V.: Ageing, neurodegeneration and parkinson’s disease. *Age and ageing* **39**(2), 156–161 (2010)
- [28] Hou, Y., Dan, X., Babbar, M., Wei, Y., Hasselbalch, S.G., Croteau, D.L., Bohr, V.A.: Ageing as a risk factor for neurodegenerative disease. *Nature Reviews Neurology* **15**(10), 565–581 (2019)
- [29] McGurk, K.A., Zhang, X., Theotokis, P., Thomson, K., Harper, A., Buchan, R.J., Mazaika, E., Ormondroyd, E., Wright, W.T., Macaya, D., *et al.*: The penetrance of rare variants in cardiomyopathy-associated genes: A cross-sectional approach to estimating penetrance for secondary findings. *The American Journal of Human Genetics* **110**(9), 1482–1495 (2023)
- [30] North, B.J., Sinclair, D.A.: The intersection between aging and cardiovascular disease. *Circulation research* **110**(8), 1097–1108 (2012)
- [31] DePinho, R.A.: The age of cancer. *Nature* **408**(6809), 248–254 (2000)
- [32] Quality Assurance Programs Provided by Preventive Medicine Foundation. <https://www.qap.tw/en/>. Online; accessed 23 April 2024
- [33] Zhao, X., Yang, Y., Sun, B.-F., Zhao, Y.-L., Yang, Y.-G.: Fto and obesity: mechanisms of association. *Current diabetes reports* **14**, 1–9 (2014)
- [34] Hinney, A., Vogel, C.I., Hebebrand, J.: From monogenic to polygenic obesity: recent advances. *European child & adolescent psychiatry* **19**, 297–310 (2010)
- [35] Sordillo, J.E., Lutz, S.M., Jorgenson, E., Iribarren, C., McGeachie, M., Dahlin, A., Tantisira, K., Kelly, R., Lasky-Su, J., Sakornsakolpat, P., *et al.*: A polygenic risk score for asthma in a large racially diverse population. *Clinical & Experimental Allergy* **51**(11), 1410–1420 (2021)
- [36] Pearson, E.R.: Type 2 diabetes: a multifaceted disease. *Diabetologia* **62**(7), 1107–1112 (2019)
- [37] Gloyn, A.L., Braun, M., Rorsman, P.: Type 2 diabetes susceptibility gene tcf7l2 and its role in β -cell function. *Diabetes* **58**(4), 800 (2009)
- [38] Regué, L., Wang, W., Ji, F., Avruch, J., Wang, H., Dai, N.: Human t2d-associated gene imp2/igf2bp2 promotes the commitment of mesenchymal stem cells into adipogenic lineage. *Diabetes* **72**(1), 33–44 (2023)

- [39] Dwivedi, O.P., Lehtovirta, M., Hastoy, B., Chandra, V., Krentz, N.A., Kleiner, S., Jain, D., Richard, A.-M., Abaitua, F., Beer, N.L., *et al.*: Loss of znt8 function protects against diabetes by enhanced insulin secretion. *Nature genetics* **51**(11), 1596–1606 (2019)

Authors' Affiliations

Yen-Tsung Huang^{1,2,3}, En-Yu Lai¹, Jia-Ying Su^{1,2}, Hsueh-Ju Lu^{4,5}, Yen-Lin Chen⁶, Jer-Yuarn Wu⁷, Chun-yu Wei^{7,8}, Ling-Hui Li⁷, Cathy S.-J. Fann⁷, Hsin-Chou Yang^{1,9}, Chien-Hsiun Chen⁷, Hung-Hsin Chen⁷, Yi-Min Liu⁷, Ming-Fang Tsai⁷, Erh-Chan Yeh⁷, Chih-Kuang Cheng¹⁰, Yen-Po Wang^{11,12}, Nai-Fang Chi^{13,14}, I-Cheng Lee^{11,12}, Harn-Shen Chen^{15,12}, Yun-Cheng Hsieh^{11,12}, Yi-Chu Liao^{13,14,16}, Shao-Jung Hsu^{11,12}, Shuo-Ming Ou^{17,12,18}, Kuan-Lin Lai^{13,14,19}, Chung-Chi Lin^{11,12}, Yi-Jen Chen^{20,21,18}, Chia-Ming Chang^{20,21}, Peng-Hui Wang^{20,18}, Yung-Hung Luo^{22,23,18}, Yun-Ting Chang^{24,23}, Chih-Chiang Chen²⁴, Yu-Cheng Hsieh^{25,26,27}, Yi-Ming Chen^{25,26}, Tzu-Hung Hsiao²⁵, Ching-Heng Lin²⁵, Yen-Ju Chen²⁵, I-Chieh Chen²⁵, Chien-Lin Mao²⁵, Shu-Jung Chang²⁵, Yen-Lin Chang²⁸, Yi-Ju Liao²⁸, Chih-Hung Lai²⁹, Wei-Ju Lee^{30,26}, Hsin Tung^{30,26}, Ting-Ting Yen³¹, Hsin-Chien Yen³², Shy-Shin Chang^{33,34}, Yu-Sheng Chang^{35,36}, Ting-I Lee^{37,38}, Shaoh-Der Yeh^{39,40}, Mei-Yi Wu^{41,42,43}, Ming-Shun Wu^{44,45,46}, Lung Wen Tsai^{47,48,49}, Cai-mei Zheng^{42,41,43}, Yu-Mei Chien³⁸, Tsung-Hsien Lin^{50,51}, Yen-Hsu Chen^{52,53,54}, Cheng-Che E. Lan^{55,56,57}, Jeng-Hsien Yen^{58,59,60}, Wen-Chen Liang^{61,62,63}, Te-Fu Chan^{64,65,66}, Shyh-Shin Chiou^{67,68,69}, Shih-Chang Chuang^{70,71}, Shang-Jyh Hwang^{72,73,74}, Yi-Jung Lin⁷, Yu-Chuang Huang⁷, Wan-Ru Li⁷, Tsai-Chuan Chen⁷, Wei-Ting Huang⁷, Kuan-Chih Chen⁷, Shin-Yee Lim⁷, Yi-Shiuan Shen⁷, Chia-Chia Huang⁷, Chien-Hung Chen⁷⁵, Ya-Chung Tian^{76,77}, Chia-Ling Chen^{78,79}, Yao-Fan Fang⁸⁰, Ji-Tseng Fang^{81,82}, Yi-Hao Yen⁸³, Wei-Chi Wu^{84,85}, Wen-Shih Huang^{86,87}, Chi-Chin Sun^{88,89}, Mei-Jyh Chen^{90,91,92}, Ching-Hung Lin^{93,94,95}, Tsung-Hua Yang^{96,97}, Pei-Lin Lee^{98,99,91}, Ming-Yang Wang^{100,101,95}, Tsen-Fang Tsai^{102,103}, Tung-Hung Su^{99,104}, Jyh-Ming Liou^{99,91,105}, Shun-Fa Yang^{106,107}, Chia-Chuan Hsieh¹⁰⁸, Chih-Chien Sung¹⁰⁹, Feng-Chih Kuo¹¹⁰, Shih-Hua Lin¹⁰⁹, Dueng-Yuan Hueng^{111,112}, Chien-Jung Lin¹¹³, Hueng-Yuan Shen¹¹⁴, Chang-Hsun Hsieh¹¹⁰, Shinn-Zong Lin^{115,116}, Tso-Fu Wang^{117,118,119}, Tsung-Jung Ho^{120,121,122}, Pei-Wei Shueng^{123,124}, Chen-Hsi Hsieh^{123,125,126}, Kuo-Shyang Jeng¹²⁷, Gwo-Chin Ma¹²⁸, Ting-Yu Chang¹²⁸, Han-Sun Chiang^{129,130}, Yi-Tien Lin^{131,132}, Kuo-Jang Kao¹³³, Chen-Fang Hung¹³³, I-Mo Fang^{134,135,136}, Po-Yueh Chen^{137,138}, Kochung Tsui^{139,140,141}, Pui-Yan Kwok¹⁴², Wei-Jen Yao¹⁴³, Shiou-Sheng Chen^{144,145,146}, Ming Chen¹²⁸, Chih-Yang Huang^{147,148}, Da-Wei Wang¹⁴⁹, Chun-houh Chen¹

¹Institute of Statistical Science, Academia Sinica, Taipei, Taiwan, ²Bioinformatics Program, Taiwan International Graduate Program, Academia Sinica, Taipei, Taiwan, ³Department of Mathematics, Institute of Epidemiology and Preventive Medicine, National Taiwan University, Taipei, Taiwan, ⁴Division of Hematology and Oncology, Department of Internal Medicine, Chung Shan Medical University Hospital, Taichung, Taiwan, ⁵School of Medicine, Chung Shan Medical University, Taichung, Taiwan, ⁶Pathology, Tri-Service General Hospital, Taipei, Taiwan, ⁷Institute of Biomedical Sciences, Academia Sinica, Taipei, Taiwan, ⁸Core Laboratory of Neoantigen Analysis for Personalized Cancer Vaccine, Office of R&D, Taipei Medical University, Taipei, Taiwan, ⁹Biomedical Translation Research Center, Academia Sinica, Taipei, Taiwan, ¹⁰Chang Gung Memorial Hospital, Linkou branch, Taoyuan, Taiwan, ¹¹Division of Gastroenterology and Hepatology, Department of Medicine, Taipei Veterans General Hospital, Taipei, Taiwan, ¹²Faculty of Medicine, School of Medicine, National Yang Ming Chiao Tung University, Taipei, Taiwan, ¹³Department of Neurology, Neurological Institute, Taipei Veterans General Hospital, Taipei, Taiwan, ¹⁴Department of Neurology, National Yang Ming Chiao Tung University School of Medicine, Taipei, Taiwan, ¹⁵Division of Endocrinology and Metabolism, Department of Medicine, Taipei Veterans General Hospital, Taipei, Taiwan, ¹⁶Brain Research Center, National Yang-Ming University, Taipei, Taiwan, ¹⁷Division of Nephrology, Department of Medicine, Taipei Veterans General Hospital, Taipei, Taiwan, ¹⁸Institute of Clinical Medicine, National Yang Ming Chiao Tung University, Taipei, Taiwan, ¹⁹Brain Research Center,

National Yang-Ming University School of Medicine, Taipei, Taiwan, ²⁰Department of Obstetrics and Gynecology, Taipei Veterans General Hospital, Taipei, Taiwan, ²¹Department of Obstetrics and Gynecology, National Yang-Ming University, Taipei, Taiwan, ²²Department of Chest Medicine, Taipei Veterans General Hospital, Taipei, Taiwan, ²³School of Medicine, National Yang Ming Chiao Tung University, Taipei, Taiwan, ²⁴Department of Dermatology, Taipei Veterans General Hospital, Taipei, Taiwan, ²⁵Department of Medical Research, Taichung Veterans General Hospital, Taichung, Taiwan, ²⁶Department of Post-Baccalaureate Medicine, National Chung Hsing University, Taichung, Taiwan, ²⁷Institute of Clinical Medicine, National Yang Ming Chiao Tung University, Taipei, Taiwan; Department of Medical Research, ²⁸Department of Pharmacy, Taichung Veterans General Hospital, Taichung, Taiwan, ²⁹Department of Medicine and Cardiovascular Center, Taichung Veterans General Hospital, Taichung, Taiwan, ³⁰Neurological Institute, Taichung Veterans General Hospital, Taichung, Taiwan, ³¹Department of Otolaryngology, Taichung Veterans General Hospital, Taichung, Taiwan, ³²Division of Pediatric Genetics and Metabolism, Children's Medical Center, Taichung Veterans General Hospital, Taichung, Taiwan, ³³Department of Family Medicine, School of Medicine, College of Medicine, Taipei Medical University, Taipei, Taiwan, ³⁴Department of Family Medicine, Taipei Medical University Hospital, Taipei, Taiwan, ³⁵Division of Allergy, Immunology, and Rheumatology, Department of Internal Medicine, Shuang Ho Hospital, Taipei Medical University, New Taipei City, Taiwan, ³⁶Division of Allergy, Immunology and Rheumatology, Department of Internal Medicine, School of Medicine, College of Medicine, Taipei Medical University, Taipei, Taiwan, ³⁷Division of Endocrinology and Metabolism, Department of Internal Medicine, School of Medicine, College of Medicine, Taipei Medical University, Taipei, Taiwan, ³⁸Division of Endocrinology and Metabolism, Department of Internal Medicine, Wan Fang Hospital, Taipei Medical University, Taipei, Taiwan, ³⁹Department of Urology, School of Medicine, College of Medicine, Taipei Medical University, Taipei, Taiwan, ⁴⁰Department of Urology, Taipei Medical University Hospital, Taipei, Taiwan, ⁴¹Division of Nephrology, Department of Internal Medicine, Shuang Ho Hospital, Taipei Medical University, New Taipei City, Taiwan, ⁴²Division of Nephrology, Department of Internal Medicine, School of Medicine, College of Medicine, Taipei Medical University, Taipei, Taiwan, ⁴³TMU Research Center of Urology and Kidney, Taipei Medical University, Taipei, Taiwan, ⁴⁴Division of Gastroenterology and Hepatology, Department of Internal Medicine, School of Medicine, College of Medicine, Taipei Medical University, Taipei, Taiwan, ⁴⁵TMU Research Center for Digestive Medicine, Taipei Medical University, Taipei, Taiwan, ⁴⁶Division of Gastroenterology, Department of Internal Medicine, Wan Fang Hospital, Taipei Medical University, Taipei, Taiwan, ⁴⁷Department of Medicine Research, Taipei Medical University Hospital, Taipei, Taiwan, ⁴⁸Department of Information Technology Office, Taipei Medical University Hospital, Taipei, Taiwan, ⁴⁹Graduate Institute of Data Science, College of Management, Taipei Medical University, Taipei, Taiwan, ⁵⁰Division of Cardiology, Department of Internal Medicine, Kaohsiung Medical University Hospital, Kaohsiung Medical University, Kaohsiung, Taiwan, ⁵¹Faculty of Medicine and Graduate Institute of Medicine, College of Medicine, Kaohsiung Medical University, Kaohsiung, Taiwan, ⁵²School of Medicine, College of Medicine, National Sun Yat-sen University, Kaohsiung, Taiwan, ⁵³Division of Infectious Diseases, Department of Internal Medicine, Kaohsiung Medical University Hospital, School of Medicine, Graduate Institute of Medicine, Center of Tropical Medicine and Infectious Diseases, Kaohsiung Medical University, Kaohsiung, Taiwan, ⁵⁴Department of Biological Science and Technology, College of Biological Science and Technology, National Yang Ming Chiao Tung University, HsinChu, Taiwan, ⁵⁵Department of Dermatology, Kaohsiung Medical University Hospital, Kaohsiung Medical University, Kaohsiung, Taiwan, ⁵⁶Department of Dermatology, College of Medicine, Kaohsiung Medical

University, Kaohsiung, Taiwan, ⁵⁷PhD Program in Translational Medicine, Kaohsiung Medical University and Academia Sinica, Kaohsiung, Taiwan, ⁵⁸Division of Rheumatology, Department of Internal Medicine, Kaohsiung Medical University Hospital, Kaohsiung Medical University, Kaohsiung, Taiwan, ⁵⁹Professor, Graduate Institute of Clinical Medicine, College of Medicine, Kaohsiung Medical University, Kaohsiung, Taiwan, ⁶⁰Joint Appointment Professor, Institute of Biomedical Science, National Sun Yat-sen University, Kaohsiung, Taiwan, ⁶¹Departments of Pediatrics, Kaohsiung Medical University Hospital, Kaohsiung Medical University, Kaohsiung, Taiwan, ⁶²Department of Pediatrics, School of Medicine, College of Medicine, Kaohsiung Medical University, Kaohsiung, Taiwan, ⁶³Graduate Institute of Clinical Medicine, College of Medicine, Kaohsiung Medical University, Kaohsiung, Taiwan, ⁶⁴Department of Obstetrics and Gynecology, College of Medicine, Kaohsiung Medical University, Kaohsiung, Taiwan, ⁶⁵Department of Obstetrics and Gynecology, Kaohsiung Medical University Hospital, Kaohsiung Medical University, Kaohsiung, Taiwan, ⁶⁶Center of Cancer Research, Kaohsiung Medical University, Kaohsiung, Taiwan, ⁶⁷Graduate Institute of Clinical Medicine, College of Medicine, Kaohsiung Medical University, Kaohsiung, Taiwan, ⁶⁸Division of Pediatric Hematology and Oncology, Department of Pediatrics, Kaohsiung Medical University Hospital, Kaohsiung Medical University, Kaohsiung, Taiwan, ⁶⁹Center of Applied Genomics, Kaohsiung Medical University, Kaohsiung, Taiwan, ⁷⁰Faculty of Medicine, College of Medicine, Kaohsiung Medical University, Kaohsiung, Taiwan, ⁷¹Division of General and Digestive Surgery, Department of Surgery, Kaohsiung Medical University Hospital, Kaohsiung Medical University, Kaohsiung, Taiwan, ⁷²Division of Nephrology, Department of Internal Medicine, Kaohsiung Medical University Hospital, Kaohsiung Medical University, Kaohsiung, Taiwan, ⁷³School of Medicine, College of Medicine, Kaohsiung Medical University, Kaohsiung, Taiwan, ⁷⁴Institute of Population Sciences, National Health Research Institutes, Miaoli, Taiwan, ⁷⁵Division of Hepato-Gastroenterology, Department of Internal Medicine, Kaohsiung Chang Gung Memorial Hospital and Chang Gung University College of Medicine, Kaohsiung, Taiwan, ⁷⁶Kidney Research Center, Department of Nephrology, Linkou Chang Gung Memorial Hospital, Taoyuan, Taiwan, ⁷⁷Department of Medicine, Chang Gung University, Taoyuan, Taiwan, ⁷⁸Department of Physical Medicine and Rehabilitation at Chang Gung Memorial Hospital, Linkou, Taoyuan, Taiwan, ⁷⁹Graduate Institute of Early Intervention, Chang Gung University, Taoyuan, Taiwan, ⁸⁰Division of Rheumatology, Allergy and Immunology, Chang Gung Memorial Hospital at Linkou, Taoyuan, Taiwan, ⁸¹Department of Nephrology, Chang Gung Memorial Hospital, Linkou Branch, Taoyuan, Taiwan, ⁸²School of Medicine, College of Medicine, Chang Gung University, Taoyuan, Taiwan, ⁸³Division of Hepato-Gastroenterology, Department of Internal Medicine, Kaohsiung Chang Gung Memorial Hospital, Kaohsiung, Taiwan, ⁸⁴Department of Ophthalmology, Chang Gung Memorial Hospital, Linkou, Taoyuan, Taiwan, ⁸⁵Department of Ophthalmology, Chang Gung Memorial Hospital, Linkou Medical Center, Taoyuan, Taiwan, ⁸⁶Graduate Institute of Clinical Medical Sciences, College of Medicine, Chang Gung University, Taoyuan, Taiwan, ⁸⁷Division of Colon and Rectal Surgery, Department of Surgery, Chiayi Chang Gung Memorial Hospital, Chiayi, Taiwan, ⁸⁸Department of Ophthalmology, Chang Gung Memorial Hospital, Keelung, Taiwan, ⁸⁹College of Medicine, Chang Gung University, Taoyuan, Taiwan, ⁹⁰Division of Gastroenterology and Hepatology, Department of Internal Medicine, National Taiwan University Hospital, Taipei, Taiwan, ⁹¹Department of Internal Medicine, National Taiwan University College of Medicine, Taipei, Taiwan, ⁹²Integrated Diagnostics and Therapeutics, National Taiwan University Hospital, National Taiwan University College of Medicine, Taipei, Taiwan, ⁹³Department of Oncology, National Taiwan University Hospital, Taipei, Taiwan, ⁹⁴Department of Medical Oncology, National Taiwan University Hospital, Cancer Center Branch, Taipei, Taiwan, ⁹⁵Department

of Internal Medicine, College of Medicine, National Taiwan University, Taipei, Taiwan, ⁹⁶Department of Internal Medicine, National Taiwan University Hospital Yunlin Branch, Douliu City, Yunlin County, Taiwan, ⁹⁷Hepatology Medical Center, National Taiwan University Hospital, Yunlin Branch, Douliu City, Yunlin County, Taiwan, ⁹⁸Center of Sleep Disorder, National Taiwan University Hospital, Taipei, Taiwan, ⁹⁹Department of Internal Medicine, National Taiwan University Hospital, Taipei, Taiwan, ¹⁰⁰Department of Surgery, National Taiwan University Hospital, Taipei, Taiwan, ¹⁰¹Department of Surgery, National Taiwan University Cancer Center, Taipei, Taiwan, ¹⁰²Department of Dermatology, National Taiwan University Cancer Center, Taipei, Taiwan, ¹⁰³Department of Dermatology, College of Medicine, National Taiwan University, Taipei, Taiwan, ¹⁰⁴Hepatitis Research Center, National Taiwan University Hospital, Taipei, Taiwan, ¹⁰⁵Department of Medicine, National Taiwan University Cancer Center, Taipei, Taiwan, ¹⁰⁶Institute of Medicine, Chung Shan Medical University, Taichung, Taiwan, ¹⁰⁷Department of Medical Research, Chung Shan Medical University Hospital, Taichung, Taiwan, ¹⁰⁸Family Medicine, Tri-Service General Hospital, National Defense Medical Center, Taipei, Taiwan, ¹⁰⁹Nephrology, Tri-Service General Hospital, National Defense Medical Center, Taipei, Taiwan, ¹¹⁰Endocrinology and Metabolism, Tri-Service General Hospital, National Defense Medical Center, Taipei, Taiwan, ¹¹¹Neurosurgery, Tri-Service General Hospital, National Defense Medical Center, Taipei, Taiwan, ¹¹²Department And Graduate Institute of biochemistry, Tri-Service General Hospital, National Defense Medical Center, Taipei, Taiwan, ¹¹³Chinese Medicine, Tri-Service General Hospital, National Defense Medical Center, Taipei, Taiwan, ¹¹⁴Nuclear Medicine, Tri-Service General Hospital, National Defense Medical Center, Taipei, Taiwan, ¹¹⁵Bioinnovation Center, Buddhist Tzu Chi Medical Foundation, Hualien, Taiwan, ¹¹⁶Department of Neurosurgery, Hualien Tzu Chi Hospital, Buddhist Tzu Chi Medical Foundation, Hualien, Taiwan, ¹¹⁷Department of Hematology and Oncology, Hualien Tzu Chi Hospital, Buddhist Tzu Chi Medical Foundation, Hualien, Taiwan, ¹¹⁸Department of Medicine, College of Medicine, Tzu Chi University, Hualien, Taiwan, ¹¹⁹Buddhist Tzu Chi Stem Cells Center, Hualien Tzu Chi Hospital, Buddhist Tzu Chi Medical Foundation, Hualien, Taiwan, ¹²⁰Department of Chinese Medicine, Hualien Tzu Chi Hospital, Buddhist Tzu Chi Medical Foundation and Tzu Chi University, Hualien, Taiwan, ¹²¹School of Post-Baccalaureate Chinese Medicine, College of Medicine, Tzu Chi University, Hualien, Taiwan, ¹²²Integration Center of Traditional Chinese and Modern Medicine, Hualien Tzu Chi Hospital, Buddhist Tzu Chi Medical Foundation, Hualien, Taiwan, ¹²³Division of Radiation Oncology, Department of Radiology, Far Eastern Memorial Hospital, New Taipei City, Taiwan, ¹²⁴School of Medicine, College of Medicine, National Yang Ming Chiao Tung University, Taipei, Taiwan, ¹²⁵School of Nursing, Yuan Ze University, Taoyuan, Taiwan, ¹²⁶School of Medicine, National Yang Ming Chiao Tung University, Taipei, Taiwan, ¹²⁷Division of General Surgery, Far Eastern Memorial Hospital, New Taipei City, Taiwan, ¹²⁸Department of Genomic Medicine and Center for Medical Genetics, Changhua Christian Hospital, Changhua, Taiwan, ¹²⁹Department of Urology, Fu Jen Catholic University Hospital, Fu Jen Catholic University, New Taipei City, Taiwan, ¹³⁰School of Medicine, College of Medicine, Fu Jen Catholic University, New Taipei City, Taiwan, ¹³¹Division of Public Affairs, Fu Jen Catholic University Hospital, Fu Jen Catholic University, New Taipei City, Taiwan, ¹³²Graduate Institute of Business Administration, Fu Jen Catholic University, New Taipei City, Taiwan, ¹³³Koo Foundation Sun Yat-Sen Cancer Center, Taipei, Taiwan, ¹³⁴Department of Ophthalmology, Taipei City Hospital, Zhongxiao Branch, Taipei, Taiwan, ¹³⁵Department of Ophthalmology, National Taiwan University Hospital, Taipei, Taiwan, ¹³⁶Department of Optometry, Mackay Medical College, New Taipei City, Taiwan, ¹³⁷Division of Gastroenterology and Hepatology, Department of Internal Medicine, Ditmanson Medical Foundation Chia-Yi Christian Hospital, Chiayi City, Taiwan, ¹³⁸Clinical Trial Center,

Department of Medical Research, Ditmanson Medical Foundation Chia-Yi Christian Hospital, Chiayi City, Taiwan, ¹³⁹Fu-Jen Catholic University School of Medicine, New Taipei City, Taiwan, ¹⁴⁰Cathay General Hospital Department of Clinical Pathology, Taipei, Taiwan, ¹⁴¹Cathay General Hospital Department of Internal Medicine, Taipei, Taiwan, ¹⁴²(No affiliation data provided), ¹⁴³Department of Nuclear Medicine, Ditmanson Medical Foundation Chia-Yi Christian Hospital, Chiayi City, Taiwan, ¹⁴⁴Division of Urology, Taipei City Hospital Ren Ai Branch, Taipei, Taiwan, ¹⁴⁵University of Taipei, General Education Center, Taipei, Taiwan, ¹⁴⁶Department of Urology, College of Medicine and Shu-Tien Urological Research Center, National Yang-Ming Chiao Tung University, Taipei, Taiwan, ¹⁴⁷Cardiovascular and Mitochondrial Related Disease Research Center, Hualien Tzu Chi Hospital, Buddhist Tzu Chi Medical Foundation, Hualien, Taiwan, ¹⁴⁸Center of General Education, Buddhist Tzu Chi Medical Foundation, Tzu Chi University of Science and Technology, Hualien, Taiwan, ¹⁴⁹Institute of Information Sciences, Academia Sinica, Taipei, Taiwan