

Machine learning analysis of the UNOS database fails to predict lung transplant outcomes

Authors: Lucy Luo¹, Marcin Możejko², Nikolay S. Markov¹, Alec Peltekian³, Suror Moshin¹, Mary Carns¹, Phillip Cooper⁴, Jeffrey Lysne⁴, Anthony Joudi¹, Alan Betensley¹, Bradford C. Bemiss¹, Catherine Myers¹, Ankit Bharat⁴, Rade Tomic¹, Ambalavanan Arunachalam¹, Ewa Szczurek^{5,6}, GR Scott Budinger¹, Alexander V. Misharin¹, Mrinalini Venkata Subramani¹

Affiliations:

¹ Northwestern University Division of Pulmonary and Critical Care

² University of Warsaw

³ Department of Computer Science, Northwestern University McCormick School of Engineering and Applied Science

⁴ Northwestern Medicine

⁵ AI for Health, Helmholtz Munich

⁶ Faculty of Mathematics, Informatics and Mechanics, University of Warsaw

Abstract: Background: Lung transplantation is the only life-saving therapy for end-stage lung disease. However, lung transplantation has the worst survival among all solid organ transplants.¹ We applied machine learning to a large standardized electronic health record (EHR) dataset from the United Network for Organ Sharing (UNOS) to test whether pre-transplant and peri-transplant donor and recipient features can predict one-, three- and five-year survival, or favorable long-term outcomes in lung transplant. **Methods:** We used data from 43,869 first time lung transplant recipients >18 years old from 1987 to November 2022 for whom one-, three-, and five-year survival outcomes were available. We applied XGBoost or a tabular BERT model called EHRFormer to the UNOS EHR dataset. **Results:** Using pre-transplant features XGBoost predicted one year mortality with a test AUC = 0.6 [0.57, 0.64] 95% CI. Addition of peri-transplant features only modestly improved AUC for one-year mortality prediction (test AUC = 0.63 [0.60, 0.67] 95% CI and 0.64 [0.63, 0.66] 95% CI for XGBoost and EHRFormer, respectively). Top predictive features of one year mortality using peri-transplant features from each model were length of index stay, transplant type, recipient age, ventilation status during the index stay, and creatinine at the time of transplant. Both XGBoost and EHRFormer performed better when predicting lung function at one-year post-transplant (XGBoost test AUC = 0.74; EHRFormer test AUC = 0.76). Both models identified and used features previously associated with transplant outcomes to inform predictions. **Conclusions:**

Despite machine learning approaches identifying known risk factors for transplant outcomes, EHR data collected by UNOS poorly predict one-, three-, and five-year mortality outcomes of lung transplantation. These results suggest caution when using pre-transplant EHR features to predict lung transplant outcomes.

Introduction

Lung transplantation is the only viable treatment option that confers improved survival and quality of life for patients with advanced lung disease and respiratory failure. Despite improvements in surgical techniques, immunosuppressive strategies, perioperative management, supportive strategies, and approaches for donor lung allocation over the years, lung transplantation is persistently associated with poor survival relative to other solid organ transplants, with a median survival of 5.8 years (1990-2014)² and a mean survival of 9.28 years.¹ Approximately 10-15% of all deaths after lung transplant occur in the first year.³ Indeed, in patients who survived one year after transplant, median survival is 10.2 years.⁴ As a result, one-year mortality is an important, trajectory-defining event and is the focus of public reporting of transplant outcomes. Recently, investigators have suggested that three- or five-year outcomes provide additional data with respect to center-specific transplant outcomes, leading some to suggest these outcomes be publicly reported⁵. We reasoned that early prediction of one-, three- and five-year survival based on factors available early in the transplant course might identify patients who would benefit from targeted interventions. Further, we reasoned that waitlist and peri-transplant factors in the donor and recipient that predict outcomes might include modifiable factors to improve outcomes.

Conventional approaches for analyzing risk factors and predictors for lung transplant outcomes rely on univariate or multivariate statistical approaches applied to selected variables. As such, available predictors of lung transplant outcomes vary by center and perform poorly.^{4,6-15} Machine learning is a powerful approach to identify predictors of outcomes from clinical data, leading to its growing use in clinical research and care. Despite this promise, the application of historic machine learning techniques to EHR data collected by the United Network for Organ Sharing have been disappointing.^{16,17} As machine learning approaches have dramatically improved since the publication of those studies, we sought to test whether modern machine learning approaches could predict one-, three-, and five-year lung transplant outcomes after training on data extracted from the UNOS database. We found that even the best performing models, including XGBoost¹⁸ and a Bidirectional Encoder Representations from Transformers

(BERT)¹⁹-based model, EHRformer performed poorly in predicting one-, three-, and five-year mortality and only modestly better when predicting lung function at one year. The predictive performance of the models was further reduced when data collected during the index stay were excluded. The predictions of the models were driven by factors previously reported to be associated with poor transplant outcomes. Our findings suggest that even with state-of-the-art machine learning models, data collected by UNOS poorly predict lung transplant outcomes.

Results

The UNOS dataset reveals changes in lung transplant practices and outcomes in the US over time.

The UNOS dataset is a standardized, national database that includes clinical and demographic information for candidates listed for lung transplantation.²⁰ For the purposes of this study, we focused on first-time lung transplant recipients >18 years old. Because the UNOS dataset is cumulative, it reflects overall changes in national lung transplant practice over time. Our exploratory analysis of these patients suggested these changes in practice explain a significant amount of variance in the dataset (Figure 1A, 1B). For example, the proportion of transplants performed for restrictive lung disease has increased relative to those performed for obstructive lung disease. Additionally, ischemic time, age, and FEV1% at transplant have increased over time, reflecting changes in organ storage and allocation, recipient characteristics, and indication type.

An initial exploration of all relevant waitlist, peri-transplant, and follow-up features (at one, three, and five years) yielded 780 features with at least 1 observation (Table S1, Figure S1A). There were distinct patterns of feature presence and missingness in the UNOS dataset (Fig. S1B), coinciding with the introduction of the Lung Allocation Score (LAS) in May 2005²¹ and changes in data collection introduced in 2015 (Fig. 1A, S1B). Accordingly, we performed modeling separately for each of these three time periods using all features available within a given period. For the entire time period, we used only shared features. To inform feature selection for machine learning applications, we first performed principal components analysis (PCA) to identify influential features and trends present in the dataset. We included all first-time lung transplant recipients >18 years old (47,864 observations) and all waitlist, peri-transplant, and follow-up features at one, three, and five years for which $\leq 10\%$ of data was missing (357 features, Fig. S1C, Table S1). Lung transplant type, indication, lung function, and transplant year explain substantial variation in the dataset (Figure 1C-E).

XGBoost and EHRFormer fail to predict one year mortality

We ran 4 separate models based on waitlist and peri-transplant features present in various time frames illustrated in Fig. 1A and S1B. Briefly, features that were at least 90% complete within each specified time frame were used for the model. For the model encompassing all observations across all years, only features that were at least 90% complete across all years were used. The number of features used in each time period is shown in Fig. 2A. A data dictionary of these features is shown in Table S1. Due to class imbalance, downsampling of the majority class was also applied such that there was a 1:1 ratio of either outcome. Additionally, those who died within 90 days of the index stay were excluded from the initial mortality prediction analysis and analyzed separately (see below) to prevent length of index stay from serving as a model shortcut. A bar graph visualizing the class imbalance of outcomes is shown in Fig 2B. Final test AUCs across all models were uniformly poor, ranging from 0.58 to 0.64 (0.64 for data from all years) for EHRFormer and from 0.62 to 0.63 (0.63 for data from all years) for XGBoost (Figure 2C, S2A, and Table 1). Confusion matrices of both models on the test set are shown in Figure S2B. Figure 2D shows test AUROC, accuracy, F1, precision, recall, and specificity across all models.

Model	1987-2004	2005-2014	2015-now	All years
EHRFormer	0.61 [0.56,0.67] 95% CI	0.60 [0.56,0.65] 95% CI	0.56 [0.50,0.62] 95% CI	0.64 [0.61, 0.66] 95% CI
XGBoost	0.62 [0.55,0.72] 95% CI	0.63 [0.58,0.69] 95% CI	0.62 [0.58,0.66] 95% CI	0.63 [0.60, 0.67] 95% CI

Table 1: Test AUROCs for EHRFormer and XGBoost predicting one year mortality across key time periods in the UNOS dataset.

XGBoost and EHRFormer fail to predict one-, three-, and five-year mortality

XGBoost and EHRformer predict one-, three-, and five-year mortality with poor performance, with test AUROCs ranging from 0.61 to 0.65 across all tasks and models (Figure 2E). There was significant imbalance in the number of patients belonging to the positive and negative classes for the one-, three-, and five-year tasks that was corrected by downsampling (Figure 2F). Model performance did not change between one-, three-, and five-year mortality prediction (Figure S3).

Model	1-year test AUROC	3-year test AUROC	5-year test AUROC
EHRFormer	0.64 [0.61, 0.66] 95% CI	0.61 [0.60, 0.63] 95% CI	0.63 [0.62, 0.64] 95% CI
XGBoost	0.63 [0.60, 0.67] 95% CI	0.65 [0.63, 0.67] 95% CI	0.63 [0.62, 0.64] 95% CI

Table 2: Test AUROCs for EHRFormer and XGBoost predicting mortality at one, three-, and five-years post-transplant.

XGBoost and EHRFormer modestly predict patients with poor lung function at one year.

We used all waitlist and peri-transplant features ($\leq 10\%$ missing) included in our mortality prediction models to predict one year lung function after downsampling for class imbalance, resulting in 4 separate models (Figure 2A, Table S1, and Figure 3A). XGBoost and EHRFormer predicted one year lung function, with final test AUCs across all models ranging from 0.72 to 0.74 (0.74 for data from all years) for EHRFormer and from 0.74 to 0.79 (0.76 for data from all years) for XGBoost (Figure 3B, 3C, S3A, S3B, and Table 3).

Model	1987-2004	2005-2014	2015-now	All years
EHRFormer	0.74 [0.72,0.78] 95% CI	0.74 [0.73,0.75] 95% CI	0.72 [0.70,0.73] 95% CI	0.74 [0.72, 0.75] 95% CI
XGBoost	0.79 [0.77,0.81] 95% CI	0.77 [0.76,0.79] 95% CI	0.74 [0.73,0.76] 95% CI	0.76 [0.74, 0.77] 95% CI

Table 3: Test AUROCs for EHRFormer and XGBoost at across key time periods in the UNOS dataset.

Index stay features have high importance for mortality prediction.

To identify features associated with one-year mortality in our models, we developed two XGBoost models. The first model was trained on features from all years that were available pre-transplant (Figure 4A, Table S1). The second model was trained on features that were available pre-transplant and during the index hospitalization (Figure 4B, Table S1). We then obtained SHapley Additive Probabilities (SHAP)²² from these two models. The pre-transplant features with high importance for mortality prediction included transplant type, donor ethnicity, PCO₂ at the time of transplant, and FVC at the time of transplant (Figure 4A). The pre-transplant features and index hospitalization features with high importance for mortality prediction included length of stay and whether the recipient experienced acute rejection during the index stay (Figure 4B).

Removing index hospitalization features and further subsetting on the Lung Allocation Score (LAS) further reduces model performance

Because index hospitalization features are unavailable when clinicians make decisions to list patients for lung transplantation, we trained another XGBoost model in which we removed the index stay features specified in Table S1. Model performance for mortality prediction at one year was lower when XGBoost was trained on features only available immediately preceding transplant (Figure 4C and Table 4). Similarly, model performance for mortality prediction at one year was significantly decreased when XGBoost was trained on the initial LAS on the waitlist, the end LAS on the waitlist, the calculated LAS, and the match LAS (Figure 4C and Table 4).

All features	Pre-transplant features	LAS
0.63 [0.60, 0.67] 95% CI	0.60 [0.57,0.64] 95% CI	0.53 [0.51,0.55] 95% CI

Table 4: Test AUROCs for XGBoost for predicting 1 year mortality using all features, pre-transplant features only, and the LAS.

Index stay features are highly influential for prediction of lung function

Features important to lung function prediction included whether the transplant performed was single or bilateral, ischemic time, PCO₂ at registration, creatinine at registration, recipient age, donor age, days on the waiting list, and O₂ requirement at rest at the time of transplant (Figure 4D and Table 5). Features unique to lung function were primarily related to lung function at the time of transplant (FEV₁ and FVC at registration), indication type (COPD and cystic fibrosis were associated with better lung function), and recipient BMI (Figure 4D and Table 5).

Stratification by transplant type results in a small increase in model performance

After length of stay, transplant type was the most important feature for 1 year mortality. Therefore, we trained separate XGBoost models on all single lung transplant recipients and all double lung transplant recipients. Utilizing all features including those collected from the index stay yielded a test AUROC of 0.67 [0.61, 0.71] 95% CI within single lung transplant recipients vs test AUROCs of 0.63 [0.60, 0.67] 95% and 0.57 [0.52, 0.62] CI for all patients and double lung transplant recipients, respectively (Figure 4E, Table 5). When modeled on pre-transplant features, subsetting on single lung transplant recipients did not increase model performance compared to modeling on both single and bilateral lung transplants. SHAP analysis within the model trained on single lung transplant recipients using only pre-transplant features revealed the importance of donor and recipient age as well as hemodynamic parameters such as

pulmonary arterial pressures. Interestingly, listing center code and center code also emerged as influential features in this model (Figure 4F). Train and test AUROC curves as well as SHAP values for XGBoost models trained on the single and bilateral subsets are shown in Figure S4.

	All features	Pre-tx features
Both	0.63 [0.60, 0.67] 95% CI	0.60 [0.57,0.64] 95% CI
Single transplants	0.67 [0.61, 0.71] 95% CI	0.58 [0.52,0.63] 95% CI
Bilateral transplants	0.57 [0.52, 0.62] 95% CI	0.55 [0.50,0.60] 95% CI

Table 5: Test AUROCs for XGBoost for predicting 1 year mortality using all features or pre-transplant features only stratified by transplant type.

EHRFormer permits querying the effect of multiple features simultaneously.

SHAP values for EHRFormer models are not currently accessible. Instead, we can query feature importance by “perturbing” or changing the value of a specified feature or even a set of multiple features and seeing what effect doing so has on the model’s output. For example, the probability distribution of mortality by one-year does not change after perturbing transplantation region (Figure 5A) but changes substantially after perturbing long index stay (Figure 5B) or dialysis during the index stay (Figure 5C). One can also perform multiple *in silico* perturbations simultaneously. For example, we set positive flags to the highest quartiles for complicated index stay features, including ECMO at 72 hours, inhaled NO at 72 hours, intubation status at 72 hours, and ventilation duration post-transplant which shifted the mortality prediction towards death at one year (Figure 5D).

Perturbing multiple features simultaneously allows EHRFormer to explain the unexpected influence of long ischemic time on one year mortality in the XGBoost model

Prolonged ischemic time has been historically associated with worse 1-year outcomes²³. Unexpectedly, longer ischemic times were associated with improved outcomes in our XGBoost models (Figure 3A). We hypothesized that the historic association between prolonged ischemic time and poor outcomes were reversed by improvements of organ handling and storage, including the use of *ex-vivo* lung perfusion (EVLP). Accordingly, we leveraged the ability of EHRFormer to query multiple features at once to investigate perturbation of a feature *conditioned on the value of another feature* - in this case what might happen if we prolong ischemic time when transplant year is set to its lowest quartile (earliest) (Figure 5E). When

setting ischemic time to its highest value alone, we see a paradoxical shift in mortality prediction that is consistent with the direction of the SHAP values seen in XGBoost (Figure 4A and B). However, when setting ischemic time to its highest value when conditioned on setting transplant year to its lowest quartile, the probability distribution reverses in the opposite direction. Additionally, when we subsetted on those whose lungs underwent EVLP prior to transplant, the proportion of those experiencing poor outcomes such as 1 year mortality, ECMO at 72 hours after transplant, and death during the index stay, were significantly reduced (Figure S6).

Features associated with frailty predicted death during the index hospitalization.

Those who died during the index hospitalization were excluded from our initial mortality prediction models. To investigate features associated with mortality in this subset of patients, we performed hierarchical clustering of all features (Figure 6A). Features associated with mortality during the index stay included transplant indication of idiopathic pulmonary fibrosis or restrictive lung disease, recipients of donors of black or African American ethnicity, and life support features such as ECMO, ventilator, and ICU status. A distinct group of features associated with recipient frailty such as functional status at the time of transplant, infection requiring IV drug therapy prior to transplant, and hospitalization status prior to transplant were associated with higher rates of index hospitalization mortality (Figure 6A). When we investigated features associated with a complicated index hospitalization, those who died during the index stay showed much higher oxygen requirements (FiO₂), rates of ECMO, rates of inhaled NO, rates of intubation, and rates of reintubation at 72 hours after transplant (Figure 6B). Similarly, we examined additional frailty features associated with higher rates of index hospitalization mortality. Those who died during the index hospitalization had higher O₂ requirements at rest, lower six-minute walk scores, as well as higher rates of chronic steroid use, pan-resistant bacterial infection, infection requiring IV drug therapy, and ventilator status at the time of transplant (Figure 6C).

Discussion

Lung transplant is a lifesaving treatment for patients with end stage lung disease. Over the years, lung transplant allocation systems have used prediction models to guide patient eligibility for transplant, organ allocation, and outcome reporting. The role of these models is two-fold: 1) to prioritize organ allocation to patients who have the greatest chance of death due to their underlying lung disease and 2) to direct scarce resources to patients who would achieve

maximum survival benefit from lung transplantation. Achieving these goals requires robust prediction models for post-transplant outcomes. Traditionally, these predictive models have been informed by expert-guided supervised selection of features incorporated into traditional statistical methods such as multilinear regression. Modern machine learning approaches such as language models or gradient boosted decision trees can accommodate non-linear relationships between variables and have the potential to account for the multiplicative risks of comorbidities on lung transplant outcomes. We used two robust machine learning models, XGBoost and EHRFormer, which have performed well in other clinical prediction tasks, to predict one-, three- and five-year mortality and lung function after lung transplantation. Our models were trained on data within the UNOS database up until November 2022. Even after optimization, these models performed poorly as predictors of mortality or lung function after transplant, particularly when data from the post-transplant index stay were excluded.

Despite their attention to known risk factors associated with transplant outcomes, the performance of our machine learning methods in predicting outcomes was poor. There are several possible reasons that might explain this poor performance. This suggests that data features collected by UNOS are not predictive of transplant outcomes and that collection of additional predictive features such as diffusing capacity of the lungs for carbon monoxide²⁴ is needed. The application of machine learning algorithms to the larger body of EHR data available at individual centers or consortia of centers might identify informative features outside of the UNOS database. Importantly, the models would incorporate molecular features, imaging features, and other modalities outside of EHR data²⁵. Second, batch effects in the UNOS data related to differences in data curation, collection, reporting between centers, and changes in practice over time might confound the models. Arguing against this, both models identified features previously associated with transplant outcomes as important for their predictions. Applying these models to EHR data that have been validated by clinician review is a strategy to address this concern at the level of individual centers or consortia. Finally, drivers of transplant outcomes might be largely independent of clinical features present before the procedure. The limited performance of these models suggests caution in using these data for predicting lung transplant outcomes.

Our study highlights the promise of machine learning approaches in identifying risk factors that drive lung transplant outcomes. We observed a high level of concordance between predictors of

poor outcomes identified by our models and those selected by experts for use in supervised models. These included donor and recipient age, length of index stay, and renal dysfunction or failure during the index stay as important predictors of 1 year mortality. Investigation of factors driving our machine learning prediction also revealed biases in the data that would likely be missed in a supervised analysis. For example, the increased risk associated with African American donors likely suggests important risks related to social determinants of health or other factors that would be unlikely to be included in supervised analyses. The failure to include these factors in current models might paradoxically perpetuate these biases in the form of reporting of higher program quality scores for centers in different geographic regions.

XGBoost provides direct measures of the relative weights of features that drive the model. BERT-based models like EHRFormer do not provide explicit information about the factors that drive their predictions. To address this concern, we developed perturbation tools in EHRFormer that allow users to investigate the hypothetical effect of changing variables. We used these to investigate the paradoxical association between prolonged ischemic time and improved mortality after transplantation in the XGBoost models. When we fixed transplant year to the earliest quartile, before procedures such as EVLP were available, increased ischemic time was associated with increased mortality. We show how this tool can be used to perform multiple “perturbations” within EHRFormer simultaneously to query multivariate hypotheses and dependencies. These tools might be helpful to generate hypotheses that can be tested with causal interventions or for individual programs to assess the relative benefits of interventions in the peri-transplant period that can improve outcomes.

Conclusion

In summary, despite their ability to identify and use clinical features known to be associated with lung transplant mortality in their predictions, modern interpretable machine learning approaches applied to the UNOS database performed poorly in predicting one-, three- and five-year survival and lung function after lung transplantation. We developed perturbation tools within EHRFormer to simultaneously explore features in the UNOS database that might reflect changes in lung transplant practice and outcomes over time and unexpected biases in the data. Our data suggest caution when using historic UNOS data to inform clinical practice decisions by multidisciplinary lung transplant teams and outcome reporting. The relative ease with which these models can be applied to more comprehensive clinical and laboratory data, and their

demonstrated ability to identify features associated with transplant outcomes, suggest them as powerful approaches to address these limitations.

Disclosure and data availability statement

All patient-de-identified data was obtained from the United Network for Organ Sharing (UNOS) Standard Transplant Analysis and Research File (SRTR), which is based on the Organ Procurement and Transplantation Network data as of 11/8/2023. All research was approved by the Northwestern Institutional Review Board (STU00221316).

Acknowledgements

This research was supported by the computational resources and staff contributions provided for the Quest high-performance computing facility at Northwestern University, which is jointly supported by the Office of the Provost, the Office for Research, and Northwestern University Information Technology. This research was supported in part through the computational resources and staff contributions provided by the Genomics Compute Cluster which is jointly supported by the Feinberg School of Medicine, the Center for Genetic Medicine, and Feinberg's Department of Biochemistry and Molecular Genetics, the Office of the Provost, the Office for Research, and Northwestern Information Technology. The Genomics Compute Cluster is part of Quest, Northwestern University's high-performance computing facility, with the purpose to advance research in genomics. We thank J. Milhans, A. Kinaci, S. Coughlin and all members of the Research Computing and Data Services team at Northwestern for their support.

Competing interest statement

The authors have no conflicts of interest to disclose.

Methods

Data preparation, cleaning, and feature encoding

All observations with a transplant date earlier than November 8, 2022 were included. All waitlist (THORACIC_WL_DATA), peri-transplant (THORACIC_DATA), and follow-up features (THORACIC_FOLLOWUP_DATA) with at least 1 observation were initially considered, yielding 786 features from the STAR File Data Dictionary. All features were reviewed for outliers and unexpected values with consultation from a committee of transplant pulmonologists. Outlier data

were treated as missing. Binary features were numerically binarized as 0 or 1. Categorical features were ordinalized if they represented a scale or one-hot encoded. Waitlist and follow-up features were collected at various points in time for each patient. For waitlist data only the first and most recent values were collected. Follow-up observations closest to and within +/-3 months of one-, three-, and five-years post-transplant were used.

Principal components analysis

The features and resultant dataframe obtained from *Data Preparation and Feature Encoding* were further filtered for those that were missing <10% of data, resulting in 363 features. Numerical features were mean imputed while categorical features were mode imputed. With this dataframe, principal components analysis was applied using *scikit-learn*²⁶ in Python, with the top 50 principal components chosen for initial exploration. *Matplotlib*²⁷ and *seaborn*²⁸ were used for data exploration and visualization.

Statistical tests

To determine whether continuous variables change with respect to time (transplant date), logistic regression was performed with *statsmodels*²⁹ to determine R-squared coefficients and p-values. To analyze differences in categorical variables between groups, the chi-squared test (*scipy.stats*)³⁰ was used with a Benjamini-Hochberg adjustment for multiple comparisons (FDR < 0.05) (*statsmodels*)²⁹. To analyze differences in continuous variables between groups, the wilcoxon rank sum test (*scipy.stats*)³⁰ was used with a Benjamini-Hochberg adjustment for multiple comparisons (FDR < 0.05) (*statsmodels*)²⁹. To draw statistical comparisons between the bootstrapped AUROCs between models (50 bootstraps), a Student's t-test was performed after assessing normality with the Shapiro-Wilk test (*scipy.stats*)³⁰. A Benjamini-Hochberg adjustment was made for multiple comparisons (FDR < 0.05) (*statsmodels*)²⁹.

Data preparation for modeling

Feature selection and preparation for modeling

Subsets of data were chosen for modeling based on observations from the following time frames (inclusive): 1987-2004, 2005-2014, and 2015-Present. These time-related subsets were chosen due to changes in data collection illustrated in S1. All waitlist and peri-transplant data were included for all modeling tasks. Features were filtered for those that were missing <10% of observations within each time period, resulting in 140, 145, 152 and 140 features for data from

1987-2004, 2005-2014, 2015-Present, and all years. Numerical features were mean imputed while categorical features were mode imputed.

EHRFormer feature representation and pretraining

From each of the 4 dataframes generated as described in the previous paragraph, 4 different models were pretrained from a tabular BERT initialized with random weights, available via *Huggingface* in the *transformers* package³¹. For the base architecture of this model (EHRFormer), we set the standard Transformer Encoder with three transformer layers, with a layer size of 64, an intermediate layer size of 128, and 4 attention heads. For input representation of the tabular data, all numerical values were quantile-binned to represent data from a single patient. Binary features were set to either the lowest or highest quartile bin. Following the standard BERT procedure, we added a 64-dimensional learnable CLS embedding at the beginning of the sequence. An additional bin was included to represent the CLS token for each patient as well as an additional bin for missing data. Each bin and each EHR feature was then assigned with a learnable 64-dimensional vector embedding. We later represented a single EHR entry with a sequence of the length of the number of features, where each element of a sequence was a 64-dimensional vector obtained by summing the feature embedding vector and its assigned bin embedding vector for every feature in the training data. In line with the BERT pretraining procedure, we pre-trained EHRFormer using a masked language model objective. The observations were divided into an 80/20 train/test split for pre-training. During this phase, we randomly masked 15% of the values in the 80% train of each entry by replacing the true bin embedding with a learnable MASK embedding. We later equipped EHRFormer with the task of predicting the actual bin values of the masked entries based on the unmasked EHR feature values. None of the observations in the 20% holdout test set were seen during pretraining.

Modeling one-, three-, and five-year mortality and lung function outcomes

Mortality label retrieval

To obtain the correct labels for one-, three-, and five-year mortality, we used the patient's date of death (COMPOSITE_DEATH_DATE) to confirm patient death. We then calculated survival in days by subtracting the difference between the patient's date of death and date of transplant (TX_DATE). Survival time was then used to further identify which patients had died within the one-, three-, and five-year outcomes of interest. To retrieve patients who were alive at one, three, and five years, we used the "patient status", patient status date, and date of death variables (PX_STAT = "A" for alive, PX_STAT_DATE, COMPOSITE_DEATH_DATE = NA).

PX_STAT_DATE was used to determine total known survival time. We then added this subset of patients to patients who might have died but whose survival exceeded the 1-, 3-, and 5-year outcomes of interest for each task. To further ensure the model was not relying on shortcut features, we removed patients who died during or within 90 days of their index stay. This was determined by filtering out patients whose length of stay (LOS) exceeded survival time by at least 90 days.

Lung function <70% of predicted label retrieval

To obtain labels for lung function <70% of predicted, we used the follow-up feature FEV_percent available at 1 year post transplant (+/- 3 months). For patients in which FEV_percent at 1 year post transplant was unavailable, we used the *spire*³² package with GLI-2012³³ reference values to determine a calculated FEV_percent of predicted based on their absolute FEV1(L) at one year (FEV). Downsampling of the majority class was also applied as described in detail in the subsequent section *EHRFormer fine-tuning and evaluation*.

EHRFormer fine-tuning and evaluation

We used fine-tuning of the pretrained EHRFormer for binary classification of the patient's mortality and lung function at 1 year. Specific outcome retrieval is described above. To perform this task within specific time frames, we used one of the 4 pretrained models that corresponded to these time frames: 1987-2004, 2005-2014, 2015-Present, and all years. With the data and pretrained model from data spanning all years, we also performed identical binary classification of whether the patient was alive or dead at 3 and 5 years. Due to class imbalance for all tasks, the majority class was downsampled at random to result in a 1:1 negative to positive class ratio in both the training and test sets separately.

For each task, following downsampling, hyperparameter tuning was performed using *optuna*'s³⁴ Parzen Tree based estimator (objective = accuracy, direction = maximize, n_trials = 75), on the 80% train split from pretraining. We searched for optimal hyperparameters within the following space: learning_rate = [1e-6, 1e-2], per_device_train_batch_size = [16, 32, 64, 128, 256], and weight_decay = [1e-4, 1e-1]. With the tuned hyperparameters, we performed 5-fold cross-validation on the 80% train split from pretraining. Splits and performance metrics (accuracy, AUROC, F1, precision, recall, and specificity) were determined using *scikit-learn*²⁶. The tuned models were finally evaluated on their performance using the remaining 20% holdout test set that were not seen during pre-training, hyperparameter tuning, or 5-fold cross-validation. To

determine the variability of performance metrics within the test set, 50 random bootstraps were performed on the test set when calculating model metrics.

XGBoost evaluation

We similarly used XGBoost for binary classification of the patient's mortality and lung function at 1 year within time frames corresponding to 1987-2004, 2005-2014, 2015-Present, and all years. We also performed identical binary classification of whether the patient was alive or dead at 3 and 5 years. Additional tasks included assessing the performance of XGBoost on all features, features only available at or before the time of transplant, and on the LAS. For these additional tasks, center-specific features were also included (ie. CTR_CODE, see Table S1). Where center code features were included, the *Catboost Encoder* package was used to perform target encoding of center codes. Finally, XGBoost was also used to determine prediction performance on single and bilateral lung transplant recipients separately. Downsampling of the majority class was done as was done for EHRFormer. Since there is no pre-training process, we divided entire datasets into an 80/20 train/test split at random. 5-fold cross-validation was performed within the training set with *scikit-learn*. Hyperparameter tuning was performed using a Bayesian optimizer with a Gaussian Process based estimator (*scikit-optimize's BayesSearchCV*)³⁵. The search space was defined as follows: `learning_rate = (0.01, 1.0)`, `max_depth = (2, 12)`, `subsample = (0.1, 1.0)`, `colsample_bytree = (0.1, 1.0)`, `reg_lambda = (1e-9, 100)`, `reg_alpha = (1e-9, 100)`, `min_child_weight = (1, 10)`, `gamma = (0, 5)`, `n_estimators = (50, 1000)`. To determine the variability of performance metrics within the test set, 50 random bootstraps were performed on the test set when calculating model metrics. For interpretability and insight into XGBoost model decisions, we used SHAP (SHapley Additive exPlanations)³⁶.

EHRFormer perturbations

To gain model insights from EHRFormer, we developed a pretrained tabular BERT similar to the pretraining process described in the modeling tasks. We specifically included data from all years and included additional features of interest such as transplant year (TX_YEAR) as well as all the features from the 2015-Present model. The entire dataset was used for pretraining as opposed to setting aside a test cohort. Hyperparameter search was performed within the entire dataset as described previously. We then ran this new model on the fine-tuning binary classification task of 1-year mortality. To understand feature importance, we randomly sampled half of the input observations 10 times. From these sampled observations, we manipulated features of interest by manually changing the bins for one or multiple features in each of the sampled observations.

These new “perturbed” inputs were fed to the model during fine-tuning. This process returned new probabilities of a positive class outcome (ie. 1 year mortality) determined by the model when given a perturbed set of features, visualized here as probability distributions before and after the perturbation was applied.

Hierarchical clustering for length of stay analysis

Hierarchical clustering was performed on all observations using all the features that were used for prediction of 1 year mortality (140 features). Numerical features were mean imputed while categorical features were mode imputed. The ward linkage method and euclidean distance were used. Whether an individual died during their index stay was used as the row annotation feature.

Propensity score matching for creating matched cohorts for length of stay analysis

To examine associations between those who died during the index stay and those who did not, we performed propensity score matching with *psmpy*³⁷ to generate a matched cohort of controls. 1:5 matching was performed based on patients with similar transplant year, indication grouping, gender, age, and ethnicity. Missing data were imputed prior to matching with a simple mean strategy. KNN matching with propensity logits was performed at a 1:5 case:control ratio to mitigate class imbalance.

References:

1. Graham CN, Watson C, Barlev A, Stevenson M, Dharnidharka VR. Mean lifetime survival estimates following solid organ transplantation in the US and UK. *J Med Econ.* 2022;25(1):230-237. doi:10.1080/13696998.2022.2033050
2. Yusen RD, Edwards LB, Dipchand AI, et al. The Registry of the International Society for Heart and Lung Transplantation: Thirty-third Adult Lung and Heart-Lung Transplant Report-2016; Focus Theme: Primary Diagnostic Indications for Transplant. *J Heart Lung Transplant.* 2016;35(10):1170-1184. doi:10.1016/J.HEALUN.2016.09.001
3. Bos S, Vos R, Van Raemdonck DE, Verleden GM. Survival in adult lung transplantation: where are we in 2020? *Curr Opin Organ Transplant.* 2020;25(3):268-273. doi:10.1097/MOT.0000000000000753
4. Foroutan F, Malik A, Clark KE, et al. Predictors of 1-year mortality after adult lung transplantation: Systematic review and meta-analyses. *The Journal of Heart and Lung Transplantation.* 2022;41(7):937-951. doi:10.1016/J.HEALUN.2022.03.017
5. Valapour M, Lehr CJ, Wey A, Skeans MA, Miller J, Lease ED. Expected effect of the lung Composite Allocation Score system on US lung transplantation. *American Journal of Transplantation.* 2022;22(12):2971-2980. doi:10.1111/AJT.17160

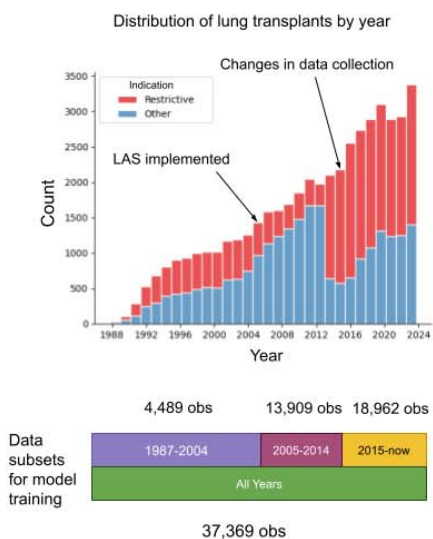
6. Inci I, Schuurmans M, Ehram J, et al. Lung transplantation for emphysema: impact of age on short- and long-term survival. *European Journal of Cardio-Thoracic Surgery*. 2015;48(6):906-909. doi:10.1093/EJCTS/EZU550
7. Allen JG, Arnaoutakis GJ, Weiss ES, Merlo CA, Conte J V., Shah AS. The impact of recipient body mass index on survival after lung transplantation. *Journal of Heart and Lung Transplantation*. 2010;29(9):1026-1033. doi:10.1016/J.HEALUN.2010.05.005
8. Ambur V, Taghavi S, Jayarajan S, et al. The impact of lungs from diabetic donors on lung transplant recipients. *academic.oup.com* V Ambur, S Taghavi, S Jayarajan, S Kadakia, H Zhao, J Gomez-Abraham, Y Toyoda *European Journal of Cardio-Thoracic Surgery*, 2017 • *academic.oup.com*. 2017;51(2):285-290. doi:10.1093/ejcts/ezw314
9. Aramini B, Kim C, Diangelo S, et al. Donor surfactant protein D (SP-D) polymorphisms are associated with lung transplant outcome. *American Journal of Transplantation*. 2013;13(8):2130-2136. doi:10.1111/AJT.12326
10. Yoon S, Jang EJ, Kim GH, et al. Adult lung transplantation case-volume and in-hospital and long-term mortality in Korea. *J Cardiothorac Surg*. 2019;14(1):1-8. doi:10.1186/S13019-019-0849-3/TABLES/4
11. Whitson BA, Hertz MI, Kelly RF, et al. Use of the donor lung after asphyxiation or drowning: Effect on lung transplant recipients. *Annals of Thoracic Surgery*. 2014;98(4):1145-1151. doi:10.1016/J.ATHORACSUR.2014.05.065
12. Tague LK, Scozzi D, Wallendorf M, et al. Lung transplant outcomes are influenced by severity of neutropenia and granulocyte colony-stimulating factor treatment. *American Journal of Transplantation*. 2020;20(1):250-261. doi:10.1111/AJT.15581
13. Hayes D, Black SM, Tobias JD, Higgins RS, Whitson BA. Influence of donor and recipient age in lung transplantation. *Journal of Heart and Lung Transplantation*. 2015;34(1):43-49. doi:10.1016/J.HEALUN.2014.08.017
14. Huppmann P, Neurohr C, Leuschner S, et al. The Munich-LTX-Score: Predictor for survival after lung transplantation. *Clin Transplant*. 2012;26(1):173-183. doi:10.1111/J.1399-0012.2011.01573.X
15. Kurihara C, Fernandez R, Safaeinili N, et al. Long-Term Impact of Cytomegalovirus Serologic Status on Lung Transplantation in the United States. *Annals of Thoracic Surgery*. 2019;107(4):1046-1052. doi:10.1016/J.ATHORACSUR.2018.10.034
16. Gholamzadeh M, Abtahi H, Safdari R. Machine learning-based techniques to improve lung transplantation outcomes and complications: a systematic review. *BMC Med Res Methodol*. 2022;22(1):331. doi:10.1186/S12874-022-01823-2
17. Agrawal A, Al-Bahrani R, Russo MJ, Raman J, Choudhary A. Lung Transplant Outcome Prediction using UNOS Data. *IEEE Xplore*. December 2013. doi:10.1109/BigData.2013.6691751
18. Chen T, Guestrin C. XGBoost: A Scalable Tree Boosting System. *Proceedings of the ACM SIGKDD International Conference on Knowledge Discovery and Data Mining*. 2016;13-17-August-2016:785-794. doi:10.1145/2939672.2939785
19. Devlin J, Chang MW, Lee K, Toutanova K. BERT: Pre-training of Deep Bidirectional Transformers for Language Understanding. *NAACL HLT 2019 - 2019 Conference of the North American Chapter of the Association for Computational Linguistics: Human*

- Language Technologies - Proceedings of the Conference*. 2018;1:4171-4186.
<https://arxiv.org/abs/1810.04805v2>. Accessed July 30, 2024.
20. OPTN database - OPTN. <https://optn.transplant.hrsa.gov/data/about-data/optn-database/>. Accessed July 30, 2024.
 21. Egan TM, Murray S, Bustami RT, et al. Development of the new lung allocation system in the United States. *Am J Transplant*. 2006;6(5 Pt 2):1212-1227. doi:10.1111/J.1600-6143.2006.01276.X
 22. Lundberg SM, Allen PG, Lee SI. A Unified Approach to Interpreting Model Predictions. <https://github.com/slundberg/shap>. Accessed July 30, 2024.
 23. Thabut G, Mal H, Cerrina J, et al. Graft ischemic time and outcome of lung transplantation: a multicenter analysis. *Am J Respir Crit Care Med*. 2005;171(7):786-791. doi:10.1164/RCCM.200409-1248OC
 24. Darley DR, Ma J, Huszti E, et al. Diffusing Capacity for Carbon Monoxide (DLCO): Association with long-term outcomes after Lung Transplantation in a 20-year longitudinal study. *European Respiratory Journal*. 2021;59(1). doi:10.1183/13993003.03639-2020
 25. Sage AT, Donahoe LL, Shamandy AA, et al. A machine-learning approach to human ex vivo lung perfusion predicts transplantation outcomes and promotes organ utilization. *Nat Commun*. 2023;14(1). doi:10.1038/S41467-023-40468-7
 26. Pedregosa FABIANPEDREGOSA F, Michel V, Grisel OLIVIERGRISEL O, et al. Scikit-learn: Machine Learning in Python. *Journal of Machine Learning Research*. 2011;12(85):2825-2830. <http://jmlr.org/papers/v12/pedregosa11a.html>. Accessed August 27, 2024.
 27. Hunter JD. Matplotlib: A 2D graphics environment. *Comput Sci Eng*. 2007;9(3):90-95. doi:10.1109/MCSE.2007.55
 28. Waskom ML. seaborn: statistical data visualization. *J Open Source Softw*. 2021;6(60):3021. doi:10.21105/JOSS.03021
 29. Seabold S, Perktold J. Statsmodels: Econometric and Statistical Modeling with Python. *Proceedings of the 9th Python in Science Conference*. 2010:92-96. doi:10.25080/MAJORA-92BF1922-011
 30. Virtanen P, Gommers R, Oliphant TE, et al. SciPy 1.0: fundamental algorithms for scientific computing in Python. *Nat Methods*. 2020;17(3):261-272. doi:10.1038/S41592-019-0686-2
 31. Wolf T, Debut L, Sanh V, et al. HuggingFace's Transformers: State-of-the-art Natural Language Processing. October 2019. <https://arxiv.org/abs/1910.03771v5>. Accessed August 27, 2024.
 32. Spiref: Spirometry Reference Value Calculator - KU Leuven. https://kuleuven.limo.libis.be/discovery/fulldisplay?docid=lirias3999656&context=SearchWebhook&vid=32KUL_KUL:Lirias&lang=en&search_scope=lirias_profile&adaptor=SearchWebhook&tab=LIRIAS&query=any,contains,LIRIAS3999656&offset=0. Accessed August 27, 2024.
 33. Quanjer PH, Stanojevic S, Cole TJ, et al. MULTI-ETHNIC REFERENCE VALUES FOR SPIROMETRY FOR THE 3–95 YEAR AGE RANGE: THE GLOBAL LUNG FUNCTION 2012 EQUATIONS: Report of the Global Lung Function Initiative (GLI), ERS Task Force

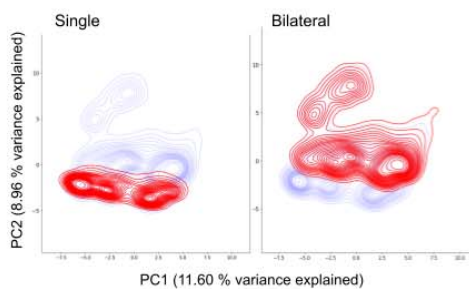
- to establish improved Lung Function Reference Values. *Eur Respir J.* 2012;40(6):1324.
doi:10.1183/09031936.00080312
34. Akiba T, Sano S, Yanase T, Ohta T, Koyama M. Optuna: A Next-generation Hyperparameter Optimization Framework. *Proceedings of the ACM SIGKDD International Conference on Knowledge Discovery and Data Mining.* July 2019:2623-2631.
doi:10.1145/3292500.3330701
 35. scikit-optimize/scikit-optimize. doi:10.5281/ZENODO.5565057
 36. Lundberg SM, Lee SI. A Unified Approach to Interpreting Model Predictions. *Adv Neural Inf Process Syst.* 2017;2017-December:4766-4775. <https://arxiv.org/abs/1705.07874v2>. Accessed August 27, 2024.
 37. Kline A, Luo Y. PsmPy: A Package for Retrospective Cohort Matching in Python. *Proceedings of the Annual International Conference of the IEEE Engineering in Medicine and Biology Society, EMBS.* 2022;2022-July:1354-1357.
doi:10.1109/EMBC48229.2022.9871333

Figures

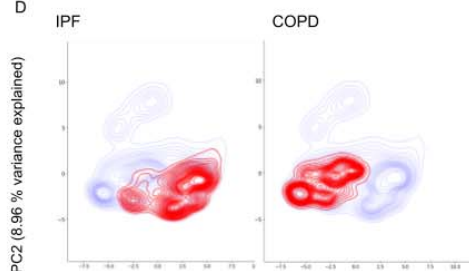
A



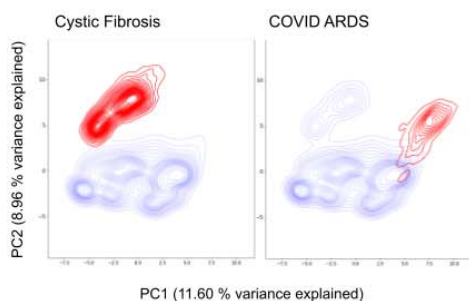
C



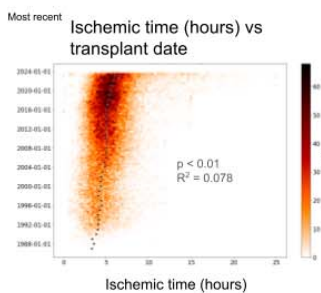
D



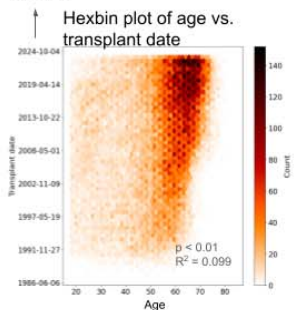
E



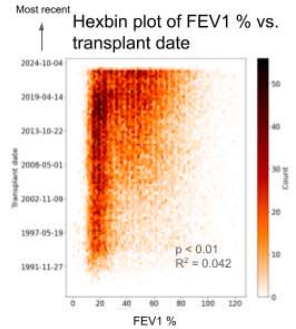
B



Most recent



Most recent



F

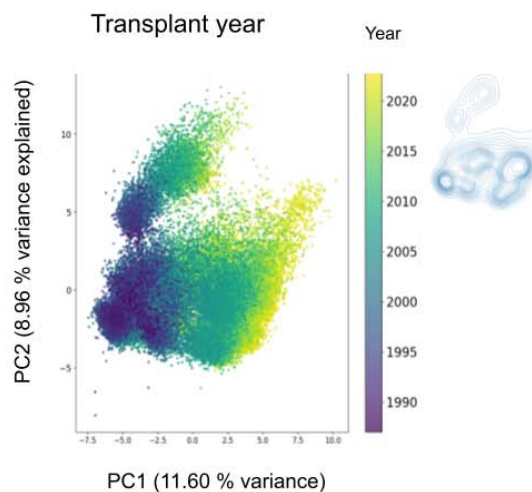
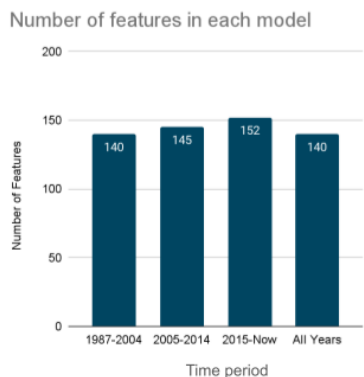
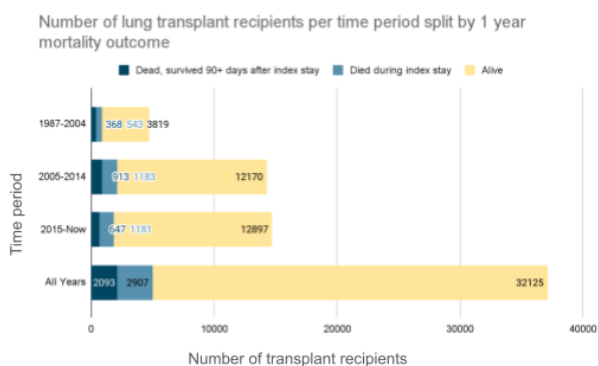


Figure 1: An exploratory analysis of the UNOS dataset reveals distinct indication-drive groupings and time-associated trends. A. Histogram of the number of lung transplants by year since 1987 split by restrictive indication (red). The timeline schematic below the x axis indicates how many observations were included for modeling for each model across various time frames. B. Hexbin plots showing from top to bottom the relationship of ischemic time (hours), recipient age, and FEV1% at the time of transplant with sorted transplant date. Black dots on the ischemic time plot indicate the yearly median of ischemic time. P values and R-squared values were derived from linear regression on all three variables vs transplant year. C. Principal components contour plots split by single and bilateral transplants, indicated in red. D. Principal components contour plots split by indication (red). E. Principal components scatterplot colored by transplant year with reference contour plot on the right. Early to most recent transplant years are illustrated from dark to light respectively.

A

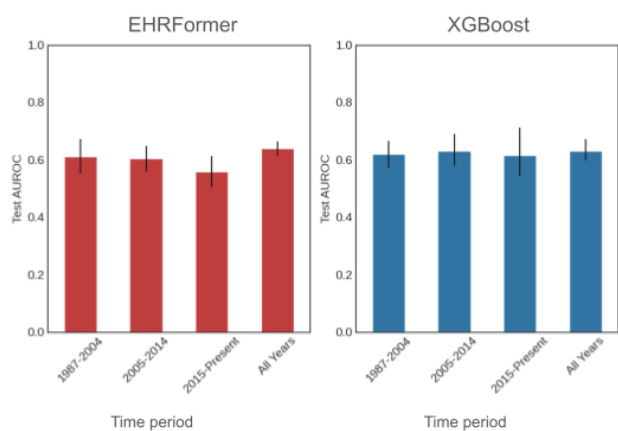


B

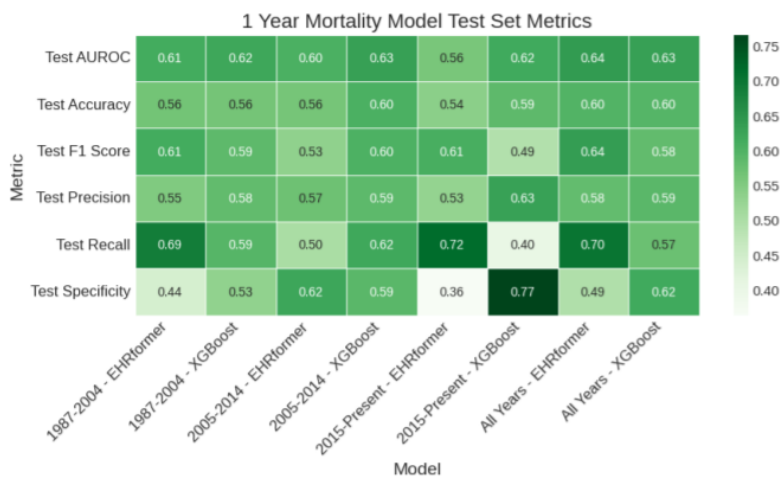


C

Test AUROCs for EHRFormer and XGBoost for 1 year mortality prediction

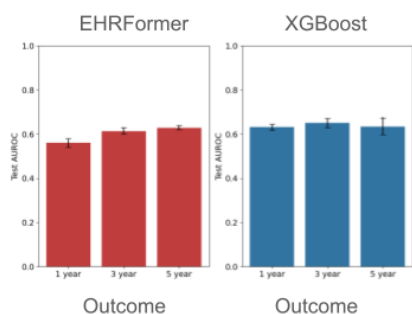


D



E

1, 3, and 5 year mortality prediction



F

Number of lung transplant recipients per outcome split by mortality status at 1, 3, and 5 years

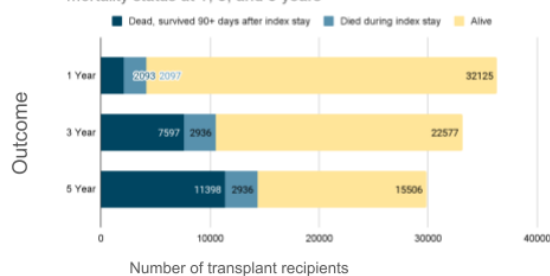
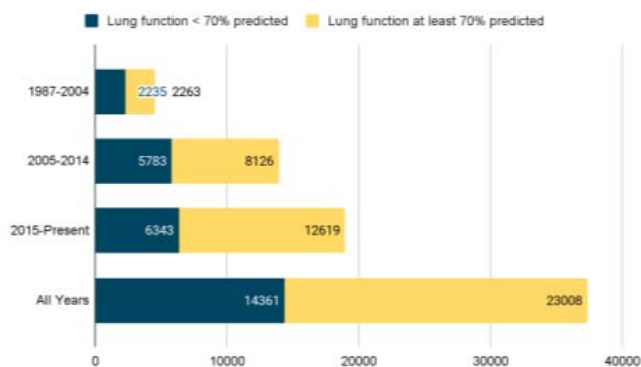
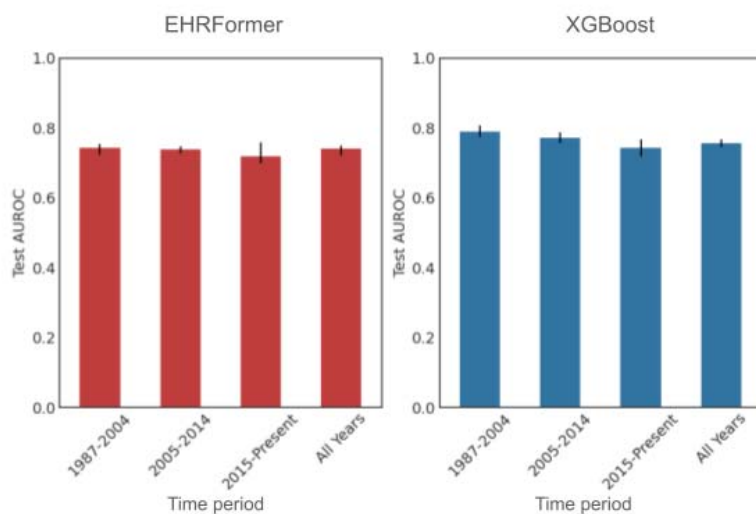


Figure 2: EHRFormer and XGBoost predict one-, three-, and five-year mortality with modest performance. A. The number of features used in each of the 4 different models. A data dictionary of these features is available in Table S1. B. The number of patients in each model split by class outcome of 1 year mortality. Teal indicates those who were excluded for modeling if they died within 90 days of their index stay. D. Test set AUROCs for EHRFormer (red) and XGBoost (blue) prediction of 1 year mortality across the 4 models. Error bars indicate 95% CIs based on 50 bootstraps of the test set. D. Heatmap of all test set metrics normalized within each metric (row-wise) including AUROC, accuracy, F1 score, precision, recall, and specificity for EHRFormer and XGBoost across the 4 models. E. Test set AUROCs for EHRFormer (red) and XGBoost (blue) prediction of 1-, 3-, and 5-year mortality. Error bars indicate 95% CIs based on 50 bootstraps of the test set. F. The number of patients split by class outcome of 1-, 3-, and 5-year mortality. Teal indicates those who were excluded for modeling if they died within 90 days of their index stay.

A Number of lung transplant recipients per time period split by lung function at one year



B Test AUROCs for EHRFormer and XGBoost for 1 year lung function <70 percent predicted prediction



C

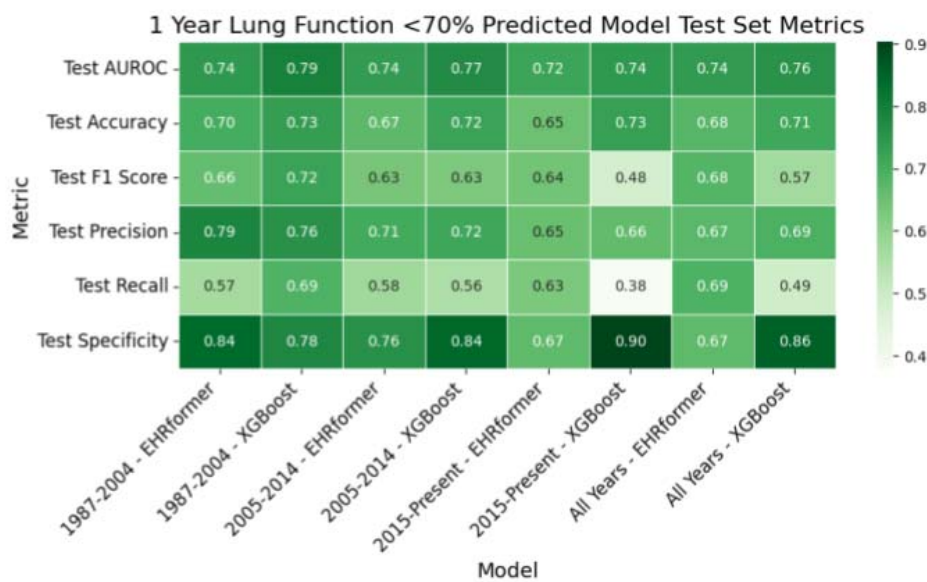
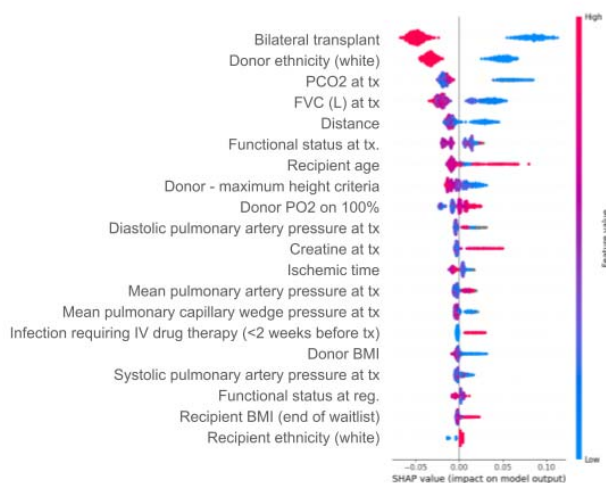
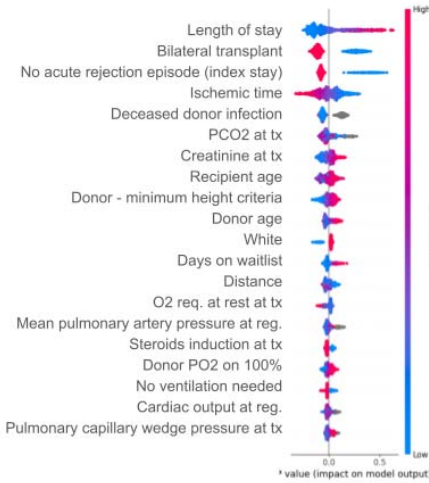


Figure 3: EHRFormer and XGBoost predict one year lung function with strong performance. A. The number of patients in each model split by class outcome of FEV1 <70% predicted at 1 year. B. Test set AUROCs for EHRFormer (red) and XGBoost (blue) prediction of FEV1p <70% predicted across the 4 models. Error bars indicate 95% CIs based on 50 bootstraps of the test set. C. Heatmap of all test set metrics normalized within each metric (row-wise) including AUROC, accuracy, F1 score, precision, recall, and specificity for EHRFormer and XGBoost across the 4 models.

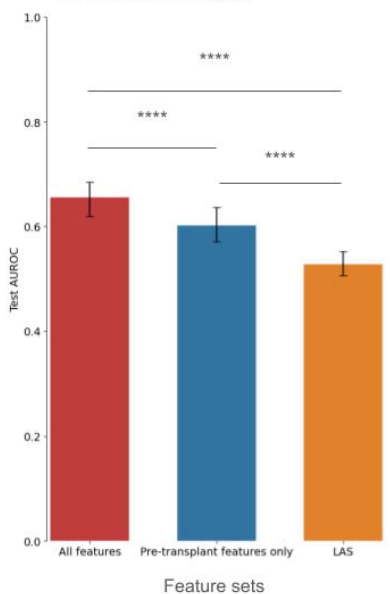
A XGBoost 1 year mortality model SHAP values for pre-transplant features only on all years



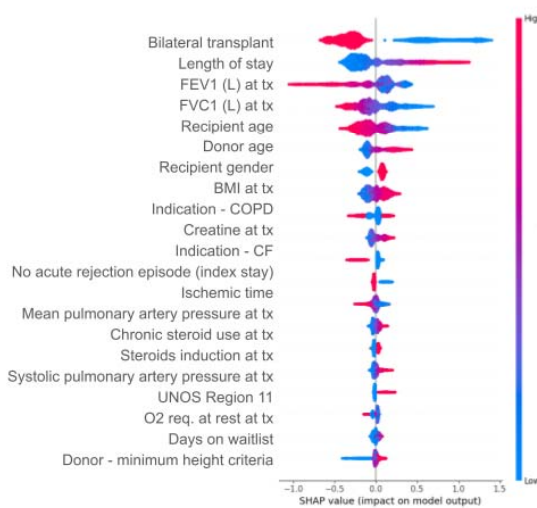
B XGBoost 1 year mortality model SHAP values including peri-transplant features on all years



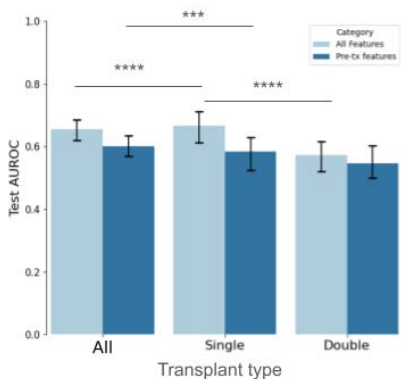
C Test AUROCs for 1 year mortality prediction with XGBoost on all years with various sets of features



D XGBoost 1 year lung function model SHAP values including peri-transplant features on all years



E Test AUROCs for 1 year mortality prediction with XGBoost on all years stratified by transplant type



F XGBoost 1 year lung function model SHAP values on all single lung transplants using pre-transplant features only

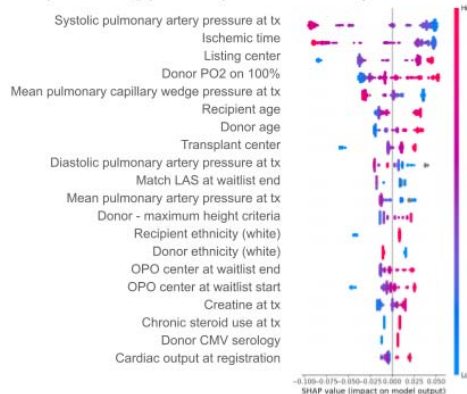
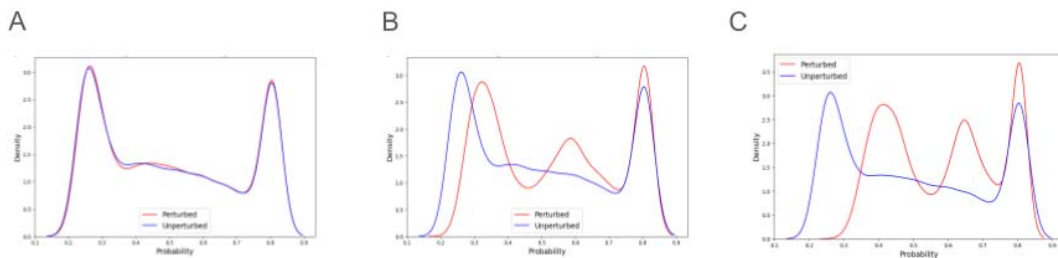


Figure 4: Index stay features strongly influence 1-year outcomes. A. SHAP values from the XGBoost model predicting 1 year mortality using pre-transplant features. B. SHAP values from the XGBoost model predicting 1 year mortality using pre-transplant and peri-transplant features. C. Test AUROCs from XGBoost models predicting 1 year mortality using all features (pre- and peri-transplant), pre-transplant features only, and lung allocation score. Error bars indicate 95% CIs based on 50 bootstraps of the test set. Statistical comparisons were made using the student's t-test method with correction for FDR <0.05. D. SHAP values from the XGBoost model predicting FEV1p <70% predicted at 1 year using pre- and peri-transplant features. E. Test AUROCs from XGBoost models predicting 1 year mortality by transplant type - all transplants, single, and double lung transplants. Light and dark blue indicate models trained on all features (pre- and peri-transplant features) vs. pre-transplant features only). Highlighted significant statistical comparisons of interest are indicated on the graph. F. SHAP values from the XGBoost model predicting FEV1p <70% predicted at 1 year within single lung transplant recipients using pre-transplant features only.

Probability distribution of mortality prediction after perturbation

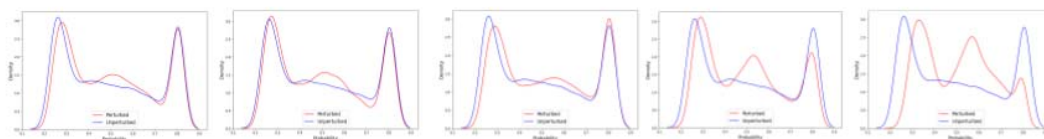


Perturbed feature

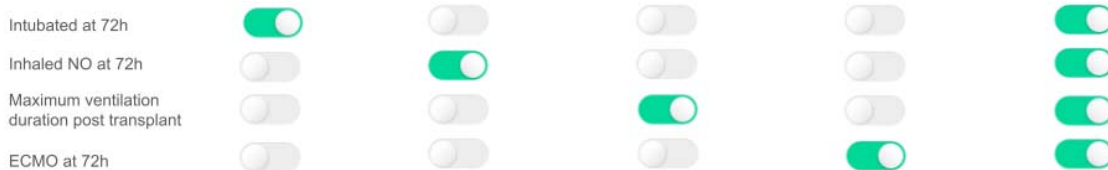


D

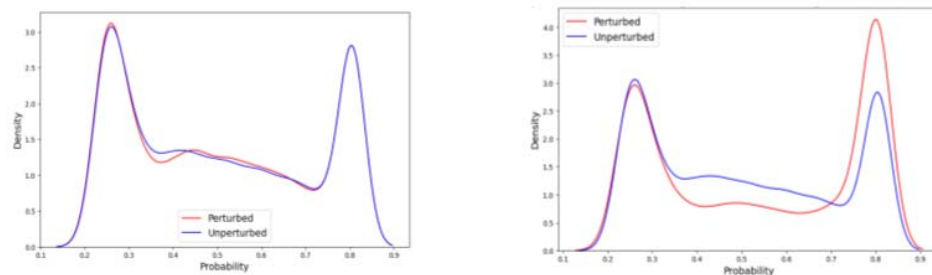
If patient experienced commonly co-occurring index-stay features



Perturbed feature



E



Perturbed feature



Figure 5: EHRFormer perturbations allow users to query the effect of one or multiple features simultaneously and reveal the paradoxical relationship of ischemic time on mortality. A, B, and C demonstrate probability distribution curves for the model's prediction of 1 year mortality and how they change when an individual feature is toggled. A. transplantation in UNOS region 2; B. whether patient experienced long index stay; C. whether patient experienced dialysis during index stay. D. Changes in probability distribution curves for 1 year mortality when index stay features reflective of complications are toggled. E. Changes in the probability distribution for 1 year mortality when all observations are set to their maximum quartile for ischemic time are shown on the left. Changes in the probability distribution for 1 year mortality when all observations are set to their maximum quartile for ischemic time and set to their lowest quartile for transplant year are shown on the right.

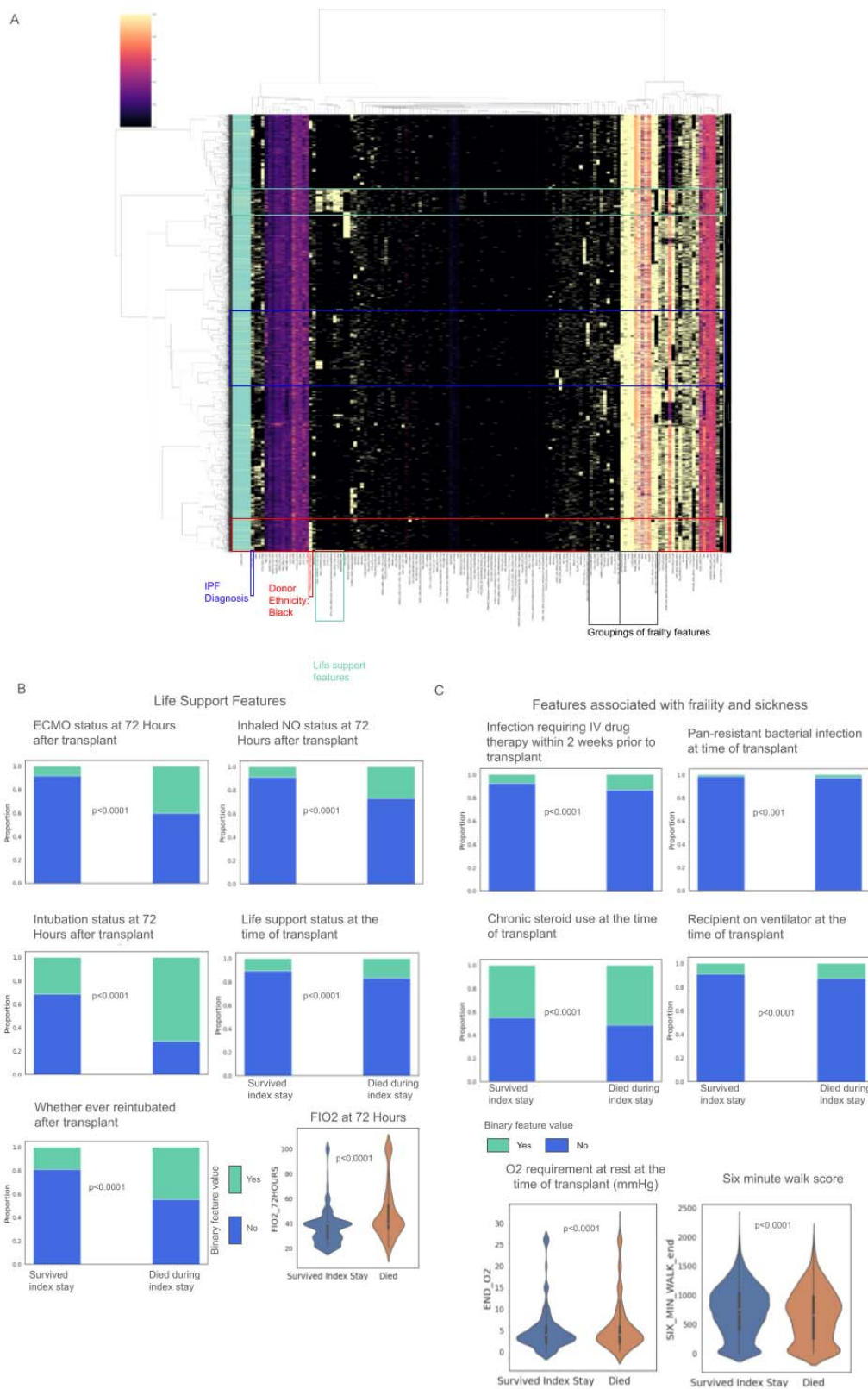
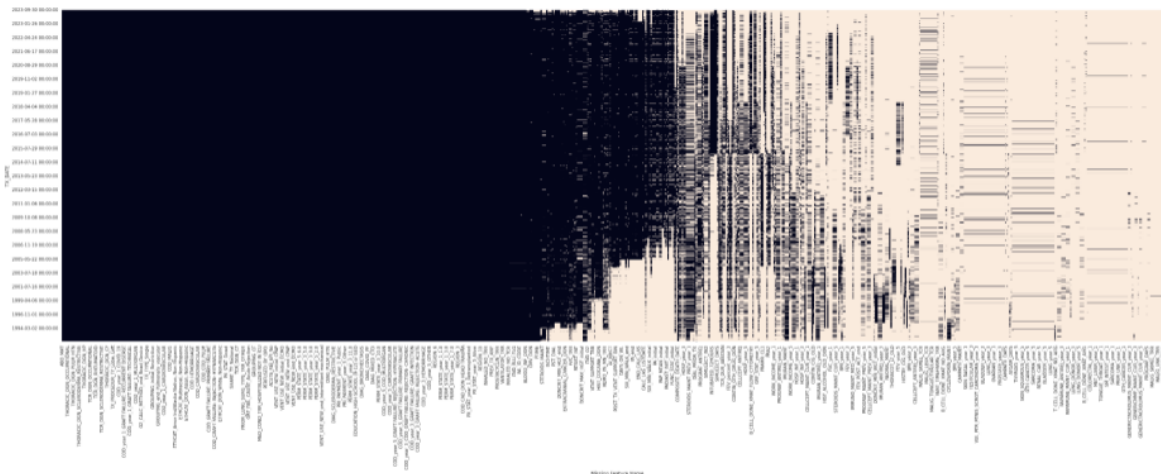


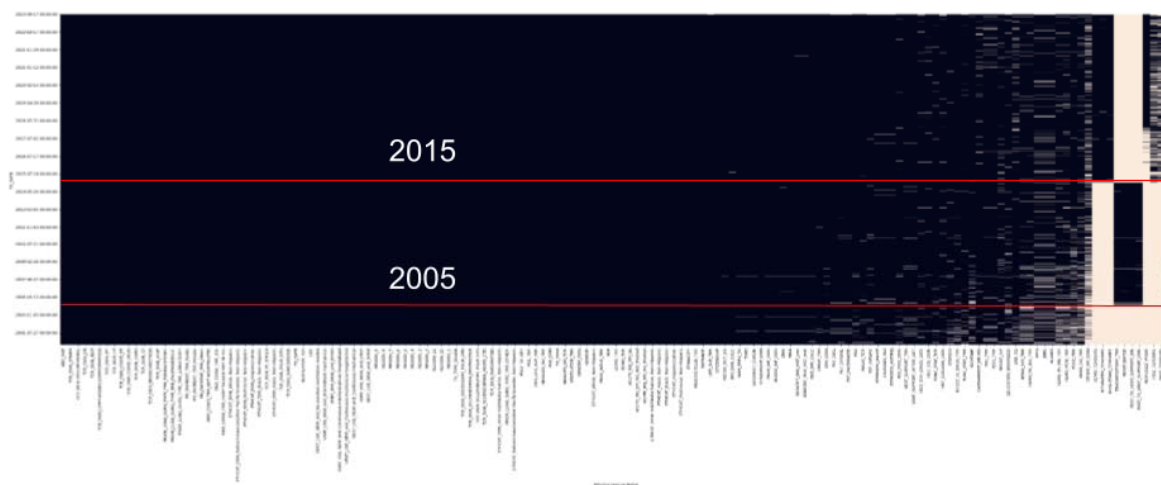
Figure 6: Those who died during their index stay have a higher proportion of flags for life support features, features associated with frailty, and index stay complications. A. heatmap visualization of the hierarchically clustered features used for the prediction tasks. The annotation legend on the left indicates those who died during their index stay (yellow) vs. those who survived the index stay (green). The heatmap also highlights groupings or clusters of features with a higher proportion of those who died during their index stay. Blue box - those whose indication for transplant was idiopathic pulmonary fibrosis; red box - a group of patients highlighted by black donor ethnicity; green box - a set of features associated with life support after transplant; grey boxes - 2 groupings belonging to separate hierarchically clustered “clades” associated with recipient frailty. B. Life support features that were statistically significant in patients who survived the index stay vs. those who died during the index stay, where stacked proportional bar plots were used to represent categorical features (green indicates “yes” and blue indicates “no” for the feature value) and violin plots were used to show continuous features. C. Frailty features that were statistically significant in patients who survived the index stay vs. those who died during the index stay. For graphs in B and C a chi-square (categorical) or Wilcoxon-rank sum (continuous) test was applied with FDR correction <0.05 for multiple comparisons.

Supplementary Figures

A.



B.



C.

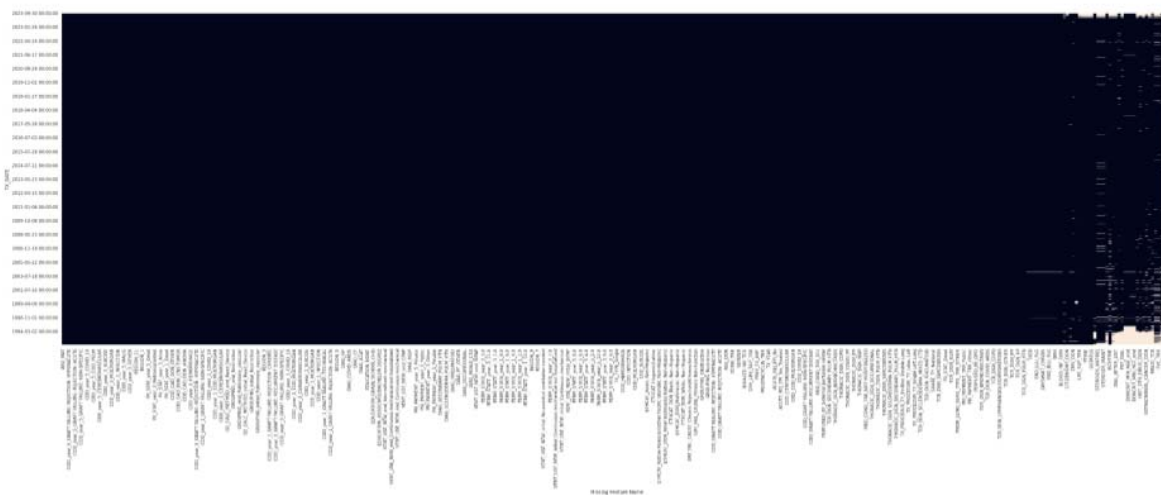


Figure S1: Heatmaps showing data missingness of features from Table S1. A. Missingness of all waitlist, follow-up, and peritransplant features sorted by transplant date (780 features). B. Missingness of all waitlist, peritransplant features sorted by transplant date that were at least 90% complete and used for modeling. 2005 and 2015 are indicated on the heatmap to demonstrate features that are missing from the time periods used for modeling. Missingness of all waitlist, follow-up, and peritransplant features sorted by transplant date, used for PCA and at least 90% complete (357 features).

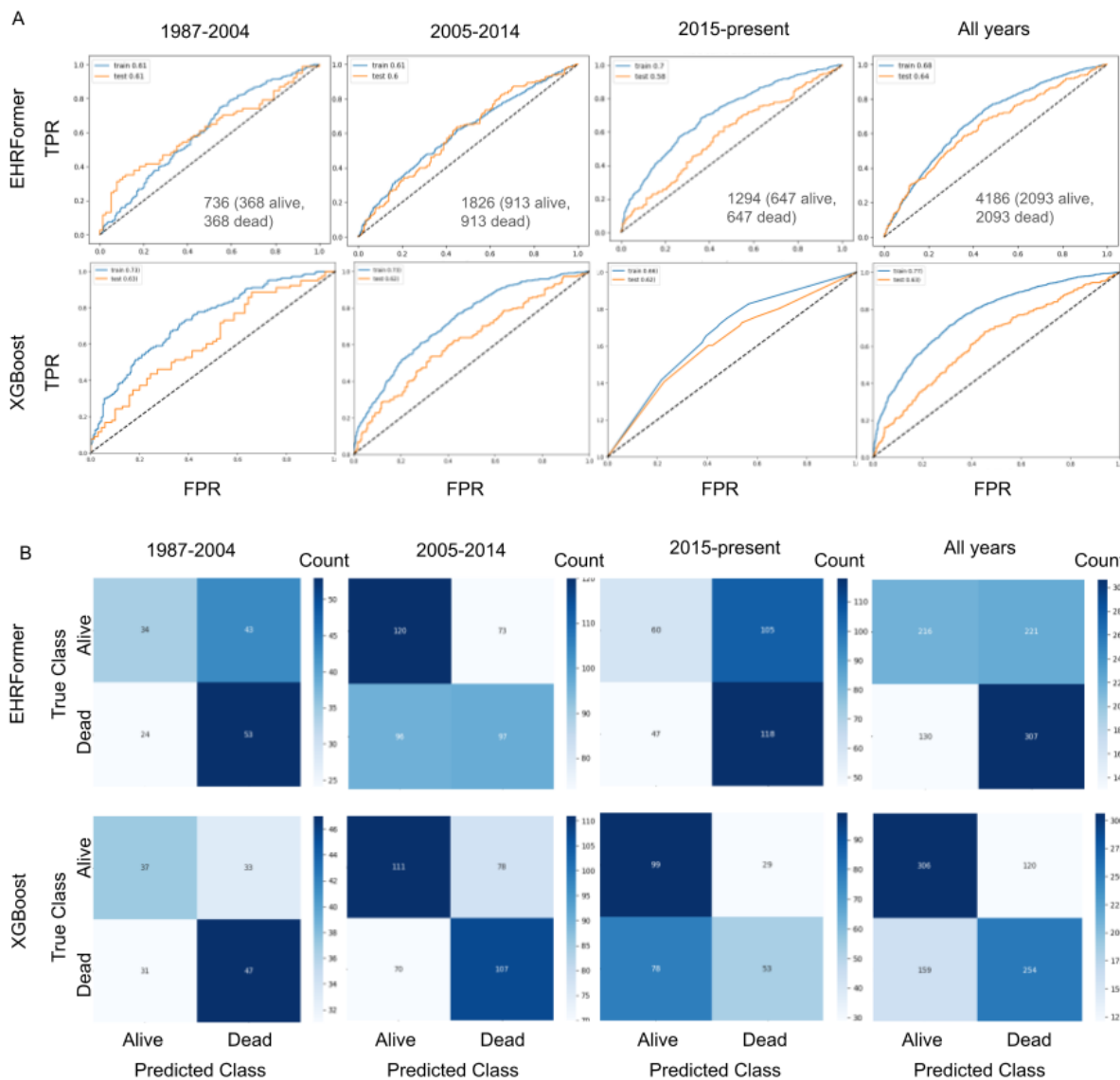


Figure S2: Area under the receiver operating curves (A) and test set confusion matrices (B) for the prediction of 1 year mortality using data from 1987-2004, 2005-2014, 2015-present, and from all years. The top row and bottom row in each panel shows the performance in EHRFormer and XGBoost respectively.

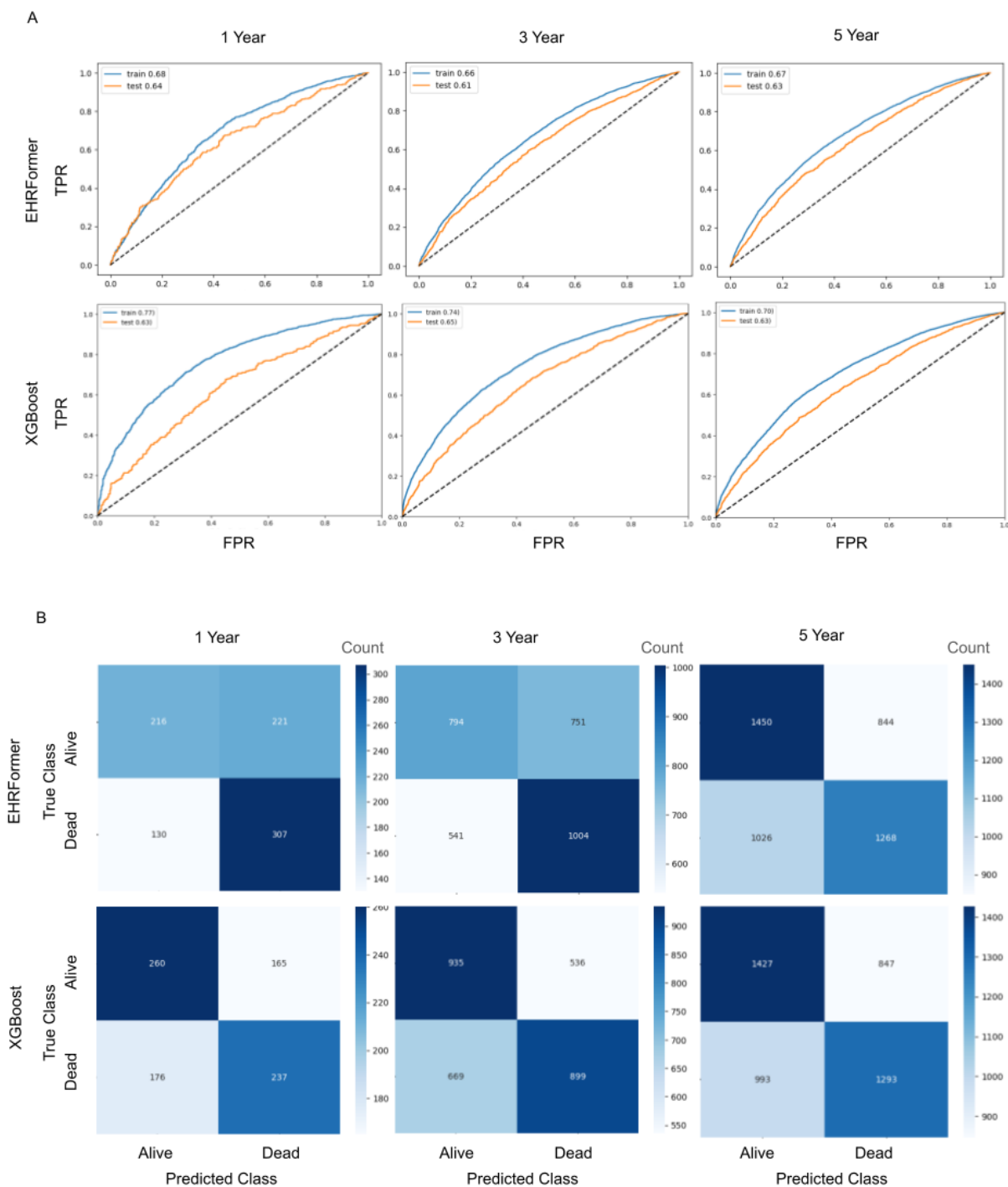


Figure S3: Area under the receiver operating curves (A) and test set confusion matrices (B) for the prediction of 1, 3, and 5 year mortality using data from 1987-2004, 2005-2014, 2015-present, and from all years. The top row and bottom row in each panel shows the performance in EHRFormer and XGBoost respectively.

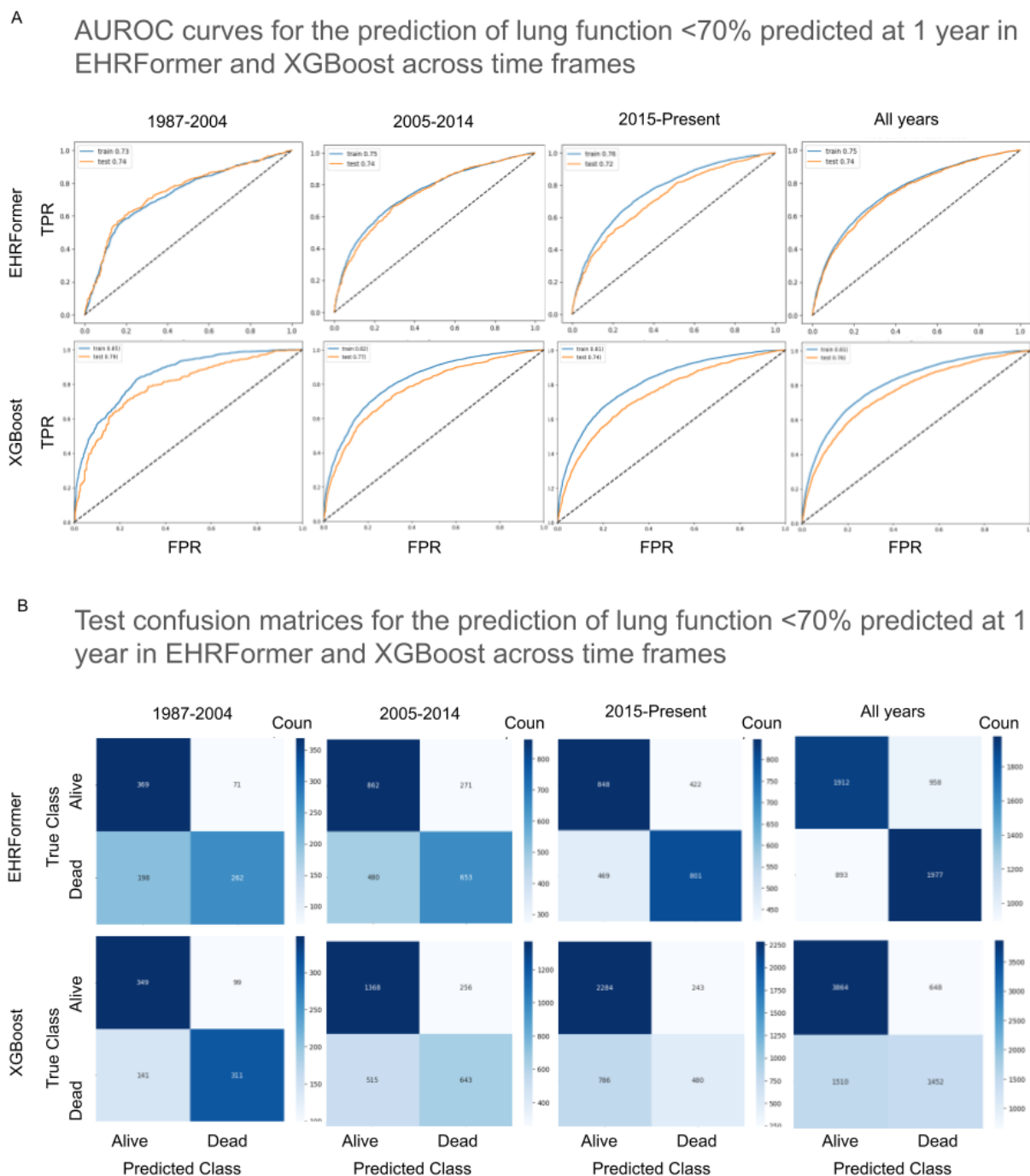
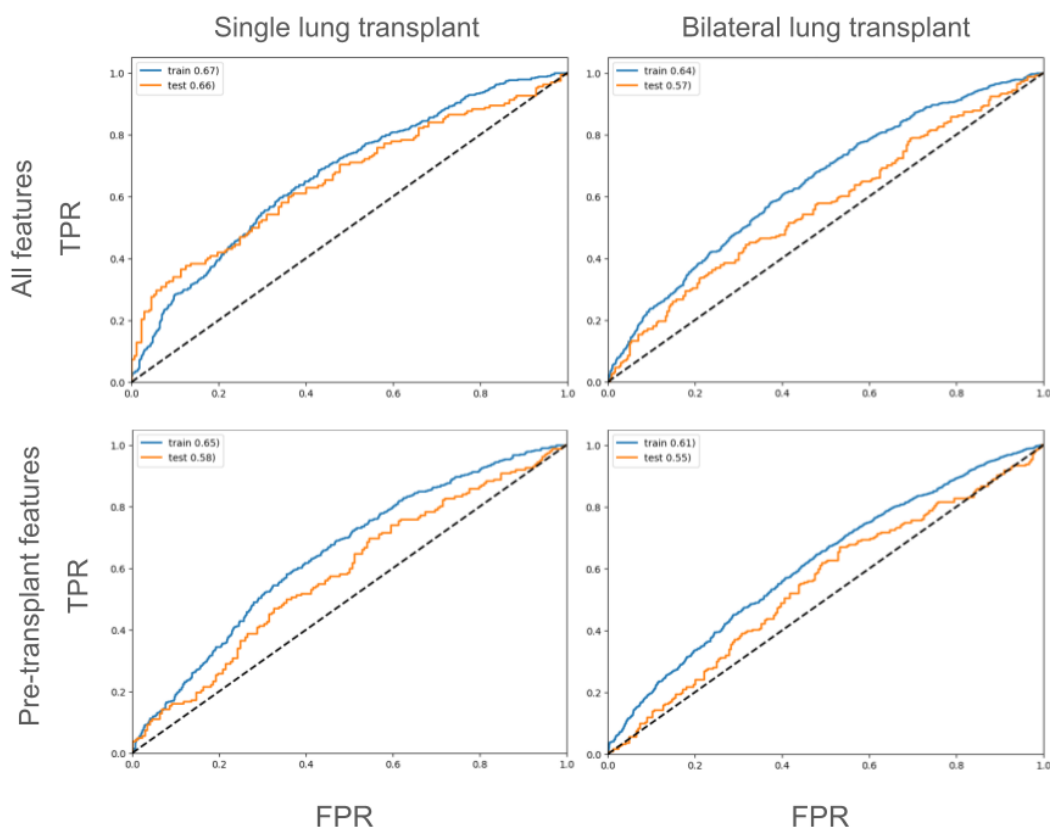


Figure S4: Area under the receiver operating curves (A) and test set confusion matrices (B) for the prediction of FEV1 <70% at 1 year using data from 1987-2004, 2005-2014, 2015-present, and from all years. The top row and bottom row in each panel shows the performance in EHRFormer and XGBoost respectively.

A. AUROC curves for the prediction of 1 year mortality in single vs bilateral lung transplants using XGBoost



B. SHAP values for the prediction of 1 year mortality in single vs bilateral lung transplants on **pre-transplant features only** using XGBoost

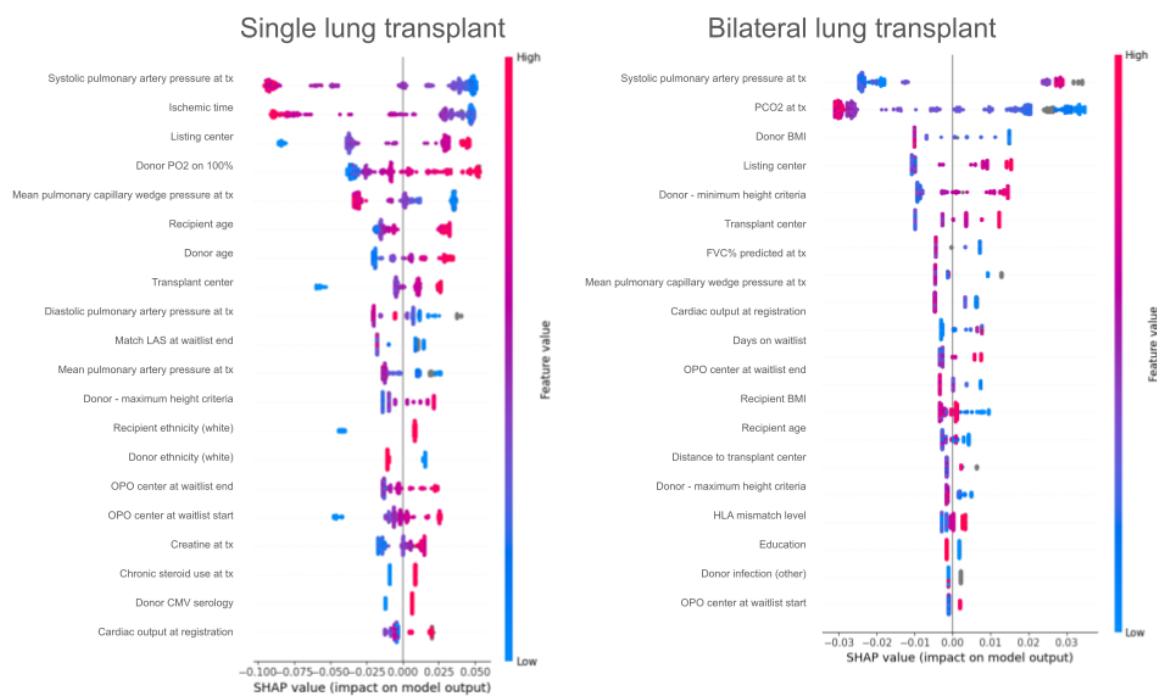


Figure S5: Area under the receiver operating curves and additional SHAP values for the prediction of 1 year mortality stratified by transplant type using all features vs. pre-transplant features only. A. Area under the receiver operating curves for XGBoost models predicting 1 year mortality in single vs bilateral lung transplant recipients using either all features or only pre-transplant features as specified in Table S1. B. SHAP values for 1 year mortality prediction single lung transplant (left) vs bilateral lung transplant (right) recipients using only pre-transplant features.

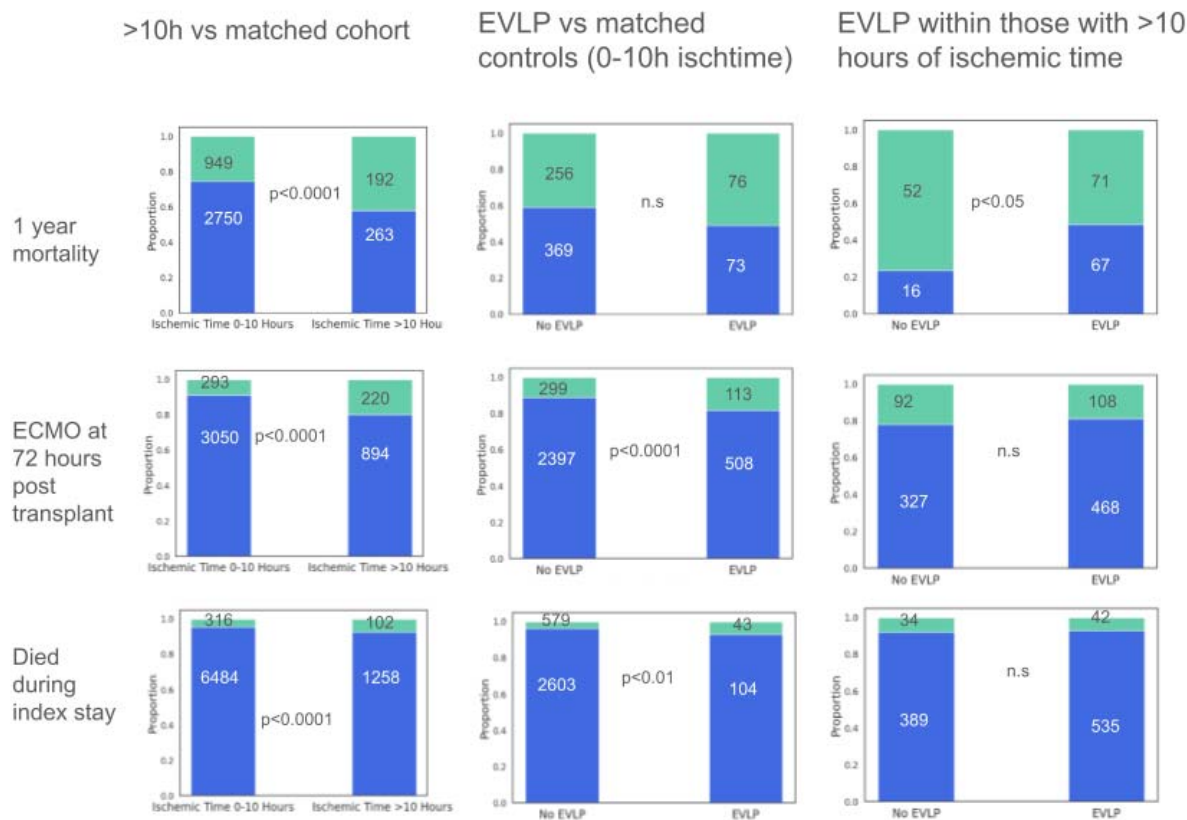


Figure S6: Stratification of patients by prolonged ischemic time (>10h) reveals a higher proportion of 1 year mortality, ECMO at 72 hours after transplant, and death during the index stay. Stacked proportional bar plots demonstrating the differences in proportions of 1 year mortality, ECMO at 72 hours after transplant, and death during the index stay (rows) between different stratifications of the patients (columns). Green indicates a positive flag for the binary outcome of interest whereas blue indicates a negative flag. Stratification by EVLP in comparison to matched controls with <10h of lung ischemic time (middle column) revealed some mitigation of poor outcomes. On the other hand, stratification by EVLP in comparison to those with >10h of lung ischemic time (last column) revealed greater mitigation of poor outcomes. Numbers of patients in each grouping are indicated on the graphs.

Supplemental Table

Feature Name	STAR Data Dictionary Description	When collected	=1 obs	≥90% complete	1997-2004 Model	2005-2014 Model	2015-Present Model	All Years Model	Pre-transplant?
ABO_MAT	DONOR-RECIPIENT ABO MATCH LEVEL	At time of transplant	Yes	Yes	Yes	Yes	Yes	Yes	Yes
AGE	RECIPIENT AGE (YRS)	At time of transplant	Yes	Yes	Yes	Yes	Yes	Yes	Yes
AGE_DON	DONOR AGE (YRS)	At time of transplant	Yes	Yes	Yes	Yes	Yes	Yes	Yes
ALCOHOL_HEAVY_DON	Heavy Alcohol Use (heavy=2+ drinks/day)	At time of transplant	Yes	No	No	No	No	No	No
AMIS	A LOCUS MISMATCH LEVEL	At time of transplant	Yes	No	Yes	Yes	Yes	Yes	Yes
BLOOD_INF_DON	DECEASED DONOR-BLOOD AS INFECTION SOURCE	At time of transplant	Yes	Yes	Yes	Yes	Yes	Yes	Yes
BMI_DON_CALC	Donor BMI - PreRx Dietation Calculated	At time of transplant	Yes	Yes	Yes	Yes	Yes	Yes	Yes
BMS	B LOCUS MISMATCH LEVEL	At time of transplant	Yes	No	Yes	Yes	Yes	Yes	Yes
BW4	Candidate Most Recent/Removal BW4 Antigen From Waiting List	At time of transplant	Yes	Yes	Yes	Yes	Yes	Yes	Yes
BW6	Candidate Most Recent/Removal BW6 Antigen From Waiting List	At time of transplant	Yes	Yes	Yes	Yes	Yes	Yes	Yes
CALC_LAS_LISTDATE	Candidate Final Calculated Lung Allocation Score on Date of Listing	At time of transplant	Yes	Yes	Yes	Yes	Yes	Yes	Yes
CARDIAREST_NEURO	DECEASED DONOR CARDIAC ARREST POST BRAIN DEATH	At time of transplant	Yes	No	No	No	No	No	No
CIG_GRT_10_OLD	HISTORY OF CIGARETTE USE >10 PACK YEARS @ REGISTRATION	At time of transplant	Yes	No	Yes	Yes	Yes	Yes	Yes
CIG_USE	HISTORY OF CIGARETTE USE	At time of transplant	Yes	No	No	No	No	No	No
CMV_DON	DONOR SEROLOGY ABTI CMV (FOR LIVING DONOR, PRE UNET DATA ONLY)	At time of transplant	Yes	Yes	Yes	Yes	Yes	Yes	Yes
CMV_IGG	RECIPIENT CMV BY IGG TEST RESULT @ TRANSPLANT	At time of transplant	Yes	No	No	No	No	No	No
CMV_IGM	RECIPIENT CMV BY IGM TEST RESULT @ TRANSPLANT	At time of transplant	Yes	No	No	No	No	No	No
COMPOSITE_DEATH_DATE	Composite Patient Death Date from OPTN or Verified from External Sources	At time of transplant	Yes	No	No	No	No	No	No
CONTIN_ALCOHOL_OLD_DON	DECEASED DONOR-HISTORY OF ALCOHOL DEPENDENCY+ RECENT 6MO USE	At time of transplant	Yes	No	No	No	No	No	No
CONTIN_CIG_DON	DECEASED DONOR-HISTORY OF CIGARETTES IN PAST@ >20PACK YRS+RECENT 6MO USE	At time of transplant	Yes	No	No	No	No	No	No
CONTIN_CIG_OLD	CIGARETTE USE > 10 PACK YRS AND CONTINUED USE DURING LAST SIX MONTHS	At time of transplant	Yes	No	No	No	No	No	No
CONTIN_COCAINE_DON	DECEASED DONOR-HISTORY OF COCAINE USE+RECENT 6MO USE	At time of transplant	Yes	No	No	No	No	No	No
CONTIN_IV_DRUG_OLD_DON	DECEASED DONOR-HISTORY OF IV DRUG USE+RECENT 6MO USE	At time of transplant	Yes	No	No	No	No	No	No
CONTIN_OTH_DRUG_DON	DECEASED DONOR-HISTORY OF OTHER DRUGS IN PAST+RECENT 6MO USE	At time of transplant	Yes	No	No	No	No	No	No
CPRA	Recipient Most Recent CPRA	At time of transplant	Yes	No	No	No	No	No	No
CPRA_PEAK	Recipient Peak CPRA	At time of transplant	Yes	No	No	No	No	No	No
CREAT_TRR	RECIPIENT SERUM CREATININE AT TIME OF TX	At time of transplant	Yes	Yes	Yes	Yes	Yes	Yes	Yes
DAYSWAIT_CHRON	TOTAL DAYS ON WAITING LIST	At time of transplant	Yes	Yes	Yes	Yes	Yes	Yes	Yes
DIAL_AFTER_LIST	DIALYSIS OCCURRING BETWEEN LISTING AND TRANSPLANT	At time of transplant	Yes	Yes	No	No	No	No	No
DIAL_PRIOR_TX	Calculated: Ever Dialysis Prior Tx?	At time of transplant	Yes	No	No	No	No	No	No
DISTANCE	DISTANCE FROM DONOR HOSP TO TX CENTER (Statistical Miles)	At time of transplant	Yes	Yes	Yes	Yes	Yes	Yes	Yes
ECMO_72HOURS	Recipient ECMO at 72 Hours	At time of transplant	Yes	No	No	Yes	No	No	No
ECMO_TCR	PATIENT ON LIFE SUPPORT - ECMO @ REGISTRATION	At time of transplant	Yes	Yes	Yes	Yes	Yes	Yes	Yes
ECMO_TRR	PATIENT ON LIFE SUPPORT - ECMO @ TRANSPLANT	At time of transplant	Yes	Yes	Yes	Yes	Yes	Yes	Yes
END_BLI_FLG	LUNG PREFERENCE AT REMOVAL/CURRENT TIME/ TCR - BOTH (1+Y)	At time of transplant	Yes	Yes	No	No	No	No	No
END_BMI_CALC	Calculated Candidate BMI at Removal/Current Time	At time of transplant	Yes	Yes	Yes	Yes	Yes	Yes	Yes
END_CALC_LAS	REMOVAL/CURRENT CALCULATED LUNG ALLOCATION SCORE	At time of transplant	Yes	No	No	No	No	No	No
END_CREAT	Serum Creatinine at TRR/Removal/Current Time (H, LU only)	At time of transplant	Yes	Yes	No	No	No	No	No
END_LLU_FLG	LUNG PREFERENCE AT REMOVAL/CURRENT TIME/ TCR - LEFT (1+Y)	At time of transplant	Yes	Yes	No	No	No	No	No
END_MATCH_LAS	REMOVAL/CURRENT LUNG ALLOCATION SCORE AT MATCH TIME	At time of transplant	Yes	No	No	No	No	No	No
END_O2	O2 Requirement at Rest at TRR/Removal/Current Time	At time of transplant	Yes	No	Yes	Yes	Yes	Yes	No
END_RLU_FLG	LUNG PREFERENCE AT REMOVAL/CURRENT TIME/ TCR - RIGHT (1+Y)	At time of transplant	Yes	Yes	No	No	No	No	No
ETHNICITY	RECIPIENT ETHNICITY (HISPANIC VS. NON-HISPANIC)	At time of transplant	Yes	Yes	Yes	Yes	Yes	Yes	Yes
EXTRACRANIAL_CANCER_DON	DECEASED DONOR-EXTRACRANIAL CANCER AT PROCUREMENT	At time of transplant	Yes	No	No	No	No	No	No
FEV1_TRR	PULMONARY STATUS: FEV1 % PREDICTED @ TRANSPLANT	At time of transplant	Yes	Yes	Yes	Yes	Yes	Yes	Yes
FI02_72HOURS	Recipient FI02 at 72 Hours	At time of transplant	Yes	No	No	Yes	No	No	No
FUNC_STAT_TCR	RECIPIENT FUNCTIONAL STATUS @ REGISTRATION	At time of transplant	Yes	Yes	Yes	Yes	Yes	Yes	Yes
FUNC_STAT_TRF	TRF FUNCTIONAL STATUS @ TRF/OL	At time of transplant	Yes	No	No	No	No	No	No
FUNC_STAT_TRR	RECIPIENT FUNCTIONAL STATUS @ TRANSPLANT	At time of transplant	Yes	No	Yes	Yes	Yes	Yes	Yes
FVC_TRR	PULMONARY STATUS: FVC % PREDICTED @ TRANSPLANT	At time of transplant	Yes	Yes	Yes	Yes	Yes	Yes	Yes
GENDER	RECIPIENT GENDER	At time of transplant	Yes	Yes	Yes	Yes	Yes	Yes	Yes
GENDER_DON	DONOR GENDER	At time of transplant	Yes	Yes	Yes	Yes	Yes	Yes	Yes
GRF_STAT	GRAFT STATUS	At time of transplant	Yes	Yes	Yes	Yes	Yes	Yes	Yes
GSTAT	GRAFT FAILED (1=YES)	At time of transplant	Yes	No	No	No	No	No	No
GTIME	GRAFT LIFESPAN-Days From Transplant to Failure/Death/Last Follow-Up	At time of transplant	Yes	Yes	No	No	No	No	No
HEMO_CO_TRR	MOST RECENT HEMODYNAMICS CO LMIN @ TRANSPLANT	At time of transplant	Yes	No	No	Yes	Yes	Yes	Yes
HEMO_PA_DIA_TRR	MOST RECENT HEMODYNAMICS PA (DIA) MMHG @ TRANSPLANT	At time of transplant	Yes	No	Yes	Yes	Yes	Yes	Yes
HEMO_PA_MIN_TRR	MOST RECENT HEMODYNAMICS PA (MEAN) MMHG @ TRANSPLANT	At time of transplant	Yes	No	Yes	Yes	Yes	Yes	Yes
HEMO_PCW_TRR	MOST RECENT HEMODYNAMICS PCW (MEAN) MMHG @ TRANSPLANT	At time of transplant	Yes	No	Yes	Yes	Yes	Yes	Yes
HEMO_SYS_TRR	MOST RECENT HEMODYNAMICS PA (SYS) MMHG @ TRANSPLANT	At time of transplant	Yes	No	Yes	Yes	Yes	Yes	Yes
HIST_ALCOHOL_OLD_DON	DECEASED DONOR-HISTORY OF ALCOHOL DEPENDENCY	At time of transplant	Yes	No	No	No	No	No	No
HIST_CIG_DON	DECEASED DONOR-HISTORY OF CIGARETTES IN PAST @ >20PACK YRS	At time of transplant	Yes	Yes	Yes	Yes	Yes	Yes	Yes
HIST_COCAINE_DON	DECEASED DONOR-HISTORY OF COCAINE USE IN PAST	At time of transplant	Yes	No	Yes	Yes	Yes	Yes	Yes
HIST_OTH_DRUG_DON	DECEASED DONOR-HISTORY OF OTHER DRUG USE IN PAST	At time of transplant	Yes	No	Yes	Yes	Yes	Yes	Yes
HISTRY_CIG_OLD	CIGARETTE USE > 20 PACK YRS (PRE-10/25/99)	At time of transplant	Yes	No	No	No	No	No	No
HLAMS	HLA MISMATCH LEVEL	At time of transplant	Yes	No	Yes	Yes	Yes	Yes	Yes
INFECT_IV_DRUG_TRR	INFECTION REQUIRING IV DRUG THERAPY (WITHIN 2 WEEKS PRIOR TO TRANSPLANT)	At time of transplant	Yes	Yes	Yes	Yes	Yes	Yes	Yes
INHALED_NO_TCR	TCR Patient on Life Support//Inhaled NO	At time of transplant	Yes	Yes	Yes	Yes	Yes	Yes	Yes
INHALED_NO_TRR	TRR Patient on Life Support//Inhaled NO	At time of transplant	Yes	Yes	Yes	Yes	Yes	Yes	Yes
INHALEDNO_72HOURS	Recipient Inhaled NO at 72 Hours	At time of transplant	Yes	No	No	Yes	No	No	No
INTUBATED_72HOURS	Recipient Intubated at 72 Hours	At time of transplant	Yes	No	No	No	Yes	No	No
ISCHTIME	ISCHEMIC TIME IN HOURS	At time of transplant	Yes	Yes	Yes	Yes	Yes	Yes	Yes
LIFE_SUP_TRR	CANDIDATE LIFE SUPPORT @ REGISTRATION	At time of transplant	Yes	Yes	Yes	Yes	Yes	Yes	Yes
LOS	RECIPIENT LENGTH OF STAY POST TX	At time of transplant	Yes	No	Yes	Yes	Yes	Yes	No
LV_EJECT	DECEASED DONOR LV EJECTION FRACTION %	At time of transplant	Yes	No	No	No	No	No	No
MOST_RCNT_CREAT	PATIENT MOST RECENT ABSOLUTE CREATININE AT LISTING	At time of transplant	Yes	No	No	No	No	No	No
NUM_PREV_TX	THE NUMBER OF PREVIOUS TRANSPLANTS	At time of transplant	Yes	Yes	Yes	Yes	Yes	Yes	Yes
OTH_LIFE_SUP_TRR	OTHER MECHANISM OF LIFE Y/N, 1=Y @ TRANSPLANT	At time of transplant	Yes	Yes	Yes	Yes	Yes	Yes	No
OTHER_INF_DON	DECEASED DONOR INFECTION OTHER SOURCE-CONFIRMED	At time of transplant	Yes	No	Yes	Yes	Yes	Yes	Yes
PAO2_72HOURS	Recipient PAO2 at 72 Hours	At time of transplant	Yes	No	No	No	Yes	No	No
PCO2_DON	DRUG/CO2	At time of transplant	Yes	No	No	No	No	No	No
PCO2_TRR	PULMONARY STATUS: PCO2 MMHG @ TRANSPLANT	At time of transplant	Yes	No	No	No	No	No	No
PERFUSED_PRIOR	TRR LUNG(S) PERFUSED PRIOR TO TRANSPLANT(S)	At time of transplant	Yes	No	Yes	Yes	Yes	Yes	Yes
PGE_TRR	PATIENT ON LIFE SUPPORT: PGE @ TRANSPLANT	At time of transplant	Yes	No	No	No	Yes	No	No
PNEUMORED_OLD	CANDIDATE PNEUMOREDUCTION PRIOR TO LISTING	At time of transplant	Yes	Yes	Yes	Yes	Yes	Yes	Yes
PNEUMOTHORAX_OLD	CANDIDATE PNEUMOTHORAX PRIOR TO LISTING	At time of transplant	Yes	No	No	No	No	No	No
PO2	DECEASED DONOR PO2 ON 100%	At time of transplant	Yes	No	No	No	No	No	No
PO2_FIO2_DON	DRUG/PO2 on FIO2 (If Yes, Lung PO2 on FIO2 at	At time of transplant	Yes	No	Yes	Yes	Yes	Yes	Yes
PRAMR	RECIPIENT MOST RECENT PRA% @ TRANSPLANT	At time of transplant	Yes	No	No	No	Yes	No	No
PRAMR_CL1	RECIPIENT MOST RECENT PRA% CLASS 1 @ TRANSPLANT	At time of transplant	Yes	No	No	No	No	No	No
PRAMR_CL2	RECIPIENT MOST RECENT PRA% CLASS 2 @ TRANSPLANT	At time of transplant	Yes	No	No	No	No	No	No
PRAPK	RECIPIENT PEAK PRA% @ TRANSPLANT	At time of transplant	Yes	No	No	No	No	No	No
PRAPK_CL1	RECIPIENT PEAK PRA% CLASS 1 @ TRANSPLANT	At time of transplant	Yes	No	No	No	No	No	No
PRAPK_CL2	RECIPIENT PEAK PRA% CLASS 2 @ TRANSPLANT	At time of transplant	Yes	No	No	No	No	No	No
PREV_TX_ANY	CALCULATED Previous Transplant of Any Organ Type	At time of transplant	Yes	Yes	Yes	Yes	Yes	Yes	Yes
PRIOR_CARD_SURG_TRR	TRR CARDIAC SURGERY BETWEEN LISTING AND TRANSPLANT (NON-TRANSPLANT)	At time of transplant	Yes	No	No	No	No	No	No
PRIOR_LUNG_SURG_TRR	TRR LUNG SURGERY BETWEEN LISTING AND TRANSPLANT (NON-TRANSPLANT)	At time of transplant	Yes	No	No	No	No	No	No

PROS_INFUS_TRR	TRR RECIPIENT PROSTACYCLIN INFUSION	At time of transplant	Yes	Yes	Yes	Yes	Yes	Yes	No
PROSTACYCLIN_TRR	TRR RECIPIENT PROSTACYCLIN INHALATION	At time of transplant	Yes	Yes	Yes	Yes	Yes	Yes	No
PST_AIRWAY	EVENTS PRIOR TO DISCHARGE: AIRWAY DEHISCENCE	At time of transplant	Yes	Yes	Yes	Yes	Yes	Yes	No
PST_DIAL	EVENTS PRIOR TO DISCHARGE: DIALYSIS	At time of transplant	Yes	Yes	Yes	Yes	Yes	Yes	No
PST_PACEMAKER	EVENTS PRIOR TO DISCHARGE: PERMANENT PACEMAKER	At time of transplant	Yes	Yes	Yes	Yes	Yes	Yes	No
PST_STROKE	EVENTS PRIOR TO DISCHARGE: STROKE	At time of transplant	Yes	Yes	Yes	Yes	Yes	Yes	No
PSTATUS	Boolean Most Recent Patient Status (based on composite death date) (1=Dead, 0=Alive)	At time of transplant	Yes	Yes	No	No	No	No	No
PTIME	Patient Survival Time in days (based on composite death date)	At time of transplant	Yes	Yes	No	No	No	No	No
PULM_INF_DON	DECEASED DONOR-INFECTIOUS PULMONARY SOURCE	At time of transplant	Yes	Yes	Yes	Yes	Yes	Yes	Yes
RECOV_OUT_US	ORGAN RECOVERED OUTSIDE U S	At time of transplant	Yes	Yes	Yes	Yes	Yes	Yes	Yes
REINTUBATED	RECIPIENT REINTUBATED POST TRANSPLANT	At time of transplant	Yes	No	No	Yes	Yes	No	No
RESIST_INF	PAN RESISTANT BACTERIAL INFECTION @ REGISTRATION	At time of transplant	Yes	Yes	No	Yes	Yes	Yes	Yes
STERNOTOMY_TRR	EVENTS OCCURRING BETWEEN LISTING AND TRANSPLANT: STERNOTOMY	At time of transplant	Yes	No	No	No	No	No	No
STEROID	CHRONIC STEROID USE: Y/NU @ TRANSPLANT	At time of transplant	Yes	Yes	No	Yes	Yes	Yes	Yes
TCR_DUR_ABSTAIN	DURATION OF ABSTINENCE FOR CIGARETTE USE	At time of transplant	Yes	No	No	No	No	No	No
THORACOT_LT_OLD	CANDIDATE THORACOTOMY LEFT AT LISTING	At time of transplant	Yes	No	No	No	No	No	No
THORACOT_RT_OLD	CANDIDATE THORACOTOMY RIGHT AT LISTING	At time of transplant	Yes	No	No	No	No	No	No
TOTAL_PERFUSION_TIME	TOTAL TIME (MINUTES) LUNGS(S) ON PERFUSION	At time of transplant	Yes	No	No	No	No	No	No
TRACHEOSTOMY_TRR	TRR TRACHEOSTOMY	At time of transplant	Yes	No	No	Yes	Yes	No	No
TRTREFJY	TREATED FOR REJECTION WITHIN 1 YEAR	At time of transplant	Yes	No	No	No	No	No	No
TX_YEAR	TRANSPLANT YEAR	At time of transplant	Yes	No	No	No	No	No	No
TXED	CANDIDATE RECEIVED DECEASED DONOR TRANSPLANT? 1=YES	At time of transplant	Yes	Yes	Yes	Yes	Yes	Yes	Yes
VENT_SUPPORT_AFTER_LIST	EVENTS OCCURRING BETWEEN LISTING AND TRANSPLANT: EPISODE OF VENTILATORY SUPPORT	At time of transplant	Yes	No	Yes	Yes	Yes	Yes	Yes
VENT_SUPPORT_TRR	TRR EPISODE OF VENTILATORY SUPPORT	At time of transplant	Yes	No	Yes	Yes	Yes	Yes	No
VENT_TIMEFRAME_TRR	TRR MOST RECENT VENT SUPPORT TIMEFRAME	At time of transplant	Yes	No	No	Yes	Yes	No	No
VENTILATOR_TRR	PATIENT ON LIFE SUPPORT - VENTILATOR @ TRANSPLANT	At time of transplant	Yes	Yes	Yes	Yes	Yes	Yes	No
VENTILATOR_TRC	PATIENT ON LIFE SUPPORT - VENTILATOR @ REGISTRATION	At time of transplant	Yes	Yes	Yes	Yes	Yes	Yes	Yes
WORK_INCOME_TRR	RECIPIENT WORK FOR INCOME AT TRANSPLANT?	At time of transplant	Yes	No	No	No	No	No	No
ATGAM_DAYS	ATGAM # OF DAYS INDUCTION (ANTI-LYMPHOCYTE RECEPTOR ANTIBODY)	At time of transplant	Yes	No	No	No	No	No	No
ATGAM_IND	ATGAM INDUCTION AT TIME OF TX (ANTI-LYMPHOCYTE RECEPTOR ANTIBODY)	At time of transplant	Yes	No	No	No	No	No	No
ATGAM_MAINT	ATGAM MAINTENANCE AT TIME OF TX (ANTI-LYMPHOCYTE RECEPTOR ANTIBODY)	At time of transplant	Yes	No	No	No	No	No	No
CAMPATH_ANTIREJ	CAMPATH ANTIREJECTION	At time of transplant	Yes	No	No	No	No	No	No
CAMPATH_DAYS	CAMPATH # OF DAYS INDUCTION	At time of transplant	Yes	No	No	No	No	No	No
CAMPATH_IND	CAMPATH INDUCTION AT TIME OF TX	At time of transplant	Yes	No	No	No	No	No	No
CAMPATH_MAINT	CAMPATH MAINTENANCE AT TIME OF TX	At time of transplant	Yes	No	No	No	No	No	No
CELLCEPT_ANTIREJ	CELLCEPT ANTIREJECTION (T-CELL ACTIVATION INHIBITOR)	At time of transplant	Yes	No	No	No	No	No	No
CELLCEPT_DAYS	CELLCEPT # OF DAYS INDUCTION (T-CELL ACTIVATION INHIBITOR)	At time of transplant	Yes	No	No	No	No	No	No
CELLCEPT_IND	CELLCEPT INDUCTION AT TIME OF TX (T-CELL ACTIVATION INHIBITOR)	At time of transplant	Yes	No	No	No	No	No	No
CELLCEPT_MAINT	CELLCEPT MAINTENANCE AT TIME OF TX (T-CELL ACTIVATION INHIBITOR)	At time of transplant	Yes	No	No	No	No	No	No
CYCLOSPORIN_ANTIREJ	CYCLOSPORIN ANTIREJECTION (T-CELL ACTIVATION INHIBITOR)	At time of transplant	Yes	No	No	No	No	No	No
CYCLOSPORIN_IND	CYCLOSPORIN INDUCTION AT TIME OF TX (T-CELL ACTIVATION INHIBITOR)	At time of transplant	Yes	No	No	No	No	No	No
CYCLOSPORIN_MAINT	CYCLOSPORIN MAINTENANCE AT TIME OF TX (T-CELL ACTIVATION INHIBITOR)	At time of transplant	Yes	No	No	No	No	No	No
GENERICCMIF_MAINT	GENERICCMIF MAINTENANCE AT TIME OF TX	At time of transplant	Yes	No	No	No	No	No	No
GENERICACROLIUMUS_MAINT	GENERICACROLIUMUS MAINTENANCE AT TIME OF TX	At time of transplant	Yes	No	No	No	No	No	No
MURAN_ANTIREJ	MURAN ANTIREJECTION (ANTIMETABOLITE)	At time of transplant	Yes	No	No	No	No	No	No
MURAN_DAYS	MURAN # OF DAYS INDUCTION (ANTIMETABOLITE)	At time of transplant	Yes	No	No	No	No	No	No
MURAN_IND	MURAN INDUCTION AT TIME OF TX (ANTIMETABOLITE)	At time of transplant	Yes	No	No	No	No	No	No
MURAN_MAINT	MURAN MAINTENANCE AT TIME OF TX (ANTIMETABOLITE)	At time of transplant	Yes	No	No	No	No	No	No
SIMULECT_ANTIREJ	SIMULECT ANTIREJECTION (ANTI-LYMPHOCYTE RECEPTOR ANTIBODY)	At time of transplant	Yes	No	No	No	No	No	No
SIMULECT_DAYS	SIMULECT # OF DAYS INDUCTION (ANTI-LYMPHOCYTE RECEPTOR ANTIBODY)	At time of transplant	Yes	No	No	No	No	No	No
SIMULECT_IND	SIMULECT INDUCTION AT TIME OF TX (ANTI-LYMPHOCYTE RECEPTOR ANTIBODY)	At time of transplant	Yes	No	No	No	No	No	No
SIMULECT_MAINT	SIMULECT MAINTENANCE AT TIME OF TX (ANTI-LYMPHOCYTE RECEPTOR ANTIBODY)	At time of transplant	Yes	No	No	No	No	No	No
STEROIDS_ANTIREJ	STERIODS ANTIREJECTION	At time of transplant	Yes	Yes	Yes	Yes	Yes	Yes	Yes
STEROIDS_DAYS	STERIODS # OF DAYS INDUCTION	At time of transplant	Yes	No	No	No	No	No	No
STEROIDS_IND	STERIODS INDUCTION AT TIME OF TX	At time of transplant	Yes	Yes	Yes	Yes	Yes	Yes	Yes
STEROIDS_MAINT	STERIODS MAINTENANCE AT TIME OF TX	At time of transplant	Yes	Yes	Yes	Yes	Yes	Yes	Yes
B_CELL_DONE_XMAT_AHG	RH PHYSICAL CROSSMATCH - B-CELL CROSSMATCH CYTOTOXICITY AHG TEST RESULT	At time of transplant	Yes	No	No	No	No	No	No
B_CELL_DONE_XMAT_FLOW_CYT	RH PHYSICAL CROSSMATCH - B-CELL CROSSMATCH CYTOTOXICITY FLOW CYTOMETRY TEST RES	At time of transplant	Yes	No	No	No	No	No	No
B_CELL_DONE_XMAT_NO_AHG	RH PHYSICAL CROSSMATCH - B-CELL CROSSMATCH CYTOTOXICITY NO AHG TEST RESULT	At time of transplant	Yes	No	No	No	No	No	No
PRA1	PRA (% MOST RECENT CLASS I)	At time of transplant	Yes	No	No	No	No	No	No
PRA2	PRA (% MOST RECENT CLASS II)	At time of transplant	Yes	No	No	No	No	No	No
T_CELL_DONE_XMAT_AHG	RH PHYSICAL CROSSMATCH - T-CELL CROSSMATCH CYTOTOXICITY AHG TEST RESULT	At time of transplant	Yes	No	No	No	No	No	No
T_CELL_DONE_XMAT_FLOW_CYT	RH PHYSICAL CROSSMATCH - T-CELL CROSSMATCH CYTOTOXICITY FLOW CYTOMETRY TEST RES	At time of transplant	Yes	No	No	No	No	No	No
T_CELL_DONE_XMAT_NO_AHG	RH PHYSICAL CROSSMATCH - T-CELL CROSSMATCH CYTOTOXICITY NO AHG TEST RESULT	At time of transplant	Yes	No	No	No	No	No	No
CTR_CODE	ENCRYPTED TRANSPLANT CENTER CODE	At time of transplant	No	No	No	No	No	No	No
INIT_OPO_CTR_CODE	ENCRYPTED INITIAL OPO MAPPED FROM LISTING CENTER AND BEGINNING DATE	At time of transplant	No	No	No	No	No	No	No
END_OPO_CTR_CODE	ENCRYPTED REMOVAL/CURRENT OPO MAPPED FROM LISTING CENTER AND ENDING DATE	At time of transplant	No	No	No	No	No	No	No
OPO_CTR_CODE	ENCRYPTED OPO CENTER CODE (OPO OF THE DECEASED DONOR RECOVERY FROM DOR FORM)	At time of transplant	No	No	No	No	No	No	No
LISTING_CTR_CODE	ENCRYPTED WL LISTING CENTER	At time of transplant	No	No	No	No	No	No	No
MATCH_LAS_initial	Match LAS at start of waitlist	Waitlist	Yes	No	No	No	No	No	No
WL_MEASURE_initial	Waitlist Urgency Measure at start of waitlist	Waitlist	Yes	No	No	No	No	No	No
BMI_initial	BMI at start of waitlist	Waitlist	Yes	No	No	No	No	No	No
Cl_initial	Cardiac Index (Cl) at start of waitlist	Waitlist	Yes	No	No	No	No	No	No
CREATININE_initial	Creatinine at start of waitlist	Waitlist	Yes	No	No	No	No	No	No
FEV_POST_ACT_initial	Actual Post Bronchodilator FEV at start of waitlist	Waitlist	Yes	No	No	No	No	No	No
FEV_POST_PCT_initial	Percent Post Bronchodilator FEV at start of waitlist	Waitlist	Yes	No	No	No	No	No	No
FEV_PRE_ACT_initial	Actual Predicted Pre Bronchodilator FEV at start of waitlist	Waitlist	Yes	No	No	No	No	No	No
FEV_PRE_PCT_initial	Percent Predicted Pre Bronchodilator FEV at start of waitlist	Waitlist	Yes	No	No	No	No	No	No
FLUNC_STAT_initial	Functional Status at start of waitlist	Waitlist	Yes	No	No	No	No	No	No
FVC_ABS_initial	Actual Forced Vital Capacity (FVC) at start of waitlist	Waitlist	Yes	No	No	No	No	No	No
FVC_PRE_initial	Predicted FVC Pre Bronchodilator at start of waitlist	Waitlist	Yes	No	No	No	No	No	No
NYHA_initial	New York Heart Assoc Class at start of waitlist	Waitlist	Yes	No	No	No	No	No	No
O2_initial	Supplemental Oxygen Amount at start of waitlist	Waitlist	Yes	No	No	No	No	No	No
PA_initial	Pulmonary Artery Systolic Pressure at start of waitlist	Waitlist	Yes	No	No	No	No	No	No
PADIAST_INIT_initial	Pulmonary Artery Diastolic Pressure at start of waitlist	Waitlist	Yes	No	No	No	No	No	No
PAP_MEAN_initial	Pulmonary artery Pressure Mean at start of waitlist	Waitlist	Yes	No	No	No	No	No	No
PCW_initial	Pulmonary Capillary Wedge Mean at start of waitlist	Waitlist	Yes	No	No	No	No	No	No
SIX_MIN_WALK_initial	Six Minute Walk Distance at start of waitlist	Waitlist	Yes	No	No	No	No	No	No
DONCRIT_ACPD_DCD_initial	Donor Criteria - Accept DCD donor at start of waitlist	Waitlist	Yes	No	No	No	No	No	No
DONCRIT_MAX_AGE_initial	Donor Criteria - Maximum Acceptable Donor Age (months) at start of waitlist	Waitlist	Yes	No	No	No	No	No	No
DONCRIT_MAX_HGT_initial	Donor Criteria - Maximum Acceptable Donor Height (cm) at start of waitlist	Waitlist	Yes	No	No	No	No	No	No
DONCRIT_MAX_WGT_initial	Donor Criteria - Maximum Acceptable Donor Weight (kg) at start of waitlist	Waitlist	Yes	No	No	No	No	No	No
DONCRIT_MIN_AGE_initial	Donor Criteria - Minimum Acceptable Donor Age (months) at start of waitlist	Waitlist	Yes	No	No	No	No	No	No
DONCRIT_MIN_HGT_initial	Donor Criteria - Minimum Acceptable Donor Height (cm) at start of waitlist	Waitlist	Yes	No	No	No	No	No	No
DONCRIT_MIN_WGT_initial	Donor Criteria - Minimum Acceptable Donor Weight (kg) at start of waitlist	Waitlist	Yes	No	No	No	No	No	No
MATCH_LAS_end	Match LAS at end of waitlist	Waitlist	Yes	No	No	No	No	No	No
WL_MEASURE_end	Waitlist Urgency Measure at end of waitlist	Waitlist	Yes	No	No	No	No	No	No

BMI_end	BMI at end of waitlist	Waitlist	Yes	No	No	No	No	No	No
CI_end	Cardiac Index (CI) at end of waitlist	Waitlist	Yes	No	No	No	No	No	No
CREATININE_end	Creatinine at end of waitlist	Waitlist	Yes	No	No	No	No	No	No
FEV_POST_ACT_end	Actual Post Bronchodilator FEV at end of waitlist	Waitlist	Yes	No	No	No	No	No	No
FEV_POST_PCT_end	Percent Post Post Bronchodilator FEV at end of waitlist	Waitlist	Yes	No	No	No	No	No	No
FEV_PRE_ACT_end	Actual Predicted Pre Bronchodilator FEV at end of waitlist	Waitlist	Yes	No	No	No	No	No	No
FEV_PRE_PCT_end	Percent Predicted Pre Bronchodilator FEV at end of waitlist	Waitlist	Yes	No	No	No	No	No	No
FUNC_STAT_end	Functional Status at end of waitlist	Waitlist	Yes	No	No	No	No	No	No
FVC_ABS_end	Actual Forced Vital Capacity (FVC) at end of waitlist	Waitlist	Yes	No	No	No	No	No	No
FVC_PRE_end	Predicted FVC Pre Bronchodilator at end of waitlist	Waitlist	Yes	No	No	No	No	No	No
NYHA_end	New York Heart Assoc Class at end of waitlist	Waitlist	Yes	No	No	No	No	No	No
O2_end	Supplemental Oxygen Amount at end of waitlist	Waitlist	Yes	No	No	No	No	No	No
PA_end	Pulmonary Artery Systolic Pressure at end of waitlist	Waitlist	Yes	No	No	No	No	No	No
PADIAST_INT_end	Pulmonary Artery Diastolic Pressure at end of waitlist	Waitlist	Yes	No	No	No	No	No	No
PAP_MEAN_end	Pulmonary Artery Pressure Mean at end of waitlist	Waitlist	Yes	No	No	No	No	No	No
PCW_end	Pulmonary Capillary Wedge Mean at end of waitlist	Waitlist	Yes	No	No	No	No	No	No
SIX_MIN_WALK_end	Six Minute Walk Distance at end of waitlist	Waitlist	Yes	No	No	No	No	No	No
DONCRIT_ACPD_DCD_end	Donor Criteria - Accept DCD donor at end of waitlist	Waitlist	Yes	No	No	No	No	No	No
DONCRIT_MAX_AGE_end	Donor Criteria - Maximum Acceptable Donor Age (months) at end of waitlist	Waitlist	Yes	Yes	No	No	No	No	No
DONCRIT_MAX_HGT_end	Donor Criteria - Maximum Acceptable Donor Height (cm) at end of waitlist	Waitlist	Yes	Yes	Yes	Yes	Yes	Yes	Yes
DONCRIT_MAX_WGT_end	Donor Criteria - Maximum Acceptable Donor Weight (kg) at end of waitlist	Waitlist	Yes	No	No	No	No	No	No
DONCRIT_MIN_AGE_end	Donor Criteria - Minimum Acceptable Donor Age (months) at end of waitlist	Waitlist	Yes	Yes	No	No	No	No	No
DONCRIT_MIN_HGT_end	Donor Criteria - Minimum Acceptable Donor Height (cm) at end of waitlist	Waitlist	Yes	Yes	Yes	Yes	Yes	Yes	Yes
DONCRIT_MIN_WGT_end	Donor Criteria - Minimum Acceptable Donor Weight (kg) at end of waitlist	Waitlist	Yes	No	No	No	No	No	No
TIME_ON_WL	Time on waitlist (days)	Waitlist	Yes	No	No	No	No	No	No
DAYS_ON_WL	Time on waitlist (days)	Waitlist	Yes	No	No	No	No	No	No
BMI_year_1	Recipient BMI at year 1	Follow-up	Yes	No	No	No	No	No	No
BRONC_OBLIT_year_1	Lung Graft Status -- Broncholitis Obliterans since Last Follow-up at year 1	Follow-up	Yes	No	No	No	No	No	No
BRONC_STRICT_year_1	Lung Graft Status -- Bronchial Stenosis since Last Follow-up at year 1	Follow-up	Yes	No	No	No	No	No	No
CHRONIC_DIAL_year_1	Post Transplant Events since Last Follow-up -- If Renal Dysfunction, Chronic Dialysis? at year 1	Follow-up	Yes	No	No	No	No	No	No
CREAT_year_1	Most Recent Serum Creatinine at year 1	Follow-up	Yes	No	No	No	No	No	No
CURRENTO2REQUIREMENTS	Current Supplemental O2 Requirements at Rest and/or Exercise at year 1	Follow-up	Yes	No	No	No	No	No	No
GRF_STAT_year_1	Graft Status at Time of Follow-Up (Y=Functioning, N=Failed) at year 1	Follow-up	Yes	No	No	No	No	No	No
HOSP_year_1	Hospitalizations during Follow-Up Period at year 1	Follow-up	Yes	No	No	No	No	No	No
HOSP_INF_year_1	Hospitalized for Infection during Follow-Up Period at year 1	Follow-up	Yes	No	No	No	No	No	No
HOSP_REJ_year_1	Hospitalized for Rejection during Follow-Up Period at year 1	Follow-up	Yes	No	No	No	No	No	No
IMMUNO_MAINT_MED_year_1	Any Medications Given during follow-up for Maintenance or Anti-Rejection? at year 1	Follow-up	Yes	No	No	No	No	No	No
O2_REQ_year_1	Lung Graft Status -- Oxygen Requirement (L/min) at rest at the time of Follow-up at year 1	Follow-up	Yes	No	No	No	No	No	No
RENAL_TX_year_1	Post Transplant Events since Last Follow-up -- If Renal Dysfunction, Renal Transplant since Thoracic Transplant	Follow-up	Yes	No	No	No	No	No	No
TRT_REJ_year_1	Patient Treated for Rejection (Y/N/U) during Follow-Up Period at year 1	Follow-up	Yes	No	No	No	No	No	No
WORK_INCOME_year_1	RECIPIENT WORK FOR INCOME? at year 1	Follow-up	Yes	No	No	No	No	No	No
CELLCEPT_ANTIREJ_year_1	CELLCEPT ANTIREJECTION (T-CELL ACTIVATION INHIBITOR) at year 1	Follow-up	Yes	No	No	No	No	No	No
CELLCEPT_MAINT_CUR_year_1	CELLCEPT CURRENT MAINTENANCE AT TIME OF FOLLOWUP (T-CELL ACTIVATION INHIBITOR) at year 1	Follow-up	Yes	No	No	No	No	No	No
CELLCEPT_MAINT_PREV_year_1	CELLCEPT MAINTENANCE BETWEEN LAST FOLLOWUP AND THIS FOLLOWUP (T-CELL ACTIVATION INHIBITOR) at year 1	Follow-up	Yes	No	No	No	No	No	No
CYCLOSPORIN_MAINT_CUR_year_1	CYCLOSPORIN CURRENT MAINTENANCE AT TIME OF FOLLOWUP (T-CELL ACTIVATION INHIBITOR) at year 1	Follow-up	Yes	No	No	No	No	No	No
CYCLOSPORIN_MAINT_PREV_year_1	CYCLOSPORIN MAINTENANCE BETWEEN LAST FOLLOWUP AND THIS FOLLOWUP (T-CELL ACTIVATION INHIBITOR) at year 1	Follow-up	Yes	No	No	No	No	No	No
GENERICMMF_MAINT_CUR_year_1	GENERICMMF CURRENT MAINTENANCE AT TIME OF FOLLOWUP at year 1	Follow-up	Yes	No	No	No	No	No	No
GENERICMMF_MAINT_PREV_year_1	GENERICMMF MAINTENANCE BETWEEN LAST FOLLOWUP AND THIS FOLLOWUP at year 1	Follow-up	Yes	No	No	No	No	No	No
GENERICACROLIMUS_MAINT_CUR_year_1	GENERICACROLIMUS CURRENT MAINTENANCE AT TIME OF FOLLOWUP at year 1	Follow-up	Yes	No	No	No	No	No	No

GENERICTACROLIMUS_MAINT_PREV	GENERICTACROLIMUS MAINTENANCE BETWEEN LAST FOLLOWUP AND THIS FOLLOWUP at year 1	Follow-up	Yes	No	No	No	No	No	No	No
ILIRAN_ANTIREJ_year_1	ILIRAN ANTIREJECTION (ANTIMETABOLITE) at year 1	Follow-up	Yes	No	No	No	No	No	No	No
ILIRAN_MAINT_CUR_year_1	ILIRAN CURRENT MAINTENANCE AT TIME OF FOLLOWUP (ANTIMETABOLITE) at year 1	Follow-up	Yes	No	No	No	No	No	No	No
ILIRAN_MAINT_PREV_year_1	ILIRAN MAINTENANCE BETWEEN LAST FOLLOWUP AND THIS FOLLOWUP (ANTIMETABOLITE) at year 1	Follow-up	Yes	No	No	No	No	No	No	No
NEORAL_ANTIREJ_year_1	NEORAL ANTIREJECTION (T-CELL ACTIVATION INHIBITOR) at year 1	Follow-up	Yes	No	No	No	No	No	No	No
NEORAL_MAINT_CUR_year_1	NEORAL CURRENT MAINTENANCE AT TIME OF FOLLOWUP (T-CELL ACTIVATION INHIBITOR) at year 1	Follow-up	Yes	No	No	No	No	No	No	No
NEORAL_MAINT_PREV_year_1	NEORAL MAINTENANCE BETWEEN LAST FOLLOWUP AND THIS FOLLOWUP (T-CELL ACTIVATION INHIBITOR) at year 1	Follow-up	Yes	No	No	No	No	No	No	No
PROGRAF_ANTIREJ_year_1	PROGRAF ANTIREJECTION (ANTIMETABOLITE) at year 1	Follow-up	Yes	No	No	No	No	No	No	No
PROGRAF_MAINT_CUR_year_1	PROGRAF CURRENT MAINTENANCE AT TIME OF FOLLOWUP (ANTIMETABOLITE) at year 1	Follow-up	Yes	No	No	No	No	No	No	No
PROGRAF_MAINT_PREV_year_1	PROGRAF MAINTENANCE BETWEEN LAST FOLLOWUP AND THIS FOLLOWUP (ANTIMETABOLITE) at year 1	Follow-up	Yes	No	No	No	No	No	No	No
RAPAMUNE_ANTIREJ_year_1	RAPAMUNE ANTIREJECTION (T-CELL ACTIVATION INHIBITOR) at year 1	Follow-up	Yes	No	No	No	No	No	No	No
RAPAMUNE_MAINT_CUR_year_1	RAPAMUNE CURRENT MAINTENANCE AT TIME OF FOLLOWUP (T-CELL ACTIVATION INHIBITOR) at year 1	Follow-up	Yes	No	No	No	No	No	No	No
RAPAMUNE_MAINT_PREV_year_1	RAPAMUNE MAINTENANCE BETWEEN LAST FOLLOWUP AND THIS FOLLOWUP (T-CELL ACTIVATION INHIBITOR) at year 1	Follow-up	Yes	No	No	No	No	No	No	No
STERIODS_ANTIREJ_year_1	STERIODS ANTIREJECTION at year 1	Follow-up	Yes	No	No	No	No	No	No	No
STERIODS_MAINT_CUR_year_1	STERIODS CURRENT MAINTENANCE AT TIME OF FOLLOWUP at year 1	Follow-up	Yes	No	No	No	No	No	No	No
STERIODS_MAINT_PREV_year_1	STERIODS MAINTENANCE BETWEEN LAST FOLLOWUP AND THIS FOLLOWUP at year 1	Follow-up	Yes	No	No	No	No	No	No	No
BLADDER_year_1	DeNovo Solid Tumor - Bladder at year 1	Follow-up	Yes	No	No	No	No	No	No	No
COLORECTAL_year_1	DeNovo Solid Tumor - Colo-rectal at year 1	Follow-up	Yes	No	No	No	No	No	No	No
DX_DATE10_year_1	Date of Diagnosis: Squamous Cell at year 1	Follow-up	Yes	No	No	No	No	No	No	No
DX_DATE10_year_1	Date of Diagnosis: Ovarian at year 1	Follow-up	Yes	No	No	No	No	No	No	No
ESOPHAGUS_year_1	DeNovo Solid Tumor - Esophagus at year 1	Follow-up	Yes	No	No	No	No	No	No	No
KAPOSI_CUTANEOUS_year_1	DeNovo Solid Tumor - Kaposi's Sarcoma - Cutaneous at year 1	Follow-up	Yes	No	No	No	No	No	No	No
KAPOSI_VISCERAL_year_1	DeNovo Solid Tumor - Kaposi's Sarcoma - Visceral at year 1	Follow-up	Yes	No	No	No	No	No	No	No
KAPOSI_VISCERAL_DONOR_year_1	Donor Related Tumor - Kaposi's Sarcoma - Visceral at year 1	Follow-up	Yes	No	No	No	No	No	No	No
LARYNX_year_1	DeNovo Solid Tumor - Larynx at year 1	Follow-up	Yes	No	No	No	No	No	No	No
LEUK_year_1	DeNovo Solid Tumor - Leukemia at year 1	Follow-up	Yes	No	No	No	No	No	No	No
LEUK_DONOR_year_1	Donor Related Tumor - Leukemia at year 1	Follow-up	Yes	No	No	No	No	No	No	No
LUNG_year_1	DeNovo Solid Tumor - Lung at year 1	Follow-up	Yes	No	No	No	No	No	No	No
LUNG_DONOR_year_1	Donor Related Tumor - Lung at year 1	Follow-up	Yes	No	No	No	No	No	No	No
MALIG_year_1	Post Transplant Malignancy at year 1	Follow-up	Yes	No	No	No	No	No	No	No
MALIG_DENOVO_LYMPH_year_1	Post Transplant Lymphoproliferative Disease (PTLD) at year 1	Follow-up	Yes	No	No	No	No	No	No	No
MALIG_DENOVO_TUMOR_year_1	Post Transplant DeNovo Solid Tumor (excluding Skin Squamous/Basal Cancers) at year 1	Follow-up	Yes	No	No	No	No	No	No	No
MALIG_DON_REL_year_1	Post Transplant Donor Related Tumor at year 1	Follow-up	Yes	No	No	No	No	No	No	No
MET_LIVER_year_1	DeNovo Solid Tumor - Metastatic Liver Tumor at year 1	Follow-up	Yes	No	No	No	No	No	No	No
OTH_CANCER_year_1	DeNovo Solid Tumor - Other Cancers at year 1	Follow-up	Yes	No	No	No	No	No	No	No
OVARIAN_year_1	DeNovo Solid Tumor - Ovarian at year 1	Follow-up	Yes	No	No	No	No	No	No	No
PANCREAS_year_1	DeNovo Solid Tumor - Pancreas at year 1	Follow-up	Yes	No	No	No	No	No	No	No
PRIM_HEPATIC_year_1	DeNovo Solid Tumor - Primary Hepatic Tumor at year 1	Follow-up	Yes	No	No	No	No	No	No	No
PRIM_UNK_year_1	DeNovo Solid Tumor - Primary Unknown at year 1	Follow-up	Yes	No	No	No	No	No	No	No
PROSTATE_year_1	DeNovo Solid Tumor - Prostate at year 1	Follow-up	Yes	No	No	No	No	No	No	No
RENAL_CAR_year_1	DeNovo Solid Tumor - Renal Carcinoma at year 1	Follow-up	Yes	No	No	No	No	No	No	No
SARCOMA_year_1	DeNovo Solid Tumor - Sarcomas (excluding Kaposi's) at year 1	Follow-up	Yes	No	No	No	No	No	No	No
SKIN_BASAL_year_1	Skin Cancer Type - Basal Cell at year 1	Follow-up	Yes	No	No	No	No	No	No	No
SKIN_MELANOMA_year_1	DeNovo Solid Tumor - Skin Melanoma at year 1	Follow-up	Yes	No	No	No	No	No	No	No
SKIN_SQUAMOUS_year_1	Skin Cancer Type - Squamous Cell at year 1	Follow-up	Yes	No	No	No	No	No	No	No
SM_INTEST_year_1	DeNovo Solid Tumor - Small Intestine at year 1	Follow-up	Yes	No	No	No	No	No	No	No
STOMACH_year_1	DeNovo Solid Tumor - Stomach at year 1	Follow-up	Yes	No	No	No	No	No	No	No
TESTICULAR_year_1	DeNovo Solid Tumor - Testicular at year 1	Follow-up	Yes	No	No	No	No	No	No	No
THYROID_year_1	DeNovo Solid Tumor - Thyroid at year 1	Follow-up	Yes	No	No	No	No	No	No	No
TONGUE_THROAT_year_1	DeNovo Solid Tumor - Tongue, Throat at year 1	Follow-up	Yes	No	No	No	No	No	No	No
UTERUS_CAR_year_1	DeNovo Solid Tumor - Carcinoma of the Uterus at year 1	Follow-up	Yes	No	No	No	No	No	No	No
VUL_PER_PENS_SCROT_CARCI	DeNovo Solid Tumor - Carcinoma of Vula, Penneum or Penis, Scrotum at year 1	Follow-up	Yes	No	No	No	No	No	No	No
BMI_year_3	Recipient BMI at year 3	Follow-up	Yes	No	No	No	No	No	No	No
BRONC_OBLIT_year_3	Lung Graft Status - Broncholiths Obliterans since Last Follow-up at year 3	Follow-up	Yes	No	No	No	No	No	No	No
BRONC_STRIC_year_3	Lung Graft Status - Bronchial Stricture since Last Follow-up at year 3	Follow-up	Yes	No	No	No	No	No	No	No
CHRONIC_DIAL_year_3	Post Transplant Events since Last Follow-up - if Renal Dysfunction, Chronic Dialysis? at year 3	Follow-up	Yes	No	No	No	No	No	No	No
CREAT_year_3	Most Recent Serum Creatinine at year 3	Follow-up	Yes	No	No	No	No	No	No	No
CURRENTO2REQUIREMENTS	Current Supplemental O2 Requirements at Rest and/or Exercise at year 3	Follow-up	Yes	No	No	No	No	No	No	No
GRF_STAT_year_3	Graft Status at Time of Follow-Up (Y=Functioning, N=Failed) at year 3	Follow-up	Yes	No	No	No	No	No	No	No
HOSP_year_3	Hospitalizations during Follow-Up Period at year 3	Follow-up	Yes	No	No	No	No	No	No	No
HOSP_INF_year_3	Hospitalized for Infection during Follow-Up Period at year 3	Follow-up	Yes	No	No	No	No	No	No	No
HOSP_REJ_year_3	Hospitalized for Rejection during Follow-Up Period at year 3	Follow-up	Yes	No	No	No	No	No	No	No
IMMUNO_MAINT_MED_year_3	Any Medications Given during follow-up for Maintenance or Anti-Rejection? at year 3	Follow-up	Yes	No	No	No	No	No	No	No
O2_REQ_year_3	Lung Graft Status - Oxygen Requirement (L/min) at rest at the time of Follow-up at year 3	Follow-up	Yes	No	No	No	No	No	No	No
RENAL_TX_year_3	Post Transplant Events since Last Follow-up - if Renal Dysfunction, Renal Transplant since Thoracic Transplant at year 3	Follow-up	Yes	No	No	No	No	No	No	No
TRT_REJ_year_3	Patient Treated for Rejection (Y/N/U) during Follow-Up Period at year 3	Follow-up	Yes	No	No	No	No	No	No	No
WORK_INCOME_year_3	RECIPIENT WORK FOR INCOME? at year 3	Follow-up	Yes	No	No	No	No	No	No	No
CELLCEPT_ANTIREJ_year_3	CELLCEPT ANTIREJECTION (T-CELL ACTIVATION INHIBITOR) at year 3	Follow-up	Yes	No	No	No	No	No	No	No
CELLCEPT_MAINT_CUR_year_3	CELLCEPT CURRENT MAINTENANCE AT TIME OF FOLLOWUP (T-CELL ACTIVATION INHIBITOR) at year 3	Follow-up	Yes	No	No	No	No	No	No	No
CELLCEPT_MAINT_PREV_year_3	CELLCEPT MAINTENANCE BETWEEN LAST FOLLOWUP AND THIS FOLLOWUP (T-CELL ACTIVATION INHIBITOR) at year 3	Follow-up	Yes	No	No	No	No	No	No	No
CYCLOSPORIN_MAINT_PREV_year_3	CYCLOSPORIN MAINTENANCE BETWEEN LAST FOLLOWUP AND THIS FOLLOWUP (T-CELL ACTIVATION INHIBITOR) at year 3	Follow-up	Yes	No	No	No	No	No	No	No
GENERICMMF_MAINT_CUR_year_3	GENERICMMF CURRENT MAINTENANCE AT TIME OF FOLLOWUP at year 3	Follow-up	Yes	No	No	No	No	No	No	No
GENERICMMF_MAINT_PREV_year_3	GENERICMMF MAINTENANCE BETWEEN LAST FOLLOWUP AND THIS FOLLOWUP at year 3	Follow-up	Yes	No	No	No	No	No	No	No
GENERICTACROLIMUS_MAINT_CUR_year_3	GENERICTACROLIMUS CURRENT MAINTENANCE AT TIME OF FOLLOWUP at year 3	Follow-up	Yes	No	No	No	No	No	No	No
GENERICTACROLIMUS_MAINT_PREV_year_3	GENERICTACROLIMUS MAINTENANCE BETWEEN LAST FOLLOWUP AND THIS FOLLOWUP at year 3	Follow-up	Yes	No	No	No	No	No	No	No
ILIRAN_ANTIREJ_year_3	ILIRAN ANTIREJECTION (ANTIMETABOLITE) at year 3	Follow-up	Yes	No	No	No	No	No	No	No
ILIRAN_MAINT_CUR_year_3	ILIRAN CURRENT MAINTENANCE AT TIME OF FOLLOWUP (ANTIMETABOLITE) at year 3	Follow-up	Yes	No	No	No	No	No	No	No
ILIRAN_MAINT_PREV_year_3	ILIRAN MAINTENANCE BETWEEN LAST FOLLOWUP AND THIS FOLLOWUP (ANTIMETABOLITE) at year 3	Follow-up	Yes	No	No	No	No	No	No	No
NEORAL_ANTIREJ_year_3	NEORAL ANTIREJECTION (T-CELL ACTIVATION INHIBITOR) at year 3	Follow-up	Yes	No	No	No	No	No	No	No
NEORAL_MAINT_CUR_year_3	NEORAL CURRENT MAINTENANCE AT TIME OF FOLLOWUP (T-CELL ACTIVATION INHIBITOR) at year 3	Follow-up	Yes	No	No	No	No	No	No	No
NEORAL_MAINT_PREV_year_3	NEORAL MAINTENANCE BETWEEN LAST FOLLOWUP AND THIS FOLLOWUP (T-CELL ACTIVATION INHIBITOR) at year 3	Follow-up	Yes	No	No	No	No	No	No	No
PROGRAF_ANTIREJ_year_3	PROGRAF ANTIREJECTION (ANTIMETABOLITE) at year 3	Follow-up	Yes	No	No	No	No	No	No	No
PROGRAF_MAINT_CUR_year_3	PROGRAF CURRENT MAINTENANCE AT TIME OF FOLLOWUP (ANTIMETABOLITE) at year 3	Follow-up	Yes	No	No	No	No	No	No	No
PROGRAF_MAINT_PREV_year_3	PROGRAF MAINTENANCE BETWEEN LAST FOLLOWUP AND THIS FOLLOWUP (ANTIMETABOLITE) at year 3	Follow-up	Yes	No	No	No	No	No	No	No
RAPAMUNE_ANTIREJ_year_3	RAPAMUNE ANTIREJECTION (T-CELL ACTIVATION INHIBITOR) at year 3	Follow-up	Yes	No	No	No	No	No	No	No
RAPAMUNE_MAINT_CUR_year_3	RAPAMUNE CURRENT MAINTENANCE AT TIME OF FOLLOWUP (T-CELL ACTIVATION INHIBITOR) at year 3	Follow-up	Yes	No	No	No	No	No	No	No
RAPAMUNE_MAINT_PREV_year_3	RAPAMUNE MAINTENANCE BETWEEN LAST FOLLOWUP AND THIS FOLLOWUP (T-CELL ACTIVATION INHIBITOR) at year 3	Follow-up	Yes	No	No	No	No	No	No	No
STERIODS_ANTIREJ_year_3	STERIODS ANTIREJECTION at year 3	Follow-up	Yes	No	No	No	No	No	No	No
STERIODS_MAINT_CUR_year_3	STERIODS CURRENT MAINTENANCE AT TIME OF FOLLOWUP at year 3	Follow-up	Yes	No	No	No	No	No	No	No
STERIODS_MAINT_PREV_year_3	STERIODS MAINTENANCE BETWEEN LAST FOLLOWUP AND THIS FOLLOWUP at year 3	Follow-up	Yes	No	No	No	No	No	No	No
BLADDER_year_3	DeNovo Solid Tumor - Bladder at year 3	Follow-up	Yes	No	No	No	No	No	No	No
COLORECTAL_year_3	DeNovo Solid Tumor - Colo-rectal at year 3	Follow-up	Yes	No	No	No	No	No	No	No
DX_DATE101_year_3	Date of Diagnosis: Ovarian at year 3	Follow-up	Yes	No	No	No	No	No	No	No
ESOPHAGUS_year_3	DeNovo Solid Tumor - Esophagus at year 3	Follow-up	Yes	No	No	No	No	No	No	No
KAPOSI_CUTANEOUS_year_3	DeNovo Solid Tumor - Kaposi's Sarcoma - Cutaneous at year 3	Follow-up	Yes	No	No	No	No	No	No	No
KAPOSI_VISCERAL_year_3	DeNovo Solid Tumor - Kaposi's Sarcoma - Visceral at year 3	Follow-up	Yes	No	No	No	No	No	No	No

KAPOSI VISCERAL DONOR year 3	Donor Related Tumor - Kaposi's Sarcoma - Visceral at year 3	Follow-up	Yes	No	No	No	No	No	No
LARYNX_year 3	DeNovo Solid Tumor - Larynx at year 3	Follow-up	Yes	No	No	No	No	No	No
LEUK_year 3	DeNovo Solid Tumor - Leukemia at year 3	Follow-up	Yes	No	No	No	No	No	No
LEUK_DONOR_year 3	Donor Related Tumor - Leukemia at year 3	Follow-up	Yes	No	No	No	No	No	No
LUNG_year 3	DeNovo Solid Tumor - Lung at year 3	Follow-up	Yes	No	No	No	No	No	No
LUNG_DONOR_year 3	Donor Related Tumor - Lung at year 3	Follow-up	Yes	No	No	No	No	No	No
MALIG_year 3	Post Transplant Malignancy at year 3	Follow-up	Yes	No	No	No	No	No	No
MALIG_DENOVO LYMPH_year 3	Post Transplant Lymphoproliferative Disease (PTLD) at year 3	Follow-up	Yes	No	No	No	No	No	No
MALIG_DENOVO TUMOR_year 3	Post Transplant DeNovo Solid Tumor (excluding Skin Squamous/Basal Cancers) at year 3	Follow-up	Yes	No	No	No	No	No	No
MALIG_DON_REL_year 3	Post Transplant Donor Related Tumor at year 3	Follow-up	Yes	No	No	No	No	No	No
MET_LIVER_year 3	DeNovo Solid Tumor - Metastatic Liver Tumor at year 3	Follow-up	Yes	No	No	No	No	No	No
OTH_CANCER_year 3	DeNovo Solid Tumor - Other Cancers at year 3	Follow-up	Yes	No	No	No	No	No	No
OVARIAN_year 3	DeNovo Solid Tumor - Ovarian at year 3	Follow-up	Yes	No	No	No	No	No	No
PANCREAS_year 3	DeNovo Solid Tumor - Pancreas at year 3	Follow-up	Yes	No	No	No	No	No	No
PRIM_HEPATIC_year 3	DeNovo Solid Tumor - Primary Hepatic Tumor at year 3	Follow-up	Yes	No	No	No	No	No	No
PRIM_UNK_year 3	DeNovo Solid Tumor - Primary Unknown at year 3	Follow-up	Yes	No	No	No	No	No	No
PROSTATE_year 3	DeNovo Solid Tumor - Prostate at year 3	Follow-up	Yes	No	No	No	No	No	No
RENAL_CAR_year 3	DeNovo Solid Tumor - Renal Carcinoma at year 3	Follow-up	Yes	No	No	No	No	No	No
SARCOMA_year 3	DeNovo Solid Tumor - Sarcomas (excluding Kaposi's) at year 3	Follow-up	Yes	No	No	No	No	No	No
SKIN_BASAL_year 3	Skin Cancer Type - Basal Cell at year 3	Follow-up	Yes	No	No	No	No	No	No
SKIN_MELANOMA_year 3	DeNovo Solid Tumor - Skin Melanoma at year 3	Follow-up	Yes	No	No	No	No	No	No
SKIN_SQUAMOUS_year 3	Skin Cancer Type - Squamous Cell at year 3	Follow-up	Yes	No	No	No	No	No	No
SM_INTEST_year 3	DeNovo Solid Tumor - Small Intestine at year 3	Follow-up	Yes	No	No	No	No	No	No
STOMACH_year 3	DeNovo Solid Tumor - Stomach at year 3	Follow-up	Yes	No	No	No	No	No	No
TESTICULAR_year 3	DeNovo Solid Tumor - Testicular at year 3	Follow-up	Yes	No	No	No	No	No	No
THYROID_year 3	DeNovo Solid Tumor - Thyroid at year 3	Follow-up	Yes	No	No	No	No	No	No
TONGUE_THROAT_year 3	DeNovo Solid Tumor - Tongue, Throat at year 3	Follow-up	Yes	No	No	No	No	No	No
UTERUS_CAR_year 3	DeNovo Solid Tumor - Carcinoma of the Uterus at year 3	Follow-up	Yes	No	No	No	No	No	No
VUL_PER_PENIS_SCROT_CARCI	DeNovo Solid Tumor - Carcinoma of Vulva, Penneum or Penis, Scrotum at year 3	Follow-up	Yes	No	No	No	No	No	No
BMI_year 5	Recipient BMI at year 5	Follow-up	Yes	No	No	No	No	No	No
BRONC_OBLIT_year 5	Lung Graft Status - Bronchiolitis Obliterans since Last Follow-up at year 5	Follow-up	Yes	No	No	No	No	No	No
BRONC_STRICT_year 5	Lung Graft Status - Bronchial Stricture since Last Follow-up at year 5	Follow-up	Yes	No	No	No	No	No	No
CHRONIC_DIAL_year 5	Post Transplant Events since Last Follow-up - If Renal Dysfunction, Chronic Dialysis? at year 5	Follow-up	Yes	No	No	No	No	No	No
CREAT_year 5	Most Recent Serum Creatinine at year 5	Follow-up	Yes	No	No	No	No	No	No
CURRENTREQUIREMENTSIN	Current Supplemental O2 Requirements at Rest and/or Exercise at year 5	Follow-up	Yes	No	No	No	No	No	No
HOSP_year 5	Hospitalizations during Follow-Up Period at year 5	Follow-up	Yes	No	No	No	No	No	No
HOSP_INF_year 5	Hospitalized for Infection during Follow-Up Period at year 5	Follow-up	Yes	No	No	No	No	No	No
HOSP_REJ_year 5	Hospitalized for Rejection during Follow-Up Period at year 5	Follow-up	Yes	No	No	No	No	No	No
IMMUNO_MANT_MED_year 5	Any Medications Given during follow-up for Maintenance or Anti-Rejection? at year 5	Follow-up	Yes	No	No	No	No	No	No
O2_REQ_year 5	Lung Graft Status - Oxygen Requirement (L/min) at rest at the time of Follow-up at year 5	Follow-up	Yes	No	No	No	No	No	No
RENAL_TX_year 5	Post Transplant Events since Last Follow-up - If Renal Dysfunction, Renal Transplant since Thoracic Tran	Follow-up	Yes	No	No	No	No	No	No
TRT_REJ_year 5	Patient Treated for Rejection (Y/N/U) during Follow-Up Period at year 5	Follow-up	Yes	No	No	No	No	No	No
WORK_INCOME_year 5	RECIPIENT WORK FOR INCOME? at year 5	Follow-up	Yes	No	No	No	No	No	No
CELLCEPT_ANTIREJ_year 5	CELLCEPT ANTIREJECTION (T-CELL ACTIVATION INHIBITOR) at year 5	Follow-up	Yes	No	No	No	No	No	No
CELLCEPT_MANT_CUR_year 5	CELLCEPT CURRENT MAINTENANCE AT TIME OF FOLLOWUP (T-CELL ACTIVATION INHIBITOR) at year 5	Follow-up	Yes	No	No	No	No	No	No
CELLCEPT_MANT_PREV_year 5	CELLCEPT MAINTENANCE BETWEEN LAST FOLLOWUP AND THIS FOLLOWUP (T-CELL ACTIVATION INHIBITOR) at year 5	Follow-up	Yes	No	No	No	No	No	No
CYCLOSPORIN_MANT_PREV_year 5	CYCLOSPORIN MAINTENANCE BETWEEN LAST FOLLOWUP AND THIS FOLLOWUP (T-CELL ACTIVATION INHIBITOR) at year 5	Follow-up	Yes	No	No	No	No	No	No
GENERICMMF_MANT_CUR_year 5	GENERICMMF CURRENT MAINTENANCE AT TIME OF FOLLOWUP at year 5	Follow-up	Yes	No	No	No	No	No	No
GENERICMMF_MANT_PREV_year 5	GENERICMMF MAINTENANCE BETWEEN LAST FOLLOWUP AND THIS FOLLOWUP at year 5	Follow-up	Yes	No	No	No	No	No	No
GENERICACROLIUMUS_MANT_CUR	GENERICACROLIUMUS CURRENT MAINTENANCE AT TIME OF FOLLOWUP at year 5	Follow-up	Yes	No	No	No	No	No	No
GENERICACROLIUMUS_MANT_PREV	GENERICACROLIUMUS MAINTENANCE BETWEEN LAST FOLLOWUP AND THIS FOLLOWUP at year 5	Follow-up	Yes	No	No	No	No	No	No
MURAN_ANTIREJ_year 5	MURAN ANTIREJECTION (ANTIMETABOLITE) at year 5	Follow-up	Yes	No	No	No	No	No	No
MURAN_MANT_CUR_year 5	MURAN CURRENT MAINTENANCE AT TIME OF FOLLOWUP (ANTIMETABOLITE) at year 5	Follow-up	Yes	No	No	No	No	No	No
MURAN_MANT_PREV_year 5	MURAN MAINTENANCE BETWEEN LAST FOLLOWUP AND THIS FOLLOWUP (ANTIMETABOLITE) at year 5	Follow-up	Yes	No	No	No	No	No	No
NEORAL_ANTIREJ_year 5	NEORAL ANTIREJECTION (T-CELL ACTIVATION INHIBITOR) at year 5	Follow-up	Yes	No	No	No	No	No	No
NEORAL_MANT_CUR_year 5	NEORAL CURRENT MAINTENANCE AT TIME OF FOLLOWUP (T-CELL ACTIVATION INHIBITOR) at year 5	Follow-up	Yes	No	No	No	No	No	No
NEORAL_MANT_PREV_year 5	NEORAL MAINTENANCE BETWEEN LAST FOLLOWUP AND THIS FOLLOWUP (T-CELL ACTIVATION INHIBITOR) at year 5	Follow-up	Yes	No	No	No	No	No	No
PROGRAF_ANTIREJ_year 5	PROGRAF ANTIREJECTION (ANTIMETABOLITE) at year 5	Follow-up	Yes	No	No	No	No	No	No
PROGRAF_MANT_CUR_year 5	PROGRAF CURRENT MAINTENANCE AT TIME OF FOLLOWUP (ANTIMETABOLITE) at year 5	Follow-up	Yes	No	No	No	No	No	No
PROGRAF_MANT_PREV_year 5	PROGRAF MAINTENANCE BETWEEN LAST FOLLOWUP AND THIS FOLLOWUP (ANTIMETABOLITE) at year 5	Follow-up	Yes	No	No	No	No	No	No
RAPAMUNE_ANTIREJ_year 5	RAPAMUNE ANTIREJECTION (T-CELL ACTIVATION INHIBITOR) at year 5	Follow-up	Yes	No	No	No	No	No	No
RAPAMUNE_MANT_CUR_year 5	RAPAMUNE CURRENT MAINTENANCE AT TIME OF FOLLOWUP (T-CELL ACTIVATION INHIBITOR) at year 5	Follow-up	Yes	No	No	No	No	No	No
RAPAMUNE_MANT_PREV_year 5	RAPAMUNE MAINTENANCE BETWEEN LAST FOLLOWUP AND THIS FOLLOWUP (T-CELL ACTIVATION INHIBITOR) at year 5	Follow-up	Yes	No	No	No	No	No	No
STERIODS_ANTIREJ_year 5	STERIODS ANTIREJECTION at year 5	Follow-up	Yes	No	No	No	No	No	No
STERIODS_MANT_CUR_year 5	STERIODS CURRENT MAINTENANCE AT TIME OF FOLLOWUP at year 5	Follow-up	Yes	No	No	No	No	No	No
STERIODS_MANT_PREV_year 5	STERIODS MAINTENANCE BETWEEN LAST FOLLOWUP AND THIS FOLLOWUP at year 5	Follow-up	Yes	No	No	No	No	No	No
BLADDER_year 5	DeNovo Solid Tumor - Bladder at year 5	Follow-up	Yes	No	No	No	No	No	No
COLORECTAL_year 5	DeNovo Solid Tumor - Colo-rectal at year 5	Follow-up	Yes	No	No	No	No	No	No
ESOPHAGUS_year 5	DeNovo Solid Tumor - Esophagus at year 5	Follow-up	Yes	No	No	No	No	No	No
KAPOSI CUTANEOUS_year 5	DeNovo Solid Tumor - Kaposi's Sarcoma - Cutaneous at year 5	Follow-up	Yes	No	No	No	No	No	No
KAPOSI VISCERAL_year 5	DeNovo Solid Tumor - Kaposi's Sarcoma - Visceral at year 5	Follow-up	Yes	No	No	No	No	No	No
KAPOSI VISCERAL DONOR_year 5	Donor Related Tumor - Kaposi's Sarcoma - Visceral at year 5	Follow-up	Yes	No	No	No	No	No	No
LARYNX_year 5	DeNovo Solid Tumor - Larynx at year 5	Follow-up	Yes	No	No	No	No	No	No
LEUK_year 5	DeNovo Solid Tumor - Leukemia at year 5	Follow-up	Yes	No	No	No	No	No	No
LEUK_DONOR_year 5	Donor Related Tumor - Leukemia at year 5	Follow-up	Yes	No	No	No	No	No	No
LUNG_year 5	DeNovo Solid Tumor - Lung at year 5	Follow-up	Yes	No	No	No	No	No	No
LUNG_DONOR_year 5	Donor Related Tumor - Lung at year 5	Follow-up	Yes	No	No	No	No	No	No
MALIG_year 5	Post Transplant Malignancy at year 5	Follow-up	Yes	No	No	No	No	No	No
MALIG_DENOVO LYMPH_year 5	Post Transplant Lymphoproliferative Disease (PTLD) at year 5	Follow-up	Yes	No	No	No	No	No	No
MALIG_DENOVO TUMOR_year 5	Post Transplant DeNovo Solid Tumor (excluding Skin Squamous/Basal Cancers) at year 5	Follow-up	Yes	No	No	No	No	No	No
MALIG_DON_REL_year 5	Post Transplant Donor Related Tumor at year 5	Follow-up	Yes	No	No	No	No	No	No
MET_LIVER_year 5	DeNovo Solid Tumor - Metastatic Liver Tumor at year 5	Follow-up	Yes	No	No	No	No	No	No
OTH_CANCER_year 5	DeNovo Solid Tumor - Other Cancers at year 5	Follow-up	Yes	No	No	No	No	No	No
OVARIAN_year 5	DeNovo Solid Tumor - Ovarian at year 5	Follow-up	Yes	No	No	No	No	No	No
PANCREAS_year 5	DeNovo Solid Tumor - Pancreas at year 5	Follow-up	Yes	No	No	No	No	No	No
PRIM_HEPATIC_year 5	DeNovo Solid Tumor - Primary Hepatic Tumor at year 5	Follow-up	Yes	No	No	No	No	No	No
PRIM_UNK_year 5	DeNovo Solid Tumor - Primary Unknown at year 5	Follow-up	Yes	No	No	No	No	No	No
PROSTATE_year 5	DeNovo Solid Tumor - Prostate at year 5	Follow-up	Yes	No	No	No	No	No	No
RENAL_CAR_year 5	DeNovo Solid Tumor - Renal Carcinoma at year 5	Follow-up	Yes	No	No	No	No	No	No
SARCOMA_year 5	DeNovo Solid Tumor - Sarcomas (excluding Kaposi's) at year 5	Follow-up	Yes	No	No	No	No	No	No
SKIN_BASAL_year 5	Skin Cancer Type - Basal Cell at year 5	Follow-up	Yes	No	No	No	No	No	No
SKIN_MELANOMA_year 5	DeNovo Solid Tumor - Skin Melanoma at year 5	Follow-up	Yes	No	No	No	No	No	No
SKIN_SQUAMOUS_year 5	Skin Cancer Type - Squamous Cell at year 5	Follow-up	Yes	No	No	No	No	No	No
SM_INTEST_year 5	DeNovo Solid Tumor - Small Intestine at year 5	Follow-up	Yes	No	No	No	No	No	No
STOMACH_year 5	DeNovo Solid Tumor - Stomach at year 5	Follow-up	Yes	No	No	No	No	No	No
TESTICULAR_year 5	DeNovo Solid Tumor - Testicular at year 5	Follow-up	Yes	No	No	No	No	No	No

THYROID_year_5	DeNovo Solid Tumor - Thyroid at year 5	Follow-up	Yes	No	No	No	No	No	No	No
TONGUE_THROAT_year_5	DeNovo Solid Tumor - Tongue, Throat at year 5	Follow-up	Yes	No	No	No	No	No	No	No
UTERUS_CAR_year_5	DeNovo Solid Tumor - Carcinoma of the Uterus at year 5	Follow-up	Yes	No	No	No	No	No	No	No
VULV_PER_PENIS_SCROT_CARCB	DeNovo Solid Tumor - Carcinoma of Vulva, Penneum or Penis, Scrotum at year 5	Follow-up	Yes	No	No	No	No	No	No	No
FEV_percent_year_1	Lung Graft Status - Most Recent Value Available for Forced Expiratory Volume at one second (%) at year 1	Follow-up	Yes	No	No	No	No	No	No	No
FEF25_year_1	Graft Function - FEF25-75 (L/sec) at year 1	Follow-up	Yes	No	No	No	No	No	No	No
FEV_year_1	Graft Function - FEV1 (L) at year 1	Follow-up	Yes	No	No	No	No	No	No	No
FVC_year_1	Graft Function - FVC (L) at year 1	Follow-up	Yes	No	No	No	No	No	No	No
FEV_percent_year_3	Lung Graft Status - Most Recent Value Available for Forced Expiratory Volume at one second (%) at year 3	Follow-up	Yes	No	No	No	No	No	No	No
FEF25_year_3	Graft Function - FEF25-75 (L/sec) at year 3	Follow-up	Yes	No	No	No	No	No	No	No
FEV_year_3	Graft Function - FEV1 (L) at year 3	Follow-up	Yes	No	No	No	No	No	No	No
FVC_year_3	Graft Function - FVC (L) at year 3	Follow-up	Yes	No	No	No	No	No	No	No
FEV_percent_year_5	Lung Graft Status - Most Recent Value Available for Forced Expiratory Volume at one second (%) at year 5	Follow-up	Yes	No	No	No	No	No	No	No
FEF25_year_5	Graft Function - FEF25-75 (L/sec) at year 5	Follow-up	Yes	No	No	No	No	No	No	No
FEV_year_5	Graft Function - FEV1 (L) at year 5	Follow-up	Yes	No	No	No	No	No	No	No
FVC_year_5	Graft Function - FVC (L) at year 5	Follow-up	Yes	No	No	No	No	No	No	No
CITIZENSHIP	RECIPIENT CITIZENSHIP @ REGISTRATION	At time of transplant	Yes	Yes	Yes	Yes	Yes	Yes	Yes	Yes
CITIZENSHIP_DON	DONOR CITIZENSHIP	At time of transplant	Yes	Yes	Yes	Yes	Yes	Yes	Yes	Yes
MALIG_TRR	RECIPIENT ANY KNOWN MALIGNANCIES SINCE LISTING @ TRANSPLANT	At time of transplant	Yes	Yes	Yes	Yes	Yes	Yes	Yes	Yes
MALIG_TCR	ANY PREVIOUS MALIGNANCY (EXCLUDE NON-MELANOMA SKIN CANCER) @ REGISTRATION	At time of transplant	Yes	No	No	No	No	No	No	No
GRADE_1_MIN_BRONC_ORBLT_yes	Lung Graft Status - Bronchiolitis Obliterans grade at least B1 since Last Follow-up at year 1	Follow-up	Yes	Yes	Yes	Yes	Yes	Yes	Yes	Yes
GRADE_1_MIN_BRONC_ORBLT_year_3	Lung Graft Status - Bronchiolitis Obliterans grade at least B1 since Last Follow-up at year 3	Follow-up	Yes	No	No	No	No	No	No	No
GRADE_1_MIN_BRONC_ORBLT_year_5	Lung Graft Status - Bronchiolitis Obliterans grade at least B1 since Last Follow-up at year 5	Follow-up	Yes	No	No	No	No	No	No	No
MALIG_SKMEL_TRR	TYPE OF MALIGNANCY BETWEEN LISTING AND TRANSPLANT - SKIN, MELANOMA	At time of transplant	Yes	No	No	No	No	No	No	No
MALIG_SKMEL_TCR	TYPE OF PREVIOUS MALIGNANCY - SKIN, MELANOMA	At time of transplant	Yes	No	No	No	No	No	No	No
MALIG_THYR_TRR	TYPE OF MALIGNANCY BETWEEN LISTING AND TRANSPLANT - THYROID	At time of transplant	Yes	No	No	No	No	No	No	No
MALIG_THYR_TCR	TYPE OF PREVIOUS MALIGNANCY - THYROID	At time of transplant	Yes	No	No	No	No	No	No	No
MALIG_BREAST_TRR	TYPE OF MALIGNANCY BETWEEN LISTING AND TRANSPLANT - BREAST	At time of transplant	Yes	No	No	No	No	No	No	No
MALIG_BREAST_TCR	TYPE OF PREVIOUS MALIGNANCY - BREAST	At time of transplant	Yes	No	No	No	No	No	No	No
MALIG_OTH_TRR	TYPE OF MALIGNANCY BETWEEN LISTING AND TRANSPLANT - OTHER	At time of transplant	Yes	No	No	No	No	No	No	No
MALIG_OTH_TCR	TYPE OF PREVIOUS MALIGNANCY - OTHER	At time of transplant	Yes	No	No	No	No	No	No	No
MALIG_TONGUE/THRULAR_TRR	TYPE OF MALIGNANCY BETWEEN LISTING AND TRANSPLANT - TONGUE, THROAT, LARYNX	At time of transplant	Yes	No	No	No	No	No	No	No
MALIG_TONGUE/THRULAR_TCR	TYPE OF PREVIOUS MALIGNANCY - TONGUE, THROAT, LARYNX	At time of transplant	Yes	No	No	No	No	No	No	No
MALIG_GENURIN_TRR	TYPE OF MALIGNANCY BETWEEN LISTING AND TRANSPLANT - GENITOURINARY	At time of transplant	Yes	No	No	No	No	No	No	No
MALIG_GENURIN_TCR	TYPE OF PREVIOUS MALIGNANCY - GENITOURINARY	At time of transplant	Yes	No	No	No	No	No	No	No
MALIG_UNK_TRR	TYPE OF MALIGNANCY BETWEEN LISTING AND TRANSPLANT - UNKNOWN	At time of transplant	Yes	No	No	No	No	No	No	No
MALIG_UNK_TCR	TYPE OF PREVIOUS MALIGNANCY - UNKNOWN	At time of transplant	Yes	No	No	No	No	No	No	No
MALIG_LI_TRR	TYPE OF MALIGNANCY BETWEEN LISTING AND TRANSPLANT - LIVER	At time of transplant	Yes	No	No	No	No	No	No	No
MALIG_LI_TCR	TYPE OF PREVIOUS MALIGNANCY - LIVER	At time of transplant	Yes	No	No	No	No	No	No	No
MALIG_LU_TRR	TYPE OF MALIGNANCY BETWEEN LISTING AND TRANSPLANT - LUNG	At time of transplant	Yes	No	No	No	No	No	No	No
MALIG_LU_TCR	TYPE OF PREVIOUS MALIGNANCY - LUNG	At time of transplant	Yes	No	No	No	No	No	No	No
MALIG_CNS_TRR	TYPE OF MALIGNANCY BETWEEN LISTING AND TRANSPLANT - CNS	At time of transplant	Yes	No	No	No	No	No	No	No
MALIG_CNS_TCR	TYPE OF PREVIOUS MALIGNANCY - CNS	At time of transplant	Yes	No	No	No	No	No	No	No
MALIG_LEUK_TRR	TYPE OF MALIGNANCY BETWEEN LISTING AND TRANSPLANT - LEUKEMIA	At time of transplant	Yes	No	No	No	No	No	No	No
MALIG_LEUK_TCR	TYPE OF PREVIOUS MALIGNANCY - LEUKEMIA	At time of transplant	Yes	No	No	No	No	No	No	No
MALIG_SKNONMEL_TRR	TYPE OF MALIGNANCY BETWEEN LISTING AND TRANSPLANT - SKIN NON-MELANOMA	At time of transplant	Yes	No	No	No	No	No	No	No
MALIG_SKNONMEL_TCR	TYPE OF PREVIOUS MALIGNANCY - SKIN NON-MELANOMA	At time of transplant	Yes	No	No	No	No	No	No	No
ACUTE_REJ_EPI_No	ACUTE REJECTION EPISODE BETWEEN TRANSPLANT AND DISCHARGE? No	At time of transplant	Yes	Yes	Yes	Yes	Yes	Yes	Yes	No
ACUTE_REJ_EPI_Yes_Not_Treated	ACUTE REJECTION EPISODE BETWEEN TRANSPLANT AND DISCHARGE? Yes Not Treated	At time of transplant	Yes	Yes	Yes	Yes	Yes	Yes	Yes	No
ACUTE_REJ_EPI_Yes_Treated	ACUTE REJECTION EPISODE BETWEEN TRANSPLANT AND DISCHARGE? Yes Treated	At time of transplant	Yes	Yes	Yes	Yes	Yes	Yes	Yes	No
COD_CARDIOVASCULAR	RECIPIENT PRIMARY CAUSE OF DEATH CARDIOVASCULAR	At time of transplant	Yes	Yes	No	Yes	Yes	Yes	Yes	No
COD_CEREBROVASCULAR	RECIPIENT PRIMARY CAUSE OF DEATH CEREBROVASCULAR	At time of transplant	Yes	Yes	No	Yes	Yes	Yes	Yes	No
COD_GRAFT_FAILURE_REJECTION	RECIPIENT PRIMARY CAUSE OF DEATH GRAFT FAILURE, REJECTION-CHRONIC	At time of transplant	Yes	Yes	No	No	No	No	No	No
COD_MULTORGAN	RECIPIENT PRIMARY CAUSE OF DEATH MULTORGAN	At time of transplant	Yes	Yes	No	Yes	Yes	Yes	Yes	No
COD_PULM	RECIPIENT PRIMARY CAUSE OF DEATH PULMONARY	At time of transplant	Yes	No	No	No	No	No	No	No
COD_COVID_19	RECIPIENT PRIMARY CAUSE OF DEATH COVID-19	At time of transplant	Yes	Yes	No	No	No	No	No	No
COD_GRAFT_FAILURE_GRAFT_INF	RECIPIENT PRIMARY CAUSE OF DEATH GRAFT FAILURE, GRAFT INFECTION	At time of transplant	Yes	Yes	No	No	No	No	No	No
COD_GRAFT_FAILURE_NON-SPEC	RECIPIENT PRIMARY CAUSE OF DEATH GRAFT FAILURE, NON_SPECIFIC	At time of transplant	Yes	Yes	No	No	No	No	No	No
COD_GRAFT_FAILURE_PRIMARY	RECIPIENT PRIMARY CAUSE OF DEATH GRAFT FAILURE, PRIMARY FAILURE	At time of transplant	Yes	Yes	No	No	No	No	No	No
COD_GRAFT_FAILURE_RECURRENT	RECIPIENT PRIMARY CAUSE OF DEATH GRAFT FAILURE, RECURRENT DISEASE	At time of transplant	Yes	Yes	No	No	No	No	No	No
COD_GRAFT_FAILURE_REJECTION	RECIPIENT PRIMARY CAUSE OF DEATH GRAFT FAILURE, REJECTION-ACUTE	At time of transplant	Yes	Yes	No	No	No	No	No	No
COD_GRAFT_FAILURE_REJECTION_HYPERACUTE	RECIPIENT PRIMARY CAUSE OF DEATH GRAFT FAILURE, REJECTION-HYPERACUTE	At time of transplant	Yes	Yes	No	No	No	No	No	No
COD_GRAFT_FAILURE_TECHNICAL	RECIPIENT PRIMARY CAUSE OF DEATH GRAFT FAILURE, TECHNICAL	At time of transplant	Yes	Yes	No	No	No	No	No	No
COD_HEMORRHAGE	RECIPIENT PRIMARY CAUSE OF DEATH HEMORRHAGE	At time of transplant	Yes	Yes	No	No	No	No	No	No
COD_IMMUNOSUPPRESSIVE	RECIPIENT PRIMARY CAUSE OF DEATH IMMUNOSUPPRESSIVE	At time of transplant	Yes	Yes	No	No	No	No	No	No
COD_INFECTON	RECIPIENT PRIMARY CAUSE OF DEATH INFECTION	At time of transplant	Yes	Yes	No	No	No	No	No	No
COD_MALIG	RECIPIENT PRIMARY CAUSE OF DEATH MALIGNANCY	At time of transplant	Yes	Yes	No	No	No	No	No	No
COD_OTHER	RECIPIENT PRIMARY CAUSE OF DEATH OTHER	At time of transplant	Yes	Yes	No	No	No	No	No	No
COD_SUICIDE	RECIPIENT PRIMARY CAUSE OF DEATH SUICIDE	At time of transplant	Yes	Yes	No	No	No	No	No	No
ETHCAT_Amer Ind/Alaska Native, Non-Hispanic	RECIPIENT ETHNICITY CATEGORY Amer Ind/Alaska Native, Non-Hispanic	At time of transplant	Yes	Yes	Yes	Yes	Yes	Yes	Yes	Yes
ETHCAT_Asian, Non-Hispanic	RECIPIENT ETHNICITY CATEGORY Asian, Non-Hispanic	At time of transplant	Yes	Yes	Yes	Yes	Yes	Yes	Yes	Yes
ETHCAT_Black, Non-Hispanic	RECIPIENT ETHNICITY CATEGORY Black, Non-Hispanic	At time of transplant	Yes	Yes	Yes	Yes	Yes	Yes	Yes	Yes
ETHCAT_Hispanic/Latino	RECIPIENT ETHNICITY CATEGORY Hispanic/Latino	At time of transplant	Yes	Yes	Yes	Yes	Yes	Yes	Yes	Yes
ETHCAT_Multiracial, Non-Hispanic	RECIPIENT ETHNICITY CATEGORY Multiracial, Non-Hispanic	At time of transplant	Yes	Yes	Yes	Yes	Yes	Yes	Yes	Yes
ETHCAT_Native Hawaiian/other Pacific Islander, Non-Hispanic	RECIPIENT ETHNICITY CATEGORY Native Hawaiian/other Pacific Islander, Non-Hispanic	At time of transplant	Yes	Yes	Yes	Yes	Yes	Yes	Yes	Yes
ETHCAT_White, Non-Hispanic	RECIPIENT ETHNICITY CATEGORY White, Non-Hispanic	At time of transplant	Yes	Yes	Yes	Yes	Yes	Yes	Yes	Yes
ETHCAT_DON_Amer Ind/Alaska Native, Non-Hispanic	DONOR ETHNICITY CATEGORY Amer Ind/Alaska Native, Non-Hispanic	At time of transplant	Yes	Yes	Yes	Yes	Yes	Yes	Yes	Yes
ETHCAT_DON_Asian, Non-Hispanic	DONOR ETHNICITY CATEGORY Asian, Non-Hispanic	At time of transplant	Yes	Yes	Yes	Yes	Yes	Yes	Yes	Yes
ETHCAT_DON_Black, Non-Hispanic	DONOR ETHNICITY CATEGORY Black, Non-Hispanic	At time of transplant	Yes	Yes	Yes	Yes	Yes	Yes	Yes	Yes
ETHCAT_DON_Hispanic/Latino	DONOR ETHNICITY CATEGORY Hispanic/Latino	At time of transplant	Yes	Yes	Yes	Yes	Yes	Yes	Yes	Yes
ETHCAT_DON_Multiracial, Non-Hispanic	DONOR ETHNICITY CATEGORY Multiracial, Non-Hispanic	At time of transplant	Yes	Yes	Yes	Yes	Yes	Yes	Yes	Yes
ETHCAT_DON_Native Hawaiian/other Pacific Islander, Non-Hispanic	DONOR ETHNICITY CATEGORY Native Hawaiian/other Pacific Islander, Non-Hispanic	At time of transplant	Yes	Yes	Yes	Yes	Yes	Yes	Yes	Yes
ETHCAT_DON_White, Non-Hispanic	DONOR ETHNICITY CATEGORY White, Non-Hispanic	At time of transplant	Yes	Yes	Yes	Yes	Yes	Yes	Yes	Yes
GRF_FAIL_CAUSE_Acute Rejection	CAUSE OF GRAFT FAILURE Acute Rejection	At time of transplant	Yes	Yes	No	Yes	Yes	Yes	Yes	Yes
GRF_FAIL_CAUSE_Chronic Rejection/Atherosclerosis	CAUSE OF GRAFT FAILURE Chronic Rejection/Atherosclerosis	At time of transplant	Yes	Yes	No	No	No	No	No	No
GRF_FAIL_CAUSE_Other	CAUSE OF GRAFT FAILURE Other	At time of transplant	Yes	Yes	No	No	No	No	No	No
GRF_FAIL_CAUSE_Primary Non-Function	CAUSE OF GRAFT FAILURE Primary Non-Function	At time of transplant	Yes	Yes	No	No	No	No	No	No
GROUPING_CF	LUH, DIAGNOSIS GROUPING ON WLQ(ON THORACIC_DGN/TRC, TGN/TRR, DGN) Cystic Fibrosis	At time of transplant	Yes	Yes	No	No	No	No	No	No
GROUPING_Obstructive	LUH, DIAGNOSIS GROUPING ON WLQ(ON THORACIC_DGN/TRC, TGN/TRR, DGN) Obstructive	At time of transplant	Yes	Yes	No	No	No	No	No	No
GROUPING_Pulmonary, vascular	LUH, DIAGNOSIS GROUPING ON WLQ(ON THORACIC_DGN/TRC, TGN/TRR, DGN) Pulmonary Vascular	At time of transplant	Yes	Yes	No	No	No	No	No	No
GROUPING_Restrictive	LUH, DIAGNOSIS GROUPING ON WLQ(ON THORACIC_DGN/TRC, TGN/TRR, DGN) Restrictive	At time of transplant	Yes	Yes	No	No	No	No	No	No
MED_COND_TRR_HOSPITALIZED	RECIPIENT MEDICAL CONDITION PRE-TRANSPLANT @ TRANSPLANT NOT IN ICU	At time of transplant	Yes	Yes	Yes	Yes	Yes	Yes	Yes	Yes
MED_COND_TRR_ICU	RECIPIENT MEDICAL CONDITION PRE-TRANSPLANT @ TRANSPLANT ICU	At time of transplant	Yes	Yes	Yes	Yes	Yes	Yes	Yes	Yes
MED_COND_TRR_NOT HOSPITALIZED	RECIPIENT MEDICAL CONDITION PRE-TRANSPLANT @ TRANSPLANT NOT HOSPITALIZED	At time of transplant	Yes	Yes	Yes	Yes	Yes	Yes	Yes	Yes
PERFUSED_BY_External perfusion	TRR LUNG(S) PERFUSION PERFORMED BY EXTERNAL PERFUSION CENTER	At time of transplant	Yes	Yes	No	No	No	No	No	No
PERFUSED_BY_OPO	TRR LUNG(S) PERFUSION PERFORMED BY OPO	At time of transplant	Yes	Yes	No	No	No	No	No	No

PERFUSED_BY_Transplant Program	TRR LUNG(S) PERFUSION PERFORMED BY Transplant Program	At time of transplant	Yes	Yes	No	No	No	No	No
PRI_PAYMENT_TRR_Other	RECIPIENT PRIMARY PAYMENT SOURCE @ TRANSPLANT Other	At time of transplant	Yes	Yes	Yes	Yes	Yes	Yes	Yes
PRI_PAYMENT_TRR_Private	RECIPIENT PRIMARY PAYMENT SOURCE @ TRANSPLANT Private	At time of transplant	Yes	Yes	Yes	Yes	Yes	Yes	Yes
PRI_PAYMENT_TRR_Public	RECIPIENT PRIMARY PAYMENT SOURCE @ TRANSPLANT Public	At time of transplant	Yes	Yes	Yes	Yes	Yes	Yes	Yes
PRIOR_LUNG_SURG_TYPE_TRR	TRR LUNG SURGERY TYPE BETWEEN LISTING AND TRANSPLANT (NON-TRANSPLANT) Lobectomy	At time of transplant	Yes	Yes	Yes	Yes	Yes	Yes	Yes
PRIOR_LUNG_SURG_TYPE_TRR	TRR LUNG SURGERY TYPE BETWEEN LISTING AND TRANSPLANT (NON-TRANSPLANT) Other	At time of transplant	Yes	Yes	Yes	Yes	Yes	Yes	Yes
PRIOR_LUNG_SURG_TYPE_TRR	TRR LUNG SURGERY TYPE BETWEEN LISTING AND TRANSPLANT (NON-TRANSPLANT) Pneumoreduction	At time of transplant	Yes	Yes	Yes	Yes	Yes	Yes	Yes
PRIOR_LUNG_SURG_TYPE_TRR	TRR LUNG SURGERY TYPE BETWEEN LISTING AND TRANSPLANT (NON-TRANSPLANT) Thoracotomy	At time of transplant	Yes	Yes	Yes	Yes	Yes	Yes	Yes
PX_STAT_Alive	RECIPIENT STATUS(Dead, ReTX, Lost, Alive) Alive	At time of transplant	Yes	Yes	No	No	No	No	No
PX_STAT_Dead	RECIPIENT STATUS(Dead, ReTX, Lost, Alive) Dead	At time of transplant	Yes	Yes	No	No	No	No	No
PX_STAT_Retransplanted	RECIPIENT STATUS(Dead, ReTX, Lost, Alive) Retransplanted	At time of transplant	Yes	Yes	No	No	No	No	No
SHARE_TY_Foreign Donor	ALLOCATION TYPE Foreign Donor	At time of transplant	Yes	Yes	No	No	No	No	No
SHARE_TY_Local	ALLOCATION TYPE Local	At time of transplant	Yes	Yes	No	No	No	No	No
SHARE_TY_National	ALLOCATION TYPE National	At time of transplant	Yes	Yes	No	No	No	No	No
SHARE_TY_Regional	ALLOCATION TYPE Regional	At time of transplant	Yes	Yes	No	No	No	No	No
TCR_DGN_A1AT	CANDIDATE DIAGNOSIS AT LISTING Alpha 1 Antitrypsin Deficiency	At time of transplant	Yes	Yes	Yes	Yes	Yes	Yes	Yes
TCR_DGN_BRONCHIECTASIS	CANDIDATE DIAGNOSIS AT LISTING Bronchiectasis	At time of transplant	Yes	Yes	Yes	Yes	Yes	Yes	Yes
TCR_DGN_CF	CANDIDATE DIAGNOSIS AT LISTING Cystic Fibrosis	At time of transplant	Yes	Yes	Yes	Yes	Yes	Yes	Yes
TCR_DGN_COPD	CANDIDATE DIAGNOSIS AT LISTING COPD	At time of transplant	Yes	Yes	Yes	Yes	Yes	Yes	Yes
TCR_DGN_COVID_ARDS	CANDIDATE DIAGNOSIS AT LISTING COVID ARDS	At time of transplant	Yes	Yes	Yes	Yes	Yes	Yes	Yes
TCR_DGN_COVID_FF	CANDIDATE DIAGNOSIS AT LISTING COVID Pulmonary Fibrosis	At time of transplant	Yes	Yes	Yes	Yes	Yes	Yes	Yes
TCR_DGN_HP	CANDIDATE DIAGNOSIS AT LISTING Hypersensitivity Pneumonitis	At time of transplant	Yes	Yes	Yes	Yes	Yes	Yes	Yes
TCR_DGN_IPF	CANDIDATE DIAGNOSIS AT LISTING Idiopathic Pulmonary Fibrosis	At time of transplant	Yes	Yes	Yes	Yes	Yes	Yes	Yes
TCR_DGN_LYMPHANGIOLEIOMYOMATOSIS	CANDIDATE DIAGNOSIS AT LISTING LYMPHANGIOLEIOMYOMATOSIS	At time of transplant	Yes	Yes	Yes	Yes	Yes	Yes	Yes
TCR_DGN_NSIP	CANDIDATE DIAGNOSIS AT LISTING Nonspecific interstitial pneumonia	At time of transplant	Yes	Yes	Yes	Yes	Yes	Yes	Yes
TCR_DGN_OB	CANDIDATE DIAGNOSIS AT LISTING Obstructive bronchiolitis	At time of transplant	Yes	Yes	Yes	Yes	Yes	Yes	Yes
TCR_DGN_OCCUPATIONAL	CANDIDATE DIAGNOSIS AT LISTING Occupational	At time of transplant	Yes	Yes	Yes	Yes	Yes	Yes	Yes
TCR_DGN_OTHER	CANDIDATE DIAGNOSIS AT LISTING Other	At time of transplant	Yes	Yes	Yes	Yes	Yes	Yes	Yes
TCR_DGN_PF_OTHER	CANDIDATE DIAGNOSIS AT LISTING Pulmonary fibrosis - other	At time of transplant	Yes	Yes	Yes	Yes	Yes	Yes	Yes
TCR_DGN_PULM_HTN	CANDIDATE DIAGNOSIS AT LISTING Pulmonary hypertension	At time of transplant	Yes	Yes	Yes	Yes	Yes	Yes	Yes
TCR_DGN_RHEUMATOID	CANDIDATE DIAGNOSIS AT LISTING Rheumatoid	At time of transplant	Yes	Yes	Yes	Yes	Yes	Yes	Yes
TCR_DGN_SARCIDOSIS	CANDIDATE DIAGNOSIS AT LISTING Sarcoidosis	At time of transplant	Yes	Yes	Yes	Yes	Yes	Yes	Yes
TCR_DGN_SCLERODERMA_MIXED	CANDIDATE DIAGNOSIS AT LISTING Scleroderma mixed connective tissue disease	At time of transplant	Yes	Yes	Yes	Yes	Yes	Yes	Yes
TCR_DGN_SCLERODERMA_PULM	CANDIDATE DIAGNOSIS AT LISTING Scleroderma pulmonary hypertension	At time of transplant	Yes	Yes	Yes	Yes	Yes	Yes	Yes
TCR_DGN_SCLERODERMA_RESTRICTIVE	CANDIDATE DIAGNOSIS AT LISTING Scleroderma restrictive	At time of transplant	Yes	Yes	Yes	Yes	Yes	Yes	Yes
TCR_DGN_SECONDARY_PULM_HTN	CANDIDATE DIAGNOSIS AT LISTING Secondary pulmonary hypertension	At time of transplant	Yes	Yes	Yes	Yes	Yes	Yes	Yes
THORACIC_DGN_A1AT	Waitlist CANDIDATE DIAGNOSIS Alpha 1 Antitrypsin Deficiency	At time of transplant	Yes	Yes	No	No	No	No	No
THORACIC_DGN_BRONCHIECTASIS	Waitlist CANDIDATE DIAGNOSIS Bronchiectasis	At time of transplant	Yes	Yes	No	No	No	No	No
THORACIC_DGN_CF	Waitlist CANDIDATE DIAGNOSIS Cystic Fibrosis	At time of transplant	Yes	Yes	No	No	No	No	No
THORACIC_DGN_COPD	Waitlist CANDIDATE DIAGNOSIS COPD	At time of transplant	Yes	Yes	No	No	No	No	No
THORACIC_DGN_COVID_ARDS	Waitlist CANDIDATE DIAGNOSIS COVID ARDS	At time of transplant	Yes	Yes	No	No	No	No	No
THORACIC_DGN_COVID_FF	Waitlist CANDIDATE DIAGNOSIS COVID Pulmonary Fibrosis	At time of transplant	Yes	Yes	No	No	No	No	No
THORACIC_DGN_HP	Waitlist CANDIDATE DIAGNOSIS Hypersensitivity Pneumonitis	At time of transplant	Yes	Yes	No	No	No	No	No
THORACIC_DGN_IPF	Waitlist CANDIDATE DIAGNOSIS Idiopathic Pulmonary Fibrosis	At time of transplant	Yes	Yes	No	No	No	No	No
THORACIC_DGN_LYMPHANGIOLEIOMYOMATOSIS	Waitlist CANDIDATE DIAGNOSIS LYMPHANGIOLEIOMYOMATOSIS	At time of transplant	Yes	Yes	No	No	No	No	No
THORACIC_DGN_NSIP	Waitlist CANDIDATE DIAGNOSIS Nonspecific interstitial pneumonia	At time of transplant	Yes	Yes	No	No	No	No	No
THORACIC_DGN_OB	Waitlist CANDIDATE DIAGNOSIS Obstructive bronchiolitis	At time of transplant	Yes	Yes	No	No	No	No	No
THORACIC_DGN_OCCUPATIONAL	Waitlist CANDIDATE DIAGNOSIS Occupational	At time of transplant	Yes	Yes	No	No	No	No	No
THORACIC_DGN_OTHER	Waitlist CANDIDATE DIAGNOSIS Other	At time of transplant	Yes	Yes	No	No	No	No	No
THORACIC_DGN_PF_OTHER	Waitlist CANDIDATE DIAGNOSIS Pulmonary fibrosis - other	At time of transplant	Yes	Yes	No	No	No	No	No
THORACIC_DGN_PULM_HTN	Waitlist CANDIDATE DIAGNOSIS Pulmonary hypertension	At time of transplant	Yes	Yes	No	No	No	No	No
THORACIC_DGN_RHEUMATOID	Waitlist CANDIDATE DIAGNOSIS Rheumatoid	At time of transplant	Yes	Yes	No	No	No	No	No
THORACIC_DGN_SARCIDOSIS	Waitlist CANDIDATE DIAGNOSIS Sarcoidosis	At time of transplant	Yes	Yes	No	No	No	No	No
THORACIC_DGN_SCLERODERMA_MIXED	Waitlist CANDIDATE DIAGNOSIS Scleroderma mixed connective tissue disease	At time of transplant	Yes	Yes	No	No	No	No	No
THORACIC_DGN_SCLERODERMA_PULM	Waitlist CANDIDATE DIAGNOSIS Scleroderma pulmonary hypertension	At time of transplant	Yes	Yes	No	No	No	No	No
THORACIC_DGN_SCLERODERMA_RESTRICTIVE	Waitlist CANDIDATE DIAGNOSIS Scleroderma restrictive	At time of transplant	Yes	Yes	No	No	No	No	No
THORACIC_DGN_SECONDARY_PULM_HTN	Waitlist CANDIDATE DIAGNOSIS Secondary pulmonary hypertension	At time of transplant	Yes	Yes	No	No	No	No	No
TX_PROCEDURE_TY_Bilateral Sequen	RECIPIENT PROCEDURE TYPE Bilateral Sequential Lung	At time of transplant	Yes	Yes	No	No	No	No	No
TX_PROCEDURE_TY_En-Bloc Double Lung	RECIPIENT PROCEDURE TYPE En-Bloc Double Lung	At time of transplant	Yes	Yes	No	No	No	No	No
TX_PROCEDURE_TY_Lobe, Both Left	RECIPIENT PROCEDURE TYPE Lobe, Both Left & Right	At time of transplant	Yes	Yes	No	No	No	No	No
TX_PROCEDURE_TY_Lobe, Left	RECIPIENT PROCEDURE TYPE Lobe, Left	At time of transplant	Yes	Yes	No	No	No	No	No
TX_PROCEDURE_TY_Lobe, Right	RECIPIENT PROCEDURE TYPE Lobe, Right	At time of transplant	Yes	Yes	No	No	No	No	No
TX_PROCEDURE_TY_Single Left Lung	RECIPIENT PROCEDURE TYPE Single Left Lung	At time of transplant	Yes	Yes	No	No	No	No	No
TX_PROCEDURE_TY_Single Right Lung	RECIPIENT PROCEDURE TYPE Single Right Lung	At time of transplant	Yes	Yes	No	No	No	No	No
TX_TYPE_Double	TYPE OF TRANSPLANT Double	At time of transplant	Yes	Yes	Yes	Yes	Yes	Yes	Yes
TX_TYPE_Single	TYPE OF TRANSPLANT Single	At time of transplant	Yes	Yes	No	No	No	No	No
GROUPING_initial_Obstructive	LUHL DIAGNOSIS GROUPING ON WL(ON THORACIC_DGN/TCR_TGN/TRR_DGN) Cystic Fibrosis	Waitlist	Yes	Yes	No	No	No	No	No
GROUPING_initial_Pulmonary_vascu	LUHL DIAGNOSIS GROUPING ON WL(ON THORACIC_DGN/TCR_TGN/TRR_DGN) Obstructive	Waitlist	Yes	Yes	No	No	No	No	No
GROUPING_initial_CF	LUHL DIAGNOSIS GROUPING ON WL(ON THORACIC_DGN/TCR_TGN/TRR_DGN) Pulmonary Vascular	Waitlist	Yes	Yes	No	No	No	No	No
GROUPING_initial_Restrictive	LUHL DIAGNOSIS GROUPING ON WL(ON THORACIC_DGN/TCR_TGN/TRR_DGN) Restrictive	Waitlist	Yes	Yes	No	No	No	No	No
O2_CALC_METHOD_initial_Calc	O2_CALC_METHOD whether calculated at start of waitlist	Waitlist	Yes	Yes	No	No	No	No	No
O2_CALC_METHOD_initial_Read_Dev	O2_CALC_METHOD whether used device at start of waitlist	Waitlist	Yes	Yes	No	No	No	No	No
GROUPING_end_Obstructive	LUHL DIAGNOSIS GROUPING ON WL(ON THORACIC_DGN/TCR_TGN/TRR_DGN) Cystic Fibrosis	Waitlist	Yes	Yes	No	No	No	No	No
GROUPING_end_Pulmonary_vascu	LUHL DIAGNOSIS GROUPING ON WL(ON THORACIC_DGN/TCR_TGN/TRR_DGN) Obstructive	Waitlist	Yes	Yes	No	No	No	No	No
GROUPING_end_CF	LUHL DIAGNOSIS GROUPING ON WL(ON THORACIC_DGN/TCR_TGN/TRR_DGN) Pulmonary Vascular	Waitlist	Yes	Yes	No	No	No	No	No
GROUPING_end_Restrictive	LUHL DIAGNOSIS GROUPING ON WL(ON THORACIC_DGN/TCR_TGN/TRR_DGN) Restrictive	Waitlist	Yes	Yes	No	No	No	No	No
O2_CALC_METHOD_end_Calc	O2_CALC_METHOD whether calculated at end of waitlist	Waitlist	Yes	Yes	No	No	No	No	No
O2_CALC_METHOD_end_Read_Dev	O2_CALC_METHOD whether used device at end of waitlist	Waitlist	Yes	Yes	No	No	No	No	No
COD_year_1_CARDIOVASCULAR	RECIPIENT PRIMARY CAUSE OF DEATH CARDIOVASCULAR at year 1	Follow-up	Yes	Yes	No	No	No	No	No
COD_year_1_CEREBROVASCULAR	RECIPIENT PRIMARY CAUSE OF DEATH CEREBROVASCULAR at year 1	Follow-up	Yes	Yes	No	No	No	No	No
COD_year_1_COD_GRAFT FAILURE	RECIPIENT PRIMARY CAUSE OF DEATH GRAFT FAILURE, REJECTION-CHRONIC at year 1	Follow-up	Yes	Yes	No	No	No	No	No
COD_year_1_COD_MULTIORGAN	RECIPIENT PRIMARY CAUSE OF DEATH MULTIORGAN at year 1	Follow-up	Yes	Yes	No	No	No	No	No
COD_year_1_COD_PULM	RECIPIENT PRIMARY CAUSE OF DEATH PULMONARY at year 1	Follow-up	Yes	Yes	No	No	No	No	No
COD_year_1_COVID_19	RECIPIENT PRIMARY CAUSE OF DEATH COVID-19 at year 1	Follow-up	Yes	Yes	No	No	No	No	No
COD_year_1_GRAFT FAILURE: GR	RECIPIENT PRIMARY CAUSE OF DEATH GRAFT FAILURE, GRAFT INFECTION at year 1	Follow-up	Yes	Yes	No	No	No	No	No
COD_year_1_GRAFT FAILURE: NON	RECIPIENT PRIMARY CAUSE OF DEATH GRAFT FAILURE, NON_SPECIFIC at year 1	Follow-up	Yes	Yes	No	No	No	No	No
COD_year_1_GRAFT FAILURE: PRIM	RECIPIENT PRIMARY CAUSE OF DEATH GRAFT FAILURE, PRIMARY FAILURE at year 1	Follow-up	Yes	Yes	No	No	No	No	No
COD_year_1_GRAFT FAILURE: REC	RECIPIENT PRIMARY CAUSE OF DEATH GRAFT FAILURE, RECURRENT DISEASE at year 1	Follow-up	Yes	Yes	No	No	No	No	No
COD_year_1_GRAFT FAILURE: REJ	RECIPIENT PRIMARY CAUSE OF DEATH GRAFT FAILURE, REJECTION-ACUTE at year 1	Follow-up	Yes	Yes	No	No	No	No	No
COD_year_1_GRAFT FAILURE: REJ	RECIPIENT PRIMARY CAUSE OF DEATH GRAFT FAILURE, REJECTION-HYPERACUTE at year 1	Follow-up	Yes	Yes	No	No	No	No	No
COD_year_1_GRAFT FAILURE: TECH	RECIPIENT PRIMARY CAUSE OF DEATH GRAFT FAILURE, TECHNICAL at year 1	Follow-up	Yes	Yes	No	No	No	No	No
COD_year_1_HEMORRHAGE	RECIPIENT PRIMARY CAUSE OF DEATH HEMORRHAGE at year 1	Follow-up	Yes	Yes	No	No	No	No	No
COD_year_1_INFECTION	RECIPIENT PRIMARY CAUSE OF DEATH IMMUNOSUPPRESSIVE at year 1	Follow-up	Yes	Yes	No	No	No	No	No
COD_year_1_MALIGN	RECIPIENT PRIMARY CAUSE OF DEATH INFECTION at year 1	Follow-up	Yes	Yes	No	No	No	No	No
COD_year_1_MULTIORGAN	RECIPIENT PRIMARY CAUSE OF DEATH MALIGNANCY at year 1	Follow-up	Yes	Yes	No	No	No	No	No
COD_year_1_OTHER	RECIPIENT PRIMARY CAUSE OF DEATH OTHER at year 1	Follow-up	Yes	Yes	No	No	No	No	No

VENT_USE_NEW_initial_CPAP	Assisted Ventilator Use CPAP at start of waitlist	Waitlist	Yes	Yes	No	No	No	No	No	No
VENT_USE_NEW_initial_Continuous	Assisted Ventilator Use Continuous mechanical at start of waitlist	Waitlist	Yes	Yes	No	No	No	No	No	No
VENT_USE_NEW_initial_Continuous_hospitalized	Assisted Ventilator Use Continuous mechanical hospitalized at start of waitlist	Waitlist	Yes	Yes	No	No	No	No	No	No
VENT_USE_NEW_initial_Continuous_not_hospitalized	Assisted Ventilator Use Continuous mechanical not hospitalized at start of waitlist	Waitlist	Yes	Yes	No	No	No	No	No	No
VENT_USE_NEW_initial_ECMO	Assisted Ventilator Use ECMO at start of waitlist	Waitlist	Yes	Yes	No	No	No	No	No	No
VENT_USE_NEW_initial_Intermittent	Assisted Ventilator Use Intermittent mechanical at start of waitlist	Waitlist	Yes	Yes	No	No	No	No	No	No
VENT_USE_NEW_initial_No_assisted	Assisted Ventilator Use No assisted ventilation needed at start of waitlist	Waitlist	Yes	Yes	No	No	No	No	No	No
VENT_USE_NEW_end_BiPAP	Assisted Ventilator Use BiPAP at end of waitlist	Waitlist	Yes	Yes	Yes	Yes	Yes	Yes	Yes	No
VENT_USE_NEW_end_CPAP	Assisted Ventilator Use CPAP at end of waitlist	Waitlist	Yes	Yes	Yes	Yes	Yes	Yes	Yes	No
VENT_USE_NEW_end_Continuous	Assisted Ventilator Use Continuous mechanical at end of waitlist	Waitlist	Yes	Yes	Yes	Yes	Yes	Yes	Yes	No
VENT_USE_NEW_end_Continuous_hospitalized	Assisted Ventilator Use Continuous mechanical hospitalized at end of waitlist	Waitlist	Yes	Yes	Yes	Yes	Yes	Yes	Yes	No
VENT_USE_NEW_end_Continuous_not_hospitalized	Assisted Ventilator Use Continuous mechanical not hospitalized at end of waitlist	Waitlist	Yes	Yes	Yes	Yes	Yes	Yes	Yes	No
VENT_USE_NEW_end_ECMO	Assisted Ventilator Use ECMO at end of waitlist	Waitlist	Yes	Yes	Yes	Yes	Yes	Yes	Yes	No
VENT_USE_NEW_end_Intermittent	Assisted Ventilator Use Intermittent mechanical at end of waitlist	Waitlist	Yes	Yes	Yes	Yes	Yes	Yes	Yes	No
VENT_USE_NEW_end_No_assisted	Assisted Ventilator Use No assisted ventilation needed at end of waitlist	Waitlist	Yes	Yes	Yes	Yes	Yes	Yes	Yes	No
EDUCATION_ASSOCIATE/BACHELOR	RECIPIENT HIGHEST EDUCATIONAL LEVEL @ REGISTRATION ASSOCIATE/BACHELOR DEGREE	At time of transplant	Yes	Yes	No	No	No	No	No	No
EDUCATION_ATTENDED COLLEGE	RECIPIENT HIGHEST EDUCATIONAL LEVEL @ REGISTRATION ATTENDED COLLEGE/TECHNICAL SCHOOL	At time of transplant	Yes	Yes	No	No	No	No	No	No
EDUCATION_GRADE SCHOOL (0-8)	RECIPIENT HIGHEST EDUCATIONAL LEVEL @ REGISTRATION GRADE SCHOOL (0-8)	At time of transplant	Yes	Yes	No	No	No	No	No	No
EDUCATION_HIGH SCHOOL (9-12)	RECIPIENT HIGHEST EDUCATIONAL LEVEL @ REGISTRATION HIGH SCHOOL (9-12) or GED	At time of transplant	Yes	Yes	No	No	No	No	No	No
EDUCATION_NONE	RECIPIENT HIGHEST EDUCATIONAL LEVEL @ REGISTRATION NONE	At time of transplant	Yes	Yes	No	No	No	No	No	No
EDUCATION_POST COLLEGE GRADUATE DEGREE	RECIPIENT HIGHEST EDUCATIONAL LEVEL @ REGISTRATION POST-COLLEGE GRADUATE DEGREE	At time of transplant	Yes	Yes	No	No	No	No	No	No
EDUCATION_BINARIZED	RECIPIENT HIGHEST EDUCATIONAL LEVEL @ REGISTRATION BINARIZED (0 for High School/GED or 1 for College/Graduate Degree)	At time of transplant	Yes	Yes	Yes	Yes	Yes	Yes	Yes	Yes
DIAG_ATAT	RECIPIENT PRIMARY DIAGNOSIS Alpha 1 Antitrypsin Deficiency	At time of transplant	Yes	Yes	No	No	No	No	No	No
DIAG_BRONCHIECTASIS	RECIPIENT PRIMARY DIAGNOSIS Bronchiectasis	At time of transplant	Yes	Yes	No	No	No	No	No	No
DIAG_CF	RECIPIENT PRIMARY DIAGNOSIS Cystic Fibrosis	At time of transplant	Yes	Yes	No	No	No	No	No	No
DIAG_COPD	RECIPIENT PRIMARY DIAGNOSIS COPD	At time of transplant	Yes	Yes	No	No	No	No	No	No
DIAG_COVID_ARDS	RECIPIENT PRIMARY DIAGNOSIS COVID ARDS	At time of transplant	Yes	Yes	No	No	No	No	No	No
DIAG_COVID_PF	RECIPIENT PRIMARY DIAGNOSIS COVID Pulmonary Fibrosis	At time of transplant	Yes	Yes	No	No	No	No	No	No
DIAG_HP	RECIPIENT PRIMARY DIAGNOSIS Hypersensitivity Pneumonitis	At time of transplant	Yes	Yes	No	No	No	No	No	No
DIAG_IPF	RECIPIENT PRIMARY DIAGNOSIS Idiopathic Pulmonary Fibrosis	At time of transplant	Yes	Yes	No	No	No	No	No	No
DIAG_LYMPHANGIOLEIOMYOMATOSIS	RECIPIENT PRIMARY DIAGNOSIS LYMPHANGIOLEIOMYOMATOSIS	At time of transplant	Yes	Yes	No	No	No	No	No	No
DIAG_MIXED_CTD	RECIPIENT PRIMARY DIAGNOSIS Nonspecific interstitial pneumonia	At time of transplant	Yes	Yes	No	No	No	No	No	No
DIAG_NSIP	RECIPIENT PRIMARY DIAGNOSIS Obliterative bronchiolitis	At time of transplant	Yes	Yes	No	No	No	No	No	No
DIAG_OB	RECIPIENT PRIMARY DIAGNOSIS Occupational	At time of transplant	Yes	Yes	No	No	No	No	No	No
DIAG_OCCUPATIONAL	RECIPIENT PRIMARY DIAGNOSIS Other	At time of transplant	Yes	Yes	No	No	No	No	No	No
DIAG_OTHER	RECIPIENT PRIMARY DIAGNOSIS Pulmonary fibrosis - other	At time of transplant	Yes	Yes	No	No	No	No	No	No
DIAG_PF_OTHER	RECIPIENT PRIMARY DIAGNOSIS Pulmonary hypertension	At time of transplant	Yes	Yes	No	No	No	No	No	No
DIAG_PULM_HTN	RECIPIENT PRIMARY DIAGNOSIS Rheumatoid	At time of transplant	Yes	Yes	No	No	No	No	No	No
DIAG_RHEUMATOID	RECIPIENT PRIMARY DIAGNOSIS Sarcoidosis	At time of transplant	Yes	Yes	No	No	No	No	No	No
DIAG_SARCOIDOSIS	RECIPIENT PRIMARY DIAGNOSIS Scleroderma mixed connective tissue disease	At time of transplant	Yes	Yes	No	No	No	No	No	No
DIAG_SCLERODERMA_PULM_HTN	RECIPIENT PRIMARY DIAGNOSIS Scleroderma pulmonary hypertension	At time of transplant	Yes	Yes	No	No	No	No	No	No
DIAG_SCLERODERMA_RESTRICTIVE	RECIPIENT PRIMARY DIAGNOSIS Scleroderma restrictive	At time of transplant	Yes	Yes	No	No	No	No	No	No
DIAG_SECONDARY_PULM_HTN	RECIPIENT PRIMARY DIAGNOSIS Secondary pulmonary hypertension	At time of transplant	Yes	Yes	No	No	No	No	No	No
PRI_PAYMENT_year_1_Other	RECIPIENT PRIMARY PAYMENT SOURCE @ TRANSPLANT Other at year 1	Follow-up	Yes	Yes	No	No	No	No	No	No
PRI_PAYMENT_year_1_Private	RECIPIENT PRIMARY PAYMENT SOURCE @ TRANSPLANT Private at year 1	Follow-up	Yes	Yes	No	No	No	No	No	No
PRI_PAYMENT_year_1_Public	RECIPIENT PRIMARY PAYMENT SOURCE @ TRANSPLANT Public at year 1	Follow-up	Yes	Yes	No	No	No	No	No	No
PRI_PAYMENT_year_3_Other	RECIPIENT PRIMARY PAYMENT SOURCE @ TRANSPLANT Other at year 3	Follow-up	Yes	Yes	No	No	No	No	No	No
PRI_PAYMENT_year_3_Private	RECIPIENT PRIMARY PAYMENT SOURCE @ TRANSPLANT Private at year 3	Follow-up	Yes	Yes	No	No	No	No	No	No
PRI_PAYMENT_year_3_Public	RECIPIENT PRIMARY PAYMENT SOURCE @ TRANSPLANT Public at year 3	Follow-up	Yes	Yes	No	No	No	No	No	No
POST_TX_VENT_SUPPORT_ORD	RECIPIENT VENTILATOR SUPPORT POST TRANSPLANT Timeframe ordinalized (NoVentilator support for	At time of transplant	Yes	No	No	Yes	Yes	Yes	No	No
POST_TX_VENT_SUPPORT_BIN	RECIPIENT VENTILATOR SUPPORT POST TRANSPLANT Timeframe binarized (NoVentilator support, Vent	At time of transplant	Yes	No	No	Yes	Yes	Yes	No	No
GRF_STAT_year_5	Craft Status at Time of Follow-Up (Y=Functioning, N=Failed) at year 5	Follow-up	Yes	No	No	No	No	No	No	No

Table S1: Data dictionary of all UNOS features used for analysis. The columns indicate which features were used for data exploration and which features were used in various models.