

1 **Title:** Early life factors and dementia risk: A study of adverse childhood experiences and later-  
2 life cognition and behaviour

3  
4 **Author Names:** Dinithi Mudalige<sup>1</sup>, Dylan X. Guan<sup>1,2</sup>, Clive Ballard, MD<sup>3</sup>, Byron Creese, PhD<sup>4</sup>,  
5 Anne Corbett, PhD<sup>3</sup>, Ellie Pickering, MSc<sup>3</sup>, Adam Hampshire<sup>5</sup>, Pamela Roach PhD<sup>2,6-8</sup>, Eric E.  
6 Smith, MD, MPH,<sup>2,6,9</sup> Zahinoor Ismail, MD<sup>2,3,6, 8-11\*</sup>

- 7  
8  
9 1) University of Calgary, AB, Canada  
10 2) Hotchkiss Brain Institute, University of Calgary, AB, Canada  
11 3) Clinical and Biomedical Sciences, Faculty of Health and Life Sciences, University of Exeter,  
12 Exeter, UK.  
13 4) Department of Life Sciences, Brunel University London, UK  
14 5) Division of Brain Sciences, Imperial College London, UK  
15 6) Department of Community Health Sciences, University of Calgary, AB, Canada  
16 7) Department of Family Medicine, University of Calgary, AB, Canada  
17 8) O'Brien Institute for Public Health, University of Calgary, AB, Canada  
18 9) Department of Clinical Neurosciences, University of Calgary, AB, Canada  
19 10) Department of Psychiatry, University of Calgary, AB, Canada  
20 11) Department of Pathology and Laboratory Medicine, University of Calgary, Calgary, Canada

21 **Running Title:** Childhood adversity, mild behavioural impairment & cognition

22  
23 \*Corresponding Author:  
24 Zahinoor Ismail  
25 3280 Hospital Dr. NW Calgary AB  
26 Canada T2N 4Z6  
27 403-210-6900  
28 [ismailz@ucalgary.ca](mailto:ismailz@ucalgary.ca)

29  
30 **Abstract Word Count:** 245

31 **Manuscript Word Count:** 2982

32 **Reference Count:** 60

33 **Table & Figure Count:** 3

34  
35 **Keywords:** adverse childhood experiences, social determinants of health, mild behavioral  
36 impairment, cognition, dementia

37 **ABSTRACT**

38

39 **Word Count: 249**

40

41 **Introduction:** Adverse childhood experiences (ACEs) are associated with brain alterations and  
42 cognitive decline. In later life, cognitive impairment and mild behavioural impairment (MBI) are  
43 associated with greater dementia risk.

44

45 **Objective & Study Design:** We investigated whether more severe ACEs are cross-sectionally  
46 associated with worse later-life cognitive and behavioural symptoms.

47

48 **Method:** Data are from the Canadian Platform for Research Online to Investigate Health, Quality  
49 of Life, Cognition, Behaviour, Function, and Caregiving in Aging (CAN-PROTECT). Measures  
50 included the Childhood Trauma Screener (CTS-5), neuropsychological testing, Everyday  
51 Cognition (ECog)-II scale, and MBI Checklist (MBI-C). Linear regressions modelled  
52 associations between ACEs severity and neuropsychological test scores. Multivariable negative  
53 binomial regressions (zero-inflated, if appropriate) modelled associations between ACEs severity  
54 and ECog-II and MBI-C scores. All models controlled for age, sex, education, and ethnocultural  
55 origin. Clinical diagnoses of depression and/or anxiety were explored as covariates or mediators.

56

57 **Results:** In adjusted analyses, higher ACEs scores were associated with worse performance on  
58 Trail-Making B (standardized  $b=0.10$ ,  $q=0.003$ ), Switching Stroop ( $b=-0.08$ ,  $q=0.027$ ), Paired  
59 Associates Learning ( $b=-0.08$ ,  $q=0.049$ ), and Digit Span ( $b=-0.08$ ,  $q=0.029$ ). Higher ACEs  
60 scores were also associated with higher ECog-II ( $b=1.08$ ,  $q=0.029$ ) and MBI-C ( $b=1.20$ ,  
61  $q<0.001$ ) scores; these associations were neither mediated by affective symptoms (ECog  $p=0.16$ ;  
62 MBI  $p=0.13$ ) nor moderated by sex (ECog  $p=0.09$ ; MBI  $p=0.46$ ).

63

64 **Conclusion:** Older adults with a history of more severe ACEs show greater cognitive and  
65 behavioural risk markers for dementia that cannot be explained by previous psychiatric history.  
66 Further research into ACEs as an early modifiable risk factor for dementia is warranted.

67

68

69

70

71

72

73

74 **INTRODUCTION**

75 Risk for dementia starts developing in early life <sup>1</sup>, although beyond education, little  
76 emphasis has been placed on early-life factors such as adverse childhood experiences (ACEs). Of  
77 the 12 modifiable risk factors of dementia established by the Lancet Commission, only one –  
78 level of education – spans early life stages <sup>2</sup>. However, early developmental stages involve  
79 extensive brain changes, and childhood experiences have the potential to have long-lasting  
80 effects. Because of this temporal association, targeting early-life factors may have a greater  
81 impact on dementia risk reduction than addressing modifiable risk factors in later life.

82 ACEs include abuse (physical, sexual, emotional), neglect, and household dysfunction  
83 occurring before the age of 18 <sup>3</sup>. Studies have found long-term alterations in brain circuitry and  
84 structure secondary to ACEs. These alterations include amygdalar hyperactivity and volume  
85 reduction in the hippocampus, cerebellum, corpus callosum, and whole brain <sup>4-7</sup>. These changes  
86 may lead to lower brain reserve, which is the brain's physical capacity to maintain function  
87 despite deterioration. Those with lower brain reserve show clinical impairment with less  
88 neurological compromise (e.g., brain volume loss and/or neural dysconnectivity) compared to  
89 those with greater reserve <sup>8</sup>. For example, an individual with ACEs-related hippocampal atrophy  
90 may experience earlier and more severe impairment from the changes in early-stage Alzheimer  
91 disease (AD) <sup>9</sup>. Studies have found that those with ACEs have a greater risk of developing  
92 dementia <sup>10, 11</sup>, indicating that the impact of ACEs can extend beyond the immediate aftermath of  
93 these experiences. ACEs can also be related to social, systemic, and structural determinants of  
94 health. For instance, the Lancet Commission reports that risk of cognitive decline and dementia  
95 are particularly high in socially disadvantaged populations <sup>2</sup>.

96           However, beyond dichotomizing ACEs as present or absent, ACEs severity may be  
97 important to assess; few studies have taken this approach <sup>10, 12</sup>. Specifically, ACEs severity may  
98 correspond to differential effects on brain function and varying degrees of dementia risk. Thus,  
99 incorporating ACEs severity and later-life dementia markers may provide insights into screening  
100 for those at risk of dementia.

101           In light of this, we examined two dementia markers: cognition and behaviour. Later-life  
102 changes in both objective and subjective measures of cognition are associated with a greater risk  
103 of incident dementia <sup>13, 14</sup>. Similarly, later-life emergent and persistent changes in behaviour or  
104 personality are also associated with cognitive decline and incident dementia <sup>15</sup>. Mild behavioural  
105 impairment is a syndrome that operationalizes later-life behavioural changes for dementia risk  
106 determination. MBI symptoms are categorized into five domains: decreased drive and motivation  
107 (apathy), affective dysregulation (mood and anxiety symptoms), impulse dyscontrol (agitation,  
108 impulsivity, abnormal reward salience), social inappropriateness (impaired social cognition), and  
109 abnormal perception or thought content (hallucinations and delusions, i.e., psychotic symptoms).  
110 Studies have indicated that MBI is associated with cognitive impairment cross-sectionally <sup>16, 17</sup>  
111 and incident cognitive decline and dementia longitudinally in cognitively normal (CN) older  
112 adults <sup>18, 19</sup>, mixed CN and mild cognitive impairment (MCI) samples <sup>20-26</sup> and in MCI <sup>27, 28</sup>.

113           Therefore, this study aimed to determine the relationships between ACEs and later-life  
114 changes in cognition and behaviour. We hypothesized that individuals with greater number and  
115 severity of ACEs would 1) have lower neuropsychological test scores; 2) experience more later-  
116 life cognitive symptoms; and 3) experience a greater burden of MBI, all of which are linked to  
117 dementia risk.

## 118 **METHOD**

119 ***Study Design***

120 Data were obtained from the Canadian Platform for Research Online to Investigate  
121 Health, Quality of Life, Cognition, Behavior, Function, and Caregiving in Aging (CAN-  
122 PROTECT)<sup>1</sup>. CAN-PROTECT is a nationwide online longitudinal observational cohort study of  
123 dementia-free community-dwelling Canadian residents aged  $\geq 18$  years. CAN-PROTECT  
124 consists of a validated neuropsychological test battery<sup>29</sup>, detailed demographics, and participant-  
125 rated questionnaires on cognition, behaviour, function, quality of life, medical and mental health  
126 history, and lifestyle, amongst others. Currently, only baseline data are available. Extensive  
127 descriptions of CAN-PROTECT recruitment and data collection procedures have been published  
128 elsewhere<sup>1</sup>. Participants provided informed consent as part of the registration process. Ethics  
129 approval for the study was acquired from the Conjoint Health Research Ethics Board at the  
130 University of Calgary.

131

132 ***Participants***

133 The overall sample from the CAN-PROTECT November 2023 data release comprised  
134 2304 participants. Participants were excluded from the present analyses if they (1) had not yet  
135 completed the cognitive test battery (n=614); (2) did not complete questionnaires related to  
136 ACEs (n=306), subjective cognitive function (n=112), or MBI (n=47); or (3) or were younger  
137 than 50 years old (n=123) (Figure 1). Demographics between participants included and excluded  
138 for completing the cognitive battery, and those included and excluded for the completion of  
139 ACEs questionnaires are indicated in Supplementary Figures 1 and 2, respectively. Only  
140 participants who were older than 50 years were included, in accordance with the MBI criterion

141 stipulating the de novo onset of persistent neuropsychiatric symptoms (NPS) after the age of 50  
142 <sup>15</sup>. Therefore, the final sample size for analysis was 1102.

143

## 144 *Measures*

### 145 Adverse Childhood Experiences

146 ACEs were measured using the validated Childhood Trauma Screener 5-Question  
147 Questionnaire (CTS-5) <sup>30</sup>. Participants responded with the frequency of the following on a scale  
148 ranging from 0 to 4, with 4 being very often true: “I felt loved”; “people from my family hit me  
149 so hard that I got bruises or scrapes”; “I felt like someone in my family hated me”; “someone  
150 sexually molested me”; and “there was someone to take me to the doctor when I needed it.” As  
151 the items “I felt loved” and “there was someone to take me to the doctor when I needed it”  
152 indicate more positive childhood experiences, these items were reverse-coded. Then, the  
153 responses to these five questions were summed to create the total ACEs severity score (range=0-  
154 20), where higher scores indicate more ACEs.

155

### 156 Neuropsychological Tests

157 Objective cognitive performance was measured using a validated neuropsychological test  
158 battery. This battery assesses performance on the Trail-Making B, Switching Stroop, Self-  
159 Ordered Search, Paired Associate Learning, Digit Span, and Verbal Reasoning tasks. All tasks,  
160 with the exception of Trail-Making B and Switching Stroop, are part of the Factors of  
161 Longitudinal Attention, Memory, and Executive Function cognitive battery <sup>29</sup> and have been  
162 developed and validated in online settings <sup>31</sup>. Together, the battery measures cognitive domains

163 of executive function, attention, task-switching, visual episodic memory, verbal reasoning, and  
164 working memory<sup>32-37</sup>.

165

### 166 Everyday Cognition

167 Cognitive symptoms were measured with the self-reported Everyday Cognition (ECog)-II  
168 scale<sup>38</sup>. The ECog-II asks participants to compare their cognition now to what it was 10 years  
169 ago with 41 questions across the domains of memory (9 questions), language (9 questions),  
170 visuospatial and perceptual abilities (8 questions), and executive functioning (15 questions).  
171 Each question can be answered on a scale from 0-3, with 0 indicating no change and 3 indicating  
172 the most consistent change compared to 10 years ago. The ECog-II total score, ranging from 0-  
173 123, is calculated by summing the scores for each question, with higher scores indicating more  
174 severe symptoms.

175

### 176 Mild Behavioural Impairment

177 MBI was measured by the self-reported MBI-C, developed to operationalize the MBI-C  
178 criteria of later-life onset of persistent NPS that represent a change from longstanding behaviours  
179<sup>39</sup>. The MBI-C comprises 34 items across five domains: decreased motivation (6 questions),  
180 emotional dysregulation (6 questions), impulse dyscontrol (12 questions), social  
181 inappropriateness (5 questions), and abnormal perception or thought content (5 questions). Each  
182 question assesses the presence and severity of symptoms, rated on a scale from 1 to 3 if present,  
183 with 3 indicating the greatest severity. The MBI total score, ranging from 0-102, is calculated by  
184 summing the scores for each question, with higher scores indicating greater global severity.

185

186 ***Statistical Analysis***

187 Participant demographics were summarized using descriptive statistics (means, standard  
188 deviations [SD], ranges, counts, and percentages). To compare groups, Wilcoxon signed-rank  
189 tests and chi-squared tests were used.

190 Multivariable linear regression modelled the association between ACEs (predictor) and  
191 neuropsychological test scores (outcome). Multivariable negative binomial regression modelled  
192 the association between ACEs (predictor) and ECog-II score (outcome), since the data were  
193 overdispersed (variance  $\gg$  mean) counts. Multivariable zero-inflated negative binomial  
194 regression modelled the association between ACEs (predictor) and MBI-C score (outcome). All  
195 models were adjusted for age, sex, highest level of education, ethnocultural origin, and self-  
196 reported clinical diagnosis mood symptoms (depression and/or anxiety).

197 The associations between ACEs (predictor), ECog-II (outcome) score and MBI-C  
198 (outcome) were explored further through several secondary analyses. Two analyses explored to  
199 what extent affective symptoms mediated the associations between ACEs, ECog, and MBI-C,  
200 using bootstrapping with 1000 simulations. Moderation by sex was also examined for these  
201 associations. Lastly, the associations between ACEs (predictor) and MBI domains (outcomes)  
202 were explored using five multivariable negative binomial regressions. R version 4.0.5 was used  
203 to conduct all statistical analyses <sup>40</sup>.

204

205 **RESULTS**

206 ***Participant Characteristics***

207 Participant characteristics for all analyses, stratified by sex, have been summarized in  
208 Table 1. Of the total sample (n=1102), study participants were 64.6 (SD=7.3, range=50-89) years



209 old on average, 883 (80.1%) were female, 290 (26.3%) had a bachelor's degree or certificate  
210 equivalent to a bachelor's degree, and 939 (85.2%) were of European origins. Additionally, 321  
211 (29.1%) reported a previous diagnosis of depression, and 229 (20.8%) reported a previous  
212 diagnosis of anxiety. The average ACEs score was 2.05 (SD=2.7, range=0-19.0).

213

### 214 **Adverse Childhood Experiences and Cognition**

215 For objective neuropsychological test scores, every 1 SD increase in ACEs score was  
216 associated with an increase of 0.10 SD (95%CI:0.05 – 0.16,  $q=0.003$ ) on Trail-Making B score,  
217 and decreases of 0.08 SD (95%CI:-0.14– -0.03,  $q=0.027$ ) on Switching Stroop, Paired Associates  
218 Learning (95%CI:-0.13 – -0.02,  $q=0.049$ ), and Digit Span (95%CI:-0.14 – -0.02,  $q=0.029$ )  
219 scores. Self-Ordered Search ( $b=-0.05$ , 95%CI:-0.11– -0.01,  $q=0.22$ ) and Verbal Reasoning Tasks  
220 ( $b=-0.05$ , 95%CI:-0.11– -0.01,  $q=0.22$ ) did not demonstrate statistically significant associations  
221 with ACEs score, although the magnitude and direction of effect were similar to the other  
222 neuropsychological tests.

223 For subjective cognition, every 1 SD increase in ACEs score was associated with a 1.08-  
224 fold (95%CI:1.02 – 1.14,  $q=0.029$ ) higher ECog-II score, adjusting for all covariates (Table 2).  
225 This association was neither mediated by mood symptoms ( $b=0$ , 95%CI:0 – 0.01,  $p=0.16$ ) nor  
226 moderated by sex ( $b=0.14$ , 95%CI:-0.04 – 0.31,  $p=0.09$ ). Scatterplot distributions for these  
227 associations are illustrated in Supplementary Figures 1 and 2.

228

### 229 **Adverse Childhood Experiences and Mild Behavioural Impairment**

230 For total MBI, every 1 SD increase in the ACEs score was associated with a 1.20-fold  
231 (95%CI:1.11 – 1.30,  $q<0.001$ ) higher MBI-C score, adjusting for all covariates (Table 2).

232 Additionally, this association was neither mediated by mood symptoms ( $b=0.12$ , 95%CI:-0.04 –  
233 0.29,  $p=0.13$ ) nor moderated by sex ( $b=0.11$ , 95%CI:-0.11 – 0.32,  $p=0.46$ ). A scatterplot  
234 distribution for this association is illustrated in Supplementary Figure 3.

235 For MBI domains, every 1 SD increase in ACEs score was associated with a 10.2%  
236 (95%CI: 1.1 – 20.2,  $p= 0.027$ ) higher decreased motivation, 18.4% (95%CI: 9.3 – 28.2,  $p<0.001$ )  
237 higher emotional dysregulation, 25.1% (95%CI: 14.7 – 36.4,  $p<0.001$ ) higher impulse  
238 dyscontrol, 33.2% (95%CI: 13.6 – 56.3,  $p<0.001$ ) higher social inappropriateness, and 40.7%  
239 (95%CI: 21.6 – 62.8,  $p<0.001$ ) higher abnormal perceptions or thought content score.

240

## 241 **DISCUSSION**

242 This study explored associations between experiences in childhood and risk for dementia  
243 in later life. As hypothesized, more severe ACEs were found to be associated with more severe  
244 cognitive and behavioural symptoms, both of which reflect a greater risk for incident dementia.  
245 These symptoms could not be explained by previous psychiatric history. Our findings emphasize  
246 the role of quantifying the severity of ACEs in determining dementia risk using cognition and  
247 behaviour. This study adds depth to our understanding of childhood experiences as a component  
248 of social, systemic, and structural determinants of later-life brain health.

249 The fact that ACEs are associated with worse cognition is consistent with the current  
250 literature. For instance, in community-dwelling older adults, those with a history of ACEs were  
251 more likely to experience cognitive impairment<sup>41, 42</sup>. However, the links to dementia are less  
252 clear. In a French cohort, while ACEs were associated with psychomotor slowing, especially in  
253 females, there was no association with incident dementia<sup>43</sup>. In a sample of former male  
254 professional football players with a mean age of 57.2 (SD=13.5, range=28-92), ACEs were

255 associated with cognitive and functional impairment consistent with dementia based on the AD8  
256 scale <sup>10</sup>. Similarly, another study in Japanese older adults found that those who experienced three  
257 or more ACEs had a greater risk of developing dementia than those who grew up without ACEs,  
258 controlling for age, sex, childhood economic hardship, nutritional environment, and education <sup>11</sup>.

259 Exploring the link between ACEs and NPS is more novel and studied less often,  
260 especially in the context of dementia risk. In the same study of football players, ACEs were  
261 associated with probable depression (measured using the PHQ-9). However, after adjusting for  
262 concussions, depression no longer differed from those without ACEs <sup>10</sup>. Another study found  
263 that in Chinese older adults, those with ACEs were more likely to have psychiatric disorders in  
264 the past year after adjusting for age, sex, marital status, employment status, education, rural or  
265 urban residence, region, and physical diseases <sup>44</sup>. However, to our knowledge, there are no data  
266 on the relationship between ACEs and MBI, which is a novel but well-validated dementia risk  
267 syndrome.

268 Nonetheless, ACEs and MBI both indicate greater risk for incident dementia<sup>11, 15</sup>. It is  
269 plausible that ACEs contribute to greater psychiatric symptoms, which then contribute to  
270 cognitive impairment and dementia risk. However, our finding that neither the association  
271 between ACEs and cognition nor the association between ACEs and MBI were mediated by  
272 previous psychiatric history indicates that these relationships may involve other pathways  
273 unrelated to psychiatric conditions.

274 An alternative hypothesis may involve brain reserve. Subtypes of ACEs, including  
275 childhood abuse and neglect, have been linked to inhibited blood flow to the prefrontal cortex,  
276 impeding development <sup>7</sup>. These changes have subsequently been linked to poorer executive  
277 functioning <sup>45</sup>. As the prefrontal cortex is a critical region associated with many NPS <sup>46</sup>, reduced

278 prefrontal cortex volume and thickness (indicating reduced brain reserve), may also be associated  
279 with more severe NPS. Moreover, childhood abuse is also associated with elevated cortisol <sup>47</sup>.  
280 Cortisol has been found to promote amyloid  $\beta$  plaque deposits <sup>48,49</sup>, one of the hallmark features  
281 of AD. The accumulation of these plaques is related to brain atrophy, linked to worsening  
282 cognitive and behavioural symptoms as individuals age <sup>50,51</sup>. In fact, a recent study has found  
283 that while total stressful life events were not associated with AD pathophysiology and  
284 neuroinflammation, stressful life events occurring in childhood were <sup>52</sup>. Additionally, ACEs may  
285 be related to heightened levels of systemic inflammation, which presents another potential  
286 mechanism for the association between ACEs-related cognitive and behavioural impairment.  
287 Studies have found associations between higher C-reactive protein (CRP) levels, a marker of  
288 systemic inflammation <sup>53</sup>, and poorer performance on tests of memory <sup>54,55</sup>. Similarly,  
289 inflammation plays an important role in the pathogenesis of neuropsychiatric disorders <sup>56</sup>.  
290 Neuroinflammation may be implicated in neurobehavioural changes, including the development  
291 of neuropsychiatric disorders <sup>57</sup>. ACEs are also linked with lower academic achievement and  
292 pursuit of higher education <sup>58,59</sup>. As education contributes to cognitive reserve and is therefore  
293 protective against cognitive decline <sup>60</sup>, those with more severe ACEs may be less protected  
294 against cognitive and behavioural impairment and onset of dementia.

295         These findings emphasize that those with ACEs are at heightened risk for dementia,  
296 although further longitudinal data are required to understand risk in this specific sample.  
297 Nonetheless, clinicians might consider a dementia risk assessment, including measures of later-  
298 life changes in cognition and behaviour, in older adults who present with a history of ACEs. If  
299 addressing ACEs can prevent or mitigate later-life cognitive and behavioural impairment and  
300 decrease the risk of dementia, then ACEs might be considered a modifiable risk factor. At a

301 public health level, measures to mitigate ACEs could be amongst the earliest of dementia  
302 prevention interventions. In addition to considering childhood public health and policy through a  
303 dementia risk factor lens, these findings prompt further investigations to determine the  
304 mechanisms involved in the association between ACEs and cognitive and behavioural risk  
305 markers for dementia. Of note, our sample comprises mostly cognitively unimpaired participants,  
306 none with dementia diagnoses or living in continuing care settings.

307         There are limitations to our study. These are cross-sectional data, so no causal  
308 associations can be inferred. Further, the five-item questionnaire that assessed ACEs may not  
309 encompass all domains of childhood adversity. For instance, domains of ACEs, such as  
310 witnessing interpersonal violence, family substance use, family incarceration, or family mental  
311 illness, are not adequately captured by the five questions in the CTS-5. Additionally, the ECog-II  
312 is a subjective measure of cognition and may not accurately depict objective cognitive status. In  
313 light of this, we used objective neuropsychological tests to assess domains of cognition and  
314 differences in performance were found, which were consistent with the subjective cognitive  
315 reports. Lastly, other mediating factors aside from previous psychiatric history may have  
316 contributed to the relationship between ACEs and cognition/MBI. Future studies could assess  
317 additional aspects of ACEs to examine whether other factors contribute to the aforementioned  
318 relationships and explore the underlying determinants of ACEs, cognition, and MBI.

319         Regardless, we establish a starting point for further investigation regarding this novel  
320 relationship between ACEs severity and later-life cognitive and behavioural impairment.  
321 Additionally, this study emphasizes the importance of early-life factors for the risk of dementia  
322 and is relevant at a public health level. Further, the large sample size also provided sufficient  
323 statistical power to test several hypotheses, including moderation and mediation, enabling a

324 fuller understanding of the relationship between ACEs, cognition, and MBI. As longitudinal data  
325 from CAN-PROTECT become available, we will be able to assess change over time and build on  
326 these foundational results.

327

## 328 **CONCLUSION**

329 This study demonstrated that older adults with a history of ACEs have more cognitive  
330 and behavioural symptoms in later life, indicative of greater dementia risk. These relationships  
331 were not mediated by previous psychiatric history, indicating that ACEs may directly contribute  
332 to later-life cognitive and behavioural impairment. The relevance of our study is reflected by the  
333 novelty of the findings, the identification of an at-risk sub-population of older adults who can be  
334 screened for dementia risk with assessments of cognitive and behavioural change, and the  
335 potential to inform preventative strategies aimed at reducing the burden of dementia, starting in  
336 childhood.

## 337 References

- 338 1. Ismail Z, Guan D, Vellone D, Ballard C, Creese B, Corbett A, et al. The Canadian  
339 platform for research online to investigate health, quality of life, cognition, behaviour, function,  
340 and caregiving in aging (CAN-PROTECT): study protocol, platform description, and preliminary  
341 analyses. *medRxiv*. 2023:2023.12.16.23300094.
- 342 2. Livingston G, Huntley J, Sommerlad A, Ames D, Ballard C, Banerjee S, et al. Dementia  
343 prevention, intervention, and care: 2020 report of the Lancet Commission. *The Lancet*. 2020;  
344 396:413-46.
- 345 3. Loveday S, Hall T, Constable L, Paton K, Sancu L, Goldfeld S, et al. Screening for  
346 Adverse Childhood Experiences in Children: A Systematic Review. *Pediatrics*. 2022;  
347 149:e2021051884.
- 348 4. Teicher MH, Anderson CM, Polcari A. Childhood maltreatment is associated with  
349 reduced volume in the hippocampal subfields CA3, dentate gyrus, and subiculum. *Proceedings*  
350 *of the National Academy of Sciences*. 2012; 109:E563-E72.
- 351 5. Pechtel P, Lyons-Ruth K, Anderson CM, Teicher MH. Sensitive periods of amygdala  
352 development: the role of maltreatment in preadolescence. *Neuroimage*. 2014; 97:236-44.
- 353 6. Bick J, Nelson CA. Early Adverse Experiences and the Developing Brain.  
354 *Neuropsychopharmacology*. 2016; 41:177-96.
- 355 7. Teicher MH, Samson JA. Annual Research Review: Enduring neurobiological effects of  
356 childhood abuse and neglect. *Journal of Child Psychology and Psychiatry*. 2016; 57:241-66.
- 357 8. Stern Y, Barnes CA, Grady C, Jones RN, Raz N. Brain reserve, cognitive reserve,  
358 compensation, and maintenance: operationalization, validity, and mechanisms of cognitive  
359 resilience. *Neurobiol Aging*. 2019; 83:124-9.
- 360 9. Rao YL, Ganaraja B, Murlimanju BV, Joy T, Krishnamurthy A, Agrawal A.  
361 Hippocampus and its involvement in Alzheimer's disease: a review. *3 Biotech*. 2022; 12:55.
- 362 10. Roberts AL, Zafonte R, Chibnik LB, Baggish A, Taylor H, Baker J, et al. Association of  
363 Adverse Childhood Experiences With Poor Neuropsychiatric Health and Dementia Among  
364 Former Professional US Football Players. *JAMA Network Open*. 2022; 5:e223299-e.
- 365 11. Tani Y, Fujiwara T, Kondo K. Association Between Adverse Childhood Experiences and  
366 Dementia in Older Japanese Adults. *JAMA Network Open*. 2020; 3:e1920740-e.
- 367 12. Schickedanz HB, Jennings LA, Schickedanz A. The Association Between Adverse  
368 Childhood Experiences and Positive Dementia Screen in American Older Adults. *J Gen Intern*  
369 *Med*. 2022; 37:2398-404.
- 370 13. Jessen F, Wolfsgruber S, Wiese B, Bickel H, Mösch E, Kaduszkiewicz H, et al. AD  
371 dementia risk in late MCI, in early MCI, and in subjective memory impairment. *Alzheimer's &*  
372 *Dementia*. 2014; 10:76-83.
- 373 14. Hayat SA, Luben R, Khaw K-T, Brayne C. The Relationship Between Cognitive  
374 Performance Using Tests Assessing a Range of Cognitive Domains and Future Dementia  
375 Diagnosis in a British Cohort: A Ten-Year Prospective Study. *Journal of Alzheimer's Disease*.  
376 2021; 81:123-35.
- 377 15. Ismail Z, Smith EE, Geda Y, Sultzer D, Brodaty H, Smith G, et al. Neuropsychiatric  
378 symptoms as early manifestations of emergent dementia: provisional diagnostic criteria for mild  
379 behavioral impairment. *Alzheimer's & Dementia*. 2016; 12:195-202.

- 380 16. Rouse HJ, Small BJ, Schinka JA, Loewenstein DA, Duara R, Potter H. Mild behavioral  
381 impairment as a predictor of cognitive functioning in older adults. *Int Psychogeriatr.* 2021;  
382 33:285-93.
- 383 17. Kassam F, Chen H, Nosheny RL, McGirr A, Williams T, Ng N, et al. Cognitive profile of  
384 people with mild behavioral impairment in Brain Health Registry participants. *Int Psychogeriatr.*  
385 2023; 35:643-52.
- 386 18. Creese B, Brooker H, Ismail Z, Wesnes KA, Hampshire A, Khan Z, et al. Mild  
387 behavioral impairment as a marker of cognitive decline in cognitively normal older adults. *The*  
388 *American Journal of Geriatric Psychiatry.* 2019; 27:823-34.
- 389 19. Ismail Z, McGirr A, Gill S, Hu S, Forkert ND, Smith EE. Mild Behavioral Impairment  
390 and Subjective Cognitive Decline Predict Cognitive and Functional Decline. *J Alzheimers Dis.*  
391 2021; 80:459-69.
- 392 20. Kan CN, Cano J, Zhao X, Ismail Z, Chen CL, Xu X. Prevalence, Clinical Correlates,  
393 Cognitive Trajectories, and Dementia Risk Associated With Mild Behavioral Impairment in  
394 Asians. *J Clin Psychiatry.* 2022; 83.
- 395 21. Wolfova K, Creese B, Aarsland D, Ismail Z, Corbett A, Ballard C, et al. Gender/Sex  
396 Differences in the Association of Mild Behavioral Impairment with Cognitive Aging. *J*  
397 *Alzheimers Dis.* 2022; 88:345-55.
- 398 22. Vellone D, Ghahremani M, Goodarzi Z, Forkert ND, Smith EE, Ismail Z. Apathy and  
399 APOE in mild behavioral impairment, and risk for incident dementia. *Alzheimers Dement (N Y).*  
400 2022; 8:e12370.
- 401 23. Ebrahim IM, Ghahremani M, Camicioli R, Smith EE, Ismail Z. Effects of race, baseline  
402 cognition, and APOE on the association of affective dysregulation with incident dementia: A  
403 longitudinal study of dementia-free older adults. *Journal of Affective Disorders.* 2023; 332:9-18.
- 404 24. Ismail Z, Ghahremani M, Amlish Munir M, Fischer CE, Smith EE, Creese B. A  
405 longitudinal study of late-life psychosis and incident dementia and the potential effects of race  
406 and cognition. *Nature Mental Health.* 2023; 1:273-83.
- 407 25. Ghahremani M, Wang M, Chen HY, Zetterberg H, Smith E, Ismail Z. Plasma  
408 Phosphorylated Tau at Threonine 181 and Neuropsychiatric Symptoms in Preclinical and  
409 Prodromal Alzheimer Disease. *Neurology.* 2023; 100:e683-e93.
- 410 26. Matsuoka T, Ismail Z, Narumoto J. Prevalence of Mild Behavioral Impairment and Risk  
411 of Dementia in a Psychiatric Outpatient Clinic. *J Alzheimers Dis.* 2019; 70:505-13.
- 412 27. McGirr A, Nathan S, Ghahremani M, Gill S, Smith EE, Ismail Z. Progression to  
413 Dementia or Reversion to Normal Cognition in Mild Cognitive Impairment as a Function of  
414 Late-Onset Neuropsychiatric Symptoms. *Neurology.* 2022; 98:e2132.
- 415 28. Ismail Z, Leon R, Creese B, Ballard C, Robert P, Smith EE. Optimizing detection of  
416 Alzheimer's disease in mild cognitive impairment: a 4-year biomarker study of mild behavioral  
417 impairment in ADNI and MEMENTO. *Molecular Neurodegeneration.* 2023; 18:50.
- 418 29. Brooker H, Williams G, Hampshire A, Corbett A, Aarsland D, Cummings J, et al.  
419 FLAME: A computerized neuropsychological composite for trials in early dementia. *Alzheimer's*  
420 *& Dementia: Diagnosis, Assessment & Disease Monitoring.* 2020; 12:e12098.
- 421 30. Grabe HJ, Schulz A, Schmidt CO, Appel K, Driessen M, Wingenfeld K, et al. A brief  
422 instrument for the assessment of childhood abuse and neglect: the childhood trauma screener  
423 (CTS). *Psychiatrische Praxis.* 2012; 39:109-15.



- 424 31. Huntley J, Corbett A, Wesnes K, Brooker H, Stenton R, Hampshire A, et al. Online  
425 assessment of risk factors for dementia and cognitive function in healthy adults. *International*  
426 *Journal of Geriatric Psychiatry*. 2018; 33:e286-e93.
- 427 32. Reitan RM. Validity of the Trail Making Test as an indicator of organic brain damage.  
428 *Perceptual and motor skills*. 1958; 8:271-6.
- 429 33. Stroop JR. Studies of interference in serial verbal reactions. *Journal of experimental*  
430 *psychology*. 1935; 18:643.
- 431 34. Owen AM, Downes JJ, Sahakian BJ, Polkey CE, Robbins TW. Planning and spatial  
432 working memory following frontal lobe lesions in man. *Neuropsychologia*. 1990; 28:1021-34.
- 433 35. Owen AM, Beksinska M, James M, Leigh P, Summers B, Marsden C, et al. Visuospatial  
434 memory deficits at different stages of Parkinson's disease. *Neuropsychologia*. 1993; 31:627-44.
- 435 36. Huntley J, Hampshire A, Bor D, Owen A, Howard R. Adaptive working memory strategy  
436 training in early Alzheimer's disease: randomised controlled trial. *The British Journal of*  
437 *Psychiatry*. 2017; 210:61-6.
- 438 37. Baddeley AD. A 3 min reasoning test based on grammatical transformation.  
439 *Psychonomic science*. 1968; 10:341-2.
- 440 38. Farias ST, Weakley A, Harvey D, Chandler J, Huss O, Mungas D. The Measurement of  
441 Everyday Cognition (ECog): Revisions and Updates. *Alzheimer Dis Assoc Disord*. 2021;  
442 35:258-64.
- 443 39. Ismail Z, Agüera-Ortiz L, Brodaty H, Cieslak A, Cummings J, Fischer CE, et al. The  
444 Mild Behavioral Impairment Checklist (MBI-C): A Rating Scale for Neuropsychiatric Symptoms  
445 in Pre-Dementia Populations. *J Alzheimers Dis*. 2017; 56:929-38.
- 446 40. R Core Team. R: A Language and Environment for Statistical Computing. In: *Computing*  
447 *RfS*, editor. Austria2022.
- 448 41. Patel P, Oremus M. The Association Between Adverse Childhood Experiences and Late-  
449 Life Cognition: A Systematic Review of Cross-Sectional and Case-Control Studies.  
450 *Gerontologist*. 2023; 63:1087-103.
- 451 42. Lee VM, Hargrave AS, Lisha NE, Huang AJ. Adverse Childhood Experiences and  
452 Aging-Associated Functional Impairment in a National Sample of Older Community-Dwelling  
453 Adults. *J Gen Intern Med*. 2023; 38:3362-71.
- 454 43. Nilaweera D, Freak-Poli R, Gurvich C, Ritchie K, Chaudieu I, Ancelin M-L, et al. The  
455 association between adverse childhood events and later-life cognitive function and dementia risk.  
456 *Journal of Affective Disorders*. 2022; 304:128-32.
- 457 44. Li J, Liu Z, Li M, Huang Y, Yin H, Xu G, et al. Associations of adverse childhood  
458 experiences with common psychiatric disorder in later life: results from the China mental health  
459 survey. *BMC Geriatrics*. 2023; 23:706.
- 460 45. Yuan P, Raz N. Prefrontal cortex and executive functions in healthy adults: a meta-  
461 analysis of structural neuroimaging studies. *Neurosci Biobehav Rev*. 2014; 42:180-92.
- 462 46. Chen Y, Dang M, Zhang Z. Brain mechanisms underlying neuropsychiatric symptoms in  
463 Alzheimer's disease: a systematic review of symptom-general and -specific lesion patterns.  
464 *Molecular Neurodegeneration*. 2021; 16:38.
- 465 47. Aas M, Ueland T, Inova A, Melle I, Andreassen OA, Steen NE. Childhood Trauma Is  
466 Nominally Associated With Elevated Cortisol Metabolism in Severe Mental Disorder. *Front*  
467 *Psychiatry*. 2020; 11:391.
- 468 48. Ouanes S, Popp J. High Cortisol and the Risk of Dementia and Alzheimer's Disease: A  
469 Review of the Literature. *Front Aging Neurosci*. 2019; 11:43.

- 470 49. Kim NG, Lauren MB, Benno R, James LM, Frank ML. Glucocorticoids Increase  
471 Amyloid- $\beta$  and Tau Pathology in a Mouse Model of Alzheimer's Disease. *The Journal of*  
472 *Neuroscience*. 2006; 26:9047.
- 473 50. Martikainen IK, Kempainen N, Johansson J, Teuho J, Helin S, Liu Y, et al. Brain  $\beta$ -  
474 Amyloid and Atrophy in Individuals at Increased Risk of Cognitive Decline. *AJNR Am J*  
475 *Neuroradiol*. 2019; 40:80-5.
- 476 51. Miao R, Chen H-Y, Gill S, Naude J, Smith EE, Ismail Z. Plasma  $\beta$ -Amyloid in Mild  
477 Behavioural Impairment – Neuropsychiatric Symptoms on the Alzheimer's Continuum. *Journal*  
478 *of Geriatric Psychiatry and Neurology*. 2021; 35:434-41.
- 479 52. Palpatzis E, Akinci M, Aguilar-Dominguez P, Garcia-Prat M, Blennow K, Zetterberg H,  
480 et al. Lifetime Stressful Events Associated with Alzheimer's Pathologies, Neuroinflammation  
481 and Brain Structure in a Risk Enriched Cohort. *Annals of Neurology*. 2024; n/a.
- 482 53. Du Clos TW. Function of C-reactive protein. *Annals of medicine*. 2000; 32:274-8.
- 483 54. Bettcher BM, Wilhelm R, Rigby T, Green R, Miller JW, Racine CA, et al. C-reactive  
484 protein is related to memory and medial temporal brain volume in older adults. *Brain, behavior,*  
485 *and immunity*. 2012; 26:103-8.
- 486 55. Noble JM, Manly JJ, Schupf N, Tang MX, Mayeux R, Luchsinger JA. Association of C-  
487 reactive protein with cognitive impairment. *Archives of neurology*. 2010; 67:87-92.
- 488 56. Radtke FA, Chapman G, Hall J, Syed YA. Modulating Neuroinflammation to Treat  
489 Neuropsychiatric Disorders. *BioMed Research International*. 2017; 2017:5071786.
- 490 57. Feiger JA, Snyder RL, Walsh MJ, Cissne M, Cwiek A, Al-Momani SI, et al. The Role of  
491 Neuroinflammation in Neuropsychiatric Disorders Following Traumatic Brain Injury: A  
492 Systematic Review. *J Head Trauma Rehabil*. 2022; 37:E370-e82.
- 493 58. Blodgett C, Lanigan JD. The Association Between Adverse Childhood Experience (ACE)  
494 and School Success in Elementary School Children. *School Psychology Quarterly*. 2018;  
495 33:137–46.
- 496 59. Hardcastle K, Bellis MA, Ford K, Hughes K, Garner J, Ramos Rodriguez G. Measuring  
497 the relationships between adverse childhood experiences and educational and employment  
498 success in England and Wales: findings from a retrospective study. *Public Health*. 2018;  
499 165:106-16.
- 500 60. Thow ME, Summers MJ, Saunders NL, Summers JJ, Ritchie K, Vickers JC. Further  
501 education improves cognitive reserve and triggers improvement in selective cognitive functions  
502 in older adults: The Tasmanian Healthy Brain Project. *Alzheimers Dement (Amst)*. 2018; 10:22-  
503 30.

504

505

506

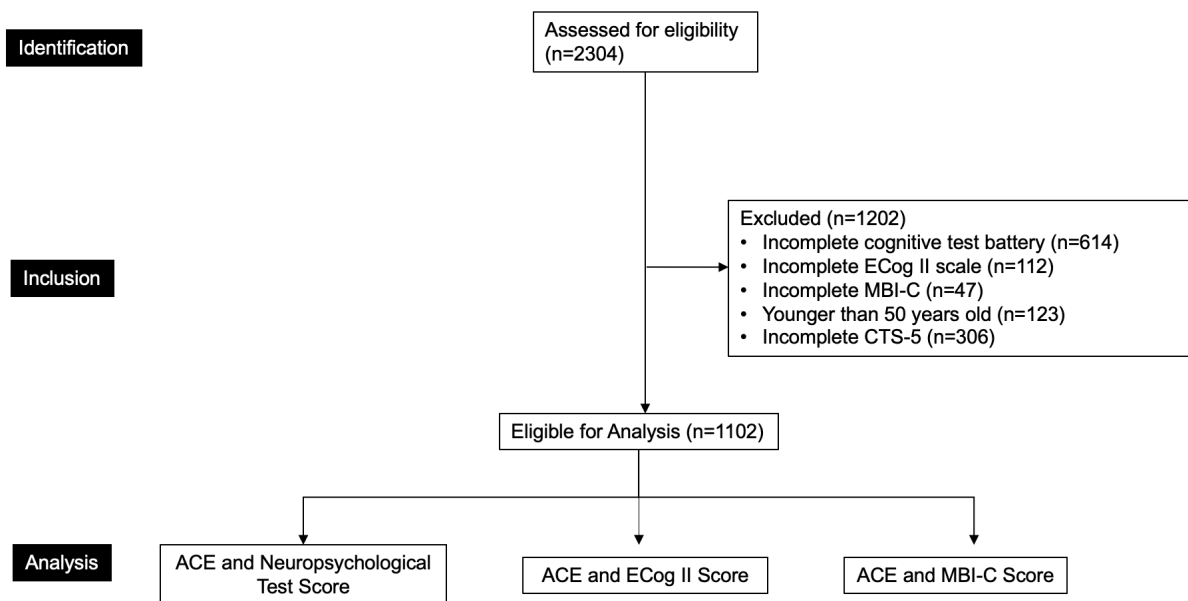
507

508

509

510 **FIGURES AND TABLES**

511  
512 **Figure 1. Participant Flow-Diagram.** Neuropsychological tests include Trail-Making B,  
513 Switching Stroop, Self-Ordered Search, Paired Associate Learning, Digit Span, and Verbal  
514 Reasoning tasks. Abbreviations: CTS-5, Childhood Trauma Screener 5-Question Questionnaire;  
515 ACEs, Adverse Childhood Experiences; MBI-C, Mild Behavioral Impairment Checklist; ECog  
516 II, Everyday Cognition II.  
517



518  
519  
520

**Table 1. Participant characteristics**

|   | <b>Total<br/>(n=1102)</b> | <b>Male<br/>(n=219)</b> | <b>Female<br/>(n=883)</b> | <b><i>p</i></b>     |
|---|---------------------------|-------------------------|---------------------------|---------------------|
| <b>Age (Years)</b>                      | 64.6 (7.3), 50.0-89.0     | 65.7 (7.8), 50.0-89.0   | 64.3 (7.2), 50.0-88.0     | 0.028 <sup>c</sup>  |
| <b>Education</b>                        |                           |                         |                           | <0.001 <sup>w</sup> |
| Some primary school                     | 1 (0.1)                   | 0 (0)                   | 1 (0.1)                   |                     |
| Some high school                        | 12 (1.1)                  | 2 (0.9)                 | 10 (1.1)                  |                     |
| High school diploma                     | 117 (10.6)                | 25 (11.4)               | 92 (10.4)                 |                     |
| Trade certificate/diploma               | 63 (5.7)                  | 27 (12.3)               | 36 (4.1)                  |                     |
| Non-university certificate/diploma      | 276 (25.0)                | 36 (16.4)               | 240 (27.2)                |                     |
| University certificate below bachelor's | 55 (5.0)                  | 6 (2.7)                 | 49 (5.5)                  |                     |
| Bachelor's degree                       | 290 (26.3)                | 54 (24.7)               | 236 (26.7)                |                     |
| degree/certificate above bachelor's     | 288 (26.1)                | 69 (31.5)               | 219 (24.8)                |                     |
| <b>Ethno-Cultural Origin</b>            |                           |                         |                           | 0.33 <sup>w</sup>   |
| European Origins                        | 939 (85.2)                | 182 (83.1)              | 757 (85.7)                |                     |
| Non-European Origins                    | 163 (14.8)                | 37 (16.9)               | 126 (14.3)                |                     |
| <b>Mood Symptoms</b>                    |                           |                         |                           | <0.001 <sup>w</sup> |
| Absent                                  | 696 (63.2%)               | 161 (73.5%)             | 535 (60.6%)               |                     |
| Present                                 | 406 (36.8%)               | 58 (26.5%)              | 348 (39.4%)               |                     |
| <b>ACEs Score</b>                       | 2.05 (2.7), 0-19.0        | 1.6 (2.2), 0-12.0       | 2.2 (2.8), 0-19.0         | 0.012 <sup>c</sup>  |
| <b>ECog Score</b>                       | 11.7 (10.9), 0-88.0       | 11.6 (11.3), 0-63.0     | 11.7 (10.8), 0-88.0       | 0.71 <sup>c</sup>   |
| <b>Trail-Making B</b>                   | 60.9 (19.1), 26.8-193     | 63.2 (18.7), 34.4-148   | 60.4 (19.2), 26.8-193     | 0.016 <sup>c</sup>  |
| <b>Switching Stroop</b>                 | 38.5 (14.3), 0-83.3       | 39.6 (14.4), 3.00-75.0  | 38.3 (14.3), 0-83.3       | 0.19 <sup>c</sup>   |
| <b>Self-Ordered Search</b>              | 6.7 (2.5), 0-14.0         | 7.0 (2.7), 0-12.0       | 6.6 (2.5), 0-14.0         | <0.001 <sup>c</sup> |
| <b>Paired Associates Learning</b>       | 3.9 (0.9), 0-7.0          | 3.8 (0.9), 0-7.0        | 4.0 (0.9), 0-7.0          | 0.019 <sup>c</sup>  |
| <b>Verbal Reasoning</b>                 | 32.0 (9.4), -1.0-67.0     | 31.1 (9.2), -1.0-61.3   | 32.2 (9.5), 0-67.0        | 0.060 <sup>c</sup>  |
| <b>Digit Span</b>                       | 7.0 (1.8), 0-20.0         | 6.9 (1.7), 0-16.0       | 7.0 (1.8), 0-20.0         | 0.51 <sup>c</sup>   |
| <b>MBI Score</b>                        | 5.3 (7.4), 0-65.0         | 4.9 (7.0), 0-49.0       | 5.4 (7.5), 0-65.0         | 0.25 <sup>c</sup>   |

*Note.* All values for continuous variables are shown in mean (SD), range. Values were rounded to one decimal place where appropriate. Categorical variables are shown as n (%). Participants missing data in any of the variables were excluded from descriptive statistical analysis.

Abbreviations: ECog-II, everyday cognition; MBI, mild behavioral impairment; ACEs, adverse childhood experience  
w – Wilcoxon Rank Sum (Mann-Whitney) Test; c – Chi-Squared Test

521  
522  
523  
524  
525  
526

**Table 2. Multivariable regression models for the association between ACEs score and ECog-II, neuropsychological tests scores, and MBI-C scores**

| <b>Outcome Variable</b>    | <b>B or exp(B)</b> | <b>95%CI</b>  | <b>p</b> |
|----------------------------|--------------------|---------------|----------|
| Trail-Making B             | 0.10               | 0.05 – 0.16   | 0.003    |
| Switching Stroop           | -0.08              | -0.14 – -0.03 | 0.027    |
| Self-Ordered Search        | -0.05              | -0.11 – 0.01  | 0.22     |
| Paired-Associates Learning | -0.08              | -0.13 – -0.02 | 0.049    |
| Verbal Reasoning           | -0.05              | -0.11 – 0.01  | 0.22     |
| Digit Span                 | -0.08              | -0.14 – -0.02 | 0.029    |
| ECog-II Score              | 1.08*              | 1.02 – 1.14   | 0.03     |
| MBI-C Score                | 1.20*              | 1.11– 1.30    | <0.001   |
| Decreased Motivation       | 1.10*              | 1.01 – 1.20   | 0.03     |
| Emotional Dysregulation    | 1.18*              | 1.09 – 1.28   | <0.001   |
| Impulse Dyscontrol         | 1.25*              | 1.15 – 1.36   | <0.001   |
| Social Inappropriateness   | 1.33*              | 1.13 – 1.56   | <0.001   |
| Abnormal Perceptions       | 1.41*              | 1.22 –1.63    | <0.001   |

*Note.* \*exp(B). The exposure variable was standardized ACEs score for all models. The association between ACEs score and ECog-II score was tested using a Multivariable Negative Binomial regression model, the associations between standardized ACEs score and standardized neuropsychological test scores were tested using Multivariable Linear Regressions, and the association between standardized ACEs score and MBI-C total and domain scores were tested using a Multivariable Zero-Inflated Negative Binomial regression model, adjusted for age, sex, level of education, ethno-cultural origin, and diagnosis of anxiety or depression. P values were adjusted for the associations with the following outcomes: neuropsychological test scores, ECog-II Score, MBI-C Score.

Abbreviations: ACEs, adverse childhood experience; MBI, mild behavioral impairment; ECog-II, everyday cognition; CI, confidence interval

527

528

529

530

531

532 **SUPPLEMENTARY TABLES/FIGURES**

533 **Supplementary Table 1. Participant Characteristics for Incomplete and Complete Cognitive Battery**

|   | <b>Total<br/>(N=2304)</b> | <b>Cognitive Battery<br/>Incomplete<br/>(N=614)</b> | <b>Cognitive Battery<br/>Complete<br/>(N=1690)</b> | <b><i>p</i></b> |
|---|---------------------------|---|--|-----------------|
| <b>Age</b>                              | 62.8 (9.43), 23.0-91.0    | 62.3 (10.4), 34.0-88.0                              | 63.0 (9.05), 23.0-91.0                             | 0.22            |
| <b>Sex</b>                              |                           |   |  | 0.55            |
| Male                                    | 513 (22.3%)               | 142 (23.1%)   | 371 (22.0%)  |                 |
| Female                                  | 1791 (77.7%)              | 472 (76.9%)   | 1319 (78.0%)                                       |                 |
| <b>Education</b>                        |                           |   |  | 0.82            |
| Some primary school                     | 1 (0.0%)                  | 0 (0%)  | 1 (0.1%)   |                 |
| Some high school                        | 32 (1.4%)                 | 8 (1.3%)  | 24 (1.4%)  |                 |
| High school diploma                     | 246 (10.7%)               | 72 (11.7%)  | 174 (10.3%)  |                 |
| Trade certificate/diploma               | 134 (5.8%)                | 32 (5.2%)   | 102 (6.0%)   |                 |
| Non-university certificate/diploma      | 560 (24.3%)               | 146 (23.8%)   | 414 (24.5%)  |                 |
| University certificate below bachelor's | 131 (5.7%)                | 41 (6.7%)   | 90 (5.3%)  |                 |
| Bachelor's degree                       | 600 (26.0%)               | 161 (26.2%)   | 439 (26.0%)  |                 |
| degree/certificate above bachelor's     | 600 (26.0%)               | 154 (25.1%)   | 446 (26.4%)  |                 |
| <b>Ethno-Cultural Origin</b>            |                           |   |  | 0.43            |
| European Origins                        | 1926 (83.6%)              | 507 (82.6%)   | 1419 (84.0%)                                       |                 |
| Non-European Origins                    | 378 (16.4%)               | 107 (17.4%)   | 271 (16.0%)  |                 |

534 *Note.* All values for continuous variables are shown in mean (SD), range. Values were rounded to one decimal place  
535 where appropriate.

536  
537 w – Wilcoxon Rank Sum (Mann-Whitney) Test; c – Chi-Squared Test

538  
539  
540  
541  
542  
543  
544  
545  
546  
547  
548  
549

550 Supplementary Table 2. Participant Characteristics for Participants with Childhood Trauma  
 551 Screener Data Absent and Present

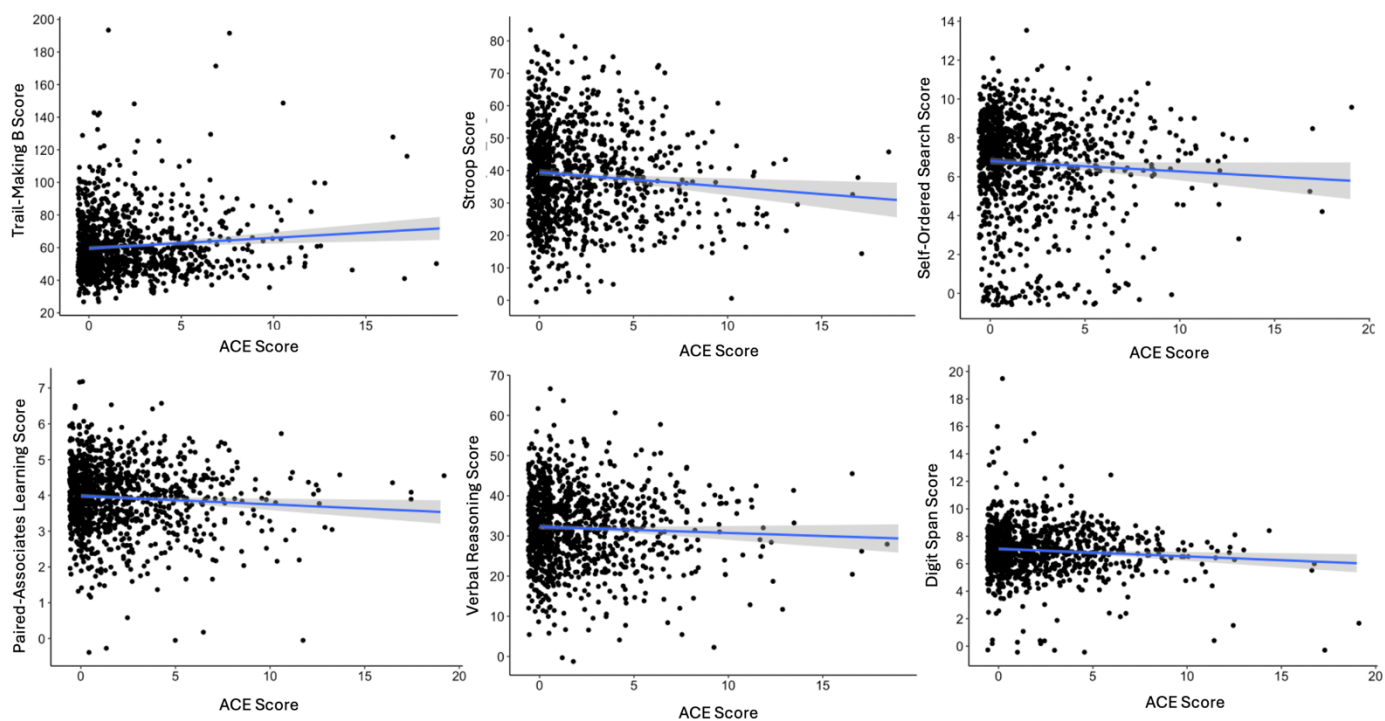
|   | <b>Total<br/>(N=1408)</b> | <b>CTS Data Absent<br/>(N=306)</b> | <b>CTS Data Present<br/>(N=1102)</b> | <b><i>p</i></b> |
|---|---------------------------|------------------------------------|--------------------------------------|-----------------|
| <b>Age</b>                              | 64.5 (7.41), 50.0-89.0    | 64.1 (7.77), 50.0-88.0             | 64.6 (7.31), 50.0-89.0               | 0.20            |
| <b>Sex</b>                              |                           |                                    |                                      | 0.37            |
| Male                                    | 287 (20.4%)               | 68 (22.2%)                         | 219 (19.9%)                          |                 |
| Female                                  | 1121 (79.6%)              | 238 (77.8%)                        | 883 (80.1%)                          |                 |
| <b>Education</b>                        |                           |                                    |                                      | 0.42            |
| Some primary school                     | 1 (0.1%)                  | 0 (0%)                             | 1 (0.1%)                             |                 |
| Some high school                        | 18 (1.3%)                 | 6 (2.0%)                           | 12 (1.1%)                            |                 |
| High school diploma                     | 148 (10.5%)               | 31 (10.1%)                         | 117 (10.6%)                          |                 |
| Trade certificate/diploma               | 76 (5.4%)                 | 13 (4.2%)                          | 63 (5.7%)                            |                 |
| Non-university certificate/diploma      | 365 (25.9%)               | 89 (29.1%)                         | 276 (25.0%)                          |                 |
| University certificate below bachelor's | 75 (5.3%)                 | 20 (6.5%)                          | 55 (5.0%)                            |                 |
| Bachelor's degree                       | 357 (25.4%)               | 67 (21.9%)                         | 290 (26.3%)                          |                 |
| degree/certificate above bachelor's     | 368 (26.1%)               | 80 (26.1%)                         | 288 (26.1%)                          |                 |
| <b>Ethno-Cultural Origin</b>            |                           |                                    |                                      | 0.08            |
| European Origins                        | 1187 (84.3%)              | 248 (81.0%)                        | 939 (85.2%)                          |                 |
| Non-European Origins                    | 221 (15.7%)               | 58 (19.0%)                         | 163 (14.8%)                          |                 |

552 *Note.* All values for continuous variables are shown in mean (SD), range. Values were rounded to one decimal place  
 553 where appropriate.

554  
 555 Abbreviations: CTS; childhood trauma screener  
 556 w – Wilcoxon Rank Sum (Mann-Whitney) Test; c – Chi-Squared Test  
 557

558  
 559  
 560  
 561  
 562  
 563  
 564

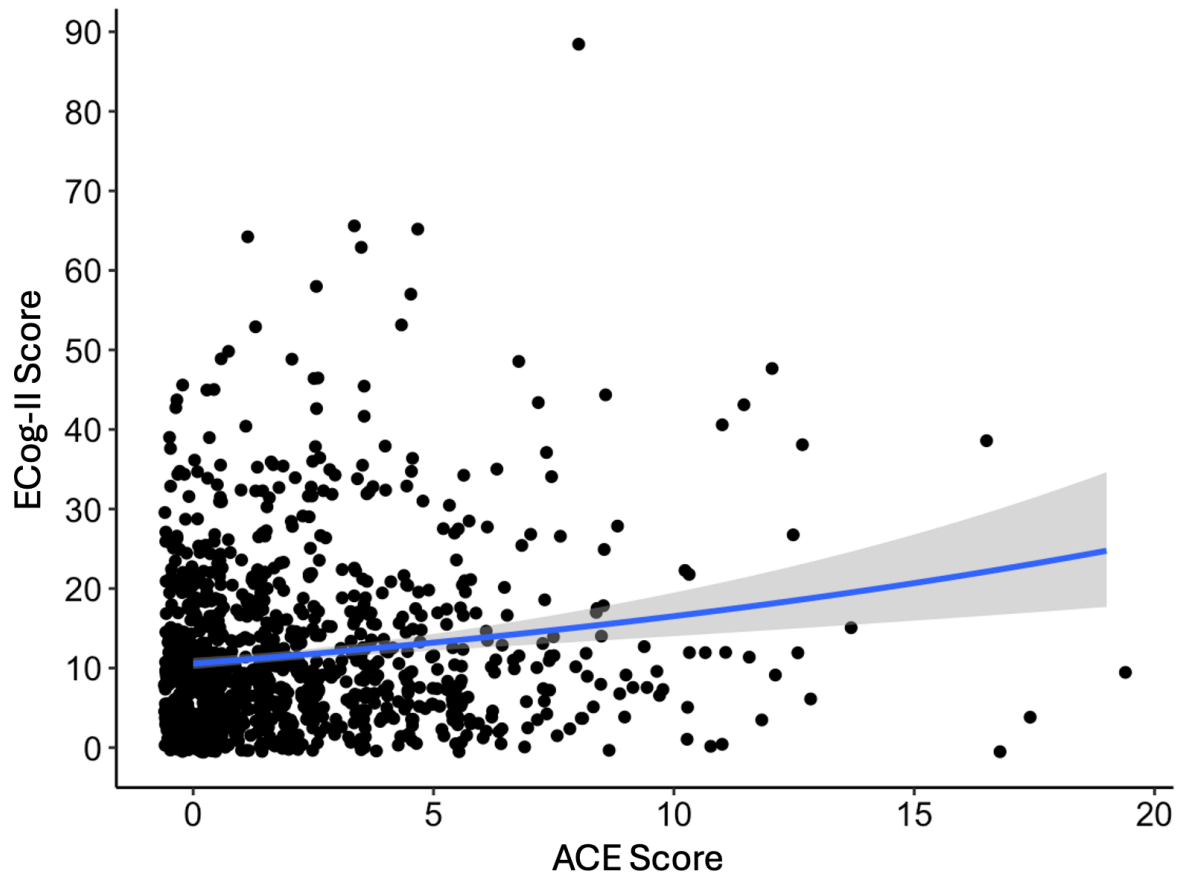
565 **Supplementary Figure 1. Scatterplot distributions.** Adverse childhood experiences (ACEs)  
566 score as a function of neuropsychological test scores



567  
568

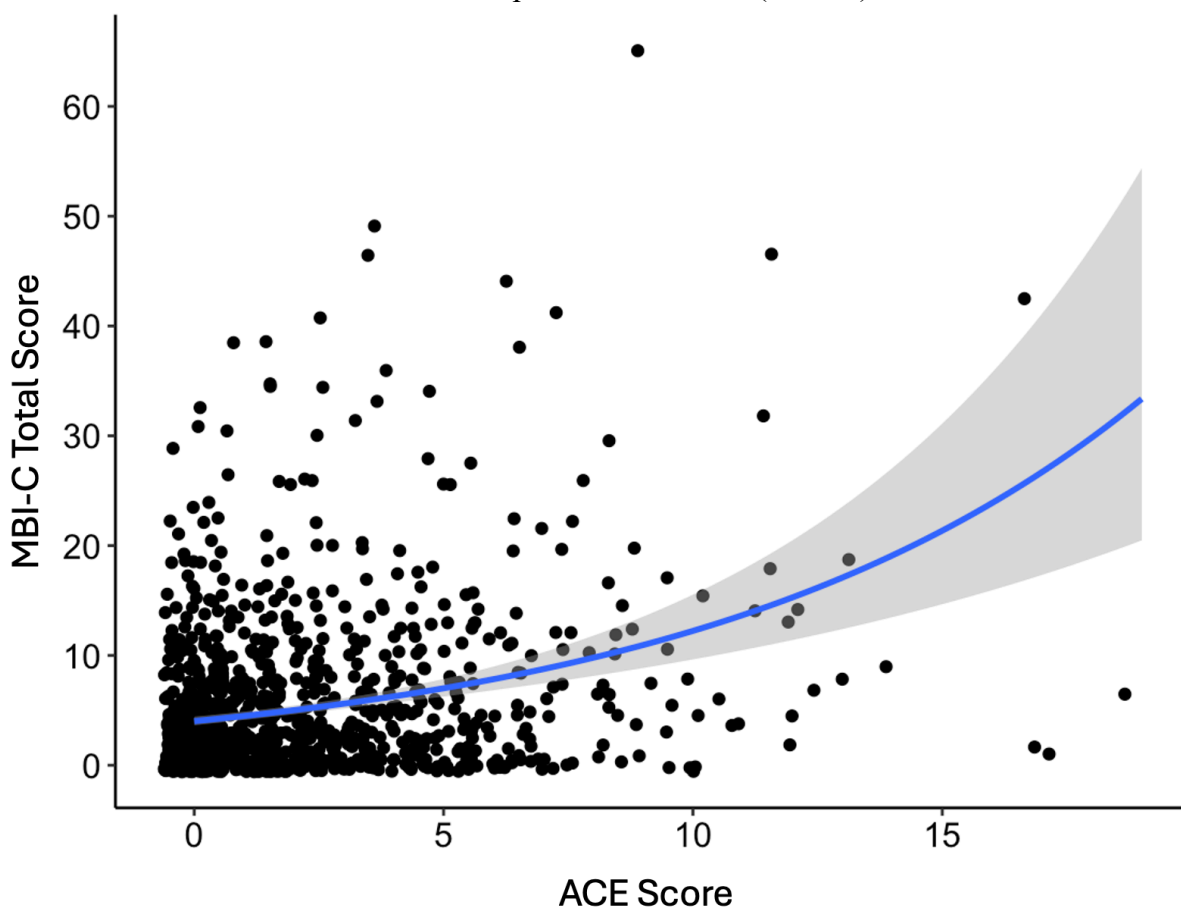


569 **Supplementary Figure 2. Scatterplot distribution.** Adverse childhood experiences (ACEs)  
570 score as a function of everyday cognition II (ECog-II) score



571  
572

573 **Supplementary Figure 3. Scatterplot distribution.** Adverse childhood experiences (ACEs)  
574 score as a function of mild behavioral impairment checklist (MBI-C) total score



575