

Causes of Death among Cancer Patients: Emerging Trends in the 21st Century

Junpu Wang^{1, 2, 3, 4, 5†}, Jie Liu^{1, 2†}, Ziyu Liu^{1, 2}, Zongjiang Zhou^{1, 2}, DIABATE Ousmane^{1, 2}, Liu Liu⁶, Li Peng^{7*}, Xiaoqing Yuan^{7, 8*}

1. Department of Pathology, Xiangya Hospital, Central South University, Changsha, China.
2. Department of Pathology, School of Basic Medicine, Central South University, Changsha, China.
3. Ultrapathology (Biomedical electron microscopy) Center, Department of Pathology, Xiangya Hospital, Central South University, Changsha, China.
4. Key Laboratory of Hunan Province in Neurodegenerative Disorders, Xiangya Hospital, Central South University, Changsha, China.
5. National Clinical Research Center for Geriatric Disorders, Xiangya Hospital, Central South University, Changsha, China.
6. School of Business, Central South University, Changsha, China.
7. Guangdong Provincial Key Laboratory of Malignant Tumor Epigenetics and Gene Regulation, Guangdong-Hong Kong Joint Laboratory for RNA Medicine, Medical Research Center, Sun Yat-Sen Memorial Hospital, Sun Yat-Sen University, Guangzhou, China.
8. Guangdong Provincial Key Laboratory of Cancer Pathogenesis and Precision Diagnosis and Treatment, Shenshan Medical Center, Sun Yat-sen Memorial Hospital, Sun Yat-sen University, Shanwei, China.

†These authors contributed equally to this work.

*Correspondence:

Xiaoqing Yuan,
Guangdong Provincial Key Laboratory of Malignant Tumor Epigenetics and Gene Regulation, Guangdong-Hong Kong Joint Laboratory for RNA Medicine, Medical Research Center, Sun Yat-Sen Memorial Hospital, Sun Yat-Sen University, Guangzhou, Guangdong 510120, China.
E-mail: yuanxq7@mail.sysu.edu.cn

Li Peng,
Guangdong Provincial Key Laboratory of Malignant Tumor Epigenetics and Gene Regulation, Guangdong-Hong Kong Joint Laboratory for RNA Medicine, Medical

NOTE: This preprint reports new research that has not been certified by peer review and should not be used to guide clinical practice.

Research Center, Sun Yat-Sen Memorial Hospital, Sun Yat-Sen University,
Guangzhou, Guangdong 510120, China.
E-mail: pengli9@mail.sysu.edu.cn

Abstract:

Most studies examining the causes of cancer-related deaths have primarily focused on specific cancer types, often neglecting the evolving spectrum of death causes among cancer patients in the 21st century. This study, utilizing data from the National Cancer Institute's Surveillance, Epidemiology, and End Results (SEER) Program, analyzed the causes of death in patients diagnosed with 36 types of cancer between 2000 and 2021. By categorizing these causes into deaths from index cancers, non-index cancers, and non-cancer causes, this study provides a comprehensive analysis of cause-of-death patterns and emerging trends, stratified by year of death, age at diagnosis, and survival duration. The findings reveal that while relative mortality rates from index cancers remain elevated for brain, pancreatic, and gallbladder cancers, significant declines were observed for lung, liver, nasopharyngeal, and esophageal cancers, as well as multiple myeloma cancers, reflecting advancements in cancer treatment. Besides, relative mortality rates from non-index cancers surpassed those from index cancers in oral cavity, oropharyngeal, vaginal, and small intestine cancers, indicating a potential benefit from enhanced surveillance and early detection of non-index cancers in these patient populations. Importantly, non-cancer-related causes of death, such as heart disease, chronic liver disease and cirrhosis, also emerged as prominent contributors to mortality among cancer patients. The results of this study offer critical and current data to inform public health policy, optimize healthcare resource allocation, and facilitate international collaboration in cancer research and control. Meanwhile, this study is of great reference value for developing countries to formulate medium- and long-term public health policies.

Keywords: cancer, cause of death, SEER, epidemiology

Introduction:

Cancer remains one of the most significant threats to human health worldwide, imposing severe physical and psychological burdens on patients and their families, while also challenging healthcare systems and public health policies¹. In 2022, nearly 20 million new cancer cases and 9.7 million cancer-related deaths were reported globally¹. Despite advances in medical technology and the emergence of new cancer treatments²⁻⁶, survival rates among cancer patients have significantly improved⁷. However, cancer continues to be one of the leading causes of death in many countries, with millions of individuals succumbing to the disease each year⁸. Understanding the causes of death among cancer patients is critical not only for improving their survival rates and quality of life but also for guiding the development of prevention and treatment strategies for cancer-related mortality and advancing basic and translational research into these causes.

The causes of death among cancer patients have been partially explored in previous epidemiological studies. Using U.S. cancer data from 1973 to 2012, Zaorsky et al. classified the causes of death among cancer patients into three categories: index cancer, non-index cancer, and non-cancer causes⁹. This study comprehensively analyzed the risk of death from these three categories across 28 cancer types, comparing the risk of death from 13 non-cancer causes between cancer patients and the general population. These findings provided valuable insights into trends in causes of death among cancer patients over time⁹. Additionally, some studies have revealed generational differences in the causes of death in cancer patients. For instance, early research identified metastasis as the leading cause of death in breast cancer patients¹⁰. However, with advances in medical technology and improved treatments, researchers are increasingly recognizing that other factors also significantly influence the causes of death among cancer patients. For example, Ramin et al. reported that cardiovascular disease accounted for a considerable proportion of deaths among breast cancer patients¹¹. Although these studies have enhanced our understanding of

cancer mortality, several limitations remain. First, most studies have concentrated on specific cancer types, leading to an incomplete understanding of the causes of death across all cancer patients. Second, there is a scarcity of research examining shifts in the spectrum of death causes among cancer patients during the first two decades of the 21st century.

In this context, the objective of this study is to provide a detailed analysis of the causes of death among cancer patients, focusing on the first two decades of the 21st century. Using data from the SEER database, the study will categorize death causes by year of death, age at diagnosis, and survival time after diagnosis. The goal is to supply healthcare systems with the most current data and trend analyses on cancer mortality. The results of this study will offer valuable insights for formulating public health policies, optimizing medical resource allocation, fostering international collaboration and knowledge exchange in cancer research, prevention, and control, and enhancing public awareness of cancer-related mortality.

Materials and Methods:

Study Design and Data Source

Data for this observational study were obtained from the National Cancer Institute's SEER program, a population-based cancer registry covering approximately 47.9% of the U.S. population. The SEER database regularly collects and publishes detailed information on cancer incidence, survival rates, treatment modalities, and causes of death¹². SEER*Stat software (version 8.4.3) was used to extract data on cancer patients from 2000 to 2021, specifically from the SEER 17 registry (2023 submission), which includes approximately 26.5% of the U.S. population¹³⁻¹⁵. Detailed session information for extracting cancer data is available in the supplementary material S1. As SEER data are anonymized and classified as non-human subject research, this study did not require institutional review board

approval. The study adhered to the Strengthening the Reporting of Observational Studies in Epidemiology (STROBE) guidelines¹⁶.

Study Population

The study included all patients diagnosed with malignant tumors between January 1, 2000, and December 31, 2021. To ensure the focus was on patients' first cancer diagnoses, only cases with "one primary only" and "1st of 2 or more primaries" tumor sequence numbers were included. Patients whose cancer diagnoses were made solely through autopsy or death certificate were excluded. For comparison with the general population, mortality data for the general U.S. population from 2000 to 2021 were obtained from the National Center for Health Statistics through the SEER program.

Definition of Variables

Cancer classifications were defined according to SEER standards, based on the International Classification of Diseases for Oncology, Third Edition (ICD-O-3). Cause-of-death information was sourced from death certificates and defined by SEER using the International Classification of Diseases, 10th Edition (ICD-10). Causes of death were categorized into three primary groups: index cancer deaths, non-index cancer deaths, and non-cancer deaths. Index cancer deaths refer to deaths resulting directly from the initially diagnosed primary cancer. Non-index cancer deaths refer to deaths caused by another independent cancer unrelated to the initial diagnosis. Non-cancer deaths encompass deaths from non-cancer-related medical causes, grouped into 25 categories (supplementary Table S1). In some instances, primary cancer deaths may have been miscoded; to address this, deaths from certain sites were reclassified as index cancer deaths if attributed to the local or regional spread of the primary cancer. For example, if a patient initially diagnosed with pancreatic cancer was coded as having died from "liver cancer", the cause of death was recategorized as pancreatic cancer (supplementary Table S2). Post-diagnostic follow-up time was

defined as the interval from cancer diagnosis to death from any cause, the date of the last follow-up, or the end of the study on December 31, 2021.

Statistical Analysis

Relative mortality rates for causes of death were calculated as the ratio of total deaths during the follow-up period to the number of deaths attributed to specific causes. For non-cancer causes, standardized mortality ratios (SMRs) were calculated¹⁷. The SMR is based on the assumption that the general population is cancer-free, comparing mortality rates among cancer patients to those in the general population to assess whether cancer patients face an elevated risk of death from specific non-cancer causes. SMRs were computed as the ratio of observed to expected deaths, where observed deaths reflect the actual number of deaths among cancer patients from a specific cause, and expected deaths represent the number of deaths from the same cause in a demographically matched general population (e.g., age, sex, race, and calendar year). The Poisson distribution method was used to calculate 95% confidence intervals for SMRs, and all statistical tests were two-sided with P-values <0.05 considered statistically significant. Analyses were performed using SEER*Stat (version 8.4.3) and Microsoft Excel 2021 (version 2407, build 16.0.17830.20056, 64-bit)¹⁴.

Results

Baseline Characteristics

Between 2000 and 2021, a total of 6,903,506 patients were diagnosed with cancer, of whom 3,364,903 (48.7%) had died by December 31, 2021. The median age at cancer diagnosis was 65.1 years. Age at diagnosis varied across tumor types, with testicular cancer being diagnosed at a younger median age (33.3 years) and bladder cancer at an older median age (71.3 years). The overall gender distribution among cancer patients was similar (males: 51.1%); however, in addition to cancers that are exclusively gender-specific, there were substantial gender differences for certain

cancers. Nearly all breast cancer patients were female (99.3%), whereas bladder cancer predominantly affected males (75.6%). Additionally, the majority of patients were white. Detailed baseline characteristics are presented in Table 1.

Causes of Death: 2000-2021

Index-Cancer Deaths.

From 2000 to 2021, the proportion of deaths attributed to index cancer steadily declined, decreasing from 78% in 2000 to 44.9% in 2021. In contrast, non-cancer-related deaths increased from 14.8% in 2000 to 43.4% in 2021 (Figure 1A). Lung cancer contributed the largest proportion of index cancer deaths (Figure 1B). Furthermore, in 2020, there was a sharp decline in the proportion of deaths caused by index cancer, accompanied by a corresponding increase in non-cancer causes of death (Figure 1A). This trend was observed across the majority of cancer types, including cancers of the salivary gland, nasopharynx, thyroid, breast, corpus uteri, vagina, vulva, colon, liver, lymphoma, multiple myeloma, leukemia, prostate, testis, bladder, kidney, and lung (Figure 2). Cancer types that showed the most significant declines in the proportion of index cancer deaths included thyroid cancer, kidney cancer, leukemia, testicular cancer, melanoma, non-Hodgkin lymphoma, bladder cancer, breast cancer, uterine corpus cancer, anal canal cancer, laryngeal cancer, nasopharyngeal cancer, vulva cancer, colon cancer, and Hodgkin lymphoma. By contrast, the proportion of deaths due to index cancer remained stable for pancreatic cancer, malignant tumors of the brain and central nervous system, oropharyngeal cancer, gallbladder cancer, and malignant tumors of the bone and joints (Figure 2, black lines).

Non-Index Cancer Deaths

Prostate and breast cancers accounted for a substantial proportion of non-index cancer deaths. Although the non-index cancer death rate for lung cancer was relatively low, the absolute number of non-index cancer deaths remained significant

due to its high incidence and mortality (Figure 1C). The cancer types with the highest non-index cancer death rates included head and neck cancers, vaginal cancer, small intestine cancer, Hodgkin lymphoma, testicular cancer, penile cancer, and malignant tumors of the bone and joints. Thyroid cancer showed the largest increase in the non-index cancer death rate between 2000 and 2021, whereas other cancer types exhibited stable trends over time (Figure 2, yellow lines).

Non-Cancer Deaths

Among non-cancer causes of death, prostate and breast cancers were associated with the largest numbers of deaths, followed by lung and colon cancers (Figure 1D). Over time, for patients with cancers of the head and neck (including oral cavity, salivary glands, tonsils, larynx, and thyroid), breast, uterine corpus, vulva, small intestine, lymphoma, male genital tract, genitourinary tract, and melanoma, the proportion of deaths from non-cancer causes surpassed that from index cancers (Figure 2, green lines). This trend suggests that non-cancer causes are becoming the leading causes of death in these cancer populations. Heart disease was the most frequent cause of non-cancer-related deaths. A higher proportion of heart disease-related deaths was observed among patients with thyroid cancer, prostate cancer, penile cancer, bladder cancer, kidney cancer, and melanoma (Figure 2, blue lines). Between 2000 and 2021, 946,584 cancer patients died from non-cancer causes. The leading non-cancer causes of death were heart disease (305,634 deaths) and other causes (213,594 deaths) (Table 2). Non-cancer death rates varied by age group. Among patients under 45 years of age, the primary non-cancer causes of death included other causes, infectious and parasitic diseases, and HIV. Accidents and adverse effects were more prevalent among patients aged 20-39 years. For patients over 45 years of age, heart disease and other causes were the most common non-cancer causes of death (Figure 3A). Heart disease consistently accounted for the largest proportion of non-cancer deaths, regardless of follow-up duration (Figure 3B). A heat map comparing the 15 most common non-cancer causes of death showed that chronic liver disease and cirrhosis (SMR: 12.5 [95% CI: 12.3-12.7]), other infectious

and parasitic diseases, HIV (SMR: 9.98 [95% CI: 9.84-10.12]), and suicide and self-inflicted injury (SMR: 8.71 [95% CI: 8.53-8.9]) had the highest SMRs (Supplementary material S1_SMR heatmap table).

SMRs for the four major non-cancer causes of death were stratified by age at diagnosis and time since diagnosis (Figure 4). Younger patients generally had the highest SMRs. Cancer patients had a significantly elevated risk of death from chronic liver disease and cirrhosis compared to the general population, with the highest SMRs observed among hepatocellular carcinoma patients. Chronic liver disease and cirrhosis were also associated with higher SMRs among patients diagnosed with ovarian, gastric, pancreatic, and lung cancers. Hematologic malignancies (e.g., non-Hodgkin lymphoma, leukemia, multiple myeloma) were linked to higher SMRs for deaths from infectious and parasitic diseases, including HIV. Lung and liver cancer patients also had elevated SMRs for infectious and parasitic diseases. Among younger patients, those with ovarian, breast, gastric, and pancreatic cancers had the highest SMRs for suicide and self-inflicted injuries (Figure 4A). Patients with brain and neurologic malignancies were most likely to die from non-cancer causes within the first year after diagnosis compared to patients with other cancers. Among patients who died from infectious diseases and HIV, those with pharyngeal or hematologic malignancies had the highest SMRs. Patients with pancreatic cancer had the highest SMR for suicide and self-inflicted injuries in the first year after diagnosis. In addition, cervical cancer patients showed a continued increase in the risk of suicide and self-injury over time, with the highest SMR observed more than 10 years after diagnosis (Figure 4B).

Emerging Trends in Cause of Death: A Comparative Analysis of 1975-1999 and 2000-2021

For comparison, we also analyzed cause-of-death data for cancer patients registered with SEER between 1975 and 1999. Detailed analytical methods and results are provided in the supplementary material. In contrast to the trends observed during 1975–1999, our study of cancer patients diagnosed between 2000 and 2021

revealed several emerging trends in the causes of cancer-related deaths in the 21st century.

Overall, although the trends in the proportions of different causes of death were largely consistent across the two periods, the slope was steeper in the 21st century. From 2000 to 2021, the slope for index cancer death cause was -1.58, compared to -1.09 between 1975 and 1999. Similarly, the slopes for non-cancer death causes were 1.36 and 0.86 for 2000-2021 and 1975-1999, respectively (Figure 1A, Supplemental Figure S1A). Specifically, between 2000 and 2021, index cancer mortality rates for cancers such as brain malignancies, pancreatic cancer, and gallbladder cancer remained consistently high, similar to historical trends, while mortality rates for lung, liver, esophageal cancers, and multiple myeloma declined. Notably, the mortality rate for leukemia showed an even more pronounced decline. While non-index cancer deaths were not the primary cause of death overall, a high proportion of non-index cancer deaths was observed in patients with head and neck cancers (e.g., oral cavity, oropharynx), vaginal cancer, and small intestine cancer. Particularly in oropharyngeal cancer, the proportion of non-index cancer deaths ranged from 50% to 60%, a pattern consistent across both the 1975-1999 and 2000-2021 periods. Nevertheless, the proportion of non-index cancer deaths from small intestine cancer increased significantly during the 2000-2021 period. Impressively, the characteristics of non-cancer causes of death among cancer patients differed markedly between the two periods (Figure 2, Supplemental Figure S2).

A notable trend in the 21st century has been the increased risk of various non-cancer causes of death, with most causes showing higher SMR compared to the previous century. From 1975 to 1999, heart disease was the leading non-cancer cause of death, with an SMR of 1.84. By 2000-2021, the SMR for heart disease had risen to 3.11. One striking change was the significant increase in risk for Alzheimer's disease, with its SMR rising from 0.41 in 1975-1999 to 1.84 in 2000-2021. Moreover, from 1975 to 1999, cancer patients did not exhibit a statistically significant difference in the

risk of death from hypertension (without heart disease) or from symptoms, signs, and ill-defined conditions compared to the general population. However, from 2000 to 2021, the risks for both conditions among cancer patients surpassed those of the general population, with SMR greater than 1. Notably, the risk of death from other infectious and parasitic diseases, including HIV, decreased over time, with the SMR dropping from 16.25 in 1975-1999 to 9.98 in 2000-2021 (Table 2). After stratifying cancer patients who died from non-cancer causes by age and follow-up time after diagnosis, it was found that, overall, the proportion of younger patients dying from non-bacterial infections has significantly decreased in the 21st century, particularly among those aged 25 to 49. In contrast, the proportion of deaths due to accidents and adverse effects has correspondingly increased. Among older patients, the proportion of deaths from heart disease has slightly decreased (Figure 3A, Supplemental Figure S3A). The trends in the proportion of non-cancer causes of death over time after diagnosis are generally consistent between the two periods, with a slight decline in deaths from heart disease and a slight increase in deaths from other causes (Figure 3B, Supplemental Figure S3B). Notably, the SMR charts for the four leading non-cancer causes of death reveal that in the 21st century, the mortality risks for chronic liver disease and cirrhosis, suicide and self-inflicted injury, and diseases of heart generally increased across all age groups and follow-up periods. However, a different trend was observed for other infectious and parasitic diseases, including HIV, where the mortality risk exhibited a broad decline across follow-up periods compared to the years 1975-1999 (Figure 4, Supplemental Figure S4).

Discussion

We analyzed the causes of death for 3,364,903 cancer patients registered with SEER between 2000 and 2021, identifying the characteristics of the cause-of-death spectrum among cancer patients in the first two decades of the 21st century. The causes of death varied by cancer type, time since diagnosis, and age at diagnosis.

Certain types of cancer, such as malignant brain tumors, pancreatic cancer, and gallbladder cancer, persistently show high mortality rates directly linked to the primary disease. This highlights the urgent need for more effective prevention strategies, early detection through screening and surveillance, and the development of new treatment options. Zaorsky et al. have reported that cancers including liver, pancreatic, lung, nasopharyngeal, esophageal, malignant brain tumors, and multiple myeloma remained among those with the highest rates of death due to index cancer for patients diagnosed between 1973 and 2012⁹. Our study corroborates this finding, revealing a significant proportion of deaths attributable to index cancers within these types. However, we observed a notable decline in the proportion of deaths from index cancers for lung, liver, nasopharyngeal, esophageal cancers, and multiple myeloma in the 21st century. This trend indicates a substantial shift in the cancer mortality profile, likely attributable to advancements in cancer management strategies in recent years. The progress in cancer management strategies in the new century is heavily influenced by personalized medicine. Although the concept of personalized medicine emerged in the late 20th century¹⁸, it has rapidly advanced and matured in the early 21st century due to developments in genomics, molecular biology, and informatics^{19,20}. Precision oncology, a critical aspect of personalized medicine, has become a central focus in contemporary cancer treatment²¹. Significant strides have been made in the clinical application of targeted therapies and immunotherapies. For instance, targeted agents have markedly improved survival rates in lung cancer patients^{22,23}, while novel immunomodulatory drugs, such as proteasome inhibitors, have notably enhanced remission rates and overall survival in multiple myeloma patients²⁴. In esophageal cancer, trastuzumab has significantly improved outcomes in HER2-positive patients²⁵. The decline in deaths from liver cancer-index cancers may be attributed to new staging and scoring systems, such as the Barcelona Clinic Liver Cancer (BCLC) staging system²⁶⁻²⁸, the Milan criteria²⁹, and the Model for End-Stage Liver Disease (MELD) score³⁰, which are crucial for evaluating liver cancer patients for transplantation. Advances in locoregional therapies, including radiofrequency ablation (RFA) and transarterial chemoembolization (TACE), have also provided new

treatment options for patients with unresectable liver cancer³¹. Additionally, targeted drugs like Sorafenib have significantly extended survival in advanced liver cancer cases³². The reduction in deaths from nasopharyngeal carcinoma may be linked to improvements in radiation therapy techniques³³. Despite these advances, the proportion of deaths from index cancers remains high, suggesting that current and emerging treatment and surveillance strategies may only benefit a subset of the patient population.

Our study found that the proportion of non-index cancer deaths exceeded the proportion of index cancer deaths for oral cavity, oropharyngeal, vaginal, and small intestine cancers. Additionally, the absolute number of non-index cancer deaths was highest among patients with prostate, breast, and lung cancers. This observation highlights the significance of non-index cancers among cancer survivors. Similarly, Makoto et al. reported a high proportion of non-index cancer deaths for oral cavity and pharyngeal cancers in a Japanese cancer cohort from 1985 to 2014³⁴. This phenomenon may be attributable to common carcinogenic factors, such as genetic susceptibility, environmental influences, or lifestyle choices, as well as treatment-related factors. For instance, oral cavity and oropharyngeal cancers are linked to prolonged exposure to carcinogens like tobacco, alcohol³⁵, and HPV infection³⁶, which can lead to simultaneous or sequential cancers at multiple sites and thereby increase the risk of non-index cancers. While chemotherapy, radiation therapy, and other cancer treatments are effective for controlling the primary cancer, they may inadvertently induce secondary cancers. For example, radiotherapy can elevate the risk of cancers at sites outside the treated area, and chemotherapy may heighten the risk of cancers in other organs due to its systemic effects^{37,38}. Therefore, patients with these cancers would benefit from vigilant surveillance and early screening for non-index cancers. Comprehensive physical examinations and targeted imaging for all cancer survivors are essential for the early detection of potential non-index cancers. Endoscopic screening following a diagnosis of oral cancer has been shown to significantly enhance the early detection of second primary esophageal cancer and

reduce all-cause mortality from oral cancer³⁹. Additionally, optimizing cancer treatment regimens is crucial. Treatment plans should aim to minimize damage to healthy tissues by adjusting radiotherapy doses and employing more selective chemotherapeutic agents. Lifestyle modifications, including smoking cessation, reducing alcohol intake, and minimizing exposure to carcinogens, can also help mitigate the risk of non-index cancers. Future studies should investigate the non-index cancers most likely to occur and their associated risk factors in patients with the aforementioned cancer types. By identifying these specific non-index cancers and their risk factors, interventions can be more precisely tailored to reduce mortality from non-index cancers.

This study analyzed deaths from non-cancer causes in cancer patients between 2000 and 2021, revealing the significant impact of non-cancer causes of death such as heart disease, chronic liver disease and cirrhosis in specific groups of cancer patients. Notably, the SMR for non-cancer causes of death was significantly higher in younger patients compared to other age groups, indicating that younger cancer patients may face an elevated risk of non-cancer deaths following treatment. Our results corroborate previous findings regarding the predominance of heart disease in cancer patients⁹. Cancer patients have a higher risk of death from heart disease compared to the general population, with this risk being particularly pronounced in patients younger than 45 years. This heightened risk may be related to shared risk factors between cardiovascular disease and cancer⁴⁰, the cancer itself, and the complex effects of cancer treatment on the cardiovascular system. Certain cancer treatments, notably anthracyclines, immunotherapies, and targeted therapies, have been associated with increased risks of myocardial injury, arrhythmias, and heart failure⁴¹. Inflammation and dysregulation of the immune system, common in cancer patients, can also accelerate atherosclerosis, further increasing the risk of cardiac disease⁴². The interactions between heart disease and cancer are complex⁴³. Additionally, epidemiologic studies have demonstrated an increased risk of cancer in patients with heart failure⁴⁴. The risk of heart disease extends beyond the treatment period; with

prolonged survival after diagnosis, patients continue to face long-term cardiovascular risks. Our study confirms that the risk of death from heart disease increases with time after diagnosis, as evidenced by the work of Kelsey C et al⁴⁵. Furthermore, our study examined the risk of death from chronic liver disease and cirrhosis in cancer patients. Previous epidemiologic research has highlighted a significant increase in SMR for chronic liver disease and cirrhosis in patients with digestive system cancers⁴⁶. Liver cancer patients are at an elevated risk of developing chronic liver disease and cirrhosis due to direct liver damage. However, this increased risk is also notably significant in patients with other cancers, including ovarian, gastric, pancreatic, and lung cancers. This phenomenon can be attributed to various mechanisms. Cancer treatments may induce liver toxicity, leading to chronic damage and fibrosis that can progress to chronic liver disease and cirrhosis. For example, certain commonly used targeted drugs⁴⁷ and immunotherapeutic agents⁴⁸ have been shown to have high hepatotoxicity, contributing to the development of chronic liver disease. Additionally, the systemic inflammatory response and metabolic changes⁴⁹ associated with cancer may exacerbate liver injury, increasing the risk of death from chronic liver disease. These findings underscore the importance of monitoring and protecting liver function during cancer treatment, especially for patients with cancers other than hepatocellular carcinoma. The SMR for other infectious diseases, parasitic diseases, and HIV is significantly elevated in certain cancer patients, particularly those with hematopoietic malignancies. This elevation may be related to impaired immune function, which makes these patients more susceptible to infections. Studies have shown that immunosuppressive agents used in cellular therapy⁵⁰, immunotherapy, and molecularly targeted drugs⁵¹ can increase susceptibility to infectious diseases. Consequently, these patients are not only more prone to infections but also more likely to experience severe complications, which heightens their risk of death. Higher SMRs for infections have also been observed in patients with lung and liver cancers, suggesting these cancer types may be associated with a greater risk of infection. Enhanced infection prevention and early treatment measures are crucial for these patient groups to reduce mortality risk. Lastly, patients with pancreatic cancer

exhibited the highest SMR for suicide and self-injury within the first year after diagnosis, likely related to the disease's high lethality and associated psychological stress⁵². Conversely, patients with cervical cancer showed a significantly increased risk of suicide and self-injury more than 10 years after diagnosis, highlighting the need for ongoing mental health support for long-term survivors. This suggests that the quality of life and mental health issues of long-term cervical cancer survivors should not be overlooked⁵³. These findings emphasize the importance of psychological support and mental health interventions during cancer treatment and follow-up. Additionally, the increased risk of death from Alzheimer's disease and hypertension in cancer patients in the 21st century may be associated with improved cancer treatments and an aging population, suggesting the need for comprehensive health management strategies to address the multiple health risks of cancer patients.

Our study findings have revealed significant characteristics in the causes of death among cancer patients between 2000 and 2021, in contrast to the trends observed from 1975 to 1999. The declining trends in index cancer mortality rates for specific cancer types, such as lung and liver cancer, in the 21st century may reflect advancements in cancer treatment and management, as well as the broader implementation of early diagnostic techniques, leading to improved survival rates. The widespread increase in the risk of various non-cancer causes of death underscores the importance of prioritizing patients' overall health rather than focusing exclusively on the cancer itself. The persistently higher rates of non-index cancer mortality in certain cancers, such as head and neck cancers and small intestine cancer, across both periods suggest that these patients may profit significantly from second cancer screenings.

Despite the remarkable advancements in cancer science research during this century, cancer continues to pose a substantial threat to global health, suggesting a gap between foundational scientific research and clinical translation. Consequently, a thorough analysis of causes of death is crucial for evaluating the survival benefits of

cancer patients from a macro perspective. This study offers a comprehensive, population-based analysis of causes of death among cancer patients, reflecting the most current data available. Admittedly, it is important to acknowledge certain limitations. First, inherent biases, such as selection bias and information bias, may arise due to the retrospective nature of the analysis. Second, the classification of causes of death may present challenges, particularly when complete or detailed medical records are lacking; for instance, a patient's cause of death might be inaccurately categorized as "other causes" or deemed undetermined. In addition, a longer follow-up period allows for the accumulation of additional non-index cancer deaths and non-cancer deaths, which may lead to a gradual increase in the proportion of such deaths over calendar years. Finally, this study relies on data from the SEER database, which is representative of the U.S. population, thus presenting limitations regarding external generalizability. However, as economic and healthcare standards improve in developing countries, those with higher levels of development can leverage the findings of this study to guide the formulation of medium- and long-term cancer control and public health policies. To further enhance the generalizability of future research, we recommend incorporating data from a broader range of races and regions. Furthermore, many countries lack systematic records of causes of death, which are crucial for clinical translational research and public health policy development. Therefore, establishing comprehensive databases on cancer-related deaths is both urgent and essential for global health development.

Conclusion

This study highlights the trends in three categories of death causes—index cancer causes, non-index cancer causes, and non-cancer causes—among cancer patients during the first two decades of the 21st century, along with the specific cause-of-death characteristics for each cancer site. The persistently high mortality rates from index cancers of the brain, pancreas, and gallbladder underscore the urgent need for more effective prevention, screening, and treatment strategies. Notably,

while mortality rates from index cancers of the lung, liver, nasopharynx, esophagus, and multiple myeloma were historically high, they have shown a decline in the first two decades of the 21st century, reflecting advancements in cancer management. Conversely, mortality rates from non-index cancers in patients with oral cavity, oropharyngeal, vaginal, and small intestine cancers exceeded those from index cancers, indicating that these patients might benefit from enhanced surveillance and early screening for non-index cancers. Additionally, several non-cancer causes of death, including heart disease, chronic liver disease and cirrhosis, remain significant contributors to mortality among cancer patients. The trends revealed in this study provide crucial insights for the future management of cancer patients. As mortality rates for certain index cancers continue to decline, the widespread implementation of cancer screening and early diagnosis should be further emphasized to reduce mortality across more cancer types. Meanwhile, for cancers with high mortality from non-index cancers, increased surveillance and preventive strategies for non-index cancers are essential to help patients avoid potential secondary cancer threats. Furthermore, the prominence of non-cancer causes of death, such as heart disease and chronic liver disease, underscores the necessity of a holistic approach to health management in cancer patients. Future treatment strategies should be more comprehensive to improve the overall quality of life for cancer patients.

ACKNOWLEDGMENTS

This work was partially supported by the National Natural Science Foundation of China (81602167; 82372617 and 81972658; 81803636), the Hunan Provincial Natural Science Foundation of China (2017JJ3494 and 2021JJ31100), the Open Project of Xiangjiang Laboratory (23XJ03001), the Science and Technology Program Foundation of Changsha City (kq2004085), the Fundamental Research Funds for the Hunan Provincial Innovation Foundation for Postgraduate (CX20230328), the Guangdong Basic and Applied Basic Research Foundation (2024B1515020090 and 2023A1515012683; 2024A1515030038; 2023B1212060013 and 2020B1212030004),

and the Basic and Applied Basic Research of Guangzhou Municipal Basic Research Plan (2024A03J0845 and 2023A04J2098). In addition, we appreciate laboratory members for thoughtful suggestions and comments on the manuscript.

DECLARATION OF INTERESTS

The authors declare no competing interests.

1. Bray F, Laversanne M, Sung H, et al. Global cancer statistics 2022: GLOBOCAN estimates of incidence and mortality worldwide for 36 cancers in 185 countries. *CA Cancer J Clin.* 2024;74(3):229-263. doi:10.3322/caac.21834
2. Salgado R, Moore H, Martens JWM, et al. Steps forward for cancer precision medicine. *Nat Rev Drug Discov.* 2018;17(1):1-2. doi:10.1038/nrd.2017.218
3. Liu Z, Shi M, Ren Y, et al. Recent advances and applications of CRISPR-Cas9 in cancer immunotherapy. *Mol Cancer.* 2023;22(1):35. doi:10.1186/s12943-023-01738-6
4. Schilsky RL. Personalized medicine in oncology: the future is now. *Nat Rev Drug Discov.* 2010;9(5):363-366. doi:10.1038/nrd3181
5. Passaro A, Al Bakir M, Hamilton EG, et al. Cancer biomarkers: Emerging trends and clinical implications for personalized treatment. *Cell.* 2024;187(7):1617-1635. doi:10.1016/j.cell.2024.02.041
6. Zhang Y, Zhang Z. The history and advances in cancer immunotherapy: understanding the characteristics of tumor-infiltrating immune cells and their therapeutic implications. *Cell Mol Immunol.* 2020;17(8):807-821. doi:10.1038/s41423-020-0488-6
7. Siegel RL, Giaquinto AN, Jemal A. Cancer statistics, 2024. *CA Cancer J Clin.* 2024;74(1):12-49. doi:10.3322/caac.21820
8. Bray F, Laversanne M, Weiderpass E, et al. The ever-increasing importance of cancer as a leading cause of premature death worldwide. *Cancer.* 2021;127(16):3029-3030. doi:10.1002/cncr.33587
9. Zaorsky NG, Churilla TM, Egleston BL, et al. Causes of death among cancer patients. *Ann Oncol.* 2017;28(2):400-407. doi:10.1093/annonc/mdw604
10. Weigelt B, Peterse JL, van 't Veer LJ. Breast cancer metastasis: markers and models. *Nat Rev Cancer.* 2005;5(8):591-602. doi:10.1038/nrc1670
11. Ramin C, Schaeffer ML, Zheng Z, et al. All-Cause and Cardiovascular Disease Mortality Among Breast Cancer Survivors in CLUE II, a Long-Standing Community-Based Cohort. *J Natl Cancer Inst.* 2021;113(2):137-145. doi:10.1093/jnci/djaa096
12. Surveillance, Epidemiology, and End Results Program. SEER. Accessed July 14, 2024. <https://seer.cancer.gov/index.html>
13. SEER*Stat Databases: November 2023 Submission. SEER. Accessed July 14, 2024. <https://seer.cancer.gov/data-software/documentation/seerstat/nov2023/index.html>
14. Surveillance Research Program, National Cancer Institute SEER*Stat software (seer.cancer.gov/seerstat) version 8.3.4
15. Surveillance, Epidemiology, and End Results (SEER) Program (www.seer.cancer.gov) SEER*Stat Database: Incidence - SEER Research Data, 17 Registries, Nov 2023 Sub (2000-2021) - Linked To County Attributes - Time Dependent (1990-2022) Income/Rurality, 1969-2022 Counties, National Cancer Institute, DCCPS, Surveillance Research Program, released April 2024, based on the November 2023 submission.

16. Field N, Cohen T, Struelens MJ, et al. Strengthening the Reporting of Molecular Epidemiology for Infectious Diseases (STROME-ID): an extension of the STROBE statement. *The Lancet Infectious Diseases*. 2014;14(4):341-352. doi:10.1016/S1473-3099(13)70324-4
17. NE B, NE D. *Statistical Methods in Cancer Research Volume II: The Design and Analysis of Cohort Studies*. Accessed August 17, 2024. <https://publications.iarc.fr/Book-And-Report-Series/Iarc-Scientific-Publications/Statistical-Methods-In-Cancer-Research-Volume-II-The-Design-And-Analysis-Of-Cohort-Studies-1986>
18. Langreth R, Waldholz M. New era of personalized medicine: targeting drugs for each unique genetic profile. *Oncologist*. 1999;4(5):426-427.
19. Ding L, Getz G, Wheeler DA, et al. Somatic mutations affect key pathways in lung adenocarcinoma. *Nature*. 2008;455(7216):1069-1075. doi:10.1038/nature07423
20. Annual Review of Genomics and Human Genetics. Accessed August 10, 2024. <https://www.annualreviews.org/content/journals/genom>
21. Garraway LA, Lander ES. Lessons from the Cancer Genome. *Cell*. 2013;153(1):17-37. doi:10.1016/j.cell.2013.03.002
22. Chirieac LR, Dacic S. Targeted Therapies in Lung Cancer. *Surg Pathol Clin*. 2010;3(1):71-82. doi:10.1016/j.path.2010.04.001
23. Zhou C, Wu YL, Chen G, et al. Erlotinib versus chemotherapy as first-line treatment for patients with advanced EGFR mutation-positive non-small-cell lung cancer (OPTIMAL, CTONG-0802): a multicentre, open-label, randomised, phase 3 study. *Lancet Oncol*. 2011;12(8):735-742. doi:10.1016/S1470-2045(11)70184-X
24. Palumbo A, Bringhen S, Rossi D, et al. Bortezomib-melphalan-prednisone-thalidomide followed by maintenance with bortezomib-thalidomide compared with bortezomib-melphalan-prednisone for initial treatment of multiple myeloma: a randomized controlled trial. *J Clin Oncol*. 2010;28(34):5101-5109. doi:10.1200/JCO.2010.29.8216
25. Bang YJ, Van Cutsem E, Feyereislova A, et al. Trastuzumab in combination with chemotherapy versus chemotherapy alone for treatment of HER2-positive advanced gastric or gastro-oesophageal junction cancer (ToGA): a phase 3, open-label, randomised controlled trial. *Lancet*. 2010;376(9742):687-697. doi:10.1016/S0140-6736(10)61121-X
26. Llovet JM, Brú C, Bruix J. Prognosis of hepatocellular carcinoma: the BCLC staging classification. *Semin Liver Dis*. 1999;19(3):329-338. doi:10.1055/s-2007-1007122
27. Bolondi L, Burroughs A, Dufour JF, et al. Heterogeneity of patients with intermediate (BCLC B) Hepatocellular Carcinoma: proposal for a subclassification to facilitate treatment decisions. *Semin Liver Dis*. 2012;32(4):348-359. doi:10.1055/s-0032-1329906
28. Kudo M, Arizumi T, Ueshima K, et al. Subclassification of BCLC B Stage Hepatocellular Carcinoma and Treatment Strategies: Proposal of Modified Bolondi's Subclassification (Kinki Criteria). *Dig Dis*. 2015;33(6):751-758. doi:10.1159/000439290

29. Mazzaferro V, Regalia E, Doci R, et al. Liver Transplantation for the Treatment of Small Hepatocellular Carcinomas in Patients with Cirrhosis. *New England Journal of Medicine*. 1996;334(11):693-700. doi:10.1056/NEJM199603143341104
30. Kamath PS, Kim WR. The model for end-stage liver disease (MELD). *Hepatology*. 2007;45(3):797-805. doi:10.1002/hep.21563
31. Llovet JM, De Baere T, Kulik L, et al. Locoregional therapies in the era of molecular and immune treatments for hepatocellular carcinoma. *Nat Rev Gastroenterol Hepatol*. 2021;18(5):293-313. doi:10.1038/s41575-020-00395-0
32. Llovet JM, Ricci S, Mazzaferro V, et al. Sorafenib in advanced hepatocellular carcinoma. *N Engl J Med*. 2008;359(4):378-390. doi:10.1056/NEJMoa0708857
33. Lee N, Xia P, Quivey JM, et al. Intensity-modulated radiotherapy in the treatment of nasopharyngeal carcinoma: an update of the UCSF experience. *International Journal of Radiation Oncology*Biophysics*. 2002;53(1):12-22. doi:10.1016/S0360-3016(02)02724-4
34. Fujii M, Morishima T, Nagayasu M, et al. Cause of Death among Long-Term Cancer Survivors: The NANDE Study. *Healthcare (Basel)*. 2023;11(6):835. doi:10.3390/healthcare11060835
35. Chamoli A, Gosavi AS, Shirwadkar UP, et al. Overview of oral cavity squamous cell carcinoma: Risk factors, mechanisms, and diagnostics. *Oral Oncol*. 2021;121:105451. doi:10.1016/j.oraloncology.2021.105451
36. D'Souza G, Kreimer AR, Viscidi R, et al. Case–Control Study of Human Papillomavirus and Oropharyngeal Cancer. *New England Journal of Medicine*. 2007;356(19):1944-1956. doi:10.1056/NEJMoa065497
37. Demoor-Goldschmidt C, de Vathaire F. Review of risk factors of secondary cancers among cancer survivors. *Br J Radiol*. 2019;92(1093):20180390. doi:10.1259/bjr.20180390
38. Tiruye T, David R, O'Callaghan M, et al. Risk of secondary malignancy following radiation therapy for prostate cancer. *Sci Rep*. 2023;13(1):20083. doi:10.1038/s41598-023-45856-z
39. Chen YH, Ho CM, Wu MS, et al. Effect of esophageal cancer screening on mortality among patients with oral cancer and second primary esophageal cancer in Taiwan. *Am J Otolaryngol*. 2023;44(4):103856. doi:10.1016/j.amjoto.2023.103856
40. Wilcox NS, Amit U, Reibel JB, et al. Cardiovascular disease and cancer: shared risk factors and mechanisms. *Nat Rev Cardiol*. 2024;21(9):617-631. doi:10.1038/s41569-024-01017-x
41. Alexandre J, Cautela J, Ederhy S, et al. Cardiovascular Toxicity Related to Cancer Treatment: A Pragmatic Approach to the American and European Cardio-Oncology Guidelines. *Journal of the American Heart Association*. 2020;9(18):e018403. doi:10.1161/JAHA.120.018403
42. Prousi GS, Joshi AM, Atti V, et al. Vascular Inflammation, Cancer, and Cardiovascular Diseases. *Curr Oncol Rep*. 2023;25(9):955-963. doi:10.1007/s11912-023-01426-0
43. Kadowaki H, Akazawa H, Shindo A, et al. Shared and Reciprocal Mechanisms Between Heart Failure and Cancer - An Emerging Concept of Heart-Cancer Axis.

Circ J. 2024;88(2):182-188. doi:10.1253/circj.CJ-23-0838

44. Bertero E, Robusto F, Rulli E, et al. Cancer Incidence and Mortality According to Pre-Existing Heart Failure in a Community-Based Cohort. *JACC CardioOncol.* 2022;4(1):98-109. doi:10.1016/j.jacc.2021.11.007

45. Stoltzfus KC, Zhang Y, Sturgeon K, et al. Fatal heart disease among cancer patients. *Nat Commun.* 2020;11:2011. doi:10.1038/s41467-020-15639-5

46. Sun S, Shi D, Wang W. Risk of chronic liver disease and cirrhosis mortality among patients with digestive system cancers: a registry-based analysis. *Clin Exp Med.* 2023;23(8):5355-5365. doi:10.1007/s10238-023-01199-7

47. Chen X, Yang S, Ma S. [Drug induced hepatotoxicity in targeted therapy for lung cancer]. *Zhongguo Fei Ai Za Zhi.* 2014;17(9):685-688. doi:10.3779/j.issn.1009-3419.2014.09.08

48. Chour A, Denis J, Mascaux C, et al. Brief Report: Severe Sotorasib-Related Hepatotoxicity and Non-Liver Adverse Events Associated With Sequential Anti-Programmed Cell Death (Ligand)1 and Sotorasib Therapy in KRASG12C-Mutant Lung Cancer. *J Thorac Oncol.* 2023;18(10):1408-1415. doi:10.1016/j.jtho.2023.05.013

49. Piccinin E, Villani G, Moschetta A. Metabolic aspects in NAFLD, NASH and hepatocellular carcinoma: the role of PGC1 coactivators. *Nat Rev Gastroenterol Hepatol.* 2019;16(3):160-174. doi:10.1038/s41575-018-0089-3

50. Gudiol C, Lewis RE, Strati P, et al. Chimeric antigen receptor T-cell therapy for the treatment of lymphoid malignancies: is there an excess risk for infection? *The Lancet Haematology.* 2021;8(3):e216-e228. doi:10.1016/S2352-3026(20)30376-8

51. Maschmeyer G, De Greef J, Mellinghoff SC, et al. Infections associated with immunotherapeutic and molecular targeted agents in hematology and oncology. A position paper by the European Conference on Infections in Leukemia (ECIL). *Leukemia.* 2019;33(4):844-862. doi:10.1038/s41375-019-0388-x

52. Chapple A, Evans J, McPherson A, et al. Patients with pancreatic cancer and relatives talk about preferred place of death and what influenced their preferences: a qualitative study. *BMJ Support Palliat Care.* 2011;1(3):291-295. doi:10.1136/bmjspcare-2011-000091

53. Shylasree TS, Ranade R, Kattapur AK, et al. Quality of life in long term survivors of cervical cancer: A cross sectional study. *Indian J Cancer.* 2021;58(2):171-178. doi:10.4103/ijc.IJC_712_18

Table 1. Demographic characteristics and number of deaths among patients diagnosed with cancer between 2000 and 2021.

Cancer site	Age at	Sex				Race										Vital status			
	diagnosis	Men		Women		White		Black		AI/AN		API		Unknown		Alive		Death	
	Median	cases	% ^a	cases	% ^a	cases	% ^a	cases	% ^a	cases	% ^a	cases	% ^a	cases	% ^a	cases	% ^a	cases	% ^a
All sites	65.1	3530407	51.1	3373099	48.9	5557818	80.5	713921	10.3	43763	0.6	495284	7.2	92720	1.3	3538603	51.3	3364903	48.7
Lip, oral cavity	67.2	59597	67.6	28619	32.4	75046	85.1	6141	7.0	511	0.6	5309	6.0	1209	1.4	43765	49.6	44451	50.4
Salivary gland	63.4	10457	57.7	7674	42.3	14450	79.7	1668	9.2	122	0.7	1652	9.1	239	1.3	10383	57.3	7748	42.7
Nasopharynx	55.5	7285	70.5	3051	29.5	4778	46.2	1197	11.6	165	1.6	4078	39.5	118	1.1	5182	50.1	5154	49.9
Tonsil	58.7	26472	83.2	5334	16.8	27695	87.1	2638	8.3	229	0.7	1002	3.2	242	0.8	19623	61.7	12183	38.3
Oropharynx	61.9	5601	79.2	1468	20.8	5818	82.3	935	13.2	51	0.7	205	2.9	60	0.8	3093	43.8	3976	56.2
Hypopharynx	63.9	6695	80.7	1598	19.3	6365	76.8	1295	15.6	87	1.0	522	6.3	24	0.3	1791	21.6	6502	78.4
Esophagus	67.0	49589	78.4	13622	21.6	52837	83.6	6425	10.2	482	0.8	3241	5.1	226	0.4	10491	16.6	52720	83.4
Stomach	67.8	65300	60.0	43526	40.0	76176	70.0	14447	13.3	1103	1.0	16330	15.0	770	0.7	28616	26.3	80210	73.7
Small intestine	64.4	16061	52.5	14542	47.5	23523	76.9	4891	16.0	171	0.6	1714	5.6	304	1.0	16266	53.2	14337	46.8
Colon	68.6	217091	49.4	222770	50.6	345505	78.5	52882	12.0	3286	0.7	35049	8.0	3139	0.7	185826	42.2	254035	57.8
Rectum	62.1	83768	57.8	61052	42.2	111923	77.3	14774	10.2	1325	0.9	14608	10.1	2190	1.5	74762	51.6	70058	48.4
Anus	61.5	9776	36.9	16715	63.1	22654	85.5	2688	10.1	188	0.7	759	2.9	202	0.8	14553	54.9	11938	45.1
Liver	64.0	85563	74.5	29295	25.5	79947	69.6	13855	12.1	1673	1.5	18742	16.3	641	0.6	22822	19.9	92036	80.1
Gallbladder	70.8	5385	30.2	12444	69.8	13418	75.3	2109	11.8	267	1.5	1948	10.9	87	0.5	3157	17.7	14672	82.3
Pancreas	69.8	91191	50.4	89819	49.6	143818	79.5	20955	11.6	1210	0.7	14425	8.0	602	0.3	21209	11.7	159801	88.3
Larynx	64.4	37836	80.7	9061	19.3	37799	80.6	6898	14.7	266	0.6	1655	3.5	279	0.6	17910	38.2	28987	61.8
Lung and bronchus	69.7	409532	52.7	366912	47.3	635673	81.9	82565	10.6	4409	0.6	51994	6.7	1803	0.2	121342	15.6	655102	84.4
Bones and joints	37.4	8288	56.4	6404	43.6	11826	80.5	1446	9.8	122	0.8	1130	7.7	168	1.1	9046	61.6	5646	38.4
Melanoma of the	60.5	172892	55.9	136355	44.1	288561	93.3	1334	0.4	798	0.3	2056	0.7	16498	5.3	231594	74.9	77653	25.1

skin																			
Breast	60.9	7348	0.7	1038205	99.3	829147	79.3	109029	10.4	6439	0.6	92929	8.9	8009	0.8	739704	70.7	305849	29.3
Cervix uteri	48.3	0	0.0	67376	100.0	50525	75.0	8908	13.2	663	1.0	6533	9.7	747	1.1	41756	62.0	25620	38.0
Corpus uteri	62.3	0	0.0	218759	100.0	174584	79.8	21200	9.7	1632	0.7	19393	8.9	1950	0.9	151033	69.0	67726	31.0
Ovary	62.4	0	0.0	99923	100.0	81731	81.8	8237	8.2	727	0.7	8713	8.7	515	0.5	38736	38.8	61187	61.2
Vagina	66.9	0	0.0	4453	100.0	3441	77.3	669	15.0	23	0.5	290	6.5	30	0.7	1753	39.4	2700	60.6
Vulva	67.0	0	0.0	17523	100.0	15095	86.1	1420	8.1	113	0.6	675	3.9	220	1.3	9010	51.4	8513	48.6
Prostate	67.1	1055784	100.0	0	0.0	813638	77.1	155148	14.7	4380	0.4	54426	5.2	28192	2.7	704753	66.8	351031	33.2
Testis	33.3	49002	100.0	0	0.0	43717	89.2	1438	2.9	545	1.1	2091	4.3	1211	2.5	44746	91.3	4256	8.7
Penis	66.3	5621	100.0	0	0.0	4697	83.6	504	9.0	54	1.0	284	5.1	82	1.5	2626	46.7	2995	53.3
Urinary bladder	71.3	200325	75.6	64606	24.4	234454	88.5	14171	5.3	1004	0.4	12074	4.6	3228	1.2	127324	48.1	137607	51.9
Kidney, renal pelvis	63.1	140095	62.6	83587	37.4	182745	81.7	23991	10.7	2471	1.1	12643	5.7	1832	0.8	128735	57.6	94947	42.4
Brain, other nervous system	55.5	54029	55.9	42592	44.1	83075	86.0	6511	6.7	591	0.6	5809	6.0	635	0.7	32068	33.2	64553	66.8
Thyroid	48.7	46235	23.5	150241	76.5	157112	80.0	12763	6.5	1402	0.7	22284	11.3	2915	1.5	176187	89.7	20289	10.3
Hodgkin lymphoma	36.4	23647	54.7	19559	45.3	34952	80.9	5125	11.9	234	0.5	2358	5.5	537	1.2	33866	78.4	9340	21.6
NK lymphoma	65.3	155227	54.4	130119	45.6	236257	82.8	22308	7.8	1598	0.6	21275	7.5	3908	1.4	150436	52.7	134910	47.3
Myeloma	68.1	53886	54.7	44678	45.3	71882	72.9	19163	19.4	682	0.7	6067	6.2	770	0.8	37395	37.9	61169	62.1
Leukemia	63.9	113604	57.6	83766	42.4	165483	83.8	15681	7.9	1297	0.7	12028	6.1	2881	1.5	95812	48.5	101558	51.5

Note: vital status was followed until 31 December 2021.

Abbreviation: AI/AN, American Indian/Alaska Native. API, Asian or Pacific Islander. NK Lymphoma, Non-Hodgkin Lymphoma.

^a Percentage of total cancer patients.

Table 2. Standardized mortality ratios of non-cancer death among cancer patients

Cause of death	2000-2021			1975-1999		
	Rank ¹	Observed deaths	SMR (95%CI) ²	Rank ¹	Observed deaths	SMR (95%CI) ²
Diseases of heart	1	305,634	3.11(3.1,3.12)	1	110,044	1.84(1.83,1.85)
Other cause of death	2	213,594	3.11(3.09,3.12)	2	33,361	1.41(1.4,1.43)
Chronic obstructive pulmonary disease	3	80,049	4.16(4.13,4.19)	3	25,304	1.64(1.62,1.66)
Cerebrovascular diseases	4	64,666	3.01(2.98,3.03)	4	17,803	2.18(2.14,2.21)
Alzheimers	5	43,886	1.84(1.82,1.86)	15	6,082	0.41(0.39,0.43)
Diabetes mellitus	6	34,380	4.5(4.45,4.55)	7	3,303	1.91(1.86,1.96)
Accidents, adverse effects	7	33,599	4.14(4.1,4.19)	8	11,858	1.72(1.67,1.76)
Pneumonia and influenza	8	29,288	3.23(3.19,3.26)	5	6,296	1.69(1.67,1.72)
Nephritis, nephrotic syndrome, nephrosis	9	25,784	3.6(3.56,3.65)	10	1,483	1.46(1.41,1.51)
Septicemia	10	22,371	4.98(4.92,5.05)	11	3,795	1.95(1.88,2.02)
Other infectious, parasitic diseases, HIV	11	20,826	9.98(9.84,10.12)	6	3,509	16.25(15.96,16.55)
Hypertension without heart disease	12	16,643	2.86(2.81,2.9)	17	2,834	0.99(0.94,1.04)
Chronic liver disease and cirrhosis	13	15,385	12.5(12.3,12.7)	12	2,488	6.36(6.13,6.6)
Symptoms, signs and ill-defined conditions	14	14,461	3.62(3.56,3.68)	16	1,893	0.98(0.93,1.02)
Suicide, self-inflicted injury	15	8,856	8.71(8.53,8.9)	13	16,016	5(4.81,5.18)
Aortic aneurysm and dissection	16	4,384	4.38(4.25,4.51)	14	2,623	2.43(2.34,2.53)
Other diseases of arteries, arterioles, capillaries	17	4,322	3.62(3.51,3.73)	18	2,901	1.78(1.69,1.87)
Atherosclerosis	18	3,578	2.81(2.72,2.9)	9	1,695	1.57(1.52,1.62)
Stomach and duodenal ulcers	19	1,956	4.7(4.49,4.91)	19	1,245	2.36(2.23,2.5)
Congenital anomalies	20	1,184	7.05(6.65,7.46)	20	455	3.35(3.05,3.67)
Homicide and legal intervention	21	994	11.98(11.25,12.75)	21	264	5.8(5.13,6.55)
Complications of pregnancy, childbirth, puerperium	22	377	85.18(76.79,94.22)	25	26	40.43(14.84,87.99)
Tuberculosis	23	325	6.07(5.43,6.77)	22	9	4.64(4.02,5.34)
Certain conditions originating in perinatal period	24	29	12.58(8.42,18.06)	23	6	2.83(1.85,4.14)
Syphilis	25	13	2.44(1.3,4.17)	24	196	1.7(0.78,3.22)

Abbreviations: SMR, standardized mortality ratios; CI, confidence interval.

¹Causes of death are ranked by the number of observed deaths.

²The SMR is calculated as the ratio of deaths observed in cancer patients to the deaths expected in the general population, adjusted for age, sex, race, and year. An SMR above 1 means a higher risk of death for the cancer patients.

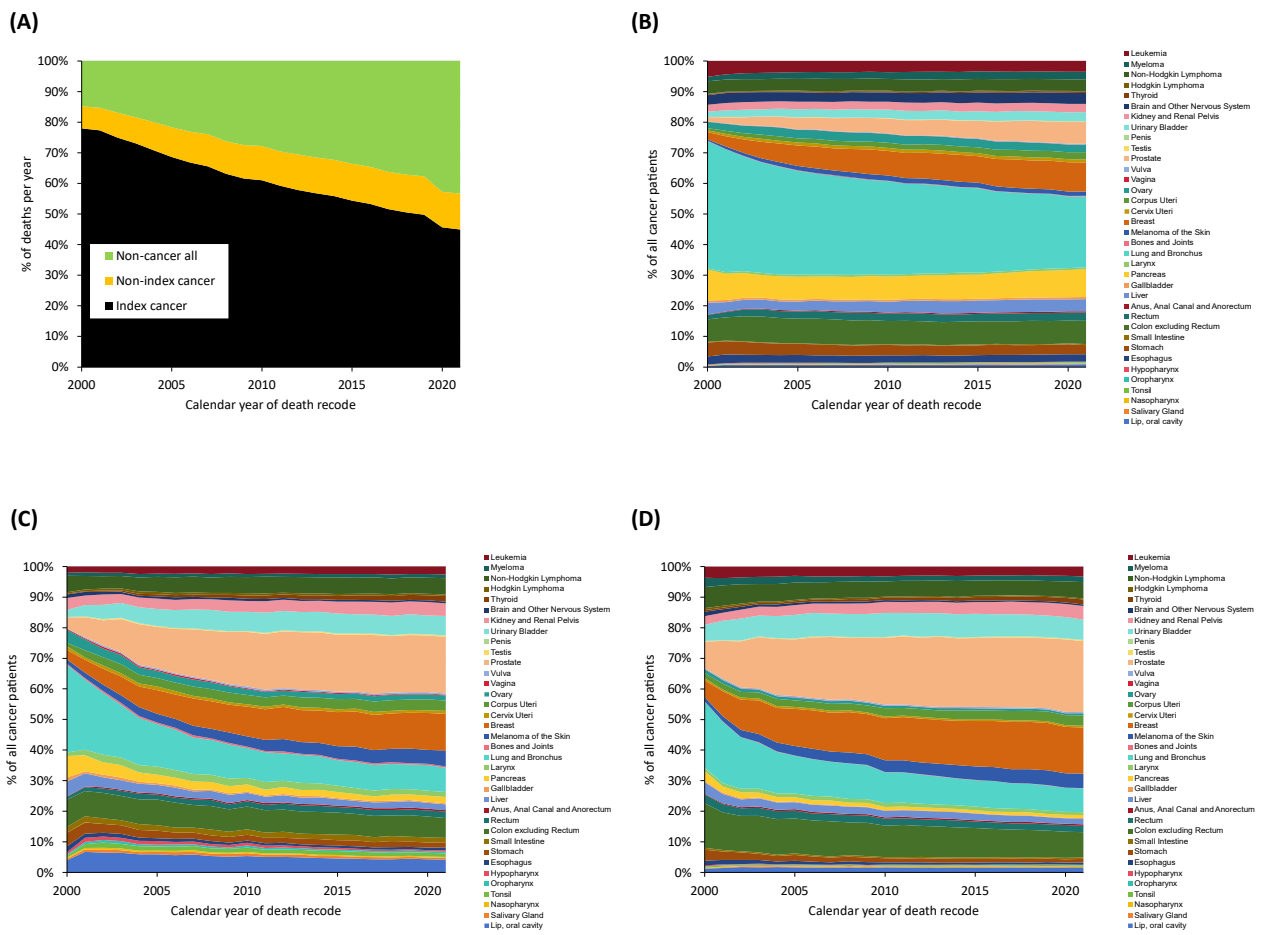
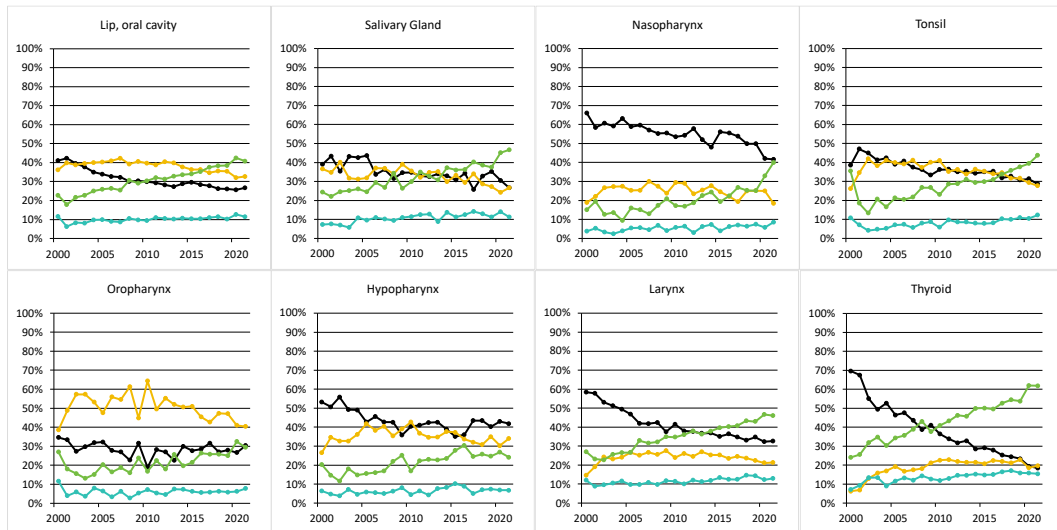
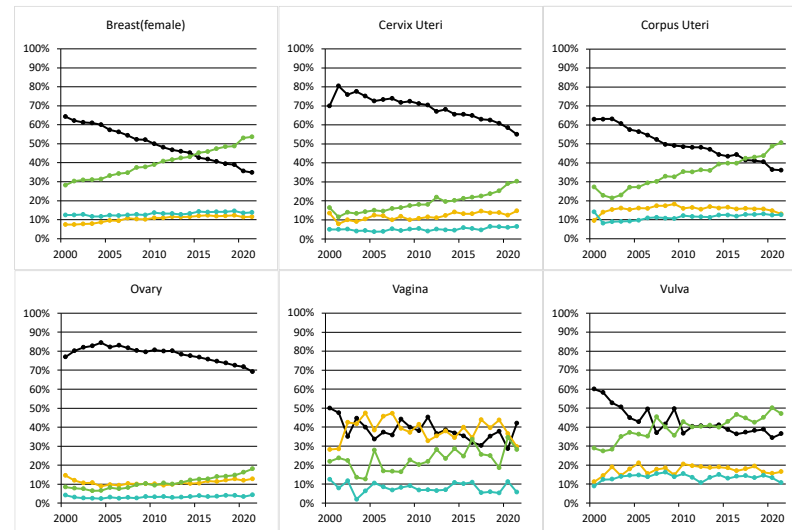


Figure 1. Overall trends in causes of death among cancer patients in the 21st century. (A) Proportional graph of cancer patients' deaths due to index cancers (black), non-index cancers (yellow), and non-cancer causes (green) from 2000 to 2021. The proportion of index-cancer deaths has been continuously decreasing, while deaths due to non-cancer causes have increased. Proportional graph of deaths caused by (B) index cancers, (C) non-index cancers, and (D) non-cancer causes, stratified by various types of cancer.

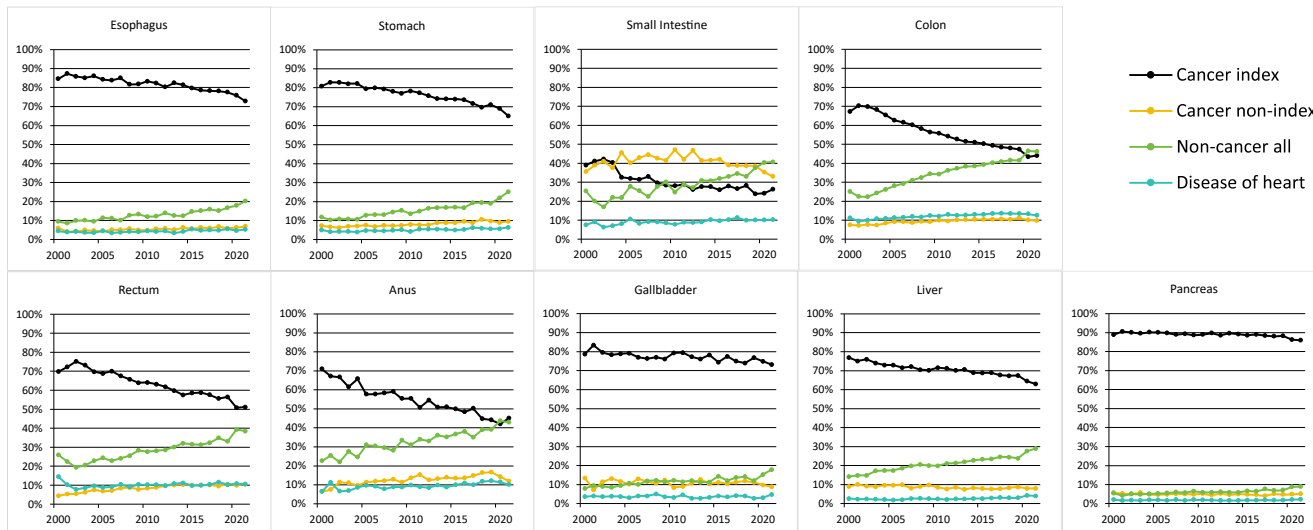
(A) Head and neck



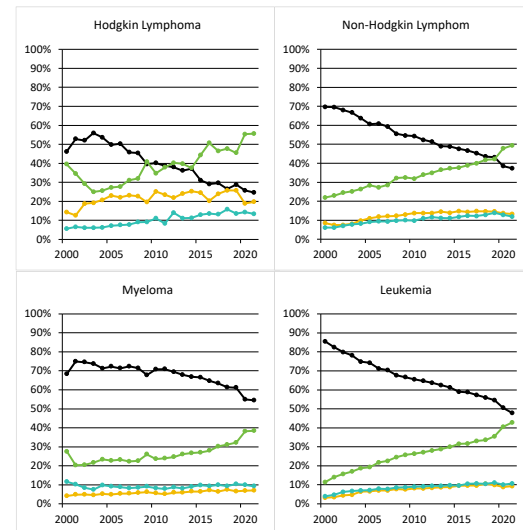
(B) Female specific



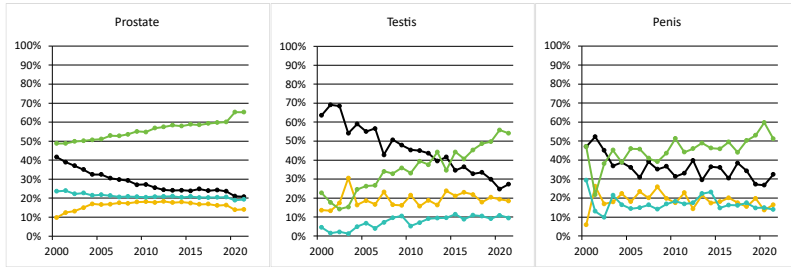
(C) Gastrointestinal



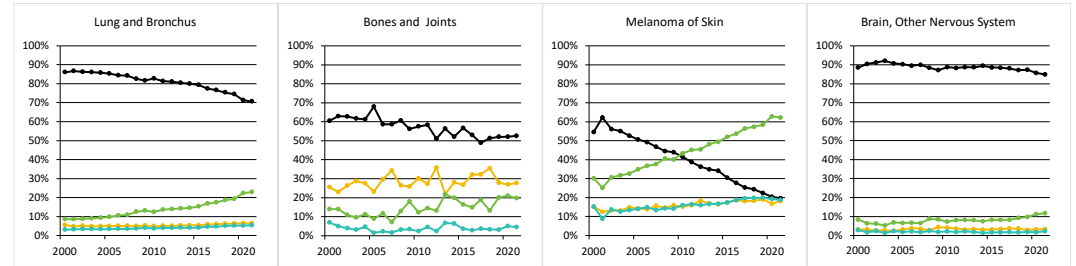
(D) Hematologic



(E) Male specific



(F) Other



(G) Genitourinary

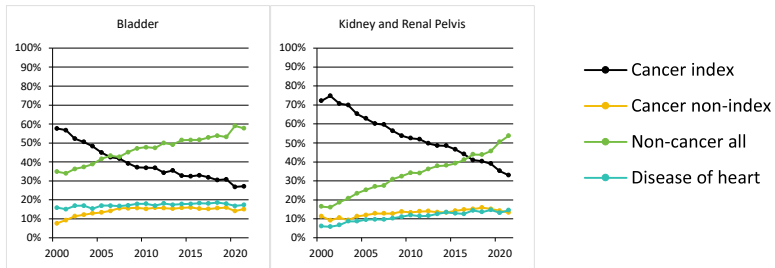
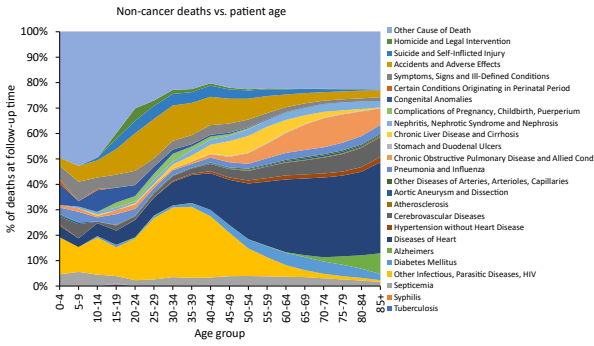


Figure 2. Proportion of cause of death versus year of death among cancer patients diagnosed between 2000 and 2021 for various cancers. Death was characterized as due to “index-cancer,” (black lines), “non-index cancer” (yellow lines), and “noncancer death” (green lines). Year of death refers to the year in which the death occurred.

(A)



(B)

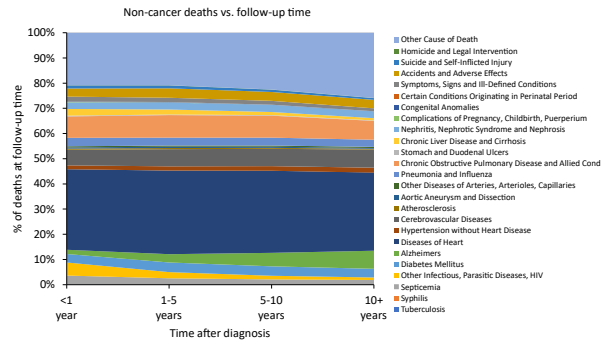
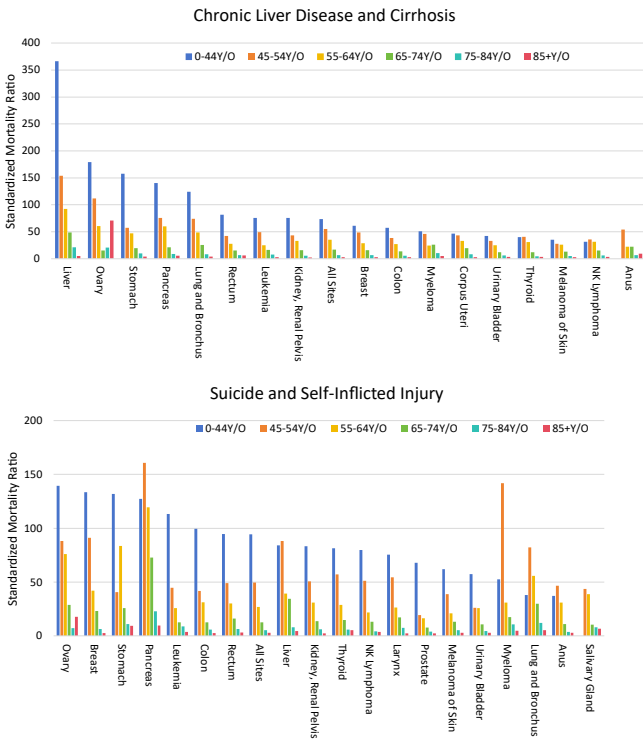


Figure 3. Overall trends of the proportion of non-cancer causes of death among cancer patients in the 21st century. Proportional graphs of death due to non-cancer causes among cancer patients diagnosed between 2000 and 2021 by (A) patient age and (B) time after diagnosis, stratified by various non-cancer causes.

(A)



(B)

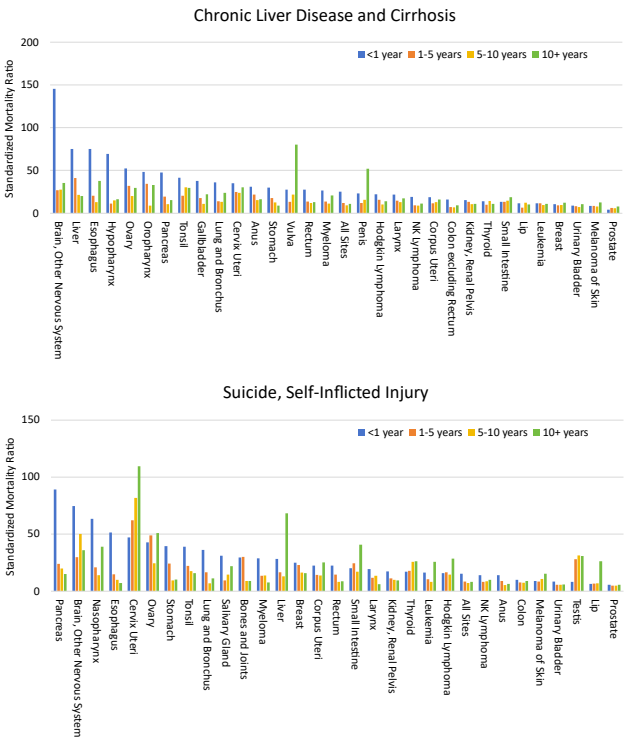


Figure 4. Standardized mortality ratios (SMRs) for the leading causes of non-cancer death among cancer patients diagnosed between 2000 and 2021 by (A) age group and (B) time periods after diagnosis.