

1 **Title: Salivary IgG antibody response against SARS-CoV-2 differs between**
2 **vaccinated children and adults**

3
4 **Author names and affiliations:** María Noel Badano¹, Irene Keitelman¹, Matías Javier Pereson¹,
5 Natalia Aloisi², Florencia Sabbione¹, Patricia Baré^{1,2}

6
7 ¹ Instituto de Medicina Experimental (IMEX)-Consejo Nacional de Investigaciones Científicas y
8 Técnicas (CONICET), Academia Nacional de Medicina. Postal address: J.A. Pacheco de Melo
9 3081, CABA 1425, Buenos Aires, Argentina.

10 ² Instituto de Investigaciones Hematológicas (IIHEMA), Academia Nacional de Medicina. Postal
11 address: J.A. Pacheco de Melo 3081, CABA 1425, Buenos Aires, Argentina.

12
13 **Correspondence:** María Noel Badano, Laboratorio de Patogenia de Infecciones Virales,
14 Instituto de Medicina Experimental (IMEX)-CONICET, Academia Nacional de Medicina,
15 J.A. Pacheco de Melo 3081, CABA 1425, noebadano@yahoo.com.ar, +5491167586135.
16 ORCID identifier: 0000-0002-0358-7738.

17
18 **Data availability statement:** The data that support the findings of this study are available
19 from the corresponding author upon reasonable request.

20
21 **Funding/Support:** This study was supported by a grant from CONICET (PIP
22 11220210100378CO).

23
24 **Conflict of Interest Disclosure:** The authors declare that they have no known competing
25 financial interests or personal relationships that could have appeared to influence the work
26 reported in this paper.

27
28 **Ethics Statement:** This study was approved by the Academia Nacional de Medicina Ethics
29 Committee.

30
31 **Consent Statement:** Written informed consent was obtained from adult participants and
32 from parents for children participants.

33
34 **Abbreviations:** binding antibody units (BAU) per mL (BAU/mL), geometric mean
35 concentrations (GMC), 95% confidence intervals (95% CI).

42 **Abstract**

43

44 Studies comparing antibody responses against SARS-CoV-2 between children and adults show
45 conflicting results in blood and are limited in the mucosa. Furthermore, as the results of studies
46 comparing systemic and salivary immune responses are inconsistent, it is unclear whether
47 determination of salivary antibodies against SARS-CoV-2 could be a non-invasive approach to
48 evaluate the humoral immune response.

49 In this work, by studying and comparing systemic and salivary IgG antibody responses in
50 vaccinated adults, we observed that the salivary immune response against SARS-CoV-2 in
51 vaccinated adults largely reflects that observed at systemic levels. Higher salivary and systemic
52 antibody concentrations were observed in adults who had schedules that included mRNA-based
53 vaccines, a greater number of exposures, a shorter interval time between last exposure and saliva
54 collection and had been exposed to SARS-CoV-2. Detection of salivary antibodies was associated
55 with schedules that included mRNA-based vaccines, time between last exposure and sample
56 collection, and systemic antibody concentrations. This suggests that salivary antibody detection
57 might be compromised in subjects with lower systemic antibody levels.

58 Comparison of salivary antibody levels between vaccinated children and adults showed a stronger
59 salivary antibody response against SARS-CoV-2 in vaccinated children. This also remained when
60 antibody levels were compared between children and adults who had similar vaccination schedules
61 or the same number of exposures or interval time between last exposure and saliva collection. A
62 multivariable linear regression analysis confirmed these results showing that age, symptomatic
63 exposure, number of vaccine doses and schedules that included mRNA-based vaccines associated
64 with salivary anti-SARS-CoV-2 IgG antibody levels.

65 Determination of salivary antibodies against SARS-CoV-2 could be a non-invasive approach to
66 evaluate the short-term immune response in children and adults with multiple exposures, especially

67 in settings where blood sampling cannot be fulfilled. The higher levels of salivary anti-SARS-CoV-
68 2 IgG antibodies observed in children align with studies reporting stronger systemic antibody
69 responses in children, suggesting their adaptive immune responses might be more efficient both
70 locally and systemically. Further studies are required to characterize the salivary microenvironment
71 for a better understanding of the difference observed in the local humoral immune response between
72 children and adults.

73

74 **Keywords**

75

76 SARS-CoV-2; Salivary IgG antibody response; Systemic IgG antibody response; vaccines;
77 children.

78

79 **Introduction**

80

81 While several advances have been made in the understanding of SARS-CoV-2 infection and its
82 associated pathology, certain aspects related to the immune response remain uncertain. The lower
83 availability of blood samples from children coupled with the late administration of COVID-19
84 vaccines in this population led to less knowledge about their immune response following infection
85 and vaccination in comparison to adults.

86 It is still debatable whether children and adults show similar systemic humoral immune responses
87 against SARS-CoV-2 after infection and vaccination. Studies have reported similar [1, 2], lower [3,
88 4] or stronger and longer-lasting [5, 6] systemic antibody responses to SARS-CoV-2 infection in
89 children than adults. There are also conflicting results regarding antibody responses following
90 vaccination, with studies showing higher [6, 7], similar [8-10] or lower [4] SARS-CoV-2-specific
91 antibody levels in children compared to adults.

92 Information about the mucosal immune response against SARS-CoV-2 in children is limited. Using
93 saliva-based tests, the prevalence of salivary anti-SARS-CoV-2 IgG antibodies in unvaccinated and
94 vaccinated children has been studied [11-13], further showing that salivary antibody levels increase
95 following infection or exposure [12, 14] and vaccination [13]. However, studies comparing salivary
96 antibody responses against SARS-CoV-2 between children and adults have yielded contradictory
97 results, showing higher [15] or lower [4] salivary antibody levels in children than in adults.
98 On the other hand, results from studies comparing systemic and salivary humoral immune responses
99 to SARS-CoV-2 are inconsistent. While several studies have shown a positive correlation between
100 systemic and salivary anti-SARS-CoV-2 IgG antibody levels in both adults [16-18] and children
101 [11, 15], other studies have shown a weak correlation [19, 20]. We have also previously shown that
102 SARS-CoV-2 breakthrough infections in vaccinated adults boost antibody levels not only in the
103 blood but also in the salivary compartment [21]. Therefore, although several studies have
104 demonstrate the validity of the determination of specific salivary antibodies as indicators of
105 seroconversion after natural infection or vaccination [16-18, 22], is still unclear whether saliva
106 could be used as an alternative to blood for the determination of antibodies against SARS-CoV-2.
107 In this work we investigated and compared the systemic and salivary IgG antibody responses
108 against SARS-CoV-2 in vaccinated adults, to analyze whether the determination of salivary
109 antibodies against SARS-CoV-2 could be a non-invasive approach to evaluate the humoral immune
110 response following infection or vaccination. Salivary antibody levels were also compared between
111 vaccinated children and adults to analyze whether the specific humoral immune response differed
112 within the salivary compartment.

113

114

115

116

117 **Materials and methods**

118

119 *Study Design, Participants and Samples*

120

121 The results of adults presented in this study are part of an ongoing observational prospective cohort
122 study started at the beginning of the pandemic among healthcare workers from the Academia
123 Nacional de Medicina, to study the humoral immune response against SARS-CoV-2 after
124 vaccination and/or infection. The results of the children included in this work are part of an
125 observational cohort study started on February 2022 to analyze the prevalence of salivary anti-
126 SARS-CoV-2 IgG antibodies in children.

127 Blood and saliva sample pairs ($n = 101$) from adults who had received the primary vaccination
128 schedule and a booster dose were collected between December 2021-November 2022. Saliva
129 samples ($n = 80$) from children up to 18 years old who had received two or three vaccine doses
130 were collected between February-August 2022. The median time between last exposure to SARS-
131 CoV-2 antigens (through vaccination, infection or exposure) and sample collection for all samples
132 was 58 (21-270), for adult samples was 50 (21-234) and for children's samples was 77 (21-270)
133 days (Table 1).

134 In both adults and children, samples were obtained from unexposed individuals and from those who
135 were exposed to SARS-CoV-2 at any stage of vaccination. Exposed subjects included those with
136 confirmed past SARS-CoV-2 infection and those who were household contacts. All subjects with
137 confirmed past SARS-CoV-2 infection had mild disease based on the World Health Organization
138 classification [23]. Among adults, 49/101 had a confirmed past SARS-CoV-2 infection, 3/101 were
139 household contacts and 49/101 were unexposed subjects. 11/49 of the infected subjects and 3/3
140 household contacts were exposed before the Omicron variant circulated in Argentina. The
141 remaining 38/49 subjects were infected when the only circulating variant in Argentina was

142 Omicron. Among children, 11/80 had a confirmed past SARS-CoV-2 infection, 35/80 were
143 household contacts and 34/80 were unexposed subjects. 13/46 of the children who have been
144 infected/household contacts were exposed before the Omicron variant circulated in Argentina, while
145 the remaining 33/46 children were exposed when Omicron was the only circulating variant in
146 Argentina. Of the adults exposed to SARS-CoV-2, 48/52 had mild symptoms, while 4/52 reported
147 no symptoms. Of the SARS-CoV-2 exposed children, 26/46 reported mild symptoms, while 20/46
148 had no symptoms.

149 Information regarding demographic characteristic, SARS-CoV-2 exposure and vaccination
150 schedules are detailed in Table 1. Vaccines from the same platform were administered on similar
151 dates and with similar interval time between doses. This study was approved by the Academia
152 Nacional de Medicina Ethics Committee.

153 Written informed consent was obtained from adult participants and from parents for children
154 participants.

155

156 ***Sample collection and processing***

157

158 Plasma or serum samples were obtained immediately after centrifugation of the peripheral blood
159 and stored in aliquots at -20°C until used. For saliva sampling, individuals spat their first saliva of
160 the day into a tube, without drinking, brushing teeth or eating, before collection. Saliva samples
161 were centrifuged at $17,000 \times g$ for 10 min (4°C) and the supernatant was stored at -20°C until used.

162

163 ***SARS-CoV-2 Antibody ELISA***

164

165 Detection of anti-spike SARS-CoV-2 IgG antibodies both in blood and saliva was performed by
166 ELISA (COVIDAR-IgG, Laboratorios Lemos S.R.L, Buenos Aires, Argentina). The plates of the

167 assay are coated with a purified mixture of the spike protein and the receptor binding domain
168 (RBD) of the SARS-CoV-2 from the original viral variant from Wuhan (GenBank: MN908947).
169 Determination of specific antibodies in blood was performed following the manufacturer's
170 instructions [21]. Determination of salivary antibodies was performed with the conditions we had
171 previously established for the salivary measurements [21]. Basically, salivary IgG anti-spike
172 antibodies were determined following the manufacturer's instructions, without performing the first
173 sample dilution. Antibody concentrations in binding antibody units (BAU) per mL (BAU/mL) were
174 obtained by interpolating the OD 450 nm values of the samples into a calibration curve performed
175 with the provided standard (400 BAU/mL).

176

177 *Statistical Analysis*

178

179 Data analyses were performed using the GraphPad 10.2.3 Prism software (GraphPad Software, San
180 Diego, CA, USA). Geometric mean concentrations (GMC) of specific antibody levels with 95%
181 confidence intervals (95% CI) were calculated. Antibody levels between groups were compared
182 with Mann-Whitney test. The Spearman coefficient of rank correlation was used to assess the
183 correlation between specific salivary and blood antibodies. A multivariable linear regression model
184 was performed with age, sex, symptomatic exposure, number of vaccine doses, number of
185 exposures, vaccination schedules that included mRNA-based vaccines, time between most recent
186 antigen exposure and sample collection as independent variables and salivary antibody levels as
187 dependent variable. The linear regression coefficients (β) with 95% CI were calculated. In all cases,
188 a value of $p < 0.05$ was considered indicative of a significant difference.

189

190

191

192 **Results**

193

194 **IgG specific salivary and blood antibody responses in vaccinated adults**

195

196 Specific antibodies were detected in 100% of blood samples (GMC BAU/mL, 95% CI: 3154,
197 2461–4043) and in 82% of saliva samples (GMC BAU/mL, 95% CI: 67.0, 42.8–104.7). Subjects
198 with higher systemic antibody levels (\geq GMC: 3154 BAU/mL) also showed higher salivary antibody
199 concentrations than those with lower systemic antibody levels (GMC BAU/mL, 95% CI, Saliva:
200 156.8, 92.7–265.2 vs 24.2, 11.1–52.7; $p < 0.001$). Furthermore, higher systemic antibody levels
201 were found in subjects with detectable salivary antibodies compared to those without detectable
202 salivary antibodies (GMC BAU/mL, 95% CI, Blood: 3841, 2979–4952 vs 1316, 701.1–2469; $p <$
203 0.01) (Figure 1A-D). Specific antibody levels in blood and saliva were positively correlated ($r =$
204 0.5, $p < 0.0001$).

205 Therefore, we analyzed how variables previously reported to be associated with systemic anti-
206 SARS-CoV-2 IgG antibody levels, relate to antibody levels in both the blood and the salivary
207 compartment. As we observed similar results among subjects who received one or two doses of
208 mRNA-based vaccines, they were combined into a single group (non-mRNA + mRNA (3d)) for the
209 presentation of the results. Levels of anti-spike SARS-CoV-2 IgG antibodies were higher in
210 subjects who received three doses of schedules that included mRNA-based vaccines (non-mRNA +
211 mRNA (3d)) compared to those observed in individuals who received three doses of schemes not
212 including mRNA-based vaccines (non-mRNA (3d)) (GMC BAU/mL, 95% CI, Blood: 6335,
213 3990–10058 vs 2494, 1875–3318; $p < 0.01$; Saliva: 183.3, 106.5–315.6 vs 47.2, 27.1–82.2; $p < 0.01$)
214 (Figure 1A). Subjects with a greater number of exposures to SARS-CoV-2 antigens (through
215 vaccination, infection or exposure) showed higher antibody concentrations than those with a lower
216 number of exposures (GMC BAU/mL, 95% CI, Blood: 5586, 4237–7365 vs 1615, 1162–2245; $p <$

217 0.0001; Saliva: 99.0, 52.6–186.4 vs 43.2, 23.5–80.0; $p < 0.01$) (Figure 1B). Antibody concentrations
218 decreased as the interval time between last exposure and sample collection increased (GMC
219 BAU/mL, 95% CI, Blood: 5448, 4087–7263 vs 1847, 1305–2614; $p < 0.0001$; Saliva: 179.3,
220 113.3–283.7 vs 22.0, 11.1–43.5; $p < 0.0001$) (Figure 1C). Subjects exposed to SARS-CoV-2 showed
221 higher antibody levels than those unexposed (GMC BAU/mL, 95% CI, Blood: 5183, 3871–6940 vs
222 1807, 1275–2561; $p < 0.0001$; Saliva: 104.5, 54.8–200.0 vs 42.9, 23.6–78.0; $p < 0.01$) (Figure 1D).
223 Using Fisher’s exact test, detection of specific antibodies in saliva was associated with schedules
224 that included mRNA-based vaccines ($p < 0.05$; OR=7.8) (Figure 1A), the time between last exposure
225 and sample collection ($p < 0.001$; OR=7.8) (Figure 1C) and systemic antibody concentrations ($p <$
226 0.01; OR=7.1) (Figure 1A-D).

227

228 **Comparison of IgG specific salivary antibody responses between vaccinated children** 229 **and adults**

230

231 Considering all samples, higher salivary antibody concentrations were observed in children
232 compared to adults (GMC: 104.0 BAU/mL, 95% CI: 58.7–184.1 vs 66.0 BAU/mL, 95% CI:
233 42.8–104.7; $p < 0.05$). No significant differences were found in antibody levels between adults
234 receiving three doses of non-mRNA-based vaccines (non-mRNA (3d)) and children receiving two
235 doses of non-mRNA-based vaccines (GMC: 47.2 BAU/mL, 95% CI: 27.1–82.2 vs 27.3 BAU/mL,
236 95% CI: 13.7–54.3; $p = 0.3$). However, antibody levels in adults who received three doses of
237 schedules that included mRNA-based vaccines (non-mRNA + mRNA (3d)) (GMC: 183.3
238 BAU/mL; 95% CI: 106.5–315.6) were higher than in children who received two doses of non-
239 mRNA vaccines ($p < 0.001$). Children who received three doses of mRNA vaccines (mRNA (3d))
240 (GMC: 486.0 BAU/mL; 95% CI: 220.7–1069) or two doses of a non-mRNA-based vaccine plus
241 one dose of an mRNA-based vaccine (non-mRNA + mRNA (3d)) (GMC: 1997 BAU/mL; 95% CI:

242 878.6–4538) showed higher antibody concentrations than adults who received three doses of
243 schedules that did or did not include mRNA-based vaccines ($p < 0.01$) (Figure 2A). Salivary
244 antibody concentrations were higher in children who had three exposures compared to adults who
245 had three exposures (GMC: 138.4 BAU/mL, 95% CI: 64.3–298.0 vs 43.2 BAU/mL, 95% CI:
246 23.5–80.0; $p < 0.001$) (Figure 2B). Children who had four exposures (GMC: 495.3 BAU/mL; 95%
247 CI: 178.2–1377) showed higher antibody levels than adults who had three or four exposures (GMC:
248 99.0 BAU/mL; 95% CI: 52.6–186.4) ($p < 0.001$) (Figure 2B). Antibody concentrations were higher
249 in children compared to adults who had the same interval time (≤ 58 days) between last exposure
250 and saliva collection (GMC: 396.0 BAU/mL, 95% CI: 185.8–844.1 vs GMC: 156.3 BAU/mL, 95%
251 CI: 98.0–249.6; $p < 0.01$) (Figure 2C). Unexposed adults showed lower antibody levels than
252 exposed children (GMC BAU/mL, 95% CI: 42.9, 23.6–78.0 vs 150.8, 74.5–305.5; $p < 0.001$)
253 (Figure 2D). Age (β_1 : -24.6, 95% CI: -39.2–-9.9; $p < 0.001$), symptomatic exposure (β_2 : 871.7,
254 95% CI: 249.5–1494; $p < 0.01$), number of vaccine doses (β_3 : 881.4, 95% CI: 90.5–1672; $p < 0.05$)
255 and schedules that included mRNA-based vaccines (β_4 : 726.0, 95% CI: 189.5–1263; $p < 0.01$)
256 associated with salivary antibody levels in a multivariable linear regression analysis ($p < 0.0001$).

257

258 **Discussion**

259

260 Data from studies comparing antibody responses against SARS-CoV-2 after infection or
261 vaccination between children and adults are conflicting in blood [1-10] and limited in mucosa [4,
262 15]. On the other hand, as studies comparing systemic and salivary humoral immune responses to
263 SARS-CoV-2 have yielded contradictory results [11, 15, 16-22], it remains yet to be determined
264 whether saliva could be used as an alternative to blood for the determination of antibodies against
265 SARS-CoV-2.

266 In this work, we investigated and compared the systemic and salivary IgG antibody responses
267 against SARS-CoV-2 in vaccinated adults. Analysis of different variables previously reported to be
268 related to systemic anti-SARS-CoV-2 IgG antibody levels showed similar results for blood and
269 saliva. Higher antibody concentrations were observed in both the blood and saliva of adults who
270 had schedules that included mRNA-based vaccines, a greater number of exposures, a shorter
271 interval time between last antigens exposure and saliva collection and had been exposed to SARS-
272 CoV-2. Furthermore, a positive correlation was found between systemic and salivary anti-SARS-
273 CoV-2 IgG antibody levels, with higher salivary antibody concentrations observed in subjects with
274 higher systemic antibody levels. However, specific antibodies were detected in 100% of blood
275 samples and in 82% of saliva samples. Detection of specific salivary antibodies was associated with
276 schedules that included mRNA-based vaccines, time between last exposure and sample collection,
277 and systemic antibody concentrations. These results, together with the fact that most subjects
278 without detectable salivary antibodies showed lower systemic antibody levels, suggest that salivary
279 antibody detection would appear to depend on variables that influence systemic antibody levels.
280 Therefore, although our results showed that the salivary immune response against SARS-CoV-2 in
281 vaccinated adults largely reflects that observed at systemic levels, salivary antibody detection might
282 be compromised in subjects presenting lower systemic antibody concentrations. This is in
283 agreement with previously reported results showing that salivary antibody responses were mainly
284 detected in subjects showing higher serum antibody levels [24]. However, we observed that the
285 prevalence of salivary antibodies was high in both adults (82%) and children (81%) [12], unlike to
286 that previously reported in unvaccinated infected subjects [11, 13, 24] but in agreement with those
287 reported in vaccinated subjects [13, 18, 22], suggesting that multiple exposures are required to
288 enhance systemic antibody levels and allow salivary antibody detection.
289 Salivary antibody concentrations were also compared between vaccinated children and adults to
290 analyze whether specific antibody responses differed within the salivary compartment. We observed
291 a higher salivary antibody response against SARS-CoV-2 in vaccinated children compared to

292 adults. This also remained when antibody levels were compared between children and adults who
293 had similar vaccination schedules (three doses combining mRNA and non-mRNA based vaccines)
294 or the same number of exposures. Furthermore, when considering the same interval time between
295 last exposure and saliva collection, children also showed higher antibody concentrations than adults.
296 Higher antibody levels were also observed in children exposed to SARS-CoV-2 compared to
297 unexposed adults. These results were confirmed in a multivariable linear regression analysis,
298 showing that age, symptomatic exposure, number of vaccine doses and schedules that included
299 mRNA-based vaccines were associated with salivary anti-SARS-CoV-2 IgG antibody levels.
300 The biological and molecular basis for a favorable outcome after SARS-CoV-2 infection in children
301 compared to adults is not fully understood. Several hypotheses have tried to explain the milder
302 presentation of the disease in children, including a protective role of pre-existing cross-reactive
303 antibodies against seasonal coronaviruses, a lower expression of the angiotensin-converting enzyme
304 2 (ACE2) and a less propensity to develop an exacerbated pro-inflammatory response, among
305 others [25]. Furthermore, it is not entirely clear the relative contribution of the antibody response to
306 SARS-CoV-2 to the favorable outcome in the pediatric population. In the current work, we showed
307 that children had higher salivary anti-SARS-CoV-2 IgG antibody concentrations than adults. Given
308 that mucosal immunity plays a key role in prevention and early defense against infection, being the
309 entry route for the virus and the site of first encounter with the immune response, it is tempting to
310 speculate that the stronger salivary antibody response observed in children could help prevent or
311 limit infection, thus contributing to the favorable outcome observed in the pediatric population.
312 As salivary IgG is derived primarily from circulating IgG through transudation [26] and the salivary
313 IgG response in adults highly reflects the systemic antibody response, it is very likely that the
314 salivary antibody response observed in children also largely reflects that present in blood. However,
315 given that there is also some local IgG production, we cannot rule out that a difference in the local
316 immune response mounted may also account to the observed difference in the salivary antibody
317 response against SARS-CoV-2 between children and adults.

318 Limitations of this study include the lack of information on the systemic antibody response in
319 children, which precluded direct comparison between the systemic and salivary immune responses
320 in children. We had no information on neutralization titers and specific IgA antibody responses in
321 both blood and saliva. Besides, for reasons inherent to the vaccination policies in our country, adults
322 mainly received non-mRNA based primary vaccination schedules and children only received
323 mRNA vaccines as third doses. Therefore, a comparison could not be made with samples from
324 adults vaccinated with three doses of mRNA vaccines or from children vaccinated with three doses
325 of non-mRNA-based vaccines. Despite this, we observed that among subjects who received three
326 vaccine doses, children who only received one dose of mRNA-based vaccine showed higher
327 salivary antibody concentrations than adults who also received one or even two doses of mRNA-
328 based vaccines, suggesting that other factors inherent to children, in addition to the vaccination
329 schedules received, could be contributing to the higher salivary antibody response observed in
330 children. Information about SARS-CoV-2 variants involved in the infections/exposures and their
331 association with antibody levels was not available. However, most infections/exposures both in
332 adults and children occurred when the only circulating variant in Argentina was Omicron.
333 Altogether, our results showed that the salivary immune response against SARS-CoV-2 in
334 vaccinated adults largely reflects that observed at systemic levels. However, salivary antibody
335 detection might be compromised in subjects with low systemic antibody concentrations, which
336 could be related to lower immune stimulation resulting from less immunogenic vaccines, fewer
337 exposures, or excessive time since last exposure, potentially leading to false negative results
338 compared to blood. Nevertheless, since saliva sampling is non-invasive and allows self-collection
339 unlike blood sampling, salivary antibody determination could be performed as an initial screening
340 to evaluate the immune response against SARS-CoV-2, and in those subjects who do not show
341 detectable salivary antibodies, determination of antibodies in blood should be performed whenever
342 possible. Besides, as salivary immune response is indicative of the systemic antibody response,
343 salivary antibody determination could guide vaccination strategies through the administration of

344 booster doses in those subjects who lack detectable salivary antibodies, so that they can achieve
345 high systemic antibody levels. In conclusion, the determination of salivary antibodies against
346 SARS-CoV-2 could be a non-invasive approach for the evaluation of the short-term immune
347 response in subjects with multiple exposures, either resulting from vaccination combined with
348 infection or from the administration of immunogenic vaccination schedules, both in the adult and
349 pediatric population, especially in settings where blood sampling cannot be fulfilled.
350 Furthermore, the higher levels of salivary anti-SARS-CoV-2 IgG antibodies observed in children
351 are in agreement with studies reporting stronger systemic antibody responses in the pediatric
352 population. This suggests that children could have more efficient adaptive immune responses, both
353 at local and systemic levels, compared to adults. Additional studies focusing on the characterization
354 of the salivary microenvironment are required for a better understanding of the difference observed
355 in the local humoral immune response between children and adults.

356

357 **Acknowledgments**

358

359 The authors thank all enrolled children and adults for their participation in this study. Some aspects
360 of this work could not have been fulfilled without the generous contribution of the IIHEMA and the
361 Academia Nacional de Medicina, who provide financial support to our ongoing research. This study
362 was supported by a grant from CONICET (PIP 11220210100378CO).

363

364 **References**

365

- 366 1. Weisberg SP, Connors TJ, Zhu Y, Baldwin MR, Lin WH, Wontakal S, et al. Distinct antibody responses to SARS-
367 CoV-2 in children and adults across the COVID-19 clinical spectrum. *Nat Immunol.* 2021;22(1):25-31. doi:
368 10.1038/s41590-020-00826-9.

- 369 2. Toh ZQ, Higgins RA, Do LAH, Rautenbacher K, Mordant FL, Subbarao K, Dohle K et al. Persistence of SARS-
370 CoV-2-Specific IgG in Children 6 Months After Infection, Australia. *Emerg Infect Dis.* 2021;27(8):2233-2235. doi:
371 10.3201/eid2708.210965.
- 372 3. Hachim A, Gu H, Kavian O, Mori M, Kwan MYW, Chan WH, et al. SARS-CoV-2 accessory proteins reveal
373 distinct serological signatures in children. *Nat Commun.* 2022;13(1):2951. doi: 10.1038/s41467-022-30699-5.
- 374 4. Padoan A, Cosma C, Di Chiara C, Furlan G, Gastaldo S, Talli I, et al. Clinical and Analytical Performance of
375 ELISA Salivary Serologic Assay to Detect SARS-CoV-2 IgG in Children and Adults. *Antibodies (Basel).* 2024
376 Jan;13(1):6. doi: 10.3390/antib13010006.
- 377 5. Dowell AC, Butler MS, Jinks E, Tut G, Lancaster T, Sylla P, et al. Children develop robust and sustained cross-
378 reactive spike-specific immune responses to SARS-CoV-2 infection. *Nat Immunol.* 2022;23(1):40-49. doi:
379 10.1038/s41590-021-01089-8.
- 380 6. Kim M, Cheng WA, Congrave-Wilson Z, Marentes Ruiz CJ, Turner L, et al. Comparisons of Pediatric and Adult
381 SARS-CoV-2-Specific Antibodies up to 6 Months after Infection, Vaccination, or Hybrid Immunity. *J Pediatric*
382 *Infect Dis Soc.* 2024;13(1):91-99. doi: 10.1093/jpids/piad107.
- 383 7. Tawinprai K, Siripongboonsitti T, Porntharukchareon T, Vanichsetakul P, Thonginnetra S, Niemsorn K, et al.
384 Safety and Immunogenicity of the BBIBP-CorV Vaccine in Adolescents Aged 12 to 17 Years in the Thai
385 Population: An Immunobridging Study. *Vaccines (Basel).* 2022 ;10(5):807. doi: 10.3390/vaccines10050807.
- 386 8. Rosa Duque JS, Wang X, Leung D, Cheng SMS, Cohen CA, Mu X, et al. Immunogenicity and reactogenicity of
387 SARS-CoV-2 vaccines BNT162b2 and CoronaVac in healthy adolescents. *Nat Commun.* 2022;13(1):3700. doi:
388 10.1038/s41467-022-31485-z.
- 389 9. Xia S, Zhang Y, Wang Y, Wang H, Yang Y, Gao GF, et al. Safety and immunogenicity of an inactivated COVID-19
390 vaccine, BBIBP-CorV, in people younger than 18 years: a randomised, double-blind, controlled, phase 1/2 trial.
391 *Lancet Infect Dis.* 2022;22(2):196-208. doi: 10.1016/S1473-3099(21)00462-X.
- 392 10. Li G, Cappuccini F, Marchevsky NG, Aley PK, Aley R, Anslow R, et al. Safety and immunogenicity of the
393 ChAdOx1 nCoV-19 (AZD1222) vaccine in children aged 6-17 years: a preliminary report of COV006, a phase 2
394 single-blind, randomised, controlled trial. *Lancet.* 2022;399(10342):2212-2225. doi: 10.1016/S0140-
395 6736(22)00770-X.
- 396 11. Keuning MW, Grobden M, Bijlsma MW, Anker B, Berman-de Jong EP, Cohen S, et al. Differences in systemic and
397 mucosal SARS-CoV-2 antibody prevalence in a prospective cohort of Dutch children. *Front Immunol.*
398 2022;13:976382. doi: 10.3389/fimmu.2022.976382.

- 399 12. Badano MN, Duarte A, Salamone G, Sabbione F, Pereson M, Chuit R, et al. Prevalence of salivary anti-SARS-CoV-
400 2 IgG antibodies in vaccinated children. *Immunology*. 2023;169(3):384-387. doi: 10.1111/imm.13656.
- 401 13. Conti MG, Piano Mortari E, Nenna R, Pierangeli A, Sorrentino L, Frasca F, et al. SARS-CoV-2-specific mucosal
402 immune response in vaccinated versus infected children. *Front Cell Infect Microbiol*. 2024;14:1231697. doi:
403 10.3389/fcimb.2024.1231697.
- 404 14. Thomas AC, Oliver E, Baum HE, Gupta K, Shelley KL, Long AE, et al. Evaluation and deployment of isotype-
405 specific salivary antibody assays for detecting previous SARS-CoV-2 infection in children and adults. *Commun*
406 *Med (Lond)*. 2023;3(1):37. doi: 10.1038/s43856-023-00264-2.
- 407 15. Dobaño C, Alonso S, Vidal M, Jiménez A, Rubio R, Santano R, et al. Multiplex Antibody Analysis of IgM, IgA and
408 IgG to SARS-CoV-2 in Saliva and Serum From Infected Children and Their Close Contacts. *Front Immunol*.
409 2022;13:751705. doi: 10.3389/fimmu.2022.751705.
- 410 16. Isho B, Abe KT, Zuo M, Jamal AJ, Rathod B, Wang JH, et al. Persistence of serum and saliva antibody responses to
411 SARS-CoV-2 spike antigens in COVID-19 patients. *Sci Immunol*. 2020;5(52):eabe5511. doi:
412 10.1126/sciimmunol.abe5511.
- 413 17. Pisanic N, Randad PR, Kruczynski K, Manabe YC, Thomas DL, Pekosz A, et al. COVID-19 Serology at Population
414 Scale: SARS-CoV-2-Specific Antibody Responses in Saliva. *J Clin Microbiol*. 2020;59(1):e02204-20. doi:
415 10.1128/JCM.02204-20.
- 416 18. Healy K, Pin E, Chen P, Söderdahl G, Nowak P, Mielke S, et al. Salivary IgG to SARS-CoV-2 indicates
417 seroconversion and correlates to serum neutralization in mRNA-vaccinated immunocompromised individuals. *Med*.
418 2022;3(2):137-153.e3. doi: 10.1016/j.medj.2022.01.001.
- 419 19. Darwich A, Pozzi C, Fornasa G, Lizier M, Azzolini E, Spadoni I, et al. BNT162b2 vaccine induces antibody release
420 in saliva: a possible role for mucosal viral protection? *EMBO Mol Med*. 2022;14(5):e15326. doi:
421 10.15252/emmm.202115326.
- 422 20. Azzi L, Dalla Gasperina D, Veronesi G, Shallak M, Ietto G, Iovino D, et al. Mucosal immune response in
423 BNT162b2 COVID-19 vaccine recipients. *EBioMedicine*. 2022;75:103788. doi: 10.1016/j.ebiom.2021.103788.
- 424 21. Badano MN, Pereson MJ, Sabbione F, Keitelman I, Aloisi N, Chuit R, et al. SARS-CoV-2 Breakthrough Infections
425 after Third Doses Boost IgG Specific Salivary and Blood Antibodies. *Vaccines (Basel)*. 2023;11(3):534. doi:
426 10.3390/vaccines11030534.
- 427 22. Ketas TJ, Chaturbhuj D, Portillo VMC, Francomano E, Golden E, Chandrasekhar S, et al. Antibody Responses to
428 SARS-CoV-2 mRNA Vaccines Are Detectable in Saliva. *Pathog Immun*. 2021;6(1):116-134. doi:
429 10.20411/pai.v6i1.441.

- 430 23. World Health Organization. Clinical management of COVID-19: living guideline (WHO/2019-
431 nCoV/clinical/2023.2). Available online: <https://www.who.int/publications/i/item/WHO-2019-nCoV-clinical-2023.2>
432 (Accessed October 7, 2024).
- 433 24. Faustini SE, Jossi SE, Perez-Toledo M, Shields AM, Allen JD, Watanabe Y, et al. Development of a high-sensitivity
434 ELISA detecting IgG, IgA and IgM antibodies to the SARS-CoV-2 spike glycoprotein in serum and saliva.
435 *Immunology*. 2021;164(1):135-147. doi: 10.1111/imm.13349.
- 436 25. Falahi S, Abdoli A, Kenarkoohi A. Claims and reasons about mild COVID-19 in children. *New Microbes New*
437 *Infect*. 2021;41:100864. doi: 10.1016/j.nmni.2021.100864.
- 438 26. Brandtzaeg P. Secretory immunity with special reference to the oral cavity. *J Oral Microbiol*. 2013;5. doi:
439 10.3402/jom.v5i0.20401.
- 440
441
442
443
444

Figure 1

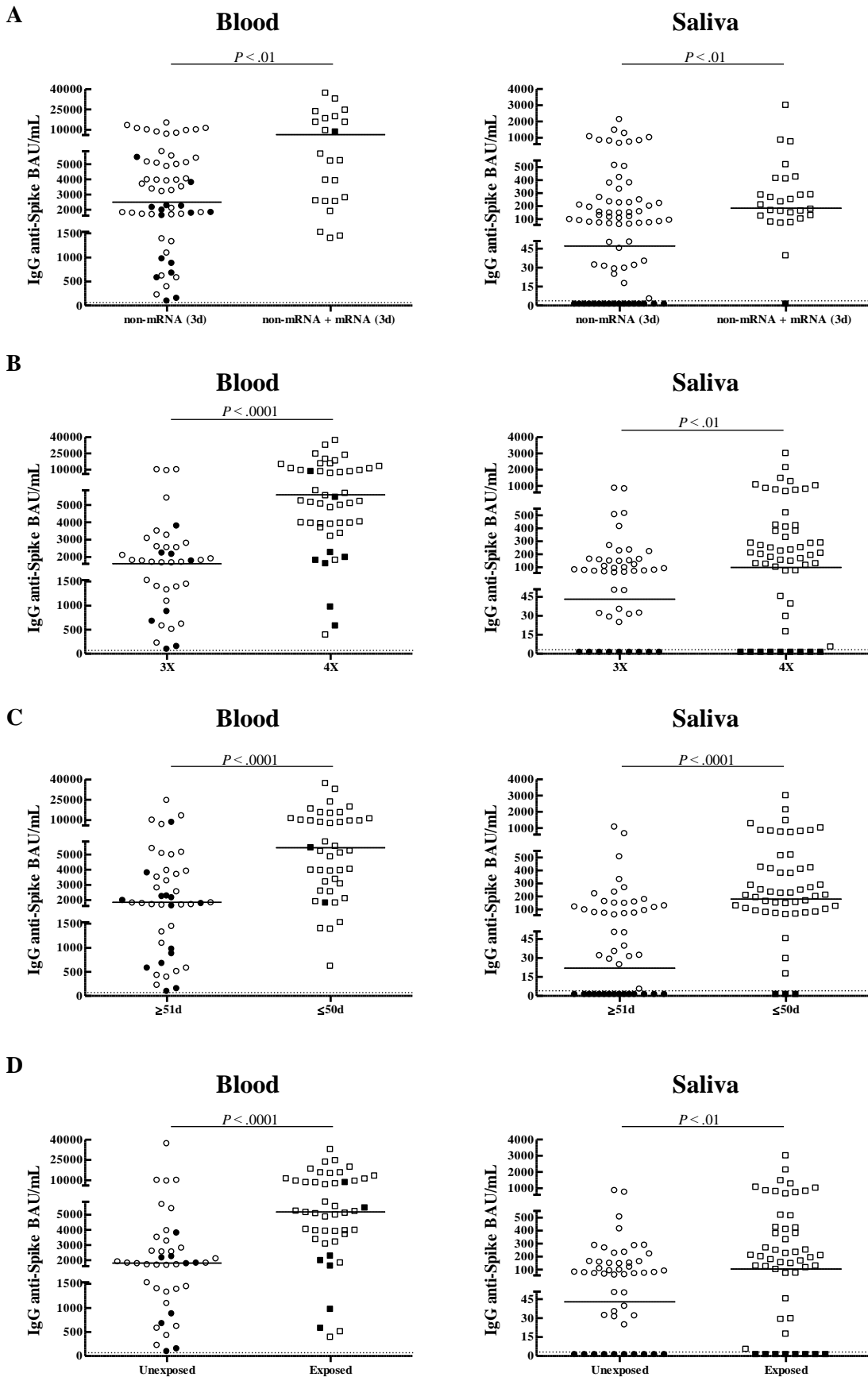
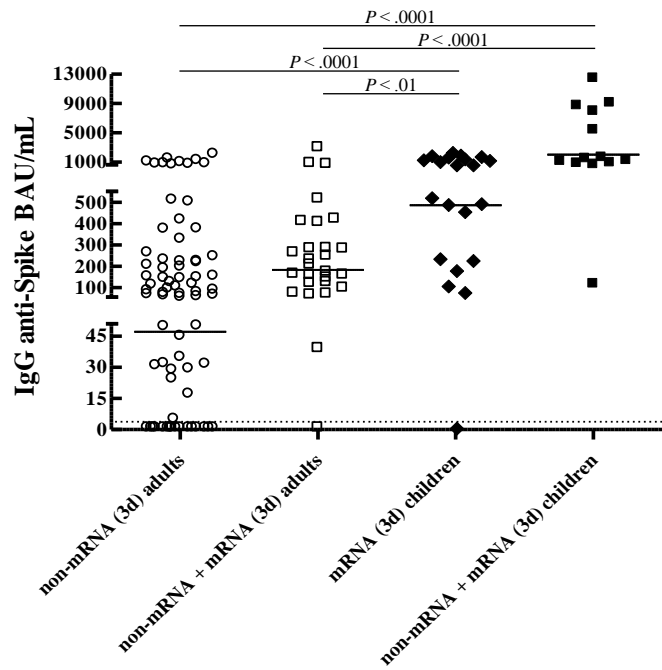
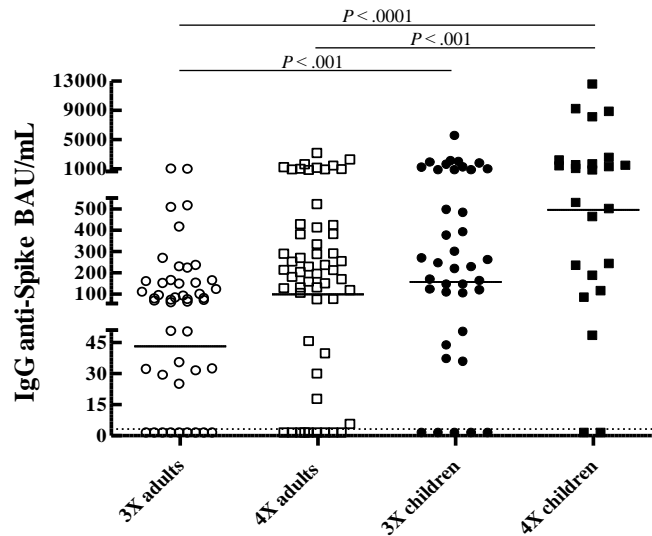


Figure 2

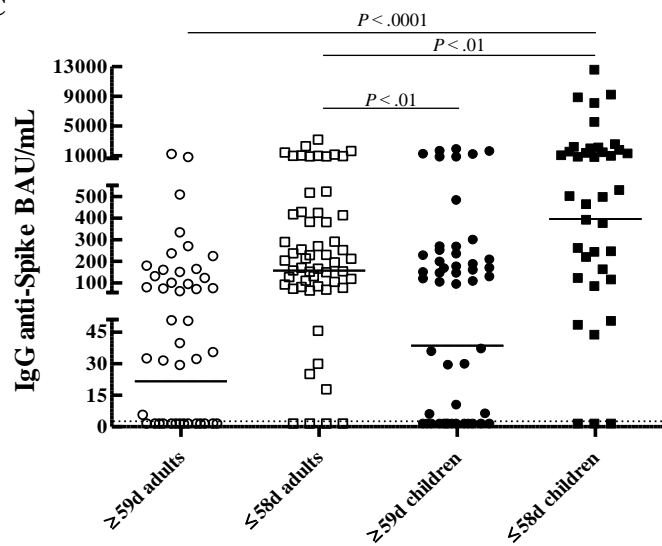
A



B



C



D

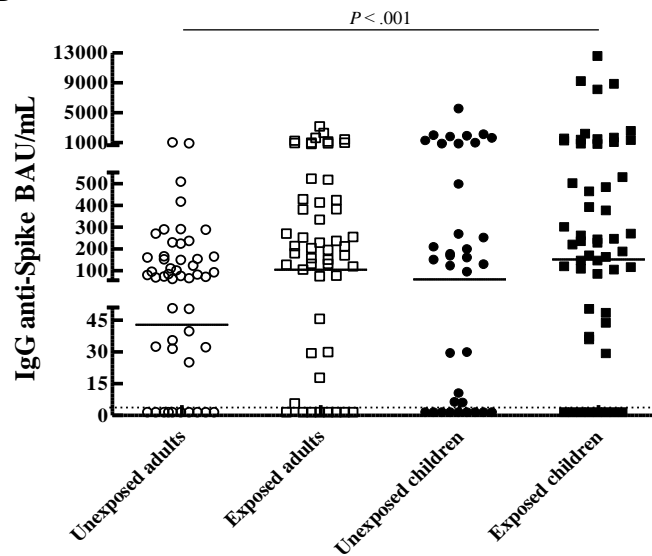


Figure legends

Figure 1. Systemic and salivary antibody responses against SARS-CoV-2 in vaccinated adults.

Blood and salivary anti-SARS-CoV-2 antibody levels were analyzed in vaccinated adults according to: vaccination schedules (A), number of exposures (B), time between last exposure and sample collection (C), exposure to SARS-CoV-2 (D). IgG anti-spike antibody concentrations (BAU/mL) with geometric means are shown. Dotted line indicates the assay detection limit (4.03 BAU/mL). Subjects with detectable salivary antibodies (white circles or squares) and those without detectable salivary antibodies (black circles or squares) are shown. *p* values were determined by Mann-Whitney test.

Figure 2. Comparison of salivary antibody responses against SARS-CoV-2 between

vaccinated children and adults. Salivary anti-SARS-CoV-2 antibody levels were compared between vaccinated adults and children according to: vaccination schedules (A), number of exposures (B), time between last exposure and sample collection (C), exposure to SARS-CoV-2 (D). IgG anti-spike antibody concentrations (BAU/mL) with geometric means are shown. Dotted line indicates the assay detection limit (4.03 BAU/mL). *p* values were determined by Mann-Whitney test.

Table 1. Characteristics of children and adults

	Children (n=80)	Adults (n=101)
General characteristics		
Age, median (range), y	10 (4–17)	46 (27-83)
Sex		
Female, No. (%)	39/80 (49)	71/101 (70)
Male, No. (%)	41/80 (51)	30/101 (30)
Exposure to SARS-CoV-2		
Unexposed, No. (%)	34/80 (42.5)	49/101 (48.5)
Confirmed past SARS-CoV-2 infection, No. (%)	11/80 (13.75)	49/101 (48.5)
Household contacts, No. (%)	35/80 (43.75)	3/101 (3)
Infected/household contacts with COVID-19 compatible symptoms, No. (%)	26/46 (56)	48/52 (92)
Vaccination schedules non-mRNA-based		
BBIBP-CorV x 2, No. (%)	46/80 (57.5)	
BBIBP-CorV x 2 + ChAdOx1 nCoV-19 x 1, No. (%)	–	62/101 (61)
Sputnik V x 2 + ChAdOx1 nCoV-19 x 1, No. (%)	–	8/101 (8)
ChAdOx1 nCoV-19 x 3, No. (%)	–	4/101 (4)
Vaccination schedules mRNA-based		
BNT162b2 mRNA x 3, No. (%)	17/80 (21)	–
BNT162b2 mRNA x 2 + mRNA-1273 x 1, No. (%)	4/80 (5)	–
BBIBP-CorV x 2 + BNT162b2 mRNA x1, No. (%)	11/80 (14)	7/101 (7)
BBIBP-CorV x 2 + mRNA-1273 x 1, No. (%)	2/80 (2.5)	–
Sputnik V x 2 + BNT162b2 mRNA x1, No. (%)	–	5/101 (5)
ChAdOx1 nCoV-19 x 2+ BNT162b2 mRNA x1, No. (%)	–	3/101 (3)
Sputnik V x 1 + mRNA-1273 x 2, No. (%)	–	12/101 (12)
Number of exposures		
Two vaccine doses (2X), No. (%)	22/80 (27.5)	–
Two vaccine doses plus one infection/exposure (3X), No. (%)	22/80 (27.5)	–
Three vaccine doses (3X), No. (%)	12/80 (15)	46/101 (45.5)
Two vaccine doses plus two exposures (4X), No. (%)	2/80 (2.5)	–
Three vaccine doses plus one infection/exposure (4X), No. (%)	22/80 (27.5)	55/101 (54.5)
Time between most recent antigen exposure and sample collection, median (range), days	77 (21–270)	50 (21-234)
Time between most recent antigen exposure and sample collection, median (range), days	58 (21-270)	

BBIBP-CorV (Sinopharm); BNT162b2 mRNA (Pfizer–BioNTech); mRNA-1273 (Moderna).