

**Title:** Vector competence for Oropouche virus: a systematic review of pre-2024 experiments

**Authors:** Emily N Gallichotte<sup>1\*</sup>, Gregory D Ebel<sup>1</sup>, Colin J Carlson<sup>2\*</sup>

**Affiliations:**

<sup>1</sup> Department of Microbiology, Immunology and Pathology, Colorado State University, Fort Collins, CO 80523, USA

<sup>2</sup> Department of Epidemiology of Microbial Diseases, Yale School of Public Health, New Haven, CT 06510, USA

\* Correspondence should be directed to [emily.gallichotte@colostate.edu](mailto:emily.gallichotte@colostate.edu) or [colin.carlson@yale.edu](mailto:colin.carlson@yale.edu).

## Abstract

The 2023-24 epidemic of Oropouche fever in the Americas and the associated ongoing outbreak in Cuba suggests a potential state shift in the epidemiology of the disease, raising questions about which vectors are driving transmission. In this study, we conduct a systematic review of vector competence experiments with Oropouche virus (OROV, *Orthobunyavirus*) that were published prior to the 2023-24 epidemic season. Only seven studies were published by September 2024, highlighting the chronic neglect that Oropouche virus (like many other orthobunyaviruses) has been subjected to since its discovery in 1954. Two species of midge (*Culicoides paraensis* and *C. sonorensis*) consistently demonstrate a high competence to transmit OROV, while mosquitoes (including both *Aedes* and *Culex* spp.) exhibited an infection rate consistently below ~20%, and showed limited OROV transmission. Further research is needed to establish which vectors are involved in the ongoing outbreak in Cuba, and whether local vectors create any risk of establishment in regions with frequent travel to Latin America and the Caribbean.

## Author Summary

Oropouche virus has recently become a major threat to public health in Central and South America. While OROV is mainly transmitted by biting midges, some public health agencies and scientific sources note that some mosquito species may also transmit the virus. We conducted a systematic review of literature prior to the current epidemic, and identified seven studies that experimentally tested the ability of vectors to become infected with, and transmit OROV (i.e., that assessed their vector competence). These studies have consistently found that biting midges become infected at higher rates than mosquitoes, which rarely transmit the virus. It is unclear which vectors are responsible for transmitting OROV in the current outbreak. Existing published data support the observation that biting midges are likely to be significant vectors compared to mosquitoes, which are comparatively incompetent. However, increased vector surveillance and pathogen testing, and additional vector competence experiments using current OROV strains, are urgently needed.

## Introduction

Oropouche virus (OROV) is a Simbu serogroup orthobunyavirus endemic to South America and parts of the Caribbean. Historically, OROV has been neglected compared to other arboviral diseases, such as yellow fever, dengue, chikungunya, or Zika. However, an ongoing epidemic of Oropouche fever has brought new attention to the virus. In the first seven months of 2024, there were more than 8,000 cases across the Americas, mostly concentrated in Brazil; at the time of writing, a second epidemic wave is ongoing in Cuba, with over 11,000 suspected cases. The scale of this outbreak may be connected to evolutionary changes in the pathogen: recent genetic analyses revealed that the OROV lineage currently circulating in Brazil is a novel reassortant containing M segment from viruses detected in the eastern Amazon from 2009-2018, and L and S segments from viruses detected in Peru from 2008-2021. *In vitro* characterization of the novel reassortant virus recently demonstrated that it replicates to higher levels than the prototypic strain in mammalian cells, and is less sensitive to neutralization by human OROV immune sera collected prior to 2016 [1]. This reassortment event may also explain changes in the clinical presentation of Oropouche fever. Prior to 2024, symptoms were generally considered similar to other febrile illnesses, and no deaths had been reported [2]; in the 2024 outbreak, however, two deaths caused by OROV were reported in healthy young women, and there have been multiple reports of miscarriage, fetal deaths, and microcephaly associated with OROV infection [3].

Surprisingly little is known about the vectors involved in the current epidemic. Current evidence suggests that, unlike many other arthropod-borne orthobunyaviruses, OROV is primarily transmitted by culicoid midges (*Ceratopogonidae*: *Culicoides*) rather than mosquitoes or ticks [4]. *C. paraensis* are considered the principal vector of epidemic urban OROV transmission due to their high abundance in locations of previous OROV outbreaks, and isolation from *C. paraensis* multiple times during a 1975 outbreak in Brazil [5–7]. When OROV was first detected in 1955 in Trinidad & Tobago, over 700 mosquitoes (*Aedes*, *Wyeomyias*, *Psorophora*, *Mansonia*, *Culex*, *Anopheles*, *Haemogogous*, and other unidentified sabethines) were collected from the same area as the infected patient, but OROV was only detected in *Coquillettidia venezuelensis* (referred to as *Mansonia venezuelensis* in the paper) [8]. In 1961, OROV was isolated from a pool of *Aedes serratus* in Brazil [9]. Because *Cq. venezuelensis* and *Ae. serratus* are hematophagous mosquitoes that inhabit sylvatic environments, they were suggested as potential sylvatic vectors. *Cx. quinquefasciatus* have also been proposed as a secondary, urban, anthropophilic vector because OROV has been isolated from them multiple times [7,10]. However, in all instances of virus isolation from mosquitoes, detection rates were very low, suggesting either low OROV prevalence in humans, or poor susceptibility of the vector to infection. Overall, these suggest that many blood-feeding arthropods are exposed to the virus in nature, but mosquitoes may not be meaningfully involved in transmission. The scale of the current epidemic, particularly in Cuba, has prompted speculation about a potential shift to mosquito vectors, but so far no observational data supports this idea.

To define the extent and outcomes of previously published vector competence experiments using OROV, we developed a standardized dataset of all pre-2024 records of vector competence experiments that studied OROV, following a previously-developed data standard [11]. Despite the large number of outbreaks over the last 50 years, there is significant uncertainty regarding which vectors are responsible for OROV transmission, including in the current epidemic. Because the virus is spreading to locations where it has not previously been detected (e.g., Cuba [12]), and could continue to spread to new locations (e.g., the United States), it is critical to understand transmission risk posed by a wide range of potential vectors. Unfortunately, we found that before 2024 there was limited experimental research testing the ability of different vectors to become infected with, and transmit OROV. The small number of studies that have been conducted demonstrate that *Culex* spp. can infrequently be infected with OROV, but transmit virus at low rates compared to *Culicoides* midges. It thus seems unlikely that mosquitoes have been a major vector of OROV thus far.

## Materials and Methods

**Systematic search.** A systematic search was conducted on September 17, 2024 on PubMed using the search term “Oropouche virus”. No filters or limits were used. The search returned 168 publications, which were imported into Rayyan for manual screening [13]. Exclusion criteria included: reviews, news articles, commentaries, surveillance studies, experimental studies in systems other than vectors (e.g., cells, mice, etc), etc.). The following inclusion criteria were required: full text available in English; experimental OROV infections in vectors (mosquitoes or midges), and raw data must be available (e.g., number of individual vectors positive and total tested, not derived rates). A single reviewer screened all publications. Two additional publications were identified from citation searching, one of which was not captured in the original search. There were seven publications that met all criteria and were used in our analyses.

**Data collection.** Information was extracted from publications into a standardized template, following a previously-published minimum data and metadata standard [11]. Data sections include information on vectors, viruses, experimental conditions, infection conditions, and infection outcomes (specifically sample type tested, assay used to detect infection, number tested, and number positive). Information not provided in publications were left blank, and no assumptions about any missing or unclear information. Experiments evaluating the ability of OROV to be mechanically transmitted by vectors were not included. Authors of Mendonça *et al.* [14] were contacted for the vector origin year which was provided. Risk of bias assessment, effect measures, reporting bias assessment and certainty assessment were not determined.

**Data analysis and statistics.** All data were analyzed in GraphPad Prism Version 10.2.3.

**Data availability.** All data are publicly available on Figshare [15].

## Results

**Systematic search and selection process.** A total of 168 publications were retrieved from PubMed (see Methods for search criteria) and screened for eligibility. Abstracts were reviewed, and only five met all eligibility criteria [14,16–18]. Two additional publications were identified from citation searching, which met all eligibility criteria, and were included in the final sample (**Figure 1**) [8,19]. Experimental data were extracted from published studies into a previously described template allowing for comparisons and analyses [11].

**Summary of included studies.** The seven eligible studies were published in 1961, 1981, 1982, 1987, 1991, and 2021 (n = 2) (**Figure 2a**). Shortly after the first OROV outbreak in Trinidad in 1954, the first experimental vector competence study was published. OROV subsequently caused outbreaks in many countries in Central and South America, with many in Brazil and Peru (**Figure 2a**). Minimal experimental details were available in Anderson *et al.* [8], making comparisons across studies challenging, so results from this study are discussed in Figure 6. The six remaining studies included multiple *Aedes*, *Culex*, and *Culicoides* species, with multiple studies comparing different vectors (**Figure 2b**).

**Vectors used in experimental studies.** Vectors used in studies were originally collected throughout the Americas and in Thailand, and in some studies, multiple species were collected from the same location (**Figure 3a, 3b**). Some vectors were collected from the field within a few years of study publication, however other colonies (e.g., *Cx. tarsalis* from McGregor *et al.* [16]), were colonized 60+ years prior to experimental infections and publications (**Figure 3c**).

A total of 2,408 individual vectors were tested in vector competence experiments; 28% *Aedes* spp., 55% *Culex* spp. and 16% *Culicoides* spp (Figure 4a). Vectors were exposed to OROV via feeding on a live animal, artificial bloodmeal, and intrathoracic injection (Figure 4a). Of those fed on live animals, the majority were fed on infected hamsters, with a smaller proportion fed on AG129 mice, and humans (Figure 4b). Vectors were exposed to a range of OROV quantified using multiple techniques, ranging from 5.2 to 9.9 log<sub>10</sub> SMLD<sub>50</sub>/mL (Figure 4c).

**Vector competence of mosquitoes and midges infected with OROV.** Infection rates were calculated for all studies, with time points, virus quantification method, vector sample, and other variables combined. Of vectors infected via a live animal or artificial bloodmeal, only *Culicoides* (both *C. paraensis* and *C. sonorensis*) had infection rates >20% (Figure 5a). This was dose-dependent, as no *C. paraensis* exposed to OROV ≤5.2 log<sub>10</sub> SMLD<sub>50</sub>/mL were infected. Conversely, while *Aedes* and *Culex* spp. injected with OROV were efficiently infected, those exposed via live animal and artificial bloodmeal had infection rates <20% regardless of virus titer (Figure 5a). Despite a range of infection rates, when comparing individual experiments, *Culicoides* spp. had higher average infection rates than all mosquito species tested (Figure 5b). Similar trends are seen with dissemination rates, *C. sonorensis* have higher rates of dissemination compared to both *Aedes* and *Culex* spp. (Figure 5c).

Across studies, transmission was evaluated two ways: the detection of OROV in expectorated vector saliva, and detection of infection (virus or seroconversion) in naïve animals fed on by infected vectors (Figure 5d). *C. sonorensis* had significantly higher rates of OROV in saliva compared to *Cx. tarsalis* and *Cx. quinquefasciatus* (Figure 5d). Similarly, *C. paraensis* had higher rates of OROV transmission to naïve animals compared to *Ae. albopictus* and *Cx. quinquefasciatus*, however the confidence intervals are much larger due to the lower number of animals tested as compared to vector saliva (Figure 5d).

In the first study evaluating OROV vector competence [8], substantial experimental details were missing, making it challenging to compare results across studies and are instead presented here. OROV infection and transmission was evaluated in parenterally inoculated *Ae. scapularis*, *Ae. serratus*, *Cx. quinquefasciatus* (referred to as *Cx. fatigans* in the paper), and *Psorophora ferox* (Figure 6). Despite small group sizes (n = 7, 4, 4, 5, respectively), two weeks after inoculation, all species became infected, with lowest infection rates in *P. ferox* (Figure 6a). To evaluate transmission, mosquitoes were fed on 2-day old mice, which were immediately blended and intracranially injected into mice. While the number of recipient animals exposed and tested are unknown, no transmission occurred (Figure 6b).

## Discussion

Our systematic review revealed that, in the six decades between the discovery of Oropouche virus and the 2023-24 epidemic in the Americas, only seven vector competence studies were published. Even accounting for the possibility that more experiments were conducted but never published, our findings reveal that OROV has been subject to chronic neglect – a pattern that is true more broadly of most orthobunyaviruses, particularly compared to well-studied flaviviruses (e.g., yellow fever virus and dengue virus) and alphaviruses (e.g., chikungunya virus and Mayaro virus) [20]. Nevertheless, the seven studies we identified – and the nine arthropod species they examined – provide a useful starting point for establishing the vectors involved in sylvatic and urban OROV transmission, as well as the basic biology of OROV-vector interactions.

Despite variation in study design, methods, and materials (e.g., geographic origin of vectors or time since collection from the field), results consistently showed that *Aedes* and *Culex* mosquitoes rarely become infected

with OROV following an infectious bloodmeal, and have a limited ability to transmit the virus. Intrathoracic injections, which bypass the initial midgut infection and escape barriers and deliver virus directly into the hemocoel, revealed that OROV can replicate in mosquitoes, suggesting that the block of infection is not virus and host molecular incompatibility, but at the initial infection of midgut cells. (While studies based on intrathoracic injection are useful to understand fundamental questions of virus-vector interactions, we also caution that they are not representative of natural infection and transmission risk.)

Midges (*Culicoides* spp.) are the primary vectors of many viruses of medical and veterinary importance, including bluetongue virus (BTV), Schmallenberg virus, and OROV-related viruses within the Simbu serogroup of the genus *Orthobunyavirus* [21]. However, they remain dramatically under-studied and under-surveyed in comparison to mosquitoes and ticks. Experimental results support the observation that *Culicoides* midges are highly competent for OROV vectors. However, there are few studies experimentally evaluating midge vector competence for any virus due to challenges surrounding lab colonization and experimental manipulation of these arthropods [22]. Epidemiological evidence implicates *C. paraensis* as the primary urban vector [7], but detection and isolation rates in *C. paraensis* pools have been low (4 positive of 31,555 tested, ~0.01% positivity) [6,7]. Further research is needed to confirm which *Culicoides* species are actively involved in OROV transmission or could someday pose a risk.

Based on current evidence, mosquitoes are unlikely to be a primary vector of OROV in natural settings. Despite extensive efforts, OROV has rarely been isolated from mosquito vectors of other arboviruses, even during outbreaks when it has been estimated >15% of the population is infected [7]. Of >28,000 *Cx. quinquefasciatus* mosquitoes tested during outbreaks over 14 years, only three have tested positive (~0.01%), including a mosquito engorged with blood caught in a hospital ward at the bedside of a viremic patient 1975 in Pará, Brazil [6,7]. Low infection and transmission rates seen in experimental vector competence studies, and incredibly low rates of virus isolation during outbreaks, suggest that *Cx. quinquefasciatus* are likely a comparatively poor vector for OROV. However, vector competence is only one component of vectorial capacity, which also incorporates factors such as vector density and bloodfeeding behavior [23]; therefore, a vector with low competence may still be important at maintaining and transmitting the virus in nature.

It remains unknown whether shifts in vector-virus interactions have contributed to the current epidemic. It is possible that genetic changes to the virus have improved vector competence, similar to what has been seen with chikungunya virus and *Ae. albopictus*, or West Nile virus and *Culex* spp. mosquitoes [28–30]. New experiments should focus on establishing whether the novel reassortant is more transmissible by *Culicoides* midges, or can be newly maintained by common urban vectors such as *Ae. aegypti* or *Cx. quinquefasciatus*. However, other factors could also contribute to the unusual intensity of recent and ongoing outbreaks, including climate change, urbanization, deforestation, and human mobility [24–27]. Field studies on the epidemiology and drivers of these outbreaks will be an important complement to experimental work, particularly in order to establish whether Oropouche virus will continue to emerge as a threat to public health in the coming decades.

## **Acknowledgements**

We thank Silvana Mendonça and colleagues for providing additional data, and thank Doug Brackney and Nate Grubaugh for helpful discussion. ENG, GDE and CJC were supported by funding to Verena ([viralemergence.org](http://viralemergence.org)) from the U.S. National Science Foundation, including NSF DBI 2021909 and NSF DBI 2213854.

## **Author Contributions**

ENG - conceptualization, investigation, formal analysis, writing - original draft, writing - review & editing ; GDE - writing - review & editing; CJC - conceptualization, funding acquisition, writing - original draft, writing - review & editing.

## **Competing Interests**

Authors declare no competing interests.

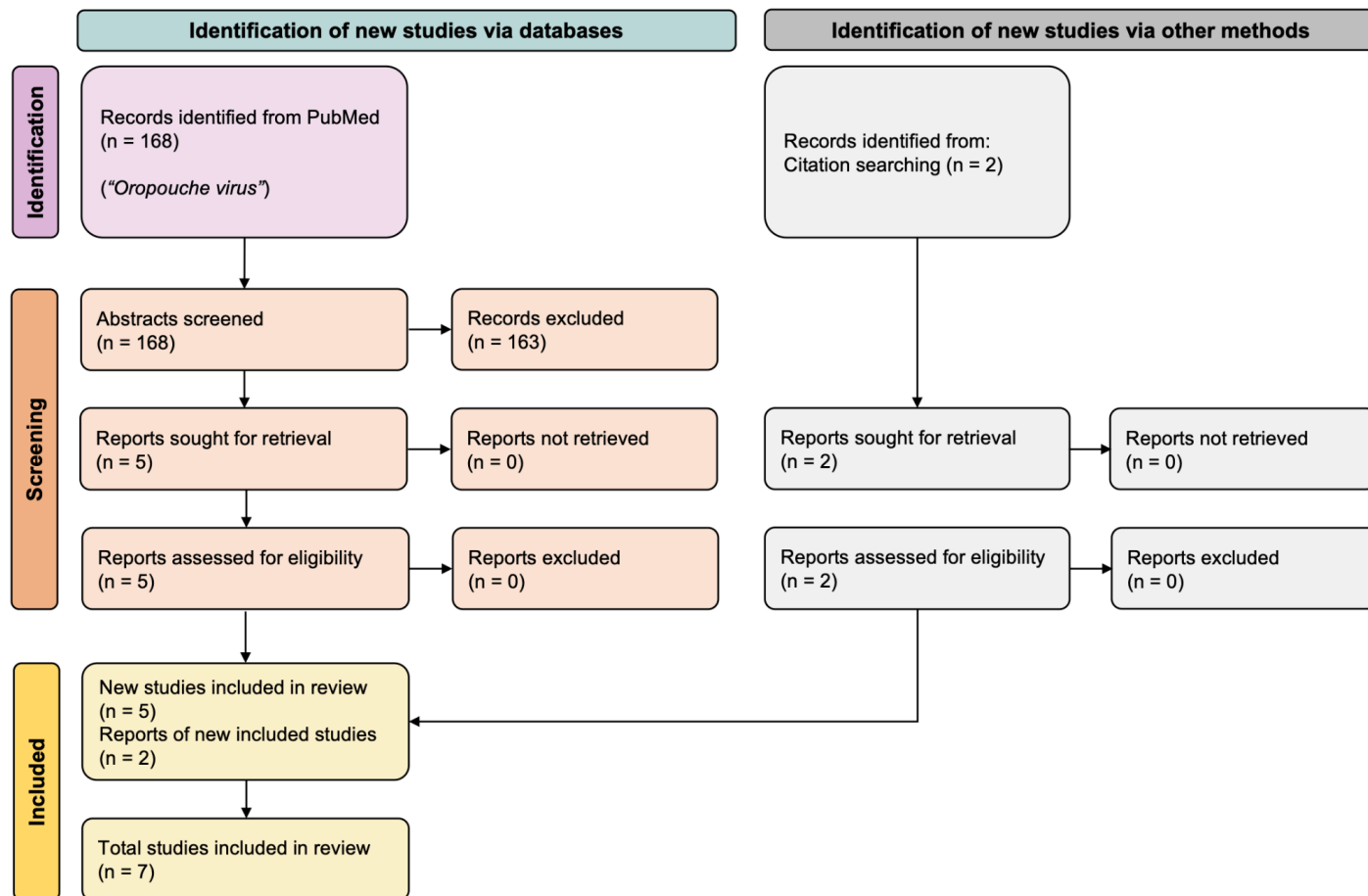
## **Supplementary Files.**

Supplemental Table 1. Oropouche virus experimental metadata.

Supplemental Table 2. PRISMA checklist.

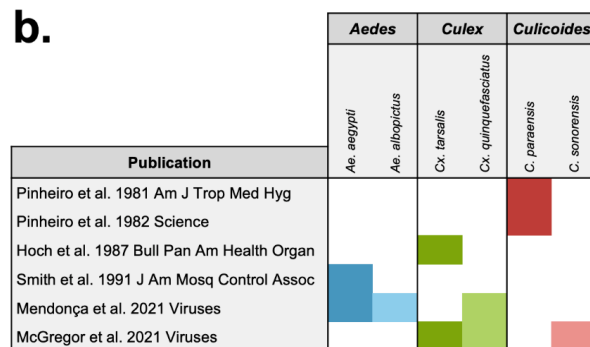
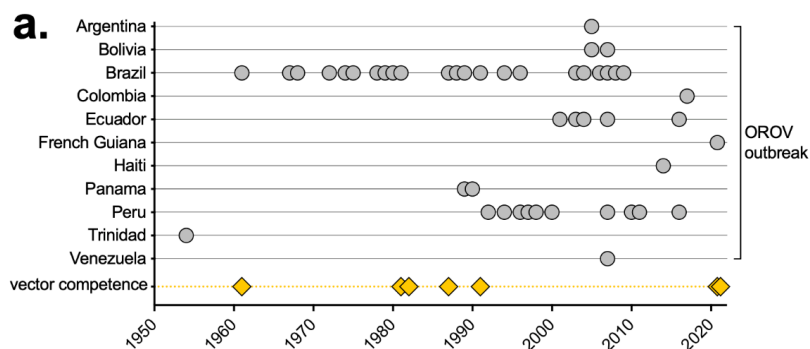
## Figures

Figure 1. PRISMA flow diagram of search according to PRISMA 2020 strategy [33].

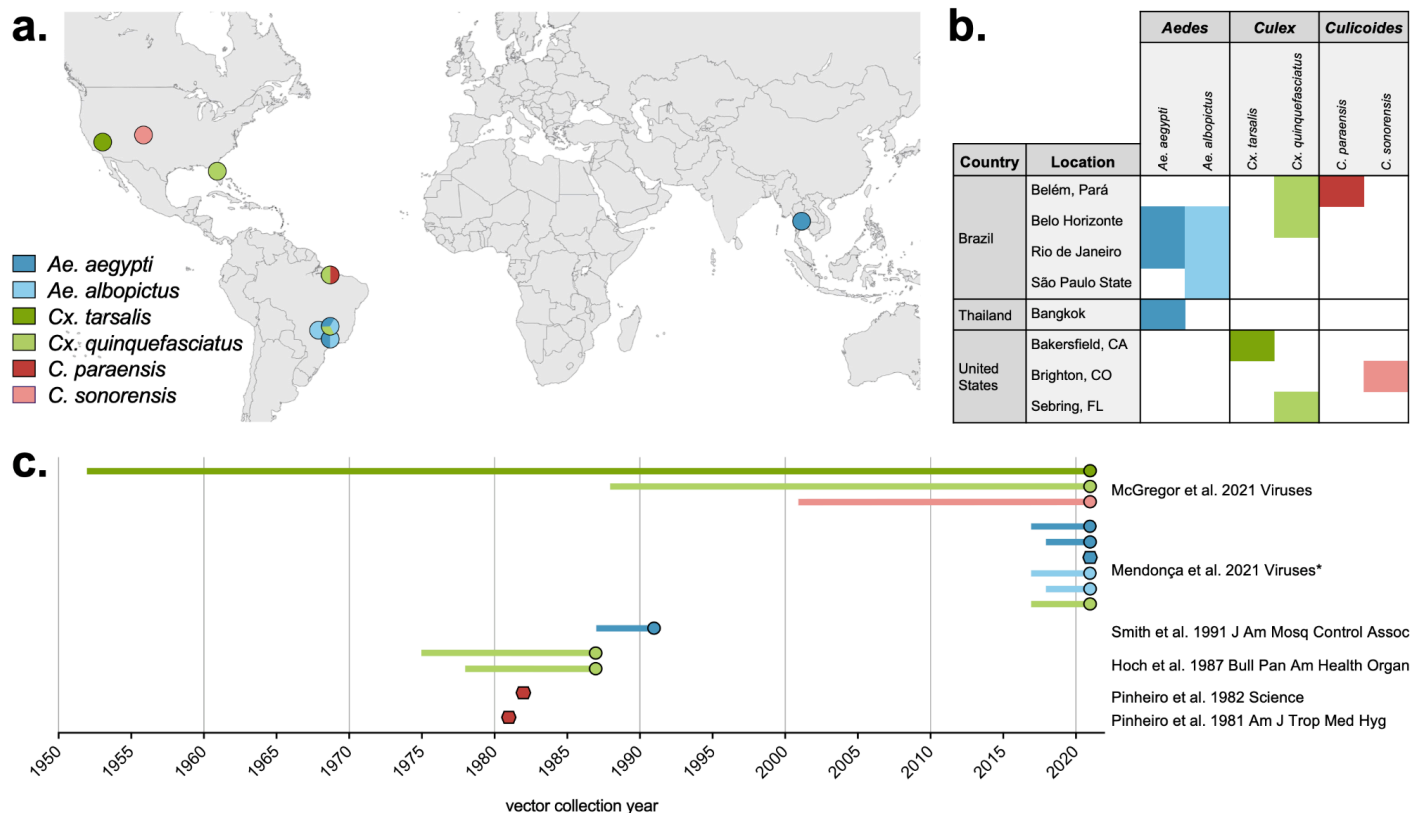




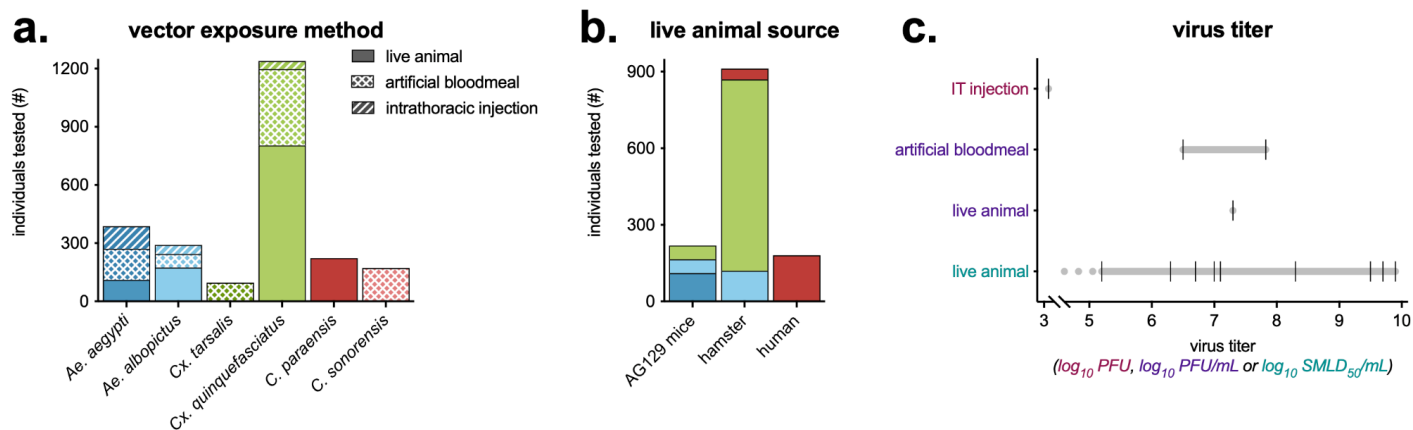
**Figure 2. OROV outbreaks and experimental vector competence publications.** a) Timeline of OROV outbreaks in countries in the Caribbean and Central and South America, modified from Tilston-Lunel, 2024 [34]. Experimental vector competence publications from PRISMA review are shown by publication date. b) Vector species (*Aedes*, *Culex* and *Culicoides* spp.) tested for each of the six papers identified through the PRISMA search (Figure 1).



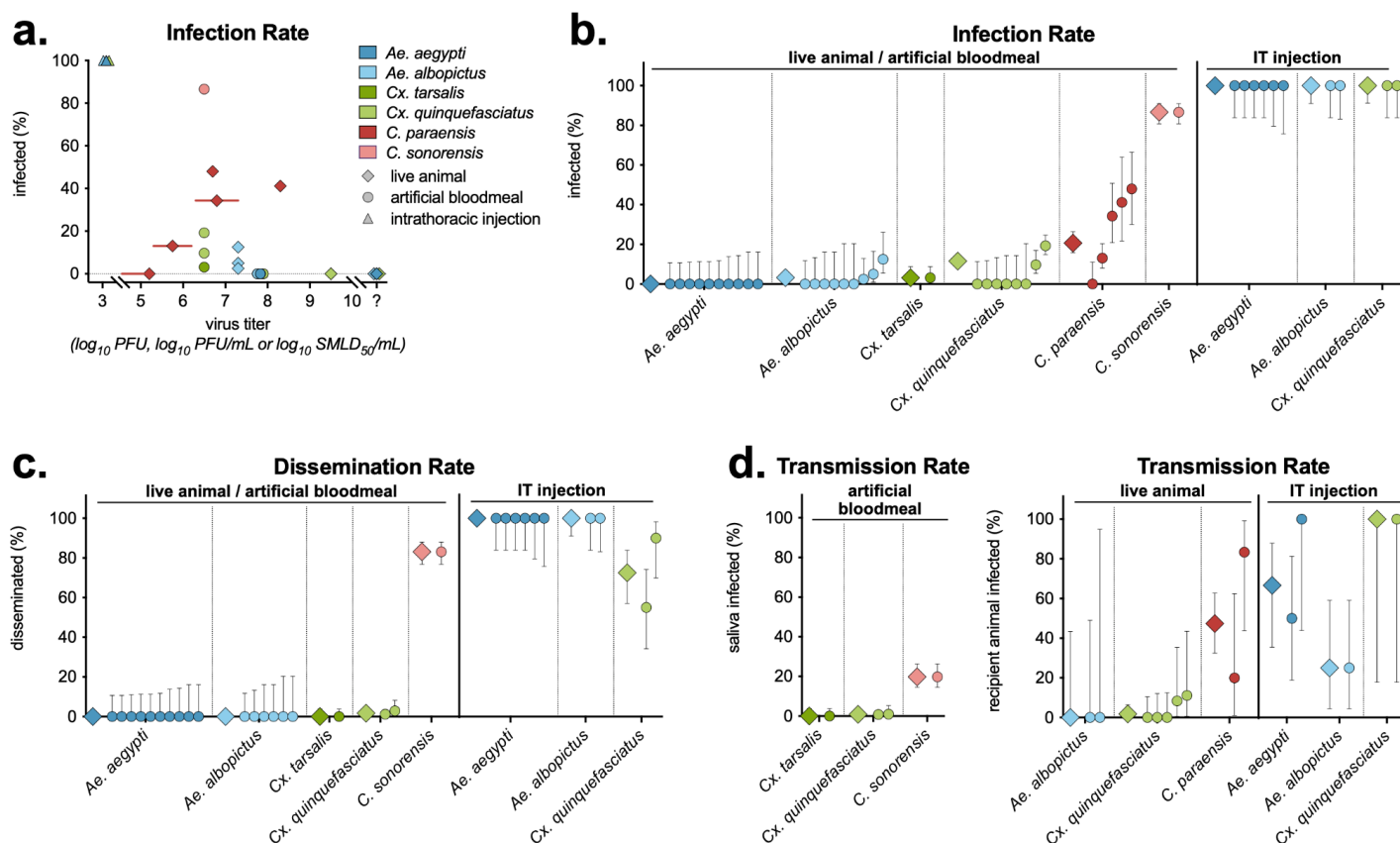
**Figure 3. Experimental vector origin location and collection year.** a) Map and b) table of the origin of each vector used in experimental vector competence publications. c) The vector collection year of each colony/strain of species relative to the corresponding publication year. Vectors without a collection year stated in the publication are shown as hexagons. \*Collection year of vectors used in Mendonça *et al.* [14] were provided directly by the authors.



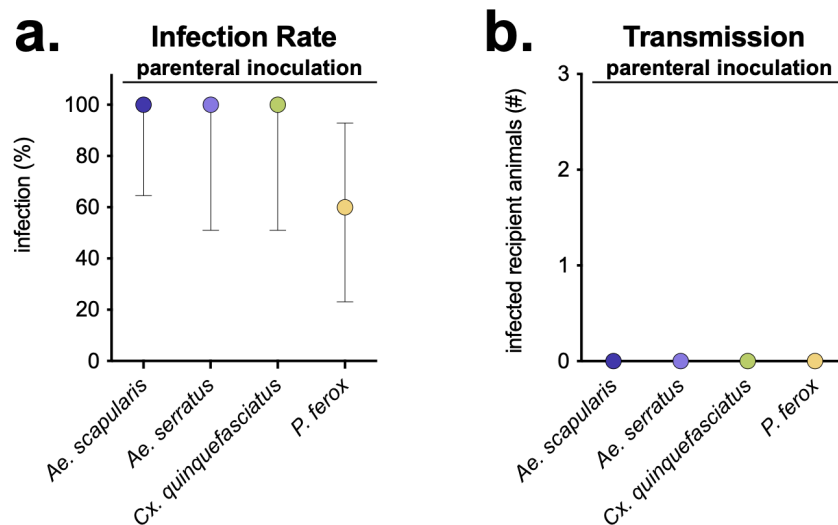
**Figure 4. Vectors and OROV used in vector competence experiments. a)** For each vector species, the total number of individuals tested, and their virus exposure method (e.g., live animal, artificial bloodmeal, intrathoracic injection). **b)** Of vectors exposed via a live animal, the number of individuals tested by the species of animal they were fed on. **c)** OROV titer by the vector exposure method and virus quantification assay ( $\log_{10}$  transformed plaque forming units (PFU), plaque forming units per milliliter (PFU/mL), or suckling mouse lethal dose 50 per milliliter (SMLD<sub>50</sub>/mL)). OROV titers used in experiments show a black hash mark, with a gray line connecting the range. In one experiment of vectors fed on a live animal, virus was quantified as 5.2  $\log_{10}$  SMLD<sub>50</sub>/mL or lower (denoted as a dotted gray line).



**Figure 5. OROV infection, dissemination and transmission rates in mosquitoes and midges.** **a)** Infection rates (number infected vectors of the total number tested) for each experiment, by vector spp., exposure method and virus titer (all virus quantification assays on the same axis). Experiments where virus concentration was unknown are plotted at the far right of the x-axis (“?”). In three experiments feeding *C. parvaensis* on live animals, the virus titer was provided as a range (e.g., 5.3-6.3  $\log_{10}$  SMLD<sub>50</sub>/mL), shown with a red line. **b)** Infection, **c)** dissemination and **d)** transmission results for all experiments by vector spp. and exposure method. Each experiment is shown as a circle, with averages for the species shown as a diamond. Infection rates (**a**, **b**) were measured via vector body or abdomen (artificial bloodmeal and live animal exposure), or head and thorax (intrathoracic injection). **c)** Dissemination rates were measured via legs or head and thorax (artificial bloodmeal and live animal), or abdomen (intrathoracic injection). **d)** Left panel - transmission rates were measured via the number of positive vector saliva samples out of total saliva samples measured. Right panel - transmission rates were measured via the number of virus positive recipient animals fed on by vectors, out of the total number of recipient animals tested. In all graphs, symbols show mean, with error bars showing 95% Wilson/Brown confidence intervals.



**Figure 6. No OROV transmission in parenterally inoculated mosquitoes.** **a)** Infection rates (number infected vectors of the total number tested) for each mosquito species. Mosquito samples (e.g., body, thorax) tested to evaluate infection are unknown. Symbols show mean, with error bars showing 95% Wilson/Brown confidence intervals. **b)** Number of recipient animals testing positive for OROV after i.c. injection of mouse homogenate immediately after being fed on by OROV-inoculated mosquitoes.



## References

1. Scachetti GC, Forato J, Claro IM, Hua X, Salgado BB, Vieira A, et al. Reemergence of Oropouche virus between 2023 and 2024 in Brazil. *medRxiv*. 2024. doi:10.1101/2024.07.27.24310296
2. Liu BM. Epidemiological and clinical overview of the 2024 Oropouche virus disease outbreaks, an emerging/re-emerging neurotropic arboviral disease and global public health threat. *J Med Virol*. 2024;96:e29897.
3. The Lancet Infectious Diseases. Oropouche fever, the mysterious threat. *Lancet Infect Dis*. 2024;24: 935.
4. Elliott RM. Orthobunyaviruses: recent genetic and structural insights. *Nat Rev Microbiol*. 2014;12: 673–685.
5. Roberts DR, Hoch AL, Dixon KE, Llewellyn CH. Oropouche virus. III. Entomological observations from three epidemics in Pará, Brazil, 1975. *Am J Trop Med Hyg*. 1981;30: 165–171.
6. Pinheiro FP, Travassos da Rosa AP, Travassos da Rosa JF, Bensabath G. An outbreak of Oropouche virus disease in the vicinity of santarem, para, barzil. *Tropenmed Parasitol*. 1976;27: 213–223.
7. Pinheiro FP, Travassos da Rosa AP, Travassos da Rosa JF, Ishak R, Freitas RB, Gomes ML, et al. Oropouche virus. I. A review of clinical, epidemiological, and ecological findings. *Am J Trop Med Hyg*. 1981;30: 149–160.
8. Anderson CR, Spence L, Downs WG, Aitken TH. Oropouche virus: a new human disease agent from Trinidad, West Indies. *Am J Trop Med Hyg*. 1961;10: 574–578.
9. Pinheiro F de P, Pinheiro M, Bensabath G, Causey OR, Shope RE. Epidemia de vírus Oropouche em Belém. *Revista de Serviço Especial de Saude Publica*. 1962;12: 15–23.
10. Cardoso BF, Serra OP, Heinen LB da S, Zuchi N, Souza VC de, Naveca FG, et al. Detection of Oropouche virus segment S in patients and in *Culex quinquefasciatus* in the state of Mato Grosso, Brazil. *Mem Inst Oswaldo Cruz*. 2015;110: 745–754.
11. Wu VY, Chen B, Christofferson R, Ebel G, Fagre AC, Gallichotte EN, et al. A minimum data standard for vector competence experiments. *Sci Data*. 2022;9: 634.
12. Escobedo AA, Rodríguez-Morales AJ. Oropouche fever rears its head in Cuba: What lies beneath the surface? *New Microbes New Infect*. 2024;62: 101460.
13. Ouzzani M, Hammady H, Fedorowicz Z, Elmagarmid A. Rayyan-a web and mobile app for systematic reviews. *Syst Rev*. 2016;5: 210.
14. de Mendonça SF, Rocha MN, Ferreira FV, Leite THJF, Amadou SCG, Sucupira PHF, et al. Evaluation of *Aedes aegypti*, *Aedes albopictus*, and *Culex quinquefasciatus* Mosquitoes Competence to Oropouche virus Infection. *Viruses*. 2021;13: 755.
15. Gallichotte E, Ebel G, Carlson C. Oropouche vector competence data. *figshare*; 2024. doi:10.6084/M9.FIGSHARE.27157029.V1
16. McGregor BL, Connelly CR, Kenney JL. Infection, Dissemination, and Transmission Potential of North American *Culex quinquefasciatus*, *Culex tarsalis*, and *Culicoides sonorensis* for Oropouche Virus. *Viruses*. 2021;13: 226.
17. Hoch AL, Pinheiro FP, Roberts DR, Gomes ML. Laboratory transmission of Oropouche virus by *Culex Quinquefasciatus* Say. *Bull Pan Am Health Organ*. 1987;21: 55–61.

18. Pinheiro FP, Travassos da Rosa AP, Gomes ML, LeDuc JW, Hoch AL. Transmission of Oropouche virus from man to hamster by the midge *Culicoides paraensis*. *Science*. 1982;215: 1251–1253.
19. Smith GC, Francy DB. Laboratory studies of a Brazilian strain of *Aedes albopictus* as a potential vector of Mayaro and Oropouche viruses. *J Am Mosq Control Assoc*. 1991;7: 89–93.
20. Chen B, Sweeny AR, Wu VY, Christofferson RC, Ebel G, Fagre AC, et al. Exploring the mosquito-arbovirus network: A survey of vector competence experiments. *Am J Trop Med Hyg*. 2023;108: 987–994.
21. Sick F, Beer M, Kampen H, Wernike K. *Culicoides* biting midges-underestimated vectors for arboviruses of public health and veterinary importance. *Viruses*. 2019;11: 376.
22. Carpenter S, Veronesi E, Mullens B, Venter G. Vector competence of *Culicoides* for arboviruses: three major periods of research, their influence on current studies and future directions. *Rev Sci Tech*. 2015;34: 97–112.
23. Kramer LD, Ciota AT. Dissecting vectorial capacity for mosquito-borne viruses. *Curr Opin Virol*. 2015;15: 112–118.
24. Taglialegna A. Re-emergence of Oropouche virus. *Nat Rev Microbiol*. 2024. doi:10.1038/s41579-024-01118-x
25. Zhang Y, Liu X, Wu Z, Feng S, Lu K, Zhu W, et al. Oropouche virus: A neglected global arboviral threat. *Virus Res*. 2024;341: 199318.
26. Gräf T, Delatorre E, Ferreira C do N, Rossi A, Pizzato BR, Nascimento V, et al. Long-range spread and sustained transmission of Oropouche virus outside the endemic Brazilian Amazon region. *Social Science Research Network*. 2024. doi:10.2139/ssrn.4932381
27. Gibb R, Ryan SJ, Pigott D, Fernandez M del P, Muylaert RL, Albery GF, et al. The anthropogenic fingerprint on emerging infectious diseases. *bioRxiv*. 2024. doi:10.1101/2024.05.22.24307684
28. Tsetsarkin KA, Vanlandingham DL, McGee CE, Higgs S. A single mutation in chikungunya virus affects vector specificity and epidemic potential. *PLoS Pathog*. 2007;3: e201.
29. Ebel GD, Carricaburu J, Young D, Bernard KA, Kramer LD. Genetic and phenotypic variation of West Nile virus in New York, 2000-2003. *Am J Trop Med Hyg*. 2004;71: 493–500.
30. Moudy RM, Meola MA, Morin L-LL, Ebel GD, Kramer LD. A newly emergent genotype of West Nile virus is transmitted earlier and more efficiently by *Culex* mosquitoes. *Am J Trop Med Hyg*. 2007;77: 365–370.
31. Burkett-Cadena ND, Fish D, Weaver S, Vittor AY. Everglades virus: an underrecognized disease-causing subtype of Venezuelan equine encephalitis virus endemic to Florida, USA. *J Med Entomol*. 2023;60: 1149–1164.
32. Wilkinson MD, Dumontier M, Aalbersberg IJJ, Appleton G, Axton M, Baak A, et al. The FAIR Guiding Principles for scientific data management and stewardship. *Sci Data*. 2016;3: 160018.
33. Rethlefsen ML, Kirtley S, Waffenschmidt S, Ayala AP, Moher D, Page MJ, et al. PRISMA-S: An extension to the PRISMA Statement for reporting literature searches in systematic reviews. *Syst Rev*. 2021;10: 39.
34. Tilston-Lunel NL. Oropouche virus: An emerging Orthobunyavirus. *J Gen Virol*. 2024;105. doi:10.1099/jgv.0.002027