

1 **Modeling the potential impacts of outpatient antiviral treatment in reducing influenza-**
2 **associated hospitalizations in the United States.**

3 Sinead E. Morris^{*1,2}, Sarabeth M. Mathis^{*1}, Emily Reeves¹, Jessie R. Chung¹, Rebecca K. Borchering¹,
4 Nathaniel M. Lewis¹, Svetlana Masalovich¹, Shikha Garg¹, Timothy M. Uyeki¹, A. Danielle Iuliano¹, Mark
5 W. Tenforde¹, Carrie Reed¹, Matthew Biggerstaff¹

6
7 **Contributed equally*

8
9 ¹*Influenza Division, Centers for Disease Control and Prevention, Atlanta, GA, USA, 30329*

10 ²*Goldbelt Professional Services, Chesapeake, VA, USA, 23320*

11

12 **Corresponding authors:** Sinead E. Morris (run7@cdc.gov) and Sarabeth M. Mathis (nqr2@cdc.gov)

13

14 **Disclaimer:** The findings and conclusions in this report are those of the authors and do not necessarily
15 represent the views of the Centers for Disease Control and Prevention.

16

17 **Short title:** Modeling influenza antiviral treatment.

18

19 **40 word summary:** We probabilistically modeled influenza antiviral treatment among outpatients with
20 influenza virus infection in the United States. Antiviral treatment reduced influenza-associated
21 hospitalizations, with the greatest impacts among adults ≥ 65 years and persons with conditions
22 associated with higher risk of influenza complications.

23

24

25

26

27

28

29

30

31

32

33

34

35

36

37

38

39

40

41 **Abstract**

42

43 **Background** Seasonal influenza causes an estimated 100,000–710,000 hospitalizations annually in the
44 United States (U.S.). Treatment with antiviral medications, such as oseltamivir, can reduce risks of
45 hospitalization among people with influenza-associated illness. The U.S. Centers for Disease Control and
46 Prevention recommends initiating antiviral treatment as soon as possible for outpatients with suspected
47 or confirmed influenza who have severe or progressive illness or are at higher risk of influenza
48 complications.

49

50 **Methods** We developed a probabilistic model to estimate the impact of antiviral treatment in reducing
51 hospitalizations among U.S. outpatients with influenza. Parameters were informed by seasonal influenza
52 surveillance platforms and stratified by age group and whether individuals had a medical condition
53 associated with higher risk of influenza complications. We modeled different scenarios for influenza
54 antiviral effectiveness and outpatient testing and prescribing practices, then compared our results to a
55 baseline scenario in which antivirals were not used.

56

57 **Results** Across the modeled scenarios, antiviral treatment resulted in 1,215–14,184 fewer influenza-
58 associated hospitalizations on average compared to the baseline scenario (a 0.2%–2.7% reduction). The
59 greatest effects occurred among adults ≥ 65 years and individuals with conditions associated with higher
60 risk of influenza complications. Modeling 50% improvements in access to care, testing, prescribing, and
61 treatment resulted in greater potential impacts, with over 71,000 (13.3%) influenza-associated
62 hospitalizations averted on average compared to baseline.

63

64 **Conclusions** Our results support recommendations to prioritize outpatient antiviral treatment among
65 older adults and others at higher risk of influenza complications. Improving access to prompt testing and
66 treatment among outpatients with suspected influenza could reduce hospitalizations substantially.

67

68

69 **Keywords:** influenza; antivirals; oseltamivir; outpatient treatment; hospitalization

70

71

72 **Introduction**

73

74 Seasonal influenza causes substantial morbidity in the United States, with an estimated 100,000–
75 710,000 influenza-associated hospitalizations occurring each year¹. Antivirals, including neuraminidase
76 inhibitors like oseltamivir, can reduce the risk of hospitalization for those who are ill with influenza,
77 particularly when administered within 48 hours of symptom onset^{2–4}. The U.S. Centers for Disease
78 Control and Prevention (CDC) recommends starting antiviral treatment as soon as possible for any
79 outpatient with suspected or confirmed influenza who is at higher risk of influenza complications or has
80 severe or progressive illness⁵. Those considered at higher risk of influenza complications include children

81 <2 years, adults ≥65 years, pregnant people, and individuals with chronic medical conditions including
82 asthma, lung disease, and heart disease⁶.

83 Although antiviral prescribing for people with suspected or confirmed influenza is generally high
84 among hospitalized patients, it can be low in outpatient settings, even among patients at higher risk of
85 complications^{7–9}. Antiviral prescribing also depends on testing practices and individual access to care. For
86 example, patients seeking care within 48 hours of symptom onset may be more likely to receive an
87 antiviral prescription than patients seeking care after 48 hours^{10,11}. Similarly, patients with a positive
88 influenza test result may be more likely to receive a prescription than patients with a negative result, or
89 patients who are not tested^{7,10}. It is unclear how these different factors influence the impact of antivirals
90 in reducing influenza-associated hospitalizations among outpatients.

91 We developed a probabilistic model to estimate the impact of influenza antiviral treatment in
92 reducing hospitalizations among outpatients with symptomatic influenza virus infection. The model is
93 stratified by age and risk of influenza complications. We used data from seasonal influenza surveillance
94 platforms to inform parameter inputs and modeled a range of scenarios that reflected plausible
95 variations in antiviral effectiveness, and current testing and prescribing practices. We also explored how
96 the impact of influenza antivirals may change with improvements in individual access to care and clinical
97 testing and prescribing rates. Our results can be used to identify groups that may benefit most from
98 influenza antiviral treatment.

99

100 **Methods**

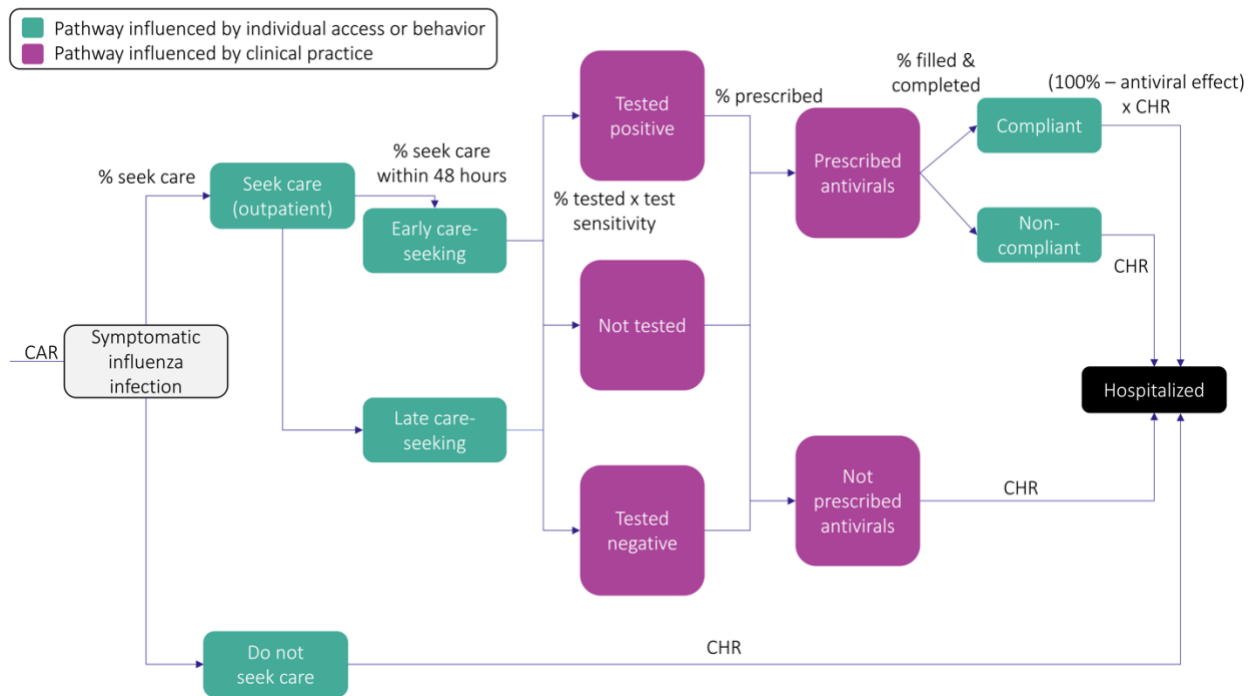
101

102 *Model framework*

103

104 We developed a probabilistic model to track care-seeking, testing, antiviral prescribing, and risks of
105 hospitalization among individuals with symptomatic influenza virus infection in the United States (Figure
106 1). The model was stratified into five age groups (0–4, 5–17, 18–49, 50–64, and ≥65 years). Within each
107 age group, individuals were further stratified by risk of hospitalization based on the presence or absence
108 of a condition associated with increased risk of influenza-associated complications⁵. Within each age
109 group and risk stratification, individuals with symptomatic infection were partitioned into those who did
110 or did not seek care in an outpatient clinical setting. For those who did not seek care, the probabilities of
111 hospitalization were p_{LR} and p_{HR} for the low- and high-risk stratifications, respectively. Those that did
112 seek care were partitioned according to whether they sought care within 48 hours of symptom onset
113 (referred to as ‘early care-seekers’) or more than 48 hours after symptom onset (‘late care-seekers’).
114 Both early and late care-seekers had a certain probability of being tested for influenza in the outpatient
115 setting and, if tested, a certain probability of testing positive that was determined by the sensitivity of
116 the diagnostic assay. Early and late care-seekers were subsequently partitioned into three groups: those
117 who tested positive for influenza, those who tested negative, and those who did not receive a test. We
118 assumed individuals in these groups were then prescribed antivirals with probabilities determined by
119 their test status, timing of care-seeking, and whether they were in a low- or high-risk stratification. Those
120 who were not prescribed antivirals were hospitalized with probabilities p_{LR} and p_{HR} for the low- and
121 high-risk stratifications, respectively. Those who were prescribed antivirals but did not fill their
122 prescription or did not complete the full treatment course were also hospitalized with probabilities p_{LR}

123 and p_{HR} . Those who did fill their prescription and complete the full course (referred to as ‘full antiviral
 124 compliance’) were hospitalized with reduced probabilities $(1 - r) p_{LR}$ and $(1 - r) p_{HR}$, where r is the
 125 effectiveness of antivirals in reducing the risk of influenza-associated hospitalization. We parameterized
 126 r based on reported effectiveness of oseltamivir, the most commonly prescribed influenza antiviral in
 127 outpatient settings¹², and allowed it to vary with the timing of care-seeking^{3,4}.
 128



129 **Figure 1. Model structure within each age group and risk stratification.** The risk of hospitalization for individuals
 130 with symptomatic influenza infection depends on whether individuals seek care, the timing of care-seeking, the
 131 occurrence and result of testing, the prescribing of antiviral treatment, and the filling and completion of any
 132 treatment course. The number of individuals progressing through each pathway may change by age and/or risk
 133 stratification (see Figure S7 for a Sankey diagram showing example flows for high-risk adults ≥ 65 years¹³). In
 134 addition, the number progressing through each testing and prescribing pathway will vary by the timing of care-
 135 seeking (i.e., early vs. late). Similarly, antiviral effectiveness varies by the timing of care-seeking and will lead to
 136 different numbers progressing through the fully compliant to hospitalized pathway. Finally, the colors indicate
 137 compartments that are influenced by parameters relating to individual behavior and/or access to medical care and
 138 treatment (care-seeking, timing of care-seeking, and antiviral compliance) or parameters relating to clinical testing
 139 and prescribing practices. We investigate the impact of changing these parameters as part of our analyses.
 140 Abbreviations: CAR = clinical attack rate; CHR = case-hospitalization ratio.
 141

142
 143 *Parameterization*

144
 145 We determined the number of individuals in each age group and risk stratification using 2022 US census
 146 data and age-specific estimates of the proportion of people at higher risk of influenza complications^{14,15}
 147 (Table S1). The latter estimates included pregnant people and those with chronic medical conditions
 148 including asthma, heart disease, and lung disease, but did not include people with a body mass index

149 (BMI) ≥ 40 or those living in long-term care facilities who are also considered to be at higher risk of
 150 influenza complications⁵. The number of individuals developing symptomatic influenza virus infection
 151 was approximated using age-specific clinical attack rates for influenza-associated illness during the 2022–
 152 2023 influenza season¹⁶. Age-specific risks of hospitalization were obtained from influenza-associated
 153 case-hospitalization ratios and adjusted for risk stratification^{17–19} (Table S1). Probabilities of seeking care,
 154 being an early or late care-seeker, and filling and completing an antiviral prescription were informed by
 155 seasonal influenza surveillance platforms and prior literature^{7,11,20–23}. Care-seeking varied by age and risk
 156 stratification, the timing of care-seeking varied by age but was constant across risk stratifications, and
 157 antiviral compliance was constant across age and risk stratifications¹¹.

158 The remaining parameters of testing, prescribing, and antiviral effectiveness are highly variable
 159 in outpatient settings. We therefore defined a range of scenarios that reflected plausible values for these
 160 parameters and were informed by prior literature and unpublished data from seasonal influenza
 161 surveillance platforms (Table 1). We defined three scenarios ('low', 'intermediate', and 'high') for the
 162 probability an outpatient with symptomatic influenza virus infection was tested for influenza^{21,22}. For
 163 each scenario, we assumed these probabilities were the same for all age groups and risk stratifications
 164 but were higher among early care-seekers compared with late care-seekers. To determine the proportion
 165 of outpatients testing positive for influenza, we multiplied the testing probability by estimates of test
 166 sensitivity for rapid molecular assays^{24,25}. We also defined two scenarios ('low' and 'high') for the
 167 probability an outpatient was prescribed influenza antiviral medications. We assumed these probabilities
 168 were constant across age groups, but varied with risk stratification, time of care-seeking, and the result
 169 of influenza testing^{7,10,21,22,26}. Finally, we explored three scenarios for antiviral effectiveness ('low',
 170 'intermediate', and 'high') that were primarily informed by studies of oseltamivir but could be applicable
 171 to other existing or novel influenza antivirals given the broad range of values considered^{2–4,27–29}. We
 172 assumed effectiveness varied with the time of care-seeking but was constant across age and risk
 173 stratifications.

174

175 **Table 1. Initial scenario inputs for antiviral effectiveness and clinical testing and antiviral prescribing practices.**

176 Influenza antiviral effectiveness and testing values are assumed equal among low- and high-risk stratifications. All
 177 input values are assumed equal across age groups but may differ among early and late care-seekers.

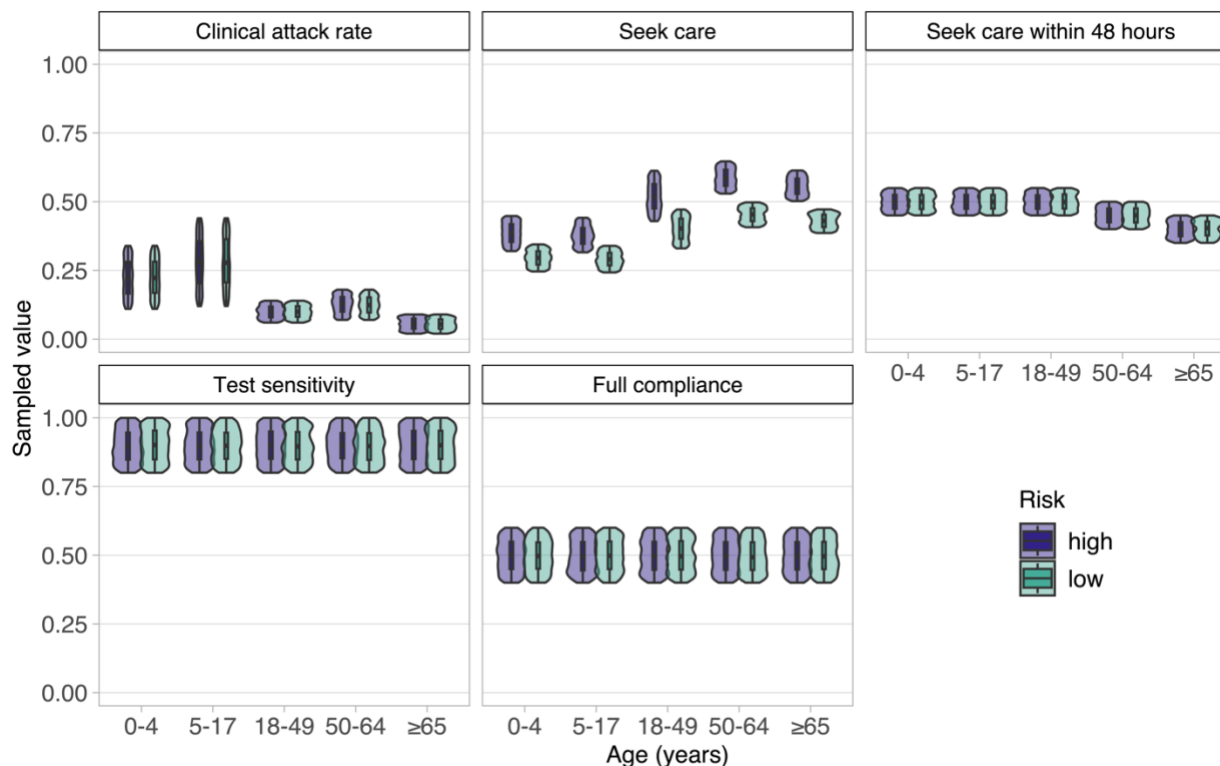
Parameter	Scenario	Influenza test status	Early care-seekers	Late care-seekers
Proportion of care-seekers with symptomatic influenza infection who are tested	Low	N/A	5%	5%
	Intermediate		25%	5%
	High		50%	10%
Proportion prescribed antivirals (High-risk ¹ / low-risk)	Low	Positive test	25% / 25%	10% / 10%
		No test	10% / 10%	5% / 5%
		Negative test	5% / 5%	0% / 0%
	High	Positive test	50% / 25%	20% / 10%
		No test	20% / 10%	10% / 5%
		Negative test	10% / 5%	5% / 0%
Reduction in risk of influenza-associated	Low	N/A	20%	0%
	Intermediate		40%	20%
	High		70%	35%

hospitalization following antiviral treatment				
-----------------------------------------------	--	--	--	--

178 ¹High-risk stratifications reflect people at higher risk of influenza complications, including pregnant people and
 179 those with chronic medical conditions such as asthma, heart disease, and lung disease^{14,15}.

180
 181 *Model simulation*

182
 183 Taking all combinations of possible values for testing, prescribing, and antiviral effectiveness resulted in
 184 18 (3 x 2 x 3) initial scenarios (Table 1). All remaining model inputs were assumed to follow independent
 185 Uniform probability distributions, except population size and hospitalization risk which were defined by
 186 age and risk-stratified point estimates (Table S1). For each scenario, we generated 1,000 independent
 187 samples for the parameters with Uniform probability distributions (Figure 2). We then simulated the
 188 model for each of the 18,000 resulting combinations and calculated the number of influenza-associated
 189 hospitalizations that occurred among all symptomatic individuals. We also compared the estimated
 190 number of hospitalizations to a corresponding baseline scenario without antiviral medications. Results
 191 are presented as the number, or percent, of all hospitalizations averted relative to this baseline scenario.
 192 Finally, we tracked the number of antiviral courses prescribed in each simulation and calculated the
 193 number of prescriptions needed to avert one hospitalization as the total number of prescriptions divided
 194 by the total number of hospitalizations averted.



196
 197 **Figure 2. Simulated parameter inputs.** Input parameter distributions were generated by taking 1,000 samples from
 198 their corresponding probability distributions. Risk stratifications refer to groups with high or low risk of influenza-

199 associated hospitalization; full compliance refers to individuals who filled and completed a prescribed course of
200 antiviral treatment.

201

202 *Alternative scenarios*

203

204 In addition to the scenarios defined above, we considered alternative scenarios for improved uptake of
205 influenza antivirals through increasing upstream levels of care-seeking, early care-seeking, testing,
206 prescribing for those with a positive test, and the filling and completion of antiviral prescriptions (Figure
207 1). For each parameter and age group or risk stratification, we increased the initial scenario or sampled
208 distributions by 50% (Figure S1, Table S2), and investigated the impact of increasing one parameter at a
209 time or increasing multiple parameters simultaneously. For all alternative scenarios, we used the most
210 optimistic initial levels of antiviral effectiveness, testing, and prescribing as the starting point (i.e., the
211 initial scenario with the highest levels of effectiveness, testing, and prescribing).

212

213 All analyses were performed in R 4.0.3 using the `data.table` and `tidyverse` packages^{30,31,32}.

214

215 **Results**

216

217 *Initial scenarios*

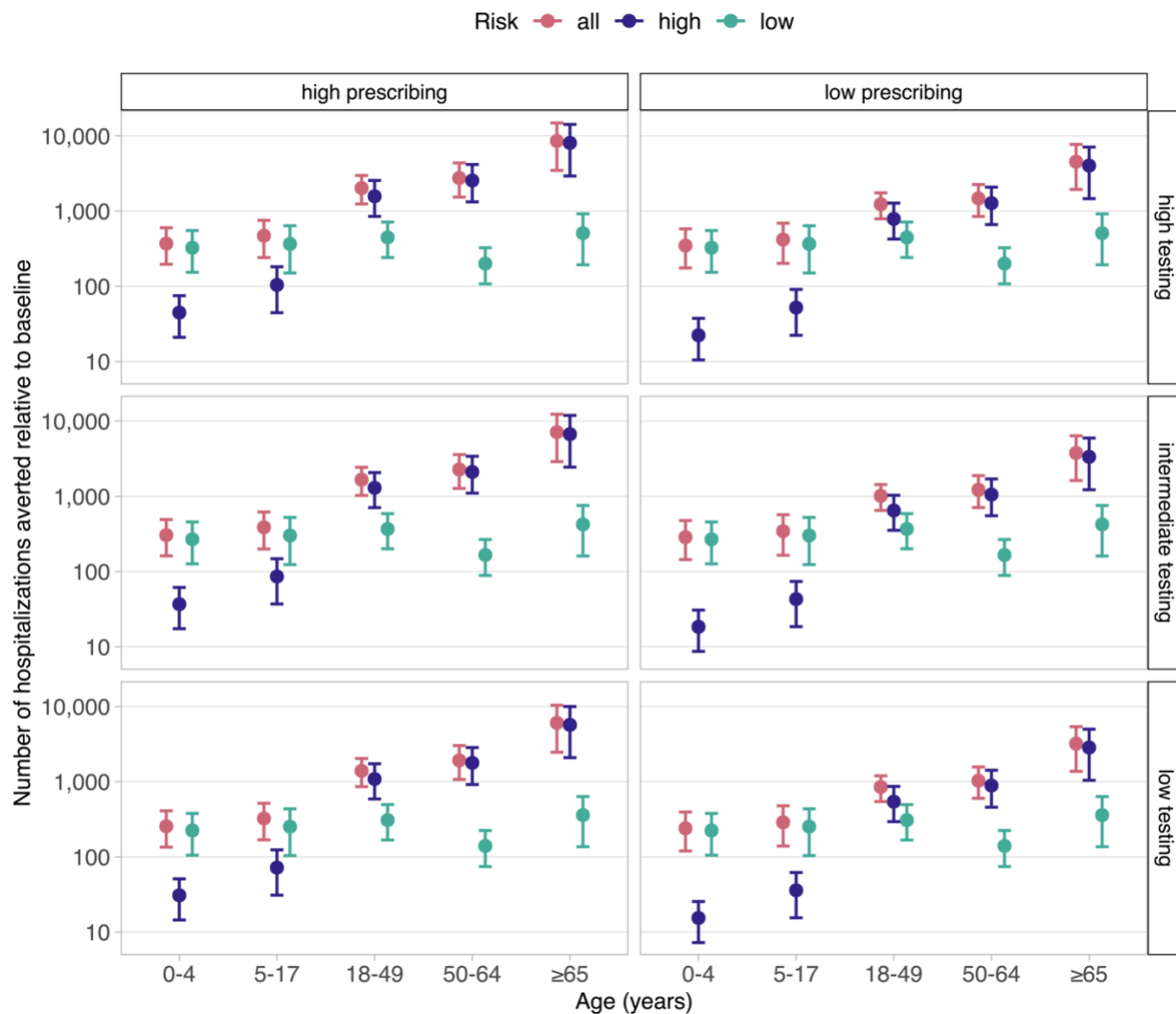
218

219 We estimated there would be an average of 531,920 influenza-associated hospitalizations (95th
220 percentile: 360,353–699,923) in the baseline scenario without influenza antivirals. The use of antivirals
221 averted an average of 1,215 (802–1,693) hospitalizations in the least optimistic scenario with low testing,
222 low prescribing, and low antiviral effectiveness, and 14,184 (8,700–20,224) hospitalizations in the most
223 optimistic scenario with high testing, high prescribing, and high antiviral effectiveness (Figure S2A).
224 These numbers corresponded to a modest percentage reduction in total hospitalizations: 0.2% (0.2–
225 0.3%) and 2.7% (2.2–3.2%) in the least optimistic and most optimistic scenarios, respectively. The total
226 number of prescribed antiviral courses ranged from 1,370,274 (1,073,330–1,700,729) to 2,379,603
227 (1,914,821–2,879,333) and the number of prescriptions needed to avert one hospitalization ranged from
228 176 (117–261) to 1,168 (785–1,689) (Figure S2B).

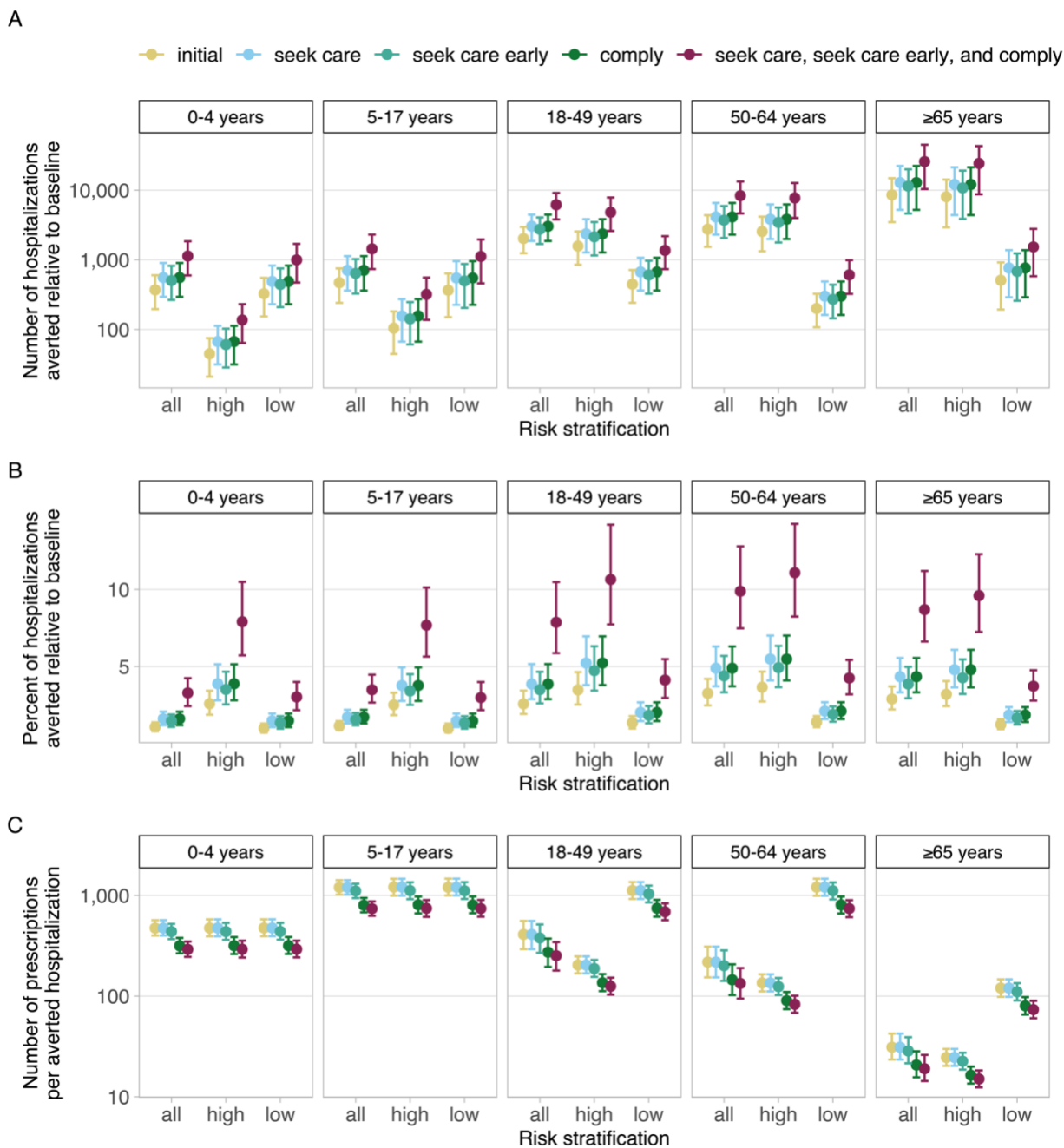
229

230 Among individuals at higher risk of influenza complications, the number of averted
231 hospitalizations increased with increasing age group, from an average of 45 (21–75) among children 0–4
232 years to 8,061 (2,927–14,216) among adults ≥ 65 years in the most optimistic scenario with high testing,
233 high prescribing, and high antiviral effectiveness (Figure 3). When testing and prescribing were instead
234 fixed at their lowest levels, the number averted ranged from 15 (7–26) among children 0–4 years to
235 2,849 (1,044–4,996) among adults ≥ 65 years. Notably, the percent of hospitalizations averted was
236 greatest for adults aged 18–49 and 50–64 years, with the latter experiencing an average reduction of
237 3.7% (2.7–4.7%) in the most optimistic scenario (Figure S3). In all scenarios, the number of prescriptions
238 needed to avert one hospitalization was highest among children 5–17 years and lowest among adults
239 ≥ 65 years (Figure S4).

239



240
 241 **Figure 3. Estimated number of influenza-associated hospitalizations averted in each initial testing and prescribing**
 242 **scenario compared with a baseline scenario without antivirals.** Antiviral effectiveness is fixed at its highest value
 243 (70% reduction in risk of hospitalization for early care-seekers and 35% for late care-seekers). Results are
 244 partitioned by age group and risk stratification, with points and error bars showing the mean and 95th percentiles,
 245 respectively.
 246



247
 248 **Figure 4. Estimated influenza-associated hospitalizations averted in select alternative scenarios compared with a**
 249 **baseline scenario without antivirals.** (A) Number of hospitalizations averted. (B) Percent of hospitalizations
 250 averted. (C) Number of prescriptions needed to avert one hospitalization. Scenarios shown are as follows: most
 251 optimistic initial scenario ('initial'); 50% increase in the fraction of people seeking care ('seek care'); 50% increase in
 252 the fraction of people seeking care within 48 hours ('seek care early'); 50% increase in the fraction of people
 253 completing an antiviral treatment course ('comply'); and 50% increase in the fraction of people seeking care,
 254 seeking care early, and completing a treatment course. Antiviral effectiveness, testing, and prescribing are fixed at
 255 their highest initial values. Results are partitioned by age group and risk stratification, with points and error bars
 256 showing the mean and 95th percentiles, respectively.

257 *Scenarios to improve antiviral impact*

258
259 Given the relatively modest estimated impact of antivirals in reducing influenza-associated
260 hospitalizations in the scenarios above, we explored whether this impact could be improved by
261 increasing upstream levels of care-seeking, timing of care-seeking, testing, prescribing, or antiviral
262 compliance. First, we considered the parameters with sampled distributions that were broadly
263 associated with individual behavior and access to care and treatment (care-seeking, timing of care-
264 seeking, and antiviral compliance) (Figure 1). Increasing either care-seeking or antiviral compliance by
265 50% resulted in equal improvements in averted hospitalizations compared to the most optimistic initial
266 scenario. While increasing early care-seeking by 50% also resulted in improvements compared to the
267 most optimistic initial scenario, these were slightly less than those achieved by increasing care-seeking
268 or antiviral compliance (Figure 4). Unsurprisingly, the largest improvement was achieved by increasing all
269 three parameters simultaneously. In this case, the number of averted hospitalizations was greatest
270 among adults ≥ 65 years in the high-risk stratification, reaching up to 24,220 (8,709–42,968) (Figure 4A).
271 In contrast, the greatest percent of hospitalizations were averted among adults aged 50–64 years in the
272 high-risk stratification, reaching up to 11.1% (8.2–14.3%) (Figure 4B). The number of antiviral
273 prescriptions needed to avert one hospitalization decreased in all alternative scenarios compared to the
274 initial scenario, except when only care-seeking was improved (Figure 4C). The scenarios which resulted in
275 the greatest decrease were those with increased antiviral compliance and with all parameters increased
276 simultaneously.

277 We also considered alternative scenarios for the parameters broadly associated with clinical
278 practices, i.e., the probability of testing and prescribing (Figure 1). Increased antiviral prescribing among
279 outpatients with a positive test averted more hospitalizations than increased testing and required
280 slightly fewer prescriptions to avert one hospitalization (Figure S5). Increasing both parameters averted
281 the most hospitalizations among adults ≥ 65 years in the high-risk stratification (up to 12,909 [4,650–
282 22,834]), and the greatest percent of hospitalizations among adults 50–64 years in the high-risk
283 stratification (5.9% [4.4–7.6%]).

284 Finally, to explore even greater potential improvements in antiviral impact, we considered an
285 alternative scenario in which all five parameters were increased simultaneously. Again, the number of
286 averted hospitalizations was greatest among adults ≥ 65 years in the high-risk stratification, at 40,093
287 (14,332–71,087), whereas the greatest percentage of hospitalizations was averted among adults 50–64
288 years in the high-risk stratification, at 18.5% (13.5–24.0%) (Figure S6). Across all age and risk groups, the
289 use of antivirals averted 71,142 (43,581–102,969) hospitalizations, or 13.3% (11.1–16.2%), and the
290 overall number of prescriptions needed to avert one hospitalization was 107 (71–157).

291

292 **Discussion**

293

294 We developed a probabilistic model to estimate the impact of antivirals in reducing hospitalizations
295 among outpatients with symptomatic influenza virus infection under a range of plausible parameter
296 values. Antiviral usage reduced hospitalizations compared to a scenario without antivirals. Although the
297 percentage reduction (0.2–2.7%) was modest, the absolute reduction (1,215–14,184) could be clinically

298 significant and supports the use of antivirals to treat outpatients with suspected or confirmed influenza.
299 Among age groups and risk stratifications, the greatest impacts occurred among adults ≥ 65 years and
300 individuals with conditions associated with higher risk of influenza complications. Our results align with
301 CDC recommendations to prioritize these individuals for antiviral treatment. More broadly, our
302 framework can help identify groups for which treatment could have the greatest impact, particularly in
303 situations where antiviral resources may be limited.

304 In all our scenarios we assumed a non-zero benefit of antivirals in reducing influenza-associated
305 hospitalizations among early care-seekers who completed a full treatment course: from 20% in the least
306 optimistic scenario to 70% in the most optimistic scenario. The variation in these values reflects
307 underlying challenges in estimating the true impact of antivirals on preventing influenza-associated
308 hospitalizations, with randomized controlled trials (RCTs) requiring very large sample sizes (e.g., tens of
309 thousands of patients) for sufficient statistical power. For example, a recent meta-analysis of RCTs for
310 oseltamivir that reported no significant reduction in hospitalizations among outpatients with influenza
311 was likely underpowered and, in addition, included trials in which hospitalization was not the primary
312 endpoint^{29,33,34}. Given these challenges, observational studies and RCTs that investigate alternative end
313 points for disease progression can provide valuable additional evidence to support treatment guidelines.
314 Examples include a meta-analysis of observational data that demonstrated a significant reduction in the
315 odds of hospital admission among adults and children treated with neuraminidase inhibitors (including
316 oseltamivir) during the 2009 H1N1 pandemic³, and another meta-analysis of RCTs that found oseltamivir
317 significantly reduced the risk of lower respiratory tract complications requiring antibiotics among adults
318 treated within 36 hours of illness onset². These studies suggest that antivirals, like oseltamivir, can
319 reduce the risk of severe disease progression when treatment is initiated early after influenza symptom
320 onset. We therefore focused on a positive effect of antivirals in reducing hospitalization risk but did
321 include a zero benefit among late care-seekers (in the least optimistic scenario) to incorporate the
322 possibility of no effect when treatment is delayed. Our scenarios were also conservative in assuming no
323 benefit of antivirals among outpatients who did not complete a full treatment course. Thus, our results
324 show a positive impact of antivirals in averting hospitalizations across a range of plausible antiviral effect
325 magnitudes, from conservative to optimistic, and support their use in outpatient settings to reduce
326 severe influenza disease burden, particularly among patients at higher risk of complications.

327 As antiviral effectiveness was just one parameter influencing averted influenza-associated
328 hospitalizations, we also explored the effect of improving five other parameters (including care-seeking,
329 testing, and prescribing) that determined whether someone received, and ultimately completed, an
330 antiviral prescription. Over 71,000 (13.3%) hospitalizations were averted when all parameters were
331 increased by 50%, and the number of prescriptions needed to avert one hospitalization was reduced.
332 Thus, combined improvements in multiple components of the care and treatment pathway could
333 substantially improve the impact of antivirals in reducing influenza-associated hospitalizations.

334 Our framework has several limitations. First, we modeled the direct effects of antivirals in
335 reducing the risk of hospitalization among treated outpatients but did not account for indirect effects
336 that may occur following reductions in the risk of onward influenza transmission. However, these effects
337 may be small as prior work has shown oseltamivir treatment does not significantly reduce influenza viral
338 shedding^{35,36}. In line with this, a mathematical modeling study that did account for indirect effects still
339 found modest impacts of antivirals in reducing influenza-associated hospitalizations³⁷. Second, we did

340 not consider the prophylactic use of antivirals to reduce infection risk in individuals exposed to an
341 influenza virus. Such measures may be more important in congregate settings, like long-term care
342 facilities³⁸, which were not the focus of this work. Third, our estimates of the proportion of the
343 population at higher risk of influenza complications did not include people with a BMI ≥ 40 or those living
344 in long-term care facilities^{5,15}. Accounting for these groups would expand the population at increased
345 risk for influenza complications, among whom antivirals had the greatest impact, and thus increase the
346 estimated number of averted hospitalizations. Fourth, our test sensitivity inputs were based on
347 molecular tests (rapid or standard) rather than rapid antigen tests which typically have lower sensitivity
348 (e.g., 50–70%)³⁹. Allowing a fraction of tests to be rapid antigen would reduce the number of tested
349 individuals who receive a positive result, and thus reduce the number of antiviral medications ultimately
350 prescribed. However, the magnitude of the reduction would depend on the relative proportions of
351 antigen and molecular tests, which are highly variable in outpatient settings²¹. Fifth, we assumed that
352 the risk of influenza-associated hospitalization (in the absence of antiviral treatment) was the same
353 among people who did and did not seek care. This risk was parameterized using case-hospitalization
354 ratios that are adjusted for care-seeking behavior and thus reflect an average across all individuals with
355 influenza-associated illness. More generally, our model inputs will likely vary by many factors, including
356 location, clinical setting, type of antiviral medication, and access to insurance and medical care. We
357 included probabilistic ranges or different scenarios to account for this variation, but our results should
358 not be interpreted as an estimate of the current impact of antivirals on influenza-associated
359 hospitalizations. Instead, they provide a range of plausible estimates given likely underlying
360 heterogeneity in individual care-seeking, clinical testing, and antiviral prescribing practices across the
361 United States.

362 We modeled the potential impact of antiviral treatment in reducing hospitalizations among
363 outpatients with influenza. In general, we estimated modest overall reductions in hospitalizations, but
364 found greater benefits among people at higher risk of influenza-associated complications, and when
365 multiple components of the care and treatment pathway were improved. Our findings align with current
366 guidance for prioritizing prompt antiviral treatment among persons with suspected or confirmed
367 influenza who are at higher risk of influenza complications and, more generally, demonstrate the utility
368 of our framework in assessing the potential impact of influenza antivirals in a large population with
369 uncertain parameter inputs.

370
371 **Acknowledgements:** The authors wish to thank Matthew Gilmer, Ryan Threlkel, Daniel Moore, and
372 Alexandra Mellis for data contributions that informed model inputs and Pragati Prasad for early
373 contributions to the model code.

374
375 **Data Availability Statement:** All model inputs and code needed to perform the analysis will be made
376 available at <https://github.com/CDCgov> upon publication. Data were used solely to inform model inputs
377 and were the result of secondary analyses; the original sources are cited in the text.

378
379 **Conflict of Interest Statement:** The authors have no conflicts of interest or funding sources to declare.

380

381 References

- 382
- 383 1. CDC. About Estimated Flu Burden. 2024. Accessed October 4, 2024. [https://www.cdc.gov/flu-](https://www.cdc.gov/flu-burden/php/about/index.html)
- 384 [burden/php/about/index.html](https://www.cdc.gov/flu-burden/php/about/index.html)
- 385 2. Dobson J, Whitley RJ, Pocock S, Monto AS. Oseltamivir treatment for influenza in adults: a meta-
- 386 analysis of randomised controlled trials. *Lancet Lond Engl*. 2015;385(9979):1729-1737.
- 387 doi:10.1016/S0140-6736(14)62449-1
- 388 3. Venkatesan S, Myles PR, Leonardi-Bee J, et al. Impact of Outpatient Neuraminidase Inhibitor
- 389 Treatment in Patients Infected With Influenza A(H1N1)pdm09 at High Risk of Hospitalization: An
- 390 Individual Participant Data Metaanalysis. *Clin Infect Dis Off Publ Infect Dis Soc Am*.
- 391 2017;64(10):1328-1334. doi:10.1093/cid/cix127
- 392 4. Hsu J, Santesso N, Mustafa R, et al. Antivirals for treatment of influenza: a systematic review and
- 393 meta-analysis of observational studies. *Ann Intern Med*. 2012;156(7):512-524. doi:10.7326/0003-
- 394 4819-156-7-201204030-00411
- 395 5. CDC. Influenza Antiviral Medications: Summary for Clinicians. 2023. Accessed April 26, 2024.
- 396 <https://www.cdc.gov/flu/hcp/antivirals/summary-clinicians.html>
- 397 6. CDC. People at Increased Risk for Flu Complications. September 11, 2024. Accessed October 8, 2024.
- 398 <https://www.cdc.gov/flu/highrisk/index.htm>
- 399 7. Stewart RJ, Flannery B, Chung JR, et al. Influenza Antiviral Prescribing for Outpatients With an Acute
- 400 Respiratory Illness and at High Risk for Influenza-Associated Complications During 5 Influenza
- 401 Seasons—United States, 2011–2016. *Clin Infect Dis Off Publ Infect Dis Soc Am*. 2018;66(7):1035.
- 402 doi:10.1093/cid/cix922
- 403 8. Tenforde MW, Cummings CN, O’Halloran AC, et al. Influenza Antiviral Use in Patients Hospitalized
- 404 With Laboratory-Confirmed Influenza in the United States, FluSurv-NET, 2015-2019. *Open Forum*
- 405 *Infect Dis*. 2023;10(1):ofac681. doi:10.1093/ofid/ofac681
- 406 9. Appiah GD, Chaves SS, Kirley PD, et al. Increased Antiviral Treatment Among Hospitalized Children and
- 407 Adults With Laboratory-Confirmed Influenza, 2010-2015. *Clin Infect Dis Off Publ Infect Dis Soc Am*.
- 408 2017;64(3):364-367. doi:10.1093/cid/ciw745
- 409 10. Fowlkes AL, Steffens A, Reed C, Temte JL, Campbell AP, Influenza Incidence Surveillance Project
- 410 Working Group. Influenza Antiviral Prescribing Practices and the Influence of Rapid Testing Among
- 411 Primary Care Providers in the US, 2009–2016. *Open Forum Infect Dis*. 2019;6(6):ofz192.
- 412 doi:10.1093/ofid/ofz192
- 413 11. Biggerstaff M, Jhung MA, Reed C, Fry AM, Balluz L, Finelli L. Influenza-like illness, the time to seek
- 414 healthcare, and influenza antiviral receipt during the 2010-2011 influenza season-United States. *J*
- 415 *Infect Dis*. 2014;210(4):535-544. doi:10.1093/infdis/jiu224
- 416 12. CDC. Influenza Antiviral Drug Resistance. 2022. Accessed July 4, 2024.
- 417 <https://www.cdc.gov/flu/treatment/antiviralresistance.html>

- 418 13. SankeyMATIC: Make Beautiful Flow Diagrams. Accessed July 5, 2024. <https://sankeymatic.com/>
- 419 14. US Census Bureau. National Population by Characteristics: 2020-2023. 2024. Accessed April 29,
420 2024. <https://www.census.gov/data/datasets/time-series/demo/popest/2020s-national-detail.html>
- 421 15. Zimmerman RK, Lauderdale DS, Tan SM, Wagener DK. Prevalence of High Risk Indications for
422 Influenza Vaccine Varies by Age, Race, and Income. *Vaccine*. 2010;28(39):6470-6477.
423 doi:10.1016/j.vaccine.2010.07.037
- 424 16. CDC. Preliminary Estimated Flu Disease Burden 2022–2023 Flu Season. November 22, 2023.
425 Accessed October 14, 2024. <https://www.cdc.gov/flu-burden/php/data-vis/2022-2023.html>
- 426 17. CDC. Influenza Hospitalization Surveillance Network (FluSurv-NET). 2024. Accessed April 29, 2024.
427 <https://www.cdc.gov/fluview/overview/influenza-hospitalization-surveillance.html>
- 428 18. Matias G, Taylor R, Haguinet F, Schuck-Paim C, Lustig R, Shinde V. Estimates of hospitalization
429 attributable to influenza and RSV in the US during 1997–2009, by age and risk status. *BMC Public*
430 *Health*. 2017;17(1):271. doi:10.1186/s12889-017-4177-z
- 431 19. Reed C, Kim IK, Singleton JA, et al. Estimated Influenza Illnesses and Hospitalizations Averted by
432 Vaccination — United States, 2013–14 Influenza Season. *MMWR Morb Mortal Wkly Rep*.
433 2014;63(49):1151-1154.
- 434 20. Outbreaks Near Me. Accessed April 29, 2024. <https://outbreaksnearme.org/us/en-US>
- 435 21. CDC. US Flu VE Network. 2023. Accessed March 26, 2024. <https://www.cdc.gov/flu-vaccines-work/php/vaccine-effectiveness/us-flu-ve-network.html>
- 436
- 437 22. CDC. VISION Vaccine Effectiveness Network. 2024. Accessed April 29, 2024.
438 <https://www.cdc.gov/flu-vaccines-work/php/vaccine-effectiveness/vision-network.html>
- 439 23. CDC. Respiratory Virus Transmission Network. 2024. Accessed April 29, 2024.
440 <https://www.cdc.gov/flu-vaccines-work/php/vaccine-effectiveness/rtvn-flu.html>
- 441 24. Vos LM, Bruning AHL, Reitsma JB, et al. Rapid Molecular Tests for Influenza, Respiratory Syncytial
442 Virus, and Other Respiratory Viruses: A Systematic Review of Diagnostic Accuracy and Clinical Impact
443 Studies. *Clin Infect Dis Off Publ Infect Dis Soc Am*. 2019;69(7):1243-1253. doi:10.1093/cid/ciz056
- 444 25. Merckx J, Wali R, Schiller I, et al. Diagnostic Accuracy of Novel and Traditional Rapid Tests for
445 Influenza Infection Compared With Reverse Transcriptase Polymerase Chain Reaction: A Systematic
446 Review and Meta-analysis. *Ann Intern Med*. 2017;167(6):394-409. doi:10.7326/M17-0848
- 447 26. Wesolowski A, Miller JL, Shields M, Dela-Pena J. Antimicrobial prescribing after rapid influenza PCR
448 implementation in the emergency department. *Am J Emerg Med*. 2023;71:123-128.
449 doi:10.1016/j.ajem.2023.06.015
- 450 27. Kaiser L, Wat C, Mills T, Mahoney P, Ward P, Hayden F. Impact of oseltamivir treatment on influenza-
451 related lower respiratory tract complications and hospitalizations. *Arch Intern Med*.
452 2003;163(14):1667-1672. doi:10.1001/archinte.163.14.1667

- 453 28. Sutton SS, Magagnoli J, Cummings T, Hardin J. Association Between the Use of Antibiotics, Antivirals,
454 and Hospitalizations Among Patients With Laboratory-confirmed Influenza. *Clin Infect Dis Off Publ*
455 *Infect Dis Soc Am*. 2021;72(4):566-573. doi:10.1093/cid/ciaa074
- 456 29. Hanula R, Bortolussi-Courval É, Mendel A, Ward BJ, Lee TC, McDonald EG. Evaluation of Oseltamivir
457 Used to Prevent Hospitalization in Outpatients With Influenza: A Systematic Review and Meta-
458 Analysis. *JAMA Intern Med*. 2024;184(1):18-27. doi:10.1001/jamainternmed.2023.0699
- 459 30. R Core Team. R: A language and environment for statistical computing. Published online 2022.
460 <https://www.R-project.org/>
- 461 31. Dowle M, Srinivasan A. data.table: Extension of `data.frame`. Published online 2021. [https://CRAN.R-](https://CRAN.R-project.org/package=data.table)
462 [project.org/package=data.table](https://CRAN.R-project.org/package=data.table)
- 463 32. Wickham H, Averick M, Bryan J, et al. Welcome to the Tidyverse. *J Open Source Softw*.
464 2019;4(43):1686. doi:10.21105/joss.01686
- 465 33. Uyeki TM, Hui DSC, Lee N. Oseltamivir May or May Not Reduce Hospitalizations. *JAMA Intern Med*.
466 2024;184(1):116. doi:10.1001/jamainternmed.2023.4711
- 467 34. Antoon JW, Grijalva CG, Talbot K. Oseltamivir May or May Not Reduce Hospitalizations. *JAMA Intern*
468 *Med*. 2024;184(1):116-117. doi:10.1001/jamainternmed.2023.4720
- 469 35. Ng S, Cowling BJ, Fang VJ, et al. Effects of oseltamivir treatment on duration of clinical illness and
470 viral shedding, and household transmission of influenza virus. *Clin Infect Dis Off Publ Infect Dis Soc*
471 *Am*. 2010;50(5):707-714. doi:10.1086/650458
- 472 36. Cheung DH, Tsang TK, Fang VJ, et al. Association of Oseltamivir Treatment With Virus Shedding,
473 Illness, and Household Transmission of Influenza Viruses. *J Infect Dis*. 2015;212(3):391-396.
474 doi:10.1093/infdis/jiv058
- 475 37. Yechezkel M, Ndeffo Mbah ML, Yamin D. Optimizing antiviral treatment for seasonal influenza in the
476 USA: a mathematical modeling analysis. *BMC Med*. 2021;19(1):54. doi:10.1186/s12916-021-01926-5
- 477 38. Morris SE, Zipfel CM, Peer K, et al. Modeling the Impacts of Antiviral Prophylaxis Strategies in
478 Mitigating Seasonal Influenza Outbreaks in Nursing Homes. *Clin Infect Dis*. 2024;78(15):1336-1344.
479 doi:10.1093/cid/ciad764
- 480 39. CDC. Rapid Influenza Diagnostic Tests. 2024. Accessed May 10, 2024.
481 https://www.cdc.gov/flu/hcp/testing-methods/clinician_guidance_ridt.html

482