

1 **Title:**

2 Clinical Relevance and Applicability of the 2022 World Health  
3 Organization Classification of Childhood B Lymphoblastic  
4 Leukemia in the Context of MRD-Directed Therapy

5  
6 **Running Title:**

7 Clinical Relevance of WHO5 Classification in B-ALL

8 **Authors:**

9 Sweta Rajpal<sup>1,2</sup>, Gaurav Chatterjee<sup>1,2</sup>, Prasanna Bhanshe<sup>1</sup>, Vishram Terse<sup>1</sup>, Swapnali Joshi<sup>1</sup>, Shruti  
10 Chaudhary<sup>1</sup>, Dhanalaxmi Shetty<sup>4,2</sup>, Purvi Mohanty<sup>4,2</sup>, Chetan Dhamne<sup>3,2</sup>, Prashant Tembhare<sup>1,2</sup>, Shyam  
11 Srinivasan<sup>3,2</sup>, Akanksha Chichra<sup>3,2</sup>, Nirmalya Roy Malik<sup>3,2</sup>, Shripad Banavali<sup>3,2</sup>, Sumeet Gujral<sup>1,2</sup>, Gaurav  
12 Narula<sup>3,2</sup>, PG Subramanian<sup>1,2</sup>, Nikhil Patkar<sup>1,2\*</sup>

13  
14 **Type of Article:**

15 Full Article

16 **Affiliations:**

17 <sup>1</sup> Department of Haematopathology, ACTREC, Tata Memorial Centre, Navi Mumbai, India

18 <sup>2</sup>Homi Bhabha National Institute (HBNI), Mumbai, India

19 <sup>3</sup>Pediatric Haematolymphoid Disease Management Group, Tata Memorial Centre, Mumbai, India

20 <sup>4</sup>Dept of Cytogenetics, ACTREC, Tata Memorial Centre, Navi Mumbai, India

21 \*Corresponding Author

22 **Correspondence:**

23 Dr Nikhil Patkar MD,DNB

24 Clinician Scientist & Professor

25 Wellcome Trust – DBT Senior Fellow

26 Department of Hematopathology, CCE Building, Advanced Centre for Treatment Research and

27 Education in Cancer, Tata Memorial Centre, Kharghar, Maharashtra, India, Pin: 410210

28 Email: [nvpatkar@gmail.com](mailto:nvpatkar@gmail.com)

29 Phone: +91-22-27405000

30

31 **Word Count:** Article: 3426, No of Figures: 4; No of Tables: 4; References: 21, Supplementary Files:1

32 **Competing Interests:** The authors have no conflict of interest to declare

33 **Keywords:** B Cell Precursor ALL, RNA sequencing, MRD Directed Therapy

## 34 Abstract

35 WHO5-2022 classification of B-lymphoblastic leukemia (B-ALL) incorporates  
36 several novel entities requiring high-throughput sequencing for their accurate characterization.  
37 The clinical relevance of this classification in the context of contemporary MRD-directed  
38 therapy is unclear. We analyzed 533 pediatric B-ALL uniformly treated with ICiCLE-ALL-14  
39 protocol as defined by WHO2016 and reclassified them as per WHO5-2022 using targeted  
40 sequencing, FISH, and cytogenetics. Subtype-defining genetic abnormalities were identified in  
41 81.2% of the cohort as per the WHO5 classification. Among the new subtypes, *PAX5*<sup>alt</sup>, *MEF2D*-  
42 *r*, and *BCR::ABL1*-like(*ABL*-class) were associated with an inferior 2-year event-free survival  
43 (EFS) of 39.1% ( $p<0.0001$ ), 53.8% ( $p=0.024$ ) and 60.6% ( $p=0.043$ ), respectively. We developed  
44 a 3-tier genetic risk stratification model incorporating 15 genetic subtypes and the *IKZF1*  
45 deletion. Children with standard, intermediate, and high genetic risk demonstrated 2-year EFS of  
46 92.6%, 71.0%, and 50.7% ( $p<0.0001$ ), and 2-year overall survival of 94.3%, 81.9%, and 71.6%  
47 ( $p<0.0001$ ), respectively. Genetic risk further identified heterogeneous outcomes among ICiCLE  
48 risk groups ( $p<0.0001$ ). Standard genetic risk was associated with superior OS and EFS  
49 irrespective of MRD status. We demonstrate the applicability of the WHO5 classification in  
50 routine practice and create a general framework for incorporating the WHO5 classification in  
51 risk-adapted therapy for childhood B-ALL.

## 52 Introduction

53 In the last few decades, successful adoption of risk-directed therapy has resulted in  
54 remarkably improved pediatric B-lymphoblastic leukemia/lymphoma (B-ALL) outcomes.  
55 Assessment of therapeutic response by detecting and quantitating measurable residual disease  
56 (MRD) forms the cornerstone of contemporary risk-adapted protocols.

57 The underlying biology of the B-ALL subtype, which includes abnormalities of  
58 chromosome number such as high hyperdiploid as well as chimeric gene fusions such as  
59 *ETV6::RUNX1*, are clinically relevant even in the context of MRD-directed therapies.<sup>1</sup>  
60 Contemporary protocols have thus adopted an integrated approach incorporating both baseline  
61 genetics and MRD as an optimal strategy for risk-directed therapy.<sup>1,2</sup>

62 In the last decade, we have significantly advanced our understanding of B-ALL biology  
63 due to progress in genome sequencing technologies such as whole genome and transcriptome  
64 sequencing. These seminal studies have led to the identification of novel biological subgroups of  
65 B-ALL.<sup>3,4</sup> The WHO5 and ICC classifications have incorporated several of these new subtypes,  
66 such as *TCF3::HLF1*, *PAX5* alteration (*PAX5<sup>alt</sup>*), *PAX5* P80R, *DUX4*-rearrangement (*DUX4-r*),  
67 *MEF2D-r*, *ZNF384-r*, *NUTM1-r*, *ETV6::RUNX1*-like, *IG::MYC*.<sup>5,6</sup> Recently, Jeha and colleagues  
68 have shown the clinical significance of the new subtypes of B-ALL in the context of the MRD-  
69 directed St. Jude Total Therapy Study 16 protocol.<sup>7</sup> It is important to validate and incorporate  
70 these genomics data into clinical practice for prognostication and targeted therapy.<sup>7,8</sup>

71 A major challenge in detecting the WHO5-recognised subtypes of B-ALL in routine  
72 practice is the heterogenous biology of B-ALL, which requires integration of copy number  
73 alterations, fusions involving multiple genes with various partners, and somatic mutations to

74 comprehensively detect all subtypes. For diagnosis of these new entities, legacy workflows like  
75 fluorescent in situ hybridization (FISH), multiplexed PCR, and multiplex ligation-dependent  
76 probe amplification (MLPA) require multiple rounds of reflexive testing that would result in  
77 time delay. Furthermore, PCR-based tests require knowledge of both partners involved in the  
78 fusion, which is not always feasible, especially with the novel described entities.

79 Whole transcriptome sequencing (WTS) has been proposed as a one-stop solution for this  
80 problem; however, the clinical translation of WTS in practice is challenging due to the resource-  
81 intensive nature and turn-around time of WTS, especially if RNA-sequencing results are to  
82 impact therapeutic decisions. We have previously validated NARASIMHA, a lab-developed,  
83 cost-effective modular targeted RNA-sequencing assay to detect chimeric gene fusions with  
84 knowledge of only one partner gene involved in the fusion (for, e.g., *ABL1*). We hypothesized  
85 that a combination of targeted DNA and RNA sequencing, with an initial screen based on legacy  
86 techniques, could detect all the entities described in the WHO5 classification of B-ALL.

87 Here, we present the clinical utility of this approach in detecting WHO5 subtypes in a  
88 large, uniformly treated cohort of pediatric B-ALL. We further describe the clinical relevance of  
89 such an approach in predicting outcomes in the context of MRD-directed therapy in childhood B-  
90 ALL.

## 91 **Methods**

### 92 **Diagnostic Evaluation of B-ALL**

93 *Diagnosis:* A total of 533 newly diagnosed pediatric B-ALL, aged 1-15 years, enrolled in  
94 the ICiCLE-ALL-14 trial (Clinical Trials Registry-India number, CTRI/2015/12/006,434), from  
95 whom peripheral blood or bone marrow samples were received for molecular testing between  
96 January 2019 to March 2022, were included in this study (overview in Supplementary Figure 1).  
97 B-ALL diagnosis was made using a 10-12 color, 5-tube multi-color flow cytometry (MFC) panel  
98 as per WHO2016 criteria, as described elsewhere.<sup>9</sup> Also, ploidy status was determined using the  
99 FxCycle Violet-dye-based MFC method.<sup>10</sup> Informed consent was taken from the legal gurdians  
100 while enrolling in the ICiCLE-ALL-14 trial (Clinical Trials Registry-India number,  
101 CTRI/2015/12/006,434) for participation and data sharing including publication. Institutional  
102 Ethics Committee of ACTREC, Tata Memorial Centre gave ethical approval for this work (IEC  
103 III – 900924).

104 *Cytogenetics Work-up:* FISH was performed using locus-specific identifier (LSI) probes  
105 for *BCR::ABL1* (Zytovision, Bremerhaven, Germany), *TCF3::PBX1* (CytoTest, Rockville,  
106 USA), *ETV6::RUNX1*, and *KMT2A-r* (Abbott, Green Oaks, USA). Hyperdiploid B-ALL was  
107 diagnosed using centromeric FISH probes for chromosomes 4, 10, and 17 (Zytovision,  
108 Bremerhaven, Germany). SureFISH 7p12.2 IKZF1 (Agilent Dako, USA) probe was used to  
109 detect partial/whole *IKZF1* gene deletions. Ploidy analysis was also performed on Giemsa-  
110 stained metaphases obtained from overnight cultured BMA/peripheral blood cells to determine  
111 the modal chromosome number. Analysis was carried out under a fluorescence microscope

112 (Olympus BX61) using GenASIs software (Applied Spectral Imaging, Israel), and 200 intact  
113 interphase nuclei were evaluated by two independent co-observers as previously described.<sup>11</sup>

114 *Polymerase Chain Reaction based screening:* Common translocations (*BCR::ABL1*  
115 (*E13/14A2* and *E1A2*), *ETV6::RUNX1*, *TCF3::PBX1* and *KMT2A::AFF1*) were screened using  
116 real-time PCR. *IKZF1* deletions were detected using fragment length analysis.<sup>12,13</sup>

117 *Next Generation Sequencing:* Targeted RNA sequencing was performed in 392 patients  
118 (73.5%) who were negative for common translocations (Supplementary Figure 1, Supplementary  
119 Table 1). Patients with negative RNA sequencing (n=124) were subjected to targeted DNA  
120 sequencing. The details of these assays and bioinformatics analysis can be seen in supplementary  
121 data.

122 *Risk stratification and treatment protocol:* Patients were stratified according to the  
123 ICiCLE-ALL-14 risk stratification detailed in the supplementary data. These patients were  
124 treated according to the ICiCLE-ALL-14 risk-adapted protocol.<sup>14</sup> Briefly, patients underwent  
125 four intensive treatment blocks (induction, consolidation, interim maintenance, delayed  
126 intensification) followed by 96 weeks of maintenance, varying treatment intensity according to  
127 risk group. The first randomization explored the toxicity impact of a shorter induction schedule  
128 of prednisolone (3 vs 5 weeks) in young, non-high-risk B-ALL patients. The second  
129 randomization assessed the survival benefits of replacing doxorubicin with mitoxantrone during  
130 delayed intensification across all patients (Supplementary Figure 2). Only fifteen patients  
131 underwent an allogeneic Hematopoietic stem cell transplant. Post-induction (PI) and post-  
132 consolidation (PC) MRD assessments were performed using our previously validated highly  
133 sensitive MFC assay.<sup>15</sup>

134            *Classification according to WHO 2016 and WHO 2022:* The pediatric B-ALL cases were  
135 assigned to defined genetic categories as per the WHO 2016 (revised 4th edition), and WHO  
136 2022 (5th edition) Classification of Tumours of Haematopoietic and Lymphoid Tissues  
137 integrating DNA ploidy by MFC, FISH, chromosomal counting, screening PCR, NARASIMHA  
138 and targeted DNA sequencing.<sup>16</sup>

139            *Clinical Endpoints and Statistical Analysis:* Overall survival (OS) was calculated from  
140 the diagnosis date to either the last follow-up date or death with censoring at the last contact.  
141 Event-free survival (EFS) was defined from diagnosis to events like death, relapse, or refractory  
142 status, also censored at the last contact. Chi-square or Fisher's exact test (two-sided) in MedCalc  
143 (version 14.8.1) assessed the association between categorical variables such as MRD positivity  
144 and genetic subgroups. The impact of genetic subgroups on EFS and OS was analyzed using  
145 Kaplan-Meier curves, generated on Python3 (version 3.12.0), and compared using the log-rank  
146 test. We stratified genetic risk into standard (SGR), intermediate (IGR), and high risk (HGR)  
147 based on genetic predictors of outcome and published literature for rare variants. This  
148 stratification was correlated with PI MRD and ICiCLe risk groups. Kaplan-Meier curves for  
149 these subgroups were produced using MedCalc (version 14.8.1). Multivariate analysis was  
150 performed using the Cox proportional-hazards regression analysis.

## 151 Results

152 *Clinical, laboratory, and risk stratification characteristics of patients enrolled:* Our final  
153 analysis included 533 children with B-ALL with a male-to-female ratio of 1.99:1 and a median  
154 age of 5 years. According to the NCI risk stratification, most patients were classified as standard  
155 risk (SR, 67.2%). However, with the final ICiCLe risk stratification, the majority (57.4%) were  
156 categorized as high risk (HiR), followed by SR (22.9%) and intermediate risk (IR, 19.7%).  
157 Nearly one-third of patients (32.2%, out of 519 assessed) were detected to harbor measurable  
158 residual disease (defined as MRD  $\geq 0.01\%$ ) at the PI timepoint. Similarly, 9.8% (out of 244  
159 assessed) were positive at the PC timepoint. A summary of clinical, laboratory, and genetic  
160 characteristics, as well as MRD responses, can be seen in Table 1.

161 *Characterization of Genetic Subgroups and their Correlations:* Through the integration  
162 of conventional PCR, targeted RNA sequencing, cytogenetics, and immunophenotyping, we  
163 identified 13 distinct genetic subgroups within our cohort (Table 2). *PAX5<sup>alt</sup>* (24, 4.5%),  
164 *BCR::ABL1*-like (23, 4.3%), *DUX4*-r (12, 2.3%), *MEF2D*-r (13, 2.4%), *ZNF384*-r (3, 0.6%) and  
165 *TCF3::HLF* (4, 0.7%) subgroups of B-ALL were exclusively identified using RNA-sequencing  
166 (Figure 1). Among the *BCR::ABL1*-like category, almost equal division was seen among the  
167 *BCR::ABL1*-like: ABL-class (n=11) and JAK-STAT activated (n=13) classes. Among the  
168 *BCR::ABL1*-like: ABL-class, the 3' partner were *PDGFRB* (*EBF1*; n=5), *ABL1* (n=4; one each  
169 of *ETV6*, *NUP214*, *RANBP2*, *FOXPI*), *ABL2* (*RCSD1*) and *CSF1R* (*LBD1*) and those in JAK-  
170 STAT activated class were *CRLF2* (n=9; *P2RY8*; n=8 and one *IGH*), *JAK2* (n=4; comprising  
171 *PAX5*; n=3 and one *EBF1*). For *PAX5<sup>alt</sup>* category, the 3' fusion partners were *AUTS2* (n=5),  
172 succeeded by *MBNL1* (n=3), *ETV6* (n=2), *IGH* (n=2), *ZNF521* (n=2) and one each with



173 *CBFA2T3*, *FOXP1*, *GSE1*, *ANKRD12*, *CA10*, and *ESSRB*. For *MEF2D*-r, the fusion partners  
174 were *BCL9* (n=8), *HNRNPUL* (n=3), *DASAPI* (n=1) and *SFI* (n=1). For *ZNF384*-r cases, the  
175 fusion partners were *TCF3* (n=2) and *EP300* (n=1).

176 Targeted DNA sequencing further helped identify additional *PAX5*<sup>alt</sup> (n=4) and the *PAX5*  
177 P80R group (n=4). Using this approach, we could identify a genomic abnormality in 81.2% of all  
178 cases when compared to legacy approaches (61.7%)

179 Patients harboring *BCR::ABL1* (median age- 10 years;  $p<0.001$ ), *BCR::ABL1*-like  
180 (median age- 11.5 years,  $p=0.001$ ), and *MEF2D*-r (median age- 9 years;  $p=0.004$ ) were  
181 significantly older compared to the entire cohort (median age- 5 years; range- 1 to 15 years).  
182 *BCR::ABL1* (median WBC-  $61.7 \times 10^9/L$ ;  $p=0.003$ ) and *BCR::ABL1* like (median WBC-  $33.5 \times$   
183  $10^9/L$ ;  $p=0.005$ ) showed higher WBC counts as compared to the entire cohort (median WBC-  $6.4$   
184  $\times 10^9/L$ ; range- 0.2 to  $692.3 \times 10^9/L$ ). Additionally, the *BCR::ABL1* (48.3% MRD-positive;  
185 median MRD: 0.48;  $p=0.02$ ) and *BCR::ABL1*-like (70.8% MRD-positive; median MRD: 1.6;  
186  $p<0.0001$ ) groups exhibited higher PI MRD positivity as compared to the rest (32.3% PI MRD-  
187 positive; median PI MRD: 0.14%). The MRD characteristics of each sub-group are detailed in  
188 supplementary data and highlighted in Supplementary Figure 3.

189 *IKZF1* deletion was identified in 69 (15.1%) of the 458 patients tested and showed a high  
190 prevalence in the *BCR::ABL1* (56.5%) and *BCR::ABL1*-like (55.6%) genetic subgroups.  
191 Additionally, *IKZF1* deletions were detected across various other subgroups, including NOS,  
192 high hyperdiploidy, *PAX5*<sup>alt</sup>, *DUX4*-r, *KMT2A*-r, hypodiploidy, *ETV6::RUNX1*, and *iAMP21*  
193 (Supplementary Figure 4).

194 *Re-stratification from the WHO 2016 to WHO 2022 classification:* There was no change  
195 in the classification of 373 patients (*ETV6::RUNX1*, High hyperdiploidy, *BCR::ABL1*,  
196 *TCF3::PBX1*, *BCR::ABL1* like *KMT2A-r*, hypodiploidy, iAMP21) when they were classified as  
197 per the WHO 2022 compared to the WHO 2016. Among WHO 2016-defined NOS subgroup  
198 (n=160, 30% of the entire cohort), 60 (37.5%) children were reclassified into newly recognized  
199 subtypes such as *PAX5<sup>alt</sup>* (n=24, 15%), *DUX4-r* (n=12, 7.5%), *MEF2D-r* (n=13, 8.1%), *PAX5*  
200 *P80R* (n=4, 2.5%), *TCF3::HLF* (n=4, 2.5%), and *ZNF384-r* (n=3, 1.9%) as seen in Figure 1A.

201 *Patient Outcomes:* The 2-year EFS and OS of the entire cohort were 75.8% and 85.1%,  
202 respectively (median EFS and OS not reached). The median follow-up of the cohort was 26.8  
203 months. The presence of PI MRD predicted a significantly inferior EFS [HR- 2.0; 95% CI- 1.42  
204 to 2.89; ( $p<0.0001$ )] and OS [HR- 1.7; 95% CI- 1.08 to 2.64; ( $p=0.01$ )]. Similarly, PC MRD  
205 positivity was associated with markedly worse EFS [HR- 22.0; 95% CI- 4.37 to 110.93;  
206 ( $p<0.0001$ )] and OS [HR- 2.4; 95% CI- 0.78 to 7.70; ( $p=0.02$ )] (Supplementary Figure 5). The  
207 impact of ICiCLE risk stratification on patient outcomes is detailed in the supplementary data  
208 (Supplementary Figure 6).

209 *Outcomes for individual genetic subgroups:* On evaluating the impact of genetic  
210 subgroups, the following were associated with inferior EFS: *PAX5<sup>alt</sup>* (HR- 2.8; 95% CI- 1.18 to  
211 6.68;  $p=0.0001$ ), *BCR::ABL1* (HR- 2.5; 95% CI- 1.17 to 5.51;  $p=0.0002$ ), *MEF2D-r* (HR- 2.3;  
212 95% CI- 0.75 to 7.20;  $p=0.024$ ), and *BCR::ABL1*-like with ABL-class fusion (HR-2.3; 95% CI-  
213 0.68 to 7.55;  $p=0.043$ ) (Table 3). Subgroups associated with inferior OS were *PAX5<sup>alt</sup>* (HR-4.3;  
214 95% CI- 1.46 to 12.96;  $p<0.0001$ ) and *BCR::ABL1* (HR-2.4; 95% CI- 0.98 to 6.11;  $p=0.004$ ).  
215 Similarly, *IKZF1* deletion was associated with inferior EFS (HR-3.0; 95% CI- 1.72 to 5.07;  
216  $p<0.0001$ ) and OS (HR-1.8; 95% CI- 0.95 to 3.51;  $p=0.022$ ). *TCF3::HLF* subgroup also

217 exhibited poor EFS, with three out of four affected children having refractory disease and one  
218 experiencing an early relapse; however, statistical analysis was not performed due to the small  
219 sample size.

220 Conversely, high hyperdiploidy was associated with superior EFS (HR-0.4; 95% CI- 0.26  
221 to 0.49;  $p < 0.0001$ ) and OS (HR-0.4; 95% CI- 0.29 to 0.65;  $p=0.0006$ ). *ETV6::RUNX1* also  
222 predicted superior EFS (HR-0.4; 95% CI- 0.27 to 0.65;  $p=0.006$ ) and OS (HR- 0.4; 95% CI- 0.23  
223 to 0.72;  $p=0.027$ ) as seen in Table 3.

224 *Genetic risk assignment:* We devised a 3-tier genetic risk model (SGR, IGR, and HGR)  
225 incorporating variables found to be significantly predictive of EFS on univariate analysis in the  
226 present study. Furthermore, if the number of available cases was  $<10$  in our study, available  
227 literature for those categories was considered (for, e.g., *TCF3::HLF*). Genetic categories with a  
228 hazard ratio (HR)  $< 0.75$  were classified as SGR, those with an HR between 0.75 and 2 as IGR,  
229 and those with an HR  $> 2$  as HGR. The details of this classification can be seen in Figure 3. The  
230 2-year EFS for SGR, IGR, and HGR was 92.6%, 71.2%, and 50.3%, respectively ( $p<0.0001$ ),  
231 and the 2-year OS for SGR, IGR, and HGR were 94.3%, 81.9%, and 71.6%, respectively  
232 ( $p<0.0001$ ; Table 4).

233 *Genetic Risk Identifies Heterogeneous Outcomes within ICiCLE Risk Groups:* Since  
234 patients in this cohort were treated with risk-adapted protocol, we further evaluated the effect of  
235 genetic risk stratification in risk groups treated with similar intensities. The ICiCLE initial SR  
236 and IR were combined for this analysis, while the HiR group was analyzed separately. Genetic  
237 risk stratification retained its prognostic significance within both ICiCLE initial SR/IR and HiR  
238 groups. The 2-year EFS of SGR, IGR, and HGR within ICiCLE initial SR/IR were 93.8%,

239 74.0%, and 50.0%, respectively ( $p<0.0001$ ), and that within ICiCLE initial HiR was 89.2%,  
240 64.4% and 51.1% respectively ( $p<0.0001$ ) (Figure 4). Similarly, the 2-year OS of SGR, IGR, and  
241 HGR within ICiCLE initial SR/IR were 94.2%, 81.4%, and 70.6%, respectively ( $p<0.0001$ ), and  
242 that within ICiCLE initial HiR was 94.5%, 83.8% and 73.1% respectively ( $p=0.026$ ) (Table 4).

243 *Genetic Risk Identifies Heterogeneity in Standard Risk B-ALL Irrespective of MRD*  
244 *Status:* Patients in the SGR group exhibited superior outcomes regardless of PI MRD status, with  
245 2-year EFS rates of 93.9% for MRD-positive and 90.6% for MRD-negative patients ( $p=0.469$ ),  
246 and 2-year OS rates of 95.9% and 93.5%, respectively ( $p=0.954$ ). In the IGR group, OS was  
247 similar between MRD-negative (84.2%) and MRD-positive (79.9%) patients ( $p=0.239$ ). In the  
248 HGR group, OS was 79.6% for MRD-negative and 68.3% for MRD-positive patients ( $p=0.054$ ).  
249 However, MRD status remained a significant predictor of EFS in the IGR and HGR groups, with  
250 2-year EFS rates of 58.7% for MRD-positive versus 77.4% for MRD-negative in the IGR group  
251 ( $p=0.017$ ), and 34.2% for MRD-positive versus 67.4% for MRD-negative in the HGR group  
252 ( $p<0.0001$ ) (Table 4, Figure 4).

253 *Multivariate analysis:* On multivariate analysis, genetic risk stratification (HR-2.0; 95%  
254 CI- 1.62 to 2.45;  $p<0.0001$ ), initial ICiCLE risk (HR-1.3; 95% CI- 1.05 to 1.57;  $p=0.015$ ), and PI  
255 MRD (HR-2.0; 95% CI- 1.42 to 2.74;  $p<0.0001$ ) independently predicted EFS, with genetic risk  
256 stratification (HR-1.7; 95% CI- 1.29 to 2.17;  $p=0.0001$ ) and PI MRD positivity (HR-1.6; 95%  
257 CI- 1.03 to 2.38;  $p<0.0001$ ) also independently impacting OS (Supplementary Table 2).

## 258 **Discussion:**

259           Pioneering recent studies have utilized unbiased broad-spectrum approaches such as  
260 WTS/WGS to uncover novel genetic subtypes<sup>4,17</sup>, which have been recognized as distinct entities  
261 in the latest WHO5/ICC classification of B-ALL.<sup>16</sup> Routine clinical application of WTS/WGS  
262 assays remains challenging. Herein, we demonstrate that targeted RNA and DNA sequencing, in  
263 combination with standard FISH/cytogenetics, is routinely implementable in clinical practice and  
264 can detect all of the WHO5-recognized subtypes of B-ALL. We demonstrate that a targeted  
265 sequencing approach identifies prognostically relevant subgroups even in the era of  
266 contemporary MRD-directed therapies.

267           Among the recently defined genetic categories, we found frequencies of 4.5% for  
268 *BCR::ABL1*-like, 4.5% for *PAX5*<sup>alt</sup>, 2.44% for *MEF2D*-r, 2.25% for *DUX4*-r, and 0.75% each for  
269 *PAX5* P80R, and *TCF3::HLF*, and 0.56% for *ZNF384*-r. The proportion of *PAX5*<sup>alt</sup> (4.5% vs.  
270 7.5%)<sup>4</sup>, and *DUX4*-r (2.25% vs. 4%)<sup>3</sup> cases in our cohort are lower than that reported in the  
271 discovery cohorts. The NARASIMHA assay used in this study focuses only on detecting  
272 chimeric gene fusions. Unbiased sequencing approaches such as WTS that include gene  
273 expression profiling might have uncovered further cases of *BCR::ABL1*-like and *DUX4*-r.  
274 Additionally, we could not detect other specific categories, such as *ETV6::RUNX1*-like, due to a  
275 lack of gene expression profiling. Another factor to consider is that we report results only on a  
276 large cohort of children uniformly recruited in the ICiCLe-ALL-14 trial. Interestingly,  
277 transcriptomic sequencing findings from the St. Jude Total Therapy Study 16 trial reported  
278 similar *BCR::ABL1*-like (3%) and *PAX5*<sup>alt</sup> (4.85%) cases.<sup>7</sup> In total, 81.2% of the children  
279 analyzed could be assigned to a defined genetic subgroup using our approach of targeted  
280 RNA/DNA sequencing. In comparison, 18.7% of cases remained uncharacterized (B other) in

281 contrast to 12.1% B-other cases reported in the St. Jude Total Therapy Study 16.<sup>7</sup> While this gap  
282 highlights the need for broader spectrum genomic profiling in future studies, our approach  
283 provides a viable framework that detects most of the WHO5-recognised genetic abnormalities in  
284 children with B-ALL in a trial setting.

285 Here, we developed a three-tier genetic risk model incorporating variables predictive of  
286 EFS in a large cohort of children treated uniformly with MRD-directed risk-adapted ICiCLE-  
287 ALL-14 protocol. In addition to the high hyperdiploidy and *ETV6::RUNX1*, the SGR group also  
288 included *DUX4-r*. Children with *DUX4-r* had a 2-year EFS of 73.3 months (HR- 0.73; 95% CI-  
289 0.27 to 1.94) in our cohort, and although the presence of *DUX4-r* was not associated with  
290 statistically significant better EFS, possibly due to only 12 cases, *DUX4-r* has been reported to be  
291 associated with superior outcome in earlier reports.<sup>7</sup> *KMT2A-r* are often linked with adverse  
292 outcomes in both infants and adults with B-ALL. Our study included a cohort of 1–15-year-olds,  
293 and similar to the study where non-infant children with *KMT2A-r* were evaluated,<sup>18</sup> our cohort of  
294 *KMT2A-r* B-ALL demonstrated an intermediate 2-year EFS of 67.5%, thus being grouped into  
295 IGR. Interestingly, only the *BCR::ABL1*-like with ABL class-r was associated with inferior  
296 outcome (median EFS 31.3 months; HR-2.3; 95% CI- 0.68 to 7.55;  $p=0.043$ ) in our cohort and  
297 included in HGR, while the JAK-STAT perturbed *BCR::ABL1*-like group (median not reached;  
298 HR- 1.00; 95% CI- 0.37 to 2.65;  $p=0.98$ ) was not associated with significant outcome difference  
299 and was included in the IGR category. Although *BCR::ABL1*-like B-ALL is generally associated  
300 with inferior prognosis irrespective of age, previous reports have suggested that MRD-directed  
301 therapy may be beneficial in abrogating the prognostic impact.<sup>19</sup> In a retrospective multi-centric  
302 study of the pre-tyrosine kinase inhibitor (TKI) era, *BCR::ABL1*-like ABL-class-r had inferior  
303 outcomes.<sup>20</sup> Our cohort of *BCR::ABL1*-like B-ALL has a relatively larger proportion of ABL-

304 class-r cases, which might have allowed the identification of distinct inferior outcomes of this  
305 subgroup. Among the patients of *BCR::ABL1*-like ABL-class-r, nine received TKI, despite  
306 which their outcome remained poor. The PAX5<sup>alt</sup> group had the worst 2-year EFS (39.1%, HR-  
307 2.8; 95% CI- 1.18 to 6.68,  $p=0.0001$ ) in our cohort and is included in the HiR category. Initial  
308 studies from the SJRCH/COG group have reported an intermediate prognosis of PAX5<sup>alt</sup> with  
309 MRD-directed therapy,<sup>4,7</sup> however, based on the dismal EFS in our cohort, we have included the  
310 PAX5<sup>alt</sup> in the HGR category. This finding aligns with the recently published study by Chang  
311 and colleagues, where approximately 50% of children with PAX5<sup>alt</sup> ALL relapsed, highlighting  
312 the poor prognosis of this subtype in standard-risk pediatric patients.<sup>21</sup> We included *IKZF1*  
313 deletion, *MEF2D*-r and *TCF3::HLF* in the HGR category, which is in line with previous findings  
314 by the SJRCH/COG group.<sup>4,7</sup>

315 The genetic risk groups proposed here were associated with distinct EFS across ICiCLE  
316 risk groups and had an independent association with EFS on multivariate analysis, in addition to  
317 ICiCLE-ALL-14 initial risk and PI MRD status. On combining genomic data with PI MRD  
318 assessments, we found out that the SGR group was associated with uniformly superior prognosis  
319 irrespective of MRD status. This, however, should not be interpreted as a rationale to deescalate  
320 therapy as the patients with MRD positive in the SGR category were all treated with high-risk  
321 consolidation in this cohort. MRD positive status was associated with inferior outcomes within  
322 the IGR and HGR categories, suggesting that a combination of genomic risk group and MRD  
323 status might form the most optimum strategy for risk-adapted protocols in children with B-ALL.

324 We acknowledge the limitation of our study of relatively shorter follow-up and lack of  
325 gene expression profiling. Incorporating unbiased sequencing approaches will help further  
326 delineate the genetic makeup of the NOS cases and may identify missed cases. However, the

327 stepwise approach, targeted RNA/DNA sequencing strategy, and the genomic risk score  
328 described in this manuscript are easily implementable in routine practice and, together with  
329 MRD status, may help in refining risk-stratification approaches in children with B-ALL.

330 In conclusion, we demonstrate the applicability of the WHO5 classification in routine  
331 practice and create a general framework for the incorporation of the WHO5 classification in risk-  
332 adapted therapy for childhood B-ALL.



333 **Acknowledgements:**

334 We would like to express our sincere gratitude to Rakhi Salve, Bhagyashree Satam, Tuhina  
335 Srivastava, Harsh Chindarkar and Dr. Shivangi Harankhedkar for their invaluable assistance in  
336 entering and managing the patient data for this study. Their contributions were crucial to the  
337 successful completion of this work. We also acknowledge Mr Sitaram Ghogale and Mr Nilesh  
338 Deshpande for processing samples for flow cytometry testing.

339

340 **Authorship and conflict-of-interest statements:**

341 SR, NP and GC designed the study, conducted research, analyzed, interpreted the data, and wrote  
342 the manuscript. PB, SJ, SC, PT, DS, SG and PS conducted research conducted research and  
343 analyzed data. SS, AC, CD, NM, SB and GN recruited patients and analyzed data. Dr Nikhil  
344 Patkar is supported by an India Alliance (Wellcome-DBT) Senior Fellowship for Clinicians and  
345 Public Health Researchers. Dr Gaurav Chatterjee is supported by an India Alliance (Wellcome-  
346 DBT) Intermediate Fellowship for Clinicians and Public Health Researchers. Dr Nikhil Patkar  
347 has received research funding from Illumina Inc and ThermoFisher Scientific.

348 The author(s) declare no competing financial interests.

349

350 **Agreement to Share Publication-Related Data and Data Sharing Statement:**

351 Dr Nikhil Patkar, Department of Haematopathology, CCE Building, Advanced Centre for  
352 Treatment Research and Education in Cancer, Tata Memorial Centre, Kharghar, Maharashtra,  
353 India, Pin:410210. Email: [nvpatkar@gmail.com](mailto:nvpatkar@gmail.com); [npatkar@actrec.gov.in](mailto:npatkar@actrec.gov.in). Phone: +91-22-  
354 27405000

355

356

<b>Demographics</b>	
Total number of patients accrued	533
Age (years)	Range:- 1-15, Median:- 5
Gender	Male: Female- 1.99:1
<b>Laboratory characteristics</b>	
TLC at presentation	
1. $\geq 50 \times 10^9/L$	81 (15.2%)
2. $< 50 \times 10^9/L$	452 (84.8%)
<b>WHO 2016 Genetic categories</b>	
1. Hyperdiploidy	182 (34.1%)
2. <i>ETV6::RUNX1</i>	68 (12.8%)
3. <i>TCF3::PBX1</i>	42 (7.9%)
4. <i>BCR::ABL1</i>	29 (5.4%)
5. <i>BCR::ABL1</i> like	24 (4.5%)
6. <i>KMT2A</i> rearranged	19 (3.6%)
7. Hypodiploidy	6 (1.1%)
8. iAMP21	3 (0.6%)
9. NOS	160 (30.0%)
<b>NCI Risk</b>	
SR	358 (67.2%)
HR	175 (32.8%)
<b>ICiCLe Initial Risk (n=533)</b>	
SR	205 (38.4%)
IR	148 (27.8%)
HR	180 (33.8%)
<b>ICiCLe Risk (n=519)</b>	
SR	119 (22.9%)
IR	102 (19.7%)
HR	298 (57.4%)
<b>Post-induction MRD (n=519)</b>	
Positive	167 (32.2%), Median- 0.14, Range- 0.01-88
Negative	352 (67.8%)
<b>Post-consolidation MRD (n=244)</b>	
Positive	24 (9.8%), Median- 0.2, Range- 0.01-86
Negative	220 (90.2%)

357

358

359 **Table 1. Demographic and Laboratory Characteristics, WHO 2016 Classification, MRD**  
 360 **characteristics and Risk Stratification of B-ALL Patients**  
 361

<b>Genetic category</b>	<b>N (%)</b>	<b>Median age in years (range), p-value*</b>	<b>Male n (%), p-value*</b>	<b>Median WBC (range) at diagnosis (X 10<sup>9</sup>/L), p-value*</b>	<b>Percentage of PI MRD positive cases (median, range), p-value*</b>
<b>All categories</b>	<b>533</b>	<b>5 (1-15)</b>	<b>355 (66.5)</b>	<b>6.37 (0.23-692.3)</b>	<b>32.2 (0.14, 0.01- 88)</b>
High hyperdiploidy	182 (34.1)	4 (1 – 13), < 0.001	125 (67.2), 1.000	4.63 (0.61–253.0), < 0.001	30.3 (0.01, 0.01- 11), 0.38
<i>ETV6::RUNX1</i>	68 (12.8)	4 (1 – 15), 0.003	44 (66.7), 1.000	4.85 (0.23–90.1), 0.064	24.2 (0.02, 0.01-5.8), 0.10
<i>TCF3::PBX1</i>	42 (7.9)	6(2-14), 0.154	24 (57.1), 0.177	14.185 (1.22–281.0), 0.003	26.2 (0.03, 0.01-3.60), 0.55
<i>BCR::ABL1</i>	29 (5.4)	10 (2 – 14), <0.001	22 (75.9), 0.318	61.71 (1.11–559.4), <0.01	48.3 (0.48, 0.01-23.50), 0.01
<i>BCR::ABL1</i> like	24 (4.5)	11.5 (3-15), 0.001	17 (70.8), 0.825	33.525 (0.93–295.1), 0.005	70.8 (1.6, 0.01-62), 0.000033
<i>PAX<sup>alt</sup></i>	24 (4.5)	4 (1-14), 0.354	16 (69.6), 0.825	8.15 (0.59–208.5), 0.637	23.8 (0.04, 0.01-1.1), 0.46
<i>KMT2A-r</i>	19 (3.6)	3 (0-14), 0.001	12 (63.2), 0.806	19.54 (1.37–424.71), 0.055	26.3 (0.26, 0.01-50), 0.76
<i>MEF2D-r</i>	13 (2.4)	9 (3-14), 0.004	5 (38.5), 0.038	11.15 (1.31–119.11), 0.252	30.8 (0.05, 0.01- 0.24), 1.00
<i>DUX4-r</i>	12 (2.3)	6 (3-14), 0.167	9 (75.0), 0.759	5.14 (1.56–27.73), 0.358	33.3 (0.03, 0.01-3.5), 1.00
Hypodiploidy	6 (1.1)	11 (4-13)	4 (66.7)	3.27 (1.34–155.1)	33.3 (0.01, 0.01-4.3)
<i>PAX5 P80R</i>	4 (0.7)	12 (8-14)	4 (100)	55.87 (1.99-86.8)	0
<i>TCF3::HLF</i>	4 (0.7)	8 (4-14)	3 (75)	6.335 (1.32–9.74)	75.0 (1.25, 0.01- 6.5)
<i>ZNF384-r</i>	3 (0.6)	5 (4-16)	1 (33.3)	14.33 (4.37–22.32)	66.7 (6.20, 0.32-12.09)
<i>iAMP21</i>	3 (0.6)	6 (2-10)	2 (66.7)	3.04 (2.94-5.4)	0, 0.56
NOS	100 (18.8)	7 (1 – 14), < 0.001	70 (70.0), 0.481	8.07 (0.29-692.3), 0.147	33.0 (0.05, 0.01-71.7), 1.00

362 **Table 2. Age and Sex Distribution, WBC Counts, and MRD characteristics across Genetic**  
 363 **Subgroups.** \*p-values are not provided for genetic subgroups with fewer than 10 cases.

364

365

	Overall survival			Event free survival		
	2 years OS	P-value	Hazard ratio (95% Confidence Interval)	2 years EFS	P-value	Hazard ratio (95% Confidence Interval)
<i>IKZF1</i> del	77.5	0.022	1.8 (0.95 to 3.51)	46.2	<0.0001	3.0 (1.72 to 5.07)
<i>PAX5</i> <sup>alt</sup>	46.6	<0.0001	4.3 (1.46 to 12.96)	39.1	0.0001	2.8 (1.18 to 6.68)
<i>BCR::ABL1</i>	67.6	0.004	2.4 (0.98 to 6.11)	50.6	0.0002	2.5 (1.17 to 5.51)
<i>MEF2D-r</i>	66.1	0.114	2.2 (0.51 to 9.33)	53.8	0.024	2.3 (0.75 to 7.20)
<i>BCR::ABL1</i> like, ABL-Class	90.9	0.821	0.9 (0.23 to 3.11)	60.6	0.043	2.3 (0.68 to 7.55)
NOS	84.2	0.714	1.1 (0.67 to 1.79)	65.9	0.015	1.6 (1.03 to 2.33)
<i>TCF3::PBX1</i>	77.3	0.133	1.6 (0.77 to 3.26)	67.4	0.253	1.3 (0.76 to 2.36)
Hypodiploidy	83.3	0.961	1.1 (0.14 to 7.90)	66.7	0.684	1.3 (0.27 to 6.64)
<i>KMT2A-r</i>	72.0	0.214	1.8 (0.5469 to 5.6249)	67.5	0.645	1.2 (0.50 to 2.95)
<i>BCR::ABL1</i> like, JAK-STAT	84.6	0.730	1.2 (0.35 to 4.33)	63.5	0.98	1.0 (0.37 to 2.65)
<i>DUX4-r</i>	82.5	0.791	0.8 (0.23 to 2.97)	73.3	0.58	0.7 (0.27 to 1.94)
<i>ETV6::RUNX1</i>	100	0.027	0.4 (0.23 to 0.72)	98.0	0.006	0.4 (0.27 to 0.65)
High Hyperdiploidy	92.1	0.0006	0.4 (0.29 to 0.65)	88.9	<0.0001	0.4 (0.26 to 0.49)

366 **Table 3. Event-free and overall survival rates for genetic categories of B-ALL, as classified by**  
 367 **WHO 2022, including hazard ratios and p-values. The genetic categories with fewer than 10 cases**  
 368 **are not included in the table.**

369

Impact of Genetic Risk on Patient Outcomes (n-533)						
	Event free survival			Overall survival		
	Hazard ratio (95% confidence interval)	2 year EFS	p-value	Hazard ratio (95% confidence interval)	2 year EFS	p-value
Standard genomic risk (SGR)	1	92.6%	<0.0001	1	94.3%	<0.0001
Intermediate genomic risk (IGR)	2.77 (1.91 to 4.02)	71.2%		2.37 (1.48 to 3.79)	81.9%	
High genomic risk (IGR)	5.34 (3.61 to 7.89)	50.3%		3.81 (2.34 to 6.19)	71.6%	
Survival analyses in genetic risk categories in ICiCLE initial SR/IR risk categories (n-352)						
	Event free survival			Overall survival		
	Hazard ratio (95% confidence interval)	2 year EFS	p-value	Hazard ratio (95% confidence interval)	2 year EFS	p-value
ICiCLE SR/IR & SGR	1	93.8%	<0.0001	1	94.2%	<0.0001
ICiCLE SR/IR & IGR	2.81 (1.76 to 4.48)	74.0%		2.34 (1.34 to 4.08)	81.4%	
ICiCLE SR/IR & HGR	5.70 (3.18 to 10.20)	50.0%		4.38 (2.21 to 8.68)	70.6%	
Survival analyses in genetic risk categories in ICiCLE initial HiR risk categories (n-181)						
	Event free survival			Overall survival		
	Hazard ratio (95% confidence interval)	2 year EFS	p-value	Hazard ratio (95% confidence interval)	2 year EFS	p-value
ICiCLE HiR & SGR	1	89.0%	<0.0001	1	94.5%	0.026
ICiCLE HiR & IGR	2.67 (1.39 to 5.10)	64.4%		2.35 (0.96 to 5.74)	83.8%	
ICiCLE HiR & HGR	4.36 (2.53 to 7.51)	51.1%		3.28 (1.55 to 6.93)	73.1%	
Impact of PI MRD in standard genomic risk (n-248)						
	Event free survival			Overall survival		
	Hazard ratio (95% confidence interval)	2 year EFS	p-value	Hazard ratio (95% confidence interval)	2 year EFS	p-value
SGR with PI MRD Negative	1	93.9%	0.47	1	95.9%	0.96

SGR with PI MRD positive	0.75 (0.36 to 2.80)	90.6%		1.02 (0.42 to 2.48)	91.7%	
Impact of PI MRD in intermediate genomic risk (n-130)						
	Event free survival			Overall survival		
	Hazard ratio (95% confidence interval)	2 year EFS	p-value	Hazard ratio (95% confidence interval)	2 year EFS	p-value
IQR with PI MRD Negative	1	77.4%	0.017	1	82.8%	0.239
IQR with PI MRD positive	2.03 (1.03 to 4.00)	58.7%		1.56 (0.69 to 3.50)	79.9%	
Impact of PI MRD in high genomic risk (n-141)						
	Event free survival			Overall survival		
	Hazard ratio (95% confidence interval)	2 year EFS	p-value	Hazard ratio (95% confidence interval)	2 year EFS	p-value
HGR with PI MRD Negative	1	67.4%	<0.0001	1	79.6%	0.054
HGR with PI MRD positive	2.71 (1.65 to 4.43)	34.2%		1.86 (0.97 to 3.55)	68.3%	

370

371 **Table 4. Genetic risk-based survival outcomes and the impact of post-induction measurable**  
 372 **residual disease positivity.**

373

374

## 375 References

- 376 1 Moorman A V., Enshaei A, Murdy D, Joy M, Boer JM, den Boer ML *et al.* Integration of  
377 genetics and MRD to define low risk patients with B-cell precursor acute lymphoblastic  
378 leukaemia with intermediate MRD levels at the end of induction. *Leukemia* 2024; **38**.  
379 doi:10.1038/S41375-024-02329-0.
- 380 2 Moorman A V., Enshaei A, Schwab C, Wade R, Chilton L, Elliott A *et al.* A novel  
381 integrated cytogenetic and genomic classification refines risk stratification in pediatric  
382 acute lymphoblastic leukemia. *Blood* 2014; **124**: 1434–1444.
- 383 3 Lilljebjörn H, Henningsson R, Hyrenius-Wittsten A, Olsson L, Orsmark-Pietras C, Von  
384 Palfy S *et al.* Identification of ETV6-RUNX1-like and DUX4-rearranged subtypes in  
385 paediatric B-cell precursor acute lymphoblastic leukaemia. *Nat Commun* 2016; **7**.  
386 doi:10.1038/NCOMMS11790.
- 387 4 Gu Z, Churchman ML, Roberts KG, Moore I, Zhou X, Nakitandwe J *et al.* PAX5-driven  
388 Subtypes of B-progenitor Acute Lymphoblastic Leukemia. *Nat Genet* 2019; **51**: 296.
- 389 5 Alaggio R, Amador C, Anagnostopoulos I, Attygalle AD, Araujo IB de O, Berti E *et al.* The  
390 5th edition of the World Health Organization Classification of Haematolymphoid Tumours:  
391 Lymphoid Neoplasms. *Leukemia*. 2022; **36**. doi:10.1038/s41375-022-01620-2.
- 392 6 Duffield AS, Mullighan CG, Borowitz MJ. International Consensus Classification of acute  
393 lymphoblastic leukemia/lymphoma. *Virchows Arch* 2023; **482**: 11–26.
- 394 7 Jeha S, Choi J, Roberts KG, Pei D, Coustan-Smith E, Inaba H *et al.* Clinical Significance  
395 of Novel Subtypes of Acute Lymphoblastic Leukemia in the Context of Minimal Residual  
396 Disease–Directed Therapy. *Blood Cancer Discov* 2021; **2**: 326–337.
- 397 8 Tanasi I, Ba I, Sirvent N, Braun T, Cuccuini W, Ballerini P *et al.* Efficacy of tyrosine kinase  
398 inhibitors in Ph-like acute lymphoblastic leukemia harboring ABL-class rearrangements.  
399 *Blood* 2019; **134**: 1351–1355.
- 400 9 Gudapati P, Khanka T, Chatterjee G, Ghogale S, Badrinath Y, Deshpande N *et al.*  
401 CD304/neuropilin-1 is a very useful and dependable marker for the measurable residual  
402 disease assessment of B-cell precursor acute lymphoblastic leukemia. *Cytometry B Clin*  
403 *Cytom* 2020; **98**: 328–335.
- 404 10 Tembhare P, Badrinath Y, Ghogale S, Patkar N, Dhole N, Dalavi P *et al.* A novel and  
405 easy FxCycle™ violet based flow cytometric method for simultaneous assessment of  
406 DNA ploidy and six-color immunophenotyping. *Cytometry Part A* 2016; **89**: 281–291.
- 407 11 Amare PSK, Jain H, Kabre S, Deshpande Y, Pawar P, Banavali S *et al.* Cytogenetic  
408 Profile in 7209 Indian Patients with &lt;i>de novo</i> Acute Leukemia: A Single  
409 Centre Study from India. *J Cancer Ther* 2016; **07**: 530–544.
- 410 12 van Dongen JJ, Macintyre EA, Gabert JA, Delabesse E, Rossi V, Saglio G *et al.*  
411 Standardized RT-PCR analysis of fusion gene transcripts from chromosome aberrations  
412 in acute leukemia for detection of minimal residual disease. Report of the BIOMED-1  
413 Concerted Action: investigation of minimal residual disease in acute leukemia. *Leukemia*  
414 1999; **13**: 1901–28.
- 415 13 Caye A, Beldjord K, Mass-Malo K, Drunat S, Soulier J, Gandemer V *et al.* Breakpoint-  
416 specific multiplex polymerase chain reaction allows the detection of IKZF1 intragenic

- 417 deletions and minimal residual disease monitoring in B-cell precursor acute lymphoblastic  
418 leukemia. *Haematologica* 2013; **98**: 597–601.
- 419 14 Das N, Banavali S, Bakhshi S, Trehan A, Radhakrishnan V, Seth R *et al*. Protocol for  
420 ICiCLE-ALL-14 (InPOG-ALL-15-01): a prospective, risk stratified, randomised,  
421 multicentre, open label, controlled therapeutic trial for newly diagnosed childhood acute  
422 lymphoblastic leukaemia in India. *Trials* 2022; **23**: 1–20.
- 423 15 Tembhare PR, Subramanian PG PG, Ghogale S, Chatterjee G, Patkar N V., Gupta A *et*  
424 *al*. A High-Sensitivity 10-Color Flow Cytometric Minimal Residual Disease Assay in B-  
425 Lymphoblastic Leukemia/Lymphoma Can Easily Achieve the Sensitivity of 2-in-10<sup>6</sup> and Is  
426 Superior to Standard Minimal Residual Disease Assay: A Study of 622 Patients.  
427 *Cytometry B Clin Cytom* 2020; **98**: 57–67.
- 428 16 Alaggio R, Amador C, Anagnostopoulos I, Attygalle AD, Araujo IB de O, Berti E *et al*. The  
429 5th edition of the World Health Organization Classification of Haematolymphoid Tumours:  
430 Lymphoid Neoplasms. *Leukemia* 2022; **36**: 1720–1748.
- 431 17 Li JF, Dai YT, Lilljebjörn H, Shen SH, Cui BW, Bai L *et al*. Transcriptional landscape of B  
432 cell precursor acute lymphoblastic leukemia based on an international study of 1,223  
433 cases. *Proc Natl Acad Sci U S A* 2018; **115**: E11711–E11720.
- 434 18 Attarbaschi A, Möricke A, Harrison CJ, Mann G, Baruchel A, De Moerloose B *et al*.  
435 Outcomes of Childhood Noninfant Acute Lymphoblastic Leukemia With 11q23/ KMT2A  
436 Rearrangements in a Modern Therapy Era: A Retrospective International Study. *J Clin*  
437 *Oncol* 2023; **41**: 1404–1422.
- 438 19 Roberts KG, Pei D, Campana D, Payne-Turner D, Li Y, Cheng C *et al*. Outcomes of  
439 children with BCR-ABL1-like acute lymphoblastic leukemia treated with risk-directed  
440 therapy based on the levels of minimal residual disease. *J Clin Oncol* 2014; **32**: 3012–  
441 3020.
- 442 20 den Boer ML, Cario G, Moorman A V., Boer JM, de Groot-Kruseman HA, Fiocco M *et al*.  
443 Outcomes of paediatric patients with B-cell acute lymphocytic leukaemia with ABL-class  
444 fusion in the pre-tyrosine-kinase inhibitor era: a multicentre, retrospective, cohort study.  
445 *Lancet Haematol* 2021; **8**: e55–e66.
- 446 21 Chang TC, Chen W, Qu C, Cheng Z, Hedges D, Elsayed A *et al*. Genomic Determinants  
447 of Outcome in Acute Lymphoblastic Leukemia. *J Clin Oncol* 2024.  
448 doi:10.1200/JCO.23.02238.  
449



450 **Figure Legend**

451 **Figure 1.** (a) Sankey Diagram Illustrating the Reclassification of B-ALL Cases from WHO 2016  
452 to WHO 2022 B-ALL Classification (b) Circos diagram showing fusions identified in pediatric  
453 B-ALL.

454 **Figure 2.** Event-free survival (EFS) of pediatric B-cell acute lymphoblastic leukemia (B-ALL)  
455 patients (n=533) categorized by genetic subtypes.

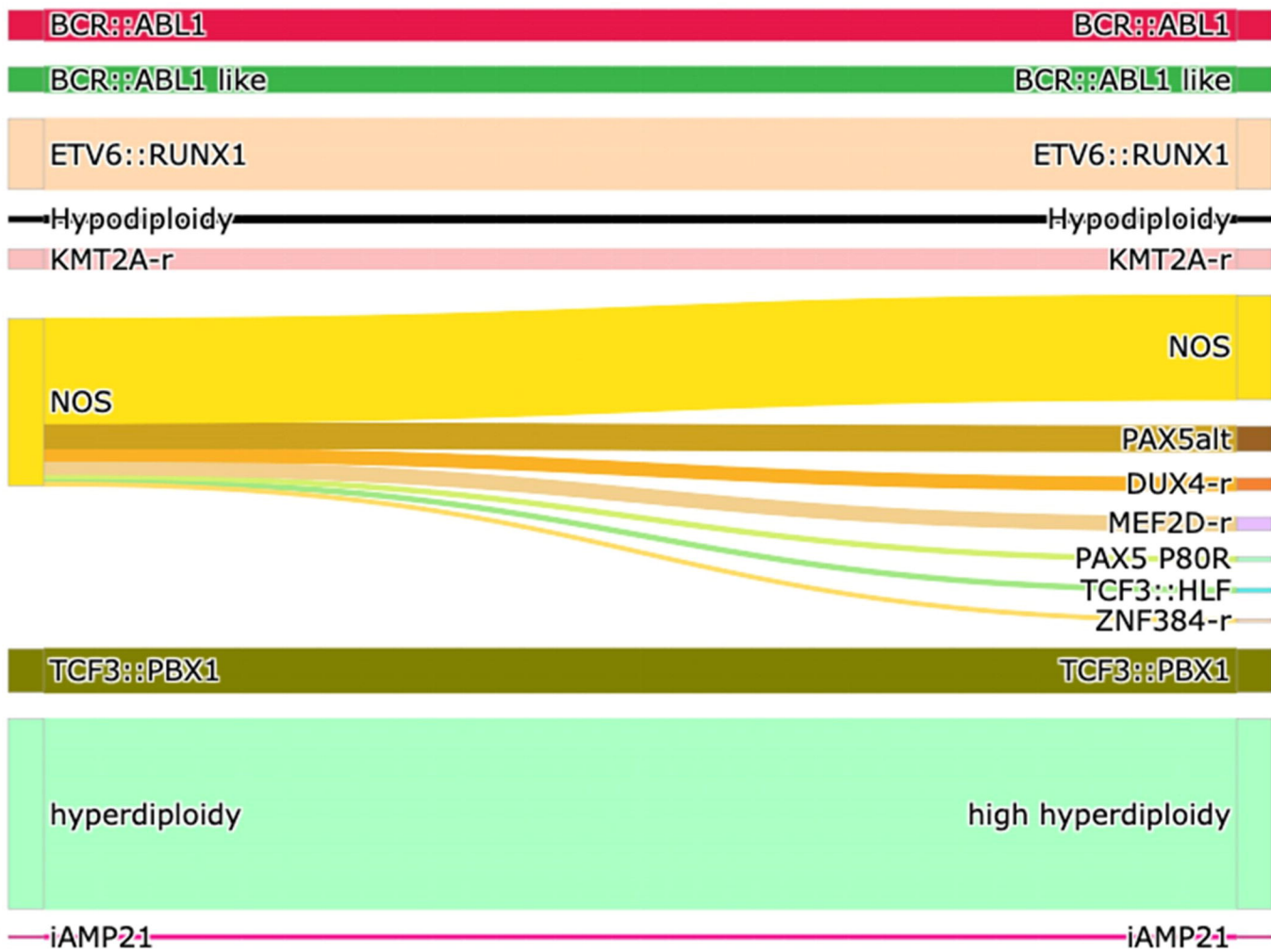
456 **Figure 3.** Event-free and overall survival of pediatric B-ALL patients stratified by genetic risk  
457 classification into standard (SGR), intermediate (IGR), and high (HGR) genetic risk groups.

458 **Figure 4.** (a) Event free survival in pediatric B-ALL stratified by genetic risk and post-induction  
459 MRD revealing similar outcome in the standard genomic risk category irrespective of post-  
460 induction measurable residual disease status; (b) Event free survival in pediatric B-ALL stratified  
461 by ICiCLe initial risk stratification and genetic risk heterogenous outcomes within the ICiCLe  
462 risk groups.

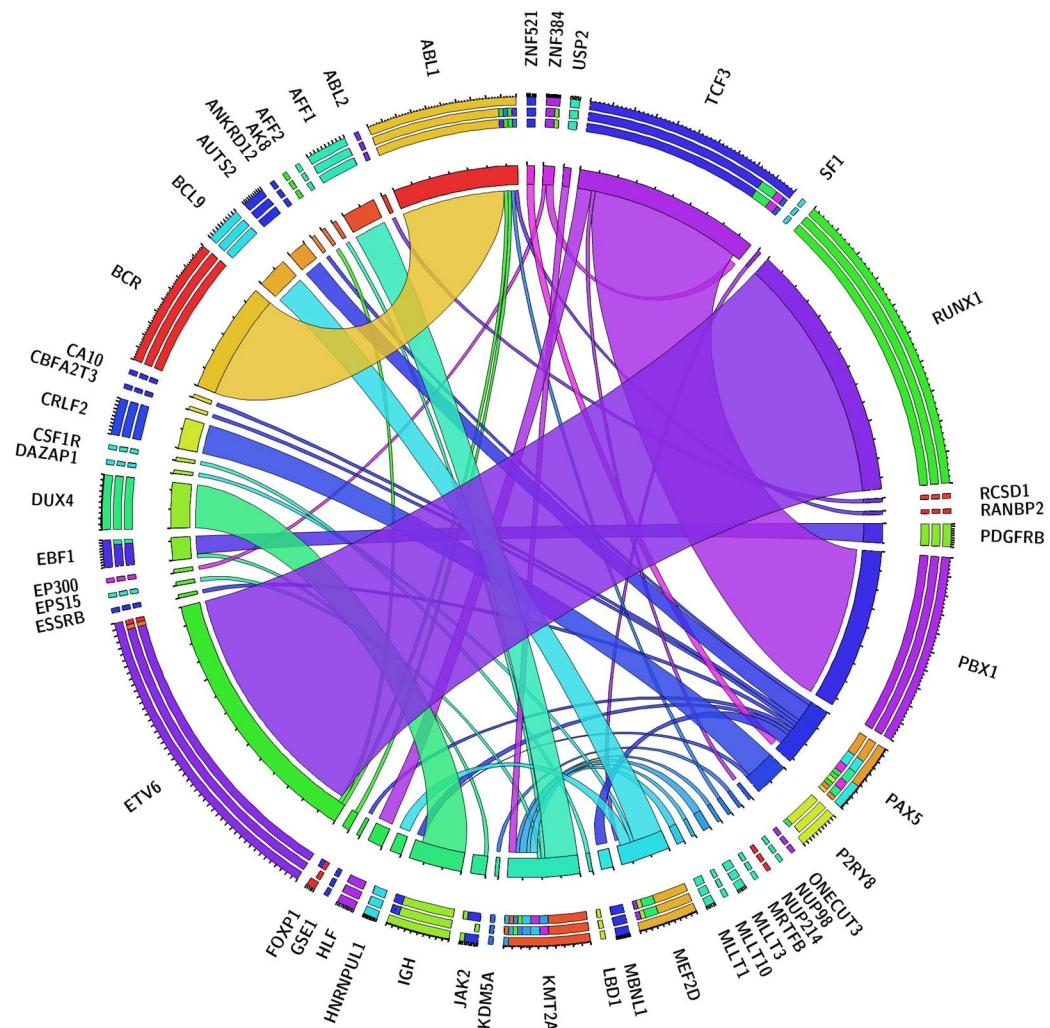
A

WHO 2016

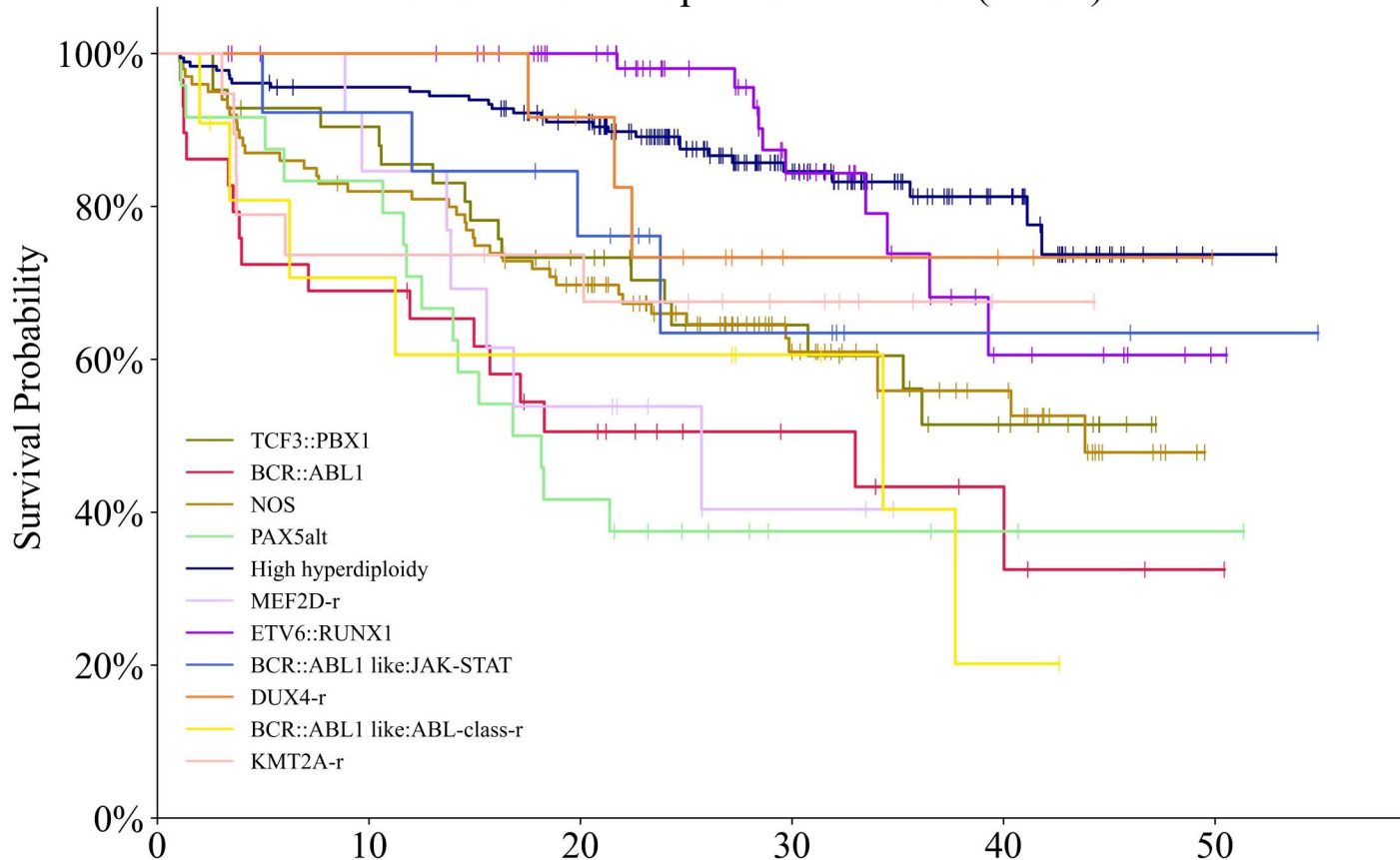
WHO 2022



B

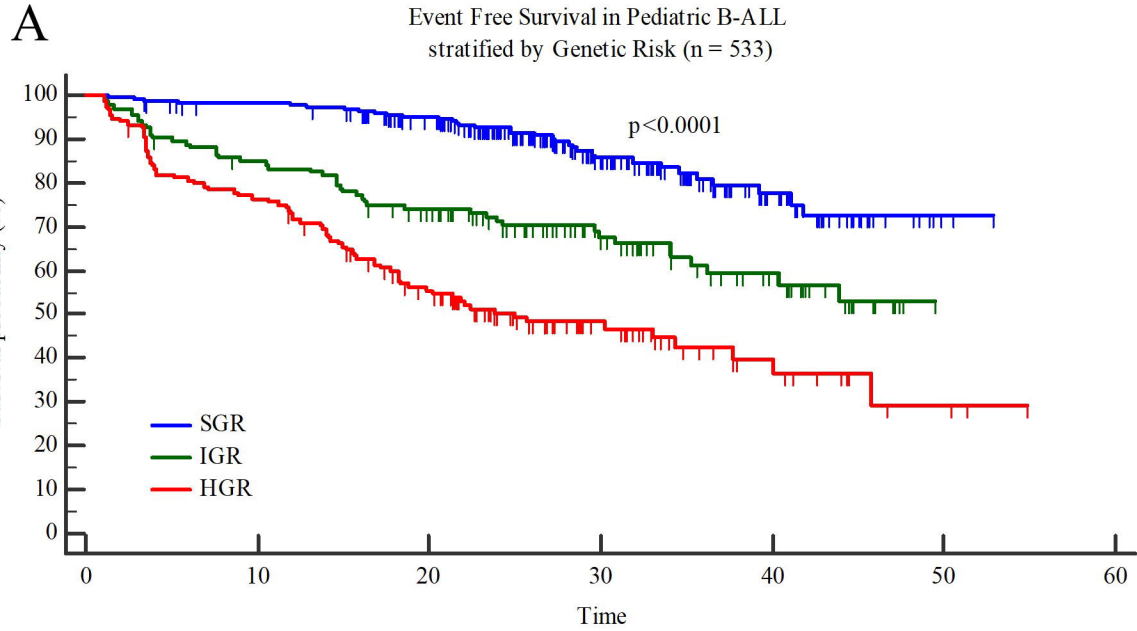


# Event free survival of pediatric B-ALL (n-533)



Number at risk

	0	10	20	30	40	50
High hyperdiploidy	182	172	153	75	28	2
NOS	100	82	65	34	19	1
<i>ETV6::RUNX1</i>	68	66	57	29	8	2
<i>TCF3::PBX1</i>	42	38	29	17	10	1
<i>BCR::ABL1</i>	29	21	14	8	5	2
<i>PAX5</i> <sup>alt</sup>	24	21	11	4	3	2
<i>KMT2A</i> -r	19	15	13	8	2	1
<i>MEF2D</i> -r	13	12	8	3	1	1
<i>BCR::ABL1</i> like: JAK-STAT-r	13	13	10	6	3	2
<i>DUX4</i> -r	12	12	11	4	3	1
<i>BCR::ABL1</i> like:ABL-class	11	8	7	5	2	1



Number at risk

Group	0	10	20	30	40	50	60
Group: SGR	251	240	212	103	37	2	0
Group: IGR	133	110	91	52	26	0	0
Group: HGR	149	113	74	33	12	3	0

**Standard Genetic Risk (SGR)**

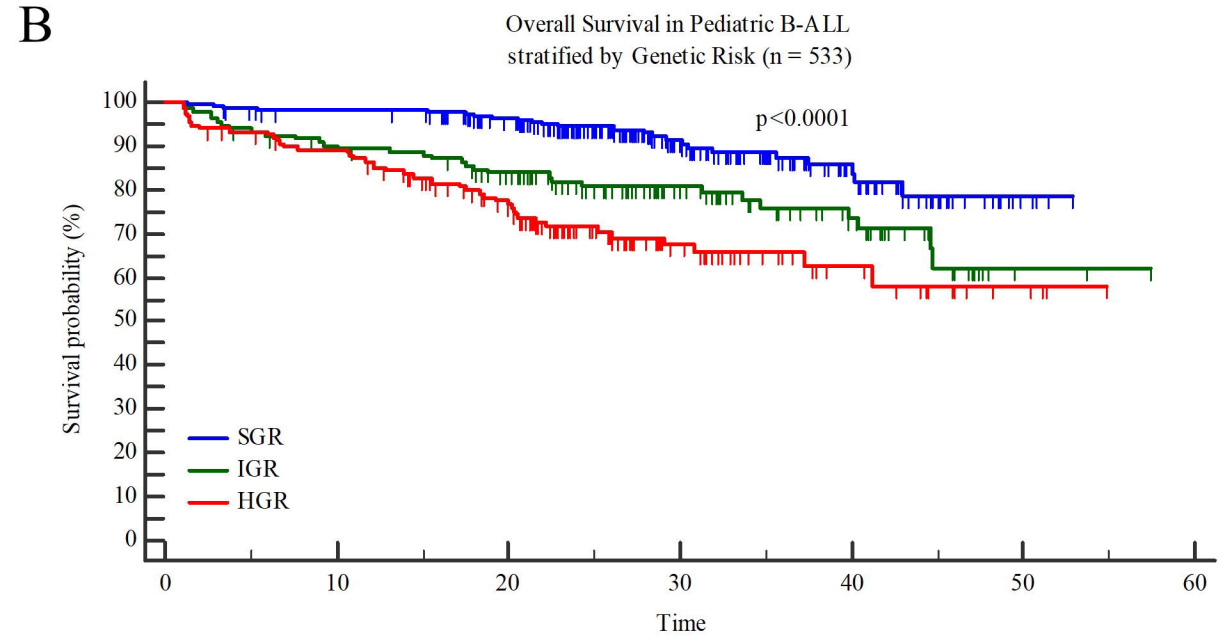
High hyperdiploidy  
*ETV6::RUNX1*  
*DUX4-r*

**Intermediate Genetic Risk (IGR)**

*TCF3::PBX1*  
*KMT2A-r*  
*BCR::ABL1* like: JAK-STAT-r  
*PAX5 P80R*  
*ZNF384-r*  
NOS

**High Genetic Risk (HGR)**

*PAX5<sup>alt</sup>*  
*MEF2D-r*  
*BCR::ABL1* like: ABL class-r  
*TCF3::HLF*  
*BCR::ABL1*  
Hypodiploidy  
*iAMP21*  
*IKZF1* deletion

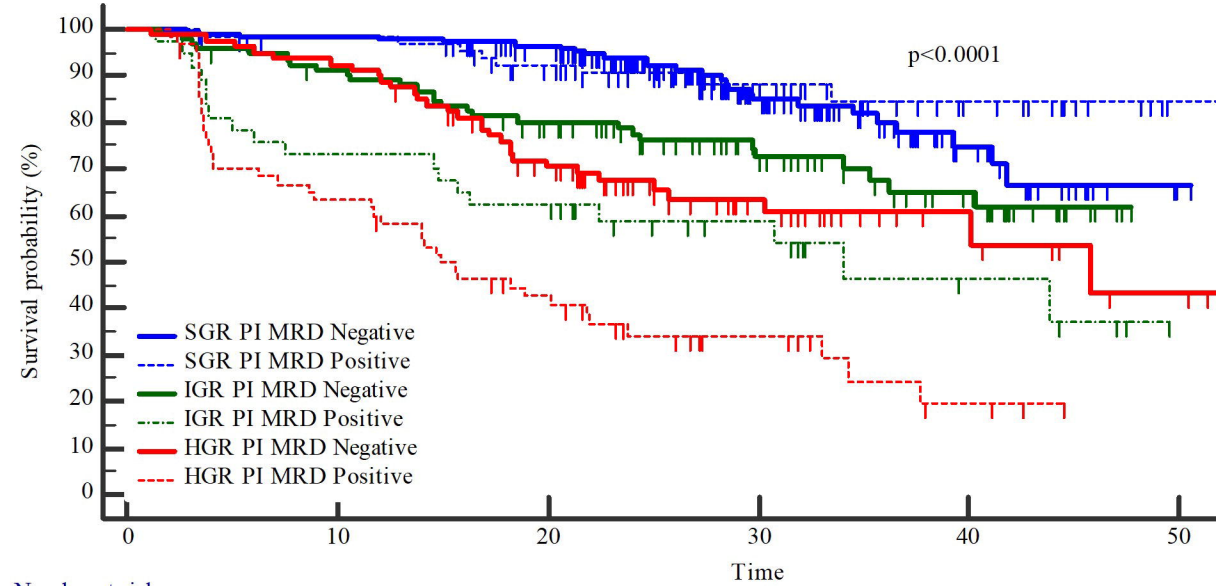


Number at risk

Group	0	10	20	30	40	50	60
Group: SGR	251	240	215	107	41	4	0
Group: IGR	133	116	100	58	32	2	0
Group: HGR	149	129	95	39	16	4	0

A

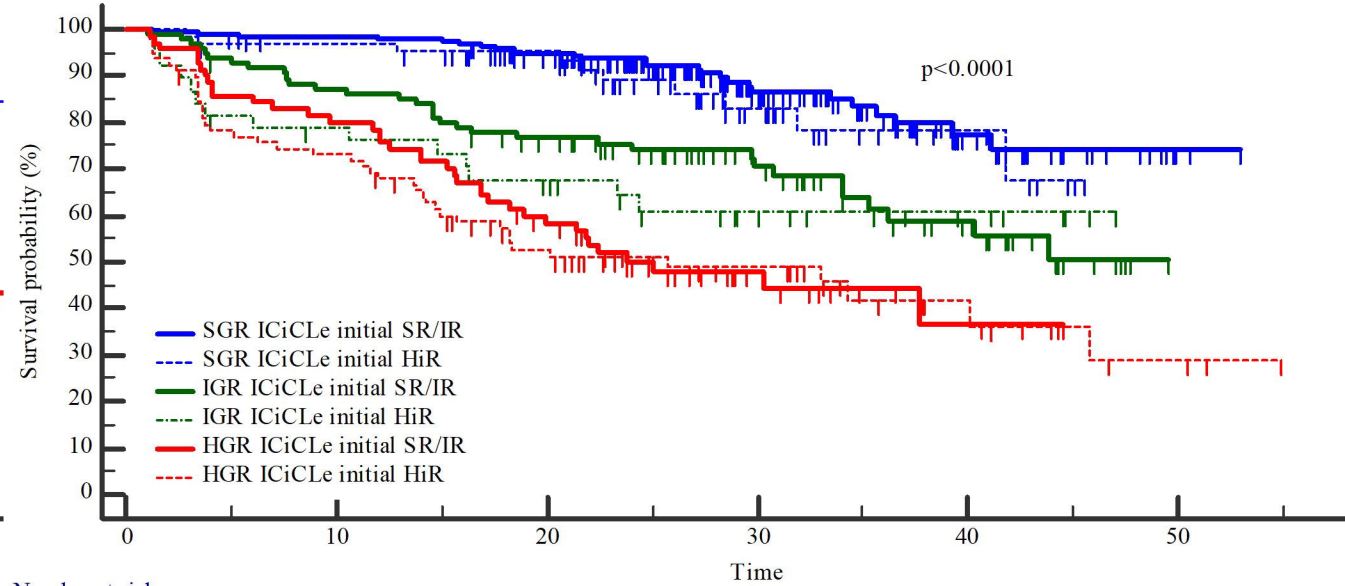
Event Free Survival in Pediatric B-ALL Stratified by Genetic Risk and Post-Induction MRD (n-519)



Number at risk	0	10	20	30	40	50
Group: SGR PI MRD Negative	179	174	157	73	24	1
Group: SGR PI MRD Positive	69	65	55	30	13	1
Group: IGR PI MRD Negative	93	82	67	39	21	0
Group: IGR PI MRD Positive	37	27	23	13	5	0
Group: HGR PI MRD Negative	80	74	51	23	9	3
Group: HGR PI MRD Positive	61	38	23	10	3	0

B

Event Free Survival in Pediatric B-ALL Stratified by Genetic Risk and ICiCLE Initial Risk (n-533)



Number at risk	0	10	20	30	40	50
Group: SGR ICiCLE initial SR/IR	187	180	163	80	28	2
Group: SGR ICiCLE initial HiR	64	60	49	23	9	0
Group: IGR ICiCLE initial SR/IR	95	82	68	39	20	0
Group: IGR ICiCLE initial HiR	38	28	23	13	6	0
Group: HGR ICiCLE initial SR/IR	70	56	39	13	5	0
Group: HGR ICiCLE initial HiR	79	57	35	20	7	3