

1 **Protocol for the Feasibility and Acceptability of Mentalization-based Treatment for**
2 **Early Adolescents With Depression: A Short-Term Psychotherapy Approach for**
3 **Patients and Families**

4 Javier Moran-Kneer (corresponding author), School of Psychology/Translational Center for
5 Stress and Mental Health Studies (C-ESTRES), Universidad de Valparaíso, Chile.

6 Javiera Duarte, School of Psychology, Universidad Diego Portales, Chile.

7 Johana Zapata, School of Psychology, Universidad Autónoma, Chile.

8 Louise Alkabes-Esquenazi, Universidad Católica Santa María La Antigua, Panamá.

9 Silvia González, School of Psychology, Universidad de Valparaíso, Chile.

10 Paula Solervicens, School of Psychology, Universidad de Valparaíso, Chile.

11 Melannie Klagges, San Borja Arriarán Clinical Hospital, Chile.

12 Francisca García, School of Medicine, Universidad de Valparaíso, Chile.

13 Marcelo Arancibia, School of Medicine/Translational Center for Stress and Mental Health
14 Studies (C-ESTRES), Universidad de Valparaíso, Chile.

15 Francisca Díaz, Fundación en Mente, Chile.

16 Nicole Avalos, School of Psychology, Universidad de Valparaíso, Chile.

17

18 Trial registration on ichgcp.net NCT06252090, February 6, 2024

19

20

21

22

23

24

25

26

NOTE: This preprint reports new research that has not been certified by peer review and should not be used to guide clinical practice.

27 **Abstract**

28 Background: Approximately 13.4% of children and adolescents worldwide suffer from
29 depression, with early onset often manifesting before the age of 14 and disproportionately
30 affecting vulnerable groups. The prevalence of adolescent depression has increased since the
31 COVID-19 pandemic, with significant long-term impacts on development, social functioning,
32 and academic performance. Mentalization-based treatment (MBT), particularly the MBT-A
33 model tailored for adolescents, has shown promise in addressing depression by increasing
34 mentalizing capacity. This study explores the feasibility and acceptability of a short-term
35 MBT-A intervention that incorporates both individual and family components to address
36 depression in early adolescents. Methods: This feasibility pilot study will recruit 15
37 adolescents aged 10--14 years who are diagnosed with mild to moderate depression from
38 primary healthcare centers and psychological care clinics in Valparaíso, Chile. The
39 participants will undergo a 12-session MBT-A intervention, which is structured into three
40 phases: joint understanding of the problem, intensive promotion of mentalization, and
41 evaluation of the process. Outcomes will be assessed through mixed methods, including
42 quantitative measures (e.g., recruitment rate, adherence rate, effect size on depressive
43 symptoms) and qualitative interviews with patients, families, and therapists. Discussion:
44 Fostering mentalization in adolescents with depression may reduce depressive symptoms and
45 enhance emotional regulation, benefiting both individuals and their families. This study aims
46 to provide preliminary data to inform the planning of a larger randomized controlled trial
47 (RCT). By incorporating family components, the intervention not only addresses individual
48 symptoms but also promotes supportive family dynamics, which are crucial for sustaining
49 therapeutic gains. This pilot study will identify practical aspects of implementing MBT-A and
50 gather essential data on its feasibility and potential efficacy in a real-world setting.

51

52

53 **Keywords**

54 Adolescent depression, Mentalization-Based Treatment, MBT-A, feasibility study, family
55 intervention, short-term psychotherapy, emotional, pilot study.

56

57 **Trial registration**

58 Trial registration on ichgcp.net NCT06252090, February 6, 2024

59

60

61

62

63

64

65

66

67

68

69

70

71

72

73

74

75

76

77

78

79 **1. Background and rationale**

80 Approximately 13.4% of children and adolescents worldwide suffer from depression (1).
81 Mental health issues often manifest before the age of 14 (2) and disproportionately affect
82 vulnerable groups (3), with significant economic repercussions for public health that persist
83 into adulthood (4). Adolescent depression, in particular, is a prevalent issue closely linked to
84 self-harm, suicidal behaviors, and other risky behaviors (5). This condition frequently
85 cooccurs with substance abuse, high-risk sexual behaviors, anxiety, and personality disorders
86 (6, 7). Early onset of depression is tied to notable neurodevelopmental impairments during
87 adolescence (8)). The prevalence of depression surged following the COVID-19 pandemic,
88 with an estimated increase of 25% in depression and anxiety cases worldwide (9). International
89 reports highlight four key areas impacted in children and adolescents: education, rights
90 protection, poverty, and mental health (10, 11, 12).

91 Early adolescent depression, which occurs before the age of 15, is particularly significant
92 because of its long-term impacts on development and functioning (13). Depression during
93 these formative years is associated with impaired academic performance, which can have
94 lasting effects on educational and occupational outcomes (14).

95 Early onset of depression can disrupt normal social and emotional development, leading to
96 difficulties in forming and maintaining relationships, increasing the risk of social isolation (15)
97 and increasing the risk of more severe and recurrent episodes in the future (16). Moreover,
98 early adolescence serves as a critical period for brain development due to synaptic pruning—
99 a crucial process for the maturation of regions involved in executive functions, emotional
100 regulation, and social behavior (17). Disruptions in synaptic pruning can lead to maladaptive
101 neural circuitry, which impacts emotional regulation and heightens the risk of depression (18).
102 According to this evidence, addressing depression early in adolescence is crucial to mitigate
103 these risks and support healthier developmental trajectories (19).

104 Importantly, these neural changes also impact adolescents' capacity for mentalization—the
105 ability to understand the mental states of oneself and others (20). Research has shown that the
106 development and reorganization of brain areas during adolescence, particularly those involved
107 in social cognition and executive functions, are crucial for the enhancement of mentalizing
108 abilities (21,22). Recent studies have indicated that mental health disorders, including
109 depression, are linked to dysfunctions in mentalizing capacities (23). Failures in mentalizing
110 may play a crucial role in the development of depressive symptoms (24). During this time,
111 adolescents must also develop new capabilities such as establishing relationships, gaining
112 greater autonomy, and enhancing agency. These developments largely depend on the
113 regulation of stress, mentalization, and reward systems. Consequently, poor mentalizing is
114 linked to higher rates of depression during developmental transitions (25).

115 There is evidence suggesting that mentalization-based treatment (MBT), particularly when
116 tailored for adolescents via the MBT-A model, is an effective intervention for addressing
117 depression symptoms within this age group. A randomized controlled trial (26) revealed that
118 short-term MBT-A therapy (12 sessions) reduced symptoms of depression and self-harm in
119 adolescents more effectively than treatment as usual (TAU). Notably, 37% of patients in the
120 MBT-A group no longer exhibited signs of clinical depression, whereas only 22% of patients
121 in the TAU group did. The authors attributed this superiority of the MBT-A to improvements
122 in adolescents' mentalizing capacities and a reduction in their avoidant attachment behaviors.
123 Similarly, a pilot randomized controlled trial (27) investigated an adaptation of the adult MBT
124 introductory manual in a group format for adolescents. This study, which was conducted in a
125 clinical setting, aimed to assess the feasibility and initial effects of a group-based
126 Mentalization-Based Treatment for Adolescents (MBT-Ai). The findings indicated a reduction
127 in self-harm behaviors among participants, supporting the potential of MBT-Ai as a promising
128 intervention for this population.

129 In recent years, the focus of mentalization-based interventions has shifted from an individual
130 approach to a family and community approach (28). These results also prove how intervention
131 at the family level can promote mentalization and trust, even after the therapeutic intervention
132 has been completed. This holistic approach not only fosters individual healing but also
133 cultivates a supportive environment that perpetuates positive behaviors and emotional health
134 across the community, thereby contributing to the sustainable well-being of all its members
135 (29). Additionally, highlighting the role of attachment relationships in this model, it is
136 important to note that the emotional and behavioral symptoms of children and adolescents
137 appear to be positively related to parental well-being. Family relationships have been shown
138 to be a protective factor in adolescent mental health (30, 31, 32). Conversely, evidence shows
139 that poor family communication is associated with the development of psychopathology (33,
140 34). Adolescent depression is also associated with parental psychopathology and family
141 dysfunction (35), which are factors that are reinforced by current sociohealth conditions (36).
142 Parental involvement in psychotherapeutic interventions for adolescent depression enhances
143 their effects, for example, through improved emotional coregulation, a key factor in treating
144 these types of psychopathologies (37). Additionally, in the treatment of adolescents, parental
145 emotional regulation skills and strategies should be addressed to reduce behaviors that could
146 interfere with therapeutic processes (38).

147 In summary, we propose that mentalization-based psychotherapy, which includes both
148 individual and family components, may serve as an effective intervention for addressing
149 depression in early adolescents. This study presents the research protocol for a therapeutic
150 model designed for this specific population. The theoretical foundation of this intervention is
151 evolutionarily relevant, as it focuses primarily on strengthening psychologically vulnerable
152 functions in the context of neurodevelopment. Moreover, it integrates the family as a central
153 part of the treatment, an essential aspect considering its impact on the development and
154 maintenance of psychopathology in adolescents and its protective value in this context. In this

155 context, this therapy has a predominantly preventive nature, addressing depression at an early
156 stage. This study provides both qualitative and quantitative data for the planning of a clinical
157 trial to test the proposed hypotheses.

158

159 **2. Methods/design**

160 2.1. Aims This feasibility pilot study aims to assess the feasibility and acceptability of short-
161 term mentalization-based treatment for adolescents diagnosed with mild to moderate
162 depression. The primary objectives include the estimation of a) the proportion of invited
163 patients who agree to participate in the study (recruitment rate), b) the proportion of patients
164 who complete the intervention relative to the initial number of participants (adherence rate),
165 and c) the intervention's effect size on depressive symptoms in adolescents. Additionally, on
166 a qualitative level, the study aims to explore a) patient satisfaction with the intervention
167 (acceptability) and b) the applicability of the treatment from the perspective of the therapists
168 and supervisors involved in the intervention.

169 As secondary objectives, the study aims to determine the intervention's effect size on a)
170 depressive symptoms in other family members, b) anxious symptoms in all intervention
171 participants, c) family cohesion, and d) overall adaptation of all family system members.

172

173 2.2. Design. The research corresponds to a pilot study aimed at evaluating the feasibility and
174 acceptability of a brief family intervention informed by mentalization to address adolescents
175 diagnosed with mild to moderate depression attending a secondary care center in the city of
176 Valparaíso.

177 The mixed-methods study incorporates both qualitative and quantitative techniques for data
178 collection and analysis to obtain and evaluate primary and secondary outcomes in the context
179 of the intervention study. The design is based on the principles of the Consolidated Standards
180 of Reporting Trials [CONSORT] - Extension to randomized pilot and feasibility trials (39).

181 According to the CONSORT, this type of design is recommended to evaluate the feasibility of
182 interventions on a small and exploratory scale before scaling them up to randomized controlled
183 trials (RCTs). This type of study allows for documenting changes to the original design, such
184 as treatment type, eligibility criteria, and primary dependent variables, among others,
185 providing reasons for these changes (40). Adicionalmente, el estudio sigue las guías de SPIRIT
186 (41) (see Additional file 1)

187

188 2.3. Primary outcomes

189 The feasibility of the intervention will be assessed as follows:

190 a) Recruitment rate

191 b) Data attrition rate

192 c) Follow-up rate

193 d) Professionals' reports who conducted the intervention through qualitative interviews.

194

195 The acceptability of the intervention will be evaluated as follows:

196 a) Adherence rate

197 b) Reports from adolescents and responsible adults through qualitative interviews and the
198 Credibility/Expectancy Questionnaire (CEQ) (42).

199

200 2.4. Secondary outcomes

201 The following screening instruments will be applied to calculate the effect size of the
202 intervention. The evaluation will be conducted on the responsible adult:

203 a) Depressive symptomatology was assessed via the PHQ-9 (43, 44).

204 b) Anxiety symptomatology according to the DASS-21 anxiety scale (45, 46)

205

206 The evaluation for adolescents will include the following:

- 207 a) Depressive symptomatology using the RCADS (47, 48, 49)
- 208 b) Externalizing and internalizing symptoms through the SDQ-SF (50).
- 209 Finally, at the family system level, family cohesion will be assessed via FACES III (51).

210

211 2.5. Additional assessments

212 At the psychotherapy process level, evaluations are carried out by external observers:

- 213 a) Therapeutic alliance through the VTAS-SF scale (52).
- 214 b) Adherence to the therapeutic model via the Mentalization-based Treatment Adherence and
- 215 Competence Scale (MBT-ACS) (53).
- 216 c) Quality of patient mentalization based on the OMP-A (54)

217

218 Additionally, the progress of participants' psychological well-being will be assessed through

219 session-to-session evaluation via the CORE-OM (55) (for adults) and YP-CORE-OM (56) (for

220 adolescents) scales.

221 The following table summarizes all the measures used in this study according to the different

222 stages of the intervention:

223

224

225

226

227

228

229

230

231

232

233 Table 1. Overview of the assessments according to time points

	SCREENING	T0	T1	T2	T3
ENROLMENT					
Eligibility screen	X				
Informed consent	X				
<i>Psychiatrist assessment</i>	X				
INTERVENTION					
MBT intervention			X		
ASSESSMENTS					
Adult	PHQ-9	X		X	X
	SDQ	X		X	X
	FACES III	X		X	X
	CEQ	X		X	
	DASS-21	X		X	X
	CORE-OM	X			
Adolescent	RCADS-30	X		X	X
	YP-CORE-OM	X		X	X
	CEQ			X	
Observation Instruments	OMP-A		X		
	MBT-ACS		X		
	VTAS-SF		X		

234

235 T0: Baseline, T1: Intervention, T2: Postintervention, T3: Follow-up, PHQ-9: Patient Health

236 Questionnaire, SDQ: Strengths and Difficulties Questionnaire, FACES III: Family

237 Adaptability and Cohesion Evaluation Scale, CEQ: Credibility/Expectancy Questionnaire
238 DASS-21: Depression Anxiety Stress Scales, CORE-OM: Clinical Outcomes in Routine
239 Evaluation – Outcome Measure, RCADS-30: Revised Child Anxiety and Depression Scale,
240 YP-CORE-OM: Young Person-Clinical Outcomes in Routine Evaluation-Outcome Measure,
241 OMP-A: Observing the Mentalization in Psychotherapy for Adolescents Scale, MBT-ACS:
242 Mentalization-based Therapy Adherence and Competence Scale, VTAS-SF: Vanderbilt
243 Therapeutic Alliance Scale.

244

245 --- INSERT FIGURE 1 HERE ----

246

247 2.6. Participants

248 15 Adolescents aged between 10 and 14 years and diagnosed with mild to moderate major
249 depressive disorder, according to the Diagnostic and Statistical Manual of Mental Disorders
250 (DSM-5-TR) (57), will be recruited through direct referral from a primary healthcare center.
251 Healthcare providers from this center will be responsible for conducting an initial screening
252 of patients and referring them to the study until the total number of patients is reached. The
253 mental health caregivers at the referral centers will consult with responsible adults of
254 adolescents suspected of having depression regarding the possibility of being contacted by the
255 research team to invite them to participate in the study. Informed consent will be obtained, and
256 there will be no financial compensation for participation in the study. The psychological
257 interventions will be provided in a teaching-assisted psychological care clinic.

258 Participant recruitment began on September 1, 2023, and will conclude on December 1, 2024.
259 Follow-up of participants will continue until the end of 2024. The authors confirm that the
260 ongoing trial for this intervention is registered at [https://ichgcp.net/clinical-trials-
261 registry/NCT06252090](https://ichgcp.net/clinical-trials-registry/NCT06252090).

262

263 2.7. Eligibility criteria

264 Participants who agree to be contacted will be assessed by a psychiatrist, who will interview
265 both the teenager and the responsible adult to confirm the diagnosis of mild to moderate
266 depression. In addition to the diagnosis of depression, the inclusion criterion requires the
267 presence of at least one legally responsible adult who consents to participate in the therapeutic
268 process. The exclusion criteria included adolescents with diagnoses of autism spectrum
269 disorders, psychosis, bipolar affective disorder, active suicidal ideation, or substance use
270 disorder. Pregnancy is also an exclusion criterion. All participants must be users of the public
271 healthcare system. The therapists include clinical psychologists and child and adolescent
272 psychiatrists, who are part of the research team that contributed to the project's formulation
273 and will work in Child and Adolescent Psychiatric Services (CAPSI) specifically for this
274 study. All the therapists had a minimum of 5 years of experience working with families and/or
275 adolescents in the clinical setting.

276 The sample size calculation was initially based on an alpha value of .08, a 1-beta value of .05,
277 and a large effect size for the depression outcome, anticipating significant clinical
278 improvements due to the targeted nature of the MBT-A intervention. This assumption aligns
279 with previous studies, such as Rossouw and Fonagy (26), where substantial effects were
280 observed in similar populations. However, to ensure a robust design, we have also incorporated
281 feasibility thresholds derived from the same study, setting recruitment at 60%, retention at
282 50%, and adherence at 70%. These thresholds provide a practical foundation for determining
283 the sample size needed for a larger randomized controlled trial (RCT), ensuring that our
284 estimates are grounded in both anticipated effect size and the practicalities of implementation
285 in this specific population. With these parameters, a sample size of 15 families was estimated
286 via G-Power 3.1.

287

288 2.8. Intervention

289 Short-term mentalization-based treatment for adolescents (MBT-A) with depression aims to
290 increase the mentalization ability of adolescents to reduce depressive symptoms. This goal is
291 achieved through both individual work and family intervention. This model retains the main
292 characteristics of mentalization-based therapy, such as the therapist's basic attitude toward
293 actively promoting patients' mentalization, the noncertainty of mental states, a focus on the
294 here and now, and the use of affect as a mechanism for change. The treatment is structured
295 approximately 12 weekly sessions organized into three phases. The model has a flexible
296 structure, which is primarily based on achieving the objectives of each stage. The first phase's
297 main goal is the joint understanding of the problem, culminating in the creation of a written
298 clinical formulation that is shared with the family between sessions 1 and 3. The second phase
299 is characterized by intensive promotion of mentalization at both the individual and family
300 levels, on the basis of the therapeutic focus established in stage 1. The third stage is oriented
301 toward evaluating the process and establishing actions aimed at maintaining change. The
302 treatment incorporates a psychoeducational component through a video animation introduced
303 during the first phase. This component is designed to explain and discuss what depression is
304 from a mentalization perspective, how it manifests in this stage, and the family's role in
305 treatment. Additionally, symptom tracking is incorporated throughout the process through
306 routine outcome monitoring.

307

308 2.9. Treatment adherence

309 The interventions will be conducted by therapists trained in the MBT-A model (Mentalization-
310 Based Therapy for Adolescents), who have completed 3 days of basic training provided by a
311 certified instructor. All psychotherapy sessions will be video-recorded and evaluated by
312 independent judges to determine adherence to the model via the MBT adherence and
313 competence scale (53). Group supervision sessions will be held with the aim of reflecting on
314 the development of clinical cases and promoting adherence to the model. Evaluations from

315 independent judges will be integrated into weekly case discussions. Additionally, eight
316 supervision sessions will be conducted with an expert supervisor in the MBT-A model
317 throughout the study.

318

319 2.10. Data analysis

320 Descriptive analyses will be conducted to characterize the sociodemographic background of
321 the sample, screening measures applied to participants, and primary quantitative feasibility
322 outcomes (recruitment rate, data attrition rate, follow-up rate), as well as acceptability
323 outcomes (adherence rate and quantitative evaluation of credibility/expectancy). For
324 secondary variables related to participant symptomatology and family cohesion, multilevel
325 analyses will be performed, considering the nesting of the therapists and the longitudinal
326 nature of the data, to compare changes between the pre-assessment (T1), post-assessment (T2),
327 and follow-up assessment (T3) periods. This analysis provides values for calculating effect
328 sizes, a crucial input for determining the sample size needed for a larger-scale clinical trial.
329 Finally, descriptive analyses will be conducted for additional assessments (therapeutic
330 alliance, patient mentalization, treatment adherence, and progression of psychological well-
331 being). All quantitative analyses will adhere to the per-protocol analysis principle (58) via
332 Stata-18® software.

333 Qualitative data will be analyzed using thematic analysis (67) methodology. Interviews will
334 be transcribed and coded to identify key themes, using NVivo software for data management.
335 To ensure accuracy, findings will be triangulated across participants and validated through
336 member checking

337 The procedures associated with data management are described in the protocol approved by
338 the Institutional Ethics Committee of the University of Valparaíso (CEC-UV 262-22).

339

340 **3. Discussion**

341 This protocol describes the process of a feasibility and acceptability study of short-term
342 mentalization-based treatment for adolescents (MBT-A) diagnosed with mild to moderate
343 depression. Adolescent depression requires not only symptomatic management but also
344 consideration of neurodevelopmental changes during this stage. A mentalization-based
345 approach strengthens structural functions (mentalization), which are crucial during
346 adolescence for affect regulation. Promoting mentalization in individuals vulnerable to
347 depression helps them cope with lifelong stressors, reducing the likelihood of relapse and even
348 intergenerational transmission of depression (59).

349 There is also a need to incorporate the family as a key component, highlighting the impact of
350 attachment relationships on the development of neurobiological structures involved in affect
351 regulation and self-organization (60). Incorporating the family promotes the maintenance of
352 changes and the prevention of future episodes (61).

353 Mentalization-based therapy, particularly its version for adolescents (MBT-A), has proven to
354 be appropriate for treating depression in self-harming individuals (26). However, few studies
355 on this therapeutic approach have focused specifically on adolescents with depression as the
356 primary diagnosis, incorporating a family approach (62).

357 In accordance with the CONSORT statement (39), our main objective is to investigate the
358 feasibility of an RCT in this group of patients, and as a secondary objective, to evaluate
359 preliminary results of the intervention to assess possible treatment efficacy. The results from
360 the interview analysis and the effect size calculation of the intervention for various outcomes
361 are considered parameters and guidelines for a future RCT.

362 A pilot study is necessary before conducting an RCT in this group of patients, as depression
363 has been reported as one of the diagnoses with the highest dropout rates in psychotherapeutic
364 treatment, both before and during treatment, especially in the outpatient setting (63). There is
365 also a need to maintain the adherence of participating family members.

366 The study design is adaptive, addressing specific concerns related to the depressive condition
367 regarding the intervention or evaluations during treatment. Additionally, consulting
368 adolescents' oral evaluations at the end of treatment, along with quantitative data analysis, will
369 further help develop and adapt the treatment in close collaboration with the adolescents.

370 Limitations of the study include the lack of a control group and potential recruitment biases
371 due to high comorbidity with adolescent depression (64,65,66). Additionally, the intensity of
372 weekly therapist supervision and differences in training levels are sources of bias in the results.

373 **Supplementary Information**

374 **Acknowledgments**

375 This work was possible thanks to the financial support of the National Fund for Health
376 Research (FONIS), Chile. We would like to sincerely thank Dr. Efrain Bleiberg for his
377 valuable suggestions and guidance throughout this project.

378 **Trial status**

379 Currently, the clinical trial is in the recruitment phase. The intervention and follow-up of the
380 participants are ongoing. The trial start date was May 5, 2023, and the intervention phase is
381 expected to be completed in December 2024.

382 **Trial registration**

383 Trial registration on ichgcp.net [NCT06252090](https://clinicaltrials.gov/ct2/show/study/NCT06252090), February 6, 2024

384 **Harms**

385 The procedures applied in this study are noninvasive, and no degree of discomfort or harm to
386 the participants is expected. No ancillary or posttrial care or compensation in case of damage
387 is planned.

388 **Data monitoring and auditing**

389 There will not be a Data Monitoring Committee, as no harm is expected to result from study
390 participation. Additionally, no auditing is conducted.

391 **Dissemination policy**

392 The results of this research will be presented in publications, seminars and/or scientific and/or
393 academic meetings.

394 **Abbreviations**

395 CEQ: Credibility/Expectancy Questionnaire

396 CORE-OM: Clinical Outcomes in Routine Evaluations – Outcome Measures

397 DASS-21: Depression Anxiety Stress Scale

398 DSM: Diagnostic and Statistical Manual for Mental Disorders

399 FACES III: Family Adaptability and Cohesion Evaluation Scale III

400 MBT: Mentalization-based treatment

401 MBT-A: Mentalization-based treatment for adolescents

402 PHQ-9: Patient Health Questionnaire

403 RCADS-30: Revised Child Anxiety and Depression Scale-30

404 RCT: Randomized controlled trial

405 SDQ: Strengths and Difficulties Questionnaire

406 YP-CORE-OM: Young Person-Clinical Outcomes in Routine Evaluation-Outcome Measure

407 VTAS-SF: Vanderbilt therapeutic alliance scale

408 **Authors' contributions**

409 JM and JD led the research project, performed project coordination, and provided overall
410 supervision. JM, JD, JZ, FD and MA contributed to the conceptualization and design of the
411 study. The content of the manuscript has been critically reviewed to ensure scientific integrity.

412 JD, JZ, LE, MK, NA and FG contributed to the review of the literature and the objectives of
413 the intervention. PS, SG, FD and NA contributed to the design and review of the manuscript
414 writing. MA and FG conducted the discussion of the article. MA and JM contributed to the
415 trial registration. Each author read and approved the final version of the manuscript, and all
416 contributed significantly to the research and preparation of the article.

417 **Funding**

418 This project was supported by the National Fund for Health Research (FONIS), Chile, through
419 project SA22I0168.

420 **Availability of data and materials**

421 Data availability: The raw data supporting the conclusions of this article are accessible through
422 a formal request process. Interested parties may submit requests for access to the data by
423 contacting the corresponding author at javier.moran@uv.cl. The procedures for reviewing and
424 approving these requests will be outlined upon inquiry.

425 **Declarations**

426 Ethics approval and consent to participate

427 This study was approved by the Scientific-Ethical Committee of the University of Valparaíso
428 (CEC-UV), which guaranteed the informed consent of the participants and protected the
429 confidentiality of the information collected. The study is registered with the number CEC-UV
430 262--22.

431 **Consent for publication**

432 The participants had the right to know the results of this research. Informed consent will be
433 obtained from at least one of the participants' parents, as well as assent from the participant
434 prior to inclusion.

435 **Competing interests**

436 The authors declare that they have no competing interests.

437

438 **Contributor information**

439 Javier Morán, Email: javier.moran@uv.cl

440 Javiera Duarte, Email: javiera.duarte@mail.udp.cl

441 Johana Zapata, Email: johanazapatah@gmail.com

442 Louise Alkabes-Esquenazi, Email: Louise.esquenazi@gmail.com

443 Silvia González, Email: silvia.gonzalez@uv.cl
444 Paula Solervicens, Email: paula.solervicens@uv.cl
445 Melanie Klagges, Email: mklaggesf@gmail.com
446 Francisca García, Email: franciscagarciay@gmail.com
447 Marcelo Arancibia, Email: marcelo.arancibiame@uv.cl
448 Francisca Diaz, Email: m_franciscad@uv.cl
449 Nicole Avalos, Email: nicoleavalosg@gmail.com

450

451 **Recruitment status**

452 Recruitment and intervention are ongoing

453 **Primary sponsor, principal investigator, and lead investigator**

454 Javier Moran-Kneer (Javier.moran@uv.cl) is responsible for the design and conduct of the
455 trial. He led the preparation of the protocol and revisions and the publication of the study
456 results.

457 **Recruitment country**

458 Chile

459 **Health conditions studied**

460 Depression

461 **Intervention**

462 Short-term mentalization-based treatment for adolescents (MBT-A)

463 **Key inclusion and exclusion criteria**

464 Adolescents aged between 10 and 14 years and diagnosed with mild to moderate major
465 depressive disorder according to the DSM-5-TR were included. Additionally, at least one
466 legally responsible adult must consent to participate in the therapeutic process, and all
467 participants must be users of the public healthcare system.

468 Excluded are adolescents with diagnoses of autism spectrum disorders, psychosis, bipolar
469 affective disorder, active suicidal ideation, or substance use disorder. Pregnancy is also an
470 exclusion criterion

471 **Study type**

472 Feasibility and pilot study (single group)

473 **Date of first enrollment**

474 01.09.2023

475 **Study status**

476 The study is currently recruiting, intervening, and following up with patients.

477 **Primary outcomes**

478 Feasibility of the MBT-A intervention (as indicated by recruitment rates, data attrition rates,
479 follow-up rates, and qualitative interviews with professionals), acceptability of the
480 intervention (as indicated by adherence rates, reports from adolescents and responsible adults
481 through qualitative interviews and questionnaires, and necessary organizational resources
482 (scientific personnel, recruitment networks, MBT-A training and supervision) to estimate the
483 feasibility of an RCT.

484 **Secondary outcomes**

485 Effect size of the intervention on depressive symptoms in adolescents, anxious symptoms in
486 all intervention participants, family cohesion, and overall adaptation of all family system
487 members.

488 **Protocol version**

489 Version 1.0

490

491

492

493

494

495

496

497

498

499

500

501

502

503 **4. References**

504 1. Polanczyk GV, et al. Annual Research Review: A meta-analysis of the worldwide
505 prevalence of mental disorders in children and adolescents. *J Child Psychol Psychiatry*.

506 2015;56(3):345-365. <https://doi.org/10.1111/jcpp.12381>

507 2. Kessler RC, Berglund P, Demler O, Jin R, Merikangas KR, Walters EE. Lifetime prevalence
508 and age-of-onset distributions of DSM-IV disorders in the National Comorbidity

509 Survey Replication. *Arch Gen Psychiatry*. 2005;62(6):593-602.

510 <https://doi.org/10.1001/archpsyc.62.6.593>

511 3. Benton TD, Boyd RC, Njoroge WFM. Addressing the Global Crisis of Child and
512 Adolescent Mental Health. *JAMA Pediatr*. 2021;175(11):1108-1110.

513 <https://doi.org/10.1001/jamapediatrics.2021.2479>

514 4. Sontheimer N, Konnopka A, König HH. The excess costs of dementia: A systematic review
515 and meta-analysis. *J Alzheimers Dis*. 2021;83(1):333-354.

516 <https://doi.org/10.3233/JAD-210174>

517 5. Zisook S, Lesser I, Stewart JW, Wisniewski SR, Balasubramani GK, Fava M, et al. Effect
518 of age at onset on the course of major depressive disorder. *Am J Psychiatry*.

519 2007;164(10):1539-1546. <https://doi.org/10.1176/appi.ajp.2007.06101757>

- 520 6. Wirback T, Möller J, Larsson JO, Engström K. Social and sex differences in psychiatric
521 comorbidity and psychosocial functioning among adolescents with depression. *J*
522 *Affect Disord.* 2021;282:1132-1142. <https://doi.org/10.1016/j.jad.2020.12.179>
- 523 7. Kim EM, Kim H, Park E. How are depression and suicidal ideation associated with multiple
524 health risk behaviors among adolescents? A secondary data analysis using the 2016
525 Korea Youth Risk Behavior Web-based Survey. *J Psychiatr Ment Health Nurs.*
526 2020;27(5):595-606. <https://doi.org/10.1111/jpm.12610>
- 527 8. Pollmann A, Sasso R, Bates K, Fuhrmann D. Making Connections: Neurodevelopmental
528 Changes in Brain Connectivity After Adverse Experiences in Early Adolescence. *J*
529 *Neurosci.* 2024;44(8). <https://doi.org/10.1523/JNEUROSCI.0991-23.2023>
- 530 9. World Health Organization. COVID-19 pandemic triggers 25% increase in prevalence of
531 anxiety and depression worldwide. 2022. Available from:
532 [https://www.who.int/news/item/02-03-2022-covid-19-pandemic-triggers-25-](https://www.who.int/news/item/02-03-2022-covid-19-pandemic-triggers-25-increase-in-prevalence-of-anxiety-and-depression-worldwide)
533 [increase-in-prevalence-of-anxiety-and-depression-worldwide](https://www.who.int/news/item/02-03-2022-covid-19-pandemic-triggers-25-increase-in-prevalence-of-anxiety-and-depression-worldwide)
- 534 10. Human Rights Watch. Covid-19 and children's rights. 2020. Available from:
535 <https://www.hrw.org/news/2020/04/09/covid-19-and-childrens-rights-0>
- 536 11. United Nations. Policy brief: Impact of COVID-19 on children. 2020. Available from:
537 [https://unsdg.un.org/sites/default/files/202004/160420_Covid_Children_Policy_Brief](https://unsdg.un.org/sites/default/files/202004/160420_Covid_Children_Policy_Brief.pdf)
538 [.pdf](https://unsdg.un.org/sites/default/files/202004/160420_Covid_Children_Policy_Brief.pdf)
- 539 12. World Health Organization. Adolescent mental health. 2020. Available from:
540 <https://www.who.int/news-room/fact-sheets/detail/adolescent-mental-health>
- 541 13. Bernaras E, Jaureguizar J, Garaigordobil M. Child and adolescent depression: A review of
542 theories, evaluation instruments, prevention programs, and treatments. *Front Psychol.*
543 2019;10:543. <https://doi.org/10.3389/fpsyg.2019.00543>
- 544 14. Wickersham A, Sugg HVR, Epstein S, Stewart R, Ford T, Downs J. Systematic review
545 and meta-analysis: the association between childhood school performance and adult

- 546 depression. J Affect Disord. 2021;285:150-159.
547 <https://doi.org/10.1016/j.jaac.2020.10.008>
- 548 15. World Health Organization. Depression and other common mental disorders: Global
549 health estimates. 2021. Available from:
550 <https://www.who.int/publications/i/item/depression-global-health-estimates>
- 551 16. Paus T, Keshavan M, Giedd JN. Why do many psychiatric disorders emerge during
552 adolescence? Nat Rev Neurosci. 2008;9(12):947-957. <https://doi.org/10.1038/nrn2513>
- 553 17. Vijayakumar N, Op de Macks Z, Shirtcliff EA, Pfeifer JH. Puberty and the human brain:
554 Insights into adolescent development. Neurosci Biobehav Rev. 2018;92:417-436.
555 <https://doi.org/10.1016/j.neubiorev.2018.06.004>
- 556 18. Whittle S, Vijayakumar N, Dennison M, Schwartz O, Simmons JG, Yap MBH, et al.
557 Observed measures of negative parenting predict brain development during
558 adolescence. PLoS One. 2014;9(7). <https://doi.org/10.1371/journal.pone.0103777>
- 559 19. Beames JR, Kikas K, Werner-Seidler A. Prevention and early intervention of depression
560 in young people: an integrated narrative review of affective awareness and Ecological
561 Momentary Assessment. BMC Psychol. 2021;9(1):113.
562 <https://doi.org/10.1186/s40359-021-00614-6>
- 563 20. Fonagy P, Rossouw T, Sharp C, Bateman A, Allison L, Farrar C. Mentalization-based
564 treatment for adolescents with borderline traits. In: Handbook of Borderline
565 Personality Disorder in Children and Adolescents. Springer; 2014. p. 313-332.
566 https://doi.org/10.1007/978-1-4939-0591-1_21
- 567 21. Blakemore SJ, Mills KL. Is adolescence a sensitive period for sociocultural processing?
568 Annu Rev Psychol. 2014;65:187-207. <https://doi.org/10.1146/annurev-psych-010213-115202>
569 [115202](https://doi.org/10.1146/annurev-psych-010213-115202)

- 570 22. Crone EA, Dahl RE. Understanding adolescence as a period of social-affective
571 engagement and goal flexibility. *Nat Rev Neurosci*. 2012;13(9):636-650.
572 <https://doi.org/10.1038/nrn3313>
- 573 23. Taubner S, Hauschild S, Kasper L, Kaess M, Sobanski E, Gablonski TC, et al.
574 Mentalization-based treatment for adolescents with conduct disorder (MBT-CD):
575 Protocol of a feasibility and pilot study. *Pilot Feasibility Stud*. 2021;7:139.
576 <https://doi.org/10.1186/s40814-021-00876-2>
- 577 24. Malik S, Wells A, Wittkowski A. Emotion regulation as a mediator in the relationship
578 between attachment and depressive symptomatology: A systematic review. *J Affect*
579 *Disord*. 2015;172:428-444. <http://dx.doi.org/10.1016/j.jad.2014.10.007>
- 580 25. Luyten P, Fonagy P. The stress–reward–mentalizing model of depression: An integrative
581 developmental cascade approach to child and adolescent depressive disorder based on
582 the Research Domain Criteria (RDoC) approach. *Clin Psychol Rev*. 2018;64:87-98.
583 <https://doi.org/10.1016/j.cpr.2017.09.008>
- 584 26. Rossouw T, Fonagy P. Mentalization-based treatment for self-harm in adolescents: A
585 randomized controlled trial. *J Am Acad Child Adolesc Psychiatry*. 2012;51(12):1304-
586 1313. <https://doi.org/10.1016/j.jaac.2012.09.018>
- 587 27. Griffiths H, Duffy F, Duffy L, Brown S, Hockaday H, Eliasson E, et al. Efficacy of
588 Mentalization-based group therapy for adolescents: the results of a pilot randomized
589 controlled trial. *BMC Psychiatry*. 2019;19:1-13. [https://doi.org/10.1186/s12888-021-](https://doi.org/10.1186/s12888-021-03102-8)
590 [03102-8](https://doi.org/10.1186/s12888-021-03102-8)
- 591 28. Luyten P, Campbell C, Allison E, Fonagy P. The mentalizing approach to
592 psychopathology: State of the art and future directions. *Annu Rev Clin Psychol*.
593 2020;16:297-325. <https://doi.org/10.1146/annurev-clinpsy-071919-015355>
- 594 29. Bateman A, Fonagy P. *Handbook of Mentalizing in Mental Health Practice*. American
595 Psychiatric Publishing; 2012.

- 596 30. Levin KA, Currie C. Family structure, mother-child communication, father-child
597 communication, and adolescent life satisfaction: A cross-sectional multilevel analysis.
598 Health Educ. 2010;110(3):152-168. <https://doi.org/10.1108/09654281011038831>
- 599 31. Elgar FJ, Craig W, Trites SJ. Family dinners, communication, and mental health in
600 Canadian adolescents. J Adolesc Health. 2013;52(4):433-438.
601 <https://doi.org/10.1016/j.jadohealth.2012.07.012>
- 602 32. Clarke A, Meredith PJ, Rose TA. Exploring mentalization, trust, communication quality,
603 and alienation in adolescents. PLoS One. 2020;15(6).
604 <https://doi.org/10.1371/journal.pone.0234662>
- 605 33. Cerniglia L, Cimino S, Tafa M, Marzilli E, Ballarotto G, Bracaglia F. Family profiles in
606 eating disorders: Family functioning and psychopathology. Psychol Res Behav
607 Manag. 2017;10:305-312. <https://doi.org/10.2147/PRBM.S145463>
- 608 34. King DL, Delfabbro PH. Features of parent-child relationships in adolescents with internet
609 gaming disorder. Int J Ment Health Addiction. 2017;15:1270-1283.
610 <https://doi.org/10.1007/s11469-016-9699-6>
- 611 35. Goodman SH, Rouse MH, Connell AM, Broth MR, Hall CM, Heyward D. Maternal
612 depression and child psychopathology: A meta-analytic review. Clin Child Fam
613 Psychol Rev. 2011;14(1):1-27. <https://doi.org/10.1007/s10567-010-0080-1>
- 614 36. Reiss F. Socioeconomic inequalities and mental health problems in children and
615 adolescents: A systematic review. Soc Sci Med. 2013;90:24-31.
616 <https://doi.org/10.1016/j.socscimed.2013.04.026>
- 617 37. Mercado E, Kim J, Gonzales NA, Fuligni AJ. Emotional coregulation in Mexican-origin
618 parent-adolescent dyads: Associations with adolescent mental health. J Youth
619 Adolesc. 2019;48(6):1116-1130. <https://doi.org/10.1007/s10964-019-01002-5>
- 620 38. Sibley M, LaCount P. Enhancing engagement and motivation with adolescents with
621 ADHD and their parents: The Supporting Teens' Autonomy Daily (STAND) model.

- 622 In: McQuade JF, editor. The ADHD Handbook: Integrated Approaches for the
623 Complex, Multimodal Management of ADHD. Cambridge University Press; 2021. p.
624 127-140. <https://doi.org/10.1017/9781108682053.012>
- 625 39. Eldridge SM, Chan CL, Campbell MJ, Bond CM, Hopewell S, Thabane L, et al.
626 CONSORT 2010 statement: Extension to randomized pilot and feasibility trials. Pilot
627 Feasibility Stud. 2016;2(1):1-33. <https://doi.org/10.1186/s40814-016-0105-8>
- 628 40. Hoskins D, Duncan LG, Moskowitz JT, Ordóñez AE. Positive Adaptations for Trauma
629 and Healing (PATH), a pilot study of group therapy with Latino youth. Psychol
630 Trauma. 2018;10(2):163. <https://doi.org/10.1037/tra0000285>
- 631 41. Chan AW, Tetzlaff JM, Altman DG, Laupacis A, Gøtzsche PC, Krleža-Jerić K, et al.
632 SPIRIT 2013 statement: Defining standard protocol items for clinical trials. Ann Intern
633 Med. 2013;158(3):200-207. <https://doi.org/10.7326/0003-4819-158-3-201302050-00583>
634 [00583](https://doi.org/10.7326/0003-4819-158-3-201302050-00583)
- 635 42. Devilly GJ, Borkovec TD. Psychometric properties of the credibility/expectancy
636 questionnaire. J Behav Ther Exp Psychiatry. 2000;31(2):73-86.
637 [https://doi.org/10.1016/S0005-7916\(00\)00012-4](https://doi.org/10.1016/S0005-7916(00)00012-4)
- 638 43. Diez-Quevedo C, Rangil T, Sanchez-Planell L, Kroenke K, Spitzer RL. Validation and
639 utility of the patient health questionnaire in diagnosing mental disorders in 1003
640 general hospital Spanish inpatients. Psychosom Med. 2001;63(4):679-686.
641 <https://doi.org/10.1097/00006842-200107000-00021>
- 642 44. Baader T, Molina JL, Venezian S, Rojas C, Farías R, Fierro-Freixenet C, et al. Validación
643 y utilidad de la encuesta PHQ-9 (Patient Health Questionnaire) en el diagnóstico de
644 depresión en pacientes usuarios de atención primaria en Chile. Rev Chil Neuro-
645 Psiquiat. 2012;50(1):10-22. <http://dx.doi.org/10.4067/S0717-92272012000100002>
- 646 45. Lovibond P, Lovibond S. The structure of negative emotional states: comparison of the
647 depression anxiety stress scales (DASS) with the Beck depression and anxiety

- 648 inventories. Behav Res Ther. 1995;33:335-343. <https://doi.org/10.1016/0005->
649 [7967\(94\)00075-U](https://doi.org/10.1016/0005-7967(94)00075-U)
- 650 46. Antúnez Z, Vinet EV. Escalas de depresión, ansiedad y estrés (DASS-21): Validación de
651 la versión abreviada en estudiantes universitarios chilenos. Terapia psicológica.
652 2012;30(3):49-55. <http://dx.doi.org/10.4067/S0718-48082012000300005>
- 653 47. Sandín B, Chorot P, Valiente RM, Chorpita BF. Desarrollo de una versión de 30 ítems de
654 la Revised Child Anxiety and Depression Scale. Rev Psicopatol Psicol Clin.
655 2010;15(3):165-178. <https://doi.org/10.5944/rppc.vol.15.num.3.2010.4095>
- 656 48. Krause KR, Chung S, Adewuya AO, Albano AM, Babins-Wagner R, Birkinshaw L, et al.
657 International consensus on a standard set of outcome measures for child and youth
658 anxiety, depression, obsessive-compulsive disorder, and posttraumatic stress disorder.
659 Lancet Psychiatry. 2021;8(1):76-86. [https://doi.org/10.1016/S2215-0366\(20\)30356-4](https://doi.org/10.1016/S2215-0366(20)30356-4)
- 660 49. Martínez-González AE, Veas A, Piqueras JA. 30-item version of the revised child anxiety
661 and depression scale in Chilean adolescents: psychometric properties. Curr Psychol.
662 2022;1-11. <https://doi.org/10.1007/s12144-020-00934-7>
- 663 50. Sánchez Gómez V. Estimación de propiedades psicométricas del strengths and difficulties
664 questionnaire (SDQ) en su versión autoadministrada en población de niños y
665 adolescentes de la ciudad de Santiago de Chile. CES Psicología. 2017;13(3):51-75.
666 Available from: <https://repositorio.uchile.cl/handle/2250/145009>
- 667 51. Olson DH, Portner J, Lavee Y. Faces III: Family Adaptability & Cohesion Evaluation
668 Scales. St. Paul: University of Minnesota; 1985.
- 669 52. Mellado A, Suárez N, Altimir C, Martínez C, Pérez J, Krause M, et al. Disentangling the
670 change–alliance relationship: Observational assessment of the therapeutic alliance
671 during change and stuck episodes. Psychother Res. 2017;27(5):595-607.
672 <https://doi.org/10.1080/10503307.2016.1147657>

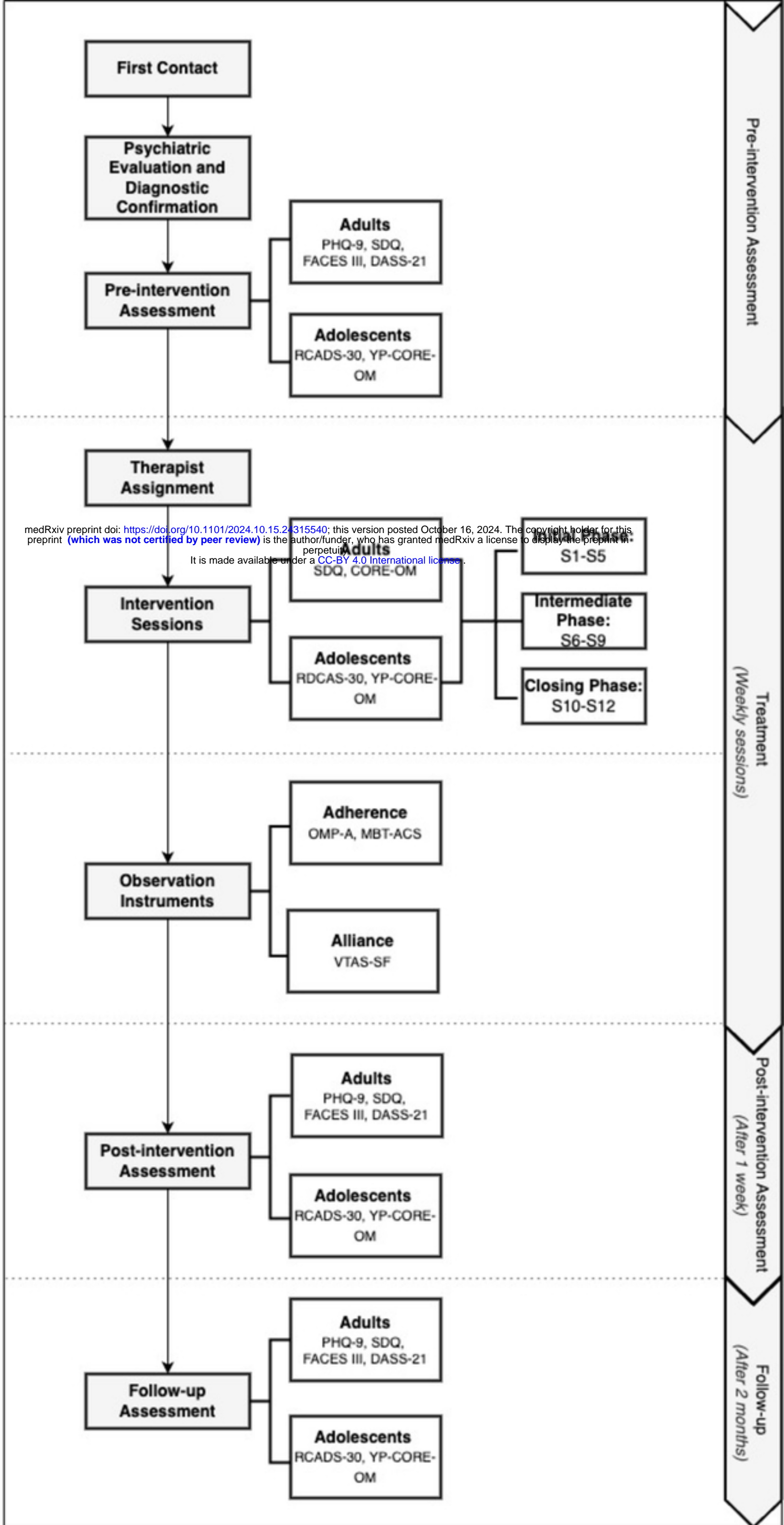
- 673 53. Karterud S, Pedersen G, Engen M, Johansen MS, Johansson PN, Schlüter C, et al. The
674 MBT Adherence and Competence Scale (MBT-ACS): Development, structure and
675 reliability. *Psychother Res.* 2013;23(6):705-717.
676 <https://doi.org/10.1080/10503307.2012.708795>
- 677 54. Moran J, Martínez C, Díaz M, González S, Arce K, Duarte J. Observando la mentalización
678 en psicoterapias con adolescentes: Diseño de un sistema de observación de la
679 interacción terapéutica. *CES Psicología.* 2020;13(3):51-75.
680 <https://doi.org/10.21615/cesp.13.3.4>
- 681 55. Barkham M, Gilbert N, Connell J, Marshall C, Twigg E. Suitability and utility of the
682 CORE-OM and CORE-A for assessing severity of presenting problems in
683 psychological therapy services based in primary and secondary care settings. *Br J*
684 *Psychiatry.* 2005;186(3):239-246. <https://doi.org/10.1192/bjp.186.3.239>
- 685 56. Twigg E, Barkham M, Bewick BM, Mulhern B, Connell J, Cooper M. The Young Person's
686 CORE: Development of a brief outcome measure for young people. *Couns Psychother*
687 *Res.* 2009;9(3):160-168. <https://doi.org/10.1080/14733140902979722>
- 688 57. American Psychiatric Association. Diagnostic and statistical manual of mental disorders.
689 5th ed., text rev. 2022. <https://doi.org/10.1176/appi.books.9780890425787>
- 690 58. Hernán MA, Robins JM. Per-protocol analyses of pragmatic trials. *N Engl J Med.*
691 2017;375(5):448-454. <https://doi.org/10.1056/NEJMs1605385>
- 692 59. McFarquhar T, Luyten P, Fonagy P. Changes in interpersonal problems in the
693 psychotherapeutic treatment of depression as measured by the Inventory of
694 Interpersonal Problems: A systematic review and meta-analysis. *J Affect Disord.*
695 2018;226:108-123. <https://doi.org/10.1016/j.jad.2017.09.036>
- 696 60. Straub J, Brown R, Malejko K, Bonenberger M, Grön G, Plener PL, et al. Adolescent
697 depression and brain development: Evidence from voxel-based morphometry. *J*
698 *Psychiatry Neurosci.* 2019;44(4):237-245. <https://doi.org/10.1503/jpn.170233>

- 699 61. Kassis W, Artz S, White J. Understanding depression in adolescents: A dynamic
700 psychosocial web of risk and protective factors. *Child Youth Care Forum*.
701 2017;46:721-743. <https://doi.org/10.1007/s10566-017-9404-3>
- 702 62. Byrne G, Murphy S, Cannon G. Mentalization-based treatments with children and
703 families: A systematic review of the literature. *Clin Child Psychol Psychiatry*.
704 2020;25(4):1022-1048. <https://doi.org/10.1177/1359104520920689>
- 705 63. Fernández E, Salem D, Swift JK, Ramtahal N. Meta-analysis of dropout from cognitive
706 behavioral therapy. *J Consult Clin Psychol*. 2015;83(6):1108-1122.
707 <https://doi.org/10.1037/ccp0000044>
- 708 64. Konac D, Young KS, Lau J, Barker ED. Comorbidity between depression and anxiety in
709 adolescents: Bridge symptoms and relevance of risk and protective factors. *J*
710 *Psychopathol Behav Assess*. 2021;43(4):583-596. [https://doi.org/10.1007/s10862-](https://doi.org/10.1007/s10862-021-09880-5)
711 [021-09880-5](https://doi.org/10.1007/s10862-021-09880-5)
- 712 65. Alaie I, Ssegonja R, Philipson A, von Knorring AL, Möller M, von Knorring L, et al.
713 Adolescent depression, early psychiatric comorbidities, and adulthood welfare burden:
714 A 25-year longitudinal cohort study. *Soc Psychiatry Psychiatr Epidemiol*.
715 2021;56:1993-2004. <https://doi.org/10.1007/s00127-021-02056-2>
- 716 66. Ridout SJ, Ridout KK, Kole J, Fitzgerald KL, Donaldson AA, Alverson B. Comparison of
717 eating disorder characteristics and depression comorbidity in adolescent males and
718 females: an observational study. *Psychiatry Res*. 2021;296:113650.
719 <https://doi.org/10.1016/j.psychres.2020.113650>
- 720 67. Braun V, Clarke V. Using thematic analysis in psychology. *Qual Res Psychol*.
721 2006;3(2):77-101. <https://doi.org/10.1191/1478088706qp063oa>
722
723
724

725

726

727



Figure