

1 **Mortality and lost to follow-up among Tuberculosis patients on**
2 **treatment in Meru County, Kenya: a retrospective cohort study.**

3 **Authors**

4 Moses M. Ngari^{1,2}, Jane K. Mberia², Eunice Kanana³, Deche Sanga⁴, Martin K. Ngari⁵, David N. Nyagah²,
5 Osman A. Abdullahi².

6
7 **Affiliations**

8 ¹KEMRI/Wellcome Trust Research Programme, Kilifi, Kenya, ²Department of Public Health, School of Health &
9 Human Sciences, Pwani University, Kilifi, Kenya, ³Meru County TB Control Program, Meru, Kenya, ⁴Kilifi County
10 TB Control Program, Kilifi, Kenya, ⁵Makueni County Referral Hospital, Wote, Kenya.

11

12

13

14

15 **Corresponding Author:**

16 Dr Moses M. Ngari
17 KEMRI–Wellcome Trust Research Programme,

18 P.O Box 230-80108, Kilifi, Kenya.

19 Email: mngari@kemri-wellcome.org

20

21

22

23 SHORT TITLE: TB treatment outcomes in Meru County, Kenya.

24

25 **Abstract**

26 Tuberculosis (TB) remains a leading cause of death globally. Patients who get lost-to-follow-up
27 (LTFU) during TB treatment have high risk of relapse, mortality, treatment failure and developing
28 Multidrug resistant TB. Empirical data to monitor long-term TB treatment outcomes in low-and-
29 middle income countries (LMICs) are sparse. We determined proportion of TB patients who die
30 or are LTFU during six months of treatment and identified factors independently associated with
31 mortality or LTFU. A retrospective cohort using data from routine Meru County TB surveillance
32 system. We included 38020 records of TB patients aged ≥ 15 years on treatment 2012 to 2022. TB
33 treatment outcomes of interest were LTFU or death within six months of treatment. Survival
34 analyses accounting for competing events were performed. Among the 38020 patients included,
35 27608 (73%) were male and the median (IQR) age was 32 [25–42] years. 26599 (70%) had
36 bacteriologically confirmed TB while 11421 (30%) were clinically diagnosed. During 16531
37 person-years of follow-up, 2385 (6.3%, 95%CI 6.0–6.5) and 1942 (5.1%, 95%CI 4.9–5.3) patients
38 were LTFU and died respectively. In the multivariable model, patients on re-treatment after LTFU
39 or after failure and those previously treated compared to new TB patients were positively
40 associated with LTFU. Patients coinfecting with HIV and those with unknown HIV status were
41 positively associated with LTFU. In contrast, females, clinically diagnosed, extra-pulmonary TB
42 and older patients were negatively associated with LTFU. Patients HIV infected on ARVs, not on
43 ARVs and unknown HIV status versus not infected were positively associated with mortality.
44 Other comorbidities (not HIV), clinically diagnosed, undernourished and older patients were
45 positively associated with mortality. More than 10% of TB patients either die or are LTFU before
46 completing treatment. TB patients on re-treatment, HIV infected, clinically diagnosed,

47 undernourished and the elderly needs more targeted interventions to improve survival and
48 successfully treatment.

49

50 **Key words:** Tuberculosis; Mortality; Lost-to-follow-up; Treatment outcomes; low-and-middle
51 income countries; Africa.

52

53 **Introduction**

54 Tuberculosis (TB) is a curable disease; however, it remains one of the leading causes of death
55 globally[1-4]. In 2022, it was the second leading cause of death globally from a single infectious
56 agent after COVID-19[4]. Up to 11.4million people developed TB in 2022 in the whole world[4].
57 The United Nations Sustainable Development Goals (SDG-3) set an ambitious target to end the
58 TB epidemic in 2030 by reducing the TB incidence by 80% and TB deaths by 90% from the 2015
59 levels. Despite the progress made in TB diagnosis through use of rapid culture/molecular
60 techniques such as Xpert MTB/RIF assay, and clinical management, the global targets (SDG-3)
61 are off-track [5]. In 2022, TB is estimated to have caused 1.3 million deaths, a reduction of 19%
62 since 2015, which is below the End TB Strategy target of reducing TB deaths by 75% before 2025
63 [4, 5]. Sub-Saharan Africa and South-East Asia continue to bare the highest burden of TB deaths,
64 accounting for 81% of deaths in 2022[4, 6]. HIV which is endemic in Sub-Saharan Africa is one
65 of the leading causes of deaths among people living with HIV (PLWHIV) and co-infected with
66 TB despite the high uptake of ARVs [7-10]. Kenya is among the 30 high TB burden countries that
67 contributed 87% of the global cases in 2022 [4].

68
69 Lost to follow-up (LTFU) during TB treatment remains another major threat to successful TB
70 treatment. Patients who interrupt TB treatment have high risk of relapse, mortality, treatment
71 failure and developing Multidrug resistant TB[11]. This means they remain infectious for longer
72 period and therefore continue transmitting TB in the community[11]. Most studies usually report
73 poor TB treatment outcome (combined treatment failure, death, lost to follow-up and not
74 evaluated) and not LTFU separately. In China as high as 13% adult TB patients were LTFU from
75 2017 to 2021, while retreated patients and those with underlying medical conditions like hepatitis

76 and cirrhosis were more likely to default treatment[12]. In Ethiopia, among children and adult
77 patients, 5.36% and 16.6% were LTFU respectively while 13% were LTFU in urban informal
78 settlement in Kenya[13-15]. Among multidrug resistant TB patients, up to 17% are LTFU before
79 completing treatment[16]. However, in Brazil and Mozambique 18.1% and a high of 44.9% were
80 LTFU respectively[17, 18].

81 It is highly likely both mortality and LTFU during TB treatment will vary depending on the
82 incidence of TB, prevalence of underlying medical conditions like HIV, incidence of multidrug
83 resistant TB and access to health care. In Kenya, a few studies have studied mortality and LTFU
84 during TB treatment[15, 19-21], with some studies focusing on select population like paediatrics
85 only[22]. Currently, there is limited empirical data to monitor long-term TB treatment outcomes
86 in low-and-middle income countries (LMICs) and how the outcomes are impacted by evolving
87 epidemiology of both infectious and noncommunicable diseases such as HIV, COVID-19,
88 diabetes, hypertension and malnutrition. We aimed to determine proportion of TB patients who
89 die or are LTFU during six months of TB treatment in Meru County, Kenya and identify factors
90 independently associated with mortality (adjusted for competing risk of LTFU) or LTFU (adjusted
91 for competing risk of mortality).

92

93 **Materials and Methods**

94 **Study design**

95 A retrospective cohort using data from routine standard National Leprosy and Tuberculosis and
96 Lung Disease (NTLD) register.

97 **Study settings**

98 The study analysed routine data from the TB electronic surveillance system from Meru County in
99 Kenya. Meru County is located east of Mt Kenya with an estimated population of 1.5 million
100 people in the 2019 census. Its population density in 2019 was 220 people per Sq.Km. The major
101 economic activities are agriculture with Tea, Coffee, Khat, Bananas and Avocado as the top cash
102 crops. The county is served by one regional referral hospital and approximately 176 public health
103 facilities. The HIV prevalence in Meru County was 2.6% in 2020 and the ART coverage was
104 70%[23] The county follows the Kenya national guidelines to diagnose and treat presumptive TB
105 cases[24]. TB patients are diagnosed using World Health Organization (WHO)-recommended
106 molecular TB diagnostics (Xpert MTB/RIF), smear microscopy and culture. Additionally,
107 extrapulmonary cases and those diagnosed based on clinical symptoms, suggestive histological
108 examination or X-ray abnormalities without laboratory confirmation are clinically diagnosed and
109 started on TB treatment. New TB patients are considered drug-susceptible and take Rifampicin
110 (R), Isoniazid (H), Pyrazinamide (Z) and Ethambutol (E) during the intensive phase (first two
111 months) followed by four months of treatment on Rifampicin (R) and Isoniazid (H)
112 (2RHZE/4RH). However, new patients diagnosed with TB but with other complications such as
113 meningitis and osteo-articular TB are treated with RHZE for the first two months followed by
114 Rifampicin (R) and Isoniazid (H) for ten months (2RHZE/10RH). TB patients who previously had
115 been on anti-TB including relapsed cases, were retreated in the first two months with Streptomycin

116 (S), Ethambutol (E), Rifampicin (R), Isoniazid (H) and Pyrazinamide (Z), followed by Ethambutol
117 (E), Rifampicin (R), Isoniazid (H) and Pyrazinamide (Z) for one month and Ethambutol (E),
118 Rifampicin (R) and Isoniazid (H) for five months (2SRHZE/1RHZE/5RHE). The
119 2SRHZE/1RHZE/5RHE regimen was phased out in 2020 and replaced with 2RHZE/4RH. All TB
120 patients are systematically screened for malnutrition and offered HIV test at the time of starting
121 TB treatment. Undernourished patients are offered nutritional support while HIV infected are
122 referred to Comprehensive Care Center (CCC) which offers HIV management care. In all Kenya
123 government health facilities, TB and HIV diagnosis and treatment are offered for free.

124 **Study Population**

125 We included records of TB patients starting treatment within Meru County aged 15 years and
126 above from January 2012 to December 2022 and registered in the County TB surveillance system.

127 **Data source and variables.**

128 Data used in this study were extracted from the Treatment Information from Basic Unit (TIBU)
129 Meru County TB Electronic surveillance on 20th May 2024. Kenya transitioned from paper-based
130 reporting to a national electronic surveillance system i.e TIBU in 2012. The system is operational
131 in all Counties in Kenya that captures and stores individual-level TB patient data which is reported
132 to the Kenya national TB program. At each health facility, data are recorded into TB registers
133 which are periodically transcribed electronically using tablets and synchronized to the national
134 server[25]. Patients diagnosed with TB while in the wards are linked with outpatient TB clinics
135 where they get registered in the TIBU system. The study included the following variables collected
136 in the routine data; demographic (age, sex), sub-counties, date of starting TB treatment, Clinical
137 features including type of TB (pulmonary or extra-pulmonary), new or retreated patients, HIV
138 status, other underlying medical conditions, TB diagnosis (either bacteriological or clinical),

139 treatment regimen, Body Mass Index (BMI) a proxy for nutritional status, nutritional support
140 provided and the type of direct observed treatment provided. A new patient was a presumptive TB
141 case who has never been on TB treatment or had taken anti-TB medication for less than one month.
142 TB patients on retreatment included; a) relapsed patients who were declared as completed
143 treatment or cured but has been diagnosed with recurrent episode, b) treatment failures who
144 included previously treated patients whose treatment outcome was declared as failure, c) treatment
145 after loss-to-follow-up included patients previously treated but were categorized as lost-to-follow-
146 up and d) other previously treated included those previously treated but outcome was unknown.
147 The outcomes of interest were the WHO TB treatment outcomes either death or lost-to-follow-up
148 during six months of treatment. The deaths included TB patients who died for any reason on or
149 after starting treatment but within the six months of follow-up. Lost-to-follow-up was defined to
150 include TB patient who started TB treatment but was interrupted for at least two consecutive
151 months[26]. Treatment success was used to define those who completed at least six months of TB
152 treatment without evidence of treatment failure and those cured.

153

154 **Study size**

155 Data from 38020 presumptive TB patients on treatment from 2012 to 2022 within Meru County
156 were included in the study. The study size (N=38020) had a power of at least 90% to detect a
157 hazard ratio ≥ 2.0 of HIV infected compared to HIV negative or clinical versus bacteriologically
158 diagnosed TB being associated with mortality assuming 5% overall probability of death and two-
159 tailed alpha of 0.05[10, 27].

160 **Statistical analysis**

161 Data shared by the County TB coordinator were checked for completeness and processed for
162 analysis. We found all records had a treatment outcome since we got data after at least one year of
163 starting treatment (i.e. the last patient in the data started treatment on 31st December 2022 meaning
164 they had completed treatment by 20th May 2024 when data were extracted). We assessed the
165 pattern of missing data in the other variables and found low proportion (<10%) of missing data in
166 HIV and BMI variables. The missing records were associated with the outcomes of interest and
167 therefore were assumed not to be missing at random. Among the HIV and BMI variables, an extra
168 category called 'unknown' was added to represent the missing data and included in the analysis.
169 The continuous BMI was categorized into: undernourished (BMI<18.5), normal (BMI 18.5 to 25)
170 and overweight (BMI≥25). Age in years was categorized into groups of ten years apart from the
171 open ended ≥65 years.

172 The data are reported as frequencies and proportions. Mortality and LTFU are reported as
173 proportions with binomial exact 95% confidence interval. A non-parametric Wilcoxon-type test
174 for trend was used to evaluate evidence of linear trend in annual proportion of deaths and LTFU
175 from 2012 to 2022 [28]. Survival analysis was used to examine time to either death or LTFU after
176 starting TB treatment and independent factors associated with the two outcomes separately. Person
177 time was calculated from date of starting TB treatment up to date of the event or six months later
178 (for those who completed treatment). Mortality and LTFU rates are reported as number of events
179 per 1000 person-years and compared across groups using log-rank test. We tested proportional-
180 hazards (PH) assumption using scaled Schoenfeld residuals and found no evidence of PH violation
181 for both outcomes. Time to event were plotted using Nelson-Aalen Cumulative hazard curves. To
182 assess the effects of independent exposures on time to death or LTFU, two separate multilevel
183 survival regression models were fitted for each outcome accounting for heterogeneity by sub-

184 Counties. For the death outcome, we treated LTFU and transfer outside Meru County during the
185 course of the six months as competing event because they precluded the probability of observing
186 the event of interest (death). While for the LTFU outcome, deaths and transfer outside Meru
187 County were treated as competing events. Therefore, the Fine and Gray competing risk method
188 was used to examine independent factors associated with death or LTFU accounting for the sub-
189 Counties heterogeneity and reported sub-distribution hazards ratios (SHR) as the measure of
190 effects and their respective 95% confidence intervals[29]. We performed univariate analysis
191 including only one independent variable and reported the crude SHR. To build multivariable
192 models, we retained independent variables with P-value<0.1 using backwards stepwise approach
193 and reported adjusted SHR in the final model. All statistical analyses were conducted using
194 STATA version 17.0 (StataCorp, College Station, TX, USA) and R (version 4.2.0).

195 **Ethical consideration**

196 Ethical approval was granted by the Pwani University Ethics Review Committee (ISERC/PU-
197 STAFF/003/2024) and permit to conduct the study granted by Department of Health, Meru County
198 (MRU/GEN/GEN/C.50). Study participants and caregivers for children less than eighteen years
199 old provided written informed consent for their data to be used. The analyses used anonymized
200 data. The study is reported following STrengthening the Reporting of OBservation studies in
201 Epidemiology (STROBE) [30] and REporting of studies CONducted using Observational
202 Routinely-collected health Data (RECORD) [31].

203

204 **Results**

205 **Patient Characteristics**

206 During the review period, 42116 TB patients were started on treatment of which 38020/42116
207 (90%) were ≥ 15 years old and included in this study. They included 27,608 (73%) male and their
208 median (interquartile range - IQR) age was 32 [25–42] years. The patients were relatively young
209 with over 50% younger than 35 years. The patients were more frequently from a public health
210 facility. Approximately one third (n=12573, 33%) had normal BMI and only 4.0% were
211 overweight. Bacteriologically confirmed TB cases were 26599 (70%) while 11421 (30%) were
212 diagnosed based on clinical signs and abnormal Xray suggestive of TB. Among the 26599
213 bacteriologically confirmed cases, 10480 (39%) had both sputum smear positive and GenXpert
214 result, 14419 (54%) were sputum smear positive only while 1700 (6.4%) were GenXpert positive
215 only. A total of 33979 (89%) patients were new TB cases, 2333 (6.1%) were on retreatment after
216 relapse, 596 (1.6%) were being retreated after LTFU (they were actively traced and restarted on
217 treatment) and 652 (1.7%) were transferred into Meru County having started treatment in other
218 Counties. There were 6773 (18%) TB patients co-infected with HIV while 1061 (2.8%) had
219 unknown HIV status. Among the 6773 HIV infected patients, 6350 (94%) and 6698 (99%) were on
220 ARVs and cotrimoxazole prophylaxis respectively. Overall, 280 (0.7%) had other comorbidities
221 other than HIV. The most frequent comorbidities were: 125 diabetes cases, 92 cases of
222 hypertension and 29 cases of mental health conditions (**S1 Fig**). One thousand five hundred and
223 ninety-four (4.2%) were on recreation drugs. The most frequent direct observed treatment was
224 family-based (n=35415, 93%). Thirty-six thousands and eleven (95%) were on the six-months first
225 line treatment regimen of 2-month intensive phase of Rifampin (R), Isoniazid (H), Pyrazinamide
226 (Z) and Ethambutol (E) followed by 4-month phase of Rifampin (R) and Isoniazid (H)
227 (2RHZE/4RH) **Table 1**.

228 Clinical diagnosis, extrapulmonary TB and other comorbidities apart from HIV were more
229 frequent among the elderly (all P-values<0.001) (**S1 Table**). HIV infection was more frequent
230 among females, clinically diagnosed and extra-Pulmonary TB cases (all P-values<0.001) (**S2**
231 **Table**).

232 **Treatment outcome**

233 A total of 32194/38020 (85%) successfully completed at least six months of TB treatment, of
234 which 13988/32194 (43%) were cured. There was no evidence of linear trend in annual proportion
235 of patients who completed treatment from 2012 to 2022 (Trend P-value=0.70) **Fig 1a**. Two
236 thousand three hundred and eighty-five (6.3%), 1942 (5.1), 830 (2.2%), 342 (0.9%) and 327 (0.9%)
237 were LTFU, died, transferred out of their treatment facility, failed treatment and developed
238 resistant and were moved to the drug-resistant cohort respectively (S2 Fig).

239 **Follow-up time and rates**

240 The patients were on follow-up for 16531 person-years. During treatment, 2385 (6.3%, 95%CI 6.0
241 to 6.5) patients were lost to follow-up; incidence rate was 144 (95%CI 139–150) LTFU/1000
242 person-years. The median [IQR] time to LTFU was 68 [35–112] days. A total of 1084/2385 (45%)
243 LTFU occurred within the first two months of intensive treatment, while cumulatively 1529/2385
244 (64%) LTFU occurred within three months of starting TB treatment. There was no evidence of
245 linear trend in the annual LTFU rates from 2012 to 2022 (Trend P-value=0.06) **Fig 1b**.

246 One thousand nine hundred and forty-two (5.1%, 95%CI 4.9 to 5.3) patients died: incidence rate
247 of 117 (95%CI 112 to 123) deaths/1000 person-years. The median [IQR] time to death was 43
248 [18–88] days. A total of 1178/1942 (61%) deaths occurred within the first two months of intensive
249 treatment, while cumulatively 1483/1942 (76%) deaths occurred within three months of starting

250 TB treatment. There was no evidence of linear trend in the annual mortality rates from 2012 to 22
251 (Trend P-value=0.11) **Fig 1b**.

252 LTFU and mortality rates per 1000 person-years are shown in **Table 2**. The rate of LTFU was
253 highest in Igembe North Sub- County (196, 95%CI 177 to 218)/1000 person-years) and lowest in
254 Meru Central Sub- County (53, 95%CI 42 to 67)/1000 person-years), Log-rank P-value<0.001
255 (**Fig 2c**). Mortality rate was highest in Imenti North Sub- County (142, 95%CI 129 to 158)/1000
256 person-years) and lowest in Igembe North Sub- County (91, 95%CI 78 to 106)/1000 person-years),
257 Log-rank P-value<0.001 (**Fig 2d**). The rates of LTFU were not significantly different between
258 patients with and without other comorbidity (Not HIV), on versus not on recreation drugs and
259 across the DOT approaches (all log-rank test P-values >0.05). Mortality rates were not
260 significantly different between patients on versus not on recreation drugs and across the DOT
261 approaches (all log-rank test P-values >0.05) **Table 2**.

262 **Factors associated with LTFU or mortality.**

263 All the exposure variables explored for association with LTFU in the univariable analysis are
264 shown in **S3 Table**. In the multivariable analysis, patients on re-treatment after LTFU (aSHR 3.28
265 (95%CI 2.59–4.17)) or after failure (aSHR 1.65 (95%CI 1.27–2.14)) and those previously treated
266 (aSHR 2.11 (95%CI 1.66–2.68)) had higher hazard of LTFU compared to new TB cases (**Fig 2a**).
267 Patients coinfecting with HIV (on and not on ARVs) and those with unknown HIV status were
268 positively associated with LTFU (**Fig 2b**). Compared to the first-line treatment regimen, those on
269 longer treatment period i.e 2SRHZE/1RHZE/5RHE had 34% higher hazard of being LTFU (aSHR
270 1.34 (95%CI 1.13–1.58)). In contrast, female patients were 36% less likely to be LTFU (aSHR
271 0.64 (95%CI 0.60–0.69)) and older patients had significantly lower hazard of LTFU relative to
272 younger ones. Compared to patients from public health facilities, those from prisons had 38%

273 lower hazard of LTFU (aSHR 0.62 (95%CI 0.47–0.82)). Clinically diagnosed patients and those
274 with extra-pulmonary TB had lower hazard of LTFU. However, the BMI, other comorbidity (not
275 HIV), on recreation drugs and type of DOT approach were not significantly associated with LTFU
276 (**Table 3**).

277 Age had a linear trend association with mortality where the hazard of death increased from aSHR
278 of 1.57 (25 to 34 years versus <25 years) to aSHR of 5.86 (\geq 65 years versus <25 years) test for
279 trend P-value <0.001 (**Fig 2c**). Compared to non-HIV infected, those infected on ARVs (aSHR
280 2.41 (95%CI 2.04–2.85)), infected and not on ARVs (aSHR 5.03 (95%CI 3.56–7.10)) and
281 unknown HIV status were positively associated with mortality (**Fig 2d**). Other comorbidities (not
282 HIV) were positively associated with mortality (aSHR 2.67 (95%CI 1.78–4.01)). Compared to
283 bacteriologically diagnosed, clinically diagnosed patients had more than 2fold hazard of death
284 (aSHR 2.22 (95%CI 1.97–2.49)). Undernourished patients had 50% higher hazard of deaths while
285 the years 2021 and 2022 had significant higher mortality relative to 2012. However, patients from
286 prisons had 30% lower hazard of death (aSHR 0.70 (95%CI 0.55–0.90)) compared to those from
287 public health facilities. Patient sex, type of TB, use of recreation drugs and type of DOT were not
288 associated with mortality (**Table 3**).

289

290 **Discussion**

291 In this large cohort of drug-susceptible TB patients on treatment, we found 5.1% died with no
292 evidence of declining trend over the decade. Despite the improved understanding of the disease
293 epidemiology and the investments in simplified diagnosis and free treatment in all health facilities
294 in Kenya, there was an increase in TB Case Fatality Ratio during the last two years (2021 and
295 2022) relative to 2012 baseline which could partly be attributable to the disruptive effect of

296 COVID-19 pandemic on health systems. The proportion of patients who died is within the range
297 reported in India, South Africa and previously in Kenya[19, 32, 33]. The first two months during
298 the intensive treatment phase mark the most vulnerable period when almost two-thirds of deaths
299 occurred. The high risk of early deaths could be a sign of poor health system preparedness which
300 delays TB diagnosis and is unresponsive to needs of severely ill patients. In high HIV burden
301 countries, patients co-affected with TB and HIV usually die very early following TB treatment[10,
302 34, 35]. However, as observed in this study, starting ARV treatment during the intensive treatment
303 phase reduces mortality relative to being HIV infected but not on ARVs[36-38]. In fact, providing
304 ARVs to patients with TB and HIV regardless of starting in the intensive treatment phase, reduces
305 mortality by 44 to 71%[8]. Before 2016, in Kenya, HIV patients started ARVs when they have
306 advanced HIV. However, following the WHO guidelines recommending immediate starting of
307 ARVs upon HIV diagnosis in 2015, Kenya adopted the guidelines in mid-2016[39]. Our results
308 emphasize the need for implementing this policy to improve survival. But it is worth noting that
309 ~3% of the patients had unknown HIV status despite the requirement of systematic screening for
310 HIV among all TB cases for free in Kenya, and that those with unknown HIV status had high risk
311 of mortality.

312 Our results show patients who were elderly, undernourished, HIV infected including those with
313 unknown HIV status, diagnosed using clinical signs, had other comorbidities and being treated
314 after relapse had significantly high risk of death. These were not isolated findings because all these
315 factors have been previously identified as risk factors for death among TB patients[2, 40, 41].
316 Advancing older age had a linear trend with increasing risk of mortality likely because of weakening
317 immune responses among the elderly and age-related comorbidities which suggest the need for
318 more support and care during TB treatment in this population[2]. As observed in this study and

319 previously, the elderly more frequently had extrapulmonary TB and clinical diagnosis which
320 sometimes are hard to diagnose causing delays in starting TB treatment and thus increased
321 mortality[40, 42]. TB patients who are started on treatment based on clinical diagnosis usually will
322 have a negative smear result and takes time to either diagnose extrapulmonary or start treatment
323 based on the clinical signs which can cause delay in treatment with a possibility of increasing
324 mortality. Clinical diagnosis also has potential to under-diagnose other severe respiratory diseases
325 and is more frequent among patients with HIV infection and the elderly[27, 42]. The finding of
326 patients on treatment after relapse had high risk of death suggests they were not cured which is not
327 surprising given more than one-third of the patients were classified as 'completed treatment'
328 without evidence of negative smear negative test in the last two months of treatment. This could
329 arise because of poor drug adherence, poor drug quality or treatment regimen inadequate for the
330 population. Relapsed patients also include new infection likely caused by community high
331 prevalence of infectious TB or exposure to different *M.tuberculosis* strain[43]. The association
332 with undernutrition was not surprising given it is the leading attributable risk factor for TB and
333 malnourished patients have double risk of death from TB compared to non-malnourished
334 patients[44, 45]. Malnutrition impairs immune response and may alter how drugs are absorbed[44,
335 46].

336 We observed a LTFU of ~6% within the six months of TB treatment which did not decline over
337 the decade. It was within the range observed in Ghana (8.6%)[47], 5.3% in Kilifi, Kenya[21] and
338 6.8% in China[48]. However, it was lower than 13% in urban region in Nairobi, Kenya[15], 18.1%
339 in Brazil[17] and 44.9% in Mozambique[18]. The differences could be due to varying HIV status,
340 study settings and health system support availed to the patients during follow-up. During the
341 intensive phase of TB treatment 45% of all LTFU occurred which was within the pooled range of

342 0% to 85% previously observed[49], highlighting the high risk of LTFU immediately after starting
343 treatment. These patients who are LTFU present a threat because they contribute to TB
344 transmission in the community and acquisition of drug resistance[11].

345 Unlike the factors positively associated with mortality, elderly patients and those diagnosed using
346 clinical signs had lower risk of LTFU. It is likely these group of patients which had very high risk
347 of death felt adhering to TB treatment and the regular contacts with health workers would be of
348 much benefit to their recovery. However, in Ethiopia, the risk of LTFU was higher among the
349 elderly which could be attributed to varying social support systems available to the elderly in
350 Kenya and Ethiopia[14]. TB patients who are on retreatment after previous treatment either after
351 LTFU or treatment failure had remarkably high risk of LTFU. This highlights a sub-population of
352 TB patients that would benefit from more social support such as the community-based DOT and
353 involvement of family members during the treatment phase. As previously observed, HIV co-
354 infected patients regardless of whether on ARTs or not had higher risk of LTFU which could be
355 attributable to the huge burden of concurrent HIV and TB medication[21]. The introduction of
356 immediate starting of ARVs upon HIV diagnosis has been associated with increased risk of LTFU
357 in Uganda and Ethiopia, calling for a more cautious approach in implementing the policy[50, 51].
358 It is likely the new HIV diagnosed patients who also have TB are not adequately prepared for the
359 lifelong ART medication in addition to the six months or more TB treatment or may not have
360 severe HIV clinical signs thus likely to default treatment. Females were less likely to be LTFU
361 because males who are predominantly household providers are more economically engaged and
362 thus miss their follow-ups when working[52].

363 Our findings suggest deaths during TB treatment are predictable and preventable. Deaths mostly
364 occur during the intensive phase of treatment and among the elderly with underlying

365 comorbidities, advanced HIV infections and low BMI. A comprehensive assessment of the clinical
366 needs for these patients during follow-up should be considered and risk stratified care offered.
367 Future research to develop appropriate clinical support for example criteria for inpatient care
368 referral and monitoring adherence to current guidelines such as systematic screening for HIV and
369 malnutrition, immediate initiation of ARVs to those HIV infected and nutritional support should
370 be prioritized[39, 53]. We also identified LTFU as a significant challenge during TB treatment. A
371 people-centred care recommended by the WHO in the End TB strategy has not been fully adopted
372 in LMICs because of resources constrains[26, 54, 55]. Evidence of type of psychosocial support
373 that works, and how they can be effectively implemented to reduce LTFU in LMICs are
374 inconclusive[55, 56]. A multi-sectoral approach is thus necessary to improve TB successful
375 treatment.

376

377 **Study strengths and Limitations**

378 The strength of the study was the large number of patients systematically followed up during TB
379 treatment and the availability of detailed TB treatment outcomes (the outcomes and actual dates
380 of the outcomes). This was a passive surveillance using routinely collected data with its inherent
381 limitations. Therefore, the analyses were limited to only available data. Data on adherence to
382 treatment and social economical exposures were not collected. Data to identify patients referred
383 for care from wards and those who got admitted to hospital during the six months of treatment
384 were not available too. The study was only conducted in one County in Kenya and should be
385 interpreted with caution.

386 **Conclusion**

387 More than one tenth of TB patients either die or are LTFU before completing treatment. Our
388 findings highlight the high burden of mortality and LTFU during the intensive phase of treatment.
389 Interventions targeting TB patients on re-treatment, HIV infected, clinically diagnosed,
390 undernourished and the elderly provides an opportunity to improve survival and successfully TB
391 treatment.

392

393 **Acknowledgement**

394 We acknowledge study participants and Meru County TB program staff who managed and
395 collected data from the patients. We thank Lilian Mwangi for help with depositing data and
396 analysis code to the data repository.

397 **Data availability Statement**

398 The study anonymized data and the analyses codes underlying the results presented are archived
399 in the Harvard Dataverse repository: <https://doi.org/10.7910/DVN/78JGUE>

400

401 **Author contributions**

402 **Conceptualization:** Moses M. Ngari, Osman A. Abdullahi

403 **Data curation:** Eunice Kanana, Jane K. Mberia

404 **Formal analysis:** Moses M. Ngari

405 **Investigation:** Eunice Kanana, Jane K. Mberia

406 **Methodology:** Moses M. Ngari, Deche Sanga, Martin K. Ngari, David N. Nyagah, Osman A.

407 Abdullahi.

408 **Project administration:** Moses M. Ngari, David N. Nyagah, Martin K. Ngari, Eunice Kanana

409

410 **Supervision:** Osman A. Abdullahi

411 **Validation:** Osman A. Abdullahi

412 **Visualization:** Moses M. Ngari

413 **Writing-original draft:** Moses M. Ngari

414 **Writing-review & editing:** Moses M. Ngari, Jane K. Mberia, Eunice Kanana, Deche Sanga, Martin K.

415 Ngari, David N. Nyagah, Osman A. Abdullahi.

416

417

418

419

420 References

- 421 1. Romanowski K, Baumann B, Basham CA, Ahmad Khan F, Fox GJ, Johnston JC. Long-term all-cause
422 mortality in people treated for tuberculosis: a systematic review and meta-analysis. *Lancet Infect Dis.*
423 2019;19(10):1129-37. Epub 2019/07/22. doi: 10.1016/S1473-3099(19)30309-3. PubMed PMID:
424 31324519.
- 425 2. Nicholson TJ, Hoddinott G, Seddon JA, Claassens MM, van der Zalm MM, Lopez E, et al. A
426 systematic review of risk factors for mortality among tuberculosis patients in South Africa. *Syst Rev.*
427 2023;12(1):23. Epub 2023/02/24. doi: 10.1186/s13643-023-02175-8. PubMed PMID: 36814335; PubMed
428 Central PMCID: PMCPMC9946877.
- 429 3. Lumu I, Musaazi J, Semeere A, Handel I, Castelnuovo B. Survival and predictors of mortality after
430 completion of TB treatment among people living with HIV: a 5-year analytical cohort. *BMC Infect Dis.*
431 2023;23(1):238. Epub 2023/04/19. doi: 10.1186/s12879-023-08217-9. PubMed PMID: 37072726;
432 PubMed Central PMCID: PMCPMC10111785.
- 433 4. World Health Organization. Global tuberculosis report 2023. Geneva: : WHO, 2023.
- 434 5. Fukunaga R, Glaziou P, Harris JB, Date A, Floyd K, Kasaeva T. Epidemiology of Tuberculosis and
435 Progress Toward Meeting Global Targets - Worldwide, 2019. *MMWR Morb Mortal Wkly Rep.*
436 2021;70(12):427-30. Epub 2021/03/26. doi: 10.15585/mmwr.mm7012a4. PubMed PMID: 33764960;
437 PubMed Central PMCID: PMCPMC7993552 Journal Editors form for disclosure of potential conflicts of
438 interest. No potential conflicts of interest were disclosed.
- 439 6. Dodd PJ, Yuen CM, Sismanidis C, Seddon JA, Jenkins HE. The global burden of tuberculosis
440 mortality in children: a mathematical modelling study. *Lancet Glob Health.* 2017;5(9):e898-e906. Epub
441 2017/08/16. doi: 10.1016/S2214-109X(17)30289-9. PubMed PMID: 28807188; PubMed Central PMCID:
442 PMCPMC5556253.
- 443 7. Nliwasa M, MacPherson P, Gupta-Wright A, Mwapasa M, Horton K, Odland JO, et al. High HIV
444 and active tuberculosis prevalence and increased mortality risk in adults with symptoms of TB: a
445 systematic review and meta-analyses. *J Int AIDS Soc.* 2018;21(7):e25162. Epub 2018/08/01. doi:
446 10.1002/jia2.25162. PubMed PMID: 30063287; PubMed Central PMCID: PMCPMC6067081.
- 447 8. Odone A, Amadasi S, White RG, Cohen T, Grant AD, Houben RM. The impact of antiretroviral
448 therapy on mortality in HIV positive people during tuberculosis treatment: a systematic review and
449 meta-analysis. *PLoS One.* 2014;9(11):e112017. Epub 2014/11/13. doi: 10.1371/journal.pone.0112017.
450 PubMed PMID: 25391135; PubMed Central PMCID: PMCPMC4229142.
- 451 9. Sullivan A, Nathavitharana RR. Addressing TB-related mortality in adults living with HIV: a review
452 of the challenges and potential solutions. *Ther Adv Infect Dis.* 2022;9:20499361221084163. Epub
453 2022/03/25. doi: 10.1177/20499361221084163. PubMed PMID: 35321342; PubMed Central PMCID:
454 PMCPMC8935406.
- 455 10. Ngari MM, Rashid MA, Sanga D, Mathenge H, Agoro O, Mberia JK, et al. Burden of HIV and
456 treatment outcomes among TB patients in rural Kenya: a 9-year longitudinal study. *BMC Infect Dis.*
457 2023;23(1):362. Epub 2023/05/31. doi: 10.1186/s12879-023-08347-0. PubMed PMID: 37254064;
458 PubMed Central PMCID: PMCPMC10227789.
- 459 11. Volmink J, Garner P. Directly observed therapy for treating tuberculosis. *Cochrane Database Syst*
460 *Rev.* 2006;(2):CD003343. Epub 2006/04/21. doi: 10.1002/14651858.CD003343.pub2. PubMed PMID:
461 16625579.
- 462 12. Jiang Y, Chen J, Ying M, Liu L, Li M, Lu S, et al. Factors associated with loss to follow-up before
463 and after treatment initiation among patients with tuberculosis: A 5-year observation in China. *Front*
464 *Med (Lausanne).* 2023;10:1136094. Epub 2023/05/14. doi: 10.3389/fmed.2023.1136094. PubMed
465 PMID: 37181365; PubMed Central PMCID: PMCPMC10167013.

- 466 13. Belay GM, Wubneh CA. Childhood tuberculosis treatment outcome and its association with HIV
467 co-infection in Ethiopia: a systematic review and meta-analysis. *Trop Med Health*. 2020;48:7. Epub
468 2020/02/27. doi: 10.1186/s41182-020-00195-x. PubMed PMID: 32099521; PubMed Central PMCID:
469 PMCPMC7027074.
- 470 14. Birhane M, Mekonnen S, Dingeta T, Teklemariam Z. Loss to follow-up tuberculosis treatment
471 and associated factors among adults attending at public health facilities in Warder District, Somali
472 Regional State, Eastern Ethiopia. *Front Public Health*. 2023;11:1151077. Epub 2023/05/26. doi:
473 10.3389/fpubh.2023.1151077. PubMed PMID: 37234759; PubMed Central PMCID: PMCPMC10208408.
- 474 15. Kizito KW, Dunkley S, Kingori M, Reid T. Lost to follow up from tuberculosis treatment in an
475 urban informal settlement (Kibera), Nairobi, Kenya: what are the rates and determinants? *Trans R Soc
476 Trop Med Hyg*. 2011;105(1):52-7. Epub 2010/10/05. doi: 10.1016/j.trstmh.2010.08.015. PubMed PMID:
477 20889176.
- 478 16. Walker IF, Shi O, Hicks JP, Elsey H, Wei X, Menzies D, et al. Analysis of loss to follow-up in 4099
479 multidrug-resistant pulmonary tuberculosis patients. *Eur Respir J*. 2019;54(1). Epub 2019/05/11. doi:
480 10.1183/13993003.00353-2018. PubMed PMID: 31073080.
- 481 17. Lima S, de Araujo K, Nunes MAP, Nunes C. Early identification of individuals at risk for loss to
482 follow-up of tuberculosis treatment: A generalised hierarchical analysis. *Heliyon*. 2021;7(4):e06788.
483 Epub 2021/05/14. doi: 10.1016/j.heliyon.2021.e06788. PubMed PMID: 33981876; PubMed Central
484 PMCID: PMCPMC8085707.
- 485 18. Wikman-Jorgensen PE, Morales-Cartagena A, Llenas-Garcia J, Perez-Porcuna TM, Hobbins M,
486 Ehmer J, et al. Implementation challenges of a TB programme in rural northern mozambique: evaluation
487 of 2012-2013 outcomes. *Pathog Glob Health*. 2015;109(5):221-7. Epub 2015/08/05. doi:
488 10.1179/2047773215Y.0000000027. PubMed PMID: 26239760; PubMed Central PMCID:
489 PMCPMC4727574.
- 490 19. Abdullahi OA, Ngari MM, Sanga D, Katana G, Willetts A. Mortality during treatment for
491 tuberculosis; a review of surveillance data in a rural county in Kenya. *PLoS One*. 2019;14(7):e0219191.
492 Epub 2019/07/12. doi: 10.1371/journal.pone.0219191. PubMed PMID: 31295277; PubMed Central
493 PMCID: PMCPMC6622488.
- 494 20. Wekunda PW, Aduda DSO, Guyah B, Odongo J. Predictors of mortality and survival probability
495 distribution among patients on tuberculosis treatment in Vihiga County, Kenya. *Afr Health Sci*.
496 2023;23(1):218-30. Epub 2023/08/07. doi: 10.4314/ahs.v23i1.24. PubMed PMID: 37545936; PubMed
497 Central PMCID: PMCPMC10398452.
- 498 21. Katana GG, Ngari M, Maina T, Sanga D, Abdullahi OA. Tuberculosis poor treatment outcomes
499 and its determinants in Kilifi County, Kenya: a retrospective cohort study from 2012 to 2019. *Arch Public
500 Health*. 2022;80(1):48. Epub 2022/02/07. doi: 10.1186/s13690-022-00807-4. PubMed PMID: 35123570;
501 PubMed Central PMCID: PMCPMC8818215.
- 502 22. Onyango DO, Yuen CM, Masini E, Borgdorff MW. Epidemiology of Pediatric Tuberculosis in
503 Kenya and Risk Factors for Mortality during Treatment: A National Retrospective Cohort Study. *J Pediatr*.
504 2018;201:115-21. Epub 2018/06/11. doi: 10.1016/j.jpeds.2018.05.017. PubMed PMID: 29885751.
- 505 23. National AIDS Control Council (NACC). Ministry of Health - Kenya. Kenya HIV estimates, Report
506 2020. Nairobi: 2020.
- 507 24. Ministry of Health. Guidelines for Management of Tuberculosis and Leprosy in Kenya. Nairobi:
508 2013.
- 509 25. Sharma A, Ndisha M, Ngari F, Kipruto H, Cain KP, Sitienei J, et al. A review of data quality of an
510 electronic tuberculosis surveillance system for case-based reporting in Kenya. *Eur J Public Health*.
511 2015;25(6):1095-7. Epub 2015/05/27. doi: 10.1093/eurpub/ckv092. PubMed PMID: 26009610; PubMed
512 Central PMCID: PMCPMC5017003.

- 513 26. World Health Organization. The end TB strategy. Geneva: World Health Organization. Geneva:
514 2015.
- 515 27. Abdullahi O, Moses N, Sanga D, Annie W. The effect of empirical and laboratory-confirmed
516 tuberculosis on treatment outcomes. *Sci Rep.* 2021;11(1):14854. Epub 2021/07/23. doi:
517 10.1038/s41598-021-94153-0. PubMed PMID: 34290301; PubMed Central PMCID: PMC8295390.
- 518 28. Cuzick J. A Wilcoxon-type test for trend. *Stat Med.* 1985;4(1):87-90. Epub 1985/01/01. doi:
519 10.1002/sim.4780040112. PubMed PMID: 3992076.
- 520 29. Fine JP. Regression modeling of competing crude failure probabilities. *Biostatistics.*
521 2001;2(1):85-97. doi: 10.1093/biostatistics/2.1.85. PubMed PMID: 12933558.
- 522 30. von Elm E, Altman DG, Egger M, Pocock SJ, Gotsche PC, Vandenbroucke JP, et al. The
523 Strengthening the Reporting of Observational Studies in Epidemiology (STROBE) statement: guidelines
524 for reporting observational studies. *Epidemiology.* 2007;18(6):800-4. Epub 2007/12/01. doi:
525 10.1097/EDE.0b013e3181577654. PubMed PMID: 18049194.
- 526 31. Benchimol EI, Smeeth L, Guttmann A, Harron K, Moher D, Petersen I, et al. The REporting of
527 studies Conducted using Observational Routinely-collected health Data (RECORD) statement. *PLoS Med.*
528 2015;12(10):e1001885. Epub 2015/10/07. doi: 10.1371/journal.pmed.1001885. PubMed PMID:
529 26440803; PubMed Central PMCID: PMC4595218.
- 530 32. Osman M, van Schalkwyk C, Naidoo P, Seddon JA, Dunbar R, Dlamini SS, et al. Mortality during
531 tuberculosis treatment in South Africa using an 8-year analysis of the national tuberculosis treatment
532 register. *Sci Rep.* 2021;11(1):15894. Epub 2021/08/07. doi: 10.1038/s41598-021-95331-w. PubMed
533 PMID: 34354135; PubMed Central PMCID: PMC8342475.
- 534 33. Jonnalagada S, Harries AD, Zachariah R, Satyanarayana S, Tetali S, Keshav Chander G, et al. The
535 timing of death in patients with tuberculosis who die during anti-tuberculosis treatment in Andhra
536 Pradesh, South India. *BMC Public Health.* 2011;11:921. Epub 2011/12/15. doi: 10.1186/1471-2458-11-
537 921. PubMed PMID: 22166132; PubMed Central PMCID: PMC3254139.
- 538 34. Mukadi YD, Maher D, Harries A. Tuberculosis case fatality rates in high HIV prevalence
539 populations in sub-Saharan Africa. *AIDS.* 2001;15(2):143-52. Epub 2001/02/24. doi: 10.1097/00002030-
540 200101260-00002. PubMed PMID: 11216921.
- 541 35. Harries AD, Hargreaves NJ, Gausi F, Kwanjana JH, Salaniponi FM. High early death rate in
542 tuberculosis patients in Malawi. *Int J Tuberc Lung Dis.* 2001;5(11):1000-5. Epub 2001/11/22. PubMed
543 PMID: 11716335.
- 544 36. Zachariah R, Fitzgerald M, Massaquoi M, Acabu A, Chilomo D, Salaniponi FM, et al. Does
545 antiretroviral treatment reduce case fatality among HIV-positive patients with tuberculosis in Malawi?
546 *Int J Tuberc Lung Dis.* 2007;11(8):848-53. Epub 2007/08/21. PubMed PMID: 17705949.
- 547 37. Onyango DO, Yuen CM, Cain KP, Ngari F, Masini EO, Borgdorff MW. Reduction of HIV-associated
548 excess mortality by antiretroviral treatment among tuberculosis patients in Kenya. *PLoS One.*
549 2017;12(11):e0188235. Epub 2017/11/18. doi: 10.1371/journal.pone.0188235. PubMed PMID:
550 29145454; PubMed Central PMCID: PMC5690617.
- 551 38. Blanc FX, Sok T, Laureillard D, Borand L, Rekacewicz C, Nerrienet E, et al. Earlier versus later start
552 of antiretroviral therapy in HIV-infected adults with tuberculosis. *N Engl J Med.* 2011;365(16):1471-81.
553 Epub 2011/10/21. doi: 10.1056/NEJMoa1013911. PubMed PMID: 22010913; PubMed Central PMCID:
554 PMC4879711.
- 555 39. World Health Organization. Guideline on when to start antiretroviral therapy and on pre-
556 exposure pro-phylaxis for HIV. Geneva, Switzerland 2015.
- 557 40. Heunis JC, Kigozi NG, Chikobvu P, Botha S, van Rensburg HD. Risk factors for mortality in TB
558 patients: a 10-year electronic record review in a South African province. *BMC Public Health.*
559 2017;17(1):38. Epub 2017/01/08. doi: 10.1186/s12889-016-3972-2. PubMed PMID: 28061839; PubMed
560 Central PMCID: PMC5217308.

- 561 41. Limenh LW, Kasahun AE, Sendekie AK, Seid AM, Mitku ML, Fenta ET, et al. Tuberculosis
562 treatment outcomes and associated factors among tuberculosis patients treated at healthcare facilities
563 of Motta Town, Northwest Ethiopia: a five-year retrospective study. *Sci Rep.* 2024;14(1):7695. Epub
564 2024/04/03. doi: 10.1038/s41598-024-58080-0. PubMed PMID: 38565912; PubMed Central PMCID:
565 PMCPMC10987627.
- 566 42. Bukundi EM, Mhimbira F, Kishimba R, Kondo Z, Moshiro C. Mortality and associated factors
567 among adult patients on tuberculosis treatment in Tanzania: A retrospective cohort study. *J Clin Tuberc
568 Other Mycobact Dis.* 2021;24:100263. Epub 2021/08/07. doi: 10.1016/j.jctube.2021.100263. PubMed
569 PMID: 34355068; PubMed Central PMCID: PMCPMC8322306.
- 570 43. World Health Organization. Definitions and Reporting Framework for Tuberculosis—2013
571 Revision. Geneva2013.
- 572 44. World Health Organization. Global tuberculosis report 2022. Geneva2022.
- 573 45. Ter Beek L, Bolhuis MS, Jager-Wittenaar H, Brijan RXD, Sturkenboom MGG, Kerstjens HAM, et al.
574 Malnutrition assessment methods in adult patients with tuberculosis: a systematic review. *BMJ Open.*
575 2021;11(12):e049777. Epub 2022/03/29. doi: 10.1136/bmjopen-2021-049777. PubMed PMID:
576 35344503; PubMed Central PMCID: PMCPMC8719177.
- 577 46. Bourke CD, Berkley JA, Prendergast AJ. Immune Dysfunction as a Cause and Consequence of
578 Malnutrition. *Trends Immunol.* 2016;37(6):386-98. Epub 2016/05/31. doi: 10.1016/j.it.2016.04.003.
579 PubMed PMID: 27237815; PubMed Central PMCID: PMCPMC4889773.
- 580 47. Puplampu P, Kyeremateng I, Asafu-Adjaye O, Asare AA, Agyabeng K, Sarkodee R, et al.
581 Evaluation of treatment outcomes among adult patients diagnosed with tuberculosis in Ghana: A 10
582 year retrospective review. *IJID Reg.* 2024;10:9-14. Epub 2023/12/04. doi: 10.1016/j.ijregi.2023.11.004.
583 PubMed PMID: 38045863; PubMed Central PMCID: PMCPMC10687693.
- 584 48. Lin Y, Enarson DA, Du J, Dlodlo RA, Chiang CY, Rusen ID. Risk factors for unfavourable treatment
585 outcome among new smear-positive pulmonary tuberculosis cases in China. *Public Health Action.*
586 2017;7(4):299-303. Epub 2018/03/28. doi: 10.5588/pha.17.0056. PubMed PMID: 29584792; PubMed
587 Central PMCID: PMCPMC5753784.
- 588 49. Walker EF, Flook M, Rodger AJ, Fielding KL, Stagg HR. Quantifying non-adherence to anti-
589 tuberculosis treatment due to early discontinuation: a systematic literature review of timings to loss to
590 follow-up. *BMJ Open Respir Res.* 2024;11(1). Epub 2024/02/16. doi: 10.1136/bmjresp-2023-001894.
591 PubMed PMID: 38359965; PubMed Central PMCID: PMCPMC10875541.
- 592 50. Bantie B, Seid A, Kerebeh G, Alebel A, Dessie G. Loss to follow-up in "test and treat era" and its
593 predictors among HIV-positive adults receiving ART in Northwest Ethiopia: Institution-based cohort
594 study. *Front Public Health.* 2022;10:876430. Epub 2022/10/18. doi: 10.3389/fpubh.2022.876430.
595 PubMed PMID: 36249247; PubMed Central PMCID: PMCPMC9557930.
- 596 51. Kiwanuka J, Mukulu Waila J, Muhindo Kahungu M, Kitonsa J, Kiwanuka N. Determinants of loss
597 to follow-up among HIV positive patients receiving antiretroviral therapy in a test and treat setting: A
598 retrospective cohort study in Masaka, Uganda. *PLoS One.* 2020;15(4):e0217606. Epub 2020/04/08. doi:
599 10.1371/journal.pone.0217606. PubMed PMID: 32255796; PubMed Central PMCID: PMCPMC7138304.
- 600 52. Monique O, Ilse DP. Factors Contributing to Pulmonary Tb Treatment Lost to Follow-up in
601 Developing Countries: An Overview. *Afr J Infect Dis.* 2023;17(1):60-73. Epub 2023/02/10. doi:
602 10.21010/Ajdiv17i1.6. PubMed PMID: 36756489; PubMed Central PMCID: PMCPMC9885020.
- 603 53. Bhargava A, Bhargava M. Tuberculosis deaths are predictable and preventable: Comprehensive
604 assessment and clinical care is the key. *J Clin Tuberc Other Mycobact Dis.* 2020;19:100155. Epub
605 2020/03/27. doi: 10.1016/j.jctube.2020.100155. PubMed PMID: 32211519; PubMed Central PMCID:
606 PMCPMC7082610.
- 607 54. Janse Van Rensburg A, Dube A, Curran R, Ambaw F, Murdoch J, Bachmann M, et al.
608 Comorbidities between tuberculosis and common mental disorders: a scoping review of epidemiological

609 patterns and person-centred care interventions from low-to-middle income and BRICS countries. *Infect*
610 *Dis Poverty*. 2020;9(1):4. Epub 2020/01/17. doi: 10.1186/s40249-019-0619-4. PubMed PMID: 31941551;
611 PubMed Central PMCID: PMC6964032.

612 55. Myburgh H, Baloyi D, Loveday M, Meehan SA, Osman M, Wademan D, et al. A scoping review of
613 patient-centred tuberculosis care interventions: Gaps and opportunities. *PLOS Glob Public Health*.
614 2023;3(2):e0001357. Epub 2023/03/25. doi: 10.1371/journal.pgph.0001357. PubMed PMID: 36963071;
615 PubMed Central PMCID: PMC6964032.

616 56. Maynard C, Tariq S, Sotgiu G, Migliori GB, van den Boom M, Field N. Psychosocial support
617 interventions to improve treatment outcomes for people living with tuberculosis: a mixed methods
618 systematic review and meta-analysis. *EClinicalMedicine*. 2023;61:102057. Epub 2023/07/17. doi:
619 10.1016/j.eclinm.2023.102057. PubMed PMID: 37457116; PubMed Central PMCID: PMC6964032.

620

621

622 **Figures legend**

623 **Fig 1. Annual trend in: a) Successful TB treatment, b) Deaths and LTFU, c) Incidence rate**
624 **of LTFU by sub-counties and d) Incidence rate of mortality by sub-counties.**

625 Panel a represents annual percentage of successful TB treatment while b, c and d are LTFU or deaths rates per 1000 person-years.

626

627 **Fig 2. Cumulative Hazard of LTFU by: a) Patient Type, b) HIV status and Cumulative**
628 **Hazard for deaths by: c) age in years and d) HIV status.**

629

630 **Tables and Figures**

631 **Table 1. Patient characteristics at the time of starting TB treatment.**

Characteristics	N=38020
Sex	
Male	27608 (73)
Female	10412 (27)
Age in years	
15 to 24	9233 (24)
25 to 34	11830 (31)
35 to 44	8619 (23)
45 to 54	4383 (12)
55 to 64	2175 (5.7)
≥65	1780 (4.7)
Year of starting TB treatment	
2012	2860 (7.5)
2013	3137 (8.3)
2014	3337 (8.8)
2015	3025 (8.0)
2016	2939 (7.7)
2017	3826 (10)
2018	4250 (11)
2019	3879 (10)
2020	3382 (8.9)
2021	3577 (9.4)
2022	3808 (10)
Sub-County	
Buuri	8295 (22)
Igembe North	4245 (11)
Igembe South	5596 (15)
Imenti North	6030 (16)
Imenti South	6496 (17)
Meru Central	2761 (7.3)
Tigania East	1606 (4.2)
Tigania West	2991 (7.9)
Treatment facility type	
Public health facility	29972 (79)
Private health facility	7262 (19)
Prisons	786 (2.1)
BMI group	
Undernourished (BMI<18.5)	21331 (56)
Normal (BMI 18.5 to 24.9)	12573 (33)
Overweight (BMI ≥25)	1529 (4.0)
Unknown/missing	2587 (6.8)
TB diagnosis	
Bacteriologically confirmed	26599 (70)

632

Clinical signs and X-ray	11421 (30)
Patient category*	
New case	33979 (89)
Re-treatment after relapse	2333 (6.1)
Re-treatment after LTFU	851 (2.2)
Transfer in	652 (1.7)
Treatment after failure	205 (0.5)
Type of TB	
Pulmonary TB	33399 (88)
Extra-Pulmonary TB	4621 (12)
HIV status	
Negative	30186 (79)
Infected	6773 (18)
Unknown/missing	1061 (2.8)
HIV treatment (ARVs) n=6773	
Started taking ARVs	6350 (94)
Not yet	423 (6.3)
On cotrimoxazole prophylaxis (n=6773)	
Yes	6698 (99)
No	75 (1.0)
Other comorbidity*	
On recreation drugs§	1594 (4.2)
Direct observed treatment (dot)	
Family-based	35415 (93)
Community health Volunteer	262 (0.7)
Healthcare worker	2343 (6.2)
Treatment regimen	
2RHZE/4RH	36011 (95)
2SRHZE/1RHZE/5RHE	1350 (3.6)
2RHZ/4RH	304 (0.8)
RHZE/10RH	195 (0.5)
Others	160 (0.4)
Nutritional support	
No food support	7268 (19)
Therapeutic/Supplementary food	14924 (39)
Counselling only	15828 (42)

633

634

635

636

*,76 kidney disease, 52 hypertension, 18 neurodevelopmental disorders, 11 chronic obstructive pulmonary disease, 3 cancer, 3 asthma and 3 COVID-19, §;use of alcohol and smoking

637 **Table 2. Lost-to-follow-up (LTFU) and mortality rates per 1000 person-years.**

Characteristics	LTFU (N=2385)			Deaths (N=1942)		
	N (%)	Rate/1000 person-years (95% CI)	Log-rank P-value	N (%)	Rate/1000 person-years (95% CI)	Log-rank P-value
Sex						
Male	1914 (6.9)	160 (153–167)	<0.001	1334 (4.8)	111 (106–118)	0.0002
Female	471 (4.5)	103 (94–113)		608 (5.8)	133 (123-144)	
Age in years						
15 to 24	618 (6.7)	151 (140–164)	<0.001	206 (2.2)	50 (44-58)	<0.001
25 to 34	900 (7.6)	175 (164–186)		466 (3.9)	90 (83-99)	
35 to 44	496 (5.8)	132 (121–144)		462 (5.4)	123 (112-135)	
45 to 54	219 (5.0)	116 (101–132)		315 (7.2)	166 (149-186)	
55 to 64	85 (3.9)	93 (75–114)		219 (10)	238 (209-272)	
≥65	67 (3.8)	92 (72–117)		274 (15)	377 (335-424)	
Year of starting TB treatment						
2012	224 (7.8)	180 (158–206)	<0.001	144 (5.0)	116 (99-137)	0.03
2013	256 (8.2)	186 (165–211)		151 (4.8)	110 (94-129)	
2014	196 (5.9)	133 (116–153)		180 (5.4)	122 (106-141)	
2015	158 (5.2)	118 (101–138)		143 (4.7)	107 (91-126)	
2016	189 (6.4)	148 (128–171)		149 (5.1)	117 (99-137)	
2017	315 (8.2)	193 (173–215)		172 (4.5)	105 (91-122)	
2018	258 (6.1)	141 (125–159)		210 (4.9)	115 (100-131)	
2019	218 (5.6)	130 (114–148)		181 (4.7)	108 (93-125)	
2020	170 (5.0)	115 (99–134)		164 (4.9)	111 (96-130)	
2021	224 (6.3)	144 (126–164)		207 (5.8)	133 (116-153)	
2022	177 (4.7)	107 (92–124)		241 (6.3)	146 (128-165)	
Treatment facility type						
Public health facility	2000 (6.7)	153 (147–160)	<0.001	1475 (4.9)	113 (107-119)	0.0001
Private health facility	348 (4.8)	110 (99–122)		441 (6.1)	140 (127-153)	
Prisons	37 (4.7)	114 (83–158)		26 (3.3)	80 (55-118)	
BMI group						
Undernourished	1395 (6.5)	151 (143–159)	<0.001	1152 (5.4)	124 (117-132)	<0.001
Normal	688 (5.5)	124 (115–134)		501 (3.9)	91 (83-99)	
Overweight	68 (4.5)	101 (80–128)		69 (4.5)	103 (81-130)	
Unknown/missing	234 (9.1)	218 (191–247)		220 (8.5)	205 (179-234)	
TB diagnosis						
Bacteriological	1826 (6.9)	156 (149–163)	<0.001	882 (3.3)	75 (70-80)	<0.001
Clinical signs	559 (4.9)	116 (107–126)		1060 (9.3)	220 (207-234)	
Patient category						
New case	2025 (5.9)	137 (131–143)	<0.001	1675 (4.9)	113 (108-119)	<0.001
Re-treatment after relapse	122 (5.2)	121 (101–145)		179 (7.7)	178 (153-206)	
Re-treatment after LTFU	172 (20)	519 (447–602)		64 (7.5)	193 (151-247)	
Transfer in	42 (6.4)	146 (108–197)		23 (3.5)	80 (53-120)	
Treatment after failure	24 (12)	268 (180–400)		1 (0.5)	11 (1.58-79)	
Type of TB						
Pulmonary TB	2208 (6.6)	152 (145–158)	<0.001	1546 (4.6)	106 (101-112)	<0.001
Extra-Pulmonary TB	177 (3.8)	90 (78–104)		396 (8.6)	202 (183-222)	
HIV status						
Negative	1821 (6.0)	136 (131–143)	<0.001	1118 (3.7)	84 (79-89)	<0.001
Infected	449 (6.6)	160 (146–175)		730 (11)	260 (241-280)	

Unknown/missing	115 (11)	271 (226–326)		J94 (8.9)	222 (181-271)	
Other comorbidity (Not HIV)						
No	2376 (6.3)	145 (139-151)	0.07	1890 (5.0)	115 (110-120)	<0.001
Yes	9 (3.2)	81 (42-156)		52 (19)	470 (358-617)	
On recreation drugs						
No	2282 (6.3)	144 (138-150)	0.73	1857 (5.1)	117 (112-123)	0.63
Yes	103 (6.5)	152 (125-184)		85 (5.3)	125 (101-155)	
Direct observed treatment (dot)						
Family-based	2210 (6.2)	144 (138–150)	0.69	1795 (5.1)	117 (111-122)	0.52
Community health Volunteer	17(6.5)	153 (95–246)		14 (5.3)	126 (74-212)	
Healthcare worker	158 (6.7)	151 (130–177)		133 (5.7)	128 (108-151)	
Treatment regimen						
2RHZE/4RH	2196 (6.1)	140 (134–146)	<0.001	1800 (5.0)	115 (110-120)	<0.001
2SRHZE/1RHZE/5RHE	162 (12)	283 (242–330)		103 (7.6)	180 (148-218)	
2RHZ/4RH	12 (4.0)	90 (51–158)		13 (4.3)	97 (57-168)	
RHZE/10RH	14 (7.2)	171 (101–289)		20 (10)	245 (158-379)	
Others	1 (0.6)	13.6 (1.91–96)		6 (3.8)	81 (37-181)	

638 All P-values are from log-rank test, the rates are per 1000 person-years.

639 **Table 3. Multivariable analysis of patient characteristics associated with LTFU and**
 640 **mortality within six months of starting TB treatment.**

Characteristics	LTFU		Mortality	
	aSHR (95%CI)	P-value	aSHR (95%CI)	p-value
Sex				
Male	Reference		¶	
Female	0.64 (0.60–0.69)	<0.001	¶	
Age in years				
15 to 24	Reference		Reference	
25 to 34	1.09 (0.96–1.23)	0.18	1.57 (1.42–1.74)	<0.001
35 to 44	0.83 (0.73–0.95)	0.008	1.89 (1.55–2.39)	<0.001
45 to 54	0.75 (0.62–0.90)	0.002	2.40 (2.04–2.81)	<0.001
55 to 64	0.60 (0.44–0.82)	0.001	3.48 (2.90–4.17)	<0.001
≥65	0.63 (0.51–0.78)	<0.001	5.86 (4.82–7.13)	<0.001
Year of starting TB treatment				
2012	Reference		Reference	
2013	1.06 (0.94–1.18)	0.34	0.98 (0.77–1.26)	0.91
2014	0.71 (0.51–1.00)	0.05	1.13 (0.89–1.44)	0.31
2015	0.67 (0.56–0.80)	<0.001	1.24 (0.97–1.59)	0.08
2016	0.85 (0.60–1.19)	0.34	1.42 (1.12–1.80)	0.004
2017	1.10 (0.87–1.40)	0.41	1.09 (0.93–1.29)	0.29
2018	0.83 (0.74–0.93)	0.001	1.15 (0.86–1.54)	0.34
2019	0.76 (0.61–0.94)	0.01	1.14 (0.90–1.46)	0.29
2020	0.67 (0.55–0.81)	<0.001	1.20 (0.95–1.51)	0.14
2021	0.81 (0.59–1.13)	0.21	1.34 (1.05–1.70)	0.02
2022	0.61 (0.48–0.77)	<0.001	1.40 (1.17–1.67)	<0.001
Treatment facility type				
Public health facility	Reference		Reference	
Private health facility	0.78 (0.60–1.00)	0.05	0.85 (0.69–1.06)	0.15
Prisons	0.62 (0.47–0.82)	0.001	0.70 (0.55–0.90)	0.006
BMI group				
Undernourished (BMI<18.5)	¶		1.50 (1.40–1.61)	<0.001
Normal (BMI 18.5 to 24.9)	¶		Reference	
Overweight (BMI ≥25)	¶		0.86 (0.76–0.98)	0.03
Unknown/missing	¶		2.06 (1.61–2.63)	<0.001
TB diagnosis				
Bacteriologically confirmed	Reference		Reference	
Clinical signs and X-ray	0.85 (0.73–0.99)	0.03	2.22 (1.97–2.49)	<0.001
Patient category				
New case	Reference		Reference	

Re-treatment after relapse	0.77 (0.67–0.99)	0.001	1.43 (1.12–1.82)	0.004
Re-treatment after LTFU	3.28 (2.59–4.17)	<0.001	1.59 (0.93–2.73)	0.09
Transfer in	1.06 (0.69–1.63)	0.79	0.75 (0.40–1.39)	0.36
Previously treated	2.11 (1.66–2.68)	<0.001	1.39 (0.77–2.49)	0.27
Treatment after failure	1.65 (1.27–2.14)	<0.001	0.15 (0.02–1.19)	0.07
Type of TB				
Pulmonary TB	Reference		¶	
Extra-Pulmonary TB	0.72 (0.60–0.86)	<0.001	¶	
HIV status				
Negative	Reference		Reference	
Infected on ARVs	1.24 (1.07–1.44)	0.003	2.41 (2.04–2.85)	<0.001
Infected not on ARVs	2.30 (1.90–3.03)	<0.001	5.03 (3.56–7.10)	<0.001
Unknown/missing	1.83 (1.26–2.65)	0.001	2.27 (1.79–2.88)	<0.001
Other comorbidity	¶		2.67 (1.78–4.01)	<0.001
Treatment regimen				
2RHZE/4RH	Reference		Reference	
2SRHZE/1RHZE/5RHE	1.34 (1.13–1.58)	0.001	1.13 (0.86–1.50)	0.37
2RHZ/4RH	0.62 (0.33–1.18)	0.15	0.91 (0.47–1.79)	0.79
RHZE/10RH	1.54 (0.87–2.73)	0.14	1.51 (1.06–2.15)	0.02
Others	0.13 (0.59–0.30)	<0.001	0.50 (0.15–1.75)	0.28

641 ¶; independent variables not selected for inclusion in multivariable model, aSHR; adjusted Sub-distribution Hazard Ratio, aSHR are from
 642 multilevel competing risk analysis models.

643

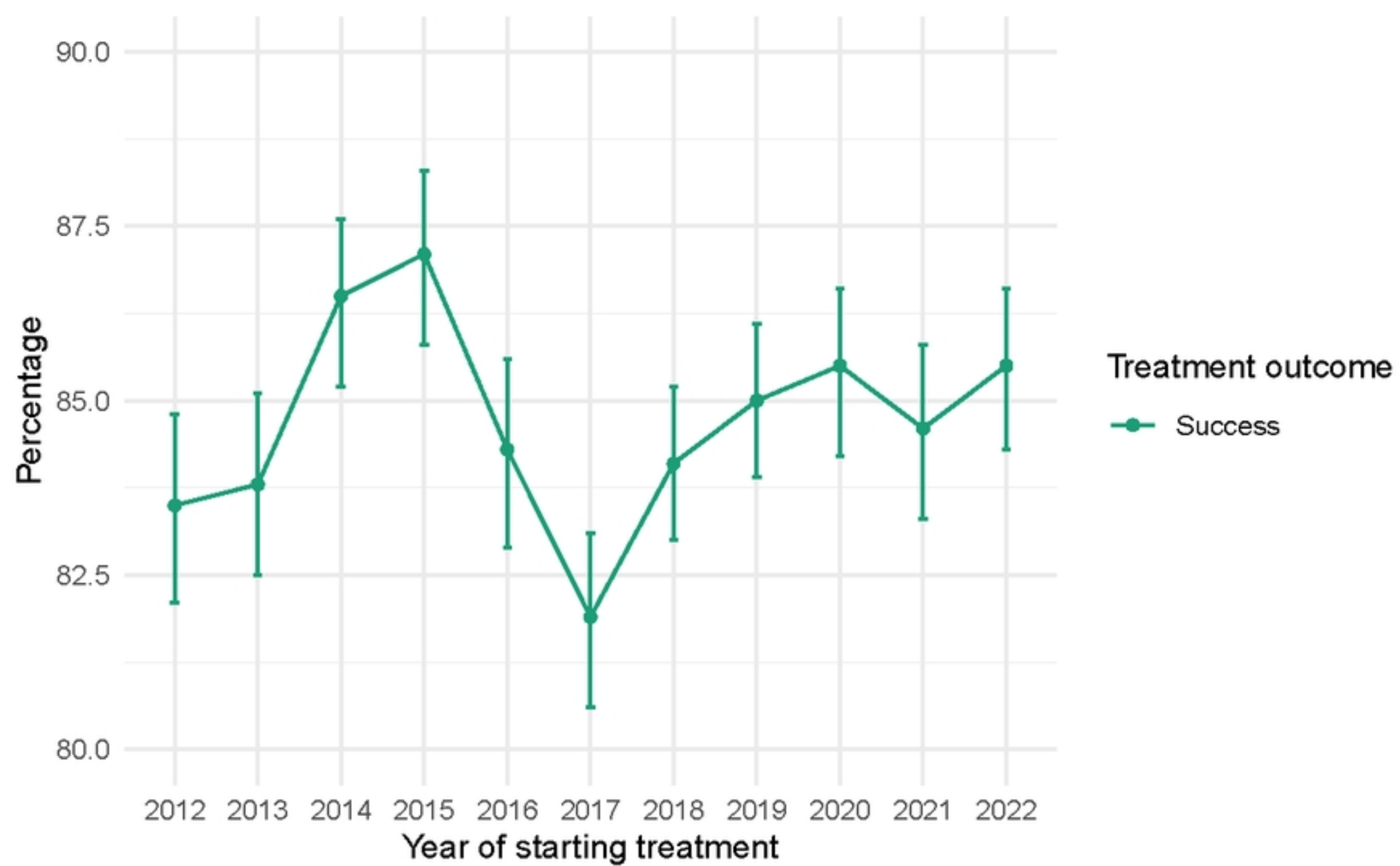


Fig 1a

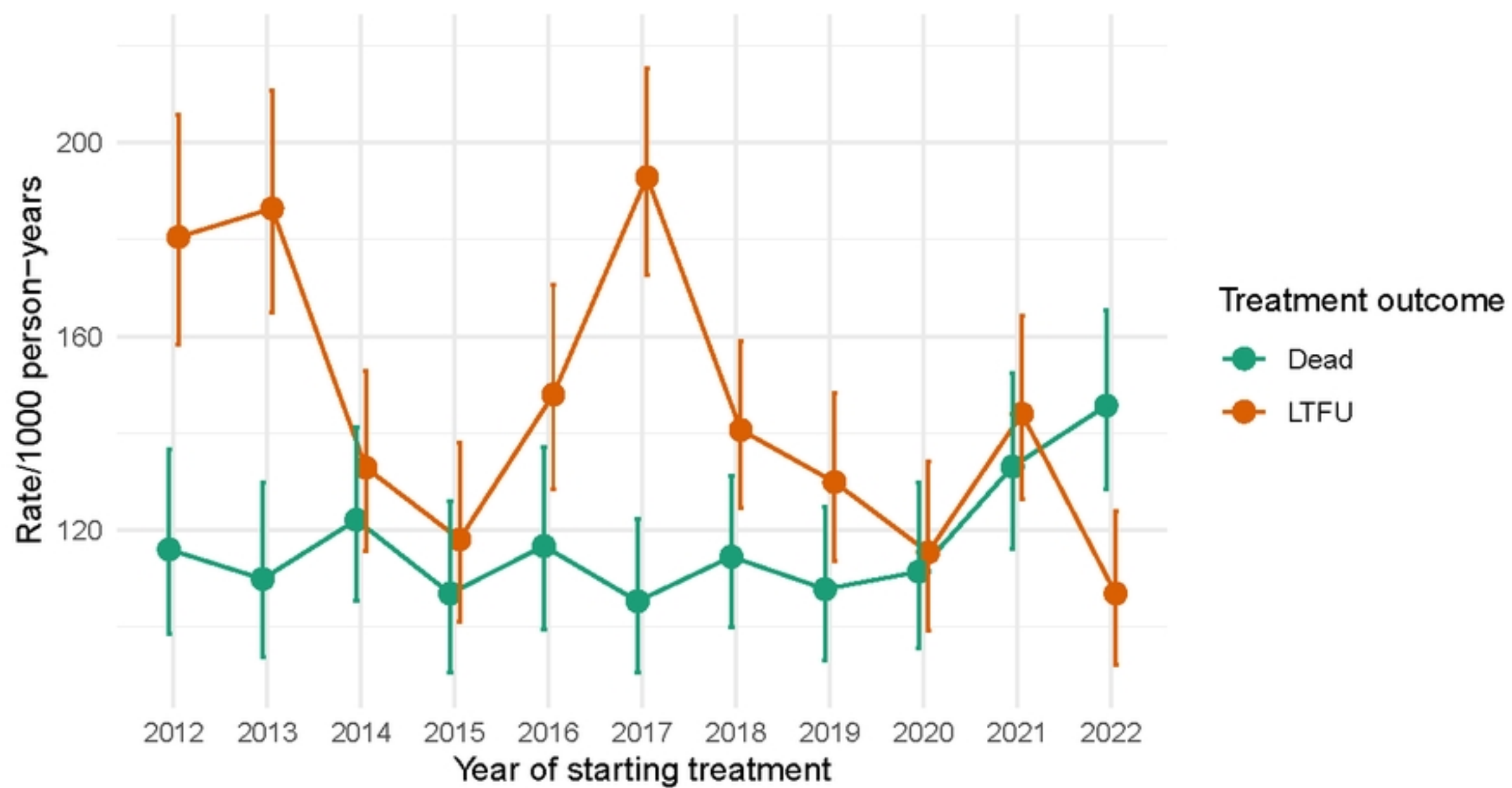


Fig 1b

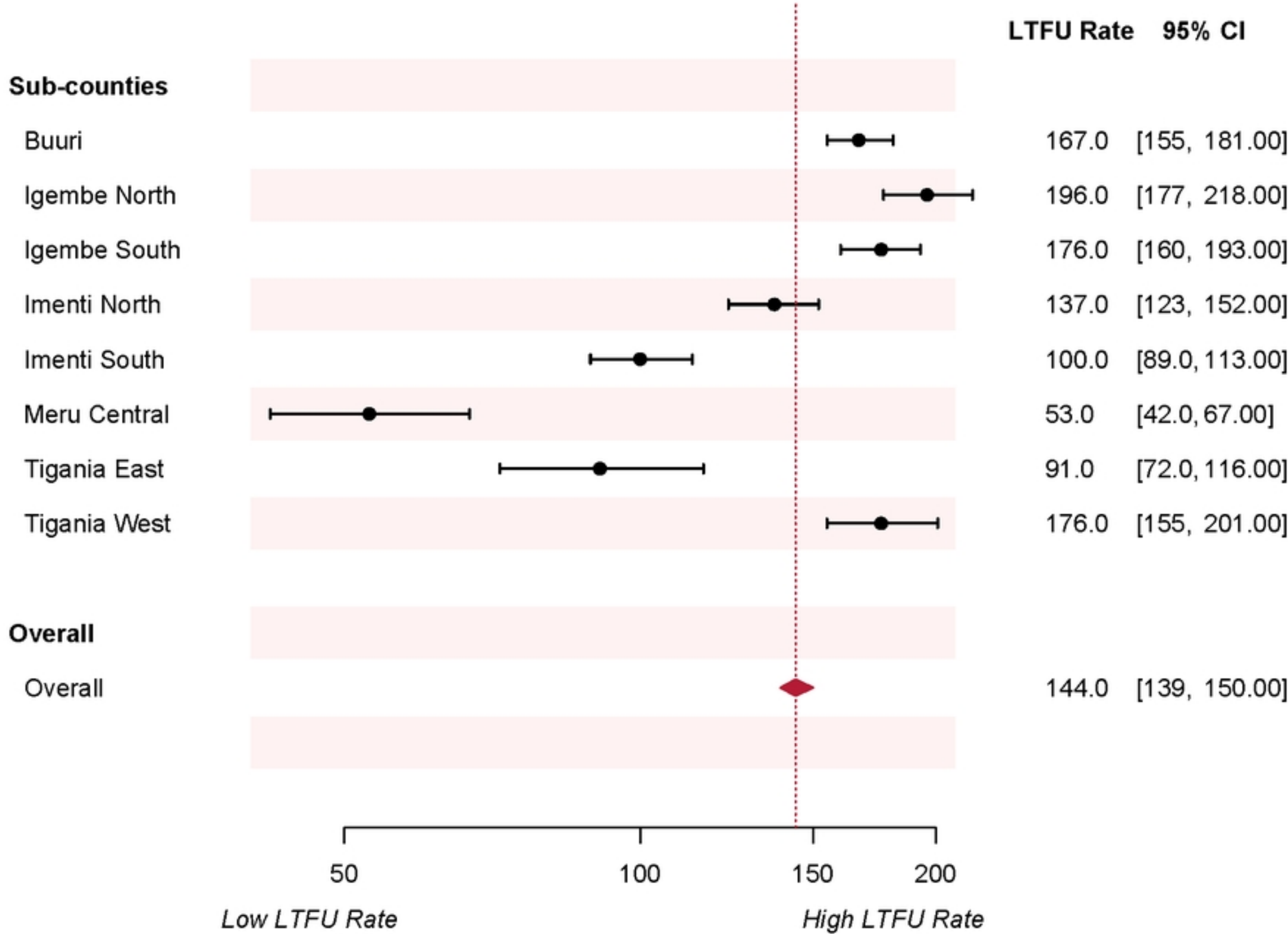


Fig 1c

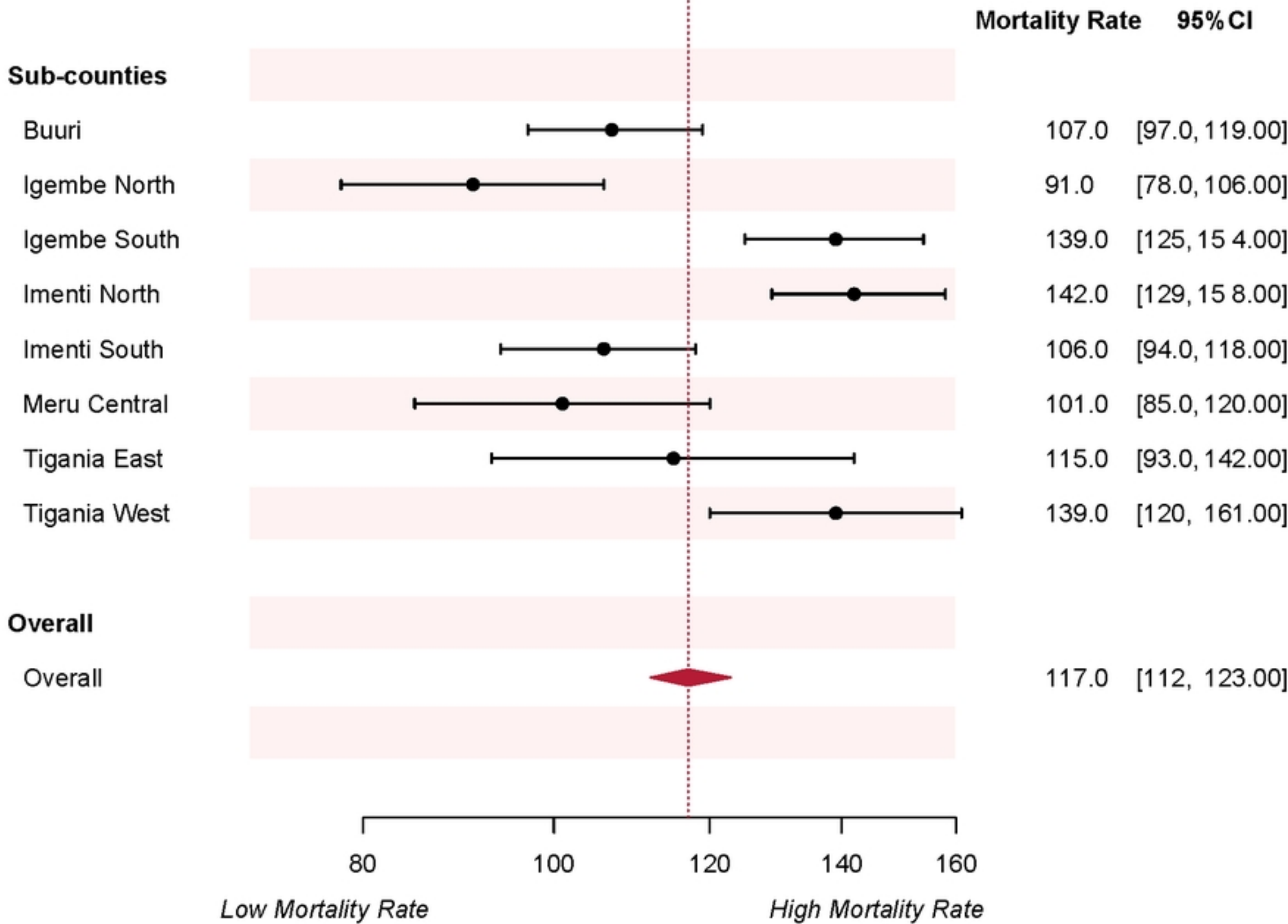
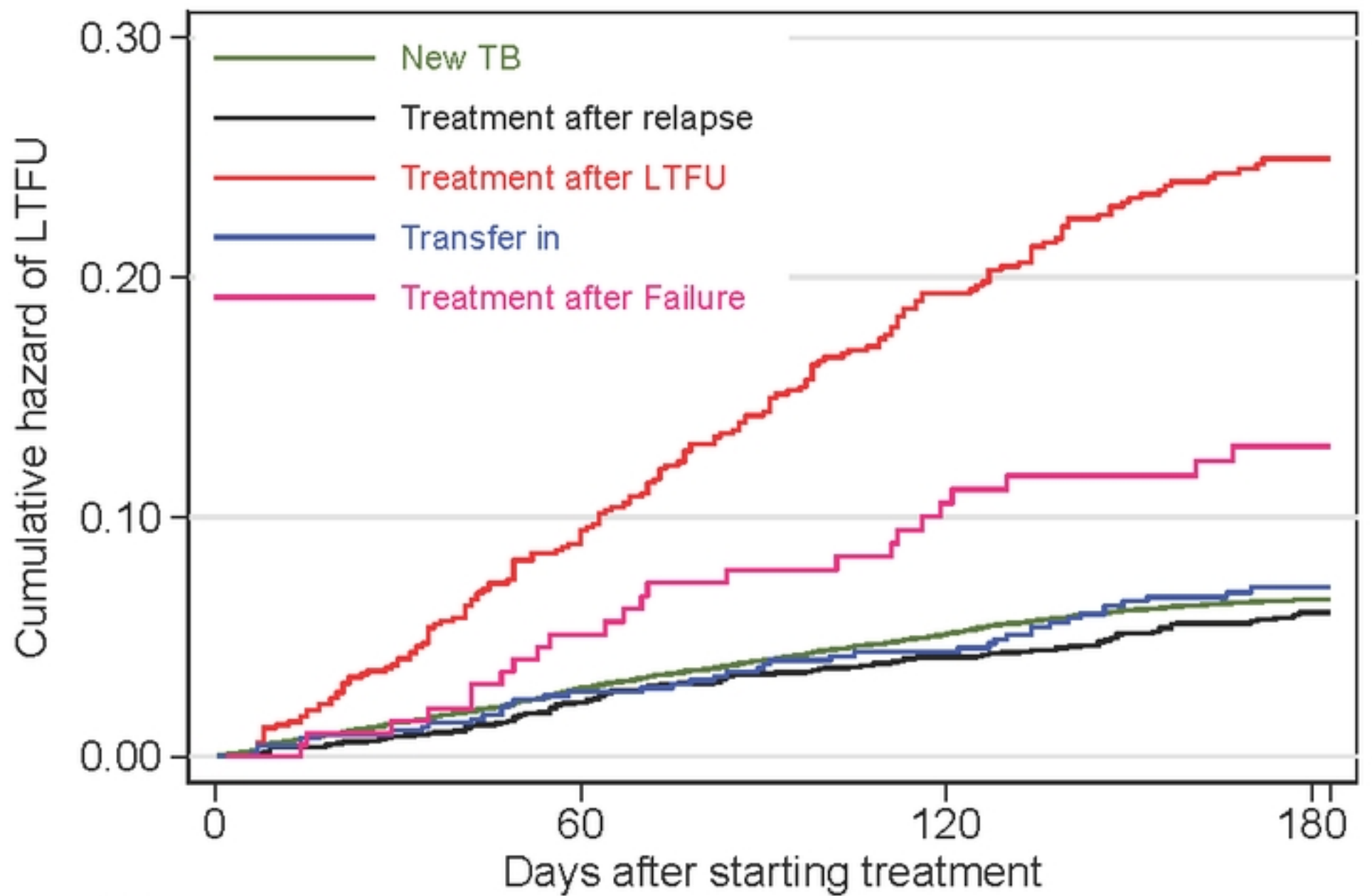


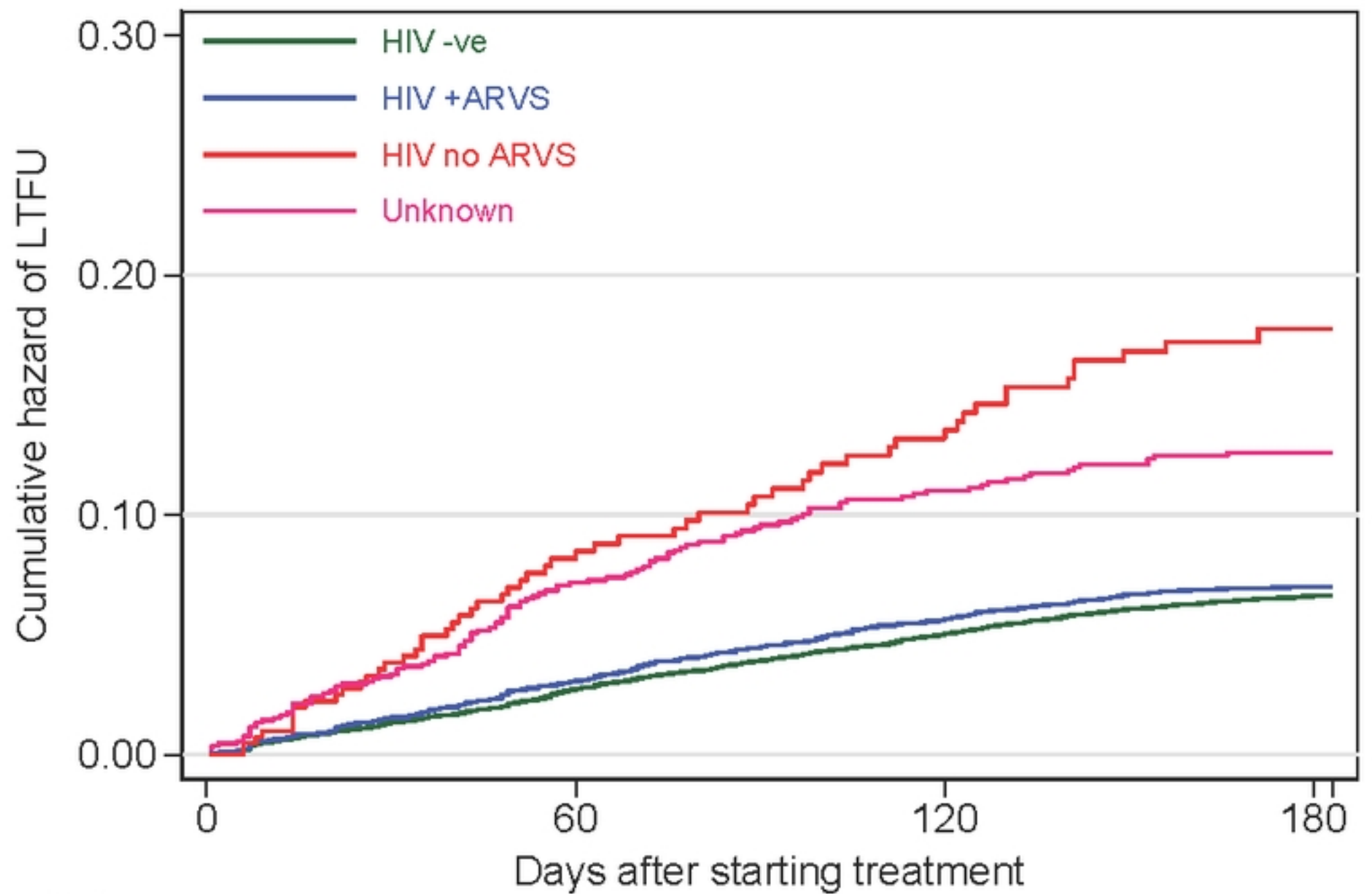
Fig 1d



Number at risk

New TB	33979	(921)	31286	(688)	29797	(414)	13270
Treatment after relapse	2333	(50)	2128	(39)	2013	(33)	961
Treatment after LTFU	851	(69)	717	(70)	623	(33)	363
Transfer in	652	(17)	611	(10)	579	(15)	250
Treatment after Failure	205	(10)	189	(10)	175	(4)	100

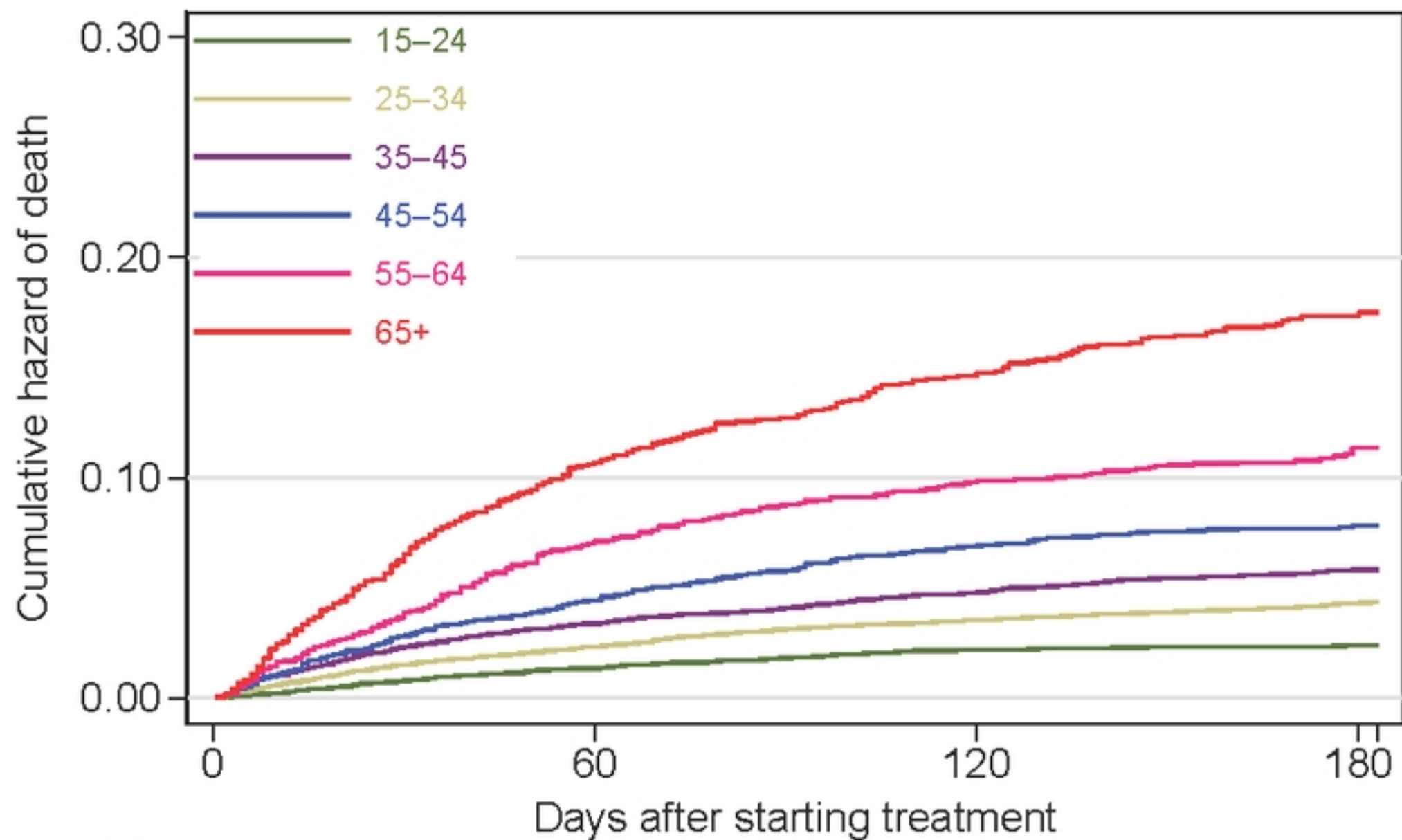
Fig 2a



Number at risk

HIV -ve	30186	(786)	28060	(629)	26807	(404)	12076
HIV +ARVS	6350	(182)	5659	(140)	5272	(70)	2313
HIV no ARVS	423	(30)	323	(15)	280	(12)	132
Unknown	1061	(69)	889	(33)	828	(13)	423

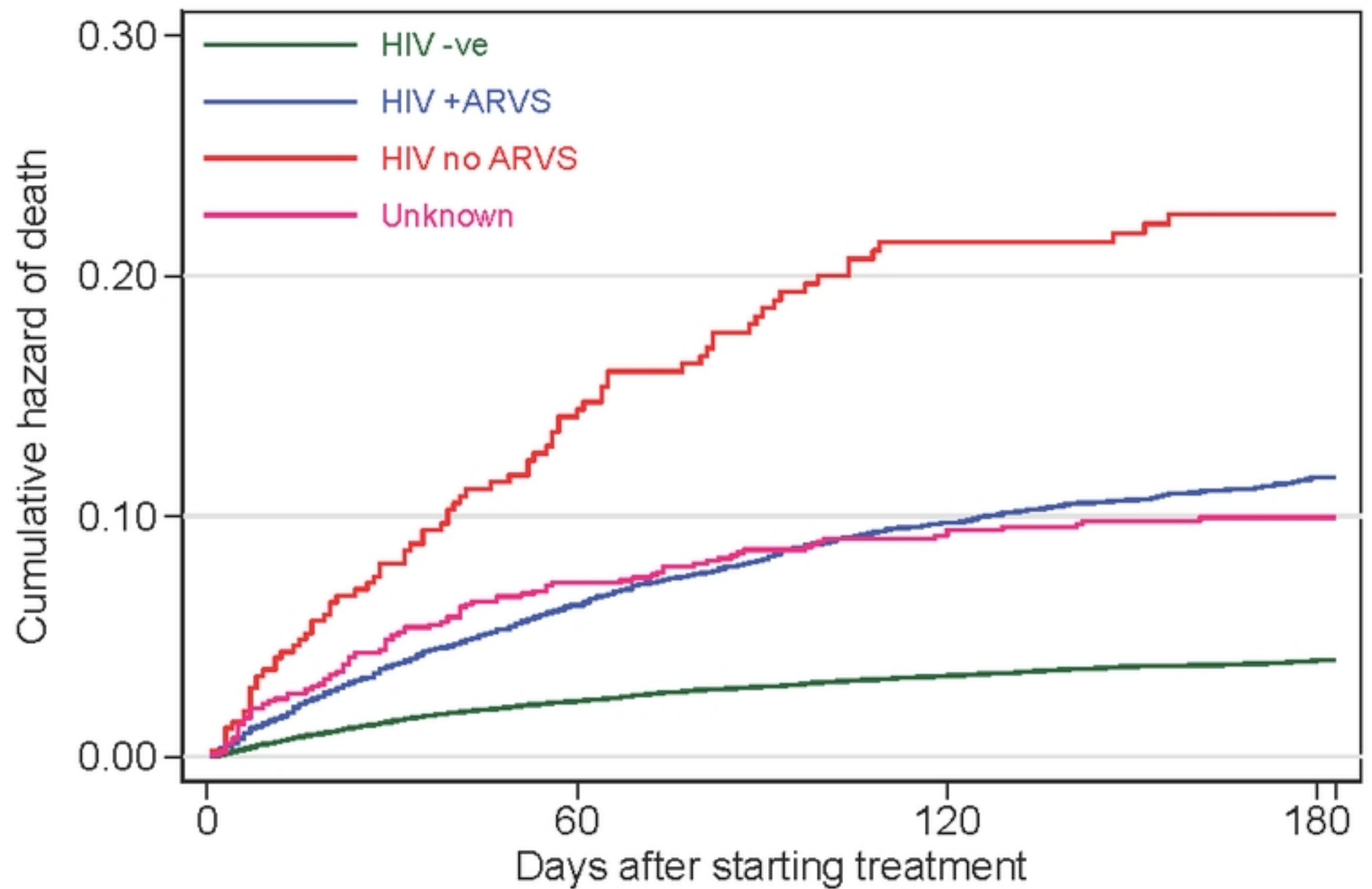
Fig 2b



Number at risk

15-24	9233	(120)	8602	(70)	8207	(16)	3809
25-34	11830	(266)	10904	(129)	10313	(69)	4786
35-45	8619	(280)	7936	(110)	7577	(71)	3350
45-54	4383	(186)	4017	(96)	3794	(33)	1641
55-64	2175	(144)	1934	(53)	1843	(22)	772
65+	1780	(176)	1538	(60)	1453	(37)	586

Fig 2c



Number at risk

HIV -ve	30186	(669)	28060	(292)	26807	(153)	12076
HIV +ARVS	6350	(379)	5659	(187)	5272	(86)	2313
HIV no ARVS	423	(53)	323	(22)	280	(3)	132
Unknown	1061	(71)	889	(17)	828	(6)	423

Fig 2d