

# Mortality and lost to follow-up among Tuberculosis patients on treatment in Meru County, Kenya: a retrospective cohort study.

## Authors

Moses M. Ngari<sup>1,2</sup>, Jane K. Mberia<sup>2</sup>, Eunice Kanana<sup>3</sup>, Deche Sanga<sup>4</sup>, Martin K. Ngari<sup>5</sup>, David N. Nyagah<sup>2</sup>, Osman A. Abdullahi<sup>2</sup>.

## Affiliations

<sup>1</sup>KEMRI/Wellcome Trust Research Programme, Kilifi, Kenya, <sup>2</sup>Department of Public Health, School of Health & Human Sciences, Pwani University, Kilifi, Kenya, <sup>3</sup>Meru County TB Control Program, Meru, Kenya, <sup>4</sup>Kilifi County TB Control Program, Kilifi, Kenya, <sup>5</sup>Makueni County Referral Hospital, Wote, Kenya.

## Corresponding Author:

Dr Moses M. Ngari  
KEMRI–Wellcome Trust Research Programme,  
P.O Box 230-80108, Kilifi, Kenya.

Email: [mngari@kemri-wellcome.org](mailto:mngari@kemri-wellcome.org)

SHORT TITLE: TB treatment outcomes in Meru County, Kenya.

## Abstract

Tuberculosis (TB) remains a leading cause of death globally. Patients who get lost-to-follow-up (LTFU) during TB treatment have high risk of relapse, mortality, treatment failure and developing Multidrug resistant TB. Empirical data to monitor long-term TB treatment outcomes in low-and-middle income countries (LMICs) are sparse. We determined proportion of TB patients who die or are LTFU during six months of treatment and identified factors independently associated with mortality or LTFU. A retrospective cohort using data from routine Meru County TB surveillance system. We included 38020 records of TB patients aged  $\geq 15$  years on treatment 2012 to 2022. TB treatment outcomes of interest were LTFU or death within six months of treatment. Survival analyses accounting for competing events were performed. Among the 38020 patients included, 27608 (73%) were male and the median (IQR) age was 32 [25–42] years. 26599 (70%) had bacteriologically confirmed TB while 11421 (30%) were clinically diagnosed. During 16531 person-years of follow-up, 2385 (6.3%, 95%CI 6.0–6.5) and 1942 (5.1%, 95%CI 4.9–5.3) patients were LTFU and died respectively. In the multivariable model, patients on re-treatment after LTFU or after failure and those previously treated compared to new TB patients were positively associated with LTFU. Patients coinfected with HIV and those with unknown HIV status were positively associated with LTFU. In contrast, females, clinically diagnosed, extra-pulmonary TB and older patients were negatively associated with LTFU. Patients HIV infected on ARVs, not on ARVs and unknown HIV status versus not infected were positively associated with mortality. Other comorbidities (not HIV), clinically diagnosed, undernourished and older patients were positively associated with mortality. More than 10% of TB patients either die or are LTFU before completing treatment. TB patients on re-treatment, HIV infected, clinically diagnosed,

47    undernourished and the elderly needs more targeted interventions to improve survival and  
48    successfully treatment.

49

50    **Key words:** Tuberculosis; Mortality; Lost-to-follow-up; Treatment outcomes; low-and-middle  
51    income countries; Africa.

52

## Introduction

Tuberculosis (TB) is a curable disease; however, it remains one of the leading causes of death globally[1-4]. In 2022, it was the second leading cause of death globally from a single infectious agent after COVID-19[4]. Up to 11.4million people developed TB in 2022 in the whole world[4]. The United Nations Sustainable Development Goals (SDG-3) set an ambitious target to end the TB epidemic in 2030 by reducing the TB incidence by 80% and TB deaths by 90% from the 2015 levels. Despite the progress made in TB diagnosis through use of rapid culture/molecular techniques such as Xpert MTB/RIF assay, and clinical management, the global targets (SDG-3) are off-track [5]. In 2022, TB is estimated to have caused 1.3 million deaths, a reduction of 19% since 2015, which is below the End TB Strategy target of reducing TB deaths by 75% before 2025 [4, 5]. Sub-Saharan Africa and South-East Asia continue to bare the highest burden of TB deaths, accounting for 81% of deaths in 2022[4, 6]. HIV which is endemic in Sub-Saharan Africa is one of the leading causes of deaths among people living with HIV (PLWHIV) and co-infected with TB despite the high uptake of ARVs [7-10]. Kenya is among the 30 high TB burden countries that contributed 87% of the global cases in 2022 [4].

Lost to follow-up (LTFU) during TB treatment remains another major threat to successful TB treatment. Patients who interrupt TB treatment have high risk of relapse, mortality, treatment failure and developing Multidrug resistant TB[11]. This means they remain infectious for longer period and therefore continue transmitting TB in the community[11]. Most studies usually report poor TB treatment outcome (combined treatment failure, death, lost to follow-up and not evaluated) and not LTFU separately. In China as high as 13% adult TB patients were LTFU from 2017 to 2021, while retreated patients and those with underlying medical conditions like hepatitis

and cirrhosis were more likely to default treatment[12]. In Ethiopia, among children and adult patients, 5.36% and 16.6% were LTFU respectively while 13% were LTFU in urban informal settlement in Kenya[13-15]. Among multidrug resistant TB patients, up to 17% are LTFU before completing treatment[16]. However, in Brazil and Mozambique 18.1% and a high of 44.9% were LTFU respectively[17, 18].

It is highly likely both mortality and LTFU during TB treatment will vary depending on the incidence of TB, prevalence of underlying medical conditions like HIV, incidence of multidrug resistant TB and access to health care. In Kenya, a few studies have studied mortality and LTFU during TB treatment[15, 19-21], with some studies focusing on select population like paediatrics only[22]. Currently, there is limited empirical data to monitor long-term TB treatment outcomes in low-and-middle income countries (LMICs) and how the outcomes are impacted by evolving epidemiology of both infectious and noncommunicable diseases such as HIV, COVID-19, diabetes, hypertension and malnutrition. We aimed to determine proportion of TB patients who die or are LTFU during six months of TB treatment in Meru County, Kenya and identify factors independently associated with mortality (adjusted for competing risk of LTFU) or LTFU (adjusted for competing risk of mortality).

## Materials and Methods

### Study design

A retrospective cohort using data from routine standard National Leprosy and Tuberculosis and Lung Disease (NTLD) register.

### Study settings

The study analysed routine data from the TB electronic surveillance system from Meru County in Kenya. Meru County is located east of Mt Kenya with an estimated population of 1.5 million people in the 2019 census. Its population density in 2019 was 220 people per Sq.Km. The major economic activities are agriculture with Tea, Coffee, Khat, Bananas and Avocado as the top cash crops. The county is served by one regional referral hospital and approximately 176 public health facilities. The HIV prevalence in Meru County was 2.6% in 2020 and the ART coverage was 70%[23]. The county follows the Kenya national guidelines to diagnose and treat presumptive TB cases[24]. TB patients are diagnosed using World Health Organization (WHO)-recommended molecular TB diagnostics (Xpert MTB/RIF), smear microscopy and culture. Additionally, extrapulmonary cases and those diagnosed based on clinical symptoms, suggestive histological examination or X-ray abnormalities without laboratory confirmation are clinically diagnosed and started on TB treatment. New TB patients are considered drug-susceptible and take Rifampicin (R), Isoniazid (H), Pyrazinamide (Z) and Ethambutol (E) during the intensive phase (first two months) followed by four months of treatment on Rifampicin (R) and Isoniazid (H) (2RHZE/4RH). However, new patients diagnosed with TB but with other complications such as meningitis and osteo-articular TB are treated with RHZE for the first two months followed by Rifampicin (R) and Isoniazid (H) for ten months (2RHZE/10RH). TB patients who previously had been on anti-TB including relapsed cases, were retreated in the first two months with Streptomycin

(S), Ethambutol (E), Rifampicin (R), Isoniazid (H) and Pyrazinamide (Z), followed by Ethambutol (E), Rifampicin (R), Isoniazid (H) and Pyrazinamide (Z) for one month and Ethambutol (E), Rifampicin (R) and Isoniazid (H) for five months (2SRHZE/1RHZE/5RHE). The 2SRHZE/1RHZE/5RHE regimen was phased out in 2020 and replaced with 2RHZE/4RH. All TB patients are systematically screened for malnutrition and offered HIV test at the time of starting TB treatment. Undernourished patients are offered nutritional support while HIV infected are referred to Comprehensive Care Center (CCC) which offers HIV management care. In all Kenya government health facilities, TB and HIV diagnosis and treatment are offered for free.

## **Study Population**

We included records of TB patients starting treatment within Meru County aged 15 years and above from January 2012 to December 2022 and registered in the County TB surveillance system.

## **Data source and variables.**

Data used in this study were extracted from the Treatment Information from Basic Unit (TIBU) Meru County TB Electronic surveillance on 20<sup>th</sup> May 2024. Kenya transitioned from paper-based reporting to a national electronic surveillance system i.e TIBU in 2012. The system is operational in all Counties in Kenya that captures and stores individual-level TB patient data which is reported to the Kenya national TB program. At each health facility, data are recorded into TB registers which are periodically transcribed electronically using tablets and synchronized to the national server[25]. Patients diagnosed with TB while in the wards are linked with outpatient TB clinics where they get registered in the TIBU system. The study included the following variables collected in the routine data; demographic (age, sex), sub-counties, date of starting TB treatment, Clinical features including type of TB (pulmonary or extra-pulmonary), new or retreated patients, HIV status, other underlying medical conditions, TB diagnosis (either bacteriological or clinical),

treatment regimen, Body Mass Index (BMI) a proxy for nutritional status, nutritional support provided and the type of direct observed treatment provided. A new patient was a presumptive TB case who has never been on TB treatment or had taken anti-TB medication for less than one month. TB patients on retreatment included; a) relapsed patients who were declared as completed treatment or cured but has been diagnosed with recurrent episode, b) treatment failures who included previously treated patients whose treatment outcome was declared as failure, c) treatment after loss-to-follow-up included patients previously treated but were categorized as lost-to-follow-up and d) other previously treated included those previously treated but outcome was unknown. The outcomes of interest were the WHO TB treatment outcomes either death or lost-to-follow-up during six months of treatment. The deaths included TB patients who died for any reason on or after starting treatment but within the six months of follow-up. Lost-to-follow-up was defined to include TB patient who started TB treatment but was interrupted for at least two consecutive months[26]. Treatment success was used to define those who completed at least six months of TB treatment without evidence of treatment failure and those cured.

## Study size

Data from 38020 presumptive TB patients on treatment from 2012 to 2022 within Meru County were included in the study. The study size (N=38020) had a power of at least 90% to detect a hazard ratio  $\geq 2.0$  of HIV infected compared to HIV negative or clinical versus bacteriologically diagnosed TB being associated with mortality assuming 5% overall probability of death and two-tailed alpha of 0.05[10, 27].

## Statistical analysis



Data shared by the County TB coordinator were checked for completeness and processed for analysis. We found all records had a treatment outcome since we got data after at least one year of starting treatment (i.e. the last patient in the data started treatment on 31<sup>st</sup> December 2022 meaning they had completed treatment by 20<sup>th</sup> May 2024 when data were extracted). We assessed the pattern of missing data in the other variables and found low proportion (<10%) of missing data in HIV and BMI variables. The missing records were associated with the outcomes of interest and therefore were assumed not to be missing at random. Among the HIV and BMI variables, an extra category called 'unknown' was added to represent the missing data and included in the analysis. The continuous BMI was categorized into: undernourished (BMI<18.5), normal (BMI 18.5 to 25) and overweight (BMI≥25). Age in years was categorized into groups of ten years apart from the open ended ≥65 years.

The data are reported as frequencies and proportions. Mortality and LTFU are reported as proportions with binomial exact 95% confidence interval. A non-parametric Wilcoxon-type test for trend was used to evaluate evidence of linear trend in annual proportion of deaths and LTFU from 2012 to 2022 [28]. Survival analysis was used to examine time to either death or LTFU after starting TB treatment and independent factors associated with the two outcomes separately. Person time was calculated from date of starting TB treatment up to date of the event or six months later (for those who completed treatment). Mortality and LTFU rates are reported as number of events per 1000 person-years and compared across groups using log-rank test. We tested proportional-hazards (PH) assumption using scaled Schoenfeld residuals and found no evidence of PH violation for both outcomes. Time to event were plotted using Nelson-Aalen Cumulative hazard curves. To assess the effects of independent exposures on time to death or LTFU, two separate multilevel survival regression models were fixed for each outcome accounting for heterogeneity by sub-

Counties. For the death outcome, we treated LTFU and transfer outside Meru County during the course of the six months as competing event because they precluded the probability of observing the event of interest (death). While for the LTFU outcome, deaths and transfer outside Meru County were treated as competing events. Therefore, the Fine and Gray competing risk method was used to examine independent factors associated with death or LTFU accounting for the sub-Counties heterogeneity and reported sub-distribution hazards ratios (SHR) as the measure of effects and their respective 95% confidence intervals[29]. We performed univariate analysis including only one independent variable and reported the crude SHR. To build multivariable models, we retained independent variables with P-value<0.1 using backwards stepwise approach and reported adjusted SHR in the final model. All statistical analyses were conducted using STATA version 17.0 (StataCorp, College Station, TX, USA) and R (version 4.2.0).

## **Ethical consideration**

Ethical approval was granted by the Pwani University Ethics Review Committee (ISERC/PU-STAFF/003/2024) and permit to conduct the study granted by Department of Health, Meru County (MRU/GEN/GEN/C.50). Study participants and caregivers for children less than eighteen years old provided written informed consent for their data to be used. The analyses used anonymized data. The study is reported following STrengthening the Reporting of OBservation studies in Epidemiology (STROBE) [30] and REporting of studies CONducted using Observational Routinely-collected health Data (RECORD) [31].

## **Results**

### **Patient Characteristics**

During the review period, 42116 TB patients were started on treatment of which 38020/42116 (90%) were  $\geq 15$  years old and included in this study. They included 27,608 (73%) male and their median (interquartile range - IQR) age was 32 [25–42] years. The patients were relatively young with over 50% younger than 35 years. The patients were more frequently from a public health facility. Approximately one third ( $n=12573$ , 33%) had normal BMI and only 4.0% were overweight. Bacteriologically confirmed TB cases were 26599 (70%) while 11421 (30%) were diagnosed based on clinical signs and abnormal Xray suggestive of TB. Among the 26599 bacteriologically confirmed cases, 10480 (39%) had both sputum smear positive and GenXpert result, 14419 (54%) were sputum smear positive only while 1700 (6.4%) were GenXpert positive only. A total of 33979 (89%) patients were new TB cases, 2333 (6.1%) were on retreatment after relapse, 596 (1.6%) were being retreated after LTFU (they were actively traced and restarted on treatment) and 652 (1.7%) were transferred into Meru County having started treatment in other Counties. There were 6773 (18%) TB patients co-infected with HIV while 1061 (2.8%) had unknown HIV status. Among the 6773 HIV infected patients, 6350 (94%) and 6698 (99%) were on ARVs and cotrimoxazole prophylaxis respectively. Overall, 280 (0.7%) had other comorbidities other than HIV. The most frequent comorbidities were: 125 diabetes cases, 92 cases of hypertension and 29 cases of mental health conditions (**S1 Fig**). One thousand five hundred and ninety-four (4.2%) were on recreation drugs. The most frequent direct observed treatment was family-based ( $n=35415$ , 93%). Thirty-six thousands and eleven (95%) were on the six-months first line treatment regimen of 2-month intensive phase of Rifampin (R), Isoniazid (H), Pyrazinamide (Z) and Ethambutol (E) followed by 4-month phase of Rifampin (R) and Isoniazid (H) (2RHZE/4RH) **Table 1**.

Clinical diagnosis, extrapulmonary TB and other comorbidities apart from HIV were more frequent among the elderly (all P-values<0.001) (**S1 Table**). HIV infection was more frequent among females, clinically diagnosed and extra-Pulmonary TB cases (all P-values<0.001) (**S2 Table**).

## **Treatment outcome**

A total of 32194/38020 (85%) successfully completed at least six months of TB treatment, of which 13988/32194 (43%) were cured. There was no evidence of linear trend in annual proportion of patients who completed treatment from 2012 to 2022 (Trend P-value=0.70) **Fig 1a**. Two thousand three hundred and eighty-five (6.3%), 1942 (5.1), 830 (2.2%), 342 (0.9%) and 327 (0.9%) were LTFU, died, transferred out of their treatment facility, failed treatment and developed resistant and were moved to the drug-resistant cohort respectively (S2 Fig).

## **Follow-up time and rates**

The patients were on follow-up for 16531 person-years. During treatment, 2385 (6.3%, 95%CI 6.0 to 6.5) patients were lost to follow-up; incidence rate was 144 (95%CI 139–150) LTFU/1000 person-years. The median [IQR] time to LTFU was 68 [35–112] days. A total of 1084/2385 (45%) LTFU occurred within the first two months of intensive treatment, while cumulatively 1529/2385 (64%) LTFU occurred within three months of starting TB treatment. There was no evidence of linear trend in the annual LTFU rates from 2012 to 2022 (Trend P-value=0.06) **Fig 1b**.

One thousand nine hundred and forty-two (5.1%, 95%CI 4.9 to 5.3) patients died: incidence rate of 117 (95%CI 112 to 123) deaths/1000 person-years. The median [IQR] time to death was 43 [18–88] days. A total of 1178/1942 (61%) deaths occurred within the first two months of intensive treatment, while cumulatively 1483/1942 (76%) deaths occurred within three months of starting

TB treatment. There was no evidence of linear trend in the annual mortality rates from 2012 to 22  
(Trend P-value=0.11) **Fig 1b**.

LTFU and mortality rates per 1000 person-years are shown in **Table 2**. The rate of LTFU was  
highest in Igembe North Sub- County (196, 95%CI 177 to 218)/1000 person-years) and lowest in  
Meru Central Sub- County (53, 95%CI 42 to 67)/1000 person-years), Log-rank P-value<0.001  
(**Fig 2c**). Mortality rate was highest in Imenti North Sub- County (142, 95%CI 129 to 158)/1000  
person-years) and lowest in Igembe North Sub- County (91, 95%CI 78 to 106)/1000 person-years),  
Log-rank P-value<0.001 (**Fig 2d**). The rates of LTFU were not significantly different between  
patients with and without other comorbidity (Not HIV), on versus not on recreation drugs and  
across the DOT approaches (all log-rank test P-values >0.05). Mortality rates were not  
significantly different between patients on versus not on recreation drugs and across the DOT  
approaches (all log-rank test P-values >0.05) **Table 2**.

# **Factors associated with LTFU or mortality.**

All the exposure variables explored for association with LTFU in the univariable analysis are  
shown in **S3 Table**. In the multivariable analysis, patients on re-treatment after LTFU (aSHR 3.28  
(95%CI 2.59–4.17)) or after failure (aSHR 1.65 (95%CI 1.27–2.14)) and those previously treated  
(aSHR 2.11 (95%CI 1.66–2.68)) had higher hazard of LTFU compared to new TB cases (**Fig 2a**).  
Patients coinfectd with HIV (on and not on ARVs) and those with unknown HIV status were  
positively associated with LTFU (**Fig 2b**). Compared to the first-line treatment regimen, those on  
longer treatment period i.e 2SRHZE/1RHZE/5RHE had 34% higher hazard of being LTFU (aSHR  
1.34 (95%CI 1.13–1.58)). In contrast, female patients were 36% less likely to be LTFU (aSHR  
0.64 (95%CI 0.60–0.69)) and older patients had significantly lower hazard of LTFU relative to  
younger ones. Compared to patients from public health facilities, those from prisons had 38%

lower hazard of LTFU (aSHR 0.62 (95%CI 0.47–0.82)). Clinically diagnosed patients and those with extra-pulmonary TB had lower hazard of LTFU. However, the BMI, other comorbidity (not HIV), on recreation drugs and type of DOT approach were not significantly associated with LTFU (Table 3).

Age had a linear trend association with mortality where the hazard of death increased from aSHR of 1.57 (25 to 34 years versus <25 years) to aSHR of 5.86 ( $\geq 65$  years versus <25 years) test for trend P-value <0.001 (Fig 2c). Compared to non-HIV infected, those infected on ARVs (aSHR 2.41 (95%CI 2.04–2.85)), infected and not on ARVs (aSHR 5.03 (95%CI 3.56–7.10)) and unknown HIV status were positively associated with mortality (Fig 2d). Other comorbidities (not HIV) were positively associated with mortality (aSHR 2.67 (95%CI 1.78–4.01)). Compared to bacteriologically diagnosed, clinically diagnosed patients had more than 2fold hazard of death (aSHR 2.22 (95%CI 1.97–2.49)). Undernourished patients had 50% higher hazard of deaths while the years 2021 and 2022 had significant higher mortality relative to 2012. However, patients from prisons had 30% lower hazard of death (aSHR 0.70 (95%CI 0.55–0.90)) compared to those from public health facilities. Patient sex, type of TB, use of recreation drugs and type of DOT were not associated with mortality (Table 3).

## Discussion

In this large cohort of drug-susceptible TB patients on treatment, we found 5.1% died with no evidence of declining trend over the decade. Despite the improved understanding of the disease epidemiology and the investments in simplified diagnosis and free treatment in all health facilities in Kenya, there was an increase in TB Case Fatality Ratio during the last two years (2021 and 2022) relative to 2012 baseline which could partly be attributable to the disruptive effect of

COVID-19 pandemic on health systems. The proportion of patients who died is within the range reported in India, South Africa and previously in Kenya[19, 32, 33]. The first two months during the intensive treatment phase mark the most vulnerable period when almost two-thirds of deaths occurred. The high risk of early deaths could be a sign of poor health system preparedness which delays TB diagnosis and is unresponsive to needs of severely ill patients. In high HIV burden countries, patients co-affected with TB and HIV usually die very early following TB treatment[10, 34, 35]. However, as observed in this study, starting ARV treatment during the intensive treatment phase reduces mortality relative to being HIV infected but not on ARVs[36-38]. In fact, providing ARVs to patients with TB and HIV regardless of starting in the intensive treatment phase, reduces mortality by 44 to 71%[8]. Before 2016, in Kenya, HIV patients started ARVs when they have advanced HIV. However, following the WHO guidelines recommending immediate starting of ARVs upon HIV diagnosis in 2015, Kenya adopted the guidelines in mid-2016[39]. Our results emphasize the need for implementing this policy to improve survival. But it is worth noting that ~3% of the patients had unknown HIV status despite the requirement of systematic screening for HIV among all TB cases for free in Kenya, and that those with unknown HIV status had high risk of mortality.

Our results show patients who were elderly, undernourished, HIV infected including those with unknown HIV status, diagnosed using clinical signs, had other comorbidities and being treated after relapse had significantly high risk of death. These were not isolated findings because all these factors have been previously identified as risk factors for death among TB patients[2, 40, 41]. Advancing older age had a linear trend with increasing risk of mortality likely because of weakening immune responses among the elderly and age-related comorbidities which suggest the need for more support and care during TB treatment in this population[2]. As observed in this study and

previously, the elderly more frequently had extrapulmonary TB and clinical diagnosis which sometimes are hard to diagnose causing delays in starting TB treatment and thus increased mortality[40, 42]. TB patients who are started on treatment based on clinical diagnosis usually will have a negative smear result and takes time to either diagnose extrapulmonary or start treatment based on the clinical signs which can cause delay in treatment with a possibility of increasing mortality. Clinical diagnosis also has potential to under-diagnose other severe respiratory diseases and is more frequent among patients with HIV infection and the elderly[27, 42]. The finding of patients on treatment after relapse had high risk of death suggests they were not cured which is not surprising given more than one-third of the patients were classified as 'completed treatment' without evidence of negative smear negative test in the last two months of treatment. This could arise because of poor drug adherence, poor drug quality or treatment regimen inadequate for the population. Relapsed patients also include new infection likely caused by community high prevalence of infectious TB or exposure to different *M.tuberculosis* strain[43]. The association with undernutrition was not surprising given it is the leading attributable risk factor for TB and malnourished patients have double risk of death from TB compared to non-malnourished patients[44, 45]. Malnutrition impairs immune response and may alter how drugs are absorbed[44, 46].

We observed a LTFU of ~6% within the six months of TB treatment which did not decline over the decade. It was within the range observed in Ghana (8.6%)[47], 5.3% in Kilifi, Kenya[21] and 6.8% in China[48]. However, it was lower than 13% in urban region in Nairobi, Kenya[15], 18.1% in Brazil[17] and 44.9% in Mozambique[18]. The differences could be due to varying HIV status, study settings and health system support availed to the patients during follow-up. During the intensive phase of TB treatment 45% of all LTFU occurred which was within the pooled range of



0% to 85% previously observed[49], highlighting the high risk of LTFU immediately after starting treatment. These patients who are LTFU present a threat because they contribute to TB transmission in the community and acquisition of drug resistance[11].

Unlike the factors positively associated with mortality, elderly patients and those diagnosed using clinical signs had lower risk of LTFU. It is likely these group of patients which had very high risk of death felt adhering to TB treatment and the regular contacts with health workers would be of much benefit to their recovery. However, in Ethiopia, the risk of LTFU was higher among the elderly which could be attributed to varying social support systems available to the elderly in Kenya and Ethiopia[14]. TB patients who are on retreatment after previous treatment either after LTFU or treatment failure had remarkably high risk of LTFU. This highlights a sub-population of TB patients that would benefit from more social support such as the community-based DOT and involvement of family members during the treatment phase. As previously observed, HIV co-infected patients regardless of whether on ARTs or not had higher risk of LTFU which could be attributable to the huge burden of concurrent HIV and TB medication[21]. The introduction of immediate starting of ARVs upon HIV diagnosis has been associated with increased risk of LTFU in Uganda and Ethiopia, calling for a more cautious approach in implementing the policy[50, 51]. It is likely the new HIV diagnosed patients who also have TB are not adequately prepared for the lifelong ART medication in addition to the six months or more TB treatment or may not have severe HIV clinical signs thus likely to default treatment. Females were less likely to be LTFU because males who are predominantly household providers are more economically engaged and thus miss their follow-ups when working[52].

Our findings suggest deaths during TB treatment are predictable and preventable. Deaths mostly occur during the intensive phase of treatment and among the elderly with underlying

comorbidities, advanced HIV infections and low BMI. A comprehensive assessment of the clinical needs for these patients during follow-up should be considered and risk stratified care offered. Future research to develop appropriate clinical support for example criteria for inpatient care referral and monitoring adherence to current guidelines such as systematic screening for HIV and malnutrition, immediate initiation of ARVs to those HIV infected and nutritional support should be prioritized[39, 53]. We also identified LTFU as a significant challenge during TB treatment. A people-centred care recommended by the WHO in the End TB strategy has not been fully adopted in LMICs because of resources constrains[26, 54, 55]. Evidence of type of psychosocial support that works, and how they can be effectively implemented to reduce LTFU in LMICs are inconclusive[55, 56]. A multi-sectoral approach is thus necessary to improve TB successful treatment.

### **Study strengths and Limitations**

The strength of the study was the large number of patients systematically followed up during TB treatment and the availability of detailed TB treatment outcomes (the outcomes and actual dates of the outcomes). This was a passive surveillance using routinely collected data with its inherent limitations. Therefore, the analyses were limited to only available data. Data on adherence to treatment and social economical exposures were not collected. Data to identify patients referred for care from wards and those who got admitted to hospital during the six months of treatment were not available too. The study was only conducted in one County in Kenya and should be interpreted with caution.

### **Conclusion**

More than one tenth of TB patients either die or are LTFU before completing treatment. Our findings highlight the high burden of mortality and LTFU during the intensive phase of treatment. Interventions targeting TB patients on re-treatment, HIV infected, clinically diagnosed, undernourished and the elderly provides an opportunity to improve survival and successfully TB treatment.

## Acknowledgement

We acknowledge study participants and Meru County TB program staff who managed and collected data from the patients. We thank Lilian Mwango for help with depositing data and analysis code to the data repository.

## Data availability Statement

The study anonymized data and the analyses codes underlying the results presented are archived in the Harvard Dataverse repository: <https://doi.org/10.7910/DVN/78JGUE>

## Author contributions

**Conceptualization:** Moses M. Ngari, Osman A. Abdullahi

**Data curation:** Eunice Kanana, Jane K. Mberia

**Formal analysis:** Moses M. Ngari

**Investigation:** Eunice Kanana, Jane K. Mberia

406 **Methodology:** Moses M. Ngari, Deche Sanga, Martin K. Ngari, David N. Nyagah, Osman A.

407 Abdullahi.

408 **Project administration:** Moses M. Ngari, David N. Nyagah, Martin K. Ngari, Eunice Kanana

409

410 **Supervision:** Osman A. Abdullahi

411 **Validation:** Osman A. Abdullahi

412 **Visualization:** Moses M. Ngari

413 **Writing-original draft:** Moses M. Ngari

414 **Writing-review & editing:** Moses M. Ngari, Jane K. Mberia, Eunice Kanana, Deche Sanga, Martin K.

415 Ngari, David N. Nyagah, Osman A. Abdullahi.

416

417

418

419

## References

1. Romanowski K, Baumann B, Basham CA, Ahmad Khan F, Fox GJ, Johnston JC. Long-term all-cause mortality in people treated for tuberculosis: a systematic review and meta-analysis. *Lancet Infect Dis.* 2019;19(10):1129-37. Epub 2019/07/22. doi: 10.1016/S1473-3099(19)30309-3. PubMed PMID: 31324519.
2. Nicholson TJ, Hoddinott G, Seddon JA, Claassens MM, van der Zalm MM, Lopez E, et al. A systematic review of risk factors for mortality among tuberculosis patients in South Africa. *Syst Rev.* 2023;12(1):23. Epub 2023/02/24. doi: 10.1186/s13643-023-02175-8. PubMed PMID: 36814335; PubMed Central PMCID: PMCPCMC9946877.
3. Lumu I, Musaaazi J, Semeere A, Handel I, Castelnuovo B. Survival and predictors of mortality after completion of TB treatment among people living with HIV: a 5-year analytical cohort. *BMC Infect Dis.* 2023;23(1):238. Epub 2023/04/19. doi: 10.1186/s12879-023-08217-9. PubMed PMID: 37072726; PubMed Central PMCID: PMCPCMC10111785.
4. World Health Organization. Global tuberculosis report 2023. Geneva: : WHO, 2023.
5. Fukunaga R, Glaziou P, Harris JB, Date A, Floyd K, Kasaeva T. Epidemiology of Tuberculosis and Progress Toward Meeting Global Targets - Worldwide, 2019. *MMWR Morb Mortal Wkly Rep.* 2021;70(12):427-30. Epub 2021/03/26. doi: 10.15585/mmwr.mm7012a4. PubMed PMID: 33764960; PubMed Central PMCID: PMCPCMC7993552
6. Journal Editors form for disclosure of potential conflicts of interest. No potential conflicts of interest were disclosed.
7. Dodd PJ, Yuen CM, Sismanidis C, Seddon JA, Jenkins HE. The global burden of tuberculosis mortality in children: a mathematical modelling study. *Lancet Glob Health.* 2017;5(9):e898-e906. Epub 2017/08/16. doi: 10.1016/S2214-109X(17)30289-9. PubMed PMID: 28807188; PubMed Central PMCID: PMCPCMC5556253.
8. Nliwasa M, MacPherson P, Gupta-Wright A, Mwapasa M, Horton K, Odland JO, et al. High HIV and active tuberculosis prevalence and increased mortality risk in adults with symptoms of TB: a systematic review and meta-analyses. *J Int AIDS Soc.* 2018;21(7):e25162. Epub 2018/08/01. doi: 10.1002/jia2.25162. PubMed PMID: 30063287; PubMed Central PMCID: PMCPCMC6067081.
9. Odone A, Amadasi S, White RG, Cohen T, Grant AD, Houben RM. The impact of antiretroviral therapy on mortality in HIV positive people during tuberculosis treatment: a systematic review and meta-analysis. *PLoS One.* 2014;9(11):e112017. Epub 2014/11/13. doi: 10.1371/journal.pone.0112017. PubMed PMID: 25391135; PubMed Central PMCID: PMCPCMC4229142.
10. Sullivan A, Nathavitharana RR. Addressing TB-related mortality in adults living with HIV: a review of the challenges and potential solutions. *Ther Adv Infect Dis.* 2022;9:20499361221084163. Epub 2022/03/25. doi: 10.1177/20499361221084163. PubMed PMID: 35321342; PubMed Central PMCID: PMCPCMC8935406.
11. Ngari MM, Rashid MA, Sanga D, Mathenge H, Agoro O, Mberia JK, et al. Burden of HIV and treatment outcomes among TB patients in rural Kenya: a 9-year longitudinal study. *BMC Infect Dis.* 2023;23(1):362. Epub 2023/05/31. doi: 10.1186/s12879-023-08347-0. PubMed PMID: 37254064; PubMed Central PMCID: PMCPCMC10227789.
12. Volmink J, Garner P. Directly observed therapy for treating tuberculosis. *Cochrane Database Syst Rev.* 2006;(2):CD003343. Epub 2006/04/21. doi: 10.1002/14651858.CD003343.pub2. PubMed PMID: 16625579.
13. Jiang Y, Chen J, Ying M, Liu L, Li M, Lu S, et al. Factors associated with loss to follow-up before and after treatment initiation among patients with tuberculosis: A 5-year observation in China. *Front Med (Lausanne).* 2023;10:1136094. Epub 2023/05/14. doi: 10.3389/fmed.2023.1136094. PubMed PMID: 37181365; PubMed Central PMCID: PMCPCMC10167013.

13. Belay GM, Wubneh CA. Childhood tuberculosis treatment outcome and its association with HIV co-infection in Ethiopia: a systematic review and meta-analysis. *Trop Med Health*. 2020;48:7. Epub 2020/02/27. doi: 10.1186/s41182-020-00195-x. PubMed PMID: 32099521; PubMed Central PMCID: PMC7027074.
14. Birhane M, Mekonnen S, Dingeta T, Teklemariam Z. Loss to follow-up tuberculosis treatment and associated factors among adults attending at public health facilities in Warder District, Somali Regional State, Eastern Ethiopia. *Front Public Health*. 2023;11:1151077. Epub 2023/05/26. doi: 10.3389/fpubh.2023.1151077. PubMed PMID: 37234759; PubMed Central PMCID: PMC10208408.
15. Kizito KW, Dunkley S, Kingori M, Reid T. Lost to follow up from tuberculosis treatment in an urban informal settlement (Kibera), Nairobi, Kenya: what are the rates and determinants? *Trans R Soc Trop Med Hyg*. 2011;105(1):52-7. Epub 2010/10/05. doi: 10.1016/j.trstmh.2010.08.015. PubMed PMID: 20889176.
16. Walker IF, Shi O, Hicks JP, Elsey H, Wei X, Menzies D, et al. Analysis of loss to follow-up in 4099 multidrug-resistant pulmonary tuberculosis patients. *Eur Respir J*. 2019;54(1). Epub 2019/05/11. doi: 10.1183/13993003.00353-2018. PubMed PMID: 31073080.
17. Lima S, de Araujo K, Nunes MAP, Nunes C. Early identification of individuals at risk for loss to follow-up of tuberculosis treatment: A generalised hierarchical analysis. *Heliyon*. 2021;7(4):e06788. Epub 2021/05/14. doi: 10.1016/j.heliyon.2021.e06788. PubMed PMID: 33981876; PubMed Central PMCID: PMC8085707.
18. Wikman-Jorgensen PE, Morales-Cartagena A, Llenas-Garcia J, Perez-Porcuna TM, Hobbins M, Ehmer J, et al. Implementation challenges of a TB programme in rural northern mozambique: evaluation of 2012-2013 outcomes. *Pathog Glob Health*. 2015;109(5):221-7. Epub 2015/08/05. doi: 10.1179/2047773215Y.0000000027. PubMed PMID: 26239760; PubMed Central PMCID: PMC4727574.
19. Abdullahi OA, Ngari MM, Sanga D, Katana G, Willetts A. Mortality during treatment for tuberculosis; a review of surveillance data in a rural county in Kenya. *PLoS One*. 2019;14(7):e0219191. Epub 2019/07/12. doi: 10.1371/journal.pone.0219191. PubMed PMID: 31295277; PubMed Central PMCID: PMC6622488.
20. Wekunda PW, Aduda DSO, Guyah B, Odongo J. Predictors of mortality and survival probability distribution among patients on tuberculosis treatment in Vihiga County, Kenya. *Afr Health Sci*. 2023;23(1):218-30. Epub 2023/08/07. doi: 10.4314/ahs.v23i1.24. PubMed PMID: 37545936; PubMed Central PMCID: PMC10398452.
21. Katana GG, Ngari M, Maina T, Sanga D, Abdullahi OA. Tuberculosis poor treatment outcomes and its determinants in Kilifi County, Kenya: a retrospective cohort study from 2012 to 2019. *Arch Public Health*. 2022;80(1):48. Epub 2022/02/07. doi: 10.1186/s13690-022-00807-4. PubMed PMID: 35123570; PubMed Central PMCID: PMC8818215.
22. Onyango DO, Yuen CM, Masini E, Borgdorff MW. Epidemiology of Pediatric Tuberculosis in Kenya and Risk Factors for Mortality during Treatment: A National Retrospective Cohort Study. *J Pediatr*. 2018;201:115-21. Epub 2018/06/11. doi: 10.1016/j.jpeds.2018.05.017. PubMed PMID: 29885751.
23. National AIDS Control Council (NACC). Ministry of Health - Kenya. Kenya HIV estimates, Report 2020. Nairobi: 2020.
24. Ministry of Health. Guidelines for Management of Tuberculosis and Leprosy in Kenya. Nairobi: 2013.
25. Sharma A, Ndisha M, Ngari F, Kipruto H, Cain KP, Sitienei J, et al. A review of data quality of an electronic tuberculosis surveillance system for case-based reporting in Kenya. *Eur J Public Health*. 2015;25(6):1095-7. Epub 2015/05/27. doi: 10.1093/eurpub/ckv092. PubMed PMID: 26009610; PubMed Central PMCID: PMC5017003.

26. World Health Organization. The end TB strategy. Geneva: World Health Organization. Geneva: 2015.
27. Abdullahi O, Moses N, Sanga D, Annie W. The effect of empirical and laboratory-confirmed tuberculosis on treatment outcomes. *Sci Rep.* 2021;11(1):14854. Epub 2021/07/23. doi: 10.1038/s41598-021-94153-0. PubMed PMID: 34290301; PubMed Central PMCID: PMCPCMC8295390.
28. Cuzick J. A Wilcoxon-type test for trend. *Stat Med.* 1985;4(1):87-90. Epub 1985/01/01. doi: 10.1002/sim.4780040112. PubMed PMID: 3992076.
29. Fine JP. Regression modeling of competing crude failure probabilities. *Biostatistics.* 2001;2(1):85-97. doi: 10.1093/biostatistics/2.1.85. PubMed PMID: 12933558.
30. von Elm E, Altman DG, Egger M, Pocock SJ, Gotsche PC, Vandenbroucke JP, et al. The Strengthening the Reporting of Observational Studies in Epidemiology (STROBE) statement: guidelines for reporting observational studies. *Epidemiology.* 2007;18(6):800-4. Epub 2007/12/01. doi: 10.1097/EDE.0b013e3181577654. PubMed PMID: 18049194.
31. Benchimol EI, Smeeth L, Guttman A, Harron K, Moher D, Petersen I, et al. The REporting of studies Conducted using Observational Routinely-collected health Data (RECORD) statement. *PLoS Med.* 2015;12(10):e1001885. Epub 2015/10/07. doi: 10.1371/journal.pmed.1001885. PubMed PMID: 26440803; PubMed Central PMCID: PMCPCMC4595218.
32. Osman M, van Schalkwyk C, Naidoo P, Seddon JA, Dunbar R, Dlamini SS, et al. Mortality during tuberculosis treatment in South Africa using an 8-year analysis of the national tuberculosis treatment register. *Sci Rep.* 2021;11(1):15894. Epub 2021/08/07. doi: 10.1038/s41598-021-95331-w. PubMed PMID: 34354135; PubMed Central PMCID: PMCPCMC8342475.
33. Jonnalagadda S, Harries AD, Zachariah R, Satyanarayana S, Tetali S, Keshav Chander G, et al. The timing of death in patients with tuberculosis who die during anti-tuberculosis treatment in Andhra Pradesh, South India. *BMC Public Health.* 2011;11:921. Epub 2011/12/15. doi: 10.1186/1471-2458-11-921. PubMed PMID: 22166132; PubMed Central PMCID: PMCPCMC3254139.
34. Mukadi YD, Maher D, Harries A. Tuberculosis case fatality rates in high HIV prevalence populations in sub-Saharan Africa. *AIDS.* 2001;15(2):143-52. Epub 2001/02/24. doi: 10.1097/00002030-200101260-00002. PubMed PMID: 11216921.
35. Harries AD, Hargreaves NJ, Gausi F, Kwanjana JH, Salaniponi FM. High early death rate in tuberculosis patients in Malawi. *Int J Tuberc Lung Dis.* 2001;5(11):1000-5. Epub 2001/11/22. PubMed PMID: 11716335.
36. Zachariah R, Fitzgerald M, Massaquoi M, Acabu A, Chilomo D, Salaniponi FM, et al. Does antiretroviral treatment reduce case fatality among HIV-positive patients with tuberculosis in Malawi? *Int J Tuberc Lung Dis.* 2007;11(8):848-53. Epub 2007/08/21. PubMed PMID: 17705949.
37. Onyango DO, Yuen CM, Cain KP, Ngari F, Masini EO, Borgdorff MW. Reduction of HIV-associated excess mortality by antiretroviral treatment among tuberculosis patients in Kenya. *PLoS One.* 2017;12(11):e0188235. Epub 2017/11/18. doi: 10.1371/journal.pone.0188235. PubMed PMID: 29145454; PubMed Central PMCID: PMCPCMC5690617.
38. Blanc FX, Sok T, Laureillard D, Borand L, Rekacewicz C, Nerrienet E, et al. Earlier versus later start of antiretroviral therapy in HIV-infected adults with tuberculosis. *N Engl J Med.* 2011;365(16):1471-81. Epub 2011/10/21. doi: 10.1056/NEJMoa1013911. PubMed PMID: 22010913; PubMed Central PMCID: PMCPCMC4879711.
39. World Health Organization. Guideline on when to start antiretroviral therapy and on pre-exposure pro-phylaxis for HIV. Geneva, Switzerland 2015.
40. Heunis JC, Kigozi NG, Chikobvu P, Botha S, van Rensburg HD. Risk factors for mortality in TB patients: a 10-year electronic record review in a South African province. *BMC Public Health.* 2017;17(1):38. Epub 2017/01/08. doi: 10.1186/s12889-016-3972-2. PubMed PMID: 28061839; PubMed Central PMCID: PMCPCMC5217308.



41. Limenh LW, Kasahun AE, Sendekie AK, Seid AM, Mitku ML, Fenta ET, et al. Tuberculosis treatment outcomes and associated factors among tuberculosis patients treated at healthcare facilities of Motta Town, Northwest Ethiopia: a five-year retrospective study. *Sci Rep.* 2024;14(1):7695. Epub 2024/04/03. doi: 10.1038/s41598-024-58080-0. PubMed PMID: 38565912; PubMed Central PMCID: PMCPMC10987627.
42. Bukundi EM, Mhimbira F, Kishimba R, Kondo Z, Moshiri C. Mortality and associated factors among adult patients on tuberculosis treatment in Tanzania: A retrospective cohort study. *J Clin Tuberc Other Mycobact Dis.* 2021;24:100263. Epub 2021/08/07. doi: 10.1016/j.jctube.2021.100263. PubMed PMID: 34355068; PubMed Central PMCID: PMCPMC8322306.
43. World Health Organization. Definitions and Reporting Framework for Tuberculosis—2013 Revision. Geneva2013.
44. World Health Organization. Global tuberculosis report 2022. Geneva2022.
45. Ter Beek L, Bolhuis MS, Jager-Wittenaar H, Brijan RXD, Sturkenboom MGG, Kerstjens HAM, et al. Malnutrition assessment methods in adult patients with tuberculosis: a systematic review. *BMJ Open.* 2021;11(12):e049777. Epub 2022/03/29. doi: 10.1136/bmjopen-2021-049777. PubMed PMID: 35344503; PubMed Central PMCID: PMCPMC8719177.
46. Bourke CD, Berkley JA, Prendergast AJ. Immune Dysfunction as a Cause and Consequence of Malnutrition. *Trends Immunol.* 2016;37(6):386-98. Epub 2016/05/31. doi: 10.1016/j.it.2016.04.003. PubMed PMID: 27237815; PubMed Central PMCID: PMCPMC4889773.
47. Puplampu P, Kyeremateng I, Asafu-Adjaye O, Asare AA, Agyabeng K, Sarkodee R, et al. Evaluation of treatment outcomes among adult patients diagnosed with tuberculosis in Ghana: A 10 year retrospective review. *IJID Reg.* 2024;10:9-14. Epub 2023/12/04. doi: 10.1016/j.ijregi.2023.11.004. PubMed PMID: 38045863; PubMed Central PMCID: PMCPMC10687693.
48. Lin Y, Enarson DA, Du J, Dlodlo RA, Chiang CY, Rusen ID. Risk factors for unfavourable treatment outcome among new smear-positive pulmonary tuberculosis cases in China. *Public Health Action.* 2017;7(4):299-303. Epub 2018/03/28. doi: 10.5588/pha.17.0056. PubMed PMID: 29584792; PubMed Central PMCID: PMCPMC5753784.
49. Walker EF, Flook M, Rodger AJ, Fielding KL, Stagg HR. Quantifying non-adherence to anti-tuberculosis treatment due to early discontinuation: a systematic literature review of timings to loss to follow-up. *BMJ Open Respir Res.* 2024;11(1). Epub 2024/02/16. doi: 10.1136/bmjresp-2023-001894. PubMed PMID: 38359965; PubMed Central PMCID: PMCPMC10875541.
50. Bantie B, Seid A, Kerebeh G, Alebel A, Dessie G. Loss to follow-up in "test and treat era" and its predictors among HIV-positive adults receiving ART in Northwest Ethiopia: Institution-based cohort study. *Front Public Health.* 2022;10:876430. Epub 2022/10/18. doi: 10.3389/fpubh.2022.876430. PubMed PMID: 36249247; PubMed Central PMCID: PMCPMC9557930.
51. Kiwanuka J, Mukulu Waila J, Muhindo Kahungu M, Kitonsa J, Kiwanuka N. Determinants of loss to follow-up among HIV positive patients receiving antiretroviral therapy in a test and treat setting: A retrospective cohort study in Masaka, Uganda. *PLoS One.* 2020;15(4):e0217606. Epub 2020/04/08. doi: 10.1371/journal.pone.0217606. PubMed PMID: 32255796; PubMed Central PMCID: PMCPMC7138304.
52. Monique O, Ilse DP. Factors Contributing to Pulmonary Tb Treatment Lost to Follow-up in Developing Countries: An Overview. *Afr J Infect Dis.* 2023;17(1):60-73. Epub 2023/02/10. doi: 10.21010/Ajidv17i1.6. PubMed PMID: 36756489; PubMed Central PMCID: PMCPMC9885020.
53. Bhargava A, Bhargava M. Tuberculosis deaths are predictable and preventable: Comprehensive assessment and clinical care is the key. *J Clin Tuberc Other Mycobact Dis.* 2020;19:100155. Epub 2020/03/27. doi: 10.1016/j.jctube.2020.100155. PubMed PMID: 32211519; PubMed Central PMCID: PMCPMC7082610.
54. Janse Van Rensburg A, Dube A, Curran R, Ambaw F, Murdoch J, Bachmann M, et al. Comorbidities between tuberculosis and common mental disorders: a scoping review of epidemiological



patterns and person-centred care interventions from low-to-middle income and BRICS countries. *Infect Dis Poverty*. 2020;9(1):4. Epub 2020/01/17. doi: 10.1186/s40249-019-0619-4. PubMed PMID: 31941551; PubMed Central PMCID: PMC6964032.

55. Myburgh H, Baloyi D, Loveday M, Meehan SA, Osman M, Wademan D, et al. A scoping review of patient-centred tuberculosis care interventions: Gaps and opportunities. *PLOS Glob Public Health*. 2023;3(2):e0001357. Epub 2023/03/25. doi: 10.1371/journal.pgph.0001357. PubMed PMID: 36963071; PubMed Central PMCID: PMC10021744.

56. Maynard C, Tariq S, Sotgiu G, Migliori GB, van den Boom M, Field N. Psychosocial support interventions to improve treatment outcomes for people living with tuberculosis: a mixed methods systematic review and meta-analysis. *EClinicalMedicine*. 2023;61:102057. Epub 2023/07/17. doi: 10.1016/j.eclinm.2023.102057. PubMed PMID: 37457116; PubMed Central PMCID: PMC10338299.

## Figures legend

### **Fig 1. Annual trend in: a) Successful TB treatment, b) Deaths and LTFU, c) Incidence rate of LTFU by sub-counties and d) Incidence rate of mortality by sub-counties.**

Panel a represents annual percentage of successful TB treatment while b, c and d are LTFU or deaths rates per 1000 person-years.

### **Fig 2. Cumulative Hazard of LTFU by: a) Patient Type, b) HIV status and Cumulative Hazard for deaths by: c) age in years and d) HIV status.**

## 630 Tables and Figures

631 **Table 1. Patient characteristics at the time of starting TB treatment.**

Characteristics	N=38020
Sex	
Male	27608 (73)
Female	10412 (27)
Age in years	
15 to 24	9233 (24)
25 to 34	11830 (31)
35 to 44	8619 (23)
45 to 54	4383 (12)
55 to 64	2175 (5.7)
≥65	1780 (4.7)
Year of starting TB treatment	
2012	2860 (7.5)
2013	3137 (8.3)
2014	3337 (8.8)
2015	3025 (8.0)
2016	2939 (7.7)
2017	3826 (10)
2018	4250 (11)
2019	3879 (10)
2020	3382 (8.9)
2021	3577 (9.4)
2022	3808 (10)
Sub-County	
Buuri	8295 (22)
Igembe North	4245 (11)
Igembe South	5596 (15)
Imenti North	6030 (16)
Imenti South	6496 (17)
Meru Central	2761 (7.3)
Tigania East	1606 (4.2)
Tigania West	2991 (7.9)
Treatment facility type	
Public health facility	29972 (79)
Private health facility	7262 (19)
Prisons	786 (2.1)
BMI group	
Undernourished (BMI<18.5)	21331 (56)
Normal (BMI 18.5 to 24.9)	12573 (33)
Overweight (BMI ≥25)	1529 (4.0)
Unknown/missing	2587 (6.8)
TB diagnosis	
Bacteriologically confirmed	26599 (70)

632

Clinical signs and X-ray	11421 (30)
Patient category*	
New case	33979 (89)
Re-treatment after relapse	2333 (6.1)
Re-treatment after LTFU	851 (2.2)
Transfer in	652 (1.7)
Treatment after failure	205 (0.5)
Type of TB	
Pulmonary TB	33399 (88)
Extra-Pulmonary TB	4621 (12)
HIV status	
Negative	30186 (79)
Infected	6773 (18)
Unknown/missing	1061 (2.8)
HIV treatment (ARVs) n=6773	
Started taking ARVs	6350 (94)
Not yet	423 (6.3)
On cotrimoxazole prophylaxis (n=6773)	
Yes	6698 (99)
No	75 (1.0)
Other comorbidity*	280 (0.7)
On recreation drugs\$	1594 (4.2)
Direct observed treatment (dot)	
Family-based	35415 (93)
Community health Volunteer	262 (0.7)
Healthcare worker	2343 (6.2)
Treatment regimen	
2RHZE/4RH	36011 (95)
2SRHZE/1RHZE/5RHE	1350 (3.6)
2RHZ/4RH	304 (0.8)
RHZE/10RH	195 (0.5)
Others	160 (0.4)
Nutritional support	
No food support	7268 (19)
Therapeutic/Supplementary food	14924 (39)
Counselling only	15828 (42)

633

634

635

\*,76 kidney disease, 52 hypertension, 18 neurodevelopmental disorders, 11 chronic obstructive pulmonary disease, 3 cancer, 3 asthma and 3 COVID-19, \$;use of alcohol and smoking

636

637 **Table 2. Lost-to-follow-up (LTFU) and mortality rates per 1000 person-years.**

Characteristics	LTFU (N=2385)			Deaths (N=1942)		
	N (%)	Rate/1000 person-years (95% CI)	Log-rank P-value	N (%)	Rate/1000 person-years (95% CI)	Log-rank P-value
Sex						
Male	1914 (6.9)	160 (153–167)	<0.001	1334 (4.8)	111 (106–118)	0.0002
Female	471 (4.5)	103 (94–113)		608 (5.8)	133 (123–144)	
Age in years						
15 to 24	618 (6.7)	151 (140–164)	<0.001	206 (2.2)	50 (44–58)	<0.001
25 to 34	900 (7.6)	175 (164–186)		466 (3.9)	90 (83–99)	
35 to 44	496 (5.8)	132 (121–144)		462 (5.4)	123 (112–135)	
45 to 54	219 (5.0)	116 (101–132)		315 (7.2)	166 (149–186)	
55 to 64	85 (3.9)	93 (75–114)		219 (10)	238 (209–272)	
≥65	67 (3.8)	92 (72–117)		274 (15)	377 (335–424)	
Year of starting TB treatment						
2012	224 (7.8)	180 (158–206)	<0.001	144 (5.0)	116 (99–137)	0.03
2013	256 (8.2)	186 (165–211)		151 (4.8)	110 (94–129)	
2014	196 (5.9)	133 (116–153)		180 (5.4)	122 (106–141)	
2015	158 (5.2)	118 (101–138)		143 (4.7)	107 (91–126)	
2016	189 (6.4)	148 (128–171)		149 (5.1)	117 (99–137)	
2017	315 (8.2)	193 (173–215)		172 (4.5)	105 (91–122)	
2018	258 (6.1)	141 (125–159)		210 (4.9)	115 (100–131)	
2019	218 (5.6)	130 (114–148)		181 (4.7)	108 (93–125)	
2020	170 (5.0)	115 (99–134)		164 (4.9)	111 (96–130)	
2021	224 (6.3)	144 (126–164)		207 (5.8)	133 (116–153)	
2022	177 (4.7)	107 (92–124)		241 (6.3)	146 (128–165)	
Treatment facility type						
Public health facility	2000 (6.7)	153 (147–160)	<0.001	1475 (4.9)	113 (107–119)	0.0001
Private health facility	348 (4.8)	110 (99–122)		441 (6.1)	140 (127–153)	
Prisons	37 (4.7)	114 (83–158)		26 (3.3)	80 (55–118)	
BMI group						
Undernourished	1395 (6.5)	151 (143–159)	<0.001	1152 (5.4)	124 (117–132)	<0.001
Normal	688 (5.5)	124 (115–134)		501 (3.9)	91 (83–99)	
Overweight	68 (4.5)	101 (80–128)		69 (4.5)	103 (81–130)	
Unknown/missing	234 (9.1)	218 (191–247)		220 (8.5)	205 (179–234)	
TB diagnosis						
Bacteriological	1826 (6.9)	156 (149–163)	<0.001	882 (3.3)	75 (70–80)	<0.001
Clinical signs	559 (4.9)	116 (107–126)		1060 (9.3)	220 (207–234)	
Patient category						
New case	2025 (5.9)	137 (131–143)	<0.001	1675 (4.9)	113 (108–119)	<0.001
Re-treatment after relapse	122 (5.2)	121 (101–145)		179 (7.7)	178 (153–206)	
Re-treatment after LTFU	172 (20)	519 (447–602)		64 (7.5)	193 (151–247)	
Transfer in	42 (6.4)	146 (108–197)		23 (3.5)	80 (53–120)	
Treatment after failure	24 (12)	268 (180–400)		1 (0.5)	11 (1.58–79)	
Type of TB						
Pulmonary TB	2208 (6.6)	152 (145–158)	<0.001	1546 (4.6)	106 (101–112)	<0.001
Extra-Pulmonary TB	177 (3.8)	90 (78–104)		396 (8.6)	202 (183–222)	
HIV status						
Negative	1821 (6.0)	136 (131–143)	<0.001	1118 (3.7)	84 (79–89)	<0.001
Infected	449 (6.6)	160 (146–175)		730 (11)	260 (241–280)	

Unknown/missing	115 (11)	271 (226–326)		J94 (8.9)	222 (181-271)	
Other comorbidity (Not HIV)						
No	2376 (6.3)	145 (139-151)	0.07	1890 (5.0)	115 (110-120)	<0.001
Yes	9 (3.2)	81 (42-156)		52 (19)	470 (358-617)	
On recreation drugs						
No	2282 (6.3)	144 (138-150)	0.73	1857 (5.1)	117 (112-123)	0.63
Yes	103 (6.5)	152 (125-184)		85 (5.3)	125 (101-155)	
Direct observed treatment (dot)						
Family-based	2210 (6.2)	144 (138–150)	0.69	1795 (5.1)	117 (111-122)	0.52
Community health Volunteer	17(6.5)	153 (95–246)		14 (5.3)	126 (74-212)	
Healthcare worker	158 (6.7)	151 (130–177)		133 (5.7)	128 (108-151)	
Treatment regimen						
2RHZE/4RH	2196 (6.1)	140 (134–146)	<0.001	1800 (5.0)	115 (110-120)	<0.001
2SRHZE/1RHZE/5RHE	162 (12)	283 (242–330)		103 (7.6)	180 (148-218)	
2RHZ/4RH	12 (4.0)	90 (51–158)		13 (4.3)	97 (57-168)	
RHZE/10RH	14 (7.2)	171 (101–289)		20 (10)	245 (158-379)	
Others	1 (0.6)	13.6 (1.91–96)		6 (3.8)	81 (37-181)	

All P-values are from log-rank test, the rates are per 1000 person-years.

**Table 3. Multivariable analysis of patient characteristics associated with LTFU and mortality within six months of starting TB treatment.**

Characteristics	LTFU		Mortality	
	aSHR (95%CI)	P-value	aSHR (95%CI)	p-value
Sex				
Male	Reference		¶	
Female	0.64 (0.60–0.69)	<0.001	¶	
Age in years				
15 to 24	Reference		Reference	
25 to 34	1.09 (0.96–1.23)	0.18	1.57 (1.42–1.74)	<0.001
35 to 44	0.83 (0.73–0.95)	0.008	1.89 (1.55–2.39)	<0.001
45 to 54	0.75 (0.62–0.90)	0.002	2.40 (2.04–2.81)	<0.001
55 to 64	0.60 (0.44–0.82)	0.001	3.48 (2.90–4.17)	<0.001
≥65	0.63 (0.51–0.78)	<0.001	5.86 (4.82–7.13)	<0.001
Year of starting TB treatment				
2012	Reference		Reference	
2013	1.06 (0.94–1.18)	0.34	0.98 (0.77–1.26)	0.91
2014	0.71 (0.51–1.00)	0.05	1.13 (0.89–1.44)	0.31
2015	0.67 (0.56–0.80)	<0.001	1.24 (0.97–1.59)	0.08
2016	0.85 (0.60–1.19)	0.34	1.42 (1.12–1.80)	0.004
2017	1.10 (0.87–1.40)	0.41	1.09 (0.93–1.29)	0.29
2018	0.83 (0.74–0.93)	0.001	1.15 (0.86–1.54)	0.34
2019	0.76 (0.61–0.94)	0.01	1.14 (0.90–1.46)	0.29
2020	0.67 (0.55–0.81)	<0.001	1.20 (0.95–1.51)	0.14
2021	0.81 (0.59–1.13)	0.21	1.34 (1.05–1.70)	0.02
2022	0.61 (0.48–0.77)	<0.001	1.40 (1.17–1.67)	<0.001
Treatment facility type				
Public health facility	Reference		Reference	
Private health facility	0.78 (0.60–1.00)	0.05	0.85 (0.69–1.06)	0.15
Prisons	0.62 (0.47–0.82)	0.001	0.70 (0.55–0.90)	0.006
BMI group				
Undernourished (BMI<18.5)	¶		1.50 (1.40–1.61)	<0.001
Normal (BMI 18.5 to 24.9)	¶		Reference	
Overweight (BMI ≥25)	¶		0.86 (0.76–0.98)	0.03
Unknown/missing	¶		2.06 (1.61–2.63)	<0.001
TB diagnosis				
Bacteriologically confirmed	Reference		Reference	
Clinical signs and X-ray	0.85 (0.73–0.99)	0.03	2.22 (1.97–2.49)	<0.001
Patient category				
New case	Reference		Reference	

Re-treatment after relapse	0.77 (0.67–0.99)	0.001	1.43 (1.12–1.82)	0.004
Re-treatment after LTFU	3.28 (2.59–4.17)	<0.001	1.59 (0.93–2.73)	0.09
Transfer in	1.06 (0.69–1.63)	0.79	0.75 (0.40–1.39)	0.36
Previously treated	2.11 (1.66–2.68)	<0.001	1.39 (0.77–2.49)	0.27
Treatment after failure	1.65 (1.27–2.14)	<0.001	0.15 (0.02–1.19)	0.07
Type of TB				
Pulmonary TB	Reference		¶	
Extra-Pulmonary TB	0.72 (0.60–0.86)	<0.001	¶	
HIV status				
Negative	Reference		Reference	
Infected on ARVs	1.24 (1.07–1.44)	0.003	2.41 (2.04–2.85)	<0.001
Infected not on ARVs	2.30 (1.90–3.03)	<0.001	5.03 (3.56–7.10)	<0.001
Unknown/missing	1.83 (1.26–2.65)	0.001	2.27 (1.79–2.88)	<0.001
Other comorbidity	¶		2.67 (1.78–4.01)	<0.001
Treatment regimen				
2RHZE/4RH	Reference		Reference	
2SRHZE/1RHZE/5RHE	1.34 (1.13–1.58)	0.001	1.13 (0.86–1.50)	0.37
2RHZ/4RH	0.62 (0.33–1.18)	0.15	0.91 (0.47–1.79)	0.79
RHZE/10RH	1.54 (0.87–2.73)	0.14	1.51 (1.06–2.15)	0.02
Others	0.13 (0.59–0.30)	<0.001	0.50 (0.15–1.75)	0.28

¶; independent variables not selected for inclusion in multivariable model, aSHR; adjusted Sub-distribution Hazard Ratio, aSHR are from multilevel competing risk analysis models.



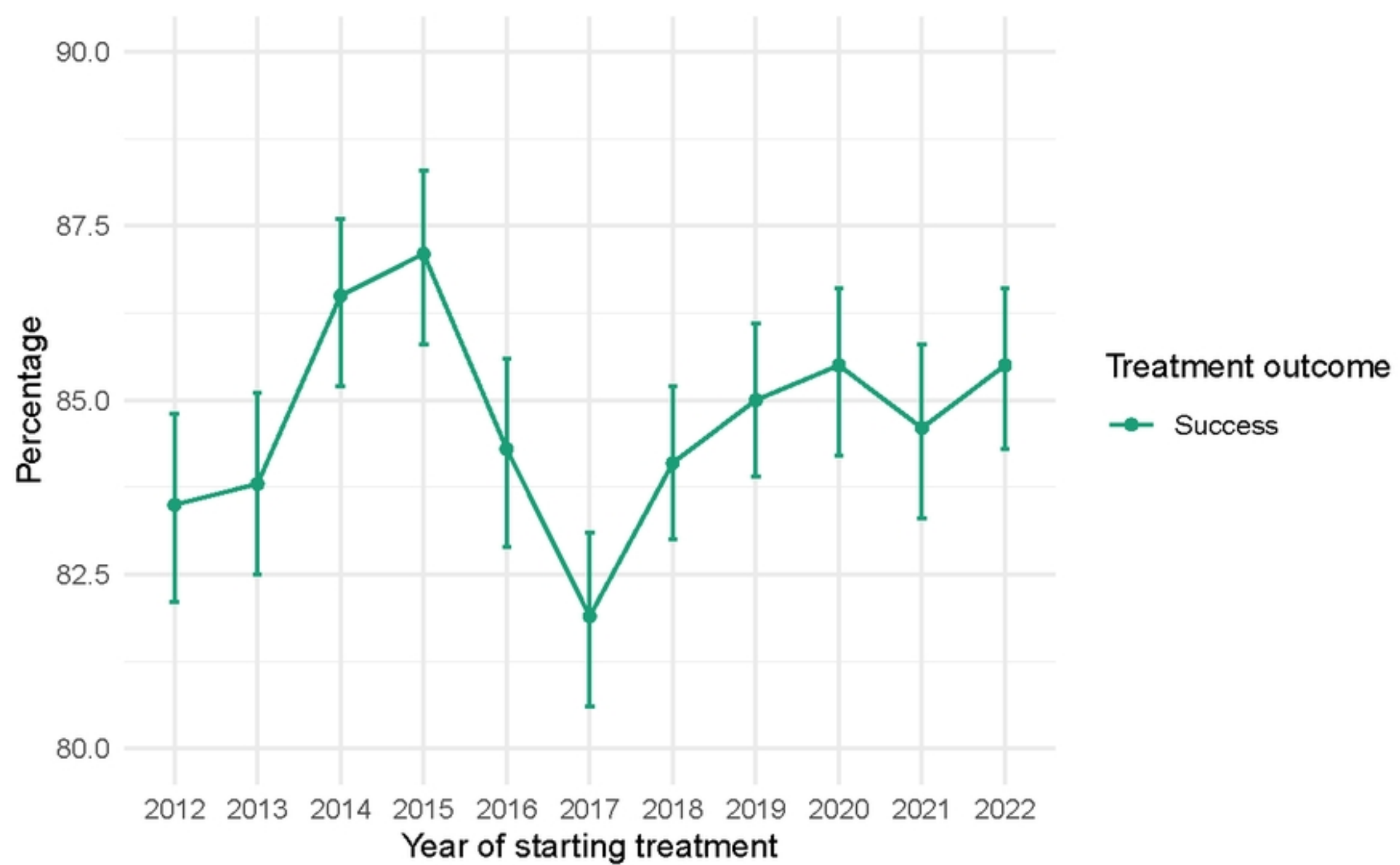


Fig 1a

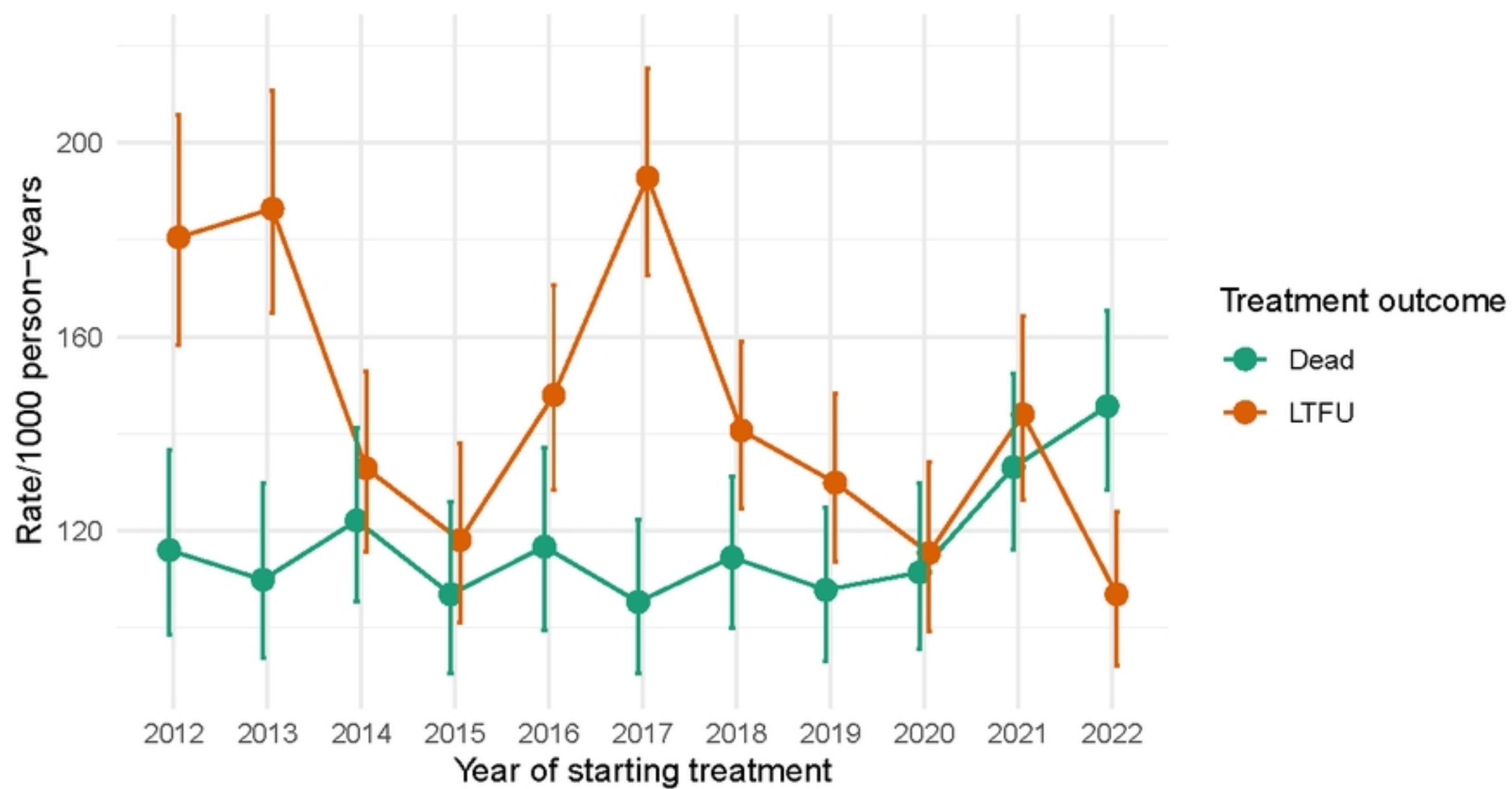


Fig 1b

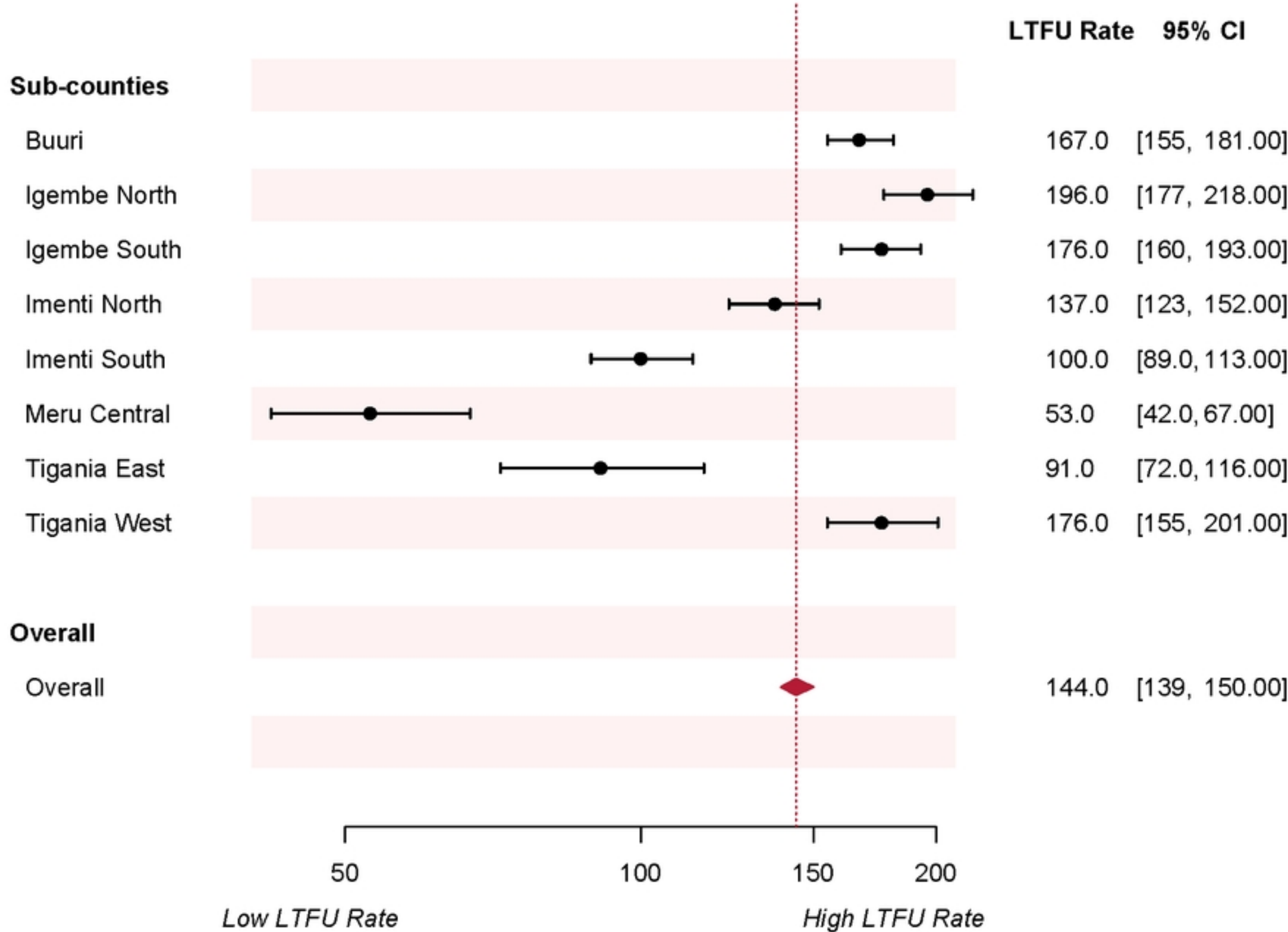


Fig 1c

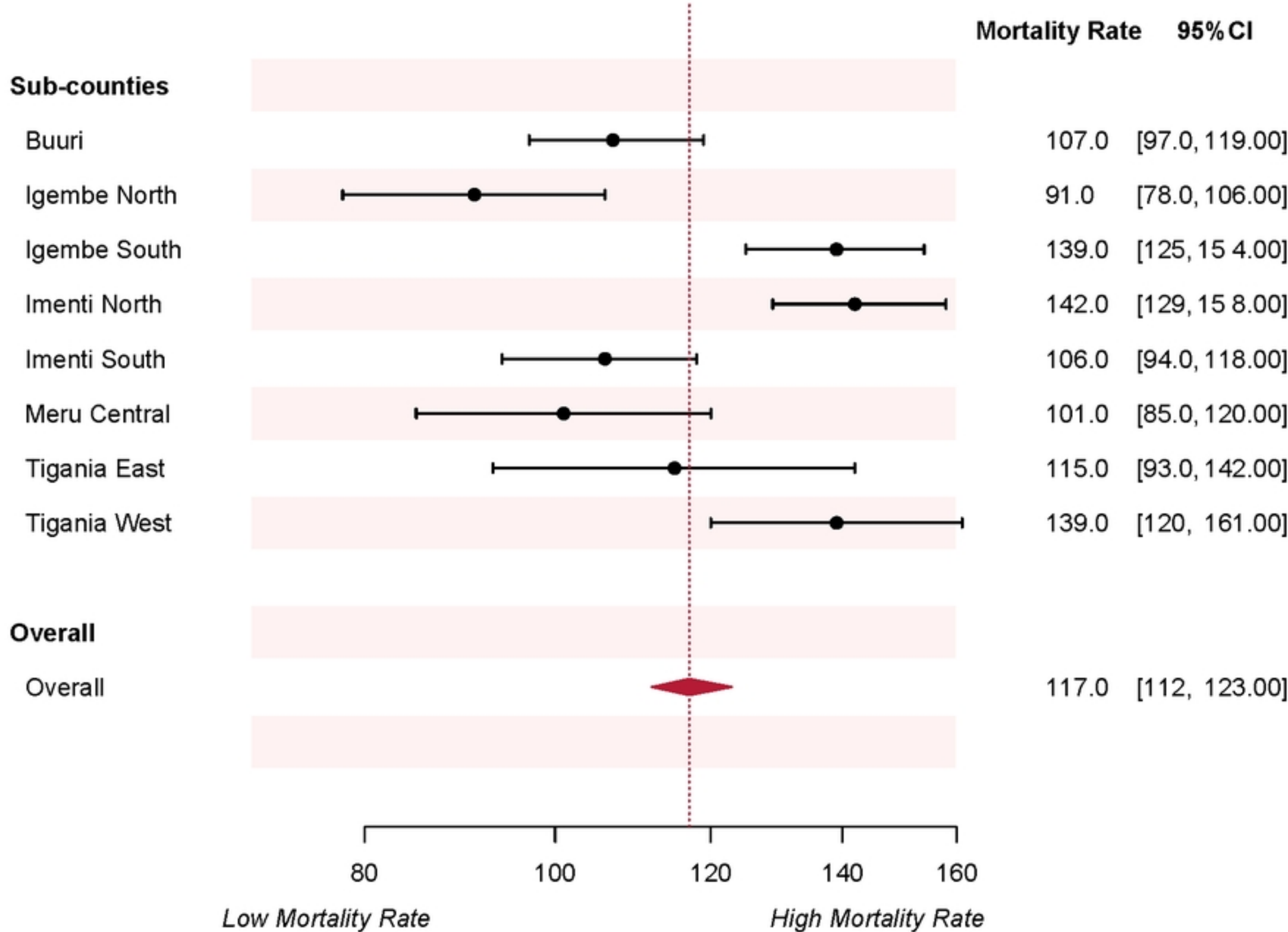
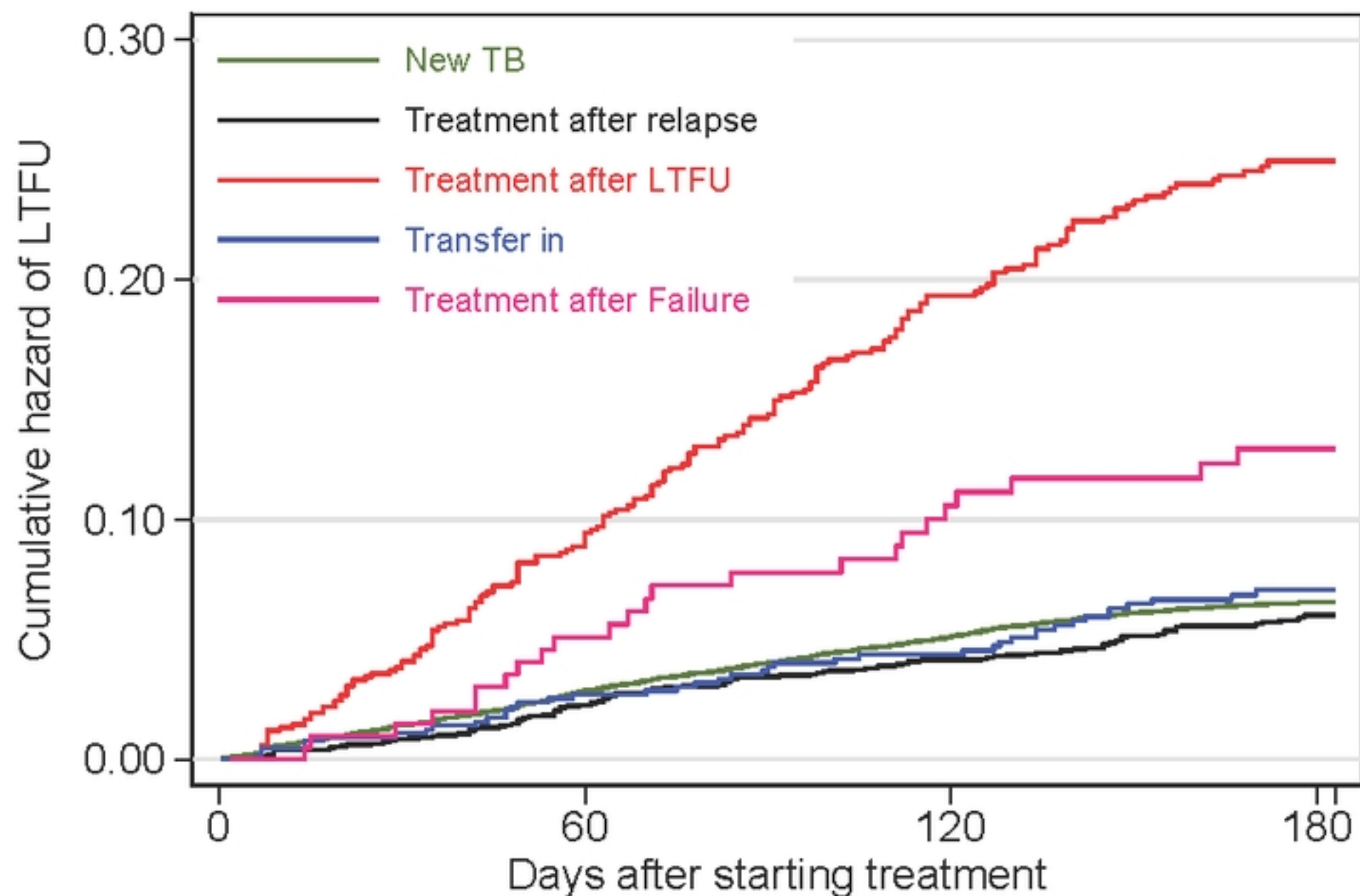
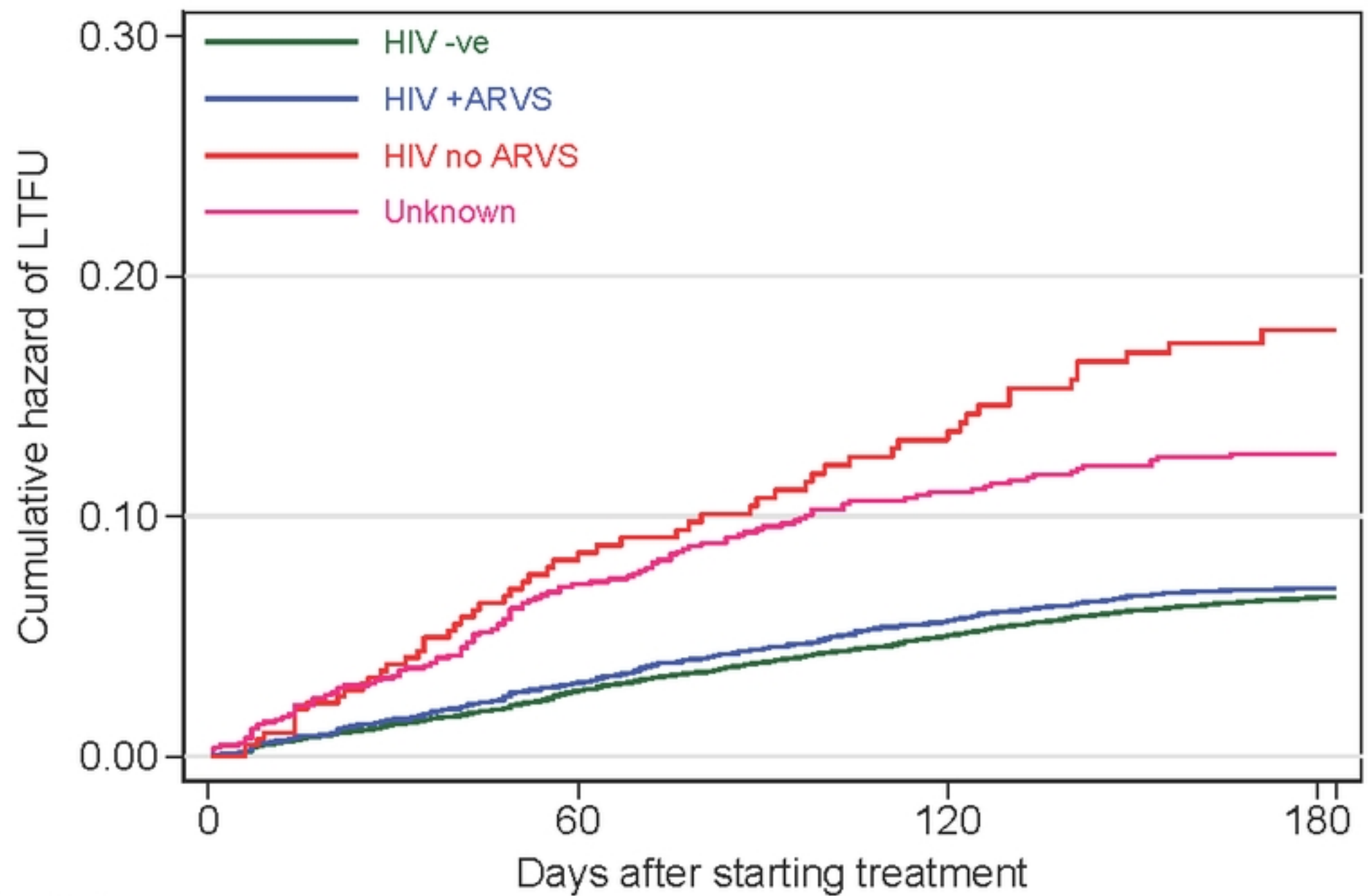


Fig 1d



Number at risk							
New TB	33979	(921)	31286	(688)	29797	(414)	13270
Treatment after relapse	2333	(50)	2128	(39)	2013	(33)	961
Treatment after LTFU	851	(69)	717	(70)	623	(33)	363
Transfer in	652	(17)	611	(10)	579	(15)	250
Treatment after Failure	205	(10)	189	(10)	175	(4)	100

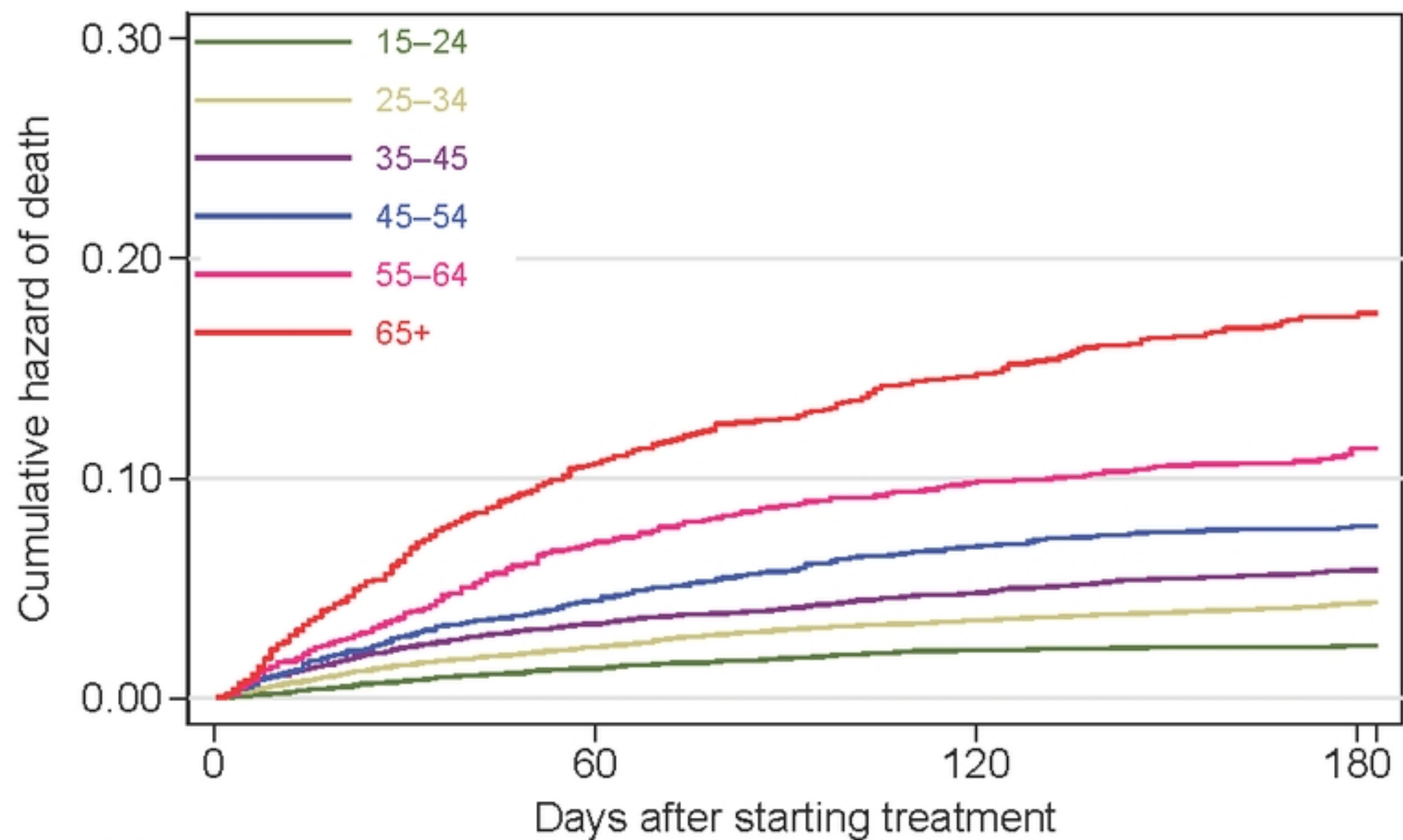
Fig 2a



Number at risk

HIV -ve	30186	(786)	28060	(629)	26807	(404)	12076
HIV +ARVS	6350	(182)	5659	(140)	5272	(70)	2313
HIV no ARVS	423	(30)	323	(15)	280	(12)	132
Unknown	1061	(69)	889	(33)	828	(13)	423

Fig 2b

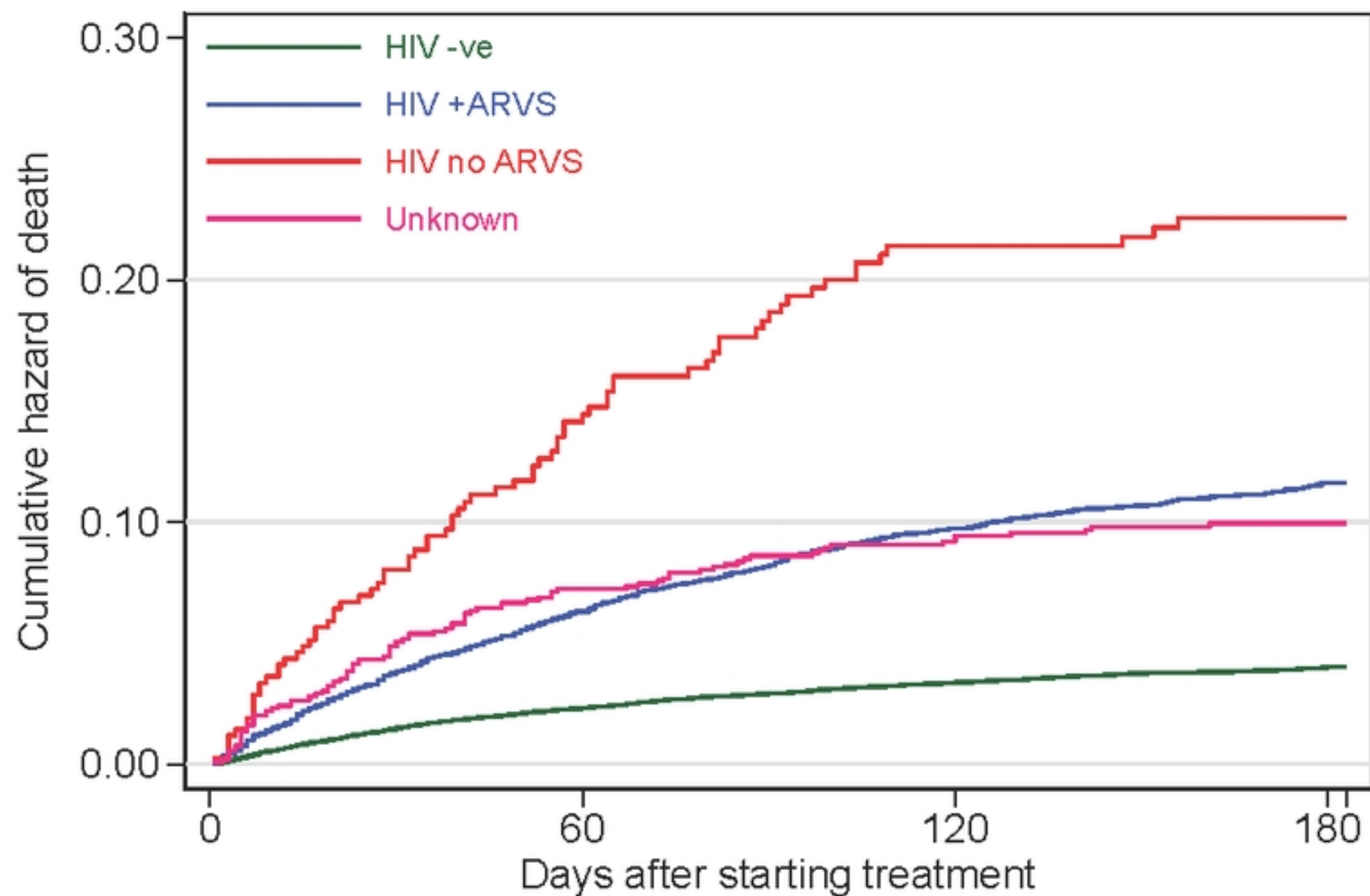


Number at risk

15-24	9233	(120)	8602	(70)	8207	(16)	3809
25-34	11830	(266)	10904	(129)	10313	(69)	4786
35-45	8619	(280)	7936	(110)	7577	(71)	3350
45-54	4383	(186)	4017	(96)	3794	(33)	1641
55-64	2175	(144)	1934	(53)	1843	(22)	772
65+	1780	(176)	1538	(60)	1453	(37)	586

Fig 2c





Number at risk

HIV -ve	30186	(669)	28060	(292)	26807	(153)	12076
HIV +ARVS	6350	(379)	5659	(187)	5272	(86)	2313
HIV no ARVS	423	(53)	323	(22)	280	(3)	132
Unknown	1061	(71)	889	(17)	828	(6)	423

Fig 2d