

## Title

A systematic review of aperiodic neural activity in clinical investigations

## Authors

Thomas Donoghue<sup>1</sup>

### *Affiliations*

<sup>1</sup>Department of Biomedical Engineering, Columbia University

### *Corresponding Author*

Thomas Donoghue – [tdonoghue.research@gmail.com](mailto:tdonoghue.research@gmail.com)

## Disclosures

### *Conflicts of Interest*

The author declares no conflicts of interest.

## Acknowledgements

The author would like to thank Jonathan K Kleen, Sydney Smith, and Bradley Voytek for helpful comments on this manuscript.

## Abstract

In the study of neuro-electrophysiological recordings, aperiodic neural activity – activity with no characteristic frequency – has increasingly become a common feature of study. This interest has rapidly extended to clinical work, with many reports investigating aperiodic activity from patients from a broad range of clinical disorders. This work typically seeks to evaluate aperiodic activity as a putative biomarker relating to diagnosis or treatment response, and/or as a potential marker of underlying physiological activity. There is thus far no clear consensus on if and how aperiodic neural activity relates to clinical disorders, nor on the best practices for how to study it in clinical research. To address this, this systematic literature review, following PRISMA guidelines, examines reports of aperiodic activity in electrophysiological recordings with human patients with psychiatric and/or neurological disorders, finding 143 reports across 35 distinct disorders. Reports within and across disorders are summarized to evaluate current findings and examine what can be learned as pertains to the analysis, interpretations, and overall utility of aperiodic neural activity in clinical investigations. Aperiodic activity is commonly reported to relate to clinical diagnoses, with 31 of 35 disorders reporting a significant effect in diagnostic and/or treatment related studies. However, there is variation in the consistency of results across disorders, with the heterogeneity of patient groups, disease etiologies, and treatment status arising as common themes across different disorders. Overall, the current variability of results, potentially confounding covariates, and limitations in current understanding of aperiodic activity suggests further work is needed before aperiodic activity can be established as a potential biomarker and/or marker of underlying pathological physiology. Finally, a series of recommendations are proposed, based on the findings, limitations, and key discussion topics of the current literature to assist with guiding productive future work on the clinical utility of studying aperiodic neural activity.

## Keywords

aperiodic neural activity, biomarker, clinical neurophysiology, spectral parameterization, aperiodic exponent, spectral slope, EI ratio

## Abbreviations

EEG: electroencephalography; MEG: magnetoencephalography; iEEG: intracranial EEG; DBS: deep brain stimulation; RNS: responsive neurostimulation;

## Project Repository

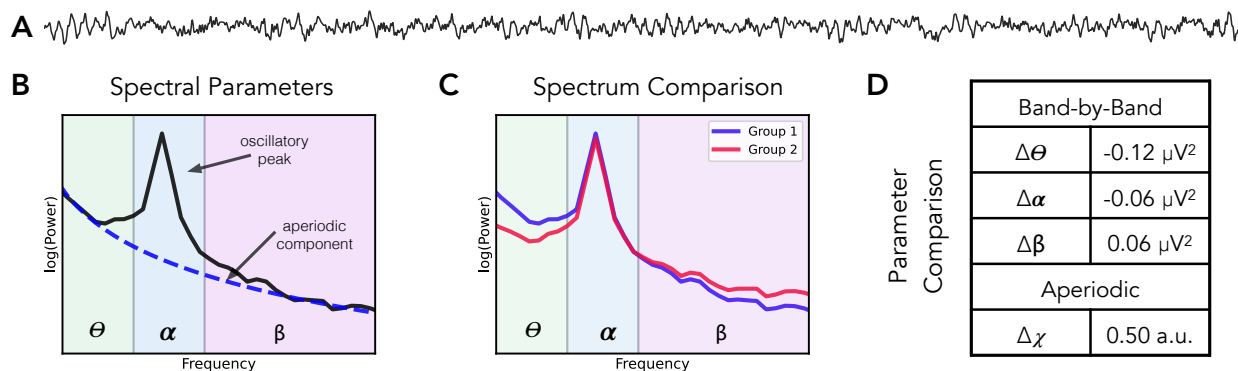
The project repository contains code & data related to this project:  
<https://github.com/TomDonoghue/AperiodicClinical>

## Introduction

There is a long history of using neuro-electrophysiological recordings from methods such as electroencephalography (EEG), magnetoencephalography (MEG), and in some cases, invasive recordings to investigate clinical disorders across psychiatry and neurology (Babiloni et al., 2020; Başar & Güntekin, 2008; Donoghue & Voytek, 2022; Newson & Thiagarajan, 2019). Recently, work exploring different methods for analyzing such data has led to a rapid increase in the popularity of the study of aperiodic neural activity as a feature of interest. Aperiodic activity is defined by a lack of a characteristic frequency, as compared to oscillatory (rhythmic) activity that has a reoccurring pattern. Aperiodic activity can be examined by measuring the aperiodic exponent (equivalently, the spectral slope) from the neural power spectrum (Figure 1A-B). Aperiodic neural activity is a dynamic physiological signal, and has been shown to vary systematically through development and in aging (Stanyard et al., 2024; Voytek et al., 2015), across sleep and wake stages (Ameen et al., 2024; Lendner et al., 2020), and during cognitive tasks (Gyurkovics et al., 2022; Waschke et al., 2021).

Methodologically, a key motivation for measuring aperiodic activity is due to its potential for confounding more traditional measures of oscillatory activity (Figure 1C-D). Specifically, analyses designed to examine oscillatory activity may actually reflect aperiodic activity, which can lead to erroneous conclusions and interpretations (Donoghue, Dominguez, et al., 2020). This is important as clinical research has often sought to examine band-specific changes in putative oscillatory activity, some of which may be driven instead by changes in aperiodic activity (Newson & Thiagarajan, 2019). To address this, explicitly separating and measuring both aperiodic and oscillatory measures together is necessary to properly adjudicate which features vary with clinical measures of interest (Donoghue, Haller, et al., 2020). Practically, the recent development of numerous methodological approaches that can separate and measure aperiodic and oscillatory activity has allowed for explicitly examining which features relate to cognitive and clinical correlates of interest (Donoghue & Watrous, 2023).

Collectively, these recent developments have led to a rapid adoption of measures of aperiodic activity in clinical applications, including examining if aperiodic activity may underlie previously reported findings. Much, though not all, of this work is also in the context of seeking 'biomarkers', meaning biological measurements that can be used to assist in diagnosis, prognosis, or treatment evaluation of clinical disorders (Aronson & Ferner, 2017; Califf, 2018). In addition to the aforementioned methodological considerations, aperiodic activity is also of interest due to its putative physiological interpretations, which offer the potential for investigating underlying mechanisms of clinical disorders. One such interpretation is its potential relationship with excitatory and inhibitory balance, whereby a steeper aperiodic component is thought to be related to increased inhibitory activity (Gao et al., 2017).



**Figure 1) Schematic introducing features of neuro-electrophysiological recordings. A)** An example (simulated) time series, with a combination of aperiodic activity and a bursty 10 Hz oscillation. **B)** The annotated power spectrum for the signal in (A), showing the estimated power of the signal (black) as well as the measured aperiodic component (blue). Frequency ranges are shaded by typical oscillation band ranges - theta: 3-8 Hz, alpha: 8-13 Hz, and beta: 13-35 Hz. **C)** An example comparison of two power spectra. In this comparison, the difference in the two power spectra was simulated as a change in the aperiodic exponent. **D)** The quantified parameter differences for the example spectra in (B). When measuring power across pre-defined oscillations bands, there is what appears to be a pattern of changes across bands. However, this can be explained by a change in the aperiodic exponent, which is the parameter that was actually changed in this simulation.

Collectively, this recent work on aperiodic neural activity has led to a rapidly expanding literature analyzing aperiodic neuro-electrophysiological features in clinical recordings, across a wide range of different diagnoses (Figure 2A). This systematic review examines this emerging literature, collecting clinically related investigations of aperiodic activity across disorders in order to evaluate and integrate information within and across disorders. To do so, this review aims to provide brief overviews of key findings within each disorder, as well as a summary of the current practices, consistencies, and differences across disorders. In reviewing reported results, this review finds that there is substantial evidence for differences in aperiodic neural activity across clinical diagnoses – such that this ubiquity of differences itself raises questions about the specificity and interpretations of such changes. Based on this, the main findings, key questions, and shared difficulties of this work are discussed and used to make recommendations to assist with future work investigating aperiodic neural activity in clinical contexts. This includes highlighting several common themes that are discussed and summarized in order to contribute suggested guidelines for future research on aperiodic activity in clinical investigations.

## Methods

This project is a systematic review of clinically related work that measures aperiodic neural activity in neuro-electrophysiological recordings. To introduce key concepts, example simulations were made with the *neurodsp* Python module (Cole et al., 2019) for time-domain simulations and the spectral parameterization (*specparam*; formerly *foof*) Python module (Donoghue, Haller, et al., 2020) for frequency domain simulations. This project followed the PRISMA 2020 guidelines for systematic reviews (Page et al., 2021). The literature collection was done using curated search terms with explicit inclusion and exclusion terms, through a combination of manual search and extraction with the automated 'literate scanner' (*lisc*) Python tool (Donoghue, 2019). Automated searches collected references from the Pubmed database, using search terms for each disorder combined with terms related to aperiodic activity (details below). Features of interest were systematically extracted from all included reports, and analyzed within and across disorders, with key themes and discussions topics also collected from across the literature dataset. PRISMA checklists and project materials including lists of search terms, information on the collected literature data, and code for simulations, literature collections, and analyses are available in the project repository (<https://github.com/TomDonoghue/AperiodicClinical>).

Literature searches were done in a two-step process, the first to identify studies examining aperiodic activity in clinical disorders using general terms, which was then used to curate a list of disorders that was used in a second phase searching per disorder. Studies that met criteria from either search were included in the analysis. For both phases the following terms were used as search terms for aperiodic neural activity: 'aperiodic exponent', 'aperiodic slope', 'spectral exponent', 'spectral slope', '1/f slope', '1/f exponent'. In the first phase, these search terms were combined with the 'or' search operator and separately searched with each of the following terms: 'clinical', 'disorder', 'disease', 'biomarker', 'diagnosis', 'diagnostic', 'treatment'. From this original search, for any report added to dataset, the name of the disorder was added to a list of disorders that have been examined in relation to aperiodic activity. A second set of searches was then run combining the same aperiodic search terms with each of the disorders, to search for additional reports. The set of disorder terms is included in the Appendix. Further reports were found and added through reference searches of already included reports.

For the literature analyses, reports were included if they examined electrical field recordings (M/EEG, iEEG, DBS, RNS) from human participants that included patients with a clinical diagnosis as a topic of study and/or at-risk participants with later evaluations for clinical diagnoses. Specifically, reports were included if they reported an analysis of aperiodic activity as measured from the frequency domain, comparing between clinical group(s) and/or a control group (between subject analyses), and/or if they included analyses within clinical patients, including analyses across clinical events, anatomical areas, or treatment regimens (within subject analyses). Excluded from this review are reports that investigate topics without an explicit diagnosis (e.g. acute intoxication or anesthesia), investigations that only employ time domain

methods that cannot be easily compared to frequency domain measures, investigations in animal models, and conference abstracts or conference papers. All reports were screened for inclusion by the author. All reports that met inclusions criteria that were available as published articles or as preprints by July 1<sup>st</sup>, 2024 were included.

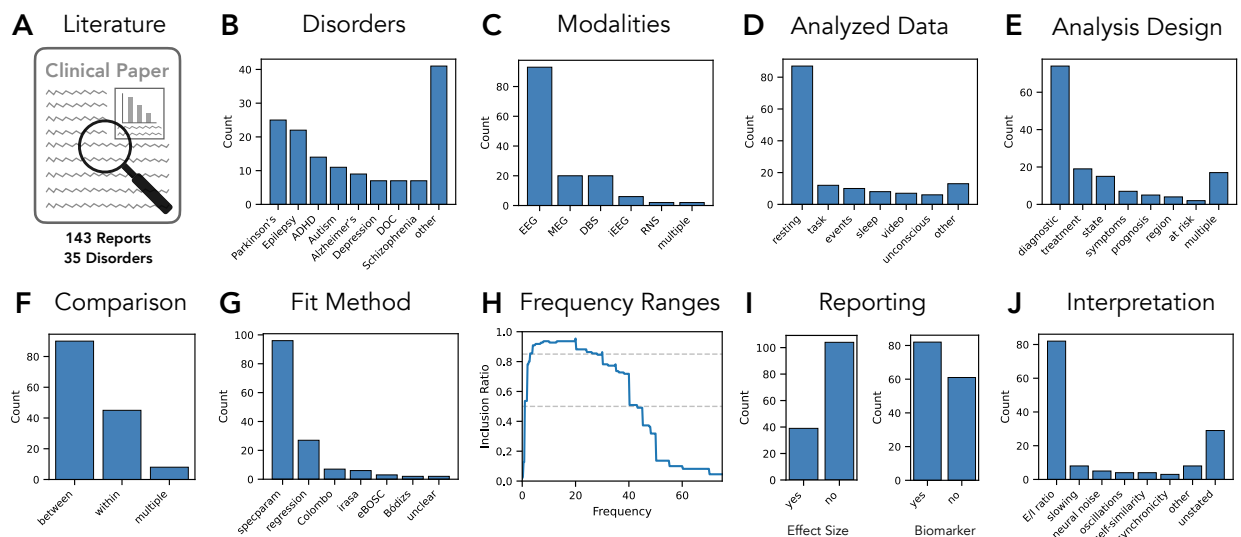
To be included, a report had to analyze aperiodic parameters, for example, examining aperiodic activity in relation to a clinical diagnosis, symptomology, and/or treatment. Reports that measured aperiodic activity in the process of examining another feature – for example, being used to normalize measures of neural oscillations without also reporting aperiodic features – were not included. Relevant analyses were restricted to the aperiodic exponent as it is the most analyzed parameter of aperiodic neural activity. No reports were excluded based on only reporting another aperiodic parameter, but some reports do additionally discuss other aperiodic parameters, the details of which are not included here. This review consistently uses the term ‘aperiodic exponent’ (reflecting the  $\chi$  parameter in the  $1/f^\chi$  formulation), though note that included reports were not required to use this same terminology. For example, the ‘spectral slope’ ( $b$ ), when referring the slope of the log-log power spectrum, is an equivalent measure (whereby  $\chi = -b$ ), and investigations of this measure are included. For clarity and consistency, in this report all measured values are discussed as exponents (using the conversion above if needed), such that all values are reported as positive, with a value of 0 reflecting white noise (uniform power across all frequencies), and a value of 1 reflects pink noise (decreasing power across increasing frequencies). With this terminology, an increase in the magnitude of the exponent reflects a steepening of the aperiodic component and a decrease in the exponent reflects a flattening of the aperiodic component.

For each included report, extracted information included clinical information (clinical disorder(s) under study); bibliographic information (title, authors, journal, month and year of publication, DOI); dataset information (within or between subject analysis, analysis design, number of patients, number of control participants, ages); recording information (recording modality, what type of data was analyzed (e.g. rest, task, etc.), amount of data (time) analyzed); analysis information (analysis method used to analyze aperiodic activity, the frequency range that was fit, and whether settings and/or goodness of fit measures were reported for the fit method); and results information (the reported results, if and which effect size measures were reported, reported interpretation, and whether this study discusses aperiodic measures as potential biomarkers). In addition, any additional notes about the study were logged, including notes specific to the report and/or relating to discussion topics raised by the report. The full set of this information is available in the dataset as published in the project repository, including a full description of how information is coded for each feature.

After collecting and extracting the literature, this review sought to synthesize results within individual diagnoses, where possible, as well as collate themes across the entire literature. For clinical diagnoses for which there were at least 5 individual reports (8 disorders), a mini review of the findings for the disorder was performed. These brief overviews had the goal of summarizing the main results and noting the consistency of findings as well as any key discussion

topics from within the literature. Note that these within-disorder summaries seek to synthesize results across studies, but are not meta-analyses, and do not include any methods to assess bias or quality, for example weighting of reports by their sample size, or any other quantitative evaluation of the evidence across reports. For diagnoses with fewer than 5 reports each (27 disorders), a synthesis of results within each disorder was not attempted, with this work briefly summarized collectively.

Across the entire literature dataset, patterns were also examined across time, by organizing reports by publication year. As there is an uneven number of reports across different time periods, with all but the recent years having too few reports to compute summary metrics across individual years, publications prior to 2021 were grouped together, and compared to subsequent reports grouped by individual year. From across all reports, key themes were also identified (such as patterns of findings, difficulties of analyses, overlapping discussion points), to examine the commonalities across disorders. Note that while this narrative overview includes some basic quantifications of the literature data (for example, the number of reports reporting specific findings), it overall reflects a largely qualitative overview of the available literature. Finally, based on a combination of the systematically extracted variables as well as the themes identified across reports, a set of recommendations and best practice guidelines for future work investigating aperiodic activity in clinical contexts is presented.



**Figure 2) Summary results of the collected literature data.** **A)** Literature reporting on the analysis of aperiodic activity in human clinical populations was collected, with 143 reports across 35 disorders found. **B)** Most studied disorders in the literature dataset. **C)** Recording modalities. **D)** State of the recorded data. **E)** Main analysis design of the study. **F)** Analysis design - comparison within or between subjects. **G)** Analysis method used to analyze the aperiodic activity. **H)** Frequency ranges, showing the proportion of reported frequency ranges that include each frequency, for the 110 reports that report a single frequency range. Gray dashed line show thresholds for indicating frequencies included in 50% of analyzed frequency ranges (1-43 Hz) and for frequencies included in 85% of all analyzed frequency ranges (3-30 Hz). **I)** Reported information of the reports, including whether they report an effect size measure, and whether they discuss the aperiodic activity as a potential biomarker. **J)** The main stated interpretation of aperiodic activity.

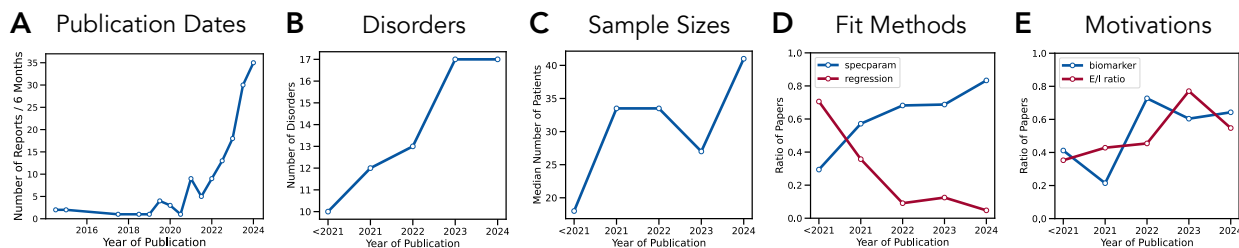
## Results

From the literature search, 143 reports were found including 35 different clinical disorders (Figure 2A-B). This literature was published across 77 distinct journals and also included 17 preprints. In total, 8892 clinical patients were reported in this literature (5438 control participants), with a median patient group size of 34 [range: 1-1038] (control: median 35, range: [6-732]). In terms of recording modality, the majority (>60%) of the investigations use EEG (93/143; 65%), with MEG (20; 14%), DBS (20;14%), iEEG (6; 4%), and RNS (2: 1%) comprising the remainder (Figure 2C). Most investigations analyzed resting state data (87; 61%; Figure 2D). The most common analysis design was investigating diagnosis related differences (74; 52%), with additional designs including treatment response and predicting specific disease states (Figure 2E). Accordingly, most reports employed or included a between-subject group comparison approach (98/143 reports; 69%), with the remaining reports also / instead examining within-subject designs (53/143; 37%).



In terms of estimation methods (Figure 2G), the most common method is spectral parameterization (*specparam*; formerly *fooof*; 96/143; 67%; Donoghue, Haller, et al., 2020), with some usage of other specific algorithms and procedures, including the *irasa* algorithm (6; 4%; Wen & Liu, 2016), the Colombo procedure (7; 5%; Colombo et al., 2019), the *eBOSC* algorithm (3; 2%; Kosciessa et al., 2020), and the Bódizs procedure (2; 1%; Bódizs et al., 2021), as well as a significant number that use a simple linear regression approach (27; 19%). A notable source of variation across reports is the frequency range that is examined – with 56 different specific ranges used within reports that use a single frequency range and an additional 9 reports using multiple different ranges across analyses. However, clustering the related frequency ranges (grouping, for example, ranges 1-40 and 2-40 as similar), shows more commonality across reports. To examine this, the proportion of reported frequency ranges that included each frequency was computed across the full range of frequencies included in any reported frequency range (Figure 2H). This shows a relative consistency in analyzing a broad range of predominantly low frequencies, with the frequencies from 1-43 Hz being included in 50% of all analyzed ranges, and the frequencies from 3-30 Hz being included in 85% of all reported ranges. This summary analysis is consistent with 1-40 Hz being the most reported range (11 reports; 8%). Other than this common range, subsets of reports examine shorter ranges (e.g. 1-20 Hz or similar), broader ranges (e.g. 2-55 Hz or similar) and/or ranges starting at higher frequencies (e.g. 20-45 or similar). Notably, 24 (17%) reports have an unclear (not explicitly reported) frequency range.

Additional information was extracted on the reporting of the methods and results (Figure 2I). For the methods, this included noting if the report included a report of the method settings and goodness of fit evaluations, which was specifically evaluated for the use of the *specparam* method for which doing so is recommended as best practice (Donoghue, Haller, et al., 2020; Ostlund et al., 2022). This analysis revealed that of reports using *specparam*, only 54/96 (56%) included a partial or full note of settings that were used, and only 29/96 (30%) reported goodness of fit evaluations. Across the results, there was not a consistent direction of reported differences – in diagnostic analyses across groups, 30/86 (35%) reported an increase in the aperiodic exponent in the clinical group, 27 (31%) reported a decrease, 26 (30%) reported no difference, and 3 (3%) did not clearly report the direction of difference. Across all reports, only 39/143 (27%) included a measure of standardized effect size – most commonly Cohen’s *d*. In addition, of 86 reports that included the analysis of group differences between clinical and control groups, in only 20 (23%) were the measured exponent values clearly reported. A majority of reports (82/143; 57%) discuss the analyzed features as possible biomarkers (indicating the report discussed aperiodic activity as a potential biomarker, though not necessarily including the conclusion that it is a good biomarker candidate). In terms of the stated interpretations of aperiodic activity (Figure 2J), the most common stated interpretation is E/I balance (82/143; 57%), with a notable minority not explicitly stating a specific interpretation of aperiodic activity (29/143; 20%).



**Figure 3) Results Across time.** **A)** Publication years of the literature dataset. Each datapoint represents a 6 month time interval. **B-E)** Properties of the dataset across time, showing **B)** number of disorders studied, **C)** median sample sizes, **D)** fit methods, comparing spectral parameterization (*specparam*) and linear regression methods and **E)** reported motivations and interpretations, reporting if proportion of reports interpreting aperiodic activity as related to E/I ratio and the proportion discussing aperiodic activity as a possible biomarker. Note that in B-E, each time intervals is not an equal length, as papers prior to 2021 are grouped together (due to the low number of papers per year during this time), and the year 2024 including only the first 6 months of the year.

We also examined the literature dataset across time, to examine potential trends in research across time. Overall, there is a rapid rise in research (Figure 3A), with the majority of the research conducted in the last several years and the most current year on track to have more reports than the last several years combined. To examine features across time while addressing the uneven number of reports, we grouped reports from prior to 2021 and compared them to reports in more recent years. This shows that the number of distinct disorders examined per year has risen (Figure 3B), consistent with the expansion of this literature. The average sample sizes per report looks to be higher in recent reports (Figure 3C). Methodologically, recent method developments such as *specparam* appear to be replacing the use of simpler linear regression methods (Figure 3D). Examining motivations and interpretations, the discussion of aperiodic activity as a biomarker and/or as a potential marker of E/I ratio appears to be increasing slightly across time (Figure 3E).

In the following, brief summaries of disorders for which there is a sufficient number of reports ( $\geq 5$ ) are presented (8 disorders; total of 102 reports), ordered by the number of reports per disorder. A summary of these disorders including the main findings and key discussions points is reported in Table 1. The remaining reports, covering an additional 27 disorders (41 reports), are then briefly discussed. The entire set of included reports, including reference information and listings of properties, analyses, and results per report is presented in Table 2.

**Table 1: Summary of literature in the most studied disorders**

Disorder	#	Modalities	Design	#/D	Main Findings	Discussion Topics
Parkinson's	25	DBS, EEG, MEG	diagnostic treatment symptoms	10 6 2	↑ clinical vs. control (8/10) inconsistent w medication (4∅; 3↑) inconsistent w symptom (3 yes; 2 no)	Δ across modality / subject groups Δ across symptoms measures
Epilepsy	22	EEG, iEEG, MEG, DBS, RNS	state treatment region	14 3 2	↑ prior / during seizure (n=11) ↓ with treatment ↑ in seizure onset zones	Δ across events / brain state Δ across anatomical locations Δ across frequency ranges
ADHD	14	EEG	diagnostic treatment	13 4	↓ clinical vs. control (8↓; 3↑; 2∅) varies with treatment - inconsistent	Δ across age / development Δ with treatment / condition
Autism	11	EEG, MEG	diagnostic symptoms	9 3	inconsistent (5∅; 1↑; 3↓) relates to symptoms, idiosyncratically	Δ across age / development Δ with specific symptoms
Alzheimer's	9	EEG, MEG	diagnostic region	8 3	inconsistent (4∅; 2↑; 2↓) report region specific differences	Δ across etiology / progression Δ across anatomical locations
DOC	7	EEG	diagnostic prognosis	4 3	↑ clinical vs. control (3/4) ↓ ~improved clinical scores	Δ across etiology / progression Δ in analysis methods / ranges
Depression	7	EEG, DBS	diagnostic treatment	2 4	inconsistent (1↓; 1∅) ↑ with treatment (3/4)	Δ in modality / subject groups
Schizophrenia	7	EEG	diagnostic	7	inconsistent (4∅; 2↑; 1↓)	Δ across recording state (tasks)

For disorders with more than 5 individual reports, a summary across reports was performed. Abbreviations: #: number of reports for each disorder; #/D: number of reports per research design. Modalities are listed in order of occurrence (most used first). Symbols: ↑ an increase in aperiodic exponent was reported; ↓ a decrease in aperiodic exponent was reported; ∅ no difference in aperiodic exponent was reported; Δ changes or differences (across listed topic) were reported and discussed.

## Parkinson's

Parkinson's disease is the most studied disorder in the collected literature, with 25 reports (median # patients: 24 [range: 7-146]), across M/EEG and DBS, investigating diagnostic, prognostic, treatment, or symptom-related hypotheses. For diagnostic comparisons, there is a fair amount of consistency – of 10 clinical to control group comparisons, 8 report an increased exponent in Parkinson's, 1 reports a decreased exponent, and 1 reports no difference. Investigations relating aperiodic activity to treatment status and symptoms are more variable. Comparisons between on and off medication include 4 reports of no difference and 3 reporting an increased exponent when on medication. Symptom comparisons include 3 reports finding no relationship to cognitive or motor symptoms, and 2 reporting a correlation between increased exponent and worse clinical scores. The variability in the later comparisons may relate to differences across recording modalities, treatment details, and symptom measures, with some reports also investigating and discussing regional differences. A common theme across this literature is that the motivation for measuring aperiodic activity was often noted as including the goal of better isolating beta oscillations, which are also implicated in Parkinson's disease. Overall, reports that investigated both aperiodic and periodic features broadly report that they both relate to disease status, and that separating the components assists with investigating the relationships of each to clinical features. Collectively, this literature suggests a generally consistent relationship of an increased (steepened) exponent relating to Parkinson's disease with somewhat less consistency when examining to what extent this relates to treatment status and symptom measures.

## Epilepsy

Epilepsy is the second most examined clinical disorder (22 reports; median # patients: 18 [range: 1-307]), as well as the one with the most longstanding interest, including most of the oldest reports in the dataset. In contrast to most other disorders, investigations are mostly not oriented around between-subjects comparisons examining diagnostic differences, but instead largely relate to within-subject analyses of different states (seizure detection, e.g. comparing differences between ictal (during) and interictal (between) seizure events). Within this work, there is a high degree of consistency across reports, with pre-ictal and ictal activity tending towards having a great aperiodic exponent – though note that there are idiosyncrasies relating to which particular event categories and timepoints are examined. Similarly, regional comparisons tend to find a greater aperiodic exponent in seizure onset zones, as compared to control regions. A small number of reports also suggest a decrease in the aperiodic exponent with treatment (across different kinds of treatment). Interestingly, in epilepsy there is some work explicitly comparing different frequency ranges, including reports of different findings across different frequency ranges. Collectively, the work in epilepsy is broadly consistent with temporally and regionally specific changes in aperiodic activity systematically relating to seizure activity.

## ADHD

The study of ADHD is focused on reports using EEG to compare clinical populations to control groups to examine diagnosis-related differences in aperiodic activity (14 reports; median # patients: 68 [range: 23-1038]). Collectively, the diagnostic results across these reports are somewhat variable, with 8 reports reporting a lower aperiodic exponent in the ADHD group, 3 reports reporting a higher exponent, and 2 reporting no difference. What is emerging across this research is the variable nature of aperiodic activity in this population – results are reported to interact with demographics such as age, treatment status, and task condition of the recording. Age appears to explain some of the differences across reports, as well as patient group characteristics, including several reports demonstrating an effect of medication status on aperiodic exponent, which is not limited to acute status and can persist after drug washout. There is thus far only minimal work that evaluates aperiodic activity in relation to symptoms. Collectively, the literature on ADHD suggests a complex pattern of differences in aperiodic activity and suggests that the heterogeneity of the populations under study – including variation in age, treatment status, and symptomology – contributes to variability that needs to be considered and addressed in order to examine differences in more targeted sub-groups.

## Autism

The investigation of autism (11 reports; median # patients: 71 [range: 15-421]) includes mostly EEG investigations comparing clinical patients to control patients, including some work on at-risk populations comparing measured parameters to future diagnoses. The results across these reports are variable – while 3 report a decreased exponent in autistic individuals or those who are later diagnosed as autistic, 1 reports an increase, and 5 report no difference. Two at risk studies report an increased exponent relating to later clinical measures, but using different measures. This variability perhaps relates to the heterogeneity of autism – 2 reports examining relationships to symptom scores reported relationships of aperiodic activity to specific symptom

measures, even in the absence of group level diagnostic differences. There is also a high variability of age ranges across reports, including distinct developmental stages ranging from infancy to adulthood, and age-related effects / confounds are discussed in this literature. Overall, the available evidence in autism therefore suggests that there is not a clear and consistent pattern of aperiodic activity across all diagnosed individuals, though there may be more nuanced relationships between subgroups of patients and/or to specific symptoms of the disorder.

### **Alzheimer's Disease**

The study of Alzheimer's Disease includes 9 reports (median # patients: 47 [range: 36-120]) that examine differences between clinical and non-clinical groups in MEG and EEG analyses, all of resting or baseline data. The results of comparisons between patients with Alzheimer's and control groups are quite variable, including 4 reports finding no differences, 2 reporting a lower exponent in the clinical group, and 2 reporting a higher exponent in the clinical group. One key consideration that may relate to the variable findings are differences in disease etiology and progression, as analyses comparing different disease states (e.g. MCI vs. AD) and/or including comparisons to other dementia-related diagnoses report differences between distinct clinical groups. This suggests differences in aperiodic activity may be dynamic across disease progression and/or specific to disease etiology. Several investigations also reported region-specific differences, such that differences in modality and analyzed areas may contribute to the reported differences. Collectively, the study of Alzheimer's dementia does not suggest a clear and consistent difference in such patients (as compared to control), though the broader comparison of dementia suggests potential differences that may be specific to progression, etiology, and/or anatomical regions.

### **Disorders of Consciousness**

In disorders of consciousness research (7 reports; median # patients: 49 [range: 8-260]), key research questions include examining whether aperiodic activity can help dissociate between different diagnoses (e.g. vegetative state vs. locked in syndrome) and/or predict future recovery. Reports examining the aperiodic exponent are quite consistent in suggesting an increased exponent is related to disorders of consciousness, and that a lower exponent is related to better clinical scores and treatment response. Notably, however, recent investigations have emphasized that this is not a ubiquitous finding across all DOC patients, with notable differences across different etiologies, in particular comparing between anoxic and non-anoxic patients. Across this work, there have been multiple different frequency ranges, analysis methods, and patient groups examined, such that the precise details of which specific measures vary in which specific groups is still a topic of ongoing research. Collectively, this work suggests that when addressing differences in etiology of DOCs, the aperiodic exponent has a fairly consistent relationship to both diagnosis and clinical measures.

### **Depression**

The work on depression (7 reports; median # patients: 9 [range: 4-119]) includes some diagnosis related comparisons, with the most common analyses being in relation to treatment responses. Notable across this literature is the variation in recording modality, with a mix of EEG

and DBS, which have significant differences in the anatomical locations and sources of the recorded data. Many of the examined treatments are stimulation based (DBS, ECT, TMS), which are generally consistent in reporting increases in the aperiodic exponent with stimulation treatment. This is also consistent with one diagnostic study that reported a decreased exponent in patients as compared to controls – though another reported no difference between groups, and 2 reports examining clinical severity scores instead suggest a flattening of the exponent correlates with decreased clinical severity. Overall, the literature in depression includes a high degree of variation of modalities and designs that are difficult to compare (not only due to modality differences themselves but the likelihood that, for example, differences in patients who are eligible for invasive treatments such as DBS as compared to those on standard care), with a suggestion overall that treatment for depression may increase the aperiodic exponent.

### Schizophrenia

The study of aperiodic activity in schizophrenia (7 reports; median # patients: 36 [range: 14-58]) is all with EEG, and mostly focused on examining diagnostic differences. Reported diagnostic results are overall inconsistent, with two reporting increased exponent in schizophrenic patients as compared to controls, two reporting a decreased exponent, and two reporting no difference. Despite the consistency in recording modality and subject demographics (all young adults), there are considerable differences in the analyzed data, with multiple different tasks being analyzed, potentially relating to the differences in results across reports. There is thus far limited evidence on the effect of pharmacological treatment, with one study reporting a treatment-related decrease of exponent in schizophrenic patients, and limited investigation of symptoms or cognitive measures. Overall, the literature in schizophrenia does not suggest a clear and consistent difference across all patients, with potential impacts of the recording state of the data, treatment status, and symptom dimensions currently unclear.

### Other

Beyond the reports summarized thus far, an additional 41 reports across a further 27 disorders were collected in the literature dataset, including diagnoses relating to sleep disorders, genetic disorders, anxiety related disorders, neurodegenerative diseases, brain injury related disorders, movement disorders, pain related disorders, glioma, and other disorders (median # patients: 28 [range: 1-413]). The number of distinct diagnoses – including 17 diagnoses with a single report each – further emphasizes the breadth of aperiodic-related investigations in clinical contexts. Across this additional literature, the majority of investigations (23/27) report at least one significant difference between groups and/or a treatment related effect of aperiodic activity. Largely due to the large number of different examined disorders (and the small number of reports per disorder) there are no clear patterns to note – with diagnostic differences being reported as both increases and decreases, as well as multiple and variable relationships reported across treatment-related, prognosis-related, and regional comparisons. Several reports also include multiple different clinical groups that are compared together. Common discussion points include the heterogeneity of clinical groups and variation across diagnoses, treatments, modalities, and regions, which is overall consistent with discussion points raised within individual disorder evaluations. Combining across all disorders, 31 out of the 35 diagnoses included in this

Table 2: Dataset of all reports investigating aperiodic neural activity with clinical populations

Disorder	Reference	Mod	State	CP	Analysis	#CL	#CT	Method	FR	Result	BM	Interp.
<b>Parkinson's Disease</b>												
Parkinson's	Martin et al., 2018	DBS	rest	btwn	symptoms	13	-	regression	8-90	∅ w symptoms	yes	E/I ratio
Parkinson's	Mostile et al., 2019	EEG	rest	btwn	diagnostic	34	18	regression	unclear	↓ clinical vs. control	yes	complexity
Parkinson's	Vinding et al., 2020	MEG	rest	btwn	diagnostic	19	19	specparam	1-48	↑ clinical vs. control	no	unstated
Parkinson's	Belova et al., 2021	DBS	rest	w/in	state symptoms	22	-	specparam	unclear	↓ w movement Δ ~motor symptoms	no	E/I ratio
Parkinson's	Z. Wang et al., 2022	EEG	rest	w/in	treatment	15	16	specparam	2-40	↑ on vs. off medication	yes	E/I ratio
Parkinson's	Zhang et al., 2022	EEG	rest	w/in	treatment	15	-	Colombo	2-45	↑ on vs. off medication	yes	E/I ratio
Parkinson's	Bernasconi et al., 2023	EEG	rest	btwn	symptoms	75	-	specparam	2-45	∅ w cognitive symptoms	no	unstated
Parkinson's	Clark et al., 2023	DBS	intra-op	w/in	symptoms	19	-	specparam	2-50	∅ w motor symptoms	yes	E/I ratio
Parkinson's	Darmani et al., 2023	DBS	rest	w/in	treatment prognosis	10	-	irasa	13-35	∅ on vs. off medication ↑ over time with DBS	yes	E/I ratio
Parkinson's	Gimenez-Aparisi et al., 2023	EEG	rest	btwn	diagnostic	13	20	Colombo	2.5-45	↑ clinical vs. control	yes	E/I ratio
Parkinson's	Helson et al., 2023	MEG	rest	btwn	diagnostic	17	20	specparam	1-45	↑ clinical vs. control ∅ on vs. off medication	no	E/I ratio
Parkinson's	Monchy et al., 2023	EEG	task	btwn	diagnostic	30	30	specparam	1-40	∅ clinical vs. control	yes	E/I ratio
Parkinson's	Rosenblum, Shiner, et al., 2023	EEG	rest	btwn	diagnostic	22 21	28	irasa	1-26	↑ Parkinson's vs. controls ↑ DLB vs. Parkinson's	yes	E/I ratio
Parkinson's	Wiesman et al., 2023	MEG	rest	btwn	diagnostic	79	65	specparam	2-40	↑ clinical vs. controls ↑ ~worse clinical scores	no	slowing
Parkinson's	Wiest et al., 2023	DBS	rest	w/in	treatment	24	-	specparam	40-90 10-50	↑ w medication ↑ w stimulation [DBS]	yes	E/I ratio
Parkinson's	Wu et al., 2023	DBS	intra-op	btwn	diagnostic	61	-	specparam	2-45	↓ early onset vs. late onset	yes	E/I ratio
Parkinson's	Bush et al., 2024	DBS	intra-op	btwn	symptoms	29	-	specparam	1-50	↑ ~worse clinical scores	yes	unstated
Parkinson's	Da Silva Castanheira et al., 2024	MEG	rest	btwn	diagnostic	79	54	specparam	2-40	reduced differentiation clinical individuals vs. controls	yes	E/I ratio
Parkinson's	Joshi et al., 2024	DBS	rest	w/in	prognosis	7	-	specparam	4-60	Δ w exercise training	no	E/I ratio
Parkinson's	X. Liu et al., 2024	DBS	intra-op	w/in	region	146	-	specparam	3-70	Δ across STN sub-regions	yes	E/I ratio
Parkinson's	McKeown et al., 2024	EEG	rest	btwn	diagnostic treatment	26	26	specparam	2-40	↑ clinical vs. control ∅ on vs. off medication	yes	E/I ratio
Parkinson's	Pardo-Valencia et al., 2024	DBS	rest	w/in	treatment	21	-	specparam	1-95	∅ on vs. off medication	yes	E/I ratio
Parkinson's	Peng et al., 2024	DBS	rest	w/in	prognosis	15	-	specparam	1-38	↓ over time / after surgery	no	E/I ratio
Parkinson's	Vinding et al., 2024	MEG	rest	btwn	diagnostic	78	60	specparam	0.5-40	↑ clinical vs. control	yes	E/I ratio
Parkinson's	Wiesman, Madge, et al., 2024	MEG	rest	btwn	diagnostic	58	65	specparam	2-40	↑ clinical vs. control	yes	E/I ratio
<b>Epilepsy</b>												
Epilepsy	Inouye et al., 1994	EEG	rest	w/in	state	10	-	regression	0-35	↑ before seizure	no	unstated
Epilepsy	Janjarasjitt & Loparo, 2013	iEEG	events	w/in	state	5	-	regression	unclear	↓ during seizure	no	self-sim
Epilepsy	Janjarasjitt & Loparo, 2014	iEEG	events	w/in	state	5	-	regression	unclear	↑ during seizure	no	self-sim
Epilepsy	Janjarasjitt, 2015	iEEG	events	w/in	state	5	-	regression	low high	↓ during seizure [low range] ↑ during seizure [high range]	no	self-sim
Epilepsy	Janjarasjitt & Loparo, 2015	iEEG	events	w/in	state	1	-	regression	unclear	↑ during seizure	no	self-sim
Epilepsy	Meisenhelter et al., 2021	iEEG	task	w/in	state	307	-	regression	2-120	↑ after IEDs	no	unstated

Disorder	Reference	Mod	State	CP	Analysis	#CL	#CT	Method	FR	Result	BM	Interp.
Epilepsy	van Heumen et al., 2021	MEG	sleep	w/in	state	1	-	specparam	1-70	↑ in SOZ prior / during seizure	no	synchro
Epilepsy	Armstrong et al., 2022	EEG	rest	w/in	treatment	47	-	unclear	unclear	↓ w medication	yes	synchro
Epilepsy	Coa et al., 2022	EEG	rest	w/in	treatment	10	-	unclear	unclear	↓ w stimulation [VNS]	no	unstated
Epilepsy	Jiang et al., 2022	iEEG	rest	w/in	region	27	-	specparam	1-250	↑ in SOZ vs. non-SOZ	yes	E/I ratio
Epilepsy	Kaur et al., 2023	MEG	rest	btwn	symptoms	36	-	specparam	1-47.5	Δ ~increased seizure severity	no	E/I ratio
Epilepsy	Kluger et al., 2023	MEG	rest	btwn w/in	state state	1	40	specparam	1-40	Δ pattern respiration coupling ↓ during inter-ictal spikes	no	E/I ratio
Epilepsy	Kundu et al., 2023	RNS	samples	w/in	prognosis	1	-	specparam	unclear	↓ over time after surgery	yes	E/I ratio
Epilepsy	S. Liu et al., 2023	EEG	events	w/in	state	28	-	specparam	unclear	can predict ictal vs. interictal	yes	unstated
Epilepsy	Y. Yang et al., 2023	EEG	unclear	w/in	treatment	8	-	specparam	1-40	↓ w stimulation [TMS]	no	E/I ratio
Epilepsy	A. I. Yang et al., 2023	DBS	events	w/in	state	14	-	specparam	unclear	↑ during seizure	yes	E/I ratio
Epilepsy	Charlebois et al., 2024	RNS	samples	w/in	state	24	-	specparam	4-75	↑ during seizure Δ sleep / wake ~ seizures	yes	E/I ratio
Epilepsy	Duma et al., 2024	EEG	rest	btwn	diagnostic	67	35	specparam	1-35	↑ clinical vs. control	yes	E/I ratio
Epilepsy	Kozma et al., 2024	iEEG MEG	rest	w/in	treatment	63 33	234 70	specparam	1-30	∅ across surgical outcomes	yes	unstated
Epilepsy	H. Li et al., 2024	EEG	events	w/in	state	25	-	specparam	unclear	↑ preictal vs. interictal	yes	unstated
Epilepsy	Liao et al., 2024	EEG	events	w/in	state	23	-	specparam	0.5-30	↑ ictal vs. interictal	no	unstated
Epilepsy	Yu et al., 2024	DBS	events	w/in	state	39	-	regression	1-15 15-45	↓ during seizure [low range] ↑ during seizure [high range]	yes	unstated
<b>Attention Deficit Hyperactivity Disorder (ADHD)</b>												
ADHD	Robertson et al., 2019	EEG	rest	btwn	diagnostic	76	78	specparam	4-50	↑ clinical vs. control ↓ w medication	yes	E/I ratio
ADHD	Pertermann et al., 2019	EEG	task	btwn	diagnostic	29	32	regression	0.5-20	↓ clinical vs. control ↑ w medication	no	neural noise
ADHD	Ostlund et al., 2021	EEG	rest	btwn	diagnostic	87	97	specparam	2-50	↓ clinical vs. control	no	E/I ratio
ADHD	Arnett, Rutter, et al., 2022	EEG	video	btwn	diagnostic	29	30	specparam	1-50	↓ clinical [non-responders]	yes	oscillations
ADHD	Arnett, Fearey, et al., 2022	EEG	video	btwn	diagnostic	88	29	specparam	1-50	↓ clinical [condition specific]	yes	integration
ADHD	Arnett, Peisch, et al., 2022	EEG	base	btwn	diagnostic	82	28	specparam	1-50	↓ clinical vs. control	yes	oscillations
ADHD	Karalunas et al., 2022	EEG	rest	btwn w/in	diagnostic at risk	107 69	152	specparam	2-50 1-30	↓ ~ADHD diagnosis [teens] ↑ ~ADHD history [infants]	yes	E/I ratio
ADHD	Tröndle et al., 2022	EEG	rest	btwn	diagnostic	1038	732	specparam	2-40	∅ clinical vs. control	no	E/I ratio
ADHD	Dakwar-Kawar et al., 2023	EEG	rest	btwn	treatment	23	-	specparam	1-40	↓ w stimulation [tRNS]	no	E/I ratio
ADHD	Chen et al., 2024	EEG	rest	btwn	diagnostic	62	52	specparam	unclear	↓ clinical vs. control	yes	unstated
ADHD	Dakwar-Kawar et al., 2024	EEG	rest	btwn	diagnostic	33	33	specparam	1-40	↑ clinical vs. control	yes	E/I ratio
ADHD	Peisch & Arnett, 2024	EEG	rest	btwn	diagnostic	75	29	specparam	1-50	↓ clinical vs. control	no	oscillations
ADHD	Peisch et al., 2024	EEG	rest	btwn	diagnostic	37	15	specparam	1-50	↑ clinical vs. control	yes	oscillations
ADHD	Snipes et al., 2024	EEG	task	btwn	diagnostic	58	105	specparam	2-35	∅ clinical vs. control	no	E/I ratio
<b>Autism Spectrum Disorder (ASD)</b>												
Autism	Q. Li, Weiland, et al., 2022	EEG	rest	btwn	diagnostic	95	91	specparam	unclear	∅ clinical vs. control	yes	unstated
Autism	Manyukhina et al., 2022	MEG	rest	btwn	diagnostic	49	49	regression	35-45	↓ clinical vs. control	yes	E/I ratio
Autism	Shuffrey et al., 2022	EEG	sleep	w/in	at risk	71	-	specparam	1-20	↑ ~subsequent autism scores	yes	E/I ratio
Autism	Dede et al., 2023	EEG	rest	btwn	diagnostic	421	338	regression	2-24	∅ clinical vs. control	yes	unstated
Autism	Ellis et al., 2023	EEG	rest	btwn	diagnostic	15	25	specparam	3-28	∅ clinical vs. control	no	E/I ratio
Autism	Martinez & Chen, 2023	EEG	sleep	btwn	diagnostic	149	197	specparam	unclear	↓ clinical vs. control	yes	E/I ratio



Disorder	Reference	Mod	State	CP	Analysis	#CL	#CT	Method	FR	Result	BM	Interp.
Autism	Webb et al., 2023	EEG	video	btwn	diagnostic	280	119	regression	2-50	∅ clinical vs. control	yes	E/I ratio
Autism	Arutiunian et al., 2024	MEG	base	btwn	diagnostic	20	20	specparam	1-35	↓ clinical vs. control	no	E/I ratio
Autism	Carter Leno et al., 2024	EEG	video	btwn	at risk	76	26	specparam	1-20	↑ ~hyperresponsivity symptoms	no	E/I ratio
Autism	Chung et al., 2024	EEG	video	btwn	diagnostic symtoms	25	80	specparam	2.5-50	∅ future diagnosed vs. not ↓ ~future repetitive behaviors	no	E/I ratio
Autism	McCleod et al., 2024	EEG	rest	btwn	diagnostic	19	23	irasa	unclear	↑ clinical vs. control	no	unstated
<b>Alzheimer's Disease</b>												
Alzheimer's	Vyšata et al., 2014	EEG	rest	btwn	diagnostic	120	120	regression	0.5-60	↓ clinical vs. control	yes	criticality
Alzheimer's	Springer et al., 2022	MEG	base	btwn	diagnostic	38	20	specparam	4-50	∅ clinical vs. control	no	unstated
Alzheimer's	Azami et al., 2023	EEG	rest	btwn	diagnostic	41	44	specparam	1-45	∅ clinical vs. control	no	E/I ratio
Alzheimer's	Martínez-Cañada et al., 2023	EEG MEG	rest	btwn	diagnostic	26 50	114 51	specparam	1-40	∅ AD vs. control [EEG] ↓ MCI vs. control [MEG]	yes	E/I ratio
Alzheimer's	Van Nifterick et al., 2023	MEG	rest	btwn	diagnostic symptoms	51	45	specparam	30-48	↓ clinical vs. control [AD] ↓ ~worse cognitive scores	no	E/I ratio
Alzheimer's	Burelo et al., 2024	EEG	rest	btwn	diagnostic	64	21	specparam	1-45	Δ in different diagnoses	no	slowing
Alzheimer's	Kopčanová et al., 2024	EEG	rest	btwn	diagnostic	47	42	specparam	3-40	∅ clinical vs. control	yes	slowing
Alzheimer's	Z. Wang et al., 2024	EEG	rest	btwn	diagnostic	36	29	specparam	2-40	↑ clinical vs. control	yes	E/I ratio
Alzheimer's	Wiesman, Gallego-Rudolf, et al., 2024	MEG	rest	btwn	diagnostic	38	20	specparam	1-40	↑ clinical vs. control	no	unstated
<b>Depression</b>												
Depression	Veerakumar et al., 2019	DBS	rest	w/in	treatment	4	-	regression	2-48	↑ w stimulation [DBS]	yes	E/I ratio
Depression	Sonkusare et al., 2022	DBS	rest	w/in	symptoms	6	-	specparam	1-36	↑ ~severity scores	yes	E/I ratio
Depression	Rosenblum, Bovy, et al., 2023	EEG	sleep	btwn w/in	diagnostic treatment	38	38	irasa	0.2-48	↓ clinical vs. control ↓ w medication	yes	E/I ratio
Depression	Hacker et al., 2023	DBS	rest	w/in	treatment	5	-	regression	20-45	↓ w reduced severity	yes	E/I ratio
Depression	Smith, Ma, et al., 2023	EEG	rest	w/in	treatment	9	-	specparam	1-30	↑ w stimulation [ECT]	no	E/I ratio
Depression	Smith, Kosik, et al., 2023	EEG	rest	w/in	treatment	44	-	specparam	0.5-30	↑ w stimulation [ECT & MST]	yes	E/I ratio
Depression	Stolz et al., 2023	EEG	rest	btwn	diagnostic	119	36	specparam	unclear	∅ clinical vs. control	yes	E/I ratio
<b>Disorders of Consciousness (DOC)</b>												
DOC	Zilio et al., 2021	EEG	uncon	btwn	diagnostic	49	23	regression	mult	↑ clinical vs. control	no	timescale
DOC	Alnes et al., 2021	EEG	task	btwn	diagnostic prognosis	67	13	regression	mult	↓ clinical vs. control [20-40 Hz] ∅ survivor vs. non-survivor	no	neural noise
DOC	Colombo et al., 2023	EEG	uncon	btwn	diagnostic	87	65	Colombo	1-40	↑ ~less conscious [non-anoxic]	no	slowing
DOC	Maschke et al., 2023	EEG	uncon	btwn	symptoms	43	-	specparam	1-45 30-45	↑ ~worse clinical scores Δ w anesthesia ~ clinical scores	no	E/I ratio
DOC	Zilio et al., 2023	EEG	uncon	btwn	diagnostic	10	6	regression	mult	↑ clinical vs. control	yes	timescale
DOC	Maschke et al., 2024	EEG	uncon	btwn w/in	symptoms prognosis	260	-	specparam	1-45	↑ ~clinical scores [non-anoxic] ↑ ~prob. of recovery [anoxic]	no	unstated
DOC	Y. Wang et al., 2024	EEG	uncon	w/in	treatment	8	-	Colombo	1-40	↓ over time / w tDCS treatment	no	E/I ratio
<b>Schizophrenia</b>												
Schizophrenia	Molina et al., 2020	EEG	task	btwn w/in	diagnostic treatment	36	31	specparam	4-50	↑ clinical vs. control ↓ w medication	yes	E/I ratio
Schizophrenia	Racz et al., 2021	EEG	rest	btwn	diagnostic	14	14	irasa	mult.	∅ clinical vs. control	yes	criticality
Schizophrenia	Jacob et al., 2023	EEG	rest	btwn	diagnostic	57	46	specparam	1-50	∅ clinical vs. control	yes	E/I ratio
Schizophrenia	Peterson et al., 2023	EEG	task	btwn	diagnostic	24	36	specparam	4-50	↑ clinical vs. control	yes	E/I ratio

Disorder	Reference	Mod	State	CP	Analysis	#CL	#CT	Method	FR	Result	BM	Interp.
Schizophrenia	Spencer et al., 2023	EEG	task	btwn	diagnostic	24	24	specparam	unclear	↓ clinical vs. control	no	E/I ratio
Schizophrenia	Boudewyn et al., 2024	EEG	task	btwn	diagnostic	58	98	specparam	unclear	∅ clinical vs. control	yes	E/I ratio
Schizophrenia	Earl et al., 2024	EEG	rest	btwn	diagnostic	43	23	specparam	3-50	∅ clinical vs. control	no	E/I ratio
<b>Genetic Disorders</b>												
22q.11.2	Donnelly et al., 2022	EEG	sleep	btwn	diagnostic	28	17	irasa	0.25-20	∅ clinical vs. control	yes	unstated
CDKL5	Saby et al., 2022	EEG	rest	btwn	diagnostic	26	18	regression	unclear	↑ clinical vs. control	yes	unstated
Down Syndrome	Geiger et al., 2024	EEG	video	btwn	diagnostic	29	87	specparam	2-55	↓ clinical vs. control	no	E/I ratio
Fragile X	C. L. Wilkinson & Nelson, 2021	EEG	rest	btwn	diagnostic	11	24	specparam	2-55	↓ clinical vs. control	yes	E/I ratio
NF1	Carter Leno et al., 2022	EEG	video	btwn	diagnostic	21	24	specparam	1-10	↑ clinical vs. control	no	E/I ratio
Rett Syndrome	Roche et al., 2019	EEG	rest	btwn	diagnostic	57	37	regression	2-24	↑ clinical vs. control	yes	E/I ratio
Rett Syndrome	Saby et al., 2024	EEG	rest	btwn	diagnostic	60	26	regression	2-20	↑ clinical vs. control	yes	slowing
STXBP1	Houtman et al., 2021	EEG	rest	btwn	diagnostic	14	50	specparam	1-30	↑ clinical vs. control	no	E/I ratio
TSC	Clements et al., 2024	EEG	rest	btwn	diagnostic	49	49	specparam	2-55	∅ clinical vs. control	yes	unstated
<b>Neurodegenerative Disorders</b>												
ALS	Trubshaw et al., 2024	MEG	rest	btwn	diagnostic	36	51	specparam	1-70	↓ clinical vs. control	yes	E/I ratio
Huntington's	Davis, Fitzgerald, et al., 2023	EEG	rest	w/in	treatment	22	20	eBOSC	unclear	↓ w stimulation [tACS]	no	E/I ratio
Huntington's	Davis, Hill, et al., 2023	EEG	rest	btwn	diagnostic	22	20	eBOSC	unclear	∅ clinical vs. control	yes	unstated
MS	Akbarian et al., 2023	MEG	rest	btwn	diagnostic treatment	95	44	specparam	20-45	↑ clinical vs. control ↑ w medication	yes	E/I ratio
MS	Akbarian et al., 2024	MEG	task	btwn	diagnostic	79	38	specparam	3-45	↓ clinical vs. control	yes	E/I ratio
<b>Sleep Disorders</b>												
Insomnia	Andrillon et al., 2020	EEG	sleep	btwn	diagnostic	347	89	specparam	unclear	↓ clinical vs. control	no	E/I ratio
NREM parasomnia	Pani et al., 2021	EEG	sleep	btwn	diagnostic	16	-	specparam	0.5-50	↑ NREM parasomnia vs SHE	yes	unstated
REM-SBD	Roascio et al., 2022	EEG	rest	btwn w/in	diagnostic prognosis	18	10	specparam	1-30	∅ clinical vs. control ∅ within subject timepoints	yes	unstated
REM-SBD	Hernandez et al., 2024	EEG	rest	w/in	prognosis	81	-	Bódizs	0.5-32	↑ patients who convert	yes	E/I ratio
<b>Brain Injuries</b>												
Concussion	Makale, Nybo, et al., 2023	EEG	rest	w/in	treatment	185	-	regression	2-20	↓ w stimulation [TMS]	yes	neurotrans
TBI	Hussain et al., 2023	EEG	rest	btwn	treatment	19	-	specparam	0.5-55	↑ ~TMS motor threshold	no	E/I ratio
TBI	Tewarie et al., 2023	EEG	samples	btwn	prognosis	55	49	specparam	unclear	significant prediction outcomes	no	E/I ratio
TBI	Nwakamma et al., 2024	EEG	rest	btwn	diagnostic	56	32	specparam	1-50	∅ clinical vs. control	yes	unstated
<b>Stroke</b>												
Stroke	C. M. Wilkinson et al., 2020	EEG	rest	btwn	diagnostic	16	9	specparam	0.5-30	∅ clinical vs. control	no	unstated
Stroke	Lanzone et al., 2022	EEG	rest	btwn w/in w/in	diagnostic region prognosis	18	16	Colombo	1-40	↑ clinical vs. control ↑ affected hemisphere ↓ over time	no	slowing
Stroke	Johnston et al., 2023	MEG	rest	btwn w/in	diagnostic region	23	23	specparam	1-50	↑ clinical vs. control ↑ affected hemisphere	no	slowing
Stroke	Lanzone et al., 2024	EEG	rest	w/in	region prognosis	13	-	Colombo	1-20	↑ affected hemisphere ↓ over time	yes	slowing
<b>Anxiety-Related Disorders</b>												

Disorder	Reference	Mod	State	CP	Analysis	#CL	#CT	Method	FR	Result	BM	Interp.
Anxiety	Blaskovich et al., 2024	EEG	sleep	btwn	diagnostic	47	36	Bódizs	2-30	∅ clinical vs. control	yes	unstated
PTSD	Q. Li, Coulson et al., 2022	EEG	rest	btwn	diagnostic	107	95	specparam	2-40	predicts clinical label	yes	unstated
PTSD	Makale, Abbasi, et al., 2023	EEG	rest	w/in	treatment	185	-	regression	2-20	↑ w stim [TMS; responders] ↓ w stim [TMS; nonresponders]	yes	synchro
OCD	Perera et al., 2023	EEG	rest	btwn	diagnostic	25	27	eBOSC	unclear	∅ clinical vs. control	yes	unstated
<b>Movement Disorders</b>												
Dystonia	Semenova et al., 2021	DBS	intra-op	w/in	region	9	-	regression	30-70	↑ affected hemisphere	no	E/I ratio
Dystonia	Averna et al., 2023	DBS	move	w/in	state	2	-	Colombo	7-45	↑ during walking	yes	E/I ratio
Dystonia	Wiest, Morgante, et al., 2023	DBS	rest	w/in	treatment	7	-	specparam	5-50	↑ w stimulation [DBS]	no	E/I ratio
<b>Pain-Related Disorders</b>												
Chronic Pain	Lopez Ramos et al., 2024	DBS	events	w/in	state	1	-	specparam	0-40	↓ during pain events	yes	E/I ratio
Fibromyalgia	González-Villar et al., 2017	EEG	task	btwn	diagnostic	18	22	regression	3-30	↓ clinical vs. control	no	neural noise
<b>Glioma</b>												
Glioma	Numan et al., 2021	MEG	rest	btwn	diagnostic	45	36	specparam	0.5-48	↑ clinical vs. control	no	E/I ratio
Glioma	Numan et al., 2022	MEG	rest	btwn	region	413	65	specparam	0.5-48	↑ ~tumor occurrence Δ ~tumor type subgroups	no	E/I ratio
<b>Other Disorders</b>												
Dyslexia	Turri et al., 2023	EEG	rest	btwn	diagnostic	26	31	specparam	1-40	↓ clinical vs. control	yes	E/I ratio
Dyslexia	Glica et al., 2024	EEG	rest	btwn	diagnostic	60	60	specparam	1-43	∅ clinical vs. control	yes	neural noise
Tinnitus	To et al., 2021	EEG	rest	btwn	diagnostic	120	120	regression	1-43	↓ clinical vs. control	no	complexity
Tourettes	Adelhöfer et al., 2021	EEG	task	btwn	diagnostic	74	74	specparam	2-40	↓ clinical vs. control	no	neural noise

All reports identified and included in the literature dataset are listed, organized by disorder. Disorders are organized by grouping, and have the following fields: **Disorder**: the clinical diagnosis under investigation in each report. **Reference**: the bibliographic reference for the report. **Mod** (Modality): the recording modality of the data. **State**: the recording state of the data. **CP** (Comparison): the analysis design as within (w/in) or between (btwn) subjects. **Analysis**: the main analysis design of the report. **#CL**: the number of clinical participants. **#CT**: the number of control participants (if relevant). **Method**: the analysis method used to measure aperiodic activity. **FR** (Fit Range): the frequency fit range, in Hz, the method was applied to. **Result**: the main aperiodic exponent related result(s) of the report. **BM** (Biomarker): whether the report discusses aperiodic activity as a potential biomarker. **Interp** (Interpretation): the main interpretation of aperiodic activity discussed by the report. **Abbreviations** - *Disorder column*: 22q.11.2: 22q.11.2 Deletion Syndrome; ADHD: attention deficit hyperactivity disorder; CDKL5: CDKL5 Deficiency Disorder; MS: multiple sclerosis; NF1: Neurofibromatosis type 1; OCD: obsessive-compulsive disorder; PTSD: post-traumatic stress disorder; REM-SBD: REM Sleep Behavior Disorder; TBI: traumatic brain injury; TSC: tuberous sclerosis complex. *State column*: base: baseline; intra-op: intraoperative; move: movement; mult: multiple; uncon: unconscious. *Modality column*: DBS: deep brain stimulation; EEG: electroencephalography; iEEG: intracranial EEG; MEG: magnetoencephalography; RNS: responsive neurostimulation. *Result column*: AD: Alzheimer's dementia; DLB: Dementia with Lewy Bodies; ECT: electro-convulsive therapy; IED: interictal epileptiform discharges; MCI: mild cognitive impairment; MST: magnetic seizure therapy; SHE: sleep-related hypermotor epilepsy; SOZ: seizure onset zone; STN: subthalamic nucleus; tACS: transcranial alternating current stimulation; TMS: transcranial magnetic stimulation; tRNS: transcranial random noise stimulation; VNS: vagal nerve stimulation. *Interpretation column*: neurotrans: neurotransmission; self-sim: self-similarity; synchro: synchronicity.

investigation include at least one report reporting a relationship between aperiodic activity and disease status, treatment, or symptoms – showing that differences in aperiodic activity are a common aspect of clinical disorders.

## Discussion

This literature review examined investigations of aperiodic neural activity in clinical contexts, summarizing 143 reports across 35 distinct clinical diagnoses. The consistency of results across disorders varies, with the most studied disorders of Parkinson’s and epilepsy having arguably the most consistency in their results. By comparison, the psychiatric reports appear to generally have less consistent results, consistent with the longstanding difficulty in identifying consistent biomarkers in psychiatric conditions (García-Gutiérrez et al., 2020; Venkatasubramanian & Keshavan, 2016). Most of the included diagnoses currently included too few individual reports to examine the results across reports. By examining across the different disorders, several themes have arisen across multiple different disorders – of heterogeneity, notable covariates, limitations in current methodological practice, and discussion of interpretations of aperiodic activity – that can be used to develop recommendations for best practices to pursue further work evaluating aperiodic neural activity in clinical contexts.

A key pattern is the heterogeneity within and across disorders – related but different diagnoses, subject demographics, disease etiologies, symptom clusters, or brain states during recording have been shown to have differing findings. This was noted in reports of autism, ADHD, DOC, dementia, depression, and schizophrenia – disorders in which there are variable findings across reports. This heterogeneity has different forms – for example, in the case of DOC and dementia, findings suggest different diagnoses, etiologies and/or disease progression can have different relationships with aperiodic activity; in ADHD and potentially autism there appears to be differences across age / developmental stages; in schizophrenia as well as ADHD there is some suggestion of differences in task conditions relating to differences in results; and differences in findings in depression may relate to difference in the subject populations that participate in different treatments. Ultimately, across many different diagnoses, the pattern that is emerging is that it appears to be common for clinically-related differences in aperiodic activity to be moderated by subject demographics, clinical etiology, disease progression and/or symptom clusters – motivating these considerations as key factors for designing robust analysis strategies – rather than differences in aperiodic activity reflecting a simple binary difference of with vs. without diagnoses.

Another key theme is the effect of treatment, whereby direct investigations of treatment-related effects as well as investigations comparing clinical to control groups (and not aimed at examining treatment response) have often noted an effect of treatment (pharmacological or otherwise) on measured aperiodic activity. The effect of pharmacological medication is most persistently discussed in reports of ADHD and Parkinson’s disease, as well as some work in schizophrenia and depression, and includes evidence that such differences can extend beyond

acute drug effect's such that they are not necessarily addressed by research designs that use a drug washout period prior to recording. There are also numerous investigations showing differences in non-pharmacological treatments, including invasive and non-invasive brain stimulation. These findings emphasize the importance of employing approaches that can seek to delineate differences due to the disorder vs. differences due to treatment.

Across investigations and disorders, there is also the topic of anatomical specificity. In disorders such as Parkinson's and epilepsy, for which there are hypotheses about focal origins of disordered activity, there is evidence for regional specificity in aperiodic differences (for example, across different regions of the basal ganglia in Parkinson's or within and outside the seizure onset zone in epilepsy). This may also relate to differences in aperiodic activity between cortical and sub-cortical locations (Bush et al., 2024). Notably, many of the surveyed investigations average results across electrodes / regions, including some reports which average all electrodes across the whole head. Further research is needed to evaluate if and when such averaging is appropriate, and/or if it may be sub-optimal due to potentially masking region-specific differences, and/or increase susceptibility to artifact sources such as muscle noise in peripheral electrodes. An additional consideration is potential differences based on different modalities – while this review included reports from across multiple different recording modalities, if and how the differences in recording modality (their spatial specificity and differences in sensitivity) relates to recorded aperiodic features is currently unknown. Future non-clinical work on the spatial properties of aperiodic activity would be of great benefit – including examining the spatial properties of aperiodic activity, modality related differences, and best-practices for if and how to average results across channels and regions. Within clinical applications, future work may benefit from more systematically considering anatomical variation within and between groups.

Collectively, a general theme across the examined clinical investigations suggests several key dimensions of variability, including clinical heterogeneity, impacts of treatment effects, and differences across anatomical regions. As well as the relative consistency in Parkinson's and epilepsy, disorders of consciousness also have quite consistent results (when controlling for differences in disease etiology). This suggests increased consistency of findings in diagnoses for which there is relatively greater understanding of hypothesized regions of interest and physiological underpinnings. The relative preponderance of invasive recording modalities in Parkinson's and epilepsy may also relate to increased consistency, not due to the regional specificity and increased SNR of invasive recordings, but also, speculatively, due to the increased similarity of patient populations who meet criteria as surgical candidates. By comparison, while extracranial recordings, and in particular EEG, are by far more common, and have been applied to a large number of mostly psychiatric disorders (for which, broadly speaking, there are not robust physiological descriptions), the results thus far do not support clear diagnosis related differences, but rather more complex interactions of differences in aperiodic activity that may vary with other patients characteristics (e.g. age, treatment status, etiology, disease progression).

## Methodological Related Discussion Points

One of the key motivating factors for studying aperiodic activity, as stated explicitly in many of the examined reports, is for methodological validation of whether reported differences between clinical and control groups reflect oscillatory or aperiodic features. Recent reviews and methodological investigations have noted that many reported clinical findings could reflect aperiodic activity, for example a common pattern of increased power at low frequencies and decreased power at high frequencies (Newson & Thiagarajan, 2019) and/or a change in measured 'band ratios' of power across low and high frequency ranges (Donoghue, Dominguez, et al., 2020; Finley et al., 2022). As established across the examined literature, there is now evidence that in many disorders there is indeed evidence for differences in aperiodic activity. In some cases, these findings have been evaluated to potentially 'explain away' previous reports on predefined oscillation bands, for example in ADHD where differences in aperiodic activity may explain previous reports of differences in theta / beta ratio. It's important to emphasize, however, that there is not a general answer to whether oscillatory and/or aperiodic features relate to clinical diagnoses, and it needs to be evaluated on a per case basis. Results in Parkinson's and Alzheimer's, for example, have established that measuring and controlling for aperiodic activity assists in isolating oscillatory activity and improves associations between aperiodic-adjusted oscillatory features and clinical features of interest, even in reports that also report associations with aperiodic activity. This also emphasizes the importance and relevance of evaluating and reporting null results for aperiodic activity, as this may be instrumental for investigating other features, such as neural oscillations (Donoghue et al., 2022). Collectively, the findings here are consistent with noting the importance of separating and measuring aperiodic and oscillatory power together, to best adjudicate which features correlate with measures of interest.

The recent emphasis on investigating aperiodic features and separating them from oscillatory activity is reflected in multiple recently developed analysis methods (Donoghue & Watrous, 2023), many of which were used in the examined literature. Broadly speaking, while comparisons of methods such as *specparam* and *irasa* have found that these methods are similar in their performance, simple linear regression approaches, which are quite common in the examined literature, are generally worse performing (Donoghue et al., 2024) and should be avoided in future work. This review also focused explicitly on reports that explicitly measure and interpret aperiodic components as measured from the power spectrum. There are also numerous other measures of complexity, entropy, and similar measures that highly overlap with spectral measures of the aperiodic component (Donoghue et al., 2024). Collectively this suggests that beyond this rapidly growing research on frequency domain measures of aperiodic activity, many other reports using related measures likely reflect similar and/or overlapping dynamics in the data, and future work should seek to compare to and integrate these findings.

Regardless of which analysis method is used, there needs to be consistent and clear protocols and reporting guidelines to ensure consistent quality control and reporting such that results can be further integrated and meta-analyzed. In the collected literature, one of the most variable aspects of the analysis is the examined frequency range. This is an important source of variation – it quite plausible that some inconsistencies in reported results may reflect differences

in the measured frequency range of the data. Notably, if electrophysiological recordings were strictly  $1/f$  distributed, it would not matter what range was analyzed, as all ranges would be self-similar. However, in practice such data is not strictly  $1/f$  (hence the term  $1/f$ -like), and the presence of oscillatory peaks, artifacts sources, filters, and various other features can lead to the examined range having significant impact on the measured parameters. The variability in frequency range also relates to considering the interpretations of aperiodic activity – for example, the relationship to E/I is proposed to be most strongly related to a specific range of frequencies (Chini et al., 2022; Gao et al., 2017). In addition, aperiodic components can have ‘knees’, regions where there is a change in the  $1/f$  scaling, which appears as a bend in the log-log spectrum (Gao et al., 2020), with some evidence that variations in knees, if not accounted for, may underlie measured changes in the exponent when analyzing short frequency ranges (Ameen et al., 2024).

Measuring aperiodic neural activity also raises its own set of methodological questions. Most of the reports involved resting state recordings with relatively short amounts of data (median: 5 minutes, range: [30 seconds - 40 minutes]). The evidence thus far (in MEG) suggests that aperiodic estimates are stable with about one minute of data (Wiesman et al., 2022), suggesting current practice in terms of amount of data is likely adequate, though more work, including with clinical populations, is needed on this topic. Another consideration for the potential use of aperiodic neural activity as a potential biomarker is the test-retest reliability of such measures. There has recently been a series of investigations examining test-retest reliability of aperiodic parameters in healthy adult subjects (McKeown et al., 2024; Pathania et al., 2021; Pauls et al., 2024; Tröndle et al., 2023), which all reported intra-class correlations above 0.7, and some much higher, reflecting high reliability. Notably, the aforementioned investigations were done in healthy, adult participants. In clinical contexts, investigations of children with autism have reported good, though lower, ICCs in the range of 0.5-0.7 (Levin et al., 2020, Webb et al., 2023). Future work should continue to validate test / retest reliability scores for aperiodic exponent estimation across broader age ranges (including children), and across more clinical populations.

Methodologically, a key goal for continued work on aperiodic neural activity in clinical contexts should be the development of normative measures of key features across large populations of clinical and non-clinical participants that can be used to compare to clinical groups. There is already some research on this topic, including evaluations of aperiodic parameters across large, primarily non-clinical datasets (>1000 participants) that help to establish norms (Hernandez et al., 2024; Tröndle et al., 2023). It’s also important to consider that many clinical populations are young (infant and early childhood, for developmental disorders) or older adults (for late-in-life diseases). Such age groups may not be well-represented in non-clinical work that often examines healthy young adults, thus requiring dedicated work to examine such populations, with some existing large-sample investigations of young (McSweeney et al., 2023) and old (Cesnaite et al., 2023) populations. In addition, there has recently been an investigation of aperiodic activity in a large dataset of clinical recordings that sought to establish clinical norms (Leroy et al., 2024). Collectively, this work is starting to provide information on expected values and ranges that future clinical work can compare to, with further work needed for establishing normative values for clinical and non-clinical populations.

## Interpretations of Aperiodic Neural Activity in Clinical Reports

Being able to record population activity, especially non-invasively, and infer circuit properties is a key goal – but also a difficult problem – for cognitive, computational, and clinical neuroscience (Ahmad et al., 2022; Cohen, 2017; Martínez-Cañada et al., 2021; Pesaran et al., 2018). One such circuit property of interest, E/I balance, is hypothesized to relate to numerous clinical disorders (Ferguson & Gao, 2018; Foss-Feig et al., 2017; Gao & Penzes, 2015; Selten et al., 2018; Sohal & Rubenstein, 2019). The interpretation of aperiodic neural activity as a potential marker of E/I balance is clearly a driving factor of clinical work, being by far the most common stated interpretation in the reviewed clinical reports – though note that different potential interpretations of aperiodic activity are not necessarily mutually exclusive, so this does not imply other interpretations are invalid or any less relevant.

Evidence for the link between the aperiodic exponent and E/I balance comes from computational models (Chini et al., 2022; Gao et al., 2017; Lombardi et al., 2017; Trakoshis et al., 2020) and empirical demonstrations of patterns of aperiodic activity across sleep, anesthesia, and task engagement are broadly consistent with the expected pattern given this interpretation (Colombo et al., 2019; Gao et al., 2017; Lendner et al., 2020; Waschke et al., 2021). However, there is still a relative lack of direct evidence from physiological manipulations that clearly establishes this link, and the available evidence is not definitive. Invasive animal model recordings including optogenetic stimulation show that increasing or reducing inhibitory activity leads to changes in activity consistent with changes in the aperiodic exponent (Chini et al., 2022), as do pharmacological approaches that increase inhibition (Gonzalez-Burgos et al., 2023). However, subsequent work with pharmacological and optogenetic manipulations found that while an increase in inhibition does lead to an increase in the exponent, an increase in excitation does not reliably decrease the exponent (Salvatore et al., 2024). Manipulations of dopamine have also been reported to flatten the aperiodic exponent in animal models (Kim et al., 2022; Valencia et al., 2012), though such effects may not be as robust in human patients (see Parkinson’s section on medication effects). A flattening of the exponent in response to dopamine manipulation could be interpreted as an increase in excitation – however, that dopamine, a neuromodulator, influences the exponent in such a way when more direct manipulations of excitatory neurotransmitters do not is overall not entirely consistent with the E/I balance interpretation of the aperiodic exponent.

Collectively, the evidence motivates that while physiological manipulations do impact aperiodic activity – consistent with its biological relevance – they do not do so entirely consistently with the predictions of simple models of excitation and inhibition. While driving inhibition more consistently evokes the expected effect on aperiodic activity, the effect of excitation is less clear, with a lack of demonstration of expected effects of increased excitation through direct manipulations of excitatory activity and/or transmitters, while flattening is observed with neuromodulators such as dopamine. Notably, E/I balance, while clearly a powerful and important concept, is also a complex one, with further specification needed in specific cases to define whether differences in E/I balance are expected in terms of the number of neurons, the amount of different neurotransmitters, and/or the activity patterns across neurons (Ahmad et al.,



2022). This can be inferred from considering the reviewed clinical literature whereby discussions of changes in E/I balance include cell death (e.g. in DOC & stroke), neurotransmitter availability (e.g. ADHD & Parkinson's), and differences in connectivity (e.g. autism & epilepsy). In addition, there are other proposals for underlying factors that can relate to the measured aperiodic exponent, for example oscillation damping (Evertz et al., 2022).

Combining the above discussion of the empirical data, with this broader discussion of E/I, emphasizes some key points about the E/I balance interpretation of the aperiodic exponent, including that i) differences in E/I balance (and therefore aperiodic exponent, in so far as it reflects E/I) can reflect multiple, distinct underlying physiological changes; ii) not all changes in E/I balance have the expected impact on measured aperiodic exponent, suggesting it is not a clear one-to-one mapping; and iii) aperiodic activity is a coarse, global measure, and observed relationships between it and E/I do not preclude that other, non-E/I related changes may also impact the measured exponent. Collectively, this suggests that given the current evidence, a change in aperiodic activity may or may not reflect a change in E/I balance, the lack of a change in the aperiodic exponent does not imply the lack of a change in E/I balance, and the same change in aperiodic exponent can likely arise from different underlying changes in E/I related or non-E/I related features. As such, a change in aperiodic activity, by itself, should not be strongly interpreted as a direct marker of E/I balance.

While this lack of a clear general relationship between the aperiodic exponent and E/I complicates simple interpretations of changes in aperiodic activity, it also helps explain how seemingly similar patterns of differences can be seen across such a range of disparate disorders. The causes of the noted changes in aperiodic activity across a broad range of clinical disorders are likely underdetermined – varying across disorders – and may relate to variable underlying differences in E/I balance, from various sources, and/or to other aspects of neural function. Better understanding these underlying changes better understanding the underlying sources of aperiodic activity. Notably, recent work is working to address this complexity, for example modeling approaches that can examine more detailed biophysical interpretations of changes in power spectrum structure (Bloniasz et al., 2024). Overall, the current research suggests that more nuanced interpretations concepts such as E/I, motivated by more detailed modelling of changes in power spectrum changes are needed – with future work needed to integrate recent advances into the discussion and interpretation of changes in aperiodic activity seen in clinical disorders.

### **Aperiodic Activity as a Potential Biomarker**

Given these methodological and scientific considerations, it's worth revisiting the idea of the aperiodic exponent as a potential biomarker, as discussed by many of the included reports. The term 'biomarker', while rapidly increasing in use in the literature, is used in variable ways and is often poorly defined (Aronson & Ferner, 2017; Califf, 2018). Notably, few of the included reports explicitly define what is meant by 'biomarker' in each of their respective usages. In psychiatry in particular, there have been longstanding attempts, but little progress in developing objective biomarkers, which has been the topic of much debate (García-Gutiérrez et al., 2020; Venkatasubramanian & Keshavan, 2016). The exploration of aperiodic activity as a potential

biomarker should learn from this background – presenting clear and specific definitions that clarify how the term is being used, how it is envisioned as contributing to clinical practice, and doing so considering the history of similar attempts and detailing how known problems and limitations will be addressed.

In most cases in the collected literature, the term biomarker is used in relation to examining diagnostic related differences between groups. It's important to note that examining mean group difference between groups – the most common approach taken – is insufficient to evaluate a measure as a diagnostic biomarker, as this approach does not consider the variability within each group (Loth et al., 2021). Relatedly, the frequent lack of standardized effect size measures limits the consideration of findings as potential biomarkers. Additionally, almost all reports examine only one diagnosis, but across the literature many disorders are reported to have differences in aperiodic activity – with 31/ 35 disorders included in this investigation including at least one report of a relationship between aperiodic activity and disease status, treatment, or symptoms. This lack of specificity of differences in aperiodic activity, as well as diagnostic comorbidity and the difficulty this poses for prediction from electrophysiological features (Langer et al., 2022), suggests that while non-normative measures of aperiodic may reflect a general indicator of abnormal activity, it is not currently established that aperiodic activity has the reliability or specificity to serve a biomarker to assist with differential diagnoses.

Importantly, many of the mentions of biomarkers were not diagnostic related, but rather relate to symptom scores and/or within-subject prediction of future state, for example, in discussions of treatment response (to pharmacology or stimulation) and/or in examining prognosis. Such cases may be more promising for the potential use of aperiodic measures as markers for examining treatment response and/or tracking disease progression – with more longitudinal research needed for such cases. Additionally, addressing the sources of heterogeneity mentioned across this literature will also be key for discussions of biomarkers – considering, for example, aperiodic activity in particular regions and/or as related to particular symptoms in appropriately curated subgroups of patients with similar disease progressions and/or etiologies may reveal currently elusive levels of reliability and specificity.

Given that much of the reviewed literature motivates the study of aperiodic activity due to its potential as a measure of E/I balance and/or as a putative biomarker, both of which have limitations, it is worth considering the future of examining aperiodic activity in clinical work. First, as discussed, measuring and controlling for aperiodic activity is important for adjudicating which features vary in neuro-electrophysiological recordings, and so measures of aperiodic activity should still be included as part of methodological best practice. In doing so, while our current understanding of the physiological underpinnings of aperiodic neural activity is incomplete, the available evidence does support that it relates to properties of underlying circuits — even if our current simple models do not fully capture how it does so — such that ongoing and future work on the physiological underpinnings of aperiodic activity holds promise for contributing to further understanding the neurophysiology of neurological and psychiatric pathologies (Bloniasz et al., 2024). Additionally, the limitations highlighted here should not eclipse that many of the included

analyses do report promising findings regarding diagnostic, treatment, and/or state related differences in aperiodic activity that may well be clinically useful, and work within and across different disorders is productively highlighting considerations to improve the robustness and interpretability of future studies such that it's potential use as biomarker for certain applications is still plausible. Notably, most of the literature included in this review reflects work across just a few years as methods and ideas have rapidly developed, setting the stage for future work to build on this work, address current limitations, and further evaluate the utility of measuring aperiodic neural activity in clinical disorders.

**Table 3: Checklist of recommendations for clinical investigations of aperiodic activity**

Topic	Recommendation(s)	
Goal	Specify a clear goal for the analysis (e.g., search for biomarker? search for mechanisms?). State key definitions (e.g., what is meant by biomarker? what constitutes a mechanism?).	<input type="checkbox"/>
Terminology	Choose, define, and use a consistent terminology for describing aperiodic features (e.g., slope vs. exponent; 1/f vs. aperiodic). Note relation to other common terms.	<input type="checkbox"/>
Design	Clearly define plans for between and/or within subject analyses and consider sample sizes. Design a priori analysis selections (e.g., electrode choice) and/or report as exploratory.	<input type="checkbox"/>
Sample	Evaluate and report sample characteristics for covariates of interest, e.g., age, treatment status, treatment history, symptom measures, disease progression, disease etiology, etc.	<input type="checkbox"/>
Methods	Choose methods with appropriate properties for measuring aperiodic activity in the dataset. Consider and evaluate model forms. Report frequency range and all method settings.	<input type="checkbox"/>
Quality Control	Evaluate and report goodness-of-fit metrics for model fits and compare between groups / conditions. Visualize example power spectra demonstrating model fit quality.	<input type="checkbox"/>
Results	Report measured parameter values and standardized effect sizes. Visualize measured parameters and/or power spectra demonstrating differences between conditions / groups.	<input type="checkbox"/>
Interpretation	Note if results are consistent with original hypotheses and other work on the disorder. Evaluate current findings on aperiodic activity and consider alternate explanations.	<input type="checkbox"/>
Conclusions	Based on stated goal, revisit conclusions based on findings (e.g., is it a plausible biomarker, is the mechanistic insight compelling), considering effect size / alternative explanations.	<input type="checkbox"/>

Each topic includes a summary of recommendations to check / consider for research investigating aperiodic activity in clinically related investigations. Note that not all recommendations are relevant for all research designs. See main text for further details.

### Recommendations for Future Work

To best be able to engage in productive future work on aperiodic activity in clinical disorders, this systematic review suggests some key recommendations based on its review of clinical findings and the ensuing discussion of the methodological and scientific themes. These recommendations are also summarized in a checklist (Table 3), drawing from the summarized literature to assist with developing best practices for continued work in this area. At the level of individual reports, it is important to establish clearly defined goals for the investigation – whether it is, for example, an explicit search for a biomarker for diagnosis and/or treatment (including clarifications of what is meant by biomarker) and/or a study to examine potential mechanisms (including clarification on how the exponent is being interpreted). In designing experiments, collecting data samples, and creating analyses, it's important to consider topics that have arisen in this literature – for example, confounds of age / development, variation across etiology /

severity, medication-related changes in aperiodic, regional differences, etc. – to ensure that research designs are best suited to examine questions of interest.

One aspect that would benefit from improved consistency and clarity is terminology. This review included reports that discuss aperiodic activity described in multiple ways, including the terms ‘aperiodic exponent’ and ‘spectral slope’. Either description is a valid description which are ultimately functionally equivalent (whereby exponent  $x = -b$ ). There are however reports that use both, sometimes interchangeably, which can be confusing and create interpretational issues – since slope values are negative and exponent values positive, the report of a decrease / increase of the aperiodic parameter is ambiguous if the unit / value is not clearly established (since a decrease of 2 to 1 exponent values is a flattening, whereas a decrease of -1 to -2 of slope is a steepening, though this is also complicated by some reports seeming to discuss increases / decreases of slope magnitude rather than of actual value). In cases where actual values are not reported and/or results are not visualized, the actual results can be quite unclear. Terms such as “flattening” and “steepening” are useful as they are unambiguous regardless of the measured quantity. Reports are recommended to consistently employ a single, consistent description of aperiodic activity, and clearly and consistently report data values and directions of changes.

Methodologically, the reviewed literature includes multiple different analysis methods and high variability in the reporting standards for describing the use of these methods. Most notably, the analyzed frequency range must be properly reported, as well as any settings for the chosen method. There is also a lack of reporting of goodness-of-fit measures that can help to establish the quality of the model fits, and limitations in the reporting of measured parameter values. In designing and applying analyses, consider possible anatomical differences and choose included electrodes and regions of interest, avoiding approaches such as averaging across all electrodes which may neglect regional differences, and which may be more susceptible to artifacts. For quality control of measures, use of model fitting methods such as *specparam* should include the evaluation and reporting of goodness-of-fit measures, including evaluating potential group differences in model fit quality and checking for and potentially excluding outliers. It is also useful to examine and provide example and/or group average model fits, which can be used to demonstrate model fit quality and to visualize differences that are quantified by the models.

In terms of results reporting, when possible, it is useful to report parameter values per group / condition. This allows for evaluating if the values are in an expected range, as more reports of normative values become available, and makes such values available for inclusion in future meta-analyses and comparisons to future datasets. Where appropriate, the calculation and reporting of standardized effect sizes of group / condition differences can help to evaluate the magnitude of effects and discriminability of patients based on such features, beyond only reporting if there are significant differences. Reports should also include clear statements on how individual parameters relate to diagnostic and/or treatment related features of interest ensuring, for example, that prediction-based analyses that mainly report accuracy include information on the direction of differences between groups / conditions. In reporting the results, interpretations, and conclusions, reports should make a clear connection between the analysis results and the

original goals and hypotheses, while considering the magnitude of effects, the current status of research on interpretations of aperiodic activity, and possible alternate explanations.

To best support the investigations of aperiodic activity in clinical conditions, the above noted recommendations should be supplemented by the continued development of standardized guidelines and protocols for investigating aperiodic neural activity. There also needs to be consistent communication between clinical and non-clinical work – with clinical investigations having both much to contribute to the broader understanding of aperiodic neural activity and its interpretations, and much to gain from non-clinical methodological, cognitive, and physiological investigations. In particular, the research field as a whole will benefit from work continuing to pursue large-scale norming studies, with and without clinical subjects, to establish clearer definitions of normative values for aperiodic activity; methodological work continuing to evaluate method-related best-practices, the impact of methodological choices such as frequency range and different model forms, and relationship(s) between distinct methods; physiological work probing the underlying circuit mechanisms that drive changes in aperiodic activity; and ultimately, the development of standardized and evidence-based protocols for best-practices to measure aperiodic activity.

### **Limitations**

There are some limitations to the approach taken in this systematic review. Perhaps most notably is the high-level overview of a large number of reports covering a broad range of investigations in this study. This approach – reducing reports to a single or small number of briefly summarized key results – necessarily ignores many details of the investigations, limits the nuances of the results that are discussed, and may miss notable details that could help explain findings and patterns within and across diagnoses. The inclusions of many different disorders, and many different research designs (e.g. diagnostic, treatment-related, symptom-related, etc.) also precludes more systematic and quantitative meta-analytic approaches, such that the overall approach here includes multiple mini-reviews within disorders as well as a largely qualitative overview across the entire literature. In addition, the organization of reports based on a single diagnosis does not fully reflect the details of a small number of reports that included multiple different diagnoses and/or comorbid diagnoses, nor does it integrate information across different but similar or related diagnoses. Accordingly, this investigation should only serve as a general summary across the clinical work at large, whereby future work should be dedicated to more fully examining the details of investigations within individual disorders and/or related groups.

## Conclusion

Aperiodic neural activity has rapidly emerged as a feature of interest in clinical research, as evidenced by the rapid rise in the number of reports across time. This research has made many contributions, including methodological work evaluating which neural features relate to clinical disorders and providing potential markers to track treatment and prognosis; and scientific work, probing potential physiological interpretations of disease-related changes or differences in neural function. However, some caution is warranted, as across fields and disorders there are common issues and discussion points that often complicate the conclusions; overlapping findings across disorders that suggest a lack of specificity in the results; and ongoing discussions of the interpretations of aperiodic activity that complicate its straight-forward interpretation as a biomarker and in relation to underlying circuit activity. Future work can hopefully use this interim check-in on the status of clinically related reports of aperiodic neural activity to guide future work on how to examine and interpret this feature in clinical work.

## Appendix: Literature Search Terms

The following details the search terms used for the literature collection. For further details on how these terms were used, see the Methods section. For the use of these search terms in automated literature searches, see the Project Repository.

### **Aperiodic activity search terms (used for all searches):**

'aperiodic exponent', 'aperiodic slope', 'spectral exponent', 'spectral slope', '1/f slope', '1/f exponent'.

### **Phase 1 search terms for clinically related reports on aperiodic activity:**

'clinical', 'disorder', 'disease', 'biomarker', 'diagnosis', 'diagnostic', 'treatment'.

### **Phase 2 search terms for reports per disorder:**

"parkinson's"; 'epilepsy', 'seizure'; 'ADHD', 'attention deficit hyperactivity disorder'; 'autism', 'ASD'; 'alzheimers', 'dementia'; 'disorders of consciousness', 'coma', 'locked-in'; 'depression', 'MDD', 'major depressive disorder'; 'schizophrenia'; 'stroke'; 'dystonia'; 'TBI', 'traumatic brain injury'; 'dyslexia'; 'glioma'; "huntington's"; 'multiple sclerosis'; 'PTSD', 'post traumatic stress disorder'; 'REM sleep behavior disorder'; 'rett syndrome'; '22q.11.2'; 'ALS', 'amyotrophic lateral sclerosis', "Lou Gehrig's disease"; 'anxiety'; 'CDKL5 deficiency disorder'; 'chronic pain'; 'concussion'; 'down syndrome'; 'fibromyalgia'; 'fragile X'; 'insomnia'; 'NF1'; 'NREM parasomina'; 'OCD', 'obsessive compulsive disorder'; 'STXBP1'; 'tinnitus'; 'tourette'; 'tuberous sclerosis complex';

### **Exclusion terms, used to ignore unrelated literature:**

'acid', 'protein', 'ion', 'enzyme', 'ultrasound', 'cancer', 'halide', 'spectroscopy', 'iodide', 'tissue'.

## References (Main Text)

- Ahmad, J., Ellis, C., Leech, R., Voytek, B., Garces, P., Jones, E., Buitelaar, J., Loth, E., Dos Santos, F. P., Amil, A. F., Verschure, P. F. M. J., Murphy, D., & McAlonan, G. (2022). From mechanisms to markers: Novel noninvasive EEG proxy markers of the neural excitation and inhibition system in humans. *Translational Psychiatry*, 12(1), 467. <https://doi.org/10.1038/s41398-022-02218-z>
- Ameen, M. S., Jacobs, J., Schabus, M., Hoedlmoser, K., & Donoghue, T. (2024). *The Temporal Dynamics of Aperiodic Neural Activity Track Changes in Sleep Architecture*. biorXiv. <https://doi.org/10.1101/2024.01.25.577204>
- Aronson, J. K., & Ferner, R. E. (2017). Biomarkers—A General Review. *Current Protocols in Pharmacology*, 76(1), 9–23.
- Babiloni, C., Barry, R. J., Başar, E., Blinowska, K. J., Cichocki, A., Drinkenburg, W. H. I. M., Klimesch, W., Knight, R. T., Lopes da Silva, F., Nunez, P., Oostenveld, R., Jeong, J., Pascual-Marqui, R., Valdes-Sosa, P., & Hallett, M. (2020). International Federation of Clinical Neurophysiology (IFCN) – EEG research workgroup: Recommendations on frequency and topographic analysis of resting state EEG rhythms. Part 1: Applications in clinical research studies. *Clinical Neurophysiology*, 131(1), 285–307. <https://doi.org/10.1016/j.clinph.2019.06.234>
- Başar, E., & Güntekin, B. (2008). A review of brain oscillations in cognitive disorders and the role of neurotransmitters. *Brain Research*, 1235, 172–193. <https://doi.org/10.1016/j.brainres.2008.06.103>
- Bloniasz, P. F., Oyama, S., & Stephen, E. P. (2024). *Filtered Point Processes Tractably Capture Rhythmic And Broadband Power Spectral Structure in Neural Electrophysiological Recordings*. biorXiv. <https://doi.org/10.1101/2024.10.01.616132>
- Bódizs, R., Szalárdy, O., Horváth, C., Ujma, P. P., Gombos, F., Simor, P., Pótári, A., Zeising, M., Steiger, A., & Dresler, M. (2021). A set of composite, non-redundant EEG measures of NREM sleep based on the power law scaling of the Fourier spectrum. *Scientific Reports*, 11(1), 2041. <https://doi.org/10.1038/s41598-021-81230-7>
- Bush, A., Zou, J. F., Lipski, W. J., Kokkinos, V., & Richardson, R. M. (2024). Aperiodic components of local field potentials reflect inherent differences between cortical and subcortical activity. *Cerebral Cortex*, 34(5), bhae186. <https://doi.org/10.1093/cercor/bhae186>
- Califf, R. M. (2018). Biomarker definitions and their applications. *Experimental Biology and Medicine*, 243(3), 213–221. <https://doi.org/10.1177/1535370217750088>
- Cesnaite, E., Steinfath, P., Jamshidi Idaji, M., Stephani, T., Kumral, D., Haufe, S., Sander, C., Hensch, T., Hegerl, U., Riedel-Heller, S., Röhr, S., Schroeter, M. L., Witte, A., Villringer, A., & Nikulin, V. V. (2023). Alterations in rhythmic and non-rhythmic resting-state EEG activity and their link to cognition in older age. *NeuroImage*, 268, 119810. <https://doi.org/10.1016/j.neuroimage.2022.119810>
- Chini, M., Pfeffer, T., & Hanganu-Opatz, I. (2022). An increase of inhibition drives the developmental decorrelation of neural activity. *eLife*, 11, e78811. <https://doi.org/10.7554/eLife.78811>
- Cohen, M. X. (2017). Where Does EEG Come From and What Does It Mean? *Trends in Neurosciences*, 40(4), 208–218. <https://doi.org/10.1016/j.tins.2017.02.004>
- Cole, S. R., Donoghue, T., Gao, R., & Voytek, B. (2019). NeuroDSP: A package for neural digital signal processing. *Journal of Open Source Software*, 4(36), 1272. <https://doi.org/10.21105/joss.01272>
- Colombo, M. A., Napolitani, M., Boly, M., Gosseries, O., Casarotto, S., Rosanova, M., Brichant, J.-F., Boveroux, P., Rex, S., Laureys, S., Massimini, M., Chiaregato, A., & Sarasso, S. (2019). The spectral exponent of the resting EEG indexes the presence of consciousness during unresponsiveness induced by propofol, xenon, and ketamine. *NeuroImage*, 189, 631–644. <https://doi.org/10.1016/j.neuroimage.2019.01.024>
- Donoghue, T. (2019). LISC: A Python Package for Scientific Literature Collection and Analysis. *Journal of Open Source Software*, 4(41), 1674. <https://doi.org/10.21105/joss.01674>
- Donoghue, T., Dominguez, J., & Voytek, B. (2020). Electrophysiological Frequency Band Ratio Measures Conflate Periodic and Aperiodic Neural Activity. *eNeuro*, 7(6), ENEURO.0192-20.2020. <https://doi.org/10.1523/ENEURO.0192-20.2020>
- Donoghue, T., Haller, M., Peterson, E. J., Varma, P., Sebastian, P., Gao, R., Noto, T., Lara, A. H., Wallis, J. D., Knight, R. T., Shestyuk, A., & Voytek, B. (2020). Parameterizing neural power spectra into periodic and aperiodic components. *Nature Neuroscience*, 23(12), 1655–1665. <https://doi.org/10.1038/s41593-020-00744-x>
- Donoghue, T., Hammonds, R., Lybrand, E., Washcke, L., Gao, R., & Voytek, B. (2024). *Evaluating and Comparing Measures of Aperiodic Neural Activity*. biorXiv. <https://doi.org/10.1101/2024.09.15.613114>
- Donoghue, T., Schaworonkow, N., & Voytek, B. (2022). Methodological considerations for studying neural oscillations. *European Journal of Neuroscience*, 55(11–12), 3502–3527. <https://doi.org/10.1111/ejn.15361>
- Donoghue, T., & Voytek, B. (2022). Automated meta-analysis of the event-related potential (ERP) literature. *Scientific Reports*, 12(1), 1867. <https://doi.org/10.1038/s41598-022-05939-9>
- Donoghue, T., & Watrous, A. J. (2023). How Can We Differentiate Narrow-Band Oscillations from Aperiodic Activity? In N. Axmacher (Ed.), *Intracranial EEG: A Guide for Cognitive Neuroscientists* (pp. 351–364). Springer International Publishing. [https://doi.org/10.1007/978-3-031-20910-9\\_22](https://doi.org/10.1007/978-3-031-20910-9_22)



- Evertz, R., Hicks, D. G., & Liley, D. T. J. (2022). Alpha blocking and  $1/f\beta$  spectral scaling in resting EEG can be accounted for by a sum of damped alpha band oscillatory processes. *PLoS Computational Biology*, *18*(4), e1010012. <https://doi.org/10.1371/journal.pcbi.1010012>
- Ferguson, B. R., & Gao, W.-J. (2018). PV Interneurons: Critical Regulators of E/I Balance for Prefrontal Cortex-Dependent Behavior and Psychiatric Disorders. *Frontiers in Neural Circuits*, *12*, 37. <https://doi.org/10.3389/fncir.2018.00037>
- Finley, A. J., Angus, D. J., Van Reekum, C. M., Davidson, R. J., & Schaefer, S. M. (2022). Periodic and aperiodic contributions to theta-beta ratios across adulthood. *Psychophysiology*, *59*(11). <https://doi.org/10.1111/psyp.14113>
- Foss-Feig, J. H., Adkinson, B. D., Ji, J. L., Yang, G., Srihari, V. H., McPartland, J. C., Krystal, J. H., Murray, J. D., & Anticevic, A. (2017). Searching for Cross-Diagnostic Convergence: Neural Mechanisms Governing Excitation and Inhibition Balance in Schizophrenia and Autism Spectrum Disorders. *Biological Psychiatry*, *81*(10), 848–861. <https://doi.org/10.1016/j.biopsych.2017.03.005>
- Gao, R., & Penzes, P. (2015). Common Mechanisms of Excitatory and Inhibitory Imbalance in Schizophrenia and Autism Spectrum Disorders. *Current Molecular Medicine*, *15*(2), 146–167. <https://doi.org/10.2174/1566524015666150303003028>
- Gao, R., Peterson, E. J., & Voytek, B. (2017). Inferring synaptic excitation/inhibition balance from field potentials. *NeuroImage*, *158*, 70–78. <https://doi.org/10.1016/j.neuroimage.2017.06.078>
- Gao, R., van den Brink, R. L., Pfeffer, T., & Voytek, B. (2020). Neuronal timescales are functionally dynamic and shaped by cortical microarchitecture. *eLife*, *9*, e61277. <https://doi.org/10.7554/eLife.61277>
- García-Gutiérrez, M. S., Navarrete, F., Sala, F., Gasparyan, A., Austrich-Olivares, A., & Manzanares, J. (2020). Biomarkers in Psychiatry: Concept, Definition, Types and Relevance to the Clinical Reality. *Frontiers in Psychiatry*, *11*.
- Gonzalez-Burgos, I., Bainier, M., Gross, S., Schoenenberger, P., Ochoa, J. A., Valencia, M., & Redondo, R. L. (2023). Glutamatergic and GABAergic Receptor Modulation Present Unique Electrophysiological Fingerprints in a Concentration-Dependent and Region-Specific Manner. *Eneuro*, *10*(4), ENEURO.0406-22.2023. <https://doi.org/10.1523/ENEURO.0406-22.2023>
- Gyurkovics, M., Clements, G. M., Low, K. A., Fabiani, M., & Gratton, G. (2022). Stimulus-Induced Changes in  $1/f$ -like Background Activity in EEG. *The Journal of Neuroscience*, *42*(37), 7144–7151. <https://doi.org/10.1523/JNEUROSCI.0414-22.2022>
- Hernandez, H., Baez, S., Medel, V., Moguilner, S., Cuadros, J., Santamaria-Garcia, H., Tagliazucchi, E., Valdes-Sosa, P. A., Lopera, F., OchoaGómez, J. F., González-Hernández, A., Bonilla-Santos, J., Gonzalez-Montealegre, R. A., Aktürk, T., Yıldırım, E., Anghinah, R., Legaz, A., Fittipaldi, S., Yener, G. G., ... Ibanez, A. (2024). Brain health in diverse settings: How age, demographics and cognition shape brain function. *NeuroImage*, *295*, 120636. <https://doi.org/10.1016/j.neuroimage.2024.120636>
- Kim, J., Lee, J., Kim, E., Choi, J. H., Rah, J.-C., & Choi, J.-W. (2022). Dopamine depletion can be predicted by the aperiodic component of subthalamic local field potentials. *Neurobiology of Disease*, *168*, 105692. <https://doi.org/10.1016/j.nbd.2022.105692>
- Kosciessa, J. Q., Grandy, T. H., Garrett, D. D., & Werkle-Bergner, M. (2020). Single-trial characterization of neural rhythms: Potential and challenges. *NeuroImage*, *206*, 116331. <https://doi.org/10.1016/j.neuroimage.2019.116331>
- Langer, N., Plomecka, M. B., Tröndle, M., Negi, A., Popov, T., Milham, M., & Haufe, S. (2022). A benchmark for prediction of psychiatric multimorbidity from resting EEG data in a large pediatric sample. *NeuroImage*, *258*, 119348. <https://doi.org/10.1016/j.neuroimage.2022.119348>
- Lendner, J. D., Helfrich, R. F., Mander, B. A., Romundstad, L., Lin, J. J., Walker, M. P., Larsson, P. G., & Knight, R. T. (2020). An electrophysiological marker of arousal level in humans. *eLife*, *9*, e55092. <https://doi.org/10.7554/eLife.55092>
- Leroy, S., Bublitz, V., Von Dincklage, F., Antonenko, D., & Fleischmann, R. (2024). Normative characterization of age-related periodic and aperiodic activity in resting-state clinical EEG recordings. medRxiv. <https://doi.org/10.1101/2024.06.18.24308910>
- Levin, A. R., Naples, A. J., Scheffler, A. W., Webb, S. J., Shic, F., Sugar, C. A., Murias, M., Bernier, R. A., Chawarska, K., Dawson, G., Faja, S., Jeste, S., Nelson, C. A., McPartland, J. C., Şentürk, D., & The Autism Biomarkers Consortium for Clinical Trials. (2020). Day-to-Day Test-Retest Reliability of EEG Profiles in Children With Autism Spectrum Disorder and Typical Development. *Frontiers in Integrative Neuroscience*, *14*, 21. <https://doi.org/10.3389/fnint.2020.00021>
- Lombardi, F., Herrmann, H. J., & de Arcangelis, L. (2017). Balance of excitation and inhibition determines  $1/f$  power spectrum in neuronal networks. *Chaos*, *27*(4), 047402. <https://doi.org/10.1063/1.4979043>
- Loth, E., Ahmad, J., Chatham, C., López, B., Carter, B., Crawley, D., Oakley, B., Hayward, H., Cooke, J., San José Cáceres, A., Bzdok, D., Jones, E., Charman, T., Beckmann, C., Bourgeron, T., Toro, R., Buitelaar, J., Murphy, D., & Dumas, G. (2021). The meaning of significant mean group differences for biomarker discovery. *PLoS Computational Biology*, *17*(11), e1009477. <https://doi.org/10.1371/journal.pcbi.1009477>
- Martínez-Cañada, P., Noei, S., & Panzeri, S. (2021). Methods for inferring neural circuit interactions and neuromodulation from local field potential and electroencephalogram measures. *Brain Informatics*, *8*(1), 27. <https://doi.org/10.1186/s40708-021-00148-y>
- McKeown, D. J., Finley, A. J., Kelley, N. J., Cavanagh, J. F., Keage, H. A. D., Baumann, O., Schinazi, V. R., Moustafa, A. A., & Angus, D. J. (2024). Test-retest reliability of spectral parameterization by  $1/f$  characterization using SpecParam. *Cerebral Cortex*, *34*(1), bhad482. <https://doi.org/10.1093/cercor/bhad482>

- McSweeney, M., Morales, S., Valadez, E. A., Buzzell, G. A., Yoder, L., Fifer, W. P., Pini, N., Shuffrey, L. C., Elliott, A. J., Isler, J. R., & Fox, N. A. (2023). Age-related trends in aperiodic EEG activity and alpha oscillations during early- to middle-childhood. *NeuroImage*, *269*, 119925. <https://doi.org/10.1016/j.neuroimage.2023.119925>
- Newson, J. J., & Thiagarajan, T. C. (2019). EEG Frequency Bands in Psychiatric Disorders: A Review of Resting State Studies. *Frontiers in Human Neuroscience*, *12*. <https://doi.org/10.3389/fnhum.2018.00521>
- Ostlund, B., Donoghue, T., Anaya, B., Gunther, K. E., Karalunas, S. L., Voytek, B., & Pérez-Edgar, K. E. (2022). Spectral parameterization for studying neurodevelopment: How and why. *Developmental Cognitive Neuroscience*, *54*, 101073. <https://doi.org/10.1016/j.dcn.2022.101073>
- Page, M. J., McKenzie, J. E., Bossuyt, P. M., Boutron, I., Hoffmann, T. C., Mulrow, C. D., Shamseer, L., Tetzlaff, J. M., Akl, E. A., Brennan, S. E., Chou, R., Glanville, J., Grimshaw, J. M., Hróbjartsson, A., Lalu, M. M., Li, T., Loder, E. W., Mayo-Wilson, E., McDonald, S., ... Moher, D. (2021). The PRISMA 2020 statement: An updated guideline for reporting systematic reviews. *BMJ*, *n71*. <https://doi.org/10.1136/bmj.n71>
- Pathania, A., Schreiber, M., Miller, M. W., Euler, M. J., & Lohse, K. R. (2021). Exploring the reliability and sensitivity of the EEG power spectrum as a biomarker. *International Journal of Psychophysiology*, *160*, 18–27. <https://doi.org/10.1016/j.ijpsycho.2020.12.002>
- Pauls, K. A. M., Nurmi, P., Ala-Salomäki, H., Renvall, H., Kujala, J., & Liljeström, M. (2024). Human sensorimotor resting state beta events and aperiodic activity show good test–retest reliability. *Clinical Neurophysiology*, *163*, 244–254. <https://doi.org/10.1016/j.clinph.2024.03.021>
- Pesaran, B., Vinck, M., Einevoll, G. T., Sirota, A., Fries, P., Siegel, M., Truccolo, W., Schroeder, C. E., & Srinivasan, R. (2018). Investigating large-scale brain dynamics using field potential recordings: Analysis and interpretation. *Nature Neuroscience*. <https://doi.org/10.1038/s41593-018-0171-8>
- Salvatore, S. V., Lambert, P. M., Benz, A., Rensing, N. R., Wong, M., Zorumski, C. F., & Mennerick, S. (2024). Periodic and aperiodic changes to cortical EEG in response to pharmacological manipulation. *Journal of Neurophysiology*, *131*(3), 529–540. <https://doi.org/10.1152/jn.00445.2023>
- Selten, M., Van Bokhoven, H., & Nadif Kasri, N. (2018). Inhibitory control of the excitatory/inhibitory balance in psychiatric disorders. *F1000Research*, *7*, 23. <https://doi.org/10.12688/f1000research.12155.1>
- Sohal, V. S., & Rubenstein, J. L. R. (2019). Excitation-inhibition balance as a framework for investigating mechanisms in neuropsychiatric disorders. *Molecular Psychiatry*, *24*(9), 1248–1257. <https://doi.org/10.1038/s41380-019-0426-0>
- Stanyard, R. A., Mason, D., Ellis, C., Dickson, H., Short, R., Batalle, D., & Arichi, T. (2024). Aperiodic and Hurst EEG exponents across early human brain development: A systematic review. *Developmental Cognitive Neuroscience*, *68*, 101402. <https://doi.org/10.1016/j.dcn.2024.101402>
- Trakoshis, S., Martínez-Cañada, P., Rocchi, F., Canella, C., You, W., Chakrabarti, B., Ruigrok, A. N., Bullmore, E. T., Suckling, J., Markicevic, M., Zerbi, V., MRC AIMS Consortium, Baron-Cohen, S., Gozzi, A., Lai, M.-C., Panzeri, S., & Lombardo, M. V. (2020). Intrinsic excitation-inhibition imbalance affects medial prefrontal cortex differently in autistic men versus women. *eLife*, *9*, e55684. <https://doi.org/10.7554/eLife.55684>
- Tröndle, M., Popov, T., Pedroni, A., Pfeiffer, C., Barañczuk-Turska, Z., & Langer, N. (2023). Decomposing age effects in EEG alpha power. *Cortex*, *161*, 116–144. <https://doi.org/10.1016/j.cortex.2023.02.002>
- Valencia, M., López-Azcárate, J., Nicolás, M. J., Alegre, M., & Artieda, J. (2012). Dopaminergic modulation of the spectral characteristics in the rat brain oscillatory activity. *Chaos, Solitons & Fractals*, *45*(5), 619–628. <https://doi.org/10.1016/j.chaos.2011.12.019>
- Venkatasubramanian, G., & Keshavan, M. S. (2016). Biomarkers in Psychiatry—A Critique. *Annals of Neurosciences*, *23*(1), 3–5. <https://doi.org/10.1159/000443549>
- Voytek, B., Kramer, M. A., Case, J., Lepage, K. Q., Tempesta, Z. R., Knight, R. T., & Gazzaley, A. (2015). Age-Related Changes in 1/f Neural Electrophysiological Noise. *Journal of Neuroscience*, *35*(38), 13257–13265. <https://doi.org/10.1523/JNEUROSCI.2332-14.2015>
- Waschke, L., Donoghue, T., Fiedler, L., Smith, S., Garrett, D. D., Voytek, B., & Obleser, J. (2021). Modality-specific tracking of attention and sensory statistics in the human electrophysiological spectral exponent. *eLife*, *10*, e70068. <https://doi.org/10.7554/eLife.70068>
- Wen, H., & Liu, Z. (2016). Separating Fractal and Oscillatory Components in the Power Spectrum of Neurophysiological Signal. *Brain Topography*, *29*(1), 13–26. <https://doi.org/10.1007/s10548-015-0448-0>
- Wiesman, A. I., Da Silva Castanheira, J., & Baillet, S. (2022). Stability of spectral estimates in resting-state magnetoencephalography: Recommendations for minimal data duration with neuroanatomical specificity. *NeuroImage*, *247*, 118823. <https://doi.org/10.1016/j.neuroimage.2021.118823>

## References (Dataset – from the table)

- Adelhöfer, N., Paulus, T., Mückschel, M., Bäumer, T., Bluschke, A., Takacs, A., Tóth-Fáber, E., Tárnok, Z., Roessner, V., Weissbach, A., Münchau, A., & Beste, C. (2021). Increased scale-free and aperiodic neural activity during sensorimotor integration—A novel facet in Tourette syndrome. *Brain Communications*, 3(4), fcab250. <https://doi.org/10.1093/braincomms/fcab250>
- Akbarian, F., Rossi, C., Costers, L., D'hooghe, M. B., D'haeseleer, M., Nagels, G., & Van Schependom, J. (2023). The spectral slope as a marker of excitation/inhibition ratio and cognitive functioning in multiple sclerosis. *Human Brain Mapping*, 44(17), 5784–5794. <https://doi.org/10.1002/hbm.26476>
- Akbarian, F., Rossi, C., Costers, L., D'hooghe, M. B., D'haeseleer, M., Nagels, G., & Van Schependom, J. (2024). Stimulus-related modulation in the 1/f spectral slope suggests an impaired inhibition during a working memory task in people with multiple sclerosis. *Multiple Sclerosis Journal*, 30(8), 1036–1046. <https://doi.org/10.1177/13524585241253777>
- Alnes, S. L., Lucia, M. D., Rossetti, A. O., & Tzovara, A. (2021). Complementary roles of neural synchrony and complexity for indexing consciousness and chances of surviving in acute coma. *NeuroImage*, 245, 118638. <https://doi.org/10.1016/j.neuroimage.2021.118638>
- Andrillon, T., Solelhac, G., Bouchequet, P., Romano, F., Le Brun, M.-P., Brigham, M., Chennaoui, M., & Léger, D. (2020). Revisiting the value of polysomnographic data in insomnia: More than meets the eye. *Sleep Medicine*, 66, 184–200. <https://doi.org/10.1016/j.sleep.2019.12.002>
- Armstrong, C., Zavez, A., Mulcahey, P. J., Sogawa, Y., Gotoff, J. M., Hagopian, S., Minnick, J., & Marsh, E. D. (2022). Quantitative electroencephalographic analysis as a potential biomarker of response to treatment with cannabidiol. *Epilepsy Research*, 185, 106996. <https://doi.org/10.1016/j.eplepsyres.2022.106996>
- Arnett, A. B., Fearey, M., Peisch, V., & Levin, A. R. (2022). Absence of dynamic neural oscillatory response to environmental conditions marks childhood attention deficit hyperactivity disorder. *Journal of Child Psychology and Psychiatry*, 63(12), 1615–1621. <https://doi.org/10.1111/jcpp.13645>
- Arnett, A. B., Peisch, V., & Levin, A. R. (2022). The role of aperiodic spectral slope in event-related potentials and cognition among children with and without attention deficit hyperactivity disorder. *Journal of Neurophysiology*, 128(6), 1546–1554. <https://doi.org/10.1152/jn.00295.2022>
- Arnett, A. B., Rutter, T. M., & Stein, M. A. (2022). Neural Markers of Methylphenidate Response in Children With Attention Deficit Hyperactivity Disorder. *Frontiers in Behavioral Neuroscience*, 16, 887622. <https://doi.org/10.3389/fnbeh.2022.887622>
- Arutiunian, V., Arcara, G., Buyanova, I., Fedorov, M., Davydova, E., Pereverzeva, D., Sorokin, A., Tyushkevich, S., Mamokhina, U., Danilina, K., & Dragoy, O. (2024). Abnormalities in both stimulus-induced and baseline MEG alpha oscillations in the auditory cortex of children with Autism Spectrum Disorder. *Brain Structure and Function*, 229(5), 1225–1242. <https://doi.org/10.1007/s00429-024-02802-7>
- Averna, A., Arlotti, M., Rosa, M., Chabardès, S., Seigneuret, E., Priori, A., Moro, E., & Meoni, S. (2023). Pallidal and Cortical Oscillations in Freely Moving Patients With Dystonia. *Neuromodulation: Technology at the Neural Interface*, 26(8), 1661–1667. <https://doi.org/10.1111/ner.13503>
- Azami, H., Zrenner, C., Brooks, H., Zomorodi, R., Blumberger, D. M., Fischer, C. E., Flint, A., Herrmann, N., Kumar, S., Lanctôt, K., Mah, L., Mulsant, B. H., Pollock, B. G., Rajji, T. K., & on behalf of the PACT-MD Study Group. (2023). Beta to theta power ratio in EEG periodic components as a potential biomarker in mild cognitive impairment and Alzheimer's dementia. *Alzheimer's Research & Therapy*, 15(1), 133. <https://doi.org/10.1186/s13195-023-01280-z>
- Belova, E. M., Semenova, U., Gamaleyeva, A. A., Tomskiy, A. A., & Sedov, A. (2021). Voluntary movements cause beta oscillations increase and broadband slope decrease in the subthalamic nucleus of parkinsonian patients. *European Journal of Neuroscience*, 53(7), 2205–2213. <https://doi.org/10.1111/ejn.14715>
- Bernasconi, F., Pagonabarraga, J., Bejr-Kasem, H., Martinez-Horta, S., Marín-Lahoz, J., Horta-Barba, A., Kulisevsky, J., & Blanke, O. (2023). Theta oscillations and minor hallucinations in Parkinson's disease reveal decrease in frontal lobe functions and later cognitive decline. *Nature Mental Health*, 1(7), 477–488. <https://doi.org/10.1038/s44220-023-00080-6>
- Blaskovich, B., Bullón-Tarrasó, E., Pöhlchen, D., Manafis, A., Neumayer, H., Besedovsky, L., Brückl, T., BeCOME Working Group, Simor, P., Binder, F. P., & Spoormaker, V. I. (2024). The utility of wearable headband electroencephalography and pulse photoplethysmography to assess cortical and physiological arousal in individuals with stress-related mental disorders. *Journal of Sleep Research*, 33(4), e14123. <https://doi.org/10.1111/jsr.14123>
- Boudewyn, M. A., Erickson, M. A., Winsler, K., Barch, D. M., Carter, C. S., Frank, M. J., Gold, J. M., MacDonald, A. W., Ragland, J. D., Silverstein, S. M., Yonelinas, A. P., & Luck, S. J. (2024). Assessing Trial-by-Trial Electrophysiological and Behavioral Markers of Attentional Control and Sensory Precision in Psychotic and Mood Disorders. *Schizophrenia Bulletin*, sbae038. <https://doi.org/10.1093/schbul/sbae038>
- Burelo, M., Bray, J., Gulka, O., Firkbank, M., Taylor, J.-P., & Platt, B. (2024). Advanced qEEG analyses discriminate between dementia subtypes. *Journal of Neuroscience Methods*, 409, 110195. <https://doi.org/10.1016/j.jneumeth.2024.110195>
- Bush, A., Zou, J. F., Lipski, W. J., Kokkinos, V., & Richardson, R. M. (2024). Aperiodic components of local field potentials reflect inherent differences between cortical and subcortical activity. *Cerebral Cortex*, 34(5), bhae186. <https://doi.org/10.1093/cercor/bhae186>

- Carter Leno, V., Begum-Ali, J., Goodwin, A., Mason, L., Pasco, G., Narvekar, N., Pickles, A., Charman, T., Johnson, M., Jones, E., & Team, T. S. (2024). *Cortical markers of excitation/inhibition balance are associated with sensory responsivity from infancy in longitudinal cohorts enriched for autism and ADHD*. Research Square. <https://doi.org/10.21203/rs.3.rs-3879380/v1>
- Carter Leno, V., Begum-Ali, J., Goodwin, A., Mason, L., Pasco, G., Pickles, A., Garg, S., Green, J., Charman, T., Johnson, M. H., Jones, E. J. H., the EDEN, Vassallo, G., Burkitt-Wright, E., Eelloo, J., Gareth Evans, D., West, S., Hupton, E., Lewis, L., ... Taylor, C. (2022). Infant excitation/inhibition balance interacts with executive attention to predict autistic traits in childhood. *Molecular Autism*, 13(1), 46. <https://doi.org/10.1186/s13229-022-00526-1>
- Charlebois, C. M., Anderson, D. N., Smith, E. H., Davis, T. S., Newman, B. J., Peters, A. Y., Arain, A. M., Dorval, A. D., Rolston, J. D., & Butson, C. R. (2024). Circadian changes in aperiodic activity are correlated with seizure reduction in patients with mesial temporal lobe epilepsy treated with responsive neurostimulation. *Epilepsia*, 65(5), 1360–1373. <https://doi.org/10.1111/epi.17938>
- Chen, R., Liu, W., Wang, J.-J., Zhou, D.-D., & Wang, Y. (2024). Aperiodic components and aperiodic-adjusted alpha-band oscillations in children with ADHD. *Journal of Psychiatric Research*, 173, 225–231. <https://doi.org/10.1016/j.jpsychires.2024.03.042>
- Chung, H., Wilkinson, C. L., Said, A. J., Tager-Flusberg, H., & Nelson, C. A. (2024). *Evaluating early EEG correlates of restricted and repetitive behaviors for toddlers with or without autism*. Research Square. <https://doi.org/10.21203/rs.3.rs-3871138/v1>
- Clark, D. L., Khalil, T., Kim, L. H., Noor, M. S., Luo, F., & Kiss, Z. H. (2023). Aperiodic subthalamic activity predicts motor severity and stimulation response in Parkinson disease. *Parkinsonism & Related Disorders*, 110, 105397. <https://doi.org/10.1016/j.parkreldis.2023.105397>
- Clements, C. C., Engelstad, A.-M., Wilkinson, C. L., Hyde, C., Hartney, M., Simmons, A., Tager-Flusberg, H., Jeste, S., & Nelson, C. A. (2024). *Resting state EEG in young children with Tuberous Sclerosis Complex*. Research Square. <https://doi.org/10.21203/rs.3.rs-4543112/v1>
- Coa, R., La Cava, S. M., Baldazzi, G., Polizzi, L., Pinna, G., Conti, C., Defazio, G., Pani, D., & Puligheddu, M. (2022). Estimated EEG functional connectivity and aperiodic component induced by vagal nerve stimulation in patients with drug-resistant epilepsy. *Frontiers in Neurology*, 13, 1030118. <https://doi.org/10.3389/fneur.2022.1030118>
- Colombo, M. A., Comanducci, A., Casarotto, S., Derchi, C.-C., Annen, J., Viganò, A., Mazza, A., Trimarchi, P. D., Boly, M., Fecchio, M., Bodart, O., Navarro, J., Laureys, S., Gosseries, O., Massimini, M., Sarasso, S., & Rosanova, M. (2023). Beyond alpha power: EEG spatial and spectral gradients robustly stratify disorders of consciousness. *Cerebral Cortex*, 33(11), 7193–7210. <https://doi.org/10.1093/cercor/bhad031>
- Da Silva Castanheira, J., Wiesman, A. I., Hansen, J. Y., Mistic, B., Baillet, S., Breitner, J., Poirier, J., Baillet, S., Bellec, P., Bohbot, V., Chakravarty, M., Collins, L., Etienne, P., Evans, A., Gauthier, S., Hoge, R., Ituria-Medina, Y., Multhaup, G., Münter, L.-M., ... Vitali, P. (2024). The neurophysiological brain-fingerprint of Parkinson's disease. *eBioMedicine*, 105, 105201. <https://doi.org/10.1016/j.ebiom.2024.105201>
- Dakwar-Kawar, O., Mairon, N., Hochman, S., Berger, I., Cohen Kadosh, R., & Nahum, M. (2023). Transcranial random noise stimulation combined with cognitive training for treating ADHD: A randomized, sham-controlled clinical trial. *Translational Psychiatry*, 13(1), 271. <https://doi.org/10.1038/s41398-023-02547-7>
- Dakwar-Kawar, O., Mentch-Lifshits, T., Hochman, S., Mairon, N., Cohen, R., Balasubramani, P., Mishra, J., Jordan, J., Cohen Kadosh, R., Berger, I., & Nahum, M. (2024). Aperiodic and periodic components of oscillatory brain activity in relation to cognition and symptoms in pediatric ADHD. *Cerebral Cortex*, 34(6), bhae236. <https://doi.org/10.1093/cercor/bhae236>
- Darmani, G., Drummond, N. M., Ramezani, H., Saha, U., Hoque, T., Udupa, K., Sarica, C., Zeng, K., Cortez Grippe, T., Nankoo, J., Bergmann, T. O., Hodaie, M., Kalia, S. K., Lozano, A. M., Hutchison, W. D., Fasano, A., & Chen, R. (2023). Long-Term Recording of Subthalamic Aperiodic Activities and Beta Bursts in Parkinson's Disease. *Movement Disorders*, 38(2), 232–243. <https://doi.org/10.1002/mds.29276>
- Davis, M.-C., Fitzgerald, P. B., Bailey, N. W., Sullivan, C., Stout, J. C., Hill, A. T., & Hoy, K. E. (2023). Effects of medial prefrontal transcranial alternating current stimulation on neural activity and connectivity in people with Huntington's disease and neurotypical controls. *Brain Research*, 1811, 148379. <https://doi.org/10.1016/j.brainres.2023.148379>
- Davis, M.-C., Hill, A. T., Fitzgerald, P. B., Bailey, N. W., Stout, J. C., & Hoy, K. E. (2023). Neurophysiological correlates of non-motor symptoms in late premanifest and early-stage manifest huntington's disease. *Clinical Neurophysiology*, 153, 166–176. <https://doi.org/10.1016/j.clinph.2023.06.021>
- Dede, A. J. O., Xiao, W., Vaci, N., Cohen, M. X., & Milne, E. (2023). *Lack of univariate, clinically-relevant biomarkers of autism in resting state EEG: A study of 776 participants*. <https://doi.org/10.1101/2023.05.21.23290300>
- Donnelly, N. A., Bartsch, U., Moulding, H. A., Eaton, C., Marston, H., Hall, J. H., Hall, J., Owen, M. J., Van Den Bree, M. B., & Jones, M. W. (2022). Sleep EEG in young people with 22q11.2 deletion syndrome: A cross-sectional study of slow-waves, spindles and correlations with memory and neurodevelopmental symptoms. *eLife*, 11, e75482. <https://doi.org/10.7554/eLife.75482>
- Duma, G. M., Cuozzo, S., Wilson, L., Danieli, A., Bonanni, P., & Pellegrino, G. (2024). Excitation/Inhibition balance relates to cognitive function and gene expression in temporal lobe epilepsy: A high density EEG assessment with aperiodic exponent. *Brain Communications*, 6(4), fcae231. <https://doi.org/10.1093/braincomms/fcae231>

- Earl, R. J., Ford, T. C., Lum, J. A. G., Enticott, P. G., & Hill, A. T. (2024). Exploring aperiodic activity in first episode schizophrenia spectrum psychosis: A resting-state EEG analysis. *Brain Research*, 1840, 149052. <https://doi.org/10.1016/j.brainres.2024.149052>
- Ellis, C. L., Ahmad, J., Zoumpoulaki, A., Dimitrov, M., Velthuis, H. E., Pereira, A. C., Wong, N. M. L., Ponteduro, M. F., Kowalewski, L., Leonard, A., Garces, P., Huang, Q., Daly, E., Murphy, D., & McAlonan, G. (2023). *The dynamically neurodiverse human brain: Measuring excitatory-inhibitory dynamics and identifying homeostatic differences in autistic and non-autistic people*. medRxiv. <https://doi.org/10.1101/2023.06.19.23291507>
- Geiger, M., Hurewitz, S. R., Pawlowski, K., Baumer, N. T., & Wilkinson, C. L. (2024). *Alterations in aperiodic and periodic EEG activity in young children with Down syndrome*. medRxiv. <https://doi.org/10.1101/2024.05.01.24306729>
- Gimenez-Aparisi, G., Guijarro-Estelles, E., Chornet-Lurbe, A., Ballesta-Martinez, S., Pardo-Hernandez, M., & Ye-Lin, Y. (2023). Early detection of Parkinson's disease: Systematic analysis of the influence of the eyes on quantitative biomarkers in resting state electroencephalography. *Heliyon*, 9(10), e20625. <https://doi.org/10.1016/j.heliyon.2023.e20625>
- Glica, A., Wasilewska, K., Jurkowska, J., Żygierewicz, J., Kossowski, B., & Jednoróg, K. (2024). *Reevaluating the Neural Noise Hypothesis in Dyslexia: Insights from EEG and 7T MRS Biomarkers*. bioRxiv. <https://doi.org/10.1101/2024.06.11.598476>
- González-Villar, A. J., Samartin-Veiga, N., Arias, M., & Carrillo-de-la-Peña, M. T. (2017). Increased neural noise and impaired brain synchronization in fibromyalgia patients during cognitive interference. *Scientific Reports*, 7(1). <https://doi.org/10.1038/s41598-017-06103-4>
- Hacker, C., Mocchi, M. M., Xiao, J., Metzger, B. A., Adkinson, J. A., Pascuzzi, B. R., Mathura, R. C., Oswald, D., Watrous, A., Bartoli, E., Allawala, A., Pirtle, V., Fan, X., Danstrom, I., Shofty, B., Banks, G., Zhang, Y., Armenta-Salas, M., Mirpour, K., ... Bijanki, K. R. (2023). *Aperiodic neural activity is a biomarker for depression severity*. medRxiv. <https://doi.org/10.1101/2023.11.07.23298040>
- Helson, P., Lundqvist, D., Svenningsson, P., Vinding, M. C., & Kumar, A. (2023). Cortex-wide topography of 1/f-exponent in Parkinson's disease. *NPJ Parkinson's Disease*, 9(1), 109. <https://doi.org/10.1038/s41531-023-00553-6>
- Hernandez, J., Lina, J.-M., Dubé, J., Lafrenière, A., Gagnon, J.-F., Montplaisir, J.-Y., Postuma, R. B., & Carrier, J. (2024). EEG rhythmic and arrhythmic spectral components and functional connectivity at resting state may predict the development of synucleinopathies in idiopathic REM sleep behavior disorder. *Sleep*, zsa074. <https://doi.org/10.1093/sleep/zsa074>
- Houtman, S. J., Lammertse, H. C. A., Van Berkel, A. A., Balagura, G., Gardella, E., Ramautar, J. R., Reale, C., Möller, R. S., Zara, F., Striano, P., Misra-Isrie, M., Van Haelst, M. M., Engelen, M., Van Zuijen, T. L., Mansvelter, H. D., Verhage, M., Bruining, H., & Linkenkaer-Hansen, K. (2021). STXBP1 Syndrome Is Characterized by Inhibition-Dominated Dynamics of Resting-State EEG. *Frontiers in Physiology*, 12, 775172. <https://doi.org/10.3389/fphys.2021.775172>
- Hussain, M. Z., Lewis, C. J., Jamil, A., Franke, L. M., Camprodon, J. A., & Hadimani, R. L. (2023). Investigation of EEG Neurophysiological Relationship to TMS Response in Mild Traumatic Brain Injury Patients. *IEEE Transactions on Magnetics*, 59(11), 1–5. <https://doi.org/10.1109/TMAG.2023.3282614>
- Inouye, T., Matsumoto, Y., Shinosaki, K., Iyama, A., & Toi, S. (1994). Increases in the power spectral slope of background electroencephalogram just prior to asymmetric spike and wave complexes in epileptic patients. *Neuroscience Letters*, 173, 197–200. [https://doi.org/10.1016/0304-3940\(94\)90182-1](https://doi.org/10.1016/0304-3940(94)90182-1)
- Jacob, M. S., Sargent, K., Roach, B. J., Shamshiri, E. A., Mathalon, D. H., & Ford, J. M. (2023). The Scanner as the Stimulus: Deficient Gamma-BOLD Coupling in Schizophrenia at Rest. *Schizophrenia Bulletin*, 49(5), 1364–1374. <https://doi.org/10.1093/schbul/sbad014>
- Janjarasjitt, S. (2015). Spectral exponent characteristics of intracranial EEGs for epileptic seizure classification. *IRBM*, 36(1), 33–39. <https://doi.org/10.1016/j.irbm.2014.07.005>
- Janjarasjitt, S., & Loparo, K. A. (2013). Comparison of complexity measures using two complex system analysis methods applied to the epileptic ECoG. *Journal of the Korean Physical Society*, 63(8), 1659–1665. <https://doi.org/10.3938/jkps.63.1659>
- Janjarasjitt, S., & Loparo, K. A. (2014). Examination of scale-invariant characteristics of epileptic electroencephalograms using wavelet-based analysis. *Computers & Electrical Engineering*, 40(5), 1766–1773. <https://doi.org/10.1016/j.compeleceng.2014.04.005>
- Janjarasjitt, S., & Loparo, K. A. (2015). Examination of Scale-Invariant Characteristics of Multi-channel ECoG Data for Epileptic Seizure Localization. *Journal of Medical and Biological Engineering*, 35(2), 278–284. <https://doi.org/10.1007/s40846-015-0020-0>
- Jiang, H., Kokkinos, V., Ye, S., Urban, A., Bagić, A., Richardson, M., & He, B. (2022). Interictal SEEG Resting-State Connectivity Localizes the Seizure Onset Zone and Predicts Seizure Outcome. *Advanced Science*, 9(18), 2200887. <https://doi.org/10.1002/advs.202200887>
- Johnston, P. R., McIntosh, A. R., & Meltzer, J. A. (2023). Spectral slowing in chronic stroke reflects abnormalities in both periodic and aperiodic neural dynamics. *NeuroImage: Clinical*, 37, 103277. <https://doi.org/10.1016/j.nicl.2022.103277>
- Joshi, P., Shigo, L., Smith, B., Kilbane, C., Loparo, K., Ridgel, A. L., & Shaikh, A. (2024). *Electrophysiological Correlates of Dynamic Cycling in Parkinson's Disease*. medRxiv. <https://doi.org/10.1101/2024.02.16.24301952>
- Karalunas, S. L., Ostlund, B. D., Alperin, B. R., Figuracion, M., Gustafsson, H. C., Deming, E. M., Foti, D., Antovich, D., Dude, J., Nigg, J., & Sullivan, E. (2022). Electroencephalogram aperiodic power spectral slope can be reliably measured and predicts ADHD risk in early development. *Developmental Psychobiology*, 64(3). <https://doi.org/10.1002/dev.22228>

- Kaur, K., Horsley, J. J., Kozma, C., Hall, G. R., Owen, T. W., Wang, Y., Singh, G., Chandra, S. P., Tripathi, M., & Taylor, P. N. (2023). *Aperiodic MEG abnormality in patients with focal to bilateral tonic-clonic seizures*. arXiv. <https://doi.org/10.48550/ARXIV.2310.12080>
- Kluger, D. S., Erdbrügger, T., Stier, C., Höltershinken, M. B., Abbasi, O., Saltafossi, M., Unnwongse, K., Wehner, T., Wellmer, J., Gross, J., & Wolters, C. H. (2023). *Respiratory modulations of cortical excitability and interictal spike timing in focal epilepsy—A case report*. biorXiv. <https://doi.org/10.1101/2023.08.28.555061>
- Kopčanová, M., Tait, L., Donoghue, T., Stothart, G., Smith, L., Flores-Sandoval, A. A., Davila-Perez, P., Buss, S., Shafi, M. M., Pascual-Leone, A., Fried, P. J., & Benwell, C. S. Y. (2024). Resting-state EEG signatures of Alzheimer's disease are driven by periodic but not aperiodic changes. *Neurobiology of Disease*, *190*, 106380. <https://doi.org/10.1016/j.nbd.2023.106380>
- Kozma, C., Schroeder, G., Owen, T., De Tisi, J., McEvoy, A. W., Miserocchi, A., Duncan, J., Wang, Y., & Taylor, P. N. (2024). Identifying epileptogenic abnormality by decomposing intracranial EEG and MEG power spectra. *Journal of Neuroscience Methods*, *408*, 110180. <https://doi.org/10.1016/j.jneumeth.2024.110180>
- Kundu, B., Charlebois, C. M., Anderson, D. N., Peters, A., & Rolston, J. D. (2023). Chronic intracranial recordings after resection for epilepsy reveal a “running down” of epileptiform activity. *Epilepsia*, *64*(7). <https://doi.org/10.1111/epi.17645>
- Lanzone, J., Colombo, M. A., Sarasso, S., Zappasodi, F., Rosanova, M., Massimini, M., Di Lazzaro, V., & Assenza, G. (2022). EEG spectral exponent as a synthetic index for the longitudinal assessment of stroke recovery. *Clinical Neurophysiology*, *137*, 92–101. <https://doi.org/10.1016/j.clinph.2022.02.022>
- Lanzone, J., Zulueta, A., Boscarino, M., Gallotta, M., Argentieri, M. R., Viganò, A., Sarasso, S., Colombo, M. A., D'Ambrosio, S., Lunetta, C., & Parati, E. (2024). Spectral exponent assessment and neurofilament light chain: A comprehensive approach to describe recovery patterns in stroke. *Frontiers in Neurology*, *15*, 1329044. <https://doi.org/10.3389/fneur.2024.1329044>
- Li, H., Liao, J., Wang, H., Zhan, C. A., & Yang, F. (2024). EEG power spectra parameterization and adaptive channel selection towards semi-supervised seizure prediction. *Computers in Biology and Medicine*, *175*, 108510. <https://doi.org/10.1016/j.compbiomed.2024.108510>
- Li, Q., Coulson Theodorsen, M., Konvalinka, I., Eskelund, K., Karstoft, K.-I., Bo Andersen, S., & Andersen, T. S. (2022). Resting-state EEG functional connectivity predicts post-traumatic stress disorder subtypes in veterans. *Journal of Neural Engineering*, *19*(6), 066005. <https://doi.org/10.1088/1741-2552/ac9aaf>
- Li, Q., Weiland, R. F., Konvalinka, I., Mansvelder, H. D., Andersen, T. S., Smit, D. J. A., Begeer, S., & Linkenkaer-Hansen, K. (2022). Intellectually able adults with autism spectrum disorder show typical resting-state EEG activity. *Scientific Reports*, *12*(1), 19016. <https://doi.org/10.1038/s41598-022-22597-z>
- Liao, J., Wang, J., Zhan, C. A., & Yang, F. (2024). Parameterized aperiodic and periodic components of single-channel EEG enables reliable seizure detection. *Physical and Engineering Sciences in Medicine*, *47*(1), 31–47. <https://doi.org/10.1007/s13246-023-01340-6>
- Liu, S., Wang, J., Li, S., & Cai, L. (2023). Epileptic Seizure Detection and Prediction in EEGs Using Power Spectra Density Parameterization. *IEEE Transactions on Neural Systems and Rehabilitation Engineering*, *31*, 3884–3894. <https://doi.org/10.1109/TNSRE.2023.3317093>
- Liu, X., Guang, J., Glowinsky, S., Abadi, H., Arkadir, D., Linetsky, E., Abu Snineh, M., León, J. F., Israel, Z., Wang, W., & Bergman, H. (2024). Subthalamic nucleus input-output dynamics are correlated with Parkinson's burden and treatment efficacy. *NPJ Parkinson's Disease*, *10*(1), 117. <https://doi.org/10.1038/s41531-024-00737-8>
- Lopez Ramos, C. G., Rockhill, A. P., Shahin, M. N., Gragg, A., Tan, H., Yamamoto, E. A., Fecker, A. L., Ismail, M., Cleary, D. R., & Raslan, A. M. (2024). Beta Oscillations in the Sensory Thalamus During Severe Facial Neuropathic Pain Using Novel Sensing Deep Brain Stimulation. *Neuromodulation: Technology at the Neural Interface*, *S1094715924001065*. <https://doi.org/10.1016/j.neurom.2024.05.003>
- Makale, M. T., Abbasi, S., Nybo, C., Keifer, J., Christman, L., Fairchild, J. K., Yesavage, J., Blum, K., Gold, M. S., Baron, D., Cadet, J. L., Elman, I., Dennen, C. A., & Murphy, K. T. (2023). Personalized repetitive transcranial magnetic stimulation (prTMS®) for post-traumatic stress disorder (ptsd) in military combat veterans. *Heliyon*, *9*(8), e18943. <https://doi.org/10.1016/j.heliyon.2023.e18943>
- Makale, M. T., Nybo, C., Keifer, J., Blum, K., Dennen, C. A., Baron, D., Sunder, K., Elman, I., Makale, M. R., Thanos, P. K., & Murphy, K. T. (2023). Preliminary Observations of Personalized Repetitive Magnetic Stimulation (PrTMS) Guided by EEG Spectra for Concussion. *Brain Sciences*, *13*(8), 1179. <https://doi.org/10.3390/brainsci13081179>
- Manyukhina, V. O., Prokofyev, A. O., Galuta, I. A., Goiaeva, D. E., Obukhova, T. S., Schneiderman, J. F., Altukhov, D. I., Stroganova, T. A., & Orekhova, E. V. (2022). Globally elevated excitation–inhibition ratio in children with autism spectrum disorder and below-average intelligence. *Molecular Autism*, *13*(1), 20. <https://doi.org/10.1186/s13229-022-00498-2>
- Martin, S., Iturrate, I., Chavarriga, R., Leeb, R., Sobolewski, A., Li, A. M., Zaldivar, J., Peciu-Florianu, I., Pralong, E., Castro-Jiménez, M., Benninger, D., Vingerhoets, F., Knight, R. T., Bloch, J., & Millán, J. del R. (2018). Differential contributions of subthalamic beta rhythms and 1/f broadband activity to motor symptoms in Parkinson's disease. *NPJ Parkinson's Disease*, *4*(1). <https://doi.org/10.1038/s41531-018-0068-y>

- Martinez, C., & Chen, Z. S. (2023). Identification of atypical sleep microarchitecture biomarkers in children with autism spectrum disorder. *Frontiers in Psychiatry, 14*, 1115374. <https://doi.org/10.3389/fpsy.2023.1115374>
- Martínez-Cañada, P., Pérez-Valero, E., Minguillon, J., Pelayo, F., López-Gordo, M. A., & Morillas, C. (2023). Combining aperiodic 1/f slopes and brain simulation: An EEG/MEG proxy marker of excitation/inhibition imbalance in Alzheimer's disease. *Alzheimer's & Dementia: Diagnosis, Assessment & Disease Monitoring, 15*(3), e12477. <https://doi.org/10.1002/dad2.12477>
- Maschke, C., Belloli, L., Manasova, D., Sitt, J. D., & Blain-Moraes, S. (2024). *The role of etiology in the identification of clinical markers of consciousness: Comparing EEG alpha power, complexity, and spectral exponent*. medRxiv. <https://doi.org/10.1101/2024.03.20.24304639>
- Maschke, C., Duclos, C., Owen, A. M., Jerbi, K., & Blain-Moraes, S. (2023). Aperiodic brain activity and response to anesthesia vary in disorders of consciousness. *NeuroImage, 275*, 120154. <https://doi.org/10.1016/j.neuroimage.2023.120154>
- McCleod, M., Borneman, S., & Malaia, E. (2024). *Neurocomputational Phenotypes in Female and Male Autistic Individuals* (Version 1). arXiv. <https://doi.org/10.48550/ARXIV.2405.04248>
- McKeown, D. J., Jones, M., Pihl, C., Finley, A. J., Kelley, N., Baumann, O., Schinazi, V. R., Moustafa, A. A., Cavanagh, J. F., & Angus, D. J. (2024). Medication-invariant resting aperiodic and periodic neural activity in Parkinson's disease. *Psychophysiology, 61*(4), e14478. <https://doi.org/10.1111/psyp.14478>
- Meisenhelter, S., Quon, R. J., Steimel, S. A., Testorf, M. E., Camp, E. J., Moein, P., Culler, G. W., Gross, R. E., Lega, B. C., Sperling, M. R., Kahana, M. J., & Jobst, B. C. (2021). Interictal Epileptiform Discharges are Task Dependent and are Associated with Lasting Electrocorticographic Changes. *Cerebral Cortex Communications, 2*(2), tgab019. <https://doi.org/10.1093/texcom/tgab019>
- Molina, J. L., Voytek, B., Thomas, M. L., Joshi, Y. B., Bhakta, S. G., Talledo, J. A., Swerdlow, N. R., & Light, G. A. (2020). Memantine Effects on Electroencephalographic Measures of Putative Excitatory/Inhibitory Balance in Schizophrenia. *Biological Psychiatry: Cognitive Neuroscience and Neuroimaging, 5*(6), 562–568. <https://doi.org/10.1016/j.bpsc.2020.02.004>
- Monchy, N., Modolo, J., Houvenaghel, J.-F., Voytek, B., & Duprez, J. (2023). *Changes in electrophysiological aperiodic activity during cognitive control in Parkinson's disease*. bioRxiv. <https://doi.org/10.1101/2023.10.09.561166>
- Mostile, G., Giuliano, L., Dibilio, V., Luca, A., Cicero, C. E., Sofia, V., Nicoletti, A., & Zappia, M. (2019). Complexity of electrocortical activity as potential biomarker in untreated Parkinson's disease. *Journal of Neural Transmission, 126*(2), 167–172. <https://doi.org/10.1007/s00702-018-1961-6>
- Numan, T., Breedt, L. C., Maciel, B. de A. P. C., Kulik, S. D., Derks, J., Schoonheim, M. M., Klein, M., de Witt Hamer, P. C., Miller, J. J., Gerstner, E. R., Stufflebeam, S. M., Hillebrand, A., Stam, C. J., Geurts, J. J. G., Reijneveld, J. C., & Douw, L. (2022). Regional healthy brain activity, glioma occurrence and symptomatology. *Brain, 145*(10), 3654–3665. <https://doi.org/10.1093/brain/awac180>
- Numan, T., Kulik, S. D., Moraal, B., Reijneveld, J. C., Stam, C. J., De Witt Hamer, P. C., Derks, J., Bruynzeel, A. M. E., Van Linde, M. E., Wesseling, P., Kouwenhoven, M. C. M., Klein, M., Würdinger, T., Barkhof, F., Geurts, J. J. G., Hillebrand, A., & Douw, L. (2021). Non-invasively measured brain activity and radiological progression in diffuse glioma. *Scientific Reports, 11*(1), 18990. <https://doi.org/10.1038/s41598-021-97818-y>
- Nwakamma, M. C., Stillman, A. M., Gabard-Durnam, L. J., Cavanagh, J. F., Hillman, C. H., & Morris, T. P. (2024). Slowing of Parameterized Resting-State Electroencephalography After Mild Traumatic Brain Injury. *Neurotrauma Reports, 5*(1), 448–461. <https://doi.org/10.1089/neur.2024.0004>
- Ostlund, B. D., Alperin, B. R., Drew, T., & Karalunas, S. L. (2021). Behavioral and cognitive correlates of the aperiodic (1/f-like) exponent of the EEG power spectrum in adolescents with and without ADHD. *Developmental Cognitive Neuroscience, 48*, 100931. <https://doi.org/10.1016/j.dcn.2021.100931>
- Pani, S. M., Fraschini, M., Figorilli, M., Tamburrino, L., Ferri, R., & Puligheddu, M. (2021). Sleep-related hypermotor epilepsy and non-rapid eye movement parasomnias: Differences in the periodic and aperiodic component of the electroencephalographic power spectra. *Journal of Sleep Research, 30*(1), 13339. <https://doi.org/10.1111/jsr.13339>
- Pardo-Valencia, J., Fernández-García, C., Alonso-Frech, F., & Foffani, G. (2024). Oscillatory vs. Non-oscillatory subthalamic beta activity in Parkinson's disease. *The Journal of Physiology, 602*(2), 373–395. <https://doi.org/10.1113/JP284768>
- Peisch, V., & Arnett, A. B. (2024). Neural activation, cognitive control, and attention deficit hyperactivity disorder: Evaluating three competing etiological models. *Development and Psychopathology, 36*(1), 255–265. <https://doi.org/10.1017/S095457942200116X>
- Peisch, V., Rutter, T. M., Sargent, C., Oommen, R., Stein, M. A., & Arnett, A. B. (2024). Longitudinal Stability of Neural Correlates of Pediatric Attention Deficit Hyperactivity Disorder: A Pilot Study of Event Related Potentials and Electroencephalography. *Journal of Attention Disorders, 28*(4), 493–511. <https://doi.org/10.1177/10870547231214983>
- Peng, C., Wang, Z., Sun, Y., Mo, Y., Hu, K., Li, Q., Hou, X., Zhu, Z., He, X., Xue, S., & Zhang, S. (2024). Subthalamic nucleus dynamics track microlesion effect in Parkinson's disease. *Frontiers in Cell and Developmental Biology, 12*, 1370287. <https://doi.org/10.3389/fcell.2024.1370287>
- Perera, M. P. N., Mallawaarachchi, S., Bailey, N. W., Murphy, O. W., & Fitzgerald, P. B. (2023). Obsessive-compulsive disorder (OCD) is associated with increased electroencephalographic (EEG) delta and theta oscillatory power but reduced delta connectivity. *Journal of Psychiatric Research, 163*, 310–317. <https://doi.org/10.1016/j.jpsychires.2023.05.026>

- Pertermann, M., Bluschke, A., Roessner, V., & Beste, C. (2019). The Modulation of Neural Noise Underlies the Effectiveness of Methylphenidate Treatment in Attention-Deficit/Hyperactivity Disorder. *Biological Psychiatry: Cognitive Neuroscience and Neuroimaging*, 4(8), 743–750. <https://doi.org/10.1016/j.bpsc.2019.03.011>
- Peterson, E. J., Rosen, B. Q., Belger, A., Voytek, B., & Campbell, A. M. (2023). Aperiodic Neural Activity is a Better Predictor of Schizophrenia than Neural Oscillations. *Clinical EEG and Neuroscience*, 54(4), 434–445. <https://doi.org/10.1177/15500594231165589>
- Racz, F. S., Farkas, K., Stylianou, O., Kaposzta, Z., Czoch, A., Mukli, P., Csukly, G., & Eke, A. (2021). Separating scale-free and oscillatory components of neural activity in schizophrenia. *Brain and Behavior*, 11(5). <https://doi.org/10.1002/brb3.2047>
- Roascio, M., Canessa, A., Trò, R., Mattioli, P., Famà, F., Giorgetti, L., Girtler, N., Orso, B., Morbelli, S., Nobili, F., Arnaldi, D., & Arnulfo, G. (2022). Phase and amplitude electroencephalography correlations change with disease progression in people with idiopathic rapid eye-movement sleep behavior disorder. *Sleep*, 45(1), zsab232. <https://doi.org/10.1093/sleep/zsab232>
- Robertson, M. M., Furlong, S., Voytek, B., Donoghue, T., Boettiger, C. A., & Sheridan, M. A. (2019). EEG Power Spectral Slope differs by ADHD status and stimulant medication exposure in early childhood. *Journal of Neurophysiology*, 122(6), 2427–2437. <https://doi.org/10.1152/jn.00388.2019>
- Roche, K. J., LeBlanc, J. J., Levin, A. R., O’Leary, H. M., Baczewski, L. M., & Nelson, C. A. (2019). Electroencephalographic spectral power as a marker of cortical function and disease severity in girls with Rett syndrome. *Journal of Neurodevelopmental Disorders*, 11(1), 15. <https://doi.org/10.1186/s11689-019-9275-z>
- Rosenblum, Y., Bovy, L., Weber, F. D., Steiger, A., Zeising, M., & Dresler, M. (2023). Increased Aperiodic Neural Activity During Sleep in Major Depressive Disorder. *Biological Psychiatry Global Open Science*, 3(4), 1021–1029. <https://doi.org/10.1016/j.bpsgos.2022.10.001>
- Rosenblum, Y., Shiner, T., Bregman, N., Giladi, N., Maidan, I., Fahoum, F., & Mirelman, A. (2023). Decreased aperiodic neural activity in Parkinson’s disease and dementia with Lewy bodies. *Journal of Neurology*, 270(8), 3958–3969. <https://doi.org/10.1007/s00415-023-11728-9>
- Saby, J. N., Mulcahey, P. J., Benke, T. A., Peters, S. U., Standridge, S. M., Lieberman, D. N., Key, A. P., Percy, A. K., Nelson, C. A., Roberts, T. P. L., Neul, J. L., & Marsh, E. D. (2024). Electroencephalographic Correlates of Clinical Severity in the Natural history study of RTT and Related Disorders. *Annals of Neurology*, 96(1), 175–186. <https://doi.org/10.1002/ana.26948>
- Saby, J. N., Mulcahey, P. J., Zavez, A. E., Peters, S. U., Standridge, S. M., Swanson, L. C., Lieberman, D. N., Olson, H. E., Key, A. P., Percy, A. K., Neul, J. L., Nelson, C. A., Roberts, T. P. L., Benke, T. A., & Marsh, E. D. (2022). Electrophysiological biomarkers of brain function in CDKL5 deficiency disorder. *Brain Communications*, 4(4), fcac197. <https://doi.org/10.1093/braincomms/fcac197>
- Semenova, U., Popov, V., Tomskiy, A., Shaikh, A. G., & Sedov, A. (2021). Pallidal 1/f asymmetry in patients with cervical dystonia. *European Journal of Neuroscience*, 53(7), 2214–2219. <https://doi.org/10.1111/ejn.14729>
- Shuffrey, L. C., Pini, N., Potter, M., Springer, P., Lucchini, M., Rayport, Y., Sania, A., Firestein, M., Brink, L., Isler, J. R., Odendaal, H., & Fifer, W. P. (2022). Aperiodic electrophysiological activity in preterm infants is linked to subsequent autism risk. *Developmental Psychobiology*, 64(4). <https://doi.org/10.1002/dev.22271>
- Smith, S. E., Kosik, E. L., Van Engen, Q., Kohn, J., Hill, A. T., Zomorodi, R., Blumberger, D. M., Daskalakis, Z. J., Hadas, I., & Voytek, B. (2023). Magnetic seizure therapy and electroconvulsive therapy increase aperiodic activity. *Translational Psychiatry*, 13(1), 347. <https://doi.org/10.1038/s41398-023-02631-y>
- Smith, S. E., Ma, V., Gonzalez, C., Chapman, A., Printz, D., Voytek, B., & Soltani, M. (2023). Clinical EEG slowing induced by electroconvulsive therapy is better described by increased frontal aperiodic activity. *Translational Psychiatry*, 13(1), 348. <https://doi.org/10.1038/s41398-023-02634-9>
- Snipes, S., Krugliakova, E., Jaramillo, V., Volk, C., Furrer, M., Studler, M., LeBourgeois, M., Kurth, S., Jenni, O. G., & Huber, R. (2024). Wake EEG oscillation dynamics reflect both sleep need and brain maturation across childhood and adolescence [Preprint]. bioRxiv. <https://doi.org/10.1101/2024.02.24.581878>
- Sonkusare, S., Ding, Q., Zhang, Y., Wang, L., Gong, H., Mandali, A., Manssuer, L., Zhao, Y.-J., Pan, Y., Zhang, C., Li, D., Sun, B., & Voon, V. (2022). Power signatures of habenular neuronal signals in patients with bipolar or unipolar depressive disorders correlate with their disease severity. *Translational Psychiatry*, 12(1), 72. <https://doi.org/10.1038/s41398-022-01830-3>
- Spencer, K. M., Nakhnikian, A., Hirano, Y., & Levin, M. (2023). The contribution of gamma bursting to spontaneous gamma activity in schizophrenia. *Frontiers in Human Neuroscience*, 17, 1130897. <https://doi.org/10.3389/fnhum.2023.1130897>
- Springer, S. D., Wiesman, A. I., May, P. E., Schantell, M., Johnson, H. J., Willett, M. P., Castelblanco, C. A., Eastman, J. A., Christopher-Hayes, N. J., Wolfson, S. L., Johnson, C. M., Murman, D. L., & Wilson, T. W. (2022). Altered visual entrainment in patients with Alzheimer’s disease: Magnetoencephalography evidence. *Brain Communications*, 4(4), fcac198. <https://doi.org/10.1093/braincomms/fcac198>
- Stolz, L. A., Kohn, J. N., Smith, S. E., Benster, L. L., & Appelbaum, L. G. (2023). Predictive Biomarkers of Treatment Response in Major Depressive Disorder. *Brain Sciences*, 13(11), 1570. <https://doi.org/10.3390/brainsci13111570>
- Tewarie, P. K. B., Beernink, T. M. J., Eertman-Meyer, C. J., Cornet, A. D., Beishuizen, A., Van Putten, M. J. A. M., & Tjepkema-Cloostermans, M. C. (2023). Early EEG monitoring predicts clinical outcome in patients with moderate to severe traumatic brain injury. *NeuroImage: Clinical*, 37, 103350. <https://doi.org/10.1016/j.nicl.2023.103350>



- To, W. T., Song, J.-J., Mohan, A., De Ridder, D., & Vanneste, S. (2021). Thalamocortical dysrhythmia underpin the log-dynamics in phantom sounds. In *Progress in Brain Research* (Vol. 262, pp. 511–526). Elsevier.  
<https://doi.org/10.1016/bs.pbr.2021.04.001>
- Tröndle, M., Popov, T., Dziemian, S., & Langer, N. (2022). Decomposing the role of alpha oscillations during brain maturation. *eLife*, *11*, e77571. <https://doi.org/10.7554/eLife.77571>
- Trubshaw, M., Gohil, C., Yoganathan, K., Kohl, O., Edmond, E., Proudfoot, M., Thompson, A. G., Talbot, K., Stagg, C. J., Nobre, A. C., Woolrich, M., & Turner, M. R. (2024). The cortical neurophysiological signature of amyotrophic lateral sclerosis. *Brain Communications*, *6*(3), fcae164. <https://doi.org/10.1093/braincomms/fcae164>
- Turri, C., Di Dona, G., Santoni, A., Zamfira, D. A., Franchin, L., Melcher, D., & Ronconi, L. (2023). Periodic and Aperiodic EEG Features as Potential Markers of Developmental Dyslexia. *Biomedicines*, *11*(6), 1607.  
<https://doi.org/10.3390/biomedicines11061607>
- van Heumen, S., Moreau, J. T., Simard-Tremblay, E., Albrecht, S., Dudley, R. W., & Baillet, S. (2021). Case Report: Aperiodic Fluctuations of Neural Activity in the Ictal MEG of a Child With Drug-Resistant Fronto-Temporal Epilepsy. *Frontiers in Human Neuroscience*, *15*, 646426. <https://doi.org/10.3389/fnhum.2021.646426>
- Van Nifterick, A. M., Mulder, D., Duineveld, D. J., Diachenko, M., Scheltens, P., Stam, C. J., Van Kesteren, R. E., Linkenkaer-Hansen, K., Hillebrand, A., & Gouw, A. A. (2023). Resting-state oscillations reveal disturbed excitation–inhibition ratio in Alzheimer’s disease patients. *Scientific Reports*, *13*(1), 7419. <https://doi.org/10.1038/s41598-023-33973-8>
- Veerakumar, A., Tiruvadi, V., Howell, B., Waters, A. C., Crowell, A. L., Voytek, B., Riva-Posse, P., Denison, L., Rajendra, J. K., Edwards, J. A., Bijanki, K. R., Choi, K. S., & Mayberg, H. S. (2019). Field potential 1/f activity in the subcallosal cingulate region as a candidate signal for monitoring deep brain stimulation for treatment-resistant depression. *Journal of Neurophysiology*, *122*(3), 1023–1035. <https://doi.org/10.1152/jn.00875.2018>
- Vinding, M. C., Tsitsi, P., Waldthaler, J., Oostenveld, R., Ingvar, M., Svenningsson, P., & Lundqvist, D. (2020). Reduction of spontaneous cortical beta bursts in Parkinson’s disease is linked to symptom severity. *Brain Communications*, *2*(1), fcaa052. <https://doi.org/10.1093/braincomms/fcaa052>
- Vinding, M. C., Waldthaler, J., Eriksson, A., Manting, C. L., Ferreira, D., Ingvar, M., Svenningsson, P., & Lundqvist, D. (2024). Oscillatory and non-oscillatory features of the magnetoencephalic sensorimotor rhythm in Parkinson’s disease. *Npj Parkinson’s Disease*, *10*(1), 51. <https://doi.org/10.1038/s41531-024-00669-3>
- Vyšata, O., Procházka, A., Mareš, J., Rusina, R., Pazdera, L., Vališ, M., & Kukul, J. (2014). Change in the Characteristics of EEG Color Noise in Alzheimer’s Disease. *Clinical EEG and Neuroscience*, *45*(3), 147–151.  
<https://doi.org/10.1177/1550059413491558>
- Wang, Y., Liu, W., Wang, Y., Ouyang, G., & Guo, Y. (2024). Long-term HD-tDCS modulates dynamic changes of brain activity on patients with disorders of consciousness: A resting-state EEG study. *Computers in Biology and Medicine*, *170*, 108084.  
<https://doi.org/10.1016/j.compbiomed.2024.108084>
- Wang, Z., Liu, A., Yu, J., Wang, P., Bi, Y., Xue, S., Zhang, J., Guo, H., & Zhang, W. (2024). The effect of aperiodic components in distinguishing Alzheimer’s disease from frontotemporal dementia. *GeroScience*, *46*(1), 751–768.  
<https://doi.org/10.1007/s11357-023-01041-8>
- Wang, Z., Mo, Y., Sun, Y., Hu, K., Peng, C., Zhang, S., & Xue, S. (2022). Separating the aperiodic and periodic components of neural activity in Parkinson’s disease. *European Journal of Neuroscience*, *56*(6), 4889–4900.  
<https://doi.org/10.1111/ejn.15774>
- Webb, S. J., Naples, A. J., Levin, A. R., Helleman, G., Borland, H., Benton, J., Carlos, C., McAllister, T., Santhosh, M., Seow, H., Atyabi, A., Bernier, R., Chawarska, K., Dawson, G., Dziura, J., Faja, S., Jeste, S., Murias, M., Nelson, C. A., ... McPartland, J. C. (2023). The Autism Biomarkers Consortium for Clinical Trials: Initial Evaluation of a Battery of Candidate EEG Biomarkers. *American Journal of Psychiatry*, *180*(1), 41–49. <https://doi.org/10.1176/appi.ajp.21050485>
- Wiesman, A. I., Da Silva Castanheira, J., Degroot, C., Fon, E. A., Baillet, S., & Network, Q. P. (2023). Adverse and compensatory neurophysiological slowing in Parkinson’s disease. *Progress in Neurobiology*, *231*, 102538.  
<https://doi.org/10.1016/j.pneurobio.2023.102538>
- Wiesman, A. I., Gallego-Rudolf, J., Villeneuve, S., Baillet, S., Wilson, T. W., & the PREVENT-AD Research Group. (2024). *Alignments between cortical neurochemical systems, proteinopathy and neurophysiological alterations along the Alzheimer’s disease continuum*. medRxiv. <https://doi.org/10.1101/2024.04.13.24305551>
- Wiesman, A. I., Madge, V., Fon, E. A., Dagher, A., Collins, D. L., Baillet, S., PREVENT-AD Research Group, & Quebec Parkinson Network. (2024). *Associations between neuromelanin depletion and cortical rhythmic activity in Parkinson’s disease*. medRxiv. <https://doi.org/10.1101/2024.02.16.24302958>
- Wiest, C., Morgante, F., Torrecillos, F., Pogosyan, A., He, S., Baig, F., Bertaina, I., Hart, M. G., Edwards, M. J., Pereira, E. A., & Tan, H. (2023). Subthalamic Nucleus Stimulation–Induced Local Field Potential Changes in Dystonia. *Movement Disorders*, *38*(3), 423–434. <https://doi.org/10.1002/mds.29302>
- Wiest, C., Torrecillos, F., Pogosyan, A., Bange, M., Muthuraman, M., Groppa, S., Hulse, N., Hasegawa, H., Ashkan, K., Baig, F., Morgante, F., Pereira, E. A., Mallet, N., Magill, P. J., Brown, P., Sharott, A., & Tan, H. (2023). The aperiodic exponent of subthalamic field potentials reflects excitation/inhibition balance in Parkinsonism. *eLife*, *12*, e82467.  
<https://doi.org/10.7554/eLife.82467>

- Wilkinson, C. L., & Nelson, C. A. (2021). Increased aperiodic gamma power in young boys with Fragile X Syndrome is associated with better language ability. *Molecular Autism*, *12*(1), 17. <https://doi.org/10.1186/s13229-021-00425-x>
- Wilkinson, C. M., Burrell, J. I., Kuziek, J. W. P., Thirunavukkarasu, S., Buck, B. H., & Mathewson, K. E. (2020). Predicting stroke severity with a 3-min recording from the Muse portable EEG system for rapid diagnosis of stroke. *Scientific Reports*, *10*(1), 18465. <https://doi.org/10.1038/s41598-020-75379-w>
- Wu, D., Zhao, B., Xie, H., Xu, Y., Yin, Z., Bai, Y., Fan, H., Zhang, Q., Liu, D., Hu, T., Jiang, Y., An, Q., Zhang, X., Yang, A., & Zhang, J. (2023). Profiling the low-beta characteristics of the subthalamic nucleus in early- and late-onset Parkinson's disease. *Frontiers in Aging Neuroscience*, *15*, 1114466. <https://doi.org/10.3389/fnagi.2023.1114466>
- Yang, A. I., Raghu, A. L. B., Isbaine, F., Alwaki, A., & Gross, R. E. (2023). Sensing with deep brain stimulation device in epilepsy: Aperiodic changes in thalamic local field potential during seizures. *Epilepsia*, *64*(11), 3025–3035. <https://doi.org/10.1111/epi.17758>
- Yang, Y., Han, Y., Wang, J., Zhou, Y., Chen, D., Wang, M., & Li, T. (2023). Effects of altered excitation–inhibition imbalance by repetitive transcranial magnetic stimulation for self-limited epilepsy with centrotemporal spikes. *Frontiers in Neurology*, *14*, 1164082. <https://doi.org/10.3389/fneur.2023.1164082>
- Yu, Z., Yang, B., Wei, P., Xu, H., Shan, Y., Fan, X., Zhang, H., Wang, C., Wang, J., Yu, S., & Zhao, G. (2024). Critical biomarkers for responsive deep brain stimulation and responsive focal cortex stimulation in epilepsy field. *Fundamental Research*, S2667325824002656. <https://doi.org/10.1016/j.fmre.2024.05.018>
- Zhang, J., Villringer, A., & Nikulin, V. V. (2022). Dopaminergic Modulation of Local Non-oscillatory Activity and Global-Network Properties in Parkinson's Disease: An EEG Study. *Frontiers in Aging Neuroscience*, *14*, 846017. <https://doi.org/10.3389/fnagi.2022.846017>
- Zilio, F., Gomez-Pilar, J., Cao, S., Zhang, J., Zang, D., Qi, Z., Tan, J., Hiromi, T., Wu, X., Fogel, S., Huang, Z., Hohmann, M. R., Fomina, T., Synofzik, M., Grosse-Wentrup, M., Owen, A. M., & Northoff, G. (2021). Are intrinsic neural timescales related to sensory processing? Evidence from abnormal behavioral states. *NeuroImage*, *226*, 117579. <https://doi.org/10.1016/j.neuroimage.2020.117579>
- Zilio, F., Gomez-Pilar, J., Chaudhary, U., Fogel, S., Fomina, T., Synofzik, M., Schöls, L., Cao, S., Zhang, J., Huang, Z., Birbaumer, N., & Northoff, G. (2023). Altered brain dynamics index levels of arousal in complete locked-in syndrome. *Communications Biology*, *6*(1), 757. <https://doi.org/10.1038/s42003-023-05109-1>