

1

2

3

4 **APOE4 carriers display loss of anticipatory cerebral vascular regulation over AD progression**

5

6

7

8

9

10

11 **Jacqueline A. Palmer<sup>1, 2, 3\*</sup>, Carolyn S. Kaufman<sup>4,5</sup>, Alicen A. Whitaker-Hilbig<sup>6,7</sup>, Sandra A.**

12 **Billinger<sup>2, 3</sup>**

13

14 <sup>1</sup>Division of Physical Therapy and Rehabilitation Science, University of Minnesota Medical School, ,

15 Minneapolis, MN, United States of America

16

17 <sup>2</sup>Department of Neurology, University of Kansas Medical Center, Kansas City, KS, United States of

18 America

19 <sup>3</sup>University of Kansas Alzheimer's Disease Research Center, Fairway, KS, United States of America

20 <sup>4</sup>Department of Molecular & Integrative Physiology, University of Kansas Medical Center, Kansas  
21 City, KS, United States of America

22 <sup>5</sup>Department of Internal Medicine, Stanford Health Care, Stanford University, Palo Alto, CA, United  
23 States of America

24 <sup>6</sup>Department of Physical Medicine and Rehabilitation, Medical College of Wisconsin, 123 Milwaukee  
25 Way, Milwaukee, WI, United States of America

26 <sup>7</sup>Cardiovascular Center, Medical College of Wisconsin, Milwaukee, WI, United States of America

27

28 \* **Correspondence:**

29 Jacqueline A. Palmer, DPT, PhD

30 426 Church Street S.E.

31 Room R284 ChRC

32 Email: [palmerj@umn.edu](mailto:palmerj@umn.edu)

33

34 **Word counts:**

35 Manuscript words (6,850 (total))

36 Tables (1)

37 Figures (3)

38        **Abstract**

39        **INTRODUCTION:** Maintenance of cerebral blood flow during orthostasis is impaired with aging and  
40 associated with cognitive decline, but the effect of Apolipoprotein  $\epsilon$ 4-allele (*APOE4*) is unknown.

41        **METHODS:** Older adults (n=108) (*APOE4* carriers, n=47; noncarriers, n=61) diagnosed as  
42 cognitively-normal (NC), MCI, or AD participated. Middle cerebral artery blood velocity (MCAv),  
43 assessed using Transcranial Doppler ultrasound, and beat-to-beat mean arterial blood pressure  
44 (MAP) were continuously recorded during a sit-to-stand transition. Anticipatory and orthostatic-  
45 induced MCAv and MAP responses were compared between genotypes and across disease  
46 progression.

47        **RESULTS:** Cognitively-normal *APOE4* carriers showed greater anticipatory MCAv increase, greater  
48 MCAv decrease with orthostasis, and shorter latency of peripheral MAP responses to orthostasis  
49 compared to noncarriers. MCAv and MAP responses were delayed and attenuated across the  
50 *APOE4* disease progression, with no differences between genotypes in MCI and AD.

51        **DISCUSSION:** *APOE4* carriers and noncarriers present with distinct phenotypes of cerebral  
52 vascular dysfunction during hemodynamic orthostatic challenge. Unique cerebral and peripheral  
53 vascular compensation observed in *APOE4* carriers may be lost as AD progresses.

## 54 1. Introduction

55 Possession of the *Apolipoprotein*  $\epsilon$ 4-allele (*APOE4*) is an established central player in the  
56 pathogenesis of Alzheimer's disease.[1–4] Increasing evidence points to impairments in cerebral  
57 vascular function and a greater decline in cerebral blood flow (CBF) in *APOE4* carriers that may  
58 contribute to cognitive impairment and dementia.[5–9] Cognitively-normal older adults who carry the  
59 *APOE4* allele demonstrate a greater decline in CBF with aging compared to noncarriers,[10] and an  
60 earlier blood-brain barrier breakdown that predicts subsequent cognitive decline.[9] Cognitively-  
61 normal older adult *APOE4* carriers with lower cerebral vascular function and greater amyloid-beta  
62 deposition have lower cognitive executive function, an interaction that is not present in  
63 noncarriers.[11,12] Interestingly, differences in cerebral vascular function have even been detected  
64 in young adult *APOE4* carriers, who show reduced cerebrovascular reactivity to carbon dioxide  
65 compared to noncarriers.[13] Together, these results implicate differences in cerebral vascular  
66 function between *APOE* genotypes that may influence their vulnerability to Alzheimer's disease.

67 Regulation of cerebral blood flow (CBF) velocity under states of hemodynamic challenge, such  
68 as those induced during orthostasis, can be measured using transcranial Doppler ultrasound  
69 (TCD)[14–16]. Cerebral blood flow responses during orthostasis offer insight into function of the  
70 cerebral vascular system not gleaned from resting states alone, particularly in older adult  
71 populations [17] and diseased brain states.[18] In response to hypotension induced during transition  
72 from seated to standing positions, the cerebral microvasculature typically dilates quickly to increase  
73 blood flow to the brain.[19] Impaired ability to regulate the cerebral pressure/flow relationship results  
74 in repeated, exaggerated drops in cerebral perfusion that could damage neuronal tissue over  
75 time.[20,21] Abnormalities in cerebral blood flow responses to orthostasis have been observed in  
76 older adults[17] and a range of diseased brain states (e.g. stroke,[22,23] concussion,[24,25] and  
77 diabetes[26]); however, relationships to cognitive impairment and dementia have been inconsistent,  
78 with some studies finding no differences in orthostatic-induced cerebral blood flow decreases in MCI  
79 and AD and others show subtle differences.[27–30] One study found that transgenic *APOE4*

80 expressing mice have reduced cerebral blood flow and an inability to increase cerebral blood flow to  
81 meet the demands of active brain areas; this resulted in local hypoxia causing white matter damage  
82 and cognitive dysfunction.[8] These findings suggest that *APOE4* may impair vasodilatory  
83 mechanisms involved in cerebrovascular regulation, which are necessary for effective responses  
84 during orthostasis, potentially leading to downstream damage to the brain parenchyma.

85 In addition to differences in cerebral vascular health and function, emerging evidence suggests  
86 that *APOE4* carriers may display earlier signs of neurovascular compensation during cognitive and  
87 motor tasks compared to their noncarrier (*APOE3* or *APOE2*) peers.[8,31] For example, cognitively-  
88 normal older adults who carry *APOE4* show greater cognitive-motor dual-task interference during  
89 gait,[31] and animal models of *APOE4* show an impaired ability to match cerebral blood flow with  
90 increases in task-related brain activity compared to *APOE3*. [8] Greater prefrontal cortical activity,  
91 implicated in cognitive dual-task interference, can be engaged in an anticipatory manner prior to  
92 movement initiation.[32] In addition to cognitive processing, the prefrontal cortex has also been  
93 strongly implicated in the regulation of cardiovascular function.[33,34] However, whether or how  
94 differences in cortically-mediated whole-body behaviors may interact or influence differences in  
95 cerebral vascular function observed between *APOE4* carriers and noncarriers is unclear.

96 Considering differences in neurovascular brain function between *APOE4* carriers and  
97 noncarriers are detected even at a young age, yet only half of heterozygous *APOE4* carriers  
98 develop AD,[35] there must be contributing neuroprotective factors that influence Alzheimer's  
99 disease development. Here, we hypothesized that older adult *APOE4* carriers would show a  
100 dysfunctional cerebrovascular response to orthostasis compared to their noncarrier peers, but would  
101 also display vascular compensation during the preclinical stages of AD progression. We further  
102 hypothesized that disease progression to MCI and AD would be characterized by greater  
103 cerebrovascular dysfunction and loss of vascular compensation in *APOE4* carriers. We tested the  
104 effect of *APOE4* genotype on anticipatory and orthostatic-induced changes in cerebral blood velocity  
105 and beat-to-beat peripheral mean arterial blood pressure (MAP) in a group of older adults classified

106 as cognitively-normal (NC), mild cognitive impairment (MCI), or early-stage Alzheimer's disease  
107 (AD).

## 108 **2. Materials and Methods**

### 109 **2.1. Participants**

110 Participants (n=108) were diagnostically classified as cognitively-normal (NC, n=65), mild  
111 cognitive impairment (MCI, n=25), or early Alzheimer's disease (AD, n=18) (**Table 1**). Inclusion  
112 criteria for the present analyses were (1) age 65-90 years, (2) absence of neurologic diagnosis other  
113 than MCI or AD, (3) ability to follow two-step verbal commands, (4) presence of a TCD signal, and  
114 (5) absence of orthopedic disability to prevent independent standing. Exclusion criteria were (1)  
115 insulin-dependent diabetes, (2) peripheral neuropathy, (3) active coronary artery disease and  
116 congestive heart failure. The experimental protocol was approved by the University of Kansas  
117 Institutional Review Board (IRB#: STUDY 00147888 and 0011132) and all participants provided  
118 written informed consent.

### 119 **2.2. Clinical neuropsychological test battery**

120 All participants completed a standard in-person clinical and cognitive evaluation on a separate  
121 day, during which the Clinical Dementia Rating (CDR) scale and the United States Alzheimer's  
122 Disease Research Center network neuropsychological test battery was performed by a trained  
123 clinician and psychometrist, respectively.[36,37] Clinical and cognitive data were reviewed and each  
124 participant was classified as being cognitively-normal (NC), having mild cognitive impairment (MCI),  
125 or Alzheimer's disease (AD) at a consensus diagnostic conference[38]. Participants also completed  
126 a Mini-Mental State Exam (MMSE)[39] and Montreal Cognitive Assessment (MoCA)[40](**Table 1**).

127

### 128 **2.3. Sit-to-stand protocol and data acquisition**

129 TCD was used to assess middle cerebral artery blood velocity (MCAv) during a sit-to-stand  
130 positional transfer. A 2-MHz TCD probe (RobotoC2MD, Multigon Industries) was used to record right  
131 MCAv over the temporal window. The left MCA was used if the right MCA signal was absent.  
132 Continuous beat-to-beat MAP was recorded through a cuff around the left middle finger (Finapres  
133 Medical Systems, Amsterdam, The Netherlands). A 5-lead electrocardiogram (Cardiocard; Nasiff  
134 Associates, Central Square, New York) continuously recorded heart rhythm and was used to  
135 synchronize MCAv and MAP across the cardiac cycle.[41,42] A capnograph (BCI Capnocheck  
136 Sleep 9004; Smiths Medical, Dublin,OH) recorded continuous expired end tidal carbon dioxide  
137 ( $P_{ET}CO_2$ ) through a nasal canula and participants were instructed to breathe through their nose  
138 throughout the 3-minute duration of the sit-to-stand recording. All data were recorded at 500Hz.  
139 During the first minute of the recording, the participant remained seated quietly. At the 60-second  
140 mark of the recording, the experimenter verbally cued the participant to stand and remain standing  
141 for 2 minutes. Time-synchronized raw data were acquired through an analog-to-digital unit (NI-USB-  
142 6212, National Instruments) and custom written MATLAB software (The Mathworks Inc. Natick, MA).

### 143 **2.3. Quantification of anticipatory and autonomic responses**

144 Recordings of MCAv and MAP were visually inspected and discarded when R-to-R intervals  
145 were >5 Hz or changes in peak MCAv or MAP exceeded 10 cm/s or 10mmHg in a single cardiac  
146 cycle, respectively. Trials with <85% samples were discarded from analysis. Mean MCAv and MAP  
147 were calculated from the area under the curve (AUC) for each cardiac cycle.[43] The onset of the  
148 sit-to-stand event was identified at 60 seconds into the recording, and the onset beat=0 was  
149 identified as the beat immediately following t=60s. Two mean baseline (BL) metrics were computed  
150 within the 30 beats immediately preceding the onset of the sit to stand transition, in which BL1= -31  
151 to -16 beats and BL2=-15 to -1 beats, and onset =beat 0. Automated identification of the post-stand  
152 MCAv and MAP nadir (lowest point after standing) and latency in seconds from the onset time=0 to  
153 nadir were identified within the first 20 beats immediately following the onset of sit-to-stand, and

154 were visually confirmed for accuracy. We calculated the % change in anticipatory ((BL2-  
155 BL1)/BL1\*100%) and orthostatic post-stand responses ((nadir-BL2)/BL2\*100%).

## 156 **2.4. APOE genotyping**

157 Taqman single nucleotide polymorphism (SNP) allelic discrimination assays (ThermoFisher)  
158 were used to determine *APOE4*, *APOE3*, and *APOE2* alleles to the two *APOE*-defining SNPs,  
159 rs429358 (C\_3084793\_20) and rs7412 (C\_904973\_10) using whole blood samples stored at -80  
160 degrees Celsius.[44,45] Individuals were classified as an *APOE4* carrier in the presence of 1 or 2  
161 *APOE4* alleles (e.g. E3/E4, E4/E4). Individuals with homozygous E3 (i.e. E3/E3) or E2/E3 were  
162 classified as noncarriers.

## 163 **2.5. Statistical analyses**

164 We tested for normality and heterogeneity of variance of all data used for analyses using  
165 Kolmogorov-Smirnov and Levene's tests, respectively. First, we compared acute MCAv and MAP  
166 change during orthostasis between cognitively-normal *APOE4* carriers and noncarriers. We used  
167 separate two-way repeated measures analysis of variance (RM-ANOVAs) with factors of genotype  
168 (*APOE4* carrier, noncarrier) and time (BL1, BL2, post-stand) for each MCAv and MAP. We  
169 compared MCAv and MAP anticipatory and orthostatic response amplitudes, as well as orthostatic  
170 response latencies between cognitively-normal *APOE4* carriers and noncarriers using independent  
171 t-tests and within time using paired t-tests.

172 We then used two-way ANOVAs to compare acute MCAv and MAP change during orthostasis  
173 over the course of Alzheimer's disease progression in each *APOE4* carriers and noncarriers. We  
174 performed RM-ANOVA tests with factors of diagnosis (NC, MCI, AD) and time (BL1, BL2, post-  
175 stand) for each genotype separately. Two-way independent ANOVAs were used to compare the  
176 magnitude of MCAv and MAP anticipatory responses, orthostatic responses, and orthostatic  
177 response latencies within and between *APOE4* carriers and noncarriers. All analyses were  
178 performed using SPSS version 29 with an a priori level of significance set to 0.05.



179

### 180 3. RESULTS

181 For two participants (NC, *APOE4*, n=1; AD, *APOE4*, n=1), MAP data were unavailable due to  
182 technical issues with the device and were discarded from this part of the analysis. Two different  
183 participants (NC, *APOE4*, n=1; AD, *APOE4*, n=1), had <85% samples available free of artifact on  
184 TCD signals and were discarded from this part of the analysis.

185 Within each diagnostic group (NC, MCI, AD), there were no significant differences between  
186 *APOE4* carriers and noncarriers in age ( $p>0.58$ ), MMSE ( $p>0.236$ ), or MOCA score ( $p>0.693$ ). In the  
187 NC group, there was a greater proportion of females in the noncarrier compared to the *APOE4*  
188 carrier genotype ( $p=0.030$ ), with no sex differences in MCI or AD diagnostic groups ( $p>0.065$ ). We  
189 observed no main effect of time (BL1, BL2, or post-stand) in  $P_{ET}CO_2$  ( $p=0.988$ ) and no differences in  
190  $P_{ET}CO_2$  or heart rate between *APOE4* carriers and noncarriers or diagnosis group at any time point  
191 ( $p>0.408$ ).

192

#### 193 3.1. Effect of *APOE* genotype on cerebral and peripheral vascular responses to 194 orthostasis

195 Cognitively-normal *APOE4* carriers showed a greater anticipatory increase and greater  
196 orthostatic-induced decrease in MCAv compared to noncarriers (**Figure 1A**). There was a significant  
197 time-by-genotype interaction ( $F_{2,124} = 4.43$ ,  $p=0.014$ ); while there were no between-group differences  
198 in absolute MCAv at any time point ( $p>0.285$ ), *APOE4* carriers showed a significant within-group  
199 anticipatory increase in MCAv between BL1 and BL2 ( $p=0.004$ ) that did not occur in noncarriers  
200 ( $p=0.125$ ) (**Figure 1A**). Both groups showed a significant decrease in MCAv between BL2 and post-  
201 stand ( $p<0.001$ ) (**Figure 1A**). When comparing the normalized magnitude of change in MCAv  
202 between groups, *APOE4* carriers demonstrated a greater anticipatory increase ( $p=0.002$ ) (**Figure**

203 **1C)** and greater post-stand reduction in MCAv compared to noncarriers ( $p=0.023$ ) (**Figure 1D**). No  
204 group differences in MCAv nadir latency were observed ( $p=0.147$ ) (**Figure 1E**).

205 For peripheral MAP, cognitively-normal *APOE4* carriers showed no difference in anticipatory  
206 change or orthostatic-induced decrease in MAP (**Figure 1B**), but did demonstrate shorter latencies  
207 of orthostatic-induced MAP responses (**Figure 1E**). There was no significant time-by-genotype  
208 interaction ( $F_{2,124} = 2.27$ ,  $p=0.108$ ) or main effect of genotype ( $F_{2,124} = 0.35$ ,  $p=0.559$ ). There was a  
209 main effect of time ( $F_{2,124} = 298.22$ ,  $p<0.001$ ), in which MAP was higher at BL2 compared to BL1  
210 regardless of genotype ( $p=0.031$ ), and was lower at the post-stand time point regardless of  
211 genotype ( $p<0.001$ ). When comparing the normalized magnitude of change in MAP between  
212 groups, there were no significant differences in MAP anticipatory increase ( $p=0.086$ ) (**Figure 1C**) or  
213 post-stand decrease ( $p=0.493$ ) between groups (**Figure 1D**). *APOE4* carriers demonstrated shorter  
214 MAP response latencies compared to noncarriers (*APOE4* =  $9.2 \pm 2.7s$ ; noncarriers =  $11.4 \pm 2.6s$ ,  
215  $p=0.003$ ) (**Figure 1E**).

216

### 217 **3.2. Effect of Alzheimer's disease progression on cerebrovascular response to** 218 **orthostasis in *APOE4* carriers and noncarriers**

219 In *APOE4* carriers, Alzheimer's disease progression (MCI and AD) was characterized by a loss  
220 of anticipatory increase in MCAv and slower MCAv responses to orthostasis compared to NC, while  
221 no effect of diagnosis was present in noncarriers. When testing whether MCAv differed over each  
222 time point among diagnosis groups, there were no significant interaction effects for either  
223 noncarriers (**Figure 2A**) or *APOE4* carriers (**Figure 2B**) ( $p>0.258$ ), but there were significant main  
224 effects of time for both genotypes ( $p<0.001$ ). Both genotypes and all diagnostic subgroups displayed  
225 a significant reduction in MCAv between BL2 and post-stand time points in response to orthostasis  
226 ( $p<0.001$ ). While not statistically significant, noncarriers showed a trend for greater MCAv at BL2  
227 compared to BL1 within the MCI subgroup ( $p=0.055$ ), and a trend for MCI showing greater MCAv at

228 BL1 compared to AD and NC ( $p \geq 0.065$ ). NC *APOE4* carriers showed a significant MCAv increase  
229 between BL1 and BL2 ( $p < 0.001$ ), while MCI and AD *APOE4* carriers showed no statistical difference  
230 (MCI,  $p = 0.079$ ; AD,  $p = 0.096$ ).

231 For anticipatory %change in MCAv, there was a diagnosis-by-genotype interaction effect  
232 ( $F_{5,105} = 3.05$ ,  $p = 0.026$ ) and no main effects of diagnosis or genotype ( $p > 0.521$ ). NC *APOE4* carriers  
233 showed greater anticipatory increases in MCAv compared to NC noncarriers ( $p = 0.004$ ), but no  
234 difference in anticipatory MCAv increases compared to noncarriers at the MCI and early AD stages  
235 of disease ( $p > 0.490$ ) (**Figure 2C**). In contrast, noncarriers with MCI showed a greater anticipatory  
236 MCAv increase on average compared to noncarrier NCs, though this difference did not meet our  
237 adopted level of significance ( $p = 0.067$ ).

238 For orthostatic-induced MCAv response, no diagnosis-by-time interaction or main effects were  
239 observed for the magnitude of MCAv change (**Figure 2D**) or latency of response (**Figure 2E**)  
240 ( $p > 0.192$ ). While NC *APOE4* carriers showed greater reduction in MCAv compared to noncarriers  
241 (**Figure 1D**) no group differences were observed at the MCI and early AD stages of disease  
242 ( $p > 0.480$ ) (**Figure 2D**). *APOE4* carriers with early-stage AD tended to show slower MCAv response  
243 latencies compared to MCI and NCs, but this difference did not meet our adopted level of  
244 significance ( $p \geq 0.138$ ) (**Figure 2E**).

### 245 **3.3. Effect of Alzheimer's disease progression on peripheral blood pressure response** 246 **to orthostasis in *APOE4* carriers and noncarriers**

247 Disease progression did not affect the magnitude of anticipatory or orthostatic-induced changes  
248 in peripheral MAP in either *APOE4* carriers or noncarriers. When testing whether MAP differed over  
249 each time point between diagnosis groups, there were no significant interaction effects for either  
250 noncarriers (**Figure 3A**) or *APOE4* carriers (**Figure 3B**) ( $p > 0.489$ ), but main effects of time were  
251 present for both genotypes ( $p < 0.001$ ). Both genotypes and all diagnostic subgroups displayed a  
252 significant reduction in MAP between BL2 and post-stand time points in response to orthostasis

253 (p<0.001). Noncarriers showed no difference at BL2 compared to BL1 within each diagnostic  
254 subgroup (p≥0.143). NC *APOE4* carriers showed a significant MAP increase between BL1 and BL2  
255 (p<0.001), while MCI and AD *APOE4* carriers showed no statistical difference (MCI, p=0.136; AD,  
256 p=0.575).

257 There were no diagnosis-by-genotype interaction effects for either anticipatory or orthostatic-  
258 induced change in MAP (p>0.707). There was a main effect of genotype, in which *APOE4* carriers  
259 showed greater anticipatory increases in MAP (p=0.040) and less reduction in MAP during  
260 orthostasis compared to noncarriers (p=0.004). There were no main effects of diagnosis for either  
261 anticipatory or orthostatic-induced changes in MAP (p>0.416).

262 There was a significant disease-by-genotype interaction for orthostatic MAP response latency  
263 ( $F_{5,105} = 3.42, p=0.037$ ), in which the shorter latency of orthostatic-induced MAP response observed  
264 in NC *APOE4* carriers compared to noncarriers (**Figure 1E**) was also present at the MCI disease  
265 stage (p=0.007), but increased to comparable levels to noncarriers in early AD (p=0.743) (**Figure**  
266 **3E**).

267

## 268 4. DISCUSSION

269 This study provides novel insights into the effects of the *APOE* genotype on mechanistic  
270 regulation of cerebral and peripheral vascular responses to orthostasis over the early stages of  
271 Alzheimer's disease progression. The sit-to-stand paradigm provided a hemodynamic challenge to  
272 the cerebral vascular system[14–16,46] that exposed differences in cerebrovascular regulation  
273 between *APOE4* carriers and noncarriers. Here, cognitively-normal *APOE4* carriers showed greater  
274 drops in MCAv during orthostasis as well as higher anticipatory increases in MCAv and faster  
275 peripheral MAP responses compared to their noncarrier peers, which may reflect genotype-specific  
276 vascular adaptations to counteract an impaired cerebral pressure/flow relationship during  
277 orthostasis. Consistent with previous research in AD, we found that baseline resting cerebral blood  
278 velocity tended to show a (nonsignificant) decrease over disease progression.[29,47,48] However,  
279 the magnitude of orthostatic-induced drops in MCAv and MAP remained consistent [28] and even  
280 showed a trend towards attenuation (lesser drop) in MCI and AD diagnoses compared to NCs  
281 (**Figure 2D, Figure 3D**), potentially reflecting heightened sympathetic drive observed across the AD  
282 progression.[49–51] Together, our findings extend the knowledge of Alzheimer's disease-related  
283 impairments and progression in cerebral vascular regulation to understand differential physiologic  
284 responses in individuals who carry the *APOE4* allele within hemodynamic behavioral contexts,  
285 which may play a role in their increased vulnerability to AD.[52] Importantly, our findings identify  
286 vascular compensatory strategies in *APOE4* carriers that may serve as a target for treatment efforts  
287 during this window of therapeutic opportunity in the prodromal stages of the disease.

288 The present results provide novel evidence that *APOE4* carriers utilize vascular compensation  
289 strategies that may counteract genotype-specific impairments in cerebral vascular regulation in the  
290 preclinical stages of AD. Greater anticipatory increases in MCAv (**Figure 1C**) in *APOE4* carriers may  
291 potentially serve as compensatory neurovascular adaptations to chronically impaired cerebral  
292 vascular regulation. This anticipatory increase in MCAv is consistent with greater recruitment of  
293 prefrontal cortical regions during mobility in cognitively-normal, older adult *APOE4* carriers,<sup>10</sup> and

294 heightened excitability of the prefrontal cortex in patients with AD.[53,54] Notably, the prefrontal  
295 cortex can strongly influence the regulation of cardiovascular function.<sup>12,13</sup> Differences in anticipatory  
296 MCAv increase were not present in MCI and AD between genotypes (**Figure 2C**), implicating that  
297 these compensatory adaptations may be lost as *APOE4* carriers progress into clinical syndrome.  
298 Greater increases in anticipatory MCAv may reflect greater cerebral vascular contractility, resulting  
299 in exaggerated changes in vasoconstriction and dilation in response to changes in blood pressure,  
300 which has been reported in post-mortem examination of AD cortical tissue.[55] In the present study,  
301 greater cerebral vasomotor activity may be engaged in anticipation of hemodynamic blood flow  
302 reduction, resulting in more effective cerebral vascular regulation during orthostasis (**Figure 1A**).  
303 However, higher cerebral vasomotor activity could also lead to chronically reduced cerebral blood  
304 flow, especially if blood pressure becomes elevated.[55] Supporting this notion, there was no  
305 difference in baseline MCAv between cognitively-normal *APOE4* carriers and noncarriers (**Figure**  
306 **1A**), but *APOE4* carriers with AD presented with higher baseline (BL1) MAP on average (**Figure**  
307 **3B**). Greater anticipatory vascular compensation for hemodynamic dysfunction may also be  
308 consistent with recent research implicating that *APOE4* drives AD processes through a gain of  
309 abnormal neuronal function, rather than a loss of normal function.[56] However, without longitudinal  
310 assessments, it remains possible that older adults in the NC group reflect a “healthy survivor” bias,  
311 in which greater anticipatory MCAv and faster orthostatic MAP responses potentially contribute to  
312 increased neurocognitive resilience.[43] Future studies measuring cortical activity and that employ  
313 targeted modulation of key brain regions will help elucidate underlying neural mechanisms that may  
314 explain these differences in cerebral and peripheral anticipatory vascular responses in *APOE4*  
315 carriers.

316 Our findings provide evidence that impaired vascular responses to hemodynamic challenge in  
317 *APOE4* carriers are cerebral specific. We observed no differences in the magnitude of orthostatic-  
318 induced peripheral MAP changes between genotypes or across all stages of disease diagnosis  
319 (**Figure 3D**). Faster peripheral vascular responses to orthostasis in cognitively-normal *APOE4*

320 carriers, indicated by shorter MAP response latencies (**Figure 1E**), may also be consistent with  
321 vascular compensation for greater orthostatic-induced drops in MCAv in this subgroup (**Figure 1D**).  
322 Similar to anticipatory cerebral vascular responses, we found that faster MAP responses during  
323 orthostasis were present only in cognitively-normal older adults and slowed in older adults with AD  
324 (**Figure 3E**). These results could be explained by a heightened sensitivity of the arterial baroreflex in  
325 cognitively-normal *APOE4* carriers that becomes gradually desensitized over time.[57] Autonomic  
326 dysfunction of blood pressure regulation has been associated with AD pathology to the insular  
327 cortex, which may negatively affect baroreflex mechanisms of blood pressure control.[58] The  
328 present results support distinct phenotypes of cerebral vascular dysfunction in *APOE4* carriers and  
329 noncarriers throughout the course of AD progression, in which peripheral vascular responses may  
330 act synergistically with greater anticipatory cerebral vascular mechanisms as neuroprotective  
331 features in the prodromal disease stage.

332 We observed two unexpected findings involving noncarriers in this study: 1) anticipatory MCAv  
333 tended to increase in the MCI stage of disease (**Figure 1C**) (though did not reach statistical  
334 significance  $p=0.055$ ) and 2) baseline (BL1) MCAv in noncarriers with MCI tended to be higher than  
335 NCs and AD ( $p\geq 0.065$ ) (**Figure 1A**). While these patterns did not reach statistical significance in the  
336 present study, they may identify directions for future investigation involving dissociable effects of  
337 *APOE4* in the MCI stage of AD processes. While a decrease in cerebral blood flow is a consistent  
338 finding in AD, [29,47,48] a paradoxical increase in cerebral perfusion has also been reported in the  
339 early stages of neurodegenerative diseases such as Parkinson's disease.[59] This initial period of  
340 increased cerebral perfusion is posited to be a compensatory response for the emergence of  
341 orthostatic hypotension in these patient populations.[59] Consistent with this hypothesis, noncarriers  
342 with MCI and AD in the present study tended to show greater orthostatic-induced drops in MCAv  
343 (**Figure 2C**) and MAP (**Figure 3C**) compared to noncarrier NCs, which could have influenced their  
344 tendency for higher levels of cerebral blood velocity observed at baseline (**Figure 2A**). Our results  
345 therefore suggest that *APOE4* carriers and noncarriers may present two distinct phenotypes of



346 cerebral vascular dysfunction in AD progression, in which *APOE4* carriers display a loss of effective  
347 vascular compensation, while noncarriers display an engagement in compensation during early  
348 stages of the disease (MCI) that may be less effective in resisting clinical syndrome. Future studies  
349 are needed to determine the effectiveness of targeted treatments for brain vascular health in  
350 resisting cognitive decline in each *APOE* phenotype of cerebral vascular dysfunction.

#### 351 **4.1. Limitations**

352 The biological variable of sex can interact with aging and brain vascular function to influence  
353 cognitive function;[12] thus, differences in sexes in the NC group in the present study should be  
354 considered in the interpretation of the present results. While previous studies using MR-based  
355 imaging show no changes in cerebral vessel diameter in response to change in  $P_{ET}CO_2$ ,[60] it is  
356 possible that changes in MCA vessel diameter could have influenced the present results and were  
357 not captured in our TCD measures of MCAv. People with MCI and AD may be increasingly  
358 prescribed antihypertensive medications,[28,61] which may have an effect on cerebral and  
359 peripheral responses to orthostasis and could not be controlled for in the present study. During the  
360 sit-to-stand, other factors including neurovascular coupling, sympathetic activity, and cardiac output  
361 can affect cerebral and peripheral responses to orthostasis and were not captured in the present  
362 study.

#### 363 **4.2. Conclusions**

364 For the first time, our findings show that hemodynamic challenge exposes *APOE* genotype-  
365 specific deficits in cerebral vascular responses to orthostasis in older adults who carry the E4-allele.  
366 Our findings also reveal greater anticipatory increases in cerebral blood velocity and faster arterial  
367 pressure responses to orthostasis, consistent with vascular compensatory mechanisms, in  
368 cognitively-normal *APOE4* carriers that may be lost as AD progresses. Further, differences in the  
369 trajectories of cerebral and peripheral vascular function over the course of AD progression implicate  
370 that *APOE4* carriers and noncarriers present with different phenotypes of brain vascular function



371 during hemodynamic challenge that may be clinically-relevant to cognitive decline. These findings  
372 may identify specific features of cerebral vascular dysfunction that could be targeted through  
373 precision-based approaches in individuals at high genetic risk for AD.

374

## 375 **ACKNOWLEDGMENTS**

376 a) We wish to acknowledge Emily Hazen for assistance with data collection and analysis.

377 b) Funding: This work was supported by the National Institute on Aging of the National Institutes of  
378 Health [K99AG075255 (JP)] and [P30 AG072973 (SB)], the National Heart, Lung and Blood Institute  
379 [T32HL134643 (AWH)] the Cardiovascular Center's A.O. Smith Fellowship Scholars Program, and  
380 the Georgia Holland Endowment Fund. The content of this publication is solely the responsibility of  
381 the authors and does not necessarily represent the official views of the National Institutes of Health  
382 or any other funding agency. The funding sources had no involvement in the collection, analysis, or  
383 interpretation of the presented data.

384 **DISCLOSURES:** The authors have no conflicts of interest to disclose.

## 385 **Keywords (3-5)**

386 *transcranial Doppler ultrasound, Apolipoprotein E4, dynamic cerebral autoregulation, mild cognitive*  
387 *impairment, Alzheimer's disease*

388

389

## 390 REFERENCES

- 391 [1] Kloske CM, Belloy ME, Blue EE, Bowman GR, Carrillo MC, Chen X, et al. Advancements in  
392 APOE and dementia research: Highlights from the 2023 AAIC Advancements: APOE  
393 conference. *Alzheimer's & Dementia* 2024;20:6590–605. <https://doi.org/10.1002/alz.13877>.
- 394 [2] Husain MA, Laurent B, Plourde M. APOE and Alzheimer's Disease: From Lipid Transport to  
395 Physiopathology and Therapeutics. *Frontiers in Neuroscience* 2021;15.
- 396 [3] Lu K, Nicholas JM, Pertzov Y, Grogan J, Husain M, Pavisic IM, et al. Dissociable effects of  
397 APOE  $\epsilon$ 4 and  $\beta$ -amyloid pathology on visual working memory. *Nat Aging* 2021;1:1002–9.  
398 <https://doi.org/10.1038/s43587-021-00117-4>.
- 399 [4] Kloske CM, Wilcock DM. The Important Interface Between Apolipoprotein E and  
400 Neuroinflammation in Alzheimer's Disease. *Frontiers in Immunology* 2020;11.
- 401 [5] Austin BP, Nair VA, Meier TB, Xu G, Rowley HA, Carlsson CM, et al. Effects of hypoperfusion  
402 in Alzheimer's disease. *J Alzheimers Dis* 2011;26 Suppl 3:123–33. [https://doi.org/10.3233/JAD-](https://doi.org/10.3233/JAD-2011-0010)  
403 [2011-0010](https://doi.org/10.3233/JAD-2011-0010).
- 404 [6] Bell RD, Winkler EA, Singh I, Sagare AP, Deane R, Wu Z, et al. Apolipoprotein E controls  
405 cerebrovascular integrity via cyclophilin A. *Nature* 2012;485:512–6.  
406 <https://doi.org/10.1038/nature11087>.
- 407 [7] Kaufman CS, Morris JK, Vidoni ED, Burns JM, Billinger SA. Apolipoprotein E4 moderates the  
408 association between vascular risk factors & brain pathology. *Journal of Alzheimer Disease &*  
409 *Associated Disorders* 2021. <https://doi.org/epub ahead of print>.
- 410 [8] Koizumi K, Hattori Y, Ahn SJ, Buendia I, Ciacciarelli A, Uekawa K, et al. Apo $\epsilon$ 4 disrupts  
411 neurovascular regulation and undermines white matter integrity and cognitive function. *Nat*  
412 *Commun* 2018;9:3816. <https://doi.org/10.1038/s41467-018-06301-2>.
- 413 [9] Montagne A, Nation DA, Sagare AP, Barisano G, Sweeney MD, Chakhoyan A, et al. APOE4  
414 leads to blood–brain barrier dysfunction predicting cognitive decline. *Nature* 2020;581:71–6.  
415 <https://doi.org/10.1038/s41586-020-2247-3>.
- 416 [10] Thambisetty M, Beason-Held L, An Y, Kraut MA, Resnick SM. APOE epsilon4 genotype and  
417 longitudinal changes in cerebral blood flow in normal aging. *Arch Neurol* 2010;67:93–8.  
418 <https://doi.org/10.1001/archneurol.2009.913>.
- 419 [11] Palmer JA, Kaufman CS, Vidoni ED, Honea RA, Burns JM, Billinger SA. Cerebrovascular  
420 response to exercise interacts with individual genotype and amyloid-beta deposition to  
421 influence response inhibition with aging. *Neurobiology of Aging* 2022.  
422 <https://doi.org/10.1016/j.neurobiolaging.2022.02.014>.
- 423 [12] Palmer JA, Kaufman CS, Vidoni ED, Honea RA, Burns JM, Billinger SA. Sex Differences in  
424 Resilience and Resistance to Brain Pathology and Dysfunction Moderated by Cerebrovascular  
425 Response to Exercise and Genetic Risk for Alzheimer's Disease. *J Alzheimers Dis* 2022.  
426 <https://doi.org/10.3233/JAD-220359>.
- 427 [13] Suri S, Mackay CE, Kelly ME, Germuska M, Tunbridge EM, Frisoni GB, et al. Reduced  
428 cerebrovascular reactivity in young adults carrying the APOE  $\epsilon$ 4 allele. *Alzheimers Dement*  
429 2015;11:648–657.e1. <https://doi.org/10.1016/j.jalz.2014.05.1755>.
- 430 [14] Brassard P, Labrecque L, Smirl JD, Tymko MM, Caldwell HG, Hoiland RL, et al. Losing the  
431 dogmatic view of cerebral autoregulation. *Physiol Rep* 2021;9:e14982.  
432 <https://doi.org/10.14814/phy2.14982>.

- 433 [15] Labrecque L, Rahimaly K, Imhoff S, Paquette M, Le Blanc O, Malenfant S, et al. Dynamic  
434 cerebral autoregulation is attenuated in young fit women. *Physiol Rep* 2019;7:e13984.  
435 <https://doi.org/10.14814/phy2.13984>.
- 436 [16] Whitaker AA, Vidoni ED, Aaron SE, Rouse AG, Billinger SA. Novel application of a force  
437 sensor during sit-to-stands to measure dynamic cerebral autoregulation onset. *Physiol Rep*  
438 2022;10:e15244. <https://doi.org/10.14814/phy2.15244>.
- 439 [17] Klein T, Bailey TG, Wollseiffen P, Schneider S, Askew CD. The effect of age on cerebral blood  
440 flow responses during repeated and sustained stand to sit transitions. *Physiol Rep*  
441 2020;8:e14421. <https://doi.org/10.14814/phy2.14421>.
- 442 [18] Whitaker AA, Aaron SE, Chertoff M, Brassard P, Buchanan J, Nguyen K, et al. Lower dynamic  
443 cerebral autoregulation following acute bout of low-volume high-intensity interval exercise in  
444 chronic stroke compared to healthy adults. *J Appl Physiol (1985)* 2024;136:707–20.  
445 <https://doi.org/10.1152/jappphysiol.00635.2023>.
- 446 [19] Duffin J, Sobczyk O, McKetton L, Crawley A, Poublanc J, Venkatraghavan L, et al.  
447 Cerebrovascular Resistance: The Basis of Cerebrovascular Reactivity. *Frontiers in*  
448 *Neuroscience* 2018;12.
- 449 [20] Aoi MC, Hu K, Lo M-T, Selim M, Olufsen MS, Novak V. Impaired cerebral autoregulation is  
450 associated with brain atrophy and worse functional status in chronic ischemic stroke. *PLoS*  
451 *One* 2012;7:e46794. <https://doi.org/10.1371/journal.pone.0046794>.
- 452 [21] Tarumi T, Zhang R. Cerebral blood flow in normal aging adults: cardiovascular determinants,  
453 clinical implications, and aerobic fitness. *Journal of Neurochemistry* 2018;144:595–608.  
454 <https://doi.org/10.1111/jnc.14234>.
- 455 [22] Castro P, Serrador J, Sorond F, Azevedo E, Rocha I. Sympathovagal imbalance in early  
456 ischemic stroke is linked to impaired cerebral autoregulation and increased infarct volumes.  
457 *Auton Neurosci* 2022;241:102986. <https://doi.org/10.1016/j.autneu.2022.102986>.
- 458 [23] Xiong L, Tian G, Lin W, Wang W, Wang L, Leung T, et al. Is Dynamic Cerebral Autoregulation  
459 Bilaterally Impaired after Unilateral Acute Ischemic Stroke? *J Stroke Cerebrovasc Dis*  
460 2017;26:1081–7. <https://doi.org/10.1016/j.jstrokecerebrovasdis.2016.12.024>.
- 461 [24] Kostoglou K, Wright AD, Smirl JD, Bryk K, van Donkelaar P, Mitsis GD. Dynamic cerebral  
462 autoregulation in young athletes following concussion. *Annu Int Conf IEEE Eng Med Biol Soc*  
463 2016;2016:696–9. <https://doi.org/10.1109/EMBC.2016.7590797>.
- 464 [25] Wright AD, Smirl JD, Bryk K, Fraser S, Jakovac M, van Donkelaar P. Sport-Related  
465 Concussion Alters Indices of Dynamic Cerebral Autoregulation. *Front Neurol* 2018;9:196.  
466 <https://doi.org/10.3389/fneur.2018.00196>.
- 467 [26] Vianna LC, Deo SH, Jensen AK, Holwerda SW, Zimmerman MC, Fadel PJ. Impaired dynamic  
468 cerebral autoregulation at rest and during isometric exercise in type 2 diabetes patients. *Am J*  
469 *Physiol Heart Circ Physiol* 2015;308:H681-687. <https://doi.org/10.1152/ajpheart.00343.2014>.
- 470 [27] Claassen JAH, Diaz-Arrastia R, Martin-Cook K, Levine BD, Zhang R. Altered Cerebral  
471 Hemodynamics in Early Alzheimer Disease: A Pilot Study Using Transcranial Doppler. *J*  
472 *Alzheimers Dis* 2009;17:621–9. <https://doi.org/10.3233/JAD-2009-1079>.
- 473 [28] de Heus RAA, de Jong DLK, Sanders ML, van Spijker GJ, Oudegeest-Sander MH, Hopman  
474 MT, et al. Dynamic Regulation of Cerebral Blood Flow in Patients With Alzheimer Disease.  
475 *Hypertension* 2018;72:139–50. <https://doi.org/10.1161/HYPERTENSIONAHA.118.10900>.
- 476 [29] Heutz R, Claassen J, Feiner S, Davies A, Gurung D, Panerai RB, et al. Dynamic cerebral  
477 autoregulation in Alzheimer's disease and mild cognitive impairment: A systematic review. *J*  
478 *Cereb Blood Flow Metab* 2023;43:1223–36. <https://doi.org/10.1177/0271678X231173449>.

- 479 [30] Marmarelis VZ, Shin DC, Tarumi T, Zhang R. Comparison of Model-Based Indices of Cerebral  
480 Autoregulation and Vasomotor Reactivity Using Transcranial Doppler versus Near-Infrared  
481 Spectroscopy in Patients with Amnesic Mild Cognitive Impairment. *J Alzheimers Dis*  
482 2016;56:89–105. <https://doi.org/10.3233/JAD-161004>.
- 483 [31] Whitson HE, Potter GG, Feld JA, Plassman BL, Reynolds K, Sloane R, et al. Dual-Task Gait  
484 and Alzheimer’s Disease Genetic Risk in Cognitively Normal Adults: A Pilot Study. *J*  
485 *Alzheimers Dis* 2018;64:1137–48. <https://doi.org/10.3233/JAD-180016>.
- 486 [32] Palmer JA, Payne AM, Ting LH, Borich MR. Cortical Engagement Metrics During Reactive  
487 Balance Are Associated With Distinct Aspects of Balance Behavior in Older Adults. *Frontiers in*  
488 *Aging Neuroscience* 2021;13:410. <https://doi.org/10.3389/fnagi.2021.684743>.
- 489 [33] Thayer JF, Hansen AL, Saus-Rose E, Johnsen BH. Heart Rate Variability, Prefrontal Neural  
490 Function, and Cognitive Performance: The Neurovisceral Integration Perspective on Self-  
491 regulation, Adaptation, and Health. *Annals of Behavioral Medicine* 2009;37:141–53.  
492 <https://doi.org/10.1007/s12160-009-9101-z>.
- 493 [34] Valenza G, Sclocco R, Duggento A, Passamonti L, Napadow V, Barbieri R, et al. The central  
494 autonomic network at rest: Uncovering functional MRI correlates of time-varying autonomic  
495 outflow. *Neuroimage* 2019;197:383–90. <https://doi.org/10.1016/j.neuroimage.2019.04.075>.
- 496 [35] Liu C-C, Kanekiyo T, Xu H, Bu G. Apolipoprotein E and Alzheimer disease: risk, mechanisms,  
497 and therapy. *Nat Rev Neurol* 2013;9:106–18. <https://doi.org/10.1038/nrneurol.2012.263>.
- 498 [36] Morris JC. The Clinical Dementia Rating (CDR): current version and scoring rules. *Neurology*  
499 1993;43:2412–4. <https://doi.org/10.1212/wnl.43.11.2412-a>.
- 500 [37] Monsell SE, Dodge HH, Zhou X-H, Bu Y, Besser LM, Mock C, et al. Results From the NACC  
501 Uniform Data Set Neuropsychological Battery Crosswalk Study. *Alzheimer Dis Assoc Disord*  
502 2016;30:134–9. <https://doi.org/10.1097/WAD.0000000000000111>.
- 503 [38] Graves RS, Mahnken JD, Swerdlow RH, Burns JM, Price C, Amstein B, et al. Open-source,  
504 Rapid Reporting of Dementia Evaluations. *J Registry Manag* 2015;42:111–4.
- 505 [39] Folstein MF, Folstein SE, McHugh PR. “Mini-mental state”. A practical method for grading the  
506 cognitive state of patients for the clinician. *J Psychiatr Res* 1975;12:189–98.  
507 [https://doi.org/10.1016/0022-3956\(75\)90026-6](https://doi.org/10.1016/0022-3956(75)90026-6).
- 508 [40] Nasreddine ZS, Phillips NA, Bédirian V, Charbonneau S, Whitehead V, Collin I, et al. The  
509 Montreal Cognitive Assessment, MoCA: A Brief Screening Tool For Mild Cognitive Impairment.  
510 *Journal of the American Geriatrics Society* 2005;53:695–9. <https://doi.org/10.1111/j.1532-5415.2005.53221.x>.
- 512 [41] Billinger SA, Craig JC, Kwapiszeski SJ, Sisante J-FV, Vidoni ED, Maletsky R, et al. Dynamics  
513 of middle cerebral artery blood flow velocity during moderate-intensity exercise. *J Appl Physiol*  
514 (1985) 2017;122:1125–33. <https://doi.org/10.1152/jappphysiol.00995.2016>.
- 515 [42] Ward JL, Craig JC, Liu Y, Vidoni ED, Maletsky R, Poole DC, et al. Effect of healthy aging and  
516 sex on middle cerebral artery blood velocity dynamics during moderate-intensity exercise. *Am J*  
517 *Physiol Heart Circ Physiol* 2018;315:H492–501. <https://doi.org/10.1152/ajpheart.00129.2018>.
- 518 [43] Palmer JA, Hazen EM, Billinger SA. Dual-task balance control reveals cerebrovascular-  
519 behavioral relationships in older adults resistant to cognitive decline. *J Am Geriatr Soc* 2024.  
520 <https://doi.org/10.1111/jgs.19049>.
- 521 [44] Kaufman CS, Morris JK, Vidoni ED, Burns JM, Billinger SA. Apolipoprotein E4 Moderates the  
522 Association Between Vascular Risk Factors and Brain Pathology. *Alzheimer Dis Assoc Disord*  
523 2021. <https://doi.org/10.1097/WAD.0000000000000442>.

- 524 [45] Vidoni ED, Morris JK, Watts A, Perry M, Clutton J, Sciver AV, et al. Effect of aerobic exercise  
525 on amyloid accumulation in preclinical Alzheimer's: A 1-year randomized controlled trial. *PLOS*  
526 *ONE* 2021;16:e0244893. <https://doi.org/10.1371/journal.pone.0244893>.
- 527 [46] Sorond FA, Serrador JM, Jones RN, Shaffer ML, Lipsitz LA. The Sit-to-Stand Technique for the  
528 Measurement of Dynamic Cerebral Autoregulation. *Ultrasound in Medicine & Biology*  
529 2009;35:21–9. <https://doi.org/10.1016/j.ultrasmedbio.2008.08.001>.
- 530 [47] Binnewijzend MAA, Benedictus MR, Kuijer JPA, van der Flier WM, Teunissen CE, Prins ND, et  
531 al. Cerebral perfusion in the predementia stages of Alzheimer's disease. *Eur Radiol*  
532 2016;26:506–14. <https://doi.org/10.1007/s00330-015-3834-9>.
- 533 [48] Wolters FJ, Zonneveld HI, Hofman A, van der Lugt A, Koudstaal PJ, Vernooij MW, et al.  
534 Cerebral Perfusion and the Risk of Dementia: A Population-Based Study. *Circulation*  
535 2017;136:719–28. <https://doi.org/10.1161/CIRCULATIONAHA.117.027448>.
- 536 [49] Nicolini P, Lucchi T, Abbate C, Inglese S, Tomasini E, Mari D, et al. Autonomic function  
537 predicts cognitive decline in mild cognitive impairment: Evidence from power spectral analysis  
538 of heart rate variability in a longitudinal study. *Front Aging Neurosci* 2022;14:886023.  
539 <https://doi.org/10.3389/fnagi.2022.886023>.
- 540 [50] Nicolini P, Lucchi T, Vicenzi M. Heart rate variability: a predictor of cognitive decline. *Aging*  
541 (Albany NY) 2023;15:9233–4. <https://doi.org/10.18632/aging.204715>.
- 542 [51] Lin F, Ren P, Wang X, Anthony M, Tadin D, Heffner KL. Cortical thickness is associated with  
543 altered autonomic function in cognitively impaired and non-impaired older adults. *J Physiol*  
544 2017;595:6969–78. <https://doi.org/10.1113/JP274714>.
- 545 [52] Heffernan AL, Chidgey C, Peng P, Masters CL, Roberts BR. The Neurobiology and Age-  
546 Related Prevalence of the  $\epsilon 4$  Allele of Apolipoprotein E in Alzheimer's Disease Cohorts. *J Mol*  
547 *Neurosci* 2016;60:316–24. <https://doi.org/10.1007/s12031-016-0804-x>.
- 548 [53] Joseph S, Knezevic D, Zomorodi R, Blumberger DM, Daskalakis ZJ, Mulsant BH, et al.  
549 Dorsolateral prefrontal cortex excitability abnormalities in Alzheimer's Dementia: Findings from  
550 transcranial magnetic stimulation and electroencephalography study. *International Journal of*  
551 *Psychophysiology* 2021;169:55–62. <https://doi.org/10.1016/j.ijpsycho.2021.08.008>.
- 552 [54] Bagattini C, Mutanen TP, Fracassi C, Manenti R, Cotelli M, Ilmoniemi RJ, et al. Predicting  
553 Alzheimer's disease severity by means of TMS-EEG coregistration. *Neurobiol Aging*  
554 2019;80:38–45. <https://doi.org/10.1016/j.neurobiolaging.2019.04.008>.
- 555 [55] Thomas T, Miners S, Love S. Post-mortem assessment of hypoperfusion of cerebral cortex in  
556 Alzheimer's disease and vascular dementia. *Brain* 2015;138:1059–69.  
557 <https://doi.org/10.1093/brain/awv025>.
- 558 [56] Chemparathy A, Le Guen Y, Chen S, Lee E-G, Leong L, Gorzynski JE, et al. APOE loss-of-  
559 function variants: Compatible with longevity and associated with resistance to Alzheimer's  
560 disease pathology. *Neuron* 2024;112:1110-1116.e5.  
561 <https://doi.org/10.1016/j.neuron.2024.01.008>.
- 562 [57] Maxwell JD, Bannell DJ, Brislane A, Carter SE, Miller GD, Roberts KA, et al. The impact of  
563 age, sex, cardio-respiratory fitness, and cardiovascular disease risk on dynamic cerebral  
564 autoregulation and baroreflex sensitivity. *Eur J Appl Physiol* 2022.  
565 <https://doi.org/10.1007/s00421-022-04933-3>.
- 566 [58] Nagai M, Dote K, Kato M, Sasaki S, Oda N, Kagawa E, et al. Visit-to-Visit Blood Pressure  
567 Variability and Alzheimer's Disease: Links and Risks. *J Alzheimers Dis* 2017;59:515–26.  
568 <https://doi.org/10.3233/JAD-161172>.



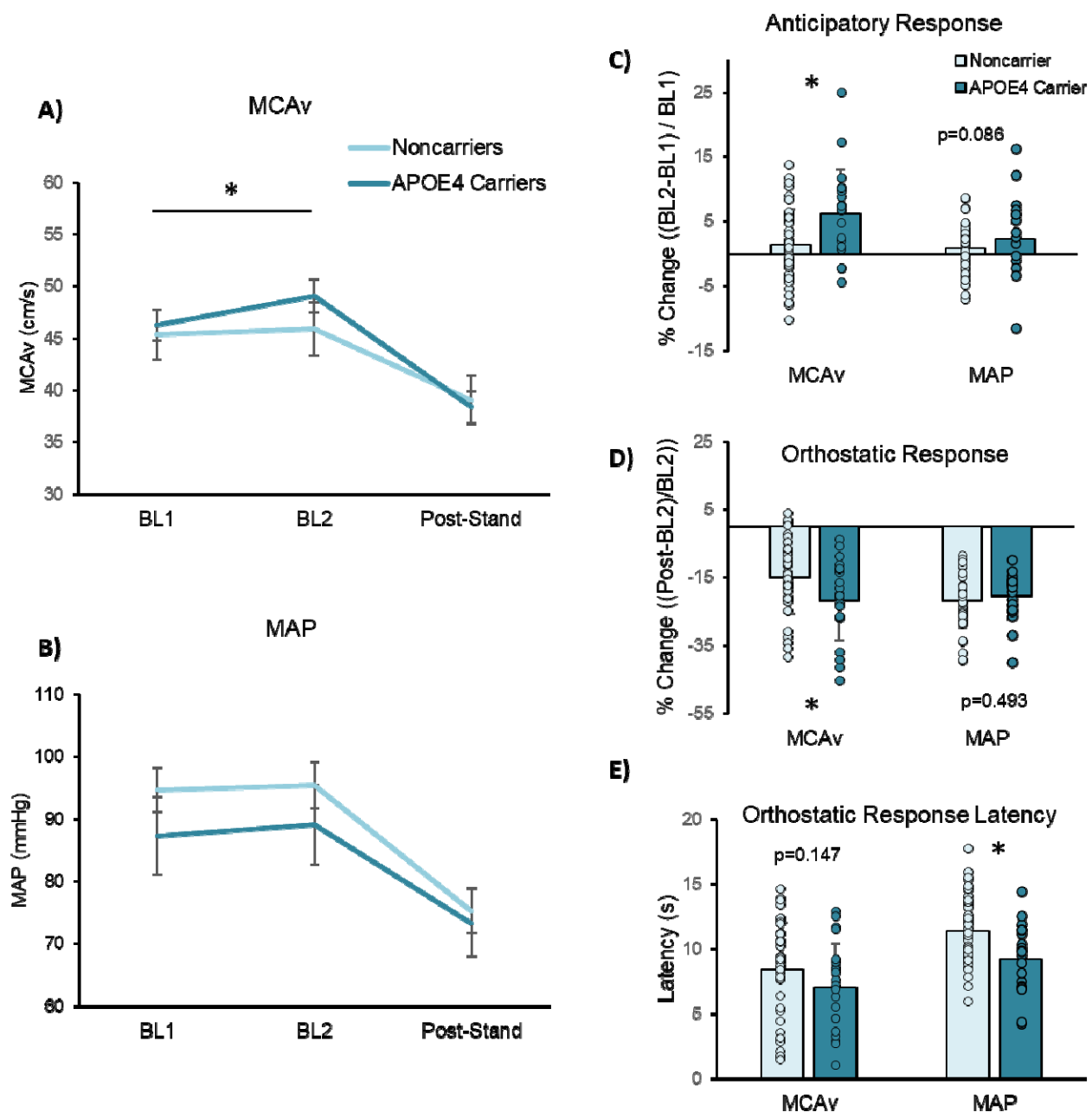
- 569 [59] Yoo S-W, Ha S, Yoon H, Yoo J-Y, Lee K-S, Kim J-S. Paradoxical Cerebral Perfusion in  
570 Parkinson's Disease Patients with Orthostatic Hypotension: A Dual-Phase 18F-Florbetaben  
571 Positron Emission Tomography Study. *J Parkinsons Dis* 2021;11:1335–44.  
572 <https://doi.org/10.3233/JPD-212596>.
- 573 [60] Miller KB, Howery AJ, Rivera-Rivera LA, Johnson SC, Rowley HA, Wieben O, et al. Age-  
574 Related Reductions in Cerebrovascular Reactivity Using 4D Flow MRI. *Front Aging Neurosci*  
575 2019;11:281. <https://doi.org/10.3389/fnagi.2019.00281>.
- 576 [61] Nagai M, Hoshida S, Kario K. Hypertension and dementia. *Am J Hypertens* 2010;23:116–24.  
577 <https://doi.org/10.1038/ajh.2009.212>.
- 578

579

580 **CONSENT STATEMENT:** All human subjects in this study provided written, informed consent.

581

582 **1 LEGENDS AND FIGURES**



583

584 **Figure 1.** Cerebral and peripheral vascular responses during orthostasis in *APOE4* carriers and

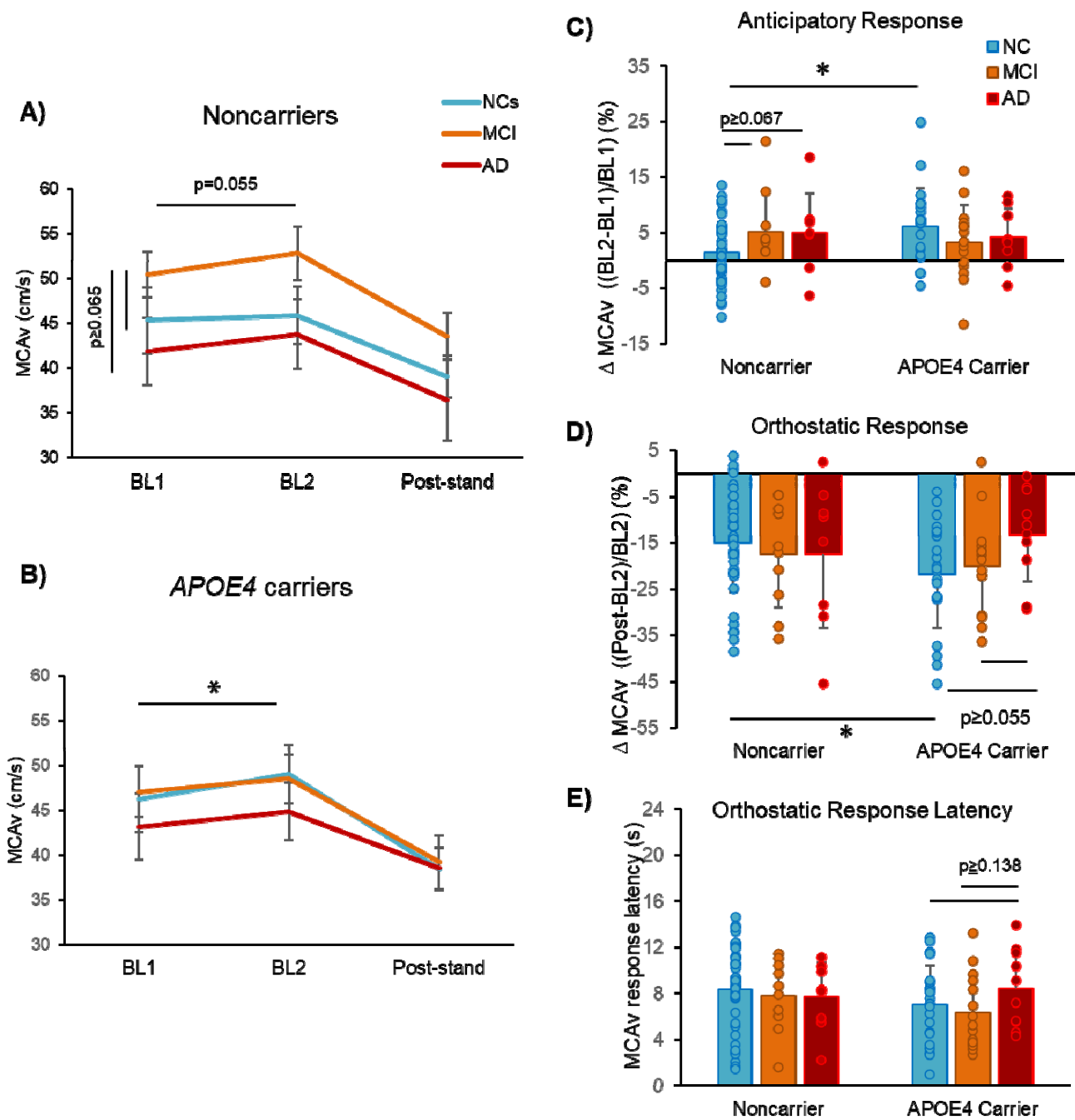
585 noncarriers with normal cognition. **(A)** Both genotypes experienced significant drops in middle

586 cerebral artery blood flow velocity (MCAv) after standing. However, only *APOE4* carriers showed an

587 anticipatory increase in MCAv just before standing, while noncarriers did not show any significant  
588 change. **(B)** Anticipatory increases in beat-to-beat mean arterial pressure (MAP) and drops in MAP  
589 after standing were observed across all participants, regardless of genotype **(C)** *APOE4* carriers  
590 demonstrated a greater anticipatory increase in MCAv but no difference MAP compared to  
591 noncarriers. **(D)** *APOE4* carriers showed greater post-stand decreases in MCAv compared to  
592 noncarriers, but no difference in MAP decreases. **(E)** *APOE4* carriers showed shorter MAP  
593 responses latencies ( $p=0.003$ ) compared to noncarriers, while MCAv response latency was not  
594 different between genotypes ( $p=0.147$ )

595 \* indicates  $p<0.05$  for between-group (genotype) differences.



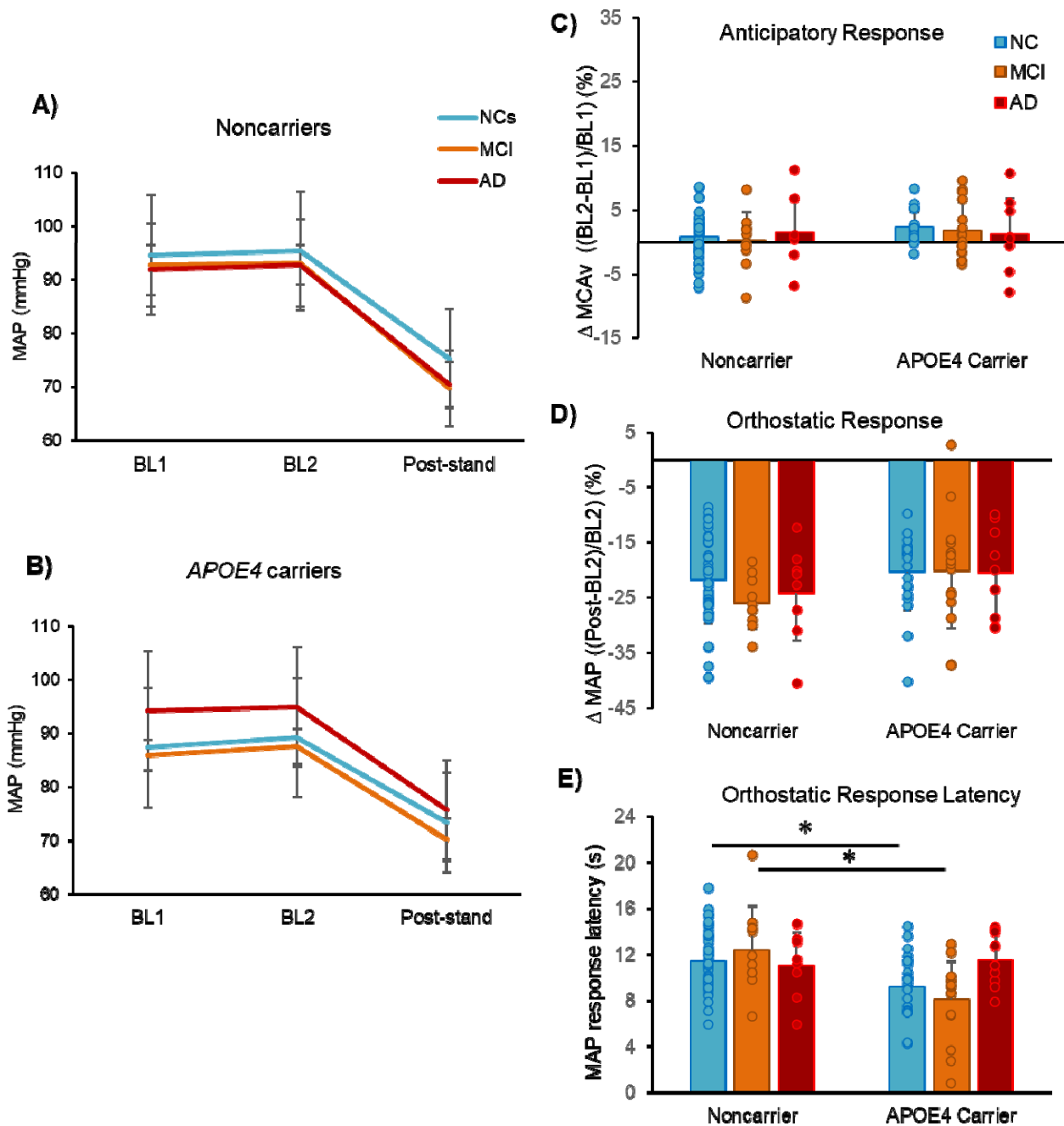


596

597 **Figure 2.** Cerebral vascular responses during orthostasis in over the course of AD progression in  
 598 normal cognition (NC), mild cognitive impairment (MCI), and early-stage Alzheimer's disease (AD).  
 599 **(A)** Noncarriers of *APOE4* showed no significant effect of diagnosis on MCAv. **(B)** NC *APOE4*  
 600 carriers showed a significant anticipatory increase in MCAv, while this anticipatory response was  
 601 attenuated in MCI and AD *APOE4* carriers. **(C)** NC *APOE4* carriers showed greater anticipatory  
 602 percent increase in MCAv compared to noncarriers, but genotype differences were not observed in

603 MCI and AD. **(D)** NC *APOE4* carriers showed greater orthostatic-induced reduction in MCAv, but no  
 604 genotype differences were observed in MCI and AD. **(E)** No genotype or diagnoses differences were  
 605 observed for MCAv response latency during orthostasis.

606 \* indicates  $p < 0.05$  for between-diagnosis and between-genotype differences.



607

608

609 **Figure 3.** Mean arterial blood pressure (MAP) responses during orthostasis in over the course of AD  
610 progression in normal cognition (NC), mild cognitive impairment (MCI), and early-stage Alzheimer's  
611 disease (AD). **(A)** In noncarriers, MAP decreased at post-stand time points in response to  
612 orthostasis but showed no difference in anticipatory increase, regardless of diagnosis. **(B)** In APOE4  
613 carriers, there was an anticipatory increase in MAP only in NCs. **(C)** Anticipatory MAP, nor **(D)**  
614 orthostatic-induced change in MAP differed by diagnosis. **(E)** Shorter latency of orthostatic-induced  
615 MAP response observed in NC *APOE4* carriers compared to noncarriers was also present at the  
616 MCI disease stage, but showed no difference in early AD.

617 \* indicates  $p < 0.05$  for between-diagnosis and between-genotype differences.

618