

1 **Full title**

2 **Prednisone enhances pregnancy outcomes in gonadotropin-releasing**
3 **hormone antagonist protocol: a multi-center randomized clinical trial**

4

5 **Short title**

6 **Prednisone in gonadotropin-releasing hormone antagonist protocol**

7

8 Dan Zhang^{1¶}, Xian Wu^{1¶}, Ai-Fang Jiang^{2¶}, Tingting Yang^{2¶}, Shu-Qin Zhao^{3¶}, Lei Wang³, Jian Li⁴, Yan

9 Li¹, Xiao-Wei Zhou¹, Lan Xia¹, Shen Zhao¹, Hui-Hui Xu¹, Xiao-Ling Wang¹, Yao Qu², Hsun-Ming

10 Chang⁵, Ai-Jun Zhang^{1,6&}, Chun-E Ren^{2&}, Bu-Fang Xu^{1,7&*}

11

12 1. Reproductive Medical Center, Department of Obstetrics and Gynecology, Ruijin Hospital,

13 Shanghai Jiao Tong University School of Medicine, Shanghai, China

14 2. Department of Reproductive Medicine, Affiliated Hospital of Shandong Second Medical

15 University, Weifang, Shandong, China

16 3. Maternal and Child Health Care Hospital of Zaozhuang, Shandong, China

17 4. Clinical research center, Ruijin Hospital, Shanghai Jiao Tong University School of Medicine,

18 Shanghai, China

19 5. Department of Obstetrics and Gynecology, China Medical University Hospital, Taichung,

20 Taiwan

21 6. Shanghai Key Laboratory for Assisted Reproduction and Reproductive Genetics, Shanghai,

22 China

NOTE: This preprint reports new research that has not been certified by peer review and should not be used to guide clinical practice.

23 7. Shanghai Key Laboratory of Reproductive Medicine, Department of Histoembryology, Genetics
24 and Developmental Biology, Shanghai Jiao Tong University School of Medicine, Shanghai, China

25

26 * Corresponding author:

27 E-mail: bufangxu@163.com.cn (B-F X)

28

29 [¶] These authors contributed equally to this work.

30 [&] These authors also contributed equally to this work.

31

32

33

34

35

36

37

38

39

40

41

42

43

44 **Abstract:**

45 **Background**

46 The gonadotrophin-releasing hormone antagonist (GnRH-ant) protocol in controlled
47 ovarian stimulation (COS) has distinct advantages and become widespread. However,
48 the dose-dependent disturbance of GnRH-ant on endometrial immune factors may
49 negatively impact endometrial receptivity, potentially contributing to lower clinical
50 pregnancy rates in fresh embryo transfer cycles, thereby diminishing the benefits of
51 this protocol. Identifying strategies to mitigate these adverse effects on the
52 endometrium is crucial for improving pregnancy outcomes in fresh embryo transfer
53 cycles following this COS protocol. Prednisone, a primary immunosuppressive agent,
54 has been proposed as a means to counteract the negative effects of GnRH-ant on the
55 endometrium. This study designed a multi-center randomized clinical trial to
56 compare the efficacy of combining prednisone with a fixed full-dose GnRH-ant
57 protocol versus a flexible half-dose GnRH-ant protocol and a conventional fixed
58 full-dose GnRH-ant protocol.

59 **Methods and Findings**

60 We conducted a randomized, controlled, open-label clinical trial across three
61 reproductive centers in China from April 2019 to November 2022, with follow-up
62 completed in August 2023. Of the 5,042 identified patients aged 20 to 35 years
63 undergoing in vitro fertilization and embryo transfer (IVF-ET) with the GnRH-ant

64 protocol, 2,052 patients without contraindications for fresh embryo transfer were
65 enrolled. Participants were randomly assigned to three groups: Group A received a
66 fixed full-dose GnRH-ant combined with prednisone 10 mg per day from the start day
67 of stimulation until 11 to 14 days after embryo transfer; Group B received a flexible
68 half-dose GnRH-ant; and Group C received a fixed full-dose GnRH-ant. The primary
69 outcome, clinical pregnancy rate (CPR), was defined as the ultrasound confirmation
70 of an intrauterine gestation sac 30 to 35 days after embryo transfer, divided by the
71 number of cases that underwent transfer. Of the enrolled patients, 1,512 (73.7%)
72 underwent embryo transfer. Group A demonstrated a significantly higher CPR (63.1%)
73 compared to Group B (54.7%; rate difference (RD) 8.4%, 95% confidence interval (CI)
74 2.4%–14.5%, $P = 0.007$) and Group C (46.4%; RD 16.7%, 95% CI 10.7%–22.7%, $P <$
75 0.001). The cancellation rate of fresh embryo transfer in Group A (18.7%) was similar
76 to that in Group C (19.9%), but significantly lower than in Group B (24.1%). No
77 significant differences in embryo laboratory results or in adverse events were
78 observed among the groups.

79 **Conclusions**

80 In patients undergoing IVF with the GnRH-ant protocol, the addition of low dose
81 prednisone significantly improved the CPR without increasing adverse effects. These
82 findings suggest an optimal strategy to enhance the success of the antagonist
83 protocol in IVF-ET.

84 **Trial registration** Chinese clinical trial registry: ChiCTR1900021024.

85

86 **Key words:** gonadotrophin-releasing hormone antagonist, prednisone, clinical
87 pregnancy rate, fresh embryo transfer, in vitro fertilization

88 **Introduction**

89 Infertility affects a significant number of couples worldwide, and in vitro fertilization
90 and embryo transfer (IVF-ET) stands as the foremost medical solution for addressing
91 infertility [1]. Among the various controlled ovulation stimulation (COS) protocols,
92 the gonadotrophin-releasing hormone antagonist (GnRH-ant) offers notable
93 advantages, including a flexible, safe, and short stimulation period [2-5]. The
94 guidelines for COS formulated by the European Society of Human Reproduction and
95 Embryology in 2020 recommend the GnRH-ant protocol as the first-line choice for
96 patients with various ovarian responses[6]. Especially during the COVID-19 pandemic,
97 the characteristics of the GnRH-ant protocol effectively met the need to reduce the
98 risk of infection for patients and staff, leading to its widespread acceptance and
99 adoption[7]. Survey data indicate an increasing use of GnRH-ant protocol in China,
100 from 6% in 2014 to 37% in 2021[8]. Additionally, an annual report from Germany in
101 2021 showed that the proportion of GnRH-ant protocol adopted in COS reached
102 70%[9].

103 However, previous studies have reported lower clinical pregnancy rate (CPR) and live
104 birth rate (LBR) of fresh embryo transfer following GnRH-ant protocol than GnRH
105 agonist long protocol in general IVF patients [2, 10-13]. While no significant
106 difference about pregnancy rates had been observed among frozen-thawed embryo

107 transfer (FET) cycles between the two protocols [14], which indicated that GnRH-ant
108 did not compromise the quality of embryos but may affect endometrial receptivity.
109 Although a large sample size randomized controlled trial (RCT) study of Zijiang Chen's
110 team showed no difference in pregnancy rates between fresh and frozen embryo
111 transfers among normal ovulating patients who were undergoing IVF with GnRH-ant
112 protocol [15], another RCT from the same team showed that frozen single blastocyst
113 transfer resulted in a higher LBR than fresh single blastocyst transfer when using
114 GnRH-ant protocol [16], which suggested the decreased endometrial receptivity
115 during a fresh embryo transfer cycle was the main concern, and the cleavage staged
116 and multiple embryos transfer of the former study may interfere the results. To
117 eliminate the side effect of GnRH-ant and improve clinical pregnancy rates, various
118 strategies have been employed, such as utilizing freeze-all embryo strategy followed
119 by FET. However, FET has its limitations, including increased risk of pregnancy
120 complications and added economic and time burden for patients [16, 17]. Therefore,
121 finding strategies to enhance CPR and LBR in fresh embryo transfer cycles under the
122 GnRH-ant protocol, remains of great importance.

123 Our previous work has suggested that abnormal immunity plays a key role in the
124 adverse effects of GnRH-ant on endometrial receptivity. Specifically, we observed
125 heightened uterine natural killer (uNK) cells and increased expression of tumor
126 necrosis factor-alpha (TNF α) in the endometrium during the implantation phase of
127 women undergoing GnRH-ant protocol, with a dose-dependent relationship [18, 19].
128 Prednisone, a primary immunosuppressive agent, has been shown to reduce

129 inflammatory responses, decrease the number of uNK cells in the preimplantation
130 endometrium, and suppress cytotoxicity and cytokine secretion [20]. Related studies
131 have also confirmed the safety of low-dose prednisone during pregnancy for the
132 offspring [21, 22]. Based on these findings, we hypothesize that prednisone
133 administration could enhance endometrial receptivity in women undergoing the
134 GnRH-ant protocol and ultimately improving pregnancy outcomes.
135 Theoretically, reducing the dose of antagonists could diminish its negative impact on
136 endometrial receptivity. Also in our previous retrospective study, we demonstrated
137 the safety and effectiveness of flexibly reducing the dosage of GnRH antagonist for
138 patients with normal ovarian reserve [23]. Thus, in this study, we aim to assess the
139 effects of low-dose prednisone on improving pregnancy rates in fresh ET cycles under
140 the GnRH-ant protocol, in comparison with a flexible half-dose GnRH-ant protocol
141 and the conventional full-dose GnRH-ant protocol.

142 **Methods**

143 **Study design**

144 This multicenter, open-label, randomized controlled clinical trial was conducted
145 across three sites in China (Reproductive Medical Center of Ruijin Hospital, Shanghai;
146 Department of Reproductive Medicine, Affiliated Hospital of Shandong Second
147 Medical University, Weifang, Shandong; and Maternal and Child Health Care Hospital
148 of Zaozhuang, Shandong) from April 2019 to November 2022, with follow-up
149 completed in August 2023 (We originally planned to complete patients recruitment
150 in 2 years and follow up for another 1 year, and total 3 years to complete the study.

151 However, due to the COVID-19 pandemic during 2020 to 2022, our recruitment
152 period was extended by 2 years). The study adhered to the principles outlined in the
153 Declaration of Helsinki and received approval from the institutional review board and
154 ethics committee of Ruijin Hospital (No. 2018-185). Written informed consent was
155 obtained from all participants. The trial protocol can be found in Supplement 1 and
156 has been registered in the Chinese Clinical Trial Registry before trial commencement
157 (Name of the registry: The effect of flexibly reducing the dose of GnRH antagonist
158 and adding low dose prednisone on clinical pregnancy rate in IVF antagonist cycles;
159 trial number: ChiCTR1900021024;
160 trial URL: <https://www.chictr.org.cn/showproj.html?proj=32931>). There were no
161 modifications to the inclusion criteria or outcomes following the start of the trial. All
162 the changes made to the original protocol received approval from our institutional
163 review board and are detailed in the end of Supplement 1.

164 **Patients**

165 Enrollment criteria included women aged 20–35 years undergoing GnRH-ant protocol
166 and preparing for their initial IVF procedure with fresh ET. Exclusion criteria were
167 factors that could impair pregnancy rates, such as reduced ovarian reserve [basic
168 follicle-stimulating hormone (FSH) ≥ 15 IU/L, bilateral antral follicle count (AFC) < 5 ,
169 anti-Müllerian hormone (AMH) ≤ 1.1 ng/mL]; polycystic ovary syndrome patients with
170 uncontrolled androgen levels; hydrosalpinx, endometrial polyps, moderate-to-severe
171 intrauterine adhesions; the presence of endometriosis, adenomyosis, or
172 hysteromyoma (excluding subserous myoma); thyroid dysfunction, immune

173 abnormality, or insulin resistance; contraindications related to medication (e.g.,
174 allergy to the medicines involved or known contraindications for glucocorticoids);
175 and a history of experiencing ≥ 2 spontaneous abortions.

176 **Randomization and concealment of allocation**

177 Eligible patients were randomly assigned in a 1:1:1 ratio to Groups A (adding
178 prednisone to conventional full-dose GnRH-ant protocol), B (receiving flexible
179 half-dose GnRH-ant), and C (receiving conventional full-dose GnRH-ant). The
180 randomization process was conducted by an independent statistician (Dr. Jian Li),
181 utilizing SAS 9.2 software (SAS Institute Inc., Cary, NC, USA), employing a stratified
182 block randomization method with a block size 6 to generate corresponding random
183 numbers. These random numbers, along with the respective treatment groups, were
184 sealed within opaque envelopes, sequentially numbered, and remained unopened
185 until the participant's eligibility for the study was explicitly confirmed. The Clinician
186 opened the envelope and assigned the participant to the corresponding intervention.
187 Due to the distinct drugs administered, blinding of doctors to treatment assignments
188 was impractical. Thus, masking (blinding) was not implemented in this trial.

189 **Procedures**

190 Recombinant FSH (rFSH; Gonal-f[®], Merck Serono) and GnRH-ant (Cetrotide[®], Merck
191 Serono) were utilized for COS. The starting rFSH dose ranged from 100 to 400 IU,
192 tailored to personal weight and ovarian reserve, and began on day 2 of the menstrual
193 cycle. The daily dose was adjusted every 2 to 4 days based on individual responses by
194 the attending physician.

195 Group A: Received prednisone 10 mg once daily in the morning from the start of rFSH
196 until 11 days after embryo transfer (ET). The prednisone was then discontinued
197 regardless of pregnancy. Patients also received a fixed dose of GnRH-ant (0.25
198 mg/day) from day 6 until the day of oocyte maturation triggering. Group B: Received
199 half-dose GnRH-ant (0.125 mg/day) from day 6 until the day of oocyte maturation
200 triggering. During COS, the dose was increased to 0.25 mg daily when serum LH was
201 ≥ 10 mIU/mL[24] or when LH was $>2 \times$ baseline (>3 mIU/mL) until the trigger day[25].
202 Group C: Received a fixed dose of GnRH-ant (0.25 mg/day) from day 6 until the day
203 of oocyte maturation triggering.

204 Throughout the COS process, the size of follicles, and serum LH, estradiol (E_2), and
205 progesterone levels were monitored. Human chorionic gonadotropin (HCG; Lizhu,
206 China) 4,000–6,000 U was administered for triggering when at least two leading
207 follicles reached an 18-mm diameter or three leading follicles reached a 17-mm
208 diameter. Oocytes were retrieved 36 hours after triggering, and insemination was
209 performed on the same day. Intracytoplasmic sperm injection (ICSI) was employed in
210 cases of male factor infertility. Normal fertilization was confirmed by the presence of
211 two pronuclei 16–18 hours after insemination. Subsequently, all fertilized oocytes
212 were cultured at 37°C under 5% O_2 and 6% CO_2 in sequential media (Vitrolife,
213 Sweden). Specifically, G-1™ plus (Vitrolife) was used for embryo culture from the
214 pronucleate stage to day 3, followed by G-2™ plus (Vitrolife) from day 3 to the
215 blastocyst stage. Embryos were evaluated on day 3 (S1 Table) or day 5 (S2 Table) after
216 fertilization using a standardized scoring system based on morphological

217 characteristics[26-28].

218 Luteal support began on day 1 after oocyte retrieval, comprising 90 mg progesterone
219 sustained-release gel (Merck Sereno, France) combined with 150 mg oral
220 progesterone. For patients eligible for fresh ET, one to two available cleavage-stage
221 embryos on day 3 or blastocysts on day 5 post-oocyte retrieval were transferred
222 under ultrasound guidance. Embryo selection was based on patient preference and
223 physician judgment.

224 Criteria for fresh ET included: (1) $E_2 \leq 7,000$ pg/mL on the trigger day and ≤ 20 oocytes
225 retrieved; (2) oocyte stimulation duration within 8–14 days; (3) endometrial
226 thickness 8–14 mm on the trigger day, with A or B type morphology by ultrasound; (4)
227 progesterone ≤ 1.5 ng/mL, or >1.5 ng/mL but <1.7 ng/mL only once throughout the
228 COS process; (5) available embryos: cleavage stage embryo score ≥ 5 , or available day
229 5 blastocysts (S1 and S2 Tables).

230 **Outcomes**

231 The primary outcome was the CPR, defined as the number of patients achieving
232 clinical pregnancy (detection of an intrauterine gestation sac 30–35 days after fresh
233 ET) divided by the total number of cases undergoing fresh ET. Secondary outcomes
234 encompassed LBR, biochemical pregnancy rate, implantation rate, early miscarriage
235 rate, late miscarriage rate, and premature birth rate. Additionally, key embryological
236 outcomes included mean number of retrieved oocytes, fertilization rate, available
237 and high-quality embryos, and cycle cancellation rate due to premature ovulation.
238 Definitions of secondary outcomes and adverse events are detailed in S3 and S4

239 Tables. There were no changes to the trial outcomes after the trial commenced.

240 **Sample size calculation**

241 Referenced to the CPRs of different protocols in recent three years in our center, the
242 CPRs for Group A, Group B and Group C were estimated at 60%, 51% and 45%,
243 respectively. Using a bilateral α of 0.05 and power of 0.8, for the comparison
244 between Group A and Group B, the minimum sample size by Chi-square test was
245 determined to be 478 patients for each group. For the comparison between Group A
246 and Group C, the calculated sample size was 173 cases for each group. However, to
247 ensure robust analysis, a larger sample size of 478 cases per group was used. We
248 originally predicted a 10% cancellation rate of fresh ET and a 10% loss of follow-up,
249 and the calculated sample size was 600 for each group. But the interim analysis,
250 when 450 participants were enrolled in May 2021, found that the cancellation rate of
251 fresh ET in Group B was significantly higher than 10%. As a result, we revised the
252 cancellation rate for fresh ET to 20% and increased the sample size to 684 cases per
253 group, with a total of 2,052 cases required for all three groups.

254 **Statistical analysis**

255 All statistical analyses were performed using SPSS 25.0. Analysis included both the
256 intention-to-treat (ITT) set, which encompassed all randomized patients, and the
257 per-protocol (PP) set, which included all patients who completed the fresh ET
258 procedure along with follow-up visits. Our primary outcome, CPR, and pregnancy
259 related secondary outcomes were analyzed in the PP set. The baseline characteristics
260 and COS related secondary outcomes were analyzed in the ITT set. Continuous data

261 were presented as mean \pm standard deviation (SD) for normally distributed variables,
262 with between-group differences assessed through one-way analysis of variance or
263 Student's t-test. Non-normally distributed data were expressed as median and
264 interquartile range (IQR) and analyzed using the non-parametric Kruskal-Wallis test.
265 For many patients in the ITT set who did not receive embryo transfer, CPR and other
266 outcomes pertaining to pregnancy were analyzed based on the PP dataset.
267 Categorical variables were presented as frequency and percentage, and inter-group
268 differences were evaluated using bilateral Pearson chi-squared or Fisher's exact
269 probability tests. A two-sided $P < 0.05$ was considered indicative of statistical
270 significance.

271 Rate differences (RD) and rate ratio (RR) are reported with 95% confidence intervals
272 for both the primary outcome and second outcomes. No adjustments for multiple
273 testing were applied to the outcomes, rendering them exploratory. A *post-hoc*
274 subgroup analysis of the primary outcome was undertaken to explore the
275 consistency of treatment outcomes within significant subgroups.

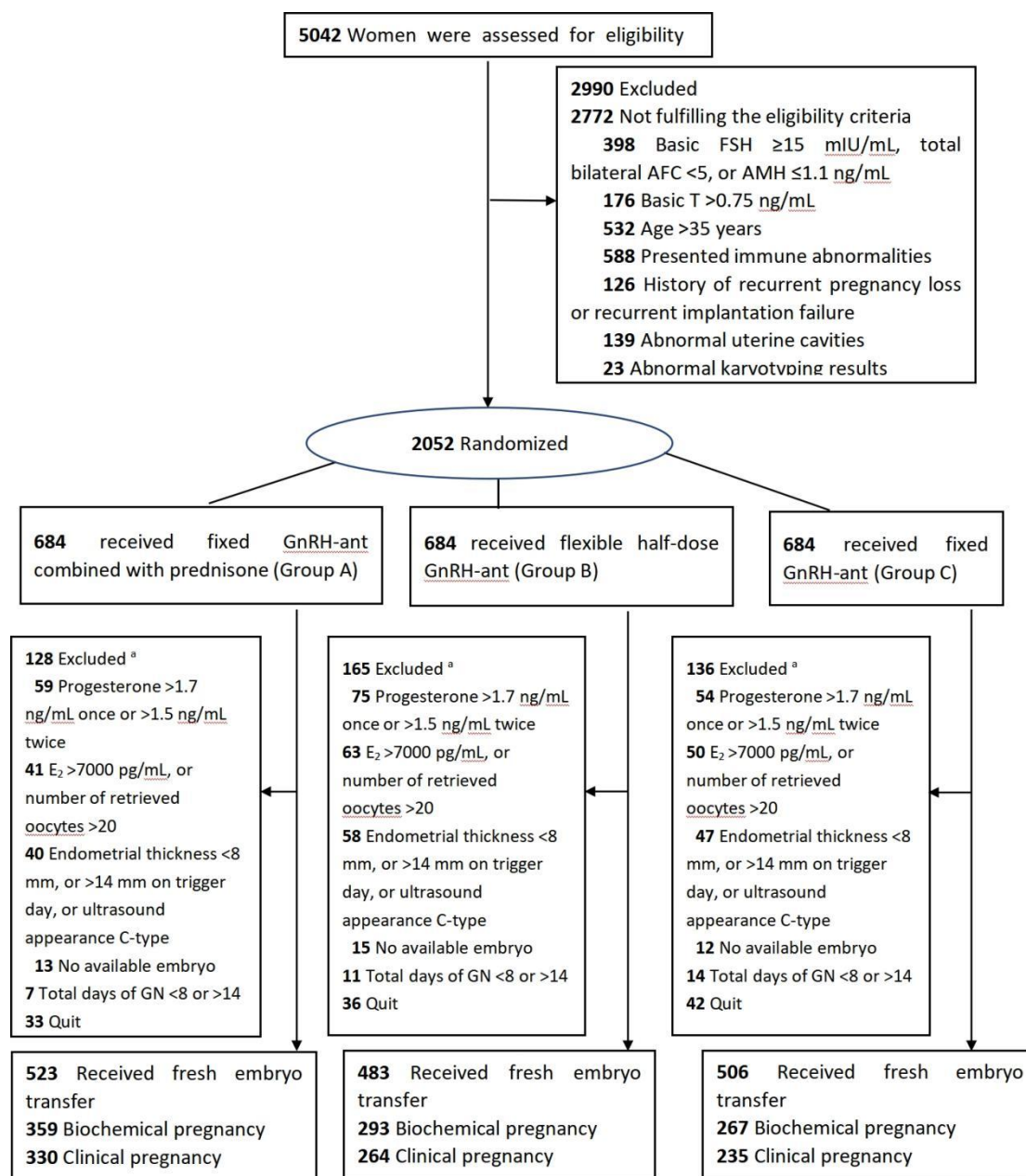
276 **Results**

277 **Study participants**

278 From April 2019 to November 2022, a total of 5,042 patients were screened for
279 inclusion. Of these, 2,052 were randomized for the IVF/ICSI procedure (684 per group)
280 and composed the ITT population. Among these, 1,512 patients underwent fresh ET
281 (Group A: 523; Group B: 483; and Group C: 506), constituting the PP population (Fig
282 1). The last patient follow-up was completed in August 2023. Baseline characteristics,

283 including age, BMI, infertility duration, cause of infertility, AMH, total AFC, baseline
 284 FSH (bFSH), LH, E₂, and progesterone levels, were well balanced across the three
 285 groups (Table 1).

286 **Fig 1. Flow chart of participant selection.**



287
 288
 289 Abbreviations: FSH, follicle stimulating hormone; AFC, antral follicle count; AMH, anti-Mullerian hormone; T,
 290 testosterone; E₂, estrogen; GN, gonadotropin; HCG, human chorionic gonadotropin.

291 ^a Multiple reasons for some patients.

292

293 **Table 1 Baseline characteristics of ITT and PP patients.**

	ITT patients			PP patients		
	Group A (n=684)	Group B (n=684)	Group C (n=684)	Group A (n=523)	Group B (n=483)	Group C (n=506)
Age, y [#]	30.4 (3.1)	30.5 (3.2)	30.7 (2.8)	30.5 (3.1)	30.6 (3.2)	30.9 (2.8)
BMI [#]	23.4 (3.4)	23.3 (3.6)	23.4 (3.2)	23.4 (3.4)	23.1 (3.5)	23.2 (3.1)
Infertility duration, y [#]	3.1 (2.0)	3.2 (2.2)	3.2 (2.0)	3.0 (2.1)	3.2 (2.2)	3.2 (2.1)
Type of infertility*						
Primary	318 (46.5)	353 (51.6)	352 (51.5)	244 (46.7)	245 (50.7)	260 (51.4)
Secondary	366 (53.5)	331 (48.4)	332 (48.5)	279 (53.3)	238 (49.3)	246 (48.6)
Cause of infertility*						
Male factor	61 (8.9)	64 (9.4)	62 (9.1)	43 (8.2)	45 (9.3)	43 (8.5)
Tubal	477 (69.7)	464 (67.8)	431(63.0)	375 (71.7)	343 (71.0)	337 (66.6)
Mixed factors	146 (21.3)	156 (22.8)	191 (27.9)	105 (20.1)	95 (19.7)	126 (24.9)
Antral follicle count, No. [#]	14.5 (7.8)	14.4 (8.0)	14.4 (8.4)	14.2 (7.7)	13.7 (7.4)	14.2 (8.1)
AMH, ng/mL [#]	4.1 (3.1)	4.5 (3.3)	4.2 (3.3)	3.7 (2.7)	3.9 (2.6)	3.6 (2.5)
Basal FSH level, mIU/mL [#]	7.1 (2.0)	7.2 (2.0)	7.3 (2.0)	7.2 (2.0)	7.4 (2.0)	7.4 (2.0)
Basal LH level, mIU/mL [#]	5.2 (3.1)	5.0 (2.7)	5.2 (3.1)	5.0 (2.9)	4.8 (2.5)	5.2 (3.0)
Basal E ₂ level, pg/mL [#]	41.4 (19.9)	40.4 (30.3)	40.8 (19.6)	41.8 (21.0)	41.0 (33.9)	40.9 (19.0)
Basal progesterone, ng/mL [#]	0.5(0.5)	0.5 (0.4)	0.5 (0.5)	0.5 (0.4)	0.5 (0.4)	0.5 (0.4)

294 [#] mean (SD) , * No.(%);

295 Abbreviations: FSH, follicle stimulating hormone; BMI, body mass index; AMH, anti-Mullerian hormone; LH,
296 luteinizing hormone; E₂, estrogen; SD, standard deviation.

297

298 **COS results**

299 In the ITT patients, there were no significant differences in COS parameters between
300 Group A and Group C. However, in the PP patients, Group A had relatively lower
301 progesterone levels on the trigger day compared to Group C. Compared to Group B,
302 Group A exhibited a significantly higher total GnRH-ant dose and a lower rate of
303 premature LH rise, markedly lower levels of E₂ and progesterone on trigger day, and
304 these findings were consistent in both ITT and PP patients (Table 2). According to the
305 criteria, in Group B, 145 (21.2%) women in the ITT population increased their dosage
306 of GnRH-ant to full-dose, including 95 women with a LH rise \geq 10 mIU/mL, and 50

307 women with a LH rise >2× baseline (>3 mIU/mL) during stimulation. The endometrial
308 thickness, and the number and quality of embryos were all balanced among groups
309 (Table 2).

310 **Table 2 . COS indexes of both ITT and PP patients and characters of**
311 **transferred embryos for PP patients.**

	Group A	Group B	Group C	P (Group A vs B)	P (Group A vs C)
ITT patients	n=684	n=684	n=684		
Starting dose of GN, U*	200.0(150.0– 225.0)	200.0(150.0– 225.0)	200.0(150.0– 225.0)	0.514	0.057
Total dosage of GN, U [#]	2032.9(597.5)	2065.8(566.5)	2085.0(609.8)	0.295	0.110
Total days of GN, day*	9.0(8.0–10.0)	9.0(8.0–10.0)	9.0(8.0–10.0)	0.366	0.371
Total days of Cetrotide, day*	5.0(4.0–6.0)	5.0(4.0–6.0)	5.0(4.0–6.0)	0.366	0.371
LH on Cetrotide start day, mIU/mL*	2.9(1.7–5.4)	2.7(1.7–4.5)	3.1(1.8–6.0)	0.214	0.788
E ₂ on Cetrotide start day, pg/mL*	553.9(294.3– 960.5)	522.0(305.0– 886.0)	591.5(294.5– 1016.0)	0.353	0.408
Progesterone on Cetrotide start day, ng/mL*	0.4(0.3–0.7)	0.4(0.3–0.7)	0.5(0.3–0.8)	0.371	0.131
Total dosage of Cetrotide, mg*	1.3(1.0–1.5) ^b	0.8(0.5–0.9) ^a	1.3(1.0–1.5) ^b	<0.001	0.390
LH on trigger day, mIU/mL*	2.5(1.4–4.3)	2.7(1.5–4.6)	2.6(1.5–4.0)	0.293	0.901
E ₂ on trigger day, pg/mL*	2751.6(1762. 0–4266.8)	3163.0(2041. 0–4669.2)	2786.5(1758. 5–4430.5)	<0.001	0.245
Progesterone on trigger day, ng/mL [#]	1.0(0.6)	1.1(0.6)	1.0(0.6)	<0.001	0.026
Endometrial thickness on trigger day, mm [#]	11.0(1.9)	11.0(1.8)	11.0(1.8)	0.697	0.629
Premature LH rise ^{& c}	82 (12.0) ^b	146 (21.3) ^a	71 (10.4) ^b	<0.001	0.345
Cycles for adjusting the Cetrotide dosage ^{& d}	NA	145(21.2)	NA	NA	NA
Cycle cancellation due to premature ovulation(%)	0	0	0	NA	NA
Number of oocytes retrieved [#]	11.5(5.4)	11.9(5.9)	11.3(5.9)	0.198	0.557
IVF fertilization rate ^{&}	5195/6490 (80.0)	5132/6358 (80.7)	5135/6379 (80.5)	0.338	0.519
ICSI fertilization rate ^{&}	1046/1245 (84.0)	1296/1558 (83.2)	1007/1197 (84.1)	0.555	0.940
Rate of available embryos at cleavage ^{&}	3613/6033 (59.9)	3716/6229 (59.7)	3636/5949 (61.1)	0.794	0.168
Top quality embryo rate at cleavage ^{&}	707/6033 (11.7)	790/6229 (12.7)	746/5949 (12.5)	0.103	0.169
PP patients	n = 523	n = 483	n = 506		
Starting dose of GN, U*	187.5 (150.0–225.0)	200.0 (150.0–225.0)	200.0 (150.0–225.0)	0.216	0.065

Total dosage of GN, U [#]	2027.4(573.4)	2083.2(563.9)	2087.5(607.8)	0.120	0.103
Total days of GN, day*	9.0 (8.0–10.0)	9.0 (8.0-10.0)	9.0 (9.0–10.0)	0.421	0.168
Total days of Cetrotide, day*	5.0 (4.0–6.0)	5.0 (4.0–6.0)	5.0 (5.0–6.0)	0.421	0.168
LH on Cetrotide start day, mIU/mL*	2.7 (1.7–4.6)	2.6 (1.7–4.0)	2.9 (1.7–5.2)	0.378	0.672
E ₂ on Cetrotide start day, pg/mL*	498.2 (253.9-829.5)	490.0 (271.3–768.5)	514.0 (263.9–854.0)	0.942	0.532
Progesterone on Cetrotide start day, ng/mL*	0.4 (0.2–0.6)	0.4(0.3–0.6)	0.4(0.2–0.7)	0.286	0.384
LH on trigger day, mIU/mL*	2.6(1.6–4.4)	2.7(1.6–4.6)	2.6(1.5–4.0)	0.845	0.401
E ₂ on trigger day, pg/mL*	2566.0(1622. 0–3735.0)	2883.0(1922. 5–4067.7)	2503.0(1642. 0–3957.0)	0.001	0.269
Progesterone on trigger day, ng/mL [#]	0.8(0.4)	0.9(0.4)	0.9(0.4)	<0.001	<0.001
Total dosage of Cetrotide, mg*	1.3(1.0–1.5)	0.8(0.5–0.9)	1.3(1.0–1.5)	<0.001	0.199
Premature LH rise ^{&c}	47 (9.0) ^b	94 (19.5) ^a	42 (8.3) ^b	<0.001	0.695
Cycles for adjusting the Cetrotide dosage ^{&d}	NA	102(21.1)	NA	NA	NA
Number of oocytes retrieved [#]	10.7(4.2)	10.7(4.3)	10.2(4.4)	0.808	0.115
IVF fertilization rate ^{&}	3574/4471 (79.9)	3114/3830 (81.3)	3319/4108 (80.8)	0.116	0.319
ICSI fertilization rate ^{&}	844/1021 (82.7)	1025/1226 (83.6)	808/957 (84.4)	0.553	0.290
Rate of available embryos at cleavage ^{&}	2757/4306 (64.0)	2527/4038 (62.6)	2564/4026 (63.7)	0.171	0.746
Top quality embryo rate at cleavage ^{&}	426/4306 (9.9)	367/4038 (9.1)	388/4026 (9.6)	0.210	0.694
Endometrial thickness on trigger day, mm [#]	11.0(1.7)	10.9(1.7)	11.0(1.7)	0.086	0.507
Stage of transferred embryos				0.368	0.023
Blastocysts ^{&}	82/523 (15.7)	66/483 (13.7)	55/506 (10.9)		
Cleavage-stage embryos ^{&}	441/523 (84.3)	417/483 (86.3)	451/506 (89.1)		
Number of transferred embryos [#]	1.7(0.5)	1.7(0.5)	1.7(0.5)	0.955	0.729
One embryo transferred ^{&}	154/523 (29.4)	143/483 (29.6)	154/506 (30.4)	0.955	0.729
Two embryos transferred ^{&}	369/523 (70.6)	340/483 (70.4)	352/506 (69.6)		
Score of transferred cleavage-stage embryos [#]	7.5(1.0)	7.4(1.1)	7.5(1.0)	0.121	0.410

312 *median(IQR), [#] mean(SD), [&] No.(%);

313 ^{ab} Comparisons between two groups; columns with the same superscript letter showed no statistically significant
314 difference, and vice versa;

315 ^c Premature LH rise refers to LH ≥ 10 mIU/mL during COS;

316 ^d During the COS process, 21.2% of ITT patients in Group B (145 cycles) converted to a daily dosage of 0.25 mg
317 GnRH antagonist, including 95 cycles with a LH rise ≥10 mIU/mL, and 50 cycles with a LH rise >2× baseline LH (3
318 mIU/mL). 21.1% of PP patients (102 cycles) converted to a daily dosage of 0.25 mg GnRH, including 64 cycles with
319 a LH rise ≥10 mIU/mL, and 38 cycles with a LH rise >2× baseline LH (3 mIU/mL);

320 *P* < 0.05 indicates a statistically significant difference.

321 **Fresh ET ratio**

322 Among all enrolled patients, 540 (26.3%) did not undergo fresh ET [Group A: 161
323 (23.5%); Group B: 201 (29.4%); Group C: 178 (26.0%)]. Excluding personal reasons,
324 Group A had a significantly lower ET cancellation rate (128, 18.7%) compared to
325 Group B (165, 24.1%), with no differences compared to Group C (136, 19.9%). The
326 primary reasons for cancellation in Group B were high progesterone levels on the
327 trigger day (75, 11.1%) and the risk of ovarian hyperstimulation syndrome (OHSS)
328 [including $E_2 > 7,000$ pg/mL on the trigger day or retrieval of more than 20 oocytes
329 (63, 9.2%)] (Fig 1; S5 Table). No statistically significant differences were found in
330 embryo grading, progesterone and estrogen levels, or endometrial thickness on the
331 day of endometrial transformation among the PP population across the three groups.

332 **Primary outcome**

333 The CPR in Group A (63.1%, 330/523) was significantly higher than in Group B (54.7%,
334 264/483; RD 8.4%, 95% CI 2.4%–14.5%; $P = 0.007$) and Group C (46.4%, 235/506; RD
335 16.7%, 95% CI 10.7%–22.7%; $P < 0.001$) (Table 3). *Post-hoc* analysis showed general
336 consistency of CPR results across different subgroups in Group A vs Group B and
337 Group A vs Group C (S1 Fig). The results of exploratory subgroup analysis for Group A
338 vs Group B showed that there were significant advantages in CPR observed in Group
339 A for the following subgroups: age ≥ 30 years old, BMI between 18.5 to 23.9,
340 infertility duration between 3 to 5 years, primary infertility, infertility for tubal and
341 mixed factors, AMH ≤ 4.7 ng/mL and basic FSH < 10 IU/L, and AFC ≤ 20 . Subgroup
342 Analysis for Group A vs Group C showed significant improvements in CPR across

343 almost all the subgroups, including all age groups, both primary and secondary
 344 infertility, various AMH values, different AFC numbers in Group A. Only a few
 345 subgroups showed no difference: BMI <18.5 and >28, infertility duration > 5 years,
 346 infertility due to male factors, and bFSH \geq 10IU/L.

347 **Table 3. Pregnancy outcomes of Group A compared with the other two**
 348 **groups.**

Outcomes	No. (%)			Group A vs Group B			Group A vs Group C		
	Group A	Group B	Group C	RD (%, 95%CI)	RR(95%CI)	P	RD (%, 95%CI)	RR (95%CI)	P
Primary									
CPR	330/52 3 (63.1)	264/483 (54.7)	235/506 (46.4)	8.4 (2.4 to 14.5)	1.154 (1.040 to 1.281)	.007	16.7 (10.7 to 22.7)	1.359 (1.212 to 1.523)	<0.001
Secondary									
Biochemical pregnancy rate	359/52 3 (68.6)	293/483 (60.7)	267/506 (52.8)	8.0 (2.1 to 13.9)	1.132 (1.032 to 1.241)	.008	15.9 (10.0 to 21.8)	1.301 (1.176 to 1.439)	<0.001
Implantation rate	431/89 2 (48.3)	329/823 (40.0)	303/858 (35.3)	8.3 (3.7 to 13.0)	1.209 (1.085 to 1.346)	.001	13.0 (8.4 to 17.6)	1.368 (1.222 to 1.532)	<0.001
Live birth rate	281/52 3 (53.7)	221/483 (45.8)	194/506 (38.3)	8.0 (1.8 to 14.1)	1.174 (1.036 to 1.331)	.012	15.4 (9.4 to 21.4)	1.401 (1.223 to 1.606)	<0.001
Early miscarriage rate	30/330 (9.1)	24/264 (9.1)	25/235 (10.6)	0 (-4.7 to 4.6)	1.000 (0.599 to 1.668)	>.99	-1.5 (-6.6 to 3.5)	0.855 (0.516 to 1.414)	0.541
Late miscarriage rate	14/330 (4.2)	12/264 (4.5)	13/235 (5.5)	-0.3 (-3.6 to 3.0)	0.933 (0.439 to 1.984)	.858	-1.3 (-4.9 to 2.4)	0.767 (0.367 to 1.601)	0.479
Premature birth rate	53/330 (16.1)	37/264 (14.0)	38/235 (16.2)	2.0 (-3.7 to 7.8)	1.146 (0.778 to 1.688)	.490	-0.1 (-6.3 to 6.0)	0.993 (0.678 to 1.455)	0.972
Other birth outcomes									
Gestational weeks [#]	38.1 (2.4)	38.3 (2.4)	38.2(1.7)	NA	NA	.345	NA	NA	0.909
Birthweight									
Singleton, kg [#]	3.3(0.6)	3.3(0.6)	3.3(0.5)	NA	NA	.963	NA	NA	0.320
Twin,kg [#]	2.5(0.5)	2.6(0.4)	2.5(0.4)	NA	NA	.394	NA	NA	0.727

349 [#]mean (SD).

350 Secondary outcomes

351 Implantation rate, biochemical pregnancy rate, and LBR were significantly higher in
 352 Group A (48.3%, 68.6%, and 53.7%, respectively) compared to Group B (40.0%, 60.7%,

353 and 45.8%, respectively) and Group C (35.3%, 52.8%, and 38.3%, respectively) (Table
354 3). No differences were observed among the groups regarding the mean number of
355 retrieved oocytes, cycle cancellation rate (due to premature ovulation), main
356 embryological outcomes (Table 2), early or late miscarriage, and premature birth
357 (Table 3).

358 **Adverse events**

359 There were no significant differences among the three groups in terms of adverse
360 events, including moderate or severe OHSS, ectopic pregnancy, gestational diabetes,
361 stillbirth, placenta previa, premature rupture of membrane, pre-eclampsia, and
362 neonatal complications such as small or large for gestational age, congenital
363 anomalies, and neonatal death (Table 4).

364 **Table 4. Adverse events of all randomized patients.**

	Group A	Group B	Group C	<i>P</i>
Maternal complications				
Moderate or severe OHSS	1/684 (0.1)	3/684 (0.4)	1/684 (0.1)	0.475
Ectopic pregnancy*	8/359 (2.2)	7/293 (2.4)	3/267 (1.2)	0.500
Gestational diabetes	18/330 (5.5)	21/264 (8.0)	11/235 (4.7)	0.263
Stillbirth	1/330 (0.3)	1/264 (0.4)	0/235 (0)	0.507
Placenta previa	0/330 (0)	3/264 (1.1)	1/235 (0.4)	0.086
Premature rupture of membrane (PROM)	5/330 (1.5)	7/264 (2.7)	2/235 (0.9)	0.282
Pre-eclampsia	0/330 (0)	1/264 (0.4)	1/235 (0.4)	0.361
Neonatal complications				
Small for gestational age (<2.5 kg)	70/351 (19.9)	45/261 (17.2)	43/240 (17.9)	0.667
Large for gestational age (≥4.0 kg)	20/351 (5.7)	12/261 (4.6)	10/240 (4.2)	0.670
Congenital anomalies	1/351 (0.3)	1/261 (0.4)	0/240 (0)	0.504
Neonatal death	1/351 (0.3)	1/261 (0.4)	0/240 (0)	0.504

365 *In Group A, three patients had heterotopic pregnancy.

366 **Discussion**

367 In this multicenter randomized controlled clinical trial, we focused on the impact of

368 prednisone on the pregnancy outcomes of fresh ET cycles in the context of the
369 GnRH-ant protocol. Our results demonstrate that the addition of low dose
370 prednisone significantly enhances pregnancy outcomes without elevating adverse
371 effects.

372 Prednisone is one of the most commonly used glucocorticoids for immune-regulatory
373 that widely used during IVF-ET. However, its use remains controversial. Previous
374 studies have confirmed that glucocorticoids were effective in improving clinical
375 pregnancy rates in IVF-ET, especially for the patients with endometritis [28], positive
376 immune antibody [29], and repeated implantation failure [30]. However, it was also
377 reported that prednisone could not improve the pregnancy outcomes of patients
378 with negative antibodies, endometriosis, or undergoing IVF-ET for the first time [31],
379 and thus against regular use of prednisone for non-selected IVF population [32]. Yun
380 sun *et al.* included 795 patients, who have undergone failures of 2 or more embryo
381 transfer cycles, to receive prednisone or placebo randomly when they experienced
382 another time of frozen-thawed embryo transfer, and they found prednisone did not
383 improve LBR when compared to placebo, which raising questions about the value of
384 prednisone in IVF-ET [33].

385 However, it is important to note that these studies mainly focused on frozen embryo
386 transfer cycles, and did not limited the protocols of COS. In this study, we only
387 included patients who receiving fresh embryo transfer and undergoing GnRH-ant
388 protocol for COS, and patients with immune abnormality and recurrent spontaneous
389 abortion (RSA) were excluded. Our previous studies confirmed that GnRH-ant had

390 adverse effects on endometrial receptivity [34]. Thus, we chose CPR but not LBR as
391 the primary outcome for that the difference of CPR has the sufficient power to signal
392 the differences of endometrial receptivity since there was no difference about
393 embryos [35].

394 In our study, the patients in Group A achieved a significantly higher CPR and all other
395 pregnancy rates than the patients in Group C. Previous studies suggested that the
396 mechanisms of glucocorticoids enhancing pregnancy outcomes of IVF-ET cycles
397 mainly lies in the following aspects. Firstly, glucocorticoids can inhibit immune
398 processes, decrease anti-phospholipid antibody and number of uNK cells [31]. The
399 immune inhibition effects of prednisone might contribute to the high CPR of Group A
400 by mitigating immune damage to the endometrium caused by GnRH-ant [18, 19].
401 Secondly, it can potentially promote the ovarian reaction to gonadotropin and
402 modulate the hormonal environment, for instance, reducing progesterone levels
403 during follicular phase [36]. In our study, most of the COS indexes, including the dose
404 and duration of gonadotropins, level of E₂ on the trigger day, thickness of
405 endometrium, number of oocyte retrieved, and the rate of available embryos,
406 showed no differences between Group A and Group C among ITT and PP patients.
407 These results showed that prednisone did not alter ovarian response to
408 gonadotropins or GnRH antagonist, or influence the thickness of endometrium and
409 quality of embryos. However, the blood level of progesterone on the trigger day was
410 lower in Group A than in Group C. Alongside suppressing pituitary LH and ovarian
411 progesterone production caused by full-dose GnRH-ant, the combined prednisone

412 might inhibit the adrenal production of progesterone [36] , accounting overall for the
413 low level of progesterone on the trigger day observed in Group A. It has been
414 reported that elevated progesterone (even <1.5 ng/mL) on the trigger day adversely
415 affects the outcome of fresh ET, and patients with lower progesterone levels on the
416 trigger day exhibited a higher CPR and LBR [37-39].

417 In this study, we set another control group that using half-dose GnRH-ant and flexibly
418 elevating to the full dose until the trigger day once LH ≥ 10 mIU/mL [40] or >2
419 baseline LH (>3 mIU/mL) [24]. This approach resulted in a significant reduction in the
420 total GnRH-ant dosage in Group B without any cycle cancellation due to premature
421 ovulation. However, the CPR and other pregnancy outcomes in Group B were inferior
422 than those in Group A. Reducing the antagonist dosage may theoretically mitigate its
423 impact on the endometrium, but it is noteworthy that despite a substantial
424 proportion (21.2%) of women undergoing the conversion of GnRH-ant dosage to full
425 dose, the premature LH rise rate in Group B was 21.3%, exceeding that of the other
426 two groups. Additionally, Group B exhibited the highest rate of fresh ET cancellation,
427 primarily attributed to elevated progesterone levels or the risk of OHSS (S5 Table).
428 Levels of E₂ on the trigger day in Group B were significantly higher than those in the
429 other two groups, and the progesterone levels on the trigger day was significantly
430 higher in Group B than in Group A (Table 1). We hypothesize that low-dose GnRH-ant
431 may attenuate the inhibition of endogenous FSH and LH, leading to increased E₂ and
432 progesterone production [41-43]. Our results demonstrated that it is better to use
433 full-dose GnRH-ant combined with prednisone than use half-dose GnRH-ant for

434 alleviating adverse effects of GnRH-ant to endometrium and improving pregnancy
435 rates.

436 Our post-hoc analysis showed a significant improved CPR in almost all the subgroups
437 of Group A when compared to Group C, including all the subgroups of ages, infertility
438 types, AMH values, and AFC numbers (S1 Fig). However, there were no significant
439 differences between Group A and Group C in these subgroups that with a BMI less
440 than 18.5 or greater than 27.9, infertility duration exceeding 5 years, male factor
441 infertility, and bFSH levels of 10 IU/L or higher. These results suggest that factors
442 other than GnRH antagonist-induced impairment of endometrial receptivity
443 influence pregnancy rates in these subgroups, such as obese, hyperlipidemia [44],
444 semen parameter [45], *et al.*, which cannot be compensated by prednisone. When
445 compared to Group B, similar improvements of CPR in most subgroups of Group A
446 were yielded, and only those subgroups with age younger than 30 years, BMI
447 between 24 and 27.9, infertility duration less than 3 years, and AMH levels higher
448 than 4.7 ng/ml did not exhibit differences. These results intimated that these
449 populations could possible be benefit from reducing the dosage of GnRH antagonist,
450 consistent with our previous studies [23].

451 Apart from the aforementioned results, there were no significant differences in
452 pregnancy loss (both early and late miscarriage rates), gestational age, birth weight,
453 or the incidence of maternal–fetal complications among the groups, indicating that
454 combination with low doses of prednisone during the GnRH-ant protocol was safe for

455 both the mothers and fetuses, which is consistent with previous studies. Additionally,
456 its affordability and convenience make it widely applicable in clinical practice [33].
457 Overall, the results of this study demonstrate that the combination of low-dose
458 prednisone with the GnRH-ant protocol definitively improves pregnancy outcomes of
459 fresh embryo transfer cycles, and surpassing the benefits of reducing the dosage of
460 GnRH antagonist alone.

461 **Limitations**

462 Several limitations of this study should be acknowledged. First, the administration of
463 prednisone 10 mg every morning was sustained from the initiation of rFSH to 11 days
464 after fresh ET, and alternative dose or duration might yield different outcomes.
465 Second, the absence of a half-dose GnRH-ant combined with prednisone group
466 precluded the evaluation of the combined effectiveness and safety of these two
467 factors. Third, as an open-label study, a placebo control for prednisone was not
468 incorporated, potentially impacting result accuracy. Finally, the study population
469 consisted of young individuals with normal ovarian responses and was limited to Han
470 Chinese participants. Therefore, caution is advised in generalizing the conclusions
471 drawn from our results to other cohorts of women.

472 **Conclusion**

473 The administration of low-dose prednisone emerges as a significant enhancer of
474 pregnancy outcomes in fresh ET cycles for women undergoing the GnRH-ant protocol,
475 demonstrating notable improvements without incurring adverse consequences.

476 **Funding**

477 This trial was funded by the National Natural Science Foundation of China [82371704
478 (BFX), 82071712 (BFX), and 82271703(A-j Z)], Shanghai Municipal Education
479 commission-Gaofeng Clinical Medicine Grant Support (20181803, BFX), Health
480 Development Fund "Yiyuan Star Outstanding Young Physician" Project [SHWJRS
481 (2021)-99, BFX], the Beijing Health Promotion Association's "Reproductive Medicine
482 Young and Middle-aged Clinical Research" Project
483 (BJHPA-2022-SHZHYXZHQNYJ-LCH-009, BFX), and National Key R&D Program of China
484 (2022YFC2703800, A-j Z).

485 **Acknowledgments**

486 We thank all the staff involved in patients follow-up and information entry in the
487 three centers.

488

489 **References**

- 490 1. Inhorn MC, Patrizio P. Infertility around the globe: new thinking on gender, reproductive
491 technologies and global movements in the 21st century. *Hum Reprod Update*. 2015;21(4):411-426.
- 492 2. Lambalk CB, Banga FR, Huirne JA, Toftager M, Pinborg A, Homburg R, et al. GnRH antagonist
493 versus long agonist protocols in IVF: a systematic review and meta-analysis accounting for patient type.
494 *Hum Reprod Update*. 2017;23(5):560-579.
- 495 3. Pal A, Mani T, Chinta P, Karthikeyan M, Kunjummen AT, Kamath MS. Effectiveness of GnRH
496 Agonist Short Protocol Versus GnRH Antagonist Protocol in POSEIDON Groups 3 and 4: a Retrospective
497 Cohort Study. *Reprod Sci*. 2023;30(8):2481-2488.
- 498 4. Kadoura S, Alhalabi M, Nattouf AH. Conventional GnRH antagonist protocols versus long GnRH
499 agonist protocol in IVF/ICSI cycles of polycystic ovary syndrome women: a systematic review and
500 meta-analysis. *Sci Rep*. 2022;12(1):4456.
- 501 5. Tarlatzis BC, Fauser BC, Kolibianakis EM, Diedrich K, Rombauts L, Devroey P. GnRH antagonists in
502 ovarian stimulation for IVF. *Hum Reprod Update*. 2006;12(4):333-340.
- 503 6. Ovarian Stimulation T, Bosch E, Broer S, Griesinger G, Grynberg M, Humaidan P, et al. ESHRE
504 guideline: ovarian stimulation for IVF/ICSI(dagger). *Hum Reprod Open*. 2020;2020(2):hoaa009.
- 505 7. Greco E, Donno V, Greco P, Arrivi C, Litwicka K, Varricchio MT. COVID-19 - compliant - IVF:
506 reorganized clinical practice taking into account the pandemic. *Gynecol Endocrinol*.
507 2022;38(6):474-477.

- 508 8. Expert Consensus Compilation Group of Reproductive Medicine Committee of China Medical
509 Women's Association. Expert consensus on standardized application of antagonist protocol in assisted
510 reproductive technology, *Chin J Reprod Contracep* 2022; 42, (2): 109-116.
- 511 9. D-I-R Annual 2022-The German IVF-Registry (2023). Available online at:
512 <https://www.deutsches-ivf-register.de/ivf-international.php>.
- 513 10. Lv M, Yu J, Chen P, Xiao Q, Lou L, Luo Y, et al. Ovarian stimulation in IVF couples with severe male
514 factor infertility: GnRH antagonist versus long GnRH agonist. *Front Endocrinol (Lausanne)*.
515 2022;13:1037220.
- 516 11. Zhao D, Xie R, Li X. Comparison of pregnancy outcome after fresh embryo transfer between
517 GnRH antagonist and GnRH agonist regimens in patients with thin endometrium. *Front Med*
518 (Lausanne). 2023;10:1071014.
- 519 12. Wang X, Li W, Chen X, Zhang W, Chu M, Yin S, et al. Is the long-acting gonadotropin-releasing
520 hormone agonist long protocol better for patients with endometriosis undergoing IVF? *Int J Gynaecol*
521 *Obstet.* 2023;162(1):325-332.
- 522 13. Orvieto R, Meltzer S, Rabinson J, Zohav E, Anteby EY, Nahum R. GnRH agonist versus GnRH
523 antagonist in ovarian stimulation: the role of endometrial receptivity. *Fertil Steril*.
524 2008;90(4):1294-1296.
- 525 14. Bahceci M, Ulug U, Erden HF, Tosun S, Ciray N. Frozen-thawed cleavage-stage embryo transfer
526 cycles after previous GnRH agonist or antagonist stimulation. *Reprod Biomed Online*.
527 2009;18(1):67-72.
- 528 15. Shi Y, Sun Y, Hao C, Zhang H, Wei D, Zhang Y, et al. Transfer of Fresh versus Frozen Embryos in
529 Ovulatory Women. *N Engl J Med*. 2018;378(2):126-136.
- 530 16. Wei D, Liu JY, Sun Y, Shi Y, Zhang B, Liu JQ, et al. Frozen versus fresh single blastocyst transfer in
531 ovulatory women: a multicentre, randomised controlled trial. *Lancet*. 2019;393(10178):1310-1318.
- 532 17. Chen M, Li ZL, Lin H, Xia RB, Wang YL. Comparison of Pregnancy and Neonatal Outcomes
533 Between Fresh Embryo Transfer and Frozen-Thawed Embryo Transfer. *Ther Hypothermia Temp Manag*.
534 2023;13(3):120-125.
- 535 18. Xu B, Zhou M, Wang J, Zhang D, Guo F, Si C, et al. Increased AIF-1-mediated TNF-alpha expression
536 during implantation phase in IVF cycles with GnRH antagonist protocol. *Hum Reprod*.
537 2018;33(7):1270-1280.
- 538 19. Xu B, Wang J, Xia L, Zhang D, Wu X, Zhang A. Increased Uterine NK cell numbers and perforin
539 expression during the implantation phase in IVF Cycles with GnRH Antagonist Protocol. *Sci Rep*.
540 2017;7:39912.
- 541 20. Practice Committee of the American Society for Reproductive Medicine. Electronic address Aao,
542 Practice Committee of the American Society for Reproductive M. The role of immunotherapy in in
543 vitro fertilization: a guideline. *Fertil Steril*. 2018;110(3):387-400.
- 544 21. Franchimont D. Overview of the actions of glucocorticoids on the immune response: a good
545 model to characterize new pathways of immunosuppression for new treatment strategies. *Ann N Y*
546 *Acad Sci*. 2004;1024:124-137.
- 547 22. Flammer JR, Rogatsky I. Minireview: Glucocorticoids in autoimmunity: unexpected targets and
548 mechanisms. *Mol Endocrinol*. 2011;25(7):1075-1086.
- 549 23. Zhang D, Xia L, Xu H, Chen Q, Jin B, Zhang A, et al. Flexible Low-Dose GnRH Antagonist Protocol Is
550 Effective in Patients With Sufficient Ovarian Reserve in IVF. *Front Endocrinol (Lausanne)*. 2018;9:767.

- 551 24. Kao TC, Hsieh YC, Yang JJ, Wu MY, Chen MJ, Yang JH, et al. Progestin-primed ovarian stimulation
552 versus GnRH antagonist protocol in poor responders: Risk of premature LH surge and outcome of
553 oocyte retrieval. *J Formos Med Assoc.* 2023;122(1):29-35.
- 554 25. Feng L, Fan R, Jiang A, Jiang J, Wang Q, Sun Y, et al. The effect of flexible low-dose GnRH
555 antagonist on pregnancy outcome in the fresh embryo transfer cycle of IVF-ET: a randomized
556 controlled trial. *Reprod Biol Endocrinol.* 2022;20(1):55.
- 557 26. Xu H, Zhao S, Gao X, Wu X, Xia L, Zhang D, et al. GnRH Antagonist Protocol With Cessation of
558 Cetrorelix on Trigger Day Improves Embryological Outcomes for Patients With Sufficient Ovarian
559 Reserve. *Front Endocrinol (Lausanne).* 2021;12:758896.
- 560 27. Gardner DK, Lane M, Stevens J, Schlenker T, Schoolcraft WB. Blastocyst score affects implantation
561 and pregnancy outcome: towards a single blastocyst transfer. *Fertil Steril.* 2000;73(6):1155-1158.
- 562 28. Alpha Scientists in Reproductive M, Embryology ESIGo. The Istanbul consensus workshop on
563 embryo assessment: proceedings of an expert meeting. *Hum Reprod.* 2011;26(6):1270-1283.
- 564 29. Zhang Y, Xu H, Liu Y, Zheng S, Zhao W, Wu D, et al. Confirmation of chronic endometritis in
565 repeated implantation failure and success outcome in IVF-ET after intrauterine delivery of the
566 combined administration of antibiotic and dexamethasone. *Am J Reprod Immunol.*
567 2019;82(5):e13177.
- 568 30. Fan J, Zhong Y, Chen C. Combined treatment of prednisone and aspirin, starting before ovulation
569 induction, may improve reproductive outcomes in ANA-positive patients. *Am J Reprod Immunol.*
570 2016;76(5):391-395.
- 571 31. Huang Q, Wu H, Li M, Yang Y, Fu X. Prednisone improves pregnancy outcome in repeated
572 implantation failure by enhance regulatory T cells bias. *J Reprod Immunol.* 2021;143:103245.
- 573 32. Lv Y, Chen Y, Hu L, Ding H, Liu M, Li H, et al. Is glucocorticoid use associated with a higher clinical
574 pregnancy rate of in vitro fertilization and embryo transfer? A meta-analysis. *Heliyon.*
575 2023;9(5):e15833.
- 576 33. Boomsma CM, Kamath MS, Keay SD, Macklon NS. Peri-implantation glucocorticoid administration
577 for assisted reproductive technology cycles. *Cochrane Database Syst Rev.* 2022;6(6):CD005996.
- 578 34. Sun Y, Cui L, Lu Y, Tan J, Dong X, Ni T, et al. Prednisone vs Placebo and Live Birth in Patients With
579 Recurrent Implantation Failure Undergoing In Vitro Fertilization: A Randomized Clinical Trial. *JAMA.*
580 2023;329(17):1460-1468.
- 581 35. Chen Q, Fan Y, Zhou X, Yan Z, Kuang Y, Zhang A, et al. GnRH antagonist alters the migration of
582 endometrial epithelial cells by reducing CKB. *Reproduction.* 2020;159(6):733-743.
- 583 36. Shapiro BS, Daneshmand ST, Garner FC, Aguirre M, Hudson C, Thomas S. Evidence of impaired
584 endometrial receptivity after ovarian stimulation for in vitro fertilization: a prospective randomized
585 trial comparing fresh and frozen-thawed embryo transfers in high responders. *Fertil Steril.*
586 2011;96(2):516-518.
- 587 37. Liu S, Shi L, Wang T, Shi J. Effect of low-dose dexamethasone on patients with elevated early
588 follicular phase progesterone level and pregnancy outcomes in IVF-ET treatment: A randomized
589 controlled clinical trial. *Clin Endocrinol (Oxf).* 2018;89(6):771-778.
- 590 38. Huang Y, Wang EY, Du QY, Xiong YJ, Guo XY, Yu YP, et al. Progesterone elevation on the day of
591 human chorionic gonadotropin administration adversely affects the outcome of IVF with transferred
592 embryos at different developmental stages. *Reprod Biol Endocrinol.* 2015;13:82.

- 593 39. Simon C, Cano F, Valbuena D, Remohi J, Pellicer A. Clinical evidence for a detrimental effect on
594 uterine receptivity of high serum oestradiol concentrations in high and normal responder patients.
595 Hum Reprod. 1995;10(9):2432-2437.
- 596 40. Verberg MF, Macklon NS, Nargund G, Frydman R, Devroey P, Broekmans FJ, et al. Mild ovarian
597 stimulation for IVF. Hum Reprod Update. 2009;15(1):13-29.
- 598 41. Hsieh YY, Chang CC, Tsai HD. Comparisons of different dosages of gonadotropin-releasing
599 hormone (GnRH) antagonist, short-acting form and single, half-dose, long-acting form of GnRH agonist
600 during controlled ovarian hyperstimulation and in vitro fertilization. Taiwan J Obstet Gynecol.
601 2008;47(1):66-74.
- 602 42. Reichman DE, Zakarin L, Chao K, Meyer L, Davis OK, Rosenwaks Z. Diminished ovarian reserve is
603 the predominant risk factor for gonadotropin-releasing hormone antagonist failure resulting in
604 breakthrough luteinizing hormone surges in in vitro fertilization cycles. Fertil Steril.
605 2014;102(1):99-102.
- 606 43. Kummer NE, Weitzman VN, Benadiva CA, Schmidt DW, Engmann LL, Nulsen JC. In vitro
607 fertilization outcomes in patients experiencing a premature rise in luteinizing hormone during a
608 gonadotropin-releasing hormone antagonist cycle. Fertil Steril. 2011;95(8):2592-2594.
- 609 44. Yang F, Lu JC, Shen T, Jin YH, Liang YJ. Effect of hyperlipidemia on the outcome of in vitro
610 fertilization in non-obese patients with polycystic ovary syndrome. Front Endocrinol (Lausanne).
611 2023;14:1281794.
- 612 45. Ribas-Maynou J, Yeste M, Becerra-Tomas N, Aston KI, James ER, Salas-Huetos A. Clinical
613 implications of sperm DNA damage in IVF and ICSI: updated systematic review and meta-analysis. Biol
614 Rev Camb Philos Soc. 2021;96(4):1284-1300

Supplemental Content

S1 Table. The criteria for cleavage embryos.

S2 Table. The grading criteria for blastocysts.

S3 Table. Definition of secondary outcomes.

S4 Table. Definition of adverse events.

S5 Table. Reasons for cancellation of embryo transfer.

S1 Fig. *Post-hoc* analysis for Group A vs Group C and Group A vs Group B.

This supplemental material has been provided by the authors to provide readers with additional information about their research.

S1 Table. The criteria for cleavage embryos.

Score	0	1	2	3	4
Cell number (C)	<2	2-3	4-5	>10 & 6-7	8-10
Fragmentation (F)(%)	>50	26-50	11-25	5-10	<5
Symmetry (S)	Severely asymmetric	Symmetrical and uniform	-	-	-

The embryo scoring was performed on the morning of day 3. The embryo score is the sum of the scores for the

number of cells (C), degree of fragmentation (F), and symmetry (S). Embryos with a score ≥ 9 were considered to

be of top quality, while those with a score <5 were classified as not suitable for transfer.

S2 Table. Blastocyst grading criteria.

Stage	Description
1	Represents an early blastocyst with a small cavity, where the cavity volume is less than half of the total embryo volume.
2	Indicates a blastocyst with a cavity volume equal to or greater than half of the total embryo volume.
3	Represents an expanded blastocyst with the cavity completely occupying the total embryo volume.
4	Represents a blastocyst with the cavity completely filled, resulting in an increase in total embryo volume and thinning of the zona pellucida.
5	Represents a hatching blastocyst, where part of the blastocyst has emerged from the zona pellucida.
6	Represents a hatched blastocyst, where the entire blastocyst has emerged from the zona pellucida.
Internal cell mass	Description
A	Numerous cells tightly packed together with uniform shape, diameter >60 μm , uniform cell size, and compact fusion.
B	Represents fewer cells loosely arranged with irregular shape, diameter >60 μm , uneven cell size, and a considerable portion lacking fusion.
C	Represents very few cells, noticeably smaller than normal, with very few blastomeres.
Trophectoderm	Description
A	Epithelial layer composed of numerous cells with a dense structure, >10 blastomeres distributed along the “equatorial plane” of the blastocyst, uniform in size, and all cells at the bottom surface of the blastocyst have clear morphology with visible nuclei in most cells.
B	Represents an epithelial layer composed of fewer cells with a loose structure, around 10 blastomeres distributed along the “equatorial plane” of the blastocyst, uneven in size, and some cells at the bottom surface having clear morphology with nuclei visible in some cells.
C	Represents an epithelial layer composed of sparse cells and a few large cells, with >10 blastomeres distributed along the “equatorial plane” of the blastocyst, significantly uneven in size, significant fragments between trophoblast cells and zona pellucida, and difficulty in identifying cells at the bottom surface of the blastocyst.

According to the Gardner scoring system, a comprehensive assessment of blastocyst quality includes evaluation of expansion status, inner cell mass development, and trophoctoderm development. The available blastocysts refer to those in phases 3–6, with at least one of the internal cell mass or trophoblast cells graded as B or above.

S3 Table. Definition of secondary outcomes.

Secondary Outcomes	Definition
Biochemical pregnancy rate	The number of biochemical pregnancies (detection of serum β -hCG ≥ 5 mIU/mL measured 9–11 days after embryo transfer) divided by the number of transplanted cases.
Implantation rate	Number of gestational sacs divided by the number of transplanted embryos.
Early miscarriage rate	Number of early miscarriage cases (occurring before 12 weeks of gestation) divided by the number of pregnant cases confirmed by ultrasound.
Late miscarriage rate	Number of late miscarriage cases (occurring between 12 and 28 weeks of gestation) divided by the number of pregnant cases confirmed by ultrasound.
Premature birth rate	Number of premature births (delivery at >28 and <37 weeks gestational age) divided by number of pregnant cases confirmed by ultrasound.
Live birth rate	Number of live births (deliveries of any number of newborns at ≥ 28 weeks of gestation with signs of life) divided by the number of transplantation cycles.
Fertilization rate	Number of fertilized oocytes divided by oocytes (IVF) or MII oocytes (ICSI).
Cleavage rate	The number of fertilized oocytes that split into embryos divided by the number of all fertilized oocytes.
Available embryo rate	The number of available embryos divided by the number of all embryos.
Top-quality embryo rate	The number of top-quality embryos divided by the number of all embryos.
Premature LH rise	LH ≥ 10 mIU/mL during COS.
Rate of cycle cancellation due to premature ovulation	Number of cycles cancelled due to premature ovulation divided by the total number of stimulation cycles.

S4 Table. Definition of adverse events.

Adverse events	Definition
Moderate or severe ovarian hyperstimulation syndrome (OHSS)	OHSS was defined according to the Golan criteria. Moderate OHSS was diagnosed when ultrasonographic ascites were present in addition to abdominal distension and discomfort with or without nausea or vomiting. Severe OHSS was diagnosed when there was clinical evidence of ascites and/or hydrothorax or breathing difficulties with or without hemoconcentration, coagulation abnormalities and diminished renal function.
Ectopic pregnancy	Ectopic pregnancy occurs when the embryo implants at any site other than the endometrial lining of the uterus.
Gestational diabetes mellitus (GDM)	GDM was defined as carbohydrate intolerance of variable severity with onset or first recognition during pregnancy as determined from the diagnosis in the obstetrical medical record.
Stillbirth	The absence of signs of life at or after birth.
Placenta previa	Placenta previa was used to describe a placenta that is implanted over or very near the internal cervical opening.
Premature rupture of membrane (PROM)	PROM was defined as rupture of the amniotic membranes before the onset of labor including PROM of term and preterm PROM.
Pre-eclampsia	Pre-eclampsia was defined as the development of gestational hypertension with proteinuria (≥ 300 mg/24-h urine collection or 30 mg/dL in a single urine sample) of new onset after 20 weeks of gestation. Severe pre-eclampsia was defined as symptoms of central nervous system dysfunction, hepatic abnormality, severe blood pressure elevation, thrombocytopenia, renal abnormality or pulmonary edema.
Congenital anomalies	Congenital anomalies were defined as structural or functional anomalies that occur during intrauterine life, including anomalies.
Neonatal death	The death of a live-born neonate within 6 weeks after delivery.

S5 Table. Reasons for cancellation of embryo transfer.

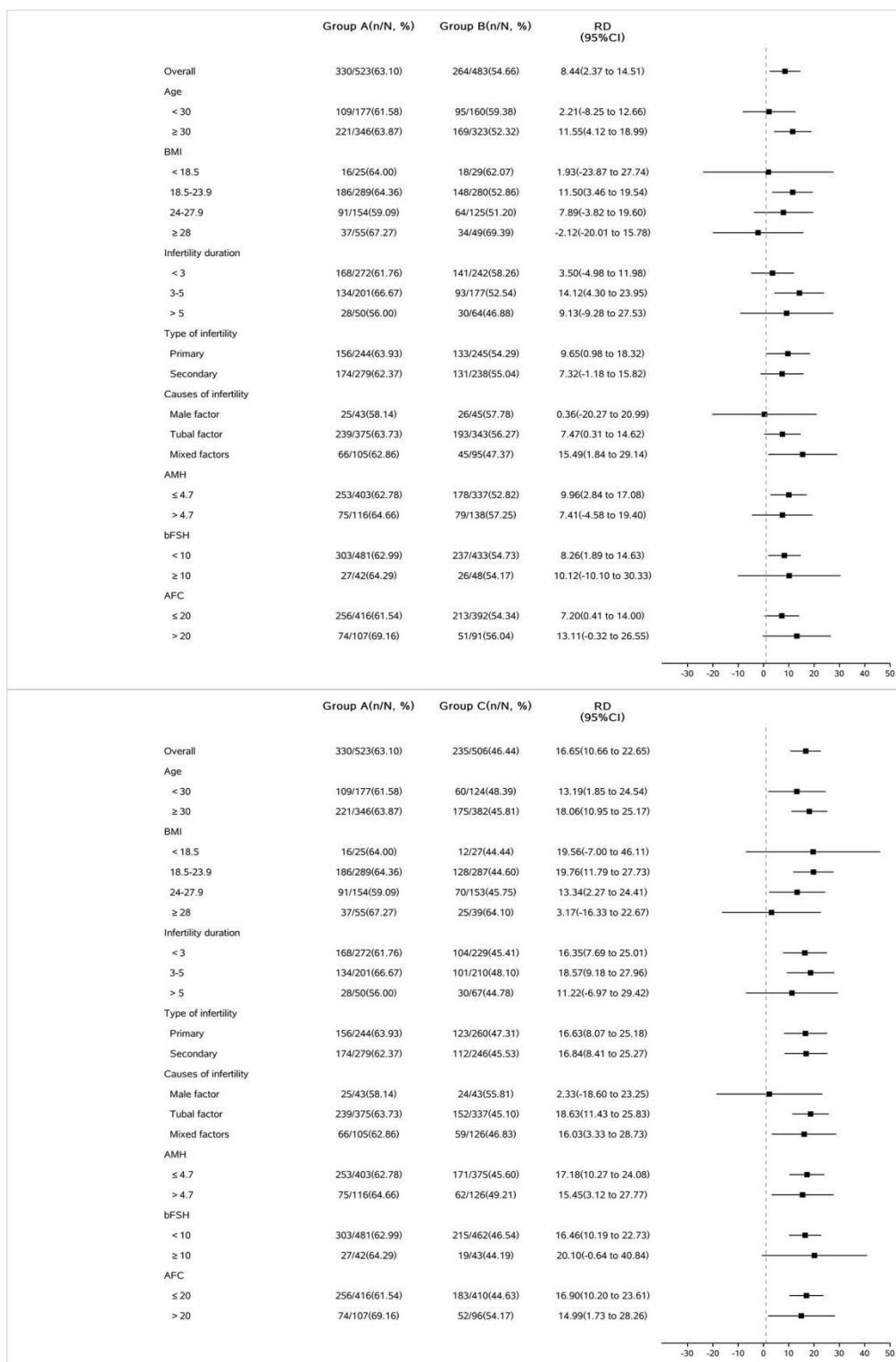
	Group A	Group B	Group C	<i>P</i>
	No. (%)	No. (%)	No. (%)	
The embryo transfer cancellation rate	128/684 (18.7) ^b	165/684 (24.1) ^a	136/684 (19.9) ^{a,b}	0.035
Reasons*				
(1) progesterone >1.7 ng/mL once or >1.5 ng/mL twice	59/684 (8.6)	75/684 (11.1)	54/684 (7.9)	0.121
(2) E ₂ >7,000 pg/mL, or number of retrieved oocytes >20	41/684 (6.0)	63/684 (9.2)	50/684 (7.3)	0.076
(3) Endometrial thickness on HCG day <8 mm, or >14mm, or with a C type ultrasonic morphology	40/684 (5.8)	58/684 (8.5)	47/684 (6.9)	0.160
(4) No available embryo	13/684 (1.9)	15/684 (2.2)	12/684 (1.8)	0.837
(5) Total days of GN <8 or >14	7/684 (1.0)	11/684 (1.6)	14/684 (2.0)	0.309
Drop-out rate				
Quit	33/684 (4.8)	36/684 (5.3)	42/684 (6.1)	0.549

P < 0.05 indicates a statistically significant difference.

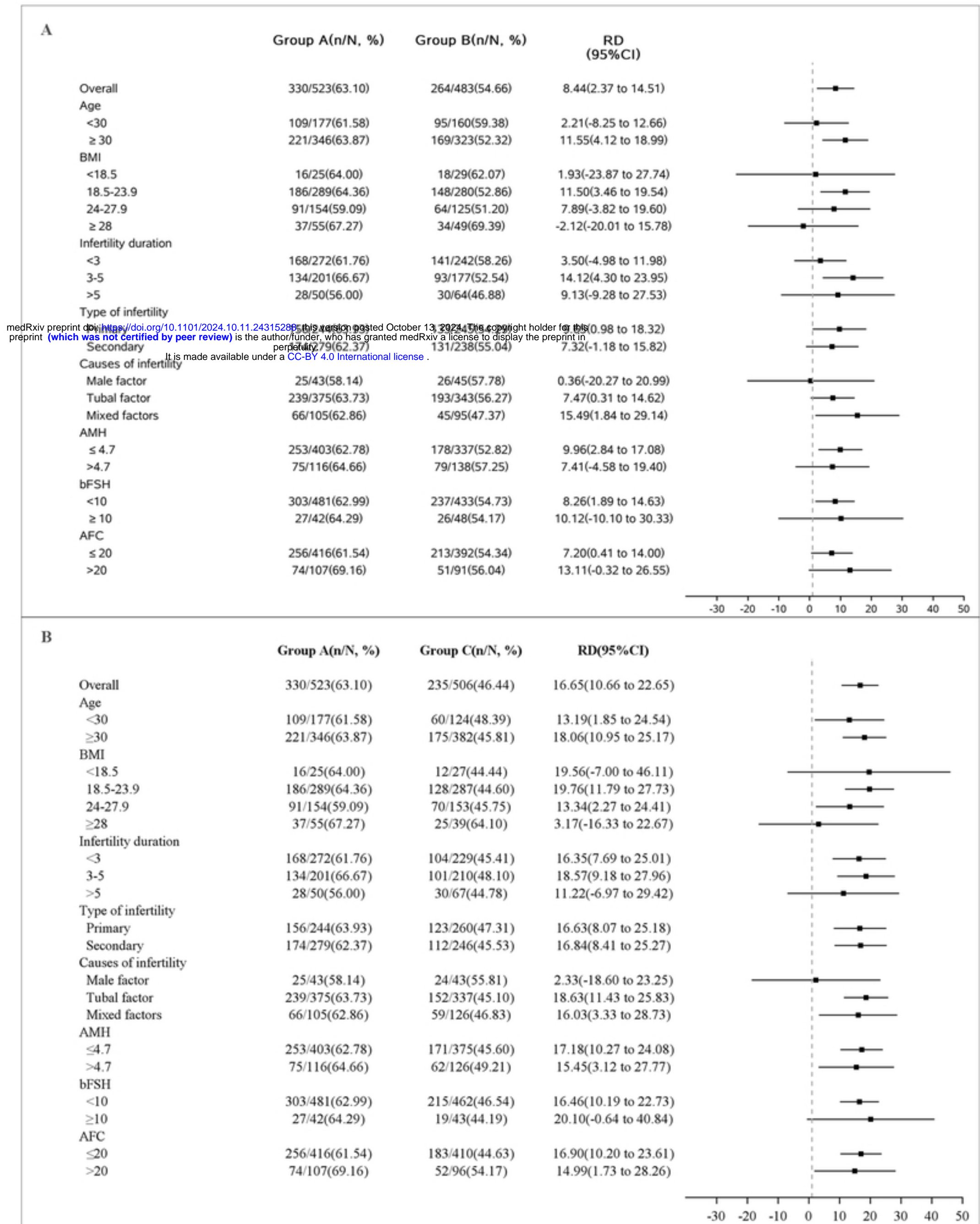
*Multiple reasons for some patients.

^{ab} Comparisons between two groups; columns with the same superscript letter showed no statistically significant difference, and vice versa.

S1 Fig. *Post-hoc* analysis for Group A vs Group B and Group A vs Group C.



The upper panel exhibits the *Post-hoc* analysis of primary outcome for Group A vs Group B, and the lower panel exhibits the results for Group A vs Group C.



medRxiv preprint doi: <https://doi.org/10.1101/2024.10.11.24315288>; this version posted October 13, 2024. The copyright holder for this preprint (which was not certified by peer review) is the author/funder, who has granted medRxiv a license to display the preprint in perpetuity. It is made available under a [CC-BY 4.0 International license](https://creativecommons.org/licenses/by/4.0/).

5042 Women were assessed for eligibility

2990 Excluded

2772 Not fulfilling the eligibility criteria

398 Basic FSH ≥ 15 mIU/mL, total bilateral AFC < 5 , or AMH ≤ 1.1 ng/mL

176 Basic T > 0.75 ng/mL

532 Age > 35 years

588 Presented immune abnormalities

126 History of recurrent pregnancy loss or recurrent implantation failure

139 Abnormal uterine cavities

23 Abnormal karvotvping results

medRxiv preprint doi: <https://doi.org/10.1101/2024.10.11.24315288>; this version posted October 13, 2024. The copyright holder for this preprint (which was not certified by peer review) is the author/funder, who has granted medRxiv a license to display the preprint in perpetuity. It is made available under a [CC-BY 4.0 International license](https://creativecommons.org/licenses/by/4.0/).

2052 Randomized

684 received fixed GnRH-ant combined with prednisone (Group A)

684 received flexible half-dose GnRH-ant (Group B)

684 received fixed GnRH-ant (Group C)

128 Excluded^a

59 Progesterone > 1.7 ng/mL once or > 1.5 ng/mL twice

41 E₂ > 7000 pg/mL, or number of retrieved oocytes > 20

40 Endometrial thickness < 8 mm, or > 14 mm on trigger day, or ultrasound appearance C-type

13 No available embryo

7 Total days of GN < 8 or > 14

33 Quit

523 Received fresh embryo transfer

359 Biochemical pregnancy

330 Clinical pregnancy

165 Excluded^a

75 Progesterone > 1.7 ng/mL once or > 1.5 ng/mL twice

63 E₂ > 7000 pg/mL, or number of retrieved oocytes > 20

58 Endometrial thickness < 8 mm, or > 14 mm on trigger day, or ultrasound appearance C-type

15 No available embryo

11 Total days of GN < 8 or > 14

36 Quit

483 Received fresh embryo transfer

293 Biochemical pregnancy

264 Clinical pregnancy

136 Excluded^a

54 Progesterone > 1.7 ng/mL once or > 1.5 ng/mL twice

50 E₂ > 7000 pg/mL, or number of retrieved oocytes > 20

47 Endometrial thickness < 8 mm, or > 14 mm on trigger day, or ultrasound appearance C-type

12 No available embryo

14 Total days of GN < 8 or > 14

42 Quit

506 Received fresh embryo transfer

267 Biochemical pregnancy

235 Clinical pregnancy

Fig 1