

The impact of differentiated service delivery (DSD) on retention in care and viral suppression in South Africa: A target trial emulation of routine care data

Amy N. Huber^{1¶*}, Lise Jamieson^{1,2¶}, Matthew P. Fox^{1,3}, Musa Manganye⁴, Lufuno Malala⁴, Thato Chidarikire⁵, Nthabiseng Khoza⁴, Brooke E. Nichols^{3,6}, Sydney Rosen^{1,3}, Sophie Pascoe¹

¹ Health Economics and Epidemiology Research Office, Faculty of Health Sciences, University of the Witwatersrand, Johannesburg, South Africa

² The South African Department of Science and Innovation/National Research Foundation Centre of Excellence in Epidemiological Modelling and Analysis (SACEMA), Stellenbosch University, Stellenbosch, Republic of South Africa

³ Department of Global Health, Boston University School of Public Health, Boston, MA, USA

⁴ National Department of Health, Pretoria, South Africa,

⁵ World Health Organization

⁶ Department of Global Health, Amsterdam Institute for Global Health and Development, Amsterdam UMC, University of Amsterdam, Amsterdam, Netherlands

*Corresponding author: Amy N. Huber: ahuber@heroza.org

*These authors contributed equally to this work.

E-mail addresses of authors:

ANH: ahuber@heroza.org

LJ: ljamieson@heroza.org

MM: musa.manganye@health.gov.za

LM: lufuno.malala@health.gov.za

TC: chidarikiret@who.int

NK: petrus.khoza@health.gov.za

BN: brooken@bu.edu

MF: mfox@bu.edu

SR : sbrosen@bu.edu

SP: spascoe@heroza.org

Keywords: South Africa, HIV, antiretroviral therapy, differentiated service delivery, outcomes

Word count:

Abstract: 429

Main text: 4567

1 **Abstract**

2

3 **Introduction**

4

5 Replacing conventional, facility-based HIV treatment with less intensive differentiated service delivery
6 (DSD) models could benefit DSD clients and the health system, but its value depends on maintaining or
7 improving clinical outcomes. We compared retention and viral suppression between antiretroviral
8 therapy (ART) clients enrolled in DSD models to those eligible for but not enrolled in DSD models in
9 South Africa.

10

11 **Methods**

12

13 We applied a target trial emulation (TTE) methodology to data from South Africa's electronic medical
14 record system (TIER.Net) for 18 clinics across 3 provinces and estimated retention in care (attended
15 clinic visit within 12 months) and viral suppression (<400 copies/ml³) at 12, 24, and 36 months after
16 follow-up start date, defined as DSD enrollment date for the intervention arm and the first trial
17 enrollment period clinic visit for the comparison arm. Clients were eligible for DSD models if they were
18 ≥ 18 years old, on ART ≥ 12 months, and had two suppressed viral load (VL) measurements, per prevailing
19 national guidelines. For the TTE, we designated eight 6-month target trial enrolment periods between 1
20 July 2017 and 1 July 2021. For each period, we estimated the risk differences for retention in care and
21 viral suppression by comparing those enrolled in DSD models to those not enrolled, using a Poisson
22 distribution with an identity link function. We report adjusted and unadjusted risk differences for clients
23 enrolled in DSD models and for DSD-eligible clients not enrolled in a DSD model.

24

25 **Results and discussion**

26

27 49,595 unique individuals were eligible for DSD enrolment over eight target trials, contributing to a total
28 of 148,943 trial-clients, of whom 17% (25,775) were enrolled in DSD models. The pooled adjusted risk
29 difference for retention in care between clients enrolled in DSD and those not enrolled in DSD was 3.2%

30 (95% confidence interval (CI) 1.6%; 4.7%) at 12 months, 4.2% (2.4%; 6.0%) at 24 months, and 4.4%
31 (2.0%; 6.8%) at 36 months. For viral suppression, the adjusted risk difference comparing DSD to non-DSD
32 was estimated to be 1.4% (-0.5%; 3.2%) at 12 months, 1.7% (-0.5%; 4.0%) at 24 months, and 1.4% (-
33 0.6%; 4.4%) at 36 months. Results remained consistent across target trials. Clients who were younger,
34 lived in urban settings, or had less ART experience at trial enrolment had lower retention.

35
36 **Conclusions**

37
38 Clients enrolled in DSD models in South Africa had slightly better retention in care and similar viral
39 suppression to those who were eligible for but not enrolled in DSD. With better or equivalent outcomes,
40 DSD models can be assessed on the basis of non-clinic costs and benefits, such as changes in quality of
41 care and resource utilization.

42
43 **Registration:** Clinicaltrials.gov NCT04149782.
44

45 **Introduction**

46
47 In South Africa, as in other countries in sub-Saharan Africa (SSA), the use of differentiated service
48 delivery (DSD) models for HIV treatment is expanding rapidly [1,2]. For eligible antiretroviral therapy
49 (ART) clients, DSD models adapt the characteristics of service delivery, such as location and frequency of
50 healthcare system interactions, to meet the needs of different client groups. This approach is expected
51 to sustain clients' positive clinical outcomes, increase satisfaction with their care, and increase the
52 efficiency of healthcare systems by decongesting clinics, reducing pressure on healthcare providers, and
53 simplifying procedures[3,4]. Most DSD models are limited to "established" or stable ART clients who
54 have been on treatment for at least 6 months, have documented viral load suppression, and do not have
55 uncontrolled co-morbid conditions or HIV-related symptoms[5]. The proportion of established clients
56 enrolled in any DSD model, rather than remaining in conventional (non-differentiated) care, varies
57 widely by country and facility, based on guidelines, resources, and provider and client preferences,
58 among other factors[6].

59
60 South Africa, home to the world's largest HIV treatment program[7], offers three main less intensive
61 models for ART clients who are established on treatment and have documented viral suppression:
62 facility-based medication pickup points, external (out-of-facility) medication pickup points, and
63 adherence clubs. (In South Africa, these models are referred to as Differentiated Models of Care, or
64 DMOC and fall within the category of Repeat Prescription Collection strategies or RPCs.) The three
65 models for established ART clients are supported by the Central Chronic Medicine Dispensing and
66 Distribution (CCMDD) programme, the Central Dispensing Unit (CDU), or facility-based pharmacies. They
67 provide centralized medication packaging and delivery to clients, with options for pickup at either
68 facility pickup points within healthcare facilities or at external pickup points adjacent to facilities or

69 within communities[7–10]. Other DSD models, such as medication lockers and home delivery, have also
70 been implemented in South Africa, but on a much smaller scale.

71
72 Several randomized trials and observational studies have reported the outcomes of clients enrolled in
73 South Africa's less intensive models [11–13] and in others outside South Africa[14] and found high rates
74 of retention in care and viral suppression after one or more years of model exposure, an unsurprising
75 result given that retention and suppression are also both eligibility criteria for model enrollment. Few
76 studies[15–17], however, have compared the outcomes of clients actively enrolled in DSD models to
77 those who are eligible for DSD models but remain in conventional care. It is these eligible-but-not-
78 enrolled clients who comprise the relevant comparison group.

79
80 The absence of evidence about how clients' outcomes in DSD models compare to those of similar clients
81 remaining in conventional care hampers decisions about whether to expand differentiated service
82 delivery programs and how to update eligibility criteria. To help fill that gap, we assessed the
83 effectiveness of DSD by comparing clients on DSD to those eligible for but not on DSD on outcomes of
84 retention in care and viral suppression at 12, 24, and 36 months using routinely collected electronic
85 medical record data.

86 87 **Methods**

88
89 Using a target trial emulation approach, we analyzed routinely collected medical records from a sample
90 of public sector facilities. We compared the 12-, 24- and 36-month retention in care and viral
91 suppression outcomes of DSD clients to those eligible but not enrolled in DSD in South Africa at primary
92 health clinics between 1 July 2017 and 1 July 2021.

93

94 *Models of care*

95

96 As noted above, DSD-eligible ART clients were either enrolled in one of three less intensive
97 differentiated models of care in use during our analysis – primarily facility-based medication pickup and
98 external medication pickup, along with adherence clubs for a smaller number of clients – or in
99 conventional (non-differentiated) care. Enrollment decisions were presumably based on client eligibility,
100 provider preference, the availability of each model at any specific healthcare facility, and the facility’s
101 access to enrolment procedures (e.g. the CCMDD database). Features of the four models represented in
102 our analysis are described in Table 1. We were not able to distinguish between these in the TIER.Net
103 data and therefore could only evaluate the impact of all DSD models compared to conventional care,
104 rather than comparing DSD models with one another. The 2016 South African Adherence Guidelines
105 were used to define DSD eligibility and viral suppression in this analysis, as the majority of the
106 enrollment period fell within their period of coverage [18]. During the study period, eligibility for DSD
107 enrollment required clients to be non-pregnant adults with a minimum of 12 months of experience on
108 ART and at least two documented suppressed viral loads (<400 copies/ml). We note that under current
109 guidelines, the VL threshold for suppression is 50 c/mL and 3 month-dispensing is recommended.

110

111 **Table 1. Description of widely used models of HIV treatment delivery in South Africa**

112

Model	Description
All models	During the study period, clients were expected to make at least two full clinical visits per year (every 6 months). Prescriptions could be written for a maximum of 6 months. Antiretroviral medications were dispensed in quantities of 1, 2, or 3 months at a time.
Conventional care	Clients attend the health care facility for all visits. At every visit, the client checks in and registers, collects their client folder, has their vital signs taken and sees a clinician, usually a nurse (full clinic visit). Established clients are dispensed 2 or 3 months of medication at a time after the consultation with the clinician. Conventional care requires 4-6 full clinic visits per year.

Facility pickup points	Clients attend the primary healthcare facility for all visits. If a client meets enrollment criteria, they are offered the choice to enroll into the facility pickup model and receive a six-month prescription for their chronic medication. The client is dispensed 2 or 3 months of medication from the clinician on the day of enrollment and then collects their medication from the facility pickup point for the duration of the six-month prescription. For facility pickup point collections, the client proceeds directly to the medication collection point upon arrival at the primary healthcare facility and is given a pre-packed medication distributed by the pharmacy assistant or other trained clinic staff member. Medication is pre-packed by either CCMDD, a CDU, or the facility. This model requires 2 full clinic visits and 2-4 medication pickup visits to the facility per year.
External pickup points	The external pickup point model operates on the same schedule as the facility pickup point model described above. The model differs in the form and location of the pickup point – instead of collecting at the facility, the client collects a pre-packed treatment supply from an external service provider. Medication is pre-packed by either CCMDD or a CDU. Types of external pickup points include private pharmacies (major national chains and independent pharmacies), community-based venues, and electronic medication lockers. This model requires 2 full clinic visits and 2-4 medication pickup visits to an external pickup point per year.
Adherence clubs	The adherence club model operates on the same schedule as the facility and external pickup point models described above. Adherence clubs offer group-based medication delivery, with up to 30 clients receiving pre-packed treatment supply on the same day from a healthcare provider or trained staff member at a location either on-site at the healthcare facility or off-site at another suitable location within the community. Medication is pre-packed by either CCMDD, a CDU, or the facility. This model requires 2 full clinic visits and 2-4 medication pickup visits from an adherence club per year.

113
 114 *Study sites and population*
 115
 116 Data were drawn from 24 public-sector health facilities in four districts in three provinces of South Africa
 117 (6 clinics in each district- West Rand and Ekurhuleni in Gauteng Province, King Cetshwayo in KwaZulu-
 118 Natal Province, and Ehlanzeni in Mpumalanga Province). We purposively chose a mix of high- and
 119 medium-volume facilities in urban and rural settings. All sites included offered at least one DSD model at
 120 the time of data collection had at least 1,000 clients on ART and utilized South Africa’s electronic
 121 medical record system, TIER.Net[19]. The data extracted from the study sites spanned the period from
 122 July 2017 to June 2023, depending on the district, and in 2021 the approximate proportion of ART clients

123 enrolled in DSD models ranged between 24% and 81%, with KwaZulu-Natal reporting the highest
124 proportion of clients enrolled. (Supplementary Table S1).

125
126 The TIER.Net system[20] is a facility-based electronic register. Each client’s health information is
127 recorded in a paper file at the point of care and then entered into TIER.Net by an on-site data capturer.
128 Data are collected prospectively, and inactive records are not deleted. The system allows for capture of
129 age, gender, HIV test date, ART start date, visit date, ART medication prescribed, and months of ART
130 dispensed for all clinic interactions, date and result of HIV-related laboratory tests, and the outcome
131 date and status for clients who have died, transferred, or become disengaged from care. A DSD model
132 enrollment variable was introduced in 2016, but with three limitations for DSD program monitoring.
133 First, out-of-facility medication collection from external pickup points and community-based adherence
134 clubs is not captured in TIER.Net—only actual clinic visits are recorded. Second, before June 2020, the
135 DSD enrollment variable did not distinguish among separate DSD models, but only the client’s
136 enrollment in any non-conventional model. And third, unofficial (silent) transfers of clients between
137 facilities are not captured in TIER.Net, creating a potentially large discrepancy between facility-level and
138 overall ART program loss to follow-up [21]. To address these limitations, we grouped all DSD models
139 together, included a 12-month window for follow-up visit measurement, and reported facility-level
140 retention.

141
142 *Target trial emulation*

143
144 Target trial emulation is a methodology that simulates a hypothetical randomized clinical trial and can
145 be applied to observational data in a way that assists in estimating causal effects[22]. It also helps to
146 prevent immortal time bias, whereby a person can accrue person time in the study when they cannot

147 logically experience the outcome. Immortal time bias often occurs when the beginning of follow-up time
 148 and intervention exposure are not aligned[23]. Using this methodology, we clearly described the
 149 hypothetical trial we would like to have conducted and then attempted to mimic that trial as closely as
 150 possible using observational data, potentially reducing bias in our assessment of the effect of DSD on
 151 treatment outcomes.

152
 153 Table 2 outlines our hypothetical target trial and the choices we made in our observational study to best
 154 emulate that trial. Both the target trial and the emulation sought to estimate the impact of enrollment
 155 in differentiated service delivery (DSD) models on retention in care and viral load suppression at 12-, 24-
 156 and 36- months after DSD eligibility. To do this, we used in both the trial and the emulation the DSD
 157 eligibility criteria in the South African guidelines [21] in effect at the time of the study [18]. In addition,
 158 we included in the emulation additional trial eligibility criteria in line with the conduct of our
 159 hypothetical trial: 1) documentation of a recent clinic visit, within 6 months before the trial, and 2) no
 160 prior DSD enrollment recorded (DSD naïve at study enrollment).

161
 162 **Table 2. Target trial emulation specification of differentiated service delivery (DSD) models care**
 163

Component	Target trial	Emulated trial
Aim	To estimate the impact of differentiated service delivery (DSD) models on retention in care and viral load suppression at 12-, 24- and 36-months post-DSD eligibility in South Africa.	Same.
Trial eligibility	Adults (aged 18 years or older) in South Africa living with HIV and are eligible for DSD by being on antiretroviral treatment (ART) for at least 12 months, having at least two suppressed viral loads (<400 copies/ml), being non-pregnant and being DSD naïve (no prior DSD enrollment in record).	Same.
Intervention arm strategy	Enrolling in a DSD model at randomization with model of care after randomization determined by the client and provider	Enrolling in a DSD model at baseline with model of care after enrollment determined by the client and provider
Comparison arm strategy	Remaining in conventional care at randomization with model of care after randomization determined by the client and provider	Remaining in conventional care at baseline with model of care after baseline determined by the client and provider
Intervention assignment	Clients randomly assigned to DSD vs non-DSD (comparison arm).	Clients non-randomly assigned to DSD model. Randomization is emulated by

Component	Target trial	Emulated trial
		adjusting for baseline covariates: age, sex, urban/rural status, province
Data	TIER.Net is used for the passive collection of follow-up trial data. Passive data collection through routine medical care systems to avoid influencing the primary outcome of retention.	Same
Follow-up start date	Follow-up starts at intervention assignment	DSD: follow-up starts at the first DSD visit in the trial baseline. Non-DSD: follow-up starts at the first visit in the trial baseline.
Follow-up end date	Follow-up ends at death, loss to follow-up or at 36 months follow-up, whichever occurs first.	Same but with administrative censoring for each 12-, 24- and 36-month outcomes to ensure clients had sufficient potential follow-up data available to assess outcomes. Censoring was based on the date the data was extracted for each district, and clients were censored if the outer window for measuring each outcome went beyond the data extract date.
Outcome	1) Retention in care at 12, 24 and 36 months, defined as having a clinic visit between 12-24, 24-36 and 36-48 months after intervention assignment, respectively. 2) Viral suppression at 12, 24 and 36 months, defined as having a viral load measured at <400 copies/ml between 12-24, 24-36 and 36-48 months after intervention assignment, respectively.	Same.
Causal contrast	Intention-to-treat effect, i.e. effect of being assigned to DSD vs. non-DSD models at baseline, regardless of whether clients enrolled into a DSD model after baseline or those assigned to DSD remained on DSD after randomization.	Observational equivalent of intention-to-treat effect, i.e., the effect of being assigned to DSD vs non-DSD models at baseline, regardless of whether clients enrolled into a DSD model after baseline.
Statistical analysis	Risk difference model estimating retention and viral suppression in DSD vs non-DSD.	Same. Adjustment for baseline covariates did not substantially change the estimates.

164
165 Our target trial intervention was enrollment in a DSD model. After target trial randomization,
166 participants could return to standard care at the discretion of the client and the provider. We mimicked
167 this in our emulation by defining the intervention to be enrollment in DSD at baseline. After DSD
168 enrollment, participants could return to regular standard care, but we would still analyze them as if they
169 were in the DSD arm as per intention-to-treat, as would have been done in the target trial. The
170 comparison arm for our target trial was the participants randomized to not immediately enroll in a DSD
171 model. As would happen in routine care, however, comparison arm participants would be allowed to
172 enroll in a DSD model at a later time point after the enrollment period, should they be offered the

173 opportunity and accept it. This effectively alters our study question to comparing the effect of enrolling
174 in DSD immediately to the effect of a delayed opportunity for DSD enrollment, with some comparison
175 arm participants later enrolling in DSD and some never doing so. To mimic this in our emulated trial, we
176 assigned anyone within the baseline enrollment period who did not enroll in DSD to the comparison
177 arm, noting that after baseline, they had regular standard care, which in some cases could involve later
178 enrolling in DSD.

179

180 *Development of multiple trial emulations*

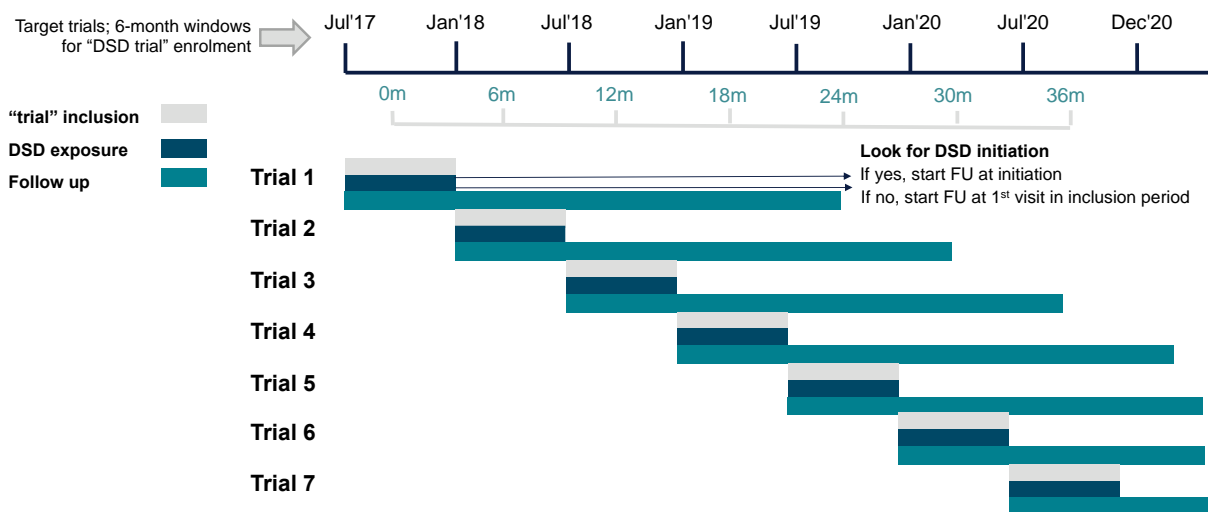
181

182 For this analysis, we chose to emulate a series of eight target trials, each encompassing a 6-calendar
183 month DSD enrollment period in our data set as our baseline, between 1 July 2017 and 1 Jul 2021 (e.g. 1
184 July 2017 to 31 December 2017, 1 January 2018 to 30 June 2018, etc.). This approach maximized the
185 value of our multi-year data set within the constraints of the target trial methodology. Had we
186 conducted only one emulated trial limited to the first six-month calendar period for which we had data
187 (July to December 2017), all participants could readily have been assigned to either intervention or
188 comparison arm status, but this approach would have excluded all the individuals in the data set who
189 enrolled in or became eligible for DSD enrollment after December 2017. Alternatively, we could have
190 conducted only one emulated trial incorporating all the data in our data set (July 2017 to June 2021), in
191 which all clients who enrolled in DSD later in the study period would have been assigned to the DSD
192 arm. As those clients would, by definition, have survived longer on ART before enrolling in DSD,
193 however, and longer duration on ART is associated with better retention and suppression outcomes, this
194 could create bias.

195

196 Emulating multiple, time-limited trials offers one solution to the problem described above. Within each
 197 of the eight target trial periods we assessed eligibility for participation in the trial and DSD models for
 198 individuals in the database at the start of each six-month trial (Figure 1). All those who met the criteria
 199 were included in the new trial, and individual clients could thus be included in the comparison arm of
 200 multiple trials. Participants eligible for each six-month calendar period were then assigned to the
 201 intervention or comparison arm. Because being DSD-naïve is a trial eligibility criterion, anyone who had
 202 enrolled in DSD during a prior six-month period and been analyzed in a previous emulated trial would no
 203 longer be eligible for subsequent trials. A participant who had not yet enrolled in DSD in a prior period
 204 could meet the study eligibility criteria for subsequent trials, however, along with anyone who became
 205 newly eligible for DSD based on national guidelines. As a result, any individual could be enrolled in one
 206 or more trials as a comparison arm participant only; in one or more trials as a comparison arm
 207 participant and one as an intervention participant; or in just one trial as an intervention participant.

208
 209 **Figure 1: Summary of the eight target trial periods**



210
 211 *Outcomes*
 212

213 We defined two outcomes for this analysis, retention in care and viral suppression, each assessed at 12,
214 24, and 36 months after the start date of follow-up as specified in Table 2. Retention in care was defined
215 as having had a recorded clinic visit at the same clinic facility at 12, 24, or 36 months after the start date,
216 with the start date defined as the DSD enrolment date for the intervention arm and the first clinic visit
217 attended during the trial enrolment period for the comparison arm. Viral suppression (<400 copies/mL)
218 was also assessed at these time points but could only be reported for those with viral loads measured
219 (i.e. our denominator only includes those who had documented viral load results in their medical
220 records); participants missing viral load measures were excluded from the analysis of this second
221 outcome. It is important to note that because our data source, TIER.Net, does not capture unreported
222 (“silent”) transfers between facilities, those who informally transfer appear to have disengaged from
223 care. Retention in this study thus refers to retention at the same facility, not retention across the HIV
224 treatment program.

225
226 For both retention in care and viral suppression outcomes, we allowed for a wide 12-month window
227 after the endpoint to recognize outcomes. Clients were considered retained in care for 12 months, for
228 example, if they had a clinic visit any time between 12 and 24 months after DSD enrolment, and their
229 viral load outcome for the 12-month endpoint reflected laboratory tests conducted between 12 and 24
230 months after DSD enrollment. These relatively long (12-month) windows were chosen to accommodate
231 local practice during the study period, which included the COVID-19 pandemic when South Africa
232 temporarily allowed 12-month prescriptions of ART medications. A 12-month window for recording viral
233 suppression was necessary because viral load tests are recommended and typically conducted only
234 every 12 months after the first year on ART. We used the earliest viral load result within the 12-month
235 window after the specified endpoint as the outcome measure. We also extracted from TIER.Net
236 individual characteristics such as age, gender, time on ART, WHO stage, and CD4 count at ART initiation.

237
238 Follow-up for all clients continued for up to 48 months from the start date through their electronic
239 medical records in the TIER.Net system. We applied administrative censoring for each 12-, 24- and 36-
240 month outcome to ensure clients had sufficient potential follow-up data available to assess outcomes.
241 Clients were censored if the outer window for measuring each outcome went beyond the data
242 extraction date. For assessing the 12-month outcome, for example, clients included in the analysis had
243 to have at least 24 months of potential follow-up data available (= 12-month follow up period + 12-
244 month window for outcomes). Clients starting in 2021 or later had not accrued enough follow-up time
245 for the 24- and 36-month outcomes. These clients were excluded from having their outcomes assessed
246 at 24 and/or 36 months and are denoted as having “insufficient follow-up” for those time points.

247
248 *Statistical analysis*

249
250 We first describe the characteristics of the unique clients in the analytic cohort in the study. Since
251 individual participants could be included in multiple trials, however, our unit of analysis was a trial-
252 client, rather than a unique client. Trial-clients are also described (supplementary files). Once all eight
253 target trials were defined and the cohorts were created, we estimated the risk differences for retention
254 in care and viral suppression comparing those in DSD to those not enrolled in DSD models using a
255 Poisson distribution with an identity link function. We adjusted for age, gender, urban/rural setting,
256 province, WHO stage at ART initiation, and years on ART at trial enrolment. We did not adjust for CD4
257 count at ART initiation for two reasons: 1) potential collinearity with WHO stage and 2) CD4 count had
258 more missing data compared to WHO stage. We did conduct a sensitivity analysis in which we adjusted
259 for CD4 count at ART initiation in place of WHO stage, and these results are reported in the
260 Supplementary Appendix. We also conducted an age-stratified and sex-stratified analysis to further

261 evaluate the age- and sex-specific impact of DSD on health outcomes. We present risk differences and
262 95% confidence intervals for each of the eight trials and a pooled estimate that further adjusts for the
263 individual target trial. To account for clients appearing in multiple target trials (resulting in multiple trials
264 for some that would artificially inflate the sample size and bias our standard errors), we also adjusted for
265 within-subject variance using robust variance estimates.

266

267 *Ethics approval*

268

269 The study was approved by the Human Research Ethics Committee (HREC) of the University of the
270 Witwatersrand (M190445) and the Boston University Institutional Review Board (IRB) (H-38115). Both
271 approved use of routine clinic data for the evaluation and provided a waiver of consent.

272

273 **Results**

274

275 *Analytic cohort*

276

277 A total of 49,595 unique individuals were eligible for DSD model enrolment in our data set. Of these,
278 52% (25,775) were enrolled in DSD models during the observation period, while 23,820 were eligible but
279 never enrolled. The distribution of gender and WHO stage at ART initiation was similar between those
280 ever enrolled in DSD and those who remained in standard care, with two-thirds (67%) of the clients in
281 WHO stage 1 at baseline and most (69%) female (Table 3). The age and median time on ART at the start
282 of the first trial were higher for those enrolled in DSD (51% aged 35-49 years; median time on ART 4.0
283 years [interquartile range (IQR) 2.3 to 6.5 years]) compared to those not enrolled in DSD (42% aged 35-
284 49 years; median time on ART 2.5 years [1.5 to 5.3 years]). Clients in the youngest age group (18-24)

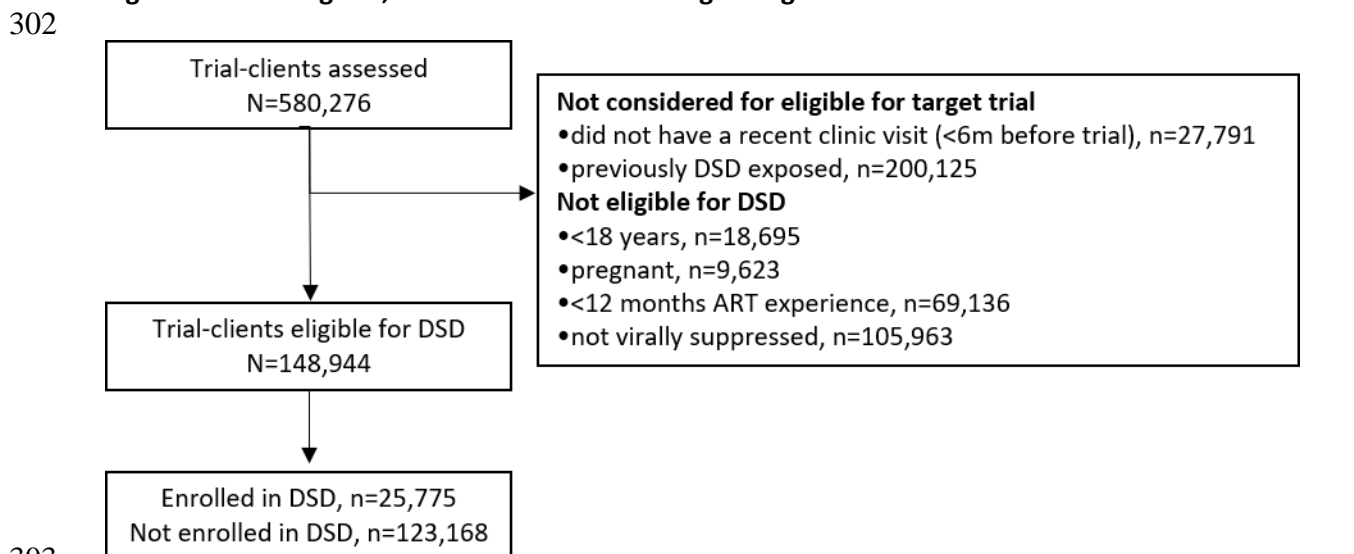
285 were less likely to be enrolled in DSD than were older clients. Clients ever enrolled in DSD were slightly
 286 more likely to receive care in urban settings than were those never enrolled in DSD (75% vs 69%,
 287 respectively) (Table 3). Cohort characteristics based on client trials, rather than unique individuals
 288 (available in Supplementary Table S2), are more balanced between DSD and our comparator arms.

289
 290 **Table 3. Characteristics of cohort eligible for DSD models in the study**
 291

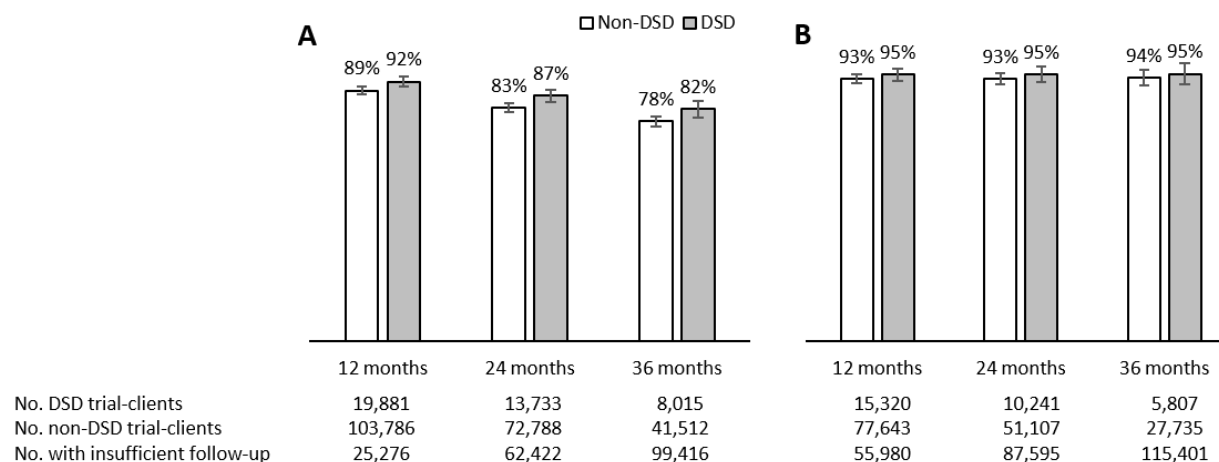
Characteristic		Number of clients (% of total)	Never enrolled in DSD (%)	Ever enrolled in DSD (%)
N		49,595	23,820	25,775
Age group in years	18-24	2,759 (6%)	1,868 (68%)	891 (32%)
	25-34	14,715 (30%)	7,625 (52%)	7,090 (48%)
	35-49	23,064 (47%)	10,040 (44%)	13,024 (56%)
	50+	9,057 (18%)	4,287 (47%)	4,770 (53%)
Gender	Female	34,145 (69%)	16,273 (48%)	17,872 (52%)
	Male	15,450 (31%)	7,547 (49%)	7,903 (51%)
Years on ART at trial start	Years (median, IQR)	3.3 (1.8 – 6.0)	2.5 (1.5 - 5.3)	4.0 (2.3 - 6.5)
	1 to <2	14,249 (29%)	9,333 (65%)	4,916 (35%)
	2 to <5	18,881 (38%)	7,897 (42%)	10,984 (58%)
	5+	16,465 (33%)	6,590 (40%)	9,875 (60%)
WHO stage at ART initiation	1	30,022 (67%)	14,473 (48%)	15,549 (52%)
	2	8,105 (18%)	3,801 (47%)	4,304 (53%)
	3	5,582 (13%)	2,576 (46%)	3,006 (54%)
	4	861 (2%)	409 (48%)	452 (52%)
CD4 (cells/μl) at ART initiation; median (IQR)		244 (131 - 386)	250 (133 - 407)	239 (129 - 370)
Location	Rural	13,685 (28%)	7,289 (53%)	6,396 (47%)
	Urban	35,910 (72%)	16,531 (46%)	19,379 (54%)
Province	Gauteng	23,833 (48%)	11,145 (47%)	12,688 (53%)
	KwaZulu-Natal	12,193 (25%)	6,696 (55%)	5,497 (45%)
	Mpumalanga	13,569 (27%)	5,979 (44%)	7,590 (56%)

292
 293 As explained above, because individual participants were included in multiple trials, our unit of analysis
 294 was a trial-client, rather than a unique client. 580,276 trial-clients were assessed over the eight target
 295 trial enrolment periods between July 2017 and July 2021 (Figure 2). Of all trial-clients, 431,333 were
 296 excluded for different reasons: a third (34%, n=200,125) were previously exposed to DSD models, 5%
 297 (n=27,791) had not had a recent clinic visit before trial enrolment, 3% (n=18,695) were aged <18 years,
 298 2% (n=9,623) were pregnant during the trial enrolment period, 16% (n=69,136) had <12 months of ART
 299 experience, and 25% (n=105,963) were not virally suppressed(Figure 2). A detailed disaggregated flow
 300 diagram depicting each of the eight target trials is available in Supplementary Figure S1.

301 **Figure 2: Flow diagram, consolidated across all eight target trials**



314 **Figure 3: (A) Retention in care and (B) viral load suppression outcomes by DSD enrolment, at 12, 24,**
 315 **and 36 months; adjusted mean estimates with 95% confidence intervals**



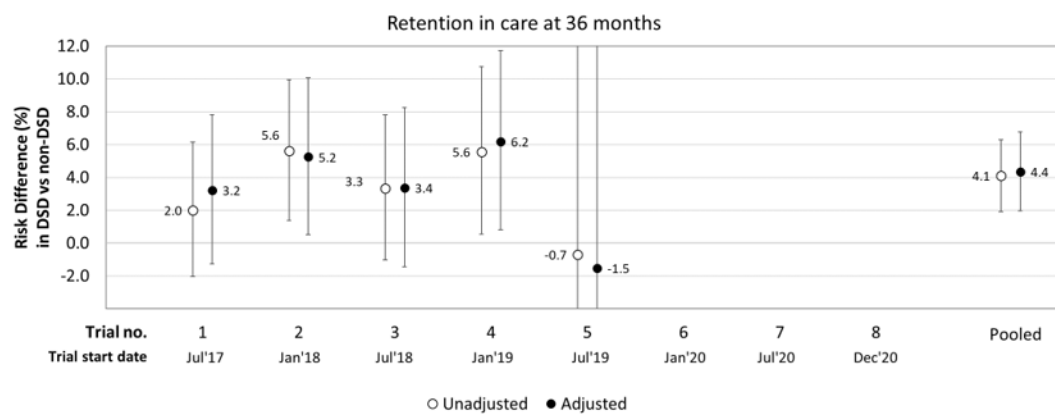
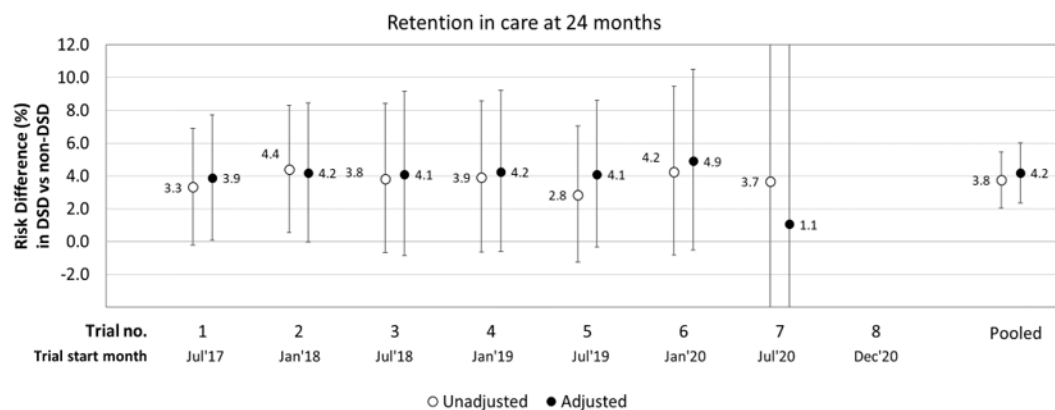
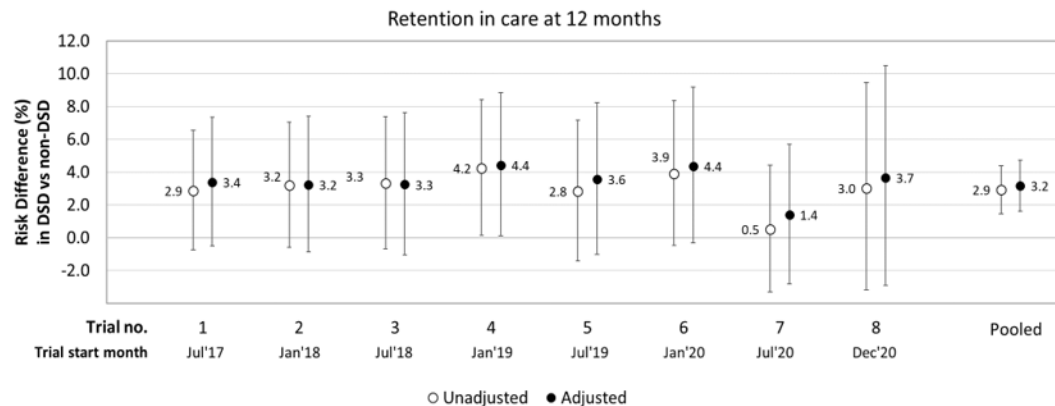
316
 317 The pooled adjusted risk difference for retention in care between clients enrolled in DSD and those
 318 eligible but not enrolled was estimated to be 3.2% (95% confidence interval (CI) 1.6%; 4.7%) at 12
 319 months, 4.2% (2.4%; 6.0%) at 24 months, and 4.4% (2.0%; 6.8%) at 36 months (Figure 4). Estimates
 320 stratified by each of the target trials were similar, except for the 12-month outcome in the 7th trial which
 321 could be explained by timing of the trial enrolment period, which occurred during the first two waves of
 322 the COVID-19 pandemic.

323 For viral suppression outcomes, the adjusted risk difference comparing DSD to non-DSD was estimated
 324 to be 1.4% (-0.5%; 3.2%) at 12 months, 1.7% (-0.5%; 4.0%) at 24 months, and 1.4% (-0.6%; 4.4%) at 36
 325 months (Figure 5). The pooled adjusted risk differences including the covariate estimates are available in
 326 Supplementary Table S3. These show that clients who were younger (aged 18-34 years), received care
 327 from an urban clinic, or had fewer years on ART (<2 years) at study enrolment were significantly less
 328 likely to be retained in care, while those aged 18-24 years had lower rates of viral suppression at 12
 329 months (Supplementary Table S3). Adjusting for CD4 count at ART initiation, instead of WHO stage, did
 330 not fundamentally change the effect estimates for those on DSD models (Supplementary Table S4).

331 Age-stratified analyses showed some variation in risk difference estimates between age groups when
332 comparing DSD vs non-DSD rates of retention and viral suppression. In particular, younger participants
333 (aged 18-24 years) had a higher risk difference for both retention and viral suppression compared to
334 those older (aged 25+ years) (Supplementary Table S5 and S6). Adjusted risk differences for retention
335 ranged from 4.4%-7.8% for 18-24-year-old clients and from 2.5%-5.4% for clients aged 25+ years, while
336 for viral suppression they ranged from 3.3%-6.1% (aged 18-24 years) and from 0.9%-1.7% (aged 25+
337 years). Confidence intervals were wider for 18-24-year-old clients due to the smaller sample sizes
338 involved, however. Sex-stratified analyses produced similar risk difference estimates between males and
339 females for retention. There were some differences in viral suppression by sex, however, with male
340 clients having a slightly higher adjusted risk difference estimate comparing DSD vs non-DSD (ranging
341 from 1.8%-2.2%) than did female clients (range 1.1%-1.5%) (Supplementary Table S7 and S8).

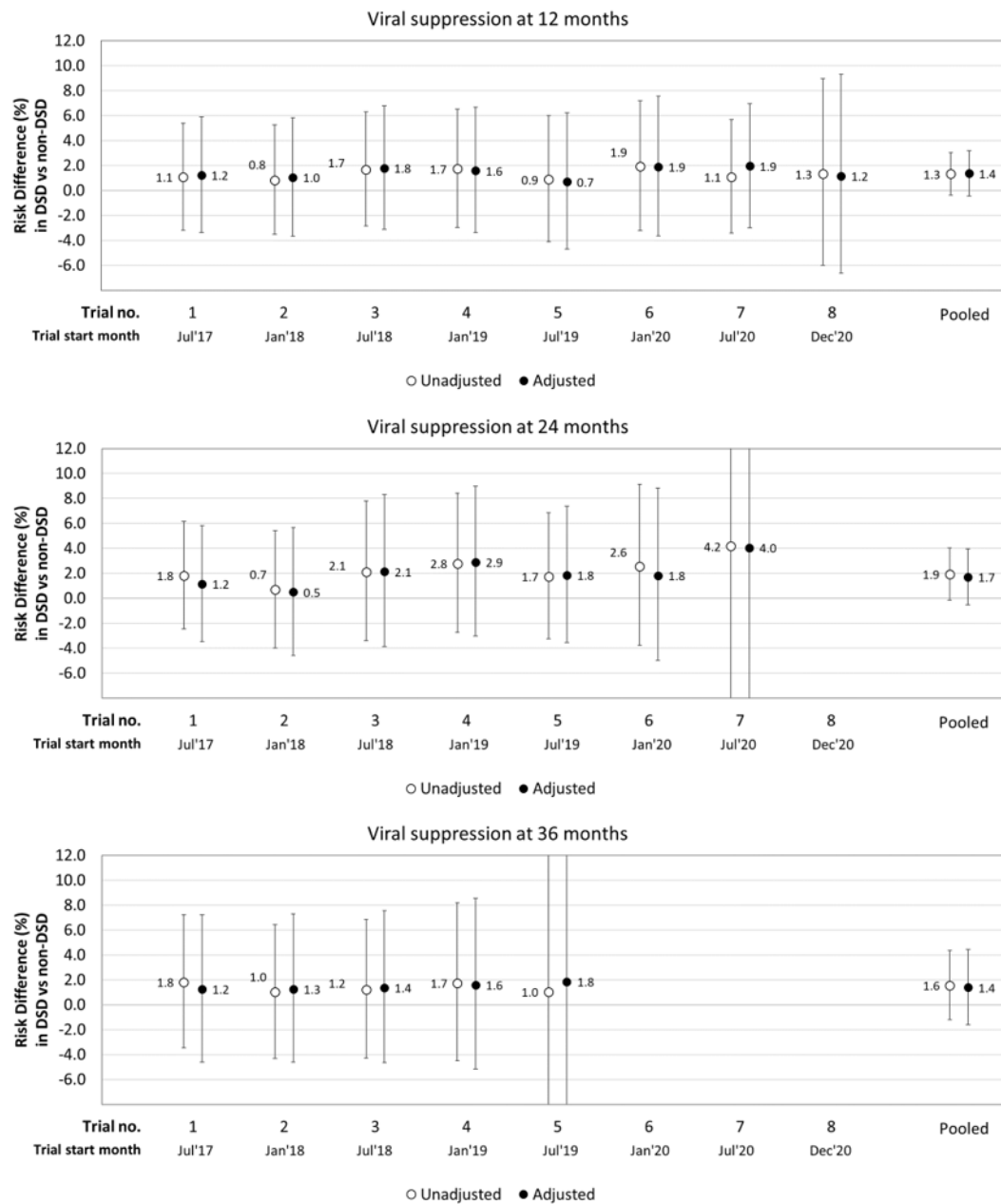
342
343
344

345 **Figure 4: Adjusted risk differences for retention in care (12, 24, and 36 months) comparing DSD vs**
346 **non-DSD clients**
347



348
349
350
351

352 **Figure 5: Adjusted risk differences for viral suppression (12, 24, and 36 months) comparing DSD vs**
 353 **non-DSD clients**
 354



355
 356
 357 **Discussion**

358
 359 In this study, we conducted one of the first analyses of a large cohort of clients comparing viral
 360 suppression and retention outcomes between those enrolled in differentiated service delivery models
 361 and those eligible for DSD enrollment but remaining in conventional care in a routine healthcare setting.

362 We found that clients enrolled in DSD models had similar or slightly better rates of retention in care and
363 viral load suppression as did those who were eligible for DSD but remained in conventional care.

364
365 For clients eligible for DSD—i.e. those considered “established” on ART-- it is reassuring that retention
366 and suppression outcomes were comparable between conventional care and DSD models. There was
367 little room for these clients’ rate of viral suppression to improve over the follow-up period, as all had
368 documented viral suppression at enrollment. The concern that less intensive models of service delivery,
369 with less direct interaction with clients than under conventional care, might lead to worse retention in
370 care, however, was not borne out in our analysis. The potential benefits of differentiated service
371 delivery, in this setting, can thus be assessed based on non-clinical factors, such as costs to clients,
372 health system resource utilization and efficiency, and client and provider satisfaction.

373
374 While countries across sub-Saharan Africa have implemented differentiated models of HIV treatment,
375 few of these programs have undergone rigorous evaluation at scale. Many studies have focused on the
376 impact of individual interventions, often in controlled settings, while less attention has been given to
377 reporting outcomes of these DSD models in routine care settings after national implementation. Despite
378 differences in study designs, our results largely align with the majority of studies on individual models,
379 indicating that less intensive DSD models enrolling clients already established on ART provide equivalent
380 or slightly better retention and viral suppression outcomes [11-17]. Our findings are also consistent with
381 a recent large-scale study assessing the impact of DSD models on 12-month retention in
382 Mozambique[24]. In that study, the research team conducted an interrupted time series analysis
383 comparing clinic-wide retention before and 12 months after the implementation of a package
384 comprising eight models of care. We note that while the question of clinic-wide retention addressed in

385 that analysis differs from the one addressed in our paper, which specifically focuses on the eligible
386 population, both perspectives merit consideration.

387
388 Our study had several limitations, most resulting from the observational design and reliance on routinely
389 collected medical records. Although the use of TIER.Net data provided a large sample of ART clients
390 attending multiple healthcare facilities, until June 2020 it did not record the specific DSD model in which
391 a client was enrolled and instead only captured whether the client was in a DSD model or not. As noted
392 above, TIER.Net does not capture off-site medication collection visits for clients enrolled in DSD models,
393 but only the facility-based visits that occur every 6 months, requiring a long follow-up window for
394 retention to be documented. Since the TIER.Net system is not linked across facilities, moreover, “silent”
395 or unrecorded transfers between facilities appear in the system as disengagement from care, likely
396 underestimating overall retention in this study. We cannot know if this effect is differential or non-
397 differential between DSD and comparison clients, however. In addition, in South Africa, the CCMDD
398 program, which provides the majority of medication for DSD models, requires a valid South African
399 identification number, passport number, or asylum seeker number for registration. Anecdotally, a lack
400 of a valid identification number for registration is often offered as a reason for not enrolling clients in
401 the CCMDD program. In clinics with a large number of individuals without these numbers, such as those
402 that serve immigrant communities, facilities may decide to pack medications themselves, at the facility,
403 rather than relying on the CCMDD program. This could explain why some clients who appear in their
404 medical records to be eligible for DSD are not enrolled.

405
406 The target trial emulation methodology used in this analysis is a robust method for defining a
407 comparator arm and determining outcomes in routine care data but it cannot correct all issues that
408 affect observational studies. It can help prevent issues like misaligned person time, poorly defined

409 eligibility criteria, and unclear causal questions. It does not fully address the limitations of observational
410 studies, however, as residual confounding can still be present. In our case, it is likely that many of those
411 who were offered and accepted enrollment in DSD models were, on average, in better health, more
412 motivated, or more empowered to remain in care than those who were not, suggesting that DSD
413 participants may have had better outcomes than comparison participants even in the absence of DSD.
414 This bias would overestimate the retention benefit of DSD over conventional care. The exclusion from
415 DSD of otherwise-eligible clients without national identification numbers could also skew our results,
416 either in favor of no difference (if clients without ID numbers also have good outcomes in conventional
417 care, offsetting the bias mentioned above) or by overestimating the effect of DSD, if clients without ID
418 numbers face greater barriers to remaining in care.

419
420 Despite these study limitations, our results using a robust observational methodology and large sample
421 size suggest that retention and viral suppression for those in DSD models in South Africa are similar to,
422 or better than, outcomes in conventional care for ART clients who meet typical DSD eligibility criteria.
423 These findings should assure policy makers and program managers that the less intensive models of care
424 that South Africa has introduced do not threaten the achievements of national HIV programs and that
425 the non-clinical benefits they generate for the healthcare system, such as savings in provider time use,
426 and for clients, such as less time and lower costs, will not be offset by poorer clinical outcomes.

427
428 **Competing interests**

429
430 The authors have no competing interests to report. LM, MM and NK are employed by the government
431 agency that has supervisory authority over the healthcare facilities from which the data for this study
432 were drawn.

433
434 **Authors' contributions**

435
436 Conceptualization: Amy Huber, Lise Jamieson, Matthew Fox, Brooke Nichols, Sydney Rosen
437 Data curation: Amy Huber, Lise Jamieson

438 Formal analysis: Amy Huber, Lise Jamieson, Matthew Fox
439 Funding acquisition: Sophie Pascoe, Sydney Rosen
440 Methodology: Matthew Fox, Lise Jamieson
441 Project administration: Amy Huber, Sophie Pascoe
442 Validation: Lufuno Malala, Musa Manganye, Thato Chidarikire, Nthabiseng Khoza
443 Visualization: n/a
444 Writing – original draft: Amy Huber, Lise Jamieson, Sydney Rosen
445 Writing – review & editing: Amy Huber, Lise Jamieson, Matthew P. Fox, Musa Manganye, Lufuno Malala,
446 Thato Chidarikire, Nthabiseng Khoza, Brooke Nichols, Sydney Rosen, Sophie Pascoe

447 448 **Funding**

449
450 Funding for the study was provided by the Bill & Melinda Gates Foundation through OPP1192640 to
451 Boston University and INV-037138 to the Wits Health Consortium. The funders had no role in study
452 design, data collection and analysis, decision to publish or preparation of the manuscript.

453 454 **References**

- 455
- 456 1. Grimsrud A, Wilkinson L. Acceleration of differentiated service delivery for HIV treatment in sub-
457 Saharan Africa during COVID-19. *J Int AIDS Soc.* 2021;24: e25704. doi:10.1002/jia2.25704
458
 - 459 2. Ehrenkranz P, Grimsrud A, Rabkin M. Differentiated service delivery: Navigating the path to scale.
460 *Curr Opin HIV AIDS.* 2019;14: 60–65. doi:10.1097/COH.0000000000000509
461
 - 462 3. Duncombe C, Rosenblum S, Hellmann N, Holmes CB, Wilkinson L, Biot M, et al. Reframing HIV
463 care: putting people at the centre of antiretroviral delivery. *Trop Med Int Health.* 2015;20: n/a-
464 n/a. doi:10.1111/tmi.12460
465
 - 466 4. Ehrenkranz P, Grimsrud A, Holmes C, Preko P, Rabkin M. Expanding the vision for differentiated
467 service delivery: a call for more inclusive and truly patient-centered care for people living with
468 HIV. *JAIDS Journal of Acquired Immune Deficiency Syndromes.* 2020; Publish Ah: 147–152.
469 doi:10.1097/QAI.0000000000002549
470
 - 471 5. Huber A, Pascoe S, Nichols B, Long L, Kuchukhidze S, Phiri B, et al. Differentiated Service Delivery
472 Models for HIV Treatment in Malawi, South Africa, and Zambia: A Landscape Analysis. *Glob
473 Health Sci Pract.* 2021;9.
474
 - 475 6. HIV Coverage, Quality, and Impact Network (CQUIN). CQUIN 7th Annual Meeting Posters. CQUIN
476 7th Annual Meeting; November 13–17, 2023; Johannesburg, South Africa. Available from:
477 <https://cquin.icap.columbia.edu/event/cquin-7th-annual-meeting/posters/>
478
 - 479 7. World Health Organization. Latest HIV estimates and updates on HIV policies uptake. *Global HIV,
480 Hepatitis and STI Programmes.* 2020; 1–40. Available: [https://www.who.int/docs/default-
481 source/hiv-hq/latest-hiv-estimates-and-updates-on-hiv-policies-uptake-
482 november2020.pdf?sfvrsn=10a0043d_12](https://www.who.int/docs/default-source/hiv-hq/latest-hiv-estimates-and-updates-on-hiv-policies-uptake-november2020.pdf?sfvrsn=10a0043d_12)
483

- 484 8. The South African National Department of Health. Adherence Guidelines for HIV, TB and NCDs.
485 Department of Health, Pretoria, Republic of South Africa; 2023.
486
- 487 9. Liu L, Christie S, Munsamy M, Roberts P, Pillay M, Sheno S V, et al. Expansion of a national
488 differentiated service delivery model to support people living with HIV and other chronic
489 conditions in South Africa : a descriptive analysis. *BMC Health Serv Res.* 2021;21: 463.
490
- 491 10. Dorward J, Msimango L, Gibbs A, Shozi H, Tonkin-Crine S, Hayward G, et al. Understanding how
492 community antiretroviral delivery influences engagement in HIV care: A qualitative assessment of
493 the Centralised Chronic Medication Dispensing and Distribution programme in South Africa. *BMJ*
494 *Open.* 2020;10. doi:10.1136/bmjopen-2019-035412
495
- 496 11. Luque-Fernandez MA, Van Cutsem G, Goemaere E, Hilderbrand K, Schomaker M, Mantangana N,
497 et al. Effectiveness of patient adherence groups as a model of care for stable patients on
498 antiretroviral therapy in Khayelitsha, Cape Town, South Africa. *PLoS One.* 2013;8: e56088.
499 doi:10.1371/journal.pone.0056088
500
- 501 12. Wang M, Violette LR, Dorward J, Ngobese H, Sookrajh Y, Bulo E, et al. Delivery of Community-
502 based Antiretroviral Therapy to Maintain Viral Suppression and Retention in Care in South Africa.
503 *J Acquir Immune Defic Syndr.* 2023 Jun 1;93(2):126-133. doi: 10.1097/QAI.0000000000003176.
504
- 505 13. Lewis L, Sookrajh Y, Van Der Molen J, Khubone T, Maraj M, Sosibo P, et al. Long-term usage
506 patterns and clinical outcomes in a community-based differentiated antiretroviral therapy
507 delivery programme in South Africa. *J Int AIDS Soc.* 2023;26: 26141. doi:10.1002/jia2.26141/full
508
- 509 14. Long L, Kuchukhidze S, Pascoe S, Nichols BE, Fox MP, Cele R, et al. Retention in care and viral
510 suppression in differentiated service delivery models for HIV treatment delivery in sub-Saharan
511 Africa: a rapid systematic review. *J Int AIDS Soc.* 2020;23: 1–14. doi:10.1002/jia2.25640
512
- 513 15. Fox MP, Pascoe S, Huber AN, Murphy J, Phokojoe M, Gorgens M, et al. Adherence Clubs and
514 Decentralized Medication Delivery to Support Patient Retention and Sustained Viral Suppression
515 in Care: Results from A Cluster Randomized Evaluation of Differentiated ART delivery models in
516 South Africa. *PLoS Med.* 2019;16: e1002874.
517
- 518 16. Jo Y, Jamieson L, Phiri B, Grimsrud A, Mwansa M, Shakwelele H, et al. Attrition from HIV
519 treatment after enrollment in a differentiated service delivery model: A cohort analysis of routine
520 care in Zambia. *PLoS One.* 2023;18: e0280748. doi:10.1371/journal.pone.0280748
521
- 522 17. Uetela DAM, Augusto O, Hughes JP, Uetela OA, Gudo ES, Chicumbe SA, et al. Impact of
523 differentiated service delivery models on 12-month retention in HIV treatment in Mozambique:
524 an interrupted time-series analysis. *Lancet HIV.* 2023;10: e674–e683. doi:10.1016/S2352-
525 3018(23)00184-4
526
- 527 18. The South African National Department of Health. Adherence guidelines for HIV, TB and NCDs:
528 Policy and service guidelines for linkage to care, adherence to treatment and retention in care.
529 Department of Health, Pretoria, Republic of South Africa; 2016.
530

- 531 19. Pascoe S, Huber A, Mokhele I, Lekodeba N, Ntjikelane V, Sande L, et al. The SENTINEL study of
532 differentiated service delivery models for HIV treatment in Malawi, South Africa, and Zambia:
533 research protocol for a prospective cohort study. *BMC Health Serv Res.* 2023;23: 891.
534 doi:10.1186/s12913-023-09813-w
535
- 536 20. Osler M, Hilderbrand K, Hennessey C, Arendse J, Goemaere E, Ford N, et al. A three-tier
537 framework for monitoring antiretroviral therapy in high HIV burden settings. *J Int AIDS Soc.*
538 2014;17. doi:10.7448/IAS.17.1.18908
539
- 540 21. Etoori D, Wringe A, Kabudula CW, Renju J, Rice B, Gomez-Olive FX, et al. Misreporting of Patient
541 Outcomes in the South African National HIV Treatment Database: Consequences for Programme
542 Planning, Monitoring, and Evaluation. *Front Public Health.* 2020;8.
543 doi:10.3389/FPUBH.2020.00100
544
- 545 22. Hernán MA, Robins JM. Using Big Data to Emulate a Target Trial When a Randomized Trial Is Not
546 Available. *Am J Epidemiol.* 2016;183: 758–764. doi:10.1093/aje/kwv254
547
- 548 23. Hernán MA, Sauer BC, Hernández-Díaz S, Platt R, Shrier I. Specifying a target trial prevents
549 immortal time bias and other self-inflicted injuries in observational analyses. *J Clin Epidemiol.*
550 2016;79: 70–75. doi:10.1016/j.jclinepi.2016.04.014
551
- 552 24. Uetela DAM, Augusto O, Hughes JP, Uetela OA, Gudo ES, Chicumbe SA, et al. Impact of
553 differentiated service delivery models on 12-month retention in HIV treatment in Mozambique:
554 an interrupted time-series analysis. *Lancet HIV.* 2023;10: e674–e683. doi:10.1016/S2352-
555 3018(23)00184-4
556

1 **Supplementary Appendix**

2
3
4

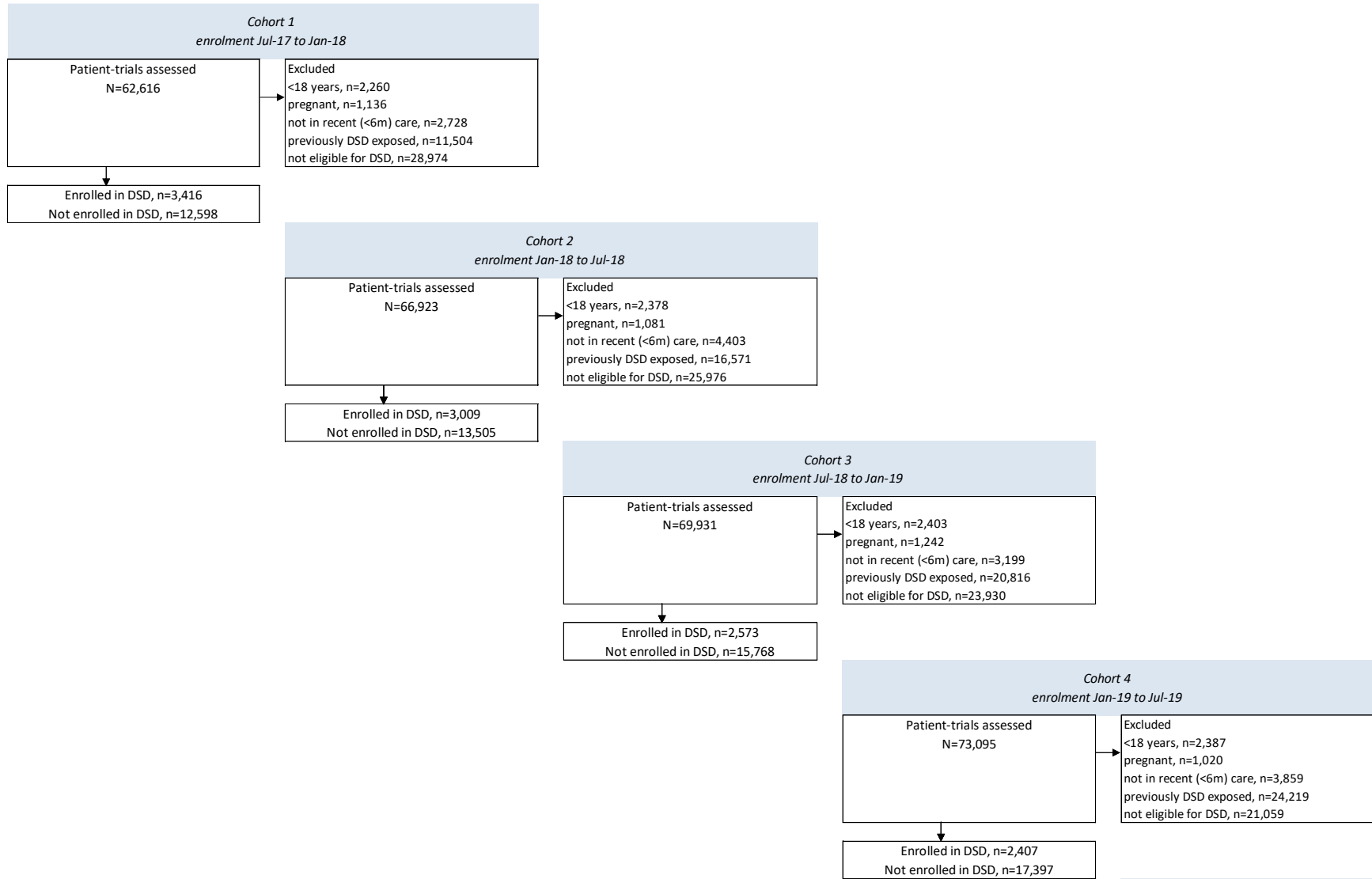
Table S1. Study site description

Site	Setting	Number on ART 2021	Approximate % of ART clients enrolled in DSD models (2021)
<i>Ekurhuleni District (data from Jan 2016 - Jun 2020)</i>			
Clinic	Urban	2,386	53%
Clinic	Urban	2,658	44%
Clinic	Urban	7,213	51%
Clinic	Urban	1,482	Missing
Clinic	Urban	3,502	Missing
Clinic	Urban	4,560	Missing
<i>West Rand District (data from Jan 2016 - Jun 2023)</i>			
Clinic	Urban	1,783	Missing
Clinic	Rural	1,803	32%
Clinic	Urban	1,897	24%
Clinic	Urban	2,116	57%
Clinic	Rural	2,301	43%
Clinic	Urban	2,959	66%
<i>Ehlanzeni District (data from Jan 2016 - Jan 2023)</i>			
Community Health Centre	Urban	6,622	61%
Clinic	Rural	3,553	44%
Clinic	Rural	1,943	48%
Clinic	Rural	3,001	11%
Community Health Centre	Urban	5,234	25%
Clinic	Urban	5,515	28%
<i>King Cetshwayo District (data from Jan 2016 - Apr 2023)</i>			
Clinic	Rural	1,182	24%
Clinic	Rural	1,509	81%
Clinic	Rural	2,231	78%
Clinic	Rural	3,361	Missing
Clinic	Rural	5,190	61%
Clinic	Urban	7,934	75%

5

6 **Figure S1. Cohort flow diagram**

7

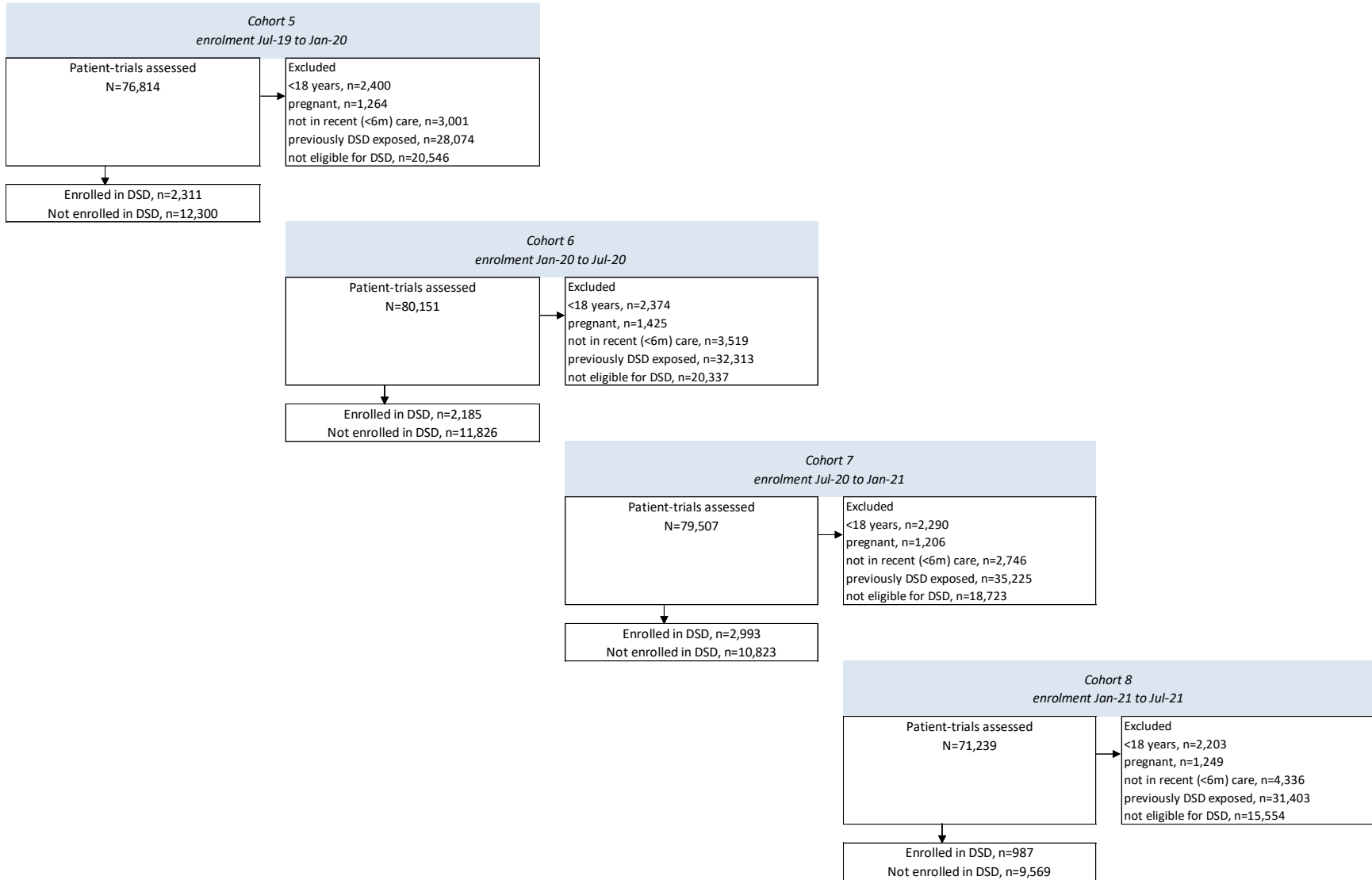


8

9

10
11

Figure S1. Cohort flow diagram (continued)



12
13

14 **Table S2. Baseline demographics of trial-clients eligible for DSD models across all eight emulated target trials**

15

		Total (%)	Not enrolled in DSD (%)	Enrolled in DSD (%)
Number of trial-clients *		148,943	123,168	25,775
Age group in years	18-24	6,664 (4%)	5,773 (87%)	891 (13%)
	25-34	40,063 (27%)	32,973 (82%)	7,090 (18%)
	35-49	70,700 (47%)	57,676 (82%)	13,024 (18%)
	50+	31,516 (21%)	26,746 (85%)	4,770 (15%)
Gender	Female	102,680 (69%)	84,808 (83%)	17,872 (17%)
	Male	46,263 (31%)	38,360 (83%)	7,903 (17%)
Years on ART at trial start, median (IQR)		4.1 (2.4 - 6.7)	4.1 (2.4 - 6.7)	4.0 (2.3 - 6.5)
Years on ART at trial start	1-<2	26,590 (18%)	21,674 (82%)	4,916 (18%)
	2-<5	62,539 (42%)	51,555 (82%)	10,984 (18%)
	5+	59,814 (40%)	49,939 (83%)	9,875 (17%)
WHO stage at ART initiation	1	86,361 (65%)	70,812 (82%)	15,549 (18%)
	2	25,732 (19%)	21,428 (83%)	4,304 (17%)
	3	17,901 (13%)	14,895 (83%)	3,006 (17%)
	4	2,842 (2%)	2,390 (84%)	452 (16%)
CD4 (cells/μl) at ART initiation; median (IQR)		238 (128 - 371)	237 (128 - 372)	239 (129 - 370)
Location	Rural	42,292 (28%)	35,896 (85%)	6,396 (15%)
	Urban	106,651 (72%)	87,272 (82%)	19,379 (18%)
Province	Gauteng	71,265 (48%)	58,577 (82%)	12,688 (18%)
	KwaZulu-Natal	37,327 (25%)	31,830 (85%)	5,497 (15%)
	Mpumalanga	40,351 (27%)	32,761 (81%)	7,590 (19%)

16 * trial-clients refers to the number of clients followed across all 8 target trials, with some clients appearing in multiple target trials

17

18 Table S3. Pooled adjusted risk difference (%) of retention in care and viral suppression by DSD enrolment at 12, 24 and 36 months

		Retained/N (%)	Retention in care Unadjusted risk difference (95% confidence interval)	Adjusted risk difference (95% confidence interval)	Virally suppressed/N* (%)	Viral suppression Unadjusted risk difference (95% confidence interval)	Adjusted risk difference (95% confidence interval)
12 months							
DSD enrolment	No	93,966/103,786 (91%)	reference	reference	74,108/77,643 (95%)	reference	reference
	Yes	18,583/19,881 (93%)	2.9 (1.5; 4.4)	3.2 (1.6; 4.7)	14,824/15,320 (97%)	1.3 (-0.4; 3.0)	1.4 (-0.5; 3.2)
Age group (years)	18-24	5,010/5,883 (85%)	-7.3 (-9.7; -4.7)	-7.1 (-9.8; -4.4)	3,788/4,096 (92%)	-3.6 (-6.6; -0.4)	-3.8 (-7.1; -0.4)
	25-34	30,506/34,203 (89%)	-3.2 (-4.5; -1.9)	-2.9 (-4.3; -1.5)	23,878/25,100 (95%)	-0.9 (-2.4; 0.6)	-1.1 (-2.8; 0.5)
	35-49	53,175/57,542 (92%)	reference	reference	42,307/44,051 (96%)	reference	reference
	50+	23,858/26,039 (92%)	-0.8 (-2.2; 0.6)	-0.8 (-2.3; 0.7)	18,959/19,716 (96%)	0.1 (-1.5; 1.8)	0.3 (-1.5; 2.1)
	Gender	Female	78,225/85,960 (91%)	reference	reference	62,330/64,863 (96%)	reference
	Male	34,324/37,707 (91%)	0.0 (-1.1; 1.2)	-0.4 (-1.7; 0.8)	26,602/28,100 (95%)	-1.4 (-2.8; -0.1)	-1.6 (-3.1; -0.1)
Location	Rural	38,137/41,278 (92%)	reference	reference	29,723/31,548 (94%)	reference	reference
	Urban	74,412/82,389 (90%)	-2.1 (-3.2; -0.9)	-2.1 (-3.6; -0.6)	59,209/61,415 (96%)	2.2 (0.9; 3.5)	1.0 (-0.7; 2.8)
Province	GP	42,750/47,423 (90%)	reference	reference	33,615/34,716 (97%)	reference	reference
	KZN	33,793/37,065 (91%)	1.0 (-0.3; 2.3)	0.5 (-1.0; 2.1)	28,242/29,365 (96%)	-0.7 (-2.2; 0.9)	0.1 (-1.8; 1.9)
	MP	36,006/39,179 (92%)	1.8 (0.5; 3.0)	0.4 (-1.3; 2.1)	27,075/28,882 (94%)	-3.1 (-4.6; -1.6)	-2.2 (-4.2; -0.2)
Years on ART	1-<2	20,108/22,711 (89%)	-3.8 (-5.3; -2.3)	-2.8 (-4.4; -1.1)	16,016/16,806 (95%)	-0.6 (-2.4; 1.2)	-0.2 (-2.2; 1.8)
	2-<5	47,995/52,818 (91%)	-1.5 (-2.6; -0.3)	-0.8 (-2.1; 0.5)	37,571/39,298 (96%)	-0.3 (-1.7; 1.1)	-0.1 (-1.6; 1.4)
	5+	44,446/48,138 (92%)	reference	reference	35,345/36,859 (96%)	reference	reference
WHO stage at ART initiation	1	63,847/70,449 (91%)	reference	reference	50,763/52,704 (96%)	reference	reference
	2	19,731/21,506 (92%)	1.1 (-0.3; 2.6)	0.4 (-1.1; 1.9)	15,353/16,185 (95%)	-1.5 (-3.2; 0.3)	-1.1 (-2.9; 0.6)
	3	13,060/14,339 (91%)	0.5 (-1.3; 2.2)	-0.3 (-2.1; 1.4)	10,235/10,829 (95%)	-1.8 (-3.8; 0.2)	-1.9 (-4.0; 0.1)
	4	2,048/2,256 (91%)	0.2 (-3.8; 4.2)	-0.6 (-4.5; 3.5)	1,634/1,731 (94%)	-1.9 (-6.5; 2.8)	-2.2 (-6.8; 2.5)
24 months							
DSD enrolment	No	61,943/72,788 (85%)	reference	reference	48,637/51,107 (95%)	reference	reference
	Yes	12,203/13,733 (89%)	3.8 (2.1; 5.5)	4.2 (2.4; 6.0)	9,943/10,241 (97%)	1.9 (-0.2; 4)	1.7 (-0.5; 4.0)
Age group (years)	18-24	3,102/4,031 (77%)	-10.7 (-13.6; -7.9)	-10.7 (-13.8; -7.5)	2,342/2,551 (92%)	-4.2 (-8.0; -0.3)	-4.2 (-8.4; 0.2)
	25-34	20,214/24,142 (84%)	-4.0 (-5.4; -2.5)	-3.6 (-5.2; -2.0)	15,752/16,652 (95%)	-1.4 (-3.3; 0.4)	-1.6 (-3.6; 0.5)
	35-49	35,234/40,178 (88%)	reference	reference	28,080/29,248 (96%)	reference	reference
	50+	15,596/18,170 (86%)	-1.9 (-3.5; -0.2)	-1.8 (-3.6; 0.0)	12,406/12,897 (96%)	0.2 (-1.8; 2.2)	0.4 (-1.8; 2.7)
	Gender	Female	51,960/60,536 (86%)	reference	reference	41,421/43,186 (96%)	reference
	Male	22,186/25,985 (85%)	-0.5 (-1.8; 0.9)	-1.1 (-2.5; 0.4)	17,159/18,162 (94%)	-1.4 (-3.1; 0.3)	-1.4 (-3.2; 0.5)
Location	Rural	26,638/30,270 (88%)	reference	reference	20,544/21,884 (94%)	reference	reference
	Urban	47,508/56,251 (84%)	-3.5 (-4.8; -2.2)	-3.3 (-5.0; -1.5)	38,036/39,464 (96%)	2.5 (0.9; 4.1)	1.1 (-1.1; 3.2)
Province	GP	24,846/29,616 (84%)	reference	reference	19,713/20,294 (97%)	reference	reference
	KZN	23,537/27,290 (86%)	2.4 (0.8; 3.9)	1.7 (-0.1; 3.5)	19,762/20,596 (96%)	-1.2 (-3.1; 0.7)	-0.4 (-2.6; 1.9)
	MP	25,763/29,615 (87%)	3.1 (1.6; 4.6)	1.3 (-0.6; 3.2)	19,105/20,458 (93%)	-3.8 (-5.6; -1.9)	-2.7 (-5.1; -0.2)
Years on ART	1-<2	13,513/16,314 (83%)	-4.5 (-6.3; -2.8)	-3.5 (-5.5; -1.6)	10,648/11,197 (95%)	-0.9 (-3.1; 1.3)	-0.4 (-2.9; 2.1)
	2-<5	32,288/37,761 (86%)	-1.9 (-3.2; -0.5)	-1.1 (-2.7; 0.4)	25,282/26,561 (95%)	-0.8 (-2.5; 0.9)	-0.6 (-2.5; 1.3)
	5+	28,345/32,446 (87%)	reference	reference	22,650/23,590 (96%)	reference	reference
WHO stage at ART initiation	1	40,646/47,719 (85%)	reference	reference	32,427/33,686 (96%)	reference	reference
	2	13,533/15,646 (86%)	1.3 (-0.4; 3.0)	0.3 (-1.4; 2.0)	10,456/11,065 (94%)	-1.8 (-3.9; 0.3)	-1.4 (-3.5; 0.8)

		Retention in care			Viral suppression		
		Retained/N (%)	Unadjusted risk difference (95% confidence interval)	Adjusted risk difference (95% confidence interval)	Virally suppressed/N* (%)	Unadjusted risk difference (95% confidence interval)	Adjusted risk difference (95% confidence interval)
	3	8,712/10,182 (86%)	0.4 (-1.6; 2.4)	-0.5 (-2.5; 1.5)	6,847/7,255 (94%)	-1.9 (-4.3; 0.6)	-2.1 (-4.6; 0.4)
	4	1,376/1,583 (87%)	1.7 (-2.8; 6.5)	0.8 (-3.8; 5.5)	1,107/1,172 (94%)	-1.8 (-7.4; 4.0)	-2.2 (-7.7; 3.6)
36 months							
DSD enrolment	No	33,568/41,512 (81%)	reference	reference	26,481/27,735 (95%)	reference	reference
	Yes	6,810/8,015 (85%)	4.1 (1.9; 6.3)	4.4 (2.0; 6.8)	5,635/5,807 (97%)	1.6 (-1.2; 4.4)	1.4 (-1.6; 4.4)
Age group (years)	18-24	1,679/2,351 (71%)	-12.4 (-16.0; -8.7)	-12.0 (-16.0; -8.0)	1,273/1,372 (93%)	-3.3 (-8.6; 2.1)	-3.5 (-9.3; 2.4)
	25-34	11,162/13,950 (80%)	-3.8 (-5.7; -1.9)	-3.4 (-5.5; -1.3)	8,792/9,259 (95%)	-1.2 (-3.6; 1.4)	-1.1 (-3.9; 1.7)
	35-49	19,090/22,773 (84%)	reference	reference	15,356/15,978 (96%)	reference	reference
	50+	8,447/10,453 (81%)	-3.0 (-5.1; -0.9)	-2.9 (-5.2; -0.6)	6,695/6,933 (97%)	0.5 (-2.3; 3.2)	0.5 (-2.5; 3.6)
Gender	Female	28,593/34,875 (82%)	reference	reference	23,010/23,910 (96%)	reference	reference
	Male	11,785/14,652 (80%)	-1.6 (-3.3; 0.2)	-2.2 (-4.1; -0.3)	9,106/9,632 (95%)	-1.7 (-4.0; 0.6)	-1.6 (-4.1; 1.0)
Location	Rural	16,004/18,965 (84%)	reference	reference	12,313/13,035 (94%)	reference	reference
	Urban	24,374/30,562 (80%)	-4.6 (-6.3; -3.0)	-3.7 (-5.9; -1.6)	19,803/20,507 (97%)	2.1 (0.0; 4.2)	1.0 (-1.8; 3.8)
Province	GP	10,396/13,281 (78%)	reference	reference	8,349/8,578 (97%)	reference	reference
	KZN	14,867/18,068 (82%)	4.0 (2.0; 6.0)	3.1 (0.8; 5.4)	12,485/12,969 (96%)	-1.1 (-3.8; 1.6)	-0.4 (-3.5; 2.7)
	MP	15,115/18,178 (83%)	4.9 (2.9; 6.9)	2.7 (0.2; 5.2)	11,282/11,995 (94%)	-3.3 (-6.0; -0.6)	-2.0 (-5.4; 1.4)
Years on ART	1-<2	8,229/10,485 (78%)	-5.0 (-7.2; -2.9)	-4.4 (-6.9; -1.9)	6,524/6,854 (95%)	-1.2 (-4.0; 1.7)	-0.9 (-4.2; 2.4)
	2-<5	17,295/21,256 (81%)	-2.1 (-4.0; -0.3)	-1.8 (-3.8; 0.3)	13,644/14,286 (96%)	-0.8 (-3.2; 1.5)	-0.7 (-3.4; 1.9)
	5+	14,854/17,786 (84%)	reference	reference	11,948/12,402 (96%)	reference	reference
WHO stage at ART initiation	1	21,334/26,314 (81%)	reference	reference	17,241/17,846 (97%)	reference	reference
	2	7,632/9,252 (82%)	1.4 (-0.7; 3.6)	0.2 (-2.0; 2.4)	5,860/6,200 (95%)	-2.1 (-4.9; 0.7)	-1.7 (-4.6; 1.2)
	3	4,806/5,951 (81%)	-0.3 (-2.8; 2.2)	-1.4 (-3.9; 1.2)	3,787/4,004 (95%)	-2.0 (-5.3; 1.3)	-2.1 (-5.4; 1.4)
	4	769/928 (83%)	1.8 (-4.0; 7.9)	0.7 (-5.2; 6.8)	631/666 (95%)	-1.9 (-9.2; 5.9)	-2.1 (-9.4; 5.7)

*denominator only includes those with a viral load measured during the 12-, 24- or 36-month outcome periods

19
20
21
22
23
24
25
26
27

28
29**Table S4. Pooled adjusted risk difference (%) of retention in care and viral suppression by DSD enrolment at 12, 24 and 36 months, adjusting for CD4 count at ART initiation**

		Retained/N (%)	Retention in care Unadjusted risk difference (95% confidence interval)	Adjusted risk difference (95% confidence interval)	Virally suppressed/N* (%)	Viral suppression Unadjusted risk difference (95% confidence interval)	Adjusted risk difference (95% confidence interval)
12 months							
DSD enrolment	No	93,966/103,786 (91%)	reference	reference	74,108/77,643 (95%)	reference	reference
	Yes	18,583/19,881 (93%)	2.9 (1.5; 4.4)	3.0 (1.3; 4.7)	14,824/15,320 (97%)	1.3 (-0.4; 3.0)	1.4 (-0.5; 3.3)
Age group (years)	18-24	5,010/5,883 (85%)	-7.3 (-9.7; -4.7)	-6.2 (-9.2; -3.1)	3,788/4,096 (92%)	-3.6 (-6.6; -0.4)	-3.7 (-7.4; 0.0)
	25-34	30,506/34,203 (89%)	-3.2 (-4.5; -1.9)	-2.8 (-4.3; -1.3)	23,878/25,100 (95%)	-0.9 (-2.4; 0.6)	-1.2 (-2.9; 0.6)
	35-49	53,175/57,542 (92%)	reference	reference	42,307/44,051 (96%)	reference	reference
	50+	23,858/26,039 (92%)	-0.8 (-2.2; 0.6)	-0.9 (-2.5; 0.7)	18,959/19,716 (96%)	0.1 (-1.5; 1.8)	0.2 (-1.6; 2.1)
Gender	Female	78,225/85,960 (91%)	reference	reference	62,330/64,863 (96%)	reference	reference
	Male	34,324/37,707 (91%)	0.0 (-1.1; 1.2)	-0.6 (-1.9; 0.7)	26,602/28,100 (95%)	-1.4 (-2.8; -0.1)	-1.6 (-3.2; 0.0)
Location	Rural	38,137/41,278 (92%)	reference	reference	29,723/31,548 (94%)	reference	reference
	Urban	74,412/82,389 (90%)	-2.1 (-3.2; -0.9)	-1.9 (-3.6; -0.3)	59,209/61,415 (96%)	2.2 (0.9; 3.5)	1.0 (-1.0; 2.9)
Province	GP	42,750/47,423 (90%)	reference	reference	33,615/34,716 (97%)	reference	reference
	KZN	33,793/37,065 (91%)	1.0 (-0.3; 2.3)	1.1 (-0.5; 2.7)	28,242/29,365 (96%)	-0.7 (-2.2; 0.9)	0.2 (-1.7; 2.1)
	MP	36,006/39,179 (92%)	1.8 (0.5; 3.0)	0.7 (-1.1; 2.6)	27,075/28,882 (94%)	-3.1 (-4.6; -1.6)	-2.6 (-4.8; -0.3)
Years on ART	1-<2	20,108/22,711 (89%)	-3.8 (-5.3; -2.3)	-2.7 (-4.5; -0.8)	16,016/16,806 (95%)	-0.6 (-2.4; 1.2)	-0.5 (-2.7; 1.7)
	2-<5	47,995/52,818 (91%)	-1.5 (-2.6; -0.3)	-0.7 (-2.1; 0.6)	37,571/39,298 (96%)	-0.3 (-1.7; 1.1)	-0.2 (-1.8; 1.5)
	5+	44,446/48,138 (92%)	reference	reference	35,345/36,859 (96%)	reference	reference
CD4 (cells/ μ l) at ART initiation	<200	36,949/40,107 (92%)	reference	reference	29,048/30,594 (95%)	reference	reference
	200-349	27,694/30,341 (91%)	-0.9 (-2.3; 0.6)	-0.5 (-2.0; 0.9)	21,964/22,857 (96%)	1.1 (-0.5; 2.8)	1.3 (-0.4; 3.0)
	350-499	13,619/15,004 (91%)	-1.4 (-3.1; 0.4)	-0.5 (-2.3; 1.4)	10,726/11,165 (96%)	1.1 (-1.0; 3.2)	1.5 (-0.7; 3.7)
	500+	11,282/12,636 (89%)	-2.8 (-4.7; -0.9)	-1.6 (-3.6; 0.4)	9,071/9,361 (97%)	2.0 (-0.3; 4.2)	2.3 (0.0; 4.7)
24 months							
DSD enrolment	No	61,943/72,788 (85%)	reference	reference	48,637/51,107 (95%)	reference	reference
	Yes	12,203/13,733 (89%)	3.8 (2.1; 5.5)	3.8 (1.9; 5.8)	9,943/10,241 (97%)	1.9 (-0.2; 4)	1.8 (-0.5; 4.1)
Age group (years)	18-24	3,102/4,031 (77%)	-10.7 (-13.6; -7.9)	-9.7 (-13.1; -6.1)	2,342/2,551 (92%)	-4.2 (-8.0; -0.3)	-3.8 (-8.5; 0.9)
	25-34	20,214/24,142 (84%)	-4.0 (-5.4; -2.5)	-3.5 (-5.2; -1.8)	15,752/16,652 (95%)	-1.4 (-3.3; 0.4)	-1.8 (-3.9; 0.3)
	35-49	35,234/40,178 (88%)	reference	reference	28,080/29,248 (96%)	reference	reference
	50+	15,596/18,170 (86%)	-1.9 (-3.5; -0.2)	-2.0 (-3.8; -0.1)	12,406/12,897 (96%)	0.2 (-1.8; 2.2)	0.4 (-1.9; 2.7)
Gender	Female	51,960/60,536 (86%)	reference	reference	41,421/43,186 (96%)	reference	reference
	Male	22,186/25,985 (85%)	-0.5 (-1.8; 0.9)	-1.3 (-2.8; 0.3)	17,159/18,162 (94%)	-1.4 (-3.1; 0.3)	-1.6 (-3.5; 0.3)
Location	Rural	26,638/30,270 (88%)	reference	reference	20,544/21,884 (94%)	reference	reference
	Urban	47,508/56,251 (84%)	-3.5 (-4.8; -2.2)	-3.1 (-5.0; -1.3)	38,036/39,464 (96%)	2.5 (0.9; 4.1)	0.6 (-1.7; 2.9)
Province	GP	24,846/29,616 (84%)	reference	reference	19,713/20,294 (97%)	reference	reference
	KZN	23,537/27,290 (86%)	2.4 (0.8; 3.9)	2.3 (0.4; 4.1)	19,762/20,596 (96%)	-1.2 (-3.1; 0.7)	-0.6 (-2.9; 1.7)
	MP	25,763/29,615 (87%)	3.1 (1.6; 4.6)	1.7 (-0.4; 3.8)	19,105/20,458 (93%)	-3.8 (-5.6; -1.9)	-3.6 (-6.2; -0.9)
Years on ART	1-<2	13,513/16,314 (83%)	-4.5 (-6.3; -2.8)	-3.2 (-5.3; -1.0)	10,648/11,197 (95%)	-0.9 (-3.1; 1.3)	-0.9 (-3.6; 1.8)
	2-<5	32,288/37,761 (86%)	-1.9 (-3.2; -0.5)	-1.1 (-2.8; 0.5)	25,282/26,561 (95%)	-0.8 (-2.5; 0.9)	-1.0 (-3.0; 1.0)
	5+	28,345/32,446 (87%)	reference	reference	22,650/23,590 (96%)	reference	reference
	<200	24,666/28,327 (87%)	reference	reference	19,386/20,496 (95%)	reference	reference

		Retention in care			Viral suppression		
		Retained/N (%)	Unadjusted risk difference (95% confidence interval)	Adjusted risk difference (95% confidence interval)	Virally suppressed/N* (%)	Unadjusted risk difference (95% confidence interval)	Adjusted risk difference (95% confidence interval)
CD4 (cells/μl) at ART initiation	200-349	18,965/22,058 (86%)	-1.1 (-2.7; 0.5)	-0.7 (-2.4; 0.9)	15,103/15,735 (96%)	1.4 (-0.6; 3.4)	1.8 (-0.3; 3.8)
	350-499	9,030/10,559 (86%)	-1.6 (-3.6; 0.5)	-0.5 (-2.6; 1.7)	7,093/7,382 (96%)	1.5 (-1.1; 4.1)	2.3 (-0.4; 5.0)
	500+	6,879/8,241 (83%)	-3.6 (-5.8; -1.3)	-2.1 (-4.4; 0.3)	5,512/5,701 (97%)	2.1 (-0.8; 5.0)	2.9 (-0.1; 5.9)
36 months							
DSD enrolment	No	33,568/41,512 (81%)	reference	reference	26,481/27,735 (95%)	reference	reference
	Yes	6,810/8,015 (85%)	4.1 (1.9; 6.3)	3.7 (1.3; 6.2)	5,635/5,807 (97%)	1.6 (-1.2; 4.4)	1.5 (-1.5; 4.6)
Age group (years)	18-24	1,679/2,351 (71%)	-12.4 (-16.0; -8.7)	-11.6 (-15.8; -7.2)	1,273/1,372 (93%)	-3.3 (-8.6; 2.1)	-2.8 (-9.0; 3.7)
	25-34	11,162/13,950 (80%)	-3.8 (-5.7; -1.9)	-3.4 (-5.6; -1.3)	8,792/9,259 (95%)	-1.2 (-3.6; 1.4)	-1.4 (-4.3; 1.4)
	35-49	19,090/22,773 (84%)	reference	reference	15,356/15,978 (96%)	reference	reference
	50+	8,447/10,453 (81%)	-3.0 (-5.1; -0.9)	-3.0 (-5.3; -0.6)	6,695/6,933 (97%)	0.5 (-2.3; 3.2)	0.5 (-2.6; 3.6)
Gender	Female	28,593/34,875 (82%)	reference	reference	23,010/23,910 (96%)	reference	reference
	Male	11,785/14,652 (80%)	-1.6 (-3.3; 0.2)	-2.5 (-4.4; -0.5)	9,106/9,632 (95%)	-1.7 (-4.0; 0.6)	-1.9 (-4.5; 0.7)
Location	Rural	16,004/18,965 (84%)	reference	reference	12,313/13,035 (94%)	reference	reference
	Urban	24,374/30,562 (80%)	-4.6 (-6.3; -3.0)	-3.9 (-6.2; -1.7)	19,803/20,507 (97%)	2.1 (0; 4.2)	0.8 (-2.1; 3.7)
Province	GP	10,396/13,281 (78%)	reference	reference	8,349/8,578 (97%)	reference	reference
	KZN	14,867/18,068 (82%)	4.0 (2.0; 6.0)	3.5 (1.1; 5.9)	12,485/12,969 (96%)	-1.1 (-3.8; 1.6)	-0.5 (-3.7; 2.7)
	MP	15,115/18,178 (83%)	4.9 (2.9; 6.9)	2.6 (-0.1; 5.3)	11,282/11,995 (94%)	-3.3 (-6.0; -0.6)	-2.7 (-6.3; 1.0)
Years on ART	1-<2	8,229/10,485 (78%)	-5.0 (-7.2; -2.9)	-3.7 (-6.3; -1.0)	6,524/6,854 (95%)	-1.2 (-4.0; 1.7)	-1.2 (-4.7; 2.3)
	2-<5	17,295/21,256 (81%)	-2.1 (-4.0; -0.3)	-1.6 (-3.7; 0.5)	13,644/14,286 (96%)	-0.8 (-3.2; 1.5)	-1.0 (-3.7; 1.7)
	5+	14,854/17,786 (84%)	reference	reference	11,948/12,402 (96%)	reference	reference
	<200	13,478/16,254 (83%)	reference	reference	10,662/11,214 (95%)	reference	reference
CD4 (cells/μl) at ART initiation	200-349	10,881/13,225 (82%)	-0.6 (-2.7; 1.4)	-0.3 (-2.4; 1.8)	8,762/9,099 (96%)	1.2 (-1.5; 3.9)	1.5 (-1.3; 4.2)
	350-499	4,991/6,161 (81%)	-1.9 (-4.5; 0.7)	-0.8 (-3.5; 2.0)	3,996/4,161 (96%)	1.0 (-2.5; 4.5)	1.5 (-2.1; 5.2)
	500+	3,472/4,422 (79%)	-4.4 (-7.3; -1.4)	-2.7 (-5.8; 0.4)	2,814/2,919 (96%)	1.3 (-2.6; 5.4)	1.8 (-2.4; 6.0)

*denominator only includes those with a viral load measured during the 12-, 24- or 36-month outcome periods

30
31
32
33
34
35
36
37
38

39 **Table S5. Age-stratified pooled risk differences for retention**

40

Age group	n/N (%) retained in DSD	n/N (%) retained in non-DSD	Unadjusted Risk Difference comparing DSD vs non-DSD (95% CI)	Adjusted Risk Difference comparing DSD vs non-DSD (95% CI)
12 months				
18-24	660/745 (89%)	4,350/5,138 (85%)	3.9 (-3.1; 11.3)	4.4 (-3.2; 12.3)
25-34	5,268/5,713 (92%)	25,238/28,491 (89%)	3.6 (0.9; 6.4)	4.1 (1.3; 7.0)
35-49	9,241/9,797 (94%)	43,934/47,745 (92%)	2.3 (0.2; 4.4)	2.5 (0.3; 4.8)
50+	3,414/3,627 (94%)	20,444/22,412 (91%)	2.9 (-0.5; 6.3)	3.0 (-0.6; 6.7)
24 months				
18-24	422/505 (84%)	2,680/3,526 (76%)	7.6 (-0.7; 16.3)	7.8 (-1.2; 17.2)
25-34	3,469/3,990 (87%)	16,745/20,153 (83%)	3.9 (0.7; 7.0)	4.7 (1.4; 8.1)
35-49	6,087/6,743 (90%)	29,147/33,435 (87%)	3.1 (0.6; 5.6)	3.5 (0.9; 6.2)
50+	2,225/2,496 (89%)	13,371/15,674 (85%)	3.8 (-0.1; 7.9)	4.1 (-0.1; 8.5)
36 months				
18-24	234/301 (78%)	1,445/2,050 (70%)	7.3 (-3.0; 18.2)	7.0 (-4.2; 19.0)
25-34	1,982/2,400 (83%)	9,180/11,550 (79%)	3.1 (-0.8; 7.1)	3.6 (-0.6; 8.0)
35-49	3,381/3,892 (87%)	15,709/18,881 (83%)	3.7 (0.5; 6.9)	4.2 (0.7; 7.8)
50+	1,213/1,422 (85%)	7,234/9,031 (80%)	5.2 (0.1; 10.4)	5.4 (-0.1; 11.1)

41

42

43

44

45 **Table S6. Age-stratified pooled risk differences for viral suppression**

46

Age group	n/N (%) virally suppressed* in DSD	n/N (%) virally suppressed in non-DSD	Unadjusted Risk Difference comparing DSD vs non-DSD (95% CI)	Adjusted Risk Difference comparing DSD vs non-DSD (95% CI)
12 months				
18-24	531/555 (96%)	3,257/3,541 (92%)	3.7 (-4.8; 12.6)	3.3 (-5.9; 12.9)
25-34	4,171/4,335 (96%)	19,706/20,765 (95%)	1.3 (-1.9; 4.5)	1.4 (-2.0; 4.8)
35-49	7,404/7,627 (97%)	34,901/36,424 (96%)	1.3 (-1.2; 3.7)	1.2 (-1.3; 3.8)
50+	2,717/2,803 (97%)	16,236/16,913 (96%)	0.9 (-3.0; 4.9)	1.3 (-2.9; 5.6)
24 months				
18-24	329/347 (95%)	2,013/2,204 (91%)	3.5 (-7.2; 14.8)	4.1 (-7.6; 16.6)
25-34	2,780/2,891 (96%)	12,972/13,762 (94%)	1.9 (-2.0; 5.9)	1.3 (-2.8; 5.6)
35-49	5,002/5,129 (98%)	23,075/24,119 (96%)	1.9 (-1.1; 4.8)	1.7 (-1.5; 4.9)
50+	1,829/1,874 (98%)	10,575/11,023 (96%)	1.7 (-3.1; 6.6)	1.6 (-3.5; 6.9)
36 months				
18-24	196/200 (98%)	1,077/1,172 (92%)	6.1 (-8.1; 21.4)	6.1 (-9.7; 23.3)
25-34	1,629/1,688 (97%)	7,161/7,571 (95%)	1.9 (-3.2; 7.2)	1.6 (-3.8; 7.3)
35-49	2,811/2,900 (97%)	12,543/13,078 (96%)	1.0 (-2.9; 5.0)	0.9 (-3.4; 5.2)
50+	999/1,019 (98%)	5,695/5,914 (96%)	1.7 (-4.7; 8.4)	1.6 (-5.4; 8.9)

47 *Viral suppression defined as having a viral load of <400 copies/ml

48

49

50 **Table S7. Sex-stratified pooled risk differences for viral suppression**

51

Age group	n/N (%) retained in DSD	n/N (%) retained in non-DSD	Unadjusted Risk Difference comparing DSD vs non-DSD (95% CI)	Adjusted Risk Difference comparing DSD vs non-DSD (95% CI)
12 months				
Female	13,090/13,991 (94%)	65,135/71,970 (91%)	3.1 (1.3; 4.8)	3.2 (1.3; 5.0)
Male	5,493/5,891 (93%)	28,831/31,816 (91%)	2.6 (0.0; 5.3)	3.1 (0.3; 6.0)
24 months				
Female	8,678/9,755 (89%)	43,282/50,782 (85%)	3.7 (1.7; 5.8)	4.1 (1.9; 6.3)
Male	3,525/3,979 (89%)	18,661/22,006 (85%)	3.8 (0.6; 7.0)	4.3 (1.0; 7.8)
36 months				
Female	4,924/5,756 (86%)	23,669/29,119 (81%)	4.3 (1.7; 6.9)	4.4 (1.5; 7.2)
Male	1,886/2,259 (83%)	9,899/12,393 (80%)	3.6 (-0.4; 7.7)	4.4 (0.0; 8.9)

52

53

54

55

Table S8. Sex-stratified pooled risk differences for viral suppression

Age group	n/N (%) virally suppressed in DSD	n/N (%) virally suppressed in non-DSD	Unadjusted Risk Difference comparing DSD vs non-DSD (95% CI)	Adjusted Risk Difference comparing DSD vs non-DSD (95% CI)
12 months				
Female	10,532/10,861 (97%)	51,790/54,002 (96%)	1.1 (-1.0; 3.1)	1.1 (-1.0; 3.3)
Male	4,291/4,459 (96%)	22,310/23,641 (94%)	1.9 (-1.2; 5.0)	1.8 (-1.5; 5.2)
24 months				
Female	7,106/7,307 (97%)	34,313/35,880 (96%)	1.6 (-0.8; 4.1)	1.5 (-1.2; 4.1)
Male	2,834/2,934 (97%)	14,322/15,228 (94%)	2.5 (-1.3; 6.5)	2.2 (-1.9; 6.3)
36 months				
Female	4,119/4,237 (97%)	18,889/19,673 (96%)	1.2 (-2.0; 4.5)	1.2 (-2.3; 4.8)
Male	1,516/1,570 (97%)	7,587/8,062 (94%)	2.5 (-2.8; 7.8)	1.9 (-3.8; 7.7)

56