

1 **Blood Eosinophil Reference Values and Determinants in a Representative Adult Population**

2 Reshed Abohalaka^a, Selin Ercan^a, Lauri Lehtimäki^{b,c}, Saliha Selin Özuygur Ermis^a, Daniil Lisik^a,

3 Muwada Bashir Awad Bashir^a, Radhika Jadhav^a, Linda Ekerljung^{a,d}, Göran Wennergren^e, Jan

4 Lötvall^a, Teet Pullerits^a, Helena Backman^f, Madeleine Rådinge^a, Bright I. Nwaru^a, Hannu

5 Kankaanranta^{a,c,g}

6

7 ^a Krefting Research Centre, Department of Internal Medicine and Clinical Nutrition, Institute

8 of Medicine, Sahlgrenska Academy, University of Gothenburg, Gothenburg, Sweden

9 ^b Allergy Centre, Tampere University Hospital, Tampere, Finland

10 ^c Faculty of Medicine and Health Technology, Tampere University, Tampere, Finland

11 ^d Department of Internal Medicine/Respiratory Medicine and Allergology, Sahlgrenska

12 Academy, University of Gothenburg, Gothenburg, Sweden

13 ^e Department of Paediatrics, Sahlgrenska Academy, University of Gothenburg, Gothenburg,

14 Sweden

15 ^f Department of Public Health and Clinical Medicine, Umeå University, Umeå, Sweden

16 ^g Department of Respiratory Medicine, Seinäjoki Central Hospital, Seinäjoki, Finland

17 Corresponding author: Reshed Abohalaka

18 Krefting Research Centre

19 Department of Internal Medicine and Clinical Nutrition

20 Institute of Medicine

21 Sahlgrenska Academy

22 University of Gothenburg, 41390 Gothenburg, Sweden

23 Tel: +46 31 786 67 12

24 E-Mail: reshed.abohalaka@gu.se

NOTE: This preprint reports new research that has not been certified by peer review and should not be used to guide clinical practice.

25 E-mail addresses

26 Reshed.abohalaka@gu.se

27 selin.ercan@gu.se

28 lauri.lehtimaki@tuni.fi

29 selin.ozuygur@gu.se

30 daniil.lisik@gu.se

31 muwada.bashir@gu.se

32 radhika.jadhav@gu.se

33 linda.ekerljung@lungall.gu.se

34 goran.wennergren@pediat.gu.se

35 jan.lotvall@gu.se

36 teet.pullerits@lungall.gu.se

37 helena.backman@norrbottn.se

38 madeleine.radinger@lungall.gu.se

39 bright.nwaru@gu.se

40 hannu.kankaanranta@tuni.fi

41 **Running head: Blood Eosinophil Reference Values in general population**

42 **Abstract word count: 222/250**

43 **Total word count: 3000/3500**

44 **Tables/figures:**

8/8

45 **Clinical Implications:** The upper limit of normal blood eosinophil count (BEC) in participants
46 free from asthma, COPD, and clinical allergy ranged between 300 and 400 cells/ μ L depending
47 on age. These results facilitate the interpretation of BEC in clinical practice.

48 **Capsule summary:** The upper limit of normal blood eosinophil count (BEC) in healthy
49 individuals ranged between 300 and 400 cells/ μ L depending on age. Determinants of BEC
50 values include age, smoking, obesity, asthma, and clinical allergy.

51
52 **Support statement**

53 The study was supported by the VBG Group Herman Krefting Foundation for Asthma and
54 Allergy Research (Trollhättan, Sweden), Swedish Research Council (Stockholm, Sweden), the
55 Swedish Heart-Lung Foundation (Stockholm, Sweden), the Swedish Asthma and Allergy
56 Foundation (Stockholm, Sweden), Tampere Tuberculosis Foundation (Tampere, Finland), and
57 ALF agreement (grant from the Swedish state under the agreement between the Swedish
58 Government and the county councils, Sweden).

59
60 **Conflict of interest**

61 **LL** reports personal fees from ALK, AstraZeneca, Berlin Chemie, Boehringer-Ingelheim, Chiesi,
62 GSK, Novartis, Orion Pharma and Sanofi outside the current work. **SSÖE** reports conference-
63 attendance related costs from Thermo Fisher Scientific outside the current work. **TP** reports
64 fees for lectures and/or consulting from AstraZeneca, Chiesi, GSK, Novartis and Sanofi outside
65 the current work. **HB** reports personal fees for lectures form AstraZeneca, Boehringer
66 Ingelheim and GSK outside the current work. **NIB** reports personal fees for lectures and
67 consulting from DBV Technologies and AstraZeneca outside the current work. **HK** reports fees
68 for lectures and/or consulting from AstraZeneca, Boehringer-Ingelheim, Chiesi, Covis Pharma,
69 GSK, MedScape, MSD, Novartis, Orion Pharma and Sanofi outside the current work. The rest
70 of the authors have no conflict of interest to declare.

71

72 **Abstract**

73 **Background** The use of blood eosinophil count (BEC) as a prognostic biomarker in the
74 management of conditions such as asthma and chronic obstructive pulmonary disease (COPD)
75 may be complicated by factors like atopy, age, sex, smoking, and comorbidities. Therefore,
76 we aimed to produce reference values for BEC, considering age, asthma, COPD, and clinical
77 allergy for the general adult population.

78 **Methods** The West Sweden Asthma Study constitutes a population-representative clinical
79 epidemiological cohort of randomly selected adults in western Sweden. From this cohort,
80 $n=1,145$ took part in clinical examinations, including e.g. skin prick testing, specific
81 immunoglobulin E, and BEC.

82 **Results** The upper limit (95th percentile) of BEC varied by age. It ranged between 400 to 500
83 cells/ μL in the full sample, and from 300 to 400 cells/ μL in subjects without asthma, COPD,
84 and clinical allergy ($n=710$). Sex, smoking, atopy, clinical allergy, obesity, asthma, COPD,
85 diabetes, and hypertension were statistically significantly associated with higher BEC levels.
86 However, only asthma and clinical allergy in the full sample, and obesity and diabetes in those
87 without asthma, COPD, or clinical allergy, remained statistically significant in multiple
88 regression analyses.

89 **Conclusion** In a population-representative sample, the upper limit of BEC in healthy adults
90 ranged between 300 and 400 cells/ μL , varying by age. Age, smoking, obesity, asthma, COPD,
91 and clinical allergy influence BEC levels and should be considered in clinical interpretation.

92

93 **Keywords:** Blood eosinophil count, asthma, COPD, atopy, allergy, reference values,
94 population-representative, normal range

95

96	Abbreviations
97	BEC: blood eosinophil count
98	BMI: body mass index
99	COPD: chronic obstructive pulmonary disease
100	FEV ₁ : forced expiratory volume in one second
101	FVC: forced vital capacity
102	GINA: Global Initiative for Asthma
103	GOLD: Global Strategy for the Diagnosis, Management and Prevention of Chronic Obstructive
104	Lung Disease
105	ICS: inhaled corticosteroids
106	sIgE: specific immunoglobulin E
107	WSAS: West Sweden Asthma Study
108	
109	
110	
111	
112	
113	
114	
115	
116	
117	
118	
119	

120 Introduction

121 Blood eosinophil count (BEC) plays a pivotal role in determining the severity, phenotypes, and
122 therapy of a spectrum of chronic inflammatory lung disorders, most notably asthma and
123 chronic obstructive pulmonary disease (COPD) [1,2]. Indeed, BEC is a valuable prognostic
124 indicator for assessing responsiveness to anti-interleukin 5 (anti-IL5) and anti-IL-4/13
125 therapies in severe asthma [3], as well as for predicting the efficacy of inhaled corticosteroids
126 (ICS) in COPD [4,5]. In addition, the Global Initiative for Asthma (GINA) recommends the use
127 of BEC to identify asthma patients with type 2 (T2) inflammation [2]. Meanwhile, the Global
128 Strategy for the Diagnosis, Management and Prevention of Chronic Obstructive Lung Disease
129 (GOLD) recommends the use of 300 cells/ μ L as a threshold of circulating eosinophils to guide
130 therapy with ICS in patients with COPD who continue to exacerbate despite appropriate
131 bronchodilator therapy [1].

132 However, the application of BEC as a biomarker in clinical practice is not straightforward. First,
133 the predictive cut-off points for BEC interpretation derived from randomized controlled trials
134 are confined to studies conducted within asthma and COPD populations [6–16]. Second, the
135 recommended BEC thresholds in clinical guidelines are subject to debate due to their
136 perceived overlap with normal eosinophil ranges [17,18]. This controversy arises from the
137 limited evidence of normal and abnormal blood eosinophil levels across diverse populations
138 with varying backgrounds and health conditions. This evidence gap is highlighted by the fact
139 that investigations into healthy populations suggest that BEC are influenced by several
140 demographic and clinical factors, including age, sex, obesity, atopy, and smoking [19–21].

141 Furthermore, studies having representative random samples from the general population are
142 scarce. A recent systematic review by *Benson et al.* [21] that aimed to synthesize the absolute
143 BEC rather than reference values, identified 14 studies conducted in the general population.

144 Only one of these studies used a random sample directly from the population itself [22].
145 Conversely, two additional studies, while encompassing a considerable sample size, did not
146 recruit participants from the general population [20] nor did report reference values for the
147 healthy cohort [23]. Thus, the typical range of BEC in the general population is not well-
148 established. Therefore, our objective was to determine the BEC reference values and its
149 determinants in a population-representative sample.

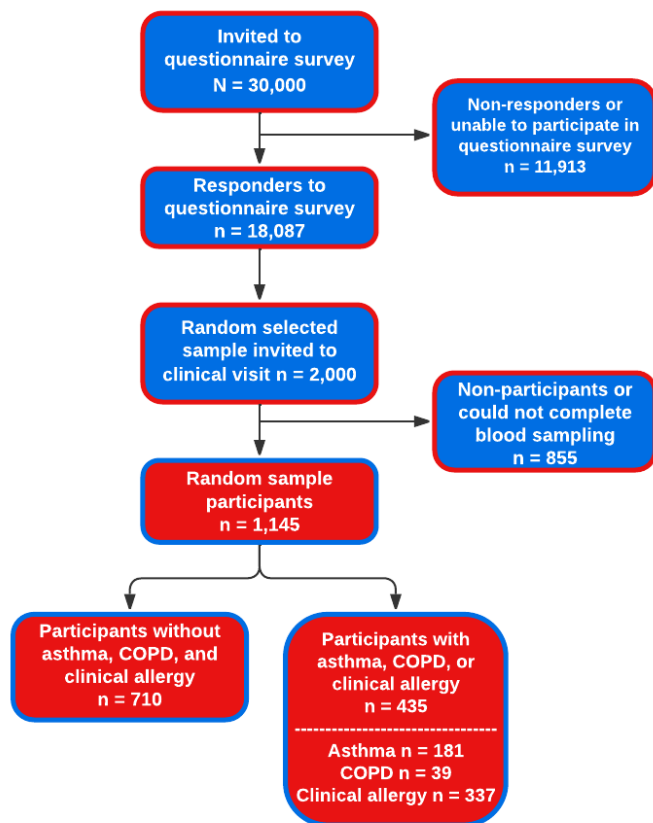
150

151 **Methods**

152 **Study area and population**

153 The West Sweden Asthma Study (WSAS) has been described in detail previously [24]. Briefly,
154 WSAS examines individuals aged 16 to 75 years at recruitment, randomly selected from the
155 general population of western Sweden. Commencing in 2008, a total of 30,000 subjects within
156 the specified age range were randomly selected through the Swedish Population Register and
157 invited to take part in a postal survey. Of those invited, 18,087 individuals participated in the
158 survey study. Subsequently, a random subset of 2,000 individuals were invited to
159 comprehensive clinical examinations, of which 1,145 participated (**Figure 1**). All participants
160 signed informed consent, and the study was approved by the regional ethics board in
161 Gothenburg, Sweden.

162



163

164
165
166
167

Figure 1 Flow chart of participation in the study. Clinical allergy was defined by the presence of allergic sensitization coupled with consistent self-reported allergic symptoms attributable to the same allergen. COPD: Chronic Obstructive Pulmonary Disease.

168

Clinical examinations

169

The examinations included, but not limited to, blood cell quantification, skin prick testing (SPT), specific immunoglobulin E (sIgE) level assessment, and measurement of height and weight. Additionally, the clinical examination encompassed in-depth, structured interviews and administration of questionnaires pertaining to respiratory diseases and symptoms, morbidities, healthcare utilization, and potential risk factors.

174

175

Assessment of sensitization and blood eosinophils

176

Sensitization was evaluated through the determination of sIgE levels and SPT for 11 aeroallergens (Details are provided in the **supplementary file**). BECs were determined using

177

178 standard procedures at Sahlgrenska University Hospital (Gothenburg, Sweden) with ADVIA®
179 2120i Hematology System (Siemens Healthineers, Erlangen, Germany), and are reported as
180 the number of cells per microliter (μL).

181

182 **Definitions of diseases**

183 Clinical allergy was defined as the presence of allergic sensitization, indicated by either a
184 positive SPT or elevated sIgE level to at least one allergen (atopy), coupled with self-reported
185 allergic symptoms attributable to the same allergen. The presence of metabolic disorder was
186 confirmed by obesity (body mass index [BMI] $\geq 30 \text{ kg/m}^2$) or any of the following self-reported
187 conditions: hypertension, hyperlipidaemia, or diabetes [25]. Detailed definition of Asthma
188 and COPD are provided in the **supplementary file**.

189

190 **Statistical analyses**

191 In the establishment of reference values, the presumption is that the spectrum of values
192 derived from a cohort of healthy individuals is a proxy for normal values. Consequently,
193 individuals manifesting values beyond the norm, typically delineated by the central 90% of
194 the range of values in the healthy population (upper limit of normal or 95th percentile and
195 lower limit of normal or 5th percentile), are frequently characterized as exhibiting anomalous
196 outcomes [26, 27]. As a result, our reporting considers the 95th percentile of BEC as the upper
197 limit of normal. Due to the non-normal distribution of BEC values exhibiting a right-skewed
198 shape, percentiles were derived from the logarithmically transformed dataset, as previously
199 described [20]. Statistical comparisons were carried out using independent Student's t-tests.
200 Statistical significance was deemed present at a threshold of $p < 0.05$.

201 A multiple binary logistic regression model was applied to compute odds ratios (OR)
202 accompanied by 95% confidence intervals (CI) for the purpose of elucidating associations
203 between various factors and BEC values higher than the upper limit (95th percentile), adjusting
204 for potential confounding variables. All statistical analyses were executed utilizing SPSS 29.0
205 (IBM Corp, New York, USA).

206

207 **Results**

208 **Characteristics of the random sample**

209 The random sample comprised of 1,145 individuals, with 46.8% being males. The mean age
210 of the total study sample was 50.4±15.4 years (mean±standard deviation (SD)). Nearly half of
211 the participants (50.8%,*n*=582) reported no history of smoking, while 11.4% were current
212 smokers. Of the participants, 37.8% (*n*=426) were sensitized (atopic), while 29.8% (*n*=337)
213 met the criteria for clinical allergy (**Table 1**). Individuals with clinical allergy were younger
214 (45.6±14.7 years), had more males, and more non-smokers than those without clinical allergy
215 (**Table 1**). For other characteristics of those with asthma with or without clinical allergy, see
216 **Table S1**.

217

218

219 **Blood-eosinophil count in the random sample**

220 In the full random sample, the upper limit of BEC was 400 cells/μL across all ages, except for
221 those aged 50-60 years, where it reached nearly 500 cells/μL (**Figure 2A**). To assess the
222 influence of asthma and COPD on BEC, we excluded patients with these conditions (**Figure**
223 **2B**). The 95th percentile BEC remained stable at 400 cells/μL for those without asthma and
224 non-COPD individuals across different ages, except for those aged 30-40 years, where it was

225 around 300 cells/ μ L. Next, we examined the impact of clinical allergy on BEC (**Figure 2C**).
226 Among participants without clinical allergy, asthma, or COPD ($n=710$), the upper BEC limit
227 increased with age from 300 cells/ μ L for those aged <40 years to 400 cells/ μ L for subjects
228 aged >40 years (**Table 2**). Further, excluding atopic subjects, there was a minimal change in
229 the 95th percentile compared to those without clinical allergy (**Figure 2D**). Detailed reference
230 values of those subjects ($n=628$) are presented in **Table S2**.

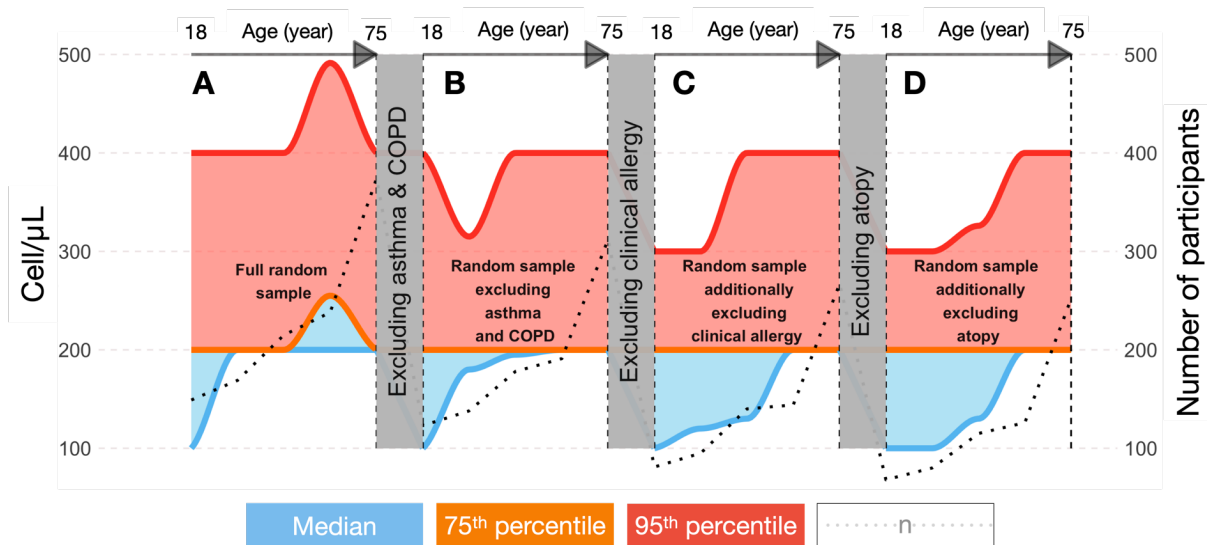
231 The 75th percentile of BEC was similar to the 95th percentile in the entire random sample
232 (**Figure 2A**). However, when excluding those with asthma, COPD, clinical allergy, or atopy, the
233 75th percentile remained constant at 200 cells/ μ L across all age groups (**Figure 2B-2D**).
234 Meanwhile, the median BEC in the full random sample increased gradually with age, from 100
235 cells/ μ L to a peak of 200 cells/ μ L for those aged >30 years, with similar trends in the other
236 groups (**Figure 2**).

237

238 **The impact of asthma, COPD, and clinical allergy on BEC**

239 To understand the rise in the upper limit of normal and the 75th percentile of BEC in people
240 aged 50-60 years in the random sample, we focused on the 95th and 75th percentiles of BEC
241 in subjects with asthma, COPD, or clinical allergy. Detailed analyses of eosinophil and BEC
242 values for the subgroups with asthma and clinical allergy in the random sample are illustrated
243 in **Figures S1A- C**.

244



245
246
247
248
249
250
251
252
253

Figure 2: The characteristics of blood eosinophil count across different age groups, delineated for (A) the entire population-representative random sample comprising of 1,145 individuals, (B) random sample participants excluding asthma and COPD patients ($n = 948$), (C) individuals additionally devoid of clinical allergy ($n = 710$), and (D) individuals additionally devoid of atopy ($n = 628$). The depicted blue region demarcates the space between the median and 75th percentile curves, while the red region signifies the interval between the 75th percentile and 95th percentile curves.

254 Determinants of BEC

255 A comprehensive understanding of the determinants affecting the upper normal limit of BEC
256 within the general population necessitates a comparative investigation of BEC upper 95th
257 percentile values across diverse demographic and clinical parameters. However, the 95th
258 percentile is a collective outcome and not individually available for each patient. Hence, to
259 comprehend the determinants influencing BEC in the general population, we evaluated the
260 effect of various factors, previously reported to affect BEC, on mean BEC levels in our full
261 random sample (**Table 3**). BEC levels were significantly higher in men compared to women
262 and in ever-smokers compared to never-smokers. BEC was significantly higher in those with
263 than in those without clinical allergy, in those with than in those without atopy, and in those
264 with than those without asthma. Moreover, high BEC was significantly linked to the presence
265 of COPD, obesity, hypertension, and a minimum of one metabolic disease (**Table 3**).

266

267 **Multiple linear regression model for factors associated with higher BEC values**

268 Multiple linear regression analyses were conducted to discern factors associated with higher
269 BEC values considering potential confounders. To achieve this objective, two distinct analyses
270 were performed: one including the entire random sample and another focusing solely on
271 participants lacking any predisposing factors to eosinophilic inflammation, such as allergies,
272 atopy, asthma, or COPD. The initial analysis revealed that only asthma and clinical allergy –
273 not atopy– were significant determinants of BEC in the whole sample (**Table 4A**).
274 Subsequently, to discern factors linked to higher BEC in the absence of established morbidities
275 known to increase BEC, such as atopy, clinical allergy, asthma, and COPD, we conducted a
276 separate analysis within this subset, in which diabetes and obesity were identified as
277 significant predictors of BEC (**Table 4B**).

278

279

280 **Binary logistic regression model for factors associated with elevated BEC values:**

281

282 To evaluate factors associated with BEC above the upper limit of normal (>400 cells/ μ l), we
283 conducted adjusted binary logistic regression analyses similar to the above linear regressions.
284 In the whole sample, asthma and ever smoking were significantly associated with high BEC
285 (**Figure 3**). Diabetes, hypertension and ever smoking were significantly associated with high
286 BEC in participants without atopy, asthma or COPD (**Figure 3**).

287

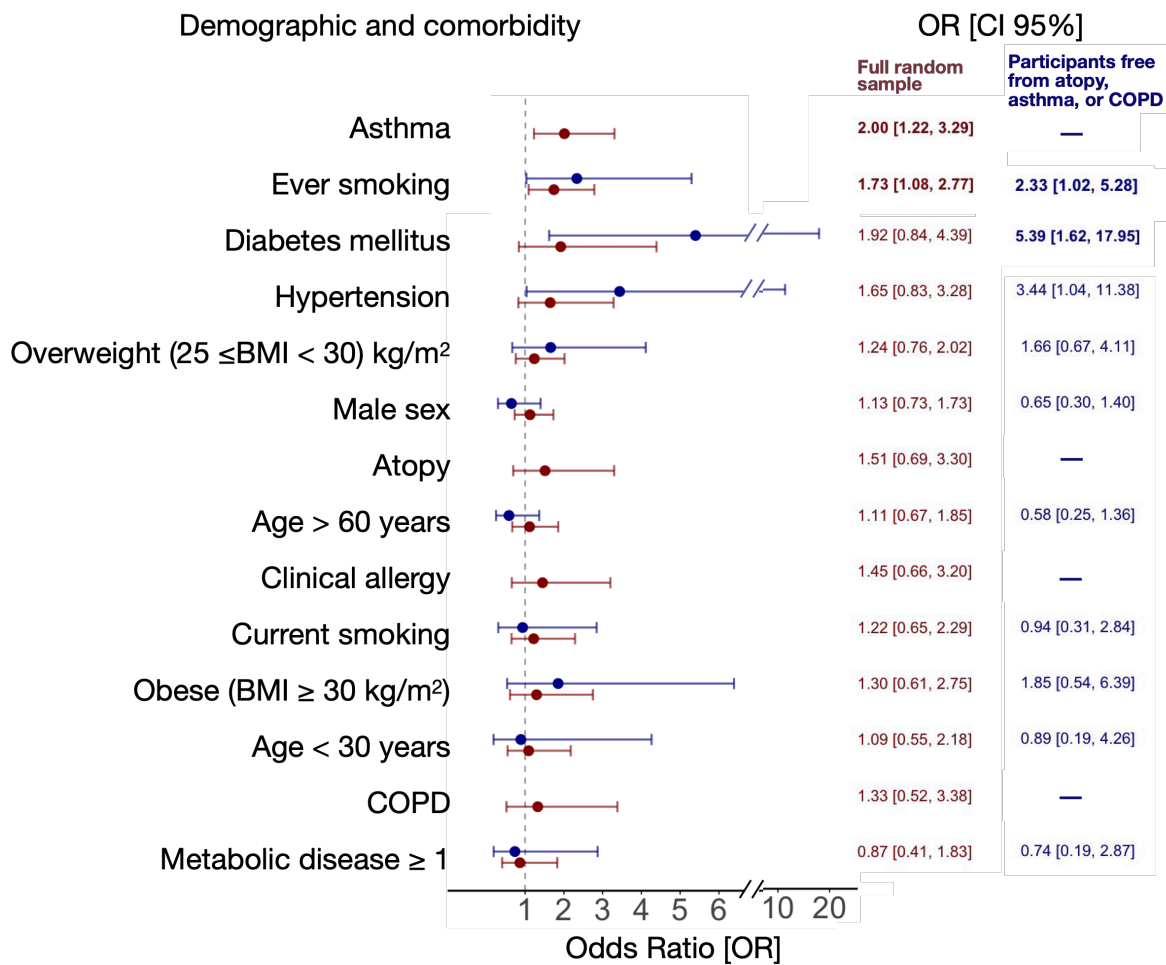


Figure 3 Adjusted binary logistic regression analyses (OR and 95% CI) for BEC > 400 cells/uL in the full population-representative random sample ($n = 1145$; red), and in subjects without clinical allergy, atopy, asthma, or COPD ($n = 628$; blue). Bold font indicates significant OR ($p < 0.05$) associations. COPD: chronic obstructive lung disease.

288
289
290
291
292
293

294 Discussion

295 In our population-representative random sample, the upper limit of BEC ranged from 400 to
 296 500 cells/ μ L, depending on age. In individuals without asthma, COPD, or clinical allergy, the
 297 upper limit of BEC increased from 300 to 400 cells/ μ L after the age of 40. Sex, smoking, atopy,
 298 clinical allergy, obesity, asthma, COPD, diabetes, and hypertension were significantly
 299 associated with higher BEC levels. However, only asthma and clinical allergy in the full sample,
 300 and obesity and diabetes in healthy individuals, remained significant determinants of BEC.
 301 Asthma and ever smoking were associated with high BEC in all subjects, while diabetes,
 302 hypertension, and ever smoking were associated with high BEC in healthy participants. These

303 findings clarify the highly needed typical BEC range in the general population, a crucial
304 biomarker for diagnosing, treating, and managing asthma and COPD [1,2].
305 Several studies have attempted to establish reference values for BEC in their populations [20,
306 28–32]. The upper limit of normal BEC ranged from 550 to 630 cells/ μ L in a French population
307 [29], from 500 to 600 cells/ μ L in a Moroccan population [31], and from 450 to 590 cells/ μ L in
308 a Turkish population [28], depending on sex and age. In healthy individuals, the upper limit
309 ranged from 500 to 800 cells/ μ L in a Thai population [30], and from 490 to 640 cells/ μ L in a
310 Kenyan population [32], depending on sex. Even though the upper limit of normal BEC in our
311 study similarly varied by age with relatively lower range, it is important to note that most of
312 these studies do not represent the general population accurately, and their outcomes could
313 be affected. They either analysed data from selected registries or small sample sizes instead
314 of the large randomly selected sample from the general population. In addition, the studies
315 using healthy populations have employed impractical strict criteria in defining their healthy
316 population such as excluding obese, smokers, alcohol consumers, or participants with any
317 comorbidities. In particular, our findings align more closely with those of Hartl et al. [20], who
318 reported a 95th percentile BEC range of 360 to 450 cells/ μ L in the general population and 290
319 to 350 cells/ μ L in healthy individuals, using a large sample size.
320 The reference intervals for BEC utilized in diverse contexts exhibit variability, encompassing
321 upper limits ranging from the 75th to-the 90th, the 95th, and as high as the 97.5th percentile
322 [20,28–34]. Hartl et al. [20] designated the 75th percentile as a threshold denoting "high blood
323 eosinophils", employing it in their forced-entry binary multivariable logistic regression
324 analysis. However, our analysis reveals that the sensitivity of the 75th percentile to alterations
325 is somewhat diminished, contingent upon factors such as age, atopy, clinical allergy, and
326 smoking. Conversely, the 95th percentile exhibited greater sensitivity to changes in these

327 factors. In addition, using the 75th percentile to label something as "high" implies that 25% of
328 healthy adults are abnormal, which is not reasonable. Even those above the 95th percentile
329 do not necessarily have a disease. However, their significant deviation from the norm suggests
330 a higher likelihood of clinically relevant abnormality. Consequently, we employed the 95th
331 percentile as the basis for our adjusted binary logistic regression analysis.

332 The median of BEC as reported in both healthy and general population studies exhibits a range
333 spanning (100-200) cells/ μ L [8,13,14,23,35], with a proclivity to approximate 200 cells/ μ L in
334 investigations with large sample sizes [8,21, 23]. Consistent with existing literature, our study
335 observed a distribution of random sample BEC medians ranging from 100 cells/ μ L in the age
336 group under 30 years to 200 cells/ μ L in the older age strata. Moreover, in concordance with
337 asthma population studies, the median BEC has been reported to fluctuate between 157 and
338 298 cells/ μ L [6,7,15,16,21,36,37], demonstrating a tendency to approximate 200 cells/ μ L in
339 studies involving a sizable participant pool [6,7,15,21]. In our study, the median BEC varied
340 from 180 cells/ μ L among asthmatic participants under 30 years of age to 200 cells/ μ L in the
341 remaining age strata. Although the absolute and average BEC values are parallel to those in
342 other cohorts, our study uniquely helps determine the abnormality of a person's measured
343 value by providing reference values from a representative sample of the general population.

344 In our study, when comparing BEC levels between groups, we found that male sex, smoking
345 (both current and past), atopy, clinical allergy, obesity, asthma, COPD, diabetes, and
346 hypertension were significantly associated with higher BEC levels. Previous studies have
347 reported similar findings regarding male sex [20,21,23,28,34], current smoking [20,34], ever
348 smoking [34], metabolic disorders [20,23,28], and allergy parameters [20,23,34]. However,
349 our study is the first to characterize the determinants of BEC levels using multivariate linear
350 regression, showing that asthma and clinical allergy are significant predictors in the full

351 random sample, while obesity and diabetes are significantly associated in healthy individuals.
352 Giovannelli et al. [23] also identified allergic asthma, atopy, and BMI as predictors of BEC in
353 their cohort, although BMI was only significant among non-smokers. However, there was no
354 analysis for predictors in healthy subgroup in their study. Additionally, no prior study has
355 explored the impact of clinical allergy on BEC within the general population; most studies
356 have evaluated the influence of atopy. This is of particular significance given that clinical
357 allergy retains its status as a substantive predictor of BEC even after adjustments for several
358 confounders including atopy in our multiple linear regression analysis. Moreover, clinical
359 allergy, rather than atopy alone, is used to define T2 inflammation in asthma guidelines [2].
360 The WSAS cohort presents several notable strengths. Firstly, the study encompasses a sizable
361 sample, systematically selected without any exclusion criteria, rendering it representative of
362 the adult population in Western Sweden. Secondly, our investigation marks the first
363 exploration of the impact of clinical allergy, in conjunction with atopy, among the participants.
364 Challenges often arise in diagnosing factors like clinical allergy and asthma, with many studies
365 relying on self-reported disease. In contrast, our study employed a meticulous classification
366 process, involving thorough clinical examinations overseen by pulmonary and allergy
367 specialists. This approach enhances the reliability of our findings, which reveal that while
368 asthma and clinical allergy are predictors of BEC in the general population, only asthma and
369 a history of smoking are linked to BEC levels above the upper normal limit. The fact that
370 allergic parameters do not pose a risk for abnormal BEC values underscores the potential
371 utility of our established upper limit of normal for interpreting BEC values in asthma clinics.
372 Nevertheless, it is crucial to note the limitation of the present study to adults, acknowledging
373 that the predicted BEC values might be substantially different among children and

374 adolescents. Additionally, our study does not account for less common infectious or chronic
375 diseases that could potentially be linked to elevated BEC.

376 The upper limit of normal BEC in participants without asthma, COPD, and clinical allergy
377 ranged between (300-400) cells/ μ L depending on age. GINA recommends the use of BEC to
378 identify asthma patients with T2 inflammation using cutoff points such as 150 and 300 cells/ μ L
379 [2]. Similarly, GOLD recommends the use of 300 cells/ μ L as a threshold of BEC to guide
380 therapy with ICS in COPD patients [1]. It is important to note that these cutoff points fall within
381 the normal BEC range for healthy adults in our cohort, indicating that while they are useful
382 for predicting treatment response, they are not necessarily considered "high". However, the
383 observation that only asthma and smoking, but not clinical allergy, are associated with
384 abnormal BEC values highlights the potential for establishing treatment response indicators
385 for asthma and COPD that align with reference values for healthy individuals.

386 In conclusion, the 95th percentile in BEC ranged depending on age between (400- 500)
387 cells/ μ L in a random sample of the general adult population, and between (300-400) cells/ μ L
388 in individuals free from asthma, COPD, and clinical allergy. Additionally, asthma and smoking,
389 though not allergic parameters, were identified as risk factors for having BEC above the upper
390 limit of normal in the full sample. In subjects without asthma, clinical allergy, or COPD,
391 smoking, diabetes, and hypertension were recognized as risk factors for elevated BEC.
392 Consequently, these factors merit careful consideration during the clinical interpretation of
393 BEC.

394
395
396
397

398 Authors' contributions

399 Conception and design RA, SE, LL, BIN, HK,

400 ; Data analysis RA, SE, HB, BIN, HK,

401 ; Data collection RA, SE, RJ, DL, SÖ, MB, LE, MR, JL, GW, TP, BIN, HK,

402 ; Manuscript writing RA, BIN, HK

403 ; Manuscript review and editing all authors.

404

405

406

407

408

409

410

411

412

413

414

415

416

417

418

419

420

421

422

Table 1. Characteristics of study subjects with or without asthma or clinical allergy (N=1,145).

	Without Asthma	With Asthma	Without Clinical allergy	With Clinical allergy
Subjects n (%)	964 (84.2)	181 (15.8)	792 (70.2)	337 (29.8)
Asthma n (%)	-	181 (100)	65 (8.2)	115 (34.1)
Clinical allergy* n (%)	222 (23.4)	115 (63.9)	-	337 (100)
Demographics				
Age (y) mean (SD)	50.7 (15.5)	48.7 (15.1)	52.1 (15.3)	45.6 (14.7)
Male sex n (%)	456 (47.3)	80 (44.2)	349 (44.1)	179 (53.1)
BMI, kg/m ² mean (SD)	26.0 (4.1)	26.9 (4.5)	26.1 (4.1)	26.2 (4.3)
Education years over 12 years n (%)	437 (45.4)	90 (50.0)	345 (43.6)	175 (52.9)
Never smokers n (%)	496 (51.5)	86 (47.5)	380 (48.0)	196 (58.2)
Current smokers n (%)	103 (10.7)	27 (14.9)	99 (12.5)	29 (8.6)
Pack-year mean (SD)	14.0 (12.8)	17.5 (15.9)	14.8 (13.1)	13.3 (14.0)
Allergic symptoms				
Age at onset of symptoms mean (SD)	24.5 (16.8)	17.8 (15.0)	28.6 (18.1)	18.6 (14.3)
Eyes and nasal symptoms n (%)	249 (49.2)	106 (68.8)	119 (33.1)	234 (79.9)
Ever allergic nasal symptoms n (%)	301 (31.3)	129 (71.3)	152 (19.3)	273 (81.0)
Current allergic nasal symptoms n (%)	454 (88.0)	147 (94.8)	309 (84.5)	285 (96.0)
Atopy and allergy				
≥1 positive reaction in SPT# n (%)	223 (34.0)	102 (72.9)	60 (11.7)	265 (94.0)
≥1 positive sIgE n (%)	251 (27.4)	111 (63.4)	65 (8.5)	297 (91.7)
Atopic (SPT or sIgE) n (%)	304 (32.1)	122 (67.8)	92 (11.6)	337 (100)
Clinical allergy to mite n (%)	42 (4.4)	42 (23.3)	-	84 (24.9)
Clinical allergy to furry animals n (%)	74 (7.8)	71 (39.4)	-	145 (43.0)
Clinical allergy to pollen n (%)	168 (17.7)	97 (53.9)	-	265 (78.6)
Clinical allergy to nuts n (%)	40 (4.4)	49 (28.0)	-	89 (27.5)
Clinical allergy to seafood or dairy n (%)	38 (4.1)	19 (10.9)	-	57 (17.6)
Morbidities				
COPD	22 (2.3)	17 (9.4)	26 (3.3)	10 (3.0)
Obesity (BMI ≥ 30 kg/m ²)	132 (13.7)	40 (22.1)	113 (14.3)	55 (16.3)
Diabetes mellitus	37 (3.8)	9 (5.0)	27 (3.4)	18 (5.4)
Hypertension	225 (23.5)	48 (26.7)	197 (25.0)	67 (20.1)
Other cardiovascular diseases	113 (11.7)	23 (12.7)	98 (12.4)	32 (9.5)
Hyperlipidaemia	151 (15.7)	32 (17.7)	129 (16.3)	47 (13.9)
Metabolic disease	377 (39.1)	83 (45.9)	321 (40.5)	127 (37.7)
Gastroesophageal reflux disease	409 (42.5)	102 (56.4)	342 (43.3)	163 (48.4)

Data was presented as n (%) or mean (SD). BMI= body mass index, SPT = skin prick test, sIgE = specific immunoglobulin E, COPD = chronic obstructive pulmonary disease. * Some participants (N = 16) did not undergo SPT test nor sIgE, so they have been excluded from the total count of clinical allergy. #Some participants (N = 349) did not undergo SPT test, so they have been excluded from the total percentage.

423
424
425
426
427
428

429

430
431

Table 2. The descriptive values of BEC in non-allergic, non-asthmatic and COPD-free randomly selected participants (n = 710)

Age (years)	n	Mean cells/uL	SD cells/uL	P5 cells/ μ L	P25 cells/ μ L	P50 cells/uL	P75 cells/uL	P95 cells/uL
18-30	81	153	95	50	90	100	200	300
30-40	95	154	107	28	80	120	200	300
40-50	139	169	112	40	100	130	200	400
50-60	140	178	100	61	100	200	200	400
>60	255	175	109	60	100	200	200	400

432

433

434

435

436

437

438

439

440

441

442

443

444

445

446

447

448

449

450

451

452

453

454

455

456

457

458

459

460
461
462

Table 3. The blood eosinophil counts in the full random sample according to the demographic features and absence or presence of different conditions (N=1,145).

Condition	Eosinophils Mean (SD)		p value
	Condition Absent	Condition Present	
Demographics			
Male sex	181 (122)	195 (124)	0.026
Ever smoker	178 (115)	196 (130)	0.007
Current smoker	185 (122)	205 (126)	0.040
Allergic Symptoms			
Eye and nasal symptoms	189 (128)	204 (132)	0.072
Ever allergic nasal symptoms	175 (115)	206 (133)	<0.001
Current allergic nasal symptoms	174 (111)	200 (132)	0.056
Current usage of antihistamines	195 (155)	216 (138)	0.130
Atopy and Allergy			
≥1 positive reaction in SPT [#]	170 (111)	210 (133)	<0.001
≥1 positive sIgE	176 (115)	213 (136)	<0.001
Atopic (SPT or sIgE)	174 (113)	210 (134)	<0.001
Clinically allergic to mite	185 (120)	217 (149)	0.011
Clinically allergic to furry animals	182 (118)	222 (148)	<0.001
Clinically allergic to pollen	179 (119)	214 (130)	<0.001
Clinically allergic to nuts	185 (121)	225 (145)	0.001
Clinically allergic to seafood or dairy	185 (121)	244 (157)	<0.001
Having at least one clinical allergy	174 (113)	218 (137)	<0.001
Morbidities			
Obesity	184 (123)	208 (123)	0.009
Asthma	179 (115)	232 (151)	<0.001
COPD	185 (120)	238 (186)	0.004
Diabetes mellitus	186 (122)	220 (148)	0.031
Hypertension	184 (122)	198 (126)	0.044
Other cardiovascular diseases	185 (121)	202 (135)	0.063
Hyperlipidaemia	186 (121)	196 (132)	0.143
Metabolic disease	182 (120)	196 (127)	0.030
Gastroesophageal reflux disease	187 (118)	187 (127)	0.487

Data is presented as mean (SD). SPT = skin prick test, sIgE = specific immunoglobulin E, COPD = chronic obstructive pulmonary disease. [#]Some participants (n = 349) did not undergo SPT test, so they have been excluded from this analysis. Statistical significances were evaluated by independent samples t-test. *P* < 0.05 is considered significant.

463
464
465
466
467
468
469
470
471
472
473
474

475
476
477

Table 4: Determinants of blood eosinophil count values in adjusted multiple linear regression analysis of population-representative full random sample (N=1,145) (A) and in participants free from asthma, COPD, clinical allergy, and atopy (n=628) (B).

	Coefficient B	Std. Error	Lower 95% CI	Upper 95% CI	P value
A Full random sample					
Demographics					
Age (years)					
> 60	4.81	8.87	-12.59	22.21	0.588
< 30	-15.97	11.42	-38.37	6.44	0.162
Male sex	8.18	7.45	-6.43	22.79	0.272
BMI (kg/m ²)					
Underweight (BMI < 18.5)	-58.29	38.62	-134.07	17.48	0.131
Overweight (25 ≤ BMI < 30)	4.504	8.30	-11.78	20.79	0.588
Obese (BMI ≥ 30)	22.230	13.85	-4.95	49.41	0.109
Ever smoking	12.308	8.05	-3.49	28.11	0.127
Currently smoking	13.988	12.39	-10.31	38.29	0.259
Morbidities					
Asthma	34.09	10.55	13.39	54.79	0.001
COPD	24.60	21.17	-16.95	66.14	0.246
Hypertension	12.93	12.62	-11.83	37.69	0.306
Diabetes	23.14	19.12	-14.38	60.66	0.226
Metabolic disease (≥1)	-11.77	13.13	-37.53	14.00	0.370
Atopy	7.60	13.31	-18.51	33.71	0.568
Clinical allergy [#]	29.98	14.24	2.04	57.93	0.035
B Participants free from asthma, COPD, and clinical allergy					
Demographics					
Age (years)					
> 60	2.93	9.60	-15.92	21.78	0.760
< 30	-0.60	14.24	-28.57	27.37	0.966
Male sex	3.32	8.56	-13.49	20.14	0.698
BMI (kg/m ²)					
Underweight (BMI < 18.5)	-48.95	37.15	-121.91	24.01	0.188
Overweight (25 ≤ BMI < 30)	9.120	9.71	-9.95	28.19	0.348
Obese (BMI ≥ 30)	39.59	15.77	8.62	70.55	0.012
Ever smoking	12.46	9.03	-5.28	30.21	0.168
Currently smoking	8.82	14.46	-19.58	37.22	0.542
Morbidities					
Hypertension	20.12	14.25	-7.85	48.10	0.158
Diabetes mellitus	60.05	24.09	12.74	107.37	0.013
Metabolic disease (≥1)	-22.22	15.02	-51.71	7.27	0.139

Variables linked with the elevation of Blood Eosinophil Count (BEC) were examined through multiple linear regression analyses including all the variables presented in the table. Data are presented as the unstandardized b coefficient, standard error of b, and 95% CI. BMI= body mass index, COPD = chronic obstructive pulmonary disease.

478
479
480
481
482
483
484

1 **References:**

- 2
3 1 GOLD GI for GOLD. Global Strategy for the Diagnosis, Management, and Prevention of
4 Chronic Obstructive Pulmonary Disease [Internet]. 2023Report No.: 2023. Available from:
5 <https://goldcopd.org/2023-gold-report-2/>.
- 6 2 GINA GI for A. Global Strategy for Asthma Management and Prevention [Internet].
7 2023Report No.: 2023. Available from: [https://ginasthma.org/wp-](https://ginasthma.org/wp-content/uploads/2023/07/GINA-2023-Full-report-23_07_06-WMS.pdf)
8 [content/uploads/2023/07/GINA-2023-Full-report-23_07_06-WMS.pdf](https://ginasthma.org/wp-content/uploads/2023/07/GINA-2023-Full-report-23_07_06-WMS.pdf).
- 9 3 Ortega HG, Liu MC, Pavord ID, *et al.* Mepolizumab Treatment in Patients with Severe
10 Eosinophilic Asthma. *N Engl J Med* 2014; 371: 1198–1207.
- 11 4 Siddiqui SH, Guasconi A, Vestbo J, *et al.* Blood Eosinophils: A Biomarker of Response to
12 Extrafine Beclomethasone/Formoterol in Chronic Obstructive Pulmonary Disease. *Am J*
13 *Respir Crit Care Med* 2015; 192: 523–525.
- 14 5 Pavord ID, Lettis S, Locantore N, *et al.* Blood eosinophils and inhaled corticosteroid/long-
15 acting β -2 agonist efficacy in COPD. *Thorax* 2016; 71: 118–125.
- 16 6 Price DB, Rigazio A, Campbell JD, *et al.* Blood eosinophil count and prospective annual
17 asthma disease burden: a UK cohort study. *Lancet Respir Med* 2015; 3: 849–858.
- 18 7 Price D, Wilson AM, Chisholm A, *et al.* Predicting frequent asthma exacerbations using
19 blood eosinophil count and other patient data routinely available in clinical practice. *J*
20 *Asthma Allergy* 2016; 9: 1–12.
- 21 8 Vedel-Krogh S, Fallgaard Nielsen S, Lange P, *et al.* Association of Blood Eosinophil and
22 Blood Neutrophil Counts with Asthma Exacerbations in the Copenhagen General
23 Population Study. *Clin Chem* 2017; 63: 823–832.
- 24 9 Castro M, Mathur S, Hargreave F, *et al.* Reslizumab for poorly controlled, eosinophilic
25 asthma: a randomized, placebo-controlled study. *Am J Respir Crit Care Med* United
26 States; 2011; 184: 1125–1132.
- 27 10Pavord ID, Korn S, Howarth P, *et al.* Mepolizumab for severe eosinophilic asthma
28 (DREAM): a multicentre, double-blind, placebo-controlled trial. *Lancet Lond Engl* 2012;
29 380: 651–659.
- 30 11Calverley PMA, Tetzlaff K, Vogelmeier C, *et al.* Eosinophilia, Frequent Exacerbations, and
31 Steroid Response in Chronic Obstructive Pulmonary Disease. *Am J Respir Crit Care Med*
32 2017; 196: 1219–1221.
- 33 12Watz H, Tetzlaff K, Wouters EFM, *et al.* Blood eosinophil count and exacerbations in
34 severe chronic obstructive pulmonary disease after withdrawal of inhaled corticosteroids:
35 a post-hoc analysis of the WISDOM trial. *Lancet Respir Med* 2016; 4: 390–398.
- 36 13Racine G, Castano R, Cartier A, *et al.* Diagnostic Accuracy of Inflammatory Markers for
37 Diagnosing Occupational Asthma. *J Allergy Clin Immunol Pract* 2017; 5: 1371-1377.e1.

- 1 14Bouzigon E, Monier F, Boussaha M, *et al.* Associations between Nitric Oxide Synthase
2 Genes and Exhaled NO-Related Phenotypes according to Asthma Status. *PLOS ONE* Public
3 Library of Science; 2012; 7: e36672.
- 4 15Tuomisto LE, Ilmarinen P, Niemelä O, *et al.* A 12-year prognosis of adult-onset asthma:
5 Seinäjoki Adult Asthma Study. *Respir Med* 2016; 117: 223–229.
- 6 16Kerkhof M, Tran TN, Soriano JB, *et al.* Healthcare resource use and costs of severe,
7 uncontrolled eosinophilic asthma in the UK general population. *Thorax* 2018; 73: 116–
8 124.
- 9 17Bafadhel M, McKenna S, Terry S, *et al.* Blood eosinophils to direct corticosteroid
10 treatment of exacerbations of chronic obstructive pulmonary disease: a randomized
11 placebo-controlled trial. *Am J Respir Crit Care Med* 2012; 186: 48–55.
- 12 18Criner GJ, Celli BR, Brightling CE, *et al.* Benralizumab for the Prevention of COPD
13 Exacerbations. *N Engl J Med* 2019; 381: 1023–1034.
- 14 19Higuchi T, Omata F, Tsuchihashi K, *et al.* Current cigarette smoking is a reversible cause of
15 elevated white blood cell count: Cross-sectional and longitudinal studies. *Prev Med Rep*
16 2016; 4: 417–422.
- 17 20Hartl S, Breyer M-K, Burghuber OC, *et al.* Blood eosinophil count in the general
18 population: typical values and potential confounders. *Eur Respir J* 2020; 55: 1901874.
- 19 21Benson VS, Hartl S, Barnes N, *et al.* Blood eosinophil counts in the general population and
20 airways disease: a comprehensive review and meta-analysis. *Eur Respir J* 2022; 59:
21 2004590.
- 22 22Musk AW, Knuiman M, Hunter M, *et al.* Patterns of airway disease and the clinical
23 diagnosis of asthma in the Busselton population. *Eur Respir J* 2011; 38: 1053–1059.
- 24 23Vedel-Krogh S, Nielsen SF, Lange P, *et al.* Blood Eosinophils and Exacerbations in Chronic
25 Obstructive Pulmonary Disease. The Copenhagen General Population Study. *Am J Respir*
26 *Crit Care Med* American Thoracic Society - AJRCCM; 2016; 193: 965–974.
- 27 24Nwaru BI, Ekerljung L, Rådinger M, *et al.* Cohort profile: the West Sweden Asthma Study
28 (WSAS): a multidisciplinary population-based longitudinal study of asthma, allergy and
29 respiratory conditions in adults. *BMJ Open* 2019; 9: e027808.
- 30 25Zakir F, Mohapatra S, Farooq U, *et al.* Chapter 1 - Introduction to metabolic disorders. In:
31 Dureja H, Murthy SN, Wich PR, *et al.*, eds. *Drug Deliv Syst Metab Disord* [Internet]
32 Academic Press; 2022 [cited 2024 Jul 17]. p. 1–20. Available from:
33 <https://www.sciencedirect.com/science/article/pii/B9780323996167000013>.
- 34 26Tuomisto LE, Ilmarinen P, Lehtimäki L, *et al.* Immediate bronchodilator response in FEV1
35 as a diagnostic criterion for adult asthma. *Eur Respir J* 2019; 53: 1800904.
- 36 27S. Stanojevic, A. Wade, J. Stocks. Reference values for lung function: past, present and
37 future. *Eur Respir J* 2010; 36: 12.

- 1 28 Ozarda Y, Ichihara K, Bakan E, *et al.* A nationwide multicentre study in Turkey for
2 establishing reference intervals of haematological parameters with novel use of a panel
3 of whole blood. *Biochem Medica* 2017; 27: 350–377.
- 4 29 Troussard X, Vol S, Cornet E, *et al.* Full blood count normal reference values for adults in
5 France. *J Clin Pathol* 2014; 67: 341–344.
- 6 30 Wongkrajang P, Chinswangwatanakul W, Mokkhamakkun C, *et al.* Establishment of new
7 complete blood count reference values for healthy Thai adults. *Int J Lab Hematol* 2018;
8 40: 478–483.
- 9 31 Bakrim S, Motiaa Y, Benajiba M, *et al.* Establishment of the hematology reference
10 intervals in a healthy population of adults in the Northwest of Morocco (Tangier-Tetouan
11 region). *Pan Afr Med J Uganda*; 2018; 29: 169.
- 12 32 Omuse G, Maina D, Mwangi J, *et al.* Complete blood count reference intervals from a
13 healthy adult urban population in Kenya. Nagler M, ed. *PLOS ONE* 2018; 13: e0198444.
- 14 33 Karita E, Ketter N, Price MA, *et al.* CLSI-Derived Hematology and Biochemistry Reference
15 Intervals for Healthy Adults in Eastern and Southern Africa. Wang C, ed. *PLoS ONE* 2009;
16 4: e4401.
- 17 34 Giovannelli J, Chérot-Kornobis N, Hulo S, *et al.* Both exhaled nitric oxide and blood
18 eosinophil count were associated with mild allergic asthma only in non-smokers. *Clin Exp*
19 *Allergy J Br Soc Allergy Clin Immunol* 2016; 46: 543–554.
- 20 35 Malinovsky A, Fonseca JA, Jacinto T, *et al.* Exhaled nitric oxide levels and blood
21 eosinophil counts independently associate with wheeze and asthma events in National
22 Health and Nutrition Examination Survey subjects. *J Allergy Clin Immunol* 2013; 132: 821-
23 827.e1-5.
- 24 36 Agarwal R, Aggarwal AN, Garg M, *et al.* Cut-off values of serum IgE (total and A. fumigatus
25 -specific) and eosinophil count in differentiating allergic bronchopulmonary aspergillosis
26 from asthma. *Mycoses* 2014; 57: 659–663.
- 27 37 Tran TN, Khattri DB, Ke X, *et al.* High blood eosinophil count is associated with more
28 frequent asthma attacks in asthma patients. *Ann Allergy Asthma Immunol Off Publ Am*
29 *Coll Allergy Asthma Immunol* 2014; 113: 19–24.
- 30
31
32