

1
2
3
4
5
6
7
8
9
10
11
12
13
14
15
16
17
18
19
20
21
22
23
24
25
26
27
28
29
30
31
32
33
34
35
36
37
38
39
40
41
42
43
44

Title page

Title: Changing species dynamics and species-specific associations observed between *Anopheles* and *Plasmodium* genera in Diebougou health district, southwest Burkina Faso

Authors: Lado P^{1^}, Gray LI^{1^}, Sougué E^{4^}, Knight AL¹, Sorensen M¹, Leon AS¹, Ring ME¹, Pugh G¹, Randall JC¹, Coffin KL¹, Hemming-Schroeder E¹, Goodwin J², Wade M², Sproch H², Ouédraogo COW⁴, Dah SR⁴, Somé AF⁴, Dabiré RK⁴, Parikh S², Foy BD^{1*}

¹Center for Vector-borne Infectious Diseases, Department of Microbiology, Immunology and Pathology, Colorado State University, Fort Collins, CO, USA; ²Department of Epidemiology of Microbial Diseases, Yale School of Public Health, New Haven, CT, USA; ³Center for Innovative Design and Analysis, University of Colorado Anschutz Medical Campus, Aurora, CO, USA; ⁴Institut de Recherche en Sciences de la Santé, Direction Régionale de l'Ouest, Bobo-Dioulasso, Burkina Faso; [^]These authors contributed equally; ^{*}Corresponding Author

Abstract

The prevalence of malaria parasite species in parts of Africa is rapidly changing and influenced by detection methods. The natural vector competence and vectorial capacity of African anophelines for human *Plasmodium* species has only been well described for *P. falciparum* and is unclear in the context of mixed and non-falciparum infections. Over the course of two clinical trials (2015 and 2019-2020) testing ivermectin for malaria control in the same region of Burkina Faso, we sampled participants' blood and their households for *Anopheles* spp. mosquitoes and tested these samples for *Plasmodium* species. *Plasmodium* prevalence in participants and their blood samples was high in both trials. While *P. falciparum* mono-infections comprised most infections in the 1st trial, mixed and non-falciparum infections comprised 27% of infections in the 2nd trial, with notable changes in species present within participants over time. Furthermore, *An. gambiae* s.l. was the main vector captured, but *An. funestus* mosquitoes were unexpectedly prevalent in the 2nd trial, and we found that parasite species prevalence differed in abdominal and head+thorax tissues of these two vector species. Most notably, *P. falciparum* sporozoites were significantly more prevalent than other parasite species in *An. gambiae* s.l. while *P. ovale* sporozoites were significantly more prevalent than other parasite species in *An. funestus*. Our data suggest differential vector competence for *Plasmodium* species at the study site, which may significantly impact malaria epidemiology, disease prevalence and control efforts.

45 Introduction

46
47 Malaria, caused by *Plasmodium* parasites transmitted by *Anopheles* mosquitoes, is one of the
48 most prevalent infectious diseases in Africa and other parts of the tropics. Of the estimated 249
49 million cases worldwide, 48.5% occur in West Africa. Burkina Faso is among the most affected
50 countries, ranking 6th in malaria cases and 9th deaths globally (1). Efforts to control the disease
51 burden in the country, similar to other high transmission countries in West Africa, includes using
52 point-of-care (POC) rapid diagnostic tests (RDT) and treatment with artemisinin-based
53 combined therapies (ACT), intermittent preventative treatment in pregnancy (IPTp), and use of
54 seasonal malaria chemoprevention (SMC) with sulfadoxine-pyrimethamine (SP) plus
55 amodiaquine (AQ). To control transmission, health authorities perform community distributions
56 of insecticide-treated bed nets (ITN) approximately every 2-4 years, which more recently
57 includes distribution of nets containing more than one chemical (dual-chemistry nets), and less
58 often conduct indoor residual spraying (IRS) of insecticides in specific regions (2, 3). Despite
59 these efforts, the malaria burden in Burkina Faso has remained high with increasing incidence
60 for nearly a decade (4, 5).

61
62 Potential causes for the intransigence of malaria in Burkina Faso despite these intensive control
63 efforts are many. Socioeconomic factors such as high rates of poverty, limited community
64 uptake and/or compliance with parasite and vector control tools, political upheaval with high
65 migrant flows, and extensive artisanal gold mining across the country all likely contribute to the
66 current situation (6-11). Within- and between-species parasite diversity is also underappreciated
67 and represents an additional challenge of malaria control in high burden countries. Infections
68 with a diversity of genotypic clones of *Plasmodium falciparum* (*Pf*) are common in such settings
69 and correlated to higher malaria incidence among young children in many settings (12-14). In
70 center-west Burkina Faso, higher diversity (multiplicity of infection; MOI) of *Pf* genotypes among
71 those presenting with malaria correlated with periods of higher malaria incidence, and overall
72 MOI decreased with advancing age (15). In southwestern Burkina Faso, using amplicon deep
73 sequencing, we recently demonstrated that asymptomatic individuals harbored a mean of 3.1
74 distinct *Pf* clones per sampling timepoint spanning across wet and dry seasons, each of which
75 could theoretically have different genetics relating to antimalarial drug resistance,
76 immunogenicity, or other factors relating to disease processes (16).

77
78 Parasite species diversity also complicates malaria control, but a recognition of the scope of
79 such diversity within different African regions is only recently emerging. Reports over the past
80 several years have demonstrated unexpected or increasing prevalence of *Plasmodium malariae*
81 (*Pm*), with its unique 72-hour life cycle, and *P. ovale* (*Po*) species and *P. vivax* (*Pv*) with their
82 dormant hypnozoite stages in certain regions (17-19). More limited data from West Africa
83 suggest unexpected prevalence or increases in non-falciparum species in parts of Burkina Faso
84 and other countries (20-22). The lack of detection of non-falciparum species is not surprising
85 because these species tend to maintain lower peripheral parasite densities and therefore are
86 less likely to be detected by microscopy and RDTs (23-25). In addition, African countries nearly
87 universally lack treatment policies which support anti-relapse treatment of dormant hypnozoites
88 of *Po* species and *Pv*, leaving a persistent and unaddressed reservoir within the continent (26).

89
90 On the vector side, there is similarly high diversity both within and between mosquito species
91 across Burkina Faso which varies from the dry Sahel ecozone in the north with a short but
92 intense rainy season to the Sudanian ecozone in the south with a longer rainy season (27-37).
93 *Anopheles gambiae* s.s. and *An. coluzzi* typically have the highest human biting rates in rural
94 and semi-rural areas during the rainy seasons (38, 39), while *An. arabiensis* drives malaria
95 transmission in urban centers especially during the dry seasons (32). In other landscapes,
96 different species can be the primary vectors, including *An. funestus* group species around areas
97 with more permanent water sources such as dams, swamps and ponds (39-42), and *An. nili*
98 which breeds along the edges of rivers and streams in the south (43). Highly zoophagic and
99 exophagic vectors such as *An. squamosis*, *An. rufipes*, *An. coustani*, and *An. pharoensis* can
100 also be prevalent across landscapes in the south (43). These diverse vector species and their
101 varied bionomics can hamper vector control efficacy. For example, exophilic and exophagic
102 behaviors that limit exposure to ITN and IRS insecticides, plus increasing insecticide resistance
103 among these vectors due to exposure from both agriculture and malaria vector control efforts,
104 may be hampering the success of the limited vector control tools available (44).. The complexity
105 of parasite transmission from these diverse vectors also likely fosters malaria risk. For example,
106 malaria risk increases with vector density and blood feeding rates among persons with low ITN
107 use (45), and infection intensity and high MOI in different vector species can also drive
108 differential malaria risks or infections with unique genotypes (16, 46-49)

109
110 To develop new malaria control tools that might better control malaria in Burkina Faso, we have
111 conducted cluster-randomized control trials in the southwestern Diebougou district to test if
112 ivermectin mass drug administrations (MDA) can reduce malaria incidence. Ivermectin is a
113 widely used endectocide that exhibits mosquitocidal activity (50). The drug's strong safety
114 profile in humans and broad-spectrum anti-parasitic effects has allowed for its use in MDA to
115 control neglected filarial diseases (51), and ongoing efforts to test its ability to reduce the
116 survival of malaria vectors and limit malaria transmission (52-57).The first trial in Burkina Faso,
117 termed Repeat Ivermectin Mass Drug Administrations for control of Malaria (RIMDAMAL), was
118 conducted from July to November in 2015 and evaluated repeated low dose ivermectin MDA
119 given at 3-week intervals in treatment clusters compared to a single MDA in control clusters
120 (58), while the second trial, termed RIMDAMAL II, occurred in the same region over two
121 consecutive rainy seasons (from July to November in both 2019 and 2020) and evaluated high
122 dose ivermectin or placebo MDA given monthly (59). Additionally, in RIMDAMAL II, MDAs were
123 operationally paired with SMC distribution to children 3-59 months old in all clusters, which was
124 first implemented in the study area in 2018, in between the time of the two RIMDAMAL trials.
125 The RIMDAMAL trials are among several other cluster-randomized control trials that have
126 tested or are in the process of testing if ivermectin MDA can reduce malaria incidence or
127 parasite prevalence among participants in treated communities (60-62).

128
129 The outcomes of the RIMDAMAL trial have been published, and the primary and secondary
130 outcomes of the RIMDAMAL II trial will be presented elsewhere. In the process of analyzing the
131 parasite and vector samples collected from these trials, we observed noticeable differences in
132 the prevalence of different parasite species' infecting participants between the first and second

133 trial, some of whom participated in both trials. Most notably, in RIMDAMAL II, we observed
134 significant associations of specific vector species with different *Plasmodium* species that are
135 suggestive of differences in vector competence and/or vectorial capacity for certain parasite
136 species. In sub-Saharan Africa (SSA), despite *Pf* being the species most frequently detected
137 and responsible for the majority of clinical cases (63), *Po* and *Pm* can significantly contribute to
138 malaria epidemiology and have been observed to occur at high prevalence in parts of several
139 countries (18, 19, 21, 64-73) or increasing in prevalence over longitudinal studies within a
140 country (20). The data presented here shed light on vector-parasite interactions that may
141 influence malaria epidemiology observations in these and other studies.

142
143

144 **Results**

145 **Organization and timelines surrounding the RIMDAMAL trials**

146 The health district of Diebouougou is in the southwest region of Burkina Faso in Bougouriba
147 province. The district has been conducting yearly MDA with single dose ivermectin (150 µg/kg)
148 and albendazole (400 mg/kg) in all its communities for more than a decade to control
149 onchocerciasis and lymphatic filariasis. The RIMDAMAL trial was conducted during the 2015
150 rainy season in 8 clusters (villages) in the health district, while the RIMDAMAL II trial was
151 conducted during the 2019 and 2020 rainy seasons in 14 clusters of the district. Trial designs,
152 cluster selection and allocation in both trials are described elsewhere (58, 59). Briefly, in both
153 trials, clusters were randomized 1:1 between the treatment and control arms, and the trial
154 organizations and treatments and controls were different, however four clusters were common
155 among the two trials (Table 1). In RIMDAMAL, repeated low dose ivermectin MDA (single oral
156 dose, 150 µg/kg) was given at 3-week intervals in treatment clusters and compared to a single
157 MDA at the start of the trial in control clusters, while the RIMDAMAL II trial occurred over two
158 consecutive rainy seasons and repeated high dose ivermectin MDA (1 oral dose daily for 3
159 days; 300 µg/kg) was given at 1-month intervals in treatment clusters compared to placebo
160 MDA on the same schedule in control clusters. Furthermore, in RIMDAMAL II, MDA was
161 operationally paired with SMC distribution to children between 3-59 months old in all clusters,
162 which was instituted as national policy starting in 2017. A third, unrelated, cluster randomized
163 trial called the REACT trial was conducted from 2016-18 by a few of the authors, which had one
164 trial arm including ivermectin treatment of cattle, goats and sheep in the 2017 rainy season and
165 occurred in villages of the Diebouougou health district that were not part of the RIMDAMAL II trial
166 (74, 75). District ITN distributions occurred in 2016 with standard pyrethroid-based nets, and at
167 the end of 2019 (between October 29-November 2) with new dual-chemistry (alpha-
168 cypermethrin and chlorfenapyr) Interceptor® G2 nets to better control insecticide-resistant
169 malaria vectors. An analysis of Normalized Difference Moisture Index (NDMI), a measure of
170 vegetation moisture content and indicator of land surface wetness, across the study areas from
171 2015-2020 revealed marked interannual variation as well as variation between clusters (Figure
172 1). Overall, the 2015 RIMDAMAL trial was conducted during a drier rainy season of those
173 analyzed for the study area, while both rainy seasons of RIMDAMAL II (2019 and 2020) were
174 relatively wet (Figure 1). NDMI was selected for analysis because it provides information on
175 both temporal precipitation and landscape heterogeneity which may correspond to differences in
176 larval habitat abundance (76).

177
178

Table 1. Timeline and organizational features of the RIMDAMAL trials and other malaria control trial and efforts in the Diebouogou health district.						
Event	Year					
	2015	2016	2017	2018	2019	2020
RIMDAMAL trial	July 17 – November 22 <u>Treatment</u> DG, KK, KP , TJ <u>Control</u> DK, LM, ML, TG					
RIMDAMAL II trial					July 26 – November 13 <u>Treatment</u> BG, DK , DT, GB, KP , KS , SG <u>Control (Placebo)</u> <u>DE</u> , <u>DL</u> , MT, NB, NV, TG , TJ	July 20 – November 9 <u>Treatment</u> BG, DK , DT, GB, KP , KS , SG <u>Control (Placebo)</u> <u>DE</u> , <u>DL</u> , MT, NB, NV, TG , TJ
REACT trial			September ivermectin treatment of cattle, goats and sheep in 6 villages of the health district.			
SMC distribution				July-October SP-AQ	July-October SP-AQ	July-October SP-AQ
ITN distributions		July deltamethrin ITN			October 29- November 2 α-cypermethin + chlorfenapyr ITN	
Clusters in bold denote those that were recruited to both RIMDAMAL trials. Underlined clusters in RIMDAMAL II were those randomly selected for entomological sampling. SP: sulfadoxine-pyrimethamine - AQ: amodiaquine. ITN: Insecticide-treated nets.						

179

180 **Differences in the prevalence of *Plasmodium* species between participants of the**
181 **RIMDAMAL and RIMDAMAL II trials.**

182 The prevalence of blood smear slides from the 2015 RIMDAMAL trial that were positive by
183 microscopy for *Plasmodium* spp. and for different *Plasmodium* species was previously reported,
184 as was the multiplicity of infection and molecular force of infection in *Pf* positives (58). Here we
185 report data using molecular analyses on 90 archived blood samples taken from 24 children
186 aged 0-5 years (split equally from 2 clusters in each arm) who had a fever or history of fever in
187 the prior 24 hours. Of those, 39% (35/90) of tested samples were positive for *Plasmodium*
188 species and all were *Pf* mono-infections. Overall, 71% (17/24) of these tested children had a
189 molecularly confirmed parasitemia at least once during the trial (Table 2).

190

191 In contrast, in the RIMDAMAL II trial, infections with multiple different *Plasmodium* species were
192 commonly detected in human dried blood spots from 70 randomly chosen RIMDAMAL II
193 participants (split equally from 3 clusters in each arm, and between age grouping and sex) from
194 our cross-sectional cohort (3 villages per arm) sampled over 2 seasons (2019-2020) (Table 2).
195 Of the 405 samples tested, 56% (225/405) were positive for *Plasmodium* species, and of these
196 72% (161/225) were *Pf* mono-infections and 28% (64/225) were *Pf*-mixed or non-falciparum
197 infections (12% (27/225) *Pf*+*Pm* co-infections, 5% (12/225) *Pm* mono-infections, 5% (12/225) *Pf*
198 + *Po* co-infections, 2% (4/225) *Po* mono-infections, 0.4% (1/225) *Pf* + *Pv* co-infections, and 3%
199 (7/225) *Pf*+*Po*+*Pm* infections). Children 0-5 years old (who took SMC in the trial) more often had
200 negative blood samples over the trial period relative to participants ≥ 6 years old (61% vs. 34%;

201 P < 0.0001) and tended to less often be infected with at least one non-falciparum species over
 202 the trial period relative to participants ≥ 6 years old (56% vs. 33%; P = 0.0871). Across all age
 203 groups, most non-falciparum infections were detected in one or two cross-sectional blood
 204 samples obtained from individuals throughout the trial period (Figure 2).
 205

Table 2. Molecular detection of *Plasmodium* parasites from participants of the RIMDAMAL trials.

Trial	Participants (any longitudinal sample)								Participants' samples							
	ACD cohort (0-5 yrs old)*				Participants ≥ 6 yrs old				ACD cohort (0-5 yrs old)*				Participants ≥ 6 yrs old			
	Pf	Pf+nPf	nPf	neg	Pf	Pf+nPf	nPf	neg	Pf	Pf+nPf	nPf	neg	Pf	Pf+nPf	nPf	neg
RIMDAMAL	71% (17/24)	0% (0/24)	0% (0/24)	29% (7/24)	-	-	-	-	39% (35/90)	0% (0/90)	0% (0/90)	61% (55/90)	-	-	-	-
RIMDAMAL II	59% (16/27)	22% (6/27)	11% (3/27)	7% (2/27)	37% (16/43)	53% (23/43)	2% (1/43)	7% (3/43)	30% (47/156)	5% (8/156)	4% (6/156)	61% (95/156)	46% (114/249)	16% (40/249)	4% (10/249)	34% (85/249)

*ACD: active case detection cohort. In RIMDAMAL, SMC was not yet initiated, but in RIMDAMAL II eligible members of the ACD cohort (those 3-59 month old) were given SMC. Pf: *P. falciparum*, nPf: *P. malariae*, *P. ovale*, *P. vivax*.

206
 207 **Anopheles speciation and blood meal analysis**
 208 RIMDAMAL entomology data were previously reported (58). Briefly, 2,801 mosquitoes were
 209 captured via indoor aspirated of which 99% (2,784/2,801) were morphologically identified as *An.*
 210 *gambiae* s.l. These were blood fed mosquitoes that were separated into 1) head+thorax tissue
 211 that were previously homogenized and used in sporozoite ELISA assays to detect *Pf*
 212 circumsporozoite (CSP) protein, and into 2) bloodfed abdomens that were squashed onto filter
 213 papers cards but then used in other experiments.
 214

215 In RIMDAMAL II, a total of 7,942 anopheline mosquitoes were collected (2019, n = 5,827; 2020,
 216 n = 2,115) of which the majority were indoor-captured blood-feds that were held in assays to
 217 measure their survival over time. Morphological identification determined the majority to be *An.*
 218 *gambiae* sensu lato (s.l.) (85%; 6,745/7,942), with approximately twice the number captured in
 219 2019 (n = 4,679) as compared to 2020 (n = 2,066). The remainder were *An. funestus* group
 220 mosquitoes (15%; 1,197/7,942) of which 96% (1,148/1,197) came from 2019. A subset of *An.*
 221 *gambiae* s.l. mosquitoes were further speciated using molecular methods (n= 354). The majority
 222 were identified as *An. gambiae* (79.4%), followed by *An. coluzzi* (15.5%) and *An. arabiensis*
 223 (5.1%). Similarly, a subset of *An. funestus* group mosquitoes were further speciated (n = 251)
 224 and the majority were identified as *An. funestus* (96.4%), while a small portion were identified as
 225 *An. rivulorum* (3.2%) and *An. lesoni* (0.4%).
 226

227 Blood meal analysis was performed on bloodfed mosquito abdomens from a subset of *An.*
 228 *gambiae* s.l. and *An. funestus* complex mosquitoes (n = 171 and 64, respectively). Human
 229 blood meals were detected in most samples from both *An. gambiae* s.l. (81%) and *An. funestus*
 230 (68%) (P = 0.0559). Cattle blood meals were the next most abundant but were significantly
 231 more prevalent in *An. funestus* (23%; 15/64) than in *An. gambiae* s.l. (6%; 11/171) (P = 0.0006).
 232 Dog, goat, and pig blood meals were detected in both mosquito species, but were uncommon
 233 (Figure 3).
 234

235 **Prevalence of *Plasmodium* parasites species detected in bloodfed and unfed mosquito**
 236 **head-thorax tissues from both trials.**

237 In RIMDAMAL, the overall sporozoite rate over the intervention period and across arms was
 238 4.8% (62/1759; *An. gambiae* s.l. only, head-thoraxes tested by CSP-ELISA) (Table 3).

239

Table 3. Sporozoite rates in the RIMDAMAL trials.

Trial	Mosquito species	Trial arm	Sporozoite rate over trial	P value
RIMDAMAL	<i>An. gambiae</i> s.l.	Control	3.4% (33/961)	-
		Treatment	3.6% (29/798)	0.8207
RIMDAMAL II	<i>An. gambiae</i> s.l.	Control	5.3% (74/1399)	-
		Treatment	4.3% (48/1129)	0.2626
	<i>An. funestus</i>	Control	20.4% (23/113)	-
		Treatment	11% (15/136)	0.0416
	<i>An. gambiae</i> s.l. + <i>An. funestus</i>	Control	6.4% (97/1512)	-
		Treatment	5% (63/1265)	0.1201

Sporozoite detection from RIMDAMAL trial was performed using head-thoraxies in CSP-ELISA assays using a monoclonal antibody against *Pf*, while sporozoite detection from RIMDAMAL II was performed using head-thoraxies in qPCR assays designed to detect *Pf*, *Po*, *Pm* or *Pv* species.

240

241 From RIMDAMAL II, a total of n = 2,777 mosquito head-thorax samples (n = 2,528 *An. gambiae*
 242 s.l and n = 249 *An. funestus*) were screened for *Plasmodium* sporozoites using species-specific
 243 qPCR. The overall sporozoite rate over the intervention period and across arms was 5.8 % (n =
 244 160/2,777). In *An. gambiae* s.l. the overall sporozoite rate across arms was 4.8 % (n =
 245 122/2528) and the most common *Plasmodium* species of sporozoites detected among positives
 246 was *Pf* mono-infections (65%; 79/122), followed by *Po* mono-infections (25%; 31/122), *Pm*
 247 mono-infections (8%; 10/122), and only two mixed species infections (both *Pf+Po* co-infections;
 248 Figure 4c). In contrast, *An. funestus* had a significantly higher overall sporozoite rate over the
 249 intervention period than *An. gambiae* s.l. (15.3%; 38/249; P < 0.0001). Also, in contrast to *An.*
 250 *gambiae* s.l., the most prevalent sporozoite species detected among positives of *An. funestus*
 251 was *Po* (63.2%;24/38), followed by *Pf* and *Pm*, both at 18.4% (7/38 each) (Figure 4f). Thus, in
 252 the RIMDAMAL II trial, the *Pf* sporozoite rate in *An. gambiae* s.l. was significantly greater than in
 253 *An. funestus* (P <0.0001), and the *Po* sporozoite rate in *An. funestus* was significantly greater
 254 than in *An. gambiae* s.l. (P <0.0001) from mosquitoes captured in the same villages and houses
 255 over the same dates. Furthermore, while the overall sporozoite rates and those from *An.*
 256 *gambiae* s.l. captured in clusters from treatment or control arms were not significantly different
 257 from one another, sporozoite rates were significantly higher (~2 fold) in the control arm relative
 258 to the intervention arm for *An. funestus* (P = 0.0416; Table 3).

259

260 **Prevalence of *Plasmodium* parasites species detected in bloodfed and unfed mosquito**
 261 **abdomens in RIMDAMAL II**

262 To better understand the observed differences in sporozoite rates between species and
 263 treatment arms in RIMDAMAL II, we examined a portion of the stored bloodfed and unfed
 264 abdomen samples from each mosquito species and from those that were either sporozoite-
 265 positive or sporozoite-negative. Of the 264 *An. gambiae* s.l. bloodfed abdomens tested, 75%
 266 (198/264) were positive for at least one *Plasmodium* species (Figure 4a). Approximately half of
 267 positives (47%; 93/198) contained parasites of only one species and most often this was *Pf*.
 268 However, nearly as many (41%; 81/198) contained mixed parasites consisting of *Pf* plus one or
 269 more non-falciparum species. In contrast, of the *An. funestus* bloodfed abdomens tested, a

270 significantly lower proportion were *Plasmodium*-positive (52.8%; 47/89; $P = 0.0002$) (Figure 4d),
271 with the majority (87.2%; 41/47; $P < 0.0001$) containing parasites of a single species of either
272 *Pf*, *Po* or *Pm*. Overall *Plasmodium* spp. prevalence in blood fed abdomens was modestly higher
273 in sporozoite-positive versus sporozoite-negative mosquitoes, regardless of mosquito species
274 (Figure 5). Similarly, mosquitoes captured from treatment arm clusters had a modestly lower
275 prevalence of *Plasmodium* spp. than those captured from control arm clusters (Figure 6).

276
277 Most unfed abdomens tested negative for parasites (Figure 4b & 4e), in contrast to the blood
278 fed abdomens of the same species (Figure 4a & 4c). Furthermore, *Plasmodium* species
279 prevalence in these unfed abdomens were higher than, but reflective of, the sporozoite-positive
280 head-thoraxes of the different mosquitoes in that only mono-infections were detected. *Pf* and *Po*
281 infections were approximately equal among the unfed abdomens of these mosquitoes, but *Pm*
282 infections of unfed abdomens were only detected in *An. funestus* (Figure 4b & 4e).

283 284 Discussion

285 The results presented suggest that malaria epidemiology at the study site appears to have
286 changed over a six-year period whereby non-falciparum species have become prevalent,
287 particularly as mixed infections with *Pf*. The data also suggest that vectors species have
288 differential competence for spreading non-falciparum infections, which may be one novel driver
289 explaining changes in malaria species epidemiology. Unfortunately, standard malaria
290 surveillance performed by the national health authorities, and most other malaria studies in the
291 country over the last decade, have focused on tackling the burden of *Pf*, and molecular data on
292 the prevalence of non-falciparum species in Burkina Faso is largely lacking. One other
293 published study, however, similarly reported an increase in non-falciparum infections from 2007-
294 2010 in central-west Burkina Faso in, but entomological indices were not reported (20).

295
296 In addition to entomological factors, anthropogenic factors regarding diagnostics and treatment
297 algorithms have likely driven or influenced the epidemiologic changes observed. Most notably,
298 current POC diagnostics suffer from relatively low sensitivity, requiring peripheral densities of
299 ~100-500 parasites/ μL for detection, yet most non-falciparum species tend to maintain lower
300 parasitemias that go undetected (17, 18, 23, 24, 77-79). In addition, while microscopy has the
301 advantage of morphologic-based speciation, this is challenging in practice, particularly in the
302 presence of mixed species infection. With regards to RDTs, nearly 80% of RDTs currently
303 procured in sub-Saharan Africa detect only *Pf*-specific HRP-2 (80-82). While a second less
304 widely available RDT detects both *Pf*HRP-2 and pan-*Plasmodium* LDH (83-86), its sensitivity is
305 also low at densities below 1000/ μL (25, 87-89). Treatment and prevention guidelines also likely
306 impact species prevalence, as most strategies are explicitly geared towards reducing the *Pf*
307 burden. In West Africa, the implementation of SMC, including at the site of the RIMDAMAL trials
308 in 2018, has proven to have significant impacts on *Pf* incidence in children, and although it is
309 anticipated that SP-AQ has activity against non-falciparum species, its precise impact on these
310 other species has not been investigated (90-96). Similarly, the impact of ACTs on non-
311 falciparum species is less well studied, and the near-complete lack of usage of 8-
312 aminoquinolines directed at the dormant liver stages of *Po* and *Pv* in Africa results in a
313 persisting reservoir of infection even if blood-stage therapy is initiated. In a 2-year study of

314 malaria prevalence in Niger during and after SMC distributions, cross sectional microscopy
315 surveys detected *Pf* alone in the high and low seasons of year 1, but subsequently detected
316 mixed- and mono-infections with *Po* and *Pm* in year 2 (97). In our RIMDAMAL trials, incidence
317 in 0 to 5 year olds dropped approximately 80% between 2015 and 2019 (58) (ClinicalTrials.gov:
318 NCT03967054), presumably due to SMC commencing in 2018, but parasite prevalence
319 remained exceedingly high in both trials suggesting a limited ability of SMC to affect parasite
320 prevalence in this high transmission setting. Malaria incidence among the child cohort in
321 RIMDAMAL II dropped further in 2020 across both arms, which is likely connected to the activity
322 of dual chemistry nets distributed in both trial arms. It is also possibly that an increase in non-
323 *falciparum* parasite species at the field site may have contributed to the overall reduction in
324 malaria incidence via our active case detection procedures between the two RIMDAMAL trials
325 given that the pyrogenic thresholds of non-*falciparum* species are likely to be lower than *Pf* (98)
326 from considerably lower parasitemias and shorter durations of patent infections (23, 24, 99,
327 100).

328
329 The abundance of *An. funestus* in RIMDAMAL II during the 2019 rainy season was unexpected
330 considering our data from previous seasons (39, 41, 58). Typically, this vector increases at the
331 very end of the rainy season and persists through the early, 'cold' dry season (late October -
332 February), a time when *An. gambiae* s.l. populations fall dramatically. Its presence is connected
333 to more permanent water sources with emergent vegetation (42, 101) that remain following the
334 cessation of the seasonal rains. *An. funestus* was highly prevalent at the study site in human
335 landing catches performed during dry season sampling between 2017-8 during the REACT trial
336 (75). Its abnormally high density so early in the year in 2019 may be related to the wetter-than-
337 average rainy season (Figure 1) where it could take advantage of the more abundant, possibly
338 deeper water breeding sites across the landscape due to the excess water. Regardless, the
339 opportunity to catch both *An. gambiae* s.l. and *An. funestus*, especially the blood feds, in the
340 same households over the same timeframes allowed for novel insights into potential differential
341 vector competence between *An. gambiae* and *An. funestus* in our area.

342
343 The tested blood fed abdomens of both mosquito species would be expected to contain a mix of
344 newly ingested parasites (both asexual forms and gametocytes) from mostly human blood
345 meals that were taken the night prior to capture, as well a smaller proportion of developing early
346 sporogonic stages in and on the midgut tissues of mosquitoes that were infected from an earlier
347 blood meal. The unfed abdomens, being from host-seeking mosquitoes captured in the same
348 households as the blood feds, provided a measure of the proportion of mosquitoes already
349 containing those developing sporogonic stages, which was 21.6% for *An. gambiae* s.l. and
350 38.2% for *An. funestus*. Considering the proportions of negative abdominal tissues between
351 blood feds and unfeds, the data suggest *An. gambiae* s.l. are exposed to parasites upon blood
352 feeding nearly twice as often as *An. funestus*, likely from higher human biting rates that we
353 observed from this mosquito, and potentially also from a higher propensity to blood feed on
354 multiple people over a single night (102). The data also show that mixed-parasite species blood
355 meals, which we surprisingly observed often in the human samples too, were present nearly five
356 times as often among *An. gambiae* s.l. than *An. funestus*, but mixed infections were not
357 detected in unfed abdomens of either mosquito species, and only detected twice in thoraxes as

358 sporozoites. Dividing the unfed abdomen infection rates by the blood fed abdomen parasite rate
359 can provide a rough approximation of successful midgut infection in the wild for both mosquito
360 species, which was only 29% of the time for *An. gambiae* s.l. but approximately 72% of the time
361 for *An. funestus*. Examination of infected unfed abdomens compared to sporozoite infections in
362 the positive head+thorax tissues suggests that successful parasite development from early to
363 late sporogonic forms may be similarly more restrictive in *An. gambiae* s.l. (22%) than in *An.*
364 *funestus* (40%). Lastly, the differences observed in the prevalence of different *Plasmodium*
365 species across the tissues of the two mosquitoes is notable. These data suggest that while *An.*
366 *funestus* was less often exposed to parasites during blood feeding, the exposure was more
367 often as mono-infections and parasite infection was more often successful. Furthermore, *An.*
368 *funestus* was preferentially infected with *Pm* or *Po*, but complete sporogonic development to
369 sporozoites more often favored *Po*. In contrast, *An. gambiae* s.l. captured at the same
370 timepoints and from the same households was more often exposed to parasites during blood
371 feeding and up to 40% may have been mixed-infection exposures, but parasite infections were
372 less successful. Furthermore, midgut infections in *An. gambiae* s.l. (unfed abdomens) were
373 nearly always of a single parasite species which was typically *Pf* and *Po*, but *Pf* more often
374 successfully developed into sporozoites.

375
376 Given these are observational entomological and human data, there are several non-mutually
377 exclusive hypotheses that could explain the findings. Most obviously, data may reflect true
378 vector competence differences of mosquito species for different parasite species, such as
379 parasite exflagellation, fertilization or sporogonic development being enhanced for *Po* in *An.*
380 *funestus*, or the inverse whereby these are inhibited for *Pm* and *Po* in *An. gambiae*, perhaps via
381 innate immune targeting mechanisms (103). This may be an observation of emergent co-
382 speciation between vector and parasite species. Parasite species sporogony competition, either
383 directly or for resources in the mosquito, may also contribute to preferential vector
384 competence outcomes in one mosquito species over the other (104-108). Lastly, factors
385 influencing vectorial capacity may also help explain some of these observations. The *An.*
386 *funestus* we captured blood fed more often on cattle, which may explain some of the parasite
387 prevalence data in blood fed abdomens, but another possibility is that *An. funestus* preferentially
388 blood fed on human hosts with different parasite species relative to *An. gambiae*, possibly due
389 to a preference for certain attractive odors given off by the infected host dependent on the
390 parasite species they were infected with (109). Some of the results may also be explained by
391 differences in vector blood meal sizes or vector lifespans, such as if most of the *An. funestus*
392 mosquitoes are longer-lived and therefore more likely to have non-falciparum sporozoites which
393 develop less rapidly than *Pf*, or mortality in the field due to certain combinations of parasite and
394 vector, for example if *Pm* sporogonic development increases *An. gambiae* s.l. mortality. We are
395 not aware of previous field reports on co-speciation or preferential sporogonic development of
396 certain *Plasmodium* species over others in different species of vector anophelines. Molecular
397 detection of *Plasmodium* in mosquitoes captured from the field in African settings remains
398 relatively rare due to the costs of performing qPCR on numerous individual mosquito samples
399 with different molecular probes. More often ELISA assays are used to save costs, but these are
400 often only used with antibodies to *Pf* or *Pv* alone (110) and are relatively insensitive and prone
401 to false positives when compared to molecular analyses (111-113). Also, for molecular analyses

402 of mosquitoes, the most efficient molecular targets are also still being compared (114, 115), as
403 are the dissection methods to ensure the fewest false positives (116). We chose to dissect at
404 the junction of the midgut and abdomen, however, the large differences in parasite prevalence
405 between blood fed abdomens compared to unfed abdomens and head+thoracies suggests our
406 analyses was not overly biased from parasite contamination across mosquito tissues.
407 Regardless, this was a comparative analysis between mosquito species.

408
409 Importantly, this study has several limitations. Foremost, these longitudinal data are confined to
410 a single field site and must be tested to determine their generalizability. It is possible that the
411 results are partially related to the ivermectin or other intervention activities occurring at the site.
412 Regarding the human data, we had limitations from our more limited testing of archived samples
413 from the RIMDAMAL trial, including that the blood samples tested were only from symptomatic
414 children. Retrospective molecular analysis of mosquito tissues from the RIMDAMAL trial were
415 also not possible due to the samples having been used in prior assays. Follow-up blood
416 sampling and testing should be performed at the site to determine if the change in prevalence
417 from *Pf* to more non-*falciparum* species persists or increases over time, and if non-*falciparum*
418 infections are correlated with presence of *An. funestus* or increased rainfall during the wet
419 season in other areas. While the entomological data are a measure of natural infection
420 outcomes, the analyses are associative being based on observational data alone and so they
421 should be validated using mosquito feeding assays with the blood from infectious participants.
422

423 **Conclusion**

424 The data presented here show that malaria parasite species prevalence in humans changed
425 dramatically in the Diebougou health district in southwest Burkina Faso over the period
426 bracketing the two RIMDAMAL trials occurring five years apart, and when SMC was initiated at
427 the site in between the two trials. The parasite species changed from almost exclusively being
428 *Pf* to a high prevalence of non-*falciparum* species mixed with *Pf* or occurring alone.
429 Furthermore, evidence suggests that non-*falciparum* species were preferentially transmitted by
430 *An. funestus* while *Pf* was preferentially transmitted by *An. gambiae* s.l. These formative studies
431 should be followed up with more rigorous testing of the hypotheses regarding vector
432 competence or vectorial capacity differences for *Plasmodium* parasites between the different
433 mosquito species and may explain the changing malaria epidemiology in areas of sub-Saharan
434 Africa where a diversity of anopheles vectors exist or are in flux.
435

436 **Methods**

437 **Study area, experimental design, and adult mosquito collection**

438 The Diebougou health district in southwestern Burkina Faso experiences a single long rainy
439 season from approximately June-November (39). The RIMDAMAL trial spanned one rainy
440 season (July-November) in 2015, and RIMDAMAL II spanned rainy seasons (July-November) in
441 two consecutive years, 2019 and 2020 and both were conducted in this health district. Detailed
442 information about both trials is available elsewhere (58, 59). Briefly, in RIMDAMAL, 8 village
443 clusters were studied and 4 were randomized to the intervention arm consisting of 6 ivermectin
444 MDAs (single dose of 150 µg/kg) for eligible participants every 3 weeks over one season, while
445 the other 4 were randomized to the control arm consisting of a single ivermectin MDA (single

446 dose of 150 µg/kg) for eligible participants at the beginning of the season. In RIMDAMAL II, 14
447 village clusters were studied and 7 were randomized to the intervention arm consisting of 4
448 ivermectin MDA (3 consecutive daily doses of 300 µg/kg) for eligible participants once per
449 month over 4 months of the season, while the other 7 were randomized to the control arm
450 consisting of placebo administered in the same manner. To estimate spatiotemporal variations
451 in land surface wetness in the study area, Normalized Difference Moisture Index (NDMI), a
452 measure of vegetation moisture content, was assessed from 2015-2020. NDMI was measured
453 from Landsat 8 Level 2, Collection 2, Tier 1 satellite images at 30-m resolution. Satellite images
454 were obtained from the rainy seasons (May to October) and median NDMI calculated for each
455 year from near infrared and short-wave infrared bands after cloud masking in Google Earth
456 Engine.

457
458 *Anopheline* mosquito sampling in both trials was performed similarly, in 8 households from each
459 village in RIMDAMAL and from 8 households in each of 3 villages per arm in RIMDAMAL II,
460 whereby most mosquitoes captured were resting indoor blood feeds and aspirated from walls and
461 ceilings in the mornings, and additional capture of host-seeking mosquitoes was performed
462 using light traps located a single centrally located house per village placed indoors next to a
463 person sleeping under a bed net and outdoors next to a person sleeping in a tent. In
464 RIMDAMAL, mosquito collections occurred on the 2nd week follow each MDA, and in
465 RIMDAMAL II on the 1st and 3rd weeks following each MDA. Participants' blood from these same
466 households was also serially sampled across the intervention periods to allow linking of
467 parasitology and entomology outcomes. After collection, mosquitoes were morphologically
468 identified in the field station as either *An. gambiae* s.l., *An. funestus* complex, or other species,
469 and molecular analyses were performed subsequently in laboratories.

470 471 **DNA extraction from dried human blood spots**

472 Dried blood spots (DBS) on filter paper cards were made in RIMDAMAL from active case
473 detection (ACD) cohort children whose blood was sampled during febrile episodes occurring
474 during the trial. DBS from 24 of these randomly chosen participants who were living in the 4
475 villages that were also enrolled in RIMDAMAL II (Table 1; KP, TJ, DK, TG) and which were also
476 sampled for mosquitoes were tested for *Plasmodium* species. In RIMDAMAL II, serially
477 collected DBS were collected from participants of all ages from households that were also
478 sampled for mosquitoes, and DBS from 100 of these randomly chosen participants were tested
479 for *Plasmodium* species. DNA was extracted from 3mm hole punches of each DBS by
480 incubating them overnight in a 60°C shaking incubator with PBS and proteinase K and the
481 supernatant process with a Mag-Bind Viral DNA/RNA 96 kit (Omega Bio-Tek) using the
482 KingFisher Flex Magnetic Particle Processor (Thermo Fisher Scientific). DNA was eluted in 30
483 µL of nuclease-free water and stored at -80° C prior to testing.

484 485 **DNA extraction from RIMDAMAL II mosquito tissues**

486 Female *Anopheline* head+thoraces stored in RNALater® (Thermo Fisher Scientific) were
487 removed from tubes and blotted on absorbent paper to remove excess liquid. Samples were
488 then individually placed in new tubes with 300 µL mosquito diluent containing 20% of FBS, 100
489 µg/mL of streptomycin, 100 units/mL of penicillin, 50 µg/mL gentamicin, and 2.5 µg/mL

490 fungizone in PBS. Samples were homogenized by a single zinc-plated, steel 4.5 mm bead for
491 1.5 minutes at 24 Hz before being centrifuged for 5 minutes at 14,000 x g at 4°C. DNA was
492 extracted from all samples using the Mag-Bind Viral DNA/RNA 96 kit (Omega Bio-Tek) using
493 the KingFisher Flex Magnetic Particle Processor (Thermo Fisher Scientific). DNA was eluted in
494 30 µL of nuclease-free water and stored at -80°C. Abdomen samples were placed in 2.0 mL
495 tubes with one 4-5 mm steel bead, TL buffer, and proteinase K solution provided by the Mag
496 Bind Blood and Tissue Kit HDQ 96 kit (Omega Bio-Tek). Each sample was homogenized (50
497 oscillation for 5 minutes), centrifuged (8,000 rpm for 30 seconds), and incubated in a 56°C dry
498 bath overnight. The next day, homogenates were extracted using a KingFisher™ Flex
499 Purification System (Thermo Fisher Scientific). DNA was eluted in 100 µL of nuclease-free
500 water and yields were quantified using a Nanodrop device (ThermoFisher Scientific) to
501 determine the success of extraction. Once quantified, samples were stored at -80°C until further
502 analysis.

503

504 ***Anopheles* speciation**

505 Morphological identification of wild-caught *An. funestus* and *An. gambiae* s.l. mosquitoes was
506 done using standard taxonomic key in the field (117, 118). In a MiniAmp Plus Thermocycler, *An.*
507 *gambiae* s.l. were further speciated following PCR assay which amplified a region of the
508 intergenic spacer 2 (119) to identify *An. gambiae*, *An. coluzzii* and *An. arabiensis*. To further
509 speciate mosquitoes belonging to the *An. funestus* complex, a portion of the ITS2 gene was
510 amplified following the method of Koekemoer et al. (120), and subsequently sequenced. The
511 DNA sequences were aligned in Mesquite (121), and the *Anopheles* species was determined by
512 comparing the sequences with those found in the GeneBank nucleotide database.

513

514 ***Plasmodium* detection in both human and mosquito samples**

515 To detect the presence of *Pf*, *Po*, *Pm* and *Pv* in the head+thorax and/or abdomen tissues, two
516 real-time PCRs were done. *Pf* DNA was detected using the assay described by Hoffman et al.
517 (122), which detects *P. falciparum* DNA in mosquito tissues by amplifying the *var* gene acidic
518 terminal sequence (*varATS*). *Po*, *Pm* and *Pv* were detected following the protocol described by
519 Phuong et al. (123), which targets the 18S rRNA gene. *Pf* samples that amplified at or before 36
520 cycles and showed a logarithmic amplification curve were interpreted as positive. The positive
521 controls for *Pf* were DNA from *Plasmodium*-infected DBS generated from *in vitro* culture at
522 various ranges of parasitemia placed on filter paper, from which 3 mm punches were placed in
523 PCR tubes with 70 µL Rapid Extraction Solution (Thermo Fisher Scientific) and rocked overnight
524 at 4°C and the DNA was purified using the same procedure as described for head+thorax.
525 Negative controls were DNA extracts from malaria-negative DBS. *Po*, *Pm* and *Pv* were detected
526 following the protocol described by Phuong et al. (123), which involved using species-specific
527 forward primers and probes targeting the 18S rRNA gene. *Po* was identified using a probe
528 labeled with VIC at the 5' end and a minor groove binding quencher at the 3' end. *Pv* was
529 detected using a probe labeled with TAMRA at the 5' end and a BHQ-2 quencher at the 3' end.
530 *Pm* was identified using a probe labeled with FAM at the 5' end and a minor groove binding
531 quencher at the 3' end. The same reverse primer was used for all species identification.
532 Nuclease-free water served as the negative control, while linearized, clean DNA from the
533 plasmid clones (MRA numbers 177–180; BEI Resources, NIH, NIAID) acted as both positive

534 controls. All head+thorax samples that showed logarithmic amplification at or before 36 cycles
535 were interpreted as positive. All PCR reactions were performed in a QuantStudio 3 real-time
536 PCR instrument (Thermo Fisher Scientific).

537

538 **Blood meal analysis**

539 A conventional PCR followed by a 1.5% electrophoresis gel was done to analyze the host blood
540 meal of mosquito abdomen samples, following the methods described by Kent et al. (124),
541 which amplifies a region of the cytochrome b mitochondrial gene and includes primers to identify
542 blood meals from dog, human, cow, pig, and goat host species. The electrophoresis gel ran at
543 90 volts for 45 minutes and was imaged on a BIO-RAD ChemiDoc MP Imaging System for
544 analysis.

545

546 **Statistical analysis**

547 Data was analyzed on GraphPad Prism or R (R-project.org). Chi-square tests and Fisher's
548 exact test were performed, depending on the number of variables. Chi-square test for trend
549 tests for linear trends between variables, while the Fisher's exact test tests for association
550 between variables, and both assess the chances of observing the trend/association in random
551 sampling (GraphPad Prism Version 9.3.1). A P value less than 0.05 was interpreted as
552 statistically significant.

553

554 **Data Availability**

555 All RIMDAMAL II data will be deposited in ClinEpiDB.org and be available for analysis and
556 download under the terms of set by the website.

557

558

559 **Figures**

560

561

562

563

564

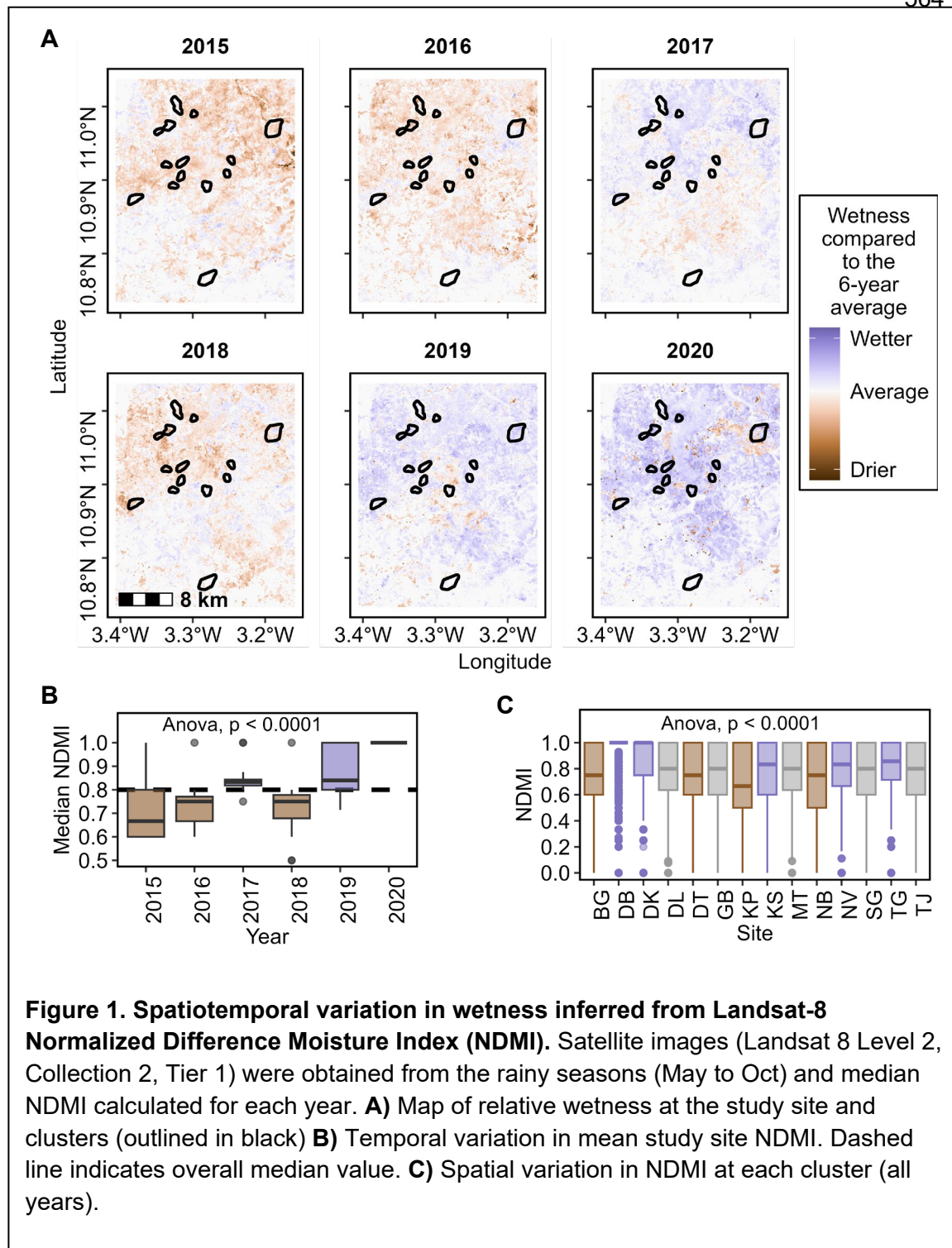
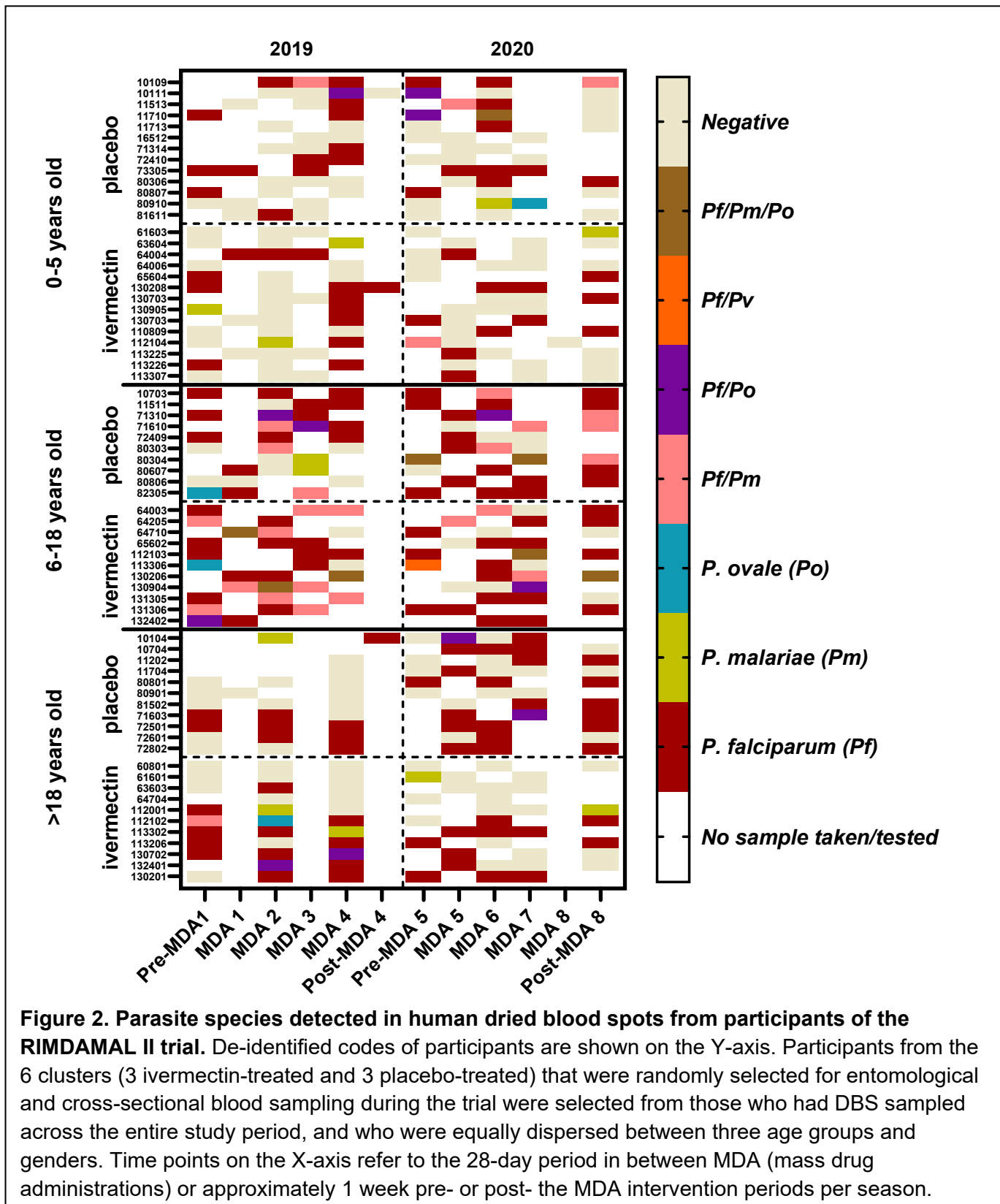


Figure 1. Spatiotemporal variation in wetness inferred from Landsat-8 Normalized Difference Moisture Index (NDMI). Satellite images (Landsat 8 Level 2, Collection 2, Tier 1) were obtained from the rainy seasons (May to Oct) and median NDMI calculated for each year. **A)** Map of relative wetness at the study site and clusters (outlined in black) **B)** Temporal variation in mean study site NDMI. Dashed line indicates overall median value. **C)** Spatial variation in NDMI at each cluster (all years).

598

599



601
602
603
604
605
606
607
608
609
610
611
612
613
614
615
616
617
618
619
620
621
622
623
624
625
626
627
628
629
630
631
632
633
634
635
636
637

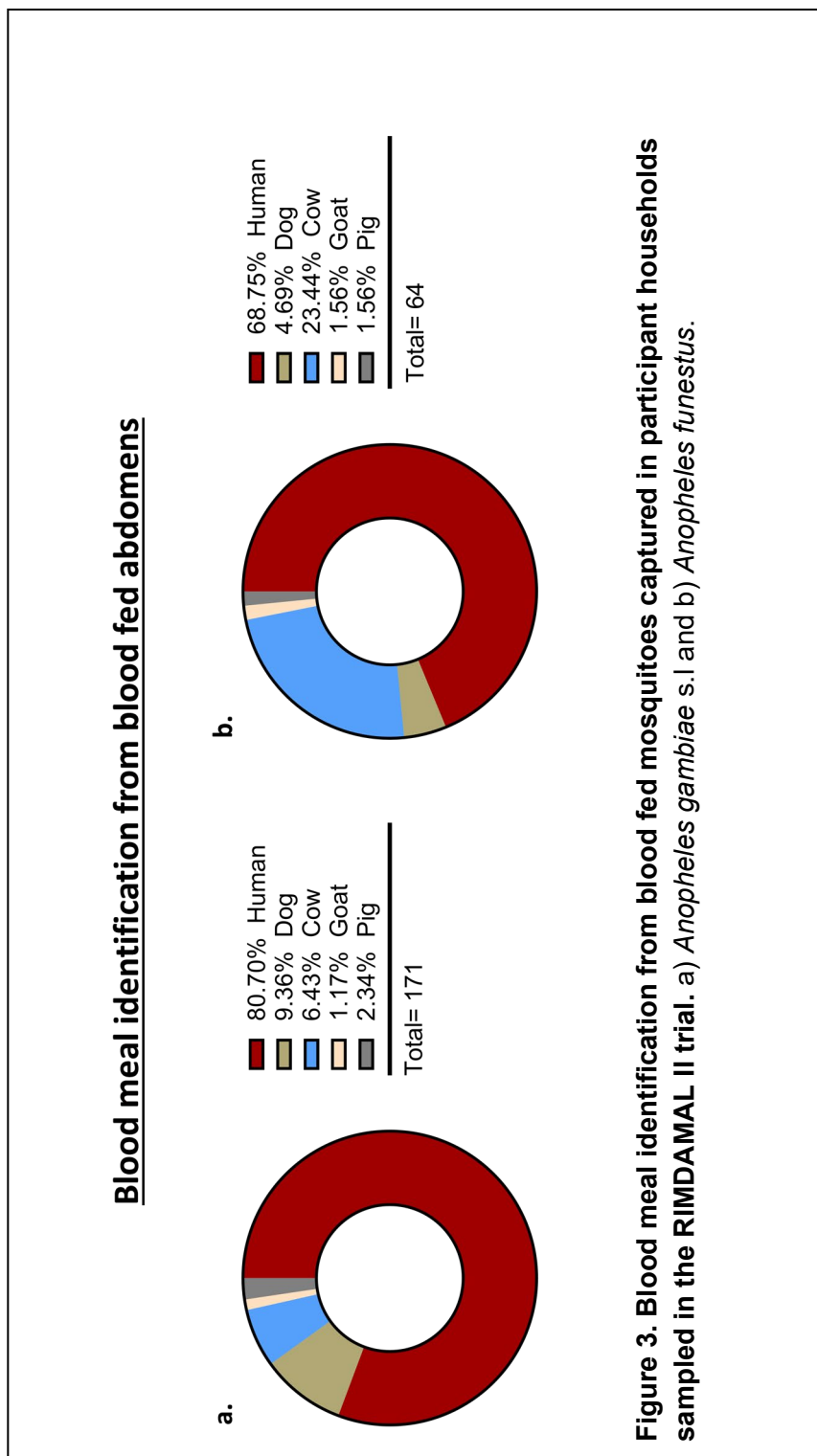


Figure 3. Blood meal identification from blood fed mosquitoes captured in participant households sampled in the RIMDAMAL II trial. a) *Anopheles gambiae* s.l and b) *Anopheles funestus*.

638
639
640
641
642
643
644
645
646
647
648
649
650
651
652
653
654
655
656
657
658
659
660
661
662
663
664
665
666
667
668
669
670
671
672
673
674

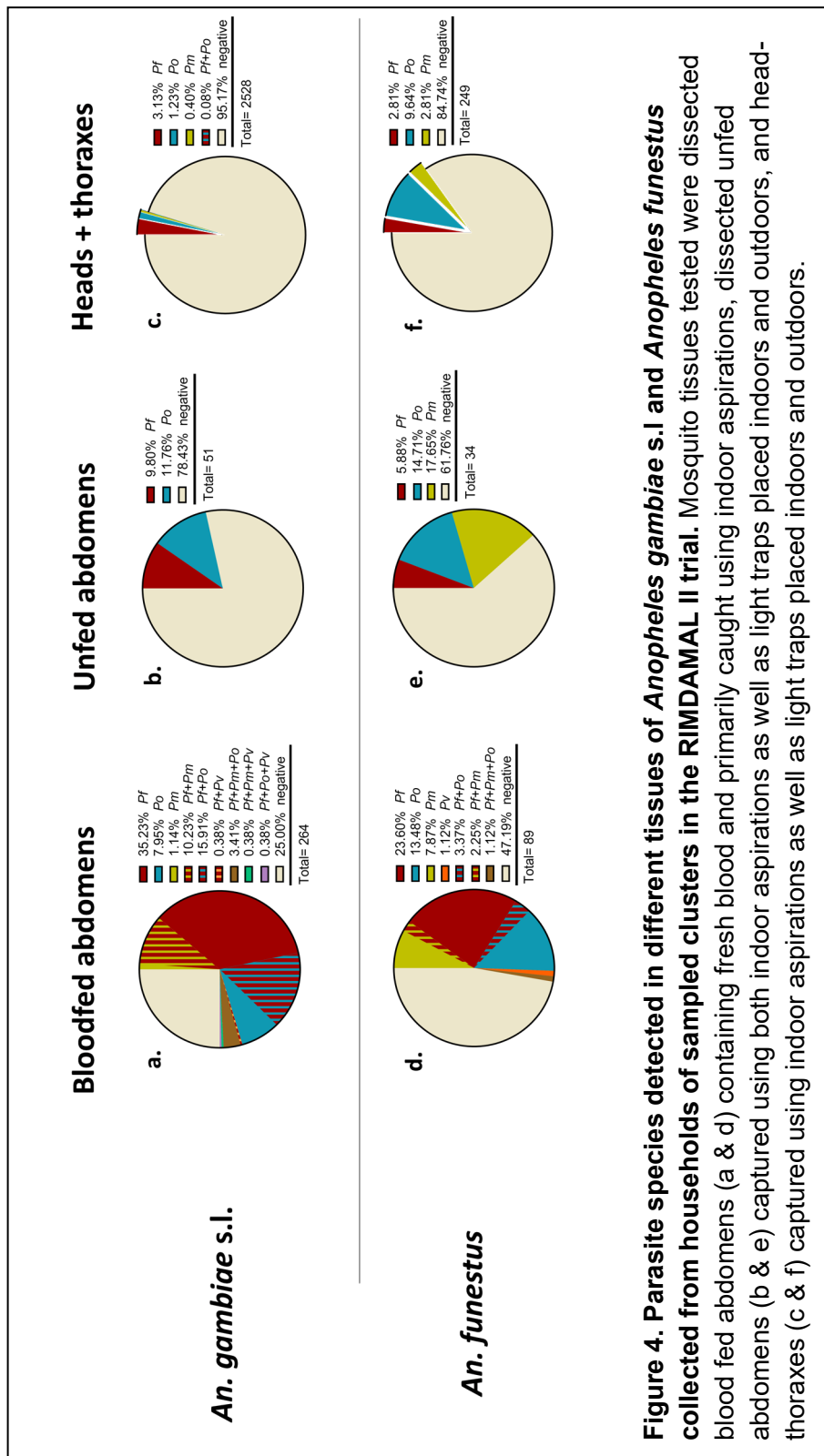


Figure 4. Parasite species detected in different tissues of *Anopheles gambiae s.l.* and *Anopheles funestus* collected from households of sampled clusters in the RIMDAMAL II trial. Mosquito tissues tested were dissected blood fed abdomens (a & d) containing fresh blood and primarily caught using indoor aspirations, dissected unfed abdomens (b & e) captured using both indoor aspirations as well as light traps placed indoors and outdoors, and head-thoraxes (c & f) captured using indoor aspirations as well as light traps placed indoors and outdoors.

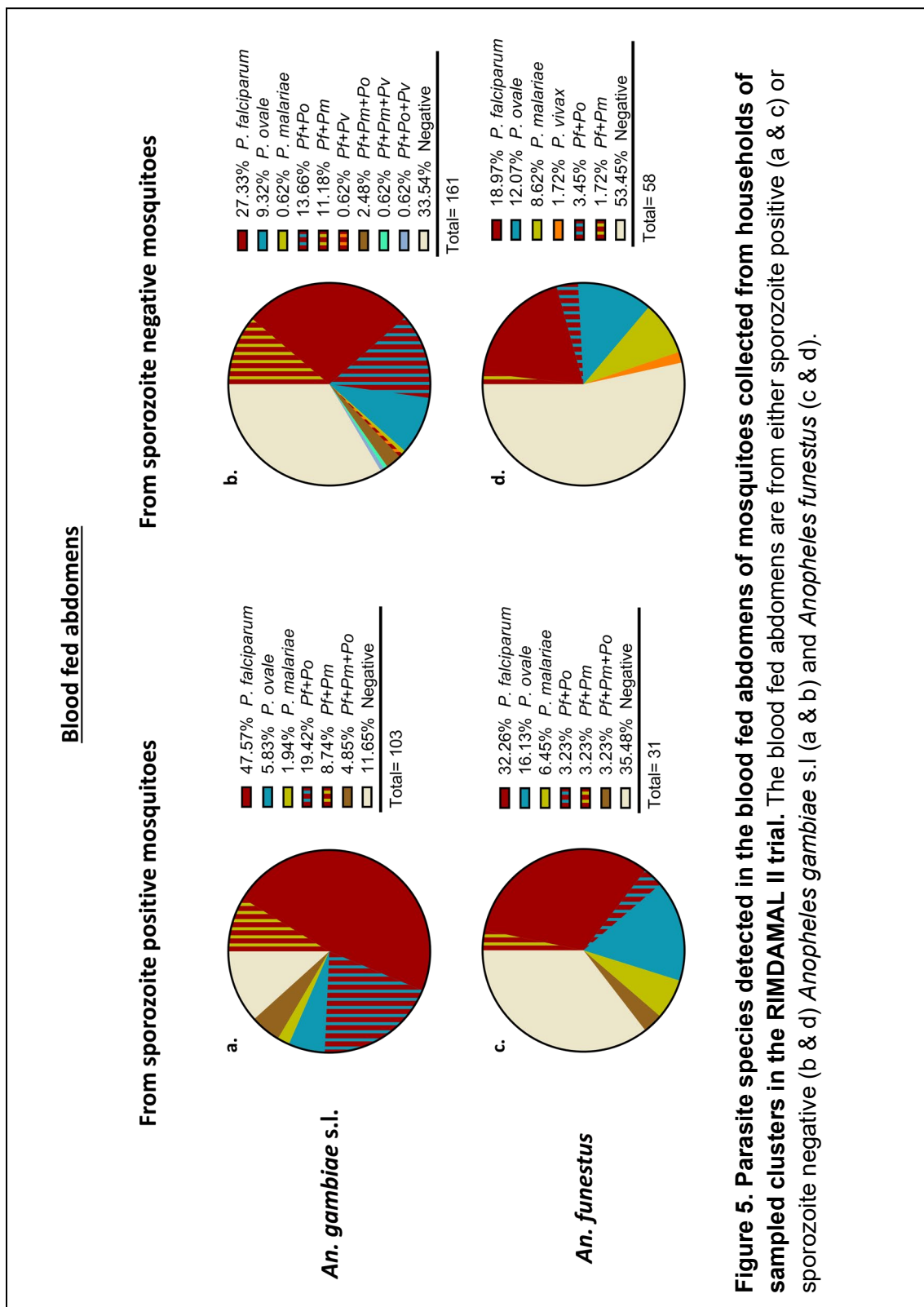


Figure 5. Parasite species detected in the blood fed abdomens of mosquitoes collected from households of sampled clusters in the RIMDAMAL II trial. The blood fed abdomens are from either sporozoite positive (a & c) or sporozoite negative (b & d) *Anopheles gambiae* s.l (a & b) and *Anopheles funestus* (c & d).

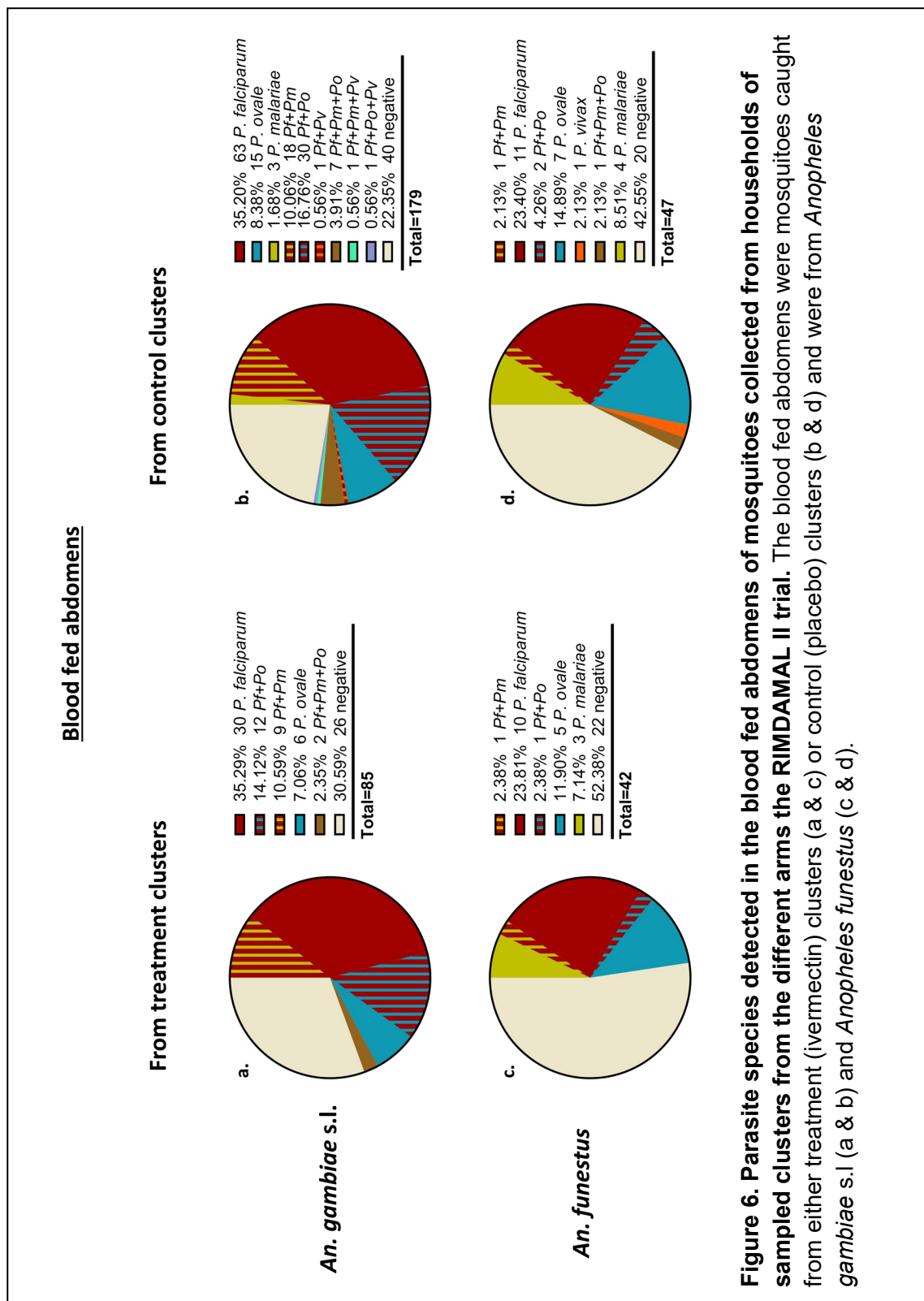


Figure 6. Parasite species detected in the blood fed abdomens of mosquitoes collected from households of sampled clusters from the different arms the RIMDAMAL II trial. The blood fed abdomens were mosquitoes caught from either treatment (ivermectin) clusters (a & c) or control (placebo) clusters (b & d) and were from *Anopheles gambiae* s.l (a & b) and *Anopheles funestus* (c & d).

749 References

- 750 1. World Health Programme. World Malaria Report 2023. Geneva: 2023.
- 751 2. Institut National de la Statistique et de la Démographie (INSD) PdAaD, Sanitaire (PADS)
752 PNdLclPPel. Enquête sur les indicateurs du paludisme au Burkina Faso. Rockville, Maryland,
753 USA: 2018.
- 754 3. Yaro JB, Tiono AB, Ouedraogo A, Lambert B, Ouedraogo ZA, Diarra A, Traore A,
755 Lankouande M, Soulama I, Sanou A, Worrall E, Agboraw E, Sagnon N, Ranson H, Churcher
756 TS, Lindsay SW, Wilson AL. Risk of Plasmodium falciparum infection in south-west Burkina
757 Faso: potential impact of expanding eligibility for seasonal malaria chemoprevention. *Sci Rep.*
758 2022;12(1):1402. doi: 10.1038/s41598-022-05056-7. PubMed PMID: 35082312; PMCID:
759 PMC8791962.
- 760 4. Sangare I, Ouattara CA, Soma DD, Soma D, Assogba BS, Namountougou M, Tougri G,
761 Savadogo LB. Spatial-temporal pattern of malaria in Burkina Faso from 2013 to 2020. *Parasite*
762 *Epidemiol Control.* 2022;18:e00261. doi: 10.1016/j.parepi.2022.e00261. PubMed PMID:
763 35859938; PMCID: PMC9289732.
- 764 5. Bationo C, Cissoko M, Katile A, Sylla B, Ouedraogo A, Ouedraogo JB, Tougri G,
765 Kompaore SCB, Moiroux N, Gaudart J. Malaria in Burkina Faso: A comprehensive analysis of
766 spatiotemporal distribution of incidence and environmental drivers, and implications for control
767 strategies. *PLoS One.* 2023;18(9):e0290233. doi: 10.1371/journal.pone.0290233. PubMed
768 PMID: 37703223; PMCID: PMC10499254.
- 769 6. US Presidents Malaria Initiative. U.S. President's Malaria Initiative Burkina Faso Malaria
770 Operational Plan FY 2024. U.S. President's Malaria Initiative 2023.
- 771 7. United Nations Development Programme. Human Development Report 2021-22:
772 Uncertain Times, Unsettled Lives: Shaping our Future in a Transforming World. New York:
773 2022.
- 774 8. Rouamba T, Nakanabo-Diallo S, Derra K, Rouamba E, Kazienga A, Inoue Y, Ouedraogo
775 EK, Waongo M, Dieng S, Guindo A, Ouedraogo B, Sallah KL, Barro S, Yaka P, Kirakoya-
776 Samadoulougou F, Tinto H, Gaudart J. Socioeconomic and environmental factors associated
777 with malaria hotspots in the Nanoro demographic surveillance area, Burkina Faso. *BMC Public*
778 *Health.* 2019;19(1):249. doi: 10.1186/s12889-019-6565-z. PubMed PMID: 30819132; PMCID:
779 PMC6396465.
- 780 9. Guglielmo F, Ranson H, Sagnon N, Jones C. The issue is not 'compliance': exploring
781 exposure to malaria vector bites through social dynamics in Burkina Faso. *Anthropol Med.*
782 2021;28(4):508-25. doi: 10.1080/13648470.2021.1884185. PubMed PMID: 33970705; PMCID:
783 PMC7613283.
- 784 10. Allan-Blitz LT, Goldfine C, Erickson TB. Environmental and health risks posed to children
785 by artisanal gold mining: A systematic review. *SAGE Open Med.* 2022;10:20503121221076934.
786 doi: 10.1177/20503121221076934. PubMed PMID: 35173966; PMCID: PMC8841918.
- 787 11. Boukaré B. The development impact of "gold rushes" in Mali and Burkina Faso: the
788 multifaceted effects of migration on artisanal gold mining sites. In: Fargues F, M. Rango, E.
789 Börngnas and I. Schöfberger, editor. *Migration in West and North Africa and across the*
790 *Mediterranean.* Geneva2020.
- 791 12. Mueller I, Schoepflin S, Smith TA, Benton KL, Bretscher MT, Lin E, Kiniboro B,
792 Zimmerman PA, Speed TP, Siba P, Felger I. Force of infection is key to understanding the
793 epidemiology of Plasmodium falciparum malaria in Papua New Guinean children. *Proc Natl*
794 *Acad Sci U S A.* 2012;109(25):10030-5. Epub 2012/06/06. doi: 10.1073/pnas.1200841109.
795 PubMed PMID: 22665809; PMCID: 3382533.
- 796 13. Eldh M, Hammar U, Arnot D, Beck HP, Garcia A, Liljander A, Mercereau-Puijalon O,
797 Migot-Nabias F, Mueller I, Ntoumi F, Ross A, Smith T, Sonden K, Vafa Homann M, Yman V,
798 Felger I, Farnert A. Multiplicity of Asymptomatic Plasmodium falciparum Infections and Risk of

- 799 Clinical Malaria: A Systematic Review and Pooled Analysis of Individual Participant Data. *J*
800 *Infect Dis.* 2020;221(5):775-85. doi: 10.1093/infdis/jiz510. PubMed PMID: 31585009; PMCID:
801 PMC7026891.
- 802 14. Goodwin J, Kajubi R, Wang K, Li F, Wade M, Orukan F, Huang L, Whalen M, Aweeka
803 FT, Mwebaza N, Parikh S. Persistent and multiclonal malaria parasite dynamics despite
804 extended artemether-lumefantrine treatment in children. *Nat Commun.* 2024;15(1):3817. doi:
805 10.1038/s41467-024-48210-7. PubMed PMID: 38714692; PMCID: PMC11076639.
- 806 15. Sondo P, Derra K, Rouamba T, Nakanabo Diallo S, Taconet P, Kazienga A, Ilboudo H,
807 Tahita MC, Valea I, Sorgho H, Lefevre T, Tinto H. Determinants of *Plasmodium falciparum*
808 multiplicity of infection and genetic diversity in Burkina Faso. *Parasit Vectors.* 2020;13(1):427.
809 doi: 10.1186/s13071-020-04302-z. PubMed PMID: 32819420; PMCID: PMC7441709.
- 810 16. Ehrlich HY, Some AF, Bazie T, Ebou CN, Dembele EL, Balma R, Goodwin J, Wade M,
811 Bei AK, Ouedraogo JB, Foy BD, Dabire RK, Parikh S. Tracking antimalarial drug resistance
812 using mosquito blood meals: a cross-sectional study. *Lancet Microbe.* 2023. doi:
813 10.1016/S2666-5247(23)00063-0. PubMed PMID: 37086737.
- 814 17. Mueller I, Zimmerman PA, Reeder JC. *Plasmodium malariae* and *Plasmodium ovale*--
815 the "bashful" malaria parasites. *Trends Parasitol.* 2007;23(6):278-83. doi:
816 10.1016/j.pt.2007.04.009. PubMed PMID: 17459775; PMCID: PMC3728836.
- 817 18. Roh ME, Oyet C, Orikiriza P, Wade M, Kiwanuka GN, Mwanga-Amumpaire J, Parikh S,
818 Boum Y, 2nd. Asymptomatic *Plasmodium* Infections in Children in Low Malaria Transmission
819 Setting, Southwestern Uganda(1). *Emerg Infect Dis.* 2016;22(8):1494-8. doi:
820 10.3201/eid2208.160619. PubMed PMID: 27434741; PMCID: PMC4982177.
- 821 19. Sendor R, Banek K, Kashamuka MM, Mvuama N, Bala JA, Nkalani M, Kihuma G, Atibu
822 J, Thwai KL, Svec WM, Goel V, Nseka T, Lin JT, Bailey JA, Emch M, Carrel M, Juliano JJ,
823 Tshefu A, Parr JB. Epidemiology of *Plasmodium malariae* and *Plasmodium ovale* spp. in
824 Kinshasa Province, Democratic Republic of Congo. *Nat Commun.* 2023;14(1):6618. doi:
825 10.1038/s41467-023-42190-w. PubMed PMID: 37857597; PMCID: PMC10587068
826 Laboratories, and consulting for Zymeron Corporation, all outside the scope of this study. The
827 remaining authors declare no competing interests.
- 828 20. Gneme A, Guelbeogo WM, Riehle MM, Tiono AB, Diarra A, Kabre GB, Sagnon N,
829 Vernick KD. *Plasmodium* species occurrence, temporal distribution and interaction in a child-
830 aged population in rural Burkina Faso. *Malar J.* 2013;12:67. Epub 2013/02/21. doi:
831 10.1186/1475-2875-12-67. PubMed PMID: 23421809; PMCID: 3583752.
- 832 21. Heinemann M, Phillips RO, Vinnemeier CD, Rolling CC, Tannich E, Rolling T. High
833 prevalence of asymptomatic malaria infections in adults, Ashanti Region, Ghana, 2018. *Malar J.*
834 2020;19(1):366. doi: 10.1186/s12936-020-03441-z. PubMed PMID: 33046056; PMCID:
835 PMC7552528.
- 836 22. Agonhossou R, Akoton R, Lagnika H, Djihinto OY, Sovegnon PM, Saizonou HD, Ntoumi
837 F, Wondji CS, Borrmann S, Adegnika AA, Djogbenou LS. *P. falciparum* msp1 and msp2 genetic
838 diversity in *P. falciparum* single and mixed infection with *P. malariae* among the asymptomatic
839 population in Southern Benin. *Parasitol Int.* 2022;89:102590. doi: 10.1016/j.parint.2022.102590.
840 PubMed PMID: 35472441.
- 841 23. Trape JF, Rogier C, Konate L, Diagne N, Bouganali H, Canque B, Legros F, Badji A,
842 Ndiaye G, Ndiaye P, et al. The Dielmo project: a longitudinal study of natural malaria infection
843 and the mechanisms of protective immunity in a community living in a holoendemic area of
844 Senegal. *Am J Trop Med Hyg.* 1994;51(2):123-37. doi: 10.4269/ajtmh.1994.51.123. PubMed
845 PMID: 8074247.
- 846 24. Faye FB, Konate L, Rogier C, Trape JF. *Plasmodium ovale* in a highly malaria endemic
847 area of Senegal. *Trans R Soc Trop Med Hyg.* 1998;92(5):522-5. doi: 10.1016/s0035-
848 9203(98)90900-2. PubMed PMID: 9861368.

- 849 25. Yerlikaya S, Campillo A, Gonzalez IJ. A Systematic Review: Performance of Rapid
850 Diagnostic Tests for the Detection of Plasmodium knowlesi, Plasmodium malariae, and
851 Plasmodium ovale Monoinfections in Human Blood. *J Infect Dis.* 2018;218(2):265-76. doi:
852 10.1093/infdis/jiy150. PubMed PMID: 29554284; PMCID: PMC6009649.
- 853 26. World Health Organization. Testing for G6PD deficiency for safe use of primaquine in
854 radical cure of *P. vivax* and *P. ovale* malaria 2016.
- 855 27. Diabate A, Dabire RK, Kengne P, Brengues C, Baldet T, Ouari A, Simard F, Lehmann T.
856 Mixed swarms of the molecular M and S forms of *Anopheles gambiae* (Diptera: Culicidae) in
857 sympatric area from Burkina Faso. *J Med Entomol.* 2006;43(3):480-3. doi: 10.1603/0022-
858 2585(2006)43[480:msothmm]2.0.co;2. PubMed PMID: 16739404.
- 859 28. Fournet F, Cussac M, Ouari A, Meyer PE, Toe HK, Gouagna LC, Dabire RK. Diversity in
860 anopheline larval habitats and adult composition during the dry and wet seasons in
861 Ouagadougou (Burkina Faso). *Malar J.* 2010;9:78. doi: 10.1186/1475-2875-9-78. PubMed
862 PMID: 20298619; PMCID: PMC2907872.
- 863 29. Wondji CS, Dabire RK, Tukur Z, Irving H, Djouaka R, Morgan JC. Identification and
864 distribution of a GABA receptor mutation conferring dieldrin resistance in the malaria vector
865 *Anopheles funestus* in Africa. *Insect Biochem Mol Biol.* 2011;41(7):484-91. doi:
866 10.1016/j.ibmb.2011.03.012. PubMed PMID: 21501685; PMCID: PMC3579012.
- 867 30. Gimonneau G, Pombi M, Choisy M, Morand S, Dabire RK, Simard F. Larval habitat
868 segregation between the molecular forms of the mosquito *Anopheles gambiae* in a rice field
869 area of Burkina Faso, West Africa. *Med Vet Entomol.* 2012;26(1):9-17. doi: 10.1111/j.1365-
870 2915.2011.00957.x. PubMed PMID: 21501199; PMCID: PMC3140611.
- 871 31. Namountougou M, Simard F, Baldet T, Diabate A, Ouedraogo JB, Martin T, Dabire RK.
872 Multiple insecticide resistance in *Anopheles gambiae* s.l. populations from Burkina Faso, West
873 Africa. *PLoS One.* 2012;7(11):e48412. Epub 2012/11/29. doi: 10.1371/journal.pone.0048412.
874 PubMed PMID: 23189131; PMCID: 3506617.
- 875 32. Dabire RK, Namountougou M, Sawadogo SP, Yaro LB, Toe HK, Ouari A, Gouagna LC,
876 Simard F, Chandre F, Baldet T, Bass C, Diabate A. Population dynamics of *Anopheles gambiae*
877 s.l. in Bobo-Dioulasso city: bionomics, infection rate and susceptibility to insecticides. *Parasit*
878 *Vectors.* 2012;5:127. Epub 2012/06/23. doi: 10.1186/1756-3305-5-127. PubMed PMID:
879 22721002; PMCID: 3424103.
- 880 33. Namountougou M, Diabate A, Etang J, Bass C, Sawadogo SP, Gnankinie O, Baldet T,
881 Martin T, Chandre F, Simard F, Dabire RK. First report of the L1014S kdr mutation in wild
882 populations of *Anopheles gambiae* M and S molecular forms in Burkina Faso (West Africa).
883 *Acta Trop.* 2013;125(2):123-7. Epub 2012/11/07. doi: 10.1016/j.actatropica.2012.10.012.
884 PubMed PMID: 23128044.
- 885 34. Niang A, Epopa PS, Sawadogo SP, Maiga H, Konate L, Faye O, Dabire RK, Tripet F,
886 Diabate A. Does extreme asymmetric dominance promote hybridization between *Anopheles*
887 *coluzzii* and *Anopheles gambiae* s.s. in seasonal malaria mosquito communities of West Africa?
888 *Parasit Vectors.* 2015;8:586. doi: 10.1186/s13071-015-1190-x. PubMed PMID: 26559354;
889 PMCID: PMC4642620.
- 890 35. Hidalgo K, Montazeau C, Siaussat D, Braman V, Tralalon M, Simard F, Renault D,
891 Dabire RK, Mouline K. Distinct physiological, biochemical and morphometric adjustments in the
892 malaria vectors *Anopheles gambiae* and *A. coluzzii* as means to survive dry season conditions
893 in Burkina Faso. *The Journal of experimental biology.* 2018;221(Pt 6). doi: 10.1242/jeb.174433.
894 PubMed PMID: 29378815.
- 895 36. Goldenhard M, Rono EK, Diarra A, Boissiere A, Bascunan P, Carrillo-Bustamante P,
896 Camara D, Kruger H, Mariko M, Mariko R, Mireji P, Nsango SE, Pompon J, Reis Y, Rono MK,
897 Seda PB, Thailayil J, Traore A, Yapto CV, Awono-Ambene P, Dabire RK, Diabate A, Masiga D,
898 Catteruccia F, Morlais I, Diallo M, Sangare D, Levashina EA. Mosquito microevolution drives

- 899 Plasmodium falciparum dynamics. *Nat Microbiol.* 2019;4(6):941-7. doi: 10.1038/s41564-019-
900 0414-9. PubMed PMID: 30911126; PMCID: PMC7613322.
- 901 37. Namountougou M, Soma DD, Kientega M, Balbone M, Kabore DPA, Drabo SF,
902 Coulibaly AY, Fournet F, Baldet T, Diabate A, Dabire RK, Gnankine O. Insecticide resistance
903 mechanisms in Anopheles gambiae complex populations from Burkina Faso, West Africa. *Acta*
904 *Trop.* 2019;197:105054. doi: 10.1016/j.actatropica.2019.105054. PubMed PMID: 31175862.
- 905 38. Epopa PS, Collins CM, North A, Millogo AA, Benedict MQ, Tripet F, Diabate A. Seasonal
906 malaria vector and transmission dynamics in western Burkina Faso. *Malar J.* 2019;18(1):113.
907 doi: 10.1186/s12936-019-2747-5. PubMed PMID: 30940141; PMCID: PMC6444393.
- 908 39. Soma DD, Zogo BM, Some A, Tchiekoi BN, Hien DFS, Pooda HS, Coulibaly S,
909 Gnambani JE, Ouari A, Mouline K, Dahounto A, Ouedraogo GA, Fournet F, Koffi AA, Pennetier
910 C, Moiroux N, Dabire RK. Anopheles bionomics, insecticide resistance and malaria transmission
911 in southwest Burkina Faso: A pre-intervention study. *PLoS One.* 2020;15(8):e0236920. doi:
912 10.1371/journal.pone.0236920. PubMed PMID: 32745085; PMCID: PMC7398507.
- 913 40. Dabire KR, Baldet T, Diabate A, Dia I, Costantini C, Cohuet A, Guiguemde TR,
914 Fontenille D. Anopheles funestus (Diptera: Culicidae) in a humid savannah area of western
915 Burkina Faso: bionomics, insecticide resistance status, and role in malaria transmission. *J Med*
916 *Entomol.* 2007;44(6):990-7. doi: 10.1603/0022-2585(2007)44[990:afdcia]2.0.co;2. PubMed
917 PMID: 18047197.
- 918 41. Soma DD, Poda SB, Hien AS, Namountougou M, Sangare I, Sawadogo JME, Fournet F,
919 Ouedraogo GA, Diabate A, Moiroux N, Dabire RK. Malaria vectors diversity, insecticide
920 resistance and transmission during the rainy season in peri-urban villages of south-western
921 Burkina Faso. *Malar J.* 2021;20(1):63. doi: 10.1186/s12936-020-03554-5. PubMed PMID:
922 33494779; PMCID: PMC7831184.
- 923 42. Taconet P, Porciani A, Soma DD, Mouline K, Simard F, Koffi AA, Pennetier C, Dabire
924 RK, Mangeas M, Moiroux N. Data-driven and interpretable machine-learning modeling to
925 explore the fine-scale environmental determinants of malaria vectors biting rates in rural Burkina
926 Faso. *Parasit Vectors.* 2021;14(1):345. doi: 10.1186/s13071-021-04851-x. PubMed PMID:
927 34187546; PMCID: PMC8243492.
- 928 43. Epopa PS, Millogo AA, Collins CM, North AR, Benedict MQ, Tripet F, O'Loughlin S,
929 Dabire RK, Ouedraogo GA, Diabate A. Anopheles gambiae (s.l.) is found where few are looking:
930 assessing mosquito diversity and density outside inhabited areas using diverse sampling
931 methods. *Parasit Vectors.* 2020;13(1):516. doi: 10.1186/s13071-020-04403-9. PubMed PMID:
932 33059722; PMCID: PMC7558606.
- 933 44. Maweje HD, Kilama M, Kigozi SP, Musiime AK, Kanya M, Lines J, Lindsey SW, Smith
934 D, Dorsey G, Donnelly MJ, Staedke SG. Impact of seasonality and malaria control interventions
935 on Anopheles density and species composition from three areas of Uganda with differing
936 malaria endemicity. *Malaria J.* 2021;20(1). doi: 10.1186/s12936-021-03675-5.
- 937 45. O'Meara WP, Simmons R, Bullins P, Freedman B, Abel L, Mangeni J, Taylor SM, Obala
938 AA. Mosquito Exposure and Malaria Morbidity: A Microlevel Analysis of Household Mosquito
939 Populations and Malaria in a Population-Based Longitudinal Cohort in Western Kenya. *J Infect*
940 *Dis.* 2020;221(7):1176-84. doi: 10.1093/infdis/jiz561. PubMed PMID: 31665350; PMCID:
941 PMC7325711.
- 942 46. Morlais I, Nsango SE, Toussile W, Abate L, Annan Z, Tchioffo MT, Cohuet A, Awono-
943 Ambene PH, Fontenille D, Rousset F, Berry A. Plasmodium falciparum mating patterns and
944 mosquito infectivity of natural isolates of gametocytes. *PLoS One.* 2015;10(4):e0123777. doi:
945 10.1371/journal.pone.0123777. PubMed PMID: 25875840; PMCID: PMC4397039.
- 946 47. Das S, Muleba M, Stevenson JC, Pringle JC, Norris DE. Beyond the entomological
947 inoculation rate: characterizing multiple blood feeding behavior and Plasmodium falciparum
948 multiplicity of infection in Anopheles mosquitoes in northern Zambia. *Parasit Vectors.*

- 949 2017;10(1):45. doi: 10.1186/s13071-017-1993-z. PubMed PMID: 28122597; PMCID:
950 PMC5267472.
- 951 48. Kanatani S, Stiffler D, Bousema T, Yenokyan G, Sinnis P. Revisiting the Plasmodium
952 sporozoite inoculum and elucidating the efficiency with which malaria parasites progress
953 through the mosquito. *Nat Commun.* 2024;15(1):748. doi: 10.1038/s41467-024-44962-4.
954 PubMed PMID: 38272943; PMCID: PMC10811227.
- 955 49. Andolina C, Graumans W, Guelbeogo M, van Gemert GJ, Ramijth J, Harouna S,
956 Soumanaba Z, Stoter R, Vegte-Bolmer M, Pangos M, Sinnis P, Collins K, Staedke SG, Tiono
957 AB, Drakeley C, Lanke K, Bousema T. Quantification of sporozoite expelling by Anopheles
958 mosquitoes infected with laboratory and naturally circulating *P. falciparum* gametocytes. *Elife.*
959 2024;12. doi: 10.7554/eLife.90989. PubMed PMID: 38517746; PMCID: PMC10959522.
- 960 50. Pampiglioni S, Majori G, Petrangeli G, Romi R. Avermectins, MK-933 and MK-936, for
961 mosquito control. *Trans R Soc Trop Med Hyg.* 1985;79:797-9.
- 962 51. Crump A, Omura S. Ivermectin, 'wonder drug' from Japan: the human use perspective.
963 *Proceedings of the Japan Academy Series B, Physical and biological sciences.* 2011;87(2):13-
964 28. Epub 2011/02/16. PubMed PMID: 21321478; PMCID: 3043740.
- 965 52. Bockarie MJ, Hii JL, Alexander ND, Bockarie F, Dagoro H, Kazura JW, Alpers MP. Mass
966 treatment with ivermectin for filariasis control in Papua New Guinea: impact on mosquito
967 survival. *Med Vet Entomol.* 1999;13(2):120-3. PubMed PMID: 10484157.
- 968 53. Chaccour C, Lines J, Whitty CJ. Effect of ivermectin on *Anopheles gambiae* mosquitoes
969 fed on humans: the potential of oral insecticides in malaria control. *J Infect Dis.*
970 2010;202(1):113-6. PubMed PMID: 20482251.
- 971 54. Kobylinski KC, Sylla M, Chapman PL, Sarr MD, Foy BD. Ivermectin mass drug
972 administration to humans disrupts malaria parasite transmission in Senegalese villages. *Am J*
973 *Trop Med Hyg.* 2011;85(1):3-5. Epub 2011/07/08. doi: 10.4269/ajtmh.2011.11-0160. PubMed
974 PMID: 21734116; PMCID: 3122335.
- 975 55. Smit MR, Ochomo E, Aljayoussi G, Kwambai T, Abong'o B, Bayoh N, Gimnig J,
976 Samuels A, Desai M, Phillips-Howard PA, Kariuki S, Wang D, Ward S, Ter Kuile FO. Efficacy
977 and Safety of High-Dose Ivermectin for Reducing Malaria Transmission (IVERMAL): Protocol for
978 a Double-Blind, Randomized, Placebo-Controlled, Dose-Finding Trial in Western Kenya. *JMIR*
979 *Res Protoc.* 2016;5(4):e213. doi: 10.2196/resprot.6617. PubMed PMID: 27856406; PMCID:
980 PMC5133431.
- 981 56. The Ivermectin Roadmappers, Billingsley P, Binka F, Chaccour C, Foy B, Gold S,
982 Gonzalez-Silva M, Jacobson J, Jagoe G, Jones C, Kachur P, Kobylinski K, Last A, Lavery JV,
983 Mabey D, Mboera D, Mbogo C, Mendez-Lopez A, Rabinovich NR, Rees S, Richards F, Rist C,
984 Rockwood J, Ruiz-Castillo P, Sattabongkot J, Saute F, Slater H, Steer A, Xia K, Zullinger R. A
985 Roadmap for the Development of Ivermectin as a Complementary Malaria Vector Control Tool.
986 *Am J Trop Med Hyg.* 2020;102(2s):3-24. doi: 10.4269/ajtmh.19-0620. PubMed PMID:
987 31971144; PMCID: PMC7008306.
- 988 57. Kositz C, Bradley J, Hutchins H, Last A, D'Alessandro U, Marks M. Broadening the
989 range of use cases for ivermectin - a review of the evidence. *Trans R Soc Trop Med Hyg.*
990 2022;116(3):201-12. doi: 10.1093/trstmh/trab114. PubMed PMID: 34323283; PMCID:
991 PMC8890779.
- 992 58. Foy BD, Alout H, Seaman JA, Rao S, Magalhaes T, Wade M, Parikh S, Soma DD,
993 Sagna AB, Fournet F, Slater HC, Bougma R, Drabo F, Diabate A, Couliadiy AGV, Rouamba N,
994 Dabire RK. Efficacy and risk of harms of repeat ivermectin mass drug administrations for control
995 of malaria (RIMDAMAL): a cluster-randomised trial. *Lancet.* 2019. doi: 10.1016/S0140-
996 6736(18)32321-3. PubMed PMID: 30878222.
- 997 59. Foy BD, Some A, Magalhaes T, Gray L, Rao S, Sougue E, Jackson CL, Kittelson J,
998 Slater HC, Bousema T, Da O, Couliadiy AGV, Colt M, Wade M, Richards K, Some AF, Dabire
999 RK, Parikh S. Repeat Ivermectin Mass Drug Administrations for Malaria Control II: Protocol for a

- 1000 Double-blind, Cluster-Randomized, Placebo-Controlled Trial for the Integrated Control of
1001 Malaria. *JMIR Res Protoc.* 2023;12:e41197. doi: 10.2196/41197. PubMed PMID: 36939832;
1002 PMCID: PMC10132043.
- 1003 60. Dabira ED, Soumare HM, Lindsay SW, Conteh B, Ceesay F, Bradley J, Kositz C,
1004 Broekhuizen H, Kandeh B, Fehr AE, Nieto-Sanchez C, Ribera JM, Peeters Grietens K, Smit
1005 MR, Drakeley C, Bousema T, Achan J, D'Alessandro U. Mass Drug Administration With High-
1006 Dose Ivermectin and Dihydroartemisinin-Piperaquine for Malaria Elimination in an Area of Low
1007 Transmission With High Coverage of Malaria Control Interventions: Protocol for the MASSIV
1008 Cluster Randomized Clinical Trial. *JMIR Res Protoc.* 2020;9(11):e20904. doi: 10.2196/20904.
1009 PubMed PMID: 33211022; PMCID: PMC7714640.
- 1010 61. Hutchins H, Bradley J, Pretorius E, Teixeira da Silva E, Vasileva H, Jones RT, Ndiath
1011 MO, Dit Massire Soumare H, Mabey D, Nante EJ, Martins C, Logan JG, Slater H, Drakeley C,
1012 D'Alessandro U, Rodrigues A, Last AR. Protocol for a cluster randomised placebo-controlled
1013 trial of adjunctive ivermectin mass drug administration for malaria control on the Bijagos
1014 Archipelago of Guinea-Bissau: the MATAMAL trial. *BMJ Open.* 2023;13(7):e072347. doi:
1015 10.1136/bmjopen-2023-072347. PubMed PMID: 37419638; PMCID: PMC10335573.
- 1016 62. Chaccour C, Casellas A, Hammann F, Ruiz-Castillo P, Nicolas P, Montana J, Mael M,
1017 Selvaraj P, Duthaler U, Mrema S, Kakolwa M, Lyimo I, Okumu F, Marathe A, Schurch R,
1018 Elobolobo E, Sacoar C, Saute F, Xia K, Jones C, Rist C, Maia M, Rabinovich NR. BOHEMIA:
1019 Broad One Health Endectocide-based Malaria Intervention in Africa—a phase III cluster-
1020 randomized, open-label, clinical trial to study the safety and efficacy of ivermectin mass drug
1021 administration to reduce malaria transmission in two African settings. *Trials.* 2023;24(1):128.
1022 doi: 10.1186/s13063-023-07098-2. PubMed PMID: 36810194; PMCID: PMC9942013.
- 1023 63. World Health Organization. World Malaria Report 2023.
- 1024 64. Taylor SM, Messina JP, Hand CC, Juliano JJ, Muwonga J, Tshetu AK, Atua B, Emch M,
1025 Meshnick SR. Molecular malaria epidemiology: mapping and burden estimates for the
1026 Democratic Republic of the Congo, 2007. *PLoS One.* 2011;6(1):e16420. doi:
1027 10.1371/journal.pone.0016420. PubMed PMID: 21305011; PMCID: PMC3031549.
- 1028 65. Woldearegai TG, Lalremruata A, Nguyen TT, Gmeiner M, Veletzky L, Tazemda-Kuitsouc
1029 GB, Matsiegui PB, Mordmuller B, Held J. Characterization of Plasmodium infections among
1030 inhabitants of rural areas in Gabon. *Sci Rep.* 2019;9(1):9784. doi: 10.1038/s41598-019-46194-
1031 9. PubMed PMID: 31278305; PMCID: PMC6611864.
- 1032 66. Abdulraheem MA, Ernest M, Ugwuanyi I, Abkallo HM, Nishikawa S, Adeleke M,
1033 Orimadegun AE, Culleton R. High prevalence of Plasmodium malariae and Plasmodium ovale
1034 in co-infections with Plasmodium falciparum in asymptomatic malaria parasite carriers in
1035 southwestern Nigeria. *Int J Parasitol.* 2022;52(1):23-33. doi: 10.1016/j.ijpara.2021.06.003.
1036 PubMed PMID: 34390743.
- 1037 67. Amoah LE, Asare KK, Dickson D, Anang SF, Busayo A, Bredu D, Asumah G, Peprah N,
1038 Asamoah A, Abuaku B, Malm KL. Nationwide molecular surveillance of three Plasmodium
1039 species harboured by symptomatic malaria patients living in Ghana. *Parasit Vectors.*
1040 2022;15(1):40. doi: 10.1186/s13071-022-05153-6. PubMed PMID: 35090545; PMCID:
1041 PMC8796507.
- 1042 68. Amoah LE, Donu D, Abuaku B, Ahorlu C, Arhinful D, Afari E, Malm K, Koram KA.
1043 Probing the composition of Plasmodium species contained in malaria infections in the Eastern
1044 region of Ghana. *BMC Public Health.* 2019;19(1):1617. doi: 10.1186/s12889-019-7989-1.
1045 PubMed PMID: 31791319; PMCID: PMC6889690.
- 1046 69. Nguiffo-Nguete D, Nongley Nkemngo F, Ndo C, Agbor JP, Boussougou-Sambe ST,
1047 Salako Djogbenou L, Ntoumi F, Adegnika AA, Borrmann S, Wondji CS. Plasmodium malariae
1048 contributes to high levels of malaria transmission in a forest-savannah transition area in
1049 Cameroon. *Parasit Vectors.* 2023;16(1):31. doi: 10.1186/s13071-022-05635-7. PubMed PMID:
1050 36698132; PMCID: PMC9875470.

- 1051 70. Oriero EC, Olukosi AY, Oduwole OA, Djimde A, D'Alessandro U, Meremikwu MM,
1052 Amambua-Ngwa A. Seroprevalence and Parasite Rates of Plasmodium malariae in a High
1053 Malaria Transmission Setting of Southern Nigeria. *Am J Trop Med Hyg.* 2020;103(6):2208-16.
1054 doi: 10.4269/ajtmh.20-0593. PubMed PMID: 33124531; PMCID: PMC7695047.
- 1055 71. Quaye IK, Aleksenko L, Oeuvray C, Yewhalaw D, Duah N, Gyan B, Haiyambo DH,
1056 Dongho GBD, Torgby RA, Amoah L, Hamid MA, Worku S, Bahiti AA, Pasquale HA, Bitshi M,
1057 Troare I, Diarra A, Njunju E, Cisse M, Soulama I, Savadogo RJ, Issifou S, Niangaly A, Demebele
1058 L, Greco B. The Pan African Vivax and Ovale Network (PAVON): Refocusing on Plasmodium
1059 vivax, ovale and asymptomatic malaria in sub-Saharan Africa. *Parasitol Int.* 2021;84:102415.
1060 doi: 10.1016/j.parint.2021.102415. PubMed PMID: 34216801.
- 1061 72. Sendor R, Mitchell CL, Chacky F, Mohamed A, Mhamilawa LE, Molteni F, Nyinondi S,
1062 Kabula B, Mkali H, Reaves EJ, Serbantez N, Kitojo C, Makene T, Kyaw T, Muller M, Mwanza A,
1063 Eckert EL, Parr JB, Lin JT, Juliano JJ, Ngasala B. Similar Prevalence of Plasmodium falciparum
1064 and Non-P. falciparum Malaria Infections among Schoolchildren, Tanzania(1). *Emerg Infect Dis.*
1065 2023;29(6):1143-53. doi: 10.3201/eid2906.221016. PubMed PMID: 37209670; PMCID:
1066 PMC10202886.
- 1067 73. Hawadak J, Dongang Nana RR, Singh V. Global trend of Plasmodium malariae and
1068 Plasmodium ovale spp. malaria infections in the last two decades (2000-2020): a systematic
1069 review and meta-analysis. *Parasit Vectors.* 2021;14(1):297. doi: 10.1186/s13071-021-04797-0.
1070 PubMed PMID: 34082791; PMCID: PMC8173816.
- 1071 74. Sagna AB, Zela L, Ouedraogo COW, Pooda SH, Porciani A, Furnival-Adams J, Lado P,
1072 Some AF, Pennetier C, Chaccour CJ, Dabire RK, Mouline K. Ivermectin as a novel malaria
1073 control tool: Getting ahead of the resistance curse. *Acta Trop.* 2023;245:106973. doi:
1074 10.1016/j.actatropica.2023.106973. PubMed PMID: 37352998.
- 1075 75. Taconet P, Zogo B, Soma DD, Ahoua Alou LP, Mouline K, Dabire RK, Amanan Koffi A,
1076 Pennetier C, Moiroux N. Anopheles sampling collections in the health districts of Korhogo (Cote
1077 d'Ivoire) and Diebougou (Burkina Faso) between 2016 and 2018. *GigaByte.*
1078 2023;2023:gigabyte83. doi: 10.46471/gigabyte.83. PubMed PMID: 37408730; PMCID:
1079 PMC10318348.
- 1080 76. McMahan A, Franca CMB, Wimberly MC. Comparing Satellite and Ground-Based
1081 Measurements of Environmental Suitability for Vector Mosquitoes in an Urban Landscape. *J*
1082 *Med Entomol.* 2022;59(6):1936-46. doi: 10.1093/jme/tjac145. PubMed PMID: 36189969;
1083 PMCID: PMC9667728.
- 1084 77. Snounou G, Pinheiro L, Goncalves A, Fonseca L, Dias F, Brown KN, do Rosario VE.
1085 The importance of sensitive detection of malaria parasites in the human and insect hosts in
1086 epidemiological studies, as shown by the analysis of field samples from Guinea Bissau. *Trans R*
1087 *Soc Trop Med Hyg.* 1993;87(6):649-53. doi: 10.1016/0035-9203(93)90274-t. PubMed PMID:
1088 8296364.
- 1089 78. Nsobya SL, Parikh S, Kironde F, Lubega G, Kanya MR, Rosenthal PJ, Dorsey G.
1090 Molecular evaluation of the natural history of asymptomatic parasitemia in Ugandan children. *J*
1091 *Infect Dis.* 2004;189(12):2220-6. doi: 10.1086/421281. PubMed PMID: 15181569.
- 1092 79. Murphy SC, Shott JP, Parikh S, Etter P, Prescott WR, Stewart VA. Malaria diagnostics in
1093 clinical trials. *Am J Trop Med Hyg.* 2013;89(5):824-39. doi: 10.4269/ajtmh.12-0675. PubMed
1094 PMID: 24062484; PMCID: PMC3820323.
- 1095 80. Beadle C, Long GW, Weiss WR, McElroy PD, Maret SM, Oloo AJ, Hoffman SL.
1096 Diagnosis of malaria by detection of Plasmodium falciparum HRP-2 antigen with a rapid dipstick
1097 antigen-capture assay. *Lancet.* 1994;343(8897):564-8. doi: 10.1016/s0140-6736(94)91520-2.
1098 PubMed PMID: 7906328.
- 1099 81. Poti KE, Sullivan DJ, Dondorp AM, Woodrow CJ. HRP2: Transforming Malaria
1100 Diagnosis, but with Caveats. *Trends Parasitol.* 2020;36(2):112-26. doi:
1101 10.1016/j.pt.2019.12.004. PubMed PMID: 31848119.

- 1102 82. WHO. World Malaria Report 2023. Geneva: World Health Organization, 2023.
- 1103 83. Singh B. Molecular methods for diagnosis and epidemiological studies of parasitic
1104 infections. *Int J Parasitol.* 1997;27(10):1135-45. doi: 10.1016/s0020-7519(97)00111-2. PubMed
1105 PMID: 9394184.
- 1106 84. Abba K, Deeks JJ, Olliaro P, Naing CM, Jackson SM, Takwoingi Y, Donegan S, Garner
1107 P. Rapid diagnostic tests for diagnosing uncomplicated *P. falciparum* malaria in endemic
1108 countries. *The Cochrane database of systematic reviews.* 2011;2011(7):CD008122. doi:
1109 10.1002/14651858.CD008122.pub2. PubMed PMID: 21735422; PMCID: PMC6532563.
- 1110 85. Maltha J, Gillet P, Jacobs J. Malaria rapid diagnostic tests in endemic settings. *Clin
1111 Microbiol Infect.* 2013;19(5):399-407. doi: 10.1111/1469-0691.12151. PubMed PMID:
1112 23438048.
- 1113 86. Jimenez A, Rees-Channer RR, Perera R, Gamboa D, Chiodini PL, Gonzalez IJ, Mayor
1114 A, Ding XC. Analytical sensitivity of current best-in-class malaria rapid diagnostic tests. *Malar J.*
1115 2017;16(1):128. doi: 10.1186/s12936-017-1780-5. PubMed PMID: 28340585; PMCID:
1116 PMC5366122.
- 1117 87. Farcas GA, Zhong KJ, Lovegrove FE, Graham CM, Kain KC. Evaluation of the Binax
1118 NOW ICT test versus polymerase chain reaction and microscopy for the detection of malaria in
1119 returned travelers. *Am J Trop Med Hyg.* 2003;69(6):589-92. PubMed PMID: 14740873.
- 1120 88. Ratsimbaoa A, Randriamanantena A, Raherinjafy R, Rasoarilalao N, Menard D. Which
1121 malaria rapid test for Madagascar? Field and laboratory evaluation of three tests and expert
1122 microscopy of samples from suspected malaria patients in Madagascar. *Am J Trop Med Hyg.*
1123 2007;76(3):481-5. PubMed PMID: 17360871.
- 1124 89. Khairnar K, Martin D, Lau R, Ralevski F, Pillai DR. Multiplex real-time quantitative PCR,
1125 microscopy and rapid diagnostic immuno-chromatographic tests for the detection of
1126 *Plasmodium* spp: performance, limit of detection analysis and quality assurance. *Malar J.*
1127 2009;8:284. doi: 10.1186/1475-2875-8-284. PubMed PMID: 20003199; PMCID: PMC2796674.
- 1128 90. Sokhna C, Cisse B, Ba el H, Milligan P, Hallett R, Sutherland C, Gaye O, Boulanger D,
1129 Simondon K, Simondon F, Targett G, Lines J, Greenwood B, Trape JF. A trial of the efficacy,
1130 safety and impact on drug resistance of four drug regimens for seasonal intermittent preventive
1131 treatment for malaria in Senegalese children. *PLoS One.* 2008;3(1):e1471. doi:
1132 10.1371/journal.pone.0001471. PubMed PMID: 18213379; PMCID: PMC2198946.
- 1133 91. Dicko A, Diallo AI, Tembine I, Dicko Y, Dara N, Sidibe Y, Santara G, Diawara H, Conare
1134 T, Djimde A, Chandramohan D, Cousens S, Milligan PJ, Diallo DA, Doumbo OK, Greenwood B.
1135 Intermittent preventive treatment of malaria provides substantial protection against malaria in
1136 children already protected by an insecticide-treated bednet in Mali: a randomised, double-blind,
1137 placebo-controlled trial. *PLoS Med.* 2011;8(2):e1000407. doi: 10.1371/journal.pmed.1000407.
1138 PubMed PMID: 21304923; PMCID: PMC3032550.
- 1139 92. Tagbor H, Antwi GD, Acheampong PR, Bart Plange C, Chandramohan D, Cairns M.
1140 Seasonal malaria chemoprevention in an area of extended seasonal transmission in Ashanti,
1141 Ghana: an individually randomised clinical trial. *Trop Med Int Health.* 2016;21(2):224-35. doi:
1142 10.1111/tmi.12642. PubMed PMID: 26578353; PMCID: PMC4982104.
- 1143 93. Cisse B, Ba EH, Sokhna C, JL ND, Gomis JF, Dial Y, Pitt C, M ND, Cairns M, Faye E, M
1144 ND, Lo A, Tine R, Faye S, Faye B, Sy O, Konate L, Kouevijdin E, Flach C, Faye O, Trape JF,
1145 Sutherland C, Fall FB, Thior PM, Faye OK, Greenwood B, Gaye O, Milligan P. Effectiveness of
1146 Seasonal Malaria Chemoprevention in Children under Ten Years of Age in Senegal: A Stepped-
1147 Wedge Cluster-Randomised Trial. *PLoS Med.* 2016;13(11):e1002175. doi:
1148 10.1371/journal.pmed.1002175. PubMed PMID: 27875528; PMCID: PMC5119693.
- 1149 94. Diawara SI, Konate D, Kayentao K, Mihigo J, Shaffer JG, Sangare M, Ndabamenye P,
1150 Swedberg E, Garg LW, Gamache N, Keita B, Kamate B, Ndaruhutse P, Kone D, Sanogo V,
1151 Tounkara M, Diakite M, Doumbia S, Eckert E. Effect of seasonal malaria chemoprevention in
1152 children between 5 and 9 years old in Kita and Bafoulabe districts, Mali. *Parasite Epidemiol*

- 1153 Control. 2022;18:e00258. doi: 10.1016/j.parepi.2022.e00258. PubMed PMID: 35789762;
1154 PMCID: PMC9249800.
- 1155 95. Ansah PO, Ansah NA, Malm K, Awuni D, Peprah N, Dassah S, Yarig S, Manful C,
1156 Agbenyeri J, Awoonor-Williams J, Ofosu W, Oduro AR. Evaluation of pilot implementation of
1157 seasonal malaria chemoprevention on morbidity in young children in Northern Sahelian Ghana.
1158 *Malar J.* 2021;20(1):440. doi: 10.1186/s12936-021-03974-x. PubMed PMID: 34794431; PMCID:
1159 PMC8600740.
- 1160 96. Chandramohan D, Zongo I, Sagara I, Cairns M, Yerbanga RS, Diarra M, Nikiema F,
1161 Tapily A, Sompougdou F, Issiaka D, Zoungrana C, Sanogo K, Haro A, Kaya M, Sienou AA,
1162 Traore S, Mahamar A, Thera I, Diarra K, Dolo A, Kuepfer I, Snell P, Milligan P, Ockenhouse C,
1163 Ofori-Anyinam O, Tinto H, Djimde A, Ouedraogo JB, Dicko A, Greenwood B. Seasonal Malaria
1164 Vaccination with or without Seasonal Malaria Chemoprevention. *N Engl J Med.*
1165 2021;385(11):1005-17. doi: 10.1056/NEJMoa2026330. PubMed PMID: 34432975.
- 1166 97. Coldiron ME, Assao B, Guindo O, Sayinzoga-Makombe N, Koscalova A, Sterk E, Quere
1167 M, Ciglencecki I, Mumina A, Atti S, Langendorf C, Grais RF. Prevalence of malaria in an area
1168 receiving seasonal malaria chemoprevention in Niger. *Malar J.* 2021;20(1):419. doi:
1169 10.1186/s12936-021-03953-2. PubMed PMID: 34689782; PMCID: PMC8543849.
- 1170 98. Faye FB, Spiegel A, Tall A, Sokhna C, Fontenille D, Rogier C, Trape JF. Diagnostic
1171 criteria and risk factors for *Plasmodium ovale* malaria. *J Infect Dis.* 2002;186(5):690-5. doi:
1172 10.1086/342395. PubMed PMID: 12195357.
- 1173 99. Collins WE, Jeffery GM. *Plasmodium malariae*: parasite and disease. *Clin Microbiol Rev.*
1174 2007;20(4):579-92. doi: 10.1128/CMR.00027-07. PubMed PMID: 17934075; PMCID:
1175 PMC2176047.
- 1176 100. Collins WE, Jeffery GM. *Plasmodium ovale*: parasite and disease. *Clin Microbiol Rev.*
1177 2005;18(3):570-81. doi: 10.1128/CMR.18.3.570-581.2005. PubMed PMID: 16020691; PMCID:
1178 PMC1195966.
- 1179 101. Nambunga IH, Ngowo HS, Mapua SA, Hape EE, Msugupakulya BJ, Msaky DS,
1180 Mhumbira NT, MchWembo KR, Tamayamali GZ, Mlembe SV, Njalambaha RM, Lwetoijera DW,
1181 Finda MF, Govella NJ, Matoke-Muhia D, Kaindoa EW, Okumu FO. Aquatic habitats of the
1182 malaria vector *Anopheles funestus* in rural south-eastern Tanzania. *Malar J.* 2020;19(1):219.
1183 doi: 10.1186/s12936-020-03295-5. PubMed PMID: 32576200; PMCID: PMC7310514.
- 1184 102. Scott TW, Takken W. Feeding strategies of anthropophilic mosquitoes result in
1185 increased risk of pathogen transmission. *Trends Parasitol.* 2012;28(3):114-21. doi:
1186 10.1016/j.pt.2012.01.001. PubMed PMID: 22300806.
- 1187 103. Bartholomay LC, Michel K. Mosquito Immunobiology: The Intersection of Vector Health
1188 and Vector Competence. *Annu Rev Entomol.* 2018;63:145-67. doi: 10.1146/annurev-ento-
1189 010715-023530. PubMed PMID: 29324042.
- 1190 104. McKenzie FE, Bossert WH. Mixed-species *Plasmodium* infections of *Anopheles*
1191 (Diptera: Culicidae). *J Med Entomol.* 1997;34(4):417-25. doi: 10.1093/jmedent/34.4.417.
1192 PubMed PMID: 9220675; PMCID: PMC2500223.
- 1193 105. Shaw WR, Marcenac P, Catteruccia F. *Plasmodium* development in *Anopheles*: a tale of
1194 shared resources. *Trends Parasitol.* 2022;38(2):124-35. doi: 10.1016/j.pt.2021.08.009. PubMed
1195 PMID: 34548252; PMCID: PMC8758519.
- 1196 106. Arez AP, Pinto J, Palsson K, Snounou G, Jaenson TG, do Rosario VE. Transmission of
1197 mixed *Plasmodium* species and *Plasmodium falciparum* genotypes. *Am J Trop Med Hyg.*
1198 2003;68(2):161-8. PubMed PMID: 12641406.
- 1199 107. Imwong M, Nakeesathit S, Day NP, White NJ. A review of mixed malaria species
1200 infections in anopheline mosquitoes. *Malar J.* 2011;10:253. doi: 10.1186/1475-2875-10-253.
1201 PubMed PMID: 21880138; PMCID: PMC3201030.
- 1202 108. Balasubramanian S, Rahman RS, Lon C, Parobek C, Ubalee R, Hathaway N,
1203 Kuntawunginn W, My M, Vy D, Saxe J, Lanteri C, Lin FC, Spring M, Meshnick SR, Juliano JJ,

- 1204 Saunders DL, Lin JT. Efficient Transmission of Mixed Plasmodium falciparum/vivax Infections
1205 From Humans to Mosquitoes. *J Infect Dis.* 2020;221(3):428-37. doi: 10.1093/infdis/jiz388.
1206 PubMed PMID: 31549156; PMCID: PMC7184918.
- 1207 109. Robinson A, Busula AO, Voets MA, Beshir KB, Caulfield JC, Powers SJ, Verhulst NO,
1208 Winskill P, Muwanguzi J, Birkett MA, Smallegange RC, Masiga DK, Mukabana WR, Sauerwein
1209 RW, Sutherland CJ, Bousema T, Pickett JA, Takken W, Logan JG, de Boer JG. Plasmodium-
1210 associated changes in human odor attract mosquitoes. *Proc Natl Acad Sci U S A.*
1211 2018;115(18):E4209-E18. doi: 10.1073/pnas.1721610115. PubMed PMID: 29666273; PMCID:
1212 PMC5939094.
- 1213 110. MR4. *Methods in Anopheles Research 2014.* Available from:
1214 [https://www.beiresources.org/portals/2/MR4/MR4_Publications/Methods%20in%20Anopheles%
1215 20Research%202014/2014MethodsInAnophelesResearchManualFullVersionv2tso.pdf](https://www.beiresources.org/portals/2/MR4/MR4_Publications/Methods%20in%20Anopheles%20Research%202014/2014MethodsInAnophelesResearchManualFullVersionv2tso.pdf).
- 1216 111. Burkot TR, Zavala F, Gwadz RW, Collins FH, Nussenzweig RS, Roberts DR.
1217 Identification of malaria-infected mosquitoes by a two-site enzyme-linked immunosorbent assay.
1218 *Am J Trop Med Hyg.* 1984;33(2):227-31. doi: 10.4269/ajtmh.1984.33.227. PubMed PMID:
1219 6370003.
- 1220 112. Beier JC, Perkins PV, Koros JK, Onyango FK, Gargan TP, Wirtz RA, Koech DK, Roberts
1221 CR. Malaria sporozoite detection by dissection and ELISA to assess infectivity of afrotropical
1222 Anopheles (Diptera: Culicidae). *J Med Entomol.* 1990;27(3):377-84. doi:
1223 10.1093/jmedent/27.3.377. PubMed PMID: 2185363.
- 1224 113. Durnez L, Van Bortel W, Denis L, Roelants P, Veracx A, Trung HD, Sochantha T,
1225 Coosemans M. False positive circumsporozoite protein ELISA: a challenge for the estimation of
1226 the entomological inoculation rate of malaria and for vector incrimination. *Malar J.* 2011;10:195.
1227 doi: 10.1186/1475-2875-10-195. PubMed PMID: 21767376; PMCID: PMC3160429.
- 1228 114. Echeverry DF, Deason NA, Makuru V, Davidson J, Xiao H, Niedbalski J, Yu X,
1229 Stevenson JC, Bugoro H, Aparaimo A, Reuben H, Cooper R, Burkot TR, Russell TL, Collins FH,
1230 Lobo NF. Fast and robust single PCR for Plasmodium sporozoite detection in mosquitoes using
1231 the cytochrome oxidase I gene. *Malar J.* 2017;16(1):230. doi: 10.1186/s12936-017-1881-1.
1232 PubMed PMID: 28569159; PMCID: PMC5452387.
- 1233 115. Ogola EO, Fillinger U, Ondiba IM, Villinger J, Masiga DK, Torto B, Tchouassi DP.
1234 Insights into malaria transmission among Anopheles funestus mosquitoes, Kenya. *Parasit
1235 Vectors.* 2018;11(1):577. doi: 10.1186/s13071-018-3171-3. PubMed PMID: 30400976; PMCID:
1236 PMC6219006.
- 1237 116. Foley DH, Harrison G, Murphy JR, Dowler M, Rueda LM, Wilkerson RC. Mosquito
1238 bisection as a variable in estimates of PCR-derived malaria sporozoite rates. *Malar J.*
1239 2012;11:145. doi: 10.1186/1475-2875-11-145. PubMed PMID: 22551078; PMCID:
1240 PMC3411414.
- 1241 117. Diagne N, Fontenille D, Konate L, Faye O, Lamizana MT, Legros F, Molez JF, Trape JF.
1242 [Anopheles of Senegal. An annotated and illustrated list]. *Bull Soc Pathol Exot.* 1994;87(4):267-
1243 77. PubMed PMID: 7866049.
- 1244 118. Gillies MT, Coetzee M. A supplement to the Anophelinae of Africa South of the Sahara
1245 (Afrotropical Region). *S Afr Inst Med Res.* 1987:143.
- 1246 119. Wilkins EE, Howell PI, Benedict MQ. IMP PCR primers detect single nucleotide
1247 polymorphisms for Anopheles gambiae species identification, Mopti and Savanna rDNA types,
1248 and resistance to dieltrin in Anopheles arabiensis. *Malar J.* 2006;5:125. doi: 10.1186/1475-
1249 2875-5-125. PubMed PMID: 17177993; PMCID: PMC1769388.
- 1250 120. Koekemoer LL, Kamau L, Hunt RH, Coetzee M. A cocktail polymerase chain reaction
1251 assay to identify members of the Anopheles funestus (Diptera: Culicidae) group. *Am J Trop Med
1252 Hyg.* 2002;66(6):804-11. doi: 10.4269/ajtmh.2002.66.804. PubMed PMID: 12224596.
- 1253 121. Maddison WP, Maddison DR. Mesquite: a modular system for evolutionary analysis.
1254 2021.

- 1255 122. Hofmann N, Mwingira F, Shekalaghe S, Robinson LJ, Mueller I, Felger I. Ultra-sensitive
1256 detection of Plasmodium falciparum by amplification of multi-copy subtelomeric targets. PLoS
1257 Med. 2015;12(3):e1001788. doi: 10.1371/journal.pmed.1001788. PubMed PMID: 25734259;
1258 PMCID: PMC4348198.
- 1259 123. Phuong M, Lau R, Ralevski F, Boggild AK. Sequence-based optimization of a
1260 quantitative real-time PCR assay for detection of Plasmodium ovale and Plasmodium malariae.
1261 J Clin Microbiol. 2014;52(4):1068-73. doi: 10.1128/JCM.03477-13. PubMed PMID: 24430459;
1262 PMCID: PMC3993485.
- 1263 124. Kent RJ, Norris DE. Identification of mammalian blood meals in mosquitoes by a
1264 multiplexed polymerase chain reaction targeting cytochrome B. Am J Trop Med Hyg.
1265 2005;73(2):336-42. PubMed PMID: 16103600; PMCID: PMC4147110.
1266