

# 1 **Outbreak of Chikungunya Fever in the Central Valley of Chiapas, Mexico.**

## 2 **Short title: Outbreak of Chikungunya in Chiapas, Mexico**

3 Ana Luz Gonzalez-Perez<sup>1</sup>, Ana Vazquez<sup>2,3</sup>, Fernando de Ory<sup>3,4</sup>, Anabel Negrodo<sup>2</sup>, Kenneth S.

4 Plante<sup>5</sup>, Jessica A. Plante<sup>5</sup>, Pedro M. Palermo<sup>6</sup>, Douglas Watts<sup>6</sup>, Maria Paz Sanchez-Seco<sup>2</sup>, Scott

5 C. Weaver<sup>5</sup>, Jose Guillermo Estrada-Franco<sup>7</sup>.

6

7 <sup>1</sup>Centro de Investigación y Estudios Avanzados en Salud Animal (CIESA), Universidad

8 Autónoma del Estado de México, Toluca, México.

9 <sup>2</sup> Laboratory of Arboviruses and Imported Viral Diseases, Centro Nacional de Microbiología,

10 Instituto de Salud Carlos III, Majadahonda, Spain.

11 <sup>3</sup> National Microbiology Centre, Institute of Health Carlos III, Biomedical Research Networking

12 Centre for Public Health (CiberESP), Spain.

13 <sup>4</sup> Laboratory of Serology, National Microbiology Centre, Institute of Health Carlos III,

14 Majadahonda, Madrid, Spain.

15 <sup>5</sup> Institute for Human Infections and Immunity, World Reference Center for Emerging Viruses

16 and Arboviruses, and Department of Microbiology & Immunology, University of Texas Medical

17 Branch at Galveston, Texas, United States of America

18 <sup>6</sup> Border Biomedical Research Center, Department of Biological Sciences, University of Texas at

19 El Paso, Texas, USA

20 <sup>7</sup> Centro de Biotecnología Genómica, Instituto Politécnico Nacional, Reynosa, Tamaulipas,  
21 Mexico.

22 \* Corresponding author

23 Email: [jestradaf@ipn.mx](mailto:jestradaf@ipn.mx)

## 24 **Abstract**

25 Chikungunya virus (CHIKV) was isolated from humans in an outbreak of a febrile illness during  
26 July and August 2015 in the central valleys of Chiapas, Mexico. Sera obtained from 80 patients  
27 were tested for CHIKV RNA by reverse transcriptase polymerase chain reaction (RT-PCR) and  
28 for IgM and IgG antibodies by an enzyme linked immunoassay and a commercial indirect  
29 immunofluorescence test for CHIKV and dengue virus (DENV). Of the 80 patients, 67 were  
30 positive, including 50 for RNA and 17 for IgM. In addition, one patient was coinfecting with  
31 CHIKV-DENV and 40 patients were positive for IgG antibody to DENV. The clinical  
32 manifestations included a high fever, polyarthralgia, headache, myalgia, rash, digestive  
33 disorders, conjunctivitis, and adenopathy associated with cervical and axillary inguinal regions.  
34 Complete nucleotide sequences of two of the CHIKV isolates showed that they belonged to the  
35 Asian lineage but did not group with other Mexican CHIKV isolates from the Chiapas coast. Our  
36 findings documented that different Asian lineage strains of CHIKV were circulating  
37 simultaneously during the 2015 outbreak in the Central Valley of Chiapas, Mexico. The 2024  
38 cases suggest an explosive scenario of re-emergence of thousands of new Chikungunya and  
39 dengue fever (DENV) cases associated with deaths, and a dangerous increase of the four DENV  
40 serotypes throughout the Americas, especially in South American countries that have shown a

41 high influx of human migration to southern Mexico. In Mexico, the state of Chiapas and other  
42 southern regions are the most vulnerable.

43

#### 44 **Author Summary:**

45 The first ever recorded outbreak of Chikungunya virus (CHIKV) in the highlands (central valley  
46 of Chiapas) Mexico took place in 2015. Clinical data from 80 infected patients together with  
47 information provided from virus isolates offered a vision of the diseased and their response  
48 linked to different variables such as age, gender, association with pre-existing diseases of some  
49 patients, including CHIKF-DENF co-infection. The origins of the Tuxtla Gutierrez CHIKV  
50 viruses isolated in the study, including other Mexican isolates, were traced to viruses circulating  
51 in regions of Asia in Micronesia and Philippines. Also, we call the attention of the influx of  
52 migrants coming from countries having current explosive outbreaks of CHIKV and DENV in the  
53 Americas and into southern Mexico. Further we discuss vulnerabilities and point out specially to  
54 the geographic location of Chiapas State and its strategic position for attracting the human  
55 migrant population.

56

57 **Keywords:** Chikungunya, Chiapas, Mexico, viral RNA, IgM and IgG antibody, Dengue.

58

#### 59 **Introduction**

60 Chikungunya virus (CHIKV), *Togaviridae*, genus *Alphavirus*, is an arthropod-borne virus  
61 transmitted peri-domestically by *Aedes (Stegomyia) aegypti* and *Ae. (Stegomyia) albopictus*  
62 mosquitoes [1]. At least four genetic lineages of CHIKV have been described including West  
63 African, East/ Central/South African, Asian, and Indian Ocean [2].

64 The first documented outbreak of chikungunya fever (CHIKF) associated with  
65 autochthonous transmission in the Americas was reported during December of 2013 on the  
66 Caribbean Island of St. Martin [3]. In 2014, the Pan American Health Organization (PAHO)  
67 estimated more than a million cases of CHIKF in 50 countries in the Americas [4]. The disease  
68 manifestations include fever  $>38^{\circ}\text{C}$ , rash and severe arthralgia that is disabling, and patients may  
69 also experience a chronic phase with continuing articular and periarticular inflammation lasting  
70 for months or years that is seldom fatal [5].

71 In 2004, CHIKV began to cause major outbreaks that affected humans in substantial  
72 portions of Africa, the Indian Ocean Basin, Asia, Europe, and more recently the Americas [6].  
73 The spread of CHIKV was exacerbated by infected people travelling from regions of active virus  
74 transmission [7]. Millions were affected, and this scenario was further complicated in some  
75 areas, due in part to the adaptive mutations in the CHIKV viral genome that resulted in changes  
76 in the E1 (A226V) [8,9] and E2 (several substitutions) glycoproteins [10]. These mutations  
77 enhanced infection of *Ae. albopictus* mosquitoes, and an increase in the vector competence of  
78 this species for CHIKV. As a result, European outbreaks of CHIKF in Italy and France and in  
79 islands of the Indian Ocean [11] were associated with the distribution of *Ae. albopictus*  
80 mosquitoes, thus demonstrating the emerging importance of this species as a potential vector of  
81 CHIKV [12]. The ability of both *Ae. aegypti* and *Ae. albopictus* to serve as efficient vectors  
82 represents a highly efficient vectorial system for the transmission of CHIKV worldwide [13].

83 In Mexico, the first traveler case of CHIKF was reported in Jalisco state in May 2014  
84 [14], and the first autochthonous case was diagnosed in Coastal Chiapas, Mexico, in November  
85 2014 [15]. In a period of 10 years (2014 – 2024), Mexico’s Health Ministry recorded 776 cases  
86 of CHIKF in the State of Chiapas [16]. According to the Pan American Health Organization  
87 (PAHO), 273,685 CHIKF cases were recorded in 2022 and 410,754 CHIKF cases were recorded  
88 during 2023 in 17 countries of the Americas, including 419 deaths, representing a 43% increase  
89 in the number of cases. In 2024, 186,274 cases with 60 deaths had been recorded by the  
90 epidemiological week 14 [17]. Clearly there is an escalation of CHIKV cases reported mainly in  
91 South American countries with a high migratory trend in the south Chiapas Mexican border [18].

92 The occurrence during early 2015 of unusual dengue-like cases in the medical  
93 community of the Metropolitan region of Tuxtla Gutierrez, the capital State of Chiapas,  
94 suggested the outbreak represented an extension of the first epidemic of Mexican CHIKV  
95 recorded in the State’s coastal region [19]. Here we describe the epidemiology, clinical, and  
96 molecular observations of the first major epidemic of CHIKF that occurred during the summer of  
97 2015 in the central valleys of Chiapas, Mexico. Phylogenetic studies indicated that the outbreaks  
98 in Mexico were caused by strains of the CHIKV Asian lineage [20], and *Ae. aegypti* was  
99 incriminated as the principal vector [21].

100

### 101 **Study area: The Central Valley of Chiapas**

102 The study was carried out in the Central Valley of Chiapas during July and August of  
103 2015 at three sites, two health care facilities: 1) at the General Hospital "Dr. Belisario  
104 Domínguez", Institute of Security and Social Services of State Workers ISSSTE, located in  
105 Tuxtla Gutiérrez (16 ° 45'11 "N 93 ° 06'56" W; altitude 522 meters), and including patients from

106 the municipalities of Berriozabal, Chiapa de Corzo, and Suchiapa (Fig 1 and Fig 2) the Rural  
107 Hospital of Solidarity Opportunities, Mexican Institute of Social Security IMSS Number 31,  
108 located in Ocozocoautla de Espinoza (16 ° 45'00 "N 93 ° 22'00" W; 818 altitude meters) at 18.7  
109 km west of Tuxtla Gutierrez. The third site was Miguel Álvarez del Toro Zoo (ZooMAT) located  
110 in Tuxtla Gutierrez.

111 The climate in the Central Valley is warm and humid, with an average annual  
112 temperature of 25.4°C and annual rainfall of 1,200 mm [22].

### 113 **Patient Selection Criteria**

114 Blood samples were collected from patients who presented at the health care facilities  
115 and samples from suspected zoo workers, using a case definition of suspected CHIKF including  
116 a fever >38°C and arthritis/arthralgia with an acute onset that was not explained by other medical  
117 conditions, and residing in or visiting the epidemic areas during two weeks prior to the onset of  
118 illness [23].

### 119 **Patient Data Collection**

120 A questionnaire was designed to record the following variables: a) Epidemiological and  
121 demographic: age, sex, contact with relatives, neighbors, friends at school and/or work contacts,  
122 previous days of illness, and recent travel; b) Clinical: detailed description of the symptoms and  
123 signs; c) Laboratory: blood biometry, serology, and RT-PCR results; d) Environmental:  
124 community environment characteristics.

### 125 **Sample Collection**

126 Venipuncture blood samples were collected and centrifuged at 1207 x g to obtain serum that was  
127 aliquoted and stored at -80°C. Samples were sent for diagnostic testing and nucleotide  
128 sequencing to the World Reference Center for Emerging Viruses and Arboviruses at the

129 University of Texas Medical Branch (UTMB), Galveston, Texas, USA; to the National Center  
130 for Microbiology (CNM), Instituto de Salud Carlos III (ISCIII), Majadahonda, Spain and to the  
131 Virology Laboratory at the University of Texas at El Paso (UTEP), Texas.

### 132 **Blood Biometry**

133 Hematological values were determined using a hematology analyzer Advia® 120 (Siemens  
134 Healthcare Diagnostics, Erlangen, Germany).

### 135 **Molecular assays**

136 They were conducted through two protocols: 1) Viral RNA was extracted from sera using the  
137 ZR-96 Viral RNA Kit (Zymo Research, Orange, CA, USA) according to the manufacturer's  
138 protocol. A one-step quantitative reverse transcription PCR (qRT-PCR) was performed by using  
139 the TaqMan RNA-to-Ct 1-step Kit (Applied Biosystems, San Francisco, CA, USA) [24].

140 2) To extend the screening, RNA was extracted from the sera using the QIAamp viral RNA kit  
141 (Qiagen, Valencia, CA) following the manufacturer's protocol. Next, RT-PCR targeting the  
142 alphavirus nsP4 gene was used to detect CHIKV RNA, as previously described [25]. The results  
143 were confirmed with a specific nested PCR for CHIKV, which was directed to the E1 gene [26].  
144 Subsequently, all samples were screened by qRT-PCR for CHIKV (Realstar CHIKV RT-PCR  
145 kit, Altona Diagnostic, Hamburg, Germany). All negative samples were also tested for other  
146 etiologic agents, including bunyaviruses, arenaviruses, hantaviruses, and phleboviruses using in-  
147 house RT-PCR techniques [27-29].

### 148 **Methods**

#### 149 **Ethical considerations**

150 The Bioethics Committee of the Faculty of Medicine of the Autonomous University of  
151 the State of Mexico (Approval No. 011/2015) approved the study. Written informed consent was

152 obtained from all patients who enrolled in this study. Minor patients participated with the prior  
153 authorization of their parents. Patients' personal information was anonymized before analyzing  
154 patient data, including demographic characteristics, clinical signs and symptoms.

### 155 **Serology assays**

156 All samples were tested for CHIKV antibody using enzyme-linked immunosorbent assay  
157 (ELISA) [30]. An IgM antibody-capture (ELISA) was performed using a chimeric Eilat-CHIK  
158 containing the nonstructural protein genes of Eilat virus and structural protein genes of CHIKV,  
159 which produces virions indistinguishable structurally from those of CHIKV [31]. Additionally,  
160 sera were screened by a commercial indirect immunofluorescent (IIF) anti-Chikungunya Virus  
161 IIFT IgG and IgM (Euroimmun AG, Lübeck, Germany) [32, 33] and the IIF assay Arboviral  
162 Fever Mosaic IgG and IgM, Euroimmun, Germany [34, 35]. Also, the samples were tested to  
163 determine antibody titers by a dengue IgM capture ELISA, Panbio® and dengue indirect IgG  
164 ELISA, Panbio®, Queensland, Australia [36].

### 165 **Sequencing and phylogenetic analysis**

166 Two CHIKV positive sera (ID 2107 and ID 2115) were selected for Illumina® Bio Systems  
167 nucleotide sequencing. Available CHIKV sequences encoding both open reading frames of the  
168 genome were retrieved from the Genbank database. CHIKV sequences without published  
169 references were excluded. A total of 143 representative strains were selected for the phylogenetic  
170 analysis including our CHIKV strains 2107 and 2115. Sequences were trimmed to remove the 5'  
171 and 3' untranslated genome regions (UTRs) and were aligned using Clustal Omega in MegAlign  
172 Pro version 12.0.0 (DNASTAR Inc, Madison, WI). Maximum likelihood analysis was performed  
173 using the phangorn package [37] in R version 3.4.2 [38]. The GTR+G+I model of nucleotide  
174 substitution was selected from the 24 options analyzed as part of the model test analysis in



175 phangorn based on minimizing the AIC score. Bootstrapping was performed with 1,000  
176 iterations. The resulting tree was visualized using iTOL version 4.3.3 [39].

## 177 **Results**

178 Among the sera obtained from 80 patients, 46 were collected in Tuxtla Gutierrez, 31 in  
179 Ocozacoautla de Espinoza and 3 from the municipalities of Chiapa de Corzo, Berriozabal and  
180 Suchiapa (Fig 1). Of the 46 samples collected in Tuxtla Gutierrez, 7 were from ZooMAT  
181 workers. We conducted two assay protocols on the 80 samples at UTMB and AEVI-CNM-ISCIH  
182 and obtained 50 positives for CHIKV RNA RT-PCR and 17 samples were positive by ELISA for  
183 CHIKV IgM antibody. The 17 IgM positive samples were reconfirmed by IIF for Chikungunya  
184 IgM antibody. Of the seven samples from patients related to the ZooMAT, three were positive  
185 for CHIKV RNA by RT-PCR, qRT-PCR and three were positives CHIKV IgM or IgG antibody  
186 by ELISA.

187 The assay of the 80 serum samples by RT-PCR for arenavirus, hantavirus, bunyavirus and  
188 phlebovirus viral RNA was negative. One CHIKV RNA positive sample and one CHIKV RNA  
189 negative were positive for dengue IgM antibody by ELISA. Also, the results revealed that 40 of  
190 the 80 patients had DENV IgG antibody as evidence of a previous infection.

## 191 **Viral isolation**

192 Seventeen of the 50 CHIKV PCR-positive samples were tested for virus isolation in C6/36 cells.  
193 CHIKV was isolated from all seventeen samples based on the detection of cytopathic effects on  
194 day 6 post-inoculation and were also positive for CHIKV by IFA as more conclusive results.

## 195 **Sequencing and Phylogenetic Analysis**

196 The genomes of two CHIKV isolates, ID 2107 and ID 2115, were fully sequenced and the  
197 assembled complete genome sequences were submitted to GenBank under the accession

198 numbers PQ261036 and PQ261037. A phylogenetic analysis was performed, along with 143  
199 geographically and temporally diverse CHIKV sequences from GenBank encompassing Asian,  
200 East/Central/South African (ECSA), Indian Ocean and West African lineage strains of CHIKV  
201 (S1 Table). A maximum-likelihood tree was generated using complete open reading frame  
202 sequences with the 5' and 3' UTRs removed. The results showed that both isolates (ID 2107 and  
203 ID 2115) clustered with the Asian lineage and with the other CHIKV isolates obtained from the  
204 Americas and the Caribbean (Fig 3). The uncorrected pairwise distances between both 2107 and  
205 2115 and the other Asian lineage isolates from the Americas and Caribbean ranged from 0.0003  
206 (0.03% nucleotide sequence divergence) to 0.0016. Their distance to the other Asian lineage  
207 strains varied from 0.0015 for strains thought to immediately precede the introduction of CHIKV  
208 to the Caribbean, such as the Yap 2013 isolate, and up to 0.0279 for the 1973 Indian isolate.  
209 Their distances from the ECSA strains ranged from 0.0559 to 0.0654, and their distances from all  
210 including West African strains ranged from 0.1565 to 0.1583.

211 There were 110 variable nucleotide positions among the Asian lineage CHIKV sequences from  
212 the Americas. The 2107 and 2115 strains differed from the consensus sequence at 11 positions  
213 (five in 2107, two in 2115, and four mutual positions for both strains 2107 and 2115) (Table 1).  
214 Only one of these changes encoded an amino acid substitution in nsP3 (H377P) which was in the  
215 hypervariable region and was unique to strain 2115 (Table 1). It should be noted, however, that  
216 all of the West African lineage isolates analyzed possess a leucine at this position and five of the  
217 26 Asian lineages isolates from Asia did not contain a deletion in this codon 377. Neither strain  
218 2107 nor 2115 encoded the *Ae. albopictus*-adaptive E1 [9] or E2 [11] substitutions identified in  
219 some of the Indian Ocean Lineage CHIKV strains.

220 Amino acid variation was also analyzed among CHIKV isolates ID 2107 and ID 2115,  
221 and the other eight Mexican CHIKV isolates from other studies with complete coding sequences  
222 available in GenBank (Table 2). Other than the nsP3 H377P change detected in 2115, only one  
223 amino acid in nsP3 varied among Mexican isolates: L340S, detected only in CH-R-1950.  
224 Interestingly, although the Mexican isolates were evenly split between valine and alanine at E3-  
225 113, it is worth noting that all other strains considered in the phylogeny possessed a valine at this  
226 position except for the 2014 isolate from the British Virgin Islands isolate, which contains an  
227 alanine.

### 228 **Blood biometrics**

229 Blood count abnormalities were found among the CHIKV positive patients. Samples had  
230 changes in one or all three cell types (leukopenia, lymphopenia and neutropenia) that help to  
231 differentiate CHIKF, especially in the acute phase [40] (Table 3).

### 232 **Epidemiological variables**

#### 233 **Demographic**

234 Of the 67 CHIK-positive patients, 40% were male and 60% were female. Most of the  
235 cases of CHIKF occurred among the 10-59 years old group (Table 4). Among occupations, 34  
236 (51%) were workers (professional, employee, crafts), 19 (28%) students, 11 (16%) housemakers,  
237 two (3%) retired, and one (2%) was a preschooler patient.

#### 238 **Clinical-epidemiological findings**

239 During the initial phase, 40% of CHIKV-positive patients were misdiagnosed by the  
240 primary care medical staff. The treating health personnel recorded signs and symptoms due to  
241 other etiologies, including 60% who were diagnosed with DENF, 25% with other types of  
242 illnesses such as respiratory diseases (15%), stress and chronic exhaustion (5%), common

243 headache (3%), food allergies (2%); and only 15% were properly diagnosed as CHIKF cases.  
244 CHIKV positive patients' signs/symptoms included fever 38 °C - 41.0 °C ( $\bar{x}$ = 38.3°C) with 2-5  
245 days of evolution. The dominant signs/symptoms observed in the patients were polyarthralgia in  
246 67 people (83.3%; 95% CI 75%-91%) of 1-5 days duration, headache 53 patients (66%; 95 CI  
247 55%-76%) evolving within a range of 1-7 days, myalgia 46 patients (57.4%; 95% CI 46%-68%)  
248 in 2-3 days, conjunctivitis 42 individuals (52.4%; 95% CI 41%-63%) progressing in 1-4 days,  
249 and exanthema 42 patients (52.4%; 95% CI 41%-63%) unfolding in 1-6 days (Table 5).  
250 Symmetric bilateral arthralgia was present in 52 individuals (64.8%; 95% CI 54%-75%) and a  
251 severe degree of pain was observed in 36 individuals (45%;95% CI 34%-55%). Nine (11.7%;  
252 95% CI 5.2%-18%) patients had pain in all joints of the body. In 33 persons affected joints  
253 involved the upper (41.3%;95% CI 30%-52%) (shoulder, elbow, wrist, hand, fingers) and in 23  
254 (29%; 95% CI 19%-38%) patients lower limbs (hip, knee, ankle. foot, toes). Acute cutaneous  
255 manifestations were present in 42 patients (52.4%; 95% CI 41%-63%), including a rash that  
256 presented as maculopapular and pruritic, pruritic, maculopapular and diffuse (Table 6). Bullous  
257 and pruritic rash was observed in a school-age patient. The rash developed mainly in arms in 30  
258 persons (37.6%; 95% CI 27%-48%), 16 patients in legs (20.3%; 95% 11%-29%), and in 15  
259 persons (19.1%; 95% CI 10%-27%) (Table 7). Five patients reported having burning sensation in  
260 the skin, three of them in the soles and two in the palms (Table 7).

261 Adenopathy was observed in 28 CHIKF patients (35.1%; 95% CI 24%-45%) 41.8%,  
262 including cervical (retroauricular, neck), axillary and inguinal region. Twelve patients involved a  
263 single anatomical site and 16 in two or more anatomical areas. Four CHIKF patients required  
264 hospitalization and 14 persons reported comorbidities, including three patients with diabetes, five  
265 with hypertension, two persons with diabetes and hypertension, one with muscular dystrophy,

266 one patient disc herniation and cystitis, one patient with Horner syndrome and, one with  
267 hypertension and one with vertigo.

## 268 **Environment characteristics**

269         Seventy four percent CHIKF cases lived in urban areas and 26% lived in suburban-rural  
270 areas. Fifty-one percent had contact with CHIKF like homes, work, school or in the same  
271 locality. Fifty-four percent had periodic contact with bodies of water. The characteristics of the  
272 water for 40% of the cases was sewage, 30% clean running water (streams, lakes) and 6.6%  
273 standing water. Twenty two positive patients lived, worked or studied near a dump or cemetery.  
274 Fifty three patients lived near areas with abundant vegetation. All of these premises were located  
275 at distance of  $\leq 150$  meters of radius. At the ZooMAT we obtained six positive samples wild  
276 forest reserve area with a large population of vertebrate wild fauna and many invertebrates  
277 particularly *Aedes albopictus* and *Ae. aegypti* mosquitoes in abundance within the reserve.

278

## 279 **Discussion**

280         We report the first CHIKV isolates from febrile patients in the Central Valley of Chiapas  
281 State, Mexico, including five municipalities: Tuxtla Gutiérrez, Ocozocoautla de Espinoza,  
282 Berriozabal, Chiapa de Corzo, and Suchiapa. Isolates were obtained from patients who resided  
283 about 130 km away from the first Mexican autochthonous recorded CHIKF case in 2014 [16].

284         Phylogenetic analysis showed that our CHIKV isolates belong to the Asian lineage that  
285 was circulating in the Americas [3]. Our isolates were found to be closely related to the CHIKV  
286 sequences from the Bahamas 2014 (KY435470), Mexico 2015 CHR1950 (MG921596) and  
287 Mexico 2014 InDRE 51 (KP851709), but clustering in a different subclade. According to the  
288 terminology of Sahadeo et al, 2017 [2], our isolates grouped in the Asian/American lineage,

289 which is defined by two amino acid substitutions: E2 V368A and 6K L20M. When comparing  
290 our isolates with the consensus sequence, 11 point mutations were found in the nsP1, nsP2, nsP3  
291 and capsid genes, presenting more variants than observed in the structural proteins E2 and E1. In  
292 nsP1, we observed two synonymous mutations in both isolates (2107 and 2115). nsP2 had one  
293 synonymous mutation only in the 2107 sequence. The nsP3 gene had four mutations, three of  
294 which were synonymous in the 2107 sequence and one nonsynonymous mutation in isolate 2115.  
295 Sequence 2115 mutation is classified as transition and transversion in region 378 of nsP3. There  
296 is a change of histidine (hydrophobic amino acid, no polarity) by proline (amino acid hydrophilic  
297 with positive polarity), which is a novel finding. Substitution of a hydrophobic residue with a  
298 polar amino acid could represent possible structural changes, as observed in other alphaviruses  
299 [41], which affects in vitro replication and viral pathogenesis. The observation warrants future  
300 studies on CHIKV.

301 The CHIKV isolates of this study did not group with other isolates from coastal Chiapas  
302 which have the E2 V113A substitution as observed for CHIKV isolates in the British Virgin  
303 Islands sequences [2]. We also found differences in the non-structural (nsP3 and nsP4) and  
304 structural proteins (E2 and E3) of our strains. These findings showed that different strains of the  
305 CHIKV Asian lineage were circulating simultaneously in the Central Valley of Chiapas.

306 In our study, CHIKF cases were diagnosed among people of wide age ranges, from  
307 nursling to octogenarians ( $\bar{x} = 33$  years), supporting the expected outcome for the age  
308 distribution of cases due to recent introduction of CHIKV into the completely naïve population  
309 of the Americas. A higher proportion of our cases occurred in the age ranges 1-9, 30-39 and 40-  
310 49, unlike the data of the Mexican Epidemiological Surveillance System SINAVE/DGC [17], the  
311 most affected age group was 25-29 years in 2015. Our findings of clinical manifestations

312 including high fever, polyarthralgia, headache, myalgia, rash, and digestive disorders, matched  
313 with the clinical signs/symptoms of CHIKF outbreaks (see table 5 for Confidence 95% intervals)  
314 involving the Asian lineage [42-46]. Interestingly, we also observed signs/symptoms that were  
315 rarely described in other studies: conjunctivitis of 1-4 days of duration in 62.7% and adenopathy  
316 in 41.8%, the later associated with cervical (retroauricular, neck), axillary, and inguinal region.  
317 Other studies have reported the development of adenopathies in CHIKF as being uncommon  
318 [47,48] whereas such changes are commonly found in other alphaviruses patients, such as  
319 o'nyong-nyong fever [49]. Also, unlike other studies we found 62.7% of patients with mainly  
320 maculopapular and pruritic rash and bullous and pruritic in a schooler patient. One sign that  
321 appeared nearly only in women at a 4:1 ratio with men was facial hyperemia. Others were ulcers  
322 (17.9%), hemorrhages (6.0%), gum pain (11.9%), burning skin (7.5%) and jaundice (3.0%). The  
323 clinical signs of the patient from whom strain 2115 was obtained with the mutation in the nsP3  
324 region were symmetric bilateral arthralgia with severe joint pain in the shoulder, trunk, back and  
325 hip; pruritic maculopapular rash in the chest, trunk and abdomen, adenopathy, burning sensation  
326 on the skin, high and low back pain, dizziness, nausea, vomiting, difficulty breathing, and  
327 lymphopenia. As previously mentioned, clinical signs such as adenopathy, skin burning, and  
328 difficulty breathing have rarely been associated with CHIKV infection [11,42,43,45].

329         In our study, clinical signs and symptoms were observed more frequently in women  
330 (60%) than in men, which potentially reflects greater exposure to mosquito bite risk due to the  
331 fact of household activities, clothing practices, and/or greater willingness to seek medical care.  
332 Also, during the initial phase, we observed that 40% of our CHIKV-positive patients were  
333 misdiagnosed by the primary care medical staff. The treating health personnel recorded signs and  
334 symptoms due to other etiologies, including DENF, respiratory diseases, stress and chronic

335 exhaustion, common headache, food allergies; and only 15% were properly diagnosed as CHIKF  
336 cases. A significant decrease in labor productivity due to absenteeism and disabling pain was  
337 also observed, suggesting a serious effect associated with CHIKF at the family household  
338 economy.

339 Misdiagnosis can greatly affect the clinical picture of infected patients. This would  
340 impact the evolution from DENF to severe dengue hemorrhagic fever (DHF) disease and the  
341 risks unsuitable medication of CHIKF patients with arthralgia-alleviating nonsteroidal anti-  
342 inflammatory drugs, which could lead to severe bleeding in patients with DHF or  
343 thrombocytopenia [50].

344 Chikungunya continues to be a latent and important public health problem, especially in  
345 regions lacking proper medical care and diagnostic facilities that characterize the Mexican  
346 Republic and mosquito vectorial populations that are abundant.

347 The SINAVE in 2015 reported 683 cases in Chiapas, out of the total number of CHIKF  
348 patients registered throughout the country. Between 2016-2018, 18 cases of CHIKF were  
349 documented in Chiapas. No cases were recognized between 2019-2021 and until 2022-2023 only  
350 two cases, one per year, were reported. As of the epidemiological week 27, 2024, no cases of the  
351 CKIKF had been documented [17].

352 In Mexico, there is an apparent decrease in the circulation and transmission of CHIKV  
353 which can be explained mainly by two facts, a) the CDC-PAHO guidelines proposing to test only  
354 5% of the supposedly suspected CHIKF cases in health settings [23] and b) protection  
355 considering that the first explosive outbreaks occurred in 2015- 2016 that resulted in herd  
356 immunity protection by the exposed population. In this context, we assumed that the true burden  
357 of CHIK disease in this Mexican region is unknown and that confirmed cases could be under-



358 reported. It is likely that the burden of CHIK disease is underreported because several positive  
359 cases were missed by surveillance systems due to clinical similarities with other endemic viral  
360 diseases (dengue, Zika, etc.) [17] in the study area.

361 The current picture reported in other geographical regions of the Americas have revealed  
362 explosive outbreaks of CHIKV, particularly in south American countries, suggesting a latent or  
363 even progress outbreaks of CHIKV forecasted for Mexico. According to PAHO data from  
364 January 1 to September 10, 2024, 11,574,374 cases of CHIKF and more than 6,542 deaths were  
365 documented from 20 countries most from the South American region. In 2023, 410,754  
366 including 419 deaths, cases were reported, this was an increase in more than 135,000 cases as  
367 compared with the previous 2022 year, with the most affected countries being Brazil, Paraguay,  
368 Argentina, Uruguay and Bolivia [17, 51]. Of the five countries, Brazil stands out as one of the  
369 most important contributing human migratory numbers into south Mexico, including the Chiapas  
370 State region (UN, IOM Annual Report 2024) [18], with trends pointing to in land migratory  
371 movements towards the Mexico-US northern border. We believe the picture during 2024 is  
372 complemented by an ongoing DENF outbreak near the south Mexican border, including the State  
373 of Chiapas, with an increase of 354 % DENF cases only in the July month of 2024 [22,211  
374 DENF cases] as compared to 2023 (4,892 DENF cases) [51]. The actual scenario recorded in the  
375 Mexican Republic reinforces the notion that hundreds of cases of CHIKF might be hidden under  
376 the dengue umbrella. During our studies in 2015, we found at least one coinfecting case of  
377 CHIKV-DENV and half of the positive CHIKF cases showed IgG DENV antibodies suggesting  
378 that in the 2024 Mexican scenario, DENV diagnosis should be complemented throughout a  
379 concerted approach of differential diagnostics with CHIKF by the different regional health  
380 entities. We consider this to be an essential approach to help clarify some of the enigmas

381 associated with the explosive arboviral outbreaks going on in many regions of Mexico and  
382 elsewhere in the continent. All in all, the scope of CHIKV in Mexico likely represents an  
383 underestimation of CHIKF cases. Therefore, it is advisable that differential diagnostics be  
384 implemented by the health agencies to distinguish between DENV (flavivirus) and CHIKV  
385 (alphavirus) infection. It is important to stress that in the case of any foreseen outbreak of  
386 CHIKF in the Chiapas region, an important component of the surveillance policies should focus  
387 on molecular approaches to monitor for novel mutations that might increase the vector  
388 competence and therefore lead to an increase infection rate among the human vertebrate host in  
389 the region. This is going to help determine the true regional CHIKV burden and even other  
390 arbovirus etiologies in the Mexican southern regions and elsewhere.

#### 391 **Funding sources**

392 This work was part of the PhD studies of the first author (ALGP) at the Universidad Autónoma  
393 del Estado de México (UAEM) and was supported by Consejo Nacional de Humanidades,  
394 Ciencias y Tecnologías (CONAHCYT) grant 231888, México. Also, the study was supported in  
395 part by a Grant 2U54MD007592 from the National Institutes on Minority Health and Health  
396 Disparities (NIMHD), a component of the National Institutes of Health (NIH). JGEF was  
397 supported by SIP-IPN grants, 20221576, 20230712, 20231063 and 20242330.

398

#### 399 **Acknowledgements**

400 The authors convey their sincere thanks to Teodora Minguito, María Ángeles Murillo, Lourdes  
401 Hernández and Francisca Molero.

#### 402 **Conflicts of Interest**

403 The authors declare no conflict of interest.

404 **Author Bio**

405 MC. Gonzalez-Perez is a doctoral student at the Universidad Autónoma del Estado de  
406 México, where she has been investigating emerging and reemerging zoonotic diseases. Her  
407 doctoral studies have an emphasis on management of pathogens of biosafety level 3 and 4.

408

409 **Author contributions**

410 Conceptualization: Ana Luz Gonzalez-Perez, Jose Guillermo Estrada-Franco

411 Design experiments: Ana Luz Gonzalez-Perez, Jose Guillermo Estrada-Franco

412 Data curation: Ana Luz Gonzalez-Perez

413 Funding acquisition: Jose Guillermo Estrada-Franco, Scott Weaver, Maria Paz Sanchez-Seco

414 Investigation: Ana Luz Gonzalez-Perez

415 Methodology: Ana Luz Gonzalez-Perez, Ana Vazquez, Maria Paz Sanchez-Seco, Scott Weaver

416 Lab molecular diagnostics: Ana Luz Gonzalez-Perez, Jessica A. Plante, Kenneth S. Plante, Scott Weaver,

417 Douglas Watts, María Paz Sanchez-Seco, Ana Vazquez, Anabel Negredo, Pedro M. Palermo, Jose

418 Guillermo Estrada-Franco

419 Lab serological diagnosis: Ana Luz Gonzalez-Perez, Fernando de Ory, Jessica A. Plante, Douglas Watts,

420 Jose Guillermo Estrada-Franco

421 Project administration: Jose Guillermo Estrada-Franco

422 Resources: Ana Luz Gonzalez-Perez, Scott Weaver, Maria Paz Sanchez-Seco, Douglas Watts, Jose

423 Guillermo Estrada-Franco

424 Software: Jessica A. Plante, Kenneth S. Plante

425 Writing – original draft: Ana Luz Gonzalez-Perez, Jose Guillermo Estrada-Franco

426 Writing – review & editing: Ana Luz Gonzalez-Perez, Douglas Watts, Scott Weaver, Fernando de Ory,

427 Jose Guillermo Estrada-Franco

428

429 **Supporting information**

430 S1 Table. Chikungunya strains list of isolates. (XLSX)

431

432

433 **References**

- 434 1. Weaver SC. Arrival of chikungunya virus in the new world: prospects for spread and impact  
435 on public health. *PLoS Negl Trop Dis* 2014; 8:e2921
- 436 2. Sahadeo NSD, Allicock OM, De Salazar PM, Auguste AJ, Widen S, Olowokure B, et al.  
437 Understanding the evolution and spread of chikungunya virus in the Americas using  
438 complete genome sequences. *Virus Evol.* 2017; 3(1), vex010
- 439 3. European Centre for Disease Prevention and Control (ECDC). Rapid Risk Assessment.  
440 Autochthonous cases of chikungunya fever on the Caribbean Island, Saint Martin. 11  
441 December 2013. Stockholm: ECDC;2013.
- 442 4. Pan American Health Organization (PAHO), World Health Organization (WHO). 2018.  
443 Number of reported cases of chikungunya fever in the Americas, by country or territory  
444 2017 (to week noted) epidemiological week / EW 51 (Updated as of 22 December 2017).  
445 Cited May 30, 2024, available at: [https://www3.paho.org/hq/dmdocuments/2017/2017-ago-  
446 18-phe-CHIKV-cases-ew-33.pdf](https://www3.paho.org/hq/dmdocuments/2017/2017-ago-18-phe-CHIKV-cases-ew-33.pdf)
- 447 5. Pialoux G, Gaüzère B-A, Jauréguiberry S, Strobel M. Chikungunya, an epidemic  
448 arbovirosis. *Lancet Infect Dis.* 2007; 7(5):319-27.
- 449 6. Burt FJ, Rolph MS, Rulli NE, Mahalingam S, Heise MT. Chikungunya: a re-emerging virus.  
450 *Lancet.* 2012; 379(2):662–71.

- 451 7. Centers for Disease Control and Prevention (CDC). Chikungunya fever diagnosed among  
452 international travelers-United States, 2005-2006. *MMWR Morb Mortal Wkly Rep.* 2006;  
453 Sep 29;55(38):1040-2.
- 454 8. Tsetsarkin KA, Vanlandingham DL, McGee CE, Higgs S. A single mutation in chikungunya  
455 virus affects vector specificity and epidemic potential. *PLoS Pathog.* 2007; 3(12): e201.
- 456 9. Vazeille M, Moutailler S, Coudrier D, Rousseaux C, Khun H, Huerre M, et al. Two  
457 chikungunya isolates from the outbreak of La Reunion (Indian Ocean) exhibit different  
458 patterns of infection in the mosquito, *Aedes albopictus*. *PLoS One.* 2007; 2:e1168.
- 459 10. Tsetsarkin KA, Chen R, Yun R, Rossi SL, Plante KS, Guerbois M, et al. Multi-peaked  
460 adaptive landscape for chikungunya virus evolution predicts continued fitness optimization  
461 in *Aedes albopictus* mosquitoes. *Nat Commun.* 2014; 5:4084.
- 462 11. Thiberville SD, Moyon N, Dupuis-Maguiraga L, Nougairede A, Gould EA, Roques P, et al.  
463 Chikungunya fever: epidemiology, clinical syndrome, pathogenesis and therapy. *Antiviral*  
464 *Res.* 2013; 99:345–70.
- 465 12. Reiter P, Fontenille D, Paupy C. *Aedes albopictus* as an epidemic vector of chikungunya  
466 virus: another emerging problem? *The Lancet Infect Dis.* 2006; 6(8),463–464.
- 467 13. Powers AM, Logue CH. Changing patterns of chikungunya virus: re-emergence of a  
468 zoonotic arbovirus. *J Gen Virol.* 2007 Sep;88(Pt 9):2363-2377.
- 469 14. Rivera-Ávila RC. Chikungunya fever in Mexico: confirmed case and notes on the  
470 epidemiologic response. *Salud Publica Mex.* 2014; 56:402-404.
- 471 15. Centro Nacional de Programas Preventivos y Control de Enfermedades. Declaratoria de  
472 emergencia epidemiológica EE-2-2014 para el estado de Chiapas ante el primer caso de  
473 transmisión autóctona de enfermedad por virus de chikungunya. [Internet]. 2014 [Cited

- 474 January 2024].
- 475 [http://www.cenaprece.salud.gob.mx/programas/interior/emergencias/descargas/pdf/Declaratoria\\_Emergencia\\_Chiapas\\_Chikungunya.pdf](http://www.cenaprece.salud.gob.mx/programas/interior/emergencias/descargas/pdf/Declaratoria_Emergencia_Chiapas_Chikungunya.pdf)
- 476
- 477 16. Dirección General de Epidemiología (DGE). Sistema Nacional de Vigilancia
- 478 Epidemiológica (SINAVE). Boletín epidemiológico. Histórico de semanas epidemiológicas
- 479 52. 2024 Dirección de Información Epidemiológica, DGE/SINAVE/SALUD. 2024 [Cited
- 480 May 29 2024]. Available in: [https://www.gob.mx/salud/acciones-y-programas/historico-](https://www.gob.mx/salud/acciones-y-programas/historico-boletin-epidemiologico)
- 481 [boletin-epidemiologico](https://www.gob.mx/salud/acciones-y-programas/historico-boletin-epidemiologico)
- 482 17. Pan American Health Organization (PAHO), World Health Organization (WHO). 2024.
- 483 Epidemiological actualization: chikungunya in the Americas region. April 22, 2024.
- 484 Washington, D.C. OPS/OMS. Cited Jun 20, 2024, available at:
- 485 [https://www.paho.org/en/documents/epidemiological-update-chikungunya-region-](https://www.paho.org/en/documents/epidemiological-update-chikungunya-region-americas-22-april-2024)
- 486 [americas-22-april-2024](https://www.paho.org/en/documents/epidemiological-update-chikungunya-region-americas-22-april-2024)
- 487 18. IOM. International Organization for Migration. Migration trends in the Americas. July-Sep
- 488 2023 Mexico. Annual report. Available at:
- 489 [https://rosanjose.iom.int/sites/g/files/tmzbd11446/files/documents/2023-12/en-tendencias-](https://rosanjose.iom.int/sites/g/files/tmzbd11446/files/documents/2023-12/en-tendencias-julio-setiembre-de-2024.pdf)
- 490 [julio-setiembre-de-2024.pdf](https://rosanjose.iom.int/sites/g/files/tmzbd11446/files/documents/2023-12/en-tendencias-julio-setiembre-de-2024.pdf)
- 491 19. Kautz TF, Díaz-González EE, Erasmus JH, Malo-García IR, Langsjoen RM, Patterson EI,
- 492 et al. Chikungunya virus as cause of febrile illness outbreak, Chiapas, Mexico, 2014. *Emerg*
- 493 *Infect Dis.* 2015; Nov 21(11):2070-3.
- 494 20. Díaz-Quinonez JA, Ortiz-Alcántara J, Fragoso-Fonseca DE, Garcés-Ayala F, Escobar-
- 495 Escamilla N, Vázquez-Pichardo M, et al. Complete genome sequences of chikungunya virus

- 496 strains isolated in Mexico: first detection of imported and autochthonous cases. *Genome*  
497 *Announc.* 2015; May 7;3(3):e00300-15.
- 498 21. Díaz-González EE, Kautz TF, Dorantes-Delgado A, Malo-García IR, Laguna-Aguilar M,  
499 Langsjoen RM, et al. First report of *Aedes aegypti* transmission of chikungunya virus in the  
500 Americas. *Am J Trop Med Hyg.* 2015 Dec;93(6):1325-9.
- 501 22. Instituto Nacional de Estadística y Geografía. Conociendo Chiapas. (2013) México: INEGI  
502 [Cited April 30 2022] Disponible en:  
503 [http://internet.contenidos.inegi.org.mx/contenidos/Productos/prod\\_serv/contenidos/espanol/bvineg](http://internet.contenidos.inegi.org.mx/contenidos/Productos/prod_serv/contenidos/espanol/bvineg)  
504 [i/productos/estudios/conociendo/Chiapas.pdf](http://internet.contenidos.inegi.org.mx/contenidos/Productos/prod_serv/contenidos/espanol/bvineg/i/productos/estudios/conociendo/Chiapas.pdf)
- 505 23. Pan American Health Organization. PAHO/CDC. Preparedness and response of  
506 chikungunya virus in the Americas. Washington DC: PAHO 2011; 149 pages.
- 507 24. Powers AM, Roehrig JT. Alphaviruses. *Methods Mol Biol.* 2010; 665:17–38.
- 508 25. Sánchez-Seco MP, Rosario D, Quiroz E, Guzmán G, Tenorio A. A generic nested-RT-PCR  
509 followed by sequencing for detection and identification of members of the alphavirus genus.  
510 *J Virol Methods.* 2001; 95(1-2), 153–161.
- 511 26. Collao X, Negredo AI, Cano J, Tenorio A, de Ory F, Benito A, et al. Different lineages of  
512 chikungunya virus in Equatorial Guinea in 2002 and 2006. *Am J Trop Med Hyg,* 2010;  
513 82:505–507.
- 514 27. Sanchez-Seco MP, Echevarria JM, Hernandez L, Estevez D, Navarro-Mari JM, Tenorio A.  
515 Detection and identification of toscana and other phleboviruses by RT-nested-PCR assays  
516 with degenerated primers. *J Med Virol.* 2003; 71:140 –149.
- 517 28. Sánchez-Seco MP, Rosario D, Domingo C, Hernandez L, Valdés K, Guzmán MG, et al.  
518 Generic RT-nested-PCR for detection of flaviviruses using degenerated primers and internal

- 519 control followed by sequencing for specific identification. *J Virol Methods*. 2015; 126:101-  
520 109.
- 521 29. Ledesma J, Fedele CG, Carro F, Lledó L, Sánchez-Seco MP, Tenorio A, et al. Independent  
522 lineage of lymphocytic choriomeningitis virus in wood mice (*Apodemus sylvaticus*), Spain.  
523 *Emerg Infect Dis*. 2009 Oct;15(10):1677-80.
- 524 30. Beaty BJ, Calisher CH, Shope RE. Arboviruses. In: Diagnostic procedures for viral,  
525 rickettsial, and chlamydial infections (N. J. Schmidt & E. W. Emmons, eds.), 6th Ed. 1989;  
526 pp. 797-855, Washington, D.C.: American Public Health Association.
- 527 31. Erasmus JH, Needham J, Raychaudhuri S, Diamond MS, David W. C. Beasley DWC, et al.  
528 Utilization of an Eilat virus-based chimera for serological detection of chikungunya  
529 infection. *PLOS Negl Trop Dis*. 2015; 9(10): e0004119.
- 530 32. Litzba N, Schuffenecker I, Zeller H, Drosten C, Emmerich P, Charrel R, et al. Evaluation  
531 of the first commercial chikungunya virus indirect immunofluorescence test. *J Virol*  
532 *Methods* 2008; Apr 149(1):175–179-9.
- 533 33. Burdino E, Calleri G, Caramello P, Ghisetti V. Unmet needs for a rapid diagnosis of  
534 chikungunya virus infection. *Emerg Infect Dis*. 2016; 22(10), 1837-1839.
- 535 34. Huzly D, Hanselmann I, Schmidt-Chanasit J, Panning M. High specificity of a novel zika  
536 virus ELISA in European patients after exposure to different flaviviruses. *Euro Surveill*.  
537 2016; 21(16):pii=30203
- 538 35. Granger D, Gómez LJ, Schimek M, Dubbels M, Mosquera JA, Christensen J, et al. Zika  
539 virus antibody detection: evaluation of three different serologic methodologies. 2016; Abstr  
540 32nd Clin Virol Symp, Daytona Beach, Florida, USA.



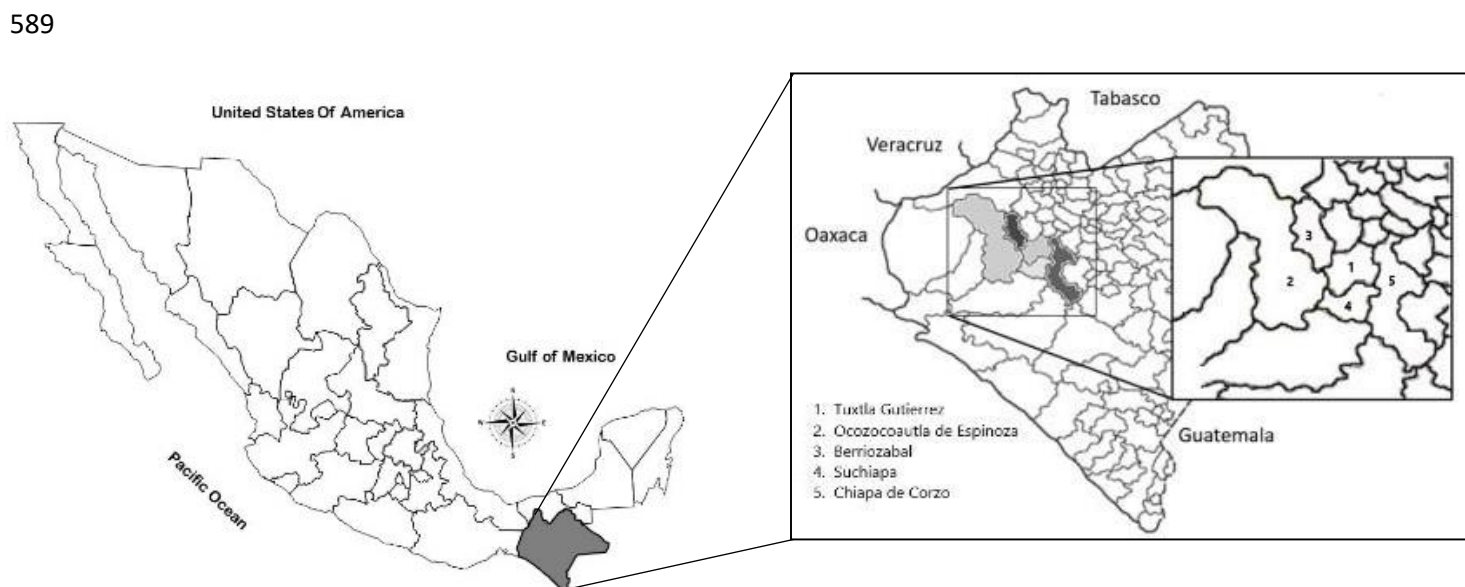
- 541 36. Cuzzubbo AJ, Vaughn DW, Nisalak A, Solomon T, Kalayanarooj S, Aaskov J, et al.  
542 Comparison of PanBio Dengue Duo IgM and IgG capture ELISA and venture technologies  
543 dengue IgM and IgG dot blot. *J Clin Virol*. 2000 Apr;16(2):135-44.
- 544 37. Schleip KP. Phangorn: Phylogenetic analysis in R. *Bioinformatics*. 2011; 27(4) 592-593.
- 545 38. R Core Team. R: A language and environment for statistical computing. R Foundation for  
546 Statistical Computing, 2017, Vienna, Ausitria. URL <https://www.R-project.org/>
- 547 39. Letunic I, Bork P. Interactive Tree of Life (iTOL) v4: recent updates and new developments.  
548 *Nucleic Acids Res*. 2019; April 1.
- 549 40. Meshram CD, Phillips AT, Lukash T, Shiliaev N, Frolova EI, Frolov I. Mutations in  
550 hypervariable domain of venezuelan equine encephalitis virus nsP3 protein differentially  
551 affect viral replication. *J Virol*. 2020 Jan 17;94(3). pii: e01841-19
- 552 41. Mattar S, Miranda J, Pinzon H, Tique V, Bolanos A, Aponte J, et al. Outbreak of  
553 chikungunya virus in the north Caribbean area of Colombia: clinical presentation and  
554 phylogenetic analysis. *J Infect Dev Ctries*. 2015; 9: 1126±32.
- 555 42. Sahadeo N, Mohammed H, Allicock OM, Auguste AJ, Widen SG, Badal K, et al. Molecular  
556 characterization of chikungunya virus infections in Trinidad and comparison of clinical and  
557 laboratory features with dengue and other acute febrile cases. *PLoS Negl Trop Dis*. 2015;  
558 9:e0004199.
- 559 43. Danis-Lozano R, Diaz-Gonzalez EE, Trujillo-Murillo KC, Caballero-Sosa S, Sepulveda-  
560 Delgado J, Malo-Garcia IR, et al. Clinical characterization of acute and convalescent illness  
561 of confirmed chikungunya cases from Chiapas, S. Mexico: A cross sectional study. *PLoS*  
562 *ONE*. 2017; 12(10):e0186923.

- 563 44. Cigarroa-Toledo N, Blitvich BJ, Cetina-Trejo RC, Talavera-Aguilar LG, Baak-Baak, CM,  
564 Torres-Chablé OM, et. al. Chikungunya virus in febrile humans and *Aedes aegypti*  
565 mosquitoes, Yucatan, Mexico. *Emerging infectious diseases*. 2016; 22(10), 1804–1807.
- 566 45. Macpherson C, Noe ÈT, Fields P, Jungkind D, Yearwood K, Simmons M, et al. Clinical  
567 and serological insights from the Asian lineage Chikungunya outbreak in Grenada, 2014:  
568 An observational study. *Am J Trop Med Hyg*. 2016; 95: 890±893.
- 569 46. Norman FF, Monge-Maillo B, Perez-Molina J-A, de Ory F, Franco L, Sánchez-Seco M-P,  
570 et al. Lymphadenopathy in patients with chikungunya virus infection imported from  
571 Hispaniola: case reports. *J Travel Med*. 2015; 22: 272±275.
- 572 47. Keny MS, Pereira IA, Desa SB, Gomes EJ. Painful cervical lymphadenopathy: an unusual  
573 presentation of chikungunya. *Int J Appl Basic Med Res*. 2014; 4: 47±9.
- 574 48. Kiwanuka N, Sanders EJ, Rwaguma EB, Kawamata J, Ssengooba FP, Najjemba R, et al.  
575 O'nyongnyong fever in south-central Uganda, 1996±1997: clinical features and validation  
576 of a clinical case definition for surveillance purposes. *Clin Infect Dis*. 1999; 29: 1243±50.
- 577 49. Weaver SC. Urbanization and geographic expansion of zoonotic arboviral diseases:  
578 mechanisms and potential strategies for prevention. *Trends Microbiol*. 2013;21(8):360–363.
- 579 50. Laoprasopwattana K, Kaewjungwad L, Jarumanokul R, Geater A. Differential diagnosis of  
580 chikungunya, dengue viral infection and other acute febrile illnesses in children. *Pediatr*  
581 *Infect Dis J*. 2012;31:459–463.
- 582 51. OPS/OMS-PLISA data. (cited: October 23, 2023). Available at:  
583 <https://www3.paho.org/data/index.php/es/>

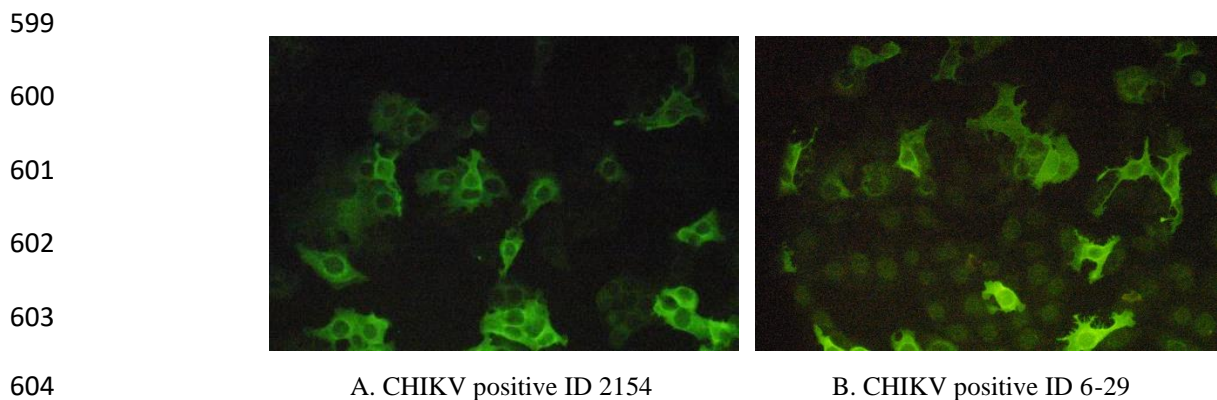
584 Address for correspondence: José Guillermo Estrada-Franco, Centro de Biotecnología  
585 Genómica, Instituto Politécnico Nacional, Boulevard del Maestro s/n. Colonia Narciso Mendoza.  
586 88710, Reynosa, Tamaulipas, México; email: [jestradaf@ipn.mx](mailto:jestradaf@ipn.mx)

587 **Tables and Figures**

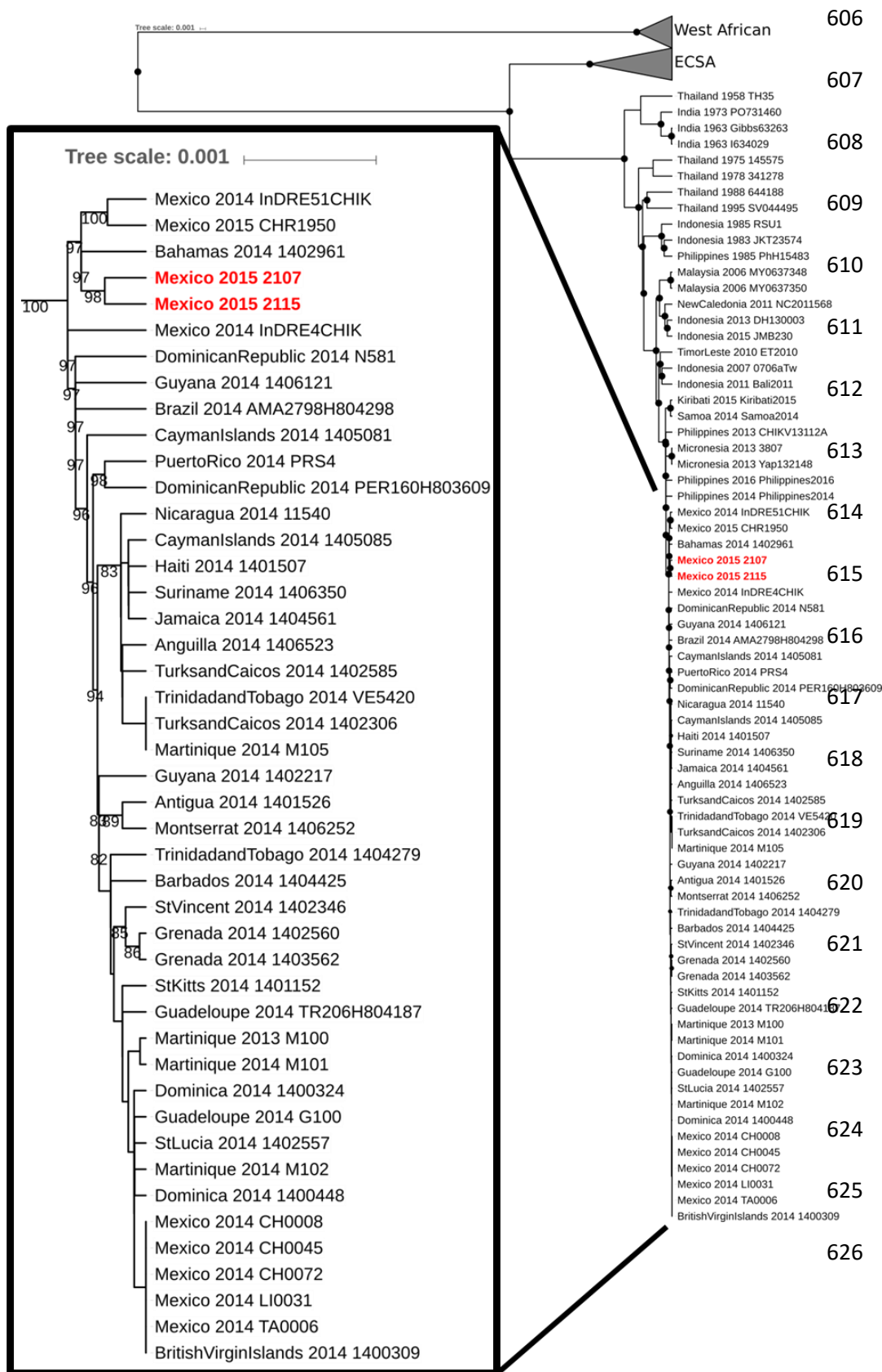
588 **Fig 1.** Map of Chiapas, Mexico showing the sites where serum samples were obtained to test for Chikungunya virus in 2015.



595  
596  
597 **Fig 2.** The results for testing sera sample obtained from suspected chikungunya fever cases by a commercial indirect  
598 immunofluorescent antibody assay during an outbreak of chikungunya fever in 2015 in Chiapas, Mexico.



605 **Fig 3.** Phylogenetic analysis of CHIKV isolates obtained from patients during an outbreak of chikungunya fever in Chiapas, Mexico.



627 Maximum-likelihood tree based on the full genome sequences (minus the 5' and 3' UTRs) of 143 geographically and temporally  
628 diverse strains of CHIKV from GenBank, along with strains 2107 and 2115 (highlighted with red and bold text). Branch lengths are  
629 scaled relative to substitutions. Bootstrapping was performed with 1,000 iterations; values  $\geq 80$  are represented as closed black  
630 circles at the node in the full phylogenetic tree (right), and are listed as text in the expanded view of the Asian lineage strains from  
631 the Americas and Caribbean (left).

632

633

634 **Table 1.** Mutations in complete chikungunya virus ORF nucleotide sequences for chikungunya virus isolates (ID 2017 and ID 2115)  
635 from Chiapas patients during an outbreak 2015 in Chiapas, Mexico.

636

Nucleotide Change	Protein	Amino Acid Change	Isolate ID
	<b>Location</b>		
T480C	nsP1 135	Silent (L)	2107, 2115
C1526T	nsP1 483	Silent (Y)	2107, 2115
A2279T	nsP2 199	Silent (L)	2107
T4172C	nsP3 32	Silent (G)	2107
T4727C	nsP3 217	Silent (H)	2107
T5009C	nsP3 311	Silent (F)	2107
<b>A5206C</b>	<b>nsP3 377</b>	<b>H&gt;P</b>	<b>2115</b>
C7819T	Capsid 88	Silent (P)	2115
C8998T	E2 156	Silent (Y)	2107
T9265C	E2 245	Silent (N)	2107, 2115
C10225T	E1 81	Silent (F)	2107, 2115

637 Summary of nucleotide-level variation between chikungunya virus isolates 2107 and 2115 and 43 other New World Asian lineages  
638 strains of chikungunya virus. Nucleotide and amino acid positions are based on Accession KP164567.1

639

640

641 **Table 2.** Amino acid variation among Mexican chikungunya virus (CHIKV) isolates obtained during an outbreak of chikungunya  
 642 fever in 2015 in Chiapas, Mexico.  
 643

Protein name	AA position	Strains										
		2107	2115	CH0008	CH0045	CH0072	InDRE 4CHIK	InDRE 51CHIK	LI0031	TA0006	CH-R-1950	
nsP3	340	Leu	Leu	Leu	Leu	Leu	Leu	Leu	Leu	Leu	Leu	<b>Ser</b>
nsP3	377	His	<b>Pro</b>	His	His	His	His	His	His	His	His	His
nsP4	274	Asn	Asn	Asn	Asn	Asn	<b>Asp</b>	Asn	Asn	Asn	Asn	Asn
nsP4	399	Ser	Ser	Ser	Ser	Ser	Ser	<b>Cys</b>	Ser	Ser	Ser	Ser
nsP4	432	Met	Met	Met	Met	Met	<b>Thr</b>	Met	Met	Met	Met	Met
E3	42	Pro	Pro	Pro	Pro	Pro	Pro	Pro	Pro	Pro	Pro	<b>Ser</b>
E2	113	Val	Val	<b>Ala</b>	<b>Ala</b>	<b>Ala</b>	Val	Val	<b>Ala</b>	<b>Ala</b>	Val	Val

644 Summary of amino acid variation between all Mexican isolates of CHIKV with full coding sequences deposited in Gene Bank, in  
 645 addition to 2107 and 2115. Consensus determined by alignment of 45 New World Asian lineage strains of CHIKV. Bold indicates non-  
 646 consensus residue. Amino acid positions are based on Accession KP164567.1.

647  
 648  
 649  
 650  
 651  
 652  
 653  
 654  
 655  
 656

657 **Table 3.** Hematological abnormalities in 67 chikungunya fever patients during an outbreak of chikungunya fever in 2015 in Chiapas,  
 658 Mexico.

Blood formula	% (n=67)
Leukopenia (<4.50 miles/ $\mu$ l)	13 (9)
Leukocytosis (>10.50 miles/ $\mu$ l)	9 (6)
Erythrocytosis (>5.0 million/ $\mu$ l)	67 (11)
Hemoglobin Low (<12.5 g/dl)	13 (9)
Hematocrit Low (<37.0 %)	2 (1)
Lymphopenia (<24 miles/UI)	52 (35)
Lymphocytosis (>38 miles/UI)	12 (8)
Monocytopenia (<4.0 miles/UI)	68 (11)
Monocytosis (>10.0 miles/UI)	8.5 (6)
Thrombocytopenia (<50.0 miles/ $\mu$ l)	7.4 (5)

659  
 660 **Table 4.** Incidence of chikungunya virus (CHIKV) infection by age and gender during a chikungunya fever outbreak during 2015  
 661 in Chiapas, Mexico.

Age (Years)	Infected CHIKV Female (%)	Infected CHIKV Male (%)	Total Infected CHIKV%
1-9	4 (67)	2 (3)	6 (100)
10-19	10 (53)	5 (26)	15 (79)
20-29	5 (41)	4 (33)	9 (75)
30-39	6 (50)	3 (25)	9 (75)
40-49	10 (63)	5 (31)	15 (94)
50-59	6 (55)	4 (36)	10 (91)



60-69	1 (100)	0 (N/A)	1 (100)
70-79	0	0 (N/A)	0 (0)
80-89	0	2 (67)	2 (67)
Total	42	25	67

662

663

664 **Table 5.** Clinical manifestation of the patients infected during a chikungunya fever outbreak of 2015 in Chiapas, Mexico.

Signs/ Symptoms	% Female	(n=67)	95% CI	% Male	%(n=67)	95% CI	% Total (n=80)	95% CI
Arthralgias	62.7 (42)	52.4 (42)	41%-63%	37.3 (25)	31.4 (25)	21%-41%	83.7 (67)	75%-91%
Headache	60.4 (32)	40.1 (32)	29%-50%	39.6 (21)	26.5 (21)	17%-36%	66 (53)	55%-76%
Myalgia	56.2 (26)	32.7 (26)	22%-42%	43.5 (20)	25.3 (20)	16%-34%	57.4 (46)	46%-68%
Conjunctivitis	59.5 (25)	31.4 (25)	21%-41%	40.5 (17)	21.6 (17)	12%-30%	52.4 (42)	41%-63%
Exanthema	64.3 (27)	33.9 (27)	23%-44%	35.7 (15)	19.1 (15)	10%-27%	52.4 (42)	41%-63%
Depression	63.4 (26)	32.7 (26)	22%-42%	36.6 (15)	19.1 (15)	10%-27%	51.2 (41)	40%-62%
Abdominal pain	69.5(25)	31.4 (25)	21%-41%	30.5 (11)	14.1 (11)	7%-21%	45 (36)	34%-55%
Retro eye pain	57.6 (19)	24 (19)	15%-33%	42.4 (14)	17.9 (14)	9.9%-26%	41.3 (33)	30%-52%
Adenopathy	71.4 (20)	25.3 (20)	16%-34%	28.6 (8)	10.4 (8)	4.3%-17%	35.1 (28)	24%-45%
Photophobia	50.0 (14)	17.9 (14)	10%-25%	50.0 (14)	17.9 (14)	9.9%-26%	35.1 (28)	24%-45%
Nausea	70.4 (19)	24 (19)	15%-33%	29.6 (8)	10.4 (8)	4.3%-17%	33.9% (27)	23%-44%
Tonsillitis	66.7 (18)	22.8 (18)	14%-32%	33.3 (9)	11.7 (9)	5.2%-18%	33.9% (27)	23%-44%
Paresia	58.3 (14)	17.9 (14)	10%-26%	41.7 (10)	12.9 (10)	6.1%-20%	30.2 (24)	20%-40%
Cough	50.0 (11)	14.1 (11)	7%-21%	50.0 (11)	14.1 (11)	7%-21%	27.7 (22)	18%-37%
Diarrhea	68.2 (15)	19.1 (15)	10%-27%	31.8 (7)	9 (7)	0.3%-15%	27.7 (22)	18%-37%
Nasal congestion	66.7 (14)	17.9 (14)	10%-26%	33.3 (7)	9 (7)	0.3%-15%	26.5 (21)	17%-36%
Dyspnoea	60.0 (12)	15.4 (12)	8%-23%	40.0 (8)	10.4 (8)	4.3%-17%	25.3 (20)	16%-34%
Otitis	64.7 (11)	14.1 (11)	7%-21%	35.3 (6)	8 (6)	2.6%-13%	21.6 (17)	12%-30%
Facial hyperemia	82.4 (14)	17.9 (14)	9.9%-26%	17.6 (3)	4.3 (3)	0.6%-8.7%	21.6 (17)	12%-30%
Petechiae	62.5 (10)	12.9 (10)	6.1%-20%	37.5 (6)	8 (6)	2.6%-13%	20.3 (16)	11%-29%
Inappetence	73.3 (11)	14.1 (11)	7%-21.0%	26.7 (4)	5.5 (4)	1.2%-10%	19.1 (15)	10%-27%

Abnormal muscle sensitivity	53.3 (8)	10.4 (8)	4.3%-17%	46.7 (7)	9 (7)	0.3%-15%	19.1 (15)	10%-27%
Pharyngitis	78.6 (11)	14.1 (11)	7.0%-21.0%	21.4 (3)	4.3 (3)	0.6%-8.7%	17.9 (14)	9.9%-26%
Puke	75.0 (9)	11.7 (9)	5.2%-18%	25 (3)	4.3 (3)	0.6%-8.7%	15.4 (12)	7.9%-23%
Ulcers	41.7 (5)	7 (5)	1.9%-12%	58.3 (7)	9 (7)	0.3%-15%	15.4 (12)	7.9%-23%
Agitation	72.7 (8)	10.4 (8)	4.3%-17%	27.3 (3)	4.3 (3)	0.6%-8.7%	14.1 (11)	7.0%-21%
Dizziness	60.0 (6)	8 (6)	2.6%-13%	40 (4)	5.5 (4)	1.2%-10%	12.9 (10)	6.1%-20%
Swelling of limbs	55.5 (5)	6.7 (5)	1.9%-12%	44.6 (4)	5.5 (4)	1.2%-10%	11.7 (9)	5.2%-18%
Drowsiness	66.7 (6)	8 (6)	2.6%-13%	33.3 (3)	4.3 (3)	0.6%-8.7%	11.7 (9)	5.2%-18%
Gum pain	50 (4)	5.5 (4)	1.2%-10%	50 (4)	5.5 (4)	1.2%-10%	10.4 (8)	4.3%-17%
Tremors	62.5 (5)	6.7 (5)	1.9%-12%	37.5 (3)	4.3 (3)	0.6%-8.7%	10.4 (8)	4.3%-17%
Burning in skin	80.0 (4)	5.5 (4)	1.2%-10%	20 (1)	1.8 (1)	0.2%-4.7%	6.7 (5)	1.9%-12%
Bleeding	75 (3)	4.3 (3)	0.6%-8.7%	25 (1)	1.8 (1)	0.2%-4.7%	5.5 (4)	1.2%-10%
Jaundice	100 (2)	3 (2)	0.1%-6.0%	N/A(0)	0 (0)	0.2%	3 (2)	0.1%-6.0%
Confusion	100 (2)	3 (2)	0.1%-6.0%	N/A(0)	0 (0)	0.2%	3 (2)	0.1%-6.0%

665 CI 95 % Confidence interval

666

667 **Table 6.** Characteristics of the arthralgia for chikungunya fever cases during an outbreak of in 2015 in Chiapas, Mexico.

Characteristic arthralgia	% (n=67)	% (n=80)	95% CI
<b>Distribution</b>			
Arthralgia bilateral	77.6 (52)	64.8 (52)	54%-75%
Arthralgia unilateral	22.4 (15)	19.1 (15)	10%-27%
Arthralgia symmetrical	77.6 (52)	64.8 (52)	54%-75%
<b>Degree of pain</b>			
Mild Pain	5.9 (4)	5.5 (4)	1.2%-10%
Moderate Pain	40.3 (27)	33.9 (27)	23%-44%
Severe Pain	53.7 (36)	45 (36)	34%-55%

<b>Anatomical sites joint</b>			
Arms	49.2 (33)	41.3 (33)	30%-52%
Shoulder	6 (4)	5.5 (4)	1.2%-10%
Elbow	8.9 (6)	8.0 (6)	2.6%-13%
Wrist	32.8 (22)	27.7 (22)	18%-37%
Hand	22.3 (15)	19.1 (15)	10%-27%
Fingers	14.9 (10)	12.9 (10)	6.1%-20%
Legs	34.3 (23)	29 (23)	19%-38%
Hips	25.3 (7)	9% (7)	0.3%-15%
Knee	23.8 (16)	20.3% (16)	11%-29%
Ankle	23.8 (16)	20.3% (16)	11%-29%
Foot	23.8 (16)	20.3% (16)	11%-29%
Jaw	8.9 (6)	8.0% (6)	2.6%-1.3%
Neck	8.9 (6)	8.0% (6)	2.6%-1.3%
Chest	7.4 (5)	6.7% (5)	1.9%-12%
Trunk	25.3 (17)	21.6% (17)	12%-30%
Spine	4.4 (3)	4.3% (3)	0.6%-8.7%
Waist	10.4 (7)	9 (7)	0.3%-15%
All Joints	13.4 (9)	11.7% (9)	5.2%-18%

668 CI 95 % Confidence interval

669

670

671 **Table 7.** Characteristics of the exanthema in 42 patients of the 67 positive chikungunya fever cases during an outbreak of in 2015 in  
 672 Chiapas, Mexico.

673

<b>Characteristic exanthema</b>	<b>% (n=42)</b>	<b>% (n=80)</b>	<b>95% CI</b>
<b>Distribution</b>			
Maculopapular	7.14 (3)	4.3 (3)	0.6%-8.7%
Maculopapular and Pruritic	23.8 (10)	12.9 (10)	6.1%-20%
Pruritic	21.4 (9)	11.7 (9)	5.2%-18%
Bullosa and Pruritic	2.4 (1)	1.8 (1)	0.2%-4.7%
Difuse	7.1 (3)	4.3% (3)	0.6%-8.7%
Difuse and Pruritic	2.4 (1)	1.8% (1)	0.2%-4.7%
<b>Anatomical sites exanthema</b>			
Face	11.9 (5)	6.7 (5)	1.9%-12%
Neck	2.3 (1)	1.8 (1)	0.2%-4.7%
Trunk	33.3 (14)	17.9 (14)	9.9%-26%
Arms	71.4 (30)	37.6 (30)	27%-48%
Hand	7.1 (3)	4.3 (3)	0.6%-8.7%
Chest	11.9 (5)	6.7% (5)	1.9%-12%
Abdomen	35.7 (15)	19.1% (15)	10%-27%
Back	19 (8)	10.4% (8)	4.3%-17%
Legs	38.1 (16)	20.3% (16)	11%-29%
Feet and Soles	4.7 (2)	3% (2)	0.1%-6%

Entire Body	2.3 (1)	1.8% (1)	0.2%-4.7%
-------------	---------	----------	-----------

674 CI 95 % Confidence interval

