

**Title:** Incidence of Right Ventricular Dysfunction in an Echocardiographic Referral Cohort

**Brief Title:** Incidence of Right Ventricular Dysfunction

**Authors:** Jonah D. Garry,<sup>1</sup> Shi Huang, PhD,<sup>2</sup> Jeffrey Annis, PhD,<sup>2</sup> Suman Kundu, PhD<sup>2</sup>, Anna Hemnes, MD,<sup>3</sup> Matthew Freiberg, MD, MSc,<sup>1</sup> Evan L. Brittain MD, MSCI<sup>1</sup>

**Affiliations:**

1: Division of Cardiovascular Medicine, Vanderbilt University Medical Center, Nashville, TN

2: Vanderbilt Institute of Clinical and Translational Research, Vanderbilt University Medical Center, Nashville, TN

3: Division of Allergy, Pulmonary, and Critical Care Medicine, Vanderbilt University Medical Center, Nashville, TN

**Address for correspondence:**

Evan L. Brittain, MD, MSCI

Vanderbilt University Medical Center

2525 West End Ave, Suite 300A

Nashville, TN 37203

Email: [evan.brittain@vumc.org](mailto:evan.brittain@vumc.org)

**Conflicts of Interest:** None

**Funding:** This work was supported by the National Heart Lung and Blood Institute: T32 HL 087738 (Garry), R01 HL 163960 (Brittain), R01 HL 146588 (Brittain, Freiberg), R01 HL 155278 (Brittain); National Institute of Diabetes and Digestive and Kidney Diseases: R01 DK 124845 (Brittain); and US Food and Drug Administration R01 FD 007627 (Brittain).

## **Abbreviation List**

AF = Atrial Fibrillation

BMI = Body Mass Index

CAD = Coronary Artery Disease

eGFR = Estimated Glomerular Filtration Rate

HF = Heart Failure

HFpEF = Heart Failure with preserved ejection fraction

HFrEF = Heart Failure with reduced ejection fraction

ILD = Interstitial Lung Disease

IR = Incidence Rate

LV = Left Ventricle

PH = Pulmonary Hypertension

RAP = Right atrial pressure

RV = Right Ventricle

RVD = Right Ventricular dysfunction

RV-PA = Right Ventricular – Pulmonary Artery

RVSP = Right Ventricular Systolic Pressure

TTE = Transthoracic Echocardiogram

TAPSE = Tricuspid Annular Plane Systolic Excursion

TRV = Tricuspid Regurgitant Velocity

## **Abstract**

### *Introduction:*

Incidence rates (IRs) of RV dysfunction (RVD) are unknown. We examined the rates, risk factors, and heart failure (HF) hospitalization hazard associated with incident RVD in patients referred for Transthoracic Echocardiogram (TTE).

### *Methods:*

In this retrospective cohort study, we extracted tricuspid regurgitant velocity (TRV) and tricuspid annular systolic plane excursion (TAPSE) from TTEs at Vanderbilt (2010-2023). We followed patients from their earliest TTE with normal RV function ( $TAPSE \geq 17\text{mm}$ ) and a reported TRV. The primary outcome was new RVD ( $TAPSE < 17\text{mm}$ ), and the secondary outcome was HF hospitalization after second TTE. Poisson regression and multivariable cox models estimated IRs and hazard ratios, adjusted for demographics, comorbidities, and TTE measures.

### *Results:*

Among 45,753 patients (63 years [IQR 50-72], 45% Male, 13% Black) meeting inclusion criteria, 13,735 (30.1%) underwent a follow up TTE and 4,198 (9.2%) developed RVD. The IR of RVD in the full cohort was 3.2/100 person/years (95%CI 3.1-3.3) and 8.2 (95%CI 8.0-8.5) in the repeat TTE cohort. IRs increased with rising RVSP. Risk factors for incident RVD were most prominently HF (HR 1.88; 95%CI 1.75–2.03), left-sided valvular disease (HR 1.68; 95%CI 1.53–1.85), and other cardiovascular comorbidities. Baseline RVSP  $> 35$  mmHg associated with TAPSE decline over time. Incident RVD increased hazard of HF hospitalization (HR 2.02; 95%CI 1.85-2.21). Hazard of HF hospitalization increased when TAPSE declined by  $\geq 5\text{mm}$ .

### *Conclusions:*

RVD incidence is substantial among patients referred for TTE. Clinical monitoring is warranted if RVSP >35mmHg. Cardiovascular comorbidities drive RVD in this population. Incident RVD associates with increased hazard of HF hospitalization.

## Introduction

Right ventricular dysfunction (RVD) is associated with increased morbidity and mortality in the general population<sup>1</sup> and across the spectrum of cardiovascular disease,<sup>2-7</sup> however there are substantial gaps in current understandings of RV epidemiology.<sup>8</sup> To date, studies of RVD have focused on prevalence and prognostic implications in highly selected populations, with small studies examining the impact of RVD within a specific underlying etiology such as heart failure (HF) with further subdivision by left ventricular ejection fraction (LVEF)<sup>9-12</sup> and pulmonary hypertension (PH)<sup>5</sup> with stratification by WSPH group or etiology.<sup>13-15</sup> The few population-level epidemiologic investigations of RVD to date derive from the NHLBI cohorts MESA,<sup>16</sup> ARIC,<sup>17</sup> and CARDIA<sup>18</sup> and provide cross-sectional prevalence using multiple imaging metrics of RV function. No studies to date have described the incidence rate (IR) of RVD longitudinally or evaluated the clinical characteristics associated with development of RVD in a large-scale population of patients seeking care.

Here, we report the first incidence rates of RVD among patients referred for echocardiography and identify the associated clinical risk factors to better understand population-level drivers of RVD. We hypothesized that the predominant factors associated with RVD would be cardiovascular comorbidities in addition to pulmonary pressure and that incident RVD would be associated with an increased hazard of heart failure hospitalization.

## Study Design and Methods

We conducted a retrospective cohort study using deidentified electronic medical record data from a tertiary care center. The local Institutional Review Board approved the study. We

extracted TTE reports from the electronic health record as previously described.<sup>19,20</sup> We assessed all adult patients (aged  $\geq 18$  years) referred for TTE between May 7, 2010 (when TTE reports began recording Tricuspid Annular Plane Systolic Excursion [TAPSE]) and August 2023.

### *Exposures, Covariates, and Outcomes*

We selected the first TTE available with normal RV function (TAPSE  $\geq 17$ mm) and a concurrently available TRV for each patient as the baseline. Overall TRV availability (46.3%) was comparable to the similarly sized contemporaneous National Echo Database Australia cohort and higher than the CARDIA echocardiography core laboratory.<sup>21–23</sup> Patients who had a TTE with TAPSE  $< 17$ mm before a subsequent TTE with normal RV function were excluded. The predictor of interest was PH, defined by a TRV  $> 2.8$ m/s based on the 2022 ERS/ERC guidelines.<sup>24</sup> The primary outcome of interest was the development of RVD on a follow up TTE defined as TAPSE  $< 17$ mm.<sup>25</sup> Routine TAPSE measures were instituted in our echocardiography lab in 2011 after publication of the ASE guidelines for assessment of the right heart<sup>26</sup> and a contemporaneous primer for cardiac sonographers<sup>27</sup> following a strict quality control period. TAPSE measures were generated by RDCS certified sonographers and overread by attending echocardiographers. We identified the temporally closest follow-up TTE demonstrating RVD. For patients who did not develop RVD, we censored patients at the date of last medical contact or death. We excluded patients with fewer than 3 months follow-up to avoid biasing incident RVD estimates with acute changes to RVD.

We abstracted demographic, laboratory, echocardiographic, and comorbidity information indexed to the date of baseline TTE in a similar fashion to prior studies.<sup>28–30</sup> Further details regarding data abstraction are included in the ***Supplemental Methods***.

### *Incidence Rate Analyses*

We estimated IRs for the overall cohort, stratified by PH status, and stratified by RVSP categories. Our primary IR estimates using the Full Cohort assumed conservatively that all patients without a second TAPSE measurement did not develop RVD (“minimum estimate”). We then performed secondary analysis limiting the analysis cohort to patients with at least one follow up TAPSE measurement (“Repeat TTE Cohort”), using the temporally closest TTE and derived a “maximum estimate.” This dual approach provides maximum information from our cohort by offering upper and lower bounds for RVD IR estimates. To assess whether long-term follow up without repeat TTE could bias our results to lower rates we also performed a sensitivity analysis of the full cohort censoring all patients at 5-years of follow up.

### *Characteristics Associated with RVD and TAPSE*

We assessed the association between baseline characteristics and development of RVD in the Full Cohort and Repeat TTE Cohort. In secondary analyses we re-assessed these associations stratified by PH status. We performed sensitivity analyses with time-varying comorbidities to assess whether new diagnoses explained some degree of incident RVD hazard. Details of exposure time, follow up echo selection, and variable selection for these models are noted in the ***Supplemental Methods***.

### *HF Hospitalization*

We conducted a time-to-event analysis to assess the impact of incident RVD and change in TAPSE between TTEs on the hazard of HF hospitalization or rehospitalization. We performed a sensitivity analysis of only those patients with their second TTE conducted outpatient with inpatient TTE status determined the presence of any inpatient ICD code within one day of the TTE. Details of HF hospitalization definition, exposure time, and inpatient/outpatient TTE status are detailed in the ***Supplemental Methods***.

### *Right Ventricle-Pulmonary Artery (RV-PA) Uncoupling*

In secondary analysis, we assessed the IRs, risk factors, and HF hospitalization hazard associated with incident RV-PA Uncoupling. We defined RV-PA Uncoupling by TAPSE/RVSP <0.36 mm/mmHg based on prior reports.<sup>5,31</sup> For this analysis we excluded patients in the full cohort with prevalent RV-PA uncoupling and included follow up TTEs with both TAPSE and RVSP available.

### *Statistical Analysis*

Patient characteristics were described using frequency with percentages for categorical variables and median with interquartile range for continuous variables. We assessed differences in clinical characteristics by PH status using Pearson chi-squared testing for categorical variables and Wilcoxon-Rank Sum testing for continuous variables. IRs for RVD were calculated as cases per 100 person-years, with estimated 95% confidence intervals generated



under Poisson distribution assumption and by exact method. We used Kaplan Meier curves to display the time to development of RVD with log-rank testing to compare between patients with and without PH. We examined the relationship between baseline characteristics and hazard of developing RVD using multivariable cox regression, adjusting for demographics, comorbidities, and baseline echo measures. We assessed the relationship between baseline characteristics and change in TAPSE using Ordinary Least Squares regression, adjusting for baseline TAPSE and length of follow up time. In all multivariable models, the effects of continuous predictors were assumed nonlinear, using restricted cubic splines with three knots. We report predictors' effect graphically and by comparing the 75<sup>th</sup> percentile value to the 25<sup>th</sup> percentile value. We assessed the relationship between incident RVD/change in TAPSE and HF hospitalization using multivariable Cox regression and adjusting for demographics, time-varying comorbidities, and baseline TTE measures.

All models were conducted using complete case analysis. We excluded baseline variables with >10% missingness in the primary regression models. Statistical Analyses were performed using R software (version 4.3.1; [www.r-project.org](http://www.r-project.org)).

## Results

We identified 45,753 patients without RVD who had a baseline TTE with TRV and TAPSE measurements available and met our inclusion criteria (Full Cohort; **Figure 1**). Of these, 9,700 patients had PH (PH+ cohort) and 36,053 did not (PH- cohort). Baseline characteristics stratified by PH status are displayed in **Table 1**. There were 13,735 patients referred for a follow up TTE

over the study period (Repeat TTE Cohort). **eTable 1** displays characteristics compared between the Full Cohort and Repeat TTE Cohort.

The PH+ cohort expectedly had a higher RVSP (44 mmHg vs 26 mmHg) and were older (68 vs 61 years), with similar sex distribution, body mass index (BMI), and racial/ethnic composition. Baseline TAPSE was similar between the two groups (2.20 vs 2.20,  $p = 0.68$ ). There was a higher prevalence of cardiometabolic and pulmonary comorbidities in the PH+ cohort including HF (45% vs 22%) and AF (36% vs 21%) as well as a higher prevalence of cardiac structural pathology. Median follow up was shorter in the PH+ cohort (625 days [IQR 297-1288] vs 794 days [IQR 368-1562]). Ultimately 1690 patients (4.7%) without PH at baseline newly developed PH on their follow up TTE.

#### *Incidence Rates of Right Ventricular Dysfunction*

The primary outcome (new RVD) occurred in 4,198 patients (10.1%). The median time to development of new RVD was 765 days (IQR 364-1466), while patients who did not develop RVD (followed until death or last medical contact) were followed for a median of 758 days (IQR 353-1045). For patients with a second TAPSE measurement, the mean change in TAPSE was -2.44mm +/- 5.78mm. Unsurprisingly, there was a larger TAPSE decline among the subset of these patients who developed incident RVD (-7.18mm +/- 4.37) compared to patients who did not (-0.52mm +/- 5.14). The primary outcome occurred in 14.0% of patients with PH ( $n = 1,359$  patients) and 7.9% of patients without PH ( $n=2,839$ ). Of note, the proportion of patients with a repeat TTE was different between the PH+ and PH- cohorts (37.1% vs 28.1%).

The IR estimate of RVD in the Full Cohort (minimum estimate) was 3.2 per 100 person-years (95%CI 3.1–3.3), reaching up to 8.2 per 100 person-years (95%CI 8.0–8.5) in the Repeat TTE cohort (maximum estimate). Rates were nearly identical with censoring at 5-years of follow up. IRs of RVD in the PH+ cohort were 1.6-2.1x higher than the PH- cohort. IRs of RVD increased consistently as RVSP increased (**Table 2**). Kaplan-Meier curves for the development of RVD stratified by PH status are displayed in **Figure 2**.

### *Baseline Characteristics Associated with Incident RVD*

The baseline characteristics most strongly associated with RVD in multivariable regression modeling were HF (HR 1.88; 95%CI 1.75-2.03), systemic sclerosis (HR 1.84; 95%CI 1.41–2.39), atrial fibrillation (AF) (HR 1.54; 95%CI 1.44–1.65), and left sided valvular disease (HR 1.68; 95%CI 1.53–1.85). The full regression model is displayed in **eTable 2**. Notably, coronary artery disease (CAD), diabetes, interstitial lung disease (ILD), and Male Sex were associated with a significantly increased hazard of RVD while moderate or worse tricuspid regurgitation was associated with a decreased hazard of RVD (HR 0.84 [95%CI 0.72–0.98]). Associations between continuous variables and probability of RVD at 3 years (median follow-up) are displayed in **Figure 3**. TAPSE, BMI, and LVEF were non-linearly associated with RVD (all  $p < 0.001$ ). The probability of RVD at 3 years decreased steeply as baseline TAPSE increased from 1.7 until 2.5, above which the probability of RVD continued to decrease more gradually. The probability of RVD is consistently highest for BMIs  $< 30$ , however as BMI increases above 30 the probability of RVD steadily decreases. For LVEF the probability of RVD appears to linearly decrease from the lowest values up to 60, above which there is a small increase in probability of RVD. The

probability of RVD decreased linearly as age and eGFR increased and increased linearly as RVSP and LA diameter increased (all  $p < 0.05$ ). Higher stages of diastolic dysfunction were associated with increased hazard of RVD, while LV average  $E/e'$  was not significantly associated with hazard of RVD. Addition of eGFR and diastolic function to the model did not significantly change the association of any other variables, including HF or LVEF.

On time-varying multivariable Cox regression, we found that the hazard of RVD associated with HF (HR 2.26 [95%CI 2.09–2.43]) and AF (HR 1.81 [95%CI 1.69-2.94]) become more pronounced (**eTable 2**). All baseline characteristics retained their directional association with hazard of incident RVD and all continuous variables retained their association with probability of RVD at 3 years in the Repeat TTE Cohort (**eTable 2, eFigure 1**).

We then assessed the association between baseline characteristics and incident RVD stratified by PH status (**eTable 3**). Several variables were more strongly associated with RVD in the PH- group, including male sex, Systemic Sclerosis, and left sided valvular disease. The relationships between continuous variables and probability of normal RV function (i.e shape of the splines) were similar between PH+ and PH- cohorts (**eFigure 2**).

#### *Association of Baseline Characteristics with Change in TAPSE*

In the Repeat TTE Cohort, the mean change in TAPSE was  $-2.44\text{mm} \pm 5.78\text{mm}$ . Baseline AF ( $\beta = -1.22\text{ mm}$ ,  $p < 0.001$ ), left-sided valvular disease ( $\beta = -1.18\text{ mm}$ ,  $p = 0.001$ ), CAD ( $\beta = -0.93\text{ mm}$ ,  $p < 0.001$ ), and HF ( $\beta = -0.73\text{ mm}$ ,  $p = 0.001$ ) were strongly associated with larger decline in TAPSE. Adjusted  $\beta$ -coefficients with 95%CIs for all variables are displayed in **eTable 4**. Male sex, Diabetes, ILD, and obstructive sleep apnea were associated with decline in TAPSE to a

lesser degree (all  $p < 0.05$ ). Increasing age ( $\beta = 0.09$  mm per 10 years,  $p = 0.005$ ), SBP ( $\beta = 0.05$  mm per 10mmHg,  $p = 0.038$ ), and LVEF ( $\beta = 0.27$  mm per 10% increase,  $p < 0.001$ ) were associated with a smaller decline in TAPSE. Baseline RVSP, BMI, and baseline TAPSE were non-linearly associated with change in TAPSE (all  $p < 0.05$ ). For RVSP, the change in TAPSE was stable at -0.1 until an inflection point near 35mmHg, above which increasing RVSP is linearly associated with progressive decline in TAPSE. TAPSE change was stable for BMI  $< 30$ , however as BMI increases above 30 there is an association with increasing improvement in TAPSE. The model-estimated TAPSE change by all continuous variables are displayed in **eFigure 3**.

#### *Association between Incident RV Dysfunction and HF Hospitalization*

Of the Repeat TTE cohort, 13,142 patients (95.7%) had follow-up encounters at our institution after their second TTE and 2,343 of these patients (17.8%) had a subsequent HF hospitalization or rehospitalization. Median time between TTEs was 791 days (IQR 374-1510) and median follow up after second TTE was 227 days (IQR 42-434). Incident RVD (vs no development of RVD) was associated with an increased hazard of HF hospitalization (HR 2.02; 95%CI 1.85-2.21), exhibiting a hazard ratio of similar magnitude to that of prevalent HF (**eTable 5**). There was an increased hazard of HF hospitalization beginning near a 5mm decrease in TAPSE that steadily increased with greater TAPSE decline (**Figure 4A**). When restricted to outpatient follow up TTEs the hazard of HF hospitalization associated with incident RVD (HR 2.05; 95%CI 1.86-2.27) and relationship between TAPSE and HF hospitalization were unchanged (spline not shown).

### *RV-PA Uncoupling*

There were 44,563 patients from the full cohort with normal RV-PA coupling at baseline. Of these, 11,148 patients (25.0%) had an available follow up TTE with TASPE and RVSP measurement. New RV-PA uncoupling was uncovered in 1,592 patients (3.6%). The median time to development of RV-PA uncoupling was 869 days (IQR 381 – 1671), while patients who did not develop RV-PA uncoupling were followed for a median of 797 days (IQR 366 – 1572). The mean change in TAPSE/RVSP ratio was -0.11 mm/mmHg +/- 0.49.

The IR estimate of RV-PA uncoupling in the Full Cohort (minimum estimate) was 1.2 per 100 person-years (95%CI 1.1–1.3) and increased to 3.4 per 100 person-years (95%CI 3.2 – 3.6) in patients with a repeat RV-PA measurement. IRs of RV-PA uncoupling were substantially higher in the PH+ population and increased consistently as RVSP increased (**Table 2**). The baseline characteristics associated with RV-PA coupling were the same as the characteristics associated with RV dysfunction (**eTable 6, eFigure 4**). Degree of diastolic dysfunction, AF, HF, and systemic sclerosis demonstrated particularly strong associations with incident RV-PA uncoupling. As with RV dysfunction, we found that the hazard of RV-PA uncoupling associated with HF and AF become more pronounced on time-varying regression modeling. Incident RV-PA uncoupling was associated with an increased hazard of HF hospitalization (HR 3.21; 95%CI 2.84-3.63), exhibiting a hazard ratio greater than that of prevalent HF (**eTable 7**). There was an increased hazard of HF hospitalization beginning near a 0.1mm/mmHg decrease in TAPSE/RVSP ratio that steadily increased with further decline (**Figure 4B**).

### **Discussion**

We examined longitudinal development of incident RVD defined by TAPSE and RV-PA uncoupling defined by TAPSE/RVSP ratio in a large echocardiographic referral cohort. This work is significant because incidence rates for RVD uncoupling have not been reported, in contrast to virtually all other cardiopulmonary conditions. The major findings are: 1) The incidence of RVD in the echocardiographic referral population is substantial and 1.7-2.1 fold higher in individuals with PH (5.6-11.9/100 PY) compared to those without (2.7-7.2/100PY). 2) Among clinical characteristics, cardiovascular comorbidities were the most strongly associated with increased hazard of RVD and RV-PA uncoupling, with a possible causal relationship for HF and AF. 3) There appears to be a threshold effect for the association between RVSP and RVD near 35 mmHg. 4) Incident RVD and RV-PA uncoupling are independently associated with a 2-fold and 3-fold increased hazard of HF hospitalization, respectively. 5) Decline in TAPSE greater than 5mm and a decline in TAPSE/RVSP greater than 0.1 mm/mmHg are associated with an increased hazard of HF hospitalization.

Despite the well-established prognostic significance of RVD, it is one of the few cardiovascular phenotypes lacking data on IRs. Population-level prevalence estimates of RVD derive from longitudinal community-based NIH cohorts. Among 1,004 ARIC participants in their 70s with moderate comorbidity burden the prevalence of RVD by TTE 3D RVEF or RV longitudinal strain was 17.2%-19.8%,<sup>17</sup> but significantly lower at 8% when measured by TAPSE or RV S' among 3,433 CARDIA participants with low comorbidity burden<sup>18</sup> and as low as 5.9% in MESA when measured by CMR RVEF.<sup>16</sup> While there is some data on RV-PA coupling variation in the general population from ARIC (measured as echocardiographic RVEF/PASP),<sup>17</sup> prevalence estimates of RV-PA uncoupling are lacking, in part due to the lack of consensus cutoff. The

prevalence of RVD is substantial in selected populations such as HFpEF (26-49%),<sup>32</sup> HFrEF (35-50%),<sup>31,33-36</sup> and PH (>25%)<sup>37</sup>, as is the prevalence of RV-PA uncoupling which varies widely from 14-40% in the largest published cohorts using a TAPSE/PASP definition of <0.36mm/mmHg.<sup>9,38</sup> To the best of our knowledge, there are no studies that estimate IRs for RVD or RV-PA uncoupling as in our study.

We found the rate of RVD to be 3.2-8.2% per person-year in a large, diverse echocardiographic referral cohort, increasing to 9.9-17.3% per person-year in patients with RVSP>60 mmHg. RV-PA uncoupling rates were generally lower, estimated between 1.2-3.4% per person-year for the full cohort and similarly increasing rapidly with higher RVSP. The minimum estimates are conservative because they assume all patients who did not undergo a repeat TTE did not develop RVD, which is unlikely to be true. Conversely, the maximum estimates are likely inflated by selection bias by including only patients referred for a repeat TTE. The true incident rate likely falls somewhere within the range. Despite inherent enrichment for cardiac comorbidities and structural disease in a TTE referral cohort our findings are highly relevant for clinical care in patients with suspected cardiopulmonary disease with an indication for TTE. The IR estimates and adjusted hazards for RVD described in this study identify patients at risk and provide an evidence base for powering future trials targeting RV function.

We identified cardiovascular comorbidities and cardiac structural disease as key drivers of both RVD and RV-PA uncoupling, confirming previously noted strong associations with HF, LV diastolic and systolic dysfunction, AF, coronary artery disease, and left-sided valvular disease.<sup>7,9,10,32,35,39-42</sup> Tricuspid regurgitation was associated with decreased RVD, which may be



related to preservation in lateral RV systolic motion via increased RV preload, RV dilation and increased stroke volume along with co-occurring compensatory RV hypertrophy. We found stronger associations between HF/AF and incident RVD when new cases were accounted for, suggesting a possible mechanistic link.<sup>43</sup> Contrary to prior observations of a linkage between metabolic dysfunction and RVD, we found that higher BMI was associated with improved RV function. This relationship which may be specific to TAPSE however, as other RV function metrics decline with increasing BMI.<sup>18,44–46</sup> Systemic sclerosis and left-sided valvular disease were associated with RVD in patients without PH, but not patients with PH, highlighting the need for future research.

We observed a threshold effect of RVSP on TAPSE near 35 mmHg, mirroring the relationship between RVSP and mortality,<sup>5,47</sup> and correlating with the ERS/ERC 2022 guideline cutoff to suggest increased suspicion of PH at TRV >2.8 m/s (equivalent to RVSP of ~34mmHg assuming a normal RAP).<sup>24</sup> An RVSP  $\geq$ 35 mmHg may represent a population-level pathologic threshold for RVD that warrants serial monitoring over time. Our finding lends further evidence to the appropriateness of the established cutoff for suspicion of PH.

Incident RVD and RV-PA uncoupling were strongly independently associated with increased HF hospitalization hazard after robust multivariable adjustment and on sensitivity analysis among patients with outpatient TTEs. Our results align with prior studies that have established prevalent RVD and RV-PA uncoupling as important prognostic findings in PH<sup>5,48–51</sup> and HF.<sup>9,31,52</sup> We define novel numeric cutoffs for HF hospitalization risk, noting an increased HF hazard with a TAPSE decline of 5mm or greater and TAPSE/RVSP decline of 0.1mm/mmHg or greater compared to no change over time.

### *Limitations*

Our cohort was derived from a TTE referral population, which introduces selection bias, but our findings are directly applicable to routine care. The IRs of RVD that we describe may be overestimated as not all patients with PH undergo TTE, potentially missing cases. Conversely, follow up TTEs were conducted according to clinical practice and RVD may have occurred before being identified, therefore incident rates may be systemically underestimated. Overall, these effects are unlikely to substantially change the estimated IRs. We chose TAPSE as the primary metric of RV function due to its widespread availability, reproducibility, and extensive prior study.<sup>1,35,53</sup> Alternative TTE measures of RV function such as tricuspid annular velocity, fractional area change, or RV ejection fraction were less available in our cohort. We cannot determine whether beat-to-beat variability in TAPSE due to AF at the time of TTE affected our measures, but given the cohort size, this potential source of error likely did not impact our results. The associations observed in our study do not imply causality and should be considered hypothesis generating for future mechanistic studies. There is minimal data missingness in our primary analyses (<10% for all variables) that is unlikely to impact the relationships identified between baseline characteristics and incident RVD.

### *Conclusions*

We report the first incident rate estimates of RVD and RV-PA uncoupling among patients seeking care. The rate of incident RVD is substantial and may warrant closer monitoring among patients with RVSP >35mmHg. Cardiovascular comorbidities, especially HF

and AF, increase the hazard of RVD and RV-PA uncoupling. RVD and RV-PA uncoupling are the strongest predictors of HF hospitalization even after accounting for prevalent HF and other cardiovascular comorbidities. A decline in TAPSE of greater than 5mm or a decline in TAPSE/RVSP of greater than 0.1 mm/mmHg warrant increased scrutiny and clinical surveillance.

## References

1. Modin D, Møgelvang R, Andersen DM, Biering-Sørensen T. Right Ventricular Function Evaluated by Tricuspid Annular Plane Systolic Excursion Predicts Cardiovascular Death in the General Population. *J Am Heart Assoc.* 2019;8. doi:10.1161/JAHA.119.012197.
2. Khemasuwan D, Yingchoncharoen T, Tunsupon P, Kusunose K, Moghekar A, Klein A, Tonelli AR. Right ventricular echocardiographic parameters are associated with mortality after acute pulmonary embolism. *Journal of the American Society of Echocardiography.* 2015;28. doi:10.1016/j.echo.2014.11.012.
3. Poeschner A, Chattranukulchai P, Heitner JF, Shah DJ, Hayes B, Rehwald W, Parker MA, Kim HW, Judd RM, Kim RJ, Klem I. The Prevalence, Correlates, and Impact on Cardiac Mortality of Right Ventricular Dysfunction in Nonischemic Cardiomyopathy. *JACC Cardiovasc Imaging.* 2017;10. doi:10.1016/j.jcmg.2017.06.013.
4. Vallabhajosyula S, Shankar A, Vojjini R, Cheungpasitporn W, Sundaragiri PR, DuBrock HM, Sekiguchi H, Frantz RP, Cajigas HR, Kane GC, Oh JK. Impact of Right Ventricular Dysfunction on Short-term and Long-term Mortality in Sepsis: A Meta-analysis of 1,373 Patients. *Chest.* 2021;159. doi:10.1016/j.chest.2020.12.016.
5. Huston JH, Maron BA, French J, Huang S, Thayer T, Farber-Eger EH, Wells QS, Choudhary G, Hemnes AR, Brittain EL. Association of Mild Echocardiographic Pulmonary Hypertension With Mortality and Right Ventricular Function. *JAMA Cardiol.* 2019;4:1112. doi:10.1001/jamacardio.2019.3345
6. Lam CSP, Roger VL, Rodeheffer RJ, Borlaug BA, Enders FT, Redfield MM. Pulmonary hypertension in heart failure with preserved ejection fraction: a community-based study. *J Am Coll Cardiol.* 2009;53:1119–1126. doi: 10.1016/j.jacc.2008.11.051
7. Ghio S, Raineri C, Scelsi L, Ašanin M, Polovina M, Seferovic P. Pulmonary hypertension and right ventricular remodeling in HFpEF and HFrEF. *Heart Fail Rev.* 2020;25:85–91. doi: 10.1007/s10741-019-09810-4
8. Leopold JA, Kawut SM, Aldred MA, Archer SL, Benza RL, Bristow MR, Brittain EL, Chesler N, Deman FS, Erzurum SC, Gladwin MT, Hassoun PM, Hemnes AR, Lahm T, Lima JAC, Loscalzo J, Maron BA, Mercer Rosa L, Newman JH, Redline S, Rich S, Rischard F, Sugeng L, Tang WHW, Tedford RJ, Tsai EJ, Ventetuolo CE, Zhao Y, Aggarwal NR, Xiao L. Diagnosis and Treatment of Right Heart Failure in Pulmonary Vascular Diseases: A National Heart, Lung, and Blood Institute Workshop. *Circ Heart Fail.* . 2021;14. doi:10.1161/circheartfailure.120.007975.

9. Ghio S, Guazzi M, Scardovi AB, Klersy C, Clemenza F, Carluccio E, Temporelli PL, Rossi A, Faggiano P, Traversi E, Vriz O, Dini FL. Different correlates but similar prognostic implications for right ventricular dysfunction in heart failure patients with reduced or preserved ejection fraction. *Eur J Heart Fail.* 2017;19. doi:10.1002/ejhf.664.
10. Bosch L, Lam CSP, Gong L, Chan SP, Sim D, Yeo D, Jaufeerally F, Leong KTG, Ong HY, Ng TP, Richards AM, Arslan F, Ling LH. Right ventricular dysfunction in left-sided heart failure with preserved versus reduced ejection fraction. *Eur J Heart Fail.* 2017;19. doi:10.1002/ejhf.873.
11. Melenovsky V, Hwang S-J, Lin G, Redfield MM, Borlaug BA. Right heart dysfunction in heart failure with preserved ejection fraction. *Eur Heart J.* 2014;35:3452–3462. Doi: 10.1093/eurheartj/ehu193
12. Mohammed SF, Hussain I, Abou Ezzeddine OF, Takahama H, Kwon SH, Forfia P, Roger VL, Redfield MM. Right ventricular function in heart failure with preserved ejection fraction: A community-based study. *Circulation.* 2014;130. doi:10.1161/circulationaha.113.008461.
13. Gerges M, Gerges C, Pistritto AM, Lang MB, Trip P, Jakowitsch J, Binder T, Lang IM. Pulmonary hypertension in heart failure epidemiology, right ventricular function, and survival. *Am J Respir Crit Care Med.* 2015;192. doi:10.1164/rccm.201503-0529OC.
14. Prins KW, Rose L, Archer SL, Pritzker M, Weir EK, Olson MD, Thenappan T. Clinical determinants and prognostic implications of right ventricular dysfunction in pulmonary hypertension caused by chronic lung disease. *J Am Heart Assoc.* 2019;8. doi:10.1161/jaha.118.011464.
15. Sachdev A, Villarraga HR, Frantz RP, McGoon MD, Hsiao JF, Maalouf JF, Ammash NM, McCully RB, Miller FA, Pellikka PA, Oh JK, Kane GC. Right ventricular strain for prediction of survival in patients with pulmonary arterial hypertension. *Chest.* 2011;139. doi:10.1378/chest.10-2015.
16. Kawut SM, Barr RG, Lima JAC, Praestgaard A, Johnson WC, Chahal H, Ogunyankin KO, Bristow MR, Kizer JR, Tandri H, Bluemke DA. Right Ventricular Structure Is Associated With the Risk of Heart Failure and Cardiovascular Death. *Circulation.* 2012;126. doi:10.1161/circulationaha.112.095216.
17. Nochioka K, Querejeta Roca G, Claggett B, Biering-Sørensen T, Matsushita K, Hung C-L, Solomon SD, Kitzman D, Shah AM. Right Ventricular Function, Right Ventricular–Pulmonary Artery Coupling, and Heart Failure Risk in 4 US Communities. *JAMA Cardiol.* 2018;3. doi:10.1001/jamacardio.2018.2454.

18. Patel K V., Metzinger M, Park B, Allen N, Ayers C, Kawut SM, Sidney S, Goff DC, Jacobs DR, Zaky AF, Carnethon M, Berry JD, Pandey A. Longitudinal associations of fitness and obesity in young adulthood with right ventricular function and pulmonary artery systolic pressure in middle age: The cardia study. *J Am Heart Assoc.* 2021;10. doi:10.1161/jaha.120.016968.
19. Wells QS, Farber-Eger E, Crawford DC. Extraction of echocardiographic data from the electronic medical record is a rapid and efficient method for study of cardiac structure and function. *J Clin Bioinforma.* 2014;4. doi:10.1186/2043-9113-4-12.
20. Patterson OV, Freiberg MS, Skanderson M, Fodeh SJ, Brandt CA, DuVall SL. Unlocking echocardiogram measurements for heart disease research through natural language processing. *BMC Cardiovasc Disord.* 2017;17. doi:10.1186/S12872-017-0580-8.
21. Strange G, Stewart S, Celermajer DS, Prior D, Scalia GM, Marwick TH, Gabbay E, Ilton M, Joseph M, Codde J, Playford D. Threshold of Pulmonary Hypertension Associated With Increased Mortality. *J Am Coll Cardiol.* 2019;73:2660–2672. doi:10.1016/j.jacc.2019.03.482
22. Stewart S, Chan YK, Playford D, Strange GA. Mild pulmonary hypertension and premature mortality among 154956 men and women undergoing routine echocardiography. *European Respiratory Journal.* 2022;59. doi:10.1183/13993003.00832-2021.
23. Brittain EL, Nwabuo C, Xu M, Gupta DK, Hemnes AR, Moreira HT, De Vasconcellos HD, Terry JG, Carr JJ, Lima JAC. Echocardiographic Pulmonary Artery Systolic Pressure in the Coronary Artery Risk Development in Young Adults (CARDIA) Study: Associations With Race and Metabolic Dysregulation. *J Am Heart Assoc.* 2017;6. doi:10.1161/jaha.116.005111.
24. Humbert M, Kovacs G, Hoeper MM, Badagliacca R, Berger RMF, Brida M, Carlsen J, Coats AJS, Escribano-Subias P, Ferrari P, Ferreira DS, Ghofrani HA, Giannakoulas G, Kiely DG, Mayer E, Meszaros G, Nagavci B, Olsson KM, Pepke-Zaba J, Quint JK, Rådegran G, Simonneau G, Sitbon O, Tonia T, Toshner M, Vachiery JL, Vonk Noordegraaf A, Delcroix M, Rosenkranz S. 2022 ESC/ERS Guidelines for the diagnosis and treatment of pulmonary hypertension. *Eur Respir J.* 2023;61. doi:10.1183/13993003.00879-2022.
25. Lang RM, Badano LP, Victor MA, Afilalo J, Armstrong A, Ernande L, Flachskampf FA, Foster E, Goldstein SA, Kuznetsova T, Lancellotti P, Muraru D, Picard MH, Retzschel ER, Rudski L, Spencer KT, Tsang W, Voigt JU. Recommendations for cardiac chamber quantification by echocardiography in adults: an update from the

- American Society of Echocardiography and the European Association of Cardiovascular Imaging. *J Am Soc Echocardiogr*. 2015;28:1-39.e14. doi:10.1016/J.ECHO.2014.10.003
26. Rudski LG, Lai WW, Afilalo J, Hua L, Handschumacher MD, Chandrasekaran K, Solomon SD, Louie EK, Schiller NB. Guidelines for the echocardiographic assessment of the right heart in adults: a report from the American Society of Echocardiography endorsed by the European Association of Echocardiography, a registered branch of the European Society of Cardiology, and the Canadian Society of Echocardiography. *J Am Soc Echocardiogr*. 2010;23:685–713. doi:10.1016/j.echo.2010.05.010
  27. Horton KD, Meece RW, Hill JC. Assessment of the right ventricle by echocardiography: a primer for cardiac sonographers. *J Am Soc Echocardiogr*. 2009;22:776–792. doi:10.1016/j.echo.2009.04.027
  28. Morrison AM, Huang S, Annis JS, Garry JD, Hemnes AR, Freiberg MS, Brittain EL. Cardiometabolic Risk Factors Associated With Right Ventricular Function and Compensation in Patients Referred for Echocardiography. *J Am Heart Assoc*. 2023;12. doi:10.1161/jaha.122.028936.
  29. Assad TR, Maron BA, Robbins IM, Xu M, Huang S, Harrell FE, Farber-Eger EH, Wells QS, Choudhary G, Hemnes AR, Brittain EL. Prognostic Effect and Longitudinal Hemodynamic Assessment of Borderline Pulmonary Hypertension. *JAMA Cardiol*. 2017;2:1361–1368. doi:10.1001/jamacardio.2017.3882
  30. Assad TR, Hemnes AR, Larkin EK, Glazer AM, Xu M, Wells QS, Farber-Eger EH, Sheng Q, Shyr Y, Harrell FE, Newman JH, Brittain EL. Clinical and Biological Insights Into Combined Post- and Pre-Capillary Pulmonary Hypertension. *J Am Coll Cardiol*. 2016;68. doi:10.1016/j.jacc.2016.09.942.
  31. Guazzi M, Bandera F, Pelissero G, Castelveccchio S, Menicanti L, Ghio S, Temporelli PL, Arena R. Tricuspid annular plane systolic excursion and pulmonary arterial systolic pressure relationship in heart failure: An index of right ventricular contractile function and prognosis. *Am J Physiol Heart Circ Physiol*. 2013;305. doi:10.1152/ajpheart.00157.2013.
  32. Gorter TM, Hoendermis ES, van Veldhuisen DJ, Voors AA, Lam CSP, Geelhoed B, Willems TP, van Melle JP. Right ventricular dysfunction in heart failure with preserved ejection fraction: a systematic review and meta-analysis. *Eur J Heart Fail*. 2016;18. doi:10.1002/ejhf.630.
  33. Dini FL, Carluccio E, Simioniuc A, Biagioli P, Reboldi G, Galeotti GG, Raineri C, Gargani L, Scelsi L, Mandoli GE, Cannito A, Rossi A, Temporelli PL, Ghio S. Right

- ventricular recovery during follow-up is associated with improved survival in patients with chronic heart failure with reduced ejection fraction. *Eur J Heart Fail*. 2016;18. doi:10.1002/ejhf.639.
34. Ghio S, Recusani F, Klersy C, Sebastiani R, Laudisa ML, Campana C, Gavazzi A, Tavazzi L. Prognostic usefulness of the tricuspid annular plane systolic excursion in patients with congestive heart failure secondary to idiopathic or ischemic dilated cardiomyopathy. *American Journal of Cardiology*. 2000;85. doi:10.1016/S0002-9149(99)00877-2.
  35. Damy T, Kallvikbacka-Bennett A, Goode K, Khaleva O, Lewinter C, Hobkirk J, Nikitin NP, Dubois-Randé JL, Hittinger L, Clark AL, Cleland JGF. Prevalence of, associations with, and prognostic value of tricuspid annular plane systolic excursion (TAPSE) among out-patients referred for the evaluation of heart failure. *J Card Fail*. 2012;18. doi:10.1016/j.cardfail.2011.12.003.
  36. Ansari Ramandi MM, van Melle JP, Gorter TM, Hoendermis ES, van Veldhuisen DJ, Nauta JF, van der Wal MHL, Warink-Riemersma J, Voors AA, Dickinson MG. Right ventricular dysfunction in patients with new-onset heart failure: longitudinal follow-up during guideline-directed medical therapy. *Eur J Heart Fail*. 2022;24. doi:10.1002/ejhf.2721.
  37. Hemnes AR, Leopold JA, Radeva MK, Beck GJ, Abidov A, Aldred MA, Barnard J, Rosenzweig EB, Borlaug BA, Chung WK, Comhair SAA, Desai AA, Dubrock HM, Erzurum SC, Finet JE, Frantz RP, Garcia JGN, Geraci MW, Gray MP, Grunig G, Hassoun PM, Highland KB, Hill NS, Hu B, Kwon DH, Jacob MS, Jellis CL, Larive AB, Lempel JK, Maron BA, Mathai SC, McCarthy K, Mehra R, Nawabit R, Newman JH, Olman MA, Park MM, Ramos JA, Renapurkar RD, Rischard FP, Sherer SG, Tang WHW, Thomas JD, Vanderpool RR, Waxman AB, Wilcox JD, Yuan JXJ, Horn EM. Clinical Characteristics and Transplant-Free Survival Across the Spectrum of Pulmonary Vascular Disease. *J Am Coll Cardiol*. 2022;80. doi:10.1016/j.jacc.2022.05.038.
  38. Santas E, Palau P, Guazzi M, de la Espriella R, Miñana G, Sanchis J, Bayes-Genís A, Lupón J, Chorro FJ, Núñez J. Usefulness of Right Ventricular to Pulmonary Circulation Coupling as an Indicator of Risk for Recurrent Admissions in Heart Failure With Preserved Ejection Fraction. *Am J Cardiol*. 2019;124:567–572. doi:10.1016/j.amjcard.2019.05.024
  39. Surkova E, Kovács A, Tokodi M, Lakatos BK, Merkely B, Muraru D, Ruocco A, Parati G, Badano LP. Contraction Patterns of the Right Ventricle Associated with Different Degrees of Left Ventricular Systolic Dysfunction. *Circ Cardiovasc Imaging*. 2021;14:e012774. doi:10.1161/circimaging.121.012774



40. Naeije R, Badagliacca R. The overloaded right heart and ventricular interdependence. *Cardiovasc Res*. 2017;113:1474–1485. doi:10.1093/cvr/cvx160
41. Friedberg MK, Redington AN. Right Versus Left Ventricular Failure. *Circulation*. 2014;129:1033–1044. doi:10.1161/circulationaha.113.001375
42. Gorter TM, van Melle JP, Rienstra M, Borlaug BA, Hummel YM, van Gelder IC, Hoendermis ES, Voors AA, van Veldhuisen DJ, Lam CSP. Right Heart Dysfunction in Heart Failure With Preserved Ejection Fraction: The Impact of Atrial Fibrillation. *J Card Fail*. 2018;24. doi:10.1016/j.cardfail.2017.11.005.
43. Ancona F, Melillo F, Calvo F, Attalla El Halabieh N, Stella S, Capogrosso C, Ingallina G, Tafciu E, Pascarella A, Ancona MB, De Bonis M, Castiglioni A, Denti P, Montorfano M, Latib A, Colombo A, Alfieri O, Agricola E. Right ventricular systolic function in severe tricuspid regurgitation: Prognostic relevance of longitudinal strain. *Eur Heart J Cardiovasc Imaging*. 2021;22. doi:10.1093/ehjci/jeab030.
44. Chahal H, McClelland RL, Tandri H, Jain A, Turkbey EB, Hundley WG, Barr RG, Kizer J, Lima JAC, Bluemke DA, Kawut SM. Obesity and right ventricular structure and function: The MESA-right ventricle study. *Chest*. 2012;141. doi:10.1378/chest.11-0172.
45. Foppa M, Arora G, Gona P, Ashrafi A, Salton CJ, Yeon SB, Blease SJ, Levy D, O'Donnell CJ, Manning WJ, Chuang ML. Right Ventricular Volumes and Systolic Function by Cardiac Magnetic Resonance and the Impact of Sex, Age, and Obesity in a Longitudinally Followed Cohort Free of Pulmonary and Cardiovascular Disease: The Framingham Heart Study. *Circ Cardiovasc Imaging*. 2016;9. doi:10.1161/circimaging.115.003810.
46. Zeller J, Strack C, Fenk S, Mohr M, Loew T, Schmitz G, Maier L, Fischer M, Baessler A. Relation between obesity, metabolic syndrome, successful long-term weight reduction, and right ventricular function. *Int Heart J*. 2016;57. doi:10.1536/ihj.15-403.
47. Maron BA, Hess E, Maddox TM, Opatowsky AR, Tedford RJ, Lahm T, Joynt KE, Kass DJ, Stephens T, Stanislawski MA, Swenson ER, Goldstein RH, Leopold JA, Zamanian RT, Elwing JM, Plomondon ME, Grunwald GK, Barón AE, Rumsfeld JS, Choudhary G. Association of Borderline Pulmonary Hypertension With Mortality and Hospitalization in a Large Patient Cohort: Insights From the Veterans Affairs Clinical Assessment, Reporting, and Tracking Program. *Circulation*. 2016;133:1240–1248. doi:10.1161/circulationaha.115.020207
48. Forfia PR, Fisher MR, Mathai SC, Houston-Harris T, Hemnes AR, Borlaug BA, Chamera E, Corretti MC, Champion HC, Abraham TP, Girgis RE, Hassoun PM.

- Tricuspid annular displacement predicts survival in pulmonary hypertension. *Am J Respir Crit Care Med*. 2006;174. doi:10.1164/rccm.200604-547OC.
49. Padang R, Chandrashekar N, Indrabhinduwat M, Scott CG, Luis SA, Chandrasekaran K, Michelena HI, Nkomo VT, Pislaru S V., Pellikka PA, Kane GC. Aetiology and outcomes of severe right ventricular dysfunction. *Eur Heart J*. 2020;41. doi:10.1093/eurheartj/ehaa037.
  50. Tedford RJ, Mudd JO, Girgis RE, Mathai SC, Zaiman AL, Houston-Harris T, Boyce D, Kelemen BW, Bacher AC, Shah AA, Hummers LK, Wigley FM, Russell SD, Saggar R, Saggar R, Maughan WL, Hassoun PM, Kass DA. Right ventricular dysfunction in systemic sclerosis-associated pulmonary arterial hypertension. *Circ Heart Fail*. 2013;6. doi:10.1161/circheartfailure.112.000008.
  51. Badagliacca R, Ghio S, Correale M, Poscia R, Camporotondo R, Ferraretti A, Papa S, Pezzuto B, Petrone P, Torre R, Di Biase M, Novara P, Guida S, Vizza CD. Prognostic significance of the echocardiographic estimate of pulmonary hypertension and of right ventricular dysfunction in acute decompensated heart failure. A pilot study in HFrEF patients. *Int J Cardiol*. 2018;271. doi:10.1016/j.ijcard.2018.04.069.
  52. Guazzi M, Dixon D, Labate V, Beussink-Nelson L, Bandera F, Cuttica MJ, Shah SJ. RV Contractile Function and its Coupling to Pulmonary Circulation in Heart Failure With Preserved Ejection Fraction: Stratification of Clinical Phenotypes and Outcomes. *JACC Cardiovasc Imaging*. 2017;10:1211–1221. doi:10.1016/j.jcmg.2016.12.024
  53. Sato T, Tsujino I, Ohira H, Oyama-Manabe N, Yamada A, Ito YM, Goto C, Watanabe T, Sakaue S, Nishimura M. Validation study on the accuracy of echocardiographic measurements of right ventricular systolic function in pulmonary hypertension. *Journal of the American Society of Echocardiography*. 2012;25. doi:10.1016/j.echo.2011.12.012.

**Table 1: Clinical Characteristics at Baseline Transthoracic Echocardiogram by PH status (Full Cohort n = 45753)**

Characteristic	PH absent (PH-) n = 36053	PH present (PH+) n = 9700	p-value
Age in years	61 (47–71)	68 (58–77)	<0.001
Male Sex	16410 (46%)	4309 (44%)	0.055
BMI in kg/m <sup>2</sup>	28.7 (24.8–33.6)	29.2 (25.1–34.8)	0.001
Race/Ethnicity			0.001
White, Non-Hispanic	29124 (81%)	7551 (78%)	
Black	4175 (12%)	1589 (16%)	
Hispanic	529 (1%)	121 (1%)	
Other	1274 (4%)	278 (3%)	
Baseline TAPSE in cm	2.20 (1.99–2.50)	2.20 (1.95–2.56)	0.680
Baseline RVSP in mmHg	26 (22–31)	44 (39–52)	<0.001
LV Ejection Fraction	62 (56–67)	61 (55–67)	<0.001
Left-Sided Valvular Disease	1183 (3%)	914 (9%)	<0.001
Tricuspid Regurgitation	243 (1%)	620 (6%)	<0.001
Left Atrial Diameter in cm	3.7 (3.2–4.1)	4.1 (3.6–4.6)	<0.001
Average E/e'	8.3 (6.5–10.6)	10.9 (8.1–14.8)	<0.001
Diastolic Function			<0.001
Normal	7952 (22%)	1089 (11%)	
Grade 1	5328 (15%)	1233 (13%)	
Grade 2	680 (2%)	643 (7%)	
Grade 3	119 (1%)	235 (2%)	
eGFR in mL/min/1.73m <sup>2</sup>	80 (63–96)	68 (45–87)	<0.001
SBP in mmHg	126 (115–140)	130 (117–146)	<0.001
Systemic Sclerosis	217 (1%)	109 (1%)	<0.001
Heart Failure	7783 (22%)	4406 (45%)	<0.001
Atrial fibrillation	7595 (21%)	3495 (36%)	<0.001
Coronary Artery Disease	9855 (27%)	3739 (39%)	<0.001
Interstitial Lung Disease	4249 (12%)	2086 (22%)	<0.001
COPD	3762 (10%)	2027 (21%)	<0.001
Obstructive Sleep Apnea	6636 (18%)	2253 (23%)	<0.001
HIV	392 (1%)	108 (1%)	0.830
Diabetes Mellitus	8479 (24%)	3473 (36%)	<0.001
Hyperlipidemia	19756 (55%)	6211 (64%)	<0.001
Follow Up in days	794 (368–1562)	625 (297–1288)	<0.001

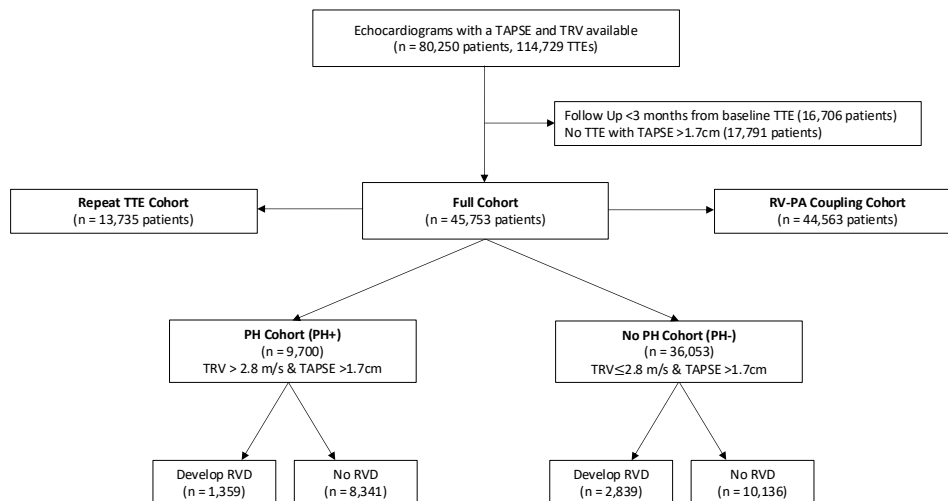
Variable Missingness in Overall Cohort: Race/Ethnicity: 1112 (2.4%); BMI: 828 (1.8%); eGFR: 11302 (24.7%); SBP 492 (1.1%); LVEF 490 (n=1.1%); LA diameter 8022 (17.5%); Average LV E/e' ratio (67.3%); Diastolic Function 28,474 (62.2%)

**Table 2: Incidence Rate Estimates of Right Ventricular Dysfunction and RV-PA Uncoupling**

	<b>TAPSE</b>		<b>TAPSE/RVSP Ratio</b>	
	<b>Full cohort</b> (Minimum estimate)	<b>Repeat TTE Cohort</b> (Maximum estimate)	<b>Full Cohort</b> (Minimum estimate)	<b>Repeat TTE Cohort</b> (Maximum estimate)
	<b>Rate/100 PY (95% CI)</b>			
<b>Entire follow up</b>	3.2 (3.1 – 3.3)	8.2 (8.0 – 8.5)	1.2 (1.1 – 1.3)	3.4 (3.2 – 3.6)
<b>5-year Limited</b>	3.1 (3.0 – 3.2)	8.2 (7.9 – 8.4)	1.1 (1.0 – 1.2)	3.3 (3.1 – 3.5)
<b>Stratified by Baseline PH Status</b>				
<b>PH +</b>	5.6 (5.3 – 5.9)	11.9 (11.3 – 12.6)	3.6 (3.3 – 3.8)	9.3 (7.7 – 8.9)
<b>PH -</b>	2.7 (2.6 – 2.8)	7.2 (6.9 – 7.5)	0.7 (0.7 – 0.8)	2.2 (2.1 – 2.4)
<b>Stratified by RVSP Category</b>				
<b>&lt; 30 mmHg</b>	2.5 (2.3 – 2.6)	6.9 (6.6 – 7.2)	0.5 (0.5 – 0.6)	1.5 (1.3 – 1.6)
<b>[30-40) mmHg</b>	3.3 (3.2 – 3.5)	8.1 (7.6 – 8.6)	1.5 (1.4 – 1.6)	3.5 (3.2 – 3.9)
<b>[40-50) mmHg</b>	5.4 (5.0 – 5.9)	11.7 (10.8 – 12.7)	4.0 (3.6 – 4.5)	8.5 (7.6 – 9.4)
<b>[50-60) mmHg</b>	6.5 (5.7 – 7.4)	13.1 (11.5 – 14.9)	5.1 (4.2 – 6.1)	10.6 (8.7 – 12.7)
<b>&gt;60 mmHg</b>	9.9 (8.8 – 11.1)	17.3 (15.3 – 19.4)	6.2 (4.3 – 8.6)	14.0 (9.8 – 19.5)
NOTE: Percentage of patients with a follow up TTE varies between cohorts which may impact upper bound estimate.				

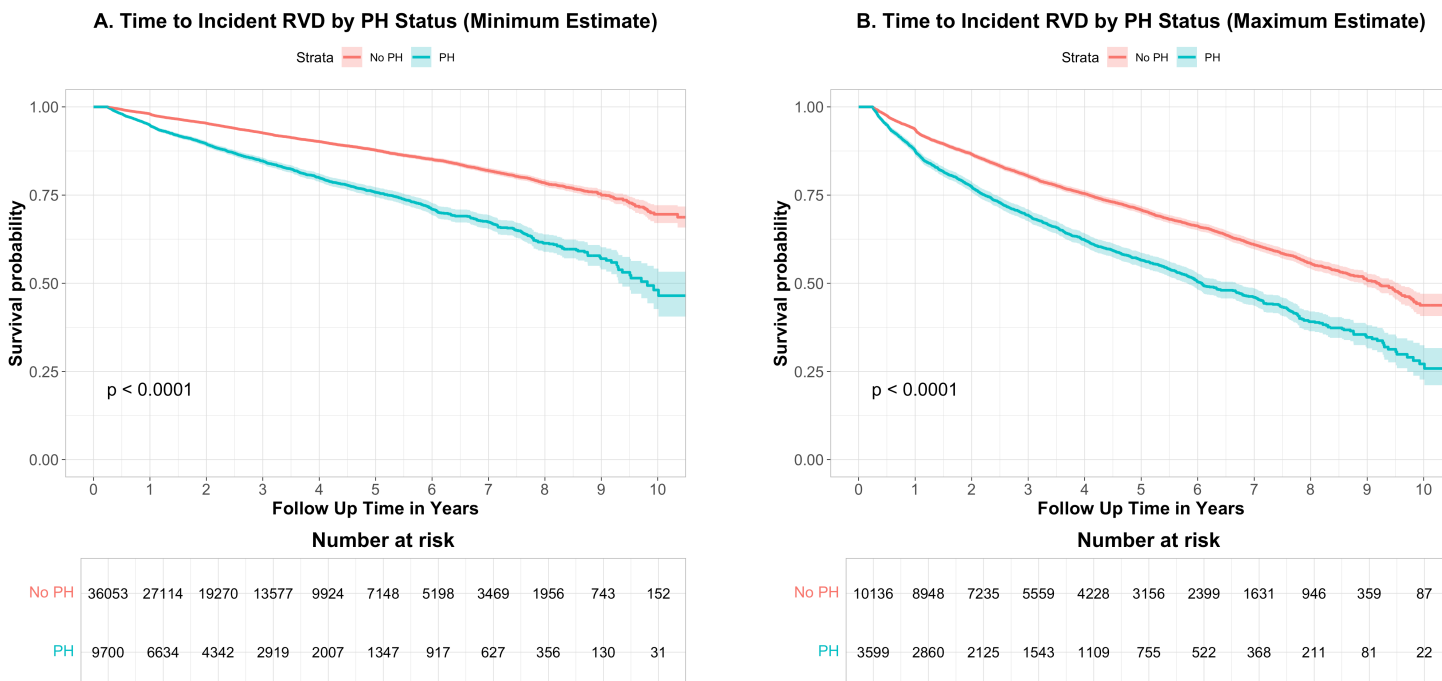
**Figure 1:** Cohort Identification Diagram

Figure 1 displays the process of identification of the study cohort and reasons for echocardiogram/patient exclusion



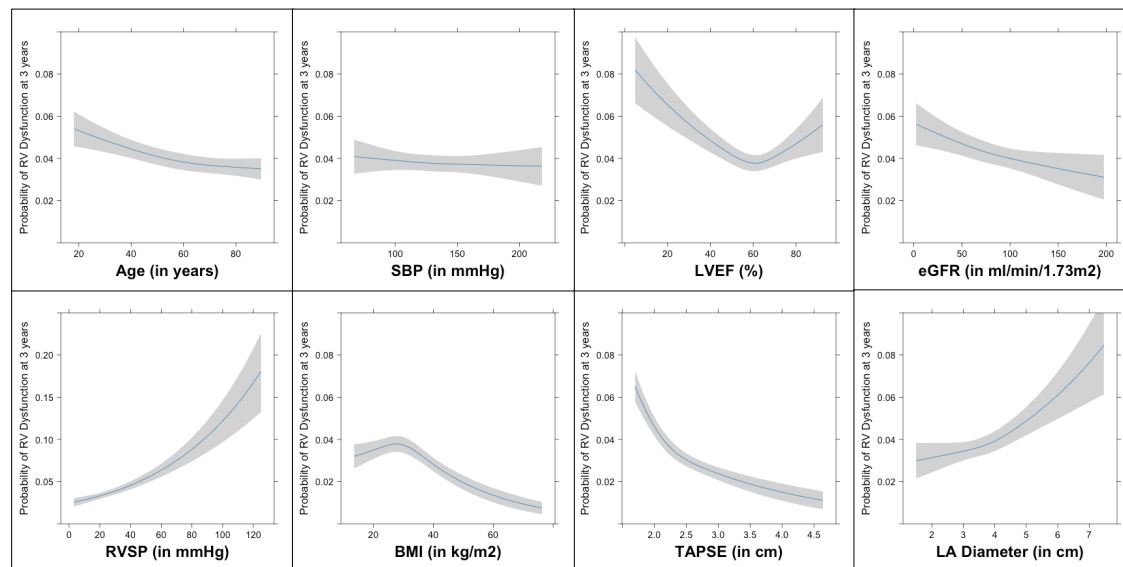
**Figure 2:** Kaplan Meier Curves for Incidence of Right Ventricular Dysfunction

Figure 2 displays Kaplan Meier Curves for the Incidence of Right Ventricular Dysfunction in the Full Cohort (A), representing a minimum estimate, and in the Repeat TTE Cohort (B), representing a maximum estimate.



**Figure 3:** Associations between continuous variables at baseline and probability of right ventricular dysfunction at median follow up (3 years).

Figure 3 displays the model-adjusted association between continuous baseline covariates and the outcome of incident right ventricular dysfunction as restricted cubic splines with 3 knots within the Full Cohort. The Y-axis displays the probability of normal RV dysfunction at 3 years of follow up and the x-axis displays the range of covariate values with the gray area representing a 95% confidence interval for the effect estimate at a given x-axis value.



**Figure 4:** Association of change in (A) TAPSE and (B) TAPSE/RVSP Ratio with Hazard of HF Hospitalization/Rehospitalization

Figure 4 displays the Hazard of HF hospitalization or rehospitalization associated with a given change in (A) TAPSE or (B) TAPSE/RVSP Ratio, relative to the hazard of hospitalization or rehospitalization for no change.

