

1 **The Double Burden of TB/HIV co-infection: Evidence from Central Region of Ghana.**

2 Martin Badagda Lugutuah^{1*}, Daniel Boateng¹, Phenehance Effah Konadu², Marion Okoh-Owusu² and
3 Emmanuel Kwaku Nakua¹

4 **Author's affiliation and full address:**

5 ¹*Department of Epidemiology and Biostatistics, School of Public Health, Kwame Nkrumah University of
6 Science and Technology, Kumasi, Ghana.*

7 ²*Central Regional Health Directorate, Ghana Health Service, Cape Coast, Ghana*

8 **martin.lugutuah@ghs.gov.gh*

9 **Abstract**

10 The synergistic burden of Tuberculosis (TB) and Human Immunodeficiency Virus (HIV) is a significant
11 health risk in low and middle-income economies. This study estimated the prevalence and predictors of
12 TB/HIV co-infection in the Central region of Ghana. Using a cross-sectional study, we randomly selected
13 five districts and employed a retrospective records review of TB cases registered between 2019 and 2022. A
14 stepwise multivariate logistic regression was used to identify important predictors of TB/HIV co-infection.
15 The overall prevalence of TB/HIV co-infection in the study period was 10.92%. This was highest at 55
16 (15.54%) among the age group 25 – 40 years. The burden of TB/HIV co-infection was highest at 36 (19.25%)
17 in the Gomoa East district and lowest at 30 (8.38%) in Mfantseman municipal. In the adjusted model, TB
18 patients 60 years and above had 78% lower odds of being HIV infected (AOR: 0.22; 95% CI: 0.08 – 0.66).
19 Males were 37% less likely to be co-infected (AOR: 0.63; 95% CI: 0.42 – 0.96). Also, pulmonary-positive
20 TB patients were 5 times more likely to be co-infected (AOR: 5.04; 95% CI: 1.71 – 14.85). Furthermore, TB
21 patients who died in the course of treatment were 2 times more likely to be infected with HIV (AOR:2.15;
22 95% CI: 1.05 – 4.40). TB patients treated in the Gomoa East district were 2.7 times more likely to be HIV-
23 infected (AOR: 2.67; 95% CI: 1.34 – 5.35). The burden of TB/HIV co-infection was moderate in the study
24 sites and significantly associated with age, sex, bacteriological confirmation, type of TB, treatment outcome,
25 treatment district, and year of treatment. There is a need for targeted interventions such as community
26 awareness creation that is specific to sexually active female groups. Efforts to improve TB case detection
27 such as health facility-based screening of patients with Respiratory Tract Infections (RTI) and contact tracing
28 should be intensified.

29 **1.0 Introduction**

30 Globally, the “twin infection” of Tuberculosis (TB) and Human Immunodeficiency Virus (HIV) poses a
31 major public health concern, particularly in low-resource settings [1]. TB caused by *Mycobacterium*
32 *tuberculosis* is recognized worldwide as the most frequent opportunistic infection among people living with

33 HIV [2]. In 2020, the World Health Organization (WHO) estimated TB to account for one-third of the
34 690,000 Acquired Immunodeficiency Syndrome (AIDS)-related deaths worldwide with approximately 84%
35 coming from sub-Saharan Africa [3, 4]. In the 2022 WHO Global TB report, 10.6 million people were
36 estimated to have TB in 2021 of which 6.7% of these cases were TB/HIV co-infected. This was a 4.5%
37 increase from the 2020 estimates [5]. In countries with high HIV prevalence, living with HIV increases the
38 likelihood of developing active TB by 26-31 times compared to HIV-seronegative individuals [3, 6, 7]. TB
39 and HIV co-infection increases the risk of mortality due to their syndemic interaction [7, 8]. The relationship
40 between TB and HIV is not just a simple interaction between two infectious diseases, but their combined
41 effect accelerates adverse disease outcomes [1, 3].

42 Infection with both TB and HIV is known as TB/HIV co-infection. The synergistic relationship between this
43 dual epidemic manifests in the deterioration of immunological functions which is a result of the increased
44 level of immune activation and oxidative stress [6]. Co-infection of TB/HIV in an individual heightens the
45 progression of each disease [9].

46 As in many countries of sub-Saharan Africa, Ghana is among the 41 nations accounting for the 97% global
47 incidence of TB/HIV co-infection according to the 2015 Global TB Report [10]. Alliance and efforts from
48 global partners have had success in lessening the effects of both infections with HIV reducing from 2.0%
49 between 2016 and 2019 [11, 12]. Nonetheless, regional variations exist across the country. In 2017, the
50 incidence of TB/HIV co-infection was estimated to be 21% in Ghana [10]. However, a health facility study
51 in the Greater Accra Region estimated a co-infection prevalence of 22.9% in 2020 [13]. In another
52 population-based study in the Volta region, TB/HIV co-infection was reported to be 19.1% in 2019 [14]. In
53 a retrospective cohort study of 531 TB cases in two urban health facilities in Accra Ghana, treatment success
54 was 91.2% among HIV non-infected individuals compared to 77% in HIV infected individuals [15]. In the
55 same study, mortality associated with TB/HIV co-infection was 21.5% compared to 5.5% in those without
56 HIV [15]. In a Nationwide survey of TB/HIV co-infection, Addo and colleagues documented an overall
57 prevalence of 14.7% [16]. However, data from the District Health Information Management System II
58 (DHIMS II) records Ghana's TB/HIV co-infection as 12.9% in 2022 and 11.0% in 2023. It shows a
59 prevalence of 7.4% and 8.4% respectively for the same period in the Central Region. With improvement in
60 treatment regimen and public awareness, there might be a reduction in the overall prevalence of TB/HIV co-
61 infection.

62 Consistent with WHO recommendations on the need for collaboration in addressing TB/HIV, TB/HIV
63 activities have been integrated into TB and HIV services in Ghana since 2007. In this collaboration,

64 Treatment centres are to routinely test for HIV in TB patients and vice versa. Health facilities are also required
65 to provide a one-stop shop of services including Antiretroviral Therapy (ART) as part of the basic services
66 for all persons diagnosed with TB/HIV co-infection [12]

67 Notwithstanding the glaring nature of the public health threat presented by TB/HIV synergy, there are limited
68 epidemiological studies in the space of TB/HIV co-infection in Ghana particularly in less endowed regions
69 such as the Central region. Previous studies in Ghana were conducted using a relatively small sample size
70 and a limited number of sites, hence findings may not reflect that of the general population. It is therefore
71 imperative to estimate the dual epidemic of TB and HIV regularly to track the collaborative efforts between
72 the National TB Control Programme (NTP) and the Ghana AIDS Commission in the fight against this deadly
73 syndemic. This will contribute to addressing program implementation bottlenecks and provide evidence for
74 policy decisions about how best to provide high-quality integrated TB and HIV interventions at the facility
75 and community level. From what we know, no previous studies have focused on co-infections of TB and
76 HIV in the Central Region of Ghana. This study therefore sought to bridge this knowledge gap by
77 determining the burden and predictors of TB/HIV co-infection in the Central region of Ghana.

78 **2.0 Methods**

79 **2.1 Study Design**

80 This was a cross-sectional study, involving a retrospective records review of TB cases registered between
81 2019 and 2022 in five districts of the Central Region of Ghana.

82 **2.2 Study Setting**

83 The Central Region occupies an area of 9,826 square kilometres, which is about 6.6% of the total land
84 area of Ghana. The region has 22 administrative districts with the historical city of Cape Coast as the
85 capital. About 42.1% of the region is rural with an estimated 2023 annual population of 2,989,954
86 with a growth rate of 2.4%[17]. TB/HIV diagnoses are mainly done in district hospital laboratories
87 while counselling and treatment are carried out at treatment centres across districts in the region
88 according to NTP guidelines (Central Region Annual Report, 2022). Upper Denkyira West,
89 Mfantseman, Assin Fosu, Gomoa East, and Ajumako Enyan Essiam were randomly selected to
90 represent the coastal, middle, and northern zones of the region as indicated in Figure 1.

91

92 **Figure 1:** Map of Central Region of Ghana Showing Study Sites (Source: Authors construct).

93 **2.3 Sampling**

94 Between 2019 and 2022, 1102 TB cases were found in the TB registers for the five study districts. Of these,

95 58 records were excluded because they were incomplete, MDR cases or the dependent variable could not be
96 ascertained. The study population involved all persons diagnosed with TB and registered for TB care in the
97 study districts between 1st January 2019 and 31st December 2022.

98
99 **Figure 2:** Flow Chart of sample selection based on inclusion and exclusion criteria (Source: Authors
100 construct).

101 **2.4 Data Collection**

102 Data collection for this study was between 1st March to 30th April 2024. The data collection process involved
103 reviewing medical records from the district TB register for information regarding age, sex, date of registration,
104 pre-treatment bacteriological confirmation results, date of diagnosis, date of starting treatment, classification
105 of TB, type of patient, treatment outcome and TB/HIV co-infection.

106 **2.5 Study Variables and Definitions**

107 All study variables were extracted from the district TB register. This register contains all TB cases registered
108 in health facilities in the district. As part of the NTP guidelines TB coordinators at the district level are
109 required to periodically update this register with TB cases reported at all health facilities in their district. The
110 primary dependent variable for this study was TB/HIV co-infection (dichotomized as the presence or absence
111 of TB/HIV co-infection) while treatment outcome was considered the secondary outcome (categorized as
112 cured/treatment completed/treatment failure/lost to follow-up (defaulter) or death. Age, sex, pre-treatment
113 bacteriological confirmation results; defined as results from biological specimens investigated with either
114 smear microscopy, culture or GeneXpert, classification of TB and type of patient were treated as the predictor
115 variables. All variables in this study were defined according to the WHO and National Tuberculosis Control
116 Programme (NTP) of Ghana working definitions as presented in Table 1.

117 **Table 1:** Operational definition of study variables

Variable	Operational definition
New	A patient who has never had treatment for TB or who has taken anti-tuberculosis drugs for less than a month.
Relapse	A patient previously treated for TB, declared cured or treatment completed, and who is diagnosed with bacteriological (+) TB.
Return after treatment failure	A patient who is re-started on TB treatment after having failed previous treatment.

Return after loss to follow up	A patient who returns to treatment positive bacteriologically following interruption of treatment for 2 or more consecutive months.
Extra Pulmonary TB	Any bacteriologically or clinically confirmed TB case in which other organs than the lungs are involved
Pulmonary TB	Any bacteriologically or clinically confirmed TB case in which the lungs parenchyma or the tracheobronchial tree is involved
Cured	A patient whose sputum smear or GeneXpert or culture results were positive at the beginning of treatment but who was smear or culture-negative in the last month of treatment and at least one previous occasion.
Treatment completed	A patient who completed treatment but who does not have a negative sputum smear or culture results in the last month of treatment and on at least one previous occasion.
Lost to follow-up	A patient whose treatment was interrupted for two consecutive months or more.
Treatment failure	A patient whose sputum or culture is positive at 5 months or later during treatment.
Others*	These include previously treated, transferred in and other types of patients not classified in any of the above.
Died	A patient who dies of any reason during treatment.

118 * Defined for the purposes of this study

119 **2.6 Data Management and Statistical Analysis**

120 Data from the TB registers was extracted into a Microsoft Excel 365 spreadsheet for wrangling before being
121 exported to STATA version 17 for analysis. Graduate National Service Personnel were trained as research
122 assistants to extract data. Variables such as Age, sex, pre-treatment bacteriologically confirmation results,
123 classification of TB and type of patient, treatment outcome and TB/HIV co-infection were extracted from
124 the TB register. Consistency and completeness checks were applied to ensure the data extracted was fit for
125 analysis. Descriptive statistics were reported using frequency, percentages, tables, and graphs. To estimate
126 the burden of the primary dependent variable, the total number of TB patients testing positive for HIV was
127 used as the numerator against the total number of TB patients testing for HIV over the study period. A
128 stepwise multivariate logistic regression was used to identify important predictors of TB/HIV co-infection in
129 the study area. At a 95% confidence interval, odds ratios (OR) were used to assess the association between

130 the explanatory and outcome variables. A p -value of <0.05 was considered statistically significant.

131 2.7 Ethical Considerations

132 Ethical approval was obtained from the Ethics Review Committee of the Ghana Health Service (**Protocol**
133 **Number: GHS-ERC 016/02/24**). Written permission was obtained from the Central Regional Health
134 Directorate. The PI also signed a confidentiality statement with the five study District Health Directorates.

135 3.0 Results

136 3.1 Demographic and Clinical Characteristics of TB Patients

137 There were 1,044 study patients in this study. A majority (66.8%) were males, and the mean age was 42 ± 17
138 years. Eight Hundred and Seventeen (78.3%) of the cases were Pulmonary Positive while 80 (7.7%) were
139 Extra Pulmonary. For the category of TB cases, 973 (93.2%) were new TB cases, 44 (4.2%) were relapse
140 cases, and 12 (1.2%) were returned after loss to follow-up. Concerning treatment outcome, 618 (59.2%)
141 were cured, 305 (29.2%) completed treatment, and 78 (7.5%) died. Of the total 1044 TB cases, 358 (34.3%)
142 were recorded in Mfanteman district, 226 (21.7%) in Ajumako Enyan Essiam District, 187 (17.9%), 154
143 (14.8%) and 119 (11.4%) for Gomoa East, Assin Fosu and Upper Denkyira West districts respectively. With
144 regards to years of treatment, majority 304 (29.12%) of the cases were treated in 2019 while 217 (20.79%)
145 were treated in 2020.

146 **Table 2:** Demographic and Clinical Characteristics of TB Patients

Covariates	Frequency (n=1044)	Percentage
Age (years)		
0 – 24	159	15.23
25 – 40	354	33.91
41 – 60	375	35.92
60+	156	14.94
Sex		
Female	347	33.24
Male	697	66.76
Classification of TB		
Extra Pulmonary	80	7.66
Pulmonary –	147	14.08
Pulmonary +	817	78.26
Type of patient		
New	973	93.20
Others	15	1.14
Relapse	44	4.21
RALTF*	12	1.15
Bacteriological Confirmation		
Negative	264	25.29

Positive	780	74.71
Treatment Outcome		
Completed	305	29.21
Cured	618	59.20
Died	78	7.47
LTF*	42	4.02
Refused Treatment	1	0.10
Study site		
Ajumako Enyan Essiam	226	21.65
Assin Fosu	154	14.75
Gomoa East	187	17.91
Mfantseman	358	34.29
Upper Denkyira West	119	11.40
Year of Diagnosis		
2019	304	29.12
2020	217	20.79
2021	257	24.62
2022	266	25.48

147 RALTF* Return After Loss to Follow-up, LTF* Loss to Follow-up

148 **3.2 Burden of TB/HIV Co-infection**

149 The overall prevalence of TB/HIV co-infection in the study period was 10.92%. This was highest 55 (15.54%)
 150 among age group 25 – 40 years compared to 5 (3.21%) in patients 60 years and above. In 2019, 44 (14.47%)
 151 TB patients were infected with HIV. This dipped significantly to 16 (7.37%) in 2020 and subsequently rose
 152 to 30 (11.67%) in 2021, however, in 2022, it decreased to 24 (9.02%). Patients aged 25 – 40 years had higher
 153 odds (OR:1.28; 95% CI: 0.74 – 2.22; $p = 0.381$) of being co-infected compared to those aged ≤ 24 years,
 154 although this was not statistically significant. In this study, TB patients 60 years and above had significantly
 155 lower odds (OR: 0.23; 95% CI: 0.08 – 0.63; $p < 0.05$) of being co-infected compared to ≤ 24 years.
 156 Concerning sex, prevalence was 50 (14.41%) among females compared to 64 (9.18%) males. Males had
 157 significantly lower odds (OR: 0.60; 95% CI: 0.40 – 0.89; $p < 0.05$) of being TB/HIV co-infection. With a
 158 prevalence of 103 (12.61%), pulmonary-positive TB patients were twice as likely to be co-infected compared
 159 to extrapulmonary patients. This was however not statistically significant. We also found that 14 (17.95%)
 160 of patients who died in the course of treatment were 1.7 times more (OR: 1.72; 95% CI: 1.88 – 3.44; $p <$
 161 0.05) likely to be co-infected compared to those who completed treatment. The burden of TB/HIV co-
 162 infection was highest at 36 (19.25%) in Gomoa East and lowest at 30 (8.38%) in Mfantseman as shown in
 163 Figure 3. Additionally, compared to TB patients treated in the Ajumako Enyan Essiam district, those in the
 164 Gomoa East district were 2.5 times more likely to be co-infected with HIV (OR: 2.46; 95% CI:1.37 – 4.41;
 165 $p = 0.003$). The prevalence of TB/HIV co-infection has been unstable during the four-year study period. Our

166 study showed that TB patients treated in 2020 were 53% less likely to be HIV positive (OR: 0.47; 95% CI:
167 0.26- 0.86, $p = 0.014$) compared to their counterparts in 2019.

168 **Table 3:** Bivariate and Multivariable analysis of TB/HIV co-infection.

Covariates	TB/HIV n=114 (%)	<i>p</i> -value (χ^2)	COR (95% CI)	<i>p</i> -value	AOR (95% CI)	<i>p</i> -value
Age (years)						
0 – 24	20 (12.58)		1		1	
25 – 40	55 (15.54)		1.28 (0.74 – 2.22)	0.381	1.31(0.73 – 2.36)	0.369
41 – 60	34 (9.07)	0.001*	0.69 (0.39 – 1.25)	0.220	0.74(0.39 – 1.39)	0.351
60+	5 (3.21)		0.23 (0.08 – 0.63)	0.004*	0.22(0.08 – 0.66)	0.006*
Sex						
Female	50 (14.41)		1		1	
Male	64 (9.18)	0.011*	0.60 (0.40 – 0.89)	0.011*	0.63(0.42 – 0.96)	0.030*
Classification of TB						
Extra Pulmonary	7 (8.75)		1		1	
Pulmonary –	4 (2.72)		0.29 (0.08 – 1.03)	0.055	0.22(0.05 – 0.85)	0.028*
Pulmonary +	103 (12.61)	0.002*	1.50 (0.67 – 3.36)	0.319	5.04(1.71 – 14.85)	0.003*
Type of patient						
New	102 (10.48)		1		1	
Others	4 (24.67)	0.191	3.11 (0.97 – 9.93)	0.056	2.07(0.44 – 9.58)	0.353
Relapse	6 (13.64)		1.35 (0.56 – 3.27)	0.508	1.37(0.53 – 3.57)	0.518
RALTF*	2 (16.67)		1.71 (0.36 – 7.90)	0.493	0.98(0.17 – 5.64)	0.990
Bacteriological Confirmation						
Negative	29 (10.98)		1		1	
Positive	85 (10.90)	0.969	0.99 (0.63 – 1.55)	0.969	0.31(0.14 – 0.67)	0.003*
Treatment Outcome						
Completed	34 (11.15)		1		1	
Cured	60 (9.71)		0.85 (0.55 – 1.34)	0.497	0.80(0.49 – 1.29)	0.359
Died	14 (17.95)	0.238	1.74 (1.88 – 3.44)	0.010*	2.15(1.05 – 4.40)	0.036*
LTF*	6 (14.29)		1.33 (0.54 – 3.38)	0.552	1.20(0.45 – 3.19)	0.713
Refused Treatment	0					
Study site						
Ajumako Enyan Essiam	20 (8.85)		1		1	
Assin Fosu	18 (11.69)		1.36 (0.70 – 2.67)	0.367	1.53(0.72 – 3.28)	0.656
Gomoa East	36 (19.25)	0.001*	2.46 (1.37 – 4.41)	0.003*	2.68(1.34 – 5.35)	0.005*
Mfantseman	30 (8.38)		0.94 (0.52 – 1.70)	0.843	0.95(0.48 – 1.89)	0.888
Upper Denkyira West	10 (8.40)		0.94 (0.43 – 2.09)	0.889	1.58(0.66 – 3.82)	0.304
Year of Diagnosis						
2019	44 (14.47)		1		1	
2020	16 (7.37)		0.47 (0.26 – 0.86)	0.014*	0.51(0.28 – 0.95)	0.034*
2021	30 (11.67)	0.048	0.78 (0.47 – 1.28)	0.330	0.90(0.54 – 1.52)	0.704
2022	24 (9.02)		0.59 (0.35 – 0.99)	0.047	0.73(0.42 – 1.29)	0.282
Overall Prevalence	114 (10.92)					

169 *Statistical significance, RALTF* Return After Loss to Follow-up, COR Crude Odds Ratio, AOR

170 Adjusted Odds Ratio.

171

172 **Figure 3: TB/HIV Prevalence in Study Sites (Source: Authors construct).**

173 **3.3 Predictors of TB/HIV Co-infection**

174 In the adjusted model, TB patients 60 years and above had 78% lower odds of being HIV infected compared
175 to patients who were ≤ 24 years of age (AOR: 0.22; 95% CI: 0.08 – 0.66; $p = 0.006$). With regards to sex,
176 males were 37% less likely to be co-infected compared to females (AOR: 0.63; 95% CI: 0.42 – 0.96; $p =$
177 0.030). Also, pulmonary-positive TB patients were 5 times more likely to be co-infected compared with
178 Extra pulmonary patients (AOR: 5.04; 95% CI: 1.71 – 14.85; $p = 0.03$). Pulmonary-negative cases however
179 had a 78% lower odds of being co-infected (AOR: 0.22; 95% CI: 0.05 – 0.85; $p = 0.028$). Additionally,
180 bacteriologically confirmed TB cases had almost 70% lower odds of being co-infected compared with those
181 clinically confirmed (AOR: 0.31; 95% CI: 0.14 – 0.67; $p = 0.003$). Furthermore, TB patients who died in the
182 course of treatment were 2 times more likely to be infected with HIV compared with those who completed
183 treatment (AOR: 2.15; 95% CI: 1.05 – 4.40; $p = 0.036$). Loss to follow-up TB patients also had a 20% higher
184 odds of being HIV co-infected, this was however not statistically significant. TB patients treated in the
185 Gomoa East district were 2.7 times more likely to be HIV infected compared to those treated in the Ajumako
186 Enyan Essiam district (AOR: 2.67; 95% CI: 1.34 – 5.35; $p = 0.005$). TB patients treated in the year 2020 had
187 a 49% lower odds of being HIV positive compared to those registered in 2019 (AOR: 0.51; 95% CI: 0.28 –
188 0.95; $p = 0.034$). In this study, we observed that age, sex, treatment outcome, treatment district, and year of
189 treatment were significantly associated with TB/HIV co-infection.

190 **4.0 Discussion**

191 The HIV epidemic has considerably influenced the epidemiology of TB [18]. Our study examined the dual
192 burden of TB/HIV co-infections in the Central Region of Ghana between 2019 and 2022. The prevalence of
193 TB/HIV co-infection in the study area was 10.92%, higher than WHO 2022 global estimates of 6.7% [19].
194 This corroborates with studies conducted in Nepal [9], Ghana [16, 19] and Ethiopia [21]. Our findings are
195 however lower than the findings of similar studies conducted in Ghana (21.5%), (18%), (18.6%) [1,11,15]
196 and Kazakhstan (22 %) [22]. The current findings could be the results of efforts by the Ghana Health Service
197 to reduce the TB/HIV burden through improvements in treatment regimens.

198 In the present study, TB patients aged ≤ 24 years were at a higher risk of HIV infection compared to those
199 aged 60 years and above. We found that TB patients aged 60 years and above had 78% lower odds of HIV
200 infection. This finding is in congruence with [23]. These findings are considerably different from what has
201 been reported by other studies in Ghana [11] and northeast Ethiopia [18]. The difference in findings could be

202 attributed to the difference in sample selection where the other studies exclude TB patients below 18 years.
203 Although men are at a greater risk of TB and consistent with findings from several epidemiological studies
204 [5, 11, 12, 23, 24], we found males were 37% less likely to be co-infected with HIV. This is explained by
205 the biological make-up of females which makes them more susceptible to the risk of acquiring HIV infection
206 [26].

207 Findings from our study suggest that co-infection was 5 times more likely in pulmonary-positive TB patients
208 compared with extrapulmonary patients. This is similar to results reported in Ghana [15]. However, these
209 findings are incongruence with what was observed by [27] in Harare, Zimbabwe. A study conducted in
210 Ethiopia found no statistical difference between type of TB and HIV co-infection [23]. The limited capacity
211 to diagnose extrapulmonary TB in the study settings could account for this disparity.

212 This study showed that almost bacteriologically confirmed TB cases had a 70% lower odds of co-infection
213 compared with clinically diagnosed TB. Limited studies have considered this type of analysis. It is more
214 likely that bacteriologically confirmed TB patients would take TB treatment and counselling more seriously
215 because the results have been confirmed in a laboratory compared to those with bacteriologically negative
216 results who may have some doubts.

217 In this study, the odds of HIV infection among TB patients who died in the course of treatment was 2.17
218 times compared with those who completed treatment. These findings are analogous to those found in similar
219 settings of the same region [28] and in Malaysia [29]. According to the current literature on TB/HIV co-
220 infection, these two duos in an individual increase the risk of mortality due to their syndemic interaction [1,
221 3, 9, 19].

222 There was a disproportionate rate of TB/HIV co-infection in the study area ranging from 8.35% to 19.25%.
223 Our study demonstrated that TB patients who live in the Gomoa East treatment site were 2.4 times more
224 likely to be co-infected with HIV compared to those who lived in the Ajumako Enyan Essiam district.
225 Limited studies have been conducted in the study sites. However, the district TB coordinator cited the
226 existence of the erstwhile Budumburam camp as a contributing factor as the area which is located in the
227 district is known to be a highly endemic of HIV. Prevalence of TB/HIV co-infection in the WHO AFRO
228 Region shows a range of 2.9% to 72.3%, with a pooled prevalence of 23.5% [13]. The finding from this
229 study is also lower than and range of 10.8% to 26% documented in the Volta region of Ghana [12]. These
230 differences could be attributed to the fact that TB/HIV co-infections have been reducing globally since 2008
231 [30].

232 TB patients diagnosed in 2020 in this study were 49% less likely to be co-infected with HIV compared to

233 those diagnosed in 2019. We found a low (20.79%) TB case detection in all the study sites in 2020. The
234 WHO Global Tuberculosis Report 2022 has stated the negative impact of the COVID-19 pandemic on TB
235 management [19]. Osei and colleagues in their study contended that the COVID-19 pandemic resulted in an
236 abrupt decline in TB notification and HIV testing by 20.5% and 40.3% respectively [31]. With reduced cases
237 of TB detected in 2020, there is a high likelihood of a corresponding low detection of TB/HIV co-infection
238 as TB cases are tested for HIV after TB detection through the TB and HIV collaboration.
239 This was a cross-sectional study, based on a retrospective records review of existing health facility TB records.
240 We could not independently verify the HIV and TB status of patients. Also, other important variables such
241 as education, occupation, nutrition, alcohol use, and smoking were not accessed in this study.
242 Notwithstanding these limitations, the study generated valuable evidence into the prevalence and predictors
243 of HIV among TB patients in the Central region of Ghana. These findings may guide TB and HIV control
244 program managers and policymakers to improve the implementation of TB/HIV integration activities to
245 reduce this dual epidemic.

246 **5.0 Conclusion**

247 The burden of TB/HIV co-infection was moderate in the study sites and significantly associated with age,
248 sex, bacteriological confirmation, type of TB, treatment outcome, treatment district, and year of treatment.
249 There is a need for targeted interventions such as community awareness creation that is specific to sexually
250 active female groups, especially in the Gomoa East District. Efforts to improve TB case detection such as
251 health facility-based screening of patients with Respiratory Tract Infections (RTI) and contact tracing
252 should be intensified. Logistics constraints to the testing for HIV in TB patients should also addressed by
253 program managers to improve the detection of co-infections. Future prospective studies of TB/HIV co-
254 infection should be conducted in the study settings to understand the risk of co-infection properly.

255 **Authors Contributions**

256 **Conceptualization:** Martin Badagda Lugutuah

257 **Data curation:** Martin Badagda Lugutuah, Phenehance Effah Konadu

258 **Formal Analysis:** Martin Badagda Lugutuah, Daniel Boateng

259 **Validation:** Daniel Boateng, Emmanuel Kwaku Nakua

260 **Writing Original draft:** Martin Badagda Lugutuah, Daniel Boateng, Phenehance Effah Konadu

261 **Review and Editing:** Daniel Boateng, Marion Okoh-Owusu and Emmanuel Kwaku Nakua

262 **Supporting Information**

263 The correspondence author will make other information available upon request.

264 **Acknowledgements**

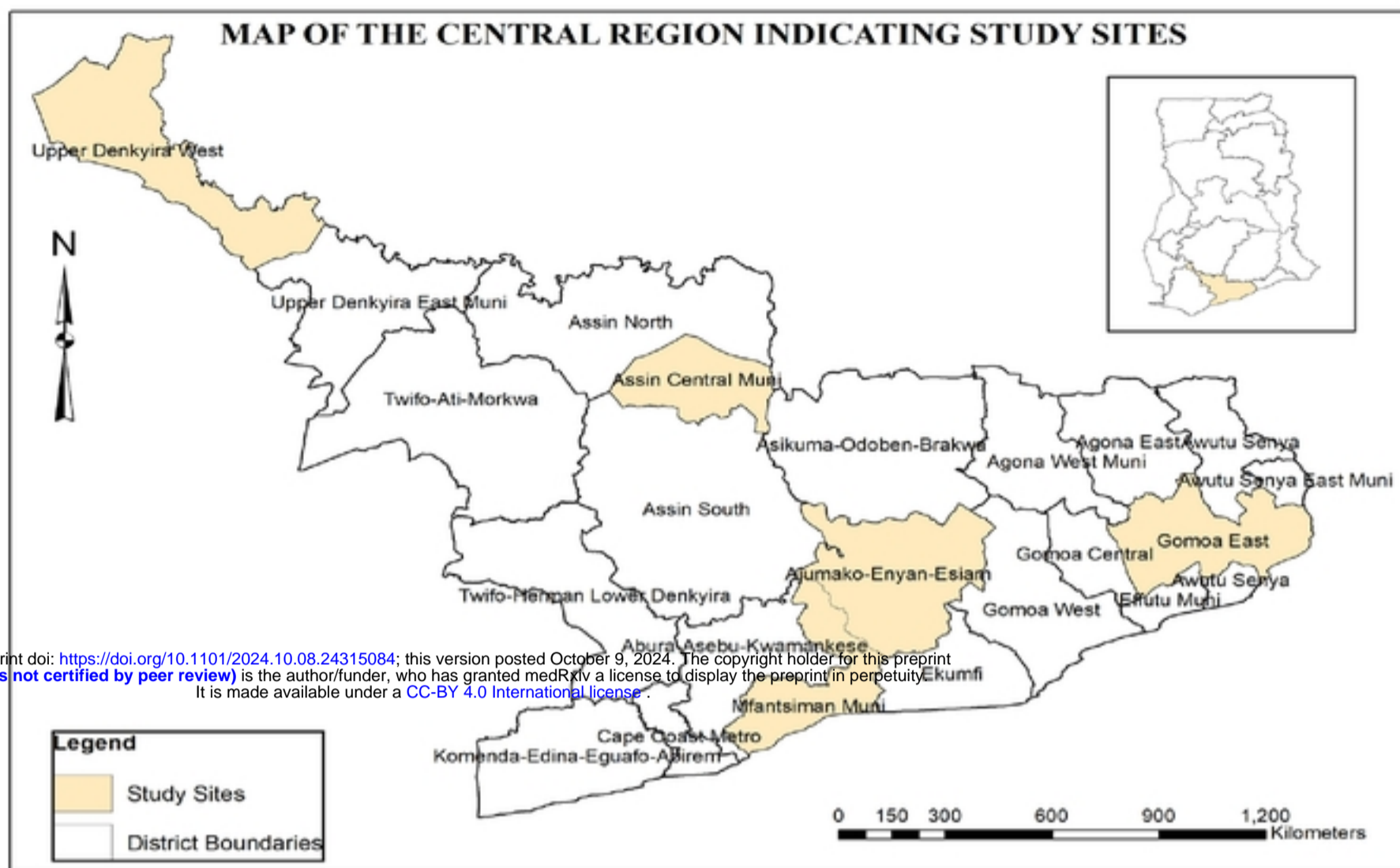
265 We acknowledge the support of the Central Regional Health Directorate and Heads of selected study sites.
266

268 **References**

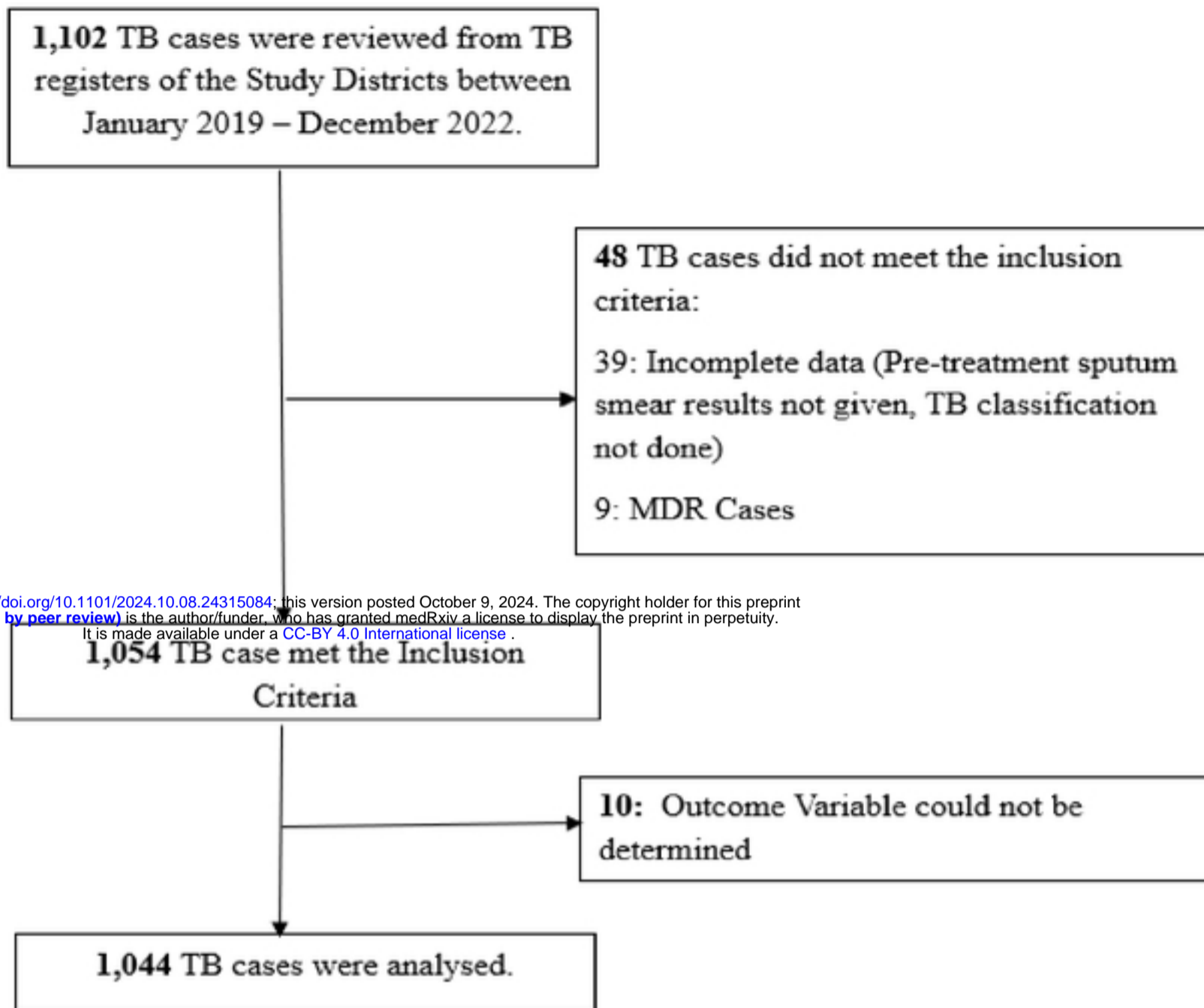
- 269 [1] E. Osei Bonsu, I. Y. Addo, B. N. Adjei, M. M. Alhassan, and E. K. Nakua, “Prevalence, treatment
270 outcomes and determinants of TB-HIV coinfection: a 10-year retrospective review of TB registry in
271 Kwabre East Municipality of Ghana,” *BMJ Open*, vol. 13, no. 3, pp. 1–9, 2023, doi:
272 10.1136/bmjopen-2022-067613.
- 273 [2] M. A. Zeru, “Prevalence and associated factors of hiv-tb co-infection among hiv patients: A
274 retrospective study,” *Afr. Health Sci.*, vol. 21, no. 3, pp. 1003–1009, 2021, doi: 10.4314/ahs.v21i3.7.
- 275 [3] C. C. Qi *et al.*, “Prevalence and risk factors of tuberculosis among people living with HIV/AIDS in
276 China: a systematic review and meta-analysis,” *BMC Infect. Dis.*, vol. 23, no. 1, p. 584, 2023, doi:
277 10.1186/s12879-023-08575-4.
- 278 [4] G. H. Shah *et al.*, “Risk factors for tb/hiv coinfection and consequences for patient outcomes:
279 Evidence from 241 clinics in the Democratic republic of Congo,” *Int. J. Environ. Res. Public
280 Health*, vol. 18, no. 10, 2021, doi: 10.3390/ijerph18105165.
- 281 [5] A. Seid, Y. Girma, A. Abebe, E. Dereb, M. Kassa, and N. Berhane, “Characteristics of TB/HIV Co-
282 Infection and Patterns of Multidrug-Resistance Tuberculosis in the Northwest Amhara, Ethiopia,”
283 *Infect. Drug Resist.*, vol. 16, no. June, pp. 3829–3845, 2023, doi: 10.2147/IDR.S412951.
- 284 [6] C. Herbert, L. Luies, D. T. Loots, and A. A. Williams, “The metabolic consequences of HIV/TB co-
285 infection,” *BMC Infect. Dis.*, vol. 23, no. 1, pp. 1–21, 2023, doi: 10.1186/s12879-023-08505-4.
- 286 [7] M. E. Lelisho *et al.*, “Survival rate and predictors of mortality among TB/HIV co-infected adult
287 patients: retrospective cohort study,” *Sci. Rep.*, vol. 12, no. 1, pp. 1–11, 2022, doi: 10.1038/s41598-
288 022-23316-4.
- 289 [8] N. Yang, J. He, J. Li, Y. Zhong, Y. Song, and C. Chen, “Predictors of death among TB/HIV co-
290 infected patients on tuberculosis treatment in Sichuan, China: A retrospective cohort study,” *Med.*,
291 vol. 102, no. 5, p. E32811, 2023, doi: 10.1097/MD.00000000000032811.
- 292 [9] N. Adhikari *et al.*, “Prevalence and associated risk factors for tuberculosis among people living with
293 HIV in Nepal,” *PLoS One*, vol. 17, no. 1 January, pp. 1–12, 2022, doi:
294 10.1371/journal.pone.0262720.
- 295 [10] S. A. Narh-Bana, M. Kawonga, S. A. Odopey, F. Bonsu, L. Ibisomi, and T. F. Chirwa, “Factors
296 influencing the implementation of TB screening among PLHIV in selected HIV clinics in Ghana: a
297 qualitative study,” *BMC Health Serv. Res.*, vol. 22, no. 1, pp. 1–12, 2022, doi: 10.1186/s12913-022-
298 08295-6.

- 299 [11] H. M. Salisu, I. N. Ojule, F. O. Adeniji, and G. K. Kwakye, “Prevalence and trend of TB/HIV co-
300 infection in Suhum Municipality, Ghana,” *PLOS Glob. Public Heal.*, vol. 2, no. 7, p. e0000378,
301 2022, doi: 10.1371/journal.pgph.0000378.
- 302 [12] E. Osei, J. Der, R. Owusu, P. Kofie, and W. K. Axame, “The burden of HIV on Tuberculosis
303 patients in the Volta region of Ghana from 2012 to 2015: Implication for Tuberculosis control,”
304 *BMC Infect. Dis.*, vol. 17, no. 1, pp. 1–9, 2017, doi: 10.1186/s12879-017-2598-z.
- 305 [13] K. M. Hayibor, D. A. Bandoh, A. Asante-Poku, and E. Kenu, “Predictors of Adverse TB Treatment
306 Outcome among TB/HIV Patients Compared with Non-HIV Patients in the Greater Accra Regional
307 Hospital from 2008 to 2016,” *Tuberc. Res. Treat.*, vol. 2020, pp. 1–8, 2020, doi:
308 10.1155/2020/1097581.
- 309 [14] E. Osei *et al.*, “Reflecting on tuberculosis case notification and treatment outcomes in the Volta
310 region of Ghana: a retrospective pool analysis of a multicentre cohort from 2013 to 2017,” *Glob.*
311 *Heal. Res. Policy*, vol. 4, no. 1, pp. 1–13, 2019, doi: 10.1186/s41256-019-0128-9.
- 312 [15] L. Ogyiri *et al.*, “Effect of HIV infection on TB treatment outcomes and time to mortality in two
313 urban hospitals in Ghana—a retrospective cohort study,” *Pan Afr. Med. J.*, vol. 32, pp. 1–10, 2019,
314 doi: 10.11604/pamj.2019.32.206.18673.
- 315 [16] K. K. Addo *et al.*, “First Nationwide Survey of the Prevalence of TB/HIV Co-Infection in Ghana,”
316 *J. Tuberc. Res.*, vol. 06, no. 02, pp. 135–147, 2018, doi: 10.4236/jtr.2018.62013.
- 317 [17] Ghana Statistical Service, *Ghana 2021 Population and Housing Census*, vol. 6, no. November.
318 2021.
- 319 [18] M. Belay, G. Bjune, and F. Abebe, “Prevalence of tuberculosis, HIV, and TB-HIV co-infection
320 among pulmonary tuberculosis suspects in a predominantly pastoralist area, northeast Ethiopia,”
321 *Glob. Health Action*, vol. 8, 2015, doi: 10.3402/gha.v8.27949.
- 322 [19] World Health Organization, “Global tuberculosis report 2022,” *Geneva WHO Publ.*, 2022.
- 323 [20] J. Zhang, S. Kern-Allely, T. Yu, and R. K. Price, “HIV and tuberculosis co-infection in East Asia
324 and the Pacific from 1990 to 2017: Results from the Global Burden of Disease Study 2017,” *J.*
325 *Thorac. Dis.*, vol. 11, no. 9, pp. 3822–3835, 2019, doi: 10.21037/jtd.2019.09.23.
- 326 [21] K. Addis *et al.*, “Spatial patterns of tuberculosis and HIV co- infection in Ethiopia,” pp. 1–15, 2019.
- 327 [22] A. Mukhatayeva *et al.*, “Hepatitis B, Hepatitis C, tuberculosis and sexually-transmitted infections
328 among HIV positive patients in Kazakhstan,” *Sci. Rep.*, vol. 11, no. 1, pp. 1–11, 2021, doi:
329 10.1038/s41598-021-92688-w.

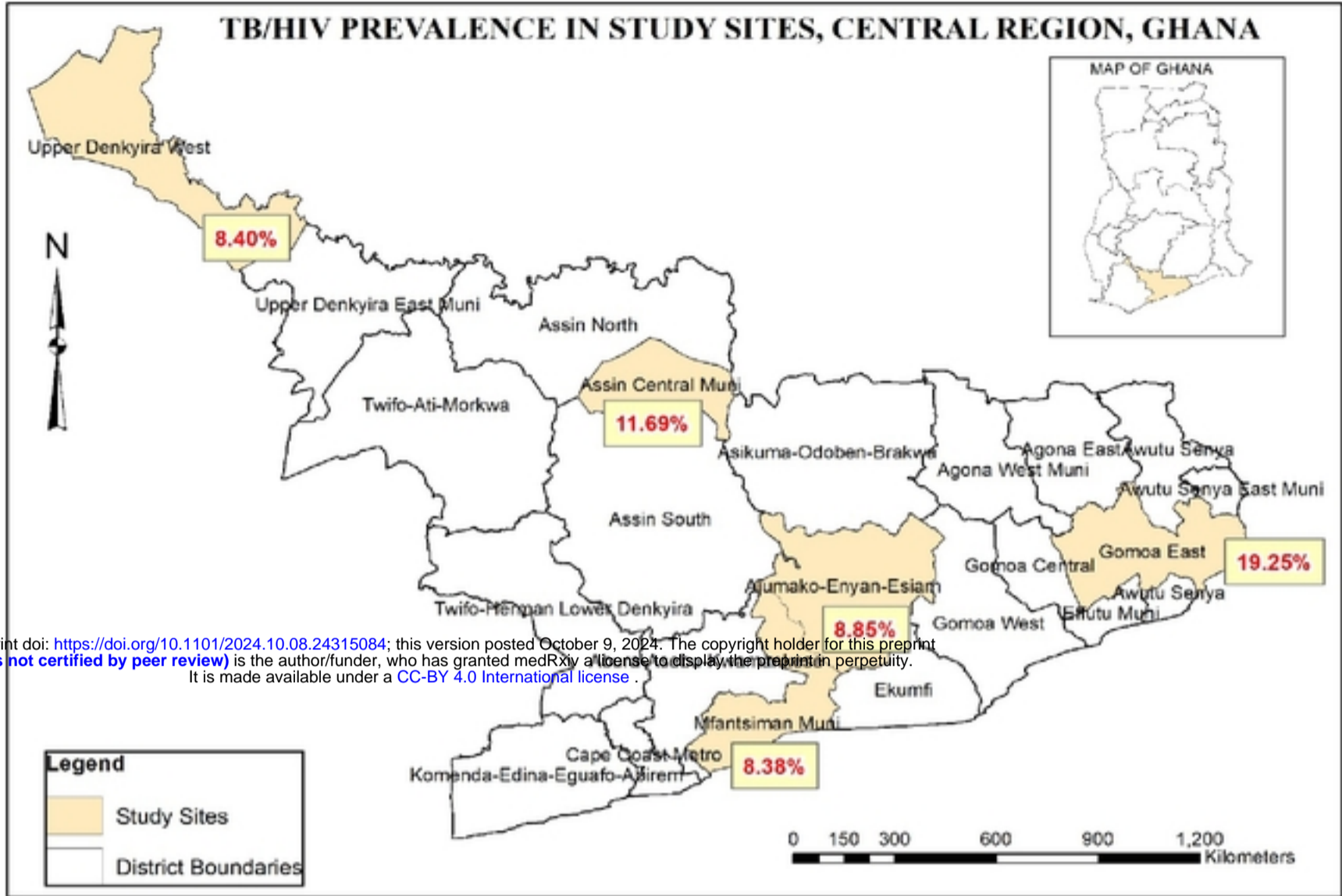
- 330 [23] D. Amare, “Tuberculosis and HIV Co-infection among Patients on Tuberculosis Treatment at
331 Fenote Selam District Hospital, Amhara Regional State, Northwest Ethiopia,” *Glob. J. Med. Res.*,
332 vol. 15, no. F5, pp. 7–13, 2015.
- 333 [24] D. Sia, Y. Onadja, A. Nandi, A. Foro, and T. Brewer, “What lies behind gender inequalities in
334 HIV/AIDS in sub-Saharan African countries: Evidence from Kenya, Lesotho and Tanzania,” *Health
335 Policy Plan.*, vol. 29, no. 7, pp. 938–949, 2014, doi: 10.1093/heapol/czt075.
- 336 [25] D. Sia, Y. Onadja, M. Hajizadeh, S. J. Heymann, T. F. Brewer, and A. Nandi, “What explains
337 gender inequalities in HIV/AIDS prevalence in sub-Saharan Africa? Evidence from the
338 demographic and health surveys,” *BMC Public Health*, vol. 16, no. 1, pp. 1–18, 2016, doi:
339 10.1186/s12889-016-3783-5.
- 340 [26] N. S. Abbai, H. Wand, and G. Ramjee, “Biological factors that place women at risk for HIV:
341 Evidence from a large-scale clinical trial in Durban,” *BMC Womens. Health*, vol. 16, no. 1, pp. 1–7,
342 2016, doi: 10.1186/s12905-016-0295-5.
- 343 [27] R. J. Martino, J. Chirenda, H. A. Mujuru, W. Ye, and Z. Yang, “Characteristics indicative of
344 tuberculosis/HIV coinfection in a high-burden setting: Lessons from 13,802 incident tuberculosis
345 cases in Harare, Zimbabwe,” *Am. J. Trop. Med. Hyg.*, vol. 103, no. 1, pp. 214–220, 2020, doi:
346 10.4269/ajtmh.19-0856.
- 347 [28] M. B. Lugutuah *et al.*, “Long-term survival experience of tuberculosis patients in a rural district of
348 Ghana,” *Int. J. Sci. Res. Arch.*, vol. 11, no. 01, pp. 163–172, 2024, doi:
349 <https://doi.org/10.30574/ijrsra.2024.11.1.0981>.
- 350 [29] I. Ismail and A. Bulgiba, “Predictors of Death during Tuberculosis Treatment in TB/HIV Co-
351 Infected Patients in Malaysia,” *PLoS One*, vol. 8, no. 8, pp. 1–7, 2013, doi:
352 10.1371/journal.pone.0073250.
- 353 [30] World Health Organization, “Global tuberculosis report 2023,” *Geneva WHO Publ.*, 2023.
- 354 [31] E. Osei *et al.*, “Impact of COVID-19 pandemic on Tuberculosis and HIV services in Ghana: An
355 interrupted time series analysis,” *PLoS One*, vol. 18, no. 9 September, pp. 1–16, 2023, doi:
356 10.1371/journal.pone.0291808.



medRxiv preprint doi: <https://doi.org/10.1101/2024.10.08.24315084>; this version posted October 9, 2024. The copyright holder for this preprint (which was not certified by peer review) is the author/funder, who has granted medRxiv a license to display the preprint in perpetuity. It is made available under a [CC-BY 4.0 International license](https://creativecommons.org/licenses/by/4.0/).



medRxiv preprint doi: <https://doi.org/10.1101/2024.10.08.24315084>; this version posted October 9, 2024. The copyright holder for this preprint (which was not certified by peer review) is the author/funder, who has granted medRxiv a license to display the preprint in perpetuity. It is made available under a [CC-BY 4.0 International license](https://creativecommons.org/licenses/by/4.0/).



medRxiv preprint doi: <https://doi.org/10.1101/2024.10.08.24315084>; this version posted October 9, 2024. The copyright holder for this preprint (which was not certified by peer review) is the author/funder, who has granted medRxiv a license to display the preprint in perpetuity. It is made available under a [CC-BY 4.0 International license](https://creativecommons.org/licenses/by/4.0/).

Figure