

1 Hospital environments harbor chlorhexidine tolerant bacteria potentially 2 linked to chlorhexidine persistence in the environment

3 Jiaxian Shen¹, Yuhan Weng¹, Tyler Shimada¹, Meghana Karan¹, Andrew Watson¹, Rachel L.
4 Medernach², Vincent B. Young³, Mary K. Hayden², Erica M. Hartmann^{1,4,5,*}

5 ¹Department of Civil and Environmental Engineering, McCormick School of Engineering,
6 Northwestern University, USA

7 ²Division of Infectious Diseases, Department of Internal Medicine, Rush University Medical
8 Center, USA

9 ³Department of Internal Medicine/Division of Infectious Diseases, Department of Microbiology
10 & Immunology, University of Michigan Medical School, USA

11 ⁴Center for Synthetic Biology, Northwestern University, USA

12 ⁵Department of Medicine/Division of Pulmonary Medicine, Feinberg School of Medicine,
13 Northwestern University, USA

14 *Correspondence: Erica M. Hartmann; 2145 Sheridan Road, Tech A322, Evanston, IL 60208;
15 Email: erica.hartmann@northwestern.edu; Tel: 847-467-4528

16 Abstract

17 A One Health approach is essential in combating antibiotic and antimicrobial resistance.
18 Chlorhexidine (di)gluconate (CHG), a widely used antiseptic in medical intensive care units
19 (MICU), has recently come under scrutiny. However, studies on CHG tolerance, particularly in
20 interconnected indoor environments, are limited. We comprehensively explored CHG tolerance
21 in MICU environments from chemical, microbial, and molecular perspectives. Using microcosm
22 experiments and field surveys, we demonstrated that CHG, if transferred from patient skin to
23 environments, can persist on surfaces despite cleaning and disinfection and decrease to sublethal
24 levels for clinically relevant bacteria. We detected widespread CHG-tolerant bacteria (≥ 18.75
25 $\mu\text{g/mL}$), including opportunistic pathogens (e.g., *Pseudomonas aeruginosa*, *Stenotrophomonas*
26 *maltophilia*, *Elizabethkingia miricola*), with minimum inhibitory concentrations up to 512
27 $\mu\text{g/mL}$. Sink drains emerged as critical hotspots, and indoor air as a potential transport
28 mechanism. We observed indications of bacterial persistence, increased tolerance, in-situ
29 evolution, and dissemination across MICU rooms. Molecular analyses revealed heterogeneous
30 and largely unexplored CHG resistance mechanisms and identified resistance determinant
31 candidates, particularly *qacEdelta1*-carrying, plasmid-borne multidrug-resistant cassettes. Our
32 findings underscore the importance of understanding human-environment and chemical-microbe
33 interactions to preserve chlorhexidine's efficacy and inform infection prevention strategies. We
34 advocate for integrated environmental management and clinical interventions under the One
35 Health framework.

36 Introduction

37 The emergence of resistance to antimicrobials is a critical concern worldwide, severely limiting
38 our ability to prevent and treat infections. Chlorhexidine digluconate (CHG) has been widely
39 used as a topical antiseptic in hospitals), both for patient skin antisepsis and for healthcare
40 provider hand hygiene. Other clinical applications of CHG include antiseptic bathing of residents
41 of long-term care facilities, skin preparation before invasive outpatient procedures and surgeries,
42 and as a mouthwash for treating gingivitis. Additionally, it is extensively utilized in veterinary
43 medicine. Chlorhexidine has broad antimicrobial activity – it is bactericidal at higher
44 concentrations (>0.12%) and bacteriostatic at lower concentrations (0.02%-0.06%)¹ – and it has
45 been used for decades with little concern for resistance. While daily bathing of patients with 2%
46 (20,000 µg/mL) CHG has served as an effective measure for prevention of healthcare-associated
47 infections²⁻⁴, exposure of bacteria to sublethal concentrations of chlorhexidine can lead to
48 reduced susceptibility to this antiseptic and other clinically relevant antibiotics (e.g.,
49 erythromycin, clindamycin, daptomycin, vancomycin, azithromycin and ciprofloxacin)⁵⁻⁸. Post-
50 application, CHG may be shed from the skin onto indoor surfaces, resulting in sublethal
51 concentrations of CHG in the patient’s surrounding environment. Furthermore, CHG residuals
52 might persist in the built environment, even after undergoing degradation by heat, light, and
53 other chemicals⁹⁻¹¹.

54 Decreased susceptibility to CHG has been observed in various bacterial taxa (e.g., *Acinetobacter*
55 spp., *Pseudomonas* spp., *Enterobacter* spp., and *Enterococcus* spp.), including clinically
56 significant pathogens (e.g., *Klebsiella pneumoniae*, methicillin-resistant *Staphylococcus aureus*
57 [MRSA]). Cross-resistance of these isolates to colistin has also been observed, raising concerns
58 about unintended consequences of CHG application in healthcare settings¹²⁻¹⁴. Studies have
59 obtained correlations between CHG susceptibility and antibiotic susceptibility in both minimum
60 inhibitory concentrations (MICs) and minimum bactericidal concentrations (MBCs) among
61 Gram-negative bacteria, and MBCs among Gram-positive bacteria¹⁵. Sporadic cases of hospital
62 infection outbreaks caused by highly CHG-resistant *Serratia marcescens* strains have been
63 reported¹⁶⁻¹⁹. The concern is magnified considering the inductive effect of widely used
64 antimicrobial chemicals (e.g., triclosan, CHG) on the dissemination of antibiotic resistance genes
65 (ARGs)^{20,21}, and the possibility that mobile antibiotic resistance elements could transfer from
66 environmental bacteria to human pathogens. In a veterinary hospital, multi-drug resistant
67 *Serratia* isolates with similar resistance profiles were detected from animals and CHG solutions
68 used across the hospital. Furthermore, the authors identified an IncHI2 multi-drug resistance
69 plasmid that is shared by these *Serratia* isolates and an *Enterobacter hormaechei* strain
70 previously recovered from the hospital environment, with the plasmid’s mobility confirmed by
71 conjugation experiments¹⁹.

72 Generally, studies about CHG tolerance are restricted to human subjects (e.g., clinical isolates
73 from patients, especially those on the WHO priority list of antibiotic-resistant bacteria), while
74 little attention has been paid to the surrounding environments, which can serve as hotspots of
75 antibiotic-resistant bacteria and hospital-acquired infections. To date, CHG susceptibility of
76 environmental microbes has been reported only sporadically. These reports are often associated
77 with outbreak investigations^{19,22-24}, while comprehensive surveillance is lacking. Comprehensive
78 CHG surveillance is partly impeded by the lack of standardized terms, including resistance,
79 tolerance, and reduced susceptibility. In this study, we defined chlorhexidine resistance using
80 epidemiological cut-off values proposed previously (Table S1)^{12,25,26}, due to the lack of
81 standardized clinical breakpoints for chlorhexidine²⁷. The values were defined as the upper limit
82 of the normal MIC distribution for a given antimicrobial and wild-type species. Clinical
83 implications of these values are unclear, but they are nevertheless helpful in resistance
84 monitoring. In cases where epidemiological cut-offs are also unknown, we interchangeably used
85 the terms tolerance and reduced susceptibility as general descriptors. In this study, chlorhexidine
86 digluconate was used for MIC measurements, and chlorhexidine MICs were used as a general
87 term for MICs reported by previous studies where the chemical was not explicitly stated. In cases
88 where the taxonomy or the epidemiological cut-off values were unknown, for uniformity
89 reasons, we described MICs ≥ 128 $\mu\text{g}/\text{mL}$ as high CHG MICs, MICs of 512 $\mu\text{g}/\text{mL}$ as the
90 highest CHG MICs, and bacteria that grew at 18.75 $\mu\text{g}/\text{mL}$ CHG as CHG tolerant³.

91 In this study, we conducted the most comprehensive exploration of CHG tolerance in MICU
92 environments to date, examining chemical, microbial, and molecular aspects. Through controlled
93 microcosm experiments, we gained insights into the fate of CHG on surfaces and the factors
94 influencing its persistence. In subsequent field surveys, we identified environmental hotspots
95 harboring CHG-tolerant, opportunistic, persistent, and disseminating bacteria. Additionally, we
96 identified candidate and novel ARGs and mobile genetic cassettes potentially associated with
97 CHG tolerance.

98 Results

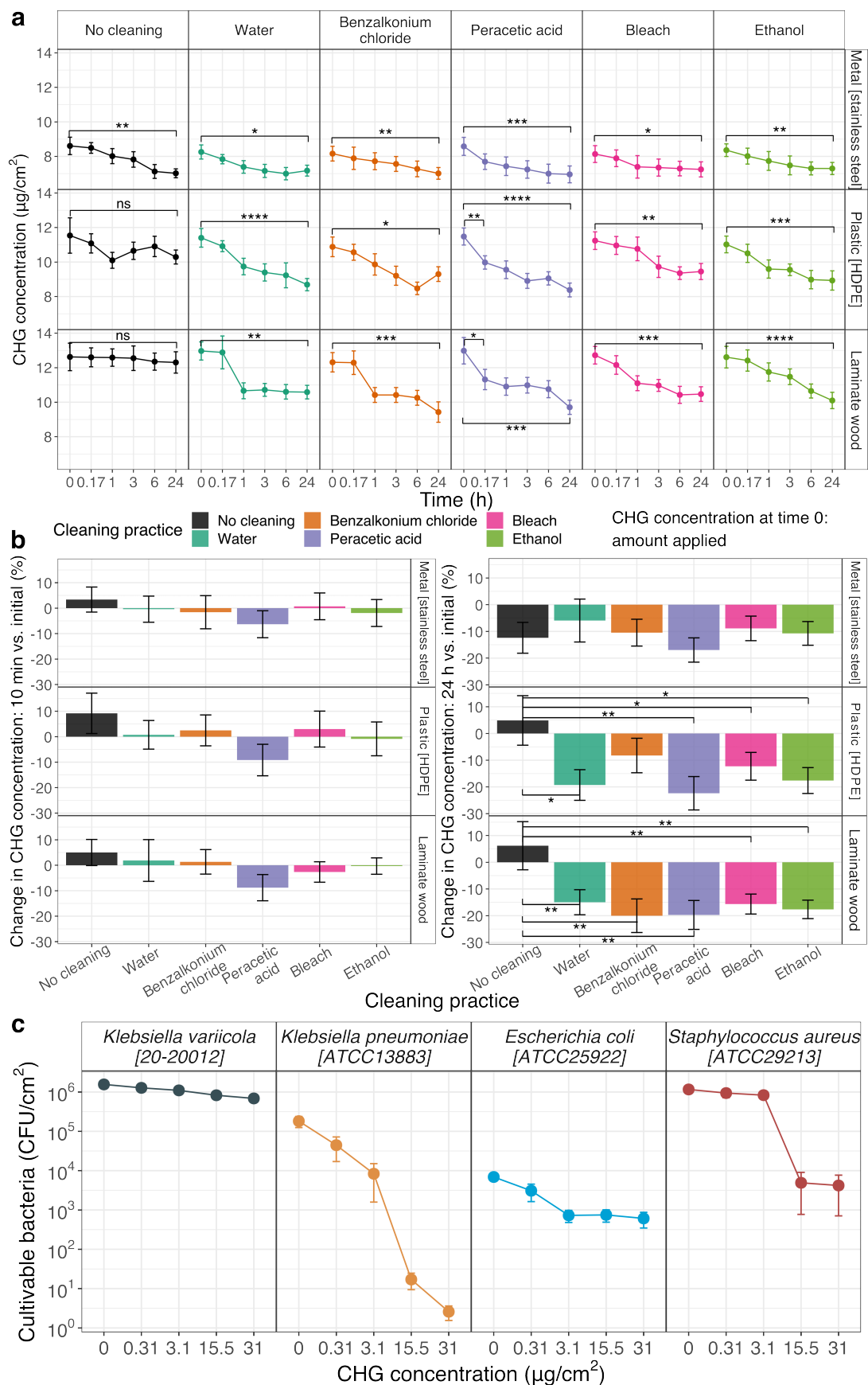
99 Residual chlorhexidine persists on surfaces under disinfection and cleaning in 100 microcosm experiments

101 CHG in the environment can degrade naturally due to environmental factors such as heat and
102 light. Additionally, physical removal through cleaning or reactions with cleaning products may
103 decrease residual surface concentrations. We investigated CHG persistence on three common
104 hospital surface types - laminate wood, plastic (high-density polyethylene; HDPE), and metal
105 (stainless steel) - under six cleaning practices. These practices included no cleaning, cleaning

106 with water, and disinfecting with ethanol, bleach, peracetic acid, or benzalkonium chloride (Fig.
107 S1).

108 While the concentration of CHG decreased over time, it persisted on indoor surfaces over 24 h
109 (Fig. 1a, Table S2). The persistence patterns of CHG residual were impacted by surface material
110 and cleaning practice. We first investigated the immediate impact of wiping a surface on CHG
111 persistence by comparing the concentrations at time 0 (i.e., the amount applied) and 10 min (i.e.,
112 0.17 h). Among the cleaning practices, wiping with peracetic acid had the largest immediate
113 impact, showing significant differences on plastic and laminate wood surfaces ($p < 0.02$) and
114 approaching significance on metal surfaces ($p = 0.056$). This is supported by previous evidence
115 that CHG can be inactivated at a low pH and in the presence of anionic molecules²⁸⁻³⁰. In
116 contrast, none of the other disinfectants tested are known to interact with CHG. Benzalkonium
117 chloride and ethanol have been shown to have synergistic or additive antimicrobial properties
118 when applied with CHG, indicating that their co-occurrence will not cause chlorhexidine
119 degradation³¹⁻³⁵. This is concordant with our observation that CHG concentration is not
120 significantly affected by benzalkonium chloride or ethanol application.

121 Although CHG concentration significantly decreased after 24 h on all cleaned surfaces, it still
122 persisted on indoor surfaces with residual concentrations ranging from 7.0 to 12.3 $\mu\text{g}/\text{cm}^2$ (Fig.
123 1a). When cleaning was not conducted, CHG concentrations remained stable on laminate wood
124 and plastic surfaces, whereas a significant decrease was observed on metal surfaces ($p = 0.005$).
125 While all cleaning methods induced significant concentration reductions after 24 h (Fig. 1a),
126 only cleaning plastic and laminate wood showed a significantly greater reduction effect than no
127 cleaning ($p < 0.05$), whereas disinfecting did not statistically differ from cleaning with water
128 (Fig. 1b). This suggests that, for all tested surface types, potential interactions between
129 disinfecting chemicals and CHG do not exhibit a notably greater reduction effect than the
130 physical removal of CHG during cleaning. Our findings align with previous indications that
131 chlorhexidine degradation might be catalyzed by metals and that chlorhexidine is unstable under
132 acidic and alkaline conditions (pH 3.5-6.5 and pH > 8.5)³⁶.



134 **Fig. 1 Residual CHG persists on surfaces despite cleaning and disinfection, with**
135 **concentrations decreasing to sublethal levels for clinically relevant bacteria. a)** The change
136 patterns of CHG concentrations on surfaces over time in response to cleaning and disinfection.
137 Significance was determined by paired *t*-tests with the alternative hypothesis that the CHG
138 concentration at 0 h was greater than that at 0.17 h (or 24 h). For the immediate impact (0 h vs
139 0.17 h), only groups with significant differences were labeled for visual clarity. Recovery rates in
140 sampling and measurement were accounted for in the calculations. **b)** Immediate and long-term
141 reduction effects of cleaning practices across surface types. Significance was determined by
142 pairwise *t*-tests relative to the “no cleaning” group or the “cleaning with water” group, with the
143 alternative hypothesis that the tested groups had a greater reduction effect than the reference
144 group. Multi-test *p*-values were adjusted using the Benjamini-Hochberg method. Only significant
145 associations were labeled; thus, only cleaning plastic and laminate wood showed a significantly
146 greater reduction effect than no cleaning. **c)** Clinically relevant bacteria can survive 24-hour
147 exposure to CHG residual concentrations on plastic surfaces.

148 **Clinically relevant bacteria can survive 24 h low-dose chlorhexidine exposure on** 149 **surfaces**

150 We examined the survival of four clinically relevant bacterial isolates (*Escherichia coli* [ATCC
151 25922], *Klebsiella pneumoniae* [ATCC 13883], *Klebsiella variicola* [20-20012]³⁷,
152 *Staphylococcus aureus* [ATCC 29213]) on plastic surfaces after exposure to CHG for 24 h (Fig.
153 1c). Plastic was selected as a representative surface because it is a common material of
154 equipment in the immediate vicinity of patients and healthcare workers (e.g., bedrail, nurse call
155 button, keyboard, mouse). Five concentrations of CHG (31.00, 15.50, 3.10, 0.31, and 0 µg/cm²)
156 were tested to encompass the range persisting on surfaces after cleaning or disinfection.

157 After 24 h, all species of bacteria survived on CHG-treated surfaces across all tested microbial
158 densities and CHG concentrations (2.58 – 1.28×10⁶ CFU/cm², log₁₀ reduction ranging from 0.08
159 to 4.87). Although fewer *Klebsiella pneumoniae* CFUs survived at 15.5 and 31 µg/cm² CHG, an
160 estimation from the data trend suggests that >17 CFU/cm² could survive at CHG concentrations
161 of 8.4-11.5 µg/cm² (range of CHG persisting on plastic surfaces). As previous studies have linked
162 exposure to sublethal concentrations of chlorhexidine with reduced susceptibility to chlorhexidine
163 and clinical antibiotics such as vancomycin and daptomycin^{6-8,38}, these results raise concerns about
164 potential development of antimicrobial resistance in bacteria on surfaces that possibly harbor CHG
165 residues (e.g., hospital environments where patients are bathed with CHG).

166 **Chlorhexidine-tolerant bacteria are widespread in MICU environments with sink** 167 **drains being critical hotspots**

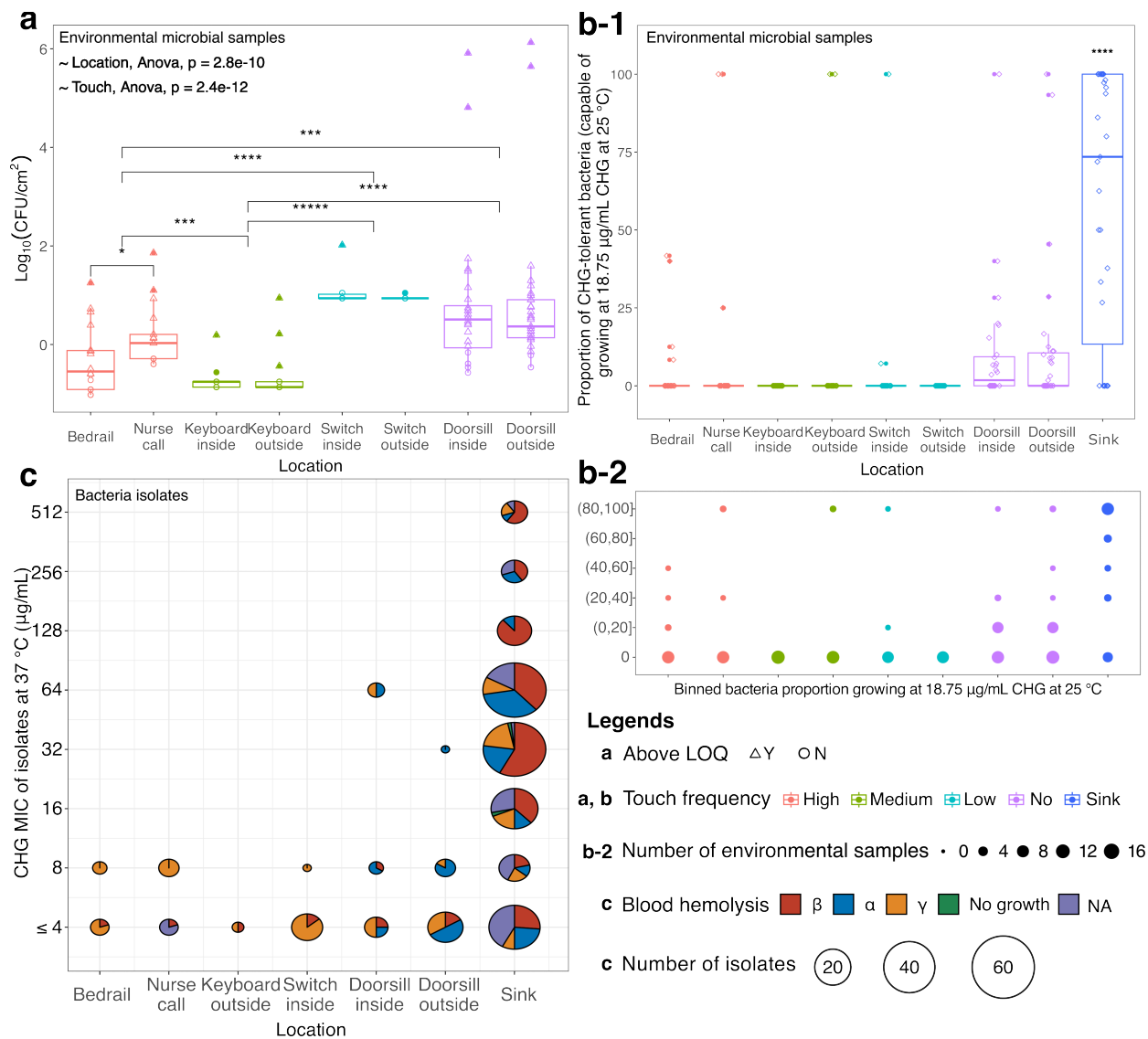
168 Our microcosm experiments indicated that the environment may serve as a hotspot for CHG-
169 tolerant bacteria. To determine how widespread CHG tolerance is *in situ*, we further conducted a
170 field survey of environmental locations in a MICU (Methods, Fig. S2). Cultivation yielded a
171 total of 1415 isolates of 345 different phenotypic morphologies, of which 306 isolates (21.6%)

172 were confirmed to grow at 18.75 $\mu\text{g}/\text{mL}$ CHG at 25 $^{\circ}\text{C}$ (Fig. S3). In this study, 18.75 $\mu\text{g}/\text{mL}$ was
173 used as the threshold to describe CHG tolerance of bacteria³. Additionally, 203 isolates (14.3%)
174 were suspected to grow; due to colony proximity on the agar, it was difficult to determine
175 whether they grew independently or were protected by neighboring colonies. All 509 isolates
176 (36.0%) underwent CHG MIC testing.

177 We found that unit area surface bioburden in the MICU was significantly associated with touch
178 and cleaning frequencies (see Methods for definitions of touch frequencies), and the overall trend
179 was consistent with a previous study³⁹. The rarely cleaned doorsills had significantly higher
180 bioburden than high-touch bedrails and nurse call buttons, followed by medium-touch keyboards
181 (unpaired *t*-tests, \log_{10} scale) (Fig. 2a). This trend was also consistent for the absolute bioburden
182 in the entirety of the surfaces (Fig. S4). The absolute bioburden on low-touch light switches was
183 the lowest. However, they exhibited the highest unit area bioburden among dry surfaces. It is
184 worth noting that the switches had the smallest surface area (Table S3), which may have
185 contributed to greater uncertainty in calculating the unit area bioburden. No effect of sampling
186 seasons and patient room isolation status (contact isolation or not) was observed (Fig. S5).

187 Despite CHG primarily being applied to patient skin, CHG tolerance was identified in multiple
188 spatially distinct locations within the MICU. Most bacteria on dry surfaces were not CHG
189 tolerant at 25 $^{\circ}\text{C}$ (Fig. 2b), defined as the ability to grow at 18.75 $\mu\text{g}/\text{mL}$ CHG. The percentages
190 of bacteria exhibiting tolerance did not significantly differ among dry surfaces, with mean
191 percentages ranging from 0% (keyboards in patient rooms, light switches in the hallway) to
192 13.2% (nurse call buttons). Potential pathogens (as indicated by β hemolysis on blood agar at
193 37 $^{\circ}\text{C}$) were detected across all environmental locations⁴⁰. However, doorsills were the only dry
194 surfaces where CHG tolerance at 37 $^{\circ}\text{C}$ was detected (Fig. 2c, 32 $\mu\text{g}/\text{mL}$ - one isolate, 64 $\mu\text{g}/\text{mL}$
195 - four isolates). There was also a slight trend of a subpopulation of doorsill samples harboring
196 high proportions of CHG tolerant bacteria (3 out of 59 samples had percentages >90%).

197 Sink drains were critical hotspots for absolute bioburden (Fig. S4), CHG tolerance (Fig. 2b-c),
198 and potential pathogens (Fig. 2c). The absolute bioburden and proportion of CHG-tolerant
199 bacteria in sink drains were significantly higher than on all dry surfaces ($p \leq 0.0001$). Moreover,
200 37 bacterial isolates with high CHG MICs ($\geq 128 \mu\text{g}/\text{mL}$) were detected from sink drains in
201 patient rooms, medication rooms, and MICU hallways (128 $\mu\text{g}/\text{mL}$ - 17 isolates, 256 $\mu\text{g}/\text{mL}$ - 10
202 isolates, 512 $\mu\text{g}/\text{mL}$ - 10 isolates) (Fig. 2c). Of the CHG-tolerant bacteria at 25 $^{\circ}\text{C}$ from the sink
203 drains, 70.6% (127 out of 180 isolates) were β -hemolytic (a highly predictive indication of
204 pathogenicity⁴⁰), including these with high MICs (24 out of 29 isolates, Fig. 2c).



205

206 **Fig. 2 Chlorhexidine-tolerant bacteria are widespread in MICU environments with sink**
 207 **drains being critical hotspots. a)** Unit area bioburden of bacteria across different touch
 208 frequencies on dry surfaces (cultivation temperature: 25 °C). CFU: colony forming unit. To
 209 avoid mis-interpreting data with small colony counts, we set the limit of quantification (LOQ) of
 210 our culture efforts as colony counts = 3. Values below this threshold were recorded as half of
 211 LOQ (i.e., 1.5). **b)** Proportion of bacteria tolerant to 18.75 $\mu\text{g/mL}$ CHG (described as CHG
 212 tolerant in this study) at 25 °C across different touch frequencies on dry surfaces and sink. The
 213 proportion of sink samples was significantly higher than that of all the other touch groups
 214 according to unpaired *t*-tests ($p \leq 0.0001$ for all comparisons). In both a) and b), only significant
 215 comparisons were labeled for visual clarity. **c)** Of the bacterial isolates growing at 18.75 $\mu\text{g/mL}$
 216 CHG at 25 °C, distribution of their CHG MICs at 37 °C and the corresponding blood hemolysis
 217 status. Nurse call button is abbreviated as nurse call in the figure.

218 **Opportunistic pathogens and high CHG MIC bacteria were detected in MICU** 219 **environments with increased tolerance and potential for persistence**

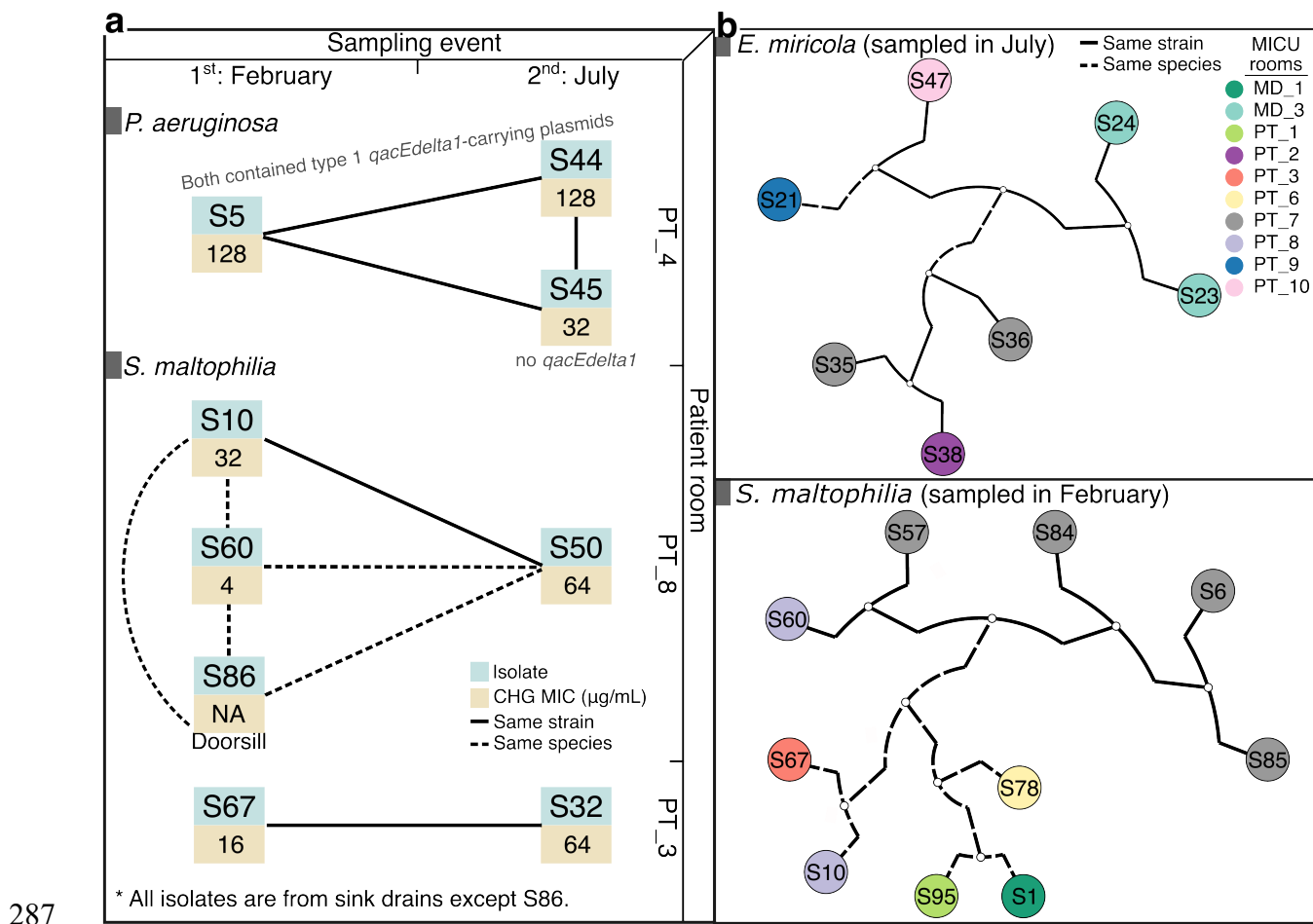
220 To further investigate their potential clinical importance and genomic resistance mechanisms, we
221 performed whole-genome sequencing on 63 isolates (Fig. S6, Table S4). The isolates were
222 randomly selected, with efforts to ensure coverage of various colony morphologies and MICs.
223 Additionally, comparisons were prioritized by selecting isolates with different MICs but the
224 same colony morphology. Among these, the three most represented species are opportunistic
225 pathogens: *Stenotrophomonas maltophilia* (n = 19), *Elizabethkingia miricola* (n = 7), and
226 *Pseudomonas aeruginosa* (n = 6). Isolates with high CHG MICs were detected among these
227 species, with the highest values being 128, 512, and 128 µg/mL, respectively. Notably, all these
228 isolates were recovered from sink drains located in diverse spaces across patient rooms,
229 medication rooms, and hallways, except for one *S. maltophilia* isolate from a doorsill in the
230 hallway. Additionally, we detected two *Acinetobacter radioresistens* isolates from the doorsill of
231 a patient room, both carrying the carbapenemase gene *bla*_{OXA-23}. While there were no patient
232 infections or colonization by *S. maltophilia* or *E. miricola* at the sampled MICU during the
233 sampling sessions, these species have previously been reported to develop multi-drug resistance
234 and be associated with nosocomial and community-acquired infections. Specifically, *S.*
235 *maltophilia* is associated with respiratory infections⁴¹. *E. miricola* has been reported to associate
236 with a variety of infections including bacteremia, pulmonary abscess, urinary tract infection,
237 catheter-associated bacteremia in a hemodialysis patient, and a fatal intracranial infection⁴²⁻⁴⁹.
238 *Elizabethkingia* has also been implicated in healthcare-associated outbreaks of the built
239 healthcare environment⁵⁰. *P. aeruginosa* can cause pneumonia and bacteremia, along with
240 urinary tract and wound infections⁵¹. It is one of the three species ranked first priority on the
241 World Health Organization (WHO) list of antibiotic-resistant bacteria⁵² and a pathogen of major
242 concern for nosocomial infections⁵³. Although rare, *A. radioresistens* can cause infections in the
243 lungs, blood, wounds, or urinary tracts, particularly in hospital settings⁵⁴⁻⁵⁷. More importantly, it
244 has been identified as a potential disseminator of ARGs, transferring the *bla*_{OXA-23} gene to
245 *Acinetobacter baumannii*⁵⁸, another first-priority pathogen on the WHO list.

246 Moreover, we identified five genomically different isolates belonging to novel species according
247 to multiple identification algorithms (KmerFinder, PhyloPhlAn, autoMLST, and MiGA), all of
248 which were recovered from sink drains and three of which are potential pathogens (β-hemolysis
249 on blood agar⁴⁰) harboring multiple copies of multidrug-resistant ARGs. Three can be identified
250 to genus level (*g_Stenotrophomonas*, *g_Achromobacter*, *g_Cupriavidus*), while the other two
251 can only be identified to family level (*f_Rhizobiaceae*, *f_Xanthomonadaceae*).

252 Interestingly, in this subgroup (63 out of 1415 isolates), we observed potential evidence of
253 bacterial persistence and in situ evolution of opportunistic pathogens in sink drains, as well as

254 their potential dissemination across multiple MICU rooms. In both sampling events (February
255 and July), we recovered the same strains ($\text{ANI} \geq 99.99\%^{59,60}$) of *P. aeruginosa* and *S.*
256 *maltophilia* from the same sink drains across three patient rooms (PT_3, PT_4, PT_8, Fig. 3a).
257 Observation of the same strain in the same location at two time points suggests that it persisted in
258 sink drains over the course of half a year. Notably, the original *P. aeruginosa* isolate and one of
259 the subsequent isolates carried type-1 *qacEdelta1*-carrying plasmids and exhibited high CHG
260 MICs (128 $\mu\text{g/mL}$, above *P. aeruginosa*'s epidemiological breakpoint 50 $\mu\text{g/mL}$, Fig. 6, Table
261 S1). However, a second subsequent isolate, while still meeting the identity threshold for
262 belonging to the same strain, did not contain the *qacEdelta1* gene and had an MIC of 32 $\mu\text{g/mL}$.
263 This observation suggests that the ARG-carrying plasmid can be lost, potentially under reduced
264 selective pressure, and that carrying *qacEdelta1* may associate with CHG resistance in *P.*
265 *aeruginosa* (Table S1). For *S. maltophilia*, we observed signs of increased CHG tolerance and
266 intra-species/inter-strain competition during the persistence. In the PT_3 sink drain, the MIC of
267 two intra-strain isolates increased from 16 to 64 $\mu\text{g/mL}$ between the first and second sampling
268 events. In the PT_8 sink drain, we identified two inter-strain isolates with MICs of 4 $\mu\text{g/mL}$
269 (S60) and 32 $\mu\text{g/mL}$ (S10) during the first sampling event, and one isolate with an MIC of 64
270 $\mu\text{g/mL}$, belonging to the same strain as S10, during the second event. Furthermore, in sink drains
271 of multiple rooms, we detected the same strains of *E. miricola* (MD_3 and PT_10, PT_2 and
272 PT_7) and *S. maltophilia* (PT_7 and PT_8) as well as the same species of *P. aeruginosa* and
273 *Delftia tsuruhatensis* (Fig. 3b, Fig. S7). Additionally, we found that *S. maltophilia* and *P.*
274 *aeruginosa* cohabitated the same sink drain in two patient rooms (PT_5, PT_7). These organisms
275 can be co-colonizers in the respiratory tract of cystic fibrosis patients⁴¹, indicating the possibility
276 of contracting both pathogens from the same environmental location⁶¹. It should be noted that
277 these findings are based on a limited number of isolates due to a tradeoff with taxa breadth.
278 Nevertheless, they offer guidance for future studies with larger sample sizes, potentially focusing
279 on specific species.

280 Of the 37 high-CHG MIC isolates in the cultivation dataset, 19 were sequenced. Among these,
281 we found three *S. maltophilia*, two *P. aeruginosa*, seven *E. miricola*, two *Cupriavidus*
282 *metallidurans*, and two *D. tsuruhatensis* isolates. The remaining three isolates had ambiguous
283 species assignments possibly belonging to *D. tsuruhatensis*, *Delftia acidovorans*, or *S.*
284 *maltophilia*. While *S. maltophilia*, *P. aeruginosa*, and *E. miricola* are more often recognized in
285 clinical cultures, *C. metallidurans*, *D. tsuruhatensis*, and *D. acidovorans* are gaining attention as
286 emerging opportunistic pathogens⁶²⁻⁶⁷.



287
288 **Fig. 3 Indications of a) bacterial persistence and in situ evolution of opportunistic**
289 **pathogens in sink drains, as well as b) their potential dissemination across multiple MICU**
290 **rooms.** Patient rooms were deidentified. See Fig. S7 for additional species with multiple isolates
291 detected in several MICU rooms during the same sampling event.

292 **Molecular mechanisms conferring chlorhexidine resistance are heterogeneous and**
293 **remain largely undiscovered**

294 Across high-CHG-MIC species, antibiotic efflux was the most prevalent and abundant identified
295 resistance mechanism (Fig. 4a). *P. aeruginosa* harbored a significantly greater quantity and
296 variety of ARGs than other species. However, while *C. metallidurans* harbored fewer ARGs,
297 most of its ARGs were mobile (6 out of 8 on average). ARG profiles of high-CHG-MIC species
298 demonstrated heterogeneity both within and across species (Fig. 4b-c). We detected several
299 ARGs falling into Q1 of the health risk index ranking⁶⁸ in ≥ 2 species (out of 7), including *sme*
300 family, *sull*, and *adeF*. Particularly, *adeF* was present in all high-CHG-MIC isolates except *P.*
301 *aeruginosa*.

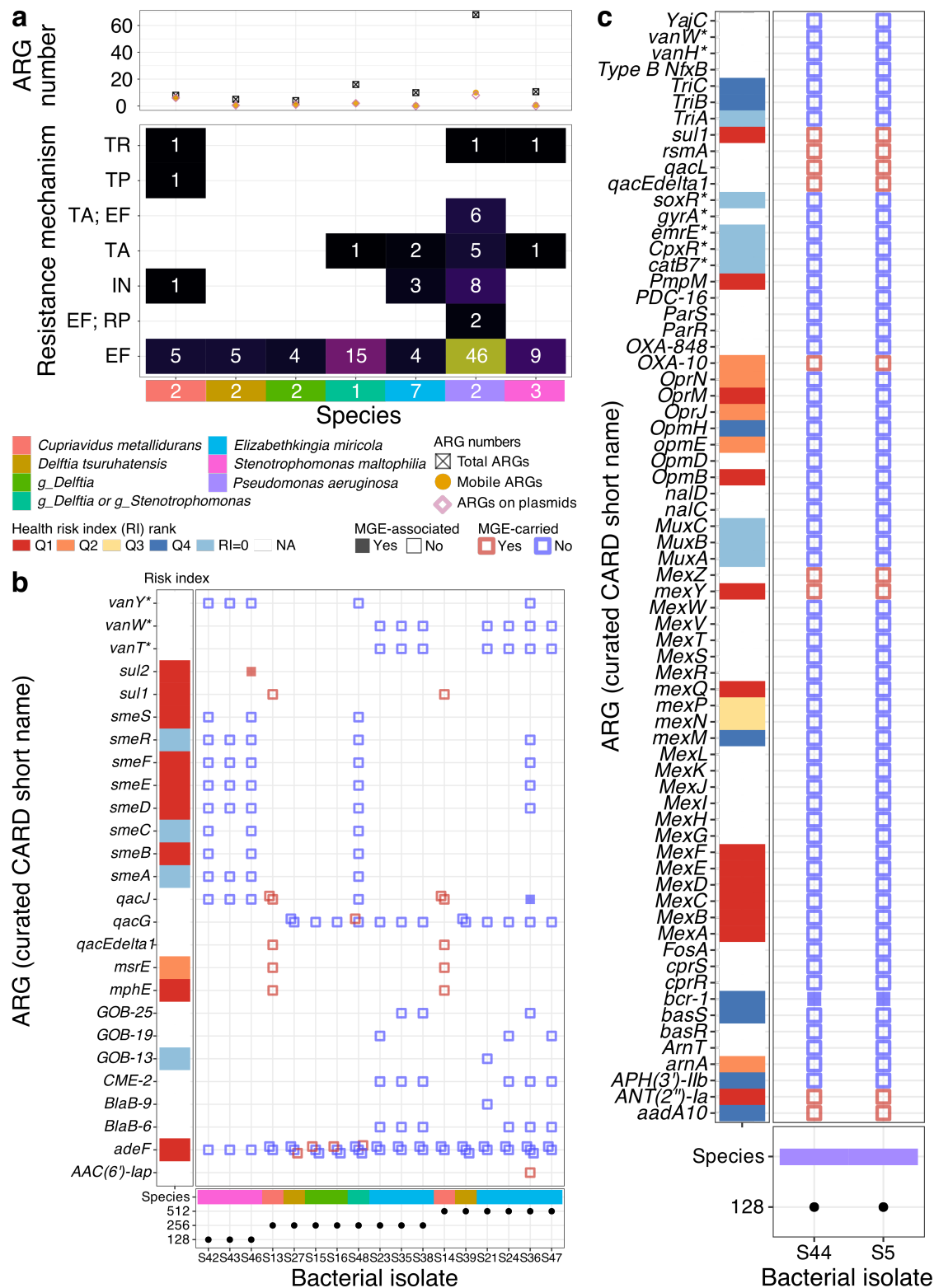
302 Although many ARGs were identified, only two known to reduce susceptibility to CHG,
303 *qacEdelta1*⁶⁹⁻⁷¹ and *norA*⁷²⁻⁷⁵, were observed in 63 sequenced isolates (Table S4). Among the
304 high-CHG-MIC isolates, only *qacEdelta1* was detected, and this was limited to four out of 19
305 such isolates belonging to two species (*C. metallidurans* and *P. aeruginosa*, Fig. 4b-c). In
306 addition, two *Acinetobacter radioresistens* isolates sharing the same ARG profile exhibited \geq 16-
307 fold CHG MICs difference (Fig. 5c). These, in combination, indicate that novel ARGs or
308 pathways conferring CHG resistance remain to be discovered.

309

310

311

312



313

314 **Fig. 4 Antibiotic resistance mechanism and gene profiles of the sequenced high-CHG-MIC**
 315 **isolates (MICs $\geq 128 \mu\text{g/mL}$). a) Distribution of antibiotic resistance mechanisms and genes**

316 across different species. ARG numbers: Error bars represent the mean standard error. Resistance
317 mechanisms: Numbers in the main heatmap represent the average ARG counts for each
318 mechanism; those in the marginal heat blocks indicate the number of high-CHG-MIC isolates
319 per species. Antibiotic resistance gene profiles of high-CHG-MIC isolates: **b)** all species except
320 *Pseudomonas aeruginosa*, **c)** *Pseudomonas aeruginosa*. Each square in the dot plots represents
321 one ARG copy. ARGs were named according to the curated CARD short names (output of
322 Resistance Gene Identifier, Methods)⁷⁶. ARGs located within MGEs were classified as MGE-
323 carried; those situated within a 5 kb proximity to an MGE were considered MGE-associated;
324 both were deemed mobile. Health risk index ranks from Zhang et al. were used to prioritize
325 ARGs⁶⁸. Abbreviations: **a)** EF: efflux, IN: inactivation, RP: reduced permeability, TR: target
326 replacement, TP: target protection, TA: target alteration; **b)** *vanY**: *vanY* gene in *vanM* cluster,
327 *vanW**: *vanW* gene in *vanG* cluster, *vanT**: *vanT* gene in *vanG* cluster; **c)** *vanH**: *vanH* gene in
328 *vanB* cluster, *gyrA**: *Pseudomonas aeruginosa gyrA* conferring resistance to fluoroquinolones,
329 *emrE**: *Pseudomonas aeruginosa emrE*, *CpxR**: *Pseudomonas aeruginosa CpxR*, *catB7**:
330 *Pseudomonas aeruginosa catB7*, *soxR**: *Pseudomonas aeruginosa soxR*; **legend)** *g_Delftia*:
331 ambiguous species *Delftia tsuruhatensis* or *Delftia acidovorans*, *g_Delftia* or
332 *g_Stenotrophomonas*: ambiguous species *Delftia tsuruhatensis*, *Delftia acidovorans* or
333 *Stenotrophomonas maltophilia*.

334
335 To further investigate the genetic characteristics of clinically important bacteria regarding CHG
336 tolerance, we examined the presence, types, and differential abundances of ARGs and mobile
337 ARGs with varied CHG MICs in *S. maltophilia*, *E. miricola*, *A. radioresistens*, and *P.*
338 *aeruginosa* (Fig. 5). Among these species, *P. aeruginosa* was the only one found to carry a
339 known CHG-ARG, *qacEdelta1*, which was present in three out of the six isolates. Specifically,
340 two isolates had MICs of 128 µg/mL and one had an MIC of 32 µg/mL. In all cases, the gene
341 was located on a plasmid, indicating potential for horizontal gene transfer. Although no known
342 CHG ARG was predicted in the other two species, upon qualitative inspection, we identified
343 ARGs potentially associated with CHG tolerance. These included *sul2*, *smeA/B/C/S* for *S.*
344 *maltophilia*, and *smeD/E/F/R*, *qacJ*, *AAC(6')-Iap* for *E. miricola*. Future research could
345 interrogate these gene candidates, especially the Q1 health risk ARGs⁶⁸ *sul2* and *smeB/D/E/F/S*,
346 by employing more quantitative and systematic surveys along with experimental validations. The
347 taxon *E. miricola* may be associated with high CHG MICs, as all isolates exhibited MICs of 256
348 µg/mL or higher. Particularly, isolate S36 had an MIC of 512 µg/mL. Compared to other *E.*
349 *miricola* isolates, it contained more types and quantities of ARGs, and more critically two unique
350 mobile ARGs (*qacJ* and *AAC(6')-Iap*). *P. aeruginosa* exhibited significantly higher quantities of
351 ARGs and mobile ARGs compared to most species in the dataset (Table S4) and consistently
352 ranked in the top three for all three indices. Notably, several isolates warrant further attention:
353 isolate S30, with an ambiguous species assignment between *Citrobacter amalonaticus* and
354 *Citrobacter freundii*; S25, belonging to a novel species of genus *Cupriavidus*; and S13 and S14,
355 identified as *Cupriavidus metallidurans*, all contained a high number of ARGs or mobile ARGs.
356 However, we could not establish statistical correlations between CHG MICs and the quantities of

368 *vanH**: *vanH* in *vanO* cluster; **b)** *vanW**: *vanW* gene in *vanG* cluster, *vanT**: *vanT* gene in *vanG*
369 cluster.

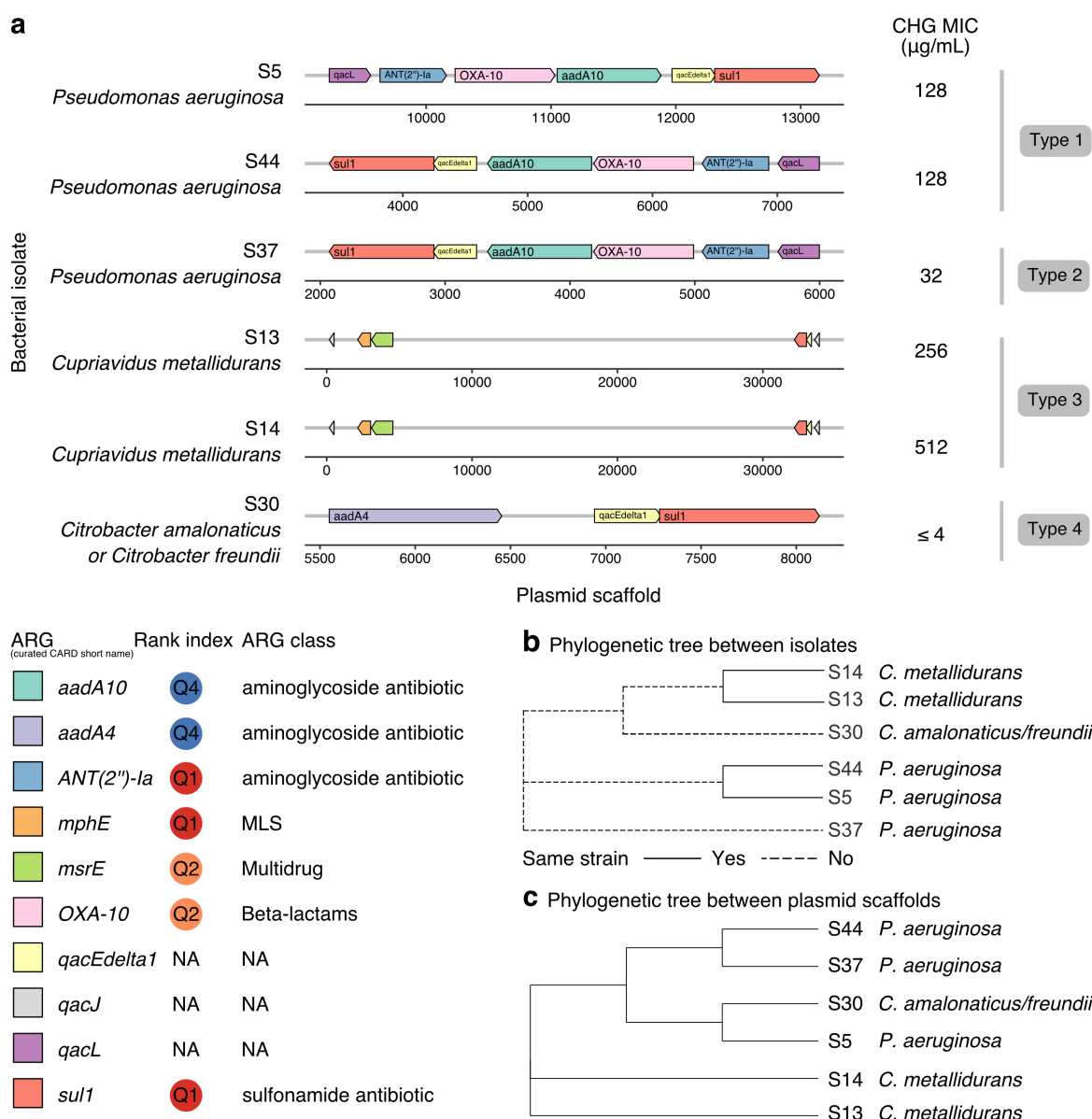
370 ***qacEdelta1*-carrying multidrug-resistant plasmids are a potential concern**

371 *qacEdelta1* was detected exclusively on plasmids in six isolates (Fig. 6, Table S5). Each isolate
372 harbored one *qacEdelta1*-carrying plasmid. All isolates were recovered from sink drains, with
373 S30 originating from a staff-only restroom and the remaining coming from patient rooms.
374 Notably, all six *qacEdelta1*-carrying plasmid scaffolds had ≥ 3 ARGs regardless of species, five
375 of which carried the highest number of ARGs among all plasmid scaffolds in the sequenced
376 isolates (six ARGs in one plasmid scaffold). Another notable feature shared by these plasmids
377 was the colocalization of *qacEdelta1* and *sull*, arrayed next to each other as a cassette.
378 Importantly, *sull*, a Q1 health risk ARG, confers resistance to sulfonamide antibiotics and its
379 proximity to *qacEdelta1* merits attention.

380 The *qacEdelta1*-carrying plasmid scaffolds could be classified into four types according to blastn
381 alignments⁷⁷, and type-1 and type-3 plasmid scaffolds were possibly associated with high CHG
382 tolerance. Type 1 contained two identical plasmid scaffolds in two isolates of the same *P.*
383 *aeruginosa* strain (S5, S44). Type 2 comprised a plasmid scaffold from another *P. aeruginosa*
384 strain (S37) that was closely related to type 1 with 8 bases unaligned. Type 3 was composed of
385 the other two identical plasmid scaffolds in two isolates of the same *C. metallidurans* strain (S13,
386 S14). Type 4 held a different plasmid scaffold in an isolate with an ambiguous species
387 assignment between *Citrobacter amalonaticus* and *Citrobacter freundii* (S30) which shared
388 common regions with the other plasmids. It is worth highlighting that the top BLAST hits for
389 type-1 plasmid scaffolds (query coverage: 100%, identity $\geq 99.99\%$, database: nr/nt) matched
390 two plasmids from clinical *P. aeruginosa* strains - one from a bloodstream infection and the
391 other from sputum - both collected in Chicago (Table S5). While the two type-1 plasmid
392 scaffolds shared an identical sequence alignment in the two *P. aeruginosa* strain-matched
393 isolates, S5 and S44, they were positioned in opposite directions and were not the most closely
394 related phylogenetically (Fig. 6). This suggests that carriage of this ARG cassette is dynamic and
395 large-scale genomic changes like inversions might occur. Nevertheless, they still manifest the
396 same MIC (128 $\mu\text{g}/\text{mL}$), indicating that the inversion did not disrupt the function of CHG
397 tolerance. Notably, the strain of S5 and S44 probably persisted in sink drains over half a year
398 (Fig. 3a). In comparison, plasmid scaffolds of S5 - S30 and S44 - S37 were more closely related,
399 respectively. S44 and S37 were two different strains of *P. aeruginosa*, while S5 and S30
400 belonged to different orders. This suggests that the *qacEdelta1*-carrying plasmid could be
401 transferred in situ not only between environmental bacteria of the same species but also between
402 those that are more evolutionarily distant.

403 To the best of our knowledge, this study is the first to report the presence of the *qacEdelta1* gene
 404 on a plasmid in *C. metallidurans*. *C. metallidurans* was traditionally considered non-pathogenic
 405 until recent case reports suggested otherwise. In 2005, this bacterium was identified in the
 406 respiratory secretions of cystic fibrosis patients, though its pathogenic effects were not
 407 understood at the time⁷⁸. In 2011, a case of invasive nosocomial septicemia caused by *C.*
 408 *metallidurans* was reported following surgery⁶². Furthermore, in 2015, four cases of catheter-
 409 related bacteremia due to this bacterium were documented⁷⁹. The growing clinical importance,
 410 combined with its detection in MICU patient room environments, high CHG tolerance, and
 411 carriage of a concerning plasmid, implicate the need for further investigations.

412



413

414 **Fig. 6 *qacEdelta1*-carrying multidrug-resistant plasmids are of potential concern,**
415 **particularly type-1 and type-3 plasmid scaffolds, which are possibly associated with high**
416 **CHG tolerance. a)** Colocalization of ARGs on the plasmid scaffolds. **b)** Phylogenetic
417 relationship between the isolates. **c)** Phylogenetic relationship between the plasmid scaffolds. All
418 isolates were recovered from sink drains. S30 was from a staff-only restroom, and the other
419 isolates were from patient rooms. See Table S5 for more information. ARGs were named
420 according to the curated CARD short names (output of Resistance Gene Identifier, Methods)⁷⁶.
421 Health risk index ranks from Zhang et al. were used to prioritize ARGs⁶⁸. MLS: macrolides,
422 lincosamides and streptogramins.

423 Discussion

424 Although CHG is used primarily on patient skin, it could be transferred to hospital environments.
425 Once there, CHG likely persists on indoor surfaces despite surface cleaning and disinfection,
426 with its concentration decreasing to sublethal levels for some clinically relevant bacteria, as
427 demonstrated by our microcosm experiments. This finding was further corroborated by an in-situ
428 field survey, which revealed widespread CHG tolerance in MICU environments. Notably, we
429 emphasized sink drains as critical hotspots, corroborating previous findings. Further, based on
430 the isolation of CHG-tolerant bacteria from doorsills, we urge more attention to indoor air as
431 transport mechanisms for resistant organisms. We observed potential evidence of bacterial
432 persistence, increased tolerance, and in-situ evolution of opportunistic pathogens in sink drains,
433 as well as dissemination across multiple MICU rooms. *S. maltophilia*, *E. miricola*, and *P.*
434 *aeruginosa* were highly represented species in the sequenced subset. Through our broad-scope
435 study, we found that the molecular mechanisms conferring chlorhexidine resistance were
436 heterogeneous and largely undiscovered. Nevertheless, we identified ARG candidates that
437 warrant future investigation, particularly two types of *qacEdelta1*-carrying, plasmid-borne
438 multidrug-resistant cassettes. These cassettes are potentially concerning for their role in pathogen
439 persistence, the development and dissemination of CHG resistance, and broader antibiotic
440 resistance.

441 The ways in which humans interact with their environment, including touch and cleaning, along
442 with characteristics like surface material, jointly impact the fate of chemicals applied to humans.
443 Subsequently, these factors influence the trajectory of microbial ecology and evolution and in
444 return affect our exposome⁸⁰. We identified sink drains and air as environmental hotspots for
445 CHG tolerance and opportunistic pathogens. Consistent with previous observations⁸¹⁻⁸³, sink
446 drains were confirmed as critical reservoirs. CHG-tolerant and/or opportunistic bacteria hosted in
447 sink drains, likely within biofilms, could persist for at least half a year, adaptively evolving and
448 increasing their CHG tolerance, and potentially disseminating⁸⁴. We hypothesize that water
449 availability plays an important role, driving the in-situ microbial survival and persistence as well
450 as antimicrobial adaptation and evolution in the built environment (e.g., sink drains). It may exert

451 a stronger impact than other factors such as touch frequency and surface material^{185,86}. Building
452 on previous evidence that microbes can be transmitted from sinks to patients⁶¹, our findings
453 further emphasize the importance of sinks as possible sources of healthcare-associated infections
454 and antimicrobial resistance, supporting the waterless ICU initiative⁸⁷.

455 Since biomass on doorsills reflects what is circulating in the air⁸⁸⁻⁹⁰, indoor air was identified as
456 another hotspot, particularly for its role as a transport mechanism for resistant organisms. Unlike
457 in sink drains, where water potentially supports bacterial metabolism and growth, bacteria in dry
458 environments (e.g., doorsills) are more likely dormant⁸⁰. Thus, we hypothesize that these bacteria
459 are transferred to such environments and remain in the same state as when they were on human
460 bodies. For example, bacteria detected on doorsills, including *A. radioresistens*, *S. maltophilia*,
461 and *E. hormaechei*, may be carried on air currents and settle there along with biological debris
462 (e.g., skin squames) shed by humans. Previous studies have implicated this phenomenon for *S.*
463 *aureus*^{91,92}. It is possible that settled bacteria could be re-suspended into the air and potentially
464 infect patients. Although high-touch surfaces yielded fewer CHG-tolerant isolates compared to
465 sink drains and air, they still hold value for monitoring due to frequent interactions. Note that the
466 roles of environmental locations are dynamic within this interaction model, shifting as conditions
467 and time change. For example, sink drains act as reservoirs when they receive inputs from hands,
468 incoming water, and air, hosting microbes in biofilms. They can become sources of exposure
469 when microbes are re-aerosolized⁶¹, or serve as transport mediums when contaminants flow
470 through them to wastewater treatment plants. Similarly, the two hypotheses are also dynamic and
471 condition-dependent.

472 Detection of CHG-tolerant, ARG-carrying, and/or opportunistic bacteria in environments does
473 not necessarily translate to elevated risk of infection and antibiotic resistance due to several
474 challenges and knowledge gaps^{93,94}. First, more studies are needed to clarify the relationship
475 between carrying ARGs and manifesting resistance phenotypes or increased tolerance. For
476 instance, while *qacEdelta1* was a shared ARG in some high-CHG-MIC isolates (Fig. 4b-c), its
477 presence was not exclusive to these, as it was also identified in two isolates with relatively low
478 MICs (*P. aeruginosa*: 32 µg/mL, below its epidemiological cut-off value 50 µg/mL¹²; genus
479 *Citrobacter*: ≤ 4 µg/mL; Table S4). In contrast, carrying *norA* (the other known CHG ARG) in
480 *Staphylococcus epidermidis* appeared to associate with reduced susceptibility²⁵. The *norA*-
481 carrying isolate from our cohort showed an MIC of 4 µg/mL. Compared with previous reports⁹⁵,
482 this was 4.3 times higher than that observed in 33 blood isolates from 1965-1966, 2.1 times that
483 of 290 more recent clinical isolates (post-2002), and comparable to that in four isolates from
484 infected joint replacements. Future studies should aim to extend these qualitative phenomena
485 observed in a limited sample size to quantitative analyses.

486 In addition to these ARGs previously reported to associate with CHG tolerance, we demonstrated
487 from various angles that novel resistance mechanisms await discovery, and identified ARG and
488 plasmid candidates (i.e., type-1 and type-3 *qacEdelta1*-carrying multidrug-resistant plasmids).
489 Despite the richness of available data resources, we were challenged by the poor representation
490 of environmental bacteria in current databases. For example, when searching the BLAST
491 database for our *qacEdelta1*-carrying plasmid scaffolds, we found two top hits for *P. aeruginosa*
492 with 100% query coverage. However, the maximum query coverage was only 46% for
493 *Citrobacter spp.* and 20% for *C. metallidurans*. Expanding these databases and performing *de*
494 *novo* gene annotations as complementary approaches would be beneficial in the future. To
495 further connect carriage of ARGs to resistance phenotypes, future investigations should
496 interrogate these candidates using functional metagenomics⁹⁶, knockouts or cloning, as well as
497 assess cross-resistance to medically relevant antibiotics via susceptibility tests (e.g., MIC
498 assays).

499 Second, the clinical importance of detecting biocide resistance phenotypes in laboratories (e.g.,
500 using MIC assays) is not sufficiently understood and lacks consensus. The clinical relevance
501 includes both disinfection efficacy and the evolution of cross-resistance to antibiotics,
502 particularly in opportunistic pathogens. Several terms - resistance, tolerance, and reduced
503 susceptibility - are used ambiguously in the field to describe these phenotypes, but their
504 definitions and applications are not well standardized. Moreover, there is ongoing debate over
505 whether MIC is the appropriate metric for assessing biocide efficacy⁹⁷. MIC, which was
506 originally developed for antibiotics, measures the ability of a compound to inhibit bacterial
507 growth over 16-24 hours, whereas biocides are often applied at high concentrations for brief
508 periods during skin antiseptics or environmental disinfection. Special cases exist, such as CHG
509 bathing, where we seek both immediate antiseptic effects and longer-term benefits from residual
510 CHG on the skin for up to 24 hours. To address some of these ambiguities, studies have
511 proposed new frameworks⁹⁸ and metrics (e.g., the minimum duration for killing) to complement
512 MIC. However, these alternatives lack sufficient benchmarking and evaluation of
513 generalizability. As surveillance expands, generalizability becomes increasingly important - a
514 limitation the current gold standard, MIC, also faces. For example, clinical breakpoints for
515 chlorhexidine, as with many other antimicrobials, have not yet been established²⁷. Reaching
516 consensus on clinical breakpoints and even epidemiological cut-offs is challenging. For instance,
517 we used 18.75 µg/mL as the cut-off for CHG tolerance, as it was indicated as a threshold CHG
518 skin concentration³; however, a recent study has shown disagreement⁹⁹. Nonetheless, CHG
519 concentrations used in clinical applications on skin and mucosal surfaces are much higher than
520 the highest MICs identified in our environmental isolates.

521 Large-scale environmental surveillance introduces additional challenges. During MIC assays,
522 despite following the CLSI standards¹⁰⁰ as closely as possible, we could not confirm that all
523 inocula were standardized to 10⁴ CFU per 5- to 8-mm diameter spot (Methods) because the
524 taxonomy and growth characteristics of isolates were unknown at the time of testing.
525 Furthermore, it remains unclear whether the standard CFU threshold has the same clinical
526 relevance for environmental isolates as it does for clinical isolates, which were used to develop
527 the standard. The limitations of MIC extend beyond the lab. In environmental settings, microbes
528 rarely exist in isolation or as free-living cells; rather, they often form biofilms within complex
529 communities where synergistic/competitive interactions and physical protection may occur. As a
530 result, assays that simulate their in-situ states may offer more accurate insights. Alternative
531 approaches, such as examining contact times necessary to achieve a reduction threshold⁹⁷ or
532 using microcosm experiments, like those employed in our study, may provide better
533 approximations of real-world conditions. For instance, we examined bacterial survival following
534 24-h CHG exposure on surface coupons (Fig. 1c), which better approximates in-situ conditions
535 than liquid media assays. However, this approach requires optimization. To ensure technical
536 feasibility, we used a higher starting bacterial density than is typically found on uncontaminated
537 hospital surfaces. This version simulates a scenario where residual CHG is present on a surface,
538 and a high burden of pathogens is introduced (e.g., through sneezing). More research is needed
539 to develop consensus methods that are applicable to real-world scenarios.

540 Furthermore, researchers should be more explicit when communicating findings. For example,
541 while chlorhexidine digluconate is the most used formula, other forms, such as chlorhexidine
542 acetate, exist. We have encountered instances where the type of formula was not explicitly
543 reported in the literature, hindering normalized evaluations through reviews and meta-
544 analyses¹⁰¹.

545 Despite these challenges, we conducted surveillance of CHG tolerance in built-environment
546 isolates, a practice less common than in clinical and animal isolates. The MICs of environmental
547 isolates are generally considered lower (Table S6)^{16,17,19,22-24,102,103}. However, bacteria isolated in
548 our study, especially those from sinks, exhibited CHG MICs at the high end of the reported
549 spectrum^{12,15,27,101,104-108}. Although further investigation is needed to determine whether our
550 isolates represent a statistically significant increase in tolerance, the results suggest that the
551 MICU environment harbors CHG-tolerant microbes, raising a potential warning sign.

552 Moving forward, we should further scrutinize the environmental hotspots (e.g., sink drains, air)
553 and establish models to quantify the complex human-environment and chemical-microbe
554 interplay. First, combining broad-scope studies with more focused, larger-sized studies is
555 recommended. We should collect denser longitudinal samples and richer metadata; for example,

556 a logical next step would be to survey chlorhexidine concentrations in MICUs. Second, profiling
557 these samples using multimodal approaches, such as combining multi-omic sequencing of
558 communities with whole-genome sequencing of isolates, could provide deeper insights. Third,
559 pairing environmental and human microbiota could uncover more nuanced connections.
560 Furthermore, as our understanding in MICUs advances, studies could be expanded to other
561 buildings (e.g., entire hospitals, veterinary facilities, homes, athletic facilities) to determine
562 whether findings surrounding CHG tolerance are unique to MICUs, hospitals, or built
563 environments in general.

564 In summary, by combining microcosm experiments with field surveys, we provided a
565 comprehensive depiction of CHG tolerance in MICU environments, connecting chemical,
566 microbial, and molecular perspectives. Understanding these interactions could reveal potential
567 intervention opportunities for infection prevention and lead to actionable recommendations for
568 regulations and healthcare policy. Given the critical value of CHG in healthcare and the dearth of
569 viable alternatives, proactive measures are important, such as integrating environmental
570 management with clinical interventions, expanding stewardship programs, and exploring
571 alternatives to CHG. Furthermore, due to chlorhexidine's versatile applications, the insights
572 gained from this study could benefit a broader audience, informing stewardship practices in
573 veterinary hospitals and other built environments, as well as guiding consumer use of antiseptics
574 and disinfectants.

575 **Methods**

576 **Chlorhexidine persistence on surfaces**

577 We investigated the chlorhexidine persistence on three surface materials commonly found in
578 hospital (laminated wood, plastic [high-density polyethylene; HDPE], metal [stainless steel]) in
579 response to six different cleaning practices used commonly on inanimate hospital surfaces (no
580 cleaning, clean with water, disinfect with ethanol, bleach, peracetic acid, or benzalkonium
581 chloride) (Fig. S1).

582 **Microcosm setup**

583 Each surface was cut into 4"×8" coupons, and each coupon was divided into 1"×1" sections by
584 drawing markers. The coupons were UV sterilized for 15 minutes before applying 2%
585 chlorhexidine digluconate (CHG, IUPAC name: (1E)-2-[6-[[amino-[(E)-[amino-(4-
586 chloroanilino)methylidene]amino]methylidene]amino]hexyl]-1-[amino-(4-
587 chloroanilino)methylidene]guanidine;(2R,3S,4R,5R)-2,3,4,5,6-pentahydroxyhexanoic acid)
588 solution (w/v, Sigma-Aldrich, St. Louis, MO, USA). The concentration 2% was selected to
589 represent commercial CHG wipes used in patient bathing^{109,110}. We first folded a Kimwipe

590 (Kimberly-Clark, Irving, TX, USA) in half three times to get a square about 2”×2” and 8 layers
591 thick. We then pipetted 1 mL CHG onto the Kimwipe and wiped in a zigzag pattern along the
592 long axis of the surface, such that the whole surface was covered after 5 passes. Wiping was
593 repeated with a second Kimwipe from the opposite direction. Once the surface dried, an initial
594 CHG measurement was taken in biological triplicate, representing 0 min. Each 1”×1” section
595 was swabbed using a nonsterile cotton swab (Puritan, Guilford, ME, USA) premoistened in 0.8
596 mL deionized water. The swabbing was conducted with consistent pressure and speed in two
597 directions (up and down, left and right) for 15 s total. The swab was then stored in the deionized
598 water for extraction and CHG concentration measurement.

599 Simulated cleaning practices were applied to CHG-treated surfaces using the same wiping
600 technique. A group of surfaces that were not wiped served as baseline controls. The wiping
601 solutions included deionized water, 70% ethanol (Decon Laboratories, King of Prussia, PA,
602 USA), 10% bleach (Clorox, Oakland, CA, USA), 0.2% peracetic acid (Sigma-Aldrich, St. Louis,
603 MO, USA), and 0.26% benzalkonium chloride (MP Biomedicals, Santa Ana, CA, USA; C8-
604 18)¹¹¹. The CHG concentrations were measured in biological triplicate at 5 additional timepoints
605 (10 min, 1 h, 3 h, 6 h, and 24 h) following the same method. We selected 24 h as an experimental
606 cycle because in MICU, patients were bathed with CHG wipes on a daily basis. The coupons
607 were kept in light-proof compartments when not being wiped or swabbed. This was repeated for
608 each disinfectant and each surface for 8 trials, yielding 24 biological replicates in total.

609 **Swab extraction and CHG concentration measurement**

610 CHG on swabs was extracted into water following an adaptation of CDC’s Swab Extraction
611 Method^{94,112,113}. The Falcon tube was vortexed at maximum speed for 1 min and shaken at 180
612 rpm and 25 °C for 10 min, followed by careful squeezing against the tube wall and removal of
613 the swab. CHG concentration was determined by a previously reported colorimetric assay with
614 modifications^{3,114,115}. We mixed 500 µL CHG solution with 500 µL
615 hexadecyltrimethylammonium bromide (0.01 g/mL in deionized water, Sigma-Aldrich, St.
616 Louis, MO, USA) and 200 µL sodium hypobromite (Aqua Solutions, Deer Park, TX, USA).
617 Absorbance of the mixture was measured at 262 nm using a spectrophotometer (UV-2450,
618 Shimadzu, Kyoto, Japan).

619 **Quantification of CHG recovery rates from surfaces and application efficiency to surfaces**

620 We examined the CHG recovery rates from different surface materials using the same swabbing
621 technique and accounted for these rates in calculating the CHG concentration on surfaces (Table
622 S7). After UV sterilization, we pipetted 100 µL 2% CHG onto a 1”×1” square for a total of 10
623 replicates each surface type. Additionally, 100 µL 2% CHG was directly pipetted onto a swab to
624 investigate the recovery rate of the swab extraction. When we directly applied CHG onto swabs,

625 85.46% was recovered in the measurement. For the tested surfaces, metal had a comparably high
626 recovery rate (83.04%), indicating that almost all the CHG (97.16%) on a metal surface can be
627 collected by swabbing. In contrast, plastic and laminate wood both retained CHG in sampling,
628 with recovery rates of 69.79% and 55.58%, respectively.

629 CHG transfer rates from the Kimwipe to the surfaces in application was quantified afterwards
630 (Table S8). Upon wiping a surface with a CHG wipe, we found that only 4-7% CHG on the wipe
631 was transferred onto the surfaces. In comparison to the recovery rates from surfaces by swab
632 sampling, the transfer rates showed an opposite trend across surface materials. While metal had
633 the highest recovery rate in sampling, it captured the least CHG in application. Furthermore, the
634 values were within the range of disinfectants released from ready-to-use Towelettes¹¹⁶, validating
635 that our application technique mimics the usage of commercial disinfectants.

636 **Viability assay of bacterial isolates on CHG-contaminated surfaces**

637 We tested the survival of bacterial isolates on plastic surfaces after exposure to various
638 concentrations of CHG for 24 h in biological triplicate. Four bacterial isolates (*Escherichia coli*
639 [ATCC 25922], *Klebsiella pneumoniae* [ATCC 13883], *Klebsiella variicola* [20-20012]³⁷, and
640 *Staphylococcus aureus* [ATCC 29213]) were selected as model strains. Plastic was selected as a
641 representative surface because it is a common material of equipment in the immediate vicinity of
642 patients and healthcare workers (e.g., bedrail, nurse call button, keyboard, mouse). Five different
643 CHG concentrations (31.00, 15.50, 3.10, 0.31, 0 [positive control] $\mu\text{g}/\text{cm}^2$) were tested to cover
644 the range of CHG persisting on surfaces under disinfection and cleaning.

645 To prepare bacterial inocula, the second passage of the stock culture were grown at 37°C to the
646 late exponential phase and harvested at 3000 rpm for 1 min. The pellet was then resuspended in
647 phosphate-buffered saline (PBS). The bacterial cell density in the inocula was determined by
648 spread plating. To prepare surface coupons, HDPE plastic was cut into 2"×2" squares, UV
649 sterilized for 15 min, and placed in a petri dish. CHG was applied to the center 1"×1" of the
650 coupon by pipetting 100 μL solution and spreading evenly with the pipette tip. Subsequently,
651 100 μL isolate suspension was applied using the same technique¹¹⁷. An additional coupon
652 inoculated with 100 μL PBS was included as the negative control. Surfaces were kept in dark at
653 room temperature.

654 After 24 h, bacteria were sampled from surfaces and the surviving numbers were counted. Each
655 surface was first dry swabbed for 5 s and wet swabbed twice for 7.5 s each time after rinsing in 1
656 mL PBS. Finally, the swab was squeezed against the tube wall to expel any residual liquid¹¹⁷.
657 Samples were diluted and 100 μL of each dilution was spread plated onto TSA plates. The plates
658 were incubated at 37°C for 24 hours to count the colonies.

659 **Field survey in a Medical Intensive Care Unit**

660 **Sample collection**

661 We collected 219 swab samples from seven different locations (e.g., bedrails, nurse call buttons,
662 doorsills, keyboards, light switches, proximal sink drains; Table S3) in the MICU at Rush
663 University Medical Center over two sampling events (February and July, 2018) (Fig. S2),
664 including negative field controls and negative media controls. The MICU was selected because
665 intensive care units are known to have high prevalence of antibiotic-resistant organism
666 colonization and infection, and because patients in the MICU received daily skin cleansing with
667 2% CHG-impregnated cloths (Sage 2% Chlorhexidine Gluconate Cloths, Stryker, Portage, MI,
668 USA)^{118,119}, which gives this environment a higher probability but also a lower threshold for
669 acceptable risk of containing antibiotic-resistant and CHG-tolerant organisms. Sampling
670 locations were selected to capture a variety of surfaces reflecting different ways in which people
671 interact with the surface¹²⁰ and time-integrated aggregates of what was in the air (i.e.,
672 doorsills)¹²¹. Sites were further selected to facilitate comparison with other hospital surveillance
673 studies¹²² and to keep a relatively balanced number of samples from each touch frequency group.
674 Touch frequency categorization included bedrails and nurse call buttons as high-touch,
675 keyboards as medium-touch, light switches as low-touch surfaces, and doorsills as no-touch.
676 Sink drains were labeled as themselves. Touch frequency designations were based on interviews
677 with healthcare professionals and prior evidence from the literature¹²³⁻¹²⁶.

678 Swabbing was conducted following CDC's Environmental Surface Sampling Swab Contact
679 Method. Briefly, we used three sterile Nylon Flocked Dry Swabs (COPAN Diagnostics,
680 Murrieta, CA, USA) premoistened with PBS to increase the recovery of biomass. Surfaces were
681 swabbed in their entirety three times with consistent pressure and speed. Each time, we rotated
682 the swabs and switched their order. Swabs were stored in 15 mL tubes with PBS and transferred
683 to the lab on ice within 24 hours for immediate processing. Temperature, relative humidity,
684 isolation level, and patient mobility for each patient room were recorded. The surface area of
685 each sampling location was measured (Table S3).

686 **Swab extraction, sample cultivation, and initial screening**

687 Biomass on swabs was extracted into PBS following an adaptation of CDC's Swab Extraction
688 Method^{94,112,113}. Briefly, the Falcon tubes with swabs inside were vortexed at maximum speed
689 for 10 s, shaken at 180 rpm and 25 °C for 10 min, and then vortexed again for 10 s, followed by
690 careful squeezing against the side of the tube and removal of the swabs.

691 The samples were then subjected to cultivation and screening following a protocol modified
692 from a previous study¹²⁷ (Fig. S3). Inocula were diluted to obtain between 30 and 300 colonies
693 per plate. 100 µL of inoculum was spread plated on tryptic soy agar supplemented with 4 mg/L

694 itraconazole (TSAI) and incubated at 25°C for 4 days. When observable growth was detected,
695 morphologies of colonies were characterized using standardized ontologies for streamlined
696 analysis, and a representative number of colonies belonging to each morphology type were
697 picked and stored in glycerol at -80°C. These plates were then replica plated onto blood agar and
698 chlorhexidine agar plates for initial screening¹²⁸. Chlorhexidine agar plates contained 10.56
699 µg/mL chlorhexidine (equivalent to 18.75 µg/mL chlorhexidine digluconate, Sigma-Aldrich, St.
700 Louis, MO, USA). *Staphylococcus aureus* ATCC 25923, *Staphylococcus epidermidis* ATCC
701 12228, and *Pseudomonas putida* 56A10 (in-house ID)¹²⁹ were used as control strains in this
702 chlorhexidine screening process. The chlorhexidine concentration was selected for initial
703 tolerance screening because it was reported as the minimum effective concentration associated
704 with significantly decreased colony counts of Gram-positive bacteria on the skin of patients who
705 were bathed daily with CHG in the MICU. In addition, all the patient skin isolates recovered in
706 the study had MICs below 18.75 µg/mL CHG³.

707 **Antimicrobial susceptibility testing**

708 We confirmed and refined chlorhexidine tolerance observed in the initial screen using a simplified
709 agar dilution method adapted from the CLSI standard M07Ed11¹⁰⁰. Briefly, agar dilution plates
710 with different concentrations of CHG (0, 4, 8, 16, 32, 64, 128, 256, 512 µg/mL) were made with
711 Mueller-Hinton Agar (MHA; Sigma-Aldrich, St. Louis, MO, USA) and chlorhexidine digluconate
712 solution (20% w/v, Sigma-Aldrich, St. Louis, MO, USA). Each isolate was first inoculated from
713 frozen stock in 100 µL TSB in a sterile 96-well clear round-bottom not-treated microplate (Corning,
714 NY, USA) and incubated at 37 °C for 24 h, yielding F1. F1 was subcultured in 100 µL TSB with
715 a 96-pin microplate replicator (transfers 1 µL inoculum each pin, Boekel Scientific, Feasterville-
716 Trevoise, PA, USA) and incubated for another 24 h, yielding F2. F2 was inoculated onto surfaces
717 of the agar dilution plates in biological triplicate with the 96-pin replicator, starting from the lowest
718 concentration to the highest. MICs were determined after incubating the plates at 37 °C for 20 h.
719 Negative controls and two quality control (QC) strains were included in every batch. The two QC
720 strains were both MRSA with CHG MICs 1-2 and 8 µg/mL, respectively³⁷.

721 **Genomic exploration of isolates recovered in the MICU**

722 **Whole-genome sequencing**

723 A subset of 63 isolates were selected for whole-genome sequencing in two batches. Three
724 negative controls were processed in parallel to samples throughout the entire pipeline, and all
725 isolates were sequenced at 2×150 bp. The first batch was conducted by the Broad Institute using
726 a fluorescent dye-based method on an Illumina HiSeq platform as previously described¹²⁹. The
727 second batch was performed at the NUSeq Core Facility at Northwestern University on an
728 Illumina NovaSeq 6000 platform using an SP flow cell, and the sequencing library was prepared

729 using the Illumina Nextera XT DNA Sample Preparation Kit following the kit protocol. The
730 average coverage depth was $214.9\times$ ($87.5\times \sim 536.5\times$) by estimation assuming 5 Mb for bacterial
731 genome sizes.

732 **Genome assembly, taxonomic identification, and phylogenetic analysis**

733 The analysis pipeline was illustrated in Fig. S8. Raw reads were first quality checked by
734 FastQC¹³⁰ (v0.11.5) and cleaned by fastp¹³¹ (v0.23.2). Genomes were assembled using
735 SPAdes¹³² (v3.15.0) with the assembly quality assessed by CheckM¹³³ (v1.2.2) and QUAST¹³⁴
736 (v5.2.0). In the genome assembly, SPAdes parameters --careful and --isolate were compared and
737 selected according to the quality of the resulted scaffolds. Integrating insights from the research
738 community¹³⁵, --careful was used for all samples except isolate S33. We then performed
739 taxonomic assignments using KmerFinder¹³⁶⁻¹³⁸ (v3.0.2) with the database version 20211017 and
740 PhyloPhlAn¹³⁹ (v3.0.36) metagenomic SGBs with the database SGB.Jul20. Isolates with
741 inconsistent assignments were further examined using autoMLST¹⁴⁰ *de novo* mode and MiGA
742 TypeMat¹⁴¹. Phylogenetic trees among bacteria isolates were constructed with PhyloPhlAn
743 (v3.0.36) on the low diversity setting using the assembled scaffolds. The strain-level relationship
744 between isolates was determined using fastANI for ANI values $\geq 99.99\%$ ^{59,60}. The phylogenetic
745 tree among plasmid scaffolds (Fig. 6c) was constructed with Clustal Omega¹⁴².

746 **Analysis of antimicrobial resistance genes**

747 ARGs were predicted using Resistance Gene Identifier (RGI, v6.0.2) coupled with the
748 Comprehensive Antibiotic Resistance Database (CARD, v3.2.7)⁷⁶. Only ARGs under perfect and
749 strict paradigms were included in the downstream analyses. ARGs presented in this study were
750 named according to the curated CARD short names (i.e., Best_Hit_ARO output by RGI)⁷⁶.
751 Briefly, if the original gene name is less than 15 characters, the CARD short name is identical;
752 otherwise, it has been abbreviated by CARD curators specifically to identify the proper gene or
753 protein name. Mapping between a unique CARD short name and the corresponding metadata can
754 be found in the CARD ontology database (<https://card.mcmaster.ca/>), including AMR gene
755 families, drug classes, resistance mechanisms, resistomes, and homolog sequences. Mobile
756 genetic elements were predicted using geNomad¹⁴³ (v1.5.2), MobileElementFinder¹⁴⁴
757 (mge_finder v1.1.2, mgedb v1.1.1, blastn v2.14.0+), and VRprofile2¹⁴⁵ with default parameters.
758 In MobileElementFinder outputs, putative composite transposons were excluded to avoid false-
759 positive predictions. To infer the mobility of ARGs, they were classified as MGE-carried, MGE-
760 associated, or MGE-unassociated according to their relative location to MGEs. Specifically,
761 ARGs located within MGEs were classified as MGE-carried, whereas those situated within a 5
762 kb proximity to an MGE were considered MGE-associated. Both MGE-carried and MGE-
763 associated ARGs were deemed mobile^{68,146}. To prioritize ARGs, health risk indices from Zhang
764 et al. were employed, which they crafted by integrating factors of human accessibility, mobility,

765 pathogenicity and clinical availability⁶⁸. To contextualize our findings within the framework of
766 known CHG resistance mechanisms, we carried out a targeted review and curated a list of CHG
767 ARGs, annotating each with a confidence level based on whether the evidence was correlational
768 or causal (Table S9).

769 **Statistical analysis**

770 Statistical analyses and data visualization were conducted in R (v4.0.4)¹⁴⁷ with packages such as
771 dplyr¹⁴⁸, stringr¹⁴⁹, rstatix¹⁵⁰, ggplot2¹⁵¹, ComplexHeatmap¹⁵², and gggenes¹⁵³. Differences
772 between groups were determined by Student's *T*-test with p-values adjusted by the Benjamini-
773 Hochberg method or ANOVA coupled with Tukey's post hoc test. $p \leq 0.05$ was defined as
774 statistically significant. Significance codes are as follows: $p > 0.05$ (ns), $0.01 < p \leq 0.05$ (*),
775 $0.001 < p \leq 0.01$ (**), $0.0001 < p \leq 0.001$ (***), and $p \leq 0.0001$ (****).

776 **Availability of data and materials**

777 The raw whole genome sequencing data of bacteria isolates are available in the NCBI SRA
778 repository under BioProject number PRJNA1169385. The data will be accessible upon
779 manuscript acceptance. Source code for the analyses are available under MIT license at
780 https://github.com/hartmann-lab/Chlorhexidine_Tolerance_Hospital_Environments. Bacteria
781 isolates are available upon request (erica.hartmann@northwestern.edu).

782 **Supplementary figures**

783 **Fig. S1 Coupons used in the microcosm experiments examining chlorhexidine persistence.**

784 Grids on the coupons indicate specific swabbing sites.

785 **Fig. S2 a) Floor plan of the Medical Intensive Care Unit at the sampled hospital. b)**

786 **Illustrations of the swabbed area for the sampled environmental locations.**

787 **Fig. S3 Cultivation and screening pipeline.** TSAI is tryptic soy agar (TSA) supplemented with
788 4 mg/L itraconazole. TSA+CHX is TSA containing 10.56 $\mu\text{g/mL}$ chlorhexidine powder
789 (equivalent to 18.75 $\mu\text{g/mL}$ CHG).

790 **Fig. S4 Absolute bioburden of bacteria ($\log_{10}\text{CFU}$) in the entirety of the dry surfaces and by**
791 **swabbing the proximal sink drain.** The bacteria CFUs were not normalized by sampling area.
792 Differences between groups were determined by unpaired *t*-tests with the Benjamini-Hochberg
793 adjustment. To avoid mis-interpreting data with small colony counts, we empirically set the limit
794 of quantification (LOQ) of our culture efforts as colony counts = 3. Values below this threshold
795 were recorded as half of LOQ (i.e., 1.5). Nurse call button is abbreviated as nurse call in the
796 figure.

797 **Fig. S5 No significant differences were observed in: a)** Unit area bioburden of bacteria
798 between the two sampling seasons, **b)** Unit area bioburden of bacteria between patient rooms
799 with contact isolation and those without, and **c)** Proportions of CHG-tolerant bacteria (tolerating
800 18.75 µg/mL CHG at 25°C) between contact isolation levels of patient rooms. Cultivation
801 temperature was 25°C for all cases. Nurse call button is abbreviated as nurse call in the figure.

802 **Fig. S6 A phylogenetic tree of all sequenced isolates.**

803 **Fig. S7 Potential dissemination of opportunistic pathogens across multiple MICU rooms.**
804 Patient rooms were deidentified. Each panel shows one species with multiple isolates detected in
805 sink drains of different MICU rooms during the same sampling event.

806 **Fig. S8 Analysis pipeline of whole-genome sequences.**

807 [Supplementary tables](#)

808 **Table S1 Epidemiological cut-off values for CHG resistance.**

809 **Table S2 Statistical testing results of CHG persistence on surfaces.** List of abbreviations for
810 cleaning: C="No liquid", W= "Water", Q= "Benzalkonium chloride", P= "Peracetic acid", B=
811 "Bleach", E= "Ethanol"

812 **Table S3 Sample collection metadata. a)** Specific sampling locations within the MICU **b)**
813 Distribution of Number of collected samples for each sampling event **c)** List of Abbreviations for
814 sampling locations and space types **d)** Surface area of sampling locations

815 **Table S4 Antibiotic resistance genes (ARGs, curated CARD short name) predicted using**
816 **Resistance Gene Identifier (RGI) and Comprehensive Antibiotic Resistance Database**
817 **(CARD) under Perfect and Strict paradigms**, with further annotations of ARG health risk
818 (blue), chlorhexidine MICs (green), taxonomic assignments (orange), sample collection and
819 cultivation results (purple), mobile ARGs (gray). List of abbreviations for Space Type: MD =
820 "Medication room", PT = "Patient room", CM = "Communicating space", ST = "Staff-only
821 restroom." Room numbers were deidentified by randomly generating unique numbers.

822 **Table S5 Additional information of *qacEdelta1*-carrying multidrug-resistant plasmid**
823 **scaffolds. a)** Metadata of *qacEdelta1*-carrying plasmid scaffolds. **b)** Intra-species similarity of
824 *qacEdelta1*-carrying plasmid scaffolds determined by blastn. **c)** Inter-species similarity of
825 *qacEdelta1*-carrying plasmid scaffolds determined by blastn. **d)** Assessment of the completeness
826 of plasmid scaffolds. **e)** The top BLAST hits for type-1 plasmid scaffolds matched two plasmids

827 from clinical *P. aeruginosa* strains - one from a bloodstream infection and the other from sputum
828 - both collected in Chicago.

829 **Table S6 Reports of the highest CHG MICs ($\mu\text{g/mL}$) for environmental isolates.** Bacteria
830 isolated in our study, especially those from sinks, exhibited MICs at the high end of this
831 spectrum.

832 **Table S7 Recovery rate of CHG on different surface materials.** The recovery rate measured
833 for surfaces was the integrative rate, representing the overall impacts of swabbing on surfaces,
834 extracting CHG from the swab, and all the loss in the process.

835 **Table S8 Transfer rate of chlorhexidine digluconate (CHG) from Kimwipe to surfaces by**
836 **wiping.**

837 **Table S9 A targeted review of antibiotic resistance genes (ARGs) conferring resistance to**
838 **chlorhexidine.** CHX resistance: Y, confer resistance to CHX; N, do not confer resistance; C,
839 controversial with conflicting results. Correlation & causality: Y, evidence available; N,
840 evidence not available; NA, not applicable.

841 **Acknowledgements**

842 This study was partially supported by the Searle Leadership Fund and the Northwestern
843 University 2020 NUSeq Pilot Project Program. Additionally, the computational resources and
844 staff contributions provided by the Quest high performance computing facility at Northwestern
845 University, which is jointly supported by the Office of the Provost, the Office for Research, and
846 Northwestern University Information Technology, were instrumental.

847 JS was supported by Northwestern University Terminal Year Fellowship from the Richter
848 Memorial Fund. Undergraduate researchers received support from Northwestern University
849 Undergraduate Research Grants: AW from the Buffett Institute, MK from the Weinberg College
850 of Arts and Sciences Summer Undergraduate Research Grant, and YW and YS from the Office
851 of Undergraduate Research Summer Undergraduate Research Grant.

852 We are deeply thankful to Teppei Shimasaki, Khaled Aboushaala, Thelma Dangana, Yoona
853 Rhee and Alexander G. McFarland for their help in sample collection and coordination. Our
854 appreciation extends to the clinical staff of the Medical Intensive Care Unit at Rush University
855 Medical Center. We gratefully acknowledge Adam J. Glawe and James Lindsay for their
856 contributions to microbial cultivation. Finally, we would like to thank the anonymous reviewers
857 whose insights significantly improved this manuscript.

858 Reference

- 859 1 Knox, C. *et al.* DrugBank 6.0: the DrugBank Knowledgebase for 2024. *Nucleic Acids Res*
860 **52**, D1265-D1275, doi:10.1093/nar/gkad976 (2024).
- 861 2 Malakova, I. H. T. Effect on Skin Microflora in Hygienic Bathing of Patients with
862 Chlorhexidine Gluconate Disinfectant and Non-Rinse Product. *Health Sci J.*,
863 doi:10.36648/1791-809X.14.2.708 (2020).
- 864 3 Popovich, K. J. *et al.* Relationship between chlorhexidine gluconate skin concentration
865 and microbial density on the skin of critically ill patients bathed daily with chlorhexidine
866 gluconate. *Infect Control Hosp Epidemiol* **33**, 889-896, doi:10.1086/667371 (2012).
- 867 4 Rupp, M. E. *et al.* Effect of hospital-wide chlorhexidine patient bathing on healthcare-
868 associated infections. *Infect Control Hosp Epidemiol* **33**, 1094-1100, doi:10.1086/668024
869 (2012).
- 870 5 Fruh, R. *et al.* Antibiotic Resistance of Selected Bacteria after Treatment of the
871 Supragingival Biofilm with Subinhibitory Chlorhexidine Concentrations. *Antibiotics*
872 (*Basel*) **11**, doi:10.3390/antibiotics11101420 (2022).
- 873 6 Bhardwaj, P., Hans, A., Ruikar, K., Guan, Z. & Palmer, K. L. Reduced Chlorhexidine
874 and Daptomycin Susceptibility in Vancomycin-Resistant *Enterococcus faecium* after
875 Serial Chlorhexidine Exposure. *Antimicrob Agents Chemother* **62**,
876 doi:10.1128/AAC.01235-17 (2018).
- 877 7 Baseri, N., Najar-Peerayeh, S., Bakhshi, B. & Campanile, F. Phenotypic and genotypic
878 changes of *Staphylococcus aureus* in the presence of the inappropriate concentration of
879 chlorhexidine gluconate. *BMC Microbiol* **22**, 100, doi:10.1186/s12866-022-02522-0
880 (2022).
- 881 8 Laumen, J. G. E. *et al.* Sub-Inhibitory Concentrations of Chlorhexidine Induce Resistance
882 to Chlorhexidine and Decrease Antibiotic Susceptibility in *Neisseria gonorrhoeae*. *Front*
883 *Microbiol* **12**, 776909, doi:10.3389/fmicb.2021.776909 (2021).
- 884 9 Das, R., Sarkar, S. & Bhattacharjee, C. Photocatalytic degradation of chlorhexidine—A
885 chemical assessment and prediction of optimal condition by response surface
886 methodology. *Journal of Water Process Engineering* **2**, 79-86,
887 doi:<https://doi.org/10.1016/j.jwpe.2014.05.005> (2014).
- 888 10 Sarkar, S., Bhattacharjee, C. & Curcio, S. Studies on adsorption, reaction mechanisms
889 and kinetics for photocatalytic degradation of CHD, a pharmaceutical waste. *Ecotoxicol*
890 *Environ Saf* **121**, 154-163, doi:10.1016/j.ecoenv.2015.04.036 (2015).
- 891 11 Zong, Z. & Kirsch, L. E. Studies on the Instability of Chlorhexidine, Part I: Kinetics and
892 Mechanisms. *Journal of Pharmaceutical Sciences* **101**, 2417-2427,
893 doi:<https://doi.org/10.1002/jps.23151> (2012).
- 894 12 Kampf, G. Acquired resistance to chlorhexidine - is it time to establish an 'antiseptic
895 stewardship' initiative? *J Hosp Infect* **94**, 213-227, doi:10.1016/j.jhin.2016.08.018 (2016).
- 896 13 Babiker, A., Lutgring, J. D., Fridkin, S. & Hayden, M. K. Assessing the Potential for
897 Unintended Microbial Consequences of Routine Chlorhexidine Bathing for Prevention of
898 Healthcare-associated Infections. *Clin Infect Dis* **72**, 891-898, doi:10.1093/cid/cia1103
899 (2021).
- 900 14 Van den Poel, B., Saegeman, V. & Schuermans, A. Increasing usage of chlorhexidine in
901 health care settings: blessing or curse? A narrative review of the risk of chlorhexidine
902 resistance and the implications for infection prevention and control. *Eur J Clin Microbiol*
903 *Infect Dis* **41**, 349-362, doi:10.1007/s10096-022-04403-w (2022).

- 904 15 Kõljalg, S., Naaber, P. & Mikelsaar, M. Antibiotic resistance as an indicator of bacterial
905 chlorhexidine susceptibility. *Journal of Hospital Infection* **51**, 106-113,
906 doi:10.1053/jhin.2002.1204 (2002).
- 907 16 Keck, N. *et al.* Long-lasting nosocomial persistence of chlorhexidine-resistant *Serratia*
908 *marcescens* in a veterinary hospital. *Vet Microbiol* **245**, 108686,
909 doi:10.1016/j.vetmic.2020.108686 (2020).
- 910 17 Vigeant, P. *et al.* An outbreak of *Serratia marcescens* infections related to contaminated
911 chlorhexidine. *Infect Control Hosp Epidemiol* **19**, 791-794, doi:10.1086/647728 (1998).
- 912 18 Okuda, T., Endo, N., Osada, Y. & Zen-Yoji, H. Outbreak of nosocomial urinary tract
913 infections caused by *Serratia marcescens*. *Journal of Clinical Microbiology* **20**, 691-695,
914 doi:10.1128/jcm.20.4.691-695.1984 (1984).
- 915 19 Allen, J. L., Doidge, N. P., Bushell, R. N., Browning, G. F. & Marena, M. S.
916 Healthcare-associated infections caused by chlorhexidine-tolerant *Serratia marcescens*
917 carrying a promiscuous IncHI2 multi-drug resistance plasmid in a veterinary hospital.
918 *PLOS ONE* **17**, e0264848, doi:10.1371/journal.pone.0264848 (2022).
- 919 20 Carey, D. E. & McNamara, P. J. The impact of triclosan on the spread of antibiotic
920 resistance in the environment. *Front Microbiol* **5**, 780, doi:10.3389/fmicb.2014.00780
921 (2014).
- 922 21 Jutkina, J., Marathe, N. P., Flach, C. F. & Larsson, D. G. J. Antibiotics and common
923 antibacterial biocides stimulate horizontal transfer of resistance at low concentrations. *Sci*
924 *Total Environ* **616-617**, 172-178, doi:10.1016/j.scitotenv.2017.10.312 (2018).
- 925 22 Vásquez-Giraldo, D. F., Libreros-Zúñiga, G. A. & Crespo-Ortiz, M. d. P. Effects of
926 biocide exposure on *P. Aeruginosa*, *E. coli* and *A. Baumannii* complex isolates from
927 hospital and household environments. *Infectio* **21**, 243-250 (2017).
- 928 23 Braga, T. M., Pomba, C. & Lopes, M. F. S. High-level vancomycin resistant
929 *Enterococcus faecium* related to humans and pigs found in dust from pig breeding
930 facilities. *Vet. Microbiol.* **161**, 344-349, doi:<https://doi.org/10.1016/j.vetmic.2012.07.034>
931 (2013).
- 932 24 Namaki Kheljan, M., Teymorpour, R., Peeri Doghaheh, H. & Arzanlou, M.
933 Antimicrobial Biocides Susceptibility and Tolerance-Associated Genes in *Enterococcus*
934 *faecalis* and *Enterococcus faecium* Isolates Collected from Human and Environmental
935 Sources. *Current Microbiology* **79**, 170, doi:10.1007/s00284-022-02858-w (2022).
- 936 25 Horner, C., Mawer, D. & Wilcox, M. Reduced susceptibility to chlorhexidine in
937 staphylococci: is it increasing and does it matter? *J Antimicrob Chemother* **67**, 2547-
938 2559, doi:10.1093/jac/dks284 (2012).
- 939 26 Morrissey, I. *et al.* Evaluation of Epidemiological Cut-Off Values Indicates that Biocide
940 Resistant Subpopulations Are Uncommon in Natural Isolates of Clinically-Relevant
941 Microorganisms. *PLOS ONE* **9**, e86669, doi:10.1371/journal.pone.0086669 (2014).
- 942 27 Denk, L. A. *et al.* Chlorhexidine and octenidine susceptibility of bacterial isolates from
943 clinical samples in a three-armed cluster randomised decolonisation trial. *PLoS One* **17**,
944 e0278569, doi:10.1371/journal.pone.0278569 (2022).
- 945 28 Tran, G. *et al.* Evidence of incompatibility for topical anionic agents used in conjunction
946 with chlorhexidine gluconate: A systematic review. *Journal of Surgical Dermatology*
947 (2016).

- 948 29 Kaiser, N., Klein, D., Karanja, P., Greten, Z. & Newman, J. Inactivation of chlorhexidine
949 gluconate on skin by incompatible alcohol hand sanitizing gels. *Am J Infect Control* **37**,
950 569-573, doi:10.1016/j.ajic.2008.12.008 (2009).
- 951 30 Zong, Z. & Kirsch, L. E. Studies on the instability of chlorhexidine, part I: kinetics and
952 mechanisms. *J Pharm Sci* **101**, 2417-2427, doi:10.1002/jps.23151 (2012).
- 953 31 Abu-Obaid, E. *et al.* Comparative Evaluation of the Antimicrobial Effects of Different
954 Mouthrinses against Streptococcus Mutans: An in Vitro Study. *J Clin Pediatr Dent* **43**,
955 398-407, doi:10.17796/1053-4625-43.6.7 (2019).
- 956 32 Choi, J. S. [Evaluation of a waterless, scrubless chlorhexidine gluconate/ethanol surgical
957 scrub and povidone-iodine for antimicrobial efficacy]. *Taehan Kanho Hakhoe Chi* **38**,
958 39-44, doi:10.4040/jkan.2008.38.1.39 (2008).
- 959 33 Pons, J. L., Bonnaveiro, N., Chevalier, J. & Crémieux, A. Evaluation of antimicrobial
960 interactions between chlorhexidine, quaternary ammonium compounds, preservatives and
961 excipients. *J Appl Bacteriol* **73**, 395-400, doi:10.1111/j.1365-2672.1992.tb04994.x
962 (1992).
- 963 34 Gkatzonis, A. M. *et al.* A randomized controlled clinical trial on the effectiveness of three
964 different mouthrinses (chlorhexidine with or without alcohol and C31G), adjunct to
965 periodontal surgery, in early wound healing. *Clin Oral Investig* **22**, 2581-2591,
966 doi:10.1007/s00784-018-2357-6 (2018).
- 967 35 Marty Cooney, R. *et al.* The use of 3.15% chlorhexidine gluconate/70% alcohol hub
968 disinfection to prevent central line-associated bloodstream infections in dialysis patients.
969 *Br J Nurs* **29**, S24-s26, doi:10.12968/bjon.2020.29.2.S24 (2020).
- 970 36 Purdy, K. R. *Aspects of chlorhexidine degradation* Ph.D. thesis, University of Bath,
971 (1987).
- 972 37 Lutgring, J. D. *et al.* Development of a Broth Microdilution Method To Characterize
973 Chlorhexidine MICs among Bacteria Collected from 2005 to 2019 at Three U.S. Sites.
974 *Microbiol Spectr* **11**, e0413422, doi:10.1128/spectrum.04134-22 (2023).
- 975 38 Htun, H. L., Hon, P. Y., Holden, M. T. G., Ang, B. & Chow, A. Chlorhexidine and
976 octenidine use, carriage of qac genes, and reduced antiseptic susceptibility in methicillin-
977 resistant Staphylococcus aureus isolates from a healthcare network. *Clin Microbiol Infect*
978 **25**, 1154 e1151-1154 e1157, doi:10.1016/j.cmi.2018.12.036 (2019).
- 979 39 Adams, C. E., Smith, J., Watson, V., Robertson, C. & Dancer, S. J. Examining the
980 association between surface bioburden and frequently touched sites in intensive care. *J*
981 *Hosp Infect* **95**, 76-80, doi:10.1016/j.jhin.2016.11.002 (2017).
- 982 40 Sum, R., Swaminathan, M., Rastogi, S. K., Piloto, O. & Cheong, I. Beta-Hemolytic
983 Bacteria Selectively Trigger Liposome Lysis, Enabling Rapid and Accurate Pathogen
984 Detection. *ACS Sens* **2**, 1441-1451, doi:10.1021/acssensors.7b00333 (2017).
- 985 41 Brooke, J. S. *Stenotrophomonas maltophilia*: an emerging global opportunistic pathogen.
986 *Clin Microbiol Rev* **25**, 2-41, doi:10.1128/CMR.00019-11 (2012).
- 987 42 Gao, H., Li, T., Feng, L. & Zhang, S. Elizabethkingia miricola Causes Intracranial
988 Infection: A Case Study. *Front Med (Lausanne)* **8**, 761924,
989 doi:10.3389/fmed.2021.761924 (2021).
- 990 43 Gonzalez, C. *et al.* [Severe sepsis and pulmonary abscess with bacteremia due to
991 Elizabethkingia miricola]. *Med Mal Infect* **46**, 49-51, doi:10.1016/j.medmal.2015.10.011
992 (2016).

- 993 44 Green, O., Murray, P. & Gea-Banacloche, J. C. Sepsis caused by Elizabethkingia
994 miricola successfully treated with tigecycline and levofloxacin. *Diagn Microbiol Infect*
995 *Dis* **62**, 430-432, doi:10.1016/j.diagmicrobio.2008.07.015 (2008).
- 996 45 Gupta, P., Zaman, K., Mohan, B. & Taneja, N. Elizabethkingia miricola: A rare non-
997 fermenter causing urinary tract infection. *World J Clin Cases* **5**, 187-190,
998 doi:10.12998/wjcc.v5.i5.187 (2017).
- 999 46 Howard, J. C., Chen, K., Anderson, T. & Dalton, S. C. Elizabethkingia miricola
1000 bacteraemia in a haemodialysis patient. *Access Microbiol* **2**, acmi000098,
1001 doi:10.1099/acmi.0.000098 (2020).
- 1002 47 Kalchev, Y., Petrova, A., Lengerova, G., Ivanov, I. & Murdjeva, M. Elizabethkingia
1003 miricola Recovered from a Peritoneal Fluid Sample – A Clinical Case Report with
1004 Diagnostic Challenges. *Open Access Macedonian Journal of Medical Sciences* **10**, 28-31,
1005 doi:10.3889/oamjms.2022.7716 (2022).
- 1006 48 Soler, E. *et al.* Elizabethkingia miricola: an opportunistic pathogen in ICU. *European*
1007 *Journal of Public Health* **32**, ckac131.406, doi:10.1093/eurpub/ckac131.406 (2022).
- 1008 49 Zdziarski, P., Paściak, M., Rogala, K., Korzeniowska-Kowal, A. & Gamian, A.
1009 Elizabethkingia miricola as an opportunistic oral pathogen associated with
1010 superinfectious complications in humoral immunodeficiency: a case report. *BMC*
1011 *Infectious Diseases* **17**, 763, doi:10.1186/s12879-017-2886-7 (2017).
- 1012 50 Choi, M. H. *et al.* Risk Factors for Elizabethkingia Acquisition and Clinical
1013 Characteristics of Patients, South Korea. *Emerg Infect Dis* **25**, 42-51,
1014 doi:10.3201/eid2501.171985 (2019).
- 1015 51 Prevention, C. f. D. C. a. *Pseudomonas aeruginosa in Healthcare Settings*,
1016 <<https://www.cdc.gov/hai/organisms/pseudomonas.html>> (2019).
- 1017 52 Tacconelli, E. *et al.* Discovery, research, and development of new antibiotics: the WHO
1018 priority list of antibiotic-resistant bacteria and tuberculosis. *The Lancet Infectious*
1019 *Diseases* **18**, 318-327, doi:[https://doi.org/10.1016/S1473-3099\(17\)30753-3](https://doi.org/10.1016/S1473-3099(17)30753-3) (2018).
- 1020 53 Manner, C. *et al.* A genetic switch controls Pseudomonas aeruginosa surface
1021 colonization. *Nat Microbiol* **8**, 1520-1533, doi:10.1038/s41564-023-01403-0 (2023).
- 1022 54 Lazarev, A., Hyun, J., Sanchez, J. L. & Verda, L. Community-Acquired Acinetobacter
1023 radioresistens Bacteremia in an Immunocompetent Host. *Cureus* **14**, e29650,
1024 doi:10.7759/cureus.29650 (2022).
- 1025 55 Verma, R. & Baroco, A. L. Acinetobacter radioresistens Septicemia Associated With
1026 Pneumonia in a Patient With Chronic Obstructive Pulmonary Disease and Hepatitis C.
1027 *Infectious Diseases in Clinical Practice* **25**, e12-e13, doi:10.1097/ipc.0000000000000521
1028 (2017).
- 1029 56 Visca, P. *et al.* Community-acquired Acinetobacter radioresistens bacteremia in an HIV-
1030 positive patient. *Emerg Infect Dis* **7**, 1032-1035, doi:10.3201/eid0706.010621 (2001).
- 1031 57 Wang, T., Costa, V., Jenkins, S. G., Hartman, B. J. & Westblade, L. F. Acinetobacter
1032 radioresistens infection with bacteremia and pneumonia. *IDCases* **15**, e00495,
1033 doi:10.1016/j.idcr.2019.e00495 (2019).
- 1034 58 Poirel, L., Figueiredo, S., Cattoir, V., Carattoli, A. & Nordmann, P. Acinetobacter
1035 radioresistens as a silent source of carbapenem resistance for Acinetobacter spp.
1036 *Antimicrob Agents Chemother* **52**, 1252-1256, doi:10.1128/AAC.01304-07 (2008).
- 1037 59 Rodriguez, R. L. *et al.* An ANI gap within bacterial species that advances the definitions
1038 of intra-species units. *mBio* **15**, e0269623, doi:10.1128/mbio.02696-23 (2024).

- 1039 60 Viver, T. *et al.* Towards estimating the number of strains that make up a natural bacterial
1040 population. *Nat Commun* **15**, 544, doi:10.1038/s41467-023-44622-z (2024).
- 1041 61 Kotay, S., Chai, W., Guilford, W., Barry, K. & Mathers, A. J. Spread from the Sink to the
1042 Patient: In Situ Study Using Green Fluorescent Protein (GFP)-Expressing *Escherichia*
1043 *coli* To Model Bacterial Dispersion from Hand-Washing Sink-Trap Reservoirs. *Applied*
1044 *and environmental microbiology* **83**, e03327-03316, doi:10.1128/AEM.03327-16 (2017).
- 1045 62 Langevin, S., Vincelette, J., Bekal, S. & Gaudreau, C. First case of invasive human
1046 infection caused by *Cupriavidus metallidurans*. *J Clin Microbiol* **49**, 744-745,
1047 doi:10.1128/JCM.01947-10 (2011).
- 1048 63 Ranc, A., Dubourg, G., Fournier, P. E., Raoult, D. & Fenollar, F. *Delftia tsuruhatensis*, an
1049 Emergent Opportunistic Healthcare-Associated Pathogen. *Emerg Infect Dis* **24**, 594-596,
1050 doi:10.3201/eid2403.160939 (2018).
- 1051 64 Yin, Z. *et al.* Pan-Genome Analysis of *Delftia tsuruhatensis* Reveals Important Traits
1052 Concerning the Genetic Diversity, Pathogenicity, and Biotechnological Properties of the
1053 Species. *Microbiol Spectr* **10**, e0207221, doi:10.1128/spectrum.02072-21 (2022).
- 1054 65 Hojgaard, S. M. M. *et al.* Characteristics and Outcomes of Patients with *Delftia*
1055 *acidovorans* Infections: a Retrospective Cohort Study. *Microbiol Spectr* **10**, e0032622,
1056 doi:10.1128/spectrum.00326-22 (2022).
- 1057 66 Bilgin, H., Sarmis, A., Tigen, E., Soyletir, G. & Mulazimoglu, L. *Delftia acidovorans*: A
1058 rare pathogen in immunocompetent and immunocompromised patients. *Can J Infect Dis*
1059 *Med Microbiol* **26**, 277-279, doi:10.1155/2015/973284 (2015).
- 1060 67 Khan, S., Sistla, S., Dhodapkar, R. & Parija, S. C. Fatal *Delftia acidovorans* infection in
1061 an immunocompetent patient with empyema. *Asian Pac J Trop Biomed* **2**, 923-924,
1062 doi:10.1016/S2221-1691(12)60254-8 (2012).
- 1063 68 Zhang, Z. *et al.* Assessment of global health risk of antibiotic resistance genes. *Nat*
1064 *Commun* **13**, 1553, doi:10.1038/s41467-022-29283-8 (2022).
- 1065 69 Kazama, H., Hamashima, H., Sasatsu, M. & Arai, T. Distribution of the antiseptic-
1066 resistance gene *qacEΔ1* in Gram-positive bacteria. *FEMS Microbiology Letters* **165**, 295-
1067 299, doi:10.1111/j.1574-6968.1998.tb13160.x (1998).
- 1068 70 Chen, Y. *et al.* Determining the susceptibility of carbapenem resistant *Klebsiella*
1069 *pneumoniae* and *Escherichia coli* strains against common disinfectants at a tertiary
1070 hospital in China. *BMC Infect Dis* **20**, 88, doi:10.1186/s12879-020-4813-6 (2020).
- 1071 71 Pastrana-Carrasco, J. *et al.* [QacEdelta1 gene frequency and biocide resistance in
1072 extended-spectrum beta-lactamase producing enterobacteriaceae clinical isolates]. *Rev*
1073 *Invest Clin* **64**, 535-540 (2012).
- 1074 72 Furi, L. *et al.* Evaluation of Reduced Susceptibility to Quaternary Ammonium
1075 Compounds and Bisbiguanides in Clinical Isolates and Laboratory-Generated Mutants of
1076 *Staphylococcus aureus*. *Antimicrobial Agents and Chemotherapy* **57**, 3488,
1077 doi:10.1128/AAC.00498-13 (2013).
- 1078 73 Hardy, K. *et al.* Increased Usage of Antiseptics Is Associated with Reduced
1079 Susceptibility in Clinical Isolates of *Staphylococcus aureus*. *mBio* **9**, e00894-00818,
1080 doi:10.1128/mBio.00894-18 (2018).
- 1081 74 Liu, Q. *et al.* Frequency of biocide-resistant genes and susceptibility to chlorhexidine in
1082 high-level mupirocin-resistant, methicillin-resistant *Staphylococcus aureus* (MuH
1083 MRSA). *Diagn Microbiol Infect Dis* **82**, 278-283,
1084 doi:10.1016/j.diagmicrobio.2015.03.023 (2015).

- 1085 75 Kroning, I. S. *et al.* New spa types, resistance to sanitisers and presence of efflux pump
1086 genes in *Staphylococcus aureus* from milk. *International Dairy Journal* **109**, 104712,
1087 doi:<https://doi.org/10.1016/j.idairyj.2020.104712> (2020).
- 1088 76 Alcock, B. P. *et al.* CARD 2023: expanded curation, support for machine learning, and
1089 resistome prediction at the Comprehensive Antibiotic Resistance Database. *Nucleic Acids*
1090 *Res* **51**, D690-D699, doi:10.1093/nar/gkac920 (2023).
- 1091 77 Madden, T. *The BLAST Sequence Analysis Tool*. 16 (National Center for Biotechnology
1092 Information (US), 2003).
- 1093 78 Coenye, T., Spilker, T., Reik, R., Vandamme, P. & Lipuma, J. J. Use of PCR analyses to
1094 define the distribution of *Ralstonia* species recovered from patients with cystic fibrosis. *J*
1095 *Clin Microbiol* **43**, 3463-3466, doi:10.1128/JCM.43.7.3463-3466.2005 (2005).
- 1096 79 D'Inzeo, T. *et al.* Catheter-related bacteremia by *Cupriavidus metallidurans*. *Diagn*
1097 *Microbiol Infect Dis* **81**, 9-12, doi:10.1016/j.diagmicrobio.2014.09.015 (2015).
- 1098 80 Velazquez, S. *et al.* From one species to another: A review on the interaction between
1099 chemistry and microbiology in relation to cleaning in the built environment. *Indoor air*
1100 **29**, 880-894 (2019).
- 1101 81 FA, P. & DJ, F. Prevalence of gentamicin- and amikacin-resistant bacteria in sink drains.
1102 *Journal of clinical microbiology* **12**, doi:10.1128/JCM.12.1.79-83.1980 (1980).
- 1103 82 MH, L., B, O., C, N., SA, K. & RA, W. *Pseudomonas* in the sinks in an intensive care
1104 unit: relation to patients. *Journal of clinical pathology* **37**, doi:10.1136/jcp.37.4.424
1105 (1984).
- 1106 83 Rutala, W. A. & Weber, D. J. Water as a reservoir of nosocomial pathogens. *Infect*
1107 *Control Hosp Epidemiol* **18**, 609-616 (1997).
- 1108 84 Cohen, N. R., Lobritz, M. A. & Collins, J. J. Microbial persistence and the road to drug
1109 resistance. *Cell Host Microbe* **13**, 632-642, doi:10.1016/j.chom.2013.05.009 (2013).
- 1110 85 Hu, J. & Hartmann, E. M. Anthropogenic chemicals and their impacts on microbes living
1111 in buildings. *Microb Biotechnol*, doi:10.1111/1751-7915.13676 (2020).
- 1112 86 Lax, S. *et al.* Microbial and metabolic succession on common building materials under
1113 high humidity conditions. *Nat Commun* **10**, 1767, doi:10.1038/s41467-019-09764-z
1114 (2019).
- 1115 87 Inkster, T., Walker, J. & Weinbren, M. Water-free patient care: a narrative review of the
1116 literature and discussion of the pressing need for a way forward. *J Hosp Infect* **152**, 36-
1117 41, doi:10.1016/j.jhin.2024.06.006 (2024).
- 1118 88 Adams, R. I. *et al.* Passive dust collectors for assessing airborne microbial material.
1119 *Microbiome* **3**, 46, doi:10.1186/s40168-015-0112-7 (2015).
- 1120 89 Barberan, A. *et al.* The ecology of microscopic life in household dust. *Proc Biol Sci* **282**,
1121 doi:10.1098/rspb.2015.1139 (2015).
- 1122 90 Emerson, J. B. *et al.* High temporal variability in airborne bacterial diversity and
1123 abundance inside single-family residences. *Indoor Air* **27**, 576-586,
1124 doi:10.1111/ina.12347 (2017).
- 1125 91 Adams, C. E. & Dancer, S. J. Dynamic Transmission of *Staphylococcus Aureus* in the
1126 Intensive Care Unit. *Int J Environ Res Public Health* **17**, doi:10.3390/ijerph17062109
1127 (2020).
- 1128 92 Kozajda, A., Jezak, K. & Kapsa, A. Airborne *Staphylococcus aureus* in different
1129 environments-a review. *Environ Sci Pollut Res Int* **26**, 34741-34753,
1130 doi:10.1007/s11356-019-06557-1 (2019).

- 1131 93 Shen, J., McFarland, A. G., Young, V. B., Hayden, M. K. & Hartmann, E. M. Toward
1132 Accurate and Robust Environmental Surveillance Using Metagenomics. *Frontiers in*
1133 *Genetics* **12**, doi:10.3389/fgene.2021.600111 (2021).
- 1134 94 Shen, J. *et al.* An improved workflow for accurate and robust healthcare environmental
1135 surveillance using metagenomics. *Microbiome* **10**, 206, doi:10.1186/s40168-022-01412-x
1136 (2022).
- 1137 95 Skovgaard, S. *et al.* Recently introduced qacA/B genes in *Staphylococcus epidermidis* do
1138 not increase chlorhexidine MIC/MBC. *J Antimicrob Chemother* **68**, 2226-2233,
1139 doi:10.1093/jac/dkt182 (2013).
- 1140 96 Crofts, T. S., McFarland, A. G. & Hartmann, E. M. Mosaic Ends Tagmentation (METa)
1141 Assembly for Highly Efficient Construction of Functional Metagenomic Libraries.
1142 *mSystems* **6**, e0052421, doi:10.1128/mSystems.00524-21 (2021).
- 1143 97 Maillard, J. Y. & Pascoe, M. Disinfectants and antiseptics: mechanisms of action and
1144 resistance. *Nat Rev Microbiol* **22**, 4-17, doi:10.1038/s41579-023-00958-3 (2024).
- 1145 98 Brauner, A., Fridman, O., Gefen, O. & Balaban, N. Q. Distinguishing between resistance,
1146 tolerance and persistence to antibiotic treatment. *Nature Reviews Microbiology* **14**, 320-
1147 330, doi:10.1038/nrmicro.2016.34 (2016).
- 1148 99 Rhee, Y. *et al.* Relationship between chlorhexidine gluconate concentration and
1149 microbial colonization of patients' skin. *Infect Control Hosp Epidemiol*, 1-6,
1150 doi:10.1017/ice.2024.81 (2024).
- 1151 100 CLSI. (Clinical and Laboratory Standards Institute, Wayne, PA, 2018).
- 1152 101 Aftab, R., Dodhia, V. H., Jeanes, C. & Wade, R. G. Bacterial sensitivity to chlorhexidine
1153 and povidone-iodine antiseptics over time: a systematic review and meta-analysis of
1154 human-derived data. *Scientific Reports* **13**, 347, doi:10.1038/s41598-022-26658-1 (2023).
- 1155 102 Cowley, N. L. *et al.* Effects of Formulation on Microbicide Potency and Mitigation of the
1156 Development of Bacterial Insusceptibility. *Appl Environ Microbiol* **81**, 7330-7338,
1157 doi:10.1128/AEM.01985-15 (2015).
- 1158 103 de Frutos, M. *et al.* *Serratia marcescens* outbreak due to contaminated 2% aqueous
1159 chlorhexidine. *Enferm Infecc Microbiol Clin* **35**, 624-629,
1160 doi:10.1016/j.eimc.2016.06.016 (2017).
- 1161 104 Buxser, S. Has resistance to chlorhexidine increased among clinically-relevant bacteria?
1162 A systematic review of time course and subpopulation data. *PLOS ONE* **16**, e0256336,
1163 doi:10.1371/journal.pone.0256336 (2021).
- 1164 105 Kawamura-Sato, K., Wachino, J. I., Kondo, T., Ito, H. & Arakawa, Y. Correlation
1165 between reduced susceptibility to disinfectants and multidrug resistance among clinical
1166 isolates of *Acinetobacter* species. *Journal of Antimicrobial Chemotherapy* **65**, 1975-1983,
1167 doi:10.1093/jac/dkq227 (2010).
- 1168 106 Lambert, R. J. W., Joynson, J. & Forbes, B. The relationships and susceptibilities of some
1169 industrial, laboratory and clinical isolates of *Pseudomonas aeruginosa* to some antibiotics
1170 and biocides. *Journal of Applied Microbiology* **91**, 972-984, doi:10.1046/j.1365-
1171 2672.2001.01460.x (2001).
- 1172 107 Lepointeur, M. *et al.* Prevalence of resistance to antiseptics and mupirocin among
1173 invasive coagulase-negative staphylococci from very preterm neonates in NICU: The
1174 creeping threat? *Journal of Hospital Infection* **83**, 333-336,
1175 doi:10.1016/j.jhin.2012.11.025 (2013).

- 1176 108 Long, M. *et al.* Disinfectant susceptibility of different Salmonella serotypes isolated from
1177 chicken and egg production chains. *Journal of Applied Microbiology* **121**, 672-681,
1178 doi:10.1111/jam.13184 (2016).
- 1179 109 Evans, H. L. *et al.* Effect of chlorhexidine whole-body bathing on hospital-acquired
1180 infections among trauma patients. *Arch Surg* **145**, 240-246, doi:10.1001/archsurg.2010.5
1181 (2010).
- 1182 110 Climo, M. W. *et al.* Effect of daily chlorhexidine bathing on hospital-acquired infection.
1183 *N Engl J Med* **368**, 533-542, doi:10.1056/NEJMoa1113849 (2013).
- 1184 111 Arnold, B. *et al.* Review of Quaternary Ammonium Compounds: A Chemical Class of
1185 Emerging Concern. *Environmental Science & Technology*.
- 1186 112 Blaustein, R. A. *et al.* Toothbrush microbiomes feature a meeting ground for human oral
1187 and environmental microbiota. *Microbiome* **9**, 32, doi:10.1186/s40168-020-00983-x
1188 (2021).
- 1189 113 Shen, J. & Hartmann, E. M. Collect, extract, pool, and cultivate surface swab samples
1190 from built environments. *Protocol Exchange*, doi:10.21203/rs.3.pex-1656/v1 (2022).
- 1191 114 Edmiston, C. E., Jr. *et al.* Preoperative shower revisited: can high topical antiseptic levels
1192 be achieved on the skin surface before surgical admission? *J Am Coll Surg* **207**, 233-239,
1193 doi:10.1016/j.jamcollsurg.2007.12.054 (2008).
- 1194 115 Gefter Shenderovich, J. *et al.* Chlorhexidine sustained-release varnishes for catheter
1195 coating - Dissolution kinetics and antibiofilm properties. *Eur J Pharm Sci* **112**, 1-7,
1196 doi:10.1016/j.ejps.2017.10.041 (2018).
- 1197 116 West, A. M. *et al.* Surface area wiped, product type, and target strain impact bactericidal
1198 efficacy of ready-to-use disinfectant Towelettes. *Antimicrob Resist Infect Control* **7**, 122,
1199 doi:10.1186/s13756-018-0416-z (2018).
- 1200 117 Hu, J. *et al.* Impacts of indoor surface finishes on bacterial viability. *Indoor Air* **29**, 551-
1201 562, doi:10.1111/ina.12558 (2019).
- 1202 118 Fridkin, S. K. Increasing prevalence of antimicrobial resistance in intensive care units.
1203 *Crit Care Med* **29**, N64-68, doi:10.1097/00003246-200104001-00002 (2001).
- 1204 119 Kollef, M. H. & Fraser, V. J. Antibiotic resistance in the intensive care unit. *Ann Intern*
1205 *Med* **134**, 298-314, doi:10.7326/0003-4819-134-4-200102200-00014 (2001).
- 1206 120 Hsu, T. *et al.* Urban Transit System Microbial Communities Differ by Surface Type and
1207 Interaction with Humans and the Environment. *mSystems* **1**,
1208 doi:10.1128/mSystems.00018-16 (2016).
- 1209 121 Rintala, H., Pitkaranta, M. & Taubel, M. Microbial communities associated with house
1210 dust. *Adv Appl Microbiol* **78**, 75-120, doi:10.1016/B978-0-12-394805-2.00004-X (2012).
- 1211 122 Lax, S. *et al.* Bacterial colonization and succession in a newly opened hospital. *Sci Transl*
1212 *Med* **9**, doi:10.1126/scitranslmed.aah6500 (2017).
- 1213 123 Huslage, K., Rutala, W. A., Sickbert-Bennett, E. & Weber, D. J. A quantitative approach
1214 to defining "high-touch" surfaces in hospitals. *Infect Control Hosp Epidemiol* **31**, 850-
1215 853, doi:10.1086/655016 (2010).
- 1216 124 Sehulster, L. M. *et al.* Guidelines for environmental infection control in health-care
1217 facilities. Recommendations from CDC and the Healthcare Infection Control Practices
1218 Advisory Committee (HICPAC). (Chicago IL, 2004).
- 1219 125 Jinadatha, C. *et al.* Interaction of healthcare worker hands and portable medical
1220 equipment: a sequence analysis to show potential transmission opportunities. *BMC Infect*
1221 *Dis* **17**, 800, doi:10.1186/s12879-017-2895-6 (2017).

- 1222 126 Cheng, V. C. *et al.* Hand-touch contact assessment of high-touch and mutual-touch
1223 surfaces among healthcare workers, patients, and visitors. *J Hosp Infect* **90**, 220-225,
1224 doi:10.1016/j.jhin.2014.12.024 (2015).
- 1225 127 Xu, S. *et al.* Effects of the biocides on the culturable house dust-borne bacterial
1226 compositions and diversities. *Human and Ecological Risk Assessment: An International*
1227 *Journal* **22**, 1133-1146, doi:10.1080/10807039.2016.1143769 (2016).
- 1228 128 Lederberg, J. & Lederberg, E. M. Replica plating and indirect selection of bacterial
1229 mutants. *J Bacteriol* **63**, 399-406, doi:10.1128/JB.63.3.399-406.1952 (1952).
- 1230 129 McFarland, A. G. *et al.* Triclosan Tolerance Is Driven by a Conserved Mechanism in
1231 Diverse Pseudomonas Species. *Applied and Environmental Microbiology* **87**,
1232 doi:10.1128/aem.02924-20 (2021).
- 1233 130 Andrews, S. *et al.* *FastQC: a quality control tool for high throughput sequence data*,
1234 <<http://www.bioinformatics.babraham.ac.uk/projects/fastqc>> (2016).
- 1235 131 Chen, S., Zhou, Y., Chen, Y. & Gu, J. fastp: an ultra-fast all-in-one FASTQ preprocessor.
1236 *Bioinformatics* **34**, i884-i890, doi:10.1093/bioinformatics/bty560 (2018).
- 1237 132 Bankevich, A. *et al.* SPAdes: a new genome assembly algorithm and its applications to
1238 single-cell sequencing. *J Comput Biol* **19**, 455-477, doi:10.1089/cmb.2012.0021 (2012).
- 1239 133 Parks, D. H., Imelfort, M., Skennerton, C. T., Hugenholtz, P. & Tyson, G. W. CheckM:
1240 assessing the quality of microbial genomes recovered from isolates, single cells, and
1241 metagenomes. *Genome Res* **25**, 1043-1055, doi:10.1101/gr.186072.114 (2015).
- 1242 134 Gurevich, A., Saveliev, V., Vyahhi, N. & Tesler, G. QUAST: quality assessment tool for
1243 genome assemblies. *Bioinformatics* **29**, 1072-1075, doi:10.1093/bioinformatics/btt086
1244 (2013).
- 1245 135 Ramsin, C. (2022).
- 1246 136 Clausen, P., Aarestrup, F. M. & Lund, O. Rapid and precise alignment of raw reads
1247 against redundant databases with KMA. *BMC Bioinformatics* **19**, 307,
1248 doi:10.1186/s12859-018-2336-6 (2018).
- 1249 137 Larsen, M. V. *et al.* Benchmarking of methods for genomic taxonomy. *J Clin Microbiol*
1250 **52**, 1529-1539, doi:10.1128/JCM.02981-13 (2014).
- 1251 138 Hasman, H. *et al.* Rapid whole-genome sequencing for detection and characterization of
1252 microorganisms directly from clinical samples. *J Clin Microbiol* **52**, 139-146,
1253 doi:10.1128/JCM.02452-13 (2014).
- 1254 139 Asnicar, F. *et al.* Precise phylogenetic analysis of microbial isolates and genomes from
1255 metagenomes using PhyloPhlAn 3.0. *Nat Commun* **11**, 2500, doi:10.1038/s41467-020-
1256 16366-7 (2020).
- 1257 140 Alanjary, M., Steinke, K. & Ziemert, N. AutoMLST: an automated web server for
1258 generating multi-locus species trees highlighting natural product potential. *Nucleic Acids*
1259 *Res* **47**, W276-W282, doi:10.1093/nar/gkz282 (2019).
- 1260 141 Rodriguez, R. L. *et al.* The Microbial Genomes Atlas (MiGA) webserver: taxonomic and
1261 gene diversity analysis of Archaea and Bacteria at the whole genome level. *Nucleic Acids*
1262 *Res* **46**, W282-W288, doi:10.1093/nar/gky467 (2018).
- 1263 142 Sievers, F. & Higgins, D. G. Clustal Omega for making accurate alignments of many
1264 protein sequences. *Protein Sci* **27**, 135-145, doi:10.1002/pro.3290 (2018).
- 1265 143 Camargo, A. P. *et al.* Identification of mobile genetic elements with geNomad. *Nat*
1266 *Biotechnol*, doi:10.1038/s41587-023-01953-y (2023).

- 1267 144 Johansson, M. H. K. *et al.* Detection of mobile genetic elements associated with
1268 antibiotic resistance in *Salmonella enterica* using a newly developed web tool:
1269 MobileElementFinder. *J Antimicrob Chemother* **76**, 101-109, doi:10.1093/jac/dkaa390
1270 (2021).
- 1271 145 Wang, M. *et al.* VRprofile2: detection of antibiotic resistance-associated mobilome in
1272 bacterial pathogens. *Nucleic Acids Res* **50**, W768-W773, doi:10.1093/nar/gkac321
1273 (2022).
- 1274 146 Maciel-Guerra, A. *et al.* Dissecting microbial communities and resistomes for
1275 interconnected humans, soil, and livestock. *ISME J* **17**, 21-35, doi:10.1038/s41396-022-
1276 01315-7 (2023).
- 1277 147 Team, R. C. R: A language and environment for statistical computing. (2013).
- 1278 148 Wickham, H., François, R., Henry, L. & Müller, K. *dplyr: A Grammar of Data*
1279 *Manipulation*, <<https://dplyr.tidyverse.org>> (2022).
- 1280 149 Wickham, H. *stringr: Simple, consistent wrappers for common string operations*,
1281 <<https://stringr.tidyverse.org>> (2023).
- 1282 150 Kassambara, A. *rstatix: Pipe-friendly framework for basic statistical tests*,
1283 <<https://rpkgs.datanovia.com/rstatix/>> (2023).
- 1284 151 Wickham, H. *ggplot2: Elegant Graphics for Data Analysis*. (Springer-Verlag New York,
1285 2016).
- 1286 152 Gu, Z., Eils, R. & Schlesner, M. Complex heatmaps reveal patterns and correlations in
1287 multidimensional genomic data. *Bioinformatics* **32**, 2847-2849,
1288 doi:10.1093/bioinformatics/btw313 (2016).
- 1289 153 Wilkins, D. *gggenes: Draw gene arrow maps in 'ggplot2'*, <[https://CRAN.R-](https://CRAN.R-project.org/package=gggenes)
1290 [project.org/package=gggenes](https://CRAN.R-project.org/package=gggenes)> (2020).

1291