

## A playbook for harmonization of standards for emergent viral pathogens

**Authors:** Sara Suliman<sup>1,2,3,#,\*</sup>, Sebastien Fuchs<sup>4,#</sup>, David Catoe<sup>5</sup>, Loren Hansen<sup>5</sup>, Deepa Eveleigh<sup>6</sup>, Michael A. Crone<sup>7,8,9</sup>, Paul S. Freemont<sup>7,8,9</sup>, Martin Kammel<sup>10,11</sup>, Heinz Zeichhardt<sup>11,12</sup>, Andrew T. Anfora<sup>13</sup>, Russell Garlick<sup>13</sup>, Neil Almond<sup>14</sup>, Mark Page<sup>14</sup>, Brian Beck<sup>15</sup>, Hui Wang<sup>16</sup>, Karuna Sharma<sup>17</sup>, Gary Pestano<sup>18</sup>, Joannes Vancann<sup>19</sup>, Jo Vandesompele<sup>19</sup>, Adam S Corner<sup>20</sup>, Jeffrey Albrecht<sup>21</sup>, Deborah J. Boles<sup>21</sup>, Marcia Eisenberg<sup>21</sup>, Ayla B. Harris<sup>21</sup>, Brian J. Krueger<sup>21</sup>, Amanda L. Suchanek<sup>21</sup>, Thomas J. Urban<sup>21</sup>, Jonathan D. Williams<sup>21</sup>, Patrick Chain<sup>22</sup>, Alina Deshpande<sup>22</sup>, Attelia Hollander<sup>22</sup>, Sujata Chalise<sup>23</sup>, David R. Walt<sup>23,24,25</sup>, Jeffrey Germer<sup>26</sup>, Joseph D. Yao<sup>26</sup>, Bobbi S. Pritt<sup>26</sup>, Frederick S. Nolte<sup>27</sup>, Alexandra Bogožalec Košir<sup>28</sup>, Mojca Milavec<sup>28</sup>, Megan H. Cleveland<sup>29</sup>, Peter M. Vallone<sup>29</sup>, Eloise J. Busby<sup>30,31</sup>, Jim F. Huggett<sup>30,31</sup>, Denise M. O'Sullivan<sup>30,31</sup>, Elizabeth M. Marlowe<sup>32</sup>, Benjamin A. Pinsky<sup>33</sup>, Annaleise Kealiher<sup>34</sup>, Jeantine E. Lunshof<sup>24,35</sup>, Christopher E. Mason<sup>36,37,38,39</sup>, John Sninsky<sup>40</sup>, Cristina Tato<sup>41</sup>, Timothy Mercer<sup>42</sup>, Thomas J. White<sup>43</sup>, Marc Salit<sup>5,34,44,45,\*</sup>

<sup>1</sup>Zuckerberg San Francisco General Hospital, Division of Experimental Medicine, University of California San Francisco, San Francisco, CA, USA

<sup>2</sup>Chan Zuckerberg Biohub, San Francisco, CA, USA

<sup>3</sup>COVID Diagnostics Accelerator Lab, Mass General Brigham, Boston, MA, USA

<sup>4</sup>Western University of Health Sciences, College of Osteopathic Medicine of the Pacific, Pomona, CA, USA

<sup>5</sup>Joint Initiative for Metrology in Biology, SLAC National Accelerator Laboratory, 2575 Sand Hill Road, Menlo Park, California 94025, United States.

<sup>6</sup>Bio-techne, Inc, Austin, TX, USA

<sup>7</sup>London Biofoundry, Imperial College Translation and Innovation Hub, London, UK

26 <sup>8</sup>Section of Structural and Synthetic Biology, Department of Infectious Disease, Imperial College  
27 London, London, UK

28 <sup>9</sup>UK Dementia Research Institute Centre for Care Research and Technology, Imperial College  
29 London, London, UK

30 <sup>10</sup>INSTAND Society for Promoting Quality Assurance in Medical Laboratories, Düsseldorf,  
31 Germany

32 <sup>11</sup>GBD Gesellschaft für Biotechnologische Diagnostik mbH, Berlin, Germany

33 <sup>12</sup>IQVD GmbH Institut fuer Qualitaetssicherung in der Virusdiagnostik, Berlin, Germany

34 <sup>13</sup>LGC Clinical Diagnostics, Product Management, Gaithersburg, MD, USA

35 <sup>14</sup>Medicines and Healthcare Products Regulatory Agency, MHRA, Blanche Lane, Potters Bar,  
36 United Kingdom

37 <sup>15</sup>Microbiologics, St Cloud, MN, USA

38 <sup>16</sup>Thermo Fisher Scientific, Waltham, MA, USA

39 <sup>17</sup>ZeptoMetrix LLC; Buffalo NY, USA

40 <sup>18</sup>Biodesix Inc. Louisville, CO, USA

41 <sup>19</sup>Biogazelle, a CellCarta company, Technologiepark, Zwijnaarde, Belgium

42 <sup>20</sup>Digital Biology Group, Bio-Rad Laboratories Inc., Pleasanton, California

43 <sup>21</sup>Labcorp, Burlington, NC, 27215, USA.

44 <sup>22</sup>Bioscience Division, Los Alamos National Laboratory, Los Alamos, NM, USA

45 <sup>23</sup>Mass General Brigham Center for COVID Innovation, Boston, MA, USA

46 <sup>24</sup>Wyss Institute for Biologically Inspired Engineering, Harvard University, Boston, MA, USA

47 <sup>25</sup>Department of Pathology, Brigham and Women's Hospital, Harvard Medical School, Boston,  
48 MA, USA

49 <sup>26</sup>Department of Laboratory Medicine and Pathology, Division of Clinical Microbiology, Mayo  
50 Clinic, Rochester, MN, USA

51 <sup>27</sup>Department of Pathology and Laboratory Medicine, Medical University of South Carolina,  
52 Charleston, South Carolina, USA

53 <sup>28</sup>Department of Biotechnology and Systems Biology, National Institute of Biology, Ljubljana,  
54 Slovenia

55 <sup>29</sup>Applied Genetics Group, National Institute of Standards and Technology, Gaithersburg, MD,  
56 USA

57 <sup>30</sup>National Measurement Laboratory (NML), LGC, Queens Road, Teddington, Middlesex, UK.

58 <sup>31</sup>School of Biosciences & Medicine, Faculty of Health & Medical Science, University of Surrey,  
59 Guildford, UK

60 <sup>32</sup>Quest Diagnostic Infectious Disease, San Juan Capistrano, CA, USA

61 <sup>33</sup>Department of Pathology, Stanford University School of Medicine, Stanford, CA, USA

62 <sup>34</sup>MITRE Corporation, McLean, VA USA

63 <sup>35</sup>Department of Genetics, Harvard Medical School, Boston, MA, USA

64 <sup>36</sup>Department of Physiology and Biophysics, Weill Cornell Medicine, New York, NY, USA

65 <sup>37</sup>The HRH Prince Alwaleed Bin Talal Bin Abdulaziz Alsaud Institute for Computational  
66 Biomedicine, Weill Cornell Medicine, New York, NY, USA

67 <sup>38</sup>The WorldQuant Initiative for Quantitative Prediction, Weill Cornell Medicine, New York, NY,  
68 USA

69 <sup>39</sup>The Feil Family Brain and Mind Research Institute, Weill Cornell Medicine, New York, NY,  
70 USA

71 <sup>40</sup>SPARK Stanford University, Palo Alto, CA, USA

72 <sup>41</sup>Chan Zuckerberg Biohub, San Francisco, CA, USA

73 <sup>42</sup>University Of Queensland, Brisbane, Australia

74 <sup>43</sup>Human Rights Center, School of Law, University of California, Berkeley, CA, USA

75 <sup>44</sup>Department of Bioengineering, Stanford University, Stanford, CA USA

76

77

78

79 #Contributed Equally

80

81 **\*Co-Corresponding Authors:**

82 Sara Suliman, UCSF, San Francisco, CA, USA, 94110, Email: [sara.suliman@ucsf.edu](mailto:sara.suliman@ucsf.edu)

83 Marc Salit, MITRE Corporation, McLean, VA, USA 22102 Email: [msalit@mitre.org](mailto:msalit@mitre.org)

84

85

86

87

88

89

90

91



92 **Abstract (63 words)**

93

94 Effective clinical and public health decision-making during a pandemic depends on  
95 reliable and interoperable clinical diagnostic test results. To ensure trustworthy outcomes, we  
96 need widely available and harmonized calibration standards on a shared scale. We present a  
97 'playbook' for an inter-laboratory harmonization study that calibrates any available standards  
98 against a limited-availability standard issued by a global authority like the World Health  
99 Organization (WHO).

100

101 **Main Text (1,250 words)**

102 **What this is:**

103 As part of the global response to the COVID-19 pandemic<sup>1,2</sup>, various organizations  
104 rapidly made available a wide variety of standards and controls to develop, calibrate, and  
105 validate molecular diagnostics for SARS-CoV-2. Our *Coronavirus Standards Working Group*  
106 (CSWG)<sup>3</sup> designed and conducted a “harmonization study” to establish the comparability of a  
107 set of these standards and controls (hereafter collectively referred to as ‘standards’).  
108 Harmonized standards can be used as a basis for meaningful quantitative comparability of test  
109 performance, and can underpin quantitative virology, therapeutic actions, and vaccinology.  
110 Harmonization balances the tension between the widespread need for standards and the limited  
111 availability of standards from global authorities. Our study is presented here in the form of a  
112 “playbook” as a recipe to conduct a robust harmonization study when it is needed again.

113 We calibrated 8 widely available molecular standards to the rapidly developed World  
114 Health Organization (WHO) International Standard (IS)<sup>4</sup>, putting all the quantitative values of  
115 these standards on this common scale (**Supplementary Table 1A**). We recruited 14  
116 laboratories internationally to participate in a designed experiment to “value assign” the

117 standards on the scale (**Figure 1A and B and Supplementary Table 1B**). Our intent was for  
118 widely available harmonized standards to be part of the infrastructure to confidently deploy  
119 testing at scale. We prototyped a “proof-of-concept study” to test whether calibrating with the  
120 harmonized standards would yield comparable results when measuring clinical samples  
121 (**Supplementary Figure 1**).

122 This interlaboratory study had the sole aim to establish the quantitative comparability of  
123 these widely available SARS-CoV-2 standards for molecular diagnostics. The study was not  
124 intended to be a comparison of tests or laboratories, a survey of test performance, or an  
125 evaluation of commutability.

## 126 Why it matters:

127 The pandemic response (including development of diagnostics) was based on best  
128 practices developed in the moment. We offer here a study design pre-positioned for a better  
129 response to emerging pathogens with pandemic potential. Harmonizing standards with this  
130 design will assure comparability of results from diagnostic tests<sup>5</sup>. Comparable results enable  
131 quantitative, systematic diagnostic virology to understand pathogenesis and rapidly integrate  
132 data across space and time. Understanding pathogenesis<sup>6</sup> and transmission<sup>2,7-9</sup> is critical for  
133 clinical and public health decision-making, and well-calibrated controls are essential for  
134 adjudicating accuracy of diagnostics, especially tests using new or nascent technology. We  
135 present and support this approach here for a viral pathogen but recognize that the principles  
136 would apply to non-viral pathogens.

## 137 What we did:

138 The study was coordinated by the Joint Initiative for Metrology in Biology, the convener  
139 of the CSWG<sup>3</sup>. The coordinating laboratory worked with the CSWG to design the study, develop  
140 a Standard Operating Procedure (SOP), and create a reporting template for the study. The

141 study design ensured that the results meaningfully represented the variety of standard materials  
142 and laboratories and their protocols (**Figure 1A**). The SOP ensured that we obtained results  
143 from a common experimental design that permitted assessment of variability (**Supplement 1**),  
144 and the template ensured consistent analysis of results (**Supplementary Table 2 and**  
145 **Methods**). We developed an open public web-based analysis package to transparently present  
146 and share results (Shiny App: <https://msalit.shinyapps.io/RNAstudy/>).

147 We selected 8 widely available standards (including materials derived from inactivated  
148 virus, recombinant virus, and recombinant bacteriophage) that could be processed in the  
149 laboratory workflow as clinical specimens. We recruited 14 laboratories from different sectors  
150 (clinical, academic, public, commercial, and government) to each calibrate the standards to  
151 Medicines and Healthcare Products Regulatory Agency (MHRA), formerly known as National  
152 Institute for Biological Standards and Control (NIBSC) 20/146<sup>4</sup>, the first WHO International  
153 Standard for SARS-CoV-2 RNA (WHO-IS) that defined the International Unit (IU, **Figure 1C**,  
154 **Supplementary Table 1A**). Our study design used 4 replicate serial dilutions of the IS across 6  
155 orders of magnitude, with 4 replicates of each dilution of the WHO-IS and each standard  
156 (**Supplementary Figures 2A-K**). After calibration of these 8 standards, they were harmonized  
157 to a common scale by their value assignment in IU.

158 We operated a companion study to evaluate the hypothesis that the PCR tests  
159 calibrated with harmonized standards yield comparable results when measuring clinical samples  
160 (**Supplementary Figure 1**). We used pooled biobanked samples (15 pools including negative  
161 controls and clinical positives at 3 viral load levels), evaluated by a subset of laboratories (3  
162 laboratories using a total of 5 different assays) and two of the 8 standards.

## 163 **How it came out:**

164 Harmonization results: The 8 standards were all successfully value-assigned to a common,  
165 shared reference: the IU (**Figure 1C** and *Results v. Nominal* in analysis dashboard of the Shiny

166 app). The analysis dashboard also contains figures showing the measurement results for each  
167 standard by assay within lab for each of the 8 materials sortable by rank order or laboratory;  
168 deviations from median value for each assay; tabular results, and raw data.

169  
170 Proof-of-Concept results: Calibrating the assays with harmonized standards allowed us to  
171 compare results from different laboratories and tests on the clinical samples (**Figure 2A**). Each  
172 laboratory used its own experiment design, representing real-life testing where labs use different  
173 tests. This proof-of-concept experiment demonstrated the use of calibration to bring clinical  
174 sample results from disparate assay modalities (reverse transcription quantitative real time PCR  
175 (RT-qPCR) and reverse transcription digital PCR (RT-dPCR)) to the same scale, plotted on the  
176 same axis (**Figure 2B**). Critical analysis of these data and assessment of bias and variability is  
177 in the Supplement (**Supplementary Figure 3A-C**). Lessons learned from this experiment have  
178 been incorporated into the playbook recommendations. Results from these studies promise that  
179 test results can be aggregated across space-and-time for scientific knowledge development and  
180 public-health decision-making.

## 181 **What we learned:**

182 It is practical and possible to harmonize standards and controls early in an outbreak or  
183 pandemic by strategically bringing together a diverse set of specialists. A thoughtful study  
184 design supported by clear SOPs and consistent data reporting make harmonization possible.  
185 Our CSWG experience cultivated a community of practitioners working collectively to respond to  
186 a global emergency, fostering new fruitful collaborations.

187 Our harmonization study and proof-of-concept study were conducted at different times, a  
188 year apart. We recommend that these studies be done simultaneously, with the same assays  
189 and lots of standards used in the harmonization. This improved design (**see “playbook” in**

190 **Supplement 3)** can be periodically repeated to maintain comparability as the pathogens,  
191 assays and tests, sampling, and standards evolve.

192 The heterogeneity of laboratories, assays, and materials highlight the influence of these  
193 variables on test performance. The most significant artifacts we observed arose from standards  
194 developed from different materials. Full-genome inactivated virus standards and recombinant  
195 whole-virus samples behaved differently than the much smaller genomes with limited PCR  
196 target coverage of the bacteriophage materials. These different materials also had very different  
197 genome concentrations, requiring different dilution and handling in the lab.

198 The study design permits robust estimates of measurement uncertainty. Such estimates  
199 promise the ability to propagate uncertainties in calibrated results. This design ensures broad  
200 applicability to the heterogeneous tests and materials deployed internationally.

## 201 **How to do it next time:**

202 It is inevitable that new pathogens (viral, bacterial, fungal or parasites) will emerge. The  
203 WHO provides guidance on preparing secondary standards to test for emerging pathogens<sup>10</sup>.  
204 Our experience with the harmonization study conducted by the CSWG for SARS-CoV-2 is  
205 captured and presented (**Supplement 3**) in a generalized Playbook for Harmonization of  
206 Standards to Calibrate Pathogen Molecular Diagnostics.

## 207 **Summary:**

208 Both the harmonization and proof-of-concept studies demonstrate that it is possible to  
209 contribute to the standardization of measurement results for diagnostic laboratories through  
210 international and interdisciplinary cooperation. Our data provide a framework to break the glass  
211 when needed and rapidly harmonize molecular standards.

212

## 213 Acknowledgements:

214 We acknowledge Lynne Sopchak for critically reading the manuscript and providing  
215 comments. We also acknowledge Andrew Hyatt for support with graphic design. Points of view  
216 in this document are those of the authors and do not necessarily represent the official position  
217 or policies of the U.S. Department of Commerce. Certain commercial software, instruments, and  
218 materials are identified in order to specify experimental procedures as completely as possible.  
219 In no case does such identification imply a recommendation or endorsement by the National  
220 Institute of Standards and Technology, nor does it imply that any of the materials, instruments,  
221 or equipment identified are necessarily the best available for the purpose. SS is supported by  
222 grants from the Chan Zuckerberg Biohub, San Francisco and the National Institute of Allergy  
223 and Infectious Diseases (NIAID).  
224

225 **Figure Legends:**

226 **Figure 1: (A)** Molecular Standards Harmonization Study Design: Schematic representation of  
227 the Coronavirus Standards Working Group (CSWG) molecular standards harmonization study.  
228 Four identical aliquots of each of the secondary reference materials were shipped to the 14  
229 participating laboratories. The NIBSC code 20/146 WHO-IS was also shipped in 4 aliquots to  
230 benchmark the 8 secondary reference standards. **(B)** Box and whiskers represent median and  
231 interquartile ranges corresponding to the SARS-CoV-2 concentrations in IU, calibrated using the  
232 NIBSC 20/146 reference material. Each measurement represents a unique laboratory and  
233 assay, with the orange line spanning the median concentration across the different platforms  
234 and assays. Measurements are ordered from the lowest to highest extrapolated values. Data  
235 are summarized assuming each laboratory:assay are independent samples from the population.  
236 **(C)** Observed concentrations of each standard in  $\log_{10}$  IU mL<sup>-1</sup> versus the nominal value in  $\log_{10}$   
237 genome copies mL<sup>-1</sup>. The error bars are 95% Confidence Intervals. The line represents the IS  
238 values for the international standard serial dilution. The line is the multiplicative factor of the IS  
239 value to copies, showing that this proportionality is consistent across the population of the 8  
240 standards.

241 **Figure 2: (A)** Study design of a proof-of-concept application of the harmonized secondary  
242 reference materials to real clinical samples. 15 pools of biobanked samples (from 3 patients  
243 each) were aliquoted and shipped to three participating labs (Los Alamos National Laboratory  
244 (LANL), Biogazelle, and Biodesix), along with 3 calibrated standards representing the 3 classes:  
245 Inactivated virus: AcroMetrix/ThermoFisher Scientific, recombinant virus: Accuplex™/LGC  
246 Clinical Diagnostics, and recombinant bacteriophage: Armored RNA Quant SARS-CoV-  
247 2/Asuragen. Labs performed PCR using their described testing platforms and sent raw Cq or  
248 count data from their RT-qPCR or RT-dPCR platforms, respectively. **(B)** Harmonized  
249 measurements of viral load in 12 pooled clinical samples s01-s12: Calibrated measurements in  
250 clinical samples reported in IU mL<sup>-1</sup>. Pooled samples with different viral loads were measured by

251 different labs along with two calibrant materials: LGC Clinical Diagnostics, and AcroMetrix. Data  
252 is shown after calibration of the raw data from both qPCR and dPCR platforms (Supplementary  
253 Figure 3).

254  
255 **Supplementary Figure 1:** Calibration curves of each individual laboratory and assay using the  
256 6-step dilution curves of the NIBSC 20/146 reference material. All data (RT-qPCR and RT-  
257 dPCR) have generated standard curves. Curve statistics are in Supplementary table 3.

258  
259 **Supplementary Figure 2:** Expanded Box and whiskers represent median and interquartile  
260 ranges corresponding to the SARS-CoV-2 concentrations in IU, as depicted in Figure 1B in  
261 different types of standards: inactivated virus **(A)**, recombinant virus **(B)**, and bacteriophage **(C)**.

262  
263 **Supplementary Figure 3:** Raw C<sub>q</sub> values from LANL **(A)** and Biogazelle **(B)**, and raw counts  
264 from Biodesix **(C)** of the 15 pools of samples along with the secondary reference standards.  
265 Red points correspond to samples with undetectable amplification by PCR.

266  
267  
268  
269  
270  
271

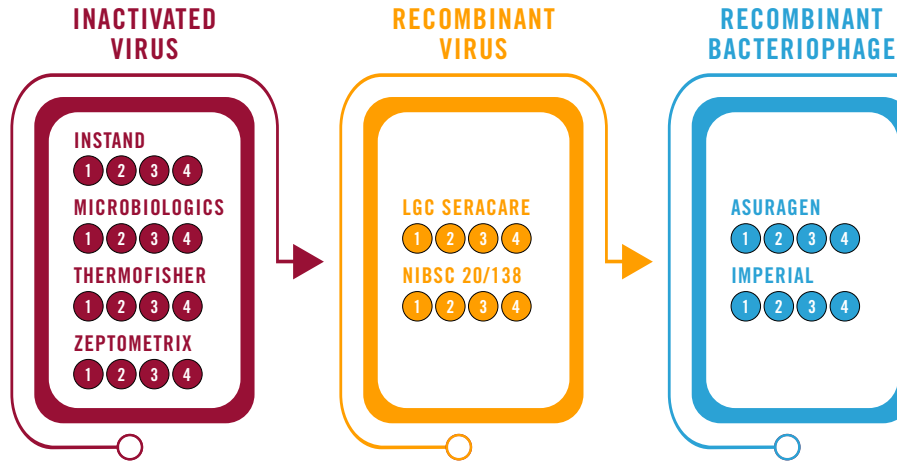


272 **References:**

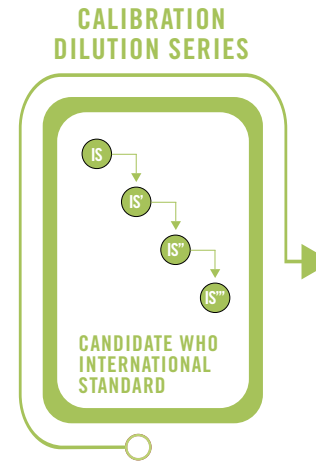
- 273 1 Dong, E., Du, H. & Gardner, L. An interactive web-based dashboard to track COVID-19  
274 in real time. *Lancet Infect Dis* **20**, 533-534 (2020). [https://doi.org/10.1016/S1473-](https://doi.org/10.1016/S1473-3099(20)30120-1)  
275 [3099\(20\)30120-1](https://doi.org/10.1016/S1473-3099(20)30120-1)
- 276 2 Kissler, S. M., Tedijanto, C., Goldstein, E., Grad, Y. H. & Lipsitch, M. Projecting the  
277 transmission dynamics of SARS-CoV-2 through the postpandemic period. *Science* **368**,  
278 860-868 (2020). <https://doi.org/10.1126/science.abb5793>
- 279 3 Mercer, T. *et al.* The Coronavirus Standards Working Group's roadmap for improved  
280 population testing. *Nat Biotechnol* **40**, 1563-1568 (2022). [https://doi.org/10.1038/s41587-](https://doi.org/10.1038/s41587-022-01538-1)  
281 [022-01538-1](https://doi.org/10.1038/s41587-022-01538-1)
- 282 4 Nguyen, L. T. *et al.* Establishment of an in-house real-time RT-PCR assay for the  
283 detection of severe acute respiratory syndrome coronavirus 2 using the first World  
284 Health Organization international standard in a resource-limited country. *J Clin Lab Anal*  
285 **36**, e24355 (2022). <https://doi.org/10.1002/jcla.24355>
- 286 5 Evans, D. *et al.* The Dangers of Using Cq to Quantify Nucleic Acid in Biological  
287 Samples: A Lesson From COVID-19. *Clin Chem* **68**, 153-162 (2021).  
288 <https://doi.org/10.1093/clinchem/hvab219>
- 289 6 Dadras, O. *et al.* The relationship between COVID-19 viral load and disease severity: A  
290 systematic review. *Immun Inflamm Dis* **10**, e580 (2022). <https://doi.org/10.1002/iid3.580>
- 291 7 Li, Q. *et al.* Early Transmission Dynamics in Wuhan, China, of Novel Coronavirus-  
292 Infected Pneumonia. *N Engl J Med* **382**, 1199-1207 (2020).  
293 <https://doi.org/10.1056/NEJMoa2001316>
- 294 8 Lipsitch, M., Krammer, F., Regev-Yochay, G., Lustig, Y. & Balicer, R. D. SARS-CoV-2  
295 breakthrough infections in vaccinated individuals: measurement, causes and impact. *Nat*  
296 *Rev Immunol* **22**, 57-65 (2022). <https://doi.org/10.1038/s41577-021-00662-4>
- 297 9 Salvagno, G. L. *et al.* SARS-CoV-2 Omicron infection is associated with high  
298 nasopharyngeal viral load. *J Infect* (2022). <https://doi.org/10.1016/j.jinf.2022.02.025>
- 299 10 WHO. WHO manual for the preparation of secondary reference materials for in vitro  
300 diagnostic assays designed for infectious disease nucleic acid or antigen detection:  
301 calibration to WHO International Standards. *Annex 6 Health Product Policy and*  
302 **Standards (HPS)** (2017).  
303

A

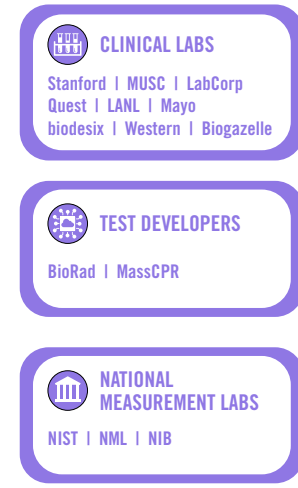
## REFERENCE STANDARDS



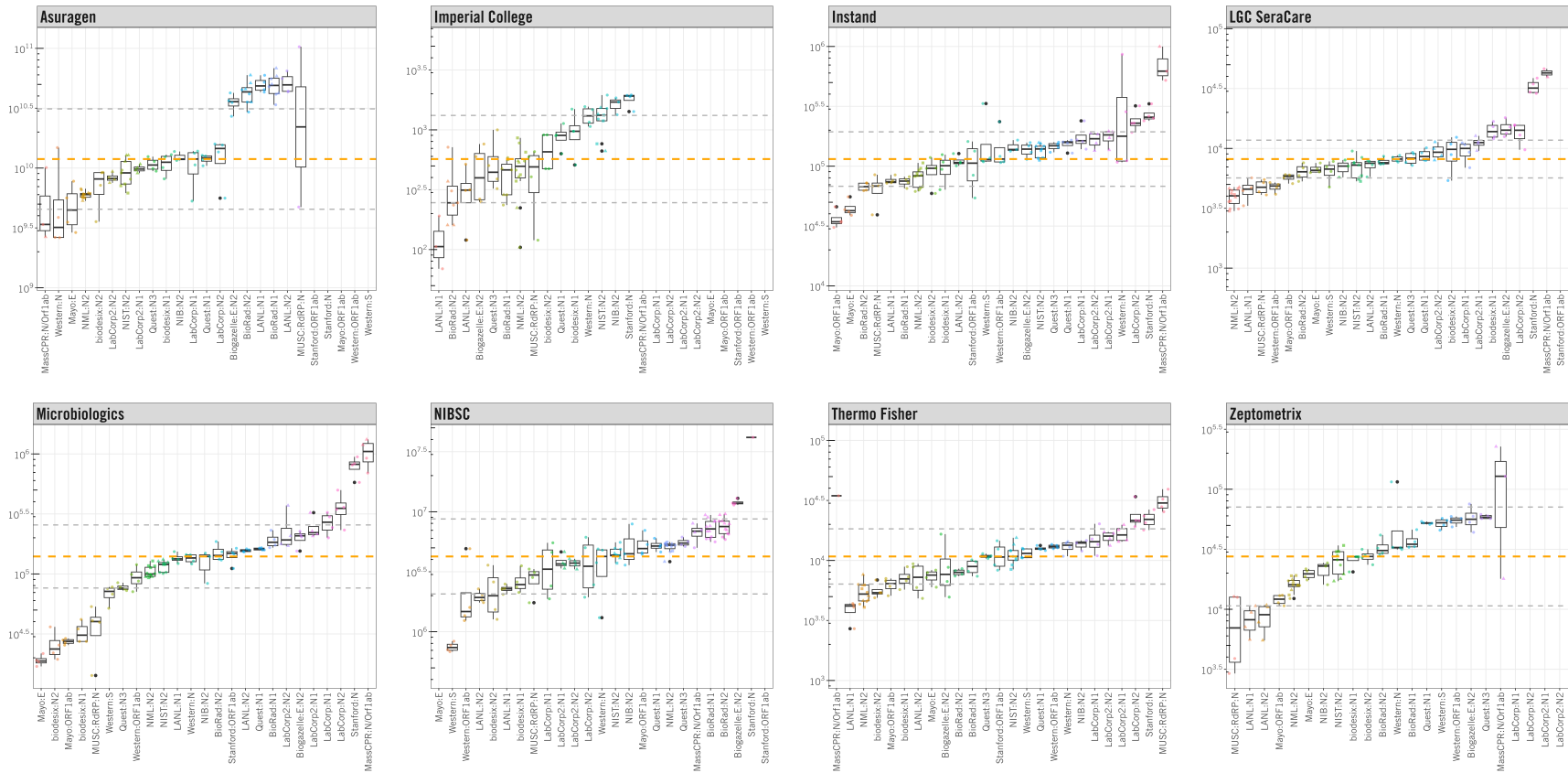
## WHO-IS NIBSC 20/146

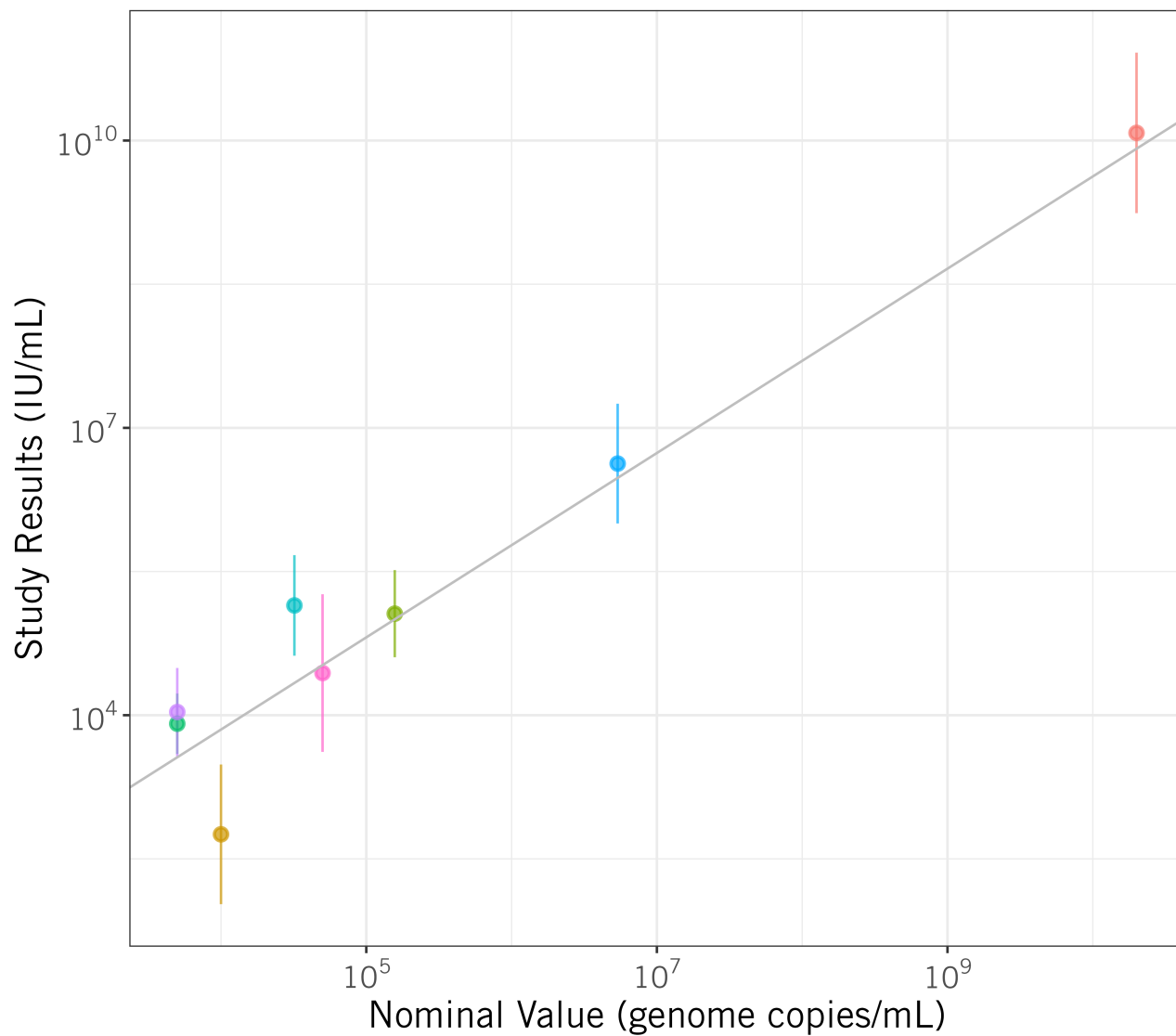


## PARTICIPATING LABS



B



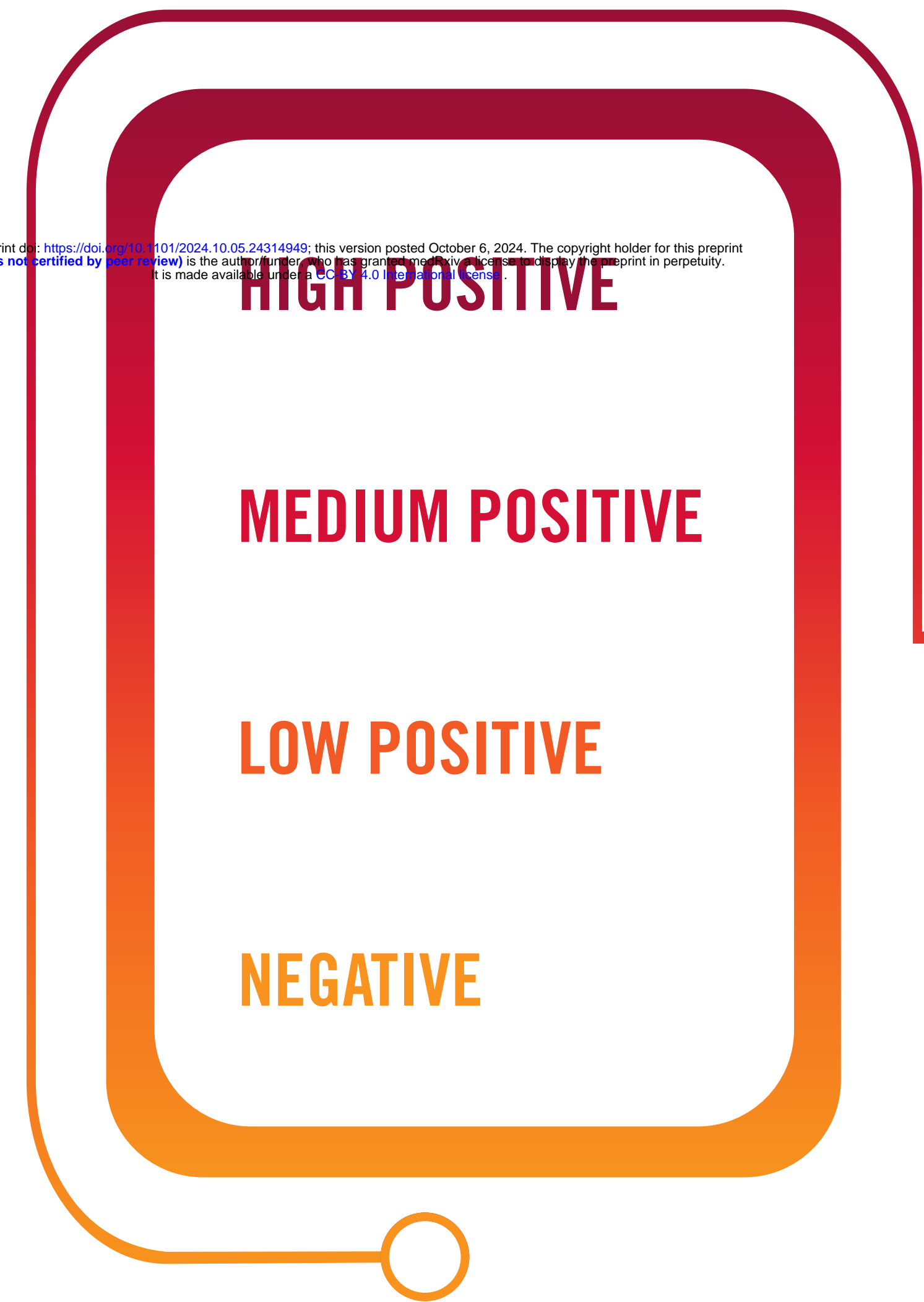


Material

Asuragen	Instand	Microbiologics	Thermo Fisher
Imperial College	LGC SeraCare	NIBSC	Zeptomatrix

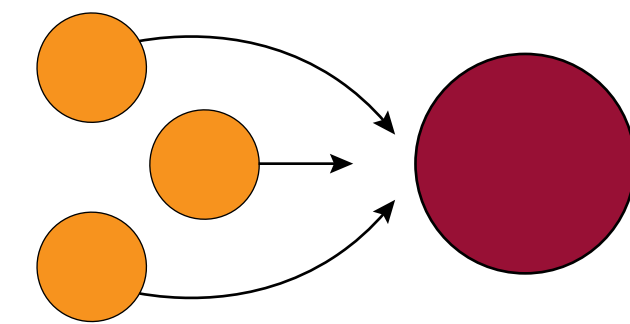
# CLINICAL SAMPLES

## CLINICAL SAMPLES

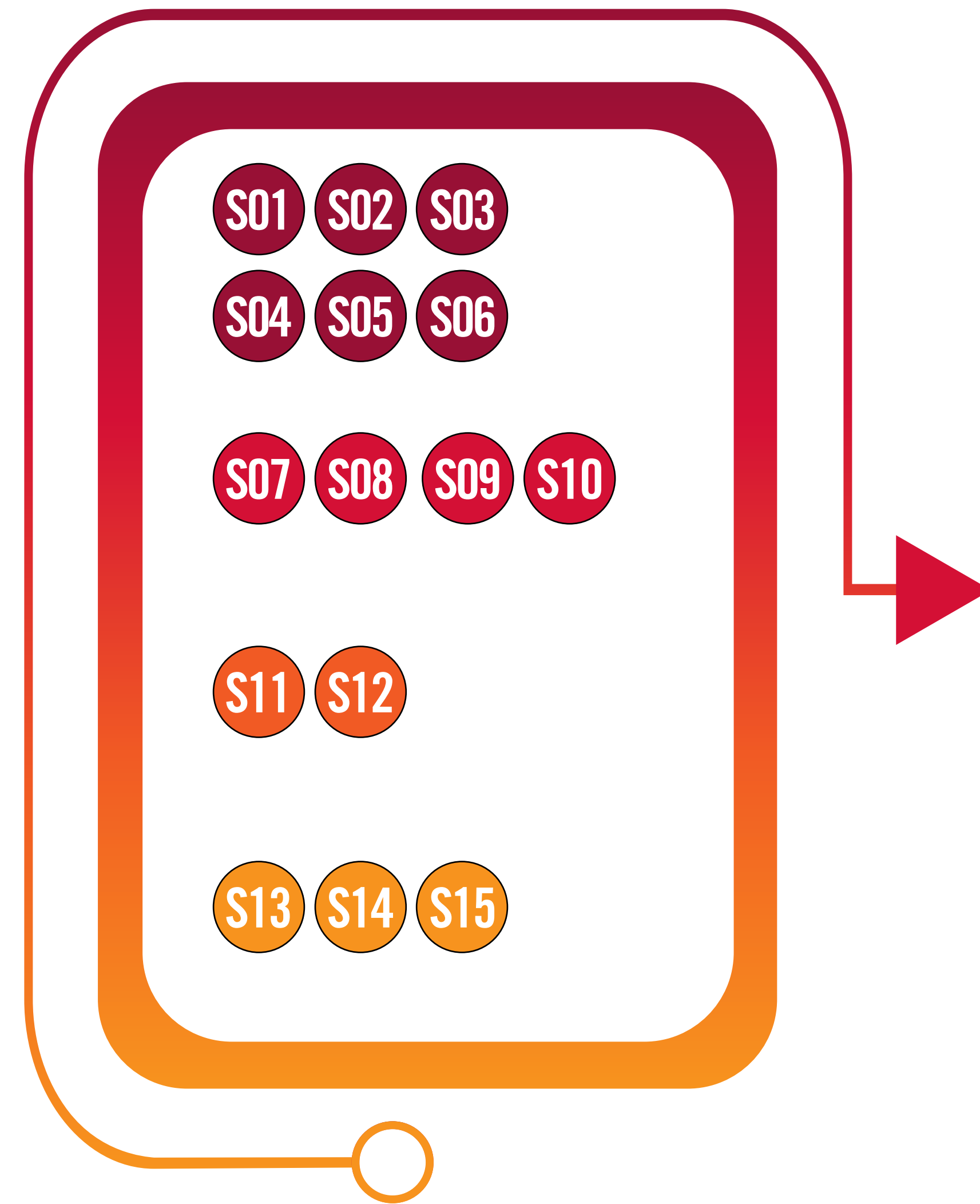


medRxiv preprint doi: <https://doi.org/10.1101/2024.10.05.24314949>; this version posted October 6, 2024. The copyright holder for this preprint (which was not certified by peer review) is the author/funder. All rights reserved. No reuse allowed without permission.

### POOLING

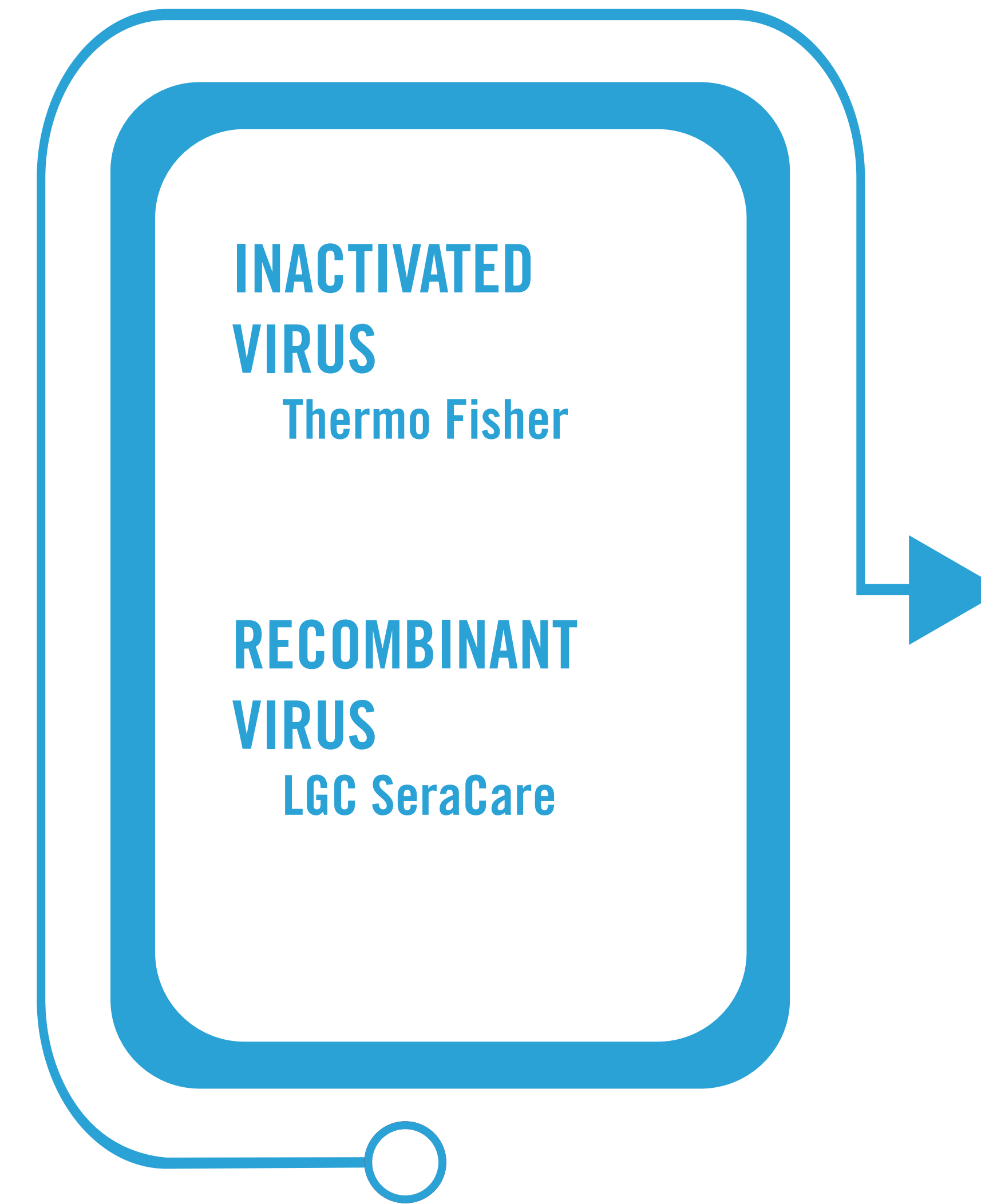


## POOLED CLINICAL SAMPLES\*



# HARMONIZED CALIBRATION

## CALIBRANTS



# CLINICAL TESTS

## PARTICIPATING LABS

