

# Effects of Isocaloric Early vs. Late Time-Restricted Eating on Insulin Sensitivity, Cardiometabolic Health, and Internal Circadian Time in Women with Overweight or Obesity

## A Randomized Clinical Trial

**Beeke Peters<sup>1,2,3,4</sup>, Julia Schwarz<sup>2,5</sup>, Bettina Schuppelius<sup>2,6,7</sup>, Agnieszka Ottawa<sup>2,7</sup>, Daniela A. Koppold<sup>8,9,10,11</sup>, Daniela Weber<sup>12</sup>, Nico Steckhan<sup>9,11,13</sup>, Knut Mai<sup>2,4,7</sup>, Tilman Grune<sup>6,12,15</sup>, Andreas F.H. Pfeiffer<sup>4,7</sup>, Andreas Michalsen<sup>8,9</sup>, Achim Kramer<sup>14</sup>, Olga Pivovarova-Ramich<sup>1,2,4,7\*</sup>**

<sup>1</sup>Department of Molecular Metabolism and Precision Nutrition, German Institute of Human Nutrition Potsdam-Rehbruecke, 14558 Nuthetal, Germany;

<sup>2</sup>Research Group Molecular Nutritional Medicine and Department of Human Nutrition, German Institute of Human Nutrition Potsdam-Rehbruecke, 14558 Nuthetal, Germany;

<sup>3</sup>Institute of Human Nutrition and Food Science, Faculty of Agriculture and Food Sciences, Christian-Albrecht-University Kiel, 24118 Kiel, Germany;

<sup>4</sup>German Center for Diabetes Research, 85764 München-Neuherberg, Germany;

<sup>5</sup>Institute of Agricultural and Nutritional Sciences, Martin Luther University Halle-Wittenberg, 06120 Halle, Germany;

<sup>6</sup>Institute of Nutritional Science, University of Potsdam, 14469 Potsdam, Germany;

<sup>7</sup>Department of Endocrinology and Metabolism, Charité – Universitätsmedizin Berlin, Corporate Member of Freie Universität Berlin and Humboldt-Universität zu Berlin, 10117 Berlin, Germany;

<sup>8</sup>Institute of Social Medicine, Epidemiology and Health Economics, Charité-Universitätsmedizin Berlin, Corporate Member of Freie Universität Berlin and Humboldt-Universität zu Berlin, 10117 Berlin, Germany;

<sup>9</sup>Department of Internal Medicine and Nature-Based Therapies, Immanuel Hospital Berlin, 14109 Berlin, Germany;

<sup>10</sup>Charité Competence Center for Traditional and Integrative Medicine (CCCTIM), Charité – Universitätsmedizin Berlin, Corporate Member of Freie Universität Berlin, Humboldt-Universität zu Berlin and Berlin Institute of Health, Berlin, Germany;

<sup>11</sup>Department for Prevention and Care of Diabetes, Department of Medicine III, Faculty of Medicine Carl Gustav Carus, Technische Universität Dresden, 01307 Dresden, Germany;

<sup>12</sup>Department of Molecular Toxicology, German Institute of Human Nutrition Potsdam-Rehbruecke, 14558 Nuthetal, Germany;

**NOTE:** This preprint reports new research that has not been certified by peer review and should not be used to guide clinical practice.

<sup>13</sup>Digital Health - Connected Healthcare, Hasso Plattner Institute, University of Potsdam, 14482 Potsdam, Germany;

<sup>14</sup>Laboratory of Chronobiology, Institute for Medical Immunology, Charité-Universitätsmedizin Berlin, Corporate Member of Freie Universität Berlin and Humboldt-Universität zu Berlin, 10117 Berlin, Germany;

<sup>15</sup>Department of Physiological Chemistry, Faculty of Chemistry, University of Vienna, 1090 Vienna, Austria.

**Short title: Isocaloric Early vs. Late Time-Restricted Eating in Women with Overweight or Obesity**

**\* Corresponding Author:**

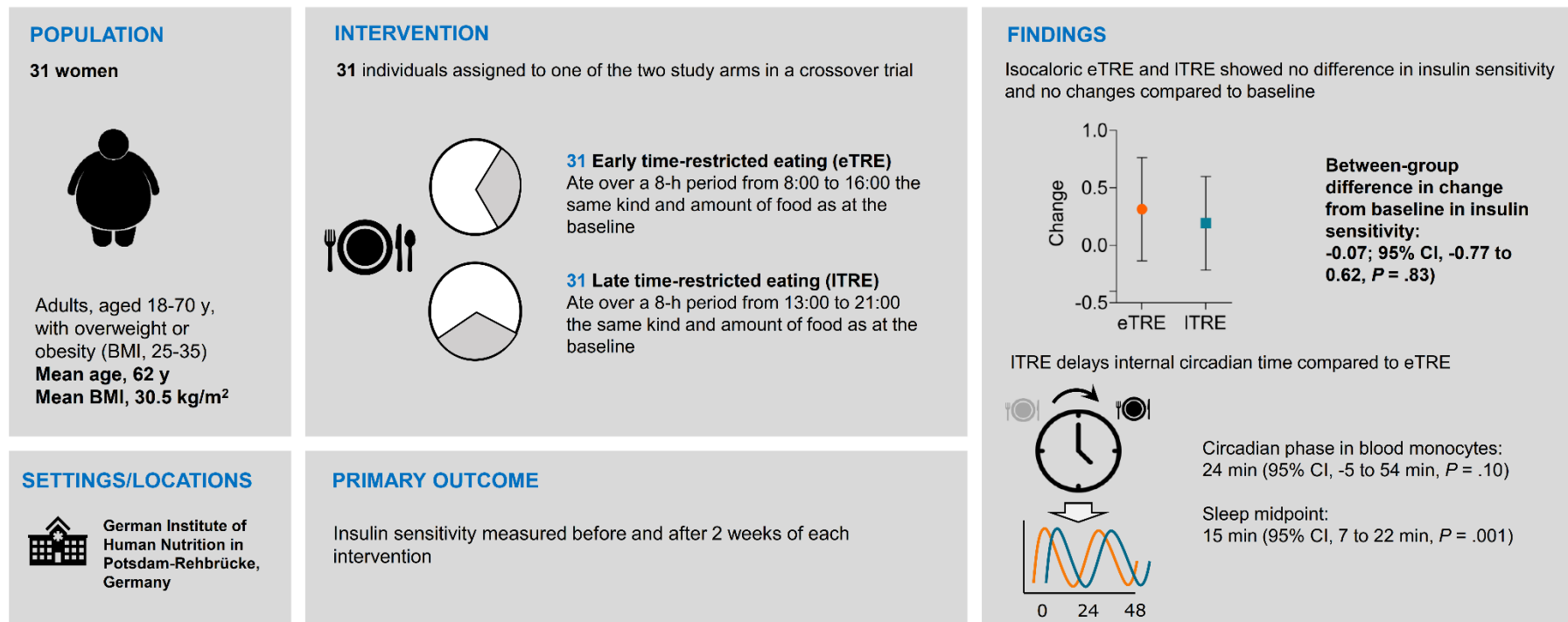
Olga Pivovarova-Ramich, German Institute of Human Nutrition Potsdam-Rehbruecke, Arthur-Scheunert-Allee 114-116, 14558 Nuthetal, Germany, Tel.: +49 33200882749, Email: [olga.ramich@dife.de](mailto:olga.ramich@dife.de)

**Keywords:** time-restricted eating, meal timing, circadian clock, obesity, diabetes, metabolism, inflammation

**Main text word count: 3972; abstract word count: 348; references: 58; tables: 2; figures: 3; supplemental tables: 7; supplemental figures: 4.**

## Graphical Abstract

### RCT: Effects of Isocaloric Early vs. Late Time-Restricted Eating on Insulin Sensitivity, Cardiometabolic Health, and Internal Circadian Time in Women with Overweight or Obesity



Peters B, Schwarz J, Schuppelius B, et al. Effects of Isocaloric Early vs. Late Time-Restricted Eating on Insulin Sensitivity, Cardiometabolic Health, and Internal Circadian Time in Women with Overweight and Obesity.

## Abstract

**IMPORTANCE** It is unclear whether time-restricted eating (TRE) induces cardiometabolic benefits independently of the reduction in calorie intake and whether its effects depend on the timing of the eating window.

**OBJECTIVE** The main objective was to determine whether 8-hour TRE alters insulin sensitivity in an isocaloric setting. The secondary objective was to compare effects of early (eTRE) vs. late TRE (ITRE) on cardiometabolic outcomes and internal circadian time.

**DESIGN, SETTING, AND PARTICIPANTS** The study was a randomized 10-week crossover trial conducted at the German Institute of Human Nutrition Potsdam-Rehbruecke, Germany, between March 2020 to December 2021. Participants were non-diabetic women with overweight or obesity, aged 18 to 70 years.

**INTERVENTIONS** All participants underwent two 2-week isocaloric interventions with a restriction of the eating period to 8 hours: (i) early in the day (eTRE: 8:00-16:00 hr) and (ii) late in the day (ITRE: 13:00-21:00 hr).

**MAIN OUTCOMES AND MEASURES** The primary outcome was insulin sensitivity assessed by an oral glucose tolerance test. Secondary outcomes included levels of glucose, lipids, adipokines, cytokines, oxidative stress markers, and internal circadian phase.

**RESULTS** 31 female participants (mean (SD) BMI of 30.5 (2.9) and median [IQR] age of 62 [53-65] years) completed the trial. Timely adherence was 96.5 % in eTRE and 97.7 % in ITRE. Food records showed a minor daily calorie deficit in eTRE (-167 kcal) but not in ITRE. Insulin sensitivity did not differ between eTRE and ITRE (-0.07; 95% CI, -0.77 to 0.62,  $P = .83$ ) and showed no within-intervention changes (eTRE: 0.31; 95% CI, -0.14 to 0.76,  $P = .11$ ; ITRE: 0.19; 95% CI, -0.22 to 0.60,  $P = .25$ ). 24-hour glucose levels, lipid, inflammatory, and oxidative stress markers showed no clinically meaningful between- and within-intervention differences. ITRE delayed the circadian phase in blood monocytes (24 min; 95% CI, -5 to 54 min,  $P = .10$ ) and sleep midpoint (15 min; 95% CI, 7 to 22 min,  $P = .001$ ) compared to eTRE.

**CONCLUSIONS AND RELEVANCE** In a nearly isocaloric setting, neither eTRE nor lTRE improve insulin sensitivity or other cardiometabolic traits despite significant changes in the circadian system.

**TRIAL REGISTRATION** ClinicalTrials.gov Identifier: NCT04351672

---

## Key Points

**QUESTIONS** Does isocaloric time-restricted eating (TRE) alter insulin sensitivity and cardiometabolic traits? Do effects differ for early and late TRE?

**FINDINGS** In this randomized crossover trial that included 31 women with overweight and obesity, isocaloric early and late TRE showed no clinically meaningful differences in insulin sensitivity, mean 24-hour glucose or other glycemic, lipid, inflammatory, and oxidative stress markers between and within-interventions. Late TRE delayed the circadian clock phase and sleep timing compared to early TRE.

**MEANING** In an isocaloric setting, neither early nor late TRE influence insulin sensitivity or cardiometabolic traits despite shifting internal circadian time.

---

## Introduction

Time-restricted eating (TRE) is a form of intermittent fasting characterized by a daily eating window of 10 hours or less and a prolonged fasting period of at least 14 hours over the course of the day<sup>1</sup>. TRE is becoming increasingly popular as a simple dietary approach to control body weight and improve metabolic health<sup>2,3</sup>. In rodents, TRE is protective against diet-induced obesity and associated metabolic disturbances<sup>4,5</sup>. Similarly, human trials on TRE have highlighted numerous beneficial cardiometabolic effects, such as improved fasting<sup>3,6,7</sup> and mean daily<sup>3,8</sup> glucose levels, insulin resistance<sup>3,7,9</sup> or insulin sensitivity<sup>10,11</sup>, triglyceride<sup>6,8,12,13</sup>, total<sup>13,14</sup> and LDL cholesterol<sup>14</sup> levels, and blood pressure<sup>2,14,15</sup> as well as moderate body weight<sup>8,14,16-18</sup> and body fat reduction<sup>7,14,18</sup>. Therefore, beyond its effects on body weight, TRE represents a promising approach to combat insulin resistance and diabetes.

However, results of TRE trials are inconsistent<sup>19,20</sup> and require stronger clinical trial evidence<sup>21</sup> to answer several practically relevant questions. Especially, it is unclear whether metabolic improvements are induced by the restriction of the daily eating duration itself, by accompanying caloric restriction (and respective weight loss), or by the combination of both factors. Indeed, most TRE trials did not carefully monitor energy intake and/or other potential cofounders. Therefore, we conducted a clinical trial to investigate whether 8-hour TRE can improve insulin sensitivity and other cardiometabolic parameters in an isocaloric setting. We precisely controlled timely adherence, dietary composition, calorie intake, physical activity, and sleep timing during the TRE intervention.

The secondary objective of the trial was to compare the effects of eating early (eTRE) vs. late (ITRE) in the day during the TRE intervention. Although most clinical studies suggest additional benefits of eTRE<sup>2,3,10,22</sup>, which might be explained by circadian rhythms of key metabolic processes<sup>20,23</sup>, trials that directly compare eTRE and ITRE are very limited<sup>8,24,25</sup>. Based on previous research, we hypothesized that an isocaloric TRE would improve insulin sensitivity and cardiometabolic health compared to baseline and that eTRE would be more effective than ITRE.

## Methods

### Participants

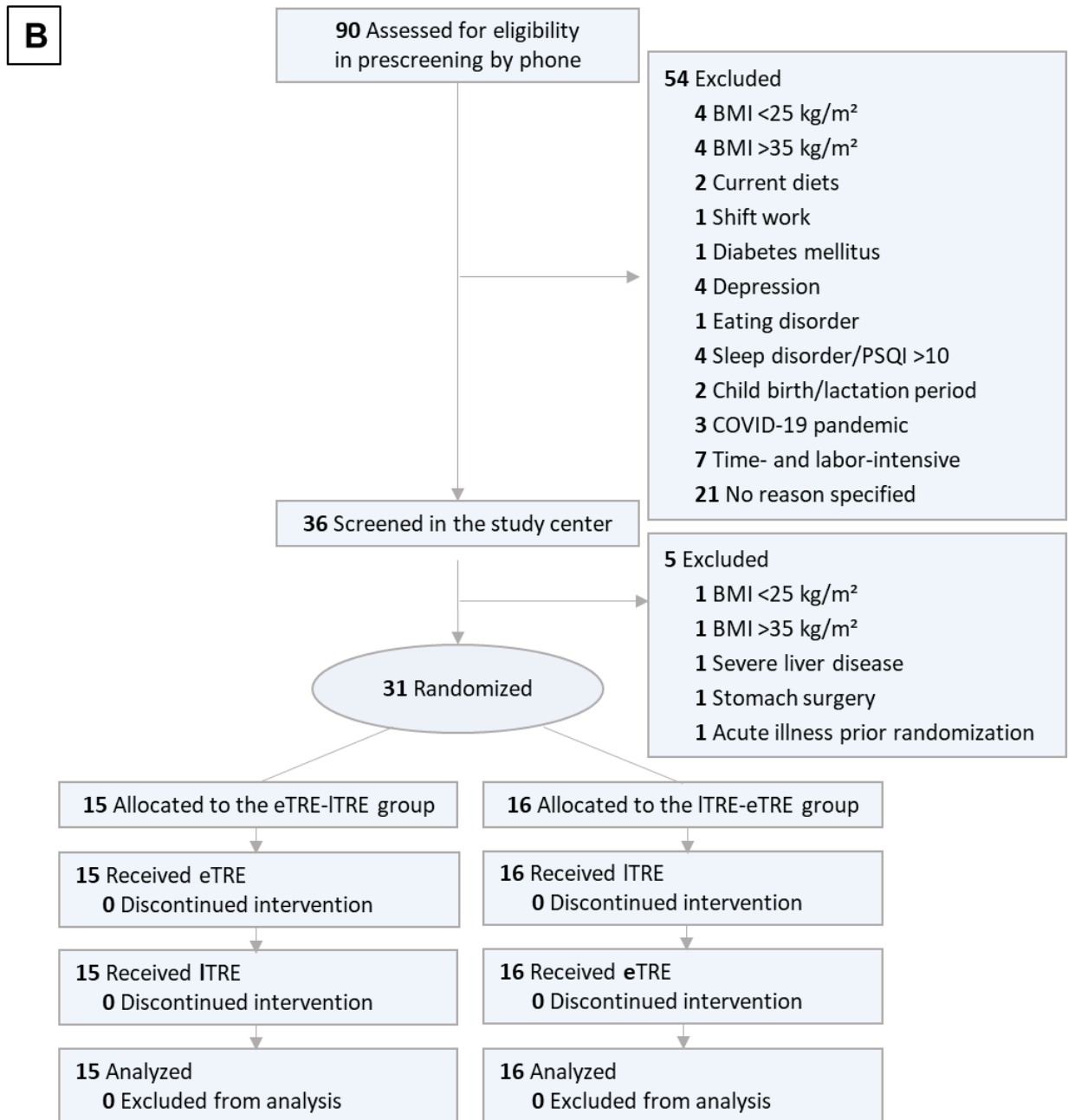
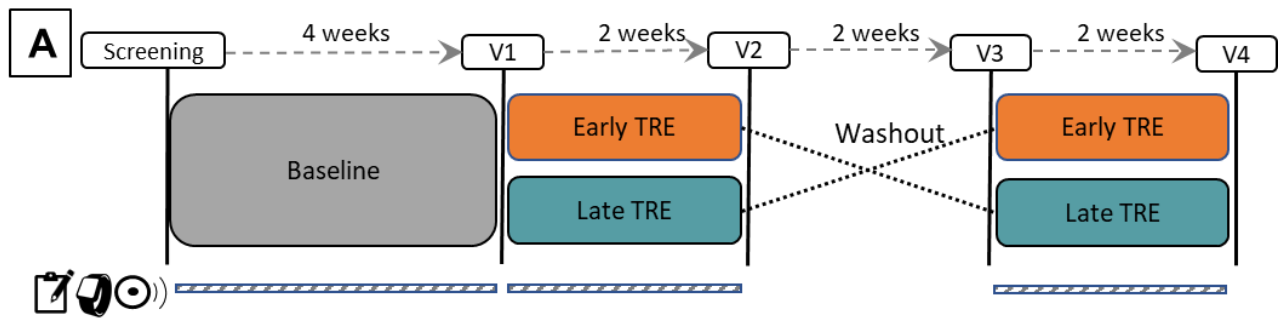
Participants with overweight or obesity from the Berlin-Brandenburg area, Germany, were recruited between January 2020 and December 2021 through flyers, posters, newspaper advertisements, and ads websites. Applicants were eligible if they were female, aged 18 to 70 years, had a body mass index (BMI) between 25 and 35 kg/m<sup>2</sup>, stable body weight within the past 3 months, and good sleep quality. They were excluded if they had diabetes or other severe diseases, traveled across multiple time zones, practiced shift work or TRE before the study commencement, as described in **eMethods in Supplement 1**. This trial was approved by the Ethical Committee of the University of Potsdam, Germany (EA No. 8/2019). All participants provided written informed consent prior to the study participation. The trial protocol has been published previously<sup>19</sup>. The statistical analysis plan is included in **Supplement 2**.

### **Trial Design and Randomization**

The ChronoFast study was a 10-week randomized crossover trial including two 2-week dietary intervention periods: (1) eTRE (8-hour eating window between 8:00 and 16:00 hr) and (2) ITRE (8-hour eating window between 13:00 and 21:00 hr), preceded by a 4-week baseline period and separated by a 2-week washout period<sup>19</sup> (**Figure 1A**). Participants were randomly allocated to the eTRE-ITRE or ITRE-eTRE study arms based on their BMI and age using the computed minimization method (MinimPy Software)<sup>26</sup>.

### **Time-Restricted Eating Interventions**

During the baseline (run-in) period, the participants followed their usual eating habits, including their habitual eating times. In the TRE intervention periods, the participants were asked to maintain their usual kind and amount of food, and only limit the eating window duration to 8 h per day, depending on the predefined time frames for eTRE and ITRE. Only water, non-caloric drinks (e.g., tea and black coffee), low-caloric diet sodas, mints, or chewing gum with sweeteners were allowed in limited amounts. In the washout phase, participants were asked to return to their habitual eating window. Participants were also counseled to maintain their habitual physical activity and sleep times throughout the entire trial duration. See **eMethods in Supplement 1** for more details.





---

## Figure 1. Study Design and Participant Flow Diagram.

A, study design. The ChronoFast study was a 10-week randomized crossover trial including two 2-week dietary intervention periods: (1) early time-restricted eating (eTRE: 8-hour eating window between 8:00 and 16:00 hr) and (2) late time-restricted eating (ITRE: 8-hour eating window between 13:00 and 21:00 hr), preceded by a 4-week baseline period and separated by a 2-week washout period. Prior to baseline, participants were pre-screened by phone and completed comprehensive screening at the study center to determine eligibility. Eligible participants were randomly allocated to the eTRE-ITRE or ITRE-eTRE study arms based on their BMI and age. During the study center visits (V1-4) before and after each intervention, glycemic and other cardiometabolic parameters were assessed in a fasting state and in an oral glucose tolerance test. During the 14 days of the baseline and both TRE intervention periods, continuous glucose monitoring (CGM), actigraphy, food and sleep diaries were conducted. B, CONSORT diagram describing a number of participants throughout the study, from enrollment to completion.

### Food Intake, Physical Activity, and Sleep Monitoring

Energy intake, macronutrient composition, and eating times were measured by digital or handwritten food records, and physical activity was assessed by actigraphy for 14 consecutive days during baseline and both TRE intervention periods at the same time with CGM. Sleep times were assessed by sleep diaries, as described in **eMethods in Supplement 1**. TRE intervention adherence was assessed based on: 1) duration of the eating window being less than 8 hours; 2) adherence to the prescribed eating time  $\pm$  30 minutes; 3) unchanged energy intake; 4) unchanged macronutrient composition.

### Outcome Measures

The primary outcome was insulin sensitivity assessed by the Matsuda index in the oral glucose tolerance test (OGTT). Secondary outcomes were glucose levels in OGTT, mean 24-hour glucose, hormones of glucose metabolism, insulin secretion and beta-cell function indices, as well as blood pressure, levels of lipids, liver enzymes, adipokines, and cytokines assessed after the overnight fast. Additional outcomes included anthropometric parameters and body composition, hunger and satiety scores and hormones, parameters of intervention adherence (eating times, calorie intake, macronutrient composition), physical activity, and sleep. The exploratory outcomes were the expression of metabolic and inflammatory genes in peripheral mononuclear blood cells (PBMC) and the internal circadian phase. Outcomes were assessed before and after eTRE and ITRE interventions or during baseline, eTRE, and ITRE periods.

### **Glucose Metabolism Parameters**

Blood samples were collected after the overnight fast and during a 75g OGTT. Glucose levels, hormones of glucose metabolism (insulin, C-peptide, glucagon, and hemoglobin A1c (HbA1c)) were measured as described in **eMethods in Supplement 1**. Insulin sensitivity (Matsuda index), insulin secretion (insulinogenic index) and beta-cell function (disposition index) were assessed using OGTT. Mean 24-hour glucose level was assessed by continuous glucose monitoring (CGM) for 14 consecutive days within the baseline, eTRE and ITRE periods; indices for glycemic variability were analyzed using EasyGV© software<sup>27</sup> (**eMethods in Supplement 1**).

### **Cardiometabolic Parameters, Adipokines, Cytokines, and Oxidative Stress Markers**

Blood pressure, lipid levels, and liver enzymes were measured using standard procedures. Adipokines (adiponectin, leptin) and inflammatory markers (interleukin 6 (IL-6), tumor necrosis factor alpha (TNF $\alpha$ ), monocyte chemoattractant protein 1 (MCP-1, also known as CCL2)) were assessed by commercial enzyme-linked immunosorbent assays (ELISA). Oxidative stress markers (malondialdehyde, 3-nitrotyrosine, and protein carbonyls) were measured as described in **eMethods in Supplement 1**.

### **Anthropometric Measurements, Body Composition, and Blood Pressure**

Anthropometric assessments, including measurements of weight, height, waist and hip circumferences, and body composition, were performed following an overnight fast as described in **eMethods in Supplement 1**.

### **Gene Expression and Circadian Phase in Blood Monocytes**

Gene expression was measured in PBMC by quantitative real-time PCR (**eTable 1 in Supplement 1**). The circadian phase was assessed in CD14+ blood monocytes using BodyTime assay<sup>28</sup> (**eMethods in Supplement 1**).

### **Statistical analysis**

Data analyses were performed with SPSS 28.0 software (SPSS, Chicago, IL) using 2-sided tests with  $\alpha = .05$ . All analyses were intention-to-treat. For the comparison of two groups, either a paired Student's t-test or the Wilcoxon signed rank test was used, depending on the data distribution and accordingly to the statistical analysis plan (**Supplement 2**). See **eMethods in Supplement 1** for more details.

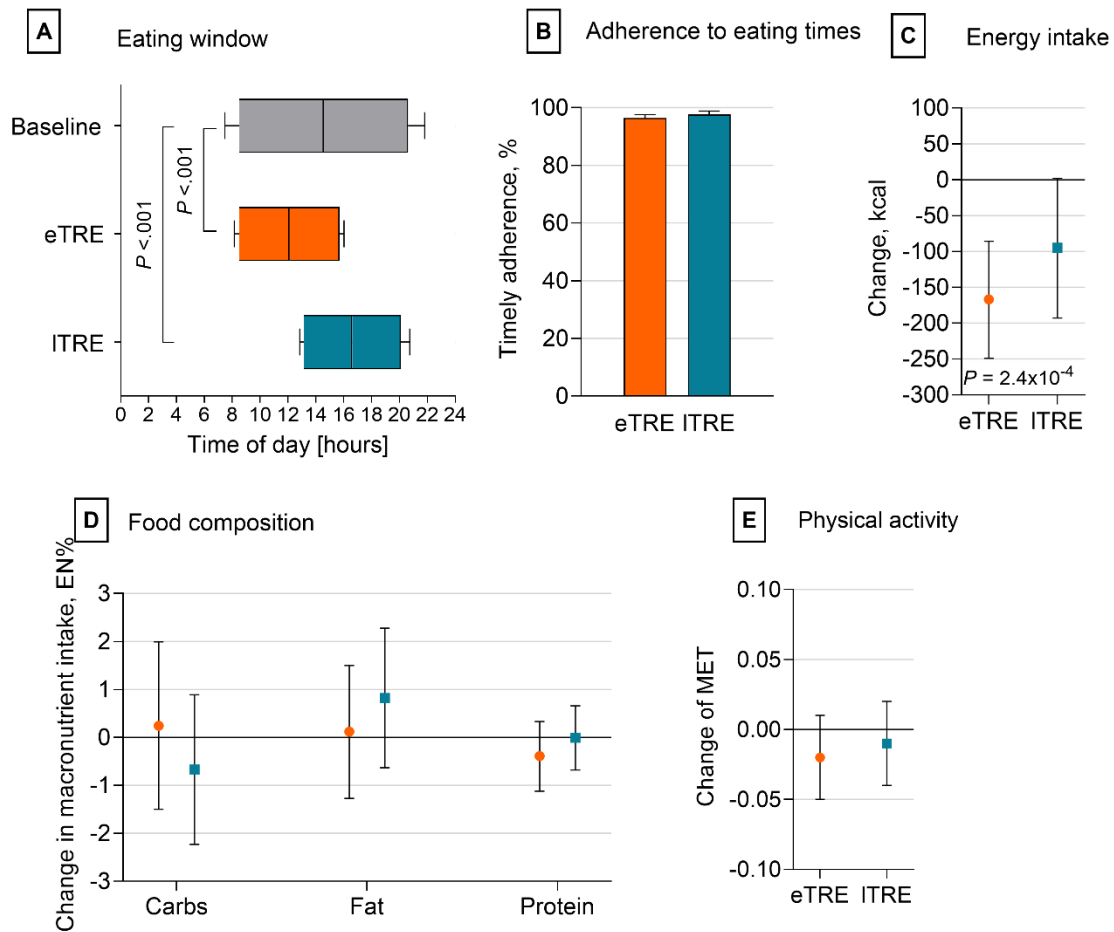
## Results

### Participants Characteristics and Study Flow

We screened 90 and enrolled 31 participants, of whom 15 were allocated to the eTRE-ITRE and 16 to the ITRE-eTRE study arms (**Figure 1B**). Participants had a mean (SD) BMI of 30.5 (2.9) and median (IQR) age of 62 (53-65) years. 18 participants showed a normal (NGT), and 13 - an impaired fasting glucose or impaired glucose tolerance (IFG/IGT). All participants were female, White, and of Caucasian ethnicity (**Table 1**). Despite the COVID-19 pandemic, there were no dropouts after randomization, and all 31 participants completed the study. Final analysis included 31 subjects. No serious adverse events possibly related to the intervention were reported (**eAppendix in Supplement 1**).

### Adherence to TRE Interventions and Study Protocol

All participants showed high adherence to the 8-hour restricted eating window during the TRE interventions. During the baseline, they ate within a mean (SD) time period of 12:06 (1:35) hours. The eating duration was mean (SD) of 7:09 (0:32) hours in eTRE and of 6:57 (0:50) hours in ITRE (**Figure 2A, eFigure 1 in Supplement 1**). Adherence to the prescribed eating timing was high, with a mean (SD) of 96.5% (6.3%) in eTRE and 97.7% (6.1%) in ITRE, according to the food record analysis (**Figure 2B**). Energy intake remained unchanged in ITRE but decreased minimally in eTRE (-167 kcal; 95% CI, -249 to -86 kcal;  $P = 2.4 \times 10^{-4}$ ) compared to the baseline (**Figure 2C**). No changes in percentage of carbohydrate, fat, and protein intake, as well as in physical activity levels, were found in both TRE interventions compared to the baseline (**Figure 2D-E, eTable 2 in Supplement 1**).



**Figure 2. Adherence to eTRE and ITRE Regimes**

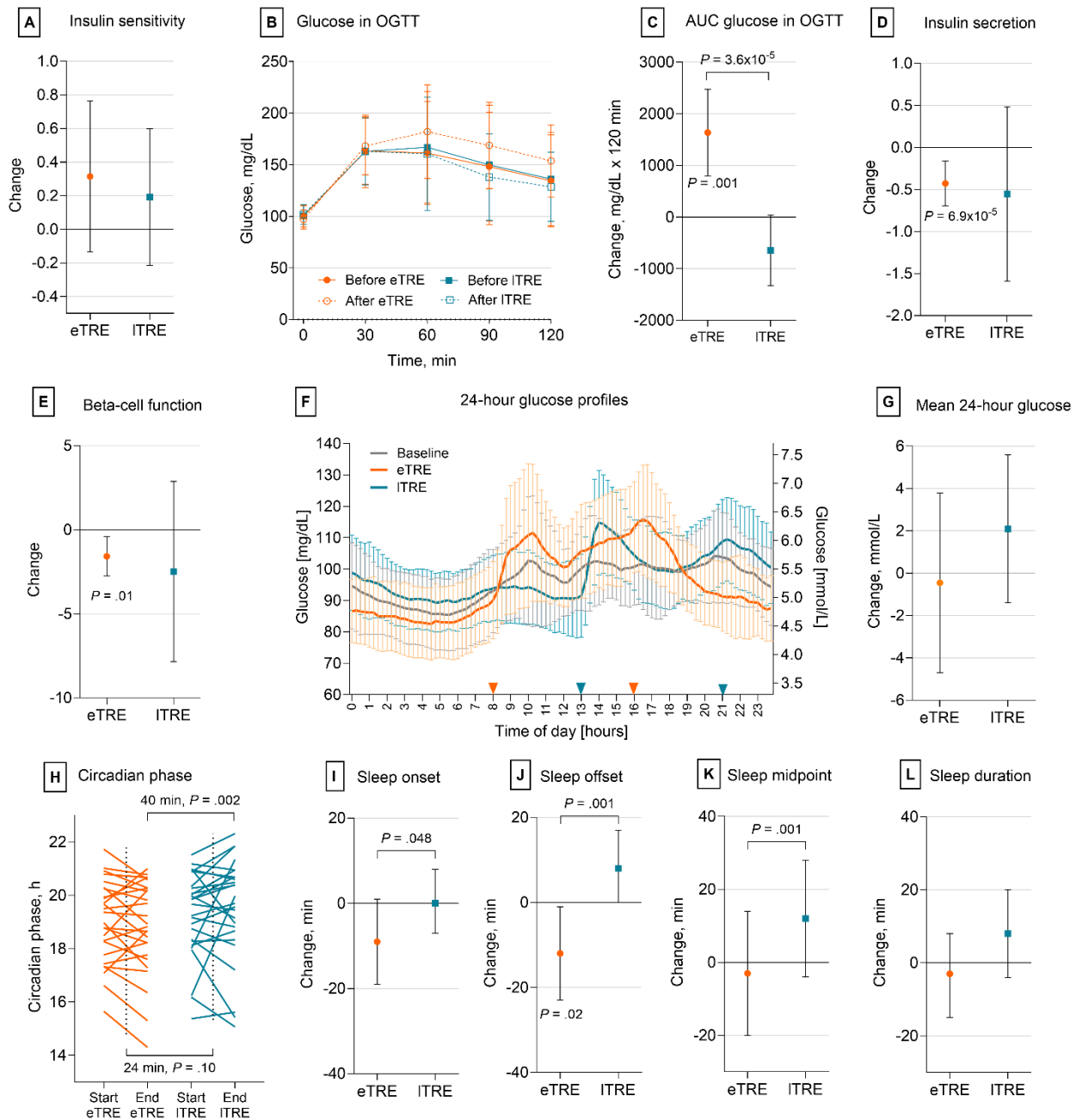
A, Shown are the times of day (mean [SD]) when participants began eating (left end of box and left whisker) and stopped eating (right end of box and right whisker) in the baseline phase, eTRE and ITRE intervention phases. The vertical line within the boxes indicates the midpoint of the eating window (averaged across all participants). Participants reduced their habitual eating duration under 8-hours with a difference to the baseline of 4:57 hours (95% CI, -5:32 to -4:21 hr,  $P < .001$ ) in eTRE and of 5:08 hours (95% CI, -5:47 to -4:29 hr,  $P < .001$ ) in ITRE ( $P$ -values are shown left on the graph). B, Timely adherence, defined as a percentage of the adherent timing of eTRE and ITRE to specified times (eTRE: 8 AM to 4 PM  $\pm$  30 min and ITRE: 1 PM to 9 PM  $\pm$  30 min), was high within both interventions. Data are shown as means [SD] (bars and whiskers). C, Displayed are changes in energy intake compared to the baseline demonstrating a decrease within eTRE. Data are shown as means with 95% CI. D, Food composition defined as macronutrient intake remained unchanged in eTRE and ITRE. Data presenting changes are shown as means with 95% CI. E, Physical activity defines as MET remained unchanged in eTRE and ITRE. Data presenting changes are shown as means with 95% CI.

## Body Weight and Composition

Participants showed a minimal weight loss of -1.08 kg (95% CI, -0.77 to -1.40 kg;  $P = 9.1 \times 10^{-8}$ ) within eTRE and -0.44 kg (95% CI, -0.74 to -0.13;  $P = .01$ ) within ITRE resulting in a between-intervention difference of 0.65 kg (95% CI, 0.27 to 1.03 kg;  $P = .002$ ) (**Table 2**). BMI decreased in eTRE (-0.45 kg/m<sup>2</sup>; 95% CI, -0.56 to -0.33 kg/m<sup>2</sup>;  $P = 5.4 \times 10^{-9}$ ) and ITRE (-0.12 kg/m<sup>2</sup>; 95% CI, -0.21 to -0.03 kg/m<sup>2</sup>;  $P = .01$ ) with a between-diet difference of 0.33 kg/m<sup>2</sup> (95% CI, 0.21 to 0.44 kg/m<sup>2</sup>;  $P = 2.2 \times 10^{-6}$ ). Fat mass loss (-0.61 kg, 95% CI, -1.01 to -0.22 kg;  $P = .002$ ) and lean mass loss (-0.57 kg; -1.11 to -0.04 kg;  $P = .04$ ) were observed within eTRE only (**Table 2**).

## Insulin Sensitivity and Glucose Tolerance

Insulin sensitivity, the primary outcome in this study, showed no differences between the TRE interventions (-0.07; 95% CI, -0.77 to 0.62,  $P = .83$  for ITRE vs. eTRE) as well as within eTRE (0.31; 95% CI, -0.14 to 0.76,  $P = .11$ ) and ITRE (0.19; 95% CI, -0.22 to 0.60,  $P = .25$ ) (**Figure 3A**). AUC glucose in OGTT increased within eTRE (1636; 95% CI, 798 to 2475,  $P = .001$ ), and its changes differed between interventions (-2175; 95% CI, -3088 to 1262,  $P = 3.6 \times 10^{-5}$ ) (**Figure 3B, C**). This suggests a minor decline in glucose tolerance within eTRE and might be explained by a decrease of insulin secretion relative to glucose, as indicated by a decline in the insulinogenic index (-0.43; 95% CI, -0.69 to -0.16;  $P = 6.9 \times 10^{-5}$ ; **Figure 3D, eFigure 2 in Supplement 1**). This was also reflected by a decrease in the disposition index, which characterizes insulin secretion in combination with insulin sensitivity (-1.58; 95% CI, -2.75 to -0.41,  $P = .14$ ; **Figure 3E**), and by higher free fatty acids in the OGTT after eTRE (**eFigure 2 in Supplement 1**). We further observed a decrease of glucagon in eTRE without differences between interventions (**eFigure 2 in Supplement 1**). Despite minor changes in glucose tolerance in OGTT, mean 24-hour glucose assessed by CGM showed no differences between TRE interventions and no changes within eTRE and ITRE compared to baseline (**Figure 3F, G**). Glucose variability assessed in CGM showed an increase of intra-day variation and the percentage of time in the high-glucose range within eTRE and a decrease of inter-day variation within ITRE (**eMethods and eTable 3 in Supplement 1**).



**Figure 3. Effects of eTRE and ITRE on Glucose Homeostasis.**

A, Plotted are changes in insulin sensitivity in eTRE and ITRE. Data are shown as means with 95% CI. B, Presented are glucose values before and at the 30, 60, 90, 120 min of OGTT before and after the eTRE and ITRE interventions (mean [SD]). C, Depicted are changes in AUC glucose in OGTT which increased within eTRE and differed between interventions. Data are shown as means with 95% CI. D, Changes of the insulin secretion (assessed by the insulinogenic index) showed a decline within eTRE compared to the value before intervention. Data are shown as means with 95% CI. E, Changes of the beta-cell function (assessed by the disposition index) showed a decline within eTRE compared to the value before intervention. Data are shown as means with 95% CI. F, Plotted are 24-hour glucose profiles assessed by CGM over 14 days in

the baseline phase, eTRE and ITRE intervention phase. Solid lines and whiskers represent the mean glucose and SD, respectively, summarized all assessed days for 30 participants. G, Plotted are the mean 24-hour glucose values assessed by CGM over 14 days in the baseline phase, eTRE and ITRE intervention phase. Data are shown as means with 95% CI. H, Circadian phase before and after eTRE and ITRE as assessed by BodyTime assay in blood monocytes showed between-intervention changes with a delay for 24 min for ITRE compared to eTRE (dashed black lines). Comparison of samples collected after both interventions revealed a delay for 40 min after ITRE (n=26). Orange and petrol lines bind individual circadian phase values before and after eTRE and ITRE, respectively. The circadian phase corresponds to the BodyTime-predicted DLMO. I, Sleep onset moved later in ITRE compared to eTRE. J, Sleep offset moved later in ITRE compared to eTRE. K, Sleep midpoint moved later in ITRE compared to eTRE. L, Sleep duration showed no changes in eTRE and ITRE. I-J: Data are shown as means with 95% CI.

### Cardiometabolic Parameters

None of the TRE interventions affected systolic and diastolic blood pressure, total cholesterol, LDL cholesterol, and triglyceride levels (**Table 2**). However, the decline in HDL cholesterol was detected within both eTRE (-0.10 mmol/L; 95% CI, -0.14 to -0.06 mmol/L;  $P = 6.0 \times 10^{-5}$ ) and ITRE (-0.07 mmol/L; 95% CI, -0.11 to -0.03 mmol/L,  $P = .003$ ), with no difference between the interventions. Both the eTRE (-3.58 U/L; 95% CI, -5.60 to -1.56 U/L,  $P = 4.0 \times 10^{-5}$ ) and the ITRE (-3.46 U/L; 95% CI -6.14 to -0.79 U/L,  $P = .001$ ) induced a decrease in  $\gamma$ -glutamyltransferase (GGT) but not in aspartate aminotransferase (ALT) and alanine aminotransferase (AST) (**Table 2**).

### Adipokines, Inflammatory Markers, and Oxidative Stress Markers

We further investigated levels of adipokines leptin and adiponectin, as well as inflammatory markers IL-6, TNF $\alpha$ , MCP-1, and C-reactive protein (hsCRP), which strongly contribute to obesity pathogenesis. Leptin levels declined within both eTRE (-8080 pg/mL; 95% CI -15995 to -166 pg/mL,  $P = .02$ ) and ITRE (-10763 pg/mL; 95% CI -19035 to -2492 pg/mL;  $P = .001$ ) without differences between interventions. Adiponectin levels were also reduced within eTRE (-0.94 pg/mL; 95% CI -1.54 to 0.34 pg/mL,  $P = .003$ ), with this change differing from ITRE (1.28 pg/mL; 95% CI -2.36 to -0.20 pg/mL,  $P = .04$ ) (**eFigure 3 in Supplement 1**). The analyzed inflammatory markers were not affected by either eTRE or ITRE intervention (**Table 2, eFigure 3 in Supplement 1**). Levels of oxidative stress markers malondialdehyde, 3-nitrotyrosine, and protein carbonyls were not changed in any TRE intervention (**eTable 4 in Supplement 1**).

## Hunger and Satiety

As assessed by a visual analog scale, participants showed lower desire to eat, hunger, and capacity to eat during the ITRE in the morning, but not in the evening compared to the eTRE whereas satiety did not differ at any time of day (**eTable 5 in Supplement 1**). In agreement with this, changes in the satiety hormone PYY differed between interventions (34.7 pg/mL; 95% CI, 18.2 to 51.3 pg/mL,  $P = 1.9 \times 10^{-4}$ ), showing a decrease within eTRE (-13.0 pg/mL; 95% CI -24.5 to -1.5 pg/mL,  $P = .01$ ) and increase within ITRE (22.5 pg/mL; 95% CI 13.1 to 31.9 pg/mL,  $P = 1.6 \times 10^{-4}$ ). Levels of the hunger hormone ghrelin remained unchanged in both TRE interventions (**eTable 5 in Supplement 1**).

## Analysis in participants with impaired glucose metabolism

Additional analysis in a subcohort with impaired glucose metabolism (IFG/IFT) revealed no differences in the insulin sensitivity and mean 24-hour glucose between and within TRE interventions. Other secondary glycemic, cardiometabolic, inflammatory, and oxidative stress outcomes also showed effects similar to the whole cohort (**eTable 6, 7 in Supplement 1**).

## PBMC Gene Expression

To elucidate molecular pathway potentially induced by TRE, we then measured the expression of genes coding inflammatory markers (*IL6*, *TNF $\alpha$* , *CCL2*, *IL10*), as well as key metabolic genes (*CPT1A*, *PDK4*, *SIRT1*, *FASN*, *LPL*), and clock genes (*CLOCK*, *BMAL1*, *PER1*, *PER2*, *NR1D1*, *CRY1*, *CRY2*, *RORA*) in PBMC samples. Core clock genes *PER1* (-0.30; 95% CI, -0.57 to -0.03,  $P = .03$ ) and *NR1D1* (-0.24; 95% CI, -0.48 to -0.01,  $P = .02$ ), which are strongly involved in metabolic regulation<sup>29</sup>, declined their expression levels within eTRE without between-intervention difference. Other genes showed no TRE-induced expression changes (**eFigure 4 in Supplement 1**).

## Sleep Timing and Circadian Phase

Considering the results of clock gene expression in PBMC and literature data on the effect of food intake on circadian clocks<sup>25,30-32</sup>, we tested whether the eating time during the TRE affects internal circadian clocks. Circadian phase was defined by the predicted dim-light melatonin onset (DLMO) and assessed using the BodyTime assay in blood monocytes<sup>28</sup>. TRE-



induced circadian phase changes showed a between-intervention difference with a tendency to the delay for 24 min (-5 to 54 min,  $P = .10$ ) in ITRE. When comparing samples collected at the end of both interventions, the circadian phase after ITRE was 40 minutes later than that after eTRE (18 to 62 min,  $P = .002$ ) (**Figure 3H**). In agreement with this, the self-reported sleep onset (9 min; 0 to 18 min,  $P = .048$ ), offset (20 min; 9 to 32 min,  $P = .001$ ), and midpoint (15 min; 7 to 22 min,  $P = .001$ ) all occurred later in ITRE as compared to eTRE. Sleep duration was not altered by eTRE and ITRE (**Figure 3I-L**).

## Discussion

---

We conducted a randomized crossover trial comparing 8-hour early vs. late TRE in an isocaloric setting. Using several digital approaches<sup>33,34</sup> for 24-hour monitoring, we confirmed high adherence to both interventions as evidenced by successful reductions of eating window under 8 hours, timely compliance being over 96%, unchanged dietary composition, and physical activity.

The main finding of this study is that neither eTRE nor ITRE improve insulin sensitivity or induce other clinically meaningful changes of cardiometabolic and inflammatory traits in nearly isocaloric conditions. This contradicts our study hypothesis and most published data on TRE, which show beneficial effects on insulin sensitivity<sup>3,7,9 10,11</sup>, glucose<sup>3,6,7 3,8</sup> and lipid<sup>6,8,12-14</sup> levels, as well as body weight and body fat<sup>7,8,14,16-18</sup>, whereas eTRE is suggested to be more effective compared to the late or mid-day TRE<sup>2,24,25,35</sup>. In contrast, long eating windows<sup>16</sup>, late evening<sup>16,36</sup> and night<sup>37,38</sup> eating, which are common in modern society, are associated with an risk of obesity, diabetes, and other metabolic diseases, at least partly due to the desynchronization of circadian clocks<sup>39,40</sup>.

However, the beneficial cardiometabolic effects of TRE might be rather induced by TRE-mediated calorie restriction and not by the shortening of the eating window itself. Indeed, spontaneous calorie restriction up to 30% due to the restriction of the eating window was reported in several TRE trials<sup>10,13-15,18</sup>. In this trial, the intensive dietary counselling ensured unchanged energy intake in ITRE, whereas in eTRE spontaneous calorie restriction could not be completely avoided. Energy intake in eTRE minimally decreased by 167 kcal, which approximately corresponds two hard-boiled eggs. This can happen, for example, if subjects skip high-fat or sweet snacks or alcohol drinks often consumed in the evening. Both eTRE and

ITRE showed minor weight loss of 1.08 kg and 0.44 kg, respectively, which was more pronounced in eTRE, and the fat loss was observed in eTRE only.

Despite unavoidable minor decrease of energy intake in eTRE and minimal weight loss within both interventions, insulin sensitivity, the primary outcome, showed no between- and within-intervention difference. This finding aligns with a recent study in subjects with type 2 diabetes, which reported no improvement in insulin sensitivity after three weeks of 10-hour self-selected TRE<sup>39</sup>. However, it contradicts another study that demonstrated an improvement in insulin sensitivity in 8 overweight men with prediabetes after 5 weeks of eTRE<sup>2</sup>, although a weight loss was minor in both studies (1.0 kg and 1.4 kg, respectively) and similar to our trial. Thus, timing or duration of eating window as well as difference in study populations may contribute to the data heterogeneity.

We further highlighted that the 24-hour mean glucose levels, which reflected glycemic control in real-life conditions over 14 days and has a high clinical relevance, did not show any differences within or between the TRE interventions. This contrasts to the glucose and insulin changes, which were detected in the experimental OGTT setting and may be explained by the design limitations as discussed below. Finally, the absence of TRE-induced changes in most lipid, inflammatory, and oxidative stress markers (as confirmed at the transcriptional level in PBMC) supports the idea that calorie restriction, but not shortening of the eating timing itself, is crucial to induce positive metabolic effects of TRE.

Because our trial observed no effects of TRE on most analyzed parameters in an isocaloric setting, we were unable to compare effects of eTRE and ITRE. When calorie intake is spontaneously reduced, metabolic effects of eTRE are apparently more beneficial compared to ITRE<sup>2,3,10,22</sup>, but only few trials directly compared eTRE and ITRE<sup>8,24,25</sup>. Xie et al.<sup>24</sup> compared early and mid-day TRE in a parallel-arm study and revealed that early eating is more effective for improving of insulin sensitivity, fasting glucose, body mass, and inflammation. Similarly, Zhang et al.<sup>25</sup> reported improvements in mean glucose, fasting insulin, and insulin resistance after the eTRE, whereas leptin was reduced after both eTRE and ITRE. Notably, our trial observed similar effects on leptin, confirming TRE's influence on adipose tissue. In contrast, a single published cross-over study comparing 7-day eTRE and ITRE<sup>8</sup> found no significant difference in improvements in postprandial glucose and fasting triglycerides between the two eating windows. Recent research suggests that the most beneficial eating timing may vary for

individuals based on chronotype, genetic, social and other personal factors<sup>41-43</sup>, highlighting the need for further investigation.

The second key finding of this study is that alterations of eating timing shift internal circadian time. We found that shifting the eating window by 5 hours from eTRE to ITRE induces 1) a delay in the circadian phase as estimated by transcript biomarkers in blood monocytes (BodyTime assay), which strongly correlates with DLMO<sup>28</sup>; 2) expression changes of core clock genes *PER1* and *NR1D1* at a single time point (which can also be caused by the clock phase shift); 3) a delay in sleep timing, which is also controlled by the circadian system<sup>44</sup>. This finding confirms in humans that food intake acts as a *zeitgeber* for circadian clocks as shown in multiple animal studies<sup>30,31</sup> and very few human trials<sup>32,45,46</sup>. The study of Koppold-Liebscher et al.<sup>32</sup>, which used the same monocyte assay as in our study, observed transient shifts of circadian phase after religious intermittent fasting, characterized by eating at unusual time before sunrise and after the sunset; this effect disappeared 3 months after the return to usual eating time. Wehrens et al.<sup>45</sup> demonstrated a delay of *PER2* mRNA rhythms in adipose tissue by about one hour after the 5-hour delay in meal times, whereas our study observed a 40-minute shift in samples collected after the ITRE vs. eTRE. Finally, a very recent trial showed that eTRE can advance sleep in late sleepers<sup>46</sup>. The regulation of peripheral, and possibly also of central, clocks by the timing of food intake may be mediated by postprandial changes of nutrients, metabolites, and hormones<sup>47</sup>, with insulin apparently playing an essential role<sup>48</sup>. Our data suggest that meal timing-based strategies may help resynchronize and adjust circadian rhythms in individuals with circadian rhythm disturbances, shift workers, and travelers.

Finally, this trial elucidated an altered hunger regulation by the eating timing during the TRE. In eTRE, subjects felt more hunger, desire and capacity to eat in the morning than in ITRE. This can be explained by longer fasting after the last meal in eTRE at the day before the visit and by a habituation effect to the early eating window, so that the body “expects” the food intake early in the day<sup>49</sup>. Our study also revealed a novel hormonal mechanism which might contribute to the hunger regulation by the TRE timing. Whereas the ghrelin levels did not differ, the morning levels of anorectic hormone PYY increased within ITRE and declined in eTRE, suggesting a role of PYY in the observed lower hunger in the morning after the ITRE. Whether the eating/fasting timing during TRE alters the circadian rhythm of PYY secretion<sup>50,51</sup>

in humans and how it can be related to possible changes in the gut microbiome<sup>52</sup> needs to be investigated in the future.

## Limitations

Our study has several limitations. The duration of the trial was short based on our previous trials demonstrated marked metabolic changes even after one week of the isocaloric dietary intervention<sup>53,54</sup>. In planning the 2-week interventions, we aimed to achieve the maximally accurate 24-hour monitoring of food intake, glucose levels, physical activity, and sleep, and to ensure isocaloric conditions through intensive dietary counselling. Despite these efforts, we could not fully avoid a minor caloric reduction in eTRE. We enrolled exclusively women to ensure cohort homogeneity, which limits the generalizability of our findings to men. The OGTT was conducted at the same time of day, at 9:30 hr, to avoid diurnal variation of glucose tolerance<sup>55,56</sup>. However, this resulted in a longer fasting before the test in eTRE compared to ITRE, which may partially explain the observed decrease in glucose tolerance within eTRE, because longer fasting can reduce insulin secretion<sup>57,58</sup>. Finally, we did not perform indirect calorimetry due to hygienic standards during the COVID-19 pandemic, and therefore, we could not compare energy expenditure between eTRE and ITRE.

## Conclusion

---

In a nearly isocaloric setting, neither eTRE nor ITRE improve insulin sensitivity or other glycemic, cardiometabolic, and inflammatory traits despite significant changes in circadian system. This trial highlights the importance of calorie restriction in positive metabolic effects of TRE. Carefully controlled studies should investigate whether the timing of eating influences TRE outcomes in a hypocaloric setting. Further, future research should focus on precision nutrition to identify who will benefit more from eTRE or ITRE interventions.

## ARTICLE INFORMATION

**Author Contributions:** Olga Pivovarova-Ramich and Beeke Peters had full access to all of the data in the study and take responsibility for the integrity of the data and the accuracy of the data analysis.

*Concept and design:* Michalsen, Koppold, Pfeiffer, Kramer, Pivovarova-Ramich.

*Acquisition, analysis, or interpretation of data:* Peters, Schuppelius, Schwarz, Weber, Kramer, Pivovarova-Ramich.

*Drafting of the manuscript:* Peters, Pivovarova-Ramich.

*Critical revision of the manuscript for important intellectual content:* All authors.

*Statistical analysis:* Peters, Steckhan, Pivovarova-Ramich.

*Obtained funding:* Pivovarova-Ramich.

*Administrative, technical, or material support:* Michalsen, Koppold, Steckhan, Arnrich, Mai, Grune, Kramer, Pivovarova-Ramich.

*Supervision:* Pivovarova-Ramich.

**Conflict of Interest Disclosures:** No disclosures were reported.

**Funding/Support:** This study was supported by grants from the German Science Foundation (DFG RA 3340/3-1, project number 434112826, and RA 3340/4-1, project number 530918029 to O.P.-R.), of the German Diabetic Association (Allgemeine Projektförderung of DDG, 2020 to O.P.-R.; Adam-Heller-Projektförderung of DDG/Abbott, 2021, to O.P.-R.); of the European Association of Study of Diabetes (EASD Morgagni Prize, 2020 to O.P.-R.).

**Role of the Funder/Sponsor:** The funders were not involved in the design and conduct of the study; collection, management, analysis, and interpretation of the data; preparation, review, or approval of the manuscript; and decision to submit the manuscript for publication.

**Meeting Presentation:** Results from preliminary analyses of selected outcomes were presented at the Diabetes Congresses 2021, 2022, 2023, and 2024 in Berlin, Germany; EASD Congress 2022 in Stockholm, Sweden; Fasting Congress 2023 in Berlin, Germany; Society for Research on Biological Rhythms (SRBR) Meeting 2024 in San Juan, Puerto Rico. Full analyses, which included the whole dataset, were conducted later.

**Data Sharing Statement:** See **Supplement 3**.

**Additional Contributions:** We acknowledge all study participants for their cooperation. We gratefully thank Manuela Bergmann for the support in the clinical trial preparation, Juliane Roeder, Melanie Hannemann, and Lothar Napieralski for their work with study subjects, Katja Treu and Christiana Gerbracht for the help in the preparation of nutritional counselling, Marion Urbich and Nadine Huckauf for excellent technical assistance in the sample analysis. We also thank all students contributed to the clinical trial and Maya Patterson for language proof-reading of the manuscript.

## References

---

1. Koppold DA, Breinlinger C, Hanslian E, et al. International consensus on fasting terminology. *Cell metabolism*. Aug 6 2024;36(8):1779-1794 e4. doi:10.1016/j.cmet.2024.06.013
2. Sutton EF, Beyl R, Early KS, Cefalu WT, Ravussin E, Peterson CM. Early Time-Restricted Feeding Improves Insulin Sensitivity, Blood Pressure, and Oxidative Stress Even without Weight Loss in Men with Prediabetes. *Cell metabolism*. Jun 5 2018;27(6):1212-1221 e3. doi:10.1016/j.cmet.2018.04.010
3. Jamshed H, Beyl RA, Della Manna DL, Yang ES, Ravussin E, Peterson CM. Early Time-Restricted Feeding Improves 24-Hour Glucose Levels and Affects Markers of the Circadian Clock, Aging, and Autophagy in Humans. *Nutrients*. May 30 2019;11(6)doi:10.3390/nu11061234
4. Chaix A, Zarrinpar A, Miu P, Panda S. Time-restricted feeding is a preventative and therapeutic intervention against diverse nutritional challenges. *Cell metabolism*. Dec 2 2014;20(6):991-1005. doi:10.1016/j.cmet.2014.11.001
5. Hatori M, Vollmers C, Zarrinpar A, et al. Time-restricted feeding without reducing caloric intake prevents metabolic diseases in mice fed a high-fat diet. *Cell metabolism*. Jun 6 2012;15(6):848-60. doi:10.1016/j.cmet.2012.04.019
6. Chow LS, Manoogian ENC, Alvear A, et al. Time-Restricted Eating Effects on Body Composition and Metabolic Measures in Humans who are Overweight: A Feasibility Study. *Obesity (Silver Spring)*. May 2020;28(5):860-869. doi:10.1002/oby.22756
7. Moro T, Tinsley G, Bianco A, et al. Effects of eight weeks of time-restricted feeding (16/8) on basal metabolism, maximal strength, body composition, inflammation, and cardiovascular risk factors in resistance-trained males. *Journal of translational medicine*. Oct 13 2016;14(1):290. doi:10.1186/s12967-016-1044-0
8. Hutchison AT, Regmi P, Manoogian ENC, et al. Time-Restricted Feeding Improves Glucose Tolerance in Men at Risk for Type 2 Diabetes: A Randomized Crossover Trial. *Obesity (Silver Spring)*. May 2019;27(5):724-732. doi:10.1002/oby.22449
9. Cienfuegos S, Gabel K, Kalam F, et al. Effects of 4- and 6-h Time-Restricted Feeding on Weight and Cardiometabolic Health: A Randomized Controlled Trial in Adults with Obesity. *Cell Metab*. Sep 1 2020;32(3):366-378.e3. doi:10.1016/j.cmet.2020.06.018
10. Jones R, Pabla P, Mallinson J, et al. Two weeks of early time-restricted feeding (eTRF) improves skeletal muscle insulin and anabolic sensitivity in healthy men. *Am J Clin Nutr*. Oct 1 2020;112(4):1015-1028. doi:10.1093/ajcn/nqaa192
11. Sutton EF, Beyl R, Early KS, Cefalu WT, Ravussin E, Peterson CM. Early Time-Restricted Feeding Improves Insulin Sensitivity, Blood Pressure, and Oxidative Stress Even without Weight Loss in Men with Prediabetes. *Cell Metab*. Jun 5 2018;27(6):1212-1221.e3. doi:10.1016/j.cmet.2018.04.010
12. Cai H, Qin YL, Shi ZY, et al. Effects of alternate-day fasting on body weight and dyslipidaemia in patients with non-alcoholic fatty liver disease: a randomised controlled trial. *BMC Gastroenterol*. Dec 18 2019;19(1):219. doi:10.1186/s12876-019-1132-8
13. Zeb F, Wu X, Chen L, et al. Effect of time-restricted feeding on metabolic risk and circadian rhythm associated with gut microbiome in healthy males. *Br J Nutr*. Jun 14 2020;123(11):1216-1226. doi:10.1017/S0007114519003428
14. Wilkinson MJ, Manoogian ENC, Zadourian A, et al. Ten-Hour Time-Restricted Eating Reduces Weight, Blood Pressure, and Atherogenic Lipids in Patients with Metabolic Syndrome. *Cell metabolism*. Jan 7 2020;31(1):92-104 e5. doi:10.1016/j.cmet.2019.11.004
15. Gabel K, Marcell J, Cares K, et al. Effect of time restricted feeding on the gut microbiome in adults with obesity: A pilot study. *Nutr Health*. Jun 2020;26(2):79-85. doi:10.1177/0260106020910907
16. Gill S, Panda S. A Smartphone App Reveals Erratic Diurnal Eating Patterns in Humans that Can Be Modulated for Health Benefits. *Cell metabolism*. Nov 3 2015;22(5):789-98. doi:10.1016/j.cmet.2015.09.005

17. Gabel K, Hoddy KK, Haggerty N, et al. Effects of 8-hour time restricted feeding on body weight and metabolic disease risk factors in obese adults: A pilot study. *Nutr Healthy Aging*. Jun 15 2018;4(4):345-353. doi:10.3233/NHA-170036
18. Cienfuegos S, Gabel K, Kalam F, et al. Effects of 4- and 6-h Time-Restricted Feeding on Weight and Cardiometabolic Health: A Randomized Controlled Trial in Adults with Obesity. *Cell metabolism*. Sep 1 2020;32(3):366-378 e3. doi:10.1016/j.cmet.2020.06.018
19. Peters B, Koppold-Liebscher DA, Schuppelius B, et al. Effects of Early vs. Late Time-Restricted Eating on Cardiometabolic Health, Inflammation, and Sleep in Overweight and Obese Women: A Study Protocol for the ChronoFast Trial. *Front Nutr*. 2021;8:765543. doi:10.3389/fnut.2021.765543
20. Schuppelius B, Peters B, Ottawa A, Pivovarova-Ramich O. Time Restricted Eating: A Dietary Strategy to Prevent and Treat Metabolic Disturbances. *Front Endocrinol (Lausanne)*. 2021;12:683140. doi:10.3389/fendo.2021.683140
21. Bhasin S. Time-Restricted Eating to Improve Health-A Promising Idea in Need of Stronger Clinical Trial Evidence. *JAMA Intern Med*. Sep 1 2022;182(9):963-964. doi:10.1001/jamainternmed.2022.3038
22. Ravussin E, Beyl RA, Poggiogalle E, Hsia DS, Peterson CM. Early Time-Restricted Feeding Reduces Appetite and Increases Fat Oxidation But Does Not Affect Energy Expenditure in Humans. *Obesity (Silver Spring)*. Aug 2019;27(8):1244-1254. doi:10.1002/oby.22518
23. Poggiogalle E, Jamshed H, Peterson CM. Circadian regulation of glucose, lipid, and energy metabolism in humans. *Metabolism: clinical and experimental*. Jul 2018;84:11-27. doi:10.1016/j.metabol.2017.11.017
24. Xie Z, Sun Y, Ye Y, et al. Randomized controlled trial for time-restricted eating in healthy volunteers without obesity. *Nat Commun*. Feb 22 2022;13(1):1003. doi:10.1038/s41467-022-28662-5
25. Zhang LM, Liu Z, Wang JQ, et al. Randomized controlled trial for time-restricted eating in overweight and obese young adults. *iScience*. Sep 16 2022;25(9):104870. doi:10.1016/j.isci.2022.104870
26. Saghaei M. An overview of randomization and minimization programs for randomized clinical trials. *J Med Signals Sens*. Jan 2011;1(1):55-61.
27. Hill NR, Oliver NS, Choudhary P, Levy JC, Hindmarsh P, Matthews DR. Normal reference range for mean tissue glucose and glycemic variability derived from continuous glucose monitoring for subjects without diabetes in different ethnic groups. *Diabetes technology & therapeutics*. Sep 2011;13(9):921-8. doi:10.1089/dia.2010.0247
28. Wittenbrink N, Ananthasubramaniam B, Munch M, et al. High-accuracy determination of internal circadian time from a single blood sample. *The Journal of clinical investigation*. Aug 31 2018;128(9):3826-3839. doi:10.1172/JCI120874
29. Panda S. Circadian physiology of metabolism. *Science*. Nov 25 2016;354(6315):1008-1015. doi:10.1126/science.aah4967
30. Damiola F, Le Minh N, Preitner N, Kornmann B, Fleury-Olela F, Schibler U. Restricted feeding uncouples circadian oscillators in peripheral tissues from the central pacemaker in the suprachiasmatic nucleus. Research Support, Non-U.S. Gov't. *Genes & development*. Dec 1 2000;14(23):2950-61.
31. Mukherji A, Kobiita A, Damara M, et al. Shifting eating to the circadian rest phase misaligns the peripheral clocks with the master SCN clock and leads to a metabolic syndrome. *Proceedings of the National Academy of Sciences of the United States of America*. Dec 01 2015;112(48):E6691-8. doi:10.1073/pnas.1519807112
32. Koppold-Liebscher DA, Klatte C, Demmrich S, et al. Effects of Daytime Dry Fasting on Hydration, Glucose Metabolism and Circadian Phase: A Prospective Exploratory Cohort Study in Baha'i Volunteers. *Front Nutr*. 2021;8:662310. doi:10.3389/fnut.2021.662310
33. Baum Martinez I, Peters B, Schwarz J, et al. Validation of a Smartphone Application for the Assessment of Dietary Compliance in an Intermittent Fasting Trial. *Nutrients*. Sep 7 2022;14(18):doi:10.3390/nu14183697

34. Pappé CL, Peters B, Dommisch H, Woelber JP, Pivovarovva-Ramich O. Effects of reducing free sugars on 24-hour glucose profiles and glycemic variability in subjects without diabetes. *Front Nutr.* 2023;10:1213661. doi:10.3389/fnut.2023.1213661
35. Jamshed H, Steger FL, Bryan DR, et al. Effectiveness of Early Time-Restricted Eating for Weight Loss, Fat Loss, and Cardiometabolic Health in Adults With Obesity: A Randomized Clinical Trial. *JAMA Intern Med.* Sep 1 2022;182(9):953-962. doi:10.1001/jamainternmed.2022.3050
36. Gupta NJ, Kumar V, Panda S. A camera-phone based study reveals erratic eating pattern and disrupted daily eating-fasting cycle among adults in India. *PLoS one.* 2017;12(3):e0172852. doi:10.1371/journal.pone.0172852
37. Antunes LC, Levandovski R, Dantas G, Caumo W, Hidalgo MP. Obesity and shift work: chronobiological aspects. *Nutr Res Rev.* Jun 2010;23(1):155-68. doi:10.1017/S0954422410000016
38. Scheer FA, Hilton MF, Mantzoros CS, Shea SA. Adverse metabolic and cardiovascular consequences of circadian misalignment. *Proceedings of the National Academy of Sciences of the United States of America.* Mar 17 2009;106(11):4453-8. doi:10.1073/pnas.0808180106
39. Andriessen C, Fealy CE, Veelen A, et al. Three weeks of time-restricted eating improves glucose homeostasis in adults with type 2 diabetes but does not improve insulin sensitivity: a randomised crossover trial. *Diabetologia.* Oct 2022;65(10):1710-1720. doi:10.1007/s00125-022-05752-z
40. Franzago M, Alessandrelli E, Notarangelo S, Stuppia L, Vitacolonna E. Chrono-Nutrition: Circadian Rhythm and Personalized Nutrition. *Int J Mol Sci.* Jan 29 2023;24(3)doi:10.3390/ijms24032571
41. McHill AW, Phillips AJ, Czeisler CA, et al. Later circadian timing of food intake is associated with increased body fat. *Am J Clin Nutr.* Nov 2017;106(5):1213-1219. doi:10.3945/ajcn.117.161588
42. Garaulet M, Lopez-Minguez J, Dashti HS, et al. Interplay of Dinner Timing and MTNR1B Type 2 Diabetes Risk Variant on Glucose Tolerance and Insulin Secretion: A Randomized Crossover Trial. *Diabetes care.* Mar 1 2022;45(3):512-519. doi:10.2337/dc21-1314
43. Peters B, Vahlhaus J, Pivovarovva-Ramich O. Meal timing and its role in obesity and associated diseases. *Frontiers in endocrinology.* 2024;15:1359772. doi:10.3389/fendo.2024.1359772
44. Ashbrook LH, Krystal AD, Fu YH, Ptacek LJ. Genetics of the human circadian clock and sleep homeostat. *Neuropsychopharmacology.* Jan 2020;45(1):45-54. doi:10.1038/s41386-019-0476-7
45. Wehrens SMT, Christou S, Isherwood C, et al. Meal Timing Regulates the Human Circadian System. *Current biology : CB.* Jun 19 2017;27(12):1768-1775 e3. doi:10.1016/j.cub.2017.04.059
46. Blum DJ, Hernandez B, Zeitzer JM. Early time-restricted eating advances sleep in late sleepers: a pilot randomized controlled trial. *J Clin Sleep Med.* Dec 1 2023;19(12):2097-2106. doi:10.5664/jcsm.10754
47. Chaudhari A, Gupta R, Makwana K, Kondratov R. Circadian clocks, diets and aging. *Nutr Healthy Aging.* Mar 31 2017;4(2):101-112. doi:10.3233/NHA-160006
48. Tuvia N, Pivovarovva-Ramich O, Murahovschi V, et al. Insulin directly regulates the circadian clock in adipose tissue. *Diabetes.* Jul 5 2021;doi:10.2337/db20-0910
49. Epstein LH, Carr KA. Food reinforcement and habituation to food are processes related to initiation and cessation of eating. *Physiology & behavior.* Oct 1 2021;239:113512. doi:10.1016/j.physbeh.2021.113512
50. Rynders CA, Morton SJ, Bessesen DH, Wright KP, Jr., Broussard JL. Circadian Rhythm of Substrate Oxidation and Hormonal Regulators of Energy Balance. *Obesity (Silver Spring).* Jul 2020;28 Suppl 1(Suppl 1):S104-S113. doi:10.1002/oby.22816
51. Maroni MJ, Capri KM, Cushman AV, et al. The timing of fasting leads to different levels of food consumption and PYY(3-36) in nocturnal mice. *Hormones (Athens).* Dec 2020;19(4):549-558. doi:10.1007/s42000-020-00221-x
52. Chambers ES, Viardot A, Psichas A, et al. Effects of targeted delivery of propionate to the human colon on appetite regulation, body weight maintenance and adiposity in overweight adults. *Gut.* Nov 2015;64(11):1744-54. doi:10.1136/gutjnl-2014-307913



53. Sucher S, Markova M, Hornemann S, et al. Comparison of the effects of diets high in animal or plant protein on metabolic and cardiovascular markers in type 2 diabetes: A randomized clinical trial. *Diabetes Obes Metab*. Jul 2017;19(7):944-952. doi:10.1111/dom.12901
  54. Frahnow T, Osterhoff MA, Hornemann S, et al. Heritability and responses to high fat diet of plasma lipidomics in a twin study. *Scientific reports*. Jun 16 2017;7(1):3750. doi:10.1038/s41598-017-03965-6
  55. Kessler K, Hornemann S, Petzke KJ, et al. The effect of diurnal distribution of carbohydrates and fat on glycaemic control in humans: a randomized controlled trial. *Scientific reports*. Mar 08 2017;7:44170. doi:10.1038/srep44170
  56. Saad A, Dalla Man C, Nandy DK, et al. Diurnal pattern to insulin secretion and insulin action in healthy individuals. *Diabetes*. Nov 2012;61(11):2691-700. doi:10.2337/db11-1478
  57. Jorgensen SW, Hjort L, Gillberg L, et al. Impact of prolonged fasting on insulin secretion, insulin action, and hepatic versus whole body insulin secretion disposition indices in healthy young males. *American journal of physiology Endocrinology and metabolism*. Feb 1 2021;320(2):E281-E290. doi:10.1152/ajpendo.00433.2020
  58. Nas A, Mirza N, Hagele F, et al. Impact of breakfast skipping compared with dinner skipping on regulation of energy balance and metabolic risk. *Am J Clin Nutr*. Jun 2017;105(6):1351-1361. doi:10.3945/ajcn.116.151332
-

**Table 1. Baseline Characteristics**

	All participants (n = 31)	eTRE - ITRE group (n = 15)	ITRE - eTRE group (n =16)
<b>Variable</b>			
<b>Demographic characteristics</b>			
Age, median (IQR), y	62 (53-65)	62 (53-65)	60 (52-65)
Sex, female:male	31:0	15:0	16:0
Race, white:other	31:0	15:0	16:0
Ethnicity: Caucasian:other	31:0:0	15:0:0	16:0:0
<b>Body composition</b>			
Weight, mean (SD), kg	82.5 (8.4)	83.2 (8.8)	81.9 (8.2)
Fat mass, mean (SD), kg	34.1 (6.6)	35.0 (6.4)	33.3 (6.9)
Lean mass, mean (SD), kg	48.4 (5.4)	48.2 (4.7)	48.6 (6.1)
Waist circumference, mean (SD), cm	99 (9)	101 (9)	98 (9)
BMI, mean (SD), kg/m <sup>2</sup>	30.5 (2.9)	30.7 (2.9)	30.2 (3.0)
<b>Glucose homeostasis</b>			
Fasting glucose, median (IQR), mg/dL	90 (87-96)	88 (82-96)	91 (89-102)
HbA1c, mean (IQR), % <sup>a</sup>	5.50 (5.22-5.70)	5.41 (5.16-5.68)	5.50 (5.23-5.70)
Glycemic state by OGTT, NGT:IFG/IGT	18:13	9:6	9:7
<b>Cardiometabolic parameters</b>			
Systolic blood pressure, median (IQR), mm Hg	117 (110-135)	120 (112-132)	116 (108-137)

Diastolic blood pressure, median (IQR), mm Hg	75 (68-79)	75 (70-79)	74 (66-80)
Total cholesterol, mean (SD), mmol/L	5.63 (0.92)	5.60 (0.89)	5.66 (0.97)
HDL cholesterol, median (IQR), mmol/L	1.46 (1.33-1.65)	1.51 (1.31-1.76)	1.46 (1.34-1.63)
LDL cholesterol, mean (SD), mmol/L	3.47 (0.82)	3.41 (0.80)	3.54 (0.86)
Triglycerides, mean (SD), mmol/L	1.35 (0.62)	1.30 (0.52)	1.40 (0.72)
ASAT, mean (SD), U/L	32.2 (6.6)	31.2 (5.8)	33.1 (7.4)
ALAT, median (IQR), U/L	22.1 (19.8-27.6)	22.2 (17.7-26.3)	22.0 (19.8-28.3)
GGT, median (IQR), U/L	21.2 (18.0-25.3)	19.5 (15.8-24.1)	23.8 (19.6-35.9)
hsCRP, median (IQR), mg/L	1.30 (0.80-2.60)	1.30 (0.90-2.10)	1.55 (0.55-3.28)

---

#### **Eating habits and physical activity**

Eating duration, mean (SD), h:m	12:06 (1:35)	11:52 (1:28)	12:20 (1:43)
Eating start time, mean (SD), h:m	8:30 (1:03)	8:27 (0:49)	8:33 (1:15)
Eating end time, mean (SD), h:m	20:38 (1:11)	20:08 (0:56)	21:06 (1:14)
MET, mean (SD) <sup>b</sup>	1.59 (0.15)	1.63 (0.13)	1.57 (0.14)

---

#### **Internal clock and sleep timing**

Chronotype (MSFsc), early:normal:late	18:11:2	11:3:1	7:8:1
Sleep duration, mean (SD), h:m	7:53 (0:51)	7:59 (0:58)	7:47 (0:46)
Sleep onset, mean (SD), h:m	23:29 (0:54)	23:14 (0:56)	23:44 (0:49)
Sleep offset, mean (SD), h:m	7:23 (0:40)	7:14 (0:39)	7:32 (0:39)

---

Abbreviations: eTRE, early time-restricted eating; lTRE, late time-restricted eating; WHR, waist-to-hip ratio; BMI, body mass index; NGT, normal glucose tolerance; IFG, impaired fasting glucose; IGT, impaired glucose tolerance; HbA<sub>1c</sub>, hemoglobin A<sub>1c</sub>; HDL, high-density lipoprotein; hsCRP, high sensitive C-reactive protein;

LDL, low-density lipoprotein; MSFsc, the midpoint of the sleep phase on days off, corrected for sleep deprivation accumulated on work days; MET, metabolic equivalent of task.

SI conversion factors: To convert cholesterol mmol/L to mg/dL divide by 0.0259; glucose mg/dL to mmol/L multiply by 0.0555; insulin mU/L to pmol/L multiply by 6.945; triglycerides mg/dL to mmol/L multiply by 0.0113.

<sup>a</sup> One baseline value in group B (ITRE-eTRE) was not measured due to loss of the sample.

<sup>b</sup> Two baseline values for MET were excluded in all groups due to defect actigraphs.

---

**Table 2. TRE Effects on Body Composition, Glucose Homeostasis, and Cardiometabolic Parameters.**

Outcome	Change (95% CI)		Difference between			
	eTRE (n = 31)	P value	ITRE (n = 31) <sup>a</sup>	P value	ITRE vs. eTRE interventions (95% CI)	P value
<b>Body Composition</b>						
Weight, kg	-1.08 (-1.40 to -0.77)	9.1x10 <sup>-8</sup>	-0.44 (-0.74 to -0.13)	.01	0.65 (0.27 to 1.03)	.002
Fat mass, kg <sup>a</sup>	-0.61 (-1.01 to -0.22)	.002	0.02 (-0.36 to 0.39)	.92	0.65 (0.19 to 1.11)	.007
Lean mass, kg <sup>a</sup>	-0.57 (-1.11 to -0.04)	.04	-0.28 (-0.78 to 0.23)	.27	0.25 (-0.31 to 0.81)	.37
Waist circumference, cm	-0.36 (-1.65 to 0.92)	.57	0.48 (-0.97 to 1.92)	.51	0.84 (-1.21 to 2.89)	.41
BMI, kg/m <sup>2</sup>	-0.45 (-0.56 to -0.33)	5.4x10 <sup>-9</sup>	-0.12 (-0.21 to -0.03)	.01	0.33 (0.21 to 0.44)	2.3x10 <sup>-6</sup>
<b>Glucose Homeostasis</b>						
Fasting glucose, mg/dl	-0.16 (-0.31 to -0.01)	.04	0.08 (-0.02 to 0.18)	.07	0.24 (0.06 to 0.42)	.01
Fasting insulin, μU/ml	-2.25 (-3.33 to -1.17)	3.1x10 <sup>-4</sup>	-1.54 (-3.77 to 0.69)	.23	0.71 (-1.86 to 3.27)	.09
HbA1c, %	-0.01 (-0.05 to 0.03)	.73	-0.02 (-0.06 to 0.01)	.22	-0.01 (-0.06 to 0.03)	.50
<b>Cardiometabolic Parameters</b>						
Systolic blood pressure, mm Hg	0.61 (-3.41 to 4.62)	.76	4.23 (-0.05 to 8.51)	.05	2.04 (-3.46 to 7.54)	.45
Diastolic blood pressure, mm Hg	0.29 (-2.68 to 3.25)	.84	1.10 (-1.92 to 4.12)	.69	0.11 (-3.93 to 4.15)	.83
Total cholesterol, mmol/L	-0.12 (-0.32 to 0.08)	.24	-0.12 (-0.30 to 0.06)	.19	0.00 (-0.28 to 0.28)	.94
HDL cholesterol, mmol/L	-0.10 (-0.14 to -0.06)	6.0x10 <sup>-5</sup>	-0.07 (-0.11 to -0.03)	.003	0.03 (-0.04 to 0.09)	.45
LDL cholesterol, mmol/L	0.21 (-0.15 to 0.57)	.24	0.22 (-0.10 to 0.55)	.17	0.01 (-0.54 to 0.56)	.77
Triglycerides, mmol/L	0.06 (-0.08 to 0.21)	.27	-0.01 (-0.15 to 0.13)	.56	-0.07 (-0.22 to 0.08)	.34
ASAT, U/L	-0.55 (-1.77 to 0.68)	.37	-0.66 (-2.31 to 0.99)	.42	-0.12 (-2.51 to 2.27)	.90

ALAT, U/L	-1.74 (-3.71 to 0.22)	.13	-2.08 (-5.43 to 1.28)	.72	-0.34 (-4.33 to 3.66)	.56
GGT, U/L	-3.58 (-5.60 to -1.56)	4.0x10 <sup>-5</sup>	-3.46 (-6.14 to -0.79)	.001	0.11 (-2.02 to 2.24)	.59
hsCRP, mg/L	0.08 (-2.02 to 2.18)	.59	-0.07 (-0.38 to 0.24)	.61	-0.15 (-2.29 to 1.98)	.83
Beta-Hydroxybutyrate, mmol/L	0.03 (0.00 to 0.05)	.02	0.00 (-0.02 to 0.03)	.83	-0.02 (-0.05 to 0.00)	.09

---

Abbreviations: WHR, waist-to-hip ratio; BMI, body mass index; HDL, high-density lipoprotein; hsCRP, high sensitive C-reactive protein; LDL, low-density lipoprotein; ASAT, aspartate-aminotransferases; ALAT, alanine-aminotransferases; GGT, gamma-glutamyltransferases

<sup>a</sup> one eTRE and three ITRE data sets (pre and post) were excluded because of invalid bioelectrical impedance analysis

## Supplemental Online Content: Supplement 1

Peters B, Schwarz J, Schuppelius B, et al. Effects of Isocaloric Early vs. Late Time-Restricted Eating on Insulin Sensitivity, Cardiometabolic Health, and Internal Circadian Time in Women with Overweight and Obesity: A Randomized Crossover Clinical Trial.

**eMethods and eReferences.**

**eAppendix.** Adverse Events.

**eTable 1.** Primer Sequences.

**eTable 2.** Changes of Physical Activity.

**eTable 3.** Changes of Continuous Glucose Monitoring Indices.

**eTable 4.** Changes of Oxidative Stress Markers.

**eTable 5.** Feeling of Hunger and Satiety and Changes of Related Hormones.

**eTable 6.** Baseline Characteristics in Participants with Impaired Glucose Metabolism.

**eTable 7.** TRE Effects on Body Composition, Glucose Homeostasis, and Cardiometabolic Parameters in Participants with Impaired Glucose Metabolism.

**eFigure 1.** Individual Eating Timing at the Baseline and during eTRE and ITRE.

**eFigure 2.** Hormones of Glucose Homeostasis and Free Fatty Acids in Oral Glucose Tolerance Test.

**eFigure 3.** Adipokine and Cytokine Levels.

**eFigure 4.** Gene Expression in Peripheral Blood Mononuclear Cells.

This supplemental material has been provided by the authors to give readers additional information about their work.

## eMethods

**Reporting Guidelines and Informed Consent.** We followed the CONSORT reporting guidelines. The written informed consent was obtained from all study participants prior to enrollment.

**Eligibility Criteria.** Participants were excluded when they had a male sex; didn't meet the age range between 18 to 70 years; had a BMI lower than 18 kg/m<sup>2</sup> or higher than 35 kg/m<sup>2</sup>; did shift work; travelled over more than one time zone in the month prior to the study start; reported weight changes of more than 5% in the past 3 months prior to the study start; were pregnant or breastfeeding; had severe intestinal diseases; practiced special diets, e.g., intermittent fasting; had low sleep quality (Pittsburgh Sleep Quality Index<sup>1</sup> higher than 10) or sleep disorders; had diabetes type 1 or 2 or other endocrinological diseases; reported severe renal and liver diseases; reported a stroke the 6 months prior to the study start; had cancer in the 2 years prior to the study start; were on medication with glucocorticoids; had coagulation disorders; were on anticoagulant medication; reported severe anemia or systemic infections; had psychiatric diseases, addictive diseases, or depression. In the case of using other medication or food allergies, the study doctor individually considered whether study participation was possible.

**Overview of Measurements at the Baseline, Examination Days, and TRE Intervention Periods.** The ChronoFast study was a 10-week randomized crossover trial including two 2-week dietary intervention periods: (1) early time-restricted eating (eTRE) and (2) late time-restricted eating (ITRE), preceded by a 2-4-week baseline (run-in) period and separated by a 2-week washout period. Participants visited the clinical study center at the German Institute of Human Nutrition Potsdam-Rehbrücke for the initial screening as well as before and after each dietary intervention (eTRE and ITRE). Visit days began at 8:30 hr and included anthropometrical measurements, fasting blood collection, an oral glucose tolerance test (OGTT), and nutritional instruction by a dietician. During the 14 days of the baseline and both TRE intervention periods (eTRE and ITRE), continuous glucose monitoring (CGM) and actigraphy were performed, and food, sleep and weight diaries were maintained.

**Time-Restricted Eating Interventions.** During the baseline period, the participants followed their usual eating habits, including their habitual eating times. In contrast, during the TRE interventions, participants had to restrict their eating duration to 8 hours per day but consume their usual kind and amount of food. In the eTRE intervention, participants had to consume food between 8:00 and 16:00 hr, and in the ITRE, between 13:00 and 21:00 hr. During the daily 16-hour fasting period, participants had to consume non-caloric drinks only, such as water, black coffee, or tea, as well as sugar-free chewing gums or mints. Participants were free to divide their meals within the predetermined eating windows. As instruction, and to maintain their habitual daily calorie intake, food composition, and minimize body weight changes, participants received a copy of their individual 14-days food diaries from the baseline period. Within the 2-week washout period, participants were requested to return to their habitual eating behavior, including their usual eating window.

**Food Intake Documentation.** Food documentation was conducted within the baseline period and both TRE intervention periods for 14 consecutive days. Participants were asked to digitally document their food selection, amount, and time of consumption using the free smartphone



app Fddb Extender (<https://fddb.info/>)<sup>2</sup>. Participants who were not familiar with using a smartphone completed paper-based dietary records, which were then transferred to the Fddb Extender app by a study assistance. Prior to the baseline period, all participants received detailed instruction for digital or handwritten food documentation. They were requested to weigh their food whenever possible (or use household measures, e.g., glasses, cups, teaspoons), to add supplemental information (e.g., brand names) and the time of food consumption. The Fddb food database (Fddb Internetportale GmbH, <https://fddb.info/>) was used for analyzing eating timing, energy intake, and macronutrient composition as validated previously<sup>2</sup>.

**TRE Intervention Adherence.** TRE intervention adherence was assessed based on the following criteria: 1) duration of the eating window of less than 8 hours; 2) adherence to the prescribed eating time within  $\pm 30$  minutes; 3) unchanged energy intake; and 4) unchanged macronutrient composition. Participants were also asked to maintain a constant body weight throughout the study. They were instructed to record their weight daily and report any weight fluctuation of  $\geq 700$  g on 2 consecutive days. Participants were called by the dietician after 7 days of the baseline period and each TRE intervention period to promote adherence to the assigned intervention and answer questions. The Fddb Extender app enabled accurate and simple real-time monitoring<sup>2</sup> of compliance, including the adherence to the given time frames and potential weight changes. Accessing the nutrition log during the intervention allowed a dietician to intervene rapidly and contact the study subjects in case of adherence problems. For the quantification of timely adherence, the daily eating window corresponding to the period between the first and last calorie intake was assessed. All days when the subjects followed the required TRE eating time frame with a maximum deviation of  $\pm 30$  minutes were considered as compliant. Further, during the baseline and TRE intervention periods, calorie intake and macronutrient composition were carefully monitored using the Fddb app and Fddb food database.

**Anthropometric Measurements, Body Composition, and Blood Pressure.** Body weight was measured with a digital scale, and body height was measured with a stadiometer. Waist and hip circumferences were measured using a metric tape. Body composition was assessed by bioelectrical impedance analysis (BIA; Bioimpedance Analyzer Quantum S, Akern, Italy), with fat and lean mass (in kg and percentage) calculated using the related Bodygram<sup>TM</sup> software (Akern, Italy). Blood pressure was measured on the left upper arm after at least a 3-minute rest, three times, and an average value was calculated.

**Blood Sampling, Oral Glucose Tolerance Tests and OGTT indices.** Fasting blood samples were collected after an overnight fast. For the OGTT, participants consumed a syrup (ACCU-CHEK<sup>®</sup> Dextrose O.G-T., Roche Diabetes Care, Mannheim, Germany) containing 75g glucose at 9:30 hr within a 5-minute time frame. Blood samples were collected after 30, 60, 90, and 120 minutes using EDTA and serum monovettes (Sarstedt, Germany) via an intravenous catheter. To analyse incretins, 10  $\mu$ g/ml aprotinin (Roth, Germany) and 50  $\mu$ M DPP4 inhibitor (Merck Millipore, Darmstadt, Germany) were added to the blood samples. Serum and plasma samples were centrifuged at  $1,800 \times g$  for 10 min at 4°C and stored at  $-80^{\circ}\text{C}$  until analysis. In OGTT, indices of insulin sensitivity (Matsuda index), insulin secretion in response to glucose challenge

(insulinogenic index), and beta-cell function (disposition index, which characterizes insulin secretion in combination with insulin sensitivity) were calculated based on fasting and postprandial glucose and insulin levels<sup>3</sup>. The disposition index is often used as a predictor for the development of type 2 diabetes<sup>4</sup>. For glucose, free fatty acids, and hormone secretion in OGTT, areas under the curve (AUC) were determined using the trapezoidal method.

**Continuous Glucose Monitoring and Calculation of CGM Indices.** The 24h glucose profile was examined using a Freestyle Libre 2 CGM system (Abbott, Wiesbaden, Germany), which measures interstitial fluid glucose with 15 min sampling intervals during the baseline and TRE intervention periods for 14 consequent days. To prevent data loss, participants were instructed to scan the subcutaneous placed sensor on their upper arm with a portable reader. Glycemic control was described by 24-hour mean sensor glucose level (MSG) and the minimum and maximum sensor glucose level. Glycemic variability (GV) was assessed using the EasyGV® software version 9.0.R2<sup>5</sup> (available for non-commercial use at <https://www.phc.ox.ac.uk/research/resources/easygv>). For this, following intra-day indices were calculated as described previously<sup>6</sup>: (1) standard deviation (SD) of mean glucose value, indicating variation from the average glucose; (2) mean amplitude of glucose excursions (MAGE), describing the height of glucose excursions above one SD; (3) continuous overlapping net glycemic action (CONGA) as a descriptor for varying glucose levels at intervals which were previously set as 60 minutes. Mean of daily differences (MODD), representing the inter-day GV, was calculated as the average of equally timed glucose values across different days. The Easy GV tool also converted glucose data into risk scores, such as the low blood glucose index (LBGI: <0) and high blood glucose index (HBGI: >0). As additional parameter of GV, the coefficient of variation in percentage (CV%) was calculated using the formula  $SD/MSG \times 100$ <sup>6</sup>.

**Biochemical Measurements.** Measurement of routine laboratory parameters, i.e., aspartate aminotransferase, alanine aminotransferase, gamma glutamyltransferase, C-reactive protein, glucose, HbA1c, total cholesterol, HDL cholesterol, and non-esterified free fatty acids, were performed using ABX Pentra (HORIBA ABX SAS, Montpellier, France). LDL cholesterol was determined using the Friedewald equation. Circulating levels of insulin (10-1113-01), C-peptide (10-1136-01) and glucagon (10-1271-01, all from Mercodia Inc., NC, USA), MCP-1 (DCP00, Quantikine® ELISA, R&D Systems Inc., MN, USA), IL-6 (HS600C) and TNF-α (HSTA00E, both Quantikine® ELISA HS, R&D Systems Inc., MN, USA), PYY (EZHPYYT66K, Merck Millipore, Germany), adiponectin (RD195023100, Biovendor, Germany), and leptin (DLP00, Quantikine® ELISA, R&D Systems Inc., MN, USA) were quantified using commercial ELISA kits using a DSX® 4-Plate ELISA Processing System (DYNEX Technologies GmbH, Denkendorf, Germany). Ghrelin ELISA (RA194063500R, Biovendor, Germany) was conducted using a BioTek Eon™ plate reader (BioTek Instruments, Bad Friedrichshall, Germany).

**Oxidative Stress Markers.** Malondialdehyde (MDA) was measured in plasma samples after derivatization with thiobarbituric acid (TBA) and separation by reverse-phase HPLC coupled with fluorescence detection. 3-Nitrotyrosine and protein carbonyls were assessed by indirect in-house ELISA with nitrated BSA and oxidized BSA as standards, respectively, as previously described<sup>7</sup>.

**Assessment of Physical Activity and Metabolic Equivalent.** Participants were asked to maintain their habitual physical activity throughout the entire trial duration. 24-hour physical activity was monitored using a blinded accelerometer (ActiGraph wGT3X-BT, ActiGraph, Netherlands), which was placed on the wrist of the non-dominant arm for 14 days during the baseline phase and both TRE interventions. The device was to be removed only during bathing or swimming, and participants were asked to record non-wear times in a protocol. The analysis of energy expenditure, physical activity levels, and the metabolic equivalent of task (MET) was conducted using ActiLife software version 6.13.4 (ActiGraph, Netherlands).

**Chronotype assessment and Sleep Timing.** Individual chronotypes were assessed using the Munich Chronotype Questionnaire (MCTQ)<sup>8</sup> and the Horne-Östberg Morningness-Eveningness Questionnaire (MEQ)<sup>9</sup>. For chronotype classification, the MSFsc value (mid-sleep on free days corrected for the sleep debt over the working days) was used. MCF-Sc <4 was defined as an early chronotype, MCF-Sc >5 as a late chronotype, and intermediate values as a normal chronotype. Classification in MEQ also based on standardized criteria with a range from 59-69 for early chronotypes, 31-41 for late chronotypes, and intermediate values for normal chronotypes. Extreme values in MEQ outside the mentioned ranges were counted as early and late chronotypes and not classified as extreme chronotypes. In case of heterogeneous results in both questionnaires, the MCTQ was used for the final chronotype classification. Participants were asked to maintain their habitual sleep times throughout the trial. Sleep timing (sleep onset and offset) was monitored using a sleep diary for 14 days during the baseline and both intervention periods.

**Hunger and Satiety Scores.** The assessment of hunger and satiety was conducted on the last day of both TRE-intervention periods in the morning (at 8:00 hr) and in the evening (at 20:00 hr) using a Visual Analog Scale (VAS). The questionnaire included four questions about (i) the desire to eat, (ii) hunger, (iii) satiety, and (iv) the capacity to eat.

**Gene Expression and Circadian Phase in Blood Monocytes.** Peripheral blood mononuclear cells (PBMC) were isolated from fasting EDTA blood collected between 8:30 and 11:00 hr using BD Vacutainer<sup>®</sup> CPT with an integrated FICOLL<sup>™</sup> gradient (BD Biosciences). For gene expression analysis, total RNA was purified using the NucleoSpin RNA midi kit (Macherey-Nagel, Berlin, Germany). RNA concentration was measured using a ND-1000 spectrophotometer (Nanodrop, PeqLab). Single-stranded cDNA was synthesized using the high-capacity cDNA reverse transcription kit (Applied Biosystems<sup>™</sup>, Carlsbad, USA). Quantitative real-time PCR (qPCR) was performed with the ViiA 7 sequence detection system using Power SYBR Green PCR Master Mix (Applied Biosystems, USA) and specific primers (**eTable 1**). Gene expression was assessed by the standard curve method and normalized to the housekeeper gene beta-2-microglobulin (B2M).

The circadian phase was defined by dim light melatonin onset predicted (DLMO), which typically occurs about two hours before habitual bedtime, and was assessed using the recently validated BodyTime assay. This assay requires only one blood sample to objectively determine the phase of the circadian clock of an individual<sup>10</sup>. For the analysis, blood monocytes were purified from PBMC samples using CD14 microbeads (Bergisch Gladbach, Germany) via positive magnetic sorting. Total RNA was isolated from monocytes using TRIzol reagent (Invitrogen, Germany). 1 µg RNA was used to analyze the expression of 20 biomarker genes

using the NanoString nCounter platform (NanoString Technologies, Seattle, WA, US) as described <sup>10</sup>.

### **Sample Size Calculation.**

Power calculation was completed using the G-Power software v.3.1 <sup>11</sup> for the primary end point of change in insulin sensitivity. The calculation was based on the difference in insulin sensitivity observed in the meal tolerance tests conducted in the morning and in the evening in subjects with IFG/IGT in our previous study <sup>12</sup>. The trial was statistically powered to detect a difference in insulin sensitivity of 12.8 % plus or minus 7.1 % at a significance level of 0.05 and a statistical power of 80%. Assuming a 10% dropout rate, an estimated 33 enrollees were needed to ensure that 30 individuals completed the trial. The allocation of subjects to study arms was performed by matching for age and BMI using a minimization method and the MinimPy software <sup>13</sup>. Recruitment stopped once the target sample size was exceeded (n=31).

**Blinding.** Participants and intervention staff were unblinded. Prior to randomization, all outcomes were collected blinded. About 70% of the post-intervention data were assessed blinded. Specifically, all blood parameters, CGM, physical activity, and gene expression measurements were performed blinded, whereas anthropometric measurements, food intake, and chronotype assessments were not. The dietician who analyzed food records and estimated TRE adherence was not blinded to group assignments. Other investigators and statisticians were blinded during the study procedures and were unblinded only after all data had been analyzed.

**Data Handling.** Collected data was stored in a database on servers at the German Institute of Human Nutrition. Regular data backups were performed, and access was restricted to authorized personnel. During data collection, data was pseudonymized, with research data stored separately from identifying information. Anonymization was completed once the data collection process was finished. Anonymized data was used for subsequent research and will be archived for at least 10 years on servers at the German Institute of Human Nutrition, in accordance with good scientific practice.

**Statistical Methods.** Data analyses were performed using SPSS 28.0 software (SPSS, Chicago, IL) using 2-sided tests at  $\alpha = .05$ , according to the statistical analysis plan (**Supplement 2**). All analyses were intention-to-treat. All data were initially checked for missing values, cleaned, and inspected to determine ranges, identify outliers, and assess data distribution using the Shapiro–Wilk test. Absolute values were expressed as mean  $\pm$  SD when normally distributed and median (IQR) when not normally distributed. Within-intervention comparisons (values after/during the intervention vs. values before the intervention) and between-intervention (parameter changes in ITRE vs. changes in eTRE) comparisons were assessed using paired Student's t-test for normally distributed data or the Wilcoxon test for non-normally distributed data. Changes within-intervention and differences between-intervention were expressed as mean (95% CI). Comparisons of two independent groups were conducted using Student's unpaired t-test for normally distributed data or the Mann–Whitney U-test for non-normally distributed data. Data for endpoints involving repeated measures will be analyzed using the repeated measures ANOVA. Our analyses did not adjust p-values for multiple comparisons when analyzing cardiometabolic outcomes, consistent with a majority of

published nutritional and weight loss clinical trials. The visualization of the data was performed using GraphPad Prism software version 10.2.3 (GraphPad Prism Inc., La Jolla, CA, USA).

## eReferences

1. Buysse DJ, Reynolds CF, 3rd, Monk TH, Berman SR, Kupfer DJ. The Pittsburgh Sleep Quality Index: a new instrument for psychiatric practice and research. *Psychiatry Res.* May 1989;28(2):193-213. doi:10.1016/0165-1781(89)90047-4
2. Baum Martinez I, Peters B, Schwarz J, et al. Validation of a Smartphone Application for the Assessment of Dietary Compliance in an Intermittent Fasting Trial. *Nutrients.* Sep 7 2022;14(18)doi:10.3390/nu14183697
3. Rudovich N, Pivovarov O, Fisher E, et al. Polymorphisms within insulin-degrading enzyme (IDE) gene determine insulin metabolism and risk of type 2 diabetes. *J Mol Med (Berl).* Nov 2009;87(11):1145-51. doi:10.1007/s00109-009-0540-6
4. Utzschneider KM, Prigeon RL, Faulenbach MV, et al. Oral disposition index predicts the development of future diabetes above and beyond fasting and 2-h glucose levels. *Diabetes care.* Feb 2009;32(2):335-41. doi:10.2337/dc08-1478
5. Hill NR, Oliver NS, Choudhary P, Levy JC, Hindmarsh P, Matthews DR. Normal reference range for mean tissue glucose and glycemic variability derived from continuous glucose monitoring for subjects without diabetes in different ethnic groups. *Diabetes technology & therapeutics.* Sep 2011;13(9):921-8. doi:10.1089/dia.2010.0247
6. Pappé CL, Peters B, Dommisch H, Woelber JP, Pivovarov-Ramich O. Effects of reducing free sugars on 24-hour glucose profiles and glycemic variability in subjects without diabetes. *Front Nutr.* 2023;10:1213661. doi:10.3389/fnut.2023.1213661
7. Weber D, Stuetz W, Bernhard W, et al. Oxidative stress markers and micronutrients in maternal and cord blood in relation to neonatal outcome. *Eur J Clin Nutr.* Feb 2014;68(2):215-22. doi:10.1038/ejcn.2013.263
8. Roenneberg T, Wirz-Justice A, Mrosovsky M. Life between clocks: daily temporal patterns of human chronotypes. *Journal of biological rhythms.* Feb 2003;18(1):80-90. doi:10.1177/0748730402239679
9. Horne JA, Ostberg O. A self-assessment questionnaire to determine morningness-eveningness in human circadian rhythms. *Int J Chronobiol.* 1976;4(2):97-110.
10. Wittenbrink N, Ananthasubramanian B, Munch M, et al. High-accuracy determination of internal circadian time from a single blood sample. *The Journal of clinical investigation.* Aug 31 2018;128(9):3826-3839. doi:10.1172/JCI120874
11. Faul F, Erdfelder E, Lang AG, Buchner A. G\*Power 3: a flexible statistical power analysis program for the social, behavioral, and biomedical sciences. *Behav Res Methods.* May 2007;39(2):175-91. doi:10.3758/bf03193146
12. Kessler K, Hornemann S, Petzke KJ, et al. The effect of diurnal distribution of carbohydrates and fat on glycaemic control in humans: a randomized controlled trial. *Scientific reports.* Mar 08 2017;7:44170. doi:10.1038/srep44170
13. Saghaei M. An overview of randomization and minimization programs for randomized clinical trials. *J Med Signals Sens.* Jan 2011;1(1):55-61.

## **eAppendix. Adverse Events**

Adverse events were assessed during the phone call within each intervention. There were 30 adverse events possibly related to the study, none were serious. In the eTRE, there were 10 adverse events possibly related to the intervention, including irregular defecation (n=3), fatigue (n=1), headaches (n=2), vomiting after breakfast (n=1), dizziness (n=1), feeling cold (n=1), and night hypoglycemia (n=1). In the ITRE, there were 20 adverse events possibly related to the intervention, including irregular defecation (n=3), diarrhea (n=1), fatigue (n=3), stomach pain (n=3) or grumbling (n=1), gastric reflux after the dinner (n=1), headaches (n=3), dizziness (n=3), feeling cold (n=1), sweating in the evening (n=1).

**eTable 1. Primer Sequences.** Sequences of primers used for the quantitative real-time PCR in PBMC are shown. Genes were selected based on the previously published human or animal data on their circadian rhythmicity and/or their potential role in the TRE-induced metabolic effects.

Gene name	Gene symbol	Forward primer	Reverse primer
<b>Clock genes</b>			
Clock circadian regulator	<i>CLOCK</i>	ATTCCACAAGGCATGTCCA	TTTGCTTCTATCATGCGTGTCC
Basic helix-loop-helix ARNT like 1	<i>BMAL1</i>	CATTAAGAGGTGCCACCAATCC	CAAAAATCCATCTGCTGCC
Period circadian regulator 1	<i>PER1</i>	ATTCCGCCTAACCCCGTATGT	CCGCGTAGTGAAAATCCTCTTG
Period circadian regulator 2	<i>PER2</i>	AGCAGGTGAAAGCCAATGAAG	AGGTAACGCTCTCCATCTCCTC
Nuclear receptor subfamily 1 group D member 1	<i>NR1D1</i>	TGACCTTCTCAGCATGACCAA	CAAAGCGCACCATCAGCAC
Cryptochrome circadian regulator 1	<i>CRY1</i>	GGGACCTGTGGATTAGTTGGG	GCTCCAATCTGCATCAAGCAA
Cryptochrome circadian regulator 2	<i>CRY2</i>	TGCATCTGTTGACACTCATGATTC	GGTACTCCCCAGCCCAG
RAR related orphan receptor A	<i>RORA</i>	ACTCCTGTCTCGTCAGAAGA	CATCCCTACGGCAAGGCATTT
<b>Metabolic genes</b>			
Carnitine palmitoyltransferase 1A	<i>CPT1A</i>	ATTATGCCATGGATCTGCTG	AGCGGAGCAGAGTGGAATC
Fatty acid synthase	<i>FASN</i>	AGACACTCGTGGGCTACAGCAT	ATGGCCTGGTAGGCGTTCT
Pyruvate dehydrogenase kinase 4	<i>PDK4</i>	CCCTGAGAATTATTGACCGCCT	AAGCCGTAACCAAAACCAGCC
Sirtuin 1	<i>SIRT1</i>	ATGCTGGCCTAATAGAGTGGA	CCTCAGCGCCATGGAAAAAT
Lipoprotein lipase	<i>LPL</i>	TGCAGGAAGTCTGACCAATAAG	CCCTCTGGTGAATGTGTGTAAG
<b>Inflammation genes</b>			
Interleukin 6	<i>IL6</i>	AGCCCTGAGAAAGGAGACATGTA	TCTGCCAGTGCCTCTTTGCT
Tumor necrosis factor alpha	<i>TNF<math>\alpha</math></i>	GGACCTCTCTAATCAGCCCTC	TCGAGAAGATGATCTGACTGCC
Monocyte chemotactic protein 1	<i>CCL2</i>	CATAGCAGCCACCTTCATTCC	TCTGCACTGAGATCTTCCTATTGG
<b>Housekeeper gene</b>			
Beta-2-microglobulin	<i>B2M</i>	CTATCCAGCGTACTCAAAG	AAACCCAGACACATAGCAAT

**eTable 2. Changes of Physical Activity.** There were no between-intervention and within-intervention differences in the changes in metabolic equivalent of task (MET) as well as light, moderate, and sedentary activity in eTRE and ITRE.

Outcome	Change (95% CI)				Difference between ITRE vs. eTRE interventions (95% CI) <sup>a</sup>	
	eTRE (n = 29) <sup>a</sup>	P value	ITRE (n = 29) <sup>a</sup>	P value		P value
MET	-0.02 (-0.05 to 0.01)	.19	-0.01 (-0.04 to 0.02)	.52	0.01 (-0.02 to 0.04)	.54
Light activity	0.15 (-1.03 to 1.33)	.97	-0.29 (-1.39 to 0.81)	.58	-0.44 (-1.64 to 0.75)	.45
Moderate activity	-0.51 (-1.34 to 0.32)	.22	-0.26 (-1.26 to 0.74)	.59	0.25 (-0.74 to 1.23)	.61
Sedentary activity	0.35 (-1.29 to 2.00)	.16	0.56 (-0.85 to 1.96)	.21	0.20 (-1.42 to 1.83)	.97

Abbreviations: eTRE, early Time-Restricted Eating; ITRE, late Time-Restricted Eating; MET, metabolic equivalent of task

<sup>a</sup> Two baseline values for physical activity parameters were excluded in all pairwise comparisons due to two defect actigraphs at baseline.



**eTable 3. Changes of Continuous Glucose Monitoring Indices.** Glucose variability assessed in continuous glucose monitoring (CGM) showed an increase of intra-day variation indices (SD: 0.13; 95% CI, 0.02 to 0.24,  $P = .03$ ; CV: 2.78; 95% CI, 0.28 to 5.28,  $P = .006$ ) and percentage in the high-glucose range (HBGI: 0.23; 95% CI, 0.08 to 0.37,  $P = .006$ ) within eTRE as well as a decrease of inter-day variation (MODD: -0.09; 95% CI, -0.14 to -0.03;  $P = .003$ ) within ITRE. Between-intervention differences are shown in the table below.

Outcome	Change (95% CI)		Difference between ITRE vs. eTRE		P value	
	eTRE (n = 30) <sup>a</sup>	P value	ITRE (n = 30) <sup>a</sup>	P value		Difference between interventions (95% CI) <sup>a</sup>
MSG [mmol/L]	-0.03 (-0.26 to 0.21)	.82	0.12 (-0.08 to 0.31)	.23	0.14 (-0.06 to 0.35)	.17
SD [mmol/L]	0.13 (0.02 to 0.24)	.003	-0.03 (-0.09 to 0.03)	.34	-0.16 (-0.28 to -0.05)	.002
CV [%]	2.78 (0.28 to 5.28)	.006	-0.85 (-1.88 to 0.18)	.10	-3.63 (-6.37 to -0.89)	.001
MAGE [mmol/L]	0.09 (-0.01 to 0.18)	.08	-0.08 (-0.16 to 0.01)	.07	-0.16 (-0.25 to -0.07)	.001
CONGA [mmol/L]	0.08 (-0.14 to 0.31)	.47	0.18 (0.00 to 0.36)	.05	0.10 (-0.08 to 0.29)	.27
MODD [mmol/L]	-0.06 (-0.12 to 0.00)	.08	-0.09 (-0.14 to -0.03)	.003	-0.03 (-0.09 to 0.03)	.38
LBGI	2.84 (-2.29 to 7.97)	.18	-0.44 (-1.02 to 0.13)	.24	-3.28 (-8.56 to 1.99)	.04
HBGI	0.23 (0.08 to 0.37)	.006	-0.02 (-0.17 to 0.12)	.40	-0.25 (-0.43 to -0.08)	.003

Abbreviations: eTRE, early Time-Restricted Eating; ITRE, late Time-Restricted Eating; MSG, Mean Sensor Glucose; SD, Standard Deviation; CV, Percentage Coefficient of Variation for Glucose; MAGE, Mean Amplitude of Glycemic Excursions; CONGA, Continuous Overall Net Glycemic Action; MAG change, Mean Absolute Glucose change; MODD, Mean of Daily Differences; LBGI, Low Blood Glucose Index; HBGI, High Blood Glucose Index.

<sup>a</sup>One participant was excluded from CGM analysis due to incomplete CGM data. Data gaps can be attributed to non-regular measurement by the participant which avoided the saving of the data.

**eTable 4. Changes of Oxidative Stress Markers.** Levels of oxidative stress markers malondialdehyde, 3-nitrotyrosine, and protein carbonyls were not changed in eTRE and ITRE interventions.

Outcome	Change (95% CI)				Difference between ITRE vs. eTRE interventions (95% CI)	
	eTRE (n = 31)	P value	ITRE (n = 31)	P value		P value
Malondialdehyde, $\mu\text{mol/L}$	0.002 (-0.09 to 0.09)	.98	0.08 (-0.02 to 0.19)	.22	0.08 (-0.04 to 0.21)	.29
3-nitrotyrosine, pmol/mg	0.03 (-1.32 to 1.39)	.95	-0.08 (-1.03 to 0.86)	.73	-0.12 (-1.64 to 1.40)	.95
Protein carbonyls, nmol/mg	-0.05 (-0.13 to 0.03)	.23	0.02 (-0.06 to 0.11)	.60	0.07 (-0.06 to 0.20)	.27

Abbreviations: eTRE, early Time-Restricted Eating; ITRE, late Time-Restricted Eating

**eTable 5. Feeling of Hunger and Satiety and Changes of Related Hormones.** As assessed by a visual analog scale, participants showed lower desire to eat (-1.49; -2.58 to -0.40,  $P = .02$ ), hunger (-1.16; 95% CI, -2.28 to -0.03,  $P = .04$ ), and capacity to eat (-1.16; 95% CI, -2.28 to -0.03,  $P = .03$ ) during the ITRE in the morning, but not in the evening compared to the eTRE whereas the satiety did not differ at any daytime. Changes of satiety hormone PYY differ between interventions (34.7 pg/mL; 95% CI, 18.2 to 51.3 pg/mL,  $P = 1.9 \times 10^{-4}$ ) showing a decrease within eTRE (-13.0 pg/mL; 95% CI -24.5 to -1.5 pg/mL,  $P = .01$ ) and increase within ITRE (22.5 pg/mL; 95% CI 13.1 to 31.9 pg/mL,  $P = 1.6 \times 10^{-4}$ ). Levels of the hunger hormone ghrelin were unchanged in both TRE interventions.

Outcome	eTRE	P value	ITRE	P value	Difference between ITRE vs. eTRE interventions (95% CI)	P value
<b>Hunger and Satiety Scores in the Morning</b>						
Desire to eat, median (IQR) <sup>a</sup>	4.40 (2.25-5.35)		1.20 (0.25-5.60)		-1.49 (-2.58 to -0.40)	.02
Hunger, median (IQR) <sup>a</sup>	3.20 (2.10-4.80)		1.30 (0.15-4.30)		-1.16 (-2.28 to -0.03)	.04
Satiety, median (IQR) <sup>a</sup>	5.10 (2.65-6.30)		5.40 (1.80-9.00)		0.90 (-0.45 to 2.24)	.22
Capacity to eat, median (IQR) <sup>a</sup>	5.00 (3.10-5.80)		2.90 (0.80-5.05)		-1.16 (-2.28 to -0.03)	.03
<b>Hunger and Satiety Scores in the Evening</b>						
Desire to eat, median (IQR) <sup>a</sup>	4.50 (2.20-7.65)		3.30 (0.70-5.75)		-0.85 (-1.82 to 0.12)	.10
Hunger, median (IQR) <sup>a</sup>	3.60 (1.95-6.55)		3.20 (0.25-5.15)		-0.58 (-1.68 to 0.53)	.25
Satiety, median (IQR) <sup>a</sup>	5.00 (2.75-7.85)		6.70 (3.35-9.00)		0.75 (-0.52 to 2.08)	.12
Capacity to eat, median (IQR) <sup>a</sup>	4.40 (2.60-5.40)		3.30 (1.00-5.35)		-0.55 (-1.59 to 0.48)	.28
<b>Changes of Hormones Related to Hunger and Satiety</b>						
Peptide YY <sup>b</sup> , 95% CI	-13.0 (-24.5 to -1.5)	.01	22.5 (13.1 to 31.9)	$1.6 \times 10^{-4}$	34.7 (18.2 to 51.3)	$1.9 \times 10^{-4}$
Ghrelin <sup>c</sup> , 95% CI	1.31 (-2.30 to 4.92)	.50	-0.10 (-1.91 to 1.72)	.59	-1.36 (-5.42 to 2.69)	.94

Abbreviations: eTRE, early Time-Restricted Eating; ITRE, late Time-Restricted Eating.

<sup>a</sup> Two participants in each intervention were identified were excluded for paired analysis (eTRE n = 29; ITRE n = 29; Difference between TRE interventions n = 27).

<sup>b</sup> One participant in each intervention were identified as outlier and therefore were excluded for paired analysis (eTRE n = 30; ITRE n = 30; Difference between TRE interventions n = 29).

<sup>c</sup> Two participants in both interventions and one further participant in ITRE intervention were identified as outlier and therefore were excluded for paired analysis (eTRE n = 29; ITRE n = 28; Difference between TRE interventions n = 28)

**eTable 6. Baseline Characteristics in Participants with Impaired Glucose Metabolism.**

	Participants with NGT (n = 18)	Participants with IFG/IGT (n =13)
Age, mean (SD), y	55 (9)	63 (5)
Sex, female:male	18:0	11:0
Race, white:other	18:0	11:0
Ethnicity: Caucasian:other	18:0:0	11:0:0
Weight, mean (SD), kg	80.9 (7.6)	84.8 (9.3)
Fat mass, mean (SD), kg	31.7 (6.2)	37.4 (5.9)
Lean mass, mean (SD), kg	49.1 (5.9)	47.4 (4.7)
Waist circumference, mean (SD), cm	96 (8)	104 (8)
BMI, mean (SD), kg/m <sup>2</sup>	29.2 (2.6)	32.2 (2.4)
<b>Glucose homeostasis</b>		
Fasting glucose, mean (SD), mg/dL	87 (7)	101 (12)
Glucose 120 min in OGTT, mean (SD), mg/dL	101 (17)	153 (29)
HbA1c, mean (SD), % <sup>a</sup>	5.35 (0.26)	5.64 (0.33)
<b>Cardiometabolic parameters</b>		
Systolic blood pressure, median (IQR), mm Hg	114 (110-125)	120 (115-139)
Diastolic blood pressure, median (IQR), mm Hg	76 (69-78)	73 (68-80)
Total cholesterol, mean (SD), mmol/L	5.75 (0.98)	5.47 (0.84)
HDL cholesterol, mean (SD), mmol/L	1.64 (0.43)	1.42 (0.27)
LDL cholesterol, mean (SD), mmol/L	3.52 (0.82)	3.41 (0.86)
Triglycerides, mean (SD), mmol/L	1.30 (0.77)	1.42 (0.35)
ASAT, mean (SD), U/L	30.1 (6.0)	25.2 (5.9)
ALAT, median (IQR), U/L	21.8 (17.2-23.8)	26.6 (21.0-29.0)
GGT, median (IQR), U/L	19.4 (15.8-24.3)	24.1 (20.4-31.9)
hsCRP, median (IQR), mg/L	1.15 (0.50-3.05)	1.60 (1.30-2.45)

Abbreviations: eTRE, early time-restricted eating; lTRE, late time-restricted eating; WHR, waist-to-hip ratio; BMI, body mass index; NGT, normal glucose tolerance; IFG, impaired fasting glucose; IGT, impaired glucose tolerance; HbA1c, hemoglobin A<sub>1c</sub>; HDL, high-density lipoprotein; hsCRP, high sensitive C-reactive protein; LDL, low-density lipoprotein.

SI conversion factors: To convert cholesterol mmol/L to mg/dL divide by 0.0259; glucose mg/dL to mmol/L multiply by 0.0555; triglycerides mg/dL to mmol/L multiply by 0.0113.

<sup>a</sup> One baseline value in group B (lTRE-eTRE) was not measured due to loss of the sample.

**eTable 7. TRE Effects on Body Composition, Glucose Homeostasis, and Cardiometabolic Parameters in Participants with Impaired Glucose Metabolism.** No differences in the insulin sensitivity and mean 24-hour glucose between and within TRE interventions were observed. Other cardiometabolic, inflammatory, and oxidative stress outcomes showed similar effects as in the whole cohort (Table 2, Figure 3).

Outcome	Change (95% CI)		Difference between			
	eTRE (n = 31)	P value	ITRE (n = 31)	P value	ITRE vs. eTRE interventions (95% CI)	P value
<b>Body Composition</b>						
Weight, kg	-1.45 (-1.96 to -0.93)	.002	-0.73 (-1.24 to -0.22)	.005	0.72 (-0.06 to 1.49)	.07
Fat mass, kg <sup>a</sup>	-0.82 (-1.78 to 0.14)	.08	0.16 (-0.44 to 0.76)	.56	0.98 (0.12 to 1.84)	.03
Lean mass, kg <sup>a</sup>	-0.76 (-1.94 to -0.42)	.05	-0.48 (-1.13 to 0.17)	.09	0.28 (-0.68 to 1.24)	.53
Waist circumference, cm	-1.05 (-2.78 to 0.67)	.21	-0.87 (-2.88 to 1.15)	.36	0.19 (-2.32 to 2.69)	.87
BMI, kg/m <sup>2</sup>	-0.63 (-0.78 to -0.48)	9.7x10 <sup>-7</sup>	-0.16 (-0.28 to -0.06)	.007	0.46 (0.29 to 0.64)	8.6x10 <sup>-5</sup>
<b>Glucose Homeostasis</b>						
Insulin sensitivity <sup>b</sup>	0.29 (-0.33 to 0.91)	.28	0.21 (-0.21 to 0.64)	.35	-0.08 (-0.95 to 0.79)	.85
Insulin secretion <sup>c</sup>	-0.35 (-0.70 to -0.01)	.007	0.03 (-0.13 to 0.20)	.42	0.39 (-0.01 to 0.79)	.06
Beta-cell function <sup>d</sup>	-1.03 (-2.89 to 0.83)	.15	0.55 (-0.08 to 1.17)	.10	1.58 (-0.60 to 3.77)	.10
Fasting glucose, mg/dL	-0.05 (-0.36 to 0.25)	.72	0.04 (-0.15 to 0.23)	.46	0.09 (-0.24 to 0.42)	.56
AUC glucose, mg/dL x 120 min	865 (-413 to 2144)	.17	-1213 (-2380 to -45)	.04	-2078 (-3768 to 388)	.02
Fasting insulin, μU/mL	-1.91 (-3.78 to -0.03)	.02	-2.77 (-8.15 to 2.60)	.20	-0.87 (-6.71 to 4.98)	.86
AUC insulin, μU/mL x 120 min	-1372 (-3828 to 1084)	.51	368 (-2491 to 3227)	.75	1740 (-2077 to 5557)	.25
HbA <sub>1c</sub> , %	-0.01 (-0.08 to 0.06)	.77	-0.03 (-0.08 to 0.03)	.30	0.02 (-0.07 to 0.10)	.68
Mean 24-hour glucose, mg/dL	-2.18 (-7.62 to 3.27)	.40	-0.95 (-6.06 to 4.17)	.69	1.23 (-3.70 to 6.16)	.60

<b>Cardiometabolic Parameters</b>						
Systolic blood pressure, mm Hg	1.80 (-4.61 to 8.21)	.54	6.54 (-1.64 to 14.72)	.11	2.20 (-9.86 to 14.26)	.69
Diastolic blood pressure, mm Hg	0.40 (-6.52 to 7.32)	.90	0.62 (-5.15 to 6.38)	.82	-2.00 (-12.09 to 8.09)	.67
Total cholesterol, mmol/L	-0.22 (-0.57 to 0.13)	.19	-0.12 (-0.29 to 0.05)	.16	0.11 (-0.33 to 0.54)	.92
HDL cholesterol, mmol/L	-0.09 (-0.14 to -0.04)	.003	-0.09 (-0.15 to -0.04)	.008	0.002 (-0.05 to 0.05)	.95
LDL cholesterol, mmol/L	-0.72 (-0.50 to 0.35)	.72	0.19 (-0.16 to 0.54)	.27	0.26 (-0.44 to 0.96)	.44
Triglycerides, mmol/L	0.06 (-0.14 to 0.26)	.51	-0.10 (-0.31 to 0.11)	.32	-0.16 (-0.42 to 0.09)	.19
ASAT, U/L	-0.50 (-0.82 to 1.82)	.42	-1.39 (-3.36 to 0.58)	.15	-1.89 (-4.41 to 0.62)	.13
ALAT, U/L	0.42 (-1.02 to 1.86)	.53	-3.52 (-10.06 to 3.02)	.20	-3.95 (-11.47 to 3.58)	.12
GGT, U/L	-3.21 (-5.62 to -0.80)	.008	-3.05 (-6.40 to 0.30)	.06	0.15 (-4.33 to 4.64)	.86
<b>Adipokines, Inflammatory Markers, and Oxidative Stress Markers</b>						
Leptin, pg/mL	-14954 (-31015 to 1106)	.046	-19537 (-33645 to -5429)	.002	-4583 (-20391 to 11226)	.60
Adiponectin, pg/mL	-0.001 (-1.20 to 1.20)	.10	-0.91 (-2.02 to 0.19)	.99	-0.91 (-2.57 to 0.75)	.26
IL-6, pg/mL	-0.23 (-0.82 to 0.37)	.44	0.83 (-1.55 to 3.22)	.92	-1.06 (-3.46 to 1.33)	.97
TNF $\alpha$ , pg/mL	-0.003 (-0.04 to 0.04)	.75	-0.01 (-0.06 to 0.04)	.69	-0.007 (-0.06 to 0.05)	.80
MCP-1, pg/mL	-20.10 (-64.39 to 24.19)	.32	-27.61 (-61.99 to 6.77)	.11	-7.51 (-40.74 to 55.77)	.60
hsCRP, mg/L	0.08 (-2.02 to 2.18)	.59	-0.07 (-0.38 to 0.24)	.61	-0.15 (-2.29 to 1.98)	.83
Malondialdehyde, $\mu$ mol/L	-0.06 (-0.24 to 0.12)	.63	0.01 (-0.11 to 0.13)	.81	-0.07 (-0.28 to 0.14)	.47
3-nitrotyrosine, pmol/mg	0.20 (-1.84 to 2.23)	.84	-0.05 (-0.78 to 0.69)	.76	0.24 (-1.67 to 2.16)	.92
Protein carbonyls, nmol/mg	-0.02 (-0.12 to 0.09)	.76	0.10 (-0.04 to 0.23)	.14	-0.11 (-0.27 to 0.05)	.16

Abbreviations: WHR, waist-to-hip ratio; BMI, body mass index; HDL, high-density lipoprotein; hsCRP, high sensitive C-reactive protein; LDL, low-density lipoprotein; ASAT, aspartate-aminotransferases; ALAT, alanine-aminotransferases; GGT, gamma-glutamyltransferases

<sup>a</sup> one eTRE and two ITRE data sets (pre and post) were excluded because of invalid bioelectrical impedance analysis

<sup>b</sup> assessed by Matsuda index in OGTT

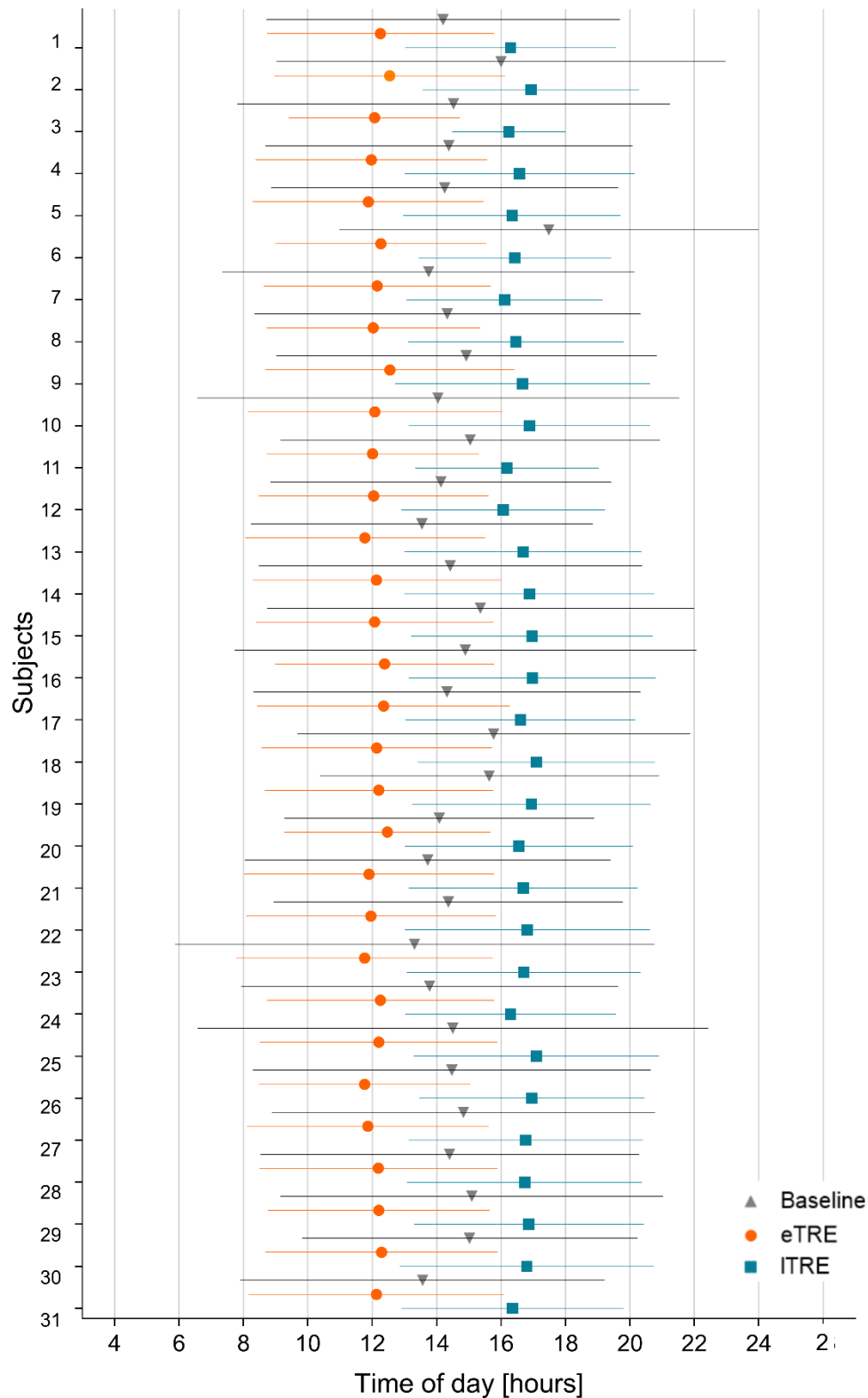
<sup>c</sup> assessed by insulinogenic index in OGTT

<sup>d</sup> assessed by disposition index in OGTT

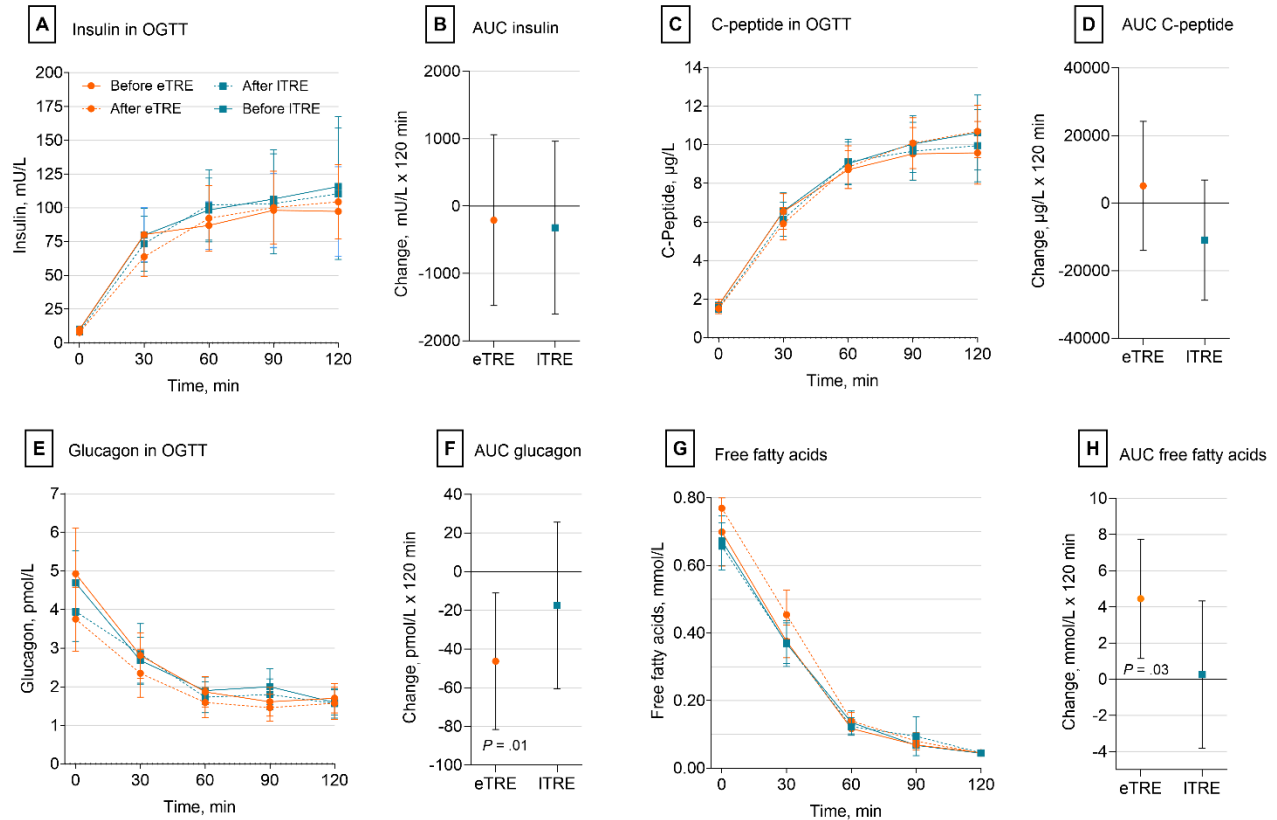


**eFigure 1. Individual Eating Times at the Baseline and during eTRE and ITRE.** Plotted are individual times of day when participants started eating (left whisker) and stopped eating (right whisker) as well as the midpoint of eating (mean for each individual) in the baseline phase, eTRE and ITRE intervention phases. All participants reduced their habitual eating window below the 8-hour value during the eTRE and ITRE showing a high timely adherence.

Individual eating timing

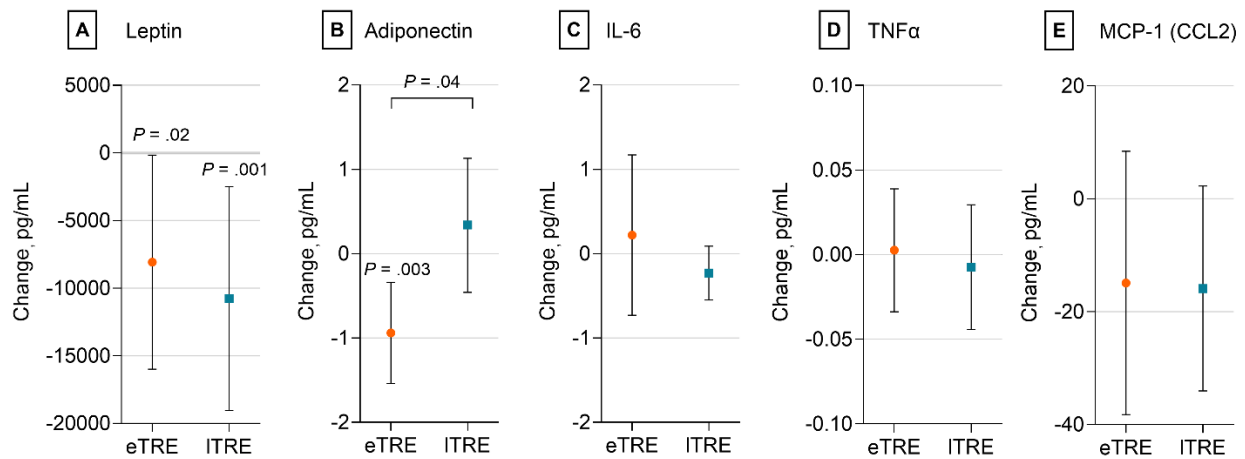


**eFigure 2. Hormones of Glucose Homeostasis and Free Fatty Acids in Oral Glucose Tolerance Test.** A, C, E, G, Plotted are levels for insulin, C-peptide, glucagon, and free fatty acids in the oral glucose tolerance test (OGTT) before and after eTRE and ITRE intervention (mean [SD]). B, D, F, H, Shown are changes in the areas under the curve (AUC) for above mentioned hormones and fatty acids in OGTT before and after eTRE and ITRE. Data are shown as means with 95% CI. eTRE decreased AUC of glucagon (-46.3 pmol/L; -81.6 to -11.0 pmol/L,  $P = .01$ ) and increased AUC of free fatty acids (4.45 mmol/L; 1.15 to 7.74 mmol/L,  $P = .03$ ) within intervention. No between-intervention differences were observed.

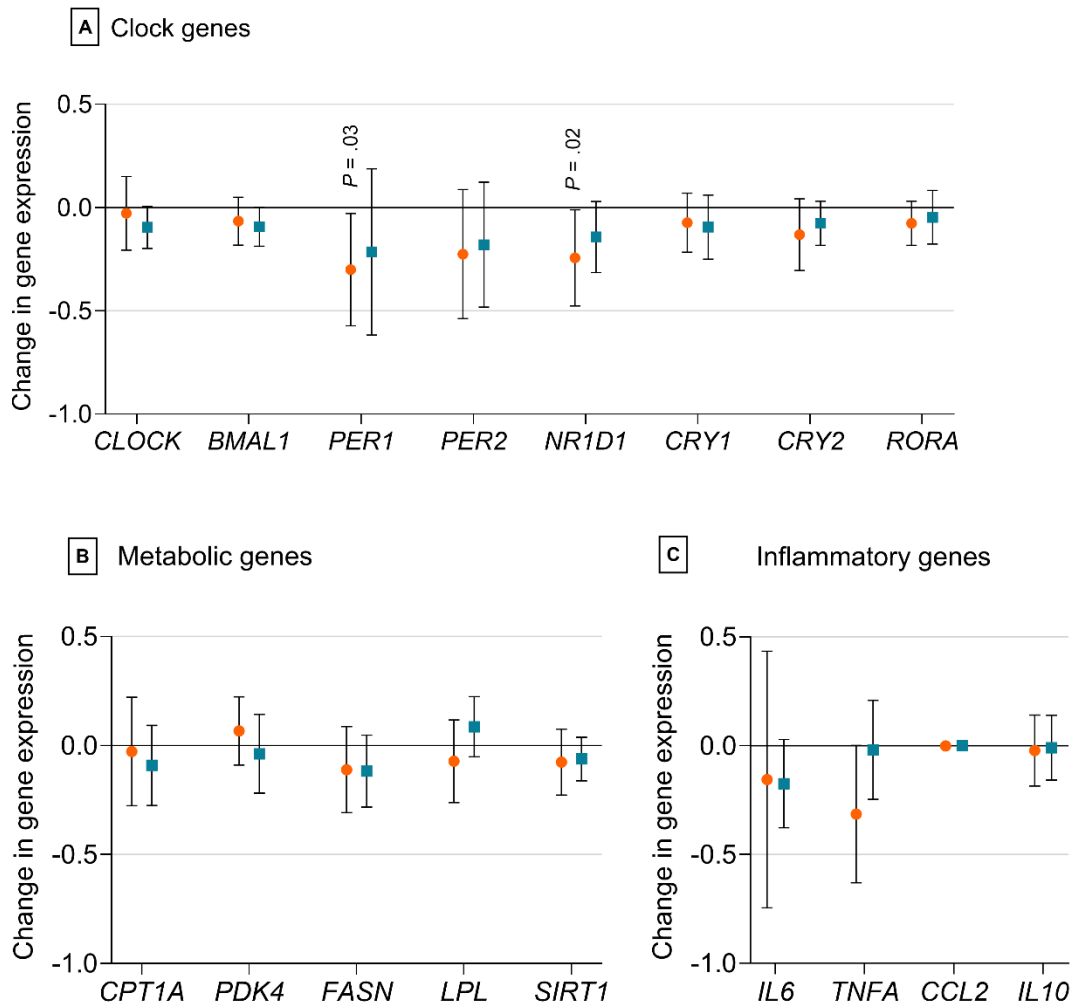


### eFigure 3. Adipokine and Cytokine Levels.

Adipokine leptin (A) was decreased after both eTRE (-8080 pg/mL; 95% CI -15995 to -166 pg/mL,  $P = .02$ ) and ITRE (-10763 pg/mL; 95% CI -19035 to -2492 pg/mL;  $P = .001$ ) compared to the intervention start without between-intervention differences. Adiponectin (B) was reduced within eTRE only (-0.94 pg/mL; 95% CI -1.54 to -0.34 pg/mL,  $P = .003$ ) and these changes differ from ITRE (1.28 pg/mL; 95% CI 0.20 to 2.36 pg/mL,  $P = .04$  for ITRE vs. eTRE). Cytokines IL-6 (C), TNF $\alpha$  (D), MCP-1 (also known as CCL2) (E) were not affected by eTRE or ITRE intervention. Data are shown as means with 95% CI.



**eFigure 4. Gene Expression in Peripheral Blood Mononuclear Cells.** Levels of the mRNA expression were measured by qPCR in peripheral blood mononuclear cells (PBMC) collected between 8:30 and 11:00 hr before and after each intervention. Changes in the expression of genes coding (A) clock genes, (B) key metabolic genes, and (C) inflammatory genes are shown as means with 95% CI. Core clock genes *PER1* (-0.30; 95% CI, -0.57 to -0.03,  $P = .03$ ) and *NR1D1* (-0.24; 95% CI, -0.48 to -0.01,  $P = .02$ ) decreased their expression levels within eTRE without between-intervention difference. Other genes showed no TRE-induced expression changes.



## Supplemental Online Content: Supplement 2

Peters B, Schwarz J, Schuppelius B, et al. Effects of Isocaloric Early vs. Late Time-Restricted Eating on Insulin Sensitivity, Cardiometabolic Health, and Internal Circadian Time in Women with Overweight and Obesity: A Randomized Crossover Clinical Trial.

### STATISTICAL ANALYSIS PLAN

**Original Statistical Plan:** The funding provided by the German Science Foundation (DFG RA 3340/3-1, project number 434112826) and Ethic Committee of the University of Potsdam, Germany (EA No. 8/2019), required a preassigned statistician to draft the statistical analysis plan, as a stipulation of applying for funding and ethic approval. The original statistical analysis plan was as follows:

Power calculation was completed using the G-Power software v.3.1<sup>1</sup> for the primary end point change in insulin sensitivity. The power calculation was based on the diurnal difference in insulin sensitivity in the meal tolerance tests conducted in the morning and in the evening in subjects with IFG/IGT in the previous study<sup>2</sup>. The trial will be statistically powered to detect a difference in insulin sensitivity of 12.8 % plus or minus 7.1 % at a significance level of 0.05 and a statistical power of 80%. Assuming a 10% dropout rate, an estimated 33 enrollees will be needed to ensure that 30 individuals completed the trial. The allocation of subjects to study arms will be performed by matching for age and BMI using a minimization method and the MinimPy software<sup>3</sup>. Recruitment will be stopped once the target sample size is met.

The primary outcome will be insulin sensitivity assessed by Matsuda index in the oral glucose tolerance test (OGTT). Secondary outcomes will be glucose levels in OGTT and mean 24-hour glucose in continuous glucose monitoring (CGM), hormones of glucose metabolism in OGTT, insulin secretion and beta-cell-function indices, as well as fasting cardiometabolic parameters (blood pressure, lipid levels, liver enzymes), adipokine and cytokine levels assessed after overnight fast. Additional outcomes will be anthropometric parameters and body composition, hunger and satiety scores and hormones, parameters of intervention adherence (eating times, calorie intake, macronutrient composition), physical activity, and sleep. The exploratory outcome will be the expression of metabolic and inflammatory genes in peripheral mononuclear blood cells (PBMC) and internal circadian phase. Most outcomes will be measured before and after eTRE and ITRE interventions, except of parameters of food intake, CGM, physical activity and sleep, which will be assessed during 14 days within baseline, eTRE and ITRE periods. Hunger and satiety scores will be assessed at the end of eTRE and ITRE interventions.

Statistical analyses will be performed with SPSS software (SPSS, Chicago, IL) using 2-sided tests with  $\alpha = .05$ . All analyses will be intention-to-treat. All data will initially be checked for missing values, cleaned, and inspected to determine the ranges, identify outliers, and check for the data distribution using the Shapiro–Wilk test (continuous variables only). The within-intervention (values after/during the intervention vs. values before the intervention) and between-intervention (parameter changes in ITRE vs. changes in eTRE) comparisons will be

assessed by paired Student's t-test for normally distributed data or the Wilcoxon signed rank test for non-normally distributed data. Comparisons of two independent groups will be conducted using Student's unpaired t-test for normally distributed data or the Mann–Whitney U-test for non-normally distributed data. Data for endpoints that involve repeated measures will be analyzed using the repeated measures ANOVA. P-values and confidence intervals will be not adjusted for multiple comparisons, which is consistent with most of the published nutritional and weight loss clinical trials. For glucose, and glucose-induced hormone secretion, and free fatty acid levels in OGTT, areas under the curve (AUC) will be determined by trapezoidal method. Insulin sensitivity and insulin secretion indices in OGTT will be calculated as described <sup>4</sup>.

## References

1. Faul F, Erdfelder E, Lang AG, Buchner A. G\*Power 3: a flexible statistical power analysis program for the social, behavioral, and biomedical sciences. *Behav Res Methods*. May 2007;39(2):175-91. doi:10.3758/bf03193146
2. Kessler K, Hornemann S, Petzke KJ, et al. The effect of diurnal distribution of carbohydrates and fat on glycaemic control in humans: a randomized controlled trial. *Scientific reports*. Mar 08 2017;7:44170. doi:10.1038/srep44170
3. Saghaei M. An overview of randomization and minimization programs for randomized clinical trials. *J Med Signals Sens*. Jan 2011;1(1):55-61.
4. Rudovich N, Pivovarova O, Fisher E, et al. Polymorphisms within insulin-degrading enzyme (IDE) gene determine insulin metabolism and risk of type 2 diabetes. *J Mol Med (Berl)*. Nov 2009;87(11):1145-51. doi:10.1007/s00109-009-0540-6

## Supplemental Online Content: Supplement 3

### Data Sharing Statement

Peters B, Schwarz J, Schuppelius B, et al. Effects of Isocaloric Early vs. Late Time-Restricted Eating on Insulin Sensitivity, Cardiometabolic Health, and Internal Circadian Time in Women with Overweight and Obesity: A Randomized Clinical Trial.

#### Data

**Data available:** Yes

**Data types:** Deidentified participant data

**How to access data:** Send requests for participant data to the corresponding author, Dr. Olga Pivovarova-Ramich, at [olga.ramich@dife.de](mailto:olga.ramich@dife.de)

**When available:** Beginning date: 01-09-2024

#### Supporting Documents

**Document types:** None

#### Additional Information

**Who can access the data:** Any scientific researchers who request

**Types of analyses:** For any purpose

**Mechanisms of data availability:** With a signed data access agreement