



## Abstract

Attention-deficit/hyperactivity disorder (ADHD), autism spectrum disorder (ASD), and obsessive-compulsive disorder (OCD) are heritable disorders that frequently co-occur with insulin resistance (IR)-related conditions. Traditional genetic case-control comparisons are challenged by the extent of heterogeneity and comorbidity within and across these conditions. In this study we step away from univariate analyses to let biology guide us to the potential genetic links between insulin and psychiatry-related traits.

We used large-scale population-based genetic studies (N= 17,666-697,734) and applied genomic structural equation modeling to identify the factor structure best representing the joint genetic architecture of symptom scores of ADHD, ASD, and OCD, and five IR-related traits: body mass index (BMI), fasting plasma glucose (FPG), fasting plasma insulin, glycated haemoglobin (HbA1c), and homeostatic model assessment for IR. Subsequently we performed multivariate genome-wide association analyses on the psychiatry-IR related factors to explore genetic associations to unravel its biological basis. Factor analyses indicated that a three-factor model fitted the data best ( $\chi^2(df=9)=18.79$ , AIC=56.8, CFI=0.99, SRMR=0.068). One factor included ADHD traits and three IR-related traits (BMI, FPG, HbA1c), while another encompassed OCD traits and HbA1c. The last factor included solely IR-related traits. Gene-wide analyses revealed 57 genes significantly associated with the ADHD-IR factor ( $p < 2.961e-06$ ) and one gene, *MTNR1B* ( $p=3.44e-07$ ), with the OCD/OCS-IR factor. Gene-set analyses found associations with neurodevelopmental pathways.

Our findings suggest a shared genetic liability between psychiatric symptoms and IR-related traits in the general population, offering new perspectives on the molecular genetics underlying the overlap between psychiatric and IR-related somatic conditions as well as biologically informed clustering within psychiatry.

## Introduction

Attention-deficit/hyperactivity disorder (ADHD), autism spectrum disorder (ASD), and obsessive-compulsive disorder (OCD) are common neurodevelopmental disorders that frequently co-occur[1,2]. These complex psychiatric disorders are known to be heritable and have complex multifactorial etiologies [3,4,5]. Univariate genome-wide association studies (GWAS) comparing individuals with ADHD, ASD or OCD to those without these disorders have identified the first disorder-associated common genetic variants [6,7,8]. However, enormous sample sizes were needed to find single variants with small effect sizes and underlying biological mechanisms still remain largely unknown. One challenge in gene finding is the observed heterogeneity of clinical manifestations in psychiatric disorders, where psychiatric patients with the same diagnostic label can differ substantially from each other. Currently, clinical diagnoses for ADHD, ASD, and OCD are dependent on arbitrary threshold of symptoms only, without a biological basis [9,10]. Due to the lack of biological understanding, ambiguous diagnoses and large amounts of co-morbidity exist in individuals with psychiatric disorders, which extends beyond psychiatric phenotypes and also includes insulin resistance (IR)-related somatic conditions, like type 2 diabetes mellitus (T2D) and obesity [11,12,13].

The link between ADHD, ASD, and OCD and IR-related somatic conditions is supported by epidemiological data. It has been found that having T2D or other metabolic conditions during pregnancy increases the risk of the offspring developing ASD or ADHD [14,15,16]. In addition, large-scale registry data convincingly showed that obesity is a relevant risk factor not only for developing T2D and metabolic syndrome, but also for receiving mental health diagnoses [17] and that bidirectional associations exist between T2D and psychiatric disorders, including ADHD, ASD, and OCD [18]. The observed multimorbidity between IR-related conditions and psychiatric disorders complicates clinical trajectories [19] and have been linked to more severe clinical outcomes [20,21] indicating their potential clinical relevance.

One connection between psychiatric conditions and IR-related somatic conditions might lie in dysregulated insulin. While the role of insulin in glycemic control in our body is well known, it is becoming more clear that insulin also has an important function in the brain [22]. In the brain, insulin activates insulin receptors expressed on the surface of neuronal and glial cells, initiating a cascade of intracellular transduction processes [23]. By mediating cellular metabolism, insulin contributes to the development and homeostasis of the central nervous system, influencing neurogenesis, neuronal differentiation and promoting neurite growth [24]. Additionally, insulin has protective properties in the brain preventing damage from apoptosis and oxidative stress [24]. Previous studies show that IR-related conditions and traits associated with cognitive performance including IR-related associations with poorer verbal

and numerical reasoning ability and slower processing speed [25] and global cognitive function [26]. While metabolic disturbances in psychiatry have been perceived as possible consequences of unhealthy lifestyles, sedentary habits, or the chronic use of psychotropic medication [27], the observation that glycaemic and metabolic imbalances have been found in drug-naïve acute psychiatric patients already at disease onset suggest the potential involvement of common biological mechanisms [28]. Until now, our understanding of these underlying mechanisms linked to the multimorbidity of psychiatric disorders and IR-related conditions is limited.

Since IR-related somatic diseases are complex heritable diseases as well [29], like ADHD, ASD, and OCD, one way to learn more about potential shared etiologies could lie in genetic analyses. It was already noted in GWAS investigating OCD that genes regulating insulin signaling were enriched in the top results [30] and that insulin-related traits, including levels of fasting insulin and two hour glucose measures, showed significant genetic correlations with OCD [31]. Genetic sharing between IR-related conditions [32] and psychiatric disorders [33] have also been well reported. A recent study investigated the genetic cross-links between nine neuropsychiatric disorders and three IR-related somatic diseases using publicly available GWAS data [34]. They were able to show two distinct clusters, in which the genetics of IR-related conditions may exert divergent pleiotropic effects: one including OCD as well as anorexia nervosa and schizophrenia, which showed negative genetic overlap with somatic IR-related conditions, and the other one including ADHD and major depressive disorder showing positive genetic overlap with IR-related conditions [34]. In addition, a recent family-based study was able to show that relatives of individuals with a psychiatric disorder had an increased risk for T2D and, within a subpart of their study, they were able to show that genetic risk for T2D was associated with an increased risk for several psychiatric disorders, including ASD and ADHD [35]. These studies highlight the evidence for multiple genetic links between IR-related somatic diseases and ADHD, ASD, and OCD.

Another challenge in gene finding in psychiatry, apart from the phenotypic heterogeneity, lies in genetic heterogeneity. Genetic evidence shows that psychiatric disorders share genetic risk factors [36], and cross-disorder studies have identified pleiotropic genetic risk factors involved in several psychiatric disorders [37]. These results indicate that the clinical diagnoses do not follow the biology well, and first studies now indicate that substructures might exist in the genetic contributions to psychiatric categories [38,39]. With examples like T2D being prevalent in 5-22% of individuals with psychiatric disorders [40] and the other way around, with one-third to almost two-thirds of somatic patients having mental disorders [41], IR could be an interesting starting point to explore the underlying biology of heterogeneous psychiatric phenotypes. Moreover, the extensive genetic links between IR-related conditions and

psychiatric conditions also support this interest. Furthermore, somatic IR-related traits can be objectively measured, potentially allowing for the stratification of individuals based on objectively measurable features, something we currently still lack in clinical psychiatry.

With classical genetic case-control comparisons being challenged by the extent of heterogeneity and comorbidity within and across psychiatric conditions, researchers have explored alternative ways to study psychiatric genetics. One of these approaches is to explore continuous phenotypes [42,43]. Many symptoms/characteristics of psychiatric disorders are also observed in healthy individuals. Such disorder-like traits tend to show a nearly normal distribution in the general population, with psychiatric cases clustering at the extreme end [44]. It was shown that this trait-disorder continuum also holds at the genetic level, demonstrated by genetic overlap between obsessive-compulsive traits ('guilty taboo thoughts') and OCD [45, 46], autistic-like traits (including social withdrawal) and ASD [47,48] and attention-deficit/hyperactivity symptoms and ADHD [49]. Additionally, some traits span multiple diagnoses, indicating trans-diagnostic characteristics that align with the genetic correlations found in cross-disorder studies [33]. Investigating these continuous traits can help elucidate the observed heterogeneity in clinical phenotypes.

While bi-variate genetic analyses have been instrumental for showing shared genetic etiologies between psychiatric traits and IR-related traits, new statistical tools make it possible to identify genetic relationships associated with multiple traits. Genomic Structural Equation Modelling (Genomic SEM) is a multivariate method that can analyze the joint genetic architecture of complex traits [50]. First results indicate patterns of substructures in the genetic correlations between major psychiatric disorders and show that multivariate genetic analyses are able to find additional genetic risk variants that were not found in univariate analyses [51,52]. This study aims to explore the existence of latent genetic factors based on the genetics of ADHD, ASD, and OCD symptomatology, as well as IR-related continuous measures observed in population-based genetic studies to examine its joint genetic architecture. We leveraged trait-based GWAS focusing on the continuum of symptoms related to ADHD, ASD, and OCD rather than the differences between cases and controls. We applied multivariate genomic SEM to parse heterogeneity and genetic overlap between these psychiatric phenotypes and IR-related traits. Subsequently, we performed multivariate GWASs on the modeled genetic factors to uncover genetic and biological underpinnings of the latent genetic factors representing shared genetics between psychiatric and IR-related traits.

## **Materials and Methods**

### ***Data source***

We utilized publicly available summary statistics [53] from large-scale population-based GWASs that included symptoms related to ADHD, ASD, OCD or IR-related measures (N=17,666 – 697,734). The inclusion criteria for GWASs consisted of a minimum sample size of 10 000 and having significant SNP-based heritability ( $p < 0.05$ ;  $Z > 2$ ). To ensure the inclusion of the largest possible GWAS datasets available, we utilized the online database GWAS Catalog [53] for the final selection. An overview of GWAS datasets used is provided in Table 1.

**Table 1. Overview of included GWAS datasets.**

Phenotype	N	Cases	Controls	Neff	Study	PMID
ADHD	225,534	38,691	186,843	103,135.5	Demontis et al. 2023	36702997
ASD	46,350	18,381	27,969		Grove et al. 2019	30804558
OCD	9,725	2,688	7,037	7,281.307	IOCDF-GC/OCGAS 2018	28761083
ADHD total symptom score	17,666				Middeldorp et al. 2016	27663945
OCS + OCD	17,992				Smit et al. 2019	31891238
Sociability	342,461				Bralten et al. 2021	34054130
2hGlu	63,396				Chen et al. 2021	34059833
BMI	697,734				Pulit et al. 2019	30239722
FPG	140,595				Lagou et al. 2021	33402679
FPI	98,210				Lagou et al. 2021	33402679
Hb1ac	123,665				Wheeler et al. 2017	28898252
HOMA-IR	37,037				Dupuis et al. 2010	20081858
HOMA-B	36,466				Dupuis et al. 2010	20081858

All included GWAS datasets were of European ancestry. Abbreviations: ADHD= attention-deficit/hyperactivity disorder; ASD= autism spectrum disorder; OCD= obsessive-compulsive disorder; OCS=obsessive-compulsive symptoms; 2hGlu= glucose levels two hours after an oral glucose challenge; BMI=body mass index; FPI=fasting insulin; FPG=fasting glucose;

Hb1ac=glycated haemoglobin; HOMA-B=homeostatic model assessment of  $\beta$ -cell function; HOMA-IR=homeostatic model assessment for insulin resistance. Neff= effective sample size.

### ***GWASs of population-based psychiatric traits***

To include a population-based trait for ADHD, we considered the GWAS meta-analysis of a total score of attention and hyperactivity symptoms in children [49]. This meta-analysis includes 17,666 children from nine population-based cohorts of the EARly Genetics and Life course Epidemiology (EAGLE) consortium. Data were based on scaled questionnaires, including the Attention Problems scale of the Child Behavior Checklist (CBCL) and the Hyperactivity scale of the Strengths and Difficulties Questionnaire (SDQ), consisting of parent- and teacher-rated scales [49].

For OCD traits, previous GWASs of obsessive-compulsive symptoms did not reach the sample size requirements for Genomic SEM. Therefore, we used a GWAS that meta-analyzed obsessive-compulsive symptoms (OCS) in combination with OCD case-control status [54]. The OCS score in this meta-analysis used subscales that measured obsessions (rumination and impulsions) and compulsions (checking, washing, and ordering/precision), based on the Padua Inventory scale [54]. The continuous OCS scores were measured in a population with an age range between 18 and 80 years, including 8,267 individuals based on self-reported items. The OCD case-control subsample included 2,688 individuals with OCD and 7,037 controls from the Psychiatric Genomics Consortium OCD GWAS [8].

For ASD-related traits, we used a GWAS on sociability [48] since social difficulties are at the core of the autistic phenotype and there is evidence of genetic overlap between sociability and ASD genetics [48]. The sociability GWAS was performed on an aggregated score based on four questions related to social behavior in a total of 342,461 adults (mean age 56.61). Further information regarding the sociability measure items and genotyping has been reported [48]. In our analysis, the direction of beta association values of SNPs from the sociability GWAS summary statistics was reversed to indicate reduced sociability, reflecting social withdrawal.

### ***GWASs of population-based IR-related traits***

GWAS data on IR-related traits were preselected based on the aforementioned inclusion criteria, as well as the existence of significant genetic correlations with either ADHD, ASD, or OCD, aligning with Genomic SEM requirements. IR-related traits considered were: glucose

levels two hours after an oral glucose challenge (2hGlu), body mass index (BMI), fasting glucose (FPG), fasting insulin (FPI), glycated haemoglobin (HbA1c), homeostatic model assessment for insulin resistance (HOMA-IR), and homeostatic model assessment of  $\beta$ -cell function (HOMA-B) [55,56,57,58,59]. We performed genetic correlation analyses with linkage disequilibrium score (LDSC) regression between the IR-related traits with psychiatric disorders (ADHD, ASD, OCD) as described in Supplementary Materials in Supplementary Figure S1 and Table S1.

### ***Genomic Structural Equation Modeling***

Genomic SEM was applied to investigate latent genetic factors underlying the three population-based symptom GWASs (attention-deficit/hyperactivity symptom scores, OCD+OCS symptoms, social withdrawal) and the five IR-related trait GWASs (BMI, FPG, FPI, HbA1c, HOMA-IR) that were significantly genetically correlated to at least one among ADHD, ASD, and OCD. Genomic SEM is a data-driven, multivariate genetic analysis approach used to identify latent factors underlying different variables [50]. The analysis involves exploratory and confirmatory factor analyses (EFA and CFA, respectively) to determine the model based on loading thresholds above 0.25 and thereafter examine model fit. Factor analyses were performed separately for the odd and even chromosomes to avoid overfitting. In the first step of Genomic SEM, the genetic covariance matrix and sampling covariance matrix were estimated using precomputed linkage disequilibrium (LD) scores obtained from the 1000 Genomes Project [60]. During the second step, the model fit was estimated using standardized root mean square residual (SRMR), model  $\chi^2$ , Akaike Information Criterion (AIC), and the Comparative Fit Index (CFI). The model fit statistic CFI tests to what degree the proposed model better fits compared to a model in which all traits are heritable but not correlated genetically ( $>.95$  is considered good fit), and AIC is a relative fit statistic to compare models, with lower values being a better fit [50]. The analysis followed procedures described on the Genomic SEM GitHub, using default parameters (see <https://github.com/GenomicSEM/GenomicSEM>).

### ***Multivariate GWAS***

We performed multivariate GWASs within the Genomic SEM framework on the factors that loaded both psychiatric and IR-related traits to estimate individual SNP effects on the latent factors. Multivariate GWAS was run on SNPs filtered on default SNP filtering on minor allele frequency (MAF) (MAF $>0.01$ ) and quality info score (INFO $>0.6$ ) when such information was



available [51]. In addition, we removed any variants that presented additional warnings during the analysis, such as NA values. SNPs were considered significant if they reached the genome-wide significance threshold of  $p < 5e-08$ . A SNP-level heterogeneity test (QSNP) was then performed to test the null hypothesis that a SNP acts on the latent factor instead of acting on individual or subset of traits/observed variables. Therefore, we calculated the heterogeneity (Q) index [50, 51] by using independent pathway models in which the effects of the SNPs on the traits and the residual variances are freely estimated. The common and independent pathway models are then used to estimate a  $\chi^2$  distributed QSNP test statistic with degrees of freedom (df) equal to  $k-1$ , where  $k$  reflects the number of included phenotypes. We then removed significant QSNPs ( $p < 5e-08$ ) for subsequent analyses as these SNPs do not represent direct effects on latent factors.

The effective sample size (Neff) for each psychiatric-IR factor was calculated [50, 61] and in this calculation the summary statistics are restricted to MAF limits of 10% and 40% to produce stable estimates, as described on the Genomic SEM Github (<https://github.com/GenomicSEM/GenomicSEM/wiki/5.-User-Specified-Models-with-SNP-Effects>).

## **FUMA**

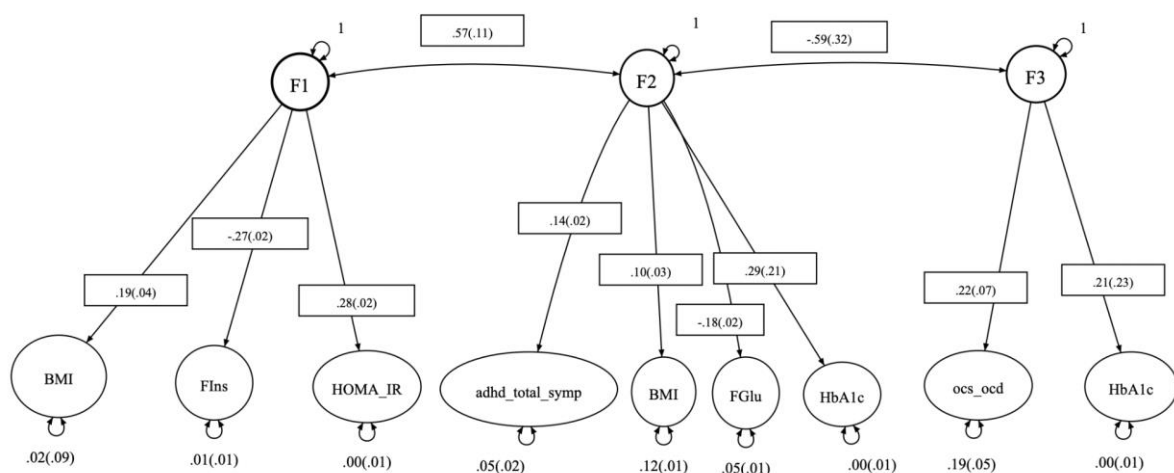
The online tool for functional mapping and annotation of GWASs (FUMA v1.5.4) [62] was utilized to interpret the multivariate GWAS outcomes of each psychiatric-IR related latent factor. The SNP2GENE module within FUMA was used to perform gene mapping (i.e., positional mapping, eQTL mapping), as well as gene-based, gene-property, and gene set analyses in Multi-marker Analysis of GenoMic Annotation (MAGMA). The gene-wide genome-wide significance threshold was set at  $p = 0.05/16888 = 2.961e-06$  accounting for the 16,888 tested protein coding genes. The gene set analysis was performed on 5,917 Gene Ontology (GO) terms and 4,761 curated gene sets obtained from MsigDB v6.2. Gene set analysis results were considered significant at  $p < 0.05/10678 = 4.68e-06$ . For the gene-property analyses we selected 30 GTEx/v8, 53 GTEx/v8 and BrainSpan gene expression datasets to examine gene expression in brain-related regions in adults and during brain development. As input for the sample size parameter (N) in FUMA we used the Neff due to inputting multivariate GWAS outcomes in FUMA analysis.

## Results

### Identification of psychiatric-IR latent genetic factors

Based on our input data of eight variables: three psychiatric traits (ADHD total symptom score, OCS and OCD case-control score, and social withdrawal) and five IR-related continuous traits (BMI, FPI, FPG, Hb1ac, HOMA-IR) the EFA analysis within Genomic SEM on odd chromosomes provided four potential models. The subsequent CFA analysis on these models on even chromosomes confirmed the best model fit for a three-factor model ( $\chi^2(df=9)=22.87$ , AIC=60.8, CFI=0.97, SRMR=0.093), see Figure 1. This model also fits well for all chromosomes ( $\chi^2(df=9)=18.79$ , AIC=56.8, CFI=0.99, SRMR=0.068).

The first factor was loaded solely by IR-related traits (BMI, FPI, and HOMA-IR). The second factor included ADHD total symptom scores together with BMI, FPG, and HbA1c and was named ADHD-IR factor. The third factor included OCD+OCS symptoms together with HbA1c and was named OCD/OCS-IR factor. Social withdrawal did not load in any of the three factors.



**Figure 1. Three-factor model path diagram.** The structural equation model path diagram of the identified three-model as the best model fit to the data based on the exploratory factor analysis in Genomic SEM. Abbreviations: adhd\_total\_symp= ADHD total symptom score; ocs\_ocr= obsessive-compulsive and OCD case-control score; BMI=body mass index; FPI=fasting insulin; FPG=fasting glucose; Hb1ac=glycated haemoglobin; HOMA-

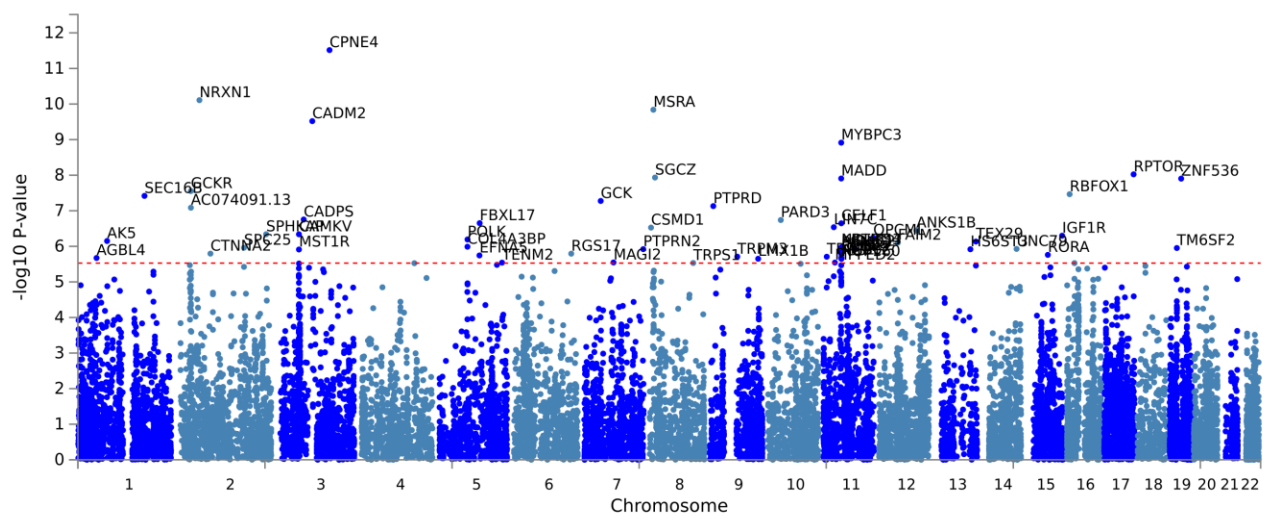
IR=homeostatic model assessment for insulin resistance. Created with <https://semdiag.psychstat.org/>.

### SNP associations

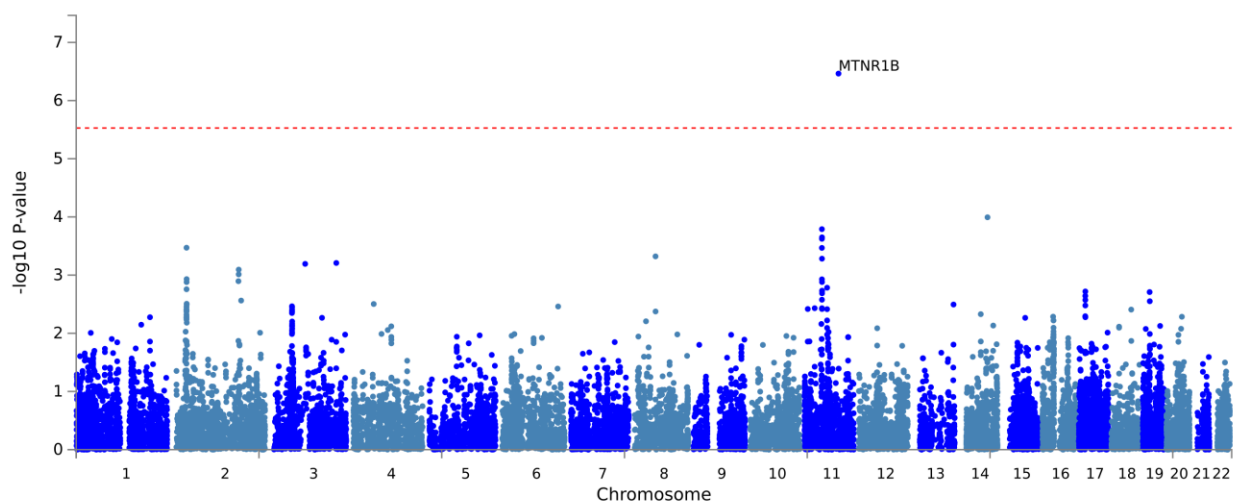
Multivariate GWAS were performed on the ADHD-IR and the OCD/OCS-IR factors. Multivariate genome-wide associations on the ADHD-IR factor identified two genome-wide significant SNPs, rs780093 ( $p=1.56e-08$ ) and rs551754 ( $p=1.63e-08$ ) (See Supplementary Figure S2). Heterogeneity tests indicated a total of 1,304 heterogeneous QSNPs, and both genome-wide significant associations were QSNPs and therefore removed for subsequent analyses (See Supplementary Figure S3). The analysis identified no genome-wide significant associations for the OCD/OCS-IR latent factor (See Supplementary Figures S4 and S5) and 813 heterogeneous QSNPs, which were removed for subsequent analyses. The most significant SNPs for the ADHD-IR factor and OCD/OCS-IR factors provided by FUMA can be found in Supplementary Tables S2 and S4. Additional quality control statistics (quantile-quantile plots) are available in Supplementary Figures S6 and S7.

### Gene-level associations

Using the FUMA SNP2GENES module, SNPs from the multivariate GWAS outputs of the ADHD-IR and OCD/OCS-IR latent factors were annotated to 16,888 protein coding genes. The built-in MAGMA gene-based analysis identified 57 genes reaching genome-wide significance for the association with the ADHD-IR factor (Figure 2 and Supplementary Table S3), and one gene, *MTNR1B* gene ( $p=3.4364e-07$ ), for the OCD/OCS-IR factor (Figure 3).



**Figure 2. Manhattan plot of gene-based analysis of ADHD-IR latent factor.** Gene-based Manhattan plot based on the input GWAS summary statistics of the multivariate GWAS of the ADHD-IR factor. The input SNPs of the GWAS summary statistics were mapped to a total of 16888 protein coding genes. The x-axis displays the positional location on the different chromosomes, and the y-axis displays the  $-\log$  p-value of the gene-wide associations. The genome wide significance threshold (red dashed line in the plot) was set at  $p=0.05/16888=2.961e-6$  accounting for the number of genes tested. The plot shows the 57 significant top genes.



**Figure 3. Manhattan plot of gene-based analysis of OCD/OCS-IR latent factor.** Gene-based Manhattan plot based on the input GWAS summary statistics of the multivariate GWAS of the OCD/OCS-IR latent factor. The input SNPs of the GWAS summary statistics were mapped to a total of 16884 protein coding genes. The x-axis displays the positional location on the different chromosomes, and the y-axis displays the  $-\log$  p-value of the gene-wide associations. The genome wide significance threshold (red dashed line in the plot) was set at  $p=0.05/16884=2.961e-6$ . accounting for the number of genes tested.

### ***Gene set enrichment and tissue specificity***

Subsequently, MAGMA gene-set analysis allowed to explore factor-associated gene sets. This analytical step yielded significant results for 12 gene sets associated with the ADHD-IR

factor and five gene ontology terms associated with the OCD/OCS-IR factor (Table 2 and 3, respectively), including neuron differentiation, neuron development and neurogenesis.

**Table 2. Results of the MAGMA gene set based analysis of ADHD-IR latent factor.** The table shows the top significant identified gene sets based on Bonferroni corrected p-values accounting for 5917 Gene Ontology (GO) terms and 4761 curated gene sets. N genes= number of genes; Beta=beta value; Beta STD=beta value standard deviation; SE=standard error; P=p-value ; Pbon=p-value after Bonferroni correction.

Gene set	N genes	Beta	Beta STD	SE	P	Pbon
GO_bp:go_neuron_differentiation	1162	0.16823	0.042594	0.029012	3.4126e-09	5.28202228e-05
GO_bp:go_neuron_development	956	0.16921	0.039113	0.031859	5.5211e-08	0.000854500647
GO_bp:go_neurogenesis	1383	0.14199	0.038943	0.02681	5.9978e-08	0.000928219528
GO_bp:go_positive_regulation_of_biosynthetic_process	1692	0.1206	0.036219	0.02396	2.4373e-07	0.00377172175
GO_bp:go_negative_regulation_of_signaling	1159	0.13615	0.034429	0.028454	8.6411e-07	0.01337123814
GO_bp:go_positive_regulation_of_gene_expression	1669	0.11499	0.034324	0.024369	1.1983e-06	0.0185412959
GO_mf:go_dna_binding_transcription_factor_activity	1443	0.13257	0.037068	0.028133	1.2356e-06	0.0191172032
GO_bp:go_negative_regulation_of_biosynthetic_process	1272	0.12736	0.03362	0.027117	1.3335e-06	0.0206305785
GO_bp:go_cellular_response_to_endogenous_stimulus	1183	0.13286	0.033918	0.028819	2.0294e-06	0.031394818
GO_bp:go_regulation_of_nervous_system_development	790	0.16366	0.034567	0.035686	2.2771e-06	0.0352244599
GO_bp:go_signal_release	408	0.22339	0.034309	0.048843	2.4156e-06	0.0373645008
GO_bp:go_positive_regulation_of_rna_biosynthesis	1378	0.12058	0.033017	0.026425	2.5407e-06	0.0392970069

c_process						
-----------	--	--	--	--	--	--

**Table 3. Results of the MAGMA gene set based analysis of OCD/OCS-IR latent factor.**

The table shows the top significant identified gene sets based on Bonferroni corrected p-values accounting for 5917 Gene Ontology (GO) terms and 4761 curated gene sets. N genes= number of genes; Beta=beta value; Beta STD=beta value standard deviation; SE=standard error; P=p-value ; Pbon=p-value after Bonferroni correction.

Gene set	N genes	Beta	Beta STD	SE	P	Pbon
GO_bp:go_positive_regulation_of_rna_biosynthetic_process	1378	0.097151	0.026599	0.019947	5.6251e-07	0.00870652978
GO_mf:go_dna_binding_transcription_factor_activity	1444	0.10013	0.028003	0.021234	1.2167e-06	0.0188308659
GO_bp:go_neuron_differentiation	1162	0.10139	0.025669	0.021905	1.8554e-06	0.0287141704
GO_cc:go_nucleoplasm_part	957	0.10355	0.023944	0.022468	2.0439e-06	0.0316293525
GO_bp:go_positive_regulation_of_gene_expression	1669	0.084632	0.02526	0.018406	2.1496e-06	0.0332629104

Gene-property analyses indicated significant enrichments in the brain and pituitary for genes related to the ADHD-IR factor across 30 general tissue types. Moreover, it indicated significant enrichments in all brain regions, including cerebellum, except the substantia nigra for genes related to the ADHD-IR factor across 53 tissue types. Additionally, significant enrichments were found between early and late mid-prenatal developmental stages of the brain for genes related to the ADHD-IR factor (Supplementary Figure S8). For the OCD/OCS-IR factor, we observed significant enrichments in the brain, pituitary and uterus across 30 general tissue types and seven out of the 13 brain regions across 53 specific tissue types. In addition, significant enrichments were observed from early prenatal to late mid-prenatal developmental stages of the brain for genes related to the OCD/OCS-IR factor (Supplementary Figure S9).

## Discussion

Psychiatric phenotypes and IR-related conditions co-occur and are genetically correlated, yet the molecular genetic underpinnings of this overlap remain poorly understood. This study employed multivariate genomic analyses of population-based traits to demonstrate the

existence of genetic factors that include ADHD symptoms and IR-related measures, and obsessive-compulsive symptoms and cases, and IR-related measures. Follow-up bioinformatic analyses suggest the potential involvement of IR-related genes as well as genes involved in neuron differentiation, neuron development, and neurogenesis. Identifying these psychiatric-IR genetic factors may be a step towards biologically informed subgroups within psychiatry in the future. Our work shows the existence of a latent genetic factor loaded by ADHD total symptom scores and three IR-related traits (BMI, FPG, and HbA1c). These IR-related traits have previously shown positive genetic correlations with ADHD [34] and results are in line with phenotypic observations of elevated HbA1c levels in children with ADHD compared to children without ADHD [63]. Poor glycaemic control within diabetic patients has been linked to increased risk of ADHD [64], suggesting the potential of a distinct biological profile for a subgroup of individuals with ADHD. In addition, our results are in line with a previous study describing individuals diagnosed with T2D being susceptible to presenting ADHD-related symptoms [65]. Previous work also indicates a link between insulin and dopamine signaling in the midbrain making a connection to altered reward behavior [66]. Altered reward sensitivity is known in ADHD [67] and dopamine and ADHD have been linked through different routes, including genetics [68], brain imaging [69], as well as the pharmacodynamics of symptom reducing medications [70].

We also identified a latent genetic factor loading OCD/OCS and HbA1c. An IR-related OCD/OCS factor is in line with studies linking insulin to OCD. Among these, Hou and colleagues found that individuals diagnosed with OCD present increased glucose metabolism in the orbitofrontal cortex compared to healthy controls [71], aligning with rodent models of T2D that presented compulsivity-related behavior, and increased glucose levels in the dorsomedial striatum [72]. Also genetic work has linked insulin genes to both OCD [30] and OCS [31]. For HbA1c no genetic sharing with OCD measures was observed previously [31]. Nonetheless, HbA1c levels have been shown to be positively correlated to OCD symptomatology [73,74]. Prior work did report genetic sharing between OCD and FPI levels and the 2hGlu measure [31], while negative genetic correlations of BMI and obesity have been described with OCD diagnosis [34]. Strom and colleagues defined OCD subgroups based on comorbid diagnoses and genetic relations between psychiatric disorders with somatic and mental measures. Their study showed that polygenic risk score for BMI was more negatively associated with the OCD group without comorbidities compared to OCD subgroups having a comorbid condition, such as ADHD [75]. This observation may highlight the specific negative genetic relationship between OCD and the IR-related trait BMI. The disparate genetic relationships of OCD versus ADHD to different traits, specifically IR-related traits, denotes potential different underlying mechanisms. Again, this is in line with the defined clusters related to IR-related multimorbidity observed, placing ADHD and OCD in different clusters [34].

The results of our multivariate genetic analyses highlighted 57 genes significantly associated with the ADHD-IR factor, including *CPNE4*, encoding copine 4. Copines are a family of calcium-dependent membrane binding proteins enriched in neurons [76] and involved in insulin secretion and glucose uptake regulation [77]. Another top gene was *CADM2*, encoding cell adhesion molecule 2. *CADM2* has been linked to core ADHD features like impulsivity and risk-taking behavior [78]. Conditional genetic analyses showed that variants within *CADM2* influence both psychiatric and metabolic traits, including BMI, and are expressed in adult brain and adipose tissue [79], suggesting common biological mechanisms. Interventions on expression of *CADM2* in animal models resulted in changes in adiposity, systemic glucose levels and insulin sensitivity [80], linking this gene to glycemic regulation. This insulin-psychiatric link is also apparent in other top genes, including *NRXN1*, implicated in insulin vesicle granule docking [81] and neurodevelopmental disorders, including ASD and depression [82,83,84]. Hughes and colleagues investigated an ASD mouse model with reduced *Nrxn1 $\alpha$*  expression, that showed increased glucose metabolism in the dorsal raphe nucleus, and decreased insulin receptor signaling in the prefrontal cortex, a top identified brain region in our gene property analysis for the ADHD-IR factor associated genes [84]. We also find *RPTOR* as a top associated gene to the ADHD-IR genetic factor. This gene encodes the regulatory-associated protein of mTOR, or raptor, implicated in the mTOR pathway and regulating cell growth and survival [85]. The genetic variants within the mTOR pathway has been described as a link between brain volume and ASD in earlier analyses [86]. This regulatory protein is sensitive to insulin levels, and also regulates glucose metabolism and synaptic plasticity via the mTOR cascade [87]. Moreover, upregulation of mTOR-related genes has not only been observed in ASD, but also in ADHD [87].

Next to single genes we also observed top significant associated gene sets with the ADHD-IR factor that included neuron differentiation, neuron development, and neurogenesis in accordance with ADHD being a neurodevelopmental disorder [88]. Based on accumulating evidence for the actions of insulin in the brain [24,89], we could speculate that the role of insulin in neurodevelopment could be important in relation to our identified factor. In tissue expression analyses of the genes associated to the ADHD-IR latent factor, we observed significant enrichments in all tested brain regions except the pituitary and the substantia nigra. The positive association between gene expression in the cerebellum and genetic associations of the ADHD-IR factor link to the finding of a previous study reporting an association between smaller volume of the vermis of the cerebellum and the amount of ADHD symptoms [90]. ADHD symptoms scores on an attention scale also associated to smaller surface areas, including frontal gyrus and total surface area, in a pediatric population cohort [91]. Our findings linking gene expression in the frontal cortex BA9 region and brain cortex are in line with



previous work suggesting aberrated maturation of frontal lobes may result in ADHD symptoms in a subgroup of children with ADHD [92].

Children with ADHD have increased waist circumference and BMI compared to children without ADHD, and these measures are linked to the severity of the condition [93]. Children with ADHD also show unhealthy dietary behavior, consuming less vitamins and simple sugars in contrast to undiagnosed children [93]. Such observations, along with our results, may direct to new avenues to identify subgroups of individuals with attention-deficit/hyperactivity symptoms who may benefit from receiving personalized lifestyle-based interventions.

We identified *MTNR1B* as a genome-wide significant gene associated to the OCD/OCS-IR factor. This gene encodes the melatonin receptor 1B, a high affinity membrane receptor for the melatonin hormone [94]. *MTNR1B* is implicated in glucose homeostasis due to melatonin functioning, as elevated melatonin levels may impair glucose tolerance and modulate fasting glucose levels [95], linking this gene to glycemic regulation. Altered levels of melatonin have been associated to the risk for type 2 diabetes as well as disturbed circadian rhythm [94,96]. Lane and colleagues investigated circadian rhythm based on sleep measures via self-reports and physiological measurements with polysomnography. Here, they reported that circadian disruption may mediate risk for type 2 diabetes via *MTNR1B* [94]. Sleep disturbances are also described in OCD, linking the severity of obsessive-compulsive symptom severity to sleep quality [97]. Finding neuron differentiation in our gene set analysis links neuronal development to the genetic architecture of the OCD/OCS-IR factor, in line with the known neurodevelopmental trajectory of OCD [8].

The OCD/OCS-IR factor related genes were associated with gene expression across a total of 7 brain regions, including the brain cerebellar hemisphere and brain cerebellum. Links between OCD and the brain have been reported before. Zhang and colleagues reported an association between functional connectivity between posterior cerebellum and right striatum, and OCD symptom severity in individuals diagnosed with OCD [98]. We reported positive associations between the mid-prenatal and prenatal developmental stages of the brain and the genetic associations of the OCD- IR-related factor, linking the OCD/OCS-IR genetic factor to fetal brain development. A similar conclusion was reached regarding OCD and fetal origin based on BrainSpan transcriptome profiles in a supervised learning approach study [99], also supporting the link of prenatal developmental trajectory to our genetic factor.

We hypothesized a role of insulin signaling in ASD but did not identify a genetic factor including our ASD-related trait social withdrawal and the IR-related traits. While previous work also did find neither global nor local genetic correlations between IR-related measures and ASD [34,100], stratified analyses did indicate a significant covariance for genes within the insulin signaling pathway between ASD and metabolic syndrome [34]. It must be noted that an ASD diagnosis consists of more than social withdrawal-related symptoms, however in the current

analyses we restricted to social withdrawal because of its adequate sample size as there was no total autism spectrum-like symptom GWAS available with a sufficient sample size. Therefore, we cannot conclude the absence of the existence of a potential ASD-related IR genetic factor, but we can only report not finding one with social withdrawal.

This study has several strengths and limitations. By moving beyond a traditional case-control approach to the study of population-based psychiatric and IR-related traits, we yielded novel insights into the biological basis of symptom dimensions in psychiatry, while gaining more statistical power through the use of large input GWAS datasets in our analyses. Genetically-based factors, as demonstrated by the identified ADHD-IR and OCD/OCS-IR genetic clusters, can delineate biologically informed grouping. Moreover, our study highlights the utility of integrating psychiatric and somatic traits to better understand the complex interplay between these factors. However, our study also has some limitations. The reliance on publicly available population-based GWAS data introduces dependence on current data availability. The limited sample size of some studies may impede the discovery of genetic variants due to insufficient statistical power. Additionally, the use of European cohorts hinders the generalizability of our findings to other ethnicities. Future research should examine if our findings can be validated in clinical settings and explore if the biological clustering can be observed in diverse populations.

In conclusion, this study identified latent genetic factors characterized by shared liabilities underlying ADHD symptoms with IR-related measures and obsessive-compulsive symptoms and OCD cases with IR-related measure. The ADHD-IR factor included ADHD total symptom scores with BMI, FPG, and HbA1c, while the OCD/OCS-IR factor comprised OCS and OCD traits with HbA1c. These factors could potentially aid in pointing towards subgrouping within psychiatric disorders like ADHD and OCD, characterized by specific IR-related profiles. To our knowledge, this is the first study reporting on the multivariate genetic clustering of dimensional psychiatric symptoms with somatic IR-related traits in population-based datasets. Our work highlights the shared genetic architecture of psychiatric and IR-related traits, and provides a starting point for the potential of clustering individuals based on objectively measurable IR-related traits and multimorbidity prevention strategies. These insights may pave the way for more targeted and effective treatments, ultimately enhancing patient outcomes.

## **Ethical statement**

We utilized publicly available summary statistics of genome-wide association studies conducted by external consortia and studies, and therefore no authorization was required from the local Ethics Committee.

### **Data availability**

All data are available upon request from the corresponding author.

### **Conflict of Interest**

All other authors report no financial or potential conflicts of interest.

### **Acknowledgements**

This publication is part of the project 'No labels needed: understanding psychiatric disorders based on genetic traits' (with project number 09150161910091) of the research program Veni, which is partly financed by the Dutch Research Council (NWO) Health Research and Development (ZonMW). This project has received funding from the European Union's Horizon 2020 research and innovation program under grant agreement No. 847879 (PRIME, Prevention and Remediation of Insulin Multimorbidity in Europe). The analyses were carried out on the Dutch national e-infrastructure with the support of SURF Cooperative. Research reported in this publication was supported by the National Institute Of Mental Health of the National Institutes of Health under Award Number R01MH124851. The content is solely the responsibility of the authors and does not necessarily represent the official views of any of the funders.

## References

1. Anholt GE, Cath DC, van Oppen P, et al: Autism and ADHD symptoms in patients with OCD: are they associated with specific OC symptom dimensions or OC symptom severity? *J Autism Dev Disord* 2010; 40:580–589
2. Antshel KM, Zhang-James Y, Faraone SV: The comorbidity of ADHD and autism spectrum disorder. *Expert Rev Neurother* 2013; 13:1117–1128
3. Heritability of autism spectrum disorders: a meta-analysis of twin studies. Tick B, Bolton P, Happé F, Rutter M, Rijdsdijk F.J *Child Psychol Psychiatry*. 2016 May;57(5):585-95. doi: 10.1111/jcpp.12499. Epub 2015 Dec 27. PMID: 26709141
4. Genetics of attention deficit hyperactivity disorder. Faraone SV, Larsson H. *Mol Psychiatry*. 2019 Apr;24(4):562-575. doi: 10.1038/s41380-018-0070-0. Epub 2018 Jun 11. PMID: 29892054
5. Genetics of obsessive-compulsive disorder. Mahjani B, Bey K, Boberg J, Burton C. *Psychol Med*. 2021 Oct;51(13):2247-2259. doi: 10.1017/S0033291721001744. Epub 2021 May 25. PMID: 34030745
6. Demontis, D., Walters, G. B., Athanasiadis, G., Walters, R., Therrien, K., Nielsen, T. T., Farajzadeh, L., Voloudakis, G., Bendl, J., Zeng, B., Zhang, W., Grove, J., Als, T. D., Duan, J., Satterstrom, F. K., Bybjerg-Grauholm, J., Baekved-Hansen, M., Gudmundsson, O. O., Magnusson, S. H., . . . Borglum, A. D. (2023). Genome-wide analyses of ADHD identify 27 risk loci, refine the genetic architecture and implicate several cognitive domains. *Nat Genet*, 55(2), 198-208. <https://doi.org/10.1038/s41588-022-01285-8>
7. Grove, J., Ripke, S., Als, T. D., Mattheisen, M., Walters, R. K., Won, H., Pallesen, J., Agerbo, E., Andreassen, O. A., Anney, R., Awashti, S., Belliveau, R., Bettella, F., Buxbaum, J. D., Bybjerg-Grauholm, J., Baekvad-Hansen, M., Cerrato, F., Chambert,

- K., Christensen, J. H., . . . Borglum, A. D. (2019). Identification of common genetic risk variants for autism spectrum disorder. *Nat Genet*, 51(3), 431-444.  
<https://doi.org/10.1038/s41588-019-0344-8>
8. International Obsessive Compulsive Disorder Foundation Genetics, C., & Studies, O. C. D. C. G. A. (2018). Revealing the complex genetic architecture of obsessive-compulsive disorder using meta-analysis. *Mol Psychiatry*, 23(5), 1181-1188.  
<https://doi.org/10.1038/mp.2017.154>
9. Lecavalier, L., McCracken, C. E., Aman, M. G., McDougle, C. J., McCracken, J. T., Tierney, E., Smith, T., Johnson, C., King, B., Handen, B., Swiezy, N. B., Eugene Arnold, L., Bearss, K., Vitiello, B., & Scahill, L. (2019). An exploration of concomitant psychiatric disorders in children with autism spectrum disorder. *Compr Psychiatry*, 88, 57-64. <https://doi.org/10.1016/j.comppsy.2018.10.012>
10. Wendt, F. R., Pathak, G. A., Tylee, D. S., Goswami, A., & Polimanti, R. (2020). Heterogeneity and Polygenicity in Psychiatric Disorders: A Genome-Wide Perspective. *Chronic Stress (Thousand Oaks)*, 4, 2470547020924844.  
<https://doi.org/10.1177/2470547020924844>
11. Instanes, J.T., et al., Adult ADHD and Comorbid Somatic Disease: A Systematic Literature Review. *J Atten Disord*, 2018. 22(3): p. 203-228.
12. Isomura, K., et al., Metabolic and Cardiovascular Complications in Obsessive-Compulsive Disorder: A Total Population, Sibling Comparison Study With Long-Term Follow-up. *Biol Psychiatry*, 2018. 84(5): p. 324-331.
13. Shedlock, K., et al., Autism Spectrum Disorders and Metabolic Complications of Obesity. *J Pediatr*, 2016. 178: p. 183-187 e1.
14. Krakowiak, P., Walker, C. K., Bremer, A. A., Baker, A. S., Ozonoff, S., Hansen, R. L., & Hertz-Picciotto, I. (2012). Maternal metabolic conditions and risk for autism and other neurodevelopmental disorders. *Pediatrics*, 129(5), e1121-1128.  
<https://doi.org/10.1542/peds.2011-2583>

15. Xiang, A. H., Wang, X., Martinez, M. P., Walthall, J. C., Curry, E. S., Page, K., Buchanan, T. A., Coleman, K. J., & Getahun, D. (2015). Association of maternal diabetes with autism in offspring. *JAMA*, 313(14), 1425-1434. <https://doi.org/10.1001/jama.2015.2707>
16. Chen, K. R., Yu, T., Lien, Y. J., Chou, Y. Y., & Kuo, P. L. (2023). Childhood neurodevelopmental disorders and maternal diabetes: A population-based cohort study. *Developmental medicine and child neurology*, 65(7), 933–941. <https://doi.org/10.1111/dmncn.15488>
17. Leutner, M., Dervic, E., Bellach, L., Klimek, P., Thurner, S., & Kautzky, A. (2023). Obesity as pleiotropic risk state for metabolic and mental health throughout life. *Translational psychiatry*, 13(1), 175. <https://doi.org/10.1038/s41398-023-02447-w>
18. Wimberley, T., Horsdal, H. T., Brikell, I., Laursen, T. M., Astrup, A., Fanelli, G., Bralten, J., Poelmans, G., Gils, V. V., Jansen, W. J., Vos, S. J. B., Bertaina-Anglade, V., Camacho-Barcia, L., Mora-Maltas, B., Fernandez-Aranda, F., Bonet, M. B., Salas-Salvadó, J., Franke, B., & Dalsgaard, S. (2022). Temporally ordered associations between type 2 diabetes and brain disorders - a Danish register-based cohort study. *BMC psychiatry*, 22(1), 573. <https://doi.org/10.1186/s12888-022-04163-z>
19. Skou, S. T., Mair, F. S., Fortin, M., Guthrie, B., Nunes, B. P., Miranda, J. J., Boyd, C. M., Pati, S., Mtenga, S., & Smith, S. M. (2022). Multimorbidity. *Nature reviews. Disease primers*, 8(1), 48. <https://doi.org/10.1038/s41572-022-00376-4>
20. Fanelli, G., & Serretti, A. (2022). Depression, antidepressants, and insulin resistance: which link?. *European neuropsychopharmacology : the journal of the European College of Neuropsychopharmacology*, 60, 4–6. <https://doi.org/10.1016/j.euroneuro.2022.04.011>
21. Possidente, C., Fanelli, G., Serretti, A., & Fabbri, C. (2023). Clinical insights into the cross-link between mood disorders and type 2 diabetes: A review of longitudinal studies and Mendelian randomisation analyses. *Neuroscience and biobehavioral reviews*, 152, 105298. <https://doi.org/10.1016/j.neubiorev.2023.105298>

22. Chen, W., Cai, W., Hoover, B., & Kahn, C. R. (2022). Insulin action in the brain: cell types, circuits, and diseases. *Trends in neurosciences*, 45(5), 384–400.  
<https://doi.org/10.1016/j.tins.2022.03.001>
23. Pomytkin, I., Costa-Nunes, J. P., Kasatkin, V., Veniaminova, E., Demchenko, A., Lyundup, A., Lesch, K. P., Ponomarev, E. D., & Strekalova, T. (2018). Insulin receptor in the brain: Mechanisms of activation and the role in the CNS pathology and treatment. *CNS Neurosci Ther*, 24(9), 763-774. <https://doi.org/10.1111/cns.12866>
24. Agrawal, R., Reno, C. M., Sharma, S., Christensen, C., Huang, Y., & Fisher, S. J. (2021). Insulin action in the brain regulates both central and peripheral functions. *Am J Physiol Endocrinol Metab*, 321(1), E156-E163.  
<https://doi.org/10.1152/ajpendo.00642.2020>
25. Fanelli, G., Mota, N. R., Salas-Salvadó, J., Bulló, M., Fernandez-Aranda, F., Camacho-Barcia, L., Testa, G., Jiménez-Murcia, S., Bertaina-Anglade, V., Franke, B., Poelmans, G., van Gils, V., Jansen, W. J., Vos, S. J. B., Wimberley, T., Dalsgaard, S., Barta, C., Serretti, A., Fabbri, C., & Bralten, J. (2022). The link between cognition and somatic conditions related to insulin resistance in the UK Biobank study cohort: a systematic review. *Neuroscience and biobehavioral reviews*, 143, 104927.  
<https://doi.org/10.1016/j.neubiorev.2022.104927>
26. Gómez-Martínez, C., Babio, N., Júlvez, J., Becerra-Tomás, N., Martínez-González, M. Á., Corella, D., Castañer, O., Romaguera, D., Vioque, J., Alonso-Gómez, Á. M., Wärnberg, J., Martínez, J. A., Serra-Majem, L., Estruch, R., Tinahones, F. J., Lapetra, J., Pintó, X., Tur, J. A., López-Miranda, J., Bueno-Cavanillas, A., ... Salas-Salvadó, J. (2021). Glycemic Dysregulations Are Associated With Worsening Cognitive Function in Older Participants at High Risk of Cardiovascular Disease: Two-Year Follow-up in the PREDIMED-Plus Study. *Frontiers in endocrinology*, 12, 754347.  
<https://doi.org/10.3389/fendo.2021.754347>

27. Grajales, D., Ferreira, V., & Valverde, Á. M. (2019). Second-Generation Antipsychotics and Dysregulation of Glucose Metabolism: Beyond Weight Gain. *Cells*, 8(11), 1336. <https://doi.org/10.3390/cells8111336>
28. Coello, K., Vinberg, M., Knop, F. K., Pedersen, B. K., McIntyre, R. S., Kessing, L. V., & Munkholm, K. (2019). Metabolic profile in patients with newly diagnosed bipolar disorder and their unaffected first-degree relatives. *International journal of bipolar disorders*, 7(1), 8. <https://doi.org/10.1186/s40345-019-0142-3>
29. Almgren P, Lehtovirta M, Isomaa B, Sarelin L, Taskinen MR, Lyssenko V, et al. Heritability and familiarity of type 2 diabetes and related quantitative traits in the Botnia Study. *Diabetologia*. 2011;54:2811–9.
30. van de Vondervoort, I., Poelmans, G., Aschrafi, A., Pauls, D. L., Buitelaar, J. K., Glennon, J. C., & Franke, B. (2016). An integrated molecular landscape implicates the regulation of dendritic spine formation through IR-related signalling in obsessive-compulsive disorder. *Journal of psychiatry & neuroscience : JPN*, 41(4), 280–285. <https://doi.org/10.1503/jpn.140327>
31. Bralten, J., Widomska, J., Witte, W., Yu, D., Mathews, C. A., Scharf, J. M., Buitelaar, J., Crosbie, J., Schachar, R., Arnold, P., Lemire, M., Burton, C. L., Franke, B., & Poelmans, G. (2020). Shared genetic etiology between obsessive-compulsive disorder, obsessive-compulsive symptoms in the population, and insulin signaling. *Transl Psychiatry*, 10(1), 121. <https://doi.org/10.1038/s41398-020-0793-y>
32. Lind L. (2019). Genome-Wide Association Study of the Metabolic Syndrome in UK Biobank. *Metabolic syndrome and related disorders*, 17(10), 505–511. <https://doi.org/10.1089/met.2019.0070>
33. Cross-Disorder Group of the Psychiatric Genomics Consortium. Electronic address, p. m. h. e., & Cross-Disorder Group of the Psychiatric Genomics, C. (2019). Genomic Relationships, Novel Loci, and Pleiotropic Mechanisms across Eight Psychiatric Disorders. *Cell*, 179(7), 1469-1482 e1411. <https://doi.org/10.1016/j.cell.2019.11.020>



34. Fanelli, G., Franke, B., De Witte, W., Ruisch, I. H., Haavik, J., van Gils, V., Jansen, W. J., Vos, S. J. B., Lind, L., Buitelaar, J. K., Banaschewski, T., Dalsgaard, S., Serretti, A., Mota, N. R., Poelmans, G., & Bralten, J. (2022). Insulinopathies of the brain? Genetic overlap between somatic IR-related and neuropsychiatric disorders. *Transl Psychiatry*, 12(1), 59. <https://doi.org/10.1038/s41398-022-01817-0>
35. Wimberley, T., Brikell, I., Astrup, A., Larsen, J. T., Petersen, L. V., Albiñana, C., Vilhjálmsón, B. J., Bulik, C. M., Chang, Z., Fanelli, G., Bralten, J., Mota, N. R., Salas-Salvadó, J., Fernandez-Aranda, F., Bulló, M., Franke, B., Børghlum, A., Mortensen, P. B., Horsdal, H. T., & Dalsgaard, S. (2024). Shared familial risk for type 2 diabetes mellitus and psychiatric disorders: a nationwide multigenerational genetics study. *Psychological medicine*, 1–10. Advance online publication. <https://doi.org/10.1017/S0033291724001053>
36. Brainstorm Consortium, Anttila, V., Bulik-Sullivan, B., Finucane, H. K., Walters, R. K., Bras, J., Duncan, L., Escott-Price, V., Falcone, G. J., Gormley, P., Malik, R., Patsopoulos, N. A., Ripke, S., Wei, Z., Yu, D., Lee, P. H., Turley, P., Grenier-Boley, B., Chouraki, V., Kamatani, Y., ... Murray, R. (2018). Analysis of shared heritability in common disorders of the brain. *Science (New York, N.Y.)*, 360(6395), eaap8757. <https://doi.org/10.1126/science.aap8757>
37. Lee, P. H., Feng, Y. A., & Smoller, J. W. (2021). Pleiotropy and Cross-Disorder Genetics Among Psychiatric Disorders. *Biological psychiatry*, 89(1), 20–31. <https://doi.org/10.1016/j.biopsych.2020.09.026>
38. Grotzinger, A. D., Mallard, T. T., Akingbuwa, W. A., Ip, H. F., Adams, M. J., Lewis, C. M., McIntosh, A. M., Grove, J., Dalsgaard, S., Lesch, K. P., Strom, N., Meier, S. M., Mattheisen, M., Borglum, A. D., Mors, O., Breen, G., iPsych, Tourette, S., Obsessive Compulsive Disorder Working Group of the Psychiatric Genetics, C., . . . Nivard, M. G. (2022). Genetic architecture of 11 major psychiatric disorders at biobehavioral, functional genomic and molecular genetic levels of analysis. *Nat Genet*, 54(5), 548-559. <https://doi.org/10.1038/s41588-022-01057-4>

39. Peterson, R. E., Cai, N., Dahl, A. W., Bigdeli, T. B., Edwards, A. C., Webb, B. T., Bacanu, S. A., Zaitlen, N., Flint, J., & Kendler, K. S. (2018). Molecular Genetic Analysis Subdivided by Adversity Exposure Suggests Etiologic Heterogeneity in Major Depression. *The American journal of psychiatry*, 175(6), 545–554. <https://doi.org/10.1176/appi.ajp.2017.17060621>
40. Lindekilde, N., Scheuer, S. H., Rutters, F., Knudsen, L., Lasgaard, M., Rubin, K. H., Henriksen, J. E., Kivimäki, M., Andersen, G. S., & Pouwer, F. (2022). Prevalence of type 2 diabetes in psychiatric disorders: an umbrella review with meta-analysis of 245 observational studies from 32 systematic reviews. *Diabetologia*, 65(3), 440–456. <https://doi.org/10.1007/s00125-021-05609-x>
41. Fountoulakis, K. N., Karakatsoulis, G. N., Abraham, S., Adorjan, K., Ahmed, H. U., Alarcón, R. D., Arai, K., Auwal, S. S., Berk, M., Bjedov, S., Bobes, J., Bobes-Bascaran, T., Bourgin-Duchesnay, J., Bredicean, C. A., Bukelskis, L., Burkadze, A., Cabrera Abud, I. I., Castilla-Puentes, R., Cetkovich, M., Colon-Rivera, H., ... Smirnova, D. (2024). Somatic multicomorbidity and disability in patients with psychiatric disorders in comparison to the general population: a quasi-epidemiological investigation in 54,826 subjects from 40 countries (COMET-G study). *CNS spectrums*, 29(2), 126–149. <https://doi.org/10.1017/S1092852924000026>
42. Taylor, M. J., Martin, J., Lu, Y., Brikell, I., Lundström, S., Larsson, H., & Lichtenstein, P. (2019). Association of Genetic Risk Factors for Psychiatric Disorders and Traits of These Disorders in a Swedish Population Twin Sample. *JAMA psychiatry*, 76(3), 280–289. <https://doi.org/10.1001/jamapsychiatry.2018.3652>
43. Insel, T., Cuthbert, B., Garvey, M., Heinszen, R., Pine, D. S., Quinn, K., Sanislow, C., & Wang, P. (2010). Research domain criteria (RDoC): toward a new classification framework for research on mental disorders. *The American journal of psychiatry*, 167(7), 748–751. <https://doi.org/10.1176/appi.ajp.2010.09091379>
44. Bralten, J., van Hulzen, K. J., Martens, M. B., Galesloot, T. E., Arias Vasquez, A., Kiemeneij, L. A., Buitelaar, J. K., Muntjewerff, J. W., Franke, B., & Poelmans, G.

- (2018). Autism spectrum disorders and autistic traits share genetics and biology. *Mol Psychiatry*, 23(5), 1205-1212. <https://doi.org/10.1038/mp.2017.98>
45. Bralten, J., Widomska, J., Witte, W., Yu, D., Mathews, C. A., Scharf, J. M., Buitelaar, J., Crosbie, J., Schachar, R., Arnold, P., Lemire, M., Burton, C. L., Franke, B., & Poelmans, G. (2020). Shared genetic etiology between obsessive-compulsive disorder, obsessive-compulsive symptoms in the population, and insulin signaling. *Transl Psychiatry*, 10(1), 121. <https://doi.org/10.1038/s41398-020-0793-y>
46. Burton, C. L., Lemire, M., Xiao, B., Corfield, E. C., Erdman, L., Bralten, J., Poelmans, G., Yu, D., Shaheen, S. M., Goodale, T., Sinopoli, V. M., Consortium, O. C. D. W. G. o. t. P. G., Soreni, N., Hanna, G. L., Fitzgerald, K. D., Rosenberg, D., Nestadt, G., Paterson, A. D., Strug, L. J., . . . Arnold, P. D. (2021). Genome-wide association study of pediatric obsessive-compulsive traits: shared genetic risk between traits and disorder. *Transl Psychiatry*, 11(1), 91. <https://doi.org/10.1038/s41398-020-01121-9>
47. Bralten, J., van Hulzen, K. J., Martens, M. B., Galesloot, T. E., Arias Vasquez, A., Kiemeneij, L. A., Buitelaar, J. K., Muntjewerff, J. W., Franke, B., & Poelmans, G. (2018). Autism spectrum disorders and autistic traits share genetics and biology. *Mol Psychiatry*, 23(5), 1205-1212. <https://doi.org/10.1038/mp.2017.98>
48. Bralten, J., Mota, N. R., Klemann, C., De Witte, W., Laing, E., Collier, D. A., de Kluiver, H., Bauduin, S., Arango, C., Ayuso-Mateos, J. L., Fabbri, C., Kas, M. J., van der Wee, N., Penninx, B., Serretti, A., Franke, B., & Poelmans, G. (2021). Genetic underpinnings of sociability in the general population. *Neuropsychopharmacology*, 46(9), 1627-1634. <https://doi.org/10.1038/s41386-021-01044-z>
49. Middeldorp, C. M., Hammerschlag, A. R., Ouwens, K. G., Groen-Blokhuis, M. M., Pourcain, B. S., Greven, C. U., Pappa, I., Tiesler, C. M. T., Ang, W., Nolte, I. M., Vilor-Tejedor, N., Bacelis, J., Ebejer, J. L., Zhao, H., Davies, G. E., Ehli, E. A., Evans, D. M., Fedko, I. O., Guxens, M., . . . Boomsma, D. I. (2016). A Genome-Wide Association Meta-Analysis of Attention-Deficit/Hyperactivity Disorder Symptoms in Population-

Based Pediatric Cohorts. *J Am Acad Child Adolesc Psychiatry*, 55(10), 896-905 e896.  
<https://doi.org/10.1016/j.jaac.2016.05.025>

50. Grotzinger, A. D., Rhemtulla, M., de Vlaming, R., Ritchie, S. J., Mallard, T. T., Hill, W. D., Ip, H. F., Marioni, R. E., McIntosh, A. M., Deary, I. J., Koellinger, P. D., Harden, K. P., Nivard, M. G., & Tucker-Drob, E. M. (2019). Genomic structural equation modelling provides insights into the multivariate genetic architecture of complex traits. *Nat Hum Behav*, 3(5), 513-525. <https://doi.org/10.1038/s41562-019-0566-x>
51. Grotzinger, A. D., Mallard, T. T., Akingbuwa, W. A., Ip, H. F., Adams, M. J., Lewis, C. M., McIntosh, A. M., Grove, J., Dalsgaard, S., Lesch, K. P., Strom, N., Meier, S. M., Mattheisen, M., Borglum, A. D., Mors, O., Breen, G., iPsych, Tourette, S., Obsessive Compulsive Disorder Working Group of the Psychiatric Genetics, C., . . . Nivard, M. G. (2022). Genetic architecture of 11 major psychiatric disorders at biobehavioral, functional genomic and molecular genetic levels of analysis. *Nat Genet*, 54(5), 548-559. <https://doi.org/10.1038/s41588-022-01057-4>
52. Grotzinger, A. D., Singh, K., Miller-Fleming, T. W., Lam, M., Mallard, T. T., Chen, Y., Liu, Z., Ge, T., & Smoller, J. W. (2023). Transcriptome-Wide Structural Equation Modeling of 13 Major Psychiatric Disorders for Cross-Disorder Risk and Drug Repurposing. *JAMA psychiatry*, 80(8), 811–821.  
<https://doi.org/10.1001/jamapsychiatry.2023.1808>
53. Sollis, E., Mosaku, A., Abid, A., Buniello, A., Cerezo, M., Gil, L., Groza, T., Gunes, O., Hall, P., Hayhurst, J., Ibrahim, A., Ji, Y., John, S., Lewis, E., MacArthur, J. A. L., McMahon, A., Osumi-Sutherland, D., Panoutsopoulou, K., Pendlington, Z., . . . Harris, L. W. (2023). The NHGRI-EBI GWAS Catalog: knowledgebase and deposition resource. *Nucleic Acids Res*, 51(D1), D977-D985.  
<https://doi.org/10.1093/nar/gkac1010>
54. Smit, D. J. A., Cath, D., Zilhao, N. R., Ip, H. F., Denys, D., den Braber, A., de Geus, E. J. C., Verweij, K. J. H., Hottenga, J. J., & Boomsma, D. I. (2020). Genetic meta-analysis of obsessive-compulsive disorder and self-report compulsive symptoms. *Am J Med*

Genet B Neuropsychiatr Genet, 183(4), 208-216.

<https://doi.org/10.1002/ajmg.b.32777>

55. Chen, J., Spracklen, C. N., Marenne, G., Varshney, A., Corbin, L. J., Luan, J., Willems, S. M., Wu, Y., Zhang, X., Horikoshi, M., Boutin, T. S., Mägi, R., Waage, J., Li-Gao, R., Chan, K. H. K., Yao, J., Anasanti, M. D., Chu, A. Y., Claringbould, A., Heikkinen, J., ... Meta-Analysis of Glucose and IR-related Traits Consortium (MAGIC) (2021). The trans-ancestral genomic architecture of glycaemic traits. *Nature genetics*, 53(6), 840–860. <https://doi.org/10.1038/s41588-021-00852-9>
56. Dupuis, J., Langenberg, C., Prokopenko, I., Saxena, R., Soranzo, N., Jackson, A. U., Wheeler, E., Glazer, N. L., Bouatia-Naji, N., Gloyn, A. L., Lindgren, C. M., Mägi, R., Morris, A. P., Randall, J., Johnson, T., Elliott, P., Rybin, D., Thorleifsson, G., Steinthorsdottir, V., Henneman, P., ... Barroso, I. (2010). New genetic loci implicated in fasting glucose homeostasis and their impact on type 2 diabetes risk. *Nature genetics*, 42(2), 105–116. <https://doi.org/10.1038/ng.520>
57. Lagou, V., Mägi, R., Hottenga, J. J., Grallert, H., Perry, J. R. B., Bouatia-Naji, N., Marullo, L., Rybin, D., Jansen, R., Min, J. L., Dimas, A. S., Ulrich, A., Zudina, L., Gådin, J. R., Jiang, L., Faggian, A., Bonnefond, A., Fadista, J., Stathopoulou, M. G., Isaacs, A., ... Meta-Analyses of Glucose and Insulin-related traits Consortium (MAGIC) (2021). Sex-dimorphic genetic effects and novel loci for fasting glucose and insulin variability. *Nature communications*, 12(1), 24. <https://doi.org/10.1038/s41467-020-19366-9>
58. Pulit, S. L., Stoneman, C., Morris, A. P., Wood, A. R., Glastonbury, C. A., Tyrrell, J., Yengo, L., Ferreira, T., Marouli, E., Ji, Y., Yang, J., Jones, S., Beaumont, R., Croteau-Chonka, D. C., Winkler, T. W., GIANT Consortium, Hattersley, A. T., Loos, R. J. F., Hirschhorn, J. N., Visscher, P. M., ... Lindgren, C. M. (2019). Meta-analysis of genome-wide association studies for body fat distribution in 694 649 individuals of European ancestry. *Human molecular genetics*, 28(1), 166–174. <https://doi.org/10.1093/hmg/ddy327>

59. Wheeler, E., Leong, A., Liu, C. T., Hivert, M. F., Strawbridge, R. J., Podmore, C., Li, M., Yao, J., Sim, X., Hong, J., Chu, A. Y., Zhang, W., Wang, X., Chen, P., Maruthur, N. M., Porneala, B. C., Sharp, S. J., Jia, Y., Kabagambe, E. K., Chang, L. C., ... Meigs, J. B. (2017). Impact of common genetic determinants of Hemoglobin A1c on type 2 diabetes risk and diagnosis in ancestrally diverse populations: A transethnic genome-wide meta-analysis. *PLoS medicine*, 14(9), e1002383. <https://doi.org/10.1371/journal.pmed.1002383>
60. Genomes Project, C., Auton, A., Brooks, L. D., Durbin, R. M., Garrison, E. P., Kang, H. M., Korbel, J. O., Marchini, J. L., McCarthy, S., McVean, G. A., & Abecasis, G. R. (2015). A global reference for human genetic variation. *Nature*, 526(7571), 68-74. <https://doi.org/10.1038/nature15393>
61. Mallard, T. T., Linner, R. K., Grotzinger, A. D., Sanchez-Roige, S., Seidlitz, J., Okbay, A., de Vlaming, R., Meddens, S. F. W., Bipolar Disorder Working Group of the Psychiatric Genomics, C., Palmer, A. A., Davis, L. K., Tucker-Drob, E. M., Kendler, K. S., Keller, M. C., Koellinger, P. D., & Harden, K. P. (2022). Multivariate GWAS of psychiatric disorders and their cardinal symptoms reveal two dimensions of cross-cutting genetic liabilities. *Cell Genom*, 2(6). <https://doi.org/10.1016/j.xgen.2022.100140>
62. Watanabe, K., Taskesen, E., van Bochoven, A., & Posthuma, D. (2017). Functional mapping and annotation of genetic associations with FUMA. *Nat Commun*, 8(1), 1826. <https://doi.org/10.1038/s41467-017-01261-5>
63. Lindblad, F., Eickhoff, M., Forslund, A. H., Isaksson, J., & Gustafsson, J. (2015). Fasting blood glucose and HbA1c in children with ADHD. *Psychiatry Res*, 226(2-3), 515-516. <https://doi.org/10.1016/j.psychres.2015.01.028>
64. Liu, S., Kuja-Halkola, R., Larsson, H., Lichtenstein, P., Ludvigsson, J. F., Svensson, A. M., Gudbjörnsdottir, S., Tideman, M., Serlachius, E., & Butwicki, A. (2021). Poor glycaemic control is associated with increased risk of neurodevelopmental disorders

- in childhood-onset type 1 diabetes: a population-based cohort study. *Diabetologia*, 64(4), 767–777. <https://doi.org/10.1007/s00125-020-05372-5>
65. Dehnavi, A. Z., Zhang-James, Y., Draytsel, D., Carguello, B., Faraone, S. V., & Weinstock, R. S. (2023). Association of attention-deficit/hyperactivity symptoms with type 2 diabetes and cardiovascular comorbidities in adults receiving outpatient diabetes care. *J Clin Transl Endocrinol*, 32, 100318. <https://doi.org/10.1016/j.jcte.2023.100318>
66. Gruber, J., Hanssen, R., Qubad, M., Bouzouina, A., Schack, V., Sochor, H., Schiweck, C., Aichholzer, M., Matura, S., Slattery, D. A., Zopf, Y., Borgland, S. L., Reif, A., & Thanarajah, S. E. (2023). Impact of insulin and insulin resistance on brain dopamine signalling and reward processing - An underexplored mechanism in the pathophysiology of depression?. *Neuroscience and biobehavioral reviews*, 149, 105179. <https://doi.org/10.1016/j.neubiorev.2023.105179>
67. Luman, M., Tripp, G., & Scheres, A. (2010). Identifying the neurobiology of altered reinforcement sensitivity in ADHD: a review and research agenda. *Neuroscience and biobehavioral reviews*, 34(5), 744–754. <https://doi.org/10.1016/j.neubiorev.2009.11.021>
68. Bralten, J., Franke, B., Waldman, I., Rommelse, N., Hartman, C., Asherson, P., Banaschewski, T., Ebstein, R. P., Gill, M., Miranda, A., Oades, R. D., Roeyers, H., Rothenberger, A., Sergeant, J. A., Oosterlaan, J., Sonuga-Barke, E., Steinhausen, H. C., Faraone, S. V., Buitelaar, J. K., & Arias-Vásquez, A. (2013). Candidate genetic pathways for attention-deficit/hyperactivity disorder (ADHD) show association to hyperactive/impulsive symptoms in children with ADHD. *Journal of the American Academy of Child and Adolescent Psychiatry*, 52(11), 1204–1212.e1. <https://doi.org/10.1016/j.jaac.2013.08.020>
69. Grimm, O., Thomä, L., Kranz, T. M., & Reif, A. (2022). Is genetic risk of ADHD mediated via dopaminergic mechanism? A study of functional connectivity in ADHD

- and pharmacologically challenged healthy volunteers with a genetic risk profile.  
Translational psychiatry, 12(1), 264. <https://doi.org/10.1038/s41398-022-02003-y>
70. Faraone S. V. (2018). The pharmacology of amphetamine and methylphenidate: Relevance to the neurobiology of attention-deficit/hyperactivity disorder and other psychiatric comorbidities. *Neuroscience and biobehavioral reviews*, 87, 255–270. <https://doi.org/10.1016/j.neubiorev.2018.02.001>
71. Hou, X., Wang, H., Cheng, M., & Yue, J. (2022). A study of brain glucose metabolism in obsessive-compulsive disorder patients. *Ann Palliat Med*, 11(11), 3503-3512. <https://doi.org/10.21037/apm-22-1161>
72. van de Vondervoort, I., Amiri, H., Bruchhage, M. M. K., Oomen, C. A., Rustogi, N., Cooper, J. D., van Asten, J. J. A., Heerschap, A., Bahn, S., Williams, S. C. R., Buitelaar, J. K., Poelmans, G., & Glennon, J. C. (2019). Converging evidence points towards a role of insulin signaling in regulating compulsive behavior. *Transl Psychiatry*, 9(1), 225. <https://doi.org/10.1038/s41398-019-0559-6>
73. Kontoangelos, K., Raptis, A. E., Papageorgiou, C. C., Papadimitriou, G. N., Rabavilas, A. D., Dimitriadis, G., & Raptis, S. A. (2013). The association of the metabolic profile in diabetes mellitus type 2 patients with obsessive-compulsive symptomatology and depressive symptomatology: new insights. *Int J Psychiatry Clin Pract*, 17(1), 48-55. <https://doi.org/10.3109/13651501.2012.697563>
74. Shams Alizadeh N., Maroufi A., Rostami S., Ghaderi E. (2018). The Relationship Between Obsessive-Compulsive Symptoms and Glycemic Control in Patients with Diabetes. *Iran J Psychiatry Behav Sci.*;12(3):e11611. <https://doi.org/10.5812/ijpbs.11611>.
75. Strom, N. I., Grove, J., Meier, S. M., Baekvad-Hansen, M., Becker Nissen, J., Damm Als, T., Halvorsen, M., Nordentoft, M., Mortensen, P. B., Hougaard, D. M., Werge, T., Mors, O., Borglum, A. D., Crowley, J. J., Bybjerg-Grauholm, J., & Mattheisen, M. (2021). Polygenic Heterogeneity Across Obsessive-Compulsive Disorder Subgroups



- Defined by a Comorbid Diagnosis. *Front Genet*, 12, 711624.  
<https://doi.org/10.3389/fgene.2021.711624>
76. Goel, M., Aponte, A. M., Wistow, G., & Badea, T. C. (2021). Molecular studies into cell biological role of Copine-4 in Retinal Ganglion Cells. *PLoS One*, 16(11), e0255860.  
<https://doi.org/10.1371/journal.pone.0255860>
77. El-Huneidi, W., Anjum, S., Mohammed, A. K., Unnikannan, H., Saeed, R., Bajbouj, K., Abu-Gharbieh, E., & Taneera, J. (2021). Copine 3 "CPNE3" is a novel regulator for insulin secretion and glucose uptake in pancreatic beta-cells. *Sci Rep*, 11(1), 20692.  
<https://doi.org/10.1038/s41598-021-00255-0>
78. Sanchez-Roige, S., Jennings, M. V., Thorpe, H. H. A., Mallari, J. E., van der Werf, L. C., Bianchi, S. B., Huang, Y., Lee, C., Mallard, T. T., Barnes, S. A., Wu, J. Y., Barkley-Levenson, A. M., Boussaty, E. C., Snethlage, C. E., Schafer, D., Babic, Z., Winters, B. D., Watters, K. E., Biederer, T., . . . Palmer, A. A. (2023). *CADM2* is implicated in impulsive personality and numerous other traits by genome- and phenome-wide association studies in humans and mice. *Transl Psychiatry*, 13(1), 167.  
<https://doi.org/10.1038/s41398-023-02453-y>
79. Morris, J., Bailey, M. E. S., Baldassarre, D., Cullen, B., de Faire, U., Ferguson, A., Gigante, B., Giral, P., Goel, A., Graham, N., Hamsten, A., Humphries, S. E., Johnston, K. J. A., Lyall, D. M., Lyall, L. M., Sennblad, B., Silveira, A., Smit, A. J., Tremoli, E., . . . Strawbridge, R. J. (2019). Genetic variation in *CADM2* as a link between psychological traits and obesity. *Sci Rep*, 9(1), 7339. <https://doi.org/10.1038/s41598-019-43861-9>
80. Yan, X., Wang, Z., Schmidt, V., Gauert, A., Willnow, T. E., Heinig, M., & Poy, M. N. (2018). *Cadm2* regulates body weight and energy homeostasis in mice. *Mol Metab*, 8, 180-188. <https://doi.org/10.1016/j.molmet.2017.11.010>
81. Mosedale, M., Egodage, S., Calma, R. C., Chi, N. W., & Chessler, S. D. (2012). Neurexin-1alpha contributes to insulin-containing secretory granule docking. *J Biol Chem*, 287(9), 6350-6361. <https://doi.org/10.1074/jbc.M111.299081>

82. Hughes, R. B., Whittingham-Dowd, J., Clapcote, S. J., Broughton, S. J., & Dawson, N. (2022). Altered medial prefrontal cortex and dorsal raphe activity predict genotype and correlate with abnormal learning behavior in a mouse model of autism-associated 2p16.3 deletion. *Autism Res*, 15(4), 614-627. <https://doi.org/10.1002/aur.2685>
83. Skiba, A., Talarowska, M., Szemraj, J., & Galecki, P. (2021). Is NRXN1 Gene Expression an Important Marker of Treatment of Depressive Disorders? A Pilot Study. *J Pers Med*, 11(7). <https://doi.org/10.3390/jpm11070637>
84. Südhof, T. C. (2017). Synaptic Neurexin Complexes: A Molecular Code for the Logic of Neural Circuits. *Cell*, 171(4), 745-769. <https://doi.org/10.1016/j.cell.2017.10.024>
85. Debniak, T., Soczawa, E., Boer, M., Rozewicka-Czabanska, M., Wisniewska, J., Serrano-Fernandez, P., Mirecka, A., Paszkowska-Szczur, K., Lubinski, J., Krysztoforska, L., Adamski, Z., & Maleszka, R. (2014). Common variants of ZNF750, RPTOR and TRAF3IP2 genes and psoriasis risk. *Arch Dermatol Res*, 306(3), 231-238. <https://doi.org/10.1007/s00403-013-1407-9>
86. Arenella, M., Mota, N. R., Teunissen, M. W. A., Brunner, H. G., & Bralten, J. (2023). Autism spectrum disorder and brain volume link through a set of mTOR-related genes. *J Child Psychol Psychiatry*, 64(7), 1007-1014. <https://doi.org/10.1111/jcpp.13783>
87. Grunblatt, E., Homolák, J., Babic Perhoc, A., Davor, V., Knezovic, A., Osmanovic Barilar, J., Riederer, P., Walitza, S., Tackenberg, C., & Salkovic-Petrisic, M. (2023). From attention-deficit hyperactivity disorder to sporadic Alzheimer's disease- Wnt/mTOR pathways hypothesis. *Front Neurosci*, 17, 1104985. <https://doi.org/10.3389/fnins.2023.1104985>
88. Vaidya, C. J. (2012). Neurodevelopmental abnormalities in ADHD. *Curr Top Behav Neurosci*, 9, 49-66. [https://doi.org/10.1007/7854\\_2011\\_138](https://doi.org/10.1007/7854_2011_138)
89. Chiu, S. L., & Cline, H. T. (2010). Insulin receptor signaling in the development of neuronal structure and function. *Neural Dev*, 5, 7. <https://doi.org/10.1186/1749-8104-5-7>

90. Ivanov, I., Murrough, J. W., Bansal, R., Hao, X., & Peterson, B. S. (2014). Cerebellar morphology and the effects of stimulant medications in youths with attention deficit-hyperactivity disorder. *Neuropsychopharmacology*, 39(3), 718-726. <https://doi.org/10.1038/npp.2013.257>
91. Hoogman, M., Muetzel, R., Guimaraes, J. P., Shumskaya, E., Mennes, M., Zwiers, M. P., Jahanshad, N., Sudre, G., Wolfers, T., Earl, E. A., Soliva Vila, J. C., Vives-Gilabert, Y., Khadka, S., Novotny, S. E., Hartman, C. A., Heslenfeld, D. J., Schweren, L. J. S., Ambrosino, S., Oranje, B., de Zeeuw, P., ... Franke, B. (2019). Brain Imaging of the Cortex in ADHD: A Coordinated Analysis of Large-Scale Clinical and Population-Based Samples. *The American journal of psychiatry*, 176(7), 531–542. <https://doi.org/10.1176/appi.ajp.2019.18091033>
92. Leisman, G., & Melillo, R. (2022). Front and center: Maturational dysregulation of frontal lobe functional neuroanatomic connections in attention deficit hyperactivity disorder. *Front Neuroanat*, 16, 936025. <https://doi.org/10.3389/fnana.2022.936025>
93. Salvat, H., Mohammadi, M. N., Molavi, P., Mostafavi, S. A., Rostami, R., & Salehinejad, M. A. (2022). Nutrient intake, dietary patterns, and anthropometric variables of children with ADHD in comparison to healthy controls: a case-control study. *BMC pediatrics*, 22(1), 70. <https://doi.org/10.1186/s12887-022-03123-6>
94. Lane, J. M., Chang, A. M., Bjornes, A. C., Aeschbach, D., Anderson, C., Cade, B. E., Cain, S. W., Czeisler, C. A., Gharib, S. A., Gooley, J. J., Gottlieb, D. J., Grant, S. F., Klerman, E. B., Lauderdale, D. S., Lockley, S. W., Munch, M., Patel, S., Punjabi, N. M., Rajaratnam, S. M., . . . Saxena, R. (2016). Impact of Common Diabetes Risk Variant in MTNR1B on Sleep, Circadian, and Melatonin Physiology. *Diabetes*, 65(6), 1741-1751. <https://doi.org/10.2337/db15-0999>
95. Hu, C., Zhang, R., Wang, C., Yu, W., Lu, J., Ma, X., Wang, J., Jiang, F., Tang, S., Bao, Y., Xiang, K., & Jia, W. (2010). Effects of GCK, GCKR, G6PC2 and MTNR1B variants on glucose metabolism and insulin secretion. *PLoS One*, 5(7), e11761. <https://doi.org/10.1371/journal.pone.0011761>

96. Wu, J., & Tan, X. (2022). The role of MTNR1B polymorphism on circadian rhythm-related cancer: A UK Biobank cohort study. *Int J Cancer*, 151(6), 888-896. <https://doi.org/10.1002/ijc.34047>
97. Segalàs, C., Labad, J., Salvat-Pujol, N., Real, E., Alonso, P., Bertolín, S., Jiménez-Murcia, S., Soriano-Mas, C., Monasterio, C., Menchón, J. M., & Soria, V. (2021). Sleep disturbances in obsessive-compulsive disorder: influence of depression symptoms and trait anxiety. *BMC psychiatry*, 21(1), 42. <https://doi.org/10.1186/s12888-021-03038-z>
98. Zhang, H., Wang, B., Li, K., Wang, X., Li, X., Zhu, J., Zhao, Q., Yang, Y., Lv, L., Zhang, M., & Zhang, H. (2019). Altered Functional Connectivity Between the Cerebellum and the Cortico-Striato-Thalamo-Cortical Circuit in Obsessive-Compulsive Disorder. *Frontiers in psychiatry*, 10, 522. <https://doi.org/10.3389/fpsy.2019.00522>
99. Jia, P., Manuel, A. M., Fernandes, B. S., Dai, Y., & Zhao, Z. (2021). Distinct effect of prenatal and postnatal brain expression across 20 brain disorders and anthropometric social traits: a systematic study of spatiotemporal modularity. *Brief Bioinform*, 22(6). <https://doi.org/10.1093/bib/bbab214>
100. Fanelli, G. et al. Local patterns of genetic sharing challenge the boundaries between neuropsychiatric and insulin resistance-related conditions. Preprint at <https://doi.org/10.1101/2024.03.07.24303921> (2024).